

WEATHER

	High	Low
Sunday	68	35
Monday	73	39
Tuesday	65	36
Wednesday	75	42

Year's total moisture: 1.55

The Hereford Brand

16 Pages

Fifty-Six Years of Service
SINCE 1901

Published Every Thursday

Our Slogan: "More People—More Farms"

Hereford, Texas, Thursday, March 14, 1957

Price 5c Per Copy

56TH YEAR — NO. 11



SIGNS OF SPRING — When a flowering peach tree burst into bloom this week in Hereford, Ella Marie Williams, 17, stopped to admire the blossoms. The tree is at Doc Kirby's place, 107 Ave. H. Ella Marie, a Here-

ford high school junior, is the daughter of Mr. and Mrs. S. S. Williams, 139 Ave. B. And spring, not due officially until March 20, shows every sign of having arrived. (Staff Photo by Roy Clark)

HIGH SCHOOL EXPANSION RECOMMENDED BY GROUP

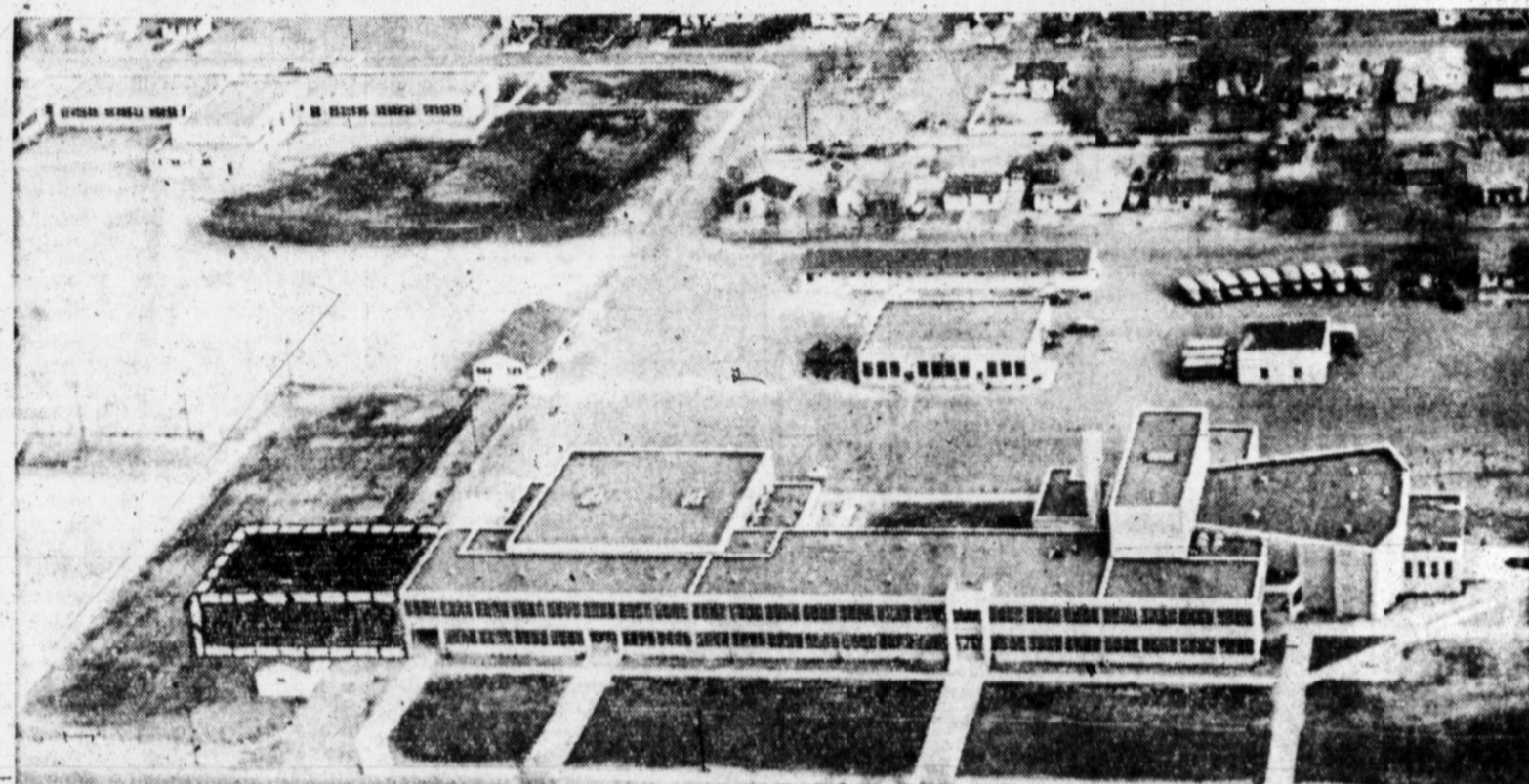
School Board Is Planning Special Session Tuesday

The school board will meet in special session on Tuesday night to chart a program for expansion of high school classroom space and other school facilities. The meeting was called by Robert Wagoner, board trustee, after the hearing of a partial report of recommendations prepared by a citizens' advisory committee on school building needs.

The report calls for immediate planning for addition of 12 classrooms to the existing building, and for action by the board of trustees to insure Hereford's meeting physical educational requirements laid down by the state board of education. Also recommended is the building of a cafeteria to serve high school and junior high school students.

Steady increases in the sizes of classes in the upper grades, based only on current enrollment figures in local schools, will fill the building to capacity by 1960, the report noted. Construction then of a second junior high school building should result in the school building needs being met until 1967, when an additional wing may be required at the high school.

Elementary school facilities were seen as adequate for the next several years, if the population increase rate remains at the present level, according to figures compiled by the committee.



PROPOSED SCHOOL ADDITION—Hereford's nearly new high school building, now in its second year of use, already needs 12 additional classrooms according to a report released this week by a citizens' advisory committee. The proposed addition, indicated by dotted lines and shaded area, would extend the building to the north to within about 20 yards of the ath-

letic field. An alternative would be to extend the wing from the same position toward the east. The recommendation for expansion of classrooms, and possibly the building of a field house or gymnasium and a cafeteria will be discussed in a special meeting of the board of trustees on Tuesday. (Staff Photo)

South Hereford Residents Are Asked To Discuss Annexation

South Hereford area residents have been invited to attend the city commission meeting at 7:30 p.m. Monday in City Hall to discuss possible annexation of a part of their area by the City of Hereford. The same meeting will include the public hearing on the proposed \$401,000 city budget.

The initial cost to the city of annexing a part of South Hereford is estimated by city officials at \$60,000 to \$80,000. The estimate is based on anticipated costs of installing water lines, sewer lines and a sewage lift station to serve dwellings.

Not included in the budget, the cost of utilities would be provided from bonds approved by Hereford voters early last year that have not yet been issued.

THE MOVE to annex South Hereford stems not from a desire to expand the corporate limits of Hereford, but is prompted by requests from residents of the unincorporated area located just south of Tierra Blanca Creek, according to Mayor Henry Sears. The requests for annexation are reported to have been prompted by homeowners experiencing increasing difficulties in maintaining private wells and septic tanks to provide vital home services.

A petition for annexation bearing the signatures of a majority of the qualified voters living within the area will be needed to start the process of annexation, said City Attorney Earnest Langley. The process of drawing up the petition and obtaining the needed signatures will be explained by Langley during the Monday evening session.

No election is necessary for annexation. If properly petitioned, the city can annex a part or all (Continued On Page 2)

Around Town

A near-accident Wednesday morning brings to mind a state law that motorists approaching or overtaking a stopped school bus must stop. A youngster boarding a local school bus was misled by inches by a passing car.

Plans were complete today for the third annual Lions Club pancake supper, scheduled for Friday evening — 5:30 to 8:30 — at Hotel Jim Hill, according to Neil Cooper, chairman. Clee Meharg, ticket sales chairman, said that the "turnout will be about like 1956, possibly better." He also said that tickets will be on sale at the door. Last year, the Lions Club fed around 1,100 people at the supper.

Alvin Shirley, formerly of Hereford, now of Mountain View, Calif., reported by letter to friends that he's doing fine now after having his hip dislocated when a horse fell on him. Shirley, while in Hereford, entered the local rodeos and was known as an amateur horseman.

J. F. Loerwald is reported to be in critical condition in the Veterans' Hospital in Amarillo. A longtime resident of Hereford, he is one of the few remaining survivors of the Spanish-American War.

County Commissioner J. T. Guinn, sporting a new set of store-bought choppers — his first set, incidentally — was trapped into buying lunch Monday for other members of the county board. Guinn sipped soup while adding up the tab for the other commissioners' meat and potatoes.

Five irrigated farms will be offered for sale at 1:30 p.m. Friday at auction in one of the largest open bid sales ever held in Hereford. Other offerings in the event scheduled by Hugh Bookout Real Estate and Nelson Auction Service include three residences, six lots with two business buildings, a trailer park and five other lots adjoining the trailer park. The farms include three owned by Alton Fraser, and others owned by Wayne Mustion and Mrs. Mary

(Continued On Page 2)

MATCHES HERE MONDAY

Boxers Prep for Tourney

The tempo of workouts by the Hereford boxing team has increased sharply this week as time draws near for the first bouts here in many years.

Court Notes New Jail Is Quiet Issue

County commissioners sat through their quietest session in months Monday. They discussed and paid bills, approved reports of various offices and left in mid-afternoon to "look over" the new Randall County jail at Canyon.

The board members reported they have heard little if any opposition — but lots of support — for their recent decision to start plans for a new \$150,000 jail. They have outlined a proposal to finance the new structure through the issuance of warrants rather than through a bond election.

James C. Perrin Rites at Adrian

Funeral services for James C. Perrin, a farmer in the Bippus community, were held Tuesday morning in the First Methodist Church in Adrian.

Mr. Perrin died at 4 a.m. Monday in Deaf Smith County Hospital. He had entered the hospital Sunday afternoon. Death was attributed to a heart condition.

The Rev. Johnny Williams, pastor, and the Rev. Ralph Odum of Channing officiated at the services. Burial was in Haskell Wednesday. Arrangements were by Gilliland Funeral Home.

Mr. Perrin was born in Decatur and came to Deaf Smith County from Haskell in 1936. He lived 45 miles northwest of Hereford.

Surviving are three brothers, Carroll of Hereford and David and William, both of Haskell; five sisters, Mrs. Eureka Gentry and Mrs. Mamie Chitwood, both of Dallas, Mrs. Ollie Freeman and Mrs. Irene Ballard, both of Haskell, and Mrs. Pearl Barton of Wichita Falls.

Hereford boxers will meet fighters from Tulin and Amarillo Monday in the Bull Barn. Fights will begin at 8 p.m. At least 15 bouts are scheduled, according to Melvin Young, coach.

The bouts are sponsored by the Hereford Athletic Club. Tickets to the fights are now on sale. Prices are 90 cents for ringside seats, 75 cents for general admission and 50 cents for students.

TICKETS may be bought from members of the Rotary, Kiwanis and Optimist clubs and the American Legion and Veterans of Foreign Wars. General admission tickets are on sale at The Ink Spot, 315-N Main.

The boxing team is working out in a barracks building in Veterans Park. The building was donated by the two veterans' groups. A boxing ring and punching bag are being installed in the barracks and it will be used for other Athletic Club activities (Continued On Page 2)

CONTRACTS TO ALL TEACHERS

Head Coach L. B. (Scat) Russell's request to stay in the school system as a teacher has been honored by the school board which accepted his resignation in a recent unpublished special meeting on March 7. All other members of the coaching staff will be offered contracts, it was revealed during the reading of minutes in the regular board meeting Tuesday night.

The trustees have slated action on consideration of applications for the position of head coach for their regular meeting in April.

In Tuesday's meeting, the board members approved the offering of new contracts to all teachers and special instructors in the system. Parkview School, where colored elementary students are enrolled, was included in the motion to offer contracts to all teachers, Board President Robert Wagoner noted that this will be the first year that colored teachers have been offered regular teaching contracts.

COST OF THE NEW CLASSROOMS

has been estimated at \$200,000 by school architect B. R. Cantrell of Pampa.

Fred Cunningham, superintendent of schools, estimates that the ultimate cost of the expansion program may be as high as \$500,000. He said that the half-million dollar estimate is "not, however, a conservative one. Having previously underestimated the costs of constructing buildings, we might as well be realistic in considering this program."

In a second part of the citizens' report, the adoption of Senate Bill 116 was recommended as needed

More Details

The complete text of the citizens advisory committee's recommendations to the school board will appear in The Sunday Brand. The recommendations spell out the reasons for each recommendation and cite the advantages the district voters would realize in adopting Senate Bill 116.

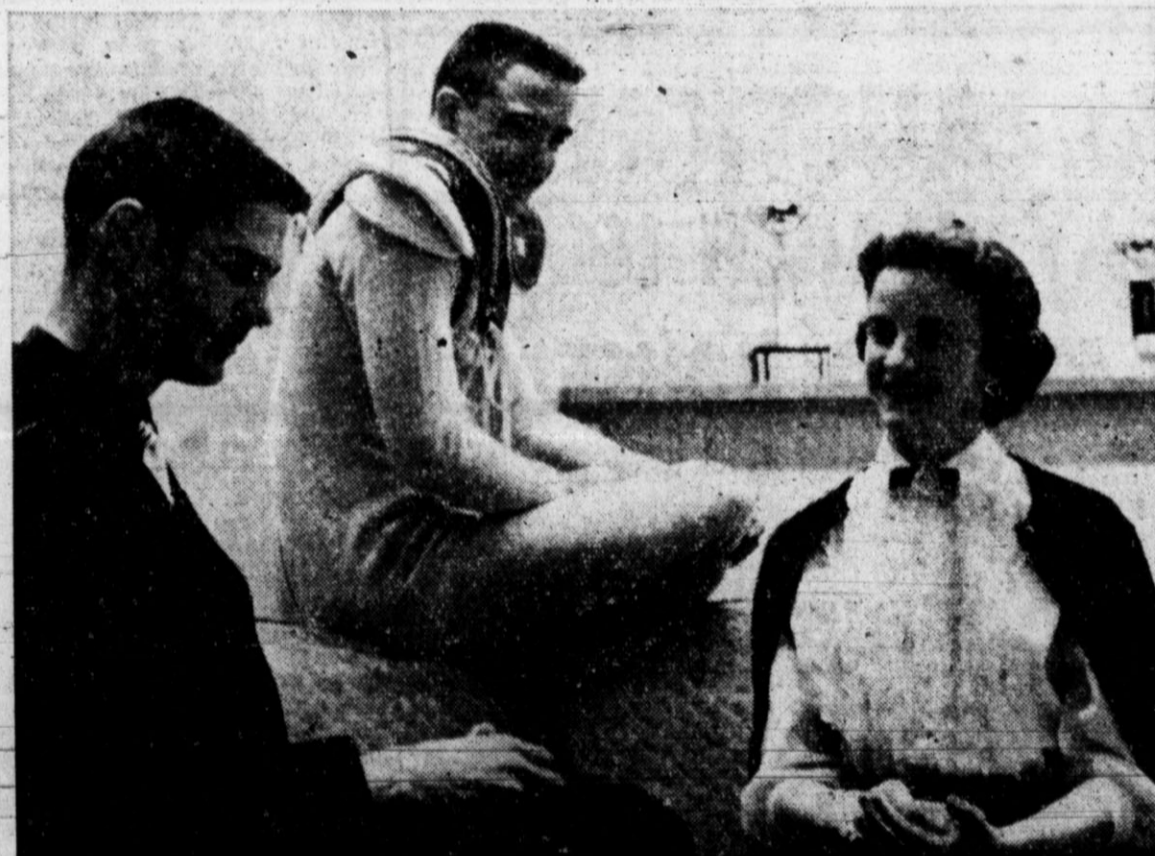
to improve the schools financial condition and the conditions under which it sells bonds.

IN VIEWING the district's financial condition, the citizens recommended that any new indebtedness created this year under existing law not exceed \$250,000, and that any new indebtedness created between now and 1960 under existing law not exceed \$500,000. But a first priority was given to adopting the method of financing made possible by Senate Bill 116, which would remove the \$250,000 limit on new bonds and still maintain a sound financial condition for the district.

Emphasis in the report of the 19-member citizens' group was given to the need for long-range planning by the board of trustees. The adoption of a class division system that would place only three classes in high school and include three rather than two classes in junior high was recommended as desirable "as quickly as it is financially feasible."

The year 1961 was set as a target date for the adoption of the recommended 6-3-3 arrangement of classes.

THE CITIZENS committee, meeting in its third general session on Monday night, adopted by unanimous vote recommendations prepared by sub-committees on accreditation, building needs and financial conditions. Roy Clark, committee secretary, read the building needs and financial conditions (Continued On Page 2)



STAR IN PLAY—Shy but likeable Willoughby Adams is portrayed by George Davis, left, in "The Brain Storm" tonight and Friday at the high school auditorium. Inner Willy, which puts Ed Schroeter in an unlikely uniform, represents Adam's inner self and with Sally Bishop—Mary Lou McCullough—helps a reluctant youth make a difficult decision in the three-act comedy. (Staff Photo)

and is convinced that he's just the man his team needs for quarterback.

THE BRAIN STORM

Opening Night for Senior Play

The Hereford senior class production of "The Brain Storm" will be presented tonight and Friday in Hereford High School auditorium.

The play, written by Betty Knapp, is light as a thistle-down. It features eight boys and 10 girls, most of whom get their chance to pull their share of the witticisms.

Willoughby Adams, portrayed by George Davis, is the main

character of the comedy. He is 17, shy and meek, but likeable. Inner Willy, played by Ed Schroeter, is Willoughby's conscience and constantly hounds him. Inner Willy is visible to and can be heard only by Willoughby, which makes for amusing situations.

Coach Lloyd, the football coach with a temper, catches Willoughby during one of his impulsive urges

and is convinced that he's just the man his team needs for quarterback.

WILLOUGHBY ISN'T too hot on the idea, however, and when the whole college, and especially pert Sally Bishop, rallies behind the coach, the situation which ensues in a corker.

Willoughby's three aunts, Lou (Continued On Page 2)

Rider's Polo Team Facing Defending Champs at Spur

The Hereford Riders Club's palmetto polo team will be matched with the defending champion team in the opening event of a world's championship tournament Friday at Spur. Eleven members of the local club will participate in the double elimination tournament scheduled to run through Sunday.

Although approved by the American Association of Sheriff's Posse and Riders Club, the tournament is one of two scheduled for this month in which teams will vie for the world's championship honors. The second tournament will be held in Florida later in March, and the Eldorado, Tex., club will represent the Lone Star State there.

The host at Spur will be the Dickens County Sheriff's Posse, winner of the Florida matches last year. The Spur riders decided they should have an opportunity to defend their title on their home grounds, according to Harold Beauchamp who is president of the Hereford Riders.

The Hereford Spur polo match is slated to start at 2:30 p.m. tomorrow. Among other cities entering teams in the tournament are Albuquerque, N. M., San Angelo, Sterling City and Lubbock.

Hereford team members who will compete at Spur include T. D. Devonport, Floyd Walton Jr., Mutt Wheeler, Cliff Johnson, Ed Johnson, T. W. Roberson, Jim White, Walter Johnson, Harold Esley, Faust Collier and Beauchamp.

CASH IS STOLEN — Glenn Kendrick, 811 S. 25 Mile Ave., reported to City Police that \$33 in cash was taken from his house between 1 and 1:30 p.m. Monday. Kendrick said the cash was taken from a purse on a dresser.

YOU CAN BE A WINNER



This beautiful 1957 Plymouth will be given away Saturday, March 16. Visit your Furr Food Store often and register . . .

IN
FURR'S SENSATIONAL GIVEAWAY

HOW TO WIN

It's easy . . . just register as often as you like at any of your friendly Furr Stores. It could be your lucky day.

REGISTER TODAY

LOWEST EVERY DAY PRICES

TOMATO JUICE
25¢
Hunt's 46 oz. can

EGGS Doz. **27¢**
Fresh Country

FLOUR
\$1.59
Elna 25 lb. bag

DRUG NEEDS

- NOTE BOOK FILLER** 39¢ SIZE 5 FOR \$1.00
- KLEENEX** 200 Count Box 9 FOR \$1.00
- MILK OF MAGNESIA** Lg. Bot. 73c Size 2 FOR \$1.00
- CLEANSING CREAM** AYERS 2.50 VALUE \$1.25
- SPRAZEE** For Firm Lasting Set Nestles \$1.25 value 89¢
- CREME RINSE** Richard Hudnut \$1.75 value \$1.10
- ASPIRIN** St. Joseph 200 count 79c size 69¢

COFFEE
79¢
Elna Your Favorite Grind 1 lb

USDA Graded Beef at Furr's
USDA GRADING ASSURES YOU OF CONSISTENT FINE QUALITY - LOOK FOR THE USDA GRADE STAMP.

- FRESH HENS** Extra Nice Medium weight lb. 29¢
- SAUSAGE** Pure Pork Country Style Sack 2 LB. 59¢
- PORK ROAST** Fresh Lean Shoulder Cuts lb. 39¢
- PORK STEAK** Fresh Lean Shoulder Cuts lb. 45¢
- FISH STICKS** Food Club 8 oz. pkg. 37¢
- SHRIMP** Sea-Pak 10 oz. pkg. 57¢
- CHEESE SPREAD** Elna 2 Lb. Loaf 69¢

- POWDERED MILK** Food Club 3 qt size 22¢
- COOKIES** Curtiss, Baby Ruth or Butterfinger 16 oz. bag 39¢
- SWEET PICKLES** Banner full quart 39¢
- SPINACH** Elna No. 303 can 12 1/2¢
- APPLE SAUCE** Food Club No. 303 can 19¢

LOWEST EVERY DAY PRICES

- SPAGHETTI** Bionnate No. 300 can 10¢
- COFFEE** White Swan Your Favorite Grind 1 lb. 89¢
- CATSUP** Elna 12 oz. bottle 2 for 31¢
- TOILET SOAP** Woodbury Beauty and deodorant reg. bar 2 for 29¢
- VIENNA SAUSAGE** Armour can 2 for 35¢
- SOUP** Lipton's Chicken-Noodle, Tomato Pkg. 3 for 39¢
- DOG FOOD** Red Heart tall can. 2 for 29¢
- TUNA FISH** Star Kist Grated can 28¢
- OLEO** All Sweet, Swift lb. 33¢

TISSUE
3 Rolls for 25¢

FURR'S FINE PRODUCE

- CARROTS** Calif. Green Top 2 lg. bu. 25¢
- CELERY** Crisp Tender Calif. Green Pascal lb. 15¢
- Potatoes** Colorado No. 1 Red 10 lb. mesh bag 39¢

You will be pleased with the many quality gifts you can get with valuable Frontier



SAVE FRONTIER STAMPS

MIXED FRUIT
19¢
Elna No. 303 can

STRAWBERRY PRESERVES
39¢
Zestee 20 oz. glass

FRESH FROZEN FOOD

- ORANGE JUICE** Fresh Frozen Dartmouth 6 oz. can 12 1/2¢
- STRAWBERRIES** Crystal 10 oz. can 2 for 35¢
- POTATO PATTIES** Food Club 12 oz. pkg. 15¢
- BRUSSEL SPROUTS** Food Club 10 oz. pkg. 25¢
- POT PIES** Libby's Chicken, Beef or turkey 8 oz. pkg. 25¢

CLOSED SUNDAY

PORK & BEANS
3 FOR 25¢
CAMPFIRE NO. 300 CAN

FURR'S

We Reserve the Right to Limit Quantity



IT'S: HER POINT OF VIEW
Bridge Tourney
Action Is Hot

By **BETTY BABIONE**
By now, you may have heard more about the hot bridge tournament that has gone into its second week of play and is reaching a grandiose climax. There were eight tables of contestants, 32 of the town's (I might even say the area's) sharpest bridge-players, at the beginning of the tournament; and by Sunday all but eight entrants had been eliminated. By that time the excitement had really mounted, even for the spectators — there were more kibitzers than players all along.

In the two tables of the semi-finals, Ruth Muse was paired with Marie Cogdell against Helen Ann and Jay McWhorter; Mrs. J. A. Pitman and son, John Douglas, battled it out with Geneva and F. H. King. And talk about the pressure being on! Social bridge is one thing, but these tournament entrants get down to serious business — a faux pas may well be your Waterloo.

Anyhow, in the semi-final matches, Helen Ann and Jay lost to Madames Cogdell and Muse. . . the Kings defeated the Pitman duo. If the two pairs of winners meet in the Championship Match before my next deadline, I'll announce the outcome with glorious hurrahs — personally, the suspense is killing me. Although the finalists seem calm and collected about the matter, I don't hear any of them saying, "Oh well, it's just a game." Funny that F. H. King is the only man still in the ring for the last round.

BOY, I'D give a nickel to know the driver of a certain car that hemmed my car into a parking space Monday while I was at the movies. Parallel parking isn't exactly my tour de force (isn't aren't I getting Frenchy) and it was a wonder that I managed it with four feet of space in front and behind. But I tell you I did it and with the kids crawling all over me at that. Of course, my bumper was a mite close to the car in front, but that was all right because there were yards and yards between my car and the one behind.

I'm sure anyone will understand why I was upset when I returned to find a strange car parked behind mine. The dastardly villain had braked his (or her) green and white Oldsmobile (about a '52 or '53 model I'd guess) practically within a hand's width from my little ole hoopy's rear bumper. Now I'm an old hand at getting out of tight spots but not that kind! Why I even considered going in and disrupting the movie to find out whose blankety-blank car it was (I'm positive it must have been someone in the theater), but I conquered that urge along with the idea of waiting until the criminal showed up. If I had found a pencil, I'd have left a note on his ear (nailing it to his left, front tire as a fiendish notion that crossed my mind). . . I was so mad!

As in most cases when the temper is spent, I managed to move my car out without resorting to any of these drastic actions; but I'm not telling how I accomplished it. And I might add that I performed the feat without denting any fenders. . . tho' in my estimation, my close-parking friend deserved a few. (If he should read this and is bigger than I am—I'm only kidding.)

I really was in such an emotional state that I almost ran over Mrs. Lynn Kester when I finally did extricate my vehicle.

SAY, HAVE you seen Zelda Doenges driving about in a sporty, brown and white station wagon? . . . or Mary Waldrep in a glamorous (new word), long, low Lincoln? These people with new cars . . . sigh.

For a Dodge dealer's wife, Mary Hale, drives more Buicks and Chevrolts than anyone I know. Having had the experience of being a car dealer's spouse (same husband; former occupation) I can sympathize with Mary in her circumstance — that of having to drive the trade-ins. Mary is lucky. . . Gerald does let her have the late models.

IT WAS heartening to see so many fathers in the crowds that

visited the schools last week. . . to note a few: daddies Beauchamp, Duval, Roland, Marcum and Hanna. I almost missed the incident because he covered-up so well, but Grant Hanna forgot where he was and practically had a cigarette lighted before a little bird warned him that smoking in school isn't permitted.

Still have my cold, how about you? Heard that the President took off for Florida to cure his. About the only place I can go to try to cure mine is to bed. So . . . wake me up along about Friday.

Courthouse
Records

Warranty Deeds

Clyde L. Truly; et ux, to Benny L. Womble, all of Lot 7 and N. 40 ft. of Lot 8 of Blk. 1 of Westhaven Add.

Gertrude Probasco to Stephen Stubbs; et ux, Lot 7 of R. Severn's Sub. of W 1/2 of Blk. 24, Evants Add.

Deeds of Trust

Joe G. Evans, et ux, to Federal Savings and Loan Assn., of Amarillo, part of Blk. 14 of Evants Add.

Ethel E. Logan to First Federal Savings and Loan Assn., of Clovis, N. M., all of Lot 22 of Parker Sub. of W 1/2 of Blk. 23 of Evants Add.

O. H. Herring, et al, to Wright Williams, all of Blk. D, Rowland G. Sisk Sub., of Blk. 1, Mabry Add., including all improvements located thereon.

James L. Johnson; et ux, to Upshaw Trust Co., all of Sec. 40, Blk. K-5.

Vehicle Licenses

Mrs. Charlie George, 1950 Ford, Milburn Motor Co., 1953 Cadillac; George M. Howard, 1951 Chevrolet; Robert G. Davis, 1956 Mercury; Mrs. B. B. Noyes, 1951 Chevrolet; Santiago Magrinal, 1950 Ford; H. C. Parvin, 1954 Ford; Charlie Seeds, 1957 Ford, 3-9; H. E. Bippus, 1957 Chevrolet; Harold Joe Wells, 1957 Chevrolet, R. B. Medley, 1949 Chevrolet, 3-9.

Richard Clark, 1929 Ford; J. L. Marcum, 1956 Chevrolet; Albert F. Maxwell, 1957 Ford; G. W. Brumley, 1957 Buick; Mrs. Leonard Latham, 1955 Chevrolet; Mrs. Leonard Latham, 1952 Chevrolet; F. G. Collier, 1957 Mercury; Elmer J. Wall, 1953 Mercury; Don Hamilton 1949 Plymouth; Wynell Stayton, 1954 Chevrolet; John B. Baber, 1955 Chevrolet; Ray Skelton, 1950 Plymouth; J. D. Anderson, 1951 Chevrolet; E. P. Daniels, 1949 Dodge; D. C. Allmon, 1953 Pontiac; Glen Watts, 1955 Oldsmobile; Flabio Crespin, 1951 Chevrolet; Delmar Sigle, 1957 Oldsmobile; J. M. Wright, 1957 Chevrolet; J. E. Springer, 1957 Ford; G. G. Weir, 1957 Oldsmobile, 3-11.

Clifford Hill, 1948 Nash, 3-12; Earl Plank, 1951 Ford; Lee Renfro, 1954 Chevrolet; Young Motor Co., 1955 Mercury; Byrdie D. Fellers, 1957 Ford; William F. Hardwick, 1957 Plymouth; James W. Witherspoon, 1951 Ford; Ernesto Griego, 1949 Chevrolet; Ernesto Griego, 1951 Ford; W. A. Helton, 1957 Ford, 3-12.

VISIT WITH PARENTS

Mr. and Mrs. R. B. Vinson and family of Portales, N. M., and Miss Johnnie B. Vinson of Dallas, spent the weekend with their parents, Mr. and Mrs. Stanley Vinson. Miss Vinson has just returned from New York City where she received a special training course for a position with International Business Machines Co., with offices in Dallas.

HOME ON WEEKEND

Marian Jo Wilson visited her parents, Mr. and Mrs. Bob Wilson, here over the weekend. Marian is a senior at Texas Tech and will receive her degree in home economics in June.

RED CROSS OFFICIAL

James H. Patterson, Red Cross field representative from Pampa was in Hereford Monday visiting with county chapter officials on business.



HEARD the NEWS?

Dozens of special values in staple groceries at **PIGGLY WIGGLY** stock your pantry **TODAY!**

Sweet Potatoes
4 FOR \$1.00

BEETS 8 FOR \$1.00

SEAFOOD

CODFISH lb 33c

Fish Sticks 10 Pkg. 29c

FREE! A Shurfine ANNIVERSARY SPECIAL!
A PKG. OF **Shurfine NOODLES** WITH PURCHASE OF 2 CANS
Shurfine CHUNK PACK TUNA 2/59

BACON Armour's Star Lb. 59c

SAUSAGE Armour's Star Link Lb. 49c

Cheese Kraft's Longhorn 10 oz. Hair Moon 45c

CUTLETS Armour's Star Genuine 4 FOR \$69c

PICNIC HAMS Armour's Canner Ready to Eat 3 Lb. Can \$1.98

FREE! Be Sure to Register for Armour's Star Ham to be given away Sat., Mar. 16

TOMATOES HUNT'S Solid Pack No. 300 Cans 7 FOR \$1.00
CASE OF 24 \$3.19

HAND CREAM Melrose \$1.00 Size Plus Tax 59c

ROLLS Fresh Frozen, Cloverleaf or Parker House 39c
Strawberries Essex, Fresh Frozen 10 oz. pkg. 16c

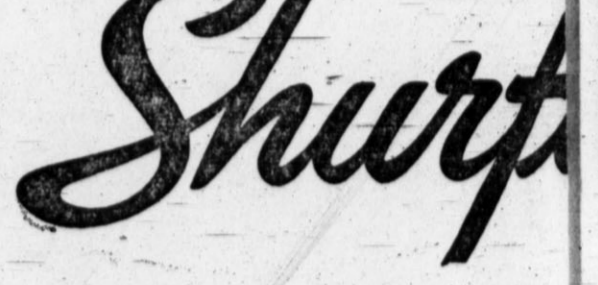
BEANS Shurfine Mexican style No. 300 cans 8 FOR \$1.00

PORK & BEANS No. 300 Cans Shurfine 10 FOR \$1.00

GREEN BEANS Shurfine Vert. Pak 4 FOR \$1.00
Blue Lake No. 303 cans 4 FOR \$1.00

BLACKEYES Shurfine Fresh Shelled No. 300 cans 8 FOR \$1.00

YOU'LL BE SITTING



COFFEE

FLOUR Shurfine

TOMATOES

Peaches Shurfine Yellow Slice No. 2

CAGI

Cherries Shurfine No. 300

CHEESE SPREAD Shurfresh - 2 lb. box 59c

59c

Shurfine HUBBARD Specials
MARGARINE Shurfresh 2 LBS 45c
PEAS Shurfine - Early Harvest No. 303 Cans 2 FOR 39c

Fresh FRUIT

BAN

Large Golden Ripe Central American

ORANG

CARRA

POTA

The Winner of the Free Sewing Machine was Mrs. Myrtle McCool of Hereford, Texas
We wish to express our appreciation to everyone who helped to make our Grand Opening such a wonderful success.
Hereford Sewing Circle
L. R. Roberts - Owner

...PRETTY...

WITH A CUPBOARD FULL OF SHURFINE

YOUNG MOTHER HUBBARD SALE



Shurfine
Lb. Can

89¢

"S.M."
Green Stamps

Now!

25 Lb. Cotton Bag **\$1.69** | **CORN** Shurfine Whole Kernel or Cream Style Golden No. 303 cans **7 FOR \$1.00**

4 Shurfine **4** **\$1.00**
46 oz. cans **for 1**

3 **83¢** **FLOUR** Shurfine **10** **79¢**
Cling or Halves 2 cans LB. BAG

3 **\$1.00** **EGGS** J. B. Haile **3** **\$1.00**
Med. Size **DOZ**

5 **\$1.00** **SHORTENING** Shurfine **79¢**
303 3 Lb. Can

1 **\$1.00**
COCKTAIL
No. 303 cans

6 **\$1.00** **APPLE SAUCE**
Shurfine No. 303 cans

5 **\$1.00** **GRAPEFRUIT SEGMENTS**
Shurfine No. 303 Cans

4 **\$1.00** **APPLE BUTTER**
Shurfine 28 oz. Jars

2 **29¢** **BANANAS**
LBS
Sparkling, Sun-Ripened and VEGETABLES

2 **29¢** **ORANGES**
LBS
Calif. Sunkist Navel

2 **19¢** **RATS**
FOR
Fresh, Texas 1 lb. bags

10 **39¢** **POTATOES**
LB. BAG
Red McClure

Shurfine YOUNG MOTHER HUBBARD Specials

PICKLES
Shurfine Whole, Dill or Sour
32 oz. Jar **3 FOR \$1.00**

KRAUT
Shurfine No. 303 cans
7 FOR \$1.00

FREE!
ICE COLD
Kraft's NEW ORANGE JUICE
Served All Day Friday & Sat.

APRICOT
Shurfine Halves No. 303 cans **4 FOR \$1.00**

PEARS
Bartlett Halves No. 303 Cans **4 FOR \$1.00**

MILK
Shurfine Tall Cans **8 FOR \$1.00**

CATSUP
Shurfine 14 oz. bottles **5 FOR \$1.00**

ASPARAGUS
Shurfine All Green Cut - No. 300 **4 FOR \$1.00**

HOMINY
Shurfine White No. 303 cans **11 FOR \$1.00**

GRAPEFRUIT JUICE
Shurfine - 46 oz. cans **4 FOR \$1.00**



22 on Squad for Crosbyton Relays This Weekend

Hereford High School's track team, seeking its third victory, will enter the Crosbyton Relays Saturday at Crosbyton.

Coach John Poindexter is taking 22 men to compete in the meet. About 30 other schools have entered the relays, Poindexter said.

The Whiteface trackmen have won two of three meets this season and placed second in the other meet.

Making the trip and entering the following events are:

Pat Elliston, Bill Callaway, 100-yard dash; Ed Wakefield, Danny Martin, 220-yard dash; Wynn Morris, Fred Lookingbill, 440-yard dash; Ron Cook, Ken Clearman, 880-yard run; Elliston, Callaway, Martin, Bill Drake, 440-yard relay; Jim Curtisinger, Drake, Ron Bryant, James Teas, mile - relay; Paul Higgins, Bryant, high hurdles; Wheeler Sears, Durwood Jacobs, low hurdles; Milner Duvall, Curtisinger, pole vault; C. D. Fitzgerald, Glenn Reeves, broad jump; Higgins, Steve Slagle, high jump; Callaway, Fitzgerald, shot put; Curtisinger, Jacobs, discus; Bobby Shelton, Reeves, mile run.

HELD ON CHECK CHARGE

Marion Brown, 21, of Perryton was picked up by sheriff's officers in Wheeler Monday and brought to Hereford to face charges of passing a hot check for more than \$50.

VISIT IN GILMER

Mr. and Mrs. R. W. Botsford, Mr. and Mrs. Thomas Botsford and Thomas Jr., visited in Gilmer with the Irvin Botsford family over the weekend.

WINS SUPERIOR RATING

Don Zimmerman Jr., of Hereford, freshman engineering physics student at Texas Tech, won a superior rating in after-dinner speaking in an intramural speech tournament held recently at Texas Tech. Zimmerman holds a Westminister Fellowship to the Lubbock school.

OUT TO HUNT

MUSKEGON, Mich. — To let his customers know where he had gone, barber Charles Finkler left his three barber chairs occupied by three mounted deer heads, each wrapped in a barber's sheet. Then he and his two assistants went hunting.

Orsborn-Norwood Chev.-Olds.

OK Hugh Says: **OK**

Here's a foolproof receipt for reputation. Take a number of years of dependable dealing. Add a good portion of friendly service—put in a stack of excellent "OK" Used Cars, and you have the right kind of a dealer—who won't sell you the wrong kind of car!

SPECIAL THURSDAY	
1954 Chevrolet Bel Air 4 door Sedan, radio, heater, Powerglide. Burnt orange and ivory. One owner, low mileage, the cream of the used-car crop.	\$1150
1957 Buick Roadmaster 4 door hardtop, completely loaded with all power and factory air conditioner. Two tone black and white. Only 5000 actual miles—just like new. If you would like to save over \$1000 on a '57 Buick Roadmaster—see this one	4,200.00
1955 Ford V-8 Fairlane Club Sedan, light blue, radio, heater, Ford-o-matic, white tires, a dream of a car at a realistic price.	1,595.00
1951 Chevrolet Deluxe, 4 door Sedan, radio, heater, dark gray finish, excellent tires. Reliable transportation for Mom and the kids when Dad needs the family car.	495.00
1950 Plymouth 4 door Sedan, Blue and Ivory two-tone, Radio, Heater, Fair tires. Lots of good miles in this "Mayflower" Special	295.00
1949 Ford V-8, dark green, radio, heater, fair rubber, fair condition. If you're looking for something to knock about in, this is the one. "As is."	135.00

SEE THESE TRUCKS	
SPECIAL THURSDAY	
1952 Chevrolet 1/2 ton pickup, 3 speed transmission, near new motor, new paint, a step ahead in quality, a mile below in price.	\$495
1954 Chevrolet 1/2 ton Pickup, new dark green paint job, heater, 3 speed transmission, good tires, extra nice cab, good motor, new transmission. Ready and rarin' to go.	895.00
1953 Chevrolet 1/2 ton pickup, blue, radio, heater, 3 speed transmission, excellent cab and bed. You just couldn't find a nicer '53.	645.00
1948 Chevrolet 3/4 ton, forward control, 10 ft. walk-in body—Completely reconditioned motor, excellent rubber. In the long run... you'll have a longer run in this "OK" used truck.	795.00
1949 GMC 1/2 ton Pickup, 3 speed, heater, turquoise, deluxe cab, runs and looks like a '53 or '54 pickup. Will serve you right.	445.00
1951 Ford 1 1/2 ton truck, V-8, with good grain bed, good rubber, cab and equipment. Just the truck for your farm use and priced to sell quickly. Complete ready to roll.	595.00

Hugh Tremble
Used Car Manager
Orsborn - Norwood Chev. - Olds
Truck Transportation Headquarters
Main & 5th. Across Street from Piggly Wiggly Phone 730

Classifieds...

(Continued From Page 6)

11 Business Services

PARTICULAR PAINTING
FOR
PARTICULAR PEOPLE
Jack Wederbrook
Phone 1815 Hereford
B-11-10-10p

INCOME TAX SERVICE: B. Lee
Cocanougher, 108 West 8th.
B-11-9-33-18p

FIX-IT SHOP
Guaranteed work on toasters,
percolators, irons, etc.; also
guns, fishing reels and other
small items. Let Johnnie Do It.
Prices reasonable. Johnnie Ha-
ney, 200 Grand Street.
B-11-29-10p

**Quick - Efficient
HOME LOANS**
Dependable Abstract and Insur-
ance Service

ELIZABETH WOMBLE
146 Main Phone 497
B-11-27-tfc

AUTO PREMIUMS. Financed for
6 months. Low cost. John Mc-
Lean Ins. Agency. B-11-12-45-tfc

PLAINS MACHINE SHOP
Phone 469
Gearhead Repair work.
Pickup & Delivery
Pumps Repaired
Located at Winget Pump Co.
B-11-2-13-tfc

WE WRITE AUTO COVERAGE.
ALL kinds. Yes, finance for 6
months. John McLean Insurance
Agency

FOR YARD and garden plowing.
Call Leon Bell, 410W.
B-11-9-21-tfc.

WE REPAIR electric clocks, irons,
toasters, percolators and all
small electrical appliances.
Phone 75, Witherspoon Electric,
129 West 3rd Street.
B-11-20-50-tfc.

ROTATILLER plowing, yards and
gardens. Bermuda Lawns. Aer-
ated and plowed. James Vines,
229 Avenue K. Phone 1186.
B-11-17-29-tfc.

MARCH 15th.
CREDIT BUREAU
B-11-34-8c

13 Lost & Found

LOST, ladies, black billfold. Con-
tains important papers. If found,
call 1822-W1.
T-13-11-11-p.

WESTWAY NEWS

**Community
Improvement
Is Discussed**

By MRS. T. B. THOMAS

Community residents met on Sat-
urday night for a discussion on
the community improvement con-
test. George Turrentine was elect-
ed as chairman; Buren Sowell as
vice chairman and Mrs. Merlin
Kaul, secretary. Harold Head was
acting as temporary chairman.
Plans were made for another meet-
ing on March 30 at the commu-
nity house. After the business was
out of the way card tables were
set up and games of "42" were
enjoyed and cookies and coffee
were served.

Attending were Mr. and Mrs.
D. Alston, Mr. and Mrs. T. B.
Thomas, and Deborah, Mr. and
Mrs. J. C. Morrison, Judith, Mr.
and Mrs. J. H. Landers, Mr. and
Mrs. G. C. Merritt, Mr. and Mrs.
P. B. Sowell, Mr. and Mrs. C. A.
Saucy, Mr. and Mrs. R. L. Wil-
son, Mr. and Mrs. Merlin Kaul,
Mrs. George Turrentine and girls,
Mrs. Ernest Flood, Harold Head,
Mr. and Mrs. Paul Rudd.

A basket dinner was spread in
the cafeteria of the Westway
community house on Sunday. Dr.
E. Landreth district superinten-
dent of the Methodist Church
brought the morning sermon, af-
ter which members enjoyed the
fellowship of lunch. Attending
were Mr. and Mrs. Jack Ren-
fro, Mr. and Mrs. J. C. Morrison
and Judith, Mr. and Mrs. T. B.
Thomas, Dieder, Danny and De-
borah, Mr. and Mrs. G. C. Mer-
ritt, Mr. and Mrs. J. H. Land-
ers, Mr. and Mrs. R. E. Wilson,
Mr. and Mrs. W. W. Cummings,
Mr. and Mrs. C. A. Saucy, Mer-
lin Kaul, Dr. Landreth, and the
Rev. E. L. Naugle. The Metho-
dists held a meeting in the af-
ternoon.

Mrs. Ralph Mitchell had the mis-
fortune of running a splinter
through her hand on Saturday
while she was washing woodwork.

Mrs. Clinton Jackson brought her
to the doctor in Hereford.
L. G. Thuet Sr., of Post and
Floyd Housert of Lubbock were
Saturday dinner guests of Mr. and
Mrs. J. C. Morrison and girls. The
men were on their way to Vega
to visit with Mr. and Mrs. J. W.
Thuet.

Mr. and Mrs. W. W. Cummings
had as their guests on Sunday
night for a fish fry, Mr. and
Mrs. G. C. Merritt and Mrs.
Malise Whitaker of Hereford.
Mr. and Mrs. Harold Head are
the parents of a daughter born on
Saturday in the Deaf Smith County
hospital. The Heads have three other
children. Little Jimmy asked
his daddy if there hadn't been a
mistake in the identity of the new
baby, he was planning on a brother
for a playmate but guesses lit-
tle sister will have to do.

Mary Lynn Morrison spent Sat-
urday night in Hereford with Lin-
coln Cox.

Mr. and Mrs. Elmer Combs, Bill
Eugene spent the weekend in
Hereford with their parents, Mr.
and Mrs. W. E. Combs and Mr.
and Mrs. Bert O'Connor.

Mrs. T. B. Thomas and Mrs. G.
C. Merritt were in Amarillo on
business on Monday. While there,
they visited with a friend of Mrs.
Thomas' Mrs. A. L. Fango. Mrs.
Jack Renfro was in Amarillo also
on business.

The Westway H. D. Club will
meet on Thursday afternoon in the
home of Mrs. Harold Rudd, this is
a change from last meeting.

Legal Notice

NOTICE TO BIDDERS
The City of Hereford, Texas, will
receive sealed bids on one fire
truck. Bids to be in the city man-
ager's office not later than 2 p.m.,
April 1, 1957. Specifications on the
truck and equipment may be ob-
tained at the city manager's office.
T-10-2c.

ANNOUNCEMENT:

To The Public:

I wish to announce I'm moving my office
from the T. W. Alderson Building to the B. F.
Goodrich Building located at 710 West 1st St.
on Hi-way 60, where I will engage in the Real
Estate Business with H. M. (Joe) Boozer and
Roy Paschal, and you are invited to drop
around to see us, whether you have any prop-
erty to sell or not. We need and invite listings
of both land and City Property, and will ap-
preciate your consideration.

E. S. IRELAND

P. O. Box 151 Phone 937
Licensed and Bonded Real Estate Dealers

IMPORTANT NOTICE

Don't Forget the Big Multiple
Auction Sale on

5 Irrigated Tracts of Land
3 Houses in Hereford
Business Lots

PLACE - HEREFORD COLISEUM
TIME - FRIDAY 1:30 P.M. MARCH 15

For Additional Information Contact
Hugh Bookout Realty - Hereford, Texas
Nelson Auction Service - 315 E. 20th
Amarillo, Texas

**THIRD ANNUAL
AUNT JEMIMA PANCAKE
SUPPER**

Serving Hours
5:30 p.m. - 8:30 p.m.
Friday, March 15
Jim Hill Hotel
Ball Room

Plan to Attend

**Bigger and
Better than
Ever Before
Bring The
Whole Family**

Fun for All

THANK YOU
To The Following Firms
Who Make this Affair Possible

1. Quaker Oats Co. (Makers of Aunt Jemima Products)
2. Amarillo Packing Co. (Home of Longhorn Brand Meat Products)
3. Morton Foods (Makers of Morton Food Products)
4. Kraft Foods Co. (Makers of Parkay Margarin)
5. Pet Milk Co.
6. Folger's Coffee Co.
7. Borden's (Ed Skypapa, distributor)
8. Hereford Laundry
9. Plains Creamery Co. (Jeff Dairs, representative)
10. Imperial Sugar Co.

Hot Pancakes
Butter
Syrup
Sausage
Coffee
Milk for the
Children

Tickets 50c each
for all the
Pancakes You
Can Eat

TICKETS ON SALE AT THE DOOR
SPONSORED BY LIONS CLUB

ANNOUNCING OPENING
of
WHITE'S MARKET
at
839 E. First

Hereford's Only Exclusive Meat Market
We cut, wrap and quick freeze meat for your home freezer

OPENING SPECIALS
Prices good from March 16-March 23

BABY BEEF	HALF OR WHOLE	31c	lb	PLUS PROCESSING
Fresh Lean GROUND BEEF		lb.	29c	
ARM ROAST		lb.	45c	
Family Style STEAK		lb.	39c	
Pinkney Jumbo Pak FRANKS		3 lbs.	69c	
CHUCK ROAST		lb.	39c	
Choice ROUND STEAK		lb.	69c	
Wilson's Corn King BACON		lb.	45c	
Pinkney Pure Pork SAUSAGE		2 lbs.	39c	

**FREE HALF OF BEEF GIVEN AWAY
ON MARCH 16th AT
WHITE'S MARKET**

Cut to winner's specification, wrapped and quick frozen
COME IN AND REGISTER
Any time between now and March 16th. You don't have to be present to win.



By Jimmie Gilentine

These pretty days have people talking about many things, such as gardens, Little League, killing frosts and boats. Of all the topics, the most universal is probably "boats." More people are going into the navigation business than ever before — and we have long been blessed with a large percentage ownership of small craft in this neck of the woods.

The robin is widely known as the harbinger of Spring. Poems have been written about him; but never a word of praise for the deserving baryard chicken. He is the real harbinger of Spring in this country. When you go to the post office after your mail — and can't hear yourself think for the din and clamor of "peeping" baby chicks, you can put it down in black and white. Spring is here! It's a sure sign, if you don't believe it, ask Elmer Patterson. He's been in the local post office close to 25 years — and he should know.

I hear a lot of talk about a possible county bond issue to build a new jail. No question, the old jail house is about shot. The bond issue may not be sudden like; but it is bound to pop up. Many people figure that the present jail property is becoming too valuable a place on which to rebuild. One old boy even suggested putting it in the present library location — and doing a new library. Another figured to remodel the third floor of the court house. I hear lots and lots of talk about it, all of which indicates that the County Commissioners are putting out some feelers. A new jail has been talked several times, but everyone seems to have a different idea.

If you don't eat pancakes tomorrow night at Hotel Jim Hill, it won't be Slim Wester's fault. He had sold 106 tickets Tuesday — and was still in there pitching. Some of the other Lions have been accusing him of using wrestling holds on his prospects. Chairman Neil Cooper said, however, that tickets will be available at the door, just in case Slim missed anyone.

I don't know how many cups of coffee it takes to make a garden, but Pick Harman, Hub Hager and Monk Johnson have a pretty good investment in coffee — and haven't turned a furrow. They are planning a big garden deal with Pick furnishing the land and water, Monk the seed, and Hub doing the supervising. All they need now is someone to do the work on a four-way split. I mentioned their wives, but they didn't get very enthusiastic. It seems they tried it before, and got drafted. Sounds to me like the old story of too many chiefs and not enough Indians.

Every once in awhile you hear someone ask when the cost of living spiral is going to stop, but it never does. Most places now have 10 cent Colte machines, including the grocery stores. Did you ever stop to think that the only thing you can buy for a nickel anymore is a package of chewing gum, a Thursday Brand, or a mouse trap? Honest, it's the truth.

I guess the mouse trap people

have their troubles. If they get the price too high, everyone will probably get a cat, although I would personally rather have two mice.

Francis Hardwick is back from a trip into Tennessee and Indiana, and tells me that he and Mrs. Hardwick drove into Natchez, Mississippi, and took in part of the Azalea Trail. He said they didn't run across any of the local garden club women, but he did stress the fact that a large number of the trippers were men. All of which sounds rough for Robert Veigel and a few other old boys I could name. Francis said this was especially true on Sunday — and he figures that the men were getting more out of the tour than the women, chiefly because they didn't mind showing their ignorance by asking foolish questions.

Hereford's first boxing matches in many years are scheduled for Monday night, March 18, in the new coliseum building, or bull barn. I wish someone would settle the controversy. Anyway, the matches are all lined up — and they will probably have a big crowd. Proceeds will benefit the new Hereford Athletic Club, of which boxing is a part.

J. T. Guinn sent me word that Friona is still running their weekly drawing — and that the merchants down there figure it keeps a lot of people from coming to Hereford. However, if it was a real good deal, I couldn't see why he would be sending out the message in the first place.

We have had a terrific amount of trouble with Brand deliveries and past couple of months. We apologize, and we hope that we are on the road to getting it straightened out. Anyway, we are trying. Strange as it might seem, twice each week is harder to keep rolling along than once a day. This is due in part, to the fact that our 50-cent price will not permit us to pay as much per month — although we do pay sharply more per paper delivered. Anyway, we are sorry and we beg you — in case you miss your Brand — to call. We will keep someone in the office until around 9 o'clock Sunday morning.

Had a card from Nora Gillis and Mrs. George Muse, who are off down in Hot Springs, Ark., and want The Brand. Mrs. Gillis said it was raining cats and dogs down there. I believe I like Tom Robinson's post cards better, though. Mrs. Gillis uses the kind without pictures.

I was down through Claude, Clarendon, Hedley and Wellington the other day. Folks are pretty excited over a combination gas and oil well north of Wellington near the county line. El Paso Natural got the oil while drilling for gas. McLean is also somewhat excited over the deal. A lot of folks figured we were going to put in an airport to land jets. They were dumb-founded, however, when I told them that we had no city airport at all. I was talking to a fellow who had just rented a 25-foot store building for \$20 a month. Things have really been rough, but they are looking up. This is due to the

rains, some irrigation and the oil excitement.

— Like the dry land farmers in this area, they will come back, too. We are now on the fringe of a wet cycle which should last for eight or 10 years. Things are looking up.

Hospital Notes

Patients in Hospital

George Shumard, Clovis, N. M.; Jasper Jones, Jat, N. M.; Mrs. Ann Dougherty, 123 Ave. A; Mrs. O. T. Patterson, Friona; Sybil Allen, 404 Star; Mrs. Herschel Burrows, Hereford; Mrs. W. C. Rose, 505 Irving; Mrs. Gerald Banner, 213 Ave. H; Mrs. J. R. Fovikes,

Patients Dismissed

Frances Head, 3-11; Mrs. C. O. Wilkins, 3-11; Frank Witkowski, 3-

Mr. and Mrs. L. M. Williams Observe 62nd Anniversary

Mr. and Mrs. L. M. Williams celebrated their 62nd wedding anniversary, Sunday, March 10 at their home at 13th and Ave. G. in Hereford. Those attending were

Mrs. Ora Holder, Ranger; Mrs. Florence Coffey, and sister-in-law Tildia, from Mobeetie; Mr. and Mrs. J. A. Williams, Clovis, N. M.; Mr. and Mrs. L. E. Ward and Maxine, Janice Jacobs, Mr. and Mrs. Posey Barrell, Mr. and Mrs. L. H. Williams, Sandy, Sharon, and Ronnie, all of Hereford. Mr. and Mrs. Williams have been living in Deaf Smith County for the past 31 years. The couple received several nice gifts from relatives and friends.

The children brought food, and everyone enjoyed a good meal. The day was spent reminiscing.

Mrs. Holder is remaining with her parents for an extended visit. Sweden has practically no domestic resources of coal or oil, says Swedish Minister of Commerce Gunnar Lange.

Look Who's New!

Mr. and Mrs. Gerald Banner of Hereford are the parents of a girl, Nancy, born at 12:14 a.m. Tuesday. Nancy weighed 6 lbs., 5 1/2 oz., at birth. Mr. and Mrs. John Albracht are the maternal grandparents.

A girl, Peggy Lee, was born to Mr. and Mrs. Richard L. McGowan at 1 p.m. Tuesday. She weighed 6 lbs., 12 oz., at birth. Mrs. Arthur Bingham of Silverton is the maternal grandparent.

Mr. and Mrs. Hershel Burrus of Hereford became the parents of a girl, not named as yet, at 2 p.m. Tuesday. She weighed 7 lbs., 4 1/2 oz.

oz. Mrs. Meggy Burrus of Canyon is the paternal grandparent and Mr. and Mrs. H. W. Kribbs of Pampa are the maternal grandparents.

Mr. and Mrs. Joe Flores of Hereford are the parents of a girl born at 1:21 p.m. Tuesday. The girl weighed 6 lbs., 5 1/2 oz., at birth. Mr. and Mrs. Glen Samuels are the parents of a girl, not named as yet, born at 6:40 p.m. Monday. The girl weighed 3 lbs., 9 1/2 oz.

DR. SLATER GUEST SPEAKER

Dr. Eugene Slater, pastor of Park St. Methodist Church, Amarillo, was guest speaker during a program here Monday evening at the First Methodist Church. His talk was illustrated with colored slides.



Quality Foods

...AT REAL SAVINGS!

White Swan **2** TALL CANS

MILK

25¢

FLOUR

Purasnow **5** LB. BAG **49¢** *Quality comes 1st here!*

White Swan - Halves

PEARS

Cinnamon Flavored No. 303 Jar **35¢**

PINEAPPLE

Wapco Sliced No. 2 can **24¢**

PLUMS

White Swan No. 303 Green Gage Can **18¢**

Pork & Beans

Concho No. 300 Tall Cans **25¢**

OYSTER STEW

Hiltons 8 oz. can **25¢**

VEGETABLES

White Swan No. 303 Mixed Cans **35¢**

DRIED FRUIT WEEK

CAKE MIX

Dromedary White - Yellow Devils Food 2 19 oz. Pkgs. **45¢**

Arrow

PRUNES

12 oz. Pkg. **22¢**

PURPLE PLUMS

White Tag No. 10 Can **55¢**

Sun Maid Seedless

RAISINS

2 LB. PKG. **38¢**

GREEN BEANS

Wapco Whole No. 303 Cans **29¢**

Sun Sweet Fancy

PEACHES

12 oz. Pkg. **37¢**

SPINACH

Wapco A Treat to Eat 2 No. 303 Cans **25¢**

STARLAC MILK

Borden's Instant Makes 12 Quarts Liquid pkg. **69¢**

PEAS

Concho Early June 7 No. 303 Cans **\$1.00**

Roast

Choice Grade Beef Center Cut Chuck Lb. **35¢**

LUX

32 oz. can 98c Value Only **79¢**

BANANAS

lb. **13¢**

FRANKS

3 Lb. Polythene Bag **79¢**

CELERY HEARTS

PKG. **21¢**

SAUSAGE

Country Style 4 LB. BAG **89¢**

YAMS

Puerto Ricans lb. **12¢**

Steak

Fresh Lean Pork Lb. **39¢**

POTATOES

Idaho Russets U. S. No. 1 10 Lb. Poly Bag **49¢**

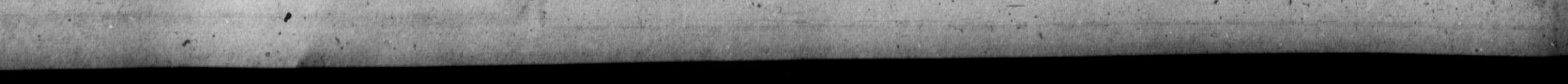
Bacon

Armour's Star Family Style Hickory Smoked 2 LB. PKG. **89¢**

HUNTER'S FOOD STORE

DOUBLE PRIDE STAMPS EVERY WEDNESDAY WITH \$2.50 CASH PURCHASE

219 Sampson St. PRICES GOOD MARCH 14, 15, 16 and 19 Phone 143 - Free Delivery



**YES SIR,
Tax Time is
Less Painful...**

**to the man
who pays his
bills by check!**

Cancelled checks are automatic receipts . . . invaluable at income-tax time — and all year 'round. Open a checking account with us soon.

FIRST NATIONAL BANK
of Hereford
Since 1906
Complete Banking Facilities

Long Time Ago

45 Years Ago
E. W. Morgan and son, Gerald, and G. T. Price and family of Fort Collins, Colo., arrived in Hereford Wednesday and will move on the Ridgeway farm which they will cultivate under modern conditions.

These men come with a full equipment of farm implements and a motive power of 12 horses. They know how to irrigate.

The truck growers around Hereford met in the county court room Saturday. C. G. Major acted as chairman. H. G. Hayes was elected as secretary to fill the place made vacant by C. N. Hill. It was shown in the meeting that it would be useless to plant truck unless a market could be had, and that for each grower to act independently would result in failure and financial loss.

25 Years Ago
Press reports show little progress in the search for the son of Col. Charles Lindbergh, noted aviator. Several more communica-

tions have been received, purporting to be from the kidnapers of the child, but they lead nowhere toward the actual return of the baby to his parents.

John Phillip Sousa, premier march king of the United States, whose "Stars and Stripes Forever" will perhaps be one of the most famous march airs of all times, died Saturday, March 5. So full of the details of lurid happenings, the papers of the nation have paid little attention to the illness of one of the greatest of Americans.

COMPANY MEN
RICE LAKE, Wis. — Frederick Leisz is the father of Rice Lake's first baby of 1957.

The father of the last baby of 1956, born six hours earlier, is Wallace Johnson, Leisz' boss.

SAMARITAN
JULESBURG, Colo. — Good-hearted Louis Hansen may not be so good-hearted in the future. After befriending a young married couple in Denver, Hansen purchased transportation for the newlyweds and rented a hotel room for them in nearby Sterling. He left his luggage in Sterling and continued on to Julesburg. The next day he returned for his luggage. The couple was gone. So was Hansen's baggage.



WRESTLING

SATURDAY, MARCH 16
8:30 P.M.

FIRST EVENT
TOMMY PHELPS
vs.
RAY DURAN
1 fall or 30 min. time limit

COLORED GIRLS SEMI-FINAL



BABS WINGO
2 out of 3 falls - 45 min. time

LULA PROVO

MAIN EVENT
KURT VON POPPENHEIM
vs.
DIZZY DAVIS
2 out of 3 falls
or
1 hour time

In the New
COLISEUM
Ringside \$1.50 - Kids 50c - Gen. Adm. \$1.00
Sponsored by the Hereford Lions Club



DEFENDING HER HONOR—Drawing shows Peggy O'Neill Eaton, wife of President Andrew Jackson's secretary of war, defending her reputation before the President and members of his Cabinet.

Snubbing of Peggy O'Neil Changed Course of History

By JANE EADS
WASHINGTON — The criticism of the President by Secretary of Defense Charles E. Wilson's wife, Jesse, is an old story by now, but it has recalled past incidents where official wives have influenced the course of events.

The most celebrated precipitated a Cabinet crisis and led to the ultimate resignation of some of its members.

This was the case of the vivacious Peggy O'Neill, widowed young daughter of an innkeeper, who became the wife of Maj. John H. Eaton, White House intimate and secretary of war in President Andrew Jackson's administration.

Gossip gave Peggy a past. Cabinet wives, led by Mrs. John C. Calhoun, Jackson's niece and official hostess, also snubbed her.

Jackson was infuriated. He begged his Cabinet to talk to their wives, and finally after an uncomfortable White House dinner where the women again pointedly cold-shouldered the bewitching Peggy, he called a special session of the Cabinet and refused in detail the charges against the young woman's honor.

But the ladies still refused to accept her. Finally, Jackson kicked out some of the Cabinet members.

Some historians say the episode changed the whole course of American history, because the controversy over Peggy O'Neill widened the split between Jackson and Vice President Calhoun.

Martin Van Buren, Jackson's secretary of state, apparently tried to accentuate the differences between his boss and Calhoun. Van Buren, a shrewd politician, and Calhoun were budding rivals for the presidency later on, and it was Van Buren who actually forced the Cabinet resignations.

At any rate, Van Buren became vice president in Jackson's second administration, replacing Calhoun, and because of Jackson's forceful support he was nominated and elected president in 1836.

As for the gay and ambitious Peggy, she finally achieved the social success denied her at home in the courts of Europe and became a great favorite of the Queen of

Q. How can I go about making a chin strap for my double chin?
A. Although I think the best corrective is the habit of carrying the head erect, and exercise and massage of these flabby, weak muscles — some success is claimed for a chin strap made of several thicknesses of gauze, soaked in chilled witch hazel, and tied firmly around the face and under the chin.

Q. Please suggest a good treatment for dry, reddened hands.
A. After washing the hands in milk, melt a pan of pure lanolin in the oven and rub this over the hands and nails while it is warm. Put on an old pair of cotton gloves. If you do not have lanolin, you can substitute warm olive oil or baby oil.

Q. What is a quick and effective way to remove fruit stains from the teeth?
A. Lemon juice is good for this.

Q. I have a thin oval face. What are some makeup hints for me?
A. Width is needed, of course, so fluff the hair out below the ears. Chokers, dog collars, and round collars will broaden the face; button earrings will give it more roundness. Dark foundation will make the chin appear less pointed. Always remember that a cream foundation catches light and brings out a certain part of the face, whereas dark foundation minimizes.

Q. How can I take precautions against my gray hair's acquiring a yellowish tinge?
A. Follow your shampoo with a bluing rinse. Ordinary bluing, that is made by a reputable firm is all right, but use it with discretion. Your water should be warm — not hot — as hot water tends to discolor gray hair.

Q. What is a good "revitalizer" for a pale and colorless complexion?
A. One of the best is a honey mask. Pat some honey over face and throat in a thin film, leave on 15 minutes, then remove with a damp cloth.

Q. How can I "prolong the life" of my fingernail polish?
A. By applying two coats of polish, which not only adds to the intensity of the color, but also prolongs its life. Be sure to wait until the first coat is dry before applying the second. Also, be sure to remove a hairline of polish from the tip of the nail with the thumb of the opposite hand to seal the polish. When the second coat has dried, finish up the job with a clear top coat.

Q. What is a good abdomen-reducing exercise?
A. Sit on floor, legs outstretched before you, and bend forward, grasping the toes while you keep your knees straight and stiff.

Q. Is there any way, while shampooing, to induce more gloss into my hair?
A. Try adding the beaten white of an egg to your regular shampoo.

Q. How can I remove lipstick stains from one of my non-washable frocks?
A. First work petroleum jelly or lard into the stain, then sponge with carbon tetrachloride. Should a trace of color remain, sponge the area with denatured alcohol, diluted with two parts of water for stains on acetate rayon or colored materials. Test colors first.

H.D. Chatter

(Continued From Page 1)
coming along well and already seven chairs and five stools or cushions have been completed. If these six people will help six more with upholstery, there will be a lot of home improvement.

Buttons for the upholstery can be covered by any person who covers buttons at the shop or the forms can be bought and you can cover them yourself. Sometimes old buttons can be covered or cardboard made into a button. Almost always it is advisable to use the size button that was on the chair.

I am glad to see that capes are good this spring, in fact I have a cape to make. The last time I had a cape was when I was in the third grade. I remember it well. It was blue serge lined in bright red satin.

The district convention for the Texas Federation of Women's Clubs will be held Thursday and Friday in Amarillo. Mrs. P. B. Sowell and Mrs. M. W. Sumner will attend as delegates. There will be a number more who will attend. It will be good for home demonstration club women to attend this convention if it is at all possible. A good program has been planned and it will certainly be well worth one or two days of your time.

Here's a note from the Texas Forest Service about the wind-break trees: Arrangements have been made to start shipping wind-break seedlings to those with valid orders starting on March 14 and continuing on successive days until all the seedlings are shipped from our nursery near Alto, Cherokee County.

Household Scrapbook

Water Stains
Water stains on mahogany may be cleaned if done at once. If it has been on long enough to cause a white spot, it can sometimes be removed if rubbed with a soft cloth and a little polish. The spot will eat into the finish if allowed to remain, and the table top will need refinishing.

Fruits and Vegetables
To take the frost out of fruits and vegetables, put them in cold water and allow them to remain until their plump, fair appearance indicates that the frost has disappeared.

Chapped Lips
If the lips are chapped and dry, try using a very greasy lip stick. Or, rub a little cold cream on the lips before using the stick.

Faded Flowers
Flowers which are fading may be restored by immersing them halfway up their stems in very hot water and allowing them to remain in it until it cools. Then cut off the scalded portions of the stems and place the flowers in clear, cold water.

Scuffed Shoes
When the leather of the shoe is scuffed, fasten it down with a little glue and after thoroughly dry polish right over it. It will hardly be noticeable.

Custard Pie
The custard pie will be an even, nice brown when baked if a little sugar is sprinkled over the top just before putting into the oven.

Bed Spreads
The bed spread will not wrinkle and can be kept off the floor by beginning at the top and folding it in half toward the foot. Then fold from each side to the middle in this way making a triangle with its base at the foot of the bed. Fold the point over the footboard.

Plant Care
Plants that have large, broad leaves should be sponged about once a week with clear, tepid water. This will remove the dust which sometimes harms the plant.

Beauty At Home

Q. How can I go about making a chin strap for my double chin?
A. Although I think the best corrective is the habit of carrying the head erect, and exercise and massage of these flabby, weak muscles — some success is claimed for a chin strap made of several thicknesses of gauze, soaked in chilled witch hazel, and tied firmly around the face and under the chin.

Q. Please suggest a good treatment for dry, reddened hands.
A. After washing the hands in milk, melt a pan of pure lanolin in the oven and rub this over the hands and nails while it is warm. Put on an old pair of cotton gloves. If you do not have lanolin, you can substitute warm olive oil or baby oil.

Q. What is a quick and effective way to remove fruit stains from the teeth?
A. Lemon juice is good for this.

Q. I have a thin oval face. What are some makeup hints for me?
A. Width is needed, of course, so fluff the hair out below the ears. Chokers, dog collars, and round collars will broaden the face; button earrings will give it more roundness. Dark foundation will make the chin appear less pointed. Always remember that a cream foundation catches light and brings out a certain part of the face, whereas dark foundation minimizes.

Q. How can I take precautions against my gray hair's acquiring a yellowish tinge?
A. Follow your shampoo with a bluing rinse. Ordinary bluing, that is made by a reputable firm is all right, but use it with discretion. Your water should be warm — not hot — as hot water tends to discolor gray hair.

Q. What is a good "revitalizer" for a pale and colorless complexion?
A. One of the best is a honey mask. Pat some honey over face and throat in a thin film, leave on 15 minutes, then remove with a damp cloth.

Q. How can I "prolong the life" of my fingernail polish?
A. By applying two coats of polish, which not only adds to the intensity of the color, but also prolongs its life. Be sure to wait until the first coat is dry before applying the second. Also, be sure to remove a hairline of polish from the tip of the nail with the thumb of the opposite hand to seal the polish. When the second coat has dried, finish up the job with a clear top coat.

Q. What is a good abdomen-reducing exercise?
A. Sit on floor, legs outstretched before you, and bend forward, grasping the toes while you keep your knees straight and stiff.

Q. Is there any way, while shampooing, to induce more gloss into my hair?
A. Try adding the beaten white of an egg to your regular shampoo.

Q. How can I remove lipstick stains from one of my non-washable frocks?
A. First work petroleum jelly or lard into the stain, then sponge with carbon tetrachloride. Should a trace of color remain, sponge the area with denatured alcohol, diluted with two parts of water for stains on acetate rayon or colored materials. Test colors first.

A. O. THOMPSON ABSTRACT CO.
Mr. and Mrs. A. J. Schroeter, Mgrs. Complete Tract Index of all land and town lots in Deaf Smith County. Write us for information.
Box 73, Phone 130

That's how this Agency conducts its business.
John McLean Insurance Agency
25 Years of Insurance
Know How
Phone 273

At The Movies

Tea and Sympathy
Deborah Kerr and John Kerr (no kin) star in this film version of the Broadway stage success. The story deals with a non-conformist student who falls in love with the wife of his house master. Runs at the Star today and Friday.

The White Squaw
May Wynn and David Brian lead the cast in this show which is slated Saturday only at the Star. Miss Wynn plays the part of a half-white Sioux who fights off the trickery of the villainous Brian.

More than 300 million pounds of fruits and berries are used in the manufacture of jams, jellies and preserves each year. Strawberry jam and grape jelly are the two national favorites.

Spain where her husband was serving as the American minister to Madrid.

YOU SAVE...
When You Convert Your
MOBILE FARM EQUIPMENT
To
BUTANE-PROPANE
That's right, Mr. Farmer. You'll save enough on your fuel bill in one season of operation to pay the cost of Converting to Butane and Propane.
WE USE GENUINE ENSIGN CARBURETION EQUIPMENT!
BLANTON BUTANE, INC.
Phone 551

YOU GET MORE WHEN YOU GO

Golden Rocket

CHECK THESE BIG-CAR EXTRA-VALUE FEATURES ...YOU GET THEM ALL AT NO EXTRA COST!

Rocket T-400 Engine • 8.50 x 14 Tires • Custom Trim • Oil Filter Turn Signals • Foot-Operated Parking Brake • Four-Barrel Carburetor!

Big-car pleasure is a standard feature with Oldsmobile . . . even on the lowest-priced Rocket. For proof, take a good look at the fine details of the Golden Rocket 88. We're talking about the extra features that add so much to the value of your car, yet don't add an extra penny to the price of your Olds.

For example, you don't pay extra for the big-car performance of Oldsmobile's Rocket Engine. The pace-setting action of its high-compression power gives you economy when you want it, power when you need it.

You don't pay extra for the long comfort of Oldsmobile's big-car ride. New Wide-Stance Chassis and Pivot-Poise Front Suspension mean added smoothness and safety, too! And there's big car glamor that's distinctively Oldsmobile. You don't pay extra for that either!

Compare Oldsmobile's extra-value features with any car at any price! You'll soon find out that you get more when you go Golden Rocket 88. And this Rocket fits your pocket. Be our guest . . . take a Rocket Test, soon.

ALL THIS AND J2

Be our guest for a J-2 test! Oldsmobile's sensational new engineering advance presents two-stage engine control through progressive carburetion, STAGE ONE, for smoother operation and better economy, STAGE TWO, for a quick surge of active power when the situation demands it.

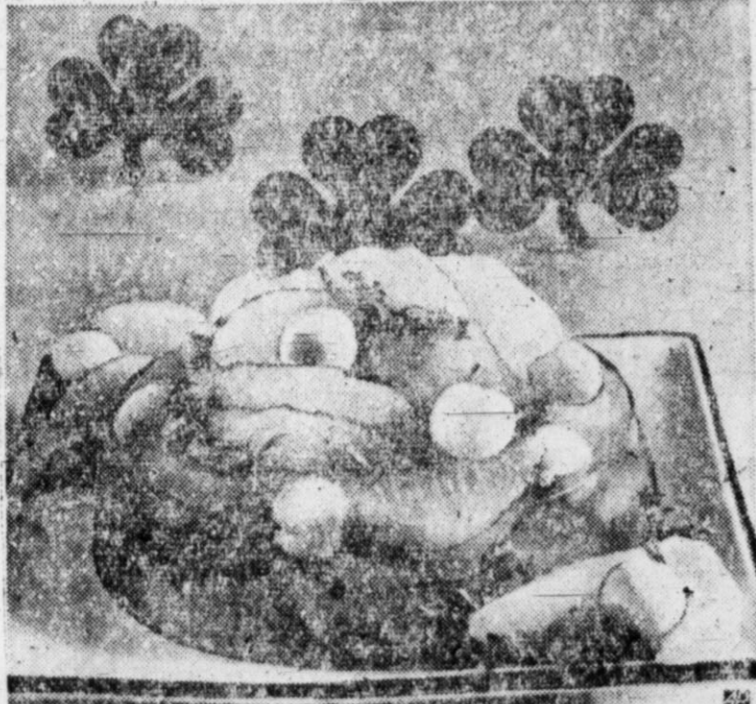
It's like two engines in one!

OLDSMOBILE
SEE YOUR AUTHORIZED OLDSMOBILE QUALITY DEALER

*277-h.p. Rocket T-400 Engine standard on all models. J-2 Rocket Engine, with 300 h.p., and special Rocket Engine, with up to 312 h.p., optional at extra cost.

Buffet Supper Tops St. Pat's Day

By CECILY BROWNSTONE
Associated Press Food Editor
Buffet supper time on St. Patrick's Day! What's on the menu? Start with a hearty potato chowder, in honor of Erin, and go on to baked ham and a big beautiful molded salad—green, of course—with the fresh, sweet-tart taste of grapefruit in it.



A MOLDED SALAD, with grapefruit sections and cream cheese balls, is colored green for St. Patrick's Day.

We're giving you two recipes for the salad: one uses unflavored gelatin, the other lime-flavored gelatin. Our own taste would choose the first—but suit yourself!

GRAPEFRUIT SALAD MOLD, NUMBER ONE

Ingredients: 1 package (3 ounces) cream cheese, 2 envelopes unflavored gelatin, ¼ cup sugar, ¼ teaspoon salt, ¾ cups canned unsweetened grapefruit juice, 3 cups drained fresh grapefruit sections, ½ cup diced pimiento, salad greens.

Method: Form cream cheese into 8 small balls; chill. Mix together the gelatin, sugar and salt in a saucepan. Add 1 cup of the grapefruit juice. Place over moderate heat, stirring occasionally, until gelatin is thoroughly dissolved. Remove from heat; add remaining ½ cup grapefruit juice. Stir in enough green food coloring to tint. Chill. Arrange a few of the grapefruit sections, cream-cheese balls, and pieces of pimiento in a 5 cup ring mold to make an attractive design. Spoon in a little of the chilled gelatin and chill until almost firm. Chill remaining gelatin until the consistency of unbeaten egg white. Fold in ½ cups grapefruit sections and remaining pimiento.

onto. Spoon into mold; chill until firm. Unmold and fill center with salad greens, remaining grapefruit sections and cream-cheese balls. Makes 8 servings.

Note: For a delicious variation, mold a small pecan or walnut half in each cream-cheese ball. Serve this salad the same day it is made; it may stiffen too much if held overnight.

GRAPEFRUIT SALAD MOLD, NUMBER TWO

Ingredients: 1 package (3 ounces) cream cheese, ¾ cups canned unsweetened grapefruit juice, 2 packages lime-flavored gelatin, ¼ teaspoon salt, 3 cups drained fresh grapefruit sections, ¼ cup diced pimiento, salad greens.

Method: Form cream cheese into 8 small balls; chill. Heat 2 cups of the grapefruit juice; add to lime-flavored gelatin with salt. Stir until gelatin is completely dissolved.

ed. Add remaining 1½ cups grapefruit juice; chill. Arrange a few of the grapefruit sections, cream cheese balls and pieces of pimiento in a 5-cup ring mold to make an attractive design. Spoon in a little of the chilled gelatin and chill until almost firm. Cool remaining gelatin until slightly thickened. Fold in ½ cups of the grapefruit sections and remaining pimiento. Spoon into mold. Chill until firm. Unmold and fill center with salad greens, remaining grapefruit sections and cream-cheese balls. Makes 8 servings.

MAKES HONOR ROLL

Richard Lee Tucker of Hereford rated among the top students in the college of engineering at the University of Texas at the end of the fall semester. His grades gave him a standing of summa cum laude, the highest division of the honor roll.

Dr. Milton C. Adams
OPTOMETRIST
Office Hours 8:30-5:00
140 W. Third, Hereford
Texas
Phone 37



Avoid skips like these in your cotton rows!

You can be sure of uniform stands of cotton when seed is treated with new Du Pont CERESAN® LIQUID

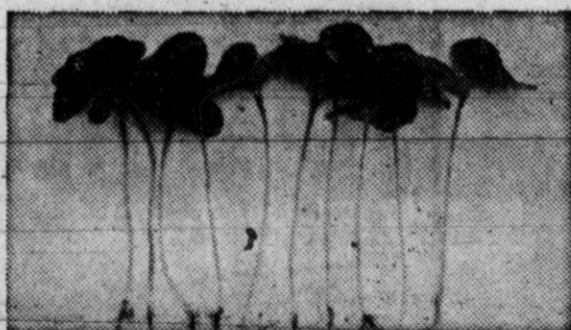
COLORS SEED RED, TOO!

You can be confident of uniform, higher-yielding cotton stands when your seed is protected from disease with new Du Pont "Ceresan" liquid seed disinfectants.

Du Pont "Ceresan" liquids help protect against the need for replanting because they stop seed decay, damping-off, anthracnose boll rot and angular leaf spot with dependable effectiveness. Seed protected with new Du Pont "Ceresan" liquid sprouts faster and gives more uniform stands.

This enables you to market more bales of better-quality cotton. It also allows you to start your weed-control program earlier and to use your machinery and labor more efficiently.

Profitable control of seed- and soil-borne diseases with new Du Pont "Ceresan" liquid costs only a few cents an acre. Ask your local seed dealer to use Du Pont "Ceresan" liquids... effective new protection that puts a strong, uniform red color on seed.



• These healthy, vigorous cotton seedlings grew from seed treated with Du Pont "Ceresan." They were protected against angular leaf spot and anthracnose boll rot by Du Pont "Ceresan."

On all chemicals, always follow label instructions and warnings carefully.



CERESAN LIQUID
Seed Disinfectants

Better Things for Better Living... through Chemistry

Your "Magic Key" to Bigger, Better Crops!

Anthony's
C. R. ANTHONY CO.

A Priceless Possession For Any Home

- Heirloom Type
- Hobnail Type

SPREADS

Early American type is a reproduction of early hand weaving. Preshrunk, Reversible and Washable. In White, Antique White, Pink or Maize... The lovely Hobnail-type has over 40,000 tufts, superbly made of Viscose Rayon and Nylon that will last for years and years. In colors of White, Pink, Aqua and Maize. Completely washable. We urge you to see these bedspread beauties... you can't resist them at this tremendously low sale price. A once in a lifetime buy so get yours early.

6.99



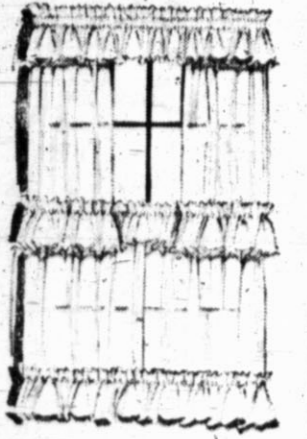
- Reg. 8.95 & 10.95 Values
- Double bed size 98"x112"
- Twin bed size 82"x112"
- Fine workmanship. Preshrunk - Washable

HOME FURNISHINGS SALE

NYLON TIER CURTAINS

Fine Nylon Marquisette

88c pr.

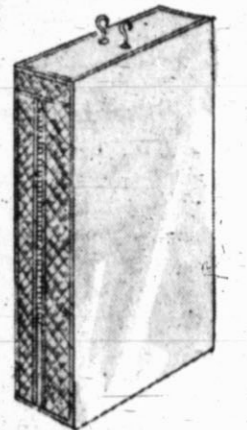


You will want to re-decorate now when you see these beautiful nylon marquisette tiers. Extra well made, ready to hang. Choose from colors of White, Pink, Yellow, Green and Blue. Ideal for any room in the home.

PLASTIC GARMENT BAG

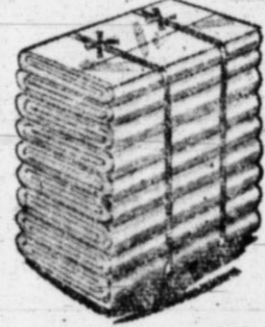
Quilted Side and Trim

Zipper Closing **99c**



Strong steel frame. Easy sliding, rust-proof zipper. Protects your clothes from dust, dirt, keeps them neat and wrinkle free. Jumbo size. 54" long. The most valuable possession in your closet. Special home furnishing sale priced.

81"x108" COLORED SHEETS



1.99

You'll want two of each color when you see these beautiful colored muslin sheets. Very, very slight imperfections of much higher priced lines. Big size. Colors in Pink, Maize, Green, Blue and Orchid. Wide hems, Strong selvage edges.

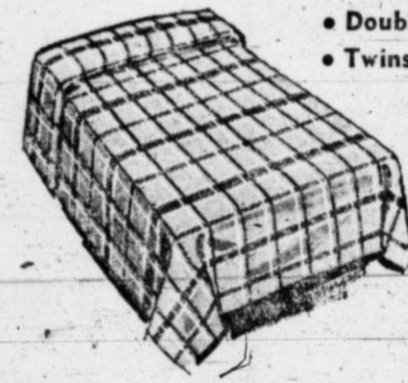
Lovely Woven

BEDSPREADS

Regular 4.98 up to 8.95 Values

3.99

- Doubles
- Twins



Brighten your bedroom at a wonderful saving. Good quality and weight. Beautiful bright plaids or new modern designs. All preshrunk and fast color for washing. Your choice of double or twin sizes. Some slight imperfections of even higher priced spreads. See these today.

T.V. AND SOFA PILLOWS

77c



Brighten your home with these colorful pillows. In many fabrics such as corduroy, antique satins, bark weaves, everglaze chintz and chrome-pun taffetas. In lovely prints or solid colors.

FOAM RUBBER PILLOWS

Large 19x26 inch size with deep 5 1/4-inch crown. Each pillow is covered with fine 80 square fabric with fine zipper opening. These are slight imperfections of regular 4.98 pillows. Truly an outstanding value anyone will appreciate.



2.99

20x40 and 22x44 Extra Heavy

Cannon Towels



2 FOR \$1

Your choice of lovely pastel colors or smart new blazer stripes in all the newest nationally advertised colors. Extra thirsty, some of the finer qualities are slight imperfections. Regular 69 and 79c values. Stock up now for spring and summer.

Beautiful "READY MADE"

DRAPES

Ordinarily you would pay from 3.98 to 4.98 for these fine drapes. Choose from solid colors in heavy rayon of a novelty jacquard weave or printed novelty weave rayon in floral and modern patterns. Extra well-made, ready to hang. Yours now at this special sale price.



2.99 Pr.

• Made of 45 inch width material, giving you 90 inch width and 84 inch length.

Outstanding Saving on Beautiful, Fine Quality

HIGH-LOW

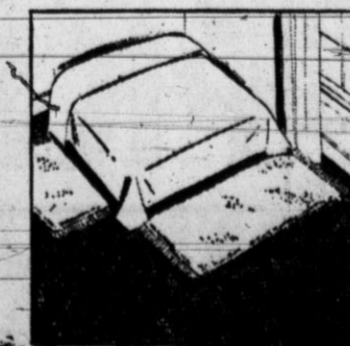
Sculptured

RUGS

4 Popular Sizes In Matching Patterns & Colors

You Would Expect To Pay Twice The Amount For Any Of These

The most outstanding rug buy we have ever offered. Bought special for this big home furnishings sale. Lovely Hi-Low sculptured weave in fine quality, good weight. Fringed ends, non-skid backs for safety. Choose from the small 2 foot by 5 foot runner up to full room 9 ft. x 12 ft. size. In mix or match colors to suit your own individual decorator taste.



SIZE 2 Ft. x 5 Ft.
Regular 2.95

1.99

SIZE 3 Ft. x 5 Ft.
Regular 3.95

2.99

SIZE 4 Ft. x 6 Ft.
Regular 6.95

4.99

SIZE 9 Ft. x 12 Ft.
Regular 29.95

19.99



IN POPULAR DECOR COLORS

THE SMARTEST BUYS IN TOWN!

<i>Shurfine</i>	young	mother	hubbard
	<i>Sale</i>		



Shurfine
CLING PEACHES Sliced or Halves 3 No. 2 1/2 Cans No. 83c

Shurfine Bartlett Halves
PEARS 4 No. 303 Cans \$1.00

Shurfine All Green Cut
Asparagus 4 No. 300 Cans \$1.00

Shurfine Mexican Style
BEANS 8 No. 303 Cans \$1.00

Shurfine
Pork & Beans 10 300 Cans \$1.00

Shurfine Fancy Vertical Pack
Green Beans 4 No. 303 Cans \$1.00

Shurfine Whole Kernel
CORN 7 No. 303 Cans \$1.00

Shurfine
CUT BEETS 8 No. 303 Cans \$1.00

Shurfine Cream Style Golden
CORN 7 303 Cans \$1.00

Cinch - Choc. - Devil's - Golden - White
CAKE MIX PKG. 19c

Red Heart - Any Flavor
DOG FOOD 2 CANS 25c

Maxwell House - 6 oz. Jars
Instant Coffee \$1.21

USDA Good Beef
CHUCK ROAST lb 39c

USDA Good Beef
Arm Roast lb 45c

Swift's Fully Cooked
PICNIC lb 39c

Pan Ready - Tenderized - Milk Fed Veal
Veal Cutlets 2 3 oz. Portions 35c



Shurfresh
Margarine 2 LBS 45c

SHURFINE FLOUR

Shurfine
Apple Sauce 6 No. 303 Cans \$1.00

Shurfine Red Sour Pitted
CHERRIES 5 No. 303 Cans \$1.00

COOPER'S Market
 FINE FOOD

COOPER

10 SA
 On Shur
 March
 Lar
 FREE
 A PK. OF
 NOO
 WITH PRCH
 Shurfine
 PACK 'U

THE SMARTEST BUYS IN TOWN!

<i>Shurfine</i>	young	mother	hubbard
<i>Sale</i>			

TODAY SALE

On Shurfine Items
March 14th thru
March 23rd

A Shurfine ANNIVERSARY SPECIAL!

A PK. OF *Shurfine* ICODLES
WITH PURCHASE OF 2 CANS

CHUNK KUNA 2/59¢
6 OZ. CANS FOR ONLY

Shurfine 5 No. 303 Cans **\$1⁰⁰**
Grapefruit Segments

Shurfine 8 No. 303 Cans **\$1⁰⁰**
Blackeyes

Shurfine Fancy Small Whole 4 NO. 2 CANS **\$1⁰⁰**
Sweet Potatoes

Shurfine Whole Dill or Sour 32 oz. 3 FOR **\$1⁰⁰**
PICKLES

Shurfine 46 oz. 4 FOR **\$1⁰⁰**
Tomato Juice

Shurfine White 11 No. 303 Cans **\$1⁰⁰**
HOMINY

Shurfine Early Harvest 2 No. 303 Cans **39¢**
PEAS

Shurfine 7 No. 303 Cans **\$1⁰⁰**
Sauerkraut

Shurfine 46 oz. 4 FOR **\$1⁰⁰**
Grapefruit Juice

Shurfine Canned Evaporated 8 TALL CANS **\$1⁰⁰**
MILK

Shurfine Tops for Quality **COFFEE** 89¢
Regular or Drip Lb. Cans

SHURFINE YOUNG MOTHER HUBBARD *Special*

Shurfine

APPLE BUTTER

4 28 oz. Jars **\$1⁰⁰**

SHURFINE YOUNG MOTHER HUBBARD *Special*

Shurfine

CATSUP

5 14 oz. Bottles **\$1⁰⁰**

Shurfresh 2 lb. box **59¢**
Cheese Spread

10 lb. bag **79¢** 25 lb. bag **\$1⁶⁹**
FLOUR

Shurfine Halves 4 No. 303 Cans **\$1⁰⁰**
APRICOTS

Shurfine 5 No. 303 Cans **\$1⁰⁰**
Fruit Cocktail



Juicy Fresh Sunkist **ORANGES** 2 LBS **29¢**

Green Crisp Stalk **PASCAL CELERY** **15¢**

Pick-O-Morn **TOMATOES** Pkg. **23¢**

Colorado 10 LB. BAG **39¢**
RED POTATOES

SHURFINE YOUNG MOTHER HUBBARD *Special*

Shurfine

Shortening

Big 3 Lb. Tin **79¢**

ER'S Market
FINE FOOD

COOPER'S Market
FINE FOOD

NO GREATER LOVE HAS ANY MAN

Park Ave. Church of Christ

on Harrison Highway
Worship services 10:30 a.m. Sunday; mid-week services 8 p.m. Wednesday.

St. Anthony's Catholic

Harrison Highway at 25 Mile Ave.
Father Michael Sugrue, Pastor
Sunday Masses are at 6:30, 8 and 10 a.m. Daily Mass is at 7 a.m. and 8:15 a.m.
Confessions are Saturday afternoon from 5 p.m. to 6 p.m. and 8 p.m. to 9 p.m.
Thursday Holy Hour is from 8 to 9 p.m. followed by confessions.

Avenue Baptist

123 N. 25-Mile Avenue
Rev. G. N. Allison, Pastor
Sunday School is held at 9:45 a.m. and worship service at 11 a.m.
Training Union is held each Sunday at 8:30 p.m.
Evening worship services are at 7:30 p.m. Sundays.
Mid-week prayer services are on Wednesday at 7:30 p.m. At 8:15 p.m. there will be choir practice.

Church of The Nazarene

Fourth and Jackson
Sunday School is held at 10 a.m., worship service at 11 a.m. and evening worship at 7:30 p.m.
The Junior Society and N.Y.P.S. will be held Sundays at 7 p.m.
Visitation will be held at 7:30 p.m. Thursday.
Prayer meeting, Wednesday will begin at 7:30 p.m.

Church of God

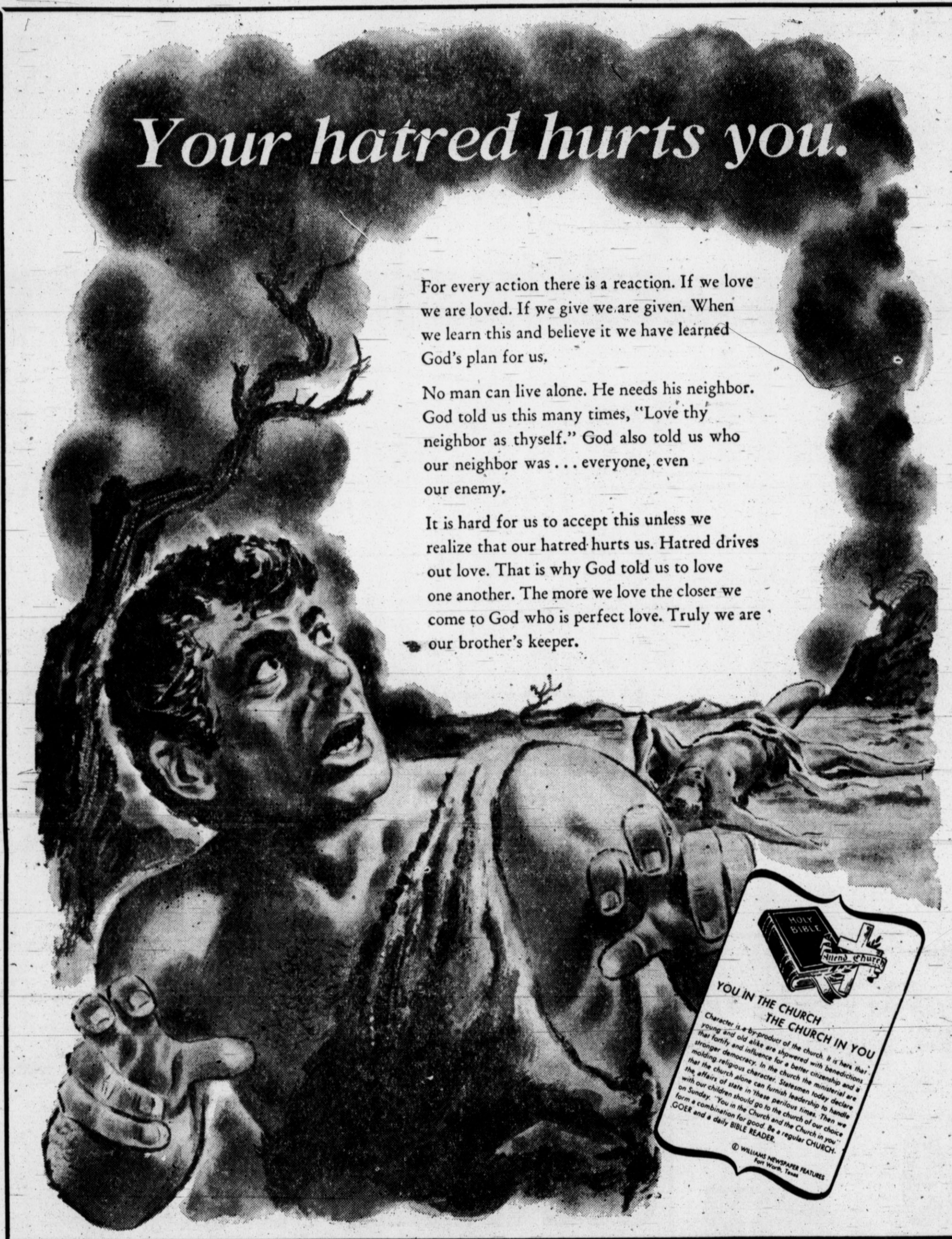
H and 13th Street
Rev. E. F. Murphy, Pastor
Sunday School will begin at 10 a.m. Worship service is at 11 a.m. Sunday evening worship begins at 7:45 p.m. and young people's service Friday at 7:45 p.m.

First Baptist

Fifth and Main
Rev. Howard Scott, Pastor
Sunday School is held at 9:45 a.m. and the worship service is held at 10:55 a.m.
Training Union will be held Sunday at 6:45 p.m., with the evening worship service at 8 p.m.
The Sunday morning Baptist Hour is broadcast at 8 a.m. over Radio Station KPAN.
Worship service is broadcast every first, second, third and fifth Sunday at 10:55 a.m. over Radio Station KPAN.

Assembly of God

Union & Ave. G.
Rev. V. W. Marcontell, Pastor
Sunday School is held at 9:45 a.m. Morning worship service convenes at 11 a.m.
C. A. service begins at 6:30 p.m.; Junior C.A.'s meet at 6:30 p.m. and worship service begins at 7:30 p.m.
From 2 to 2:30 p.m. each Sunday, the "Words of Life" Broadcast may be heard over Radio Station KPAN.
Prayer meeting and Bible Study will be held Wednesday at 7:30 p.m., after which choir practice will convene.
Women's Missionary Council will meet at the church each Thursday at 2:30 p.m.



Your hatred hurts you.

For every action there is a reaction. If we love we are loved. If we give we are given. When we learn this and believe it we have learned God's plan for us.

No man can live alone. He needs his neighbor. God told us this many times, "Love thy neighbor as thyself." God also told us who our neighbor was . . . everyone, even our enemy.

It is hard for us to accept this unless we realize that our hatred hurts us. Hatred drives out love. That is why God told us to love one another. The more we love the closer we come to God who is perfect love. Truly we are our brother's keeper.

First Christian

Sixth and Main
Dr. George Cuthrell, Pastor
Sunday School is held at 9:30 a.m. Worship service will begin at 10:50 a.m.
Chi-Rho and CYF meets at 6 p.m. Sundays and vesper services are at 7 p.m.
Functional Department's first Wednesday at 8 p.m.
General Church Board, second Wednesday at 8 p.m.
Choir rehearsal meets each Wednesday at 8 p.m.
Groups one and two meet on the third Wednesday at 9:30 a.m.
Business women meet at 7:30 a.m. on the second Tuesday.
Young Matrons meet on the second Wednesday at 9:30 a.m.
Friendly visitation on Monday, Tuesday, Wednesday, Thursday, and Friday at 7:30 p.m.

Central Church of Christ

205 E. 6th Street
Russell Ingalls, Minister
Bible School is held each Sunday at 9:50 a.m., with the morning worship at 10:55 a.m.
The Young People meet Sunday evening at 7:10 p.m. with worship service beginning at 6 p.m.
Wednesday prayer services are held at 7:30 p.m.

Church of Jesus Christ of Latter Day Saints

(Mormon)
Kendon O. Anderson, superintendent.
The Mormon Church meets in the American Legion Hall. Sunday School services are at 10 a.m.

Seventh Day Adventist

Third and Lawton
Arthur C. Carlson, Pastor
Sabbath School begins at 9:45 a.m., song service at 9:30 a.m., worship service at 11 a.m. Saturday.
For lesson study Sabbath, March 16, will be "Kindness and Sympathy." Memory verse: Luke 6:31. Study helps: "Christ's Object Lessons," pp. 376-389, 243-251; "Testimonies," Vol. 3, pp. 527-534; Lesson Helps in "Review and Herald" for Feb. 28. Lesson Outline: 1. God's loving kindness. 2. The Savior's compassion. 3. Old and New Testament examples. 4. Exhortations to brotherly kindness, key thought: "The kind, courteous Christian is the most powerful argument that can be produced in favor of Christianity." - Gospel Workers, page 122.

Temple Baptist Church

Forrest St. and Ave. K.
Rev. Robert Laceywell, Pastor
Sunday School begins at 9:45 a.m. and Training Union is in the evening at 6:15 p.m. Worship services are at 10:50 a.m. and 7:15 p.m.
Wednesday prayer service will be held at 8 p.m.
The teachers and officers meeting will begin at 7:30 p.m. Wednesday.

Wesley Methodist

410 Irving
Bernard F. Seay, Pastor
Sunday School is conducted at 9:45 a.m. and MYE at 6:30 p.m. Worship services are at 11 a.m. and 7:30 p.m.
The mid-week service will be Wednesday at 7:30 p.m.
(Continued On Page 7)

These Hereford Business Firms Make This Page Possible in the Interest of Our Churches. Make Church Going a Habit

KENNY GEARN MACHINE WORKS
W. A. & Kenny Gearn

HEREFORD FERTILIZER & INSECTICIDE CO.
Norman Moore

HEREFORD LAUNDRY & DRY CLEANERS
Ernest Kendall - Clinton West

HEREFORD GRAIN CORP.
Curtis O. Roach, Mgr.

E. B. BLACK CO.
Dick Barnard - Jesse Stanford

BLANTON BUTANE, INC.
Darrell Blanton

COSUMER'S FUEL ASS'N.
Louie-LeGrand

BIG T PUMP CO., INC.
Hilrey and Leroy Aven

ASSOCIATED GROWERS OF HEREFORD

McRIGHT GARAGE & SUPPLY
Mr. and Mrs. A. N. McRight

EAST SIDE 66 STATION
C. L. Hodges

HEREFORD WRECKING & PARTS CO.
O. Culpepper

FARMERS DRIVE IN
Troy Moore

ELIZABETH WOMBLE
148 N. Main St.

HUNTER'S FOOD MARKET
Mr. and Mrs. Russell Hunter

ROGERS DRUG
Mr. and Mrs. Grady Rogers

CONTINENTAL GRAIN CO.
Dennis & Les Wosnitzky

HEREFORD CREAMERY
Mr. and Mrs. Elton Malone

HEREFORD IMPLEMENT CO.
Herman Neff

MASTER CLEANERS
Mr. & Mrs. C. D. Fitzgerald

HUCKERT TELEVISION SERVICE
Mr. and Mrs. Joe Huckert

PIGGLY WIGGLY
Mr. and Mrs. Gaylord Newell

SOUTHWESTERN PUBLIC SERVICE CO.
W. C. Meharg

GILLILLAND FUNERAL HOME
Matt Gilliland - Marlin Gilliland

PITMAN GRAIN CO.
Mr. and Mrs. J. A. Pitman

FIRST NATIONAL BANK
Virgil Hennen

CROWE-GULDE CEMENT CO.
Ray Godwin

ORSBORN-NORWOOD CHEV.-OLDS
John Orsborn

HOWARD GAULT CO.
Vegetable Growers, Packers, Shippers

PLAINS FERTILIZER CO.
Glen O. Edwards - Lowell Sharp

WOODFORD LIVESTOCK CO.
Lewis Woodford

KEMP LUMBER CO.
John Fielder

JOHN McLEAN INSURANCE AGCY.
John McLean

HEREFORD HARDWARE
Mr. and Mrs. Don Zimmerman

SHELTON TIRE EXCHANGE
W. O. & Bessie Shelton

HEREFORD STATE BANK
Townsend Douglas, Pres.

KIRKSEY 66 SERVICE STATION
Jack Kirksey

GULF OIL DISTRIBUTOR
R. L. Pool

B. F. GOODRICH
Don Little

SUIT'S AUTO SUPPLY
Mr. and Mrs. Ray Suits

LOERWALD BROS.
Ed, George, Gene and Harold Loerwald

HOTEL JIM HILL
Mr. and Mrs. Dick Ross

PITMAN SERVICE STATION
Odice & Edd Bulls

FARM & HOME SUPPLY
W. A. DeBusk

DAVIS-McCRACKEN
W. L. Davis - J. C. McCracken

FURR FOOD STORE
Bill Shore

St. Patrick Inspires a Blazer

By DOROTHY ROE
Associated Press Women's Editor

It's a great day for the Irish, and a great day to give the small fry a thrill with the wearin' of the green.

Since spring is a signal to the home seamstress to unfurl her sewing machine, a gay way to start is by stitching up a St. Patrick's blazer for your favorite youngster.

Easy to make and fun to wear is a felt jacket that can be worn proudly on St. Patrick's Day and that will do duty on many chilly days of early spring. Local sewing center experts suggest a green felt blazer appliqued with white felt shamrocks and trimmed with white bias binding. Choose a standard pattern for a jacket that may be adapted for either a boy or a girl, and make your own pattern for the shamrocks.

LESS THAN 1/2 yard of 72-inch felt is needed to make the jacket. The inch rulers printed on the pattern piece make sleeve and length. And a felt jacket is a breeze to make, since it needs no seam finishes.

When appliqueing the shamrocks, use a close satin stitch on your automatic swing-needle sewing machine or your automatic zigzag attachment. Remember to leave a generous margin when cutting the applique, and apply the shamrocks on the pockets before stitching pockets to jacket. In the case of the elbow patches, applique these before sewing up the seam on the sleeves.

If you don't want to go all out on the Irish motif, you can use other decorations for the blazer; transfer patterns in the pattern envelope offer a choice of a fleur-de-lis, a pine tree or a heart—all decorative applique designs to brighten up a smart and practical jacket.

TOMORROW AND TOMORROW
EAST LANSING, Mich. (AP)—Dr. John Ryder, dean of engineering at Michigan State, says tomorrow's engineer must really be progressive.

"He must believe that if a device works it already is obsolete," says Dr. Ryder.



THE WEARIN' OF THE GREEN—Green felt blazers with white shamrock applique trim is easy to make at home.

Legal Notice

THE STATE OF TEXAS

To: The unknown heirs and legal representatives of Percy Welliver, deceased; the unknown heirs and legal representatives of Sarah E. Welliver, deceased; Myrtle Steelman; the unknown heirs and legal representatives of Myrtle Steelman, deceased; Ida Helm; the unknown heirs and legal representatives of John Welliver, deceased; Emma Jones; the unknown heirs and legal representatives of Emma Jones, deceased; John Welliver, the unknown heirs and legal representatives of John Welliver, deceased; Van Welliver; the unknown heirs and legal representatives of Van Welliver, deceased; Grant Welliver; the unknown heirs and legal representatives of Grant Welliver, deceased; Charlot Welliver; the unknown heirs and legal representatives of Charlot Welliver, deceased.

Defendant, Greeting: You are hereby commanded to appear by filing a written answer to the Plaintiff's Petition at or before ten o'clock A.M. of the first Monday after the expiration of forty-two days from the date of the issuance of this citation, same being Monday the 15 day of April 1957, at or before ten o'clock A.M. before the Honorable County Court of Deaf Smith County, Texas, at the Court House of said County in Hereford, Texas.

Said Plaintiff's Petition was filed in said court, on the 1 day of March A.D. 1957, in this cause, numbered 1797 on the docket of said court, and styled, Irene Gilliland Plaintiff, vs. Percy Welliver, et al, Defendants.

The names of the parties to the cause are as follows:
Irene Gilliland is Plaintiff and

The unknown heirs and legal representatives of Percy Welliver, deceased; the unknown heirs and legal representatives of Sarah E. Welliver, deceased; Myrtle Steelman; the unknown heirs and legal representatives of Myrtle Steelman, deceased; Ida Helm; the unknown heirs and legal representatives of John Welliver, deceased; Emma Jones; the unknown heirs and legal representatives of Emma Jones, deceased; John Welliver, the unknown heirs and legal representatives of John Welliver, deceased; Van Welliver; the unknown heirs and legal representatives of Van Welliver, deceased; Grant Welliver; the unknown heirs and legal representatives of Grant Welliver, deceased; Charlot Welliver; the unknown heirs and legal representatives of Charlot Welliver, deceased; and the First National Bank of Hereford, Hereford, Texas, are Defendants.

A brief statement of the nature of this suit is as follows, to wit: The adjudication of the title of monies alleged to belong to Carl Gilliland at the time of his death in special account and special deposit, carried by him as representative of the Estate of Percy Welliver, deceased, the same being his fees, after the payment of all expenses and distribution of proceeds belonging to such estate, which account was held by said Carl Gilliland in the First National Bank of Hereford, Texas, and Plaintiff is the surviving wife and sole beneficiary under the last Will and Testament of Earl Gilliland, deceased, as is more fully shown by Plaintiff's Petition on file in this suit.

If this citation is not served within ninety days after the date of its issuance, it shall be returned unserved.

The officer executing this pro-

cess shall promptly execute the same according to law, and make due return as the law directs. Issued and given under my hand and the Seal of said Court, at Hereford, Texas, this the 1 day of March A.D. 1957.

Attest:
Ralph Smith, Clerk,
County Court, Deaf Smith County, Texas.
(SEAL) T-10-4c.

OUTCAST:
JACKSONVILLE, Fla. (AP)—The newest resident of the Jacksonville zoo is a social outcast. First hint that something might be lacking in his personality came

when the owner sold the spider monkey to the zoo. But when he was put on an island with about 30 others of his kind, the hint became concrete action—the others threw him into the moat.

Zoo workers fished him out and put him back on the island. The other monkeys threw him into the moat again.

Supt. Gus Basford put the monkey in a cage by himself.

He walked away and left his truck stuck in it. The Public Works Department estimated damage to the course at \$100 and impounded the truck, belonging to a nearby horse farm, as security for payment.

New Low Prices

On Agricultural Ammonia

We handle a complete line of Dry Fertilizers in connection with our Agricultural Ammonia, which enables us to properly fertilize not one, but all, major crops grown in this area.

Yes, our Ammonia prices are lower . . . and they're tailored to fit each farm operation. Discuss your fertilizer needs with us.



Now is the time to apply PHILLIPS 66 AGRICULTURAL AMMONIA

- 1 You get your nitrogen into the ground early — no gamble on spring weather that can keep you out of your fields when your crops are all set to get up and grow.
- 2 Cool, moist soils retain nitrogen. It stays there in the ammonia form where your crops can reach it next spring.
- 3 Crop residues are decomposed — fertility and soil tilth improved with fall applied Phillips 66 Agricultural Ammonia and fields are easier to work next spring.
- 4 Pastures, hay meadows and small grains produce more forage, longer and better grazing when fed with Phillips 66 Agricultural Ammonia.

See us for full information on your next trip to town!



HEREFORD BUTANE, INC.
Veteran's Park Road Phone 1300

Watch Repairing
Lynn C. Kester
Local
Time Inspector

KESTER'S
Jewelry & Gift Shop
Hereford, Texas
Across from Post Office

PLAINS INSURANCE AGENCY
INSURE IN SURE INSURANCE

John H. Patton Wm. C. Patton
All Forms of Insurance
213 N. Main St. Since 1926 Phone 50

SOMETHING NEW
BUFFET DINNER
in
JIM HILL HOTEL BALLROOM
EACH SUNDAY 11:00 a.m. to 2:00 p.m.
(Beginning March 17th)

CHOICE OF THREE MEATS
And
ALL YOU CAN EAT
Adults - \$1.50 Children - \$1.00

Coffee Shop will remain open as usual
JIM HILL HOTEL COFFEE SHOP
Jiggs and Claudine

CHURCH
(Continued From Page 6)

First Methodist
Fifth and Main
Rev. Alby Cockrell, Pastor
Thursday: Methodist Men book review, 7:30 p.m. Covered dish supper in Fellowship Hall.
Sunday: Sunday School, membership training classes in junior assembly, 9:45 a.m.; Morning worship, 10:55 a.m.; Primary and Junior SEF, 6 p.m.; Senior and Intermediate MYF, 6:15 p.m.; evening worship, 7 p.m.
Tuesday: Prayer group, 9:15 a.m.; commission on education, 7:30 p.m.
Wednesday: All circles in Ward Hall for WSCS study of Mission Field, USA, 3 p.m.; quarterly conference in Ward Hall, 7:30 p.m.; choir practice, 8 p.m.

Immanuel Lutheran
Park Avenue at B Street
Rev. Andrew Szegedin, Pastor
Phone 871-J
Worship service every Sunday at 11 a.m. Sunday School and Bible Classes at 10 a.m.
"Call to Worship" every Sunday over Station KPAN 9:15-9:30 a.m.
Children's Instruction Class every Saturday at 2:30 p.m.
Topic for Sunday, March 17: "Christ's Gracious Purpose to Seek and to Save." Text: Luke 19:1-10.
Lenten Services every Wednesday at 8 p.m. Topic for Wednesday, March 20: "The Dream of Pi-

Grace Gospel Church
Thirteenth and Avenue K
Rev. H. V. Fields, Pastor
Sunday School is at 9:45 a.m. and worship services convene at 11 a.m.
Bible Study is held each Sunday at 7 p.m. and preaching service at 8 p.m.
Wednesday prayer meeting is held at 8 p.m.

St. Thomas Episcopal
Harrison Highway
Rev. Lester L. Jones, Pastor
Sunday School is held each Sunday morning at 9:30 a.m. and church services at 11 a.m.
Holy Communion is held each second and fourth Sunday, and Wednesday at 9:30 a.m.
London, one of the world's main ports, is up river on the Thames, 67 miles from the sea.

It's Time To . . .

REDECORATE

hundreds of today's most wanted colors for home decoration!

now in famous PITTSBURGH PAINTS including

- WALLHIDE® Rubberized Wall Paint
- WALLHIDE Alkyd Type Flat Wall Paint
- SATINHIDE® Enamel
- WALLHIDE Gloss Enamel

PITTSBURGH

maestro colors
Don't Delay - Do It Now!
We Will Help You Secure Your Home Improvement Loan!

CARL McCASLIN LUMBER CO.
A Complete Building Service
1 Block East of the Courthouse
Phone the Lumber No. 7

Selective Fish Kill Scheduled

AUSTIN — The fresh water lake with the worst rough fish infestation in Texas will be renovated if Federal authorities approve a proposed joint Federal-state project. It is Lake Walk in the Del Rio area on the Mexican border. The chief aquatic biologist for the Game and Fish Commission said Lake Walk would be treated with rotenone, a paralyzing chemical which Texas technicians have found can be applied so that only the undesirable fish species are affected. Aquatic biologist Elgin Dietz said creel census tests have shown that Lake Walk has the lowest proportionate game fish population in Texas. He referred to it as "super-saturated" with shad, carp,

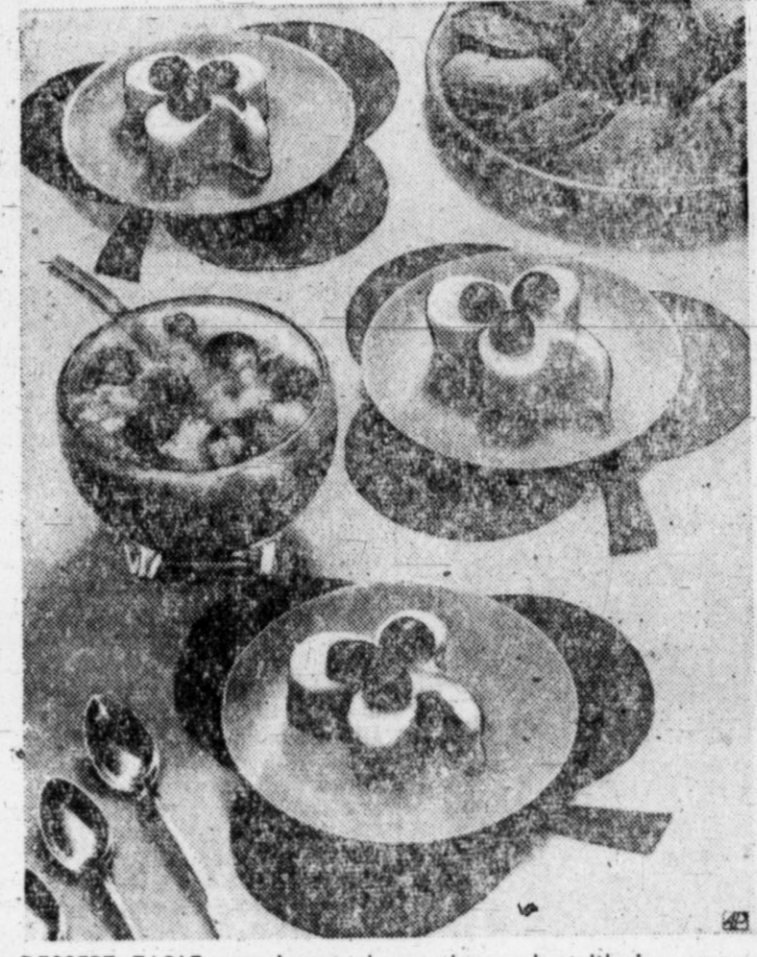
buffalo and such non-game fish. Dietz said that while Lake Walk contains some game fish, that the population is so low that restocking may have to be done to restore the lake to the desired status. Lake Walk attracts anglers from Del Rio, San Angelo, Abilene, Sonora, Big Spring, Sanderson and other points. It once was famous for its catfish and bass fishing. The lake's waters back up against the dam at Devil Lake which is much larger than Walk. The chief aquatic biologist said a crew of technicians, which has been specializing in renovating fresh water lakes would handle the Lake Walk assignment if final approval is forthcoming, and that the job would require about five days. Some screws used by Swiss watchmakers are so tiny that it takes 50,000 to fill a thimble.

Legal Notice

NOTICE OF PUBLIC HEARING ON BUDGET FOR CITY OF HEREFORD, TEXAS
On the 18th day of March, 1957, at 7:30 P.M., the City Commission of the City of Hereford, Texas, will meet in regular session at the City Hall. There will be adopted at this meeting the Budget for the fiscal year beginning May 1, 1957 and ending April 30, 1958. The public is invited to attend this meeting.
Thelma Jersig
City Secretary
B-37-2c

Shamrock Sundae Is Isish Delight

By CECILY BROWNSTONE
Associated Press Food Editor
Is it a party you're planning for St. Patrick's Day? Then why not serve that good old standby, ice cream and cookies?
Use a shamrock cookie cutter to shape the ice cream appropriately, then make up a pineapple sauce with mint-flavored green maraschino cherries. Here's the recipe:
SHAMROCK SUNDAES
Ingredients: 1 quart vanilla ice cream, 1 can (1 pound and 4 ounces) crushed pineapple, 1 tablespoon cornstarch, 1/8 teaspoon of salt, 1/3 cup (about 15) chopped mint-flavored green maraschino cherries, 1/2 cup broken walnut meats (if desired).
Method: Slice ice cream about 1 1/2 inches thick. Cut ice cream slices with 3-inch shamrock cookie cutter. Place on waxed paper. Now freeze until firm. Drain pineapple and reserve syrup. Stir cornstarch and salt together in a medium-sized saucepan; gradually add the pineapple syrup, stirring until very smooth after each addition. Cook and stir constantly over low heat until thickened and clear. Add well-drained pineapple and chopped cherries; mix well. Chill. Add walnuts to sauce before serving. Serve sauce over ice-cream shamrocks. Makes 8 to 10 servings.
RECIPE NOTE
If you haven't a shamrock cookie cutter, you may use the regulation club cookie cutter for a similar effect. Green maraschino cherries, cut into halves, may be used for an extra shamrock garnish on each ice cream shape. For the stem on this decoration cut a very thin slice from one of the cherries. The ice cream left over after cutting out the shamrocks may be saved in the freezer for later use



DESSERT TABLE can boast shamrocks made with ice cream and a cookie cutter.

Legal Notice

Notice is here given that a school trustee election will be held within the Hereford Rural High School District on Saturday, April 6th, 1957, for the purpose of electing three district trustees for a term of three years. Application blanks may be obtained at the school tax office in the court house by those who wish to file as candidates. The deadline for filing is March 26th, 1957. Any resident of the district who is a qualified voter and a property tax payer is qualified to have his name printed on the Official Ballot, upon filing his application and his Affidavit of Candidate for Public Office.
Robert E. Wagoner, President, Board of Trustees, Hereford Rural High School District.
T-10-2c.

COMPLETES COURSE
Marie Hunter, daughter of Mr. and Mrs. John H. Hunter, 508 Lawton, has finished her training at Draughon's Business College of

Amarillo and accepted a position with the J. C. Penney Co. here. More than one-third of the women working in the United States today are over 45.

STAR
SATURDAY SHOWTIME
2:00-3:49-5:38-7:27-9:16
FEATUREIME
2:34-4:23-6:12-7:01-9:50
THEY CALLED HER... "FLAMING ARROW"
Half-white half-Sioux, all woman... she scorched a path of justice across the frontier!

Star THEATRE
Phone 368
THURS. FRI. SHOWTIME
2:00-4:20-6:40-9:00
FEATUREIME
2:18-4:38-6:58-9:18

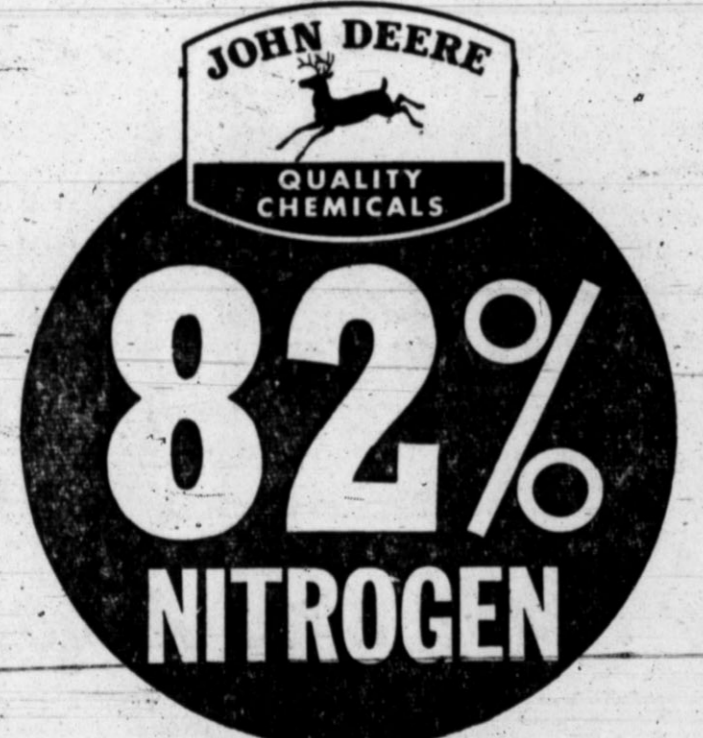
FROM THE SENSATIONAL STAGE SUCCESS!
M-G-M presents in CINEMASCOPE and METROCOLOR!
Tea and Sympathy
starring Deborah Kerr John Kerr
The love story of a teen-age boy and an understanding woman.
Passes have been sent to the following honoring them on the occasion of their Wedding Anniversary Ma. 14-16.
Mr. & Mrs. C. C. Boyer
Mr. & Mrs. O. R. Sanders
Mr. & Mrs. George Lutz
Mr. & Mrs. E. Garrison
Mr. & Mrs. R. R. Stewart
Mr. & Mrs. Lewis Coke
Mr. & Mrs. Kenneth Maxwell
Mr. & Mrs. Buddy Garrett
Mr. & Mrs. Douglas Beene
Mr. & Mrs. E. M. May
Mr. & Mrs. Jesso Scott
Mr. & Mrs. James E. Gallagher

THE WHITE SQUAW
starring David BRYAN May WYNN William BISHOP
Screenplay by LES SAVAGE, JR.
Based on the Novel by LARABIE BUSTER
Produced by WALLACE MACDONALD
Directed by RAY HAZABRO

NOW IS THE TIME

to apply Genuine John Deere ANHYDROUS AMMONIA!

Use high quality John Deere Anhydrous Ammonia now and cash in on higher yields and greater profits this year... But don't delay... Come in today and make arrangements for your Anhydrous



NOW...

At The **LOWEST PRICE EVER!**

Prices on Anhydrous Ammonia have been

REDUCED!

That's right folks... it may sound odd at this time of ever increasing prices. We are announcing a cut in the price of Agricultural Ammonia. So... there's no need to delay, phone today and place your order for your ammonia requirements.

Plains Fertilizer

Down Hereford Tri-Co. Gin

Firestone's Greatest Sale

save on the tire designed for **ORIGINAL EQUIPMENT** on 8,000,000 of America's finest cars

Firestone Super Champion

12.55

black sidewall 6.00-16 Plus Tax and recappable tire

100 DOWN Puts any Firestone tire on your car

ALL SIZES - ALL TYPES - SALE PRICED Super Champion

Black Sidewall		White Sidewall	
Size	Sale Price Each*	Size	Sale Price Each*
Tubed Type		Tubed Type	
6.70-15	14.35	6.70-15	17.55
7.10-15	16.05	7.10-15	19.70
7.60-15	17.80	7.60-15	21.55
6.00-16	12.55	6.00-16	15.35
6.50-16	17.25	6.50-16	21.15

*Plus tax and your recappable tire

Roy Oswald Firestone Store

226 N. Main Phone 59

STAR
SUNDAY MONDAY TUESDAY
SHOWTIME: 2:00 - 3:36 - 5:30 - 7:24 - 9:18
FEATUREIME: 2:16 - 4:04 - 5:58 - 7:52 - 9:46

HELL in his HOLSTERS!
and **FOUR QUEENS UP HIS SLEEVE**

Dan Kehoe was a big gun terror and he rode into Wagon Mound from nowhere, looking for trouble — and four lovely, lonely women helped him find more than he bargained for!

CLARK GABLE
ELEANOR PARKER
in **THE KING and FOUR QUEENS**
with JO VAN FLEET