

Valley View Energy Corp.
4100 Interfirst - 1
Dallas, X 75202

Program on sex education proposed

By REED PARSELL
Managing Editor

Fourth graders at Shirley Intermediate School would be the first local students to participate in a sex education program should school board members grant approval during their November meeting.

Rosemary Shook, Shirley's librarian, was at Tuesday's board meeting to report on her "health curriculum" committee's recommendations. She presented district trustees with lists of general objectives and specific areas of study for the proposed program.

Meanwhile Monday, the Hereford Independent School District board of directors listened to a description of the mastery learning concept and briefly considered the district's building renovation and construction project.

First on the general objectives list formulated by Shook's committee is "to open channels of communication between children and their parents, teachers and counselors and religious leaders concerning the meaning, significance and potential values of interpersonal relationships in human life."

Other objectives are to develop feelings of self-identity and self-worth, learn how to have "positive standards of behavior," realize physical and emotional changes which occur from puberty to maturity and understand the male and female reproductive systems.

Shook said the program, to be taught during health class perhaps three times a week for six weeks, might also include instruction on how to deal with and detect child abuse.

She said those teaching the program could receive assistance from non-district personnel, such as doctors or nurses, should a particular subject make an instructor feel "uncomfortable."

No definite lesson plans have yet been developed, Shook explained.

Shirley would test it

She said it is hoped the program, if deemed successful at Shirley, could be initiated at other schools and perhaps other grades this school year.

Recommendations by the 13-member committee were based in part on public comments received last spring. Among those joining Shook on the task force were school board member Henry Amar and Dr. Harrell Holder, HISD superintendent.

Grading under the mastery learning system was addressed by Marc Williamson, assistant superintendent for instruction. Changes in evaluating student performances have been ordered this year by the state.

"It's an adjustment, no doubt about that," Williamson said. "But being as it is based on sound educational practices, I don't think we could go wrong."

The administrator said there are five main state guidelines for the mastery concept, including 70 percent being the cutoff for passing. Also, objectives must be measured, mastery should be documented, promotion must be based solely on academic achievement and an adequate notification process concerning grades should be established.

Tests have shown that students involved in conventional programs attain mastery only 50 percent of the time, Williamson said. With a mastery learning system, prerequisite training and mixed-competency-level instruction, however, the success rate jumps to 98 percent, he claimed.

Under the proposed HISD guidelines for Grades 7 through 12, prerequisite instruction for a unit is to be followed by a "formative" test.



Addressing New Program
Rosemary Shook, librarian at Shirley Intermediate School, was at Tuesday's school board meeting to discuss a proposed sex education course. Hereford Independent School District trustees are to vote on the matter at their Nov. 13 meeting.

Local Roundup

City sent sales tax payment

Hereford was last week mailed \$42,519.23 as its allocation for the 1-cent city sales tax collected in the 30-day period ending Sept. 28, the state comptroller's office reported.

For the year, Hereford has received more than \$447,400, representing a nearly 12.5 percent jump over the \$397,000 collected through September of last year. For the September of 1983 period, the city was sent about \$22,470.

In all, approximately \$58.2 million was mailed last week to the 990 Texas cities which levy the city sales tax. Houston's check for \$9.8 million was the largest, with Dallas pulling in \$6.9 million, San Antonio \$3.5 million and Austin \$2.7 million.

"So far this year," according to Bob Bullock, state comptroller, "these payments are running better than 16 percent ahead of last year, and most Texas cities can expect even bigger checks for the rest of 1984."

Bullock added December's checks will reflect the one-eighth cent tax rate which went into effect last Tuesday.

Several residents owed money

Twenty-one Hereford residents and two local companies are each owed at least \$50 by the Texas Treasury Department, a news release from the state office claimed.

Statewide, there are more than 27,000 "lost" account holders owed more than \$9.5 million. Fourteen Texas newspapers, including the Amarillo News-Globe, printed the entire list Sunday.

According to Ann Richards, state treasurer, the list proved a "smashing success" when published for the first time last year.

Those Hereford residents reportedly entitled to some returns include Charles Allemand, Rogelio Alonzo, Rocky Battenfield, Anna Betzen, Pauline Blake, Dale Christie, Hazel Clark, Eva G. Dement, Doyal Guice, J.T. Hale and A.M. Harper.

The other local citizens listed are Howard Harvey, Francis Honea, Ronald N. Howard, Albert Lewis Lamb, James Pierce, David Ramirez, Kenneth R. Rogers, W.J. Rogers, Enrice Trebino and Leonard and Leona Wall.

No arrests made on Tuesday

Hereford policemen did not make any arrests Tuesday, though they did investigate three incidents, the local law enforcement agency reported this morning.

The three offenses committed Tuesday were assault, unauthorized use of a motor vehicle and vandalism.

TUESDAY'S HIGH: 74 (normal: 76 record: 93 (1965))
OVERNIGHT LOW: 55 (normal: 49 record: 35 (1919))
OUTLOOK: Partly cloudy tonight with a low near 50 and southerly winds of 10 to 15 miles per hour. Winds are to switch to from the southwest Thursday, which is to have a high in the middle 70s. There is a 20 percent chance of precipitation predicted for both tonight and Thursday.

United Way drive hits 40 percent of its goal

The United Way of Deaf Smith County has reached 40 percent of its goal of \$128,150 after four weeks of the campaign, it was announced Tuesday by B.J. Gilliland, drive chairman.

A total of \$50,753 in contributions and pledges had been reported as the campaign period hit the halfway mark. The United Way drive is scheduled to conclude Oct. 31.

UW President James Self said volunteer workers are "striving to reach the goal for the first time in several years," thus making the campaign slogan of "Cring More in '84" a reality.

Volunteer solicitors are divided into eight teams, and the General Division is still leading the way with 70 percent of its total collected or pledged. The Professional Division is just over the 50 percent mark, while the other divisions are nearing the halfway mark of division goals.

The 10 agencies funded by United Way include Big Brothers-Big Sisters, Boy Scouts, YMCA, Senior Citizens, Camp Fire, Family Services Center, Salvation Army, Red Cross, Hi Plains Epilepsy Foundation, and the Childrens Rehabilitation Center.

Gilliland said each individual must

Letter creates some tension

By KIMBERLY THOGMARTIN
Staff Writer

While the Buffalo Lake Water District board did not receive the long-awaited Bureau of Reclamation feasibility study at Tuesday's regular meeting, it was presented with a letter from the Fish and Wildlife Service that created a small stir among several members.

Rodney Krey, FWS manager who works both at Muleshoe and Buffalo Lake, opened his presentation to the board by announcing that a needed environmental assessment study has slowed down the issuing of the BOR's final report. The study was conducted at the request of the FWS in an attempt to determine the best strategy for repairing the dam at the now-drained lake.

Krey said he expects the environmental assessment to be completed within three weeks.

Johnny Beall, resident wildlife manager at the lake, said late last month it was his understanding the

BOR will recommend raising the dam and installing a "glory-hole" spillway, a \$7 to \$8 million alternative.

It was the matter of the so-called Stewart Dike, an earthen dam built at the far south end of the lake, that brought about a lively discussion between Krey and the board members.

Krey distributed copies of a letter written by Ellis Klett, assistant regional director in Albuquerque and addressed to Ted Abrahamson, chairman of the water district board.

"An issue arose during the water board's September meeting that is of a major concern of the FWS," the letter read. "This issue dealt with the removal of Stewart Dike, located along the south end of Buffalo Lake."

At its last meeting, the board had discussed the possibility the dam was an illegal structure since FWS had not obtained a permit from the Texas Department of Water Resources. FWS claims it does not need a permit, and both sides are expecting an answer to result from a meeting between the FWS attorney and the DWR officials in Austin.

"This dike is the heart of the refuge's wildlife management program," Klett's letter continued, "and if the water board passes a proposal to breach the dike, the FWS would have to reassess its support of the water board."

Board secretary Charles D. Johnson referred to the letter as "strongly worded" while Enoch Henderson reacted in a similar manner.

"I take great exception to anyone that threatens me," he proclaimed. "We have as much right to it (the lake area) as the Fish and Wildlife Service...There's an awful lot you people are lacking."

Abrahamson, absent from last month's meeting, said he felt Klett misunderstood the board's purpose in delving into the legality of the dam.

"One thing we wanted to do was clean up our own house before we started charging up the canyon telling others to remove their dams," he told Krey.

The board suspects that landowners have constructed illegal dams along Tierra Blanca Creek, which is the primary source of water for Buffalo Lake. Board members would like to see those dams removed, but feel they cannot take such ac-

tion if the Stewart Dike turns out to be illegal as well.

First built in 1973, the dam was partially washed out by a flood in 1978. FWS repaired the structure last spring and it now has the capacity to impound 941 acre-feet of water from the Tierra Blanca Creek. Right now, Krey told the group, the small lake has only 50 or 60 acre-feet of water, which is there for the benefit of waterfowl and other wildlife.

"We want to make sure that dam built on the Tierra Blanca Watershed is okay with the powers that be," Abrahamson told Krey. "We wanted to demonstrate to people with dams what they should do. If you need a permit, they should get one too."

Krey said Klett wrote the letter because he wanted to reinforce to the board how important the dam is. "All we want is that the board not be opposed to it," he stressed.

According to Klett's letter, the dike "is the major management unit of the refuge. Without this dike, the importance of Buffalo Lake NWR (National Wildlife Refuge), as a unit of the NWR System, would be reduced. This could result in the refuge receiving lower priority concerning projects, personnel and funds in the future."

The board decided to table the issue until the matter of the permit is dissolved in Austin, with Abrahamson still maintaining that the letter was a result of poor communication between the board and the FWS.

Also at Tuesday's meeting, Canyon Attorney Darrell Carey was sworn in as a board member to fill the unexpired term of Bill Roberts. Roberts, a Randall County representative, recently moved to Potter County.

Construction of picnic and camping facilities continues at the refuge, Krey announced. A water system for restrooms is now being installed, and two open shelters are going up as well.

Old restrooms and picnic sites on the east side of the lake have been buried, Krey told the board, since that area will not be used for recreation.

Board members voted to table discussions on funding and asking to be established as a taxing entity until the February meeting.

The board meets the second Tuesday of each month at 7:30 p.m. at the refuge headquarters near Umbarger.



News Roundup

State

Handy Dan injunction lifted

HOUSTON (AP) — A state district judge has ruled the Texas blue law that prohibits the sale of certain items seven days a week is unconstitutional, but the ruling is not binding on other courts.

Judge Thomas Phillips issued the ruling Tuesday, lifting an injunction requiring Houston-area Handy Dan hardware stores to comply with the state statute.

In the decision, which came after a two-day hearing, Phillips said the blue law is unconstitutional because it is vague and doesn't not have the effect it was designed to have.

The law, which prohibits the sale of certain items on seven days a week, says it is designed to guarantee retail employees a day of rest.

But Linda Addison, an attorney representing Handy Dan, and other critics have said the law actually serves to prevent competition on Sundays.

"Statutes like the blue law infringe on the rights of individuals," Addison said.

Handicapped trial to start

BRENNHAM, Texas (AP) — Attorneys are scheduled to go to federal court next week in a two-year-old lawsuit involving the Brenham State School's compliance with federal laws, a lawyer said.

The 1982 lawsuit alleges the school is not complying with Public Law 94-142, a federal law "which requires all handicapped children to receive at no cost to the parent a free, appropriate education," said Deborah Hiser, the attorney representing a teen-ager.

The suit was filed in U.S. District Court in Austin on behalf of Suzie Leggio, the mother of a student at the school. Ms. Leggio contends her son, Gerald Griffith, 14, is entitled to a "free appropriate public education." The boy, described as "profoundly mentally retarded" and autistic, has been a resident at the state school since 1975.

The suit alleges the school does not have a six-hour school day, does not "mainstream" its residents and does not have certified special education teachers.

Under federal law, the Texas Education Agency is supposed to implement the act in Texas schools, she said. But Ms. Hiser said she believes the Mental Health and Mental Retardation Department and the education agency are "passing the buck to one another."

PUC orders TUEC rate cut

AUSTIN (AP) — The first major electric case under the state's new utility regulation law has produced a \$9.8 million rate cut and a message for other utility companies.

"What we said pretty clearly here is the mere filing of a rate case is not going to guarantee anything. It may cost you some money," Public Utility Commission Chairman Phil Ricketts said Tuesday after his panel ordered the rate cut for Texas Utilities Electric Co.

TUEC, which serves about one-third of the state's population, wanted a \$304 million hike that would have raised rates by an average of 8 percent.

"I'm disappointed," TUEC Vice President Tom Baker said after the decision that will be challenged in court. The commissioners said the company had no reason to expect any other outcome. The utility regulation law approved by the 1983 Legislature makes it tougher for electric companies to get rate hikes.

National

Congressmen remain tied up

WASHINGTON (AP) — For the fourth time in a week, Congress has passed emergency legislation to keep the government running while it wrangles over a vital money bill. Key negotiators said if a deal can be struck over water projects, "everything will fall into place" and "we can all go home."

House and Senate conferees traded proposals Tuesday but failed to solve disputes stalling the bill needed to keep the government solvent.

The battles over aid to Nicaraguan rebels, defense items and water projects are keeping the lawmakers in Washington when most would rather be campaigning.

Tuesday night, for the fourth time in a week, both houses passed stopgap legislation by voice votes to keep the government running and avoid another shutdown of federal offices. The bill went to the White House.

Some 500,000 federal workers were sent home last Thursday when President Reagan closed down the government for half a day. The new stopgap money bill, valid until midnight Thursday, specified that those workers will be paid for the time they were absent.

Battle begins for Westmoreland

NEW YORK (AP) — Retired Gen. William C. Westmoreland, who led American forces through four critical years of the Vietnam War, gave a cold shoulder to an antiwar activist before watching as 12 jurors were picked to hear his \$120 million libel suit against CBS.

Westmoreland says the 1982 "CBS Reports" special, "The Uncounted Enemy: A Vietnam Deception," was false and malicious. The program charged Westmoreland with deliberately underestimating enemy troop strength in 1967 to maintain political support for the war.

Choosing from a panel of 100 potential jurors, U.S. district Judge Pierre N. Leval on Tuesday selected six men and six women to hear the case. The judge said three alternate jurors would likely be chosen this morning, and opening arguments could begin later in the day.

Jurors were questioned extensively about their attitudes toward the press and the military, and particularly about CBS News and the Vietnam War. None of the jurors picked had served in Vietnam, although one had a son in the Army.

AIDS vaccine thought elusive

NEW YORK (AP) — The virus suspected of causing AIDS is showing up with so many genetic variations that it might be difficult to develop a vaccine for the incurable disease, according to a noted AIDS researcher.

Dr. Robert Gallo of the National Cancer Institute said viruses from individual AIDS patients show many variations in their genetic makeup, especially in the genes that control characteristics of the viral protein coat.

As a result, it might be difficult to design a vaccine that will stimulate the body to create disease-fighting antibodies that recognize the virus despite variations, Gallo said Tuesday at the Bristol-Myers Symposium on Cancer Research, held at Rockefeller University.

"I don't know if it will be a problem. I hope not," Gallo said in an interview Tuesday.

Gallo added, however, that the genetic variations are not as extreme as those seen in influenza, which strikes populations in waves as new variants develop that resist vaccines for the previous wave.

Work to develop an AIDS vaccine has begun in several laboratories. A California genetic engineering firm hopes to produce one in a few months.

Reagan visits Michigan

Mondale claims he's 'red hot'

By MIKE SHANAHAN Associated Press Writer

PITTSBURGH (AP) — Walter F. Mondale, declaring his campaign has become "red hot" since the Louisville debate, says he has smoked out President Reagan on the touchy issue of possible cuts for future recipients of Social Security.

After reacting on Social Security on Tuesday, Reagan was heading today for Michigan, where he was addressing a group of Catholic high school students outside Detroit.

As the Social Security issue simmered, Mondale campaigned Tuesday with new energy provided by the Sunday matchup with Reagan and Mondale's favorable reviews for his performance.

Mondale talked to a noontime Detroit rally attended by about 8,000 people, then flew to Pittsburgh where he was attending a similar event today.

"I think this campaign is really red hot," Mondale said. "I think we are on a roll. I think we have a chance to win."

Mondale's comments on Social Security came as Reagan was prompted to change his position on Social Security. The White House said Reagan ruled out any reduction in benefits for future Social Security recipients — not just for those now on the benefit roles.

"I think we smoked them out," Mondale said.

Mondale noted that in their debate, Reagan pledged to leave untouched in a second term the benefits now paid retirees.

"A president should never say never," Reagan said, "but I'm going to violate that rule and say never. I will never stand for a reduction of the Social Security benefits to the people that are now getting them."

Mondale said he was skeptical about that pledge to 36 million recipients because Reagan made a similar promise in 1980, then unsuccessfully sought to reduce Social Security by 25 percent.

But Mondale, seeing an opening, interpreted the president's statement to mean that in a second term Reagan would propose cuts in benefits for workers still contributing to Social Security.

In an early morning appearance before a civic group in Cincinnati, Mondale said there is a "deeper question" of whether the president will cut future Social Security benefits as one way of reducing the swelling federal deficit.

"What about a person who is 46 today and plans to retire?" Mondale asked. "Can he count on Social Security in the pledge?"

"I think Social Security is a moral commitment not just to beneficiaries

but to those now paying into the system," Mondale said.

Mondale said he would pledge to

veto any legislation which tampers with Social Security, and he urged the president to do the same.



Selling Tickets

Hereford High School band members Heather Gee, (left) and Mary Ruth Hamman compete for the attention of Carolyn Waters as they sell tickets to Friday night's enchilada supper. The pre-game meal will be served from 5 to 7 p.m. at the high school cafeteria, with tickets priced at \$3 for adults and \$1.50 for children under 12. Take out plates will cost 30 cents extra. Proceeds will go to the band program.

Accused of killing playmate

Twelve-year-old sees trial commence

By MIKE COCHRAN Associated Press Writer

FORT WORTH, Texas (AP) — A schoolgirl looked on with a mixture of curiosity and bewilderment as prosecutors began outlining their case in the shotgun slaying of her 11-year-old playmate.

Brown-haired Patricia Dempsey, dressed in a white lace blouse and multicolored skirt, sat with her parents when not at the counsel table Tuesday, the first day of her trial in the bizarre case.

An attorney said she would testify in her own behalf at some point.

A police detective was scheduled to return to the stand today to tell the juvenile court jury about his investigative role in the Sept. 8 death of Kerry Thomas.

R.K. Burleson, a Benbrook investigator, was the state's third witness Tuesday in the delinquent conduct-murder trial of the 12-year-old.

Burleson was the conduit through which prosecutors intended to in-

roduce much of the state's physical evidence.

The state maintains Patricia intentionally killed her close friend and classmate after an argument at the Dempsey home, where Kerry was spending the weekend. The defense claims the shooting was accidental.

Jurors cannot convict or acquit in the familiar sense but must decide if the defendant "engaged in delinquent conduct."

If the jury so rules, Juvenile Court Judge Scott Moore could order her confined in a state reform school until age 18.

According to a statement given police, Patricia said she loaded and pointed the shotgun but that it discharged accidentally, striking her friend in the face.

She said she dragged Kerry's body into the backyard, buried it under some debris and returned to clean up the bloody living room.

Patricia apparently told no one of the episode until her friend's body was discovered four days later.

Her attorney, Harold Ray, said she would testify during the trial.

Detective Burleson, one of the first to arrive after the Sept. 12 discovery of the body, was called to the stand late Tuesday to identify photographs taken at the scene as well as a number of items removed from the home.

His appearance outside the jury's presence was a prelude to the state's offering the death weapon and blood-stained towels and washcloths into evidence.

Earlier, Peggy Thomas, the victim's mother, recounted how she learned of her daughter's disappearance and the trauma of the next few days.

She said she did not realize until Sunday evening, Sept. 9, that Kerry was missing because her daughter was spending the weekend at Patricia's Benbrook home.

Patricia would later say that Kerry left her house at 5:30 p.m. on Saturday.

Mrs. Thomas, near tears

throughout her testimony, said she talked with Patricia several times about Kerry's disappearance but that she "didn't seem concerned."

Patricia "just gave one-syllable answers" to her questions, she said, and Mrs. Thomas came away convinced that "she was holding something back."

During one confrontation, Mrs. Thomas said, Patricia told her the two young friends argued on the Saturday morning of the shooting but made up by noon.

"We swore on the Bible that we'd never argue again," she quoted Patricia as saying.

Robert Swett, a retired airman and Dempsey neighbor, told the jury it was he who found the girl's body in a thicket along a fence at the rear of the Dempsey house.

"I think I've found the little girl," he recalled telling a policeman summoned to the residence.

"Yes, that's the body," he said the officer replied as he crawled into the thicket.

Rebels willing to meet

San Salvador residents cheer Duarte

SAN SALVADOR, El Salvador (AP) — President Jose Napoleon Duarte returned home to cheers after leftist rebels accepted his offer for peace talks and called the guerrillas "separated brothers" who should rejoin their countrymen.

About 1,000 people shouted, "Duarte! Duarte! Duarte!" as he arrived from New York on Tuesday, the day after making his offer during a speech to the U.N. General

Assembly. Today, he meets with U.S. Secretary of State George P. Shultz.

The rebels, meanwhile, announced their acceptance of Duarte's offer to meet next Monday in La Palma, a mountain town 50 miles north of San Salvador in an area where guerrillas move freely.

"I am going to the La Palma meeting with a feeling of agreement and peace, to open my arms to our separated brothers who left one day

for the mountains," Duarte told the crowd which greeted him in San Salvador. "Now all Salvadorans say to them, 'Come back.'"

The agreement to talk is the most significant step so far toward a possible peace in the five-year war between the guerrillas and U.S.-backed Salvadoran governments.

In Mexico City, however, a rebel leader said acceptance of the offer "does not in any way mean we are

laying down our arms."

"The only thing that could disarm us is the United States army and that would be after spending a lot of time and money," said Salvador Samayoa, who contended that El Salvador continues to suffer from serious economic and human rights problems.

"Up until now and as long as we do not see other events, Duarte's proposal to begin talks is just a publicity show with other political purposes," Samayoa said.

In a seven-point communique broadcast Tuesday by Radio Venceremos, the clandestine rebel station, guerrilla leaders accepted Duarte's proposal and suggested that President Belisario Betancur of Colombia act as an intermediary in arranging the talks.

Ruben Zamora, a Salvadoran rebel leader, said in Colombia that Betancur agreed to help set up the meeting but would not mediate political questions. Betancur's office said the president was consulting with Duarte to determine how he might assist.

Obituaries



MYNA LOVE

Services for Myna Mae Love, 95, will be Thursday at 2 p.m. in the First Presbyterian Church with the Rev. George Belford, pastor, and Wallace Kirby, chaplain at King's Manor at Westgate, officiating.

Burial will be in Llano Cemetery in Amarillo under the direction of Gilliland-Watson Funeral Home.

She died at 11 a.m. Tuesday at Westgate Nursing Home after a lengthy illness.

Born in Whorton County, Kan., she married James Douglas Love on Feb. 14, 1908, in Lawton, Okla. They came to the Amarillo area in a covered wagon in 1908. They farmed

in the Amarillo-Dalhart area and in Quay County, N.M., until 1934 when they moved to Deaf Smith County.

She was a member of the First Presbyterian Church, the Cultural Extension Club, the American Legion Auxiliary and the Order of the Eastern Star.

Survivors include a son, John C. Love of Naravisa, N.Y.; two daughters, a sister, Dora Thompson of Banning, Calif.; 14 grandchildren; 25 great-grandchildren; and three great-great-grandchildren.

The family requests memorials be to the First Presbyterian Church or to King's Manor.

STELLA MAE FLOWERS

Services are pending for Stella Mae Flowers, 70, of 402 Ave. H with Gilliland-Watson Funeral Home.

She died at 6 p.m. Tuesday in Deaf Smith General Hospital.

BUCK KENWORTHY

Services for Buck Kenworthy of Dimmitt, 51, will be at 10 a.m. Thursday in the Bedford Street Church of Christ with Dale Wells, pastor, and the Rev. Vernon O'Kelly, pastor of First United Methodist Church, officiating.

Burial will be in Castro Memorial Gardens under the direction of

Parsons-Foskey Funeral Home.

He is survived by a stepdaughter, Sandra Meason of Hereford.

He died at 5:45 a.m. Tuesday in Plains Memorial Hospital after a brief illness.

He was born in Hardtner, Kan., and had been a resident of Dimmitt since 1962, moving there from Coates, Kan. He was a farmer. He married Bonnie Clayton on June 14, 1975, in Dimmitt.

Other survivors include his wife; his mother, Margaret of Coates, Kan.; his grandmother, Bertha Winn of Hardtner, Kan.; two sons, Tommy of Dimmitt and Timmy of Amarillo; a stepson, Donnie Henderson of Earth; five sisters, Ida Belle Moomau of Stroud, Okla., Lois Mills of Lake City, Kan., Ann Freeman of Pratt, Kan., Janie Eubank of Phoenix, Ariz., and Susie Young of Manchester, Okla.; three brothers, Richard of Medicine Lodge, Kan., Bill of Coates, Kan. and Bob of Pratt, Kan.; and seven grandchildren.

Pallbearers will be J.R. Brown, Stanley McDaniel, Fred Bruegel, Jr., Corky Langford, Buce Fuller and Dan Nelson.

The family suggests memorials to the Dana Wall Memorial Fund in care of Dimmitt First State Bank.

Hereford Brand

THE HEREFORD BRAND (USPS 342-260) is published daily except Mondays, Saturdays, July 4, Thanksgiving Day, Christmas Day and New Year's Day, by the Hereford Brand, Inc. 313 N. Lee, Hereford, Tx. 79045. Second class postage paid at the post office in Hereford Tx. POSTMASTER: Send address changes to the Hereford Brand P.O. Box 673, Hereford, Tx. 79045.

SUBSCRIPTION RATES: By carrier in Hereford, \$3.35 per month or \$34 per year; by mail in Deaf Smith and adjoining counties, \$34 per year; other areas by mail, \$40 per year. THE BRAND is a member of The Associated Press, which is exclusively entitled to us for republication of all news and dispatches in this newspaper and also local news published herein. All rights reserved for republication of special dispatches.

THE BRAND was established as a weekly in February, 1961, converted to a semi-weekly in 1968, to five times a week on July 4, 1976.

O.G. Nieman Publisher
Reed D. Parcell Managing Editor
Mauri Montgomery Advertising Mgr.
Charlene Brownlow Circulation Mgr.

Lifestyles



Receiving Line

These women composed the receiving line for the shower honoring Cynthia Taylor, bride-elect of Tim Hoover. From left to right are Cora Miller of Amarillo, great-

aunt of the bride-elect, Mrs. Jess Peyeaatt, aunt of the bride-elect, Cynthia Taylor, Mrs. Don Taylor, the bride-elect's mother, and Mrs. W.E. Sparks, hostess.

Recent bridal shower honors Cynthia Taylor

A bridal shower honoring Cynthia Taylor, bride-elect of Tim Hoover, was given recently in the home of Mrs. W.E. Sparks. The bride is the daughter of Mr. and Mrs. Don Taylor.

Those in the receiving line included Mrs. Don Taylor, Mrs. Jess Peyeaatt, Mrs. W.E. Sparks and Cora Miller.

Refreshments were served by Mendy Rogers and Melissa Carlile from a table of lace overlay over a burgundy cloth with silver and crystal appointments. Centerpiece of

burgundy miniature carnations and baby's breath complemented the table.

Mrs. Mike Harris registered guests.

Hostesses were Mmes. Herschel Black, E.W. Dettman, Fred Fox, Mike Harris, Truman Hazelrigg, Dean Herring, Rocky Lee and Edgar Lemons.

Also, Mmes. Gerald Martin, Bobby Owen, Ray Quillen, Ken Rogers, Clarence Scott, Eugene Sparks, Marie Stringer, Don Walser and Charles Watson.

Today in History

Today is Wednesday, Oct. 10, the 284th day of 1984. There are 82 days left in the year.

Today's highlight in history: On Oct. 10, 1973, Vice President Spiro T. Agnew resigned his office as part of a plea bargain with the Justice Department. To avoid imprisonment, Agnew, who had been accused of accepting bribes, pleaded no contest to one count of evading federal income taxes.

On this date: In 1911, revolutionaries under Sun Yat-Sen overthrew the Manchu dynasty in China.

In 1913, the waters of the Atlantic and Pacific oceans flowed together through the Panama Canal after U.S. engineers blew up the Gamboa Dam.

In 1927, oil fields which had been the focal point of the Teapot Dome scandal were returned to federal control under a U.S. Supreme Court ruling.

In 1935, the opera "Porgy and Bess," with music by George Gershwin and libretto by DuBose Hayward and Ira Gershwin, opened on Broadway.

In 1936, Chiang Kai-Shek took the oath of office as president of China.

In 1970, two masked men kidnapped Quebec Labor Minister Pierre LaPorte in Montreal. He was found dead a week later. A separatist group calling itself the "Front de Liberation du Quebec" claimed responsibility.

One year ago: South Korean leaders denounced a bombing in Burma the day before that killed 19 people, including several high-ranking South Korean officials.

Today's birthdays: Actress Helen Hayes is 84. Author James Clavell is 60. Playwright Harold Pinter and former Illinois Sen. Adlai Stevenson III are 54. Entertainer Ben Vereen is 38. Singer Tanya Tucker is 25.

Thought for today: "We march backwards into the future." — Marshall McLuhan, communications theorist (1911-1980).

Pigskin Review to kick-off activities

WTSU - Homecoming activities at West Texas State University will receive a musical kick off with Pigskin Review on Friday.

Pigskin Review, a variety show presented since 1978, features musical performances in a pep rally atmosphere. The Friday evening performance at 8 p.m. will be in North Recital Hall. Tickets are \$4 for adults and \$2 for all students, including WTSU students.

Billy Tally, a 1978 graduate who is choral director at Tascosa High school in Amarillo, will emcee the event.

The program opens with the WTSU band, Song Girls and cheerleaders performing "On, On Buffaloes," the WTSU fight song. The program also includes performances and introduction of the cheerleaders and Song Girls, remarks by Don Davis, head football coach, and a dedication of the bonfire, which will be lighted following the performance.

The University Chorale will perform "Evergreen" and a barbershop quartet of WTSU students will sing. As Homecoming queen nominees are introduced, the Chorale will sing "Starmaker."

Performances also will be featured

by the WTSU New Day Singers, graduates and former Chorale members Regi Fowler and Penny Pennington and Zeta Tau Alpha, national social sorority for women. The sorority members, as winners of the 1984 University Sing, will present their medley of "South Pacific" songs. Zeta Tau Alpha performers also received a cash prize during University Sing during competition with other campus organizations.

A drawing for prizes will be conducted during intermission.

Members of the WTSU classes of 1934 and 1954 will be guests during the performance and the Alumni Association will host a reception for the class members following the performance.

Rene Clausen, assistant professor of music, is director of choral activities at WTSU.



Ann Landers

Questions need examination



DEAR ANN LANDERS: I have worked in a nursing home for years and am fortunate to be with a facility that provides residents with lots of love and extra care.

My concern is our legal system. It is much too easy for family members, doctors and lawyers to take away the rights of our elderly. Usually it happens to someone who is financially well off. Here is a typical situation:

The person has an acute illness or accident that requires rehabilitation in a care facility after hospitalization. That person may be temporarily confused. The family members step in immediately and tell the physician that the patient needs help in handling his or her finances and they want power of attorney.

The physician writes a letter, the family gets a lawyer and they go to court. I have yet to see anyone from "the system" come to the facility and evaluate the resident to make sure he or she is unable to handle his or her own affairs. It amazes me the way two or three people can say someone is incompetent and that person's rights are gone forever.

I have seen residents change doctors, change lawyers and make an effort to regain control of their lives, but they fail because the relatives stick together with their eyes on the money. I have seen affluent residents unable to get personal spending money because everything is tied up.

Please tell us how we can help these people and also how we can protect ourselves from being victimized in this way.—Concerned In Chicago

DEAR CHICAGO: Since people are living longer and more and more of the elderly are being moved into nursing homes, your letter raises questions that need examination.

My consultant, Judge Joseph Schneider of the Circuit Court of Cook County, says laws vary according to state, but in Illinois, the law is clearly in place.

For example, if a family member petitions the court to become a legal guardian, the court must appoint a person who is not a relative or a friend. (He can be a lawyer, social

Little Mr. and Miss pageant set

A Little Mr. and Miss Pageant will take place at the Springlake-Earth auditorium on Saturday at 7 p.m.

The age categories are 3-5, 5-7 and 7-11. A \$50 savings bond will be given to the winners in each age group. Modeling includes a party dress and a play suit.

The pageant is sponsored by the Young Homemakers of Earth. For entry forms or more information, contact Tammy Simpson at 257-2160 or 257-3705 or Christy Embry at 257-2193.



worker, psychologist or psychiatrist). That person will make an independent and objective evaluation of the resident and report his findings to the judge. Further protection is provided by an independent commission that will respond to complaints and intervene on behalf of residents who feel they are treated unfairly. Another safeguard:

The Guardian and Advocacy Commission gives legal and protective services free of charge. This commission has the authority to investigate complaints.

How do you protect yourself against unscrupulous, money-hungry relatives? Don't wait until your mind gets cloudy. Appoint someone you trust—and give that person power of attorney to act on your behalf to see that you are taken care of and your wishes are carried out if you become incompetent—and yes, after you are gone.

DEAR ANN LANDERS: Does modern marriage make any sense? Wives today want to be doctors, lawyers and truck drivers, belong to men's clubs and have just as much to say about everything. They don't want to cook for a husband or wash his clothes or keep the house clean. Any man who gets married today is crazy. Please print this in your column as a warning.—A Smart

Escapee.

DEAR SMART: Where did you escape from? I'm glad you decided that marriage is not for you. You have saved some lucky woman from a life of hell.

Is alcoholism ruining your life? Know the danger signals and what to do. Read the booklet, "Alcoholism—Hope and Help," by Ann Landers. Enclose 50 cents with your request and a long, stamped, self-addressed envelope to Ann Landers, P.O. Box 11995, Chicago, Illinois 60611.



Pre-Need

Qix Counseling

FUNERAL DIRECTORS OF HEREFORD

105 Greenwood 364-6533

Who stands up as a leader for Texas hunters and gun owners?

PHIL GRAMM
For U.S. Senate.

He firmly supports your firearms ownership rights and doesn't walk away from the tough issues.

The Sportsman's Choice for Texas and America.

Paid for by NRA-Political Victory Fund and not authorized by any candidate.



Get Set For HOMECOMING '84

Make this year's Homecoming a memorable one by finishing off that new outfit or dress with a pair of Connie Shoes.

To help you do just that, we're offering our entire stock of Connie Shoes at an unbelievable price of

\$25⁹⁵

But, you better hurry! Sale ends Saturday, October 13.

Betty's Shoes

319 N. Main

364-1211



Adult Display

Cecil Lady, a member of the Deaf Smith County Lapidary Club, holds up two of the spheres he makes from rocks. He is the only club member with a sphere-making machine, and he has been shaping rocks for approximately four years. The

Lapidary Club is responsible for the adult display for the month of October. The club invites everyone to come by and see all of the display which includes belt buckles and other beautifully shaped rocks.

Club has largest membership ever

The Hereford High School Key Club has just completed a membership drive at Hereford High school with a total of 127 young men at the high school having paid dues for the 1984-85 Key Club year. This is the largest number in the organization since its beginning at Hereford High School.

The Club is already involved in several projects for the year. One

that the Club is looking forward to is the program of "Partners at Halloween." The Key club will be working with Officer Randy Williams of the Crime Prevention Department of the Hereford Police Department, to provide escorts to certain young people on Trick or Treat outing on Halloween night. Also the Club will be assisting the Friends of the Library in their annual Book Fair.

One of the most outstanding projects that the club will be engaged in in the month of October will be selling M&M candy to raise money for the Kidney Foundation. This is an annual project of the Key Club. Last year, the Club broke all records in selling and donating to the Kidney Foundation over \$3,000.00. The goal for this year Kidney Foundation Candy sales is to exceed that raised last year.

The Key Club will also begin around Oct. 20th its annual sale of Manor Texas Fruit Cakes. Key Clubbers will be taking Thanksgiving and Christmas orders. This is a fund raiser for the Club to assist it in many community projects.

The officers for the Key Club this year include Don Flood president; Lee Brockman, vice-president; Patrick Phibbs, secretary and Doug Owens as treasurer.

Also serving with the officers to form the board include Keith Kalka and Kurt Simon as senior board members, Brett Clements and Chris Rowton as junior board members and Nathan Flood and Walter Brockman are the sophomore board members. Dago Valdez serves the club as editor.

Carla Alford has been selected as the 1984-85 club sweetheart.

Health Fair scheduled Tuesday

The Deaf Smith family living committee and county extension office are sponsoring a health fair on Tuesday in the Community Center.

Over 30 health related agencies will have educational booths. Screenings and tests will include blood pressure, diabetes, TB, breast self-examination, hemacrits (anemia) and hearing.

The fair is free of charge both to exhibitors and those attending.

There is still time for organizations to reserve a place to exhibit. If anyone is interested in exhibiting, contact Louise Walker at 364-3573.

Festive foods program to be presented

Mark Thursday, at 2 p.m. or 7 p.m. on the calendar. That's the day Mary Blinderman, home economist with Southwestern Public Service, will present the program "Festive Foods" at Southwestern Public Service Building 325 Lee.

Mrs. Blinderman will prepare several festive dishes using electrical appliances. Each one attending will receive a lovely recipe book.

The program is free of charge. Plan to attend. Invite a friend and come and enjoy an educational program. For further information, call Louise Walker, CEA, at 364-3573.

Educational programs conducted by the Texas Agricultural Extension Service serve people of all ages regardless of socio-economic levels, race, color, sex, religion or national origin.

Clark receives degree at A&M

COLLEGE STATION — Dawson L. Clark of Hereford received a bachelor degree in journalism at Texas A&M University's summer commencement exercises.

A total of 1,473 degrees were awarded, including 1,034 bachelor's, 330 master's and 109 doctorates.

Organizing robots?

At a new, highly automated Fujitsu Fanuc factory in Japan, management and the union agreed in 1983 to reduce the work force by attrition. The union soon found its treasury was being reduced as due-paying members left the company and were replaced by robots. To keep labor peace, management agreed to pay union dues for each robot.

Calendar of Events

THURSDAY
Free immunizations against childhood diseases, Deaf Smith County Public Health Clinic, 902 E. Fourth, and Texas Department of Health Office, 914 E. Park, 8 a.m. to 12 noon and 1-3:45 p.m.
Ladies exercise class, Church of the Nazarene, 6:30 p.m.
Hereford Toastmasters Club, 6:30 a.m.
Kiwanis Club, Community Center, noon.
TOPS Club No. 941, Community Center, 9 a.m.
Amateur Radio Operators, north biology building of high school, 7:30 p.m.
Story hour at the library, 10 a.m.
San Jose prayer group, new fellowship hall, 735 Brevard, 8 p.m.
Al-Anon, Odd Fellow Hall, 8:30 p.m.
St. Anthony's Women's Organization.

Westgate birthday party at Westgate Nursing Home, 2:30 p.m.
Young Homemakers Extension Club, 2:30 p.m.
Deaf Smith County Genealogical Society, county library, 7 p.m.
Hereford Day Care Center Board of Directors, Hereford Country Club, 12 noon.
Men's Study Group, St. Thomas Episcopal Church, 7:30 p.m.
La Madre Mia Study Club, 8 p.m.
Calliopean Study Club, 7:30 p.m.
Sweet 'n' Fancy Cake Decorating Club, Community Center, 9:30 a.m.
Sugar Works Cake Decorating Club, American Legion Hall, 7 p.m.
Messenger Extension Homemakers Club, 2 p.m.
Pioneer 4-H Club, Community Center, 4 p.m.
Hereford Study Club, home of Betty Gilbert, 7:30 p.m.
Frio Homemakers Club, home tour in Amarillo, to meet at Frio Baptist Church, 10:30 a.m.

FRIDAY
Kiwanis Whiteface Breakfast Club, Savage's Hickory Pit, 6:30 a.m.
Community Duplicate Bridge Club, Community Center, 7:30 p.m.
Women's exercise class, First Presbyterian Church, 8:30-9:30 a.m.
Hereford Garden Club, 2 p.m.
Deaf Smith County Crimestoppers Board of Directors, Chamber of Commerce Board Room, 12 noon.

SUNDAY
Full Gospel Business Men's Fellowship, buffet breakfast, Ranch House Restaurant, 7 a.m.

MONDAY
Odd Fellows Lodge, IOOF Hall, 7:30 p.m.
TOPS Chapter No. 1011, Community Center, 5:30 p.m.
Rotary Club, Community Center, 12 noon.
Planned Parenthood Clinic open Monday through Friday, 711 25 Mile Ave. 8:30 a.m. to 4:30 p.m.
Women's exercise class, First Presbyterian Church, 8:30 to 9:30 a.m.
Evening Lions Club, K-Bob's Steak House, 7:30 p.m.
Order of Rainbow for Girls, Masonic Temple, 7:15 p.m.
VFW Auxiliary, VFW clubhouse, 8 p.m.
American Association of University Women, 7 p.m.

TUESDAY
Deaf Smith County Historical Museum: Regular museum hours Tuesday through Saturday 10 a.m. to 5 p.m. and Sunday 2-5 p.m. Museum closed Monday.
TOPS Chapter No. 576, Community Center, 9 a.m.
Al-Anon, Community center, 5 p.m. and 642 E. Second St., 8:30 p.m.
Ladies exercise class, Church of the Nazarene, 6:30 p.m.
Whiteface Booster Club, Hereford High auditorium, 7:30 p.m.
Avenue Baptist Church single-again share group, 236 Catalpa, 7:30 p.m.
Hereford Rebekah Lodge, No. 228, IOOF Hall, 8 p.m.
Free immunizations against childhood diseases, Deaf Smith County Public Health Clinic, 902 E. Fourth, and Texas Department of Health Office, 914 E. Park, 8 a.m. to 12 noon and 1-3:45 p.m.
Kiwanis Club of Hereford-Golden K, Senior Citizens Center, 12 noon.
La Affiliatus Estudio Club, Pett Ott, 3 p.m.
Baptist Women of Summerfield Baptist Church to meet at the church, 9 a.m.
Xi Epsilon Alpha Chapter of Beta Sigma Phi, 7:30 p.m.
Toujours Amis Study Club, 7:30 p.m.

Cultural Extension Homemakers Club, home of Carrie Mae Doak, 2 p.m.

SUNDAY
Full Gospel Business Men's Fellowship, buffet breakfast, Ranch House Restaurant, 7 a.m.

MONDAY
Odd Fellows Lodge, IOOF Hall, 7:30 p.m.
TOPS Chapter No. 1011, Community Center, 5:30 p.m.
Rotary Club, Community Center, 12 noon.
Planned Parenthood Clinic open Monday through Friday, 711 25 Mile Ave. 8:30 a.m. to 4:30 p.m.
Women's exercise class, First Presbyterian Church, 8:30 to 9:30 a.m.
Evening Lions Club, K-Bob's Steak House, 7:30 p.m.
Order of Rainbow for Girls, Masonic Temple, 7:15 p.m.
VFW Auxiliary, VFW clubhouse, 8 p.m.
American Association of University Women, 7 p.m.

TUESDAY
Deaf Smith County Historical Museum: Regular museum hours Tuesday through Saturday 10 a.m. to 5 p.m. and Sunday 2-5 p.m. Museum closed Monday.
TOPS Chapter No. 576, Community Center, 9 a.m.
Al-Anon, Community center, 5 p.m. and 642 E. Second St., 8:30 p.m.
Ladies exercise class, Church of the Nazarene, 6:30 p.m.
Whiteface Booster Club, Hereford High auditorium, 7:30 p.m.
Avenue Baptist Church single-again share group, 236 Catalpa, 7:30 p.m.
Hereford Rebekah Lodge, No. 228, IOOF Hall, 8 p.m.
Free immunizations against childhood diseases, Deaf Smith County Public Health Clinic, 902 E. Fourth, and Texas Department of Health Office, 914 E. Park, 8 a.m. to 12 noon and 1-3:45 p.m.
Kiwanis Club of Hereford-Golden K, Senior Citizens Center, 12 noon.
La Affiliatus Estudio Club, Pett Ott, 3 p.m.
Baptist Women of Summerfield Baptist Church to meet at the church, 9 a.m.
Xi Epsilon Alpha Chapter of Beta Sigma Phi, 7:30 p.m.
Toujours Amis Study Club, 7:30 p.m.

WEDNESDAY
Noon Lions Club, Community Center, noon.
Country Singles Square Dance Club, Community Center, 8:30 p.m.
Women's exercise class, First Presbyterian Church, 8:30 to 9:30 a.m.
Knights of Columbus at KC Hall, 9 p.m.
Christian Women's Fellowship, First Christian Church, 12 noon lunch.
Well baby screening clinic for preschool age children, Texas Department of Health Office, 914 E. Park Ave. 8:30 a.m. to 12 noon and 1-3 p.m.

La Plata Study Club, home of Lavon Nieman, 7:30 p.m.
Westway Extension Homemakers Club, home of Marjorie Thomas, 7:30 p.m.
Hereford CowBelles, noon luncheon.
Multiple Miracles Chapter, Mothers of Twins Club, Southwestern Public Service Reddy Room, 7:30 to 9:30 p.m.
Hereford Board of Realtors, lunch at Hereford Country Club, 12 noon.
Ford Extension Homemakers Club, 9:30 p.m.
Health Fair, Community Center, from 10 a.m. to 5 p.m.
Alpha Alpha Chapter of Beta Sigma Phi Sorority, SWPS Reddy Room 7:30 p.m.

WEDNESDAY
Noon Lions Club, Community Center, noon.
Country Singles Square Dance Club, Community Center, 8:30 p.m.
Women's exercise class, First Presbyterian Church, 8:30 to 9:30 a.m.
Knights of Columbus at KC Hall, 9 p.m.
Christian Women's Fellowship, First Christian Church, 12 noon lunch.
Well baby screening clinic for preschool age children, Texas Department of Health Office, 914 E. Park Ave. 8:30 a.m. to 12 noon and 1-3 p.m.

WEDNESDAY
Noon Lions Club, Community Center, noon.
Country Singles Square Dance Club, Community Center, 8:30 p.m.
Women's exercise class, First Presbyterian Church, 8:30 to 9:30 a.m.
Knights of Columbus at KC Hall, 9 p.m.
Christian Women's Fellowship, First Christian Church, 12 noon lunch.
Well baby screening clinic for preschool age children, Texas Department of Health Office, 914 E. Park Ave. 8:30 a.m. to 12 noon and 1-3 p.m.

WEDNESDAY
Noon Lions Club, Community Center, noon.
Country Singles Square Dance Club, Community Center, 8:30 p.m.
Women's exercise class, First Presbyterian Church, 8:30 to 9:30 a.m.
Knights of Columbus at KC Hall, 9 p.m.
Christian Women's Fellowship, First Christian Church, 12 noon lunch.
Well baby screening clinic for preschool age children, Texas Department of Health Office, 914 E. Park Ave. 8:30 a.m. to 12 noon and 1-3 p.m.

WEDNESDAY
Noon Lions Club, Community Center, noon.
Country Singles Square Dance Club, Community Center, 8:30 p.m.
Women's exercise class, First Presbyterian Church, 8:30 to 9:30 a.m.
Knights of Columbus at KC Hall, 9 p.m.
Christian Women's Fellowship, First Christian Church, 12 noon lunch.
Well baby screening clinic for preschool age children, Texas Department of Health Office, 914 E. Park Ave. 8:30 a.m. to 12 noon and 1-3 p.m.

The World Almanac

Q&A

Match the following conductors with their symphony orchestras:
1. Previn 2. Mehta 3. Shaw 4. Giulini 5. Solti
(a) Los Angeles Philharmonic (b) Chicago Symphony (c) New York Philharmonic (d) Atlanta Symphony (e) Pittsburgh Symphony

ANSWERS

1 e 2 c 3 d 4 a 5 b



801 N. Main 364-8461

WE'VE GOT THE TOUCH
WATCH THE CBS EVENING NEWS WITH DAN RATHER AT 5:30 PM

GREAT COMEDY & DRAMA!

THREE'S COMPANY 6:30PM

No time for romance!
Scott Baio is **CHARLES IN CHARGE** 7PM

Will a little success break up the band?
DREAMS Featuring the song "Kiss Me Red" 7:30PM

WORLD PREMIERE!
Only one couple dares to defy them... but courage might not be enough to protect them.
ATTACK ON FEAR CBS Wednesday Night Movies 8PM

CHANNEL 10 NEWS 10PM

10 A CBS AFFILIATE

See the

Victor Costa

Trunk Show

Fall / Holiday

Thursday Only

Victor's flirty dance dresses and dramatic evening longs will make any occasion special. Come join us and luxuriate with these magical clothes.

Strapless sweetheart bodice in dulcette satin, asymmetrically banded in velvet.

Meet special envoy, Lynn Smith from 10 to 5

Gaston's



Trained Fireman

Walcott volunteer fireman Pete Ortiz Jr. is better trained thanks to support from the Deaf Smith County Farm Bureau. The bureau paid the \$278 for Ortiz to attend the Texas A&M Firemen's Training school

last summer. Pictured from left are Farm Bureau President Ralph Detten, Ortiz and Bobby Hammock, chief of the Walcott squad.

Parliamentary Seminar scheduled

A Parliamentary Seminar, sponsored by the National Association of Parliamentarians, Hazel Crawley Unit, and Amarillo College, will be held Saturday in Badger Den in the Union College Building on the campus of Amarillo College from 8:30

a.m. until approximately 3 p.m. "Achieving Parliamentary Excellence" will be the theme of the seminar to be conducted by two professional registered parliamentarians, Jayne Brainard and Hazel Crawley, assisted by several advanced

parliamentary law students. Topics to be discussed include "Duties of Officers," "Bylaws," "Ex Officio and Honorary Members," "Problem Solving," "Model Club Meeting" and "Question and Answers."

Books and material, on consignment from the National Association of Parliamentarians, will be available to purchase.

The cost of \$7 includes a salad luncheon. Those attending are asked to bring their copy of "Robert's Rules of Order Newly Revised."

The deadline date for luncheon reservations is Wednesday. Registration without the luncheon, however, will be accepted at the door.

For more information or to make reservations, contact Elizabeth Harrison at 412 Forest Lane, Canyon, Tx. 79015 or call 655-0172. Reservations may be made by contacting Crawley at 129 N. Beverly, Amarillo, Tx. 79106 or call at 353-9937.

Senior Citizens Opportunities

Activities scheduled this week (Oct. 11 through Oct. 17) at the Hereford Senior Citizens Center include the following:

EVERY WEEKDAY - Quilting 8 a.m. to 5 p.m.

THURSDAY - Painting class, 9-11 a.m. and 1-4 p.m., noon meal 11:30 a.m., games 1-5 p.m.

FRIDAY - Noon meal 11:30 a.m., games 1-5 p.m.

MONDAY - Noon meal 11:30 a.m., games 1-5 p.m., bell choir 1:30 p.m.

TUESDAY - Noon meal 11:30 a.m., games 1-5 p.m.

WEDNESDAY - Noon meal 11:30 a.m., Westgate sing-along 3:30 p.m., games 1-5 p.m.

The menu will be as follows:

THURSDAY - Swiss steak, green beans, cauliflower, creamy colleslaw, bread pudding, roll-oleo.

FRIDAY - Baked cod fillet, Huntington baked potato, Harvard beets, golden salad, chocolate meringue pie, roll-oleo, apple juice.

MONDAY - Meat loaf, green beans, broccoli, onion slaw, colleslaw, canned pineapple, cornbread.

A bond in financial circles is a written promise or IOU by the issuer to repay a fixed amount of borrowed money on a specific date and to pay a set annual rate of interest in the meantime, generally at semiannual intervals. Bonds are considered safe because the borrower must make interest payments before money is spent on anything else.

oleo.

TUESDAY - Baked sliced turkey and dressing, giblet gravy, cauliflower au gratin, seasoned green peas, fresh tomato slice, cherry cobbler alamide, roll-oleo.

WEDNESDAY - Chicken baked in lemon sauce, baked potatoes, buttered asparagus, orange-honey ambrosia, pumpkin custard, roll-oleo.

Landers celebrate wedding anniversary

Mr. and Mrs. Joe Landers of Westway were honored at a family gathering Sunday in celebration of their 64th anniversary.

Lola Gunn and Joe Landers were married October 9, 1920 in Schoolton, Okla. They have lived at Westway since May of 1928.

Relatives present at Sunday's party included Adrian Bleeker of Tula, Buddy Bleeker of Okemah, Okla. and Ida Duncan of Sentinel, Okla.

Also Ross Landers of El Paso, Gail Wilcox and Edith Temple of Muleshoe, Mr. and Mrs. Ronald Nunley and Brenda of Las Vegas, N.M. and Mrs. Larry Landers and Mr. and Mrs. Rick Nunley of Amarillo.

Local residents attending were Mr. and Mrs. Forrest Ricketts, Jeff Ricketts, Mr. and Mrs. Roy Landers and Vesta Mae Nunley.

Garden Beautiful discusses table centerpieces

Garden Beautiful Club met Friday morning in the home of Ruby Carmichael with Helen Spinks as co-hostess.

Spinks, president, opened the meeting with a welcome to the two new members, Jean Dowel and Hilda Havens. Dowel introduced her guest, Catherine Bartley, who is here to celebrate Bartley Dowel's parents' 50th wedding anniversary.

Spinks then thanked the club for attending the Bayview 75th anniversary tea which everyone enjoyed. She also reminded the members to take their books to the library book sale on Saturday.

The program for the meeting was on table centerpieces. Bessie Story showed some pumpkins which she had decorated for Halloween and told how she made them. Carmichael demonstrated the making of some vegetable trays using different colored vegetables with fruit and flowers.

Spinks showed two arrangements of onion flowers which were unusual and distinctive. One was an arrangement of onion and radish flowers in a cantaloupe vase, the other a cluster of different colored large onion flowers.

Members present were Mmes.

W.P. Axe, Bruce Burney, Troyce Carmichael, Ray Cowsert, C.V. Darden, E.W. Dettmann, Bill Emmons, J.T. Gilbreath, W.W. Gilbreath, Francis Hill, Wayne Jones, Charles Newell, Charlie Noland, S.H. Sides, Louie Spinks, Joe Story, J.W. Witherspoon, E.W. Young, Bartley Dowell and Hilda Havens.

The next meeting will be Nov. 9 at 9:30 a.m. in the home of Bessie Story.

Sure sign Halloween is not far off. The first Christmas displays are nudging the masks and pumpkins off shelves.

A.O. THOMPSON ABSTRACT COMPANY
Margaret Schroeter, Owner
Abstracts Title Insurance Escrow
P.O. Box 73 242 E. 3rd Phone 364-6641
Across from Courthouse



WEEKEND SPECTACULAR

Select Group Ladies
Fall Shoes
20% Off

Ladies Jordache Fashion
Footwear
20% OFF

Prewashed Wrangler
Stretch Jeans
\$20⁹⁷ Reg. \$26⁰⁰

McGregor
Sweaters
\$17⁹⁹
Values to \$32⁵⁰

One Rack Ladies
Sleepwear
50% Off

All Fall Low Rider & Western
Hats
20% Off

Mens Flannel
Pajamas
\$8⁹⁹
2/\$17⁰⁰

Entire Stock Ladies & Jr.
Sweaters
20% OFF

Mens Velour
Robes
\$15⁹⁹ to \$18⁰⁰

Entire Stock
Sheet Sets
20% Off
Down River, Performance, & Pacific

Boys
Parachute Pants
Sizes 8-14
\$14⁹⁷ Reg. \$16⁹⁹
Assorted Navy Blue, White, Red, Black, & Gray

A N T H O N Y S

Downtown 9-7
Sugarland Mall 9-8

Sale Ends Saturday, October 13



In World Series

Tigers win Game One

By MARK J. KREIDLER
AP Sports Writer
SAN DIEGO (AP) — The statistics showed that San Diego starting pitcher Mark Thurmond should have been tiring, but Thurmond, pitching coach Norm Sherry and Manager Dick Williams tried to ignore the stats.
On Tuesday night, the numbers didn't lie, and a weary Thurmond served up a two-run fifth-inning homer to Larry Herndon that gave the Detroit Tigers a 3-2 victory over the Padres in Game One of the World Series.

The decision to leave Thurmond in was a curious one; the left-hander had thrown 111 pitches in the 4-2-3 innings that preceded Herndon's blast, which also scored Larry Parrish, who had doubled.
"I knew I'd thrown a lot of pitches,

but I didn't feel like I'd lost that much velocity on my fastball," said Thurmond, who was 14-8 with a 2.97 earned run average during the season. "I threw him a fastball, but it didn't go where I wanted it to."
"I really feel bad. I probably wouldn't have pitched past the fifth inning, anyway. I threw 117 pitches in five innings; normally, I throw maybe 90 or 100 in an entire game. I got behind Larry 3-1, and he was looking away, and that's where I threw it."
The warning signals seemed clear enough. Thurmond, who was touched for seven hits and four runs in 3 2-3 playoff innings against the Chicago Cubs last week, was in trouble in every inning but the second.
He gave up four hits and a run in the first, and the Tigers stranded two runners in both the third and fourth innings. Thurmond would have been

in deeper trouble but for a pair of deft pickoff moves that caught Detroit runners breaking for second base, resulting in easy outs.
"You'd look up, and the count would be 3-0 or 3-1 almost every time. You can't last like that," said Sherry, who had planned to replace Thurmond after five innings regardless of his performance in the fifth.
"He was behind in the count all day, but we thought he would last the fifth," said Williams. "He just made a bad pitch, and Herndon hit it out."
"We lost a very tough first game. I thought it was a good game, though," said Padres outfielder Tony Gwynn. "We didn't get all the breaks we'd like to have gotten, but maybe we'll go out there in Game Two and the breaks will be on our side. You can never tell about this game."

Oilers trade running back

Campbell leaves Texas for Louisiana

AN AP Sports Analysis By MICHAEL A. LUTZ AP Sports Writer
HOUSTON (AP) — The San Jacinto Monument still guards the battleground where Texas won its independence and the state capital remains in Austin, but Earl Campbell, an official Texas hero, is gone.
Campbell, who had played his entire career as a member of a Texas team from John Tyler High to the University of Texas to the Oilers, is now employed by the New Orleans Saints.
Saints Coach Bum Phillips, Campbell's former boss and a transplanted Texan, gave the Oilers a first round selection in 1985 for Campbell, ending years of speculation about his future and his value to the Oilers.
Campbell leaves behind a legendary career that includes three National Football League rushing championships and three trips to the playoffs.
It also includes the heartbreak years of a 2-14 season in 1983, an 0-6 start this season and a fading from the limelight.
Campbell's stature in the Oiler offense dwindled but he is held in such high regard in the state that the Texas Legislature in 1981 named Campbell an official Texas hero, right alongside Sam Houston, Stephen F. Austin and other historical Texas figures.
Still, his parting was not a happy moment.
Campbell refused to be interviewed by The Associated Press and most other news organizations Tuesday but he told KTRK-TV:
"Being traded is not that bad. It's just a day in a man's life that he has to accept because there's some things he can't control. I really did appreciate all the cheers and so forth and so on during all the years I played here."
What will the loss of a fixture like Campbell mean to the Oiler offense that already is among the worst in the National Football League?
Very little. Campbell had become a spare part in the Oilers' one-back offense.
He had been involved in only about 40 percent of the Oiler offense this season and his presence in the game was a telegram to the opponent that a running play was forthcoming.

It will open the door for enthusiastic second year runner Larry Moriarty and rookie Willie Joyner to step into the Oilers' one-back offense, where Campbell never really fit anyway.
"We were pleased that Earl could go to a team that appreciates his talent," Oiler General Manager Ladd Herzog said.
The Oilers appreciated Campbell's talent only as it related to the one-back offense.
Campbell averaged 2.9 yards per carry this season, trying to conform to the Oilers' one-back offense, although his talents are more suited to the I-formation that Phillips uses with the Saints.
Campbell started the season with 8,296 yards on 1,883 carries for a 4.4 yard average, but had gained just 278 yards on 96 carries this season.
The trade gives the Oilers two No.

1 draft choices, plus one second-round and three third-round picks.
Oiler Coach Hugh Campbell said the move could be a signal to the rest of the team.
"The way that it could have a psychological effect is that the team realizes that they (Oiler management) are serious about the future," Hugh Campbell said.
"Our fans may feel we have not only a verbal commitment but if you are willing to go out and sign another No. 1 draft pick, that's a commitment in itself."
Coach Campbell said Earl Campbell took the news of his trade calmly and politely.
"But it's been my experience that a player gets mad at being traded even if it's a team he wanted to go to," Hugh Campbell said.
Campbell the player sat through private interviews with two Houston

Frosh quarterback

Raider named Player of Week

By DENNE H. FREEMAN
AP Sports Writer
Aaron Keesee was almost perfect. If he hadn't thrown one pass too low, the Texas Tech freshman quarterback would have been graded 100 per cent against Texas A&M Saturday.
As it turned out, his 98 per cent, four-touchdown performance in the Red Raiders' 30-12 victory over Texas A&M was good enough to earn him The Associated Press Southwest Conference Offensive Player of the Week award.
Defensive honors went to Texas' All-American safety Jerry Gray, who intercepted two passes and made five unassisted tackles in the

Longhorns' 38-13 victory over Rice. Keesee completed 6 of 8 passes for 78 yards and 3 touchdowns. He also ran for another score.
He only threw two passes in the second half against Texas A&M and both went for touchdowns.
Keesee was recruited by Tech offensive coordinator Tom Wilson.
Wilson said he has never had a quarterback grade better.
Wilson said Keesee graded 98 per cent and "that's better than any quarterback I've ever been around. He made just one mistake."
"He threw a pass low on the goal line once."
Wilson added, "Even more unbelievably is the fact that he could do that as a freshman playing in Kyle Field under the conditions of loudness and the weather."
Asked Keesee's biggest assets,

Wilson said "he's a competitor. That's the biggest thing about him. He has a good football mind and sees the defense well. Pressure doesn't bother him. Maybe the more pressure put on him the better he does. He learned what we were doing in a short period of time. He's a great student of the game."
Wilson said only two schools tried to sign Keesee.
"We beat Angelo State out on him," Wilson said. "They offered him a half scholarship. That was it."

Kelley's Employment Agency
Full Service Agency
364-2023

Perkins, Mavericks agree

DALLAS (AP) — Sam Perkins, the last of the first-round National Basketball Association draft picks to hold out for a contract, has signed a five-year deal with the Dallas Mavericks.
The announcement came late Tuesday shortly before the Olympic athlete and All-American from North Carolina was scheduled to take a team physical.
Terms of the contract were not revealed, but Perkins reportedly had asked for \$700,000 a year compared with an initial Dallas offer of about \$500,000.
The 6-foot-9½ forward center arrived here Tuesday, a few hours before the signing. His agent Lee Fentress has been in town since Sunday night trying to hammer out an agreement with Mavericks General Manager Norm Sonju.
"Everything worked out fine," Perkins told reporters in a conference call interview minutes after the contract had been signed. "I knew I was coming, I just didn't know when."
Perkins missed 11 days of training camp during what he called "long and drawn out" negotiations. He said he was anxious to get to Dallas, and

worked out regularly while the talks continued but was not in prime condition.
"He will take his two-mile run in the morning and will start practice tomorrow," said Kevin Sullivan, Maverick public relations director.
Asked if he would play in a preseason game Thursday against the Philadelphia 76ers, Perkins said, "If push comes to shove, yes."
The Mavericks signed their other first-round pick, Terence Stansbury of Temple, to a four-year deal on Monday.
Perkins, one of the stars of the United States' Olympic gold medal team, joined up with Michael Jordan to help the Tar Heels win the national college championship in 1982.

broadcasters Tuesday at the Oiler practice facility and then gently but firmly pushed aside a newsman's tape recorder and ordered a Houston Chronicle photographer not to take his picture.
"I can't have these guys following me around," Campbell said to an adviser.
Campbell declined further interviews and dashed out a side entrance of the Oiler room, headed for his future in Louisiana.
It was no way for an official Texas hero to leave town.

TENNIS
SYDNEY, Australia (AP) — Unheralded Ben Testerman, ranked 50th in the world, stunned third-seeded Pat Cash of Australia 7-6, 4-6, 6-4 in the first round of the \$310,000 Australian Indoor Tennis Championships.

Homeowners Insurance
Good service/Good price
Jerry Shipman
801 N. Main St. 364-3161

COOLING SYSTEM SERVICE SPECIAL...

A DIRTY COOLING SYSTEM CAN RESTRICT PROPER FLOW OF COOLANT IN YOUR CAR'S ENGINE... FLUSHING THE SYSTEM WILL REMOVE RUST, SCALE, AND GREASE.

Includes!
● POWER FLUSH SYSTEM
● 2 GALLONS OF G.M. COOLANT
● RADIATOR CONDITIONER
● INSPECT ALL HOSES, BELTS & CLAMPS

TOTAL PRICE... **\$29.95**
Check Battery, Plugs and Plug Wires Remove and Check Thermostat

L & M Radiator & Air Conditioning
Diesel & Auto Repair
806/364-9649 After Hours call 806/364-3852
LARRY ALLEY • OWNER
229 S. Main • Hereford, TX 79045

K&A MEAT MARKET

SAVE EVEN MORE BY THE BOX OR KRY-VAC PACKAGE

New York Strips \$3.49 lb.

Brisket \$1.09 lb.	U.S.D.A. Choice ½ Beef \$1.19 lb.
Freezer Pack 25 Lbs. \$40.00	Lean Ground Chuck \$1.69 lb.

413 N. 25 Mile Ave. 364-0822
Prices Effective Thru Tuesday October 16th

ALLSUP'S FRESH COOKED CORN DOGS 289¢ FOR

HOMOGENIZED BORDEN'S MILK \$2.59 GAL.

FALL AT WAREHOUSE SALE

BORDEN'S ASST. FLAVORS ICE CREAM \$1.79 ½ GAL. CTN.

KRAFT MACARONI DINNERS 3 89¢ 7 ½ OZ. BOXES

OSCAR MAYER SLICED BOLOGNA 68¢ 8 OZ. PKG.

6 Pack 12 oz. Cans \$1.89

PEPSI-COLA PEPSI PEPSI LIGHT, PEPSI FREE, DIET PEPSI

Li'l Softies Stuffed Animals 4/99¢

TALLS UP 59¢ FOUNTAIN DRINK 32 oz.

PRICES EFFECTIVE OCTOBER 11-13, 1984
WHILE SUPPLIES LAST
PICNIC SUPPLIES-ICE-SOFT DRINKS FRESH COOKED FOODS-SELF SERVE GAS-SNACKS
PRODUCE-MONEY ORDERS

ALLSUP'S CONVENIENCE STORES
THERE'S ONE NEAR YOU

Mustang-Whiteface contest review

Herd defense controls Friday's game

By DENNIS BALL
Sports Editor

What followed Rodney Torres' 48-yard opening kickoff return Friday night in Lubbock set the tempo for the next 47:49 of the Hereford-Coronado High School football game — defense.

Fielding the ball on the Hereford 2-yard line, Torres set the Whitefaces with a first-and-10 from mid-field with only 11 ticks gone from the clock. However, the Herd managed only 13 yards before kicking the ball away to Coronado, and the struggle had begun.

It was the Herd defense that proved to be the better on this particular Friday night, and the Whitefaces notched their second win of the season, a 7-3 victory over the Mustangs.

"Our players wanted it (the win) very badly," Hereford coach Jerry Taylor said Tuesday. "It was a total team effort. All 34 players contributed and contributed well."

But Taylor must have wanted it bad, too. Facing a fourth-and-goal from the Coronado 1-yard line, the coach elected to go for the touchdown that would put the Herd in front. A field goal would have tied the game with 5:30 left before half.

He must have had some insight in deciding to go for the TD, though, because — for all practical purposes — no one would come close to scoring again.

"A 3-3 tie isn't much solace when you've been beaten three of the last four weeks," he said. "I guess I never even entertained the idea of a field goal. Maybe it was hard-

headedness. I don't know."

But it worked. Taylor agreed the fourth-down call — a dive to running back Alan Dudding — was a big play in the game. He quickly pointed out, however, that he felt other factors played just as large a role in the Whiteface victory.

"I told our players that we didn't beat Coronado on Friday night," he said. "We beat Coronado last Monday, Tuesday and Wednesday in practice. Everybody worked."

From a Whiteface standpoint, the Herd managed just 27 yards rushing against Coronado. Quarterback Mike Scott connected on eight of 18 passes for 127 yards to complete the offensive output.

"Mike competed better than he has since he was hurt (a back bruise suffered against San Angelo Central the first game of the season)," Taylor said. "I'm hoping he's finally back to 100 percent. I think he is."

Even though the Whitefaces picked up only 154 total yards, the Mustangs were held to even less. Coronado quarterback Brad Tussy passed for 37 yards and combined with the running backs for 111 more rushing.

Coronado running back Chris Moore, in his third year starting for the Mustangs, played the first half and gained only 32 yards on 10 rushes.

"Our defense did a super job against a back like Chris Moore," Taylor said. "You have to hit him with everything you have, sometimes hit him again and then wrap him up to stop him."

For his play at stopping Moore and the Mustang attack, Hereford noseguard David Parsons was named the Amarillo Globe-News 3-5A Player of the Week on defense. Parsons made 10 tackles Friday.

Taylor also commended the play of Albert Tijerina at defensive end, Patrick Phibbs at cornerback, defensive tackles Adam Olivarez and

Lazaro Abalos and linebacker Curtis Cotten.

"Curtis played his best game of the year without a doubt," Taylor said. "Adam Olivarez and Lazaro Abalos were giving away some 35 to 40 pounds across the line, but were hanging in there tough."

"We have so many players who played well against Coronado."

Dodge status uncertain

AUSTIN, Texas (AP) — Todd Dodge, the starting quarterback for the No. 1-ranked Texas Longhorns who hyperextended a knee Saturday against Rice, returned to practice Tuesday but only for limited workouts.

"He did a fine job for what we were doing today. He got around pretty well, but then we weren't going full speed and there still were a couple of things he wasn't able to do," Head Coach Fred Akers said.

Akers said Dodge was able to throw the football but that it was unclear whether Dodge would play against No. 3 Oklahoma in a showdown Saturday afternoon in the Cotton Bowl in Dallas.

On Monday, Akers had termed a Dodge start "possible." Tuesday, he was asked the latest forecast.

"Well, what is a term between possible and likely?" the Texas coach said. "I really don't know what it is. Let's just stay with possible."

"I still want to see what he's able

to do the next couple of days," Akers said.

Dodge, ranked No. 2 in the nation in passing efficiency, through three games has completed 30 of 49 passes for 488 yards and four touchdowns. He also rushed for two scores.

Dodge was injured late in the second quarter against Rice while throwing a touchdown pass in the 38-13 victory over Rice. The undefeated Longhorns also have victories over Penn State and Auburn.

The National Football League estimated that 76.3 percent of the fans at the 1984 Super Bowl were males. The percentage of females attending was 23.7.

Marvin James
Don Tardy Co. 364-4561
Universal Life/IRAs Pensions/Fixed Annuities
Southwestern Life
People with Answers



Get Ready

Hereford High School volleyball player Cindy Pruitt serves to a Palo Duro opponent Tuesday during District 3-5A action in the HHS gym. The match, which opened the second half of league play, went to Palo Duro 15-5, 10-15, 17-15. (Photo by Janet Wymore)

Bowling

B.B. KEGLERS STANDINGS

Hereford Janitor Supply	15 5
Hereford State Bank	15 5
Anthony's Downtown	14 6
Truckers Diesel Service	12 8
Team No. 12	12 8
J.J.'s Grocery	9 11
Lockwood Graders	9 11
Nick & Dee's Trucking	8 12
Deaf Smit Co. Abstract	7 13
Abalos Beer & Wine	7 13
Bowling's Bowl	6 14
Striketees	6 14

HIGH TEAM GAME (scratch) Anthony's Downtown & Hereford State Bank 619.
HIGH TEAM GAME (handicap) Team No. 12 796.
HIGH TEAM SERIES (scratch) Anthony's Downtown 177.
HIGH TEAM SERIES (handicap) Anthony's Downtown 226.
HIGH GAME - Marilyn Bell 219; Daina Britten 189; Shari Damron 186; Heles Arntt 186.
HIGH SERIES - Alice Laeb 517; Marily Bell 493; Bertha Arnold 491; Heles Arntt 491.

THURS NITE MIXED STANDINGS

W.T. Services	17 1/2	10 1/2
Texas Diesel	17 11	
Hi-Plains Savings	17 11	
Bowling's Bowl	16 12	
S&L	16 12	
Walco	15 13	
No. 7	13 15	
Smurfs	12 16	
Nuts & Bolts	11 17	
No. 3	10 1/2	17 1/2
No. 12	6 22	
Mar-Lo Chem.	14 14	

WOMEN HIGH GAME - Cindy Fields 177; Marilyn Bell 171; Lois Hillwig 169.
WOMEN HIGH SERIES - Cindy Fields 563; Marilyn Bell 474; Joyce Stevens 422.
MEN HIGH GAME - Gary Ruckman 236; Jim Hillwig 203; David McDonald 195.
MEN HIGH SERIES - Gary Ruckman 579; Jim Hillwig 563; David McDonald 496.

KINGS AND QUEENS STANDINGS

K-Bobs	38,410
Bud-Co. Inc.	38,130
Big Daddy's 4	34,304
Watts Insurance	33,460
Team No. 14	33,203
Bowling's Bowl	32,399
Poarch Brothers	32,366
Pat Walkers	32,332
Hereford Janitor Supply	31,460
Farm Bureau	31,259
SeedTec	31,153
Boots and Saddles	30,154
Garrison Seed	29,021
Ranch House	26,152

MEN'S HIGH SERIES - Fred Morris 628; Reese Dawson 584; Stanley Wilcox 521.
MEN'S HIGH GAMES - Reese Dawson 238; Fred Morris 235; Stanley Wilcox 216.
WOMEN'S HIGH SERIES - Linda Wilcox 524; Alice Laeb 507; Jettie Watts 488.
WOMEN'S HIGH GAMES - Linda Wilcox 198; Jean Watts 190; Janet Broadstreet 187.

MORNING STARS LEAGUE STANDINGS

Bowling Bags	15 5
Garcia Bros. Cons.	15 5
Team No. 7	15 5
Eager Beavers	10 10
Tagco	10 10
Hi-Plains Industries	8 12
Crofford Automotive	7 13

HIGH GAMES - Glenda Haase - 212; Janice Couiter 190; Arlene Paschel 178; Eleanor Hudspeth 174; Karen Harkins 173; Beverly Durham 171.
HIGH SERIES - Glenda Hansen 558; Helen Arntt 498; Arlene Paschel 453.
HIGH TEAM GAME (HCP) Hi-Plains Industries 709; **HIGH TEAM SERIES** Bowling Bags 2219.

AUTO RACING
PARIS (AP) — Dallas, Detroit and New York have been granted Grand Prix races for 1985 by the International Auto Sports Federation (FISA), the organization announced. FISA also handed the Dallas organizers a "severe reprimand" because of track surface problems in its first race last July. The organizers must post an irrevocable \$200,000 bond by Nov. 1.

Hereford - People Helping People

In 1900, people were coming from all walks of life to Hereford - looking for a better way to live. These pioneers were looking for a small community that would survive the hard times. They wanted to raise their families in a safe environment and be able to retire with their spouses, secure in the knowledge that their children would have the same opportunities for success which they had.

When our bank was chartered, we made a commitment to Hereford and the surrounding community. We still hold that same strict policy. We've set out to become a part of Hereford and a part of the people in the Texas Panhandle. We believe that a strong community needs a strong bank. That's why people have counted on the First National Bank of Hereford for over 84 years. It's this kind of dedicated service that has made us the bank with the pioneer spirit.



The First National Bank of Hereford

P.O. Box 593
Hereford, Texas 79045
(806) 364-2435

Member FDIC





FALL SPECIALS FROM TAYLOR & SONS FOOD STORES SPECIAL SAVINGS ON MEAT!



Boneless Sirloin
TIP STEAK
\$1.98 Lb.

Boneless
ROUND STEAK
\$1.59 Lb.

Boneless
RUMP ROAST
\$1.89 Lb.

T-Bone
STEAK
\$2.29 Lb.

Cube
STEAK
\$2.19 Lb.

Boneless Sirloin
STEAK
\$2.09 Lb.

FRESH PRODUCE

Red or Gold Delicious APPLES 99¢ A Bag	Bell PEPPERS 6 for \$1.00	Yellow Medium ONIONS 19¢ Lb.	Medium TOMATOES 39¢ Lb.	LEMONS 6 for \$1.00
--	--	--	---	----------------------------

GROCERY

Del Monte 8 oz. cans TOMATO SAUCE 6 for \$1.00	Grade A Medium EGGS 59¢ A Dozen	Del Monte 32 oz. Bottle CATSUP 99¢	IGA 1 Lb. Box CRACKERS 59¢
Casserole PINTO BEANS 4 Lb. Bag \$1.29	Charmin BATHROOM TISSUE 6 Roll Pkg. \$1.69	Havoline Supreme MOTOR OIL 10W-40 89¢ A Quart	

FREE ADAPTER

WHEN YOU BUY... **NEW ScottTowel**

PRICES EFFECTIVE WED. OCTOBER 10th- TUES. OCTOBER 16th 1984

Taylor & Sons Warehouse Foods
105 W. Wilson Borger

Taylor & Sons Food Store
900 23rd Street Canyon

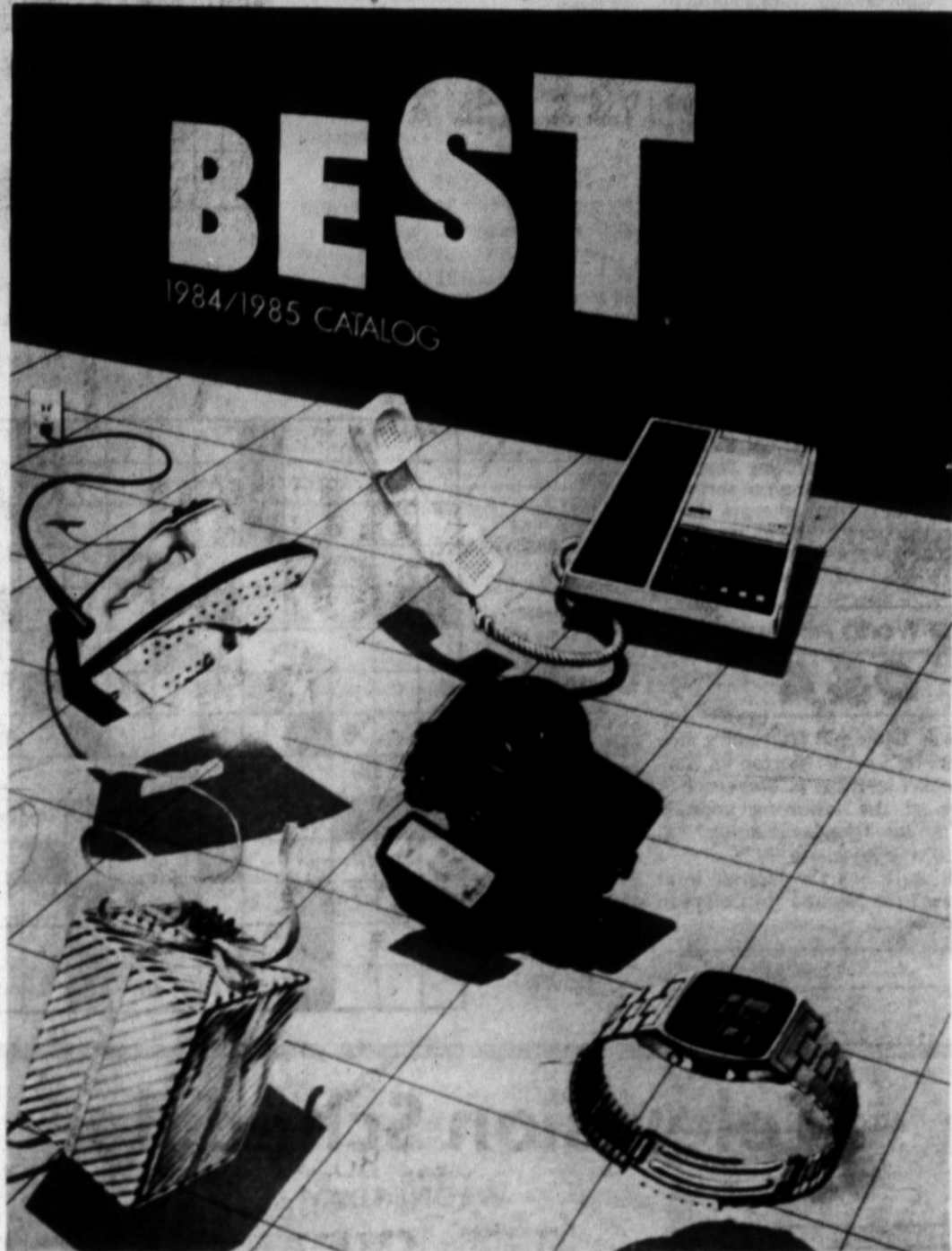
Taylor & Sons Warehouse Foods
10th & Arthur Amarillo

Taylor & Sons Warehouse Foods
105 Park Ave. Hereford

Taylor & Sons Food Store
600 N. Broadway Dimmitt

THE BEST STAMP PROGRAM ANYWHERE!

NOW YOU CAN REDEEM YOUR TAYLOR SAVERS FOR BEST MERCHANDISE AT TAYLOR & SONS FOOD STORES



YOU SAVE TWO WAYS!

Great Buys on Groceries & Great Merchandise from BEST. of Amarillo

Your Taylor & Sons Food Store Now has the **BEST**. Catalog Display in your Store.

Collect Taylor Savers And apply completed cards and books and We'll see that you Receive the Merchandise you request From **BEST**.

Check your Taylor & Sons Store display for details or ask your Taylor & Sons Food Store Manager..

Taylor & Sons Food Store
900 23rd Street Canyon

Taylor & Sons Food Store
600 N. Broadway Dimmitt

Taylor & Sons Warehouse Foods
105 Park Ave. Hereford

Taylor & Sons Warehouse Foods
105 W. Wilson Borger

Taylor & Sons Warehouse Foods
10th & Arthur Amarillo



Prices Effective Wed. October 10th-Tues. October 16th 1984



TAYLOR & SONS FOOD STORES GIVES YOU MORE...



ANNOUNCING TAYLOR SAVERS...The Best way to Shop and Save today.

HERES HOW TAYLOR SAVERS WORK FOR YOU!

1. Pick up your Taylor Savers Cash Card or Booklets at your check-out counters...
2. You get 1 Taylors Savers Stamp for each \$1.00 you spend excluding items prohibited by law. Paste 36 stamps on each card...
3. Watch our ads each week for Taylors Savers Specials...
4. You can redeem completed Taylors Savers Cards and Booklets at Taylor & Sons Food Stores for BEST* merchandise at our stores.
5. Use Taylor Savers to save money on each weeks specials.

WITH PURCHASE OF \$10.00 OR MORE REDEEM THIS VALUABLE COUPON FOR ON TAYLORS SAVERS SPECIAL
Limit one coupon per shopping trip.
Coupon effective:
Wednesday, October 10 thru Tuesday, October 16, 1984.

T&S Thick Sliced **BACON \$1.49**

TV Brand 12 oz. Pkg. **MEAT FRANKS 79¢**

Light Supreme 1 Lb. Pkg. **GROUND TURKEY 89¢**

IGA 5 Lb. Bag FLOUR 19¢	CATSUP Del Monte 32 oz. Bottle 39¢	BATHROOM TISSUE \$1.09 Charmin 6 Roll Pkg.
With Completed Taylor Savers Card. U.S. 1 10 Lb. bag Potatoes 39¢	With Completed Taylors Savers Card. PINTO BEANS Casserole 4 Lb. Bag 69¢	With Completed Taylors Savers Card. Havoline Supreme MOTOR OIL 29¢ 10 W. 40



Mr. T defends himself against family charges

LOS ANGELES (AP) — Filming an "A-Team" segment from behind an artillery bunker, Mr. T was in an appropriate spot to talk about the charges being hurled at him.

"Everybody wants to sue Mr. T," he said. "What they don't realize is that after being sued by your brother, everything else is easy."

He paused, then added, "I can't tell you why my family is suing me. They're suing me because I've got money. They didn't sue me when I didn't have any money."

Mr. T, who was shooting a scene

for the hit NBC adventure-comedy "The A-Team" on a cliff in San Pedro, is being sued for \$70,000 by his brother Gus Tero of Chicago for breach of an employment contract.

Gus and another brother, Nate, had worked for Mr. T as bodyguards until last spring. Nate quit and Gus was fired, which is the basis of his suit.

Mr. T has just published his autobiography, "Mr. T: The Man With the Gold," but Nate and Gus and three of his sisters told People magazine the legend of Mr. T is

hokum. They said his autobiography was more fiction than fact, that he wasn't the do-gooder he claimed to be. Nate Tero said, "He don't just take the truth and stretch it. He turns it inside out."

His sister, Angie Tero, reached by telephone in Chicago, told The Associated Press, "We look on the book as being a complete lie. Statements made about the family are just not true." She said tales of his taking vengeance on neighborhood criminals who robbed his mother and stealing food for the family did not happen.

She said the book and earlier statements by Mr. T had caused dissension in the family. "When I tried to call him on the phone he wouldn't accept my calls," she said.

Mr. T, his thick neck almost hidden by dozens of gold chains, declined to reply to any of the allegations. He said his next book, to be called "My Brother's Keeper, the Untold Story," would give the details.

Mr. T. zoomed from virtual obscurity to one of television's most popular personalities with his role as B.A. Baracus on "The A-Team." The

show was an instant hit when it made its debut in January 1983. Prior to that, he had played Sylvester Stallone's boxing opponent in "Rocky III" and had been a bodyguard for Muhammad Ali, Leon Spinks, Michael Jackson and LeVar Burton.

"I'm a legend in my own time," he said. "I've got enough things going to blow your mind away. But Mr. T's still cool. Every day I say my blessings. My message to kids is to stay in school, don't do drugs, don't drink and don't smoke. People don't like that. Mr. T's too popular, so they try to undercut Mr. T."

NEW YORK (AP) — An Exhibition of 174 works of traditional art created by the Maori people of New Zealand is on view at the Metropolitan Museum of Art through Jan. 6, 1985.

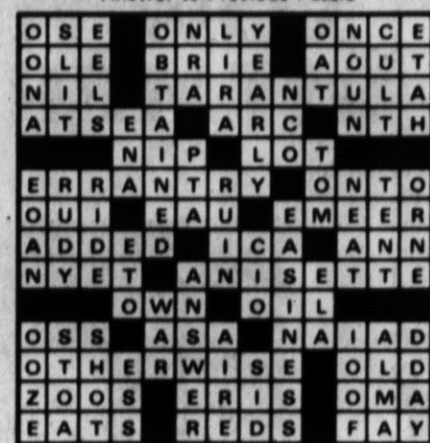
The exhibition, "Te Maori: Maori Art From New Zealand Collections," marks the first time the Maori people have allowed their treasures to journey abroad. Although a great deal of Maori art is in the care of the New Zealand museums, it remains the property of the Maori tribes, who venerate these objects as the spiritual dwelling place of ancestral powers.

Crossword

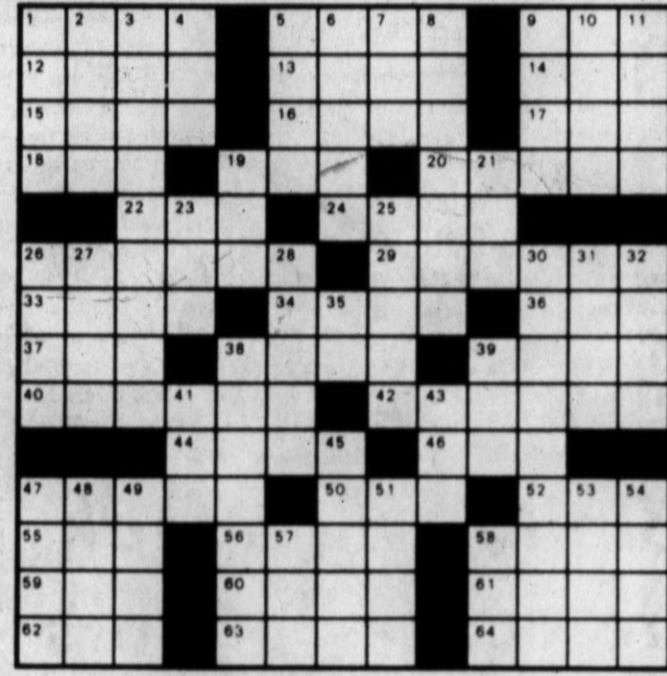
ACROSS

- 1 Scottish hillside
- 5 Spoiled child
- 9 Anglo-Saxon letter
- 12 Egg (Fr.)
- 13 French river
- 14 Orb
- 15 Oven
- 16 Semic delly
- 17 Genetic material
- 18 Sandwich type (abbr.)
- 19 Superlative suffix
- 20 More crafty
- 22 Tokyo's former name
- 24 High (Lat.)
- 26 Mom or dad
- 28 Thole
- 33 Court hearing
- 34 River in Europe
- 36 Nigerian city
- 37 Evil (Fr.)
- 38 Arm (Fr.)
- 39 La tar pits
- 40 Purge
- 42 Diving duck
- 44 Eight (Sp.)
- 46 Slender pinnacle
- 47 Breakwater
- 50 On same side (pref.)
- 52 Depression initials
- 55 Double curve
- 56 Sonny's ex
- 58 Cadence
- 59 Airline information (abbr.)
- 60 Clay and sand mixture
- 61 Single time
- 62 By means of
- 63 Alcohol lamp
- 64 British gun

Answer to Previous Puzzle



- 45 Billowy expanse
- 47 Bantam car
- 48 Italian family
- 49 Russian ruler
- 51 "La Douce"
- 53 Regatta
- 54 Egyptian sun disk
- 57 Very warm
- 58 Cattle genus



National school lunch week to be observed next week

"School Lunch: America's No. 1 Energy Source" will be the theme for this year's National School Lunch Week to begin Sunday. The Hereford Independent School District invites parents to have lunch with their children at this time.

Cost of the lunch will be \$1.60 and reservations must be made in ad-

vance at the school the child attends.

This year's sub-theme is "Champions of Nutrition." Emphasis was placed on all students and their potential for becoming true champions. A true champion is someone who is well-rounded in all areas of life.

Comics

PEANUTS by Charles M. Schultz



STEVE CANYON by Milton Caniff



FRANK AND ERNEST by Bob Thaves



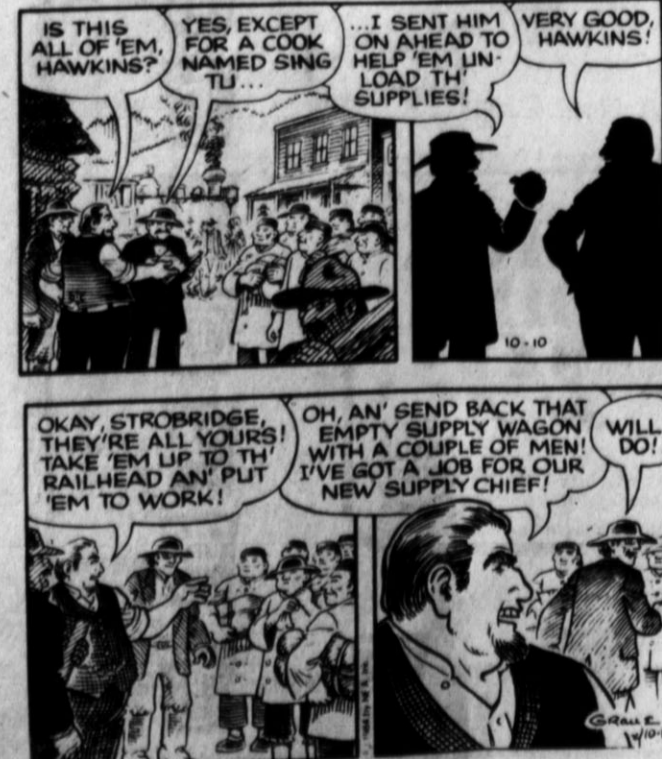
THE BORN LOSER by Art Sansom



EEK & MEEK by Howie Schneider



ALLEY OOP by Dave Graue



by Brad Anderson



The World Almanac

Q&A

1. Who was Benjamin Harrison's vice president? (a) Levi P. Morton (b) Garret A. Hobart (c) Adlai E. Stevenson
2. Which of the following animals belongs to the Canidae Family? (a) walrus (b) wolf (c) whale
3. Which state has the highest total crime rate? (a) Nevada (b) Colorado (c) New York

ANSWERS

1 a b c a 2 b c a 3 a b c

DOWN

- 1 Idiot (sl.)

Television Schedule

WEDNESDAY

Time	Program	Notes
6:00	2 Here Come the Brides	
6:30	3 M*A*S*H	
7:00	4 1984 World Series: Game 2	
7:30	5 Dreams A Little Fame	may cost Phil his friendship with Gino after he is quoted out of context in a magazine article
8:00	6 Dynasty Alexis	scheming to sabotage Blake may jeopardize the defense in her trial for the murder of Mark Jennings. (60 min.) [Closed Captioned]
8:30	7 PKA Full Contact Karate	
9:00	8 Arthur Hailey's Hotel Peter	Billy intervene in a young girl's venture into prostitution and Mrs. Cabot's magazine interview goes awry (60 min.) [Closed Captioned]
9:30	9 My Little Margie	
9:45	10 MOVIE: 'High Risk'	A filmmaker enlists three unemployed friends to help him rob a wealthy drug runner James Brolin, James Coburn, Anthony Quinn 1981
10:00	11 CBS News	
10:30	12 Best of Groucho	Magnum P.I. A veteran hires Magnum to locate his girlfriend in hopes of also finding the man responsible for a friend's death (R) (60 min.)
10:45	13 Sports Tonight	
11:00	14 Burns & Allen	
11:30	15 Late Night with David Letterman	Tonight's guest is Richard Thalheimer (60 min.)
11:45	16 MOVIE: 'Transplant'	A young man works all his life to reach the American Dream only to find that his very success is jeopardized Kevin Dobson, Melinda Dillon, Granville Van Dusen 1979

THURSDAY

Time	Program	Notes
6:00	2 Here Come the Brides	
6:30	3 M*A*S*H	
7:00	4 Circus	
7:30	5 CBS News	
8:00	6 Vice-Presidential Debate	Glitter Kate and Sam uncover a long forgotten movie star's secret. (60 min.) [Closed Captioned]
8:30	7 De Fiesta	
9:00	8 Way of the Winner	
9:30	9 My Little Margie	
10:00	10 CBS News	
10:30	11 CBS News	
10:45	12 Sports Tonight	
11:00	13 Burns & Allen	
11:30	14 Late Night with David Letterman	Tonight's guests are actor Harry Dean Stanton and master of disguises Barry Bremen (60 min.)
11:45	15 MOVIE: 'Four for Texas'	Two feuding westerners unite to oppose a crooked banker and his dastardly scheme Frank Sinatra, Dean Martin, Victor Buono 1963

Get plugged in
HBO & Cinemax
 Hereford Cablevision
 126 E. 3rd 364-3912

Accent on Agriculture

By DENNIS W. NEWTON
Extension Agent

As grain sorghum matures throughout the county, lodging problems always cause concern. This year, because of the hot dry August and September that we experienced, this problem could become a very costly one.

The major cause of most lodging in sorghum is stalk rot. There are two types that will cause severe problems in sorghum, fusarium stalk rot and charcoal rot.

Charcoal rot infested stalks show a shredded condition at and above the ground line. This can be observed by splitting the stalk and identifying the deteriorated pith tissue. Fungal fruiting structures can be seen in the affected tissue and appears as though it has been dusted with black pepper.

Conditions under which charcoal rot occurs have been documented. Soil temperatures must be in excess of 95 degrees F, which is not common on hot, very sunny days and the soil must contain less than 8 percent available moisture for four days. The sorghum must be in the early - milk to late dough stage for infection to occur.

Fusarium stalk rot, like charcoal rot, usually develops on mature or nearly mature plants that have been subjected to some sort of stress. In-

fection takes place at the base of the plant and produces discoloration in the stalk. The black fungal speck that are found in charcoal rot will not be present.

Both disease attack sorghum that was stressed severely due to lack of water, or insect damage. After the sorghum plants are infected, there is no chemical treatment that can be used. Producers will simply have to harvest the crop as early as possible and use pick up attachments on combine headers to avoid excessive losses.

As with any disease, prevention is the best method of control. Fields where these problems, have occurred should be rotated to other crops next year. Management techniques that will prevent plants from stressing are also important. This means adequate irrigation where possible and economically feasible, adequate fertilization to produce healthy plants and insect control to prevent plant desiccation.

Some varieties of sorghum are more susceptible to these two organisms than others. Selection of hybrids that have the ability to resist these organisms or that have the ability to stand even when infected can make a difference.

Smith will speak to cattle feeders

AMARILLO - Howard K. Smith, familiar voice to radio and television news audiences for more than 40 years, is among the speakers scheduled for the 17th Annual Convention of the Texas Cattle Feeders Association, Oct. 21-23 at the Amarillo Hilton Inn.

Known perhaps as the most outspoken of all network news commentators, Smith will speak on, "The Changing Challenge to America," during which he is expected to give his perspective on the

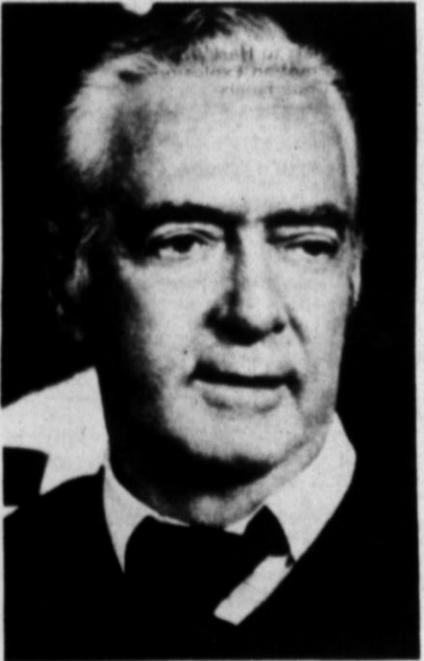
upcoming elections.

"Mr. Smith has earned and received virtually every award possible in the field of broadcast journalism, including an Emmy," said Charles E. Ball, TCFA executive vice president. "He has authored several books relating to his experience as a war and Washington correspondent. For those reasons, we are honored to have him on our convention program."

What probably characterized Smith's stature as a journalist was his being chosen above his colleagues to moderate the famous Kennedy-Nixon presidential debate in 1960 and the Carter-Reagan "Great Debate" in 1980. These debates were thought to be the most decisive factors in both elections. He is also the only newsman ever to be invited to address the House of Representatives.

Smith is scheduled to speak during the TCFA convention's first general session the morning of Oct. 22. Also on the program will be Dr. Margaret N. Maxey, director of the Chair of Free Enterprise at the University of Texas at Austin; and Dick Waterfield, TCFA president.

Other speakers in the three-day event will include U.S. Secretary of Agriculture John Block and Dr. William L. Rathje, a University of Arizona anthropologist who studies human eating habits.



HOWARD K. SMITH

Consumers prefer lean steak

COLLEGE STATION - A nationwide panel of beef tasters verified that a sizeable group of consumers want their steak lean and there will be a ready market for that type of product.

More than 1,100 consumers in four cities - San Francisco, Houston, Kansas City and Philadelphia-took part in the study just completed by the Texas Agricultural Market Research and Development Center at Texas A&M University. The center is an education and research service of the Texas Agricultural Experiment Station and Texas Agricultural Extension Service.

"The study, which is the first part of a two-phased research project, produced more than 8,000 ratings of beef steaks," said Dr. Bob Branson, director of the market research center. "Panelists ate and rated beef loin steaks as to their flavor, tenderness and juiciness. The steaks represented seven levels within the federal grades: low prime; high, middle and low choice; high and low good; and standard."

Branson explained that prime grades of beef are usually served in the better restaurants while choice and good grades are generally sold in supermarkets. The standard grade is reserved for the leanest beef. Beef grades, he explained, are based on the amount of marbling--small specks of fat--in the red meat.

"We were trying to find out what kind of beef consumers really want so that both beef producers and retailers can do a better job in providing that product," Branson said.

"Some retailers are continuing to market USDA choice beef, which has more fat, while others are trying to appeal to the consuming public by promoting the health aspects of leaner beef. Cattlemen are caught in the middle and are not sure which way to turn."

While panelists nationwide agreed on the rankings, some important geographical differences were

found, noted Branson. For instance, panelists in the Houston and San Francisco areas found no significant difference in the low choice and high good beef steaks. Also, about 25 percent of those in the study rated the lower half of the good grade beef with a seven or higher on a nine-point scale, indicating high desirability.

So where does that leave the beef producer and the retailer?

"Obviously, we still have a lot of work to do to get a better handle on what direction beef production and marketing should take in the future," Branson said. "Phase two of this study will be a market test in retail supermarkets to obtain information about consumer preferences for a variety of beef cuts and to determine how well leaner beef can be marketed."



Company Expands Seed Products

Garrison Seed Co. of Hereford is now marketing its own line of hybrid corn, grain and forage sorghum seed. Company officials hosted a sales meeting here this week for an orientation of salesmen. Left

to right are Art Stoy, vice president and general manager; Harold Tannahill, Dwayne Schroedter, Bob Crume, sales manager; Bob Simmons, Rox Oxford, and S.L. Garrison, president of the company.

Round & Square Baling SWATHING

JOE PAETZOLD 364-8384

Deaf Smith County Farm Bureau

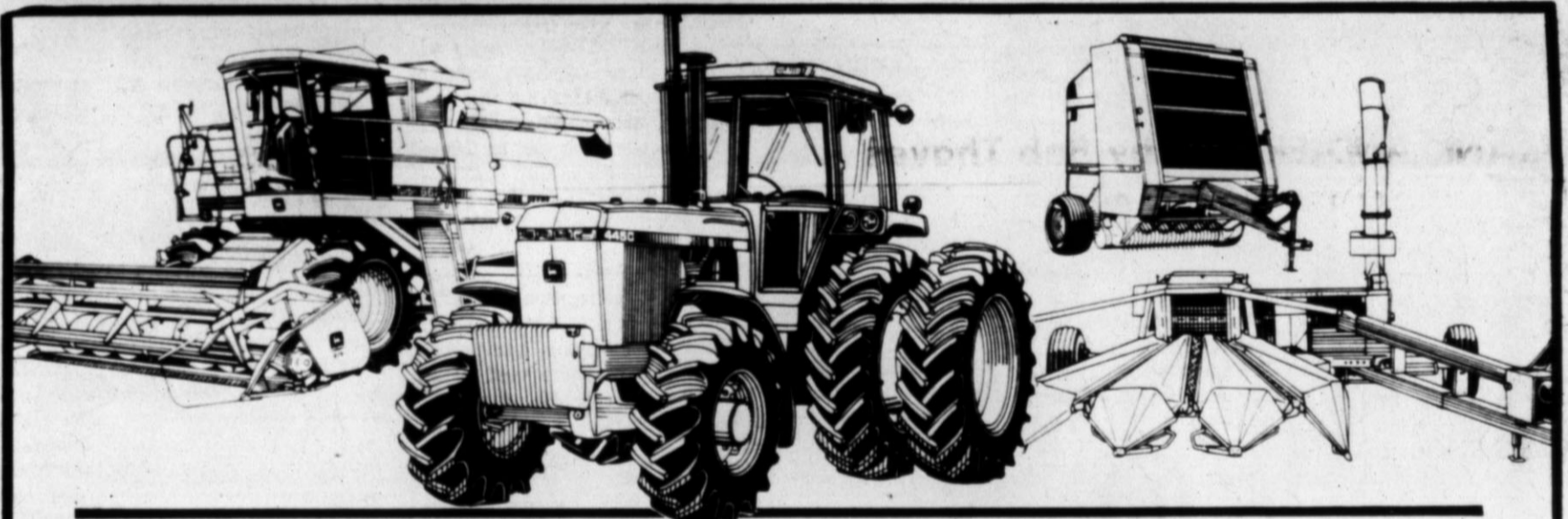


Invest In An I.R.A.

JIM CLARKE
Agency Manager
Home 364-4189

1306 West Park Ave.
364-1070

MARTHA JONES
Agent
Home 578-4352



CLEAN UP DURING YOUR JOHN DEERE DEALER'S CLEAN OUT SALE

The John Deere factories are offering us tremendous allowances and we're passing them on to you. Some are in the thousands of dollars. And on top of that, you can choose cash rebates or interest-free financing periods on many items. It all adds up to big bucks. Look over these deals, then stop by our dealership and look over the equipment. We're cleaning out and you can clean up.

NEW TRACTORS. Special allowances on 50 Series (4050, 4250, 4450, 4650, 4850) worth up to many thousands of dollars. Generous allowances on utility and 4-WD models, too. If you finance with John Deere there are even greater savings: pay no interest until March 1, 1985* or take a cash rebate as described in the chart.

USED TRACTORS. Finance a used tractor of 40 or more horsepower with John Deere and get it interest free until March 1, 1985.*

NEW COMBINES. All models carry special factory allowances of multi-\$1000s.

USED COMBINES. Interest-free to January 1, 1985*, if financed with John Deere.

HAY AND FORAGE EQUIPMENT.
OFFER #1—Pick-A-Team cash rebates up to \$1600 on new John Deere hay and forage tools. Buy one now and receive a cash rebate. PLUS a certificate entitling you to a double cash rebate if you purchase a second tool anytime before April 30, 1985.

OFFER #2—Interest-free financing until January 1, 1985, on new and used SP and PTO forage harvesters.*

OFFER #3—Interest-free John Deere financing until 1985* season of use on new and used round and square balers, SP windrowers, mower/conditioners, mowers and rakes. (Cash in lieu of waivers on new units only, except mowers and rakes).

There'll never be a better time than RIGHT NOW to make this kind of savings. The factories have authorized it. Your dealer is waiting for you.

Model**	Cash Rebate in lieu of Waiver on Tractors		
	During Aug.	During Sep.	During Oct.
40-hp 1250	\$450	\$375	\$300
50-hp 1450	500	425	350
60-hp 1650	550	475	375
45-hp 2150	525	425	350
50-hp 2255***	475	400	325
55-hp 2350	600	500	425
65-hp 2550	675	575	475
75-hp 2750	775	650	525
85-hp 2950	900	750	625
100-hp 4050	1450	1225	1000
120-hp 4250	1575	1325	1075
140-hp 4450	1650	1400	1150
165-hp 4650	2000	1700	1400
190-hp 4850	2225	1875	1550
185-hp 8450 4WD	2500	2100	1725
235-hp 8650 4WD	3050	2575	2100
300-hp 8850 4WD	3800	3225	2625

* Availability of John Deere financing subject to approval of credit. These offers may be withdrawn at any time.
** A similar financing rebate offer applies to any 40 Series Tractors remaining in inventory. Ask for details.
*** This model is not available for sale in Nebraska.

JOHN DEERE FACTORY AUTHORIZED CLEARANCE

White Implement Co.

N. Hwy. 385 Hereford

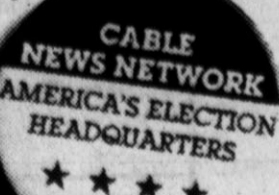


SPEAK UP AMERICA.

FREEMAN REPORTS

Sandi Freeman interviews the newsmakers and world shakers.

Cable News Network is your link to Campaign '84. Join the nation's largest round-table discussion. Watch FREEMAN REPORTS every weeknight on CNN. And stay with CNN all fall for the most complete coverage of Campaign '84, plus 24-hours of news, sports, weather, features and more everyday.



126 E. 3rd Hereford Cablevision 364-3912

WANT ADS DO IT ALL! BUY - SELL RENT - TRADE

THE HEREFORD BRAND
 WANT ADS DO IT ALL!
 YOU WANT IT YOU GOT IT
CLASSIFIED
364-2030
 ADDRESS: 313 N. LEE

CLASSIFIED ADS
 Classified advertising rates are based on a minimum of 20 words. One day is 11 cents per word. \$2.20 minimum. Rates below are for consecutive issues, no copy change, and apply to solid ads only.

NO CAPTION
 TIMES, RATES Min.
 1 day, per word: 11 2.20
 2 days, per word: 19 3.80
 3 days, per word: 27 5.40
 4 days, per word: 35 7.00
 8th day FREE
 10 days, per word: 57 13.40
 monthly, per word 23.00

Classified display rates apply for special paragraphing, captions, bold type or larger type: \$2.50 per column inch; \$1.56 for consecutive issues. Monthly rates \$1.86 per column inch.

Deadline for classifieds is 3 p.m. daily for the next day's edition. 3 p.m. Friday for Sunday's edition.

CASH IS REQUIRED ON ADVERTISEMENTS UNDER \$10.00.

LEGALS
 Advertising rates for legal notices are \$3.50 per column inch for the first time the advertisement runs, and \$3.00 per column inch for consecutive issues.

For advertising news and circulation, call 806-364-2030.

ERRORS
 Every effort is made to avoid errors in Classified Ads and legal notices but we will not be responsible for more than one incorrect insertion. Advertisers should call attention to errors immediately after the first insertion and in case of errors not the fault of the advertiser, an additional insertion will be given.

Articles for Sale

MADEN STEEL BUILDINGS.
 Carports, storage or shop buildings. Delivery or on site construction. Toby Turpen, 364-6362. 1-219-tfc

USED Minolta 101 Copy Machine. Copies up to 11x17. \$500. Call Speedy Nieman or see at Hereford Brand. 364-2030. 1-35-tfc

BETA & VHS Movies for Rent at McKnight Home Center, 226 N. Main, 364-4051. New titles Arriving Daily. 1-36-tfc

4 new 14" locking spoked wire wheel covers with 14" wheels separate or together. Complete dark room setup. Call after 6 p.m. 364-8251. 1-55-20c

CALL YOUR LOCAL USED COW DEALER FOR
 Seven days per week
DEAD STOCK REMOVAL
 364-0951 1-tfc

SHAKLEE
 Food supplements, cleaning products, cosmetics. Clyde & Lee Cave, 107 Avenue C. 364-1073. 1-75-tfc

VERTICALS & MINI
 blinds by Levolor. Verosol pleated shades. Fit any window. 1/2 price. Independent dealer. For appointment, call 364-7960. 1-22-22p

WE ARE Distributor of Amarillo Daily and Amarillo Globe News. Call 364-1346. 1-20-tfc

Antique Upright Silvertone phonograph. Cabinet, needles, & records in top shape. Works perfectly. Sacrifice at \$300.00. 364-6617. 1-66-5p

Garage Sales

GARAGE SALE - Thurs - Fri - 113 Lake. Good One. Pots dishes, pots, pans, dolls, lamps, kitchen things, clothes, knick knacks, miscellaneous. 1A-71-2p

Farm Equipment

BUY-SELL-TRADE
 New and Used farm equipment.
 The "Honest" Trader
 M.M.T. Treinen
 Phone Days 806-238-1614
 Bovina
 Nights 806-238-1450 Bovina
 2-207-tfc

GEHL SELF PROPELLED ENSILAGE CUTTER SP188 THREE ROW EXCELLENT CONDITION. TRADE FOR GOOD 150 HP ROWCROP TRACTOR. IHC SP14 WINDROWER. 364-0484. 2-67-5c

NEW HOLLAND HAYLINER 315 WIRE TIE. SP188 GEHL THREE ROW ENSILAGE CUTTER. HESTON No. 10 STACKHAND. SP 14 IHC WINDROWER. BARGAINS. 364-0484. 2-67-5c

FOR SALE: 5 H.P. Whites Roto-tiller. 22" Whites Lawn Mower. Call 364-1976. 5-68-5p

BUY & SELL gold, silver and coins. D&J Coins. 511 East Park. 364-8114. We have silver bars 1-240

FOR SALE - 1966 Cadillac as is \$600.00. King size bed, triple dresser, night stands, recliner, washer, dryer, electric stove, end table, coffee table, fish aquarium, lamps, and several other items. Call after 5 p.m. 364-7792. 1-70-5p

SILK MUMS
 Small for child \$5.00
 Large \$15.00
 Extra special silk mum \$25.00 (has rose, velveteen and lace) Names included on all mums.
 Also have garters. Call 364-4978 after 4 p.m. ask for Grace. 1-70-5c

LARGE sofa with slate end tables, matching chair and slate coffee table. 364-2155 after 5:30 p.m. 1-69-6c

FOR SALE:
 2-150,000 BTU overhead commercial heaters
 1-100,000 BTU overhead commercial heater,
 1-90,000 BTU central heat unit \$75.00 each.
 Call Harold's Body Shop, 364-8515. 1-69-5c

Will give to good home, female black Great Dane. Good watch dog and good with children. Needs lot of room. 107 Northwest 7th, Dimmitt, Texas. 1-69-3p

Hanging lamp, heavy antique brass also deep red antique looking lamp. 5 piece king size bed room suite, bath fixtures-square tub and two vanity sinks. One deep red or burgandy chair, perfect condition. Two table lamps, brass and deep red. Chandelier light fixture. 364-5311. 1-64-tfc

New 2 horse S&H side by side \$1625. New S&H 6x16 Gooseneck \$2600. New 5x16 full top stock trailer. 364-2850. 1-70-10c

SLICK
 1980 Buick Lesabre Limited. Tilt, cruise, AM-FM radio, good tires. \$4800. 364-0305. 4-70-5p

AIRPLANE
 1970 Model Cessna Cardinal 2000 TT O-SMOH. Good radios. NDH self clean. 647-5684. 3-67-5p

'76 Toyota Celica GT. Needs some body work. Runs good. \$695.00. Call 364-2145 after 5:00 p.m. 3-68-5p

1978 Honda 750 Supersport 11,000 miles. Windshield, Trunk, and saddlebags. \$1200.00. 364-2715 after 5:30 p.m. 3-68-5p

1975 Oldsmobile Tornado. Runs good, new paint. \$1700. 364-7377. 3-68-5p

1974 VW Bus. Good condition. Air conditioning. Best offer. 364-1987. 3-71-5p

82 Winnebago, low mileage 21' model 621, fully equipped \$20,000. After 5:00 P.M. 364-4417. 3A-60-tfc

'70 Model F. Gleener, cab and air. 14 ft. header. Phone 267-2248. 2-67-5p

FARM EQUIPMENT FOR SALE. Call 364-0210 after 5 p.m. 2-70-5p

J.D. And I.H. Corn Header Chains. Nichols Sweeps. 2-70-5p

Ingersoll-Rand Air Compressor. ***

Season close-out sale on all Solo Back-pack Sprayers and Wylie 25. gal. sprayers in stock.

Call or come by:
ARROW SALES
 409 E. Hwy 60
 Phone 364-2811
 S-W-2-49-4c

Cars for Sale

MILBURN MOTOR COMPANY
 We pay cash for Used Cars
 126 Sampson
 Phone 364-0077 3-tfc

NEW & USED CARS
 Now for sale at
STAGNER-ORSBORN
 BUICK-PONTIAC-GMC
 1st & Miles 3-8-tfc

FOR SALE: 1983 Ford Ranger pick-up. Dual fuel tanks, long bed, air conditioner. Call 364-0458. 3-tfc

1978 Ford Good Time Van. 3/4 ton. 460 V8 engine. 51,000 miles. \$10,000. See at 149 Ranger. 3-59-tfc

WANT TO BUY used cars and pickups.
BURNEY'S USED CARS
 126 Bennett
 364-6701. 3-63-22p

SLICK
 1980 Buick Lesabre Limited. Tilt, cruise, AM-FM radio, good tires. \$4800. 364-0305. 4-70-5p

AIRPLANE
 1970 Model Cessna Cardinal 2000 TT O-SMOH. Good radios. NDH self clean. 647-5684. 3-67-5p

'76 Toyota Celica GT. Needs some body work. Runs good. \$695.00. Call 364-2145 after 5:00 p.m. 3-68-5p

1978 Honda 750 Supersport 11,000 miles. Windshield, Trunk, and saddlebags. \$1200.00. 364-2715 after 5:30 p.m. 3-68-5p

1975 Oldsmobile Tornado. Runs good, new paint. \$1700. 364-7377. 3-68-5p

1974 VW Bus. Good condition. Air conditioning. Best offer. 364-1987. 3-71-5p

82 Winnebago, low mileage 21' model 621, fully equipped \$20,000. After 5:00 P.M. 364-4417. 3A-60-tfc

Money paid for houses, notes, mortgages and trust deeds. 364-2660. 4-71-21p

OWNERS RETIRING - for sale, lease or trade choice property West Hwy. 60, presently occupied by the Playhouse Skating Rink. Terms and price negotiable. Phone 276-5585. 4-60-tfc

KIT 'N' CARLYLE © by Larry Wright



2 bedroom, one bath house, garage, carpet. Paneling, dishwasher, plumber for washer-dryer. Huge fenced backyard. 364-2961. 4-69-20p

4 Bedroom, 3 Bath house in the Country. Owner will finance. Call HCR Real Estate. 364-4670 4-69-tfc

HOUSE FOR SALE BY OWNER
 Older two story house, 3 bedroom, 2 bath, 2 car garage, near schools. Call 364-0799. 4-69-5p

RENT TO OWN. Seller will trade for late model pickup or travel trailer for the down payment on this double wide mobile home and lot located just outside City Limits of Hereford. Call Don Tardy, Owner-Realtor, 364-4561. 4-69-tfc

Prestige location on Douglas. 4 Bedrooms, 2 1/2 bath. Many extras on this quality built home. Price reduced \$15,000, down to \$95,000. Assumable non-escalation 7 1/2 percent loan. Owner-Broker. 364-6617. 4-70-5p

LARGE 3 or 4 bedroom house, completely remodeled at 110 avenue G. Call 364-6489. 4-65-tfc

IN NORTH DEAF SMITH COUNTY
 656 acres. 419 cultivated. 3 irrigation wells, water pit. House with domestic well. On pavement. 806-293-1900 or 806-296-7957. Juliana Brockman, Broker. 4-66-tfc

FOR SALE OR LEASE: Good commercial property, prime location. Recently remodeled. Five offices, reception area, conference room. Assumable loan. owner will consider carrying second. Call Top Properties, Inc. 364-8500. 4-70-5c

701 SEMINOLE. Nice 3 bedroom, 1 1/2 bath home. Excellent condition. Assumable VA Loan. \$6000 equity. Call Sharon McNutt, 364-2754. Top Properties, Inc. 4-70-5c

20 acre tracts on payment one mile from Hereford. 6" irrigation well. HCR Real Estate 364-4670. 4-59-tfc

JUST OUTSIDE CITY LIMITS. Very nice house, orchard and one acre lot. Shop. Domestic well. Owner-builder work reflected throughout. Call Betty for appointment. 364-4561. Don Tardy Co. S-W-4-69-2c

ASSUMABLE LOW INTEREST, FIXED RATE LOAN. Exceptionally nice home. N.W. location. 3 bedrooms and 2 baths. Priced in the Fifties. Must see to appreciate. So call Marvin today. 364-4561. S-W-4-69-2c

OWNER WILL NEGOTIATE TERMS to buy large 2 bedroom, 1 1/2 bath brick home on West Park. Minimal yard care. Perfect for retirees. Call Marilyn for information. 364-4561. Don Tardy Office. S-W-4-69-2c

Two bedroom mobile home on fully fenced half acre. Near to city with good well. Call HCR Real Estate 364-4670. 4-27-tfc

LARGE 2-story house on 160 ft. by 150 ft. corner lot. Will sell house and land together or separately with house to be moved. Possible owner financing with sizeable down. N.W. and West Central schools. 407 N. Lee - By owner 364-1561 or 1186 ask for Stan. 4-58-20p

LOOKING FOR A TRADE. Owner of a very pretty 3 bedroom home on Nueces will look at land or other property. Over 2500 sq. ft. Beverly can help work out an offer. 364-4561. Don Tardy Office. S-W-4-69-2c

DID YOU SELL YOUR HOME AND FINANCE YOUR EQUITY?? I buy 1st and 2nd mortgages. Call 364-7531 afternoons and evenings. 4-58-20c

FOR SALE: Real nice home. 100 percent financing. Realtor, 364-4670. 4-59-tfc

BEST OF TWO WORLDS. Like new, beautiful 3 bedroom home and the landscapings done. Springcrest drapes, isolated mater, unbelievable storage. Call Betty for a preview. 364-4561. Don Tardy Office. S-W-4-69-2c

COUNTRY HOME - 3 bedroom brick, double car garage on approximately one acre. Sprinkler system. HCR Real Estate, 364-4670. 4-59-tfc

THREE bedroom brick, two full baths. Small down payment, assume loan. Call HCR Real Estate, 364-4670. 4-59-tfc

Call Marvin today for details on this just listed motel. Great potential for top return. On the highest traffic pattern. Owner will finance. Don Tardy Co. 364-4561. S-W-7-69-2c

DON'T RENT! BUY! This low priced home is perfect for one, or small family. Located close to the hospital, so come look at this one employee! Make an appointment with Marilyn to see it. 364-4561. Don Tardy Office. S-W-4-69-2c

THE BEST building site available for your dream home. 4 acres, priced to sell. Call 364-1394. 4-22-tfc

INSTALLER REPAIR COUNTRYSIDE Mobile Home Park
 A.P. HUCKERT 5-12-22 806/364-0064

CORONADO ACRES 5.3 miles south on Hwy 385
 5 acre tracts, now with water.
 Owner financing. Low down payment. Phone 364-2343, if no answer, call 364-3215. Office: 110 East 3rd. 4-49-tfc

WHY PAY RENT? Start building equity now with only \$99.00 total move-in. Call for details 1-800-692-4163. 4A-52-20p

SICK OF RENTING??? YOU DON'T RENT YOUR CAR, WHY RENT A HOME WHEN YOU CAN OWN YOUR OWN HOME FOR LESS?? LET ME HELP!! CALL HAROLD LANE COLLECT! 806-763-5319 4A-68-22p

FOR SALE: 2 mobile homes, both 2 bedroom, 1 bath. For more information call 364-5366. 4A-70-5p

Have a vacancy in convenient apartment. Furnished, carpeted. Wall heaters. Bills paid. For couple or single adult. No children, no pets, deposit. 364-2553 residence; 364-5191 office. 5-127-tfc

UNFURNISHED APARTMENT
 Nice, large 2 bedroom apartments. 1 1/2 baths. Refrigerated air, renter pays only electric bills. We pay cable TV, gas, water, trash. \$275.00 per month. \$100.00 deposit. 364-8421. 5-129-tfc

Self-lock storage. 364-8448. 5-95-tfc

DIAMOND VALLEY MOBILE HOME PARK
 F.H.A. Approved Lots 700 Block of Ave. G&H Office 415 North Main 364-1483 Home 364-3937 5-56-tfc

FURNISHED APARTMENTS
 One and two bedroom furnished apartments for rent. \$200 and \$250. \$100 deposit. Call for information. 364-4332. 5-74-tfc

Nice two bedroom apartment. Unfurnished. Rent starts at \$210. Deposit \$170. No pets allowed. Call Griffin Real Estate 364-1251. Equal Housing Opportunity. 5-203-tfc

2 bedroom furnished mobile home. Deposit. No pets. We offer 10 percent discount to Senior Citizens. 364-0064. Countryside Mobile Home Park. 5-21-tfc

3 bedroom house, 1 1/2 bath, refinished inside. Close to school. Also large 2 bedroom duplex. You pay bills, plus deposit. Call 364-2131. 5-65-tfc

Hereford's Finest Apartments
 Masters & Town Square
 One to Four Bedrooms For Details.
 Call 364-0739. Tu-W 5-60-tfc

For Sale, Very nice retail building, downtown Hereford with or without inventory. Call HCR Real Estate 364-4670 7-69-tfc

APARTMENT FOR RENT. STOVE & REFRIGERATOR FURNISHED. \$240.00 MONTH. UTILITIES PAID. NO PETS. 364-0484. 5-67-5c

EXTRA NICE 2 or 3 bedroom home in northwest area. Fenced back yard, two car garage. Deposit required, no pets. Call 364-4672. 5-68-5c

FOR RENT - 3 or 4 bedroom on Ave. B - 350 Per Month. Deposit & References Required. Call Realtor. 364-6633 5-68-tfc

SARATOGA GARDENS. Friona Low rent for needy families. Carpet, laundry facilities. Rent starts \$265, bills paid. Collect 247-3666. 5-87-tfc

One bedroom unfurnished apt. at 508 Knight St. Has stove & Refrig. No pets. Ph. 364-2170. 5-70-tfc

FOR RENT - 2 bedroom trailer with option to working out the rent. No pets. Countryside Mobile Home Park, 364-0064. 5-71-tfc

BUILDING FOR LEASE: 1750 sq. ft. well built recently remodeled highly exposed retail store building. Inventory, fixtures and dealerships negotiable. Send inquiries to Box 1574, Hereford, Texas. 79045. 5-37-tfc

FOR LEASE: Office space. Good down town location, across from First National Bank, presently Big Brothers-Big Sisters. Will be available November 1st. Call Carol LeGate, Top Properties, 364-8500. 5A-70-5c

Office Space for lease, attractive building excellent location - 201 E. Park ave. 2146 sq. ft. INQUIRE 205 E. Park ave., 364-2232. 5-62-tfc

Office building for lease on 25 Mile Ave. near Park Ave. Very attractive. Ample parking space. \$375 per month. 364-6617. 5-67-5p

WEST SIDE SALVAGE
 We buy trucks, cars, pickups. Any condition. Call 364-5530. 6-87-tfc

We pay cash for mobile homes, regardless of condition. Prefer 1965 to 1975 models. 364-0064. 6-172-tfc

Used trampoline needed for a foster family. Helps the children emotionally and physically. If anyone is interested, in donating or selling one, please contact 364-6957. 6-3-tfc

Wanted - Washers, Dryers, electric stoves, portable dishwashers, refrigerators, not working. Phone 364-8370 evenings. 6-71-5p

BUILDING FOR LEASE. 1750 sq. ft. well built recently remodeled highly exposed retail store building. Inventory, fixtures and dealerships negotiable. Send inquiries to Box 1574, Hereford, Texas 79045. 7-37-tfc

For Sale, Very nice retail building, downtown Hereford with or without inventory. Call HCR Real Estate 364-4670 7-69-tfc

Own your own Jean-Sportswear, Ladies Apparel, Combination, Accessories, Large Size store. National brands: Jordache, Chic, Lee, Levi, Vanderbilt, Izod, Esprit, Britannia, Calvin Klein, Sergio Valente, Evan Picone, Claiborne, Members Only, Organically Grown, Healthtex, 700 others. \$7.90 to \$24.90, inventory, airfare, training, fixtures, grand opening, etc. Can open 15 days. Mr. Loughlin (612)888 6555.

THE HEREFORD BRAND
 WANT ADS DO IT ALL!
 YOU WANT IT YOU GOT IT
CLASSIFIED
364-2030
 ADDRESS: 313 N. LEE

Mature lady will do house cleaning. Experienced. Call 364-0344. Sit-67-3p

NEED Medical Transcriptionist preferably with experience but will consider excellent typist. If interested call Deaf Smith General Hospital, 364-2141. 8-61-tfc

Capital Wire & Cable, located in Plano, is seeking machine operators for evening and night shifts. Good benefits: company paid insurance, pension plan, paid holidays and vacations. For further information contact Personnel (214)423-6565. 910 10th St. Plano. EOE 8-70-5p

Waitress needed. Apply in person after 4 p.m. at the Great American Food and Beverage, 628 West 1st. 8-104-tfc

WAITRESSES AND COOKS NEEDED at Big Daddy's Restaurant. Apply in person only. Hwy 60 east. 8-42-tfc

NEED part time church organist at the First Presbyterian Church. Please call 364-0745 or 364-2471. 8-55-tfc

Earn up to \$200 per day and more in the fast growing BeautyCare & Color Analysis business. Call Mrs. Gibson between 4 and 6 to set up an interview. 806-665-6092. 8-68-5p

THE RANCH HOUSE is now interviewing for position of cook. Must be experienced in full line menu and have references. Starting salary \$4.25 per hour, with periodic raises. For interview call 364-8102. 8-69-5c

WANTED FARMER AGE 30-40. EXPERIENCED IRRIGATION. IMPROVED PASTURE. GROWING SMALL DAIRY CALVES. WELDING. FARM MACHINERY REPAIRS. FEEDMILL CONSTRUCTION. 364-0484. 8-67-5c

THE HEREFORD BRAND
 WANT ADS DO IT ALL!
 YOU WANT IT YOU GOT IT
CLASSIFIED
364-2030

Stop Looking - It's All in the WANT ADS

WANTED:

We are taking applications for position of adult probation officer for the 22nd judicial district.

Qualifications For Appointment

Must have bachelors degree conferred by a college or university accredited by an organization recognized by the coordinating board, Texas College and University System, preferably in criminology, corrections, social work, psychology, sociology, or a related field that has been approved by the Texas Adult Probation Commission.

Required Experience:

One year of experience in full time case work, counseling, or community or group work in a social, community, corrections, or juvenile agency that deals with offenders or disadvantaged persons that has been approved by the Texas Adult Probation Commission. Under certain conditions such as a new graduate from an accredited college or university, the one year of experience in the above may be waived by the chief probation officer, if approved by the Texas Adult Probation Commission.

We are an equal opportunity employer.
MAKE APPLICATION TO: Harold N. Wheeler, Chief Adult Probation Room 204, Courthouse Hereford, Texas 79045 Telephone: (806) 364-3791

SE NECESITA:

Estamos aceptando aplicaciones para la posicion de oficial de probacion de adultos para el distrito judicial numero 222.

CALIFICACION PARA CITAR:

Tiene que tener titulo de Bachiller conducida por un colegio o universidad acreditado por una organizacion reconocida por la meza de coordinacion, el colegio de Tejas y la Universidad Sistema, preferible en criminologia, correcciones, servicio social, algologia, sociologia, o campo emparentado que ha sido aprobado por la comision de probacion de adultos de Tejas.

EXPERIENCIA REQUERIDA:

Un ano de experiencia en haber trabajado tiempo completo en casos, consejando, de comunidad o de trabajo de servicio social de grupo, comunidad, correcciones, o de agencia juveniles que tratan con ofensores o personas con desventaja que han sido aprobados por la comision de probacion de adultos. Bajo ciertas condiciones tal como un graduado nuevo de un colegio acreditado o universidad, el ano de experiencia ya mencionada puede ser pasado por el jefe oficial de probacion de adultos de Tejas.

HAGA SU APLICACION A:

Harold N. Wheeler, Chief Adult Probation Department Room 204 Courthouse Hereford, TEXAS 79045, Telephone: (806) 364-3791

9. Child Care

REGISTERED CHILD CARE.

Balanced meals, large fenced yard, lots of toys, near playground. Will take dropins. Available during football games. Call 364-4430. 9-51-tfc

KEEPING infants only. Have opening for one baby. Call Bonnie Cole, 364-6864. 9-69-tfc

Will do babysitting in my home week days. Call Jackie Matthews 364-4230 or come by 125 Juniper. 9-71-sp

LICENSED TO CARE

For Children Ages 6 months-12 years
Excellent program by trained staff
Two convenient locations
215 Norton 248 East 16th
364-1293 364-5062

10. Announcements

NEED HELP? Operation Good Shepherd. 364-0382. People helping people. 10-237-10c

DRINKING A PROBLEM? 24 hour hotline, 364-2141. Alcoholic Anonymous. Every Thursday 8 p.m. at 205 E. 6th. 10-133-tfc

10a. Personals

GET ANSWERS to questions on love, marriage, carrier cardreading. Call 364-2925. 11-60-tfc

Amarillo Agency for Women. Free walk-in pregnancy tests. Referrals. Call collect 1-373-6005. 4415 South Georgia No. 211. 10a-259-tfc

SINGLE? Romance and excitement awaits you. Over 400 single members. SPECIAL INTRODUCTIONS 378-6452. 10A-70-tfc

11. Business Service

KELLEY ELECTRIC
Virgil Kelley
Residential-Commercial
All bids & wiring
Competitive
Ph. 364-1345
Nights 364-1523
or 364-5929
P.O. BOX 30 11-15-tfc

GRAVE MARKERS
When choosing a monument for a loved one, you can save money by calling Perry Ray, 364-1065 after 6 p.m. 11-215-tfc

Blown-In Insulation
For Attics & walls
Call 364-6002. 11-62-tfc

CUSTOM BLADE PLOWING AND DISCING.
Tim Hammond, 289-5354. 11-23-22p

DOUG'S APPLIANCE SERVICE.
Serving the Hereford area since 1976.
511 East Park
Phone 364-8114
Service on all major brands of appliances. 11-252-tfc

RENT TO OWN!
New RCA TV's & VCR's,
Whirlpool Appliances.
NO CREDIT CHECK!

VHS Home Movie Rental
52 FREE overnight movie rentals with any new TV or VCR Rented.

Hereford Rapid Rental
1005 W. Park
364-3432

SMALL ENGINE REPAIR SERVICE

Factory Authorized Sales & Service Center. Factory Trained Mechanics on Duty.

Briggs & Stratton
Tecumseh
Kohler
Wisconsin
See us for all your air cooled engine needs - engine sales, short blocks, parts or repair services.

Arrow Sales
409 E. First Street
Hereford 364-2811
11-224-tfc

B.L. JONES
CONCRETE & CONSTRUCTION. Drives, sidewalks, slabs, walls, patios, foundations, residential, commercial, structures. Since 1972. 364-6617. Free estimates. 11-51-20c

PESINA PAINTING
Interior-exterior.
No job too small.
364-4898, Julio Pesina. 11-56-20p

ALLEY CLEANING,
weed spraying and mowing.
New lawns. RYDER'S LAWN SERVICE, 364-3356. 11-57-tfc

Custom Typing and Bookkeeping 1/2 mile S. on 385. Sheffy Office Services Inc. 364-0276 11-68-20c

RILEY'S BACKHOE-DITCHING SERVICE. Water lines, sewer lines, and plumbing repairs. Burnia Riley, 578-4381. 11-68-22p

Liquid Lawn Fertilizer. Dandelion, broad leaf control, insect control. Residential or commercial. Free estimate. Licensed by Texas Department of Agriculture. Lawn Magic. 364-1163. 11-236-tfc

PIANO TUNING \$30.
McBrayer-Day Baldwin. Douglas Rittenberry. We do not sell unneeded repairs or gimmicks; such as damp-chaser. Visa, M.C. 352-2739 or 655-7321. 11-63-22p

WEATHERIZATION FUNDS HAVE BEEN MADE AVAILABLE TO TEXAS PANHANDLE COMMUNITY ACTION CORPORATION TO ADMINISTER AN ENERGY CONSERVATION PROGRAM - SOLAR BANK AND WEATHERIZATION. THIS PROGRAM WAS DEVELOPED TO ACHIEVE A HEALTHFUL DWELLING ENVIRONMENT AND MAXIMUM PRACTICABLE ENERGY CONSERVATION IN THE DWELLINGS OF LOW-INCOME PERSONS, PARTICULARLY ELDERLY AND HANDICAPPED LOW-INCOME PERSONS. TEXAS PANHANDLE COMMUNITY ACTION CORPORATION SHALL MAKE ENERGY CONSERVATION AVAILABLE TO ELIGIBLE HOUSEHOLDS IN THE DEAF SMITH COUNTY AREA AT NO COST TO AN ELIGIBLE FAMILY.

HUD SECTION 8 EXISTING AND MODERATE REHABILITATION PROGRAMS (Rental). A RENTAL PROGRAM IS AVAILABLE TO ELDERLY, DISABLED, HANDICAPPED AND LOW-INCOME FAMILIES IN THIS AREA WITH RENTAL ASSISTANCE UNDER THE HUD SECTION 8 EXISTING AND MODERATE REHABILITATION PROGRAMS.

GENERAL INFORMATION IF YOU ARE INTERESTED IN OBTAINING FURTHER INFORMATION ABOUT THE ABOVE MENTIONED PROGRAMS EITHER THE WEATHERIZATION, RENTAL ASSISTANCE OF THE SECTION 8 EXISTING OR MODERATE REHABILITATION PROGRAMS, PLEASE CONTACT TEXAS PANHANDLE COMMUNITY ACTION CORPORATION, P.O. BOX 32150, AMARILLO, TEXAS 79120 PHONE 806-372-2531

OR: DEAF SMITH COUNTY COMMUNITY ACTION PROGRAM
383 McKinley
Hereford, TX 79045
Phone: 806-364-5631 12-62-10c

PIANO TUNING \$32 including new sales tax. We do service calls, repairs. HUFF'S OF CANYON, 655-4241. 11-65-tfc

CARPENTER WORK - remodel, repair, cabinets. No jobs too small. For free estimates call Jim Manning 364-5783. 11-71-22p

Watch your utility bills go down and eliminate pest and rodents at the same time! PEST CONTROL INSULATION tackles both problems. Call George Bullard, Comfort Check Insulation 364-6014. 11-71-tfc

WEED mowing and alley cleaning. C.L. Stovall, 364-4160. 11-71-tfc

EXTERIOR and interior house painting. Christian, clean and neat. Experienced. Reasonable rates. Free estimates. 364-4322. 11-237-tfc

HAULING DIRT, sand and gravel, yard work and levelling, tree trimming and trash hauling. 364-0553. 11-27-tfc

MCKIBBEN ROOFING. All types roofing; all work guaranteed. Free estimates. David 289-5570; Warren 364-6578. 11-35-tfc

Additions, remodeling, cabinet work. Free estimate. Call Bill McDowell, 364-8447 after 5 p.m. 11-66-tfc

SAVE TAX WITH AN IRA

Call Steve Nieman, CLU
or
B.J. Gilliland, Gilliland-Nieman and Associates, Inc.
205 E. Park Ave.
364-2666 1-164-tfc

ROOF STILL LEAKING?
The answer - Sealcote Roofing - Completely Seals up your roof - no seams, no leaks, and no more headaches! COST LESS than tar roofing, stays flexible through heat and cold. Call Tim at 655-7621 for business or home estimate.

SEALCOTE ROOFING

12. Livestock

FOR SALE: Good millet hay. \$100 per ton or \$3.50 per bale. Some at \$90 a ton or \$3.00 per bale. Call 364-2907. 12-62-10c

WANTED: Wheat pasture for light steers or yearlings. Neal Lemons 289-5672 or 364-6613. 12-62-tfc

ORDER BUYER. for all classes of cattle. Have on hand at all times, service type bulls for sale. L.B. Worthan, 364-5442. 12-63-tfc

YOUR wheat and beet pasture is valuable - turn it into dollars. Your pasture bill will be on the first day of preceding month. Please call Mike Solomon, 364-6880 or mobile 578-4667. 12-66-tfc

FOR SALE: Small heifers - 250-300 lbs. 30 Holstein steers 350-400 lbs. Good thin cows and calves. L.B. Worthan, 364-5442. 12-70-tfc



Temporary Bank Facilities

The First National Bank of Hereford is undergoing a huge remodeling and expansion building project, and this photo shows the temporary teller windows now in use. The bank lobby is now located on the north

end of the building, and the only entry is about midway of the downtown city block. Remodeling is currently underway on the south end of the building.

Man builds model of family cemetery

PARIS, Texas (AP) - Jack Fleming of Lamar County went to an Oakes family reunion at the Agriplex Building in Hugo, Okla., a year ago last summer. That's not unusual. But Fleming came back home from his family gathering with the idea of building a model of the Oakes Cemetery in Choctaw County, Okla.

Last winter, Fleming went to work and constructed the replica, keeping his project a secret from most of his relatives. At this year's Oakes reunion, he had a surprise for everyone. Fleming says the relatives attending the reunion were surprised and pleased.

"It was just something that struck me," he said, of his inspiration for the project. "I did it so I would be the only member of the Fleming family with a cemetery in his living room," he continued with a laugh.

A fence surrounds his detailed model, which measures 26 1/2 by 42 inches. The miniature tombstones are in the same order as the real ones, with names and dates written on the tiny slabs.

His artificial trees represent actual trees.

Over the model's entrance way is a sign that proclaims, "1850 Oakes Cemetery Now," indicating when the cemetery was established and that it is now in use.

Glancing over Fleming's model you can see the tombstone of Henry W. Oakes who died in 1850 and was one of the first people buried in the cemetery. He was the son of Thomas W. and Harriet N. Oakes, the forebearers of the Oakes family in the Red

River Valley. A tombstone in Fleming's model shows that Thomas W. was born on Feb. 14, 1814 and died on Nov. 15, 1890. The grave next to Thomas W. Oakes' is that of his wife, Harriet N. Oakes, a Choctaw Indian who came to Oklahoma (then Indian territory) on the "Trail of Tears."

The Republic of Mexico was proclaimed in 1824.

HEREFORD CATTLE COMMISSION CO. INC. SALE EVERY TUESDAY
LOCATED 5 MILES SOUTHWEST OF HEREFORD

Tuesday Oct. 9, 1984 Cattle Sold 2834

Packer Cows:	37 ⁰⁰ to 42 ⁰⁰
Packer Bulls:	46 ⁰⁰ to 52 ⁰⁰
Stocker Cows:	
Pairs:	
Steer Calves:	300-400 lbs. 67 ⁰⁰ to 72 ⁰⁰
400-500 lbs.	63 ⁰⁰ to 66 ⁰⁰
Heifer Calves:	300-400 lbs. 54 ⁰⁰ to 60 ⁰⁰
400-500 lbs.	53 ⁰⁰ to 57 ⁰⁰
Feeder Steers:	525-600 lbs. 63 ⁰⁰ to 66 ⁰⁰
600-700 lbs.	59 ⁰⁰ to 63 ⁰⁰
700-800 lbs.	56 ⁰⁰ to 62 ⁰⁰
800-900 lbs.	58 ⁰⁰ to 61 ⁰⁰
Feeder Heifers:	525-600 lbs. 53 ⁰⁰ to 57 ⁰⁰
600-700 lbs.	54 ⁰⁰ to 57 ⁰⁰

806-357-2272 YOUR BUSINESS IS IMPORTANT TO US. WE ARE HERE TO WORK FOR YOU.

REFCO
Refco Inc. Commodities

For further information on hedging or commodity trading, call or visit our office at 145 W. 3rd, Hereford, 364-6971.
Troy Don Moore
Steve McWhorter

LOCAL CASH GRAIN				GRAIN FUTURES				CATTLE FUTURES																																																																																																																																																																																																																																																																																																																																																					
<p>CORN 5.09 WHEAT 3.40 MILO 4.60 SOYBEANS 5.14 TEXAS CATTLE FEEDERS TRADE Moderate VOLUME 86.00 STEERS 61.50-62.25 HEIFERS 59.25-60.50</p>				<p>CHICAGO (AP) - Futures trading on the Chicago Board of Trade Tuesday, Oct. 9</p> <table border="1"> <tr> <th>WHEAT</th> <th>Open</th> <th>High</th> <th>Low</th> <th>Settle</th> <th>Chg</th> </tr> <tr> <td>5,000 bu minimum, dollars per bushel</td> <td></td> <td></td> <td></td> <td></td> <td></td> </tr> <tr> <td>Dec</td> <td>3.48 1/2</td> <td>3.49</td> <td>3.47 1/2</td> <td>3.49</td> <td>+00 1/2</td> </tr> <tr> <td>Nov</td> <td>3.64 1/2</td> <td>3.57</td> <td>3.59 1/2</td> <td>3.57</td> <td>+00 1/2</td> </tr> <tr> <td>May</td> <td>3.55 1/2</td> <td>3.55 1/2</td> <td>3.54 1/2</td> <td>3.55 1/2</td> <td>+00 1/2</td> </tr> <tr> <td>Jul</td> <td>3.57 1/2</td> <td>3.57 1/2</td> <td>3.56 1/2</td> <td>3.57 1/2</td> <td>+00 1/2</td> </tr> <tr> <td>Sep</td> <td>3.57 1/2</td> <td>3.47</td> <td>3.40 1/2</td> <td>3.41 1/2</td> <td>+00 1/2</td> </tr> <tr> <td>Dec</td> <td>2.94 1/2</td> <td>2.83 1/2</td> <td>2.77 1/2</td> <td>2.79 1/2</td> <td>+00 1/2</td> </tr> <tr> <td>Nov</td> <td>2.94 1/2</td> <td>2.83 1/2</td> <td>2.77 1/2</td> <td>2.79 1/2</td> <td>+00 1/2</td> </tr> <tr> <td>May</td> <td>3.27 1/2</td> <td>3.27 1/2</td> <td>3.26 1/2</td> <td>3.27 1/2</td> <td>+00 1/2</td> </tr> <tr> <td>Jul</td> <td>3.27 1/2</td> <td>3.27 1/2</td> <td>3.26 1/2</td> <td>3.27 1/2</td> <td>+00 1/2</td> </tr> <tr> <td>Sep</td> <td>3.27 1/2</td> <td>3.27 1/2</td> <td>3.26 1/2</td> <td>3.27 1/2</td> <td>+00 1/2</td> </tr> <tr> <td>Dec</td> <td>2.94 1/2</td> <td>2.83 1/2</td> <td>2.77 1/2</td> <td>2.79 1/2</td> <td>+00 1/2</td> </tr> <tr> <td>Nov</td> <td>2.94 1/2</td> <td>2.83 1/2</td> <td>2.77 1/2</td> <td>2.79 1/2</td> <td>+00 1/2</td> </tr> <tr> <td>May</td> <td>3.27 1/2</td> <td>3.27 1/2</td> <td>3.26 1/2</td> <td>3.27 1/2</td> <td>+00 1/2</td> </tr> <tr> <td>Jul</td> <td>3.27 1/2</td> <td>3.27 1/2</td> <td>3.26 1/2</td> <td>3.27 1/2</td> <td>+00 1/2</td> </tr> <tr> <td>Sep</td> <td>3.27 1/2</td> <td>3.27 1/2</td> <td>3.26 1/2</td> <td>3.27 1/2</td> <td>+00 1/2</td> </tr> <tr> <td>Dec</td> <td>2.94 1/2</td> <td>2.83 1/2</td> <td>2.77 1/2</td> <td>2.79 1/2</td> <td>+00 1/2</td> </tr> <tr> <td>Nov</td> <td>2.94 1/2</td> <td>2.83 1/2</td> <td>2.77 1/2</td> <td>2.79 1/2</td> <td>+00 1/2</td> </tr> <tr> <td>May</td> <td>3.27 1/2</td> <td>3.27 1/2</td> <td>3.26 1/2</td> <td>3.27 1/2</td> <td>+00 1/2</td> </tr> <tr> <td>Jul</td> <td>3.27 1/2</td> <td>3.27 1/2</td> <td>3.26 1/2</td> <td>3.27 1/2</td> <td>+00 1/2</td> </tr> <tr> <td>Sep</td> <td>3.27 1/2</td> <td>3.27 1/2</td> <td>3.26 1/2</td> <td>3.27 1/2</td> <td>+00 1/2</td> </tr> <tr> <td>Dec</td> <td>2.94 1/2</td> <td>2.83 1/2</td> <td>2.77 1/2</td> <td>2.79 1/2</td> <td>+00 1/2</td> </tr> <tr> <td>Nov</td> <td>2.94 1/2</td> <td>2.83 1/2</td> <td>2.77 1/2</td> <td>2.79 1/2</td> <td>+00 1/2</td> </tr> <tr> <td>May</td> <td>3.27 1/2</td> <td>3.27 1/2</td> <td>3.26 1/2</td> <td>3.27 1/2</td> <td>+00 1/2</td> </tr> <tr> <td>Jul</td> <td>3.27 1/2</td> <td>3.27 1/2</td> <td>3.26 1/2</td> <td>3.27 1/2</td> <td>+00 1/2</td> </tr> <tr> <td>Sep</td> <td>3.27 1/2</td> <td>3.27 1/2</td> <td>3.26 1/2</td> <td>3.27 1/2</td> <td>+00 1/2</td> </tr> <tr> <td>Dec</td> <td>2.94 1/2</td> <td>2.83 1/2</td> <td>2.77 1/2</td> <td>2.79 1/2</td> <td>+00 1/2</td> </tr> <tr> <td>Nov</td> <td>2.94 1/2</td> <td>2.83 1/2</td> <td>2.77 1/2</td> <td>2.79 1/2</td> <td>+00 1/2</td> </tr> <tr> <td>May</td> <td>3.27 1/2</td> <td>3.27 1/2</td> <td>3.26 1/2</td> <td>3.27 1/2</td> <td>+00 1/2</td> </tr> <tr> <td>Jul</td> <td>3.27 1/2</td> <td>3.27 1/2</td> <td>3.26 1/2</td> <td>3.27 1/2</td> <td>+00 1/2</td> </tr> <tr> <td>Sep</td> <td>3.27 1/2</td> <td>3.27 1/2</td> <td>3.26 1/2</td> <td>3.27 1/2</td> <td>+00 1/2</td> </tr> <tr> <td>Dec</td> <td>2.94 1/2</td> <td>2.83 1/2</td> <td>2.77 1/2</td> <td>2.79 1/2</td> <td>+00 1/2</td> </tr> <tr> <td>Nov</td> <td>2.94 1/2</td> <td>2.83 1/2</td> <td>2.77 1/2</td> <td>2.79 1/2</td> <td>+00 1/2</td> </tr> <tr> <td>May</td> <td>3.27 1/2</td> <td>3.27 1/2</td> <td>3.26 1/2</td> <td>3.27 1/2</td> <td>+00 1/2</td> </tr> <tr> <td>Jul</td> <td>3.27 1/2</td> <td>3.27 1/2</td> <td>3.26 1/2</td> <td>3.27 1/2</td> <td>+00 1/2</td> </tr> <tr> <td>Sep</td> <td>3.27 1/2</td> <td>3.27 1/2</td> <td>3.26 1/2</td> <td>3.27 1/2</td> <td>+00 1/2</td> </tr> <tr> <td>Dec</td> <td>2.94 1/2</td> <td>2.83 1/2</td> <td>2.77 1/2</td> <td>2.79 1/2</td> <td>+00 1/2</td> </tr> <tr> <td>Nov</td> <td>2.94 1/2</td> <td>2.83 1/2</td> <td>2.77 1/2</td> <td>2.79 1/2</td> <td>+00 1/2</td> </tr> <tr> <td>May</td> <td>3.27 1/2</td> <td>3.27 1/2</td> <td>3.26 1/2</td> <td>3.27 1/2</td> <td>+00 1/2</td> </tr> <tr> <td>Jul</td> <td>3.27 1/2</td> <td>3.27 1/2</td> <td>3.26 1/2</td> <td>3.27 1/2</td> <td>+00 1/2</td> </tr> <tr> <td>Sep</td> <td>3.27 1/2</td> <td>3.27 1/2</td> <td>3.26 1/2</td> <td>3.27 1/2</td> <td>+00 1/2</td> </tr> <tr> <td>Dec</td> <td>2.94 1/2</td> <td>2.83 1/2</td> <td>2.77 1/2</td> <td>2.79 1/2</td> <td>+00 1/2</td> </tr> <tr> <td>Nov</td> <td>2.94 1/2</td> <td>2.83 1/2</td> <td>2.77 1/2</td> <td>2.79 1/2</td> <td>+00 1/2</td> </tr> <tr> <td>May</td> <td>3.27 1/2</td> <td>3.27 1/2</td> <td>3.26 1/2</td> <td>3.27 1/2</td> <td>+00 1/2</td> </tr> <tr> <td>Jul</td> <td>3.27 1/2</td> <td>3.27 1/2</td> <td>3.26 1/2</td> <td>3.27 1/2</td> <td>+00 1/2</td> </tr> <tr> <td>Sep</td> <td>3.27 1/2</td> <td>3.27 1/2</td> <td>3.26 1/2</td> <td>3.27 1/2</td> <td>+00 1/2</td> </tr> <tr> <td>Dec</td> <td>2.94 1/2</td> <td>2.83 1/2</td> <td>2.77 1/2</td> <td>2.79 1/2</td> <td>+00 1/2</td> </tr> <tr> <td>Nov</td> <td>2.94 1/2</td> <td>2.83 1/2</td> <td>2.77 1/2</td> <td>2.79 1/2</td> <td>+00 1/2</td> </tr> <tr> <td>May</td> <td>3.27 1/2</td> <td>3.27 1/2</td> <td>3.26 1/2</td> <td>3.27 1/2</td> <td>+00 1/2</td> </tr> <tr> <td>Jul</td> <td>3.27 1/2</td> <td>3.27 1/2</td> <td>3.26 1/2</td> <td>3.27 1/2</td> <td>+00 1/2</td> </tr> <tr> <td>Sep</td> <td>3.27 1/2</td> <td>3.27 1/2</td> <td>3.26 1/2</td> <td>3.27 1/2</td> <td>+00 1/2</td> </tr> <tr> <td>Dec</td> <td>2.94 1/2</td> <td>2.83 1/2</td> <td>2.77 1/2</td> <td>2.79 1/2</td> <td>+00 1/2</td> </tr> <tr> <td>Nov</td> <td>2.94 1/2</td> <td>2.83 1/2</td> <td>2.77 1/2</td> <td>2.79 1/2</td> <td>+00 1/2</td> </tr> <tr> <td>May</td> <td>3.27 1/2</td> <td>3.27 1/2</td> <td>3.26 1/2</td> <td>3.27 1/2</td> <td>+00 1/2</td> </tr> <tr> <td>Jul</td> <td>3.27 1/2</td> <td>3.27 1/2</td> <td>3.26 1/2</td> <td>3.27 1/2</td> <td>+00 1/2</td> </tr> <tr> <td>Sep</td> <td>3.27 1/2</td> <td>3.27 1/2</td> <td>3.26 1/2</td> <td>3.27 1/2</td> <td>+00</td></tr></table>				WHEAT	Open	High	Low	Settle	Chg	5,000 bu minimum, dollars per bushel						Dec	3.48 1/2	3.49	3.47 1/2	3.49	+00 1/2	Nov	3.64 1/2	3.57	3.59 1/2	3.57	+00 1/2	May	3.55 1/2	3.55 1/2	3.54 1/2	3.55 1/2	+00 1/2	Jul	3.57 1/2	3.57 1/2	3.56 1/2	3.57 1/2	+00 1/2	Sep	3.57 1/2	3.47	3.40 1/2	3.41 1/2	+00 1/2	Dec	2.94 1/2	2.83 1/2	2.77 1/2	2.79 1/2	+00 1/2	Nov	2.94 1/2	2.83 1/2	2.77 1/2	2.79 1/2	+00 1/2	May	3.27 1/2	3.27 1/2	3.26 1/2	3.27 1/2	+00 1/2	Jul	3.27 1/2	3.27 1/2	3.26 1/2	3.27 1/2	+00 1/2	Sep	3.27 1/2	3.27 1/2	3.26 1/2	3.27 1/2	+00 1/2	Dec	2.94 1/2	2.83 1/2	2.77 1/2	2.79 1/2	+00 1/2	Nov	2.94 1/2	2.83 1/2	2.77 1/2	2.79 1/2	+00 1/2	May	3.27 1/2	3.27 1/2	3.26 1/2	3.27 1/2	+00 1/2	Jul	3.27 1/2	3.27 1/2	3.26 1/2	3.27 1/2	+00 1/2	Sep	3.27 1/2	3.27 1/2	3.26 1/2	3.27 1/2	+00 1/2	Dec	2.94 1/2	2.83 1/2	2.77 1/2	2.79 1/2	+00 1/2	Nov	2.94 1/2	2.83 1/2	2.77 1/2	2.79 1/2	+00 1/2	May	3.27 1/2	3.27 1/2	3.26 1/2	3.27 1/2	+00 1/2	Jul	3.27 1/2	3.27 1/2	3.26 1/2	3.27 1/2	+00 1/2	Sep	3.27 1/2	3.27 1/2	3.26 1/2	3.27 1/2	+00 1/2	Dec	2.94 1/2	2.83 1/2	2.77 1/2	2.79 1/2	+00 1/2	Nov	2.94 1/2	2.83 1/2	2.77 1/2	2.79 1/2	+00 1/2	May	3.27 1/2	3.27 1/2	3.26 1/2	3.27 1/2	+00 1/2	Jul	3.27 1/2	3.27 1/2	3.26 1/2	3.27 1/2	+00 1/2	Sep	3.27 1/2	3.27 1/2	3.26 1/2	3.27 1/2	+00 1/2	Dec	2.94 1/2	2.83 1/2	2.77 1/2	2.79 1/2	+00 1/2	Nov	2.94 1/2	2.83 1/2	2.77 1/2	2.79 1/2	+00 1/2	May	3.27 1/2	3.27 1/2	3.26 1/2	3.27 1/2	+00 1/2	Jul	3.27 1/2	3.27 1/2	3.26 1/2	3.27 1/2	+00 1/2	Sep	3.27 1/2	3.27 1/2	3.26 1/2	3.27 1/2	+00 1/2	Dec	2.94 1/2	2.83 1/2	2.77 1/2	2.79 1/2	+00 1/2	Nov	2.94 1/2	2.83 1/2	2.77 1/2	2.79 1/2	+00 1/2	May	3.27 1/2	3.27 1/2	3.26 1/2	3.27 1/2	+00 1/2	Jul	3.27 1/2	3.27 1/2	3.26 1/2	3.27 1/2	+00 1/2	Sep	3.27 1/2	3.27 1/2	3.26 1/2	3.27 1/2	+00 1/2	Dec	2.94 1/2	2.83 1/2	2.77 1/2	2.79 1/2	+00 1/2	Nov	2.94 1/2	2.83 1/2	2.77 1/2	2.79 1/2	+00 1/2	May	3.27 1/2	3.27 1/2	3.26 1/2	3.27 1/2	+00 1/2	Jul	3.27 1/2	3.27 1/2	3.26 1/2	3.27 1/2	+00 1/2	Sep	3.27 1/2	3.27 1/2	3.26 1/2	3.27 1/2	+00 1/2	Dec	2.94 1/2	2.83 1/2	2.77 1/2	2.79 1/2	+00 1/2	Nov	2.94 1/2	2.83 1/2	2.77 1/2	2.79 1/2	+00 1/2	May	3.27 1/2	3.27 1/2	3.26 1/2	3.27 1/2	+00 1/2	Jul	3.27 1/2	3.27 1/2	3.26 1/2	3.27 1/2	+00 1/2	Sep	3.27 1/2	3.27 1/2	3.26 1/2	3.27 1/2	+00 1/2	Dec	2.94 1/2	2.83 1/2	2.77 1/2	2.79 1/2	+00 1/2	Nov	2.94 1/2	2.83 1/2	2.77 1/2	2.79 1/2	+00 1/2	May	3.27 1/2	3.27 1/2	3.26 1/2	3.27 1/2	+00 1/2	Jul	3.27 1/2	3.27 1/2	3.26 1/2	3.27 1/2	+00 1/2	Sep	3.27 1/2	3.27 1/2	3.26 1/2	3.27 1/2	+00 1/2	Dec	2.94 1/2	2.83 1/2	2.77 1/2	2.79 1/2	+00 1/2	Nov	2.94 1/2	2.83 1/2	2.77 1/2	2.79 1/2	+00 1/2	May	3.27 1/2	3.27 1/2	3.26 1/2	3.27 1/2	+00 1/2	Jul	3.27 1/2	3.27 1/2	3.26 1/2	3.27 1/2	+00 1/2	Sep	3.27 1/2	3.27 1/2	3.26 1/2	3.27 1/2	+00
WHEAT	Open	High	Low	Settle	Chg																																																																																																																																																																																																																																																																																																																																																								
5,000 bu minimum, dollars per bushel																																																																																																																																																																																																																																																																																																																																																													
Dec	3.48 1/2	3.49	3.47 1/2	3.49	+00 1/2																																																																																																																																																																																																																																																																																																																																																								
Nov	3.64 1/2	3.57	3.59 1/2	3.57	+00 1/2																																																																																																																																																																																																																																																																																																																																																								
May	3.55 1/2	3.55 1/2	3.54 1/2	3.55 1/2	+00 1/2																																																																																																																																																																																																																																																																																																																																																								
Jul	3.57 1/2	3.57 1/2	3.56 1/2	3.57 1/2	+00 1/2																																																																																																																																																																																																																																																																																																																																																								
Sep	3.57 1/2	3.47	3.40 1/2	3.41 1/2	+00 1/2																																																																																																																																																																																																																																																																																																																																																								
Dec	2.94 1/2	2.83 1/2	2.77 1/2	2.79 1/2	+00 1/2																																																																																																																																																																																																																																																																																																																																																								
Nov	2.94 1/2	2.83 1/2	2.77 1/2	2.79 1/2	+00 1/2																																																																																																																																																																																																																																																																																																																																																								
May	3.27 1/2	3.27 1/2	3.26 1/2	3.27 1/2	+00 1/2																																																																																																																																																																																																																																																																																																																																																								
Jul	3.27 1/2	3.27 1/2	3.26 1/2	3.27 1/2	+00 1/2																																																																																																																																																																																																																																																																																																																																																								
Sep	3.27 1/2	3.27 1/2	3.26 1/2	3.27 1/2	+00 1/2																																																																																																																																																																																																																																																																																																																																																								
Dec	2.94 1/2	2.83 1/2	2.77 1/2	2.79 1/2	+00 1/2																																																																																																																																																																																																																																																																																																																																																								
Nov	2.94 1/2	2.83 1/2	2.77 1/2	2.79 1/2	+00 1/2																																																																																																																																																																																																																																																																																																																																																								
May	3.27 1/2	3.27 1/2	3.26 1/2	3.27 1/2	+00 1/2																																																																																																																																																																																																																																																																																																																																																								
Jul	3.27 1/2	3.27 1/2	3.26 1/2	3.27 1/2	+00 1/2																																																																																																																																																																																																																																																																																																																																																								
Sep	3.27 1/2	3.27 1/2	3.26 1/2	3.27 1/2	+00 1/2																																																																																																																																																																																																																																																																																																																																																								
Dec	2.94 1/2	2.83 1/2	2.77 1/2	2.79 1/2	+00 1/2																																																																																																																																																																																																																																																																																																																																																								
Nov	2.94 1/2	2.83 1/2	2.77 1/2	2.79 1/2	+00 1/2																																																																																																																																																																																																																																																																																																																																																								
May	3.27 1/2	3.27 1/2	3.26 1/2	3.27 1/2	+00 1/2																																																																																																																																																																																																																																																																																																																																																								
Jul	3.27 1/2	3.27 1/2	3.26 1/2	3.27 1/2	+00 1/2																																																																																																																																																																																																																																																																																																																																																								
Sep	3.27 1/2	3.27 1/2	3.26 1/2	3.27 1/2	+00 1/2																																																																																																																																																																																																																																																																																																																																																								
Dec	2.94 1/2	2.83 1/2	2.77 1/2	2.79 1/2	+00 1/2																																																																																																																																																																																																																																																																																																																																																								
Nov	2.94 1/2	2.83 1/2	2.77 1/2	2.79 1/2	+00 1/2																																																																																																																																																																																																																																																																																																																																																								
May	3.27 1/2	3.27 1/2	3.26 1/2	3.27 1/2	+00 1/2																																																																																																																																																																																																																																																																																																																																																								
Jul	3.27 1/2	3.27 1/2	3.26 1/2	3.27 1/2	+00 1/2																																																																																																																																																																																																																																																																																																																																																								
Sep	3.27 1/2	3.27 1/2	3.26 1/2	3.27 1/2	+00 1/2																																																																																																																																																																																																																																																																																																																																																								
Dec	2.94 1/2	2.83 1/2	2.77 1/2	2.79 1/2	+00 1/2																																																																																																																																																																																																																																																																																																																																																								
Nov	2.94 1/2	2.83 1/2	2.77 1/2	2.79 1/2	+00 1/2																																																																																																																																																																																																																																																																																																																																																								
May	3.27 1/2	3.27 1/2	3.26 1/2	3.27 1/2	+00 1/2																																																																																																																																																																																																																																																																																																																																																								
Jul	3.27 1/2	3.27 1/2	3.26 1/2	3.27 1/2	+00 1/2																																																																																																																																																																																																																																																																																																																																																								
Sep	3.27 1/2	3.27 1/2	3.26 1/2	3.27 1/2	+00 1/2																																																																																																																																																																																																																																																																																																																																																								
Dec	2.94 1/2	2.83 1/2	2.77 1/2	2.79 1/2	+00 1/2																																																																																																																																																																																																																																																																																																																																																								
Nov	2.94 1/2	2.83 1/2	2.77 1/2	2.79 1/2	+00 1/2																																																																																																																																																																																																																																																																																																																																																								
May	3.27 1/2	3.27 1/2	3.26 1/2	3.27 1/2	+00 1/2																																																																																																																																																																																																																																																																																																																																																								
Jul	3.27 1/2	3.27 1/2	3.26 1/2	3.27 1/2	+00 1/2																																																																																																																																																																																																																																																																																																																																																								
Sep	3.27 1/2	3.27 1/2	3.26 1/2	3.27 1/2	+00 1/2																																																																																																																																																																																																																																																																																																																																																								
Dec	2.94 1/2	2.83 1/2	2.77 1/2	2.79 1/2	+00 1/2																																																																																																																																																																																																																																																																																																																																																								
Nov	2.94 1/2	2.83 1/2	2.77 1/2	2.79 1/2	+00 1/2																																																																																																																																																																																																																																																																																																																																																								
May	3.27 1/2	3.27 1/2	3.26 1/2	3.27 1/2	+00 1/2																																																																																																																																																																																																																																																																																																																																																								
Jul	3.27 1/2	3.27 1/2	3.26 1/2	3.27 1/2	+00 1/2																																																																																																																																																																																																																																																																																																																																																								
Sep	3.27 1/2	3.27 1/2	3.26 1/2	3.27 1/2	+00 1/2																																																																																																																																																																																																																																																																																																																																																								
Dec	2.94 1/2	2.83 1/2	2.77 1/2	2.79 1/2	+00 1/2																																																																																																																																																																																																																																																																																																																																																								
Nov	2.94 1/2	2.83 1/2	2.77 1/2	2.79 1/2	+00 1/2																																																																																																																																																																																																																																																																																																																																																								
May	3.27 1/2	3.27 1/2	3.26 1/2	3.27 1/2	+00 1/2																																																																																																																																																																																																																																																																																																																																																								
Jul	3.27 1/2	3.27 1/2	3.26 1/2	3.27 1/2	+00 1/2																																																																																																																																																																																																																																																																																																																																																								
Sep	3.27 1/2	3.27 1/2	3.26 1/2	3.27 1/2	+00 1/2																																																																																																																																																																																																																																																																																																																																																								
Dec	2.94 1/2	2.83 1/2	2.77 1/2	2.79 1/2	+00 1/2																																																																																																																																																																																																																																																																																																																																																								
Nov	2.94 1/2	2.83 1/2	2.77 1/2	2.79 1/2	+00 1/2																																																																																																																																																																																																																																																																																																																																																								
May	3.27 1/2	3.27 1/2	3.26 1/2	3.27 1/2	+00 1/2																																																																																																																																																																																																																																																																																																																																																								
Jul	3.27 1/2	3.27 1/2	3.26 1/2	3.27 1/2	+00 1/2																																																																																																																																																																																																																																																																																																																																																								
Sep	3.27 1/2	3.27 1/2	3.26 1/2	3.27 1/2	+00 1/2																																																																																																																																																																																																																																																																																																																																																								
Dec	2.94 1/2	2.83 1/2	2.77 1/2	2.79 1/2	+00 1/2																																																																																																																																																																																																																																																																																																																																																								
Nov	2.94 1/2	2.83 1/2	2.77 1/2	2.79 1/2	+00 1/2																																																																																																																																																																																																																																																																																																																																																								
May	3.27 1/2	3.27 1/2	3.26 1/2	3.27 1/2	+00 1/2																																																																																																																																																																																																																																																																																																																																																								
Jul	3.27 1/2	3.27 1/2	3.26 1/2	3.27 1/2	+00 1/2																																																																																																																																																																																																																																																																																																																																																								
Sep	3.27 1/2	3.27 1/2	3.26 1/2	3.27 1/2	+00																																																																																																																																																																																																																																																																																																																																																								

Rusting relics from America's 'Forgotten war'

ATTU, Alaska (AP) — Frozen in time, protected by their remoteness, rusting relics from World War II litter the treeless landscape of this westernmost Aleutian island.

A .50-caliber machine gun mount stands in a pool of brackish water near Massacre Bay where it was placed more than 40 years ago to defend against low-flying Japanese planes.

A village of Quonset huts sits abandoned near a rocky beach, many with roofs open to the sky but furnished with broken-down desks and benches.

Cartridges lie sprinkled around foxholes on the fragile tundra of Engineer's Hill, cartridges left behind by a thin line of American troops who threw back Japanese infantrymen when they came screaming out of the fog with a final "ban-

zai." And a twin-engine Army pursuit plane that crash-landed after a mission more than four decades ago is a nesting place for birds near Temnac Bay, a few miles and a mountain range west of a 33-man Coast Guard detachment.

Except for spawning salmon and a variety of waterfowl and wildlife, Coast Guardsmen have the island to themselves. Only about a half-dozen of the 279 islands in the volcanic Aleutian chain are inhabited and most are unspoiled — protected by their distance from population centers and by notoriously windy and wet weather.

Despite their isolation, the islands took on a strategic significance during the early days of World War II.

They curve like a bullet's arc toward mainland Alaska. Attu is 2,424 miles from Tokyo, 1,335 miles from Anchorage. That made it about 12 hours by bomber from the western Aleutians to wartime aircraft plants near Seattle.

Along with nearby Kiska, Attu is the only slice of the United States taken and held by enemy forces since the War of 1812.

One of the toughest campaigns of the war was fought for control of the Aleutians through 15 months of 1942 and 1943.

It resulted in the first theater-wide victory for the United States over the Japanese and provided American military planners with a number of hard-earned lessons used in later amphibious operations.

Although the winds of war have blown over Attu and the rest of the thousand-mile-long Aleutian island chain, a campaign has just begun to save the relics from scavengers or from being scattered throughout the world.

A National Park Service advisory board is to meet in Boston on Oct. 22 to determine whether Attu should be included as a national landmark along with 20 other military or bat-

tlefield sites in the Pacific.

The list includes six other locations in Alaska — World War II bases or airfields at Kiska, Adak, Dutch Harbor, Kodiak, Sitka and Fairbanks, according to Erwin Thompson, a Denver-based historian who visited many of the sites and wrote the nominations.

Gaining national landmark status is an important step toward preserving a landmark, but it doesn't guarantee protection, Thompson said.

While one agency of the federal government is considering giving the areas landmark status, another is launching a multi-million-dollar

campaign to clear away some of the debris.

That has prompted some concern, however, among people who contend the cleanup could disturb the sites.

Retired Brig. Gen. Benjamin Talley, whose Army engineers built the 15 to 20 airfields used to launch attacks against the Japanese during the Aleutian campaign and who landed with the invasion force that eventually recaptured Attu, leans toward preservation.

"The monument of the battlefield is the carnage that's still there," said Talley, 81. "There's a strong move, and I think with some sense, not to disturb those things."

Hospital Notes

PATIENTS IN HOSPITAL

Dempsey Alexander, Sara Alonzo, David Briceno, Beverley Brockett, Ina Vey Carlisle, Ramon Casarez, Juanita Chavarria, Girl Chavarria, Lupe Escobedo, Rosie Gonzales, Mary Greider, Dianna Hagemeier, Ethel Jordan, Cora Layman, Diana Lumbrera.

Anita Martinez, Boy Martinez, Betty Martinez, Mary Ann Martinez, Beulah Moore, Dawn Murry, Vickie Paetzold, Girl Paetzold, Jimmie Paterson.

Genevia Phillips, Johnny Quroz, Earl Roberts, Claudine Rogers, Marta Ramirez, Anna Scott, Frederick Stindt, Archie Townsend, Janie Trevino, John Turner, W.H. Walser, Hobby Williams.

Arts, crafts bazaar scheduled

Those interested are invited to take part in the annual Holiday Arts and Craft Bazaar on Nov. 18 in Nazareth at the school cafeteria from 10 a.m. to 4 p.m.

The booths will be eight feet by ten feet and one table and two chairs will be provided. Participants must state if a table is needed or if they will provide their own display racks.

Booths cost \$15 and interested individuals need to specify if they want a wall booth or a center booth. Booths will be assigned on a first come, first serve basis. Money must be received before a booth will be reserved.

The last day to reserve a booth is Nov. 10. The cafeteria will be open at 8 a.m. Nov. 18 so participants may set up.

For more information, contact Lucille Drerup at 945-2563 (Dimmitt) or Rose Mary Wilhelm at 945-2583 (Nazareth).

Chili supper slated Oct. 20

Members of the Hereford Rebekah Lodge No. 228 invites the public to attend their annual chili supper scheduled from 5 to 8:30 p.m. Saturday, Oct. 20 at the Odd Fellow Hall, 205 E. Sixth St. Cost of tickets is \$2.75.

New Arrivals

Mr. and Mrs. Sylvester Trevino Jr. are the parents of a son, Sylvester B.J., born Oct. 6. He weighed 7 lbs. 15 oz.

Mr. and Mrs. Joe Flores are the parents of a son, Anthony James, born Oct. 5. He weighed 6 lbs. 14 oz.

The fact that "Sylvester," a new motion picture starring Robert Farnsworth, was shot in Dallas emphasizes that Texas is generating more and more production.

"We're beginning to break Hollywood's hold on the business," says Martin Jurow, Dallas-based producer of "Terms of Endearment," last year's Academy Award-winner as Best Picture. "There is an oasis of talent in Texas that matches anything I've seen outside of California."

"Tender Mercies," which won two 1983 Oscars, was filmed in Waxahachie, Texas.

Q&A

- How many gold medals did Nadia Comaneci win at the 1976 Olympics? (a) 7 (b) 5 (c) 3
- How many meters does 1 yard equal? (a) 17 (b) .9144 (c) 5.029
- In what year was the telephone invented? (a) 1906 (b) 1888 (c) 1876

ANSWERS

1. c 2. b 3. c

Harvest Hoe Down Sale

OPEN 24 Hours A Day!

2nd Week

USDA Grade A-Family Pak FRYERS 39¢ Lb.

"Grade A" WHOLE FRYERS 49¢ Lb.

Tender Fresh **FRYER THIGHS 79¢ Lb.**

Tender Fresh **FRYER DRUMSTICKS 99¢ Lb.**

Tender Fresh **FRYER BREASTS \$1.29 Lb.**

Tender Lean **BEEF CUBE STEAKS \$2.59 Lb.**

Jimmy Dean **PURE PORK SAUSAGE \$1.79 Lb.**

Hereford **TORTILLAS 32 Ct. Pkg. 1-Lb. Pkg. 89¢**

Rodeo Water Added **SMOKED PORK CHOPS \$1.99 Lb.**

Tender Taste® SIRLOIN TIP STEAKS \$2.39 Lb.

Tender Taste SIRLOIN TIP ROAST \$2.29 Lb.

Banquet **FROZEN DINNERS 89¢**

11 Oz. Pkg.

Chopped Beef
Meat Loaf
Comb-Mexican
Chicken
Turkey

PLEASMOR HOMO 1/2 GALLON MILK 99¢

Wilderness **APPLE CIDER \$2.39**

1 Gal. Jug

Kraft 3 Varieties **SALAD DRESSING 8 Oz. 89¢ Bottle**

Hunt's **WHOLE TOMATOES 14 1/2 Oz. 59¢**

Pace Mild or Medium **PICANTE SAUCE 16 Oz. \$1.39 Bottle**

Penn Dutch **MUSHROOMS 4 Oz. 59¢ Can**

Sunshine **VANILLA WAFERS 11 Oz. \$1.19 Box**

Busy Bee **PURE HONEY 32 Oz. \$2.29 Jar**

BAKERY FRESH FRENCH BREAD 69¢

Folgers **FLAKED COFFEE 13 Oz. \$1.99**

Golden Valley **PINK SALMON 15 Oz. Can \$1.89**

New! Duncan Hines **Chocolate Chip COOKIES 12 Oz. Bag \$1.39**

TRY OUR FRESH BAKERY PIZZA

Colorful Fall Produce

The Energy Food U.S. No. 1 **COLORADO RUSSET POTATOES 20 Lb. Bag \$1.89**

Kraft **GRAPE JELLY 32 Oz. Jar \$1.29**

Kraft Chilled **ORANGE JUICE 64 Oz. \$2.39**

Decaffeinated **BRIM COFFEE 13 Oz. Can \$2.89**

Kellogg's **POP TARTS 11 Oz. Pkg. 99¢**

Kleenex **PAPER NAPKINS 140 Ct. 89¢**

Bathroom Cleaner **COMET CLEANSER 3 For 99¢**

Strongheart **DOG FOOD 25 Lb. Bag \$5.79**

OSAGE **PEACHES 29 Oz. 89¢**

Sweet or Buttermilk **PLEASMOR BISCUITS 5 8 Oz. Cans \$1.00**

Hormel **CHILI & BEANS 15 Oz. 79¢**

Laundry Detergent **OXYDOL 49 Oz. \$1.99**

DELSEY BATH TISSUE 4 ROLL 59¢

W/One Certificate

KRAFT MAXI-CUP 1 LB 58¢

W/One Certificate

PLEASMOR POTATO CHIPS 8 oz. 39¢

W/One Certificate

PEPSI 32 oz. RETURNABLES \$1.49

W/One Certificate

NT BRAND COFFEE CREAMER 16 oz. 59¢

W/One Certificate

BANQUET FRIED CHICKEN BOX \$1.99

W/One Certificate

FROZEN FOODS

Our Family Frozen **VEGETABLES 16 Oz. Bag 99¢**

Cut Broccoli or California Blend or Cauliflower/Broccoli

Sugar Sweet **STRAWBERRIES 10 Oz. 49¢**

Dewy Fresh **LEMONADE 4 6 Oz. Cans \$1.00**

Laundry Detergent **WITH PRETREATED BOTTLE LIQUID ERA 64 Oz. Bottle \$3.99**

Fabric Softener Sheets **CLING FREE 36 Ct. \$1.59**

WILTONS CANDY MELTS AVAILABLE

Texize Refill **GLASS PLUS 32 Oz. Bottle \$1.29**

Normal - Oily - Dry **PRELL SHAMPOO 11 Oz. Bottle \$2.19**

Mint Mouthwash **SCOPE 18 Oz. Bottle \$2.19**

FOOD AWARENESS

By Ann Crowley R.D., Ph.D.

THE PLENTIFUL POTATO

QUESTION: I am confused! I recently started on a reduction diet because I'm about 12 pounds overweight. The diet does not allow potatoes, but I see ads on TV that a potato has less calories than a salad. What is the truth about potatoes on a reduction diet?

ANSWER: Potatoes are a good nutritious food that is moderate in calorie content. There are about 145 calories in a good size baked potato. That is without added butter, or sour cream, or gravy. It is the added fat that greatly increases the calories — just as salad dressing does to a green leafy salad.

Potatoes are a good source of vitamin C. It also makes a contribution of B vitamins — especially thiamin B — plus iron, calcium, protein and fiber to the diet.

If you are counting calories, it's a good idea to count potatoes in on your diet.

Send your questions, comments or suggestions to: Ann Crowley, P.O. Box 1828, Lubok, KS 67901

PRICES GOOD THRU OCT. 13, 1984
Quantity Rights Reserved

Jack & Jill FOOD CENTER

YOUR STORE FOR SAVINGS IN THE 80'S

Sale 12.99 ea.

Beautiful savings on her soft-tone sweaters.

Save 25%

All our men's sweaters are on sale now.

30% to 50% off The prize pullovers.

A. Orig. \$26. Your search is over! Here's our Hunt Club™ crewneck in all Shetland wool. In beautiful pastels. And all half-price! Junior sizes S,M,L.

B. Reg. \$19. These are cozy snow-flakes, knit into an easy crewneck pull-on of all acrylic. Like nature, the designs are different and beautiful. Misses' S,M,L.

Sale 14.25 to \$18

All his favorites.

C. Sale 14.25, Reg. \$19. The classic vee-neck is here in colors to go with every shirt, every pair of pants a man owns. Easy-care acrylic; men's sizes.
D. Sale 16.50, Reg. \$22. New-look argyles go vertical, horizontal, or spaced. On richly-colored, easy-care acrylic/nylon. Men's sizes.
E. Sale \$18, Reg. \$24. Jacquard dots design this handsome crewneck pullover of machine washable wool/acrylic/polyester. Classic colors; men's sizes.
F. Sale \$18, Reg. \$24. His favorite saddle-shoulder crewneck in rich Shetland wool/polyester. Machine washable colors. In men's sizes.



JCPenney



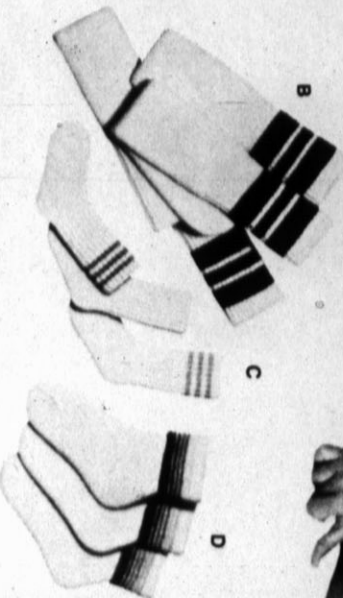
J C P E N N E Y D A Y S S A L E

15% to 25% Off

Infants, toddlers, and pre-schoolers' jogging suits on sale.

Warm their winter, Sale 5.99.

A. Reg. 6.99 and 7.99. Sleepyheads cozy up to our warm fleecy oversleeper. It's soft, it's easy-care all polyester in pastel and deep-tone prints. Sizes 1/2 to 4; sizes 5 and 6.



25% off all their socks.

B. Sale 4.67 pkg. of 6 prs., Reg. 6.23. Just like Dad's, boys' over-the-calf athletic socks with striped tops. Acrylic/nylon/polyester/elastic.

C. Sale 1.72 pkg. of 3 prs., Reg. 2.29. Infant and toddler crew socks in cotton with spandex stretch.

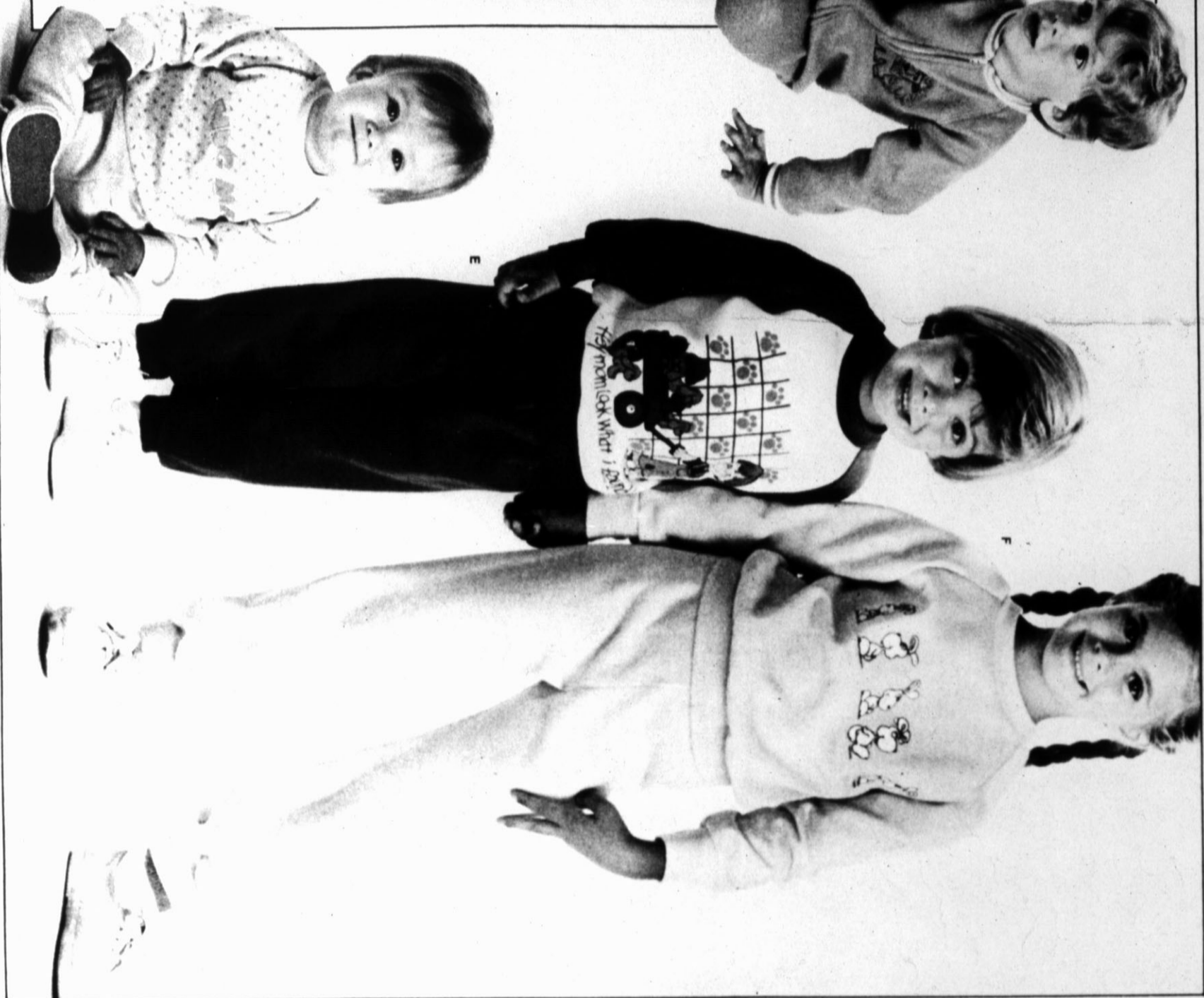
D. Sale 4.40 pkg. of 3 prs., Reg. 5.87. Girls' terry top sport sock in cotton/acrylic/nylon/polyester.

Suits for young joggers, Sale 5.99.

E. Reg. \$7 to \$8. Playmates for infants and toddlers are sturdy cotton/polyester or acrylic knit with crewnecks, elastic waists and ankles. Detailed with ruffles, prints, stripes and more. These go out for fun and games everyday, wash like a breeze and are ready for more rough and tumble immediately.

F. Little girls' acrylic fleecy jogging suit. Reg. 9.99 Sale 7.99

Not shown:
Little boys' zip-front acrylic jogging suit. Reg. \$15 Sale 11.25



25% to 40% Off

Our entire line of fashion handbags is on sale now!



Sale 9.99 to \$18

Reg. \$14 to \$24. Bag great savings on every style from colorful clutch to casual hobble! You'll also find neat daytime dress leathers in both double handle and shoulder strap style. Multi-compartment vinyl handbags. And lots more of your favorite looks for weekdays, weekends, day and nighttime. All on sale!

20% off Last week to save on our pantihose.

Stock up now on a season's worth of styles. Including our famous Sheer Toes all-purpose pantihose. Sheer enough for sandals, tough enough for daily wear. Proportioned to fit comfortably. In Flextra® nylon with cotton panel.

Sheer Toes pantihose	Reg. Sale
Sheer Toes queen size	1.59 1.27
	1.79 1.43



J C P E N N E Y D A Y S S A L E

25% to 50% off

Our entire line of misses' and juniors' outerwear*:



Sale 58.99
 A. Reg. \$79. Fingertip length stadium coat has an attached hood, colorful leaf applique. Quilted polyester/cotton poplin, nylon lined. S,M,L.

Sale 38.99
 B. Orig. \$79. Three cheers for the neat stadium jacket with cozy lining, zip pockets. Cotton/polyester poplin for sizes 8 to 18.

Sale 39.99
 C. Reg. \$60. The flannel blazer in wintry shades; pairs with pants, skirts, dresses. Solid color polyester/wool/other fibers; 8 to 18.

Sale 24.99
 D. Orig. \$45. Fine-wale cotton corduroy blazer priced so low you can triple your wardrobe looks and stay on your budget. Misses' sizes 8 to 18.

Intermediate markdowns may have been taken on originally priced merchandise shown throughout this circular. Reductions from originally priced merchandise effective until stock is depleted. *Does not include Halston III outerwear.

50% off

Make your beds beautiful with twin sheets, Sale 3.99.



Pick flowers and more, at savings.

A. Smooth on posies and butterflies printed on easy-care Dacron® polyester/cotton sheets. Flat or fitted:

	Orig.	Sale	Orig.	Sale
Twin	7.99	3.99	Standard	
Full	9.99	6.99	cases, pr.	8.99 5.99
Queen	15.99	12.99	Queen cases, pr.	9.99 6.99

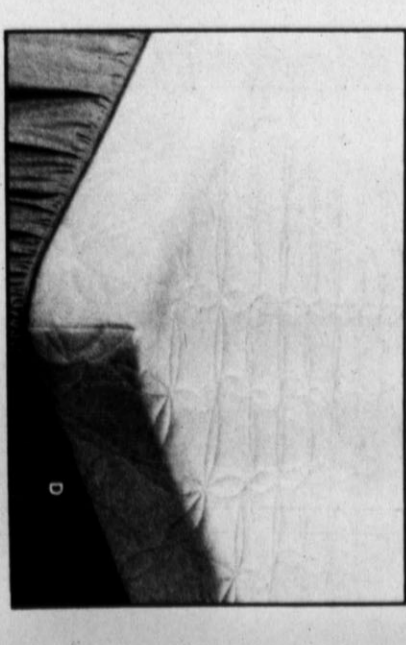
B. Coordinating bedspread is polyester/cotton quilted to polyester fiberfill.

Twin	40.00	19.99	Queen	60.00	29.99
Full	50.00	24.99	Pillow sham	20.00	9.99



50% off these bed pillows.

C. Sale 4.49, Orig. 8.99. Head-cradling Fillwell® polyester pillows at \$4 savings! They're soft enough to shape to your head, firm enough to go through machine washings and dryings. Covered in cotton/polyester.



40% off famous BedSack®

D. This wrap-around style covers top and all four sides of your mattress to make it look and feel new. Dacron® polyester quilted to polyester fiberfill.

	Orig.	Sale	Orig.	Sale
Twin	\$17	8.99	Queen	\$24
Full	\$21	11.99		13.99

J C PENNEY DAYS SALE

40% Off

The great looks in men's outerwear! At great prices!



Sale 38.99 and 47.99

A. Sale 47.99, Reg. \$80. The rope coat, with concealed hood and double patch pockets. In polyester/cotton poplin, men's sizes.
B. Sale 38.99, Reg. \$65. Our bomber style has a zip-off plaid hood, knit waist and cuffs. In polyester/cotton poplin, men's sizes.
5.99; Not shown, but too important to miss, our men's cozy flannel plaid shirt. In machine washable all cotton, men's regular sizes.
 Tall size flannel plaid shirt, 6.99
 Sale prices effective through Saturday, October 13th.

Pick up a copy of our new 600-plus page Christmas 1984 catalog and a money-saving certificate for just \$2. Filled with over 1500 toys, games, holiday fashions, electronics and much more!
 The JCPenney Catalog
 SOMETHING UNEEXPECTED EVERY TURN

JCPenney



NOW JCPENNEY WELCOMES THE AMERICAN EXPRESS CARD.
 The American Express® card is now welcome at any of our more than 2000 stores and catalog centers from coast to coast. The American Express® card. Don't leave home without it!™

EVENT STARTS MONDAY, OCTOBER 8, 1984
 435 SUGARLAND MALL

Shop 10:00am to 6:00pm Monday thru Saturday
 Store Phone 364-4062 • Catalog Phone 364-4205
 SALE PRICES EFFECTIVE THROUGH SATURDAY, OCTOBER 13, 1984
 Advertising Supplement to HEREFORD BRAND

Our biggest and best sale!

JCPenney

3 Days Second big week.

Levi's® jeans on sale.
Sale 15.99 Levi's® look even better in dark denim. Especially when they're on sale. Choose boot cut or straight leg. In cotton denim, for men's sizes.
Sale 13.99 Levi's® goes European with this tapered-fit shirt. Striped or solid color polyester/cotton in men's sizes.
Sale 19.99 Go city-smart with Levi's® jersey shirts. Great urban camouflage in three styles, with banded cuffs and waist. All cotton jersey in men's sizes.