

Tuesday, August 11, 1992

BEST AVAILABLE COPY

The

Hereford Brand



Storms 50 percent chance for more rain this evening

Hustlin' Hereford, home of Rob Barker

12 Pages 25 Cents

USDA will open ground beef imports

WASHINGTON (AP) - For the first time in 70 years, the Agriculture Department is allowing U.S. companies to buy foreign ground meat because the government now has the technology to weed out kangaroo, water buffalo or horse meat posing as ground beef.

Consumer activists say the department's decision will allow meat from abroad to reach restaurants and grocery stores containing bones, blood clots or fecal material. They also worry that what looks like beef may actually be the meat of other animals.

But USDA says consumers have nothing to worry about - that today's technology allows meat inspectors to identify the kind of meat entering the United States no matter how finely it's chopped.

The department's restrictions on fresh ground meat imports date to 1922, when inspection procedures weren't sophisticated enough to catch unwholesome or adulterated products if the pieces were too small.

The law was changed in 1970 to state that foreign meat had to be in cubes of at least two inches - big enough to check for the type of animal - and to allow packages of ground beef of less than five pounds. But few importers found it economical to ship in such small packages.

Since then, the exemptions have been in effect without incident, USDA said. And in the last decade, technological advances have improved meat inspections.

"Our testing capability is so sophisticated that, regardless of size, if it's an incorrect species," federal inspectors catch it, said Mark Manis, director of the import inspection division at USDA's Food Safety and Inspection Service.

The department also reviews the meat inspection systems in other countries with on-site visits and certifies them to export meat to the United States.

The United States imported 2.6 billion pounds of meat and poultry from 33 countries in 1990; more than half came from Australia and Canada. USDA notes that imports account for just a fraction of U.S. meat consumption, which totaled nearly 40 billion pounds in 1989.

Rod Leonard, executive director of the Community Nutrition Institute, a consumer advocacy group, said USDA's decision has health implications for consumers.

He said the prohibition on ground meat imports was designed to protect against meat from certain animals - horses, kangaroos, water buffalo and wild animals that carry trichinae, a parasite that causes the disease trichinosis.

"Once the flesh from such animals is ground along with beef or pork, detection becomes almost impossible," Leonard told Agriculture Secretary Edward Madigan in a recent letter urging USDA to restore the restrictions.

Leonard said inspectors can detain imports of meat if the flesh is putrid or diseased, or contains blood clots, bones and parts of animals not intended for consumption.

"However, if these contaminants are ground into beef, or pork or poultry, detection is unlikely," he said.



Herrera named Fiestas Patrias queen

Gloria Herrera, second from right, was crowned 1992 Fiestas Patrias Queen on Saturday at the San Jose Parish Hall. She was crowned by Isabel Rodriguez, right, 1991 queen. With them, from left, are Gabriela Gamez and Vanessa Gonzalez. Each prepared a written report and made an oral presentation about important events in the Hispanic culture.

Herrera named 1992 Fiestas Patrias queen

Gloria Herrera was crowned 1992 Fiestas Patrias Queen on Saturday at San Jose Catholic Church.

Herrera, a 1992 graduate of Hereford High School, will receive a \$1,200 scholarship.

Second place went to Vanessa Gonzalez, a senior at HHS. Gabriela Gamez, a HHS junior, won third place. They will also receive large scholarships from the Fiestas Patrias Committee.

Herrera was crowned by Isabel Rodriguez, the 1991 queen. Herrera will also be honored at events around Sept. 16, including a parade and a celebration dance.

Judges acknowledged after the competition they weighted their scores in favor of Herrera because she plans to attend college this fall.

"All three of the girls papers and presentations were great," said Gus Trujillo, an Amarillo lawyer who was one of four out-of-town judges. "There was only 12 points difference from first to third. We were probably a little biased toward the girl we gave first because she will be attending college this fall. The girl in third we didn't rate as high because she will get another chance."

Each of the girls was required to raise \$1,500, which will be used for

the scholarship money. They each wrote a research paper on their topic, and made a 15-minute presentation at Saturday's ceremonies.

Judges were given forms to follow, basing their rankings 50 percent on the written report and 50 percent on the presentation Saturday. There are no guidelines for weighing scores based on the age of the contestants.

Herrera's presentation was on the history of the Catholic Church in the Western Hemisphere. She traced the history of the church from the times of Columbus and Cortez, relating how missionaries and church officials were able to turn what had been pagan rituals into Christian celebrations.

Gonzalez told the story of the Virgin of Guadalupe. The Virgin Mary had appeared several times to a peasant, who was able to convince church officials of what he had seen only after several miracles relating to the Virgin.

Gamez related the past, present and future of the Mexican War for Independence. Mexico first proclaimed its independence on Sept. 16, 1810; it was not until 1821 that Mexico was finally free of the grip of Spain.

County approves budget, small tax increase

By GEORGIA TYLER Staff Writer

A 1993 budget that will cost taxpayers only 7/10 of a cent per \$100 of value more than they paid for the current year was approved for Deaf Smith County Monday evening.

The \$4,056,370 budget will be funded by fees, fines, auto registrations and taxes.

Because of a decrease in the tax base of the county, the rate the county may impose to raise a sum equal to the 1992 amount rose by about 7/10 of one cent, from 46.97 cents per \$100 of value to 47.69 cents.

At the new rate, a resident who paid taxes of \$164.39 on property values of \$35,000 after all exemptions will receive a bill for \$166.91, an increase of \$2.52 for the year.

No general salary increases for employees are included in the budget.

During a workshop conducted in three segments Monday, commissioners reviewed figures submitted by

County Auditor Alex Schroeter, finishing the job at 7 p.m.

They began serious work on the budget two weeks ago, spent about an hour on it Monday morning and another two hours during the afternoon. The afternoon session was recessed to allow Schroeter to make minor changes. A 15-minute discussion led up to the final approval, prior to a public hearing conducted by the commission.

General operations of Deaf Smith County should cost \$3,163,086 during the new year beginning Oct 1. Another \$814,584 will be allocated to road and bridge expense in the four commissioner precincts. Special funds, such as law library, right of way, lateral road and voter registration, will receive \$78,700.

Revenue from all sources, except taxes, is estimated at \$1,866,576. With 96 percent collection of the total tax levy, the county expects \$2,209,202.

A surplus of revenue over expenditure for the year is estimated at approximately \$19,000.

In the budget is provision for a computer network for several county offices. Proposals for providing the equipment will be received by Sept. 14.

The computer network will be used by offices of the county clerk, county judge, treasurer, sheriff, justice of the peace and sheriff, relieving the system now serving those offices and other county services.

Estimated cost of hardware and software is approximately \$98,000.

In other business Monday, commissioners:

- Authorized the auditor to advertise for bids for a proposal for an independent audit of county finances.

- Approved a request to advertise for bids for seal coating materials for county roads.

County tax bill going up slightly

This year's tax bill from the county will be a little higher.

Property value (After exemptions) ...\$35,000 At last year's rate, county tax bill was ...\$164.39 At this year's rate, the county tax bill will be ...\$166.91 Appraisal district figures for all local entities are on Pages 6 and 7 in today's Brand.



-- Agreed to advertise for proposals for fuel. -- Approved a change in policy for rental of the Bull Barn, allowing a

charge of \$10 per hour for custodial services, with no limit. Previously, there was a \$100 limit. County Judge Tom Simons suggested the change.

Grant request cut for Campbell project

A proposed grant request to install sewer and water lines in an area just outside the city limits of Hereford will be pared after Deaf Smith County commissioners learned Monday night that residents on at least one street in the project are not interested in the project.

During the second of two hearings held Monday by commissioners, residents of Kingwood south of Bradley said they do not wish to be included.

The estimated cost of the sewer-water project for Kingwood, Campbell Street and an unnamed street between the two is \$339,883.

After hearing from the Kingwood residents, Courtney Sharp of

Panhandle Regional Planning Commission said the engineering firm of McMorris and Associates of Amarillo will be asked for new estimates.

Reduction of costs could bring the project closer to the \$250,000 grant being requested.

Campbell Street residents approached Deaf Smith County commissioners for assistance in obtaining water and sewer service after their request for annexation to the City of Hereford was tabled.

City commissioners declined to act on the request because of the expense of an estimated \$350,000 to provide city services.

The grant application will include water and sewer lines from present city mains as well as connections to homes being served.

Sharp said regulations provide that residents not be required to pay the cost of connections to the lines.

Grants for community development require a five percent local match, however, which residents or a governmental entity must provide, either in kind or in money.

Commissioners conducted a hearing Monday morning that drew about a dozen persons interested in grant proposals. At the evening hearing, the county courtroom was packed with residents of the area.

Several spoke in support of the Campbell Street area project. Tina Ramirez described the water and waste disposal problems.

Residents of Kingwood said they had no objection to the project but did not wish to participate.

Sharp, who is working with Campbell Street residents and county officials on the grant application, said after new estimates are obtained, an on-site hearing must be conducted. Date for the hearing is Sept. 8.

The Campbell Street development is served by a single private water well. Residents must provide waste disposal through cesspools.

A community development grant is designed to assist in solving such

problems. The application must be scored by a PRPC committee in November, then forwarded to a state committee for scoring. The decision could be announced in Austin in February.

County Judge Tom Simons reminded the audience Monday night that "there's no assurance" the application will be approved.

A misunderstanding about possible annexation of the area by the City of Hereford was resolved by Mayor Tom LeGate, who said that the grant application "has nothing to do with annexation." He reminded everyone at the hearing that the annexation issue had been tabled by the city commission.

Child poverty moves from big city to rural areas

WASHINGTON (AP) - Poverty among children spread rampantly during the 1980s from large urban centers to smaller U.S. cities, a children's advocacy group said today.

More than one-fourth - 26.2 percent - of children living in cities with populations of 100,000 or more were impoverished in 1989, the Children's Defense Fund reported in an analysis.

Smaller cities, such as Laredo, Texas; Rochester, N.Y.; and Macon, Ga., ranked among the 20 cities with the highest rates of child poverty during a decade of prosperity, the study said.

"Extraordinarily high levels of child poverty have become pervasive in America," said fund President Marian Wright Edelman. "Such widespread child poverty also threatens children's health. And it is an affront to the moral decency of the nation."

Detroit led in the proportion of poor children, with 46.6 percent of its 296,543 children under 18 living in poverty, the study said. Laredo was second, with poverty striking 46.4 percent of its 43,922 children.

Overland Park, Kan., and Livonia, Mich., had the lowest rate: 3 percent.

Today's study is the first city-by-city count of poor children since the 1980 census, the fund said. A similar state-by-state count, released by the fund last month, showed 11.2 million U.S. children - about 18 percent - lived in families that earned less than poverty-level incomes in 1989.

The poverty level at the time was about \$13,000 for a family of four.

The study is based on figures for 168 cities with at least 100,000 residents in the 1980 and 1990 census tallies. It found that child poverty rates increased in 98 cities, fell in 69

others and remained unchanged in one: Buffalo, N.Y.

The likelihood that a child was poor fell slightly, from 27.7 percent in 1979 to 26.6 percent in 1989.

Researchers attributed that to New York City's child poverty rate dropping from 40 percent in 1979 to 30 percent during the 1980s. They noted that the current recession may cause an increase.

The latest study also found that child poverty is growing in rural counties. For example, the highest rate of child poverty in a city in 1979 - 67 percent in Newark, N.J. - was

eclipsed in 1989 by East Carroll Parish (county), La., with 70 percent.

"Across the nation, parents are struggling against steeper and steeper odds to provide for their children," Edelman said.

Poverty soared during the 1980s among minority children, striking at least half of the black children in 31 cities, Indian children in 19 cities, Hispanic children in 10 cities and Asian children in eight, the study said.

Eric, Pa., led among blacks and Hispanics, with rates of 62 percent for blacks and 69 percent for Hispanics.

Jubilee schedule Tonight: Open playday, Books open at 6:30 p.m., events start at 7 p.m.

AUG 11 1992

# Page Two

## Local Roundup

### Police arrest four persons

Hereford police arrested three persons over the weekend: a man, 19, in the 100 block of Ave. E for driving while intoxicated; a man, 36, on East U.S. Highway 60 for disorderly conduct and public intoxication; and a man, 26, in the 600 block of Irving for domestic violence assault.

Reports over the weekend included kids throwing rocks at a dog in the 800 block of S. Texas; burglary at 16th and U.S. 285; Class C assault in the 700 block of 13th, 900 block of E. Park and 300 block of Ave. I; Class A assault in the 300 block of Ave. I; domestic disturbance in the 200 block of Hereford Calle; criminal mischief in the 400 block of Ave. B, 200 block of Ave. A and 900 block of S. McKinley; open door on a business in the 700 block of S. 25 Mile Ave.; bike found by officers between buildings in the 100 block of W. Third; dog bite in the 300 block of Lawton; a youngster was caught while trying to take a bike from a porch in the 400 block of E. Fourth; dog bite in the 300 block of Lawton; theft of a bike in the 200 block of Northwest Drive; aggravated assault on East U.S. 60; and injury to a child under investigation in the 500 block of E. Fourth.

Police issued 38 tickets over the weekend.

On Monday, police arrested a man, 40, for possession of marijuana under two ounces in the 500 block of Ave. G.

Several cases of criminal mischief were reported: in the 400 block of Ave. B, with four tires slashed on a vehicle; 600 block of E. Park, where a tire was slashed; 600 block of Ave. K, where a rental house was damaged; 500 block of Miller where windows on a school bus were shot with a BB gun; 400 block of Ave. C, with two tires slashed on a vehicle; and at Forrest and Blevins, where rocks broke a truck window.

Several juveniles were taken in for questioning Monday when they tried to trade several beef steaks for a knife at Gold Nugget Pawn Shop. It was thought the steaks had been stolen.

Reports included criminal trespass in the 600 block of Blevins; assault in the 800 block of Union and 200 block of Higgins; phone harassment in the 500 block of Ave. G; and a juvenile shoplifter caught at Gibson's.

Police issued five tickets Monday and investigated two minor wrecks.

### Deputies find marijuana

Pedro Sanchez, 40, of Hereford, was arrested on charged of possession of a controlled substance and possession of paraphernalia in a drug raid Saturday evening in Hereford.

Sanchez was arrested in his home at 208 Boston by members of the Sheriff's Narcotics Attack Group. They had obtained a search warrant. Sanchez was freed on \$1,000 bond on Saturday night.

Also arrested over the weekend by deputies were a man, 53, on a bond forfeiture warrant and a man, 33, for driving while intoxicated.

Reports in the county included a report of cruelty to animals, theft of a lawn mower and theft of a box of checks.

Deputies were called Monday to investigate the theft of two baby pigs; seven head of cattle were missing from pens north of Hereford; and kids were reported shooting a rifle without permission to be on the property.

Deputies arrested a man, 36, on revocation of probation.

### HHS orientation Thursday

Orientation for Hereford High School freshmen will be held at 3:30 p.m. Thursday at the HHS auditorium.

All HHS students may pick up their schedules Thursday and Friday at the high school office.

### Good chance for more rain

Tonight, a 50 percent chance of showers and thunderstorms, otherwise cloudy. Low around 60. East wind 5 to 15 mph.

Wednesday, mostly cloudy with a 40 percent chance of showers and thunderstorms. High near 80. East wind 5 to 15 mph.

The extended forecast for Thursday through Saturday: partly cloudy with a chance of showers and thunderstorms. Highs around 80 to the mid 80s. Lows in the upper 50s to mid 60s.

This morning's low at KPAN was 62 after a high Monday of 99. KPAN recorded .05 of an inch of rain in the 24 hours ending at 7 a.m. today. Eastern parts of the county were under a severe thunderstorm warning at about 3 p.m. Monday with reports of hail up to golf ball size southeast of Vega. A small section of the county east of Hereford about six miles reported almost an inch of rain when the storm passed about 4:15 p.m. Monday.

## News Digest

### World/National

**KENNEBUNKPORT, Maine** - President Bush is expected to cement a new relationship with a new Israeli leader by announcing that the United States will co-sign up to \$10 billion in loans to help the country accommodate its flood of Russian immigrants.

**UNITED NATIONS** - Bosnia's U.N. ambassador welcomes a draft U.N. resolution authorizing military force to protect aid shipments in his war-ravaged land, but notes that it says nothing about halting aggression and "ethnic cleansing" by Serbian nationalists.

**WASHINGTON** - Ross Perot, after months of political wrangling, is telling what he learned as a presidential adviser and billionaire crusader about the fate of servicemen still missing from the Vietnam War.

**PYATNITSKAYA, Ukraine** - An American on a list of 39 civilians and servicemen who disappeared in the Soviet Union after World War II says he'd like to go home. But John Yarema doesn't speak English and doesn't have the money.

### Texas

**HOUSTON** - The abortion battle has begun - loudly, but peacefully. Abortion rights supporters overwhelmingly outnumbered anti-abortion advocates Monday, but the confrontation was just the first of what is expected to be a long series of protests for the Republican National Convention.

**HOUSTON** - The legendary Gilley's honky-tonk and its maniacal mechanical bull are long gone, but Republican conventioners looking for a little Texas fun shouldn't despair. There's plenty of partying left, and the night life here doesn't necessarily mean a trip in the pickup truck to the nearest saloon for a little two-steppin'. Of course, that's definitely an option.

**HOUSTON** - Treasury Secretary Nicholas F. Brady says he has done all he can to stimulate economic growth, deflecting demands to step down from some of his own party members.

**HOUSTON** - Republicans seeking to repair the damage from President Bush's broken "no new taxes" pledge are adding to their platform a rueful renunciation of the deficit-reduction agreement Bush signed two years ago - and calling for its repeal. "I think we have to eat a little humble pie," a platform writer said.

## The Hereford Brand

USPS 242-660  
Official paper for the City  
of Hereford and Deaf Smith County  
Published daily except Monday, Saturday  
by The Hereford Brand, Inc.  
313 N. Lee, Hereford, TX. 79045

O.G. Nieman  
John Brooks  
Maori Montgomery  
Charlene Brownlow

President & Publisher  
Managing Editor  
Advertising Manager  
Circulation Manager

Second Class postage paid at the Post Office in Hereford, TX.  
Send address changes to The Hereford Brand, Box 673, Hereford, TX. 79045  
Subscription rates: Home delivery by carrier in Hereford, \$4.20 month or \$45.70 a year; by mail in Deaf Smith and adjoining counties, \$45.70 a year; mail to other areas of Texas and U.S., \$47.75 a year

The Brand is a member of The Associated Press, Texas Press Association, National Newspaper Association, and the Panhandle and West Texas Press Associations.



### Ribbon cutting at new insurance office

The ribbon was cut Monday for the new location of the Springer Insurance Agency at 240 N. Main in Hereford. Pictured are Jean Hill, office manager; Daleine and Charles Springer, owners of the agency; and Grace Tinnin, Mrs. Springer's mother. Also pictured are friends and members of the Hereford Hustlers, goodwill ambassadors of the Deaf Smith County Chamber of Commerce. The agency handles a full line of insurance through the Farmers Insurance Group.

## Youth death going to jury

**GALVESTON, Texas (AP)** - Defense testimony in the trial of a Fort Worth couple accused in the starvation death of their teen-age son ended abruptly when the defendants took the stand to confirm they would not testify.

The case was expected to be handed over to a jury today.

Defense testimony for Jay and Linda Hill ended Monday. Closing arguments were expected to begin today.

The couple are accused of injury to a child in Stephen's death last November.

Marilyn Pregin was one of several defense witnesses in the Hills' trial yesterday. The testimony of Ms. Pregin and others Monday concluded the defense's case.

Ms. Pregin, who taught Stephen

from 1985 to 1986, said he was rowdy until he began taking the drug ritalin. His disruptive behavior returned, however, when Mrs. Hill took her son off the drug because "she thought it made her son zombie-like," Ms. Pregin said.

Mrs. Hill was also "more concerned with her rights as a mother" than her son's well-being, the teacher said.

In other testimony, a bishop at a Mormon church the Hills once attended said Mrs. Hill was concerned about her husband's role in their children's discipline.

In matters of discipline of the children, she felt that she was forced to be the soul discipline agent and that she got very little back up from Jay," Bishop Jim Morgan said.

If convicted, the Hills face a

maximum sentence of life in prison.

Authorities have said the defendants deprived their son of food and occasionally chained him away from food in the family's motor home. He weighed 55 pounds at his death, about half the normal weight of a 13-year-old.

Last week, the Hills' other son, 12-year-old Douglas, testified that he believed his parents intended to hurt his brother.

Dr. Paul Robert Prescott, director of a child abuse program at the University of Texas Southwestern Medical Center in Dallas, testified Stephen likely would have never fully recovered, even if he had lived.

The high-profile trial was moved to Galveston because attorneys feared a fair jury couldn't be picked in Fort Worth.

## GOP seeks to mend tax fence

**HOUSTON (AP)** - Republicans seeking to repair the damage from President Bush's broken "no new taxes" pledge are adding to their platform a rueful renunciation of the deficit-reduction agreement Bush signed two years ago.

### Obituaries

#### MINIBEL COLLIER

Aug. 8, 1992

Minibel Collier, 84, of Hereford, died Saturday in Hereford.

Graveside services were held Monday morning in West Park Cemetery with the Rev. Lanny Wheeler officiating. Arrangements were made by Rix Funeral Directors.

A native of Estelline, Mrs. Collier moved to Hereford from Dumas in 1947. She married Faust G. Collier in St. Louis. He preceded her in death. She was a graduate of Texas Tech University and belonged to First United Methodist Church and Texas State Teachers Association. She was a retired teacher from Hereford Independent School District.

Survivors are two cousins, Hester Branham of Amarillo and James Glaze of Muleshoe.

#### WILLIE "BILL" COGGIN

Aug. 7, 1992

Willie "Bill" Coggin, 77, of Killeen, former Hereford resident, died Friday in Waco.

Services were set for 10 a.m. Tuesday in Crawford-Bowers Funeral Home in Killeen with the Rev. Curtis Holland officiating. Burial was in Killeen City Cemetery.

Mr. Coggin was born in Prairie View, N.M., and spent his early life here. He was employed by Phillips Petroleum Company for 34 years, retiring in 1979. He had lived in Hereford and ranched before moving to Killeen earlier this year. He was a member of Avenue Baptist Church.

Survivors are his wife, Laura Coggin of Killeen; three sons, Larry Coggin of Hereford, Willie Ray Coggin of Killeen and Johnny Coggin of Seguin; two daughters, Thelma McDonald of Richmond and Mary Russell of Hereford; a brother, Roy Coggin of Lovington, N.M.; two sisters, Dora Mae Word of Lovington and Emma Permenter of Malon, N.M.; 14 grandchildren, 14 great-grandchildren and two great-great-grandchildren.

## Education gets more bad news on funding

**AUSTIN (AP)** - Texas school boards are still guessing about how to much state aid will be supplementing their 1992-93 budgets.

"It's the uncertainty factor that's the most troubling from the budgeting standpoint," said Dan Casey, a Texas Association of School Boards spokesman, Monday.

Texas Education Agency spokeswoman Della May Moore on Monday said school districts are expected to see \$540 million less state aid for 1992-93 than their student attendance and local tax effort would lead them to expect.

And for 1991-92, school districts are getting \$306 million less state funding than they expected, said TEA spokeswoman Della May Moore. That is a final figure, while the one for 1992-93 is an estimate.

The difference is due largely to higher-than-expected local tax collections that are tied to state aid, and to larger-than-anticipated enrollment, she said.

In addition, Ms. Moore said, lawmakers in writing the budget last year reduced state aid in connection with a bill that would have required school districts to cut administrative costs. Although that bill did not win final legislative approval, the budget reduction still took effect, she said.

The \$306 million figure for 1991-92 is \$75 million higher than the shortfall projected in April. Ms. Moore said the amount went up based on final attendance figures.

Ms. Moore said the agency hoped school districts could make up the difference for 1991-92 through their contingency funds. The fiscal year ends Aug. 31.

The state is putting more money into public education.

Last school year, there was a \$583 million increase in state aid, and there is to be a \$617 million increase for 1992-93.

But Education Commissioner Lionel "Skip" Meno in June warned school districts preparing their 1992-93 school budgets that the \$617 million would not be enough to fully fund the state education law. That means school districts get less state funding per student than expected.

Ms. Moore said it is to school districts' credit that attendance is high, and that TEA wants to work with them "through this very difficult time."

**PATIENTS IN HOSPITAL**  
Gloria Cano, B. Lee Cocanougher, Glenda Conner, Manuel Gallegos, Anita Marie Garcia, Connie Garza, Infant boy Garza, Walter Lemons, Nancy A. Nazworth, Sarah Payne, Annette Trujillo, E.D. Watson, Larry Jason Watts, Atha Wilks and Inez L. Zapata.

**NEWBORN**  
Mr. and Mrs. Jesus Almanaz Jr., are parents of a baby boy, Leroy Alex Almanza, 7 lbs. 3 oz., born on Aug. 5, 1992.



### Accidents reported Monday

A 1987 Oldsmobile Delta 88 driven by Alice Martinez, 21, of Hereford was struck by a 1991 Suburban driven by Alton Tomlin of Hereford at the intersection of Fifth and East Park on Monday morning. Martinez was cited for failure to yield right of way at a stop sign. In an accident at 3:17 p.m. Monday, a 1979 Ford pickup driven by Rick Bordayo of Hereford pulled into the path of a 1984 Oldsmobile driven by John Irlbeck at the intersection of county roads 12 and CC about nine miles northeast of Hereford. Bordayo was not injured; Mr. Irlbeck had minor cuts on his arm; and Emma Jo Irlbeck was taken to Deaf Smith General Hospital for treatment of bruises and abrasions to her hip and neck.

# Life!



## Back to School Happening

Members of the Women's Division style show committee have planned the Back to School Happening Style Show and Luncheon from noon until 1 p.m. Thursday at the Hereford Country Club. Tickets are priced at \$8 per person and are available at the Deaf Smith County Chamber of Commerce office, 701 N. Main St. New fall fashions are being modeled by (from left) Danielle Cornelius, Kirsten Abney, Davon Kemp, Karen Abney and Stephanie Gonzales. The event is being held in conjunction with the Town & Country Jubilee Celebration festivities this week.

## Exercise benefits dizziness

Just as your eyes adjust to the dark in a movie theater, people with vertigo can learn to adapt to dizziness -- by exercising.

"It is strange but true," says Dr. Helen Cohen, an assistant professor of otorhinolaryngology at Baylor College of Medicine in Houston. "By making them dizzy through special motion exercises, people suffering from vertigo caused by inner ear disorders that destroy balance and orientation can force their inner ear to compensate."

Cohen calls the process "habituation."

"It is no different from entering a noisy restaurant and being overwhelmed by conversations in the room. Soon though, you are able to distinguish individual sounds and conversations."

Vertigo is a common disorder affecting approximately 20 percent of the population sometime in their lives. It can be caused by head trauma either from accidents or sports like football or boxing, or by autoimmune or rheumatoid diseases. Even a common head cold virus can attack the vestibular organs, the body's system for maintaining balance and spatial orientation.

"Current medications suppress the

vestibular system," Cohen said. "The medicine relieves the dizziness, but it does not cure it. When treatment is stopped, the dizziness returns."

Cohen believes that for many vertigo sufferers, performing simple exercises at home may permanently stop the dizziness.

"In essence, these exercises are training the brain to ignore the dizziness," she said.

Repetitive head exercises such as a nodding the head up and down or side to side help the brain to recalibrate its responses to information coming from the inner ear more quickly. How the brain does this is still unknown.

Little is understood about the effectiveness of the exercises, the ideal regimen for "treatment," or the disorders for which the exercises are best suited. Cohen is conducting studies to understand better how exercises can help those with inner ear disorders.

Excavations from ancient Mesopotamia have revealed elaborately designed golden toothpicks used for removing food deposits lodged between the teeth.

## New Arrivals

Chris and Debbie Schumacher of Carrollton are parents of their first child, a baby girl, Leah Nicole Schumacher, 6 lbs. 14 oz., born on July 29 in Carrollton.

Joe and Ida Schumacher of Hereford and Ken and Janell Moran of Denton are grandparents of the new arrival.

Warren and Phyllis Cornelius of Amarillo are the parents of a son, Chance Tyler, born Aug. 6 in Northwest Texas Hospital. He weighed 9 lbs. 14 oz.

Grandparents are Guy and Phyllis Cornelius and Bill and Marilyn Kahlich, all of Hereford.

LONG BRANCH, N.J. (AP) - A summertime seaside resort since 1788, Long Branch played host to many celebrities over the years.

Presidents Ulysses S. Grant, Rutherford B. Hayes, Benjamin Harrison and Woodrow Wilson were frequent summer visitors.

## Ann Landers

**DEAR ANN LANDERS:** My boyfriend and I are middle-aged and living together. "Billy" believes his parents should have open access to our home. I do not agree and we've had some unpleasant words about this.

His folks knock on our door at least twice every weekend. A while back they took a key to our house without permission and now they come in whenever they feel like it. I wouldn't mind them having the key if they'd just let us know when they're planning to come over.

In addition to this, Ann, his parents expect to be included in our plans every weekend. I feel that I have no privacy anymore. Billy insists that everybody he knows sees their parents every weekend and that his relationship with his folks is not unusual. I come from an independent family and I'm not accustomed to the way these people cling together and have no interests that don't include each other. My family is very caring, but we give one another space to live our own lives.

I'm really not asking for advice because I know what I have to do, and I'm going to do it. What I really want to know, Ann, is how typical this behavior is. Please spell it out for me. —Open Door Policy in Greenwood, Miss.

**DEAR OPEN DOOR:** The kind of behavior you describe is not at all

typical. It exists only in families where the parents dominate and treat their grown sons and daughters like children. The fact that your boyfriend doesn't resent this and feels that it's "normal" says something about his inability to cut the apron strings. This is a subject that needs exploring before you consider marriage. I see red lights flashing all over the place.

**DEAR ANN LANDERS:** My sister-in-law, "Carol" hasn't been able to face going into a funeral home or visiting a bereaved family since her father died 15 years ago.

On three different occasions, the funerals of two relatives and one close friend, Carol couldn't bear to go, so my brother attended alone.

My grandmother died recently and I telephoned Carol to see what time she and my brother were leaving for the funeral home. I had a strong suspicion that she wasn't planning to go. Sure enough, my brother said he'd be attending, but not his wife.

When I asked Carol why she couldn't manage to go and provide support for her husband and my mother, she jumped down my throat. She told me that she had talked this over with my brother and if I couldn't accept her decision, that was my problem. I told her it was HER problem and that she was selfish. She hung up on me.

Was I out of line to confront her? I think she needs professional help. I can't imagine what will happen to Carol if anyone really close to her should die, such as her mother or one of her children.

It's been almost two weeks now and Carol hasn't spoken to me. I don't feel that I owe her an apology. What do you think? —Krazy in Kalamazoo

**DEAR KALAMAZOO:** Obviously Carol cannot handle going into a funeral home because of the painful memories relating to her father's death.

You should respect this and not try to "straighten her out." It's her problem and her business. And yes, I do believe you owe Carol an apology. In the future, you ought to M.Y.O.B.

**Gem of the Day:** Some nights the only good things on television are the vase and the clock.

Ann Landers' latest booklet, "Nuggets and Doozies," has everything from the outrageously funny to the poignantly insightful. Send a self-addressed, long, business-size envelope and a check or money order for \$5 (this includes postage and handling) to: Nuggets, c/o Ann Landers, P.O. Box 11562, Chicago, Ill. 60611-0562.

Golda Meir became prime minister of Israel in 1969.



## END OF SEASON CLEAN-UP

# 1/2 OF 1/2

SALE • SALE • SALE • SALE • SALE

### Tuesday Aug. 11th at 5 p.m.!

**REMINDER:** Make your plans to join us for the C of C Women's Division Style Show Thursday Aug. 13, 11:30 a.m., at the Hereford Country Club.

## PANTS CAGE | ETCETERA

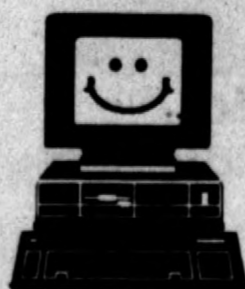
426 Main St. • The Atrium

# COMPUTER CLASSES!

COMPUTER LITERACY - "The Basics"  
 LOTUS 123 - Spreadsheet  
 WORD PERFECT - Word Processing  
 QUICKEN - Easy Accounting

Comp Lit 5-7pm Tue Sept 8, 15, 22, 29  
 Lotus 123 7-9pm Mon Sept 14, 21, 28, Oct 5  
 Quicken 7-9pm Thu Sept 10, 17, 24, Oct 1  
 Word Perf 7-9pm Tue Sept 8, 15, 22, 29

Only \$69! Limit 12 per class, so CALL NOW!!!



**FOSTER ELECTRONICS** (806)-364-4882  
 "COMPUTERS MADE EASY" 1-800-458-6474  
 Sugarland Mall

## APPRECIATION

Saluting Our Volunteers

# luncheon

King's Manor invites all King's Manor Volunteers to attend an informal "Thank You" luncheon in appreciation for your time and efforts toward the betterment of our residents.

The luncheon will be Monday, August 17 at 1 p.m. in the Lamar Room at King's Manor. We will be serving baked potatoes with all your favorite toppings. Please let us know by Friday August 14th if you plan to join us in this opportunity to express our sincere thanks.

**KING'S MANOR**  
400 Ranger • 364-0861

**METHODIST HOME**

## Optical options considered

As parents become increasingly aware of the importance of good vision care for their children, they are seeking annual checkups from eyecare professionals they can trust. In addition to receiving a skilled diagnosis, parents may also wish to consider the function, fit and comfort of their children's eye glass frames. After all, the more comfortable and attractive the frame is, the more pleasant the wearing experience will be for the child. The experts at Marchon Eyewear suggest options for parents to choose when selecting frames for their youngsters.

1. Adjustable unifit bridge. The tender cartilage of a child's nose needs special attention. A well fitted bridge will provide protection by distributing the weight of the frame evenly. Made of soft silicone, each side of a unifit bridge can be independently adjusted for a comfortable, contoured fit alleviating pressure on the nose.

2. Spring hinges enhance the durability of the frame by adding flexibility to the hinge area, reducing the need for repeated adjustments. Spring hinges maintain a smooth, constant tension that help prevent frames from sliding down the nose.

3. Comfort cables. The correct length and fit of the temple evenly distributes the weight of the frame between the child's ears and nose. Parents may wish to see a selection of children's frames with comfort cables, which are well suited for active youngsters. A rubber tubing covers a flexible metal ear tip providing a snug, comfortable fit, so eyeglass frames won't slip or fall off. For some spring-hinged metal frames, a comfort cable may be attached in lieu of the standard temple. Ask your dispenser.

4. Adjustment-free frames. Experts at Marchon suggest that frames made of carbon fiber graphite "CFG" are thin, lightweight, extremely sturdy, and are well designed for a child's facial contours. This same material is used for tennis rackets and golf clubs because of its durability and tensile strength. Frames containing over 30 percent carbon fibers require little or no adjustments - and that's good news for parents.

5. Shape retaining frames that are able to withstand rough handling and rough play do exist. Made of a memory encoded titanium alloy, Autoflex metal frames may be twisted or bent, yet automatically spring back to their original shape.

6. Choose frames that are fun to wear. Especially for younger children, choosing eyewear of vibrant color or featuring decals of cartoon characters may ease the emotional resistance to wearing prescription eyewear. Brightly colored frames and cases such as Marchon's Disney Characters - Mickey, Donald and Minnie - promote a positive experience for youngsters.

Finally, space age frame materials, trendy shapes and novel colorings and textures satisfy the interests of today's fashion-conscious children.

Mountain lions cannot roar like lions and tigers, but they can purr and occasionally emit a howl that can sound like a woman's scream, according to National Geographic.



### Officers installed at luncheon

Members of El Llano Study Club were present recently at a summer luncheon served at the Hereford Country Club. During the brief business meeting, Dolores Foster, outgoing president, installed officers for the new club year. They included (front row, from left) Alice Eades, vice president; Roberta Caviness, historian; Dolores Foster, outgoing president; (back row, from left) Diane Hoelscher, president; Elizabeth Cesar, secretary; Zula Arney, treasurer; and Linda Davis, reporter.

## Ask Dr. Lamb

**DEAR DR. LAMB:** I have been doing some exercises for my stomach. I suck in my tummy and hold it for 15 to 20 seconds. I do this 35 times and have found that this is the best exercise and the most effective to lose a little of the roll around the midsection, plus strengthen the muscles on my back. I have done this for over a year. I do bending exercises to touch my toes and walk two miles five days a week.

I have severe stomach pains and sometimes I can relieve the pain by walking until the entrapped gas is released. An examination revealed I have a hiatal hernia and a gallbladder with stones.

Is this type of exercise for my stomach and back muscles plus bending to touch my toes harmful for my kind of condition? What would be an alternative? My doctor suggested that I not bother right now about my gallbladder because I have no pain from it.

I am 69 years old, weigh 176 pounds and am 5 feet 7 inches.

**DEAR READER:** Pulling in your abdominal muscles as much as you can and holding it for 15 to 30 seconds, relaxing and repeating for at least 10 times is one of the best exercises you can do to increase the strength of your abdominal muscles. It uses the lateral muscles that act like a belt or corset to hold your abdomen in.

I have made this point with more details in Special Report 104, How to Battle the Bulge, which I'm sending you. Others who want this report can send \$3 with a long, stamped (52 cents), self-addressed envelope to THE HEALTH LETTER/104, P.O. Box 5537, Riverton, NJ 08077. Keep up your exercise.

When you have a hiatal hernia, you can make matters worse by bending over. That is why bending over to touch your toes is not a good exercise. But you can do the other exercise while you are sitting upright or even when you are standing. It is an excellent exercise for abdominal muscle if you have a hiatal hernia.

It does not strengthen your back muscles. But when your abdominal muscles are strong, it helps to brace or splint your spine and decreases the strain on it. That does help for people who have back problems.

Another exercise you need is to push away from the table. Your abdomen will not flatten if you have too much fat in your abdomen. Also an abdomen full of fat deposits will tend to make a hiatal hernia worse.

**DEAR DR. LAMB:** I am a 16-year-old girl and very concerned about my weight. I'm 5 feet 5 inches and weigh 125 pounds. I've lost about 15 pounds in the past two months, but I feel as though I am still overweight. I've been taking diet pills for a little over a month and in that time have had about 85 pills. One pill just doesn't work. I don't eat much. I have a small appetite.

Some of my friends say I could be anorexic. I tell them there is nothing to be concerned about. Am I wrong? I always thought to be an anorexic one would have to eat absolutely nothing.

**DEAR READER:** You are wrong. There is a great deal to be concerned about. Clearly from your height and weight you do not need to lose weight. And even if you did, your approach is all wrong. Limiting your diet excessively at this age can prevent normal bone development and failure of other aspects of development.

No, an anorexic person may simply not eat nearly as much as needed and then loses an excess amount of weight. She also has a false body image, thinking she is overweight, when in fact she may even be thin. Anorexia nervosa is a dangerous con-

dition, usually requiring psychiatric counseling.

**DEAR DR. LAMB:** I am an elderly man with congestive heart failure and a pacemaker implant. I have heard the suggestion to use two or three pillows to induce a more comfortable night's sleep. Also, lifting the back of one's bed into an elevated support has been recommended. The latter sounds excellent, but could you recommend an approximate height for accomplishing the maximum desired comfort effect?

**DEAR READER:** There is no set amount of elevation. When only the left side of the heart fails, it cannot pump out all the blood that comes to it from the lungs. As a result, blood accumulates in the lungs and causes breathlessness. This is made worse when you lie flat because more blood from the legs and abdomen is returned to the right heart. The strong right heart pumps even more blood into the lungs which can't be pumped out by the left heart. That causes more breathlessness.

Many patients have learned under these circumstances that sitting up to sleep does help. Or, if you have a bed that can have the head cranked up to sit up to sleep, that helps.

Then when the right heart fails, too, it can no longer pump more blood to the lungs than the left heart can pump out. That prevents so much fluid from accumulating in the lungs and relieves breathlessness. If sitting up to sleep improves your breathing, you will need to experiment to find out how much elevation you need.

Dr. Lamb welcomes letters from readers with health questions. You can write to him at P.O. Box 5537, Riverton, NJ 08077. Although Dr. Lamb cannot reply to all letters personally, he will respond to selected questions in future columns.

## Fighting Fido's flab

With over half of this country's dogs in or near the "plus sizes," you may want to check your pet's weight.

A dog that weighs 22 lbs. when he should weigh 17 lbs. may be similar to a man who weighs 220 lbs. when he should weigh 170 lbs. A few extra pounds can represent a significant proportion of your dog's weight.

Approximately 60 percent of all adult dogs are overweight or likely to get that way, due to age or activity level, so all owners should watch their dog's weight carefully.

Not only is obesity in dogs common, it may also be life-threatening. By helping an overweight dog regain and maintain its ideal weight, the pet owner is increasing that dog's odds of living a longer, healthier life.

How do you know if your dog needs to start a weight-loss program?

Different breeds have different standards, but in general, a trim dog, no matter what breed, should have a clearly visible waistline and well-defined ribs. The fit dog should have

an hourglass figure when viewed from above, slightly sunken in between the rib cage and hind hips.

An easy first step for the overweight dog is the elimination of table scraps from the diet. If you are feeding your dog a nutritionally-balanced commercial pet food, table scraps are not only an unneeded addition to his diet, they may also be harmful.

Opportunity: get your dog into shape gradually through a combination of moderate exercise and diet management. For an overweight adult dog, owners may want to feed a reduced fat, reduced calorie, high fiber food. A reduced calorie food, combined with daily walks of gradually increasing length, will help reduce the dog's weight to the optimum level.

For beginning workouts, it is suggested to schedule morning or evening walks and talking to the dog throughout the walk to maintain its enthusiasm and attention.



**Panchita's Restaurant**  
1803 E. 1st • 364-4825

**Sizzlin' Chicken Fajitas**  
featured every  
**Wednesday \$4.99**  
On Our  
**Noon Buffet**  
Buffet Hours: 11A.M. to 1:30 P.M.

**A LONE STAR "STEAL"**


Reach more than  
**3 MILLION Texans**  
for ONLY \$250

Now you can run your classified ad in newspapers all across Texas for only \$250. That's right—a 25 word ad costs only \$250 to run in 283 newspapers with a combined circulation of 1.7 million (that's more than 3 million readers) throughout the Lone Star State.

One call to this newspaper, that's all. We'll place your ad in 283 newspapers. All you have to do is get ready for the results.

This new sales opportunity is brought to you by this newspaper and the member newspapers of the Texas Press Association.

**Call this newspaper for details**



Statewide Classified Advertising Network

**NOTICE TO AT&T CUSTOMERS IN TEXAS**  
**AT&T INTRODUCES AT&T EASYREACH™ SERVICE IN TEXAS**

AT&T Communications of the Southwest, Inc. (AT&T) is pleased to announce that AT&T EasyReach™ Service will be available for intrastate use in Texas on September 3, 1992. EasyReach is already available for interstate usage nationwide and in 45 states for intrastate calling. AT&T EasyReach Service will only be available to those customers who have subscribed to the interstate service.

Subscribers to AT&T EasyReach Service are either assigned or can select a personalized number in the 700 format, which is a portable long distance number that becomes theirs for as long as they remain customers of the service.

AT&T EasyReach Service offers consumers the ability to stay in touch even when they are away from home by utilizing the Call Forwarding feature. Subscribers may also utilize additional features of the service in determining who pays for calls placed to the 700 number. Calls may be Caller-Paid or the subscriber may designate that calls from certain people will be Subscriber-Paid. The subscriber controls which callers have the ability to place Subscriber-Paid calls through the assignment of Personal Identification Numbers (PINs). Callers placing Caller-Paid calls will be given a billing prompt whereby these callers will indicate whether the call will be billed to the originating phone number or their Calling Card.

Texas intrastate usage rates are \$.32 per minute for calls placed during the peak period and \$.23 per minute for calls placed during the off-peak period. Interstate usage rates are \$.25 per minute during the peak period and \$.15 per minute during the off-peak period, whether the caller pays for the call or the subscriber pays for the call. Also, the per minute rate remains the same regardless of the distance of the call. AT&T EasyReach Service also permits subscribers, while away from home, to dial their EasyReach Service number to reach their designated telephone and charge the call to their AT&T EasyReach Service number via a Master PIN.

For more information about AT&T EasyReach Service, please call AT&T toll free at 1 800 982-8480.

AT&T has filed its application to offer AT&T EasyReach Service with the Public Utility Commission under PUC Substantive Rule §23.25 (b) and in accordance with the ruling of the Administrative Law Judge in TC No. 11242. Persons who have questions regarding this filing may contact the Public Information Division of the Public Utility Commission by calling (512) 458-0223 or (512) 458-0221 Teletypewriter for the deaf. Written inquiries should be sent to the Public Utility Commission, 7800 Shoal Creek Blvd., Austin, TX 78757.

™Service Mark of AT&T

**FACE GRAPHICS**



**Face Graphics \$12.00 value**  
**COLOR MAKEUP SKIN**

Jr. High Thurs. 13th	\$22.50 SEMINAR	Sr. High Fri. 14th
9:30 - 12:30 AM		Begins at 9:30

To Register Call: 364-0323  
\*62 Page Seminar Workbook Included

**MERLE NORMAN**  
COSMETIC STUDIOS

220 N. Main 364-0323

**Don't buy glasses until you shop The New PEARLE®**

Pearle has a whole new way of doing business. Prices have been REDUCED and every frame re-priced to include SINGLE VISION LENSES\* - a complete pair of glasses starts as low as \$59.95. Bifocals COMPLETE start at \$79.95.

**\$59.95**

- NO COUPONS
- NO GIMMICKS
- NO "2-FOR'S"

Just the best prices on quality eyewear and PEARLE's Great One-Year Eyeglass Breakage Guarantee. AT NO ADDITIONAL COST! If you break your glasses, PEARLE will repair or replace them.

PEARLE Quality and 1 Hour Service. Of course, some things at PEARLE will never change...like QUALITY and SERVICE. Your beautiful new PRESCRIPTION PERFECT glasses will be ready in about an hour, in most cases.

Nobody cares for eyes more than PEARLE.™

**PEARLE VISION EXPRESS®**  
Westgate Mall • Amarillo • (806) 358-0316

Independent Doctors of Optometry located next door.

**Dr. Charlotte Stinson**  
Optometrist  
Located Next to Pearle Express in Westgate Mall  
(806)358-0319

## Back to school treats

As fall draws near and children return to school, busy parents concerned about what their kids eat are looking for easy-to-make treats that won't be "lunchtime trade-ins" but definite keepers!

One way to be sure you're sending your children to school with something that tastes delicious and is made with all natural ingredients is to create your own great treats. It can be easy if you bake these moist and chewy Granola and Pumpkin Cookies.

- GRANOLA AND PUMPKIN COOKIES**  
(Makes 3 1/2 dozen cookies)
- 2 cups all-purpose flour
  - 1 cup quick or old fashioned oats
  - 1 cup shredded coconut
  - 1/4 cup wheat germ
  - 2 teaspoon ground cinnamon
  - 2 teaspoons ground allspice
  - 1 teaspoon baking soda
  - 1/2 teaspoon salt
  - 1 cup margarine or butter, softened
  - 1 cup packed light brown sugar
  - 1 cup granulated sugar
  - 1 egg
  - 1 cup solid pack pumpkin
  - 1 teaspoon vanilla extract
  - 1 cup raisins
  - 1 cup nuts, chopped

In medium bowl, combine flour, oats, coconut, wheat germ, cinnamon, allspice, baking soda and salt; set aside. In large mixer bowl, cream margarine, brown sugar and granulated sugar. Beat in egg, pumpkin and vanilla. Beat in flour mixture. Stir in raisins and nuts. Drop dough by rounded tablespoons onto greased baking sheets. Bake in preheated 350 degree F oven for 15 to 20 minutes, or until lightly browned. Cool on wire racks.

## Free things to send for

For a free copy of an informative 24-page booklet, "Women and Investing," call Oppenheimer Management Corporation at 1-800-892-4442.

For a free booklet on flea control, write: S.C. Johnson Wax, P.O. Box 567, Dept. E-92, Racine, WI 53403.

For a colorful brochure on San Jose's points of interest, write: San Jose Convention & Visitors Bureau, P.O. Box 6299, San Jose, CA 95150; or call 408-283-8833.

A free booklet on dry eye syndrome and a coupon for Johnson & Johnson's HypoTears are available from Hypo Tears Information, IOLAB Corp., 500 IOLAB Dr., Claremont, CA 91711.

To learn more about the Leukemia Society of America, call (800) 955-4LSA.

For free brochures about changing truck tires safely, call the Budd Company at 1-800-521-7770.



## Making Jubilee plans

The Toujour Amis Study Club will be participating in the Annual Town & Country Jubilee Celebration. Club members will be selling a variety of ice cream crepes, ham and roast beef sandwiches, coffee, candy, tea, Cokes and donuts beginning at noon Friday and 9 a.m. Saturday at the Hereford Community Center. Proceeds from the booth sales will be used to benefit the community. Planning the event are club members, from left, Cindy Simons and Judy Barrett.

## Toujour Ami members make plans for Jubilee

Members of the Toujour Amis Study Club met recently at the home of Judy Barrett for an ice cream social to discuss plans for the Town & Country Jubilee Celebration.

In conjunction with the annual festivities, the women will be serving sandwiches, dessert crepes, coffee, candy, tea, Cokes and donuts beginning at noon Friday and at 9 a.m. Saturday at the Hereford Community Center. The club will have chocolate, strawberry and praline ice cream crepes and ham and roast beef sandwiches for sale.

Proceeds from the club's annual booth sales benefit the community.

Members of the fiance committee assisted Barrett as hostess. They included Cindy Simons, Jill Savoini, Lisa Forney, Lisa Klett, Cindy Black, Trish Brown, Kim Porter and Donna West.

Other members present were Patti Brown, Kathy Carthel, Sarah Lawson, Kim Bigham, Melinda Bridge, Janet Brigance, Tami Charest, Shannon Hagar, Donna Kemp, Lisa Lewis, Kyla McDowell, Elaine McNutt, Becky Reinart and Marsha Winget.

## Guide to kids' allergies

Children with never-ending "colds" - chronic runny noses, itchy eyes and croupy coughs-may, in fact, have allergies. Children's allergies are sometimes confused with colds because youngsters are not familiar with allergies and their symptoms and, therefore, cannot express their discomfort to parents or school nurses.

According to recent reports by allergy specialists and related foundations, more than 20 million U.S. children suffer from allergies. Among children ages 6-15, sneezing, itchy eyes and runny noses account for 130 million lost school days. It is important that parents learn about the tell-tale allergy signs and discuss the child's symptoms with a family doctor or allergy specialist.

The following chart can help parents to distinguish the symptoms that signal possible allergies from those that are probably a cold.

In addition, "Welcome To The Allergy Neighborhood" is an eight page coloring book that helps children understand allergies, their triggers and their treatment.

Children are welcomed to the

allergy neighborhood by big, bold letters describing allergies. Then, as they journey down the street, into friends' backyards and homes, they are asked to color in the items (such as grasses, trees, feather pillows and stuffed animals) that might make them sneeze.

"Welcome" To The Allergy Neighborhood" is available, free, as a public service from Nasalcrom, the prescription allergy blocker. Call the Allergy Information Center and Hotline, 1-800-727-5400 to order your copy.

**Dr. Milton Adams**  
Optometrist  
335 Miles  
Phone 364-2255  
Office Hours:  
Monday - Friday  
8:30-12:00 1:00-5:00

## RENT TO OWN

TVs - VCRs - Stereos - Appliances -  
Furniture - Air Conditioners  
FREE DELIVERY - NO CREDIT CHECK  
NO LONG TERM OBLIGATION

BRING THIS COUPON AND GET  
1ST WEEKS RENT FREE  
2 WEEKS MINIMUM RENTAL

IDEAL RENTALS INC. • 241 N. Main • 364-7082

Applications for employment for the upcoming season will be made through the Texas Employment Commission at 700 25 Mile Avenue, Hereford

**HOLLY SUGAR CORP.** Equal Opportunity Employer

## New officers installed at auxiliary meeting

Members of the American Legion Auxiliary met recently in the Post Home to install 1992-93 officers.

Beverly Jesko served as installing officer. She was assisted by Ruth King, sergeant-at-arms, and Bernice Layman, chaplain. Betty Jo Carlson will serve as new president; Troyce Hanna, vice president; Bea Cargo, secretary-treasurer; Dorothy Shannon, chaplain; Lou Ann LaFever, historian; and Clara Trowbridge, junior past president.

During the installation ceremonies, Bernice Layman offered a prayer. Jesko read the duties and responsibilities of each office and also presented the past president's pin to Clara Trowbridge and handed the gavel to President Betty Jo Carlson.

As her first duty as president, Carlson presented the following appointed committee chairmen. They included Viola Wagner, cheer; Bea Cargo, finance; Troyce Hanna, membership; Clara Trowbridge, Poppy; and Beverly Jesko, scholarship. Further appointees will be announced later.

Trowbridge thanked everyone for the privilege of serving as auxiliary president for the past two years. She then called for committee reports. The cheer committee reported that in June five birthday cards, two get-well cards and three sympathy cards were sent. During July, there was one birthday card and one sympathy card sent.

The community service committee reported that there were 18 present during the July bingo party at King's Manor. Assisting with the party were Trowbridge, Willie Vinton and Millie Pavlicek with Bea Nolen calling.

Reporting for the membership committee was Carlson who explained that dues are \$12 and that there are currently 24 paid members. New cards are available.

It was announced that the \$250 scholarship was presented to Lesvia Brown.

During the yearbook committee report, Ruth King stated that the next meeting will be held Sept. 1. Trowbridge will drive a car during the annual Town & Country Jubilee parade Saturday for the auxiliary entry.

Troyce Hanna read a letter from Coza Mae and Bill Shelley who now reside in Tucson, Ariz. and Lou Ann LaFever, historian, presented the Auxiliary and Legion members the scrapbook for the year. She requested the book be on display and kept in the Legion Hall.

Dorothy Shannon announced that LaVerne McMinn's sister had died. Special guests were Michelle and Cynthia Shattles, granddaughter and daughter of Troyce and Grant Hanna.

Dorothy Shannon and Argen Draper served as hostesses to the 16 members present.

Shannon gave the closing prayer.

OXFORD, Mass. (AP) - Clara Barton, the American humanitarian and patriot who was born here in 1821, is best known as the founder of the American Red Cross.

During the Civil War she nursed wounded soldiers and was called "The Angel of the Battlefield." She also served as a battlefield nurse during the Franco-Prussian War and the Spanish-American War.



Americans buy over 60 million watches a year.

# Hereford MARKETPLACE

## TWO GUARANTEES PROTECT YOUR INVESTMENT!

- (1) Quality steel siding backed by manufacturer's warranty
- (2) Installation is my personal guarantee as a local contractor.

Hereford is my home and your satisfaction is an investment in my future

Please, call TODAY for references to my work or a FREE estimate!

## RICHARDS SIDING

"For Quality Steel Siding Construction"

Owner - Leon Richards Home - 276-5579  
Call day or night Answering Machine - 276-5366

A competitive alternative to your current link with the outside business world!



## WT Services Inc.

A Fully Owned Subsidiary Of West Texas Rural Telephone (1st Block North of W.T.R.T.) 364-7311

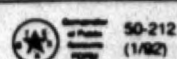
You don't have to earn less just because you have less to invest.

Mutual funds allow you to join with other investors to earn high current returns on smaller investments. Plus, you get a diverse portfolio and professional management. Call me for details.

IKE STEVENS • 508 S.25 MILE AVE. • 364-0041 • 1-800-755-4104

**Edward D. Jones & Co.**  
Member New York Stock Exchange, Inc. and Securities Investor Protection Corporation

Shop these Hereford merchants for terrific value!



1992 **Property Tax Rates in** Walcott I. S. D.

This notice concerns 1992 property tax rates for Walcott I. S. D.. It presents information about three tax rates. Last year's tax rate is the actual rate the taxing unit used to determine property taxes last year. This year's *effective* tax rate would impose the same total taxes as last year if you compare properties taxed in both years. This year's *rollback* tax rate is the highest tax rate the taxing unit can set before taxpayers can start tax rollback procedures. In each case these rates are found by dividing the total amount of taxes by the tax base (the total value of taxable property) with adjustments as required by state law. The rates are given per \$100 of property value.

**Last year's tax rate:**

Last year's operating taxes	\$	44,607.81	
Last year's debt taxes	\$	-0-	
Last year's total taxes	\$	44,607.81	
Last year's tax base	\$	26,159,503.00	
Last year's total tax rate	\$	.1710	/100

**This year's effective tax rate:**

Last year's adjusted taxes (after subtracting taxes on lost property)	\$	44,589.52	
+ This year's adjusted tax base (after subtracting value of new property)	\$	26,324,732.00	
- This year's effective tax rate	\$	.1694	/100

*In the first year a hospital district or city collects the additional sales tax, it must insert the following lines unless its first adjustment was made last year:*

- Sales tax adjustment rate	\$		/100
- Effective tax rate	\$		/100

x 1.03 = maximum rate unless unit publishes notices and holds hearing

\$	.1745	/100
----	-------	------

**This year's rollback tax rate:**

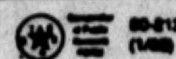
Last year's adjusted operating taxes (after subtracting taxes on lost property)	\$	36,744.52	
+ This year's adjusted tax base	\$	26,324,732.00	
- This year's effective operating rate	\$	.1396	/100
x 1.08 (or add \$.08 for schools) = this year's maximum operating rate	\$	.2196	/100
+ This year's debt rate	\$	-0-	/100

*A school district must insert the following lines:*

- This year's rollback rate before adjustment	\$	.2196	/100
+ Rate to recoup lost revenue	\$	.0479	/100
- Adjusted rollback rate	\$	.2675	/100
- This year's rollback rate	\$	.2675	/100

*A hospital district or city that collects the additional sales tax, including one that collects the tax for the first time this year, must insert the following lines:*

- Sales tax adjustment rate	\$		/100
- Rollback tax rate	\$		/100



1992 **Property Tax Rates in** Hereford I. S. D.

This notice concerns 1992 property tax rates for Hereford I. S. D.. It presents information about three tax rates. Last year's tax rate is the actual rate the taxing unit used to determine property taxes last year. This year's *effective* tax rate would impose the same total taxes as last year if you compare properties taxed in both years. This year's *rollback* tax rate is the highest tax rate the taxing unit can set before taxpayers can start tax rollback procedures. In each case these rates are found by dividing the total amount of taxes by the tax base (the total value of taxable property) with adjustments as required by state law. The rates are given per \$100 of property value.

**Last year's tax rate:**

Last year's operating taxes	\$	1,290,110.36	
Last year's debt taxes	\$	-0-	
Last year's total taxes	\$	1,290,110.36	
Last year's tax base	\$	445,292,521	
Last year's total tax rate	\$	.30	/100

**This year's effective tax rate:**

Last year's adjusted taxes (after subtracting taxes on lost property)	\$	1,250,820.00	
+ This year's adjusted tax base (after subtracting value of new property)	\$	411,036,824	
- This year's effective tax rate	\$	.3043	/100

*In the first year a hospital district or city collects the additional sales tax, it must insert the following lines unless its first adjustment was made last year:*

- Sales tax adjustment rate	\$	-0-	/100
- Effective tax rate	\$	-0-	/100

x 1.03 = maximum rate unless unit publishes notices and holds hearing

\$	.3134	/100
----	-------	------

**This year's rollback tax rate:**

Last year's adjusted operating taxes (after subtracting taxes on lost property)	\$	1,109,801.00	
+ This year's adjusted tax base	\$	411,036,824	
- This year's effective operating rate	\$	.27	/100
x 1.08 (or add \$.08 for schools) = this year's maximum operating rate	\$	.35	/100
+ This year's debt rate	\$	-0-	/100

*A school district must insert the following lines:*

- This year's rollback rate before adjustment	\$	.35	/100
+ Rate to recoup lost revenue	\$	.06958	/100
- Adjusted rollback rate	\$	.41958	/100
- This year's rollback rate	\$	.41958	/100

*A hospital district or city that collects the additional sales tax, including one that collects the tax for the first time this year, must insert the following lines:*

- Sales tax adjustment rate	\$	-0-	/100
- Rollback tax rate	\$	-0-	/100



1992 **Property Tax Rates in** County Education Dist.

This notice concerns 1992 property tax rates for CED. It presents information about three tax rates. Last year's tax rate is the actual rate the taxing unit used to determine property taxes last year. This year's *effective* tax rate would impose the same total taxes as last year if you compare properties taxed in both years. This year's *rollback* tax rate is the highest tax rate the taxing unit can set before taxpayers can start tax rollback procedures. In each case these rates are found by dividing the total amount of taxes by the tax base (the total value of taxable property) with adjustments as required by state law. The rates are given per \$100 of property value.

**Last year's tax rate:**

Last year's operating taxes	\$	3,546,093.00	
Last year's debt taxes	\$	-0-	
Last year's total taxes	\$	3,546,093.00	
Last year's tax base	\$	440,671,831	
Last year's total tax rate	\$	.809	/100

**This year's effective tax rate:**

Last year's adjusted taxes (after subtracting taxes on lost property)	\$	3,520,490.00	
+ This year's adjusted tax base (after subtracting value of new property)	\$	432,033,954	
- This year's effective tax rate	\$	.8149	/100

*In the first year a hospital district or city collects the additional sales tax, it must insert the following lines unless its first adjustment was made last year:*

- Sales tax adjustment rate	\$	-0-	/100
- Effective tax rate	\$	-0-	/100

x 1.03 = maximum rate unless unit publishes notices and holds hearing

\$	.8393	/100
----	-------	------

**This year's rollback tax rate:**

Last year's adjusted operating taxes (after subtracting taxes on lost property)	\$	3,520,490.00	
+ This year's adjusted tax base	\$	432,033,954	
- This year's effective operating rate	\$	.8149	/100
x 1.08 (or add \$.08 for schools) = this year's maximum operating rate	\$	.88	/100
+ This year's debt rate	\$	-0-	/100

*A school district must insert the following lines:*

- This year's rollback rate before adjustment	\$	-0-	/100
+ Rate to recoup lost revenue	\$	-0-	/100
- Adjusted rollback rate	\$	-0-	/100
- This year's rollback rate	\$	.88	/100

*A hospital district or city that collects the additional sales tax, including one that collects the tax for the first time this year, must insert the following lines:*

- Sales tax adjustment rate	\$		/100
- Rollback tax rate	\$		/100



1992 **Property Tax Rates in** City of Hereford

This notice concerns 1992 property tax rates for City of Hereford. It presents information about three tax rates. Last year's tax rate is the actual rate the taxing unit used to determine property taxes last year. This year's *effective* tax rate would impose the same total taxes as last year if you compare properties taxed in both years. This year's *rollback* tax rate is the highest tax rate the taxing unit can set before taxpayers can start tax rollback procedures. In each case these rates are found by dividing the total amount of taxes by the tax base (the total value of taxable property) with adjustments as required by state law. The rates are given per \$100 of property value.

**Last year's tax rate:**

Last year's operating taxes	\$	1,009,582.24	
Last year's debt taxes	\$	-0-	
Last year's total taxes	\$	1,009,582.24	
Last year's tax base	\$	240,376,570	
Last year's total tax rate	\$	.4200	/100

**This year's effective tax rate:**

Last year's adjusted taxes (after subtracting taxes on lost property)	\$	1,001,599.18	
+ This year's adjusted tax base (after subtracting value of new property)	\$	235,988,571	
- This year's effective tax rate	\$	.4244	/100

*In the first year a hospital district or city collects the additional sales tax, it must insert the following lines unless its first adjustment was made last year:*

- Sales tax adjustment rate	\$		/100
- Effective tax rate	\$		/100

x 1.03 = maximum rate unless unit publishes notices and holds hearing

\$	.4371	/100
----	-------	------

**This year's rollback tax rate:**

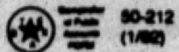
Last year's adjusted operating taxes (after subtracting taxes on lost property)	\$	1,001,599.18	
+ This year's adjusted tax base	\$	235,988,571	
- This year's effective operating rate	\$	.4244	/100
x 1.08 (or add \$.08 for schools) = this year's maximum operating rate	\$	.4584	/100
+ This year's debt rate	\$		/100

*A school district must insert the following lines:*

- This year's rollback rate before adjustment	\$		/100
+ Rate to recoup lost revenue	\$		/100
- Adjusted rollback rate	\$		/100
- This year's rollback rate	\$	.4584	/100

*A hospital district or city that collects the additional sales tax, including one that collects the tax for the first time this year, must insert the following lines:*

- Sales tax adjustment rate	\$		/100
- Rollback tax rate	\$		/100



80-212  
(1982)

1992 **Property Tax Rates in** Deaf Smith General Hospital

This notice concerns 1992 property tax rates for Deaf Smith Gen. Hospital. It presents information about three tax rates. Last year's tax rate is the actual rate the taxing unit used to determine property taxes last year. This year's effective tax rate would impose the same total taxes as last year if you compare properties taxed in both years. This year's rollback tax rate is the highest tax rate the taxing unit can set before taxpayers can start tax rollback procedures. In each case these rates are found by dividing the total amount of taxes by the tax base (the total value of taxable property) with adjustments as required by state law. The rates are given per \$100 of property value.

**Last year's tax rate:**

Last year's operating taxes	\$ 964,069.62
Last year's debt taxes	\$ 119,154.54
Last year's total taxes	\$ 1,083,224.16
Last year's tax base	\$ 492,374,129
Last year's total tax rate	\$ .2200 /\$100

**This year's effective tax rate:**

Last year's adjusted taxes (after subtracting taxes on lost property)	\$ 1,077,059.10
+ This year's adjusted tax base (after subtracting value of new property)	\$ 482,304,462
- This year's effective tax rate	\$ .2233 /\$100

*In the first year a hospital district or city collects the additional sales tax, it must insert the following lines unless its first adjustment was made last year:*

- Sales tax adjustment rate	\$ _____ /\$100
- Effective tax rate	\$ _____ /\$100

x 1.03 - maximum rate unless unit publishes notices and holds hearing	\$ .2300 /\$100
---	-----------------

**This year's rollback tax rate:**

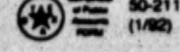
Last year's adjusted operating taxes (after subtracting taxes on lost property)	\$ 958,582.59
+ This year's adjusted tax base	\$ 482,304,462
- This year's effective operating rate	\$ .1988 /\$100
x 1.08 (or add \$.08 for schools) - this year's maximum operating rate	\$ .2147 /\$100
+ This year's debt rate	\$ .0396 /\$100

*A school district must insert the following lines:*

- This year's rollback rate before adjustment	\$ _____ /\$100
+ Rate to recoup lost revenue	\$ _____ /\$100
- Adjusted rollback rate	\$ _____ /\$100
- This year's rollback rate	\$ .2543 /\$100

*A hospital district or city that collects the additional sales tax, including one that collects the tax for the first time this year, must insert the following lines:*

- Sales tax adjustment rate	\$ _____ /\$100
- Rollback tax rate	\$ _____ /\$100



80-211  
(1982)

1992 **Property Tax Rates in** Deaf Smith County

This notice concerns 1992 property tax rates for Deaf Smith County. It presents information about three tax rates. Last year's tax rate is the actual rate the taxing unit used to determine property taxes last year. This year's effective tax rate would impose the same total taxes as last year if you compare properties taxed in both years. This year's rollback tax rate is the highest tax rate the taxing unit can set before taxpayers can start tax rollback procedures. In each case these rates are found by dividing the total amount of taxes by the tax base (the total value of taxable property) with adjustments as required by state law. The rates are given per \$100 of property value.

	General Fund	Farm to Market/ Flood Control Fund	Special Road/ Bridge Fund
<b>Last year's tax rate:</b>			
Last year's operating taxes	\$ 2,315,058	\$ _____	\$ _____
Last year's debt taxes	\$ -0-	\$ _____	\$ _____
Last year's total taxes	\$ 2,315,058	\$ _____	\$ _____
Last year's tax base	\$ 492,878,969	\$ _____	\$ _____
Last year's total tax rate	\$ .4697/\$100	\$ _____ /\$100	\$ _____ /\$100

**This year's effective tax rate:**

Last year's adjusted taxes (after subtracting taxes on lost property)	\$ 2,301,525	\$ _____	\$ _____
+ This year's adjusted tax base (after subtracting value of new property)	\$ 482,544,012	\$ _____	\$ _____
- This year's effective tax rate for each fund	\$ .47695/\$100	\$ _____ /\$100	\$ _____ /\$100

Total effective tax rate \$ .47695/\$100

*In the first year a county collects the additional sales tax, it must insert the following lines unless its first adjustment was made last year:*

- Sales tax adjustment rate	\$ -0- /\$100
- Effective tax rate	\$ -0- /\$100

x 1.03 - maximum rate unless unit publishes notices and holds hearing	\$ .4912 /\$100
---	-----------------

**This year's rollback tax rate:**

Last year's adjusted operating taxes (after subtracting taxes on lost property and including taxes for state criminal justice mandate)	\$ 2,668,859	\$ _____	\$ _____
+ This year's adjusted tax base	\$ 482,544,012	\$ _____	\$ _____
- This year's effective operating rate	\$ .55308 /\$100	\$ _____ /\$100	\$ _____ /\$100
x 1.08 - this year's maximum operating rate	\$ .5973 /\$100	\$ _____ /\$100	\$ _____ /\$100
+ This year's debt rate	\$ -0- /\$100	\$ _____ /\$100	\$ _____ /\$100
- This year's rollback rate for each fund	\$ .5973 /\$100	\$ _____ /\$100	\$ _____ /\$100
This year's total rollback rate	\$ .5973 /\$100	\$ _____ /\$100	\$ _____ /\$100

*A county that collects the additional sales tax, including one that collects the tax for the first time this year, must insert the following lines:*

- Sales tax adjustment rate	\$ .0725 /\$100
- Rollback tax rate	\$ .5248 /\$100



80-178  
(1982)

DEAF SMITH GENERAL HOSPITAL

**Schedule A  
Unencumbered Fund Balances**

The following balances will probably be left in the unit's property tax accounts at the end of the fiscal year. These balances are not encumbered by a corresponding debt obligation.

Type of Property Tax Fund	Balance
	-0-

**Schedule B  
1992 Debt Service**

The unit plans to pay the following amounts for long-term debts that are secured by property taxes. These amounts will be paid from property tax revenues (or additional sales tax revenues, if applicable).

Description of Debt	Principal or Contract Payment to be Paid	Interest to be Paid	Other Amounts to be Paid	Total Payment
(Expand as needed)	\$	% \$	\$	\$
Total required for 1992 debt service			\$ 182,192	
- Amount (if any) paid from funds listed in Schedule A			\$ -0-	
- Excess collections last year			\$ -0-	
+ Total to be paid from taxes in 1992			\$ 182,192	
+ Amount added in anticipation that the unit will collect only 95% of its taxes in 1992			\$ 9,586	
- Total Debt Levy			\$ 191,781	

**Schedule C  
Expected Revenue from Additional Sales Tax**

(For hospital districts, cities and counties with additional 1/2-cent sales tax)

In calculating its effective and rollback tax rates, the unit estimated that it will receive \$ \_\_\_\_\_ in additional sales and use tax revenues.

**Schedule D  
State Criminal Justice Mandate (For Counties)**

The \_\_\_\_\_ County Auditor certifies that \_\_\_\_\_ County has spent \$ \_\_\_\_\_ in the previous 12 months beginning \_\_\_\_\_, 19\_\_\_\_, for the maintenance and operations cost of keeping inmates sentenced to the Texas Department of Criminal Justice. \_\_\_\_\_ County Sheriff has provided information on these costs, minus the state revenues received for reimbursement of such costs.

This notice contains a summary of actual effective and rollback tax rates' calculations. You can inspect a copy of the full calculations at Deaf Smith Co. Appraisal District 140 E. 3rd Street.

Name of person preparing this notice \_\_\_\_\_  
Title Deaf Smith Co. Appraisal District  
Date prepared 8/6/92



80-178  
(1982)

DEAF SMITH COUNTY

**Schedule A  
Unencumbered Fund Balances**

The following balances will probably be left in the unit's property tax accounts at the end of the fiscal year. These balances are not encumbered by a corresponding debt obligation.

Type of Property Tax Fund	Balance
GENERAL FUND	\$100,000

**Schedule B  
1992 Debt Service**

The unit plans to pay the following amounts for long-term debts that are secured by property taxes. These amounts will be paid from property tax revenues (or additional sales tax revenues, if applicable).

Description of Debt	Principal or Contract Payment to be Paid	Interest to be Paid	Other Amounts to be Paid	Total Payment
(Expand as needed)	\$ 0	% \$	\$	\$
Total required for 1992 debt service			\$ 0	
- Amount (if any) paid from funds listed in Schedule A			\$ 0	
- Excess collections last year			\$ 0	
+ Total to be paid from taxes in 1992			\$ 0	
+ Amount added in anticipation that the unit will collect only _____% of its taxes in 1992			\$ 0	
- Total Debt Levy			\$ 0	

**Schedule C  
Expected Revenue from Additional Sales Tax**

(For hospital districts, cities and counties with additional 1/2-cent sales tax)

In calculating its effective and rollback tax rates, the unit estimated that it will receive \$ 351,775 in additional sales and use tax revenues.

**Schedule D  
State Criminal Justice Mandate (For Counties)**

The \_\_\_\_\_ County Auditor certifies that \_\_\_\_\_ County has spent \$ 0 in the previous 12 months beginning \_\_\_\_\_, 19\_\_\_\_, for the maintenance and operations cost of keeping inmates sentenced to the Texas Department of Criminal Justice. \_\_\_\_\_ County Sheriff has provided information on these costs, minus the state revenues received for reimbursement of such costs.

This notice contains a summary of actual effective and rollback tax rates' calculations. You can inspect a copy of the full calculations at 140 E 3rd.

Name of person preparing this notice \_\_\_\_\_  
Title Deaf Smith Co. Appraisal District  
Date prepared AUGUST 7, 1992

# Television

**\* LEGEND \***  
 Channel Station  
 ● DISN  
 ● KAMR  
 ● KACV  
 ● TBS

● KVII  
 ● FAM  
 ● WGN  
 ● KFDA  
 ● ESPN  
 ● KCIT

● NICK  
 ● USA  
 ● SHOW  
 ● (HBO)  
 ● (MAX)  
 ● NASH

● DISC  
 ● ABE  
 ● LIFE  
 ● PTL  
 ● UNI

## TUESDAY AUGUST 11

6 PM	6:30	7 PM	7:30	8 PM	8:30	9 PM	9:30	10 PM	10:30	11 PM
(5:30) Barber: The Movie	Lefty	Scenario Wonders	(95) Kenny Loggins: Going Home	Romancing the Stone (PG)	News	Cooby	Quantum Leap	Reasonable Doubts	Dateline NBC	News
MacNeil/Lehrer	News	Full House	Home	Roseanne	Coach	700 Club	Scarscrow and King	700 Club	Batman	Enemy Below
News	Wheeler	Full House	Home	Roseanne	Coach	700 Club	Scarscrow and King	700 Club	Batman	Enemy Below
News	Wheeler	Full House	Home	Roseanne	Coach	700 Club	Scarscrow and King	700 Club	Batman	Enemy Below
News	Wheeler	Full House	Home	Roseanne	Coach	700 Club	Scarscrow and King	700 Club	Batman	Enemy Below

## WEDNESDAY AUGUST 12

12:30	1 PM	1:30	2 PM	2:30	3 PM	3:30	4 PM	4:30	5 PM	5:30
(12:00) Animalympics	Pony Tales	Tree	Gummi	Donald	Jump	Kids Inc.	Mickey	Win, Lose	Cadillac	
(12:00) Crt. Another World	Santa Barbara	Oprah Winfrey	Ally Pech	Cur. Affair	NBC News	Body Elect. News	Inspiration	Seaside	Seaside	Seaside
(12:00) Crt. Another World	Santa Barbara	Oprah Winfrey	Ally Pech	Cur. Affair	NBC News	Body Elect. News	Inspiration	Seaside	Seaside	Seaside

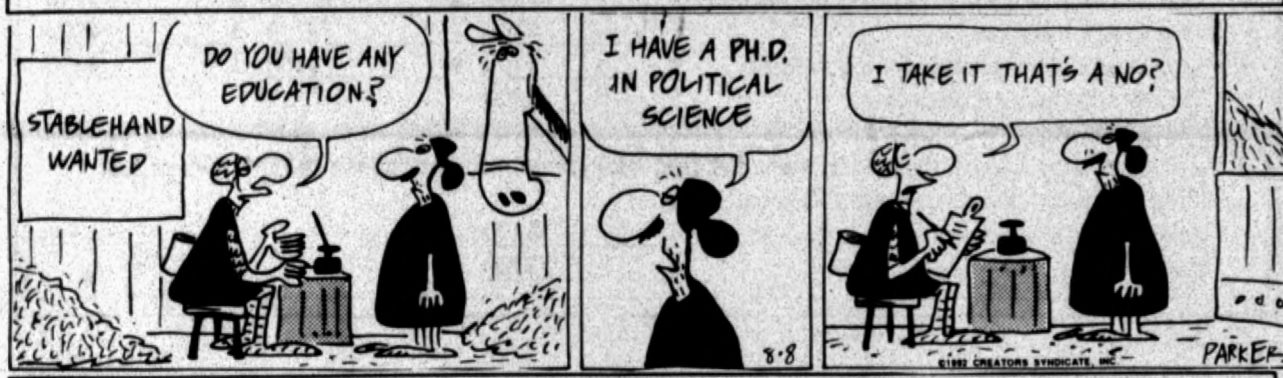
## WEDNESDAY AUGUST 12

7 AM	7:30	8 AM	8:30	9 AM	9:30	10 AM	10:30	11 AM	11:30	12 PM
Gummi	Pooch	Tree	Dumbo	Donald	Music Box	Factory	Recoona	Care Bears	Lunch Box	Animalymp.
Today	Govt	Sesame Street	Mr. Rogers	Read	America	America	America	Grow's	Grow's	Grow's
Today	Govt	Sesame Street	Mr. Rogers	Read	America	America	America	Grow's	Grow's	Grow's

## WEDNESDAY AUGUST 12

6 PM	6:30	7 PM	7:30	8 PM	8:30	9 PM	9:30	10 PM	10:30	11 PM
(5:30) Caddis	Woodman	(1989)	Movie: Polly	*** K. Knight Pulliam	(95) Ray Charles	James Taylor	(95) Gail			
(5:30) Caddis	Woodman	(1989)	Movie: Polly	*** K. Knight Pulliam	(95) Ray Charles	James Taylor	(95) Gail			

### The Wizard of Id By Brant Parker and Johnny Hart



### BLONDIE by Dean Young and Stan Drake



### Marvin By Tom Armstrong



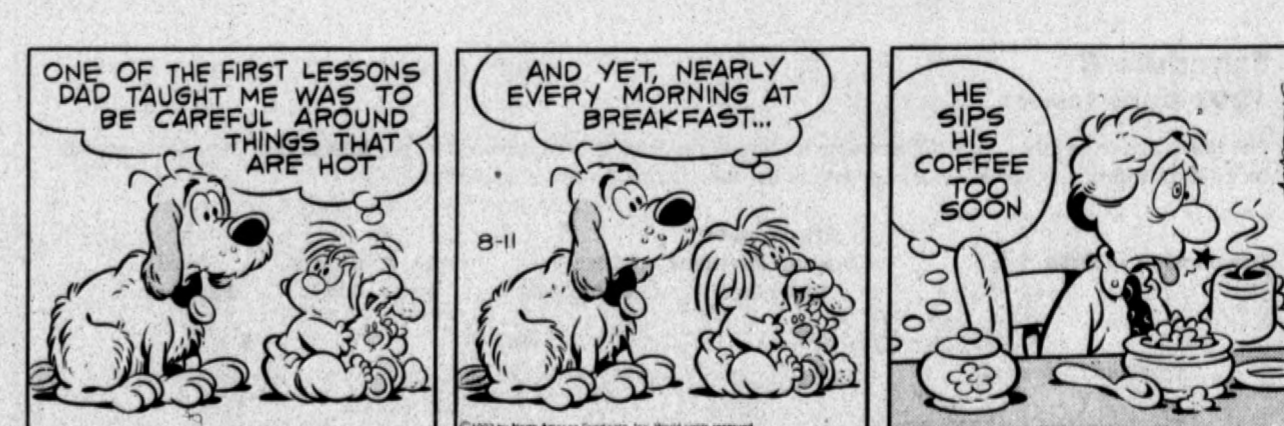
### BEETLE BAILEY By Mort Walker



### Barney Google and Snuffy Smith By Fred Lasswell



### Barney Google and Snuffy Smith By Fred Lasswell



### Barney Google and Snuffy Smith By Fred Lasswell



### Barney Google and Snuffy Smith By Fred Lasswell





# SPORTS



## Not the Rockettes

Three Herd football players loosen up for tests in the 40-yard dash and the mile run. Monday was the first day of practice for the Hereford football team. The scoreboard (left background) at Whiteface Stadium should be fixed in time for the Herd's first home game Sept. 11 (against Palo Duro). The scoreboard was knocked over by high winds in June.

## Tech faces high expectations

**By CHIP BROWN**  
Associated Press Writer  
LUBBOCK, Texas (AP) - For the past couple of years Tech coach Spike Dykes has been ignoring the experts who picked his teams to finish fifth or worse in the Southwest Conference.

Now, he is toasting them. Most of the so-called "experts" are forecasting a top three conference finish for Tech in 1992. Dykes, who normally shrugs his shoulders at any preseason hype, is enjoying the talk. "I think it's OK," he says with a chuckle. "I don't pay much attention to where we are picked. But it's a credit to our players, and from that standpoint our players are excited."

So is Dykes. His Red Raiders overcame a disastrous 1-4 start last year and won five of their last six games, including victories over bowl-bound Baylor and Arkansas.

Dykes has been trying to bottle the momentum for a strong start against Oklahoma Sept. 3 in the Red Raiders' home season opener.

"Certainly the positiveness has carried over," says Dykes, who is beginning his sixth year leading Tech. "You hope you can pick up where you left off last fall. If we can, great. If we can't, we got a problem."

An experienced line will cement an offense loaded with talent at the skill positions. A defense armed with speed and eight returning starters will try to hold Tech opponents below a 1991 average of 24.7 points per contest.

The kicking game and depth on both sides of the ball are grave concerns.

"We are excited about the defense," says Dykes. "We have been productive on offense for a while and a little bit disappointed in the production on defense."

"But we got better by the week

last year, and I think the progress has carried over."

Tech's 3-4 alignment is anchored by All-Southwest Conference safety Tracy Saul, who is tied for the SWC record of 20 career interceptions. Saul owns the conference record for most interception return yards (383).

"I think Tech has a lot better players than we have had in the past," says Saul, a senior co-captain. "Everyone has a lot of confidence in the man next to him and that is going to help us out this year."

Juniors Anthony Wiley and Donny Brooks are lightning quick at the corners. Senior Steve Carr, Tech's second-leading tackler last year, will command the linebacking chores along with Mike Liscio.

And chest-beating junior Shawn Jackson is expected to terrorize opponents from his end position.

While much of Tech's success this year will rest with the defense, all eyes will be on junior quarterback Robert Hall, whose scrambling and quick release make him a double threat to defenders.

The only question is if Hall can remain in one piece. His inclination to tuck the ball and run is as exciting to fans as it is nerve-wracking for Tech coaches, who have no experienced backups behind Hall.

"I am not going to worry," says Dykes. "Robert has always played reckless. He is that kind of a football player."

The junior quarterback says he welcomes being the focus of defenses "because it's our other players that are going to kill them."

The offense returns six starters, five on the offensive line, including tight end Don Hasley.

The Raiders lost All-Southwest Conference receiver Rodney Blackshear. But junior Lloyd Hill, Tech's second leading receiver last year, should ensure little, if no, drop off.

The running game will focus on sophomore Byron "Bam" Morris, who moved from fullback to tailback last year and led Tech with 514 yards as a backup.

The kicking game remains a question mark. The Raiders lost All-American punter Mark Bounds and veteran place kicker Lin Elliott to graduation.

Robert King is expected to take over as punter, and Jon Davis will handle the kicking chores.

"It's a question mark only because they haven't performed in a game," Dykes said.

Dykes' greatest concern, however, is depth.

"We have very little depth," Dykes says. "Sometimes a lack of depth is fatal, and sometimes it's OK. I am sure we will have some guys come in and pick up the slack and maybe some who won't."

## Magic may come back

LOS ANGELES (AP) - By all accounts, Los Angeles Lakers fans should know by early September if Earvin "Magic" Johnson is returning to the team.

Johnson said he and his wife Cookie will decide together whether he'll return to the Lakers. And if he does, the Lakers will take him back with open arms, says general manager Jerry West.

"What's going to happen is my wife and I are going to sit down and we're going to talk about it and see. It all depends on if I feel like coming back. That's all," Johnson said Monday night on "The Arsenio Hall Show."

## Johnson gives holdouts 1 week

AUSTIN, Texas (AP) - Dallas Cowboys coach Jimmy Johnson has given six holdouts a week to report to training camp, saying he'll limit the roles of any player who can't practice next week and play in the Aug. 22 exhibition game against the Denver Broncos.

"Anyone that's not here next week, their role would be reduced. Their role will be reduced - anybody. It's not a threat. It's that in order for us to perform, that's the way we have to do it," Johnson said Monday.

Dallas opens the regular season at home Sept. 7 in a Monday Night TV game against the Washington Redskins.

Among the six holdouts are wide receiver Michael Irving and tight end Jay Novacek, both of whom made the Pro Bowl last season, plus teammates Mark Stepnoski, Tony Tolbert, Ken Norton and James Washington.

Johnson reinforced his stance by taking away Washington's starting job at free safety and giving it to Robert Williams, who made the switch from cornerback during the off-season.

If and when he reports, Washington will be moved to free safety and will compete with current starter Ray Horton.

"Robert has had an outstanding camp and we feel right now he's the best player for the position," Johnson said. "He's been playing well and this moves him into the starting lineup. James always wanted to play at free safety and this allows him to compete for a spot there. Robert has had the most consistent camp of anyone."

Kenny Gant had been filling in for Washington at strong safety and Johnson said Gant will become a starter in the nickel defense.

In another camp development, Johnson said Curvin Richards has taken a commanding lead in the competition at backup running back.

Richards, a second-year player from the University of Pittsburgh, rushed for 63 yards in 10 carries in Friday night's 27-24 exhibition victory over the Miami Dolphins.

Richards, a fourth-round draft pick in 1991, left Pitt after his junior year. He was on Dallas' active roster in the

first two weeks of the season, getting only two carries for four yards in a game in September against the Washington Redskins.

He was placed on injured reserve after the second game and didn't play the rest of the season.

"He's made as much progress in one year's time as most any player I've been around," Johnson said. "Last year he struggled a little bit. He came out of school early and I don't

know if he was ready for the grind of professional football."

Richards, vying for the role as 1991 NFL rushing leader Emmitt Smith's backup in competition against free agents Chuck Weatherspoon and Michael Beasley, has impressed the coaching staff with his consistency, something he lacked in training camp last season. Coaches also had been concerned about

(See COWBOYS, Page 12)



## BANANA SPLIT! FREE DESSERT DEAL

Through the month of August  
get a FREE Banana Split  
with a dinner purchase.

Come Home to Sirloin Stockade.



**SIRLOIN  
STOCKADE**

101 WEST 15TH

**For Insurance call**  
**Jerry Shipman, CLU**  
801 N. Main • (806)364-3161  
State Farm Insurance Companies  
Home Offices: Bloomington, Illinois

# GRAB A MOVIE WHILE YOU SHOP



RENT TWO MOVIES  
GET ONE  
FREE  
ANY DAY OF THE WEEK

FEATURING  
GREAT  
ENTERTAINMENT  
in Children's Movies  
& Games, Family  
Entertainment, Adult  
Drama & Comedy!

We offer a complete computer  
controlled inventory and  
rental which eliminates long  
waits and long lines at our  
convenient check-out  
counter!

**Gibson's**  
DISCOUNT  
CENTER

Mon. - Sat.  
9:00am-9:00pm  
Sunday  
2:00pm-6:00pm

1115 W.  
Park Ave.  
364-3187

## CASH! Any time you need it with your ATM Card from the Hereford State Bank.

**The Solutions To Your Cash Problems!**  
With a **ATM Card** from The Hereford State Bank, your *cash problems* are over! No more running around town trying to cash checks. No more embarrassment and inconvenience of having to prove your identification!

### Get Cash 24-Hours-A-Day!

Carry your bank in your pocket, and you can get cash any time you need it at any hour...with your **ATM Card**.

Come see us at The Hereford State Bank, and we'll help you apply for yours.



**Hereford**  
STATE BANK

# CLASSIFIEDS

Call Janey Allmon at the Hereford Brand, 364-2030, or come by 313 N. Lee to place your classified advertising. We reach thousands everyday!

**The Hereford Brand**  
 Since 1901  
 Want Ads Do It All!

You Want It,  
 You Got It!  
 CLASSIFIEDS

**364-2030**  
 Fax: 364-8364  
 313 N. Lee

**CLASSIFIED ADS**  
 Classified advertising rates are based on 15 cents a word for first insertion (\$3.00 minimum), and 11 cents for second publication and thereafter. Rates below are based on consecutive issues, no copy change, straight word ads.

TIMES	RATE	MIN
1 day per word	.15	3.00
2 days per word	.26	5.20
3 days per word	.37	7.40
4 days per word	.48	9.60
5 days per word	.59	11.80

**CLASSIFIED DISPLAY**  
 Classified display rates apply to all other ads not set in solid-word lines—those with captions, bold or larger type, special paragraphing, all capital letters. Rates are \$4.15 per column inch; \$3.45 an inch for consecutive additional insertions.

**LEGALS**  
 Ad rates for legal notices are same as for classified display.

**ERRORS**  
 Every effort is made to avoid errors in word ads and legal notices. Advertisers should call attention to any errors immediately after the first insertion. We will not be responsible for more than one incorrect insertion. In case of errors by the publishers, an additional insertion will be published.

**1-Articles For Sale**

**FOR SALE**  
 Sweet Corn-Also Blue Lake Green Beans Andrews Produce 276-5240

New and now in stock: The Roads of New Mexico, in book form. Also The Roads of Texas. \$12.95 each. Hereford Brand, 313 N. Lee. 15003

A Great Gift!!! Texas Country Reporter Cookbook -- the cookbook reporter is talking about. 256 pages featuring quotes on recipes ranging from 1944 War Worker rolls to a creative concoction using Texas tumbleweeds. \$13.95 at Hereford Brand. 17961

Repossessed Kirby & Compact Vacuum. Other name brands \$39 & up. Sales & repair on all makes in your home. 364-4288. 18874

Will pay cash for used furniture & appliances, one piece or house full. 364-3552. 20460

Concrete construction. B.L. "Lynn" Jones. Driveways, walks, patios, foundations, slabs. Free estimates. Over 20 years experience. 364-6617. 21383

Sofa and chair for sale floral design, 7 months old. Like new asking \$750. Call 364-0874. 21494

G.E. Heavy Duty Washer/Dryer, large capacity, almond, excellent, \$450.00; Range, continuous cleaning, almond, \$200.00. 315 Elm, 364-4125. 21660

Bunk beds, cribs, bikes, dressers, king size beds, nic nacs & lots more. Maldonados, 208 N. Main, 364-4418. 21672

For sale: Refrigerator, kitchen sink & Delta Faucet. Call 364-6827. 21688

For sale: Registered Labrador puppies, \$100. Call 364-8503. 21723

For sale Yamaha Trumpet-Cornett in excellent condition, \$125. 364-4113. 21725

For sale G.E. 25" color Stereo TV, G.E. Electric Dryer, Kenmore washing machine, King size waterbed, antique trunk, antique vanity. 364-5568. 21740

Reduce: Burn off fat while you sleep, take Opal tablets and hydrox water pills available at Edwards pharmacy. 21744

**1A-Garage Sales**

Garage Sale 231 Center Thursday 1p.m.-6p.m.; Friday 9-12. One set 14" Mag wheels, cutting torch, lots of clothes & etc. 21737

Garage Sale 142 Pecan. Lots of everything, clothes, coats, tennis shoes, kitchen items, double window, Butane Bar-B-Que grill, Don't miss it Wednesday, 5p.m-8p.m.; Thursday 10a.m.-6p.m. 21742

**2-Farm Equipment**

**WHEAT SEED FOR SALE**  
 TAM 105-107-200  
 Beardless Wheat, Triticale, Bulk or Bagged.  
 Gayland Ward Seed Co.  
 1-800-299-0273  
 258-7394  
 364-2946

Versatile 875 Tractor-\$37,000  
 40' CB Silver Drill-\$12,000  
 43' RAC Plow-\$12,000  
 40' Graham-hoeme-\$4,000  
 3-20' IH oneways-\$3,000  
 1-18' IH Oneway-\$750  
 35' Hamby 3 pt. plow-\$1,500  
 11 Badger Claws-\$1,000  
 27' RAC 3 pt. plow-\$1,000  
 Call Dan Hall  
 364-3918 or 2505  
 John Hall-289-5825

For sale John Deere Wheat Drill-Six inch spaced-24 Drops, fits 30 in Rows-good shape, 2 big 12 flat bed trailers, 8x24 ft. all steel, good shape, one long wheel base pickup bed trailer. Chevrolet, good shape. Call at night, 364-6179. 21745

**3-Cars For Sale**

**MUFFLER SHOP**  
 CROFFORD AUTOMOTIVE  
 Free Estimates  
 For All Your Exhaust Needs  
 Call 364-7650

1988 Honda LXI, loaded, high mileage, Call after 5 p.m. 276-5367 or 276-5387. Very trouble free car. 21731

**TexSCAN**  
 Statewide Classified Advertising Network  
 Advertise in 309 Texas newspapers for only \$250.  
 Reach 3 MILLION Texans. Call this newspaper for details.

**MAKE A FRIEND...FOR LIFE!** Scandinavian, European, Yugoslavian, South American, Japanese high school exchange students...arriving August...host families needed! American Intercultural Student Exchange. Call Eleanor 817-467-4619 or 1-800-SIBLING.

**CZECHOSLOVAKIAN HIGH SCHOOL** exchange student, boy 17, needs host family. Likes jogging, tennis, computer-science and cactus growing. ARRIVING IN AUGUST. Call Eleanor 817-467-4619 or 1-800-SIBLING.

**GERMAN HIGH SCHOOL** exchange student, boy 16, needs host family. Enjoys basketball, computers, playing the trombone and music. ARRIVING IN AUGUST. Call Eleanor 817-467-4619 or 1-800-SIBLING.

**AIRCRAFT MECHANIC CAREER** training secure career, day/night classes, financial aid, relocation services, job placement, high starting pay, call Free 1-800-776-FICE.

**DRIVERS GO TO WORK** immediately Roadrunner Distributions Services, Inc. TX-1-800-285-8267 competitive pay new conventional medical/dental/vacation etc.... Sign on bonus EOE.

**IF YOU SMOKE, dip or chew tobacco, try CA-7 Herbal Mouthwash.** Soothing to bleeding gums and ulcers. No burning, stinging or discomfort. Distributors wanted. 512-249-2140.

**MECHANICS NEEDED KINSEL FORD** Lincoln Mercury, Beaumont, Texas. Salary plus bonus. Paid insurance, vacation and holidays, profit sharing. Call Byron, 1-800-221-2515, ext. 255 EOE M/F.

**193.26 ACRES, END of road, borders large ranch on three sides. Whitetail, muledeer, quail, javelina, dove, Terrell County. 800/acre, good owner terms and access 512-257-6564.**

**CASH FOR CONTRACTS or mortgages.** Why wait years to get all your cash? Lump sum paid for your payments. Call National Fidelity today! 1-800-384-1072.

**NEED MONEY?** Receiving monthly payments, not enough? Sell us the mortgage/trust deed you hold. Full or partial. D.T.S. Funding, 409-983-3329. Long distance call refunded.

**SAVE BIG \$ BY** reducing your utility/mortgage costs. We will show you how. Send S.A.S.E. to: Block Services, Rt. 5, Box 1399, Beaumont, TX 77713

**U.S. POSTAGE STAMP** supply route for sale. REQUIREMENTS: \$4,800 to \$26,000 investment -Car #2-10 hrs. per week. BENEFITS: Excellent financial return. No selling. High income potential. Call 24 hrs. 1-800-545-1305.

**ALISON & WOLFF TANNING BEDS** new commercial-home units from \$199. Lamps, lotions, accessories. Monthly payments low as \$18. Call today, FREE NEW color catalog 1-800-228-6292.

**URGENT! MUST LIQUIDATE** now! Dealer cost motorhomes, travel trailers, fifth wheels, Jayco, Four Winds, Skampor, Mallard, Gullstream, Shadow

**CROSSWORD**  
 by THOMAS JOSEPH

**ACROSS**

1	snack
2	Composer
3	Stravinsky
4	Marceau, "Ruthless People" for one
5	Yale student
6	costar
7	Limber
8	Surmise
9	Improve
10	Go awry
11	Math course
12	Sip the hooch
13	Different
14	High die roll
15	Trite performer
16	"M*A*S*H" character
17	With it
18	Singleton
19	Under-
20	Opera star
21	Rose feature
22	Painter
23	Edouard
24	Cabinet department
25	Biblical refuge
26	Greek letter
27	Beast of burden
28	Hollywood street
29	Perfect
30	Grab
31	Run-down
32	Terminated
33	DOWN
34	Cantina

**DOWN**

1	AROMA
2	TIED
3	COLD
4	TEY
5	YACHT
6	AY
7	PFC
8	OC
9	IOU
10	ELM
11	ELLA
12	INDIC
13	LOSES

**Yesterday's Answer**

1	stood	34	Without need
2	Family	35	Impolite
3	December 31, e.g.	36	Patella's place
4	Used a stool	37	Like the Mohave
5	In recent time	38	Breadth
6	Rich	39	Went 70
7	Dessert	40	Blue
8	Diamond	41	Sawbuck

**STUMPED?** For answers to today's crossword, call 1-900-454-7377/99¢ per minute, touch-tone / rotary phones. (18+ only) A King Features service, NYC.

For sale 1979 Freightliner, cabover, Cummins Engine, 364-2628. 21722

'79 Cad w/sun roof & '79 1000 Honda Gold Wing, \$1300.00 each. 364-3935. 21730

**4-Real Estate**

For sale by owner real nice 3 bedroom house, app. 1775 sq.ft., fireplace, 1 3/4 bath, central air & heat, with nice yard and trees at 214 Cherokee-real nice & quiet neighborhood. Call 364-7427 after 6. 21587

Two bedroom, one bath house, low down payment with good terms, owner finance, Call 364-2131. 21469

**5-Homes For Rent**

1,2,3 and 4 bedroom apartments available. Low income housing. Stove and refrigerator furnished. Blue Water Garden Apts. Bills paid. Call 364-6661. 770

Nice, large, unfurnished apartments. Refrigerated air, two bedrooms. You pay only electric-we pay the rest. \$305.00 month. 364-8421. 1320

Self-lock storage. 364-6110. 1360

Paloma Lane Apts. one and two bedroom available, central air & heat, carpeted, well maintained, HUD contracts welcomed, \$170 deposit required. Equal Housing Opportunity. 364-1255 M-F. 20835

Eldorado Arms Apts, 1 & 2 bedroom furnished apts, refrigerated air, laundry, free cable, water, & gas. 364-4332. 18873

Apartment & trailers for rent. Please Call 364-8620. 19356

Nice, large, unfurnished apartments. Refrigerated air, two bedrooms. You pay only electric-we pay the rest. \$305.00 month. 364-8421. 1320

Need part time gardener. Call days, 364-7862 or nights call 364-6788.

**7A-Situations Wanted**

Need some free time for yourself? I will do any house cleaning you need, large or small. Call Mary 364-0070. 21676

Office space for rent with storage and ample parking, \$300 monthly plus utilities. 364-3740. 21010

Commercial Building for rent, 1221 E. First, Call 364-4621. 21045

Move-in special, two bedroom, stove & fridge, water paid, 364-4370. 21079

For rent, clean furnished apartment, bills paid, single person, no pets. Call 364-1797, leave message. 21599

1, 2 and 3 bedroom furnished apartments for rent, all bills paid. 364-8042. 21626

One or two bedroom duplex, water paid, stove & fridge, \$199/364-4370. 21701

Two bedroom apartment stove, fridge, fenced patio, laundry facilities available, water & cable paid. 364-4370. 21702

For rent 3 bedroom 1 bath, w/d hookup, 215 Knight, \$225 + deposit. 364-4908. 21720

For rent 4 bedroom 2 bath, w/d hookup, new paint, 200 Bennett, \$350 + deposit. 364-4908. 21721

2 bedroom house for rent, 364-2958 after 5 p.m. 21726

Efficiency Apartment, stove, fridge, water paid, \$150/monthly, 364-3935. 21729

Very nice 3 bedroom, 2 bath, double car garage, nice yards, 242 Juniper, \$200/Deposit, \$525/monthly. 364-4113. 21736

One room furnished efficiently apartment, all bills paid, \$50 deposit, \$165 monthly. 655-0092 or 364-8268.

**HOUSECLEANING**  
 Honest, Dependable with many references-Hereford, Friona, Black, Summerfield, Milo Center, Etc.  
 364-8868 or 364-7932

**8-Help Wanted**

Fulltime RN needed, mileage reimbursement, Deaf Smith Home Care Services. Call 364-2344. 21705

Family Care Specialist to work with child abuse cases. Must have high school diploma and reside in Hereford. Send resume to Childrens Enterprises, 701 S. Philmore, Amarillo, Texas, 79101. 21724

Dr. for 35,000 hd yard, must have at least one year experience & good knowledge of sick cattle & medicine. 806-258-7298 21741

We'll pay you to type names and addresses from home. \$500.00 per 1000. Call 1-900-896-1666 (\$1.49/min 18yrs. +) or write: PASSE-480H, 161 S. Lincolnway, N.Aurora, IL 60542. 21743

**MANAGER TRAINEE**  
 \$300/weekly opportunity, need 3 people to learn and assist manager. For personal interview call Amarillo 373-7489 between 9a.m.-11a.m. only.

**9-Child Care**

Are you a working mother looking for an experienced babysitter. Call Lori at 364-7073 or come by 623 Ave. J. 21568

**KING'S MANOR METHODIST CHILD CARE**  
 \*State Licensed \*Qualified Staff  
 Monday-Friday 8:00 am - 6:00 pm  
 Drop-ins Welcome with advance notice  
 MARILYN BELL / DIRECTOR  
 364-0661 • 400 RANGER

**NEED YOUR CEILING CLEANED?**  
 Specializing in Blown, Acoustical or Tile Ceilings! Also Slip-Proofing Bathtubs & Floors!  
**ABOUT HALF THE COST OF PAINTING.**  
 FOR A FREE ESTIMATE BY APPOINTMENT,  
**CALL: 364-3882**

**ACE CEILING CLEANERS**  
 OWNER: MONTE COCHRAN

**Classifieds.**

They're just for you, everyday, in the Hereford Brand.  
 Call Janey Allmon today at 364-2030 and get a classified to work for you.

# CLASSIFIEDS

## 364-2030

### Hereford Day Care

State Licensed  
Excellent program  
By trained staff.  
Children 0-12 years  
248 E. 16th 364-5062

### 10-Announcements

Notice! Good Shepherd Clothes Closet, 625 East Hwy. 60 will be open Tuesdays and Fridays until further notice from 9 to 11:30 a.m. and 1:30 to 3:00 p.m. For low and limited income people. Most everything under \$1.00. 890

Problem Pregnancy Center Center, 801 E. 4th. Free pregnancy testing. For appointment call 364-2027. 364-5299 (Michelle) 1790

### 11-Business Service

#### Riley Construction Co.

NEW Kitchens and Baths. Painting, plumbing repair. Ceramic Tile. FREE Estimates  
Tim Riley 364-6761 or Burnia Riley 578-4381

Defensive Driving Course is now being offered nights and Saturdays. Will include ticket dismissal and insurance discount. For more information, call 364-6578. 700

Will pick up junk cars free. We buy scrap iron and metal, aluminum cans. 364-3350. 970

Garage Doors & Openers Repaired. Call Robert Betzen Mobile 364-1120; Nights Call 289-5500. 14237

We insulate attics, walls, metal buildings, build fence, paint & repair. Free estimates. Forrest Insulation & Const. 364-5477. 21385

Weed shredding. 364-2150. 21391

Will haul trash, dirt, sand & gravel, tree trimming, yard work, leveling, flower bds. 364-0553 or 364-8852. 21711

Kidd Custom Cattle Processing. Competitive prices, very experienced, no yard too large or too small. We take pride in our work. Contact Harvey or Sandra Kidd, 647-3239 or 364-3208. 21739

**ROUND-UP APPLICATION**  
Pipe-Wick Applicator  
Pipe-Wick Mounted On  
Hi-Boy. Row Crop,  
Volunteer Corn  
30" or 40" Rows  
Call Roy O'Brien  
265-3247

**WINDMILL & DOMESTIC**  
Sales, Repair, Service  
Gerald Parker,  
258-7722  
578-4646

### 12-Livestock

**MARTINEZ BEEFMASTER**  
Henry E. Martinez  
4909 Erik  
Amarillo, TX 79106  
806-352-6098

FOR SALE  
FORTY LONG YEARLING BULLS.  
PERFORMANCE TESTED. WEIGHING 1000 Lbs.

Sorghum silage for sale, packed and treated, priced to sell. Near Westway. Has lab results. Call 655-2428 or 289-5320. 21621

For you silage cutting needs, call Don Schulte, 945-2288. 21625

For sale Alfalfa hay bales. Call 364-0893.

### LEGAL NOTICES

**The Commissioners' Court of Deaf Smith County, Texas** will open bids for seal coating of paving at 9AM on August 24th, 1992 in the Courthouse. Specifications may be obtained at the County Auditor's office, 242 East Third Street, Hereford, Texas. The Commissioners reserve the right to reject any and all bids.

**NOTICE OF INCORPORATION**  
Notice is hereby given that the RANCH HOUSE, whose principal business office is at 1201 West First Street, Hereford, Texas 79045, was incorporated on the 22nd day of July, 1992, without a change of firm name except that the business is now known as the RANCH HOUSE, INC. DATED this 31st day of July, 1992  
RANCH HOUSE, INC.  
By: Michael V. Miller  
President

### AXYDLBAAXR is LONGFELLOW

One letter stands for another. In this sample A is used for the three L's, X for the two O's, etc. Single letters, apostrophes, the length and formation of the words are all hints. Each day the code letters are different.

8-11 CRYPTOQUOTE  
Z V AVY RAYOXOHRYL  
Y M V P D T L V M F V M M K  
R D V P Y F J R Y I R K A L N L M  
J R H H L A . B L L H O A Y J L  
G P A T O C J Y . — D L A W M R A B T O A  
Yesterday's Cryptoquote: EVERY TYRANT WHO HAS LIVED HAS BELIEVED IN FREEDOM — FOR HIMSELF. — ELBERT HUBBARD

## Hints from Heloise

Q. I need a solution for musty-smelling luggage that was stored in the basement. We've tried airing it out in the hot sun, but that has not helped. Would you please give me an idea how to remove the musty odor?  
— Carolyn Goldfarb, Lutherville, Md.

A. Here are a couple of hints to use to get rid of that smell. Stuff the luggage with crumpled newspaper and a few fabric-softener sheets. Close up and leave as long as possible (the longer the better). To help prevent that musty smell again, put a bar of scented soap or a fabric-softener sheet inside before storing away. — Heloise

**SEND A GREAT HINT TO:**  
Heloise  
PO Box 795000  
San Antonio TX 78279-5000  
FAST FACTS

Other uses for old, clean shower curtains:  
• Make into picnic-table and bench covers.  
• Keep in the trunk of the car in case you have car trouble.

• Use as a water slide by laying it out near a sprinkler.  
• Use as a ground cover for a sleeping bag when camping.

• Use for a drop cloth when painting or when children are finger-painting

**IMPORTANT INFORMATION**  
Dear Heloise: I'd like to share my husband's way to have identification on him while he is jogging. We made a reduced copy of our medical insurance card, and on the back we listed (in order to be called) the name and phone number of who to contact in the event of an emergency.

I laminated the card and he carries it in the pocket of his jogging shorts. A hole could be punched in it so it could be worn dog-tag style if necessary.

I hope you are able to share this idea. People do have accidents and we feel this is an excellent way to get medical attention and proper help right away. — Debbie Williams, Bellaire, Texas

**ALARM CLOCK**  
Dear Heloise: Do you want to get some sleep while your teen-agers are out during the evening? Simply agree on a time to be home, and then set an alarm clock for that time. Then go to bed and sleep!

When they come home, they turn off the alarm. If the alarm rings, it's time to get up and find out why they are not home. Occasionally they might be delayed; then it is their responsibility to call. — Marie Olsen, Hemet, Calif.

**SOUND OFF**  
Dear Heloise: In this day of recycling and the controversy over plastics, why is it that cereal, cracker and cookie manufacturers continue to put their products in inner-liner bags made of plastic?

These bags are next to impossible to open, and I don't imagine they disintegrate well in our landfills. What happened to good old wax paper? — Linda Nicoloff, Greenville, Pa.

Q. Help! How does one launder and machine-dry polyester blouses without having blotchy places show on the fabric? I tried using liquid fabric softener in the washer. When the spots appeared, I changed to fabric-softener sheets in the dryer, but the spots are still appearing. — Marguerite Lewis, Anchorage, Alaska

A. The stains might come out if you wet the garment and rub the spots with a bar of soap or liquid laundry detergent. Rinse well and wash as usual in hot water if safe for the fabric. Let the garment air dry. If the stains persist, try again.

When using liquid softener it's best to add it to the water, making sure it doesn't touch the clothing.

The spots may be caused by the fabric softener. Fabric-softener sheets can cause stains if the tem-

perature on the dryer is set too high or if there are too many or not enough clothes in the dryer, which allows the fabric-softener sheet to leave its mark. — Heloise

**VACUUM BOTTLE**  
Dear Heloise: To wash a vacuum bottle I fill it with hot water and add a teaspoon or more of baking soda, depending on the size of the bottle. I let it stand a minute or so and swish the water around. All the brown coffee residue comes clean. Just another way baking soda helps out. — Mrs. Louise Helm, Shippensburg, Pa.

Thanks for your letter. I'm sending you a copy of my baking soda pamphlet. It's just full of money-saving uses for this great product. Anyone else interested should send \$2 and a self-addressed, stamped (52 cents), long envelope to Heloise/Baking Soda #2, PO Box 795001, San Antonio TX 78279-5001. — Heloise

**SUGAR STARCH**  
Q. I was given a beautiful handmade doily. It is supposed to stand up like ruffles. I need to know how to make sugar starch. — Betty Hicker, Indianapolis, Ind.

A. Heat  $\frac{1}{4}$  cup water and  $\frac{1}{4}$  cup sugar in a small saucepan over a low heat until the liquid is clear. Remove from heat and let cool.

Wet the doily in water and roll it up in a small towel. (This helps remove any excess water.) Then dip into the cooled sugar mix and squeeze out any excess starch before shaping the doily and letting it air dry. — Heloise

**BATH MATS**  
Dear Heloise: For years I have cleaned rubber bath mats in the washing machine, along with the bath towels, using hot, soapy water and bleach.

I also wash the shower curtain this way. Both come out clean as new. — Lynn Puryear, Staunton, Ill.

Send a money- or time-saving hint to Heloise, PO Box 795000, San Antonio TX 78279-5000. I can't answer your letter personally but will use the best hints received in my column.

**Dear Readers:** In this day and age, saving money is on everyone's mind. Here are some easy cost-cutters to help cut back on your clothing dollar.

• One of the easiest ways is to shop at resale shops. Some have designer clothing without the designer price.

• Check clothing labels, and purchase clothing that can be machine-washed at home. Stay away from clothing that requires dry-cleaning or special care. If you must have the clothing cleaned often, it can add up fast.

• Share clothes that you no longer wear with friends or relatives, and encourage them to do the same. This can be extremely helpful with children's clothing.

• Mend your own clothing or find a friend or relative who will do it free or for a nominal charge. You may be able to swap "trades."

• Buy clothing that is easily mixed and matched with other items in your closet. It will save you money and you will get more wear out of your wardrobe.

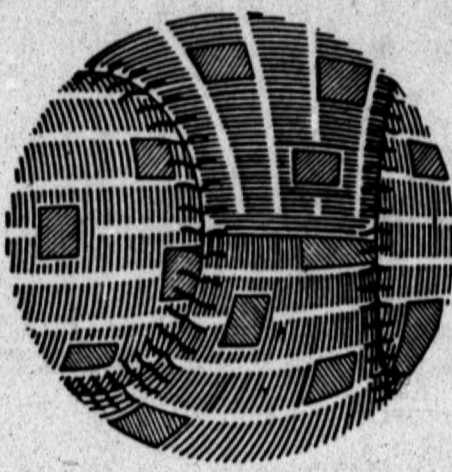
Shopping wisely can save you a bundle. — Heloise

**NEWSPAPER INK**  
Dear Heloise: While reading the morning paper I noticed that I got some newspaper ink on my favorite blouse. I can't seem to remove it. Do you have any suggestions? — Katy Sinclair, Little Rock, Ark.

Usually, normal washing removes the ink. Be sure to put in enough laundry soap (check machine manual for exact amounts) and use the hottest water safe for the fabric.

You may want to pretreat the area, and it should come out. Be sure to check before placing in the dryer. Retreat if necessary. — Heloise

# SPORTS SPORTS SPORTS



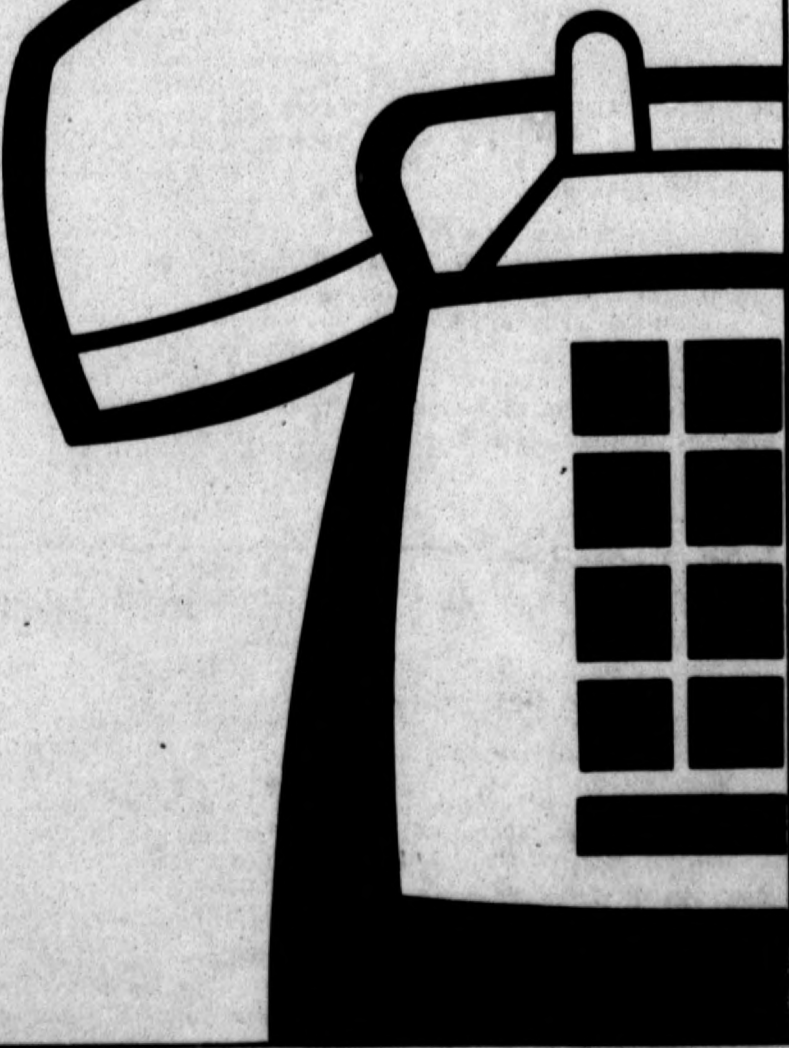
Pitch. Swing.  
Hit. Home run.

We cover your  
favorite game.

## THE HEREFORD BRAND

# Pick It Up

USE THE CLASSIFIEDS TODAY



**Schlabs Hysinger** SERVING HEREFORD SINCE 1979.  
COMMODITY SERVICES  
1500 West Park Ave. 364-1281  
Richard Schlabs Steve Hysinger

Phone 364-1286 Each Trading Day After 5:30 P.M. for Recorded Commodity Update

Prices effective Monday, August 10, 1992

### CATTLE FUTURES

Aug 03	42.75	43.45	42.47	44.85	41.80
Oct	43.75	44.25	43.27	44.55	41.80
Dec	44.75	45.25	44.27	45.25	41.80
Mar	45.75	46.25	45.27	46.00	41.80

... (more data) ...

### METAL FUTURES

Aug	330.00	332.00	330.00	332.00	334.00
Oct	330.00	332.00	330.00	332.00	334.00
Dec	330.00	332.00	330.00	332.00	334.00

... (more data) ...

### FUTURES OPTIONS

Strike	4.00	4.50	5.00	5.50	6.00
Call	1.00	0.75	0.50	0.25	0.00
Put	0.25	0.50	0.75	1.00	1.25

... (more data) ...

# Jays open showdown series with power display

By **BEN WALKER**  
AP Baseball Writer

Back home at SkyDome, the Toronto Blue Jays were the ones swinging the big bats.

Joe Carter, Dave Winfield and Candy Maldonado each hit two-run homers Monday night and the Blue Jays beat the Baltimore Orioles 8-4 in the opener of their showdown for first place in the AL East.

The Blue Jays were glad to get home following a 2-5 swing to Boston and Detroit in which Toronto pitchers had an 11.90 ERA.

"We just had a horrendous road trip so we had to get things righted," Winfield said. "We stopped our slide. Now we can concentrate on starting a good streak."

Todd Stottlemyre (7-7) gave up two runs on five hits in seven innings. The Orioles scored twice in the ninth with Tom Henke pitching.

Mike Mussina (11-5) gave up a career-high eight runs on 10 hits in 6 1/3 innings. He also allowed three home runs in a game for the first time.

"It's been a long time since I've been roughed up that badly," Mussina said. "I didn't have good location and they hit the ball well."

Carter got three hits and scored three times. He hit his 24th homer in the first inning.

Winfield put Toronto ahead for good at 3-2 with an RBI double in the third. Maldonado hit his 13th homer later in that inning, and Winfield finished Mussina with his 19th homer in the seventh.

### Angels 4, Brewers 1

Julio Valera pitched a three-hitter. Angels interim manager John Wathan left immediately after the game in Anaheim to go to Cedar Rapids, Iowa, where his father collapsed Monday night following what doctors said was either a stroke or a brain hemorrhage. Jim Wathan was revived by a friend who used CPR, but he was listed in critical condition.

Angels pitching coach Marcel Lachemann will take over for Wathan. California manager Buck

Rodgers was injured in the team's bus crash earlier this season and is not expected back before the end of the month.

Valera (6-9) struck out three and walked one in his third complete game. Bill Wegman (10-9) allowed four runs and nine hits in six innings.

### Athletics 5, White Sox 3

Oakland roughed up Charlie Hough for five runs in the first inning at home.

Lance Johnson extended the longest hitting streak in the majors this season to 24 games and Ron Karkovice hit a three-run homer for the White Sox in the fifth inning. But that was all Chicago got against Ron Darling (11-8) and Dennis Eckersley, who pitched the ninth for his 37th save.

Hough (5-8) slipped to 17-9 lifetime against the A's.

### Twins 7, Rangers 5

Kirby Puckett homered, doubled and singled as Minnesota overcame

two home runs by Texas' Dean Palmer to win at the Metrodome.

Kevin Tapani (13-7) gave up three earned runs and eight hits in eight innings and Rick Aguilera finished for his 31st save.

Bobby Witt (9-10) was tagged for seven runs and 11 hits in seven innings.

### Indians 8, Red Sox 5

Albert Belle homered twice and drove in four runs and Carlos Baerga hit a three-run homer that capped a four-run rally in the eighth inning at Cleveland.

Cleveland trailed 5-4 in the eighth when Sandy Alomar Jr. singled off third baseman Wade Boggs' glove and first baseman Mo Vaughn made an error, scoring one run against Paul Quantrill (1-2). Baerga hit his 17th homer, connecting off Jeff Reardon. Jack Armstrong (4-13) pitched two

scoreless innings and Steve Olin got three outs for his 19th save.

Belle hit a three-run homer in the third inning and a solo shot, his 23rd, in the seventh. Jack Clark hit a two-run homer for the Red Sox.

### Tigers 10, Yankees 5

Cecil Fielder hit his 26th homer and drove in three runs, giving him a major league-leading 98 RBIs, as Detroit won at Tiger Stadium.

John Doherty (3-2) was the winner

and Shawn Hillegas (1-6) was the loser. Bernie Williams hit a two-run homer for New York.

### Mariners 3, Royals 1

Randy Johnson pitched a three-hitter and struck out 10, leading Seattle past Kansas City at the Kingdome.

Johnson (8-12), leading the majors with 101 walks and 16 hit batters, walked four and hit none.

Luis Aquino (2-3) allowed five hits in seven innings.



## A.O. THOMPSON ABSTRACT COMPANY

Margaret Schroeter, Owner  
Abstracts Title Insurance Escrow  
P.O. Box 73 242 E. 3rd Phone 364-6641  
Across from Courthouse

# Bucs nip Mets in 16 innings, stretch winning streak to 11

By **The Associated Press**

It takes a good team and a decent lead to take an 11-game winning streak in stride.

"The winning streak doesn't really matter that much," Pittsburgh manager Jim Leyland said Monday night after the Pirates beat the New York Mets 3-2 in 16 innings and extended theirs to 11.

Jeff King singled home the go-ahead run as Pittsburgh matched its longest winning streak since 1978. The franchise record of 16 was set in 1909.

For the Mets, it was the seventh consecutive loss. New York has been outscored 37-14 during its slump.

"I'm proud of the way we played the game," Mets manager Jeff Torborg said. "Our bullpen was hurting but they did the job in extra innings."

Andy Van Slyke singled off Lee Guetterman (2-2) leading off the 16th, Cecil Espy sacrificed and Barry Bonds was issued the ninth intentional walk of the game. King singled home the tie-breaking run, and Jose

Lind and winner Steve Cooke (1-0) followed with RBI singles.

King popped a foul bunt to the catcher with runners on second and third and two outs in the 10th.

"I was just trying to surprise them," he said.

Pittsburgh, which maintained a 3-game lead over the Expos, had 17 hits and stranded 21 runners.

New York loaded the bases with two outs in the 12th against Bob Patterson, but Kevin Bass (0 for 7) flied to center.

### Giants 4, Astros 1

The Giants returned home for the first time since Friday's announcement of plans for a move to Florida and won behind three RBIs from Will Clark and a six-hit by John Burkett (9-6).

Clark hit a two-run homer in the third inning, his 12th of the season, following Robby Thompson's RBI double. Clark added a sacrifice fly in the fifth.

Butch Henry (3-8) allowed four runs and nine hits in 4 1/3 innings for

Houston, 4-10 on its 26-game road trip, which was caused by the Republican National Convention.

### Dodgers 5, Braves 3

Atlanta's nine-game winning streak ended when Ramon Martinez (8-8) outpitched Steve Avery (9-8). Martinez allowed three runs and five hits in 6 2/3 innings, and Jim Gott got six outs for his fifth save.

Avery (9-8) was tagged for four runs - three earned - and 11 hits in 6 2/3 innings as the Dodgers ended a four-game losing streak and avoided a four-game sweep.

### Expos 11, Cubs 0

Brian Barnes and two relievers combined on a eight-hitter and Montreal took advantage of shoddy fielding in a six-run third to stop Chicago's home winning streak at seven.

Barnes (4-3) gave up six hits, struck out five and walked none in 7 2/3 innings. Jeff Robinson (2-1) allowed four runs and six hits in two-plus innings.

# Unions' proposal aimed at keeping Giants in Bay Area

SAN FRANCISCO (AP) - The West and East coasts continued their tug-o-war with the San Francisco Giants as officials in California and Florida prepared campaigns to gain the upper hand with baseball owners.

In a bid to hold onto the team, a consortium of construction trade unions in San Francisco offered a \$200 million loan to build a new downtown stadium to whoever would sponsor the deal.

"We have pension funds on hand that we can lend to any person who wants to build a ballpark," said Larry Mazzola, a spokesman for the Plumbing and Pipe Fitting Industry Union, Local 38.

Florida officials, with the empty Suncoast Dome ready and waiting for a team, said they'll use the support of Giants owner Bob Lurie and appeal to baseball owners on a "one-on-one basis."

"Ultimately, Lurie will be the most important person in this process. He wants to get this done," said Rick Dodge, the assistant St. Petersburg city manager in charge of bringing baseball to St. Petersburg, Fla.

Lurie announced Friday that he agreed in principle to sell the team for a \$111 million to a group of Florida investors. The sale must be approved by 11 of 14 National League owners and eight of 14 in the American League. Relocation of the team has

to have the blessing of commissioner Fay Vincent.

Lurie has said he will not consider other offers until owners vote. The owners' next joint meeting is scheduled for Sept. 10 in St. Louis.

Some have speculated that approval from AL owners may be difficult because of a shift of the Giants to Tampa Bay next year - along with the expansion Florida Marlins playing in Miami - would likely preclude the AL from having a Florida team.

"It's something I've been concerned about since Lurie said he was going to sell the team," said Jack Critchfield, the Florida Progress Corp. chairman who helped organize the area's ownership group. "But it's a concern that can be overcome."

However, media market size could also be a significant issue.

The AL would benefit from the move because it would leave the Oakland Athletics as the only team in the nation's fifth-ranked media market. But the media strength is exactly what San Francisco officials are betting will keep the team local.

On Monday, officials on all sides offered few details of their campaigning efforts.

Aside from mentioning Lurie's active involvement, Dodge refused to go into detail about what efforts would be undertaken to win the necessary votes.

San Francisco supervisor Angela Alioto and mayor Frank Jordan both claimed support of the construction trade unions for a new downtown ballpark.

Alioto said her deal also included the help of Los Angeles Raiders owner Al Davis and two other construction companies. She was expected to announce further details Thursday.

Jordan said he would still try to attract a team of investors organized by developer Walter Shorenstein and Warren Hellman to purchase the team. Jordan has asked to address the baseball owners at their next meeting.

### Pac 10 Tops NCAA

OVERLAND PARK, Kan. (AP) - The NCAA Statistical Bureau says the Pacific Coast Conference is the all-time leader in national basketball championships.

The Pac-10 has won 13 NCAA titles. Most of those were posted by the UCLA powerhouse in the days of John Wooden. The Bruins won 10 championships. Oregon won the first title in 1939 and Stanford took top honors in 1942. California was successful in 1959.

The last UCLA championship was in 1975.

## COWBOYS

Richards laid-back approach to the NFL.

"He's been very consistent," Johnson said. "He looks like he's going to give us the depth we're looking for at the running back spot."

"Curvin understands the offense, a lot of people have the ability to play but he understands what we expect. It's a lot more serious now to him than what it was a year ago. He understands that the concentration at this level has got to be more than at the college level."

"I'm more comfortable and relaxed this year," Richards said. "If I make a mistake, it's going to be

going 100 percent. I'm my worst critic. There's always somewhere I need to improve."

Fourth-round draft pick Tom Myslinski returned to practice on a limited basis Monday after suffering knee and ankle injuries in the first workout three weeks ago.

The Cowboys had high hopes before camp for Myslinski, an offensive guard from the University of Tennessee.

"It's been real disappointing not to be able to do anything," Myslinski said. "It feels good to be back out there."

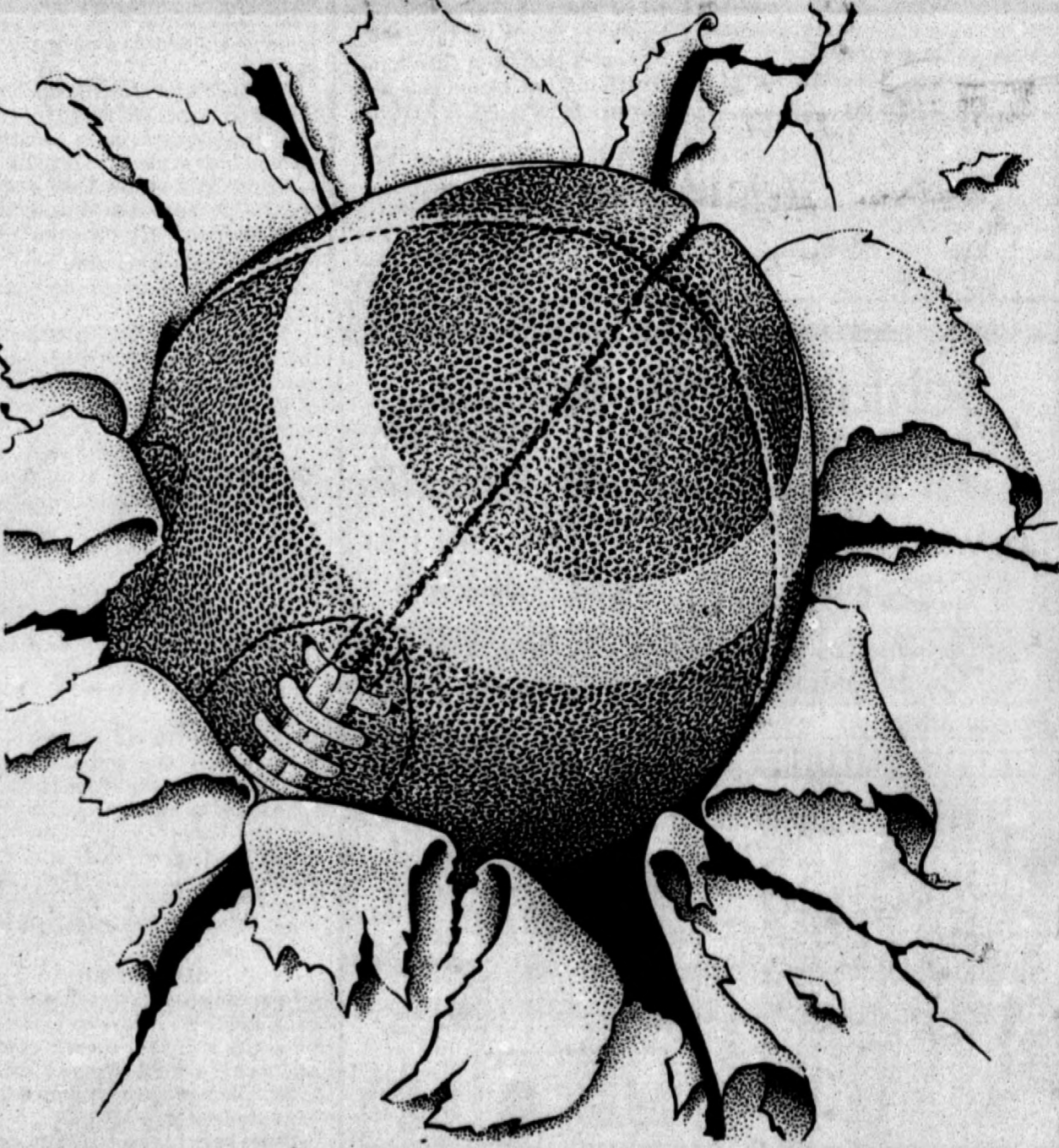
"I know I'm three weeks behind. But I can't put any extra pressure on myself to catch up. I've got to come out, give it my best shot and see what happens."

Myslinski is still not fully recovered from the sprained knee and ankle suffered on July 17.

"I feel like I've got 100 pound blocks of cement on my feet but I guess I feel as good as I can feel," Myslinski said. "Side to side movement is very hard right now, but straight ahead I feel strong."

Johnson also announced that free agent running backs Tony Jordan and Tony Burse have been released.

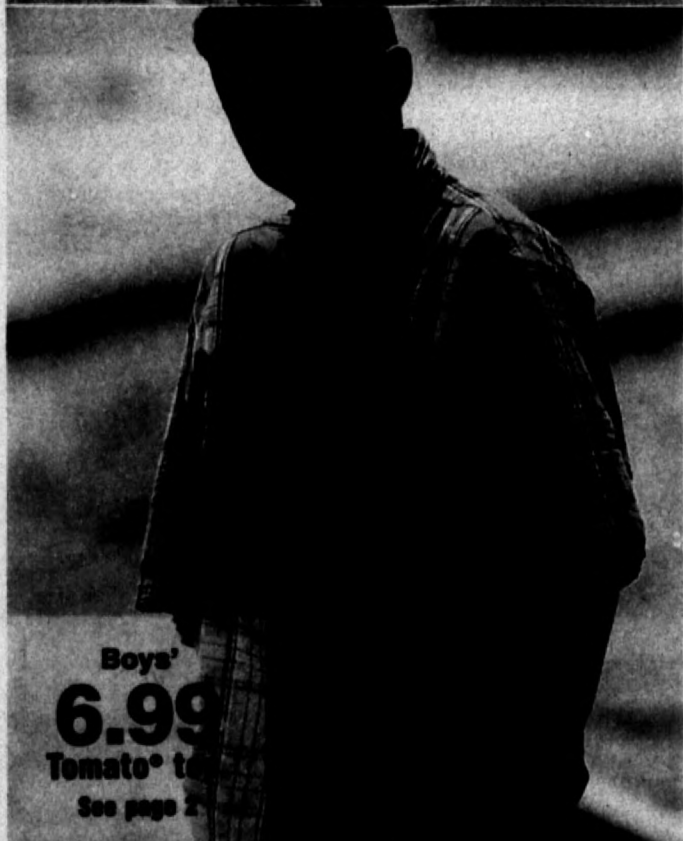
# THERE'S ONLY ONE SPORT WHERE THROWING BOMBS IS ENCOURAGED



And there's only one local contest where armchair terrorists like yourself can predict which team will get BOMBED each week!

## The HEREFORD BRAND'S FOOTBALL CONTEST!

### COMING SOON; WATCH FOR IT!

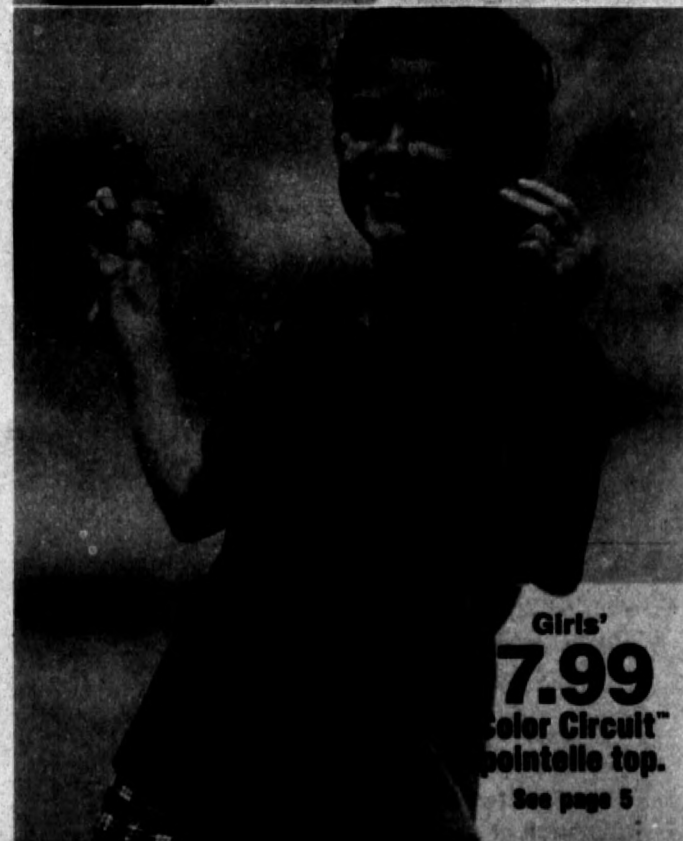


# EVERY



## SUPER VALUE WEEK

The super-low  
prices you  
want now more  
than ever.  
Just look for  
the yellow  
triangle.



Boys'  
**6.99**  
Tomato® tee  
See page 2

Boys'  
**7.99**  
Sun-kissed®  
button-front tee.  
See page 24

Girls'  
**7.99**  
Color Circuit™  
pointelle top.  
See page 5

### DEFERRED BILLING! NO PAYMENT UNTIL NOVEMBER

When the kids need tees and shorts and sneakers, you need Deferred Billing!

For any Merwyn's purchase from a participating store, you will have a bill sent to your Merwyn's account on October 1, 1997. No payment will be due until November 1, 1997. No finance charges will be added to your account for these purchases during the deferred period.

4-7 **5.99**

**SUPER VALUE**

Boys' Tomato<sup>®</sup>  
cotton shorts.

4-7, reg. 10.00,  
sale **5.99**

Top, reg. 11.00,  
sale **6.99**

**Boys' sizes 8-20:**

Shorts, reg. 11.00,  
sale **8.99**

Knit top, reg. 12.00,  
sale **7.99**

**Front cover:**

Boys' 8-20 shirt,  
reg. 12.00, sale **6.99**



**7.99**

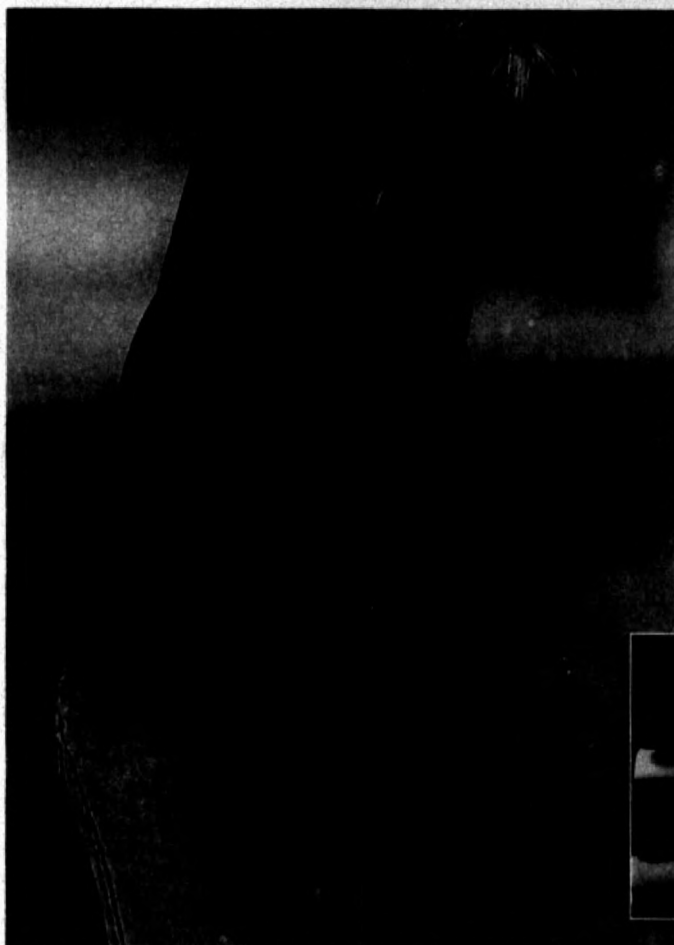
**SUPER VALUE**

Izod<sup>®</sup> for Boys  
polo shirts in  
cotton/polyester

knit. Sizes 8-20,  
reg. 12.00,  
sale **7.99**

**Sizes 4-7,**  
reg. 10.00,  
sale **7.99**

Izod<sup>®</sup> 4-20  
collection,  
reg. 10.00-15.00,  
sale **7.99-10.99**



pkg. **7.99**

**SUPER VALUE**

BVD<sup>®</sup> briefs  
package of 6.

Freshrunk 100%  
cotton. White;  
s,m,l,xl fit 6-20.

Reg. 9.75,

sale **7.99 pkg.**



**50% off**

**SUPER VALUE**

Character print  
tees. Cotton/  
polyester. Boys'  
4-7, reg. 9.00,  
sale **4.49**

**8-20 tees,**  
not shown,  
reg. 10.00,  
sale **4.99**

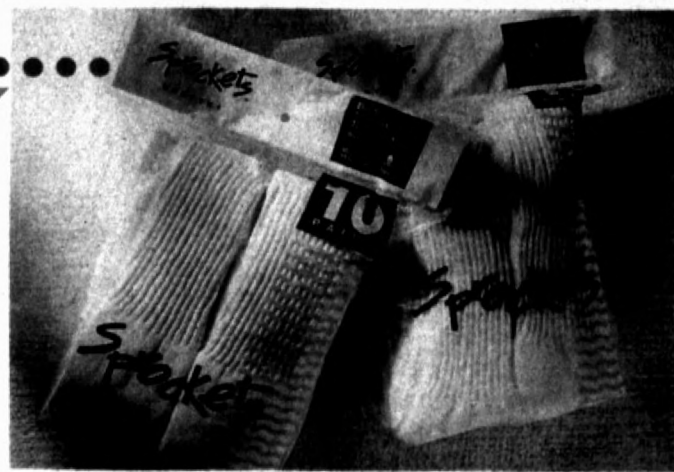


pkg. **7.99**

**SUPER VALUE**

Sprockets<sup>®</sup> 10-  
pair pack of sport  
socks. Tube, heel-  
and-toe or low-  
cut; white. Cotton

blend; 7-8 1/2,  
9-11. Reg. 9.75,  
sale **7.99 pkg.**



**SUPER VALUE  
1/3 OFF  
ENTIRE  
STOCK  
OF BUGLE BOY**

Boys' 4-20 collection.  
100% cotton and  
cotton polyester.  
Reg. 11.00-30.00,  
**sale 7.69-20.99**  
a. 4-7 Striped tee,  
reg. 14.00, **sale 9.33**  
b. 4-7 Shorts, reg. 15.00,  
**sale 9.99**  
c. 8-20 Screen tee,  
reg. 12.00, **sale 7.99**  
d. 8-20 Canvas pants,  
reg. 30.00, **sale 17.99**



**SUPER VALUE  
ENTIRE  
STOCK**

**OF GIRLS'  
7-14 SHORTS**

Girls' 7-14 shorts.  
Reg. 12.00-18.00,  
sale 7.99-12.99

a. 7-14 flannel shorts,  
reg. 12.00, sale 7.99

b. 7-14 Michael G.®  
shorts, reg. 16.00,  
sale 10.99

d. 7-14 denim shorts,  
reg. 16.00, sale 10.99

**Girls' 7-14 tops**  
in 100% cotton and  
cotton blends\*.

Sizes s,m,l.  
Reg. 14.00-16.00,  
sale 7.99-10.99

\*Exclusive of trim.



**SUPER VALUE  
ENTIRE  
STOCK**

**OF GIRLS'  
4-6x SHORTS**

Girls' 4-6x shorts.  
Reg. 16.00,  
sale 10.99

c. 4-6x denim shorts  
reg. 16.00,  
sale 10.99

**Girls' 4-6x tees.**  
Tie-front in cotton/  
polyester\*. Sizes s,m,l  
Reg. 14.00, sale 9.99

\*Exclusive of trim.

**2 pkgs.  
8.00**

**SUPER VALUE**  
Package of 5  
Sprockets™  
underwear.

Cotton/polyester;  
sizes 4-14. Pkg./5,  
reg. 5.00,  
sale 2 pkgs. 8.00



**2 pkgs.  
8.00**

**SUPER VALUE**  
Package of 6  
Sprockets™  
crew socks.  
Cotton/nylon.  
Pkg./6, reg. 5.50,  
sale 2 pkgs. 8.00



DEFERRED BILLING! NO PAYMENT UNTIL NOVEMBER





# SUPER VALUE ENTIRE STOCK OF COLOR CIRCUIT™

Girls' 4-14 collection  
in coordinating colors and  
prints; cotton/polyester.

**Pointelle tee:**

4-6x, reg. 10.00, **sale 6.99**  
7-14, reg. 12.00, **sale 7.99**

**Print tunic:**

4-6x, reg. 14.00, **sale 8.99**  
7-14, reg. 15.00, **sale 9.99**

**Solid-color tunic:**

4-6x, reg. 13.00, **sale 8.99**  
7-14, reg. 14.00, **sale 9.99**

**Skirt:**

4-6x, reg. 14.00, **sale 8.99**  
7-14, reg. 15.00, **sale 9.99**

**Print leggings:**

4-6x, reg. 10.00, **sale 6.99**  
7-14, reg. 12.00, **sale 7.99**

**Solid-color leggings:**

4-6x, reg. 9.00, **sale 6.99**  
7-14, also in xl, reg. 10.00,  
**sale 6.99**

**Cardigan:**

4-6x, 100% acrylic,  
reg. 18.00, **sale 13.99**  
7-14, 100% cotton,  
reg. 20.00, **sale 14.99**



**When the kids need tees and shorts and sneakers, you need Deferred Billing!**

For any Merco's charge transaction totaling \$100 or more, you can choose to defer billing to your Merco's account until October 1992. No payment will be due until November 1992. No finance charges will be added to your account for these purchases during the deferred period. Excludes gift certificate purchases.

**12.99**

**SUPER VALUE**

**Oshkosh B'Gosh®**  
basic overalls and  
jumpers. 100% cotton.  
Infants' 12,18,24 mos.,  
toddlers' 2,3,4.  
Reg.15.00,  
**sale 12.99**  
**Tops, shown,**  
reg. 11.00, **sale 8.99**



**30% off**

**SUPER VALUE**

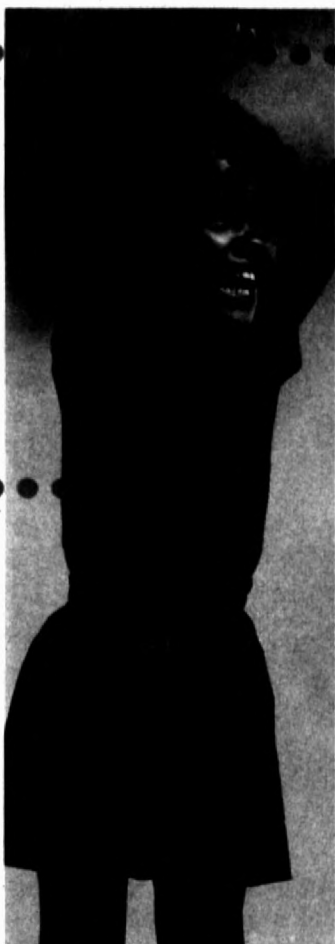
**Little Leaf®** for  
infants 12,18,24 mos.,  
toddlers 2,3,4.  
Reg. 9.00-28.00,  
**sale 6.29-19.59**  
**Girls' 4-6x,**  
not shown,  
reg. 16.00-30.00,  
**sale 11.19-20.99**



each **5.99**

**SUPER VALUE**

**Cheetah® sweats.**  
Crews or pants for  
toddlers' 2,3,4.  
Cotton/polyester.  
Reg. 8.00,  
**sale 5.99 ea.**  
**Hooded jacket,**  
reg.14.00,  
**sale 11.99**



**4.99**

**SUPER VALUE**

**Sprockets®**  
fitted crib  
sheets in 100%  
cotton. Reg. 7.00,  
**sale 4.99**  
**25% off related  
bedding,**  
reg. 4.00-26.00,  
**sale 2.99-19.49**

**30% off**

**SUPER VALUE**

**Tops and skirts**  
for toddler girls  
2,3,4. Washable  
cotton/polyester  
or polyester/rayon.  
Reg. 8.00, 12.00,  
**sale 5.59, 8.39**  
**Tees and pants**  
for toddler boys  
2,3,4. Reg. 10.00,  
**sale 5.99**



**25% off**

**SUPER VALUE**

**Toddler® basics.**  
Pkg./6 Sprockets™  
socks in cotton/  
nylon, reg. 5.00,  
**sale 3.75**  
Pkg./3 underwear  
in 100% cotton,  
reg. 4.50, 5.00  
**sale 3.37, 3.75**



2/14.00



2/12.00



2/11.00



2/11.00

**SUPER VALUE  
SPROCKETS®  
PLAYWEAR  
AND LAYETTE**

From the collector:

**a. Sunsuits in 100% cotton.**  
Infants' sizes 6,12,18 mos.  
Reg. 9.00 ea., **sale 2/14.00**

**b. Bodysuits in 100% cotton.**  
Fits up to 26 lbs. Pkg./2, reg. 8.50,  
**sale 2 pkgs. 12.00**

**25% off our cotton collection,**  
sizes 6,12,18 months,  
reg. 6.00-15.00 ea.,  
**sale 4.49-11.25 ea.**

**c. Mock tees in polyester/ cotton.**  
Sizes 12,18,24/2,3,4.  
Reg. 8.00 ea., **sale 2/11.00**

**d. Flounced tunic in polyester/  
cotton. Sizes 12,18,24/2,3,4.**  
Reg. 9.00 ea., **sale 2/11.00**

**Also available:**  
**Tops, pants and leggings,**  
reg. 6.00-10.00 ea.,  
**sale 2/9.00, 2/14.00**



**21.99**

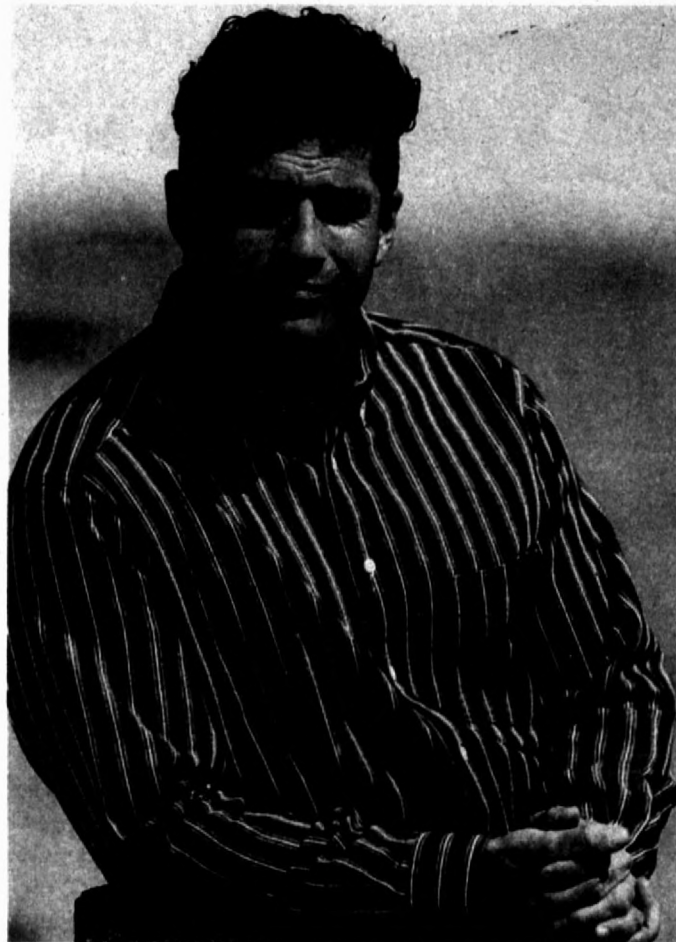
**High Sierra®  
denim shirts.**

Stripes or solids.  
Garment-washed  
100% cotton.

EXTENDED SIZE

RANGE: men's  
s,m,l,xl,xxl.

Reg. 28.00,  
sale **21.99**



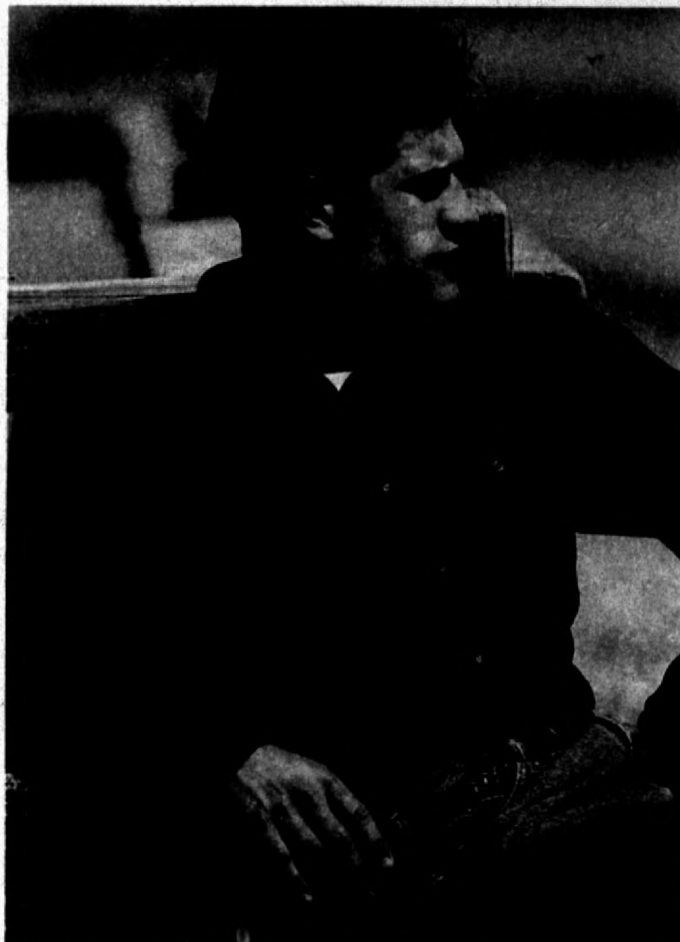
**13.99**

**High Sierra®  
flannel shirts.**

100% cotton.  
EXTENDED SIZE

RANGE: men's  
s,m,l,xl,xxl.

Reg. 19.00,  
sale **13.99**



**19.99**

**SUPER VALUE**

**Cambridge  
Classics®  
chambray shirts.**

Stripes or  
solid colors.  
Garment-washed  
100% cotton.

EXTENDED SIZE

RANGE: men's  
s,m,l,xl,xxl.

Reg. 26.00,  
sale **19.99**



**19.99**

**SUPER VALUE**

**Cambridge  
Classics®  
brushed  
twill shirts.**

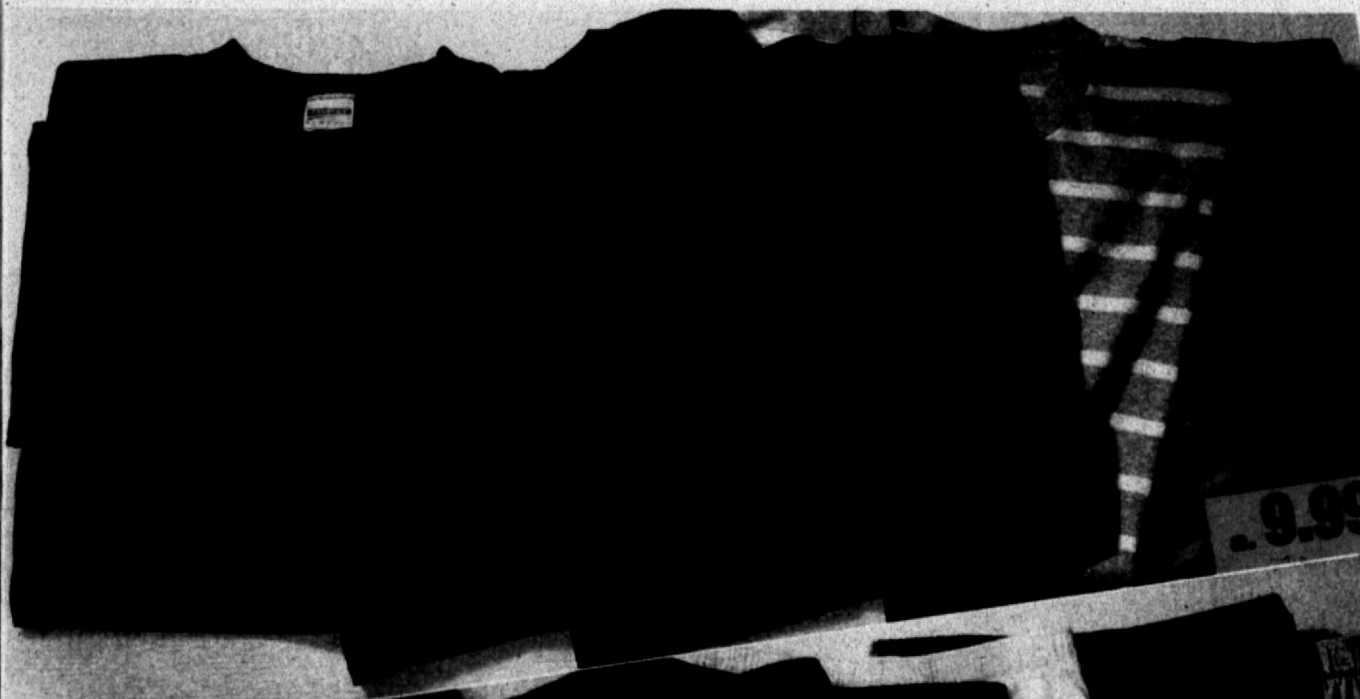
Garment-washed  
100% cotton.

EXTENDED SIZE

RANGE: men's  
s,m,l,xl,xxl.

Reg. 25.00,  
sale **19.99**





9.99

## SUPER VALUE CHEETAH® FOR MEN

100% cotton. EXTENDED SIZE  
RANGE: men's s,m,l,xl,xxl.

Reg. 8.00-20.00,

sale 4.99-16.99

a. Striped tee,

reg. 16.00, sale 9.99

b. Knit shorts,

reg. 18.00, sale 12.99

c. Pocket tee,

reg. 10.00, sale 7.99



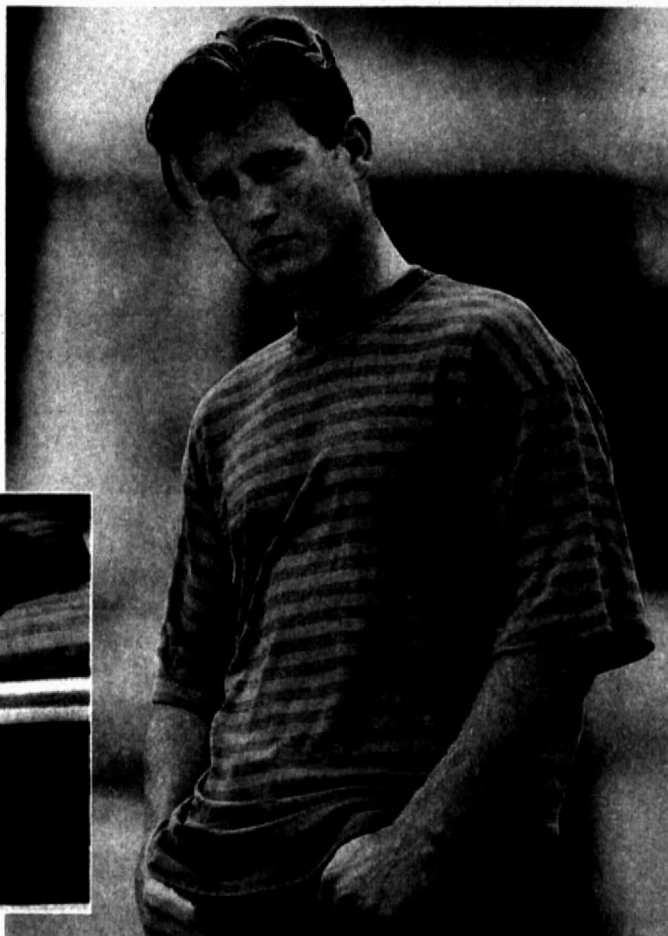
12.99



7.99

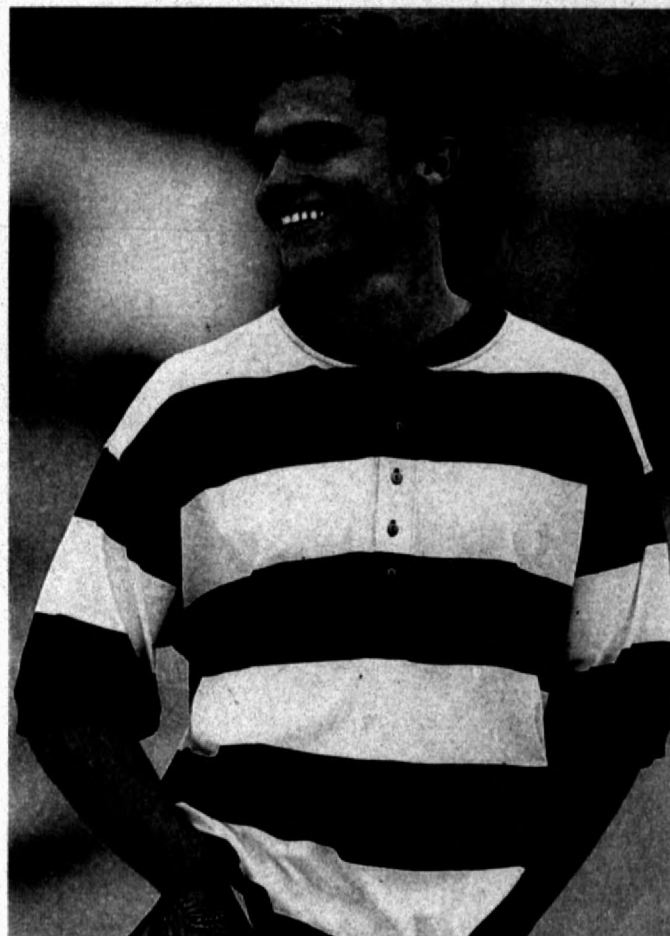
**10.99**

**Rush® jacquard tee.** Garment-dyed 100% cotton. Young men's s/m,m/l,l/xl. Reg. 16.00, **sale 10.99**



**9.99**

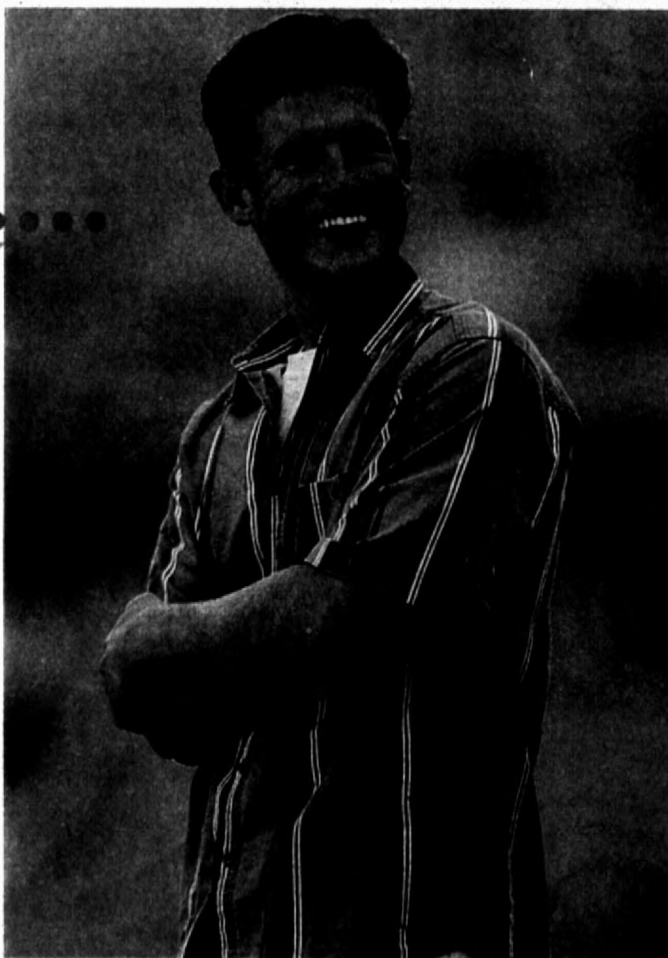
**SUPER VALUE**  
**Shah Safari® striped henley shirt.** 100% cotton. Young men's s,m,l,xl. Reg. 18.00, **sale 9.99**



**12.99**

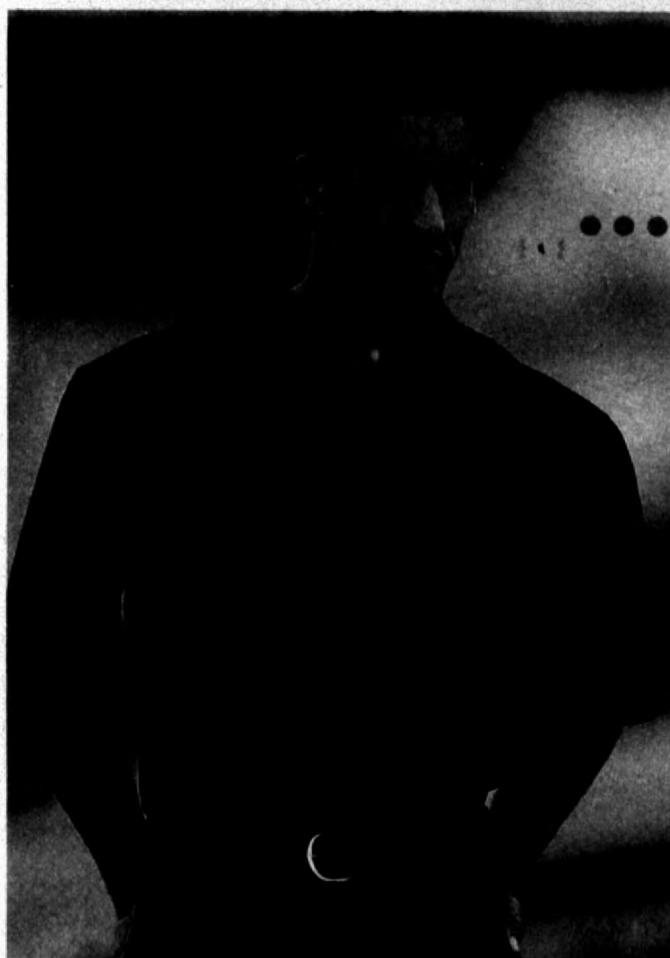
**SUPER VALUE**  
**Santana striped shirt.** 100% cotton. Young men's s,m,l,xl. Reg. 22.00, **sale 12.99**

**Chambray shirt,** not shown, reg. 22.00, **sale 12.99**



**12.99**

**SUPER VALUE**  
**Print shirts.** 100% cotton. Young men's sizes s,m,l,xl. Reg. 22.00, **sale 12.99**  
**Long sleeve,** not shown, reg. 24.00, **sale 14.99**





**SUPER VALUE  
ENTIRE  
STOCK  
OF MEN'S  
SHORTS**

100% cotton fabrics.  
Men's and young men's  
sizes. Reg. 18.00-38.00,  
**sale 13.99-28.49**

- a.** Updated shorts,  
reg. 24.00, **sale 15.99**
- b.** Camp shorts,  
reg. 18.00, **sale 13.99**
- c.** Twill shorts,  
reg. 22.00, **sale 19.99**

**15.99**

**13.99**

**19.99**

**2/17.00**

**SUPER VALUE**

**Windridge®  
pique knit shirt.**

Polyester/cotton.

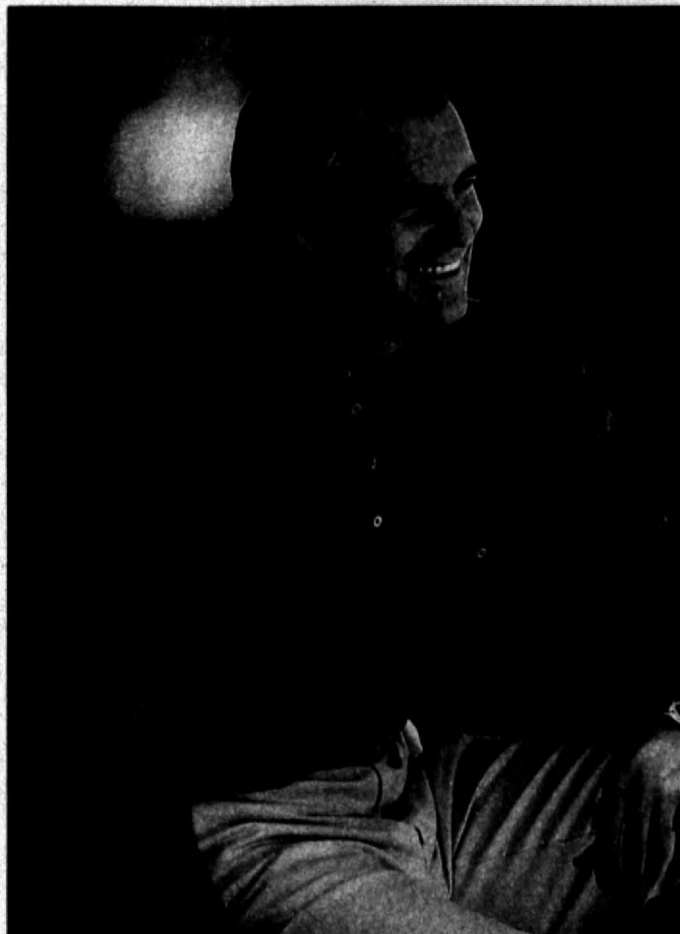
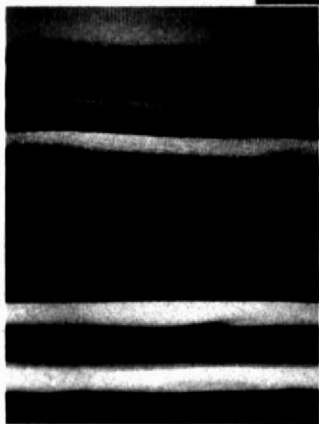
EXTENDED

SIZE RANGE:

s,m,l,xl,xxl.

Reg. 15.00 ea.,

**sale 2/17.00**



**11.99**

**SUPER VALUE**

**Windridge®  
striped golf  
shirt.**

100%  
combed cotton.

EXTENDED

SIZE RANGE:

s,m,l,xl,xxl.

Reg. 19.00,

**sale 11.99**

**Solid-color golf  
shirt, not shown,**

reg. 17.00,

**sale 9.99**



**2 pkgs.  
12.00**

**Windridge™  
underwear.**

Cotton/polyester.

Tees, v- and a-shirts,  
in pkgs./3, s-xxl.

Briefs, pkg./3, s-xl.

Boxers in pkgs./2:

tapered in s-l;

full-cut in s-xl.

Reg. 8.00-10.50 pkg.,

**sale 2 pkgs. 12.00**



**4 prs.  
7.00**

**Windridge™**

**socks.** Nylon or  
acrylic/nylon.

Reg. 2.50 pr.,

**sale 4 prs. 7.00**

**Cotton/nylon**

socks, not shown,

reg. 3.00, 3.50 pr.,

**sale 4 prs. 8.00**



**2 pkgs.  
7.00**

**Windridge™ sport**

**socks.** Crew, low-  
cut and tube styles.

Cotton/nylon.

Pkg./3 prs., reg. 5.50,

**sale 2 pkgs. 7.00**





**SUPER VALUE**

**10.99**

short sleeve solids

**11.99**

short sleeve patterns

**WINDRIDGE®  
DRESS SHIRTS**

55% cotton/45% polyester.

EXTENDED SIZE RANGE:

men's 14½-18½.

Short sleeve solid colors,  
reg. 14.00, sale **10.99**

Short sleeve patterns,  
reg. 16.00, sale **11.99**

Long sleeve solid colors,  
reg. 16.00, sale **11.99**

Long sleeve patterns,  
reg. 18.00, sale **12.99**



**Ties in patterns and  
solids. Polyester  
blends. Reg. 12.00,  
sale **8.99****



**21.99**

**SUPER VALUE**

**Levi's® For Men®**  
stretch denim  
jeans. Full-cut fit;  
cotton/polyester.  
Reg. 36.00,  
sale **21.99**

		W A I S T											
		30	31	32	33	34	36	38	40	42	44		
I N S E A M	29					▲	▲	▲					
	30	▲	▲	▲	▲	▲	▲	▲	▲	▲	▲		
	31			▲	▲	▲	▲	▲	▲	▲	▲		
	32	▲	▲	▲	▲	▲	▲	▲	▲	▲	▲	▲	▲
	34					▲	▲	▲					



**27.99**

**Levi's® Travelers**  
slacks. Relaxed  
fit; polyester/wool.  
Reg. 38.00,  
sale **27.99**

		W A I S T											
		30	31	32	33	34	36	38	40	42	44		
I N S E A M	29					▲	▲	▲					
	30	▲	▲	▲	▲	▲	▲	▲	▲	▲	▲		
	31			▲	▲	▲	▲	▲	▲	▲	▲		
	32	▲	▲	▲	▲	▲	▲	▲	▲	▲	▲	▲	▲
	34					▲	▲	▲					



**19.99**

**SUPER VALUE**

**Levi's® Action**  
Slacks. Full-cut  
fit; polyester.  
Reg. 32.00,  
sale **19.99**

		W A I S T											
		30	31	32	33	34	36	38	40	42	44		
I N S E A M	29					▲	▲	▲	▲				
	30	▲	▲	▲	▲	▲	▲	▲	▲	▲	▲		
	31			▲		▲	▲	▲					
	32	▲	▲	▲	▲	▲	▲	▲	▲	▲	▲	▲	▲
	34					▲	▲	▲					



**SUPER VALUE  
ENTIRE  
STOCK  
OF WOMEN'S  
SOCKS AND  
TIGHTS**

**Our Partners® socks:**

**a.** 6-pr. pack in cotton/nylon.  
Reg. 8.00, **sale 2 pkgs. 11.00**

**b.** 4x2 cuff socks in  
cotton/Lycra® spandex.  
Reg. 2.50 pr.,  
**sale 6 prs. 10.80**

**c.** Slouch socks  
in cotton/nylon/Lycra®  
spandex. Reg. 3.00 pr.,  
**sale 6 prs. 15.00**

**d.** 3-pr. pack in cotton nylon.  
Reg. 5.50, **sale 2 pkgs. 7.50**


**Our Partners® tights:**

**e.** Ribbed or knit cotton/  
Lycra® spandex/nylon or  
nylon/Lycra® spandex.  
Reg. 7.00, 8.00, **sale 2/10.00**

**a. 2 pkgs. 11.00**



**b. 6 prs. 10.80**



**c. 6 prs. 15.00**

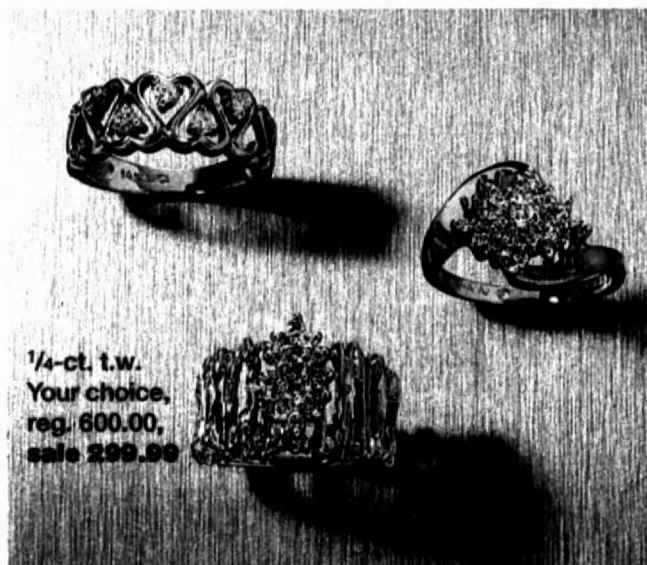


**d. 2 pkgs. 7.50**

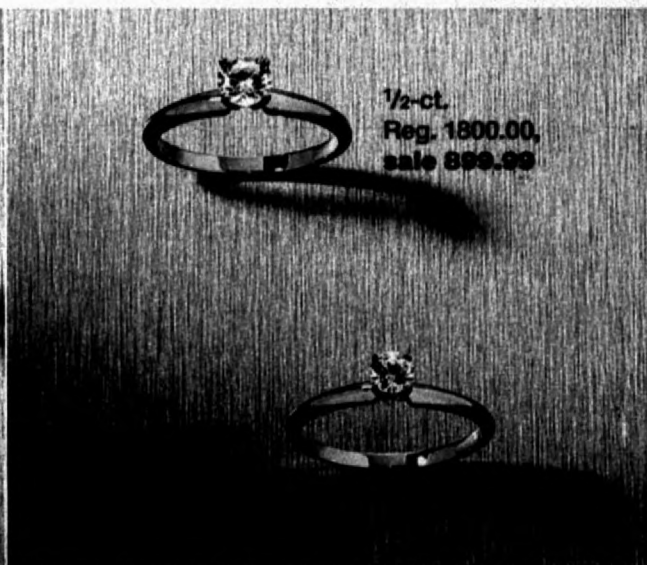


**e. 2 for 10.00**

# 50% OFF ENTIRE STOCK OF FINE JEWELRY



1/4-ct. t.w.  
Your choice,  
reg. 600.00,  
sale 299.99



1/2-ct.  
Reg. 1800.00,  
sale 899.99



1/4-ct. t.w.  
Reg. 500.00,  
sale 249.99

1/2-ct. t.w.  
Reg. 1100.00,  
sale 549.99

1 ct. t.w.  
Reg. 3500.00,  
sale 1749.99



14kt. gold.  
Your choice,  
reg. 125.00,  
sale 62.49



10kt. gold.  
Your choice,  
reg. 125.00,  
sale 62.49



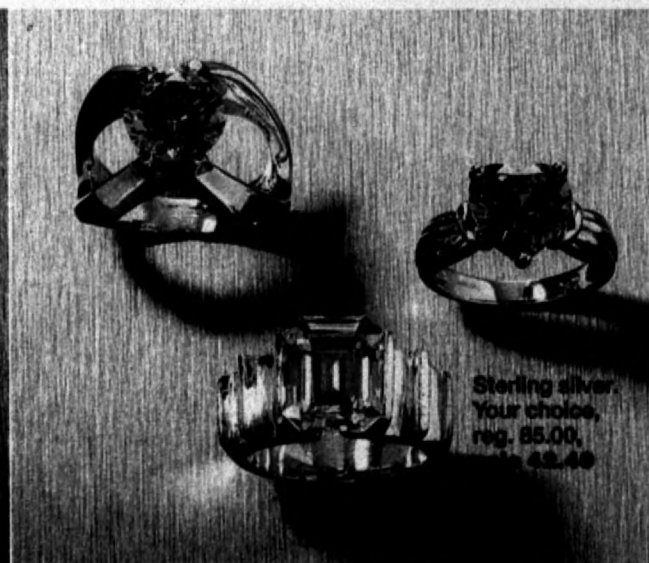
10kt. gold.  
Your choice,  
reg. 150.00,  
sale 74.99



Sterling silver.  
Your choice,  
reg. 50.00,  
sale 24.99



Sterling silver.  
Your choice,  
reg. 50.00,  
sale 24.99



Sterling silver.  
Your choice,  
reg. 85.00,  
sale 42.49

# DENIM HEADQUARTERS

## MORE DENIM FOR YOUR DOLLAR!

### 21.99 25.99 27.99



**LEVI'S 501**

Men's prewashed  
Jeans. Original  
button fly, straight  
legs. Waist sizes  
28-34, 36 and 38.  
Indigo, sale **21.99**.  
Black, overdyed  
black, sale **25.99**.  
Bleached blue, Mega  
Bleach blue,  
stonewashed indigo,  
white, blackened  
indigo, sale **27.99\***

\*Limit 6 per customer.

### 27.99-32.99



**LEVI'S 540™**

Men's relaxed-fit  
Jeans in  
100% cotton.  
Waist sizes  
Indigo,  
sale  
\$

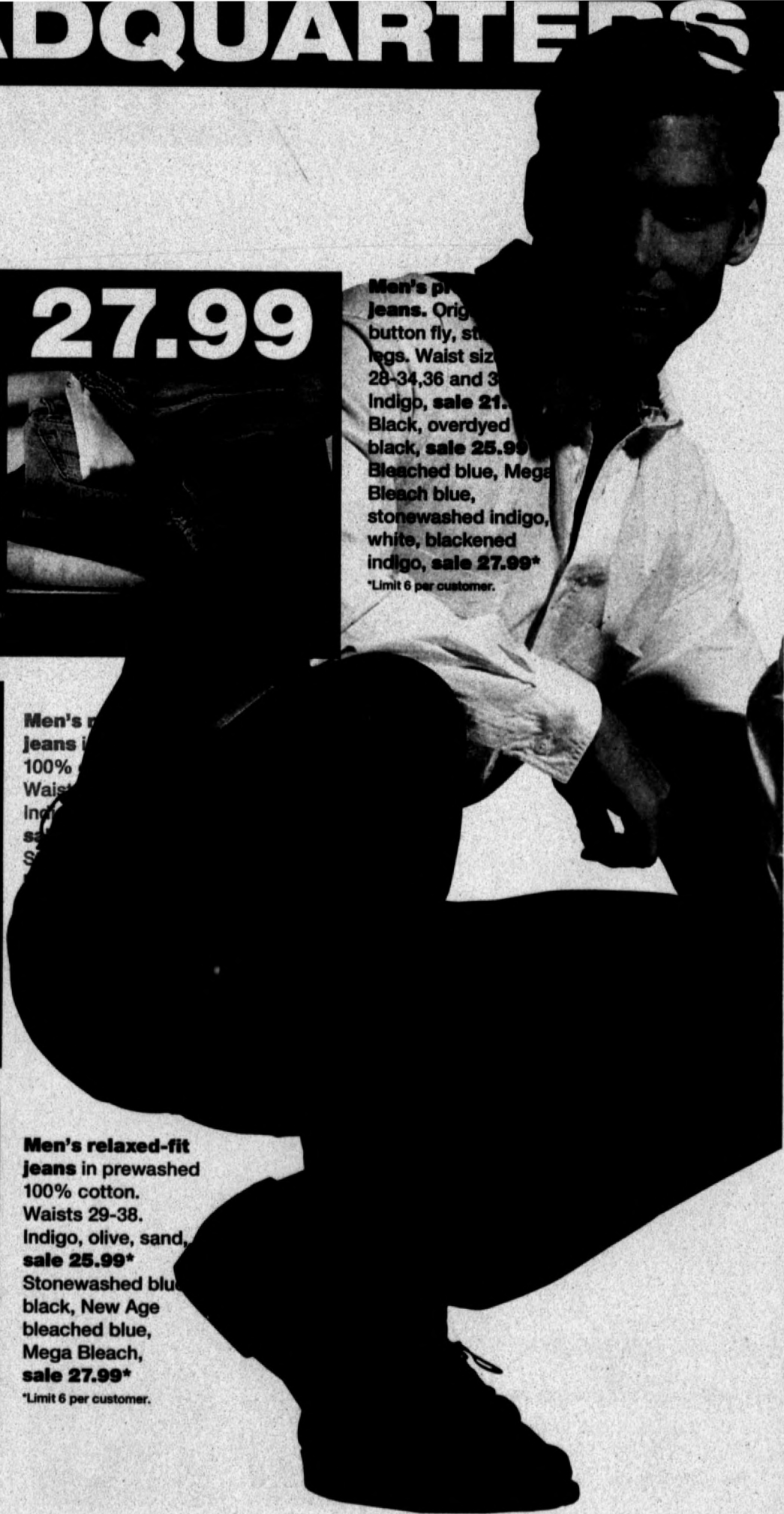
### 25.99, 27.99



**LEVI'S 550™**

Men's relaxed-fit  
jeans in prewashed  
100% cotton.  
Waists 29-38.  
Indigo, olive, sand,  
sale **25.99\***  
Stonewashed blue,  
black, New Age  
bleached blue,  
Mega Bleach,  
sale **27.99\***

\*Limit 6 per customer.



# DENIM HEAD



**10.99**

**HIGH SIERRA**

**Boys' 8-16 prewashed jeans.**  
Regular, slim. Reg. 14.00, **sale 10.99**  
4-7 reg., slim. Reg. 13.00, **sale 9.99**

**24.99**

**BIG JEAN™**

**Boys' 8-12 baggy jeans.** 8-12 regular,  
8-14 slim, **sale 24.99**  
4-7 reg., slim, **sale 22.99**  
Waists 26-30, **sale 26.99**

**18.99**

**LEVI'S 550™**

**Boys' relaxed-fit jeans.** 8-12 regular,  
8-14 slim, **sale 18.99**  
4-7 reg., slim, **sale 17.99**  
Waists 26-30, **sale 19.99**

**21.99**

**LEVI'S 560™**

**Students' loose-fitting jeans in**  
stonewashed denim. Waists 26-30,  
**sale 21.99**  
8-12 regular, 8-14 slim, **sale 20.99**

# DQUARTERS



**10.99**



**BAGGY FIT**

**Girls' 4-6x  
jeans with full  
elastic-waist.  
100% cotton  
denim.  
Reg. 14.00,  
sale 10.99**

**10.99**



**BOW-BACK**

**Girls' 4-6x  
jeans in 100%  
cotton denim.  
Regular and slim.  
Reg. 18.00,  
sale 10.99**

**12.99**



**BAGGY FIT**

**Girls' 7-16 jeans in 100%  
cotton denim; regular and slim.  
Reg. 20.00, sale 12.99**

**12.99**



**BOW-BACK**

**Girls' 7-16 jeans in 100%  
cotton denim; regular and slim.  
Reg. 20.00, sale 12.99**



# DENIM HEADQUARTERS

**Misses' Lee®  
relaxed-fit jeans.**

**PROPORTIONED  
LENGTHS:** 6-18

petite, medium;

8-18 long.

Reg. 27.00,

**sale 19.99**

**Side-elastic, not**

shown, reg. 27.00,

**sale 19.99**

**Women's-size**

with side-elastic,

not shown,

6w-24w petite,

average reg. 29.00,

**sale 21.99**

**19.99**



**LEE**

**32.99**



**LEVI'S 501**

**24.99**



**LEVI'S 501**

**MERVYN'S**

**Juniors' Levi's®  
slim-fit jeans.**

Original button-fly,  
with tapered legs.

Prewashed 100%  
cotton, in hunter,

ruby, hydro blue.

**PROPORTIONED**

**LENGTHS:** 1-13

short, regular.

Reg. 44.00,

**sale 32.99**

**Juniors' Levi's®  
slim-fit jeans.**

Original button-fly,  
with tapered legs.

Prewashed 100%  
cotton; stonewashed

indigo, Mega Bleach,

white and super

dark black.

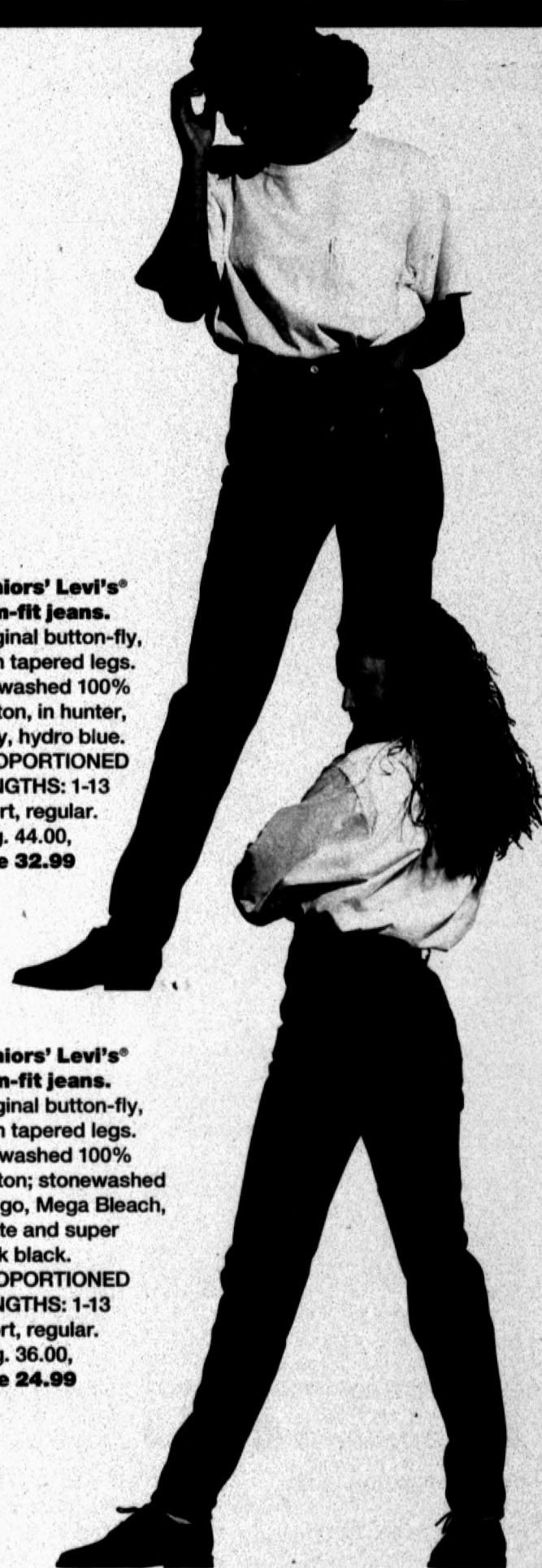
**PROPORTIONED**

**LENGTHS:** 1-13

short, regular.

Reg. 36.00,

**sale 24.99**





**SUPER VALUE**  
**25-40%**  
**off**

- Armitron®
- Casio®
- Cherokee
- Epic
- Pulsar®
- Seiko
- Timex®

For men and women.  
In Fine Jewelry.  
Reg. 24.95-350.00,  
sale 18.71-209.99

Reg. 39.95,  
sale 29.96

Reg. 24.95,  
sale 18.71

Reg. 39.95,  
sale 29.96

Reg. 49.95,  
sale 37.46

Reg. 59.95,  
sale 44.96

**24.99**

**SUPER VALUE**

**Misses'  
Cherokee®  
stirrup pants.**

100% cotton.

**PROPORTIONED**

**LENGTHS: 6-18**

short or avg.

Reg. 34.00,

**sale 24.99**

Shirt shown, reg.

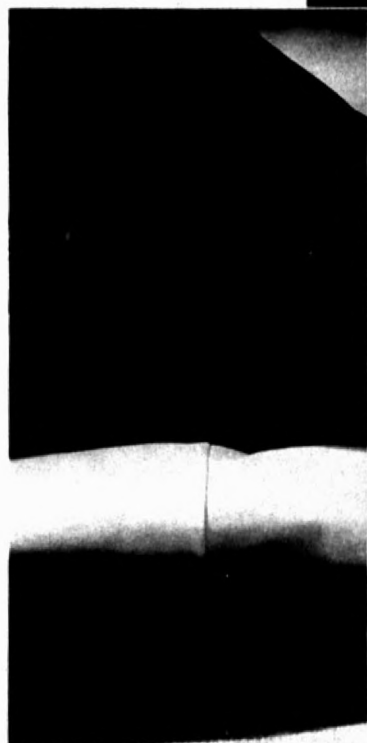
32.00, **sale 21.99**

**30% off the**

**collection,**

reg. 15.00-36.00,

**sale 10.39-25.19**



**11.99**

**SUPER VALUE**

**They're back!  
Misses' Bonding  
Easy® pants.**

100% polyester.

**PROPORTIONED**

**LENGTHS: 8-18**

short, 8-18 avg.

Reg. 14.00,

**sale 11.99**





**SUPER VALUE**

**12.99** misses'

**13.99** women's

**CASCADE  
BLUES™  
PANTS**

Pull-ons in 100% cotton.

**Misses' pants.**

**PROPORTIONED**

**LENGTHS: 6-16**

short and 8-18 avg.

Reg. 22.00, sale **12.99**

**Women's pants in all**

but pink. 16w-24w.

Reg. 24.00, sale **13.99**

**Tops shown:**

Misses' s,m,l, reg. 24.00,

sale **16.99**

Women's sizes 1x,2x,3x,

reg. 22.00, sale **14.99**



**Misses' colors**

13.99

**SUPER VALUE**

**Partners®**  
button-front tee

in 100% cotton.

Seven colors.

EXTENDED SIZE

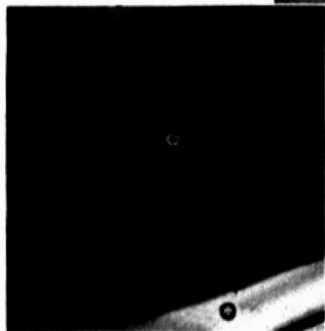
RANGE: misses'  
s,m,l,xl. Reg. 18.00,

sale 13.99

**Women's sizes**

1x,2x,3x, not  
shown, reg. 22.00,

sale 14.99



7.99

**SUPER VALUE**

**Partners®** tee  
in 100% cotton.

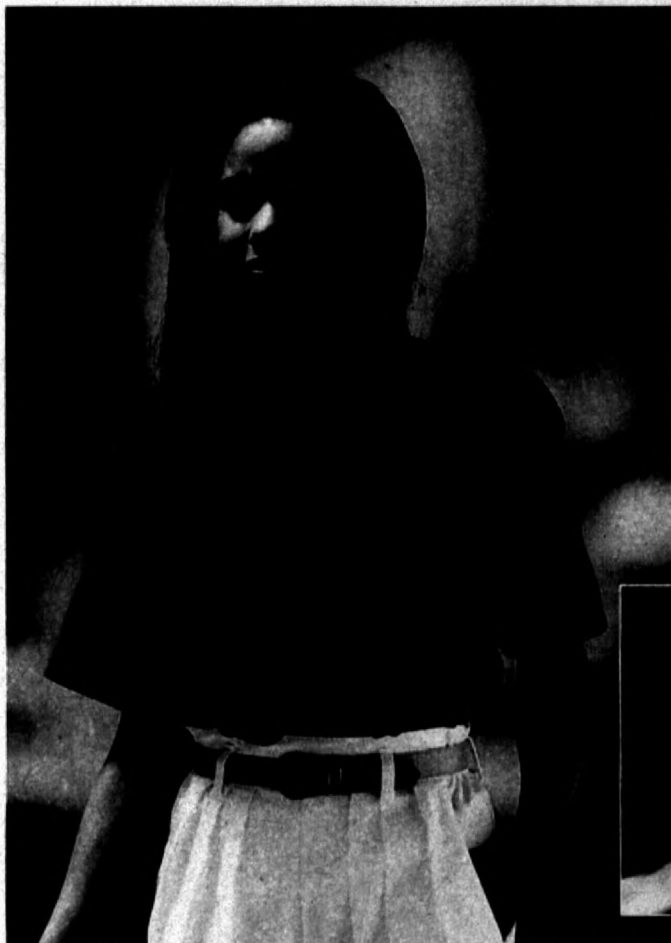
EXTENDED SIZE

RANGE: misses'  
s,m,l,xl. Reg. 12.00,

sale 7.99

**Women's sizes**

1x,2x,3x, not  
shown, reg. 16.00,  
18.00, sale 9.99



8.99

**SUPER VALUE**

**Partners®** v-neck  
tee in 100% cotton.

EXTENDED SIZE

RANGE: misses'  
s,m,l,xl. Reg. 14.00,

sale 8.99



11.99

**SUPER VALUE**

**Partners®** banded  
bottom tee in  
polyester/cotton.

EXTENDED SIZE

RANGE: misses'  
s,m,l,xl. Reg. 19.00,

sale 11.99

**Women's sizes**

1x,2x,3x, not  
shown, reg. 22.00,  
sale 13.99



## SUPER VALUE ENTIRE STOCK OF MISSES' SHORTS

The collection,  
reg. 20.00-29.00,  
sale 11.99-18.99

Shown:

**a. Bill Blass®** cotton  
denim. Sizes 6-16.

Reg. 29.00, sale 18.99

**b. Partners™** cotton  
twill, button fly. Sizes  
6-16. Reg. 20.00,

sale 14.99

**c. Partners™** 100%  
cotton twill; belted.  
Sizes 6-16. Reg. 26.00,

sale 16.99

**d. Cascade Blues™**  
cotton denim. Sizes  
6-18. Reg. 20.00,

sale 10.99

**e. Lee®** 100% cotton  
denim. Sizes 6-16.  
Reg. 29.00, sale 18.99

**f. Partners™** cotton  
knit. EXTENDED SIZE  
RANGE: s,m,l,xl.

Reg. 20.00, sale 12.99

18.99

14.99

16.99

10.99

18.99

12.99

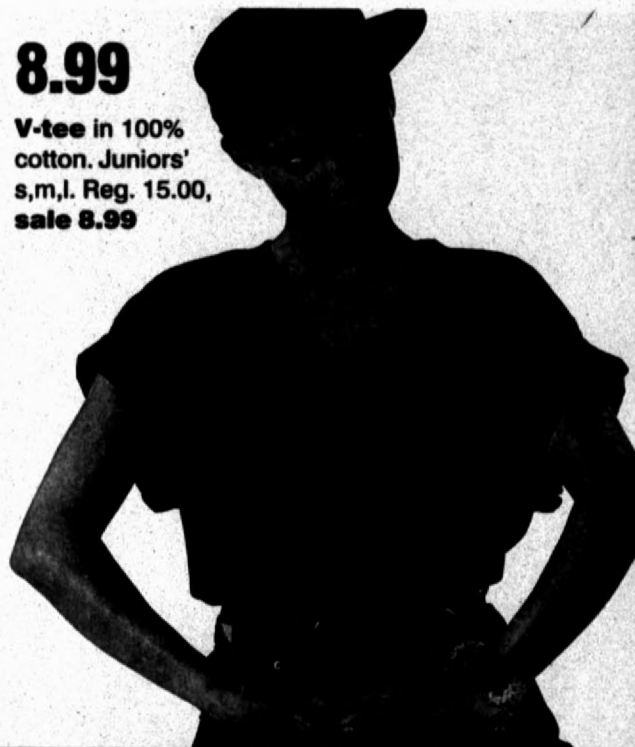
**9.99**

**Mock  
turtleneck in  
100% cotton.  
Juniors' s,m,l.  
Reg. 15.00,  
sale 9.99**



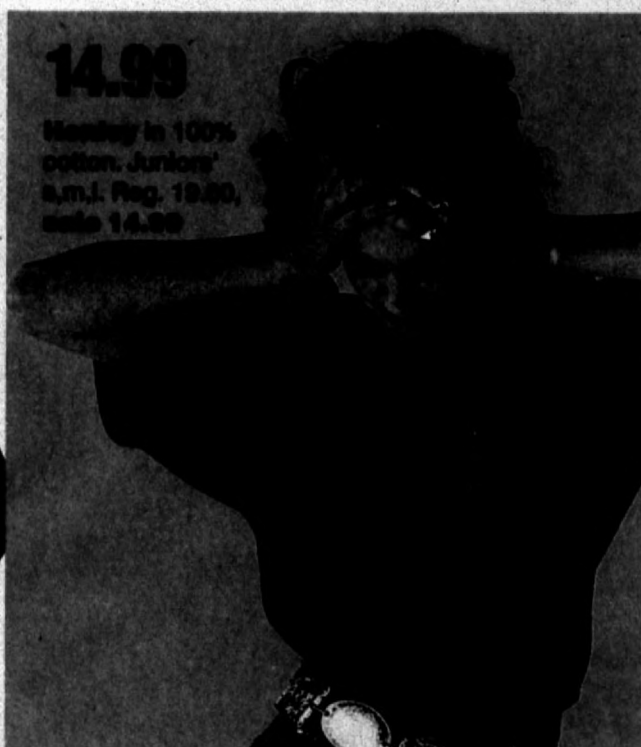
**8.99**

**V-tee in 100%  
cotton. Juniors'  
s,m,l. Reg. 15.00,  
sale 8.99**



**14.99**

**Manley in 100%  
cotton. Juniors'  
s,m,l. Reg. 19.00,  
sale 14.99**



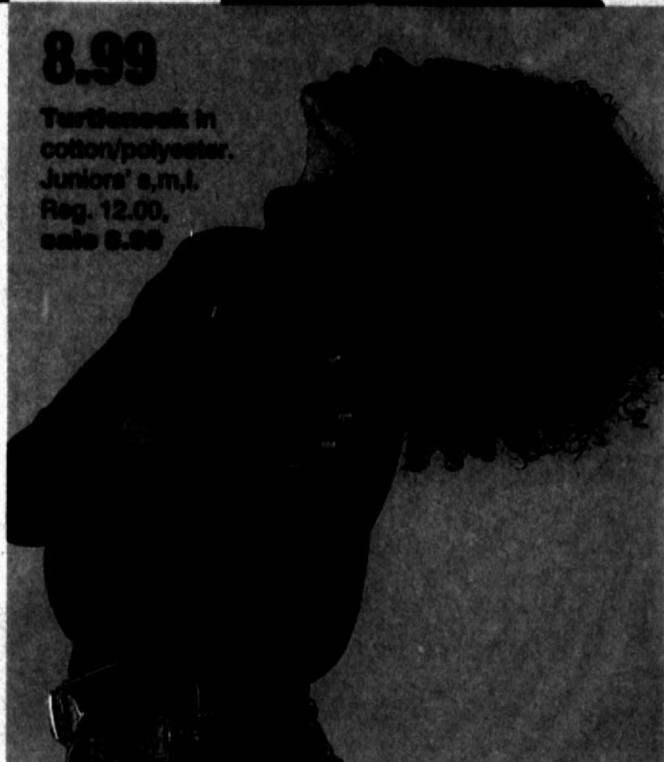
**9.99**

**Bike shorts in  
cotton/Lycra®  
spandex.  
Juniors' s,m,l.  
Reg. 15.00,  
sale 9.99**



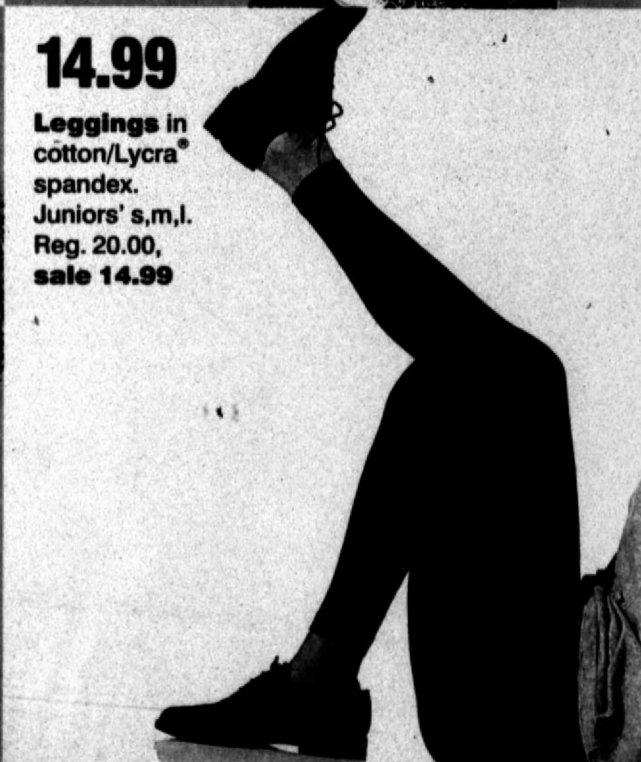
**8.99**

**Turtleneck in  
cotton/polyester.  
Juniors' s,m,l.  
Reg. 12.00,  
sale 8.99**



**14.99**

**Leggings in  
cotton/Lycra®  
spandex.  
Juniors' s,m,l.  
Reg. 20.00,  
sale 14.99**



**ELLEMENNO™**

**B A S I C S**

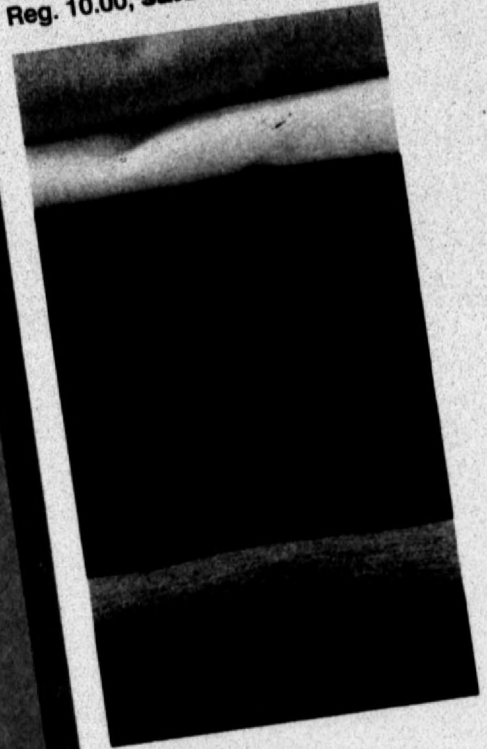


**SUPER VALUE**

**6.99**

**ELLEMENNO™  
TEE FOR  
JUNIORS**

100% cotton tee in eight  
colors. Sizes s,m,l.  
Reg. 10.00, sale **6.99**



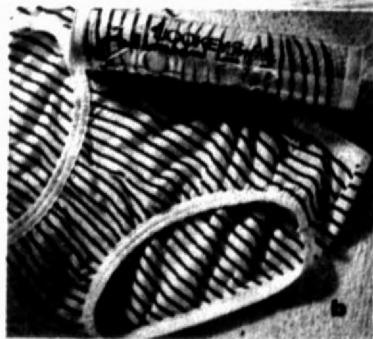
**16.99**

**Partners®**  
sleep tee or pj's  
in 100% cotton  
knit. Sleep tee  
in one size; pj's in  
EXTENDED SIZE  
RANGE: s,m,l,xl,xxl.  
Reg. 20.00,  
sale **16.99**



**25% off**

**Jockey For Her®**  
in cotton or blends.  
Reg. 5.00-14.00,  
sale **3.75-10.48**  
Shown:  
**a.** Bra, 32-36,  
reg. 9.00 ea.,  
sale **2/13.50**  
Panties, 5-7,  
reg. 7.00 ea.,  
sale **4/21.00**  
**b.** Elance™ bikinis,  
5-7, tube/3, reg. 14.00,  
sale **2 tubes 20.96**



**11.99**



**14.99**



**Buy 2,  
get 1 free**

**Maidenform® bras.**  
Buy two sale-priced  
bras; get one free  
direct from  
Maidenform®.  
Reg. 17.00-23.00,  
sale **11.99, 14.99**  
Shown:  
**a.** Sweet Nothings®  
# 6848. 32-38A,B;  
34-36C, reg. 17.00,  
sale **11.99**  
**b.** Chantilly® #7387.  
34-36A,B,C, reg. 21.50,  
sale **14.99**





## SUPER VALUE PARTNERS' BASICS

Bras, tanks and panties  
in cotton, nylon and blends.

a. Ribbed-knit tank. **EXTENDED**  
SIZE RANGE: s,m,l,xl,  
reg. 7.00 ea., **sale 2/7.00**

Ribbed-knit hi-cut, sizes 5-8,  
reg. 4.00 ea., **sale 4/8.00**

b. Cotton underwire  
bra #435. 34-38B,C,D,  
reg. 12.50, **sale 7.99**

c. Hi-cut, sizes 5-7,  
reg. 3.00 ea., **sale 5/11.00**

d. Briefs, sizes 5-10,  
pkg./3, reg. 8.00-10.00,  
**sale 2 pkgs. 11.00**

**2/7.00 tanks**

**7.99**

**5/11.00**

**2 pkgs. 11.00**

**30% off**

**SUPER VALUE**

**Our Ellomenno™ women's suede casual shoes.** Reg. 24.00-28.00, **sale 16.79-19.59**

Shown:

- a. 'Hollywood', four colors, 5½-9, 10. Reg. 28.00, **sale 19.59**
- b. 'Barcelona', five colors, 5½-10. Reg. 26.00, **sale 18.19**
- c. 'Madison', five colors, 5½-10. Reg. 24.00, **sale 16.79**



**19.99**

**SUPER VALUE**

**Women's Cherokee® suede casuals.**

'Navigator', 5½-10.

Reg. 30.00, **sale 19.99**

**From a collection,** reg. 25.00-40.00, **sale 15.99-27.99**



**17.99**

**SUPER VALUE**

**Girls' Snap™ shoes.** Sizes 11-3. Reg. 25.00, **sale 17.99.**

Shown:

- a. 'Waxy',
- b. 'Crushee',
- c. 'Penny',
- d. 'Shellette',

**30% off girls' Sprockets™ shoes and boots,** reg. 15.00-30.00, **sale 10.49-20.99**



**30% off**

**SUPER VALUE**

**All men's casuals,** reg. 20.00-32.00, **sale 13.99-43.99**

Shown, Cambridge Classics®:

- a. 'Tyler', 7-11, 12, 13 **sale 36.39**
- b. 'Morgan,' 7-11, 12, 13, **sale 36.39**
- c. Levi's® 'Coaster', 7½-11, 12, 13, **sale 41.29**





**SUPER VALUE**

**2.99** bath

**CARESS™  
COTTON  
TOWELS**

Terry in solids, stripes;  
velour in solids and  
prints. Reg. 3.00-6.00.

Bath, sale **2.99**

Hand, sale **2.69**

Wash, sale **2.49**

**25% off Caress™  
matching bath rugs.**

Reg. 8.00-20.00,

sale **5.99-14.99**



**40% OFF**

Entire stock of area  
rugs, including 100%  
cotton styles.

Reg. 12.00-46.00.

sale **7.19-27.59**

Braided 5x8' size,  
not shown, reg. 175.00,  
sale **104.99**

**6.99**

**SUPER VALUE**

**3x5" frames.**

Ceramic, brass,  
mixed metals,  
or wood.

Reg. 8.00-16.00,  
sale **6.99**



**8.99**

**SUPER VALUE**

Entire stock of  
children's  
frames. 2x3" and  
3x5", shown.

Reg. 12.00-16.00,  
sale **8.99**  
8x10" collage, reg.  
22.00, sale **14.99**



**14.99**

**SUPER VALUE**

Entire stock of  
8x10" frames.

Wood, brass,  
ceramic and  
mixed metal.

Reg. 16.00-34.00,  
sale **14.99**

**9.99**

**SUPER VALUE**

Entire stock of  
5x7" frames.

Brass, mixed  
metals, wood  
and ceramic.

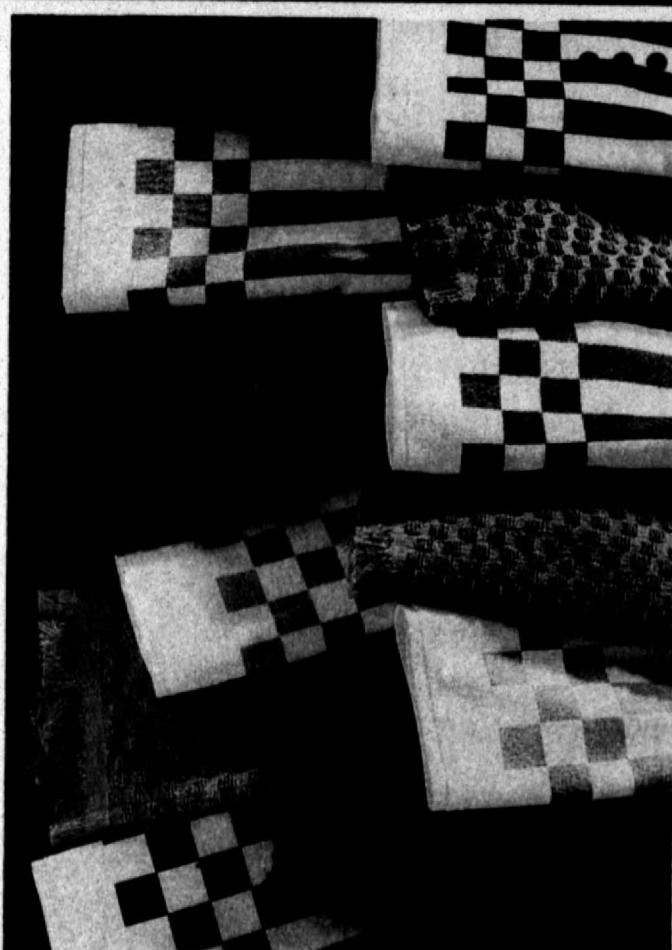
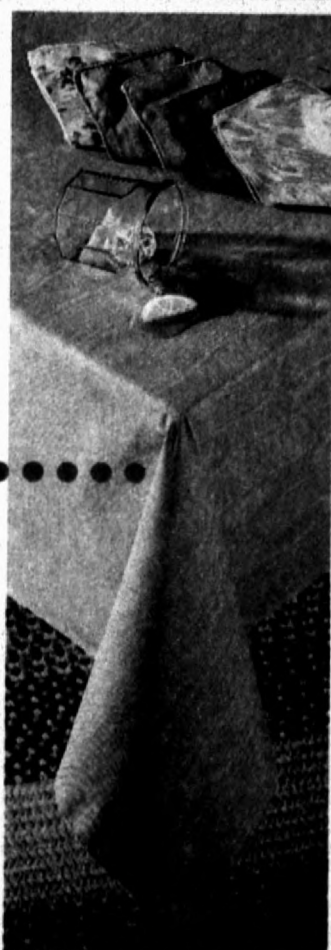
Reg. 12.00-24.00,  
sale **9.99**

**50% off**

**SUPER VALUE**

Placemats in  
reversible cotton  
or vinyl. Reg. 3.00,  
sale **1.49**

Napkins to match,  
reg. 2.00, sale **.99**



**4/8.00**

**SUPER VALUE**

Cotton terry  
towels in solid  
colors, stripes and  
prints. Reg. 3.00 ea.,  
sale **4/8.00**

**30% off**  
coordinates,  
reg. 2.25-5.00,  
sale **1.57-3.49**

**8.99**

four sizes

**SUPER VALUE**

Vinyl tablecloth  
with flannel  
backing. Wipes  
clean. 52x70" ob.,

60x84" ob./ov.,  
70" rd. Reg.

10.00, 15.00,

sale **8.99**

52x52", reg. 8.00,

sale **6.99**

24.99

16-pc. set

## 24.99 16-pc. set SOLID COLOR DINNERWARE

16-pc. set consists of four each:  
dinner plate, salad plate, soup/  
salad bowl, mug. Reg. 40.00,

sale 24.99

16-pc. bowl set,  
reg. 40.00, sale 14.99

e. 20-pc. hardware set,  
reg. 40.00, sale 27.99

d. 4-pc. canister set,  
reg. 40.00, sale 27.99

e. 5-pc. completer set,  
reg. 30.00, sale 14.99



69.99

twin

**SUPER VALUE**

**Allyson Kent™  
handmade**

**quilts.** Cotton

cover; polyester

batting. Reg.

100.00-200.00.

Twin, **sale 69.99**

Full/queen,

**sale 119.99**

King,

**sale 149.99**

Std. sham,

reg. 35.00,

**sale 28.99 ea.**

**Quilted throws,**

not shown, 50x60",

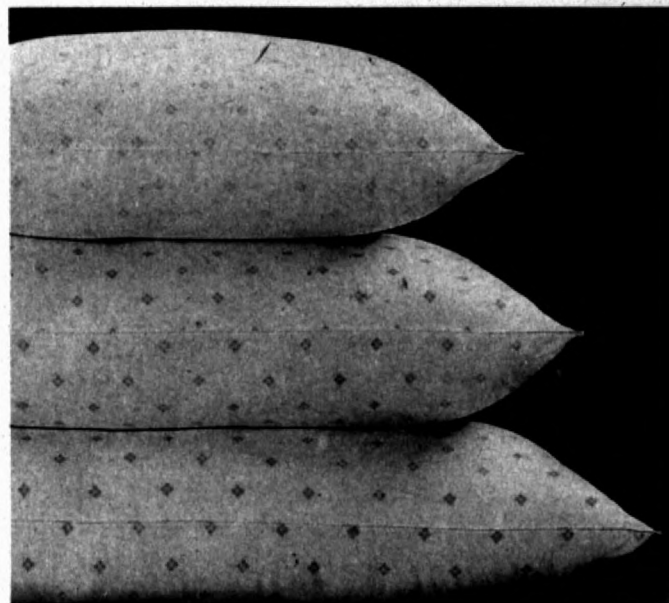
reg. 75.00,

**sale 49.99**



Dresden

Wedding Ring



50% off  
any size

**SUPER VALUE**

**Our Regency™  
pillow.** Firm

support, polyester

fill; 1-year

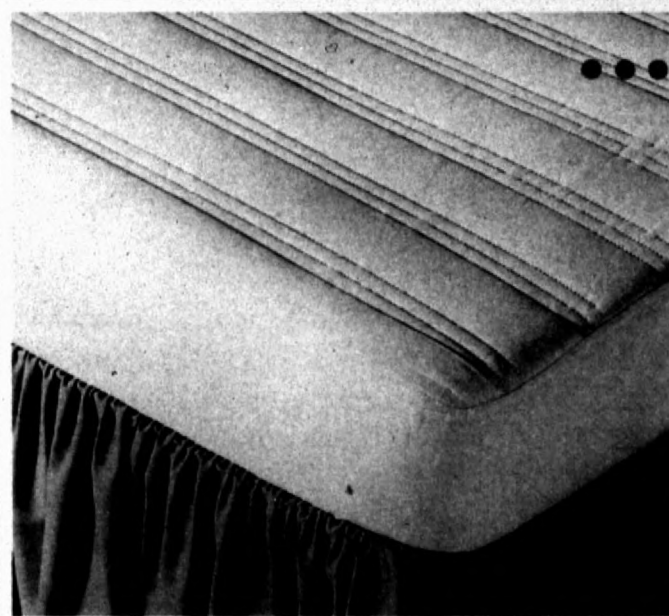
warranty.\*

Reg. 8.00-12.00.

Std., **sale 3.99**

Queen, **sale 4.99**

King, **sale 5.99**



50% off  
any size

**SUPER VALUE**

**Regency™ fitted  
pad.** Quilted

polyester/cotton,

polyester fill.

Reg. 16.00-32.00.

Twin, **sale 7.99**

Full, **sale 10.49**

Queen, **sale 13.49**

King, **sale 15.99**

50% off  
any size

**SUPER VALUE**

**Cotton thermal  
blanket.** Machine

washable; 3-year

warranty.\*

Reg. 20.00-35.00.

Twin, **sale 9.99**

Full, **sale 12.49**

Queen/king,

**sale 17.49**



40% off  
any size

**SUPER VALUE**

**Foam pad with  
soft puffs for better**

sleep. 3-year

warranty.\*

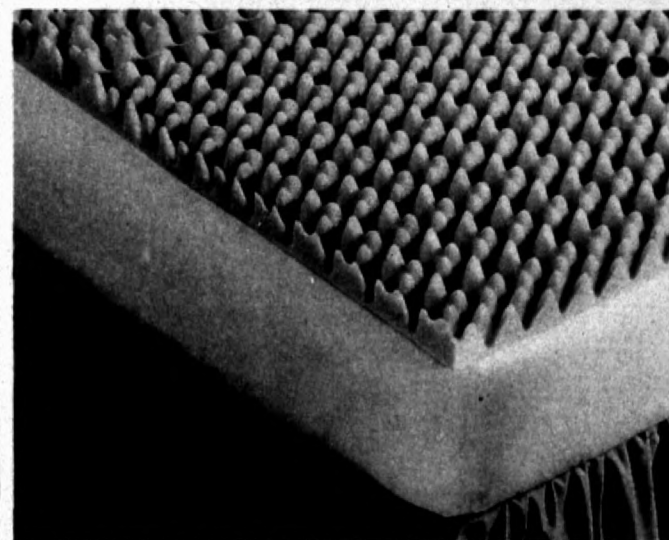
Reg. 20.00-40.00.

Twin, **sale 11.99**

Full, **sale 16.79**

Queen, **sale 20.99**

King, **sale 23.99**



\*Warranty details in store office.

DEFERRED BILLING! NO PAYMENT UNTIL NOVEMBER

**SUPER VALUE**  
**40% off**  
any size

**CARESS® PRINT  
SHEET SETS,  
COMFORTERS**

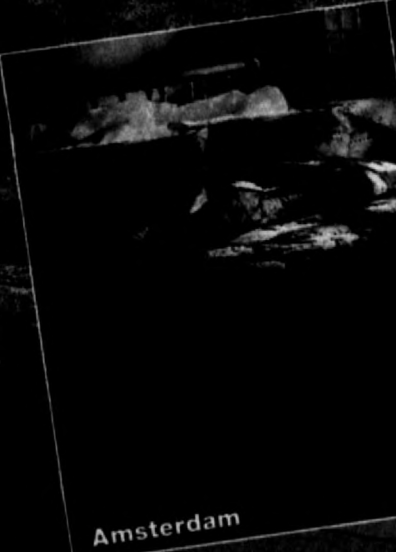
Sheet sets in 180-thread-count cotton/polyester percale. Include flat sheet, fitted sheet and pillowcase(s).  
Reg. 25.00-60.00.  
Twin, sale 14.99  
Full, sale 20.99  
Queen, sale 29.99  
King, sale 35.99

Matching® comforters,  
reg. 40.00-90.00,  
Twin, sale 23.99  
Full/queen, sale 41.99  
King, sale 53.99



Montego

Go Fish



Amsterdam



Caprice



Floral Vine

**When the kids need tees and shorts and sneakers, you need Deferred Billing!**

For any Mervyn's charge transaction\* totalling \$100 or more, you can choose to defer billing to your Mervyn's account until October 1992. No payment will be due until November 1992. No finance charges will be added to your account for these purchases during the deferred period. \*Excludes gift certificates purchases.

**24.49**

**MEN'S**

a. Cheetah  
'Harbor  
Classic'. Sizes  
7 1/2-11, 12.  
Reg. 35.00,  
sale 24.49



**22.39**

**WOMEN'S**

c. Cheetah  
'Court  
Challenge'.  
Sizes 5-9, 10.  
Reg. 32.00,  
sale 22.39



**SUPER VALUE**  
**25-30% off**  
athletic shoes by  
**CHEETAH®**  
**CONVERSE®**  
**AVIA®**  
**BRITISH KNIGHTS®**

**20.99**

**GIRLS'**

d. Cheetah  
'Pinwheel'.  
Sizes 8 1/2-3.  
Reg. 30.00,  
sale 20.99



**38.99**

**MEN'S**

e. Converse®  
'Fast Break'.  
Sizes 7, 11, 12, 13.  
Reg. 52.00,  
sale 38.99



**19.49**

**BOYS'**

f. Converse®  
'All-Star'  
high-top.  
Sizes 12 1/2-6.  
Reg. 26.00,  
sale 19.49



**37.49**

**MEN'S**

g. British Knights®  
'Mona'. Sizes  
7 1/2-11, 12.  
Reg. 50.00,  
sale 37.49



**INSTANT CREDIT!**

Take 15% off the first purchase charged to your new Mervyn's account. Apply today in any of our stores. Takes just minutes! Requires a valid photo I.D. and a Visa®, MasterCard®, Discover® or American Express® Card. Subject to credit approval.

**MERVYN'S**

PRICES EFFECTIVE MONDAY THROUGH SUNDAY, AUGUST 10-16.  
Shop Monday through Friday, 10 am-9 pm • For weekend hours and store locations, phone 1-800-M-E-R-V-Y-N-S toll-free, 24 hours a day, 7 days a week.

