

Three Charged In Trent Man's Disappearance

\$50,000 In Construction Of New Homes Indicated By Inquiries On FHA Loans

Many Asking Information On Program

First Application Filed And Others Expected When Plans Drawn

Residents whom he considered eligible for FHA loans Friday had indicated their desire to erect new homes in Big Spring in the amount of approximately \$50,000. R. E. Sikes, federal housing administration representative, declared.

Officers In Petroleum Building Grover C. Dunham, President Of The Chamber Of Commerce, Said He Was Very Much Encouraged Over The Response Given Sikes, Who Is Maintaining Offices In Room 204 Petroleum Building To Explain The Program To Prospective Home Owners.

Sikes, Who Keeps His Office Open From 8:30 A. M. Until 5 P. M., Said That Those Unable To See Him During Those Hours Could Reach Him At His Room In The Settles Hotel. He Said He Had Been Busy Since Opening His Office Thursday Morning.

Monthly Calls If interest warrants, said Sikes, he will return here once a month to confer with persons interested in obtaining FHA loans.

"The modern, practical way to home ownership is with a FHA insured mortgage—up to 80 per cent of the appraised value of the property," declared Sikes. He added that this reduces the loan to a moderate interest rate on private moneys insured by the government. The loan is to be repaid in equal monthly installments which include interest, taxes and other contingencies. Time for amortization runs as long as 20 years.

FHA also makes provisions for purchase of ex-tant residential structures, also for the refinancing of present indebtedness against homes.

All these types of loans are under what is known as title two, he pointed out. Modernization and repair work are possible under title one of the act which is more familiarly known as the modernized credit plan.

Public Hearing On School Budget Set For Next Tuesday

Public hearing on the new year's budget of the Big Spring independent school district will be held at the high school next Tuesday evening at 8:15, it was announced today.

Time of the hearing was set at a school board meeting Thursday night, when trustees reviewed the budget figures as drawn up by Supt. W. C. Blankenship. Tentative approval was given, but final action will not be taken until after the public hearing. The public is invited to next Tuesday night's session.

Washington Crew Winner

American Team Cops First In Olympic Rowing Contest

FRUNAU, Germany, Aug. 14 (AP)—The University of Washington, in a spurt finish, today won the Olympic eight-oared rowing championship, keeping unbroken American domination in this event. Italy was second and Great Britain third.

Gustav Schaefer of Germany won the singles sculling championship in which Dan Barrow of the United States was third.

In Berlin, Adolf Kiefer of the United States won the 100-meter backstroke championship. Holland captured the women's 400-meter free style relay event, with Germany placing second and the United States team third.

The United States won the Olympic basketball championship by defeating Canada.

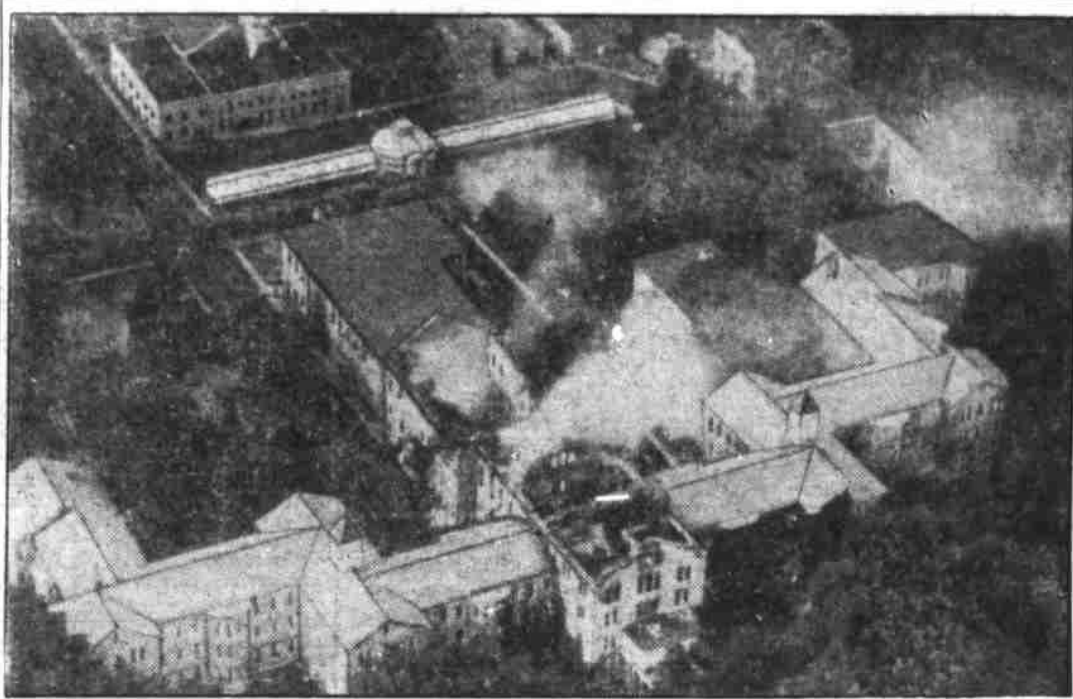
LLOYD BURKHART IS TRUSTEE AT FORSAN

Lloyd Burkhardt was appointed as a trustee of the Forsan common school district today by Miss Anne Martin, county superintendent, following an unofficial election held at Forsan Thursday afternoon.

Burkhardt received 40 votes to 39 for J. L. Johnson. Only one other vote was cast and had to be allowed because the person had voted for three instead of one.

He will succeed J. I. McCaslin, resigned, as a member of the board.

INMATES ESCAPE DEATH AS ASYLUM BURNS



Fifteen hundred insane wards were guided to safety when fire destroyed the center section of the state hospital for the insane at Mount Pleasant, Iowa. Some of the group later escaped. Above is a view of the hospital during the fire. (Associated Press Photo.)

Officials Map New US Fiscal Program

Tax Inequities To Be Revised, Early Balancing Of Budget Sought

WASHINGTON, Aug. 13 (UP)—President Roosevelt and his new deal aides today had presented the outlines of a three-fold election year fiscal program embracing assurance of no new taxes, revision of present tax inequities and early balancing of the budget.

Oppose Curb On Livestock

Ranchers Want Program Conducted To Rebuild Grazing Lands

WASHINGTON, Aug. 14 (UP)—Representatives of Texas livestock men informed the Agricultural Adjustment administration today that they would disapprove of any operation of the soil conservation act which would restrict livestock production, and that they favored instead a conservation program which would be designed to restore depleted grazing lands.

IS SENTENCED FOR GARDEN HOSE THEFT

V. H. Passmore, Amarillo, arrested here Tuesday after disposing of several hundred feet of garden hose, was sentenced to a year in jail by County Judge Charles Lewis of Sweetwater Thursday.

Local Police Gave Credit For Passmore's Arrest To Mrs. Mabel Quinn who Painted White Rings At Regular Intervals On Some Hose As Purchased Recently. It Was The Identification Mark Which Enabled Police To Connect The Suspect With Theft Of Hose. A. G. Hall Recovered 100 Feet Of Hose Stolen From Him Monday Night.

According To Sweetwater Officers, Approximately 650 Feet Of Hose Was Stolen In A Wholesale Raid On Sweetwater Lawns Sunday Night. Among Those Losing hose were E. C. Brand, R. M. Sinton, C. S. Perkins, Jack Shipley, Art Newman and others.

Four hundred and fifty feet of the hose were recovered by local officers who said they had more spotted.

Port Payment Boosts City's July Expense

Sharp Increase Shown For Month In Water And Pool Revenues

Cash payment of \$36,000 for the airport and sharp increases in water revenues mark the high spots in the monthly city financial report.

To Adopt Civil Service Rules

Examinations To Be Conducted For Age Pension Employees

AUSTIN, Aug. 14 (UP)—Civil service regulations were ordered today for Texas state age assistance administration employees.

MIDLAND MAN TO SPEAK HERE SUNDAY

Claude Crain, Midland, district president of the Baptist Sunday school association, will speak from the East Fourth Baptist church pulpit Sunday at 11 a. m., the pastor, Rev. W. S. Garnett, announced today. Crain will speak on "Christ's Challenge to Men."

LEAVES TO TAKE UP WORK AT LITTLEFIELD

Rev. and Mrs. Willis J. Ray and children left Friday afternoon for Littlefield where he is to assume the pastorate of the First Baptist church. Rev. Ray was district missionary for the past two years.

28 ABSENTEE BALLOTS

The absentee vote total crept up another notch Friday as the total reached 28. Absentee voting for the second democratic primary will end next Wednesday.

ARMY SHIP CRASHES IN FLAMES; 3 DEAD

NEW KENT COURTHOUSE, Va., Aug. 14 (AP)—An army plane, catching fire in flight, crashed on a farm near here today, burning beyond recognition three members of its crew. A fourth parachuted to safety.

Songs, Readings Given Before Club

A program of songs and readings was presented at the weekly luncheon session of the American Business Club Friday, when Ladies' Day was observed. Vocal numbers were given by June Lee Hannah, Lily Jean Cook was heard in readings, and Paul McCrory gave singing and tap dance numbers.

PLOT AGAINST SOVIET BLAMED ON TROTSKY

MOSCOW, Aug. 14 (UP)—Sixteen persons were arrested today after the discovery of a plot directly attributed to exiled Leon Trotsky, directed against the soviet regime, the government announced.

Badly Burned Crops In Wake Of Heat Wave

Conditions In County Estimated 30 Percent Worse Than Week Ago

Howard county farmers today looked back on the most destructive damage by sun and drought in years after three days which brought temperatures of more than 100 degrees.

Seek Drouth Designation

Meanwhile, Rep. George Mahon continued his efforts to have Howard, Mitchell, Scurry and Borden counties included in the drouth area.

J. W. Tapp, chairman of the drouth committee, wired that department representatives were making an investigation in the four counties recommended by Mahon.

G. E. Adams, assistant state director of the extension service, instructed county agents to make surveys and report their findings as soon as possible.

County Agent O. P. Griffin said Thursday that 400 farm people were in immediate need of employment.

Lower Temperatures Point To End Of Severe Heat

Temperatures remained high enough to make it summertime in Big Spring Friday, but the week's heat apparently was lessening here as it was elsewhere over the state.

To Adopt Civil Service Rules

AUSTIN, Aug. 14 (UP)—Civil service regulations were ordered today for Texas state age assistance administration employees.

US Marshal's Death Is Held An Accident

Officers Theorize Myers Fatally Shot While Cleaning Gun

HOUSTON, Aug. 14 (UP)—Officers today were working on the theory that Joseph Eugene Myers, deputy United States marshal, accidentally killed himself while cleaning his pistol. Justice of the Peace, Tom Mace, withheld an inquest verdict, but expressed the opinion the death was accidental.

Man Held At Dallas In Connection With Blaze at Greenville

GREENVILLE, Aug. 14 (AP)—A Norman Baines, 50, commodities supervisor at a Texas Relief commission warehouse here which was destroyed by a fire August 1 that took the lives of two firemen, faced a charge of arson today.

Dr. Splawn To Speak Tonight

Dr. W. M. W. Splawn, member of the interstate commerce commission, will speak from the tabernacle at Coahoma this evening at 8 o'clock.

Weather

BIG SPRING AND VICINITY—Fair tonight and Saturday. WEST TEXAS—Fair tonight and Saturday. EAST TEXAS—Fair tonight and Saturday; slightly warmer in south central portion tonight.

TEMPERATURES

Table with 2 columns: Time, Temp. Fri. 1 87 80, 2 87 80, 3 87 80, 4 87 80, 5 87 80, 6 87 80, 7 87 80, 8 87 80, 9 87 80, 10 87 80, 11 87 80, 12 87 80. Sunset today 7:31 p. m.; sunrise Saturday 6:16 a. m.

FINDS SON AFTER TWO YEARS



Eugene Welner, Jr., 5, is shown in Los Angeles with his father, a New York coffee merchant, who found his son after a two-year hunt and was awarded custody of him by court order. The boy's mother, Dbye Dawn, an actress, disappeared with the child in 1934 after winning custody of him following a divorce. She later died. (Associated Press Photo.)

Search Made For Grave In That Section

Missing Man's Car Found; Stains On Another Auto Investigated

SWEETWATER, Aug. 14 (AP)—Two men and a woman were in the Nolan county jail today charged with murder while a posse scoured the flat country east of here on the theory that a shallow grave holds the body of A. H. Jones, 58, filling station operator of Trent, Taylor county, who disappeared Tuesday night.

Stains Tested

Officers said they seized a new roadster which is being held as evidence while tests are made to determine if dark stains on the running board are blood.

Arson Charge Filed In Fire Fatal To Pair

ABILENE, Aug. 14 (AP)—Billie Lorena Duncan was named in a complaint charging bigamy, filed in Taylor county several weeks ago. She was arrested at Silver City, N. M., returned here and placed under \$500 bond pending action on the complaint by the grand jury.

FOREST FIRES ARE CHECKED FOLLOWING EXTENSIVE DAMAGE

ST. PAUL, Aug. 14 (UP)—Minnesota's principal forest fires were checked at least temporarily today as winds subsided and the humidity rose.

Dr. Splawn To Speak Tonight

On a brief visit to Coahoma with his wife, the former Zola Lay, sister of W. W. Lay, Dr. Splawn was prevailed upon Friday to deliver a short address on general economic trends.

ICC Member, Former U. Of T. President, Will Talk At Coahoma

Dr. Splawn, president of the University of Texas from 1924 to 1927, won attention by his work as chairman of the board of arbitration between western railroads and groups of employees in 1928. His books on railroad consolidation and government ownership of railroads placed him into the logical position as a member of the interstate commerce commission.

Songs, Readings Given Before Club

A program of songs and readings was presented at the weekly luncheon session of the American Business Club Friday, when Ladies' Day was observed. Vocal numbers were given by June Lee Hannah, Lily Jean Cook was heard in readings, and Paul McCrory gave singing and tap dance numbers.

PLOT AGAINST SOVIET BLAMED ON TROTSKY

MOSCOW, Aug. 14 (UP)—Sixteen persons were arrested today after the discovery of a plot directly attributed to exiled Leon Trotsky, directed against the soviet regime, the government announced.

Weather

Table with 2 columns: Time, Temp. Fri. 1 87 80, 2 87 80, 3 87 80, 4 87 80, 5 87 80, 6 87 80, 7 87 80, 8 87 80, 9 87 80, 10 87 80, 11 87 80, 12 87 80. Sunset today 7:31 p. m.; sunrise Saturday 6:16 a. m.

C. W. Post—Not Only A Cereal Maker, But Also A Successful Colonizer

Native Of Illinois, He Loved West Texas And Contributed To Its Development

(This is the fifth of a series of articles on persons, places and incidents significant in West Texas history, information in which is based on articles compiled by the WPA writers' project. Another feature will appear in The Herald Monday.)

Legions of West Texans have glanced at the cereal carton perched at one end of their breakfast table and unconsciously noticed the scrawling signature of C. W. Post. Of the thousands who daily see this facsimile, only a few have any knowledge about the man beyond the fact that he made a fortune by conceiving and producing tasty breakfast tidbits out of corn and wheat.

There is, decidedly, a more human and interesting Post. Christened Charles William Post on his birth in Illinois Oct. 24, 1854, Post settled down to the prosaic task of earning a living as a traveling salesman for a hardware company.

His talent as an inventor was such that he soon became manager of an implement factory. His rapid rise, however, was interrupted by dissonance in the company. In the midst of his trouble his health failed and he started traveling for his health and continued his search until 1881.

His wanderings had brought him west and to the plains, and like others who set foot on the rolling expanse, he was imbued with a deep and abiding love for the open range, the wilderness of West Texas.

Working here and there at different occupations in West Texas, Post made on well. He was devoted a man to be completely satisfied with his lot, and when he dreamed of a model town in the midst of this great country, he resolved that it was more than a dream—it was a vision.

He must have kept this tucked away in the back of his mind when he went to Battle Creek, Mich., in search of health. There he gained not only health but wealth, which brought him happiness in

(Continued On Page 4)

Around And About

The Sports Circuit



By Tom Beasley
DUE TO the fact that only five games will be played in the Steer corral this year...

GENTRY TELLS us that holders of box seat tickets last year have asked for their places back...

HELPS BIG Spring's district card for 1936: Sept. 25—Eastland at Big Spring...

AT THIS early date it appears that we'll have only one good district encounter here...

JUST TO start an argument, we'll pick the teams to wind up like this: 1—Abilene...

It wouldn't surprise us to see the Steers finish close to the top...

THE GRANDSTAND is to be thoroughly tested this year...

JESS RODGERS (of the Midland paper) was here Tuesday night...

CARDS IN GOOD POSITION TO COP NATIONAL FLAG

Cosden Enters Team In All-West Texas Title Tourney At San Angelo

COUPLE OF RECRUITS HELP OUT

ST. LOUIS, Aug. 14.—The current edition of the St. Louis Cardinals is a striking example of what hustle and fight will do in baseball...

Shattered remnants of the old Gas House Gang, ranks thinned by injuries and illness, once more appear in the National League...

Even with the addition of Tarzan Parmelee the Cardinals appeared shy of pitching in the spring...

Jack Rothrock and Ernie Orat-ti, outfield stars of the rousing campaign of 1934...

Then from out of obscurity came young Stuart McGuire Martin, a sleepy-looking kid recalled from Asheville of the Piedmont League...

But Stu Martin became ill in mid-July, and when the blocks in the red blazers checked in at Chicago the other morning they discovered that he had sud-

(Continued On Page 3)

Allen Shuts Out Detroit Tigers, 8 To 0

Indians Are Just About 'In' As The Second Place Team

NEW YORK, Aug. 14.—Johnny Allen, eccentric Indian pitcher, applied the whitewash to Detroit Thursday and defeated the Tigers, 8-0...

The Chicago Bruins, a game away from the leadership, will be entertained in Cincinnati before going into Pennsylvania for a series with the Bucs.

Home runs—Stroner, 25; Howell, Tulsa, 20.

Home runs—Stroner, 25; Howell, Tulsa, 20.

Home runs—Stroner, 25; Howell, Tulsa, 20.

Home runs—Stroner, 25; Howell, Tulsa, 20.

Home runs—Stroner, 25; Howell, Tulsa, 20.

Home runs—Stroner, 25; Howell, Tulsa, 20.

Home runs—Stroner, 25; Howell, Tulsa, 20.

Home runs—Stroner, 25; Howell, Tulsa, 20.

Home runs—Stroner, 25; Howell, Tulsa, 20.

Home runs—Stroner, 25; Howell, Tulsa, 20.

Home runs—Stroner, 25; Howell, Tulsa, 20.

Home runs—Stroner, 25; Howell, Tulsa, 20.

Home runs—Stroner, 25; Howell, Tulsa, 20.

Home runs—Stroner, 25; Howell, Tulsa, 20.

Home runs—Stroner, 25; Howell, Tulsa, 20.

Home runs—Stroner, 25; Howell, Tulsa, 20.

Home runs—Stroner, 25; Howell, Tulsa, 20.

Home runs—Stroner, 25; Howell, Tulsa, 20.

Home runs—Stroner, 25; Howell, Tulsa, 20.

Home runs—Stroner, 25; Howell, Tulsa, 20.

Home runs—Stroner, 25; Howell, Tulsa, 20.

To Direct The Football All-Americans



MATTY BELL

DUTCH MEYER

Two of the greatest grid coaches in the history of South-

west conference football will direct the All-American eleven

which meets the Chicago Bears

of the National Professional League in Dallas the night of Sept. 7...

Editor's Note—This is the first of three articles on softball in Texas.

WICHITA FALLS, Aug. 14.—Texas should have top-flight representatives to the national tournament...

State Commissioner Harold B. White, Wichita Falls, attributes softball's success to the fact that it is a "duffer's game"

which financial ratings are no serious handicap. Adults first played the game in South Texas...

The sport's greatest impetus came in 1935, when a 12-inch in-seam ball, much faster than the 14-inch out-seam pellet formerly used...

was made official. It was conducive to heavy hitting and plural scoring, much to the delight of the non-paying spectators.

This summer the Amateur Softball Association of America is sponsoring a state tournament at Fort Worth...

The winner in both men and women's divisions will go to Chicago for the national meet.

The A. S. F. A. of which White is commissioner, is closely aligned with the T. A. A. F., first sponsor of state tournaments.

Large numbers of Texans have been attracted to softball because it is strictly amateur.

The only equipment necessary is a ball, a bat, a pair of tennis shoes and some old clothes.

It does not require the financial outlay of golf or tennis. It is less violent than tennis, and requires less time than golf.

The better teams, of course, include youngsters adept at other sports, keen of eye and fast of foot.

Texas girls teams go in for colorful uniforms—shorts, blouses and anklets. Women's teams from factories, department stores, and large business houses are organized into leagues.

Their games probably are better than those played by men. Scores are smaller and the margins of victory less.

One outstanding feature of softball is that a participant usually does not suffer aching muscles after a big game.

Long practice periods are unnecessary. "The feature of softball depends upon its continuance as a sport for the 'duffer,'" said Commissioner White.

It will be a sport for professional players and must remain amateur to appeal to every class and creed.

SPARS VICIOUSLY
ORANGEBURG, N. Y., Aug. 14 (UP)—Jack Sharkey held a 44-minute workout here yesterday and appeared shipshape...

Panthers Put 12 Runs Over In 5th Frame

Defeat Red Raiders In Junior League Game Thursday, 15-9

The Panthers sent 18 men to bat in the fifth inning of their Thursday game to score twelve runs and defeat the Red Raiders, 15-9...

Box score (first game): Raiders—AB R H Womack, ss 5 1 0 Ray, p 6 2 0...

Box score (second game): Hornets—AB R H Barton, c 4 0 1 Creek, 2b 4 0 0...

NO LEAGUE GAMES TODAY STANDINGS
Hornets 7 5 583 Red Raiders 5 7 417 Cardinals 6 6 509 Panthers 6 6 500

Golf Analyzed
By JOE GLASS
It was a great surprise to me when George Dunlap, Jr., told me that it wasn't until after he had been playing golf in select circles for a long time...

It was a great surprise to me when George Dunlap, Jr., told me that it wasn't until after he had been playing golf in select circles for a long time...

It was a great surprise to me when George Dunlap, Jr., told me that it wasn't until after he had been playing golf in select circles for a long time...

It was a great surprise to me when George Dunlap, Jr., told me that it wasn't until after he had been playing golf in select circles for a long time...

It was a great surprise to me when George Dunlap, Jr., told me that it wasn't until after he had been playing golf in select circles for a long time...

It was a great surprise to me when George Dunlap, Jr., told me that it wasn't until after he had been playing golf in select circles for a long time...

It was a great surprise to me when George Dunlap, Jr., told me that it wasn't until after he had been playing golf in select circles for a long time...

It was a great surprise to me when George Dunlap, Jr., told me that it wasn't until after he had been playing golf in select circles for a long time...

It was a great surprise to me when George Dunlap, Jr., told me that it wasn't until after he had been playing golf in select circles for a long time...

It was a great surprise to me when George Dunlap, Jr., told me that it wasn't until after he had been playing golf in select circles for a long time...

It was a great surprise to me when George Dunlap, Jr., told me that it wasn't until after he had been playing golf in select circles for a long time...

It was a great surprise to me when George Dunlap, Jr., told me that it wasn't until after he had been playing golf in select circles for a long time...

It was a great surprise to me when George Dunlap, Jr., told me that it wasn't until after he had been playing golf in select circles for a long time...

It was a great surprise to me when George Dunlap, Jr., told me that it wasn't until after he had been playing golf in select circles for a long time...

It was a great surprise to me when George Dunlap, Jr., told me that it wasn't until after he had been playing golf in select circles for a long time...

It was a great surprise to me when George Dunlap, Jr., told me that it wasn't until after he had been playing golf in select circles for a long time...

It was a great surprise to me when George Dunlap, Jr., told me that it wasn't until after he had been playing golf in select circles for a long time...

It was a great surprise to me when George Dunlap, Jr., told me that it wasn't until after he had been playing golf in select circles for a long time...

It was a great surprise to me when George Dunlap, Jr., told me that it wasn't until after he had been playing golf in select circles for a long time...

It was a great surprise to me when George Dunlap, Jr., told me that it wasn't until after he had been playing golf in select circles for a long time...

It was a great surprise to me when George Dunlap, Jr., told me that it wasn't until after he had been playing golf in select circles for a long time...

Schlitz Beer advertisement featuring 'Precise Control' and 'Sunshine Vitamin D'.

C. C. Golfers After Low Rates

Hope To Get Grass Greens
Committee Studies Cost; To Report To Stockholders

The possibility of the country club golf course being changed to a grass green layout will depend largely on the water rate, according to committee members...

At a directors meeting Wednesday night, it was learned that individuals had agreed to donate over \$1,000 toward construction of grass greens.

Those attending the Wednesday confab: Pres. Carl Blomsheld, Fred Stephens, D. P. Watt, P. W. Malone, Obie Bristow and Shirley Robbins.

Obie Bristow, general chairman for the annual tournament Sept. 5, 6 and 7, will appoint his committee the first part of next week.

Obie Bristow, general chairman for the annual tournament Sept. 5, 6 and 7, will appoint his committee the first part of next week.

Obie Bristow, general chairman for the annual tournament Sept. 5, 6 and 7, will appoint his committee the first part of next week.

Obie Bristow, general chairman for the annual tournament Sept. 5, 6 and 7, will appoint his committee the first part of next week.

Obie Bristow, general chairman for the annual tournament Sept. 5, 6 and 7, will appoint his committee the first part of next week.

Obie Bristow, general chairman for the annual tournament Sept. 5, 6 and 7, will appoint his committee the first part of next week.

Obie Bristow, general chairman for the annual tournament Sept. 5, 6 and 7, will appoint his committee the first part of next week.

Obie Bristow, general chairman for the annual tournament Sept. 5, 6 and 7, will appoint his committee the first part of next week.

Obie Bristow, general chairman for the annual tournament Sept. 5, 6 and 7, will appoint his committee the first part of next week.

Obie Bristow, general chairman for the annual tournament Sept. 5, 6 and 7, will appoint his committee the first part of next week.

Obie Bristow, general chairman for the annual tournament Sept. 5, 6 and 7, will appoint his committee the first part of next week.

Obie Bristow, general chairman for the annual tournament Sept. 5, 6 and 7, will appoint his committee the first part of next week.

Obie Bristow, general chairman for the annual tournament Sept. 5, 6 and 7, will appoint his committee the first part of next week.

Obie Bristow, general chairman for the annual tournament Sept. 5, 6 and 7, will appoint his committee the first part of next week.

Obie Bristow, general chairman for the annual tournament Sept. 5, 6 and 7, will appoint his committee the first part of next week.

Obie Bristow, general chairman for the annual tournament Sept. 5, 6 and 7, will appoint his committee the first part of next week.

Eagles To Go On Grid Camp

Coach Dewey Mayhew Facing Tough Schedule With 3 Lettermen

ABILENE, Aug. 14. (Sp.)—Coach Dewey Mayhew, with three returning Abilene-high school football lettermen, will take his '36 Eagle grid prospects to Kerrville on Aug. 30 for a two-week training camp.

Mayhew will have plenty of squadmen for every position, however, and Abilene ranks as one of the strongest teams in the nine-club Oil Belt district.

The lettermen are Leonard Joris, 205-pound tackle; Odell Herman, scrappy 165-pound back, and R. B. Galbraith, a bantamweight ball totter.

Ineligibility clipped three of the Abilene lettermen.

MAJOR LEAGUE LEADERS (By The Associated Press) American League

Batting—Wentz, 365; Rogers, 32; Averill, Indians, 350.

Runs—Gehrig, Yankees, 132; Gehrig, Tigers, 109.

Runs batted in—Trosky, Indians, 112; Foxx, Red Sox, and Gehrig, 106.

Hits—Averill, 173; Trasky, 159.

Walker, Tigers, 99; Gehrig, 85.

Runs batted in—Medwick, Cardinals, 110; Ott, 100.

Hits—Medwick, 163; Demaree and Herman, Cubs, 147.

Doubles—Herman, 43; Medwick, 42.

Triples—Camilli, Phillies, and Klein, Phillies, and Berger, Bees, 20.

Some say BOURBON

Some say RYE

they all say Calhoun's

Some say BOURBON

Some say RYE

they all say Calhoun's

Some say BOURBON

Some say RYE

they all say Calhoun's

Some say BOURBON

Some say RYE

they all say Calhoun's

Some say BOURBON

Some say RYE

they all say Calhoun's

Some say BOURBON

# Devils Win From Carter, 5-3, In League Softball Windup

## Couple

(CONTINUED FROM PAGE 2)  
ferred a release that would keep him out until Sept. 1. This

## Managers Catch

NEW YORK, Aug. 14.—Of 51 managers and coaches in the major league, one-third were or are catchers. Following backstops as pilots and their assistants are third and second basemen. Outfielders and pitchers appear to be least desirable.

## MECHANICS DEFEATED BY ERRORS

By HANK HART  
Ringing down the curtain on the local 1936 softball season, the Devils ousted the Carter Mechanics Thursday night to win, 5-3. A series of miscues on the part of the Carterites played a big part in their own downfall.

## Ponies Start Work Monday

Lights At Newman Stadium To Be Ready For First Game Of Season

SWEETWATER, Aug. 14. (SP)—Work of installing lights at Newman stadium here will start next Monday, and the lights will be ready for the first Mustang grid game of the season on Sept. 11 with Roscoe.

## MEL OTT BREAKS NATIONAL CIRCUIT RECORD FOR BATTING IN RUNS AS THE GIANTS SOAR

NEW YORK, Aug. 14.—With the Yankees virtually conceded to be "in," the Giants have the big town discussing the possibility of its first five-cent world series in 13 years.

## Truckers Oppose 7,000 Pound Limit

FORT WORTH, Aug. 14 (UP)—Truck operators renewed their opposition to Texas' 7,000-pound limit law and decried the movement to increase liability insurance rates.

## Treasury Starts Big Campaign On Narcotics Traffic

WASHINGTON, Aug. 14 (UP)—The treasury announced today it would assign 570 men to start a nationwide drive to halt narcotics smuggling. The men have been working with the customs border patrol in an attempt to smash run running.

## Garrett's Sauternes

A beautiful, clear, white wine of medium-sweet taste and subtle bouquet. Superb dinner wine.

Again On Sale In Texas!

# VIRGINIA DARE

## and Other Fine GARRETT WINES

Made and guaranteed by a company famous as wine-makers for 100 years. "Garrett's" on the bottle assures the quality appreciated by Americans—particularly Southerners—for generations.

GARRETT'S VIRGINIA DARE Light Wine has been America's favorite for three generations! Red or White. Smooth, mellow, tart-sweet taste. A treat on any occasion.



# AMERICAN-MADE GARRETT'S WINES

### Garrett's Sauternes

A beautiful, clear, white wine of medium-sweet taste and subtle bouquet. Superb dinner wine.

### Garrett's Blackberry

Old North State Blackberry is a rich, sweet, heavy wine, made from Carolina blackberries, and fragrant with their spicy tang.

### Garrett's Catawba

A golden, medium-sweet wine made from the world-famous Catawba grapes. One of the most celebrated American wines. Good at any time.

### Garrett's Muscatel

A sweet, amber-colored wine, made from California Muscatel grapes in Garrett's own winery. A heavy, delicious wine that you'll like. Alcohol 19 to 21% by volume.

Badger-Herring Sales & Drug Co.

101 Main St. Phone 258  
Distributors For  
GARRETT & CO., Inc., Brooklyn, N. Y.  
MAKERS OF FINE WINES FOR 100 YEARS

# B. O. JONES GRO. & MARKET

FREE DELIVERY PHONE 236

Every day is bargain day at Jones'—Fresh vegetables are scarce but we offer all the markets afford. Use your telephone; your order will be carefully filled and delivered.

**Pecos Cantaloupes**  
4 for 25c  
**Watermelons - Pears**  
**Red Grapes - Limes**

**Crackers** 19c  
NO. 2 CAN  
**Spinach** 10c  
FRESH CORN — GREENS — SQUASH  
PEPPER — LETTUCE

|  |   |  |
|--|---|--|
| <b>Bananas</b><br>Large Size<br>Green Tip<br>4¢<br>Lb. | <b>Black-Eyed PEAS</b><br>Some Shelled<br>2 1/2¢<br>Lb. | <b>GRAPES</b><br>Seedless<br>4 Lbs. for<br>25¢         |
| <b>GREEN BEANS</b><br>Stringless<br>8c<br>Lb.          | <b>Tomatoes</b><br>Just Bite to Stuff<br>6¢<br>Lb.      | <b>SPUDS</b><br>No. 1 Whites<br>10 Lbs.<br>25c         |
| <b>No. 3 Can Peaches</b><br>Fancy Sliced<br>16¢<br>Can | <b>JELLO</b><br>All Flavors<br>6¢<br>Pkg.               | <b>NEW COOKING APPLES</b><br>Good Size<br>15¢<br>Dozen |
| <b>Pork &amp; Beans</b><br>16 Oz.<br>5c<br>Can         | <b>SLICED Bacon</b><br>Fancy<br>24¢<br>Lb.              | <b>PRIME BEEF ROAST</b><br>15c<br>Lb.                  |

# WHO'S HOT?

## NOT A BUICK OWNER!

# \$765

THE coolest people in town—the happiest and most care-free—are those wise and fortunate folks to whom we've lately delivered one of these lively, liltng Buick SPECIALS.

Swing wide those Ventipanes—let your foot down smoothly on the accelerator—and you've got your cooling breeze, made to order whenever you want it!

There's no noise, no heat, no labor to its oil-quieted, valve-in-head straight-eight engine that speeds you so smoothly along.

There's no effort to the handling—the man at the wheel takes his pleasurable ease, just like the rest of the party.

We've yet to find a hill or a stretch of tough going that can draw a puff or pant from this easy-stopping Series 40 beauty.

It isn't too late to get thrilling pleasure out of this summer. We can make quick delivery—arrange our easy terms to suit your likes. Call us—and we'll be around for a demonstration.

# "Buick's the Buy"

YOUR MONEY GOES FARTHER IN A GENERAL MOTORS CAR

## KEISLING MOTOR COMPANY

401 Runnels St. Big Spring, Texas

WHEN BETTER AUTOMOBILES ARE BUILT, BUICK WILL BUILD THEM

### SURVEY URGED OF ALL WATER BELOW GROUND

PITTSBURGH, (UP)—A plan for a national survey of underground water supplies has been submitted to President Roosevelt by H. L. Walters, veteran well drill-

er of Vanport, Pa. Walters advised the president in a letter that the nation's underground water resources are being exhausted by improper use. In a survey in the vicinity of Beaver Falls, Pa., he discovered the great sand rock formation that extends under parts of Western Pennsylvania, Ohio and West Virginia has been rendered unfit as a source of

well water. Walters said that in other parts of Pennsylvania he found contamination, oil and salt in the water of wells drilled at heavy expense. He proposed that between 2,000 and 4,000 engineers, draftsmen, chemists and others be employed by the government to conduct the survey. The survey, Walters said, should include the inspection of

### PEACE AMENDMENT PROPOSED BY GEN. SMEDLEY D. BUTLER

#### Famed Officer Favors Constitutional Change To Keep Nation From War

NEW YORK, Aug. 14.—Amendment of the constitution as a simple and practical method to "guarantee everlasting peace to our nation" is proposed by Major General Smedley D. Butler today, in an article in the Woman's Home Companion. His suggested amendment for peace is as follows: 1. The removal of members of the land armed forces from within the continental limits of the United States and the Panama Canal zone for any cause whatsoever is hereby prohibited. 2. The vessels of the United States navy, or of the other branches of the armed service, are hereby prohibited from steaming, for any reason whatsoever except on an errand of mercy, more than 500 miles from our coast. 3. Aircraft of the army, navy and marine corps is hereby prohibited from flying, for any reason whatsoever, more than 750 miles beyond the coast of the United States. "Such an amendment," General Butler writes, "would be an absolute guarantee to the women of America that their loved ones would never be sent overseas to be killed or maimed in European or Asiatic or African wars that are no concern of our people. Such an amendment, linked with adequate naval and military defenses at home, would guarantee everlasting peace to our nation."

### Col. Thompson Is Backed By Independents

#### Has Support Of 98 Percent Of Legitimate Producers, He Asserts

CLARKSVILLE, Aug. 14.—Two of the "independents" supporting his opposition were named here by Railroad Commission Chairman Ernest O. Thompson, candidate for re-election, in a speech bluntly challenging the claim of his opponent, Frank A. Morris, that Morris has the support of independent oil operators. Thompson, who led the first primary election by nearly 300,000

votes and lacked less than 10,000 of having a clear majority, declared his opponent was "welcome to their kind of support." "I can truthfully claim," he said, "the support of legitimate operators, a full 98 per cent of them. My opponent can have the kind of independents who are supporting him. I prefer the support of legitimate, law-abiding and constructive independents who are supporting me."

"Who are these independent oil men my opponent says are supporting him?" Thompson asked.

"Well, there's Freeman Burford, whose oil we refused to allow to move because of its being illegally produced," he said.

"Then there's Wallace Jenkins. He's recently been charged in federal court in connection with his oil business."

"I can truthfully claim the support of 98 percent of the legitimate oil operators, whether large or small; such authentic and reliable associations of independent producers as the North Texas Oil and Gas association and the Independent Oil Producers association have openly endorsed my candidacy."

"My opponent can have the kind of independent operators who are supporting him. I prefer the support of the legitimate, law-abiding and constructive independents who are supporting me."

Amarillo's former mayor reminded his listeners that the railroad commission had been investigated by state, federal and legislative agencies and that each time it had come through with commendation for its work and a clean bill of health.

"Why, not later than last week," Thompson said, "members of the

oil investigating committee of the Texas house of representatives came out and publicly declared that they not only had investigated me thoroughly and found nothing to criticize in my public or personal life, but that they had traced each one of these slanderous rumors against me to a finally and had found them to be baseless."

### SPECIAL

#### Sunday Evening Dinner

- Choice of: Glass of Sauterne, Claret, or Burgundy, Fruit Cocktail, Canape, Tomato Bouillon, Celery Hearts - Mixed Olives, Brest of Chicken with Premium Ham - Sauteed Pineapple Ring, Buttered Asparagus Points, Golden Bantam Corn, French Dressing, Hot Biscuits with Jelly, Choice of Desserts, Coffee, Tea, Milk

Hotel Settles COFFEE SHOP

PEACOCK BEAUTY SHOPPE 1603 Scurry Phone 126 Modern, Efficient, Skilled Operators

## HODGES GROCERY

211 East Third Ph. 608

Pork Sausage Lb. 15c

Veal Chops Lb. 15c

Steak Loin or T-Bone Lb. 20c

Extra Special THREE HUNDRED 1-4 Lb.

Fryers Fully Dressed Each 40c

Cheese Kraft's Longhorn Per Lb. 23c

Beef Roast Per Lb. 12c

Stew Meat Per Lb. 10c

Breakfast Bacon Sliced Per lb. 30c

Cocoa 2 Lb. Can 19c

Peas Extra Fancy No. 2 Can-2 for 25c

Corn Best Grade No. 2 Can-2 for 25c

Green Beans No. 2 Can 25c

Red Salmon No. 1 Tail Can 24c

Post Toasties Pkgs. 10c

Miracle Whip Qt. 35c Pint 22c

Tomatoes No. 2 Can 2 for 15c

Matches 6 Boxes for 15c

Bliss Coffee Lb. Can Limit 18c

Milk Grade A Per Qt. 8c

Oxydol 25c Size 20c

Folger's Coffee 1 Lb. Can 27c

Pickles Qt. Sour or Dill 15c

Apple Butter Qt. Ma Brown 19c

Grape Jam 4 Lb. Jar Ma Brown 49c

Preserves Ma Brown 1 Lb. Jar 19c

Olives Qt. Jar 35c

Prunes Gal. Can 29c

OATS Mother's 25c

Fruit Cocktail No. 2 Can 19c

Asparagus Tips No. 1 Can 14c

Snowdrift 8 Lb. Can 59c

Kipper Snacks 6c

Grape Juice Qt. 28c Pint 15c

Charge Accounts Issued and Extended to Those of the Proper Credit Rating.

# Piggly Wiggly

Large Size LEMONS 23c Doz. Lipton's TEA 1/4 Lb. 22c 6 Lb. Pail Snow Drift \$1.04

MIRACLE WHIP SALAD DRESSING 35c qt. PHILLIPS PORK & BEANS 14c 3 CANS

GINGER ALE LIME RICKY CLUB SODA 12. Oz. Bottles 2 for 15c

ROYAL Gelatin 19c 3 FOR NO. 2 CAN Corn 17c 2 FOR

NO. 2 CAN Kraut 20c 3 FOR SUN BRITE Cleanser 4 1/2c

GIANT BARS SOAP, 6 for 25c 1 LB. BLISS Coffee 21c

QT. PREPARED Mustard 10c OIL GLOW Shoe Polish 10c

POST Toasties 10c LIFEBOUY Soap 19c 3 FOR

Sugar Cured BACON 25c 1 Lb. Sliced Choice Veal ROAST 12c STEW MEAT 9c LB.

# PIGGLY WIGGLY

No Fear of Invasion In explaining how the amendment would work, General Butler points out that the United States is in no danger whatever of military invasion, first because of its geographical position, and second because of political dissensions abroad, which prohibit any one nation from leaving its borders unguarded in order to make war 3,000 or 6,000 miles distant. Even if foreign nations ever could agree to pool their resources against the United States, he adds, there still would be little fear of successful invasion. "Therefore," he says, "with the invasion of our shores an impossible military undertaking, the only war in which we can possibly become involved is one in which our people would have no interest and no concern—and no right to join. It would be one into which we should be thrown by some economic, political or diplomatic intrigue, and not a war which we should wage in defense of our homes. And it is from just such a war, a war such as the late World war, that we must protect ourselves."

Economic Pressure As for the country's territories and dependencies, the general would let them all go, except the Canal Zone, which is necessary to defense, Hawaii and Alaska. The last two, he would not defend against armed invasion, but feels that the occasion would never arise, if the United States would announce to the world that it would use every economic pressure possible against any nation which might be tempted to attack them. "Let's pass all suggested anti-war legislation," General Butler says; "let's attend all the peace and disarmament conferences; let's have all the war protest meetings we can arrange; let our young men form their 'veterans of future wars' groups—let's do all this and more. But if we really want to make it impossible to have our young men

every kind of mine or well that had penetrated to the water-bearing strata, to determine whether it was draining the water away or exposing it to contamination. Walters' plan was turned over to the National Resource Board for study.

## Highest Quality GROCERY Bargains

Economy in buying groceries is to obtain the highest quality, standard merchandise at reasonable prices . . . and not buying inferior grades at "cheap prices." High grades at the lowest possible prices make the U-SAVE STORES popular with housewives who practice economy. Read a few of the many items offered.

FOR FRIDAY AND SATURDAY

U. S. No. 1-10 Lbs. Potatoes 27c Thompson Seedless-2 Lbs. Grapes 15c

Large Sunkist-Dozen Lemons 25c Millers-Large Pkg. Corn Flakes 10c

Sour-Quart Pickles 15c Prepared-Quart Mustard 10c

Salted-2 Lb. Box Crackers 17c Tomatoes No. 1 Can... 5c 2 No. 2s 15c

No. 2 1-2 Can Hominy 10c No. 2 1-2 San Kraut 10c

No. 2 Can Green Lima Beans 10c Phillips Brand-No. 2 Can Mixed Vegetables 10c

## SOAPS

PALMOLIVE 3 BARS 17c

SUPER SUDS (Medium) 2 PKGS. 19c

Crystal White 5 Large Bars 22c

## MARKETS

BEEF ROAST, lb. 12 1/2c

PORK SAUSAGE, lb. 15c

STEAK lb. 15c

BOLOGNA Sausage 2 lbs 25c

# U-SAVE Groceries FINE FOODS

No. 1-305 E. 2nd St., Ph. 107 WE DELIVER No. 2-215 West 3rd, Ph. 108



## MAN! YOU CAN'T BEAT HUSKIES FOR FLAVOR!

SAYS Francis Schmidt noted football coach at Ohio State University

What makes HUSKIES so rich in food-energy? HERE'S the answer. They are made of whole wheat with whole wheat's goodness toasted into every flake! HUSKIES give you Iron for blood. Phosphorus and other valuable mineral

salts for strong bones and teeth. Carbohydrates for food-energy. Protein to help build muscle. And Vitamins A, B, E and G—important to good nutrition. At breakfast, lunch, or for that mid-afternoon "snack," HUSKIES sure "go" great! Ask your grocer for HUSKIES.



"LEFTY" GOMEZ, New York Yankee pitcher says: "HUSKIES are swell for breakfast—and a satisfying lunch."



HELEN HICKS, famous woman golfer, writes: "I sure like HUSKIES... they're so different and so good... and, HUSKIES being made of whole wheat, they have a lot of food value!"



LARRY "BUSTER" CHABBE, Olympic-winning champion, star of the Universal Serial "Flash Gordon," says: "I like HUSKIES—they're sure good what it takes!"

THESE HUSKIES EAT HUSKIES FRANKIE FRISCH, Mgr. St. Louis Cardinals CHARLIE GRIMM, Mgr. Chicago Cubs "HANK" GREENBERG Detroit Tigers' famous player JACK RUSSELL—pitcher, Boston Red Sox

# Summer Specials

SATURDAY ONLY

## Ladies' PURSES

In White and Pastels. Choice—Regular \$1.00—

39c

## Millinery

Ladies' and Children's SUMMER HATS Your Choice Value to \$1.95

39c

## Wash FROCKS

Fast colors. Light and cool. Regular \$1.00. Choice—

79c

## Ladies' SHOES

New arrivals in fall shoes in kid leather, suedes and combinations. High or medium heels.

\$1.98

## Felt HATS

Ladies' new fall felts. New brims, new shades.

\$1.00

## Silk DRESSES

New fall silks. A good variety of colors.

\$3.95

## Boys' Polo SHIRTS

Cotton polos, white and yellow. Sizes 6 to 16.

25c

## Boys' Dress SHIRTS

Just right for school. Fast colors. Sizes 6 to 14.

39c

## Kiddies ANKLETS

In Pastel Rayons

10c

LEVINE'S

# Leftovers Combined With Ham Make Different And Tasty Dishes For Summer Day Meals

By MARTHA LOGAN  
Once upon a time we dreaded summer guests, especially the kind who maintained a winter level appetite no matter how high the mercury rose in the little thermometer on the back porch "just off the kitchen."

Now the modern woman refuses or should refuse to spend hot summer days in her kitchen, sitting along with the food for the company dinner. She purchases canned and ready-to-serve foods. She has learned to appreciate the value of a vacuum cleaner, electric lights and modern labor saving equipment of all kinds. Should she not take advantage of labor saving foods as well?

When guests with hearty appetites arrive, or when the family demands "a regular dinner, not salads and stuff," that is the time for the purchase of ready-to-serve ham. These hams have the same home cooked, delicious flavor that any ham prepared in a home might have. They can be reheated in a short time with practically no

shrinkage, and much time, heat, and labor in preparation can be saved.

Here are a few recipes and suggestions for serving these ready-to-serve hams:  
**Reheated Ham With Pickled Peaches**  
Have your butcher cut the ready-to-serve ham into slices of any desired thickness, 1-2-inch to one inch thick being very good, and heat these quickly in the oven.

Place the slice of ham in a casserole. Cover with the juice from a can of pickled peaches. Cover the casserole. Heat in a moderate oven (350 degrees F.), for 15 to 20 minutes, 15 minutes for the slices 1-2 to 3-4-inch thick, and about 20 minutes for the one-inch thick slices. When hot, remove the ham to a serving platter. Thicken the remaining juice with a little cornstarch smoothed to a paste with a little cold water. Add a few raisins to the sauce and about 1-4 teaspoon lemon juice. Serve with the ham. Accompany the ham with the pickled peaches, garnished with red cherries and placed in lettuce cups. Loganberry juice, grapefruit juice, peach juice, milk or any desired juice may be substituted for the pickled peach juice.

**Hot Ham Slices With Fruit Salad**  
Place a slice or slices of ready-to-serve ham in a casserole and add the juice from a can of mixed fruit salad. Cover casserole and heat 15 to 20 minutes, depending on the thickness of the ham, in a moderate oven (350 degrees F.). Remove the ham and thicken the remaining juice with cornstarch smoothed to a paste with a little cold water. Add the fruits and heat. Add 1-2 teaspoon lemon juice. Pour the sauce over the ham and serve.

**Ham With Horseradish Sauce**  
Serve sliced ready-to-serve ham with a horseradish sauce made by folding 1-2 cup of stiffly beaten cream into a mixture of 2 tablespoons prepared horseradish, 1 teaspoon prepared mustard, 3 tablespoons mayonnaise, 1-2 teaspoon salt and a few grains of cayenne pepper.

**Ham Platter**  
In the center of a large round platter place a mound of cottage cheese mixed with toasted salted almonds and sprinkle with minced chives or parsley. Arrange small, crisp leaves of lettuce around this. Surround with slices of ready-to-serve ham and garnish the platter with mixed sweet pickles and stuffed olives.

**Ham Salad**  
2 cups ready-to-serve Ham diced, 1 cup celery, cut in small pieces, 1 green pepper, 3-4 cup finely chopped sweet pickle, Salt to taste, Mayonnaise, Lettuce, Radish roses for garnishing. Combine diced ham, celery, and sweet pickle with 1-2 of the green

## CONSTIPATION\* MAY LOWER RESISTANCE TO GERMS

Can Be Corrected by Natural Laxative Food

Common constipation is due largely to insufficient "bulk" in meals. It is a condition that should never be treated casually.

Long neglected, it may contribute to a general run-down condition. Your body lacks the strength it needs to fight off infection. You are much more likely to pick up a serious illness.

Guard against common constipation. Make sure the meals you eat contain plenty of "bulk." Kellogg's ALL-BRAN is a generous source of effective "bulk."

Within the body, the "bulk" in ALL-BRAN absorbs moisture, forms a soft mass, and gently cleanses the system. This delicious cereal also furnishes vitamin B and contains iron. Two tablespoonfuls daily, with milk or cream, are usually sufficient. Stubborn cases may require ALL-BRAN oftener. If not relieved this way, consult your doctor.

Serve ALL-BRAN in some form each day, either as a cereal, or cooked into muffins, breads, etc. Eat it regularly for regular habits.

Guaranteed by the Kellogg Company. Sold by all grocers. Made by Kellogg in Battle Creek.

\*Constipation due to transient "bulk"

## SPANISH LOYALIST LEADER SHOT



Colonel Cuervo (indicated by arrow), leader of a regiment of Spanish government troops, was executed by a firing squad from his own command after he was held guilty of leading his men into a rebel trap which practically wiped out the regiment. This dramatic picture was taken soon after Cuervo was seized and shows him trying to explain the error. (Associated Press Photo)

pepper, finely chopped. Season to taste with salt. Add mayonnaise to moisten. Place in a mound in the center of a lettuce cup. Cut the remaining half of the green pepper into shreds. Decorate the salad with the shreds and radish roses. This salad is also very good served in a tomato cup and placed in a lettuce leaf.

**Recipes For Leftovers**  
It is often economy in labor to cook more food at one time than is used for one meal. But the problem of combining cooked foods into entirely different dishes for the second appearance at the table requires originality and skill in seasoning and in combining natural food flavors.

Certain vegetables which were served plain when freshly cooked can be reheated in a sauce for the second appearance. Corn on the cob can next be served cut off the cob, creamed, or in fritters. Bony cuts of chicken or roasts with left over gravy or broth have many possibilities.

**COTTAGE PIE:** Cover the bottom of a small greased baking dish with hot mashed potatoes, add a thick layer of roast beef, chopped or cut in small pieces (season with salt, pepper, and a few drops of lemon juice) and moisten with some of the gravy; cover with a thin layer of mashed potato and bake in a hot oven long enough to heat through. Brown the top slightly.

**ESCALLOPED OYSTERS:** 1 pint oysters, 4 lbs. oyster liquor, 2 lbs milk or cream, 1-2 cup stale bread crumbs, 1 cup cracker meal, 1-2 cup melted butter, salt, pepper. Mix bread and cracker and stir in butter. Put in thin layer in the bottom of a buttered shallow baking dish. Add oysters and crumbs alternately. Pour on liquid and cover with

## Court Authorizes Sale Of Packing Company Interests

WASHINGTON, Aug. 14 (UP)—Sale of Swift & Co. interests in public stockyard market companies and stockyard terminal railroads to the United Stockyards corporation for \$6,279,757, was approved today by Justice Jennings Bailey of the federal district court.

The sale was ordered by the U. S. supreme court in February, 1929, and an additional court order of January, 1931, which denied the packing company the right to own stock in stockyard companies. The shares sold in the order included 57,387 common shares and 26,763 preferred shares of the

of Del Rio, president of the Texas Sheep and Goat Raisers association.

Sioux City, Ia. Stockyard Co. involved in the sales also were shares in the Milwaukee Stockyards Co., the South San Francisco Union Stockyards Co., the Brighton Stockyards Co., the St. Paul Stockyards Co., and the Fort Worth Stockyards Co. The sale was executed by Harry S. Mew as a Swift & Co. trustee.

The United Stockyards corporation, purchasers of the packing company's interest was organized in May, 1936, and will exercise entire control of the sale or disposition of the shares purchased.

Today's sales is the final step taken by Swift & Co. to comply with the court order issued 15 years ago which was a part of a government campaign under the anti-trust laws against the big five packing companies. The decree limited the packers to actually packing meat and prohibited them from controlling stockyard mar-

## HULL AND ROBINSON ARE EXPECTED FOR STATE DEMO SESSION

FORT WORTH, Aug. 14 (UP)—Secretary of State Cordell Hull and Sen. Joseph Robinson of Arkansas likely will be in Fort Worth for the state democratic convention Sept. 8 and 9, Karl Crowley, solicitor-general for the postoffice department, said today.

Settle Building Commercial Printing

HOOVER PRINTING CO. Settle Building Commercial Printing

# MAYTAG

saving THE HEALTH AND CLOTHES OF THE FAMILY

When you send your clothes away to be washed, they may spend a part of their life where you, personally, would not want to spend an hour. They may be treated harshly and make contacts that are dangerous.

It is the height of wisdom, economy and good management to wash your clothes at home in a Maytag. Thousands of women have found it so, and thousands have found that Maytag offers greater value in quick, clean, careful, thorough washing service. The Maytag costs more to build, but costs less to own because of its fine construction and long-life service.

Complete your home laundry with the new Maytag Ironer.

Any model Maytag may be had equipped with the famous gasoline Multi-Motor.

YOUR DEALER WILL GLADLY DEMONSTRATE, AND EXPLAIN THE EASY PAYMENT PLAN.

MAYTAG BIG SPRING COMPANY  
F. R. SPAULDING  
408 EAST 3RD ST. BIG SPRING, TEXAS

# Linck's Food Stores

"100 Per Cent Big Spring Owned"

No. 2—224 West 3rd No. 1—1405 Scurry No. 3—119 E. 2nd

## Specials for Saturday

California EARLY

|                               |                               |                         |
|-------------------------------|-------------------------------|-------------------------|
| Oranges Dozen 15c             | FLOUR 48s Pillsbury Best 1.75 | June Peas NO. 2 CAN 10c |
| No. 1 White Spuds 10 Lbs. 29c | 24s Pillsbury Best .98c       | 3 CANS FOR 25c          |
|                               | 48s Arklite 1.59              |                         |
|                               | 24s Arklite .95c              |                         |
|                               | 48s Helpmate 1.49             |                         |
|                               | 24s Helpmate .90c             |                         |
|                               | 48s Candle Light 1.39         |                         |
|                               | 24s Candle Light .85c         |                         |

|  |                           |
|--|---------------------------|
| COFFEE Morning Bracer (Guaranteed) lb. 18c | PHILLIP'S Tomato Juice 5c |
| FOLGER'S 1 Lb. Can 29c                     | Tomato Soup 5c            |
| Coffee 2 Lb. Can 56c                       | Pork & Beans 16 Oz. Can   |

### Market Specials

|                          |
|--------------------------|
| Zep Sliced BACON lb. 25c |
| Longhorn CHEESE lb. 21c  |
| Baby Beef ROAST lb. 15c  |
| BOLOGNA lb. 15c          |

**EXTRA SPECIAL**  
FANCY THOMPSON Seedless Grapes lb 4c  
Gallon Peaches Sliced or Halves 38c

# Whitmire's MARKET

1018 Johnson Phone 78 Deliveries Daily

|                                  |  |
|----------------------------------|--|
| Extra Good Salt Pork lb. 17 1/2c | 2 LB. A-1 Crackers 15c                         |
| Long Horn CHEESE lb. 20c         | 1 Lb. Chase & Sanborns COFFEE 22c              |
| Good STEAK lb. 15c               | GREEN Cabbage 1 LB. 4 1/2c                     |
| Sliced Boiled HAM lb. 45c        | TOASTS A Toasted Butter Cracker Large Pkg. 19c |
| English PEAS 8 No. 2 Cans 25c    | White King Large Size 35c                      |
| APRICOTS Gallon 45c              | Peanut Butter qt. 25c                          |
|                                  | DRIED BEEF Wilson's 2 1-2 oz. Glass 11c        |
|                                  | FRUIT SALAD No. 1 Tall Cans 16c                |
|                                  | JELLO 6 Flavors Pkg. 6c                        |
|                                  | FRESH Black Eye Peas lb. 3 1/2c                |

# Jones Test Is Nearing Sand

## Robbins-Wood Gets Show At One Level, Drills At 2,310 Feet

Drilling ahead, the B. F. Robbins, W. K. Wood et al No. 1 McCraith, Jones county test north-west of Anson, was nearing verdict Friday. It was reported by Robbins on his return from Jones county. The test was drilling at 2,310, about 40 feet off the upper Hope sand, from which production is sought. Although the test missed the Cook sand at 2,205, it encountered a strong show in the Bluff Creek sand, at 2,160, and continues to bleed some oil at that level when bailed.

The hole is caving and may have to be underreamed with six-inch casing.

The H. O. Wooten et al No. 1 Pindexter, in section 9, a mile southwest of Anson, was drilling at 2,576. It missed a producing sand from which a well two miles to the south is producing at 2,499 feet, but expected to encounter the lower Hope sand around 2,600 feet.

The Mead et al Woodson test in section 57 was drilling at 1,575. It is northeast of the Robbins-Wood location.

The H. C. Owens and Roy Prichard No. 1 Arwine, two miles south of Anson, spudded this week, was drilling at 400 feet.

## C. W. Post

Continued from page 1

Weighted down with details, he organized the Double U company (after his Double-U cattle brand) to take over the management of the town and land. Under this direction, the company started selling homes on easy terms. It was possible to buy a modern \$2,500 home for a down payment of \$25, and a like amount each month until it was paid out. Interest was pegged at only four per cent.

Not many years later he put his hand on the market, selling a farmer 160 acres of land and building him a modern five-room home with outbuildings and other improvements for \$2,000 an acre down and 75 cents an acre annually at four per cent until paid for.

For himself, he built a beautiful home to be used when he visited in Post City, which was about twice a year.

Founded Cotton Mill

No one man had more to do with the building of the Santa Fe railroad into Post City in 1909 and 1910 than did C. W. Post. Having completed this important deal, he turned to the establishment of a cotton mill, known as the Postex Cotton Mills, in 1912. This company, which manufactures Garza county products, still is one of the most modern mills in the entire south.

Overlooking nothing, Post had business houses constructed and marketed them on easy terms. Many of these concerns are operated today by the men who bought them originally from Post.

So thorough was his work, that Post City was said to have been second as a colonization project only to Austin's Texas colony. It was, at any rate, one of the best model towns in the nation's history.

Post had not completed his dream town and was fondering other ideas, ready to execute them at the right moment. He never realized these ambitions, however, for tragic death stilled the pioneering spirit of C. W. Post at Santa Barbara, Calif., on May 9, 1914.

Mr. and Mrs. Cecil C. Collings returned Thursday evening from a vacation trip to Colorado and to Yellowstone national park.

**\$1 DOWN AND \$1 PER WEEK**

**BUYS A COMPLETE OUTFIT**

**COAT, SUIT, DRESS, SHOES**

**HAT, Etc.**

**Buy Smart, Plan to Select From**

When you are ready for your Fall Outfit you will have it paid for... and never miss the money.

**USE OUR LAY-AWAY PLAN**

**La Made**

# WHOLESALE DEATHS THREATENED TO AVENGE BOMBINGS

## (By the Associated Press)

Scores of persons seized by the government, with some 700 rightist hostages incarcerated in San Sebastian, were threatened today with death before a firing squad in reprisal for the rebel bombardment of government-controlled towns on the northern seaboard of Spain.

The French government was understood in diplomatic circles to have urged Madrid to grant German demands for satisfaction in the alleged slaying of German nationals in Barcelona and the confiscation of German airplanes, since adherence by Germany to France's proposed generally neutrality accord apparently hinged on settlement of the plane seizure incident.

## Confer Here On New Relief Procedure

Miss Gaynell Hawkins, civic federation representative, and Miss Eleanor Schopke, educational consultant, both of Dallas, have been conferring with Mrs. Ora Wood, district TRC director, and case workers on the new program of referring applicants to WPA.

They planned to conclude their work today and leave tonight for Dallas.

Mrs. Wood said that the new task of referring needy unemployed to WPA was progressing and that approximately 124 persons had been passed to WPA since August 1.

Her staff has been increased to five TRC case workers, seven county workers, and two clerks.

## BODIES OF TWO ARE TAKEN FROM MINE

MOUNTAIN CITY, Nev., Aug. 14 (AP)—The bodies of two men killed by gas in a copper mine were recovered today but fumes balked attempts to recover four others from the 500-foot level where all perished apparently yesterday.

# Hospital Notes

## Big Spring Hospital

Mrs. Frid Dozier of Colorado underwent minor surgery Friday morning.

Born, to Mr. and Mrs. R. W. Wheeler, 511 East Eighteenth street, Friday morning, a son.

Robert Dunn of Cuthbert underwent a tonsillectomy Friday morning.

R. V. Guthrie of Coahoma continues to make steady improvement following major surgery several weeks ago. He will return to his home soon.

Mrs. A. O. Thomas, of Midland, in the hospital for treatment, was improved Friday.

## PUBLIC RECORDS

### Building Permits

C. T. McDonald, to build a garage at 1110 Austin street, cost \$75.

Union Planning Mill, to make addition to building at 307 West 4th street, cost \$100.

V. A. Merrick, to build a wash house and repair servants quarters at 1206 Austin, cost \$250.

R. and A. B. Shortes, to build filling station, set two gasoline pumps and bury two 550-gallon tanks, cost \$235.

In the 7th District Court

Lucy Myers vs. J. W. Myers, suit for divorce.

New Cars

McKinley Sales, Lamesa, Ford coupe.

J. A. Payne, Foran, Plymouth.

Philip E. Jenkins, Buick sedan.

W. B. Townsend, Chevrolet sedan.

## REPORT EXECUTION OF 1,000 BY REBELS

LISBON, Portugal, Aug. 14 (AP)—More than 1,000 government militiamen, including 100 women, were executed in a group by rebel forces at Almendralejo, a Portuguese newspaper correspondent reported today.

Lisbon heard that Badajoz was bombed by rebel planes, most of the victims being women, children and aged people.

# First PWA 'City' Replacing Slum, Ready To House 2,500 In Atlanta

## Atlanta, Aug. 14 (AP)—The first "city" Uncle Sam ever built awaits only the moving in of its population of 2,500 to begin functioning.

It is the Techwood low rent housing development, spreading over 22 and one-half Atlanta acres formerly designated by the government as a slum area.

A federal government innovation in that it is the first of 50 low cost housing projects completed by PWA. Techwood is a modern city.

It includes these properties: 13 apartment buildings, seven two-story residences, 14 miscellaneous structures, including eight stores grouped in a shopping center; an administration building with clinic and doctors' offices, and 169 garages.

Electric Stoves

The buildings are of trim brick, are fireproof and all look alike. The townspeople will move in August 15 and family breadwinners will begin paying Landlord Uncle Sam from \$2.47 to \$38.10 monthly for apartments, the price depending on whether they have 3, 4, 5 or 6 rooms.

Rental will cover electricity used in running the new electric stoves and refrigerators the PWA has placed in every kitchen as well as hot and cold water and heating service.

Labor Savers

But the kitchen equipment is not the only thing that elicits "ahs" from housewives inspecting the apartments. They like the elevated radiators which allow sweeping under them with a minimum of back bending, the steel casement windows and out from within the room, the incineration system, the asphalt tile floors with linoleum in the kitchen, the glazed tile halls, walls that may be washed, copper screens in every window and shades already hung.

Then there are centrally located laundries, tennis courts, playground, kindergarten, library and auditorium.

Techwood was created at a cost of \$3,000,000 and replaced a negro section.

D. A. Calhoun, manager of the project, says residents for the 603 apartment units are selected from applicant families having incomes ranging from \$1,200 to \$1,800 annually and who live at present in homes classified by the government as overcrowded or sub-standard.

More than 2,700 families have applied, he says.

# Many Texas Counties Are Helped By Oil

## Tax Values Of 46 Increased 540 Millions In The Past Decade

By H. J. STRUTH (Petroleum Economist)

Tax values assessed in forty-six Texas oil producing counties have increased more than a half-billion dollars in the last decade, according to facts just compiled by the Mid-Continent Oil & Gas Association of Texas.

Assessed valuations of these currently important oil producing counties for 1935 aggregated \$1,176,747,000, compared with a total assessed by these counties in 1925 of \$636,777,000, a net gain in valuations for taxing purposes of \$539,970,000.

This huge increase is shown by analysis to be attributed almost solely to the discovery of oil fields within these respective counties, which have in the past ten years turned millions of acres of Texas

farm and grazing lands into highly valuable mineral leases. Examination of county ad valorem tax rolls for the periods under consideration shows that practically all of the increased values on which taxes were assessed were rendered by Texas oil operators to cover lease and fee mineral interest, equipment located on oil producing properties, and oil pipe lines. This has created substantial increases in county and state tax revenues, paid by the Texas oil industry, which have made possible the building of many fine, new school houses, county court and other municipal buildings as well as thousands of miles of concrete highways.

Comparative data on tax values reported to the state comptroller, at Austin, by the leading oil producing counties of Texas reveals some astounding increases over a decade ago. For example, Gregg county shows an increase of \$50,001,000; Rusk county, a gain of \$81,308,000; Montgomery county, a gain of \$55,457,000; Harris county, a gain of \$41,954,000; Pecos county, a gain of \$38,392,000; Gray county, a gain of \$24,578,000; Hutchinson county, a gain of \$18,969,000; Wharton county, a gain of \$18,876,000; Upshur county, a gain of \$17,034,000; Van Zandt county, a gain of \$15,208,000; Smith county, a gain of \$13,673,000; Fort Bend county, a gain of \$10,706,000. Thirty-four other oil producing counties of the state show increases in valuations within this period of from \$137,000 to \$9,445,000.

In contrast with the substantial

Free Delivery On Wines and Liquors 8:30 A. M. to 11:00 P. M. Excepting Sundays 1403 Scurry St. Ph. 284 JACK FROST PHARMACY

RADIATORS Cleaned and Repaired Acetylene electric welding Work called for and delivered Phone 425, opposite Coleman Camp, day or night. FEUBLOY-HENDERSON RADIATOR CO.

# HOWARD CO. COUPLE UNITED IN MARRIAGE

## Jesse W. Skeen and Miss Adeline Bennett, both of the Vincent community, were united in marriage at 1 p. m. Friday by Rev. C. A. Bickley, pastor of the First Methodist church here. The ceremony was performed in the Bickley home.

Some of the counties which had not as yet been added to the growing list of producers. A majority of the non-oil-producing counties of the state either show decreases in valuations or practically no change from ten years ago. For example Wise county shows a decline of \$3,039,000; Parker county, a decline of \$2,327,000; Uvalde county, a decline of \$2,019,000; Hamilton county, a decline of \$1,745,000; Val Verde county, a decline of \$1,329,000; Coryell county, a decline of \$1,075,000; Titus county, a decline of \$992,000; Cass county, a decline of \$669,000. Some of these and many other Texas counties are being actively developed for oil and are expected to show subsequent appreciation in taxable valuations. It is apparent from these facts that oil has undoubtedly contributed more to the pro-



Skilled Operators in MODERN HAIR DRESSING Latest Equipment PARADISE BEAUTY SALON Bonnie Mae Colburn 209 E. 2nd. Ph. 628

**NIGHT SNACK**

crackle snap pop

**Kellogg's RICE KRISPIES**

made in Canada

Just at bedtime eat a bowlful of Kellogg's Rice Krispies. Nourishing. Delicious. Easy to digest. They promote sound sleep. An ideal meal for the daytime too. So crisp you can actually hear them crackle in milk or cream. At grocers everywhere in the Mother Goose story package. Made by Kellogg in Battle Creek. Quality guaranteed.

SO CRISP they actually crackle in milk or cream

MEN'S WEAR

# BIG NEWS

## MEN AND WOMEN

# THE FAIR

## WELCOME!

SHOES HOES

TO BIG SPRING'S NEW EST SHOPPING SPOT

POPULAR PRICES

EVERYTHING NEW! ALL POPULAR PRICES

GALA PUBLIC OPENING Today, Friday, August 14th

The FAIR

A STORE FOUNDED ON FAIRNESS TO ALL . . .

- STANDARD QUALITY
- PERSONAL SERVICE
- ONE FAIR PRICE TO ALL

Yes, The FAIR is a New Store with New Stock — A store where you will like to shop . . . a store planned with the idea of Serving Your Needs for Standard Quality Goods of Fashionable Style at POPULAR PRICES — The FAIR is a store where you will enjoy shopping, with a service you will like and SAVINGS YOU WILL APPRECIATE.

LOCATED IN THE FIRST NATIONAL BANK BUILDING  
108 EAST SECOND STREET  
(Building Formerly Occupied by Texas Electric Service Company)

MEN

DRESS SMARTLY

INEXPENSIVELY

WOMEN

FALL FELT HATS

The newest in novelty hats, wide range of colors and shapes. A size for every man.

- EXTRA SOFT FUR FELTS . . . \$1.98
- New process for beauty and service. Special— \$2.98
- THREE SUPER VALUES . . . \$1.98
- In staple shapes in light tan, grey and brown. Special—

SHIRTS

Men's dress shirts in wide range of colors in print broadcloth. Regular \$1.98. Special— \$0.98

WORK CLOTHING

SHIRTS—Soft sanforized covert work shirts. Will not fade. Extra special— \$0.98

Sanforized khaki, two-pleated pockets. Vat dyed. Special— \$0.98

Sanforized ideal chambray, very soft. Two pleated pockets. Special— \$0.79

PANTS

Men's sanforized, vat dyed khaki work pants — well tailored, soft material. Special— \$1.25

Men's solid blue and striped sanforized work pants. Strong construction. Now— \$0.98

Boys' blue and striped school pants. Extra sturdy for hard wear. Special— \$0.98

WORK SHOES

In black and brown plain toe, full grain calf with leather and composition sole. Opening special— \$1.98

MEN'S NEW OXFORDS

Fine soft calf leather. . . a beauty. . . in black and brown. A \$3.95 value. Opening price— \$2.98

Plain and cap toe oxfords in black and brown. A wonderful \$6.00 shoe for— \$3.95

CHILDREN'S SHOES

Black and brown oxfords for boys and girls. Well made, ideal for school wear. \$1.45

Boys' black oxfords, leather soles and heels. Sizes 1-2 to 6. Special— \$2.29

Girls' black and brown kid strap sandals for dress wear. Only— \$1.99

NEW FALL DRESSES

New creations. Slenderizing polka dots. . . cotton crepe. . . rayon crepe. . . Clever new sleeve effects. A good value at \$2.95, but at The FAIR—only— \$1.79

\$10.95 Values—Silks and Woolens . . . \$7.95

\$ 6.95 Values—Silks and Woolens . . . \$4.95

FOOTWEAR

High throat pump, straps and oxfords in patent, suede and combinations. Very dressy and priced very low. \$1.98

Four styles—Values to \$3.95. Offered at our opening for only— \$2.98

CHILD'S SHOES

We want you to visit our Child's Shoe Department. You will find quality at a Price SPECIAL—Kiddie Pride White Calf Boots, with spurs. Sizes 4 to 10. \$1.69

LINGERIE

SLIPS—Of fine rayon—Special . . . 49c

PANTIES—Rayon—fancy trim—Special . . . 29c

Lace Top Extra Soft Rayon Slips . . . 79c

Wide assortment of regular 1.95 bags. All new. Opening special— \$1.00

Other bags up to \$5.00—Only \$2.95

MILLINERY

You will appreciate these exclusive hand blocked, French inspired, street fur felts. Wide range of colors. Priced for opening sale at only— \$1.98

Other felts at 98c—\$1.49

SMOCKS

True-Fit—Two tone style of heavy Indian Head. A \$1.98 value and the lowest style for only— \$1.49

MEN'S SOCKS

All colors in plain and fancy patterns. Opening sale special! For pair— \$0.50

SILK TIES

Heavy quality, non-wrinkle, lining. All new fall shades. \$1 value. Opening Special— \$0.98

SILK SOCKS

Men's pure silk socks, fancy patterns. Opening special! For pair, only— \$1.00

SHIRTS

Men's Dress Shirts with Trubricated collar. Regular \$4.95 value. Opening Special. Only— \$3.98

### Welfare Nursery Enlargement Program Discussion Saturday

Crowded conditions at the welfare nursery have made necessary an enlargement program which will be discussed and planned at a meeting to be held in the office of R. H. McNew in the Petroleum building at 10 o'clock Saturday morning.

After an inspection of the cottage it was found that the staff of three cannot satisfactorily care for the number of charges. Plans are to double the staff. It will also be necessary to find larger quarters and to increase the equipment supply.

Special request for attendance at tomorrow's meeting is issued to the social welfare chairmen of all churches, P. T. A. groups, Red Cross, American Legion, V. F. W. and railroad brotherhood auxiliaries.

**P-R-I-N-T-I-N-G**  
**T. E. JORDAN & CO.**  
115 W. First St.  
Just Phone 488

**R. C. OLIVER**  
Monuments  
405 Johnson Street  
Big Spring, Texas

### Louis Mayfield Has Birthday Party At Home Of Parents

Louis Padgett Mayfield celebrated his fifth birthday at the home of his parents, Mr. and Mrs. L. A. Mayfield, Tuesday with a party. The house was beautifully decorated with summer flowers. A theme of pink and white was carried out in the party favors and refreshments.

Games were played under the direction of Cecil Robert Westerman. Party guests were Kylene and Bob Blackerby, Bob Coffey, Sonny Boy Smith, Cecilia and Cecil Westerman, Annie Eleanor Douglas, Spencer Ernest Wolf, Harold Roosen, Mary Elizabeth Martin, DeJohn Davis, Billie Jean Johnson, Thomas Clinkscale, Virginia Louise and Charles Ray Phillips, Eola Mae Payne of Ballinger, Carolyn Lee Cantrell, Dan Mayfield, Harry Hurt, Jr.

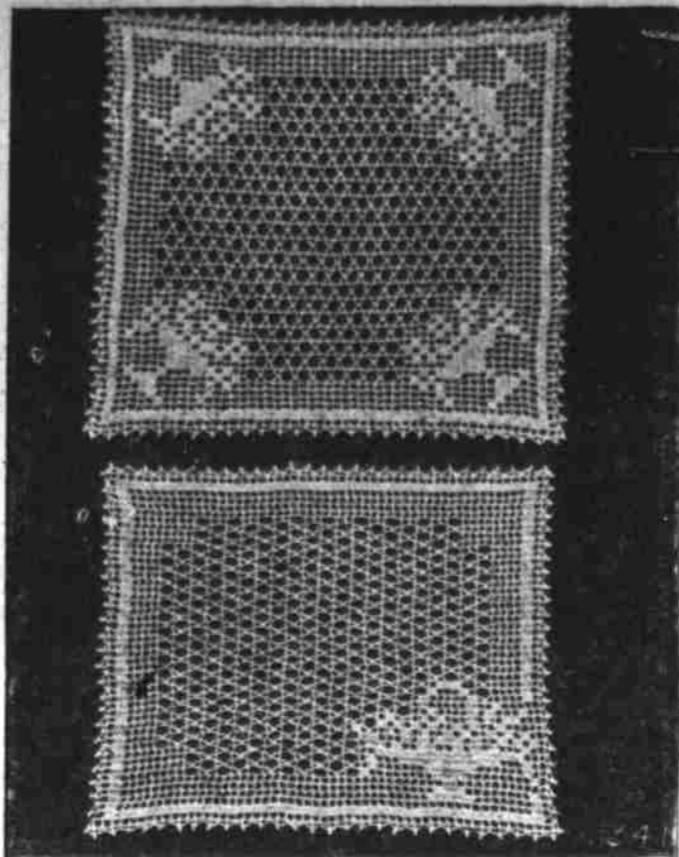
Mothers present were Mrs. Johnson, Mrs. H. H. Padgett, Mrs. James Currie and Mrs. Mayfield.

### Retired Naval Officer Guest Of Cunninghams

Mr. and Mrs. C. W. Cunningham have as their guest, Mr. Cunningham's brother, J. C. Cunningham, retired commander of the United States navy. Commander Cunningham arrived Thursday from New York City and will spend two weeks here.

and son, Thomas Arthur, left today for Ruidoso, N. M., to spend the remainder of the summer.

### New Luncheon Set To Crochet



By RUTH ORR  
Pattern No. 341

The table center of this set measures about 18 inches square and has a small basket of flowers in each corner. The place doilies measure about 12 by 18 inches and have only one flower basket, but each one has a center panel of all-over lace. The set is crocheted in jig time, because it is done in knitting and crochet cotton which works up like the wind, and wears forever and ever. Not only that, it has an added attraction, for all you have to do on laundry days is to wash it out, spread it flat and let it dry. "And, 'That,' said John, 'is that!'"

The pattern envelope contains complete, easy to understand illustrated directions, with diagrams to aid you; also what crochet hook and what material and how much you will need.

To obtain this pattern, send for No. 341 and enclose 10 cents in stamps or coin (coin preferred) to cover service and postage. Address:

### Walter Wrights Are Shower Honorees

Honoring Mr. and Mrs. Walter Wright, a party was given Wednesday afternoon at the home of Mrs. Mattie Wright, 400 Nolan street, at which their friends showered the couple with many lovely gifts.

The Wrights were married August 8.

Games appropriate to the occasion were played after which refreshments were served.

These friends and relatives attended: Mr. and Mrs. J. B. Nix, Mrs. Ora Todd, Mrs. Bessie Wood, Mrs. D. B. Parkhill, Mrs. W. M. Heath, Mrs. C. M. Ray, Mrs. Vera Mills, Mrs. A. P. Stewart, Miss Eva Todd, Miss Geraldine Wood.

Big Spring Herald, Needlework Dept., P. O. Box 200, Station D, New York, N. Y.  
(Copyright, 1936, by The Bell Syndicate, Inc.)

### Services

#### Churches Topics

##### FIRST BAPTIST CHURCH

Rev. R. E. Day, Pastor  
9:30 a. m. Sunday school, George H. Gentry, superintendent.  
10:50 a. m. Morning worship. Quartet: "Savior, Pilot Me," Mrs. J. O. Brown, soprano; Miss Ruby Bell, alto; Ira M. Powell, tenor; W. E. Matthews, bass. Sermon by the pastor.

##### FIRST CHRISTIAN CHURCH

Fifth and Scurry Streets  
G. C. Schurman, Pastor  
9:45 a. m.—Bible school, George L. Wilke, superintendent.  
10:45 a. m.—Morning worship. Sermon by pastor. Topic: "Christian Courage" (taught over from last Sunday). Solo by Mrs. Housewright.

##### CHRISTIAN SCIENCE SOCIETY

Services 11 A. M., Settles Hotel, Room 1  
"Soul" is the subject of the lesson-sermon which will be read in all Churches of Christ, Scientist on Sunday, August 16, 1936.  
The Golden Text is: "Bless the Lord, O my soul, and forget not all His benefits: Who forgiveth all thine iniquities; who healeth all thy diseases" (Psalms 103: 2, 3).  
Among the citations which comprise the lesson-sermon is the following from the Bible: "The Lord God is a sun and shield: the Lord will give grace and glory: no good thing will He withhold from them that walk uprightly" (Psalms 84: 11).  
The lesson-sermon includes also:

##### ST. PAUL'S LUTHERAN

561 N. Gregg  
T. H. Graffmann, Pastor  
10—Sunday school.  
11—Morning service. The topic of the sermon will be: "The Covenant of Promise." All are cordially invited.

##### FIRST METHODIST

Alonso Bickley, Pastor  
Sunday school, 9:45 a. m. Parson Bueckner, general superintendent.  
Preaching 11 a. m. and 8:15 p. m. Morning subject: "God's Service Station." Special music.  
Evening subject: "A Strange Mixture."  
The young people will meet in their groups at 7:15 p. m.  
A cordial invitation is extended to you to come and worship with us.

##### CATHOLIC SERVICES

St. Thomas' parish, in North Big Spring.  
Tomorrow, Saturday, is the feast of the Assumption of the Blessed Virgin, a Holy day of obligation. There will be high mass at 6 a. m. in the parish church at 7:30 a. m. there will be low mass in the Mexican mission.  
Sunday, at 9, in the parish church there will be mass with English sermon. Two interesting and important announcements will be made. Every parishoner is urged to be present at this. Non-Catholics always welcome.  
Father Charles Taylor, O. M. I., pastor.

##### ST. MARY'S EPISCOPAL

Morning prayer and sermon will be held Sunday morning at 11 o'clock at St. Mary's Episcopal church. The church school will meet at 9:45 a. m.  
Visitors are cordially invited to worship at St. Mary's.

Mr. and Mrs. Jack Bishop, Llano, are visiting with his parents, Mr. and Mrs. D. E. Bishop of this city. J. E. McGeath, Longview, will join his wife, a daughter of Mr. and Mrs. D. E. Bishop, here for a reunion. A son, Curtis Bishop, is also here for the occasion.

**FRANK POOL**  
Food Market  
Store Located 1/2 Block East Of  
Municipal Building  
TELEPHONE 872  
—We Deliver—

**Spuds**  
No. 1 Whites, lb. .... 3c

**Peaches**  
Del Monte No. 2 1-2 Cans Sliced - Halved ..... 16c

**Pineapple**  
Del Monte No. 2 Cans Sliced - Crushed ..... 17c

**Prunes**  
Packed Fresh ..... 29c  
Fresh, Gal. .... 29c

**Shortening**  
Crustene  
8 lb. Cartons ..... 98c

**Tomatoes**  
3 No. 2 Cans ..... 25c

**Tomato Juice**  
3 Tall Cans ..... 25c  
Del Monte ..... 25c

**English Peas**  
2 Medium Cans ..... 11c

**Pork & Beans**  
Reg. Size Can ..... 5c

**Soup**  
Phillip's Vegetable, Can ..... 6c

**Salmon**  
Fancy Pink Tall Cans ..... 10c

**Potted Meat**  
2 Cans ..... 10c

**Syrup**  
Brer Rabbit 1/2 Gal. .... 32c

**Folger's Coffee**  
1 Lb. 29c 2 Lbs. 32c

**Martini**  
Butter Wafers ..... 10c

**Post Toasties**  
Pkg. .... 11c

**Cocoa**  
100% Pure 2 Lbs. .... 13c

**Catsup**  
Large Bottle ..... 13c

**Flour**  
Light Crust 24 Lbs. .... 98c

**HOUSEHOLD**  
Necessities

SOAP CHIPS 5 lbs. .... 32c

SOAP, Crystal White 5 Giant Bars ..... 19c

LUX FLAKES Reg Pkg. .... 10c

LUX SOAP 3 Bars ..... 20c

LIFEBUOY SOAP 3 Bars ..... 19c

WALDORF TISSUE 3 Rolls ..... 13c

SANIFLUSH Can ..... 21c

SUNBRITE CLEANSER, Can ..... 5c

### Market SPECIALS

BEEF ROAST, lb. .... 12 1/2c

STEW MEAT, lb. .... 9c

HAMBURGER, lb. .... 10c

Longhorn Cheese, lb. .... 25c

TELEPHONE 872  
—We Deliver—  
**FRANK POOL**  
Food Market

## THE GRAND LEADER Closing Out Sale IS IN FULL SWING!

### Outstanding Bargains for All

Just a sample of our many outstanding bargains. You can buy—

#### Piece Goods

Values of to 39c For 14c

#### Other Piece Goods At Close Out Prices

LOOK!

59c VALUES

2yds. 25c

Many thrifty women are still buying REAL BARGAINS at our Closing Out Sale. You too, should be wise and buy Piece Goods, Shoes, Ready-to-Wear, Millinery and Children's Wear while you can — at Such Low Prices.  
Buy Now! For School Wear—Save while we are closing out items at New Low Prices. You know our quality—so shop here today and SAVE!

## THE GRAND LEADER

204 MAIN STREET

Victor Mellinger, Proprietor



NEW!

## CURLEE SUITS

For Fall!

● YES, the new Curlee Suits for fall are better than ever before. The tailoring is superb, the Material is a better grade, selections are complete and we are better prepared to fit you properly.

Curlee offers you a greater Suit Value than ever before.

Single and double breasted styles, a size for every man. Try one on today!

\$24<sup>50</sup>

NEW FALL MERCHANDISE ARRIVING DAILY!

## MELLINGER'S STORE for MEN & BOYS

Main and Third

## SHOES for SCHOOL

Smart looking boys' and girls' models designed for long wear and lasting comfort. Featured at moderate prices.

### Plenty of Style

to suit the taste of these modern youngsters, and lots of

wear resisting

features for "boys who will be boys." Oxfords, straps, sandals, shawl tongues and moccasins in genuine leathers. All designed to give roomy comfort for active young feet. Bring your children in now and let them slip on a pair. All sizes for boys and girls.



Girls' T-Strap sandal in black only. Flat heel and rounded toe. Genuine patent leather.

98c



Boys' blucher oxford in black. All leather — built for sturdy wear. Sizes 8 1/2 to 12. At Burr's only—

98c



Girls' kitten tongue in brown or black. Single strap over the instep. In grained leather. Sizes 8 1/2 to 12.

98c

Low Heel Oxfords

—for the Miss who wants new styles that are designed to fit properly. Shop now while selections are complete. An unusual value at—  
\$1.98

**YOUNG MEN'S**  
Sizes 6 to 11  
  
OXFORDS — Styled to satisfy your utmost demands for a smart appearance plus additional foot comfort.  
\$2.98

OXFORDS — with a heel that insures style as well as comfort. Let our experts fit you.  
\$1.98

116-117 EAST SECOND STREET  
**Burr's**  
DEPARTMENT STORE  
\$1.98



Boys' blucher moccasin in grained calf. Roomy rounded toe—for solid comfort. Sizes 8 1/2 to 12.

98c



Girls' kitten tongue in brown or black. Single strap over the instep. In grained leather. Sizes 8 1/2 to 12.

\$1.29



Boys' Oxfords

Full cut, roomy toes that prevent pinching or squeezing. Bring your boy to BURR'S, start him off right with the proper fit. Truly a Burr Value at only—  
\$1.98

Big Spring Daily Herald

Published Sunday morning and each weekday afternoon except Saturday, by BIG SPRING HERALD, Inc.

JOE W. GALBRAITH, Publisher; ROBERT W. WHIPKEY, Managing Editor; MARVIN K. HOUSE, Business Manager

NOTICE TO SUBSCRIBERS: Subscribers desiring their addresses changed will please state in their communication both the old and new addresses.

Subscription Rates table with columns for Term (One Year, Six Months, Three Months, One Month), Mail, and Carried.

TEXAS DAILY PRESS ASSOCIATION: 1200 East Third St., Dallas, Texas

This paper's first duty is to print all the news that is fit to print honestly and fairly to all, unbiased by any consideration, even including its own editorial opinion.

Any erroneous reflection upon the character, standing or reputation of any person, firm or corporation which may appear in any issue of this paper will be cheerfully corrected upon being brought to the attention of the management.

MEMBER OF THE ASSOCIATED PRESS: The Associated Press is exclusively entitled to the use of publication of all news dispatches credited to it or not otherwise credited in the paper and also the local news published herein.

THE WANING SALES TAX

The sales tax, which a few years ago seemed well on the way to making a permanent place for itself in the fiscal affairs of the states, seems to be readily waning in popularity.

A reliable source reports that 28 states have enacted sales tax laws at one time or another. In five of these, popular resentment has brought about abandonment of the law.

Of the remaining 21 states, 11 have sales tax laws which will expire by statutory limitation in 1937, unless reenacted.

Mississippi, the first state to adopt the sales tax, did so because its finances were in desperate condition.

The likelihood is that the number of sales tax states will be slowly but steadily reduced in the next few years.

In proposals to finance age pensions, Texas may yet hear more about the sales tax; but it has been a general interpretation of the huge vote given Governor Allred in July that Texans are in no mood to approve needless tax schemes.

On the basis of the July verdict, it seems safe to predict that this state will go no farther toward a sales tax than levies on certain "luxuries."

Man About Manhattan

By George Tucker

Aside from dissipating the kidnap craze, the most notable achievement of G-men to date is the way they have torn down the illusion of gaudy crime.

Broadway used to be alive with legends of underworld characters who wore the robes of a fantastic fame.

But since the G-men exposed them as a species of very yellow rats, most people have gotten away from regarding them as anything but what they are.

A notable example in the trend away from such nonsense is New York's apathy towards criminals today as compared to the halo of sentiment that once was permitted to be wreathed about the brows of such cheap welters as "Legs" Diamond and Arnold Rothstein.

"Legs" was long looked upon as a big shot. He liked to fancy himself as a second Al Capone, knuckling the half-world to his will. It was a bullet that exploded this fallacy and revealed him as a small time thief with a craving to see his picture in the newspapers.

Another myth exploded by a cold perusal of the records was the supposed daring of the gambler Rothstein. Many were the legends concerning his generosity with money, his nerve, his willingness to risk any amount on the throw of the dice.

But after a bullet ended his life, the truth about the gambler began to seep out. He wasn't generous and he wasn't very daring. He even turned out to be a welscher, and it was probably because of this that they put the finger on him in his hotel that last luckless dawn.

Even so, "Legs" and Rothstein had plenty of luck—they lived before G-men got around to changing public opinion about hoodlums and bums. But Dillinger, "Lucky" Luciano, "Dutch" Schultz and the others of that ilk came too late.

All the letters on Fannie Hurst's typewriter are the same—there aren't any capitals. "You'd be surprised how

The Daily Washington Merry-Go-Round

By DREW PEARSON and ROBERT S. ALLEN

WASHINGTON — The chairman of the national committee of either party always is on the hot spot, whether it be Jim Farley, Walter Brown or Will Hays. And now Chairman John Hamilton is sitting there.

Hamilton's trouble is coming from right inside the republican party. And though nothing is being said publicly, it is causing some of the higher-ups a little worry.

Hamilton is getting it from progressive republican leaders on one side, from old guard GOPers on the other.

Some of Landon's best friends and staunchest supporters are progressives of the William Allen White class, none too keen about Hamilton. They get along with him on the surface but keep their fingers crossed beneath the table.

Slashing at Hamilton's coat-tails on the other side are two very effective old guards — Charley Hiles, national committeeman from New York, and J. Henry Roraback, who occupies the same position in Connecticut.

At any rate no love is now lost between them, though it probably won't make any of them vote for Roosevelt.

During his recent trip east, Father Charles Coughlin told friends that the week prior to Herbert Hoover's speech at the republican convention in Cleveland, he received two long-distance telephone calls from the ex-president.

According to Coughlin, Hoover discussed his speech and assured the priest that he was going to blast the federal reserve system as revised by the new deal banking act of 1935.

At the last minute, however, Hoover changed his mind, Coughlin said, and deleted all reference to the radio priest's pot hate.

Chief Justice Hughes has a hard time getting any privacy, even in the summer. His white beard, his stately mien, identify him instantly to anyone who has seen his picture.

On one occasion when Hughes was secretary of state, Charley MacArthur, playwright husband of Helen Hayes, saw him walking down Fifth avenue, and walked just behind him, repeating over and over again:

"I know you, Mr. Secretary of State. I know you, Mr. Secretary of State. I know you, Mr. Secretary of State."

Finally Hughes called a taxi and escaped.

This summer Hughes is vacationing in New Hampshire, but even there he cannot avoid the public eye. Mrs. Hughes is a patroness of a summer theatre, "The Forty Niners," and one day the chief justice and his wife, both of whom enjoy the theatre, dropped in.

But the photographers were there ahead of him. The chief justice ducked, was somewhat annoyed, got his tickets mixed up, but finally reached the comparative peace of the orchestra pit.

Governor Landon certainly put his finger on a sore spot when he charged that there is politics in the AAA.

New deal agricultural chiefs are hopping mad at the accusation. With great indignation they insist it is not true, and as evidence of non-partisanship cite the facts: Lee M. Gentry, chairman of the Illinois conservation committee, administering the new soil conservation act in that state, is the former manager of ex-Gov. Frank O. Lowden's model farm. Gentry also had charge of the Illinois corn-hog program under the old AAA.

R. M. Evans, one of the executive officers of the Iowa soil conservation administration, is a prominent republican whose name was mentioned as a GOP candidate for senator.

Further, the administrationites point out, the officials of the county committees are elected locally by the farmers themselves. If there is any politics, they say, it comes from the farmers.

Big Jim Farley may not have named any of the top-rung AAA officials in Washington or in the field, but many a lowly clerk and stenographer owes his job to the intervention of Julien Friant, a Farley aide who was made special assistant to Secretary Henry Wallace.

Feminine master minds of the democratic national committee have evolved a new wrinkle in winning women's votes. They plan to replace the old-fashioned sewing circle with radio parties.

Each state is to have a radio chairman, who in turn will have under her a chairman in every county, who in turn will command a flock of local chairmen.

Bridge



DAILY CROSSWORD PUZZLE

The Daily Herald is authorized to announce the following candidates, subject to the action of the Democratic primaries in August, 1936:

- For District Clerk: HUGH DUBBERLY, MRS. N. W. MCLESKEY
For County Judge: H. R. DEBENPORT, CHARLIE SULLIVAN
For County Treasurer: E. G. TOWLER, MRS. J. L. COLLINS
For Commissioner Precinct No. 1: FRANK HODNETT, J. E. (ED) BROWN
For Constable Precinct 1: J. F. (JIM) CRENSHAW, SAM M. STINSON
For Commissioner Precinct No. 2: A. W. THOMPSON, PETE JOHNSON
For Commissioner Precinct No. 3: J. S. WINSLOW, H. H. (HUB) RUTHERFORD
For Commissioner Precinct 4: ED J. CARPENTER, W. M. FLETCHER

ACROSS and DOWN crossword puzzle clues. ACROSS: 1. Assort, 2. Molten, 3. Knocks, 4. Watermark, 5. Yielding, 6. Son, 7. Let it stand, 8. Catch, 9. Voyage, 10. Goddess of discord, 11. Square shaft with a pyramidal top, 12. Move, 13. Slightly, 14. English county, 15. Catchword, 16. The golden-breasted trumpeter, 17. Work, 18. Negative prefix, 19. Baseball team, 20. Catchword, 21. Deliberate, 22. Grammatical sex distinction, 23. Small East Indian water vessel, 24. Beard of grain, 25. Metal forms, 26. Stockings, 27. Very black, 28. Slope or pitch of the face of a roof, 29. Presently, 30. Hotch, 31. Masculine nickname, 32. For fear that, 33. Stockings, 34. Slope or pitch of the face of a roof, 35. Field crew, 36. Hand saw, 37. Of the mind, 38. Shellfish, 39. Expectant, 40. Direction, 41. Unit of force, 42. Spin, 43. Complete collection, 44. Field crew, 45. Swamp, 46. Of the mind, 47. Shellfish, 48. Expectant, 49. Direction, 50. Unit of force, 51. Spin, 52. Complete collection, 53. Field crew, 54. Swamp, 55. Of the mind, 56. Shellfish, 57. Expectant, 58. Direction, 59. Unit of force, 60. Spin, 61. Complete collection, 62. Field crew, 63. Swamp, 64. Of the mind, 65. Shellfish, 66. Expectant, 67. Direction, 68. Unit of force, 69. Spin, 70. Complete collection, 71. Field crew, 72. Swamp, 73. Of the mind, 74. Shellfish, 75. Expectant, 76. Direction, 77. Unit of force, 78. Spin, 79. Complete collection, 80. Field crew, 81. Swamp, 82. Of the mind, 83. Shellfish, 84. Expectant, 85. Direction, 86. Unit of force, 87. Spin, 88. Complete collection, 89. Field crew, 90. Swamp, 91. Of the mind, 92. Shellfish, 93. Expectant, 94. Direction, 95. Unit of force, 96. Spin, 97. Complete collection, 98. Field crew, 99. Swamp, 100. Of the mind, 101. Shellfish, 102. Expectant, 103. Direction, 104. Unit of force, 105. Spin, 106. Complete collection, 107. Field crew, 108. Swamp, 109. Of the mind, 110. Shellfish, 111. Expectant, 112. Direction, 113. Unit of force, 114. Spin, 115. Complete collection, 116. Field crew, 117. Swamp, 118. Of the mind, 119. Shellfish, 120. Expectant, 121. Direction, 122. Unit of force, 123. Spin, 124. Complete collection, 125. Field crew, 126. Swamp, 127. Of the mind, 128. Shellfish, 129. Expectant, 130. Direction, 131. Unit of force, 132. Spin, 133. Complete collection, 134. Field crew, 135. Swamp, 136. Of the mind, 137. Shellfish, 138. Expectant, 139. Direction, 140. Unit of force, 141. Spin, 142. Complete collection, 143. Field crew, 144. Swamp, 145. Of the mind, 146. Shellfish, 147. Expectant, 148. Direction, 149. Unit of force, 150. Spin, 151. Complete collection, 152. Field crew, 153. Swamp, 154. Of the mind, 155. Shellfish, 156. Expectant, 157. Direction, 158. Unit of force, 159. Spin, 160. Complete collection, 161. Field crew, 162. Swamp, 163. Of the mind, 164. Shellfish, 165. Expectant, 166. Direction, 167. Unit of force, 168. Spin, 169. Complete collection, 170. Field crew, 171. Swamp, 172. Of the mind, 173. Shellfish, 174. Expectant, 175. Direction, 176. Unit of force, 177. Spin, 178. Complete collection, 179. Field crew, 180. Swamp, 181. Of the mind, 182. Shellfish, 183. Expectant, 184. Direction, 185. Unit of force, 186. Spin, 187. Complete collection, 188. Field crew, 189. Swamp, 190. Of the mind, 191. Shellfish, 192. Expectant, 193. Direction, 194. Unit of force, 195. Spin, 196. Complete collection, 197. Field crew, 198. Swamp, 199. Of the mind, 200. Shellfish, 201. Expectant, 202. Direction, 203. Unit of force, 204. Spin, 205. Complete collection, 206. Field crew, 207. Swamp, 208. Of the mind, 209. Shellfish, 210. Expectant, 211. Direction, 212. Unit of force, 213. Spin, 214. Complete collection, 215. Field crew, 216. Swamp, 217. Of the mind, 218. Shellfish, 219. Expectant, 220. Direction, 221. Unit of force, 222. Spin, 223. Complete collection, 224. Field crew, 225. Swamp, 226. Of the mind, 227. Shellfish, 228. Expectant, 229. Direction, 230. Unit of force, 231. Spin, 232. Complete collection, 233. Field crew, 234. Swamp, 235. Of the mind, 236. Shellfish, 237. Expectant, 238. Direction, 239. Unit of force, 240. Spin, 241. Complete collection, 242. Field crew, 243. Swamp, 244. Of the mind, 245. Shellfish, 246. Expectant, 247. Direction, 248. Unit of force, 249. Spin, 250. Complete collection, 251. Field crew, 252. Swamp, 253. Of the mind, 254. Shellfish, 255. Expectant, 256. Direction, 257. Unit of force, 258. Spin, 259. Complete collection, 260. Field crew, 261. Swamp, 262. Of the mind, 263. Shellfish, 264. Expectant, 265. Direction, 266. Unit of force, 267. Spin, 268. Complete collection, 269. Field crew, 270. Swamp, 271. Of the mind, 272. Shellfish, 273. Expectant, 274. Direction, 275. Unit of force, 276. Spin, 277. Complete collection, 278. Field crew, 279. Swamp, 280. Of the mind, 281. Shellfish, 282. Expectant, 283. Direction, 284. Unit of force, 285. Spin, 286. Complete collection, 287. Field crew, 288. Swamp, 289. Of the mind, 290. Shellfish, 291. Expectant, 292. Direction, 293. Unit of force, 294. Spin, 295. Complete collection, 296. Field crew, 297. Swamp, 298. Of the mind, 299. Shellfish, 300. Expectant, 301. Direction, 302. Unit of force, 303. Spin, 304. Complete collection, 305. Field crew, 306. Swamp, 307. Of the mind, 308. Shellfish, 309. Expectant, 310. Direction, 311. Unit of force, 312. Spin, 313. Complete collection, 314. Field crew, 315. Swamp, 316. Of the mind, 317. Shellfish, 318. Expectant, 319. Direction, 320. Unit of force, 321. Spin, 322. Complete collection, 323. Field crew, 324. Swamp, 325. Of the mind, 326. Shellfish, 327. Expectant, 328. Direction, 329. Unit of force, 330. Spin, 331. Complete collection, 332. Field crew, 333. Swamp, 334. Of the mind, 335. Shellfish, 336. Expectant, 337. Direction, 338. Unit of force, 339. Spin, 340. Complete collection, 341. Field crew, 342. Swamp, 343. Of the mind, 344. Shellfish, 345. Expectant, 346. Direction, 347. Unit of force, 348. Spin, 349. Complete collection, 350. Field crew, 351. Swamp, 352. Of the mind, 353. Shellfish, 354. Expectant, 355. Direction, 356. Unit of force, 357. Spin, 358. Complete collection, 359. Field crew, 360. Swamp, 361. Of the mind, 362. Shellfish, 363. Expectant, 364. Direction, 365. Unit of force, 366. Spin, 367. Complete collection, 368. Field crew, 369. Swamp, 370. Of the mind, 371. Shellfish, 372. Expectant, 373. Direction, 374. Unit of force, 375. Spin, 376. Complete collection, 377. Field crew, 378. Swamp, 379. Of the mind, 380. Shellfish, 381. Expectant, 382. Direction, 383. Unit of force, 384. Spin, 385. Complete collection, 386. Field crew, 387. Swamp, 388. Of the mind, 389. Shellfish, 390. Expectant, 391. Direction, 392. Unit of force, 393. Spin, 394. Complete collection, 395. Field crew, 396. Swamp, 397. Of the mind, 398. Shellfish, 399. Expectant, 400. Direction, 401. Unit of force, 402. Spin, 403. Complete collection, 404. Field crew, 405. Swamp, 406. Of the mind, 407. Shellfish, 408. Expectant, 409. Direction, 410. Unit of force, 411. Spin, 412. Complete collection, 413. Field crew, 414. Swamp, 415. Of the mind, 416. Shellfish, 417. Expectant, 418. Direction, 419. Unit of force, 420. Spin, 421. Complete collection, 422. Field crew, 423. Swamp, 424. Of the mind, 425. Shellfish, 426. Expectant, 427. Direction, 428. Unit of force, 429. Spin, 430. Complete collection, 431. Field crew, 432. Swamp, 433. Of the mind, 434. Shellfish, 435. Expectant, 436. Direction, 437. Unit of force, 438. Spin, 439. Complete collection, 440. Field crew, 441. Swamp, 442. Of the mind, 443. Shellfish, 444. Expectant, 445. Direction, 446. Unit of force, 447. Spin, 448. Complete collection, 449. Field crew, 450. Swamp, 451. Of the mind, 452. Shellfish, 453. Expectant, 454. Direction, 455. Unit of force, 456. Spin, 457. Complete collection, 458. Field crew, 459. Swamp, 460. Of the mind, 461. Shellfish, 462. Expectant, 463. Direction, 464. Unit of force, 465. Spin, 466. Complete collection, 467. Field crew, 468. Swamp, 469. Of the mind, 470. Shellfish, 471. Expectant, 472. Direction, 473. Unit of force, 474. Spin, 475. Complete collection, 476. Field crew, 477. Swamp, 478. Of the mind, 479. Shellfish, 480. Expectant, 481. Direction, 482. Unit of force, 483. Spin, 484. Complete collection, 485. Field crew, 486. Swamp, 487. Of the mind, 488. Shellfish, 489. Expectant, 490. Direction, 491. Unit of force, 492. Spin, 493. Complete collection, 494. Field crew, 495. Swamp, 496. Of the mind, 497. Shellfish, 498. Expectant, 499. Direction, 500. Unit of force, 501. Spin, 502. Complete collection, 503. Field crew, 504. Swamp, 505. Of the mind, 506. Shellfish, 507. Expectant, 508. Direction, 509. Unit of force, 510. Spin, 511. Complete collection, 512. Field crew, 513. Swamp, 514. Of the mind, 515. Shellfish, 516. Expectant, 517. Direction, 518. Unit of force, 519. Spin, 520. Complete collection, 521. Field crew, 522. Swamp, 523. Of the mind, 524. Shellfish, 525. Expectant, 526. Direction, 527. Unit of force, 528. Spin, 529. Complete collection, 530. Field crew, 531. Swamp, 532. Of the mind, 533. Shellfish, 534. Expectant, 535. Direction, 536. Unit of force, 537. Spin, 538. Complete collection, 539. Field crew, 540. Swamp, 541. Of the mind, 542. Shellfish, 543. Expectant, 544. Direction, 545. Unit of force, 546. Spin, 547. Complete collection, 548. Field crew, 549. Swamp, 550. Of the mind, 551. Shellfish, 552. Expectant, 553. Direction, 554. Unit of force, 555. Spin, 556. Complete collection, 557. Field crew, 558. Swamp, 559. Of the mind, 560. Shellfish, 561. Expectant, 562. Direction, 563. Unit of force, 564. Spin, 565. Complete collection, 566. Field crew, 567. Swamp, 568. Of the mind, 569. Shellfish, 570. Expectant, 571. Direction, 572. Unit of force, 573. Spin, 574. Complete collection, 575. Field crew, 576. Swamp, 577. Of the mind, 578. Shellfish, 579. Expectant, 580. Direction, 581. Unit of force, 582. Spin, 583. Complete collection, 584. Field crew, 585. Swamp, 586. Of the mind, 587. Shellfish, 588. Expectant, 589. Direction, 590. Unit of force, 591. Spin, 592. Complete collection, 593. Field crew, 594. Swamp, 595. Of the mind, 596. Shellfish, 597. Expectant, 598. Direction, 599. Unit of force, 600. Spin, 601. Complete collection, 602. Field crew, 603. Swamp, 604. Of the mind, 605. Shellfish, 606. Expectant, 607. Direction, 608. Unit of force, 609. Spin, 610. Complete collection, 611. Field crew, 612. Swamp, 613. Of the mind, 614. Shellfish, 615. Expectant, 616. Direction, 617. Unit of force, 618. Spin, 619. Complete collection, 620. Field crew, 621. Swamp, 622. Of the mind, 623. Shellfish, 624. Expectant, 625. Direction, 626. Unit of force, 627. Spin, 628. Complete collection, 629. Field crew, 630. Swamp, 631. Of the mind, 632. Shellfish, 633. Expectant, 634. Direction, 635. Unit of force, 636. Spin, 637. Complete collection, 638. Field crew, 639. Swamp, 640. Of the mind, 641. Shellfish, 642. Expectant, 643. Direction, 644. Unit of force, 645. Spin, 646. Complete collection, 647. Field crew, 648. Swamp, 649. Of the mind, 650. Shellfish, 651. Expectant, 652. Direction, 653. Unit of force, 654. Spin, 655. Complete collection, 656. Field crew, 657. Swamp, 658. Of the mind, 659. Shellfish, 660. Expectant, 661. Direction, 662. Unit of force, 663. Spin, 664. Complete collection, 665. Field crew, 666. Swamp, 667. Of the mind, 668. Shellfish, 669. Expectant, 670. Direction, 671. Unit of force, 672. Spin, 673. Complete collection, 674. Field crew, 675. Swamp, 676. Of the mind, 677. Shellfish, 678. Expectant, 679. Direction, 680. Unit of force, 681. Spin, 682. Complete collection, 683. Field crew, 684. Swamp, 685. Of the mind, 686. Shellfish, 687. Expectant, 688. Direction, 689. Unit of force, 690. Spin, 691. Complete collection, 692. Field crew, 693. Swamp, 694. Of the mind, 695. Shellfish, 696. Expectant, 697. Direction, 698. Unit of force, 699. Spin, 700. Complete collection, 701. Field crew, 702. Swamp, 703. Of the mind, 704. Shellfish, 705. Expectant, 706. Direction, 707. Unit of force, 708. Spin, 709. Complete collection, 710. Field crew, 711. Swamp, 712. Of the mind, 713. Shellfish, 714. Expectant, 715. Direction, 716. Unit of force, 717. Spin, 718. Complete collection, 719. Field crew, 720. Swamp, 721. Of the mind, 722. Shellfish, 723. Expectant, 724. Direction, 725. Unit of force, 726. Spin, 727. Complete collection, 728. Field crew, 729. Swamp, 730. Of the mind, 731. Shellfish, 732. Expectant, 733. Direction, 734. Unit of force, 735. Spin, 736. Complete collection, 737. Field crew, 738. Swamp, 739. Of the mind, 740. Shellfish, 741. Expectant, 742. Direction, 743. Unit of force, 744. Spin, 745. Complete collection, 746. Field crew, 747. Swamp, 748. Of the mind, 749. Shellfish, 750. Expectant, 751. Direction, 752. Unit of force, 753. Spin, 754. Complete collection, 755. Field crew, 756. Swamp, 757. Of the mind, 758. Shellfish, 759. Expectant, 760. Direction, 761. Unit of force, 762. Spin, 763. Complete collection, 764. Field crew, 765. Swamp, 766. Of the mind, 767. Shellfish, 768. Expectant, 769. Direction, 770. Unit of force, 771. Spin, 772. Complete collection, 773. Field crew, 774. Swamp, 775. Of the mind, 776. Shellfish, 777. Expectant, 778. Direction, 779. Unit of force, 780. Spin, 781. Complete collection, 782. Field crew, 783. Swamp, 784. Of the mind, 785. Shellfish, 786. Expectant, 787. Direction, 788. Unit of force, 789. Spin, 790. Complete collection, 791. Field crew, 792. Swamp, 793. Of the mind, 794. Shellfish, 795. Expectant, 796. Direction, 797. Unit of force, 798. Spin, 799. Complete collection, 800. Field crew, 801. Swamp, 802. Of the mind, 803. Shellfish, 804. Expectant, 805. Direction, 806. Unit of force, 807. Spin, 808. Complete collection, 809. Field crew, 810. Swamp, 811. Of the mind, 812. Shellfish, 813. Expectant, 814. Direction, 815. Unit of force, 816. Spin, 817. Complete collection, 818. Field crew, 819. Swamp, 820. Of the mind, 821. Shellfish, 822. Expectant, 823. Direction, 824. Unit of force, 825. Spin, 826. Complete collection, 827. Field crew, 828. Swamp, 829. Of the mind, 830. Shellfish, 831. Expectant, 832. Direction, 833. Unit of force, 834. Spin, 835. Complete collection, 836. Field crew, 837. Swamp, 838. Of the mind, 839. Shellfish, 840. Expectant, 841. Direction, 842. Unit of force, 843. Spin, 844. Complete collection, 845. Field crew, 846. Swamp, 847. Of the mind, 848. Shellfish, 849. Expectant, 850. Direction, 851. Unit of force, 852. Spin, 853. Complete collection, 854. Field crew, 855. Swamp, 856. Of the mind, 857. Shellfish, 858. Expectant, 859. Direction, 860. Unit of force, 861. Spin, 862. Complete collection, 863. Field crew, 864. Swamp, 865. Of the mind, 866. Shellfish, 867. Expectant, 868. Direction, 869. Unit of force, 870. Spin, 871. Complete collection, 872. Field crew, 873. Swamp, 874. Of the mind, 875. Shellfish, 876. Expectant, 877. Direction, 878. Unit of force, 879. Spin, 880. Complete collection, 881. Field crew, 882. Swamp, 883. Of the mind, 884. Shellfish, 885. Expectant, 886. Direction, 887. Unit of force, 888. Spin, 889. Complete collection, 890. Field crew, 891. Swamp, 892. Of the mind, 893. Shellfish, 894. Expectant, 895. Direction, 896. Unit of force, 897. Spin, 898. Complete collection, 899. Field crew, 900. Swamp, 901. Of the mind, 902. Shellfish, 903. Expectant, 904. Direction, 905. Unit of force, 906. Spin, 907. Complete collection, 908. Field crew, 909. Swamp, 910. Of the mind, 911. Shellfish, 912. Expectant, 913. Direction, 914. Unit of force, 915. Spin, 916. Complete collection, 917. Field crew, 918. Swamp, 919. Of the mind, 920. Shellfish, 921. Expectant, 922. Direction, 923. Unit of force, 924. Spin, 925. Complete collection, 926. Field crew, 927. Swamp, 928. Of the mind, 929. Shellfish, 930. Expectant, 931. Direction, 932. Unit of force, 933. Spin, 934. Complete collection, 935. Field crew, 936. Swamp, 937. Of the mind, 938. Shellfish, 939. Expectant, 940. Direction, 941. Unit of force, 942. Spin, 943. Complete collection, 944. Field crew, 945. Swamp, 946. Of the mind, 947. Shellfish, 948. Expectant, 949. Direction, 950. Unit of force, 951. Spin, 952. Complete collection, 953. Field crew, 954. Swamp, 955. Of the mind, 956. Shellfish, 957. Expectant, 958. Direction, 959. Unit of force, 960. Spin, 961. Complete collection, 962. Field crew, 963. Swamp, 964. Of the mind, 965. Shellfish, 966. Expectant, 967. Direction, 968. Unit of force, 969. Spin, 970. Complete collection, 971. Field crew, 972. Swamp, 973. Of the mind, 974. Shellfish, 975. Expectant, 976. Direction, 977. Unit of force, 978. Spin, 979. Complete collection, 980. Field crew, 981. Swamp, 982. Of the mind, 983. Shellfish, 984. Expectant, 985. Direction, 986. Unit of force, 987. Spin, 988. Complete collection, 989. Field crew, 990. Swamp, 991. Of the mind, 992. Shellfish, 993. Expectant, 994. Direction, 995. Unit of force, 996. Spin, 997. Complete collection, 998. Field crew, 999. Swamp, 1000. Of the mind, 1001. Shellfish, 1002. Expectant, 1003. Direction, 1004. Unit of force, 1005. Spin, 1006. Complete collection, 1007. Field crew, 1008. Swamp, 1009. Of the mind, 1010. Shellfish, 1011. Expectant, 1012. Direction, 1013. Unit of force, 1014. Spin, 1015. Complete collection, 1016. Field crew, 1017. Swamp, 1018. Of the mind, 1019. Shellfish, 1020. Expectant, 1021. Direction, 1022. Unit of force, 1023. Spin, 1024. Complete collection, 1025. Field crew, 1026. Swamp, 1027. Of the mind, 1028. Shellfish, 1029. Expectant, 1030. Direction, 1031. Unit of force, 1032. Spin, 1033. Complete collection, 1034. Field crew, 1035. Swamp, 1036. Of the mind, 1037. Shellfish, 1038. Expectant, 1039. Direction, 1040. Unit of force, 1041. Spin, 1042. Complete collection, 1043. Field crew, 1



# MURDER TONIGHT

BY LAURENCE W. MEYNELL

Chapter 30  
**FAMILY AT ODDS**

At one o'clock Sergeant White came back to his cottage and went thoughtfully through into the kitchen where his wife was busy taking something out of the oven.

"How's Mr. Hylton this morning?" Alice asked lightly.

"He wasn't there."

"Not there? Where was he?"

"As a matter of fact I don't quite know. He told me to meet him at twelve and said particularly I was not to be late. They told me at the Hoops that he went into Morechester this morning early, and they came back about half past ten and they haven't seen him since."

"You can't find out who did that old fool in," she said irritably, "we might get a lift then and be able to afford a decent oven."

"No one can expect me to be over at Nyetson and at Erderton Court at the same time."

"It wasn't much good your being at Nyetson seemingly, the peachers were out just the same."

"How do you know that?" White asked quickly, and Alice could have bitten the end of her stupid tongue off. She ought to have learned by now, she reflected, to be doubly careful with a man as madly jealous as her husband.

"I just heard somebody talking about it somewhere in the village—here have this damned, oh I'm so sorry Jimmy, this blessed sheep-head's pie before it gets cold."

She cut him a piece of bread and put the bottle of Yorkshire Relish in his reach and filled his glass with water. All these ministrations he received with that masculine matter of course indifference which not infrequently a woman finds the most annoying thing in the whole world. One or two sharp comments came to her tongue but she repressed them. Jimmy had a regular job with good money and a pension, she wasn't going to be fool enough to fall out with him unnecessarily, especially when she could pull the wool over his eyes so beautifully as long as she was careful.

"Pie's burnt a bit," he said.

"What are you doing this afternoon?"

"Going to Morechester."

"The pictures, I suppose?"

"Well, what's wrong with the pictures?"

"You're always off there, nowadays," he said.

"A woman wants to get out of her house sometimes, I suppose."

"What's on—anything special?"

For a moment Alice could hardly believe her ears. It would be just like the almost inspired pervasiveness of the male, she thought, if he said he would come with her. He noticed her slight pause and asked again, this time looking full at her.

"I'm just trying to think," she said testily. "I'm not sure what it is, but I don't think it's anything special."

After a moment or so she could not help adding "Were you thinking of coming, Jimmy?"

"Good Lord, no. I've got something to do. I shall be out with the Inspector, I suppose."

Alice was well pleased to let the conversation run on to other lines.

"Funny you can't get any idea who's done it," she said.

"Who says we can't get any idea? I keep telling the Inspector it's most likely one of these rough-looking chaps I saw in the village day or two before."

"I wonder who they were. Nobody else saw them, did they?"

"Of course somebody else saw them, but nobody takes any notice of a tramp."

"Seems to me a waste of time looking for them. Find that out as they go along," White said with a peculiar smile.

"Do you think the Inspector suspects young Shipley?"

"Why should he?" her husband looked up sharply.

"Well, everybody knows he didn't like the old man and I suppose it might as well be him as anybody else."

"Don't talk foolishly," James White begged in a grumbling voice.

erful man, didn't seem to smoke much or drink, and all against swearing—but a man, though, you had to allow him that.

Did his duty and afraid of no one—cut up nasty most likely if ever he found out. Harry Small's smile broadened, after all what was life worth without a bit of a risk to give justice to it; and Alice was worth it any day, more than worth it. He stretched his big body in pleasurable anticipation; and so quickly that even his phenomenally quick ears gave him only a moment's warning she came up to him from behind.

"Harry."

"You've come, my dear."

"I am puffed, it's an awful pull up that bank."

"You're late."

"Late? You ought to be damned glad I've come at all."

Small's eye ran over her flushed, handsome face and her generous body.

"So I am," he allowed.

"I told him I was going to the pictures and just for the moment I thought he was going to offer to come with me."

"Sergeant White go to the pictures?"

"Does sometimes."

"Not often, I'll bet."

She sat down on the log by him still breathing quickly. He made no effort to caress her, there was plenty of time yet.

"Nice day," he said.

"Jimmy's off on this business at the Court. Who do you reckon did it Harry?"

"That chap as lives with him most likely."

"Lumsdale?"

"Yes. Unless it's one of the gen-try whose woman he played about with."

"Alice White looked up quickly.

"What do you mean?" she asked.

"What do you know about it?"

"I can't say as I know anything exactly, but I've heard a tale or two. 'E was a bit of an old cough-drop, wasn't he, for all this living alone and miser business?"

"The woman was starting down the ride. 'Did you see Jimmy on Monday night?' she asked suddenly.

"See him? No, of course I didn't. What's more important to me is did he see that Ruckley gang that was out."

"He had been out, he would have seen them, wouldn't he?"

"Nyetson Wood's a big place my dear," Small said, "big enough for you and me to get lost in anyway; let's try."

He rose to his feet, stretched himself prodigiously and bended with a sudden, quick movement picked the woman up in his arms and pressed her to him.

When her lips were free she gave a little gasp. "Oh, Harry, you are strong."

"Strong enough to pick you up anyway; and put you down where I've a mind to go."

"I like your cheek."

He slipped his arm through hers and they began to walk away together.

"Can't we stay here?" she protested. "It's lovely in this bit of sun."

"It'll be lovelier still where I've a mind to go," he said, "there's a bit of a bank the other side of the ride where the turf's so soft you might be sitting on a bed."

"All right Harry," Alice said quietly.

They had emerged from the side of the wood and overlooked an unexpected and charming little valley. Its slope lay to the southwest and formed a perfect trap for the afternoon sun, so that January and all the bleak things of the year seemed further off than ever.

With a sudden but unhurried movement he lifted her off her feet.

(Copyright, 1936, Laurence W. Meynell)



Tim McCoy, one of the most popular of western players, is the star of the picture billed Friday and Saturday at the Queen theater, "Border Caballero." Tim is a federal officer who traps a bank robbing gang.

## Tim McCoy Starred In Western Picture Booked At Queen

Tim McCoy, one of the most popular of western players, is the star of an adventure drama, "Border Caballero," which plays Friday and Saturday at the Queen theater.

There is a modern touch to this western story, inasmuch as Tim appears in the role of a G-man of the west, intent upon cleaning up a bank robbing gang which has successfully defied the attempts of local authorities to halt their marauding activities. Tim takes up the task of running down the outlaws, left incomplete when his friend, Tex Wesver, a government operative, is murdered. The star finishes the job in hurricane style. A dance hall girl, portrayed by Jois January, helps the federal sleuth in obtaining evidence that will convict the assassin, thereby avenging the death of Tex, whom the girl loved.

From beginning to end, "Border Caballero" moves at a swift pace, with its quota of hard riding, exciting chases and gun battles. The supporting cast includes Ted Adams, J. Frank Glendon and Earl Hodgins.

## George Raft In Ritz Film

Co-Starred With Dolores Barrymore In Comedy Romance

George Raft and Dolores Costello Barrymore are co-starred in "Yours for the Asking," comedy-romance of a gambler who decides to learn the ways of society, booked at the Ritz for Saturday night, Sunday and Monday. The picture has in its supporting cast Ida Lupino, Reginald Owen, James Gleason, Lynne Overman, Richard "Skeeter" Gallagher and Edgar Kennedy.

Gleason, Overman and Kennedy appear as the right-hand men of Raft in his gambling operations. The star meets Miss Barrymore, a society girl, decides to make his gambling place "an upper-crust layout," and gets her assistance. The trio of henchmen begin to fear that their boss is falling for Miss Barrymore. To prevent such an eventuality, they arrange to have Ida Lupino, beautiful adventures, try to win him.

She succeeds, for a time, so well that Raft, who believes her a member of the Four Hundred, begins taking Emily Post lessons from Miss Barrymore.

Comedy situations are built up by the three sides, Miss Lupino, and a wandering salesman of ten-cent gadgets, Owen, who poses as Miss Lupino's aristocratic uncle for purposes of the plot.

"Yours for the Asking," places Raft in a story similar in some respects to that of one of his greatest hits, "Night After Night." It marks his return to the type of role which the movie public likes best for him; the tough egg with the smooth manner.

Miss Barrymore, who stepped immediately back into her former leading place in film after a five-year absence, in "Little Lord Fauntleroy," is also given a role suited to her talents.

## SCENE FROM DRAMA AT THE RITZ



Chester Morris, Lloyd Nolan, Margot Grahame and Marian Marsh, in a scene from "Counterfeit," drama at the Ritz Friday and Saturday.

## 'Counterfeit' Is Featured At The Ritz

Chester Morris starred in the role of U. S. Treasury Agent

The exciting adventures of a federal treasury agent who single-handedly traps and captures a ring of cunning counterfeiters is the story theme of "Counterfeit," which headlines the Ritz program for Friday and Saturday.

Chester Morris is seen in the role of a department of justice agent who is assigned to destroy the criminal band headed by Lloyd Nolan. Margot Grahame, famed for her sensational performance in "The Informer," is a member of the gang and through a series of strange circumstances she innocently ensnares her sister, Marian Marsh, into the underworld activities.

Morris, desperate to achieve his ends, gains entry into the confidence of the counterfeiters by an assumed reputation as a ruthless killer. He falls in love with Marian Marsh, and his efforts to save her, without risking detection or losing his prey, provides the basis of the thrilling screen play.

Eric Kenton directed "Counterfeit" from an original story by Bruce Manning and William Rankin, which brings to the screen for the first time a behind-the-scenes expose of the "modus operandi" of the hitherto little publicized activities of the T-men, guardians of the U. S. treasury.

The new film for example, reveals in dramatic fashion the methods employed in tracking down and apprehending counterfeiters by the use of scientific means, undreamed of a decade ago.

Others in the cast are Claude Gillingwater, George McKay and John Gallaudet.

## Hoot Gibson At The Lyric

Western Star A Federal Man In 'The Riding Avenger'

A western melodrama with the gunplay, horsemanship and thrills essential to that type of story is the Lyric theater's feature for Friday and Saturday. The picture is "The Riding Avenger," and the veteran cowboy actor, Hoot Gibson, has the starring role.

Hoot, as Buck Connors, is sent by the federal government to halt the activities of the Short Ranger gang of outlaws in the western country, a task beyond the power of local authorities. Buck adopts the disguise of a spectacular bandit who is accustomed to playing a lone hand, and thus equipped, he takes to the trail. En route, he rescues a girl, the daughter of a ranch owner, from the outlaw gang, and from there on, romance is included in the plot development.

How Buck rescues the girl when she is captured by the gang a second time, and how he ennares the entire band of outlaws make for a dramatic climax to the picture.

Ruth Mix, daughter of the famous Tom Mix, and Buzz Barton, youthful western player, are in the cast. Others are June Gale, as the heroine, Stanley Blystone, Roger Williams, Francis Walker, Charles Whitaker and Bud Buster.

## ROMANCERS



George Raft and Dolores Costello Barrymore form a romance team in the comedy romance, "Yours for the Asking." The picture plays at the Ritz Sunday and Monday, following a midnight matinee showing.

## TRENCH SILOS RECOMMENDED IN DUST BOWL

LINCOLN, Neb., (UP)—With a three-year record of dry weather haunting them, Nebraska farmers have been forced to adopt their own conservation measures.

Trench silage is a major one. To dramatize the need for conserving livestock feed by this method, Gov. R. L. Cochran, Chancellor E. A. Burnett of the University of Nebraska, and high ranking officials of the university ceremoniously opened a trench silage dig by the university last year.

Agricultural college officials, estimating that there are 7,500 trench silos in Nebraska now, hope to increase that number to at least 10,000 by the end of the year. Corn stalks that failed to produce ears of corn can be used for trench silage.

The farm college has enlisted the support of every agency of information in the conservation campaign.

## PHILATHEA SOCIAL

An old fashioned ice cream supper will be given by the members of the Philathea Sunday school class of the First Methodist church this evening for their husbands.

The social will be held on the church lawn at 7:30. All members are urged to attend.

The Metropolitan opera in New York once was called the "Faustspielhaus" because it gave so many performances of Gounod's "Faust."

by Wellington

## PA'S SON-IN-LAW



## A Touch Of Brilliance



## Who's Whose Boss?



## Maybe It's The Salt Air



## Breakers Ahead



## DIANA DANE



by Don Flowers

## SCORCHY SMITH



## HOMER HOOPEE



## WELL, I WANT YOU TO FIRE HIM...



## SHORE HE'S WORKIN'...



## HE'S PAYIN' ME!



by Noel Sickles

## THE NEXT STOP IS DALLAS AND THE CENTENNIAL EXPOSITION!



## OH -- FOR THE LOVVA --



## OH -- FOR THE LOVVA --



## WHAT NOW?



## I JUST SAW THAT CONSTABLE WALKING DOWN THE HALL!



by Fred Locher

**WRIGLEY'S SPEARMINT**  
THE PERFECT GUM  
THE FLAVOR LASTS

YOU'LL HAVE BETTER CONTROL IF YOU CHEW WRIGLEY'S

**WRIGLEY'S SPEARMINT**  
THE PERFECT GUM  
THE FLAVOR LASTS

**RITZ** TODAY TOMORROW

MEET THE T-N-T MEN  
Dramatic Dynamite!

**Counterfeit**  
with CHESTER MORRIS MARGOT GRAHAME MARIAN MARSH LLOYD NOLAN

**PLUS:** PARAMOUNT NEWS, "ARBOR DAY" An Our Gang Comedy

SATURDAY MIDNITE MATINEE - SUNDAY - MONDAY

HE SUFFERED FROM HIGH BLONDE PRESSURE!  
He had a big heart but not big enough for two women!

**GEORGE RAFT**  
**Dolores Costello**  
**BARRYMORE**

with IDA LUPINO REGINALD OWEN

**9 HOURS FOR THE ASHING**

**PLUS:** METRO NEWS "WHAT NO SPINACH" "POPEYE CARTOON"

Mrs. Ray Cravens will leave this evening for a month's vacation in Los Angeles, Calif.

**ALLEN - OGDEN**

**Good, Bad News**

Due to the drought, food prices have already advanced, or are due to advance, but, foreseeing this, we have in so far as possible, bought a good supply of most items, and they are yours at the old prices as long as they last. Packers of many food products have withdrawn from the market completely, and many others are reporting only about a 50 per cent supply available. This is bad news for us all, but the good part of this bad news is that you will find what you want, usually at the old prices at our store. May we suggest that you buy in quantities, especially your staples while they are available at reasonable prices.

**Specials**

This week-end we have gotten together for your enjoyment a nice lot of specials at really special prices. They follow:

- 10 pounds sugar, 55c;
- 3 pounds A-1 crackers, 18c;
- Red & White coffee, in glass, 29c per pound;
- 2 cans Tuna fish, 25c;
- grape juice, quarts, 29c;
- 6 bars of Red & White soap for 25c;
- Ambassador toilet tissue, 6 for 35c;
- Nile cooking salmon, 3 for 25c;
- No. 2 can broken slices pineapple, 2 for 31c.

**Others**

We have a nice supply of fruits and vegetables for you this week (all that the market affords) at very reasonable prices, and the market is well supplied to take care of your week-end wants. Mrs. Burrell will have her usual supply of fine cooked foods, at prices that will please. So come to see us and have a pleasant week-end in spite of the heat.

**ALLEN - OGDEN**  
Phone 515 Free Delivery

**LYRIC** Today - Tomorrow

**HOOT GIBSON**

BRIDING AVENGER  
A WHIRLWIND OF ACTION!

with RUTH MIX BUZZ BARTON

Sunday - Monday - Tuesday

Eternity on Film!

H.G. Wells AMAZING FORECAST!

**THINGS TO COME**

PLUS: PARAMOUNT NEWS "BLACK NET WORK"

entirely—or at least most politicians think it is. Psychology Important

Although it is not always true, the saying that "as Maine goes, so goes the nation" has come to have a wide acceptance among voters generally.

Some democrats speak of it as a republican invention. Since Maine is normally a republican state, it may be counted on to go Republican in Republican years, and sometimes also in Democratic years.

The facts do not even warrant an assumption with respect to the presidential election, that "as Maine goes, so goes Maine." Four years ago the state elected a democratic governor in September, but voted for Hoover in November; for the state election and the national election not only are divided by a matter of months, but often are waged on entirely different issues.

This, however, is the factual side of the business and politics very often does not rest on a factual base at all. It deals instead in theories and psychological calculations. With regard to Maine, the politicians are interested not so much in what the returns actually mean, as in the interpretation which the public may place upon them.

There can be no doubt, for instance, that when Maine went democratic in September of 1932, the event made a profound impression throughout the country. It did not mean, as it turned out, that the republican national ticket had lost Maine. Furthermore, had the result been the other way, and had the September election returned a substantial republican majority in Maine, there is no proof that Mr. Hoover might not still have been defeated in the nation in November.

But it did mean that the republican managers had suffered a shock and a surprise, and the psychological repercussions of that travelled swiftly as far as Florida and California. The democrats began to sing their victory song. The republicans were aroused to a frenzy of effort which resulted in an apprehensive realignment of campaign strategy, and sent Mr. Hoover hurrying to the stumps.

So whatever the facts may be, whatever cold reasoning may indicate to the contrary, the Maine election does have its psychological effect. It decides whose bandwagon will start rolling.

**SPECIAL DAYS ARE SLATED NEXT WEEK AT FT. WORTH SHOW**

PORT WORTH, Aug. 14—Many special days have been designated for next week at the Fort Worth Frontier Centennial, including Marshall Day, Midland Day and Odessa Day, August 17; Lamesa Day, Tahoka Day and Miami, Fla., Day, August 18; "Know Mississippi Better Train Day," Exchange Club Day, August 19; Kiwanis Day, August 20; Albany Day, Breckenridge Day, August 21; Texas State Highway Day, Advertising Club Day, El Paso Day, August 22; Lower Rio Grande Valley Day, San Antonio Day, August 23.

**Shouting Is Starting Over Maine's Vote**

**'As Maine Goes' Demonstration Of Bangwagon Psychology**

By BYRON PRICE (Chief of AP Bureau, Washington)

The influence of bangwagon psychology is nowhere better illustrated than by the shouting which arises every four years over the Maine election.

To the uninitiated, it might appear that the whole electoral college, instead of no part of it, must be at stake in this September gathering at the polls in one of the smallest states.

Statements and manifestos without end issue from the national headquarters of the two great parties. The hardest shock troops and the heaviest artillery are thrown unreservedly into the fray. Maine becomes the focus of all eyes political, the answer to the politician's prayer from coast to coast.

Yet actually, nothing is involved but a few comparatively minor offices—and the reins to the bandwagon. A governor, a senator and three congressmen make up a pitifully small "bang" for so pretentious a hunting expedition. But capture of the bandwagon is another thing

**Skin May Look Younger at 35 Than at 28!**

THOUSANDS of women, past 30, use a cream that is a complete beauty treatment! Not only smooths skin, eliminates surface blemishes, but strikes at vital cause of old-looking skin. Works to eliminate darkening film of dead particles that often gives skin dull "old" look. Reveals amazingly clear, youthful complexion! Try this "cosmetic treatment" cream! Called Golden Face Cream. . . for sale at

Cunningham & Phillips

**'Big Spring's Sweet Air Dentist'**

**BE TRUE TO YOUR TEETH! SAYS DR. HARRIS, Or They Will Be False to You**

Come See Us Now Because—  
1. Sweet Air practically eliminates pain.  
2. Our prices are low.  
3. Our high grade work is guaranteed.

**Dr. Harris**  
219 Main St.  
Big Spring  
'Come See Us'

**Foreign Cash Eases Italy's Oil Problems**

**Concession Is Granted To American Interests For Large Refinery**

ROME, Aug. 14 (UP)—The Italian government, anxious to guard against an oil shortage in time of war, has granted an important concession to American interests which, by the beginning of 1937, will result in increased imports of crude from gulf ports, the United Press has been informed.

This concession involves construction (already well under way) of one of the world's finest oil refineries in the Naples area. Through this deal, Mussolini pushes forward his campaign to create impregnable war defenses within the Italian peninsula.

Approximately \$3,000,000 is involved. About one-half this amount will be provided by persons and interests associated with the Socomy Vacuum Oil company. The source of the rest of the capital will be earnings of affiliated American banks secured by liens upon the plant and equipment, and other sources not definitely known.

Six Miles From Naples

The new refinery, which will handle oils, chiefly from gulf ports, is being constructed about six miles from the center of Naples. It will have ready access by direct pipe lines to the nearby port of Naples, thus facilitating easy handling of crude and refined products between vessel and refinery. The site consists of a tract of about 65 acres. Five of seven large crude petroleum storage tanks are being constructed and the related storage capacity will be about 560,000 barrels. Tanks for storage of gasoline and other

**QUEEN** Today - Tomorrow

**TIM McCOY**

in **BORDER CABALLERO**

with **LOIS JANUARY**

P. L. U. S. CUSTER'S LAST STAND NO. 10

Sunday-Monday-Tuesday

**A YELP FOR HELP WAS THEIR COLLEGE YELL!**

**WE WENT TO COLLEGE**

CHARLES HUTTENWORTH

HUGH HERBERT WALTER ABEL UNA MERKEL M. G. M. PICTURE

PLUS: Pathé Topics No. 4 "Lightening Jewel"

**Foreign Cash Eases Italy's Oil Problems**

**Concession Is Granted To American Interests For Large Refinery**

ROME, Aug. 14 (UP)—The Italian government, anxious to guard against an oil shortage in time of war, has granted an important concession to American interests which, by the beginning of 1937, will result in increased imports of crude from gulf ports, the United Press has been informed.

This concession involves construction (already well under way) of one of the world's finest oil refineries in the Naples area. Through this deal, Mussolini pushes forward his campaign to create impregnable war defenses within the Italian peninsula.

Approximately \$3,000,000 is involved. About one-half this amount will be provided by persons and interests associated with the Socomy Vacuum Oil company. The source of the rest of the capital will be earnings of affiliated American banks secured by liens upon the plant and equipment, and other sources not definitely known.

Six Miles From Naples

The new refinery, which will handle oils, chiefly from gulf ports, is being constructed about six miles from the center of Naples. It will have ready access by direct pipe lines to the nearby port of Naples, thus facilitating easy handling of crude and refined products between vessel and refinery. The site consists of a tract of about 65 acres. Five of seven large crude petroleum storage tanks are being constructed and the related storage capacity will be about 560,000 barrels. Tanks for storage of gasoline and other

**666** checks **MALARIA** in 3 days **COLDS**

Liquid, Tablets, first day Salve, Nose Drops, 30 minutes

Try "Rub-My-Tham"—World's Best Liniment

**MONEY! MONEY! MONEY!** Auto Loans, New Low Rates, All Kinds Insurance

R. B. REEDER INS. AGCY. 100 W. 2nd St. Phone 531

**Pig Sandwich** TRADE MARK

510 EAST 3RD ST.

**Woodward and Coffee** Attorneys-at-Law General Practice in All Courts

Suite 215-14-17 Lester Fisher Building Phone 501

volatile derivatives will have an aggregate capacity of approximately 500,000 barrels.

Principal products to be manufactured in the refinery, which was incorporated under Italian law with the name "Raffineria di Napoli, Società Anonima Italiana" are high grade and light lubricating oils; gasoline and fuel oils, which will be sold to a local distributor or distributors; finally by-products such as greases and wax.

**Project Employs 600**

Large quantities of American material have been ordered in construction, which involves 600 Italian workmen, but other materials are also being ordered from Germany since Italy and Germany have a clearing agreement, operative for some time, making it advantageous for Italy to make many of its foreign purchases in Germany.

Construction of the refinery is being supervised by an American engineer. When finished in early 1937, the refinery will be directed by an American chemical engineer.

During negotiations for the great refinery, Italian authorities discussed to great lengths measures to safeguard the plant against aerial attack. When engineer in charge assured authorities that elaborate defensive measures were planned, including installation of fire-fighting equipment, the project finally was approved.

It is believed here that American interests will contribute substantially to execution of plans for construction of other large refineries in Italy as well as building plants for hydrogenation of hydrocarbons and installation of reserve tanks and pipe lines throughout the kingdom.

Grace Moore, the cinema-singer, recently gave \$4,000 to the fund for aged singers maintained by the Copenhagen opera.

**Fort To Mark 60th Birthday**

**Sam Houston Army Post At Santone Constructed In 1876**

SAN ANTONIO, Aug. 14 (UP)—Fort Sam Houston, chief southwestern army post, will celebrate its 60th anniversary this month. At the same time Texas will be celebrating the centennial of independence achieved under leadership of the man for whom the "fort" was named.

Only the portullis, watchtower and stone walls of the quadrangle erected in August, 1876, have any likeness to a "fort." Spreading beyond this nucleus are acres of parade and drill ground, miles of paved and shaded driveways along which stand modern hospitals, elaborate homes for officers and permanent barracks buildings for more than a war-time division.

Biggest single addition to the fort that was planned by Secretary of War W. W. Belknap has been the area of Camp Travis, upon which were erected the cantonments of the 90th division of the World war.

Infantry, artillery and cavalry posts adjoining the original fort previously had added to its size. Contiguous to the Fort Sam Houston of today is Randolph field, known as the "West Point of the Alcs." Kelly and Brooks fields, where World war aviators were schooled, also have been retained by the war department, with permanent buildings replacing the hurriedly-built structures of war days.

Camp Bullis, used for artillery practice in wartime, is a terminus for practice marches into the hilly country about Fort Sam Houston.

The fort was located as a central station from which to supply border and frontier posts. Chief attraction of the area now, for army air training.

Mrs. W. H. James of Marianne, Ark., is visiting her sons. Lee and Dennis, is the good weather for Dennis.

**Belief In Each Other**

—is the foundation of the relationship between a bank and its customers.

**THE** bank in accepting deposits from its customers also receives their confidence and trust. In granting loans to borrowers the bank expresses its own faith in their trustworthiness and business abilities.

A bank's position in its Community, therefore, is founded both on its confidence in customers and its sympathetic understanding of their aims and methods, and also on the confidence of its customers in its own business methods and policies.

This bank's loaning and investment practices, its facilities for protecting depositors' funds, and its careful consideration of all loan applications have brought us the confidence and banking business of many people in this Community.

**FIRST NATIONAL BANK**  
IN BIG SPRING

**CHEAP ELECTRICITY IS DOING GREAT THINGS FOR THIS FINE FAMILY...**

**THEY HAVE AN Electric REFRIGERATOR**

PENNYWISE SAYS: There's a food safety vault in the home of this typical Texas family—an electric refrigerator that watches after their food twenty-four hours a day, keeping it fresh and wholesome and free from harmful bacteria. Everything they eat at every meal is eaten with the assurance that it is just as it should be—and thanks to cheap electricity, all for only a few cents a day.

**BELOW FIFTY DEGREES** **The FOOD SAFETY ZONE**

See Your Electric Refrigerator Dealer

TEXAS ELECTRIC SERVICE COMPANY  
C. B. BLOMFIELD, Manager