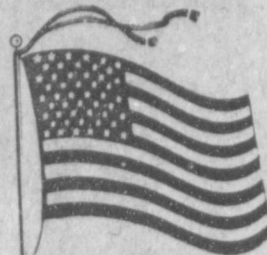


December 23	41	14
December 24	44	14
December 25	47	23
December 26	51	23



Second Four Months Bring Many Changes

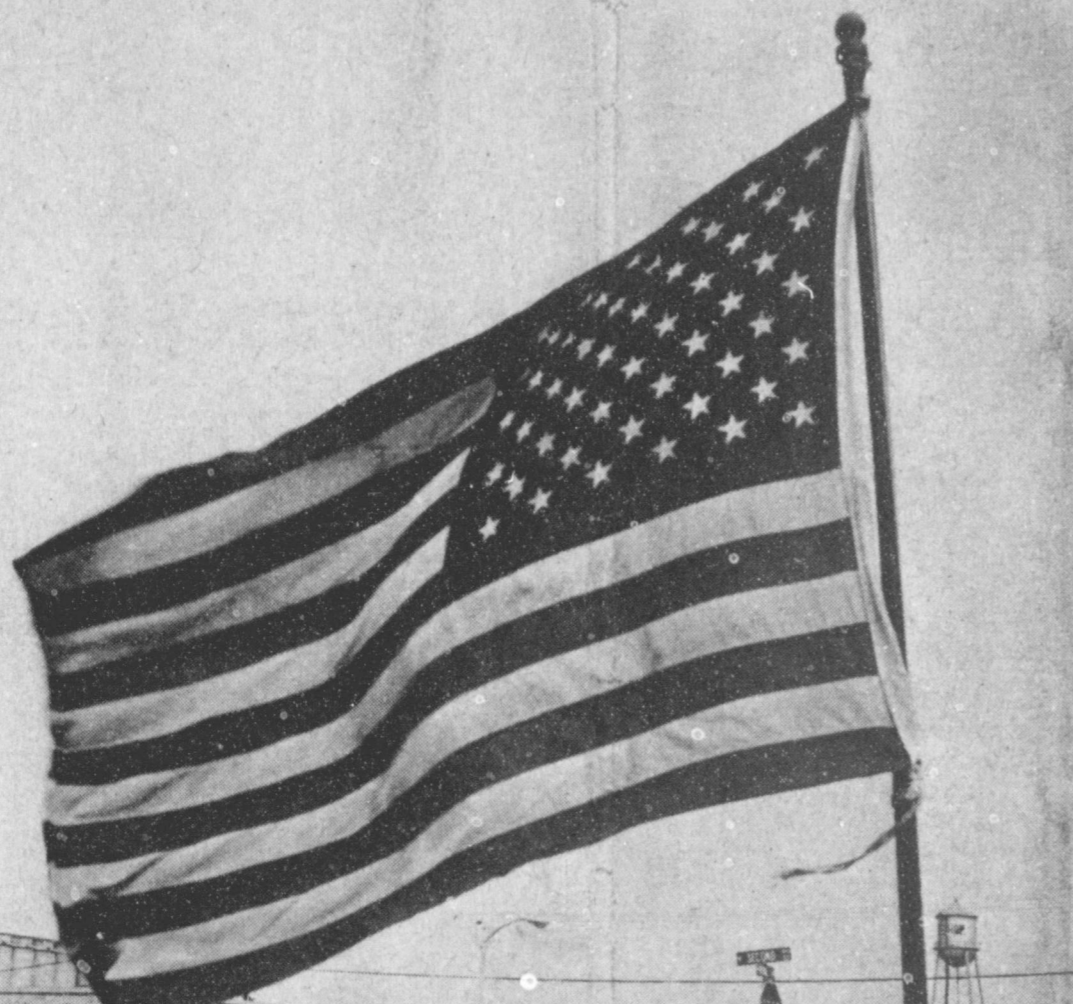
Firemen Sponsor Emergency Course

The Lazbuddie Fire Dept. will sponsor an Emergency Care Attendant course at the Lazbuddie School cafeteria beginning Monday night, January 11, 1982 at 6:30 p.m.

The course is open to everyone high school age or older. No previous training is required. The course will consist of 28 hours of class room instruction and practice covering C.P.R., bandaging and splinting, initial signs, air way obstruction, heart disorders and stroke, poisoning, burns, and injuries to all parts of the body.

Those attending the meeting January 11, 1982 will set the dates for other classes, at night, or on Saturday and Sunday afternoons.

A minimum of 20 people are needed to conduct the course. To pre-register or for information contact Glenn Lust, Fire Chief, 965-2828.



LONG MAY SHE WAVE.....Feelings in the hearts and minds of all true Americans should reflect a thankfulness-to worship-to speak-to live in such a bountiful land. Christmas draws us closer together as a family, as a nation. Let us not forget the things our proud "Old Glory" stands for and give thanks that she still waves over our homelands.

1981 Farm Bill Called "Farm Bankruptcy Act"

"Passage of the 1981 Farm Bill by Congress will do little to halt the decline family farmers are facing in prices and income which will result in the liquidation of many family farms in 1982," stated Mike Moeller, President of the Texas Farmers Union. "We think the bill should be renamed the 1981 Farm Bankruptcy Act because that is exactly the affect it is going to have on many producers."

Moeller said "Because of the irresponsibility of the Congress and the Reagan

Administration, we want them to reopen hearings for emergency legislation for farmers. Also, the TFU will be calling on the Congress to adopt legislation which will allow farmers and ranchers to bargain directly for the sale of the commodities and allow for a democratic referendum on supply management for commodities." The TFU president added "If our elected officials are serious about wanting to get the government out of agriculture, we believe it is time

they passed legislation which will allow producers to democratically control their own destiny."

Because of the low loan levels and price supports set for commodities in the farm bill, Moeller said the Congress and the Reagan Administration are ignoring the economic reality of the agriculture economy today. "We have to face facts. Farm prices right now are at the lowest level on the parity index since the height of the Depression in 1933. On top of that, we are still faced with high interest rates and projections that 1982 net farm income will drop \$3 billion to \$17 billion," Moeller said. Farm income levels will drop for the third year in a row with this projection making it the first time since the 1950's such a decrease has been recorded.

Safety Reminder Given On Cotton Bale Haulers

Each year at this time the motoring public on the South Plains experiences a large influx of cotton bale haulers on the highway. Even though the majority of cotton has been stripped from the fields these vehicles will be on the roadway carrying 500-pound bales for several months.

Keep in mind that many of these semi-trailers are unsafely loaded. It has been noted that these flat bales of cotton are not secured properly in many instances when they leave the gin and proceed to their storage place. These trucks are on the road 24-hours a day. Sometimes they carry 45, 50 and maybe as high as 60 bales of cotton on one flatbed float.

The motorist should recognize this hazard immediately and keep a longer safer following distance in order to escape injury if the load of cotton bales falls from the truck, so be alert for bales that are laying in the roadway.

The Department of Public Safety strongly urges the transporters to exercise more caution in loading their trucks and in securing their loads before movement. Major C.W. Bell, Commander of the DPS,

Region 5, strongly supports the theory that all other vehicles should exercise due respect for these cumbersome trucks and avoid any unnecessary close position to them. Major Bell said, "The most dangerous mile driven is then next mile ahead."

Sport Officials Organize

The Muleshoe Chapter of Southwest Sports Officials Association, a newly organized chapter will hold its first meeting following the Christmas holidays.

New President, Sammy Gonzales, says the Secretary will be contacting prospective members for the first meeting of the new chapter. Association will be training officials on the high school and college baseball level.

Classes will be held about twice a month with instructions lasting about an hour and a half. Each participant will take an examination at the end of the course for certification by the Southwest Officials Associations, of Texas.

Those passing the exam will be certified to umpire high school, and college baseball for the spring sea-

(Editor's Note: The second third of 1981 was as fast-paced as the first third, as local and area residents went into spring and summer months.)

May

Kenny Henderson, 20, son of Bailey County Sheriff and Mrs. Bob Henderson, was stabbed to death at his dormitory at West Texas State University, Canyon. Another WTSU student, Barry Darnell Robbins, 20, of Dallas, was charged in the death of Henderson.

Curby Brantley, Bobby Grumbles and Cheyenne Bickel were presented the top awards at the annual Future Farmers of America awards banquet at Muleshoe High School.

Muleshoe Babe Ruth League was threatened because of an apparent lack of interest by parents, and a shortage of sponsors.

Carroll Precute and Lupe Pacheco were presented the coveted Fighting Heart awards at the annual Muleshoe High School All-Sports banquet.

From three-tenths to an inch and a half of rain was welcomed by area farmers who said more rain was needed to produce a crop.

It was announced that Bob Finney had been promoted to president of the Muleshoe State Bank as outgoing president, Bill Loyd, was in the process of purchasing the First National Bank in Clovis.

After releasing information that the Junior Babe Ruth League had folded, local residents regrouped and organized for the summer, announcing that a full schedule of games would be played.

Following the resignation of Bailey County Tax Assessor/Collector LaVonne Williams and Deputy Clerk Lily Nino, the tax office in the courthouse was temporarily closed. It reopened with Kathleen Hayes named tax assessor/collector.

At Lazbuddie, outstanding athletes were honored at a banquet. Special recognition went to Sherri Seaton, Todd Gregory, Susan Glover and Daniel Schacher.

David Lust was valedictorian and Todd Gregory, salutatorian, for the 1981 graduating class at Lazbuddie High School.

Mrs. LaVonne McKillip, Muleshoe Junior High School teacher, received severe head injuries in a two vehicle wreck northeast of Muleshoe and was transferred to a Lubbock hospital for treatment.

Attorney Johnny Wayne Atkinson of Farwell was named District Attorney for Bailey and Farmer Counties. He replaced Jack Young, who was named district judge for the newly created district.

Keva Roming was named valedictorian and Clifford Watson, salutatorian, for the 1981 graduating class at Muleshoe High School. A total of 108 seniors walked across the stage to receive diplomas.

Winning the World Championship 18-Wheeler competition was Wayne Copley of Muleshoe. The competition was held in Clovis.

Ron Reeves, quarterback for the Texas Tech Red Raiders, was guest speaker for the annual banquet of the Fellowship of Christian Athletes from Muleshoe High School.

June

Gary Phillips, 29, died shortly after being transported to West Plains Medical Center in Muleshoe following a

Five Area Telephone Employees Honored

Five Area Telephone Cooperative employees and directors held their annual Christmas party Friday night in the Bailey County Coliseum.

Delbert Watson, vice president of the Coop welcomed all members and guests and Hubert Kidd, manager of the Five Area Telephone, presented awards to employees. Wayland Harris was presented a 25 year award, Arnold Gross, a 20 year award and R.G. Bennett, a 15 year award.

Santa made his traditional arrival for all the children and some of the adults. Meal preparations were provided by all employees and directors, decorations were done by employees.

Board of directors for the Five Area are Jack Angel, President; Delbert Watson, Vice President; Robert Byrd, Secretary; Bob Jones, Richard Black, Bob Foley and Rex Griffiths, board members.

Employees are Paul (Dusty) Bailey, Manuel

Balderas, R.G. Bennett III, Judy Bruns, Alton Carpenter, Violet Dean, Ray Arnold Gross, Wayland Harris, Mary Howell, Kelvin Lee Johnson, Hubert Kidd, Nina Landers, Margie Silguero, Rod Springfield, Cont. Page 6, Col. 2

head-on crash of the pickup he was driving and a gravel truck, approximately six miles north of Muleshoe.

Arriving in Muleshoe to join the dental practice of Dr. Charles Lewis and Dr. David Hamblin was Dr. Tommy Bonds. He and his wife, Annette, plan to make Muleshoe their home.

Former Bailey County Deputy Sheriff Bud Street was named Chief of the 287th District Adult Probation Department. He had been employed as an adult probation officer for two years prior to his appointment as chief.

Following several meetings, a women's division of the Muleshoe Chamber of Commerce and Agriculture was tentatively slated.

Eight Santa Fe Railway cars derailed at the south city limits of Muleshoe, temporarily tying up east-west rail traffic. No injuries were reported in the derailment.

Mid-June brought a heat wave with a temperature of 107 being registered as a high for the beginning of summer.

Muleshoe Roping Club announced plans to sponsor a contest for Miss Rodeo Muleshoe.

Two persons were held in the Bailey County jail after articles from several home burglaries were found in their possession.

Southwestern Public Service Company's Tolk Station, under construction nine miles east of Muleshoe, is approximately one year away from completion of the first stage of the coal-fired electric generating plant.

Two persons being sought for homicide in Lubbock were apprehended in Muleshoe and released to Lubbock authorities.

Dave Cavitt was installed as President of the Muleshoe Lions Club. Other officers installed included Wayne Crittenden, first vice president; Duane Lloyd, second vice president; Roland McCormick, third vice president; Sam Fox, secretary/treasurer; Leon 'Tuffy' Dent, tail twister and Owen Jones, lion tamer.

July

Muleshoe residents turned out in full force for the gigantic 4th of July activities throughout the city, capped off by a fireworks display.

Taking over the helm of the Muleshoe Rotary Club as president for the next year was Jeff Smith. Other officers installed were Tim Campbell, vice president; Clinton Kennedy, secretary; Roger Albertson, treasurer; Max King, sergeant-at-arms and Bill Kent, song leader.

In competition at the Muleshoe Roping Arena, Kim Farmer, daughter of Mr. and Mrs. Charles Farmer, was named Miss Rodeo Muleshoe, 1981.

Cont. Page 6, Col. 1



A "Good Neighbor Fund" has been established at the Muleshoe State Bank for the Johnny Vaughn family, who lost their home, furnishings and clothing in a fire last Sunday, December 20. Also, anyone wishing to donate furniture for the Vaughns may store it at Kemp's Discount Furniture at 1210 American Boulevard until such time as the family is able to find another home.

Sgt. Lionel Orozco, son of Mr. and Mrs. Dolores Orozco of 806 W. Ave. K, Muleshoe, has arrived for duty at Fort Hood, Texas. Orozco, a scout with the 6th Cavalry Brigade, was previously assigned at Garstedt, West German. He is a 1970 graduate of Muleshoe High School.

Better Business Bureau Alert

The Better Business Bureau of the South Plains is alerting the general public and especially business establishments in the South Plains area to be on the lookout for peddlers selling a product called RAM which is manufactured and distributed by Galaxy Industries out of Pensacola, Florida.

Representatives of this company are selling within the Lubbock city limits without a license to peddle from the City of Lubbock.

According to information furnished to us by the BBB in Mobile, Alabama, (the Bureau that services Pensacola), there have been complaints alleging that the product does not work.

It has been reported to this office by alleged sales representatives with the



BOXING WINNERS.....(R to L) Anthony and Johnny Orozco recently entered the Levelland Invitational Boxing Tournament last week. Anthony who is the son of Eliodora Orozco placed 1st and Johnny placed second. He is the son of Mr. and Mrs. Edward Orozco.



YEARS OF SERVICE RECOGNIZED.....Five Area Telephone Cooperative had their annual Christmas party Friday in the Coliseum. Three employees were honored for their years of service: Wayland Harris, 25 years; Arnold Gross, 20 years and R.G. Bennett, III, 15 years.



Boneless
HAMS
Wilson-Certified Halves

\$1.87

Lb.



Fresh
GROUND BEEF

Not Less Than 70% Lean

99¢


Lb.



PORK ROAST
Lean Boston Butt

\$1.17

Lb.



Smoked
HAMS
Shank Portion Bone-In

SMOKED HAMS BUTT PORTION BONE-IN \$1.00

99¢

Lb.

Sirloin Whole Cry-O-Vac
TIP ROAST

Lb. **\$1.99**

For New Year's Posole
PIGS FEET

Lb. **29¢**

Hormel P'rk Sausage
LITTLE SIZZLERS

16 oz. **\$1.29**

Lean Bone-In
PORK STEAKS

Lb. **\$1.29**

SALT JOWLS

Lb. **87¢**



SHOP RITE

501 West American Blvd.



Muleshoe, Texas

Prices Effective Sun. Thru Sat., Dec. 27 to Jan. 2, 1982

GREAT FOOD VALUES!

For New Year's Menudo

BEEF TRIPE

Lb. **37¢**

Sliced Shurfresh

BACON

16 oz. Pkg. **\$1.29**

Cream Kruff Philadelphia

CHEESE

8 oz. Pkg. **79¢**

Center Slices

SMOKED HAMS

Lb. **\$1.89**

Tony
PIZZA
Pepperoni Sausage
Hamburger Cheese

\$1.19



FREE Cutting and Serving Tray
No change given... please allow



PEPSI

\$1.49

32 oz. 6 Pack plus Deposit



Northern
BATH TISSUE

99¢

Ritz
Crackers 16 oz. pkg.

\$1.19

Log Cabin
Syrup 36 oz. btl.

\$2.29

Ranch Style 15 oz. can
Blackeye Peas

33¢

Mazola
Corn Oil 32 oz. btl.

\$1.69

Hunts
Tomato Juice 46 oz. can

79¢

Ranch Style With Chili
Beans 15 oz. can

69¢

Green Giant 12 oz. can
Corn Niblets 2 For

89¢

Chinet, Dinner 15 ct. pkg.
Paper Plates

\$1.29

Texsun
ORANGE JUICE
Unsweetened

46 oz. can

89¢




Campbell
SOUP
Tomato

4 10³/₄ oz. can **88¢**



RUFFLES
Potatoes Chips
Reg. \$1.29

79¢

RUSSET
POTATOES
Bake'em, Boil'em, Fry'em

78¢

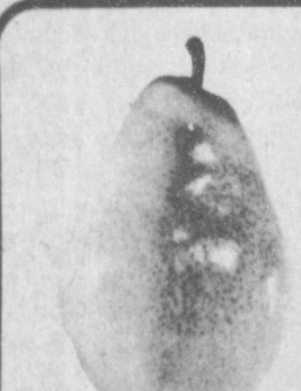
5 LB. Bag



LIMES Lb. **79¢**

Full of Flavor
LEMONS 5 FOR \$1
High in Vitamin C

GREEN ONIONS 3 Bunches **99¢**



Anjou
PEARS

Lb. **49¢**

AVOCADOS
Excellent for Dips

5 FOR \$1



Relish Tray Favorite
ROASTED PEANUTS 1 Lb. Bag. **\$1.19**
Great for Snacks



Texas Sweet & Juicy
ORANGES

3 LBS **99¢**

Information For Veterans

The Veterans Administration today announced proposed guidelines for carrying out provisions of the "Veteran Health Care, Training, and Small Business Loan Act of 1981" which was signed into law on November 3, 1981. The act, Public Law 97-72, authorized the VA to provide certain health care services to any veteran of the Vietnam era (Aug. 5, 1964 to May 7, 1975) who, while serving in Vietnam, may have been exposed to dioxin or was exposed to a toxic substance in a herbicide or defoliant used for military purposes.

The guidelines which VA will furnish to its medical facilities, on an interim basis, will be published in the "Federal Register" & public comment will be invited.

Health care services may not be provided under this law, the guidelines point out, for the care of conditions which are found to have resulted from a cause other than the specified exposures.

Health care services authorized under this provision of the law are limited to hospital and nursing home care in VA facilities, and outpatient care in VA facilities on a pre- or post-hospitalization basis or to obviate a need for hospitalization. These services will be provided without regard to the veterans age, service connected status of the inability of the veteran to defray the expenses of such care. Veterans furnished outpatient care under this authority will be accorded priority ahead of non-service-connected veterans and equal to former POWs receiving care for non-service-connected conditions.

Congress made it clear that this law provides for health care only. A determination that a veteran is eligible for such care does not constitute a basis for service connection or in any ways affect determinations regarding service connection.

VA guidelines provide also that a complete medical history, physical examination and appropriate diagnostic studies will be developed for each veteran who served in the Republic of Vietnam and who requests VA medical care. For those who have been examined within the prior six months, only those procedures which are medically indicated by the current circumstances will be repeated. Where the findings reveal a condition requiring treatment, the responsible staff physician shall make a determination as to whether the condition resulted from a cause other than the specified exposure. In making this determination, the physician

will consider that the following types of conditions are not ordinarily considered to be due to such exposure.

- Congenital or developmental condition, e.g., spina bifida, scoliosis;
- Conditions which are known to have pre-existed military service;
- Conditions resulting from trauma, e.g., deformity or limitation of motion of an extremity;
- Conditions having a specific and well established etiology, e.g., tuberculosis, gout;
- Common conditions having a well recognized clinical course, e.g., inguinal hernia, acute appendicitis.

"On occasion," the guidelines continue, "The responsible staff physician may find that a veteran requires care for one or more of the conditions listed above, but that the case presents complicating circumstances that make the provision of care under this authority appropriate. In such instances, the physician should seek guidance from the chief of staff regarding authorization for treatment. If treatment is so authorized, the reasons will be clearly documented in the medical record. Veterans who are not provided needed medical care under

this circular may be furnished care if they are eligible under any other statutory authority."

The Veterans Administration has announced that the area of Texas serviced by the Veterans Administration Regional Office in Waco has approximately 5,930 cases of delinquent debts by veterans under immediate review in which legal action will be taken unless the debts are paid.

VA Administrator Robert P. Nimmo, in announcing the agency's accelerated program of debt collection, said, "Our plans are to substantially reduce the number of outstanding debts owed to the government by veterans, and I am instructing our various district counsels to pursue an aggressive program of debt collection."

Richard J. Jones, the VA's district counsel in Waco, said that new cases of uncollected debts are being referred to his office on an average of 680 cases each month.

His office will bring suit against approximately 250 Texas veterans this month. Jones said that the VA is "more serious than ever" in seeking to recover debts owed by veterans. He added that his collection activities

"are part of a nationwide effort to recover all debts owed by veterans and non-veterans alike."

Debts as a result of VA programs are detected by the VA's Central Accounts Receivable Section in St. Paul, Minnesota. That office sends notification to the indebted veterans. If the veteran fails to resolve the indebtedness, his case is then sent to the appropriate VA district counsel for legal action.

Due to increase authority to proceed directly with a lawsuit and expanded technical capability, legal action for even small amounts has become cost-effective.

"A veteran owing debts to the Veterans Administration must realize the seriousness of the matter," Jones said. "The filing of a lawsuit, if deemed necessary, is a part of the collection effort. It is important for veterans receiving letters from this office to answer and arrange repayment. Otherwise, legal action is almost a certainty." He said that most cases will be settled by payment in full or through repayment plans.

More than a million and a quarter VA pension recipients received reminders this month that it's time to take the annual look at their incomes for this year to make certain they still meet the legal eligibility rules.

A questionnaire, required by law, was sent with November checks, and, with certain exceptions, VA pensioners must complete and return it by January 1, 1982, or face suspension of their payments.

On excepted group includes 596,000 VA pensioners over 72 years of age who have been receiving pensions for the last two years. Also excepted are children under 23 receiving pension under laws in effect prior to December 31, 1978.

Instead of income questionnaires, these groups received, with their November pension check, a reminder that they must report any changes in the number or status of their dependents and any increase in their annual income which puts it over VA limits.

VA officials said these pension recipients need not report the June 1 cost-of-living increase in their social security since VA automatically records this information.

Help on completing both the annual income questionnaires and the reminder cards is available from VA regional offices, veterans county service offices, and from the major veterans organizations.

The Veterans Administration is now able to reimburse veterans suffering from service-connected

ankylosis of one or both knees or hips, for the purchase of adaptive equipment which will enable them to drive their own automobiles or other vehicles.

The expansion of VA's automobile adaptive equipment program was made possible by recent Congressional action.

Under the program, VA makes available grants of up to \$4,400 for some seriously disabled veterans to purchase an automobile or other conveyance.

The agency also pays for special equipment, such as engine and steering controls and wheelchair lifts, required for the operation of the vehicle by the disabled veteran.

The \$4,400 one-time automobile purchase grant goes to veterans or active duty personnel with service connected loss, or permanent loss of use of one or both hands or feet, or permanent vision impairment to both eyes to a prescribed degree.

Victims of ankylosis are not eligible for the vehicle purchase grant, but only for VA adaptive equipment.



MAPLE COED JOINS SCHOLASTIC SOCIETY..... Belinda Richardson, 19 year old South Plains College student from Maple, Texas, has been initiated into Phi Theta Kappa, national honor society for students in two-year colleges. Belinda, daughter of Mr. and Mrs. Homer Richardson, is a 1980 graduate of Three Way High School.

Bailey County Journal USPS 600-208
 Established March 31, 1963. Published by Muleshoe Publishing Co., Inc. Every Sunday at 304 W. Second. B-449. Muleshoe, Texas 79361. Second class postage paid at Muleshoe, Texas 79361.

MEMBER 1981
TEXAS PRESS ASSOCIATION

L.B. Hall - President
 James Woods - Vice President
 Shirley Farmer - News Editor
 Evelyn Harris - Society Editor
 Holly Milroy - Advertising
 Ronni Bennett - Bookkeeper

SUBSCRIPTIONS:
 Muleshoe Journal and Bailey County Journal
 Bailey and surrounding counties.....\$10.50
 Muleshoe Journal and Bailey County Journal
 Everywhere in Texas.....\$11.00
 Muleshoe Journal and Bailey County Journal
 Outside of Texas.....\$12.00
 Youth by Carrier.....\$11.50
 Monthly by Carrier.....\$.95
 Advertising rate card on application

Sale Sale Sale Sale Sale Sale Sale

BARGAINS

6 Ft. American Tee Posts

1.25 Lbs. Per Ft. With Clips

2¹⁹ Each Painted Green

SHEFFIELD 6 Ft. Heavy Studded "T" Posts

5 ways new

This is the sturdy companion to reliable A to Z[®] Fence and Barbed Wire. It's all new.

- New reflector tip marks fence rows at night.
- New bright orange baked enamel points them out by day.
- New anchor plate is extra heavy and stud-fastened in three places.
- New curved front surface "rolls" water off the face, protects post from weather.
- New fastener goes in place fast, easy, at low cost.

Manufactured by Armo Steel Corporation.

1.33 Lbs. Per Ft. With Clips **2³⁹** Each

TAX INVESTMENT CREDIT

You Cant Afford To Pass Up These Prices For That Purpose. Buy Now And Save

ARMCO Baling Wire

SPECIAL ROLL **34⁵⁰**

12 Ft. - 5 Panel Gate

SPECIAL PRICE **36⁹⁵**

9 Ft. Peerless Stock Tank

20 Ga. Bottom - 20 Ga. Sides **214⁹⁰**

Sidewalls are corrugated vertically and horizontally for maximum strength and protection. Each sidewall is reinforced at the top by a 1/2" pipe around the entire diameter of the tank. The bottom is lockseamed and sweat soldered to prevent leaking.

CATTLE PANELS
52" x 16 Ft. **18⁹⁹**

HOG PANELS
34" x 16 Ft. **16¹⁹**

BARBED WIRE HEADQUARTERS

Sheffield A to Z galvanized barbed wire—better than any other

A 50% thicker aluminum-zinc coating gives greater protection—and Sheffield Steel Wire is stronger—20% stronger.

We also offer attractive bright orange Sheffield Studded "T" Fence Posts with reflector tips. They're products of Armo Steel Corporation.

12 1/2 Gauge - 1/4 Mile No. 1 Barbed Wire

ROLL **31⁹⁹**

A to Z Fence headquarters

Sheffield A to Z Fence lasts up to 50% longer. Here it is... the Fence that offers you an aluminum-zinc coating giving you up to 50% longer service. And the steel wire in A to Z is stronger too—20% stronger.

Ask too, about the sturdy, bright orange Sheffield Studded "T" Fence Post with reflector tip. They're made by Armo Steel Corporation.

32" - 12 1/2 Ga. 330 Ft. Roll Field Fence

64⁹⁵

A & M

FARM & RANCH SUPPLY

1601 S. Ave. D - Portales
 2600 E. Mabry Drive - Clovis
 1302 W. American Blvd. Muleshoe

Sale Sale Sale Sale Sale Sale Sale

Boy, These Maytags Are Really Built!

MAYTAG

Your Authorized Sales & Service Dealer

HARVEY BASS

122 S. 1st
 272-3030



Mr. and Mrs. Stephen Sperry
(nee Darla Ann Hunt)

You Itemize 1981 Is 'Good' Year

If you "itemize" (use the "long form") on your tax return, 1981 is a good year for deductions, recommends Nancy Granovsky, a family resource management specialist.

The Economic Recovery Act of 1981 will lower tax rates for 1982, so it behooves taxpayers to take deductions before Jan. 1, 1982, she advises.

Granovsky is on the home economics staff of the Texas Agricultural Extension Service, The Texas A&M University System.

For example, if you had planned to contribute money to a favorite charity, church or educational institution anyway, do it now during 1981- if you itemize, she says.

If you wait until 1982, your tax benefit on the itemized "long form" will be lower than it is this year.

That's because tax rates will drop 10 percent from 1980 rates- starting Jan. 1, 1982.

On the other hand, if you file the "short form", there's reason to wait until 1982.

That's when you'll be able to add to your standard deduction 25 percent of the first \$100 you donate.

The percentage allowed will keep climbing until 1986 when the allowable deduction will be the same as for people who file the "long form."

1982 marks the first time people who file the "short

form" will have a chance to deduct any of their charitable contributions even though the allowable deduction is only 25 percent of the first \$100 donated.

Of course, not all donations are tax deductible, Granovsky reminds taxpayers. Some groups, such as lobbying groups, do not fit the Internal Revenue Service definition of "charities" even though the groups themselves may have "tax-exempt" status.

Sudan Young Homemakers Meeting Held

The Sudan Young Homemakers met December 7th with the meeting presided over by Deanna Humphreys.

Kip Cutshall of Chisholm Florals demonstrated arranging of flowers.

Business for the night consisted of a donation for mileage to the guest and he donated it back to the group. They in turn donated it to the Ambulance Fund.

The Christmas party was held December 8 at K-Bob's. Secret pals exchanged gifts as did their husbands. The group returned to the home of Norma Burnwitt to play games.

Sudan Young Homemakers had Santa to visit the children in town and this was deemed quite successful.

The group presented June Heckman a wedding gift and also one to Ann Carson for keeping the pecans in her freezer for the past years.

Present were Paula Wood, Norma Burnett, Mary Ann Harper, Rita Conley, Mechele Edwards, Kathy Gatewood, Ann Carson, Deanna Humphreys, Margaret Williams, Cindy Nichols, Jodee Tennyson, Tracey Provence and June Heckman.

Members and husbands who attended the party were Mr. and Mrs. Charles Burnett, Mr. and Mrs. Freddie Maxwell, Ann Carson, Deanna Humphreys, Terry and Jodee Tennyson, Craig and Mary Ann Harper, David and Margaret Williams, Darren and Tracey Provence, Mechele Edwards, Rita Conley and Mr. and Mrs. Jimmy Nichols.

Miss Hunt, Sperry Wed In Montana

Darla Ann Hunt, daughter of CloAnn and Cloyce Hunt (former Muleshoe residents) of Hamilton, Montana, and Stephen Lee Sperry, son of Margaret and Glen Sperry of Corvallis, Montana were married October 23 in First Baptist Church in Hamilton

Reverend Robert L. Harville officiated at the double ring ceremony. The altar was decorated with a screen of wedding bells and roses, with a brass plate of wedding date inscribed. The altar was flanked on either side with bouquets of yellow, lavender and white roses. Pews were marked with bouquets of roses with ribbon streamers.

Cheryl Sperry, sister of the groom registered the guests from a table covered with a white eyelet over lavender cloth and laced with the wedding colors. A candle made by the brides

mother completed the decor.

Wedding music was provided by Ellen Clay on the organ. Dan Sparks of Richland, Washington accompanied by his wife, Virginia on the piano sang, "There Is Love" and "The Lord's Prayer."

Heidi Wacaser of Courde' Lene, Idaho served as maid of honor. She wore a long crepe gown of lavender print and carried a bouquet of lavender silk roses.

Jacquie Bennett of Helena, Montana was bridesmaid. She wore a long crepe gown of yellow print

and carried a bouquet of yellow silk flowers. The attendants bouquets were designed and made by the brides grandmother, Ruth Hunt of Muleshoe.

Charlie Waliser attended the groom as best man and Brad Park was the groomsman.

Ushers were Corporal Darrell Hunt of Beaufort, South Carolina and Doug Sperry, brothers of the couple.

Escorted by her father, the bride was given in marriage by her parents. She wore a Victorian style gown fashioned with a high neckline, sheer long sleeves

fastened with pearl buttons. The long overskirt of bridal illusion was edged in lace. The floor length veil designed by Sandy Miller and made by the brides mother fell in two tiers fashioned with bridal illusion edged with lace and applied lace roses. It was attached to a wreath of bridal flowers. The bride carried a bouquet of silk roses in her wedding colors with matching silk streamers. Her bouquet was also made by Mrs. Hunt.

Following tradition, the bride for something new: her wedding ensemble, something old: a handkerchief tucked in her bouquet (a gift of her late Great Grandmother Sanders), something borrowed: tiny orchid earrings from Cheryl

Sperry, and the traditional blue garter from her mother.

A reception followed in the fellowship hall of the church.

The bride graduated from Hamilton High in 1980 and is employed as an assistant at Bitterroot

Christian Academy. The bridegroom graduated from Corvallis High in 1980 and is employed at Farmers Exchange in Corvallis where the couple will make their home following a short honeymoon.

The bride is the granddaughter of Ruth Hunt of Muleshoe and the late Buford Hunt. Also the granddaughter of Luella Boyett of Mangum, Oklahoma and the late Bud White.

Held In Olton Delta Kappa Gamma Christmas Party

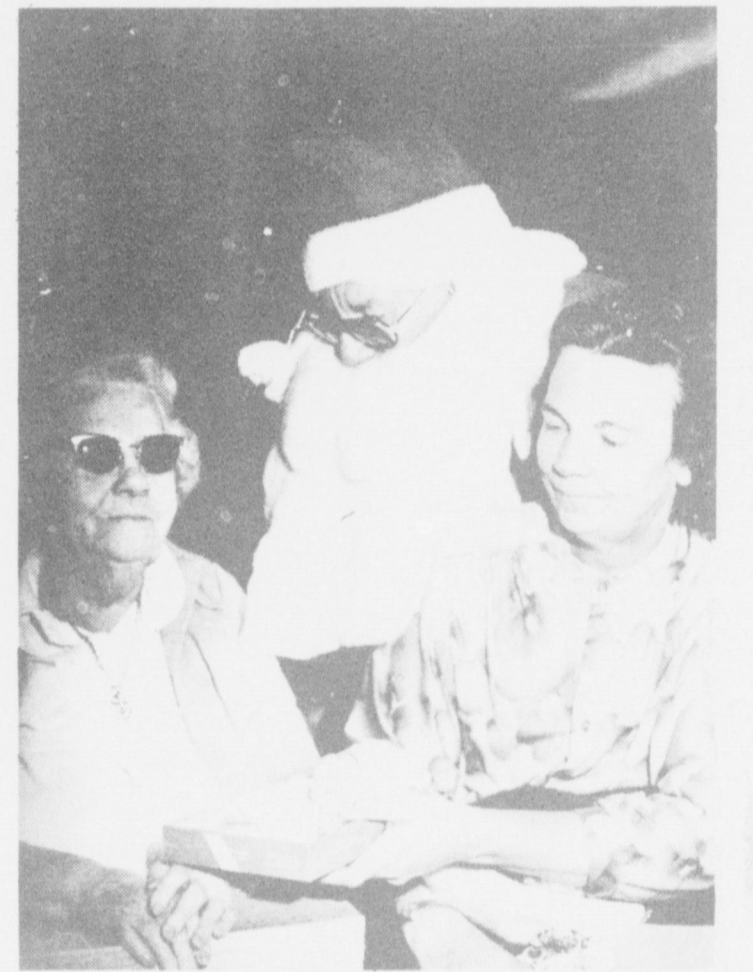
The Sudan Delta Kappa Gamma Christmas party was held at the First United Methodist Church in Olton. The Christmas dinner was followed by the singing of Christmas carols led by Mary Smith.

Christmas gifts were exchanged. Monaraye Cummings presented a program on "Jesus, The Master Architect".

Members attending were Maxine Nichols, Thelma Wiseman, Hazel May, Dyane Humphreys, Loretta Reid, Mary Smith, Georgeann Rasco, and Susan Baker.




ANNIVERSARY OBSERVED.....Mr. and Mrs. Ernest McNatt were honored with a dinner party Sunday, December 20 in a Dallas restaurant in observance of their 50th wedding anniversary. Hosts were their children Wayne McNatt of Dallas, Betty and C.L. Sufeld of Odessa. Other family members attending were the Sufeld children, Mike, Pamela and her husband, Neil Sutter, their children Mathew and Sabrina and Wayne's children, Rodney and Dana. The former Jewel Askew and McNatt were married December 20, 1931 in Oklahoma.



CHRISTMAS FOR EVERYONE.....Santa paid a visit to the Muleshoe Nursing Home Friday afternoon and visited with the residents during their Christmas party, hosted by the Hospital and Nursing Home Auxiliary.




SANTA VISITS PARTY.....Residents at the Muleshoe Nursing Home were treated to a Christmas Party recently. Santa arrived and visited with the residents and children who were present. Members of the Hospital and Nursing Home Auxiliary served refreshments and each resident was given a bag of fruit.



SEASON'S GREETINGS

'Tis the season to be jolly... have a merry Christmas!

**Rheata White,
Lynda Bell &
Students**



NOW YOU CAN LOSE 17 TO 25 POUNDS IN JUST 6 WEEKS!

HOW TO WIN AT THE LOSING GAME

DIET CENTER

"The Natural Way to Lose Weight!"

IT COULD CHANGE YOUR LIFE
272-5487

Jodi's

PRE-INVENTORY CLEARANCE SALE

Entire Stock

1/2

Price
(Except Lingerie and Jewelry)

Dresses

Blouses

Jeans

Skirts

Sweaters

Pants

Blazers

Purses

Belts

Socks

Sale Starts December 28
Hours: 8 a.m.-5:30 p.m. Mon-Fri.

Jodi's

Tradewinds Plaza 272-5611



TWIRLING TEAM... The Muleshoe Twirling Team under the direction of Debbie Cloud and Sue Bessire marched in the recent Christmas parade held December 5. Students performing were: Selina Gonzales, Shea Wilbanks, Joanna Anzaldua, Edi Black, Britt Engelking, Laupita Pinead, Brandi Estep, Angie King, D'Anne Box, Amy Turner, Sheila Humiston, April Franklin, Rebecca Gonzalez, Kristin Chitwood, Tina Copley, Cassie Cuevbs, Angela Crawford, Charla Holt, Monica Clemmons, Angela Kidd, Misti Brewer, Rosie Lopez, Audree Anzaldua, Jamie Robberson.



LILES QUALIFIES... Caroline Liles, daughter of Mr. and Mrs. Bill Liles, qualified for State Gymnastic Sectionals last weekend in Pampa. The qualifying score needed was 31.0 and Caroline scored a 31.80. Sectionals will be held the end of January in Pampa. Caroline is a student at Hawkins and Purdy's School of Dance and Gymnastics.

Two Gymnasts Attend Pampa Meet Dec. 19

The Muleshoe Twisters Gymnastic Class III team competed in Pampa last Saturday, December 19. The two gymnasts from Hawkins and Purdy's School of Dance and Gymnastics were Caroline Liles, daughter of Mr. and Mrs. Bill Liles, and Denese Peterson, daughter of Mr. and Mrs. Wayne Peterson. Caroline Liles scored a 31.80 in the 9-11 age group All-Around qualifying her to State Sectionals. She

scored a 8.4 on beam winning 2nd place, a 7.4 on bars, a 8.25 on vault placing 6th, and a 7.75 on floor exercise winning sixth place. Caroline won 4th place in All-Around. Denese Peterson scored a 29.90 in the 15 years and older category winning third place in All-Around. Denese scored a 7.5 on beam winning third place, a 7.8 on bars winning 2nd place, a 7.6 on vault winning third, and a 7.0 on floor winning third place.

Those that accompanied the gymnasts to Pampa were Coach Drew Oberbeck and Bill and Alice Liles.

and Roosevelt County viewers are asked to call 562-2112. All callers should call during the week between 8 a.m. and 5 p.m.



BREAD MAKING..... Joy Best, Extension Home Economist for Roosevelt County, demonstrates the art of bread baking on "The Creative Woman" show December 22 and 26 on Channel 3.

In Debt
When Sam was asked how he budgeted his income, he replied: "Oh, about 40 per cent food, 30 percent for rent, 30 percent for clothing, and 20 percent for amusement and incidentals."
"But that makes 120 percent."
"Don't I know it!" agreed Sam, with a groan.

Sudan 4-H Club Holds Christmas Party

The Sudan 4-H Club held their Christmas party at the community center Monday night. Games were played and the leaders served refreshments of sandwiches, Christmas cookies and punch.

Attending were Stephanie Bickett, Danette Provence, Sheila Summer, Eddy Boyles, Linda Wiseman, Gary Fields, Ricky and Star Tennyson, Jeff and Kay Lynn Gordon, Debbie Hill, Jerry Fisher, Cindy Roberts, and Kathy Powell.

Leaders attending included Mr. and Mrs. Bob Summer, Mr. and Mrs. Orville Hill, Patty Miller, Lou Boyles and Naomi Wheeler, County Extension Agent.

SMILES

Partedners
A man was sitting at the bedside of a dying business partner when the latter said, "I've got a confession to make. I once robbed the firm of \$50,000. I sold the plans of your invention to another firm."
"Don't worry about it," replied the other. "I poisoned you."

South Plains College Offer Evening Classes

South Plains College will offer more than 40 technical and occupational classes evenings during the spring semester. Spring registration will be 7-8:30 p.m. Jan. 11 in the SPC Women's Gym.

"We hope that people throughout the South Plains area will take advantage of the evening program offered by SPC," noted Don Yarbrough, dean of continuing education. "We offer technical and occupational training in a large number of areas, in addition to academic, two-year transfer courses," he added.

The schedule of evening technical-vocational courses at SPC is as follows:
Monday & Wednesday 5:30-6:45 p.m., business English, business law, police supervision and closing procedures.

Monday/Wednesday 6:30-8:30 p.m., intermediate shorthand.

Monday/Wednesday 6:55-8:10 p.m., criminal investigation, personnel management, real estate law.

Monday/Wednesday 8:20-9:35 p.m., sales management and principles of accounting II.

Tuesday/Thursday 5:30-6:45 p.m., principles of real estate and introduction to computers.

Tuesday/Thursday 6:30-8:30 p.m., elementary typewriting and intermediate typewriting.

Tuesday/Thursday 6:55-8:10 p.m. real estate math, production methods I and II, and computer logic

Tuesday/Thursday 8:20-9:35 p.m. business

machines, real estate finance.

Monday/Tuesday & Wednesday 6-11 p.m., refrigeration air conditioning mechanics I-IV.

Monday & Wednesday 8:30-9:45 p.m., word processing.

Wednesday 6-6:55 p.m., management training seminar.

Tuesday 6:55-9:35 p.m., small business management.

Monday & Wednesday 6:35-8:10 p.m., land management.

Tuesday 7-9:35 p.m. real estate appraisal.

Thursday 7-9:35 p.m., home design and furnishings.

Tuesday 7-10 p.m., studio electronics.

Thursday 6-9 p.m., electronics in sound and recording.

Monday

6-9 p.m., introduction to the studio.

Wednesday 6-9 p.m., studio production Tuesday

6-9 p.m., sound equipment repair and maintenance.

Tuesday 6:55-9:35 p.m., Spanish conversation (law enforcement emphasis).

Tuesday 7-10 p.m., welding I and II.

Home construction called a "disgrace" by building inspector

COLLEGE STATION — Many new homes in Texas are constructed so poorly that they constitute a disgrace, says a state specialist in training city building code inspectors.

Although nearly three-fourths of all Texas towns and cities have building codes, there are not enough inspectors to approve new construction, said George Stock of the Texas Engineering Extension Service (TEEX), which conducts year-round classes for inspectors.

The poor quality of some new homes stems from a heavy influx of new people into the Sunbelt and from political pressure from the housing industry to relax building code enforcement where boom times are best, said Stock.

Society Deadlines Set

Weddings must be in the office by Monday noon for the Thursday paper and by Thursday noon for the Sunday paper. Any wedding more than two weeks old must be edited and only the basic information included.

No shower picture will be taken without a 24 hour notice and copy must be in the office by Monday at 5 p.m. for the Thursday paper and by Thursday at 5 p.m. for the Sunday paper. An honoree's picture will be taken at only one shower.

All club stories for following edition of paper must be in the office by 10 a.m. on Tuesday and Friday preceding the next issue of the paper.

West Plains Medical Center Report

Admitted
Dec. 21, Maxine Donaldson, Jaton Black, Donna Nesbitt, Deborah Carpenter, Wilma Alcorn, Henrietta Ruiz, Chelsea Kaltwasser
Dec. 22, O.C. Hall, Patti Ryburn
Dec. 23, Gonzalo Lozano, Melissa Wagnon, Jerry Maxwell, Misty Taylor, Joanna Gallman

Dismissed
Dec. 21, R.D. Dale
Dec. 22, Arland Fige, Willie M. Walker, Geneva Lemons, Jaton Black and baby boy, Orpha Bartley, Alice Gonzales, Donna Nesbitt, Wilma Alcorn
Dec. 23, Dean Browning, Chelsi Kaltwasser, Luis Bazulda, Ozell Cherry, Gertrude Lancaster, Vanita Ely, Helen Bayless, Adele-na Grijillo, Henrietta Ruiz.



Latest Arrivals

Patrick Johannes Black

Mr. and Mrs. Nick Black are the proud parents of a son born at 2:41 p.m., Dec. 21.

The young man weighed seven pounds and 14 ounces and has been named Patrick Johannes. He is the first child for the couple.

Grandparents are Mr. and Mrs. Barney Scheller and Elizabeth Black, all of Muleshoe. Great grandfather is Albert G. Scheller of Dodd.

True Value
Hardware Stores

BARGAIN OF THE MONTH

CORNING WARE
While Supplies Last

now **1188**

3-PC. FRENCH WHITE COOK/SERVING SET
Elegant & functional. Goes from freezer to oven to table. Also ideal for microwave ovens. Includes 2 1/2-qt. round casserole, cover, 10-in. pie/ quiche plate. F1/3
Quantities Limited

True Value
Hardware Stores

HARDWARE VALUE OF THE MONTH

QUANTITIES LIMITED

Pollenex

now **999**
While Supplies Last

Dial Massage
Just turn dial to choose from coarse, fine, wide angle or pulsating spray. Vary intensity from gentle to vigorous. Wall mounting. DM109

Fry & Cox, Inc.
Muleshoe
401 South 1st 272-4511

8TH ANNUAL

Litton Microwave Oven Sale



with **Electronic Touch Controls**

- Controls all microwave cooking functions
- Controls most conventional cooking operations

Nobody knows more about microwave cooking than Litton.

☺ **Come In Today & Let "Smiling" Gordon Wilson Make You A Deal!**

Wilson Appliances

117 MAIN

Mon Sat 8:00 - 6:00

We Have A Trained Technician To Service Our Products

272-5531

Financial Statement

THREE WAY INDEPENDENT SCHOOL DISTRICT
MAPLE, TEXAS
1980-81

	General Operating Fund	Designated Purpose Fund	Interest & Bonded Debt Fund
Revenue From Local Sources	\$300,387.46		\$ 11,002.56
Revenue From State Sources	216,204.52	\$106,392.00	54,338.00
Other Revenue	8,802.78	16,293.40	
Total Revenue	\$525,394.76	\$122,685.40	\$ 65,340.56
Payroll Costs	\$322,071.17	\$ 81,229.58	
Purchased & Contracted Serv.	77,726.80	21,456.44	
Supplies & Materials	44,167.00	12,042.13	
Other Operating Expense	32,138.59	873.90	
Debt Service Principal & Interest			\$ 56,376.15
Capital Outlay	6,307.79	2,998.10	
Total Expenditures	\$482,411.35	\$118,600.15	\$ 56,376.15
BALANCE AUGUST 31, 1981	\$128,489.78	\$ 5,621.71	\$100,333.58

Review...

Cont. From Page 1
 Rain and hail battered southern Bailey County on July 4th, destroying more than 800 acres of cotton. Weather put on its own aerial display as a thunderstorm moved over Muleshoe with brilliant lightning flashes.
 Les Irvin, who spent three years as Chief of Police at Crockett in east Texas, arrived in Muleshoe to take over as chief of the Muleshoe Police Department.
 Shane Bennett, 27, drowned at Lake McKenzie near Silvertown. A resident of Muleshoe since early July, he was a meat cutter for Winkler Meat Company.
 After learning that water lines to the Senior Citizen Housing complex were holding up completion of the first phase of the project, the Muleshoe City Council voted to assist with the project.
 The name Jennyslippers was chosen for the women's division of the Muleshoe Chamber of Commerce and Agriculture and Nelda Merriott was named temporary chairman of the group.
 Morgan D. Locker, 61, and Capt. James Fulwider, 37, of Cannon Air Force Base, Clovis, were both killed when the small plane they were flying exploded into flames at Warren airfield in Muleshoe. After hitting the trees, the plane exploded, leaving both men dead at the crash site. Locker was a longtime resident of Muleshoe and well known flying instructor. He operated the airport.
 Late July moisture was expected to boost crop prospects in the area.

August

Roy Dyer, 64, former operator of the Corral Restaurant, and well known local businessman, was dead on arrival at West Plains Medical Center following an apparent heart attack at his home.
 Energas announced plans to increase the price of gas by 53 cents per thousand cubic feet on September 4.
 Harmon Elliott, chairman of the Muleshoe Housing Authority, was notified of a \$390,000 loan from Farmers Home Administration to construct an additional 16 units at the Muleshoe Senior Citizen housing complex.
 Local law enforcement officers organized a SWAT team with members Tom Watson and Tony Wallace, Bailey County Sheriff's office; Monte Phipps, Julian Dominguez and Mike Fox, Muleshoe Police Department and Carey Brooker, Texas Department of Public Safety.
 Ten indictments were handed down by the Grand Jury in Bailey County for food stamp fraud.
 Season football tickets went on sale in Muleshoe with hopes for another winning season for the Mules.
 As late August rains set in, farmers started hoping for a dry autumn with hot sunshine to produce cotton in the area.
 Along with the rain, bollworms added additional worries for farmers.
 Carl Wheeler and John Reynolds, new Ag teachers at Muleshoe High School were introduced by the MHS Ag Booster Club.

(The final third of the year for the Muleshoe area will be presented in the next edition of *The Journal*.)

Real service: filling a small job as if it were a big job



By **Bill Wooley**

If you aren't preconditioning weaner calves... you're probably still experiencing traditional death losses and disease treatment costs unnecessarily. Eighty percent of calves are preconditioned before they are sold to feeders. Although programs vary, John Herrick, Iowa State University, says there are some basic guidelines. The most important aspect is weaning, done at least 20 to 30 days before sale. Castration vaccination and dehorning, at the same time, is a mistake he says, adding too much stress to the calves. Vaccination should be done thirty days before breeding, he says. Dehorn and grub calves two weeks before weaning and allow calves to return to their mothers. Second shots should be given two weeks after weaning. A good preconditioning program saves calves and costs.

Wooley International, Inc.
 W. Hwy 84
 272-5514

Happy Holidays
 Ringing in the Holiday Season with Greetings and Best Wishes.

- * Color Cable Television
- * Direct Dial Telephone
- * Commercial Rates for SPS Employees
- * Truckers Welcome
- * Convenient for Shopping and Restaurant
- * Clean and Quiet

VALLEY MOTEL
 272-4279 1515 W. Amer. Blvd.

Tax Bite May Be Reduced By New Laws

New tax laws give individuals and businesses a chance to cut their 1981 taxes -- but not without careful planning.
 Recently signed legislation -- the Economic Recovery Act of 1981 -- makes sweeping changes in many federal tax laws, points out Dr. Richard Edwards, economist with the Texas Agricultural Extension Service, Texas A&M University System.
 Changes in asset depreciation, investment tax credit, leasing, inventory methods and tax rates can all help reduce the tax bite for 1981, particularly as they relate to agribusinesses.
 Depreciation of business assets is the most significant of the changes, believes Edwards. Previously a complex matter dictated by IRS guidelines, the depreciation process has been simplified through the Accelerated Cost Recovery System (ACRS). ACRS recognizes the difference between the economic and usable lives of equipment, and most important, allows businesses to recover a portion of their equipment costs over a much more realistic time period.
 Classes of depreciable assets have been reduced to three -- 15 year, 5 year, and 3 year, explains the economist. Most light trucks and cars fall into the 3 year class; fixtures and equipment, the 5 year group; and buildings, the 15 year class. Additionally, the depreciation method is accelerated and changes gradually over the next five years.

The new depreciation table is so structured that December purchases receive the full tax write-off, thus allowing more flexibility in year-end tax planning.
 An alternative to ACRS allows straight-line depreciation for periods equal to or longer than the life of the property class the equipment would be in.

Farm...
 Cont. From Page 1
 57 percent.
 "Farmers will not be the only ones to suffer under this legislation, because ultimately the consumers of this nation and the rest of the world are going to have to pay," Moeller said. "With more family farms going out of existence, we can look forward to more corporate and foreign ownership of our farmland," Moeller concluded.

Individuals also were granted a reduction in marginal rates under the new legislation. A total reduction of 25 percent will be spread over a three-year period -- 5 percent starting October 1, 1981; 10 percent starting July 1, 1982; and 10 percent beginning July 1, 1983. The so-called marriage penalty tax also has been altered.
 Beginning with the 1985 tax year, marginal tax brackets will be established to prevent inflation from pushing persons into higher brackets with no increase in "real" income. This should help the situation that most wage earners now face -- paying a larger tax burden while seeing a decrease in spendable dollars, notes Edwards.
 Many other tax provisions have been liberalized under the 1981 tax legislation, adds the economist. These include individual retirement and Keough plans, estate and gift taxes, new employee credits, extension of carryover periods for operating losses and tax credits, and treatment of capital gains.
 Looking at the current tax year and the changes that have been initiated, Edwards suggests including as many expenses as possible in 1981 since income will be taxed at a higher rate. Also, since the depreciation changes are retroactive to Jan. 1, purchases made this year come under the new accelerated depreciation rules and qualify for more liberal investment credit provisions.

Texas A&M students build their own robot
COLLEGE STATION — Dismayed by the \$50,000 price tag on a conventional industrial robot, researchers and engineering students at Texas A&M have created their own for less than \$1,000.
 Called "Aggie I", the five-axis robot is a community project being supervised by Dr. Robert E. Young, an assistant professor of industrial engineering.
 Since the field of robotics is so new, few people know much about the subject, Young said. But the rapid escalation of technology means today's engineering students will need such expertise when they enter the profession.
 "We wanted to know the problems associated with building robots, as well as information on design, control, software and hardware. In order to get a handle on it, we decided to build our own, he said.
 The project started last fall and since then several groups of engineering students have worked on various pieces of the machine. Young said "Aggie I" is no breakthrough in robot design, but does offer reasonable accuracy and is relatively easy for students to work with.

ACRS was elected, noted Edwards.
 New tax laws also have simplified and liberalized investment tax credit. The time that eligible property must be held to get the full 10 percent tax credit has been reduced from seven to five years. Another change is that 6 percent credit is allowed on some eligible assets after just three years.
 An additional change relates to the recapture of investment credit (if credit is taken and then the property is disposed of before the minimum number of years are met). The new law, in essence, allows an investment credit of 2 percent per year up to the maximum allowable for each year equipment is held, notes Edwards.
 Remodeling of old facilities also provides increased tax incentives. Investment tax credit increases to 15 percent for structures 30 to 39 years and to 20 percent for those at least 40 years old.
 In the past several restrictions were placed on the ability of leasing agents to show transactions as leases rather than conditional sales. Those restrictions have now been removed, says the economist, to simplify leasing.
 Another cost-saving device included in the new tax laws deals with adopting a LIFO (last in, first out) inventory system. This method of inventory accounting is generally preferred in times of inflation because it reduces tax liability, explains Edwards. But in the past it has been based on complex indexes. New tax legislation allows the Secretary of the Treasury to establish suitable indexes as the basis for inventory valuation. This should be especially helpful for small businesses. The changes also will allow a business to spread out the added tax liability associated with the first year of LIFO accounting over three years.
 Reduction in marginal tax rates for small businesses also should benefit agribusinesses, believes the economist. Starting in 1982, the marginal rate on income under \$25,000 will drop from 17 to 16 percent, with an additional drop to 15 percent the following year. For those in the \$25,000 to \$50,000 bracket, marginal tax rates will also drop 1 percent each of the next two years from the current 20 percent.

ACRS was elected, noted Edwards.
 New tax laws also have simplified and liberalized investment tax credit. The time that eligible property must be held to get the full 10 percent tax credit has been reduced from seven to five years. Another change is that 6 percent credit is allowed on some eligible assets after just three years.
 An additional change relates to the recapture of investment credit (if credit is taken and then the property is disposed of before the minimum number of years are met). The new law, in essence, allows an investment credit of 2 percent per year up to the maximum allowable for each year equipment is held, notes Edwards.
 Remodeling of old facilities also provides increased tax incentives. Investment tax credit increases to 15 percent for structures 30 to 39 years and to 20 percent for those at least 40 years old.
 In the past several restrictions were placed on the ability of leasing agents to show transactions as leases rather than conditional sales. Those restrictions have now been removed, says the economist, to simplify leasing.
 Another cost-saving device included in the new tax laws deals with adopting a LIFO (last in, first out) inventory system. This method of inventory accounting is generally preferred in times of inflation because it reduces tax liability, explains Edwards. But in the past it has been based on complex indexes. New tax legislation allows the Secretary of the Treasury to establish suitable indexes as the basis for inventory valuation. This should be especially helpful for small businesses. The changes also will allow a business to spread out the added tax liability associated with the first year of LIFO accounting over three years.
 Reduction in marginal tax rates for small businesses also should benefit agribusinesses, believes the economist. Starting in 1982, the marginal rate on income under \$25,000 will drop from 17 to 16 percent, with an additional drop to 15 percent the following year. For those in the \$25,000 to \$50,000 bracket, marginal tax rates will also drop 1 percent each of the next two years from the current 20 percent.

Individuals also were granted a reduction in marginal rates under the new legislation. A total reduction of 25 percent will be spread over a three-year period -- 5 percent starting October 1, 1981; 10 percent starting July 1, 1982; and 10 percent beginning July 1, 1983. The so-called marriage penalty tax also has been altered.
 Beginning with the 1985 tax year, marginal tax brackets will be established to prevent inflation from pushing persons into higher brackets with no increase in "real" income. This should help the situation that most wage earners now face -- paying a larger tax burden while seeing a decrease in spendable dollars, notes Edwards.
 Many other tax provisions have been liberalized under the 1981 tax legislation, adds the economist. These include individual retirement and Keough plans, estate and gift taxes, new employee credits, extension of carryover periods for operating losses and tax credits, and treatment of capital gains.
 Looking at the current tax year and the changes that have been initiated, Edwards suggests including as many expenses as possible in 1981 since income will be taxed at a higher rate. Also, since the depreciation changes are retroactive to Jan. 1, purchases made this year come under the new accelerated depreciation rules and qualify for more liberal investment credit provisions.

Brandon Kinard
 1826 W. Ave E.
 Muleshoe, Tx 79547

Santa Claus
 North Pole



SANTA HAS HELPERS IN MULESHOE...Please note the stamp used to mail the letter from Brandon Kinard. Besides being a good boy, he wants a screwdriver, a horse and a truck. Rest assured, the mail goes through.

Commissions Budget Slashed Again

The Texas Employment Commission hasn't even begun the second quarter of Fiscal Year 1982 and has already received two drastic budget reductions.
 The latest continuing resolution, beginning December 15, 1981, further reduces Texas Employment Commission's operating funds by an additional 12%. The Texas Employment Commission, cut recently by \$20 million, with a resulting loss of 800 positions, including 400 direct layoffs to take place December 31, 1981, received jolting news on Monday that an additional \$12 million would be reduced from Fiscal Year 1982 operating budget. This latest action by Washington will require an additional reduction in force of Texas Employment Commission employees that could be as high as 450 professional personnel.
 "There is no question in my mind that this is part of the Reagan Administration's overall plan to dismantle the national Employment Service that has served America well for the past 50 years," stated Ken Clapp, Commissioner representing Employers at the T.E.C. "This is shortsighted and saves not one thin dime for the employers who finance the program."
 Recently Clapp raised the question as to where the budget savings were going, since the entire administrative operation of T.E.C. and like agencies throughout the country operate from grants that come from the employer payroll tax (FUTA). Savings in these dollars cannot be spent for anything but those prescribed by law and included for the most part administration of the employment service as well as the unemployment insurance program.
 Texas employers have been sending \$250 million a year to Washington through their FUTA tax payments. About half of that amount has been traditionally returned to operate the T.E.C. Now Clapp notes, an additional 32% will be chopped from this amount leaving even less coming back to Texas. These dollars have been redistributed to other states that have not had the healthy economic climate of Texas and now with the nationwide cuts, a surplus will continue to be built - with no tax reduction to Texas employers.
 This last cut of \$12 million will force the Texas Employment Commission to close possibly 40 offices across the state, and to lay off up to an additional 450 people no later than January 31, 1982.

SMILES
Tit For Tat
 He-I wish I had some old-fashioned buscuts like mother used to make for me. She-And I wish I had some new-fashioned clothes like father used to buy for me.
A Ten Count
 Heavyweight Boxer--The trouble is, I don't sleep well. Doctor--You must practice auto-suggestion a little. Why not lie on your back, relax and count slowly up to ten.

EXTRA SPECIAL, SPECIAL
 Five Point
DOG FOOD
 50 LB BAG 25 LB BAG
9³⁶ 5¹⁵
Alert Cat Food 345
10 LB. Bag

A&M FARM AND RANCH SUPPLY

Sign Up Now
for All Savers Certificates
And We'll Give You 10 or 20 Bucks

It's estimated that Americans will invest \$500 billion in tax-free All Savers Certificates.* Because we want you to be among them, we'll hand you \$10 if you deposit \$2,500 to \$4,999.99 in these Certificates; \$20 if you deposit \$5,000 or more.

Tax-free All Savers Certificates are tax-exempt up to \$1,000 on an individual return; \$2,000 on a joint return.

They're insured up to \$100,000 by FDIC and pay a guaranteed, high interest rate based on 70% of the yield on 52-week Treasury Bills. They tie up your funds for one year only and require the low minimum deposit of \$500.

Why would a bank give away money? Because we want you to take advantage of tax-free All Savers Certificates while they're still available. Sign up today.

*substantial penalty for early withdrawal

MULESHOE STATE BANK
 101 American Blvd. • 272-4561 • Member FDIC

**Letters To
The Editor**

Dear Editor,

As a former Muleshoe resident and a former student of Muleshoe schools, I have read with interest the recent letters concerning the school bond election. There have been letters from students, teachers and concerned citizens, and although I am no longer a resident of Muleshoe, I felt compelled to write this letter.

I has been almost ten years since I graduated from MHS, but I can still remember the feeling of envy when I attended tournaments and contests at other schools of about the same size. Their buildings were newer, their classrooms warmer, and their auditoriums more modern. The only thing that kept my envy from turning to jealousy was the knowledge that Muleshoe had the finest speech and drama coach in the state of Texas. I knew that a fancy school didn't make a winning speech team.

That was ten years ago, and to my knowledge there have been no renovations or major repairs done to the school. Anyone who lives in a house knows that regular repairs and upkeep are necessary to make a house liveable. A school is no different. The school age children of Muleshoe spend the majority of their daytime hours at school. If the window in a child's bedroom was broken, I dare say most parents would have the window replaced. If the heater was broken in winter, it would be repaired.

I moved from Muleshoe to Levelland two years ago. A town of about 15,000.

Levelland has a progressive public school system, excellent educators and facilities. There are four elementary schools, all of which have indoor play areas and a variety of playground equipment (most of which was purchased with funds raised by parent organizations.) Levelland had a bond election recently, which also failed. But it was not from lack of voter response.

I'm glad I live in a town like Levelland that is not afraid of change. I'm glad I do not have to deal with the apathy and disinterest of a dying community. For that is surely what will happen to Muleshoe if the schools are allowed to die. What does a town of the size of Muleshoe have to offer young couples with families to raise if it has no schools? As a mother of four children, I can tell you the answer to that question is nothing.

I am not writing this to cast stones or to call names. Some of your readers may ask what right I have to even notice my opinion on this matter. I feel I have every right. As a land owner in the Muleshoe Independent School district, I pay taxes on their schools.

Greta Alexander
P.O. Box 942
Levelland, Tex. 79336
'Cook 'em Horns'

AUSTIN, Texas (Spl.) — Earl Campbell's "My Mama's Purple Hull Peas" is but one of hundreds of recipes included in "Cook 'em Horns," a new cookbook from The University of Texas Ex-Students' Association.

UT Austin exes, faculty, staff and friends have contributed to the cookbook that is a culinary salute to UT Austin's 100th anniversary. Proceeds will go for student scholarships.

Copies of "Cook 'em Horns" are available from the UT Ex-Students' Association, Box 7278, Austin, Texas 78712.



The Speaker Reports

by Bill Clayton

AUSTIN—One of the advancements made during the last regular session of which I am most proud is the creation of the Public Servant Standards of Conduct Advisory Committee. This is a 15-member ethics committee established by House Bill 3 which I sponsored.

The primary purpose in creating an ethics committee is to assemble a group of persons from various fields who work on a daily basis within this area to study the rules and regulations which relate to the conduct of public servants.

Presently, our laws relating to public servants suffer from two general problems. While some sections of these laws are too general, other sections include too many restrictions and minute reporting procedures which are time-consuming, expensive, and serve no valid purpose.

At its first meeting in November, the committee heard testimony from persons within the public education, religious, political and higher education sectors. I was encouraged by the willingness of the committee members and those who testified to work together. Many areas that deserve attention were brought forth including campaign reporting. Testimony was given regarding whether a public official should be able to use campaign contributions for personal needs. Current law states that an official can use these contributions for personal needs provided that he itemizes exactly how the money is spent.

Other areas that will receive special attention are laws relating to the regulation of lobbyists, questions on nepotism, reasons why political office holders are not generally trusted by the American people, the possibility of creating a bipartisan ethics commission

within the state, and the costs of campaigns.

This committee is the realization of a proposal that I first made in 1971. At that time I also suggested several new methods of operation. One of these suggestions was to prohibit lobbyists from contacting state representatives and senators while the Legislature is in session. These proposals were not looked upon favorably at that time although the Sharpstown scandal, which was soon to follow, brought a new light to the situation.

Last session I authored House Bill 1903 which com-

bined several pieces of legislation into a comprehensive package designed to make campaign reporting practices more defined and fair. Though the passage of this bill was an important step, there is still much left to be done in this area.

It is my hope that House Bill 1903 and the work of the Public Servant Standards of Conduct Advisory Committee will result in improved methods of operation for all public officials across the state.

Golden Gleams

'Twas the night before Christmas, when all through the house Not a creature was stirring, not even a mouse.

-C.C. Moore.

At Christmas, play, and make good cheer, For Christmas comes but once a year.

-Thomas Tasser.



AUSTIN — The political picture continues to take shape for the 1982 campaigns with three Democrats adding their names to those already in the races for major statewide offices, including governor, attorney general and land commissioner.

Attorney General Mark White jumped into what is now a three-way battle for the Democratic gubernatorial nomination. White will take on Tyler Sen. Peyton McKnight and Land Commissioner Bob Armstrong for a chance to face incumbent Gov. Bill Clements in the November 1982 general election.

In what already promises to be one of the most expensive campaigns in Texas his-

tory, White estimates he will have to spend as much as \$4 million to secure the Democratic nomination. McKnight and Armstrong also have expressed their willingness to spend millions in the primary campaign, and some observers have doubted whether White could find the financial support to make that kind of campaign.

In announcing his candidacy, White indicated that former Attorney General John Hill and former Gov. Dolph Briscoe would not enter the race, so the Democrats may avert the five-way dogfight they earlier had feared might hurt their chances to knock Clements out of the Governor's Mansion.

White, as McKnight and Armstrong did before him, came into the race criticizing Clements and saying little against his Democratic opponents.

Clements apparently doesn't like that strategy, and has suggested that the Democrats get on with a debate of who's liberal and conservative. Democratic voters are going to want to know that when they go to the polls, Clements says.

Attorney General's Race
Even before White made his formal announcement that he would not be seeking re-election to his present

post, former U.S. Attorney John Hannah of Tyler became the first announced candidate for the state's top legal position.

Hannah, a former state representative, served as U.S. attorney for the Eastern District of Texas until August of this year, and had led an investigation that resulted in criminal indictments against 20 county officials for alleged kickbacks on county purchases.

Hannah, 42, vowed that as attorney general he would continue his campaign against "pervasive and widespread" corruption in county government, to attempt to reach a compromise with the U.S. Justice Department in the lawsuit against the state prison system and to fight fraud in state programs.

The would-be successor to Attorney General White says some of the money designated for nursing home care, medicine for the poor, road construction and other purposes isn't reaching its intended destination. "Much of it is being wasted and hundreds of thousands of dollars are being stolen," he says.

Other Democrats who are thought to be potential attorney general candidates include State Sens. Jack Ogg of Houston and Ray Farabee of Wichita Falls.

SOAP OPERAS
BOSTON -- Americans who watch a lot of television—particularly soap operas—are more likely to have a "live-for-today" attitude, poor health-care habits and overly high confidence in doctors, a study by the Annenberg School of Communications at the University of Philadelphia reports.



SOUTH OF THE BORDER...Christmas in Mexico and Spain is celebrated with pinatas filled with goodies for all. This pinata was made by Mr. Johnson's sixth period history class.

Wilson
Appliance
Sales & Service For
MAYTAG
For 14 Years And Will Continue To Be!
Come In Today & Let "Smiling" Gordon Make You A Deal!

Classified Ads Offer Service Specialists



*Whatever Your Service Needs Are,
You're Sure To Find The Specialists
In The Classifieds At Reasonable
Rates.*

**Read The Classifieds
Today!**

**Deadlines For Classifieds:
Tuesday & Friday
11 a.m.**

Muleshoe & Bailey County Journals

272-4536

Texas May Become A Major Wine Producing State

AUSTIN--Texas: Big money, beef cattle, oil rigs, J. R. Ewing, cowboys, gleaming cities, border towns,



I want a Golden Dream Barbie, Go West Lady Wardrobe, Vacation Wardrobe, Bedroom Case, and a Dallas Horse, Barbie Dream House with Furniture and a Powder Puff Jeep.

Thank You
Brenna Matthews

I want a Crayola Caddy, Western Barbie, Western Ken, Western Outfit, Round-the-clock Male Wardrobe, Wedding Trouseau.

Thank You,
Tory Matthews



Producing cotton under the farm bill passed by the House in Washington December 16 will be pretty much "business as usual."

The cotton program included in the bill is the same basic "market-oriented" program in effect for the past four years, and with one major exception the differences in the cotton sections of the 1977 and 1981 bills are largely a matter of numbers.

The major exception is the absence of a disaster program in the new law.

That program, put into the 1973 farm act through the efforts of Plains Cotton Growers, Inc., Lubbock, for eight years has provided sorry-needed crop loss insurance to farmers. "But unless it can be reinstated at some future date," laments PCG President Gary Ivey of Ralls, "that program is a thing of the past."

The Commodity Credit Corporation loan rate will be figured on the same formula as before — the lower of (1) 85 percent of the average of the median three of the preceding five years U.S. spot market prices or (2) 90 percent of the preceding 15 weeks adjusted average prices in Northern Europe, except that when Northern Europe prices average below the U.S. spot average, the loan can be set anywhere between the two. The only "improvement" in the loan-setting procedure is an increase in the 1981 law's statutory minimum, to 55 cents a pound, up from this year's 48-cent minimum.

The loan formula for 1982 is expected to set the loan just above 57 cents, up from this year's 52.46 cents. PCG, along with efforts to get the disaster program extended, worked for a minimum loan at 65 percent of parity. But both causes fell before the Administration's scattergun attack on government expenditures.

There's no change in loan duration terms. Original loans will be for 10 months, with producers having the option to extend loans an additional eight months except when market prices are above 130 percent of the previous 36-month spot market average.

The law borders on being contradictory in its reference to the setting of loan program quality differentials. First it says premiums and discounts are to be set at a simple average of the prior year's loan differences and the previous nine-month spot market differences. Then it directs the Secretary to establish a 10-member committee to study procedures and criteria used to set differentials and gives him authority to conduct his own review of the process, including the committee's recommendations.

Target prices under the new law will be the higher of (1) 120 percent of the base loan rate or (2) 71 cents in 1982, 76 cents in 1983, 81 cents in 1984 and 86 cents in 1985. The old law called for basing target prices on cost of production changes.

The 1982-1985 program gives the Secretary authority to limit cotton acreage to a percentage of previous plantings as a condition for participation in loan, payments or other program benefits. But there's been no indication as to whether that authority will be used in 1982.

blue mountains. Now there is something new to add. Wine. "Though" it may not conform to the state's stereotyped image, a fledgling wine industry has sprung up and is already garnering some praise." Agriculture Commissioner Reagan V. Brown announced.

Though production is limited, keeping most Texans from their first sip of native wine, the history of grape cultivation in the state goes back to the early 1700's when Spanish missionaries grew the fruit for fermenting. In 1883 the state's first winery was established in Del Rio, a small Southwest Texas town on the Mexican border. Called Val Verde Winery, it is still run by the family that began it, the Qualias. Val Verde relies on Lenoir or Black Spanish and Herbemont varieties, the mainstay of the tiny Texas industry until the 1970's. In the last decade, however, something of a boom occurred. People began experimenting with French and American hybrids and vitis vinifera, the European wine grape used in the world's best-known wines. At that point, Texans seriously began to "think wine."

Six small wineries, including Val Verde, are operating in different parts of the state with a seventh scheduled to open. All but one process their own grapes, and some press grapes from other vineyards as well as their own. With the exception of Llano

Estacado, which is located on the High Plains near Lubbock, vineyards at the wineries grow mainly hybrid grapes, not the highly prized vinifera that French and California wines are made from. Several of these wines, however, are considered good, a few select. Among them are Rayon d'Or from La Buena Vida, which won vintner Dr. Bobby Smith a gold medal in the Eastern United States Wine Judging Competition. Two other wines of Smith's have also excelled in this contest.

"Small wineries that do an excellent job will be able to make an acceptable wine that will sell," contends Dr. William Lipe, director of grape research in Lubbock for the Texas A&M Experiment Station. But for most high quality table wines, he and others believe vitis vinifera will determine Texas's place in the United States wine industry.

Llano Estacado manager and winemaker Kim McPherson believes name recognition makes wine from vinifera grapes highly marketable. "You're not going to sell (wine made from) hybrids in this state," he asserted. "We're too far west. We have California tastes."

About half of the ills that afflict the human body originate in a pampered mind.



HOLIDAY FESTIVITIES.....Christmas trees in the Scandinavian countries of Norway, Finland, Sweden and Denmark are decorated with fishnets, candles, and bells. The second period history class put this scene together.

Goodnough Services Held Here Saturday

Funeral services for N. J. Goodnough, 53, were held at 3 p.m. Saturday, December 26, at the First Baptist Church in Muleshoe with the Rev. W. P. Coffman, interim minister of the Southcrest Baptist Church of Lubbock, officiating.

Interment was in Bailey County Memorial Park under the direction of Ellis Funeral Home. Goodnough died at 3:10 p.m. Wednesday at Lubbock General Hospital.

Born May 26, 1928, at Rochester, he had been a Lubbock resident for 22 years after moving there from Muleshoe. He married Helen Lambert October, 17, 1948, in Lubbock. He was a farmer and me-

chanic. He was a member of the Southcrest Baptist Church in Lubbock, a former Boy Scout leader and a member of the Indian Guides of the Boy Scouts.

Survivors include his wife, Helen; a son, Mike, of Lubbock; his parents, Mr. and Mrs. Riley Goodnough of Lubbock; and two grandchildren.

ONE MINUTE SPORTS QUIZ

1. What was the score of the Alabama, Georgia Tech clash?
2. Who won the women's singles U.S. Open Tennis Title?
3. Who was the Pleasant Valley Jimmy Fund Golf Classic?
4. Who won the U.S. Open men's singles title?
5. Who won the LPGA Virginia Bank Golf Classic?

Answers To Sport Quiz

1. Alabama 21, Georgia Tech 24.
2. Tracy Austin over Martina Navratilova.
3. Jack Renner.
4. John McEnroe over Bjorn Borg.
5. Jan Stephenson.

Ellis Funeral Home
24 Hour Ambulance Service
Ph. 272-4574
Muleshoe

ATTEND THE CHURCH OF YOUR CHOICE

... and they sang praises

"And suddenly there was with the angel a multitude of the heavenly host praising God, and saying, Glory to God in the highest, and on earth peace, good will toward men." LUKE 2: 13-14

I personally have a poor singing voice... this may be one of the reasons why I have so much appreciation for those who have good voices and use their talent for the Lord. At every Christmas, church choirs put forth extra work and effort so that they may present to the world the wonderful story of the birth of our Saviour. I plan to attend these services, knowing that my heart and soul will be nourished and lifted high... won't you come too?

The Church is God's appointed agency in this world for spreading the knowledge of His love for man and of His demand for man to respond to that love by loving his neighbor. Without this grounding in the love of God, no government or society or way of life will long persevere and the freedoms which we hold so dear will inevitably perish. Therefore, even from a selfish point of view, one should support the Church for the sake of the welfare of himself and his family. Beyond that, however, every person should uphold and participate in the Church because it tells the truth about man's life, death and destiny; the truth which alone will set him free to live as a child of God.

Coleman Adv. Ser.

FIRST CHRISTIAN CHURCH
130 W. Ave. G
Rev. Walter Bartholf
Sunday School - 10 a.m.
Worship - 11 a.m.

LATIN AMERICAN METHODIST MISSION
Ave. D and Fifth Street
R.Q. Chavez, Pastor

THE COMMUNITY CHURCH
H.D. Hunter, Pastor
Morton Highway

CALVARY BAPTIST CHURCH
James Williams, Pastor
1733 W. Ave. C

PROGRESS SECOND BAPTIST CHURCH
Clifford Slay, Pastor
1st and 3rd Sundays

FIRST UNITED METHODIST CHURCH
Rev. Bill Kent
507 W. Second, Muleshoe

ST. JOHN LUTHERAN
Lariat, Texas
Herman J. Schelter, Pastor
Sunday School - 10 a.m.
Worship - 11 a.m.

PRIMITIVE BAPTIST CHURCH
621 South First
Elder Bernard Gowens

MULESHOE CHURCH OF CHRIST
David Cox, Minister
Clovis Highway

JEHOVAH WITNESS
Friona Highway
Boyd Lowery, Minister

ST. MATTHEW BAPTIST CHURCH
Corner of West Boston & West Birch
Rev. M.S. Brown, Pastor

SPANISH ASSEMBLY OF GOD
East 6th and Ave. F
REV. DAVID LARA

MULESHOE BAPTIST CHURCH
8th and Ave. G
Bob Dodd, Pastor

FIRST BAPTIST CHURCH
Rev. J.E. Meeks, Pastor

CHURCH OF THE NAZARENE
Ninth and Ave. C
Rev. Jimmie Williams, Pastor

MULESHOE ASSEMBLY OF GOD
517 S. First
Rev. James Golaz

EMMANUEL BAPTIST CHURCH
Iglesia Bautista Emmanuel
107 E. Third
Isaias Cardenas, Pastor

RICHLAND HILLS BAPTIST CHURCH
17th and West Ave. D
Brock Sanders, Pastor

SPANISH BAPTIST MISSION
Rev. Aradio Gonzalez
East Third and Ave. E

TRINITY BAPTIST CHURCH
314 Ave. B
Don Knight, Pastor

LONGVIEW BAPTIST CHURCH
B.C. Stonecipher, Pastor
Phone 946-3413

16th AND AVE D CHURCH OF CHRIST
James Johnson, Pastor
Sunday - 10:30 a.m.
Evening - 6 p.m.
Wednesday - 8 p.m.

PROGRESS BAPTIST CHURCH
Progress, Texas
Danny Jackson

NORTHSIDE CHURCH OF CHRIST
117 E. Birch Street

UNITED PENTECOSTAL GOSPEL LIGHTHOUSE
207 E. Ave. G
George Green, Pastor

IMMACULATE CONCEPTION CATHOLIC CHURCH
Father Patrick Mahar
Northeast of City in Morrison Addition

West Texas KARATE

Offering beginners Karate classes starting Jan. 4. Limited enrollment. Come by 215 E. Ave. B. on Monday or Wednesday night. Call 272-5190
Now Offering Women's Self Defense Classes.
Beginning Fri. Jan. 8, 1982 8 Wk. Course
Danny Kelley, 2nd Degree Black Belt, Inst

Bratcher Motor Supply 107 E. Ave. B 272-4288	Muleshoe Publishing Co. Muleshoe 272-4536	White's Cashway Grocery Where Friends Meet & Prices Talk	Dent-Rempe Implement Co. John Deere Dealer 272-4297
Western Drug 114 Main 272-3106	James Roy Meat Market Co. 506 W. Amer. Blvd. 272-4361	Bailey County Memorial Park "Every Service A Sacred Trust" 272-4383	Muleshoe Co-op Gins
Margie Hawkins Manager Dairy Queen 272-3412	First National Bank "Home Owned" 202 S. 1st 272-4515	Baker Farm Supply Inc. 1532 W. Amer. Blvd. 272-4613	Lambert Cleaners Steam Carpet Cleaning Drapery Cleaning 123 Main 272-4626
Thornton Chevrolet 201 Main 272-3100	Farmers Spraying Service	American Valley Inc. 272-4266	Attend the Services of Your Choice

**Letters To
The Editor**

Dear Editor,
As a former Muleshoe resident and a former student of Muleshoe schools, I have read with interest the recent letters concerning the school bond election. There have been letters from students, teachers and concerned citizens, and although I am no longer a resident of Muleshoe, I felt compelled to write this letter.

I have been almost ten years since I graduated from MHS, but I can still remember the feeling of envy when I attended tournaments and contests at other schools of about the same size. Their buildings were newer, their classrooms warmer, and their auditoriums more modern. The only thing that kept my envy from turning to jealousy was the knowledge that Muleshoe had the finest speech and drama coach in the state of Texas. I knew that a fancy school didn't make a winning speech team.

That was ten years ago, and to my knowledge there have been no renovations or major repairs done to the school. Anyone who lives in a house knows that regular repairs and upkeep are necessary to make a house liveable. A school is no different. The school age children of Muleshoe spend the majority of their daytime hours at school. If the window in a child's bedroom was broken, I dare say most parents would have the window replaced. If the heater was broken in winter, it would be repaired.

I moved from Muleshoe to Levelland two years ago. A town of about 15,000.

Levelland has a progressive public school system, excellent educators and facilities. There are four elementary schools, all of which have indoor play areas and a variety of playground equipment (most of which was purchased with funds raised by parent organizations.) Levelland had a bond election recently, which also failed. But it was not from lack of voter response.

I'm glad I live in a town like Levelland that is not afraid of change. I'm glad I do not have to deal with the apathy and disinterest of a dying community. For that is surely what will happen to Muleshoe if the schools are allowed to die. What does a town of the size of Muleshoe have to offer young couples with families to raise if it has no schools? As a mother of four children, I can tell you the answer to that question is nothing.

I am not writing this to cast stones or to call names. Some of your readers may ask what right I have to even notice my opinion on this matter. I feel I have every right. As a land owner in the Muleshoe Independent School district, I pay taxes on their schools.

Greta Alexander
P.O. Box 942
Levelland, Tex. 79336
'Cook 'em Horns'

AUSTIN, Texas (Spl.) — Earl Campbell's "My Mama's Purple Hull Peas" is but one of hundreds of recipes included in "Cook 'em Horns," a new cookbook from The University of Texas Ex-Students' Association.

UT Austin exes, faculty, staff and friends have contributed to the cookbook that is a culinary salute to UT Austin's 100th anniversary. Proceeds will go for student scholarships.

Copies of "Cook 'em Horns" are available from the UT Ex-Students' Association, Box 7278, Austin, Texas 78712.

**The Speaker
Reports**
by Bill Clayton

AUSTIN—One of the advancements made during the last regular session of which I am most proud is the creation of the Public Servant Standards of Conduct Advisory Committee. This is a 15-member ethics committee established by House Bill 3 which I sponsored.

The primary purpose in creating an ethics committee is to assemble a group of persons from various fields who work on a daily basis within this area to study the rules and regulations which relate to the conduct of public servants.

Presently, our laws relating to public servants suffer from two general problems. While some sections of these laws are too general, other sections include too many restrictions and minute reporting procedures which are time-consuming, expensive, and serve no valid purpose.

At its first meeting in November, the committee heard testimony from persons within the public education, religious, political and higher education sectors. I was encouraged by the willingness of the committee members and those who testified to work together. Many areas that deserve attention were brought forth including campaign reporting. Testimony was given regarding whether a public official should be able to use campaign contributions for personal needs. Current law states that an official can use these contributions for personal needs provided that he itemizes exactly how the money is spent.

within the state, and the costs of campaigns. This committee is the realization of a proposal that I first made in 1971. At that time I also suggested several new methods of operation. One of these suggestions was to prohibit lobbyists from contacting state representatives and senators while the Legislature is in session. These proposals were not looked upon favorably at that time although the Sharpstown scandal, which was soon to follow, brought a new light to the situation.

Last session I authored House Bill 1903 which com-

bined several pieces of legislation into a comprehensive package designed to make campaign reporting practices more defined and fair. Though the passage of this bill was an important step, there is still much left to be done in this area.

It is my hope that House Bill 1903 and the work of the Public Servant Standards of Conduct Advisory Committee will result in improved methods of operation for all public officials across the state.

Golden Gleams

'Twas the night before Christmas, when all through the house Not a creature was stirring, not even a mouse.

—C.C. Moore.

At Christmas, play, and make good cheer, For Christmas comes but once a year.

—Thomas Tusser.

**STATE CAPITAL
HIGHLIGHTS**
By Lyndell Williams
TEXAS PRESS ASSOCIATION

AUSTIN — The political picture continues to take shape for the 1982 campaigns with three Democrats adding their names to those already in the races for major statewide offices, including governor, attorney general and land commissioner. Attorney General Mark White jumped into what is now a three-way battle for the Democratic gubernatorial nomination. White will take on Tyler Sen. Peyton McKnight and Land Commissioner Bob Armstrong for a chance to face incumbent Gov. Bill Clements in the November 1982 general election.

In what already promises to be one of the most expensive campaigns in Texas his-

tory, White estimates he will have to spend as much as \$4 million to secure the Democratic nomination. McKnight and Armstrong also have expressed their willingness to spend millions in the primary campaign, and some observers have doubted whether White could find the financial support to make that kind of campaign.

In announcing his candidacy, White indicated that former Attorney General John Hill and former Gov. Dolph Briscoe would not enter the race, so the Democrats may avert the five-way dogfight they earlier had feared might hurt their chances to knock Clements out of the Governor's Mansion.

White, as McKnight and Armstrong did before him, came into the race criticizing Clements and saying little against his Democratic opponents.

Clements apparently doesn't like that strategy, and has suggested that the Democrats get on with a debate of who's liberal and conservative. Democratic voters are going to want to know that when they go to the polls, Clements says.

Attorney General's Race

Even before White made his formal announcement that he would not be seeking re-election to his present

post, former U.S. Attorney John Hannah of Tyler became the first announced candidate for the state's top legal position.

Hannah, a former state representative, served as U.S. attorney for the Eastern District of Texas until August of this year, and had led an investigation that resulted in criminal indictments against 20 county officials for alleged kickbacks on county purchases.

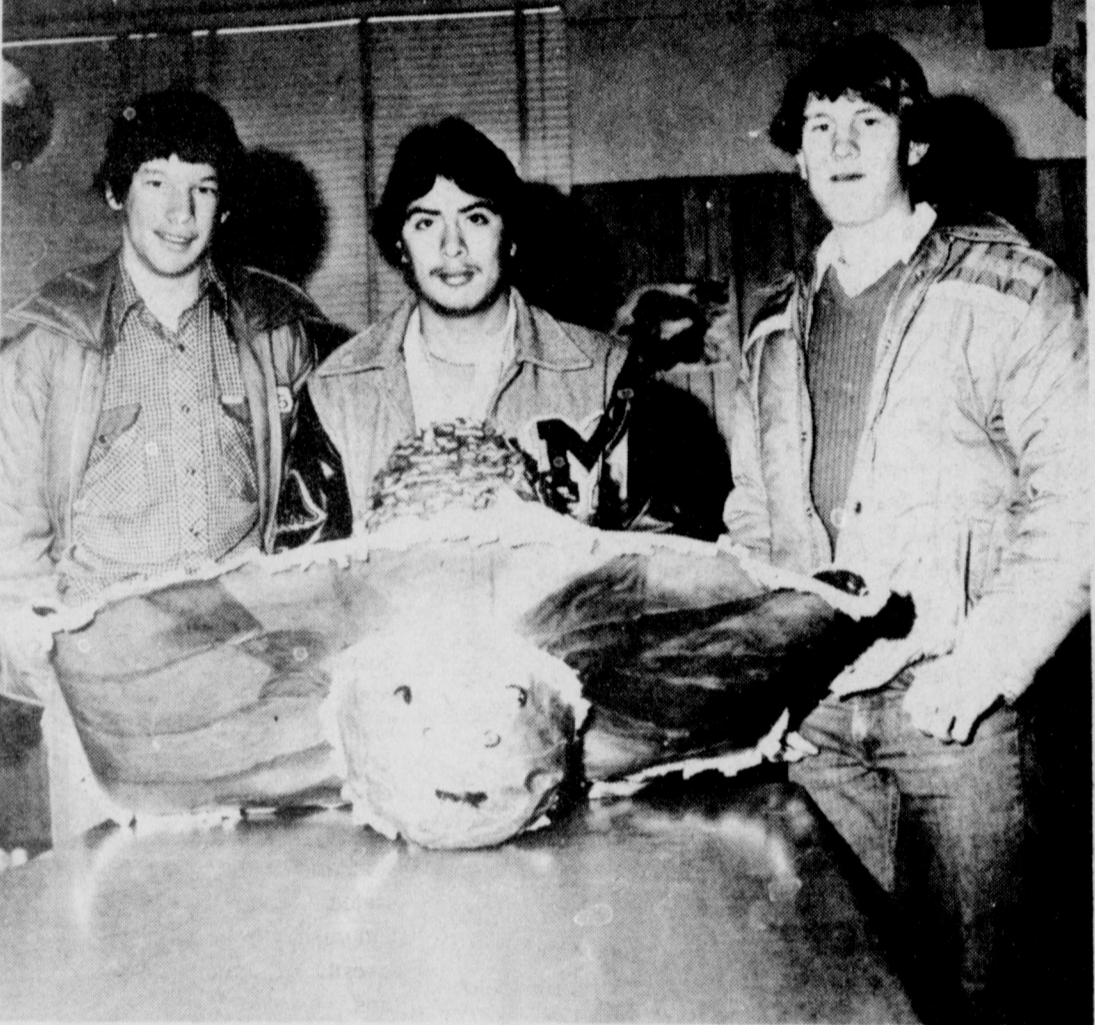
Hannah, 42, vowed that as attorney general he would continue his campaign against "pervasive and widespread" corruption in county government, to attempt to reach a compromise with the U.S. Justice Department in the lawsuit against the state prison system and to fight fraud in state programs.

The would-be successor to Attorney General White says some of the money designated for nursing home care, medicine for the poor, road construction and other purposes isn't reaching its intended destination. "Much of it is being wasted and hundreds of thousands of dollars are being stolen," he says.

Other Democrats who are thought to be potential attorney general candidates include State Sens. Jack Ogg of Houston and Ray Farabee of Wichita Falls.

SOAP OPERAS

BOSTON — Americans who watch a lot of television—particularly soap operas—are more likely to have a "live-for-today" attitude, poor health-care habits and overly high confidence in doctors, a study by the Annenberg School of Communications at the University of Philadelphia reports.



SOUTH OF THE BORDER....Christmas in Mexico and Spain is celebrated with pinatas filled with goodies for all. This pinata was made by Mr. Johnson's sixth period history class.

Wilson
Appliance
Sales & Service For
MAYTAG
For 14 Years And Will Continue To Be!
Come In Today & Let "Smiling" Gordon Make You A Deal!

Classified Ads Offer Service Specialists



*Whatever Your Service Needs Are,
You're Sure To Find The Specialists
In The Classifieds At Reasonable
Rates.*

**Read The Classifieds
Today!**

**Deadlines For Classifieds:
Tuesday & Friday
11 a.m.**

Muleshoe & Bailey County Journals

272-4536

BUYING? SELLING? CHECK OUT THE...

CLASSIFIED ADS

DEADLINE FOR CLASSIFIED ADS IS TUESDAYS AND FRIDAYS 11:00A.M

CLASSIFIED RATES

1st Insertion,
Per Word--\$.15
Minimum Charge--\$2.00
2nd Insertion,
Per Word--\$.13
3rd Insertion,
Per Word--\$.10
Minimum Charge--\$1.80
1/2 Cheaper to run
Classifieds 3 times
or more

CARD OF THANKS

25 Words--\$3.00
Over 25 Words
Charged at regular
Classified Rates
Classified Display--
\$1.55 per column inch
Double Rate for
Blind Ads
**DEADLINE FOR
INSERTION**
11 a.m. Tues. for Thurs.
11 a.m. Fri. for Sun.
**WE RESERVE THE
RIGHT TO CLASSIFY
REVISE OR REJECT
ANY AD.
NOT RESPONSIBLE
FOR ANY ERROR
AFTER AD HAS RUN
ONCE.**

PERSONALS

**STANLEY HOME
PRODUCTS**
Janice Snell
965-2665
1-43t-tfc

**WE BUY USED
FURNITURE AND
APPLIANCES
CALL 272-3030
HARVEY BASS
APPLIANCE**

1-18s-tfc
Custom farming, 8 row
equipment. Reasonable
rates. Call 272-5317 before
8 a.m. or after 7 p.m.
1-16s-tfc

Adult Drawing begin-
ning Monday, January
11, 9:30-12:30. Six
weeks.

Childrens Drawing begin-
ning Monday, Janu-
ary 11, 4:15-6:15 for
eight weeks.

Oil Landscape begin-
ning Tuesday, January
12, 9:30-12:30 for six
weeks.

Beginning Wednesday
January 13. Watercolor
classes. 9:30-12:30

Children's Art Basics.
Beginning Wednesday,
January 13, 4:15-6:15

Beginning Saturday, Janu-
ary 9 Teenager Oil Paint-
ing. 9:30-12:30. 6 weeks.

Rheta White Studio
800 W. American Blvd.
Call 272-4696 or
272-3889 after 7 p.m.
3tc

**NOW REGISTERING
FOR JANUARY
TWERLING CLASSES
ACCEPTING
BEGINNERS
AND
INTERMEDIATE
STUDENTS**

New Class of Beginners
starting January 6, 1982.
Classes will be held at
Hawkins and Purdy Dance
Studio. For more informa-
tion contact Twirling instr-
uctors:
Sue Bessire-965-2757
or Debbie Cloud 272-3584
1-52s-2tc

APARTMENTS

SARATOGA GARDENS
1300 N. Walnut, Friona
Phone 247-3666

1, 2, or 3 bedroom apart-
ments modern, wall to wall
carpet, heating/cooling,
kitchen equipped, laundry
facilities, parking. Low
rent for needy families.
Call collect.
5-46t-tfc

FOR RENT: in Muleshoe
large 3 room furnished
apartment. New carpet and
paneling. Bills and T.V.
cable paid. \$250.00 a month
\$100.00 deposit. Call
Mrs. Lloyd Routon at Far-
well 825-3555
5-50t-tfc

House for rent. 1 1/2 miles
west of town. Prefer couple
and no pets. 272-4137
4-51s-tfc

HELP WANTED

Now accepting applications
for experienced truck dri-
vers. One Year experience
in the last 3 years neces-
sary. Must be least 21 years
of age. Please apply in
person. We are an equal
opportunity employer.
Steele Tanks, Inc. Dimmitt
3-50s-8tc

TEXAS REFINERY CORP.
offers PLENTY OF MON-
EY plus cash bonuses, fringe
benefits to mature
individual in Muleshoe
area. Regardless of experi-
ence, write A.T. Sears,
Pres., Texas Refinery
Corp., Box 711, Fort Worth,
Texas 76101.
3-52t-2tc

RN needed in Muleshoe
area to work with pro-
gressive Home Health a-
gency. Competitive salary.
Mileage expenses and
fringe benefits. 894-9657
call 8-5 Mon.-Fri. [Level-
land]
3-47s-tfc

Help Wanted: Part time
evening receptionist. Call
4591 or come by Pat Walk-
ers.
3-52s-2tc

REAL ESTATE

Irrigated, new undergr-
ound pipe. 2- 158 acre
tracts near Muleshoe.
\$1150 / acre Norman Real-
tors 806-795-9514
8-42s-tfc

Choice Building site. **Rich-
land Hills.** Will finance.
272-4096
11-49s-stfc

3 bedroom, 2 bath, large
kitchen, fenced backyard,
storage building. Appraise
for FHA loan.
8-52t-tfc

Town & Country Equities
Nice 3 bdrm, 2 1/2 bath,
20 acres, barn and corral
1/2 mile from city limits
965-2642 or 272-3496
8-46t-tfc

FOR SALE: 3x1 1/2 brick,
1002 W. 7th. Call 272-4737
8-51t-tfc

Krebs Real Estate
201 W. Ave. C
Appraisals

Serving Muleshoe Area 35
years. We Appreciate your
business.
8-52t-tfc

VA appraised-No down pay-
ment to qualified Veteran.
Lovely 3 bedroom, 1 1/2 ba-
ths, brick home is Crest
Park Addition, Littlefield
Texas. Call Ida L. Howell
Real Estate at 894-8566.
8-40t-tfc

160 acre farm for sale. 4
miles north on Hwy. 1760.
Call 272-4280
8-49s-tsc

FOR SALE: 3 bedroom,
1 1/2 bath, brick, 1 car
garage, fenced yard, stor-
age house in **Richland
Hills.** 272-5132 for appoint-
ment.
8-49t-tfc

FOR SALE: Nice 2 bed-
room, 2 bath brick home.
To settle estate. 3 miles
north of Earth. 257-3776
or 257-3896.
8-49t-tfc

HOUSE FOR SALE: 3 BR,
1 1/2, LR, kitchen, dining
combination, den, ample
storage, corner lot, near 3
schools, 1928 sq. ft. living
area. 621 W. 6th Phone
272-4732 days or 272-4827
evenings.
8-47s-12tc

FOR SALE: 3 bedroom, 2
bath, brick, living room,
den with fireplace, office,
Richland Hill. 272-4701.
8-21t-tfc

Smallwood Real Estate
232 Main
272-4838

Rock house, 3 bedrooms, 2
baths, sunroom, 2 car gar-
age.

3 bedroom, 2 bath brick
house, fenced back yard.
Richland Hills
8-47t

See or call **Joe Small-
wood, Broker**
8-44t-tfc

*For all your real estate
needs call:*
GLAZE & GOFORTH
112 Ave. C
272-4208
8-11-tfc

FOR SALE OR LEASE: 1
building, with 5 offices and
shop, (all or part may be
leased) Call **Western
Sprinklers Inc., West Hwy.**
84 272-4544
13-49s-stfc

JIMMIE CRAWFORD
REAL ESTATE & INSURANCE
P.O. BOX 111 20 WEST AVENUE
MULESHOE, TEXAS 79349

Small 3 bedroom, 1 1/2
baths, fireplace, 2 car
garage, & storage house.
**Richland Hills Addi-
tion.** Very nice.

3 bedroom, 1 1/2 baths,
enclosed garage & stor-
age house. **Richland
Hills Addition.**

Rancho No Tango, 2
bedrooms, 1 1/2 baths, of-
fice, large barn and all
located on 2.9 acres. A
horseman's dream.

310 acres with 5 wells
and 2 pivot sprinklers 65
acres with 1 well and 1
tailwater pump, Large 3
bedroom, 1 1/2 baths, brick
home with 2 car
garage, barn, vegetable
stand, trailer house,
grain storage, refrigera-
ted box car all located on
2.9 acres. Good vegeta-
ble farm set-up.

59x140 ft. corner lot at
13th and D.
8-49s-stfc

George & Dianne Nieman

REID REAL ESTATE
we want your business
"Remember
REID REAL ESTATE
1614 W. American Blvd.
272-3142

4 BR 2 1/2 brick rock fire
place, paneled basement
and sun room. Double
car garage, fenced back
yard. Nice location.

Equity buys 3 BR, 2
bath, fireplace, heavy
aluminum storm wind-
ows, 1 car garage. Nice
location.

3 BR, 1 1/2 Bath, over
1,500 sq. ft. Storage
shed, fenced back yard.

3 BR, 2 bath, fireplace,
sunroom, double car gar-
age, fenced back yard.

2 houses together with
breezeway, excellent ren-
tal property.

Farm- 621 acre, well
improved, good water,
assumable loans.
8-51s-tfc

Thursie Reid-272-3142

Henry Realty

2 bedroom completely
remodeled, carpet, good
location.

Country living 3 bedroom,
2 bath, double garage,
brick home on Hwy 2 miles
from town. Immediate po-
ssession.
8-46t-8-46t-tfc

Small acreage 3 miles
east of Muleshoe on
highway.

111 W. Avenue B,
Muleshoe
272-4581
8-44s-tfc

**Bingham & Nieman
Realty**
116 E. Ave. C
272-5285/965-2488

Just listed- 3-1 1/4-1 brick
Cent. A&H, fenced
yard, nice and neat.

Country living on 1 plus
ac. with this 3-1 1/4-2
brick, approx. 1850 sq.
ft. living area, built-ins,
Cent. A&H, fireplace,
loads of storage, & ma-
ny other extras.

3-1 plus carport, totally
remodeled, small down
payment.

Just listed- 3-1 1/4 stucco
on corner lot, built-ins,
fenced yard, and priced
to sell.

Near Tolk Station- Large
3-2-2 home on 60 acres.

Equity buy- 3-1 1/4 with
large paneled living ar-
ea, built-ins, & corner
lot.

Farms
Farmer Co. 320 ac., 2-
8" wells, U.G. tile &
return system, \$800 per
acre

Bailey Co. 395 ac., 4
wells, 1 elec. center pi-
vot.

Farmer Co. 320 ac., 2-
8" elec. wells, 2 elec.
Center pivots, complete-
ly fenced, & lots of
depreciable assets.

Sudan: 3 Bay Texaco
Service Stations, priced
to sell.
8-50s-tfc

"We Appreciate
your Business!"

George & Dianne Nieman

BY OWNER-Attractive liv-
ing (w/fireplace), dining,
kitchen combination, 3
bedroom, 2 bath, dbl. gar-
age. Equity buy. Assume
loan. Shown by appoint-
ment only after 6 p.m. and
all day Sat. & Sun.
272-4428.
8-35s-stfc

**USED
CARS-TRUCKS**

FOR SALE: 402 Chevrolet
engine. Complete overhaul
\$650.00 exchange.
272-5173
11-50t-stc

FOR SALE: 1978 Mercury
Cougar 1R7. Yellow with
brown Landau top and
brown interior. Loaded.
38,000 miles \$5,250.00
272-4348
9-51t-tfc

FOR SALE: 1964 Chevy
Chevelle. New 283 V-8
engine. Engine has about
500 miles. Needs body
work. Call 272-3304 or 272-
3267
9-49t-tfc

1972 Chevy pickup. Call
272-3538 after 7 p.m.
9-49s-tfc

**FARM
EQUIPMENT**

FOR SALE: 1977 Hough
E-60 payloader. New
motor. (806) 965-2332
10-51s-4tc

**HOUSEHOLD
GOODS**

**BURROWS
UPHOLSTERY AND
FURNITURE REPAIR**
209 W. 2nd
phone 272-4255
12-44s-1tc

MISCELLANEOUS

Would like to purchase
loose stacks of corn, maize
or millet stubble. Contact
C.R. Cope Enterprises Inc.
Seminole, Texas (915) 758-
2131.
15-50s-3tsc

Want a propane system?
check with
**SMITH LP GAS
MULESHOE**
15-30s-tfc

Bud's Handyman Repair.
Paint, roofing, plumbing,
air conditioning, cement
work. 272-4111
15-50s-8tc

GORDON PLUMBING
Licensed and bonded.
New, repair, commercial
work. Free estimates. 20%
discount for senior citizens.
24 hour service. 272-4111
221 East 4th
15-50s-8tc

158 acres 5 miles north-
west of Muleshoe. 2 wells,
\$800.00 per acre. 272-4764
15-49s-10tp

Commercial building
30'x60' for rent
272-4878 after 6 p.m.
13-44s-tfc

WANTED TO BUY-used
aluminum pipe of all sizes.
Also side roll sprinklers of
all sizes. No quantities too
large. Top prices paid.
Stateline Irrigation
272-3819 or 272-3450
15-33t-tfc

BRUCE ELECTRIC
Residential, commercial,
wiring, repairs, supplies,
and fixtures.
24 hour service
272-5114
15-43s-tfc

For Work
"Fresh as a Daisy"
**HAVE BRUSH
WILL PAINT**
Call: C&D Paint & Repair
272-3574
15-52s-2tc

HONEY FOR SALE
Nick Landers
334 W. Ave. J
272-3096
15-32t-tfc

**FRANK'S
REFRIGERATION
APPLIANCE & SERVICE
PARTS & REPAIR**
315 W. 3rd Ph. 272-3822
15-7t-tfc

**WANTED
TO RENT**

Want to rent 1/2 section of
good farmland in **Bailey
County** Call 965-2665
14-50t-tfc

WANTED TO RENT: Far-
mland for '82 irrigated or
dry land. 272-4034 or
946-3415.
14-38t-tfc

**FOR SALE
OR TRADE**

FOR SALE: Good hay gra-
zer. \$3.00 a bale or \$90 a
ton delivering Call Cecil
Ward 272-4764
11-51t-4tp

FOR SALE: Motor home.
Delta 23' 400 Chev. loaded
272-4869
11-50t-8tp

Pollution
Mabel: "I'm afraid we
just violated the anti-litter
ordinance."
Jane: "How come?"
Mabel: "Our dog just had
pups."

SEEKS PAY HIKES

The Teamsters union
handed new wage demands
to the trucking industry after
assuring President Reagan it
will be "as reasonable as
conditions will permit" in
forging a contract that could
sway his quest to hold infla-
tion beneath 10 percent.

OFF LIMITS
Interior Secretary James
Watt told top department of-
ficials that he would prefer
that they put themselves off
limits to paid leaders of na-
tional environmental groups,
a Watt aide said.

DELAYS TRIAL
Senate leaders an-
nounced recently that they
would delay until January
the expulsion trial of Sen.
Harrison Williams, (D-NJ),
who was convicted in the
FBI's undercover Abscam
investigation.

ON DRAFT
Nearly one-quarter of the
18-year-old men required to
register by Sept. 1 for a
possible military draft failed
to sign up, Selective Service
Director Thomas K. Turnage
said.

OBSCENITY RULING

The Supreme Court ruled
recently that juries in
obscenity cases may sup-
press books, magazines or
movies without being certain
"beyond a reasonable
doubt" that they are
obscene.

ON AGING

President Reagan, deny-
ing that he is "an enemy of
my own generation,"
promised the White House
Conference on Aging re-
cently not to betray the
millions who rely on Social
Security.

BOOSTING AIR FORCE

A senior U.S. official said
recently that Nicaragua is
preparing to bolster its air
force with Soviet-made MiG
jets and is "on the verge of
becoming a superpower in
Central American terms."

NEW RULES

Under pressure from
government agencies, a fed-
eral board drastically scaled
down proposed rules requir-
ing federally funded build-
ings to be accessible to
handicapped people.

Pheasants Expertly Mounted



THE
PHEASANT
SPECIALISTS
Reasonable Prices

4tsc 794-4224 795-9442

RECIPE

By Sarah Anne Sheridan
Your holiday meal will
not be complete without a
colorful and tasty salad.
Cranberries and fruit salads
always go well with turkey
and ham. Cranberry Salad is
used often during cold winter
months at our home.

Cranberry Salad
1 can (20 oz.) crushed
pineapple
1 lb. fresh cranberries
1 1/2 c sugar
2 envelopes unflavored
gelatin
1 c chopped pecans
Lettuce

Drain juice from pine-
apple and add enough water
to make 1 cup liquid. Com-
bine juice, cranberries and
sugar in saucepan; cover and
cook until berries pop (about
10 minutes). Add gelatin to
hot cranberries and stir until
dissolved. Cool, add drained
pineapple and nuts. Re-
frigerate. Serve on lettuce
leaf. This salad can be made
a day ahead of serving.

Here is another holiday
goodie that can be made
ahead of the hustle and
bustle.

Glazed Nuts & Fruits
1/2 c white corn
syrup
1/2 c sugar
2 T hot water

Boil all ingredients until
syrup brittles in cold water.
Keep hot in double boiler.
Dip nuts and fruits one at a
time and lay on oiled paper.

Rent -To-Own

**Color TV
Stereos Microwave Ovens Dryers
Refrigerators Freezers Washers
Dishwashers**

No Service Expense No Interest To Pay

Wilson
Appliance
MULESHOE 272-5531

117 Main

Card Of Thanks

We wish to thank the doctors, the nurses, the
ambulance drivers, the police Dept., Father Pat
Maker & the ladies who prepared the lovely dinner at the
Immaculate Conception Hall for all of us & all the
people who sent flowers & food & for all their kindness.
And to all who were with us through our great sorrow.
Your kindness will always be remembered by our family.

The Zimmerman Family

REID REAL ESTATE


**Do You Want To
Buy A New Home?**

If you qualify we now have
**100% financing with closing
cost not included.**

Call Today!
Thursie Ried
272-3142

stfc

STATE FARM



INSURANCE

FOR INSURANCE CALL

F.L. NEWTON, Agent
128 East 10th - Box 749
Littlefield, Texas 79339
Phone: Bus. 808 385-3055

Like a good neighbor,
State Farm is there.

State Farm Insurance Companies
Home Offices: Bloomington, Illinois

SIFC

**BUYING?
SELLING?
CHECK OUT THE...**

CLASSIFIED ADS

**DEADLINE FOR CLASSIFIED
ADS IS TUESDAYS AND
FRIDAYS 11:00A.M**

CLASSIFIED RATES
1st Insertion,
Per Word--\$.15
Minimum Charge--\$2.00
2nd Insertion,
Per Word--\$.13
3rd Insertion,
Per Word--\$.10
Minimum Charge--\$1.80
½ Cheaper to run
Classifieds 3 times
or more
CARD OF THANKS
25 Words--\$3.00
Over 25 Words
Charged at regular
Classified Rates
Classified Display--
\$.55 per column inch
Double Rate for
Blind Ads
**DEADLINE FOR
INSERTION**
11 a.m. Tues. for Thurs.
11 a.m. Fri. for Sun.
**WE RESERVE THE
RIGHT TO CLASSIFY
REVISE OR REJECT
ANY AD.
NOT RESPONSIBLE
FOR ANY ERROR
AFTER AD HAS RUN
ONCE.**

PERSONALS

**STANLEY HOME
PRODUCTS**
Janice Snell
965-2665
1-43t-tfc

**WE BUY USED
FURNITURE AND
APPLIANCES**
CALL 272-3030
HARVEY BASS
APPLIANCE
1-18s-tfc

Custom farming, 8 row
equipment. Reasonable
rates. Call 272-5317 before
8 a.m. or after 7 p.m.
1-16s-tfc

Adult Drawing begin-
ning Monday, January
11. 9:30-12:30. Six
weeks.

Childrens Drawing begin-
ning Monday, Janu-
ary 11, 4:15-6:15 for
eight weeks.

Oil Landscape begin-
ning Tuesday, January
12, 9:30-12:30 for six
weeks.

Beginning Wednesday
January 13. Watercolor
classes. 9:30-12:30

Children's Art Basics.
Beginning Wednesday,
January 13, 4:15-6:15

Beginning Saturday, Janu-
ary 9 Teenager Oil Paint-
ing. 9:30-12:30. 6 weeks.

Rheta White Studio
800 W. American Blvd.
Call 272-4696 or
272-3889 after 7 p.m.
3tc

**NOW REGISTERING
FOR JANUARY
TWIRLING CLASSES
ACCEPTING
BEGINNERS
AND
INTERMEDIATE
STUDENTS**
New Class of Beginners
starting January 6, 1982.
Classes will be held at
Hawkins and Purdy Dance
Studio. For more informa-
tion contact Twirling instr-
uctors:
Sue Bessire-965-2757
or Debbie Cloud 272-3584
1-52s-2tc

APARTMENTS

SARATOGA GARDENS
1300 N. Walnut, Friona
Phone 247-3666

1, 2, or 3 bedroom apart-
ments modern, wall to wall
carpet, heating/cooling,
kitchen equipped, laundry
facilities, parking. Low
rent for needy families.
Call collect.
5-46t-tfc

FOR RENT: in Muleshoe
large 3 room furnished
apartment. New carpet and
paneling. Bills and T.V.
cable paid. \$250.00 a month
\$100.00 deposit. Call
Mrs. Lloyd Routon at Far-
well 825-3555
5-50t-tfc

House for rent. 1½ miles
west of town. Prefer couple
and no pets. 272-4137
4-51s-tfc

HELP WANTED

Now accepting applications
for experienced truck driv-
ers. One Year experience in
the last 3 years neces-
sary. Must be at least 21 years
of age. Please apply in
person. We are an equal
opportunity employer.
Steere Tanks, Inc. Dimmitt
3-50s-8tc

TEXAS REFINERY CORP.
offers PLENTY OF MON-
EY plus cash bonuses, fringe
benefits to mature
individual in Muleshoe
area. Regardless of experi-
ence, write A.T. Sears,
Pres., Texas Refinery
Corp., Box 711, Fort Worth,
Texas 76101.
3-52t-2tc

RN needed in Muleshoe
area to work with pro-
gressive Home Health a-
gency. Competitive salary.
Mileage expenses and
fringe benefits. 894-9657
call 8-5 Mon.-Fri. [Level-
land]
3-47s-tfc

Help Wanted: Part time
evening receptionist. Call
4591 or come by Pat Walk-
ers.
3-52s-2tc

REAL ESTATE

Irrigated, new under-
ground pipe. 2- 158 acre
tracts near Muleshoe.
\$1150 / acre Norman Real-
tors 806-795-9514
8-42s-tfc

Choice Building site, Rich-
land Hills. Will finance.
272-4096
11-49s-stfc

3 bedroom, 2 bath, large
kitchen, fenced backyard,
storage building. Appraise
for FHA loan.
8-52t-tfc

Town & Country Equites
Nice 3 bdrm, 2½ bath,
20 acres, barn and corral
½ mile from city limits
965-2642 or 272-3496
8-46t-tfc

FOR SALE: 3x1¼ brick,
1002 W. 7th. Call 272-4737
8-51t-tfc

Krebs Real Estate
201 W. Ave. C
Appraisals

Serving Muleshoe Area 35
years. We Appreciate your
business.
8-52t-tfc

VA appraised-No down pay-
ment to qualified Veteran.
Lovely 3 bedroom, 1¼ bath-
s, brick home in Crest
Park Addition, Littlefield
Texas. Call Ida L. Howell
Real Estate at 894-8566.
8-40t-tfc

160 acre farm for sale. 4
miles north on Hwy. 1760.
Call 272-4280
8-49s-tsc

FOR SALE: 3 bedroom,
1¼ bath, brick, 1 car
garage, fenced yard, stor-
age house in Richland
Hills. 272-5132 for appoint-
ment.
8-49t-tfc

FOR SALE: Nice 2 bed-
room, 2 bath brick home.
To settle estate. 3 miles
north of Earth. 257-3776
or 257-3896.
8-49t-tfc

HOUSE FOR SALE: 3 BR,
1¼, LR, kitchen, dining
combination, den, ample
storage, corner lot, near 3
schools, 1928 sq. ft. living
area. 621 W. 6th Phone
272-4732 days or 272-4827
evenings.
8-47s-12tc

FOR SALE: 3 bedroom, 2
bath, brick, living room,
den with fireplace, office,
Richland Hill. 272-4701.
8-21t-tfc

Smallwood Real Estate
232 Main
272-4838

Rock house, 3 bedrooms, 2
baths, sunroom, 2 car gar-
age.

3 bedroom, 2 bath brick
house, fenced back yard.
Richland Hills
8-47t

See or call Joe Small-
wood, Broker
8-44t-tfc

**For all your real estate
needs call:**
GLAZE & GOFORTH
112 Ave. C
272-4208
8-11t-tfc

FOR SALE OR LEASE: 1
building, with 5 offices and
shop, (all or part may be
leased) Call Western
Sprinklers Inc., West Hwy.
84 272-4544
13-49s-stfc

JIMMIE CRAWFORD
REAL ESTATE & INSURANCE
P.O. BOX 88 W. 7th AVENUE C
MULESHOE, TEXAS 79061

Small 3 bedroom, 1¼
baths, fireplace, 2 car
garage, & storage house.
Richland Hills Addi-
tion. Very nice.

3 bedroom, 1¼ baths,
enclosed garage & stor-
age house. Richland
Hills Addition.

Rancho No Tango, 2
bedrooms, 1¼ baths, of-
fice, large barn and all
located on 2.9 acres. A
horseman's dream.

310 acres with 5 wells
and 2 pivot sprinklers 65
acres with 1 well and 1
tailwater pump, Large 3
bedroom, 1¼ baths, brick
home with 2 car
garage, barn, vegetable
stand, trailer house,
grain storage, refrigera-
ted box car all located on
2.9 acres. Good vegeta-
ble farm set-up.

59x140 ft. corner lot at
13th and D.
8-49s-stfc

REID REAL ESTATE
we want your business
"Remember
REID REAL ESTATE
1614 W. American Blvd.
272-3142

4 BR 2¼ brick rock fire
place, paneled basement
and sun room. Double
car garage, fenced back
yard. Nice location.

Equity buys 3 BR, 2
bath, fireplace, heavy
aluminum storm win-
dows, 1 car garage. Nice
location.

3 BR, 1¼ Bath, over
1,500 sq. ft. Storage
shed, fenced back yard.

3 BR, 2 bath, fireplace,
sunroom, double car ga-
rage, fenced back yard.

2 houses together with
breezeway, excellent re-
ntal property.

Farm- 621 acre, well
improved, good water,
assumable loans.
8-51s-tfc

Thursie Reid-272-3142

Henry Realty

2 bedroom completely
remodeled, carpet, good
location.

Country living 3 bedroom,
2 bath, double garage,
brick home on Hwy 2 miles
from town. Immediate pos-
session.
8-46t-8-46t-tfc

Small acreage 3 miles
east of Muleshoe on
highway.

111 W. Avenue B,
Muleshoe
272-4581
8-44s-tfc

Bingham & Nieman Realty

116 E. Ave. C
272-5285/965-2488

Just listed- 3-1¼-1 brick
Cent. A&H, fenced
yard, nice and neat.

Country living on 1 plus
ac. with this 3-1¼-2
brick, approx. 1850 sq.
ft. living area, built-ins,
Cent. A&H, fireplace,
loads of storage, & ma-
ny other extras.

3-1 plus carport, totally
remodeled, small down
payment.

Just listed- 3-1¼ stucco
on corner lot, built-ins,
fenced yard, and priced
to sell.

Near Tolk Station- Large
3-2-2 home on 60 acres.

Equity buy- 3-1¼ with
large paneled living ar-
ea, built-ins, & corner
lot.

Farms
Parmer Co. 320 ac., 2-
8" wells, U.G. tile &
return system, \$800 per
acre

Bailey Co. 395 ac., 4
wells, 1 elec. center pi-
vot.

Parmer Co. 320 ac., 2-
8" elec. wells, 2 elec.
Center pivots, complete-
ly fenced, & lots of
depreciable assets.

Sudan: 3 Bay Texaco
Service Stations, priced
to sell.
8-50s-tfc

"We Appreciate
your Business!"
George & Dianne Nieman

BY OWNER-Attractive liv-
ing (w/fireplace), dining,
kitchen combination, 3
bedroom, 2 bath, dbl. gar-
age. Equity buy. Assume
loan. Shown by appoint-
ment only after 6 p.m. and
all day Sat. & Sun.
272-4428.
8-35s-stfc

**USED
CARS-TRUCKS**

FOR SALE: 402 Chevrolet
engine. Complete overhaul
\$650.00 exchange.
272-5173
11-50t-stc

FOR SALE: 1978 Mercury
Cougar IR7. Yellow with
brown Landau top and
brown interior. Loaded.
38,000 miles \$5,250.00
272-4348
9-51t-tfc

FOR SALE: 1964 Chevy
Chevelle. New 283 V-8
engine. Engine has about
500 miles. Needs body
work. Call 272-3304 or 272-
3267
9-49t-tfc

1972 Chevy pickup. Call
272-3538 after 7 p.m.
9-49s-tfc

FARM EQUIPMENT

FOR SALE: 1977 Hough
E-60 payload. New
motor. [806] 965-2332
10-51s-4tc

HOUSEHOLD GOODS

**"BURROWS
UPHOLSTERY AND
FURNITURE REPAIR**
209 W. 2nd
phone 272-4255
12-44s-1tc

MISCELLANEOUS

Would like to purchase
loose stacks of corn, maize
or millet stubble. Contact
C.R. Cope Enterprises Inc.
Seminole, Texas [915] 758-
2131.
15-50s-3tsc

Want a propane system?
check with
**SMITH LP GAS
MULESHOE**
15-30s-tfc

Bud's Handyman Repair.
Paint, roofing, plumbing,
air conditioning, cement
work. 272-4111
15-50s-8tc

GORDON PLUMBING
Licensed and bonded.
New, repair, commercial
work. Free estimates. 20%
discount for senior citizens.
24 hour service. 272-4111
221 East 4th
15-50s-8tc

158 acres 5 miles north-
west of Muleshoe. 2 wells,
\$800.00 per acre. 272-4764
15-49s-10tp

Commercial building
30'x60' for rent
272-4878 after 6 p.m.
13-44s-tfc

WANTED TO BUY-used
aluminum pipe of all sizes.
Also side roll sprinklers of
all sizes. No quantities too
large. Top prices paid.
Stalene Irrigation
272-3819 or 272-3450
15-33t-tfc

BRUCE ELECTRIC
Residential, commercial,
wiring, repairs, supplies,
and fixtures.
24 hour service
272-5114
15-43s-tfc

**For Work
"Fresh as a Daisy"
HAVE BRUSH
WILL PAINT**
Call: C&D Paint & Repair
272-3574
15-52s-2tc

HONEY FOR SALE
Nick Landers
334 W. Ave. J
272-3096
15-32t-tfc

**FRANK'S
REFRIGERATION
APPLIANCE & SERVICE
PARTS & REPAIR**
315 W. 3rd Ph. 272-3822
15-7t-tfc

WANTED TO RENT

Want to rent ½ section of
good farmland in Bailey
County Call 965-2665
14-50t-tfc

WANTED TO RENT: Far-
mland for '82 irrigated or
dry land. 272-4034 or
946-3415.
14-38t-tfc

FOR SALE OR TRADE

FOR SALE: Good hay gra-
zer. \$3.00 a bale or \$90 a
ton delivering Call Cecil
Ward 272-4764
11-51t-4tp

FOR SALE: Motor home.
Delta 23' 400 Chev. loaded
272-4869
11-50t-8tp

SEEKS PAY HIKES
The Teamsters union
handed new wage demands
to the trucking industry after
assuring President Reagan it
will be "as reasonable as
conditions will permit" in
forging a contract that could
sway his quest to hold infla-
tion beneath 10 percent.

OFF LIMITS
Interior Secretary James
Watt told top department of-
ficials that he would prefer
that they put themselves off
limits to paid leaders of na-
tional environmental groups,
a Watt aide said.

DELAYS TRIAL
Senate leaders an-
nounced recently that they
would delay until January
the expulsion trial of Sen.
Harrison Williams, (D-NJ),
who was convicted in the
FBI's undercover Abscam
investigation.

ON DRAFT
Nearly one-quarter of the
18-year-old men required to
register by Sept. 1 for a
possible military draft failed
to sign up. Selective Service
Director Thomas K. Turnage
said.

OBSCENITY RULING
The Supreme Court ruled
recently that juries in
obscenity cases may sup-
press books, magazines or
movies without being certain
"beyond a reasonable
doubt" that they are
obscene.

ON AGING
President Reagan, deny-
ing that he is "an enemy of
my own generation,"
promised the White House
Conference on Aging re-
cently not to betray the
millions who rely on Social
Security.

BOOSTING AIR FORCE
A senior U.S. official said
recently that Nicaragua is
preparing to bolster its air
force with Soviet-made MiG
jets and is "on the verge of
becoming a superpower in
Central American terms."

NEW RULES
Under pressure from
government agencies, a fed-
eral board drastically scaled
down proposed rules requir-
ing federally funded build-
ings to be accessible to
handicapped people.

Pheasants Expertly Mounted



**THE
PHEASANT
SPECIALISTS**
Reasonable Prices

4tsc 794-4224 795-9442

COLLEGE STATION —
Consumers all over the world
can expect to see more food
products and food ingredients
from cottonseed, soybeans and
sunflowers, say industry ex-
perts at a recent conference at
Texas A&M University.
Non-conventional plants also
will provide more fuel, rubber,
plastics, lubricants and animal
feed, the experts predict, as
researchers find replacements
for products now imported into
the United States such as castor
oil and tung oil.

RECIPE
By Sarah Anne Sheridan

Your holiday meal will
not be complete without a
colorful and tasty salad.
Cranberries and fruit salads
always go well with turkey
and ham. Cranberry Salad is
used often during cold winter
months at our home.

Cranberry Salad
1 can (20 oz.) crushed
pineapple
1 lb. fresh cranberries
1½ c sugar
2 envelopes unflavored
gelatin
1 c chopped pecans
Lettuce

Drain juice from pine-
apple and add enough water
to make 1 cup liquid. Com-
bine juice, cranberries and
sugar in saucepan; cover and
cook until berries pop (about
10 minutes). Add gelatin to
hot cranberries and stir until
dissolved. Cool, add drained
pineapple and nuts. Re-
frigerate. Serve on lettuce
leaf. This salad can be made
a day ahead of serving.

Rent -To-Own

**Color TV
Stereos Microwave Ovens Dryers
Refrigerators Freezers Washers
Dishwashers**

No Service Expense No Interest To Pay

Wilson

Appliance
MULESHOE 272-5531
117 Main

Card Of Thanks

We wish to thank the doctors, the nurses, the
ambulance drivers, the police Dept., Father Pat
Maher & the ladies who prepared the lovely dinner at the
Immaculate Conception Hall for all of us & all the
people who sent flowers & food & for all their kindness.
And to all who were with us through our great sorrow.
Your kindness will always be remembered by our family.

The Zimmerman Family

REID REAL ESTATE

**Do You Want To
Buy A New Home?**

If you qualify we now have
100% financing with closing
cost not included.

Call Today!
Thursie Ried
272-3142

stfc

STATE FARM

Auto
Life Fire
INSURANCE

FOR INSURANCE CALL

F.L. NEWTON, Agent
128 East 10th - Box 749
Littlefield, Texas 79339
Phone: Bus. 806 385-3055

Like a good neighbor,
State Farm is there.

State Farm Insurance Companies
Home Offices: Bloomington, Illinois
SIFC

Happy New Year!

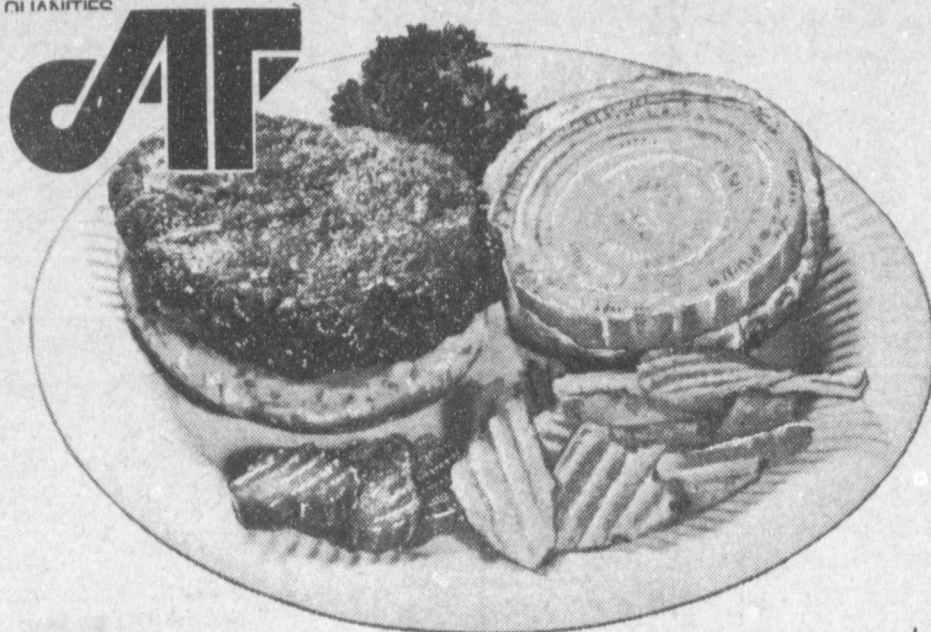


PRICES GOOD DECEMBER 28 THRU JANUARY 2, 1982
WE RESERVE THE RIGHT TO LIMIT QUANTITIES

Maryland Club
100% Pure Coffee

ALL GRINDS
MARYLAND CLUB
COFFEE
\$1.89

1 LB. CAN



BAMA STRAWBERRY
PRESERVES
59¢

16 OZ. JAR

BAMA RED
PLUM JELLY
89¢

16 OZ. JAR

GUARANTEED 73% LEAN
LEAN FRESH
GROUND BEEF
\$1.19

Gladiola

ALL PURPOSE GLADIOLA
FLOUR
89¢

25 LB. BAG **\$4.39** 5 LB. BAG

LB.
SMOKIES OSCAR MAYER LITTLE BULK LB. **\$2.49**
HAMS SHURFRESH QUALITY BONELESS FULLY COOKED HALF/WHOLE LB. **\$2.39**

MEAT SPECIALS			
BACON	WRIGHT HICKORY SMOKED SLICED SLAB	LB.	\$1.19
STEAKS	SUPER SELECT LEAN TRIM FRESH PORK	LB.	\$1.49
BOLOGNA	OSCAR MAYER SLICED MEAT/BEEF/THICK SLI.	8 OZ. PKG.	99¢
MEATS	OSCAR MAYER SLI. LUNCH SALAMI/LIVER/CHEESE/OLIVE/P&P	8 OZ. PKG.	\$1.19
MUSHROOMS	GREEN GIANT WHO/SLI IN CHEESE SAUCE	2 1/2 OZ. CAN	59¢
PEAS	LESJOUR EARLY GARDEN JUNE	17 OZ. CAN	59¢
SALAD	GREEN GIANT 3 BEAN	17 OZ. CAN	59¢
BLACKEYES	TRAPPEY WITH BEANS OR JALAPENO	15 1/2 OZ. CAN	39¢
TAMALES	GEBHARDT JUMBO	28 OZ. CAN	89¢
CRACKERS	HI HO SERVE PAK	16 OZ. BOX	89¢
SPAGHETTI	AMERICAN BEAUTY LONG	10 OZ. PKG.	49¢
CORNBREAD	GLADIOLA MIX FOR WHIT./YEL.	5 6 OZ. PKGS.	\$1
ALL TONE	\$1.00 OFF LABEL HOME LAUNDRY BATH SOAP	BOX BAR	\$9.59 59¢

DAIRY AND FROZEN FOODS			
EGG NOG	BORDEN CREAMY	QT. CTN.	99¢
DIPS	BORDEN'S SOUR CREAM OR	2 8 OZ. CTNS.	89¢
ICE CREAM	BORDEN ASSORTED	5 QT. BUCKET	\$3.99
PARKAY	KRAFT SOFT CUP MARGARINE	2-8 OZ. TUBS	79¢
WAFFLES	HOT AND BUTTERY	13 OZ. PKG.	69¢

GREEN GIANT IN BUTTER SAUCE
MIXED VEGETABLES 10 OZ. PKG. **89¢**

GREEN GIANT
NIBLETS CORN 10 OZ. PKG. **89¢**

WAREHOUSE SALE

ASSORTED JENO'S
PIZZA
89¢

13 1/2 OZ. PKG.

WAREHOUSE SALE

FISHER
MIXED NUTS
\$2.19

12 OZ. CAN

FOR THE NEW YEAR!
DRY SALT JOWLS LB. **59¢**

25% OFF LABEL
DISH ALL
\$1.89

50 OZ. BOX

HEALTH AND BEAUTY AIDS

FOR STOMACH PROTECTION
ASCRIPITIN TABLETS 100 CT. BTL. **\$1.89**

FOR STOMACH PROTECTION
MAALOX PLUS 12 OZ. BTL. **\$1.99**

CLOSE-UP SIGNAL FAMILY SIZE 40% OFF LABEL MOUTHWASH
8.4 OZ. TUBE 24 OZ. BTL. **\$1.29**
\$1.99

RANCH STYLE
PLAIN CHILI
99¢

19 OZ. CAN

PRODUCE SPECIALS
COLORADO US NO. 1
RUSSET POTATOES
99¢

5 LB. BAG

HUNT'S TOMATO
SAUCE 4 8 OZ. CANS **\$1**

HUNT'S TOMATO
PASTE 2 6 OZ. CANS **69¢**

HUNT'S TOMATO
KETCHUP 24 OZ. BTL. **89¢**

HUNT'S TOMATO
JUICE 46 OZ. CAN **79¢**

FOR BAKING OR FRYING
WESSON OIL 38 OZ. BTL. **\$1.79**

BRAVO
TORTILLA CHIPS
89¢

REG. \$1.09

REFRESHING
2 LITER
DR. PEPPER
99¢

EACH

AVOCADOS CALIFORNIA GREEN SKIN 6 FOR **\$1**
LEMONS CALIFORNIA SUNKIST LB. **39¢**
CABBAGE TEXAS GREEN LB. **12¢**