

SPORTS**No. 1 Pampa runs from Herd in 2nd half Tuesday****LIFE****News about Hereford life****INSIDE****Roundup...2 Comics...6
Life...3 Classified...8
Sports...4 Crossword...8**

©1992, The Hereford Brand Inc.

The

BEST AVAILABLE COPY

Wednesday, Feb. 5, 1992

Hereford Brand

Hustlin' Hereford, home of Homer Phillips

91st Year, No. 151, Hereford, Deaf Smith County, Texas

10 Pages

25 Cents

Friday is deadline for vote registration**New cards needed to vote on March 10**

A last call for registration of prospective voters for the March 10 party primaries has been issued by Deaf Smith County Clerk David Ruland.

The last day to register in person is Friday. Mail applications must be postmarked no later than Feb. 10.

Residents must be registered at least 30 days prior to an election to be eligible to vote.

Ruland, who serves as voter registrar for Deaf Smith County, said persons who do not hold valid registration cards may not vote in

either party primary on March 10.

Registration cards for elections during 1992 and 1993 were mailed in December to 8,419 persons who were registered during the previous two-year period.

More than 900 were returned to the voter registrar because the addressee no longer lived at the residence. By law, the cards could not be forwarded by the U.S. Postal Service.

Residents who have moved since receiving the new voter registration cards also are required to report their new addresses, Ruland said.

US students slip in studies

WASHINGTON (AP) - When it comes to math and science skills, U.S. schoolchildren lag behind students in at least a dozen other countries, the Educational Testing Service said today.

Thirteen-year-olds from the United States scored lower in science than top-ranked Korea, Taiwan, Switzerland, the former Soviet Union, Hungary, France, Italy, Israel, Canada, Scotland, Slovenia and Spain, the survey showed.

Ireland and Jordan were the only countries surveyed that had 13-year-olds scoring lower in science than U.S. students.

The math results were similar for the 13-year-olds. The survey did not include all nations.

American 9-year-olds fared better in science, averaging the third highest percentage of correct answers behind Korea and Taiwan. But the fourth graders ranked near the bottom in mathematics, averaging a significantly lower percentage of

correct answers than nearly all other students, including those from Korea, Hungary, Taiwan, the former Soviet Union, Spain, Ireland and Canada.

"This study confirms beyond any doubt that our students are not even near the best in either science or mathematics skills," said Luther S. Williams, director of education and human resources for the National Science Foundation.

The survey, the Second International Assessment of Educational Progress, involved a random sample of 3,300 students from about 110 schools from each population at each age level. Half of the students were assessed in math and half in science.

The report did not compare test results with the first survey because some countries did not test all students in the selected age groups.

All categories of math and science were tested in the new

survey.

For example, a 13-year-old may have answered a life science question that asked similar characteristics of whales, seals, horses and bats, or a physical science question that tested a student's knowledge of matter, energy or time.

Math questions focused on a student's ability to interpret graphs and charts, or his or her ability to understand whole-number operations or fractional relationships.

In science, Korean 13-year-olds ranked first with an average 77.5 percent correct answers, followed by 75.6 for Taiwan, 73.7 for Switzerland, 73.4 for Hungary and 71.3 for the former Soviet Union. The United States posted an average 67 percent correct, followed by 63.3 for Ireland and 56.6 for Jordan.

Jordan's 13-year-old students ranked last in mathematics, with an average 40.4 percent correct answers. U.S. students averaged 55.3 percent correct. Korea was

first with 73.4, followed by Taiwan at 72.7, Switzerland at 72.1 and the former Soviet Union at 71.3.

For 9-year-olds, Korea averaged 74.8 percent correct in math, followed by 68.2 for Hungary, 68.1 for Taiwan and 67.9 for the former Soviet Union. The United States had 58.4, Ireland had 55.8.

In science, Korea again ranked first with an average 67.9 percent correct, followed by Taiwan's 67.5 and the United States' 67.0. Canada ranked fourth, followed by Hungary, Spain, the former Soviet Union, Israel, Slovenia and Ireland.

Williams said the study found a close correlation between school features and student achievement. For example, top performing countries spend more on performing demanding mathematics and science courses for 13-year-olds.

**Castillo campaigns**

Tony Castillo, standing, a candidate for the Precinct 1 county commission seat, visits with supporters during an appearance Tuesday at La Tenampa Restaurant in Hereford. Campaigning will pick up in the area with the election on March 10.

Candidates seem recession-proof

WASHINGTON (AP) - The men who want to be president have clearly learned to manage their own money.

Their family incomes top \$100,000 a year, placing them among the nation's top 5 percent. At least three are millionaires and the others have assets and investment portfolios worth hundreds of thousands of dollars, according to disclosure statements filed with the Federal Election Commission.

George Bush and the five Democrats running to replace him, all fighting for votes among the nation's financially pinched, have built recession-proof lifestyles that surpass those of most Americans.

"The trust is politics has always been covered by a wealthier-than-average class," said Larry Sabato, a University of Virginia political science professor.

"Their answer has always been, 'It is because I am wealthy and freed from the day-to-day concerns that I have been able to devote my life to politics,'" he said.

Gary Koops, a spokesman for the Republican National Committee, said personal wealth doesn't necessarily distance a candidate from the voters.

"I think it's fair to say the American public wants to elect a president who has been successful, whether in running a business or government," Koops said.

Most of this year's candidates, with the exception of Bush and Brown, come from working or middle-class families "and they haven't forgotten that," said Ginny Terzano, a spokeswoman for the Democratic National Committee.

Bush leads the field with a net worth of about \$4 million. His assets include a vacation home in Kennebunkport, Maine, with a tax-assessed value of \$2.2 million.

Bush also listed a blind trust worth \$1.24 million, which includes holdings from his days as a Texas oilman. The trust earned \$245,911 in income in 1990. Bush also earned \$200,000 in presidential salary.

Arkansas Gov. Bill Clinton reported his income as between \$69,500 and \$84,900, including his governor's salary, money from a discretionary gubernatorial expense fund, speech fees and some investment earnings. He valued his assets at between \$82,000 and \$230,000.

ELECTION '92

Clinton, who has stressed that his governor's salary is the nation's lowest at \$35,000, also benefits from the income and assets of his wife, Hillary, a lawyer.

She reported assets worth between \$336,000 and \$967,000. Their 11-year-old daughter, Chelsea, reported assets valued at between \$18,000 and \$95,000, mostly telephone company stock. The family reported total income of \$203,000 on their 1989 tax form.

Iowa Sen. Tom Harkin kicked off his presidential bid by commiserating with jobless workers in unemployment lines.

He tells middle- and lower-income Americans he understands their pain, having grown up poor with a father who worked in a coal mine.

He now earns between \$141,000 and \$168,000, and his family assets are valued at between \$212,000 and \$771,000, including the Bahamas vacation home.

Paul Tsongas, the former Massachusetts senator, left Congress in 1984 to practice law after he was diagnosed with cancer. His estimated salary with a Boston law firm is \$350,000 a year.

He reported assets of between \$1.4 million and \$3 million, including the Cape Cod vacation home and another Massachusetts property that together are worth more than \$750,000. He also reported more than a half-million dollars of stock in a startup waste disposal company.

Sen. Bob Kerrey of Nebraska, who founded successful restaurant and health club chains, reported his holdings were worth at least between \$1.6 million and \$2.46 million.

His largest assets include two homes valued at between \$100,000 and \$250,000 each and stock in the restaurant chain, Grandmother's Inc., valued at more than \$1 million.

He reported income in 1990 of about \$300,000, including his Senate salary of \$98,400, \$173,000 in compensation as chairman of a financial holdings company he formed, a Navy pensions and various investment income.

Hearing underway on stay for Garrett

HUNTSVILLE, Texas (AP) - Texas death row inmate Johnny Frank Garrett can thank Pope John Paul II for making a plea that saved his life last month.

The Pope's appeal prompted Gov. Ann Richards to show mercy for Garrett, marking the first time in some two decades a Texas governor stepped in to halt an execution.

Today, for the first time in more than four years, state officials will hold a clemency hearing for Garrett, convicted of raping and strangling a 76-year-old nun when he was 17.

Garrett, now 28, was just minutes from being placed on the death chamber gurney when Richards intervened. He now faces lethal injection Feb. 11.

The 18-member Texas Board of Pardons and Paroles will hear two hours of testimony from Garrett's backers, who contend he is mentally disturbed, was abused as a child and should have his sentence commuted to life in prison without the possibility of parole.

"After considering Johnny Garrett's life, it should be clear that executing him serves no purpose worthy of a compassionate and humane society," said the Texas Resource Center, an organization that helps arrange legal representation for death row inmates.

Potter County authorities will have another two hours to show why Garrett should be executed for raping and strangling Sister Tadea Benz, a Franciscan nun, after breaking into the convent near his home in Amarillo on Halloween night in 1981.

District Attorney Danny Hill has labeled the clemency hearing ridiculous and frustrating and suggested that Selden Hale, a Richards appointee as chairman of the

Texas Board of Criminal Justice and Garrett's trial attorney, was instrumental in halting the execution last month.

Both Hale and Richards have denied any scheme.

Unlike a trial, rules of evidence will not be in effect and witnesses will not be cross-examined.

Brown said the board would release a written statement after deliberating behind closed doors. The board's decision will go to the governor, who can accept or reject it. The recommendation cannot be appealed.

The clemency hearing is the first involving a death row inmate since 1987, when the board considered a request from convicted killer John R. Thompson, Department of Criminal Justice spokesman Charles Brown said Tuesday. Thompson subsequently was executed for a 1977 San Antonio murder.

Garrett has refused to discuss his case with reporters in recent months, but inmates who see him regularly said he was surprised and "almost in shock" after Richards halted the execution.

"He's been very emotional, on a roller coaster," one inmate said. At the request of the board, however, Garrett will not be present at the hearing, Eden Harrington of the Texas Resource Center said Tuesday.

The Garrett case has energized death penalty opponents in Texas, with far leads the nation with 43 executions since the U.S. Supreme Court allowed capital punishment to resume in 1976. Texas resumed executions in 1982.

Besides the Resource Center, Amnesty International and Catholic leaders have been lobbying for Garrett's commutation to life.

Lottery consultant leaves post

AUSTIN (AP) - Texas lottery officials say they will continue contract negotiations with a ticket-printing company despite the resignation of the consultant who left under fire because of a possible conflict of interest with the company.

John Pittman resigned Tuesday after two lawmakers called for his dismissal because he failed to inform state officials soon enough that his father-in-law is an executive for the company negotiating for the contract to print instant, scratch off lottery tickets.

Pittman is the son-in-law of Jim Culver, a shareholder and vice president of Scientific Games Inc. of Atlanta, Ga.

Pittman, whose Lottery Support Group is based in Marietta, Ga., defended his consulting work as "fair and above board." But he said the allegations were hurting both him and the startup of the Texas lottery.

The resignation followed a one-hour meeting between Lottery Director Nora Linares, three state lawmakers and Pittman.

**Minor injuries in accident**

Two persons were taken to Deaf Smith General Hospital for treatment of minor injuries in a two-car accident Tuesday afternoon at West Park Ave. and Knight in Hereford. A 1980 Oldsmobile Regency, right, driven by David Neil Moore, 41, of Hereford, collided with the rear of a 1973 Chevrolet Malibu driven by Arkenntina Orona, 18, of Hereford. Moore was cited for following too closely.

FEB

05

29

Page Two

Local Roundup

Deputies investigate burglary

Deaf Smith County sheriff's deputies are investigating the theft of \$1,200 worth of liquor and other items from a store west of Hereford and a forgery. Deputies arrested a man, 30, for possession of marijuana under two ounces. Hereford police received no reports Tuesday, but issued 12 citations and investigated two accidents.

Fair weather through weekend

Tonight, fair with a low in the mid 20s. Southwest wind 5 to 15 mph. Thursday, sunny and mild. High in the mid 50s. Northwest wind 10 to 20 mph. The extended forecast for Friday through Sunday: clear to partly cloudy. Highs, upper 40s to lower 50s. Lows, mid 20s. This morning's low at KPAN was 26 after a high Tuesday of 41.

News Digest

World/National

WASHINGTON - When it comes to math and science skills, U.S. schoolchildren lag behind students in at least a dozen other countries, the Educational Testing Service said today.

LOS ANGELES - Pictures taken from a space shuttle helped explorers find buried under the desert sand the ancient lost city of Ubar, an Arabian center of the frankincense trade around the time of Jesus.

WASHINGTON - The men who want to be president clearly have learned to manage their own money. Their family incomes top \$100,000 a year, placing them among the nation's top 5 percent, according to federal financial disclosure statements.

MILWAUKEE - Jeffrey Dahmer says he had already drilled a hole in a boy's head and poured in acid when police encountered Dahmer and his naked, dazed victim on a sidewalk, according to testimony.

CARACAS, Venezuela - A weary President Carlos Andres Perez calls on his countrymen to return to work after loyal troops crush a military uprising involving elite units from the oil-rich country's most powerful garrisons.

BUFFALO, N.Y. - The jury in a \$2.8 billion lawsuit over the 1971 uprising at Attica held a deputy warden liable for violence in retaking the prison but deadlocked on three other defendants' responsibility. Another trial will be held to determine how much the state must pay in damages.

Texas

AUSTIN - The state is facing a taxpayer challenge in federal court after the Texas Supreme Court ruled that the new school property tax is unconstitutional but must be paid.

DALLAS - A lesbian who wants to be a Dallas police officer is looking forward to taking a civil service exam next week.

DALLAS - The American Bar Association, after two years of study and debate, has rejected a call to make public most lawyer-discipline records.

AUSTIN - Texas lottery officials say they will continue contract negotiations with a ticket-printing company despite the resignation of the consultant who left under fire because of a possible conflict of interest with the company.

WASHINGTON - Five conservative Texas Republicans were among the handful of congressmen who broke ranks with President Bush and the party leadership in voting against the 13-week extension of unemployment benefits.

TOMBALL - A television commercial that opens with Japanese dive bombers attacking Pearl Harbor and ends with an emotional appeal to buy American-made cars and trucks is being aired by a group of four auto dealers in this Houston suburb.

HUNTSVILLE - Texas death row inmate Johnny Frank Garrett can thank Pope John Paul II for making a plea that saved his life last month. The Pope's appeal prompted Gov. Ann Richards to show mercy for Garrett, marking the first time in some two decades a Texas governor stepped in to halt an execution.

LIBERTY - As flood wary residents along the Trinity River braced for the possibility of more flooding this week, Liberty County Judge Dempsey Henley said he will ask the federal government to buy out the 3,000 homes along the Lower Trinity.

MIDLAND - Texas Attorney General Dan Morales is trying to secure drug assets, possibly totaling more than \$750,000, that were seized by Midland County's sheriff outside of the county lines.

GALVESTON - An auditing firm and an investment banking company say they will appeal a \$568 million judgment awarded to a management company by a state district court jury.

SAN ANTONIO - Soggy South Central Texas is recovering from record rainfall that could hinder agriculture while bolstering seafood production.

CONROE - A Baptist minister stood before sprays of flowers and a wreath adorned with a black cowboy hat as he urged mourners to stand by relatives of a slain Willis couple whose 12-year-old son is a suspect in their deaths.

WASHINGTON - Border lawmakers traveled to Mexico to discuss the proposed U.S.-Mexico free trade pact, but the intended audience seems to have been President Bush instead of the Mexican officials they met with.

AUSTIN - State Comptroller John Sharp has received about 150 comic strip coupons from people who say they want to become Texans.

FORT WORTH - A lawsuit contending a Plano teen-ager was offered drugs for sex at Set Free Christian Fellowship ranch is not the first time the North Texas ministry has come under fire.

Return to normalcy asked in Venezuela

CARACAS, Venezuela (AP) - A weary President Carlos Andres Perez called on Venezuelans to return to work today after loyalist forces thwarted a coup attempt involving elite units from the country's most powerful garrisons.

The coup attempt, launched early Tuesday, was Venezuela's most serious in 34 years of democratic rule. As many as 78 people died, most of them civilians caught in the cross fire, reports said.

"It's a tragic, shameful day in which Venezuela suffered a dramatic shakeup. Let's resume normalcy immediately," Perez said in a nationwide television address Tuesday evening.

The president, tipped off by military intelligence, narrowly escaped the attack on his palace an hour after his return from a trip to Switzerland, his defense minister said. Perez said the coup plotters had aimed to kill him.

By late Tuesday, Perez said, loyal units had eliminated all pockets of

resistance in the country's major cities of Caracas, Maracaibo, Valencia and Maracay.

The capital, Caracas, was peaceful. Armored cars protected the Miraflores presidential palace in the city's center and his suburban residence, La Casona, 10 miles east of downtown.

The coup attempt shocked a nation of 19 million people that had been among Latin America's most stable democracies but has recently been wracked by violent protests stemming from a growing gulf between rich and poor.

The officers who mutinied Tuesday had demanded higher pay for soldiers, who have seen their wages become severely eroded by inflation, and criticized government corruption and mismanagement of the economy.

One detained coup leader, Lt. Col. Francisco Arias, said the rebels sought to "rescue the Venezuelan people from politicians, from demagoguery and bureaucracy."

Federal suit filed over CED taxes

AUSTIN (AP) - The state is facing a taxpayer challenge in federal court after the Texas Supreme Court ruled that the new school property tax is unconstitutional but must be paid.

The lawsuit was filed Tuesday against the new county education districts (CEDs) and state Attorney General Dan Morales by lawyer James Keahey, representing Coleman H. Smith, a retired naval captain from Lakeview.

Keahey said he hopes the suit will be certified as a class action for Texas taxpayers.

"I want to try to get a refund for everybody. If that means that the Legislature has to go back and do some more work, that's why they all ran for office in the first place," Keahey said.

The Supreme Court ruled the new CED property tax unconstitutional last Thursday. But justices gave lawmakers until June 1, 1993, to adopt a new school funding plan. The

ruling followed a challenge by property-rich school districts and some individual taxpayers.

The court majority deferred the ruling's effect so that it will not interfere with the collection of the CED property taxes for 1991 and 1992. The 1991 taxes were due Friday, and the 1992 taxes will be due in January of next year.

The delay means lawmakers could wait until their next regular session in 1993 to work on school finance.

Gov. Ann Richards also may call lawmakers into special session before then, and governor's spokesman Chuck McDonald said Richards has not ruled out that option.

The current school finance system, approved by lawmakers last year, was designed to shift hundreds of millions of local property tax dollars from richer to poorer school districts within 188 CEDs, made up of one or several counties. It was passed in response to previous Supreme Court

orders to equalize school funding.

The law raises CED taxes next school year from an effective 72-cent rate per \$100 property valuation, based on the previous year's property values, to 82 cents.

Keahey said the state Supreme Court's latest action denies taxpayers due process, violating the 14th Amendment to the U.S. Constitution.

But state lawyers said they're inclined to think federal courts will not interfere with the Texas tax matter.

"I don't think that there's a high likelihood that marauding federal courts are going to come riding into Texas and rewrite our tax laws for us," said Kevin O'Hanlon, Texas Education Agency general counsel.

Keahey filed the suit in U.S. district court after State District Judge F. Scott McCown of Austin said at a Tuesday hearing he would refuse relief to businesses and individuals with tax-protest lawsuits in state

court. Keahey had filed a state suit on behalf of taxpayers.

Most of the 71 lawsuits filed in Travis County preceded the Supreme Court's ruling. Many businesses had said they were trying to protect themselves from double taxation in case the CED tax was replaced with another levy. Tax-challenge lawsuits also were filed in other Texas counties.

"As a practical matter, I think the Supreme Court meant what they said, and that nobody's going to get any refunds," McCown said.

He said that, assuming the state's high court does not reconsider its ruling, "I'll sign any order the plaintiff wants as long as the plaintiff loses." If McCown entered a judgment against the plaintiffs, they could appeal.

The CED taxes make up \$4.5 billion of the approximately \$14-billion-a-year school finance system, officials said.

Director of EMS named to board

L.V. Watts, director of the Hereford Emergency Medical Service, was recently elected to serve a two-year term on the advisory board of the Panhandle Emergency System.

Watts is the first Deaf Smith County representative to be elected to this position. Hereford EMS is a subsidiary of Deaf Smith General Hospital.

The Panhandle Emergency System covers a 20-county area and governs the regional system. Hereford is in Zone III, which includes Deaf Smith, Oldham, Castro, Swisher and Parmer counties. Ricky Hunter of Dimmitt is the other representative from this zone.

The importance of emergency medical service technicians to the delivery of quality health care cannot be understated, according to Gene Weatherall, Texas Department of Health chief, who praised Hereford at the recent regional meeting. Dr. Red Duke of Houston was keynote speaker at the meeting.

Weatherall said the Hereford EMS was the first service to submit a clean, error-free grant application to the state. That earned the local EMS a matching grant of \$4,300. The grant will be matched by Deaf Smith General Hospital and used to purchase a "Life Pak 10" heart monitor and defibrillator that will greatly enhance the response to cardiac emergency calls.

Community interest and support have contributed significantly to the success of the Hereford EMS, according to Watts. The agency recently collected \$4,606.80 in donations from businesses and individuals for the purchase of a pulse oximeter.

The combination of donations and grant money means that Hereford EMS has been able to upgrade its capabilities with more than \$13,400 worth of equipment at a total cost to the hospital of only \$4,200.

Hospital Notes

PATIENTS IN HOSPITAL
Diana Balderaz, Gaines Butman, Infant boy Chavez, Maria Chavez, Arlie D. Dean, Charles R. Gates, Felipe V. Gonzales, Bertie L. Greenwood, Infant boy Luna, Eluterio Mariscal, Dora Ann Martinez, Richard Pittman, Lisa Marie Rivera and Luis Alberto Sosa.

NEWBORN
Mr. and Mrs. Pete Gaitan Jr., are parents of a baby boy, Toribio Gaitan, 6 lbs. 12 1/2 oz., born in Jan. 30, 1992.

The Hereford Brand

The Hereford Brand (ISSN 042-460) is published daily except Mondays, Saturdays, July 4, Thanksgiving Day, Christmas Day and New Year's Day by The Hereford Brand, Inc., 313 N. Lee, Hereford, TX 79045. Second class postage paid at the post office in Hereford, Texas.

POSTMASTER: Send address changes to the Hereford Brand, P.O. Box 673, Hereford, TX 79045.

SUBSCRIPTION RATES: Home delivery by carrier in Hereford, \$4.50 monthly; by mail in Deaf Smith County or adjoining counties, \$45.76 a year; mail to other areas, \$47.75 a year.

The Brand is a member of the Associated Press, which is exclusively entitled to use for republication all news and dispatches in this newspaper and also local news published herein. All rights reserved for republication of special dispatches.

The Brand was established as a weekly in February, 1906, converted to a semi-weekly in 1946, to five times weekly on July 4, 1976.

O.G. Henson
John Henson
Houri Montgomery
Charles Brownlow
Publisher
Managing Editor
Adv. Mgr.
Circulation Mgr.



Crimestoppers honors Paloma Lane Apartments

Lloyd Ames, left, president of Deaf Smith County Crimestoppers, presents a Certificate of Appreciation to Tracy Flood on behalf of Paloma Lane Apartments in Hereford. The apartment owners and management recently made a contribution to Crimestoppers to hold the reward fund and other Crimestoppers activities.

Border Patrol plans measures to neutralize illegal alien tactics

SAN YSIDRO, Calif. (AP) - Illegal aliens from Mexico have adopted a terrifying - and effective - new tactic of rushing the border en masse and running headlong into traffic.

Border Patrol agents can't get their hands on the illegals because they aren't allowed to make arrests on the open highway for fear of causing accidents.

To counter the tactic, the Border Patrol announced it will station 25 to 30 armed agents near the crossing beginning Thursday, and two lanes of four-lane Interstate 5 will be closed just north of the border. The highway runs perpendicular to the border.

The idea is to slow traffic enough so that border agents can stop cars, chase the migrants and arrest them without anyone getting hurt.

"This situation really has the

potential for a catastrophe," William T. Veal, deputy chief of the Border Patrol's San Diego sector, said in announcing the plan Tuesday. He said that "miraculously" no one has been killed or hurt.

The mad dash of migrants into the United States took on organized dimensions about two weeks ago, when border agents first saw at least 100 people rush the border together and run straight into traffic, Veal said.

Overwhelmed Mexican and U.S. immigration officials could do nothing but stand by as motorists on the American side braked to avert the throng.

In the past, illegal aliens tried to slip into the country alone or in small groups, usually by jumping a border fence when no one was looking. For motorists, the border crossing

consists of a tollbooth-type checkpoint.

"It's a nightmare," said California Highway Patrol Lt. Joe Garrison. "We've never seen anything like this before, and until now, there was nothing we could do about it."

So many Mexican migrants have been killed trying to cross the busy freeways in Southern California that "migrant crossing" signs have been posted.

The new tactic has been used almost continuously for two weeks, and thousands may have made it through, officials said. Using videotape, U.S. officials counted 440 migrants who successfully swarmed across the border Thursday.

The migrants typically lie in wait until they get a hand signal from a coyote, or smuggler, to rush the border, Garrison said.

Obituaries

CHARLIE RIGGIN

Feb. 4, 1992

Charlie Riggan, 66, of Dalhart, former Hereford resident, died Tuesday.

Services will be conducted in First Baptist Church of Dalhart by the pastor, the Rev. Travis LaDuke, at 2 p.m. Friday. Burial will be in Memorial Park Cemetery, under direction of Schooler-Gordon Funeral Home.

Mr. Riggan was born in Anthony, Kan., and spent his early life in Pampa. He married Patricia Thornhill in Pampa on Oct. 8, 1942. They moved to Hereford in 1965 and to Dalhart in 1977.

He had been a member of Dalhart Lions and was an active member of First Baptist Church of Dalhart, serving as a Sunday school teacher and director. Mr. Riggan was a veteran of World War II, serving with the First Marine Division in the Pacific. He received a Purple Heart.

Survivors are his wife; four sons, Coy Riggan of Bridge City, Royce

Riggan of Hereford, Tom Riggan and Rick Riggan, both of Amarillo; a sister, Helen Brewer of Cherry Valley, Cal.; 15 grandchildren and two great-grandsons.

MARGARET HIX NEAL

Feb. 3, 1992

Margaret Hix Neal, 79, of Roswell, N.M., sister of a Hereford resident, Argen Draper, died Monday.

Services will be held at 11 a.m. MST in LaGrone Funeral Chapel in Roswell with burial in South Park Cemetery. Officiating will be the Rev. Dr. Levi Price of the First Baptist Church of Roswell.

Mrs. Neal, a Roswell resident since 1946, was born in Wellington and was a graduate of Texas Tech University. She married O.K. Neal in 1946 in Wellington and was bookkeeper for Neal's Builders Supply from 1960 until 1981.

A member of First Baptist Church, Mrs. Neal belonged to the Professional Business Women's Club and Beta Sigma Phi Sorority. She was a past president of the Lioness Club.

Survivors also include her husband; two sons, O.K. Neal Jr., of Lubbock and Marion Neal of Wheaton, Ill., and two grandchildren.

JACLYN DENISE POWELL

Feb. 3, 1992

Jaclyn Denise Powell, 11 months old, daughter of Donald and Esmeralda Powell of Amarillo and great-granddaughter of Petra Elizondo of Hereford, died Monday.

Graveside services were set for 2 p.m. Wednesday in Llano Cemetery of Amarillo with the Rev. Paul Richardson of Rockwell Place Fellowship Baptist Church officiating. Arrangements were by N.S. Griggs and Sons Funeral Directors.

Other survivors are a brother, Casey Ray Powell, and two sisters, Stacy Powell and Samantha Powell, all of the home; grandparents, Lawrence Powell of Amarillo, Rosa Hubanks of Odessa, and Antonio and Nancy Arellano of Amarillo, and great-grandparents, Santos and Anita Cruz of Roscoe.

Life!

Waters, Streun host reunion with Mexican stack supper

A reunion of friends, all of whom have been members of Temple Baptist Church at some time during the 1950s through the 1990s, was hosted recently by Don and Carolyn Waters and Murlene Streun in the Waters' home.

A Mexican stack supper was served to guests on tables decorated with red and white check cloths, drippy candle centerpieces and red bandana napkins.

Memories of church activities, babysitting for one another, and the sharing of family pictures highlighted the evening of fellowship.

Those attending the event were Albert and Jean Ricketts of Canyon; Wade and Kathleen Thompson of

Lubbock; Holland and Earlene Cook of Atoka, Okla.; James and Anne Welch, Johnnie, Becky, Cade and Drew Price, Nicks and Ruth Fariss, Elmer and Kay White, and Bill and Glenice Thompson, all of Amarillo.

Also, present were Bill and Thelma Lamm, Bill and Billie McDowell, Bill and Mary Lou Shore, Jim and Evelyn Bozeman, Evelyn Wells, Sue Inmon, Don and Carolyn Waters and Murlene Streun, all of Hereford.

Those unable to attend the reunion were Bill and Maxine Ware of Las Vegas, N.M., Mark and Coriene Grimsley of Soper, Okla., Frankie O'Rand of Amarillo, and Marjorie Cocanougher of Hereford.

Senior Citizens

THURSDAY-Beef brisket, steamed cabbage, baked beans, tossed salad, oreo cookie cheesecake.

FRIDAY-Catfish filet, garden rice, broccoli with cheese sauce, cucumber and tomato salad, fruit cobbler.

MONDAY-Polish sausage, kraut, baked sliced potatoes, fried okra, garden salad, apple cobbler.

TUESDAY-Roast beef with gravy, baked potato, carrots, sunshine salad, ice cream with topping.

WEDNESDAY-Oven fried chicken, creamed new potatoes and peas, buttered corn, fruit salad, German chocolate cake.

THURSDAY-Stretch and flexibility 10-10:45 a.m., oil painting 9-11 a.m. and 1 p.m., choir 1 p.m., water exercises.

FRIDAY-Line dance 9:45-11 a.m., water exercises, board meeting 12:30 p.m.

MONDAY-Line dance 9:45 a.m., devotional 12:45 p.m., water exercises, retired teachers 11 a.m. until 2 p.m.

TUESDAY-Stretch and flexibility 10-10:45 a.m., water exercises, Beltone 1-3 p.m.

WEDNESDAY-Stretch and flexibility 10-10:45 a.m., water exercises, ceramics.

Annual Summer Job Fair scheduled at WTSU Feb. 10

Enterprising Individuals with at least one year of college education will have an opportunity to end the frustrations of a summer job search with a visit to the Summer Job Fair.

The annual event, sponsored by West Texas State University Office of Career Planning and Placement, the WTSU Recreation Club, the WTSU Residence Hall Association and the Amarillo College Student Job Center, is scheduled from 10 a.m.-2 p.m., Monday Feb. 10 in the Jack B. Kelley Student Center on the WTSU campus.

Representatives from more than

50 companies, hospitals, summer camps and governmental agencies will be available to discuss summer employment and internship opportunities.

Admission is free, and the public is invited.

For more information about the Summer Job Fair, contact the WTSU Office of Career Planning and Placement at 656-2345 or the Amarillo College Student Job Center at 371-5314.

Washington is America's leading lumber state.

Ann Landers

DEAR ANN LANDERS: This letter is for anyone who has ever gotten behind the wheel of a car while "a little bit tipsy." I want them to know the agony they could cause and the lives they could ruin.

Two months ago, our daughter was killed by a drunk driver. She was 20 years old and engaged to be married.

First came the call that there had been a terrible accident near our home. The neighbors knew it was our daughter. Then the misery of waiting for the rescue people to get her out of the car. Next the long ride to the hospital only to be told when we got there that she was dead. Finally, sitting in that sterile room with her broken, lifeless body and trying to accept the fact that she was really gone. There was still that awful task of calling her fiancé halfway around the world to tell him that his soon-to-be bride had been killed by a drunk driver.

Trying to decide what your child will wear at her own funeral is a nightmare. Did you make the right choice? Was the music what she would have wanted? There are so many things to be done: See a lawyer about her life insurance. Close her checking account. Collect their last paychecks. Make sure all of the medical bills are paid. Select the headstone.

So how do you go on with your life? You don't care if there is ever another meal cooked, another load of laundry done, or if the house is ever cleaned again. You become the walking dead. You have no appetite and no interest in life, but you go on because there is another child who needs you.

My husband and I joined a support group, but I don't believe people who attend those meetings have any idea what I am going through. It is as if no one on earth has ever experienced what has happened to me. I know this is not true. Everyone there has lost a child to death, but this irrational feeling persists. My husband and I have stopped talking about it because he can't stand to see me cry. Everything that is said now gets on someone's

nerves. Friends have stopped calling and dropping by. We feel abandoned and hurt.

You wonder why life seems to go on for everyone else. Why are their lives so good and ours so terrible? You are angry. You can't stand to be around people yet you can't stand being alone. You can't bear to hear people laugh and talk, but you leave the television on all the time for the noise.

When will lawmakers make drunk drivers pay for their crime? Why do they get away with "legal murder?" Lawmakers need to enact stricter laws and judges must get a lot tougher. Let's get lawmakers to attach a condition to DWI fines that will make drunk drivers spend a day in a hospital emergency room or, better yet, in a funeral home to see the misery they cause.

As long as drunk drivers are not held responsible, they will continue to kill innocent people and get away with it. What they spend on beer and liquor in only a few weeks could pay for their insurance. It should be mandatory in every state.

The night the wreck happened, our child lost her life but that drunk really killed a family of four.--Sad Mother From A Small Town in Arkansas

DEAR SAD MOTHER: I cannot add a single thing to what you have written. I hope and pray, dear that you will soon be able to put this tragedy behind you and live again, if not for yourself, then for the rest of your family.

Planning a wedding? What's right? What's wrong? "The Ann Landers Guide for Brides" will relieve your anxiety. Send a self-addressed, long, business-size envelope and a check or money order for \$3.65 (this includes postage and handling) to: Brides, c/o Ann Landers, P.O. Box 11562, Chicago, Ill. 60611-0562.

The most common first name of U.S. presidents is James.

ANTHONY'S

SPRING FASHION PREVIEW

TODAY THROUGH SUNDAY

Donnkenny® Pants, Skirt and Blazer

\$9.99

PANTS, REG. \$13.99

SKIRT, REG. \$18 **\$11.99**

BLAZER, REG. \$38 **\$26.99**

100% Visa® polyester for colors that stay bright. Mix and match for a career look. Women's sizes 8-18. **SAVE UP TO \$11**

PLUS SIZE PANTS Reg. \$15.99 **\$11.99**

Spun Polyester Tops

REG. \$20 **\$14.99**

The 3/4 sleeve tops are 100% spun polyester for comfort plus easy care. Assorted colors and patterns. S,M,L,XL. **SAVE \$5**

PLUS SIZE TOPS Reg. \$24 **\$16.99**

LOOK FOR THESE GREAT BUYS!

WOMEN'S & JUNIORS'	MEN'S	BOYS'
Lee® Denim Jeans Reg. \$29.99 \$19.99	Levi's® Dockers® Pants Super Price \$24.99	Levi's® Denim Jacket Reg. \$45 \$36.99
Lee® Denim Jeans Reg. \$34 & \$35 \$24.99	Hanes® Pocket T-shirts Reg. \$3.99 Each 3/\$10	ATB® Long Sleeve Western Shirts Reg. \$19 \$13.99
Cherokee® Fashion Pants Reg. \$29 & \$30 \$19.99	6-Pack Tube or Crew Socks Reg. \$5.99 & \$6.99 \$4.99	OP® Screen Print T-shirts Reg. \$12 \$8.99
The \$29.99 Dress Everyday Low Price \$29.99	6-Pack Lo-cut Socks Reg. \$4.99 \$3.99	Penguin Club® Knit Shirts Reg. \$20 \$14.99
Playtex® Bras & Girdles Reg. \$7 to \$34.50 25% Off	Levi's® Shrink-to-Fit 501® Jeans Reg. Length \$18.99	BOYS'
25% Off Reg. Price. Intermediate markdowns may have been taken.	38" Length \$20.99	Levi's® 550® Jeans Sizes 4-7, Reg. \$22 \$17.99
		Sizes 8-14, Reg. \$25 \$19.99
		Sizes 25-30, Reg. \$27 \$21.99

PLUS EXTRA SAVINGS . . .

Additional Savings on Already Reduced Fashions for the Family

Example:
 Reg. Price **\$24.99**
 Sale Price **\$19.99**
 Extra **40% Off**
\$11.99

Additional 40% Off will be taken at the register.

40% OFF

YELLOW TICKET

Fall & Winter Merchandise

Finish winter in style with incredible savings on a large array of fall and winter fashions for men, women and children. Hurry in while the selection is at it's best. Styles, colors and sizes will vary by store.

Sugarland Mall **ANTHONY'S**

PEARLE'S GRAND RE-OPENING

30% TO 60% OFF SALE

EVERY FRAME ON SALE Save big on every frame we have at Pearle when you buy a complete pair of glasses.

LIMITED TIME Men's, Women's, Kids'. All of the frames in our store have been drastically reduced from the regular price.

DESIGNER FRAMES And you don't need a coupon. All the best brand names in all the latest styles. So what are you waiting for? This spectacular sale ends February 15, 1992. **HURRY!**

PEARLE EXPRESS
GLASSES IN ONE HOUR

Amarillo Westgate Mall
(Next to Dillard's)
358-0316

Dr. Charlotte Stinson
Independent Doctor of Optometry Next Door
358-0319

*In most cases. No other discounts, coupons or insurance benefits apply. Pearle and Pearle Vision Express are trademarks of Pearle, Inc. © 1992 Pearle, Inc.

SPORTS

ENMU inks Herd trio

Eastern New Mexico University gained three football players today when Hereford High School seniors Leo Brown, Mark Kriegshauser and Monroe Timberlake signed national letters of intent.

"They've got a good program going for them," Kriegshauser said. "I like the players, and I like the school."

Timberlake also liked the fact that the school, located in Portales, N.M., was only about 70 miles away.

"It's closer to home, and they've got a better program," he said.

Timberlake and Kriegshauser, both defensive linemen, said they probably would be redshirted. Brown said one of the attractions ENMU held for him was possibly getting to play.

"I like their coaching staff, but basically just getting to play (was the reason)," he said. "They said I had a good chance of playing (the first year) but not very much."

Brown was a record-setting tailback at HHS. His 1,577 yards rushing (on 283 carries) is now a single-season school record. He scored 15 touchdowns in 10 games in 1991.

Brown was named second-team All-State by the Associated Press Sports Editors, and was a first-team all-district selection.

Timberlake, a tackle, made the district's first team in 1990 and 1991. In his senior season, he made 94 tackles (second on the team), 18 of which went for losses, and four sacks.

Kriegshauser, an end, was second-team all-district in 1991. His 72 tackles in 1991 was good for fourth on the team. He also made eight tackles for losses and four sacks.

Kriegshauser had talked with Rice University about playing there, but he hadn't heard from Rice in a while, he said, and decided a bird in hand was better than an Owl in the bush. "Rice didn't offer," he said. "I didn't want to wait around for something that might not happen."

Mike Scott, a former Herd quarterback who is now an assistant coach at ENMU, was present for the signings.

Today is the first day recruits can sign binding letters of intent with their chosen schools.

Three other HHS athletes are set to sign with colleges. Offensive lineman T.J. Samples will sign with Cameron University tonight. Thursday, volleyball players Shantel Cornelius and Brek Binder will sign with Texas and Angelo State, respectively. Binder and Cornelius already had committed to those schools.

Two other HHS seniors, Derek Mason (football) and Lori Sanders (volleyball), may play in college, but neither has made a decision.

Aggies rake in recruits

By MIKE DRAGO
Associated Press Writer

The Texas Aggies appeared to be the big winners of schoolboy football talent early on national letter-of-intent day, gathering many of the state's best players and stealing one from the Oklahoma Sooners.

However, Texas and Texas Tech had high hopes of not being far behind the Aggies in harvesting one of the Lone Star State's richest recruiting crops.

Among the earliest Texas A&M signings were Conroe McCullough receiver Kevin Beirne, Irving Nimitz lineman Desi DeLatorre and Garland Lakeview linebacker Keith Mitchell.

The Aggies also received a commitment from one of the state's best defensive linemen, Aldine's Erving Briley. Briley had given an oral commitment to Oklahoma.

The Longhorns, under new coach John Mackovic, topped their list with San Angelo Central's Shea Morenz, touted as one of the best quarterbacks in the nation. Morenz, who threw 41 touchdown passes, made his decision after Ryan Fien, the best quarterback in California, decided to go UCLA.

(See RECRUITS, Page 5)

Dr. Milton Adams
Optometrist
335 Miles
Phone 364-2255
Office Hours:
Monday - Friday
8:30-12:00 1:00-5:00



Rising above the crowd

Hereford varsity basketball players Derek Mason (34) and Leo Brown (40) go up to block the shot of Harvester Ryan Erwin. Brown got the ball, but he also got the body and was called for the foul. Looking on are Hereford's Sean Smith (left), Pampa's Cederick Wilbon (25) and Hereford's Kyle Hansen (30).

Golfers' debut canceled

Several of Hereford High School's sports teams will play this weekend, but one won't. The girls' golf team was to start its 1992 campaign Thursday, but the San Angelo Golf Tournament has been canceled. The courses, Bentwood and San Angelo Country Club, are flooded because of recent heavy rains. Herd golf coach Stacy Bixler said Tuesday. The golfers now will debut Feb. 28 in Fort Stockton.

Other events will go on, of course, including Herd tennis' first spring tournament, five basketball games at Caprock Friday and the district basketball tournament for freshman girls to be held in Hereford.

The Herd tennis team will compete in the Wichita Falls Tournament Friday and Saturday. It is each singles player's and each doubles team's first chance to see how they stack up against competition in north Texas.

Hereford's boys' and girls' varsity basketball teams, both junior varsity teams and the sophomore boys will play Caprock in Amarillo Friday. The

(See WEEKEND, Page 5)

Homeowners Insurance
Jerry Shipman, CLU
801 N. Main
(806) 364-3161
State Farm Fire and Casualty Company
Home Office: Bloomington, Illinois

Pampa blasts varsity cagers

By JAY PEDEN
Sports Editor

The Whitefaces stayed with the number one Pampa Harvesters for a half, but they lost them in a disastrous third quarter. Earlier, in the first game of the varsity doubleheader Tuesday in Whiteface Gym, the Lady Whitefaces started off with a disastrous quarter.

Either way, the games ended as blowouts. The boys lost 86-60; the girls, 78-44.

The one game of the evening which went down to the wire was the sophomore boys' game, won by Hereford, 55-52. Hereford lost the girls' junior varsity game 35-27 and the boys' JV 76-44.

The Herd started out very well

against the top team in the state--the Harvesters, 24-2, are ranked number one in Class 4A by the Texas Association of Basketball Coaches. The Harvesters got ahead early, but the Herd took the lead back at 11-10 with 3:13 left in the first quarter.

The Harvesters soon reclaimed the lead and stretched it to 23-13 early in the second quarter, but Hereford answered Pampa's surges enough to stay in the game. Leo Brown hit two consecutive baskets to bring the Herd back to within six at 30-24 just before halftime. The half ended with Pampa leading 33-26.

"It was a fun game in the first half," Herd Coach Jimmy Thomas

(See HERD, Page 5)

HMGA to meet Thursday

The annual meeting of the Hereford Men's Golf Association will be held Thursday, Feb. 13, at 7 p.m. in the Knights of Columbus Hall.

Following a short business meeting, a reception will be held for Dave Kaesheimer, new golf pro at Pitman Municipal Golf Course. John

Sherrod, HMGA president, invites members and prospective members to attend the meeting and meet the new golf pro.

The Hereford Ladies Golf Association will also attend the reception.

YMCA FALL GYMNASTICS

****Classes Will Meet On Friday!****

Ages	*Time*
Pre-schoolers(3-5)	4:00 - 5:00
Intermediate	5:00 - 6:00
Advanced	6:00 - 7:00

Ongoing Classes

- New Classes Forming
- Beginner Thru Advanced Classes: Boys & Girls
- All Around Gymnastics
- Tumbling & Trampoline

**Monthly Fee: 20.00 Members
25.00 Non-Members**

Instructor - Bob Cowley
15 Years Experience
USGF Professional Coach
USGF Safety Certified

XIT CELLULAR'S NO NONSENSE SALE...

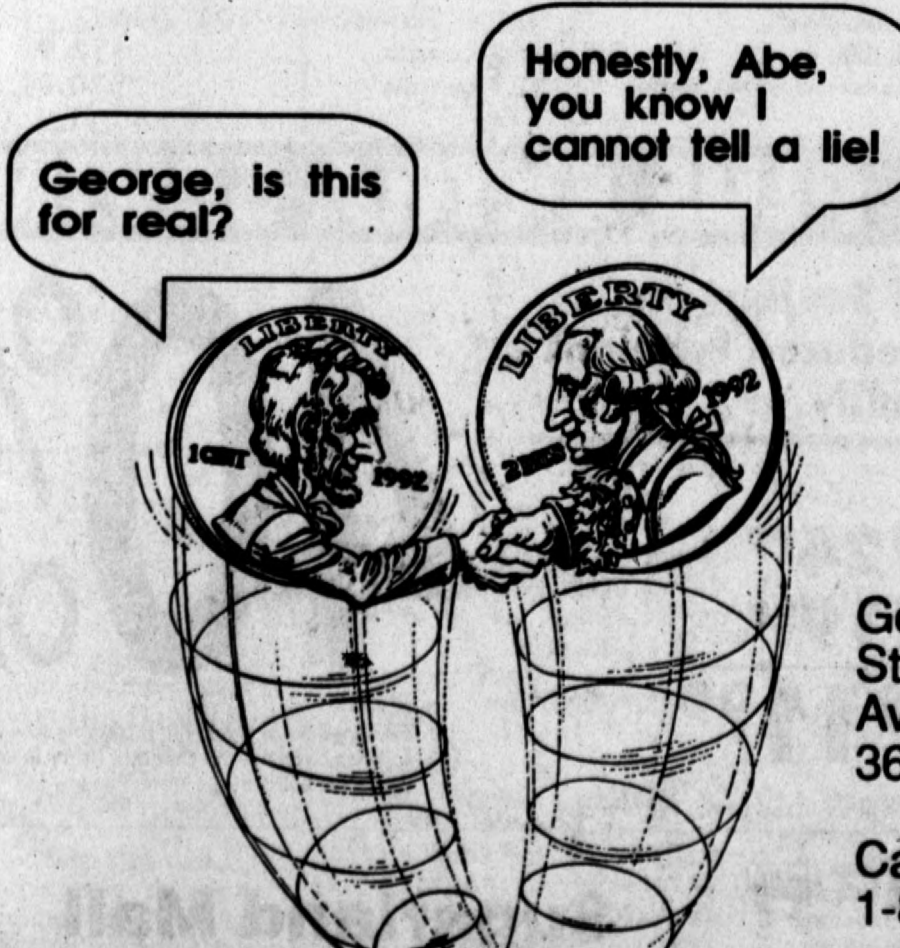
For straight answers and straight deals when you're looking for a cellular phone, stop in and talk with one of XIT's salespeople.

\$149

Motorola Tote Phone

Hurry while supply lasts!

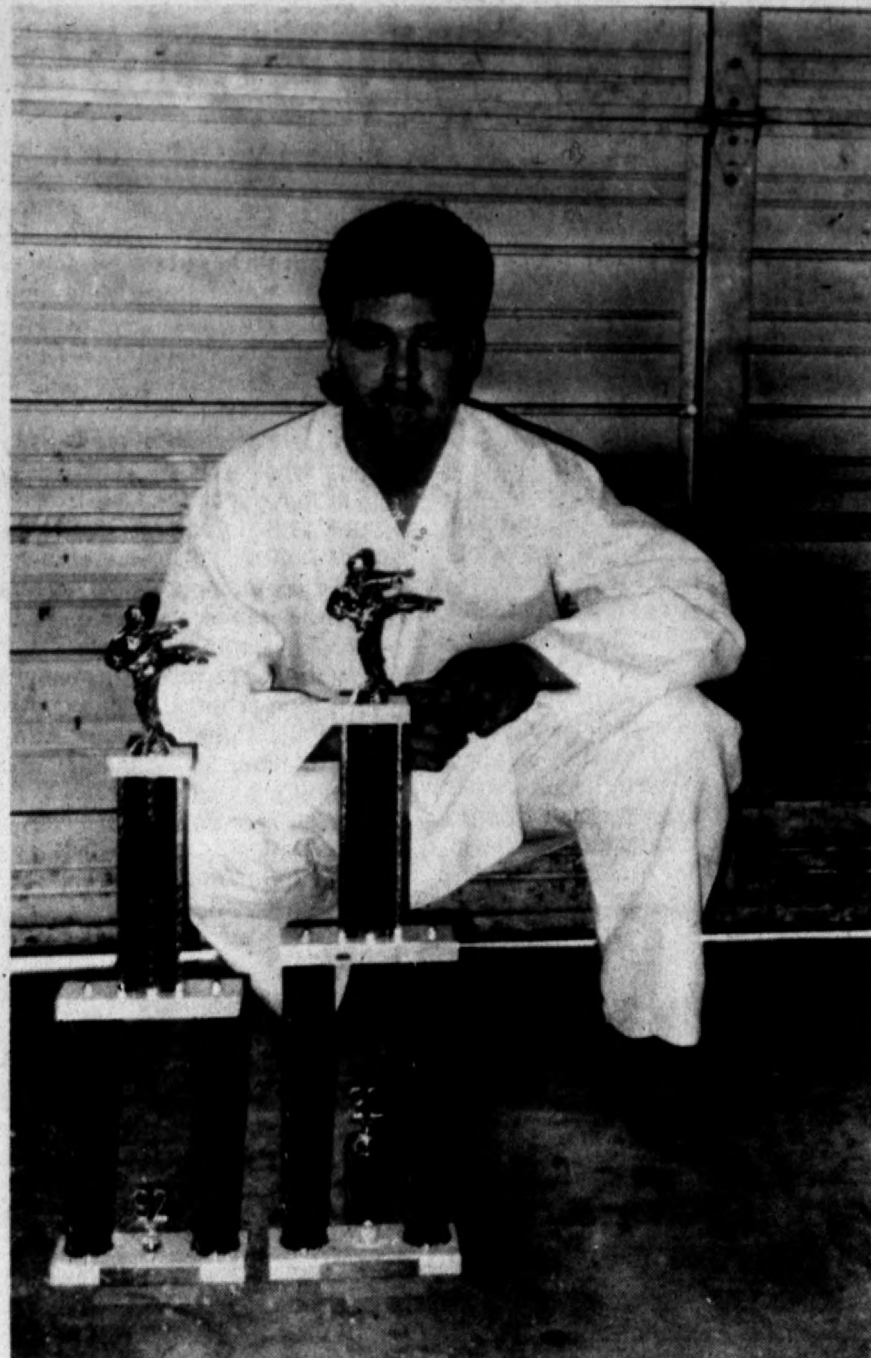
2 Year Contract Applies
(Activation with XIT Required)



Go by our Hereford Store at 1009 Park Avenue or call 364-1426!

Call Toll Free 1-800-232-3312!

Ask about VOICE MAIL!!!



Taekwondo champ

Ray Hastings shows off the trophies he won at the Sixth Annual West Texas Taekwondo Championships held Saturday in Snyder. Hastings and eight other students of the Crox Taekwondo school competed in the event, and several won trophies. Hastings won first place for fighting and second place for form in the heavyweight-blue belt division. Marie Crox won first for fighting and for form, and several other Crox students brought home second-place trophies.

HERD

said. "That first half was probably the best we've played as far as playing hard."

The third quarter ruined the Herd's upset bid and any chance of making it a close game. Pampa needed only three minutes of the period to turn a seven-point game into a 20-point game. When the quarter ended, the lead was 66-36.

Hereford had 17 turnovers in the third.

"More than anything the press killed us," Thomas said. "In the second half, they pulled it back to three-quarter court, and we didn't adjust to it."

"We turned the ball over more times in the third quarter than we had in some games. We lost our poise, our composure. We had 12 in the first half, and we were fairly in the game."

Hereford's Brown led all scorers with 24, and Sean Smith added 12. Pampa had a trio with more than 20 points each: David Johnson scored 23, including seven three pointers, and Cedrick Wilbon and Jeff Young each got 21.

Hereford falls to 1-5 in District 1-4A and 6-20 overall. Pampa is 6-0 in district.

The Lady Whitefaces couldn't solve Pampa's press and got down 22-4 after one quarter.

"We didn't execute at all," Coach Dickie Faught said. "It was a good press, but it wasn't as good as we made it look."

The Lady Harvesters kept pouring it on from there, stretching the lead to 40-19 at halftime and 67-35 at the end of the third quarter. Amber Seaton and Nikki Ryan seemingly couldn't miss. They poured in 34 and 29 points, respectively. For Hereford, Kara Sandoval led with 15 points, and Misty Dudley added nine.

Hereford is now 1-7 in district and 8-22 overall. Pampa raises its record to 7-1 and 17-7.

The sophomore game was close virtually all the way. Hereford took an early lead and led 14-12 after a quarter, then Pampa came back to lead 27-25 at the half.

Hereford took the lead back early in the second half. Hayden Andrews completed a three-point play to give Hereford a 39-33 lead near the end of the third, but Pampa tied it at 41-41 early in fourth. Hereford got a final boost when Wade Johnson's three-pointer gave them a 48-43 lead with five minutes left.

Johnson led the team with 17 points. Josh Tice pitched in 13, and Stacey Sanders and Cameron Betzen each had eight.

The Herd boys' JV, like the

varsity, stayed close to Pampa in the first half--Pampa led 34-26--but fell behind in the second half.

The Harvester JV outscored Hereford 18-6 in the third and 24-12 in the fourth. Hereford coach Oscar Rendon said part of the problem was that point guard Angel Oroscio had four fouls in the first half, and that shooting guard Greg Coplen left the game with what at first seemed to be a serious injury.

Coplen was taken to the hospital for X-Rays, but it turned out all he had was a bruised nerve in the hip.

"He'll be all right," said Ed "Doc" Morrow, head trainer for Hereford athletics.

Corey Scott led Hereford with 12 points, followed by Coplen with nine and Michael Carlson with eight.

Hereford's girls' JV beat Pampa in Pampa, but a different Pampa team showed up Tuesday.

"I think Pampa played a lot better," Hereford coach Donnie O'Rand said. "They got two move-ins that helped some. We didn't play well. We didn't shoot well. We did play good defense."

Pampa led 8-7 after the first quarter and stretched that with a 14-5 second quarter.

Lori Coronado led Hereford with seven points.

RECRUITS

Fien switched from Texas to UCLA after Tommy Maddox opted for the NFL draft.

Texas also snagged 6-0, 175-pound receiver Mike Adams of Arlington Sam Houston.

Texas Tech's early list included Odessa Permian linebacker Tony Daniels, Dallas Carter defensive back Verone McKinley and Lewisville running back Andre Brown.

Among SMU's signings were 6-5, 220-pound, Jacksonville defensive end Darrel Amen and 6-1, 290-pound offensive lineman Keith Chiles of Dallas Roosevelt.

McKinney quarterback Max Knake, who threw for more than 2,200 yards last season, joined new coach Pat Sullivan at Texas Christian.

The Horned Frogs also signed Arlington Sam Houston running back Jeff Godley and defensive end Chris Piland of Grapevine.

All eight Southwest Conference head football coaches and assistants

were waiting by the telephone and fax machines today as the schoolboy football stars made firm decisions on where they will go to school.

Coaches can't be with a student when he signs a national letter of intent so fax machines and express mail will have to do. A student can't see his college coach until 48 hours after he signs under new NCAA rules. The rule was supposed to ease the last-minute recruiting pressure on athletes.

Texas Tech, having one of its best recruiting periods under Spike Dykes, got an oral commitment from Robert Mack, a highly regarded defensive back from Galveston Ball.

Texas A&M kept marching toward one of the nation's best crops by getting the green light from Lubbock Dunbar defensive back Tyball McMullen. A&M also got a late commitment from Beaumont Central running back Leeland McElroy.

WEEKEND

sophomores start at 4:30 p.m.; girls' varsity and boys' JV start at 6:30; and boys' varsity and girls' JV start at 8.

Hereford's ninth grade girls' basketball team, coached by Brett Stegall and Jill Harrison, will host their district tournament Friday and Saturday.

Action starts at 4 p.m. with Pampa vs. Borger. All of Friday's games and most of Saturday's games will be played in the gym at Hereford High School. Two games will be played Saturday in Whiteface Gym.

Hereford's A team meets Dumas at 5:30 Friday and Hereford's B team takes on Canyon at 8:30. The other game Friday is Randall vs. Caprock at 7. Saturday's action starts at 10 a.m. at HHS and in Whiteface Gym,

and the tournament finishes with the championship game starting at 6 p.m. at HHS.

Hereford's ninth grade girls will warm up Thursday with A and B games at Pampa, at 6 p.m. and 7:30. Hereford's ninth grade boys host Pampa Thursday with A and B games at 6 and 7:15 in Whiteface Gym.

Also, the seventh grade boys' district tournament is Friday and Saturday in Borger. Then, on Monday Hereford Junior High teams play Valleyview: the girls here, starting at 5:30 p.m., and the boys at Valleyview, also starting at 5:30.

Finally, the sophomore boys play Tascosa Monday in Amarillo, starting at 6:15 p.m.

A.O. THOMPSON ABSTRACT COMPANY

Margaret Schroeter, Owner
Abstracts Title Insurance Escrow
P.O. Box 73 242 E. 3rd Phone 364-6641
Across from Courthouse

STAR SPANGLED SELL DOWN 1992



SPECIAL OF THE WEEK

1991 Explorer 4x4 Sport NADA Wholesale Price
6 cylinder, power steering, air conditioner, cassette, automatic, power brakes, tilt, cruise & more. **16,500**

STILL UNDER FACTORY WARRANTY

<p style="text-align: center;">79 Ford Flat Bed V-8, automatic, power steering As is Special 691</p>	<p style="text-align: center;">90 Mitsubishi Mirage Automatic, power steering, power brakes, air conditioner. 6,991</p>
<p style="text-align: center;">74 Ford LTD Automatic, power steering, power brakes, air conditioner, tilt. 1,491</p>	<p style="text-align: center;">82 Buick Century Power steering, power brakes, automatic, air conditioner, power locks, tilt, cruise, power seats. 2,991</p>
<p style="text-align: center;">87 Nova 4 door, automatic, power steering, power brakes, air conditioner, power windows, powerlocks, cruise. 3,491</p>	<p style="text-align: center;">88 Olds Delta 88 4 door, automatic, power steering, power brakes, air conditioner, tilt, cruise, power windows, locks & seats. 5,691</p>

SALES
8:30 TO 7:00 M-F
8:30 TO 6:00 SAT

TELEPHONE
364-2727
OR

1-800-725-2555
1-800-299-3325

HOURS
PARTS & SERVICE
8:00 TO 6:00 M-F
8:00 TO 12:00 SAT PARTS & SERVICE SALES



**WHITEFACE FORD
LINCOLN MERCURY**

550 N. 25 Mile Ave. • Hereford, TX. 79045 • 364-2727

Changing world changes stage for Winter Olympics

ALBERTVILLE, France (AP) - Snowstorms blow capriciously through the majestic French Alps, freak avalanches threaten the chic resorts, but there is one certainty about the Winter Olympics: The Soviet Union will not win the medal race.

Which is not to say that its struggling successor, the United Team - a.k.a. the Commonwealth of Independent States, a.k.a. Russia, Ukraine, Belarus and Kazakhstan - will be a pushover.

Count on Soviet, er, United Team athletes to take a large share of the golds and overall medals, just as they did at every Winter Games in the three decades when the Olympics served as one of the battlegrounds in the Cold War. The USSR finished no worse than second in every Winter Games since 1956.

A unified Germany should leap to the top this year if it can overcome dissension between its former rivals on the east and west sides of the now-demolished Berlin Wall. At Calgary in 1988, East Germany finished second with 25 medals, while West Germany was eighth with 8 medals. The Soviets that year won 29 medals.

The blending of East and West German athletes, coaches and development systems has not been without rancor. Some, such as two-time figure skating gold medalist Katarina Witt's coach - Jutta Meuller - simply have been frozen out.

The United States, reinvigorated by a lean, mean Olympic money machine and recovering from U.S. Olympic Committee scandals and a shakeup in leadership, isn't quite ready to crash the German and United Team party. The U.S. team's most realistic hope is a rise from ninth place four years ago, when it won six medals, to third this year by exceeding its own record of 12 medals. America's best chances for

golds are in figure skating and speedskating.

The former Soviet team remains a favorite in hockey, and will rack up plenty of medals in sports like biathlon and cross-country skiing. Rather than accepting the medals under the hammer-and-sickle flag, the athletes will take them just as proudly under the five-ringed Olympic flag while the Olympic anthem plays in the background.

Bankrupt though their sports ministry may be, bereft of support from their former Baltic brethren and other breakaway republics, the United Team still has enough talented athletes to compete for dominance at least through this year. After that, the republics will learn first-hand about laissez-faire sports, and no doubt search for a Peter Ueberrothnikov or George Mikhail Steinbrenner to put together a marketing scheme to pay for developing athletes.

Whatever the former Soviet republics call themselves, this may be the last great stand for an empire that ruled international sports for most of the past three decades and used gold medals to promote its political philosophy, self-image and international stature.

The effect on sports of the Soviet breakup is likely to be much more evident on the playing fields and courts of the Summer Games in Barcelona. The new United Team may compete as one again in July and August, but athletes in the summer sports were much more dependent on help from the now defunct Gosspori, the Soviet sports agency that once financed 23,000 athletes and 1,200 coaches.

These Olympics, then, in Albertville and Barcelona, mark an historic turning point in global sports competition as athletes gather in a world transformed so radically by peaceful and violent revolutions since

last they gathered in Calgary and Seoul in 1988.

Imagine an Olympics free of politics, devoid of ideological clashes, where winning medals does not represent the superiority of one system over another, and all athletes - amateurs and professionals - are free to compete.



A century after a Frenchman, Baron Pierre de Coubertin, revived the ancient Greek idea of bringing warring nations together in peace through sports, and 68 years after the first Winter Games in the French town of Chamonix between the two World Wars, the unimaginable is close to reality.

It is not, to be sure, quite there yet. Fighting still rages in Yugoslavia, the shape and destiny of the former Soviet republics is still uncertain, and other countries continue to cope with the changes unleashed by the collapse of communism.

Sports federations still quibble and maintain different rules about professionalism - skiers can race for money, NBA multimillionaires can play this summer, yet, absurdly, Brian Boitano and Katarina Witt can't skate for gold again because they tour in their own ice shows.

But if fans want to see most of the world's best athletes compete, nearly unfettered by political baggage, this year's Olympics are the places to watch.

New atlases and road maps, plus a fortune in francs, are de rigueur at the most extravagant and far-flung Winter Games in history.

It will be tough enough figuring out whom the athletes represent - Is that skier from Croatia, Yugoslavia, Carrera or Rossignol? - and even tougher trying to get to the events.

These \$740 million Games are strung out over 13 indoor and outdoor TV stage sets across 640 square miles in the French Alps because every bickering resort craved a piece of Olympic prestige and cash.

Ignoring the worldwide recession, the French are proceeding with pomp that would make Louis XIV proud, even if the locals have to eat bread for a decade to pay for the feast. Fears of a return of the "curse of Grenoble" - bills that took the French more than two decades to pay off - haunt these Games as the costs mount by the minute.

Freshly paved roads winding through the rugged mountains are prone to closure and traffic jams from snowstorms and avalanches. The only way to see all the sports is to buzz around with organizing committee co-president Jean-Claude Killy in his private helicopter or stay home and watch them on TV. A lot of fans, put off by the high prices and hassles of

getting around, are choosing the latter, resulting in an embarrassingly high vacancy rate in hotels and an abundance of unsold tickets.

Not that the arenas and bleachers will be empty. More than half the seats at all the events will go to the 17,000 accredited athletes, officials, sponsors, advertisers and journalists, leaving the rest to tourists with the temerity to show up.

American fans shouldn't expect any miracles - certainly not another Miracle on Ice like the 1980 hockey triumph. The United States would need a total breakdown of both the former Soviet teams and the Germans even to come close to winning the medal race.

Four years ago, Americans seemed to be slipping all over the place. Dan Jansen, Debi Thomas, hockey players, skiers. The only golds went to Boitano and speed skater Bonnie Blair, who is back and favored to win again.

Boitano, still a spectacular skater, is likely to challenge the international figure skating federation's rules, either privately or in court, and return to competition in 1994 at the Games in Lillehammer, Norway. Until then, his absence will be deeply felt at the Olympics, where no other men's figure skater can match his blend of artistry and athleticism.

It was in the middle of the Calgary Games, when bad luck and poor preparation plagued the Americans, that the U.S. Olympic Committee panicked and turned to Steinbrenner, charging a committee headed by him with the task of boosting performance through fundraising and better organization. The resulting changes helped, though the USOC recently suffered through embarrassing conflict-of-interest scandals and changes of leadership.

Now it is up to the athletes to show whether the changes will result in any improvement in the medal count.

Television

WEDNESDAY FEBRUARY 5

Table of TV listings for Wednesday, February 5, 1992. Columns include time slots (6 PM to 11 PM) and program titles such as Stone Fox, News, MacNeil/Lehrer, and various sports events.

THURSDAY FEBRUARY 6

Table of TV listings for Thursday, February 6, 1992. Columns include time slots (7 AM to 12 PM) and program titles such as Gurni, Today, Business, and various sports events.

Table of TV listings for Thursday, February 6, 1992. Columns include time slots (12:30 to 5:30) and program titles such as 12:00 Crt, 12:00 Crt, and various news and entertainment programs.

Table of TV listings for Thursday, February 6, 1992. Columns include time slots (6 PM to 11 PM) and program titles such as Bugs Bunny Movie, News, MacNeil/Lehrer, and various sports events.

Comics

BEETLE BAILEY By Mort Walker. Panel 1: HERE'S MY REPORT, SIR. Panel 2: OOPS! MISS BUXLEY GOT SOME OF HER LIPSTICK ON IT. Panel 3: THAT MUST BE A GREAT REPORT. HE'S REALLY STUDYING IT.

Barney Google and Snuffy Smith By Fred Lasswell. Panel 1: JUGHAID!! DID YOU TELL YORE UNCLE SNUFFY TO COME TO SUPPER? Panel 2: I CALLED AN' CALLED HIM. Panel 3: BUT HIS LINE WAS BUSY.

Marvin By Tom Armstrong. Panel 1: JEFF YOU PROMISED ME YOU'D PAINT THE GUEST BEDROOM TODAY! Panel 2: WE'RE NOT EXPECTING ANY COMPANY, SO WHO'S GONNA SEE IT? Panel 3: WELL, I KNOW SOMEBODY WHO'LL BE SLEEPING IN THERE IF HE DOESN'T GET BUSY!

BLONDIE by Dean Young and Stan Drake. Panel 1: AND I'LL RAISE YOU. Panel 2: I THINK YOU'RE BLUFFING. Panel 3: IN FACT, I'M POSITIVE YOU'RE BLUFFING. Panel 4: I'LL BET ANYTHING IN THE WORLD YOU'RE BLUFFING. Panel 5: WELL, ANYTHING BUT MONEY.

The Wizard of Id By Brant Parker and Johnny Hart. Panel 1: GO SEE WHAT THAT IS ALL ABOUT. Panel 2: DOWN WITH PROTESTS. Panel 3: IT'S OKAY... HE'S ONE OF OURS.

Awards committee now accepting nominations

Nominations are now being received by Amarillo Area Women's Forum for the 1992 Distinguished Service Awards.

The awards will be presented at the annual Distinguished Service Luncheon, noon, April 1, at West Texas State University, at the Mary Moody Northern Hall.

The Distinguished Service Awards committee will accept nominations through March, according to committee chairman Jane Rouk. 121 past award recipients include leader

sin the region for exceptional and outstanding contributions in the fields of art, business, finance, health care, medicine, farming, ranching, education, volunteerism, communications, civic responsibility and the legal system.

Women who are residents of the top 26 counties of the Panhandle and who have not previously received this award are eligible for nominations.

The committee encourages nominations of any woman who has had a significant impact on the Panhandle of Texas through her local community in one or more of those categories.

Winners are selected on the basis of lasting contributions or achievements that have had an impact on the region, she said. A Representative panel of Panhandle citizens, including former award recipients, will select the award winners.

Nominees and others interested in attending the awards luncheon may make reservations (\$15) by contacting Millie Binham, P o Box 1331, Amarillo, 79180, by April 1. Seating is limited and reservations received are nonrefundable.



HHS students win honors

Many members of the Hereford High School instrumental music program won Superior or Excellent honors at the annual UIL

Regional Solo and Ensemble Contests held Saturday at West Texas State University in Canyon.

HHS students receive honors in competition

Forty-eight members of the Hereford High School band program qualified for the State Solo and Ensemble Contest with Superior Awards at the Regional Solo and Ensemble Contest at West Texas State University.

Ninety-four HHS students received Superior and Excellent Awards in the annual competition.

"This is the best our students have ever done at the regional contest and is a tribute to them," said James MacLaskey, director of the music program for the Hereford public schools.

The state competition will be held later this year in Austin.

Students performing Class I solos, receiving Superior Awards and qualifying for state were Adela Diaz, Terri Reiter, Traci Reiter, Jenny Davis, Cecelia Rodriguez, Gloria Herrera, Elizabeth Cepeda, Gabriele Liscano, Lexi Sciumbato, Isreal Herrera, Danny Garza and Michelle Emerson.

Winning Superior Awards and qualifying for state in ensembles were: Jenny Davis, Amy Liscano and Edna Delgado, clarinet trio; Rojelio Hernandez, April Roddy and Diane Wilhelm, trombone trio; Traci Gilbert, Hayley Lockmiller, Lori Poarch and Lexi Sciumbato, french horn quartet; Bridgette King, Heidi Ruland, Tammy Boggs and Taylor Sublett, french horn quartet; David

Bone, Melissa Caraway, David Esquivel, Isreal Herrera and Lance Ortiz, brass ensemble; Elizabeth Corona, Lori Crofford, Jenny Davis, Edna Delgado, Adela Diaz, Amy Liscano, Amy Long, Claudia Ramirez, Jill Ruland, Randy Sorenson, Jacque Tohm, Diana Torres, Beth Weatherly and Chasaidy Weddel, woodwind choir; and Jarrett Baker, Tammy Boggs, David Bone, Melissa Caraway, Martin Carnahan, Elizabeth Cepeda, Charity Dearing, Melissa DeLeon, David Esquivel, Melody Hegwood, Rojelio Hernandez, Gloria Herrera, Isreal Herrera, Carol Hund, Clara Jackson, Connie Jackson, Bianca Limas, Gabriele Liscano, Hayley Lockmiller, Lori Poarch, Elias Reyna, April Roddy, Heidi Ruland and Diane Wilhelm, brass choir.

Receiving Excellent awards in Class I solos were Chasaidy Weddel, David Esquivel, Melody Hegwood, Hayley Lockmiller, Jarrett Baker, David Bone, James Carter, Ramon Corona, Jaime DeLa Cerda and Danny Garza.

Earning Excellent awards in Class I ensembles were Angie Boggs, Erin Bullard and Adela Diaz, flute trio; Becky Bridges, Melody Hegwood, Jill Ruland, Randy Sorenson and Jacque Tohm, woodwind quintet; Elizabeth Cepeda, Melissa DeLeon, Gloria Herrera and Gabriele Liscano, trumpet quartet; and James Carter,

Ramon Corona and Justin McWethy, percussion trio.

In Class II solos, Superior awards went to Edna Delgado, Amy Liscano, Bianca Limas, Heidi Ruland and Diedre Whipple. Earning Excellent awards were Becky Bridges, Joy Long, Diana Torres, Pete Galan, Diane Wilhelm, Jason Carnahan, Teresa Berryman and Jaime DeLa Cerda.

In Class II ensembles, Superior awards went to Clarissa Ramirez and

Terri and Traci Reiter, flute trio; and Teresa Berryman, Pete Galan, Connie Jackson, Lori Parch and Chris Williams, brass ensemble.

In Class III Solos, Nikki Messer and Lori Crofford won Superior awards. Earning Excellent honors were Diana Cepeda, Karon Harder and Laura Lomas.

In Class III Ensembles, the baritone trio of Jason Carnahan, Deidre Whipple and Crystal Cole won a Superior award.

Hints from Heloise

DEAR DR. LAMB: This is important to us. My blood type is B positive and my wife is A negative. Could any of our children just have my wife's blood type? If a child is A positive, could he have any of my blood type?

DEAR READER: Much of the confusion people have about blood type is because they don't realize they have two, not just one, gene for their blood type. Only the dominant gene determines your blood type, although either gene can be transmitted. You are not just B positive and your wife is not just A negative. Your B gene is only one of your genes. And the son is not just A positive either, but has two genes. You can think of type O as having two weak genes. If you are genotype AO, the blood type is A, and

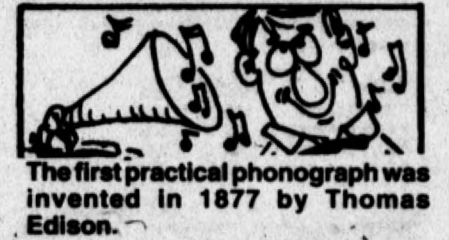
if it is BO, it is type B.

You may actually be BO and if your O gene is transmitted and your wife's A gene is transmitted, the child will be type A. In such a situation the O gene is never dominant. The son's Rh-positive gene, which you have, has to come from you because an Rh-negative person cannot transmit an Rh-positive gene.

Helping people when the need is greatest!

Rix FUNERAL DIRECTORS SINCE 1890
A Tradition in West Texas

364-6533
105 GREENWOOD/HEREFORD, TEXAS



What was that you said?

What is the difference in sending a Valentine's Card or simply saying, "I love you"? The spoken word has little staying power. With Valentine's Day only coming once a year, a few words is not enough to last. The card, however, is something you can hold on to, refer back to, carry with you, read again and again, save in your scrapbook forever. The card is a lasting record and a part of your personal history. The same can be said when comparing radio to newspaper. Notice which one can be held, referred back to, carried on shopping trips, and found in libraries for generation after generation.

Newspaper vs. Radio

- Radio copy depends on word imagery and it is limited to 30 or 60 seconds, not enough time for complex issues.
- Average recall for a 1/2 page newspaper ad is 32%; for a 1/4 page ad, it's 31%. Radio ad recall is only 4%.
- Once a commercial is aired, it is gone. There is absolutely no tangible evidence it existed. For those listeners not tuned in at that specific time, the commercial is lost.
- Radio is an entertainment medium. People listen for musical enjoyment (passive experience).
- Newspapers are an information medium. People read to seek data and learn (active experience).
- Newspapers are the only medium that allow shoppers to compare values offered by competitive advertisers.
- 77% of all newspaper readers look at every page. No audience can actively listen to the radio 77% of the time (Audits and Survey, Inc.).
- 44% of newspaper readers look forward to ads, compared to 10% for radio (Audits and Survey, Inc.).

Newspapers are the way to reach today's consumers

Make your message last... with

THE HEREFORD BRAND

S & F BEVERAGE OF TEXAS INC.

SUPER SAVINGS ITEMS NOT AVAILABLE IN ALL HOMETOWN STORES

Prices Effective Wednesday, February 5, thru Tuesday, February 11, 1992. Sales in Retail Consumer Quantities Only.

COORS BEER
Regular, Light, Gold or Dry
12 -Pack 12-oz. Cans \$6.99

MICHELOB BEER
Non-Returnable Bottles Regular, Light, Dark or Dry
6 -Pack 12-oz. Bottles \$3.79

NATURAL LIGHT BEER
6 -Pack 12-oz. Cans \$2.29

CARLO ROSSI WINES
Blush, Burgundy, Rhine, Chablis, Pinot Noir, Vin Rose or Sangria
3-Liter Bottle \$5.39

HOMETOWN

CLASSIFIEDS

Call Janey Allmon at the Hereford Brand, 364-2030, or come by 313 N. Lee to place your classified advertising. We reach thousands everyday!

The **Hereford Brand**
 Since 1901
 Want Ads Do It All!
 You Want It,
 You Got It!
 CLASSIFIEDS
 364-2030
 Fax: 364-8364
 313 N. Lee

CLASSIFIED ADS
 Classified advertising rates are based on 15 cents a word for first insertion (\$3.00 minimum), and 11 cents for second publication and thereafter. Rates below are based on consecutive issues, no copy charge, straight word ads.

TIMES	RATE	MIN
1 day per word	.15	3.00
2 days per word	.26	5.20
3 days per word	.37	7.40
4 days per word	.48	9.60
5 days per word	.59	11.80

If you run ads in five consecutive issues with NO changes, you get the same ad in the Reach 4 More free. The regular charge for that ad would be \$4.00

CLASSIFIED DISPLAY
 Classified display rates apply to all other ads not set in solid word lines-those with captions, bold or larger type, special paragraphing; all capital letters. Rates are \$4.15 per column inch; \$3.45 an inch for consecutive additional insertions.

LEGALS
 Ad rates for legal notices are same as for classified display.

ERRORS
 Every effort is made to avoid errors in word ads and legal notices. Advertisers should call attention to any errors immediately after the first insertion. We will not be responsible for more than one incorrect insertion. In case of errors by the publishers, an additional insertion will be published.

1-Articles For Sale

Wallpaper Hanging, Interior & Exterior Painting at Reasonable Rates
 Call Sylvia-364-1124 and leave message

New and now in stock: The Roads of New Mexico, in book form. Also The Roads of Texas. \$12.95 each. Hereford Brand, 313 N. Lee. 15003

A Great Gift!!! Texas Country Reporter Cookbook -- the cookbook everyone is talking about. 256 pages featuring quotes on recipes ranging from 1944 War Worker rolls to a creative concoction using Texas tumbleweeds. \$13.95 at Hereford Brand. 17961

Repossessed Kirby & Filter Queen. Other name brands \$39 & up. Sales & repair on all makes in your home. 364-4288. 18874

Copier for sale - Minolta EP-50 with 5 toner cartridges. Like new. 364-5568. 19045

Puppies to give away: 1/2 Chow, 1/2 Miniature Spitz, 3 males & one female. 118 Beach. 364-8037. 19739

1A-Garage Sales

Rummage Sale at Kings Manor Methodist Home Inc. campus in cottage 102A exit off Sunset Thursday-Feb. 6, 9-5; Friday Feb. 7 9-12. Bargain Prices. 19766

Garage sale 435 Long Thursday 9-6; Friday 9a.m.-6p.m. Furniture, pots & pans, lamps, artificial plants, dishes, radios, records, turn table, cassettes, Home Interior, coffee pots, dirt bike, blankets, bedspreads, clothes, shoes & etc. 19791

2-Farm Equipment

For sale 4 HD 800 rebuilt Molines & 3 292's. Call Steve, 965-2604 or 578-4659. 19600

C&W EQUIPMENT is now taking consignments for upcoming auction. Will buy equipment at private treaty. Auction will be Feb. 29th.

Advertised consignments must be in by February 10th.

Please call: Joe Ward-289-5394 or 357-9142 or Chris Cabbiness 364-7470 or 655-2392.

Want to buy old style pull type 2 row potatoe harvester. 364-2057. 19688

3-Cars For Sale

MUFFLER SHOP CROFFORD AUTOMOTIVE
 Free Estimates
 For All Your Exhaust Needs
 Call 364-7650

1987 Suburban, \$8,000. Call 276-5217. 19554

1986 Chevrolet Caprice Classic Brougham, excellent condition. Asking \$5,000. 364-8440. 19621

Credit Problem-No Problem. You can own a car. Call Sam at 364-2727. 19628

'84 Olds Regency, 4-door, loaded. Call 364-1050 weekdays after 6 p.m. all day Saturday & Sunday. 19680

1982 El Camino for sale. 364-2057. 19690

For sale 1987 GMC S15 Pickup with top. Call 364-0353 between 8a.m.-6p.m. Monday-Friday or 364-4142 evenings & weekends. 19723

For sale 1981 Chevrolet 4-wheel drive pickup. Call 289-5963. 19762

1991 Ford Tempo, low mileage, power, air, music, Not a scratch-White with red interior, 4 cylinder. \$6850.00. 364-0932. 19778

4-Real Estate

Money paid for houses, notes, mortgages. Call 364-2660. 790

3 bedroom house, good terms & low interest rate, reasonable down payment to person with good credit reference. 364-2131. 19379

Northwest 2,000 sq.ft., 3 bdrm., fireplace, dbl. garage, ref. air, for \$56,000.00, only \$6,000.00 down, owner carry at \$440.00 per month including interest. Gerald Hamby Broker, 364-3566. 19461

Well arranged 3 bdrm. Northwest, has ref. air, fireplace, dbl. garage, a good home at a good price. Call for details. Gerald Hamby, Broker, 364-3566. 19462

Doublewide trailer to be moved: 1624 sqft. living area, 3 bed, 2 baths, central heat, 2 car garage, \$20,000. 364-5878. 19695

For sale: 3 bedroom, 2 bath mobile home. Stove, refrigerator, microwave and dishwasher, built-in. Low monthly payments. For more information call 364-0340 after 6 p.m. 19737

Two miles South of Wildorado, 3 bedroom, 2 1/2 bath, den, utility room, 2470 sqft. on 2 1/2 acres. 426-3511. 19748

Five bedroom house on 13 1/2 acres for sale. 426-3346. 19755

Well established beauty salon for sale in Vega-3 operator shop, manicure room & tanning bed. 426-3346. 19756

Lot in Angel Fire with membership. 426-3346. 19757

CROSSWORD

by THOMAS JOSEPH

ACROSS

1 Swiss capital
 6 Elmer's nemesis
 10 George Peppard series, with "The"
 11 Mystery or romance, e.g.
 12 Checks out
 13 Available: sl.
 14 Singing group
 15 Notorious Lady
 16 Terminus
 17 Blue
 18 Moray or conger
 19 Regan, to
 22 Across
 22 Shakespearean king
 23 Deep cut
 26 Comic's reward
 29 Crony
 32 Scoreboard armts.
 33 Exist
 34 Director
 34 May
 36 Iowa city
 37 Manager Joe in St. Louis
 38 Cream of the crop

DOWN

1 Faced the pitcher
 2 Unending
 3 Sediment
 4 Treaty org.
 5 Print units
 6 Crook
 7 Loosen a bow
 8 Accent type
 9 Flower part
 11 Well-behaved
 39 Broadway backer
 40 Playwright
 41 Garson
 41 Drags
 42 Make into law

YESTERDAY'S ANSWER

ones
 15 Heater
 17 Bomb fragment
 20 Guy's date
 21 Stadium cry
 24 Endurance
 25 Church's foe
 27 Western Indian
 28 Take umbrage at
 29 Another flower part
 30 With no help
 31 T-shirt choice
 35 Angers
 36 Thicke or Arkin
 38 — out (supplement)

ACTED PAGES

CRIME ALAMO
 HARUMSCARUM
 EVE OLE ALE
 SEDATES GAD
 RED GETA
 PASTS MOSEY
 ASIS REB
 NAB AUDITED
 TRE DEI EER
 HURRYS CURRY
 ELIAS ANNIE
 REAMS LOSER

8-Help Wanted

Salesperson wanted. Must be motivated. Needs experience in sales & bookkeeping. Must speak Spanish & English fluently. Good salary + commission to qualified applicant. Apply at Barrack Furniture, West Highway 60. 19668

The Smartest Shop in town wants you to sell Avon. Call 364-2901. Ask for Melody. 19740

Has the recession got you down? Ease the squeeze. Sell Avon 364-8628 or 289-5870. 19761

Manager for a Boutique at 609 E. Park Ave. 364-1111. 19783

File Clerk-Typing, filing & detailed work. Apply at 121 Pine St. 19788

Program Specialist position in Hereford, 14 hours per week. Must have High School Diploma. Reliable transportation, clerical experience. No phone calls please. Send resume to Childrens Enterprises, 3004 D. West 27th Amarillo, 79109. 19790

2 bedroom duplex & 3 bedroom house. 364-2131. 19380

For rent 2 bedroom apartment, Paloma Lane Apartments, yard maintained, carpeted, range furnished, no pets, \$170/deposit, HUD contracts welcomed. 364-1255. 19567

For rent 2 bedroom trailer, fenced, water paid, \$225 per month, \$100 deposit. Call 364-6420 after 6 p.m. 19579

Clean 1 bedroom furnished apartment. Near Homeland and laundry. For single person. \$190 month, plus deposit & electricity. 353-6228 or 372-9993. 19715

One bedroom at 432 Mable. \$150.00, \$100.00 deposit. Pay own bills. 364-4332. 19733

One, two & three bedroom furnished apartments for rent. All bills paid. 364-8042. 19769

For rent Beauty shop location. Ample parking. Plumbed for Beauty Shop. 609 E. Park Ave. Hereford, Texas. \$225/monthly. 364-1111. 19779

For rent shop on corner location 609 E. Park Ave. 364-1111. 19784

For rent: 2 bedroom stove & ref. with W/D hookups. \$100 dep. 300/mo. Call 276-5823. 19785

Nice, large, unfurnished apartments. Refrigerated air, two bedrooms. You pay only electric-we pay the rest. \$305.00 month. 364-8421. 1320

Self-lock storage. 364-6110. 1360

8-Help Wanted

URGENTLY NEED DEPENDABLE PERSON to sell full line of high quality lubricants to manufacturing, trucking, construction and farm customers in Hereford area. Thorough training program. For personal interview, write C.C. Fox, Southwestern Petroleum, Box 961005, Ft. Worth, Tx. 76161 or phone (817)332-2336.

URGENTLY NEED DEPENDABLE PERSON to sell full line of high quality lubricants to manufacturing, trucking, construction and farm customers in Hereford area. Thorough training program. For personal interview, write C.C. Fox, Southwestern Petroleum, Box 961005, Ft. Worth, Tx. 76161 or phone (817)332-2336.

URGENTLY NEED DEPENDABLE PERSON to sell full line of high quality lubricants to manufacturing, trucking, construction and farm customers in Hereford area. Thorough training program. For personal interview, write C.C. Fox, Southwestern Petroleum, Box 961005, Ft. Worth, Tx. 76161 or phone (817)332-2336.

URGENTLY NEED DEPENDABLE PERSON to sell full line of high quality lubricants to manufacturing, trucking, construction and farm customers in Hereford area. Thorough training program. For personal interview, write C.C. Fox, Southwestern Petroleum, Box 961005, Ft. Worth, Tx. 76161 or phone (817)332-2336.

URGENTLY NEED DEPENDABLE PERSON to sell full line of high quality lubricants to manufacturing, trucking, construction and farm customers in Hereford area. Thorough training program. For personal interview, write C.C. Fox, Southwestern Petroleum, Box 961005, Ft. Worth, Tx. 76161 or phone (817)332-2336.

URGENTLY NEED DEPENDABLE PERSON to sell full line of high quality lubricants to manufacturing, trucking, construction and farm customers in Hereford area. Thorough training program. For personal interview, write C.C. Fox, Southwestern Petroleum, Box 961005, Ft. Worth, Tx. 76161 or phone (817)332-2336.

URGENTLY NEED DEPENDABLE PERSON to sell full line of high quality lubricants to manufacturing, trucking, construction and farm customers in Hereford area. Thorough training program. For personal interview, write C.C. Fox, Southwestern Petroleum, Box 961005, Ft. Worth, Tx. 76161 or phone (817)332-2336.

Construction. New Project. Earn to \$22 an hour. Carpenters, laborers, painters, drywall, masons & helpers. 1-800-551-0163. 19634

9-Child Care

KING'S MANOR METHODIST CHILD CARE
 *State Licensed
 *Qualified Staff
 Monday-Friday 6:00 am - 6:00 pm
 Drop-ins Welcome with advance notice
 MARILYN BELL / DIRECTOR
 364-0661 • 400 RANGER

Hereford Day Care

State Licensed
 Excellent program
 By trained staff.
 Children 0-12 years
 248 E. 16th 364-5062

Illy's Day Care, State Licensed. Breakfast, lunch & Snack, good program. From Infants to 4-year-old. 364-2303. 18365

Experienced Child Care openings for children under five. Call Bonnie Cole, 364-6664. 19155

10A-Personals

Notice! Good Shepherd Clothes Closet, 625 East Hwy. 60 will be open Tuesdays and Fridays until further notice from 9 to 11:30 a.m. and 1:30 to 3:00 p.m. For low and limited income people. Most everything under \$1.00. 890

Problem Pregnancy Center now located 801 E. 4th, Dr. Revell's Clinic. Free Pregnancy Testing. For appointment-Call 364-2027 or 364-7626 (Janie) 1290

Just right for Valentine's Day! A beautifully wrapped red silk rose perfect for your valentine. Each rose is \$5 (\$6 delivered). Reserve your rose by calling 364-4978. Proceeds will benefit the Fiestas Patrias Scholarship Fund at San Jose Church 16979

11-Business Service

Defensive Driving Course is now being offered nights and Saturdays. Will include ticket dismissal and insurance discount. For more information, call 364-6578. 700

Will pick up junk cars free. We buy scrap iron and metal, aluminum cans. 364-3350. 970

Garage Doors & Openers Repaired. Call Robert Betzen Mobile 1-679-5817; Nights Call 289-5500. 14237

Want to buy: Damaged grain. Sour, musty, smoke, moldy odors. Heat or insect damage. (806)-655-7650 or 1-800-749-4690. 19581

Two bedroom house to be moved. See at 901 S. Lee. Will take best offer. 364-7745 after 5 p.m. 19758

For sale 4 plots at Rest Lawn Cemetery. If interested call 364-0442 or evenings 364-2225. 19767

For sale by owner 3 bedroom, 2 bath, NW home. 9% non-qualifying assumable loan. Call 364-4633 after 6:30 p.m. 19772

Nice quiet location, 6 1/2 acres, North of town & West of John Deere Implement House. Price negotiable. 364-2060. 19773

House for sale, take up payments, 220 Aspen. 19775

For sale brick, 3 bedroom, 2 bath, 2 car garage, fireplace, updated carpet, paper, assumable, non-qualifying 10% loan--Low, low equity. 211 Centre, 364-2518 or 358-8588. 19776

"Classic" 2 bdrm custom built!! located in fabulous area on extra wide street; excellent for single or couple, price and terms will amaze you!! Call Dorothy Hawkins with HCR Real Estate 364-4670 or 1-655-0488. 19786

Gorgeous "Red Brick" 3 bdrm in terrific area! Economy priced call Dorothy with HCR Real Estate, 364-4670 or 1-655-0488. 19787

DIAMOND VALLEY MOBILE HOME PARK
 Lots Located Sioux, Cherokee Sts., G&H Office Space-415 N. Main w/janitor service & Utilities
 Doug Bartlett-415 N. Main
 364-1483-Office
 364-3937-Home

5-Homes For Rent

1,2,3 and 4 bedroom apartments available. Low income housing. Stove and refrigerator furnished. Blue Water Garden Apts. Bills paid. Call 364-6661. 770

Best deal in town, furnished 1 bedroom efficiency apartments. \$175.00 per month bills paid, red brick apartments 300 block West 2nd Street. 364-3566. 920

PARK PLACE APT.
 Apartment for Rent
 DBL Car Garage
 364-4350

Classifieds.
 They're just for you, everyday,
 in the Hereford Brand.
 Call Janey Allmon today at 364-2030 and get a classified to work for you.

CLASSIFIEDS

Call Janey Allmon at the Hereford Brand, 364-2030, or come by 313 N. Lee to place your classified advertising. We reach thousands everyday!

Forrest Insulation & Const. We blow insulation, attics, walls, metal buildings. We do remodeling, free estimates. 364-5477. 19626

Tree & shrub trimming & removal and other assorted lawn work. 364-3356. 19744

BILL SHORE INCOME TAX SERVICE & ACCOUNTING Years of Experience 709 N. Cherokee after 5:30p.m.-364-4148

HOUSECLEANING Reasonable, honest & dependable with local references. 364-8868

WINDMILL & DOMESTIC Sales, Repair, Service Gerald Parker, 258-7722 578-4646

HOME MAINTENANCE Repairs, carpentry, painting, ceramic tile, cabinet tops, attic and wall insulation, roofing & fencing. For free estimates Call: **TIM RILEY-364-6761**

12-Livestock

For sale grain type sorghum silage. Have Lab Test. 289-5562 & leave message. 19494

Alfalfa horse hay out of the barn, \$110 per ton. 364-1111. 19780

ST. JUDE NOVENA
May The Sacred Heart of Jesus be Adored, Glorified, Loved and Preserved throughout the world. Now and Forever, Sacred heart of Jesus Pray for us. St. Jude worker of miracles, pray for us. St. Jude Help the Hopeless, pray for us. Say this prayer 9 times a day. By the 8th day your prayer will be answered. Say it for 9 days. It has never been known to fail. Publication must be promised.
Thank You, St. Jude

13-Lost and Found

REWARD OFFERED
LOST: Blonde Male Pekinese with white spot on top of head. Lost in vicinity of South Hwy. 385. Answers to name of Twister. Call Bill or Judy Weaver-Days-364-5187 or 578-4291, evenings-364-5447. Reward worthwhile

Lost 3 1/2 month old Boston Terrier. Answers to the name of Gladys in vicinity of 400 block of Star. \$50 reward. 364-1851 or 364-3874. 19781

Stolen white female poodle. Has Rhinestone collar with rabies tag. A reward is being offered for her return. She needs her special food. Table food or any other will kill her. Contact 276-5589. Ask for Terri or Tommy 19782



The average account in an investors survey had an annual return of 14.9 percent.

AXYDLBAAXR
is **LONG FELLOW**

One letter stands for another. In this sample A is used for the three L's, X for the two O's, etc. Single letters, apostrophes, the length and formation of the words are all hints. Each day the code letters are different.

2-5 **CRYPTOQUOTE**

C E H W H B L I Q C F K
B K Z E G D J B D D H W H K Z H
I H C M H H K C E H Z Q L E B G K H J
Z E F Y I H W F K J F R F J J H J
Z H A A . - Z E H L C H W C G K
Yesterday's Cryptoquote: ...HE WHO DOES NOT MIND HIS BELLY WILL HARDLY MIND ANYTHING ELSE.—SAMUEL JOHNSON



The safety pin was patented by William Hunt of New York City in 1849.

Governor proclaims Feb. 2-8 Public Health Week in Texas

The Texas Department of Health (TDH), and local health agencies will observe Public Health Week in Texas, Feb. 2-8, as proclaimed by Gov. Ann Richards.

This year's theme for the annual observance is "Celebrate Your Good Health!"

Dr. Robert A. MacLean, Acting Texas Commissioner of Health, said, "If a person enjoys clean air, safe water, non-contaminated food, dependable emergency medical care and modern disease control services, then he or she has reaped the benefits of the state's public health programs."

During Public Health Week, community leaders have been urged to help promote the health services available to their populations and to discuss emerging public health issues.

"The week is an opportunity for communities to take stock of their health resources and protections, and to compare their programs with those of other cities," Dr. MacLean said.

"It also is an ideal time for local groups to offer activities that allow citizens to learn more about public health and the personnel who provide services," he added.

Among some of last year's local activities, the Tyler-Smith County Public Health District offered free health screenings at a senior citizens center, while the Tyler media aired public service announcements. Meanwhile, the Beaumont Health Department sponsored a variety of activities, including free items and services (such as birth certificates and T-shirts) offered to the public during the week.

Similar activities in other cities, accompanied by extensive media coverage, underscored interest in public health throughout the state.

Bartlett pears are the most popular pears in the United States.

for that Grand Finale

call the Hereford Brand Advertising Department for your business or private use. We'll take care of you and your business with a personal interest because we care.

The Hereford Brand "the winning choice"

364-2030 313 N. Lee

<h3>Schlabs Hysinger</h3> <p>1500 West Park Ave. 364-1281</p> <p>Richard Schlabs Steve Hysinger</p> <p>Phone 364-1286 Each Trading Day After 5:30 P.M. for Recorded Commodity Update</p>		<p>SERVING HEREFORD SINCE 1979</p> <p>COMMODITY SERVICES</p>																																																																																																																																																																																																																																																																																																																																																																		
<p>Prices effective Tuesday, February 4, 1992.</p>																																																																																																																																																																																																																																																																																																																																																																				
<h4>CATTLE FUTURES</h4> <p>CATTLE-FEEDER (CME) 40,000 lbs., cents per lb.</p> <table border="1"> <tr><td>Mar</td><td>76.45</td><td>76.10</td><td>76.45</td><td>76.77</td><td>76.47</td><td>77.10</td><td>76.00</td><td>4,390</td></tr> <tr><td>Apr</td><td>76.45</td><td>77.17</td><td>76.45</td><td>76.97</td><td>76.40</td><td>77.00</td><td>76.25</td><td>1,824</td></tr> <tr><td>May</td><td>75.50</td><td>76.50</td><td>75.50</td><td>75.50</td><td>75.50</td><td>76.50</td><td>75.45</td><td>1,722</td></tr> <tr><td>Aug</td><td>75.45</td><td>76.02</td><td>75.45</td><td>75.75</td><td>75.58</td><td>76.00</td><td>75.45</td><td>1,282</td></tr> <tr><td>Sept</td><td>75.20</td><td>75.20</td><td>75.10</td><td>75.10</td><td>75.10</td><td>75.40</td><td>75.10</td><td>147</td></tr> <tr><td>Oct</td><td>74.40</td><td>75.25</td><td>74.40</td><td>74.90</td><td>74.70</td><td>75.20</td><td>74.10</td><td>246</td></tr> </table> <p>Est. vol. 1,849; vol. Mon 1,286; open int. 9,558; -764.</p> <p>CATTLE-LIVE (CME) 40,000 lbs., cents per lb.</p> <table border="1"> <tr><td>Feb</td><td>77.25</td><td>78.00</td><td>77.25</td><td>77.25</td><td>77.75</td><td>78.00</td><td>78.00</td><td>30,740</td></tr> <tr><td>Apr</td><td>77.40</td><td>77.85</td><td>77.20</td><td>77.75</td><td>77.40</td><td>77.85</td><td>76.45</td><td>42,265</td></tr> <tr><td>June</td><td>77.47</td><td>77.15</td><td>77.40</td><td>77.15</td><td>77.40</td><td>77.15</td><td>47.40</td><td>17,499</td></tr> <tr><td>Aug</td><td>68.47</td><td>69.20</td><td>68.45</td><td>69.07</td><td>68.70</td><td>72.40</td><td>65.90</td><td>6,940</td></tr> <tr><td>Oct</td><td>69.15</td><td>69.55</td><td>69.45</td><td>69.45</td><td>69.45</td><td>72.10</td><td>68.25</td><td>3,556</td></tr> <tr><td>Dec</td><td>69.80</td><td>70.20</td><td>69.75</td><td>70.25</td><td>70.10</td><td>71.80</td><td>67.10</td><td>1,122</td></tr> <tr><td>Feb</td><td>69.75</td><td>69.80</td><td>69.75</td><td>69.75</td><td>69.75</td><td>70.25</td><td>68.40</td><td>1,122</td></tr> </table> <p>Est. vol. 22,841; vol. Mon 14,545; open int. 92,825; +1,391.</p> <p>HOGS (CME) 40,000 lbs., cents per lb.</p> <table border="1"> <tr><td>Feb</td><td>41.25</td><td>41.75</td><td>41.25</td><td>41.75</td><td>41.25</td><td>42.25</td><td>38.80</td><td>3,797</td></tr> <tr><td>Apr</td><td>42.20</td><td>41.20</td><td>41.25</td><td>41.25</td><td>41.25</td><td>42.47</td><td>37.25</td><td>12,427</td></tr> <tr><td>June</td><td>44.20</td><td>43.80</td><td>44.20</td><td>44.20</td><td>44.20</td><td>45.00</td><td>42.37</td><td>5,405</td></tr> <tr><td>Aug</td><td>44.40</td><td>45.17</td><td>44.40</td><td>45.17</td><td>45.17</td><td>46.20</td><td>43.65</td><td>1,479</td></tr> <tr><td>Oct</td><td>42.25</td><td>43.80</td><td>42.25</td><td>43.70</td><td>43.70</td><td>44.85</td><td>41.80</td><td>1,188</td></tr> <tr><td>Dec</td><td>42.65</td><td>43.15</td><td>42.65</td><td>43.15</td><td>43.15</td><td>44.20</td><td>41.25</td><td>1,221</td></tr> <tr><td>Feb</td><td>43.75</td><td>44.12</td><td>43.40</td><td>44.02</td><td>44.02</td><td>45.10</td><td>41.00</td><td>2,000</td></tr> </table> <p>Est. vol. 6,842; vol. Mon 4,262; open int. 28,000; +120.</p>		Mar	76.45	76.10	76.45	76.77	76.47	77.10	76.00	4,390	Apr	76.45	77.17	76.45	76.97	76.40	77.00	76.25	1,824	May	75.50	76.50	75.50	75.50	75.50	76.50	75.45	1,722	Aug	75.45	76.02	75.45	75.75	75.58	76.00	75.45	1,282	Sept	75.20	75.20	75.10	75.10	75.10	75.40	75.10	147	Oct	74.40	75.25	74.40	74.90	74.70	75.20	74.10	246	Feb	77.25	78.00	77.25	77.25	77.75	78.00	78.00	30,740	Apr	77.40	77.85	77.20	77.75	77.40	77.85	76.45	42,265	June	77.47	77.15	77.40	77.15	77.40	77.15	47.40	17,499	Aug	68.47	69.20	68.45	69.07	68.70	72.40	65.90	6,940	Oct	69.15	69.55	69.45	69.45	69.45	72.10	68.25	3,556	Dec	69.80	70.20	69.75	70.25	70.10	71.80	67.10	1,122	Feb	69.75	69.80	69.75	69.75	69.75	70.25	68.40	1,122	Feb	41.25	41.75	41.25	41.75	41.25	42.25	38.80	3,797	Apr	42.20	41.20	41.25	41.25	41.25	42.47	37.25	12,427	June	44.20	43.80	44.20	44.20	44.20	45.00	42.37	5,405	Aug	44.40	45.17	44.40	45.17	45.17	46.20	43.65	1,479	Oct	42.25	43.80	42.25	43.70	43.70	44.85	41.80	1,188	Dec	42.65	43.15	42.65	43.15	43.15	44.20	41.25	1,221	Feb	43.75	44.12	43.40	44.02	44.02	45.10	41.00	2,000	<h4>GRAIN FUTURES</h4> <p>CORN (CBT) 5,000 bu., cents per bu.</p> <table border="1"> <tr><td>Mar</td><td>269 1/2</td><td>269 1/2</td><td>269 1/2</td><td>269 1/2</td><td>277 1/2</td><td>277 1/2</td><td>102,349</td></tr> <tr><td>May</td><td>274 1/2</td><td>273 1/2</td><td>273 1/2</td><td>273 1/2</td><td>277 1/2</td><td>274 1/2</td><td>77,161</td></tr> <tr><td>July</td><td>279 1/2</td><td>278 1/2</td><td>278 1/2</td><td>278 1/2</td><td>282 1/2</td><td>279 1/2</td><td>71,554</td></tr> <tr><td>Sept</td><td>275 1/2</td><td>274 1/2</td><td>274 1/2</td><td>274 1/2</td><td>274 1/2</td><td>274 1/2</td><td>8,992</td></tr> <tr><td>Nov</td><td>269 1/2</td><td>270 1/2</td><td>269 1/2</td><td>270 1/2</td><td>270 1/2</td><td>270 1/2</td><td>28,020</td></tr> <tr><td>Dec</td><td>274 1/2</td><td>274 1/2</td><td>274 1/2</td><td>274 1/2</td><td>274 1/2</td><td>274 1/2</td><td>2,887</td></tr> <tr><td>Mar</td><td>279 1/2</td><td>280 1/2</td><td>279 1/2</td><td>280 1/2</td><td>280 1/2</td><td>280 1/2</td><td>151</td></tr> </table> <p>Est. vol. 4,107; vol. Mon 2,471; open int. 70,540; +1,927.</p> <p>SOYBEANS (CBT) 5,000 bu., cents per bu.</p> <table border="1"> <tr><td>Mar</td><td>377 1/2</td><td>381 1/2</td><td>377 1/2</td><td>377 1/2</td><td>380 1/2</td><td>380 1/2</td><td>42,800</td></tr> <tr><td>May</td><td>382 1/2</td><td>381 1/2</td><td>382 1/2</td><td>382 1/2</td><td>384 1/2</td><td>384 1/2</td><td>28,154</td></tr> <tr><td>July</td><td>391 1/2</td><td>390 1/2</td><td>390 1/2</td><td>390 1/2</td><td>392 1/2</td><td>392 1/2</td><td>28,216</td></tr> <tr><td>Aug</td><td>387 1/2</td><td>387 1/2</td><td>387 1/2</td><td>387 1/2</td><td>387 1/2</td><td>387 1/2</td><td>3,901</td></tr> <tr><td>Sept</td><td>394 1/2</td><td>393 1/2</td><td>393 1/2</td><td>393 1/2</td><td>393 1/2</td><td>393 1/2</td><td>2,027</td></tr> <tr><td>Nov</td><td>400 1/2</td><td>401 1/2</td><td>401 1/2</td><td>401 1/2</td><td>401 1/2</td><td>401 1/2</td><td>14,897</td></tr> <tr><td>Dec</td><td>417 1/2</td><td>417 1/2</td><td>417 1/2</td><td>417 1/2</td><td>417 1/2</td><td>417 1/2</td><td>705</td></tr> <tr><td>Mar</td><td>424 1/2</td><td>424 1/2</td><td>424 1/2</td><td>424 1/2</td><td>424 1/2</td><td>424 1/2</td><td>147</td></tr> </table> <p>Est. vol. 9,412; vol. Mon 6,450; open int. 179,261; +3,068.</p> <p>WHEAT (CBT) 5,000 bu., cents per bu.</p> <table border="1"> <tr><td>Mar</td><td>446 1/2</td><td>446 1/2</td><td>446 1/2</td><td>446 1/2</td><td>450 1/2</td><td>450 1/2</td><td>279</td><td>22,677</td></tr> <tr><td>May</td><td>451 1/2</td><td>451 1/2</td><td>451 1/2</td><td>451 1/2</td><td>451 1/2</td><td>451 1/2</td><td>279</td><td>25,715</td></tr> <tr><td>July</td><td>459 1/2</td><td>459 1/2</td><td>459 1/2</td><td>459 1/2</td><td>459 1/2</td><td>459 1/2</td><td>279</td><td>25,921</td></tr> <tr><td>Sept</td><td>457 1/2</td><td>457 1/2</td><td>457 1/2</td><td>457 1/2</td><td>457 1/2</td><td>457 1/2</td><td>279</td><td>2,291</td></tr> <tr><td>Nov</td><td>466 1/2</td><td>466 1/2</td><td>466 1/2</td><td>466 1/2</td><td>466 1/2</td><td>466 1/2</td><td>279</td><td>3,427</td></tr> <tr><td>Dec</td><td>467 1/2</td><td>467 1/2</td><td>467 1/2</td><td>467 1/2</td><td>467 1/2</td><td>467 1/2</td><td>279</td><td>189</td></tr> </table> <p>Est. vol. 8,111; vol. Mon 5,145; open int. 71,200; +864.</p>	Mar	269 1/2	269 1/2	269 1/2	269 1/2	277 1/2	277 1/2	102,349	May	274 1/2	273 1/2	273 1/2	273 1/2	277 1/2	274 1/2	77,161	July	279 1/2	278 1/2	278 1/2	278 1/2	282 1/2	279 1/2	71,554	Sept	275 1/2	274 1/2	274 1/2	274 1/2	274 1/2	274 1/2	8,992	Nov	269 1/2	270 1/2	269 1/2	270 1/2	270 1/2	270 1/2	28,020	Dec	274 1/2	274 1/2	274 1/2	274 1/2	274 1/2	274 1/2	2,887	Mar	279 1/2	280 1/2	279 1/2	280 1/2	280 1/2	280 1/2	151	Mar	377 1/2	381 1/2	377 1/2	377 1/2	380 1/2	380 1/2	42,800	May	382 1/2	381 1/2	382 1/2	382 1/2	384 1/2	384 1/2	28,154	July	391 1/2	390 1/2	390 1/2	390 1/2	392 1/2	392 1/2	28,216	Aug	387 1/2	387 1/2	387 1/2	387 1/2	387 1/2	387 1/2	3,901	Sept	394 1/2	393 1/2	393 1/2	393 1/2	393 1/2	393 1/2	2,027	Nov	400 1/2	401 1/2	401 1/2	401 1/2	401 1/2	401 1/2	14,897	Dec	417 1/2	417 1/2	417 1/2	417 1/2	417 1/2	417 1/2	705	Mar	424 1/2	424 1/2	424 1/2	424 1/2	424 1/2	424 1/2	147	Mar	446 1/2	446 1/2	446 1/2	446 1/2	450 1/2	450 1/2	279	22,677	May	451 1/2	451 1/2	451 1/2	451 1/2	451 1/2	451 1/2	279	25,715	July	459 1/2	459 1/2	459 1/2	459 1/2	459 1/2	459 1/2	279	25,921	Sept	457 1/2	457 1/2	457 1/2	457 1/2	457 1/2	457 1/2	279	2,291	Nov	466 1/2	466 1/2	466 1/2	466 1/2	466 1/2	466 1/2	279	3,427	Dec	467 1/2	467 1/2	467 1/2	467 1/2	467 1/2	467 1/2	279	189
Mar	76.45	76.10	76.45	76.77	76.47	77.10	76.00	4,390																																																																																																																																																																																																																																																																																																																																																												
Apr	76.45	77.17	76.45	76.97	76.40	77.00	76.25	1,824																																																																																																																																																																																																																																																																																																																																																												
May	75.50	76.50	75.50	75.50	75.50	76.50	75.45	1,722																																																																																																																																																																																																																																																																																																																																																												
Aug	75.45	76.02	75.45	75.75	75.58	76.00	75.45	1,282																																																																																																																																																																																																																																																																																																																																																												
Sept	75.20	75.20	75.10	75.10	75.10	75.40	75.10	147																																																																																																																																																																																																																																																																																																																																																												
Oct	74.40	75.25	74.40	74.90	74.70	75.20	74.10	246																																																																																																																																																																																																																																																																																																																																																												
Feb	77.25	78.00	77.25	77.25	77.75	78.00	78.00	30,740																																																																																																																																																																																																																																																																																																																																																												
Apr	77.40	77.85	77.20	77.75	77.40	77.85	76.45	42,265																																																																																																																																																																																																																																																																																																																																																												
June	77.47	77.15	77.40	77.15	77.40	77.15	47.40	17,499																																																																																																																																																																																																																																																																																																																																																												
Aug	68.47	69.20	68.45	69.07	68.70	72.40	65.90	6,940																																																																																																																																																																																																																																																																																																																																																												
Oct	69.15	69.55	69.45	69.45	69.45	72.10	68.25	3,556																																																																																																																																																																																																																																																																																																																																																												
Dec	69.80	70.20	69.75	70.25	70.10	71.80	67.10	1,122																																																																																																																																																																																																																																																																																																																																																												
Feb	69.75	69.80	69.75	69.75	69.75	70.25	68.40	1,122																																																																																																																																																																																																																																																																																																																																																												
Feb	41.25	41.75	41.25	41.75	41.25	42.25	38.80	3,797																																																																																																																																																																																																																																																																																																																																																												
Apr	42.20	41.20	41.25	41.25	41.25	42.47	37.25	12,427																																																																																																																																																																																																																																																																																																																																																												
June	44.20	43.80	44.20	44.20	44.20	45.00	42.37	5,405																																																																																																																																																																																																																																																																																																																																																												
Aug	44.40	45.17	44.40	45.17	45.17	46.20	43.65	1,479																																																																																																																																																																																																																																																																																																																																																												
Oct	42.25	43.80	42.25	43.70	43.70	44.85	41.80	1,188																																																																																																																																																																																																																																																																																																																																																												
Dec	42.65	43.15	42.65	43.15	43.15	44.20	41.25	1,221																																																																																																																																																																																																																																																																																																																																																												
Feb	43.75	44.12	43.40	44.02	44.02	45.10	41.00	2,000																																																																																																																																																																																																																																																																																																																																																												
Mar	269 1/2	269 1/2	269 1/2	269 1/2	277 1/2	277 1/2	102,349																																																																																																																																																																																																																																																																																																																																																													
May	274 1/2	273 1/2	273 1/2	273 1/2	277 1/2	274 1/2	77,161																																																																																																																																																																																																																																																																																																																																																													
July	279 1/2	278 1/2	278 1/2	278 1/2	282 1/2	279 1/2	71,554																																																																																																																																																																																																																																																																																																																																																													
Sept	275 1/2	274 1/2	274 1/2	274 1/2	274 1/2	274 1/2	8,992																																																																																																																																																																																																																																																																																																																																																													
Nov	269 1/2	270 1/2	269 1/2	270 1/2	270 1/2	270 1/2	28,020																																																																																																																																																																																																																																																																																																																																																													
Dec	274 1/2	274 1/2	274 1/2	274 1/2	274 1/2	274 1/2	2,887																																																																																																																																																																																																																																																																																																																																																													
Mar	279 1/2	280 1/2	279 1/2	280 1/2	280 1/2	280 1/2	151																																																																																																																																																																																																																																																																																																																																																													
Mar	377 1/2	381 1/2	377 1/2	377 1/2	380 1/2	380 1/2	42,800																																																																																																																																																																																																																																																																																																																																																													
May	382 1/2	381 1/2	382 1/2	382 1/2	384 1/2	384 1/2	28,154																																																																																																																																																																																																																																																																																																																																																													
July	391 1/2	390 1/2	390 1/2	390 1/2	392 1/2	392 1/2	28,216																																																																																																																																																																																																																																																																																																																																																													
Aug	387 1/2	387 1/2	387 1/2	387 1/2	387 1/2	387 1/2	3,901																																																																																																																																																																																																																																																																																																																																																													
Sept	394 1/2	393 1/2	393 1/2	393 1/2	393 1/2	393 1/2	2,027																																																																																																																																																																																																																																																																																																																																																													
Nov	400 1/2	401 1/2	401 1/2	401 1/2	401 1/2	401 1/2	14,897																																																																																																																																																																																																																																																																																																																																																													
Dec	417 1/2	417 1/2	417 1/2	417 1/2	417 1/2	417 1/2	705																																																																																																																																																																																																																																																																																																																																																													
Mar	424 1/2	424 1/2	424 1/2	424 1/2	424 1/2	424 1/2	147																																																																																																																																																																																																																																																																																																																																																													
Mar	446 1/2	446 1/2	446 1/2	446 1/2	450 1/2	450 1/2	279	22,677																																																																																																																																																																																																																																																																																																																																																												
May	451 1/2	451 1/2	451 1/2	451 1/2	451 1/2	451 1/2	279	25,715																																																																																																																																																																																																																																																																																																																																																												
July	459 1/2	459 1/2	459 1/2	459 1/2	459 1/2	459 1/2	279	25,921																																																																																																																																																																																																																																																																																																																																																												
Sept	457 1/2	457 1/2	457 1/2	457 1/2	457 1/2	457 1/2	279	2,291																																																																																																																																																																																																																																																																																																																																																												
Nov	466 1/2	466 1/2	466 1/2	466 1/2	466 1/2	466 1/2	279	3,427																																																																																																																																																																																																																																																																																																																																																												
Dec	467 1/2	467 1/2	467 1/2	467 1/2	467 1/2	467 1/2	279	189																																																																																																																																																																																																																																																																																																																																																												
<h4>METAL FUTURES</h4> <p>GOLD (CME) -100 Troy oz., \$ per Troy oz.</p> <table border="1"> <tr><td>Feb</td><td>326.70</td><td>327.00</td><td>326.00</td><td>326.50</td><td>326.50</td><td>326.50</td><td>2,300</td></tr> <tr><td>Apr</td><td>326.20</td><td>326.70</td><td>327.00</td><td>327.00</td><td>327.00</td><td>327.00</td><td>25,493</td></tr> <tr><td>June</td><td>326.10</td><td>326.70</td><td>326.00</td><td>326.00</td><td>326.00</td><td>326.00</td><td>15,154</td></tr> <tr><td>Aug</td><td>326.20</td><td>326.80</td><td>326.50</td><td>326.50</td><td>326.50</td><td>326.50</td><td>6,125</td></tr> <tr><td>Oct</td><td>326.40</td><td>326.80</td><td>326.10</td><td>326.10</td><td>326.10</td><td>326.10</td><td>2,274</td></tr> <tr><td>Dec</td><td>327.10</td><td>327.20</td><td>327.10</td><td>327.10</td><td>327.10</td><td>327.10</td><td>4,290</td></tr> <tr><td>Feb</td><td>329.00</td><td>329.00</td><td>329.00</td><td>329.00</td><td>329.00</td><td>329.00</td><td>6,880</td></tr> <tr><td>Apr</td><td>329.10</td><td>329.10</td><td>329.10</td><td>329.10</td><td>329.10</td><td>329.10</td><td>5,296</td></tr> <tr><td>June</td><td>329.20</td><td>329.20</td><td>329.20</td><td>329.20</td><td>329.20</td><td>329.20</td><td>2,892</td></tr> <tr><td>Aug</td><td>329.30</td><td>329.30</td><td>329.30</td><td>329.30</td><td>329.30</td><td>329.30</td><td>1,124</td></tr> <tr><td>Oct</td><td>329.40</td><td>329.40</td><td>329.40</td><td>329.40</td><td>329.40</td><td>329.40</td><td>1,181</td></tr> <tr><td>Dec</td><td>329.50</td><td>329.50</td><td>329.50</td><td>329.50</td><td>329.50</td><td>329.50</td><td>1,181</td></tr> <tr><td>Feb</td><td>329.60</td><td>329.60</td><td>329.60</td><td>329.60</td><td>329.60</td><td>329.60</td><td>1,181</td></tr> </table> <p>Est. vol. 15,600; vol. Mon 10,262; open int. 102,911; -1,979.</p> <p>SILVER (CME) -100 Troy oz., \$ per Troy oz.</p> <table border="1"> <tr><td>Feb</td><td>417.0</td><td>420.5</td><td>417.0</td><td>417.0</td><td>417.0</td><td>417.0</td><td>31</td></tr> <tr><td>Mar</td><td>420.5</td><td>420.5</td><td>420.5</td><td>420.5</td><td>420.5</td><td>420.5</td><td>28,717</td></tr> <tr><td>Apr</td><td>420.5</td><td>420.5</td><td>420.5</td><td>420.5</td><td>420.5</td><td>420.5</td><td>12,719</td></tr> <tr><td>May</td><td>420.5</td><td>420.5</td><td>420.5</td><td>420.5</td><td>420.5</td><td>420.5</td><td>10,725</td></tr> <tr><td>June</td><td>420.5</td><td>420.5</td><td>420.5</td><td>420.5</td><td>420.5</td><td>420.5</td><td>4,320</td></tr> <tr><td>July</td><td>420.5</td><td>420.5</td><td>420.5</td><td>420.5</td><td>420.5</td><td>420.5</td><td>8,294</td></tr> <tr><td>Aug</td><td>420.5</td><td>420.5</td><td>420.5</td><td>420.5</td><td>420.5</td><td>420.5</td><td>1,766</td></tr> <tr><td>Sept</td><td>420.5</td><td>420.5</td><td>420.5</td><td>420.5</td><td>420.5</td><td>420.5</td><td>1,766</td></tr> <tr><td>Oct</td><td>420.5</td><td>420.5</td><td>420.5</td><td>420.5</td><td>420.5</td><td>420.5</td><td>2,961</td></tr> <tr><td>Nov</td><td>420.5</td><td>420.5</td><td>420.5</td><td>420.5</td><td>420.5</td><td>420.5</td><td>422</td></tr> </table> <p>Est. vol. 7,800; vol. Mon 5,797; open int. 56,974; +551.</p>		Feb	326.70	327.00	326.00	326.50	326.50	326.50	2,300	Apr	326.20	326.70	327.00	327.00	327.00	327.00	25,493	June	326.10	326.70	326.00	326.00	326.00	326.00	15,154	Aug	326.20	326.80	326.50	326.50	326.50	326.50	6,125	Oct	326.40	326.80	326.10	326.10	326.10	326.10	2,274	Dec	327.10	327.20	327.10	327.10	327.10	327.10	4,290	Feb	329.00	329.00	329.00	329.00	329.00	329.00	6,880	Apr	329.10	329.10	329.10	329.10	329.10	329.10	5,296	June	329.20	329.20	329.20	329.20	329.20	329.20	2,892	Aug	329.30	329.30	329.30	329.30	329.30	329.30	1,124	Oct	329.40	329.40	329.40	329.40	329.40	329.40	1,181	Dec	329.50	329.50	329.50	329.50	329.50	329.50	1,181	Feb	329.60	329.60	329.60	329.60	329.60	329.60	1,181	Feb	417.0	420.5	417.0	417.0	417.0	417.0	31	Mar	420.5	420.5	420.5	420.5	420.5	420.5	28,717	Apr	420.5	420.5	420.5	420.5	420.5	420.5	12,719	May	420.5	420.5	420.5	420.5	420.5	420.5	10,725	June	420.5	420.5	420.5	420.5	420.5	420.5	4,320	July	420.5	420.5	420.5	420.5	420.5	420.5	8,294	Aug	420.5	420.5	420.5	420.5	420.5	420.5	1,766	Sept	420.5	420.5	420.5	420.5	420.5	420.5	1,766	Oct	420.5	420.5	420.5	420.5	420.5	420.5	2,961	Nov	420.5	420.5	420.5	420.5	420.5	420.5	422	<h4>FUTURES OPTIONS</h4> <p>CATTLE-FEEDER (CME) 40,000 lbs., cents per lb.</p> <table border="1"> <tr><td>Strike</td><td>Call</td><td>Put</td><td>Call</td><td>Put</td></tr> <tr><td>74</td><td>3.87</td><td>3.50</td><td>0.90</td><td>1.45</td></tr> <tr><td>76</td><td>2.37</td><td>2.10</td><td>0.40</td><td>1.00</td></tr> <tr><td>78</td><td>1.90</td><td>1.20</td><td>1.10</td><td>1.35</td></tr> <tr><td>80</td><td>0.95</td><td>0.75</td><td>2.00</td><td>1.70</td></tr> <tr><td>82</td><td>0.37</td><td>0.37</td><td>2.30</td><td>1.40</td></tr> <tr><td>84</td><td>0.10</td><td>0.10</td><td>2.30</td><td>1.10</td></tr> </table> <p>Est. vol. 378. Mon vol. 47 calls; 174 puts Op. int. Mon 2,922 calls; 3,847 puts</p> <p>CATTLE-LIVE (CME) 40,000 lbs., cents per lb.</p> <table border="1"> <tr><td>Strike</td><td>Call</td><td>Put</td><td>Call</td><td>Put</td></tr> <tr><td>74</td><td>3.40</td><td>4.17</td><td>1.00</td><td>0.67</td></tr> <tr><td>76</td><td>2.40</td><td>3.00</td><td>0.87</td><td>1.00</td></tr> <tr><td>78</td><td>0.40</td><td>1.40</td><td>0.30</td><td>1.40</td></tr> <tr><td>80</td><td>0.40</td><td>0.37</td><td>0.10</td><td>1.10</td></tr> <tr><td>82</td><td>0.30</td><td>0.30</td><td>0.30</td><td>1.21</td></tr> </table> <p>Est. vol. 6,842. Mon vol. 395 calls; 1,416 puts Op. int. Mon 26,284 calls; 35,251 puts</p> <p>CORN (CBT) 5,000 bu., cents per bu.</p> <table border="1"> <tr><td>Strike</td><td>Call</td><td>Put</td><td>Call</td><td>Put</td></tr> <tr><td>269</td><td>1.10</td><td>1.10</td><td>0.90</td><td>1.20</td></tr> <tr><td>270</td><td>0.80</td><td>0.80</td><td>0.80</td><td>0.80</td></tr> <tr><td>271</td><td>0.50</td><td>0.50</td><td>0.50</td><td>0.50</td></tr> <tr><td>272</td><td>0.30</td><td>0.30</td><td>0.30</td><td>0.30</td></tr> <tr><td>273</td><td>0.20</td><td>0.20</td><td>0.20</td><td>0.20</td></tr> </table> <p>Est. vol. 9,820. Mon vol. 7,200 calls; 3,621 puts Op. int. Mon 10,264 calls; 15,195 puts</p> <p>GOLD (CME) 100 Troy ounces, \$ per Troy ounce</p> <table border="1"> <tr><td>Strike</td><td>Call</td><td>Put</td><td>Call</td><td>Put</td></tr> <tr><td>326</td><td>0.80</td><td>0.80</td><td>0.80</td><td>0.80</td></tr> <tr><td>327</td><td>0.50</td><td>0.50</td><td>0.50</td><td>0.50</td></tr> <tr><td>328</td><td>0.30</td><td>0.30</td><td>0.30</td><td>0.30</td></tr> <tr><td>329</td><td>0.20</td><td>0.20</td><td>0.20</td><td>0.20</td></tr> <tr><td>330</td><td>0.10</td><td>0.10</td><td>0.10</td><td>0.10</td></tr> </table> <p>Est. vol. 1,800. Mon vol. 1,400 calls; 2,099 puts Op. int. Mon 62,267 calls; 21,692 puts</p>	Strike	Call	Put	Call	Put	74	3.87	3.50	0.90	1.45	76	2.37	2.10	0.40	1.00	78	1.90	1.20	1.10	1.35	80	0.95	0.75	2.00	1.70	82	0.37	0.37	2.30	1.40	84	0.10	0.10	2.30	1.10	Strike	Call	Put	Call	Put	74	3.40	4.17	1.00	0.67	76	2.40	3.00	0.87	1.00	78	0.40	1.40	0.30	1.40	80	0.40	0.37	0.10	1.10	82	0.30	0.30	0.30	1.21	Strike	Call	Put	Call	Put	269	1.10	1.10	0.90	1.20	270	0.80	0.80	0.80	0.80	271	0.50	0.50	0.50	0.50	272	0.30	0.30	0.30	0.30	273	0.20	0.20	0.20	0.20	Strike	Call	Put	Call	Put	326	0.80	0.80	0.80	0.80	327	0.50	0.50	0.50	0.50	328	0.30	0.30	0.30	0.30	329	0.20	0.20	0.20	0.20	330	0.10	0.10	0.10	0.10																																													
Feb	326.70	327.00	326.00	326.50	326.50	326.50	2,300																																																																																																																																																																																																																																																																																																																																																													
Apr	326.20	326.70	327.00	327.00	327.00	327.00	25,493																																																																																																																																																																																																																																																																																																																																																													
June	326.10	326.70	326.00	326.00	326.00	326.00	15,154																																																																																																																																																																																																																																																																																																																																																													
Aug	326.20	326.80	326.50	326.50	326.50	326.50	6,125																																																																																																																																																																																																																																																																																																																																																													
Oct	326.40	326.80	326.10	326.10	326.10	326.10	2,274																																																																																																																																																																																																																																																																																																																																																													
Dec	327.10	327.20	327.10	327.10	327.10	327.10	4,290																																																																																																																																																																																																																																																																																																																																																													
Feb	329.00	329.00	329.00	329.00	329.00	329.00	6,880																																																																																																																																																																																																																																																																																																																																																													
Apr	329.10	329.10	329.10	329.10	329.10	329.10	5,296																																																																																																																																																																																																																																																																																																																																																													
June	329.20	329.20	329.20	329.20	329.20	329.20	2,892																																																																																																																																																																																																																																																																																																																																																													
Aug	329.30	329.30	329.30	329.30	329.30	329.30	1,124																																																																																																																																																																																																																																																																																																																																																													
Oct	329.40	329.40	329.40	329.40	329.40	329.40	1,181																																																																																																																																																																																																																																																																																																																																																													
Dec	329.50	329.50	329.50	329.50	329.50	329.50	1,181																																																																																																																																																																																																																																																																																																																																																													
Feb	329.60	329.60	329.60	329.60	329.60	329.60	1,181																																																																																																																																																																																																																																																																																																																																																													
Feb	417.0	420.5	417.0	417.0	417.0	417.0	31																																																																																																																																																																																																																																																																																																																																																													
Mar	420.5	420.5	420.5	420.5	420.5	420.5	28,717																																																																																																																																																																																																																																																																																																																																																													
Apr	420.5	420.5	420.5	420.5	420.5	420.5	12,719																																																																																																																																																																																																																																																																																																																																																													
May	420.5	420.5	420.5	420.5	420.5	420.5	10,725																																																																																																																																																																																																																																																																																																																																																													
June	420.5	420.5	420.5	420.5	420.5	420.5	4,320																																																																																																																																																																																																																																																																																																																																																													
July	420.5	420.5	420.5	420.5	420.5	420.5	8,294																																																																																																																																																																																																																																																																																																																																																													
Aug	420.5	420.5	420.5	420.5	420.5	420.5	1,766																																																																																																																																																																																																																																																																																																																																																													
Sept	420.5	420.5	420.5	420.5	420.5	420.5	1,766																																																																																																																																																																																																																																																																																																																																																													
Oct	420.5	420.5	420.5	420.5	420.5	420.5	2,961																																																																																																																																																																																																																																																																																																																																																													
Nov	420.5	420.5	420.5	420.5	420.5	420.5	422																																																																																																																																																																																																																																																																																																																																																													
Strike	Call	Put	Call	Put																																																																																																																																																																																																																																																																																																																																																																
74	3.87	3.50	0.90	1.45																																																																																																																																																																																																																																																																																																																																																																
76	2.37	2.10	0.40	1.00																																																																																																																																																																																																																																																																																																																																																																
78	1.90	1.20	1.10	1.35																																																																																																																																																																																																																																																																																																																																																																
80	0.95	0.75	2.00	1.70																																																																																																																																																																																																																																																																																																																																																																
82	0.37	0.37	2.30	1.40																																																																																																																																																																																																																																																																																																																																																																
84	0.10	0.10	2.30	1.10																																																																																																																																																																																																																																																																																																																																																																
Strike	Call	Put	Call	Put																																																																																																																																																																																																																																																																																																																																																																
74	3.40	4.17	1.00	0.67																																																																																																																																																																																																																																																																																																																																																																
76	2.40	3.00	0.87	1.00																																																																																																																																																																																																																																																																																																																																																																
78	0.40	1.40	0.30	1.40																																																																																																																																																																																																																																																																																																																																																																
80	0.40	0.37	0.10	1.10																																																																																																																																																																																																																																																																																																																																																																
82	0.30	0.30	0.30	1.21																																																																																																																																																																																																																																																																																																																																																																
Strike	Call	Put	Call	Put																																																																																																																																																																																																																																																																																																																																																																
269	1.10	1.10	0.90	1.20																																																																																																																																																																																																																																																																																																																																																																
270	0.80	0.80	0.80	0.80																																																																																																																																																																																																																																																																																																																																																																
271	0.50	0.50	0.50	0.50																																																																																																																																																																																																																																																																																																																																																																
272	0.30	0.30	0.30	0.30																																																																																																																																																																																																																																																																																																																																																																
273	0.20	0.20	0.20	0.20																																																																																																																																																																																																																																																																																																																																																																
Strike	Call	Put	Call	Put																																																																																																																																																																																																																																																																																																																																																																
326	0.80	0.80	0.80	0.80																																																																																																																																																																																																																																																																																																																																																																
327	0.50	0.50	0.50	0.50																																																																																																																																																																																																																																																																																																																																																																
328	0.30	0.30	0.30	0.30																																																																																																																																																																																																																																																																																																																																																																
329	0.20	0.20	0.20	0.20																																																																																																																																																																																																																																																																																																																																																																
330	0.10	0.10	0.10	0.10																																																																																																																																																																																																																																																																																																																																																																

Calendar of Events

MONDAY

AA meets Monday through Friday, 406 W. Fourth St., noon, 5:30 p.m. and 8 p.m. For more information call 364-9620.

Spanish speaking AA meetings each Monday, 406 W. Fourth St., 8 p.m.

Ladies exercise class, First Baptist Church Family Life Center, 7:30 p.m.

Odd Fellows Lodge, IOOF Hall, 7:30 p.m.

TOPS Chapter No. 1011, Community Center, 5:30-6:30 p.m.

Rotary Club, Community Center, noon.

Planned Parenthood Clinic, open Monday through Friday, 711 25 Mile Ave., 8:30 a.m. until 4:30 p.m.

Civil Air Patrol United States Air Force Auxiliary, Community Center, 7 p.m.

Masonic Lodge, Masonic Temple, 7:30 p.m.

Easter Lions Club, Easter clubhouse, 8 p.m.

Hereford Music Study Club, 1:30 p.m.

Beta Sigma Phi City Council, Southwestern Public Service Reddy Room, 8 p.m.

Sweet 'n' Fancy Cake Decorating Club, Community Center, 7 p.m.

Texas Retired Teachers Association, Hereford Senior Citizens Center, 11:30 a.m.

TUESDAY

Hereford Rebekah Lodge No. 228, IOOF Hall, 7:30 p.m.

Problem Pregnancy Center, 801 E. Fourth St., open Tuesday through Friday, 9 a.m. until noon. Free and confidential pregnancy testing. Call 364-2027 or 364-7626 for appointment.

Encore recycling, Red Cross office, 3-6 p.m. Will accept glass, plastic, metal and newspaper. No cardboard or magazines please.

Domestic Violence Support Group for women who have experienced physical or emotional abuse, 5 p.m. Call 364-7822 for meeting place. Child-care is available.

Deaf Smith County Historical Museum: Regular museum hours Monday through Saturday 10 a.m. to 5 p.m. and Sunday by appointment only.

TOPS Chapter No. 576, Community Center, 9 a.m.

Kids Day Out, First United Methodist church, 9 a.m. until 4 p.m.

St. Thomas' 12-step recovery program, open to the public, 7:30-8:30 p.m. For more information call the church office at 364-0146.

Free women's exercise class, aerobics and floorwork, Community Church, 7:30 p.m.

Hereford AMBUCS Club, Ranch House, noon.

Social Security representative at courthouse, 9:15-11:30 a.m.

Kiwanis Club of Hereford-Golden K, Senior Citizens Center, noon.

Lone Star Study Club, 2:30 p.m.

Order of Eastern Star, Masonic Temple, 7:30 p.m.

Westway Extension Homemakers Club, 7 p.m.

Pioneer Study Club, 10 a.m. for business meeting and a luncheon to follow.

Pilot Club, Community Center, 7 a.m.

WEDNESDAY

Noon Lions Club, Community Center, noon.

Young at heart program, YMCA, 9 a.m. until noon.

Al-Anon, 406 W. Fourth St., 5 p.m.

Cultural Extension Homemakers Club, 2 p.m.

Bippus Extension Homemakers Club, 2 p.m.

United Methodist Women of First United Methodist Church, in Ward Parlor, 9:30 a.m.

Tech honor students listed

More than 2,500 Texas Tech University students qualified for the academic honors lists at the end of the 1991 fall semester.

Students on the President's List earned a perfect 4.0 (A) grade point average while enrolling in 12 or more credit hour of classwork. Students finishing 12 or more our with a grade point average of 3.5 to 3.9 qualified for the Dean's List.

Students making the honor rolls include the following: Donna Grotegut, Monica Grotegut, Kevin Patzold, Lara Reinaur, Poppy Richardson, and Brianna Townsend, Jeffrey Wheeler.

John Malouf made the President's List.

Credit Women International, Ranch House, noon.

Wesley United Methodist Church Women, at the church, 7:30 p.m.

THURSDAY

San Jose prayer group, 735 Brevard, 8 p.m.

Weight Watchers, Community Church, 6:30 p.m.

Kids Day Out, First United Methodist Church, 9 a.m. until 4 p.m.

Kiwanis Club, Community Center, noon.

TOPS Club No. 941, Community Center, 9 a.m.

Amateur Radio Operators, north biology building of high school, 7:30 p.m.

Story hour at library, 10 a.m.

Hereford Toastmasters Club, Ranch House, 6:30 a.m.

Ladies exercise class, First Baptist Church Family Life Center, 7:30 p.m.

Immunizations against childhood

diseases, Texas Department of Health office, 914 E. Park, 9-11:30 a.m. and 1-4 p.m.

Al-Anon, 406 W. Fourth St., 8 p.m.

Bud to Blossom Garden Club, 9:30 a.m.

Elketts, 8 p.m.

L'Allegra Study Club, 10 a.m.

Alpha Iota Mu Chapter of Beta Sigma Phi Sorority, 7:30 p.m.

North Hereford Extension Homemakers Club, 2:30 p.m.

Wyche Extension Homemakers Club, 2:30 p.m.

Bay view Study Club, 2 p.m.

VFW, VFW Clubhouse, 8 p.m.

BPOE Lodge at Elks Hall, 8:30 p.m.

National Association of Retired Federal Employees, Hereford Senior Citizens Center, 1 p.m.

Hereford Child Care Providers, 7:30 p.m.

Merry Mixers Square Dance Club, Community Center, 8 p.m.

FRIDAY

Kiwanis Whiteface Breakfast Club, Caison House, 6:30 a.m.

Community Duplicate Bridge Club, Community Center, 7:30 p.m.

Hereford Senior Citizens governing board 2 p.m. and business meeting at 3 p.m. at Senior Citizens Center.

Patriarchs Militant and Ladies Auxiliary, IOOF Hall, 8 p.m.

BEST FOR LESS EVERYDAY BEST FOR LESS EVERYDAY BEST FOR LESS EVERYDAY BEST FOR LESS EVERYDAY BEST FOR LESS EVERYDAY

Gibson's

DISCOUNT CENTER

1115 W. Park
364-3187

Mon. - Sat.
9:00am to 9:00pm
Sunday
12:00pm to 6:00pm

Prices effective thru Saturday, Feb. 8, 1992.

WE PREDICT



BIG BARGAINS

<p style="font-size: 0.8em; font-weight: bold;">BEST FOR LESS EVERYDAY</p> <p style="text-align: center; font-weight: bold;">V-05 Shampoo & Conditioner</p> <p>15 fl. oz.</p>  <p style="font-size: 2em; font-weight: bold; text-align: center;">99¢</p>	<p style="font-size: 0.8em; font-weight: bold;">BEST FOR LESS EVERYDAY</p> <p style="text-align: center; font-weight: bold;">Vaseline Intensive Care Lotion</p>  <p style="font-size: 0.8em;">Relieves over dry skin.</p> <p style="font-size: 2em; font-weight: bold; text-align: center;">\$3.99</p> <p style="font-size: 0.8em;">15 fl. oz. Reg. price 4.39</p>	<p style="font-size: 0.8em; font-weight: bold;">BEST FOR LESS EVERYDAY</p> <p style="text-align: center; font-weight: bold;">Lady's Choice Deodorant</p>  <p style="font-size: 0.8em;">1.5 oz. Reg. price 2.12</p> <p style="font-size: 2em; font-weight: bold; text-align: center;">\$1.99</p>	<p style="font-size: 0.8em; font-weight: bold;">BEST FOR LESS EVERYDAY</p> <p style="text-align: center; font-weight: bold;">Camay Soap Bar</p>  <p style="font-size: 0.8em;">Natural, Classic, Flair 2.45 oz. Reg. price 1.79</p> <p style="font-size: 2em; font-weight: bold; text-align: center;">\$1.69</p>	<p style="font-size: 0.8em; font-weight: bold;">BEST FOR LESS EVERYDAY</p> <p style="text-align: center; font-weight: bold;">Huggies Diapers</p>  <p style="font-size: 0.8em;">Jumbo Pack His And Hers Reg. Price 19.79</p> <p style="font-size: 2em; font-weight: bold; text-align: center;">\$18.99</p>	
<p style="font-size: 0.8em; font-weight: bold;">BEST FOR LESS EVERYDAY</p> <p style="text-align: center; font-weight: bold;">Celebrity Pineapple</p>  <p style="font-size: 0.8em;">Chunks, Tidbits Reg. price 49¢ 8 oz. can</p> <p style="font-size: 2em; font-weight: bold; text-align: center;">39¢</p>	<p style="font-size: 0.8em; font-weight: bold;">BEST FOR LESS EVERYDAY</p> <p style="text-align: center; font-weight: bold;">Wesson Vegetable Shortening</p>  <p style="font-size: 0.8em;">48 oz. Can Reg. price 2.29</p> <p style="font-size: 2em; font-weight: bold; text-align: center;">\$1.99</p>	<p style="font-size: 0.8em; font-weight: bold;">BEST FOR LESS EVERYDAY</p> <p style="text-align: center; font-weight: bold;">Coke</p>  <p style="font-size: 0.8em;">12 Pack</p> <p style="font-size: 2em; font-weight: bold; text-align: center;">\$3.49</p>	<p style="font-size: 0.8em; font-weight: bold;">BEST FOR LESS EVERYDAY</p> <p style="text-align: center; font-weight: bold;">2 Prints for the Price of 1</p>	<p style="font-size: 0.8em; font-weight: bold;">BEST FOR LESS EVERYDAY</p> <p style="text-align: center; font-weight: bold;">Casio Keyboard</p>  <p style="font-size: 0.8em;">Full-feature SA-8</p> <p style="font-size: 2em; font-weight: bold; text-align: center;">\$29.97</p>	
<p style="font-size: 0.8em; font-weight: bold;">BEST FOR LESS EVERYDAY</p> <p style="text-align: center; font-weight: bold;">Mead 6 to 8 Column Pad</p> <p style="font-size: 0.8em;">Reg. price 2.49 58246-58258</p> <p style="font-size: 2em; font-weight: bold; text-align: center;">\$1.99</p>	<p style="font-size: 0.8em; font-weight: bold;">BEST FOR LESS EVERYDAY</p> <p style="text-align: center; font-weight: bold;">Tandem Bricks</p> <p style="font-size: 0.8em;">300 piece bucket or 30 piece bucket. Reg. price 13.99 2030-4300</p> <p style="font-size: 2em; font-weight: bold; text-align: center;">\$9.99</p>	<p style="font-size: 0.8em; font-weight: bold;">BEST FOR LESS EVERYDAY</p> <p style="text-align: center; font-weight: bold;">Photo Album</p> <p style="font-size: 0.8em;">100 Page Magnetic A87025</p> <p style="font-size: 2em; font-weight: bold; text-align: center;">\$5.49</p>	<p style="font-size: 0.8em; font-weight: bold;">BEST FOR LESS EVERYDAY</p> <p style="text-align: center; font-weight: bold;">Renuzit Fragrance Jar</p> <p style="font-size: 0.8em;">Powder Potpourri, Floral Potpourri, or Fresh Potpourri. Reg. price</p> <p style="font-size: 2em; font-weight: bold; text-align: center;">\$1.79</p>	<p style="font-size: 0.8em; font-weight: bold;">BEST FOR LESS EVERYDAY</p> <p style="text-align: center; font-weight: bold;">Baggies Trash Bags</p> <p style="font-size: 0.8em;">50 ct. - 13 gal., 40 ct. - 26 gal., or 24 ct. - 33 gal. Reg. price 2.97</p> <p style="font-size: 2em; font-weight: bold; text-align: center;">2/\$5.00</p>	
<p style="font-size: 0.8em; font-weight: bold;">BEST FOR LESS EVERYDAY</p> <p style="text-align: center; font-weight: bold;">Men's Fleece Top or Pants</p>  <p style="font-size: 0.8em;">Your choice or Ash, royal, white or black. S/M/L, XL 83004, 83240</p> <p style="font-size: 2em; font-weight: bold; text-align: center;">\$6.97</p>	<p style="font-size: 0.8em; font-weight: bold;">BEST FOR LESS EVERYDAY</p> <p style="text-align: center; font-weight: bold;">Men's Gloves</p>  <p style="font-size: 0.8em;">Pile lined, suede side cowhide with hommed cuff in medium or large. Reg. price 5.99 800J</p> <p style="font-size: 2em; font-weight: bold; text-align: center;">\$4.00</p>	<p style="font-size: 0.8em; font-weight: bold;">BEST FOR LESS EVERYDAY</p> <p style="text-align: center; font-weight: bold;">Men's Socks</p>  <p style="font-size: 0.8em;">Stretch nylon. Assorted colors. Fits 10-13. Reg. price 2.99 1599</p> <p style="font-size: 2em; font-weight: bold; text-align: center;">\$1.89</p>	<p style="font-size: 0.8em; font-weight: bold;">BEST FOR LESS EVERYDAY</p> <p style="text-align: center; font-weight: bold;">Weslo, Inc. Aero 750 Air Exercise Bike</p> <p style="font-size: 0.8em;">Reg. price 179.84 WL40210</p> <p style="font-size: 2em; font-weight: bold; text-align: center;">\$159.99</p>	<p style="font-size: 0.8em; font-weight: bold;">BEST FOR LESS EVERYDAY</p> <p style="text-align: center; font-weight: bold;">CSA, Inc. Alpine Climber Stepper Exercise</p> <p style="font-size: 0.8em;">Reg. price 119.94 E512</p> <p style="font-size: 2em; font-weight: bold; text-align: center;">\$99.99</p>	
<p style="font-size: 0.8em; font-weight: bold;">BEST FOR LESS EVERYDAY</p> <p style="text-align: center; font-weight: bold;">Domestics Bath Towels</p> <p style="font-size: 0.8em;">Assorted solids, prints and florals. Reg. price 4.99 Southern Textiles</p> <p style="font-size: 2em; font-weight: bold; text-align: center;">2/\$7.00</p>	<p style="font-size: 0.8em; font-weight: bold;">BEST FOR LESS EVERYDAY</p> <p style="text-align: center; font-weight: bold;">Fabric Loggers Flannel</p> <p style="font-size: 0.8em;">Solids only. 60" wide. Reg. price 3.99 Per yard. A. E. Nathan</p> <p style="font-size: 2em; font-weight: bold; text-align: center;">\$2.66 per yd.</p>	<p style="font-size: 0.8em; font-weight: bold;">BEST FOR LESS EVERYDAY</p> <p style="text-align: center; font-weight: bold;">ALL Butterick Patterns</p> <p style="font-size: 2em; font-weight: bold; text-align: center;">1/2 OFF</p>	<p style="font-size: 0.8em; font-weight: bold;">BEST FOR LESS EVERYDAY</p> <p style="text-align: center; font-weight: bold;">Country Prime Dog Biscuits</p>  <p style="font-size: 0.8em;">5 lb.</p> <p style="font-size: 2em; font-weight: bold; text-align: center;">\$2.99</p>	<p style="font-size: 0.8em; font-weight: bold;">BEST FOR LESS EVERYDAY</p> <p style="text-align: center; font-weight: bold;">Acme Paint Roller Kit</p>  <p style="font-size: 0.8em;">Metal tray, roller cage, & roller cover. A19255</p> <p style="font-size: 2em; font-weight: bold; text-align: center;">\$2.27</p>	<p style="font-size: 0.8em; font-weight: bold;">BEST FOR LESS EVERYDAY</p> <p style="text-align: center; font-weight: bold;">Supreme Ceiling Fan</p>  <p style="font-size: 0.8em;">4 blade, 42", 3 sp. flush mount.</p> <p style="font-size: 2em; font-weight: bold; text-align: center;">\$29.99</p>

BEST FOR LESS EVERYDAY BEST FOR LESS EVERYDAY BEST FOR LESS EVERYDAY BEST FOR LESS EVERYDAY BEST FOR LESS EVERYDAY