

# The Hereford Brand



98th Year, Vol. Number 140 Deaf Smith County, Texas Thursday, January 21, 1999 10 Pages 50 cents

## A PRESIDENT ON TRIAL



"They might as well dismiss this impeachment hearing and get on with something else."

Pat Robertson, televangelist

## Ex-senator aids Clinton team

WASHINGTON (AP) — Concluding the first phase of President Clinton's impeachment trial, his lawyers are urging senators to reject allegations of legal wrongdoing and focus on "the big picture" — an attempt by a married man to hide an extramarital affair.

For their third and final day of oral presentations to rebut perjury and obstruction of justice charges, the Clinton team is combining the methodical arguments of private lawyer David Kendall with the oratory of Dale Bumpers.

Bumpers, a former Democratic senator from Arkansas and longtime friend of Clinton, is known as a gifted public speaker.

Once Bumpers finishes, senators who have been forced under trial rules to sit in uncharacteristic silence will have another unfamiliar task — submitting questions in writing to Chief Justice William Rehnquist, who as presiding officer will read them and ask the lawyers and House prosecutors to respond.

The question period may be the phase of the trial con-

ducted in a bipartisan spirit. Subsequent motions to dismiss the case and call witnesses such as former White House intern Monica Lewinsky likely will break down largely along party lines.

Republicans have said they oppose dismissal and support the need for limited live testimony from key witnesses such as Ms. Lewinsky, Clinton friend Vernon Jordan and presidential secretary Betty Currie — and should get their way with a 55-45 majority.

With a two-thirds majority needed to make Clinton the

first president evicted from his job, Democrats hold the votes for acquittal and show no signs of backing a move to remove him from office.

Republicans know the trial is unpopular with Americans. Clinton's job approval ratings rose after his State of the Union address Tuesday night, ranging from 66 percent in an ABC poll to 72 percent in a CBS survey to 76 percent for NBC.

One well-known conservative Republican, evangelist

See **IMPEACH**, Page A9

## Trade deficit widens

U.S. exports plunge, while imports rise

WASHINGTON (AP) — The trade deficit shot up to \$15.5 billion in November as American exports of aircraft, computer equipment and farm products fell sharply while imports climbed to an all-time high.

The November deficit was up 14 percent from a revised October figure of \$13.6 billion, the Commerce Department reported today. U.S. manufacturers continued to be battered by the global financial crisis, which has cut deeply into their export sales while triggering a flood of cheaper imports into the United States.

With one month still to be counted, the U.S. trade deficit in goods and services has already hit an all-time high of \$153.9 billion, surpassing the old mark of \$153.4 billion set back in 1987.

After December is counted, the deficit for the year is likely to climb to around \$164 billion, far above last year's \$110 billion. And economists are predicting even worse news for 1999 as recessions over more than one-third of the globe cut into U.S. exports and beleaguered Asian countries try to export their way back to prosperity by shipping goods to America.

The Labor Department said today that the number of Americans filing new claims for unemployment benefits fell by 14,000 last week to 346,000. While that was the highest level since mid-July, analysts say labor conditions still remain good, reflecting the robust overall economy.

The Clinton administration has taken to insisting that the United States cannot be the "importer of only resort" and has called on Europe, the other region of the world still prospering in the face of global adversity, to take more goods as well.

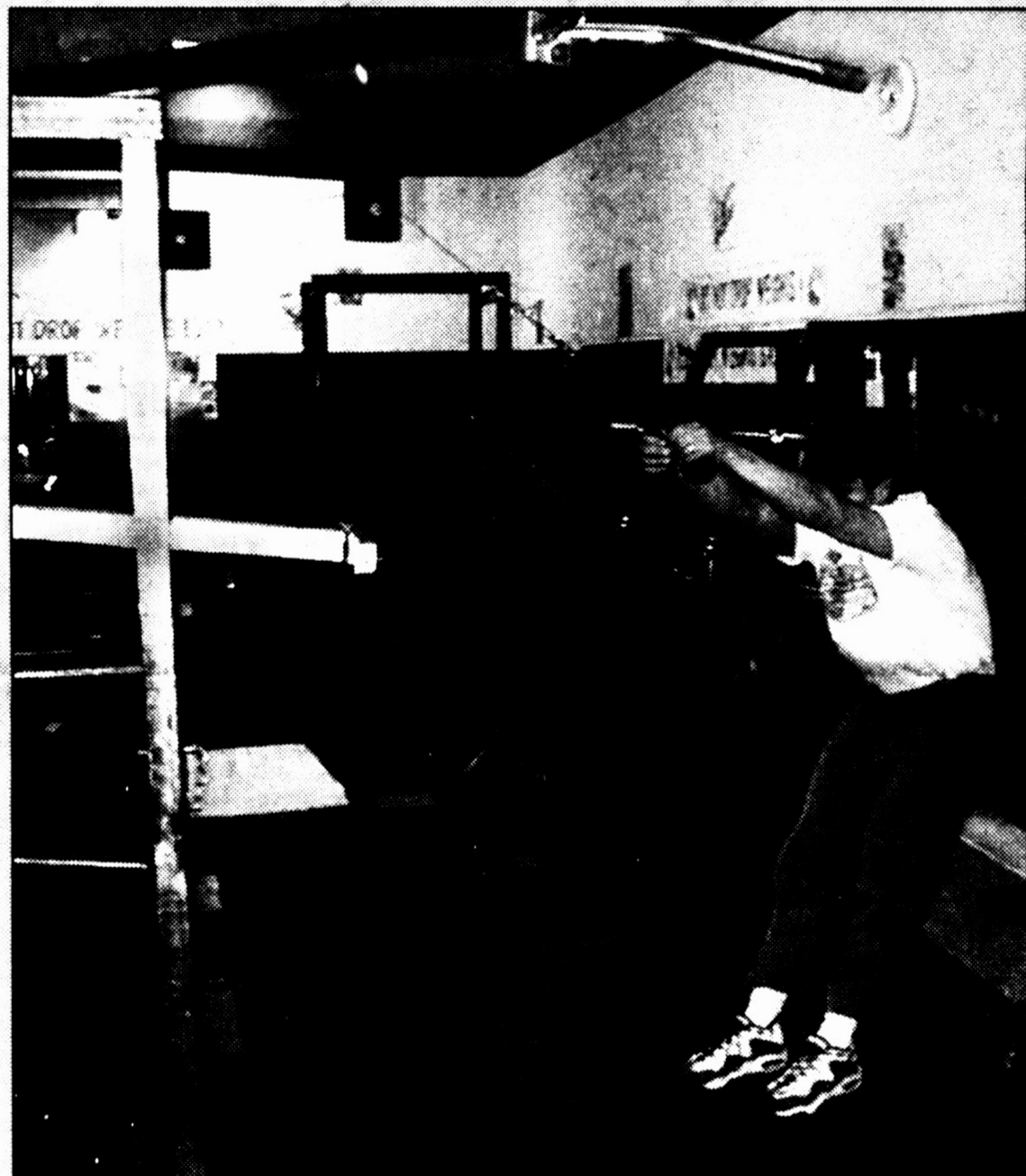
President Clinton, in his State of the Union address this week, also announced the United States will push for launching a new global round of trade liberalization talks.

Domestic political pressures are forcing Clinton to take a tougher protectionist line when it comes to one key industry, steel.

U.S. Trade Representative Charlene Barshefsky said Wednesday that if December trade figures do not show "substantial declines" in imports of Japanese steel, the government will begin proceedings to slap penalty tariffs on Japanese steel imports into the United States.

The trade figures released today indicate that the surge in steel imports had begun to abate in November although steel imports for all of 1998 are still far ahead of the 1997 pace.

## Starting the day



Art Allemand of Hereford starts his days out with a strenuous workout at the YMCA of Hereford. Allemand is among a group of Hereford men and women who can get their fitness training before going to their daily jobs.

## Hospital battles continuing drop in admissions

By Don Cooper

Hereford Brand Managing Editor

At most monthly meetings of the Deaf Smith County Hospital District board, Rodney Bailey's financial report has center stage.

However, when the Hereford Regional Medical Center finance director presented his report Tuesday night, it almost was overlooked as the board took up more controversial topics.

In his report, Bailey reported the hospital continues to be plagued by a decline in admissions, which has an adverse effect on the facility's revenue.

For December, the hospital had total operating revenue of \$689,580, down from the two previous months. For the year, the hospital's total operating revenue of \$2,205,816 is well below the \$2,296,087 for the same period last year.

Although the operating expenses of \$892,882 were about \$27,000 below the December 1997 total, the hospital still showed a \$203,302 loss from operations in the month.

For the year, the hospital's operating losses have totaled \$332,757, an improvement over the \$388,728 loss reported for the same period last year.

However, when the non-operating revenue, which includes the hospital district's share of the Texas tobacco settlement, the net loss for December was cut to \$35,096. For the year, the hospital is showing a net gain of \$71,508, which is a significant improvement over the same period last year when the hospital was reporting a net loss of \$81,888.

In his analysis of the hospital's financial operations, Bailey reported the major reason for the operating loss is continued dropoff in admissions. The loss of patient revenue also affects third-party contractuals, which also are down.

Bailey noted an increase in some expenses, notably supplies in OB/GYN, pharmacy, personnel and the business office. The David Back Clinic's expenses are higher because of startup costs, Bailey noted.

The expenses also reflected a one-time rise because of a payout to Joe Hamby, former director of the Hereford Emergency Medical Services, for vacation time.

The hospital had 138 admissions in December, which was a decline of 34 from the previous year. For the first three months of this budget year, the hospital has reported 455 admissions, down 61 from the same period last year.

See **HOSPITAL**, Page A9

## Combest sees potential for U.S. trade boost

By Speedy Nieman

Hereford Brand Publisher Emeritus

Rep. Larry Combest sees great potential for U.S. trade with South America, he reported Wednesday following a fact-finding trip that included talks with chief officials in Brazil, Chile and Venezuela.

Combest, the Lubbock Republican who recently was named chairman of the House

Agriculture Committee, was invited on the trip by House Ways & Means Chairman Bill Archer. Seven Congressmen made the 10-day trip, returning Saturday.

"I think it was one of the best educational opportunities I've ever had," said Combest. While a discussion of trade policies was the primary focus of the visits, Combest said

the group also brought back facts on Chile's new social security system.

Combest discussed the trip Wednesday during a telephone conference with six Panhandle and South Plains editors. The 19th Congressional District representative set up the conference to discuss the trip.

In response to one ques-

tion about the President's State of the Union address, Combest said he thought Clinton delivered a "great speech, as usual."

"He had something for everyone, but there were no specifics on the proposals. He's been talking about Social Security for a long time, but there were no details."

"I was very pleased to be

included on the trip," said Combest. "I have been frustrated with our government's inability to recognize the importance of setting up trade agreements with South America."

The visit to Venezuela was highlighted by talks with Hugo Chavez, the incoming

See **COMBEST**, Page A9

## 'Deficit of decency'

## Bush sidesteps Clinton impeachment

WASHINGTON (AP) — Six years after handing over authority to Bill Clinton, former President George Bush returned to the Capitol to tell an audience of senators he regrets "a deficit of decency" in recent years — although he said he had no impeachment-trial advice for them.

Bush declined an opportunity to discuss Clinton's ongoing trial in the Senate, although he told reporters, "I have to admit, the timing is a little peculiar" regarding his own appearance.

The former Republican president was back in town to attend a Senate lecture series sponsored by Senate Majority Leader Trent Lott, R-Miss.

"I had my chance to serve. And I did my best. I messed up some things and, hopefully, got some things right," Bush, 74, said. He spoke in the Old Senate Chamber, used in the 1800s, and just down the hall from the current chamber where the impeachment trial is taking place.

Although he has been back a few times since leaving of-

fice, Bush said that for the most part he has tried to stay away from Washington.

"But that does not mean I lack interest in events here," he said. "I have refrained from commenting on the serious matter now before the Senate — and will continue to do so."

As a former president, he did not want to put outside pressure on the Senate — and felt that it was better for the Senate to chart its own course, Bush said.

Still, he added, "I confess that the lack of civility in our

political debate and official dealings with one another concerns me."

"All in all, it seems to me that, whereas the problems looming over this town dealt more with budget deficits in times past, today we are confronted with a deficit of decency — one that deepens by the day."

He said he regretted "the bitter rancor that has divided us as people in recent times."

"I worry, too, about sleaze — about excessive intrusion into private lives."



"All in all, it seems to me that, whereas the problems looming over this town dealt more with budget deficits in times past, today we are confronted with a deficit of decency — one that deepens by the day."

George Bush

JAN 21 1999







**Part of exhibit**—This photo of a tractor southwest of Canyon in 1938 will be included in the *Plowing the Plains* exhibit scheduled to open Jan. 22 at the Panhandle-Plains Historical Museum in Canyon. The exhibit will continue through Nov. 15.

What's Happening

### Area Events

**WTAMU**

*Touki Bouki*, an African film directed by Djibril Diop Mambety and released in 1973, will be shown at 7:30 p.m. Thursday, Jan. 28 in the Lecture Room of the Cornette Library at West Texas A&M University as part of the Friends of Cornette Library's Film Series.

*Touki Bouki* focuses on a couple in Dakar who engage in a madcap pursuit of funds for an escape to Paris.

Dr. Chris Bierwirth, WTAMU assistant professor history, will provide background information on the film.

The film series will continue with *Taafe Fanga* on Feb. 18; *LeGrand Blanc de Lambarene* on March 11; *Prime Time South Africa* on April 1; and *Keita* on April 22.

Admission is free and open to the public. For more information or a series brochure, call the Cornette Library at 806-651-2230.

**PEP**

The Pep Ex-Students Association's 39th Annual Homecoming will be held Saturday, Jan. 30 at the Pep Parish Hall. All former students, teachers, patrons and friends are urged to attend.

Classes to host reunions will be years ending in 6-10. Registration begins at 5:30

p.m. and the banquet at 6:30 p.m. Cost is \$10 for adults and \$5 for children 12 and under.

The business meeting will follow the meal with president Vivian Henderson presiding.

One \$500 scholarship will be awarded to a 1999 high school graduate with at least one parent who is an ex-student of Pep school and is in attendance at the homecoming.

For more information or to make a scholarship donation call 806-828-4719 or 806-933-4603.

**CANYON**

Using Farm Trade Literature, catalogs, personal papers and photographs, the rich agricultural history of the Southern Plains will be told in an exhibit titled *Plowing the Plains* at the Panhandle-Plains Historical Museum.

The exhibit is scheduled to open Jan. 22 and continue through Nov. 15 in the Alexander Photo Gallery.

Displays from the Research Center's trade literature collection will help trace agrarian implements and the innovations that helped tame this region and make agriculture an essential industry.

The museum's Windmill Trade Literature will highlight the exhibit by showing the variety of windmills used to extract water from this thirsty land.

Items on exhibit will include photographs from the Hugh Porterfield Papers and the XIT Ranch Collection.

**LUBBOCK**

The Municipal Garden and Arts Center has a new spot left for their kid classes and workshops in February.

Saturday children workshops are held from 9:30 a.m. to 11 a.m. Feb. 6 through Feb. 27.

A beginning children's drawing course will be held from 1:30 p.m. to 3 p.m. every Saturday Feb. 6 through Feb. 27.

The center also has a few seats left for adults interested in beginning art courses.

A course in perspective drawing will be held from 9 a.m. to 10:30 a.m. on Tuesdays and Thursdays beginning Feb. 9 through Feb. 25.

There will also be a beginner to intermediate course in clay which will be held from 6 p.m. to 9 p.m. every Tuesday starting Feb. 2 through March 9.

A beginner to intermediate course in watercolor is scheduled from 1 p.m. to 4 p.m. on Tuesdays and Thursdays starting Feb. 2 through Feb. 18.

For cost of the courses and registration information, call 806-767-3724, fax 806-767-3726 or email at psimpson@mail.ci.lubbock.tx.us.

### Low-cost breast cancer screening clinic scheduled

The Women's Center of the Don and Sybil Harrington Cancer Center and Baptist/St. Anthony's Health System will conduct a breast cancer screening at South Plains Health Care Providers, Inc., 603 East Park, on Feb. 12.

Participants will receive a low-cost screening that in-

cludes a mammogram and instruction in self-examination by a registered nurse.

A minimum of 15 women needs to register in order for the mobile mammography clinic to come to area towns. All exams are done by appointment only.

This clinic is available only to women who need financial assistance. Funding is available through the Texas Department of Health for Texas residents who qualify for assistance.

Call 806-356-1905 or 1-800-377-4673 for more information.

### Bowling fund-raiser planned by BBBS

Big Brothers Big Sisters will hold its first Bowl for Kids Sake on March 27 at Hereford Recreation Center.

Bowl for Kids Sake is an opportunity for bowlers of all levels of ability to have fun and raise money for Big Brothers Big Sisters of Hereford.

Each five-member team will need to raise \$250 to partici-

pate in Bowl for Kids Sake. Each team member will receive a T-shirt, two hours of bowling, refreshments and snacks and be eligible for door prizes that will be drawn throughout the day.

Prizes will be awarded for high and low scores and for the team raising the most money.

Big Brothers Big Sisters of Hereford has been serving the children of Hereford since 1973. Its mission is to provide caring adult mentors for children from single parent homes.

Anyone interested in participating in Bowl for Kids Sake can call 364-6171 to sign up a team. Deadline for entries is Feb. 15.

# HEREFORD MARKETPLACE



Sue Hyer

## A.G. Edwards Is

**NATIONWIDE**

With more than 590 offices nationwide, A.G. Edwards is the largest national brokerage firm headquartered outside New York, based on the number of investment professionals and employees.

**FULL-SERVICE**

We go beyond stocks and bonds to offer you a full array of investment products and services, including comprehensive financial planning to help meet your lifelong goals.

**EXPERIENCED**

For more than a century, we've been providing trusted advice and exceptional service to investors. It's a heritage we're proud of, and one you can depend on.

Call today for a free financial consultation • Trusted Advice • Exceptional Service

Member SIPC 1998  
A.G. Edwards & Sons, Inc.  
(109)1141M-307-0599

806-372-5751 or  
800-395-5751

**A.G. Edwards**  
INVESTMENTS SINCE 1887

Boatmen's First Nat'l Bank  
700 Fillmore, STE118  
Amarillo, Tx.

## PP Panhandle Paging

"The Paging Professionals"

Local/Areawide Coverage  
Offering Digital, Voice & Alpha Paging

A Division of W.T. Service  
(806)364-7311 • S. Hwy 385 • Hereford



Keith Lowe

## CD-IRA MATURING?

**EARN 10% On Your Money**

Safe-Fully Insured • Term 36 months • Shorter term Available • No Market Risk • \$10,000 minimum • No Principle Risk • No Sales Fee

**Cornerstone Financial**

20+ Years Experience • Call for appointment or information Ask for Keith Lowe

1-888-924-1222 Toll Free • 353-0020

6900 I-40 West Amarillo, Texas 79106

Call today. Make the *choice.*

*new*

The Hereford Telephone Directory

Published By

**choice** directories

**364-5255**

Edward Jones  
Named No. 1

For a copy of the current "Investment Perspective," including recommendations from our Research Department, contact my office.

**TOM EDWARDS**  
508 S. 25 Mile Avenue  
364-0041

Recently, The Wall Street Journal recognized Edward Jones' recommended stock portfolio as the top performer among 15 of the nation's leading investment firms for the past 12 months ending 9/30/98.

**Edward Jones**  
Serving Individual Investors Since 1871  
www.edwardjones.com

*A Directory of Professional Services*

Our famous one-liner:

# SOLD

Over 10,000 people read The Hereford Brand every day. Many of them will be searching our classified ads for a car or computer to buy, a washing machine or an apartment to rent.

With readership like this, advertising in our classifieds means you'll be laughing all the way to the bank.

SINCE 1901  
**Hereford BRAND**

P.O. BOX 673 • 313 N. LEE • HEREFORD, TEXAS 79045 • (806) 364-8364 • E-MAIL: hbnews@wfri.net



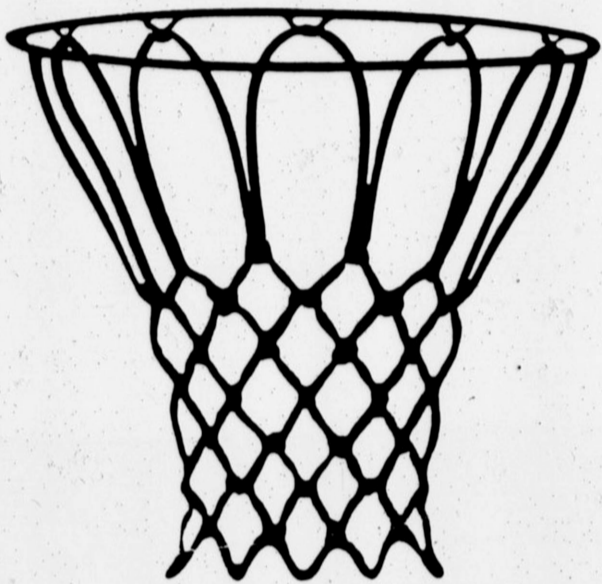


# WHITEFACE

## HOOP IT UP!

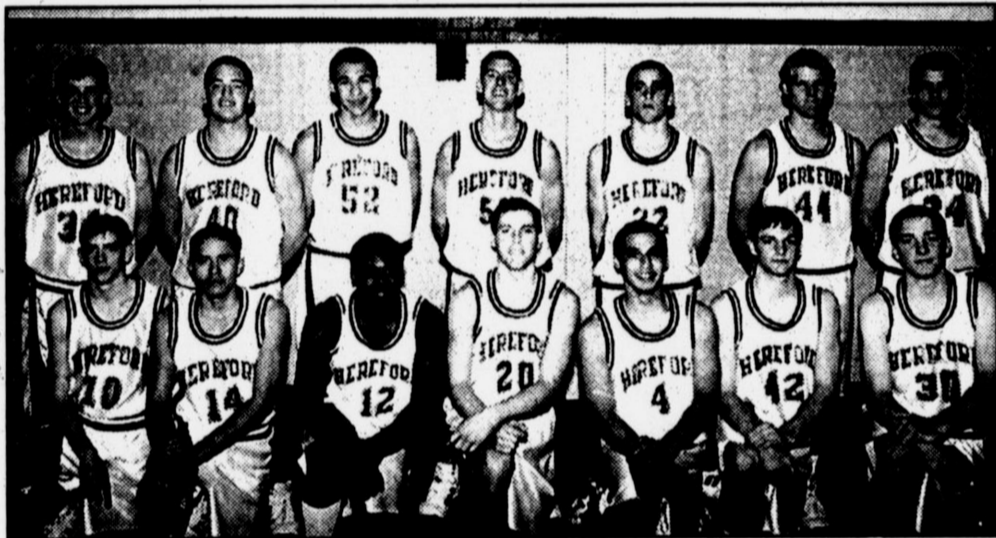


### 1998-99 Hereford Hoops Schedules



Boys			
Day	Site	Time	
Jan. 15	Pampa	There JV/V	6:00-7:30
Jan. 19	Borger	Here JV/V	6:00-7:30
Jan. 22	Caprock	Here JV/V	6:00-7:30
Jan. 26	Dumas	There JV/V	6:00-7:30
Jan. 29	Palo Duro	Here JV/V	6:00-7:30
Feb. 2	Pampa	Here JV/V	6:00-7:30
Feb. 5	Borger	There JV/V	6:00-7:30
Feb. 9	Caprock	There JV/V	6:00-7:30
Feb. 12	Dumas	Here JV/V	6:00-7:00
Feb. 16	Palo Duro	There JV/V	6:00-7:30

Girls			
Day	Site	Time	
Jan. 15	Pampa	There V/JV	6:00-7:30
Jan. 19	Borger	Here V/JV	6:00-7:30
Jan. 22	Caprock	Here V/JV	6:00-7:30
Jan. 26	Dumas	There V/JV	6:00-7:30
Jan. 29	Palo Duro	Here V/JV	6:00-7:30
Feb. 2	Pampa	Here V/JV	6:00-7:30
Feb. 5	Borger	There V/JV	6:00-7:30
Feb. 9	Caprock	There V/JV	6:00-7:30



Back row left to right: Brent Huseman, Mitch Wagner, Cody Marsh, Chayse Rives, Cody Hodges, Bryan Matthews, Tim Dudley. Front row left to right: Mac Nielson, Robert Chavarria, Greg Ewing, Eric McNutt, L.J. Vallejo, Steven Northern, Slade Hodges.

### Hereford Whitefaces

4 L.J. Vallejo	5'9"	Jr.
10 Mac Nielson	5'9"	Sr.
12 Greg Ewing	5'10"	Jr.
14 Robert Chavarria	5'9"	Sr.
20 Eric McNutt	6'0"	Jr.
22 Cody Hodges	6'0"	Soph.
24 Tim Dudley	6'1"	Soph.
30 Slade Hodges	6'0"	Soph.
34 Brent Huseman	6'0"	Sr.
40 Mitch Wagner	6'1"	Sr.
42 Steven Northern	5'11"	Jr.
44 Bryan Matthews	6'2"	Sr.
50 Chayse Rives	6'2"	Soph.
52 Cody Marsh	6'2"	Fr.

Head Coach: Randy Dean  
Asst. Coaches: Clint Coley, Tim Anuszkiewicz

### Lady Whitefaces

10 Amy Perrin	5'-8"	Sr.
12 Brionne Yosten	5'-6"	Soph.
14 Valerie Guzman	5'-8"	Jr.
20 Toni Eicke	5'-8"	Jr.
32 Amanda Hill	5'-9"	Jr.
34 Makesha Rives	5'-6"	Sr.
44 Rachel Chavez	5'-9"	Sr.
50 Ashley Fangman	5'-9"	Soph.
52 Tori Walker	5'-8"	Jr.
54 Kristin Fangman	5'-10"	Sr.

Head Coach: Key Harrison  
Assistants: Donnie O'Rand, Pam Dean  
Trainer: Ed Morrow  
Managers: Emily Fry, Emily Parker, Mandi Klein, Franziska Scheuber



Back row left to right: Holly Schilling, Ashley Fangman, Shyla Martin, Kristin Fangman, Rachel Chavez, Amy Perrin, Valerie Guzman. Front row left to right: Toni Eicke, Amanda Hill, Makesha Rives, Tori Walker, Brionne Yosten.

## Herd Sponsors

**Charlie's Tire**  
501 W. 1st • 364-5033

**Sonic Drive Inn**  
309 N. 25 Mile Ave. • 364-6881

**George Warren Seed Co. Inc.**  
120 S. Lawton • 364-4470

**Hereford Texas Federal Credit Union**  
330 Schley • 364-1888

**West Texas Rural Telephone**  
Dimmitt Hwy. • 364-3331

**W.T. Services**  
Dimmitt Hwy. • 364-7311

**Hereford Long Distance Service**  
Frio • 276-5519

**FirstBank Southwest**  
300 N. Main Street • 364-2435

**Harold's Body Shop Inc.**  
Main & Hwy 60 • 364-8515

**Deaf Smith Electric Co-op**  
E. 1st Street • 364-1166

**Hereford Janitor Supply Inc.**  
1301 E. Park Ave. • 364-0517

**B&R Thriftway**  
406 E. 7th Street • 364-1621 &  
1105 W. Park Ave. • 364-6741

**Hereford State Bank**  
212 E. 3rd St. • 364-3456

**Garrison Townsend Inc.**  
E. Hwy 60 • 364-0560

**Carl McCaslin Lumber Co.**  
344 E. 3rd St. • 364-3434

**Hereford Cablevision**  
119 E. 4th St. • 364-3912

**Plains Insurance Agency**  
205 E. Park Ave. • 364-2232

**Boots & Saddle Western Wear**  
513 N. 25 Mile • 364-5332

**First American Bank**  
501 W. Park Ave. • 364-6921

**Merle Norman Cosmetics**  
220 Main St. • 364-0323

B  
A  
S  
K  
E  
T  
B  
A  
L  
L

1  
9  
9  
9





INSIDE

Impeach

From Page A1

and broadcaster Pat Robertson, said Clinton pulled off such a public relations coup in the address that there is no chance he will be convicted.

Bumpers was chosen to make the argument that the House case was a "partisan rush to judgment" that doesn't meet with the "higher duty the Senate has always had," an adviser to the White House said Wednesday.

Clinton's predecessor, George Bush, in town to attend a Senate lecture series sponsored by Senate Majority Leader Trent Lott, R-Miss., declined a chance to discuss the impeachment trial.

During Clinton's defense before senators Wednesday, Deputy White House Counsel Cheryl Mills argued that House managers ignored testimony from Mrs. Currie in order to falsely accuse the president of trying to obstruct the Paula Jones sexual harassment lawsuit against the president.

The defense lawyer cited Mrs. Currie's testimony that Clinton never asked her to pick up gifts from Ms. Lewinsky after the presents were subpoenaed by the Jones lawyers.

Furthermore, Ms. Mills said the prosecutors ignored Mrs. Currie's testimony that Clinton was not trying to pressure his secretary when he questioned her about her recollection of his actions with Ms. Lewinsky.

"It's those facts, those stubborn facts that just don't fit," Ms. Mills said.



Ribbon cutting -- Members of the Deaf Smith County Chamber of Commerce's Hereford Hustlers joined Wilford Taylor, owner of Taylor & Sons; his mother, Mildred Taylor; and daughters, Jennifer and Kim, at the grand opening celebration for the store in its new and completely remodeled location at the intersection of Park Avenue and 25 Mile Avenue.

THE ASSOCIATED PRESS

News in brief

Study: No evidence high-fiber diet helps to lower risk of colon cancer

A large new study has found no evidence that eating lots of high-fiber foods like bran, beans and whole wheat bread helps lower the risk of colon cancer, a surprising conclusion that contradicts years of dietary advice.

The study, published in today's New England Journal of Medicine, tracked the colon and rectal health of 88,757 women who participated in the Harvard-based Nurses Health Study over 16 years.

From 1980 to 1996, 787 of the women developed cancer of the colon or the rectum. The risk was the same, regardless of how much fiber they ate.

Dr. Charles S. Fuchs and his colleagues at the Dana-Farber Cancer Institute, Brigham and Women's Hospital and Harvard Medical School said they were astounded to find that women who ate low-fiber foods were no more likely to develop colon cancer than those who stuck to bran muffins and broccoli.

"As a practicing physician and as a researcher, this is a hypothesis that has stood the test of time," Fuchs said. "There has been such an abundant enthusiasm for this hypothesis, so the important message here is that fiber, overall, has no protective effect."

However, previous studies have found that a diet rich in fruits, vegetables and whole grains has other health benefits, including reducing the risk of heart disease, high blood pressure and certain types of diabetes.

And Fuchs said the benefits of fiber in protecting against other problems like high blood pressure and heart disease — the No. 1 killer in

the country — are undeniable.

Yugoslavia hints it may back down BELGRADE, Yugoslavia — With the threat of NATO airstrikes looming, the Yugoslav government has suggested it might be prepared to rescind the expulsion of the top international monitor in Kosovo.

Signs of compromise emerged late Wednesday over the fate of William Walker, the American heading the international peace verification team who was ordered out of the country after he accused Serb police of last week's massacre of 45 ethnic Albanians near the southern village of Racak.

Deputy Prime Minister Vuk Draskovic said the "case of Ambassador Walker will be solved through compromise and to the mutual satisfaction."

Draskovic, cited by the independent Fonet news agency, spoke after meeting with Russian Deputy Foreign Minister Alexander Avdeyev. The Russian official also met with Yugoslav President Slobodan Milosevic in what diplomatic sources said was an attempt to reverse the expulsion order.

The sources spoke on condition of anonymity. The government on Monday gave Walker 48 hours to leave the country. The deadline was extended 24 hours.

Draskovic's announcement was the first sign that authorities were ready to back away from a test of wills with NATO and its member nations and came after both sides ignored NATO warnings to halt fighting northwest of Pristina.

Earlier, Avdeyev told Russian reporters that it was unlikely NATO would launch airstrikes as long as the international verifiers remained in Kosovo. Milosevic blunted — but did not end — the threat of NATO airstrikes in October when he agreed to end a prolonged crackdown on ethnic Albanian guerrillas fighting for independence for Kosovo, a province of Serbia, the dominant Yugoslav republic.

Markets not hurt by Brazilian crisis WASHINGTON — Let Brazil go bump in the night or Federal Reserve Chairman Alan Greenspan fret anew about irrational exuberance.

American investors will just keep pushing the high-flying stock market higher. At least, that is the way it seems.

Brazil's sudden devaluation of its currency did cause a brief swoon in stock prices last week. But the market soon shook off worries that the global currency crisis was being re-ignited.

Similarly, Greenspan's most explicit comments in some time about the unsustainability of current high stock prices, given slumping corporate profits, caused barely a hiccup in the market on Wednesday.

The Dow Jones industrial average actually rose by nearly 125 points after Greenspan appeared before a House committee, although it did end the day off by a slight 19 points.

That reaction was a far cry from two years ago, when Greenspan's musing about "irrational exuberance" at a time when the Dow was nearly 3,000 points lower than today caused a big selloff not only in the United States but around the world.

Economists, however, do not think the nation's most influential money man is losing his clout or that Greenspan's worries about the stock market are any less sound now than then.

Hopefuls take shots at Bush

WASHINGTON (AP) — Lamar Alexander says George W. Bush is a man of many "weasel words," and Gary Bauer says the Texas governor is something less than a Reagan Republican.

The two likely GOP presidential candidates are contrasting themselves to Bush at a three-day Conservative Political Action Conference that gets under way today. Though he has not decided whether to seek the GOP nomination, the son of former President George Bush is likely to do so and would be the early favorite.

That makes Bush, who is not attending the conference in suburban Washington, an inviting target.

Across the Potomac River, the Republican National Committee is holding its winter meeting to decide whether disappointing 1998 election results are reason enough to oust chairman Jim Nicholson. Florida GOP chairman Tom Slade, trying to prevent a second Nicholson term, has reported some momentum in recent days but still is in an uphill battle, GOP officials say.

The meeting begins today. The election is Friday.

At the CPAC meeting, a gathering of the party's most active conservatives, Alexander is saying Bush should stop describing himself as a "compassionate conservative."

"Is Mr. Bush trying to tell us that he's not like the rest of us conservatives? That conservatism, as a political philosophy, is ... without compassion?" Alexander said in a text prepared for delivery today.

He referred to the slogan dismissively as "weasel words" — designed to "confuse people by meaning nothing." Alexander warned his audience about politicians like Bush who qualify conservatism with poll-tested modifiers.

He singled out Bush's father, for example, who called himself a "kinder and gentler" Republican.

"Not long after we qualified our language, we were qualifying our principles. We accepted a tax increase — violating the bedrock conservative principle of lower taxes and smaller government — and soon found ourselves vacating the White House for the first time in 12 years," he said.

Alexander knows that the younger Bush is viewed skeptically by many conservatives who feel his father was never committed to their cause. Alexander hopes the criticism earns him support from conservative activists, many of whom consider the former Tennessee governor too moderate.

Bush shrugged off Alexander's criticism.

"Some people choose to campaign based on what they believe and some people choose to campaign on talking about the other person," he said at a Austin, Texas, news conference Wednesday.

DAILY CRYPTOQUOTES

1-21 CRYPTOQUOTE HVG PUH LVJ, EULLVJ UIIOVIOYUJW AWUGJH. YJ YF JZW XWUKJZ VB JZW WHW, ULS U EUJ PUH RUQW GIVL U NYLR.—JZWSVVOV IUONWO

Yesterday's Cryptoquote: COULD WE SEE WHEN AND WHERE WE ARE TO MEET AGAIN, WE WOULD BE MORE TENDER WHEN WE BID OUR FRIENDS GOODBYE.—OUIDA

OLDHAM COUNTY IMPL. CO., INC. Vega, Texas • 806-267-2113 January Only SPECIAL SWEEPS

Schlabs Hysinger SERVING HEREFORD SINCE 1979 COMMODITY SERVICES 1500 West Park Avenue • 364-1281

Table with columns for CATTLE FUTURES and GRAIN FUTURES, listing various contracts and their prices.

Table with columns for METAL FUTURES, listing gold and silver prices.

Table with columns for FUTURES OPTIONS, listing call and put option prices for various commodities.

Hospital Combest

From Page A1

The average daily census in December was 13, down from 15.1 in December 1997. For the year, the average daily census is 13.3, which is 0.8 percent below the same period last year.

The biggest dropoff reported by the hospital was in home health visits, which was 753 in December, well below the 2,371 reported in the previous December. For the year, there have been 2,244 home health visits, a dropoff of 5,016 for the same period last year.

Bailey attributed the decline in home health visits to changes in the Medicare/Medicaid payments resulting from the Balanced Budget Act, which he sarcastically referred to as "Bubba."

From Page A1

president. A former revolutionary, Chavez tried to overthrow the government, spent several months in prison, then came back to win election as president. He will assume office in February.

The group discussed American businesses located in the country, and it was pointed out that two-thirds of the nation's imports come from Texas and Florida.

Combust reported Archer has invited a Chilean official to come to the U.S. and outline the results of the new social security system installed there about five years ago.

Chileans were given the option of staying with the government program or going to a private, independent funding.

"Their system was in much worse condition than our Social Security program," said Combust.

About 90 percent of the people opted for the private investment fund, with 10 percent of their income being transferred to a pass-book savings program.

"The people liked the idea of having an account they could look at and see their interest compounding every day. The savings are growing at a much greater rate than the government program.

The people also have the option of putting another 10 percent of their money into the account." Combust reported on one incident that proves it is, indeed, a small world. He visited with his counterpart, Roberto Balestra, Brazil's ag chairman, through an interpreter.

# POARCH'S

## FURNITURE & CARPET

Where only the look is expensive

Plainview Store Hours:  
Mon. - Sat.  
9 a.m. - 6 p.m.

Hereford Store:  
Mon. - Fri. 9 a.m. - 6 p.m.  
Saturday 9 a.m. - 1 p.m.

• NO DOWNPAYMENT  
WITH APPROVED  
CREDIT

• 6 TO 36 MONTHS  
FINANCING  
AVAILABLE

305 Broadway  
209 E. Park

Plainview, Texas  
Hereford, Texas

Phone 293-8351  
Phone 364-4073



### AFTER-INVENTORY CLEARANCE

Inventory is complete and we find we have inventory to fill 3 STORES but we only have 2 stores! We MUST sell a STORE FULL of Bedroom, Dining Room, and Living Room furniture in the next 2 weeks. We have marked down all Discontinued items and some items Not-Discontinued.

Now through **JANUARY 30**, shop Plainview or Hereford and save big on beautiful new home furnishings!

SALE ENDS SAT. JANUARY 30TH

"FREE"  
BED FRAME  
WITH KING  
OR QUEEN  
SET

"FREE"  
BED FRAME  
WITH KING  
OR QUEEN  
SET

"FREE"  
BED FRAME  
WITH KING  
OR QUEEN  
SET

"FREE"  
BED FRAME  
WITH KING  
OR QUEEN  
SET

Superb  
Quality  
Bedding

### "CHOOSE FROM SEALY OR SOUTHLAND"

#### SOUTHLAND DELEGATE

	Reg.	Now
TWIN Ea. Pc.	\$149 <sup>95</sup>	\$ 99
FULL Ea. Pc.	\$179 <sup>95</sup>	\$119
QUEEN 2 Pc. Set	\$399 <sup>95</sup>	\$299
KING 3 Pc. Set	\$499 <sup>95</sup>	\$399

#### SOUTHLAND PILLOW TOP

	Reg.	Now
TWIN 2 Pc. Set	\$499 <sup>95</sup>	\$359
FULL 2 Pc. Set	\$599 <sup>95</sup>	\$399
QUEEN 2 Pc. Set	\$699 <sup>95</sup>	\$499
KING 3 Pc. Set	\$899 <sup>95</sup>	\$599

#### SEALY NORMANDY PLUSH

	Reg.	Now
TWIN 2 Pc. Set	\$499	\$299
FULL 2 Pc. Set	\$699	\$399
QUEEN 2 Pc. Set	\$859	\$499
KING 3 Pc. Set	\$1199	\$699

### ELECTRIC LIFT CHAIR

Convenient lifting mechanism is activated at the touch of a button. Magazine storage side pocket. Covered in a durable blue or mauve velvet.



\$500.95 Off

\$699

Reg \$1199.95

ALL DINING ROOM

GROUPS ..... 25% TO 40% OFF!

ALL BEDROOM

GROUPS ..... 20% TO 33% OFF!

ALL QUEEN-SIZE

SOFA-SLEEPERS 20% TO 33% OFF!

ALL LANE 3-PC. & 5-PC.

SECTIONALS ..... 20% TO 40% OFF!

ALL GLASS & BRASS

TABLE LAMPS ..... 25% TO 50% OFF!

ALL OCCASIONAL

TABLES AND DESKS 25% TO 60% OFF!

NOW EVERYONE'S BEST DEALS HEADING FOR THE IN TOWN!



6 Month To 36 Month Financing Available With Approved Credit!

SALE PRICED FROM

\$11.95 PER YD.

INSTALLED OVER PAD

FREE ESTIMATES FAST INSTALLATION

Beautiful 100% Nylon CUT & LOOPS

Installed Over 1/2" Pad

\$13.95 Sq. Yd.

• 16 Colors • Reg \$17.95

Beautiful 100% Nylon TEXTURED PLUSH

Installed Over 1/2" Pad

\$16.95 Sq. Yd.

• 12 Colors • Reg \$19.95

Olefin/Nylon Blended BERBERS

Installed Over Berber Pad

\$17.95 Sq. Yd.

All In-Stock ARMSTRONG SHEET VINYL

\$5 OFF Per Sq. Yd.

Wilsonart LAMINATE FLOORS

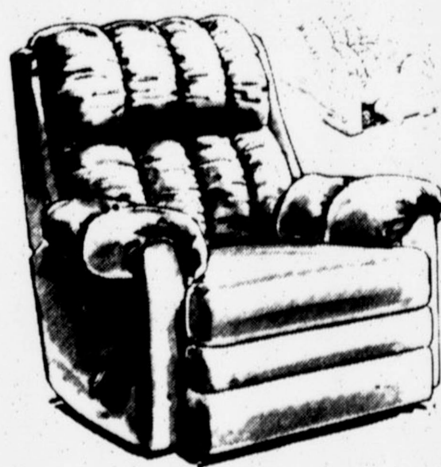
\$4.99 Sq. Ft.

Material Only

Commercial LEVEL LOOPS

\$7.95 Yd.

Carpet Only



Prices Start At \$299

Action Lane

Rocker-Recliner

# SALE!

Up To

# 50% OFF

On Discontinued Models

300 RECLINERS IN STOCK NOW FOR IMMEDIATE DELIVERY!