



BAILEY COUNTY JOURNAL

'The Community of Opportunity-Where Water Makes the Difference'



Volume 11, Number 43

12 Pages

Published Every Sunday at Muleshoe, Bailey County, Texas 79347

10 Cents

Sunday October 24, 1976

Lazbuddie School Bond Election Tuesday

Congressman Visits Local Constituents

"It's fun to be here with you," said long time Congressman George Mahon, who was honored with a reception attended by nearly a hundred people Wednesday afternoon.

Mahon was honored by local Democrats and supporters at the Muleshoe State Bank community room to an overflow crowd.

"I am glad to see my old friends, to welcome new friends in this, my fourth whistle stop for the George Mahon train today," Mahon had reference to three other stops on his campaign trail as he seeks reelection to the post he has held for the past 40 years.

Mahon was introduced by Don Williams, campaign coordinator for Bailey County, who commented, "He has shown sensitivity to the needs of the people in his own district."

Don't Forget!

Water Meet On Wednesday

Area citizens are reminded of the water meeting Wednesday at 7 p.m. in the Muleshoe City Hall council chambers. Presenting the meeting will be Frank Rayner, manager of High Plains Underground Water District, of Lubbock.

He will show slides which were taken in various locations in both Bailey and Lamb counties, and will give commentary on the slides. Showing of the slides Cont. on Page 3, Col. 5

The Congressman gave much of the credit to his wife, Helen, who accompanied him to Muleshoe. He also introduced a grandson, George Mahon Holt, who is a former resident of Dallas, now residing in North Carolina.

He spoke strongly against an ad he said was run by some candidate which stated "U.S. is Number Two in Military Matters." Mahon said the ad could have a tremendously negative impact around the world if it was shown to foreign powers.

"I am concerned about who can be of the greatest service to this country, and to this county," he added. "As chairman of the appropriation committee, I feel that with my contacts developed right into the white house and to every member of Congress, I am still qualified to serve the needs of our people. That is the main issue in the campaign, it is a matter of not looking backward, but of looking forward."

Congressman Mahon continued, "The people of Muleshoe will have their voice heard. You have kept me in Congress through these years and I have had experience in assisting people with problems from senior citizens on Social Security to high school students. Cont. on Page 3, Col. 3

Fine Arts Club Halloween Carnival Set

Members of the Muleshoe Fine Arts Booster Club will sponsor their annual Halloween Carnival on Saturday, October 30, 6:30-10:00 p.m. in the bus barn at Muleshoe High School. Featured entertainment will include the Muleshoe High School stage band, and numerous booths designed for all ages.

Several booth reservations are still open for interested civic groups, according to Dwayne Lloyd. He said reservations may be made by contacting Owen Jones or Doyle King.

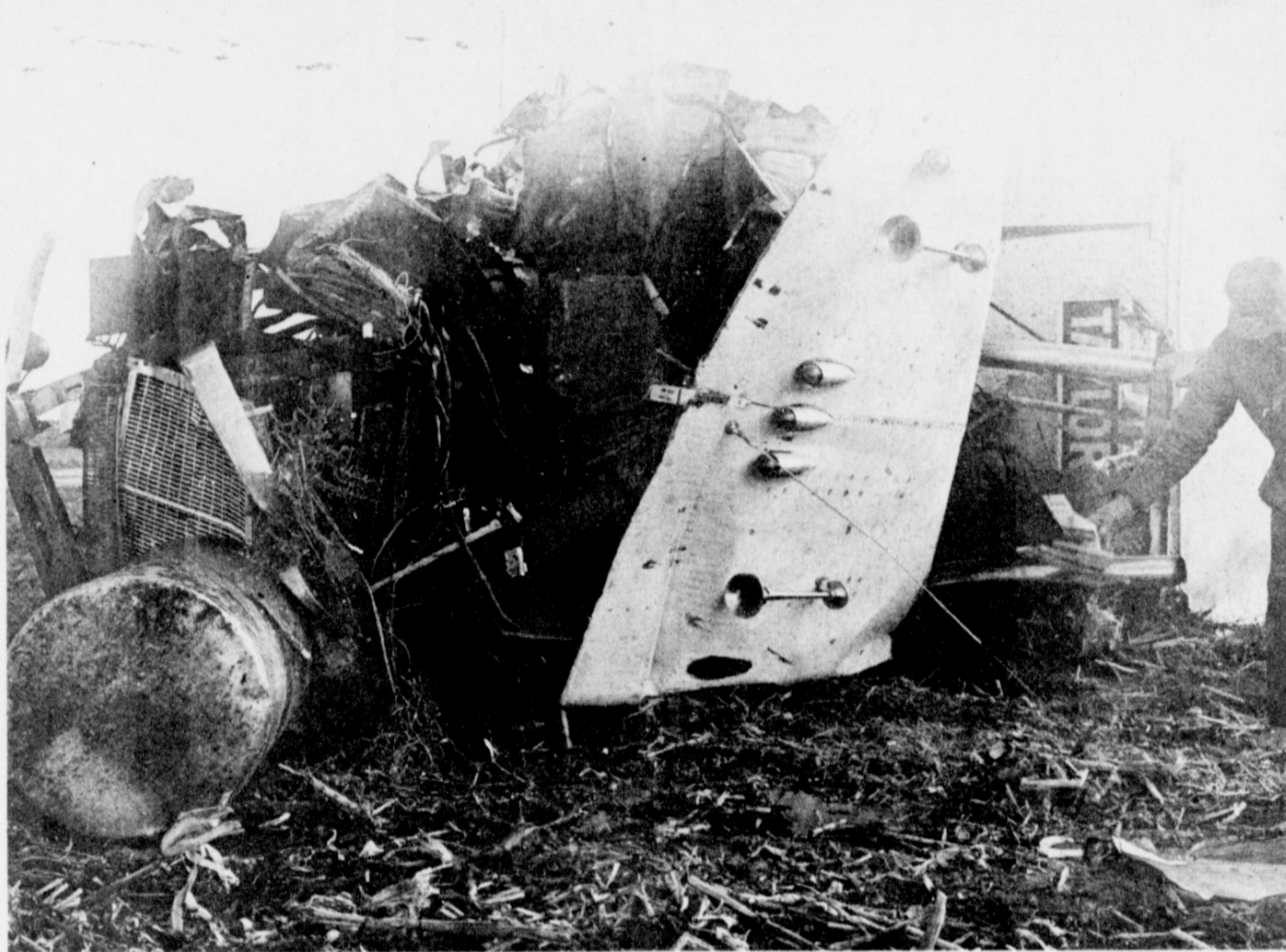
Featured will be the Halloween Queen Contest. A Princess and escort will be chosen from the Art, Band and Speech Departments of Junior High School and the Queen and escort is chosen from the same departments in high school.

Money is raised by the departments for their candidates at the rate of one vote for one cent. Tickets will be 25 cents for the contest finale which will be presented in the Muleshoe High School auditorium at 9:30 p.m. Saturday night.

Swine Flu Shots Won't Hurt You

Will flu shots hurt you? Chances are that they won't after the initial stinging sensation passes.

That's the word from Dr. John Board, Director of the Texas



JUMBLED WRECKAGE . . . A twisted pile of metal shows effects of the force behind the collision of two trucks 10 miles west of Muleshoe Friday morning. Both occupants of the truck shown here were seriously injured and are hospitalized. Approximately 20 head of cattle in this double-decker cattle truck were killed in the collision

and another 20-30 head were rounded up by horsemen after being released from the overturned rig. The front wheels and axle from this truck were in a field, intact, approximately 40 feet from where the truck lies here. Workmen were still trying to remove the truck late Friday afternoon.

Woman Critical After Collision Of Trucks

A collision of a cattle truck from Abilene and a truck load of grain left two persons hospitalized Friday. The accident was reported around 9:30 Friday morning and occurred 10 miles northwest of Muleshoe on Highway 84.

Hospitalized in Muleshoe is the driver of the cattle truck, Emmett Lee Taylor, 41, of Abilene. He has several lacerations and abrasions. At present, in critical condition at Methodist Hospital in Lubbock is Sallie Patrick of Slaton, who was a passenger in the cattle truck. She was thrown to the edge of the pavement before the

truck overturned following the collision with the grain truck. Elwood Patterson, 61, driver of the grain truck, was uninjured in the accident.

Killed in the accident were around 20 head of cattle in the enclosed double-decker trailer. Other cattle were released after several men with horses were summoned to gather them up after being released from the back of the truck.

Investigating officer Jim Bishop of the Texas Department of Safety from Farwell, said Patterson told him he had just turned onto Highway 84 from FM1731 moments before the

collision. Bishop said he was more than two feet from the center stripe in the right lane of the east bound lanes of the four lane highway at the time of the accident.

The cattle truck, driven by Taylor, struck the left rear of the slow moving grain truck with the right front of the tractor rig, leaving the right door of the large truck stuck to the back of the grain truck. The grain truck traveled a short way, then was stopped near the right edge of the highway. A heavy layer of corn strewn down both lanes of the highway hampered investigations until it could be removed.

After the collision, the Taylor tractor-trailer rig, with both front wheels knocked off, veered out of control and upended in the edge of a cornfield. Taylor was not thrown from the vehicle as was his passenger.

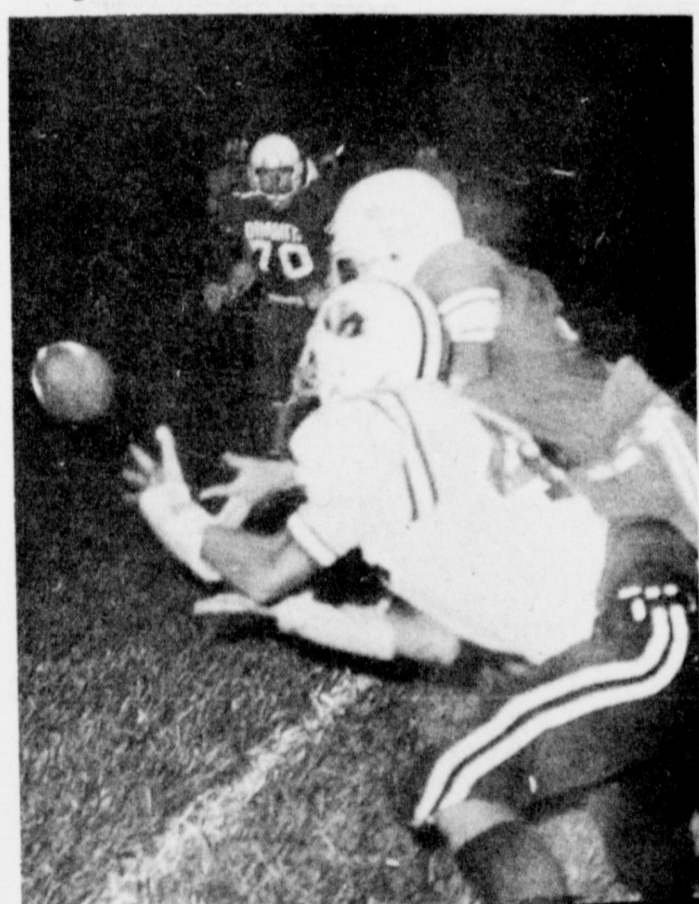
An ambulance from Portales was approximately two miles from the accident scene driving through. Attendants did emergency work on Ms. Patrick at the accident site and transport. Cont. on Page 3, Col. 3

Wily Bobcats Scratched Mules

Capitalizing on three fumbles and three interceptions, the Dimmitt Bobcats gained a definite advantage over the Muleshoe Mules by trapping them deep in their own territory several times Friday night. The Bobcats won the second of district games for 1976 by a score of 45-13 in Dimmitt.

Bobcats struck quick and dug deep, taking advantage of Mule mistakes and by halftime, had a 31-0 lead over the Mules. Taking the ball on the kickoff Dimmitt failed on a fourth and four situation on the Mules 45 yard line. A fumble set up Thompson Mayberry slammed a six yard pass into the hands of Tony Washington in the end zone. A kick made the score 7-0 with slightly over five minutes left in the first quarter.

Digging in, the Mules moved the ball for two first downs before another fumble demoralized the Mules and put another score on an 11-yard scamper, again by Washington. Following the third fumble, Dimmitt scored on a 25 yard field goal, kicked by Matt Howell, backup quarterback and place kicker for the Bobcats. Eddie Chavers added another Cont. on Page 3, Col. 4



BALL HEADED IN . . . Dean Northcutt, who scored both of Muleshoe's touchdowns in the game at Dimmitt Friday night, prepares to catch a pass from quarterback Randy Whalin. Northcutt's touchdowns failed to offset the 45-13 win by the Bobcats.

Gleason Shows Winning Steer At State Fair

A Muleshoe youth showed the Grand Champion of the entire show at the State Fair in Dallas last week. A cross shown by Jimmy Gleason, son of Dr. and Mrs. Jerry Gleason, won his class, then was named champion crossbred in a field of 238 cattle before going on to become grand champion of the entire show over 600 other cattle.

His 1105 pound steer, named Cody, was bred by Larry Hollars of Cody, Neb. and is one-fourth chianina, one fourth limousin and one half angus. He was sold in auction Friday morning at Dallas for \$6,000. The steers started being shown last Wednesday. Dr. Bob Long of Texas Tech University served as judge for the cattle division.

Other local winners included Kelly Harrison and Jacinda Gleason, fifth place and ninth place, respectively, in Class 10; Allan Harrison, sixth in Class Four; and in Class 12, Nicky Bamert, fourth, Jay Gleason, twenty second and Jerry Gleason, twenty fifth.



STATE FAIR WINNER . . . Cody, a crossbred from Muleshoe, was named Grand Champion of the Steer Show at the State Fair in Dallas this week, in competition with 600 other steers. He was shown by his owner, Jimmy Gleason. Shown with the winning 1105 pound steer are from left, Spencer Tankley, Bailey County Agent, judge Dr. Bob Long from Texas Tech University, Don Clark, stock show representative and proud winner, Jimmy Gleason. The steer was sold for \$6,000 on Friday.



GEORGE MAHON HONORED . . . Congressman George Mahon was honored at a reception in Muleshoe Friday afternoon. He was greeted by more than 80 local and area friends. From left, Don Williams, Mahon's campaign chairman for Bailey County, Congressman Mahon, Terry Gunter, E.E. Holland and W.E. Myers. Mahon presented brief comments to the group who greeted him at the Muleshoe State Bank community room.

Courthouse News

MARRIAGES
Miguel Garcia, Jr. of Muleshoe to Adelita DeLeon of Muleshoe.
Johnny Rex Terry of Lubbock to Loretta Sue Marks of Lubbock.

DIVORCES
Forest L. Creamer and Debbie M. Creamer.

WARRANTY DEEDS
O.C. Kirk et ux to Circleback Baptist Church, A.O. 15 acre tract of land out of Labor No. 18, League No. 201, Roberts County School Lands.
Jerry W. Rogers, et al to Jack N. Barbour All of lots No. 78,80, and 84, Blk. No. Seven, Apple Street, to the Town of Progress.
J.D. Evans et ux to Micheal E. Pugh, et ux All of Lot Seven

in Blk. Six, Highland Addition to the Town of Muleshoe.
Cleon E. Davis et ux to Russell Steven Whitt, Lot No. 24, Blk. Three, Lenua subdivision.
Kenneth Dale Wilhite et ux to Cleon E. Davis et ux All of the (SE/4 of SE/4) of Sec. No. Four, Blk. X.
Iva Smith to Bernice A. Holdeman, All of Lots four, five and six of Blk. Two, of Wagon's Addition.
Robert Blackwood et al to Irene Carsez Garcia, All of Lot No. Four Blk. No. One, Warren Addition No. Three.
Ell Northcutt et ux to Gerald R. Bara et ux, A rectangular tract of land 55'x140' and being more particularly described as all of Lots No. seven, eight and the (N/ly 5') of Lot No. nine, Blk. No. Nine.
Heathington Lumber Co., Inc. to Lewis Embry et ux All of the (e/ly 21/58') of Lot 222 and all of Lot 221, Richland Hills Addi-

tion.
OIL, GAS AND MINERAL LEASES
J.V. Stancell et ux to J.D. Cobb Northwest One-Fourth Sec. No. 30, in Blk. Z.
Cleo Gregory to J.D. Cobb, South One-Half Sec. No. 30, Blk. Z.
Calvin Meissner et ux to J.D. Cobb, Northeast One-Fourth Sec. No. 31, in Blk. Z.
Bradley Scott Billingsley et al to J.D. Cobb Northeast One-Fourth Sec. No. 19 and the (NE/4) Sec. No. 30, in Blk. Z.
Warren Elton Gulley et ux to J.D. Cobb Southwest One-Fourth Sec. No. 15, Blk. Z.
Francis H. Franks, Jr., to J.D. Cobb South-One-Half Sec. No. 3, in Blk. Z.
Pam Mutual Royalties, Inc., to J.D. Cobb Southeast Quarter, Sec. 31, Blk. Z.
Eddie Ramm et ux to J.D. Cobb Southwest One-Fourth Sec. No. 19, Blk. Z.

Ernest Ramm et ux to J.D. Cobb, Southeast One-Fourth Sec. No. 19 in Blk. Z.
William Richard Howard, to Van H. Rogers, All of Tract No. 9, League No. (185), Swisher County School Lands.
Johnie May Vaughn et vir to J.D. Cobb Northwest One-Fourth Sec. No. 19, and the (NE/4) Sec. No. 30, in Blk. Z.
G.P. Meissner et ux to J.D. Cobb Southeast One-Fourth Sec. No. 34, in Blk. Z.
NEW CARS
Russell Treider, 1976 GMC PU, Town and Country Auto, Inc.
Jay Herington, 1976 Ford PU, Muleshoe Motor Co., Inc.
George S. Whatley, 1976 Ford PU, Muleshoe Motor Co., Inc.
Morris Nowlin, 1976 Ford Granada, Muleshoe Motor Co., Inc.
Muleshoe Publishing Co., 1976 Ford LTD four door, Muleshoe Motor Co., Inc.
Terry Kemp, 1976 Ford Grain, Muleshoe Motor Co., Inc.
Raymond K. Schueller, 1976 Ford PU, Muleshoe Motor Co., Inc.
Ronnie Barrett, 1976 GMC PU, Town and Country Auto Inc.
Western Sprinklers Inc. 1976,

Westwind Flat, Westwind Industries Inc.
Western Sprinkler, Inc., 1976 Chevrolet PU, Copper-Hobbs Chevrolet.
Michael L. Marsh, 1976 Chevrolet Coup, Crow Chevrolet Company.
Bobby G. Free Farms, Inc. 1976, Ford Muleshoe Motor Co., Inc.
Crescent Ina Hudspeth, 1976 Ford Pinto, two door, Muleshoe Motor Co., Inc.
Gary Goodin, 1976, Olds four door, Town and Country Auto, Inc.
Arnold Prater, 1976 Mercury four door, Muleshoe Motor Co., Inc.
Marshall K. Kelly, 1976 Ford Two door, Elite Muleshoe Motor Co., Inc.

Air Force Academy theft ring probed.
Ehrlichman remains free until appeal.
Senate votes to end automatic increase in pensions.

Minimum tax on wealthy to increase.
Lobbyist withdraws claim of Dole funds.
Philadelphia, site of first debate.

U.S. issues new policy on international aviation.
Aides deny leaking report to Schorr.
House-Senate budgets ask more spending.

Public AUCTION

TERMS: CASH (Checks Accepted) TERMS: CASH

We have been commissioned by Mrs. Bulter (Steve) Stevens to sell at PUBLIC AUCTION the entire stock and equipment, new and used Furniture and Antiques.

213 SOUTH FIRST SWAP SHOP MULESHOE, TEXAS
1:00 P. M. SATURDAY, OCTOBER 30, 1976

NEW ITEMS

- 2-PIECE LIVING ROOM SUITES (5)
- HIDE-A-BED
- LOVE SEATS, VINYL AND FABRIC
- VINYL LOUNGERS
- LIVING ROOM CHAIRS, FABRIC
- DRUM TABLES
- LAMP TABLES
- 3-PIECE LIVING ROOM TABLE SETS
- CORNER WHAT-NOT SHELVES
- BOOKCASES
- NEW BOX SPRINGS AND MATTRESS
- 3-PIECE BEDROOM SUITE, MAPLE
- 2-PIECE BEDROOM SUITE, SPANISH
- 2-PIECE BEDROOM SUITE
- 4 & 5 CHAIR DINETTES EQUIPMENT
- OAK DESK
- LONG COUNTER
- SIGNS
- GLASS SHOWCASE
- SMALL TOP OF COUNTER SHOWCASE
- BOOK RACKS
- SHORT COUNTER

USED ITEMS

- LIVING ROOM DIVAN
- HIDE-A-BED
- CHAIRS
- LOUNGERS
- COFFEE TABLES
- END TABLES
- BEDS
- MIRRORS
- WARDROBE
- SEWING MACHINE
- DRESSERS
- LAMPS
- STOVES
- REFRIGERATOR
- DINETT TABLES
- HEATER - VENTING TYPE
- HANGING PLANTERS
- BOOKS

ANTIQUES

- DRESSING ROOM WITH MIRRORS
- WARDROBE
- DISHES
- CLOTHES HANGER
- JARS AND BOTTLES
- RECORDS

MANY ITEMS TOO NUMEROUS TO MENTION

BUTCH and JAMES PRIEST - AUCTIONEERS

JAMES PRIEST & ASSOCIATES - W-J AUCTION

PHO. 763-7311

"Our Knowledge Is Your Security"
108 FILE - CLOVIS, N. MEX.

PHO. 763-6029

NOTES, COMMENTS

Bragging is often synonymous with lying.

Some people stay angry over small things.

Big words do not always mean big thoughts.

Life is a long road that is uphill all the way.

It's easier to make a contract than to break one.

The trouble with spring gardens is summer grass.

Ignorance may not be as bad as knowing everything.

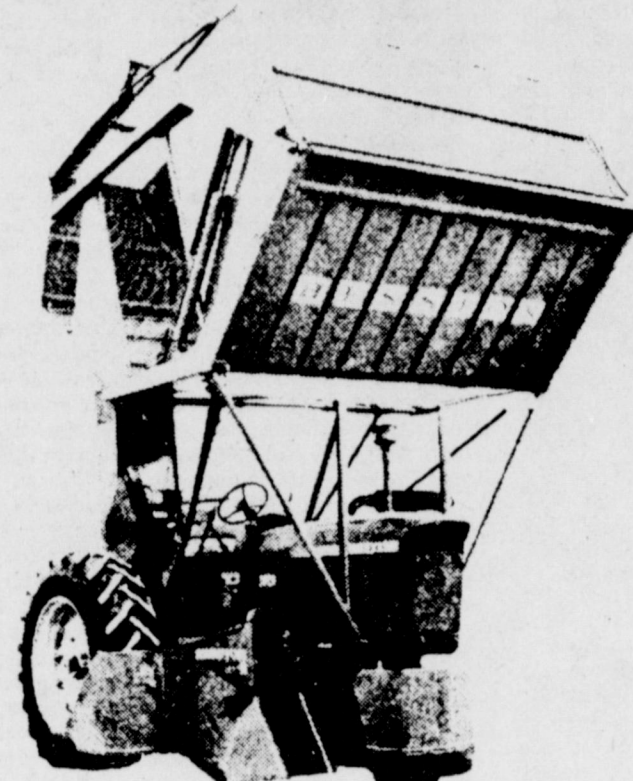
Our idea of wasting time: reading committee reports.

Praise gets cooperation quicker than fault finding.

It's still strange how serious public speakers are.

Most of us have enough to do by regulating our own life.

HESSTON COTTON HARVESTER 560 DRIVE BOX MODEL 24A



PRICED AT \$6448⁰⁰ WITH BASKET

(PLUS MOUNTING)

Barry & Young Equipment Co.



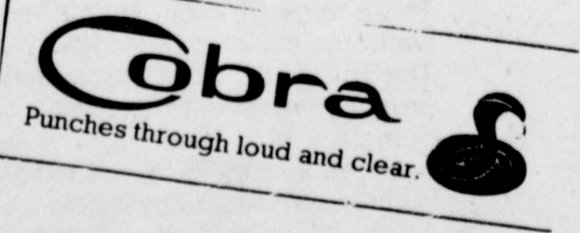
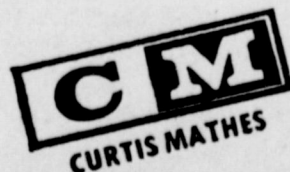
803 West American Boulevard
Phone 272-4236
MULESHOE, TEXAS 79347

DEMPSTER
KRAUSE
BUSHINGTON

ANNOUNCING...

The Future Opening of Williams TV & Appliance
Watch For Our Grand Opening At A Later Date.

Drop By- Have A Cup Of Coffee And Get Acquainted With Debra & Johnnie

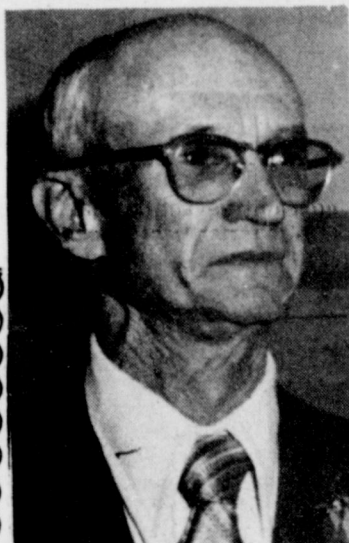


We Are Experienced In Heating- Refrigeration-Air Conditioning & Appliance Repairs

WILLIAMS TV & APPLIANCE

201 Main

Ph. 272-4118



G.P. MEISSNER

CAN YOU TRUST JIMMY CARTER TO DO WHAT'S BEST FOR THE AMERICAN FARMER?

Jimmy Carter is an engineer, a scientist, a former governor. He is also a farmer. He understands what it means to roll up his sleeves to do an honest day's work for an honest day's pay. He also understands the abuses you have suffered during a Republican Administration which has taken excellent care of the grain speculators, the

Russians, the food processors and the powerful. At your expense. The Republican big-business approach to farming is a disgrace and a failure. American farmers are going broke trying to produce food American consumers cannot afford to buy. As a farmer Jimmy Carter is committed to changing that. As President, Jimmy Carter will change that.



FARM EXPORTS.

"We can't tolerate an agricultural policy which encourages foreign sales and then cuts them off for political convenience. We can only develop overseas markets for our goods, if our buyers can depend on us and the quality and quantity of our products. Our farmers are dependable. It's our government that's not."

DOMESTIC AGRICULTURAL POLICY.

"The Republican big-business approach to agriculture is driving the family farmer out of business. We need to end the threat of embargoes, to create small but adequate reserves, to establish realistic fall back prices. We need to develop an abundant production policy coupled with a vigorous expansion of our export markets."

RURAL AND SMALL TOWN DEVELOPMENT.

"Farmers are entitled to exactly the same standard of living that most urban dwellers take for granted—adequate water and sewer systems, affordable electric and telephone service and a realistic wage for a good day's labor."

ESTATE TAXES.

"The present estate tax threatens the very existence of the family farmer. It should be and will be eliminated with progressive tax credits or by a substantial increase in estate tax exemptions. Permanent farm land must be and will be valued at its production value. Not at its value to land speculators."



TOGETHER, JIMMY CARTER AND WALTER MONDALE WILL GIVE THE AMERICAN FARMERS A VOICE IN THE WAY YOUR GOVERNMENT IS RUN.

One of the reasons Jimmy Carter chose Walter Mondale to be his running mate was because they both share the same concern for the American farmer. Born and raised in rural Minnesota, Mondale has relentlessly and consistently fought for the rights of the family farmer. And as a U.S. Senator, his record stands as one of the most impressive in Congress.

CAN YOU TRUST A REPUBLICAN ADMINISTRATION WHICH STANDS ON A RECORD LIKE THIS?

As a Congressman, Gerald Ford led the fight for cutbacks and impoundments of rural funds. He voted for every termination and elimination of rural programs family farmers so desperately need. As President, Gerald Ford and a Butz Department of Agriculture have consistently vetoed, embargoed, reduced and curtailed a long list of programs designed to guarantee the family farmer a decent standard of living. It's a record of disregard and insensitivity to the problems facing the farmers and consumers of this nation.

If you agree that drastic reforms must be made in the way this country is run, in the way our farm program is administered, you have only one choice on November 2nd. And that's for change.

ON NOVEMBER 2ND, VOTE FOR JIMMY CARTER. A LEADER, FOR A CHANGE.

Bond...

con't. from pg. 1
increase of \$47.11 or less than four cups of coffee per week.
Also, the trustees said taxes would increase by 18.71 percent if the bond election is approved.
The Trustees added, "If our children are to gain admission and compete successfully in modern industry and colleges, we must provide suitable buildings and necessary equipment for proper teaching methods."
"We can financially support this improvement program," they concluded, "This is not the type of decision you make in terms of dollars and cents. The welfare of our children and the future of our community are at stake."

Leader...

con't. from pg. 1
noted that "since money will be so limited this campaign, we will be asking individuals to establish neighborhood headquarters in their homes to contact the people to get the President's supporters to the polls on election day."
"This campaign between President Ford and Mr. Carter is one of the most critical in our history," comments Mrs. Wagon. "Certainly it is clear that President Ford better represents the views of West Texans and all other Americans than does Mr. Carter."
Explaining the crucial nature of the campaign, Mrs. Wagon emphasized that "few Texans will be able to accept Carter's farm or energy policies when they realize that Carter intends to unionize all farm workers, repeal the right-to-work laws of the state, and through his energy policies, force an income tax on the people of our state."
Concluding, Mrs. Wagon said she would soon announce the opening of a headquarters to "help see that all area voters become aware of the crucial issues in this election."

has been noted during public meetings to explain the purpose of the election, and said that although some people voiced opposition to the program when it was initiated, most Lazbuddie community people seemed adequately satisfied with the explanations of the need for the bond election.
The polls will be open 7 a.m. to 7 p.m. in the foyer of the Lazbuddie School auditorium on Tuesday, October 26.

Three Way...

con't. from pg. 1
crowning of this year's queen and her court.
Candidates include: Freshmen: Robert Layton and Belinda Richardson, Sophomores: Ken Eubanks and Beverly Dupler, Juniors: Donnie Young and Rincee Parkman, Seniors: Craig Kirby and Gloria Simpson.
Coaches Pat Risinger and Tom Newton then presented player awards for the Loop game. The offensive player was Ken Eubanks and defensive player was Ernest Cantu. Skill awards went to Craig Kirby, Jose Vidales, Adam Rodriguez, Eddie Rodriguez, Ernest Cantu, Jerry Waltrip, Albert Rand, Bill Hodnett, Louie Key, Donnie young and Ken Eubanks. The Eagles are 3-1-0 in District play.

Muleshoe...

con't. from pg. 1
coming, Friday, October 29, from 3-6:00 p.m. in the Muleshoe State Bank community room. Following an informal visitation, the group will attend a dutch treat dinner at the Corral Restaurant before game-time.
Any friends of the 1946 class will be welcome at the reunion.
Ben Harmon, son of Mr. and Mrs. Bill Harmon, who was injured in an accident last Friday, is still hospitalized at Methodist Hospital in Lubbock.
He is in room 369 and would welcome visits and cards from his friends.

Hospitalized at lubbock is Mrs. Corda Taylor and Mrs. Don Bryant is still undergoing treatment at a hospital in Albuquerque.
WORLD BANKS
Over the objection of the United States, the executive directors of the World Bank voted to admit Vietnam to their organization.

Flu...

con't. from pg. 1
About one person in 100 inoculated with flu vaccine have run temperatures above 100 degrees. Swelling, redness and tenderness in the arm occur in 20 to 40 percent of those inoculated.
Severe reactions are very rare. "But, any reaction to immunization is likely to be far less severe than the disease itself," said Dr. Philip W. Mallory, Deputy Commissioner for Health Maintenance with TDHR, who is in charge of the statewide immunization effort.
Persons who are allergic to

Mahon...

con't. from pg. 1
He referred to the 2,000 pieces of mail he receives each week, and added that he hears from all 17 counties in his district each day.
"A bad farm bill could adversely affect this district for the next decade," strongly reminded Mahon. "I'm advocating the best farm bill we can possibly come up when it is considered right after the first of the year."
The Congressman said that although the last farm bill went through the appropriations committee, and that the new Congressmen want to spend, spend, spend, he said that during the time he has been chairman of the appropriations committee, spending has been cut by some 70,000,000,000. He also said his record reflected that he had voted 95 percent conservative during the past year.
"Beware of those who deal in partial facts and omit to tell the entire story," he warned.
"And, consider asking why the Republicans in Midland have formed a Republicans for Mahon campaign headquarters and are working hard."
He advocated stronger energy laws, and much stronger and further reaching farm programs.

Wreck...

con't. from pg. 1
ed both victims to West Plains Medical Center in Muleshoe for emergency treatment. Following emergency treatment, Ms. Patrick was transferred to the Lubbock Methodist.
Officer Bishop said he was continuing his investigation, and no citations had been issued at presstime pending on completion of the investigation.
Debris was still at the accident site late Friday afternoon, and the trucks had not been removed.

eggs are requested NOT to take the swine influenza vaccine. That's because the virus used in making the vaccine is grown in eggs.
The flu vaccine contains a virus that has been killed, so you can't get influenza from the shot itself. The vaccine stimulates the production of antibodies in the body, without causing the flu. Antibodies are the body's defense against catching the disease if a person is exposed to

Mules...

con't. from pg. 1
Dimmitt score with a 24 yard run and Washington added more points from the one yard line after running an interception back for 80 yards, setting up the touchdown.
Going into halftime, the Bobcats led 31-0, but the Mules came out in the second half and got on the scoreboard midway through the third quarter when Dean Northcutt dived over the top for a seven yard touchdown. An attempt to pass the extra points failed.
Two minutes later, the Bobcats retaliated by adding an additional seven points to the score on a 43 yard run by the quarterback Mayberry. He added another six points with only eight seconds left in the third on an 11 yard run.
The Mules other touchdown in the game was also by Northcutt, who barreled his way through from the six yard line in the fourth, for the only scoring in the 4th. A pass from quarterback Randy Whalin to Mark Washington was good for two points.
After heavy scoring during the first three quarters of the game, the Bobcats failed to add additional points in the fourth quarter.

STATISTICS

| | MULES | CATS |
|-----------------|-------|------|
| Yds. Rushing | 165 | 248 |
| Yds. Passing | 101 | 103 |
| Pass Att. | 22 | 18 |
| Pass Comp. | 12 | 8 |
| Interception | 3 | 0 |
| Fumble | 3 | 2 |
| First Down | 12 | 11 |
| Punt | 4 | 2 |
| Penalties [Yds] | 45 | 50 |

NO ACTION TAKEN

The House Ethics Committee has decided to take no punitive action against CBS reporter Daniel Schorr.

it.
The dangers of catching the A/New Jersey strain of influenza are very real if the expected fall and winter outbreak occurs. A nationwide epidemic can be averted if everyone receives the influenza vaccine. All Texans are asked to do their parts.
The A/New Jersey influenza immunization campaign will open in Muleshoe on Saturday, October 30th, with clinics in operation at the Muleshoe High School Cafeteria, according to Jo Anne Head RN, Public Health Nurse.

Water...

con't. from pg. 1
has created controversy, as reports have been received from several persons who have reviewed the slides, that adverse remarks are being made about the presentation and its effect on this county and adjoining Lamb County.
Rayner agreed to bring the presentation to this county on Wednesday and present the same slides and play a tape recording made at Amarillo. He made the agreement after requests by local business representatives and Muleshoe Chamber of Commerce and Agriculture individuals contacted him after the report was given about the presentation.



Everyone should be immunized with these free shots as soon as possible in order to be protected against this strain of influenza, said Dr. Board.
There's every reason to believe that the A/New Jersey, or swine, influenza poses a serious threat to the health of all individuals in the community.
It was detected last winter at Fort Dix, N.J. If it follows the pattern of other influenza outbreaks, it can be expected to spread during the coming flu season, said Dr. Board.

Local public health authorities and members of the First Lady's Volunteer Program are working statewide in the influenza immunization campaign. The First Lady's County Coordinators are assisting with the recruitment and organization of the statewide volunteer program to complete the immunization campaign. Volunteer will work in the campaign alongside private physicians and nurses, other volunteers and public health personnel.
Clinic sites have been estab-

lished to provide for the efficient administration of the vaccine and the compilation of necessary information on each individual.
Clinic locations and clinic hours follow:
Muleshoe High School Cafeteria, October 30th, 10:00 a.m. to 6:00 p.m.
Muleshoe High School Cafeteria, October 31st, 1:00 p.m. to 6:00 p.m.
All shots administered in public health clinics will be free, said Dr. Board.

SPECIAL

25 lb. Family Pak:
Includes: 2 Roast, 1pkg. T-Bone, 1 pkg. Loin, 1 pkg. Club, 2 pkg. Tenderized Steaks, 2 pkg. Round, 3 pkg. Hamburger & 2 pkg. Patties. **\$25⁹⁹**

Choice Full Beef Loin lb. **99¢**
1/2 Beef lb. **80¢**
Hind Quarter Beef lb. **92¢**

Ask About Our New Boxes Of Steak!

Come In And See Our Newly Remodeled Facilities

Muleshoe Locker

401 Main 272-4703

Bailey County Journal
Established March 21, 1903
Published by Muleshoe Publishing Co., Inc.
Every Issue at 30¢. 5¢. Single Copy 10¢.
TEXAS PRESS ASSOCIATION
L. B. Hall - President
James Ward - Vice President
C. W. Williams - Editor
Public Relations Office
Ruth M. M. - Advertising
April 1976 - 10¢/copy

WHERE YOU ALWAYS BUY THE BEST FOR LESS

GIBSON'S DISCOUNT CENTER

STORE HOURS: 9A.M. - 8P.M.
MON. - SAT.
PRICES EFFECTIVE
MON. OCT. 25 THRU WED. OCT. 27

| | |
|---|--|
| <p>NORTHERN BRAUNNY TOWELS 100 SQ. FT. 47¢</p> | <p>ST. JOSEPH ASPIRIN 100% PURE PAIN RELIEVER 200 CT. REG. 99¢ 2/\$1.00</p> |
| <p>NORTHERN NAPKINS THRIFTY FAMILY PAK. 140 1, PLY 39¢</p> | <p>BOMAN CB-720 23 CHANNEL CB MOBILE TRANSCEIVER FEATURES PLUG-IN MIK, S/R F METER VOL., SQUELCH, AND P.A. REG. \$119.97 \$87.95</p> |
| <p>JEWEL SHORTENING 42oz. 89¢</p> | <p>REGAL COFFEE MAKER POLY PERK 4-8 CUPS REG. \$8.99 \$5.99</p> |
| <p>LYSOL DEODORIZING CLEANER 28 oz. 95¢</p> | <p>PRESTONE CONCENTRATED ANTI-FREEZE WINDSHIELD WASHER 16 OZ. REG. 79¢ \$45.00</p> |
| <p>MOUTHWASH AND GARGLE SCOPE 12 oz. 95¢</p> | <p>PORTABLE CAMP STOOLS REG. \$1.79 \$1.29</p> |
| <p>ADMIRATION COFFEE 1lb. CAN \$1.45</p> | <p>KELLEY GALVANIZED BUCKETS 10 QT. REG. \$1.97 \$1.49 12 QT. REG. 2.27 \$1.69</p> |
| <p>BLACK SHEEP INSULATED COVERALLS REG. \$29.97 \$22.88</p> | <p>PARKER BROTHERS MONOPOLY REG. \$5.99 \$4.49</p> |

GET THE DROP ON HEATING BILLS

the energy efficient home captures lost heat . . .

Here's how.
The Energy Efficient Home has a greater amount of insulation in the walls and ceiling to keep heat from escaping to the outside . . .
The Energy Efficient Home has double-paned glass or storm windows, properly weather-stripped and caulked to further trap heat inside your home . . .
And the Energy Efficient Home has efficient electric heating equipment that uses energy wisely . . .
All the specifications for the Energy Efficient Home mean that the warmth you're paying for stays where you need it . . . inside.
Call the Electric Company for the complete information on how you can get the drop on heating bills by trapping Lost Heat with the Energy Efficient Home.

building or buying? ask about E.E.H.

ELECTRICITY-IT DOES SO MUCH GOOD

FOR SO MANY PEOPLE

Muleshoe Hobby Club Has Friona Guests

Muleshoe Hobby Club met at Muleshoe State Bank Thursday, October 21 and had as their guests, the Friona Hobby Club. Visitors were Mrs. E.G. Adames, Mrs. W.C. Wilkerson, Mrs. Wesley Hardesty, Mrs. Cordine Potts, Mrs. Jewell Bar-

ry, Mrs. Louise Wilson, Mrs. Lucy Fay Cochran, Mrs. Mary Dixon, Mrs. Mabel Hartwell, and Mrs. Rosella Landrum. Members attending were Mrs. Allie Barbour, Mrs. Mabel Caldwell, Mrs. Ola Epperly, Mrs. Bub Shafer, Mrs. C.E. Briscoe,

Mrs. Verna Dement, Mrs. Henry Bass, Mrs. Opal Robison, Mrs. Dora Phipps, Mrs. Vicki Hendrix, Mrs. Ruth Williams, Mrs. Mae Loyd and Mrs. W.W. Williams. The Muleshoe Hobby Club will be with the Senior Citizens

Monday, October 25, at the Methodist Fellowship Hall at 2:00 p.m. The next regular meeting will be held November 4, with Mrs. Verna Dement as hostess. Mrs. Vicki Hendrix was hostess for the meeting and was assisted by Mrs. Robison. The hostess gift was drawn by Alice Barbour.



MRS. MIKE MILLER AND SON JON COLBY

Mrs. Mike Miller And Jon Colby Honored At Baby Shower

Jon Colby Miller and Mrs. Mike Miller were honored with a baby shower Friday morning October 15, in the home of Mrs. Corky Green. Jon Colby's grandmother, Mrs. John Miller, his great grandmother, Mrs. W.O. Timms and his mother were presented with corsages made of infant socks rolled into rose buds. Coffee cakes, sausage balls and spiced tea were served to

the guests from a table laid with a green table cloth and appointed with brass and copper. The centerpiece and registration table flowers were designed and created with and autumn theme.

Hostess for Jon Colby's shower were: Mrs. Tub Angeley, Mrs. Dick Chitwood, Mrs. Tim Foster, Mrs. Don Golden, Mrs. Corky Green, Mrs. Jerry Harrison, and Mrs. Paul Wilbanks.

The natural tendency among both employers and employes is to overestimate their contribution to the cause.

What has become of the old-fashioned man who believed that great wisdom was to be found in the nation's capital?



USDA OFFICIAL VISITS . . . A special visitor in Muleshoe Wednesday was Bill Scherle, left, who is an official with the U.S. Department of Agriculture in Washington. He was in Muleshoe informally visiting with local farmers and other agriculture producers. Also shown are Norvell Breedlove, ASCS director from Swisher County, center, and at right, Terry Hill, ASCS director for Bailey County.

USDA Representative Hears Local Farmers

Local and area farmers had the opportunity Wednesday to voice their problems, and to seek possible solutions. Visiting briefly in Muleshoe was Bill Scherle, a farmer from Iowa and former Senator who is now assistant to the Deputy Administrator of Programs for the United States Department of Agriculture in Washington. He is also the energy coordinator for the Department of Agriculture in Washington.

Scherle, who is traveling nationwide seeking input from a producer level for the new farm bill to be presented next year, spoke to area farmers at the Muleshoe City Hall council chambers. He discussed some of the existing problems and conducted a question and answer session for the group attending the meeting.

Accompanying Scherle was Norvell Breedlove, Executive Director of the ASCS office from Swisher County. Local arrangements were by Terry Hill, Executive Manager of the Bailey County office of the ASCS.

Scherle told the group he was a "dirt farmer" from Iowa and also conducts a cow-calf operation. "I know there's money in cattle," he commented, "because I put it there." I have been flooded out, droughted out and grasshoppered out. Farming is my business, my occupation and I don't want anything to happen to it."

He explained that he is presently traveling throughout the Southwest in an attempt to find out how farm programs are working, the drought effects and asked, "What do you want in the new farm bill next year?" The former Senator explained that although his position was unique, he was making the tour to personally visit with agricultural producers and find out their needs and wants, and try to find answers to some of their questions.

In explaining the role of consumers in determining agricultural needs in Washington, Scherle emphasized, "we don't need intelligence, and most of the legislators are intelligent. What we need is the practicality of problems here, which are not like problems other placed, any more than their problems.

Scherle further explained the import-export program and said the United States exported \$22.5 billion in agriculture last year. He said this represented approximately one acre of every three and a half acres produced in the U.S. for the year. "The export market hopefully will remain high," he added.

In response to a question as to what price Russia pays for grain, Scherle commented, "Russia pays the going price, in cash, as they buy on the world market."

The USDA representative cautioned against increasing cotton

acreage as he said the last time cotton was overplanted, cotton dropped to 38 cents a pound and warned such a price drop could easily happen again.

He also spoke briefly on fuel and energy and said he did not see any relief in the continuing rise in prices for natural gas adding, "Natural Gas will continue to be expensive and continue to be short in supply."

Scherle also responded favorably to a question about educating the American people to what it costs to produce a crop. He said although he did not know just what it would take to educate the public to the extremely high costs facing an agriculture producer, he wishes there could be some method devised whereby they may become more knowledgeable about problems faced by the agriculture producer.

One report by a county producer said it cost \$10 per acre to water in this county one time and it costs \$200-\$225 per acre to raise corn in this county.

At the conclusion of the meeting, the USDA representative took a list of questions posed by local producers and said he would find, or attempt to find answers for the farmers and cattlemen. He will return to Bailey County in approximately two months for further hearings.

Couple Exchange Wedding Vows

Mr. and Mrs. Raymond Treider, Jr., of Lazbuddie are proud to announce the marriage of their daughter, Raygena Gayle, to Grady Lee Free, son of Mr. and Mrs. Bobby G. Free of Muleshoe. The couple exchanged wedding vows October 1, 1976.



INSTALLING NEW PRESIDENT . . . The new president, Mrs. Ernest Martin, was installed by her sister, Mrs. Kenneth Henry.

Library News

By Anne Camp

Storyhour was held Wednesday morning at the library. Kay Elliot and Mary Cook, Young Homemakers conducted this session. After the raising of the flag, and the pledge of allegiance the 38 children attending went to the basement of the library. After Roll-Call, they sang the Good-Morning song, Identified Nursery - Rhymes; Played an action game and saw a film - "The Neat Bird." They talked about Halloween and were given a Halloween Mask to take home and color. Cookies and candy were given the children as they left. Storyhours are held for this group the 1st and 3rd Wednesday Morning of every month. A Storyhour will be held for children of the Goodwill Center Kindergarten October 27.

The film program at the library is going great. 1,015 viewers were recorded for September. Ask about this service if you are a teacher, Club leader, or Program chairman for any organization. We will have 5 films here at the library every month to choose from or we can spot-book many others out of Lubbock. Children can watch film-strips at the library anytime on request.

Did you know you can learn Spanish by checking out an entire course at the library? A workbook and cassettes are available...giving sounds and cassettes are available...giving sounds and much better than just a book.

The library has had many

West Plains Medical Center Briefs

ADMISSIONS
 October 18 - Romelo Toscano.
 October 19 - Mrs. Myrtle Jones, Mrs. Jeanette Lewis, Mrs. Celestine Lewis, Mrs. Blanch Cash, Mrs. Adelino Rodriguez and Mrs. Nona Precure.
 October 20 - John Smith and Mary Roberts.
 October 21 - F.L. Glasscock.
 DISMISSALS
 October 19 - Mrs. Lula Kistler, Mrs. Edith Bruns and Raul Rosales, Jr.
 October 20 - Jeanette Lewis and Charlotte Field.
 October 21 - Cindy Dodd.

WELCOME HOME

Support The Junior Class!
 Buy Your Mums Here.
 Contact Any Junior Or Phone 4287.
 We Have A Special Purchase
 Of Jute Macrame Hangers At Only
\$5.00
 MULESHOE FLORAL
 121 S. Main Phone 272-4287

ONEIDA STAINLESS
SALE!
 SAVE 20%

COMMUNITY* STAINLESS
 20-PIECE SET FOR 4 / **\$39.95**
 (Reg. \$49.95)
 Set Contains: Four 5-Piece Place Settings

SAVE 20% on
 MATCHING
 SERVING
 PIECES

5-PIECE
 HOSTESS SET
\$17.60
 (Reg. \$22.00)
 Hostess Set Contains: Serving Fork, Sugar Spoon, Pierced Tablespoon, Gravy Ladle, Butter Knife.

ONEIDA
 The silverware Our silverware mark of excellence.

Hurry! Sale Ends November 27, 1976

Some Patterns By Special Order Only

Something Special

222 MAIN MULESHOE 272-4933

One Hundred Percent Lovers
 For 20% Less
 from
beautymist
 Save on all Beautymist* hosiery styles.
 Oct. 23-Nov. 6

| | | |
|--------------------------|-------------|-------------|
| Sheer stretch panty hose | REG. \$1.69 | SALE \$1.39 |
| Super sheer panty hose | \$2.00 | \$1.65 |
| Support panty hose | \$3.95 | \$3.25 |
| Knee highs | \$1.00 | \$.85 |

Cobb's
 218 Main Muleshoe 272-5511

INCREASE YOUR HARVEST WITH A **FIRST FEDERAL SAVINGS ACCOUNT**

INTEREST RATES ON SAVINGS DEPOSITS
 COMPOUNDED DAILY FROM DATE OF DEPOSIT TO DATE OF WITHDRAWAL

| Passbook | ANNUAL RATE | ANNUAL YIELD | MINIMUM TIME | MINIMUM AMOUNT |
|----------|--------------|--------------|--------------|----------------|
| | 5.25% | 5.39% | | |

| Certificate of Deposit | ANNUAL RATE | ANNUAL YIELD | TERMS | MINIMUM AMOUNT |
|------------------------|--------------|--------------|-------------|----------------|
| | 5.75% | 5.92% | 90 Days | \$1,000.00 |
| | 6.50% | 6.72% | 1 Year | \$1,000.00 |
| | 6.75% | 6.98% | 2 1/2 Years | \$1,000.00 |
| | 7.00% | 7.25% | 4 Years | \$1,000.00 |
| | 7.50% | 7.79% | 4 Years | \$5,000.00 |
| | 7.75% | 8.06% | 6 Years | \$5,000.00 |

*FOR EARLY WITHDRAWAL CERTIFICATE INTEREST WILL BE PAID AT PASSBOOK RATE PLUS PENALTY OF 90 DAYS INTEREST AT PASSBOOK RATE.

To take advantage of higher rates, passbooks or Certificates must be presented to transfer funds from existing accounts.

FIRST FEDERAL
 SAVINGS & LOAN ASSOCIATION OF CLOVIS
 (DEPOSITS INSURED UP TO \$40,000.00)

HOME OFFICE: 801 Pile St. CLOVIS, N. MEX.
 BRANCH OFFICE: 2nd and Abilene St. PORTALES, N. MEX.

INSURED

Ladies Country Club Elects New Officers

President, Mrs. Harmon Elliott, opened the meeting held Wednesday, October 20, at noon at the Country Club. Hostesses were Mrs. Harold Newsom, Mrs. Don May, Mrs. Terry Parham, Mrs. Houston Hart, Mrs. Woody Lambert, Mrs. Lee Kimbrough, Mrs. Bill

Millen, Mrs. Cleon Davis and Mrs. Johnny Collins. The treasurer report was given by Mrs. Wayne Williams. Mrs. Clyde Holt, tournament chairman, announced the city tournament winners. Firt Flight was Mrs. John Lowery, first; Mrs. Carl Bamert, runner-up and Mrs. Curtis Walker, consolation. Championship Flight were Mrs. Tommy Haley, first; and Mrs. M.D. Gunstream was runner-up. Winner of the consolation was Mrs. Mac Brown. Playday balls given to Mrs. Ray Precure, Mrs. Carl Bamert,

Mrs. Kenneth Hanks, Mrs. Clifford Black, Mrs. Mac Brown, Mrs. Claude Riley, Mrs. Harmon Elliott and Mrs. Tommy Haley.

Mrs. Tommy Haley reported that she and Mrs. Gene Impletton went to Hi-Plains in Olton and Mrs. Haley won third in teh first flight.

Mrs. Kenneth Hanks installed the following officers: They are President - Mrs. Ernest artin; Vice-President - Mrs. Tim Campbell; Secretary - Mrs. Travis Bessire; Treasurer - Mrs. Pat

Wagon; Tournament - Mrs. Mac Brown; Hi-Plains - Mrs. Houston Hart; Alternate - Mrs. Tommy Haley and parliamentarian - Mrs. Bill Millen.

Mrs. Harmon Elliott presented the President's gavel to Mrs. Martin, and presented Mrs. Kenneth Henry, a gift of appreciation for serving as installing officer. Mrs. Elliott also expressed her appreciation to her officers and chairman of last year. Mrs. Martin presented the outgoing president, Mrs. Elliott with a gift.



NEW OFFICERS . . . The new officers for the Ladies Country Club Association were installed Wednesday, October 20, for the new year. They are Mrs. Ernest D. Martin - president, Mrs. Tim Campbell - vice president, Mrs. Travis Bessire - secretary, Mrs. Joe Pat Wagon - treasurer, Mrs. Gary Mac Brown - playday chairman, and Mrs. Tommy Haley - alternate Hi-Plains director. Officers not present were Mrs. Houston Hart, Hi-Plains director and Mrs. Bill Millen - parliamentarian.

Christian Women Sponsors Girl

The Christian Women Fellowship of the First Christian Church met Tuesday, October 19, 1976, at 5:00 p.m., in the home of Mrs. Walter Bartholf, Sr.

The meeting was called to order by the president, Mrs. Bartholf. She passed out year-books in which the hostesses and programs were planned and filled in the books for the year. It was voted to sponsor a girl at the Juliette Fowler Home in Fort Worth.

The topic selected to study for the year was the Book of Acts. Mrs. Bartholf introduced the Book of Acts and presented a survey of it. Two chapter will be discussed at the future meeting. The meeting was adjourned with a prayer.

Those attending the meeting were Mrs. Levina Pitts, Mrs. Lula Gorrel, Mrs. Sena Stevens, Mrs. Sylvan Robison, Mrs. Bobby McGee, Mrs. T.R. White, Mrs. Joe Costen, Miss Doris Bartholf and Mrs. Walter Bartholf, Sr.

TOPS Has Weekly Meeting

TOPS had their regular meeting October 21, Mrs. J.O. Parker was in charge of the meeting. Twenty two members answered to the roll call. Mrs. Owen Jones read the minutes of the last meeting.

Mrs. Raymond Hill was chosen as the weekly queen. Mrs. Bobby Newman was the first runner up. Janie Patton and Mrs. Buria Vinson tied for second runner up.

Mrs. Glenn Splawn was the can-can winner. Mae Province read a humorous article, "Door Checks Gets Art In Trouble", with "The Devil Has Done It". The TOPS members now have pecans for sale, and anyone interested can contact a TOPS member.

Mr., Mrs. Black Had Visitors From Germany

Mr. and Mrs. Richard Black recently received a letter from Mrs. Dietgard Engel and her father, of Ottenhofen, West Germany. They were guests in the Black's home in the month of August for nine days.

She spoke of the hospitality of "Texas" people as being great. The nice things they did togeth-

er and the interesting places the Blacks took them to, gives them great memories of their visit to Texas.

Among the places of interest in the area was a sightseeing tour of Lubbock; Muleshoe courthouse and law enforcement center. They visited the school in Sudan; visited ENMU campus at Portales; saw "Texas" and toured the West Texas Museum and Carlsbad Caverns. They went to San Antonio from here for nine days and visited many historical places there.

The country's politics interested them. They had listened to the Carter and Ford discussion on television. To them it was interesting. Before they left they were wondering how the outcome came out. During their stay with the Blacks, they were having an election of the New German Government and everyone was anxious about the results.

Lazbuddie Scouts Win New Awards

Lazbuddie Boy Scout Troup 62 won five awards at the Scout Camporee, October 9-10, at Clovis, N.M. This is the second year for the scout troop to participate, and the troop won the most awards given at the camporee. Those scouts attending the camporee were Reggie Treider, Apolonio Sanchez, Shawn Smith, Rodney Crim, Senior Patrol Leader Robert Stanley, Doug Stanley, Mario Gomez, Ricky Dale, Paul Stanley, Casey McBroom, Shane Smith, Tommy Hill, and Mark Calloway. Troop leader attending the camporee was John Hudspeeth, a former Eagle Scout and member of the Order of the Arrow, assisted by Charles Beam.

Ribbons were awarded to the Buffalo patrol, lead by Reggie Treider, assisted by Tommy Hill. The patrol won first place in the flajack flipping contest, and in the first aid competition. This enabled the patrol to win the Outstanding Patrol of the Order of the Arrow through obtaining points in the various competitions held. Through the efforts of the Buffalo and Eagle patrols, Troop 62 was awarded the Camporee Award of Merit.

Camporees are held in the district twice a year, and camping and skill development are emphasized. The morning is spent in learning and practicing skills, and then the afternoon brings spirited competitions by troops and patrols for points and awards.

Troop 62 has participated in two camporees, a craftsair, and attended summer camp for a week last summer at Camp Wehinahpay at Cloudcroft, N.M., an experience which contributed to their performance at this camporee. Future plans include a camporee and a craftsair this spring, and campouts and camp this summer.

ESA Has Birthday Social

The Epsilon Chi chapter of Epsilon Sigma Alpha met Tuesday evening, October 19, 1976, at 8:00 p.m. in the home of Mrs. Charles Isaac. Co-Hostesses for the annual birthday social were Miss Virginia Bowers and Mrs. Derrell Matthews.

Dinner was served to all members attending the function. The meal consisted of a Mexican-chicken casserole, tossed salad, chips, beverages, and dessert was served later in the evening. After the meal, several games of bingo were played, and gag gifts were presented to the winners.

Gifts were exchanged among the members from their secret sisters, celebrating the observance of the birthday of the sorority.

Those attending the social were, Mrs. Charles Isaac, Mrs. Darrell Matthews, Miss Virginia

Bowers, Mrs. Charles Moraw, Mrs. John Birdwell III, Mrs. David Anderson, Mrs. Wayne Tunnell, Mrs. Hugh Young, Mrs. Terry Parham, Mrs. Terry Hillin, Mrs. Johnny St. Clair, Mrs. Richard Kimbrough, Mrs. Bill Holman, Mrs. Larry McMullen, Mrs. Ed Cox, Mrs. Jerry Gregory, Mrs. Allen Smyer, Mrs. Al Martin, Mrs. Ronnie Barrett, Mrs. John Blackwell, Mrs. Jerry Harrison, Miss Judy Lambert, Mrs. Jack Rennels, Mrs. Mack Garrett.

Progress 4-H Club Plans For Banquet

On October 19, 1976, the Progress 4-H club met at the Lariat Lutheran Church. There were 30 members attending. They are as follows: Chad and Steven Griswold, Tommy and Curtis Wheeler, Sharla, Casey, and Kim Farmer, Mike, Kristi and Kasey Henry, Renee, Curtis and Paula Snell, Clifford Wat-

roll and read the minutes of the previous meeting. Afterwards, Mrs. Robert Hunt introduced the new 4-Hers.

The new club members are Sharla Morrison, Susan and Betsy Lunsford and Trent and Monty Hysinger.

Mrs. Jimmy Carpenter gave a report on the planning of the son, Connie and Johnny Puckett, Dusty, Lavon and JoRonda Rhodes, Monty Hysinger, Betsy and Susan Lunsford, Twila Downing, Tori and Sheila Hunt, Keva Roming, Sharla Morrison and Greg Harrison.

The meeting began with the 4-H prayer given by Curtis Wheeler, and the 4-H motto given by Lavon Rhodes. The pledge of Allegiance was presented by Tori Hunt. JoRonda Rhodes, club vice-president,

presided over the meeting. Sheila Hunt, club secretary called upcoming 4-H banquet. Afterwards, Mrs. Robert Hunt gave the program for the meeting. The program concerned revising and discussing the Progress 4-H club standing rules. Each and every rule was discussed thoroughly and very few changes were necessary.

After the program, Lavon Rhodes, recreation leader, lead the group through fun and games. The meeting was then adjourned for refreshments.

One way to determine the age of toasters and other appliances is to measure the length of the electric cord.



MRS. TOMMY HALEY...won the Championship Fight in the women's division of the city golf tournament, last week.

World progress would move faster if people would talk less and work harder.



BARBECUE

that delights...

FOR THANKSGIVING and CHRISTMAS

PLACE YOUR ORDER WITH US NOW FOR YOUR SUGAR CURED HICKORY SMOKED HAMS OR TURKEYS.



PH 965-2666
Open 6:00 PM to 10:00 PM

WE SERVE YOUR FAVORITE STEAKS AND TASTY BAR-B-QUE

TUESDAY
Bar-B-Que Buffet All you can eat for \$4.00 per plate

WEDNESDAY AND FRIDAY
Shishkabob Night

CLOSED

THURSDAY AND SUNDAY
FRIDAY AND SATURDAY
Salad Bar is open



Ten miles East on Hwy. 70 North on Hwy. 303 past the curve

TELEX

HEARING AIDS

CLOVIS HEARING AID CENTER

★ Batteries ★ Molds ★ Free Hearing Tests

SERVICE ALL MAKES

403 E. 14th Clovis, N.M. Ph. 763-6900

Congratulations

To Jimmy Gleason



1976 STATE FAIR OF TEXAS DALLAS

The Muleshoe State Bank congratulates Jimmy Gleason for showing the Grand Champion Steer at the State Fair of Texas. Jimmy is the son of Dr. and Mrs. Jerry Gleason.



Member FDIC 272-4561



3 DAY PRE-HOLIDAY

Mon. 1pm-7pm

Tue 9am-6pm

Wed 9am-6pm

TEXAS

1/2

PRICE SALE

We Will Be Closed Monday Morning Oct. 25th Preparing For Sale

OPEN 7 P.M.

Monday 25th

SAVE 50%

On Specially Selected

COATS SUITS PANTSUITS

SHIRTS SLACKS DRESSES

BLOUSES SHOES PANTIES

CASH







**HONORING THE PEOPLE
WHO PROTECT OUR NATION**

**VETERAN'S
DAY**

OCTOBER 25, 1976

A Bicentennial salute to the men and women who have served in the armed forces of the United States of America during the past 200 years. From the American Revolution to the present, the men and women of the armed services, in all ranks, have fought valiantly to protect their homeland. Members of the armed services come from all parts of this great nation and it is in their honor that we observe Veteran's Day.



Presented In The Public Interest By The Following Firms:

John's Custom Mill

First Street Conoco

Muleshoe Coop Gins

W Q Casey Insurance

Sanitary Barber Shop

First National Bank

Chubby's Beauty Shop

Higginbotham-Bartlett Co.

Whites Cashway Grocery

Muleshoe Publishing Co.

Muleshoe Implement & Supply

Bailey County Memorial Park

Williams Brothers Office Supply

Farm Bureau Insurance Co., Ray Davis, Mgr.

Cobb's

Gibson's

Dari Delite Drive-In

The Fair Store

Watson Alfalfa

Plains Auto Parts

Pay N Save Food

Berry Electric

Dinner Bell Cafe

Western '66' Co.

San Francisco Cafe

Beaver's Flowerland

Protien Processors

Alfred's '66' Service

James Crane Tire Co.

Town & Country Auto

West Plains Pharmacy

Lowe Pump Service & Supply

Spurgeon's Motor Machine

Gilbreath Seed & Grain Co.

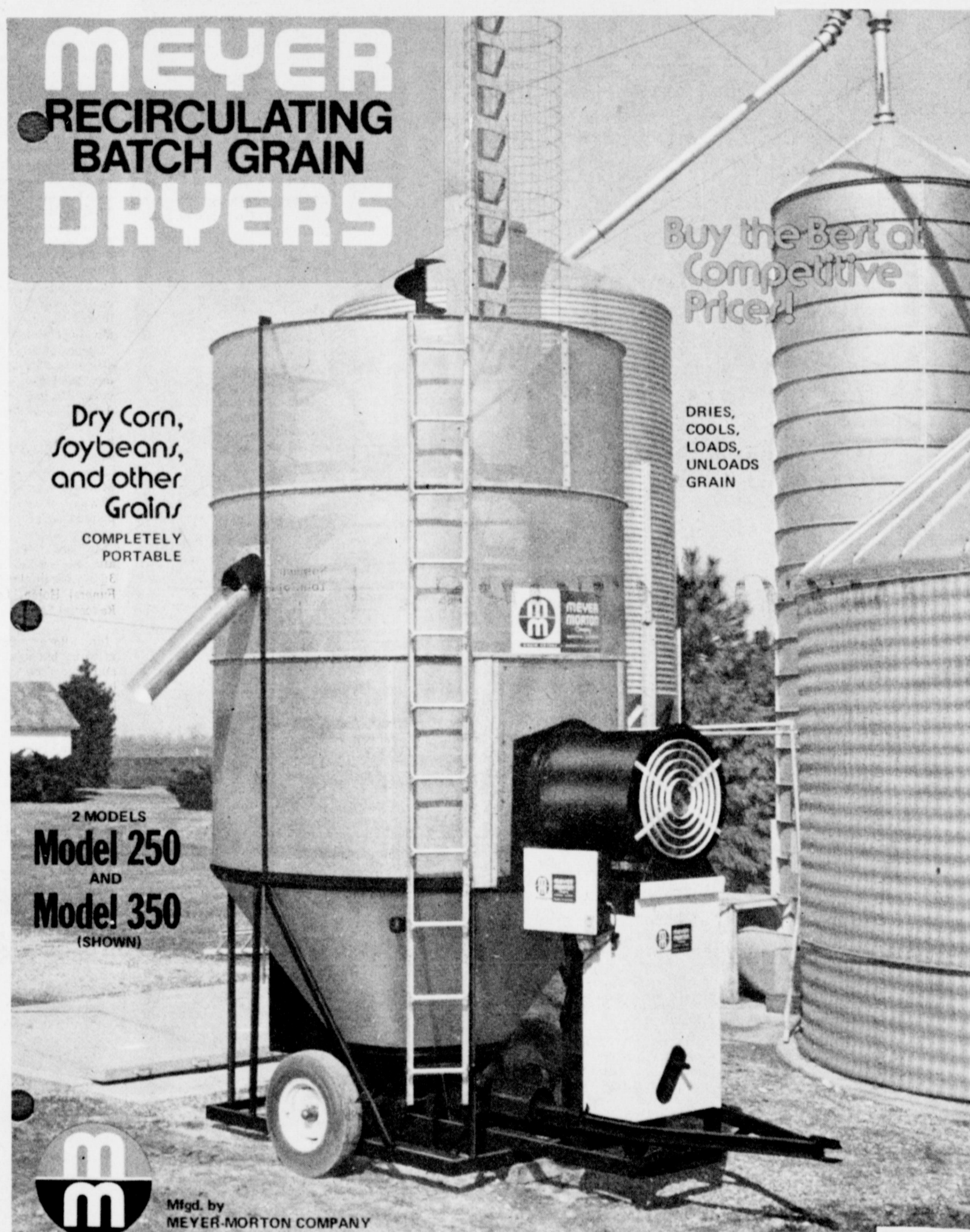
Ray Griffiths And Sons Elevator

Muleshoe Livestock Auction

Bailey County Electric Cooperative Association

WE SELL AND SERVICE MEYER MORTON RECIRCULATING BATCH GRAIN DRYERS

- (A) We sell and service a complete grain drying operation-Meyer-Morton dryers-a competitive priced dryer.
- (B) We manufacture our own elevator legs for the convenience of our customers.
- (C) We custom build any type of grain storage facilities on a turn key basis. We deal direct with you, Mr. Farmer.
- (D) We operate in a four state area, have been in business in Shallowater six years and have 20 years experience in construction
- (E) Meyer -Morton grain dryers come in various sizes to suit your individual needs.
- (F) The Meyer-Morton upright grain dryers has proven to be efficient, economical and contains a metering system that separates wet grain from dry grain



FEED MILLS

GRAIN ELEVATORS

CRANE SERVICE

OIL MILLS

MILLWRIGHT WORK

WENCH TRUCK

R. L. Stone Const. Co., Inc.

PHONE 806/832-4537

P.O. Box 850

Shallowater, Texas

Lazbuddie School Improvemet Plan

WHAT Is the Actual Cost to Property Owners in Dollars?

| IF THE PRESENT MARKET VALUE OF YOUR PROPERTY IS | YOUR PRESENT ASSESSED VALUATION IS | YOUR PRESENT TAXES ARE | YOUR YEARLY TAXES IF BONDS PASS WILL BE | YOUR NET YEARLY TAX INCREASE WILL BE |
|---|------------------------------------|------------------------|---|--------------------------------------|
| \$ 50,000 | \$ 9,000 | \$ 153.90 | \$ 182.70 | \$ 28.80 |
| 75,000 | 13,500 | 230.85 | 274.05 | 43.20 |
| 100,000 | 18,000 | 307.80 | 365.40 | 57.60 |
| 150,000 | 27,000 | 461.70 | 548.10 | 86.40 |
| 200,000 | 36,000 | 615.60 | 730.80 | 115.20 |
| 250,000 | 45,000 | 769.50 | 913.50 | 144.00 |
| 300,000 | 54,000 | 923.40 | 1,096.20 | 172.80 |

EXAMPLE: On one quarter section of top irrigated land with assessed valuation of \$14,720.00, the present tax is \$251.71. If Bonds are voted, the tax would be \$298.82, an increase of \$47.11, or less than 4 cups of coffee per week.

NOTE: Percentage of increase in taxes if Bonds are voted - 18.71%.

Where and When Do We Vote?

The election will be held in the Foyer, School Auditorium, on Tuesday, October 26, 1976 from 7 A.M. to 7 P.M.

TEXAS TURKEY INDUSTRY DAY

The annual Texas Turkey Industry Day will be held November 4 at Fredericksburg. Turkey producers will hear topics ranging from management and disease control to promotion and marketing, says a poultry specialist for the Texas Agricultural Extension Service. Walter Russell, Extension turkey specialist at the University of Missouri, will be the featured speaker. The annual membership meeting for the Texas Turkey Federation will conclude the program.

EXTENSION SPECIALISTS TO MEET

The Texas Agricultural Extension Service Specialists Association will hold its annual business meeting in College Station October 27. Highlights will include the election of a president and president-elect, talks by representatives of three other Extension Service organizations, and committee reports dealing with audits, benefits, professional improvement, public relations and membership. New association directors will also be elected for half of the 14 Extension districts.

Few people complain about being over-rewarded by life's fortunes.

Much time is wasted preparing for what doesn't happen.

Singleton-Blis Funeral Home

24 Hour Ambulance Service

Ph. 272-4574

Muleshoe

Improved gas mileage expected in '77 cars.

Free Spirit BODY BRIEFER by Playtex

AH! for a smoother you...

MONEY BACK GUARANTEE

Anthony's 321 MAIN TEXAS

Bula News

By Mrs. J. Blackman

Several from the community attended the "50" anniversary celebration of the Enochs Methodist Church, Sunday. The old timers and former members of the church came from afar, brought dinner and enjoyed the feast of both food and friendship.

Mr. and Mrs. Tom Bogard

enjoyed having to visit with them Wednesday night and Thursday. Their visitors were Mrs. Bogard's sister-in-law, Mrs. Modena Rhodes from Port Aransas. She was accompanied by her mother, Mrs. Dossie Webb, of Floydada.

Mrs. Richard Stanley of Hereford spent the weekend visiting with her mother, Mrs. John Hubbard.

Mrs. Pearl Walden enjoyed having to be with her for lunch Sunday. She visited her children, Mr. and Mrs. Clifford Walden and grandson, Wade Walden and Mrs. Goldie Nixon, all of Lubbock.

Mr. and Mrs. Tommy Kirk returned home Tuesday after making a short visit in Dallas with his aunt and uncle, Mr. and Mrs. Burt Davis. Others they visited were friends, Mr. and Mrs. Monty Berry, in Ennis.

"Congratulations", to Jamie Cox. Jamie won first place in children's division of oil paintings, at the Cochran County fair, held the past week end.

Jamie called his painting "daisies on the slope". He has been interested in drawing for several years. He had a few lessons in drawing under Jerry Teaff, at Bula school. This past summer he took painting from Martha Markam of Sudan.

Jamie is the son of Mr. and Mrs. J.L. Cox of Bula, and was 12 years of age at the time he painted the picture.

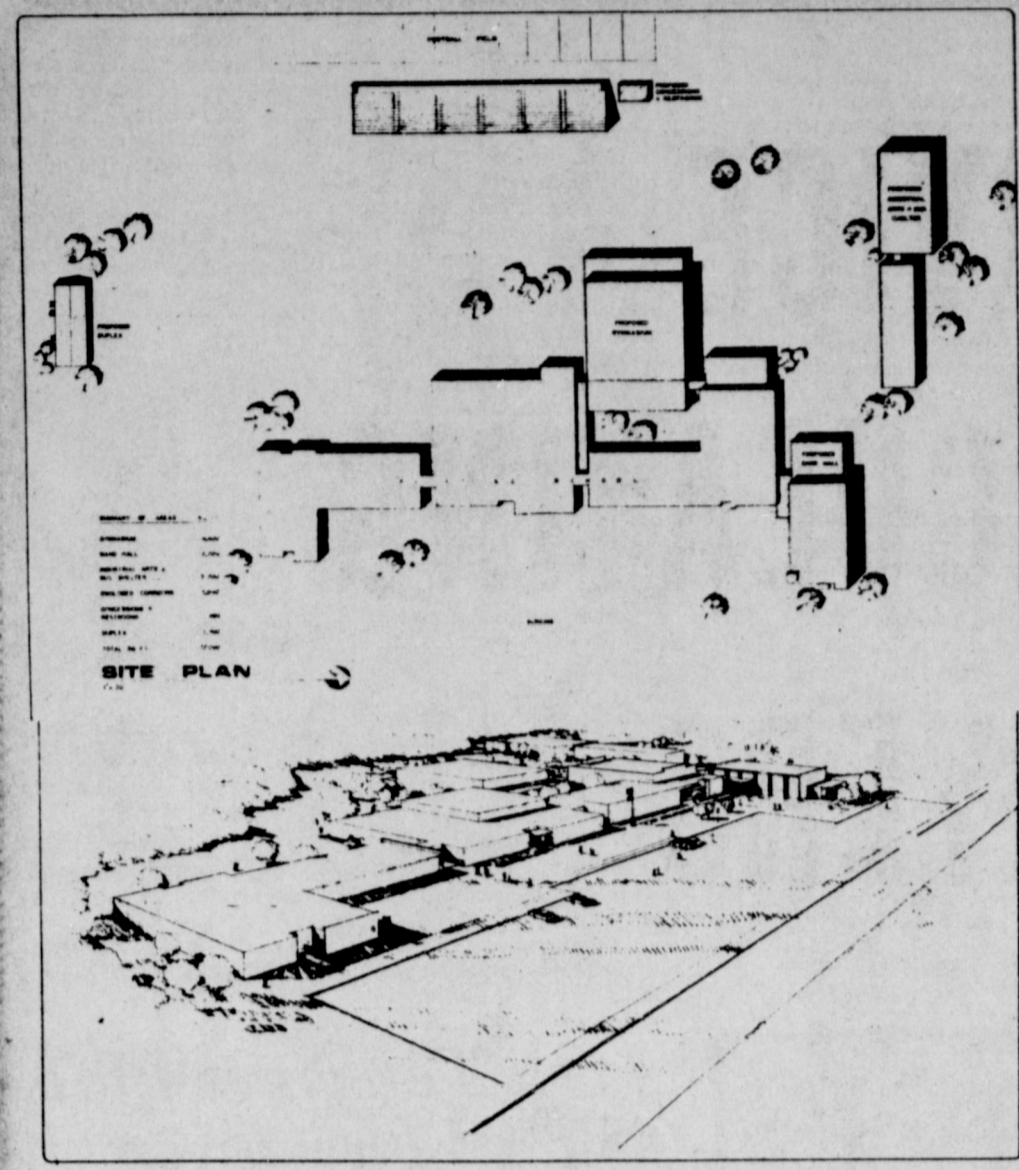
Mr. and Mrs. P.R. Pierce attended the funeral Monday at 3:30 p.m. in the George Price Funeral Home, Levelland, for Raymond Self.

Mrs. Rowena Richardson is enjoying having her many friends to call by to see her since her return home from the hospital. Also her children come every day. Mrs. John Richardson came up from Lovington, N.M. and spent Sunday night with her.

Three Way School Menu

October 25-October 29, 1976

- MONDAY
 - Corn Dogs
 - 3 oz Weiners
 - Green Beans
 - Yams
 - Cheese
 - Carrot Sticks
 - Hot Rolls
 - Peanut Butter Syrup
 - Milk
- TUESDAY
 - Hamburgers
 - Mustard Catsup
 - French Fries
 - Onions Pickles
 - Tomato Lettuce
 - Bun
 - Jello with Fruit
 - Milk
- WEDNESDAY
 - Beans
 - Pepper Sauce
 - Spinach
 - Tom. Spagetti
 - Salad
 - Corn Bread
 - Apricot Cobbler
 - Milk
- THURSDAY
 - Sloppy Joe
 - Catsup Mustard
 - French Fries
 - Salad
 - Pickles Onions
 - Bun
 - Sliced Peaches
 - Milk
- FRIDAY
 - Fish
 - Tarter Sauce
 - Cream Potato
 - Corn
 - Salad
 - Corn Bread
 - Prune Bars or Cake
 - Milk



HOME COMING '76'

It's Homecoming Time!
Come In And Let The Girls
At Decorators 216 Floral Help
You Choose Something Different
And Special For The Girl In
Your Life.

DECORATORS 216

616 S. 1st
Muleshoe, Texas

Phone 272-4340 or 272-3660

Buy A Tractor And Receive A Free Trip For 2 To Acapulco or Mexico City

ACT NOW!

Deadline is October 29th

Purchase Any White Or Massey Tractor From Fry & Cox To Qualify For This Offer

4 Days & 3 Nights Includes Air, Hotel & Tour, Plus \$50 Mad Money

1976 Prices, Contact Our Salesman Today

Post Harvest Vacation Special

Fry & Cox

401 S. FIRST MULESHOE TEXAS 79347 PH. 272 4511

George Mahon:

He knows us and we know him. And, thanks to him, our interests are well represented in Congress. He's doing a lot for the people of West Texas, and he can do a lot more next session when a new farm bill must be written, new energy and oil legislation is coming up, and there'll be new efforts to make free enterprise more free.

VOTE FOR George Mahon for Congress

Paul Political Adv. by The George Mahon for Congress Committee, H. E. Griffith, Treas., 310 Texas Commerce Bank Bldg., Lubbock, Texas.

Safety Proof Young For Best Protection

It's that time of year again when parents should attempt to "safety proof" their youngsters—many of whom are entering school for the first time. Whether walking, riding in a bus or car, or bicycling to school, plans should be made to ensure the safety of every child, reminds the Texas Department of Health Resources. Darting across streets without looking, crossing at mid-block from between parked cars, and doing bicycle tricks in traffic are just a few of the pitfalls to be avoided, advises the Health Resources Department. Parents can caution their children about all careless practices, and they also can show them. If your child is starting to school—or going to a new school—it's a good idea to make the trip at least once with the child. If he will be pedaling to and from school every day—often in inclement weather—you'll want

to be doubly sure that your child is observing safety rules. If you're a motorist in the vicinity of schools, be especially wary, says the Texas Department of Health Resources. What are the trouble spots for bicyclists and motorists? Collisions between motor vehicles and bicycles occurs about as follows: *Well over half at intersections. *Seven out of ten during daylight hours. *Most bicycle riders killed or injured in traffic accidents, were violating a traffic law at the time of the incident. *Half of the motor vehicle-bicycle accidents involved a violation on the part of the motor vehicle operator. *One out of five bicycles involved in accidents had some mechanical defect. Some of the most common traffic violations of cyclists are (not in order of frequency):

- *Failure to yield right-of-way. (In most cases, the cyclist did not "see" the car; in some cases he intentionally infringed on the motorist's right-of-way.)
- *Riding in the center of the street.
- *Speed too fast for conditions of traffic and road surface.
- *Disregard of traffic control devices—signal lights and stop signs.
- *Improper turning. To avoid such situations as just described, here are some safety rules for bicyclists:
 - *A skillful bicycle rider always has his bike under control. He never rides too fast. He always has both hands free to steer.
 - *The cyclist must develop skill in balancing and pedaling to avoid swerving into traffic, hitting a fixed object, running off the sidewalk or highway. Parents have the responsibility to be certain their child has the

skill to cope with traffic before permitting him to ride on the street. *Every bicycle driver should be familiar with the laws governing bicycling in his community, or the one in which he is riding. These rules are usually available through the school or local police. *Cyclists must ride on the right side of the street with the flow of traffic; not on the left, facing traffic. *Hand signal should be used by the cyclists, and are now commonly accepted as safe riding practice. *Cyclist should avoid crowding between cars at stop signs, or between an automobile and the

curb. Carrying more passengers than a bicycle is designed and equipped for is dangerous and illegal. Two on a bike also increases stopping distances. The polo or "banana" seat, standard equipment on the hi-rise bike, appears designed to carry two. Such is not the case! *Never hold onto a moving vehicle nor in any way attach the bike to the vehicle. *Always ride single file. *Trick riding is always dangerous. Drivers of hi-risers are especially cautioned against making the bike rear up and riding on back on wheels only, or jumping the bike over obstacles.

Bomb kills former Chilean Ambassador. Inflation maintains steady upward flow. Alaskan oil may be sold to Japan.

President Ford raises sugar tariff. Vietnam admitted into World Bank. Reagan spent \$16.1 million seeking presidency.

Economic growth seen in poor nations also. Ford signs record \$104.3 billion defense bill. France plans tough anti-inflation program.

"Someone has said the trouble with the future is it gets here so soon. There's only one time to plan for it. Now."

Let's talk now. Person to person.



Vic Benedict
721 W. Ave. C
Ph. 272-3218

Southwestern Life
Helping people—person to person.

Clark Quest Is Coming



Prices Good Thru Oct. 27th. We Reserve The Right To Limit Quantities None Sold To Dealers.

Invites You To Play

BANK VAULT BINGO



ODDS CHART as of October 17, 1976 Program #478

| GAME | NUMBER OF PRIZES | ODDS FOR ONE GAME PIECE | ODDS FOR 11 GAME PIECES | ODDS FOR 26 GAME PIECES |
|---------|------------------|-------------------------|-------------------------|-------------------------|
| \$1,000 | 111 | 1 in 88,500 | 1 in 7,804 | 1 in 3,802 |
| \$100 | 111 | 1 in 88,500 | 1 in 7,804 | 1 in 3,802 |
| \$50 | 222 | 1 in 44,250 | 1 in 3,902 | 1 in 1,901 |
| \$20 | 444 | 1 in 22,125 | 1 in 1,951 | 1 in 951 |
| \$10 | 888 | 1 in 11,062 | 1 in 975 | 1 in 475 |
| \$5 | 1,776 | 1 in 5,531 | 1 in 487 | 1 in 237 |
| \$2 | 3,552 | 1 in 2,765 | 1 in 243 | 1 in 118 |
| \$1 | 7,104 | 1 in 1,382 | 1 in 121 | 1 in 59 |
| TOTAL | 43,882 | 1 in 256 | 1 in 19 | 1 in 10 |

This Program is available at 110 Piggly Wiggly stores located in Texas, New Mexico and Oklahoma. Scheduled termination date of this Program is January 15, 1977, but game officially terminates with distribution of all game pieces. This Program may be replaced by popular demand. Game pieces and game folders may be obtained free by writing Bank Vault Bingo, Program #478, P.O. Box 5025, Dallas, Texas 75222. Only one game piece and game folder may be requested per envelope and a self-addressed stamped envelope must accompany each request.

Fresh, 3 Lbs. or More
Ground Beef
78^c
Lb.

Heavy Aged Beef
Rib Steak
98^c
Lb.

Piggly Wiggly
Grapefruit Juice
39^c
46-oz. Can

Assorted or Decorated
Scot Towels
43^c
1 Ply 168-Ct. Roll

MEAT SPECIALS

Fresh
Smoked Pork Lb. **\$1.89**
Quarter Loin Cut into 8-10
Pork Chops Lb. **\$1.29**
Country Style
Pork SPARERIBS Lb. **\$1.29**
HORMEL CHUNK STYLE Bologna ALL MEAT **98^c**
Swifts, 16 to 20 Lb. Avg.
Empire Turkeys Lb. **49^c**

MEAT SPECIALS

"Dallas City" Red Hot Smoked
Link Sausage Lb. **99^c**
DECKER JUMBO Franks Lb. **\$1.19**
Farmer Jones
Sliced Bologna 12-oz. Pkg. **88^c**
Land of Frost Wafer Thin 6 Varieties
Lunch Meats 3-oz. Pkg. **49^c**
Farmer Jones
Sliced Bacon 12-oz. Pkg. **\$1.19**

TODAYS GOOD BUYS

Glad
Waste Bags 20-Ct. Box **99^c**
Libby's
Vienna Sausages 5-oz. Can **45^c**
Libby's
Potted Meat 5 3/4-oz. Cans **\$1**
Chef Boy Ar Dee
Beef Ravioli 15-oz. Can **55^c**
Bremner
Saltine Crackers 1-Lb. Box **39^c**

EVERYDAY LOW PRICE

Gerbers Strained Fruits & Vegetables 4 3/4-oz. Jar **18^c**
Baby Food All Vegetable Shortening 3-Lb. Can **\$1.63**
Crisco For Wiper Wash 49-oz. Box **\$1.45**
Liquid Bleach
Clorox 1/2-Gal. Btl. **65^c**
Macaroni & Cheese
Kraft's Dinners 7 1/4-oz. Pkg. **25^c**

PIGGLY WIGGLY ANNIVERSARY SALE

Washington Golden
Delicious Apples
\$1.00
3 Lb.

Ocean Spray
Cranberries 1-Lb. Pkg. **49^c**
Crisp
Celery Hearts Pkgs. **79^c**
Sugary
Sweet Yams Lb. **33^c**
All Purpose
Russet Potatoes 20-Lb. Bag **\$1.49**

Frozen Foods

All Varieties Frozen
Patio Dinners 11-oz. Pkg. **49^c**
All Varieties, Frozen Deluxe
Fox Pizza 13 1/2 oz. **89^c**
Ora-Ida, Frozen
Tater Tots 2-Lb. Bag **89^c**
Morton's Mini, Frozen
Fruit Pies 3 8-oz. Pkg. **\$1**

Health & Beauty Aids

Decongestant
Dristan Tablets 24-ct. Btl. **\$1.19**
Decongestant Nasal Mist
Dristan 15cc Btl. **\$1.29**
Denture Cleanser
Efferdent 20 Tab. **79^c**
For Fresher Breath
Listerine 3-oz. Btl. **49^c**

Del Monte, Cut
Green Beans
4 \$1
16-oz. Cans

Hershey Kisses 14-oz. **\$1.55**
60 Pieces
Bubble Gum **99^c**
Fun Size
Baby Ruths **99^c**
White or Assorted
Facial Tissue 200-Ct. Box **39^c**

Fresh Dairy

Regular Quarters
Parkay Margarine 1-Lb. Pkg. **39^c**
Nestles, 12 Pack
Cocoa Mix 1-oz. Pkg. **99^c**
Piggly Wiggly
Low Fat Milk 1/2 Gal. Ctn. **93^c**
Piggly Wiggly
Buttermilk 1/2 Gal. Ctn. **93^c**

Special Buys

Piggly Wiggly, 60-75 Watt
Light Bulbs 4-Ct. Pkg. **\$1.89**
Piggly Wiggly, No. 527, Lie Flat
Rayon Mop Ea. **\$2.59**
Piggly Wiggly
Panty Hose Pr. **89^c**
Piggly Wiggly Hose
Knee Hi Pr. **69^c**