

Texas Agricultural Field Day, Sept. 15

The annual field day, Sept. 15th, sponsored by the Texas Agricultural Experiment Station, located 7½ miles North of Lubbock. This year's theme is Increase Yields and lower Production cost by use of latest developments in Agricultural research. Field Day Highlights will be:

WEED CONTROL
Chemicals for pre-emerge and post emergence weed control offer a real possibility of greatly reducing or eliminating hand hoeing of cotton on the Texas High Plains. For greatest benefits chemicals must be applied properly. Chemicals found

to be effective, rates and methods of application and costs will be discussed at the Field Day.

COTTON DISEASES
The Verticillium wilt disease of cotton costs area growers millions of dollars annually. The prospects for developing varieties within the next 5 years with resistance to this disease look very good. At the Field Day you will see the most advanced lines, bred for resistance to this disease, growing on a block of land heavily infected with Verticillium wilt. The research program covers all the major diseases of cotton and significant progress has been made in control of bac-

terial blight (angular leaf spot), seedling diseases and nematodes. You will have the opportunity to see parts of this research.

At the Field Day you will see sub-irrigation being evaluated under 5 different crops. Preliminary results in 1963 indicate that the same yield of cotton was produced with 12 percent less irrigation water with sub-irrigation when compared with furrow irrigation.

BROADCAST COTTON
You will see several cotton varieties of production. Latest experi-

ments grown under this system mental self propelled finger-type broadcast stripper will be demonstrated at the Field Day. Potentials of his type production will be discussed.

OTHER ITEMS OF INTEREST
Use of radioactive isotopes to study root development of cotton. New strains of cotton, latest varieties and hybrids of castor beans, and many other items. **YOU ARE WELCOME.**

TOASTMASTERS MEET
Toastmasters will meet Monday, 8 p.m. in the Williams and Merriman office building.

Parents - Teachers Gather For Get Acquainted Hospitalities

Three of the Richland Hills P. T. A. "Get Acquainted" coffeees have been successfully completed and the fourth and final one, to be held at 8:30 a.m. next Tuesday, promises to be just as successful.

Each teacher talked with the parents of her pupils, outlining the course of study to be followed throughout the year and explaining how parents could

Spanish Veal Special Features

By CECILY BROWNSTONE
Associated Press Food, Editor
Here's an economical dish, a stuffed breast of veal that is prepared ahead and reheated at the cook's convenience.

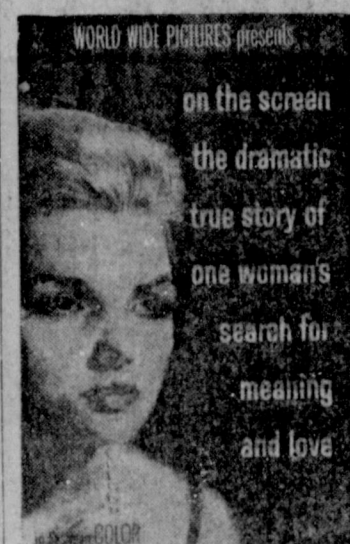
This Spanish recipe was adapted from a cook book compiled and published in Madrid. The original directions specify the use of a pressure cooker. When we tested this method in our kitchen, we found it yielded tender meat in a short time.

STUFFED VEAL BREAST
¾ pounds boned breast of veal (4 pounds before boning.)
½ pound chopped beef chuck
1½ teaspoons salt
1 egg, slightly beaten
10 green olives, pitted and chopped.
1 medium onion, quartered
1 small carrot, quartered
2 tablespoons tomato catchup
½ cup of white wine

Lay veal flat; trim any ragged edges. Mix beef with ½ teaspoon of the salt, the pepper, egg and olives. Press beef mixture flat over veal to within ½-inch from edges. Roll up veal, tucking in edges; tie with cord. In a pressure pan, brown veal in the olive oil with the garlic; discard garlic. Add onion, carrot, bay leaf, catchup, wine, water and remaining 1 teaspoon salt. Cook in pressure pan at 15 pounds pressure or 20 minutes; allow pressure to return to normal.

Labor Day Mass Offered Public

A special Labor day, Monday, September 7, Holy Mass will be offered for all workers of the Muleshoe area 9:00 a.m. in the Immaculate Conception of Mary Catholic Chapel here. The general public is welcome.



"Lucia"
with a message of hope and faith by **BILLY GRAHAM**
8 p. m. Sept. 8
FIRST BAPTIST CHURCH
EVERONE INVITED!



DON'T SAY ANOTHER WORD... JUST GO!

Don't argue... when Mom says "Go down to WESTERN DRUG and get aspirins, headache pills, throat lozenges, and this prescription filled... just GO!



EXPLANATION - Second grade teacher, Mrs. Estelle Fox, demonstrates the art of teaching. She explains to the mothers attending a coffee Thursday morning how certain books are an aid to learning and teaching. A large number of mothers and teachers attended.



Mrs. Lois Witherspoon, one of the first grade teachers is showing the mothers some of the teaching methods in the classroom.

Martin Is Grad of Missile School

ORLANDO, Fla. - Staff Sergeant Kenneth L. Martin, son of Mrs. Alice F. Martin of Earth, has graduated from the Tactical Missile school at Orlando AFB, Fla.

Sergeant Martin, 35, a missile equipment mechanic received specialized training as a member of a Mace missile combat crew. He will be assigned to a United States Air Forces in Europe (USAFE) tactical missile unit in Germany. His new unit supports the USAFE mission of providing the major air contribution for defense of the NATO countries.

The sergeant, a former student at the University of Houston, Tex., entered the Air Force in 1955.

Ever flavor the coffee to be used in coffee jelly with whole cloves and a cinnamon stick?

FOR A CAREER WITH A FUTURE... ENROLL NOW!

It Takes Only Six Months For A Complete Course In Beauty Culture!

TERMS TO SUIT YOUR BUDGET

McBride's School
OF HAIR DESIGN

1513 W. 5th PLAINVIEW Ph. CA 4-6734

\$day Specials

ONE DAY ONLY

SPECIAL PURCHASE!
LADIES'
Half Slips
LARGE SELECTION OF COLORS.
REG. \$3.00
VALUES **\$2**

GIRLS' DRESSES
SMALL GROUP OF GIRLS' DRESSES
PRICED AT -- **'1-'2-'3**

GIRLS' WHITE PATINA
BAND SHOES
VALUES to \$12.99 **\$6.99**

BOYS'
GYM SHORTS
BLACK or WHITE, SIZES 22 - 36
REGULAR \$1.00
VALUE **89¢**

MEN'S
SHORT SLEEVE SHIRTS
PRICED AT **'1-'2-'3**

MEN'S BAN-LON
SOCKS
Large Selection of Colors - One Size Fits All! Reg. \$1.00
2 pr. \$1.50

SPECIAL PURCHASE!
DRESS SHIRTS
WHITES and PASTELS with Button Down Collars.
\$2.99

Cobb's
Muleshoe's Leading Department Store

MULESHOE ELEVATOR CONGRATULATES JERRY ENGELKING ON THEIR FIRST LOAD OF 1964 MILO



Modine Allison Presenting Jerry A Bonus Check

MR. FARMER WE WILL PURCHASE OR STORE YOUR GRAIN

Double King Ceremony

Barbara Jean Simmons became the bride of Richard Bert Gordon in a double ring ceremony read at the First Baptist Church at 3 p.m. August 23.

The Rev. Don Murray read the service before an archway of satin bows and white wedding bells hanging from the center. On each side of the arch were canes rising from a mass of green leaves and yellow roses. Arrangements of yellow roses and white candles were placed on the windows. A white aisle cloth covered the bridal path.

She is the daughter of Mr. and Mrs. M. E. (Red) Simmons and he is the son of Mr. and Mrs. Bert Gordon.

Descending the aisle on the arm of her father, the bride wore a gown of heavy white satin. Accenting the portrait neckline and sculptured bodice was a Chantilly lace jacket fashioned with long sleeves ending in petal points. The bell-shaped skirt supported a chapel train of Chantilly lace over satin. The bride's veil consisted of a double rose sprinkled with rhinestones and pearls enhanced by circular tiers of silk illusion. She carried a cascade bouquet of yellow roses atop a white lace Bible, a gift from her mother.

Matron of honor was Billie Weaks Mason. Bridesmaid was Carolyn Young, Dimmitt, cousin of the bride. Mrs. Alice Laux, sister of the groom was bridesmatron.

Mrs. Mason wore a dress of yellow satin and lace styled after that of the bride. She wore an open pill box of yellow satin accented with yellow illusion, and carried a white lace fan embraced by two lily stemmed roses. The bridesmaid and bridesmatron wore identical attire and carried fans and a single stemmed rose.

Kasey and Loesa Sanderlin were flower girls and Ketha Simmons, sister of the bride and Marsha Parker, Olton, cousin of the bride were flower girls. They wore yellow satin dresses with rounded necklines and short sleeves. The full skirts were covered with a sparkled chiffon over skirt and was belted by a satin bow. They wore wrist flowers of white and yellow roses. Each candlelighter wore a pill box of satin and the flower girls headpieces were bands of fresh yellow roses.

Best man was Darrell Mason and groomsmen were Jimmy Laux and Jimmy Hunt of Strawn. Ringbearer was Jimmy Park.

Youth Chapel Scene of Meet

A meeting of the General WSCS of the First Methodist Church was held Tuesday at the Youth Chapel.

Mrs. Oscar Allison, incoming president of the organization presided during the meeting.

Twenty members attended and a recommendation was read that the Executive WSCS meet a 1 p.m. each meeting date, followed by the General meeting at 2 p.m.

Mrs. Neal Dillman gave the program concerning the meaning of WSCS and its value.

Circles are to meet Tuesday, September 8, according to Mrs. J. E. McVicker.

SHOP MULESHOE FIRST

er, Olton and ushers were Kenneth McGehee, Mike Miller, Jerry Engleking and Loyde Bradshaw.

Wedding music was provided by organist Carolyn Jarman who accompanied Jim Gordon, Midland, brother of the groom, who was soloist.

A reception was held in the dining room of the church. The table was decorated with four wedding bells laced with yellow roses. A basket holding tiny yellow rice packets was placed on the registration table presided over by Peggy Carrell and Mary Kirby, cousins of the bride.

Each serving table was laid with a white net cloth and centered with floral arrangements of roses.

The wedding cake was tiered and decorated with white and yellow flocks of roses.

The table was decorated with four Mrs. Carol Ann Adrain, Julie Williams and Marilyn Thomas served reception guests.

For a wedding trip to Red River, N. M., the bride chose a three-piece knit suit of royal blue. She added royal blue accessories and wore a strand of pearls, a gift from her father.

The couple will make their home in Portales where they will be attending Eastern New Mexico University.



Mrs. Richard Gordon

Burgers made from ground uncooked lamb will need to be cooked longer than burgers made from beef.

SCHOOL MENUS

MONDAY
NO SCHOOL - LABOR DAY

TUESDAY
1/2 pint milk
Meat Loaf
Tomato Wedges
Creamed potatoes
Blackeye Peas with snaps
Hot Rolls
Butter
Cherry Cobbler

WEDNESDAY
1/2 Pint milk
Barbecue Pork
Pork and Beans
Cabbage and Apple Salad
Hot Rolls
Butter
Stewed Apricots

THURSDAY
1/2 Pint Milk
Baked Ham
Fresh Okra, Fried
Cantaloupe
Green Beans
Celery
1/4 each half on lettuce with topping

FRIDAY
1/2 Pint milk
Hot Dogs
Chili Sauce
French Fries



Local Representative Named For



In Muleshoe And Vicinity

THE PANHANDLE PLAINS AUTOMOBILE CLUB, AN AFFILIATE OF THE AMERICAN AUTOMOBILE ASSOCIATION HAS SELECTED

Jerrell Otwell

As Local Representative For This Area. Local Members May Contact Mr. Otwell For Their Membership Needs. Citizens Desiring Information on Membership In The Club Should Call Mr. Otwell At - Ph. 3-1630 After 6 p. m.

Social Scheduled For Lazbuddie School Teachers

An Ice Cream Social will be held in the Lazbuddie school cafeteria for the purpose of welcoming new teachers to the system as well as acknowledging those returning for another year.

The event is slated for Monday, 8 p.m. Those who have ice cream

Officers Named For FTA Group

Future Teachers of America have begun work for the year, 1964 - 65.

Officers for the coming year are: Shirley Smallwood, president; Lynda Johnson, vice-president; Shirley Richards, secretary.

freezers are asked to bring ice cream and those who do not are asked to bring cake or cookies.

BOARD OF DIRECTORS

The Bailey County Farm Bureau Board of Directors met Thursday, 8 p.m. to plan the annual barbecue. Early October was selected, time and date to be announced.

Joe Putman, reporter; Gene Atkin, parliamentarian and Nine Ed Bovell, Chaplain.

The first meeting of the club was held Wednesday in the High School Library with approximately 100 attending.

Luncheon Date Set For Oct.

The Bailey County Farm Bureau Women's Committee met Thursday afternoon in the community room of the First National Bank for a workshop.

A discussion was held concerning the organization's annual luncheon.

Date has been set for October 1 and will be in Paul's Cafe.

DOLLAR DAYS

MONDAY - TUE. - WED. -

LADIES and MISSES NEW FALL

DUSTERS \$2

VALUES TO \$5.95
OXFORD CLOTH OR CORDANA
SIZES 8 to 20

GIRLS RAYON PANTIES
SIZES 2 to 12

\$1

4 for

MULESHOE MULES

SWEAT SHIRTS \$3

REG. \$3.98 and \$4.98
BLACK with WHITE MULESHOE DESIGN and LETTERING
or
WHITE with BLACK
SHORT SLEEVE, SLIP OVER OR 3/4 SLEEVE, ZIP FRONT

LADIES OR MISSES ALL WEATHER

COAT & Umbrella \$9

REVERSIBLE SOLID TO FLORAL REGULAR \$12.95

NON SKID THROW RUGS
88c
REG. \$1.49

CHILDREN'S FALL COLORS CORDUROY CREEPERS
Size 9 to 24 Months YOUR CHOICE 1 to 4 years

\$1

3 DAY SALE

Infant's 2-Piece Knit

SLEEPERS

Interlock Super Soft Cotton

Regular 1.39 value

\$1 ea.

Sizes: 0 to 3

So pretty, so practical... infant's 2 piece sleeper made of Super Soft cotton knit. Plastic dot - no slip feet, adjustable gripper waistband, long sleeve. You'll buy several at this tiny price. Excellent workmanship and fine quality. Nice assortment of pastel colors: Pink, Blue, Maize, Mint.

LOVELY NEW FALL

BATES

SEWING FABRICS
Reg. 98c to \$1.39

66c

YD.

FALL TONE

Cottons

VALUES to 59c yd.

\$1

3 YDS. FOR

Shop and Save

MEN'S NYLON STRETCH SOCKS

\$1

3 for Reg. 75c VALUE

BACK TO SCHOOL SPECIAL

CANVAS SNEAKERS

Reg. \$1.99 & \$2.98

\$1.69

BLACK WHITE RED or BLUE
LADIES or CHILDRENS

LADIES and MISSES CORDUROY SLIM PANTS

FALL COLORS SIZES 8 to 18

\$1.99

MENS SHORT SLEEVE or BOYS SPORT SHIRTS 2 for \$3

VALUES TO \$4.98 WHILE THEY LAST

MEN'S BLUE OR GREY

WORK SHIRTS \$1

Reg. \$1.39 WHILE THEY LAST

DOLLAR DAY SPECIAL

ODDS AND ENDS OF FAMOUS NAME BRANDS

1/3 OFF

GIRDLES-PANTY GIRDLES
SILF SKIN--PLAYTEX
EXQUISITE FORM BRAS

THE FASHION SHOP

Muleshoe



ANDY DOUGLASS



SAM JOHNSON



BRUCE LITTLE



CHARLES JONES



TERRY KENDALL



PAUL SWINT



SANDY CALBERT



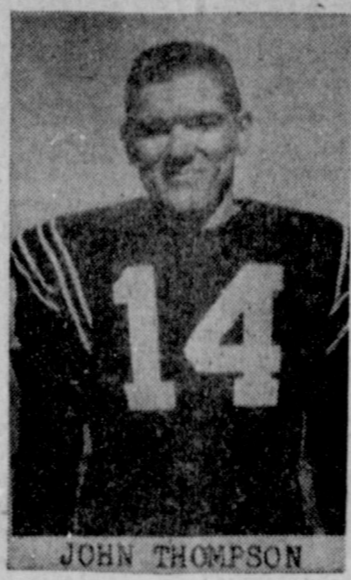
LARRY SEALES



SCOTT OLIVER



DON DOUGLAS



JOHN THOMPSON



GRADY CASEY



JOE ADAMS



GLEN CLARK



GREG BLACKWOOD



PHILLIP SHORT

BACK THE MULES



DAN SMITH



BRUCE PURDY

YOU ARE A WINNER WHEN YOU BANK AT

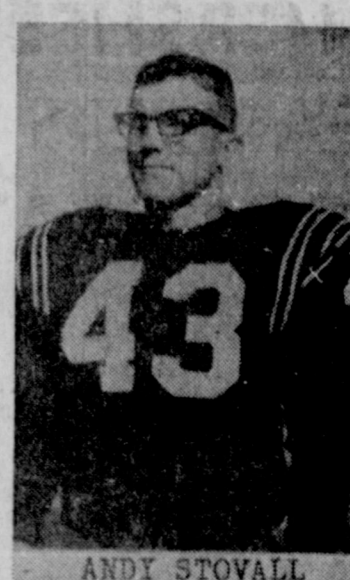
FIRST NATIONAL BANK

Member FDIC

FIRST
AND
SECOND
TEAMS



CHARLES ELROD



ANDY STOVALL



BILLY DARNELL



BILL HARBIN



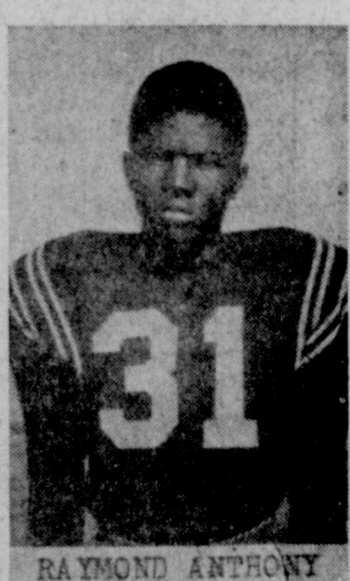
DEAN SIEBER



DAVID ALSUP



TERRY TRAPP



RAYMOND ANTHONY



JIM HICKS



CARROLL KELTON



BANSOM JONES



BILL HART



STANLEY BLACK



RONNIE SWINT



WILLIE WASHINGTON

Convention..

ternon program will be a tour of the Holly Sugar Plan now under construction in Hereford. Also, new Area I officers will be elected.

These new officers will be installed at a dinner beginning at 7:30 p.m. in Hereford High School's Cafeteria, and sponsored in part by the Bailey County Electric Cooperative.

In addition to installation of new officers, the speaker of the evening will be Reverend Leroy Hill of Amarillo. Awards will be presented to outstanding Area I Young Farmers and Young Homemakers.

D. B. Lancaster, Manager of the Bailey County Electric Cooperative says, "The Local Electric Cooperative is always pleased to have the opportunity to take part in such an outstanding program as our young Farmers Association".

Clash..

(Continued From Page 1) and Three Way. This will be an eight man game. Everyone is urged to attend and support these area teams.

Stevenson..

(Continued From Page 1) all of the home: five sisters, Mrs. Lewis Shater, Needmore; Mrs. Joyce Humphrey, Clovis; Mrs. Jun Wright, New Hall, Calif.; and Mrs. Lester Walker, Bakersfield, Calif.; and one brother, George E. Stevenson, Perryton. Burial was in Bailey County Memorial Park under direction of Singleton Funeral Home. Pallbearers were Billy Baker, Bud Whitmore, Gordon Tiller, Donald Harrison, James Beckett and Wayne Howell.

SHOP MULESHOE FIRST

Yarborough..

(Continued From Page 1) ahead of schedule in repayments; the Hallmark Industries in Jacksonville, which successfully manufactures cultured marble with an ARA loan.

Henderson, Rusk County has two successful industries with ARA loans, one was used by the Industrial Trust of Henderson to construct a building in which Nutene employs 60 people to build kitchen cabinets and the Red Dot Plastics project which employs 32 people. A tire plant is being built at Texarkana which will employ 400 people and is due for completion in September. It was built by the people of Texarkana with an APA loan.

"Many other successful ARA projects in Texas could be listed, but space prevents. The ARA training project in Laredo has trained and put workers in 400 jobs, in cooperation with Texas Education Agency and the Texas Employment Commission. Bilingual secretaries for offices, and tractor operators and irrigators for farm areas have been trained here.

"A mineral survey of all East Texas has been made with an ARA grant to the Bureau of Economics Geology of the University of Texas, and more mineral development in East Texas will result.

"As for the vicious attack on ARA and the Crockett industrial effort in the Readers Digest, not one cent of federal money was loaned or lost on the project. It was approved by ARA but when the company failed to do its part, the loan was not completed, nor any federal money is advanced.

"The people of Crockett advise me that very little money was put in the electronic company by the people of Crockett. The electronics company was formed and had raised its money in Houston, Harris County, before the ARA approval was ever made. The Houston County Crockett bought a 40-acre tract of land on which to build the electronics plant. The plant was not built. The Houston County

FRANCIS IMPLEMENT CO.
FORD TRACTOR
Muleshoe, Texas
SHOP MULESHOE FIRST

owns the 40 acres, which has increased in value and Crockett has lost no money on it. They have made money on the investment.

Furthermore, as a result of ARA activities, the Crockett people have been able to obtain the location there of Timely Furniture Co., a private company, which now employs 85 people.

"I have no knowledge of or information about the people in Houston, Harris County, who founded Audio Electronics in an effort to build a plant at Crockett, but I do know that the federal Government and Houston and the people of Crockett did not lose their land or \$60,000 in an effort to obtain this plant and federal Government nor the people of Crockett were responsible for the formation of the Houston Company which came to Crockett as a completed company looking for a plant site.

"The public news release by my Senatorial campaign opponent today that: 'The citizens of the area raised \$60,000 in cash, invested it in the company, and lost it because the project was a fraud and never started,' is a barely false statement. The people of Crockett took the \$60,000 they raised and bought land for industrial development. They used part of that land for the location of Timely Furniture Co. plant, and have been offered a 33-1/3 per cent profit on the tract that was reserved for the Audio Electronics plant which wasn't built.

"The reckless, irresponsible false charges by my opponent further demonstrate his untruthfulness and unfitness for the office of U. S. Senator or any other public office.

"There are many other utterly false statements in the Readers Digest article and in my opponent's attack on me today, and they will be proven false day by day.

"The fact that my opponent's multi-millionaire father's Wall Street investment banking connections enable the planting of false and libelous articles about me in national magazines like the Readers Digest will not enable the Connecticut candidate to buy a Texas seat in the United States Senate. The people of Texas will learn the facts, and

Mules..

(Continued From Page 1) back. Kenmore again punted. This time to his own 47. Adams returned to the 37.

After being penalized 15 yards Muleshoe lost the ball on the Dimmitt 37 on downs. Seven plays and a five yard penalty later Dimmitt lost the ball on downs on their own 49. Muleshoe advanced to the Dimmitt 3 in five plays. Dan Smith was stopped on the six inch line which ended the half with the score 14-0 for Muleshoe.

To start the second half Joe Adams kicked to the Dimmitt 24 ball to his 40. On the first down Dimmitt Ray Bradley fumbled and Muleshoe recovered. Muleshoe advanced to the 10 before Smith fumbled and Tommy Nichols covered for Dimmitt. In five plays the Bobcats reached the 31 then lost to the 20. Ronnie Kenmore punted to the Mule 30 where the ball was kicked by Dimmitt. Muleshoe reached the Dimmitt 31 before fumbling. The fumble was covered by Tony Young on the 35.

Dimmitt pushed to the 42 in three plays and Kenmore punted to the Mules 35. Muleshoe lost to the 30 in three plays ending the quarter with the score still 14-0 Muleshoe. Scot Oliver punted to the Dimmitt 40 to start the fourth and final quarter. Steve Hutton took the ball for Dimmitt, and made no return. The Bobcats pushed to the Mule 15 in 11 plays before losing the ball on downs. Muleshoe took over and in four plays reached the Dimmitt 35. From there Dan Smith went all the way to score. Adams' conversion was good, making the score 21-0 Muleshoe's game. Adams then kicked to the Dimmitt 15. Danny Land returned to his 38. The Bobcats pushed to the 41 in three plays and Kenmore punted on fourth down to the Mule 34. Muleshoe advanced to the Dimmitt land the ball went over on downs. Dimmitt made it only to the 4 in three downs. There Kenmore punted to his 34. This ended the game. The final score Muleshoe 21 - Dimmitt 0. Dimmitt coach said he was proud of his team's showing because it is a young inexperienced club. Mostly Sophomores and Juniors. Although they made

my opponent's smear campaign of falsehood is doomed to eternal perdition."

Tour..

(Continued From Page 1) A. then refinanced his farm and placed it on a longer time basis, thus allowing Throckmorton to stay on the farm and profit

Church..

(Continued From Page 1) iant fight against th disease.

Participating in the process ing bee were Mrs. Fred Ramm, Mrs. Oto Lngnau, Mrs. Kube, Mrs. Ed Ramm, Mrs. Adolph Haseloff, Mrs. Gerhardt Meissner, Mrs. Wilbur Kalbas and Mrs. Herbert Peman.

Joining the above members of the Lutheran Missionary League were Mrs. Vernon Symcox and Mrs. Robert Schuman, mother of Mrs. Haseloff.

Rev. Herbert Peiman and Gerhardt Meissner assisted the women as bean pickers and okra gathurers in helping this family.

many mistakes, they will profit from them.

Muleshoe coaches thought their boys should have made more scores but were satisfied although there were many mistakes made.

Bush..

(Continued From Page 1) pass among the crowd distributing lemonade, campaign buttons and literature of special interest will be the Candidate's views on foreign policy, federal economy, medical care, civil rights, agriculture, labor and many more.

Those making the tour with the F. H. A. officials were, J. K. Adams, Bailey County Agent, Ed Little, local farmer and also President of Bailey County Farm Bureau, Joe Wheeler, West Camp

Journal.

WE WILL BE
CLOSED MONDAY
SEPT. 7th, A LEGAL HOLIDAY
MULESHOE STATE BANK | FIRST NATIONAL BANK



WHITE "MAGIC 50" TIRE
The Only Tire in the World Guaranteed NOT TO WEAR OUT for 40,000 Miles! Plus 40,000 Mile Road Hazard Guarantee.

WHITE'S the Home of Greater Values

REVIVAL CALVARY BAPTIST CHURCH
18TH AND AVE. C
REV. ROY JOHNSON OF PLAINVIEW
7:30 NIGHTLY
SEPT. 7 THRU 13th
B. W. FELTS, Pastor | Phone 3-5180

HERSHEL WARD, MANAGER OF THE FARMERS CO-OPERATIVE ELEVATOR, CONGRATULATES T. A. THOMAS OF MAPLE, TEXAS, ON THE FIRST LOAD OF NEW MILO DELIVERED TO MULESHOE THIS YEAR!



THE FARMER'S CO-OP ELEVATOR WILL BUY YOUR GRAIN AT COMPETATIVE PRICES, WILL STORE YOUR GRAIN UNDER GOVERNMENT LOAN AND ISSUE LOCAL WAREHOUSE RECEIPTS

Specials FOR DOLLAR DAYS

PIXIE SHOES \$1.00
SIZES 6 to 11 ASST COLORS

KITCHEN TOOL \$1.47
ASSORTMENT WHITE PLASTIC HANDLES REG. 59c - 37c

Electric Blanket \$10.98 - \$8.89
80% RAYON 20% COTTON SIZES 72 inches x 84 inches ROSE - BIEGE - BLUE

WOOL SLACKS \$3.98 - \$2.77
SATIN LINED - SIZES 6 to 14

LADIES BLOUSES \$1.00
FALL COLORS - ROLL - UP SLEEVES

PERRY'S MULESHOE 25c-\$1.00

NYLON HOSE \$2.75
WITH SEAM COLORS HONEY and MIST REG. 59c

HEDSTROM SIDEWALK BIKE 16 IN. REG. \$21.95 NOW \$15.88

COASTER WAGON Large Rev Jet Reg. \$8.95 Special \$5.88

DOLLAR DAY ONLY TRY OUR LAY-A-WAY PLAN 50c WILL HOLD ANY TOY

PIXIE BOOTIER ASS'T SIZES & COLORS Reg. \$1.98

SHOP MULESHOE FIRST

BUSINESS SERVICES DIRECTORY

FROZEN FOOD LOCKERS

MEATS Cut and Wrapped
For Your Freezer

- Complete Locker Service — Low Yearly Rental

MULESHOE LOCKER CO.
401 Main — 7030

ARTISTS OF BAILEY AND SURROUNDING COUNTIES

WE HAVE A COMPLETE LINE of ART SUPPLIES

Muleshoe Publishing Company

HOUSES MOVED ANYWHERE

By **LANGER BROS. HOUSE MOVERS**

Call
Muleshoe — 5091
Clovis — PO 3-3497
Bovina — 238-3641

MISS YOUR PAPER?

Call Circulation Department
2350
Weekdays 8 to 5

PAUL'S CAFE — FINE FOODS

We Specialize In Good Steaks — Lunches — Dining Room For Parties Seating Capacity - 44 "For Reservations"

DIAL MULESHOE 3-0000

Faul Whitecotton, owner
Clovis Road Muleshoe

REPAIR SALES - SERVICE

Call 3-1630 after 6:00 p. m.

J. R. Otwell
Muleshoe, Texas

Sell Us Your **USED FURNITURE And APPLIANCES**

SWAP SHOP

Phone 3-0740

FOR A CLASSIFIED AD

Ask For Polly Or Liz. Phone 2350

Kelton Barber Shop

— BARBERS —
Omer Kelton
Sunny Shoemaker

JAKE DIEL DIRT & PAVING

Land Leveling Terracing



Ph. 8410 or 3-5940
Unit 333 Box 581
Plainview, Hwy.

HEATHINGTON LUMBER COMPANY

Lumber, Paint, Builders Hardware
Clovis Rd. - Ph. 7970

COTTONSEED DELINTED WILLIAMS SEED CLEANING CO.

Phone 3-2510 — Muleshoe

SINGLETON FUNERAL HOME

24 HOUR AMBULANCE SERVICE

Phone 2860 — Muleshoe

Good Clean Used Cars

GOSS AUTO SALES

1030 W. American Blvd. — Phone 3-9949
C. W. Goss, Owner

BURRIS SAFETY SERVICE

Wheel Aligning — Front End Rebuilding
Wheel Balancing — Shock Absorbers

811 E. Amer. Blvd. — Muleshoe — Ph. 3-2949

Irrigation Systems Designed & Installed

- Roll-Flex Concrete Pipe
- Motor Joint Concrete Pipe
- Asbestos Cement Pipe
- ALCOA ALUMINUM IRRIGATION SYSTEMS
- Gated Pipe • Flowline
- SPRINKLER SYSTEMS

SPUDNUT SHOP

We specialize in Party Orders — Come in For Coffee & Dunk your Spudnut

Viola Rundel, Owner
232 Main — 3-5429

Trade At **Phillips 66 'Trade Winds'**

Service Station
American Blvd. & 8th St.

- Phillips Products
- Motor Tune Ups

H. M. FREEMAN
Dealer

Phone 3-0780

— the number to call to save money on your new office, store, warehouse

Headquarters for attractive Inland steel buildings. Pre-engineered in any length, any width. Enclosed with colorful metal wall panels, glass, or other materials. Fast erection saves money.

STEEL BUILDINGS

B & C BUILDERS, INC.

217 E. Ave. B Muleshoe, Texas

BROWN SUPPLY CO.

Of Muleshoe
Days 2790 - Nights 4124

NO PRIMING! NO CLOGGING!

The KMP Lake Pump Delivers 1200 Gallons Per Minute in Water 18 inches or 15 Foot Deep. They are easy to move and easy to Start!

KMP Lake Pumps have built-in dependability
Dial Earth 257-2061 or 2341

KMP LAKE PUMP Manufacturing Company
One Mile South of Earth, Texas

Save Money On Auto Parts!

BOVELL MOTOR SUPPLY

107 East Ave. B — Dial 2880
W. T. BOVELL, Owner

CONOCO

FILL UP AT **FIRST STREET CONOCO STATION**

1st & American Blvd.

- FAST SERVICE
- PICK-UP & DELIVERY
- TIRES & BATTERIES

J. A. MILLS, Dealer
Phone 7920

SHAFER'S BELL SERVICE

Save Money — Trade with US
All Brands of Oil — Good Gas
Tire Service — Accessories

J. W. 'Bub' Shafer — 623 American Blvd.

FOR FHA, GI and FARM LOANS AND THE **BEST INSURANCE**

SEE— **POOL INSURANCE COMPANY**

Phone 2950 — Muleshoe
W. M. POOL, JR. — LEE R POOL

JOHN J. MOCK

LICENSED STATE LAND SURVEYOR

925 Clovis Hwy.
Phone 6760
MULESHOE

CARPENTER'S SERVICE

Tires — Batteries
Accessories
Mufflers
Washing
Lubrication
Waxing

423 American Blvd.
Dial 3-9080
MULESHOE

Try Our **BERTI-BURGERS!**

They're Great
Sandwiches
Fountain Drinks,
also Malts, Shakes

DARI-DELITE

210 N. 1st St. - Ph. 4829
Bertie Purcell, Owner

"FIRST IN FASHIONS"

Permanents — Styling
Tinting — Shaping
Revlon Cosmetics

MAIN STREET BEAUTY SALON

Bernice Holdeman
115 Main — Muleshoe
Dial 3-4480

BEAVER'S FLOWERLAND

Real and Artificial
Flowers — Corsages
Pot Plants — Banquets
Funeral Designs

520 S. First St.
Ph. 3-1160 — Muleshoe

EVERYTHING! ... for the Home and Auto!

- Admiral TV's
- Ranges
- Refrigerators
- Fishing Tackle

SAM'S AUTO STORE

121 Main St. Phone 4570

JOHN'S CUSTOM FEED MILL

523 E. American Blvd. Phone 5730

Custom Grinding & Mix'ng. Bulk Feed Delivery
Feeds for Cows, Horses, Chickens, & Birds

W. O. CASEY GENERAL INSURANCE

Let Our Complete Coverage Take Care of All Your Insurance Problems

Muleshoe State Bank Bldg. — Phone 2540

BERKELEY IRRIGATION PUMPS AND WATER SYSTEMS

COLEMAN HEATING & AIR CONDITIONING

E. R. HART CO.

210 E. 3rd — Ph. 3-3300

K.M.P. Lake Pump Made At Earth

A widely known South Plains pioneer farmer and his son have perfected a revolutionary new lake pump which water conserv-



K.M.P. PUMP CO. — Pictured above is Gus Parish, owner of KMP Pump Co., at Earth demonstrating one of his lake pumps to two prospects. Mr. Parish wearing dark hat and glasses faces camera.

Gus Parish, who moved to Earth, Texas, in 1923, is the inventor of the KMP Lake Pump which he and his son Doug are now manufacturing in a plant located on the Parish farm, one mile south of Earth.

The pump eliminates time-consuming priming and will not clog under normal lake conditions. It was designed to allow farmers of quickly and economically pump water from the thousands of lakes which throughout the South Plains each year.

The elder Parish, one of the first to use a turbine type irrigation well back in 1936, is a veteran leader in water conservation of this area, having served on many committees and boards, including the High Plains Water Conservation District.

The KMP saves money and time, Parish points out. "because it eliminates priming of the supply pipe that goes into the lake water."

Another big advantage to the KMP Lake Pump is that it will pump in water 18 inches to 15 feet without losing prime. If the pump sucks air along with water, it continues to pump as much water as is available, without losing prime.

Parish explained that lake water is "by far better for crops than underground water because it's warmer and it contains many more nutrients accumulated as the water runs into the lake."

"You can see the difference in a cotton crop irrigated with lake water," he said. And with the abundance of lake and tail water in this Plains area, Parish's development of KMP Lake Pump has been encouraged by farmers and water conservationists alike.

The pump is currently selling at about \$650.00 Parish said. It can be bought complete with trailer and motor for a total cost of about \$1600.00 at the plant.

Doug Parish, manager of the KMP plant, said current production has reached five complete pumping units per week. Orders are increasing daily, he said, as information about the pump circulates.

The KMP Pump unit mounted on a trailer is easy to move to the proper location. The pump is quickly backed into the water and connected to the delivery pipe which distributes the water. With a small engine running about 1200 r. p. m. the KMP Lake Pump with deliver about 1200 gallons per minute. Easy to motor speeds make the pumping range 600 to 1900 Gallons - Per-minute.

Sufficient water pressure is maintained or operating sprinklers, Parish added.

The KMP Lake Pump is made only in the 8 inch size presently but plans are on the drawing board or a smaller 4 inch pump which may be available by next season, the elder Parish declared.



Today's Meditation

THE HOPE OF THE CHRISTIAN

The hope of the Christian is not in the United Nations or a world organization of governments or churches but the hope of a Bible believing Christian is the Second Coming of Christ. The Bible plainly tells us there is no hope for this present world. It is doomed to destruction. God has said so and the Bible ratifies it. There is no point in discussing that.

But for the believer the coming of Christ is a glorious and much anticipated event. I quote the word of Christ found in Matthew 24:27 in relation to this event, "for as the lightning cometh out of the east and shineth even unto the west, so shall also the coming of the Son of Man be."

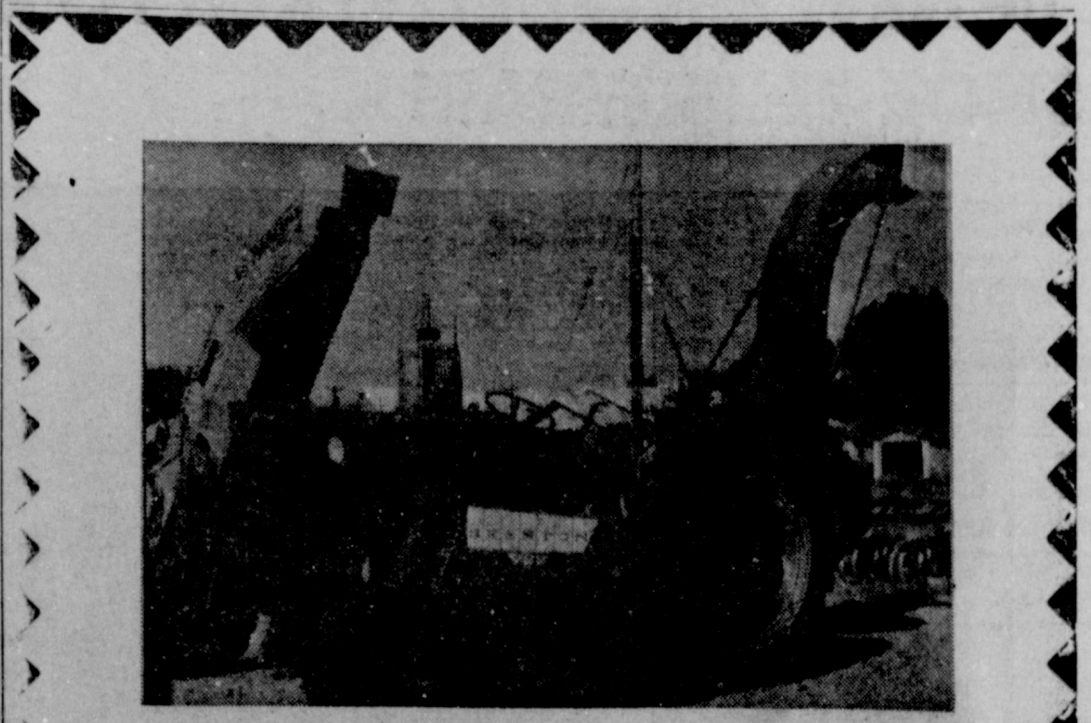
I have been told that when a storm is approaching an area the lightning shines from the west to the east, and that after the storm has passed the lightning shines from the east to the west.

The Word of God is ever true. When Christ comes back it will be with the speed of lightning and shall shine from the east to the west. Then all the storms of life for the Christian will have passed. What a glorious hope. Are you prepared for that event? It could happen any time.

Rev. Bill Felts
Calvary Baptist Church

FULL GARAGE UPPER ARLINGTON, Ohio (AP) — This well-to-do suburb of Columbus has a reputation for lots of two-car families. But now officials are learning that there are some four-bicycle families as well.

This is the community's first attempt at licensing bikes. A Safety Director Frank Gallo put it: "We started with 5,000 licenses and ran out right away. You'd be surprised at the number of adults who own and ride them."



HESSTON V-22 COTTON STRIPPER

THIS IS THE FAMOUS BRUSH AND RUBBER PADDLE MODEL . . . STRIPS MORE LINT POUNDS PER ACRE THAN ANY OTHER COTTON HARVESTER!

BASKET MODELS ALSO AVAILABLE

Fry & Cox Bros.

401 S. First Phone 3-3660
"Your Friendly & Complete One Stop Farm Supply"

