

# The Hereford Brand

44th YEAR — NO. 28

Published Every Thursday

HEREFORD, TEXAS 79045, THURSDAY, JULY 15, 1965

16 Pages

Price 10¢ Per Copy

## County Precinct Lines Redrawn

### Commission Hears Varying Problems

County commissioners approved new boundaries for the county's four precincts Monday in a move which had been talked off-and-on for several years.

Commissioners voted to equalize population in two precincts by splitting the city in half and made minor alterations giving more land to precinct 3.

Redistricting highlighted an agenda which saw county commissioners looking at several local problems during Monday's session.

Among items discussed by the county group Monday were: — A petition presented to the commission seeking aid in draining a lake which recently flooded homes near the Labor Camp (see story at right).

— A REQUEST from representatives of the Downtown Variety Park asking that county-owned property north of the courthouse be improved to provide parking for downtown merchants and shoppers.

— Use of the county-owned Bull Barn and proposals to improve the facility.

— And, rulings concerning control of barchises along county-owned roads.

MOTIONS to redistrict the county precincts came separately — with the commission voting early in the day to adjust the boundary between precincts 1 and 2, then adding to precinct 3 later in the day.

Redrawing of precinct boundaries had been talked on-and-off by commissioners for several years, and urged especially by County Judge H. C. (Hank) Williams since he took office.

Commissioner Earl Holt and Marcus Latham, who represent precincts 1 and 2 respectively, had agreed several weeks ago on a proposal to place a larger portion of the city of Hereford into precinct 1.

Previous dividing line between the precincts followed U.S. Hwy. 385 into the city and north of Fourth St., where the boundary turned east to the courthouse. There, it went south to Third St. and east to Ave. K, where it progressed north out of the city.

NEW BOUNDARY will follow the same course to the courthouse, then east along Third to Roosevelt, where it will turn north to Park Ave. and back west to 385 and then north.

Along with this adjustment, the commission created a new voting precinct for the area north of Park Ave. between 385 and Ave. K. (See map.)

LATER IN the day, Commissioner Bruce Coleman asked that his precinct 3 be enlarged by taking a few sections along the precinct's northern and eastern boundaries from precincts 4 and 2, respectively.

In other business, commissioners agreed to clean up vacant lots located across the street north of the courthouse in order to provide additional parking for the downtown area.

THIS WAS done after a committee of downtown merchants requested the action.

The commission agreed to allow the Hereford Riders Club to stage a dance in the Little Bull Barn on the nights of July 29-31.

IN CONNECTION with this discussion, Commissioner Donald Hicks suggested the county take steps to improve the Bull Barn.

He pointed to the need for air conditioning facilities, and the commission agreed to take steps toward determining cost of cooling the facility.

It was pointed out that the Chamber of Commerce and the Hereford Lions Club have both discussed plans to improve the

See PRECINCT Page 2

### NIGHT SESSION GOES OVER 6 HOURS

## School Taxes Remain Unchanged

### Teacher Payroll Upped; New Contracts Approved

By WAIN MILLER  
Staff Writer

An unchanged tax rate and a new teacher contract drew approval of the Hereford schools' board of trustees in a 6 1/2-hour session here Tuesday which also saw faculty pay hikes approved and several far-ranging topics discussed.

The marathon meeting remained in session until 1:15 a.m. Wednesday as the board discussed—among other things—the utilization of more federal funds by the local district.

Board members voiced their sentiments—concerning federal aid, apparently reaching the consensus that the local district should "get its share" of federal moneys, although one member abstained from the opinion. (See story at right.)

TAX RATE for the coming fiscal year was established at a total of \$1.85 per hundred dollar assessed valuation and a public budget hearing was slated for Aug. 10.

Taking a comprehensive look at budgeting, the board heard a report from administrators that the current budget is running low and that next year promises just as tight a squeeze.

A recommendation from the school's board of tax equalization called for a reappraisal of business property in Hereford—pointing out that downtown property is currently appraised out of proportion to other business property in the city.

Board members also heard the first of a planned series of reports on school curriculum. (See story at left.)

Supt. Johnny Clark Jr. pointed out to the board that "the local district has a choice" regarding teacher pay raises approved by state legislators.

THE BOARD chose to pass on all salary increases allocated by the state to local teachers. This will cost the local district some \$51,000 in additional salary allocations next year, Clark said.

POINTED out was the fact that the local district is not forced to increase teacher salaries.

Board members agreed that it would be necessary to pass on the salary increase "in order to remain in a competitive position" with area schools when it comes to hiring teachers.

The motion to approve the

See SCHOOL Page 2

### Courses Viewed In First Look At Curriculum

The first in a series of summaries of curriculum areas in Hereford schools was outlined to the board of education by Supt. Johnny Clark Jr. Tuesday night.

Clark summarized the system's current offerings in foreign languages, the school health department, the district's vocational training classes, and the health and special education program.

He said Tuesday's report was the first in a planned series describing the school's curriculum and services.

CONCERNING the health program, he pointed out that the system currently has "only one nurse to work with almost 4,000 students."

He also pointed to recommendations of various state and national education agencies that broader education in foreign languages be made available.

Then he outlined several vocational training courses approved by the state which are not currently employed here.

He explained that the curriculum reports are designed to acquaint board members with current offerings and possibilities available for improvements.



PETITION PRESENTED — Members of the county commission are shown as they received a petition from Sam Nunnally regarding drainage of a lake near the Labor Camp (see story).

—Staff Photo

### AIRPORT GUN RANGE OK'D

## Paving Projects Outlined; Sidewalk Sale Planned

An alarm system is being installed in Hereford Police Department to indicate any lowering of water levels in the city water supply, city manager Dudley Bayne said this week.

Prompting the action was "a prank or vandalism" on July 6 which "dangerously lowered" the water supply, Bayne said.

PUMPING stations in the city have a master control but each station has individual controls to allow repair work. Six of seven wells pumping into the McKinley St. Station were cut off at the pumps Bayne said.

"Water was dangerously low. It happens that we got by all right, but a fire could have meant trouble," the manager said.

HEREFORD normally uses about four million gallons a day with the heavy use period beginning about two or three o'clock in the afternoon and reaching peak use during the evening after five when the vegetable sheds are operating and people water their yards.

The pumps were cut off about 4 or 5:30 p.m. and the shortage was noticed in about two hours. Low pressure was noticed in parts of town, especially the northwest section.

By cutting the pumps off, the prankster lowered the pumping power for city water to about 500 gallons a minute.

STREETS INVOLVED are northern portions of avenues H and I, portions of 15th and 14th streets, and Whittier and Myrtle streets in eastern Hereford.

Commissioners decided to commence proceedings towards paving the streets, however.

In other business, the commission okayed a request from downtown merchants that they be allowed to stage their annual Sidewalk Sale on July 26.

THE GROUP established rental fees of \$25 for single engine craft and \$40 for twins at a new hangar to be built at the airport.

Street lights were approved for intersections in the Knob Hill subdivision recently annexed by the city, and proceedings continued towards annexation of portions of the Evans subdivision not currently in the city limits.

### Federal Aid Here Talked Board Members Air Sentiments

An unofficial policy regarding federal aid to local schools resulted from a lengthy discussion of the controversial issue by members of the Hereford school district board of trustees here Tuesday night.

Several members of the board agreed that the local district should look into federal funds available, although expressing dislike of the idea of federal aid.

ALTHOUGH no vote was taken on the matter, apparent consensus of board members who voiced opinions was that Hereford schools should utilize its share of applicable federal programs.

The discussion resulted after Supt. Johnny Clark Jr. reported on current federal programs which could be employed by the local school district.

HE OPENED the discussion by saying that he and business manager Dillie Kelly "feel it is our responsibility to let you know what is available to the local district if we want it."

The superintendent then outlined provisions of several federal programs, pointing out the areas in which the local district could qualify for funds.

"We have reached the point where money is appropriated for us. . . if we don't spend it, somebody else will," he commented at one point.

HE POINTED out that the Dimmitt school system will use some \$90,000 in federal funds next year (excluding lunchroom programs in which the Hereford schools are currently participating).

It was also pointed out that one program alone has allocated \$93,000 for Deaf Smith County schools. "This is 100 percent federal money that somebody

See FEDERAL Page 5

### FOR RESCUE ATTEMPT

## Hereford Man Earns Award

J. D. Anderson, Summerfield farmer, was notified early Wednesday that he has been nominated to receive the Carnegie Bronze Medal. The Carnegie Hero Fund Commission cited Anderson and one other Texan Tuesday for courageous acts.

Anderson, 45, sought to rescue Donald W. Steele, 43, a pilot, from a burning plane last Sept.



Suffer your children in their growing up . . . for they will suffer you in your growing old.—minwell

Editor's Note—"Minwell," a Hereford woman, has collected many punnish truesomes about life in her years of observing people. Watch for her comments regularly in The Brand.

12. The plane crashed on the J. C. Clearman farm three miles south of Summerfield.

CONTACTED shortly after they received word of the nomination, Mrs. Anderson said that her husband was in the field working.

"He is trying to think things out," Mrs. Anderson said. "We don't know if we should accept the award or not."

Anderson, who farms on the J. M. Wright farm about a mile south of the crash scene, saw the crash and rushed to the field where Steele's plane was in flames. Running about 100 feet from the road, Anderson called to the crop-duster, Steele, who was strapped in the seat called to Anderson, the first on the scene, for help.

Mrs. Anderson, who was in the car with her husband when they saw the crash, spoke through tears as she explained their reticence in considering the cash award of \$750.

"He (Mr. Anderson) has, to think it out — a person doesn't stop and think about himself when another man is in trouble. We just can't think of taking any honor — the poor man died — we don't know what

See AWARD Page 2



Moonlight shining through the clouds created this setting at St. Anthony's Roman Catholic Church early Tuesday morning, captured in this picture by Brand Photographer Wain Miller.

### Steps Taken To Drain Lake At Labor Camp

A petition signed by some 65 Hereford residents was presented to the county commission here Monday to initiate action towards providing permanent drainage for a lake which recently flooded several homes in the Labor Camp area.

The petition cited the recent flooding as a "health hazard" and asked that the county take action to provide drainage to prevent the lake from flooding again in the future.

PRESENTING the petition to the commission was Sam Nunnally, who said he had been asked by several persons to spearhead a move to get the lake drained.

Commissioners said they did not feel the county should be asked to pay all costs for draining the lake — and explained that the county could not legally allocate funds for such a project except under the category of eliminating a public health menace.

ALSO PRESENT for the meeting were Dan Finlan, developer of the subdivision bordering the lake where some 21 homes were flooded; Ed Dziuk, representing Hereford Housing, Inc., the organization which owns the Labor Camp; and representatives of the Texas Highway Dept.

Commissioner Marcus Latham, who had invited them to be present for the meeting, explained that although the county cannot "take on the entire project," he hoped that an arrangement could be worked out to drain the lake.

See LAKE Page 2

### Salad, Anyone?

Backyard gardens are flourishing all over town after the rains, so why not at the Deaf Smith County Courthouse?

Tended by county jail trustees under the supervision of courthouse custodian Raymond Bean, a small green garden is tucked into a plot just west of the north entrance to the building.

It began, Bean said, when a prisoner with a green thumb asked if he might plant some vegetables. His jail term long since completed, he failed to reap of his sowing but the plot produced a good crop of green onions and half a bushel of spinach and now has squash of table size with tomatoes beginning to bear.

The vegetables are growing with shrubs and blooming flowers for an ornamental, as well as appetizing, appearance.

### Weather

	M	H	L
Saturday	96		
Sunday	96	65	
Monday	96	65	
Tuesday	96	60	
Wednesday			63
Moisture this month	.15		
Moisture this year	17.87		

(Courtesy of KPAN)

### NEWS AT A GLANCE

## Today's Brand

AUTO RACING in Hereford — on a small scale. New facility fascinates fans. Story and photos on page 4.

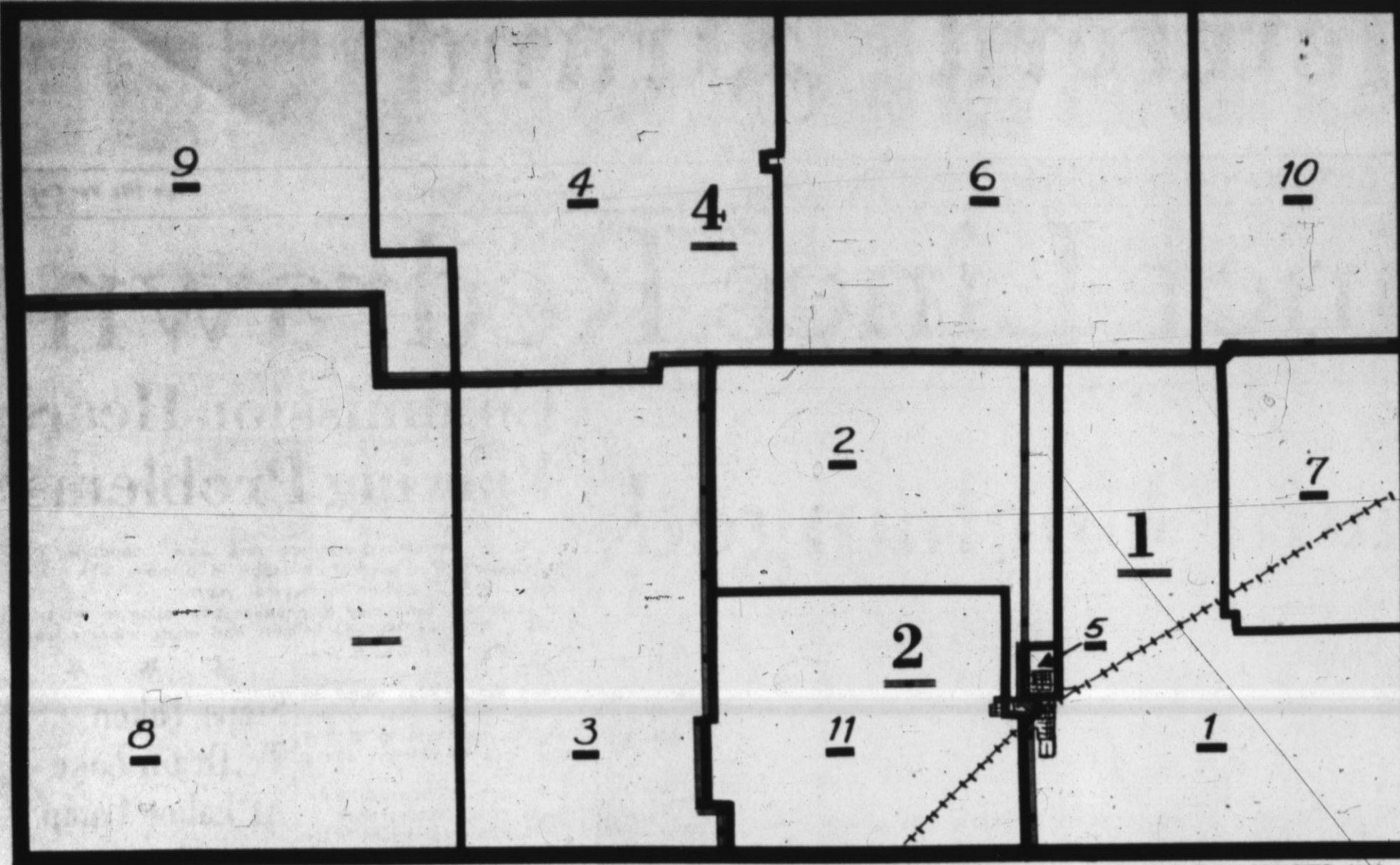
INCREASED TAXES forecast for state in 1967. Page 9.

HEREFORD baseball teams on the road for area tournaments. Page 3.

COTTON program changes outlined by Plains Cotton Growers. Page 14.

TOURIST DOLLARS in Texas show healthy increase. Page 9.

# DEAF SMITH COUNTY



VOTING PRECINCTS (1)

**PRECINCT CHANGES** — Deaf Smith County Precinct lines were changed in lines and voting precincts Monday by the Commissioners Court. Shown are the new precinct

## Precinct . . .

(Continued from Page 1) Bull Barn, but as yet have not approached the commission with definite proposals.

Judge Williams read a letter from the Texas Highway Department, which was in reply to a request by the county that steps be taken to curtail traffic hazards at the intersection of U.S. Hwy. 385 and the Labor Camp road.

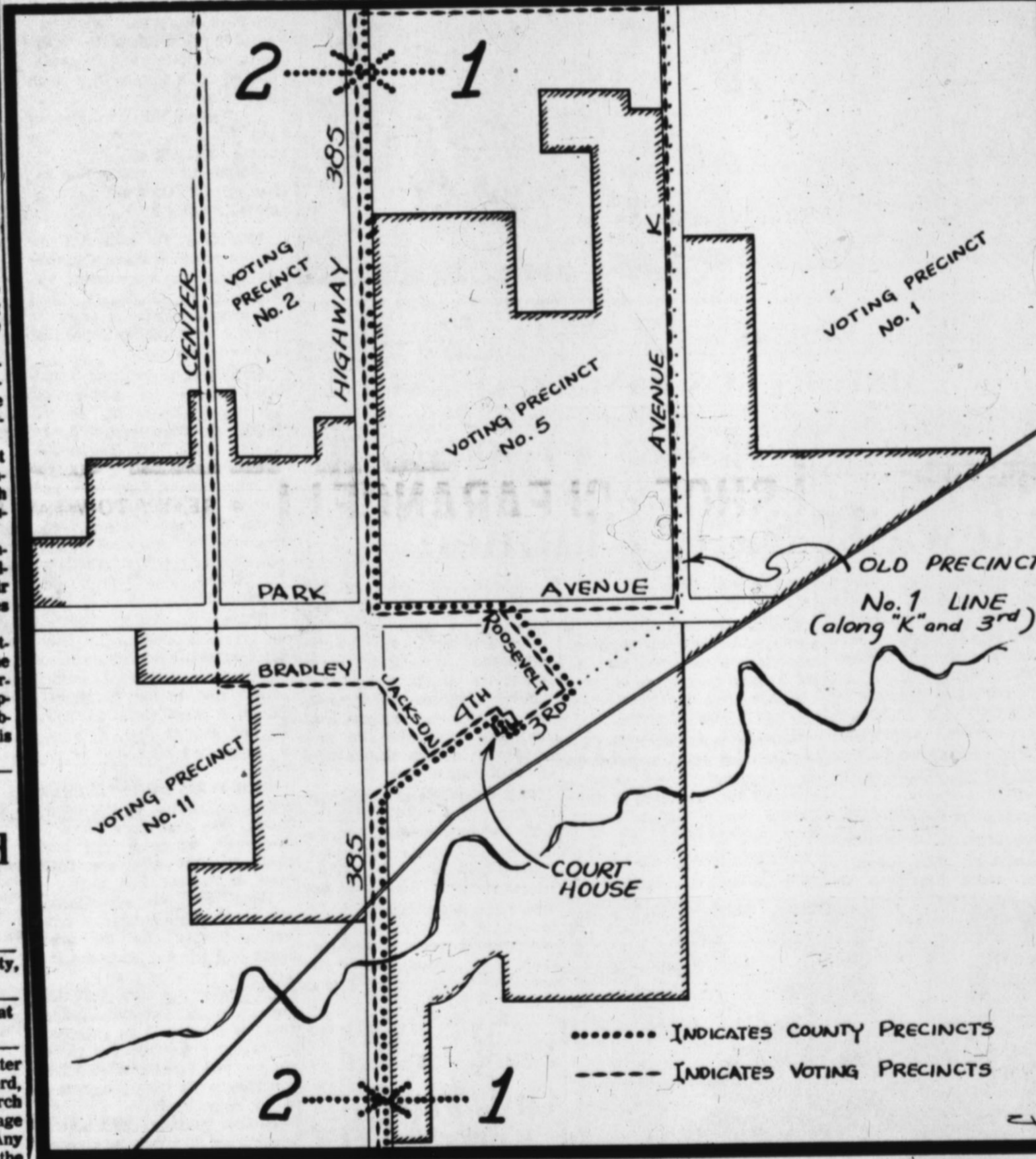
THE DEPARTMENT said two signs had been placed warning drivers of their approach to the danger spot.

Gene Godwin, a county farmer, appeared before the commission asking a definition of the county's rulings on use of bar-ditches.

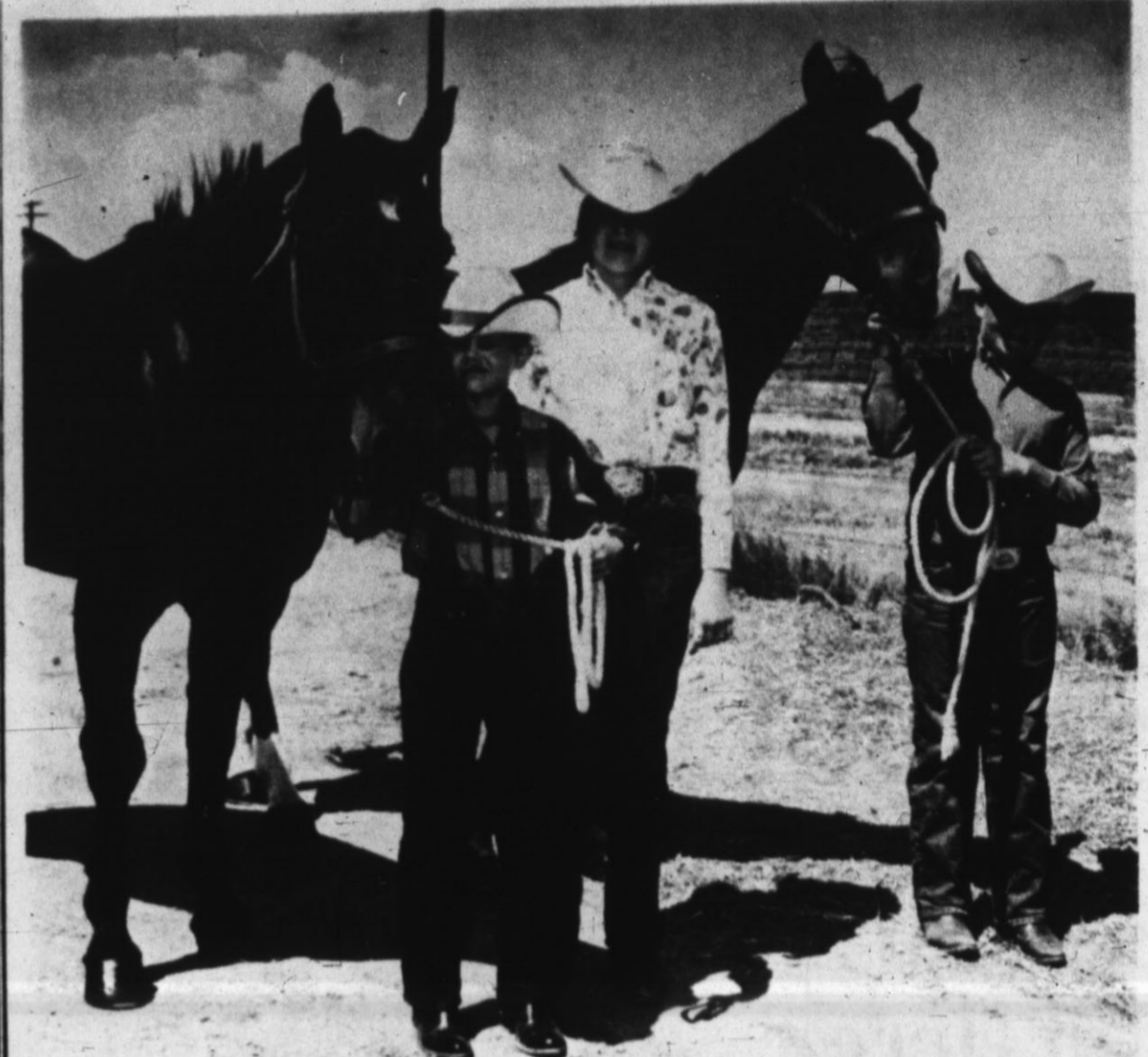
The court advised Godwin that it would be legal for him to construct a pit near the barditch to collect water which accumulates in the ditch.

It was explained that the county ruling does not prohibit land-owners to alter land on their property so long as barditches are not obstructed.

Commissioners later commented that several farmers in the county had been plowing up barditches while turning equipment, which does cause an obstruction of the ditches and is therefore illegal.



..... INDICATES COUNTY PRECINCTS  
----- INDICATES VOTING PRECINCTS



**EARN HONORS AT SHOW** — These 4-H were the children of Mr. and Mrs. Bud Burgess. Tod, at left, showed Big Red, and Eddie, at right, exhibited Stormy Star. Tracy, their sister, also participated in the show. (Staff Photo)

## Local Youths Earn Honors At 4-H Show

Two Hereford boys brought home honors from District I 4-H horse show July 10. Dumas hosted the one day event open to 4-H members only.

Tod and Eddie Burgess, sons of Mr. and Mrs. Bud Burgess, took top honors with their horses in the grade and registered gelding classes of animals over 14 hands.

Tod, 9, showed in a class of 26 and his grade gelding received first place in that class. Stormy Star, registered quarter-gelding, took the honors for Eddie, age 10. Eddie's gelding is Leo breeding.

The Burgess boys have their horses at the Holly Corp. Feed Lot where their father is resident manager. Big Red and Star are used for cutting and sorting cattle. They are not competition cutting horses, however, the boys explained.

Other entrants from Deaf Smith County included Tracy Burgess, 11, sister to Tod and Eddie, Bill Cole son of Mr. and Mrs. Floyd Cole, and Rodney Brooks, son of Mr. and Mrs. J. E. Brooks.

Judging the show was Roland Moore, Tulia, quarter horse judge.

## FROM TEXAS SENATORS Opinions Differ On Medicare

Weekly news releases from Texas Senators show a difference of opinion concerning the recently approved medical program.

Senator Ralph Yarborough's news release has a general complexion of satisfaction over the bill while Senator John Tower shows some irritation over certain phases of the legislation. Yarborough says "It is a relief, after working for eight years for a comprehensive medical program for the aged, to have the Medicare bill passed by both the House and the Senate. The bill will now go to Conference between the two houses of Congress before it goes to the President for signing into law."

TOWER'S release begins: "The Senate last week approved a severely limited medical care bill and tied its high cost to the Social Security taxation system. I regarded the medical care provisions as most inadequate, and I fear that the added expense will endanger the financial sta-

bility of the entire Social Security system upon which so many older Texans depend."

Yarborough goes on to explain the bill as being a "sound program" that will provide hospital and medical needs for elderly patients to be paid by "a small deduction from earnings while a person is working."

Tower views the bill as being "at excessively high cost and with excessive tax increases on working Texans — only very limited hospital costs."

THE RELEASE from the Republican goes on to "caution older Texans not to drop their present medical care insurance policies just because the Congress has voted on 'Medicare'."

In the meantime, I know Texans will continue to support and to improve our state program to assist the needy and that those Texans who are financially able to provide for themselves will continue to do so."

The release from the Democratic Senator explains "our elderly will be able to have better medical care without having to spend their entire savings and income and thus be forced into utter poverty by an illness in their old age. These two programs (the medicare and a voluntary health program) alone will mean \$143 million of medical benefits for Texans in the next fiscal year."

EXPLAINING why he voted against the medical care bill, Tower says, "It did not deal at all with the crucial problem of long term illness. In addition, it provided the limited care for everyone, be he poverty-stricken or millionaire."

## School Tax Rate Remains Same

(Continued from Page 1) across-the-board raises was approved unanimously.

SCHOOL officials expressed concern over progress of construction on the district's current building projects, although Clark said that the architect reported that contractors are still confident they will meet the Aug. 20 completion deadline.

Upon the recommendation of Clark, the board approved funds for the Hereford schools' membership in the West Texas Audio-Visual Cooperative — a coop comprised of several Panhandle and South Plains schools through which members obtain audio-visual aids at a price much reduced from the cost of buying for individual districts.

REVISED teacher contracts approved for the local district "are considerably different" from those used here in the past, Clark said.

He pointed out that the new contract has a more specific definition of what constitutes "sick leave."

It also includes — for the first time — a provision requiring teachers to return contracts within six days after they are offered, and stating that no resignations will be considered after Aug. 1 of any school year.

THE TAX rate was established after school tax assessor-collector Orpha Click estimated valuations for the coming year at \$58 million — up \$6 million from last year's figure.

Clark said it would require 30.3 percent of tax income for the schools' interest and sinking fund.

This amounts to \$5,6425 per hundred dollars assessed valuation to retire the school's bonded indebtedness.

\$1.85 total will go to the local maintenance fund.

The superintendent pointed out that although the total remains the same, allocations for retirement of bonded indebtedness and a local maintenance will be altered.

IN THE current 64-65 budget, 47 cents goes to the interest and sinking fund while \$1.38 is allocated for local maintenance per hundred dollars assessed valuation.

Click reported that the school's tax equalization board has recommended a reappraisal of the city's business property, saying this is necessary because of high assessments on Main St. property while relative low figures are assessed on outlying business holdings.

Supt. Clark reported to the board concerning new legislation affecting local schools. Included were:

COMPULSORY attendance has been upped from 16 years to 17 years of age.

— New law allows school district trustees to be elected on a place system, rather than on a high-man basis — as is now the case — if local districts so desire.

— Provisions have been made to allow establishment of county-wide vocational school districts.

In other business, the board designated the First National Bank as the depository for school funds.

## Look Who's New

Mr. and Mrs. Raymond Pete Gerk are the parents of a daughter, Shannon Renee, born July 11. She weighed seven pounds.

\*Go easy to own Lots for living

Lots as low as \$2,500 (\$500 down)

Assoc. Membership \$500 (\$100 down)

QUALITY NURSERY STOCK

Armstrong

305 W. Park EM 4-1864

## Lake . . .

(Continued from Page 1) THE PETITION had indicated flooding may have resulted from road developments in the area, but local highway department representatives said they felt this was not the cause of the flooding.

It was pointed out that Father Chris of the Catholic Church at the camp had been working to get the area drained and establish a park there.

Commissioners said they would work with other groups in a joint effort to accomplish the drainage project — which will cost an estimated \$12,000 — but no definite action was taken.

DZIUK SAID that Hereford Housing had been seeking funds for the project and that some \$1,200 had been pledged thus far. He predicted his organization could raise some \$3,000 towards the effort.

Finlan said he would donate land in the lakebed for a park — if the lake is drained — and that he would also contribute some to the fund.

The problem was later discussed Monday night by city commissioners, who also said that they could not legally allocate funds for the project because the area is entirely a private development.

## Two Hereford CAP Members Are Honored

Two members of Hereford Composite Squadron, Civil Air Patrol, were recognized Saturday at an Amarillo meeting.

Dr. Milton C. Adams, Commanding Officer of the Hereford unit, was promoted to Captain by Wing Commander Colonel M. R. Barnes of Kilgore. Lt. W. T. Thompson received a Certificate of Proficiency.

LT. THOMPSON is the first to earn the certificate from this squadron. Given in recognition of accomplishment for certain required training, it makes both seniors and cadets eligible for advanced training.

Others attending the Saturday meeting were Chaplain L. E. Fooks and Cadet Commander Dale Minor.

THE HEREFORD patrol participated in a practice search and rescue mission at Tulia on Sunday. Participating in the training were Dr. Adams, Curtis Traweek, Dr. Wes Owen, Bill Thompson, John E. McClesky, Gerald Burney, and cadets Jim Owen and Mark Roberson.

## Award . . .

(Continued from Page 1)

STEELE'S plane was in flames before it reached the ground. Fire was attributed to fuel being ignited by contact with power lines. Doctors who examined Steele said that he was burned by flames and not electricity.

Anderson has been working on the Wright farms for 12 years. He and his wife live south of Summerfield with their family of eight children: Fredia, 18, Jerry, 17, Rita, 15, Jan, 14, Phyllis, 11, twins David and Danny, 4, and six-weeks-old Stephen.

"WITH THE children, the cash award would be very helpful," Mrs. Anderson said, "but it just doesn't seem right."

Notification of the honor was accompanied by a questionnaire which gives them the prerogative of accepting or refusing.

The Carnegie Hero Fund Commission contacted S. M. Easley of the Hereford Flying Service, Inc. for details of the rescue.

Easley, who was associated with Steele in the flying service, supplied the information and was notified of the award.

## Services Set For County Woman, 82

Mrs. Martha Elenore Pierce, 82, a resident of Deaf Smith County since 1908, died Tuesday at West Gate Hospital after a long illness. She came here with her husband, the late Arthur C. Pierce, from Cleburne shortly after their marriage. He died in 1949.

She was born Oct. 1, 1882 at Mansfield. She was a member of First Methodist Church and her funeral will be conducted there at 3 p.m. today by the Rev. Herschel Thurston, pastor. Burial directed by Gilliland Funeral Home will be in West Park Cemetery.

Serving as pall bearers will be Merlin Kaul, Howard Gore, Kenneth Rudd, O. H. Culpepper, Stan Knox and G. C. Merritt.

Mrs. Pierce is survived by three sons, Ulys Pierce of Hereford, Raymond Pierce of Anderson, Calif. and Marlin Pierce of Dumas; a brother, W. T. Poindexter of Cleburne, 11 grandchildren and five great-grandchildren.

## The Hereford Brand

Member National Editorial Assn.  
Member Associated Press  
Hereford, Deaf Smith County, Texas — Phone EM 4-2930

Published Every Thursday at 130 W. Fourth

Entered as second-class matter at the Post Office in Hereford, Texas under the act of March 30, 1879. Second-class postage paid at Hereford, Texas. Any erroneous reflection upon the character, standing or reputation of any person, firm or corporation, which may appear in the columns of this paper, will be gladly corrected upon due notice of same being given to the editor personally at the office.

Subscription Rates: Zone 1, \$2.50 per year; Zone 2 and above, \$3.50 per year. With the Sunday Brand, both papers, Zone 1, \$4.95 per year; Zone 2, \$6.15 per year. Carrier delivery, 60c per month. Single copies, 16c each.

Classified advertising rates: 6c per word first insertion (60c minimum); 4c per word additional insertion.

James M. Ghentline, Publisher  
Melva Young General Manager  
Robert J. Awtrey, Mech. Supt.

CIRCULATION  
Mail ..... EM 4-2809  
Carrier ..... EM 4-1855

A. O. THOMPSON  
ABSTRACT CO.

Mr. & Mrs. A. J. Schroeter, Mgrs.

Courthouse  
P. O. Box 73

Phone EM 4-1504

Nansontie Attache Case  
THE INK SPOT

CLASSIFIEDS  
GET RESULTS!



**TO ANTON TOURNEY** — Pony League All-Stars will go to Anton Monday to begin their tournament. In front, left to right, are Frank Torres, David Huckert, Kenneth Laing, David Alvarado, Jim Rakestraw, Sahtry Rush, Sid Shaw, David Vines and Jimmy Victor; in back are Albert Pena,

alternate, Lanny Coffey, alternate, Billy Wall, manager, Oren Davis, alternate, Terry Warlick, Paul Hager, coach, Jim Loerwald, Gary Crume, Lynn Chisholm, alternate, Mark Woodward, alternate, Bill McMinn, John Stagner, alternate, David Alvarado and Jerry Walker. (Staff Photo)



**AT BORGER TOURNEY** — After losing their first game to Borger, 8-7, Tuesday night, Hereford's American Legion team was to play Palo Duro at 6 p.m. Wednesday. Members of the team are, from left, front row, Robby Lemons, Gary Victor, Ed Mims, Jerry Tucker, Danny Loerwald, Gary

Stagner, Ralph Loerwald, and Lynn Cook; in back, left to right, are Johnny Haney, coach, Larry Minks, Mike Ronspot, Gary Tucker, Barry Johnson, Earl Stagner, coach, Bill Waits, Frank Cain, and Kelly Tyler. (Staff Photo)

## Pony League Plays In Anton Tourney

## A Big Catch But It's Only a Turtle

Anton will be host city next week when the area Pony League tournament will be staged there, according to Jimmie Chapman, tournament director.

Representing Hereford Pony Leaguers will be Santry Rush, Gary Crume, Jim Rakestraw, David Huckert, David Alvarado, David Vines, Jim Loerwald, Jerry Odem, Bill McMinn, Terry Walick, Jimmy Victor, Frank Torres, Jerry Walker, Kenneth Laing and Sid Shaw.

Alternates will be Oren Davis, John Stagner, Mark Woodward, Lanny Coffey, Albert Pena and Lynn Chisholm.

Paul Hager is coach, and Billy Wall is manager. Business manager is Wayne Fuller.

Hereford will play Dimmitt Monday night in the first round, after Littlefield plays Anton. Tuesday night, winners will play winners and losers will play losers. The double elimination will be completed Friday night.

Winner of the tournament will pay either Borger or Childress.

MARSHALL, July — The thing on A. L. Lambert's trotline weighed 97 pounds. Just one thing wrong; it wasn't a fish; but a monster 97 pound, alligator snapping turtle.

On the heels of a 65 pound turtle from the Sulphur River and last week's catch of a 91 pound turtle in Lake Tawakoni,

the giant from Caddo topped them all.

All hands and the cook wrestled the thrashing snapper ashore where they contacted Texas Parks and Wildlife Department biologists.

Sid Knight and Joe Toole, biologists, inherited the huge 9 1/2 inch skull and promptly got busy with hydrogen peroxide to bleach and preserve the specimen for laboratory study.

The catch approaches the world's record of 114 pounds for this species.

## SemiAnnual Clearance

# SALE

STILL GOING STRONG  
SUBSTANTIAL SAVINGS ON

SUITS - SPORTCOATS  
HATS - SPORTSHIRTS  
SHIRT JACS

for Men, Young Men and Boys

**Gaston's**  
POPULAR STORE

## Co-Op Service To Be Added

Ten new consumers in the western part of Deaf Smith County will receive electric service when five miles of distribution line are completed.

The improvements are scheduled to be part of Rural Electrification expansion by Farmers Electric Cooperative in Clovis, N.M. \$9,000 of \$88,000 will be spent on the Deaf Smith County portion of the expansion according to Senate reports.

Olivetti-Underwood  
Adding Machines & Typewriters  
**THE INK SPOT**

## Clubs Begin Plans For Convention

Initial plans for the convention here next March of Top of Texas District, Texas Federation of Women's Clubs, were discussed at a meeting in Community Center Tuesday afternoon. Federated clubs in Canyon will join those of Hereford as convention hostesses.

A representative of each club was present Tuesday with Mrs. Ray Johnson of Hereford and Mrs. Troy Martin of Canyon, who as convention coordinators will serve as joint general chairmen of arrangements. Mrs. Robert L. Lindsey of Canyon, district president, and Mrs. J. M. White of Canyon, convention expeditor who is responsible

for program planning. All convention plans are in the tentative stage at present. Committees are being selected for various duties concerned with the entertainment of as many as 300 women expected for the annual session. Speakers and other program personnel will be chosen soon.

Hereford club representatives present Tuesday were Mrs. L. H. Lookingbill, Pioneer Study; Mrs. Earl Lance Jr., Summer-ville Study; Mrs. Will Kerr, Bay View Study; Ms. Buren Sowell of Deaf Smith County Federation. Those from Canyon were Mrs. L. H. Owens, Woman's Book Club; Mrs. E. E. Perkins, Sue Hite Study; Mrs. Charles Brasher, Canyon Study; Mrs. R. B. Gist Jr., University Study.

Lithography - Letter Press  
Printing  
**THE INK SPOT**

## County Club Federation Year Slated

Outlined at a meeting of the executive committee Saturday, a program schedule for Deaf Smith County Federation of Women's Clubs is announced by Mrs. John N. Jacobsen Jr., president. The committee met in her home.

Three Federation programs are planned for the season, all to be given in Community Center at 12:30 p.m.

American Heritage will be the subject at the opening meeting, Sept. 30. Hostess clubs that day will be Farm and Ranch, Hereford Garden, Pioneer Study, Business and Professional Women, with the first-named group as chairman.

Summerfield Study Club heads the Jan. 29 hostess committee, which includes Garden Beautiful, West Hereford, El Llano and Lone Star Clubs. The program topic will be Mental Health.

Officers for the following year will be installed at the April 29 meeting and a Fine Arts program will be presented. Westway Home Demonstration Club will be hostess chairman; La Plata, Bud to Blossom, LAE and North Hereford Clubs will assist.

## Chapter Raises Fund With Sale

A rummage sale Saturday swelled the treasury of Kappa Iota Chapter, Beta Sigma Phi, and provided funds for beginning chapter projects of the new year. It was held at the Justice parking lot.

Workers were Mmes. Harold Kids, Jim Cramer, Mike Wilson, Pat Parker, Jack Straw, Arliss Edwards, C. D. Fitzgerald, Joe Neely, Bobby Shelton, Wendell Maloney, John Gilliland, Pat Ferguson, Houston Frye, Dean Hacker and Randy Ammons.



REV. H. V. MARTINEZ

## Baptist Church Names Martinez As New Pastor

Rev. Herman V. Martinez is to be the new pastor of the Alex Thompson Memorial Mission. The Latin American mission, 215 Norton Street, is sponsored by the First Baptist Church in Hereford.

Reverend Martinez grew up in San Antonio. His wife, Lydia, grew up in Waxahachie. They have a three-year-old daughter, Anna. He is 26 years old and is a student at Wayland Baptist College in Plainview. They will live at 562 Knight Street.

## Teachers Attend Santa Fe Meet

A group of Hereford teachers attended a reading conference in Santa Fe, N. M., June 28-July 2. Auditing the course were Misses Della Stagner, elementary supervisor for Hereford Public Schools, Laveda Shannon, second grade teacher at Bluebonnet, Lucille Park, sixth grade teacher, Irma Walker, third grade teacher and Bea Barrett, Shirley fifth grade teacher. Sessions were held at St. Michael's College.

During their stay in Santa Fe they attended the open air opera, Peter Heart and Elizabeth Wyeth's art exhibit as well as other points of interest, Miss Stagner said.

Moore Business Forms  
**THE INK SPOT**

KORDITE

## Freezer Bags

1/2 PRICE

Hereford Surplus

1221 E. FIRST

**FULL SALE ON WAVES OF VALUES**

NAME BRANDS ONLY!  
BUY WITH CONFIDENCE!

## SHOE CLEARANCE!

• READY-TO-WEAR DEPARTMENT •  
GROUP OF

### SWIM SUITS

Reg. to 24.00 **10<sup>00</sup>**

---

### DRESSES

TO 16.00	TO 35.00	TO 60.00
<b>5<sup>00</sup></b>	<b>10<sup>00</sup></b>	<b>15<sup>00</sup></b>

---

• SKIRTS  
• BLOUSES

WERE 8.00 TO 25.00  
**5<sup>00</sup> TO 12<sup>00</sup>**

---

Complete Stock of Spring & Summer

### CHILDREN'S DRESSES

SIZES 1 TO 14 **1/2 PRICE**

---

• OUR FAMOUS BRAND •

### SLIM JIMS JAMAICAS

STRETCH SAILCLOTH  
NAVY - GOLD  
RED - BLUE  
SIZES 8 TO 20  
WERE 7.00 **3<sup>99</sup>**

---

**Gaston's**  
POPULAR STORE

THE ROAD RUNNER OF THE  
**Plumbing Industry**

NOW DEALERS FOR  
**LENNOX** HEATING & Air Conditioning

The Greatest Advance in Heating & Cooling in over 30 years...

- \* COMPLETE COOLING & HEATING SERVICE
- \* TOP NOTCH PLUMBING
- \* BOILER PROBLEMS?

"We Specialize in Boiler Repair"

- Installation • Repair • Control

CALL US TODAY

## JIM PAVLICEK CO.

FORMERLY HEREFORD PLUMBING

### EM 4-1168

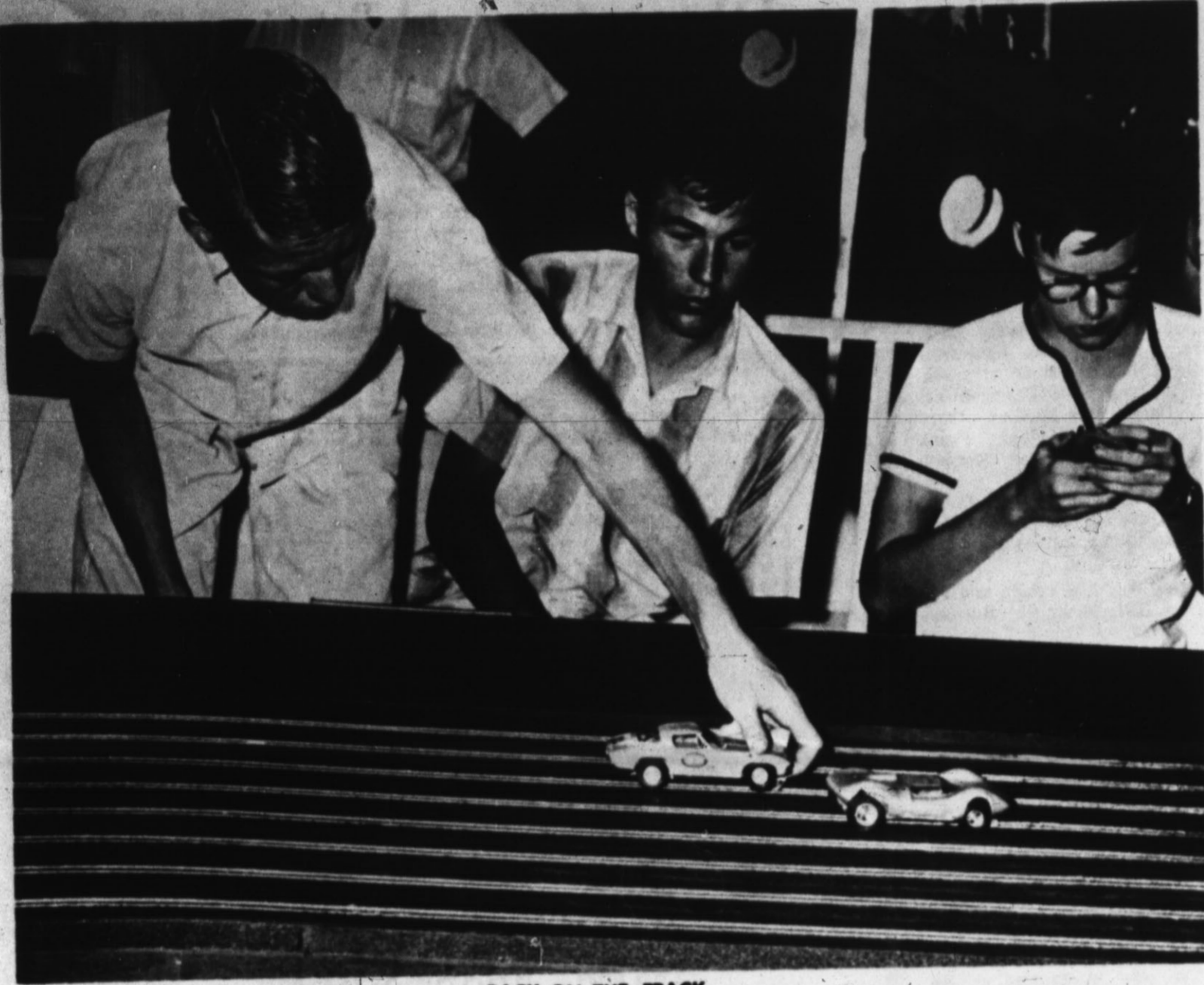
SALES — SERVICE  
HEATING - REFRIGERATION - PLUMBING

AT THE WORLD'S FAIR

## GAS

DOES 80% OF THE AIR CONDITIONING

Pioneer Natural Gas Company



**BACK ON THE TRACK**

Jimmy Bayne puts his racer back on the track following minor repairs; Jim Marcum looks on while Dennis Latham gives his car some adjustments.

# Model Car Racing Is New Thrill

Attracting youngsters and grandfathers alike, Hereford's newest "night spot" on Main St. gets lots of attention from car racing enthusiasts who don't mind sitting on the sidelines.

Hereford Raceway, located in the old First National Bank building on North Main St., is a newly formed business operated by Garland Lucas and David Westbrook, both students from

Texas Tech at Lubbock. Owners are Gene King, Douglas Adams and Bill Waldrep.

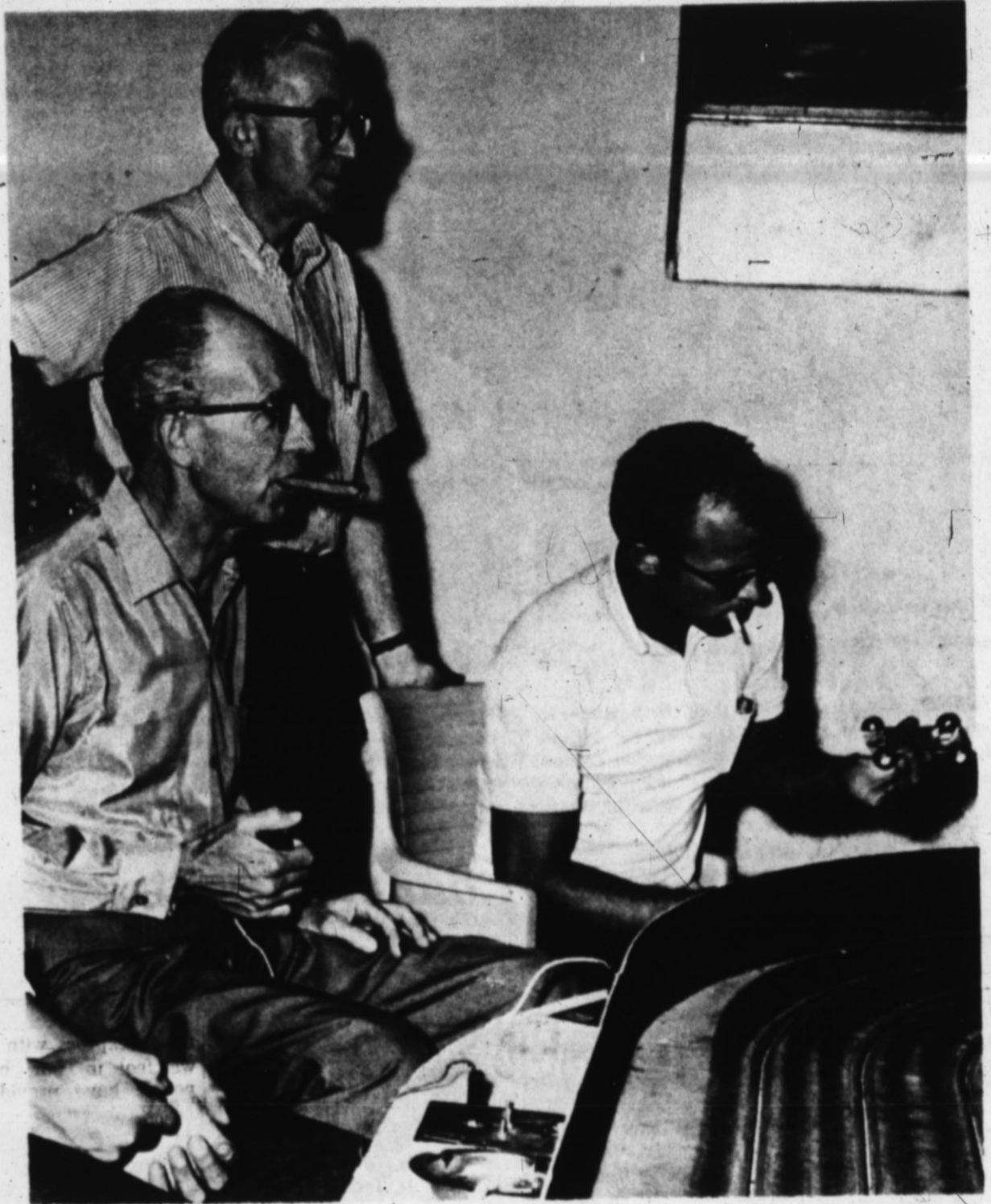
Furnishing their own cars and hand controls, lanes on the eight-lane racetrack can be rented for a dollar an hour. The sizable track fills a good part of the room — total racing length is 168 feet. The set up is about 51 feet by 18 feet.

Other similar race tracks are

in operation in Dimmitt and Plainview.

Opening at 1:30 every afternoon, Lucas says, there is no definite closing time — "just when everybody goes home." He also sells cars and accessories.

The model racers come in scales of 1/32 and 1/25; they are operated by electric motors.



**YOUNG AND OLD ALIKE**

County Judge H. C. (Hank) Williams watches his model racer round a curve.



**THE WORKING MEN**

These two youngsters are looking for trouble — on the track. Cars getting off course have to be replaced in their proper lanes.

## Courthouse Records

### Vehicle Registrations

Richard Willbank, 1957 International pickup; Herbert Mungia, 1958 Chevrolet; Carl Miller, 1956 Rambler; Leonard Click, 1965 Buick; W. E. Cox, 1963 Buick; Lloyd Newton, 1948 trailer; Wendell Mixson, 1965 Ford; Lloyd Newton, 1954 Chevrolet bus; Joe Morin, 1950 Ford pickup; D. L. Welty, 1965 Chevrolet truck; Oscar G. Rosas, 1954 Ford; Raul G. Barrera, 1959 Ford pickup; Eugene Stumpner, 1962 Ford; Maria Antonia Martinez, 1951 Plymouth; Charles Noutchens, 1964 Chevrolet pickup; A. L. Weaver, 1955 Chevrolet; Charlie Marchman, 1954 Ford; 7-9.

truck; Tiburcio C. Gonzales, 1964 Ford; Reynaldo L. Villarreal, 1959 Chevrolet; Franklin J. Jackson, 1957 Chevrolet pickup; Raymond Diez, 1959 GMC truck; Francisco Vuittonet, 1955 Olds; J. F. Messer Const. Co., 1952 Chevrolet dump body; Matias Rodriguez, 1958 Dodge truck; 9-12.

Ethel Wesson, 1963 Buick; Elias Alaya Jr., 1955 Chrysler; Robert M. Diller, 1955 Ford truck; B. J. Muse, 1965 Buick; W. B. Whitaker, 1965 Ford; J. D. Anderson, 1961 Ford; Bruce C. Rhodes, 1963 Ford; Clover Spraying Serv. Inc., 1948 Chevrolet pickup; Crescencio Mariscal, 1960 Plymouth; Santos Villarreal, 1961 Chevrolet; Arturo Florez, 1958 Dodge; Jacinto G. Conde, 1956 Chevrolet; 9-12.

Julia Mae DeLaGarza, 1957 Ford; Ladislao Perez, 1961 Ford; James T. Clarke, 1965 Chevrolet pickup; Damiah Villarreal, 1959 Plymouth; George K. Muse, 1965 Chevrolet; Jim Monroe, 1965 Chevrolet pickup; Santiago B. Delson, 1959 Ford; Gregorio Cantu, 1958 Olds; Evaristo Rinos, 1960 Mercury; Rosalio Falcón, 1959 GMC pickup; Daniel Garcia, 1959 Ford; Guadalupe Rivera, 1949 Ford pickup; T. F. Cox, 1962 Ford; 9-12.

## Farmers Need Midge Inspection

**COLLEGE STATION** — Texas farmers should start looking for signs of sorghum midge says Weldon Newton associate Extension entomologist, Texas A&M University. The small orange fly is best seen as it crawls over spikelets of young grain sorghum in early morning.

Destroying thousands of dollars of grain every year, midge is one of the most damaging insects attacking Texas grain sorghum. Usually farmers are unaware of midge until tell-tale "blighted" or "blasted" heads begin to appear. Then it is too late to attempt control, Newton adds.

He explains that sorghum midge, whose adults are about one twelfth of an inch long, overwinter as larvae in cocoons which are attached to spikelets of Johnsongrass. About the same

time that Johnsongrass begins to bloom the midge matures and flies to fields of grain sorghum where heads are beginning to emerge from the boot.

The females deposit their eggs on spikelets of young heads during a four to ten day period following booting. The eggs produce maggots that bore into and consume the internal portion of the seed.

The only economical way to control midge is by destroying the females before they deposit their eggs. This requires precise timing because it must be done during the four to ten day period when adults fly to the young heads.

Many growers choose to apply insecticides immediately after head emergence if midge damage occurred the previous year. Others prefer to inspect their fields and determine the need for treatment depending upon the number of adult midge among newly emerged heads.

"Research shows that best re-

## Community Sets Annual Reunion

The Progressive Community Reunion will be held at the Hereford Community Center at 10 a.m. Sunday, July 18. Plans for the fifth annual get-together have been formulated by Cecil Boyer, president, and Norma Tomberlin, secretary.

"The doors will be open by 10 a.m.," Boyer said, "but we don't expect much action until time to eat."

**COMMITTEE PLANS** include pictures of old timers, residents and community happenings. These will be shown with an over-head projector.

Singing will be led by Millard Gregory, Hereford farmer.

Mrs. Horace Hershey has been tentatively scheduled to conduct a memorial service.

**ALL RESIDENTS** and former residents of the Progressive Community are invited to attend and bring a basket lunch. Drinks will be provided.

At the conclusion of the program, election of officers for next year's meeting will be held. Visitors from New Mexico, Colorado, Oklahoma, and East Texas are expected, Boyer said.

## Telephone Books To Arrive Soon

"Copies of the Hereford telephone directory will be mailed to customers on July 18," Charles Sutton, Manager for the Southwestern Bell Telephone Company here said.

The cover will be of white stock, overprinted in brown ink. There will be 36 "white" or alphabetical pages and 116 classified or Yellow Pages.

Sutton said that almost 10,000 copies of the new directory have been printed but that not all of them will be mailed to customers at this time.

He explained that additional copies are always prepared to have on hand for new customers moving to this area and as replacements for books in heavily used locations such as public telephone booths.

**COOL, COMFORTABLE and Luxury Living . . .**

with many accented niceties featured.

Award Home - 116 Kinwood - Bob Pugh, Builder

Trade your present home-in on your **AWARD HOME**

**MARK IV REALTORS**

230 N. 25 Mile Ave EM 4-2220

**ATHLETE'S FOOT GERM HOW TO KILL IT. IN ONE HOUR.**

7-4-L. must stop the itch and burning or your skin back at any drug store. In 3 to 5 days, infected skin sloughs off. Then crack **HEALTHY** skin appears! **NOW** at **ROGERS DRUG COMPANY.**

**J. H. McCrary M.D.**

Announces The Opening Of His Office For The Practice Of Medicine & Surgery

907 Park Ave. Hereford, Texas

Office Hours: By Appointment

Telephones: Office — EM 4-1710 Res. — EM 4-0573

**BIG TIME WRESTLING**

**BULL BARN — FRI., JULY 16, 8:45 P.M.**

**4 - GREAT MATCHES - 4**

**6 MAN TAG TEAM MATCH**

**RICKY RAMERO** **YANKIE No. 2**  
**JOSE LOTHORIO** **IRON MIKE**  
**DORY, JR.** (vs.) **THE WRENCHES**

**Three Other Great Matches**

General Adm.	\$1.00
Ringside	\$1.50
Children	50¢

# Federal Aid Policy Talked

(Continued from Page 1)

will spend, whether we do or not," Clark said.

"As I said," Clark continued, "I have brought this up in order to find out whether the board is interested in pursuing these programs. . . if you are interested, we need to get started."

HE ADDED that the programs currently available cover a broad field. "For instance," he said, "several school systems — such as Lubbock, for example — have employed people with the sole duty of keeping up with the federal programs and how they may be applied locally."

Then came board president Bill Gentry's question: "What is the thinking of the board?"

Dr. A. T. Mims replied that he is "personally against participation in federal programs. It is hard to see how we could obtain the funds without corresponding control of the local education system."

HE WENT ON to say that if federal programs provide a means to improve the system without controls, "I would then be for it."

Board member Raymond White then pointed out that the local system has participated in federal school lunch programs for a number of years.

CLARK SAID that in the current budget local schools receive \$33,221 in commodities in addition to something like \$15,000 in funds for lunchroom operation.

"The reason I mentioned lunchrooms," White said, "is to point out that we are and have been using federal money."

Mims said that he realized that, "but I don't see how this thing can continue to increase without some problems."

GENTRY commented that federal money used in lunchrooms and in the vocational agriculture department here total some \$75,000 yearly.

Clark then explained that the funds are distributed by the state — Texas schools cannot do business directly with the federal government.

He added that "once you get into these federal programs you would be allowed to withdraw at any time you see fit. . . natural-

ly there are regulations involved but these at the present time are regulated by the state."

"Of course I want to do what is best," Mims said.

REFERRING to a provision of one of the programs Clark had described, Gentry reminded the board of the need for an additional school nurse. "We need another one, but there is no money available (in the local budget)." Clark had indicated that one of the programs might help along that line.

Kelly commented that "on science, math, and several other (federal) programs," the local district merely makes its requests and the funds are systematically approved, for the most part.

BOARD member Hugh Clearman commented that "I am about as prejudiced against federal aid as anyone can be, but I don't know whether it would be fair or not to overlook them."

"Taxpayers here are paying for these programs whether or not we participate in them, so I don't see anything we can do but take advantage of them."

Clark then commented, "When you get to this table, there is no room for personal prejudice."

"I am like Dr. Mims. . . I hate to go into this further, but it looks like we will," commented board member L. B. Russell.

"IT IS possible that we can provide better facilities by participating in them and I think we should do all that we can to improve schools," said board member Labry Ballard.

He pointed out that he had taken the same stand three years ago when the question of requesting additional federal aid was brought up.

White then commented, "I, too have mixed emotions. . . I think we all feel that we can get things done cheaper by using local funds when we have them and I am basically against federal aid, but I think the program should get its share of that which is available."

Olin Parris said that he felt the drawback to federal programs is "you're going to pay into them far more than you get back."

AT THIS point, Clark commented, "With our back in the corner like we are now (concerning finances), we would miss a lot of money that we could use."

White then said, "If I had a chance to vote on federal aid to schools, I would vote against it and I think the rest of us would too."

"BUT THE voting stage is over. . . we've got it and it's merely a choice of whether we want to take it. . . it's there," Parris said.

"We have the opportunity to get things we need — we have seen Johnny's figures and there is no way to get them without ballooning (local) taxes," Ballard opined.

"I THINK pride and independence are fine, but I am not sure they deserve first place in this instance," he added.

Mims then asked Clark, "What portions of this do you think we should use?"

Clark replied that funds are now available for such things as additional teachers for students in low-income brackets, library improvement, and additional teaching aids.

"IF YOU take the entire budget, there is no area which could not be improved with more money," the superintendent asserted.

"But I want you to understand that my sentiments are with the board. . . whatever you decide will be ok with me."

GENTRY THEN asked the superintendent, "What do you recommend?"

Clark answered that he felt if additional funds are not provided "this system will find itself in a position of being unable to compete with other schools for teachers, for instance."

"We could get to the point where if we don't take advantage of outside money we will have to spend all of our local funds on the program and would be unable to pay teachers above state schedules as we are doing now."

He explained that the system now has upwards of 200 employees who are paid an average of \$600 from local funds in addition to their state schedule.

tion to their state schedule.

Clark also said provisions for guidance and counseling programs "should not be overlooked," pointing out that one person is now used for counseling some 800 students in high school.

"I DON'T think there is a question that something should be done there," he commented.

He went on to comment that although more money does not necessarily mean improved education, "There is certainly a correlation between education and money."

Gentry then asked Clark if he needed a decision soon concerning the issue.

Clark replied that there is no time limit on the programs, "it's just a question of when you want them."

Gentry then asked the board what it wished to do.

PARRIS MOVED that the matter be tabled till the next meeting "in view of the comments that have been made."

Clark then said that a vote on the matter would not be necessary. "We are already in federal programs and I assume we will stay in them. . . I merely want to know to what extent you want us to explore other areas."

Clearman then said, "I don't mind letting you know how I feel. Although I do have misgivings about federal aid, I think we have reached the point where all we can do is get everything coming our way and take advantage of it."

Gentry, White, and Ballard then said that they agreed with Clearman.

Clark emphasized that he and Kelly would report findings to the board before applying for federal funds after studying possibilities available.

# Heath Receives Divinity Degree



JACKIE HEATH

FORT WORTH — Jackie L. Heath, husband of the former Ella Sue Thomas, 1000 Union Ave., Hereford, will receive the Bachelor of Divinity degree from Southwestern Baptist Theological Seminary here July 23.

Southwestern Seminary, largest evangelical seminary in the world, annually graduates approximately 500 students in the fields of theology, church music and religious education.

Seminary president Robert E. Naylor will present the degrees and diplomas to the 614 graduates at the summer graduation exercises.

# VFW Auxiliary Receives Awards

Awards won by Ladies Auxiliary to VFW Post 4818 at the recent Texas Department convention were reported at the Auxiliary meeting Friday by Mrs. Ada Hollabaugh, president, who was the Hereford delegate to the state meeting in El Paso.

A loving cup was presented to Mrs. Hollabaugh as an award for the Auxiliary's record of a 50 per cent membership increase the past year. The Hereford group was given Honor Roll rating for its overall report of activities.

Meeting dates of the local

Auxiliary have been changed from Friday to the second and fourth Thursday evening of each month. The next meeting will begin at 8 p.m. July 22. Members planned a party at the Veterans Hospital in Amarillo for the first Friday evening in August.

Mrs. Loymarie Burke was welcomed as a new member.

The Tennessee Walking Horse never trots and is seldom trained to jump. The horse's distinctive feature in motion is a prancing attitude — head nodding smartly in time with its feet, ears snapping, hoofs beating a rhythm, teeth often clicking like castanets.

# Four Hospitalized Following Crash

Four persons were hospitalized with injuries resulting from a two car accident Saturday night 11 miles north of Dimmitt on Highway 385. A fifth person was treated and released. The accident involved two cars just after 10 p.m.

Mrs. Dick Oakes, Hereford, was attempting to pass a truck when the left front of her car collided with the left front of a car driven by Salvatore Mirelez also of Hereford, investigating Highway Patrolmen from Dimmitt said.

Sixto Cordova, a passenger in the Mirelez vehicle, received chest bruises but was not hospitalized.

The accident victims were taken to Deaf Smith County Hospital by Gilliland ambulance except the smaller Oakes girl. She was taken to Hereford by a Highway Patrol car after an ambulance from Dimmitt had motor trouble at the scene of the accident and failed to start.

# Amherst Services Set For Today

Funeral services for Mrs. T. A. Steddum will be this afternoon at 2 p.m. in Amherst at the Church of Christ.

Mrs. Steddum, 84, was the mother of Mrs. W. T. Vernon, Hereford. She died Wednesday morning at her home in Amherst.

She is survived by four daughters; Mrs. Vernon, Mrs. Stella Davis of Southgate, Calif., Mrs. Sybil Barnett of Amarillo and Mrs. Ethel Warkintine of Houston and one son, Clarence Steddum of Southgate, Calif.

MRS. OAKES suffered a fractured right arm and multiple bruises. Two daughters of Mrs. Oakes were with her, Mary Sue, 8, and Teresa, 9. Mary Sue received lacerations of the mouth and lost several teeth attending doctors said. Teresa is described as having fractured ribs and possible intra-abdominal injuries.

Mary Sue was released from the hospital Monday.

MIRELEZ RECEIVED a broken ankle and multiple bruises. Attending doctors said he was transferred from Deaf Smith Co. hospital to Northwest Texas in Amarillo. He also had lip, nose and knee lacerations as well as multiple bruises.



**WINNERS NAMED** — Winners in Hereford's nationally sanctioned Bridge Tournament were named late Sunday night. Shown at the community center after trophies were awarded are front row, left to right: Mrs. Max Leon, Mrs. F. W. Hill, Mrs. Bill Dye, and Ann C. Woodward. Back row, left to right are Ed Theus, Payne Harrison, Mrs. Jack Vick, Mrs. John Emery, Butch Adams, and Gaylor Kasie.

# Bridge Tourney Winners Listed

Winners in the Hereford Contract Bridge Tournament were announced late Sunday night by John Emory, director. Overall winner for the three-day affair was Ed Theus, Oklahoma City.

Taking honors in masters pairs in Hereford's nationally-sanctioned regional duplicate bridge tournament were Theus and Gaylor Kasie, Tucson.

**OTHERS WINNERS** in the Hereford tournament which attracted players from Oklahoma, Texas, Arizona and New Mexico even though it was termed a sectional tournament were:

Mixed pairs: Mrs. Al Graham, Amarillo, and Theus;

Women's pairs: Mrs. Francis Hill and Mrs. Sue Emory, Wichita Falls;

Men's pairs: Theus and Kasie;

Team of Four: Mrs. Jack Vick, Amarillo, Mrs. Russell Carver, Mrs. Hill and Mrs. Emory;

Mainnutrition pairs: Mr. and Mrs. W. R. Jenkins, Amarillo;

Salad Bowl pairs: Mrs. E. A. Brown, Clovis; Mrs. Zalle Hardwick, Clovis;

Early Bird pairs: Ann Woodward and Mrs. Bill Dye;

Sugar Beet pairs: Mrs. Max Leon and Mrs. J. D. Neill;

Open pairs: Payne Harrison, Dallas, and Butch Adams, Lubbock (defending champions of 1964).

Among those playing in the tournament was Hereford's only

# Hospital Notes

**Patients in Hospital**  
Debbie Wilson, 806 W. Jones; Barbara Kaye Ward, Rt. 1, Anna Castillo, Friona; Mrs. Jack Drye, 402 Miller; Mrs. Alfred T. High, 307 Knight; D. H. Perrin, 219 N. Texas; Mrs. Anna Holman, Rt. 4; Mrs. Ruben B. Guevara, 309 Lake.

Mrs. Elbert L. Vance, 135 Beach; Mrs. Richard Ray Oakes, Box 326; Mike Pugh, 805 Brevard; Teresa Ray Oakes, Box 326.

**Patients Dismissed**  
Mrs. E. S. Ireland, Eulalia S. Martinez, Mrs. Majin Garza, James M. Parker, 7-9.

Mrs. Robert N. Lohr, Mrs. Donald K. Ney, Terri Townsend, Steven Paul Wilson, 7-10.

Mark Travis Denson, Jimmie Wilson, Mrs. Paul M. Herrera, Salvador Mirelez, Mrs. Guadalupe Gamino, Mrs. Gary D. Brooks, Mrs. Carl J. Parks, Mrs. Luciana G. Garza Jr., George F. Whitaker, 7-11.

Mrs. Joe E. Andrews, Mrs. Wilburn E. Axe, Mary Sue Oakes, Mrs. Larry Rickman, Mrs. Margarito Lopez, 7-12.

Mrs. Roy Phillips, Mrs. B. R. Averett, Felix Vasquez, Mrs. Charles Gordon Davis, 7-13.

Mrs. Raymond Pete Gerk, Jo Jahns, Elmer D. Cook, Mrs. Jennie E. Clark, 7-14.

Abraham Lincoln was postmaster of New Salem, Ill., from 1833 to 1836.

# Letter To The Editor

Dear People of Hereford,

After having been more than a week away from home, we have been able to think about this past year.

It really seems improper to try to express with words what we feel in our hearts. You people have provided us with hospitality, care, teaching and outstanding relationships that we could not forget.

During this year we have come to change our opinions and belief. Today we can very truly say that we are going back home knowing much more about the United States — and more particularly about Texas, understanding you better, knowing our own countries as seen from the U.S., being less prejudiced, and more especially possessing a stronger and more definite philosophy of life.

We sincerely wish we could write to each of you, but as you realize it, it is just impossible.

May you understand that the "thank you" we greet you with today, directly comes from the bottom of the hearts of two A. F. S. students to whom HEREFORD is and will remain forever THE town in the United States of America.

Sincerely yours,  
Rene Batard  
Michiyo Wakai

# B&PW Members Plan Conference For September

Five members of Hereford Business and Professional Women's Club attended a planning meeting in Amarillo Sunday afternoon in preparation for the annual District 9 Conference to be held in Lubbock Sept. 25-26.

Kathleen Baker, president of the Hereford Club, was appointed to serve as teller, and Ruby Lee Hickman, immediate past president, on the credentials committee for the district meeting, which will have its headquarters at Holiday Inn.

Katie Glasscock of Shamrock, District 9 president, conducted the planning session in the hospitality room of the North State Bank.

Amarillo members were hostesses at a tea afterward, honoring Bonnie Merriman of that city who was elected first vice president of Texas Business and Professional Women's Clubs at the recent state convention. She has held other state and district offices and has been editor of The Texas Woman, club magazine, through the past administration.

From Hereford, Avis Northcutt, Ursalee Jacobsen and Irene Ballard went with Mrs. Baker and Mrs. Hickman.

**Buried cable:**  
**\$10,000,000 in new life insurance for your telephone this year**



Put telephone wires underground and you've put them in a safe place. Safe from wind, rain, hot weather, cold weather, stormy weather. Safer from the slow death of ordinary weathering. Safer from man-caused damage, too. All around safer from the kinds of trouble which most often affect the talkability, hearability and dependability of your phone service.

That's why this year Southwestern Bell is spending \$10 million burying hundreds of additional miles of telephone cable underground. In effect, buying life insurance for your telephone service.

There's another tangible benefit, too. Because of this buried cable construction program, new jobs will be created. Some in the telephone business (which already has 52,179 persons on the payroll), but most important, an estimated 500 new jobs among the hundreds of firms which sell supplies, services and materials to the telephone company.

This is a 1965 communications bonus from Southwestern Bell. Part of a massive construction effort (our biggest ever) to make the world's best telephone service even more useful, dependable, convenient and valuable seven days a week, good weather and bad.



# Phone EM 4-2030 WANT ADS Phone EM 4-2030

**Lions Club**  
meets each  
Wednesday, 12 Noon  
Hotel Jim Hill

**Kwanis Club**  
Thurs. Noon  
IOOF Hall  
207 E. Sixth

**Hereford Rotary Club**  
meets every  
Monday at 12:05  
FLOYD'S RESTAURANT

**STATED MEETINGS**  
Second Monday  
  
Thurs.  
Practice  
  
Troy Stambaugh, Sec.  
Wm. S. Powell W. M.

**OUR SERVICE DEPARTMENT**  
is equipped and staffed to give you the service you are entitled to.  
  
We Appreciate Your Business  
• Buick • Rambler  
• Johnson Boat Mtrs.

**KINSEY - OSBORN**  
Motors  
142 N. Miles EM 4-0990

**DENTON PARK**  
Development and Construction  
  
North of Aikman School

**HEREFORD'S FIRST**  
• PLANNED COMMUNITY  
• SWIMMING POOL  
• AND PARK NOW OPEN  
**LADIES NIGHT**  
Thursday  
7 p.m. — 9 p.m.  
  
Future Shopping Center

**TONY RAVIZZA**  
CUSTOM BUILDER  
Office: 16th & Blevins  
EM 4-1350

**PERSONALIZED SERVICE IN ...**  
  
EM 4-3552  
West Side of Hereford  
Highway 60

**PLANNING DESIGNING FINANCING**  
  
GENERAL INSURANCE  
HOMES THAT WILL OUT  
LAST YOUR MORTGAGE  
LET US PLAN WITH YOU

**FOR SALE Miscellaneous**  
GENERATORS and starters for cars and trucks. Hereford Wrecking Co. Phone EM 4-0580. T-1-12-18-tfc

SOWS AND GILTS for sale. Farrow soon. Across road from Sugar Mill. Phone EM 4-1951. W. D. Nafzger. B-1-17-24-tfc

FOR SALE or Trade: Standard size, excellent condition, Higgins Pool Table. Cost \$465.00 year ago. Will sacrifice. EM4-0235. B-1-18-26-TFC

BOAT, MOTOR, trailer and pick-up. All for \$400.00. 607 Irving. B-1-10-27-4C

FOR SALE 10x50 three bedroom trailer and 14x24 office. Phone EM4-3135. B-1-11-27-TFC

ALFALFA HAY. See Charlie Holt, 4 1/2 miles west on Clovis Highway. EM 4-0402 or 289-5599. B-1-14-8-110p

**INSULATION**  
For new and old homes  
SHEET METAL NEEDS  
WALKER SHEET METAL  
305 E. 5th EM 4-0788  
B-1-12-tfc

FOR SALE 10x53 trailer house. 1964 Country Squire Station. Phone EM 4-3135. B-1-12-25-TFC

FOR SALE Electrostap Office Copier. See B. F. Cain, County Clerk, Deaf Smith County. B-1-14-1-tfc

**MAKE A BERNAT'S**  
Fluffi Mohair plus coat. Special \$9.95 complete kit. Many colors to select from.  
DAN'S  
5th Ave. Canyon, Texas  
B-1-52-10c

**REPOSSESSED LATE model**  
Singer sewing machine in 5 drawer walnut cabinet; will zig-zag, blind hem, embroider patterns. \$27.50 cash or 6 payments at \$5.05. Must have good credit. Write Credit Department, 1114 19th Street, Lubbock, Texas. B-1-36-2-TFC

**MEAT**  
Specializing in  
CUSTOM SLAUGHTERING  
WHOLESALE — RETAIL  
**HACKER — JESKO**  
Rt. 3 — Hereford  
EM 4-3390

**HEREFORD BAKERY**  
519 Park Ave. EM4-0177  
HOME OF  
Deaf Smith County  
Bread and Pastries

**BOYD'S HUMBLE SERVICE**  
COMPLETE CAR CARE  
**EM 4-1110**  
741 W. 1st EM 4-9056

**BIG RED BARN**  
We buy sell trade for anything of value.  
  
USED FURNITURE  
Appliances and Junk  
  
EM 4-3552  
West Side of Hereford  
Highway 60

**BILL'S ELECTRIC**  
ALL TYPES  
ELECTRICAL WORK  
PHONE EM 4-3921  
BILL'S ELECTRIC

**GLASS IS OUR BUSINESS**  
Call Us For All Your Glass Needs  
**HEREFORD GLASS CO.**  
1302 Park Ave. INC. EM 4-2652

**SOUP'S ON**, the rug that is, so clean the spot with Blue Lustre. Rent electric shampooer \$1.00. Hereford Hardware. B-1-19-2-2c

**AKC WHITE toy poodle puppy**. 518 Star. B-1-10-2-4C

**TOY FOX Terrier**, 5 months old, male. Has had all baby shots and some permanent shots. Registered with United Kennel Club, Inc., and is a pedigree. EM4-0032. B-1-27-28-4C

1955 35x8 Lone Star house trailer. \$1500.00. EM4-2229 evenings. B-1-10-28-2P

Clothing  
Potato Belts  
Gas Hot Plates  
Key Machine  
Two Wheel Trailers  
TV Antennas  
Watches and Guns  
**ASHER'S TRADING POST**  
110 West First  
B-1-28-8c

**SPINET PIANO**  
Reliable family can arrange most attractive purchase of fine Spinet Piano. Small monthly payments. First payment in Sept. Write at once. McFarland Music Co.  
200 S. Main, Elk City, Okla.  
B-1-28-2p

**FOR SALE**  
17' Scott boat with top, horn, spot light, and running lights. New 90 HP Johnson all Electric Super quick motor. Tandem Easy Load trailer, life jackets, skis, and ski ropes. \$1550.00. See at O&M Package Store or call 763-3516 in Clovis, New Mexico. B-1-28-3c

**NEED \$5,000 to \$40,000 worth of equipment?** Investigate our leasing plan before you finance any other way. Mark IV Realtors, EM 4-2220. B-2-21-14-tfc

**DAHLMAN** self propelled potato harvester. Used 300 hours. Otto Steinberg, Phone CA 4-4450, Plainview, Texas. B-2-14-23-tfc

**WE ARE DEALERS**  
for Peerless Grain Rollers and Feeding Equipment  
**DAVIS IMPLEMENT**  
144 W 2nd EM 4-2811  
B-2-18-tfc

**TOP QUALITY**  
Irrigation Dams as low as \$3.25  
**DAVIS IMPLEMENT**  
144 W 2nd EM 4-2811  
B-2-18-tfc

**FOR SALE Automobiles**  
  
**MILBURN MOTOR COMPANY**  
We Pay Cash For Used Cars  
225 N. Sampson  
Phone EM 4-0077  
B-3-33-TFC

**FOR SALE 1959 El Camino** Pick-up and 1956 Chevrolet pick-up. EM4-3217. B-3-10-2-tfc

64 BEL-AIR Chevy with air conditioner. Can be seen 108 Aspen. B-3-11-25-tfc

**FOR SALE 1961 Volkswagen** van. In good condition, new motor. Make excellent family camper or bus. Contact Brown's Sheet Metal. B-3-20-2-4C

**FOR SALE: 1960 Renault**. Clean, would make good work car. Make offer. Call Larry Fuhrmann at EM 4-2030 or EM 4-0799. B-3-19-1-tfc

**PHILLIP "66" PRODUCTS**  
**EAST SIDE "66"**  
Rocky Stewart  
1303 E. 1st. EM 4-2644

**GLASS IS OUR BUSINESS**  
Call Us For All Your Glass Needs  
**HEREFORD GLASS CO.**  
1302 Park Ave. INC. EM 4-2652

**FOR SALE 1960 4-D HDT Buick** Electra W/power, air. Priced to sell. Call EM4-2033, Private owned. b-3-16-26-TFC

**REAL ESTATE For Sale Or Trade**  
  
\$ \$ \$ \$ \$  
**ONE MILLION DOLLARS**  
To lend on irrigated land in Deaf Smith, Castro and Packer counties. And... We have expanded our territory to include the upper Panhandle.

**PRUDENTIAL**  
America's Largest Farm Lender!  
**SAM NUNNALLY**  
EM 4-0555 EM 4-2814  
**LONE STAR AGENCY**  
B-4-11-10-4p

**ASSUME LOAN**. Small Equity. Three bedroom, 1 1/2 baths, stove, disposal, fireplace, air conditioned, fenced. \$92.75 month. Call EM 4-1819. B-4-50-tfc

**TWO HOUSES** to be moved. See Credit Union, EM4-1888. B-4-10-28-4C

**Perfect 320 Acres**  
2 wells, 8" water, 200 feet water below bowls. Land is choice, lays perfect, ideal vegetable farm. Close in. North and east of Hereford.

**Hudson Realty Co.**  
815 John Doe Clovis, N.M.  
Phone 763-6860  
B-4-28-3c

**SAVE \$900.00**  
Immediate Possession  
3 Bedroom, 1 1/2 file baths, Air Cond.; Brick, 2 car garage, only \$750. & assume loan, no closing or insurance costs. See at 239 Beach, call Paul B. Schroeter, EM 4-1504 EM 4-0035. B-4-28-tfc

**RENTERS WANTED!**  
Color steel buildings built to your specifications, 2 acre lots, located north of B & B Oliver, Patterson Chemical and Merchants Fast Freight. B-4-1-tfc

**SOUTH PARK INDUSTRIAL SUBDIVISION**  
Sam Nunnally  
EM 4-0555 — Days  
Home — EM 4-2814  
B-4-1-tfc

**THREE BEDROOM BRICK**  
\$19,500 with two baths, double garage, refrigerated air, carpeted, fenced back yard, all electric kitchen. Will sell or trade for farm equipment. B-4-1-tfc

**THREE BEDROOM STUCCO**  
One bath on paved street. Close to school. \$8950 with no down payment.  
**FARMS**  
Have on short half. Good water. Must sell so make offer. Buy a quarter and crop 1/4 with six wells. Lake pump at \$425 per acre. Fair improvements.

**CARTEL REAL ESTATE**  
206 North 25 Mile Ave.  
Phone EM 4-0944  
B-4-2-3c

**FULL BLOCK** on Interstate 40. Excellent motel location. For sale or trade. See Paul Hamrick at 703 W. First. Phone EM 4-9027. B-4-2-4c

**STORAGE**  
Space is now available for anything from a trunk to a truck.  
Call  
**EM 4-1818**

You've Never Seen Such Thorough Service  
**STOP IN SOON**  
Phillip "66" Products  
**EAST SIDE "66"**  
Rocky Stewart  
1303 E. 1st. EM 4-2644

**GLASS IS OUR BUSINESS**  
Call Us For All Your Glass Needs  
**HEREFORD GLASS CO.**  
1302 Park Ave. INC. EM 4-2652

**FOR SALE**  
**TO SETTLE ESTATE** — 640 acres grass land, 2 miles South of Texline; part minerals; house, wells, sheds, etc. \$135.00 per acre, terms. Floyd H. Richgrds, Box 1328, Dalhart, Texas. B-4-2-2c

**TWO 4 BDRM. HOMES**  
NW Hereford, New Brick, dbl. garage, den & built-ins. See us for details.  
All brick, out of city limits, priced below the market at \$14,700.00.

**YOUR CHOICE \$300.00 DOWN**  
1. 2 houses on one lot \$70.00 per month.  
2. Duplex on one lot \$70.00 per month.  
3. 2 bdrm. frame \$65.00 per month.  
**2 BDRM., BRICK, AVE. C**  
Large rooms, beautiful lawn, single garage. Call us for an appointment.

**COMMERCIAL LOTS**  
N. Hwy. 385, 150 ft. 605 E. Park Ave., 95.42 ft. 311 S. 25 Mile Ave., 88.71 ft. West Park, large corner lot. Good selection of other locations to choose from.  
**RED RIVER CO., TEX.**  
2100 acres, 115 A. timber, bermuda, lespedeza and other grasses, recommended to carry 500 mother cows, price \$175.00 per acre, loan \$75.00 per A., will trade equity for irr. farm on Plains.

**SAN LUIS VALLEY, COLO.**  
660 acres, all cul., 3-10" wells, price \$200.00 per A., loan \$66,000.00, will trade equity for farm or city property.  
80 acres, all cul., 1-6" well, 30 wheat, 50 milo, near Hereford, will trade for house in town or other property as down payment.  
40 acres on paving, 8" well, will trade equity for large farm.

10 acres near town on paving only \$1,500.00 down, 10 yearly payments on bal.  
5 acres, near Hereford, out of city limits, shed and lots, 1/2 block off Hwy. Price \$3,500.00.  
We have trading property. Why not trade what you have for what you want?

**HAMBY REAL ESTATE**  
S. Hwy. 385, Hereford, Texas  
EM4-3566  
J. M. Hamby EM4-2553  
Gerald Hamby EM4-1534  
Durward Hamby EM4-3466  
Buddy Rogers EM4-2150  
B-4-27-tfc

**FOR SALE**  
215 Star Street. Two bedroom frame residence, attached garage. 60 foot lot. \$10,000.00 cash. Good loan available. See or call  
**JACK R. COWSEY**  
106 W. Bedford, Dimmitt, Tex.  
Phone 647-3221, 647-3155  
B-4-1-4c

**Reliance HOMES**  
FOXWORTH GALBRAITH  
NO DOWN PAYMENT  
NO CLOSING COSTS

**WHY PAY RENT?**  
Homes 100% Financed  
1, 2 & 3-bedroom homes. Payments \$38 to \$89 on your location or ours. Will sell to Spanish, Colored or White. Good credit not required.  
Call 894-5769 Collect  
Levelland, Texas

**Colorado Rod-Weeders**  
PTO or hydraulic drive.  
Cisco Rod - Weeders with hydraulic drive.  
Dempster Planters, Cultivators and Rotary Moes.  
Lilliston Shredders & Blades.  
See the new M-F Diesel tractors. We have several GOOD used Combines.  
SEE:  
**LESLEY MOTOR CO.**  
For the finest in farm machinery.  
West Hi-way 60  
Phone EM 4-1600

**DEMAND**  
**JUSTICE**  
Main and Highway 60 Virgil Justice

**HOMES**  
4 bedroom, 2 bath, brick home in Northwest Hereford. Double garage, dishwasher, disposal, air conditioned, carpeted, near schools. Small equity, and assume payments. F-408

4 bedroom, 2 bath, all brick and masonry constructed. Full basement; small apartment in back. Refrigerated air, carpeted and draped. Large double garage with carport. Beautifully landscaped. A corner lot near schools. H-407

3 bedroom, 1 1/2 baths, outside city limits. Large den, barbecue pit, large tool shed. \$14,800. H-379

3 bedroom, 2 bath, with five acres. One mile from town, on pavement. Corral, fenced, built-ins, carpeted and draped. H-376

As low as \$350 down will buy a three bedroom home in restricted Bluebonnet Addition, built to your specifications.

**FOR SALE** Three bedroom brick house, double garage, 200 Sunset Drive. EM4-3255. B-4-12-2-6C

**NICE 'N EASY**  
Well located 3 bedroom, carpeting, evap. air, built-in oven and range, patio and fenced yard. Loan is established. Payments \$82.00 per month.  
**TRADE**  
Nice 3<sup>rd</sup> bedroom brick, tile bath, hardwood floors, some carpeting, large kitchen & dining area. Will consider trade for equity of boat, trailer, or car.  
**LARGE FAMILY???**  
Lovely ranch style, 4 bedrooms, 2 1/2 baths, country kitchen, fireplace, spacious living room, separate dining, wonderful arrangement of built-in, desks, cabinets & storage plus huge recreation room and covered patio. Shown by appointment.  
**HI-PLAINS LAND COMPANY**  
600 West 1st EM 4-0713  
G. S. Wheeler EM 4-3798  
Gwen Leatherman EM 4-1650  
B-4-1-tfc

**FOR RENT**  
New two bedroom duplexes, 500 block Avenue H and G. D & R BUILDERS  
EM 4-3780  
I. D. Rhodes 289-5217  
Nell Spradley EM 4-1813  
B-5-47-TFC

**FOR RENT** Business Building 116 Avenue K. Phone Kenneth Gooch EM 4-3355 or EM 4-2572. B-5-16-35-tfc

**BUILDING FOR RENT**  
603 Main - Carpet - Drapes - Refrigerated Air - Worlds of Parking.  
**SAM NUNNALLY**  
Lone Star Agency  
601 Main  
EM 4-0555 EM 4-2814  
B-5-2-tfc

**CUSTOM FEEDING**  
Growing - Finishing Rations  
**CHARLIE STONE**  
EM 4-2224

**Lee Carter**  
**Jack Kirksey**  
  
GENERAL CONTRACTING  
Phone EM4-1732  
EM4-0528

**Office Space for rent**. Mark IV Realtors, EM4-2220. B-5-10-29-tfc

**NORTHWEST MOBILE LODGE**  
Mobile Home spaces. 42'x70'. One block north of King's Manor. Call EM 4-1108 Jesse Scott or EM 4-1277. B-5-11-tfc

**FOR RENT**  
215 Star Street. Two bedroom frame residence, attached garage. 60 foot lot. \$10,000.00 cash. Good loan available. See or call  
**JACK R. COWSEY**  
106 W. Bedford, Dimmitt, Tex.  
Phone 647-3221, 647-3155  
B-4-1-4c

**Lee Carter**  
**Jack Kirksey**  
  
GENERAL CONTRACTING  
Phone EM4-1732  
EM4-0528

**Colorado Rod-Weeders**  
PTO or hydraulic drive.  
Cisco Rod - Weeders with hydraulic drive.  
Dempster Planters, Cultivators and Rotary Moes.  
Lilliston Shredders & Blades.  
See the new M-F Diesel tractors. We have several GOOD used Combines.  
SEE:  
**LESLEY MOTOR CO.**  
For the finest in farm machinery.  
West Hi-way 60  
Phone EM 4-1600

**WHY PAY RENT?**  
Homes 100% Financed  
1, 2 & 3-bedroom homes. Payments \$38 to \$89 on your location or ours. Will sell to Spanish, Colored or White. Good credit not required.  
Call 894-5769 Collect  
Levelland, Texas

**DEMAND**  
**JUSTICE**  
Main and Highway 60 Virgil Justice

**HOMES**  
4 bedroom, 2 bath, brick home in Northwest Hereford. Double garage, dishwasher, disposal, air conditioned, carpeted, near schools. Small equity, and assume payments. F-408

4 bedroom, 2 bath, all brick and masonry constructed. Full basement; small apartment in back. Refrigerated air, carpeted and draped. Large double garage with carport. Beautifully landscaped. A corner lot near schools. H-407

3 bedroom, 1 1/2 baths, outside city limits. Large den, barbecue pit, large tool shed. \$14,800. H-379

3 bedroom, 2 bath, with five acres. One mile from town, on pavement. Corral, fenced, built-ins, carpeted and draped. H-376

**THREE ROOM** Apartment for rent. Private bath, private entrance. 711 East Third. Call EM 4-3851 or EM 4-1496 after 5:00. B-5-18-47-tfc

**THREE BEDROOM** unfurnished house. Call EM4-1818 or EM 4-1673. B-5-10-2-TFC

**WANTED TO RENT** fairly nice house in country. Call EM4-3803. B-5-10-2-6-TFC

**FOR RENT** Two bedroom modern unfurnished house. Bills paid. \$65.00 month. Rear of Jack Bradley residence. Phone EM4-1111. B-5-18-27-TFC

**FOR RENT** Two bedroom furnished apartment. All bills paid. EM4-3859. B-5-10-27-4C

**FOR RENT**  
New two bedroom duplexes, 500 block Avenue H and G. D & R BUILDERS  
EM 4-3780  
I. D. Rhodes 289-5217  
Nell Spradley EM 4-1813  
B-5-47-TFC

**FOR RENT** Business Building 116 Avenue K. Phone Kenneth Gooch EM 4-3355 or EM 4-2572. B-5-16-35-tfc

**BUILDING FOR RENT**  
603 Main - Carpet - Drapes - Refrigerated Air - Worlds of Parking.  
**SAM NUNNALLY**  
Lone Star Agency  
601 Main  
EM 4-0555 EM 4-2814  
B-5-2-tfc

**CUSTOM FEEDING**  
Growing - Finishing Rations  
**CHARLIE STONE**  
EM 4-2224

In Hereford  
**E. B. BLACK CO.**  
**FLOOR COVERING SPECIALISTS**  
• CARPET • LINOLEUM  
• CABINET TOPS • 9' & 12' Felt Base  
  
QUALITY MERCHANDISE  
EXPERT WORKMANSHIP  
2nd & Main Phone EM4-0055

**MARK IV REALTORS**  
"HALLMARK OF SERVICE" **MLS**  
INC. 230 N. 25 MILE AVE. EM 4-2220  
  
HOMES  
Three large bedrooms. 1700 sq. ft. brick in northwest Hereford with built-ins; fence, carpet, drapes, covered patio, central air conditioning, quarry tile in entrance halls and baths. Only \$20,000. Call now for appointment. H-378  
Three bedroom brick, 1 1/2 baths, at 423 Ave. J. for only \$14,900. Call for details. H-377  
1700 square feet of living area. Three bedroom with 1 1/2 baths. Built-ins. Located in Northwest Hereford. Only 18,500. Call for an appointment. H-383  
  
FARMS  
Ten acres with some improvements north on Hwy. 385. \$10,000, terms. F-112  
  
EVENING & SUNDAYS  
Oliver Street EM 4-2857 Francis Hardwick EM 4-2241  
Mrs. Shelby Rogers EM 4-3266 Harold Rudd 289-5639

**THE MEN WHO KNOW**  
Mike Justice Res. EM 4-0544  
Ralph Owens Res. EM 4-2560  
Frank Wiginton Res. EM 4-2028  
  
WE MAKE FARM LOANS  
960 acres at Vega. 700 acres allotments. Test hole privileges. \$200 per acre, or will trade. F-454  
950 acres. Five 8" wells. 775 acres allotments. Underground tile. Owner will carry paper on this farm, with adequate down-payment. F-445  
630 acres with three 8" wells, in excellent water area. Large 3 bedroom brick home F-437  
1599 acres at Nara Vista; New Mexico. One 6" well. \$80 per acre. 29% down. Three windmills. F-436  
640 acres. Two 6" wells on natural gas. Two bedroom home. \$275 per acre. 29% down, carry balance at 6%. F-400  
640 acres at Black Texas. Four 8" wells. Two miles underground tile. Two bedroom home. \$500 per acre. Fully allotted. F-402



**Hereford Insurance Agency**  
To be sure! Don Baugous — Manager EM4-0650

Classifieds...

SPECIAL SESSION REJECTED

New Taxes Are Forecast For Texas In 1967

7. Dressmaking-Ironing

WANT TO do ironing in my home. Phone EM4-0511. B-7-10-27-4C

WANTED IRONING to do in my home. 336 Ave. C. EM 4-0187. B-7-10-2-2C

WANT TO do sewing and ironing in my home. EM4-3709. B-7-10-28-2C

WILL DO ironing in my home. EM4-0093. B-7-10-28-4C

8. HELP WANTED

FULLER BRUSH CO.

Has local route openings in the following areas. Hereford, Friona, Bovina, Clovis, For mature married man or woman, 25 to 45, with car. \$100 a week average to start. Permanent, secure. Fringe benefits. Some part time opportunities in the same areas. For interview appointment, See local dealer Glenn Williams, 1400 3rd. Ave., Canyon, Texas or write 1624 Jordan, Amarillo or phone FL 6-5663. B-8-40-TFC

HELP WANTED: Journeyman electrician. Apply Kelley Electric. Phone EM4-1345. B-8-10-28-TFC

MATURE EXPERIENCED woman to care for 3 children in my home. Must furnish transportation. Call EM4-2566. B-8-16-28-2C

HAIR STYLIST and shampoo girl. Continental Coiffeurs. EM 4-1744. B-8-10-47-Tfc

CLEAN UP boy wanted. Apply 125 Sampson. B-8-10-2-TFC

SALES MANAGEMENT TRAINEE for National Insurance Company. Potential 1st year income \$8,000.00. Excellent fringe benefits. Ages 25-40, married. Some College background desired. Starting salary \$100.00 per week. Phone Amarillo, FL 6-5219, 9:00 to 4:00 for appointment. An equal Opportunity Employer. B-8-27-5c

10. NOTICE

WATER CONDITIONING Is our business and has been for past twenty years. For Disinfectant Water, Ozarka Water, soft water service, home owned commercial or industrial water softeners, see us at 216 N. 25 Mile Avenue Phone EM 4-3280. B-10-43-TFC

FOR BETTER HEALTH, for better living, use Soft Water, the service way. Nothing to buy, no work for you. The savings are greater than the cost. If your dishes are spotted lately, you may need Soft Water. Phone EM 4-3280 B-10-4-4fc

NOTICE The Progressive Community Reunion will be held at the Hereford Community Center, Sunday, July 18, 1965. The doors will be open at 10:00 a.m. Bring a basket lunch and come to enjoy the day. Drinks will be provided. B-10-27-3c

11. Business Service

PAINTING, taping, textoning, sheetrocking, patching, General carpentry repairs. Phone EM 4-0225. B-11-11-33-tfc

See B & J IRRIGATION SUPPLY, INC. For Your PLASTIC IRRIGATION PIPE NEEDS Now Located Just East of City Limits on North side EM 4-0955 B-11-50-tfc

VACUUM CLEANER parts and supplies. Hose, paper bags, belts, etc. All makes used cleaners. New and used Kirby's KIRBY VACUUM CLEANER CO. 434 West 1st - Ph. EM 4-0422 B-11-45-tfc

FOR THE COST of fourteen packs of FILTHY CIGARETTES, a family can buy Soft Water Service for a whole month. SOFT WATER SERVICE 216 N. 25 Mi. Ave. EM4-3280 B-11-43-TFC

WATER WELLS Domestic and Irrigation. Gravel pack or screen. Pump sales and service. T & H DRILLING CO. EM 4-0811 EM 4-2332 Hereford, Texas B-11-28-tfc

AUSTIN — Texas Research League warns that another fiscal "crisis" looms for state government in 1967, when new taxes of \$40,000,000 a year may be necessary.

Simple arithmetic points to a "sizeable" money problem, says the League. It notes that while Texas' new fiscal period will begin September 2 with a general revenue surplus of some \$97,800,000 it will end August 31, 1967, with little more than \$1,000,000 in the fund. Gov. John Connally's budget staff has estimated a balance of about \$4,200,000.

COMPARING the shrinking surplus with some non-recurring revenue measures agreed on by the 59th Legislature, TRL researchers conclude lawmakers in 1967 may have to pass a \$107,200,000 new tax bill. League admits the figure may be higher or lower. Its staff acknowledges that sales tax revenues are running well ahead of official estimates this year and if it keeps up, the new tax requirement may be reduced to \$80,000,000.

Actually, general sales tax collections this year are "much higher" than in 1964, Comptroller Robert S. Calvert reports. Collections since the current fiscal year began last September 1 total \$164,200,000, compared with \$150,600,000 for the corresponding period a year ago.

TRL observes: "An \$80 million tax bill is no small matter, but neither is it a really serious crisis for a state with the untapped tax resources and growth potential of Texas. This is, of course, an optimistic — as well as an unofficial — estimate and the tax required might well be higher if revenues do not come up to these expectations, or if expenditures substantially exceed them."

LEAGUE suggests that the Committee on State and Local Tax Policy "look at many available revenue-raising possibilities in the course of its studies." SPECIAL SESSION REJECTED Governor Connally has rejected requests for a special legislative session to deal with rising car insurance rates in Texas.

State Representatives Carl A. Parker and J. D. Weldon, both of Port Arthur, requested such a session to investigate the rate increases averaging 13.4 per cent which were authorized by the State Board of Insurance to take effect August 1.

CONNALLY said he doubts any practical benefits would be gained from a special session at this time, although he shares concern over the increases. The governor made three principal

points: — Texas' liability rates after the August increases will be lower than those of 34 states and the District of Columbia.

— Two recent legislative inquiries already have been conducted on rate-making methods and have determined no fault with the Insurance Board's formula which are available for public scrutiny.

— The Legislature is willing to give "little support" to stronger laws to curb rising auto accidents which bear directly on insurance rates.

APPOINTMENTS ANNOUNCED David L. Greenberg was named by Governor Connally as judge of the new county court No. 1 of Galveston county. He is a law partner of Galveston Sen. A. R. Schwartz.

Connally appointed Sen. Walter Richter of Gonzales to the board of control of the Southern Regional Education Board and Rep. Don Cavness of Austin to SREB's Legislative Advisory Council.

Truett Laimer, former member of the State Legislature from Abilene, is new executive director of the Texas State Historical Survey Committee. He succeeds George Hill of Austin.

State Supreme Court has agreed to review the case involving the state's right to tax coin-operated vending machines on Court of Civil Appeals, overturning Austin District Court, earlier held that the state had the power to collect the tax on Fort Hood machines.

High court backed Amarillo Court of Civil Appeals in ruling that Moore County District Court must hear the suit challenging boundaries of county commissioner's precincts.

U. S. Department of Health, Education and Welfare reports that 825 of Texas' 1,370 school districts have submitted statements of compliance with the 1964 civil rights act which received federal approval.

Another 67 Texas districts have submitted acceptable voluntary desegregation plans, and 13 more have court-ordered plans.

Deadline for integration of

schools receiving federal aid is Sept. 1, 1967.

TEXAS ECONOMY PROBED University of Texas Bureau of Business Research turns up these interesting facts and figures in a new study of the Texas economy over the past decade:

PERSONAL income per capita rose from \$1,585 to \$2,175; real purchasing power increased some 18.3 per cent compared with 24.7 per cent for the nation; Texas per capita income dropped from just under 90 per cent of the national figure in 1954 to just over 85 per cent of 1964.

More than 65 per cent of all Texas personal income remains in the form of wages and salaries. Manufacturing supplies 13.18 per cent of personal income; petroleum and natural gas producers pay 3.20 per cent; wholesale and retail trade provide 13.01 per cent; and government wage and salary payments, 14.05 per cent.

SHORT SNORTS

Cigarette tax collections jumped \$1,800,000 above May level as smokers stocked up before the new three-cents-a-pack tax increase went into effect July 1.

Rio Grande Valley citrus groves are free of burrowing nematode, a microscopic animal which causes the gradual decline of citrus trees, reports Agriculture Commissioner John C. White.

STATE Department of Health assured Houston area residents that there is no contamination of their water supply in Taylor Lake or Houston due to use by an industrial specialist of radioactive isotopes to locate a water leak in a private home.

Roger Brown of Big Spring has been sworn in to fill the unexpired term of 78th District Representative Ed Carpenter of Coahoma, who dies during the past session.

Four Beeville men have formed a corporation to find and destroy lost seismograph charges for oil and seismograph companies along Texas beaches.

Southwest State Bank of Coleman and Merchants Park Bank of Houston have filed applications for charters with State Banking Department.

IN TEXAS

Tourist Dollars Register Climb

AUSTIN — More tourists traveling by automobile entered Texas last year than in any prior year in history.

During 1964 automobile visitors to the State added the impressive total of \$524,739,000 to the Texas economy. This was more than enough to rank the Visitor Industry high on the list of the State's most important sources of revenue.

IN ADDITION, the Texas Tourist Council estimates that nearly 2.5 million visitors came to Texas by commercial carriers, adding more than \$150 million to the total spent for tourist services.

The Texas Highway Department's annual survey of out-of-state visitors shows 11,757,000 tourists came to Texas by automobile in 1964. The length of the average visitor's stay was 3.6 days and he traveled 1,020 miles while in the State.

LAST YEAR the average party consisted of three persons. Average cost per day per person was \$7.97, while the average cost per party was \$23.91. Expenditures per person were up 12 cents per day from 1963.

Last year the Department serviced 704,000 inquiries for the traveling public.

Eight Travel Information Bureaus are operated by the Department at key point-of-entry locations and in the rotunda of the State Capitol in Austin. These information centers played host to 492,000 visitors last year, of which 225,000 were from out-of-state and 267,000 were Texas residents.

Hospitality centers provided visitors with current travel information, descriptive literature on points of interest, State Highway maps, information on scenic and historical attraction, special events and state parks. Current road condition information is also made available to the highway traveler at the centers.

DURING 1964 the Texas Highway Department received via mail and filled 212,000 requests for all types of information

about the State. Some 18,000 of this total were coupons received by the Texas Tourist Development Agency as a result of its media advertising program.

Data covering out-of-state automobile travel to Texas in 1964 were collected and analyzed by the Travel and Information Division of the Texas Highway Department. The sample included nearly 10,000 Texas visitors traveling by automobile.

Comments contained on the completed survey forms indicated nearly 92 per cent were favorably impressed with the Lone Star State, with 8.2 per cent of the total comments derogatory in nature.

AN ESTIMATED 37 per cent were visiting Texas for the first time. Over 52 per cent of the total visitors to Texas last year were here for vacations. Some 56 per cent were visiting family and friends and 18 per cent came to Texas for business reasons.

Motels were a heavy favorite for overnight accommodations with 58 per cent selecting these roadside facilities. Of the remainder, 20 per cent were housed in private homes, 7 per cent stayed in hotels, 7 per cent camped out and 6 per cent had their own trailer accommodations. Two per cent of those listed reported no preference. BUSINESSES catering to the basic needs of the traveler are the first to feel the impact of the tourist dollar. A recent study of the Texas visitor's expenditures indicates the travel dollar is spent as follows:

Automobile, 30 cents; Food and refreshments, 27 cents; Lodging, 24 cents; Clothing, 9 cents; Souvenirs, post cards, etc., 4 cents; Entertainment, 3 cents; Drugs, 1 cent; Other expenses, 2 cents.

Last year tourists from all 48 other states came to Texas. Distant California was first in total numbers with 1,700,000. Neighboring Louisiana was a close second with 1,740,000. Oklahoma was third with 770,000. Florida was fourth with 667,000.



SAFeway OPENS — Hereford's Safeway store officially began business in their new Park Ave. Shopping Center store Monday morning at 7:45 with a ribbon cutting ceremony. Shown holding the ribbon at left is LeRoy McNally, Lubbock district manager of the chain store, while Mayor Ray Cowser cuts the ribbon. At right is Wayne Thomas,

president of the Chamber of Commerce, and Charles Scheetz, Safeway store manager here. In back, at the left, is Bill Thompson, Chamber of Commerce manager, with members of the Hereford Hustlers welcoming committee. (Staff Photo)

Adrian News

By ANN BEAVERS Brand Correspondent

Mr. and Mrs. Bert Speed and children from Mammoth Cave, Ky. visited the Joe Speed family and the Bobby Speeds of Vega last week.

Mr. and Mrs. Nolan Maupin and children of Santa Rosa, N. M. visited the Earl Brown family Sunday.

Sunday guests of the M. A. Ferguson family were Mr. and Mrs. J. B. Blankenship and sons, and Mr. and Mrs. Jimmy Dawson and daughter of Hereford; Mr. and Mrs. J. C. Blankenship and children of Friona; Mr. and Mrs. Clayton Thompson, Mr. and Mrs. Calvin Peters and Troy, Terry and David Williams, Jolene Betts, Rita Speed and Tom Ralls of Ft. Worth; Mr. and Mrs. Elbert Whitten and family and Mike Perry, who enjoyed a picnic lunch, skiing and boating.

Terry and David Williams and Jolene Betts and Mr. and Mrs. Clayton Thompson enjoyed a weiner roast Sunday night.

Mr. and Mrs. P. N. Johnson attended a coon hunt in Eastern New Mexico Sunday and brought home three trophies, first in Tree and second in Hole.

Mrs. O. C. Johnson and children were in El Dorado, Ark. last week, while O. C. was working on a weed burning machine for the Rock Island railway.

Mr. and Mrs. Ray Wellborn and daughters of Ventura, Calif. are visiting her sister, Mrs. O. C. Johnson, and children and in Vega she is visiting the Ewell Ward family and her brother, Dick McNabb and family.

Jimmy and Junior Clark, Jackie and Larry Loveless and Betty Whitten were in Amarillo Sunday. They went swimming and to a show and enjoyed the rides at Thompson Park, in honor of Jackie Loveless' 13th birthday.

Nell Morgan from Alabama is spending the summer with her uncle and aunt, Mr. and Mrs. Moran Pounds at Clinton, Okla. last weekend and they visited in Adrian with the E. B. Pounds family and Mrs. Nell Morgan and the Don Morgan family.

Saturday night supper guests of Mrs. Nell Morgan were her sisters, Mrs. Morris from Vega,

Mrs. Dean Rice of Duncan, Okla., Mrs. Don Rice and Shelly of Ormondo, Fla., and Mrs. Don Rice's father, Mr. Brown from Santa Fe.

Mr. and Mrs. Ed Jacobson attended the wedding of Miss Jan Drake, whose mother is the former Rhachel Shields of Vega in Denver last weekend. Mr. and Mrs. Corder Collins and family of Los Angeles and Mrs. Taylor Hill of Orange Cove, Calif., visited the John Horton family and the Bob Gruhlkey family Friday and Saturday.

A3C Howard Kirkpatrick of Tucson, Ariz. visited in Adrian over the weekend with Miss Wanda Clayton.

Visiting in the Joe Brownlee home Sunday were Mr. and Mrs. A. M. Chapman and Sue Brownlee of Amarillo, Mr. and Mrs. Ronnie Dowdy of Wichita Falls, Mr. and Mrs. Gordon Thomas, Mr. and Mrs. Don Osborn and son and Donnie Ward all from Olton.

Mr. and Mrs. Fred Brownlee of Glenrio attended the wedding of their grandson, John Brownlee, to Lynda Owens on the evening of July 5 at Borger.

Mr. and Mrs. Wayne Gilliam and children of Morton, visited in Adrian Sunday with the Lester Gilliam family.

Visiting in the R. L. Pinnel home over the weekend were Mrs. Pinnel's brother and family the Fred J. Wells from Stedman, N.C.

Mr. and Mrs. Bud Heaton and Stanley have moved to the Jim Morris farm east of Simms.

Mr. and Mrs. Sonny Whitten and family from California visited Friday night with the Elbert Whitten family.

Mrs. Judy Chism of Romero, N. M. visited her parents, Mr. and Mrs. R. L. Pinnel, Sunday. John Henry Gruhlkey visited in Houston last week with friends.

Sharon and Shelly Pounds of Lubbock visited the E. B. Pounds family last week and Sunday they all went to Earth to visit the Neil Pounds family.

Everett Summers of Ft. Worth visited the Dave Sellers family over the weekend.

Mr. and Mrs. Lorin Creitz and daughter visited the Terry Creitz family Sunday at Earth.

Mr. and Mrs. Jerry Newman of Mt. Pleasant visited the Horace Betts family and the W. B. Betts family last week.

Linda Pinnel spent Monday with Mr. and Mrs. Ed Pinnel and children in Hereford.

Mr. and Mrs. Rex Manley and children spent the weekend in

tres Rictas, N. M. Teddie and Monty Hale spent last week in Guymon visiting their grandmother, Mrs. W. B. Hale.

Mr. and Mrs. John Brownlee of Borger visited Mrs. Joe Brownlee and Mrs. Bill Gudgell Wednesday.

Mr. and Mrs. Johnny Cavitt and son Mark have moved to Romero N. M. where they will be employed on the Bridwell Ranch.

Miss Lucille Engle from Big Spring visited the Howard Engle family the past two weeks.

Mrs. Clayton Thompson was honored with a pink and blue shower Thursday afternoon in the Methodist Church. Hostesses were Mrs. Elbert Whitten and Mrs. M. H. Zaring Jr.

RED 'HAMLET'

BOLOGNA, Italy (AP) — Soviet director Kozintev's movie version of "Hamlet" has been selected by Bologna for its annual award as the year's best intellectual film. The award was given for the Red "Hamlet's" high technical value and modern treatment.

Movie advertisement for 'THE TRAIN' featuring Burt Lancaster and Jeanne Moreau. Includes showtimes and theater name 'Stat'.

Movie advertisement for 'DIARY OF A BACHELOR' featuring Tony Curtis and Debbie Reynolds. Includes showtimes and theater name 'Tower'.

Advertisement for 'THE WESTER' law firm by Dale Young. Includes a cartoon illustration of a man at a desk and contact information.

**WIN-FREE \$100!** DURING THE *Shurfine* ROYAL RECIPE **SWEEPSTAKES**

**\$25,000.00 CASH!**



**FREE!**  
OVER 140,000  
SHURFINE  
FOOD  
PRODUCTS

**HERE'S HOW IT WORKS!**

Get your FREE Shurfine Royal Recipe card each time you shop. Collect coupons until you have all three words to complete the phrase "SHURFINE ROYAL RECIPES." Take the winning coupons to store manager and collect \$100. If the name of a Shurfine food product appears on a coupon present same to store manager for FREE product indicated. A blank or illegible card entitles you to another free card.

P.A.G. Affiliated Food Stores collectively and throughout the Golden Spread are offering FREE \$25,000.00 CASH and over 140,000 FREE Shurfine food products during this promotion. Shop the P.A.G. Affiliated Food Store displaying the Shurfine Royal Recipe Sweepstakes signs.



**WONDERFUL RECIPES TOO!**

**\$100.00 WINNER**



MRS. P. L. BURRELL

**LOTS MORE WINNERS YET TO COME. BE SURE YOU GET A CARD EACH TIME YOU VISIT OUR STORE.**

**FOLGER'S COFFEE** LB. CAN **79¢**  
**SCOTT BIG ROLL PAPER TOWELS** **29¢**  
**LIPTON TEA BAGS** 48 COUNT **59¢**

Shurfine <b>MILK</b> tall can <b>2 for 29¢</b>	Scott Plastic <b>CUPS</b> 40 ct. Ass. Colors <b>39¢</b>
Shurfine <b>Early Harvest Peas</b> 303 can <b>21¢</b>	Gillette <b>Vacation Travel Kit</b> Reg. \$1.49 <b>\$1.19</b>
Hawaiian <b>PUNCH</b> 46 oz. <b>3 for \$1.00</b>	Ball Quilted Crystal <b>JELLY JARS</b> doz. <b>\$1.19</b>
Bacon Crisp - Cheese Trix <b>CANNED SNACKS</b> <b>3 for 29¢</b>	Shurfine <b>Layer Cake Mix</b> <b>4 for \$1.00</b>
Shurfine <b>PORK &amp; BEANS</b> 300 can <b>9 for \$1.00</b>	Shurfine <b>SPINACH</b> 303 can <b>8 for \$1.00</b>
Libby's <b>Vienna Sausage</b> can <b>6 for \$1.00</b>	Morton's <b>FROZEN DONUTS</b> pkg. <b>29¢</b>

Prell Liquid <b>SHAMPOO</b> Reg. 89¢ <b>69¢</b>	Thrill <b>LIQUID DETERGENT</b> 22 oz. <b>49¢</b>
Daz <b>DETERGENT</b> giant size <b>75¢</b>	For Automatic Dishwashers <b>CASCADE</b> 35 oz. <b>49¢</b>

**BLUE PLATE**

**BREADED SHRIMP** FROZEN 10 OZ. **59¢**

**BUDGET MEAT BUYS**

U.S.D.A. **CHUCK ROAST** LB. **49¢**

**GROUND BEEF** FRESH LEAN LB. **39¢**

**SWISS STEAK** U.S.D.A. lb. **69¢**

**CHUCK STEAK** U.S.D.A. lb. **59¢**

**LONGHORN CHEESE** lb. **49¢**

**HAM** Wilson Slice 'n' Serve 5 oz. **59¢**

*Tempting Produce*

**LARGE CHARLESTON GREY WATERMELON** EACH **29¢**

**HEREFORD RED POTATOES** 10 lbs. **79¢**

**HEREFORD ONIONS** White or Yellow 2 lbs. **15¢**

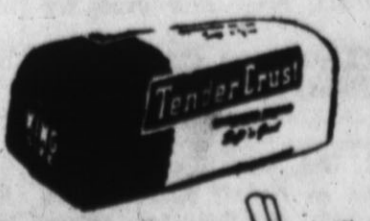
**TOMATOES** Paris, Texas 2 lbs. **15¢**

**FREESTONE PEACHES** 4 lbs. **69¢**

**NECTARINES** 4 lbs. **69¢**

**CANTALOUPE**, fine netted Lb. **7 1/2¢**

**SHURFRESH MILK**  
PICK 'EM UP TODAY  
**TENDERCRUST BREAD**



**WOODBURY HAND & BODY**

**LOTION** REG. \$1.00 **39¢**



**COOPER'S**





# Small Talk

It's interesting in any city to look over residential sections and trace the growth rings. They are clearly marked in styles of building although they are not, as in trees, rigidly bounded to prevent a sleek new ranch-style brick from sidling into a neighborhood predominantly neo-colonial.

West Texas cities are not old enough to boast many eras of growth but they do offer a picture of construction fads since the turn of the century.

Earliest houses in the Little Plains towns were chiefly square or L-shaped, with about four rooms put together in the simplest way possible with maybe a porch front and back for frills. The few which remain have mostly been left, long since, to the mercy of renters who had no respect for their declining years and so marred what original grace they had.

APPARENTLY WEST THIRD Street was the silk-stocking row,

as they said in those days, of Hereford in the early 1900's. Its white-pillared houses set in wide yards are numerous enough that one can picture it when mustached gentlemen and high-pompadoured ladies drove it in smart horse-drawn rigs.

Other houses of that type are scattered over the city, but not noticeably in neighborhoods. You can tell that Hereford had a surge of growth about the time of World War I, by the numerous bungalows with high front steps and banistered porches which burgeoned then.

There are many of the kind called California bungalows, too, set on lower foundations as the style evolved farther from its British Indian prototype. And a handful of tile-roofed succos in Spanish style which flourished briefly.

THESE HOUSES OF the 1920's spread far enough that they engulfed places which are obviously former farm homes, on streets branching at angles from the original townsite. With the 1930's dwellings, steep of roof, then the West Texas version of Cape Cod cottages, less numerous as a result of the building slowdown in depression years.

Results of the next period, early FHA, are widespread, so numerous that they again overflowed city limits and made up whole neighborhoods in what had been prairie or field.

The latest layer of growth has broken bounds again and added sections of substantial luxury-type ranch houses which will mark another era for future observers.

MORE EXCITEMENT than she planned featured one stage of Mrs. Mary Poarch's trip to western states, from which she has just returned. She met her sister, Mrs. Alto Dungan, of Sayre, Okla., in Amarillo and the two started off by train. But the recent floods in Colorado interfered, and they had to make a jaunt by bus, then another train ride before they could get back to the main line and on to Pocatello, Ida., for a visit to Mrs. Dungan's daughter. Later they visited her son in Taft, Calif. Numerous side trips made their vacation more enjoyable.

MRS. S. S. WILLIAMS and Mrs. Jim Bookout returned last weekend from a pleasant trip to California. Mrs. Bookout visited relatives in Portersville while Mrs. Williams was a guest in Los Angeles of Mrs. Pat Hanlon, former Hereford resident. They stopped in other coast cities and spent some time in San Diego, where Mrs. Bookout has a niece.

MRS. ESTELLE Lapphille and son, James, of San Francisco are visiting her mother, Mrs. J. M. Gilliland, and other relatives here. Mrs. Pink H. Gilliland of Amarillo and her niece, Laura-Gilliland of Ventura, Calif., were weekend guests of Mrs. J. M. Gilliland and Mr. and Mrs. Marlin Gilliland, and in the A. L. Manjeot home. They all were present for a family birthday celebration for the John Gillilands' small daughter Susie, who was one year old Friday.

### Daughter of Former Residents To Marry

Mrs. C. P. Cockrell will go to Woodward, Okla., this weekend to attend the wedding Sunday of her granddaughter, Miss Conna Ann Oldham, to Bruce Jones of Boulder, Colo. Miss Oldham is the daughter of Mr. and Mrs. Carl Oldham, former residents of Hereford.

Visitors in Mrs. Cockrell's home are her daughter, Mrs. Eugene Osborn, and sons Gary, Charles and Ken of Colorado Springs, who will accompany her to Woodward for the wedding which will be solemnized in the First Christian Church of that city.

IT'S EASY AS



to get the C-A-S-H from S.I.C. for things you want from



This is not very good poetry, but it's sound information. S.I.C. has specialized in providing money to people for over thirty years, and they are ready to work with you anytime you want money for any worthwhile purpose. One quick visit to the S.I.C. office nearest you will convince you.

**SOUTHWESTERN INVESTMENT COMPANY**  
Hereford, Texas  
700 South 25-mile Ave.  
Phone: Emerson 4-1394

### HEREFORD MEDICAL and SURGICAL CLINIC

Announces The Association Of Noble L. Ballard, M.D. and

Howard R. Johnson, M.D.

July 1, 1965

For Family Practice

At 343 N Miles Hereford, Texas

Office Phone: EM 4-1133

PIGGY WIGGLY PIGGY WIGGLY PIGGY WIGGLY PIGGY WIGGLY

## DURING THE SWEEPSTAKES

WIN-FREE \$100.00

# Shurfine ROYAL RECIPE

# \$25,000.00 CASH!

FREE! OVER 140,000 SHURFINE FOOD PRODUCTS

WONDERFUL RECIPES TOO! -PLUS-

HERE'S HOW IT WORKS!

Get your FREE Shurfine Royal Recipe card each time you shop. Collect coupons until you have all three words to complete the phrase "SHURFINE ROYAL RECIPES." Take the winning coupons to store manager and collect \$100. If the name of a Shurfine food product appears on a coupon present same to store manager for FREE product indicated. A blank or illegible card entitles you to another free card.

P.A.G. Affiliated Food Stores collectively and throughout the Golden Spread are offering FREE \$25,000.00 CASH and over 140,000 FREE Shurfine food products during this promotion. Shop the P.A.G. Affiliated Food Store displaying the Shurfine Royal Recipe Sweepstakes signs.

## EGGS

3 Grade 'A' Small DOZEN 79¢

TUNA DEL MONTE CHUNK STYLE - FLAT CAN 3 FOR \$1.00

PEACHES SHURFINE YELLOW CLING SLICED or HALVES 4 NO. 2 1/2 CANS \$1.00

Exquisite "Boutonniere" Pattern

## DINNERWARE

by World Famous Taylor, Smith & Taylor Company

— THIS WEEK —  
Dessert Dish

# 9

With Each \$5.00 Purchase

ARMOUR'S CAMPFIRE

## BACON

LB. 69¢

Round Steak AND Loin Tips U.S.D.A. Choice lb. 89¢

ARMOUR'S SLICED BOLOGNA lb. 49¢

WRIGHT'S ALL MEAT FRANKS 12 OZ. PKG. 39¢

## GRAPE JUICE

WELCH'S FROZEN 3 12 OZ. CANS \$1

## CHARCOAL LIGHTER

Energy quart can 39¢

## MELLORINE

LANE'S FIRST QUALITY ALL FLAVORS 1/2 GAL. 39¢

SCOTT PAPER TOWELS Big Roll Pink or Turquoise 2 for 49¢

SALAD DRESSING Shurfine qt. jar 39¢

## CHARCOAL

ENERGY 5 lb. bag 29¢

## COOKIES

TENDERCRUST 59¢ BAG VALUE 49¢

TOILET

## TISSUE

Waldorf 4 roll pkg. Assorted Colors 29¢

## CANTALOUPE

YUMA SWEET JUICY 4 FOR \$1.00

Texas Yellow SQUASH LB. 10¢

Red Hereford POTATOES 10 LB. BAG 79¢

FREE! 10 S&H Green Stamps with Each Purchase 1/2 gal. Shurfine Milk

## BREAD

1 1/2 lb. loaf. 29¢

## MILK

1/2 gal. 53¢

HIDDEN MAGIC Hair Spray - New from Proctor & Gamble. \$1.50 Value 95¢

## ORANGE JUICE

SHURFINE FROZEN 6 6 OZ. CANS \$1.00

Shop At Your "New" Downtown

# Piggly Wiggly

Store

WHERE FRIENDLY SERVICE AND "LOW, LOW PRICES STILL PREVAIL"

PIGGY WIGGLY PIGGY WIGGLY PIGGY WIGGLY PIGGY WIGGLY

# FOR GOD SO LOVED THE WORLD

## First Methodist Church

Rev. Herschel L. Thurston  
Pastor  
501 North Main

## Wesley Methodist Church

Rev. Noah Arnpriester, Pastor  
410 Irving

## Bippus Community Church

Eugene L. Nangle each first and third Sunday and R. D. Evans each second and fourth Sunday.

## Church Of Jesus Christ of Latter Day Saints (Mormon)

Country Club Drive

## Kingdom Hall Of Jehovah's Witnesses

319 Ave. I

## Assembly Of God Church

Rev. V. W. Marcontell, Pastor  
Union and Ave. G

## Immanuel Lutheran Church

Fred Beversdorf, Pastor  
Park Ave. and B Street

## The Church Of God In Christ

Rev. Calvin Hodge, Pastor  
115 West Norton

## Seventh Day Adventist Church

Pastor - Elder J. H. Turner  
West Park Addition

## Mission De San Jose

Labor Camp

## Church Of The Nazarene

Rev. K. Dwight Southworth  
Pastor  
Fourth and Jackson

## Grace Gospel Church

Rev. H. V. Fields, Pastor  
Thirteenth and Avenue K

## St. Thomas' Episcopal Church

Rev. Joel Treadwell, Vicar  
Harrison Highway

## St. Anthony's Roman Catholic Church

Father Angelus, Pastor  
Harrison Highway at 25 Mile Ave.

## First Presbyterian Church

Rev. Russell Wingert, Pastor  
610 Lee Street

## First Christian Church

Rev. Eugene Brink  
Pastor  
West Park Avenue

## Dawn Baptist Church

Eugene Suttie, Pastor

# Please God, Help Us!

In every man's life there is a moment when he is inadequate to the forces he faces. At such a time only his moral integrity will sustain him.

Those who have based their lives on their own strength inevitably will face the time and the place when that strength is insufficient to the necessity of the moment. They will crumble unless they know that they are never alone... that there is a power that can and will help them, no matter how terrible the times.

The man who has learned to rely on God can draw from this source of never-failing power and with resurgent strength face his future, unafraid.



**YOU IN THE CHURCH THE CHURCH IN YOU**

Character is a by-product of the church. It is here that young and old alike are showered with benedictions that furnish and influence for a better citizenship and a molding religious character. Statesmen today declare that the church alone can furnish leadership to handle the affairs of state in these perilous times. Then we with our children should go to the church of our choice on Sunday. "You in the Church and the Church in you" form a combination for good. Be a regular CHURCH GOER and a daily BIBLE READER.

© WILLIAMS NEWSPAPER FEATURES  
For World, Texas

## First Baptist Church

Rev. B. L. Davis, Pastor  
Fifth and Main Streets

## Frio Baptist Church

Frio Community

## Avenue Baptist Church

Ronald A. Harpster, Pastor  
130 N. 25 Mile Ave.

## Mt. Sinai Baptist Church

H. B. Whitten, Pastor  
302 Knight Street

## Summerfield Baptist Church

Rev. James Arnold, Pastor

## Calvary Baptist Church

Rev. Clarence F. Powell  
Pastor  
205 E. Sixth Street

## Westway Baptist Church

Rev. James G. Martin

## Temple Baptist Church

Forrest Ave. and Ave. K

## Fellowship Baptist Church

Independent & Fundamental  
Pastor — Kenneth Irwin  
Moreman Dr. and Greenwood

## Iglesia Metodista San Pablo

Rev. Gilbert Diaz  
Pastor  
223 Kibbe Street

## Thompson Memorial Mexican Baptist Mission

Herman V. Martinez  
Ministro  
215 Norton Street

## San Antonio A La Iglesia

North 25 Mile Avenue and Highway

## Templo el Calvario Asamblea de Dios

Pastor, Martin Musquiz  
Calle Ave. H & 13th

## La Iglesia De Cristo

Abel Ortiz, Minister  
Sunset and Plains Ave.

## Central Church Of Christ

L. E. Fooks, Minister  
148 Sunset Dr.

## Park Ave. Church Of Christ

On Harrison Highway

These Hereford Business Firms Make This Page Possible in the Interest of a Christian Community. Go to Church Sunday.

HEREFORD INSURANCE AGENCY  
323 N. Sampson

E. B. BLACK CO.  
Dick Barnard - Jesse Stanford

McRIGHT GARAGE & SUPPLY  
Mr. and Mrs. A. N. McRight

FIRST NATIONAL BANK  
Virgil Hannon

ROCKWELL BROS. & CO.  
D. R. Vandover

BIG T PUMP CO., INC.  
Hilroy and Leroy Ayan

HEREFORD GRAIN CORP.  
Joe Artho, Mgr.

HEREFORD LAUNDRY & DRY CLEANERS  
Ernest Kendall

MASTER CLEANERS  
Mr. and Mrs. C. D. Fitzgerald

HEREFORD FERTILIZER & INSECTICIDE CO.  
Norman Moore

PIGGLY WIGGLY  
Mr. and Mrs. Gaylord Newell

DAVIS IMPLEMENT CO.  
W. L. Davis, Jr.

HEREFORD OFFICE SUPPLY  
Bob Huddleston

CITY DRUG STORE  
Mr. and Mrs. Kenneth Coker

JONES' TEXACO SERVICE  
Mr. and Mrs. J. P. Jones

WESTERN WHEEL INN  
Mr. and Mrs. G. D. Colson

HEREFORD STATE BANK  
Russell E. Carver, Pres.

WESTERN WRECKING  
Anson A. and June Dearing

CONSUMERS' FUEL ASS'N.

HEREFORD TEXAS FEDERAL CREDIT UNION  
Mrs. Dyalithia Benson

ED SKYPALA  
Your Borden's Distributor

GILLILLAND FUNERAL HOME  
Marlin Gilliland

PITMAN GRAIN CO.

ROGERS DRUG  
Mr. and Mrs. Grady Rogers

GWYNNE OWEN

LOERWALD BROS.  
Ed, George, Gene and Harold Loerwald

FARMERS' DRIVE IN  
Troy Moore

SUIT'S AUTO SUPPLY

ORSBORN - CHEVROLET OLDSMOBILE  
Your Chevrolet-Oldsmobile Dealer



### Miss Minor Is Bride In Arizona

Mr. and Mrs. Marvin Dale Lane are at home at 6830 North 11th Ave., Phoenix, Ariz., after a honeymoon trip along the California coast which followed the marriage in Phoenix June 18. Mrs. Lane is the former Miss Margretta Sue Minor, daughter of Mr. and Mrs. L. E. Minor, Dairy Road.

She is employed as a laboratory technician in Good Samaritan Hospital, Phoenix. Lane is attending Phoenix College and working with an appliance firm there. His parents, Mr. and Mrs. Floyd F. Lane, reside in Mesa, Ariz. He has completed four years in the U. S. Navy.

The Rev. Glenn Roenfeldt, pastor, officiated for the marriage in the Southern Baptist Temple of Phoenix. The bride's parents were among the wedding guests. Attending the couple were Miss Melanie Griffith and Shelby Hodges; ushers were Dick Lane and Don Lane, all of Phoenix as were Mrs. James R. Smith, organist, and Mrs. Phillip Garrigan, vocal soloist.

Miss Minor chose for her wedding gown a classically simple dress of silk organza over peau de soie, floor length, with large bow and streamers closing a wide sash at center back. Her face veil was held by a huge white silk rose and she carried a pale pink orchid on a white Bible, showered with Stephanotis.

Miss Griffith's dress was in blush pink, as were flowers in the church and the reception hall where Mrs. Dick Lane, Miss Rita Lane and Mrs. Hazel Lane served the punch and three-tiered wedding cake.

For travel the bride wore an apple green sheath with white accessories and the orchid from her bouquet.

displayed by Mrs. Wilson, who used red roses, white gladioli and blue delphiniums in a milk glass compote for a tea-table composition, and Mrs. Hill, symbolized the statue of Liberty, "The Lady With the Light", with a single red rose towering above massed red, white and blue blossoms.

A tour of Mrs. Roberson's yard, with its distinctive rock garden, followed refreshment time. Present, in addition to those mentioned, were Meses: Dennis Williams, Arthur M. Stoy, Roy Calvert, J. V. Pickens, Emmett Hale, J. H. Craver, Ray L. Johnson, W. R. Mitchell, Jeff Gilbreth and C. D. Kelton.

The early inhabitants of Easter Island built large open-air altars of excellent masonry. Sometime around 1100, many of the shrines fell into ruin. Reconstruction followed eventually, and the first giant statues appeared. Who carved the massive figures out of living volcanic stone and moved them to shrines on the coast remains a mystery.

### Annual Curtsinger-Cocanougher Family Reunion Is Sunday Event

Annual reunion of the Curtsinger and Cocanougher families was held Sunday at the Bull Barn for the seventh successive year and plans were made to continue the custom with a 1966 reunion at the same place on the second Sunday in July.

Movies provided entertainment, with one film featuring the family members as stars. It was shown by Clarence Strange and was made up of films taken at previous reunions and

given the title, "This Was the Comedy". Another was Cotton John's movie, "Go View the Land". Dinner was served picnic style and time was spent in informal visiting and planning for next year's meeting. Relatives not present this year will be especially invited to the next reunion.

Curtsinger family members and guests present from the Hereford vicinity were Mr. and Mrs. Joe Curtsinger, Mr. and Mrs. Dub Curtsinger, Mr. and Mrs. Clarence Strange, Mr. and Mrs. A. T. Griffin, Mr. and Mrs. Rayburn Strange, Mr. and Mrs. Charlie Callaway, Mr. and Mrs. Boyd London, Mr. and Mrs. Bruce Wiggins.

Also Virginia Curtsinger, Jerry Curtsinger, Ronda Neff, Norma Curtsinger, Susie Mae Curtsinger, David Curtsinger, Glen Curtsinger, Dare, Joe and Edward Wiggins, Jennefer and Amy Griffin, Virgil Strange, Denise, Marc and Douglas Strange, Alice Callaway, Fred Collett.

From other cities were Mr. and Mrs. James Gillian, Mr. and Mrs. Claude Gillian and Billy Ed Merrill Jr. of Clovis, N.M.; Mrs. Arthur Cocanougher of Lubbock; Mr. and Mrs. J. F. Anderson of Idalou.

ry Gore of Amarillo; Mr. and Mrs. Roy Cocanougher, Mr. and Mrs. Arthur Cocanougher of Lubbock; Mr. and Mrs. J. F. Anderson of Idalou.

ST. PAUL'S FACE CLEANED LONDON — By July of 1966 you will be able to see St. Paul's Cathedral as the Wren masterpiece looked 255 years ago.

The cleaning of the outside of the entire cathedral should be complete by then. In addition, the cross and ball surmounting the dome will be gilded. The cost will be \$420,000, raised by public appeal.

### Rose Planting Projects Interest Hereford Garden Club Members

Two projects, one 10 years old and the other just beginning, had the attention of Hereford Garden Club members in a business session when they met recently in the home of Mrs. Jeff Roberson, Mrs. R. L. Wilson was co-hostess.

The club voted to continue work in the Peace rose garden at Hereford High School, a memorial to ex-students who have lost their lives in military service, and to plant roses at King's Manor in a new project. The projects committee headed by Mrs. G. W. Newsom is in charge of these plans.

Mrs. O. G. Hill Sr., vice president, directed business. Change of the club's fiscal year opening from June 1 to Sept. 1 was voted.

A list of authoritative speakers from Hereford Club was recommended to District One, Texas Garden Clubs Inc. Speakers and their topics include Mrs. Hill, book reviews and conservation; Mrs. W. C. Hromas, art in the

home; Mrs. M. T. Rutter, dried arrangements; Mrs. Wilson, roses; Mrs. A. O. Thompson, iris; Mrs. J. N. Jacobsen Jr., peonies and lawn care; Mrs. A. L. Manjeet, color, table settings, and A Garden Clubber in Europe.

Last half of a book by Sylvia Hirsch, The Art of Table Setting, was reviewed by Mrs. Manjeet, who first sketched the opening chapters presented in a previous program. She has attended a lecture-workshop in Ft. Worth conducted by the author and was able to add to the book's content.

She emphasized the use of beautiful table settings not only for special occasions and to express hospitality to guests, but also for everyday family meals to develop appreciation for beauty. Design, color, texture and their correlation in table appointments and food to make a pleasing picture suited to the occasion, were stressed.

Flower arrangements for tables in a patriotic theme were

WHERE YOU ALWAYS BUY THE BEST FOR LESS

## GIBSON'S DISCOUNT CENTER

SPECIALS GOOD 15th, 16th & 17th

### USE OUR LAY-A-WAY PLAN

OPEN 9:00 A.M. to 9:00 P.M.

#### SPORTING GOODS DEPT.

<p>GOTHAM 30 QUART</p> <p>ICE CHEST</p> <p>EASY TO CARRY HANDLE PERFECT FOR OUTINGS</p> <p>FOAM STYRENE</p> <p><b>99¢</b></p>	<p>SHAKESPEAR</p> <p>RODS &amp; REELS</p> <p><b>50%</b></p> <p>OFF LIST PRICE</p>	<p>FISH - N - FLOAT</p> <ul style="list-style-type: none"> <li>ZIPPER POCKET</li> <li>HEAVY DUCK</li> </ul> <p>Reg. Ret. \$14.95</p> <p><b>\$7.97</b> AT GIBSON'S</p>
---	---	---

#### HOUSEWARES DEPT.

<p>LOMA BUSHEL</p> <p>BASKET</p> <ul style="list-style-type: none"> <li>PATIO</li> <li>OUTDOORS</li> <li>LAUNDRY</li> </ul> <p>NOW <b>53¢</b></p>	<p>INLAND "MAGIC TOUCH"</p> <p>ICE CUBE TRAYS</p> <p>18-CUBE</p> <p><b>99¢</b></p> <p>AT GIBSON'S</p>	<p>MODEL M-300 HY-FRY AUTO ELEC</p> <p>COOKER - FRYER</p> <ul style="list-style-type: none"> <li>Heatrol Thermostat</li> <li>5 1/2 Qt. Capacity</li> <li>2 Year Guarantee</li> <li>Copper or Chrome</li> </ul> <p><b>\$6.87</b></p> <p>AT GIBSON'S</p>
---	---	--

<p>WHITE</p> <p>COFFEE MUG</p> <p>8 Oz. by Anchor Hocking</p> <p>REG. RET. 15¢</p> <p>NOW <b>9¢</b></p>	<p>By ANCHOR HOCKING</p> <p>PUNCH BOWL SET</p> <p>27 PIECE SET</p> <p>REG. RET. \$6.95</p> <p>NOW <b>\$4.87</b></p> <p>AT GIBSON'S</p>	<p>By ANCHOR HOCKING</p> <p>SWIRL ICE TEA TUMBLER</p> <p>25 OZ.</p> <p>REG. RET. 25¢</p> <p>NOW ONLY <b>16¢</b></p>	<p>"EKCO" Stain. Steel</p> <p>STEAK KNIVES</p> <p>Set 6 in Hardwood Holder</p> <p>REG. RET. \$5.65</p> <p>NOW ONLY <b>\$2.97</b></p>
---	--	---	--

#### HEALTH & BEAUTY AIDS

<p>NEW FORMULA</p> <p>AEROWAX</p> <p>SELF-POLISHING FLOOR WAX</p> <p>FLOOR WAX QUART</p> <p>WILL NOT YELLOW LONGER LASTING SHINE FOR ALL FLOORS</p> <p><b>53¢</b></p>	<p>HOME PERMANENT TONI</p> <p>GENTLE - SUPER - REG.</p> <p>REG. \$2.00</p> <p>NOW <b>\$1.23</b></p>	<p>New Lustre Cream</p> <p>Hair Spray</p> <p>Reg. - Soft - Tinted FULL 14 OZ.</p> <p><b>39¢</b></p> <p>REG. RET. 99¢ AT GIBSON'S</p>	<p>GRIFFIN Allwite FOR ALL WHITE SHOES</p> <p>NEW Self-Applier Package</p> <p>Reg. Ret. 29¢</p> <p><b>13¢</b></p>
---	---	--	---

<p>SARDO</p> <p>LIPODERMIC BATH</p> <p>Bathe Away Dry Skin</p> <p>REG. RET. \$3.00</p> <p>NOW ONLY <b>\$2.27</b></p>	<p>JERIS 7 Oz. Bottle</p> <p>HAIR OIL OR HAIR TONIC</p> <p>REG. RET. 89¢</p> <p>NOW <b>47¢</b></p>	<p>Tru Magic</p> <p>THE RUG SHAMPOO REMOVES SPOTS FROM CLOTHING; GREASE - CRAYON COFFEE - HAIR OIL BEVERAGES - INKS BLOOD - LIP-STICK TEA - SHOE POLISH &amp; OTHER STAINS</p> <p>A DEMONSTRATION WILL BE HELD IN OUR STORE SAT., 17th BY A TRUE MAGIC REP.</p> <p>QTS. <b>\$1.19</b> PINTS <b>77¢</b></p>	<p>Gulf Lite charcoal starter</p> <p>1-Qt. CAN OF "GULF LITE"</p> <p><b>22¢</b></p> <p>Leaves no taste, no soot, no odor. . . clean, easy to use. Great for barbecues, campfires and fireplaces.</p>
--	--	--	--

CLOSED SUNDAY

## GIBSON'S DISCOUNT CENTER

WHERE YOU BUY THE BEST FOR LESS

PHARMACY

SHOP AND SAVE EVERY DAY

GIBSON'S DISCOUNT PHARMACY QUALITY . . . ECONOMY . . .

ROBERT MILLER GRADY ROGERS



There are 32 wild and wonderful Wide-Track Pontiac tigers in tiger country.

Right now is the best time to capture one on your terms!

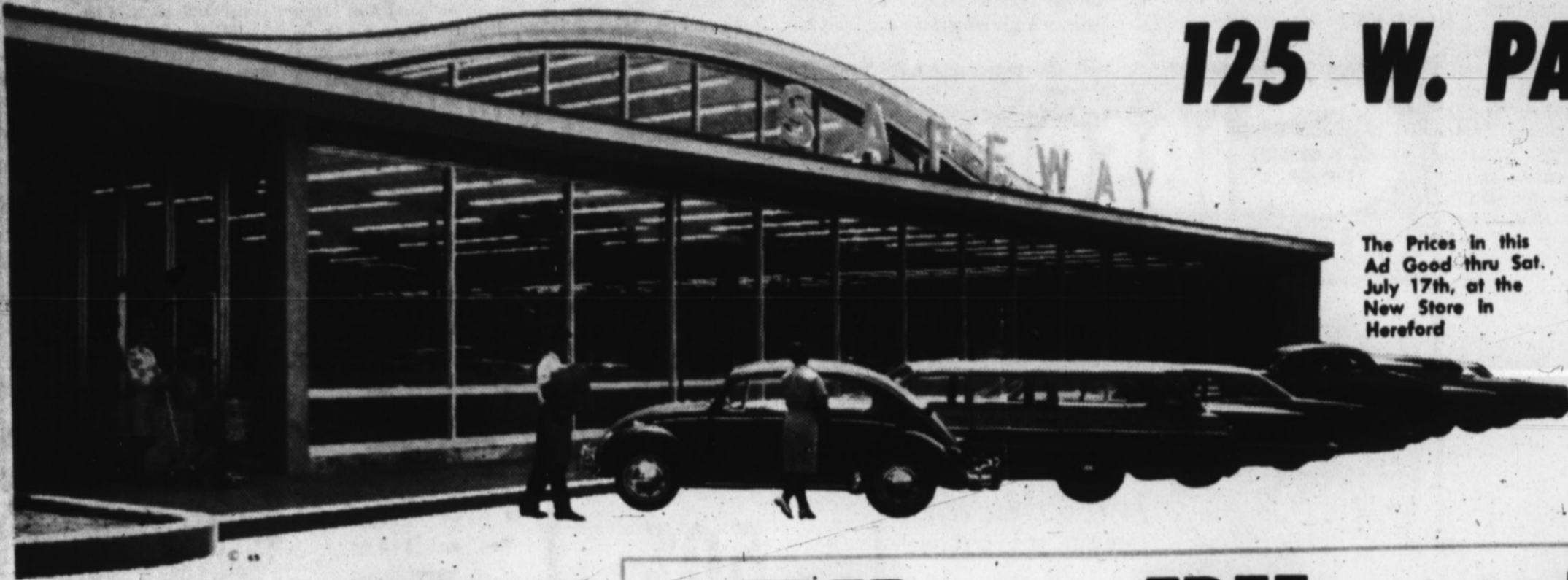
CAMPBELL PONTIAC

815 E. Highway 60 Hereford, Texas

COMI TO TIGER COUNTRY, SEE THE NEW BONNEVILLE, STAY CHEF, GRAND PRIX, CATALINA, 142, LE MANS, GTO AND TEMPEST AT YOUR AUTHORIZED PONTIAC DEALER.

# GRAND OPENING

## 125 W. PARK AVENUE



The Prices in this Ad Good thru Sat. July 17th, at the New Store in Hereford

You'll find shopping our new store a pleasure! Wide, spacious aisles; harmonizing colors; ultra-modern displays; fast, efficient check-out stands; courteous, friendly people to serve you; ample free parking space. These are but a few of the reasons. There are thousands more! They're the fine foods you always find at Safeway at low prices. Make this new store your store... come in today!

### Highway 10 for Dollar Sale!

- Pork & Beans
  - Pinto Beans
  - Red Kidney Beans
  - Mexican Beans
  - Lima Beans
  - Blackeye Peas
- NO. 300 CANS **10 FOR \$1**

### FREE

A 6 Ct. Pkg. of  
**ESKIMO PIES**  
With The Purchase Of A Gal. Lucerne Vanilla or Neopolitan  
**ICE CREAM**  
YOU GET BOTH FOR **\$1.19**

### FREE

A 29¢ Pkg. of Morton's  
**POTATO CHIPS**  
With The Purchase Of A Pkg. at Reg. Price!  
YOU GET BOTH FOR ONLY **29¢**

### FREE

A 26 Oz. Pkg. of Sno-White  
**SALT**  
When You Purchase A 4-Oz. Can Of Crown Colony  
**BLACK PEPPER**  
YOU GET BOTH FOR ONLY **39¢**

### FREE

Qt. Btl. Of White-Magic  
**BLEACH**  
When You Buy A 28 Oz. Btl. Of White Magic  
**CLEANER**  
YOU GET BOTH FOR ONLY **49¢**

LOWER YOUR TOTAL FOOD BILL: SHOP AT SAFEWAY!

SAFEGWAY GRAND OPENING VALUES!

**Cocktail Peaches Pears Beans**

- TOWN HOUSE FANCY FRUIT COCKTAIL 4 NO. 303 CANS **\$1**
- TOWN HOUSE YELLOW CLING SLICED or HALVES 4 NO. 2 1/2 CANS **\$1**
- TOWN HOUSE FANCY QUALITY PEAR HALVES 4 NO. 303 CANS **\$1**
- VAN CAMP FAMOUS PORK & BEANS 8 NO. 300 CANS **\$1**

- Orange Juice Bel-air Frozen 4 6 oz. cans **95¢**
- Lemonade Bel-air Frozen Regular or Pink 7 6 oz. cans **\$1.00**
- Grape Juice Bel-air Premium 5 6 oz. cans **\$1.00**
- Margarine Coldbrook Solids 6 1 lb. ctns. **\$1.00**
- Applesauce Highway 2 No. 303 cans **29¢**
- Spiced Peaches Hunt's Quality No. 2 1/2 can **31¢**
- Chocolate Milk Lucerne Extra Rich qt. ctn. **28¢**
- Lemonade Lucerne Quality Fancy Fresh 1/2 gal. ctn. **35¢**
- Sour Cream Lucerne Quality Safeway Guaranteed 8 oz. ctn. **29¢**

**FREE!**

15 OZ. LUCERNE  
**FRUIT GELATIN**  
with the Purchase of  
15 OZ. LUCERNE  
**WALDORF GELATIN**

**PEANUT BUTTER**  
REAL ROAST 3 LB. JAR **99¢**

**COFFEE**  
ALL GRINDS 1 LB. CAN **69¢**

Harvest Blossom  
**White Flour**  
ENRICHED ALL PURPOSE 10 LB. BAG **79¢**

Save on sparkling Fresh Produce at Safeway!

- Garden Club Mustard 16 oz. jar **19¢**
- Jalapeno Chili Peppers 12 oz. btl. **53¢**
- Shasta Salad Olives 10 oz. btl. **47¢**
- Zippy Sweet Relish 12 oz. jar **29¢**
- Dill Pickles Zippy Kosher Whole Dill 22 oz. jar **29¢**
- Van Camp Hominy White or Golden 2 No. 300 cans **23¢**
- Pineapple Juice Del Monte 46 oz. can **43¢**



**Bananas**

CENTRAL AMERICAN  
GOLDEN RIPE  
SPECIAL LOW PRICE!

**10**  
lb.

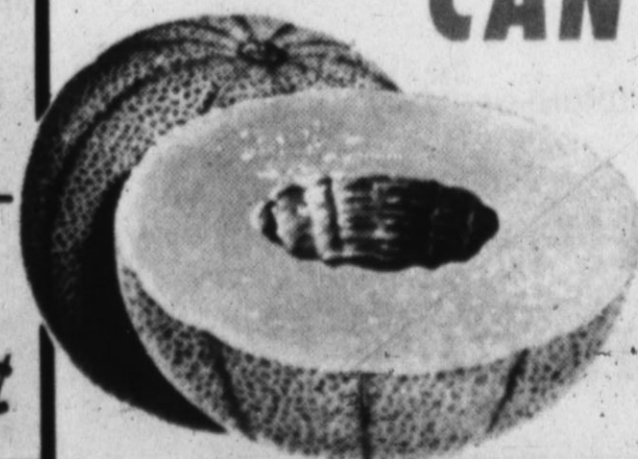
GRAND OPENING PRODUCE SPECIALS!

**CUCUMBERS**  
**Potatoes**  
**Oranges**

- CALIFORNIA LONG GREEN SLICERS EA. **5¢**
- HEREFORD GROWN U.S. NO. 1 REDS ALL PURPOSE 10 LB. BAG **79¢**
- LARGE JUICY SWEET CALIFORNIA SUNKIST VALENCIAS 8 LBS. **\$1**

**CANTALOUPE**

Large Texas Vine Ripe



**5 FOR ONLY \$1**

- TOMATOES**  
Waldorf Brand cello pkg. **25¢**
- ONIONS**  
Hereford Yellow 2 lbs. **19¢**

Bel-air Frozen Foods  
**MIX 'EM or MATCH 'EM**

- Green Peas 10 oz. pkg.
- Chopped Broccoli 10 oz. pkg.
- Leaf Spinach 12 oz. pkg.
- Chopped Spinach 12 oz. pkg.
- French Fries 9 oz. pkg.
- Squash 10 oz. pkg.
- Crinkle Cuts 9 oz. pkg.
- Collards 10 oz. pkg.

Stock Your Freezer with these BEL AIR Frozen Foods **5 Pkgs. For Only \$1**

- ROMAINE** Garden Fresh from California bch. **25¢**
- BROCCOLI** Icy Fresh California lb. **29¢**
- SQUASH** California Zucchini lb. **29¢**
- SANTA ROSA PLUMS** lb. **28¢**
- CELERY HEARTS** Fresh Pascal pkg. **39¢**
- RED CABBAGE** Crisp and Fresh lb. **15¢**
- LEAF LETTUCE** Garden Fresh Red Lettuce bch. **29¢**
- YELLOW SQUASH** Home Grown lb. **15¢**



**SAFEWAY**

# CELEBRATION



**PLAY**  
**BONUS BINGO**  
GET COMPLETE DETAILS AT NEW STORE!  
**96 WAYS TO WIN!**  
Clip Prize Slips Below to Help You Win!

<b>BONUS BINGO PRIZE SLIP</b> \$100 GAME O-3 SAFeway	<b>BONUS BINGO PRIZE SLIP</b> \$1000 GAME U-4 SAFeway	<b>BONUS BINGO PRIZE SLIP</b> \$10 GAME B-2 SAFeway
---	--	--

SAVE ON THESE GRAND OPENING SPECIALS AT SAFeway!

- |                         |                        |                |     |
|-------------------------|------------------------|----------------|-----|
| <b>Golden Corn</b>      | GARDENSIDE CREAM STYLE | 8 NO. 303 CANS | \$1 |
| <b>Spinach</b>          | GARDENSIDE TENDERLEAF  | 8 NO. 303 CANS | \$1 |
| <b>Tomatoes</b>         | GARDENSIDE CANNED      | 8 NO. 303 CANS | \$1 |
| <b>Tomato Catsup</b>    | TOWN HOUSE QUALITY     | 5 14 OZ. BTL.  | 89¢ |
| <b>Holly Beet Sugar</b> |                        | 10 lb. bag     | 99¢ |

Bel-air Premium Frozen  
**CREAM PIES**  
Chocolate, Coconut, Lemon, Banana  
4 14 oz. Pies **89¢**  
SAVE 67¢



**REGISTER FOR THESE VALUABLE FREE PRIZES**  
AT THE NEW SAFeway STORE IN HEREFORD  
Nothing to Buy! No Obligation!

Register Each Time You Visit the New Safeway Store.  
You Need Not Be Present to Win  
Winners Will Be Notified.  
You Must Be 16 or Older to Win.

**1st PRIZE:**  
"19" Inch R.C.A. PORTABLE T.V.  
To Be Given Away Saturday, July 24th. Register Today!

**2nd PRIZE:**  
Jacobson Power LAWN MOWER  
To Be Given Away Saturday, Aug. 7th.

**3rd PRIZE:**  
Westinghouse Upright FREEZER  
To Be Given Away Saturday, Aug. 21st.

**FREE:** For The Children 20 lb. Sucker

Each child will be given a ticket each store visit. Drop the stub in the lobby of our store. The drawing will be Sat. night, July 17th.

**FRYERS**  
U.S.D.A. Inspected and Graded—Grade 'A' Whole  
Bar-Be-Que FRYERS  
lb. 98¢



- |                     |   |                    |        |
|---------------------|---|--------------------|--------|
| <b>Cleanser</b>     | White Magic Powder                      | 2 14 oz. cans      | 25¢    |
| <b>Lucerne Milk</b> | Quality Condensed                       | 6 tall cans        | 79¢    |
| <b>Instant Milk</b> | Lucerne Quality                         | 8 qt. pkgs.        | 69¢    |
| <b>Preserves</b>    | Empress New Crop Strawberry             | 3 10 oz. jars      | \$1.00 |
| <b>Cookies</b>      | Melrose Coconut, Lemon, Oatmeal & Sugar | 4 13 1/2 oz. pkgs. | \$1.00 |
| <b>Tomato Juice</b> | Libby's Famous                          | 2 46 oz. cans      | 69¢    |
| <b>Soft Drinks</b>  | Cragmont Assl. Flavors                  | 14 cans            | \$1.00 |

**Grade 'A' EGGS**  
BREAKFAST GEM MED.  
4 DOZ. FOR \$1

- OTHER MEAT VALUES!**
- |                       |                              |               |     |
|-----------------------|------------------------------|---------------|-----|
| <b>GROUND BEEF</b>    | 100% Pure Meat Fancy Fresh   | lb.           | 49¢ |
| <b>CHUCK ROAST</b>    | U.S. Choice Beef Blade Cut   | lb.           | 59¢ |
| <b>SLICED BACON</b>   | Wilson's Corn King           | 1 lb. pkg.    | 69¢ |
| <b>STEWING HENS</b>   | Manor House Grade 'A' Cut-Up | lb.           | 29¢ |
| <b>SPARERIBS</b>      | Fresh Frozen Small Ribs      | lb.           | 39¢ |
| <b>PORK STEAK</b>     | Fresh Pork Lean & Tender     | lb.           | 69¢ |
| <b>PINKNEY FRANKS</b> | Skinless Economy Pack        | 2 2 lb. pkgs. | 79¢ |
| <b>Luncheon Meat</b>  | Safeway Assorted             | 2-8 oz. pkgs. | 79¢ |

**FREE**

8 Ct. Pkg. of Look Book or Mead's Hamburger **BUNS**  
with the Purchase of a 2 lb. pkg. or More GROUND BEEF

16 oz. Blue Morrow Chuck Wagon Beef **STEAK**  
with the Purchase of a 16 oz. Blue Morrow Chuck Wagon Beef Steak

**Finest Baked Foods—**  
**WONDERFULLY GOOD**

**COOK BOOK**  
**BUTTERFLY ROLLS**  
or **FRUIT ROLLS**  
3 PKGS. FOR \$1

- |                          |                               |              |     |
|--------------------------|-------------------------------|--------------|-----|
| <b>Charcoal</b>          | Hi Country                    | 10 lb. bag   | 49¢ |
| <b>Pineapple</b>         | Lalani Fancy Sliced Pineapple | 4 No. 1 cans | 69¢ |
| <b>Grape Juice</b>       | Welch Quality                 | 24 oz. btl.  | 43¢ |
| <b>Grape Juice</b>       | Empress Fancy                 | 24 oz. btl.  | 35¢ |
| <b>Grape Drink</b>       | Empress Fancy                 | 3 qt. cans   | 89¢ |
| <b>Pickled Beets</b>     | Del Monte Sweet Sliced        | 16 oz. jar   | 27¢ |
| <b>Crisco Shortening</b> |                               | 3 lb. can    | 85¢ |
| <b>Armour Lard</b>       |                               | 3 lb. can    | 59¢ |

**FREE**

A 12 OZ. PKG. OF BLUE MORROW LINK SAUSAGE  
WHEN YOU BUY ONE PKG. AT REG. PRICE  
You Get Both For Only **55¢**

- |                              |                            |               |        |
|------------------------------|----------------------------|---------------|--------|
| <b>Liquid Bleach</b>         | White Magic                | 1/2 gal. btl. | 35¢    |
| <b>Worth Syrup</b>           |                            | qt. btl.      | 49¢    |
| <b>Salmon</b>                | Pink                       | No. 1 can     | 69¢    |
| <b>Brylcreem</b>             | Hair Dressing              | 1g. tube      | 59¢    |
| <b>Crest Toothpaste</b>      |                            | ex. 1g. tube  | 69¢    |
| <b>Ironing Board Set</b>     | Foam Pad with Teflon Cover | on.           | 50¢    |
| <b>Pooch Dog Food</b>        | Dry                        | 5 lb. bag     | 59¢    |
| <b>Delta Bathroom Tissue</b> |                            | 16 rolls for  | \$1.00 |

BY PLAINS COTTON GROWERS, INC.

# Provision Of New Cotton Proposals Are Described

LUBBOCK — A highly controversial, low loan-direct payments cotton bill, H. R. 9715, was reported out of the House Agriculture Committee July 8. Diligently sought by the Administration and bitterly fought by producers, the bill finally came from the committee on a split vote of 20 to 13. Then the committee almost immediately went back into executive session, added some new features and brought out a substitute — no less controversial and no less displeasing to cotton producers.

chief proponent Congressman Harold Cooley (D-NC), carries the number H. R. 9715. Written as a four-year proposal, it provides:

1. A loan price of 21 cents per pound on middling-inch cotton at average location in 1966 and a loan price at 90 percent of the "estimated" world price for 1967, 1968 and 1969.

ceives reapportioned acreage will be eligible for the loan (21 cents) and the support payment (9 cents on domestic acres) but not for land diversion payments;

9. That allotment holders can release 85 percent of their acreage and receive a land diversion payment in the amount of one-half the loan price times projected yield from the other 15 percent without planting any cotton at all;

to 33.3 cents if he plants 75 percent and 36.6 cents if he plants only 65 percent. In this calculation it appears the Department is assuming that cotton will sell at one cent above the loan price, which may or may not be the case under varying conditions.

As an example of how the bill would work if it should become law as now written, consider a farmer with a 100 acre allotment and assume his lint yield to be 500 pounds per acre.

If he plants over 85 acres he may as well plant fence-row to fence-row because he loses eligibility for loan or payment.

If he plants 85 acres and produces 85 bales he gets a minimum of the 21 cent loan value on the full 42,500 pounds of lint, or \$8,925.00. Then, on the 65 bales from his domestic allotment, he gets a payment of 11.42 cents per pound, or \$7,511.50, for total gross income from cotton of \$16,436.50. On the 42,500 pounds, that an average price of 29.73 cents per pound and he will have to sell at one cent above the market to reach the Department's figure of 30.73 cents.

10. THAT IF the Secretary of Agriculture is unable to make payments as provided in the law he may carry out its provisions through use of loans or through purchase and resale of cotton;

11. That the Secretary of Agriculture cannot sell cotton from CCC stocks at less than 110 percent of the loan price except if he determines that production in any year will be less than offtake, in which case he can sell CCC stocks at market prices;

PLANTING 75 acres he would get the minimum 21 cent loan value on 37,500 pounds and a payment of 13.04 cents on the 32,500 pounds from domestic acreage — a total of \$12,113.00 and an average of 32.3 cents per pound for all of his cotton. Again, this is one cent below the figure used by the Department.

If he chooses to reduce back to his domestic allotment, 65 acres, he would receive a minimum of 21 cents plus 14.65 cents, or 35.65 cents per pound on all production.

Cotton on the High Plains normally averages about 3 cents per pound below the middling-inch at average location loan price, which in 1965 is 29 cents. Therefore in 1965 we have a support level under the loan of 26 cents per pound. And, converting this per-pound price to the 100 acre, 100-bale example as used above, the gross income support will be \$13,000.00.

12. That farmers may, within counties or adjoining counties, trade rice and cotton allotments between themselves, and

13. THAT SALE and transfer of cotton allotments may be made between growers within a county, except that if a referendum vote shows that two-thirds of the growers in a county approve, allotments from that county can be sold and transferred outside the county but within the state.

However, the total allotment for any farm to which acreage is transferred can not exceed 150 percent of the average size farm acreage allotment in that state or 100 acres, whichever is greater.

DEPARTMENT of Agriculture figures are reported to show that the blended, or average, price for a farmer planting 85 percent of his allotment would come to 30.73 cents per pound.

BY COMPARISON, under H. R. 9715 discussed above, the High Plains farmer electing to

### THE NEW Bill, still called the "Cooley Bill" after sponsor and

Today's Watchword

Don't let a Golfer Putter with your watch!

BRING YOUR WATCH TO A SPECIALIST FOR repairs

FREE INSPECTION!

Get Our Estimates

Accredited experts with long experience and very newest electronic-age equipment assure dependable work and fast service.

Your Watch Hospital  
**Cowan Jewelry**  
217 Main

Accredited experts with long experience and very newest electronic-age equipment assure dependable work and fast service.

Your Watch Hospital  
**Cowan Jewelry**  
217 Main

# Easter News

By RUBY STONE

Brand Correspondent

Mr. and Mrs. I. G. Holmes and sons of Lubbock were Monday visitors of the Loy Stones.

Gary Burnett of Dalhart and Sam Steen of Dumas visited Gary's parents, Mr. and Mrs. John H. Burnett, Mr. and Mrs. Bill Kirkland of Hereford visited the group Monday night.

Mrs. E. A. Hill, Mrs. G. G. Downing and daughter Tish, of Lawton, Okla., spent several days this week with the Trent Downings. Tish remained for a longer visit.

Mrs. I. E. Pryor and daughter, plant 85 percent of his allotment would have a gross support level at \$11,361.50 — a 12.6 percent drop in gross. Planting 75 percent he would have a support level at \$10,988.00 — a drop in gross of 15.5 percent. If he cuts back to 65 percent his gross support drops to \$10,611.25 for an 18.4 percent loss in gross income.

Of course these are minimum farmer receipts, or the amounts he could count on, for sure. But with a huge carryover and the possibility of some producers growing unlimited amounts of cotton, most observers see little hope that cotton will sell at much above the loan level. If it doesn't, these figures would closely approximate producer income under H. R. 9715.

Of course these are minimum farmer receipts, or the amounts he could count on, for sure. But with a huge carryover and the possibility of some producers growing unlimited amounts of cotton, most observers see little hope that cotton will sell at much above the loan level. If it doesn't, these figures would closely approximate producer income under H. R. 9715.

Of course these are minimum farmer receipts, or the amounts he could count on, for sure. But with a huge carryover and the possibility of some producers growing unlimited amounts of cotton, most observers see little hope that cotton will sell at much above the loan level. If it doesn't, these figures would closely approximate producer income under H. R. 9715.

Of course these are minimum farmer receipts, or the amounts he could count on, for sure. But with a huge carryover and the possibility of some producers growing unlimited amounts of cotton, most observers see little hope that cotton will sell at much above the loan level. If it doesn't, these figures would closely approximate producer income under H. R. 9715.

Glenda, of Odessa spent the weekend with Mr. and Mrs. W. A. Epperson.

Mr. and Mrs. Loy Stone made a business trip to Lubbock Tuesday.

Mr. and Mrs. Sam Scarborough, Ann and Carolyn, spent Thursday and Friday of last week at Buffalo Gap visiting relatives at the Thomas Jefferson Dunlap reunion.

Mr. and Mrs. R. B. Medley and Sandra Kay spent Sunday with Mr. and Mrs. W. A. Epperson.

afternoon visiting Mrs. Eula Whiteford. They attended the rodeo Thursday night.

Reba Hall spent Monday night and Tuesday with Daricell Oldham at Dimmitt.

Mr. and Mrs. C. N. Land have returned home after visiting their son and family, Mr. and Mrs. Carlon Land of Laramie, Wyo.

Lonnie Strickland of Dimmitt spent Monday night and Tuesday with Ronnie Hall.

Visitors in the Bill Struve home Wednesday night were Mrs. Thelma Heck of Abilene, Mrs. Glen Keeter, Cheryl, Donald and Steven of Lubbock, Mr. and Mrs. Steve Struve of Friona.

There are 18,000 key structural parts and more than 500,000 individual components in a modern jet aircraft.

**Place Your Booking Early**

Supply Limited

Bulk Certified Improved Triumph Wheat Seed and Will Barley, grown from foundation seed. Also bulk Tascosa seed one year from certification.

**HEREFORD GRAIN CORP.**

EM 4-3755

**Get The Bowling Habit — For Your Own Well Being!**

It's A Wonderful World Of Fun.

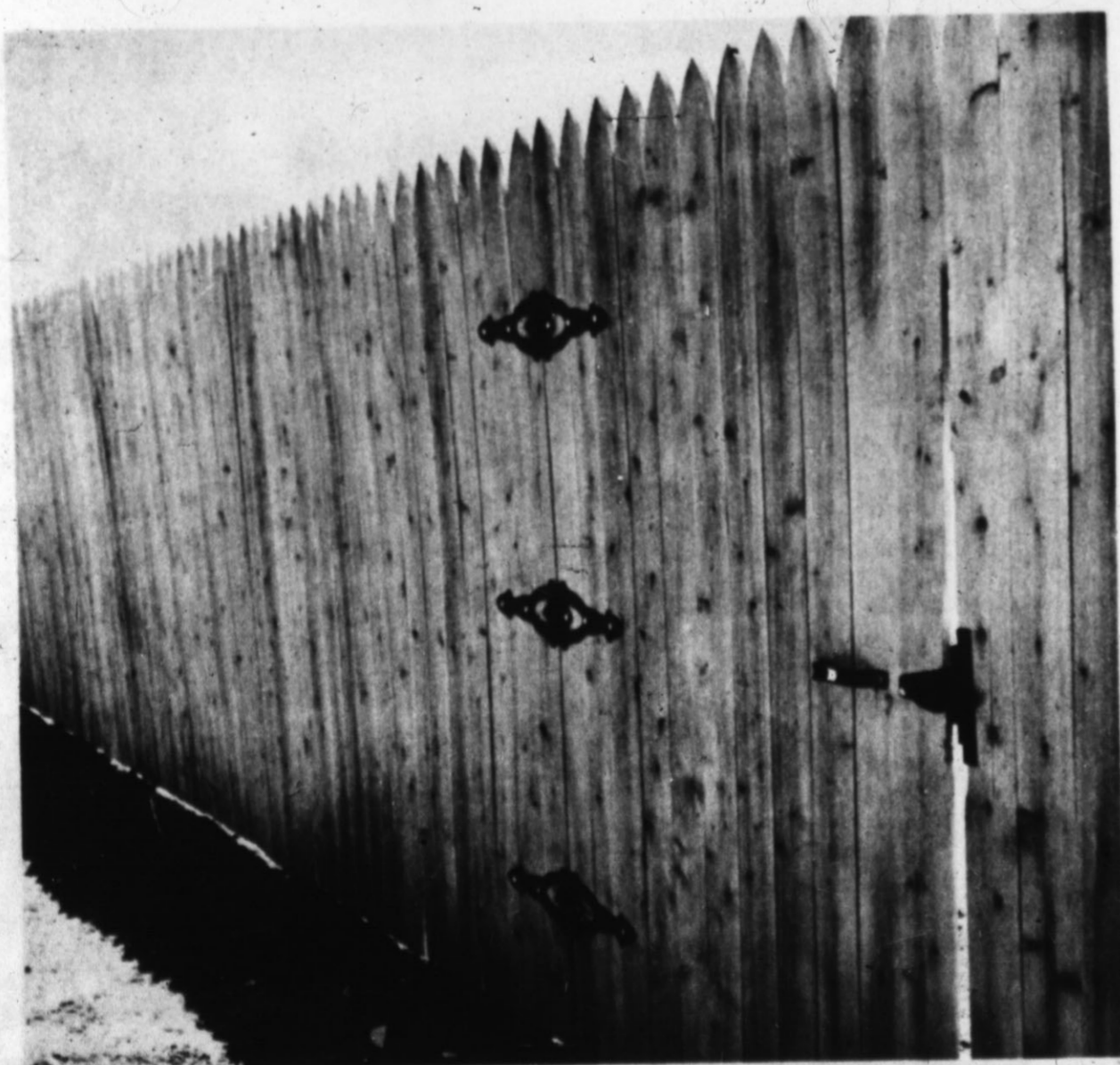
FUN FOR EVERYONE

**LET'S GO BOWLING**

**SUNSET LANES** EM 4-1560



# Stockade Fencing Material



Now in Stock at  
**CARL McCASLIN Lumber Co.**

1 Block East of the Courthouse Phone the Lumber Number EM 4-3434

**TITLE I LOANS**

TO ALL SUGAR BEET GROWERS, PATHOLOGISTS REPORT LEAF SPOT SHOWING UP IN THIS AREA. CHECK YOUR BEETS CAREFULLY OR CALL

## TIDE PRODUCTS

FOR FREE FIELD INSPECTION SERVICE.

### TIDE

HAS THE KNOWHOW AND THE CHEMICALS TO INSURE YOU TOP PRODUCTION.

DO AS OTHER SUCCESSFUL GROWERS ARE DOING AND RELY ON

## TIDE PRODUCTS

AND THEIR QUALIFIED MEN FOR ALL OF YOUR CHEMICAL NEED. CALL US TODAY.

ONLY THE BEST

WEST ON HWY. 60  
Hereford Branch - EM 4-0712  
Hart Branch - 938-3595  
Littlefield Branch - 385-5735  
Farwell Branch - 481-3346



SYMBOL OF QUALITY IS FIT TO BE TIDE

RESEARCH AT HALFWAY

New Weed Killers Now Under Study

Weeds are at all times a problem to area farmers, but due to the recent extensive rains that have fallen, many farmers are getting behind in their weed control program.

Jack Parks, Agricultural Engineer for the High Plains Research Foundation, states that now is a good time to start a weed control program by using flame cultivation. The weeds are still tender and succulent due to the wet weather and will be more susceptible to heat than at a later date when the hot, dry weather prevails.

MUCH OF the land is still too wet for conventional (sweep type) cultivation, but will support a flaming rig. Parks says that now is the time to get the jump on this year's weed crop.

The Foundation has added a new step in the research program this year in flame weed control. Parks is working closely with Dr. Arthur F. Gohlke, Senior Soil Scientist of the Foundation, in combining chemical weed control with flame.

"WE KNOW some crops that are grown out here cannot be flamed until they have some size to the plant. With cotton, the minimum flaming size is around six inches. This year at the Foundation, we are combining chemicals and flaming to see if we can get the crop by the danger stage for flaming," says Parks.

"The chemicals were applied at a low rate which will reduce the possibility of harmful residue for the crop grown on the land next year, yet will still control the weeds until the crop gets large enough to flame. By incorporating both of these methods, we can do a more effective and economical farming job."

Several combinations of rates of chemicals are under study at Halfway to determine the most effective and economical rates. All of the results of this research will be included in the 1965 Annual Research Report, published each year by the Foundation.

For more information contact the High Plains Research Foundation, P. O. Drawer 2200, Plainview, Texas.

Dawn News

The Dawn Boys' 4-H club participated in a tour of the Western Ammonia fertilizer plant at Dimmitt as a part of their agribusiness subject-matter group study.

Boys in attendance were Glenn Polan, Tommy Betzen, Dion Miller and Neil McAndrews. They were accompanied by Mrs. Clarence Betzen, Mrs. H. H. Miller and Juston McBride.

At their last meeting McBride announced that Kevin McAndrews, Stephen Hoffman, and Tommy Betzen were chosen, on the basis of their record books scores, to attend the Junior Leadership Training Laboratory at Brownwood in August. He also announced that Glenn Polan and Gary Richardson were district winners with their recreation record books. Plans for next year's projects were discussed.

Present for the meeting were Gerald Witkowski, Stephen Hoffman, Wayne Polan, Kevin McAndrews, Mike Engler, Tommy Betzen, Glenn Polan, Steven McAndrews, Dion Miller, Wayne Betzen, John Sooter and Mike Sooter.

Adults present were Mrs. Ray Polan, Mrs. Tony Hoffman, Jim Andrews, Mr. and Mrs. Clarence Betzen and County Agent Juston McBride.

LITTER CROWDS FISH NEW YORK — Fishermen are warned against crowding game fish out of the water with litter.

C. R. Gutermuth, chairman of Keep America Beautiful's national advisory council, estimate that some 50 million people in the U. S. will go fishing this year.

"Each of these anglers, if he were a litterbug, would dump about a pound of rubbish into our streams, lakes and salt water — or along the shores," Mr. Gutermuth said. "That adds up to a potential of 50 million pounds of rubbish in a single season. At that rate, we would have more litter than fish."

Dr. Milton C. Adams  
OPTOMETRIST  
OFFICE HOURS  
Mon. - Fri. 8:30-5:00  
Saturday 8:30 - 1:00  
335 Miles EM 4-2255

EVERYONE LIKES DRUMSTICK

FRIED CHICKEN



We serve chicken as you like it—

- ALL WHITE MEAT
- ALL DARK MEAT
- MIXED LIGHT AND DARK
- ALL LIVER ORDER
- ALL GIZZARD ORDER
- ALL THIGH ORDER
- ALL DRUMSTICKS (kiddies)

We Feature Family Dining at Family Prices—the average dinner check for a family of four (determined by a survey of 500,000 customers) is less than

98¢ each.

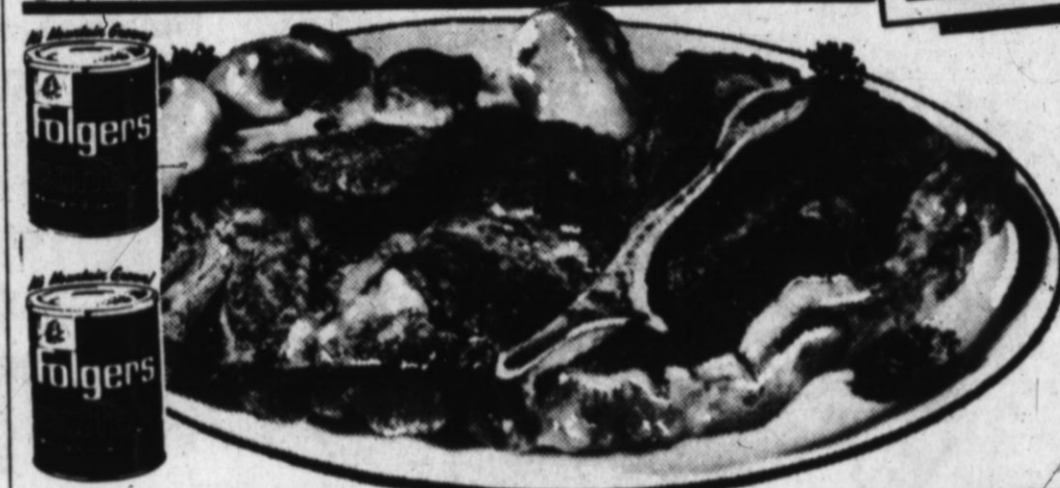
Our convenient take out department featuring complete dinners "to go."

HOME OF THE BIGGEST LITTLE RAILROAD IN ALL THE LAND  
MYERS DRUMSTICK RESTAURANTS  
2700 GEORGIA  
For TAKE OUT ORDERS call FL 5-5656

DURING THE SHURFINE ROYAL RECIPE SWEEPSTAKES

WIN-FREE \$100. \$25,000.00 CASH! FREE! OVER 140,000 SHURFINE FOOD PRODUCTS

HERE'S HOW IT WORKS!  
Get your FREE Shurfine Royal Recipe card each time you shop. Collect coupons until you have all three words to complete the phrase "SHURFINE ROYAL RECIPES." Take the winning coupons to store manager and collect \$100. If the name of a Shurfine food product appears on a coupon present same to store manager for FREE product indicated. A blank or illegible card entitles you to another free card.  
P.A.G. Affiliated Food Stores collectively and throughout the Golden Spread are offering FREE \$25,000.00 CASH and over 140,000 FREE Shurfine food products during this promotion. Shop the P.A.G. Affiliated Food Store displaying the Shurfine Royal Recipe Sweepstakes signs.



ROAST U.S.D.A. CHOICE - CHUCK 59¢ LB.

WONDERFUL RECIPES TOO!

ARM ROAST LB. 69¢

FAMILY STEAK LB. 63¢

ARM ROUND SWISS STEAK LB. 73¢

SHORT RIBS lb. 29¢ STEW MEAT Boneless lb. 69¢ BACON Favorite 2 lb. pkg. \$1.29

JOY Giant Size 69¢

DASH Giant Size 79¢

SALVO Giant Size 81¢

CAMAY 2 Bath Size Bars 31¢

TOP JOB Giant Size 69¢

ZEST 2 Bath Size Bars 45¢

THRILL Giant Size 69¢

LAVA 2 Large Bars 35¢

SPIC & SPAN Regular Size 31¢

SWIFT'S HONEYCUP MELLORINE 1/2 gal. 39¢

OLEO Shurfine 2 1 lb. pgs. 43¢

SANDWICHES HAM SALAD - CHICKEN SALAD PIMIENTO CHEESE SOLD SATURDAY ONLY 10¢ EACH

FOOD KING SHORTENING 3 LB. CAN 65¢



COOKIES TENDERCRUST MARSHMALLOW TYPE 3 FOR \$1

STRAWBERRIES SHURFINE FROZEN 10 OZ. PKG. 23¢

SPECIALS GOOD THURSDAY, FRIDAY & SATURDAY - JULY 15, 16 & 17

FISH STICKS Sea Star Frozen 5 8 oz. pkgs. \$1  
PEACHES Shurfine 4 2 1/2 cans \$1  
PIES Bremner's Jumbo Box of 12 \$1.00  
BABY MAGIC Size 69¢  
HAIR SPRAY Aqua Net 12's 3 for \$1  
KOTEX 12's 3 for \$1  
STRAW HATS FOR SUMMER

FOLGER'S COFFEE LB. CAN 79¢

SALAD SHURFINE DRESSING QT. 39¢

PHILADELPHIA CREAM CHEESE 8 OZ. PKG. 29¢

COCA COLA REGULAR or KING SIZE 6 BTL. CTN. 39¢ PLUS DEPOSIT

FLOUR SHURFINE 10 LB. BAG 91¢

PEACHES 4 LBS. 68¢

ONIONS GREEN BUNCH 5¢

CUCUMBERS lb. 12 1/2¢

FRESH PRODUCE VINE RIPE TOMATOES LB. 15¢

TAYLOR & SONS FOODS LOW LOW EVERYDAY SHELF PRICES PLUS S & H GREEN STAMPS

YOUR HOME TOWN BOYS CASH AND SAVE

### Flower Show Date Fixed By Bud To Blossom Club

Date, place and theme for the Fall Flower Show of Bud to Blossom Garden Club were selected in a special meeting Tuesday morning in the home of Mrs. W. H. Gentry, when an office vacancy was filled by election of Mrs. R. N. Yarbro as first vice president. International Flower Garden will be the show theme Oct. 15, when the annual display will be held in Community Center.

Mrs. Earnest Kendall is general chairman of show arrangements. Committees to work with her, with chairman named first, are: Mmes. Wayne Newsom, Virgil Justice and Melvin Cordray, staging; Mmes. Deimo Williams, Bruce Brown and Fran Battenfield, schedule; Mmes. Yarbro, Bill Nelson and Jim Conkwright, entries; Mmes. Pat Robinson, Al Brown and Jack Allen,

Judges and awards; Mmes. Nelson and Gentry, clerks; Mmes. B. E. Cooper and Calvin Edwards, hospitality.

The fall hat sale to be sponsored by the club as a fund-raising project will be held Sept. 15, members decided. Resignation of Mrs. T. J. Kelly and Mrs. Ira Scott from club membership were accepted with expressions of regret.

Mrs. Sam Long, president, conducted the called business session which was attended by Mmes. Newsom, Williams, Kendall, Gentry, Edwards, Cooper, Bruce Brown and Al Brown.

Action taken at the meeting clears the way for final work on club yearbooks for next season.

#### NEW CONNECTION

NEW YORK (AP) — Herb Edelman, who played a telephone repairman in "Barefoot in the Park" on Broadway, will star in the touring company of "Luv," with Tom Bosley, who starred in "Fiorello," and TV comedienne Dorothy Loudon. The three will go into rehearsal Aug. 9 and begin national tour in Wilmington, Del., Aug. 30.

### Coffee Is July Event For Club And Two Guests

Morning coffee was served to members of Valeda Study Club and two guests Tuesday in the home of Mrs. George Ritter, west of Hereford with Mrs. Hugh Clearman as co-hostess. Mrs. Ritter and Mrs. Charles Hoover, members of the yearbook committee, presented a draft of the 1965-66 program.

The meeting was an informal one, with Mrs. Ritter presiding

in the absence of Mrs. J. R. Oglesby, president, and Mrs. Glen Watts, vice president and yearbook chairman.

Aug. 17 was set as the date for another summer club social, a swimming party and picnic supper for members and their families.

The hostesses served coffee with tiny sandwiches spiced rolls, fruit, mints and nuts to Mrs. Justin McBride and Mrs. Johnny Clark Jr., guests and Mmes. Joe Frank Clark, George Olson, Bob Wilmot and Hoover.

The table, set before a wide window, had a refreshingly cool appearance with its snowy cloth,

The Hereford Brand, Hereford, Texas, Thursday, July 15, 1965

### Members To Fill Convention Jobs

When members of the Hereford congregation of Jehovah's Witnesses attend a district assembly in Lubbock July 22-25 a number will be volunteers for jobs connected with the event, from cafeteria cooks and errand boys to musicians and nurses.

Mrs. Jerry Johnson, a house-

wife, instead of preparing meals for her family will be helping in preparations to feed 6,000 delegates. One in six of those at the assembly will be serving in volunteer duties, says Crispin Soto, local presiding minister.

Fifteen Hereford members plan to be among the delegates who will assemble from Texas, Oklahoma, New Mexico and Kansas congregations. One of the older members here, Jim Williams, 68, who has attended similar conventions through the past 30 years, will be among the number.

Samsonite Attache Case THE INK SPOT



# BUY LEVI'S NOW ON LAY-AWAY

FOR BACK TO SCHOOL



School time means new Levi's time and Anthony's can fill your needs. Whether it be Levi's Denims, Levi's Wheats, Levi's Casuals or Levi's no iron Trim-Cuts buy them now while sizes are complete, on our convenient Lay Away plan and be sure you are ready for back-to-school. Just make your selections, pay a small amount down and a little at different intervals and by the time school starts your Levi's are paid for. No red tape, no carrying charges what-so-ever.



#### Men's and Boys' BLUE DENIM LEVIS

Boys', 0-12	3.39	COMPLETE STOCK
Youth, 27-29	3.85	
Men's, 30-42	4.15	

#### Men's and Boys' CALIFORNIA LEVIS

Boys' sizes 4-12	3.98	WHITE, BLACK
Youth sizes 26-29	4.98	BROWN, GREEN
Men's sizes 30-42	4.98	

#### Men's and Boys' STA PRESS LEVIS

Boys' sizes	4.98	BLACK, OLIVE, BLUE
Youth sizes	5.98	
Men's Trim Cut	6.98	
Mr. Levi	7.98	

## WIN GRAN TURISIMO RACING SET

By Revell



NOT A CONTEST · NOTHING TO BUY

STINGRAY FASTBACK ■ FERRARI 250 GT BANKED TRACK with SPINOUT APRON

REGISTER NOW AT ANTHONY'S. DRAWING JULY 29th.



LAY-AWAY IS THE THRIFTY WAY TO BUY No Extra Charges You Save up to 18% Buy School Needs Now

# BACK-TO-SCHOOL LAY-AWAY SALE GIRLS' DRESSES

Fashion's Newest, Smartest Styles, Fabrics SPECIAL LOW PRICES FOR EARLY SHOPPERS



3<sup>77</sup> 2 FOR 7<sup>50</sup>

Sizes 3 to 6X and 7 to 12 Dozens of Styles to Select From

5<sup>77</sup> 2 FOR \$11.

Send her back to school in fall's newest fashions, and at extra savings too. Anthony's big assortment includes smart two piece jumper sets, skirt and overblouse sets, princess line designs, two piece jacket bolero and dress and many more. Cottons and cotton and miracle blends.

# BOYS' "BUCKHIDE" JEANS

Made to Anthony's rigid specifications for best fit and long wear

#### BOYS' 11 1/4-OZ. BLUE DENIM JEANS

Coarse weave white back denim that is strong and durable. Western styled for perfect fit. Sanforized. Double knee construction on sizes 4 to 12.

1<sup>98</sup> 3 PAIR 5<sup>67</sup>

Odd & even Sizes 4 to 12 Double Knee in 4 to 12's



#### BOYS' 11 1/4-OZ. COTTON & NYLON VAT DYED DENIM WESTERN CUT JEANS

WON'T WEAR WHITE WON'T WASH WHITE UP TO 75% MORE WEAR

2<sup>69</sup>

3 PAIR 7<sup>57</sup>

Odd or even sizes 4 to 16. Double knee 4 to 12

Cotton blended with nylon for added wear. Vat dye denim that will stand the gaff. Wide belt loops, zipper fly, reinforced at all strain points.

#### BOYS' 13 3/4-OZ. JEANS

Rugged Long Wear White Back Denim

2<sup>39</sup>

3 PAIR 6<sup>77</sup>

Western styled and cut, sewn with extra strong tough orange thread, and bar tacked at all strain points. Built to stand the rugged wear of active boys and men. 100% cotton.



SLIM SIZES

# DURENE® The Supreme Cotton Yarn

Buy Now At Special Back To School Lay-Away Sale Prices

BOYS' BRIEFS BOYS' T-SHIRTS MEN'S BRIEFS MEN'S T-SHIRTS

3 FOR 1<sup>87</sup> 3 FOR 2<sup>27</sup> 3 FOR 2<sup>47</sup> 3 FOR 2<sup>77</sup>

Size 6 to 16. Durene® knit Briefs. Double seat and front, reinforced tapes to maintain proper fit and longer wear. Sizes 5-M-L to fit boys 6 to 16. Durene® mercerized cotton knit, sleep retention built in. A superb value. Men's 28 to 42. Double panel front and back. Durene® more comfortable to wear, wears longer. Men's S-M-L to fit 36 to 44. Anthony specification cut and sewn. Durene® quality controlled by constant laboratory testing.

