

# Lawyers Conclude Trial On School Suit

By BOBBY TEMPLETON  
Brand News Editor

In closing arguments of the \$400,000 civil suit against the Hereford School Board of Trustees, defense attorneys stated that a buildup of inappropriate and unapproved actions over several years and an uncooperative attitude by plaintiff Wayne Woodward led to his dismissal as a teacher rather than the distribution of American Civil Liberties Union material as claimed by Woodward's attorneys. The arguments were presented Wednesday afternoon in the Federal District Court of Halbert O. Woodward in Lubbock.

Robin Green and Thomas Griffith, attorneys for the plaintiff, relied principally on the First Amendment of the U.S. Constitution in presenting their case. Green, an Amarillo lawyer, was the principal attorney during the trial held Sept. 21 in Amarillo. Griffith was hired after the National Education Association decided to fund part of the case.

EARNET LANGLEY, a local attorney defending the school board, presented his statements following Green's arguments. Griffith closed out the session, which lasted for about one and a half hours. Richard Green, a partner of Langley's helped with the defense, although he made no oral statements.

The judge said he would reach a decision on the case possibly by the first of next week after he had considered the testimony further.

The suit is filed against former school superintendent Roy Hartman, La Plata Junior High School Principal Pat Hughes, and the school board serving at the time including president Jim Conkright, Ron Zimmerman, Danny Martin, Clark Andrews, Jim Arney, James Gentry, and Lynton Allred.

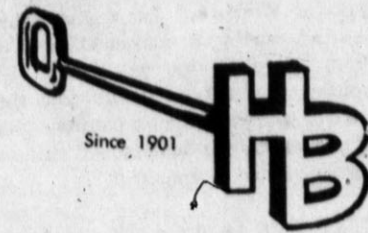
Robin Green said, "This is a first amendment case. It can stand alone on it."

After referring to some other cases, he concluded that teachers have a right to a certain level of free speech. While he conceded that speech resulting in disorder in the classroom can be used in some instances as a defense for a dismissal, no evidence was presented to prove any disorder according to this viewpoint.

Langley rebutted this contention stating that certain acts by Woodward prior to the school board's action not to issue another annual contract to the plaintiff caused a disruptive situation in the schools. Specifically, he was referring to passes Woodward reportedly handed out at will to students who in turn wandered around the halls.

THE DEFENSE ATTORNEY argued that Hughes had already given Woodward several chances to work out any misunderstandings between the two. For instance, the school board had asked Hughes in 1974 if he still wanted to keep

## THE HEREFORD BRAND



Published Daily Except Monday, Saturday

75th Year, No. 71

Hereford, Deaf Smith County, Texas

Thursday, October 7, 1976

16 Pages

15 Cents

# Ford Has Free Market Farm Philosophy; Carter Advocates 'Reasonable' Supports

[Editor's Note: The following story is the second of a two part series dealing with the proposed policies of the Democratic and Republican parties and their presidential candidates concerning

American agriculture. Today's story comprised the views of Gerald Ford and Jimmy Carter concerning farm policies. Portions of the information contained in the article were obtained from the

October edition of Progressive Farmer magazine.]

By JIM STEIERT  
Brand Farm Editor

### FORD WANTS SAME BASIC POLICIES

Gerald R. Ford, bidding for his first elected term as President, is yet to establish a real personal record on

agriculture, having inherited most of the present agricultural, food and environmental policies from the former Nixon administration and Secretary of Agriculture Earl Butz.

FORD DID impose export controls on grain sales in the fall of 1975, arousing the wrath of farmers after they had been called on for fencerow to fencerow production.

He recognized this move as a major mistake, however, and in his current

### News Analysis

campaign is emphasizing that he would not impose embargoes again.

The veto of a farm bill raising target prices of commodities is the only major move made by Ford concerning agriculture, and most farmers pointed out that the target prices contained in that legislation were too low anyway.

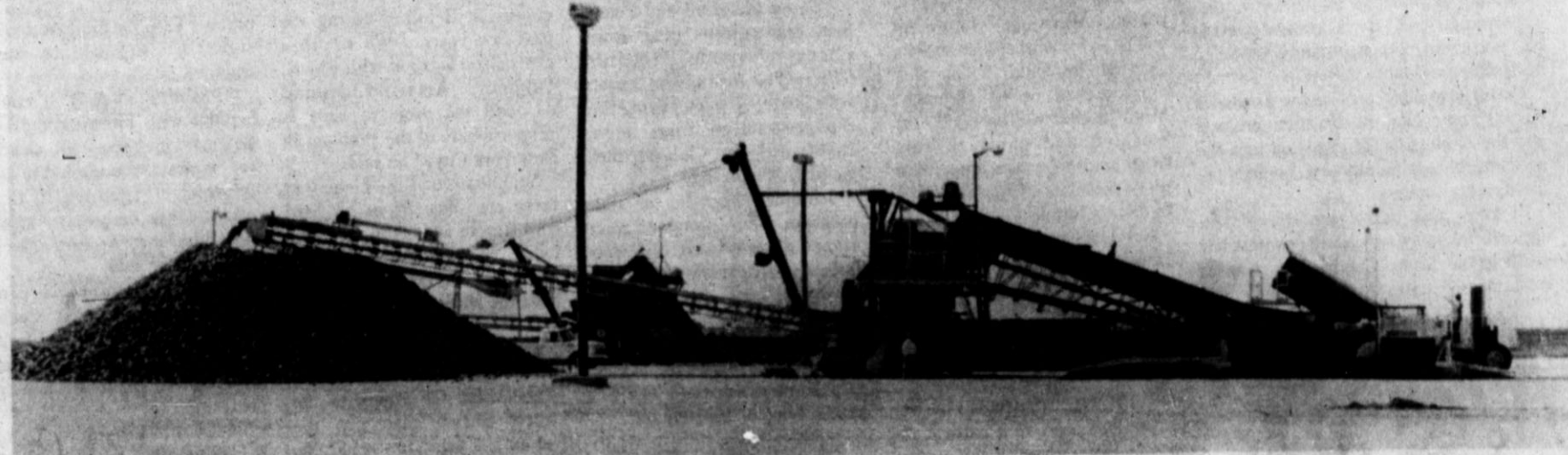
The basic theme of Ford's agricultural policy is that "U.S. agricultural production policies and programs are geared to a free market philosophy, allowing individual farmers to determine for themselves the investments of land, capital, labor and other resources which offer the greatest opportunity to make a profit."

HE CLAIMS that farm policies built on legislation from 1970 and 1973 have "completely turned around agriculture programs," and points out that in the past three years, net farm income under the Agricultural Acts of 1970 and 1973 has averaged more and \$25 billion a year.

Ford states, "After more than 40 years of cutback and curtailment in farm production, we have moved successfully

(See PLATFORM, Page 2)

(See TRIAL, Page 2)



### Campaign Kicks Off

Sugar beet harvest began in the Hereford area yesterday and the Fiolly Sugar Corporation's Merrill E. Shoup plant here kicked off the 1976 campaign with the beginning of beet piling operations. At the right of this photo, the lifted bed of a beet truck is visible as it dumps its load of beets at the unloading area. Conveyor belts elevate the beets and trash is removed before the beets

come tumbling off the long conveyor, (far left) and are piled in huge mounds. Holly officials are encouraging producers to harvest any hail damaged or diseased beets first, and are expecting the average beet yield to improve markedly this year to 22 tons per acre. [PHOTO BY JIM STEIERT]



By Speedy Nieman

That feller on Tierra Blanca Creek says his children are really a joy in his old age...but he thinks maybe they helped him get there faster than he should have.

oo

A thought while watching the Presidential TV debate: Wouldn't it be a shock to the interviewer and the entire TV audience if one of the candidates answered a question by simply saying "yes" or "no"!

oo

AMERICANS ARE the most anti-American people in the world," wrote British poet and critic Stephen Spender. We believe there is truth to that general statement, and we also think that a portion of the national media is contributing to a change in American philosophy. The emphasis is on failure. Some of the national media, supported by academic "liberals", would have us believe that things are not just going badly, they are growing progressively and rapidly worse.

Too many in the national media, it seems to me, are preoccupied with sensationalized sex scandals or what one political or statesman says to another in private conversation. Politicians have engaged in sex statements in America for 200 years...so have members of the media—not to mention doctors, lawyers, Indian chiefs and you name it.

The fundamental difference between right and wrong has not changed over the years. What has changed it seems, is that we're reporting more and more of the worse in people ignoring the better.

# Shock Waves Rebound From Ford, Carter Presidential Debate

SAN FRANCISCO (AP) - President Ford and Jimmy Carter have set off shock waves among politicians and diplomats with their second campaign debate. Among voters, the audience that really counts, an Associated Press poll today gave Carter a narrow edge.

Ford's pronouncements on Eastern Europe and the Arab boycott, and a hard line by Democrat Carter on the Panama Canal Zone, stirred instant controversy. At the same time, the debate thrust foreign and defense policy to the forefront in the presidential campaign.

The 90-minute debate was livelier than

the first encounter between the Republican President and his challenger. Both were more aggressive this time. Each attacked his opponent more freely, dropping much of the restraints and studied politeness that had marked their first confrontation.

The AP telephone survey of 1,071 registered voters was conducted immediately after the debate Wednesday night. It showed 38.2 per cent thought Carter had won, 34.6 per cent rated Ford the victor, and the rest called it a tie or said they didn't know who won.

The theoretical margin of error for a sample of this size is about 2.9 per cent in either direction if the results are projected to reflect the reaction of the entire debate audience.

So neither man was a clearcut winner. By similar margins, Ford gained the advantage in an identical survey after the first debate, two weeks ago.

### Vandals Break Windows At Stanton

An incident of criminal mischief occurred at Stanton Junior High School here yesterday.

According to a spokesman for the Hereford Police Department, a window in the shop at the school was broken out, sometime Wednesday.

The vandalism remains under investigation.

### Arrest Clears Burglaries

A 22 year old Hereford man was arrested yesterday by officers of the Hereford Police Department and the Deaf Smith County sheriff's office and charged with two counts of burglary.

Gerald L. Teagarden of 132 Ave. A was charged with the Sept. 2 burglary of the Pizza Hut on West Highway 60. Between \$2000 and \$2500 was taken in that theft.

The suspect was also charged with the Sept. 1 burglary of TagCo Industries. Taken in that incident were cash, a radio and adding machine.

A Hereford Police Department spokesman indicated that as many as three additional arrests could be forthcoming in the case.

### Mahon Launches Campaign

Democratic Congressional incumbent George Mahon, who holds the 19th District seat, launched the final phase of his re-election campaign this morning during a meeting with supporters and a news conference held at the Caison Steak House. It was a three-county effort including Deaf Smith, Castro and Parmer Counties.

Mahon is challenged for the post by Jim Reese, a Republican from Odessa.

### Carter, Ford Err Again

WASHINGTON (AP) - In debating U.S. support for Israel, President Ford and Jimmy Carter proved once again that statistics are both elastic and elusive.

Challenging the firmness of the U.S. commitment to the Jewish state, Carter said weapons shipments to Israel have slid from 60 per cent of the Middle East total under Democrats to 20 per cent under Republican Ford.

Ford, on the other hand, defended his administration's support for "our good ally," citing military sales of more than \$4 billion to Israel since he became President in August 1974.



### Learning Football

Hereford mentor Fred Upshaw answers questions by a group of local women who attended a football forum at the fieldhouse Wednesday morning. Upshaw reviewed game rules, equipment, and showed excerpts from game films to the ladies as well as answering their specific questions. [BRAND PHOTO]

### Martial Law Declared

BANGKOK, Thailand (AP) - Thailand's new military ruler clamped the iron hand of martial law on Bangkok's blood-stained streets today, arresting 3,000 students in the wake of clashes that left at least 26 persons dead and 180 wounded.

Strict controls were imposed on the local press, gatherings of more than five persons were prohibited and soldiers stood guard at some public buildings as Sangad Chalwyu sought to bring the control under his control. He met no public opposition and the capital was quite.

### Prices Soar Upward

WASHINGTON (AP) - Wholesale prices soared nine-tenths of 1 per cent in September, the sharpest increase in 11 months, due primarily to higher costs for farm products and a broad range of industrial goods, the government reported today.

The Labor Department report indicated strong inflationary pressure in the economy, and was certain to provide Democrat Jimmy Carter and other administration critics with fresh ammunition in the presidential campaign.

### weather

West Texas: Slow warming trend with no heat of precipitation Saturday through Monday. Lows mid 30s north to near 50 south Saturday rising to mid 40s north to low 50s south by Monday. Highs upper 50s north to upper 60s extreme southwest Saturday warming to low 70s north to near 80 extreme southwest by Monday.

### obituaries

Dorothy Losolia  
Virginia Russell

## update thursday

- Obituaries.....Page 2
- Sports.....Pages 3,4
- Society.....Pages 5,7-9
- Comics, TV.....Page 6
- Farm.....Pages 10,11
- Classified.....Page 15



### Trial

Woodward as a teacher and he said yes. Langley explained that it was not just one incident that was in the minds of Hughes and former superintendent Hartman that caused them to recommend that Woodward should not be given a new contract. The ACLU material (including a membership form and booklet) was not a reason for the recommendation according to the defense.

Referring to previous written opinions by a district judge, Langley said that teachers should "exercise professional and mature judgement about controversial material." He claimed that certain restraints on free speech do exist for a teacher indicating that they must be fair in their presentations.

He re-emphasized the contention that ACLU material distribution had nothing to do with the school board's decision.

Characterizing previous acts that the defense claims led to the dismissal, Langley said Woodward had avoided proper administrative channels before using controversial material, gave out excess academic work as punishment, delivered extra long talks in class on matters not pertaining to the curriculum,

orally opposed the dress code and avoided routine conference sessions with the principal by leaving school early.

**GREEN REFERRED** to previous testimony from the defendants, a lot of which the judge considered hearsay, noting that Woodward was regarded as a good and effective teacher.

At one point in the testimony, reference was made to petitions reportedly circulated by students in support of Woodward. Langley said this was an attempt by the teacher to fight the school board on his yet undecided employment contract. Griffith said the contracts with students on petitions was just a theory by the defense and that no evidence existed to support it.

The plaintiff's attorney also said Robin Green's involvement in the case was "flight of fancy" by Langley. The defense had argued that Robin Green's insistence that communications go through him concerning the case prevented Hughes from working out any solution to Woodward's probation status. The defense said the principal had gone out of his way to work with Woodward.

### from page 1... Scout Leaders

#### To Meet Tonight

Hereford Cub and Webelos Scouts will compete for physical fitness medals Saturday at 4 p.m.

Boys will be divided into 8, 9 and 10 year old age groups.

Competitive events will include pushups, situps, broad jump, 50 yard dash, and softball throw.

Activities will be held under the direction of Robert Ray at West Central School.

Individuals desiring further information may contact Jeff Morris at 364-4274.



#### Scoutmaster Honored

Lion Gary Billingsly receives an award from Lion president Clete Corlis during the Lions Club meeting Wednesday. Billingsly was recognized for his work with the local Boy Scouts. As Scoutmaster, he was instrumental in raising the number of active scouts from eight to 99. [BRAND PHOTO]

## Lions Shown Drug Program Wednesday

Former Hereford city Police man and current Deaf Smith County Juvenile Probation Officer Phil Sciombato presented a sobering, eye-opening film clip program on drugs to the Hereford Lions Club at their meeting Wednesday.

Sciombato narrated the slide program, which contained some scenes of drug users that were impressively descriptive. At the close of his presentation Sciombato reservedly told the Lions that he is working on getting Art Linkletter, nationally known speaker against drugs, to come to Hereford.

"There is nothing definite as yet, but I am working on it," Sciombato told the group. He added that the funding of Linkletter's trip is the major roadblock at the present.

Sciombato told the Lions that the drug problem has grown

greatly in Hereford during the past few years. "We are in a centralized location with Clovis, Lubbock, Amarillo around us...and the problem here is proportionate to the problem in New York City," he said.

Sciombato told the Lions that there are some 52 or 53 hard core Heroin addicts in Hereford today, but that the use of marijuana is down somewhat from the all-time high in 1969.

In the film strip program Sciombato traced the journey of Heroin from the Poppy to the street. During that trip the Heroin can bring up to 117,000 per cent profit to those who traffic in it, he said.

"One Kilo of Heroin, about 2 two pounds, costs about \$350 on the market, and in the end it can bring in \$410,000," he said.

parents keep on the lookout for signs of drug use in their children.

"Parents should become familiar with the symptoms of drug use, and above all, should not be afraid to come to the law enforcement agencies if they suspect that drugs are being used by or around their children," he said.

Prior to Sciombato's program Lion president Clete Corlis presented an award to local scoutmaster Gary Billingsley for his work with the local scouting program.

Leo Club president Greg Pagett reported on high school activities, and reminded the club that the Leos will hold their slave day sale October 14. Leo club members will be available during the day for odd jobs. Coming up is the Annual Girls Town auction, which will be held November 22.

### Platform

in a new direction. Exports are strong, farm income is up and the farm machine is more efficient than ever. Farmers are pleased with the market-oriented philosophy. Comparing results achieved under the Agricultural Act of 1970 and the Agriculture and Consumer Protection Act of 1973 with results achieved under previous farm legislation, we believe conclusive evidence is provided that the direction of farm legislation should remain basically unchanged."

#### CARTER ADVOCATES "STABILITY"

Jimmy Carter may be looked upon as somewhat of an upstart in this presidential campaign, having materialized virtually unknown among a vast field of candidates, to emerge as the Democratic nominee for President.

**THE ASPIRING** Southern peanut farmer, peanut warehouseman and farm supply business owner says two things are needed in American agriculture, "stability" and "predictability."

"We need to guarantee a decent price for the farmer and a reasonable price for the consumer. The costs of production have risen much faster than the prices you can get. Support prices are unreasonably low," says Carter. He pledges support prices at least equal to the cost of the production, in the event of his election.

"No real farmer wants a guaranteed profit, and such a measure would in no way be a guarantee, but it would give the determined farmer a chance to stay in business," the Georgian added.

**CARTER FEELS** that elimination of food reserves has contributed to wild fluctuations in commodity prices and wipes out dependable trade and export capabilities.

General principles Carter says he would improvise in his agricultural policy, were he elected president, include maximum production, stable and sustained exports with emphasis on coordination between farmers, farm groups and the USDA, and predictable and long-range commitments on basic premises of agricultural production.

Carter claims he would also call for more interrelationship between the USDA and other departments of government in evolving national economic policies.

He advocates the establishment of carryover stocks, and says that when they exist, they should be maintained with at least half of them under the control of farmers in order to prevent unwarranted dumping of agricultural products on the market to lower prices artificially."

CARTER POINTED out that he would

place a secretary of agriculture in his Cabinet whose primary responsibility, interest and knowledge "concerned the family farmer and consumer, instead of the food processor and grain speculator."

Under his agricultural policy, Carter claims he would like to have price support levels approximately equal to production costs, and agricultural research would receive a much higher priority.

He says the Department of Agriculture would not be consolidated with any other department, and efforts would be made to maintain strong ties between agriculture and labor unions.

Carter also advocates heavy emphasis on soil and water conservation projects and the elimination of intrusion into the agricultural community by nonfarmers through tax shelters.

"I know this nation can develop an agricultural policy which will ensure a fair profit to our farmers and a fair price to consumers," states Carter.



### Obituaries

#### DOROTHY LOSOLLA

A rosary service will be read at 8 p.m. today in Pioneer Chapel of Smith & Co. Funeral Home for Dorothy Losolla, 31, who died Tuesday night in Highland Hospital at Lubbock of illness.

Funeral services will be held at 4 p.m. Friday in St. Anthony's Catholic Church with the Rev. Bernard McGorry, pastor, officiating. Interment will be in St. Anthony's Catholic Cemetery by Smith & Co.

A resident of 401 Ave. C, Mrs. Losolla was born at Fort Stockton and came to this community 18 years ago. She was a member of St. Anthony's Catholic Church.

Survivors include the widower, Mike; two sons, Mike Jr. and Albert, both of the home; her parents, Mr. and Mrs. Frank Espinoza of Littlefield.

#### VIRGINIA W. RUSSELL

Services are being held at 2 p.m. today for Mrs. Virginia W. Russell of Walcott in First United Methodist Church. Dr. Jordan Grooms, pastor, and the Rev. Morris Means, pastor of Westway Community Church, will officiate.

Interment will be in West Park Cemetery by Gililand-Watson Funeral Home.

Mrs. Russell died Monday afternoon in Northwest Texas Hospital at Amarillo following a lengthy illness.

A memorial fund has been established in Mrs. Russell's name for Westway Community Church.

A former school teacher, Mrs. Russell was born July 18, 1920 at Baird, Tx. She married L.B. "Scat" Russell on March 3, 1941 at Fredrick, Okla. The couple brought their family to this county in 1952 from Cisco, Tx. and he is the principal of Walcott School.

Mrs. Russell was a member of the Methodist Church.

Survivors include the widower; a son, William Baird, three daughters, Mrs. Mary Stapleton of Los Angeles, Calif., Mrs. Marta Ishibashi of Seattle, Wash., and Miss Rene Russell of the home; her parents, Mr. and Mrs. Bill Work of Baird; a brother, John Work of Dallas; two sisters, Mrs. Martha George and Patsy Work, both of Baird.

## HEREFORD BRAND

ESTABLISHED 1901

Entered as second class matter at the Post Office in Hereford, Texas under the act of March 3, 1907. Second class postage paid at Hereford, Deaf Smith County, Texas.

Published every Tuesday, Wednesday, Thursday and Friday afternoon and Sunday morning at 130 W. 4th St., Hereford, Texas, 79045, by The Hereford Brand Inc. Subscription rates: Deaf Smith and adjoining counties—\$24 per year, other points—\$31.50 per year (tax included). Home delivery by carrier—\$2.90 per month, or \$29.40 per year, tax included.

Any erroneous reflection upon the character, standing or reputation of any person, firm or corporation, which may appear in the columns of this newspaper, will be gladly corrected upon due notice of same being given to the editor personally at the news office.

This newspaper is a member of The Associated Press, Newspaper Enterprise Association, Texas Press Association, National Newspaper Association, Publishers and West Texas Press Associations.

Management: O.G. Nieman, president and publisher-editor; Lynn Briendline, assistant publisher and advertising manager; Bobby Tompkins, news editor; Altha Melver, accounting; Charlene Brownlow, circulation.



#### Paul Harvey News

### Free People

Free people become less free by degrees. You don't feel it at first.

It's like poisoning by hemlock. The numbness begins in the extremities and by the time the victim realizes that he is in danger, he is too weak, too far gone to do anything about it.

Every day's news includes

### Scouts To Compete For Medals

Leaders of the Tierra Blanca District Boy Scouts of America will hold a round table meeting tonight (Thursday) at the Pioneer Natural Gas Flame Room at 7:30.

Club leaders will receive training under the direction of Ellen Collins and Wyatt Watkins.

Bill Phillips will direct scout leaders.

All present leaders as well as interested individuals are urged to attend.

### Roping Scheduled

Boots West of Hereford is currently sponsoring roping competition locally each Sunday.

The events are held at the Boots West Arena 2 1/2 miles east of the caution light of the Dimmitt cutoff.

This Sunday's competition will get underway at 2 p.m. with cowboys getting a chance at four head for \$20.

Winners receive cash prizes.

some reference to a product recalled because it is hazardous, a banker jailed because he misused other peoples' money, a lawyer who conspired, a doctor who was negligent, an accountant who did not pay his taxes.

Corporations guilty of bribery, kickbacks, illegal political contributions and such defend themselves by saying, "Everybody does it..."

Not everybody. And more and more enlightened Americans in business and government, in the sciences and the professions, are recognizing that self-government without self-discipline is doomed.

Separate professions develop codes of ethics for themselves, each more or less effective.

But what's needed is a total awareness by all Americans that it pays to behave.

Benjamin Franklin once observed, "if the rascals knew the advantages of virtue, they would become honest men out of rascality."

A "free enterprise bible" has been prepared. It's called "The Ethical Basis of Economic Freedom."

It is not another re-arrangement relating to how free men remain free only as long as they deserve to be. It assumes you know that by now.

But what this volume does is to present the recommendations of one established and accepted spokesperson for politics, one for medicine, one for law, one for religion, one for athletics, and so forth.

Each of these counsels his peers as to how best to police their own profession.

The last chapter is written by Treasury Secretary William Simon. With logic, concise and uncluttered, he shows that business corruption is ineffi-

cient, business ethics are efficient, that good business is good business.

He cites enough history to convince us that no free society or free economy can survive without an ethical base.

"Each new case of corporate graft, every new business scandal, further blackens the already tarnished image of American business. When this happens, and the call goes for more government interference, the innocent majority of businessmen suffer along with the guilty minority."

"The capitalist system," says Simon, "must lead the way in wiping out the abuses committed in its name."

A.W. Clausen, president of the Bank of America, says, "Many of our nation's bluest of blue chip corporations operate on the false assumption that playoffs, bribes, influence peddling, book juggling, falsification of records and miscellaneous other hanky-panky are somehow a normal part and cost of doing business. So the American public is rightfully skeptical."

His bank--and DuPont--and some others have developed rigorous codes of business conduct.

Stanley Marcus of Nieman-Marcus says, "There is never a good sale for Nieman-Marcus unless it is a good buy for the customer."

President Ken Wessner of Servicemaster says, "To the extent that we businessmen vacate our moral obligations of stewardship--to that extent our businesses eventually will be taken out of our hands."

It is sobering to see how much of our freedom has already been forfeited but encouraging to learn from this volume that some key men are alert and responding.

**Can You Spare ONE HOUR'S PAY PER MONTH to support 11 AGENCIES SERVING HEREFORD it depends on You!**

**United Way**

**GIVE GENEROUSLY Thanks to You It's working.**

**PAY TO THE ORDER ON**





## Landry Not Selling Winless Giants Short

By DENNE H. FREEMAN  
AP Sports Writer

DALLAS (AP) - Will the National Football League upset bug claim its final victim Sunday?

Dallas Cowboy Coach Tom Landry has been around long enough to believe it can happen.

The NFL's only unbeaten, untied team helps the winless New York Giants open their new

stadium in New Jersey Sunday. All the ingredients are there for the Giants to be sky high.

"The Giants are a better football team than their record," said Landry. "They've played well but lost. I think they will play us strong."

Landry said there was such parity in the NFL now that "anytime you walk on the field an upset is a possibility."

Cowboy assistant Eral Allen says "The last four games we've played against New York we've only averaged 13.5 points. Our goal is 27 points per game."

Dallas defeated the Giants 13-7 and 14-3 last year.

Dallas had trouble last week with the expansion Seattle Seahawks, finally winning 28-13.

How good is Dallas? "The only gauge we can go by is Baltimore," said Landry.

"Our schedule has not been exceptionally strong. School is still out. We have to prove ourselves in our own conference."

Landry has been particularly pleased with his passing game. Quarterback Robert Staubach is completing over 70 per cent of his passes and is rated No. 1 in the NFL.

"I feel pretty good about our passing and guess that's because our players are very confident throwing the ball," said Landry.

He added "Our team has excellent character and a lot of qualities of last year's team. But we're not making the turnovers defensively you've

got to make to get you into the playoffs."

Landry said he knows former Cowboy quarterback Craig Morton would like to have a good game against his old teammates.

"Craig reached maturity his last year with us and I still believe he is a polished quarterback," said Landry. "He handles a team very well."

## Netters Stay Busy

The Hereford High School tennis team will continue its fall schedule Friday and Saturday when they participate in the Plainview Tournament.

Coach Steve Thomas' netters will face eight teams at Plainview, and then will travel to Lubbock one week later to play in the Lubbock Tournament.

The fall schedule will end with the Herd netters facing a pair of as yet undetermined foes in Amarillo.

"I know right now who it'll be, but I'm not saying," says a mysterious Anderson.

## Men's Flag FB Begins Sunday

The Men's Flag Football League will begin play this Sunday at 2 p.m. YMCA Director Claude Huard has announced. The Sunday day for play was agreed upon by team managers at their meeting Tuesday night, Huard reported.

Six teams have entered the league, which will play a round-robin schedule before concluding the season with a single elimination tournament.

NEW YORK - The Major League's Players Association filed a grievance to bar the use in the World Series of designated hitters, claiming the rule is in violation of the new agreement between players and owners.

NEW YORK - Rawly East-Bick, the ace relief pitcher of the

The Tourney will conclude November 28.

Beginning play Sunday will be the Longhorns and Farmers, who will clash at 2 p.m. The Bombers and Squirrels will meet at 3 p.m., while the Turkeys will face Bad Company at 4 p.m. to close out the first day of action.

Some 65 players have signed up for the league, Huard revealed.

Cincinnati Reds, was named the outstanding reliever in the National League for this past season.

Ron Roberts is the new golf coach at Wake Forest University. He replaces Jesse Had-dock, who will coach the Oral Roberts University team.

## Sparky Still Mum On Pitching Choice

Catfish Hunter, Larry Gura, Steve Carlton and the "Masked Marvel" will be the starting pitchers for Saturday's baseball playoff opener.

The playoff-tested Hunter has been officially tapped to pitch for the New York Yankees and a revengeful Gura has been chosen to go for the Kansas City Royals in the first game of the American League series.

The National League managers, however, are still playing "I've Got A Secret."

Manager Danny Ozark of the Philadelphia Phillies indicates that Carlton will be the Phillies' choice, although he has made no official announcement yet. Cincinnati Manager Sparky Anderson is pulling out all the psychological stops. He hasn't named anyone yet—and won't until Friday, 24 hours before the NL playoff game in Philadelphia.

"I know right now who it'll be, but I'm not saying," says a mysterious Anderson.

New York's Billy Martin was the first of the four managers to reveal his playoff plans when earlier this week, he selected Hunter, 17-15, and Ed Figueroa, 19-10, as the pitchers for the first two AL games in Kansas City. Either Dock Ellis, 17-8, or Ken Holtzman, 14-11, will pitch in Game No. 3 for the Yankees when the playoffs shift to New York next Tuesday.

Martin, in fact, has been the most talkative of the managers during the week prior to playoff time. On Wednesday, the verbose Martin revealed that Hunter has had a sore arm this year, perhaps explaining his sub-par season. Hunter, who led the Oakland A's to three world championships in the early 1970s, failed to make the 20-victory circle for the first time in six years.

"We decided not to say anything about it during the season," Martin told reporters about Hunter's tortured arm. "I think we said he had something wrong with his leg. But it was

not a hamstring as we led you to believe. He had tendonitis in his right arm."

Hunter was given a shot for the pain and pitched admirably in his final three starts at the end of the season, allowing only five runs in 21 innings. On Wednesday he hurled two innings of an intra-squad game without discomfort.

Hunter admits that his arm did give him trouble during the season.

"I didn't get on top of the ball," said the right-hander. "I was short-arming the ball and I couldn't make it stay down."

Gura, a Yankee castoff with

bitter feelings toward Martin, is looking forward to pitching against his former team. Gura fashioned a 4-0 record after coming to the Royals in May in a trade for catcher Fran Healy.

"I was hoping against hope I would get to start Saturday," said the left-hander. "Martin told me in spring training he would use me for a long relief and spot starting. But he never did. He never even let me warm up in the bullpen. This will be the biggest, most emotional game of my life. I don't have anything against the Yankee organization. But I do against Billy Martin."

## Sparky Leaning To Right Handers

CINCINNATI (AP) - Cincinnati Reds Manager Sparky Anderson is giving the Philadelphia Phillies something to think about. He's put a "Top Secret" stamp on his pitching plans for this weekend's National League playoffs.

Anderson says he will not name his starting pitcher until Friday night, less than 24 hours before the best-of-five showdown gets under way in Philadelphia.

"I know right now who it will be, but I'm not saying," Anderson said Tuesday as the NL West champions returned to work after a day off. "I'll name all three Friday."

Philadelphia Manager Danny Ozark has named veteran lefthander Steve Carlton, 20-7, as his opening-game pitcher.

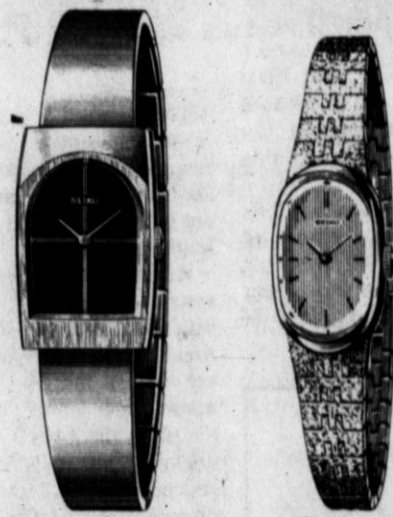
Anderson had planned a

right-handed rotation of Pat Zachry, Gary Nolan and Jack Billingham to offset the Phillies' right-handed hitting power. Billingham, however, suffered an undetermined injury to his throwing arm in the season finale and his status is uncertain.

"All their power is right-handed," explained Tony Perez.

Dr. Milton C. Adams  
OPTOMETRIST  
335 Miles  
Phone 364-2255  
OFFICE HOURS  
Mon.-Fri, 8:30 to 5:00

## THE TIME FOR LADY SEIKO ELEGANCE!



No. ZW69M—\$85.00.  
173, stainless steel, two-tone blue dial, adjustable bracelet.

No. ZW67M—\$110.00.  
173, yellow top/stainless steel back, gear/white dial, textured case and matching bracelet.

These extraordinarily good-looking watches complement every woman's wardrobe. Though they look like a million, they're priced for practically any budget. The Lady Seiko is one gift that's as pleasurable to give as to receive. Which is what giving Seiko is all about.

SEIKO  
**Cowan Jewelers**

THE HOUSE OF DIAMONDS  
LAY-AWAY NOW FOR CHRISTMAS

## A BANK FIT FOR THE KINGS... browns, jones' and smiths!



No matter what your name — you'll be treated like a king at the Best of All Possible Banks. Our motto is Service. And your patronage is our reward.

A good bank has more  
Answers than Questions!

MAKE MONEY  
MANAGEMENT EASY!  
ASK ABOUT OUR  
24-HOUR AUTOMATIC  
TELLER MACHINE

THE  
**FIRST NATIONAL BANK OF HEREFORD**  
MEMBER FDIC SINCE 1900

## Our Pizza is Good For You!

At Pizza Inn we mix our dough fresh every day... and each pizza is made with nutritious cheese, meats and other toppings. We make 4,097 delicious combinations... served with pride... just for you.

We Treat You Right at Pizza Inn.

VALIDABLE COUPON

**Pizza Inn**

Buy any giant, large or medium size Old Fashion Thick Crust Pizza at regular menu price and receive one Old Fashion Thick Crust Pizza of the next smaller size with equal number of ingredients FREE.

OR

Buy any giant, large or medium size Original Thin Crust Pizza at regular menu price and receive one Original Thin Crust Pizza of the next smaller size with equal number of ingredients FREE.

Valid Thru **October 13, 1976**

PLEASE PRESENT WITH GUEST CHECK

511 N. 25 Mile Ave. 364-6012  
2531 Paramount Blvd./Amarillo 353-7401  
3320 Bell Ave. 353-6641  
2801 I-40 East 376-4297

**Pizza Inn**  
AMERICA'S FAVORITE PIZZA

KING SIZE WALLET CREATIVE COLOR PORTRAITS FOR ONLY

**9 99¢**

Extra Charge for GROUPS

NO LIMIT

GET PICTURES MADE OF GRANDPA, GRANDMA, DAD, MOM AND ALL THE LITTLE ONES AT THESE LOW PRICES!

**SHUGART COLOR PHOTOS**

ASK About Our FREE 8 x 10 OFFER

Furr's  
400 Sugarland Drive  
Friday & Saturday Oct. 8 & 9



This Week's Games

Fearless Forecasters

Table with 7 columns: Forecaster Name, Rating, and a list of teams they forecast. Forecasts include Coronado, Pampa, Amarillo, Palo Duro, etc.

ABC Assigns Cosell To Baseball Playoffs

By WICK TEMPLE AP Sports Writer

NEW YORK (AP) - The familiar voice you hear on TV when the Yankees meet the Royals in the American League baseball playoffs Saturday will be that of your old friend, Howard Cosell.

owners will resent it, but not all of them will. I've maintained friends in baseball. At this stage of my life, the most important thing is how I feel about myself and my family.

Cosell said. It would mean a baseball game, and the red-eye special to New York Tuesday for the Tuesday night baseball game.

TENNIS TEHRAN, Iran- Argentina's Guillermo Vilas posted a straight-set victory over Nikki Spear of Yugoslavia to advance to the quarter-finals of the \$150,000 Aryamehr Tennis tournament.

Faces Favored Over Dumas

The Hereford Whitefaces are a slim four-point favorite to stop the Dumas Demons in their clash this Friday night according to the latest Harris Football Rating poll.

Hereford is ranked 159th among 4A teams this week following their 31-0 loss to Amarillo last week. The Demons are 82nd in the 3A ranks, but have a lower power rating than the Herd, 128.2-124.4.

The Monterey Plainsmen continue to hold their lofty ranking in the 4A list, and are currently resting in 19th position after forging a 5-0 record. Monterey is given a 152.9 power rating, some 24 points above Hereford.

Other local area teams highly ranked in 4A are Odessa, 27th with a 149.9, Amarillo Palo Duro, 37th with a 145.8, Amarillo High, 40th with a 145.7, and Pampa, 74th with a 139.8.

The other three District 4-4A members are all rated ahead of the Herd this week. Coronado is 98th with a 136.5 rating, Lubbock is 130th at 132.6, while Plainview is 155th with a 129.4 mark.

Lubbock Dunbar tops area 3A schools with a 143.7 rating for 12th place Canyon is rated 52nd with a 130.7 mark, while Borger is 65th at 127.6. In addition, Andrews is 21st at 140.9, Lamesa is 69th at 127.2, and Levelland is 84th with a 123.8 rating.

In class 2A Slaton is ranked

- 65. Borger 127.6
69. Lamesa 127.2
71. Seminole 127.2
82. Dumas 123.8
84. Levelland 123.8

- 1. Rockdale 149.9
2. Columbus 143.9
3. Slaton 142.9
4. McGregor 137.9
5. Bowie 136.9
6. Pearsall 136.3
7. Hondo 134.8
8. LaGrange 134.4
9. Cameron Yoe 134.1
10. West 134.3
11. Spearman 123.8
12. Tulia 123.8
13. Dalhart 122.9
14. Dimmitt 122.7
15. Floydada 119.2
16. Idalou 115.9
17. Boys Ranch 112.9
18. Olton 112.2
19. Morton 100.1
20. Quanah 100.0

- 1. Tyler J. Tyler 163.9
2. Odessa Permian 163.9
3. Longview 163.9
4. Killeen 163.9
5. Pt. Neches-Groves 159.5
6. Houston Kashmere 158.9
7. Temple 158.8
8. Plano 157.9
9. Sherman 157.8
10. Houston Memorial 155.9
11. Lubbock Monterey 152.9
12. Odessa 149.9
13. Midland Lee 148.3
14. Amarillo Palo Duro 145.8
15. Amarillo 145.7
16. Midland 145.2
17. Pampa 139.8
18. Lubbock Coronado 136.5
19. Amar. Tascosa 135.2
20. Lubbock 132.6
21. Plainview 129.1
22. Hereford 128.2

- 1. East Bernard 136.9
2. Aledo 129.9
3. Barbers Hill 125.4
4. Groveton 124.9
5. Holliday 123.9
6. Plains 123.8
7. Big Sandy 123.8
8. Falls City 123.3
9. Wellington 122.8
10. Memphis 122.8

- 1. Gorman 124.5
2. Rochester 118.8
3. Evant 112.9
4. D'Hanis 110.4
5. Groom 109.9
6. Era 109.9
7. Anton 108.8
9. Sudan 108.8
9. Meridian 107.5
10. Chilton 107.5
13. Motley County 103.9
14. Sundown 103.2
40. Amherst 92.2
41. Booker 91.7
51. Silvertown 85.0
58. Agua Dulce 83.1
76. Lazbuddie 75.6
77. Salado 75.3
90. Nazareth 70.1
91. Whiteface 70.1
98. Happy 68.1
99. McLean 68.0

- 14. Hamlin 121.3
23. Stratford 117.3
31. Sunray 114.7
42. Clarendon 112.7
43. Petersburg 112.7
44. White Deer 112.6
56. Farwell 109.4
66. Hart 108.4
70. Claude 107.4
72. Sanford-Fritch 107.4
83. Gruver 104.8
100. Phillips 102.1
102. Vega 101.6
120. Stinnett 98.0
137. Shamrock 95.1
194. Shallowater 78.1

- 1. Brownwood 151.3
2. Bmt. Hebert 149.9
3. Gainesville 149.9
4. Pecos 148.9
5. Silsbee 148.8
6. San A'lo Lk. View 146.6
7. Gregory-Pland 144.9
8. Ennis 143.9
9. Humble 143.9
10. Vernon 143.8
12. Lubbock Dunbar 143.7
21. Andrews 140.9
30. Synder 137.8
35. Lubbock Estacado 136.4
52. Canyon 130.7
60. Odessa Ector 129.2

- 1. East Bernard 136.9
2. Aledo 129.9
3. Barbers Hill 125.4
4. Groveton 124.9
5. Holliday 123.9
6. Plains 123.8
7. Big Sandy 123.8
8. Falls City 123.3
9. Wellington 122.8
10. Memphis 122.8

- 1. East Bernard 136.9
2. Aledo 129.9
3. Barbers Hill 125.4
4. Groveton 124.9
5. Holliday 123.9
6. Plains 123.8
7. Big Sandy 123.8
8. Falls City 123.3
9. Wellington 122.8
10. Memphis 122.8

Local Anglers Fare Well At Tourney

The Hereford-based Triangle Bass Masters Club was well represented at the First Annual Texas Panhandle Top Ten Bass Fishing Championship held at Greenbelt Lake last Sunday.

Four of the top 12 finishers at the tourney came from Hereford, with local angler Harry Vogler the top Hereford representative with a second-place finish.

The tourney drew a total of 34 entrants from eight area Bass clubs. Darrell Crafter of Pampa walked away with the top honors following the eight hours of fishing Sunday. Crafter hauled in a total weight of seven pounds 11 ounces to claim the first prize of \$304.

Vogler claimed the runner-up spot with a total haul of six pounds, 15 ounces to receive \$122, and Ewell Parker of Amarillo took the third-place money of \$81 for his six-pounds, 14 1/2 ounce catch.

Finishing behind the top three and their weights were: Bob Spencer, Plainview, 6-3, Dewey Williams, Perryton, 5-10, Don Vinson, Hereford, 4-12, George Seale, Lubbock, 4-0, R.L. Ortt, Pampa, 3-16, Carl Brown, Perryton, 3-13, and Sid Parker, Amarillo, 3-10.

Hereford's Raymond Drager and John Kovacs finished 11th and 12th respectively in the tourney. Spencer's 6-3 bass was the biggest fish caught during the tourney, and earned him \$81 for the effort.

The Triangle Bass Masters will hold a meeting November 1 at the West Texas Rural Telephone Office at 8:30 p.m. They will be discussing their new tourney season which will begin sometime in November.

Also the club will hold its Classic Tournament this Saturday at White River Lake. All club members that scored points during the past year in club tournament are eligible for the Classic.

John Pelham is president of the Triangle Bass Masters. Bryan Dutton serves as vice-president, while John Kovacs is the club secretary.



Trophy Winner Greg Palmer, son of Mr. and Mrs. Bill Palmer of Hereford poses with the trophy he won last Sunday in Ruidoso, New Mexico. Palmer won the trophy for finishing fourth in the motorcycle trial. [Brand Photo]

No Changed Outlook Phils' Ozark Says

PHILADELPHIA (AP) - Manager Danny Ozark of the Philadelphia Phillies doesn't like baseball's playoff system, but has definite ideas on approaching the best-of-five game series that decides the World Series opponents.

Just play it like a regular-season game, he says. "You have to take the same outlook that you had all year," Ozark explained Tuesday at a workout in preparation for Saturday's National League playoff opener with the Cincinnati Reds.

"You have to forget that it's a short series. The main thing is to execute fundamentals the way you have all year, throw to the right base, keep the double play in order, take the extra base.

"I've seen pitchers change their delivery entirely for the playoff, guys who won 18, 19, 20 games. The catcher plays a big part. He has to resist not calling for the curve ball, because he wants to throw out a runner. The hitter will be thinking with the catcher, looking for the same thing. We can't change our pattern on a hitter."

Ozark said further, "a runner can't say to himself that he's not going to steal because Johnny Bench is catching and has a great arm, and he can't steal against him." The Phillies' manager says that he has to take the same chances he took during the regular season.

"You can't immobilize a whole squad by changing the way you did things for 162 games," Ozark said. "You have to play a normal game."

Ozark dismissed the idea that the Phillies would be nervous because it's their first playoff, while the Reds are old hands at post-season competition and better equipped to handle the inherent pressures.

"If a player isn't nervous he doesn't belong on this ball-club" Ozark declared. "It's no more than like opening day. Cincinnati will be just as nervous as we are. I don't care how many times you do it. I think players thrive on pressure."

Ozark said further, "a runner can't say to himself that he's not going to steal because Johnny Bench is catching and has a great arm, and he can't steal against him." The Phillies' manager says that he has to take the same chances he took during the regular season.

Ozark said further, "a runner can't say to himself that he's not going to steal because Johnny Bench is catching and has a great arm, and he can't steal against him." The Phillies' manager says that he has to take the same chances he took during the regular season.

Ozark said further, "a runner can't say to himself that he's not going to steal because Johnny Bench is catching and has a great arm, and he can't steal against him." The Phillies' manager says that he has to take the same chances he took during the regular season.

Ozark said further, "a runner can't say to himself that he's not going to steal because Johnny Bench is catching and has a great arm, and he can't steal against him." The Phillies' manager says that he has to take the same chances he took during the regular season.

Royal Concerned About Horns' Physical Shape

By JACK KEEVER Associated Press Writer

AUSTIN (AP) - At least twice this week Coach Darrell Royal of Texas has hinted he might use both of his sophomore quarterbacks, Mike Cordaro and Ted Constanzo, against undefeated Oklahoma Saturday.

Wednesday, however, Royal seemed more concerned about the physical condition of his squad.

And senior center Billy Gordon, who has only seen action on the field against the Sooners, may have summed up the importance of the game when he said, "I think about it when I'm eating. I dream about it. It's just always in the back of your mind."

Gordon started last year but went out on the second play after he caught a finger in the eye.

Royal was asked at his news conference Monday if he intended to alternate quarterback against OU, and he said, "I doubt it. I might use two, but I won't alternate them." He said Cordaro would start.

He told the Longhorn Club Wednesday he "might play" Cordaro for one series and Constanzo for another, but added "I won't shuttle them."

The largest Longhorn Club crowd of the year turned out for Royal's narration of Texas' 42-15 trouncing of Rice last Saturday, but they were thinking of OU.

The Sooners, 4-0, are ranked No. 3 in the nation. Texas, 2-1, is No. 16, but the game is rated a near tossup.

One enthusiastic fan said this would be his 30th consecutive Texas-OU game, and "we're gonna beat the hell of out 'em." Royal watched film of Texas Saturday.

None of Texas' top four halfbacks, including starters Johnny "Lam" Jones and Johnny "Ham" Jones, are at "full speed," Royal said.

Another starter, defensive back Paul Jette, echoed Gordon's comments about the game's importance. "A lot of fans base the whole season on beating OU and I can see their point," said Jette. "If you're a human being, you're up emotionally all week."

CALL 364-1251 CARMICHAEL REAL ESTATE

Three bedrooms, two baths, basement and large living area with built-in wet bar are featured in this well kept home. Also included with this property is four acres of land which is in the city limits and in a good location for future development.

Three bdrms, with fireplace. Ref. air, Beautypleat drapes gas grill and storage building are featured in this moderately priced home in Northwest Hereford.

Let us show you this new, well located 3 bdrm, 1 1/2 bath home which features a fireplace, close to a school and shopping area all at a modest price.

Troys Carmichael Temple Abney 364-4616 Tommy Carnahan 364-5494 Lynn Kester 364-2484 L.E. Fleisher 364-1510

QUITTING BUSINESS Sale LIQUIDATING ALL STOCK-EVERYTHING MUST GO AT SOME PRICE-MAKE US A REASONABLE OFFER-WE MUST SELL! Men's & Ladies Watches Wedding Sets Ladies' Dinner Rings Loose Diamonds Men's Diamond Rings Bulova Accutron The Best Watch Bulova Makes 50% - 60% Off Regular Price Delta Jewelers Mike Hinojosa 515 E. PARK AVE. 364-5901

SHUGART COUPON Furr's 400 Sugarland Drive Friday & Saturday Oct. 8 & 9 9 WALLET SIZE COLOR PORTRAITS 99c Extra charge for GROUPS

G. E. D. TESTS G.E.D. Tests are given regularly by Hereford High School. For information and appointment to take the tests, call: Robert L. Thompson 364-0843





**La Plata Twirlers**

La Plata Junior High School's twirlers recently placed second in the junior team division and fourth in the dance team division when they performed at the South Plains Fair recently at Lubbock. From left are, Willa Bess Lawson,

Sandra Ward, Sheri Whitaker and Shirley Hutton. Willa Bess placed second in basic strutting and received third place honors for best costume and Shirley place fourth in basic strutting.

**Combined Legion Meeting Conducted**

Phil Sciombato, juvenile probation officer, spoke to members of the American Legion Auxiliary and the American Legion Tuesday evening at the Legion Hall.

Following a dinner, members of the auxiliary adjourned for a business meeting. The group elected delegates to attend the 18th District Legion Convention scheduled Nov. 6-7 at Perryton.

Serving as delegates will be Mmes. Ira Ott, Grant Hanna,

James Jesko, John Johns and M.J. Koelzer. Alternates include Mmes. J.H. Holden, Lawrence Carlson, Milton Adams, Leon Vinton and S.T. Wiseman.

Also, during the business session, Mrs. Carlson, membership chairman, announced that there are 56 members who have paid club dues. Anyone eligible to join the auxiliary is asked to contact Mrs. Carlson for

membership this year.

Four visitors were recognized by members present including Mr. and Mrs. Frances Wilhelm of Nazareth. Wilhelm is currently serving as 18th district president and his wife is the Veterans Affairs and Rehabilitation chairman.

Monday evening members of the auxiliary will go to the VA Hospital at Amarillo to play bingo and entertain patients.

**Aikman PTO To Convene Here Today**

Aikman Parent Teacher Organization will convene at 7:30 p.m. tonight at the elementary school. All parents of Aikman students are invited.

Prior to the brief business session, the school faculty will be introduced to the audience. A program will be presented by Aikman fourth graders under the direction of Mrs. Johnny Latham and the fourth grade teachers.

**Tour Reservation Deadline Announced**

Monday is the final day to make reservations for the chartered bus tour to be offered Oct. 14 by the tour committee of the Chamber of Commerce Women's Division.

Tickets for the trip can be purchased at the Chamber office, 364-3333, for \$5 per person. Cold beverages will be provided on the bus and participants are asked to bring sack lunches for a scheduled picnic stop.

Tour sites include the White Deer Lands Museum at Pampa and the Square House Museum at Panhandle. Both of these institutions have been praised by Ruby K. Sears, who is a local historical buff and promotes the museum docents here.

Departure will be at 9:30 a.m. next Thursday from the Chamber parking lot on Main Street. Return is estimated at 5:30 p.m. that afternoon.

Further information can be obtained by calling the Chamber office or Thelma Marsh, project chairman.

**Mothers of Twins Change Club Date**

Multiple Miracles, Mothers of Twins Club, has changed the date of its meeting, originally scheduled this afternoon.

The organization will now convene at 4 p.m. Thursday, Oct. 14, at Caison Steak House. Speaker will be Schalan Atkinson, assistant District Attorney, who will explain the positive aspects of the proposed Equal Rights Amendment.

**The Hereford Brand Society**

**Club To Observe Birthday Friday**

On the eighth anniversary of its conception, Hereford Newcomers Club will observe its annual birthday celebration here Friday from 9 a.m.-5 p.m. in Sugarland Mall.

The club has constructed a display which will illustrate the organization's history and activities for shoppers that day.

Included in the display will be a map pinpointing the many states represented by residents of this community. Shoppers will be invited to guess the weight of a specially decorated cake to be at the Mall. The closest estimation will award the winning individual a prize. Also, individual cakes will be on sale.

Newcomer Club members will be honored at 7:30 p.m. Friday evening in the home of Mr. and Mrs. Glen Gillis, 323 Star, to climax the day's activities.

Organized Oct. 8, 1968, Hereford Newcomers Club has a current enrollment of 35 members representing 14 states and one foreign country. Monthly luncheons are scheduled on the second Tuesday of each month.

Membership is open to all women who have moved to



**Artist of the Month**

Mrs. Gaylord Newell of 123 Liveoak has her oil paintings on display at Deaf Smith County Library. She began studying painting four years ago under Eunice Petersen, a noted local artist. On display are portraits, still-lives, seascapes and landscapes.

**A. O. THOMPSON ABSTRACT COMPANY**  
A. J. SCHROETER — MARGARET SCHROETER  
P.O. Box 73 Room 205 Courthouse 364-1504



Abstracts  
Title Insurance Policies  
Free City & County Maps

Call Avis Blakey for all your Home, Car or Business Insurance  
205 S. 25 Mile Ave.  
364-6633

**WHERE YOU BUY THE BEST for LESS!**

**AR pharmacy**  
364-1000 PRESCRIPTIONS  
Emergency 364-2818 or 364-4109



Advertised prices effective Friday & Saturday October 8th and 9th.



Listerine MOUTH WASH 48-Oz.

**\$2 19**

Head & Shoulders SHAMPOO

11-Oz. Lotion

YOUR CHOICE

7-Oz. Tube

**\$1 77**

Mr. Jumbo TOWELS 4-Roll Package



**\$1 37**



Ponds COLD CREAM 5-Oz.

**89c**



Safeguard BATH SOAP Free Bar when you buy 3

**87c**

100% Polyester THREAD 225 Yards Assorted Colors and Black & White Reg. 38'

**4 / \$1 00**



Men's Wrangler JEANS 68% Cotton 32% Polyester New Shipment

All sizes available Reg. '11"

**\$7 79**



Printed KNEE HI'S

100% Stretch Nylon

ONE SIZE FITS ALL

**77c**



Playtex BRAS

**\$2 00**

OFF REGULAR PRICE

Men's WHITE SOX

3 in Package 75% Cotton 25% Nylon

Reg. '11"

**\$1 39**



Giant TIDE DETERGENT

**\$1 29**

FRITO VARIETY PACK

**89c**

**1 RACK OF CLOTHING REDUCED for QUICK SELL! Most items below Cost!!**

**Keepsake** Registered Diamond Rings



Keester's Jewelry ACROSS FROM THE POST OFFICE IN DOWNTOWN HEREFORD



ALLEY OOP



by Dave Graue



FRANK AND ERNEST

by Bob Thaves



BARBER SHOP

by Art Sanson



THE BORN LOSER

by Howie Schneider



EK & MEK

by Howie Schneider



Literary Bit

Crossword puzzle grid with clues for Across and Down.

MARMADUKE®

by Bard Anderson



Why don't we get a sitter and have a nice quiet evening at somebody else's house?

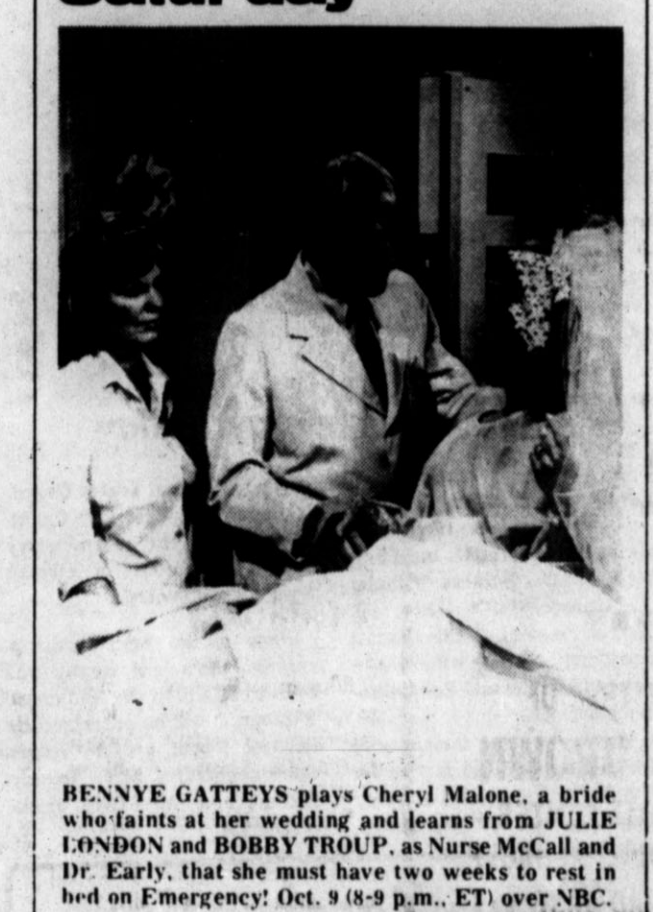
TV Star Scene

Nadia Comaneci, the 14-year-old girl gymnast who achieved an unprecedented seven perfect 10-point scores and won three gold, one silver and one bronze medal in the XXI Olympiad, will greet America in a one-hour entertainment special from her homeland, with her special American guest, and host of the program, Flip Wilson, in "Nadia -- From Romania With Love." To be filmed on location this fall for broadcast Thursday, Nov. 18 on CBS.

Production has begun in Hollywood on "Wonder Woman," starring Lynda Carter as the 1940s comic book heroine and Lyle Waggoner as Major Steve Trevor. The series of 11 specials will be aired on the ABC television Network during the 1976-77 season. "Christmas Fantasy in Disneyland," an hour-long musical comedy will star Art Carney and feature popular Walt Disney characters on ABC Dec. 8. A live-action production in which Mr. Carney searches for the true spirit of Christmas, the show will be taped at the world-famous Disneyland in Anaheim, Calif.

award from the B'nai B'rith chapter in Encino, Calif. British actor Peter Finch has been signed to star in "Entebbe," a three-hour NBC World Premiere movie based on the dramatic rescue by Israeli commandos of 103 hostages from a skyjacked jetliner in Uganda last July 4. Finch will portray Israeli Prime Minister Yitzhak Rabin. Gloria Strock has been signed to play Maggie McMillan's secretary, in the McMillan series. Gene Kelly and Henry Winkler will host a two-hour musical special "America Salutes Richard Rodgers: The Sound of His Music," Dec. 9. The tribute to the composer whose thousands of songs and 42 show scores have echoed around the world for 50 years will feature performances by some of the most distinguished stars of the music world. Kelly and Winkler will represent Rodgers' two famous lyricist partners -- Oscar Hammerstein II and Lorenz Hart -- reminiscing about their classic collaborations with the preeminent composer and showman. Performing selections from Rodgers' prodigious work will be Diahann Carroll, Vic Damone, Sammy Davis Jr., Sandy Duncan, Lena Horne, Cloris Leachman, Peggy Lee, Frank Sinatra and John Wayne. "Sills and Burnett at the Met," with Carol Burnett and Beverly Sills, will be broadcast Nov. 25 on CBS. The production, taped before a capacity audience at the Metropolitan Opera House in New York City, marks the first joint appearance of the two artists. "An All-Star Party for John Wayne," a one-hour special telecast hosted by Frank Sinatra will air in November on ABC.

Saturday



BENNY GATTEYS plays Cheryl Malone, a bride who faints at her wedding and learns from JULIE LONDON and BOBBY TROUP, as Nurse McCall and Dr. Early, that she must have two weeks to rest in bed on Emergency! Oct. 9 (8-9 p.m., ET) over NBC.

Sunday



CHARLES HAID, as Delvecchio's partner, Det. Shonski, helps Del find the killer of a veteran cop, who disagreed with Del's tactics and was shot while working with him as his temporary partner on Delvecchio, Oct. 10 (10-11 p.m., EST) on CBS.

THURSDAY

- DAYTIME MOVIE: 1:00 "A Matter of Humanities"
EVENING: 8:00 NEWS, 8:30 NEWS, 9:00 NEWS, 9:30 NEWS, 10:00 NEWS, 10:30 NEWS, 11:00 NEWS, 11:30 NEWS
7:30 BARNEY MILLER: "Quarantine" (Part II)
7:57 NBC NEWS UPDATE: A one-minute summary of the latest news.
8:00 NBC'S BEST SELLER: "Captains And The Kings"
8:30 GEMINI MAN: "Double Take"
9:00 WELCOME BACK, KOTTER: "Sweatshirt Story"
9:30 THE WALTONS: Jason, who has lost his scholarship...
10:00 HAWAII FIVE-O: A Hawaiian history museum curator...
10:30 GUNSMOKE: "Great Performances"
11:00 THE GOODIES: "Hi Doug"
11:30 MOVIE-ELEVEN: "The Ring"
12:00 TOMORROW: "In The Eyes Of God"
12:30 DAN AUGUST: "In The Eyes Of God"
1:00 TRI-STATE NEWS: 1:15 NEWS

FRIDAY

- DAYTIME MOVIE: 1:00 "Kona Coast"
EVENING: 8:00 NEWS, 8:30 NEWS, 9:00 NEWS, 9:30 NEWS, 10:00 NEWS, 10:30 NEWS, 11:00 NEWS, 11:30 NEWS
8:30 LOVE, AMERICAN STYLE: with another woman, Nancy and Kenneth offer soothing words of advice...
9:00 SERPICO: "The Indian" Serpico masquerades as a cop...
9:30 HOLLYWOOD TELEVISION THEATRE: "Phileas"
10:00 NEWS: 10:30 NEWS: 11:00 NEWS: 11:30 NEWS
10:30 MOVIE (Cont.): "The Affair"
11:00 TONIGHT SHOW: Host: Johnny Carson.
11:30 MOVIE: "The Losers" (1970) William

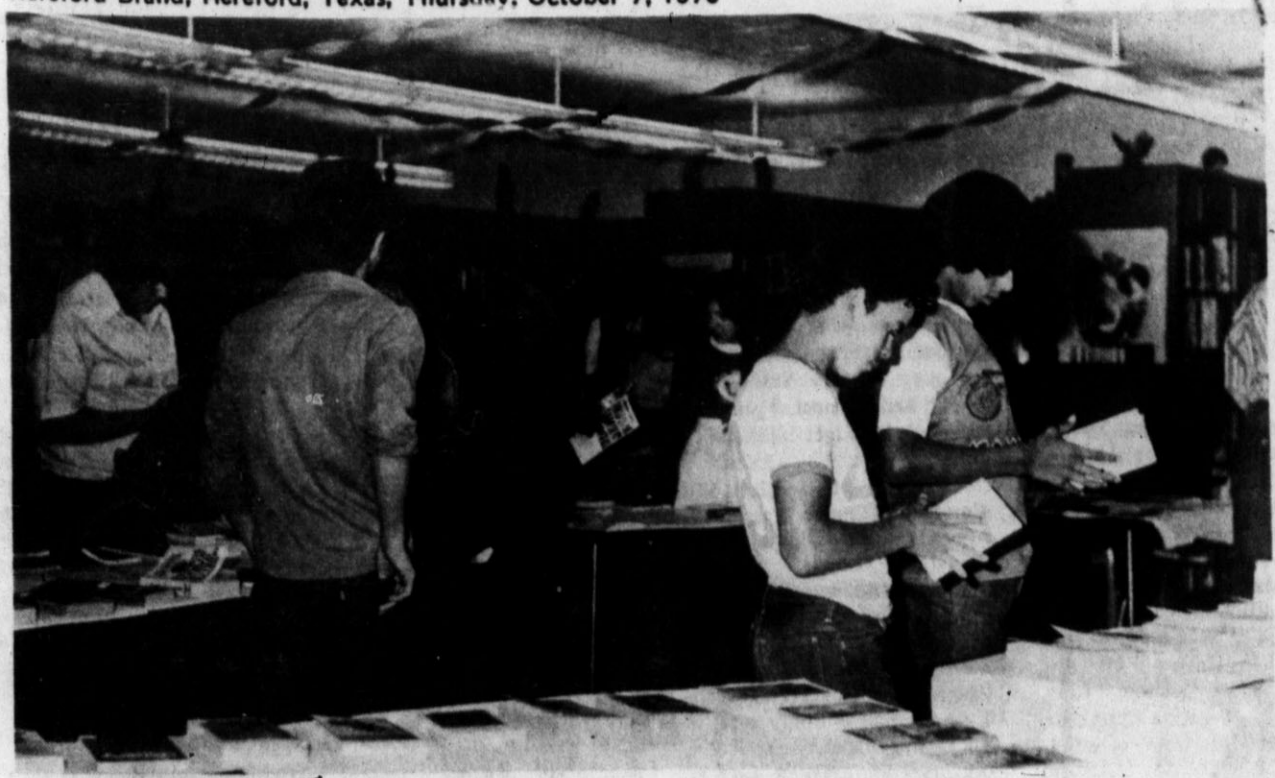
THE HEREFORD BRAND

comics

Smith, Adam Roarke. The U.S. Army enlists the aid of four Hell's Angels to ride behind enemy lines in the Vietnam jungles and rescue a presidential adviser who is being held captive.



Hereford Brand, Hereford, Texas, Thursday, October 7, 1976



Looking 'Em Over

La Plata Junior High School is conducting its annual Book Fair this week at the school library. All language art classes as well as students and

teachers may purchase any of the 200 books on display. Mrs. Spicer Gripp is the school librarian.

Club Meets Wednesday At Sims

Members of Sims Study Craft Club met Wednesday morning at Sims community building for a clean-up day and luncheon. The group worked until noon and met for a brief business meeting. During the session, they discussed the Thanksgiving luncheon in November in which they will invite past members. Hostesses for the affair will be Mmes. Leland Burns, Grady Hughes and Jerry Roberts. Members present will include Roy Blevins, John Brorman, Burns, Terry Creitz, Willis Duggan, Hughes, Robert Lloyd, Julian Perrin, Roberts and Tommy Wells.



Honors Received

Three Hereford artists received honors recently at the Tri State Fair held in Amarillo. Mrs. Charles Newell, at left, captured three blue ribbons. She placed first in the amateur wildlife division; her quilt received best in the show and her tablecloth was judged with a blue ribbon. Mrs. Ray Cowser, center, won third place with her oil painting in the adult division and Eunice Petersen placed first in the professional division with her oil painting.

La Plata Women To Make Donation

Members of La Plata Study Club elected to donate \$50 to the United Way drive when they met Tuesday evening in the home of Mrs. Jack Brown. With the hostess presiding, the budget was discussed and

approved. Elizabeth McDowell presented the program, which entailed a review of the book, "The Russian," by Hedrick Smith. The next meeting will be a Thanksgiving supper from

members' husbands in Pioneer Natural Gas Flame Room on Nov. 16. Refreshments were served to these members: Mmes. Emil Dettman, Marvin Hall, Melvin Hoover, Charles Kelley, Karl

Mannschreck, J.D. Neill, O.G. Nieman, Elmer Patterson, Frank Prowell, Ken Rogers, A.J. Schroter, Don Taylor, Harlan VanderZee, Raymond White and Louis Woodford.

Arts, Crafts Show To Be Held

Heritage Woman's Club of Canyon will sponsor an "Arts Americana" arts and crafts show Nov. 13-14 at the Ballroom of the Activities Center at the West Texas State University. The event will be held from 9:30 a.m.-6 p.m. Saturday, Nov. 13, and from 1-5 p.m., Sunday, Nov. 14. Booths will be set up from 8-9:30 a.m. Saturday. Six foot tables will be provided. Booth fees are \$15 for 8x8 ft. spaces and \$25 for 8x16 ft. spaces. Persons interested in participating should write or call Mrs. Jimmy Marrs, projects chairman, 5303 Pico Drive, Amarillo, Tex. 79110, 806-355-3748.

Congress adopted the Articles of Confederation in Philadelphia in 1777.

George Washington's farewell address was made Sept. 17, 1796.

From 1769-1782, Fra Junipero Serra founded nine Franciscan missions in California.

WE ARE PROUD TO ANNOUNCE....



THE ASSOCIATION OF CHARLES BROWN WITH PRO SPORTS CENTER AS OUR NEW SERVICE MANAGER. CHARLES HAS HAD VAST EXPERIENCE IN MOTORCYCLE MECHANIC WORK, EVERYTHING FROM SOPHISTICATED STREET MACHINES TO DIRT BIKE MODELS. IF YOU'RE HAVING MECHANICAL PROBLEMS WITH YOUR BIKE, LET CHARLES PUT IT IN TOP-NOTCH CONDITION.

CHARLES BROWN PRO SPORTS CENTER SERVICE MANAGER WE SPECIALIZE IN BORING CYLINDERS.

HONDA GOING STRONG.

Pro Sports Center

1001 WEST PARK PLAZA

364-5811

Rebekahs Meet Tuesday

Recommendation for election to various offices were made by members of Hereford Rebekah Lodge 228 Tuesday night in 100F Hall. Martha Bridges was nominated as lodge deputy of the Texas State Rebekah Assembly. This nomination will be submitted to the incoming president of TSRA. Also, Ursalee Jacobsen received a recommendation to serve as District V deputy president. Appreciation was expressed to those lodge members who took food to bereaved Rebekahs and reports were heard of ailing members and their families. It was announced that 48 visits had been made to ill individuals and 23 greeting cards had been mailed since the last meeting. Fifteen women were in attendance at the weekly meeting.

While Genghis Khan was sweeping across the world, he carried cheese as part of the basic ration for his soldiers. ever since that time cheese has been part of the rations for marching men because it's compact, nutritious as well as an instant food.

Flower Show Planned

The public is invited to view a horticultural spectacle from 3-5 p.m. Friday when members of Hereford Garden Club holds its annual Fall Flower Show. The arrangements, stressing horticulture quality and artistic design, will be displayed at Pioneer Natural Flame Room. Also, club members will be selling various homemade items as a fund raising project. Mrs. R.L. Wilson is flower show chairman and Mrs. O.G. Hill Sr. is president.

Virginia Military Institute, "The West Point of the South," trained many famous military men, including Stonewall Jackson, Gen. George Patton and Gen. George C. Marshall.

We couldn't revolutionize the foot. So we revolutionized the shoe.

The contoured soles are uniquely flexible. They put power in every step and provide full arch support. The revolutionary dip-in heel is the foundation for a whole new comfortable way of walking.



Free-Wheeler 1 in or Sand Brushed leather. \$33.00

Free-wheelers by FREEMAN RUTHERFORD'S

FINE DEPARTMENT STORE DOWNTOWN VARIETY PARK



SOFA & CHAIR SALE SAVE!

20-30 AND UP TO 50%

ON ALL SOFAS - LOVESEATS - CHAIRS

BARRICK FURNITURE

WEST HWY 60

EASY TERMS

NEVER UNDERSOLD

FREE DELIVERY

364-3552



# Calendar of Events

**THURSDAY**  
 North Hereford, Wyche and Westway Home Demonstration Clubs, Community Center, 10 a.m.  
 Deaf Smith Genealogical Society, County Library, 7 p.m.  
 Summerfield Study Club, home of Mrs. George DeLozier, 2:30 p.m.  
 Hereford Study Club, home of Mrs. Don Robinson, 101 Liveoak, 7:30 p.m.  
 Bay View Study club, home of Mrs. J.R. Allison, 113 N. Texas, 2 p.m.  
 L'Allegra Study Club, Deaf Smith County Library, 10 a.m.  
 Alpha Iota Mu Ritual Chapter of Beta Sigma Phi Sorority, REC Medallion Room, 8 p.m.  
 Kiwanis Club, Civic Club Center, noon.  
 Hereford Jaycees, Civic Club Center, 8 p.m.  
 Hereford TOPS Club, Community Center, 9 a.m.  
 VFW, VFW Clubhouse, 8 p.m.  
 American Association of Retired Persons, Community Center, 7 p.m.  
 BPOE Lodge, Elks Hall, 8:30 p.m.

**FRIDAY**  
 Hereford Garden Club Show at Pioneer Natural Gas Flame Room, 3-5 p.m.  
 Merry Mixeres Square Dance Club, Community Center, 8:30 p.m.  
 Sweet 'n' Fancy Decorating Club, Community Center, 9:30 a.m.  
 Kiwanis Whiteface Breakfast Club at Dickies Restaurant, 6:30 a.m.  
 Story hour for children, grades 1-4, at Deaf Smith County Library, 4-4:45 p.m.  
 Community Duplicate Bridge at St. Thomas Episcopal Church, 7:30 p.m.

**MONDAY**  
 Beta Sigma Phi City Council, Hereford State Bank Friendship Room, 8 p.m.  
 Hereford Study Club, home of Mrs. Joe Hacker, 2 p.m.  
 Hereford Music Study Club, home of Mrs. Clements, 2 p.m.

**TUESDAY**  
 Dawn Music Club, home of Mrs. Jim Tilley, 2 p.m.  
 Order of Eastern Star, Masonic Hall, 7:30 p.m.  
 Association of W's, Community Center, 7:30 p.m.  
 Lone Star Study Club, home of Mrs. Gaston Baer, 3 p.m.  
 Pioneer Study Club, Caison Steak House, 11:30 a.m.  
 Hereford Newcomers Club, Dickies Restaurant, noon.  
 Young Mothers Study Club, SWPS Reddy Room, 8 p.m.  
 Rebekah Lodge, 100F Hall, 8 p.m.  
 Hereford TOPS Club 576, Community Center, 9 a.m.  
 Weight Watchers, First Baptist Church, 6:30 p.m.  
 Singles groups in Fellowship Hall of First Baptist Church, 8 p.m.  
 Hereford Board of Realtors, lunch at Dickies, noon.

**WEDNESDAY**  
 Noon Lions, Civic Club Center, noon.  
 Story hours for preschool children at Deaf Smith County Library, 10 a.m. and 3 p.m.

Before a person can be elected to the U.S. Hall of Fame he must have been in government service for 25 years or more. Elections for entry to the Hall are held every five years.

Every motor driven vessel should have an identification number painted on each side of the bow and the copy of the number should be aboard whenever the vessel is in operation.

**WHO'S NEW**

**BIRTH ANNOUNCED**  
 Mr. and Mrs. Bobby Griffith of Amarillo, former Hereford residents, are the parents of a daughter, Tara Ruth, born Oct. 5 at Northwest Texas Hospital. She weighed 8 lbs. 8 oz.

**CORN KING ... FULLY COOKED**

**BONELESS HAMS**  
 WHOLE ... 14 TO 18-LB. AVERAGE

**\$1.49**  
 LB.

WATER ADDED

CORN KING, FULLY COOKED Boneless Hams... WATER ADDED HALVES \$1.59

**JIMMY DEAN PORK SAUSAGE**  
 12-OZ. PACKAGE

**99c**

JIMMY DEAN PURE Pork Sausage... 24-OZ. PKG. \$1.97

**FRESH... ARM SHOULDER PICNIC**

**PORK ROAST**  
 WHOLE ... 6 TO 8-LB. AVERAGE

**65c**  
 LB.

FRESH PORK Cubed Steaks... \$1.39  
 FRESH... ARM SHOULDER CUT

**Pork Roast**... LB. **79c**  
 FRESH ARM SHOULDER CUTS Pork Steaks... LB. \$1.09

**U.S.D.A. COKE BUTCHER BLOCK BEEF**

**Boneless Roast**  
 BEEF CHUCK

**88c**  
 LB.

U.S.D.A. CHOICE BUTCHER BLOCK BEEF Boneless Steaks... BEEFCHUCK... LB. 98c

**FRESH ... EXTRA LEAN**

**Ground Chuck**  
 IN 3-LB. PKGS OR MORE

**99c**  
 LB.

U.S.D.A. CHOICE BUTCHER BLOCK BEEF Cube Steaks... LB. \$1.69

**ASSORTED PORK CHOPS**... LB. **\$1.49**  
 PORK LOIN

# PLAY CASH KING... \$80,000 IN CASH PRIZES... PICK UP YOUR FREE TICKETS

the home of THRIFT-Prices

**IDEAL FOOD STORES**

PRICES EFFECTIVE THRU SATURDAY, OCTOBER 9, 1976. NONE SOLD TO DEALERS. LIMIT RIGHTS RESERVED.

STORE HOURS:  
 8 A.M. TO 10 P.M. MONDAY THRU SATURDAY  
 9 A.M. TO 9 P.M. SUNDAY

1105 W. PARK AVE.

WAVERY CUT CRYSTAL GLASSWARE ON SALE THIS WEEK:

9-OZ. WITH \$3.00 PURCHASE. **39c**

**On-The-Rocks**... EACH

HUNT'S **Tomato Juice**  
 46-OZ. CAN **48c**

HUNT'S **Tomato Paste**... 12-OZ. CAN **57c**

FUNK and WAGNALLS... LIBRARY OF GREAT MUSIC ON SALE THIS WEEK:

VOLUME NO. 6 WITH \$3.00 PURCHASE **\$2.69**

HUNT'S **Tomato Ketchup**  
 14-OZ. BOTTLE **32c**

HUNT'S **Manwich**... 15-OZ. CAN **69c**

ENRICHED FLOUR

**Gold Medal**  
 10-LB. BAG **\$1.66**

HUNT'S **Tomato Sauce**... 9-OZ. CAN **20c**

HUNT'S **Whole Tomatoes**... 15-OZ. CAN **41c**

SPAM... REG. OR SMOKED Luncheon Meat... 12-OZ. CAN **\$1.13**

KRAFT MINIATURE Marshmallows... 16-OZ. PKG. **69c**

NABISCO COOKIES Nutter Butter... 14-OZ. PKG. **83c**

HUNT'S **Whole Potatoes**... 15-OZ. CAN **33c**

LIBBY'S CUT **Green Beans**... 16-OZ. CAN **33c**

LIBBY'S **Sweet Peas**... 16-OZ. CANS **41c**

KOUNTY KIST WHOLE KERNEL **Golden Corn**... 3 12-OZ. CANS **\$1**

NABISCO Fig Newtons... 14-OZ. PKG. **89c**

HUNT'S **Fruit Cocktail**... 15-OZ. CAN **44c**

HUNT'S HALVES OR SLICED... YELLOW **Cling Peaches**... 29-OZ. CAN **48c**

ALL FLAVORS... **Hawaiian Punch**... 46-OZ. CAN **64c**

ALL GRINDS... **Folger's Coffee**... 2-LB. CAN **\$4.24**

BETTY CROCKER **Brownie Supreme**... 23-OZ. BOX **\$1.09**

HERSHEY'S CHOC. FLAVORED **Baking Chips**  
 12-OZ. PACKAGE **68c**

LADY CAMELOT ... ASSORTED **Bath Tissue**  
 2-ROLL PACKAGE **32c**

**Downy FABRIC SOFTENER**  
 96-OZ. BOTTLE **\$2.38**

**Tide LAUNDRY DETERGENT**  
 24-OZ. BOX **\$1.88**



# Texas Youths Plan 4-H Week Projects

COLLEGE STATION--Youth across the state of Texas are continually thinking up new ideas to better and promote their 4-H clubs. This year the young people seem to have already set out with determination to gain attention to 4-H during National 4-H Week, Oct. 3-9.

Their motto for this year is "4-H--Room to Grow" and 5.6 million 4-H members across the nation will rededicate their heads to clearer thinking, their

hearts to greater loyalty, their hands to larger service and their health to better living.

4-H projects and activities are supervised locally by staff members of the Texas Agricultural Extension Service--county agents and assistant county agents. They are assisted by volunteer leaders who may be adults, teens and juniors.

"Most 4-H youth across the state will devote this week to promoting their individual clubs and their activities through

poster contests, slide presentations and other programs to civic organizations and similar groups," points out Dr. John T. Pelham, state 4-H and youth leader with the Extension Service. "Other activities for National 4-H Week include achievement and Gold Star banquets where outstanding club members will be recognized."

Numerous counties within the state have planned special programs for the week. For

example, Harris County 4-Hers will sponsor a Discovery Day at a shopping center in the Houston area. Brazoria County youth plan to enter a float in the parade preceding the county fair.

Liberty County will provide 4-H handouts and pamphlets to local merchandisers to be given to their customers. Galveston County members have planned a special story in the Galveston News featuring two former 4-H members who were active in

4-H from 1930-1950.

4-Hers in Grayson County plan to attend church as a group on 4-H Sunday, Oct. 3. Window displays are also planned, and a poster contest will be held at the Sher-Den Mall.

In Denton County, 4-Hers and leaders are working with the staff of the Denton Record-Chronicle to put together a 12-page tabloid highlighting 4-H events and project groups. An achievement banquet to recognize outstanding 4-H members and volunteer leaders will highlight the week.

Hunt County 4-H members

are planning a supplement in the Greenville Herald-Banner that will feature stories and pictures about 4-H life. Radio messages, window displays and a speakers bureau will also spread the word about 4-H.

Regardless of the county or town, each 4-H member will have a special hand in telling the public about the "learning to do" organization known as 4-H, notes Pelham.

Argentina, Brazil and Chile are the South American countries referred to as the A.B.C. countries.

Snappy Cheese Snacks is another new leaflet that highlights quickly prepared recipes for superb but nutritious snacking. It includes Hot Monterey Dip, Smoky Swiss spread, Cheese-Shrimp Fondue, Cheesy Bean Dagwood, The Classic Reuben and the Cool Rachel Sandwich, among many others. For your copy, send a stamped, self-addressed, legal sized envelope to Snappy Cheese Snacks, American Dairy Association, 6300 North River Road, Rosemont, Illinois 60018.

New leaflet! Peanut Pairs, just off the press, combines peanuts with dairy foods in such great combinations as Zippy Peanut Snack Mix, Peanut Butter Fudge, Buttery Peanut Brittle, Curried Chicken, Pineapple-Peanut Upside Down Cake and many others. To receive your copy, send a stamped, self-addressed, legal size envelope to Peanut Pairs, American Dairy Association, 6300 North River Road, Rosemont, Illinois 60018.

U.S.D.A. GRADE A... ALL SIZES

- Honeysuckle** **69¢**
- Turkeys**.....L.B. **69¢**
- BAR-S... MEAT OR BEEF
- Skinless**
- Franks**.....12-OZ. PKG. **69¢**
- BLUE MORROW, COOKED
- Beef Fritters**.....BULK PACK L.B. **99¢**
- OSCAR MAYER, MEAT OR BEEF
- Skinless Franks**.....1-LB. PKG. **\$1.33**
- OSCAR MAYER, MEAT OR BEEF
- Sliced Bologna**.....8-OZ. PKG. **89¢**
- OSCAR MAYER, MEAT OR BEEF
- Sliced Bologna**.....12-OZ. PKG. **\$1.31**
- BAR-S, MEAT OR BEEF
- Sliced Bologna**.....12-OZ. PKG. **89¢**
- BAR-S
- Cotto Salami**.....12-OZ. PKG. **99¢**
- MEADOWDALE
- Sliced Bacon**.....1-LB. PKG. **\$1.59**
- CAMELOT
- Sliced Bacon**.....1-LB. PKG. **\$1.69**



**FRESH WATER CATFISH STEAKS**  
3 TO 4-LB. AVERAGE **98¢** L.B.

GORTON'S PRE-COOKED **Fish and Fries**.....2-LB. PKG. **\$1.19**

GORTON'S PRE-COOKED **Fish BREADED Sticks**.....2-LB. PKG. **\$1.99**

## CONGRATULATIONS TO THESE \$1,000 WINNERS!

<b>\$1,000 CASH WINNER</b> <b>MARY A. McCALLISTER</b> CLAYTON, N.M.	<b>\$1,000 CASH WINNER</b> <b>LOUISE BERNING</b> SCOTT CITY, KANSAS	<b>\$1,000 CASH WINNER</b> <b>FRANCES PHILLIPS</b> PERRYTON, TEXAS
<b>\$1,000 CASH WINNER</b> <b>KATHIE WAUGH</b> LAVERNE, OKLAHOMA	<b>\$1,000 CASH WINNER</b> <b>MIKE SAXON</b> BORGER, TEXAS	<b>\$1,000 CASH WINNER</b> <b>J.H. DUNKERSON</b> GUYMON, OKLAHOMA

### \$100<sup>00</sup> WINNERS!

FIDEIA MARTINEZ... GARDEN CITY, KANSAS  
 ETHEL JOHNSON... SCOTT CITY, KANSAS  
 GAIL DOBSON... HAYS, KANSAS  
 ELLEN PORTER... PAMPA, TEXAS  
 NANCY A. LANTROOP... ENID, OKLAHOMA  
 MRS. C.C. CALLARMAN... CANYON, TEXAS  
 MIKE KARLIN... BORGER, TEXAS  
 LATHERINE CONLEY... BORGER, TEXAS  
 MRS. HARVEY YATES... HEALY, KANSAS  
 ANNABELLE SPENCER... SCOTT CITY, KANSAS

JESSIE M. HOWE... LIBERAL, KANSAS  
 THOMAS F. FOSTER... LIBERAL, KANSAS  
 MRS. GEORGE JOY... PERRYTON, TEXAS  
 DOUGLAS A. SCOTT... HAYS, KANSAS  
 CHARLOTTE PIERSON... BORGER, TEXAS  
 MINNIE BUTLER... MEADE, KANSAS  
 DEBBIE HADA... ALVA, OKLAHOMA  
 ROBIN BARNARD... WOODWARD, OKLAHOMA  
 LEONA M. BUTCHER... BEAVER, OKLAHOMA  
 JAMES T. FOREMAN... FAIRVIEW, OKLAHOMA

# WIN UP TO \$1,000!!!

NOW...NO PURCHASE NECESSARY!

PRIZE VALUE	NO. OF PRIZES	ODDS FOR ONE STORE VISIT	ODDS FOR 9 STORE VISITS	18 PLUS 18 GAME PIECES
\$1,000.00	19	1:66,667	1:6,667	1:66,667
100.00	176	1:5,680	1:728	1:56,800
10.00	276	1:3,571	1:306	1:3,571
5.00	929	1:1,067	1:107	1:1,067
2.00	2,827	1:347	1:35	1:347
1.00	18,343	1:49	1:5	1:49
TOTAL	22,891	1:21	1:21	1:21

IDEAL'S FRESH BAKERY! **FRESH BAKED PUMPKIN PIE**.....27-OZ. **99¢**

OVEN-FRESH **SUGAR COOKIES**.....DOZEN **59¢**

## October Dairy Festival!

**KRAFT DELUXE American Slices**.....12-OZ. PKG. **\$1.06**

**FAIRMONT LO-FAT Cottage Cheese**.....24-OZ. CTN. **88¢**

**KRAFT CHEDDAR Midgot**.....16-OZ. PKG. **\$1.68**

**KRAFT ROUND Colby Cheese**.....16-OZ. PKG. **\$1.68**

**CAMELOT Butter-milk**.....QUART CTN. **3**

**Blue Bonnet**.....1-LB. CTN. **46¢**

**FAIRMONT DAIRY FAIR ICE MILK**.....ALL FLAVORS 1/2-GAL. CTN. **79¢**

**SAUSAGE... CHEESE... HAMBURGER OR PEPPERONI JENO'S PIZZA**.....13 1/2-OZ. PKG. **68¢**

**BANQUET... ALL VARIETIES Cook-in Bags**.....4 5-OZ. PKGS. **\$1**

**CAMELOT Orange Juice**.....2 12-OZ. CANS **86¢**

**Dr. Pepper**.....32-OZ. BOTTLES 6-PACK PLUS DEPOSIT **\$1.49**



**FAIRMONT Sour Cream**.....8-OZ. CTN. **47¢**

**PILLSBURY Crescent Rolls**.....8-OZ. CAN **53¢**

**KRAFT PHILADELPHIA Cream Cheese**.....8-OZ. PKG. **54¢**

**PILLSBURY COUNTRY STYLE OR BUTTERMILK Canned Biscuits**.....6 8-OZ. CANS **79¢**

**Thrif-T Frozen Foods**.....LOW TOTALS

**GOLDEN DELUXE Apple Pie**.....48-OZ. PKG. **\$1.39**

U.S. NO. 1, COLORADO McCLURE **Red Potatoes**.....10 LBS. **79¢**

**100 lb. Sack**.....**\$5.49**

**FANCY, RED Delicious Apples**.....3 LB. BAG **89¢**

**COLORADO Jonathan Apples**.....5 LBS. **\$1**

**CALIFORNIA Calmeria Grapes**.....L.B. **59¢**

**OCEAN SPRAY, FRESH Cranberries**.....1-LB. PKG. **39¢**

**CALIFORNIA Pomegranates**.....JUMBO SIZE **39¢**

**HARDIN Apple Cider**.....1/2 GAL. BTL... \$1.49 1-GAL. BTL. **\$1.99**

**FLORIDA Orange Juice**.....QUART BTL. **59¢**



# Water Importation To High Plains Opposed By Former TWDB Director

DALLAS (AP) - A former executive director of the Texas Water Development Board says the board should abandon plans to import out-of-state water to the thirsty High Plains of West Texas.

Joe G. Moore Jr., who had a large role in writing the Texas Water Plan of the 1960s while executive director, said Tuesday that the difficulties of getting out-of-state water are too great to be resolved before High Plains irrigation water is exhausted.

Moore, now an official at the University of Texas-Dallas, spoke at a Water Development Board public forum.

The forum here was one of 22 such hearings scheduled by the board to gain statewide support for a proposed state constitutional amendment that would increase its loan fund from \$200 million to \$400 million.

The proposed amendment

will be on the Nov. 2 general election ballot.

Instead, Moore said, West Texas should be working on conservation of remaining ground water, attracting industries with low water demands and conversion to dryland crop farming to make the economic adjustments.

Moore was director of the state water agency from 1965 until 1968 when the first 50-year water plan was being drafted.

Published by the board in 1968, the plan envisioned

bringing water to the High Plains from the Mississippi River system.

The Water Development Board's present executive director, James Rose, has backed efforts to obtain water from the Arkansas River system through a proposed Oklahoma canal to replenish West Texas' dwindling supply of irrigation water.

Also at the hearing, Dallas Water Utilities Director L.M. Rice gave a conditional endorsement to the proposed

amendment, saying Dallas "would benefit, economically" from it.

Howard Saxion, Dallas coordinator for Citizens Against Water Taxes, a statewide group opposing the bond proposition, testified that the Water Development Board was holding public meetings too late in the planning process and holding its bond election too soon.

"Voters want to know the contents of a new water plan before signing a blank check for it," he said.



**UNITED IRRIGATION SERVICE, INC.**  
Complete Pump & Gearhead Repair and Drilling  
Business Phone 364-6482  
or  
Mobile Phones 578-4623 or 578-4643  
Residence 364-6875  
HEREFORD, TEXAS E. HIWAY 60  
Bob Noyes  
Owner-Mgr.

## Black Member Of Ag Department Defends Butz

WASHINGTON (AP) - The only black in the policy-making hierarchy of the Agriculture Department defended Earl L. Butz, saying the resigned agriculture secretary "doesn't have a racist bone in his body."

Butz resigned Monday after almost five years in the Cabinet post because of the controversy surrounding an obscene racial slur he made against blacks. Butz said his resignation was "the price I pay for a gross indiscretion."

James E. Bostic Jr., 29, deputy assistant secretary for rural development, said Tues-

day that as a Southern black "I know my racists... and Earl Butz is no racist... He was just one of the nicest men I ever met."

Meanwhile, Butz' temporary replacement, Undersecretary John A. Knebel, was reported today by the Los Angeles Times to have helped Butz allegedly assist agriculture officials from seven states to avoid compliance with equal employment laws.

Quoting unnamed Agriculture Department sources, the Times said that when Knebel was the department's general counsel in 1974 under Butz, he attended a meeting in which Butz and aides reportedly agreed on delays in requiring civil rights compliance in Cooperative Extension Service programs in seven states.

Department sources said that as a result of the meeting the programs in the states avoided the requirement of hiring more blacks and still kept their federal funds, the newspaper said.

On Tuesday, Butz denied through a spokesman another report in the Los Angeles Times that he held secret meetings to advise the extension service how to avoid hiring more blacks. Knebel also denied the report, calling it "crazily wrong."

Knebel was quoted by the Times as saying that he was present at a meeting between Butz and the state directors. But

he denied anything was done to circumvent the 1964 Civil Rights Act.

The Times said well-informed sources reported that at the meeting Knebel told Butz to act cautiously in changing rules because "there could be problems if we change rules in the middle of the game."

At the meeting, Knebel also reportedly referred to officials of the Office of Economic Opportunity who were pressing for action against the state programs as "civil rights activists."

The Times said that when it

asked Knebel whether he or Butz had made any such statements during the meetings, Knebel said, "No, I truly don't remember. In the course of a meeting you can make many remarks that may be open to misinterpretation."

Meanwhile, Butz spent Tues-

day saying goodbye to his top policy staff, secretaries and other aides. Butz, 67, "was subdued, but not at all down. He said we all had to be forward-looking, get on with our work and see that the President is" elected, said Assistant Secretary Richard L. Feltner.

Seasonally adjusted dairy prices, however, were 7.5 per cent higher at the farm level Sept. 15.

The Crop Reporting Board said that 66 million pounds of butter were produced in August, a decline by 9 per cent from July but an increase of 14 per cent over August 1975. The market prices for milk used in butter and powdered milk were averaging \$8.66 per 100 pounds, up 15 cents in a month and \$1.13 in a year.

About 177.1 million pounds of American-type cheeses were produced, an output 34 per cent above last year but 6 per cent below July levels, the board said. The average price for milk used in American cheese was \$9.04 per 100 pounds, up 32 cents from the previous month and \$1.34 above the previous year.

Total cheese production of 284 million pounds was down 4 per cent from July but 25 per cent above August 1975, the report said.

## Production Of Dairy Goods Shows Marked Decline

WASHINGTON (AP) - With new support prices in effect for milk used in manufacturing dairy products, the Agriculture Department reports that production of most of those products in August was down slightly from July and substantially below levels of a year ago.

With such a supply situation, the retail prices of the products

probably will not be going down soon because of an upsurge this year in demand from consumers.

USDA has said that, despite cost, the report showed prices for most of the products up between 15 and 33 cents per 100 pounds from July and \$1.08 to \$1.31 from August 1975.

Effective Friday, the govern-

ment's support prices for milk used in making the products - except for nonfat dry milk, which is in surplus supply - rose almost 1.6 per cent or 13 cents per 100 pounds, an increase to \$8.26.

That was the second this year. The first was in April, as required by law for the start of the dairy marketing year.

Secretary Earl L. Butz successfully recommended to President Ford two vetoes in the last two years of bills mandating quarterly adjustments of the support. "He said one was not necessary July 1 after a review. Ford directed quarterly reviews when he vetoed the legislation.

The one for this quarter was necessary, Butz said in announcing it Sept. 20, to "assure that the support price for milk will reflect recent changes in the costs of feed, equipment, wages, energy and other farm costs."

The latest report on farm prices show such costs for all farmers up 6 per cent from a year ago, while overall prices

are down 7 per cent.

That butter support, or market floor, is an increase of 5.7 per cent; the cheese support, 2.2 per cent.

Compared to August 1975 output, production in August of creamed cottage cheese was up 6 per cent; lowfat cottage cheese, up 3 per cent; ice cream, down 4 per cent; ice milk, down 6 per cent; sherbet, up 3 per cent, and dry whole milk, up 31 per cent.

**IF YOUR AGENT WON'T TALK FRANKLY ABOUT SELF INSURANCE, FIRE HIM.**

Hire an independent agent from the **PLAINS INSURANCE AGENCY**

Because we work for you, not an insurance company. We aren't afraid to look at some alternatives to help you lower your insurance premiums.

Alternatives like self insurance, loss control and safety engineering, all part of risk management. Talk to us about it today. It's not as complicated as it sounds. And could save your business a lot of money.

**PLAINS Insurance Agency**  
218 WEST THIRD 364-2232

## South African Woman Wants To Ride Ranges

A Cape Town South Africa woman who is "keen on spending some weeks on a cattle ranch to do some Western riding" is looking for an opportunity fulfill her ambition in the Hereford area.

The Brand received a letter from Mrs. K. Kilian of Cape Town, this week, asking for help in locating such a ranch locally.

Mrs. Kilian, who plans to visit the United States next year

sometime in April or May, emphasized she's not interested in a dude ranch, but wants to gain her experience first hand on a modern day working ranch.

"I want to obtain accommodation on a cattle ranch with a view toward participating in daily western riding," she wrote.

Mrs. Kilian requests interested individuals write her in care of P.O. Box 4500, Cape Town, South Africa.

to carry out the over-all support price of \$8.26 for manufacturing-grade milk, the government will be paying out, if the market falls that far, 92.75 cents a pound for butter produced after Oct. 1 and 92.50 cents a pound for new cheddar cheese.

That butter support, or market floor, is an increase of 5.7 per cent; the cheese support, 2.2 per cent.

Compared to August 1975 output, production in August of creamed cottage cheese was up 6 per cent; lowfat cottage cheese, up 3 per cent; ice cream, down 4 per cent; ice milk, down 6 per cent; sherbet, up 3 per cent, and dry whole milk, up 31 per cent.

Domestic Rice Consumption May Increase

WASHINGTON (AP) - Agriculture Department economists who keep an eye on the rice situation say they expect domestic users of rice to increase about 5 per cent this marketing year through more sales to brewers and supermarket shoppers.

In a recent review, they noted that retail prices this spring averaged 44 cents a pound for rice, down 3 cents in a year and 9 cents in two years. They said they made it a good competitor for the consumer's dollar.

But, the report hinted, those prices could go down more since farm values, while down 6 cents, are 40 per cent above traditional levels at 6.4 cents a pound and the middleman's share is more than 100 per cent above average levels.

**CORNER CATCHER**  
The only center pivot in the world that hits the corners.

In a typical quarter section where a regular center pivot is irrigating 132 acres, you can now do about 150 acres. But the new Valley Corner System isn't limited to squares. Irrigate both ends of a rectangle. Irrigate odd shaped pieces of land too. It's the answer to getting valuable productive land that's been wasted, back under center pivot irrigation.

For flood irrigators, it's also the answer to automatic water and labor saving center pivot, without wasting valuable acres. No monitoring, no labor problems, no night work. But you have all the advantages of precise irrigation and fertilizer application through the system, that produces higher yields than ever before. It's a simple concept, precise in operation and engineered with quality of all Valley-Built Center Pivots.

**VALLEY**

Find Out More About VALLEY...  
HEREFORD..... 806-364-6900  
MULESHOE..... 806-272-4266  
OLTON..... 806-285-2648  
CLOVIS..... 505-763-4417

**FARMERS! FEEDLOT OWNERS! SCOOPS**

Recent rains have rotted feed in the troughs in feedyards. A scoop will clean it out best and assure continued cattle feeding

- Plus -

Grain Harvest is at hand. We have a fine selection of steel & aluminum scoops

<b>TRU-TEMPER ALUMINUM SCOOPS</b>	<b>TRU-TEMPER STEEL SCOOPS</b>
No. 12 \$15 <sup>20</sup>	No. 8 \$11 <sup>00</sup>
No. 10 \$11 <sup>98</sup>	No. 10 \$11 <sup>00</sup>
	No. 12 \$11 <sup>20</sup>

**Carl McCaslin LUMBER CO**  
344 E. 3rd 364-3434

The Alaska Range extends generally northeastward from the base of the Alaska Peninsula to the frontier of Yukon Territory, Canada. The range averages about 50 miles in width.

Yellow fever claimed 80,000 lives in Spain in 1800.



# Feeder Pig Show Is Scheduled

ATHENS--The fifth annual Texas State Championship Feeder Pig Show will be held in Athens, Nov. 5-6, announces Gayle L. Finch, Henderson County Extension agent. The show is aimed at improving the quality of feeder pigs and the swine industry of Texas.

General superintendent of the show is Vernon Byers of Eustace. Site of the show will be the sale facilities of the Athens Feeder Pig Sale Association located three and one-half miles north of the city on Highway 19. The event is being sponsored by area business firms.

All swine producers in Texas are eligible to enter pigs in the show, notes Finch. Entry deadline is Oct. 22. Entry forms are available from the Texas State Championship Feeder Pig Show, P.O. Box 1418, Athens, Tex. 75751. There is no entry fee or admission charge.

An entry consists of a pen of eight pigs, farrowed by the exhibitor. The pigs must weigh an average of 40 to 70 pounds. A pen may consist of barrows, gilts, registered, crossbred or any combination thereof. All barrows must be completely headed. Each exhibitor is limited to three entries.

The show will be made up of three classes, determined by the average weight of the pigs entered. Prize money plus ribbons will be awarded to the first seven places in each class. The first place winner in each class will receive \$35, then the money decreases to \$5 for seventh place. The grand champion pen will receive \$400 plus a trophy, with the reserve champion pen receiving \$200 plus a trophy.

As an added attraction, the judges will select one pig as

champion individual feeder pig. The exhibitor of this pig will be awarded a large clock trophy.

This year producers of registered swine are invited to exhibit up to six head of breeding hogs, points out Finch. All breeding hogs are eligible to participate in the breeding sale scheduled to follow the feeder pig show.

All feeder pigs and breeding hogs will be received at the show facilities Nov. 5 from 10 a.m. to 4 p.m. Exhibitors should bring their own trough, water pans, bedding material and other necessary supplies.

The show officially starts at 7 p.m., Nov. 5, with an exhibitor's banquet. Guest banquet speaker will be Dr. Paul E. Gorham of Iowa whose presentation is titled "I Love Hogs -- When They Make Me Money."

Judging of entries begins the next day at 8 a.m. Dr. T.D. Tanksley, Jr., professor and Extension swine specialist at Texas A&M University and Dr. Randall D. Grooms, Extension area livestock specialist at Overton, will serve as the official judges.

Following the judging, all entries will be sold by auction beginning at 3 p.m. A 5 per cent commission will be charged on all feeder pig sales, with 10 per cent being charged against all breeding animal sales.

Swine equipment will be on display throughout the day. A Dutch treat "East Texas" open pit pork Bar-B-Q luncheon will be served Nov. 6.

As an added attraction, Miss Kathy Kilpatrick, Texas Pork Queen, will be participating in the two-day event by presenting awards and greeting exhibitors and visitors.

# High Moisture Corn Needs Special Care

COLLEGE STATION...High Plains producers harvesting corn at a high moisture level should give particular attention to both harvesting and storing to prevent grain damage and grade reduction. "Corn harvested at a moisture content of 30 per cent breaks easier than that harvested at 20 per cent moisture," points out Richard Withers, agricultural engineer with the Texas Agricultural Extension Service. "Tests by the Agricultural Marketing Service (AMS) have shown that the wetter corn sustains more damage from the field sheller."

As far as drying wet corn is concerned, AMS tests have shown that heated air (140 to 240 degrees F.) can cause two to three times as much breakage as unheated air. "The significant factor here is the rate that moisture is removed from the corn," points out Withers. "They drying process should not remove more than 8 per cent of the moisture in an hour. Most of the damage during drying occurs when corn is between the moisture range of 14 to 19 per cent."

According to Withers, drying corn slowly with natural air results in top quality grain. However, slow drying can lead to mold development, so he

advises a process called "dyeation."

In this process the corn is dried in a batch or continuous-flow dryer to a moisture level of 16 to 18 per cent at a fairly high temperature (200 degrees F. or above). Then it is immediately transferred to a temporary storage bin equipped for aeration. After setting a few hours to "steam" or temper, the corn is aerated for about 12 hours with airflow rates of about one-half cubic foot per minute per bushel. This should get the corn's moisture content down to about 2 to 3 per cent.

"Corn should be stored at a minimum moisture level to

maintain top quality," says Withers. He especially advises producers to guard against pockets of damp grain and moisture migration, which should be controlled by aeration.

"High moisture corn can be harvested much more efficiently

than when it is dry, but unless the wet corn is dried properly, the gains at harvest time will turn into losses," emphasizes Withers. "Also, operators should adjust equipment according to the manufacturer's recommendations for efficient harvesting."

# Sheep Symposium Scheduled

LUBBOCK--The oil embargoes, changes in garment designs and increased knowledge about disease control, nutrition, management and breeding have all resulted in efficient lamb meat and wool production over the years.

However, production figures indicate that there has been a constant decline of over a million sheep every year since World War II. In 1943 there were 56,000,000 sheep on farms in this country as compared with 13,000,000 this year.

Commercial sheep producers, packers and natural fiber producers are all affected by these trends. How they are affected and what they should do in the future will be discussed by leading producers and researchers during the High Plains Sheep Symposium at Texas Tech University, Oct. 16.

The chairman of the Texas Tech animal science department, Dr. Max Lennon, expects 70 producers to attend the symposium.

Joseph A. King, Texas Tech Textile Research Center wool technologist, will outline how the wool industry has changed because of various external influences.

"Oil embargoes," he said, "have cut off a large quantity of heating oil, and people have had to cut back their thermostats and reduce heat in their homes and businesses. That marked a return to wool clothing -- not in a big way, but still significant."

"Besides, wool designs, which had been previously available only to the affluent, are becoming the styles of the middle class," he added.

The one-day symposium opens at 8 a.m. with registration. Dr. Anson R. Bertrand, dean of the college of agricultural sciences at Texas Tech, will welcome the department, the Textile Research Center and the American Sheep Industry are sponsoring the symposium.

Dwight Holaway, sheep producer from Pipestone, Minn., will speak on partial confinement as an alternative for sheep production.

Carl Menzies, director of the agricultural experiment station at San Angelo, will focus on what performance testing of rams has accomplished. A discussion on the economics of range sheep by Mark Wise, a graduate student in animal production at Texas Tech, will follow.

Dr. Leif H. Thompson, assistant professor of animal science at Texas Tech and symposium coordinator, is scheduled to talk on the use of low quality roughages during the morning session and on lamb growth studies during the post-lunch meeting.

The meat packers' viewpoint will be presented by E.H. Mattingly, manager of Armour

and Company, San Angelo. The value of pure bred rams is the topic to be discussed by Clifford Throckmorton, breeder from Levelland.

The Texas Sheep and Goat Raisers Association will be represented at the symposium by Bill Sims. He will explain the association's services for the producers.

Factors involving sheep marketing will be discussed by Jack Drake, co-owner and manager, Producers Livestock Auction, San Angelo.

The animal science department will publish a report on the conference proceedings, which will be available to delegates during registration. The symposium concludes at 4 p.m.

## NOTICE OF INTENTION TO ENGAGE IN WEATHER MODIFICATION ACTIVITIES

Notice is hereby given that Atmospherics Incorporated, 4522 East Layton Ave., Fresno, Calif. 93727, who holds License No. 7-61 (Issued 1 Sept. 1975) of the State of Texas, intends to engage in an operation to change or attempt to change by artificial methods, the natural development of appropriate atmospheric cloud forms or precipitation forms which occur in the troposphere, for and on behalf of Better Weather Incorporated, located at Littlefield, Texas, and will conduct a program of weather modification designed to augment useful precipitation and decrease damaging hailfall and will not significantly dissipate the clouds and prevent their natural course of developing rain in the area where the operation is to be conducted to the material detriment of persons or property in that area as follows:

- The area over, or within which equipment may be operated, shall include portions of the counties of Deaf Smith, Randall, Farmer, Castro, Swisher, Bailey, Lamb, Hale, Cochran, Hookley, and Lubbock.
- The target area, within which rainfall augmentation and hailfall suppression is intended to occur, can be described as follows: "The boundary of the target area shall be a line beginning at a point of origin at Littlefield, Lamb County, Texas, and running northwest along Highway 84 to its intersection with R.L. 303; thence due north on R.L. 303 to Sulon; thence northwesterly on Highway 84 to its intersection with R.L. 1780 approximately two miles northwest of Muleshoe; thence due north to R.L. 144 in Farmer County; thence due east to the western border of Castro County; thence due north along the western border of Castro County to the southern border of Deaf Smith County; thence due east along R.L. 144 to its intersection with R.L. 1780 approximately two miles northwest of Muleshoe; thence due north to R.L. 144 in Farmer County; thence due east to the western border of Castro County; thence due north along the western border of Castro County to the southern border of Deaf Smith County; thence due east along R.L. 144 to its intersection with R.L. 1780 approximately two miles northwest of Muleshoe; thence due north to R.L. 144 in Farmer County; thence due east to the western border of Castro County; thence due north along the western border of Castro County to the southern border of Deaf Smith County; thence due east along R.L. 144 to its intersection with R.L. 1780 approximately two miles northwest of Muleshoe; thence due north to R.L. 144 in Farmer County; thence due east to the western border of Castro County; thence due north along the western border of Castro County to the southern border of Deaf Smith County; thence due east along R.L. 144 to its intersection with R.L. 1780 approximately two miles northwest of Muleshoe; thence due north to R.L. 144 in Farmer County; thence due east to the western border of Castro County; thence due north along the western border of Castro County to the southern border of Deaf Smith County; thence due east along R.L. 144 to its intersection with R.L. 1780 approximately two miles northwest of Muleshoe; thence due north to R.L. 144 in Farmer County; thence due east to the western border of Castro County; thence due north along the western border of Castro County to the southern border of Deaf Smith County; thence due east along R.L. 144 to its intersection with R.L. 1780 approximately two miles northwest of Muleshoe; thence due north to R.L. 144 in Farmer County; thence due east to the western border of Castro County; thence due north along the western border of Castro County to the southern border of Deaf Smith County; thence due east along R.L. 144 to its intersection with R.L. 1780 approximately two miles northwest of Muleshoe; thence due north to R.L. 144 in Farmer County; thence due east to the western border of Castro County; thence due north along the western border of Castro County to the southern border of Deaf Smith County; thence due east along R.L. 144 to its intersection with R.L. 1780 approximately two miles northwest of Muleshoe; thence due north to R.L. 144 in Farmer County; thence due east to the western border of Castro County; thence due north along the western border of Castro County to the southern border of Deaf Smith County; thence due east along R.L. 144 to its intersection with R.L. 1780 approximately two miles northwest of Muleshoe; thence due north to R.L. 144 in Farmer County; thence due east to the western border of Castro County; thence due north along the western border of Castro County to the southern border of Deaf Smith County; thence due east along R.L. 144 to its intersection with R.L. 1780 approximately two miles northwest of Muleshoe; thence due north to R.L. 144 in Farmer County; thence due east to the western border of Castro County; thence due north along the western border of Castro County to the southern border of Deaf Smith County; thence due east along R.L. 144 to its intersection with R.L. 1780 approximately two miles northwest of Muleshoe; thence due north to R.L. 144 in Farmer County; thence due east to the western border of Castro County; thence due north along the western border of Castro County to the southern border of Deaf Smith County; thence due east along R.L. 144 to its intersection with R.L. 1780 approximately two miles northwest of Muleshoe; thence due north to R.L. 144 in Farmer County; thence due east to the western border of Castro County; thence due north along the western border of Castro County to the southern border of Deaf Smith County; thence due east along R.L. 144 to its intersection with R.L. 1780 approximately two miles northwest of Muleshoe; thence due north to R.L. 144 in Farmer County; thence due east to the western border of Castro County; thence due north along the western border of Castro County to the southern border of Deaf Smith County; thence due east along R.L. 144 to its intersection with R.L. 1780 approximately two miles northwest of Muleshoe; thence due north to R.L. 144 in Farmer County; thence due east to the western border of Castro County; thence due north along the western border of Castro County to the southern border of Deaf Smith County; thence due east along R.L. 144 to its intersection with R.L. 1780 approximately two miles northwest of Muleshoe; thence due north to R.L. 144 in Farmer County; thence due east to the western border of Castro County; thence due north along the western border of Castro County to the southern border of Deaf Smith County; thence due east along R.L. 144 to its intersection with R.L. 1780 approximately two miles northwest of Muleshoe; thence due north to R.L. 144 in Farmer County; thence due east to the western border of Castro County; thence due north along the western border of Castro County to the southern border of Deaf Smith County; thence due east along R.L. 144 to its intersection with R.L. 1780 approximately two miles northwest of Muleshoe; thence due north to R.L. 144 in Farmer County; thence due east to the western border of Castro County; thence due north along the western border of Castro County to the southern border of Deaf Smith County; thence due east along R.L. 144 to its intersection with R.L. 1780 approximately two miles northwest of Muleshoe; thence due north to R.L. 144 in Farmer County; thence due east to the western border of Castro County; thence due north along the western border of Castro County to the southern border of Deaf Smith County; thence due east along R.L. 144 to its intersection with R.L. 1780 approximately two miles northwest of Muleshoe; thence due north to R.L. 144 in Farmer County; thence due east to the western border of Castro County; thence due north along the western border of Castro County to the southern border of Deaf Smith County; thence due east along R.L. 144 to its intersection with R.L. 1780 approximately two miles northwest of Muleshoe; thence due north to R.L. 144 in Farmer County; thence due east to the western border of Castro County; thence due north along the western border of Castro County to the southern border of Deaf Smith County; thence due east along R.L. 144 to its intersection with R.L. 1780 approximately two miles northwest of Muleshoe; thence due north to R.L. 144 in Farmer County; thence due east to the western border of Castro County; thence due north along the western border of Castro County to the southern border of Deaf Smith County; thence due east along R.L. 144 to its intersection with R.L. 1780 approximately two miles northwest of Muleshoe; thence due north to R.L. 144 in Farmer County; thence due east to the western border of Castro County; thence due north along the western border of Castro County to the southern border of Deaf Smith County; thence due east along R.L. 144 to its intersection with R.L. 1780 approximately two miles northwest of Muleshoe; thence due north to R.L. 144 in Farmer County; thence due east to the western border of Castro County; thence due north along the western border of Castro County to the southern border of Deaf Smith County; thence due east along R.L. 144 to its intersection with R.L. 1780 approximately two miles northwest of Muleshoe; thence due north to R.L. 144 in Farmer County; thence due east to the western border of Castro County; thence due north along the western border of Castro County to the southern border of Deaf Smith County; thence due east along R.L. 144 to its intersection with R.L. 1780 approximately two miles northwest of Muleshoe; thence due north to R.L. 144 in Farmer County; thence due east to the western border of Castro County; thence due north along the western border of Castro County to the southern border of Deaf Smith County; thence due east along R.L. 144 to its intersection with R.L. 1780 approximately two miles northwest of Muleshoe; thence due north to R.L. 144 in Farmer County; thence due east to the western border of Castro County; thence due north along the western border of Castro County to the southern border of Deaf Smith County; thence due east along R.L. 144 to its intersection with R.L. 1780 approximately two miles northwest of Muleshoe; thence due north to R.L. 144 in Farmer County; thence due east to the western border of Castro County; thence due north along the western border of Castro County to the southern border of Deaf Smith County; thence due east along R.L. 144 to its intersection with R.L. 1780 approximately two miles northwest of Muleshoe; thence due north to R.L. 144 in Farmer County; thence due east to the western border of Castro County; thence due north along the western border of Castro County to the southern border of Deaf Smith County; thence due east along R.L. 144 to its intersection with R.L. 1780 approximately two miles northwest of Muleshoe; thence due north to R.L. 144 in Farmer County; thence due east to the western border of Castro County; thence due north along the western border of Castro County to the southern border of Deaf Smith County; thence due east along R.L. 144 to its intersection with R.L. 1780 approximately two miles northwest of Muleshoe; thence due north to R.L. 144 in Farmer County; thence due east to the western border of Castro County; thence due north along the western border of Castro County to the southern border of Deaf Smith County; thence due east along R.L. 144 to its intersection with R.L. 1780 approximately two miles northwest of Muleshoe; thence due north to R.L. 144 in Farmer County; thence due east to the western border of Castro County; thence due north along the western border of Castro County to the southern border of Deaf Smith County; thence due east along R.L. 144 to its intersection with R.L. 1780 approximately two miles northwest of Muleshoe; thence due north to R.L. 144 in Farmer County; thence due east to the western border of Castro County; thence due north along the western border of Castro County to the southern border of Deaf Smith County; thence due east along R.L. 144 to its intersection with R.L. 1780 approximately two miles northwest of Muleshoe; thence due north to R.L. 144 in Farmer County; thence due east to the western border of Castro County; thence due north along the western border of Castro County to the southern border of Deaf Smith County; thence due east along R.L. 144 to its intersection with R.L. 1780 approximately two miles northwest of Muleshoe; thence due north to R.L. 144 in Farmer County; thence due east to the western border of Castro County; thence due north along the western border of Castro County to the southern border of Deaf Smith County; thence due east along R.L. 144 to its intersection with R.L. 1780 approximately two miles northwest of Muleshoe; thence due north to R.L. 144 in Farmer County; thence due east to the western border of Castro County; thence due north along the western border of Castro County to the southern border of Deaf Smith County; thence due east along R.L. 144 to its intersection with R.L. 1780 approximately two miles northwest of Muleshoe; thence due north to R.L. 144 in Farmer County; thence due east to the western border of Castro County; thence due north along the western border of Castro County to the southern border of Deaf Smith County; thence due east along R.L. 144 to its intersection with R.L. 1780 approximately two miles northwest of Muleshoe; thence due north to R.L. 144 in Farmer County; thence due east to the western border of Castro County; thence due north along the western border of Castro County to the southern border of Deaf Smith County; thence due east along R.L. 144 to its intersection with R.L. 1780 approximately two miles northwest of Muleshoe; thence due north to R.L. 144 in Farmer County; thence due east to the western border of Castro County; thence due north along the western border of Castro County to the southern border of Deaf Smith County; thence due east along R.L. 144 to its intersection with R.L. 1780 approximately two miles northwest of Muleshoe; thence due north to R.L. 144 in Farmer County; thence due east to the western border of Castro County; thence due north along the western border of Castro County to the southern border of Deaf Smith County; thence due east along R.L. 144 to its intersection with R.L. 1780 approximately two miles northwest of Muleshoe; thence due north to R.L. 144 in Farmer County; thence due east to the western border of Castro County; thence due north along the western border of Castro County to the southern border of Deaf Smith County; thence due east along R.L. 144 to its intersection with R.L. 1780 approximately two miles northwest of Muleshoe; thence due north to R.L. 144 in Farmer County; thence due east to the western border of Castro County; thence due north along the western border of Castro County to the southern border of Deaf Smith County; thence due east along R.L. 144 to its intersection with R.L. 1780 approximately two miles northwest of Muleshoe; thence due north to R.L. 144 in Farmer County; thence due east to the western border of Castro County; thence due north along the western border of Castro County to the southern border of Deaf Smith County; thence due east along R.L. 144 to its intersection with R.L. 1780 approximately two miles northwest of Muleshoe; thence due north to R.L. 144 in Farmer County; thence due east to the western border of Castro County; thence due north along the western border of Castro County to the southern border of Deaf Smith County; thence due east along R.L. 144 to its intersection with R.L. 1780 approximately two miles northwest of Muleshoe; thence due north to R.L. 144 in Farmer County; thence due east to the western border of Castro County; thence due north along the western border of Castro County to the southern border of Deaf Smith County; thence due east along R.L. 144 to its intersection with R.L. 1780 approximately two miles northwest of Muleshoe; thence due north to R.L. 144 in Farmer County; thence due east to the western border of Castro County; thence due north along the western border of Castro County to the southern border of Deaf Smith County; thence due east along R.L. 144 to its intersection with R.L. 1780 approximately two miles northwest of Muleshoe; thence due north to R.L. 144 in Farmer County; thence due east to the western border of Castro County; thence due north along the western border of Castro County to the southern border of Deaf Smith County; thence due east along R.L. 144 to its intersection with R.L. 1780 approximately two miles northwest of Muleshoe; thence due north to R.L. 144 in Farmer County; thence due east to the western border of Castro County; thence due north along the western border of Castro County to the southern border of Deaf Smith County; thence due east along R.L. 144 to its intersection with R.L. 1780 approximately two miles northwest of Muleshoe; thence due north to R.L. 144 in Farmer County; thence due east to the western border of Castro County; thence due north along the western border of Castro County to the southern border of Deaf Smith County; thence due east along R.L. 144 to its intersection with R.L. 1780 approximately two miles northwest of Muleshoe; thence due north to R.L. 144 in Farmer County; thence due east to the western border of Castro County; thence due north along the western border of Castro County to the southern border of Deaf Smith County; thence due east along R.L. 144 to its intersection with R.L. 1780 approximately two miles northwest of Muleshoe; thence due north to R.L. 144 in Farmer County; thence due east to the western border of Castro County; thence due north along the western border of Castro County to the southern border of Deaf Smith County; thence due east along R.L. 144 to its intersection with R.L. 1780 approximately two miles northwest of Muleshoe; thence due north to R.L. 144 in Farmer County; thence due east to the western border of Castro County; thence due north along the western border of Castro County to the southern border of Deaf Smith County; thence due east along R.L. 144 to its intersection with R.L. 1780 approximately two miles northwest of Muleshoe; thence due north to R.L. 144 in Farmer County; thence due east to the western border of Castro County; thence due north along the western border of Castro County to the southern border of Deaf Smith County; thence due east along R.L. 144 to its intersection with R.L. 1780 approximately two miles northwest of Muleshoe; thence due north to R.L. 144 in Farmer County; thence due east to the western border of Castro County; thence due north along the western border of Castro County to the southern border of Deaf Smith County; thence due east along R.L. 144 to its intersection with R.L. 1780 approximately two miles northwest of Muleshoe; thence due north to R.L. 144 in Farmer County; thence due east to the western border of Castro County; thence due north along the western border of Castro County to the southern border of Deaf Smith County; thence due east along R.L. 144 to its intersection with R.L. 1780 approximately two miles northwest of Muleshoe; thence due north to R.L. 144 in Farmer County; thence due east to the western border of Castro County; thence due north along the western border of Castro County to the southern border of Deaf Smith County; thence due east along R.L. 144 to its intersection with R.L. 1780 approximately two miles northwest of Muleshoe; thence due north to R.L. 144 in Farmer County; thence due east to the western border of Castro County; thence due north along the western border of Castro County to the southern border of Deaf Smith County; thence due east along R.L. 144 to its intersection with R.L. 1780 approximately two miles northwest of Muleshoe; thence due north to R.L. 144 in Farmer County; thence due east to the western border of Castro County; thence due north along the western border of Castro County to the southern border of Deaf Smith County; thence due east along R.L. 144 to its intersection with R.L. 1780 approximately two miles northwest of Muleshoe; thence due north to R.L. 144 in Farmer County; thence due east to the western border of Castro County; thence due north along the western border of Castro County to the southern border of Deaf Smith County; thence due east along R.L. 144 to its intersection with R.L. 1780 approximately two miles northwest of Muleshoe; thence due north to R.L. 144 in Farmer County; thence due east to the western border of Castro County; thence due north along the western border of Castro County to the southern border of Deaf Smith County; thence due east along R.L. 144 to its intersection with R.L. 1780 approximately two miles northwest of Muleshoe; thence due north to R.L. 144 in Farmer County; thence due east to the western border of Castro County; thence due north along the western border of Castro County to the southern border of Deaf Smith County; thence due east along R.L. 144 to its intersection with R.L. 1780 approximately two miles northwest of Muleshoe; thence due north to R.L. 144 in Farmer County; thence due east to the western border of Castro County; thence due north along the western border of Castro County to the southern border of Deaf Smith County; thence due east along R.L. 144 to its intersection with R.L. 1780 approximately two miles northwest of Muleshoe; thence due north to R.L. 144 in Farmer County; thence due east to the western border of Castro County; thence due north along the western border of Castro County to the southern border of Deaf Smith County; thence due east along R.L. 144 to its intersection with R.L. 1780 approximately two miles northwest of Muleshoe; thence due north to R.L. 144 in Farmer County; thence due east to the western border of Castro County; thence due north along the western border of Castro County to the southern border of Deaf Smith County; thence due east along R.L. 144 to its intersection with R.L. 1780 approximately two miles northwest of Muleshoe; thence due north to R.L. 144 in Farmer County; thence due east to the western border of Castro County; thence due north along the western border of Castro County to the southern border of Deaf Smith County; thence due east along R.L. 144 to its intersection with R.L. 1780 approximately two miles northwest of Muleshoe; thence due north to R.L. 144 in Farmer County; thence due east to the western border of Castro County; thence due north along the western border of Castro County to the southern border of Deaf Smith County; thence due east along R.L. 144 to its intersection with R.L. 1780 approximately two miles northwest of Muleshoe; thence due north to R.L. 144 in Farmer County; thence due east to the western border of Castro County; thence due north along the western border of Castro County to the southern border of Deaf Smith County; thence due east along R.L. 144 to its intersection with R.L. 1780 approximately two miles northwest of Muleshoe; thence due north to R.L. 144 in Farmer County; thence due east to the western border of Castro County; thence due north along the western border of Castro County to the southern border of Deaf Smith County; thence due east along R.L. 144 to its intersection with R.L. 1780 approximately two miles northwest of Muleshoe; thence due north to R.L. 144 in Farmer County; thence due east to the western border of Castro County; thence due north along the western border of Castro County to the southern border of Deaf Smith County; thence due east along R.L. 144 to its intersection with R.L. 1780 approximately two miles northwest of Muleshoe; thence due north to R.L. 144 in Farmer County; thence due east to the western border of Castro County; thence due north along the western border of Castro County to the southern border of Deaf Smith County; thence due east along R.L. 144 to its intersection with R.L. 1780 approximately two miles northwest of Muleshoe; thence due north to R.L. 144 in Farmer County; thence due east to the western border of Castro County; thence due north along the western border of Castro County to the southern border of Deaf Smith County; thence due east along R.L. 144 to its intersection with R.L. 1780 approximately two miles northwest of Muleshoe; thence due north to R.L. 144 in Farmer County; thence due east to the western border of Castro County; thence due north along the western border of Castro County to the southern border of Deaf Smith County; thence due east along R.L. 144 to its intersection with R.L. 1780 approximately two miles northwest of Muleshoe; thence due north to R.L. 144 in Farmer County; thence due east to the western border of Castro County; thence due north along the western border of Castro County to the southern border of Deaf Smith County; thence due east along R.L. 144 to its intersection with R.L. 1780 approximately two miles northwest of Muleshoe; thence due north to R.L. 144 in Farmer County; thence due east to the western border of Castro County; thence due north along the western border of Castro County to the southern border of Deaf Smith County; thence due east along R.L. 144 to its intersection with R.L. 1780 approximately two miles northwest of Muleshoe; thence due north to R.L. 144 in Farmer County; thence due east to the western border of Castro County; thence due north along the western border of Castro County to the southern border of Deaf Smith County; thence due east along R.L. 144 to its intersection with R.L. 1780 approximately two miles northwest of Muleshoe; thence due north to R.L. 144 in Farmer County; thence due east to the western border of Castro County; thence due north along the western border of Castro County to the southern border of Deaf Smith County; thence due east along R.L. 144 to its intersection with R.L. 1780 approximately two miles northwest of Muleshoe; thence due north to R.L. 144 in Farmer County; thence due east to the western border of Castro County; thence due north along the western border of Castro County to the southern border of Deaf Smith County; thence due east along R.L. 144 to its intersection with R.L. 1780 approximately two miles northwest of Muleshoe; thence due north to R.L. 144 in Farmer County; thence due east to the western border of Castro County; thence due north along the western border of Castro County to the southern border of Deaf Smith County; thence due east along R.L. 144 to its intersection with R.L. 1780 approximately two miles northwest of Muleshoe; thence due north to R.L. 144 in Farmer County; thence due east to the western border of Castro County; thence due north along the western border of Castro County to the southern border of Deaf Smith County; thence due east along R.L. 144 to its intersection with R.L. 1780 approximately two miles northwest of Muleshoe; thence due north to R.L. 144 in Farmer County; thence due east to the western border of Castro County; thence due north along the western border of Castro County to the southern border of Deaf Smith County; thence due east along R.L. 144 to its intersection with R.L. 1780 approximately two miles northwest of Muleshoe; thence due north to R.L. 144 in Farmer County; thence due east to the western border of Castro County; thence due north along the western border of Castro County to the southern border of Deaf Smith County; thence due east along R.L. 144 to its intersection with R.L. 1780 approximately two miles northwest of Muleshoe; thence due north to R.L. 144 in Farmer County; thence due east to the western border of Castro County; thence due north along the western border of Castro County to the southern border of Deaf Smith County; thence due east along R.L. 144 to its intersection with R.L. 1780 approximately two miles northwest of Muleshoe; thence due north to R.L. 144 in Farmer County; thence due east to the western border of Castro County; thence due north along the western border of Castro County to the southern border of Deaf Smith County; thence due east along R.L. 144 to its intersection with R.L. 1780 approximately two miles northwest of Muleshoe; thence due north to R.L. 144 in Farmer County; thence due east to the western border of Castro County; thence due north along the western border of Castro County to the southern border of Deaf Smith County; thence due east along R.L. 144 to its intersection with R.L. 1780 approximately two miles northwest of Muleshoe; thence due north to R.L. 144 in Farmer County; thence due east to the western border of Castro County; thence due north along the western border of Castro County to the southern border of Deaf Smith County; thence due east along R.L. 144 to its intersection with R.L. 1780 approximately two miles northwest of Muleshoe; thence due north to R.L. 144 in Farmer County; thence due east to the western border of Castro County; thence due north along the western border of Castro County to the southern border of Deaf Smith County; thence due east along R.L. 144 to its intersection with R.L. 1780 approximately two miles northwest of Muleshoe; thence due north to R.L. 144 in Farmer County; thence due east to the western border of Castro County; thence due north along the western border of Castro County to the southern border of Deaf Smith County; thence due east along R.L. 144 to its intersection with R.L. 1780 approximately two miles northwest of Muleshoe; thence due north to R.L. 144 in Farmer County; thence due east to the western border of Castro County; thence due north along the western border of Castro County to the southern border of Deaf Smith County; thence due east along R.L. 144 to its intersection with R.L. 1780 approximately two miles northwest of Muleshoe; thence due north to R.L. 144 in Farmer County; thence due east to the western border of Castro County; thence due north along the western border of Castro County to the southern border of Deaf Smith County; thence due east along R.L. 144 to its intersection with R.L. 1780 approximately two miles northwest of Muleshoe; thence due north to R.L. 144 in Farmer County; thence due east to the western border of Castro County; thence due north along the western border of Castro County to the southern border of Deaf Smith County; thence due east along R.L. 144 to its intersection with R.L. 1780 approximately two miles northwest of Muleshoe; thence due north to R.L. 144 in Farmer County; thence due east to the western border of Castro County; thence due north along the western border of Castro County to the southern border of Deaf Smith County; thence due east along R.L. 144 to its intersection with R.L. 1780 approximately two miles northwest of Muleshoe; thence due north to R.L. 144 in Farmer County; thence due east to the western border of Castro County; thence due north along the western border of Castro County to the southern border of Deaf Smith County; thence due east along R.L. 144 to its intersection with R.L. 1780 approximately two miles northwest of Muleshoe; thence due north to R.L. 144 in Farmer County; thence due east to the western border of Castro County; thence due north along the western border of Castro County to the southern border of Deaf Smith County; thence due east along R.L. 144 to its intersection with R.L. 1780 approximately two miles northwest of Muleshoe; thence due north to R.L. 144 in Farmer County; thence due east to the western border of Castro County; thence due north along the western border of Castro County to the southern border of Deaf Smith County; thence due east along R.L. 144 to its intersection with R.L. 1780 approximately two miles northwest of Muleshoe; thence due north to R.L. 144 in Farmer County; thence due east to the western border of Castro County; thence due north along the western border of Castro County to the southern border of Deaf Smith County; thence due east along R.L. 144 to its intersection with R.L. 1780 approximately two miles northwest of Muleshoe; thence due north to R.L. 144 in Farmer County; thence due east to the western border of Castro County; thence due north along the western border of Castro County to the southern border of Deaf Smith County; thence due east along R.L. 144 to its intersection with R.L. 1780 approximately two miles northwest of Muleshoe; thence due north to R.L. 144 in Farmer County; thence due east to the western border of Castro County; thence due north along the western border of Castro County to the southern border of Deaf Smith County; thence due east along R.L. 144 to its intersection with R.L. 1780 approximately two miles northwest of Muleshoe; thence due north to R.L. 144 in Farmer County; thence due east to the western border of Castro County; thence due north along the western border of Castro County to the southern border of Deaf Smith County; thence due east along R.L. 144 to its intersection with R.L. 1780 approximately two miles northwest of Muleshoe; thence due north to R.L. 144 in Farmer County; thence due east to the western border of Castro County; thence due north along the western border of Castro County to the southern border of Deaf Smith County; thence due east along R.L. 144 to its intersection with R.L. 1780 approximately two miles northwest of Muleshoe; thence due north to R.L. 144 in Farmer County; thence due east to the western border of Castro County; thence due north along the western border of Castro County to the southern border of Deaf Smith County; thence due east along R.L. 144 to its intersection with R.L. 1780 approximately two miles northwest of Muleshoe; thence due north to R.L. 144 in Farmer County; thence due east to the western border of Castro County; thence due north along the western border of Castro County to the southern border of Deaf Smith County; thence due east along R.L. 144 to its intersection with R.L. 1780 approximately two miles northwest of Muleshoe; thence due north to R.L. 144 in Farmer County; thence due east to the western border of Castro County; thence due north along the western border of Castro County to the southern border of Deaf Smith County; thence due east along R.L. 144 to its intersection with R.L. 1780 approximately two miles northwest of Muleshoe; thence due north to R.L. 144 in Farmer County; thence due east to the western border of Castro County; thence due north along the western border of Castro County to the southern border of Deaf Smith County; thence due east along R.L. 144 to its intersection with R.L. 1780 approximately two miles northwest of Muleshoe; thence due north to R.L. 144 in Farmer County; thence due east to the western border of Castro County; thence due north along the western border of Castro County to the southern border of Deaf Smith County; thence due east along R.L. 144 to its intersection with R.L. 1780 approximately two miles northwest of Muleshoe; thence due north to R.L. 144 in Farmer County; thence due east to the western border of Castro County; thence due north along the western border of Castro County to the southern border of Deaf Smith County; thence due east along R.L. 144 to its intersection with R.L. 1780 approximately two miles northwest of Muleshoe; thence due north to R.L. 144 in Farmer County; thence due east to the western border of Castro County; thence due north along the western border of Castro County to the southern border of Deaf Smith



# Ann Landers

## I Need Help!



**DEAR ANN LANDERS:** I'm a 17-year-old girl, a high school senior who reads your column regularly and has learned a lot from other people's mistakes. Now I need help.

My father is an alcoholic. My mother has had an affair with just about every man in town. My two sisters act as if nothing is going on. Everybody knows about my mother. She has been involved with some fathers of boys at school. It's gross. I feel so ashamed I can hardly hold my head up.

The past six months at least two dozen guys have propositioned me. I'm sure they think because my mother is a tramp I must be one, too. Please don't tell me to talk to a school counselor. One is so old-fashioned she'd die of the shock. The other is a man and I'm sure my mother is sleeping with him, too. What can I do?—Alabama

**DEAR 'BAMA:** You can conduct yourself like a lady and you will be treated like one. The only person you are responsible for is yourself.

Your mom is sick and this is the way you must think about it. Both she and your dad need help, but nobody can force it on them. They must seek it themselves.

**DEAR ANN LANDERS:** Another of my son's young friends has announced he is quitting his job as a newspaper carrier because he can't collect enough money to meet his expenses. He is only 14. Six months ago he was full of enthusiasm. How sad to see his disillusioned.

Apparently some people don't realize news carriers must pay for their papers regardless. Customers destroy a youngster's morale when they write bad checks, move without paying, or become irate when they are asked for the fourth time to pay up.

Home delivery is one of the few bargains left in this country. Is it asking too much to play fair with kids who are taking their first step toward financial independence and maturity?—What More Can I Say?

**DEAR WHAT MORE:** Nothing. You've said it all—and I thank you.

**DEAR ANN:** This is the first time I've ever asked anyone for advice. Usually I'm the one who is handing it out. (I'm an attorney).

I'm in my late 30s, a bachelor. Somehow I never met the "right woman until three months ago. I feel as if I've been hit with a slab of cement. I never thought it would happen to me, but it did and I'm a goner.

This woman had all the qualities I have ever wanted in a wife. She is warm, loving, intelligent and attractive. We can communicate without words, as though we were one person. The only thing holding me back is the fact that she is ten years my senior. This means no children of our own.

My loved raised three fine kids with no help from an alcoholic husband (He's dead now.) They are all college graduates and on their own. My "girl" looks youthful and happy in spite of the hard life she has had. Everyone loves her.

I waited 38 years before I found this jewel and now I don't know what to do. My friends say

**LEXINGTON Ky. (AP)—**The University of Kentucky wants to host the finals of the 1982 NCAA basketball championships at Rupp Arena here, Athletic Director Cliff Hagan says.

Hagan said the university has submitted a bid for the games. He said the new 23,000-seats arena, scheduled for opening this fall, would be attractive site for the semifinals and final contests of the basketball tournament.

**BOSTON (AP)—**Richard T. Donovan, executive vice president of Suffolk Downs, and jockey Gonzalo Prosper will be honored at the 36th annual awards dinner at the New England Turf Writers Association on Tuesday night.

Donovan, a veteran of 22 years in thoroughbred racing, was voted "Man of the Year" by the turf writers. Prosper will receive a special achievement award as New England's leading rider this year.

I'm crazy. Am I? Or— Just Muddled.

**DEAR C OR M?** Life is dicey. If you married a woman ten years your junior, what guarantee would you have that there would be children?

The feelings you describe are precious. You may never experience them again. Your "girl" sounds like one in a

million. You'd be a fool to let her get away.

The Lapp people have a language, but no country of their own. Lapland stretches across much of the northernmost regions of Norway, Sweden, Finland and a tiny corner of the Soviet Union.

# Improvement Noted In Apple Forecast

**COLLEGE STATION—**"Apple-eating" quality will improve in about two weeks—as new-crop Jonathan and Golden and Red Delicious apples now in Texas grocery stores develop more sugar and less starchiness, Gwendolyn Clyatt predicts.

Also, raisins are plentiful—with an 18 per cent increase over last season's supply, she said.

Mrs. Clyatt is a consumer marketing information specialist with the Texas Agricultural Extension Service, The Texas

A&M University System.

At grape counters, Red Tokay grapes currently offer the best value, pricewise. However, seedless-grape costs are trending up a bit as the fruit comes from storage. Also, the grapes often are wrapped to prevent shattering, the specialist said.

Other fruits "warrant careful selection for top quality," Mrs. Clyatt added.

They include bananas, oranges, prunes, nectarines, plums, cantaloupe, and watermelon. In vegetable buying, "good"

choices—from standpoints of cost and nutritive value—are cabbage, carrots and potatoes, the specialist noted.

"Generally, prices are attractive on all hard-shell varieties of squash, such as Hubbard, Acorn, and Butternut squash."

Also, among other more economical vegetables are cucumbers, dry onions and green peppers, she said.

"Beef prices are generally stable—and some retail prices continue on the moderate to low side," Mrs. Clyatt reported.

"Special prices" appear on some broiling steaks, chuck roasts and steaks, round steaks, ground beef and liver.

**CONSUMER WATCH:** WORDS: Think twice before by-passing boneless meat because of its higher price.

With no excess fat or bone, every bit of meat adds up to more servings from each pound.

The Bank of England is often referred to as the "Old Lady of Threadneedle Street."

# Barbs

By PHIL PASTORET

Do you ever feel that this generation got off on the wrong foot for the march of history?

Now that we've finally managed to purchase an electric knife we can't afford a roast to practice on.



The way steak is served at our house these days is rarely.

# FRIENDLY PEOPLE...FRIENDLY

**SAFEWAY**



**USDA CHOICE**

Full Center Cut

# ROUND STEAK

**SUPER SAVER**

Lb.

# 1.09

Contains:  
3 Breast Quarters With Back  
3 Leg Quarters With Back  
3 Extra Wings  
3 Giblets



Serving Suggestion:

# FRYER PARTS

Cut From Grade 'A' Fryers

**SUPER SAVER**

# 35¢

Lb.

**SIRLOIN TIP**  
**BONELESS RUMP**  
**HOT LINKS**  
**CATFISH STEAK**

USDA Choice Steak or Roast Super Saver \$1.69  
USDA Choice Roast Super Saver \$1.59  
Dr. Jumbo Franks Pk. 10c Pk. Super Saver \$1.99  
Fresh Water Super Saver \$1.19

**PICK OF CHICK**

Split Breast, Legs, & Thighs

Super Saver \$1.79

**MEAT OR BEEF WIENERS**

Wilson or Safeway Brand

Super Saver 12-oz. \$0.63

# CAKE MIXES

Betty Crocker



Layer Varieties  
**50¢**  
18-oz. Box  
**SUPER SAVER**

# BISCUITS

Mrs. Wright's Sweet or Buttermilk

**70¢**  
8-oz. Cans  
**SUPER SAVER**

**MARGARINE**  
Coldbrook Solid 1-lb. Bar 28¢

# 6-PACK COLA



Cragmont Diet or Regular  
**79¢**  
16-oz. Bottles. Six Pack  
**SUPER SAVER**

# MAC. & CHEESE



Town House Dinner  
**20¢**  
7.25-oz. Box  
**SUPER SAVER**

# PEACHES

Town House Yellow Cling

**49¢**  
29-oz. Can

15¢ OFF LABEL FAB

Laundry Detergent

**\$1.26**  
49-oz. Box

10¢ OFF LABEL PALMOLIVE

Liquid Dish Detergent

**75¢**  
22-oz. Bottl.

# GELATIN

Jell Well Brand

**17¢**  
3-oz. Box

# PRESTONE

Anti-Freeze

**\$3.75**  
1 Gal.

# FLOUR

Ovenjoy Brand

**55¢**  
5-lb. Bag

**LARGE EGGS** Lucerne Grade 'A' 78¢

**CHEESE** Safeway Half Moon Longhorn or Colby \$1.59

**ICE MILK** Lucerne Brand 79¢

**BROCCOLI SPEARS** Saf Air Frozen 10-oz. 41¢

**100% Pure Florida Orange Juice**

Scotch Treat FROZEN CONCENTRATED ORANGE JUICE NET CONTENTS 6 FL. OZ. MAKES 1 1/4 PINTS 12-oz. Can 35¢



# LUCERNE BUTTERMILK

**SUPER SAVER**

1/2 gal. Ctn.

**COBBLERS** Stillwell Frozen Super Saver 98¢

**DONUTS** Horton Glazed Super Saver 12-oz. 79¢

**PARKAY** Kraft Margarine Super Saver 10-oz. 45¢

**MEAT PIES** Swanson Frozen Super Saver 9-oz. 39¢

# ORANGE JUICE

Scotch Treat

# 89¢

6-oz. Cans For



# Spelling Bee Books Already Available

County Judge Sam Morgan will be Spelling Bee Director for Deaf Smith County during the 1977 competition.

The 1976 champions from this county were Senior winner--Jan) elle Coupe, an eighth grade student at La Plata Junior High School, and Junior winner--Judy Flores, a sixth grader.

The 29th Regional Spelling Bee, co-sponsored by the Amarillo Globe-News and West Texas State University, Canyon, will be held in Amarillo on April 23, 1977.

Four states -- Texas, Oklahoma, New Mexico and Oklahoma -- will be represented and there will be 46 finalists.

The Bee is open to any student in a public or parochial school. The rules, established by the national sponsors (Scripps-Howard Newspaper, New York City) state that any student who has not reached his (or her) 16th birthday or gone beyond the eighth grade at the end of the current school term, will be eligible to enter any school contest and participate in

county eliminations.

The top district winner, when he (or she) is named on April 23, 1977, will take part in the 50th National Spelling Bee in Washington, D.C. early in June.

The champion will be representing the regional sponsors and the expenses will be courtesy of the Amarillo Globe-News.

The national sponsors, under the supervision of the director, Jim Wagner, annually prepare a study booklet used in most school and county eliminations.

It is "Words of the Champions." The 1977 issue will contain more than 500 new words and is available from the Amarillo Globe-News for 30 cents per copy.

To obtain the booklet, write to Spelling Bee Editor, Amarillo Globe-News, Post Office Box 2091, Amarillo, Texas 79166.

The AGN-WTSU offers unique opportunity to the elementary student by promoting a Junior Bee. Boys and girls in the sixth and lower grades may compete in a "Junior Division"

contest. Each county may select a champion in this division. The elementary winners will not take part in the regional bee unless they, by chance, have won both divisions in their respective counties.

All Junior and Senior county champions will be special guests of the Amarillo Globe-News at a luncheon preceding the Regional Bee.

The sponsors will present each county winner in each division with a special award. All participants, beginning with classroom entries, will be eligible to receive certificates, suitable for framing. These are made available by the Amarillo

newspaper. Director of Placemen at West Texas State University, Gene Parker, is Bee Coordinator. Mrs. Jeanne Bartlett is the Amarillo Globe-News Spelling Bee Editor.

At the 1976 National Spelling Bee there were 87 contestants, all-time high record.

In buying poultry, remember fats adds extra flavor-- but also extra calories, points out Mrs. Gwendolyn Clyatt, consumer marketing information specialist with the Texas Agricultural Extension Service, The Texas A&M University System.

# Chapter Members Meet Tuesday

Lillie Shipman presented a program on "Natural Science" to members of Xi Epsilon Alpha Chapter of Beta Sigma Phi Sorority Tuesday evening at the Hospitality Room of First National Bank.

The speaker explained why scientists used different sciences to investigate natural orders of the earth today. Pam Fogo

then read an American heritage excerpt from International on a chapter that was formed in Africa in 1943 that was trying to locate former BSP members.

During the business meeting, members present were Karen Ruland, Mary Sledge, Marilyn Bell, Cheryl Bullard, Barbara Burkhalter, Beverly Davis, Jean Holbert, Tommie Jones, Barbara Kendall, Alene Mason, Sandy Owsley, Jan Walsler, Janie Whitaker, Ilajeon Williams and Cindy Kirpatrick.

# SERVICE...SAFEWAY

ADVERTISED PRICES EFFECTIVE 7 FULL DAYS



Golden Harvest  
IRON STONE DINNERWARE  
This Weeks Feature  
10 Inch DINNER PLATES 69¢ Ea.



SPARE RIBS  
Small Meaty Pork Ribs  
SUPER SAVER  
Lb. 99¢



SMOKED PICNICS  
Wilson's Corn King  
SUPER SAVER  
Sliced lb. 64¢ Lb. 58¢

SLICED BACON  
Smok-A-Roma Brand (2-lb. #27)  
Super Saver  
lb. \$1.39

TURKEY WINGS  
or Hindquarters  
Super Saver  
lb. 39¢

SMOKED SAUSAGE VARIETY PACK  
Sliced 10-oz. #111  
Super Saver lb. \$1.59

BOLOGNA SAUSAGE  
Sliced 2-lb. #257  
Super Saver lb. \$1.29

GRAPEFRUIT JUICE  
Town House  
46-oz. Can  
47¢

FRUIT COCKTAIL  
Town House  
16-oz. Can  
37¢

BREAD  
Safeway Premium  
3 \$1.16  
16-oz. Loaves

DINNERS  
Bel Air Frozen  
Salisbury Steak Chopped Beef Meat Loaf Yeast Parmesan Beans & Fruits  
SUPER SAVER  
11-oz. Size  
49¢

FILM PROCESSING  
12 Exposure Kodacolor \$2.73  
20 Exp. #403 Roll \$4.03  
Each Roll

PIZZA  
Jeno's Frozen  
SUPER SAVER  
13-oz. Pizza  
79¢

GLASSES  
Federal Beverage Glasses  
17 1/2 oz. 3 \$1.10  
13 oz. 3 \$1.10  
10 1/2 oz. 3 \$1.10  
6-oz. 4 for \$1.00

BIG LIGHTERS  
Butane Lighters  
77¢ Each

JONATHAN APPLES  
ORANGES  
BROCCOLI  
POTATOES

HONEYDEW MELONS  
TOMATILLOS  
JADE PLANTS  
HOUSE PLANTS

PAPER TOWELS  
Hi & Dri  
Large Roll  
39¢

WASH. STATE DELICIOUS APPLES  
Red or Golden Delicious  
3 Lbs. For \$1.10

2-lb. BAG CARROTS  
Crisp and Fresh  
2 Lb. Bag 29¢

DOG FOOD  
Pooch Nuggets  
25-lb. Bag \$4.29

At Wit's End...  
By ERMA BOMBECK

If there's anything I can't stand it's being around people who are optimistic about everything.

When I'm ready to drown in a pool of self-pity, I don't want anyone throwing me a sanctimonious line.

As I told a well-meaning friend the other day, "I walked by the mirror today and said 'Mirror, mirror on the wall, who's the fairest of them all?'"

"What did it say?" Esther asked.

"I don't have to listen to language like that."

"At least you've got your health," said Esther. "No one should be this healthy. Do you realize I've only got two dresses I can squeeze into?"

"You can only wear on dress at a time," she smiled stolidly.

"That's the point, turkey, I may have to start wearing both of them at the same time."

"Waste not, want not," she said.

"You know the trouble with me? I'm too cheap to throw anything away. I clean up the kids' plates with a suction nozzle on the sweeper. I don't have a mouth, I have a trunk."

"A woman never stands so tall as when she stoops to eat a crumbled cookie."

"Where did you hear that?"

"In the Bible, I think."

"Maya said the other day I wasn't obese, I just had a lot of fat that didn't fit."

"Consider the source."

"I am considering the source, Esther. The mouth of the Nile should have a source. Does it bother you the way Mary Tyler Moore stands around with both hands on her hips? You just know they can span her waist."

"Yes, but is she happy?"

"If she isn't, I never want to smile again. I could be a size 5 if I wanted to. If I could just stop rewarding myself for answering the phone and bringing in the milk."

"Rome wasn't built in a day," she smiled charitably.

"It's your fault I'm fat!" I charged. "You and your bad platitudes."

"Well, maybe you could lose a few pounds."

"Boy, Esther, I never figured you for a mean mouth."



"I can't find a home"

At First Realty we have listings on many homes in various price ranges. Surely you'll find one you like.

FIRST REALTY OF THE SOUTHWEST



# SELL IT FAST! BUY IT RIGHT! USE WANTEDS!

## CLASSIFIED ADS

Classified advertising rates are based on a minimum of 15 words. One day is 10 cents per word, \$1.50 minimum. Rates below are for consecutive insertions, no copy change, and apply to set solid ads, only, no captions.

TIMES, RATES	MIN.
2 days, per word:	17 2.55
3 days, per word:	24 3.60
4 days, per word:	31 4.65
5th day: FREE	----
10 days, per word:	59 8.85
Monthly, per word:	1.00 15.00

Classified display rates apply for special paragraphing, captions, bold type or larger type: \$2 per column inch; \$1.50 for repeat insertions. Monthly rate: \$1 per column inch.

## 1. FOR SALE

### Miscellaneous

NEED GOOD homes for 1/4 German Shepherd and 1/4 Collie puppies. \$10 each. 364-0597. 1-70-2c

Have moved and have built-in so must sell electric range, Avacodo green, Continuous clean. \$250 firm. Call after 4 p.m. 364-6940. 1-70-10c

Used 27 Cu. Ft. Coppertone refrigerator-freezer. 364-1857 after 5 p.m. 1-70-1fc

Beautiful walnut 3-drawer cabinet for Singer Golden Touch. \$150. Call 364-6006 after 5 p.m. 1-70-1fc

**WE BUY AND SELL USED FURNITURE BARRICK FURNITURE WEST HWY 60 PHONE 364-3552** 1-1-1fc

**CALL YOUR LOCAL USED COW DEALER for Seven days per week DEAD STOCK REMOVAL.** 364-0951 1-1-1fc

For Sale: 3-speed Ford all-synchro transmission, \$50. Call 364-6006 after 5 p.m. 1-54-1fc

**BABY PARAKEETS and Finches.** 364-1017. 1-10-32-1fc

Be prepared! Cemetery spaces 1-2-3-4. Lot 136, section C in Rest Lawn Memorial Park of Hereford. All four \$700. J.C. Clearman, Rt. 1, Gorman, Tex. 76454. Phone 817-639-2532. 1-63-10c

**DELTA JEWELERS** is liquidating all our merchandise. Make a fair offer. 515 Park Ave. 1-63-1fc

Tam 101 and Centurk seed wheat treated and bagged. Leo Witkowski. 364-0991. 1-65-1fc

Hide-a-bed divan. Newly recovered, \$175. Recliner, \$50. Trundlebed, \$100. All excellent condition. 364-4247, after 6:30 p.m. 1-71-1c

**Buy good used furniture & appliances. BIG JIM'S FURNITURE & APPLIANCES 111 Archer St. [Labor Camp Road]** 1-42-1fc

**LUSKEY** roping saddle with a Bowman tree. Good condition. 364-4246. 1-69-5c

**DARLING KITTENS** free to good homes. 364-6617 or 332 Douglas. 1-69-5c

**LOSE WEIGHT** with Grapefruit diet plan with Diadax-Reduce excess fluids with Fluidex. Harold Close Drug. 1-63-Th-S-20p

One 20 gage pump vent rib shotgun. One Midland CB Delta tunc, all crystals for auto. 364-1278 after 7 p.m. 1-69-3c

**GOOD USED** carpet for sale. Call 364-4305 after 6 p.m. 1-69-3c

Need some Amway Products? Call The Power's Family 364-6884 or 364-2485. 1-67-1fc

For sale: 2-20 gallon salt water aquariums. Call 289-5590. 1-67-1fc

For sale: Good used carpeting and fire place screen. Call 364-1317. 1-68-1fc

For sale: AKC registered Samoyed puppies. Call 364-4590. 1-68-5c

Beauty shop equipment for sale. Call 647-5363, 406 N.W. 7th, Dimmitt, Texas 1-68-5c

**TWO TWIN** beds mattress and box springs. Excellent condition. \$120.00. Bookcase \$40.00. New Beauti-Pleat drapes, \$50.00. 364-2520. 1-71-1fc

Maytag gas range. 2 bedroom suites, 1 twin size bed, chairs, antiques, collectables. By appointment. 364-1287. 1-71-1fc

**GINSENG!** Chinese herb once prized more than gold, in convenient capsule. Try "Asian-root". Harold Close Drug. 1-63-Th-S-4p

**TAKE** soil the Blue Lustre way from carpets and upholstery. Rent electric shampooer. \$2. McCaslin Lumber. 1-71-Th-S-2c

**FOR SHAKLEE PRODUCTS** See Lee & Clyde Cave Phone 364-1073 107 Ave. C 1-Th-S-21-1fc

1/2" sheetrock, \$1.79 sheet. Composition shingles, \$16.95 sq. Carpet \$3.99 yard. Exterior Latex paint, \$5.95 gal. Rockwell Brothers Lumber, 104 S. Main. Phone 364-0033. 1-68-1fc

## 1A. GARAGE SALES

**GARAGE SALE** Friday, Saturday. 804 Columbia Drive, in front Tierra Blanca School. Pool table. Miscellaneous items. 1A-70-2p

**GUITARS,** records, radios, stereo, books, beds, heaters, sewing machines, siber saw, tables, miscellaneous. 401 W. Third. 1A-69-5c

**FOUR FAMILY GARAGE SALE** Bedroom suite, pickup tool box, Faberware open hearth broiler, clothes and lots of extras. 235 Centre. Friday and Saturday. 1A-71-2p

**GARAGE SALE, 829 IRVING** Friday and Saturday, 9-6. Baby bed, playpen, high chair, men, women and children's clothes, boys coats, misc. 1A-71-2c

**GARAGE SALE.** 9 to 5, Friday and Saturday. 602 West 3rd. Furniture, jars and bottles, junk, a few antiques, tools. 1A-71-1p

**GARAGE SALE.** Saturday, 9 to 6. 707 N. Lee. 1A-71-2c

**GARAGE SALE.** 440 Ave. H. 1 p.m. Friday. Furniture. Will take stamps. 1A-71-1p

**Sell it Fast, Buy it Right** With a Classified Ad in THE HEREFORD BRAND 364-2030

## 2. FOR SALE Farm Equipment

### CLOSE OUT DISCOUNT PRICES.

New 20" bushhog  
Offset disk  
Snap-on duals for 18.4x34.  
1150 Swather—complete engine overhaul.  
4-row service shredder.  
Cab for 930 Case tractor.  
30' sweep plow.  
Krause 14' tandem  
Lilliston shredder.

**CASE POWER & EQUIPMENT**  
Box 553—Dimmitt Hwy.  
Phone 364-2015 2-70-1fc

Call 806-426-9402, Wildorado, or contact Charles Hall, Vega, Texas. 2-66-5c

For sale: '70 model GMC Truck. 2 miles north of town, Phone 364-1542. 2-S-T-W-Th-S-5c

105 JD Combine, diesel, clean, shedded, 444, cornhead with corn savers. 285-2357. 2-46-1fc

763 IHC corn head. Good shape. 289-5851 or 289-5892. 2-46-1fc

**FOR SALE**  
16" well casing, new steel, 18 1/2 per lb.  
6" and 8" column pipe.  
Highest price paid for junk iron.  
**FARWELL PIPE & IRON**  
601 Avenue A, Farwell, Texas  
Phone 481-3287. 2-1-1fc

**BUY—SELL—TRADE**  
New and used farm equipment.  
The "Honest" Trader  
MM-T-Bone Treinen  
Phone Days 806/238-1614  
Bovina; Nights 806/247-3084  
Frona. 2-1-1fc

**NEW CUMMINS—DIESEL SALES & PARTS** Representative Oglesby Equipment Co., Inc. 2-1-1fc

See Us For **PARTS SWEEPS CHISELS FOR**  
Graham (Hoeme) Plows  
DAVIS IMPLEMENT  
409 E. First  
Phone 364-2811 2-33-1fc

See Us for **Mayrath Grain Augers**  
Also have parts in stock  
DAVIS IMPLEMENT  
409 EAST FIRST  
Phone 364-2811. 2-1-1fc

For sale: 1963 Chevy tractor and 33 ft. grain bed. Phone 364-2942 after 5:30 p.m. 2-67-5c

**TRACTORS FOR SALE**  
Supe-M-Farmall live lift single and dual tires planter, cultivator attachment for 30" rows. H-Farmall with vegetable cultivator and ground tools. Call 289-5810 before 9 p.m. 2-Th-S-16-1fc

## 3. VEHICLES FOR SALE

A good buy on 1972 Montego Brougham, Automatic, all power, air, clean. Excellent condition. 364-6465. 3-68-5c

For sale: 1972 Yamaha 250. Excellent condition. Call 364-4964. 3-68-5c

## 3 Grain Beds

**20"x96" Midwest Grain Platform**  
40" sides, 12" tip tops  
52" swingout gate, tarps, Galion 30 ton Hoist  
52" sides, 30 ton Hoists.

**RALPH OWENS**  
CALL 364-6666 2-48-1c

## FUNNY BUSINESS By Roger Bollen



Five grain trucks with hoists. See Troy Ray, 1210 Elm St., Frona, Texas. Phone 247-3153. 3-35-1fc

1972 Gremlin, Automatic transmission, factory air. Completely overhauled. Call 364-1417 or 258-7241. 3-70-5c

1973 THUNDERBIRD. Top condition. Loaded. New tires. Best offer over \$4,000. 364-3510 after 3 p.m. 3-70-5p

1972 Mercury Montego. Automatic transmission, air, power steering and brakes. \$2,000 firm. 209 E. 6th. 364-0108 or 655-2661 in Canyon. 3-69-3c

1973 Chevy Custom Deluxe 1/2 ton Pickup. Loaded with extras, 35,000 miles and sharp. Call 364-4407 after 5 p.m. 3-64-1fc

1969 Cadillac Coupe deVille. Gold with vinyl roof, good tires, well cared for, excellent condition. One owner. \$1200. Call John Teters after 8 p.m. at 364-6828. 3-71-5c

1975 white Chevrolet Impala 4-door. Good condition. New tires. Call 364-6871 between 8 and 5. 3-71-1fc

**THE LATEST** thing in luxury travel. 1976 Ford van. Fully loaded, dual air, power, cruise, tinted windows, captain's chairs, table-couch. A Real Buy. 364-6788 or 364-5481. 3-71-1fc

**MILBURN MOTOR COMPANY**  
We pay cash for Used Cars  
136 Sampson  
Phone 364-0077 3-33-1fc

**FOR SALE CARS**  
Camp Trailer  
Boats  
Golf Carts  
Motorcycles  
**ELMER'S USED CARS**  
901 E. 1st 3-58-23c

It Pays to Advertise...  
Advertise where it Pays...  
**THE HEREFORD BRAND**

**GOOD PRICE** on 4 bedroom, fireplace, den, living room, 2 baths, 2300 sq. ft., double car garage, NW section. Call for appointment after 5 p.m. and weekends. 364-5515. 4-51-1fc

**Close to School**  
3 bedroom, 2 baths, utility room, isolated master bedroom, double car garage with fenced back yard. Priced \$24,500.00. Buy equity and assume 7 per cent loan with payments of \$149.00 per month. Immediate possession. 5-13-1fc

**721 Stanton**  
Look at this 4 Bedroom home with 2 baths, single car garage, fenced back yard. This home can be bought for \$20,000.00, \$5,000.00 down and take up payments at \$210.00 per month. 5-Th-S-1-1fc

**601 Avenue J**  
3 bedroom, 1 1/2 baths, garage, fenced back yard, on corner lot. Priced \$26,500.00. Call for details. 6-68-5p

**4 Bedroom**  
Take a look at this home. 2 bath, fenced back yard, single car garage. Priced \$28,500.00. Owner will carry some second with reasonable down payment. 6-20-1fc

**705 Irving**  
If you need lots of room this home has 3 bedrooms, large front room, nice kitchen, and utility room, with fenced back yard. Priced \$22,500.00. Has existing loan. 6-20-1fc

**47 Acres**  
North on 385. Just what you have been looking for. 2 bedroom home with horse barns and corrals. Priced \$50,000.00. Down payment \$17,500.00. 15 years on balance. You will want to look at this place. 6-59-1fc

'72 Ford pickup. Good engine. 3 speed transmission. 109 Avenue C after 5 p.m. 3-67-5p

Extra clean 1971 two ton Chevy truck, 18' bed. New motor and tires. Call 364-3484. 3-67-1fc

1973 Grand Prix SJ. New tires, New battery, Excellent condition. Call 647-3248 Dimmitt, Texas. 3-67-5p

**WALKER'S USED CARS AND TRUCKS**  
WE BUY, SELL OR TRADE  
400 West First  
Phone 364-2250 3-41-1fc

Jaguar XJ6 still under 12,000 miles. One year total warranty. Mint condition. \$10,400. Call Amarillo, 355-7057. 3-58-S-T-8c

**RAMBLER STATION WAGON.** Very clean, good condition. Call 364-0789. 3-Th-S-31-1fc

**3-A FOR SALE RV'S & CAMPERS**  
Star Craft travel trailer for sale. Sleeps six. Call 364-0883. 3A-71-5c

**JONES MOTORS** franchised dealer for Sunflower self contained camper-trailers. 19' to 40' trailers. Park models, fifth wheels or any model. So. Hwy. 385. JONES MOTORS, Chrysler-Plymouth. 364-3150. 3A-38-1fc

**JACK'S MARINE SUPPLY** is your newly franchised dealer for Venture Camp Trailers. Jack's Marine, East Highway 60, 364-4331. 3A-62-10c

Like new, Coachmen fiber glass topper, tinted sliding windows for LWB. \$325.00 Phone 364-6617. 3A-68-5c

## 4. REAL ESTATE For Sale Or Trade

**TWO BEDROOM** rock house in Logan, N.M. Built-ins. 4 miles from fishing. 1 block from town. \$6,000. 364-0008. 4-70-5c

For Sale: 240 acres on pavement. 7 1/2 miles from Hereford, good water. Priced to sell. Robert Betzen. Phone 289-5500 or 364-3841. 4-27-1fc

**FOR SALE:** House to be moved. 578-4351 or 289-5850. 4-1-1fc

Offices for rent. Adjoining or single, answering service available. Agri-Science Center, 1500 W. Park. 364-5822. 5-56-1fc

**FOR LEASE:** 40x100 commercial building at 2nd and Miles. Will remodel to suit tenant. Ample parking. Call 364-0241. 5-41-1fc

For lease: three new offices, central heat, ref. air. On Hwy. Call 364-3566 days; 364-2553 nights. 5-13-1fc

For Rent: Commercial building. Location Avenue K and Hwy 60. Call 364-2103. 5-Th-S-1-1fc

## 6. WANTED

**CUSTOM HARVESTING**  
2 new 750 MF's  
New Chevy trucks  
Call: Leslie Grey  
405/666-2248 or 666-2276. 6-68-5p

**CUSTOM FARMING** deep chiseling, moldboarding, discing, floating. 120 h.p. tractor. 16 ft. equipment. Mike McGee, 578-4565. 6-20-1fc

**WANTED:** Corn field for 115 cows, no calves. Top money. Call collect 655-7346 or 655-4691. 6-71-Th-S-2c

**WANTED:** Wheat pasture. Would consider volunteer for short time. 364-3117 or 364-2907. 6-59-1fc

**WANTED: CUSTOM FARMING.** Call Dwight Shirley 364-6087. 6-93-1fc

**WANT TO BUY:**  
Old gold rings, watches, old class rings, etc.  
**Spangler's Diamonds**  
Sugarland Mall  
Phone 364-0070 6-48-1fc

Wanted: Corn and milo harvesting. 30" and 40" rows. C.R. Berryman, Phone 289-5870. 6-64-1fc

## 4-A MOBILE HOMES FOR SALE

1974 Titan mobile home. 3 bedroom. 2 bath, 14x70, unfurnished. Call 295-3543 after 6 p.m. or 247-3491 before 4 p.m. 4A-70-5c

**Dealer Repo.** Large 2-bedroom carpeted furnished beautiful mobile home. Assume payments \$135.75. 258-7286, Hereford. 4A-34-1fc

**Dealer Repo.** Assume payments on 14 wide 3-bedroom mobile home. 258-6286, Hereford. 4A-34-1fc

## 5. FOR RENT

**SARATOGA GARDEN APARTMENTS**  
1300 N. Walnut  
Frona, Texas  
1, 2 & 3 bedroom apartments, fully carpeted, refrigerator & range. Utilities paid.  
Office: Apt. 35, Ph. 247-3666 5-54-23c

One bedroom furnished trailer. \$130. Adults only. 418 Ave. D. 364-4049. 5-69-1fc

**ONE BEDROOM** house. Call 364-0540 after 6 p.m. 5-69-1fc

Clean, furnished one bedroom house. Call 364-0789. 5-70-1fc

NEEDED: a nursery worker for Temple Baptist Church. Salary \$2.25 hour. Call 364-6616 or 364-1892. 8-69-5c

**SERVICE MANAGER**  
Hereford's leading automobile dealership needs a service manager. Applicants should have experience in personnel management and be efficient with paper work as well as being able to meet the public.  
**COWBOY CHEVROLET**  
P.O. Box 1231  
Hereford, Texas 79045  
Attn. Mr. Bob Goss 8-69-1fc

Need experienced meat cutters and boners. High wages with many benefits. Must want to relocate to sunny resort area. Call 806-357-2241. 8-29-1fc

Accepting applications for Animal Control Warden (Dog Catcher). Contact Capt. Morgan at Hereford Police Department. 364-2323. 8-64-1fc

Experienced mechanic wanted. Apply in person at Joe's Auto Clinic, 119 Funston. 8-50-1fc

**MALE HELP WANTED:** Commonwealth Theaters are needing responsible person to operate projection equipment at Tower Drive In. Age not important. Only responsible need reply. Good pay, short hours. Contact manager at Star Theater. 8-69-5c

**WILL BREAK** horses. References available. Call 364-2033. 9-70-5c

**WOULD LIKE** to baby sit 2 or 3 children in my home Monday through Friday. North 25 Mile Ave. 364-3103. 9-69-5p

**WILL BABY SIT** in my home full time. 364-2503. 9-69-5c

## 9. SITUATIONS WANTED

**HEREFORD IRON & METAL**  
North Progressive Road  
By City Dump  
Anson A & June Dearing  
Phone 364-3350 or 364-3777. 10-34-1fc

**GENERAL ELECTRIC**  
Authorized sales and service. Expert service on all major brand appliances.  
Taylor & Furniture & Appliance  
603 Park Avenue, Hereford.  
Phone 364-1561 10-25-1fc

**ALCOHOLISM INFORMATION**  
For information on alcoholism, referrals for help, counseling, on programs on the subject of the disease of alcoholism, call 364-4540 from 8 a.m. till 12:00 1:00 p.m. until 5 p.m. Monday through Friday.  
**A UNITED FUND AGENCY** 10-1-1fc

State Licensed Child Care For Working Mothers  
**HEREFORD DAY CARE CENTER.**  
6 months through 8 years / After school care available. 364-1293. 10-5-Th-23-1fc

Needing school bus drivers. See Eldon Owens at Schoj Bus Barn. 8-17-1fc

**SALES LADY** needed, preferably between age 20 and 35. Apply Harman's Downtown. 8-70-1fc

**MALE—FEMALE—FULL & PART TIME**  
Security Guards  
Immediate Openings  
Pinkerton's Inc., the world's largest & oldest security company now has immediate openings in Hereford. Interested persons should apply in person, 8 a.m. to 4 p.m. to the guard house at Holly Sugar. Excellent working conditions and benefits including all uniforms and equipment furnished. Premium holiday pay, paid vacations, free life insurance and profit sharing. Applicants must have a clear background and stable work record. Women and veterans welcome. An equal opportunity employer. 8-71-1fc

**Wanted:** Corn and milo harvesting. 30" and 40" rows. C.R. Berryman, Phone 289-5870. 6-64-1fc

**WANTED:** Wheat pasture. Would consider volunteer for short time. 364-3117 or 364-2907. 6-59-1fc

**WANTED:** Corn field for 115 cows, no calves. Top money. Call collect 655-7346 or 655-4691. 6-71-Th-S-2c

**WANTED:** Wheat pasture. Would consider volunteer for short time. 364-3117 or 364-2907. 6-59-1fc

NEEDED: a nursery worker for Temple Baptist Church. Salary \$2.25 hour. Call 364-6616 or 364-1892. 8-69-5c

**SERVICE MANAGER**  
Hereford's leading automobile dealership needs a service manager. Applicants should have experience in personnel management and be efficient with paper work as well as being able to meet the public.  
**COWBOY CHEVROLET**  
P.O. Box 1231  
Hereford, Texas 79045  
Attn. Mr. Bob Goss 8-69-1fc

Need experienced meat cutters and boners. High wages with many benefits. Must want to relocate to sunny resort area. Call 806-357-2241.



# Small Ads... Big Results! CLASSIFIED ADS!

## 11. BUSINESS SERVICE

**AUTO UPHOLSTERY**  
Free estimates, reasonable prices. Call anytime after 5:30 p.m. 364-4880.

11-57-23c

**WANTED:** Roto tilling yards and gardens. Also complete lawn seeding. Call Jay Manion at 357-2382.

11-20-tfc

**TV & STEREO RENTAL AGENCY**  
Black & White & color 364-5077 after 4 p.m.  
Gary & Peggy Betts

11-15-tfc

**PIANO TUNING and repair** in Hereford and surrounding area. Free estimates on work. 364-1777.

11-69-5c

**GET OUR PRICES BEFORE YOU BUY**  
We sell, install & maintain all types plumbing materials. Reem Water Heaters Wall Furnaces — all sizes, double & single  
Free Estimates  
Every Job Guaranteed  
**BARRETT PLUMBING**  
364-1818 24 hours a day

11-63-tfc

**PAINTING CONTRACTOR**  
Julio Pesina  
204 Catalpa St.  
Hereford  
364-4898

7-59-23p

Singer approved dealer. Sales and service on all sewing machines and vacuums. Phone 364-4051, 226 North Main.

11-30-tfc

**FRANK WESTER CEMENT CONTRACTOR**  
107 BRADLEY  
Residential-Commercial  
Turnkey Job  
Straight finish  
Phone 364-5169

11-39-tfc

**ROTOR TILLING** yards and gardens. Call Robert Betzen, 289-5500 early mornings or late evenings.

11-1-tfc

**GRANADA ELECTRIC CO.**  
Residential Commercial  
Industrial  
Larry Granado, 712 Stanton  
Phone 364-2947

11-1-tfc

**BOBBY GRIEGO DRAGLINE SERVICE**  
TAILWATER  
PIT CLEANING  
DUMP TRUCKS  
LOADER  
DOZER

11-1-tfc

**WILL PICK UP JUNK CABS FREE**  
Call 364-3350 or 364-3777

11-24-tfc

**WEDDING PHOTOGRAPHY**  
Modern and custom poses, prompt, efficient service, plus reasonable rates. Lanny Smith 364-3953, any day of the week. See at 401 Sycamore.

11-43-tfc

**TEX-MEX DITCHING**  
Phone 364-4907  
All your ditching needs  
Turn key job  
Free estimates

11-35-tfc

**KELLY ELECTRIC**  
Virgil Kelley  
Electrical Contractors  
Residential-Commercial  
All bids & wiring competitive. Ph. 364-1345 - Nights 364-1523 or 364-5929.  
P.O. Box 30

11-15-tfc

**RYDER'S LAWN & GARDEN**  
432 Barrett St.  
Specializing in seeding new lawns & roto tilling.  
L.V. Mays & Sons-Hereford  
Phone 364-3356

11-7h-S-66-tfc

## 12. LIVESTOCK

**STOCKER CATTLE** for sale. Pasture wanted, for stocker cattle. Western Feed Lot. 364-2723 or 258-7549.

12-37-tfc

## 13. LOST & FOUND

**LOST:** on south edge of Hereford, black and white pony. REWARD. 364-2994.

13-68-5c


**LOST:** Male red Dachshund, no collar. Tuesday night from vicinity 430 Ave. I. Answers to Charley. REWARD. Call 364-9010, night 364-2830.

13-62-tfc

**Lost:** German Shepherd male dog. North of Vega. \$50 Reward. 267-2634 Vega., 258-7528 Hereford.

13-67-5c

**PUBLIC NOTICES**  
"BECAUSE THE PEOPLE MUST KNOW"



THE STATE OF TEXAS  
TO: SENIDA GARZA CASTILLO

**GREETINGS:**  
YOU ARE HEREBY COMMANDED to appear and answer before the Honorable District Court of Deaf Smith County, Texas, at the Courthouse of said County in Hereford, Texas, at or before 10:00 o'clock a.m. of the Monday next after the expiration of 20 days from the date of this Citation, then and there to answer the Petition of RODOLFO CASTILLO, Petitioner, filed in said Court on the 4th day of October, 1976, against SENIDA GARZA CASTILLO, Respondent, and the said suit being number DC-7811 on the docket of said Court, and entitled "IN THE MATTER OF THE MARRIAGE OF RODOLFO CASTILLO and SENIDA GARZA CASTILLO the nature of which is a request to grant Petitioner a divorce from Respondent and custody of the minor children to Petitioner.

The Court has the authority in this suit to enter any Judgment or Decree dissolving the marriage and providing for the division of property which will be binding on you.

**ISSUED AND GIVEN UNDER MY HAND AND SEAL OF SAID COURT,** at Hereford, Texas, this 4th day of October, 1976.

**LOLA FAYE VEAZEY**  
Clerk, Dist. Court  
Deaf Smith County, Texas  
BY: Virginia Easley  
Deputy  
71-1c

Complicated to make, but worth it.

1 envelope unflavored gelatin  
2 1/4 cups milk  
3/4 cup sugar  
4 egg yolks, slightly beaten with a dash of salt  
1 teaspoon powdered instant coffee  
4 egg whites, stiffly beaten

1 cup heavy cream, whipped  
Sprinkle the gelatin over 2 tablespoons water (in a cup) to soften. In a 2-quart heavy saucepan heat the milk until very hot. In an 8-inch skillet over moderate heat, stirring constantly, dissolve the sugar in 1/4 cup water; boil gently, stirring often, until golden; remove syrup and milk from the range; at once carefully stir the syrup into the milk — it will bubble up. Stir about half the milk-syrup into the egg yolks; stir back into milk-syrup mixture; cook gently without boiling, stirring constantly, until mixture coats a metal spoon. Stir in the gelatin and coffee until dissolved; pour into a large mixing bowl. Chill, stirring often, until beginning to thicken. Fold in the egg whites, then the cream. Turn into individual serving bowls. Chill until set — it will not be firm enough to unmold. Makes 8 servings.

**COOKING IS FUN**

## PUBLIC NOTICES

"BECAUSE THE PEOPLE MUST KNOW"

The names of the parties to the cause are as follows: Marvin W. May and wife, Helen J. May, pro forma, and May Farms, Inc., a Texas corporation, are PLAINTIFFS, and all of the parties above named to whom this citation is addressed and above described as DEFENDANTS herein.

A brief statement of the nature of this suit is as follows, to-wit: For judgement for the title to and possession of all of Section 16 and the West 1/2 of Section 15, Block 3, Deaf Smith County, Texas, and for Trespass to Try Title against each and all of the Defendants under and by virtue of three, five and ten-year statutes and twenty-five year statute of adverse possession and limitation of the State of Texas; to remove any and all claims of the Defendants each or either of them, to said lands or any part thereof, real or apparent, as clouds on Plaintiffs' fee simple title thereto; and to divest the Defendants, each and all of them, of any right, title or interest they may claim or have in and to said land, and to fully invest the fee simple title to said lands in Plaintiffs; all as is more fully shown by Plaintiff's petition on file in this suit.

If this citation is not served within ninety days after the date of its issuance, it shall be returned unserved.

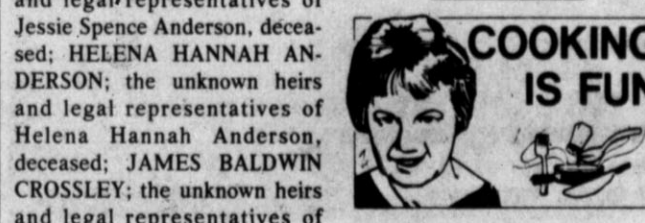
The officer executing this process shall promptly execute the same according to law, and make due return as the law directs.

**LOLA FAYE VEAZEY**, Clerk, District Court, Deaf Smith County, TX  
By Ruth Lueb, Deputy  
71-Th-4c

## TOO LATE TO CLASSIFY

**RUMMAGE SALE**  
Saturday, Oct. 9, 9 to 4 p.m. at 140 Main. Hereford Study Club.

**COOKING IS FUN**



By CECILY BROWNSTONE  
Associated Press Food Editor  
COME FOR DESSERT  
Caramel Coffee Cream  
Coffee  
CARMEL COFFEE CREAM

Complicated to make, but worth it.

**By The Garden Gate With Glad**

By Gladys Manjeot



Time is fast arriving when we should start planning to put the garden to bed for winter rest. One of the first steps to do this is to take care of potting plants and the ones we plant to life, which are in pots and prepare for winter house plants.

There are several steps necessary to preparation of the plants. Those that are to be lifted and repotted should be taken care of now. Prepare the container in which they are to be placed. If it has been previously used, sterilize thoroughly. Use a good potting soil.

A drain should be placed before soil is put in the container. Lift the plant, groom it and check carefully for insects. Spray or dust for insects. Plant in the prepared container.

Place in a protected area on the porch, garage or other location where plant will become adjusted to change. Gradually move it into the house where you plan to have it placed for winter. This takes a few weeks.

Potted poinsettias, which have been bedded during the summer, should be lifted as should those which have spent the summer on a patio or other outdoor exposure. Groom the plants, if there is hail damage (which most plants here received last week).

Add a bit of new potting soil and gradually move plant as above mentioned. To promote bloom for the poinsettias, they will have to be placed in a dark space for a number of days. A light feeding before they are placed indoors will be beneficial.

Potted amaryllis, treat as above. Then, instead of watering or feeding, place the pots to rest on their sides and gradually let the plant become dormant. When this is completed, trim off dried material.

Set aside in a place where they will not freeze and then in January, add new soil and feed lightly, with a well-recommended plant food. Should bloom after this process.

If however, you have a well-protected place outside where the bulbs could be planted this will take care of them in a nice way. A warm corner on the south is recommended for planting. Mulch well and water lightly after planting. Later the bulbs can be lifted, repotted and used as house plant, or can be left where planted and they will bloom in the late spring.

## Americans Leaving Panama

PANAMA CANAL ZONE (AP) - Americans working for the Panama Canal Zone Co. are leaving their jobs in record numbers because of the likelihood that Panama will be taking an increasing part in running the 553-square-mile zone.

"The situation is deteriorating to complete apathy," said Frank Bright, 33, who was born here but has quit his job to return to the United States. "Everyone is just sitting around waiting for the axe to fall. It's kind of sickening...." Washington and Panama have been negotiating a new treaty for the U.S.-controlled Panama Canal Zone for about 10 years.

The official name of Algeria is the Democratic and Popular Republic of Algeria. It has an estimated population of 15,700,000.

Completed in 1968, the San Mateo bridge, 17 miles south of San Francisco, is 6.7 miles long and is capable of handling 50,000 cars daily.

## Freezers Convenient For Packed Lunches

COLLEGE STATION -- A freezer can take over part of the "work" of getting kids started on school days, Frances Reasonover, a foods and nutrition specialist, says.

She is with the Texas Agricultural Extension Service, The Texas A&M University System.

"Breakfast-on-the-run is quick with frozen raisin-bran muffins. Heat them in a small electric oven while the family gets dressed. A glass of orange juice reconstituted from frozen the night before and refrigerated, together with muffins and a glass of milk make an adequate breakfast," she said.

Other quick breakfast ideas are frozen English muffins toasted and served with a favorite jelly or jam, a wedge of cheese and a bunch of grapes -- or baked frozen biscuits with pre-fried bacon (heated), applesauce and milk, the specialist suggested.

## BOOT REPAIR

**Earl & Naomi Warrick**

- ★ Complete Shoe Repair
- ★ Satisfaction Guaranteed
- ★ Red Wing Shoes

Open Mon. thru Sat. Noon  
**WARRICK'S SHOE SERVICE**  
140 W. 3rd St.  
364-6691  
Hereford, Texas

**15% LESS** State Farm offers most Texas drivers rates that are 15% less than rates set by the State. And Homeowners rates that currently average 20% less than Standard Texas Homeowners rates.

**Sound Good? Call Me:**  
**JERRY SHIPMAN**  
103 Avenue C 364-3161  
CAR-HOME-LIFE-HEALTH-BUSINESS

**COMMONWEALTH THEATRES**

**NOW!**  
The League's Leading Laugh Scorer Who Kicks a 100 yard field Goal  
**GUS**  
Opens at 7 P.M.  
Show Starts 7:30

**STAR**  
Plus Sex After Marriage  
Rated X

**TOWER DRIVE-IN**

**RELO**

**FAMILY HOMES REAL ESTATE**  
VERY PRETTY

- 3 bdrm, 1 3/4 bath with 1744 sq. ft. New main line plumbing sprinkler system, bay window, fireplace. Priced \$38,500.00 Immediate Possession.
- GOOD RENT HOUSE!
- 2 bdrm, 1 bath. Only \$11,000.00. Call for more information.
- NEED WAREHOUSE STORAGE?
- 5 lots with 40 x 40 dock-high warehouse adjacent to railroad tracks. \$14,500.00
- INEXPENSIVE
- 3 bedroom house in Northwest Hereford. New carpet, new tile & new cabinet tops.

OFFICE 364-5501  
LAVON PAGETT 364-6682  
CALL DORIS OR LEE UMSTED  
PETE JACKS 364-3157





# WE DO MORE BY SAVING YOU MORE ON YOUR TOTAL TAPE!

<b>APPLES</b> RED DELICIOUS 3-LB. BAG.....	<b>89¢</b>	<b>ROUND STEAK</b> FURR'S PROTEN FIRST CUT LB.....	<b>79¢</b>
<b>CABBAGE</b> TEXAS FINEST LB.....	<b>12¢</b>	<b>RIB STEAK</b> FURR'S PROTEN LARGE END LB.....	<b>79¢</b>
<b>POTATOES</b> ALL PURPOSE RED 10-LB. BAG.....	<b>69¢</b>	<b>CLUB STEAK</b> FURR'S PROTEN LB.....	<b>\$1 39</b>
<b>YAMS</b> EAST TEXAS LB.....	<b>29¢</b>	<b>T-BONE STEAK</b> FURR'S PROTEN LB.....	<b>\$1 49</b>
<b>CUCUMBERS</b> LONG GREEN SLICERS LB.....	<b>29¢</b>	<b>ROAST</b> SHOULDER LB.....	<b>63¢</b>
<b>ONIONS</b> YELLOW SPANISH SWEET.....	<b>2 LBS. 29¢</b>	<b>RANCH STEAK</b> FURR'S PROTEN LB.....	<b>69¢</b>
		<b>BACON</b> FARM PAC OR FRONTIER SLICED, LB.....	<b>\$1 19</b>
		<b>GROUND BEEF</b> GROUND FRESH DAILY, LB.....	<b>63¢</b>
		<b>ARM ROAST</b> FURR'S PROTEN LB.....	<b>89¢</b>
		<b>SIRLOIN</b> PIN-BONE CUT FURR'S PROTEN LB.....	<b>79¢</b>

**CARRY-OUT SPECIAL**  
SLICED PIT-SMOKED BEEF BRISKET OR BBQ CHICKEN (EACH WITH ONE SALAD, ONE VEGETABLE, ONE DESSERT, WITH BREAD) **\$1 89**

**MOZZARELLA CHEESE**  
ARMOUR (Reg. \$1.35 for 8-OZ) 1/2 PRICE

**OLD FASHION LOAF**  
ARMOUR (Reg. \$1.29 for 8-OZ) 1/2 PRICE

**HOT PIZZA SLICES** EACH **48¢**

**DELICATESSEN**

<b>DR PEPPER</b> 6 PACK 32-OZ. BOTTLE PLUS DEPOSIT.....	<b>\$1 39</b>	<b>FLOUR</b> GLADIOLA SELF RISING 5-LB. BAG.....	<b>69¢</b>
<b>GREEN BEANS</b> DEL MONTE WHOLE NO. 303 CAN.....	<b>3 FOR \$1 19</b>	<b>CORN</b> DELMONTE CREAM STYLE GOLDEN OR FAMILY STYLE NO. 303 CAN.....	<b>3 FOR \$1 00</b>
<b>EGGS</b> FARM PAC MEDIUM DOZEN.....	<b>69¢</b>	<b>PEAS</b> ROSEDALE SWEET NO. 303 CAN.....	<b>4 FOR \$1 00</b>
<b>BLACK PEPPER</b> SCHILLING BICENTENNIAL 4-OZ. CAN.....	<b>49¢</b>	<b>CATSUP</b> DEL MONTE 32-OZ. SIZE.....	<b>79¢</b> <b>59¢</b>
<b>JUICE</b> PINK GRAPEFRUIT FOOD CLUB 46-OZ. CAN.....	<b>49¢</b>	<b>TISSUE</b> ORCHIDS 8-ROLL PACKAGE.....	<b>\$1 18</b>
	<b>49¢</b>	<b>CRUNCH &amp; MUNCH TOFFEE</b> 6-OZ. BOX.....	<b>63¢</b>
	<b>PREM LUNCHEON MEAT</b> 12-OZ. CAN.....	<b>PEANUT BUTTER</b> FOOD CLUB, KRUNCHY OR SMOOTH 18-OZ. JAR.....	<b>79¢</b>
	<b>WRAPPLES</b> KRAFT CARMAL APPLE KIT.....		<b>99¢</b> <b>78¢</b>



**Frozen Food Favorites**

**EGGS BEATERS**  
FLEISCHMANN'S  
28-OZ. PKG. .... **89¢**

**TOP FROST PIZZA**  
ASSORTED  
FLAVORS  
PACKAGE..... **89¢**

**POUND CAKE**  
SARA LEE,  
FRESH FROZEN, 10 1/2-OZ..... **\$1 15**

**BONUS SPECIALS FOR BONUS-SAVINGS!**

<b>FLOUR</b> GOLD MEDAL ALL PURPOSE 5-LB. <b>29¢</b> WITH EACH FILLED S&H BONUS SPECIALS BOOKLET	<b>MIRACLE WHIP</b> KRAFT 32-OZ. JAR <b>49¢</b> WITH EACH FILLED S&H BONUS SPECIALS BOOKLET	<b>CRACKERS</b> NABISCO 1-LB. BOX <b>10¢</b> WITH EACH FILLED S&H BONUS SPECIALS BOOKLET	<b>COOKIES</b> SUNBEAM ASSORTED FLAVORS 20-OZ. BOX <b>29¢</b> WITH EACH FILLED S&H BONUS SPECIALS BOOKLET
---	---	--	--

<b>NEW O.B. TAMPONS</b> JOHNSON & JOHNSON REG. OR SUPER ECONOMY BOX OF 30 <b>ob. TAMPONS</b> <b>\$1 29</b>	<b>TUBE SOCKS</b> BOY'S 100% COTTON 3 PAIR <b>\$1 69</b>	<b>ALUMINUM BAKEWARE</b> CHOOSE FROM 6 CUP MUFFIN PAN OR DEEP LAYER ROUND CAKE PAN EACH <b>49¢</b>	<b>SINE-OFF</b> SINUS TABLETS 24-COUNT <b>SINE-OFF</b> <b>94¢</b>	<b>MOUTH WASH</b> LISTERINE 14-OZ. <b>92¢</b>
<b>ANTI-FREEZE</b> TOP CREST GAL. <b>\$3 29</b>	<b>OIL FILTER</b> TOPCREST SPIN-ON TYPE FOR MOST CARS EACH <b>\$1 29</b>	<b>SPRAY PAINT</b> TOPCREST FAST DRY ENAMEL 16 COLORS 13-OZ. CAN <b>79¢</b>	<b>Colgate MFP</b> TOOTH PASTE COLGATE 9-OZ. TUBE <b>\$1 02</b>	<b>DEODORANT</b> ARM & HAMMER REG. OR UNSCENTED, 7-OZ..... <b>\$1 15</b>
				<b>BABY MAGIC BATH</b> 16-OZ.... <b>\$1 61</b>

**SHOP Furr's MIRACLE PRICES**