

New High School Expands Instruction Field

Planners In Hereford School District Formal Dedication, Tour Of Building Set For Thursday



GEORGE L. GRAHAM
 Superintendent



FRED BAIRD
 Financial Secretary



HOWARD GAULT
 Board President



H. H. MILLER
 School Trustee



MRS. EARL PLANK
 School Trustee



IRA SCOTT
 School Trustee



ROBERT WAGONER
 School Trustee



LYLE WOODFORD
 School Trustee



DON ZIMMERMAN
 School Trustee

Hereford Enrollment Doubles Past Ten Years -- Now 2,132

By Bessie Patterson
 More than twice as many students were enrolled in the Hereford Public Schools at the beginning of the current term than were enrolled 10 years ago. There were 2,132 pupils counted in October of

this year, as compared with 1070 in the 1945-46 term. School patrons may look at the above figures and still fail to grasp the impact of the school population growth, which has been at a steady rate of from one to three

hundred additional pupils per year. There are more than half as many in high school this year than were in the entire system in 1945-46. The high school enrollment has stood above 500 all year, with the top figure 525. This group includes the ninth through twelfth grades. When they moved from the old high school building, it was occupied immediately by three grades, the sixth through eighth, with an enrollment of 480. The trend of larger classes in the lower grades is emphasized by the fact that there are more than three times as many pupils in the first as in the twelfth grades.

(Continued on page 2)

By Bessie Patterson
 An expanding program of instruction will be possible in Hereford's new \$850,000 high school plant, which will be dedicated in formal ceremonies starting at 7:30 Thursday night. Following approximately an hour's program in the new auditorium, the building will be open for inspection, and everyone who is interested is urged to attend, according to Supt. George Graham.

Facilities have been provided in the new building for a growing program in fundamentals, and in vocational and cultural aspects of the school curriculum.

SCIENCE DEPARTMENT EXPANDED AND IMPROVED
 With this scientific age making increasing demands of high school and college graduates, the local school has felt a growing interest in that field. To meet the students' demands, seven general science, one physics class, two chemistry classes, and two biology classes are included in the curriculum. The new building offers the most modern equipment for these classes in two science rooms located on the second floor.

In the chemistry and biology room, the space under the windows, is utilized for five well-planned laboratory tables. Gas, water, and electric outlets are grouped conveniently, and ample storage space is provided in every area. Special storage has been provided for laboratory materials, drawing books, and for such specialized supplies as glass tubing. A storage room connects the two science rooms and provides easy access to materials used in both.

The general science and physics room boasts a drying rack for beakers and test tubes and with permanent stands to ease handling of materials. It provides more experiment space than was available in the old building. Both rooms have glass-enclosed exhibit cases, convenient demonstration tables for the teachers' use, and aquariums. The chemistry room is equipped with a hood for carrying out noxious odors from experiments.

"The science rooms provide facilities for a very efficient program," agree the science teachers.

INSTRUCTION ROOMS ATTRACTIVE

Regular classrooms in the building are designed for the comfort of the students and are decorated in attractive colors to form a pleasant background for learning. Large windows provide ample light which is controlled by venetian blinds. Ventilation may be regulated to furnish comfort without drafts. Tiled floors and ceilings of acoustical blocks absorb routine noises of the class rooms. This feature is noticeable especially in the typing room, where both teachers and students commented on the unusual quietness of the room with more than 25 typewriters in operation at one time.

One of the most popular rooms on the first floor is the teachers' work room. It is equipped with duplicating machine, mimeograph

machine, storage cabinets, shelves for supplies, and a sink for easy clean-up after work is completed. The work room is used, too, for the publication of the school paper, "The Whiteface," every two weeks. It adjoins the typing room.

HOMEMAKING DEPARTMENT EXPANDED

Almost twice as many girls are receiving instruction in homemaking this year as last because of new facilities offered by the new building. Mrs. J. J. Durham has charge of the kitchen area and teaches five classes in cooking and general homemaking. The cooking laboratory has six kitchenette units, where girls receive instruction on both electric and gas stoves. The department also boasts a deep freeze and an automatic use.

Between the kitchen and the sewing room is an attractive dining room. The sewing room is equipped with machines of various makes, cutting tables, and fitting rooms. Mrs. Dorothy Prowell is in charge of that department, with five classes. They teach six first-year classes in homemaking.

SHOP GIVES BOOST TO VOCATIONAL SUBJECTS

Separate from the high school proper is the shop building, which provides three class rooms and two shops for vocational subjects. Shop courses are being offered this year for the first time in many years, under the direction of Craig Johnson. Approximately 77 boys are enrolled in four classes.

The Vocational Agriculture classes have Jess Robinson as teacher. First, second, and third-year courses are being taught this year, with fourth year to be offered on alternate years. The shop will permit the 60 Ag. boys to be taught how to build self feeders for hogs, farm buildings, and other farm equipment, Mr. Robinson said. J. C. Reese teaches three classes in distributive education in one of the instruction rooms in the shop building.

MUSIC DEPARTMENTS ENJOYING NEW QUARTERS

Nothing, apparently, was overlooked in the planning of the band hall, which extends east of the auditorium in the high school building. Double doors cut off the sound of band practice from the rest of the building. The 30 by 40-foot practice room will accommodate a 100-piece band, according to Bill Miller, director. The Whiteface Band now has 91 members. Besides an office, the hall includes three practice rooms large enough to accommodate ensembles, an instrument room, through which the students may enter the practice room, pick up their instruments, and be seated without congestion; a moth-proofed uniform room; an office, and a library.

Mr. Miller commented that there should be plenty of materials for high school bands provided from the 75-piece Junior High School Band and the Sixth-Grade Beginners' Band of 58 members.

The current pride of the Whiteface Band, in addition to the luxurious band hall, is a new set of

matched drums in silver flash finish. Already here are a Scotch drum, two tenors, and three parade drums; ordered are two concert snare and a concert bass drum.

Adjoining the auditorium on the west side is the chorus room. Although it is somewhat small, it will accommodate a 60-voice chorus, Mr. Don Moore said. It is being used by a 58-voice mixed chorus, a 35-voice girls' choir, the 20-voice boys' chorus, and two ensembles, the boys' quartet and girls' sextette. In the quartet are Clarence Caywood, Raymond Wells, Pickens Moore, and J. B. Wills. Members of the sextette are Wanda Kirksey, Barbara Winget, Dixie Young, Sylvia McCracken, Norma Cummings, and Ann Dyer.

Future members of the high school choruses probably will come from the Junior High Girls' chorus of 93 voices, Junior High Boys' chorus of 12 voices, and a 53-voice Sixth Grade chorus, which Mr. Moore directs.

GYM WILL CARE FOR EXPANDING PROGRAM

There will be no more cries of "cracker box" gym from Hereford's basketball opponents. A thousand fans may be seated comfortably to watch the games. When not in use for inter-school contests, the new gym will take care of two matched basketball games at one time, when the retractable bleachers are folded. John Poindexter, L. B. Russell, and Wayne Stark each teach one physical education class for boys, and Craig Johnson and Mr. Poindexter each teach a girls' physical education class.

Flanking the gym are modern, convenient dressing rooms for home and visiting teams, with commodious shower stalls and clothing racks. Free use of the gym and auditorium are encouraged by the fact that they may be shut off from instruction areas by gridded gates.

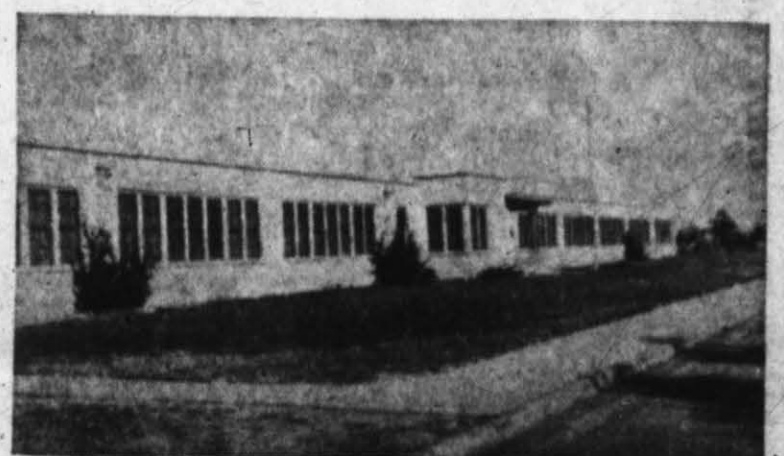
AUDITORIUM MODERN IN EVERY RESPECT

Besides the fact that it will seat 1003 people, the feature which will be most appreciated by the public in the new auditorium is its acoustics. A speaker, talking in normal voice, may be heard clearly from the stage to the seats in the very back of the auditorium. An inclined floor will aid the audience's view of the stage. At the south end of the building, the auditorium is easily accessible from the outside of the building. Ventilation and heating are provided by a forced-air unit.

The stage, itself, is outstanding, in that nothing is lacking in floor space, storage, or in overhead space for the gridiron and equipment. Dressing and storage rooms were included. Contractors are in the process of installing the stage equipment, which will be modern and beautiful, including cyclorama and box sets.

ADMINISTRATIVE OFFICES ENLARGED

Both the superintendent's and principal's offices include reception and consultation rooms. Ad- (Continued on page 2)



Shirley School . . . Erected in 1949



Junior High School . . . Erected in 1926



Fifth Grade School . . . Erected in 1947



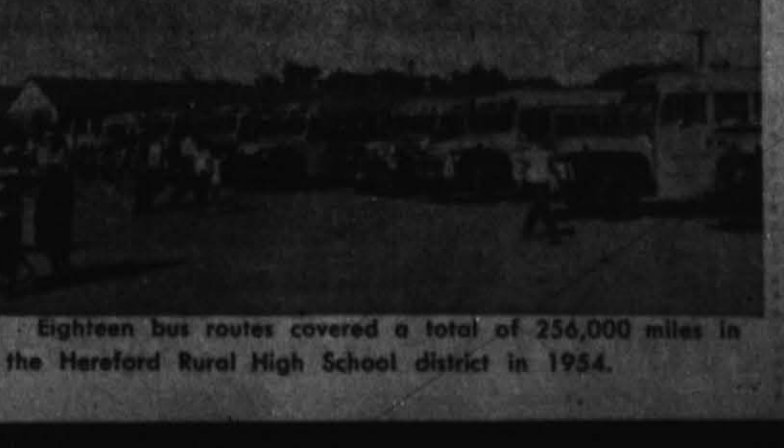
Central School . . . Erected in 1909



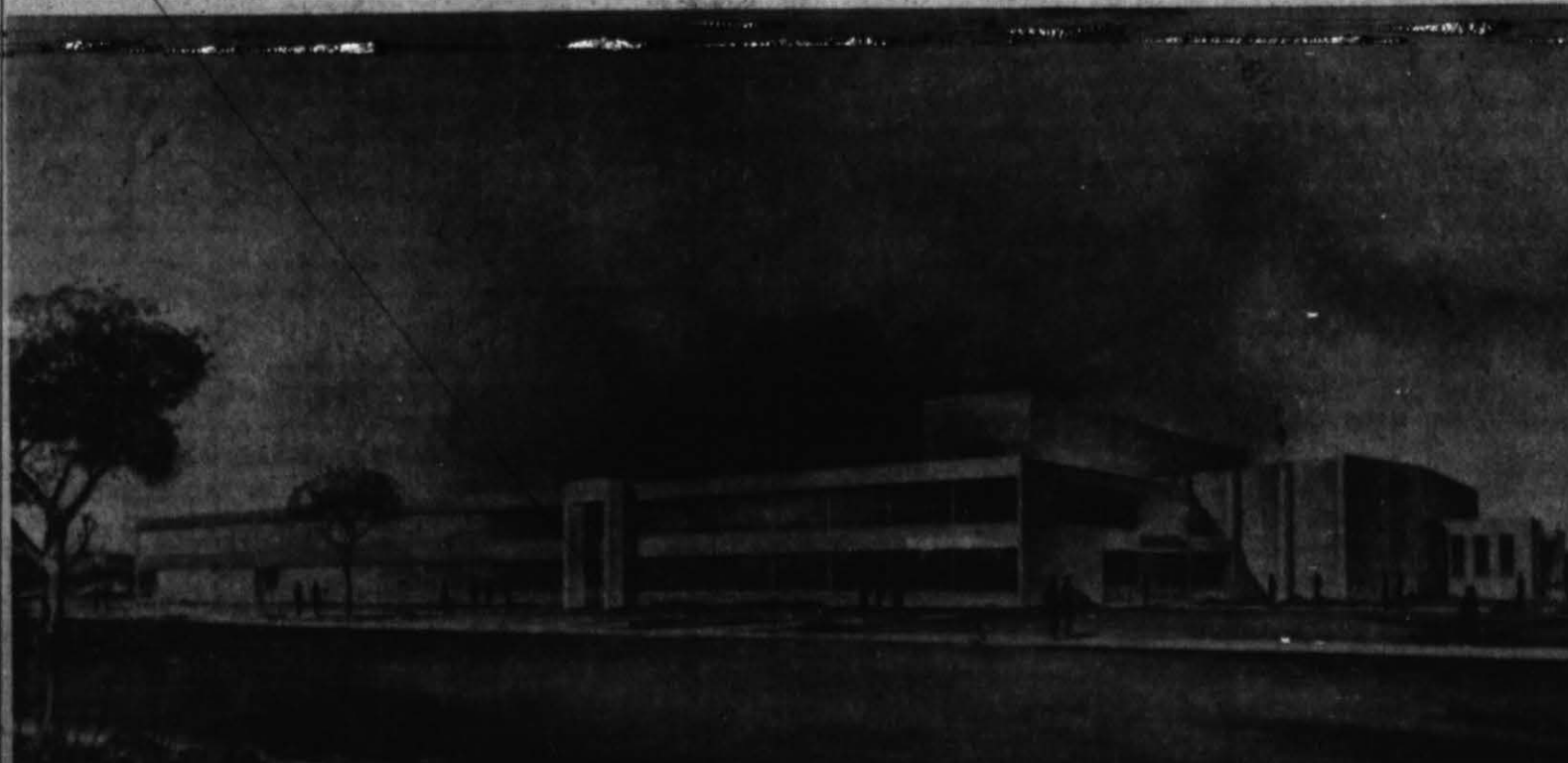
Parkview School . . . Erected in 1953



Dawn Elementary School . . . Erected in 1928



High School Entrance - West Side



HEREFORD'S NEW \$850,000 HIGH SCHOOL will be formally dedicated Thursday evening, Jan. 20, in a program beginning at 7:30 o'clock, and featuring Mrs. Billie Davis, author of "I Was A Hobo Kid". Following the one-hour dedication service, visitors will be conducted on a tour through the entire high school plant. (Staff Photo)

Eighteen bus routes covered a total of 256,000 miles in the Hereford Rural High School district in 1954.

Courthouse Records

Warranty Deeds

J. M. Hamby, et ux, to J. D. Williamson, et ux, all of Lot six, Block two, Meacham Subdivision, of Block 16, Mabry Addition.

R. J. Engler to L. W. Denton, beginning at a point in the East line of Block 43, a distance of 50 feet from the South East corner of said Block.

R. J. Engler, et ux, to L. E. Ware, et ux, all of Lot 23 of Block 44 of Evans Addition.

Sam Nunnally, et ux, to James M. Wood, a part of Block 26, Mabry Addition.

Sam Nunnally, et al, Hereford Gin Company, being a part of Block 26 of Mabry Addition.

William Isaac Allen, et ux, to R. A. McLaughlin, 100 feet by 140 feet out of the Southwest corner of Block 53.

Lewis Harvey, et ux, to C. C. Ellis, all of the South half of Section 31, Block K-3.

H. B. Hood to Gene Griffin, being a part of Block 43 of Evans Addition.

Ann Wehrheim Brown to J. A. Pitman, all of the Southwest fourth of Section seven, Township two North, Range four East.

J. A. Pitman, et al, to Porter Johnson, et al, Southwest quarter of Section seven, Township two North, Range four East of a Capital Syndicate Subdivision out of Capital Leagues 442 and 443.

H. D. Blythe, Jr., et ux, to A. A. Head, the North 56 feet of Lot 66 and the South 51 feet of Lot 67 of Barber's Subdivision of Block 22 of Evans Addition.

J. D. Poirch, et ux, to H. D. Blythe Jr., the South 21 feet of the North 31 feet of Lot 67, Barber's Subdivision of Block 22, Evans Addition.

Marriage License

Jose Sanchez to Miss Inacia Castillo.

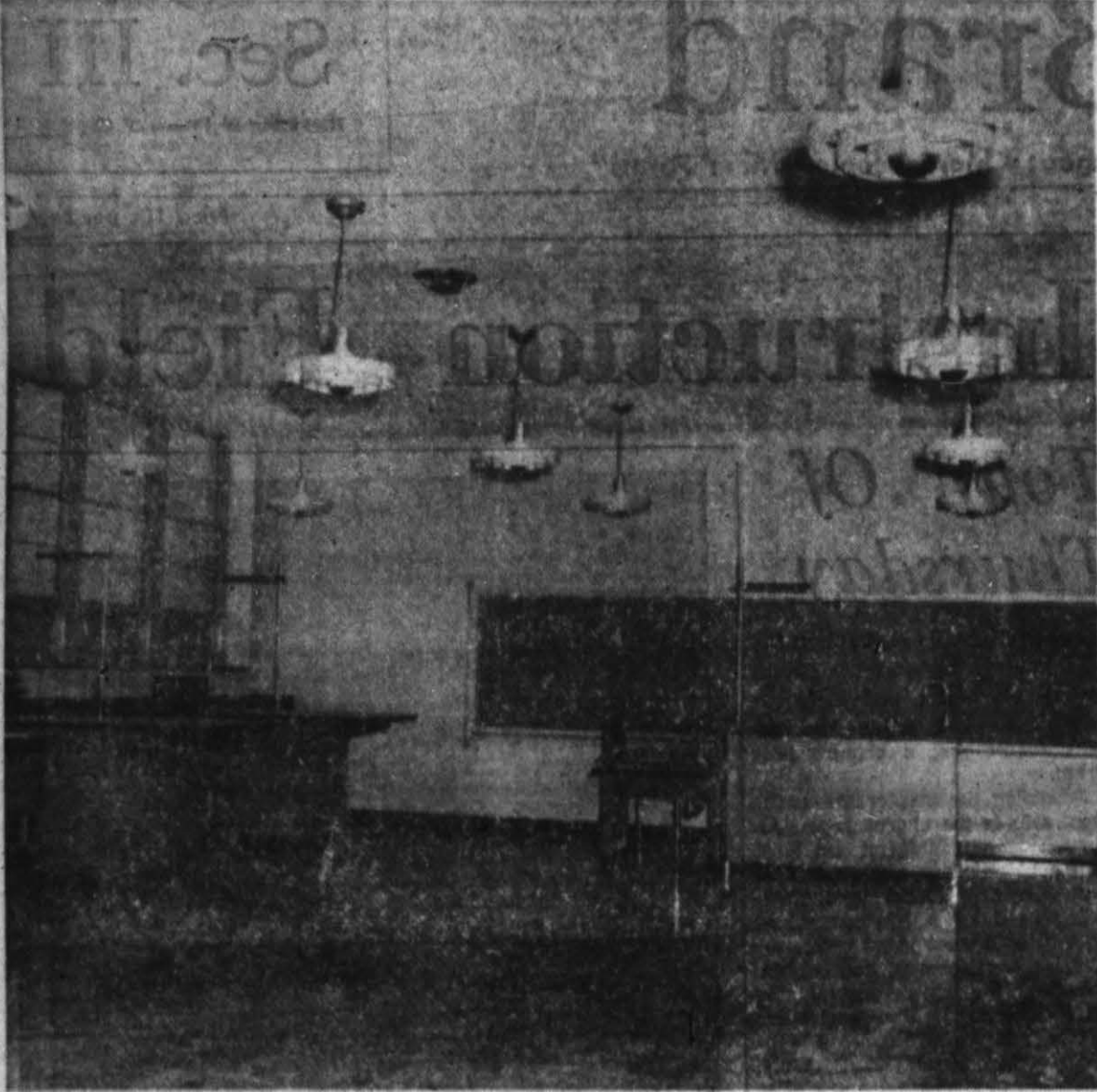
New Automobiles

Wayland E. Smith, 1955 Oldsmobile, 1-6; W. A. Springer, 1955 Pontiac, 1-5; Noah S. Spencer, 1955 Mercury, 1-7; Dent Bradley, 1955 Ford, 1-7; Archie C. and Lorraine McGinley, 1955 Mercury, 1-8; John D. Pitman, for Pitman Grain Company, 1955 Chrysler, 1-8; Danny Deaver, 1955 Chrysler, 1-8; G. D. Caison Jr., 1955 Dodge, 1-10; George A. Springer, 1955 Dodge, 1-10; A. R. Foster, 1955 Ford Victoria, 1-11; Rufino Reyna, 1955 Chevrolet, 12-31; Benny L. Womble, 1955 Chevrolet, 1-12; W. P. Axe,

1955 Chrysler, 1-12; Albert Rex Lee 1955 Pontiac, 1-13; G. E. Gollehon, 1955 Oldsmobile, 1-12.

ANTIQUE PAYS OFF
CMAHA (AP)—John Bergquist, University of Omaha Junior, has

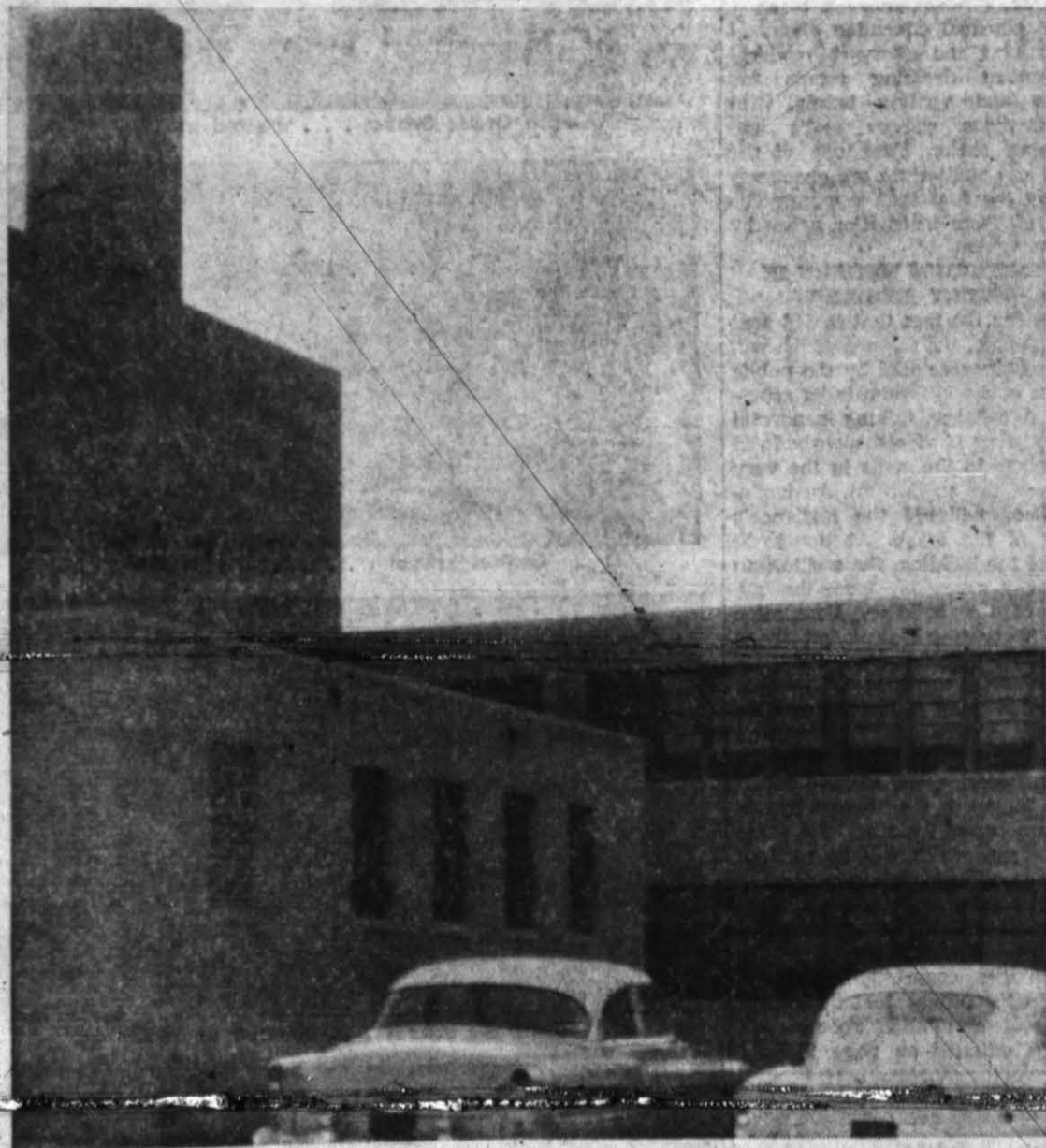
given an antique twist to the rent: \$15 a weekend or \$10 a night, plus gas and oil. He says business is brisk.



THE MODERN FIXTURES and the delicate chemistry laboratory compared to that of the old building. lighting show the predominance of this new (Staff Photo)

Congratulations

to the Good People of Hereford and Deaf Smith County upon the completion and dedication of your new High School!



We at the North Texas Steel Co. are pleased and proud that we were selected to supply the structural steel for the new Hereford High School. Your new High School is indeed something to be proud of!

In behalf of your school board and faculty members, we urge you to visit your new school addition Thursday, January 20th during the dedication of the new High School.

WE KNOW YOU'LL BE PLEASED WITH THIS FINE BUILDING!

North Texas Steel Co., Inc.

Hereford.....

(Continued from Page 1)

As late as 1946, all six grammar-school grades were housed in Central School. Removal of the seventh and eighth grades to the barracks building in 1947 barely relieved the crowded situation for one year. Shirley School was erected in 1949, and six additional rooms were built the following year. By the end of that year the remaining six grades in elementary school had filled the two buildings to capacity.

Sixth-grade classes were held in the churches at the beginning of the 1953-54 school term and were moved into the high school shop building when it was completed. Fifth-grade pupils attended class in borrowed church rooms at the beginning of this year, leaving only the first four grades in the two elementary buildings. Even the move to the new high school did not relieve the crowded conditions, however; for the fifth grade now is housed in the barracks buildings, which were considered only temporary when they were moved to the school grounds in 1947.

The school board's plans for keeping pace with the growing school population include a grade-school building on North K Avenue in the near future.

The new high school will accommodate 600 pupils. Provision for future expansion has been made through the installation of utilities—lights, electrical installations, and plumbing—of sufficient capacity to care for the addition of class rooms as they may be needed for a larger high school plant.

New High.....

(Continued from Page 1)

Joining the principal's office is the back room, which is under his supervision.

The study hall and library are in adjacent rooms on the second floor of the building. The library has been furnished in new light-colored furniture to harmonize with the decorative scheme of the building. It includes an office, stack rooms, and a large reading room.

Lady faculty members have been provided a lounge on the second floor, but faculty members of the stronger sex may still be found in the boiler room, when they are not busy during conference periods. Even the boiler room, though, in the new building, is modern, streamlined, and in keeping with

CONGRATULATIONS

to the citizens of Deaf Smith County upon the completion of your new High School!



We're happy that we were selected to furnish the

AUDITORIUM SEATS

for your new High School building!

We join with your School Board and Faculty members in inviting you to visit this new HIGH SCHOOL, THURSDAY, JAN. 20th during the dedication.

Ted Elstrand and Co.

Ft. Worth, Texas

CONGRATULATIONS

faculty and School Board Members upon the completion of the new HEREFORD HIGH SCHOOL!



The FOXWORTH - GALBRAITH LUMBER CO. of Hereford

is indeed happy to have furnished Sherwin-Williams Paints, quality lumber and other building materials used in the construction of this beautiful new building!

WE URGE YOU TO VISIT THE NEW SCHOOL

THURSDAY, JANUARY 20th.

FOXWORTH-GALBRAITH LUMBER CO. OF HEREFORD



THE NEW HIGH SCHOOL GYM, already in every respect, the new gym seats 1,000 the scene of Hereford's first annual Invitation Tournament has attracted much praise and comment from visiting ball teams. Modern fans comfortably -- and has attracted large crowds already this year. Growing interest in basketball is reported by school authorities.



The Hereford Brand and Sunday Brand

Join With School Board and Faculty Members

In Inviting You To Attend the

Dedication Service

at the new

HEREFORD HIGHSCHOOL

Thursday, January 20th.

CONGRATULATIONS

Hereford, upon the completion of the fine new **HIGH SCHOOL BUILDING!**



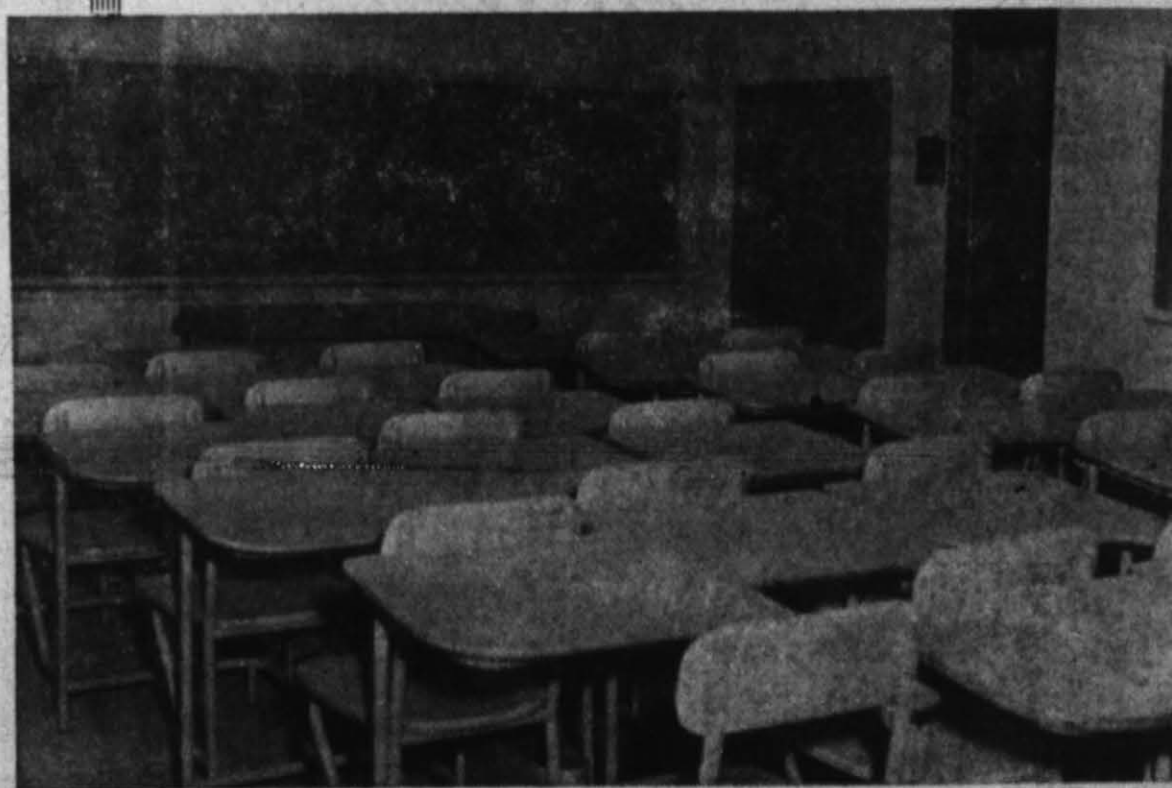
We are happy that we were selected to supply the building materials in our line, for this beautiful new High School Building. We urge you to attend the dedication Thursday, January 20th. Inspect your new High school . . . We think you'll agree there's none finer!

Remember the date **THURSDAY, JANUARY 20th**

Crowe-Gulde Cement Co.
of Hereford
PHONE 1722 1st & GOUGH ST

Congratulations

to the citizens of Hereford upon the completion and dedication of the new **HEREFORD HIGH SCHOOL**



We're happy to have had a part in the construction of this fine new **HIGH SCHOOL Building!**

We invite you to visit the new building

THURSDAY, JANUARY 20th

during the dedication and open house!

You're in for a Pleasant Surprise !!

C. S. Landers Paint Contr.

Box 119C

Route 4

Brownwood, Texas



INDUSTRIAL ARTS, stressed for the first time, is made possible in Hereford's new high school by proper equipment, excellent quarters and regular classes. The course is taught by Craig Johnson. (Staff Photo)



VOCATIONAL "AG", popular subject in recent years, is growing in demand since students occupied the new high school. Above is one of the lecture rooms occupied by Jess Robinson and his classes. (Staff Photo)

by that talented team, Norman Panama and Melvin Frank, "Knock On Wood" is the perfect vehicle for the combustible Mr. Kaye. He sings, he dances and prances in a merry madcap mix-up that sees him in the role of a ventriloquist who is forced to seek psychiatric help when his dummy starts speaking back to him. The mind doctor in this case turns out to be beautiful Swedish actress, Mai Zetterling, with whom Danny immediately falls in love. Be sure to see this picture, full of fun and laughs, enough for all.

READ THE CLASSIFIEDS

We Light The Way



We are indeed happy that we were awarded the contract for wiring the new Hereford High School!

May we offer our congratulations to the people of Hereford area on the completion of your new school, and urge you to visit the Hereford High School Thursday, January 20, during the big open house.

Brooks Electric

Box 780 Pampa, Texas

Legal Notice

THE STATE OF TEXAS
TO: Lewis Arnold; J. A. Blair; Z. B. Hagins; Nathan Edgins; Jas. McMasters; E. F. Connell; N. Edgins; W. F. Berry; R. P. Berry; W. L. Porter; E. B. Dameron; J. N. Talley; J. N. Tally; M. T. Bruce; J. Laing; Dave McBride; M. J. Akers; Mrs. M. J. Akers; A. G. Boyce; F. W. DeBoice; H. Munson; George P. Brown; J. J. Stovall; P. P. Barlow; J. A. Boid; J. F. Carpenter; W. A. Cassidy; Annie Trypen; C. G. Landes; C. G. Witherspoon; Mrs. J. J. Stovall; W. H. Jackson; H. R. Cox; F. B. Fuller; J. N. Ivey; A. B. Johnson; A. Chambers; W. H. Coffelt; Jas. M. Cook; W. J. DeBardleben; N. B. Winfrey; A. L. Ridings; Abbie McBride; Geo. A. Crutchfield; G. G. Buford; S. M. Buford; George D. Williams; J. G. Snapper; Burton E. Wilkes; B. A. Dye; L. Marrs; J. H. Willis; Thos. H. Dean; A. L. Frisbie; C. T. Hunter; M. F. Speer; J. R. Dean; J. M. Dickey; J. H. Jowell; E. F. Kennedy; Addie B. Davis; Luther Dickson; J. L. Dykes; J. S. Jones; Lute Dickson; Mrs. Leta E. Cook; Clara C. Hyatt; H. W. Eubanks;

W. J. Farwell; M. Huffman; W. S. Field; H. L. Flesher; R. S. Kelly; W. W. Kelly; Edward Freeman; Geo. Finch; W. T. Skeels; Mark Finnicum; I. A. Jackson; Perry Guinn; B. How; R. A. East; Berekly How; J. Krause; W. R. Griffith; I. N. Hunnicutt; W. E. Hunnicutt; Emmett Powers; J. E. Martin; Mrs. Sue Collins; M. Armer; Creed Click, Jr.; A. Horn; J. H. Long; Charlie Thompson; Oliver Johnson; F. C. Highsmith; W. H. Sawnee; Steve Karr; W. T. Word; J. S. Kenyon; W. T. King; John King; J. D. Koontz; J. C. McCleod; Charles Lee; R. A. Chamberlain; S. K. Mercer; R. A. Mabry; R. M. Gano; J. E. Ferguson; D. J. McNamara; N. S. McGee; Don McArthur; Stanley Miller; R. R. Wheatly; Al Popham; Annie E. Turner; J. H. Randle; J. G. Ridings; A. J. Rayfield; J. M. Robinson; E. Eppstein; H. H. Hollander; Jon Ryan; Sam F. Dunn; Wm. Hunkle; Wm. Stunkle; G. W. Gains; George Taylor; J. A. Mahers; Chas. Wheeler; G. A. Hutchins; Warren Moore; Jas. Vaughn; R. P. Vasser; D. F. Johnson; John A. Williams; W. A. Jarrell; T. J. Wilson; A. J. Tadlock; A. C. Tadlock; H. N. Wilsey; Mrs. M. A. Byars; H. H. Wallace; T. F. Mitchell; W. H. Grigsby; George

Eateman; F. White; F. A. White; John Witherspoon; L. D. Marrs; W. D. Witherspoon; G. W. Witherspoon; J. P. Connell; J. F. Witherspoon; W. W. Witherspoon; B. T. Ware; H. M. Cramer; O. H. Kirkland; Minnie Kirkland; J. H. Weems; H. E. Wesley; J. G. Beaver; Chs. Sanders; M. Rosenfield; Ed Rodgers; Tennie Sevier; Duncan Suttben; J. T. Donovan; C. D. Hope; A. C. Hahn; E. L. Sturdevant; Annie E. Elder; A. H. Elder; Vernon Witherspoon; E. N. Kirby; W. A. Witherspoon; Mrs. Leona Rogers; T. Guy Rogers; R. G. Bader; Sophia S. Connell; R. C. Cage; Carrie M. Cage; Claude Benton; the spouses of each of the above named persons; the unknown heirs and legal representatives of each and all of the above named persons deceased; W. T. Bruce & Co; Nix Holsell & Co; Kelly Bros.; and the successors and assigns of and the unknown claimants under each of said three above named firms; and also the unknown heirs and legal representatives of each of said firms and each individual thereof and the unknown heirs and legal representatives of them and each of them;

chain of title for said respective periods of time, as is more fully shown by Plaintiff's Petition on file in this suit.
The officer executing this process shall promptly execute the same according to law, and make due return as the law directs.
Issued and given under my hand and the Seal of said Court, at office in Hereford, Texas this 12th day of January A. D. 1955.
Attest:
Lucille Posey, Clerk,
District Court, Deaf Smith County, Texas
(SEAL) S-29-4c

At The Movies

"Knock On Wood"
In all the annals of Hollywood comedy the talented Danny Kaye is regarded as a star of the highest magnitude. It is for this reason, little wonder, that his latest film for Paramount, "Knock On Wood," which is due to open Wednesday and Thursday at the Star Theatre, is reported to be one of the most hilarious in all celluloid history.
Written, produced and directed

Read The Classifieds

Congratulations

Hereford upon the completion of your new High School Building!

We're Indeed happy to have furnished the mill work for this new building!

We invite you to inspect it Thursday January 20th;

Terrill Manufacturing Co.

2816 North Randolph Street San Angelo, Texas

Congratulations

Hereford, upon the Completion and dedication of your new high school building!

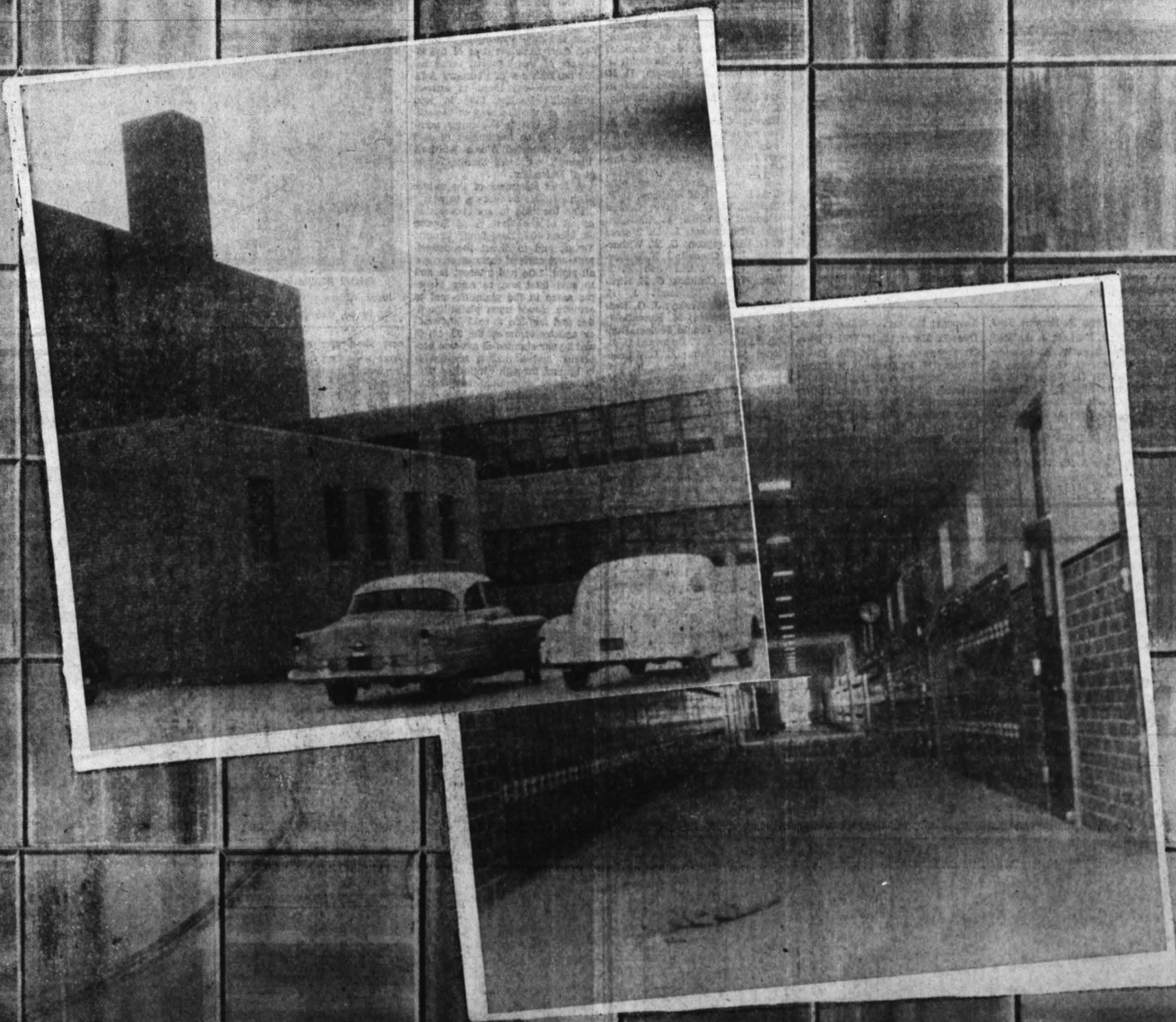
It's truly something to be proud of!

And We're PROUD, TOO, of our part in the Construction of this beautiful new building!

We suggest that you visit your New High School during the dedication Thursday, January 20th. Inspect every room . . . remember, it's YOUR children who will attend this fine new school!

MANGUM BRICK & TILE CO.

Mangum, Oklahoma



Congratulations

to the citizens of Hereford upon the occasion of the Dedication of your new High School! You have a right to be proud of it!

We are pleased and proud that we were selected to have the contract for your High School and we are particularly proud of the job we did. Visit your school to see how your money was spent!

In behalf of your school officials we urge you to visit your new school!

THURSDAY, JANUARY 20th

GOHMAN and CROUCH CONSTRUCTION CO., INC.

General Contractors
Box 66
Berger, Texas



THE BAND HALL in Hereford's new high school is another feature of which the students are exceptionally proud. (Staff Photo)

Ferry Guinn; B. How; R. A. East; Berekly How; J. Krause; W. R. Griffith; I. N. Hunnicutt; W. E. Hunnicutt; Emmett Powers; J. E. Martin; Mrs. Sue Collins; M. Armer; Creed Click, Jr.; A. Hornor; J. H. Long; Charlie Thompson; Oliver Johnson; F. C. Highsmith; W. H. Sawnel; Steve Karr; W. T. Word; J. S. Kenyon; W. T. King; John King; J. D. Koonts; J. C. McCleod; Charles Lee; R. A. Chamberlain; S. K. Mercer; W. S. Mabry; R. M. Gano; J. E. Ferguson; D. J. McNamara; N. S. McGee; Don McArthur; Stanley Miller; R. R. Wheatly; Al Popham; Annie E. Turner; J. H. Randle; J. G. Ridings; A. J. Rayfield; J. M. Robinson; E. Eppstein; H. H. Hollander; John Ryan; Sam F. Dunn; Wm. Hunkle; Wm. Stunkle; G. W. Gains; George Taylor; J. A. Mahers; Chas Wheeler; G. A. Hutchins; Warren Moore; J. S. Vaughn; R. P. Vasser; D. F. Johnson; John A. Williams; W. A. Jarrell; T. J. Wilson; A. J. Tadlock; A. C. Tadlock; H. N. Wilsey; Mrs. M. A. Byars; H. H. Wallace; T. F. Mitchell; W. H. Grigsby; George Bateman; F. White; F. A. White; John Witherspoon; L. D. Marrs; W. D. Witherspoon; G. W. Witherspoon; J. P. Connell; J. F. Witherspoon; W. W. Witherspoon; B. T. Ware; H. M. Craimer; O. H. Kirkland; Minnie Kirkland; J. H. Weems; H. E. Wesley; J. G. Beaver; Chs Sanders; M. Rosenfield; Ed Rodgers; Tennie Sevier; Duncan Suthen; J. T. Donovan; C. D. Hope; A. C. Hahn; E. L. Sturdevant; Annie E. Elder; A. H. Elder; Vernon Witherspoon; E. N. Kirby; W. A. Witherspoon; Mrs. Leona Rogers; T. Guy Rogers; R. G. Bader; Sophia S. Connell; R. C. Cage; Carrie M. Cage; Claude Benton; the spouses of each of the above named persons; the unknown heirs and legal representatives of each and all of the above named persons deceased; W. T.

Bruce & Co.; Nix Holsell & Co.; Kelly Bros.; and the successors and assigns of and the unknown claimants under each of said three above named firms; and also the unknown heirs and legal representatives of each of said firms and each individual thereof and the unknown heirs and legal representatives of them and each of them; Defendants, Greeting:

You are hereby commanded to appear before the Honorable District Court of Deaf Smith County at the Court House thereof, in Hereford, Texas, at or before 10 o'clock A. M. of the first Monday next after the expiration of forty-two days from the date of the issuance of this citation, same being the 28th day of February A. D. 1955, then and there to answer Plaintiff's Petition filed in said Court, on the 31st day of December A. D. 1954, in this cause, numbered 3732 on the docket of said court and styled Almon Whitford Plaintiff, vs. Deaf Smith County, et al Defendant.

A brief statement of the nature of this suit is as follows, to wit:

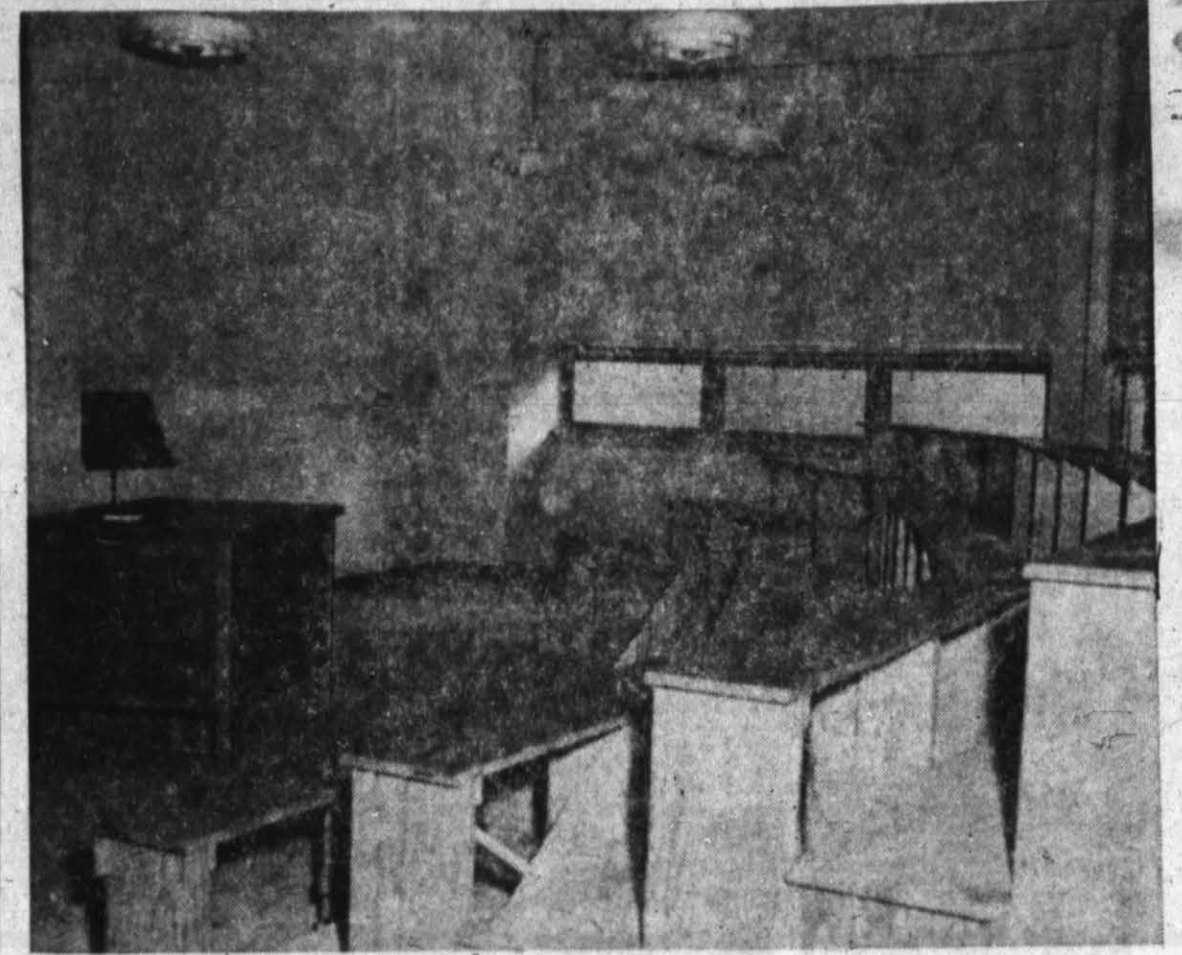
For the title and possession of all of the East 1/4 of Section 89, Block K-7, Deaf Smith County, Texas, and to divest the defendants and each of them of any and all right, title and interest in and to said land and to fully invest the same in the plaintiff; and to remove clouds upon plaintiff's title; and for title to said land under and by virtue of the 25, 10, 5, and 3 year statutes of adverse possession and limitation respectively by and through continuous use, occupancy, enjoyment, and continuous, peaceable, adverse, open possession of all of said land by plaintiff and the grantors in his chain of title for said respective periods of time, as is more fully shown by Plaintiff's Petition on file in this suit.

The officer executing this process shall promptly execute the same according to law, and make due return as the law directs.

Issued and given under my hand and the Seal of said Court, at office in Hereford, Texas this 12th day of January A. D. 1955.

Attest:
Lucille Posey, Clerk,
District Court, Deaf Smith County, Texas.

(SEAL) S-29-4c



CHOIR ROOM in the new high school features risers, which allow students to stand or to sit, depending upon requirements. The risers were made by Frank Jones and Don Moore, and are especially adapted to needs of high school groups. (Staff Photo)

Legal Notice

THE STATE OF TEXAS
TO: Lewis Arnold; J. A. Blair, Z. B. Hagins; Nathan Edgins; Jas McMasters; E. F. Connell; N. Edgins; W. F. Berry; R. P. Berry; W. L. Porter; W. B. Dameron; J. N. Talley; J. N. Tally; M. T. Bruce; J. Laing; Dave McBride; M. J. Akers; Mrs. M. J. Akers; A. G. Boyce; F. W. DeBoice; H.

Munson; George P. Brown; J. J. Stovall; P. P. Barlow; J. A. Boid; J. F. Carpenter; W. A. Cassidy; Annie Thyphen; C. G. Landes; C. G. Landis; W. H. Wooten; C. G. Witherspoon; Mrs. J. J. Stovall; W. H. Jackson; H. R. Cox; F. B. Fuller; J. N. Ivey; A. B. Johnson; A. Chambers; W. H. Coffelt; Jas M. Cook; W. J. DeBardeleben; N. B. Winfrey; A. L. Ridings; Abbie McBride; Geo. A. Crutchfield; G. G. Buford; S. M. Buford; George D. Williams; J. G. Snapper; Burton E. Wilkes; B. A. Dye; L. Marrs; J. H. Wills; Thos. H. Dean; A. L. Frisbie; C. T. Hunter; M. F. Speer; J. R. Dean; J. M. Dickey; J. H. Jowell; E. F. Kennedy; Addie B. Davis; Luther Dickson; J. L. Dykes; J. S. Jones; Lute Dickson; Mrs. Leta E. Cook; Clara C. Hyatt; H. W. Eubanks; W. J. Farwell; M. Huffman; W. S. Field; H. L. Flesher; R. S. Kelly; W. W. Kelly; Edward Freeman; Geo. Fligh; W. T. Skeins; Mark Finnicum; I. A. Jackson;

CONGRATULATIONS

to the faculty members and School Board upon the completion of the New Hereford High School Building!

We're indeed happy to have been able to supply a portion of the materials used!

BE SURE

to visit the new HIGH SCHOOL BUILDING, Thursday, Jan. 20 for the dedication!

Carl McCaslin Lumber Company

RICHARD HAGAR, forward and guard, possesses a fine eye for the basket and hits good from outside. He is a senior. (Staff Photo)

COMPLETE SERVICE

At Big Savings

OIL CHANGE

Change Now to Phillips "66"

TROP-ARTIC

The Best Oil Money Can Buy!

Protect your Motor with an Oil Change every 1000 miles!

Kirksey "66" Service

Intersection Harrison and 51 Phone 266

STAR

SUNDAY MONDAY TUESDAY

Hereford's First

CINEMASCOPE

THRUSTS YOU INTO THE LAND OF THE VIKINGS... IN THE DAYS OF

Prince Valiant

20th Century-Fox

In the wonder of STEREOPHONIC SOUND! Color by TECHNICOLOR

THE VIKINGS ATTACK! THE BLACK KNIGHT RIDES! THE ASSAULT ON THE FORTRESS! THE TOURNAMENTS OF CAMELOT! CHRISTIANS BATTLE INFIDELS! VALIANT DUELS FOR THE FAIR ALBERT!

James Mason Janet Leigh Robert Wagner Debra Paget Sterling Hayden

WEDNESDAY THURSDAY PARENT'S MAGAZINE AWARD

The Fun is When Danny's Dummy Talks Back

DANNY KAYE

Mr. Fun at his funniest! And the picture... the greatest!

COLOR BY TECHNICOLOR

KNOCK ON WOOD

Starring MAI ZETTERLING
Music and Lyrics by SYLVIA FINE
Written, Produced and Directed by NORMAN PANAMA and MELVIN FRANK

JUST PETS --- Screenline Short