

# Bailey County Journal

"The Community of Opportunity — Where Water Makes the Difference."

VOLUME 2, NUMBER 44

TEN PAGES

Published Every Sunday At Muleshoe, Bailey County, Texas — 79347

MULESHOE TEMPERATURES  
Compiled by  
R. J. Klump, Official U. S.  
Weather Observer

Oct. 29	89	47
Oct. 30	83	46
Oct. 31	71	47



New Officers Elected. The Bailey County Farm Bureau met Thursday night to elect new officers for the next two years. Pictured above, Ben Cockrell, agent manager, James Warren, re-elected secretary-treasurer, Joe Wheeler, new president, and past president and new vice president Ed Little.

## Joe Wheeler Named Farm Bureau President

The Bailey County Farm Bureau Board of Directors met in the Farm Bureau Office Thursday night with 16 members present, to elect their officers for the next two years.

Joe Wheeler was elected as president, with Ed Little outgoing president elected to the Vice President Post. James Warren was re-elected as Sec. - Treasurer. These men will hold office for two years.

Guests at this meeting were Odell Prarier, Agent Manager, and J. B. Harbin, President of the Hookley County Farm Bureau who spoke briefly to the group on the problems of the Plains Cotton Growers Association in their program against the bollweevil.

Lester Howard gave a report on plans for the State Convention to be held in Houston November 8 - 11.

Also speaking to the group

## Demos Election Party Scheduled

Farmer - Bailey Young Democrats are sponsoring an election night party November 3. The party will begin as soon as the polls close and will be held in Bailey County Electric Cooperative Community Room.

All Democrats are invited to attend and bring cards and dominoes and watch the Election Day results with the youth organization.

Refreshments will be served according to Joe Bullock, president.

## Groups Offer Election Day Transportation

Three organizations will offer free transportation to the polls during the 7 a. m. to 7 p. m. hours on election day Tuesday.

Muleshoe Jaycees central office for receiving calls will be at the Chamber of Commerce office, phone number 2480, from 6 to 7 p. m.

The Bluebonnet Belles will offer taxi service for all persons who telephone Republican headquarters at 8730. They also will have baby-sitting services available during the day.

The Young Democrats organization said Friday that they will also offer transportation, and baby-sitting after 4 p. m., for those needing the services. The telephone number for this group is 3-6300 at Harvey Bass Appliance.

## State Fund Included In Muleshoe Drive

The Texas United Fund, a state agency set up to serve state-wide organizations and national organization, has been included, among the other agencies listed below in the Muleshoe Area United Fund Drive.

TEXAS UNITED FUND — 450. A united fund of united funds, this agency assists our own Fund and provides the state-wide budget of 11 other agencies which, directly or indirectly, benefit area residents. Professional field service was given us at the time we organized last year, and various instructional and promotional materials are provided each year. A Campaign Workshop is conducted in our area area each year by the TUF and periodic information bulletins are mailed out to keep funds abreast of the latest developments. The two largest accounts in the agencies budget are for the U. S. O. and Texas Medical Research Foundation. Nine other agencies are supported by its budget; United Seaman's Service, Texas Citizens Committee of the National Council on Crime and Delinquency, World Adoption Fund, American Social Health Association, Texas Social Welfare Association, Council of Social Work Education, National Social Welfare Assembly. Roy Davis is a member of the state board of directors.

4-H YOUTH Q DEVELOPMENT CORPORATION — \$150. This agency provides a variety of activities above the county level for 4-H members and volunteer leaders. The allocation is the Bailey County "fair share" of a statewide budget of \$128,000 used to benefit more than 83,000 Texas boys and girls and 20,000 volunteer adult and junior leaders.

The state available school fund per capita apportionment is an integral part of Texas Minimum Foundation School Program. The permanent school fund interest provides nearly 16 per cent of the available school fund each year. Depleting the permanent school fund by allowing continuing raiding of the investment fund would provide funds to alleviate the immediate need for tax increases, but over the long

## Crane Season Is Off with Bang

The Muleshoe Jaycees' 1964 Sandhill Crane Hunt was off with a bang at sunrise Saturday morning, the first day of the annual contest and opening day of the season.

Persons eligible for the contest must have registered with Jaycees before yesterday's deadline and observe the rules of the contest as follows, according to Jim Bellar, Jaycee hunt chairman.

Birds will be weighed at Muleshoe Farm and Ranch store by Jaycee members. All birds will be subject to an autopsy this year. The bird that weighs the most will be the winner. The winning hunter, will walk off with a 12 gauge Remington pump shotgun.

The Sandhill Crane season runs until sunset November 29. Mel Evans, manager of the Muleshoe Wildlife Refuge, said that additional federal and state game wardens are in the area. He urged all hunters to observe the sunrise and sunset official times, as hunting hours, Sunday's sunrise is listed at 7:05 a. m., sunset at 5:55 p. m. Sunrise Monday is 7:07 a. m.

An estimated 100,000 sandhill cranes are in the Muleshoe Wildlife Refuge area, with some 12,000 on other lakes in Bailey County, Evans said.

## Student Council Play Production Monday and Tues.

The Student Council of Muleshoe High School is presenting a play Monday and Tuesday at the auditorium.

The play, "Cheaper By The Dozen" written by Gilbert and Carey, is based on the famous book and movie, the arrangement by Dramatic Compa-

## Football Teams Defeat Opponents

Muleshoe's 7th grade defeated Dimmitt's 7th grade team Tuesday night 14 to 0. Daniel Lopez and Robert Duckworth both scored touchdowns for Muleshoe. J. C. Slaughter scored an extra two points. Alfred Bleeker was the best defensive player for the seventh grade.

The 8th grade team defeated Dimmitt's 8th grade 12 to 0. Johnny St. Clair and Melvin Brown scored a touchdown each. Roger Simpson was the outstanding defensive player for the 8th grade.

Next game will be played with Friona, November 3.

## Local School Board Backs Amendment 1

The Muleshoe School Board of Trustees have unanimously approved support of voting "For" Amendment One.

The Proposal will appear on the ballot as follows:

"FOR the Constitutional authorization to transfer not exceeding one percent annually of the total value of the permanent school fund to the available school fund."

"Against the Constitutional Amendment to remove the authorization to transfer not exceeding one percent annually of the permanent school fund to the available school fund."

If voters approve the amendment (vote "for" removal of the transfer), the body of the permanent school fund (presently nearly \$530 million, or about \$8 per pupil and the interested estimated at \$20 million, or about \$8 per pupil for this year will be paid to the available school fund as at present.

If voters refuse the amendment (vote "against" removal of the transfer) the Legislature may continue to authorize a one per cent transfer of the total value of the permanent fund to the available fund - in addition to the interest earned by the permanent fund. (In the 1965-66 biennium, over \$10 million could be transferred).

The state available school fund per capita apportionment is an integral part of Texas Minimum Foundation School Program. The permanent school fund interest provides nearly 16 per cent of the available school fund each year. Depleting the permanent school fund by allowing continuing raiding of the investment fund would provide funds to alleviate the immediate need for tax increases, but over the long

## Award Certificates To Be Presented

Thirty three youths will be awarded Texas Library Award Certificate Wednesday morning at special assembly programs to be held at Mary Desha and Richland Hills Elementary Schools. Mrs. C. E. Moore, president of the local unit of the American Association of University Women, announced.

The Honor Roll Award winners will be honored for outstanding completion of the AAUW sponsored Summer Reading Program held this summer at the Muleshoe Area Public Library, with the cooperation of the Texas Bookmobile program.

The Rev. J. Frank Peery, Library Board president, will speak at the programs. Mrs. Neal Dillman will give the invocation and the special certificates will be presented by Mrs. Ed Johnson and Mrs. L. B. Hall,

## Voting Locations and Judges for Bailey

The Bailey County voting precinct location and judges for each precinct in the General Election next Tuesday have been announced as follows:

Precinct No. 1, Muleshoe employment office, Presiding Judge—Ernest Kerr, Asst. Judge—Alex Williams; Precinct No. 1-A, Muleshoe City Hall, Presiding Judge—Myron Poo, III, Asst. Judge—Jake Diehl; Precinct No. 2, West Camp church, Presiding Judge—Tom Watson, Asst. Judge—Lonnie Wilhite; Precinct No. 3, Longview Church, Presiding Judge—Bert Seals, Asst. Judge—J. U. Dawson; Precinct No. 4, Three Way School, Presiding Judge—George Tyson, Asst. Judge—H. C. Brashear; Precinct No. 5, Needmore Community Bld., Presiding Judge—Van Rogers, Asst. Judge—James Warren; Precinct No. 6, Bula School, Presiding Judge—Eddie Wallace, Asst. Judge—G. B. Salyer; Absentee Box Precinct Canvassing Board—Byron Griffiths, Senn Slemmons, Myron Pool, Jr.

Close observers of Texas elections down through the years expect an unusual amount of "ticket splitting" in the General Election November 3rd.

Members of both major parties will be affected; that is, "regular" Democrats may find that they want to cross the party lines to vote for one or more, but not all Republican nominees and vice versa.

In the 1960 General Election, at least half a million Texans voted "split tickets." This estimate comes from comparing the total vote received by the Kennedy-Johnson ticket with the Democratic and Republican votes for Governor and other state

offices.

The Courts have held, in effect, that there is no legal bar to ballot-splitting. Each voter has the right to make his individual choices, regardless of party, and this right cannot be limited by party action.

The mechanics of ballot-splitting are less complicated than the average voter realizes. To vote for a particular candidate for a particular office, whether on a paper ballot or on a voting machine, the essential thing is to leave his name and mark out the name or names of his opponents in the other columns. In counties that use voting machines, the voter is entitled to receive technical information as to how he can make his vote count as he wants it to count.

Voters using paper ballots should notice that there are other columns than the Democratic and Republican, and that these columns must not be overlooked. The final result must be, simply that only one name is left in whatever column for each office. Otherwise, the vote for that office cannot be counted.

A voter must vote for both the presidential and vice presidential candidates in the same party.

In addition to the candidates, Texas voters will also decide for or against three proposed amendments to the state constitution.

Polls will open at 7:00 a. m. and close at 7:00 p. m.

Adding special interest to this year's election are the "free" voters who can cast their ballots only for national offices. A heavy black mark across the ballot indicates the "free" territory; those voting for offices below the mark must have paid.

(See VOTING, Page 5)

## HORNETS STING MULES, 45-7

Muleshoe lost its second conference to Tulia Friday night at Tulia. The final score was Tulia 45, Muleshoe 7.

Muleshoe scored on the first kickoff they received with Joe Adams taking the ball on the 15 and racing 85 yards behind good blocking. Adams also kicked the conversion.

Officials for the game were: Cecil Franks — Referee; Bob Moore — head linesman; Jack Scarbrough — umpire and Bill Spencer — field judge.

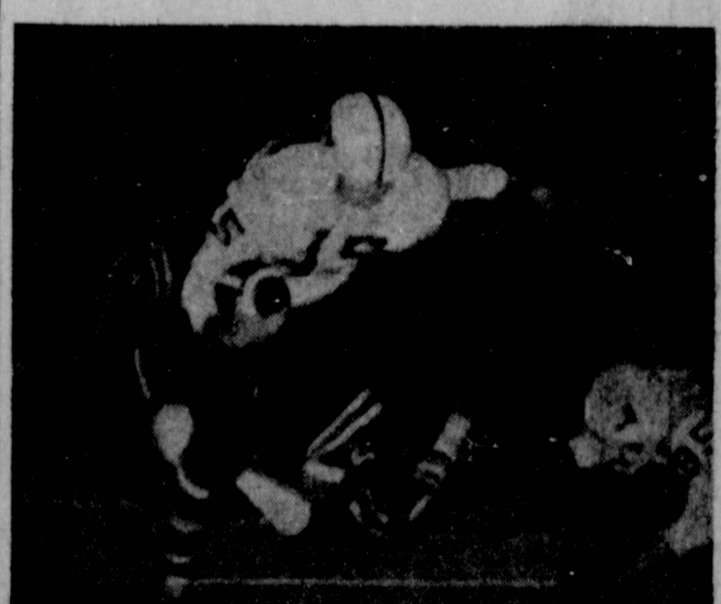
Joe Adams kicked off for Muleshoe to start the game. His kick was taken on the 20 and returned to the 44. 3 plays put the Hornets on the Mule 4. Dennis Harbee carried for the touchdown and Jeff Tucker kicked the conversion. The score: 7-0 Tulia. Happy Coe kicked for Tulia.

Joe Adams took the ball on the 15 and ran 85 yards for a touchdown. Adams conversion was good. With 9 minutes, 35 seconds left in the first quarter the score was tied 7-7.

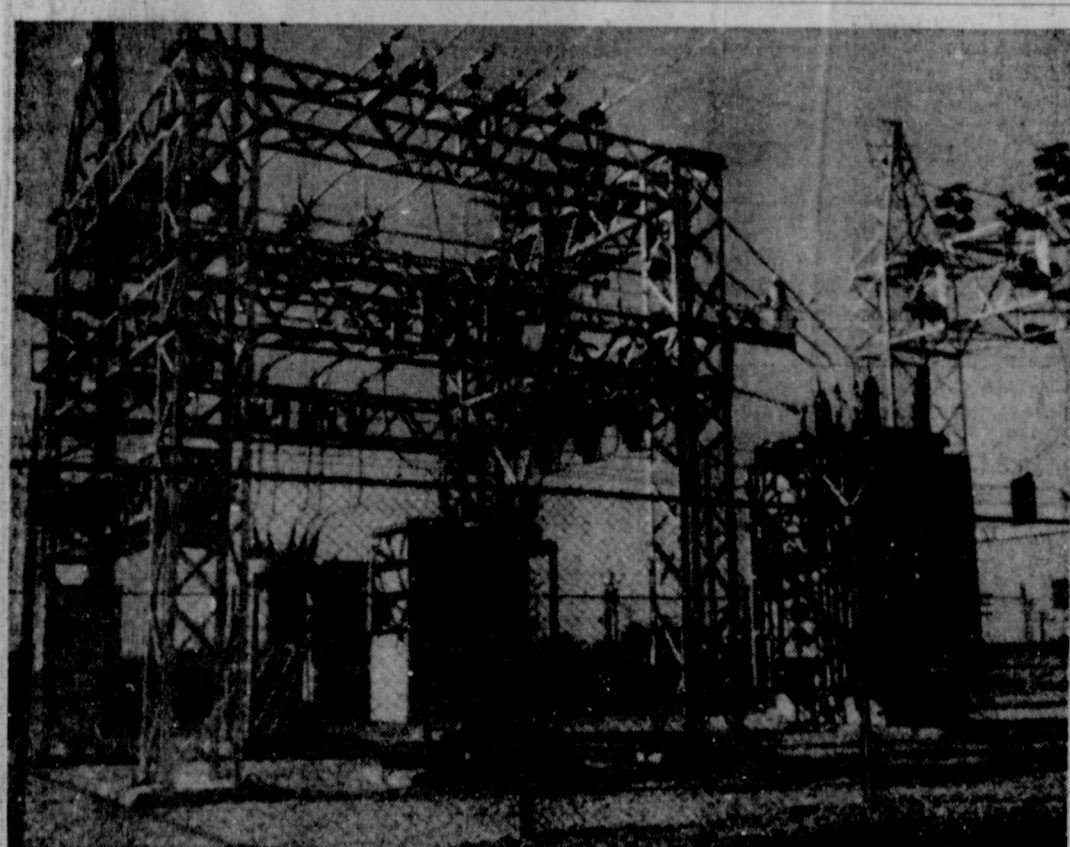
Adams kicked for the Mules to the Tulia 11. Jeff Tucker returned the kick to his 35 for Tulia. The Hornets get a first down and moved to their 49 before punting to the Muleshoe 32.

The Mules moved to the 40 and Scott Oliver punted on fourth down to the Tulia 20. Dennis Harbee took the kick and made a hand-off to Tucker who got to the 23.

The Mules held Tulia to 2 yards gained in three plays and Darrell Smith punted to the Mule 32. Muleshoe got down to the Hornet 17 on a pass from Scott Oliver to Joe Adams. Tulia would (See HORNETS, Page 5)



BIG DAN SMITH is shown as he is stopped short of the goal aimed for, a first down in the last quarter. The Mules were downed 45-7.



SUBSTATION — The new 5,000 KVA West Muleshoe Substation was recently placed in operation by Southwestern Public Service Company. Shown in the center of the picture are two 15,000 volt oil circuit breakers which automatically sectionalize the outgoing feeders in case of fault.

## Residents Select County Officials In Tues. Election

Tuesday Bailey County residents will go to the polls and select the candidates who will hold local offices for the coming term.

In the sheriff's race, Jim Bellar, Republican will oppose incumbent Dee Clements, Democrat.

Democrat Jean Lovelady and C. O. LaRue, Republican, are on the ballot for the office of County Tax Assessor - Collector.

Incumbent I. M. (Ike) Stinson, Democrat, and Billy Morrison are candidates for Commissioner for Precinct One, while Arthur Bolton and Earl Ladd, Jr. (Democrat and Republican respectively) are candidates for Constable of Precinct One.

Unopposed are County Attorney Roger Gorrell and W. H. (Bill) Eubanks, Commissioner of Precinct Three.

# TUESDAY IS ELECTION DAY

## Installation Held For Class Officers De Algodon Study Club Hears Poise And Charm Review

Officers for the installation of the First Baptist Church was "Portrait of a Sunday School Class." Mrs. J. Lewis Morris presided as installation officer.

Officers are: Frances Bruns, president; Vera Haire, vice-president; Margaret Taylor, treasurer; Ann Oyler, secretary; Elberta Wolf, reporter; Cookie Bamert and Wilma Dapis, social chairmen; Nellene Morris, class minister; and Group Captains, Ruby Hoies, Dorothy St. Clair, Joyce Avery, Peggy Bryant and Euleta Stockard.

A salad supper was served following the installation and was followed by a business meeting.

Mary B. Obenhouse is teacher of the class.

Ten members and one guest, Mrs. Lela Barron, attended.

MONDAY IS DOLLAR DAY

The regular meeting of the De Algodon Study Club was held October 19 at the Maple Cafe, Maple. The hostesses were Mrs. Freddie Parkman and Mrs. Reuel Korb. The program was given by Mrs. Truman Doss of Morton. Mrs. Doss is a student of the Gene Johnson success school and she gave a program about poise and charm.

A guest attending was Mrs. W. C. Eubanks. New members attending were Mrs. James Wilson and Mrs. Aldridge. In the business meeting a work day was decided upon for working on the Maple community center.

The next meeting of the De Algodon Study Club will meet November 2 at the Maple Cafe. The hostesses will be Mrs. James Holly and Mrs. Ed Holly. The program will be given by Mrs. W. B. Kittrell and will consist of Americanism Day.

SHOP MULESHOE FIRST

## Vows Solemnized In Catholic Chapel

Wedding vows were solemnized for Miss Beatrice Villarreal and Jose Ventura Benauides in a ceremony read at 8 p.m. Friday, October 23.

Father Clifton Corcoran read the ring service in the Immaculate Conception Catholic Church. Parents of the couple are Mr. and Mrs. Joe Villarreal, Muleshoe, and Mr. and Mrs. Jose Ventura Benauides, Monterey N. Leon, Mexico.

Given in marriage by her father, the bride wore a floor-length gown of lace and satin. The fitted bodice featured a scalloped lace and ruffles. The back of the full skirt was black with sleeves ending at the wrist in laced lace etched neckline with sleeves ending at the wrist in lace bands and ruffles. The back of the full skirt was highlighted with a sweeping chapel train.

She wore a crown of pearls with a waist-length veil attached. The veil was edged with matching lace. Her jewelry was a single strand of pearls and earrings. Her bridal bouquets was of orchids which she carried atop a white Bible.

Maid of honor was Miss Rachel Farias. She was attired in a white ballerina dress of lace and organza and carried a small bouquet.

Witnesses were Mr. and Mrs. J. P. Farias, Mr. and Mrs. H. J. Leal, Bertha Elizarraras, Eusebio LeLazo, Dolores Castro, G. Edshupe Villarreal, Florastela Valle and Mike Perez. The women wore dresses of both beige and light blue organza and male attendants wore black tuxedos and white jackets.

Ring bearer was Freddie Farias and Brine Madred.

Best man and groomsman were J. P. Farias and Jessie Leal.

Wedding March and traditional selections were played by Herbert Walker. Receiving and reception guests were Frances Perez and Ernest Perez. A tired wedding cake designed with two tiers as placed above the smaller cakes and topped with white frosting.

Approximately 80 attended the reception.

For a wedding trip to points of interest in New Mexico, the bride wore a suit of Navy blue with matching accessories.



Mr. and Mrs. Jose Ventura Benauides

## Local Teachers Attend Texas State Convention In San Antonio Oct. 23-24

The annual state convention for the Texas State Teachers Association met in San Antonio, October 22, 23, and 24. Delegate for the Muleshoe teachers was Mrs. Betty Jennings. Also attending was Mrs. Dorothy Beddingfield.

Speaker for the first general assembly was to have been Gov. John Connally, but he was called to Washington by President Johnson and was unable to be there. Speaking in his place was

Sam Levenson, former teacher and now lecturer and of television fame.

On Friday morning, Oct. 23, the Classroom Teachers Association held a breakfast. Speaker for the breakfast was Dr. Charles Jarvis, dentist from San Marcos. Here Mrs. Beddingfield was introduced as a member of the state board for Classroom Teachers Association. For the general session there were two speakers, Dr. Lois Edinger, president of the National Education Association and assistant professor of the University of North Carolina, followed a talk by Dr. Andrew Holt, president of the University of Tennessee.

A luncheon was attended then by Mrs. Jennings and Mrs. Beddingfield sponsored by the Texas Association for the Improvement of Reading. Speaker for this luncheon was Dorothy Kendall Bracken, director of the Reading Clinic at Southern Methodist University and co-author of a textbook on reading. A tea was held that afternoon by Kappa Kappa Keta, teachers organization. That evening a very inspiring program was conducted by Fred Varin, and his Pennsylvaniaans.

The following morning the House of Delegates met to conduct the business. All proposed amendments to the constitution were passed, and new State officers were introduced for the

## SCHOOL MENUS

**MONDAY**  
Sausage and Gravy  
Buttered Corn  
Blackeye Peas  
Hot Rolls  
Butter  
Apple Cobbler

**TUESDAY**  
Western Steaks  
Pinto Beans  
Turnips and Greens  
Cornbread  
Butter  
Pineapple Upside Down Cake

**WEDNESDAY**  
Juicy Burgers  
Lettuce and Tomato Salad  
French Fries  
Peanut Butter Cookies  
Fruit Cup

**THURSDAY**  
Roast Beef  
Creamed Potatoes  
Buttered fresh carrots  
Celery Sticks  
Hot Rolls  
Butter  
Honey

**FRIDAY**  
Hot Dogs  
Chili Sauce  
Potato Salad on Lettuce  
Peach Half  
Ice Cream Bar  
One - half pint milk served each day.

The meeting was very informative, educational, and entertaining.

## CALENDAR OF EVENTS

### REGULAR MEETINGS

**MONDAY**  
Jaycees - Noon - Paul's Cafe  
Toastmasters - 8 p.m. - Williams Merriman  
Art Assoc. - 9:30 a.m. - Country Club 2nd Men and 4th Mon., Richland Hills, 6:30.

**TUESDAY**  
Rotary Club - Noon - American Legion Hall  
First Baptist WMU, 9:30-Church Bldg.

**WEDNESDAY**  
Lions Club - Noon - American Legion Hall  
Firemen - 8 p.m. Fire Station  
Ladies Play Day - Noon  
Home Demo. Council - 2 p.m. 1st Wed. Clubroom.

**THURSDAY**  
Jenny TOP - R. E. A. Building  
M'shoe H. D. Club - 2nd, 4th Thurs.

**SCHEDULED MEETINGS**  
**SUNDAY**  
9:45 - First Methodist SS Class - Muleshoe State Bank.  
**MONDAY**  
7:30 - Student Council Play; High School.  
8:00 p.m. - Athletic Boosters, Muleshoe State Bank.

**TUESDAY**

**WEDNESDAY**

**THURSDAY**

**FRIDAY**

### ELECTION DAY

7:30 - Demo Election Party-Rural Electric Building.  
9:00 - Republican Election Party - Royce Turner home.  
7:30 - Young Rep. Telecast Party - Wylie Baker Home.  
7:30 - Student Council Play-High School.

7:30 - Jean Johnson - First National Bank.  
9:30 - Bluebonnet Belles First National Bank.  
8 p.m. - ECA Sorority - Muleshoe State Bank.  
8 p.m. - Ground School - Airport Office.  
7:30 - DeAlgodon Study Club - Maple Cafe.

**WEDNESDAY**  
2 p.m. - H. D. Council - Muleshoe State Bank.

**THURSDAY**  
3 p.m. - Spanish Course - First National Bank.  
7:30 - Dale Carnegie Course - First National Bank.  
8 p.m. - Jenny TOPS - Rural Electric Building.

**ROGER POOL HOME**  
Roger Pool was home Friday for a visit with his family here, the Lee Pools.

Pool received his license as a Texas Funeral Director this week. He is associated with Singleton Funeral Home in Seminole, where he has been employed since June 1963.

**MONDAY IS DOLLAR DAY**

Order YOUR FRUIT CAKE NOW!

ORDER YOUR RAINBO SUPREME FRUIT CAKE NOW!

FROM YOUR FAVORITE GROCERY

FORTHCOMING HOLIDAYS AHEAD.

See Archie Thompson Rainbo Salesman, To Order Fruit Cakes For Your Employees & Customers.

## DOLLAR DAY SPECIALS

42 x 81 NYLON PANELS Reg. \$1.29 Value **\$1** MONDAY ONLY

BIG FLUFFY CHICKEN FEATHER PILLOWS Reg. \$1.29 Value **\$1**

SPECIAL PURCHASE FLANNEL Short Lengths Reg. 39c to 59c 5 Yds. **\$1**

MENS' CHAMBRAY WORK SHIRTS Reg. \$1.29 Value 2 Pockets **\$1** MONDAY ONLY

## Anthony's NOVEMBER

SPECIAL PURCHASE Ladies Come in and ask for... **CANTRECE**

The greatest development for Nylon Hosiery in 25 Years

**\$1**

New from DuPont... Cantrecede hose fit better at the ankle, knee, calf. No looseness or let-down after hours of wear. They look different, with a soft natural appearance, without sheen or shadow. Seamless, looped heel and toe construction. Neutral beige shade. Sizes 8 1/2-11.

## DO I PLAY ORGAN WITH WELK?

Every child is talented in some way. We invite each new mother to get her baby off to a good start with quality baby supplies and quality medication from WESTERN DRUG.

**Western DRUG**  
Your Walgreen Agency  
PHONE 3-1060 MULESHOE, TEXAS

# Sale!

## LADIES SHOES VALENTINE

MID HEELS  
HIGH HEELS

Black Calf - Black Suede  
Colored Suedes and  
Black Patents  
**SPECIAL**

Wed. Nov. 4 Thur Sat. November 7  
Reg. \$12.95 and \$14.95  
**\$10.90**

SIZES 5 to 10  
WIDTHS AAAA - B

## HAYDON SHOES

"Shoes For The Entire Family"

### Mayor LeVeque To Attend Board As Representative

Mayor and Mrs. Wilbur LeVeque, members of the First Methodist Church will attend the Annual Board of Commissioners' meeting at the Methodist Home in Waco, November 4 and 5.

### Letter Received

Mrs. William Dean, chairman of the Bluebonnet Belles, gave Mike Goldwater pictures of herself and Senator Goldwater to be autographed by the presidential candidate with a letter enclosed.

### Mrs. Goldwater

and I appreciate your thoughtfulness and kind words. With best wishes, Peggy Goldwater



The pictures were taken at the Amarillo Goldwater Rally and given to Mike at the Mike Goldwater Rally in Lubbock. This week, Mrs. Dean received the autographed picture along with a letter from Peggy Goldwater.

### Sunday School Dinner Party Held In Clovis

Members of the Dorcas Sunday School class of the First Baptist Church, Sudan were in Clovis Thursday evening for dinner at the El Monterrey. Following the dinner they returned to the home of Mrs. Hank Brown for a meeting and refreshments.

### Mrs. L. Robinson Host Garden Club

Mrs. Loyd Robinson was hostess for a meeting of the Amherst Garden Club Friday afternoon. Mrs. Irene Brantley gave a program on "Bulbs". Refreshments were served from a table decorated with the Halloween motif.

### Maranatha GA'S Entertained At Halloween Party

Members of the Maranatha G.A.'s met Monday afternoon at the First Baptist Church, Sudan, for a program and were also entertained that night with a Halloween party. During the evening the group conducted a scavenger hunt, dived for apples and were served refreshments of sandwiches and drinks.

### Churches Join Thanksgiving Special Services

A Special Thanksgiving Service will be held at the First Methodist Church Sunday night, November 22 at 7 p.m. Participating will be the First Christian Church, First Presbyterian Church and the Episcopal Church.

### HOSPITAL Notes

#### WEST PLAINS HOSPITAL Admitted

Mrs. H. M. Bryant, Mrs. Hilma Rojas, Mrs. Mary L. Atkinson, E. S. Collier, Charles James, W. C. Cook, Jonnie Burris, Mrs. Oscar Langaria, Mrs. Alton Burton, Mildred Wooley, Mrs. J. O. Hardin, Mrs. H. O. Coleman, Harold Sneed, Mrs. Stero Medina, Mrs. Ophelia Monreal.

#### GREEN HOSPITAL Admitted

Mrs. W. Q. Casey, Eugene Wittner, Mrs. Carol Ellison, Raymond McGeehee, W. J. Woodard, Lindsey Davis, Pearl Lee Fleming, Mrs. L. D. Smith, G. L. (Buddy) Adrian, Mrs. Dorothy Hennesson, Baby Jarrell David Pruitt, Tommy Edmondson, Mrs. Hatie Rocky, Mrs. Pauline Tunnell, Mrs. T. L. Glascock, Phillip Johns, Ricky Meason, Mrs. Carlos Parker, Mrs. H. E. Propps, Susie Odum.

### Sudan MYF Crop Drive Nets \$92

The MYF of the First Methodist Church, Sudan, sponsored a CROP drive Monday evening when a number of youths in the community participated. \$92.00 was collected by the group. They returned to the Methodist Church and were served refreshments by Mrs. Joe Burt Markham, Mrs. Bill Nix, Mrs. Anita Wallace, Mrs. F. M. Smith, Mrs. Bob Drake. Adult sponsors were Mrs. Jay House and Rev. Jack Riley.

### Sudan WSCS Meal Served At Noon

The WSCS of the First Methodist Church met Monday morning for a Week of Prayer and Self Denial program. A Sacrificial meal was served during the noon hour.

### Book of Romans Is Study Lesson

Mrs. Joe Foster gave the introductory to the Book of Romans at the meeting Monday afternoon of the Ladies Bible class of the Church of Christ.

### Fat Overweight

Available to you without a doctor's prescription, our product called Galaxon. You must lose ugly fat or your money back. Galaxon is a tablet and easily swallowed. Get rid of excess fat and live longer. Galaxon costs \$3.00 and is sold on this guarantee: if not satisfied for any reason, just return the package to your druggist and get your full money back. No questions asked. Galaxon is sold with this guarantee by: WESTERN DRUG STORE MULESHOE - MAIL ORDERS FILLED

### Young Rep. Hold Meeting

The Muleshoe Teenage Young Republicans met Tuesday at 4:30 in Muleshoe State Bank Community Room. Sponsors attending were Mrs. Kenneth Precure and Clarence Mason. Fifteen youths were present for the program presided over by Carrol Freeman, president.

### CHURCH RETREAT

Mrs. Jack Riley attended a Retreat and Executive meeting of officers of the Conference Women's Society of the First Methodist Church held during the weekend at Buffalo Springs Lake.

### MONDAY IS DOLLAR DAY

FRANCIS IMPLEMENT CO. FORD TRACTORS Muleshoe, Texas

### RE-ELECT DEE CLEMENTS FOR SHERIFF OF BAILEY COUNTY

SERVING EIGHT YEARS AS YOUR SHERIFF

- EXPERIENCED
- QUALIFIED
- SINCERE

THANKS TO THOSE WHO SUPPORTED ME IN THE DEMOCRATIC PRIMARY ELECTION. SERVING THE CITIZENS OF BAILEY CO. CONSCIENTIOUSLY IS MY AIM. YOUR VOTE IN THE COMING ELECTION WILL BE APPRECIATED

(Paid Pol. Adv.)

### JEAN LOVELADY WANTS YOUR VOTE

FOR TAX COLLECTOR - ASSESSOR OF BAILEY COUNTY

- EXPERIENCED
- QUALIFIED

IF ELECTED - WILL RETURN YOUR CONFIDENCE and RESPECT IN SERVICE

(Paid Pol. Adv.)

### SNEED REPAIR SHOP

New Engines, Priced Right

- Continental Red Seals
- Chrysler (6 Models)
- Oldsmobile 394
- Pontiac 389
- Chevrolet 292 Truck

Reconditioned Engines

- 1-5820 Continental
- 1-R602 Continental
- 1-T427 Continental
- 1-M330 Continental
- 1-V856A Chrysler

Complete Repair service on any make of irrigation engine!  
Ratio changes and repair service on gear drives!

Phone 3-4260 for Fast Service  
D. H. SNEED, Owner

### CUT Pump Repair Bills!

WESTERN deep well TURBINES last up to 3 TIMES longer than other pumps

Western's exclusive redwood lined tubeline eliminates bronze bearings and shaft wear. Saves you money all around. For more details without obligation call your Western Pump dealer today.

EDWARDS GIN AND IRRIGATION

### KENNETH HENRY OF THE HENRY INSURANCE AGENCY

LOCATED AT 217 E. AVE. B

wants to take this opportunity to thank all of you, his policyholders, for your important part in the tremendous growth of the Henry Insurance Agency and making it possible for him to purchase the McAdams Insurance Agency. Kenneth has added 3 more reliable stock Fire and Casualty Insurance Companies to his Agency in order to better serve you with any of your insurance needs. As your insurance increases, the Henry Insurance Agency stands ready to help with all kinds of insurance coverage. When you want Insurance, Call Kenneth Henry at 3-2570, or see him at his office at 217 E. Avenue B.

MONDAY IS DOLLAR DAY

# NOTICE

After over forty years of continued enjoyable and pleasant operation of the grain business in working with the good people of the Muleshoe and adjoining communities, it is with deep regret that we are discontinuing our operation at Muleshoe, having leased our elevator to the AAA Grain and Elevator people. The good boys that have been with us for the past several years will continue working with the new firm and will appreciate your continued business with them.

**ONCE AGAIN THE ENTIRE PERSONNEL OF THE COMPANY SAYS WE THANK YOU.**

S. E. CONE GRAIN & SEED COMPANY  
J. H. WILLIAMS, President  
Lubbock Texas

# GIFTS

Wonderful to give!  
Exciting to own!

BATHROOM VANITY SHELF 7.98

40-WINKS ELECTRIC BLANKET BY SLUMBEREST 9.98

DOUBLE BED SIZE with SINGLE CONTROL (No. 13F)

MIRRO 30-CUP Automatic PERCOLATOR 9.88

Murray Wild Cat THE YEARS MOST EXCITING NEW SPORTS MODEL BIKE 38.88 (No. 21A)

A sleek, ready-for-action sport bike that's ruggedly built to take it and beautifully finished in Metallic Gold, trimmed in Red and White with sparkling chrome accents.

FIREPLACE FURNISHINGS 28.88

COMPARE AT 47.50 OR MORE (No. 16A)

Solid brass andirons, 19" high with claw feet, orn top. Screen is black mesh with brass frame, feet, pull chain. Fireset has poker, shovel, brush, 27" high.

Present Crystal 27 pc. PUNCH SET 4.88

FALL COUPON

LAURIE LAUNDRY BASKET A 70¢ VALUE WITH THIS COUPON (No. 108) 39¢

LIMIT: 1 PER CUSTOMER

NAME \_\_\_\_\_ PHONE \_\_\_\_\_

ADDRESS \_\_\_\_\_ CITY \_\_\_\_\_

### JOHNSON - POOL HDWR. & APPL.

320 MAIN Phone 3-3820 or 7370

**THREE WAY NEWS**

Honor roll for the Three Way School is:  
 Debra Burkett, Kathy Fourn, Debbie Furgeson, Pattie Ann Heard, Ken Hicks, Robby-Sowder, Cheryl Abbe, Patty Carpenter, Terry Pollard, Kundace Sower, Ann Warren, Sandra Simpson, Sam Feagley, Kathy Hicks, Juanita Samaniego, Chester Huff, Joy Eubanks, Tommy Dupler and Marvin Long.  
**FRANCIS IMPLEMENT CO.**  
 FORD TRACTOR  
 Muleshoe, Texas

Shelia Reaves, Connie Richardson, Shannon Sowder, Chuck Dupler, Rick Myers, Dean McCloud, Gene Rogers, Dan Simpson, Paula Wilson, Lynn Carpenter, Mark Corkery, Marilyn Mann, Ronnie Richardson, Blake Wilson, Jeff Lynskey, Mary Mercado, Larry Neuzler, Ronda Dupler and Suzy Herrera.  
 Mike Sowder, Denna Waltrip, J. L. Hutcherson, Mike Lynskey, Jackie McLeod, Charlie Abbe, Bruce Pruitt, Wendall Williams, Gayle Gant, Julia Bruket, Doyleen Davis, Madalyn Golt, Sharyn Wittner, Sandra Newman and Mary Ann Stegall.

**Congratulations To**

—SH—Congratulations to Mr. and Mrs. Albert Zane Ellison upon the birth of a son, Troy Dale Ellison, born October 25, 1964. Weight, 7 lbs. Mr. and Mrs. Feli Pena, upon the birth of Shawnee Jo, born 10-27-64. Weight 6 lbs. 13 oz.  
 Mr. and Mrs. Mannela Rejino upon the birth of Ava Flores, born 10-27-64. Weight 5 lbs. 9 oz.  
 Mr. and Mrs. Ira Wooley upon the birth of Matthew, born 10-28-64 Weight 9 pounds.

**Study Club Host Newcomer Social**

Newcomers were entertained with a "Get - Acquainted" Social Tuesday night at the Muleshoe State Bank. Hostesses were members of Muleshoe Study Club.  
 Approximately 30 persons attended and played games of dominoes and canasta and fellowship.  
 Refreshments of Pumpkin Mince, and Apple Pie were served with coffee.

**WANT ADS**

**LEGAL NOTICE**  
 The Board of Trustees of the Muleshoe Independent School District, will receive and open bids on the building project for the Muleshoe Schools, Wednesday, November 4, 1964 — 4:00 p. m. at the Mary De Shazo Elementary School Cafeteria.  
 44s-1tc  
 SHCP MULESHOE FIRST

**SAMPLE BALLOT**

Vote for the can of your choice in each race by scratching or marking out other names in that race. You may vote for all the candidates of a party by running a line through every other party column.

DEMOCRATIC PARTY	REPUBLICAN PARTY	CONSTITUTION PARTY	INDEPENDENT PARTY	WRITE-IN
For President and Vice-President LYNDON B. JOHNSON and HUBERT H. HUMPHERY	For President and Vice-President: BARRY M. GOLDWATER WILLIAM E. MILLER	For President and Vice-President: JOSEPH B. LIGHTBURN and THEODORE C. BILLINGS		For President and Vice-President
For United States Senator: RALPH W. YARBOROUGH	For United States Senator GEORGE BUSH	For United States Senator: JACK CARSWELL		For United States Senator:
For Congressman-At-Large: JOE POOL	For Congressman-At-Large BILL HAYES	For Congressman-At-Large: W. A. (BILL) JOHNSON		For Congressman-At-Large:
For U. S. Representative, 19th Congressional District: GEORGE MAHON	For U. S. Representative, 19th Congressional District: JOE B. PHILLIPS			For U. S. Representative, 19th Congressional District:
For Governor: JOHN B. CONNALLY	For Governor: JACK CRICHTON	For Governor: JOHN C. WILLIAMS		For Governor:
For Lieutenant Governor: PRESTON SMITH	For Lieutenant Governor: HORACE HOUSTON	For Lieutenant Governor: JOSEPH M. RUMMLER		For Lieutenant Governor:
For Attorney General: WAGGONER CARR	For Attorney General: JOHN TRICE	For Commissioner of Agriculture: DEREK C. BOWNS		For Attorney General:
For Commissioner of Agriculture: JOHN C. WHITE	For Commissioner of Agriculture: JOHN B. ARMSTRONG	For Comptroller of Public Accounts DAVID R. CLARK		For Commissioner of Agriculture:
For Commissioner of General Land Office: JERRY SADLER	For Commissioner of General Land Office JOHN A. MATTHEWS	For State Treasurer: BERT ELLIS		For Commissioner of General Land Office
For Comptroller of Public Accounts: ROBERT S. CALVERT	For Comptroller of Public Ac- counts: DALLAS CALMES, JR.			For Comptroller of Public Ac- counts:
For State Treasurer: JESSE JAMES	For State Treasurer: FRED S. NEUMANN			For State Treasurer:
For Railroad Commissioner (Full Term): BEN RAMSEY	For Railroad Commissioner (Unexpired Term): DON FLANAGAN			For Railroad Commissioner (Full Term):
For Railroad Commissioner (Unexpired Term): JIM C. LANGDON	For Associate Justice, Supreme Court, Place 1: T. E. KENNERLY			For Railroad Commissioner (Unexpired Term):
For Associate Justice, Supreme Court, Place 1: JACK POPE				For Associate Justice, Supreme Court, Place 1:
For Associate Justice, Supreme Court, Place 2: RUEL C. WALKER				For Associate Justice, Supreme Court, Place 2:
For Associate Justice, Supreme Court, Place 3: ROBERT W. HAMILTON				For Associate Justice, Supreme Court, Place 3:
For Judge, Court of Criminal Appeals: K. K. WOODEY				For Judge, Court of Criminal Appeals:
For Associate Justice Court of Civil Appeals 7th District: ERNEST O. NORTHCUT				For Associate Justice Court of Civil Appeals 154th District:
For District Attorney 154th Judicial District: JACK YOUNG				For District Attorney 154th Judicial District:
For State Representative 91st District: BILLY W. CLAYTON				For State Representative 91st District:
For County Sheriff: DEE CLEMENTS	For County Sheriff JIM BELLER			For County Sheriff:
For County Tax Assessor - Collector: JEAN LOVELADY	For County Tax Assessor - Collector: C. O. LARUE			For County Tax Assessor - Collector:
For County Attorney: ROGER GORRELL				For County Attorney:
For Commissioner Precinct No. 1: I. M. (Ike) STINSON	For Commissioner Precinct No. 1: BILLY MORRISON			For Commissioner Precinct No. 1:
For Commissioner Precinct No. 3: W. H. (Bill) EUBANKS				For Commissioner Precinct No. 3:
For Constable Precinct No. 1: ARTHUR L. BOLTON	For Constable Precinct No. 1: EARL LADD, JR.			For Constable Precinct No. 1:

**DON'T FORGET!**

**V-DAY IS TUESDAY! -VOTE!**

*It is your right as an American to be able to vote; it is your responsibility as a citizen TO vote. Don't let your country down. Go to the polls Tuesday and protect your rights.*

Published each Sunday by the Muleshoe Publishing Co., 304 West Second Street, Muleshoe, Texas

**Bailey County Journal**

Member of The Associated Press  
 Entered as second class matter at the Muleshoe Post Office under act of Congress, March 3, 1897.

**SUBSCRIPTION RATES**

Immediate Territory ..... \$4.00  
 Outside Territory ..... \$4.50  
 In combination with the Muleshoe Journal (Published each Thursday) the following rates apply

Both papers in territory ..... \$5.50  
 Both papers outside territory ..... \$6.25

L. B. HALL ..... Editor and Publisher  
 Doris Kinsor ..... Society Editor  
 (Advertising Rates on Application)

**FOR LEASE**

169 acres sand hill farm land about 12 miles west of Muleshoe. One 8 inch well. Suitable for Alfalfa or Bermuda, or ensilage crops. No cotton or grain allotment. Will make one to five year contract for cash rent to responsible party.

**A. V. WEAVER**  
 P. O. Box 1435 Lubbock, Texas

**WHITE'S MAGIC 50" TIRE**

The Only Tire in the World Guaranteed NOT TO WEAR OUT for 40,000 Miles! Plus 40,000 Mile Road Hazard Guarantee.

**WHITE'S** the Home of Greater Values

Scratch or mark out one statement so that the one remaining shall indicate the way you wish to vote.

**NO. 1** FOR the Constitutional Amendment to remove the authorization to transfer not exceeding one per cent annually of the total value of the permanent school fund to the available school fund.  
 AGAINST the Constitutional Amendment to remove the authorization to transfer not exceeding one per cent annually of the total value of the permanent school fund to the available school fund.

**NO. 2** FOR the Constitutional Amendment establishing certain requirements relative to the enactment of laws affecting particular conservation and reclamation districts.  
 AGAINST the Constitutional Amendment establishing certain requirements relative to the enactment of laws affecting particular conservation and reclamation districts.

FOR the Amendment to the Constitution giving the Legislature the power to authorize vendor payments for medical care on behalf of needy individuals sixty-five (65) years of age and over who are not recipients of Old Age Assistance, and who are unable to pay for needed medical services; providing for the acceptance of funds from the Federal Government for the purpose of paying such medical assistance; providing that the amounts paid out of State funds for such purposes shall never exceed the amount that is matchable out of Federal funds; and provided further, however, that such medical care, services or assistance shall also include the employment of objective or subjective means without the use of drugs, for the purpose of ascertaining and measuring the powers of vision of the human eye, and fitting lenses or prisms to correct or remedy any defect or abnormal condition of vision.

**NO. 3** AGAINST the Amendment to the Constitution giving the Legislature the power to authorize vendor payments for medical care on behalf of needy individuals sixty-five (65) years of age and over who are not recipients of Old Age Assistance, and who are unable to pay for needed medical services; providing for the acceptance of funds from the Federal Government for the purpose of paying such medical assistance; providing that the amounts paid out of State funds for such purposes shall never exceed the amount that is matchable out of Federal funds; and provided further, however, that such medical care, services or assistance shall also include the employment of objective or subjective means without the use of drugs, for the purpose of ascertaining and measuring the powers of vision of the human eye, and fitting lenses or prisms to correct or remedy any defect or abnormal condition of vision.

Presented In The Public Interest

**FIRST NATIONAL BANK**  
 Muleshoe, Texas

## Area United Fund Now Totals \$5,500

In a report Thursday morning the Muleshoe Area United Fund now has \$5,500, pledged and given to the fund. This drive is on its first leg of the month long drive, with most of the divisions

not in action a week yet. Marie White, Drive President, stated that everyone is urged to either make their contribution or make their pledge as soon as they are contacted by a fund worker. These gifts will be used for the ear-round support of the agencies included in this year's drive.

### State ...

(Continued from Page 1)  
\$1000. Services to the armed forces, veterans, and their families have been the most prominent of this agency's activities in this area. Other features of the national program are disaster, blood, nursing, a.p.c.w.r. In a sense, our contribution serves as a sort of insurance premium in the nationwide disaster relief system, which is designed to render assistance when and where needed. Courses in First Aid, Lifesaving, and Water Safety are expected to be made available here in the next year. About one-third of the budget remains here for local use. Mrs. Eddie Lane serves as executive secretary for Bailey County.

### Franiken Elected To College Post

Michael Franiken, Muleshoe, has recently been elected one of five senators for the senior class at Wayland Baptist College. Franiken, son of Mr. and Mrs. Michael Franiken, Muleshoe, previously served as senator of his freshman class at Wayland. In addition to his duties as senior senator, Franiken holds membership in Volunteer Mission Band, Athletes for Christ, Chi Omicron, and Wacanda Club. Franiken was recently featured in Wayland's first dramatic production of the year, "Construction", by Ralph Stone. In the play, he portrayed the character of Art, the policeman. In the upcoming production of "Julius Caesar", Franiken will play dual roles, Publius and Cilius. The presentations are scheduled for November 19-21.

SHOP MULESHOE FIRST

### Voting ...

(Continued from Page 1)  
their \$1.75 poll tax this year or have secured exemptions. Persons exempted from the poll tax are those who have reached 21 years of age and voting for the first time, new residents to the state, and those who are above 60 years of age.

Persons eligible to vote in the "free" territory on the ballot, which in Bailey County will be for the offices of president, vice president, U. S. Senator, 19th District Congressman and congressman-at-large, are those who registered for vote without paying the poll tax by last March 6.

### Patrotic Program of 1935 Study Club

"My Responsibility As An American" was the subject topic for the meeting of the 1935 Study Club held Monday evening in the home of Mrs. Beulah Wiseman, Sudan. Mrs. J. W. Olds was program director and Mrs. Marvin Tollett spoke on "Do You Know Your Candidates?" and gave information on flag etiquette. The group saluted the flag and an introductory to the program, sang "Sar Spagled Banner" as Mrs. S. D. Hay presided. Fruit cakes sold annually by the group are now available and may be purchased at the Bowman Insurance office for \$1.50 each. Present for the meeting were Mrs. Olds, Mrs. Hay, Mrs. Tollett, two new members, Mrs. Jack Riley, Mrs. Max Bullock, and other members, Mrs. Weaver Barnett, Mrs. R. S. Gatewood, Mrs. C. E. Nichols, Mrs. R. D. Nix, Mrs. Gordon Taylor, Mrs. Kenneth Wiseman, and Mrs. Sara Woods.

### Hornets ...

(Continued from Page 1)  
not give ground and at the end of the first quarter, it was Muleshoe's ball on the Tulia 27 with the score tied 7-7. To start the second quarter, Adams attempted a field goal which was short and the ball was brought out to the 20 in Tulia's possession.

The Hornets got a first down on their 34. A pass from Dennis Harbee to Jack Brooks put Tulia on the Muleshoe 10 with a first down. James Miller carried the ball over and Jeff Tucker kicked the conversion. Score: Tulia 14 - Muleshoe 7.

Happy Cole kicked for Tulia to the 20. Carl Cahoun fumbled the ball and it rolled into the end zone where Joe Adams covered it. The ball was brought out to the 20. Muleshoe got a first on the 32 but Tulia held

### Five Jailed In County

The Bailey County Sheriff's Department reported this week that they had jailed five persons this week for their offense and the City of Muleshoe. Two Spanish males were jailed on for gambling, and three for drunk and one for DWI.

### Cross Funeral Held In Plainview

Services for Arthur Bert Cross, 74, Plainview, were held at 10 a. m. Wednesday in Lemons Funeral Chapel with Dr. Marshall Rhew, pastor of First Methodist Church, officiating. Burial was in Plainview Cemetery under direction of Lemons. Cross died Monday morning at his residence. He was born in Coffeyville, Kan. His wife, Mrs. Ozeola Ross Cross died May 15 of this year.

Survivors include two stepdaughters, Mrs. Milton Forbes, Muleshoe, and Mrs. Robert Dennis, Chula Vista, Calif.; a stepson, John B. (Bud) Ross, Plainview; two brothers, George and Dick Cross, both of Lawton, Oklahoma; and two sisters, Mrs. A. B. Nichols and Mrs. Nan Jones, both of Lawton.

FRANCIS IMPLEMENT CO.  
FORD TRACTOR  
Muleshoe, Texas

them and Oliver punted to the Tulia 41. Three plays brought Tulia to the Muleshoe 3. From there Tucker went over for a touchdown and also kicked the conversion. Score, Tulia 21 - Muleshoe 7.

Happy Cole kicked to the 19. Joe Adams returned to the 45 for the Mules. Tulia held and Oliver punted to the 37. Tulia was unable to move the ball and had to punt to the Mules 25.

Muleshoe got a first down on their 41 and ran three plays to end the half. Score, Tulia 21 - Muleshoe 7.

To start the second half, Adams kicked for Muleshoe to the 5. Tucker returned to the 42 for Tulia. The Hornets were unable to get a first and punted to the Mue 22. Muleshoe got a first down on their 42. Two plays later, Dan Smith fumbled and Tulia recovered on the Mue 40. The Hornets were unsuccessful in getting a first down and punted to the 7. On second down Muleshoe fumbled and a Hornet covered on the Mue 7. Miller carried to the 1 and Tucker went over and also kicked the conversion which was blocked by Dan Smith. Score, Tulia, 27 - Muleshoe 7.

Happy Cole kicked to the Mue 30 and Smith returned to the 46. The Mues were unable to move and Oliver's punt roled into the end zone.

The ball was brought out to the 20 in Tulia's possession. The Hornets got a first down on their 31 but failed to move the ball

and Darrell Smith punted to the 33. Three plays ended the third quarter with Muleshoe on their own 30 with fourth down coming up. Oliver punted to the Tulia 33 to start the fourth quarter. The Mules held the Hornets to 6 yards gained. Darrell Smith punted to the Mue 20 where Phil Short fumbled and Dennis Harbee covered for Tulia. On third down, Harbee passed to Jack Brooks for 18 yards and a touchdown. Tucker missed the conversion. Score, Tulia 33 - Muleshoe 7.

Happy Cole kicked to the 5 and Carl Cahoun returned to the 11 for Muleshoe. The Mules got a first down on the 22 but failed to get another one and Oliver punted to the Tulia 49. Billy Larnell intercepted a Harbee pass on the 16 for Muleshoe. But a fumble was made and Tulia covered on the 5. Three plays put Darrell Smith over for a touchdown. Tucker's conversion attempt was no good. Score, Tulia 39 - Muleshoe 7.

Happy Cole kicked to the end zone and the ball was brought

out to the 20 for Muleshoe. The Mules almost made a first down on fourth down but lost the ball on the 30. Three plays, each netting a first down put Jerry Jackson over, from three yards out. Tucker's conversion attempt was blocked by Grady Casey. Score, Tulia 45 - Muleshoe 7.

Happy Cole kicked to the Mue 10. Ransom Jones returned to the 19. The Mules were unable to move the ball and Oliver punted to the Tulia 39. Tulia got a first on the Muleshoe 37. Two plays finished the quarter and the game. Final score, Tulia 45 - Muleshoe 7.

### VOTE FOR JIM BELLER

Candidate For  
**SHERIFF**

Of Bailey County

BORN AND RAISED IN BAILEY COUNTY

JIM BELLER IS THE MAN  
FOR THIS OFFICE.

YOUR VOTE AND INFLUENCE  
IN THE COMING GENERAL  
ELECTION NOVEMBER 3, 1964  
WILL BE APPRECIATED.

(Paid Pol. Adv.)



Keep a cool head in the White House...

## WORK NOW TO ELECT PRESIDENT JOHNSON!

Think your help isn't needed in the current campaign? That's exactly what the militant, dedicated minority opposition is counting on! Don't take any chances; join with proud Texans everywhere working hard for an overwhelming victory November 3 for our native son President Lyndon B. Johnson! You can make an important contribution in your own neighborhood. Act now... see your local campaign chairman... or contact State Headquarters, 1410 Lavaca, Austin.

VOTE **TEXAN** VOTE **LBJ!**

Responsible leadership for all America

Political ad paid for by Texas Johnson-Hunkshyer Campaign, Hunter McLean, Chairman

## WELCOME TO MULESHOE



**BRUCE BESSLER**, formerly of Clovis, New Mexico where he was serving with the United States Air Force at Cannon. He is now with Sinaleton Funeral Home serving as Apprentice Funeral Director. Bessler and his wife Eileen live at 1309 W. Ave. C. They have two children, Angela, age 2 1/2 and Randy age 11 months. The following merchants extend a cordial welcome to the Besslers.

**CASHWAY**  
GROCERY

402 Main

Phone 2440

**DAMRON DRUG CO.**  
REXALL

308 Main

Phone 2100

James B. Glaze  
Insurance - Real  
Estate - Loans



**MULESHOE STATE**  
BANK

304 Main

Phone 2540

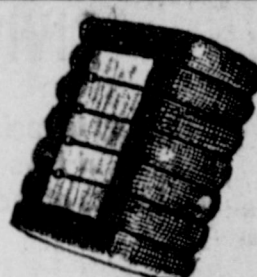
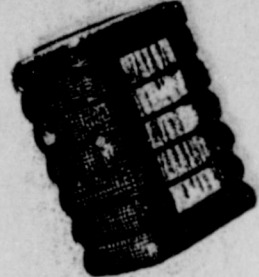
**MULESHOE MOTOR CO.**

"At The Crossroads"

**Cobb's**

218 Main

Phone 4090



"I'D RATHER FIGHT THAN SWITCH"

## WET ACID DELINTING

**B**EST METHOD OF DELINTING

**A**CCURATE PLANTING RATES

**K**EEP DOWN SEEDLING DISEASES

**E**ASIER PLANTING AND HANDLING

**R**EACH FOR THE PHONE AND CALL

COLLECT MULESHOE 6130

FOR QUALITY COTTON SEED and DELINTING

- FREE PICKUP AND DELIVERY SERVICE
- GERMINATIONS CHECKED
- SEED TREATED
- ASK ABOUT COLD WEATHER TREATMENT
- FOR INFORMATION or SERVICE, CALL

6130

## BAKER FARM SUPPLY, INC.

WEST HIGHWAY 84  
JACQUE BAKER 3-0650

NIGHTS:

MULESHOE, TEXAS  
KENNETH GEORGE 3-0370

# THE RIGHT KIND OF PRESIDENT!

## MORALITY IN GOVERNMENT

"Americans everywhere are indignant about the moral decay in Washington and nobody should accept corruption in positions of public trust as a way of life. All it takes to clean it up is an administration that really wants it cleaned up — an administration with the moral courage to fire the influence peddlers and graft takers no matter whose friends they may be."

## CIVIL RIGHTS

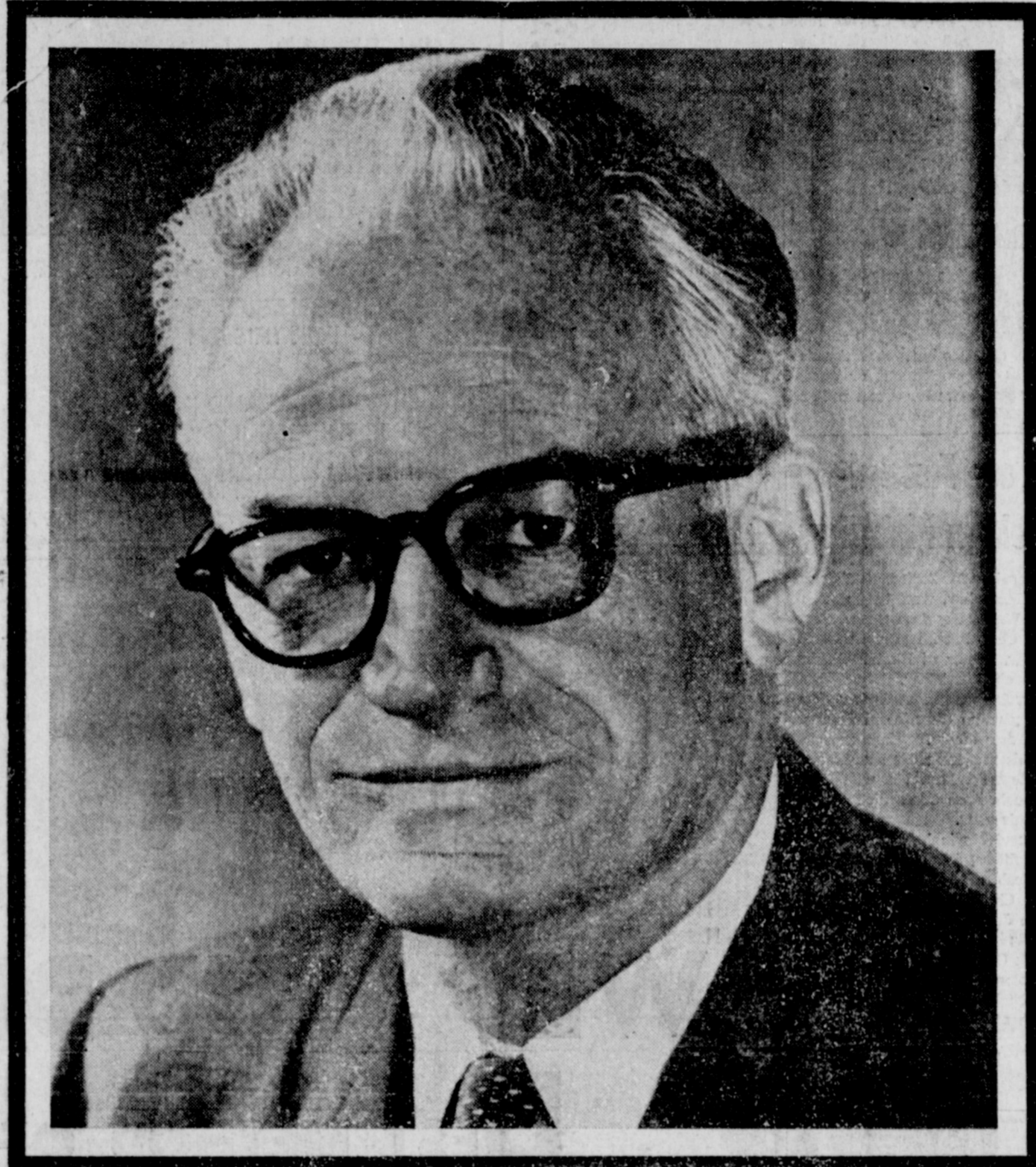
"The key to racial and religious tolerance lies not in laws alone but, ultimately, in the hearts of men."



THE RIGHT KIND OF HUSBAND



THE RIGHT KIND OF FATHER



## SOCIAL SECURITY

"I favor a sound Social Security system and I want to see it strengthened. I have always voted for improvements in the system. I pledge, as I have pledged before, my unqualified support of the Social Security system. On this, my record is clear. I have voted in favor of every Social Security Act since entering the Senate. I voted for the Acts of 1954, 1955, 1956, 1958 and 1961. In fact, I had the opportunity of presiding over the United States Senate on the day the bill was approved bringing farmers under Social Security for the first time. And that change had my active support. I want to see every participant receive all the benefits the system provides. And I want to see these benefits paid in dollars with real purchasing power."

## STATES RIGHTS

"States' rights is no mere slogan. It is the backbone of our Constitutional system. It is a check on the steady accumulation of massive power in the hands of national bureaucrats."



THE RIGHT KIND OF FAMILY

# VOTE FOR BARRY GOLDWATER

IN YOUR HEART, YOU KNOW HE'S RIGHT

Pd. For By Bailey County Republican Party, Clarence Mason, Chairman

# Curriculum of The Second Grade

By Elizabeth Watson  
READING  
The ability to learn to read is a basic task of much importance in the personal and social growth of our Second Grade of our school day is spent in developing and broadening skills in reading.

We use three types of activities in and through our reading in Grade Two. The central theme in our basic book is: "How to Be a Good Friend and Neighbor." Our New Basic Reading program includes those activities in which our children listen to, discuss, answer and ask questions, dramatize, reach to, and tell stories found in their basic reader the new "Friends and Neighbors" Grade Two one level, published by Scott, Foresman and Company, Dallas, Texas. This company publishes a work type activity book entitled: "Think and Do. An average second grade child will need about ten weeks teacher guidance in reading these books in order to master the skills needed to read the next book the new "More Friends and Neighbors" Grade Two second level. The Basic Reading Test published by Scott, Foresman and Company is made up of two tests. One for each level of reading. They give an objective measure of a child's readiness for the next level of the New Basic Reading Program and indicate to the teacher the areas in which the child needs special help. It will take around ten weeks to finish More Friends and Neighbors and the activity

Think and Do work book. There is a basic independent reader What Next? that can be read to help strengthen the skills taught in each level of reading.

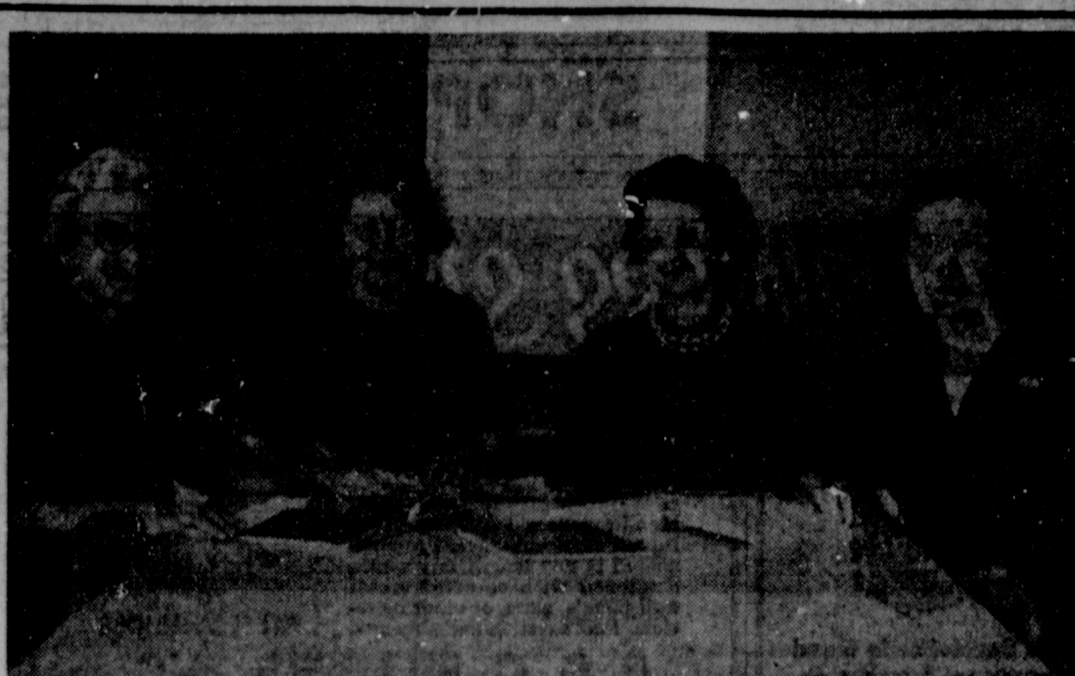
Next is the extension reading which includes supplementary reading and teacher - pupil Story Time. This reading involves those activities in which the children read stories to help extend their personal interests, needs, skills and weaknesses that center around the central basic reading theme. The supplementary reading may be done under teacher guidance or done independently by the child. The manual gives an excellent list of library books to supplement units in our basic readers. Most of these books are in our library. Some of these books can be read by the children, however, many are read by the teacher at Story Time. The teacher must provide the children with many experiences from good literature.

An excellent book, Teachers Anthology compiled by Mary Hill Arbuthnot is used for Story Time. The children receive a weekly newspaper, My Weekly Reader, published by Wesleyan University, Middletown, Connecticut. It is on average reading level and brings current news in second grade language. Many other subject activities can be outgrowths from this paper.

How rapidly children move along in reading must be adjusted to their needs by grouping children for reading instruction. We have our slow - reading child-



MARY DeShazo Elementary — Shown above are: Mrs. Loyce Killingsworth, Mrs. Mable Wolfe, Mrs. Owetha Finley and Mrs. Janice Phillips, all second grade teachers.



RICHLAND HILLS SECOND GRADE TEACHERS — Shown above are the second grade teachers of Richland Hills Elementary School. They are (L to R) Margaret Slemmons, Estelle Fox, Elsie Kendall and Gladys Everett.

ren, average and superior ones. Our Basic Reading Program states that children will differ in their physical well - being, in their inner tensions, in their language development, in their work habits, in the background of knowledge and experience and in their mental capacity. The teacher must understand these differences in her children as they come from First Grade. The teacher should then evaluate these differences and use them as guide signs in group placement for reading instruction.

Free reading involves those activities in which children read books and stories at their own level of reading and of their own choosing. They have opportunity to check out supplementary readers and library books. These are not read under teacher guidance.

PHONICS:  
The series used in the phonics program in the Mulshoe Schools is "Phonetic Keys to Reading" published by The Economy Co. of Oklahoma City, Oklahoma. The purpose of Phonics is to provide the reader with an aid word perception in reading. Phonics is the most important phase of word analysis, and is a tool and a key, which when its principles are applied, will unlock approximately 85 percent of the words of the English language. This means that about 15 percent of our words are non - phonetic; that is, we learn these words by the way they look, rather than by the way they sound. Those

children whose auditory perception is not keen enough to detect the sounds, must be taught the sight word method. These children have no word attack skills as far as hearing sounds is concerned.

SPELLING  
The Spelling program for the Second Grade consists of thirty-six units found in "Goals for Spelling", Kottmeyer and Ware, Webster Co. The first six units comprise a readiness section. Spelling power cannot be developed in pupils until they are familiar with vowels sounds as well as consonant sounds. When the pupil has mastered these sounds, he should be able to spell any short vowel word which is phonetically spelled. Units 7-36 consist of words presented in a consistent sequence in which the student is to determine the phonetic and structural characteristics of the words. Starting with Unit 8 there is sentence dictation which uses the spelling words. Starting with Unit 13 there is supplementary work for those students able to do it.

When a phonetic or structural generalization is presented in spelling, it would be desirable to give the pupil occasion to apply this skill immediately to reading. In this way he can be led to perceive the relationship of the reading and spelling skills. So we have provided "Basic Goals in Reading" which accompanies "Basic Goals in Spelling". Some of the units in Goals for (See CURRICULUM, Page 4B)

## FROM YOUR LIBRARIAN

NEED INFORMATION? TRY YOUR PUBLIC LIBRARY FIRST OVER 8,000 books to choose from.

This may seem like just another slogan, but in trying to give the best in library service, we do our best to help anyone get the information they need, on any subject. We have had some unusual requests, but can usually come up with most of the answers our readers need. Please don't hesitate to turn in a request, if you don't find just the right book on the shelf. We have many other sources of information, and if given a little time will help you.

We have located most of the books on the High School (Senior

English) Reading list. Many students are taking advantage of this outside reading material, to make their book reports. Mr. McNutt gave us his list.

Boy Scouts of Troop No. 620 came last week and worked on the grounds; This week Boy Scouts of Troop 534 came and County Agent J. K. Adams faithfully comes to water and tend the planter boxes at front and this week the Girl Scouts of Troop 70 are to come and do volunteer work. We need and appreciate their help.

We received 42 Adult Fiction books this week, many best sellers.

Also received the Children's Encyclopedia Britannica set of 26 Vols. Magazines (current and back issues) were donated by Mildred Davis, Mrs. Fred Johnson, and 20 Western books by Mrs. E. Wolfe. Mrs. Larry Hall brought in a little table and chair set for the children to use. All these will be used and appreciated.

I have been asked to attend the annual meeting of Dist. 1, of the Texas Library Association at Levelland, Texas on October 31. An invitation is extended to any and all who are interested in Library Development. I hope to go and gain a lot of good ideas and information for our Library. Anyone who would like to attend may call 7070 for the details.

Library - open 6 days a week. Library hours: 2-6 p.m. weekdays 9-12 a.m. Saturdays. Anne Camp, Librarian.

"A good book is the precious life - blood of a master - spirit, purpose to a life beyond life". . . . Milton

Diamond mining normally requires complicated equipment, but the biggest known diamond was extracted with a penknife.

The Japanese lost 26 ships in the Battle for Leyte Gulf. The Allies lost six.

## Early Migrants Move Out of Canada

Rain and snow in northern areas of the prairie provinces during late September and early October moved most early - migrating waterfowl out of western Canada. . . . Migration has been unspectacular with birds moving south in leisurely fashion. . . . Scaup, mallard and other late-migrating species are on larger waters, with some areas holding exceptionally high populations.

Some pertinent facts about waterfowl in western Canada as outlined in the October issue of the Ducks Unlimited "Duckological", prepared by General Manager Angus Gavin.

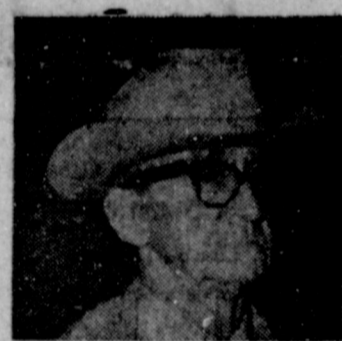
Geese have moved out in fair numbers. Migrations were noted September 26 and 30. Another fairly large movement was recorded October 7.

Gavin reports that "heavy rains received during the past month have not extended into the southern portions of the prairie provinces." He also points to the fact that both western Saskatchewan and southern Alberta remain "very dry", but with some good concentrations of birds on irrigation reservoirs and Ducks Unlimited projects.

The report describes weather and habitat conditions "at time of writing" as ideal. Temperatures recorded in the 70 degree range. Present situation can be expected to continue until weather turns colder.

Water in Puerto Rico's Phosphorescent Bay glows on dark nights. Tiny light-producing organisms teem in such abundance that the brightness is sufficient for taking pictures.

SHOP MULESHOE FIRST



TO THE VOTERS OF PRECINCT 1 Bailey County

I HAVE BEEN YOUR COMMISSIONER FOR THE PAST FOUR YEARS AND FEEL THAT I KNOW THE AREA, THE

PEOPLE AND THE PROBLEMS OF THIS PRECINCT . . .

IT IS EVERYONES RESPONSIBILITY TO GO TO THE POLLS AND VOTE.

Your Interest Are My Interests

VOTE FOR I. M. (IKE) STINSON COMMISSIONER GENERAL ELECTION NOV. 3, 1964

(Paid Pol. Adv.)

AN AREA RESIDENT FOR 38 YEARS. INTERESTED IN THE WELFARE OF BAILEY COUNTY.

**ARTHUR L. BOLTON**

DEMOCRAT CANDIDATE FOR CONSTABLE - PRECINCT 1

YOUR VOTE AND INFLUENCE APPRECIATED

GENERAL ELECTION NOVEMBER 3, 1964.

(Paid Pol. Adv.)

# Want Your Vote COUNTED?

You must mark your ballot properly, to have it counted!  
Scratch the names of all candidates you do not want to vote for.

### HOW TO MARK YOUR BALLOT:

- Do not touch the ballot with your pencil except to scratch the name of a candidate or party you want to vote against.
- To vote for a REPUBLICAN, you must mark out both the Democratic and Constitution Party candidates.
- To vote a STRAIGHT PARTY TICKET, you must mark out the entire columns for the other two parties.
- To SPLIT your vote, you must mark out the names of all candidates you do NOT want to vote for.
- Scratches void ballots. If you make a mistake, get a new ballot from the election judge.

DEMOCRATIC PARTY	REPUBLICAN PARTY	CONSTITUTION PARTY
For President and Vice President <b>LYNDON B. JOHNSON</b> <b>HUBERT H. HUMPHREY</b>	For President and Vice President <b>BARRY M. GOLDWATER</b> <b>WILLIAM F. MILLER</b>	For President and Vice President <b>JOHN F. BISHOP</b> <b>THOMAS C. COLLINGS</b>
For U. S. Senator <b>RALPH W. SPOUROUGH</b>	For U. S. Senator <b>GEORGE BUSH</b>	For U. S. Senator <b>JACK C. WELLS</b>
For Congressman-At-Large <b>JACK POOL</b>	For Congressman-At-Large <b>BILL HAYES</b>	For Congressman-At-Large <b>W. A. OWENS JOHNSON</b>
For Governor <b>JOHN B. CRINALLY</b>	For Governor <b>JACK CRICHTON</b>	For Governor <b>JOHN WILLIAMS</b>
For Lieutenant Governor <b>PRESTON SMITH</b>	For Lieutenant Governor <b>HORACE HOUSTON</b>	For Lieutenant Governor <b>JOSEPH W. HUMMELER</b>
For Attorney General <b>WAGNER CARR</b>	For Attorney General <b>JOHN TRICE</b>	For Attorney General <b>JOHN TRICE</b>
For Commissioner of Agriculture <b>JOHN C. . .</b>	For Commissioner of Agriculture <b>JOHN B. ARMSTRONG</b>	For Commissioner of Agriculture <b>DERRELL BOWENDE</b>
For Commissioner of General Land Office <b>JERRY COLLIER</b>	For Commissioner of General Land Office <b>JOHN A. MATTHEWS</b>	For Commissioner of General Land Office <b>JOHN A. MATTHEWS</b>
For Comptroller of Public Accounts <b>DAVID E. CALVERT</b>	For Comptroller of Public Accounts <b>DALLAS CALMES, JR.</b>	For Comptroller of Public Accounts <b>DAVID E. CALVERT</b>
For State Treasurer <b>JAMES . . .</b>	For State Treasurer <b>FRED S. NEUMANN</b>	For State Treasurer <b>BERNELLIS . . .</b>
For Railroad Commissioner (Full Term) <b>BEN RAMBEY</b>	For Railroad Commissioner (Full Term)	For Railroad Commissioner (Full Term)
For Railroad Commissioner (Unexpired Term) <b>DON FLANIGAN</b>	For Railroad Commissioner (Unexpired Term) <b>DON FLANIGAN</b>	For Railroad Commissioner (Unexpired Term)
For Associate Justice Supreme Court, Place 1 <b>JACK POPE</b>	For Associate Justice Supreme Court, Place 1 <b>T. E. KENNERLY</b>	For Associate Justice Supreme Court, Place 1
For Associate Justice Supreme Court, Place 2 <b>W. C. WALKER</b>	For Associate Justice Supreme Court, Place 2	For Associate Justice Supreme Court, Place 2
For Associate Justice Supreme Court, Place 3 <b>ROBERT W. HAYES</b>	For Associate Justice Supreme Court, Place 3	For Associate Justice Supreme Court, Place 3
For Judge, Court of Criminal Appeals <b>K. K. BODLEY</b>	For Judge, Court of Criminal Appeals	For Judge, Court of Criminal Appeals

MARK YOUR BALLOT PROPERLY. Leave only the names of those candidates whom you want to receive your vote. MARK OUT ALL OTHER NAMES. MAKE YOUR CONSERVATIVE VOTE COUNT!

Pol. Adv. Bailey County Republican Committee, Clarence Mason, Chairman

## Mulshoe Area YOUR FRIEND FOR LIFE



Vic Benedict

Is this man a friend of yours already? If so, you have a valuable friend indeed.

Southwestern Life agents are highly skilled in the business of planning for the future. The Company requires them to complete a graduate-level life insurance education which requires over 500 extra hours of study.

So, when you marry, when a baby comes along, when you begin planning for retirement, the counsel of this well-trained man can be of great importance to you.

If you do not know your Southwestern Life agent yet, talk to him when he calls: Your Southwestern Life Agent... your friend for life.

Southwestern Life INSURANCE COMPANY • DALLAS • SINCE 1908  
P. O. Box 625 Ph. 3-2180

## NOW! Big travel bargain for cities along Santa Fe



It's Chico Bargain Fare time again on the Santa Fe—through April 30, 1965.

For example, a regular round-trip ticket costing \$100 will be sold at the off-season bargain fare of \$80. Round trips costing \$75 now will be only \$60, and similar reductions will apply for round-trip tickets from all stations except for local trips within the State of California.

No matter where you travel on Santa Fe trains, round-trip bargain fares will save you approximately 20%. Tickets on sale every day with a return limit of 30 days. Yes, bargain fares apply for both round-trip coach and first-class tickets.

Now you can leave the car at home and save money traveling by Santa Fe.

See the Santa Fe Agent in your home town for complete information



# SHOP MULESHOE FIRST

## BUSINESS SERVICES DIRECTORY

**PAUL'S CAFE**  
— FINE FOODS



We Specialize In Good Steaks — Lunches — Dining Room For Parties Seating Capacity - 44 "For Reservations"

DIAL MULESHOE 3-0000

Paul Whitecotton, owner  
Cloviss Road Muleshoe

Phone 3-0780

— the number to call to save money on your new office, store, warehouse

Headquarters for attractive Inland steel buildings. Pre-engineered in any length, any width. Enclosed with colorful metal wall panels, glass, or other materials. Fast erection saves money.



**B & C BUILDERS, INC.**  
217 E. Ave. B Muleshoe, Texas

Save Money On Auto Parts!

**BOVELL MOTOR SUPPLY**  
107 East Ave. B — Dial 2880  
W. T. BOVELL, Owner

**HOUSES MOVED ANYWHERE**

By **LANGER BROS. HOUSE MOVERS**

Call  
Muleshoe — 5091  
Cloviss — PO 3-3497  
Bovina — 238-3641

Try Our



**BERTI-BURGERS!**  
They're Great Sandwiches Fountain Drinks, also Malts, Shakes

**DARI-DELITE**  
210 N. 1st. St. - Ph. 4829  
Bertie Purcell, Owner



FILL UP AT **FIRST STREET CONOCO STATION**  
1st & American Blvd.

- FAST SERVICE
- PICK-UP & DELIVERY
- TIRES & BATTERIES

J. A. MILLS, Dealer  
Phone 7920

ARTISTS OF BAILEY AND SURROUNDING COUNTIES WE HAVE A COMPLETE LINE of ART SUPPLIES


Muleshoe Publishing Company

**Kelton Barber Shop**  
— BARBERS —  
Omer Kelton  
Sunny Shoemaker



Trade At 'Trade Winds' Service Station  
American Blvd. & 8th St.  
Phillips Products  
Motor Tune Ups  
H. M. FREEMAN Dealer

**CARPENTER'S SERVICE**



- Tires — Batteries
- Accessories
- Mufflers
- Washing
- Lubrication
- Waxing

Dial 3-9080  
MULESHOE  
423 American Blvd.

**PAUL'S CAR WASH**  
DO IT YOURSELF AND SAVE COIN OPERATED

- Car Wash
- Car Vacuum
- Towels

5 Min. 25c  
10 Min. 50c  
AMERICAN BLVD.  
INQUIRE PAUL'S CAFE



IRRIGATION PUMPS AND WATER SYSTEMS

COLEMAN HEATING & AIR CONDITIONING

**E. R. HART CO.**  
210 E. 3rd — Ph. 3-3300

REPAIR SALES - SERVICE  
Call 3-1630 after 6:00 p. m.

J. R. Otwell  
Muleshoe, Texas

Sell Us Your USED FURNITURE AND APPLIANCES

**SWAP SHOP**  
Phone 3-0740

**HEATHINGTON LUMBER COMPANY**  
Lumber, Paint, Builders Hardware  
Cloviss Rd. - Ph. 7970

**COTTONSEED DELINTED WILLIAMS SEED CLEANING CO.**  
Phone 3-2510 — Muleshoe



**W. O. CASEY GENERAL INSURANCE**

Let Our Complete Coverage Take Care of All Your Insurance Problems

Muleshoe State Bank Bldg. — Phone 2540

**JOHN'S CUSTOM FEED MILL**  
523 E. American Blvd. Phone 5730  
Custom Grinding & Mixing. Bulk Feed Delivery  
Feeds for Cows, Horses, Chickens, & Birds

**JOHN J. MOCK**  
LICENSED STATE LAND SURVEYOR

925 Clovis Hwy.  
Phone 6760  
MULESHOE

**SHAFER'S BELL SERVICE**  
Save Money — Trade with US  
All Brands of Oil — Good Gas  
Tire Service — Accessories

J. W. 'Bub' Shafer — 623 American Blvd.

**SINGLETON FUNERAL HOME**  
24 HOUR AMBULANCE SERVICE  
Phone 2860 Muleshoe

Good Clean Used Cars

**GOSS AUTO SALES**  
1030 W. American Blvd. — Phone 3-9949  
C. W. Goss, Owner

MISS YOUR PAPER?

Call Circulation Department

2350 Weekdays 8 to 5

**JAKE DIEHL DIRT & PAVING**  
Land Leveling  
Terracing



Ph. 8410 or 3-5940  
Unit 333 Box 581  
Plainview, Hwy.

**KEN DUNCAN TRUCKING GARAGE**  
24 Hour Service  
TANDUM STOCK TRAILERS

Corner 1st and Fir  
Muleshoe, Texas  
Ph. 3-1140  
965-2661

"FIRST IN FASHIONS"



Permanents — Styling  
Tinting — Shaping  
Revlon Cosmetics

**MAIN STREET BEAUTY SALON**  
Bernice Holdeman  
115 Main — Muleshoe  
Dial 3-4480

**BEAVER'S FLOWERLAND**



Real and Artificial Flowers — Corsages  
Pot Plants — Banquets  
Funeral Designs  
520 S. First St.  
Ph. 3-1160 — Muleshoe



**NO PRIMING! NO CLOGGING!**  
The KMP Lake Pump Delivers 1200 Gallons Per Minute in Water 18 inches or 15 Foot Deep. They are easy to move and easy to Start!

KMP Lake Pumps have built-in dependability  
Dial Earth 257-2061 or 2341

**KMP LAKE PUMP Manufacturing Company**  
One Mile South of Earth, Texas

FOR FHA., GI and FARM LOANS AND THE

**BEST INSURANCE**

SEE—  
POOL INSURANCE COMPANY

Phone 2950 — Muleshoe  
W. M. POOL, JR. — LEE R POOL

CONTACT MULESHOE PUBLISHING COMPANY FOR ALL OF YOUR PRINTING NEEDS

THIS SPACE FOR SALE

FOR A CLASSIFIED AD

Ask For Polly Or Liz. Phone 2350

## K.M.P. Lake Pump Made At Earth

A widely known South Plains pioneerfarmer and his son have pump which water conservationists of the area proclaim as a great step toward further lake preservation of our underground water supply.

Gus Parish, who moved to Earth, Texas, in 1923, is the inventor of the KMP Lake Pump which he and his son, Doug, are now manufacturing in a plant located on the Parish farm, one mile south of Earth.

The pump eliminates time-consuming priming and will not clog under normal lake conditions. It was designed to allow farmers to quickly and economically pump water from the thousands of lakes which form throughout the South Plains each year.

The elder Parish, one of the first to use a turbine type irri-

gation well back in 1936, is a veteran leader in water conservation of this area, having served on many committees and boards, including the High Plains Water Conservation District.

The KMP saves money and time, Parish points out, "because it eliminates priming of the supply pipe that goes into the lake water."

Another big advantage to the KMP Lake Pump is that it will pump in water 18 inches to 15 feet without losing prime. If the pump sucks air along with water, it continues to pump as much water as is available, without losing suction.

Parish explained that lake water is "by far better for crops than underground water because it's warmer and it contains many more nutrients accumulated as the water runs into the lake."

## SUDAN NEWS

By MRS. EVELYN M. SCOTT  
Billy West, son of Mr. and Mrs. Carlous West, was on the sick list last week.

Mrs. O. D. Martin, Jr. and son Stanley, visited Friday night in the home of her parents, Mr. and Mrs. Chisholm of Needmore.

Funeral services for Rev. Claud Withrow were held Sunday in Vernon. Among those attending from here were Mr. and Mrs. John Withrow, Mr. and Mrs. James Withrow, J. C. Withrow, Mr. and Mrs. R. L. Gunn, Mr. and Mrs. Dall Burnett, Hershel Gunn of Dimmitt.

The Sudan Sewing Club met Thursday for a luncheon at the (See SUDAN, Page 3)

"You can see the difference in a cotton crop irrigated with lake water," he said. And with the abundance of lake and tail water in this Plains area, Parish's development of KMP Lake Pump has been encouraged by farmers and water conservationists alike.

The pump is currently selling at about \$650.00 Parish said. It can be bought complete with trailer and motor for a total cost of about \$1600.00 at the plant.

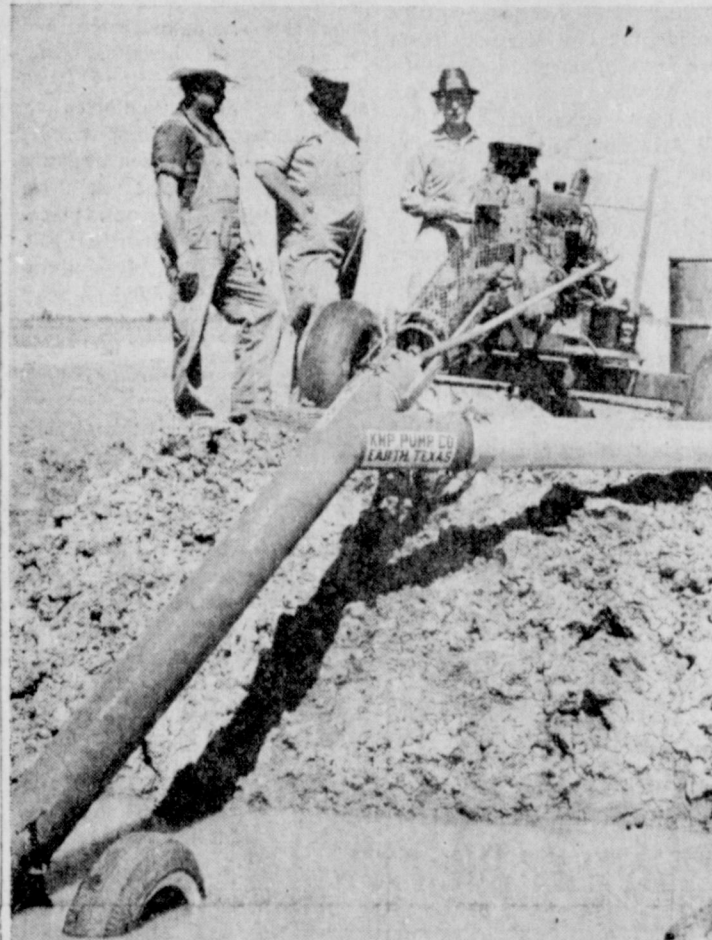
Doug Parish, manager of the KMP plant, said current production has reached five complete pumping units per week. Orders are increasing daily, he said, as information about the pump circulates.

The KMP Pump unit mounted on a trailer is easy to move to the proper location. The pump is quickly backed into the water and connected to the delivery pipe which distributes the water.

With a small engine running about 1200 r. p. m. the KMP Lake Pump will deliver about 1200 gallons per minute. Easy to motor speeds make the pumping range 600 to 1900 gallons per minute.

Sufficient water pressure is maintained for operating sprinklers, Parish added.

The KMP Lake Pump is made only in the 8 inch size presently but plans are on the drawing board for a smaller 4 inch pump which may be available by next season, the elder Parish declared.



K.M.P. PUMP CO. — Pictured above is Gus Parish, owner of KMP Pump Co., at Earth demonstrating one of his lake pumps to two prospects. Mr. Parish wearing dark hat and glasses faces camera.

## VOTE FOR THE TEXAN WHO LEADS THE FREE WORLD!

For the past eleven months, for the first time in our history, a native son has led our nation and the free world. And every Texan can take pride that President Johnson has met the awesome burdens of the office with courage, wisdom and restraint.

**THE ISSUE TUESDAY IS SIMPLE: WHO CAN BEST LEAD OUR NATION IN A TIME OF CHALLENGE AND PERIL?**

To which man do you feel most comfortable entrusting the security and well being of yourself and your children for the next four years—

A man who wants to turn back the clock of achievement . . . a man who has worked consistently against progressive measures in the Senate . . . a man virtually untested in a time of crisis?

Or a man who has dedicated his entire life to public service . . . who has demonstrated, under five administrations, progressive leadership in working for a better way of life for all Americans. A man who has proved his courage under fire . . . has demonstrated his unwavering strength to meet any aggressor with firmness, yet restraint?

**PRESIDENT JOHNSON HAS PROVIDED RESPONSIBLE LEADERSHIP FOR MORE THAN A QUARTER OF A CENTURY**

For almost three decades, President Johnson has been a pillar of strength for Texas and the nation. As Congressman, as Senator, as Majority Leader, as Vice President and now as Chief Executive, he has written a proud record of progress.

**ONLY TEXAN PRESIDENT LYNDON JOHNSON OFFERS THE EXPERIENCE, THE PATIENCE, THE WISDOM, AND THE STABILITY NEEDED BY THE NATION AND THE FREE WORLD IN THESE CRITICAL TIMES!**

★ LET'S KEEP A COOL HEAD IN THE WHITE HOUSE ★

VOTE **TEXAN** VOTE **LBJ**

★ RESPONSIBLE LEADERSHIP FOR ALL AMERICA ★

(Pol. Adv. Paid for by Texas Johnson - Humphrey Campaign, Hunter McLean, C)





**Curriculum...**

(Continued from Page 1B)  
Reading include simple material from social studies, language, science and numbers. Each unit ends with comprehension exercises which require the pupils to Write, Read and Spell.

**WRITING**  
Our writing program is developed through the "Stories in Script" series by W. S. Benson and Company.

Since handwriting is essentially a basic tool that is used in written expression of thought, the main objective is to develop in each individual the habits and skills which will result in the ability to write legibly.

In teaching writing, the first step is to establish a purpose that has meaning for the child. The second step is to study the child and his potentialities, his special needs, and his individual difficulties. The third step is to help the child identify and analyze his own errors and to put emphasis on correction of individual errors.

In order for manuscript writing to be legible, emphasis is placed on the following elements: formation of letters, spacing of letters in words and spacing of words in sentences, size of writing, alignment, live quality, position of the body, the way the pencil is held, and the position of the paper.

Handwriting is correlated with everyday activities where written expression is needed. Also, children are motivated and encouraged to do as much creative writing as possible.

Some teachers prefer to introduce cursive writing during the second semester of second grade. A child that is ready to begin cursive writing will show signs of readiness, such as: having a desire to write the cursive style, having sufficient coordination of the muscles of the arm, hand and fingers, having manuscript, having the ability to write with sufficient speed, pencil correctly, and having the habit of taking correct position. The teacher uses her own judgment as to the times when she should introduce cursive writing.

**AMERICAN HERITAGE**  
Most everyday the opportunity arises to stress what to do to be a good citizen, how to show kindness, friendliness, honesty and obedience.

**SOCIAL STUDIES**  
The social studies program centers upon the community. Included in this phase of our curriculum are: a study of the workers in the community and the services they provide, ways of communication and transportation, family unity, citizenship, safety, good manners, and holidays.

**PHYSICAL EDUCATION AND HEALTH**  
In compliance with the President's wishes, we try to stress physical fitness. We spend thirty minutes a day on supervised play.

**HEALTH**  
Health is correlated with physical education. We have a Health Reading Book, "Three Friends." Scott Forseman and Co. which deals with the basic rules of health. The school nurse checks the eyes and ears of each pupil and makes recommendations if they need glasses or should see a doctor.

**MATH**  
The Modern Math Program, now in its transitional stage, is a new approach to the teaching of mathematics. The discovery approach to learning is employed; the child is given the opportunity to discover mathematical ideas for himself.

**SCIENCE**  
We use the science book, "Science Around You," published by Ginn and Co. The experiences of this book are common to a majority of seven-year-old children.

We study the four seasons and the seasonal changes in various places. Children take part in first-hand experiences to see what is in the air and to learn how to interpret changing weather. They learn some simple but accurate information about the earth and sky. They experiment with sound and develop an understanding of vibrations and how sounds help us.

**MUSIC**  
The "This is Music" series published by Allyn and Bacon is an instructional program in music based on the needs and interests of Second Grade children. Since music is an essential part of the education of every child, the classroom teacher can make a significant contribution to the musical development of boys and girls.

**ART**  
The "Art For You" series, published by Laidlaw Brothers, is the text for Second Grade. Art for primary children is a child's creative expression of what he has discovered about the world around him. He discovers a sense of pattern and design, a love of color, and a desire to experiment and make things. Each child has his own interpretation of form, proportion, and relationships. Art has a therapeutic quality which provides for emotional, physical, and aesthetic outlets. Therefore, we, as classroom teachers, have an opportunity to help children to succeed in this area and to give self-expression to his creative skills.

**PLEASANT VALLEY NEWS**  
October 23 at the Elmo Stevens home Blake Stevens was honored with a party for his third birthday.

Visiting in the Harold and Oscar Allison homes this weekend were Mr. and Mrs. Jim Grizzel and family, Ft. Sumner, N. M.

The Roy Bryant home was the scene of a family reunion for Mrs. Bryant this past week. Those attending were: Mr. and Mrs. Virgil Woolever, Richmond, Calif., Mr. and Mrs. Burt McDonald, Slaton, and her mother and father, Mr. and Mrs. Earnest Denny, Lubbock.

Sunday, Mrs. Bonnie Haberer was in Whiteface for the Golden Wedding Anniversary of Mr. and Mrs. Hugh Knox.

Mr. and Mrs. Thurlo Branscum left Tuesday for Sherman for the State Convention of the Soil Conservation.

Ted Haberer, Grand Island, Neb., has been in the Bonnie Haberer home for several days visiting and taking care of business matters. Also a house guest over the weekend was Paul Strand of Nebraska. He was here taking delivery of the 64 calf crop of the Hossel Ranch.

Mr. and Mrs. T. L. Fowler, Fowler, Colo. were guests in the E. K. Angeley home Sunday. Ken and Tub Angeley have recently returned home from hunting in Colorado. Tub was the only one to kill anything. He got an elk.

**Congratulations To**  
Mr. and Mrs. Evaristo Cortez, upon the birth of a baby girl 10-21-64 at 9:04 p.m. weighing 7 ing 7 lb. 2 oz.

Mr. and Mrs. Mack Moore upon the birth of a baby girl, born 10-21-64 at 9:04 p.m. weighing 7 lb.

Mr. and Mrs. Osbaldo Garcia, upon the birth of a baby boy, born 10-23-64 at 12:47 a.m. weighing 7 lb. 7 oz.

FRANCIS IMPLEMENT CO.  
FORD TRACTOR  
Muleshoe, Texas

ELECT PIGGLY WIGGLY FOR A BALANCED FOOD BUDGET!  
LOWEST PRICES ALWAYS!

**APPLES**  
Washington Extra Fancy Red Delicious, Buy Em By The Dozen

**39¢**

Green Pascal CELERY HEARTS Celo Bag ..... 29¢  
Fresh Clip Top TURNIPS Pound ..... 12 1/2¢

**LETTUCE** Fresh Crisp Large Green Heads ..... **2 Heads 29¢**

Yellow No. 1 Mild ONIONS Pound ..... 5¢  
Fresh RADISHES ..... 2 Large Bunches ..... 15¢

Vel Liquid  
**DETERGENT**  
Giant Bottle ..... **69¢**

Ajax  
**CLEANSER**  
2 for 33¢

Florient Aerosol, Assorted Scents, 5¢ off Label  
**DEODORANT**  
7 oz. Can ..... **54¢**

Palmolive  
**TOILET SOAP**  
2 bath size 33¢

Vel Beauty  
**TOILET SOAP**  
2 for 49¢

Sunshine Regent Sugar Wafer  
**COOKIES**  
10 oz. Pkg. .... **39¢**

These Values Good in Muleshoe November 2-3-4, 1964. We reserve the right to Limit Quantities.

I am deeply grateful for your continued confidence and support. I hope that I may have your vote for re-election on November 3rd to continue the important progress that we are making together.



RE-ELECT GOVERNOR JOHN  
**CONNALLY**  
FOR A GREATER TEXAS!

THINKING OF BUILDING?  
LET US HELP YOU  
PLAN - BUILD - and DECORATE YOUR HOME.

Mrs. Douglas Avery is Our Muleshoe Area Representative  
For More Information Call 3-2800  
Muleshoe, Texas

**CHERRY N. AKIN - - - - GEN. CONTRACTOR**

**FROZEN FOODS!**  
**Fruit Pies** ..... **29¢**

Banquet Apple, Peach and Cherry Family Size ..... 29¢

Banquet, Macaroni and Cheese CASSEROLE ..... 2 - 8 oz. pkg. 35¢

Tip Top Assorted Flavors DRINKS ..... 8 - 6 Oz. Cans ..... \$1

Chopped Broccoli, Peas and Carrots, Potatoes, Crinkle Cut, Seabrook CUT CORN ..... 6 - 10 oz. pkg. \$1

Rosarita Cheese Enchilada or Combination DINNERS ..... 3 - 12 oz. pkgs. \$1

**Strawberries** ..... **2 10 oz. pkg. 35¢**

Western Wonder Sliced

**CRISCO** All Vegetable Shortening, Highly Unsaturated ..... **3 LB. CAN 69¢**

**TIDE** HEAVY DUTY DETERGENT GIANT BOX ..... **69¢**

**COFFEE** GOLDEN WEST 1 Lb. Can Reg., Drip or Fine ..... **69¢**

**SAUCE** OLD FASHION APPLE SAUCE No. 300 CAN ..... **10¢**

**SUGAR** HOLLY ..... **10 LB. pkgs. 95¢**

Double S&H Green Stamps every Wednesday with \$2.50 purchased or more.

Piggly Wiggly Meats! Table Trimmed for Economy!

**GROUND BEEF** ..... **3 \$1**

LEAN, 100% PURE DOMESTIC BEEF, DATED FOR FRESHNESS

**ROUND STEAK** ..... **89¢**

**FRANKS** ..... **39¢**

**HEN TURKEYS** ..... **39¢**

ARMOUR STAR HEAVY BEEF, Lb. .... 89¢  
ARMOUR STAR 12 oz. pkg. .... 39¢  
CLARY'S U.S.D.A. GRADE A. 12 to 16 lbs. Avg. POUND ..... 39¢

Health and Beauty Aids!

**TOOTH PASTE**  
Crest, 5¢ off Label, with Extra 5¢ Coupon Toward Next Purchased of

Extra Large Size ..... **46¢**

Lilt, Push Button, with 36 Free Curlers, Reg. \$2.59, Tax 19¢  
**HOME PERMANENT** ..... **\$1.88**

Vaseline, 7¢ off Label, Tax 7¢  
**HAIR DRESSING** Giant Size ..... **66¢**

Cepacol, Reg. 97¢ Retail  
**MOUTH WASH** 14 oz. bottle ..... **79¢**

Regular \$1.69 Retail  
**DRISTAN TABLETS** 50 Ct. BH. ... **\$1.29**

Ellis Plain  
**CHILI** 24 oz. Can ..... **39¢**

Ellis Jumbo  
**TAMALES** ..... 3 - No. 2 1/2 Cans **\$1**

Softly Assorted Colors  
**TOILET TISSUE** 4 Roll Pack ..... **37¢**

Kraft Miniature  
**MARSHMALLOWS** 10 1/2 oz. pkg. **19¢**

Staley's Waffle, 6¢ off label  
**SYRUP** 24 oz. bottle ..... **39¢**

Marshall Freestones, Sliced or Halves  
**PEACHES** No. 2 1/2 Can ..... **33¢**

Nestle's, 5¢ off Label  
12 oz. bag  
**CHOCOLATE MORSELS** ..... **41¢**

Sanka Instant, 20¢ off Label  
**COFFEE** 8 oz. Jar ..... **\$1.67**

Borden's None Such  
**MINCEMEAT** 28 oz. jar ..... **61¢**

Hershey  
**COCOA** 1/2 Pound Can ..... **31¢**

April Shower  
**PEAS** ..... 2 - No. 303 Cans ..... **41¢**

Wesson  
**MAYONNAISE** Quart Jar ..... **49¢**

Thriftee  
**MIXED NUTS** 13 oz. can ..... **59¢**

Folger's Drip, Fine, or Regular  
**COFFEE** 1 Pound Can ..... **79¢**  
2 Pound Can ..... **\$1.57**

Lowest Prices . . . Greatest Variety . . . always, at . . .

**Piggly Wiggly**