









# END OF THE MONTH SAVINGS AT LOMART!



Pen & Pencil Sets or Single Units  
Cross, Paper Mate or Parker

3.00 OFF

16.99

10.69



3.99



Desk Pac Kit  
Scissors, Stapler, Ball Point Pen & Much More  
While Supplies Last! 9.99

Alps Back Packs  
Great for Back to School  
Each 3.19

Master Lock Security Lock Combination Padlock 1503D 2.49

2.59



Girl's Briefs  
Pastels & Whites, Fruit of the Loom  
Sizes 2-12 1.99



Boy's Briefs  
Fruit of the Loom  
Each 2.49

Pine Sol 2.19

Renuzit Adjustable Air Freshner 7.5 Oz. 59¢

Lavacol Rubbing Alcohol 16 Oz. 89¢

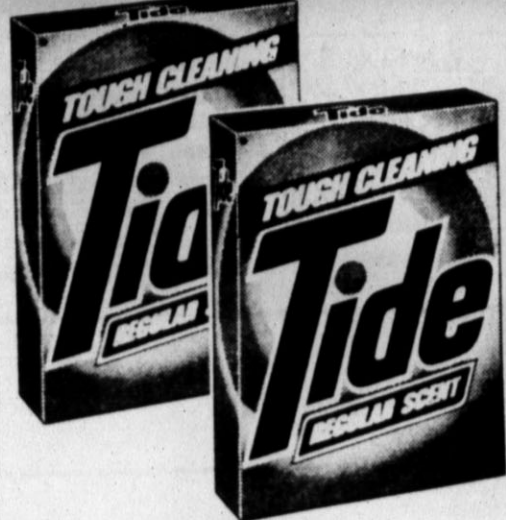
Beacon Shampoo & Conditioner 16 Oz. 89¢

Scope Mouthwash 3.99



Topco Sandwich Bags 80 Ct. 25¢

HEREFORD: 601 N. 25 Mile Avenue



Tide Laundry Detergent 40¢ Off Label Regular Scent 1.89

Luden's Cough Drops 99¢



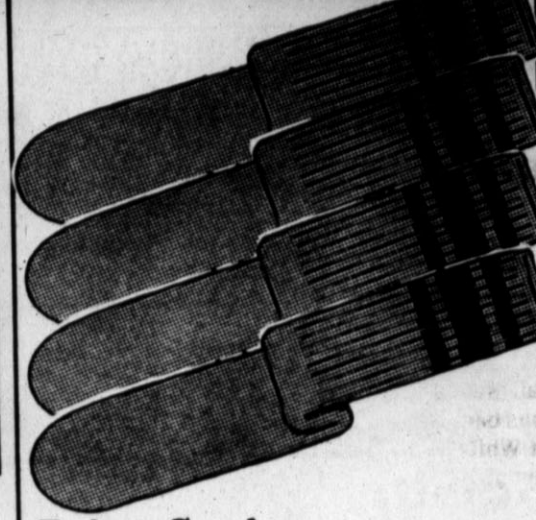
Purina Dog Chow \$1.00 Off Label 25 Lb. 6.39



Barbasol Shave Cream Assorted 11 Oz. 99¢



St. Ives Shampoo & Conditioner Twin Pack 18 Oz. 2.89



Tube Socks 6 Pr. Pkg. 8 1/2" Tall Made in U.S.A. 2.19

Bufferin Pain Relief 4.79

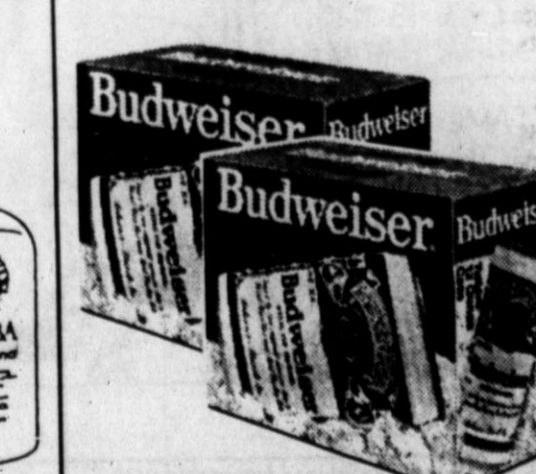


Pepto Bismol 12 Oz. 3.29

99¢

Barnes & Hinds Soft Mate Saline Solution 8 Oz. 2.99

BEER & WINE



Budweiser Beer Reg. or Light 12 Pk.- 12 Oz. Can 4.79

Effective 8/26/87 - 9/1/87



Busch or Natural Light Beer 24 Can Suitcase, 12 Oz. 6.79

California Cooler All Varieties 4 Pk.-12 Oz. NRB 2.39

Gallo Premium Table Wine All Varieties 1.5 Ltr. 2.79

3.89

Freixenet Cordon Negro Brut 750 ml. 4.19

Cruz Real Sangria Wine 1.5 Ltr. 3.69

Franzia Box Wine All Varieties 5 Ltr. 4.99

Ballatore Spumante 750 ml. 3.89



Chateau La Salle Wine All Varieties 750 ml. 3/\$6

VIDEO



Black Widow  
A complex psychological thriller about a beautiful serial killer whose victims are wealthy men. Stars Debra Winger and Theresa Russell.

62.95

# LoMart

# FDA dragging feet on absorbency ratings

CHICAGO (AP) — Federal regulators are guilty of dangerous delays in requiring standard ratings for tampon absorbency that could help millions of women reduce their risk of toxic shock syndrome, a public health advocate says.

Meanwhile, a new study by the Centers for Disease Control in Atlanta confirms that tampons with high absorbency increase the risk of toxic shock syndrome, and that absorbency may be a greater factor than the materials used to make the tampons.

The study and an editorial by Dr. Sidney M. Wolfe of the Public Citizen Health Research Group in Washington appear in today's Journal of the American Medical Association.

Wolfe wrote in an editorial titled "Dangerous Delays in Tampon Absorbency Warnings" that the FDA received its first alert in 1981 that a study had found a link between higher absorbency and higher risk.

Yet despite that evidence and further studies, as well as the FDA's announced intention in 1984 to require standardized absorbency labeling, the agency has "gone on again, off again," he said.

"The failure of the Food and Drug Administration to warn women adequately based on evidence available more than six years ago, a failure prolonged by the tampon industry, has caused unnecessary risks to

millions of American women who regularly use tampons," Wolfe wrote.

He termed the delay "unconscionable."

In a statement issued Thursday, the FDA said, "The agency did hope that an industry agreement on standardization could produce useful information on the labeling quicker than by regulation."

But manufacturers could not agree, it said, and "the agency is completing work on a proposal now and hopes to publish it for public comment soon."

Dr. Claire V. Broome, one of the CDC researchers, said women must balance the convenience of high-

absorbency tampons against "reducing the risk somewhat of a very rare disease."

"We're talking about only two cases per 100,000 menstruating women per year, which is a rare disease," she said in a telephone interview Thursday.

She and her colleagues said their study of 285 cases of tampon-associated toxic shock syndrome in 1983 and 1984 showed greater absorbency increased a woman's odds of getting the syndrome, regardless of the material the tampon was made of.

Use of the lowest absorbency tampon — Tampax Regular — was associated with 4.7 times higher odds of getting the syndrome than use of no tampon. But use of two of the highest-absorbency tampons — Kotex Super and OB Super — was linked with odds 57 times and 35.8 times greater, respectively.

Tina Barry, a spokeswoman for Dallas-based Kimberly-Clark Corp., which makes Kotex tampons, said,

"We question the validity and relevance of the study."

She said the CDC failed to provide an analysis of the control group of healthy tampon users it compared with those suffering from toxic shock syndrome, and that statistics supporting the odds ratios in the study suggest the ratios and conclusions "are inexact at best."

Susan Keithler, a spokeswoman for Milltown, N.J.-based Personal Products Co., a Johnson & Johnson company, said labels containing absorbency rating numbers on the OB tampon package and expanded information inside will allow consumers to make an informed choice.

OB tampon packages display a numerical rating based on a standard laboratory test, Wolfe said. Kimberly-Clark plans to add the ratings to Kotex tampon packaging early next year, Ms. Barry said.

Wolfe's group is proposing that manufacturers be required to indicate on packages how their product rates on the standard scale of 2 to 20.

A total of 2,962 cases of toxic shock syndrome have been reported since it was first documented in 1978, and 127 cases have been fatal, Broome said.

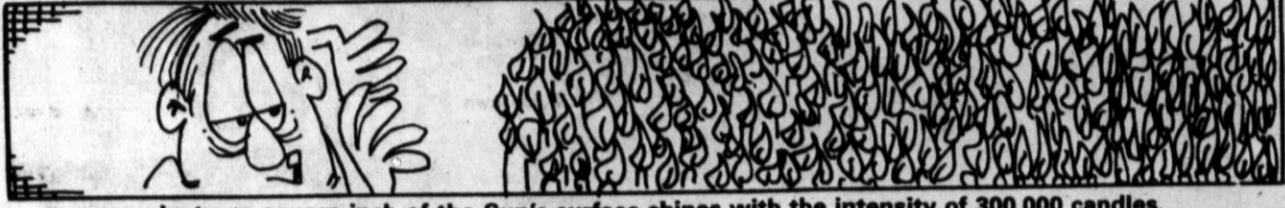
A woman who uses tampons should know the symptoms of the syndrome — high fever, vomiting, severe diarrhea, rashes, low blood pressure and shock — and if she develops them, remove her tampon and see a doctor, she said.

## A SILVER LINING

ROCHESTER, N.Y. (AP) — Some summer jobs can pay big dividends for employers.

Timothy Healy, an English major at the University of Rochester, spent last summer working in the mortgage department of the Dime Savings Bank, New York's third largest savings and loan. In 12 weeks, Healy personally brought in more than \$1 million in mortgage business to the Dime.

He had been hired through the university's "SummerReach" jobs program, which also offers subsidies to off-campus employers.



Just one square inch of the Sun's surface shines with the intensity of 300,000 candles.

# Comics

## PEANUTS by Charles Schultz



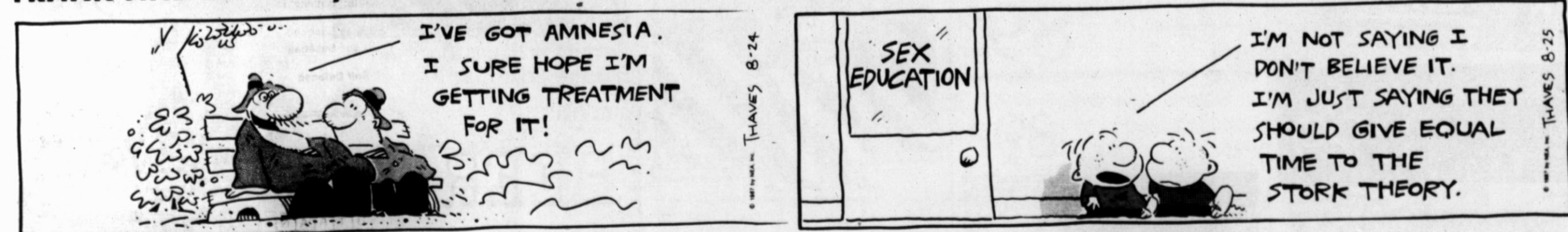
## STEVE CANYON by Milton Caniff



## THE BORN LOSER by Art Sansom



## FRANK AND ERNEST by Bob Thaves



## EK & MEK by Howie Schneider



## ALLEY OOP by Dave Graue



## MARMADUKE by Brad Anderson



Television

DAYTIME

MORNING

- 5:00 Success-N-Life
5:05 CNN Headline News
5:10 Beverly Scales
5:15 (MO,TU,WE,FR) Laverne and Shirley

- 5:00 (HBO) (TU) Henry's Cat, Part 1
5:00 (HBO) (WE) First Offender
5:00 (HBO) (TH) Mystery at Fire Island

- 5:00 (MO) Diana
5:00 (TU) Tennessee Williams' South
5:00 (WE) Guest for Beauty

- 5:00 SportsLook
5:00 Maple Town
5:00 James Robison
5:00 (FR) Dianne Warwick and Friends

- 5:00 (MO,TU,WE,TH) Little House on the Prairie
5:00 Young and the Restless
5:00 Bodies in Motion

- 5:00 (TH) Up Beat
5:00 (MO,TH,FR) Phyllis
5:00 (FR) Speedworld

EVENING

- 6:00 Hardcastle and McCormick
6:05 News
6:05 MacNeil/Lehrer NewsHour

- 6:00 (HBO) (TU) Henry's Cat, Part 1
6:00 (HBO) (WE) First Offender
6:00 (HBO) (TH) Mystery at Fire Island

- 6:00 (MO) Diana
6:00 (TU) Tennessee Williams' South
6:00 (WE) Guest for Beauty

- 6:00 SportsLook
6:00 Maple Town
6:00 James Robison
6:00 (FR) Dianne Warwick and Friends

- 6:00 (MO,TU,WE,TH) Little House on the Prairie
6:00 Young and the Restless
6:00 Bodies in Motion

- 6:00 (TH) Up Beat
6:00 (MO,TH,FR) Phyllis
6:00 (FR) Speedworld

TUESDAY

EVENING

- 6:00 Hardcastle and McCormick
6:05 News
6:05 MacNeil/Lehrer NewsHour

- 6:00 (HBO) (TU) Henry's Cat, Part 1
6:00 (HBO) (WE) First Offender
6:00 (HBO) (TH) Mystery at Fire Island

- 6:00 (MO) Diana
6:00 (TU) Tennessee Williams' South
6:00 (WE) Guest for Beauty

- 6:00 SportsLook
6:00 Maple Town
6:00 James Robison
6:00 (FR) Dianne Warwick and Friends

- 6:00 (MO,TU,WE,TH) Little House on the Prairie
6:00 Young and the Restless
6:00 Bodies in Motion

- 6:00 (TH) Up Beat
6:00 (MO,TH,FR) Phyllis
6:00 (FR) Speedworld

Crossword

Crossword puzzle grid with clues for Across and Down. Clues include: 1 Affect, 5 Status, 8 Actress, 12 Corn lily, 13 Baseball official (abbr.), 14 Moslem priest, 15 Swamps, 16 Female sheep, 17 Inflexible, 18 More nervous, 20 Nary a one (2 wds.), 22 Actor Ron, 23 Bent to one side, 24 Israeli, 27 Actress, 28 Caldwell, 28 Who (Fr.), 31 York, 32 Mold, 33 Last mo., 34 Clear Day, 35 Take a stroll, 36 Tropical cuckoo, 37 Three (pref.), 38 Last queen of Spain, 39 Fizzy drinks, 41 Container, 42 Sine non, 43 Big lizard, 46 Halt, 50 Flippers, 51 Collection, 53 Entreaty, 54 Chimney, 55 Author, 56 Demons, 57 Sweet potatoes, 58 Atmosphere, 59 Negatives

Get plugged in! Hereford Cablevision 126 E. 3rd 364-3912

DOWN
1 Musical instrument
585 (c) 1987 by NEA, Inc.







# Inmates anxious to work on degrees

By ALBERTO S. FRANCO  
Associated Press Writer

ROSHARON, Texas (AP) — Their college campus is not adorned with ivy and their shirts bear numbers rather than Greek letters.

But that doesn't stop about 40 students from looking forward to the fall term and further work on their master's degrees.

Ramsey is not a typical school. And people like James McCombs are not typical students.

"It's a positive way of coming out of a negative situation," says McCombs, 49, a narcotics convict in the fifth year of a life term at the Ramsey I Unit of the Texas Department of Corrections.

The Texas prison system, the nation's third-largest behind California and New York, is the only state offering a master's program to inmates, says Bart Reddoch, principal at

Ramsey I.

The University of Houston-Clear Lake graduate studies program began at the prison last spring and offers inmates the opportunity to achieve a master's in humanities. The program concentrates on writing and includes courses in literature, philosophy and history.

"In the wings you can't sit around and cut up Shakespeare and Plato," says Ronald Danford, 39, who is serving 15 years for various convictions, including possession of marijuana. "I thought Plato was the Chicano connection out of east Houston before coming through here."

The classes are conducted in a few small classrooms in a prison wing where conditions don't always promote learning.

"Sometimes the inmates have a hard time studying because of the noise," Reddoch says. "And the

classrooms are air-conditioned — when it's working."

George Trabling, director of the university's programs at the prison, says although college studies are not classified as rehabilitation, they serve best in that capacity.

"One of the main things it does is change their (inmate's) attitude about themselves," Trabling says.

It's the top rung in a learning ladder that starts with special education programs. All Texas prison units, except for a hospital facility, conduct classes under the auspices of the Windham School District. The Texas Board of Corrections also functions as the Windham Board of Education.

Inmates receive higher education through junior colleges and universities in cooperation with the Windham system, which in 1976 became the first prison system to be fully accredited by a regional agency, the

Southern Association of Schools.

Inmate-students say the program has benefits both now and in the future.

"College education has given me the ability to think better," says Charles Jones, who dropped out of school in the sixth grade. "If I apply it crooked, I'll be a better crook."

The program makes prison seem less monotonous than it does to other inmates who spend their time dreaming of a "big score" awaiting them on the outside, students say.

Jones, 31, serving a life sentence for murder, says the program can be a form of escape for the inmates.

"They can lock you up so tight that you can't see or hear anything, but they can't lock up your mind," says Jones, who gained a general education diploma while in prison.

Danford says he probably would not have gone to school as a free

man. "This is my fourth degree and I've never stepped in a college classroom," Danford says.

The system has occasional problems, Reddoch acknowledges. Inmates took school personnel hostage during an escape attempt at the Walls Unit in Huntsville in 1974. Two Windham people were killed.

But Trabling, who gives inmates classes in psychology and criminology, says teachers at the unit do not feel threatened in the environment and many have taught in prison schools for years. Only one guard is on duty in the school while about 180 inmates attend classes each day.

Inmates in the graduate program are treated like other university students and all of them work as much as 12 hours per day on prison jobs.

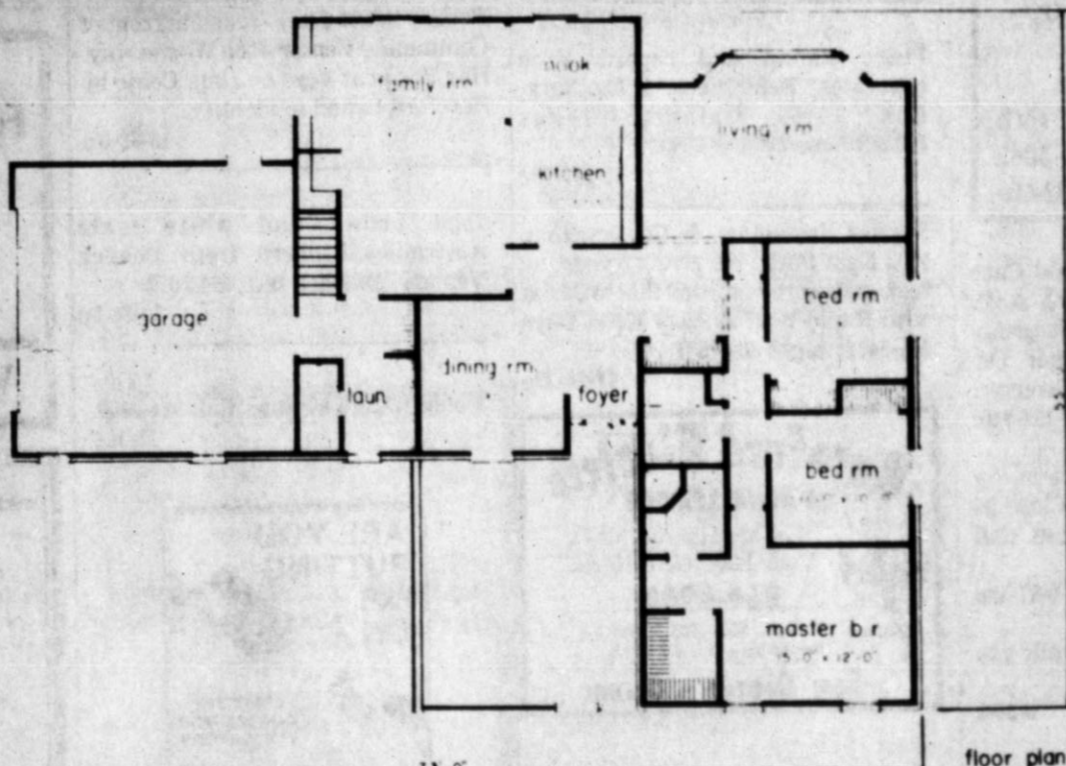
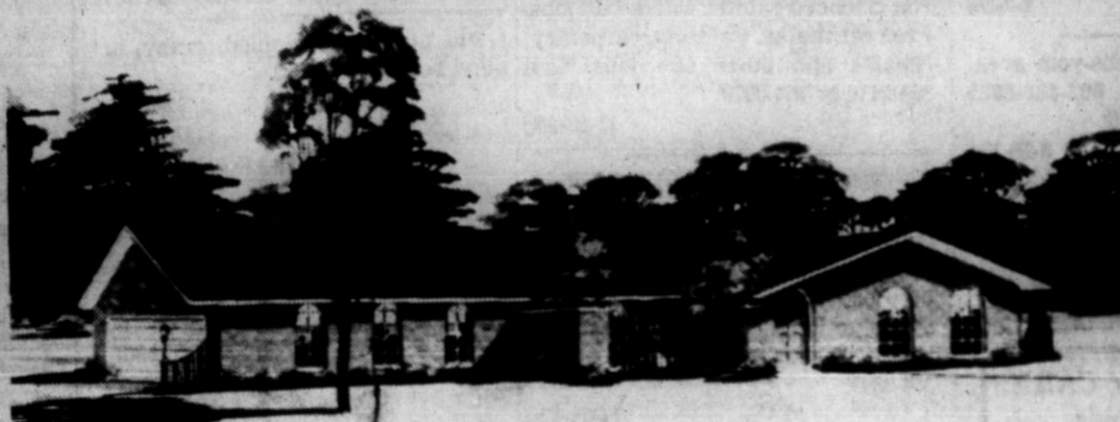
"About the only thing special we offer out here is that we let them withdraw during the semester if they're paroled," Trabling says.

Trabling says while the overall number of parolees sent back to prison hovers around 42 percent, only about 15 percent with substantial college credits will return. He says most parolees can find work on the outside, and the ex-inmates themselves are usually the ones who make their record an employment issue.

**Troy's Sweet Shop**  
We Sweeten Your Life Everyday  
Wide Selection of doughnuts and rolls  
Cakes, Coffee  
Open: Mon. - Fri. 6 a.m. - 8 p.m.  
Saturday 8 a.m. - 7 p.m.  
1802 E. Park Ave. 364-0378

# HOME FURNISHINGS

## HOMES FOR AMERICANS



THE HUB OF THIS HOUSE IS centered between the garage and bedroom wing. The kitchen, nook and family room are separate yet an integral part of one another. The family room features a fireplace. Plan HA1417G has 2,088 square feet. For more information write — enclosing a stamped, self-addressed envelope — to architect Carl E. Gaiser, 33018 Grand River, Farmington, MI 48024.

**SPEEDBALL**  
Ready To Use  
**Power Spray Cleaner**

Big job or small, this is the spray and wipe cleaner that does them all. Cuts through oil and grease film. Takes carbon and road film off vehicles. Powers off soil and marks and grime on walls, floors, machinery, vehicles, equipment, any washable surface.

HEREFORD  
**JANITOR**  
SUPPLY, INC.  
1301 E. Park Ave. 364-0517

**Your Direct Line To...**

...Innovative Service

**West Texas Rural**  
S. Hwy. 385  
364-3331

**You Make The Difference**

Let us serve you.

**The First National Bank of Hereford**

300 N. Main Hereford, Texas  
364-2435 Member F.D.I.C.

- TVS
- STEREOS
- VCR
- APPLIANCES
- FURNITURE

We Meet Your Needs

**SHOWCASE RENTALS**

"Rent to Own"  
No Questions Asked  
**364-7404 900 N. Lee**

TOMMIE MOORE Manager  
AL CHERRY Service Technician  
RICK L. SANCHEZ Collector

**YOUR Independent Insurance AGENT**  
SERVES YOU FIRST

THE MORE-THAN-ONE-COMPANY INSURANCE AGENT

**PLAINS Insurance Agency**

205 E. Park 364-2232

**Hereford Cablevision**

**HBO** KCIT  
Nickelodeon  
USA Network **ESPN**  
WGN CBN  
**CINEMAX**  
ENTERTAINMENT TO THE MAX  
**And Many More!**

364-3912 126 E. 3rd

Come in and take a look at our  
**1,000 Series Ford Tractors!**

**New Holland Inc.**  
Hwy. 385 South  
Hereford, Texas 79045

**Helpful Hints For Your Yard & Garden!**

Check your lawn for grubs or sod webworms, apply diazinon or dursban for control. Also remember to continue spraying for insects and diseases on late maturing fruits.

**First National Nursery**  
Holly Sugar Rd. 364-6030