

PAGE ONE

A QUICK READ OF THE NEWS

Campus all abuzz

Students at DeLand (Fla.) High School released 80,000 bees on campus in an apparent end-of-school prank and were sent home early after eight beehives were glued down on school grounds and the swarms escaped, principal Mitch Moyer said.

No one was stung, he said.

"We've contended with various senior pranks over the years, but this one could have been dangerous," said Moyer, who is allergic to bee stings. The Volusia County Sheriff's Office was investigating the incident.

Jurors to serve in style

Receiving a jury summons may not be such bad news anymore for people living in Orange County, Calif.

Court officials in Santa Ana unveiled a new jury assembly room designed to appease potential jurors.

Faux leather couches and ergonomically designed chairs replaced bench and floor seating.

There are two dozen workspaces equipped with modem connections so prospective jurors can keep themselves busy.

A network of seven large-screen televisions and a video projection system also have been installed to make the waiting game less grueling.

The upgrades to the state's largest jury assembly room cost more than \$1.5 million. The room can hold as many as 600 people.



Drawing date: Wednesday, June 12
Winning numbers: 7-30-32-37-44-46
Estimated jackpot: \$32 million
Winners: 0
Next drawing: Saturday, June 15
Estimated jackpot: \$40 million

On this date in history

June 13 — After the Battle of Anahuac, Texans camped at Turtle Bayou adopt the Turtle Bayou Resolutions, stating that they are not in revolt against Mexico but were fighting for Gen. Santa Anna, who was then leading a revolution against President Bustamante (1822).

LOCAL WEATHER

As of Friday, the National Weather Service was predicting another mild day Sunday (with a high of about 88) before the mercury climbs back into the mid-90s Monday. Tuesday should bring morning cloudiness, but sunshine is expected to return in the afternoon. Wednesday and Thursday should be partly cloudy with mid-90s.

Editor Ronn Smith can be reached at 272-4536 or ctyankee@fivearea.com

Missed your paper? Call carrier Yolanda Martínez at 272-4536 during business hours, 8:30 a.m.-5 p.m.

County set to consider new EMS director

JOURNAL STAFF REPORT

The Bailey County Commissioners' Court has scheduled a special meeting at 10 a.m. Monday to consider hiring a new director of emergency medical services.

Commissioners accepted the resignation of Chris Thompson as EMS director last Monday, but delayed action on hiring

a replacement.

Thompson has notified the county that Monday will be his first day on the job with Amarillo EMS, County Judge Marilyn Cox said Wednesday.

The county has interviewed two candidates — Kem Bales and Julie Mason — to replace Thompson, and both of them al-

ready work in the county's EMS system.

Monday's agenda includes time to interview any further candidates who seek the job.

Once the appointment of a new EMS director is considered, commissioners also are scheduled to conduct a budget workshop.

City may put time line on dairy cash

The Muleshoe Economic Development Corp. board voted Thursday to recommend that the city put a time limit on an offer of \$100,000 in aid to a proposed dairy.

City Manager David Brunson advised the board to take some type of action.

"We've encumbered this

see **DAIRY** on page 2

Domínguez takes All-South Plains baseball honors

D.J. Domínguez, who graduated from Muleshoe High School last month, was named to the *Lubbock Avalanche-Journal* All-South Plains honorable mention list as an outfielder Monday.

Ross Nieman, a Shallowater graduate, was named pitcher of the year and Shallowater coach Max Kattwinkel was coach of the year.

Lubbock Cooper's Blake Malick, who also graduated, was player of the year.



Journal photos: Marshall Stinnett

Twister damage

Donnie Coker of Lazbuddie stands (above) in front of the debris, mainly from one end of a barn, after an apparent tornado touched down at his farm Thursday. The other end of the barn remained standing (left) but was extensively damaged. Broken utility poles lie in the foreground. The scene was seven miles north and slightly east of Lazbuddie; no injuries were reported.



Two elementary principals needed

JOURNAL STAFF REPORT

Muleshoe School Superintendent Gene Sheets said Thursday that the district needs principals at both Dillman and DeShazo elementary schools.

Helen Grigsby is retiring as Dillman principal after a long career with the district, while DeShazo Principal Priscilla Mestas as to move to the district's special projects position, citing family reasons.

In making that move, Mestas will be replacing Carol Williams, who will become elementary prin-

cipal at Somerville, Texas.

Other school personnel changes include:

- Nick Dickson has left his junior high coaching job to become junior high coordinator at Post. He is being replaced by Jeff Withrow, a Bula High School graduate who recently finished his degree program;

- Nelda Wilhite has been hired as a second-grade teacher after teaching for several years at Three Way. She replaces Jan Morris, who

see **SCHOOLS** on page 2

Texas wheat production dives

With Bailey County's dryland wheat harvest in the home stretch and irrigated harvest under way, the Texas Agricultural Statistics Service reported last week that the state's wheat crop is being estimated at 26 percent below last year's — or about 80 million bushels.

That is still 21 percent above the 2000 crop, according to the number crunchers.

For the High Plains, though, this year's estimate looks much worse — down 57 percent from last year.

State Statistician Robin Roark said rain was received in some parts of the Panhandle in time to be of possible help to the wheat, but for the most part spring rains were either absent in or too late to help the wheat in other parts of the state.

Authorities shut down Farwell eight-liner casinos

JOURNAL STAFF REPORT

FARWELL — Dozens of law enforcement officers led by state police closed three casinos in Farwell on Friday and arrested one owner.

Authorities said the other owners would be arrested and charged with misdemeanor gambling violations when they could be located.

Mike Viesca, a spokesman for the Texas attorney general's office in Austin, said he did not know what specific charges the owners would be facing.

Viesca said the attorney

general's only involvement in the raid — which closed Border Games, Winner's Circle and George's Goldstrike — was having an investigator there to help execute search warrants.

He said he was told that 147 machines and about \$47,000 in cash were confiscated in connection with the raid.

He also said details would have to come from the Department of Public Safety, where spokeswoman Tela Mange said Friday she had no information about such a

see **RAID** on page 2



Journal photo: Marshall Stinnett

The only activity to be seen Friday around Border Games in Farwell involved a West Texas Gas crew repairing a leak in a gas line.

AROUND MULESHOE

Summer food program under way

The Muleshoe School District's summer food-service program is serving breakfast and lunch through June 28, and then at DeShazo Elementary School through July 26.

Breakfast is served from 7:30 a.m. to 8 a.m. at Dillman and DeShazo elementaries and Muleshoe High School.

Lunches are available at Dillman from 11:30 a.m. to 12:30 p.m., at the high school from 11:55 a.m. to 12:55 p.m. and at DeShazo from noon to 12:30 p.m.

The July hours at DeShazo will be the same for breakfast, with being available from 11:30 a.m. to 12:30 p.m.

Meals are available to any child between the ages of 1 and 18.

Church selling homemade fried pies

Members of First Assembly of God are selling homemade pies to be delivered or picked up June 24 between 9 a.m. and 3 p.m.

The price is \$1 each or \$10 per dozen, and flavors available are peach, apple, chocolate, lemon, apricot, blueberry and cherry.

Those who want to pick up their orders may do so at the church's Family Life Building, 521 S. First St.

Orders or more information can be obtained by calling 272-3017.

Two youths attend seminar

Shauna Kitchens and Jordan Dale of Bailey County attended the Texas Farm Bureau Citizenship Seminar in San Angelo on June 3-7.

They were among about 350 high school juniors and seniors attending from around the state.

Rodney Baker, Bailey County Farm Bureau president, said the seminar is to provide the students with a better understanding of their American heritage and the capitalistic free-enterprise system.

Showers dot Bailey County

J.K. Adams, official weather recorder for Muleshoe, says the city had a quarter of inch Wednesday afternoon

and half an inch Sunday. AK Ranch near the Three Way School reported .51 of an inch last weekend.

Notable were unofficial reports of up to 1.6 inches just west of Muleshoe, but the storm didn't reach far to the west.

Most of the county has not had measurable rainfall all spring.

Freshman orientation planned

Muleshoe High School has scheduled freshman orientation from 8:30 a.m. to 3 p.m. June 25-28 in the high school auditorium.

Lunch will be provided in the school cafeteria, and all incoming freshman are encouraged to attend.

The sessions will involve goal-setting, problem-solving, decision-making and working as a team.

Those who plan to attend are asked to notify Dana Wright at 272-7333; transportation can be arranged at the same number.

Public calendar

June 17 — 10 a.m. Bailey County Commissioners' Court, in the commission room at the courthouse.

SCHOOLS

from page 1

switched to sixth-grade reading;

- Gilbert Ramirez replaces Donnie Scott as baseball coach. Ramirez spent four years with Fort Worth schools;
- Barbara Ramirez will help with tuition and other duties as an aide under a Ninth Grade Initiative Grant; and
- Michael Matlock comes

from Lamesa to be the new choir director.

Su Scott and Leslie Kilmer have not resigned, as had been reported, and Gloria Agundiz has withdrawn her resignation.

MULESHOE MOTOR CO.
1125 W. American Blvd., Muleshoe
272-4251 or 1-800-432-7617
www.muleshoemotor.com

Also on June 17 — 11 a.m. to 2 p.m. Lazzbuddie Methodist Church blood drive.

Also on June 17 — 5:30 p.m. Public hearing at city hall to allow public discussion of the city's application for a Texas Community Development Program grant.

Also on June 17 — 7 p.m. Muleshoe School Board, in the district administration building.

June 18 — 7 p.m. Hub Cowboy Fellowship, 1 1/2 miles south of the intersection of Texas 86 and 214. Non-denominational; guest speaker is Dale Griswold.

June 18-21 — 9 a.m. to noon. Vacation Bible school at Muleshoe Church of Christ, 2201 W. American Blvd., for children age 3 through fifth grade. Snacks will be provided; everyone welcome.

June 20 — 7 p.m. Muleshoe Area Hospital District Board, in the dining room of Muleshoe Area Medical Center.

Take Dad Out for a Bite
Special Father's Day Buffet June 16th!
Buffet served 11 am - 2 pm

SIRLOIN STEAK

Sauteed with mushrooms, onions & mozzarella cheese
ALSO SERVING TURKEY & DRESSING & OUR WORLD FAMOUS POT ROAST!
Includes delicious vegetables & a trip to our fabulous salad bar!
Drink not included. Plus tax.

\$6.99

2103 W. American Blvd.
Muleshoe • 272-4080
THANK YOU FOR YOUR PATRONAGE!

Subscribe Today! 806-272-4536

DAIRY

from page 1

\$100,000, and we don't know if three years from now he's going to want this money, or exactly when it might be," Brunson said.

Board member Pat Angeley said she thought it would be reasonable to require that construction begin within a year of permit approval (which is pending) and completion with two years.

The motion was made and approved.

Brunson also told the board that this year's budget included no line item for economic development funds, so the budget will show that the board is in the

red when in fact the money is there. He said that would be changed for next year's

RAID

from page 1

raid.

District Attorney Johnny Actkinson's office was not involved because the charges are only misdemeanors.

Actkinson said the raid could have been prompted by allegations of procedural improprieties on the part of the operators or various other things, but added that he did not know what the reason was.

budget.

The next meeting was set for 5 p.m. July 11.

Arrested Wednesday was George John Kiousis, 58, of Post, the owner of George's Goldstrike.

Viesca said Parmer County Attorney Charles Aycock has asked the attorney general for assistance in prosecuting the case. Aycock was unavailable for comment.

Sandhills Village Assisted Living

If you are ready for a little help, but don't need a nursing home, consider Sandhills Village.

Compare our apartment rates. We offer flat monthly rates — no add-on charges for levels of care. We accept CBA (Medicaid).

Sandhills Village is an expansion of Runningwater Draw Care Center.

806-285-3356 12th & Avenue I Olton, Texas
License #030256

Bailey County Journal USPS 040-200
Established March 31, 1963. Published by Triple S Publishing, Inc. Every Sunday at 304 W. Second, P.O. Box 449, Muleshoe, TX 79347.
Periodicals Postage paid at Muleshoe, TX.
POSTMASTER: Send address changes to the Bailey County Journal, P.O. Box 449, Muleshoe, TX 79347.
We are qualified members of:
Panhandle Press Association, National Newspaper Association, West Texas Press Association and Texas Press Association

WEST TEXAS PRESS ASSOCIATION MEMBER 2002

PPA Panhandle Press Association

© 1990 **Yolanda Martinez, Office Assistant**

Scot Stinnett, Publisher
Lisa Stinnett, Vice-President/Comptroller
Ronn Smith, Editor
Beatrice Morin, Classifieds
Leah Bell, Advertising

SUBSCRIPTIONS: Muleshoe Journal and Bailey County Journal By Carrier Yearly - \$22.00
Bailey County — by mail - \$24.00
Elsewhere - \$26.00
Advertising Rate Cards on Application

Advertisers should check their ad the first day of insertion. The Journals will not be liable for failure to publish an ad or for a typographical error or errors in publications except to the extent of the cost of the ad for the first day of insertion. Adjustment for errors will be limited to the cost of that portion of the ad where the error occurred.

The Few. The Proud. The 2002 Father of the Year Contestants!

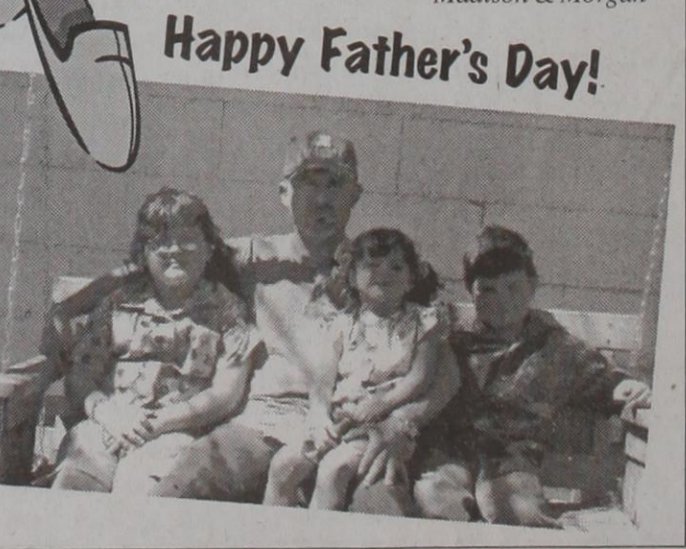
Father of the Year Contestant Leon Warren
Leon Warren is the best father because he is the best grandfather "Tater" could ever have. She was and is always included in whatever activity "PaPa" is pursuing.
Love,
Sheri & Taylor Nieves



Father of the Year Contestant Keihm Smith
We enter our dad in this contest every year because he never quits being the best dad in the world!
Love,
Madison & Morgan



Father of the Year Contestant Billy Williams
I think my dad is the best. My dad loves me. He is nice. He is sweet, gentle, playful and he is the best!!
Love, China (age 8)
My dad is the best. My dad is good to me. He plays with me. He helps me, rides bikes with me and because he loves me.
Love, Weldon (age 7)
My dad is the best dad because my daddy plays with me. He kicks balls around with me, rides bikes with me and he picks me up. He takes care of me. My daddy Loves me. That is why he is the best dad.
Love, Micha (age 4)



Happy Father's Day!



Festival competitors

Lazbuddie Spanish students who competed April 5 in the South Plains College Foreign Language Festival are (back row, from left) Juan Campos, rated superior in poetry reading; José Beliz, rated superior in drawing; Raul Mata, rated superior in drawing; Alejandro Tofoya, rated superior in drawing and poster art; and Hilda Márquez, rated superior in prose and written test; (front row, from left) Kera Lewandowski, rated excellent in poetry reading; Susie Juárez, rated excellent in poetry reading; Suzanne Mason, rated superior poster art; Amanda Schaeffer, rated superior in drawing; and Mandy Haney. All were students in Vickie Burch's Spanish I and Spanish II classes.

Camp caters to children with cancer

Camp Alpie is again accepting reservations from Panhandle and South Plains children who have or have had cancer.

The camp is scheduled for Aug. 4-9 at Ceta Canyon Methodist Camp near Canyon. Pre-registration is encouraged by June 30.

Children ages 7 through 14 are welcome at Camp Alpie, and a sibling may accompany each camper.

The camp is free to campers, thanks to sponsors who underwrite expenses. (Sponsoring a camper costs \$250.)

Established in 1988, Camp Alpie offers all the regular activities of summer camp including indoor and outdoor sports and recreation, arts and crafts, swimming and much more.

The camp provides special facilities, diets and trained staff to accommodate the needs of cancer patients.

Parents of Camp Alpie residents also receive a dose of relaxation and fun if they attend a free, concurrent parents' camp.

While their children enjoy the outdoors, parents spend a week at an Amarillo hotel being treated to diversions such as special dinners and visits to area attractions.

Parents also benefit from guest speakers and activities selected to assist the family in coping with their situation.

"We plan Camp Alpie and Parents' Camp to give everyone in the family a break," said camp president Robin Johnson.

Parents of eligible

TODAY'S RECIPE

STEAMED SALMON IN TI LEAVES

2 Tbsp. preserved black beans, rinsed, drained and chopped

2 Tbsp. minced garlic

4 ti leaves

1 1/2 lbs. (approx.) salmon fillet, skinned and cut into four portions

4 green onions and tops, thinly sliced

4 thin slices fresh ginger, slivered

Chile-soy sauce

1/4 cup vegetable oil

2 tsp. minced, seeded small hot chiles, such as fresh jalapeño

2 tsp. sesame oil

1/4 cup soy sauce

Finely chop the black beans and garlic together to make a rough paste.

To make each packet, place a ti leaf on a work surface, vein side up. Place a piece of salmon on a leaf;

spread with a tablespoon of black bean paste.

Sprinkle with a fourth of the green onions and a fourth of the ginger. Wrap both ends of a ti leaf around salmon to completely enclose the fish.

(The ends of the packet will be open.)

Prepare the sauce: Warm vegetable oil in a small pan over low heat. Remove from heat and add the minced chile and sesame oil.

Stir in the soy sauce (the oil will sizzle). Remove the pan from heat.

Place a bamboo steaming basket or steaming rack on a wok. Add water to just below the level of the basket and bring to a boil.

Place the packets in the basket, cover and steam until the center of the fish is opaque, seven to 10 minutes.

To test, cut a tiny slit through a ti leaf into a fish.

Serve fish with warm chile-soy sauce for dipping.

Makes 4 servings

Note: Ti leaves are widely available from florists. If they can't be found, wrap each portion of salmon in a 12-inch square of aluminum foil.



1125 W. American Blvd., Muleshoe
272-4251 or 1-800-432-7617
www.muleshoemotor.com

Medicare Supplement Insurance... The State Farm Way!

- flexible • affordable
- backed by good neighbor service



Call State Farm Agent:

Mark Morton
101 Main Street
Muleshoe, TX
806-272-7519



Like a good neighbor, State Farm is there.®

statefarm.com

State Farm Mutual Automobile Insurance Company
Home Office: Bloomington, Illinois

Call for details on coverage, costs, restrictions and renewability

Note: These policies are not connected with or endorsed by the United States Government or the Federal Medicare Program.

P-98415 12/00

BUSINESS NEWS

CAROLYN'S

Carolyn's Christmas Creations of Muleshoe has been awarded platinum dealer status for 2002 by the DEMDACO Co. of Stillwell, Kan.

Carolyn Johnson, owner of the store, said the award was based on the large sales

volume the store generated last season

Johnson said her largest seller from the company, which utilizes artists' original work, was the "Willow Tree" line by Susan Lordi of Kansas City, followed by Christmas carvings by Craig Kirkwood of Laramie, Wyo..

Seventh Annual

BATTLE OF THE DEALERS

The Great TENT EVENT

Extended for one week only!

Excess National Inventory DISPOSAL SALE

OVER 400 VEHICLES ALL AT ONE LOCATION

Prices continue to be slashed on NEW & USED CARS - TRUCKS - SUVs
Including program vehicles, lease returns & bank repos
PLUS, OVER 50 RECENT QUALITY TRADE-INS!

<p>SAVE \$220</p>  <p>2002 DODGE NEON ES</p> <p>ONLY \$12,000 OR \$164/mo</p> <p><small>MSRP \$14,220, *2000 factory rebate, *220 dealer discount.</small></p>	<p>SAVE \$2590</p>  <p>2002 DODGE RAM 1500</p> <p>ONLY \$17,300 OR \$237/mo</p> <p><small>MSRP \$29,690, *1500 factory rebate, *300 commercial factory rebate with qualifications, *2790 dealer discount.</small></p>	<p>SAVE \$4240</p>  <p>2002 FORD F-250 SUPER DUTY CREW CAB 4x4 XLT</p> <p>ONLY \$34,500 24 in stock</p> <p><small>MSRP \$38,740, *1000 factory rebate, *300 commercial factory rebate with qualifications, *2940 dealer discount.</small></p>
--	--	---

0.9% NEW VEHICLE FINANCING	5.7% USED VEHICLE FINANCING	\$3,000 FACTORY REBATES	GUARANTEED HIGHEST VALUE FOR YOUR TRADE! ALL CREDIT APPS ACCEPTED!
-----------------------------------	------------------------------------	--------------------------------	---

Over 200 Quality Used Cars, Trucks & SUVs To Choose From - ALL PRICED AT BOTTOM DOLLAR!

<p>YOUR CHOICE ONLY \$99 OR LESS</p> <p>1978 Dodge Conversion Van DA90755</p> <p>1990 Pontiac Sunbird OA602966</p> <p>1991 Chevrolet Ext Cab OA97056</p> <p>1991 Chrysler New Yorker DA159138</p> <p>1992 Mitsubishi Galant OA012245</p> <p>1992 Ford F-150 Super Cab XAB25603</p> <p>1993 Pontiac Grand Am OA773685</p> <p>48 months @ 9.5% apr with *1000 down, OAC.</p>	<p>YOUR CHOICE ONLY \$139 OR LESS</p> <p>1993 Nissan Altima GL DA193595</p> <p>1994 Ford F-150 XAA56606</p> <p>1995 Chevrolet Corsica OA315269</p> <p>1995 Buick Century OA406825</p> <p>1996 Chevrolet Cavalier OA232967</p> <p>1997 Plymouth Breeze YR539165</p> <p>1998 Dodge Neon OA43576</p> <p>60 months @ 9.5% apr with *1250 down, OAC.</p>	<p>YOUR CHOICE ONLY \$189 OR LESS</p> <p>1995 Dodge Ram 2500 YK22267</p> <p>1998 Pontiac Grand Am OA752310</p> <p>1999 Chevrolet Cavalier OP228360</p> <p>1999 Chevrolet Prism LSI OP412501</p> <p>1999 Pontiac Grand Am OA819113</p> <p>1999 Ford Taurus FA146880</p> <p>1999 Nissan Sentra GXE OP075072</p> <p>72 months @ 9.5% apr with *2000 down, OAC.</p>
---	--	--

EXTENDED THRU SATURDAY ONLY

ABSOLUTELY ENDS SATURDAY, JUNE 22ND

GREYHOUND STADIUM

9AM-9PM MONDAY-SATURDAY

US Highway 70
halfway between
Clovis & Portales

CLOVIS

GREYHOUND STADIUM

Blackwater Draw Museum

PORTALES

Illustrations may vary. All vehicles subject to prior sale. Rebates assigned to dealer. * 72 months @ 7.25% apr with 20% down, OAC. † Financing \$27,500 or more for 54 months or less, OAC.





Juan Jose



Josue



Gabriella



Marco



Paublo



Adriana L.



Michael



Angelina



Owen



Angela



Eric



Adriana S.



Lyzette

Kinder Steps Graduates 2002

This year's KinderSteps class includes Paublo Flores, son of Amado and Rosa Flores; Marco Daniel, son of Elias and Leonor Arrieta; Eric Sánchez, son of Arturo and Rosemary Sánchez; and Adriana Loya, daughter of Alfonso Loya and Santana Chávez.

Also Lyzette Trevino, daughter of Isidro and Anabelia Treviño; Angela Rodríguez, daughter of Humberto and Julia

Rodríguez; Juan José Alvarado, son of Martha Alvarado; Adriana Sigala, daughter of Carlota Sigala; and Angelina Pérez, daughter of José Angel and Judith Pérez;

Also Josué Chacón, son of Chano and Sonia Chacón; Owen Raymond, son of Greta Donaldson; Gabriella Chávez, daughter of Cecilo and Eva Chávez; and Michael Martínez, son of Robert and Erica Martínez.

Texas watermelon harvest goes well

SPECIAL TO THE JOURNAL COLLEGE STATION — Despite harsh weather conditions throughout parts of Texas, the state's watermelon harvest is progressing well, Texas Cooperative Extension reports.

Late-winter freezes and current water shortages in South Texas have slowed production; however, better conditions in East Texas and the South Plains have helped statewide harvest, said Dr. Frank Dainello, professor and Extension horticulturist.

"The lower Rio Grande Valley is suffering dramatically from this year's drought," he said.

The drought is also affecting production in the Winter Garden near San Antonio, but irrigation is stabilizing those conditions.

Watermelon is one of the most widely grown vegetables in Texas, with the state in close competition with Florida as the nation's leading producer.

Watermelon harvest normally begins in South Texas around the end of April and continues in the Plains region until the first frost of the year, Dainello said.

"Occasionally, there will be a fall crop of watermelons in South Texas that will last well into the November-December range," he said.

Harvest maturity is one of the most important factors contributing to a watermelon's sweetness, and consumers have their favorite ways of determining this.

"Generally, most people use the thump test, where you pat on the melon, and if you get a hollow sound, it is generally going to be sweeter," Dainello said. The less dense the fruit, the sweeter the melon is.

"The fruit begins to loosen up and becomes more juicy."

"This is not always true, however," he added. "The real key to maturity is the change of the undercolor. Most of the time, the melons will be dark green or green striped."

The part of the melon that sits on the ground should turn from green to a kind of cream color, almost yellowish, because in the dark it does not contain much chlorophyll. When the melon is rolled onto its side, the (yellow) color is revealed.

"With a very trained eye, you can tell (the maturity) by the sheen of the melon. The duller the color, the better the melon usually is," Dainello added.

The most important things producers look for in melon maturity is color uniformity and rind size. "The narrower the rind, generally the more mature the melon is going to be," Dainello said. The meat of the watermelon starts out white, and as it matures, it turns red (or yellow or orange) and the rind's cross-section narrows.

Although watermelon production is progressing well, pasture and other crop conditions are not doing as well throughout the state.

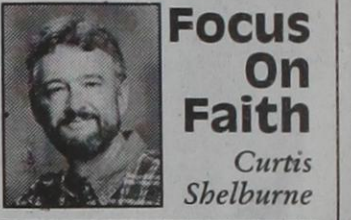
In the Panhandle, soil is dry to very dry. Corn planting completed in early June; soybeans and cotton came soon after. Wheat is rated very poor to good. Range conditions are very poor; culling of herds and supplemental feeding continue.

On the South Plains, soil is very dry. Pastures and ranges are in poor condition, and supplemental feeding of livestock continues. Wheat is in poor to fair condition. The corn crop is progressing

well, but irrigation systems are having to run full force.

MULESHOE MOTOR CO.
1125 W. American Blvd., Muleshoe
272-4251 or 1-800-432-7617
www.muleshoemotor.com

What Does a Dad Really Do?



"So tell me," one little cherub sitting on a cloud called aloud to another—
Tell me, dear wee friend,
angelic brother,
when all is said and done,
when the sun sinks red and the true tale is spun,
What's a dad really do?

"Ah, 'tis a fine question," replied his heav'nly friend sitting on a cloud head bowed in deep reflection,
"when all is said and done,
when the sun sinks red and the true tale is spun,
What's a dad really do?"

"Well, let me see," allowed Cherub Number Two, peering through the cloud for an eternity or a few,
wee little eyes searching and researching,
wee little voice inflecting and reflecting,
"when all is said and done,
when the sun sinks red and the true tale is spun,
What's a dad really do?"
I think now I see!
Really, I do!

Why, most of all, a dad just loves you.

Curtis Shelburne is minister of the 16th & D Church of Christ in Muleshoe.

PUBLIC RECORD

MULESHOE POLICE

May 15

Tommy Ray Marlow, 43, possession of marijuana under 2 ounces.

May 18

Robert Brown, 35, DWI.

May 19

José Guadalupe Reyes, 45, aggravated assault.

Tony E. Winer, 30, aggravated assault.

Gilbert Armendaris, 24, family violence.

David L. Pitcock, 47, DWI (first).

May 20

Pete P. Chávez, 22, DWI (first) and possession of marijuana under 2 ounces.

May 25

James A. Williams, 29, possession of marijuana under 2 ounces.

Bruce A. Pollard, 31, possession of marijuana under 2 ounces.

May 26

Alisha Bani Villalobos, 21, furnishing alcohol to minor.

Michael Daniel Garcia, 17, evading arrest.

May 27

Christopher Castorena, 18, burglary of habitation.

May 28

Cassandra Ann Flores, 20, assault — family violence.

Marcos Reyes, 26, unauthorized use of a motor vehicle.

May 29

Frank E. Maestas Jr., 18, assault — family violence.

Johnnie Rickey, 46, disorderly conduct (Lamb County warrant).

Muleshoe VFW Post 8570 and the Ladies Auxiliary to the VFW wish to say "Thank You" to these generous donors for helping to make our District 7 meeting a great success. We appreciate your continued support of our organizations.

Fry & Cox
Tammy's Kitchen
West Texas Seasonings
The Connection Warehouse
C&H Equipment
Dent & Co.
Muleshoe Animal Clinic
Western Drug & Something Special Gifts
Williams Athletics
James Crane Tire Co.
Viola's Restaurant
Hi-Tek Automotive
KMUL
Noe's Used Cars & Tax Services
Five Area Systems & Plateau
Chef Clay Kidd
Judge Marilyn Cox, speaker

Look for our booth at the Civic Center on July 4th. We'll be serving up fajitas and handing out VFW and Auxiliary literature along with bike safety stickers. Stop by and visit with us!

And the winner of the Muleshoe Journal's 2002 Father of the Year Contest is...



LEON WARREN

"Leon Warren is the best father because he is the best grandfather "Tater" could ever have. She was and is always included in whatever activity "PaPa" is pursuing."

Love,
Sheri & Taylor Nieves

Congratulations Leon! Stop by the Journal office to pick up a signed notification. Winner must present notification to each sponsor before prize can be claimed.

Contest sponsored by and prizes donated by these generous businesses:

Leal's
1010 W. American Blvd.
Muleshoe • 272-3294
Enjoy two Leal's Special plates on us!

Dent & Co.
Your Local John Deere Dealer
2800 W. American Blvd.
Muleshoe • 272-4296
Stop by for your Special Gift!

JOES BOOT SHOP
2600 Mabry Drive • Clovis, NM
(505) 763-3764
Stop by for your Special Gift!

FREE ONE YEAR SUBSCRIPTION FOR LEON!
MULESHOE JOURNAL

SCOTT'S CAR WASH
1408 W. American Blvd.
Muleshoe
Open 24/7
Pick up your coupon for a FREE car wash at the Journal!

MULESHOE MOTOR CO.
1125 W. American Blvd.
Muleshoe • 272-4251
Stop by for your FREE Oil Change!

Bratcher Motor Supply
107 E. Ave. B
Muleshoe • 272-4288
Stop by for your Special Gift!

Silver Screen Video
803 W. American Blvd.
Muleshoe • 272-5540
Two FREE Video Rentals For Dad!
(Must be claimed by June 30, 2002)

1315 W. American Blvd.
272-3333
Muleshoe, TX
Now open at 5:30 a.m. every day!
Stop by for Two FREE Value Meals!
we love to see you smile!

BAILEY COUNTY DEVOTIONAL PAGE

MULESHOE ANIMAL CLINIC
GENERAL PRACTICE
M S
1430 US Hwy. 84 • Muleshoe Office: 272-3061

1ST BANK MEMBER FDIC
202 South First 272-4515

MULESHOE MOTOR CO.
1125 W. American Blvd. 272-4251

SAIN IRRIGATION & MACHINES
Complete Pump Service
W. American Blvd. 272-4397
Walt Sain Muleshoe, TX 272-4148

- Two locations to serve you -
1900 W. American Blvd. 272-5337
107 E. American Blvd. 272-3978
Town & Country Muleshoe, TX

IRRIGATION PUMPS & POWER
ZIMMATIC CENTER-PIVOTS
W. Hwy. 84 272-4483

Leal's 107 E. Ash Muleshoe, TX
Tortilla Factory, Inc. 272-5772

WEST CAMP GIN, INC.
Better Ginning & Courteous Service
James & Phyllis Rt. 2 Box 1000 • 925-6681
Shepard Muleshoe, TX

FIRST AG CREDIT "Serving Farmer & Bailey Counties"
Muleshoe 272-3010 • Fax 272-5388
1601 W. American Blvd. • P.O. Box 424 • Muleshoe, TX

Muleshoe Country Club

FARMERS INSURANCE GROUP
AUTO • HOME • LIFE • BUSINESS • HEALTH
104 W. 12th Street • 272-7548
Laurie Winchell, Insurance Agent Muleshoe, Texas

1315 W. American Blvd. 272-3333
Muleshoe, TX
Now open at 5:30 a.m. every day!
McDonald's

THE TRINITY COMPANY
MULESHOE, TEXAS

"THE FIVE AREA TELEPHONE COOPERATIVE, INC."
West Plains Telecommunications, Inc.
Five Area Systems, Inc., Plateau Wireless
Five Area Long Distance - Five Area Internet
302 Uvalde Muleshoe, USA (806) 272-5533

New Tex Truck Parts & Service
107 E. 5th St. • Muleshoe 272-4106 or 800-918-9048
4200 Mabry Drive • Clovis, NM (505) 762-7186 or (877) 762-9112

United Supermarkets

McCormick Seeds, Inc.
400 East Ash • Muleshoe 272-3156
A complete line of field seeds
Tim McCormick Roland McCormick

MULESHOE PEA & BEAN, INC.
1680 CR 1044 272-5589
Muleshoe, TX

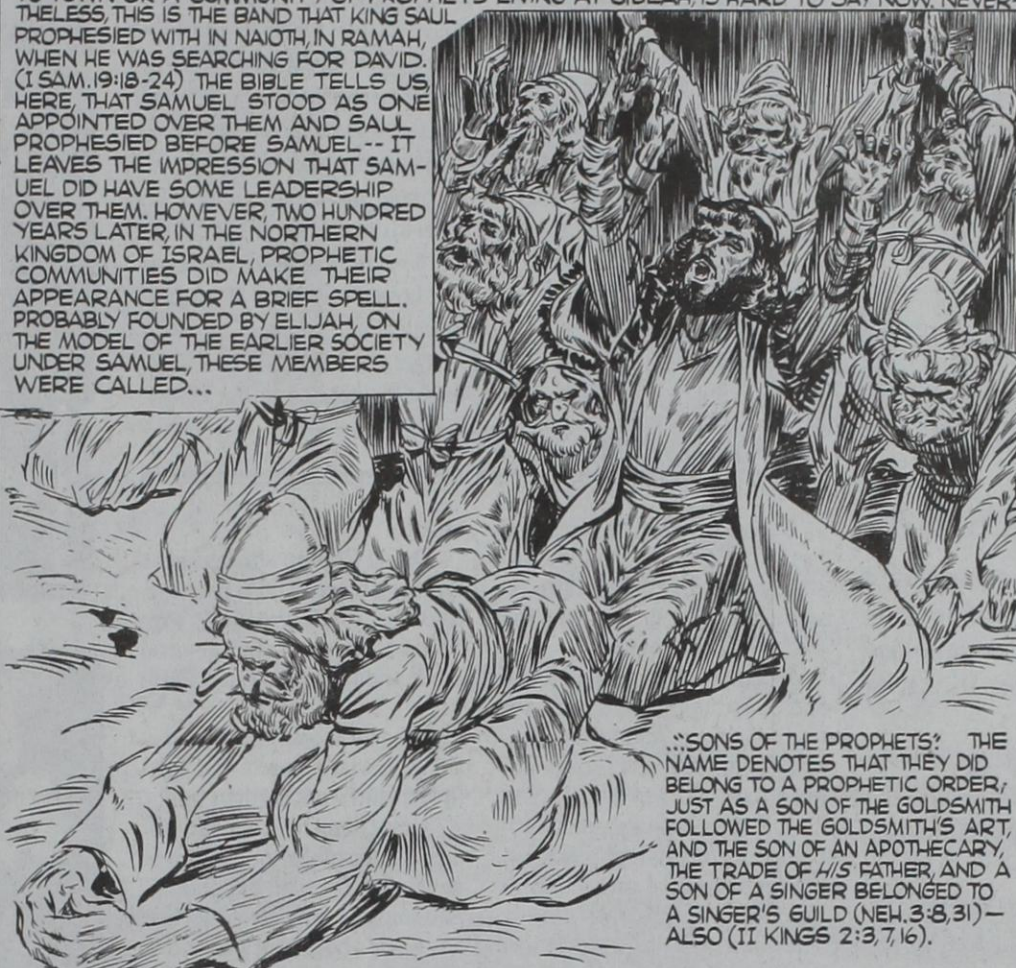
Boehning Dairy DRINK MORE MILK.
Brian & Tiffany Boehning Earth, Texas

Decorators Floral & Gifts
616 South First 272-4340
Muleshoe, TX

Facts About The **BIBLE** BY JOHN LEHTI

PROPHETIC ASSOCIATIONS

THE FIRST MENTION OF A COMPANY OF PROPHETS AS A GROUP IS NOTED IN THE BOOK OF I SAMUEL (I SAM. 10:5). THAT WAS IN THE TOWN OF GIBEAH OF GOD THE HOME OF SAUL, FIRST KING OF ISRAEL. WHETHER THEY WERE A WANDERING BAND OF PROPHETS GOING FROM TOWN TO TOWN OR A COMMUNITY OF PROPHETS LIVING AT GIBEAH, IS HARD TO SAY NOW. NEVERTHELESS, THIS IS THE BAND THAT KING SAUL PROPHESIED WITH IN NAOTH, IN RAMAH, WHEN HE WAS SEARCHING FOR DAVID. (I SAM. 19:18-24) THE BIBLE TELLS US HERE THAT SAMUEL STOOD AS ONE APPOINTED OVER THEM AND SAUL PROPHESIED BEFORE SAMUEL -- IT LEAVES THE IMPRESSION THAT SAMUEL DID HAVE SOME LEADERSHIP OVER THEM. HOWEVER, TWO HUNDRED YEARS LATER, IN THE NORTHERN KINGDOM OF ISRAEL, PROPHETIC COMMUNITIES DID MAKE THEIR APPEARANCE FOR A BRIEF SPELL. PROBABLY FOUNDED BY ELIJAH, ON THE MODEL OF THE EARLIER SOCIETY UNDER SAMUEL, THESE MEMBERS WERE CALLED...



307 SAVE THIS FOR YOUR SUNDAY SCHOOL SCRAPBOOK

MAPLE COOP GIN
927-5501
Maple, Texas

WESTERN DRUG
& Something Special Gifts
1411 W. American Blvd. 272-3106 Muleshoe

Hwy. 84 Muleshoe, TX 272-4203
AGRILIANCE

"Quality & Service At The Right Price"
igginbotham-artlett co. **Do It Best**
Since 1916 215 Main Muleshoe 272-3351 FAX 272-6860

AG AVIATION
2 1/2 miles North on HWY 214
272-3066 FAX 272-8981
P.O. Box 68 • Muleshoe, TX

GOOD YEAR JAMES CRANE TIRE CO., INC.
107 Main 272-4594
Mike Hahn Muleshoe, TX

CENTRAL COMPRESS & WAREHOUSE
SUDAN, TEXAS

Henry Insurance Agency
"Serving You Since 1964"
111 West Avenue B 272-4581
Muleshoe, TX

In the morning sow thy seed, and in the evening withhold not thine hand: for thou knowest not whether shall prosper, either this or that, or whether they both shall be alike good.
-Ecclesiastes 11:6

Muleshoe Feed Barn
311 W. American Blvd. HI-PRO
Muleshoe, TX 272-5626
FEEDS

Serve Wholeheartedly, as if you were serving the Lord, not men.
MV ALLEY INC.
(806) 272-4266 Mobile (806) 946-8763 mvinc@fivearea.com
2601 W. American Blvd. P.O. Box 631 Muleshoe, Texas

WES-TEX FEED YARDS, INC.
Custom Cattle Feeding
272-7555 Muleshoe, TX

BLACKWATER AGRI ASSN. INC.
West Hwy. 84 Muleshoe, Texas 272-4962

Life-Auto-Home-Crop
TEXAS FARM BUREAU INSURANCE CO.
1612 W. American Blvd. • 272-4567 • Muleshoe

Little Real Estate & Appraisal Services
Residential • Commercial • Farm & Ranch
Walter B. "Jack" Little
272-4805
MOBILE: 946-7965 Muleshoe FAX: 272-3729

VIOLA'S
Mexican Food Restaurant
Open: Tues.-Sat. till 8:30 pm, Sun. till 2 pm, Closed Monday
2002 W. American Blvd. • Muleshoe • 272-3838

Antiques & Fine Things
of Muleshoe
2104 W. American Blvd. • 272-4217

BAILEY COUNTY ELECTRIC COOPERATIVE ASSN.
Muleshoe — 272-4504 Morton — 266-8600

minsa corporation
P.O. Box 484 272-5545
Muleshoe, TX
FAX (806) 272-5135 (800) 852-8291

FARMERS CO-OP ASS'N
of ENOCHS
"Your Farmers Owned Gin"
Chemicals • Seed • Fuel & Oil • Fertilizer
806-927-5511 Wade Baker, Mgr.

This devotional & directory is made possible by these businesses who encourage all of us to attend worship services.

- ASSEMBLY OF GOD**
FIRST ASSEMBLY OF GOD
521 South First Street • 272-3017
Jack Stone, Min. • 272-3984
S.S. 9:45 am, W.S. 11 am & 6:30 pm, Wed. 7:30 pm
- EL BUEN PASTOR**
415 E. Ave. F • Pastor Felix Cadena
S.S. 9:45 am, W.S. 11 am & 6 pm; Wed. 7 pm
- BAPTIST**
CALVARY BAPTIST
1733 W. Ave. C. Rev. Jeff Coffman
- CIRCLE BACK BAPTIST**
Intersection FM 3397 & FM 298
Circle Back • 946-3676
- FIRST BAPTIST**
220 West Ave. E., Dr. Stacy Conner
- FIRST BAPTIST**
Lazbuddie • 965-2126
- PRIMERA IGLESIA BAUTISTA**
223 E. Ave. E, Rev. Greg Guzman
- PRIMITIVE BAPTIST**
621 South First,
Elder Cleveland Bass, Min.
- PROGRESS BAPTIST**
Progress, TX
- PROGRESS SECOND BAPTIST**
Arthur Hays, Min.
1st & 3rd Sundays
- RICHLAND HILLS BAPTIST**
17th & West Ave. D, Bruce Cotton, Interim Pastor
- ST. MATTHEWS BAPTIST**
Corner of W. Boston & W. Birch
Floyd R. Monroe, Min.
- THREE WAY BAPTIST**
927-5467
- TRINITY BAPTIST**
314 E. Ave. B, Benny Wright, Min.
- CATHOLIC**
IMMACULATE CONCEPTION CATHOLIC CHURCH
805 E. Hickory, Joseph Augustine, Min.
- CHARISMATIC EPISCOPAL**
ST. CLEMENTS
1536 W. American Blvd. • 272-5954
Father Sergio Leal
Sun. W.S. 10:30 am
- CHRISTIAN**
TRINITY CHRISTIAN CENTER
1723 W. American Blvd. • 272-3877
Reydon Stanford, Min.
- CHURCH OF CHRIST**
LARIAT CHURCH OF CHRIST
Sam Billingsley, Min.
S.S. 10 a.m.; W.S. 11 a.m. & 6 p.m., Wed. 7 p.m.
- LAZBUDDIE CHURCH OF CHRIST**
Nathan Crawford, Min.
S.S. 9:30 am; W.S. 10:20 am & 5 pm; Wed. 7 pm
- MULESHOE CHURCH OF CHRIST**
22nd & W. American Blvd.
Harry Riggs, Min.
S.S. 9:30 am; W.S. 10:20 am & 6 pm; Wed. 7:30 pm
- 16th & AVE. D CHURCH OF CHRIST**
Curtis Shelburne, Min. • 272-4619
S.S. 9:30 am; W.S. 10:30 am; Growth Gr. 1:30 pm; Wed. 7:00 pm
- LUTHERAN**
ST. JOHN LUTHERAN
Lariat, TX-David Symm, Min.
S.S. 10:30 am; W.S. 9:30 am
- METHODIST**
FIRST UNITED METHODIST
HISPANIC MINISTRIES
E. 5th and E. Ave. D
Pastor Benito Cavazos
- FIRST UNITED METHODIST**
507 W. 2nd St.
Pastor Brad Reeves
- LAZBUDDIE METHODIST**
S.S. 9:30 am; W.S. 10:30 am
Rev. Randy Thomas • 965-2121
- EL DIVINO SALVADOR U.M.C.**
519 E. 5th Street & Ave. G, Muleshoe
Javier Rodriguez, Pastor
272-6888
- NAZARENE**
NEW VISION CHURCH OF THE NAZARENE
814 W. Ave. C • 272-3622
Vance Roberts, Pastor-S.S. 10 & 11 am; W.S. 7 pm
- PENTECOSTAL**
UNITED PENTECOSTAL LIGHTHOUSE
207 East Ave. G • 1-800-454-6051
S.S. 10 am; Thursday, Bible Study 7 pm
- INTER DENOMINATIONAL**
NEW COVENANT
Plainview Hwy.
Steve Claybrook, Pastor
W.S. 10 am; Wed. 7 pm

Lowe's MARKETPLACE
401 W. American Blvd. • Muleshoe • 272-4585

WINKLES TRUCKS, INC.
Box 757 (806) 247-2724
Friona, TX

Jarman Seed
801 W. American Blvd.
PIONEER. Muleshoe, TX • 272-5985

RONNIE HOLT INSURANCE AGENCY
Specializing in Crop Insurance
218 Main, Muleshoe TX 272-4271

PACO FEED YARD, LTD.
Commercial Cattle Feeders
P.O. Box 956 265-3281
Friona, TX
Feller Hughs-Mgr.

MULESHOE LIVESTOCK AUCTION
Muleshoe, TX • Sale Every Saturday
Clayton, C.L. & Thurman Myers • 272-4201



Dr. and Mrs. Chris Larson

Gore, Larson wed in Belize

Stephanie Gore and Dr. Chris Larson were married April 23 on the beach of Ambergris Caye, Belize. The ceremony was performed by the Rev. Vidal Gonzales and witnessed by Bruce Smith of Dickerson, Texas, Robert Rickett of Galveston and Zeldia Minors of Austin.

The bride is the daughter of Mr. and Mrs. Billy Gore of Sudan. The groom is the son of Margaret Larson and the late Ed Larson of Houston and is employed by Mulleshoe Animal Clinic.

After a honeymoon at Ramon's Village on Ambergris Caye, they were honored with receptions May 18 at the Mulleshoe Country Club and May 25 at the home of Margaret Larson in Houston.

The couple will live in Mulleshoe with their daughter, Erin.

NURSING HOME NEWS

Herb and Betty Ramage purchased and assembled patio furniture and park benches for the special-care units' outside area. The funds for this purchase came from the Volunteers Plus memorial and donation fund.

The Rev. Gary and Judy Hubbard from the First United Methodist Church in Earth ministered to the residents musically Tuesday morning.

Ken and Suzanne Wilhelm of Plainview visited Kenneth Martin over the weekend.

Wednesday morning Harold and Mary Jo Burge and Buster and Wanda Kittrell served coffee and doughnuts to the residents during coffee time. Harold Burge shared with the residents words of wisdom. Jim and Velma DeWise of Plainview brought a very entertaining and uplifting program at the devotional Wednesday morning.

Leonard Kerr was visited by his wife Sunday afternoon.

Mary Holt received cards and a visit from her daughter, Mary Jo Black, and her son and daughter-in-law, Mr. and Mrs. Jim Holt on her birthday Tuesday. Her family also hosted a birthday party.

Mary Johnson also celebrated her birthday Tuesday with many cards, good wishes, gifts and visits.

Melvin Griffin, Edward Orozco and Harold Burge cooked a hearty breakfast for the men Tuesday morning as a Father's Day event.

Joe Embry, Harold Burge, Willie Maye Graves, Betty Johnson, Mr. and Mrs. Morris Nowlin and Travis Branaman of Columbia, S.C., were among those visiting Park View this week.

Jim and Brenda Kee of Ruidoso, N.M., and Gerry and Jan Pierce visited Jim Kee recently.

The residents' council met Thursday afternoon. A cheese party followed the meeting.

Harold and Avis Carpenter visited Park View on Friday afternoon. He "tickled" the piano keys as well as "tickled" the residents' ears with music.

The Rev. Brad Reeves, Glenda Jennings, Jackie Scoggins and the family of Webb Watts directed a memorial service for Watts in the day room Saturday

'CREATIVE LIVING'

Information on paper piecing quilting and products from the beehive will be featured on "Creative Living" at 1 p.m. June 18 and 3 p.m. June 13. (All times are Central.)

"Creative Living" airs on public broadcasting station KENW-TV from Eastern New Mexico University in Portales.

Donna Majors of Major Attractions in Clovis will demonstrate a quilting method called paper piecing that allows a quilter to be very accurate with sharp points and small pieces of fabric.

Jim Devlin, "Mr. Bee Pollen" from Prescott, Ariz., will talk about three products from the beehive and explain why they are healthful.

Information on Asian cuisine and furniture repairs will be fea-

ured at 10:30 p.m. June 18 and at 1 p.m. June 20.

Lina Fat, a cookbook author from Sacramento, Calif., restaurant owner and chef, will share some recipes for east-west cuisine.

Bruce Johnson of Asheville, N.C., a representative of Minwax, will demonstrate how to use glues and clamps for some easy furniture repair projects. He will talk about different types of glues and explain where each one should be used. He will also show some clamps and tell how to effectively use them, along with glue, to obtain a good solid bond.

"Creative Living" is produced and hosted by Sheryl Borden of Portales.

The show is carried on more than 100 stations in the United

States, Canada, Guam and Puerto Rico and is distributed by Westlink of Albuquerque.

Viewers can request copies of materials offered on the show by sending a first-class stamp for

each handout requested.

Send the stamps, along with name, address and booklets requested, to "Creative Living" Requests, c/o KENW-TV, 52 Broadcast Center, Portales 88130.

The Three Way ISD Last Bash Reunion was a huge success thanks to the efforts of the employees, the school board and so many volunteers!!!!

Over 700 people came home one more time to visit old friends and classmates and enjoy a West Texas brisket meal, The Ranch Dance Fiddle Band and a spectacular fireworks display that will leave us with misty, water-colored memories that light the corners of our minds.

DOWN THE STREET

Lonnie Merriott of Mulleshoe has a wildlife habitat a mile east of Clay's Corner on a farm he inherited the farm from his uncle, Delter Weners.

Merriott and his wife, Nelda, and other family members have worked on the habitat for several years. Their son and daughter-in-law, Mickey and Dawn, have helped on it recently.

The have gradually set out 600 trees to give protection to pheasant, quail and doves. The plantings include Lombardy poplar, red cedar, wild cherry, plum, sumac and wild olive.

Jewel Peeler says she's doing fine after her recent hospi-

tal stay.

Elaine Coburn showed off a quilt at a recent TOPS meeting. She had made the quilt top; Alma Robertson and several other friends helped her finish it.

Robertson told me they met at the Lariat Church of Christ to visit and work on their quilts.

Ruth Clements said she had made a lot of quilts but it was never her favorite handiwork. She said she favors crochet and has made about everything that could be made that way. She also recalled days during the Depression when she and other women met and quilted out several quilts a day.

morning. Joy Whitt and family gave Park View residents and staff a big fresh bouquet.

Harold and Mary Jo Burge conducted the bingo bash Saturday afternoon.

Members of the Mulleshoe Church of Christ directed the Communion service Sunday morning. Buster Kittrell taught the Bible study Sunday morning.

Dorothy Turner visited Alta Gore on Monday morning.

Freida Locker attended a family reunion Saturday.

Aline Locke, Grace Plyler, Clara Coffman and Bootie Tiller made two chocolate cakes for Father's Day in cooking class Monday afternoon.

Members of the 16th and D Church of Christ directed the church services Sunday afternoon.

Ruby Henderson, Linda Nowell, Eva Nell Dale, Mary Jo Burge, Claudine Embry, Pat Watson and Dana Heathington shampooed and set the women's hair and gave a lot of TLC on Tuesday afternoon. Norma Eaves

provided nail care.

Muriel Lewis was visited by her daughter and son-in-law, Ellen and Terry Brinks from Oklahoma last week. She was also visited by her daughter Patrick Wilson and Lewis' great-grandchildren.

Glenda Jennings entertained and directed a sing-along Wednesday afternoon.

An exercise mat, hand and ankle weights, and back cushions recently were purchased by The Christmas Card Project for the physical therapy room.

CLASSIC CABLE

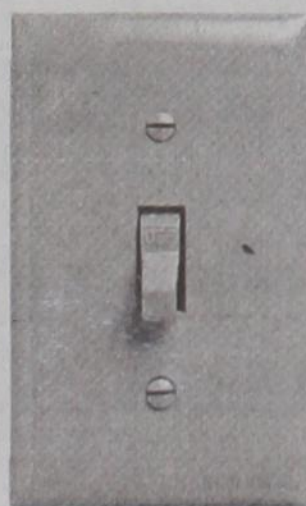
ON SALE

Get **\$1** installation & one half

OFF

50% Off 1 Month of Basic and Expanded Cable Service

We've turned on some exciting new channels!



Ready to make the switch?

Get even more channels with Classic Digital Cable. Call for a special offer!



800-999-6845

Offer valid on one standard installation on one TV set in wired service areas. Requires prepayment for first month of service. Residential customers only. Taxes and insurance. Availability of programming services subject to change. Not all channels available in all areas. Offer applies to service here. \$1 installation not valid for digital cable installation. Not valid in conjunction with any other offer. Other restrictions may apply. Offer subject to expiration without notice. Call for details.

MULLESHOE MOTOR CO.
1125 W. American Blvd., Mulleshoe
272-4251 or 1-800-432-7617
www.mulleshoemotor.com

FAMILY NIGHTS!

99¢ Single #1 & #2 Burgers
5PM - Close · Every Tuesday!

Not valid in conjunction with any other specials or offers. Offers good for a limited time, subject to change. Participating locations only.

SONIC
America's Drive-In

1633 American Blvd. • 272-3998

HOROSCOPES

JUNE 16-22

- GEMINI - May 22/June 21**
Your mind is in overdrive this week, Gemini. Wednesday proves a day of greatest revelation. You've just discovered your master plan for the rest of the year and are ready to proceed.
- CANCER - June 22/July 22**
Family members and loved ones show their affections and vent their frustrations in strange ways, Cancer. This week you're faced with many challenges, but you'll have help. Look to Virgo.
- LEO - July 23/August 23**
Show some warmth to someone who is less fortunate, Leo. It's time to be the hero rather than the villain. You'll get a confidence boost and help someone in the process. Thursday is lucky.
- VIRGO - Aug 24/Sept 22**
You may think that the others around you are clueless, but ask for their help and you may be pleasantly surprised, Virgo. Take some time for fun on Friday.
- LIBRA - Sept 23/Oct 23**
Fear is a thing of the past and curiosity takes over this week, Libra. You find that those you thought were enemies really turn out to be friends. A new job is on the horizon.
- SCORPIO - Oct 24/Nov 22**
It may sound corny, but a smile is worth all the difference when dealing with someone difficult this week, Scorpio. Try a friendly approach before you get defensive.
- SAGITTARIUS - Nov 23/Dec 21**
You've been feeling the pull of nostalgia lately, Sagittarius. Hook up with old friends to see how they are keeping busy these days. You may be surprised to find out how many changes have occurred.
- CAPRICORN - Dec 22/Jan 20**
Live large this week, Capricorn. You should have no problem being the life of the party if you only let loose and enjoy yourself. Romance is a good possibility for the weekend. Your perfect match is waiting.
- AQUARIUS - Jan 21/Feb 18**
Your truth may be elusive to many, but the right people are getting the message. You have many followers this week, Aquarius, who agree with your mission. Move forward with plans.
- PISCES - Feb 19/March 20**
A feeling of generosity washes over you this week, Pisces and you share the wealth with others. Whether treating someone to lunch or buying a gift, you'll be thanked.
- ARIES - March 21/April 20**
Give into the demands of friends this week, Aries. Others may take up your time, but you enjoy it. Show off your talents to a willing audience and you're sure to shine.
- TAURUS - April 21/May 21**
Look ahead and cheer up, Taurus. The bad luck you've been facing is bound to take a turn for the better this week. Forgive the people who have treated you unkindly.

Tanning is unhealthy . . . period

SPECIAL TO THE JOURNAL COLLEGE STATION —

Summer's here ... can bathing-suit weather be far behind? But before starting work on a tan, people should consider that tanning isn't as healthy as it looks.

Skin cancer — both melanoma and nonmelanoma — is the most common form of cancer, according to the American Cancer Society. And overexposure to ultraviolet, or UV, rays — the kind of radiation that causes the skin to tan — has been linked to both kinds of skin cancer.

Sunshine, the natural source of tanning radiation, has long been known to cause skin damage — which is why some sun-lovers are limiting their time outdoors. But what about tanning beds or tanning lamps? Can't they be safely used to get a golden tan without the skin damage caused by the sun?

Experts say no. UV rays are just as damaging to the skin, whether they come from natural or man-made sources.

"Tanning beds have been marketed as a 'safe' alternative to sunbathing outdoors," said Laura Strawn, Texas Cooperative Extension health associate and a registered nurse. "However, tanning is actually an unhealthy habit. This is because the radiation that causes tanning also causes deep skin changes that can lead to skin cancer.

"Tanning, whether outdoors or indoors, is caused by UV-A (ultraviolet-A) radiation," she said. "This radiation causes damage at an even deeper level than a sunburn, and changes underlying skin structure in a way that can lead to skin cancer at a later time."

Burning, however, is caused by both UV-A and UV-B rays, according to information from the American Academy of Dermatology.

"Since UV-A damages the skin at a deeper level, it took scientists longer to determine that it did cause changes that could be precancerous," Strawn said. "That is why tanning beds were marketed as being safe, as science had not caught up to them.

"Now we know better."

More than 40 percent of all cancers are some kind of skin cancer, according to Cancer Society information, with about 1.3 million cases of nonmelanoma skin cancer and about 53,600 cases of melanoma expected to be diagnosed in the United States this year.

Figures show that melanoma accounts for only 4 percent of skin-cancer cases, but about 79 percent of skin-cancer deaths. The Cancer Society estimates about 2,200 people will die of nonmelanoma skin cancer this year, and 7,400 will die of melanoma.

Although many sun-lovers believe that a tan is a healthy part of summer, the dermatology group states that, in fact, it's just the opposite. According to the agency's information, a suntan is the skin's response to an injury.

And that injury can be a serious one, whether the tanning is done indoors or out. The dermatology group also states that not only are tanning booths not a "safe" alternative to tanning in the sunshine, but — in addition to the possibility of skin cancer — use of tanning booths can lead to cataracts, sunburns and premature aging of the skin (think wrinkles and age spots), not to mention damage to the body's immune system and possible negative reactions to some fragrances, lotions and medications.

To protect the skin from damage caused by UV rays, experts say:

- Stay indoors during the middle of the day (10 a.m. to 4 p.m.) when the sun's rays are strongest.
- If staying indoors isn't possible, keep in the shade.
- Wear clothing that covers the body, including arms and legs, and a broad-brimmed hat to protect the head.
- Use sunscreen with a SPF (sun protection factor) of at least 15.
- Protect the eyes with UV-absorbing sunglasses.
- Don't use tanning beds or tanning lamps.

"Although many people think a tan makes you look healthy, your skin will stay healthier and younger-looking if you avoid getting a tan," Strawn said.

"If you would like a little more color in your skin, a safer alternative is to use one of the many self-tanning lotions on the market. According to the AAD, self-tanning lotions containing DHA are safe and produce a color change that lasts approximately five to seven days."

More information is available at the Extension Service's website, <http://fcs.tamu.edu/> (click on the link to health and safety). Also visit <http://coolshade.tamu.edu/>, <http://www.cancer.org/> or <http://www.aad.org/SkinCancerNews/SafeSunTips/index.html>.

John Roley's AutoCenter

Hot Vacation Specials!



See Our Large Selection of GM Certified Used Vehicles!



#GM149A
2001 Chevy Cavalier 4 Door
4 Cyl, Air, Auto Trans, 34 K Miles
\$9,995
or **\$195** Month.
WAC 8.5%, 60 mo. with \$500 down and TTL

Sizzling Summer Special!



#GM152A
1999 Pontiac Sunfire
2 Door Fun Machine!
\$7,995 or **\$154** Month
WAC 8.5%, 60 Months with \$500 Down And TT&L



#GM142A
2001 Pontiac Grand Am SE
4 Door, V-6, Air, Power Seats & Locks, Just 37K Miles
\$13,995
or **\$277** Month
WAC 8.5%, 60 mo. with \$500 down and TTL



#GM146A
2001 Ford Escort 4 Door
4 Cyl, Air, Auto Trans, 32K Miles
\$9,495
or **\$184** Month
WAC 8.5%, 60 mo. with \$500 down and TT&L



#GM145A
2001 Ford Focus 4 Door
4 Cyl, Air & Power, 33K Miles
\$11,195
or **\$220** Month
WAC 8.5%, 60 mo. with \$500 down and TT&L



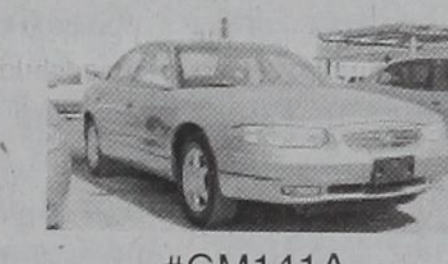
#GM140A
2001 Chevrolet Monte Carlo
V-6, Air & Power, Loaded! Just 30K Miles
\$15,995
or **\$319** Month
WAC 8.5%, 60 mo. with \$500 down and TT&L



#C2389A
2001 Chevrolet Suburban LT
2WD, 5.3 V-8, Leather, Captain Chairs, Loaded, 17K Miles
\$29,595



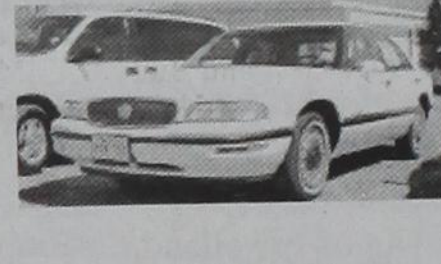
#GM157A
2001 Pontiac Montana Van
V-6, Loaded, 38K Miles
\$17,595



#GM141A
2001 Buick Regal LS
4 Door, Air & Power, Power Seats & Locks, Leather, 24K Miles
\$16,995



#GM128A
2001 Buick LeSabre Custom
4 Door, V-6, Air & Power, Loaded!
\$18,995



#B2177A
1997 Buick LeSabre Custom
4 Door, V-6, Air & Power, Loaded! 53K Miles
\$8,995



#BLAIR
1994 Ford F-250 Pickup
Long Bed, 2WD, V-8, Air & Power, Great Work Truck
\$7,495



#C2605A
2000 Chevrolet Ext. Cab 4x4
V-8, Loaded, 74K Miles
\$19,995



#GM161A
2001 Chevrolet Impala
V-6, Loaded, 32K Miles
\$14,995



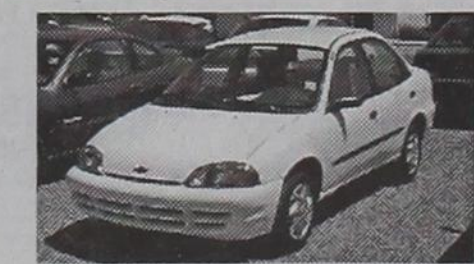
#GM162A
2002 Chevrolet Impala
V-6, Loaded, 31K Miles
\$15,995



2000 Ford Ranger XLT Supercab
V-6, Air & Power, Auto Transmission, 40K Miles
\$12,995
or **\$257** Month
WAC 8.5%, 60 mo. with \$500 down and TTL



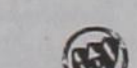
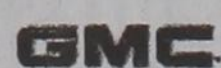
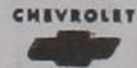
#C2602A
1995 Dodge Grand Caravan
V-6, Loaded, 75K Miles
\$6,995



#GM165A
2001 Chevrolet Metro
4 Cylinder, Air, 28K Miles Automatic Transmission
\$8,495 or **\$164⁶⁰** Month
WAC 8.5%, 60 mo. with \$500 down and TT&L



#GM153A
2000 Ford Ranger XLT Supercab
V-6, Air & Power, Auto Transmission, 43K Miles
\$11,995
or **\$236** Month.
WAC 8.5%, 60 mo. with \$500 down and TTL



All Inventory on line at www.johnroleys.com

Financing Available with Approved Credit.

John Roley's AutoCenter

E. Hwy. 84

385-6464
747-6904

LITTLEFIELD

OBITUARIES

JOE BAUTISTA

Services were held Thursday at St. Ann's Catholic Church in Morton for Joe Bautista, 73, of Morton. The Rev. Jesse Cruz was the celebrant. Burial was in Morton Memorial Cemetery.

Ellis Funeral Home of Morton handled arrangements.

Mr. Bautista was born Aug. 8, 1928, at Yancie, Texas. He died June 9 at home.

He married Olivia González on March 14, 1984, in Muleshoe.

He had been a resident of Morton for 53 years, and worked for Beseda Grain Co. there for 20 years. He worked on Ralph Carrasco's campaign for county judge and was involved in Morton's first Cinco de Mayo celebration this year.

He was a member of St. Ann's.

Mr. Bautista is survived by his wife; six sons, Arnold Bautista and Jimmy Bautista, both of Levelland, Arthur Cervántez and Adolph Cervántez, both of New Braunfels, Texas, Arnold Cervántez of Lubbock and Alvin Cervántez of San Marcos, Texas; five daughters, Aurora Domínguez of Fort Worth, Lucy Lovington of Hereford, Dolores Acosta of Ralls, Texas, Anna Marie Franco of Portales and Adeline Albiar of Lubbock; two sisters, Aurora Carrasco of Morton and Rebecca Espino of Garland; three brothers, Richard Bautista of Levelland, Arnulfo Bautista of Morton

and John Bautista of Phoenix; 16 grandchildren; and 11 great-grandchildren.

He was preceded in death by a son, Louis Bautista, in 1999 and a brother, Lorenzo Bautista, in 1990.

FELICITA C. LOPEZ

Services were held Friday at Immaculate Conception Catholic Church for Felicita C. López, 71, of Muleshoe. The Rev. Joe Augustine was the celebrant. Burial was in Muleshoe Memorial Park.

Ellis Funeral Home handled arrangements.

Mrs. López was born July 24, 1930, at Kingsbury, Texas. She died Tuesday in Lubbock.

She married José D. López on Aug. 18, 1951, in Medaryville, Ind.

She had lived in Muleshoe since 1956, when she moved here from San Marcos, Texas. She was a homemaker and a member of Immaculate Conception Catholic Church.

Mrs. López is survived by her husband; a son, Enrique C. López of Muleshoe; two daughters, Erlinda C. López, Elena C. López and Rosa Maria López, all of Muleshoe; a sister, Josefa Campos of Muleshoe; and eight grandchildren.

The family suggests memorials to Muleshoe Area Public Library (322 W. Second, Muleshoe 79347).

NELL COOPER

Services were held Saturday at Higginbotham Funeral Home Chapel in Rising Star, Texas, for Nell Cooper, 93, of Rising Star. The Rev. Dick Williams of-

ficiated. Burial was in Long Branch (Texas) Cemetery.

Mrs. Cooper was born July 26, 1908, at Carbon, Texas. She died Thursday at Rising Star Nursing Home.

She married Ulysses S. Cooper on Dec. 22, 1927, in Eastland County, Texas. He died in 1988.

She was a homemaker and a member of the Baptist Union Center.

Mrs. Cooper is survived by two daughters and a son-in-law, Ginger and Albert Wicher of Waco and Gerrie Cooper of Rising Star; a sister, Bonnie Eckstine of Whitney, Texas; two brothers, Roy McAlister of Granbury, Texas, and Bill McAlister of Whitney; six grandchildren; and 15 great-grandchildren.

She also was preceded in death by three brothers and a son.

Grandsons who served as pallbearers are Mark Wicher, Phillip Jackson, Mark SoRelle, Damon Cooper, David Cooper and David Caster.

PAULINE LAVINDER

Services were held Saturday at the First Missionary Baptist Church of Morton for Pauline Lavinder, 56, of Morton. The Rev. James

Pope officiated. Burial was in Morton Memorial Cemetery.

Ellis Funeral Home of Morton handled arrangements.

Mrs. Lavinder was born Feb. 14, 1946, in Harlingen, Texas. She died Thursday at Cochran Memorial Hospital in Morton.

She had lived in Morton since 1955, when she moved there from Lingo, N.M. She married William Lavinder on Dec. 22, 1964, in Morton.

She worked as a waitress and cook for various restaurants and was a member of First Missionary Baptist Church.

Mrs. Lavinder is survived by her husband; three daughters, Charlene Pérez of Whiteface, Bonnie Hocking of Reedsville, Texas, and Connie Henshaw of Cleburne, Texas; three sons, Patrick Lavinder and Matthew Lavinder, both of Cleburne, and Joseph Lavinder of Patuxent, Md.; four brothers, Carl Woods and Ricky Woods, both of Lubbock, Charlie Woods of Morton and Gordon Woods of Levelland; 11 grandchildren; and a great-granddaughter.

BIRTH

CASTORENA

Chris Castorena and Melissa Rodríguez of Muleshoe are the parents of a daughter, Heaven Lee Castorena, born at 3:02 p.m. June 8 at University Medical Center in Lubbock.

She has one sister, Astyn Skye Rodríguez, age 1.

Grandparents are Rich-

ard and Maria Castorena of Muleshoe, Nelda Castorena of McAllen, Texas, and Abelino and Sally Flores of Kermit, Texas.

Great-grandparents are Joe and Esther Rodríguez, Alex and Lupe Castorena, Antonio and Justa Flores, all of Muleshoe and Daniel and Connie Garza of Rio Grande City, Texas.

The family suggests memorials to the South Plains College Scholarship Foundation (1401 College Ave., Levelland 79336).

MULESHOE MOTOR CO.
1125 W. American Blvd., Muleshoe
272-4251 or 1-800-432-7617
www.muleshoemotor.com

CRANES

AMERICAN EQUIPMENT & TRAILER
3707 M.L.K. Jr. Blvd.
Lubbock, TX
806-747-2991

CONTINENTAL CREDIT
is having a
Customer Appreciation Day
FRIDAY
JUNE 21st

To show our appreciation for your business, we're serving **FREE HOT DOGS, HAMBURGERS, CHIPS AND DRINKS ALL DAY JUNE 21!**

206 S. Main Street • Muleshoe
272-3673 • ¡Se Habla Español!
Loans \$100-\$495 • While you wait or by phone • Credit Starter Loans

The Mickey Sowder Memorial Scholarship Fund has made an award to a Three Way Graduate each year since 1995. In consideration of the consolidation of Three Way ISD with Sudan ISD effective June 30, we feel it is appropriate to dispense the fund in its entirety. Members of the last graduating class of THS received equal awards on May 24. Sudan ISD will administer the "Three Way Scholarship Fund of Sudan ISD." This fund was established by the kindness and generosity of friends and family and again, we thank you. Mickey would have been humbled.

*Ann Sowder,
Rob & Susie Sowder and family,
Pat & Shannon Calhoun and family,
Matt & Janice Sowder and family,
and Jarrod Sowder and family
wish God's richest blessings for all of you.*

"THE GRAY PAGES" BUSINESS DIRECTORY

AUTO BODY REPAIR/PAINT

BURRIS COLLISION CENTER
Jackey W. Burris, Owner
402 North First-Muleshoe
272-3031 or 946-8655
Free Estimates
Come see us for all your auto body repair and glass needs!
Experienced Technician
I-Car Certified • PPG Certified
Auto Glass Repair & Replacement

SHIPMAN'S BODY SHOP, INC.
410 North First
MULESHOE, TEXAS
272-4408 Night: 272-3318

AUTO REPAIR

All Phase General Mechanical
• Electrical • A/C • Front-End • Brakes
HI-TEK AUTOMOTIVE
Complete Diagnostic & Repair Center
Foreign & Domestic
322 N. 1st • 272-3480
Joe Flores & Shawn Negro, Owners

ELECTRONICS

THE CONNECTION WAREHOUSE
RadioShack Dealer
Catch the Digital Wave!
• Digital Satellites • Digital Cell Phones
• Digital Cameras • DVD • Music
• Computer Access • And More!
117 Main • 272-5532 • Muleshoe
Don't forget our Appliances & Free Delivery!

FINANCIAL SERVICES

Serving Individual Investors Since 1871

Stocks	CDs
Mutual funds	Money market funds
Bonds	IRAs
Government securities	Tax-free bonds

...and much more.

Edward Jones
Locally, talk with
KATHERINE SCHRAEDER
220 S. Main St. - Muleshoe
806-272-4102

FUELS

West Texas Gas, Inc.
and
GASCARD

- 24 Hour Gasoline & Diesel
- Propane
- Dripoil
- L.P.G. Motor Fuel
- BBQ & RV Bottles & Parts
- Holland BBQ Grills

Open: M-F 7:30 to 5:30; Sat. 7:30 to Noon
North 1st St., Muleshoe TX
(806) 272-3157

INSURANCE

Laurie Winchell
Insurance Agent
FARMERS
Call for a Free Quote.
• HEALTH • AUTO • LIFE
• HOME • BUSINESS
104 W. 12th St., Muleshoe
272-7548 • FAX 272-4756

ADVERTISING PAYS!
272-4536

IRRIGATION

LAWN SPRINKLER Repair & Installation
Irrigation Lic. # 3617 Backflow Lic. # 496529367

MULESHOE SOD FARMS
PH: 965-2310 FAX: 965-2662
Email: msfarms@fivearea.com
ROGER & REGINA CLARKSON
"20th year serving Muleshoe"

LANDSCAPE

MULESHOE SOD FARMS
COMPLETE LANDSCAPING SERVICE
TURF • FLOWERBEDS • TREES
PONDS • HARD SCAPING
We have bedding plants & Trees!
806-965-2310
FAX 965-2662 msfarms@fivearea.com
"20th year serving Muleshoe Roger & Regina Clarkson & the surrounding area"

"THE GRAY PAGES"-AFFORDABLE & AVAILABLE TODAY!

Small ad\$3.50/week*
Medium ad\$5/week*
Large ad\$7/week*
*26 week commitment Call Leah at 272-4536 for details.

LAWN CARE

MULESHOE SOD FARMS
"Serving this area for 20 years."
Lawn Mowing
Lawn Spraying
Hedge Trimming
Flowerbed Maintenance
Chemical Lic. # 314882
806-965-2310
FAX 806-965-2662
Email: msfarms@fivearea.com
Roger & Regina Clarkson

OFFICE SUPPLIES

Williams Brothers Office Supply
FAX Service
Computer Supplies
Printer Paper
Computer Stationery
Complete Line of Office Supplies
1405 W. American Blvd.
Muleshoe • 272-3113

PHOTOGRAPHY

Oecia Susan's Photography
Susan Kirby
806-272-5153
or 806-891-0550
Quality...Utmost Consideration
Relaxed, Unhurried Atmosphere
Artistry in Lighting and Composition
In Studio, Home or Office
Oecia Gist: 806-385-5169

PLUMBING

RUBEN LEAL'S PLUMBING
Lic. #J-14510
Residential & Commercial
Full Service Plumbing
• Gas Lines • Water Heaters
• Sewer Lines • Faucets/Disposals
• Water Lines • Toilets
• Slab Leaks • House Repipes
• Drains • Bathtubs
FREE ESTIMATES - ALL WORK GUARANTEED
307 E. Dallas - Muleshoe
272-3588

RENTALS

THE RENTAL PLACE
Furniture, Appliances,
TVs, Electronics, Etc.
FREE DELIVERY
103 MAIN ST.
272-4037 • Muleshoe

RESTAURANTS

Tammy's Kitchen
Sandwiches • Fountain Drinks
Homemade Pies
Carry-Out Available
Open: 7:00 AM - 2:00 PM Mon.-Fri.
Owned by Tammy Lanzas
308 Main Street - 272-4701
Muleshoe, Texas

THIS SPOT COULD BE YOURS

Rent this spot for only
\$15.17 a month!
6 month commitment
Call 272-4536 for details.

TIRES

GOODYEAR JAMES CRANE TIRE CO., INC.
107 Main Street
(806) 272-4594
Mike Hahn, Owner

TORTILLERIA

Los invitamos a que vicite
LA TORTILLERIA SAN FRANCISCO
Los martes y los jueves para que lleve sus tortillas calientitas
De las 6 de la mañana hasta las 10.
De la mañana sabados y domingos venga para que sabore el rico menudo y la rica barbaco de cabeza para comer aqui o para llevar.
Tambien, tenemos un gran surtido de hierbas medicinales. ¡Los esperamos!
403 MAIN • MULESHOE
272-3502 • Sr. y Sra. Aurelio Cuevas

VEHICLE ACCESSORIES

KC MUFFLER & MFG., INC.

- ♦ 4" Exhaust for Diesel Pickups
- ♦ High Performance K&N Air Filters
- ♦ Performance Exhaust Systems
- ♦ Pickup & Car Accessories
- ♦ Chrome Tips

"Serving this area since 1979"
425 N. 1st-Muleshoe-272-5333

VIDEO RENTAL

MOVIES FOR RENT OR SALE
ENGLISH & SPANISH TITLES
If we don't have it, we'll get it for you!
Estrada's Video
303 W. 15th St. • 272-5433
10 am-10 pm DAILY Jose & Virginia Estrada, Owners

There are new potential customers who would do business with you if they were reminded and urged to do so!

Journal Classifieds

STOP & SHOP

Deadlines are 5 p.m. Monday and Thursday

Call 272-4536

Page 9, June 16, 2002

BUSINESS OPPORTUNITY

LOCAL VENDING Route. 100 top locations. \$90K plus yearly potential. Investment required. 1-800-483-8717, Inspired Ventures.

DRIVERS WANTED

DRIVER-ASAP! 21 OTR Drivers. Up to 38 cpm+ \$40 tarp for OTR. O/O's - up to 90 cpm. Nine months OTR required. Call Melton Truck Lines, 1-800-635-8669, today.

DRIVER - COMPANY & Owner/Ops - Regional - Home Weekly. Pay for experience up to 31 cpm Company, 81 cpm Owner/Ops. 1-800-454-2887, Arnold Transportation.

DRIVER - COVENANT TRANSPORT. Now offering per diem pay for experienced teams, solos and trainers. O/O-Solos/Teams 83 cents. No CDL, No Problem. We school with financing available for those who qualify. Authorized by the TN Higher Education Commission. Call 1-888-MORE PAY (1-888-667-3729).

DRIVERS-EXPERIENCED/INEXPERIENCED. CDL training w/meals, lodging, transportation provided. Tuition reimbursement. OTR, regional dedicated freight. Lease purchase. No credit, no problem. Trainer opportunities. Swift Transportation Co., Inc., 1-800-231-5209.

DRIVERS-GREAT MILES & Equipment! Every Friday's a payday. 401K Health Insurance. OTR Drivers needed from the Midwest, Southwest, Southeast and Northeast. 1-800-727-4374, www.continentalx.com

DRIVERS, O/O's - RUN with a company with options. 53 ft. vans, flatbeds or heavy haul. Benefits, outstanding pay. 3 years CDL "A" OTR experience. Call Express Way, Inc., 1-800-835-9471.

DRIVERS/OTR CAN easily earn \$44,000/yr. Super benefits/equipment/miles. Approximately 10 days out/2 days off. 24 years w/2 years recent O/T/R or 1 year experience after school. "No Students Please." 1-800-258-4456, www.hillbros.com

DRIVERS: NORTH AMERICAN VAN LINES has openings in Household Goods, Specialized Truckload and Flatbed Fleets. Minimum of 6 months OTR experience. Tractor purchase/lease available. 1-800-348-2147, Dept. TXS.

DRIVERS - SW REGIONAL, home on weekly basis. Teams

DRIVERS WANTED

start .34 cpm, OTR start 32 cpm. Six months OTR experience w/CDL-A. Ask for Harold/Bob, National Freight, 1-800-666-0380.

DRIVERS WANTED

LEARN TO DRIVE for Lisa Motor Lines! No CDL? No problem. Fast CDL training. Tuition reimbursement and special financing. Start earning \$\$\$ ASAP. 1-888-822-8209, www.cdlnow.com

STEVENS TRANSPORT OFFERS Company Paid CDL Training. No experience necessary. All Kenworth Conventionals. Visit and apply on-line at www.stevenstransport.com or call 1-800-333-8595 today.

FINANCIAL SERVICES

BE DEBT FREE - years sooner. Low payments. Reduce interest. Stop late fees. Stop collectors. Family Credit Counseling. Non-profit Christian Agency. Recorded message. 1-800-457-6176. Free quote, www.familycredit.org

\$\$\$CASH\$\$\$ - IMMEDIATE CASH for structured settlements, annuities, real estate notes, private mortgage notes, accident cases, and insurance payouts. J. G. Wentworth, 1-800-794-7310.

CREDIT CARD DEBT? Stop collection calls. Cut finance charges. Cut payments up to 50%. Debt consolidation. Fast approval. No credit check. Avoid Bankruptcy. National Consolidators, 1-800-270-9894.

GET OUT OF debt free! Stop collection calls; reduce payments up to 50%, lower interest. Non-profit, licensed, bonded. Call toll-free, 1-800-897-4219, www.amerix.com

FOR SALE

SAWMILL \$3895. NEW Super Lumbermate 2000. Larger capacities, more options. Manufacturer of sawmills, edgers and skidders. Norwood Sawmills, 252 Sonwil Drive, Buffalo, NY 14225. 1-800-578-1363, ext. 300-N.

STEEL BUILDINGS... "Rock Bottom Prices!" Go direct and save: 20x24 \$2,200.00; 25x30 \$3,200.00; 30x40 \$4,500.00; 32x44 \$5,800.00; 35x50 \$6,200.00. Many others. 1-800-668-5422. Pioneer...since 1980.

WOLFF TANNING BEDS - Affordable, Convenient. Tan at

FOR SALE

home. Payments from \$25/month. Free color catalog. Call today, 1-800-842-1305, www.np.etstan.com

HEALTH

ATTENTION! BAYCOL USERS (Lipobay/Cerivastatin). Death or kidney failure, Rhabdomyolysis. Grossman & Waldman, 1-800-833-9121. Free confidential consultation. Board Certified. No fee/expenses - no recovery. Houston-Principal.

ATTENTION! VIOXX - CELEBREX - Phen-Fen users! Heartr attacks and pulmonary conditions. Free confidential consultation. Grossman & Waldman, 1-800-833-9121. No fees/expenses - if no recovery. Board Certified.

DIABETIC SUPPLIES

- NO cost to you. Free Glucose Meter. Free home delivery. Covered by Medicare or insurance. Call 1-800-713-7049, or order online at www.DiabeticSupply.com

FOR SALE

SWIMMING POOLS - DEMO Homesites wanted to display maintenance free pool. Save \$\$\$ with this limited opportunity. Call to qualify, 1-800-794-6839, www.SwimTexas.com. Prices start \$999.

PET SUPPLIES

ALL NEW Happy Jack Kennel Dip II kills fleas, ticks, stable flies, lice and "hot spots" without steroids. Quicker kill. Longer residual. At TSC Tractor Supply. www.happyjackinc.com

REAL ESTATE

A FREE LIST! Affordable hunting ranches 100+ acre tracts, lowest prices. E-Z terms. Texas Land & Ranches, toll-free, 1-866-899-5263.

BOWHUNTERS RARE OPPORTUNITY! High fence game ranch liquidation. 150-180 B+C whitetails, turkey, quail, and exotics. \$29,900. EZ terms. Toll-free 1-866-516-4868.

NEW MEXICO MOUNTAINS

140 Acres - ONLY \$39,900. Gorgeous grasslands, mature tree cover, 6,500' elevation, snow-capped mountain views, year-round roads, nearby electric. Perfect for horse lovers. Great hunting property, adjacent to national forest. Excellent financing. Call today. SW Properties of NM, Inc., 1-866-350-5263.

HIGH FENCE RANCH Liquidation - \$29,900. Direct deeded access to game preserve. Trophy Whitetail, exotics, fishing. Great recreational opportunity. Fi-

LEGAL NOTICE

NOTICE TO BIDDERS
The Bailey County Commissioners Court will receive sealed bids until 10:00 a.m., Monday, July 8, 2002, for gasoline and diesel fuel to be used in all Bailey County vehicles and road equipment for a period of time beginning September 1, 2002, and ending August 31, 2003. Specifications may be obtained, and bids must be submitted to: County Judge's Office, 300 South 1st, Muleshoe, TX 79347, prior to the above date and time. The Commissioners Court reserves the right to reject any or all bids and to waive formalities. Published in the Bailey County Journal June 16, 2002.

The Commissioners Court reserves the right to reject any or all bids and to waive formalities. Published in the Bailey County Journal June 16, 2002.

REAL ESTATE

financing available. Texas Land and Ranches. 1-888-565-7592.

LAND BARGAIN BEAUTIFUL N.E. Texas piney wood acreage. Private lake and horse stables. As low as \$24,900. Call 1-800-707-8988.

RANCH SALE - 35 acres \$59,900. Magnificent Colorado ranch at 8,000' elevation. Mix of meadows with spring fed ponds, aspen and pines. Stunning views. Nearby Telluride. Good terms. Call 1-866-353-4809.

RESORTS/VACATIONS

GOT A CAMP-GROUND Membership/Timeshare? We'll take it. Selling *buying *renting? Call the best. Don't use the rest. World Wide Vacations, 1-800-423-5967, www.resortsales.com. Void where prohibited.

PANAMA CITY BEACH. Sandpiper-Beacon Beach Resort. From \$79 (1-2 persons). Restrictions. 5/27 to 8/4/02. Pools, lazy river ride, parasailing, jacuzzi, suites, tiki bar. 1-800-488-8828, www.sandpiperbeacon.com

SERVICE

NEW LOCAL PHONE Service with FREE long distance in state or out! Cut your phone bill by 30% or more. We can prove "talk's cheap" - www.excelir.com or itpays, 1-800-635-2908.

SERVICE

ALL GLASS INC

SCREENS PLEXIGLASS SAFETY GLASS PLATE GLASS STORM DOORS & WINDOWS MIRRORS SHOWER DOORS STORE FRONTS

Lic#059132 505-356-0399 1-800-40-DANNY 501 N. Ave I Portales, NM

CHILD CARE

Need a babysitter? Call me. Drop-ins welcome. 272-8912

FOR SALE

1995 Oldsmobile Aurora, 4-Door, Red. Excellent Condition. Call 272-3713.

Horizontal heater 120,000 BTU. Asking \$300. Call 806-771-1406.

BEAUTY EQUIPMENT FOR SALE. INQUIRE AT SANITARY BARBER SHOP 113 MAIN ST.

USED APPLIANCES FOR SALE WASHERS, DRYERS, FREEZERS, REFRIGERATORS. CALL 272-3091

Premium King Waveless waterbed mattress, heater, & sheets. 272-5285

HELP WANTED

NOW HIRING
Minsa has several positions available in our Production facility. We are looking for hard-working individuals to fill these positions. If interested, please come to the main office at Minsa 1 1/2 mile east and fill out an application. EOE

1000 CUSTOMERS NEEDED!!
LOANS, LOANS! \$100-\$495 CALL 272-3673 CONTINENTAL CREDIT

NOW HIRING!!!
CLEANUP (EXCEL) 3RD SHIFT STARTING AT \$7.00 AN HOUR PLEASE COME BY AND PICK UP YOUR APPLICATION TODAY. MONDAY - FRIDAY 7:00 AM - 1:00 PM T&G SERVICE COMPANY 1304 WEST 9TH FRIENA, TEXAS (806) 247-3144

***STUDENT* WORK!!**
02 HS grad/college students! \$12 base/ft. openings this week, cust. svc./sales, conditions apply. Call 9-5, 505-763-9141 summerworknow.com

Administrative Secretary - Experience preferred. Proficient in Microsoft Word, Publisher, Typing, 10-key calculator. Verbal and written communication skills. Must be responsible and dependable. Duties include typing, filing, screening phone calls, scheduling appointments and meetings, recording meeting minutes, coordinating multiple calendars, medical staff credentialing, work-related injury claims, and more. Applications may be obtained from the Human Resources Office at Muleshoe Area Medical Center, 708 South First St., Muleshoe, TX 79347, 806-272-4524

HELP WANTED

SEASONAL EMPLOYMENT OPPORTUNITIES!
TEXAS MIGRANT COUNCIL, INC. MIGRANT HEAD START PROGRAM

The Texas Migrant Council, Inc., a non-profit organization with 30 years experience providing child care services to migrant families, has the following positions available in its various Head Start centers in the PANHANDLE REGION:

WORK LOCATION: Plainview, Lubbock, Hereford, Floydada, Muleshoe.

FAMILY SERVICES ADVOCATE

If interested in any of these positions and have questions regarding the job description, feel free to request a copy at the number listed below.

FOR IMMEDIATE CONSIDERATION, PLEASE SUBMIT APPLICATIONS AND/OR RESUME WITH SALARY AND LOCATION PREFERENCE BY THURSDAY, JUNE 20, 2002 TO:

TEXAS MIGRANT COUNCIL, INC. Attn: Panhandle Regional Director 1210 Ave. R. Lubbock, TX 79401 Phone: (806) 763-4187 Fax: (806) 763-9136

An Equal Opportunity Employer

Make up to \$1,500.00 in 11 days. Looking for enthusiastic adult to manage a firework stand outside Muleshoe June 24 thru July 4. No investment required. Phone 10am thru 5pm for more information. 210-622-3788 or 1-800-364-0136.

SUMMER RUSH
20 Positions FT/PT Flexible Schedule 2100-FT, 1000-PT Call Now 766-7175

M-Pyre Auto Sales is needing someone to handle marketing. No prior experience necessary. Pick up applications at M-Pyre, 1112 W. Amer. Blvd.

LOST AND FOUND

LOST—10-week-old black kitten, answers to Sassy. Last seen on 900 block & W. 7th, next to new gym, sometime Wednesday. Call Susan at First Bank, 272-4515 or 272-3761.

Classifieds GET THE JOB DONE

REAL ESTATE

640 acres - Lazbuddie. Full allotments, good establish yields, good water, 4 sprinklers, 4 wells, improvements. Call 806-965-2895, mobile 806-946-9413

Home For Sale; 3 Bdrm/1 1/2 Bath/2 Carport, Cent. Air & Heat, All Electric, FP, Storm Windows/Doors, Fans, Covered Patio, Lg. Workshop, RV Storage, Covered Storage, Fenced Yd. PRICED TO SELL! Call For Details: 272-5109

FOR SALE
70 Acres, 3 miles North of Muleshoe Call 272-5110

3 Bedroom, 2 Bath, Dishwasher, Fireplace & Ceiling Fans. 8/10 Acre. 20x24 Barn. Call 272-5209 or 272-5263.

40 ACRE TRACTS. 2 1/2 Mi. N. of city limits on Hwy 214 & 1/2 Mi. E. to SW corner. \$600/A Fieldton—800 gpm & circles 2 Farms - Earth. 1 1/2 E. of Whiteface 257 A. Irr. \$700/A. LOTS MORE FARMS! Farrar & Associates 806-894-4386

Vic Coker Land Co.
Agricultural Real Estate

- 307 Acres North of Muleshoe. 2 sprinklers, three wells, very good water. On pavement
- 400 Acres Northwest of Muleshoe. 3 sprinklers, large barn, other improvements. Near pavement
- 1800 Acres in Bailey County. 6 oversized sprinklers, 21 wells, 470 acres in C.R.P. Possible to divide.
- 160 Acres of dryland Northeast of Muleshoe. Lays Good. Has Allotments.
- Bailey County - Nice Brick Home on 320 Acres, Large Barn, 2 Sprinklers.
- 320 Acres in Parmer County on pavement. 2 wells, 1 half-miler sprinkler, lays level, excellent soil.
- West Camp Area - 480 Acres, 2 Brick Homes, 3 Center Pivot Sprinklers, Fenced. A Nice Operation.
- Earth, 3-2-2, brick, Cent. A&H, fireplace, fans, self-cleaning oven, dishwasher, garbage disposal, nice carpets, 2 living areas, large fenced yard, separate guest room, metal storage building, extra insulation in ceiling, GREAT BUY at \$50,000.00

310 Main Street, Suite 103 Muleshoe, Texas Office 806-272-3100 Home 806-965-2468

Nieman Realty
116 E. Ave. C • George Nieman, Broker • 272-5285 or 272-5286

RICHLAND HILLS - PARKRIDGE AREA

- NICE 3-3-1 Brick, Cent. heat, evap. air, built-ins, fans, 2000+ lv. area, fenced yd., patio, stor. bldg! \$57.5K! RH-1
- NICE LOTS AVAILABLE, CALL FOR DETAILS!!!
- VERY NICE 3-2-1 Brick, Elec. Heat Pump, built-ins, nice carpet, 1680' lv. area, fenced yd., MORE!!! \$60K!! RH-2

HIGHLAND AREA

- NICE 2-2-1+2 carport Home, built-ins, FP, Cent. A&H, 1987' lv. area, corner lot, wkshp./storage, fenced yd., MORE!!! \$65K!!! HL-2
- 3-2-1 carport Home, Brick, Cent. A&H, built-ins, FP, 1,880' Lv. area, fenced yd., MORE!!! \$47.5K!!! L-1

LENAU - COUNTRY CLUB AREA

- VERY NICE 3-1-1 Brick, Heat pump, DW, nice carpets, fenced yd., MORE!!! \$37.5K!!! HS-1
- 3-1 Home, corner lot, fl. furn. heat, fenced yd. \$25K! HS-10
- HWY. 84-2-1 1/2-2 Brick, Cent. Heat, win. air, built-ins, fans, workshop/storage, fenced yd., also good office location!! PRICE REDUCED!! 40K!! HS-2
- 3-1 Home, Fl. furnace, fans, storage & 2 apartments, corner lot!! PRICE REDUCED!! \$30K HS-3
- 2-1 Home, corner lot, stove, refrig., fans, workshop & storage, fenced yd.!! \$23.5K!! HS-8
- 3-1 1/2-2 carport Home, wall furn. heat, oven, cooktop, basement, shop/storage!! "AS IS"!! \$16K!! HS-6
- EARTH - 4-2-2 carport home, Heat Pump, fans, storage-workshop!! \$35K
- VERY NICE 3-2-1 carport Brick, Elec. Heat Pump, DW, Disp., fans, nice carpet & vinyl, fenced yd., also storage, MORE!!! \$62.5K!! HS-4

COMMERCIAL

- NICE six unit office complex, Cent. A&H, restroom facilities, and also has a nice one bedroom and two bedroom rental units. \$39.5K!!
- HWY. 84-150' frontage, office, warehouse, truck dock, railroad spur access, with or without fuel storage tanks!! \$30K!!!
- GOOD INCOME PROPERTY - approx 3490 bldg., paved parking, good net lease!! PRICED TO SELL!!
- VERY NICE 2300 bldg., Cent. A&H, 175' frontage on Hwy 84 & 70!! MUCH MORE!!
- 140'X100' tract on Hwy. 84 & 70, 1760' bldg., 1500' storage, 2400' cov. area, paved parking!! \$49.5K!!!
- RANCH HOUSE CLUB/RESTAURANT!! \$70K!!!
- SELL OR LEASE - FORMER DAIRY QUEEN, land, bldg., furn. & fixtures!!
- Approximately 2,000' shop plus 450' office, cent. heat, evap. air, 250' x 100' tract on Hwy 84!! \$35K!!!

RURAL

- FIXER-UPPER - 3-2 Home on 5 acres close to town, det. garage/carport, shop, barns, MORE!!! \$35K!!!
- EXCELLENT DAIRY LOCATION-1120ac., 7 circles, 20 wells, very nice 3-2-3 Home w/basement, 40' x 60' barn w/30' x 40' shed, 3 mil. lb. grain facility, add. 3 bdrm. home, 2 mobile homes, on pavement convenient to Muleshoe, Clovis, Portales, & 5K head permit. Could be split if needed!!
- W. of SUDAN-NICE 3-2-2 Brick Home, 5 acre tract on Hwy. 298, Cent. Air & Heat, built-ins, large Quonset Barn, MORE!!! \$95K!!!
- PRICE REDUCED - 108 acres or 7 acre tract on Hwy. 70, approx. 2100' office area, 16,900' commercial bldg. w/loading dock, 3,400' warehouse, new well, 2,800' runway!!!
- STEGALL AREA - GOOD 80 acre farm!! PRICE TO SELL!!!

IN CONTRACT



Lowe's Marketplace

401 W. American Blvd. Muleshoe, Texas 272-4585

WE RESERVE THE RIGHT TO LIMIT QUANTITIES IN TEXAS

WESTERN UNION MONEY TRANSFERSM
"The fastest way to send money"

AFFILIATED FOODS INC.
MEMBER STORE AT PARTICIPATING STORES



SPECIAL X-TRA SAVINGS PRICING GOOD THRU JULY 30, 2002

ALL VARIETIES
LOWE'S OR
SHURFINE
MILK
GALLON

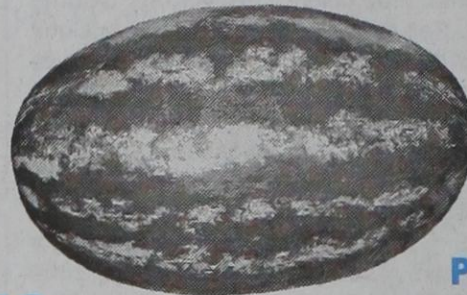


Xtra
Savings

ASSTD.
HILLSHIRE FARM
**SMOKED
SAUSAGE**
1 LB. PKG.



**RED RIPE
STRAWBERRIES**
1 LB. PKG



**RED RIPE
WATERMELONS**
WHOLE



**PILGRIM'S PRIDE
XTRA LG.
EGGS**
18 CT.

1¢

EACH WITH 1
REWARD COUPON

SELECT GROUP
MRS. BAIRD'S OR RAINBO
**HAMBURGER OR
HOT DOG BUNS**
6 TO 8 CT.



**RG'S
BEEF
PATTIES**
3 LB. BAG

Xtra
Savings

Here's How It Works! Lowe's is giving you deep discounts on many of the items you purchase everyday! For each dollar you spend at Lowe's, we will give you a point. After 50 points (or \$50), you will receive a Lowe's X-TRA Savings Reward Coupon. This coupon can then be redeemed for deep discounts on selected items. Each month, Lowe's will select from our most popular items in the store and deeply discount them for our X-TRA Savings Reward Coupon holders. Present your coupon and receive incredible savings on selected items.
X-TRA Savings Reward Program • Each Dollar You Spend is Worth ONE (1) Point • After you earn 50 points, you will receive a Lowe's X-TRA Savings Reward Coupon • Use your Lowe's X-TRA Savings Reward Coupon to get deep discounts on one of the selected items. • Only ONE (1) item can be purchased with each Reward Coupon. • Items will be changed monthly.
THE X-TRA SAVINGS REWARD PROGRAM GOOD AT LOWE'S MULESHOE, CANYON AND TUCUMCARI STORES ONLY! Points are not transferable between stores. No substitutions please on X-TRA Savings Reward items. Only one item may be purchased at the special deep discount per Reward Coupon.

McCormick's 13-14 oz. btl.
GRILLING SAUCES

Pre-Priced \$2.29
**FRITOS® CORN CHIPS
OR CHEE-TOS**

3 liter btl.
**COCA-COLA, SPRITE
OR DR. PEPPER**

48 oz. btl. Wesson
COOKING OIL

7 lb.
BAG OF ICE

17-26 oz. jar Ragu
SPAGHETTI SAUCE

24 oz. American Beauty
SPAGHETTI OR ELBO RONI

4 lb. bag Imperial
PURE CANE SUGAR

Bayer 40 ct. Gencaps or 50 ct. Caplets/Tablets
ASPIRIN

Asstd. 13.5 oz. Pert Plus
**SHAMPOO
WITH CONDITIONER**

Asstd. 6.4 oz. Colgate
TOOTHPASTE

4 pack Cello Wrapped
TOMATOES

1¢

EACH WITH
1 REWARD
COUPON

1 ITEM PER COUPON

1 lb. bag Mini, Peeled
CARROTS

8 oz. pkg. Cello Wrapped
WHOLE MUSHROOMS

128 oz. jug Langer's
FRUIT DRINKS

4 lb. bag Casserole
PINTO BEANS

32 oz. bag Comet Long Grain
BROWN RICE

6 ct. pkg. Asstd. Nature's Grain
BAGELS

16 oz. pkg. Johnsonville
BRATWURST

3 lb. Orval Kent
**POTATO SALAD
OR COLESLAW**

128 oz. Sunny Delight
CITRUS PUNCH

10 to 12 oz. box Eggo
WAFFLES

Select Group 8-9 oz. Michelina's
FROZEN ENTREES

6-8 ct. New York brand
**GARLIC TEXAS TOAST
OR BREAD STICKS**

Asstd. 1/2 gal. round Shurfine
ICE CREAM

360 ct. Zee
NAPKINS

32 oz. jar Best Maid Hamburger Sliced
DILL PICKLES

16 oz. jars Pace
PICANTE SAUCE

Kraft 18 oz. squeeze btl.
MAYO OR MIRACLE WHIP

50 ct. 12 oz. Hefty
FOAM BOWLS

Select Group GladWare
STORAGE CONTAINERS

Chinet 25 ct. 9 inch
or 15 ct. 10 inch
PAPER PLATES

MEAT

PREMIUM SELECT BEEF BONE-IN
RIBEYE STEAKS LB **\$3⁹⁹**
ASSTD. X-TRA SAVINGS PAK BONE-IN
PORK CHOPS LB **\$1¹⁹**
RAW
**TURKEY
DRUMSTICKS** LB **\$5⁹⁹**
ECKRICH ASSTD. VARIETIES
**SMOKED
SAUSAGE** 14-16 OZ. PKGS **3^{/5}**
ARMOUR CENTER CUT
BACON 12 OZ. PKGS **2^{/4}**
ECKRICH ASSTD. VARIETIES
**LUNCH MAKERS
FUN KITS!** 10.6-12.2 OZ. PKGS **3^{/5}**
MARKET CUT
COLBY CHEESE LB **\$2⁴⁹**
MOUNTAIN PASS DICED
GREEN CHILIES ... 4 OZ. CANS **2^{/1}**
ASSTD. VARIETIES 6 PK. CANS, 3 LITER
BTL. OR 6 PK. 1/2 LITER BTL.
**COCA-COLA, SPRITE OR
DR. PEPPER** YOUR CHOICE **3^{/5}**
SHURFINE 20 LB. BAG REGULAR
CHARCOAL WITH COUPON **\$4⁹⁹**
(\$.99 WITHOUT COUPON. SEE CIRCULAR.)

PRODUCE

LARGE, SWEET CALIFORNIA
PEACHES LBS **2^{/1}**
FRESH
HONEYDEW MELONS LB **59¢**
RED RIPE
STRAWBERRIES 1 LB. PKG **\$1⁸⁸**
NEW CROP SEEDLESS
WHITE GRAPES LB **\$1⁴⁹**
RED DELICIOUS
APPLES 5 LB. BAGS **2^{/5}**
RED RIPE
ROMA TOMATOES LB **88¢**
CRISP STALK
CELERY EACH **88¢**
CALIFORNIA CELLO
CARROTS 2 LB. PKG **88¢**
GARDEN FRESH
BROCCOLI LB **79¢**
SNO WHITE
MUSHROOMS 8 OZ. PKG **99¢**
SNO WHITE
CAULIFLOWER EACH **\$1⁸⁸**
TEXAS 1015
YELLOW ONIONS LBS **2^{/1}**
DORITOS®
**TORTILLA
CHIPS** PRE-PRICED \$3.29 **2^{/4}**

FROZEN & DAIRY

ASSTD. MR. P'S
PIZZA 6.5 OZ. **2^{/1}**
SELECT VARIETIES
VALUE MENU OR SELECT MENU
**BANQUET
DINNERS** 6.7-11 OZ. PKG **99¢**
SHURFINE BUTTERMILK
OR BUTTER FLAVOR
**JUMBOS
BISCUITS** 10 OZ. CAN **99¢**
BLUE BELL
**CREME
SUPREME** 48 OZ. TUBS **2^{/5}**
BLUE BELL
BULLETS 24 CT. PKGS **2^{/4}**
ASSTD. SHEDD'S SPREAD
**COUNTRY
CROCK** 48 OZ. TUBS **2^{/4}**
SELECT VARIETIES NABISCO
**HONEY MAID
CRACKERS** 13-16 OZ. PKGS **2^{/5}**
LOWE'S
**SPAGHETTI
SAUCE** 26 OZ. JARS **3^{/5}**
LIPTON REG. OR COLD BREW
**ICED TEA
BAGS** 24 CT. FAMILY SIZE **3^{/5}**

HEALTH & BEAUTY

ANGEL SOFT
BATH TISSUE 4 ROLL PKG **89¢**
ASSTD. WHITE RAIN
**SHAMPOO OR
CONDITIONER** 15 OZ. BTL **99¢**
PURINA
**MAINSTAY
DOG FOOD** 17.6 LB. BAG **\$4⁹⁹**
SHURFINE
**VIENNA
SAUSAGE** 5 OZ. CANS **3^{/99}**
QUAKER SELECT GROUP BAGGED
CEREAL 13-18 OZ. BAGS **2^{/3}**
LOWE'S WHITE
BREAD 24 OZ. LOAVES **2^{/1}**
SELECT VARIETIES BETTY CROCKER
(HAMBURGER HELPER ONLY!)
**HAMBURGER
HELPER** 6.25-8.6 OZ. BOXES **4^{/5}**
DEL MONTE SQUEEZE
KETCHUP 24 OZ. BTL **79¢**
SELECT VARIETIES
**OLD ORCHARD
COCKTAIL** 64 OZ. BTL **88¢**
SELECT VARIETIES NABISCO
**OREO
COOKIES** 13-16 OZ. PKGS **2^{/5}**

WEEKLY PRICES EFFECT. JUNE 12-18, 2002