

SCH2
COMP
HANSFORD COUNTY LIBRARY
0122 MAIN ST
SPEARMAN TX 79081-2064



HANSFORD COUNTY THE REPORTER-STATESMAN

THURSDAY,
DECEMBER 2, 2010

CELEBRATING 103 YEARS OF SERVICE TO HANSFORD COUNTY
HANSFORD COUNTY'S ONLY NEWSPAPER

75¢

WWW.SPEARMANREPORTER.COM

VOLUME 103 • ISSUE 48

reporter@spearmanreporter.com

Merry CHRISTMAS

Operation Christmas Greeting

The Hansford Hospital Auxiliary has begun their yearly fundraiser - Operation Christmas Greeting. Instead of mailing greeting cards, individuals who wish to, may donate money to the Hansford Hospital Auxiliary and have their greeting published in this paper. The money is used to purchase equipment and supplies that are not budgeted at the Hospital and Manor.

If you would like to participate in this holiday greeting, please mail your donation to: Operation Christmas Greeting, Chairman Judy Nelson, 130 Nelson Road, Spearman, Texas 79081. Checks should be made to Hansford Hospital Auxiliary and marked Operation Christmas Greeting. Thank you so much for supporting this fundraiser.

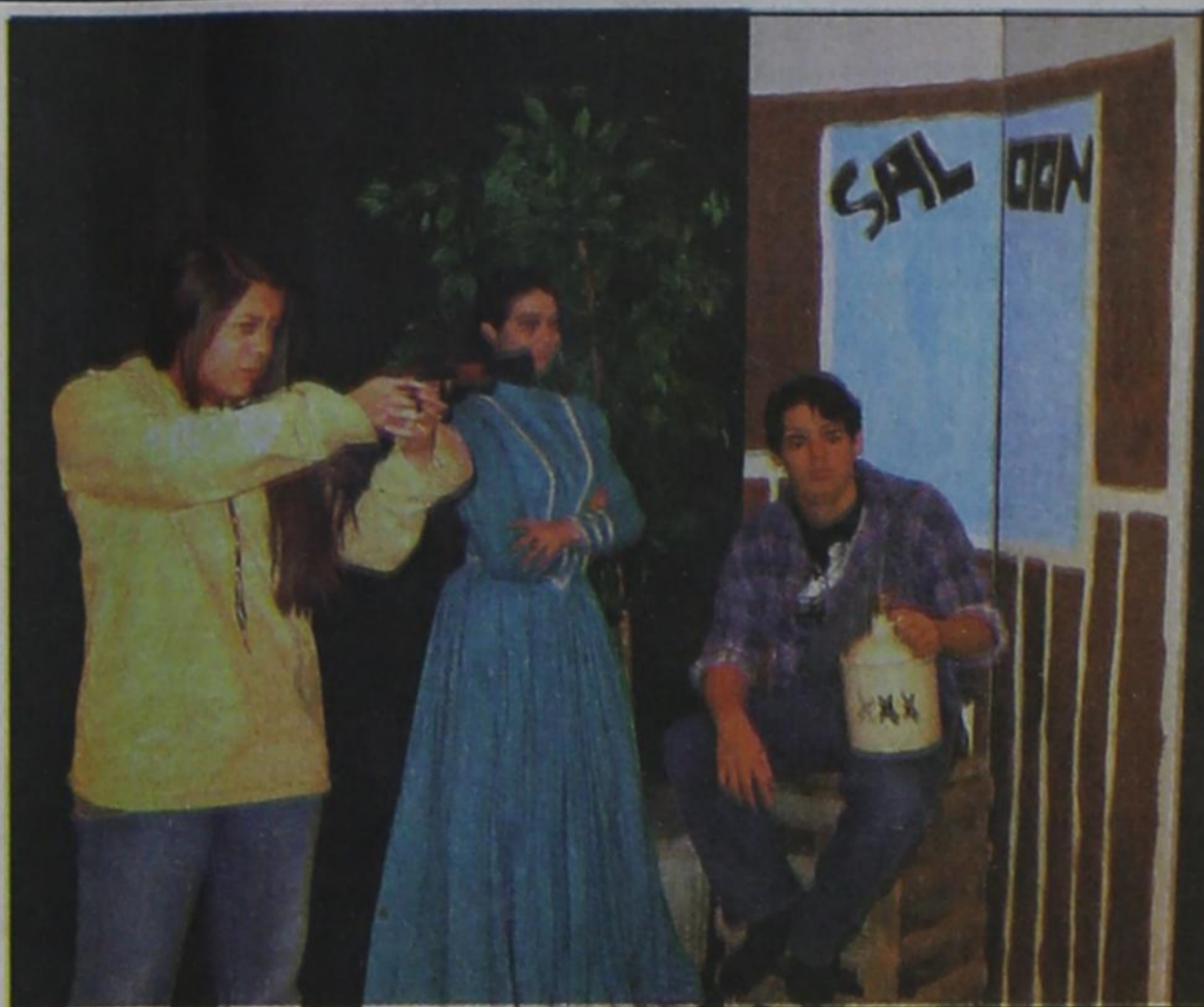
Santa Claws Holiday Photo Time!

Support the SPCA by having your pet's photo taken with Santa! Bring the whole family and make it a holiday tradition. Santa Claws will be at PetSmart® (2800 S. Soncy Rd., Amarillo) the first three weekends in December. The cost is \$9.95 for a digital photo and Christmas frame. This opportunity is held at and sponsored by PetSmart®. \$5 of your purchase price on each package supports the SPCA and its animals without homes for Christmas.

The SPCA is a non-profit organization and has been in Amarillo for more than 20 years. We currently care for almost 100 dogs and puppies and 75 cats and kittens. It is our desire to find perfect homes for each of our shelter animals and they will remain with us until that happens, as we are a no-kill shelter. If you are unable to adopt a pet, there are still many ways to support the SPCA. Volunteer, become a member, or provide financial assistance. We need your help!

To adopt, or for more information about the SPCA, contact Amarillo SPCA, 11901 S. Coulter St., Amarillo TX 79119, 806-622-0555, amarillospca@amaonline.com, www.amarillospca.net

Shelter hours: Tuesday-Friday 12-5, Saturday 1-5.



Spearman High School presented *Happyville* by Joseph George Caruso for their fall play on Monday, November 29, 2010 at 7 p.m. in the high school auditorium. This play is a comedy or farce of old time westerns. Pictured re Jessica Pinon, Candy Johnson and Auto Bosars.

COME TO THE GAME

Spearman Lynx/Lynxettes

12/2-4 VG, VB @ Nazareth Tourney
12/2-4 JVG, JVB @ Gruver Tourney
12/6 7G (5), 8G (6), JVV (6) vs. River Road
12/6 7B (5), 8B (6), 9B (6) @ River Road
12/7 JVG (5), JVB (5), VG (7:30), VB (8) @ Canadian
12/9-11 VG @ Vernon Tourney
12/9-11 JVG @ Spearman Tourney
12/9-11 JVB @ Borger Tourney
12/14 JVG (5), JVB (5), VG (6:30), VB (8) @ Stinnett
12/17 JVG (5), JVB (5), VG (6:30), VB (8) vs Gruver
12/28-30 VG, VB @ Caprock Tourney in Lubbock

Gruver Greyhounds/Lady Hounds

12/2-4 VG, VB @ Fritch Tourney
12/2-4 JVG, JVB @ Gruver Tourney
12/6 7B (5), 7G (6), 8G (5), 8B (6) @ Canadian
12/7 JVG (4), JVB (5), VG (6:30), VB (8) vs. Beaver
12/9-11 VG, VB @ Claude Tourney
12/9-11 JVG @ Spearman Tourney
12/9-11 JVB @ River Road Tourney
12/6 7B (5), 7G (6), 8G (5), 8B (6) vs Stratford
12/14 JVB (4), VG (6:30) vs. Borger
12/17 JVG (4), JVB (5), VG (6:30), VB (8) @ Spearman
12/28-30 VG, VB @ Canadian Tourney

Weather Forecast

THURSDAY NIGHT - Mostly clear. Lows in the upper 20s. South winds 5 to 10 mph.
FRIDAY - Partly cloudy. Highs around 70. West winds 10 to 15 mph.
FRIDAY NIGHT - Partly cloudy. Lows in the lower 30s. North winds 10 to 15 mph.
SATURDAY - Partly cloudy. Cooler. Highs in the lower 50s.
SATURDAY NIGHT - Partly cloudy in the evening then becoming mostly cloudy. Lows in the mid 20s.
SUNDAY - Mostly cloudy. Highs in the upper 40s.
SUNDAY NIGHT - Mostly cloudy. Lows in the mid 20s.
MONDAY - Mostly cloudy with a 20 percent chance of light rain and light snow. Highs in the lower 40s.
MONDAY NIGHT - Mostly cloudy. Lows in the lower 20s.
TUESDAY - Partly cloudy. Highs in the lower 40s.
TUESDAY NIGHT - Partly cloudy. Lows in the mid 20s.
WEDNESDAY - Partly cloudy. Highs in the lower 50s.
Read more: <http://www.city-data.com/forecast/w-Spearman-Texas.html#ixzz0xgJSWQkT>

Black and Red Classic

Gruver HS will host their annual junior varsity Black and Red Classic December 2-4. Games will begin on Thursday, December 2, at 3 p.m. and will continue through early Saturday afternoon.

The Gruver JV girls team will take the court Thursday at 6 p.m. in the varsity gym against Sunray and the JV boys team will play immediately after the girls at 7:30 p.m. against Panhandle.

The Spearman JV girls team will play on Thursday at 3 p.m. in the varsity gym against Stratford. The Spearman JV boys will play at 4:30 p.m. on Thursday in the varsity gym against Sunray.

Everyone is invited to come out and support the JV teams in the tournament.

November Declared Home Care & Hospice Month

Governor Rick Perry has declared November "Home Care and Hospice Month" in Texas. This year's theme was "Home Care and Hospice: Care Stronger". It's the season of giving thanks as well as a time for praise and respect for those who go about their jobs every day often unnoticed. Each year, the Texas Association for Home Care & Hospice (TAHC&H) leads the home care and hospice community in Texas in honor of the heroic individuals who provide home care and hospice services to millions of Texans.

The intent of this campaign is to raise public awareness concerning both hospice and home care. Approximately 4,400 licensed home and community support services agencies in Texas provide services ranging from assistance with personal care to high-tech nursing and therapies. These agencies provide quality, dependable care and support services to individuals who live alone or with friends or

family, allowing them to retain their independence and dignity. They can also provide respite for family caregivers, allowing them to have a break periodically.

Among the types of services available through these agencies are:

Home Health services include skilled and supportive care such as nursing; physical, occupational and speech-language therapies; medical social work; home health aide; and nutritional counseling. From periodic nursing assessments to high-tech intravenous therapies, home health significantly reduces the need for institutional care in hospitals or nursing homes and can manage chronic diseases.

Hospice is a philosophy of care which provides comfort for persons in the last phases of a terminal illness so they can live as comfortable as possible, whether at home or in a health care facility. These services include medical care, nursing,

home health aide, social services, spiritual care, bereavement services, volunteer services and counseling. Families also receive bereavement support through hospice.

Personal assistance services include routine, ongoing support services such as assistance with self-administered medications, bathing, dressing, grooming, feeding, meal preparation, toileting and ambulation.

Home care means freedom. It is the right to continue to stay at home in independence, even in the face of major health problems - it is where almost everyone prefers to be. Home care means having a high quality of life. And hospice means helping those facing death to do so with dignity, grace, and joy, while supporting the families and survivors who mourn the loss of loved ones.

Since 1969, the Texas Association for Home Care & Hospice has worked to expand and improve the quality and efficiencies of health care services in Texas. Its mission is to promote the quality and economic viability of licensed providers of home and community support services in Texas.

The staff of Hansford Hospice includes Lelia Bynum, RN; Stacie Ruga, RN; Cyndi Sanders, RN; Vicki Nickel, LVN; Patrice Smith, CNA; Jeanette Vasquez, CNA; and Beverly Antalek, Medical Records. Hansford Hospice volunteers are: Madalyn Fuqua, Nellie Buchanan, Gary & Cathy Smith, Brenda Wall, Garland Hopper, Muriel Boyd, Karen & Richie Thompson, Mary Kay Harbour, Deatta Sparks, June Spencer, Cindy Scribner, Betty Jean Davis, Cindy Holton, Linda Latta, Jana Brock, Charolette Sheets, Pat Sutterfield, Doyle & June Jackson, Judy Nelson, Dean & Linda Lieb, Wayne & Myrtle Ware, Terry Petr, Jo Linda Hutchison, Beverly Antalek, Verna Lee Shirley, Mary Allen, Dean Greene, Helen Sandoval, Larry McCollum, Nell Patterson, Ruby Riley, Celia Krug, Elaine Odegaard, Jim & Lana Medley, Erlene "Scooter" Russell, Jim & Sandra Reeves, Opal Wallin, Anita Marquez, Nell Evans, Wanda Wagoner, Bob Davis, Connie Gammill, Reba Hunter, Pat Irwin, Janie Jeffries, Suzanne Thomas and Micky Maupin.

Letters to Santa

The Hansford County Reporter-Statesman will print Letters to Santa from children in Hansford County in our annual Christmas edition, which will be published on December 23rd.

Letters may be mailed to: Santa Letter, % Reporter-Statesman, 213 Main Street, Spearman, TX 79081, or dropped by the Reporter-Statesman office. Office hours are Mon.-Thurs., 9 a.m.-12 noon and Mon.-Wed., 1-5 p.m. (There is a drop-slot located in the window to the right of the door.) Letters may also be dropped off at the new home of the Reporter-Statesman, 310 Barkley Street, Spearman.

In order for your letter to appear in the Christmas issue, it must be at the Reporter-Statesman office by 5 p.m. on Thursday, December 16th. All letters will be forwarded to Santa. (Letters received after the deadline may not have time to reach the North Pole by Christmas.)

The Hansford County Reporter-Statesman 2010 Holiday Schedule

SANTA LETTERS: The Reporter-Statesman will publish Santa Letters in the Thursday, December 23rd edition. The deadline to submit information for this issue will be Thursday, December 16th.

HOLIDAY GREETINGS: Anyone wishing to place a holiday greeting in the newspaper is encouraged to call or come by the Reporter-Statesman office as soon as possible. Holiday greetings will be included in the December 23rd Christmas edition, and the December 30th New Year's edition.

OFFICE CLOSED: The Hansford County Reporter-Statesman office will be closed December 20-31 for the Christmas Holidays. (The deadline for the December 23rd and December 30th issues is Thursday, December 16th at 5 p.m.) The office will open for the new year on January 3, 2011 at 9 a.m.

Deadline Notice!

The deadline to submit news and advertising to the Hansford County Reporter-Statesman is Monday at 5 p.m. Items submitted after the deadline will be published at a later date, as time and space permit.

The deadline for the December 23rd and December 30th issues will be Thursday, December 16th at 12 noon.

Items may be submitted by phone (806-659-3434), fax (806-398-9080), mail (Reporter-Statesman, 213 Main Street, Spearman TX 79081), or e-mail (reporter@spearmanreporter.com).

For more information, please contact Catherine Smith at 659-3434, or e-mail to reporter@spearmanreporter.com

Wolf Creek Heritage Museum Notes

by Virginia Scott
MUSEUM HAPPENINGS
A very quiet week with the Thanksgiving Holiday. We closed early on Wednesday and all day Thursday, so there is no report from the core team. This week there was a board meeting on Thursday to close the year and approve our goals for next year.

At this time of the year, we look at what we have accomplished and plan for the new year. We schedule artists and look for collections to display. We also plan events and fundraisers. So, I should have a lot to report in my first column of 2011.

HISTORICAL MUSINGS

We have a nice collection of phonographs of the early 1900's (we are trying to research the dates) and Robert Imke donates his talent and equipment to transfer the songs to a CD, so we can play them. The latest one has love songs with the following titles: "When You Look in the Heart of a Rose," "Serenade," "Nightingale Song," "A Mother," and "Peer Gynt Suite No. 1." If you

love old songs, visit us in the new year and give a listen.

To end the year, I am recalling the history of the "Lipscomb Heritage," the first newsletter published by the Lipscomb County Historical Society and the Wolf Creek Heritage Museum. This history was written by Betty Ruth Beard in the last issue of the newsletter in 1992.

"Members of the Lipscomb County Historical Society, who sponsor the Wolf Creek Heritage Museum in Lipscomb, met in early 1988 and decided to finance a newsletter of county history. "Lipscomb Heritage" was selected for the name of the bulletin which was to be printed every three months. Proceeds, if any, from the newsletter were earmarked for the museum (after expenses).

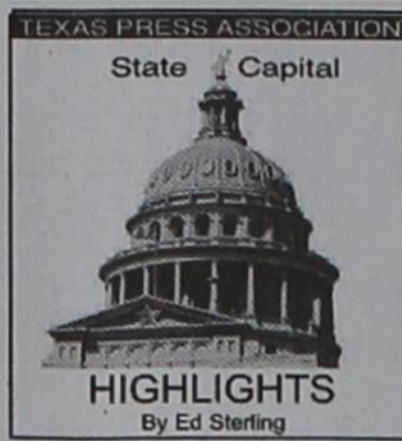
The purpose was to include all county towns in the publication, so editors were appointed from each town. They were Marki Laughlin, Higgins; Betty Ruth Beard, Lipscomb; Hazel Lockhart, Booker; Alberdine Wilhite, Follett; and Bessie Lee Duke, Dar-

rouzett."

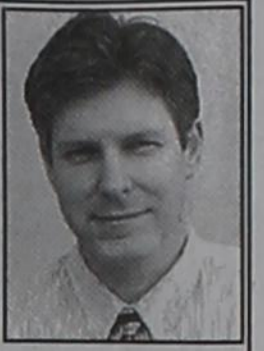
The first edition was printed in June, 1988. Throughout the past four years, the members of the Historical Society volunteered their time to writing and collecting articles and pictures to be printed. The subscription list was 130 with readers in over 12 states. Ben Boren of the Booker News printed the newsletter, beginning with the second issue. The 17 issues are now available in the museum gift shop as one of our publications.

The Lipscomb County Historical Commission and the Museum resumed publishing a newsletter in 2006 and continues providing members the newsletter with three or four issues a year. The newsletter continues our mission to preserve and protect our heritage. This past year we completed the editing of volume 2 of Lipscomb County History and from the stories we received, there's a lot of history and writers out there. We need you so think about writing an article for the quarterly newsletter. We need your history and talent.

WE WISH YOU A MERRY CHRISTMAS AND HAPPY NEW YEAR!



STATE CAPITAL HIGHLIGHTS



by Ed Sterling

City officials claim Open Meetings Act sullies communication

AUSTIN — More than a dozen city council members had their day in federal district court on Nov. 23 when their challenge to the constitutionality of the Texas Open Meetings Act was heard with Judge Rob Junell presiding.

The plaintiffs, from cities across Texas, claimed the Act violates their right to free speech because it requires them to meet and vote in public or face jail time and fines if they are convicted of deliberating about public business secretly, or in a manner that circumvents the Act.

City council members from Wichita Falls, Arlington, Alpine and Hurst testified they routinely avoid communicating with other council members outside of an official meeting because they could not be sure if doing so would be a violation of the Act.

But the Texas Attorney General's office, defendants, refuted the plaintiffs' arguments on constitutional and procedural grounds.

Judge Junell called for more input from both sides in January, before he will render a decision in the case.

Jury finds DeLay guilty on 2 counts

In an Austin state district courtroom, a 12-member jury on Nov. 24 found former U.S. House majority leader Tom DeLay, R-Sugar Land, guilty of money laundering and conspiracy.

The case stems from an incident several years ago when DeLay moved corporate campaign contributions to the Republican Party into political races for certain Texas Republicans running for seats in the U.S. House.

DeLay, who faces a sentence of five to 99 years in prison and up to a \$10,000 fine on the money laundering charge, and two to 20 years in prison and up to a \$10,000 fine on the conspiracy charge, said he will appeal.

Panel investigates allegation

The House Committee on General Investigating and Ethics met at the Capitol on Nov. 23 to check out an allegation by a state representative that he may have been pressured to vote for the reelection of House Speaker Joe Straus or lose his seat in the upcoming redrawing of districts.

The allegation, lodged by Rep. Bryan Hughes, R-Mi-

neola, sprang from a telephone conversation he had with Rep. Larry Phillips, R-Sherman. The allegation turned out to be nothing action worthy.

The Ethics Committee chalked it up as a disagreement between two members.

But of course, there is quite a bit of uncertainty afoot on how Congressional, state Senate and state House districts will look when the Texas Legislature applies Census 2010 figures to the state map.

Investments will create Texas jobs

Gov. Rick Perry on Nov. 22 announced a \$3.1 million investment in PETCO Animal Supplies Inc., that he said would create 400 jobs in San Antonio and generate an estimated \$17 million in capital investment.

On Nov. 23, Perry announced a \$2.5 million investment to create a U.S. operations center for SunPower Corp. in Austin. Perry said the investment would create 450 jobs and generate an estimated \$10 million in capital investment.

The state's financial contribution to the two projects comes through the Texas Enterprise Fund, a business incentive account that requires the governor, lieutenant governor and speaker of the House to agree before funds can be disbursed.

Plenty of shingles in our asphalt

In mid-November, the Texas Department of Transportation reported that in the last 18 months, it pre-qualified two dozen used shingle-processing operations to supply TxDOT road projects.

The use of road paving

material that incorporates asphalt roofing shingle scrap saves money, and, TxDOT said, "Placing a two-inch hot mix overlay with 5 percent recycled shingles on one mile of a two-lane road uses 80 tons of shingles and saves 40 cubic yards of landfill space."

"That's as many shingles as roofers would remove from 40 2,000-square foot homes."

Chemical company wins honor

Texas Workforce Commission on Nov. 19 announced Dow Chemical Co. as its 2010 Texas Workforce Employer of the Year.

Dow, which employs 6,500 workers in Texas, was chosen from among five finalists for its collaboration with the Texas workforce system and for supporting the agency's goal of ensuring that both employers and workers have the resources and skills Texas needs to remain competitive in the 21st century.

Officials noted that Dow dedicates resources to a state employment project that matches industry jobs to military job descriptions to help returning veterans secure employment.

10 to vie for vacant House seat

Eight Republicans, two Democrats and one Libertarian are running in the Dec. 14 special election for the House District 44 seat.

The winner will succeed the late Edmund Kuempel, R-Seguin, who had served as the district's state representative since 1983. Kuempel, 67, died of a heart attack in Austin on Nov. 4.

Guadalupe, Gonzales and Wilson counties make up House District 44.

Bob Davis Receives Golden Acres Sales Award

Bob Davis of Gruver, Texas has been presented with a Golden Achievement Award from Golden Acres Genetics. The award recognizes Golden Acres resellers who made significant contributions to the annual Golden Acres sales effort.

While presenting the 2010 awards at the company's recent kickoff meeting in San Marcos, Golden Acres president Lou Buice praised Bob Davis for "a

commitment to excellence, customer service, and independence."

Golden Acres southern seed specialist James Baxter said today's top seed resellers do more than just offer access to the latest seed technology. "Seed resellers also have to devote considerable energy to product knowledge and agronomic understanding in order to help their customers achieve maximum profitability and success. Bob is doing that, which is why his customers keep coming back year after year. He's earned that trust."

"Golden Acres works with some outstanding resellers throughout the South, and Bob Davis is certainly among the best of the best," said Buice. "We're proud to recognize his tremendous sales efforts and achievements during the past year."

As an independent and family-owned company based in Waco, Texas, Golden Acres Genetics focuses 100% of its efforts on the southern states of Arkansas, Louisiana, Mississippi, New Mexico, Oklahoma and Texas to select the best traits and genetics for southern soils. Everyone at Golden Acres, from the president down, walks the fields and examines plots to find the best performing corn and grain sorghum seed and related technologies to market to farmers across the southern half of the United States. For more information, visit www.GAseed.com.

Sergio's Auto Sales Current Inventory

- 2004 VW Passat GL \$5,900
- 2004 Hyundai Tiburon \$6,550
- 2003 F-150 Crew Cab \$14,500
- 2007 GMC Yukon \$22,500
- 1986 Chevrolet \$3,500
- 2002 Ford Crow Victoria \$5,600
- 1999 VW Beatle \$4,996
- 2005 Chevrolet Aveo \$4,995

We appreciate your support!

Happy Holidays

SERGIO'S AUTO-SALES

SERGIO VARGAS

120 W. KENNETH AVE. SPEARMAN, TX 79081
806 659 9971 CEL. 806 330 0173

The Hansford County Reporter-Statesman
Mailing Address - 213 Main Street • Spearman TX 79081
Physical Address - 310 Barkley Street • Spearman TX 79081
Phone - (806) 659-3434 • Fax - (806) 398-9080
www.spearmanreporter.com • reporter@spearmanreporter.com
Mon.-Thurs. 9 a.m.-12 p.m., Mon.-Wed. & 1-5 p.m.
Closed Thurs. afternoon and all day Fri., Sat. & Sun.

Gary Smith - Publisher Catherine Smith - Editor
Contributing Writers: Dorothy Hudson, Jim Derington, Merry Sparks, Cecil Biggers
Contributing Photographers: Charlie Johnson, Lisa Johnson, Tammy Batton, Bonnie Bergan

Subscription Rates
In Hansford County - \$30.00 • Out of County - \$40.00
E-Mail Subscription - \$35.00

The Hansford County Reporter-Statesman (USPS 529660) is published weekly in Spearman, TX. Periodical postage paid in Spearman, TX. **POSTMASTER:** Send address changes to: The Hansford County Reporter-Statesman, 213 Main Street, Spearman, TX 79081.

Publication Policy
The deadline to submit news and advertising to The Hansford County Reporter-Statesman is Monday at 5 p.m. Items submitted after the deadline will be published at a later date, as time and space permit. Publication of all items is at the discretion of the editor.

Advertising
Open Display rates are \$4.00 per column inch. Classified Ads are \$6 for the first 25 words and 10¢ per word for each additional word. (Additional charge for boxed classifieds.) There is a \$1 charge per week if billed.

Member of
Gruver Chamber of Commerce
Spearman Chamber of Commerce
Texas Press Association and Panhandle Press Association

20TH CENTURY

- ACROSS**
1. Beat, as in the Joneses
 6. Airline purchased by American
 9. Whirlpool
 13. Better than good
 14. Harry Potter's pet
 15. Hindu woman's dress
 16. Respond
 17. *Subject of 1970s embargo
 18. ___-la
 19. *Vanished aviatrix
 21. Red plus yellow
 23. Feeling of veneration
 24. Short for "and elsewhere" or "and others"
 25. *The widest net ever cast?
 28. A son of Adam and Eve
 30. Some claim it is everything
 35. Sailor's call
 37. Looked at
 39. Opposite the pinnacle
 40. Actress Campbell
 41. Humpy ungulate
 43. Hokkaido language
 44. *The American ___
 46. Rig
 47. *Landing spot
 48. Metal detector, e.g.
 50. Not any
 52. *Used in German artillery shells in WWI
- DOWN**
1. Made popular by "Shrek"
 2. Carbamide
 3. Salty drop
 4. Medvedev's country house, e.g.
 5. Capital of Canada
 6. Thomas the Engine's warning
 7. *1914-1918 event
 8. Administer
 9. Bring home the bacon
 10. *Transvestite clothing
 11. Mark for omission
 12. Uh-huh
 15. *Advocate of Great Purge
 20. Three-stringed violin
 22. *Sinatra's pack
 24. Just one on Mendeleev's table
 25. Harry's and Hermione's magic tools
 26. One of journalism's Ws
 27. Like a basket
 29. Unfledged hawk
 31. "Yes, ___!"
 32. Dostoevsky's "The ___"
 33. ___ de l'Enclos, French poet and courtisan
 34. Straining sound
 36. #12 Down, pl.
 38. Visual presentation
 42. Jargon
 45. *Candle in the wind?
 49. One time around
 51. Twist together
 54. Three-masted merchant vessel
 56. Dairy gland
 57. Voiceless consonant
 58. *The Three Tenors
 59. *Blood disease
 60. Cautious and wary, alt. spelling
 61. Damaged by long use
 62. Greek god of war
 63. R in RIP
 64. Tax helper
 66. Gone by

SUDOKU
PRESENTED BY
VolunteerMatch.org
Where volunteering begins.

2	8		6	5				
		3					7	
	1			7	9			
				1	2			
		8						
	9			2	5	7		
				6				
1	4	7						8
3			4	7				1

© 2010, StatePoint Media, Inc. answer on classified page
Fill in the blank squares in the grid, making sure that every row, column and 3-by-3 box includes all digits 1 through 9.

These games are brought to you by the
Hansford County Reporter-Statesman

CROSSWORD

1	2	3	4	5	6	7	8	9	10	11	12				
13					14				15						
16					17				18						
19					20			21	22						
					23			24							
25	26	27			28			29		30	31	32	33	34	
35		36			37			38		39					
40					41			42		43					
44					45			46					47		
48					49			50		51			52		
					53			54		55			56		
					57	58	59			60			61	62	63
64					65	66				67					
68					69					70					
71					72					73					

PRESENTED BY
VolunteerMatch.org
Where volunteering begins.

© 2010, StatePoint Media, Inc. answer on classified page

Happy Birthday!

December 2 Birthday - Audrey Beasley, Don Dillow, Paul Stavlo, Mike Close, Sharon Freeman, Kristin Dunnihoo, Ginger McClellan, Jana Price, James Terry, Amanda Gaines, Blare Title, Christi Cooper, Cecilia Favela, Frances & Jeffrey Davis

December 3 Birthday - Shell Haynes, Bethany Harris, Lila (Mike) Hergert, Kevin Harris, Francisco Lozano, Jewell King, Alvin Auld, Mark Taylor, Jenny Neff, Phyllis Cummings

Anniversary - M/M Elbert Dorton, M/M John Haynes

December 4 Birthday - Chris Spivey, Lynn Stedje, Denise Ferguson, Heather Gikas, Kristy Easley, Imogene Baker, Joyce Duncan, Tim Fletcher, Amber Newman, Kristina Christian, Aleta Jackson

Anniversary - Kent & Tammy Benton, Crockett & Melinda Tidwell

December 5 Birthday - Martha Haden, Billy Dearmond, Mike Skinner, Arbeta Nobels, Gwen Smith, Norman Scroggs, Susie Oakley, Beatrice Comp, Cory Marrs, Brayden Bynum

Anniversary - Alfonso & Carrie Ceniceros

December 6 Birthday - Ryan Ramón, Penny Kruse, Coleen Brummett, Ed Dear, Mrs. Johnny Gaither, Cecelia Randall, Mayleea Castillo, Carolyn Harnden, Kelli Cummings, Lisa Keetch, Mary Venneman, Chevy Smith, Jerald Ray Scribner, Jenna McElroy

Anniversary - Burl & Nellie Buchanan, Bill & Ginger Pittman

December 7 Birthday - Sheldon Atwood, Brenda Bayless, Janell Haefner, Bret Hobbs, Cynthia Williams, Emily Williams, C.L. Pierce, Sue Bowling, Carlee Dixon, H.E. Jenkins, Thane McCloy, Zach Gallimore, Dusty Hodge, Beth Dudley, Beverly Antalek

Anniversary - M/M Willard McClay

December 8 Birthday - Stan TeBeest, Reynaldo Garza, Lawrence Tindell, Scott Slater, Hershel Jones, Carmen Arjona, Jason Holton, Michelle Cook Kaman, Theresa Davis, Tim Weldon, Bruce Stinson, Morgan Lackey, LaVerne Parks

Anniversary - Vicki & Rodney Nickel

December 9 Birthday - Clayton Smith,

Grant Odom, Matt Overbey, Marlene Winger, J.H. Campbell Jr., Gail Vanlandingham, Elodia Flores, Melana Papay, Shawn Cook, Juan Garcia Jr., Elda DeSantiago, Maddie Rose Stork

December 10 Birthday - Pat Barkley, Akiko Bort, Marilynn Hart, Harold King, Brent Pittman, Aaron Jackson, Kayla Pletcher, Donald Piatt, Kay Barnes, Lelia Bynum, Phyllis Collins, Linda Bartz, Bryce Reed Jarvis, Serina Diaz, Brent Wagner

Anniversary - M/M John Sprigg, M/M Mark Irwin

December 11 Birthday - Kasey Davis, Manella Kiser, Dana Steele, Phillip Renner, Maria Martinez, Florence Fletcher, Jim Evans, Betty Dunaway

Anniversary - M/M Jess Wood, Irene & Butch Baker

December 12 Birthday - Gene Fletcher, Kaisi Foster, Claudia Barton, Olga Cantu, Mary Ann Martin, Jana (Pittman) Ivey, Babara Ring, Daniel Ochoa, Don Reed, Chance Johnson, Ivin Boyd, Christine Brandvik, Omar Favela, Guadalupe Trejo, Freddy Walton, Marvin Wilkerson, Justin Boyd, Brandon Sauz

Anniversary - M/M Jon King, M/M John Lopez, Charles & Melanie Elliott

December 13 Birthday - Betty Burk, James Burk Jr., Holly McCloy, Barbara Schnell, Muriel Boyd, Linda Butt, Bobby Smith, Jack Reed, Georgena Hart, Dan Roach, Dana Wattier, Robert Zamora, Marilyn Cline, Blythe Finley, Leaha Smith

Anniversary - M/M Kurt Bynum

December 14 Birthday - Bradley Clawson, Ray Etter, Todd Parker, Penny Ralston, Barbara Stavlo, Elaine Odegaard, Ron Schmehr, Bradley Sanders, Lynn Cook, Sandra Grover, Eddie Herrington, Cale Curry, Amy Gift, Betty Redwine, Kellianne Bynum

Anniversary - M/M Don Maize, M/M Chris Stork

December 15 Birthday - Dallas Henson, Harvey Proffitt, Hal Shufeldt, April Davis, Bob Pearson, Abbe Steger, Clarence Eller, Rosa Pierce, Stephanie Crossland, Donny Davis, Maria Ortiz, Jennie Jones, Jose Vargas, Jim Norton, Joey Bynum, Randall Sauer, LeAnn Shields, Eric Vasquez, April DeLaRosa

Our Sympathy

LEO CUMMINGS
SPEARMAN - Leo Cummings, 62, died Wednesday, Nov. 24, 2010.

Services were at 2 p.m. Monday, Nov. 29 in First Assembly of God Church. Burial was in Hansford Cemetery by Boxwell Brothers Funeral Home of Spearman. Mr. Cummings was born in Pampa and lived in the area his entire life. He married Phyllis Barclay on July 8, 1972, in Perryton. Leo was a utility maintenance worker for the city of Spearman for 36 years, and retired in 2009. He was a member of the Texas Water Utilities Association.

Survivors include his wife, Phyllis Cummings of Spearman; his mother, Stella Cummings of Spearman; two brothers, Wayne Cummings of Spearman and David Cummings of Dumas; and a sister, Joyce Pierce of Childress.

The family suggests memorials be to Hansford Hospice, 707 S. Roland St., Spearman, TX 79081.

IMA GENE SCHOTT
GUYMON, Okla. - Ima Gene Schott, 85, died Friday, Nov. 26, 2010, in Spearman, Texas.

Services were at 2 p.m. Monday, Nov. 29 in Henson-Novak Funeral Directors Chapel in Guymon. Burial was in Elmhurst Cemetery.

Mrs. Schott was born July 16, 1925, in Jefferson to H.A. Hardenbrook and Mabel Bracken. She married Gus on Aug. 18, 1946.

Survivors include a daughter, Diana Marvyn Tharp of Hardesty; two sons, Bill Schott of Colorado Springs, Colo., and Alan Schott of Liberal, Kan.; five grandchildren; nine great-grandchildren; and several stepgrandchildren.

The family suggests memorials be to the Empty Stocking Fund at Hansford Manor, 707 S. Roland St., Spearman, TX 79081.

WILLIAM ALFRED WHITE
CLAUDE - William Alfred White, 84, died Saturday, Nov. 20, 2010.

Services were at 10 a.m. Tuesday, Nov. 30 in Claude Church of Christ with Jim Yates officiating. Burial was at 2 p.m. in Wellington Cemetery. Arrangements are by Boxwell Brothers Funeral Home of Claude.

Alfred was born Feb. 18, 1926, at home in Lela to William Lesley White and Merle Elizabeth Hite White. He grew up in Quail and Wellington area and graduated from Wellington High School.

After high school, Alfred joined the U.S. Coast Guard, where his service on the USS Cambria took him through the invasion of the Marshall Islands, Saipan, Leyte, Lingayen Gulf and Okinawa.

Alfred was a minister of the Church of Christ and worked with congregations in Canadian, Bovina, Olton, Gruver, Texhoma, Okla., Amarillo, Aberdeen, S.D., Stratford and Groom.

Survivors include his wife of 63 years, Mary Nell Chandler White; three children, Bill White and wife Susie of Amarillo, Beth Graham and husband Bugs of Omaha, Neb., and Jim White and wife Janeane of Andrews; a grandson, Ky White and wife Kendra of Warner, Ga.; a sister, Betty White Tribble of Albuquerque, N.M.; and two sisters-in-law, Ladell Popwell and husband Leo of Wellington and Kay White of Richardson.

Viewing will be from 11 a.m. until 6 p.m. today at the funeral home.

The family suggests memorials be to New Mexico Christian Home, 1356 N.M. 236, Portales, NM 88130.



BARBARA COLENE THRASH-TEVEBAUGH
TEXHOMA, Okla. - Barbara Colene Thrash-Tevebaugh, 74, died Friday, Nov. 26, 2010.

Services were at 10 a.m. Tuesday, Nov. 30 in Keyes Baptist Church in Keyes with Mark Nickles and Jerry Coldren officiating. Burial was in Elkhart Cemetery in Elkhart, Kan., by Cimarron Mortuary of Boise City.

Barbara was born Sept. 24, 1936, Elkhart to Howard and Nellie Blakeley. She loved to craft and taught herself to sew, knit, crochet and in later years, made many quilts for family and friends.

Survivors include her husband, Olen; two children Billy Thrash of Texhoma and Jonna Hierro of Guymon; six grandchildren; and three stepchildren, Jim Tevebaugh of Boise City, Jess Tevebaugh of Fremont, Mo., and Connie Werner of Spearman, Texas.

The family suggests memorials be to hospice or donor's choice, in care of the mortuary, P.O. Box 277, Boise City, OK 73933.

ROSALIE BARBARA CHITWOOD REGIER
PERRYTON - Rosalie Barbara Chitwood Regier, 96, died Monday, Nov. 22, 2010, in Dumas.

Services were at 2 p.m. Saturday, Nov. 27 in Community Worship Center in Perryton with the Rev. Fred Huff of Balco, Okla., officiating. Burial was in Ochiltree County Cemetery by Boxwell Brothers Funeral Directors of Perryton.

Rosalie was born March 14, 1914, near Adrian, Mo., the second of five daughters and one son, to Hal and Jessie Chitwood.

The ministry took Rosalie and her husband, Jacob, to pastorates at Curtis, Okla., Wichita, Kan., Palm Springs, Calif., Hardesty, Okla., and Olathe, Colo. Texas pastorates include Vealmore near Big Spring, Center Point, Hempstead, Snyder, Wayside Chapel near Edna, Perryton, Dumas and Spearman. They conducted revivals in Oklahoma, Kentucky, Kansas, Texas, Missouri, Nebraska, Arkansas, Mississippi, Wyoming and California.

Rosalie and Jacob had been married for 54 years. He died in 1993.

Rosalie was a professional seamstress, Sunday school teacher and pianist. She had been Dean of Women at the Apostolic Faith Bible College in Baxter Springs, Kan.

Rosalie lived at The Seasons Assisted Living in Perryton for the past eight years.

She was preceded in death by her husband; a son, Dale Regier; a daughter, Kaye Spradling; her parents; four sisters; and a brother.

Survivors include a daughter Joye Watson and husband Bill of Dumas; a son-in-law, Rolly Spradling of Portland, Ore.; a daughter-in-law, Gwen Dardis and husband David of Fruita, Colo.; five grandchildren, Jill Parker and husband Zack of Amarillo, Joy Lynn McGill and husband Mark of Tulsa, Okla., Cloyce and wife Gretchen of Portland, Jessica and husband David of Kansas City, Mo., and Jacob Spradling of Houston; and three great-grandchildren, Aubrey, Jacob and Kiar Parker of Amarillo.

The family suggests memorials to Apostolic Faith Bible College, P.O. Box 110, Baxter Springs, KS 66713; or Memorial Hospice, 224 E. Second St., Dumas, TX 79029.

MONUMENTS
Boxwell Brothers
Funeral Home
519 Evans • Spearman
659-3802

Dear friends,
When you buy a monument from us we make sure it is exactly what you want at a price you can afford. If it is not right, we will make it right. And you will not have to search the countryside to find us. We are here when you have a need.
Sincerely,
Bob Boxwell

COSTA RICA \$995 + tax & fees
10 Day Tour All-Inclusive

Available at Caravan.com
Fully Guided vacation packages.
Priced \$995 to \$1,295 + tax & fees.

- 8 days Grand Canyon, Zion
- 8 days Yellowstone Park
- 8 days New England
- 9 days Canada - Rockies
- 10 days Canada - Nova Scotia

PANAMA Canal Cruise & Tour
8 day all-inclusive guided vacation. Join experienced travelers and smart shoppers who rely on Caravan.com.

GUATEMALA with Tikal
10 day all-inclusive guided vacation. Caravan.com makes it so easy and so affordable to explore your world.

Free 28 Page Brochure. Since 1952

Caravan.com
Call 1-800-CARAVAN

LIMITED TIME DIRECTV OFFER!

FREE starz + SHOWTIME for 3 months!

FREE HD Access!
With the DIRECTV HD Package or above and HD service.

FREE Standard Installation!
ASK HOW! CALL DIRECTV AT 1-800-234-7111

Toll Free 800-214-7110

With 24 month agreement. Offer ends 7/31/11. Credit card required. Offer valid in MA & PA. New approved customers only. Some restrictions apply. Call for details.

FREE HD FOR LIFE!
Only on DISH Network

- Lowest Price in America!
- \$ 24.99/mo for over 120 channels!
- \$500 Bonus!

Call Now!
1-866-799-8039

285+ Channels
160+ HD Channels

Packages Start At \$29.99 Mo.

2 FREE Upgrades - HD DVR & HD Receiver - Ask How!

FREE starz & SHOWTIME For 3 Months

DIRECTV
Direct Sat TV
1-800-577-1322
Local Installers!

Offers end 2/28/11 on approved credit. New customers only. Other restrictions apply. Call for details.

HOME PHONE SERVICE
NO Pre-Payment • NO Deposit Required!

Rates from \$6.99 per month*
(S17/month including approximate taxes & fees)

FREE 1st Month of Service
Caller ID & Call Waiting included in Packages**

New-Talk 866.934.3448

*\$10.00 minimum with auto pay. **Requirements apply. See website for details.

Replenish the seed of faith through . . .

DAILY BIBLE READING, PRAYER & REGULAR CHURCH ATTENDANCE

<p>Spearman</p> <p>Apostolic Faith Church 822 S. Drexler • 659-2870 Sunday School: 10 a.m. Worship Service: 11 a.m. Sun. Eve.: 6 p.m. Wed. Prayer Mtg.: 7 p.m. Pastor - Jack Cornell</p> <p>First Assembly of God 401 N. Bernice • 659-2295 Sunday School: 9:30 a.m. Worship: 10:40 a.m. Evening Worship: 6 p.m. Wed. Youth: 7 p.m. Pastor - Jerry Pollard</p> <p>First Christian Church (Disciples of Christ) 29 S. Bernice • 659-2036 Sunday School: 9:45 a.m. Worship: 10:50 a.m. Minister -</p> <p>First Baptist Church 123 N. Bernice • 659-5557 Sunday School: 9:45 a.m. Worship: 11 a.m. Evening Worship: 7 p.m. Men's Bible Study - Wed. 7 a.m. Children's Choir - Wed. 6 p.m. Adult Choir - Wed. 7 p.m. Wed. Bible Study: 7 p.m. Pastor - Jim Medley</p> <p>Church of Christ 121 S. Haney • 659-3244 Sunday Bible Class: 9:45 a.m. Worship: 10:30 a.m. Evening Worship: 6 p.m. Bible Study Wed.: 7:30 p.m.</p>	<p>Sacred Heart Catholic Church 901 Roland • 659-2166 Sat. Night Mass: 5:30 p.m. Sun. Mass: 9 a.m. - English Sun. Mass: 11:30 a.m. - Spanish Rev. Gregory Bunyan</p> <p>First United Methodist 407 S. Haney • 659-5503 Sunday School: 9:45 a.m. Worship: 8:30 & 11 a.m. Jr. High Youth: 5 p.m. Sunday High School: 6 p.m. Sunday Kids Club: 3 p.m. Wed. Pastor - Neely Landrum</p> <p>Grace Presbyterian Church (Worships with Faith Lutheran Church) 1101 Bernice • 659-2033</p> <p>Faith Lutheran Church (ELCA) 1101 Bernice • 659-2252 Sunday School: 9:45 a.m. Worship: 11 a.m. (Worships with Grace Presbyterian Church) Pastor - Cecil Biggers, PLM</p> <p>Union Church 31 S. Endicott • 659-2644 Sunday School: 10:00 a.m. Worship: 11:00 a.m. Bible Study: 7 p.m. Wed. Youth Service: 6 p.m. Wed. Pastor - Don Ballazor</p> <p>Fellowship Baptist 1102 S. Archer • 659-2783 Sunday School: 10 a.m. Worship: 11 a.m. Sun. Evening Worship: 6 p.m. Sun. Evening Spanish Worship: 7 p.m. Youth/Adult Service: 7:30 Wed. Pastor - Phillip Hudson</p>	<p>Primera Mision Bautista 502 E. 7th • 659-3991 Sunday School: 9:45 a.m. Worship: 11 a.m.; Evening: 6 p.m. Wed. Prayer Meeting: 7 p.m. Thurs. Visitation: 7 p.m. Pastor Joe Garcia Jr.</p> <p>El Aposento Alto U.P.C.I. 1105 S. Roland Domingos: Escuela-Domical - 10 a.m. Culto Evangelistico - 7 p.m. Jueves: Oracion - 8 p.m. Mier. Estudio Biblico - 7 p.m. Pastor - A.G. Martell (806) 659-2153</p> <p>Gruver</p> <p>First Baptist Church 402 E. Broadway • 733-2411 Sunday School: 9:45 a.m. Worship: 10:50 a.m. Disciple Training: 6 p.m. Sunday Prayer Meeting: 7:30 p.m. Wednesday Pastor - Scott Curry</p> <p>Church of Christ 209 King • 733-2760 Sunday School: 9:30 a.m. Worship: 10:20 a.m. Evening Worship: 6 p.m. Wed. Worship: 7:00 p.m. Minister - Gaylord Cook</p> <p>First Christian Church 510 King • 733-2960 Sunday School: 10:00 a.m. Sunday Worship: 11 a.m. Youth: 7:30, Sunday Adult Bible Study: 7:30, Sun. Wed. Bible Study: 8:00 p.m. Pastor - Gary Gumbo</p>	<p>Gruver United Methodist Broadway & Garrett 733-2651 Sunday School: 9:45 a.m. Worship: 8:30 & 10:50 a.m. Eve. Worship & UMY: 6 p.m. Pastor - George Price</p> <p>Spanish Cristo Redentor Church Hwy 1506-659-2166 Gruver, TX Sun. Mass: 1:30 p.m. - Spanish Rev. Gregory Bunyan</p> <p>Oslo</p> <p>Oslo Lutheran Church (ELCA) 6 Miles West & 12 Miles North of Gruver 339-7846 Sunday School: 9:45 a.m. Worship: 11 a.m. Pastor - Arlen Lloyd</p> <p>Morse</p> <p>Morse Baptist Church 733-2757 Pastor - Gary Stevens</p> <p>Waka</p> <p>Church of Christ 300 Rogers Ave. 202-7126 Sunday School - 9:30 a.m. Sunday Worship: 10:30 a.m. & 6 p.m. Wednesday Bible Study: 7 p.m. Preacher - Ed Jenkins</p>
---	--	--	---

He has showed you, O man, what is good. And what does the LORD require of you? To act justly and to love mercy and to walk humbly with your God.

Micah 6:8

This feature is made possible through the sponsorship of these civic minded businesses:

<p>Deakin ELECTRIC</p> <p>OILFIELD • RESIDENTIAL • COMMERCIAL 321 S. MAIN • SPEARMAN</p> <p>1-800-999-1506 Chris Deakin 806) 659-5016 President</p>	<p>Bartlett's Lumber & Hardware</p> <p>105 W. Broadway • Gruver, TX (806) 733-2404</p>	<p>BERRY CLEANERS</p> <p>Ann & Vernon Pipkin - Owners Phone 659-3122 • P.O. Box 1017 207 Main St. • Spearman, TX</p>	<p>Morse Implement & Auto Supply</p> <p>"Join us in church" Tom Dortch 733-2668 Box 89 • Morse, TX 79062</p>
<p>PRAIRIE MOTORS INC.</p> <p>Hwy. 207 South • P.O. Box 430 Spearman, TX 79081 • (806) 659-2541 www.prairiemotors.com</p>	<p>MurMur's Cafe</p> <p>100 Roland St Spearman, TX. 659-3580</p>	<p>Hansford County Reporter-Statesman "Proudly Serving Hansford County Since 1907" (806) 659-3434 310 Barkley • Spearman, TX</p>	<p>INTERSTATE BANK, sbb</p> <p>www.interstatebank.net 322 Main • P.O. Box 146 Spearman, TX • 659-2559</p>

HYI

FOR YOUR INFORMATION

Education Fund For Johnson Children

An education fund has been set up at First National Bank for the children of David Johnson. If anyone would like to donate, they can mail to PO Box 337, Spearman, TX or bring by the bank and give to any teller.

Pringle-Morse CISD Cougar Pride Selling Cookbooks

The parent-teacher organization of Pringle-Morse CISD-Cougar Pride, is selling one-of-a-kind cookbooks. The cookbooks are a collection of recipes from the 1995 cookbook and more from this year, with over 1,300 recipes included. The recipes were collected from our community, friends, and family members. The proceeds from the books goes toward school and community projects. Please contact the school at 733-2507 or cindy.lieb@region16.net if you are interested in purchasing a cookbook.

Senior Enchilada Fund Raiser

The Project Graduation for the Spearman Senior Class of 2011, will be taking enchilada orders Monday, November 29th - December 16th. The enchiladas will be available for pick-up on December 18th from 11:00 a.m.-3:00 p.m. at the Church Of Christ. Orders can be placed with any senior parent or you can call Missie Bates at 659-9907, or Sherry Boyd after 6:00 p.m. at 659-3844, to place your order. You can also stop by Dreamers Salon, located at 224 Hancock, to place your orders. Enchiladas will be \$13 a dozen and you may order meat and cheese or just cheese enchiladas. Please request with or without onions. Thanks from the parents and families of the upcoming graduating Class of 2011.

Gruver Chamber of Commerce 2nd Annual Best Christmas Cookies Contest

On Saturday December 4th the Gruver Chamber of Commerce will have their 2nd Annual Best Christmas Cookie Contest at 6 PM in the park pavilion. Anyone can enter!

Gruver Community Christmas Service

On Sunday at 6 PM there will be a Community Christmas Service that will include fellowship, caroling, cocoa and cookies. The Ministerial Alliance will read the Christmas story from the Bible. Everyone is welcome to attend

Gruver Chamber of Commerce Chili Lunch

You are invited to a Chili Lunch on Saturday, December 4 from 11-1 at the school cafeteria. The price is \$5 a bowl and \$1 for a refill!!

Pringle-Morse CISD Band/Choir Concert

Mark your calendars for the band and choir concert!! Thursday, Dec. 9th at 7:00pm. Come and enjoy the wonderful music and visit with Santa! Refreshments will be served after the concert. It will be a great night!

Live Nativity

The 1st-5th grade Sunday School classes of First Baptist Church of Spearman (123 S. Bernice) will present a Live Nativity on Sunday, December 12, 2010 from 6:30-7:30 p.m. The community is invited share in this celebration of the birth of our Lord, Jesus Christ.

Gruver PTO Angel Tree

The Gruver PTO Angel Tree has been at the Amazing Vase for about a week now. PTO is still in need of community members who are willing to help provide Christmas for our 'angels.' I believe that, as of today, there are still 24 angels on the tree. Those who are interested may pick up an angel at the Amazing Vase anytime (just be sure to sign the yellow PTO notepad on the counter at the flower shop). Gifts may be wrapped and returned to City Hall by the end of the workday on Friday, December 10th.

Take Off Pounds Sensibly

Take Off Pounds Sensibly meets on Tuesday mornings at 8:30 a.m. at the First Christian Church in Gruver. For more information, contact Marilyn Been at 806-733-2087.

Hansford Gun Club Rifle Shoot

The Hansford Gun Club holds a .22 rifle shoot on the second Sunday of each month, starting at 1:30 p.m. at the gun range (located on Hwy. 15 between Spearman and Gruver). Everyone is invited to join the fun.

Care Packages

If you would like to help with Care Package Drop Offs, please contact Less Sullivan at lessullivan@hotmail.com. Less is collecting items for care packages in conjunction with AmericaSupportsYouTexas.com. Journals are also located at the O'Loughlin Center, Spearman High School, and Gus Birdwell Elementary for anyone wishing to sign them. For more information, contact Less at 330-0973.

Rainbow Kids Klub is Back!!

Our new building is finished and we are inviting all children Kindergarten -Fifth grade to join Rainbow Kids Klub. This is a weekly after school program with snacks, recreation, character building Bible lessons, memorization, music, games and its all free. Rainbow Kids Klub begins Wednesday, September 8, after school until 5 p.m. at the First United Methodist Church, 407 Haney, Spearman. For more info, call 659-5503.

Amarillo Botanical Gardens

Gate admission is free in 4th quarter to the Amarillo Botanical Gardens (1400 Streit Drive, Amarillo) thanks to the Josephine Anderson Trust. Everyone is invited to come out and take advantage of this great opportunity! Events and activities are subject to a fee. Enjoy the many colors, aromas and textures in the gardens. Visit Tuesday-Saturday, 9a-5p.

Words from Faith & Grace

by Cecil R. Biggers, Lutheran Lay Minister



We learn to prepare the way of the Lord as we study Isaiah 11: 1-10, Psalm 72: 1-7,10-19, Romans 15: 4-13, and Matthew 3: 1-12.

The prophet Isaiah brings the word of the Lord to a people oppressed by Assyria, there is war and rumor of war. The prophet tells the people that the Assyrian 'tree' will be cut down and a new 'tree' will grow in Judah. A 'shoot' shall come out from the stump of Jesse. Now the word translated 'shoot' can also mean 'rod' or 'scepter', hence a new king shall emerge. This King shall have the spirit of the Lord and shall judge with righteousness. In his reign the wolf shall live with the lamb, the leopard shall lie down with the kid. Peace and Justice shall be established. Dear Christian we see in this prophecy the foretelling of the coming of the Christ.

The Psalm is a "royal psalm". It is a song of praise to the King who is held to be a representative of God on earth. The Psalmist prays that the King will be enabled by God with righteousness.

Paul tells the Romans that scripture is given to us that we might have hope. If our hope is in Jesus Christ, then we are enabled by the Holy Spirit to live in harmony with each other to the purpose that we may glorify God. Paul reminds us that our thoughts should always be for each other as Christ's thoughts were for us. In Christian fellowship we should study scripture and encourage one another as we lead the disciple life. The characteristics of Christian faith are hope, joy, peace and power; all of which are gifts of the Holy Spirit.

After a quiet for four hundred years, the voice of prophesy appears in Judea proclaiming, "Repent for the Kingdom of heaven has come near". John the Baptist, "The voice of one crying in the wilderness: Prepare the way of the Lord, make his paths straight". This scripture shows John the Baptist as a fulfillment of Isaiah 40:3. John the Baptist dressed like Elijah (cf. 2 Kings 1:8) and his message echoes Elijah and we see the fulfillment of Malachi 4:5. John denounced evil wherever he found it, be it the marriage of Herod or the actions of the Pharisees and Sadducees. John called men to repent and pointed beyond himself (e.g. 'one who is more powerful than I is coming after me). John tells the people that he is not worthy to carry the sandals (be a slave of) the One who is coming. The One who is coming will baptize with the Holy Spirit and fire. The Holy Spirit (Heb. = ruach) is the 'wind of God'; it is associated with the creative force of God, it brings God's truth to man and enables man to recognize God's truth. The baptism of fire is one of illumination of the spirit, warmth of mercy, and the purification or refining of the spirit.

May the Holy Spirit enable you to discern God's truth in Jesus Christ. Prepare the way for the King! Maranatha! Come Lord Jesus!

MERRY CHRISTMAS

Locks-N-Nails and Serenity Massage

High Plains Shopping Mall
511 Hwy. 207 • Spearman
Mon-Fri., 11 a.m.-6 p.m.; Sat. by appointment
806-341-8941 or 806-330-1233

Holiday Pamper Package - \$85
1 hour Massage, Pedicure,
Manicure, Eyebrow & Lip Wax

All Over Makeover - \$100
1 hour Massage, Pedicure,
Manicure, Eye & Lip Wax, Cut & Style

Make Your Own Package
Ask about our 12 Days of Christmas Book

We offer acrylic nails, color,
highlights, spray tan, and more!

Gordon's

Bridal Registry

Couples Currently Registered

Mary Beth Hargis & Jordan Hicks - Jan 8th wedding
Amanda Wells & Scott Earle - TBA
Megan (Evans) & Beau Clem
Kylee Howard & Jeremy Frost

Baby Registry

Britani Vasquez & Ivan Terrazas - Dec 5th
Sarah (George) & Nicholas Wright - Dec 18th
Linzi McCubbin & Kris Mixon
Cortney & Keith Winegarner
Nicole (Sander) & Paul Swanson
Jennifer & Clint Jackson
Leann (Earle) & Ed Lackey

Gordon's 659-2141
314 Main Spearman

Celebrating
90
Years!!

Please join us to celebrate
**The 90th birthday of
Ruby Lorene Riley**
Saturday, December 4, 2010
From 2 p.m.- 4 p.m.
At
Church of Christ - Fellowship Hall
121 S. Haney Spearman, Texas

Cards may be mailed to: Ruby Riley
205 W. 12th Ave, Spearman TX 79081
Best Wishes Only, please

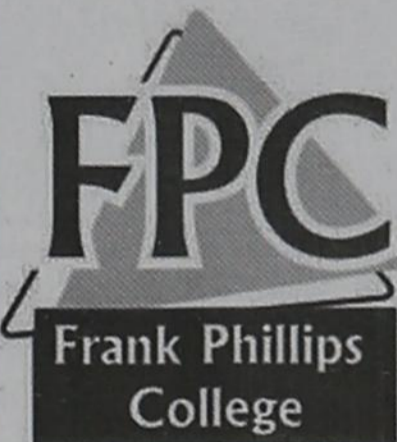
Are You A Victim of Domestic Violence, Sexual Abuse or Physical, Emotional or Sexual Assault?

Call Toll Free Hotline
1-800-753-5308

We can see individuals from Hansford County anytime upon request. Call 435-5008 or 1-800-753-5308 to set up an appointment in Hansford County. We operate a safe place for victims and their children to stay in times of crisis.

Battering Intervention & Anger Management Available

Panhandle Crisis Center
Serving Hansford, Lipscomb & Ochiltree Counties
301 S. Ash • Perryton, TX
Memorials Accepted



REGISTRATION

for **SPRING 2011 CLASSES** is underway
at the ALLEN CAMPUS
(2314 S. Jefferson, Perryton, Texas)
and classes begin on January 18th.

SO...
WHAT
ARE YOU
WAITING
FOR?

WHY SHOULD YOU CHOOSE THE FPC ALLEN CAMPUS?

- Close to Home!
- Small Class Size!
- Affordability!
- Quality Education!
- Transferability of Classes!

With our **AFFORDABILITY** and **GUARANTEED TRANSFERABILITY** of **CORE CURRICULUM COURSES (IT'S THE LAW!)** to other **PUBLIC COLLEGES AND UNIVERSITIES IN TEXAS (PROVIDED YOU MAKE A GRADE OF "C" OR BETTER)** it just makes "CENTS" to take classes at Frank Phillips College.

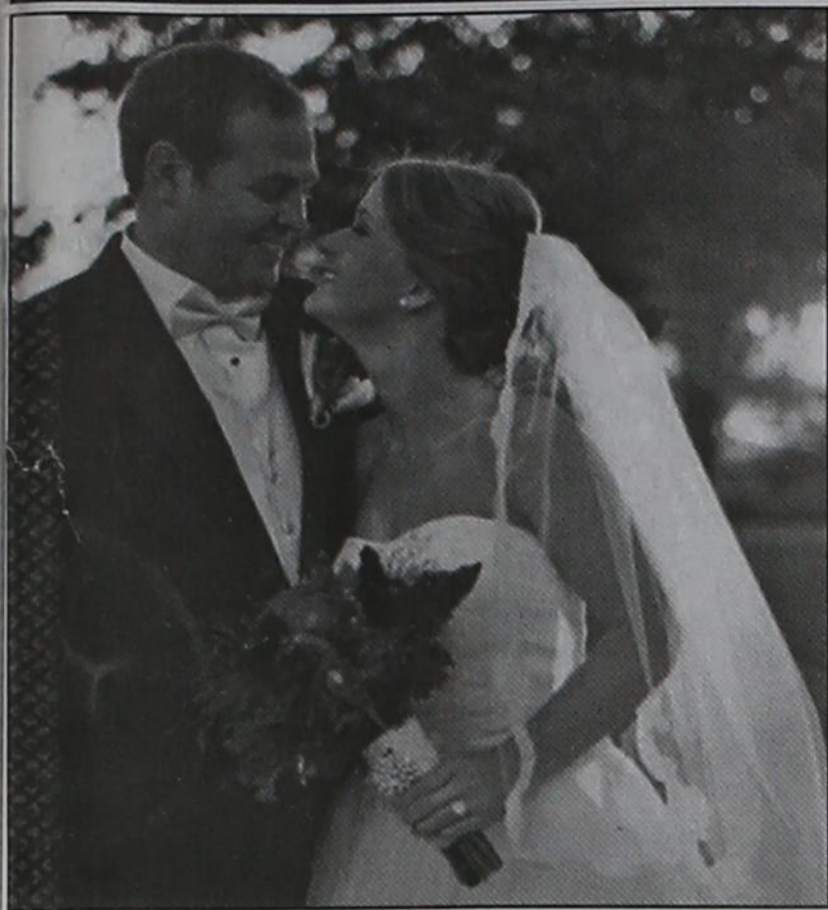
Call (806.648.1450) or stop by the Allen Campus to complete your paperwork. You can download an Allen Campus class schedule as well as a full schedule of classes offered by FPC by accessing our website:

www.fpctx.edu

Writing Matters

AT FRANK PHILLIPS COLLEGE
www.fpctx.edu

Ask us about this!!



Lechinger, Smith Wed

Taleigh McCale Lechinger and Lance Douglas Smith, both of Lubbock, Texas, were married Saturday, October 23, 2010, at the Merket Alumni Center on the Texas Tech Campus in Lubbock, Texas. Pastor Brad Jurkovich of Lubbock officiated.

The bride is the daughter of Terry and Brenda Lechinger of Cypress, Texas. Grandmother of the bride is Opal Hill of Houston, Texas.

The groom's parents are Bobby and Dixie Smith of Spearman, Texas. Grandparents of the groom are Bert and Patty Sheppard and Gwen Smith, all of Spearman, Texas.

After a honeymoon to Costa Rica, the couple is residing in Lubbock, Texas.

School Calendars

**Gruver ISD
December**

- 2-4 - Gruver JV BB Tourney; Varsity @ Fritch BB Tourney
- 7 - HS Basketball vs. Beaver, 4-10 p.m.
- 8 - HS ASVAB (all juniors)
- 9-11 - JV Boys @ River Road Tourey; JV Girls @ Spearman Tourney; Varsity BB @ Claude Tourney
- 14 - HS LHB vs. Borger, 4-8 p.m.
- 17 - HS BB @ Spearman, 4-9:30 p.m.
- 20-31 - Christmas Vacation
- 28-20 - Varsity @ Canadian Tournament

**Pringle-Morse CISD
December**

- 6 - Cougar BB @ Morse
- 9 - Christmas Band/Choir Concert, 7 p.m.
- 11 - 5-States Band Concert
- 13 - Cougar BB @ Arbor Academy
- 14 - PK-4 Sing at Hansford Manor
- 17 - Elementary Christmas Parties; Jr High Skating Party (Please bring your \$10 gift before this date. 8th grade will be providing snacks for the party.); Early Dismissal (Students dismissed at 12:00pm. Staff development in the afternoon)
- 20-31 - Christmas Vacation

**Spearman ISD
December**

- 2-4 - Nazareth Varsity BB Tourney; Gruver JV BB Tourney
- 3-4 - State FFA LDE Contest, Huntsville
- 6 - School Health Advisory Council Meeting, 4

p.m., HS Library; Band ATSSB Auditions, Panhandle

7 - Supt's Administrative Council Meeting, 8:30 a.m., HS Library

8 - 8th Grade Parent Meeting, 5 p.m., JH; Team of Eight Board/Superintendent Training, 6 p.m., Bunkhouse

9-11 - Spearman JV BB Tourney (Lynxettes); Vernon Varsity BB Tourney; Borger JV BB Tourney (Lynx)

11 - Five States Band Clinic/Concert, Guymon

12 - Band & Choir Christmas Concert, 2 p.m., Auditorium

13 - Regular School Board Meeting, 7 p.m., HS Library

15 - DEIC Meeting, 4 p.m., HS Library

16 - 2nd Grade Christmas Program, 8:30 a.m., Elementary

17 - HS Final Exams (4th & 5th Period)

20 - HS Final Exams (1st, 2nd, 3rd Period - A Day)

21 - HS Final Exams (1st, 2nd, 3rd Period - B Day); End of 3rd Six Weeks; Early Release for Christmas Holidays, 1 p.m.

22-31 - Christmas Vacation

28-30 - Caprock Classic Varsity BB Tourney (Lynx/Lynxettes) Lubbock

Jan. 3 - First Day of 2nd Semester

SHS Band News

On Saturday, November 13th the Spearman Band traveled to Guymon, OK to participate in individual auditions for the 5-States Honor Band. The 5-States Honor Band is a prestigious group where students from Texas, Oklahoma, New Mexico, Colorado and Kansas are invited to compete for spots in an honor group. All junior high students are given one set of music and all high school students are given another set of music. Every student then auditions before a panel of judges and are ranked. Top students then earn a spot in the 5-States Honor Band. These students will then return to Guymon on December 11th for a clinic to practice all day with a prestigious conductor and perform a concert that evening.

Congratulates to the following students who qualified to audition for the 5-States Honor Band: **High School Students** - Elsa Adkins, Fernanda Aguilar, Gena Gillispie, Javier Rosendo, Josue Briseno, Juan Garcia, Luis Almanza, Molly Lieb, Nidia Terrazas, Seth Carson; **Junior High Students** - Alex Valles, Angel Mendoza, Angela Mendoza, Austin Holguin, Colton Cator, Cristal Pena, Cristina Campos, Daisy

Lopez, Daniela Enriquez, Daniela Garcia, Enrique Ortiz, Enrique Vargas, Evelin Jacquez, Javier Caro, Jose Carbajal, Julio Morales, Kevin Castillo, Kevin Hopkins, Lupita Flores, Marlyn Almanza, Miguel Mendoza, Moises Rosendo, Randy Rojas, Ruben Frayre, Sarah Jackson, Sidney Hawkins, and Susy Flores.

The following students ranked high enough to earn placement in the 5-States Honor Band: **High School** - Junior Josue Briseno placed 2nd Alternate Trombone; Senior Fernanda Aguilar placed 6th chair Bass Clarinet, and Freshman Juan Garcia placed 4th chair Alto Saxophone; **Junior High School** - Randy Rojas placed 11th chair Clarinet, Lupita Flores placed 12th chair Clarinet, Cristina Campos placed 13th chair Clarinet, Marlyn Almanza placed 19th chair Clarinet, Sarah Jackson placed 2nd Chair on Bass Clarinet, Enrique Vargas placed 10th chair Trumpet, Jose Carbajal placed 2nd chair Trombone, Daisy Lopez placed 4th chair Trombone, Ruben Frayre placed 1st Alternate Mallets, Angel Mendoza placed 1st Alternate Baritone and Kevin Castillo placed 2nd Alternate Baritone.

It's A Girl!

Cale Rhylee Bynum was born at 5:18 a.m. on Thursday, November 25, 2010 to Tim and Charlotte Bynum of Amarillo. She weighed 6 pounds, 12 ounces, and was 20 inches long.

Proud grandparents are Kevin and Ronda Bynum of Spearman and Ted and Glenda Procter. Proud great-grandparents are Joe and Nita Bynum of Spearman, Joe and Helen McWorter and James and Sue Procter of Friona and the late Gordon and Mavis Collins.

See us for:
AUTO • HOME • CROP HAIL • FARM & RANCH • MULTIPERIL • LIVESTOCK

INSURANCE

BORT AGENCY, INC.
 510 Main St. • Gruver, TX
 (806) 733-2456

UNRESERVED AUCTION
 WWW.BIGIRON.COM - DECEMBER 8TH, 2010

BIG IRON

'09 John Deere 6700 Sprayer
 -683 Engine Hours
 -636 Sprayer Hours
 -2 Speed Hydro

(701) 499-2629 with questions

www.bigiron.com

Celebrate the Holiday Season with

Family, Friends and

First State Bank

Eat Lunch With Us

Wednesday, December 8th

22nd Annual Christmas

Hot Dog Cookout

11 a.m.-1:30 p.m.

FSB
First State Bank

*Strength is our Tradition...
 Service our Goal*

1 NE Court Spearman
 659-5565

Pictures with Santa
 11:30 a.m. to
 1:30 p.m.

Save your local economy...
three stores at a time.

the 3/50 project

SAVING THE BRICK AND MORTARS OUR NATION IS BUILT ON

3 Think about which three independently owned stores you'd miss most if they were gone. Stop in and say hello. Pick up a little something that will make someone smile. Your contribution is what keeps those businesses around.

50 If just half the employed U.S. population spent \$50 each month in independently owned stores, their purchases would generate \$42,629,700,000 in revenue.* Imagine the positive impact if 3/4 of employed Americans did that.

68 For every \$100 spent in independently owned stores, \$68 of it returns to the community through taxes, payroll, and other expenditures. If you spend that in a national chain, only \$43 stays here. Spend it online and *nothing comes home.*

1 The number of people it takes to start the trend...you.

Pick 3. Spend 50. Save your local economy.

For more information, visit the350project.net

© Cinda Baxter 2010; all rights reserved. Proudly supporting RetailSpeaks and independent retailers everywhere.
 * Employment statistics courtesy U.S. Department of Labor/Bureau of Labor Statistics, 2/6/2009

brought to you by the
Spearman Chamber of Commerce
 and the

Spearman Economic Development Corporation

Local Sports

Gruver BB News

Perryton JV Tournament Champions

The JV girls' team competed in the Perryton Tournament Nov. 18-20 in which they returned to Gruver as tournament champions. The played the Wheeler Lady Stangs on Thursday afternoon and earned a 10 point victory and moved on to face the Booker Lady Kiowas on Saturday morning. After knocking off the Lady Kiowas by a margin of 51-24 they moved on to the championship game against Spearman. The game against Spearman was back and forth early on but by late in the second quarter, the Lady Hounds took the lead and never looked back. With this victory over Spearman, the Lady Hounds claimed the title as tournament champions.

We will be hosting the annual Red and Black Classic on December 2-4. Please come out and support the boys and girls JV teams.

Playing for the Lady Hounds JV team this year is Audrey Lieb, Maggie Key, Callie Stedje, Nikki Beasley, Alex Logsdon, Mari Serrano, Jessica Acosta, Madi Teal, Maggie Gaspar, Niki Brown and Lupita Mendoza.

11/19/10

JV Boys 39, River Road 23
Varsity Girls 45, Dalhart 33
Varsity Boys 65, River Road 51

The Greyhounds opened the season with a good win on the road against the Wildcats (64-51). The Greyhounds were led by senior Haden Hart with 21 points and 11 rebounds. Justin Bass had a nice game also with 12 points and 7 rebounds while sophomore posts Korbin Irwin and Reese Clark each chipped in 9 points and 8 and 9 re-

bounds respectively.
11/22/10
7th Boys 18, West Texas 14
8th Girls 38, West Texas 8
7th Girls 32, West Texas 14
8th Boys 55, West Texas 8
Varsity Boys 56, Perryton 60

11/23/10
JV Girls 40, Panhandle 35
JV Boys 15, Panhandle 50
Varsity Girls 41, Panhandle 52
Varsity Boys 39, Panhandle 33

In spite of a poor second quarter, the Greyhounds came out strong in the second half and overcame an 11 point deficit to defeat a solid Panhandle team 39-33 on the road. Haden Hart pumped in 17 points and grabbed six rebounds while Justin Bass and Korbin Irwin had 7 and 6 rebounds respectively. Helping spark the Greyhounds in the 3rd quarter was senior Payton Thoreson who not only hit a huge 3-pointer, but also took a big charge. It was another team effort and the boys played very hard and unselfishly.

11/29/10
7th Boys 32, Sunray 16
8th Girls 28, Sunray 13
7th Girls 29, Sunray 22
8th Boys 44, Sunray 17

11/30/10
JV Girls 40, Pampa 22
JV Boys 23, Boys Ranch 43
Varsity Boys 41, Boys Ranch 67
Varsity Girls 58, Pampa 45

Gruver High School Basketball History submitted by Roy Mayhew

I am putting together a history of Gruver High School sports for the flat screens in the new gym commons. I am needing some help with the girl's basketball playoff history.

If you were part of a team that won district, bi-district, regional, etc., please contact me with the year that occurred from 1947 to present. If you have any information about teams before 1947, boys or girls, please send me that information. I also need a 1952 yearbook to scan a picture for boy's basketball. I would appreciate any help with this information.

Please contact me: E m a i l - roy.mayhew@att.net<mailto:roy.mayhew@att.net>, Phone- 806-338-0559

Spearman BB News

11/22/10
7th Girls 40, Highland Park 4
8th Girls 41, Highland Park 11
8th Grade Girls B 41, Highland Park 5
7th Boys 18, Highland Park 30
8th Boys 34, Highland Park 11

11/29/10
7th Girls 35, Sanford-Fritch 14
8th Girls 52, Sanford-Fritch 33
8th Grade Girls B 14, Sanford-Fritch 23

Lynx Win in Double OT
The Lynx started their season with a win on Tuesday, Nov. 30 against the Texhoma Red Devils.

The Lynx started off a little slow, scoring 9 points in the first quarter to the Red Devils' 12. They Lynx only added 4 points in the second quarter, and trailed 13-20 going into the half.

The Lynx came out ready to fight from the half and outscored the Red Devils to close the lead to 27-30 at the end of the third quarter. The Lynx took a 36-35 lead late in the fourth quarter when Wilburn made a shot at the buzzer. The Red Devils called a timeout with just 2 seconds left on the clock.

The Red Devils came back and got the ball to mid-court, tried for the game-winning shot, but missed. The Lynx were called for a foul, though, and the Red Devils had the chance to win the game at the free-throw line. They made the first shot, but the second shot rolled out of the basket, leaving the game tied at 36.

The Lynx took the lead in the first overtime, but the Red Devils came back to tie 45-45.

In the second overtime, the Lynx took a 49-45 lead early. Jace Lang-Swan made two free throws after the Red Devils tied the game at 50, with just 23 seconds left. The Lynx defeated the Red Devils 53-50.

The Lynx were lead by Tristan Wilborn with 21 points, Jace Lang-Swan with 13 and Sawyer Sutterfield with 8.

Lynxettes Defeat Red Devils

The Lynxettes hosted the Texhoma Lady Red Devils on Tuesday, November 30, winning 48-42.

The Lynxettes came onto the court ready to play, and led 12-6 at the end of the first quarter. The Red Dev-

ils used free throws to close in on the Lynxettes. The Lynxettes led by 20-18 going into halftime.

The Lynxettes came out strong in the third quarter, scoring 12 points to the Red Devils 2. The Red Devils continued to use their free throw advantage, but were unable to top the Lynxettes.

The Lynxettes were lead by Morgan Ashmore with 23 points, followed by Shelby Hanna with 7, Tiki Farrar with 6, Malory Martin 4, Kyla Walker 4, Lexi Batton 2, Mabry Sutterfield 1, and Gately Garnett 1.

Amarillo Globe-News Athlete of the Week Honor Roll 11/23/10

Madison McLain, Gruver basketball: Scored 48 points in two wins, including 27 Friday in a 45-33 win over Dalhart.

Morgan Ashmore, Spearman basketball: Scored 20 points Tuesday in a 55-52 loss to Panhandle.

2010 All-District 2-AA, Div. 2 Offensive MVP - Colton

Valle, Sanford-Fritch

Defensive MVP - Dustin Orand, Sanford-Fritch

1st Team Offense: RB - Cameron Meddock; TE - Joel Mendoza; Tackle - Marc Ortiz; Kicker - Francisco Camacho

2nd Team Offense: Receiver - Everardo Flores; Guard - Ramon Garcia; Center - Blayne Pack

1st Team Defense: OLB - Jace Lang-Swan; DE - Joel Mendoza

2nd Team Defense: Secondary - Everardo Flores; ILB - Trent Goodheart, Cameron Meddock; DE - Ramon Garcia; DL - Marc Ortiz

Honorable Mention: QB - Blayne Schroeder, Running Back - Justin Rindlisbacher, Inside Linebacker - Blayne Schroeder, Secondary - Jose Mondoza and Justin Rindlisbacher, Defensive Line - Josh Martinez, Punter - Trent Goodheart

Academic All-District Seniors - Justin Bass, Zach Logsdon, Colton Moffet, Zachary Saylor, Payton Thoreson; Junior - Kramer King; Sophomores - Korbin Irwin, Saul Suchil, Cole Wills



WHY WISH FOR SAVINGS?

Get them here.

Christmas Sale 2010

Sale Prices Good From December 6-24

<p>Men's L/S Dress Shirts Arrow, Van Heusen, Chaps, Company 81, Tabasco & More 30% OFF</p>	<p>Men's Fashion Jeans Tommy, Chaps, Company 81 \$39.95</p>	<p>All Men's & Boys Shoes Adidas, Reebok 30% OFF</p>
<p>Men's Cinch Shirts \$39.95 Men's Cinch Jeans - Black Label (Medium & Dark Denim), Blue Label & White Label</p>	<p>Men's Wrangler Riatas \$29.95 Assortment of sizes and colors</p>	<p>Boys Long Sleeve & Short Sleeve Dress Shirts - 25% Off Boys Carhartt & Company 81 Jeans - 25% Off Boys 20X Shirts & 20X Jeans - \$19.95 Boys L/S George Strait Shirts - \$19.95 Boys Cinch Shirts & Jeans - \$24.95 Boys Jeans - \$19.95 Wrangler, Levi, Denim & Colored Boys Fashion Jeans - \$29.95 Tommy, Union Bay</p>
<p>Men's 20X Shirts \$35.95</p>	<p>Men's George Strait Shirts \$35.95</p>	
<p>Men's Levis 550 & 560 Jeans \$29.95</p>	<p>Sale Rack - 1/2 Price Men's & Boys Shirts</p>	




Cates Men & Boys
221 Main Street
Spearman, Texas
(806) 659-3426
Mon.-Sat., 9 a.m.-6 p.m.



CONGRATULATIONS SHS & GHS FOOTBALL & CROSS COUNTRY TEAMS!






First National Bank

Spearman, Texas 79081 Dumas, Texas 79029
806-659-5544 806-934-8455
800-583-4196 866-583-4196

Member FDIC Each depositor insured to \$100,000



MITCHELL THEATRES.COM
GUYMON, OK • LIBERAL, KS • NEWTON, KS

NORTHBRIDGE 8
Guymon, Oklahoma
www.northridge8.com
580-338-3281

SOUTHGATE 6
Liberal, Kansas
www.southgate6.com
620-624-5573

SEQUOYAH 8
Garden City, Kansas
www.sequoyah8.com
620-275-2760

CHISHOLM TRAIL 8
Newton, Kansas
www.chisholmtrail8.com
316-283-0555

FRESH POPCORN EVERYDAY!
-PARTY ROOM & ARCADE-

Proudly Celebrating Two Years

FRONTIER FENCING & CONSTRUCTION



NOW OFFERING OVER 20 YEARS OF THE HIGHEST QUALITY FENCING EXPERIENCE BY JAVIER LOPEZ, FORMERLY WITH GARY SCROGGS FENCING

Barbed Wire Fencing Pipe Fences Corrals Metal Buildings - Prefabs & Pole Barn
Residential Fence Various Construction & Carpentry Projects

Contact - Brandt Oquin (806) 202-2208

HELP WANTED

HELP WANTED: Experienced automotive technician needed. Good working environment, holiday pay, health insurance. Also service department helper needed. Apply in person at Prairie Motors in Spearman. (806) 659-2541 or 1-800-692-4657. TFN(12/2/10)B

HELP WANTED: Wolf Creek Feedyard, located in Perryton, TX, is accepting applications for positions in our Mill, Cattle and Yard Maintenance departments. Experience is not required. We will train the right applicants. We offer a competitive wage, benefits including health insurance and a retirement plan. Please call (806) 436-5697 or come by the office to fill out an application. 2(12/2/10)B

HELP WANTED: USA Feedyard has an opening for an experienced Penrider. Must have own horses, be dependable and be good at your job. We offer great benefits including free feeding and care of your horses, free health insurance for you and your family, paid vacation, horse lease payments, and a 401-K Retirement Plan. We offer you a great place to work and make a difference in your job. Apply in person at USA Feedyard, LP, 8370 Co. Rd. W, Gruver, TX, or call Dave Christian at 806-733-5043. 1(12/2/10)B

HELP WANTED: Frontier Feedyard is now hiring an experienced pen rider. Must have horses and tack. EOE. Contact Ben at 806-883-4251 or 806-736-0230. TFN(12/2/10)B

HELP WANTED: First United Methodist Church, Spearman is currently taking applications for a nursery worker. Need to be available for Sunday church services and various times throughout the week and for funerals. If interested, please come by the church to pick up an application. 806-659-5503, 407 S. Haney. TFN(11/4/10)B

SERVICES

HOUSE CLEANING: I do house cleaning. Reasonable rates and references available. Call 806-330-1159, Maria Garcia. 2(11/18/10)B

CLICK PAINTING & HOME REPAIR Painting, Texturing, Drywall Repair, Fencing & General Carpentry. Serving Perryton, Spearman & Gruver. Don Click, 648-1480, or 202-1391 (cell). TFN(10/15/09)B

HOOCHY POOCHY PARLOR Call us for all your pet's grooming and boarding needs. Call now for reservations! 806-273-2724. TFN(11/2/07)B

PUBLIC NOTICE

NORTH PLAINS ELECTRIC COOPERATIVE, INC. is now accepting resumes to fill the position of Accountant. The person selected for this position will be required to live in or near Perryton, Texas. Applicants for this position must have a minimum of a bachelor's degree in accounting, business administration, or related field. Work experience in lieu of education will be considered. Applicants must demonstrate proficiency using a PC, MS Word, and MS Excel. The applicant must also be able to learn in-house software as well as some internet applications. A pre-employment drug screen is required. Only those interested in a non-exempt position with a 40-hour workweek and overtime as required, should submit a resume to North Plains Electric Cooperative, P.O. Box 1008, Perryton, Texas 79070 or email: resumes@npec.org. All submissions must be received by 5:00 p.m., December 17, 2010. (An Equal Opportunity Employer.) 2(12/02/10)B

NOTICE TO ALL PERSONS HAVING CLAIMS AGAINST THE ESTATE OF LEONA STAVLO DECEASED

Notice is hereby given that original Letters Testamentary for the Estate of LEONA STAVLO were issued to Amy Kathryn TeBeest, in the County Court of Hansford County, Texas, in Cause No. 2612, on the 22nd day of November, 2010. All persons having claims against this estate which is currently being administered, are required to present them within the time and manner prescribed by law. All claims should be sent to Amy Kathryn TeBeest, 8511 FM 2349, Gruver TX 79040. John L. Hutchison PO Box 506 Spearman TX 79081 Attorney for the Estate 1(12/2/10)B

FIREWOOD FOR SALE Cedar firewood for sale. Delivered & stacked, or self pickup. Call (806) 658-2573. 15(8/12/10)P

Blankenship Real Estate 659-3052 - 670-3774

LET US HELP YOU SELL YOUR HOME.

4BR, 2B, 2CG, basement, separate garage & workshop. Excellent location and condition. Many special features.

NEW LISTINGS WANTED! Eulalia Blankenship - Sales Eschol Blankenship - Broker

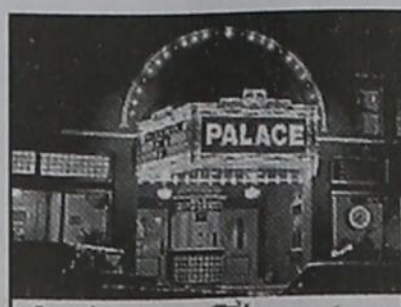
JOB REQUISITION NUMBER: 015369 TRANSPORTATION MAINTENANCE TECHNICIAN II (K513)

The Texas Department of Transportation will be accepting applications for one full-time position at the Hansford County Maintenance Office located at 114 W SH 15, Gruver, Texas.

JR015369 (K513): Performs skilled transportation maintenance work. Work requires use of maintenance tools and operation of light equipment and some types of heavy equipment. The starting salary will be \$12.08 - \$18.72 per hour.

A completed State of Texas application is required and applications will be accepted until 5:00 p.m., Friday, December 10, 2010. For further application information, including a complete job vacancy notice, contact the nearest Texas Department of Transportation. Information may also be accessed via the internet at www.txdot.gov/careers/.

Mailed applications should be postmarked no later than Friday, December 10, 2010 and sent to: TXDOT, Attn: Human Resources, 5715 Canyon Drive, Amarillo, TX 79110. If more information is needed or if an applicant needs an accommodation in order to apply for this job, contact Human Resources at (806) 356-3231. TXDOT IS AN EQUAL OPPORTUNITY/AFFIRMATIVE ACTION EMPLOYER. 2(12/2/10)B



Palace Theatre

MOVIE SHOW TIMES
Friday-Thursday - 7 p.m.
Sunday - 2 p.m.
Closed Sunday Night

FRESH POPCORN & DRINKS!
PARTY ROOM & ARCADE
MOVIE RENTALS

Palace Theatre
210 Main Street
Canadian TX 79014
806-323-5133
www.palacetheatre.com

The Palace Theatre meets Lucasfilm THX specifications for site and sound quality.

O	T	D	O	T	W	A	E	E	D	D	Y
G	R	E	A	T	O	W	L	S	A	R	E
R	E	A	C	T	O	I	L	T	R	A	L
E	A	R	H	A	R	T	O	R	A	N	G
A	W	E	E	T	A	L					
W	W	A	B	E	L	T	I	M	I	N	G
A	H	O	Y	E	Y	E	D	N	A	D	I
N	E	V	E	C	A	M	E	L	A	I	N
D	R	E	A	M	S	E	M	I	M	O	O
S	E	N	S	O	R	N	O	N	E	T	N
N	E	X	T	G	N	U					
S	T	A	R	V	E	C	O	L	D	W	A
C	U	R	I	O	B	A	A	A	D	O	R
P	R	I	D	E	E	G	G	C	E	R	E
A	D	O	S		C	O	Y	E	R	N	S

2	7	8	9	6	5	1	3	4
4	9	6	3	1	8	5	7	2
5	3	1	4	2	7	9	8	6
6	4	3	5	7	1	8	2	9
7	5	2	8	9	4	6	1	3
8	1	9	6	3	2	4	5	7
9	2	7	1	8	6	3	4	5
1	6	4	7	5	3	2	9	8
3	8	5	2	4	9	7	6	1

Are You A Victim of Domestic Violence, Sexual Abuse or Physical, Emotional or Sexual Assault?

Call Toll Free Hotline
1-800-753-5308

We can see individuals from Hansford County anytime upon request. Call 435-5008 or 1-800-753-5308 to set up an appointment in Hansford County. We operate a safe place for victims and their children to stay in times of crisis.
Battering Intervention & Anger Management Available

Panhandle Crisis Center
Serving Hansford, Lipscomb & Ochiltree Counties
301 S. Ash • Perryton, TX
Memorials Accepted

Spearman Lynx & Lynxettes

<http://spearmansports.smugmug.com>

Photos available of Spearman Lynx and Lynxette athletic events.

French & Co., Realtors
273-7355

Beautiful 3 BR, 2B home in Morse, Texas. 1.06 acres. Updates Galore, Gorgeous tile & wood floors, stunning trim, custom paint, 28x33 garage & separate shop. Call Michele for details. 806 273 7355

This ad is just a small sample of the properties that we currently have for sale. Please check our Web site and give us a call! We need your listings both large and small, all types of ag properties (ESPECIALLY CRP).

HARTLEY/MOORE COUNTY LINE - corn, wheat, cotton, cattle with all the perks, 992 acres, sprinkler irrigated with some improved pasture, large brick home, large set of state of the art steel working pens with concrete feed bunks and covered working area, on pavement. House, shop & horse barn on 2 acres may be bought separately.

DALLAM COUNTY - Three adj. sections of dryland, some native grass, irrigation in area (new wells across the road).

SWINE PRODUCTION FACILITY - Moore Co., TX. - 1200 sow capacity, capable of running 28,000 pigs annually, computerized feed mill, flex-flo feeding system, management in place. PRICED TO SELL! INVESTORS WELCOME!

SEE OUR WEBSITE OR CALL US!
www.scottlandcompany.com
Shawn Gillispie 806/922-5532
Ben G. Scott, Broker
1-800-933-9698 day/eve
TFN(11-11-10)

hchd
Hansford County Hospital District
Openings at Hansford Hospital

CLINIC LVN: Graduate of an approved LVN program. Provide general nursing care to patients in clinical setting. Interacts with patients and patient's families, Medical Staff members and other departments of HCHD on a continuous basis.

Great working environment and staff, quality facility providing opportunities for professional growth. Great benefit package. Apply at 707 S. Roland, Spearman, TX or contact Jackie Nelson at 806-659-5841. Download application at www.hchd.net EEOE (12/02/10)

Shirley Howard
Howard Properties

We NEED listings!
Call us now to help YOU sell your home for top dollar!

902 9th - Gruver: Horse Stables FOR SALE! 18,000 sq ft circular training arena, & 4500 sq ft barn on 10.42 acres! PRICE REDUCED!!

Shirley Howard, Broker/Owner
806-886-6536, Cell
Melinda McCullough, Realtor
(806) 733-5678
We would LOVE to sell your HOUSE!
CALL US!

Merry Christmas!

QUALITY AND DESIGN FOR THE HOLIDAY SEASON & BEYOND!

CALL 806-644-4000

HANSFORD COUNTY FLORAL COMPANY
300 MAIN • SPEARMAN, TX
WHERE EXPERIENCE COUNTS

TEXAS STATEWIDE CLASSIFIED ADVERTISING NETWORK
TexSCAN

TexSCAN Week of November 28, 2010

BUSINESS OPPORTUNITIES
ALL CASH VENDING Route! Be your own boss! 25 machines-candy for \$9995, 1-877-915-8222, all major credit cards accepted.

DRIVERS
50 CDL DRIVERS needed to deliver new trucks from Garland and Laredo across the U.S./Canada. 43/mile and up with fuel, tolls & permits paid. For information: 1-866-764-1601 or www.qualitydriveaway.com

DRIVER- HOME WEEKLY No touch freight! No forced NE/NYC! 6 months experience. No felony/DUI last 5 years. Solos and teams wanted. New pay package! 1-877-740-6262. www.pdl-inc.com

DRIVERS- COMPANY FFE seeks 1 year experience for OTR drivers. (\$1000 sign-on bonus) Start your new career, students welcome! Also seek owner operators. Call 1-800-569-9232 or recruit@ffex.net

DRIVER-CDL-A Drive In style! New 2011 Freightliner Cascadias plus the best miles, pay & performance bonus. \$500 sign-on for Flatbed. CDL-A, TWIC card and good driving record. Western Express: 1-866-863-4117

DRIVER/COMPANY/OWNER operator. Regional company drivers start up to 36¢ cpm. Benefits, OTR O/O's \$1.17 loaded 90¢ empty. CDL-A with 15 months experience. 1-877-826-4605, www.tangtransport.com.

DRIVERS EARN up to 49¢/mile! 1 year minimum OTR experience qualifies you to be a trainer for our fleet. Call 1-888-417-7564, CRST EXPEDITED; www.JoinCRST.com

DRIVERS-FOOD TANKER drivers needed OTR positions available now. CDL-A with Tanker required. Outstanding pay & benefits; call a recruiter today! 1-877-882-6537, www.oakleytransport.com

DRIVERS-OWNER/OPERATORS Industry leading revenue per mile+ 100% FSC. No money down tractor purchase program, no lease on costs. Class-A CDL, hazmat and tanker required. 1-888-240-4808, www.millerdriving.com

DRIVERS-OWNER/OPERATORS Solo, teams, fleets. At least 2,800 miles per week, home every 10-14 days. We have more freight than available trucks! 1-877-901-8591

DRIVERS- REGIONAL Van drivers. 35-37 cpm based on experience. BCBS benefits package. Home every week. CDL-A with 1 year experience required. Call 1-888-362-8608 or apply at www.averittcareers.com. EOE

DRIVERS- 100% Tuition paid CDL training! Start your new career. No credit check, no experience required! Call 1-888-417-7564, CRST EXPEDITED, www.JoinCRST.com

NOW HIRING CDL-A Drivers for Texas regional fleet. Home most weekends, solid miles, great equipment. 8 months OTR experience. 1-888-730-9312, www.deboertrans.com

HIRING OWNER/OPERATORS - Texas based. Miles, home, money. Check it out! Call Paul at 1-713-674-4206.

HOME FOR THE HOLIDAYS! OTR drivers, APU Equipped, Pre-Pass, EZ-Pass, every 60k mile raises. 2007 or newer equipment. Passenger / Pet Policy 100% NO touch. 1-800-528-7825

UP TO .36¢ per mile. Regional Southwest. Outstanding compensation package. Limited opportunities. Paid holidays: Class A-CDL. 1 year OTR experience. Apply now! 1-888-440-2465, www.nationalcarriers.com

FINANCIAL
CASH NOW! Get cash for your structured settlement or annuity payments. High payouts. Call J.G. Wentworth, 1-866-SETTLEMENT (1-866-738-8536). Rated A+ by the Better Business Bureau.

DO YOU RECEIVE payments on a note? Need cash now? Full and partial buy-outs. Safeway Capital; Toll Free 1-866-241-9922.

HELP WANTED
BETWEEN HIGH SCHOOL and College? Drop that entry level position. Earn what you're worth! Travel with successful young business group. Paid training, transportation and lodging provided. Success Express Sales, Inc. 1-877-646-5050.

EVALUATORS NEEDED for market research projects. BARE International licensed 23 years. Fees start at \$10/hour. Contact: NewEval@bareinternational.com or call 1-703-995-3106 or 1-800-296-6699 ext. 3106.

REAL ESTATE
ABSOLUTELY THE BEST VIEW Lake Medina/Bandera 1/4 acre tract, central W/S/E, RV/motor home/house, OK only \$830 down \$235 month (12.91¢/10yr). Guaranteed financing. More information call 1-830-460-8354

10 ACRES, north of Brady. Water, electricity, seasonal creek. Oak, elm, mesquite. Deer and turkey. \$3500/acre, owner or TX Vet financing. 1-800-876-9720, www.texastranchland.com

20 ACRES, \$0 down! Only \$12,900. Near growing El Paso, Texas. Guaranteed owner financing, no credit checks. Money back guarantee. Free map/pictures; 1-866-415-7747, www.SunsetRanches.com

1+ACRE LAKEVIEW! Stunning view of Texas 3rd biggest lake, just a stone's throw away. Access to pool area and lakeside park as well as utilities to the property. Motivated seller, will take only \$24,600. Call 1-214-613-1284.

80 ACRE LOTS Humboldt Co, Nevada near Reno. Hill views only \$299 down. No credit checks. Seller financing, great opportunity. 1-949-632-7066. See: www.CheapRuralProperties.com

676 ACRES-REEVES County, 15 Miles North Pecos. River frontage. Call Jack 1-214-755-6224.

\$106 MONTH BUYS land for RV/motor home/ house, pier boat ramp, pool, clubhouse, gated entry, on Lake Fork. \$690 down (\$6900/10.91¢/7yr) Guaranteed financing. 1-214-696-2315

\$106 MONTH BUYS land for RV, MH or cabin. Gated entry, \$690 down, (\$6900/10.91¢/7yr) 90 days same as cash, Guaranteed financing. 1-936-377-3235

LAKEFRONT REDUCED 30% 1+ acre waterfront on Texas 3rd largest lake. Market price \$99,900. Need quick sale and will take only \$69,900. Utilities to property and private boat dock allowed. Motivated seller, won't last long. 1-214-506-1043.

SCHOOLS/TRAINING
AIRLINES ARE HIRING Train for high paying aviation career. FAA approved program. Financial aid if qualified, job placement assistance. Call Aviation Institute of Maintenance, 1-877-523-4531

CAN YOU DIG IT? Heavy equipment school, 3 week training program. Backhoes, Bulldozers, Trackhoes. Local job placement assistance. Start digging dirt now. 1-866-362-6497

HIGH SCHOOL DIPLOMA graduate in 4 weeks! Free brochure! Call now! 1-866-562-3650, ext. 55, www.southeasternHS.com

Run Your Ad In TexSCAN!
Statewide Ad.....\$500
307 Newspapers, 1,018,288 Circulation
North Region Only.....\$230
99 Newspapers, 270,048 Circulation
South Region Only.....\$230
107 Newspapers, 601,889 Circulation
West Region Only.....\$230
101 Newspapers, 248,581 Circulation
To Order: Call this Newspaper direct, or call Texas Press Service at 1-800-749-4793 Today!

Holiday Help

Sun Loan Company can help with your Holiday expenses!

Loans from \$100-\$1233

During December, if you open a new loan or reopen a closed account, we will give you FREE TURKEY!

SUN Loan Company & Tax Service
106 S. Main • Perryton
(806) 435-7242 Se Habla Espanol
Contact Laura Flores, Manager

NOTICE: While most advertisers are reputable, we cannot guarantee products or services advertised. We urge readers to use caution and when in doubt, contact the Texas Attorney General at 1-800-621-0508 or the Federal Trade Commission at 1-877-FTC-HELP. The FTC web site is www.ftc.gov/bizop

Extend your advertising reach with TexSCAN, your Statewide Classified Ad Network.

by Dorothy Hudson

Out at the Lake



Jim Derington
Palo Duro River Authority
P.O. Box 99
Spearman, TX 79081
806-882-4401
pdra@dishmail.net

Lake Level--November 29, 2010--49.12 feet

The eagles are back. Jim had been seeing one eagle at a time, but now that he has a picture of two in the trees on the Gibner side of the Lake, we think we have a pair. So far the geese, cranes and ducks are mainly using the playa lakes near the fields where they feed. He expects that when these small lakes freeze over, the water birds will again come to Lake Palo Duro.



Two Bald Eagles pictured in the trees on the Gibner side of Lake Palo Duro.

A flock of the turkeys can be seen occasionally in the parks north of the dam. The mountain bluebirds have not come back in numbers, but I am hoping they will.

A deer hunter from Austin stopped at the Park again this year. He takes advantage of Public Hunting Areas. Yes, there is one in Hansford County. It is at Miller's Lake a few miles north of Gruver. He had no luck there, so he soon moved on.

White-tail deer season is still on. At a recent ball game, I saw people showing pictures on their cell phones of big bucks that had been killed in Lip-

scomb County and over by Texhoma. Another young deer slayer, Hunter Hopkins of Gruver shot a 17-point buck in Hansford County near the area where Jace Linde shot a 14 point buck. Jace is the 11 year old great grandson of the late Ross Walker. Hunter, the 12 year old son of Brenda and Bud Hopkins, shot the big buck west of the home of his grandparents SueEllen and Robert Dahl.

Pheasant season starts this Saturday. The Rotary Club in Spearman have a group of 40 hunters coming. They had to turn down a number of requests, as they must limit the number to the fields they have available. Gary Urban at Morse leads a group that is raising money for the Morse Fire Department. They have 25 hunters coming. Gary said the two big hails in their area this summer has limited the number of birds.

Hansford County FSA Asks Producers to Vote in County Committee Election

Rick Hargrove, Executive Director of USDA's Farm Service Agency (FSA) in Hansford County recently announced that the county committee elections are in progress. Ballots were mailed to eligible voters and completed ballots must be returned by mail or to local FSA offices by Dec. 6, 2010.

"I strongly recommend that producers vote because the county committee members play a huge role in the Agency, especially at the county level," said Hargrove. "County committee members make decisions on how federal farm programs will be administered locally."

County committee members are elected to office by their peers and serve as the representative voice for agriculture producers in the county, and they are responsible for communicating with USDA to ensure that national programs are adapted to fit local needs. County committees are responsible for making decisions on issues including commodity loans and payments, conservation programs, disaster assistance programs and emergency programs.

Hargrove encourages minority and female producers to serve as county committee members in the future. It is important that the county committee is comprised of members who

reflect the demographics of the local agriculture community.

Farmers and ranchers who participate in FSA programs are eligible to vote. If eligible voters do not receive a ballot by mail, one will be provided by the local USDA Service Center. Ballots returned by mail must be postmarked no later than Dec. 6, 2010. New county committee members will assume their role and related responsibilities on Jan. 1, 2011.

For more information on county committees, view the FSA website at www.fsa.usda.gov/elections or visit a local USDA Service Center.

Christmas Specials

at **Gordon's DRUG**

314 Main • Spearman • 806-659-2141
Where gift-giving is effortless & FUN!

Thursday Night Savings

Open until 8 p.m. each Thursday through December 23rd

Different Special Each Thursday Night

- Photo Machine
- Fast Printing Time
- Personalized Christmas Cards
- Poster-Size Photos

Owned & Operated by Linda & Charles Stephens

Double XXL Steakhouse

(formerly Flying X Steakhouse)

Make your reservations now for Christmas and New Year Parties!

(806) 93JESUS (806) 935-3787

From Stinnett: Go West on Hwy. 152 17 miles - Turn Left at Big White Sign (About 2 miles on Gravel Road)

From Dumas: Go East on Hwy. 152 16 miles - Turn Right at Big White Sign (About 2 miles on Gravel Road)

Open: Friday & Saturday Night
Open anytime for parties of 8 or more

www.doublexxlbranch.bravehost.com
reservations suggested

Tong's Chinese Restaurant

(806) 644-2838
22 Archer Street • Spearman

Daily Buffet

Lunch Buffet 11 a.m.-2:30 p.m.
Dinner Buffet 5:30-9 p.m.
Sushi Available on Sunday Buffet

Open Wednesday-Monday - Closed Tuesday

Merry Christmas!

FREE Internet Installation!

Digital TV with HD

- *OKC Networks in HD
- *OU Sooners Sports News
- *OSU Cowboys Sports News
- *Amarillo Networks in HD
- *Local High School Sports
- *NFL Network

Free Premium Channels for 1 month

\$29.99 per month for 6 mos.

Free Installation of up to 4 set-top boxes!

Offers good thru 12/30/10

www.ptci.net
800-562-2356
721 W 7th in Spearman

Restrictions apply. All services not available in all areas.