

SCR2
COMP
HANSFORD COUNTY LIBRARY
0122 MAIN ST
SPEARMAN TX 79081-2064



HANSFORD COUNTY ★ THE REPORTER-STATESMAN ★

CELEBRATING 104 YEARS OF SERVICE TO HANSFORD COUNTY
HANSFORD COUNTY'S ONLY NEWSPAPER

THURSDAY,
MARCH 3, 2011

75¢

WWW.SPEARMANREPORTER.COM

VOLUME 104 • ISSUE 9

reporter@spearmanreporter.com



"My Life in America" by Jose Rios of Spearman.

22nd Annual Area High School Exhibit Merit Award Winners

The Baker Arts Center and the Community Bank of Liberal are pleased to announce this year's Distinguished Merit Award Winners in the 22nd Annual Area High School Art Exhibit. The eight recipients are: Jose Rios—Spearman for "My Life in America", Stephanie Almeda—Guymon for her work "The Way I See It", Max Bearce—Stanton County for "Minas Tirith", Yesli Ochoa—Liberal for "Fluid Curls", Katrina Artega—Turpin for "Black & White Study", Cole Parks—Elkhart for "Grasping Eyes", Octavio Arredondo—Sublette for "Wild in Nature", and Alyssa Cedillo—Garden City for her "Study of Ann Cole". Community Bank of Liberal sponsors these awards which are \$50.00 savings bonds presented to these talented students in recognition of their outstanding creativity.

Please stop by the center located at 624 N. Pershing in Liberal to view all the artwork that has been created by our area art students throughout the school year. This exhibit is now on display through March 29th for everyone to enjoy. The reception for this exhibit will be held on March 20th from 2:00 to 4:00 p.m. Gallery hours are Tuesday through Friday from 9:00 -12:00 and 1:00 to 5:00 p.m. The Center is also open from 2:00 p.m. to 5:00 p.m. on Saturdays. Closed on Sundays and Mondays. This exhibit is funded in part by support from the Kansas Arts Commission, a state agency, and the National Endowment for the Arts, a federal agency.



Wildfires Sweep Panhandle

Wildfires have swept across the Panhandle over the past couple of weeks due to dry conditions and high winds. The fires burned more than 110,000 acres, destroyed 70 homes, forced evacuations and closed several roads in West Texas and the Panhandle.

There were fires in Moore, Carson, Dallam, Donley, Hutchinson, Potter, Randall, Wheeler and Lipscomb counties. Fire Departments from all across the Panhandle joined together to assist in fighting these fires.

Photo by Don Rice, Borger News-Herald

Weather Forecast

THURSDAY NIGHT - Partly cloudy. Lows in the lower 30s. East winds 5 to 10 mph.

FRIDAY - Mostly cloudy with a 20 percent chance of light rain. Highs in the mid 50s. North winds 10 to 15 mph.

FRIDAY NIGHT - Mostly cloudy. Chance of light rain in the evening - then a chance of light rain and light snow after midnight. Lows in the upper 20s. North winds around 15 mph. Chance of precipitation 30 percent.

SATURDAY - Partly cloudy. Highs in the lower 50s.

SATURDAY NIGHT - Partly cloudy. Lows in the mid 20s.

SUNDAY - Mostly cloudy. Highs in the upper 50s.

SUNDAY NIGHT - Mostly cloudy. Lows in the lower 30s.

MONDAY - Mostly cloudy. Highs in the lower 60s.

MONDAY NIGHT - Partly cloudy. Lows in the mid 30s.

TUESDAY - Partly cloudy. Breezy. Highs in the mid 60s.

TUESDAY NIGHT - Partly cloudy. Lows in the upper 20s.

WEDNESDAY - Partly cloudy. Colder. Highs in the mid 40s.

Read more: <http://www.city-data.com/forecast/w-Spearman-Texas.html#ixzz0xgJSWQkT>

Texas Crop & Weather

The following specific livestock, crop and weather conditions were reported by Panhandle Extension directors: Days were warm and dry. High winds, with gusts ranging from 50 -70 mph, drove many wildfires out of control. The region remains under a high wildfire danger. Soil moisture was very short to short. Wheat was mostly poor. Rangeland was in very poor to poor condition. Some producers were preparing fields for spring planting. Cattle were in good condition, with producers continuing to supply supplemental feeding.

Hansford Manor's Valentine King, Queen



submitted by Merry Sparks

February 14th was an exciting day for many. At the Manor it was an afternoon filled with flowers, candy, song and kisses, along with cheers and break outs of applause.

The festivities really started the week before Valentine's Day. Staff members adopted secret valentines and decorated their doors, as well as showering them with gifts, candy, and cards for a full week. There were ballot boxes at each end of the building for everyone to cast their vote for the new Mr. & Ms. Hansford Manor.

When the ballots were counted, the winners were clear. Our new Queen was Holly Brack and the new King was Norman Brack.

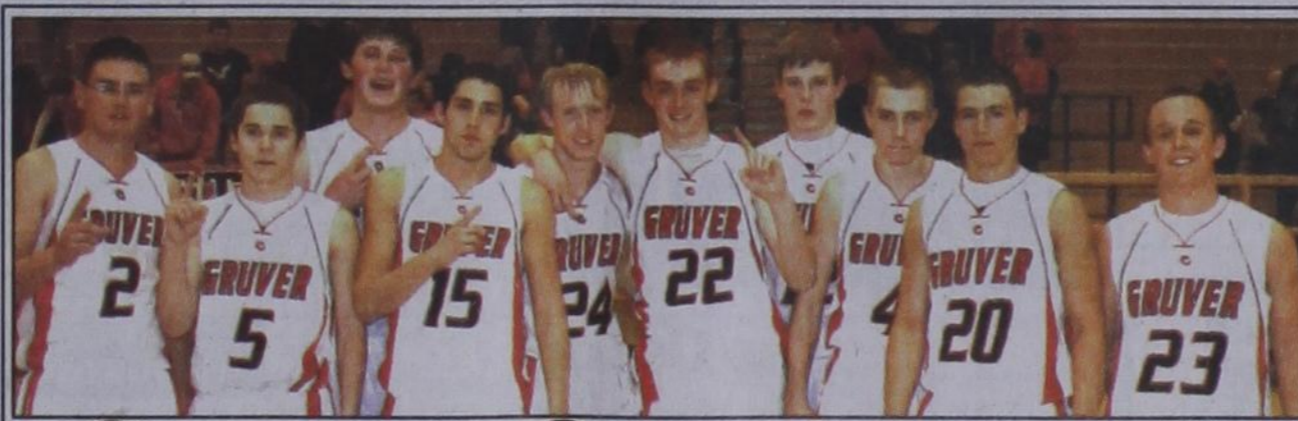
The King's court consisted of Ramon Cantu, Ed Hibbs, Mart Hart and Kim Cluck. The Queen's court was Mary Fern Terry, Betty Mullins, Caro Lee Frantz and Stella Cummings. The court was presented with candy. The King & Queen were crowned, the robes of honor were placed around their shoulders, and were presented with roses and candy.

The afternoon festivities started with Cecilia Trejo being honored for decorating the most Resident doors. Then the Resident's secret valentines were revealed to them.

A beautiful song was presented to the honorees by Verna Strawn with Janie Kunselman on the keyboard. Verna Strawn entertained the rest of the afternoon as refreshments were served and congratulations were expressed.

The Brack's were married on June 22, 1949 in the First Methodist Church in Bison, KS. Their three children, Lynn, Kendra, and Kyle, sent a note of their history, along with a description of living the good life with family, friends, and neighbors in Spearman. They expressed their appreciation of the unquestioned and rock solid love their parents had for each other.

They also shared some humorous stories of growing up, including one about the boys placing the family cat in the refrigerator when they went to bed so it would not run off. Norman coming in from work late one night with a desire for a midnight snack. When he opened the door, the half frozen cat shot out hitting him in the chest and scaring both of them.



Gruver Greyhounds Area Champions

The Hounds defeated the Wellington Skyrockets 53-37 on Friday, February 25, 2011 to become the Area Champions.

The Greyhounds played the Clarendon Broncos on Wednesday, March 2, 2011, at 7 p.m., at Tascosa High School, where they were defeated 50-55.



Blodgett Park (Purple Park) Renovation

Joey and Lyn Woolley met with the Spearman City Council on Tuesday, February 22, 2011 to request permission to raise funds for improvements to Blodgett Park (the purple park).

The Woolley's have noticed that this park is well used, but could use some maintenance.

The City Council approved their plans, which includes leveling the area and filling holes for about 150' x 200' of the park, including the playground area. They would like to install a sprinkler system and plant grass and trees. The City also agreed to pour a sidewalk from the Pavillion to the walking track.

They are seeking donations to help fund these renovations. A fund has been established at First National Bank (Blodgett Park Renovation Fund).

If you have any questions, suggestions or would like to volunteer to help, call Joey or Lyn Woolley at 659-3550 or 330-1997.



Gruver Hires New Police Officer

On Friday, February 11th, the City of Gruver hired a new patrol officer, Andrew Poole.

Andrew and his family moved to the Gruver area from Midlothian, TX. Andrew and his wife, Amy are originally from Nona, TX.

Andrew shares the love of public service with two of his three brothers who are also Texas police officers. Andrew holds several certifications that will be an asset to the city. Not only is he a certified Peace Officer, but an EMT and Firefighter. He will also be joining these volunteer departments for the City of Gruver.

The Poole's have two young sons Julian and Jameson, who are also very excited about the new changes. Please help us welcome this sweet family to Hansford County.

Wolf Creek Heritage Museum Notes

by Virginia Scott
MUSEUM HAPPENINGS
 It is a beautiful Monday morning with calm winds. We had a scary weekend with grass fires all around, and at one point asked to evacuate Lipscomb. I am always worried at that point about the museum and what to do. We have emergency references designed for museums, and after this weekend we are going to have to make a priority out of our planning for emergencies. If any one is interested in helping us design our plan, please contact me.

I am thankful that Lipscomb County was spared the losses that our southern neighbors in the Borger area are facing today. A Big THANKS to all of you volunteers that man our fire trucks, radios, etc. We appreciate all your efforts.

The museum maintains a file on all our weather related storms and events. If you have photographs of the fires this year that you would like to contribute to our collections, please bring them by the museum.

We can copy them and return the originals to you.

We still have about 30 plus people who have not picked up their copy of the Volume II, Lipscomb County History. Please help us spread the word about the book. If you can't remember if you paid for one, call us and we will check the list. We still have plenty for sale in the gift shop.

The Museum and Lipscomb County Historical Commission annual report is done. A copy can be reviewed at the museum.

HISTORICAL MUSINGS

The following correction will be filed with the history of the publishing of the Volume II history book:

One of the people who ordered a book called to report the following error. The story about his son should have said 'corporate lawyer,' not 'concrete lawyer.' He said they all got a good laugh out of it. I can't tell you how many people proofed that book, but they say that there is no such thing as a perfect book.

We are keeping a record of our errors, so report them as you find them and when you find the story of the concrete layer, please change it.

Wolf Creek Heritage Museum

Museum Hours: Monday thru Friday 10 a.m. to 4 p.m., Special hours upon request.

Museum Information:
 13310 Hwy 305, PO Box 5, Lipscomb TX 79056; telephone: 806-852-2123; e m a i l : wolfcrk@amaonline.com; website: www.wolfcreekheritagemuseum.org

Subscribe to the Reporter-Statesman. Call 659-3434 for details.

See us for:
 AUTO • HOME • CROP HAIL • FARM & RANCH • MULTIPERIL • LIVESTOCK

INSURANCE



BORT AGENCY, INC.
 510 Main St. • Gruver, TX (806) 733-2456



Palace Theatre


MOVIE SHOW TIMES
 Friday-Thursday - 7 p.m.
 Sunday - 2 p.m.
 Closed Sunday Night

FRESH POPCORN & DRINKS!
 PARTY ROOM & ARCADE
 MOVIE RENTALS

Palace Theatre
 210 Main Street
 Canadian TX 79014
 806-323-5133
 www.palacetheatre.com

The Palace Theatre meets Lucasfilm THX specifications for site and sound quality.

TEXAS PRESS ASSOCIATION



State Capital

HIGHLIGHTS
 By Ed Sterling

STATE CAPITAL HIGHLIGHTS



by Ed Sterling

Task force to deliver input on unfunded mandates

AUSTIN -- Gov. Rick Perry on Feb. 25 announced the formation of the Task Force on Unfunded Mandates, a bipartisan panel of one former and eight current Texas public officials.

The panel's mission, Perry said, is to list "burdensome unfunded mandates that have been passed down from the state to local governments, such as cities, counties and school districts."

Perry wants the list, and recommendations "on how to best alleviate these burdens on local entities," on his desk this March.

Meanwhile, the state Senate Finance and House Appropriations committees continued with their work of exploring ways to cut the 2012-2013 state budget enough to make it balance. That means stripping off somewhere between \$8 billion and \$27 billion in state services.

To address state finances in the long term, the Texas Senate adopted a proposed state constitutional amendment on Feb. 23, the subject of which indicates a sentiment that some portion of the Lone Star State's budget woes originate in Washington, DC.

Senate Joint Resolution 1 urges Congress to propose and submit to the states for ratification a federal balanced budget amendment to the U.S. Constitution. Authored by Senate Pro-Tempore Steve Ogden, R-Bryan, chair of the upper chamber's powerful Finance Committee, SJR 1 has moved to the House for consideration.

Its adoption by the Senate drew applause from Gov. Perry, who said he now looks forward to "working with members of the Texas House who share the goal of a federal balanced budget amendment to put the U.S. back on the path to fiscal responsibility."

One such federal program that is often named in conjunction with "out-of-control federal spending" is Medicaid, the health coverage program for poorer Americans that more than 4 million Texans rely upon.

Speaker weighs in on Medicaid

House Speaker Joe Straus, R-San Antonio, on Feb. 22, said, "Medicaid is an unsustainable federal program that continues to eat up more of our state budget, crowding out other

priorities. State spending on Medicaid has doubled in the last 10 years and current spending now accounts for 18.7 percent of the general revenue-related 2010-2011 Texas budget."

"Like most states, Texas is faced with the challenge of maintaining this critical safety net with limited taxpayer dollars," Straus said.

Chief justice addresses joint session

Texas Supreme Court Chief Justice Wallace Jefferson on Feb. 24 addressed a joint session of the Texas House and Senate, including members of the state judiciary. Jefferson, now in his seventh year as chief justice, asked the assembly for four things in the course of his address:

1. Increased access to legal services for poorer and even middle class Texans. "The combination of increased poverty rates, reduced interest rates on legal aid accounts, and a statewide budget crisis threatens to leave Texas' neediest communities without basic access to justice," he said.

2. \$20 million dollars from general revenue for basic civil legal services.

3. Non-partisan election of judges in Texas, and if that can't be done, eliminate straight-ticket voting. "I urge the Legislature to send the people a constitutional amendment that would allow judges to be selected on their merit."

4. To extend terms for state judges from four years to six for district court judges and from six years to

eight for appellate court judges.

Texas' 175th anniversary arrives

On Feb. 24, at the invitation of Speaker Straus, House Speaker Pro Tempore Beverly Woolley, R-Houston, on the floor of the Texas House, read the famous letter written by Col. William Barrett Travis with the Alamo under siege on Feb. 24, 1836.

And, further in observance of the 175th anniversary (terquasquicentennial) of the Republic of Texas' independence from Mexico, the originals of the Travis letter and the Republic of Texas' Declaration of Independence from Mexico, signed March 2, 1836, are on public display at the Lorenzo de Zavala State Library and Archives Building, just east of the state Capitol.

Laredo rep. files popular vote bill

State Rep. Richard Peña Raymond, D-Laredo, has filed HB 1498, legislation to make every vote count in presidential elections.

Raymond said his bill "would help change presidential elections to assure that the winner of the national popular vote would be elected president."

Texas would enter into an agreement with other states to assign all of its presidential electors to the candidate who wins the national popular vote in all 50 states plus the District of Columbia, if Raymond's bill is enacted.

Words from Faith & Grace

by Cecil R. Biggers, Lutheran Lay Minister



We wrap up the Season of Epiphany with the Transfiguration of Jesus, as we study Exodus 24: 12-18, Psalm 99, 2 Peter 1: 16-21, and Matthew 17: 1-9.

The Lord commands Moses to ascend the mountain where he will receive from God the tablets of the Law. As we read this story, we see the indicators of a "Theophany" (a revelation of God) which are glory, fire and the cloud. Notice that the mountain is covered with cloud for six days and on the seventh day (a Holy day), God calls out to Moses from the cloud. Moses enters the cloud. Moses enters into God's presence. We see in this story God, the Father, the Almighty who chooses to dwell with us.


The Psalmist sings a song of the Glory of the Lord. God is Almighty. God loves justice. God establishes equity. The Psalmist sings of God's priests, Moses and Aaron and of God's prophet, Samuel. These great men heard God from a pillar of cloud, were in God's presence. God forgave their iniquity and they followed God's decrees. Worship God for he is holy.

The epistle answers those who say that Christianity is a cleverly designed myth. Not so, says the writer of Second Peter, for we were witnesses of the transfiguration events. He tells them to heed the prophetic message as a "lamp shining in a dark place, until the day dawns and the morning star rises in your hearts." For no prophetic scripture is a matter of one's own interpretation. No prophecy comes from human will, but from the Holy Spirit. Read the gospel diligently, pray for guidance, and the Holy Spirit will open your heart to its truth.

Jesus ascends a high mountain with Peter, James and John. When they reach the summit, Jesus is transfigured before them and his face shines as the sun, and his clothes become dazzlingly white. Moses, the greatest of the law-bringers and Elijah, the greatest of the prophets, appear, talking with Jesus. It is near the time of the Feast of Booths and Peter, overwhelmed, starts offering to build a shelter for Moses, Elijah and Jesus, but as Peter is speaking, the voice of God comes from a cloud that suddenly overshadows them, says, "This is my Son, the Beloved; with him I am well pleased; listen to him!" When we are struck by awe, we do and say strange things, Peter was no exception and he and the others became afraid. Jesus tells them, "Get up and do not be afraid." The disciples listen to him, but in the coming weeks they sometimes fail to hear him. Jesus, reassured of the will of God, begins his exodus by descending the mountain towards the cross.

May the Holy Spirit reveal God's prophecy to you that you may hear the hope of the gospel.

SUDOKU
 PRESENTED BY



VolunteerMatch.org
 Where volunteering begins.

8	9		6					
1	4		8		9			2
	3		4	1				9
2	1				3	5	4	
					2	5		1
				4		2	6	
	5	4	2		1	9	3	
9	2		3	7	6		5	4
3	1					8	2	

© 2011, StatePoint Media, Inc. *answer on classified page*
 Fill in the blank squares in the grid, making sure that every row, column and 3-by-3 box includes all digits 1 through 9.

The Hansford County Reporter-Statesman
 Mailing Address - 213 Main Street • Spearman TX 79081
 Physical Address - 310 Barkley Street • Spearman TX 79081
 Phone - (806) 659-3434 • Fax - (806) 398-9080
 www.spearmanreporter.com • reporter@spearmanreporter.com
 Mon.-Thurs. 9 a.m.-12 p.m., Mon.-Wed. & 1-5 p.m.
 Closed Thurs. afternoon and all day Fri., Sat. & Sun.

Gary Smith - Publisher Catherine Smith - Editor
 Contributing Writers: Dorothy Hudson, Jim Derington, Merry Sparks, Cecil Biggers
 Contributing Photographers: Charlie Johnson, Lisa Johnson Tammy Batton, Bonnie Bergan

Subscription Rates
 In Hansford County - \$30.00 • Out of County - \$40.00
 E-Mail Subscription - \$35.00

The Hansford County Reporter-Statesman (USPS 529660) is published weekly in Spearman, TX. Periodical postage paid in Spearman, TX. **POSTMASTER:** Send address changes to: The Hansford County Reporter-Statesman, 213 Main Street, Spearman, TX 79081.

Publication Policy
 The deadline to submit news and advertising to The Hansford County Reporter-Statesman is Monday at 5 p.m. Items submitted after the deadline will be published at a later date, as time and space permit. Publication of all items is at the discretion of the editor.

Advertising
 Open Display rates are \$4.00 per column inch. Classified Ads are \$6 for the first 25 words and 10¢ per word for each additional word. (Additional charge for boxed classifieds.) There is a \$1 charge per week if billed.

Member of
 Gruver Chamber of Commerce
 Spearman Chamber of Commerce
 Texas Press Association and Panhandle Press Association

THE OSCARS

ACROSS

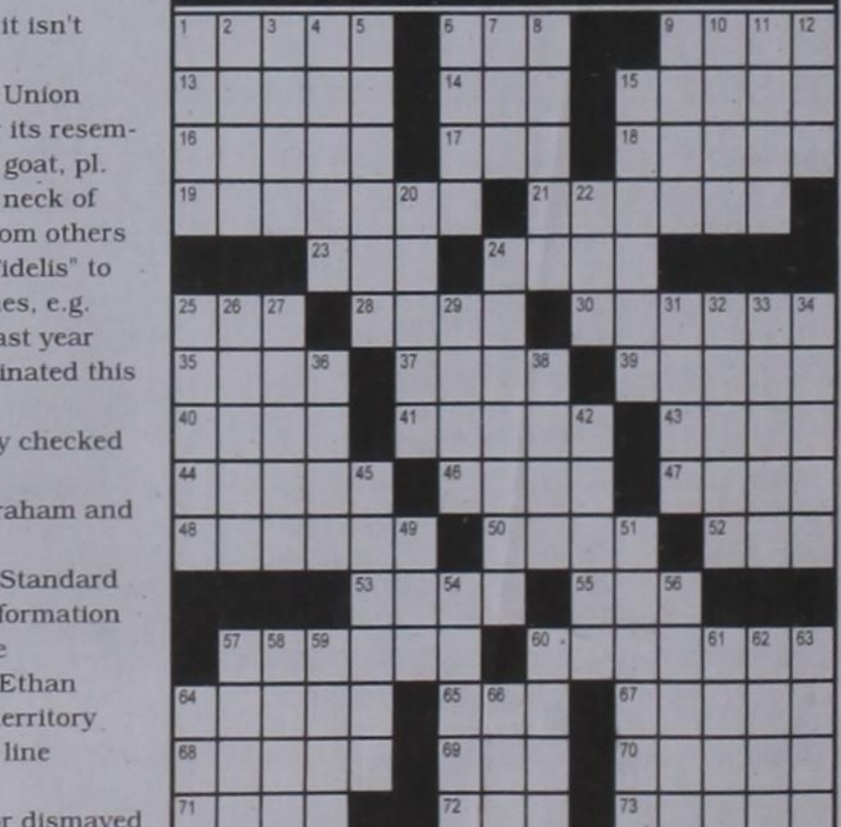
- Monument to Buddha
- Surf turf
- Over-the-head shots
- Chocolate substitute
- Boat propeller
- "The Fighter, e.g.
- Like "heavenly" cake
- Uniform Resource Identifier
- Embryo cradles
- "Jeremy Renner's movie
- "Nominated for her role in "The Kids Are All Right"
- Fifth note
- Oddball
- Every American's uncle?
- Austin Powers' charm
- Gluten-free dieter's disease
- Blood problem
- Clothing joint
- Actress Rene
- Memorization by repetition
- Impulse
- Frequently
- Deblitting spray
- Bone cavity
- Greek salad cheese
- "No ____, no gain"
- "King in "King's Speech"
- Suggestive of the supernatural
- Commonwealth of

DOWN


- Jazz singing
- Hyperbolic tangent in math
- "Dead ____ Society" (1990), Best Original Screenplay winner
- Bursting into flower
- Person, place or thing
- Van Gogh's missing part
- Cherokee or Hopi, e.g.
- Lesotho money
- Independent States
- His and ____
- Pigeon call
- Event venue
- "Swan Lake" prima ballerina
- Hindu nature spirits
- "What Collin Firth and Jeff Bridges do
- This company sued YouTube over domain name
- Unfit or inappropriate
- To do so is human?
- Handsome like Marcello Mastroianni
- "A former Batman and nominated for best supporting actor
- Allow
- "Dorothy's "Over the Rainbow" composer, 1940 winner
- Traditional plow-pullers
- Mountain in German
- ____ Lanka
- Dugout
- " ____ said it isn't ____?"
- European Union
- Named for its resemblance to a goat, pl.
- Wring the neck of
- Isolated from others
- "Semper Fidelis" to U. S. Marines, e.g.
- "He won last year and is nominated this year
- It's usually checked for cancer
- Son of Abraham and Sarah
- American Standard Code for Information Interchange
- *Joel and Ethan
- Short for territory
- Boundary line
- ____ lepsy
- Shocked or dismayed
- Snake-like fish
- West African people
- Take delight in
- Furry water mammal
- River in Siberia
- Egg-like
- Part of Batman's garb
- Saucy
- Reflect deeply on a
63. Vegas light
64. Rub-a-dub-__
66. Anger

These games are brought to you by the Hansford County Reporter-Statesman

CROSSWORD



PRESENTED BY



VolunteerMatch.org
 Where volunteering begins.

© 2011, StatePoint Media, Inc. *answer on classified page*

Happy Birthday!

March 3
Birthday - Sue Smith, Jackie Womble, Vicky (Papay) Cummings, Doris Brogdon, Kim Scroggs, Kelley Hart, Cass Lasater, Andy Scarborough, Brian Black, Darla Black, Amber Fox, Allan Taylor, Denise Schuman, Crystal Harris, Richard Melton, Paxton Pittman, Matti Wheelock, Pam Schnell, Sandra Reeves

March 4
Birthday - Evelyn Dahl, Don Evans, Tanner Sherrill, Tommy Hahn, Jon Garnett, Virgil Jones, Chuck Taylor, Jose Renteria, David Harbour, Ron Fox, Judy Park, Brenda Red, Ronald Kirby, Heather Hamilton, Lucio Vela, Carrie Guthrie, David Rosser, Don Townsen

March 5
Birthday - Ron Dunning, Beth Swink, Barry Beck, Brooks Beck, Mark Garnett, Mary Garza, Mike Cowan, Trixie Pearson, Mike Garrard, Alexis Johnson, Benny Brandvick, Steve TeBeest, Shelby Williams, Ramon Garcia, JJ Anaya, Cleo Hughes, Ashley Vasquez
Anniversary - M/M Ramiro Morales, Mark & Jamie Brown

March 6
Birthday - Brenda Hart, Charlie Slough, Marcie Womble, Bobby Archer, Tommy Barkley, Travis Patterson, Janet Reger, Doran Dulana, Kenneth Slough, Lindsey Clift, Nancy Evans, Mick Sharp
Anniversary - M/M A.R. Cazares

March 7
Birthday - David Imke, Dee Dee Shelton, Mike Garnett, Molly Turner, Bernice McBride, Viola Boyd, Donald Lane, Beulah Harris, Howard Thompson
Anniversary - M/M Danny Bass, M/M Anres Ortiz, Pete & Juanita Vera

March 8
Birthday - Patty Cator, Drew Grotegut, Mike McLain, Bill Harnish, Melvin Swene, Kirby McAdams, Deana Shields, Dee Allen, Steve Cruse, Candi Delozier, Ben Cook, Colby Red, Eric Olsen, Rae Lynn Cook, Cindee Thomas, Christi Clift, Michelle Schick
Anniversary - M/M Richard Wagner

March 9
Birthday - Roy Byrd, Craig Cooper, Tommy Henson, Elizabeth Holt, John Brown, Mary Lou Vela,

Amy Tucker, Jerry Younger, Cole Ivey, Aletha Lesley, Deann Turner, Karla Acton, Brandon Hathaway, Vickie Urban, Nita Byrd, Vernon Pipkin
Anniversary - M/M John Knowles, M/M Shawn Thompson, M/M Kermit Boone, M/M Dwayne Thompson, M/M Dan Wheelock

March 10
Birthday - Shanna Jarvis, Sandy Kirby, Debby Odom, Perry Lamb, Tucker Williams, Roy Uptergrove, Ricky Reger, Reba Ooley, Pam Hart, Shane Pearce, Eugene Barnes, Jr. Barnes, Felipe Lozano, Michael Lozano, Melinda Taylor, Sandy Spivey, Curtis Pearson, Jennifer Keim, Summer Fernandez, Kellyn King
Anniversary - M/M Bobby Mosier

March 11
Birthday - Daniel Rojas, Nina Hendricks, Dorothy Buzzard, Monty Dixon, Bob Breedon, Sandi Holt, David Ortega, Willie Jones, Felipe Dominguez
Anniversary - Buddy & Amber Newman, M/M Orville Brummett

March 12
Birthday - Loree Hart, Jason TeBeest, Lindy Tolleson, Judy Martin, Loraine Davidson, Sherry Bullard, J.L. Griffin, Sammi Johnson, Makenzie Crane, Katie Hintergardt
Anniversary - M/M Andy Hoel, M/M Tommy Henson, Kristal & Ernesto Puentes

March 13
Birthday - Fran Duncan, Bonnie Frick, Gene Leatherman, Brady Tidwell, Vernon Pipkin, Gary Pracher, Roy Flowers, Shannon (Holton) Steinberger, Chuck Fletcher, Lynell Williams, Kevin Bynum, Gretchen Collinsworth, Jerry Garcia, Dolores Moreno, Larry Butts, Hadley Fletcher, LeAnn Sheets, Thomas Cain, Pam Mayfield
Anniversary - M/M Forrest Acker, M/M Jim Dick Goodall

March 14
Birthday - Sue Gerardy, Chris Johnson, Brandy Shelton, Buck Tidwell, Steve Cook, Barbara Brown, Reagan Renner, James Ray Barimus, David Terry, Kelly Mills, Curtis Dudley, Mike Wilhelm, Madison Williams, Caylin Brown, Mason Turner
Anniversary - M/M Bill Robertson, Charles & Betty West, M/M Jimmy Bishard

Our Sympathy

BETTY Y BAKER

RAPID CITY — Betty Y Baker passed away Sunday, Feb. 20, 2011, at Rapid City Regional Hospice House.

She was born Betty Olive Yale on May 20, 1923, in Pierre to Willard and Minnie Yale. She grew up in Pierre and graduated from Pierre High School in 1940. She married Kenneth "Toy" Baker on June 29, 1940 and promptly dropped the "Olive" from her name. Toy worked as a farmer during the first years of their marriage in Canning, Onida, Blunt and Wessington. They had six children. The family moved to Pierre in November 1958 and Betty began working for Northwestern Bell Telephone Company in 1959 as a telephone operator. In June of 1975, Betty was transferred to Rapid City, where she continued working as a telephone operator until she retired from AT&T in 1986.

Betty spent her retirement years at home with Toy in Rapid City where she loved the many visits from her family. Betty loved to talk and you could always find her hanging over the fence in her yard visiting with her neighbors. Her door was always open to anyone who had some news or just wanted to sit and talk over a cup of coffee. She also enjoyed gardening. Her yard was always beautiful and she loved to watch the rabbits, birds and squirrels that would wander in. She also enjoyed baking, reading and watching her daily soap operas. She delighted in her many children and grandchildren and loved them all dearly. Granny will be greatly missed.

Betty is survived by her daughter and son-in-law, Linda and Jason Davis, who cared for her in the last years of her life. Her granddaughters, Lacey Davis and Audra Baker, also helped care for Betty, as well as many other friends and relatives. This allowed her to remain at home after she could no longer care for herself and Toy independently.

The family would like to give special thanks to the Meals on Wheels volunteers for all their help and concern over the years.

Betty is also survived by her husband Toy and a sister, Hazel Swanson, both of Rapid City; four more children, Julie Jacobsen of Gillette, Wyo., Dick Baker of Onida, Iowa, Jim Baker of Spearman, Texas, and Bonnie Redden, Rapid City; 14 grandchildren; 19 great-grandchildren; three great-great-grandchildren; and her dog Sammy.

Betty was preceded in death by her son, Kenny Baker; her parents; three sisters; her son-in-law, Dick Jacobsen; her daughter-in-law, Joan Baker; her daughter-in-law, Beth Baker; and many beloved sisters-in-law and brothers-in-law.

According to her wishes, Betty has been cremated and her ashes will be laid to rest next to her son Kenny at Riverside Cemetery in Pierre. There will be a graveside service on May 20, 2011, which would have been her 88th birthday.

Behrens-Wilson Funeral Home is in charge of the arrangements and condolences may be conveyed to the family at www.behrenswilson.com.

JAMES "JIM" HUDSON

FRITCH - James "Jim" Hudson, 86, died Tuesday, Feb. 22, 2011, in Amarillo.

Graveside services will be at 2 p.m. Friday in Westlawn Memorial Park with Richard Kasko, minister of Fritch Church of Christ, officiating. Burial will be in The Garden of Serenity in Westlawn Memorial Park by Minton/Chatwell Funeral Directors of Fritch.

Mr. Hudson was born July 26, 1924, in Perico, and had lived in Fritch for 37 years. He was in law enforcement in Amarillo, Borger, Spearman and Fritch and retired in 1991 as the chief of police in Fritch.

Survivors include his wife Judith Hudson; three sons, James Hudson of Rockwell, Don Cole of Fritch and Jim Cole of Lubbock; a sister, Bobbie Martin of Big Springs; eight grandchildren; and four great-grandchildren.

RODNEY EARL HARMOND

WACO - Rodney Earl Harmond, 92, died Tuesday, Feb. 8, 2011.

Memorial services will be at a later date. Arrangements are by Grace Gardens Funeral Home of Waco.

Rodney was born May 10, 1918, in Ochiltree County to Robert Earl and Mary Josephine Stump Harmond. He went to Spearman High School, then on to Panhandle A&M for two years.

Rodney married N. Grace Sheets on Christmas Day 1939 in Spearman. They celebrated 64 years of marriage prior to her death in 2004. The day after his wedding, he went to work for Phillips Petroleum Co. in Borger.

Rodney worked 35 years for Phillips in the maintenance department, where he ultimately held the position of superintendent of maintenance.

Rodney enjoyed traveling and had the opportunity to live and work for Phillips in numerous locations including Mexico City, Sweeny, Stavanger, Norway and Teesside, England.

During his tenure in Norway, he and his family visited many European countries: England, Denmark, Italy, Germany, The Netherlands and Scotland, as well as the Canary Islands near Africa.

Rodney's final years were spent in Meridian, living near his son and daughter-in-law.

Mr. Harmond lived a well-rounded life. He enjoyed working outside on equipment and tending cattle and chickens, and was an avid hunter and conservationist.

Although not physically able to perform much of the actual work on his son's sheep ranch, he was always thinking and inventing ways to improve the ranch.

He was preceded in death by his parents; two sisters, Sylvia Marie Harmond Fleenor and Garnett Harmond Bailey; a brother, Joseph Marlin Harmond; his wife, N. Grace Sheets Harmond; and a daughter, Dorothy Jo Harmond Chambers.

Survivors include a sister, Bonita Harmond Ohlsen; a son, Ronald Earl Harmond and Mary Jane McLaren; a daughter, Zola Marie Harmond Lander and John; a son-in-law, Douglas Chambers; seven grandchildren, Richard Earl Harmond and Cassandra Heath, Gary D. Harmond and Cynthia Kirven, Rhonda Harmond, Don Philip Chambers and Kate; Darla Chambers Caldwell and Darrell, Eric Lander and Bethany Lander; and nine great-grandchildren.

In lieu of flowers, the family suggests memorials be to Dorothy Jo Harmond Chambers Scholarship Fund, in care of Amarillo College Foundation, P.O. Box 447, Amarillo, TX 79178.

MONUMENTS

Boxwell Brothers

Funeral Home

519 Evans • Spearman

659-3802

Dear friends,

When you buy a monument from us we make sure it is exactly what you want at a price you can afford. If it is not right, we will make it right. And you will not have to search the countryside to find us. We are here when you have a need.

Sincerely,

Bob Boxwell

285+ Channels
160+ HD Channels

Packages Start At
\$29.99 Mo.

2 FREE Upgrades - HD DVR & HD Receiver - Ask How!

HBO SHOWTIME starz cinemax

For 3 Months

Direct Sat TV
1-800-360-1395
Local installers!

Offers end 7/30/11, on approved credit. New customers only. Other restrictions apply. Call for details.

DISH Network's

LOWEST ALL-DIGITAL PRICE!

As low as \$24.99/mo plus **FREE HD FOR LIFE!**
Call for limited time BONUS!

Call Now!

1-866-799-8039

Visit FamilyPoolFun.com

- Our pools create Generations of Memories everyday, vacations never end!
- Aboveground & Inground pools at WHOLESALE PRICING
- SIMPLE DIY Pool Kit Assembly
- SAVE MONEY on All Pool Supplies & Accessories. Ships Fast

Call Today! **800-950-2210**

HOME PHONE SERVICE

NO Pre-Payment • NO Deposit Required!

Rates from \$6.99 per month*

(\$17/month including approximate taxes & fees)

FREE 1st Month of Service

Caller ID & Call Waiting included in Packages**

New-Talk 866.934.3448

*\$0.99/month with auto pay **Requires either or gold package.

C.C. FLEET MAINTENANCE AUCTION

SATURDAY, MARCH 12, 2011 - 10AM

5352 AYERS ST - CORPUS CHRISTI, TX

VIEWING: FRIDAY, MAR 11, 10AM TILL 4PM; SATURDAY, 8-10AM

BACKHOES, EXCAVATORS, (2) LINK BELTS, POLICE CARS, PICKUPS, CARS, GENERATORS, HOWARD/JOHN DEERE Q-TRAK MOWERS, TRACTORS, STREET SWEEPER, ALUM.BED RECYCLING TRUCKS, DUMP TRUCKS, DUMP BED BRUSH TRUCKS, GARBAGE TRUCKS, (2) DITCHWITNES, GRADALL, VERSA MOLE & MORE! 10% BUYERS PREMIUM ON-SITE - 13% ONLINE

BID LIVE IN-PERSON OR ON-LINE LIVE

JOHN SISK AUCTIONEERS INC. TXS #7425 361-456-7771
FOR DETAILS SEE: WWW.SISKAUCTION.COM

Replenish the seed of faith through . . .

DAILY BIBLE READING, PRAYER & REGULAR CHURCH ATTENDANCE

<p style="margin: 0;">Spearman</p> <p style="margin: 0; font-size: x-small;">Apostolic Faith Church 822 S. Dressen • 659-2870 Sunday School: 10 a.m. Worship Service: 11 a.m. Sun. Eve. 6 p.m. Wed. Prayer Mtg: 7 p.m. Pastor - Jack Cornell</p> <p style="margin: 0; font-size: x-small;">First Assembly of God 401 N. Bernice • 659-2295 Sunday School: 9:30 a.m. Worship: 10:40 a.m. Evening Worship: 6 p.m. Wed. Worship: 7 p.m. Wed. Youth: 7 Pastor - Jerry Pollard</p> <p style="margin: 0; font-size: x-small;">First Christian Church (Disciples of Christ) 29 S. Bernice • 659-2036 Sunday School: 9:45 a.m. Worship: 10:50 a.m. Minister -</p> <p style="margin: 0; font-size: x-small;">First Baptist Church 123 N. Bernice • 659-5557 Sunday School: 9:45 a.m. Worship: 11 a.m. Evening Worship: 7 p.m. Men's Bible Study - Wed., 7 a.m. Children's Choir - Wed., 6 p.m. Adult Choir - Wed., 7 p.m. Wed. Bible Study: 7 p.m. Pastor - Jim Medley</p> <p style="margin: 0; font-size: x-small;">Church of Christ 121 S. Haney • 659-3244 Sunday Bible Class: 9:45 a.m. Worship: 10:30 a.m. Evening Worship: 6 p.m. Bible Study Wed.: 7:30 p.m.</p>	<p style="margin: 0; font-size: x-small;">Sacred Heart Catholic Church 901 Roland • 659-2166 Sat. Night Mass: 5:30 p.m. Sun. Mass: 9 a.m. - English Sun. Mass: 11:30 a.m. - Spanish Rev. Gregory Bunyan</p> <p style="margin: 0; font-size: x-small;">First United Methodist 407 S. Haney • 659-5503 Sunday School: 9:45 a.m. Worship: 8:30 & 11 a.m. Jr. High Youth: 5 p.m. Sunday High School: 6 p.m. Sunday Kids Club: 3 p.m. Wed. Pastor - Toni Bailey</p> <p style="margin: 0; font-size: x-small;">Grace Presbyterian Church (Worships with Faith Lutheran Church) 1101 Bernice • 659-2033 Faith Lutheran Church (ELCA) 1101 Bernice • 659-2252 Sunday School: 9:45 a.m. Worship: 11 a.m. (Worships with Grace Presbyterian Church) Pastor - Cecil Biggers, PLM</p> <p style="margin: 0; font-size: x-small;">Union Church 31 S. Endicott • 659-2644 Sunday School: 10:00 a.m. Worship: 11:00 a.m. Bible Study: 7 p.m. Wed. Youth Service: 6 p.m. Wed. Pastor - Don Baltazor</p> <p style="margin: 0; font-size: x-small;">Fellowship Baptist 1102 S. Archer • 659-2783 Sunday School: 10 a.m. Worship: 11 a.m. Sun. Evening Worship: 6 p.m. Sun. Evening Spanish Worship: 7 p.m. Youth/Adult Service: 7:30 Wed. Pastor - Philip Hudson</p>	<p style="margin: 0; font-size: x-small;">Primera Mision Bautista 502 E. 7th • 659-3991 Sunday School: 9:45 a.m. Worship: 11 a.m.; Evening: 6 p.m. Wed. Prayer Meeting: 7 p.m. Thurs. Visitation: 7 p.m. Pastor Joe Garcia Jr.</p> <p style="margin: 0; font-size: x-small;">El Aposento Alto U.P.C.I. 1105 S. Roland Domingos: Escuela-Domical - 10 a.m. Culto Evangelistico - 7 p.m. Jueves: Oracion - 8 p.m. Mier: Estudio Biblico - 7 p.m. Pastor - A.G. Martell (806) 659-2153</p>	<p style="margin: 0; font-size: x-small;">Gruver United Methodist Broadway & Garrett 733-2651 Sunday School: 9:45 a.m. Worship: 8:30 & 10:50 a.m. Eve. Worship & UMY: 6 p.m. Pastor - George Price</p> <p style="margin: 0; font-size: x-small;">Spanish Cristo Redentor Church Hwy 15 806-659-2166 Gruver, TX Sun. Mass: 1:30 p.m. - Spanish Rev. Gregory Bunyan</p> <p style="margin: 0; font-size: x-small;">Oslo</p> <p style="margin: 0; font-size: x-small;">Oslo Lutheran Church (ELCA) 6 Miles West & 12 Miles North of Gruver 339-7646 Sunday School: 9:45 a.m. Worship: 11 a.m. Pastor - Arlen Lloyd</p> <p style="margin: 0; font-size: x-small;">Morse</p> <p style="margin: 0; font-size: x-small;">Morse Baptist Church 733-2757 Pastor - Gary Stevens</p> <p style="margin: 0; font-size: x-small;">Waka</p> <p style="margin: 0; font-size: x-small;">Church of Christ 300 Rogers Ave. 202-7126 Sunday School - 9:30 a.m. Sunday Worship: 10:30 a.m. & 6 p.m. Wednesday Bible Study: 7 p.m. Preacher - Ed Jenkins</p>
--	---	---	---

He has showed you, O man, what is good. And what does the LORD require of you? To act justly and to love mercy and to walk humbly with your God.

Micah 6:8

This feature is made possible through the sponsorship of these civic minded businesses:

Deakin ELECTRIC

OILFIELD • RESIDENTIAL • COMMERCIAL
321 S. MAIN • SPEARMAN

1-800-999-1506 Chris Deakin
(806) 659-5016 President

Bartlett's Lumber & Hardware

105 W. Broadway • Gruver, TX
(806) 733-2404

BERRY CLEANERS

Ann & Vernon Pipkin - Owners
Phone 659-3122 • P.O. Box 1017
207 Main St. • Spearman, TX

Morse Implement & Auto Supply

"Join us in church"
Tom Dortch 733-2668
Box 89 • Morse, TX 79062

PRAIRIE MOTORS INC.

Hwy. 207 South • P.O. Box 430
Spearman, TX 79081 • (806) 659-2541
www.prairiemotors.com

MurMur's Cafe

100 Roland St
Spearman, TX.
659-3580

Hansford County Reporter-Statesman

"Proudly Serving Hansford County Since 1907"
(806) 659-3434
310 Barkley • Spearman, TX

INTERSTATE BANK, ssb

www.interstatebank.net
322 Main • P.O. Box 146
Spearman, TX • 659-2559

HYI

FOR YOUR INFORMATION

Education Fund for Johnson Children
An education fund has been set up at First National Bank for the children of David Johnson. If anyone would like to donate, they can mail to PO Box 337, Spearman, TX or bring by the bank and give to any teller.

Dance at No Man's Land Center
A country and western dance with music by "Cottonwood" is taking place at the No Man's Land Center, 515 NE 15th in Guymon on Sat., Feb. 19th from 8 to 11 pm. There is no alcohol or smoking allowed in the building. For the \$6 cover charge, you are also able to enjoy the pot luck supper. "It's a chance for cooks to show off their skills or a chance to get rid of their leftovers," laughs Leita Andvik, the organizer for the monthly dances. "Bring a friend. Bring a dish. Or just come by yourself and have a great time with the folks that like to dance and enjoy live country and western music." For more information, call 580-338-7216. This is another Epic Saturday event through a partnership with Main Street Guymon and Epic Touch.

Youth Writing Contest Announced
Panhandle Professional Writers has announced its 2011 Youth Writing Contest. The competition is open to any student in grades three through twelve. There are three age groups: grades three through five, six through eight, and nine through twelve. Students may enter as many times as they like in three different categories: short story, poetry, and memoir. All entries will be judged by published authors. Entries must be post-marked no later than April 16, 2011. Complete rules and entry forms can be requested at ppwriters@gmail.com First, second, and third place winners in each category will be announced in July. Panhandle Professional Writers, located in Amarillo, Texas, is the second oldest continually functioning writers group in the nation. It is open to writers at all levels and of all genres.

Ready, Set Sew 4-H Fashion & Fun Project
Ready, Set, Sew 4-H Fashion and Fun project for youth third grade and older will be held in March. Participants will learn basic sewing skills and complete simple sewing projects. To sign up and receive more information about the workshops to be held in Spearman, Gruver and Morse, visit the Hansford County Extension office located in the Courthouse, or call Peggy Winegarner, Hansford County Extension Agent, at 806-659-4130 or 806-733-2901.

Miss Irish Rose Pageant
Once again, Shamrock, Texas will be hosting their annual Saint Patrick's Celebration on March 18-20, 2011. One of the many highlights of this celebration is the crowning of Miss Irish Rose. This scholarship pageant is open to all young ladies that are between the ages of 14-19 and enrolled in high school. None of the contestants need to live in the Shamrock or Texas area, nor do they need to be currently holding a title to reign. The 2011 Miss Irish Rose, along with her three runner-ups and Miss Congeniality, will receive scholarships to the college of their choice. For further information, please send a SASE to Miss Irish Rose, Attention Terri Whiteley, 17 S Nebraska, Shamrock TX 79079, or call Terri at 806-216-0449, or the Chamber of Commerce Office at 806-256-2501. The deadline for entry forms to be received is March 3, 2011.

Project Graduation
The parents of the Spearman High School Senior Class of 2011 are hosting a "Project Graduation Party" following commencement exercises Friday, May 27th. This event is sponsored by the Texas Department of Transportation. This project offers the students the opportunity to have an alcohol and drug free celebration. To encourage the students to stay the entire night, door prizes are distributed throughout the evening. All students staying the entire night will be awarded a \$100 gift card. Prizes, gift certificates, and cash are needed for the evening's gifts. If you, the community, who have supported and encouraged these seniors for the past 13 years of school, would like to share in this final "Class of 2011" memory (making this project "special"), please contact either Sharon Kern at 659-2017; Sherry Boyd at 659-3844; or Tammy Benton at 659-3071. Contributions or donations can be mailed to: Project Graduation, Tammy Benton, P.O. Box 415, Spearman, TX 79081. On behalf of the parents and family of the Senior Class, we would like to thank you for all of your support.

NOTICE
The District Clerk's Office for Hansford County is no longer issuing applications for passports. The public can have an application issued from the District Clerk's Office at the Courthouse in Stinnett or the Post Office in Perryton.

Take Off Pounds Sensibly
Take Off Pounds Sensibly meets on Tuesday mornings at 8:30 a.m. at the First Christian Church in Gruver. For more information, contact Marilyn Been at 806-733-2087.

Hansford Gun Club Rifle Shoot
The Hansford Gun Club holds a .22 rifle shoot on the second Sunday of each month, starting at 1:30 p.m. at the gun range (located on Hwy. 15 between Spearman and Gruver).

Care Packages
If you would like to help with Care Package Drop Offs, please contact Less Sullivan at lessullivan@hotmail.com. Less is collecting items for care packages in conjunction with AmericaSupportsYouTexas.com. Journals are also located at the O'Loughlin Center, Spearman High School, and Gus Birdwell Elementary for anyone wishing to sign them. For more information, contact Less at 330-0973.

Rainbow Kids Klub is Back!!
Our new building if finished and we are inviting all children Kindergarten -Fifth grade to join Rainbow Kids Klub. This is a weekly after school program with snacks, recreation, character building Bible lessons, memorization, music, games and its all free. Rainbow Kids Klub begins Wednesday, September 8, after school until 5 p.m. at the First United Methodist Church, 407 Haney, Spearman. For more info, call 659-5503.

EXERCISE

O'Loughlin Centers Fitness Center Challenge

The O'Loughlin Center Fitness Challenge began on January 15, 2011 with 63 people signed up to compete in the 8 week weight loss challenge. The challenge modeled after the famous Biggest Loser television show was developed for Hansford residents of all shapes, sizes and ages that want to develop a healthy way to lose weight and keep it off.

Jackie Pearson, Certified Personal Trainer has been instrumental in working with the contestants on fine tuning their exercise programs. Sabina Cotter, Registered Dietician has been available to review food diaries and offer nutritional tips. Missie Bates has been a driving force by helping lead workouts twice a week, along with motivating contestants with her real life tips on weight loss success.

The challenge is based on 3 key areas with prizes being awarded in each area.

Most times worked out: 1st Place: \$100 AND 2 Tickets to Pot O' Gold; **2nd Place:** 1 month FREE Fitness Center Individual Membership

Most percentage of weight loss: 1st Place: \$100 AND 2 Tickets to Pot O' Gold; **2nd Place:** 1 month FREE Fitness Center Individual Membership

Most Inches lost: 1 month FREE Fitness Center Individual Membership

The O'Loughlin Fitness Challenge continues to have outstanding results from all our contestants. We still have over 80% of the original participants working out and losing weight and inches!

Results After 6 Weeks: 189.25 inches have been lost; 375.55 Pounds have been lost; and 1043 Total Workouts.

Most Inches Lost to Date: 1 - Johnnie Byrd, 2 - Telie Crum, 3 - Esther Lozano, 4 - Nicholas Byrd, 5 - Jeanne Swan, 6 - Jamie Brown, 7 - Melinda Roberts, 8 - Ember Keith, 9 - Patricia Rosales, 10 - Suzie Shubert, 11 - Kelly Pecha, 12 - Maria Vela, 13 - Billie Jo Miesner, 14 - Jana Knowlton

Most Workouts to Date: 1 - Karla Flowers, 2 - Kara Harrell, 3 - Dean Greene, 4 - Melodie Kelp, 5 - Telie Crum, 6 - Jamie Brown, 7 - Johnnie Byrd, 8 - Linda Latta, 9 - Christa Turner, 10 - Gale Womble, 11 - Esther Lozano, 12 - Debbie George, 13 - Halee Rice

Most # of Pounds Lost to Date: 1 - Nicholas Byrd, 2 - Esther Lozano, 3 - Johnnie Byrd, 4 - Jeanne Swan, 5 - Melinda Roberts, 6 - Ember Keith, 7 - Melodie Kelp, 8 - Telie Crum, 9 - Saul Acosta, 10 - Karla Flowers, 11 - Gary Flowers, 12 - Halee Rice, 13 - Araceli Caro

Highest Percentage of Weight Lost: 1 - Nicholas Byrd, 2 - Melodie Kelp, 3 - Esther Lozano, 4 - Karla Flowers, 5 - Johnnie Byrd, 6 - Jeanne Swan, 7 - Kara Harrell, 8 - Halee Rice, 9 - Ember Keith, 10 - Telie Crum, 11 - Bertha Flores, 12 - Melodie Roberts.

May 14th General Election

The filing date for the May 14th General Election began on February 12, 2011. The Deadline to file for election is Monday, May 14, 2011 at 4 p.m. Monday, March 21, 2011 is the last day for write-in candidates to file declarations of write-in candidacy for regular officers.

The City of Spearman has three Alderman positions up for reelection - Kathy Boyd, Mike Schnell and Tobe Shields. As of now, all three incumbents have filed.

Spearman ISD has two terms up this year. At this time no one has filed. The two terms expiring are Dwayne Mitchell and Joel Shields

Gruver ISD has two positions on the ballot this year, but no one has filed. The two candidates up for reelection are Traci Venneman and Teague Winger.

Early voting for these elections will be held from May 2nd to May 10th. Election day will be Saturday, May 14th.

Reed Accepted into Texas Tech School of Pharmacy

Kyla Reed has been accepted into the Texas Tech School of Pharmacy. She will begin on August 1, 2011, and her white coat ceremony will be on August 7th in Amarillo. She will graduate with the Class of 2015 with a Doctorate in Pharmacy.



The Texas Tech University School of Medicine was created by the 61st Texas Legislature in May 1969 as a multi-campus institution with Lubbock as the administrative center and with regional campuses at Amarillo, El Paso and Odessa. In 1979, the charter was expanded to become the Texas Tech University Health Sciences Center (TTUHSC), leading the way for establishment of the Schools of Nursing and Allied Health Sciences, and the Graduate School of Biomedical Sciences. In 1993, the School of Pharmacy was founded in Amarillo but has expanded its program to Dallas, Lubbock and Abilene.

Kyla is the daughter of Butch and Debbie Reed of Spearman.

purple wave auction
Straight. Simple. Sold.

SouthWestern Association
AG & CONSTRUCTION EQUIPMENT
INTERNET AUCTION

Bidding starts to close Tues., March 15 at 10 A.M.

Tractors: AGCO RT120A MFWD, CIH MX285 MFWD, CIH 885, JD 8100 MFWD, JD 9420 4WD, Kubota L2350DT, Kubota L2900DT, Kubota M9540FC, MF 4243, MF 1160 Combines: JD 9860 STS Forage Harvesters: (3) JD 7500 Harvesting: JD 630 pltrm hdr, (4) JD 688 forage hdr, JD 1293 crnhd Application Equip: JD 4920 spryr Hay & Forage: JD 4995 wndrwr, JD 995 5M rotary pltrm wndrwr, JD 4895 wndrwr, JD 1418 rotary cutter, NH 1475 18' haybine, NH BR750 rmd btr, NH BR780 btr Planting & Seeding: JD 7300 12R30 rigid plntr, JD 1770 16R30 plntr, JD 7300 16R30 plntr, JD 7300 8R30 plntr, JD 7300 8R30 plntr, JD 7300 16R30 plntr, JD 1710 12R30 vert fold plntr Tillage: Bigham Bros 12R30 strip-till, JD 630 disc and much more... All items sell to the highest bidder regardless of price, bid now at www.purplewave.com TX Lic. #16401 | 10% buyers premium applies.

www.purplewave.com 866.608.9283

Sergio's Auto Sales
We appreciate your support!
Sergio Vargas
120 W Kenneth Ave • Spearman TX 79081
(806) 659-9971 - day • (806) 330-0173 - night
Canyon Location Phone Number: (806) 231-8388

SERGIO'S AUTO SALES
SERGIO VARGAS
120 W. KENNETH AVE. SPEARMAN, TX 79081
806 659 9971 CEL. 806 330 0173

HIP IMPLANT RECALL

Johnson & Johnson has recalled the DePuy ASR XL Acetabular hip socket implant system due to an unacceptably high failure rate. One in eight patients experience symptoms like infection, bone fracture, dislocation and pain. Other complications include increased metal ion levels in the blood, bone staining, necrosis, swelling, nerve damage, tissue damage and/or muscle damage. If you had hip replacement surgery during or after 2005 and you know you have a DePuy ASR XL Acetabular hip implant, or are unsure, please talk to your doctor right away, then contact us toll-free for professional insight into your legal rights.

CAPPOLINO | DODD | KREBS
1-800-460-0606
www.DefectiveDrugsLaw.com
NO FEE FOR FIRST VISIT | Cameron, TX

MITCHELL THEATRES.COM
GUYMON, OK • LIBERAL, KS • NEWTON, KS

NORTHRIDGE 8
Guymon, Oklahoma
www.northridge8.com
580-338-3281

SOUTHGATE 6
Liberal, Kansas
www.southgate6.com
620-624-5573

SEQUOYAH 8
Garden City, Kansas
www.sequoyah8.com
620-275-2760

CHISHOLM TRAIL 8
Newton, Kansas
www.chisholmtrail8.com
316-283-0555

FRESH POPCORN EVERYDAY!
-PARTY ROOM & ARCADE-

PTCI Internet - Faster Speeds to More Customers!

"I honestly could not do what I do without PTCI."
They're involved in everything that goes on, whether it's high school sports or a business promotion."
~Gina Gillispie
Editor, High Plains Observer
Spearman, Texas

"PTCI is the only Home Brand for me!
I know I have a winner.
I know I have the best service.
I know I have the people who care."
~Terry Peak
Perryton, Texas

"Speed is all I need. It is always reliable and no one beats the PTCI service!
If we have an issue, I can call a local number and get help from someone I know."
~Chris Samples
KXDJ Radio
Perryton, Texas

"You have to have dependable service in order to give dependable service."
We couldn't be more happy."
~Debbie Scott
ds Design
Perryton, Texas

Are YOU a PTCI Customer?

PTCI
Communication & Broadband Solutions
www.ptci.net
800-562-2556
721 W 7th in Spearman

SHS National Honor Society Induction



Spearman High School recently inducted seventeen new members to the Edna Hartman Chapter of the National Honor Society: Katelyn Kizziar, Lauren Ferguson, Rubi Garcia, Cassidy Odegaard, Lauren Patterson, Blanca Rosendo, Crystal Cantu, Cynthia Mendoza, Kathryn Miser, Paige Pierson, Alfredo Rosendo, Erynn Saenz, Mabry Sutterfield, Luis Vela, Kyla Walker, Jake Willimon and Conner Wolf. National Honor Society Sponsors are Sandra Blankenship and Treva Braun.

SHS National Honor Society Induction



Mrs. Strain gave out her "Math Magic" awards at the Galaxy of the Stars Assembly for the 4th six weeks for her awesome 4th grade math students.

And The Winner Is...



Spearman High School senior, Joselyn Terrazas, was the winner of a \$200.00 scholarship given away at the Spearman High School Financial Aid Night. The scholarship was given by the Panhandle-Plains Management Servicing Corporation in Canyon. Congratulations!

Spotted Being Good at Gus Birdwell Elementary



Back Row: Michelle, Eduardo G., Karissa & Eduardo M.; Middle row: Tonny, Mia, Jose & Maddie; front row: Man, Aubrey and Launa submitted by Jodie Hight

Gus Birdwell Elementary held its 4th six weeks "Galaxy of the Stars" assembly on Friday. Each 6 weeks the students who are spotted being good get a ticket from their teacher and their name is put up on the bulletin board and at the end of the six weeks the names are put into a box and a boy and girl from each grade level is drawn for the winner of that six weeks. Kindergarten: Aubrey Beck and Jeb Garnett, 1st grade: Launa Burch and Man Womble; 2nd grade: Mia Pipkin and Tonny Varela; 3rd grade: Maddie McCloy and Jose J. Martinez; 4th grade: Michelle Marquez and Eduardo Galaviz; and 5th grade: Karissa Martinez and Eduardo Mendoza.

Awesome A.R. Readers-4th 6 weeks



(L-R) Colby Wood, Yolitzin Hernandez, Maren Garnett, Finley Garnett, Victor Reyes, Shaylyn Whiteley and Mia Pipkin. Absent: Charles Pearson and Ariha Nava-Hernandez by Jodie Hight

Top Accelerated Readers through the 4th six weeks with 100 PLUS points. Colby Wood, Yolitzin Hernandez, Maren Garnett, Finley Garnett, Victor Reyes, Shaylyn Whiteley and Mia Pipkin. Maren and Mia have over 200 points. Absent: Charles Pearson and Ariha Nava-Hernandez. Keep on Reading!

Ticket to Read 4th 6 Week Winners



Top Row: Tonny, Varela, Byanca Varela, Jesus Gonzalez and Victor Reyes. Bottom Row: Sam Turner, Christian Dettmer, Maggie Davis and Alana Hill. Not pictured: Charles Pearson and Sergio Ortiz. by Jodie Hight

"Ticket To Win" is our home/school computer reading program that our elementary students have access to do.

They read stories and then answer questions about that story, to receive a number of tickets. Each story they can receive up to 250 tickets. The better grade they make on the quiz, the more tickets they can earn. We announce the top ten ticket earners each six weeks at our award's assembly.

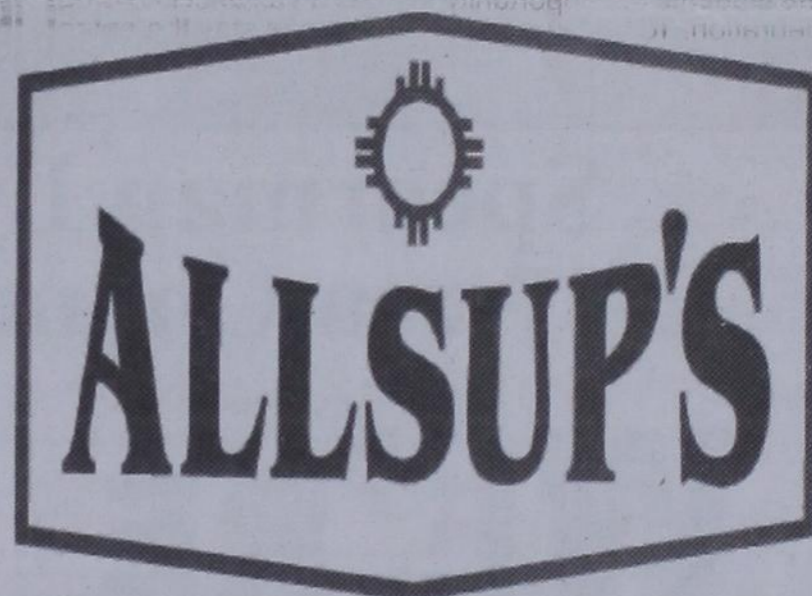
ASSORTED
PEPSI
12 PACKS

2 \$7
FOR



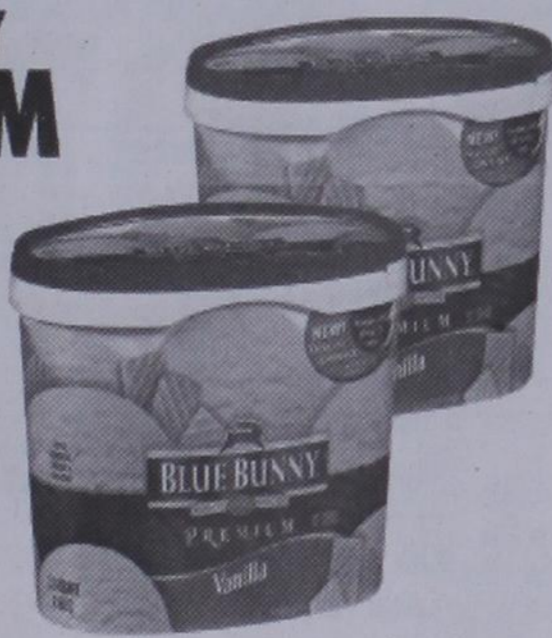
305 W. Kenneth
Spearman • 659-3135

101 Main Ave.
Gruver • 733-2953



PREMIUM BLUE BUNNY
ICE CREAM
56 OZ.

\$4.59



12 OZ.
MILK
CHOCOLATE, 1%, 2%, HOMOGENIZED

OR PLAINS
ORANGE JUICE
& GEM DONUTS
CHOCOLATE, SUGAR OR CRUNCH

1.99



**We're More Than a
Drink and Snack Stop**

Baking Supplies

Baby Goods

Paper Goods

Pet Supplies

Auto Supplies

Fresh Fruits

Fresh and Canned Vegetables

So when you're in a hurry and don't want to park blocks from the store or wait in long lines shop Allsup's

Prices Good Thru 3/19/11



**SPEARMAN
LYNX &
LYNXETTES**

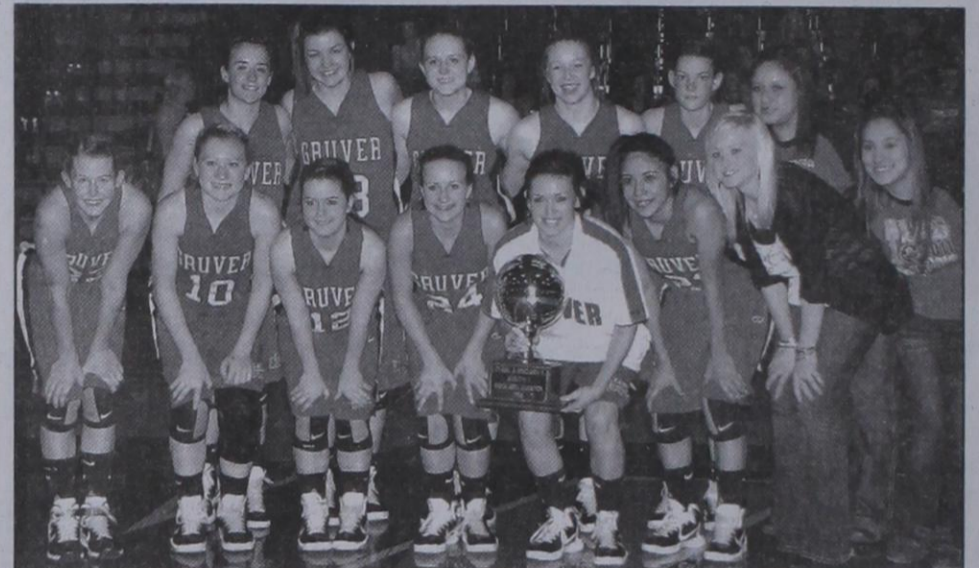
**GRUVER
GREYHOUNDS
& LADY HOUNDS**



BASKETBALL TEAMS

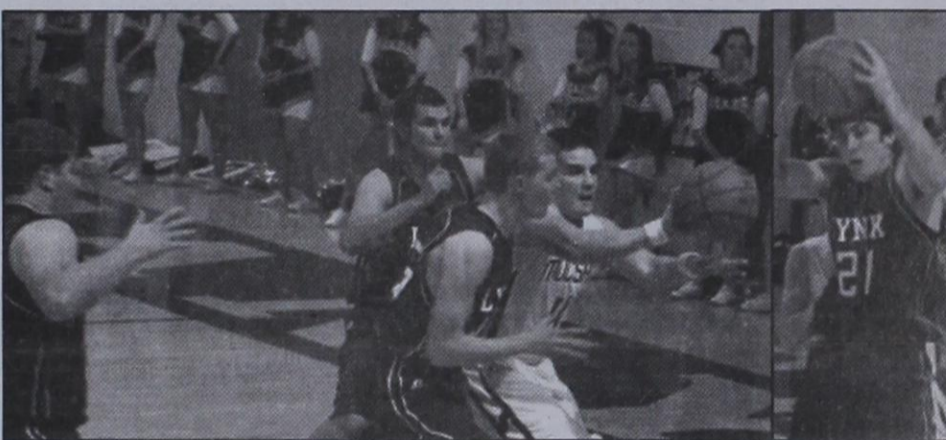


**Spearman Lynxettes
2A Area Champions**



**Gruver Lady Hounds
1A Area Champions**

CONGRATULATIONS!



**Spearman Lynx
2A Area Champions**



**Gruver Greyhounds
1A Area Champions**

WE'RE PROUD OF YOU!

From These Local Businesses

Adobe Walls Gin, LP Spearman • 659-2574	Cates Men & Boys Spearman • 659-3426	Gordon's Drug Spearman • 659-2141	Hoochy Poochy Parlor Borger • 273-2724	Perryton Office Supply Perryton • (806) 435-4812
Aeroflight Publications Gruver • 733-2483	Delinda McLaughlin Photo Solutions Spearman • 659-2800	Gruver Ford Gruver • 733-2431	Hungry Cowboy Spearman • 659-5151	Pizza Hut Spearman • 659-2547
AeroTan Gruver • 733-2483	Dreamers Spearman • 659-9907	Gruver State Bank Member FDIC Gruver • 733-5061	Interstate Bank, ssb Spearman • 659-2559	Prairie Motors Spearman • 659-2541
All Occasion Flowers Spearman • 659-5180	El Vaquero Restaurant Gruver • 733-2407	H&H Credit Union Stinnett • 878-2452	Kirk Insurance Agency Spearman • 659-2794	Rocking F Boot & Saddle Shop Spearman • 659-3342
AMA TechTel Gruver • 806-322-5500	Equity Exchange Spearman • 659-2420	H&H Water Well Spearman • 659-5577	J&S Signs & Engraving Spearman • 736-7020	Sergio's Body Shop Spearman • 659-5217
Bartlett's Ace Hardware Gruver • 733-2404	First State Bank Spearman • 659-5565 member FDIC	Hansford Abstract Co. Spearman • 659-2516	Jarvis Law Office, P.C. Spearman • 659-2554	Spearman Lynx & Lynxette Booster Club
Berry Cleaners Spearman • 659-3122	Five Star Equipment Spearman • 659-3743	Hansford County Feeders Gruver • 733-5025	Jim's Diamond Shop Borger • (806) 274-2370	Spearman Chamber of Commerce Spearman • 659-5555
Bob & Cathy Davis Gruver • Spearman	Frank Phillips College Allen Campus Perryton • 648-1450	Hansford County Floral Co. Spearman • 644-4000	Lowe's Marketplace Spearman • 659-2522	Sunray Co-Op Gruver Branch Gruver • 733-2481
Bob & Jackie Pearson Gruver • Spearman	Frontier Feedyard Spearman • 882-4251	Hansford County Hospital District Spearman • 659-2534	M&D Aerial, LLC Spearman • 806-202-2360	Tong's Chinese Food Spearman • 644-2838
Bort Agency Gruver • 733-2404	Gigot Agri Products Spearman • 659-3121	Hansford County Reporter-Statesman Spearman • 659-3434	Money's Perryton • 435-3945	Willis Boyd Dirt Services Spearman • 659-9848
Boxwell Brothers Funeral Home Spearman • 659-3802	Golden Spread Carpet Spearman • 659-3068	Hansford County Vet Clinic Spearman • 659-2100	Morse Implement Morse • 733-2668	Xcel Energy Responsible By Nature Perryton • 806-435-4052
Brown, Graham & Co. Spearman • 659-2538	Golden Spread Sales Co. Spearman • 659-3776	Hansford Pharmacy Spearman • 659-2226	MurMur's Cafe Spearman • 659-3580	
The Bunkhouse Restaurant Spearman • 659-2089		Hi-Plains Auto Supply, Inc. Spearman • 659-2506	North Plains Electric Coop 806-435-5482 • 800-272-5482	
Cargill Ag Horizons Spearman • 659-3554				

FOR SALE/RENT

FOR SALE BY OWENER: 207 S. James, 4BR, 2B, basement and large den. \$61,000. Will consider owner financing. Please call Gary at 806-270-0544 or Audra at 806-270-0266.
5(3/3/11)B
FOR RENT: 1BR & 2BR furnished apartments for rent. All bills paid, free laundry. Call 659-2247.
TFN(1/20/11)B
FOR RENT: Large 3BR apartment, located at 822 S. Roland, \$500.00 month, one year lease required. Water paid, NO PETS. Available by 2/28/2011. Call Larry O'Neal at 405-285-8782 for lease application and to view apartment.
TFN(2/17/11)B

French & Co., Realtors
273-7355

Beautiful 3 BR, 2B home in Morse, Texas. 1.06 acres. Updates Galore, Gorgeous tile & wood floors, stunning trim, custom paint, 28x33 garage & separate shop.
Call Michele for details.
806 273 7355

HELP WANTED

HELP WANTED: The Nursanickel Motel is seeking a housekeeper. Call 659-3737, or go by 815 Hwy. 207 S. in Spearman.
4(2-24-11)B
HELP WANTED: Experienced automotive technician needed. Good working environment, holiday pay, health insurance. Also service department helper needed. Apply in person at Prairie Motors in Spearman. (806) 659-2541 or 1-800-692-4657.
TFN(12/2/10)B
HELP WANTED: Mission Petroleum Carriers: Immediate Openings! Crude Oil Drivers. Home Daily. Competitive Weekly Pay, Great Training Pay, Excellent Benefits: Vacation, 402K, Medical, Life, Rx Plan, Dental and Vision. Class A CDL-X Required. 2 yrs T/T exp. or 1 yr w/driving school req. Minimum age 23. Contact: John Townley 940-549-4578. Mon.-Fri. 8 a.m.-5 p.m. EOE
2(3/3/10)B

SERVICES

HOOCHY POOCHY PARLOR
Call us for all your pet's grooming and boarding needs. Call now for reservations! 806-273-2724.
TFN(11/2/07)B

TIRED OF GARAGE SALE PRICES? Let me buy your good used furniture! 2nd Chance Antiques & Furniture, Don 806-648-1480; 806-202-1391 cell.
TFN(1/20/11)B

PUBLIC NOTICE

HELP WANTED

City of Spearman is accepting applications for a Maintenance Worker II position in the Utilities Department. A high school diploma or equivalency and a Texas drivers license is required. The City has an excellent benefit package which

hchd
Hansford County Hospital District
Openings at Hansford Hospital

Administrative Assistant: Responsible for a clear communication with the District CEO and CFO. Manages CEO calendar and schedules appointments. Assist the CEO and CFO as needed with dictation, reports, filing and other item as needed. Perform daily task as assigned by CEO. Records minutes for the District Board Meeting and Department Head Meeting. Must have great communication skills. Must be well organized.

Hospital LVN: Night shift 7p-7a. Graduate of approved LVN/RN program. Provide nursing care to patients in a hospital setting.

Home Health/Hospice LVN: Graduate of an approved LVN program. Provide general nursing care to patients in resident setting. Interacts with patients and patient's families, Medical Staff members and other departments of HCHD on a continuous basis.

Great working environment and staff, quality facility providing opportunities for professional growth. Great benefit package. Apply at 707 S. Roland, Spearman, TX or contact Jackie Nelson at 806-659-5841. Download application at www.hchd.net
EEOE
(2/17/11)

includes retirement, health insurance, vacation, holiday, and sick leave pay. Applications may be obtained at City Hall, 30 SW Court, until position is filled. EOE.
2(2/24/11)B

LEGAL NOTICE

Hansford County Commissioner's Court will receive sealed bids until 4:00 p.m. on Friday, March 11, 2011 on the sell of one used Catapillar motor grader. Bids will be opened on Monday, March 14, 2011 at the regular Commissioners' Court meeting beginning at 10:00 a.m. in the Law Library of the Hansford County Courthouse. Call 806-736-0162 or 806-659-3144 to make appointment to see the 1991 - 140 G series motor grader. The Court reserves the right to accept or reject any or all bids.

Benny Wilson
Hansford County Judge
3(2/24/11)B

PUBLIC NOTICE

The Board of Directors of the Hansford County Library is selling "SURPLUS ITEMS". Item may be purchased from March 1 through March 30 at Hansford County Library, 122 Main, Spearman, Texas, will be sold at the highest reasonable offer, and will be on a cash basis. The sale will conclude on March 30, 2011 unless all items are sold before that date.

The Board reserves the right to reject any and/or all offers and to award the sales as they appear to be advantageous to the Library. The "ITEMS" will be purchased "As Is, with No Return & No Guarantee" and are to be removed from the Library by PURCHASER at the time of the sale or no later than 4:00 PM on March 30, 2011.

SALE ITEMS: 2 tall rotating video stands on wooden base; 22 green plastic stacking chairs; 12 brown wooden stacking chairs; 19 metal folding chairs; 3 wooden dining chairs; 1 wooden video display stand; 1 round child's table; 2 drawer card catalog storage - metal; 1 drawer card catalog storage - wood; 1 large 60 drawer card catalog storage - wood; wire dictionary stand; wooden child's bookcase; 3 plastic children's chairs; and 1 Tom Knapp pen and ink draw-

ing.
3(3/3/11)B

NOTICE TO CREDITORS

Notice is hereby given that original Letters Testamentary for the Estate of Maylynn Schubert Ayres, Deceased, were issued on February 25, 2011, in Cause No. PO2619, pending in the County Court of Hansford County, Texas, to: Burton Schubert.

All persons having claims against this Estate which is currently being administered are required to present them to the undersigned within the time and in the manner prescribed by law.

c/o: Cecil R. Biggers
Attorney at Law
PO Box 342
13 W. Kenneth Street
Spearman TX 79081
DATED the 25th day of February, 2011.

Cecil R. Biggers
Attorney for Burton Schubert
State Bar No.: 02308500
PO Box 342
13 W. Kenneth Street
Spearman TX 79081
Telephone: (806) 659-5531
Facsimile: (806) 659-5531
1(3/3/11)B

NOTICE TO ALL PERSONS HAVING CLAIMS AGAINST THE ESTATE OF LEOTA A. DELANO, DECEASED

Notice is hereby given that original Letters Testamentary for the Estate of LEOTAA. DELANO were issued to Lesa Marrell and John Merle Hardesty in the County Court of Hansford County, Texas, in Cause No. PO2617, on the 28th day of February, 2011. All persons having claims against this estate which is currently being administered, are required to present them within the time and manner prescribed by law. All claims should be sent to Lesa Marrell, 8001 Shores Court, Amarillo TX 79110.

John L. Hutchison
PO Box 506
Spearman TX 79081
Attorney for the Estate
1(3/3/11)B

NOTICE TO ALL PERSONS HAVING CLAIMS AGAINST THE ESTATE OF GLORIA PEARL COOPER, DECEASED

Notice is hereby given that original Letters Testamentary for the Estate of GLORIA

PEARL COOPER were issued to Lesa Marrell and John Hardesty in the County Court of Hansford County, Texas, in Cause No. PO2620, on the 28th day of February, 2011. All persons having claims against this estate which is currently being administered, are required to present them within the time and manner prescribed by law. All claims should be sent to Lesa Marrell, 3001 Shores Court, Amarillo TX 79110.

John L. Hutchison
PO Box 506
Spearman TX 79081
Attorney for the Estate
1(3/3/11)B

S	T	U	P	A	N	E	T	L	O	B	S
C	A	R	O	B	O	A	R	B	O	X	E
A	N	G	E	L	U	R	I	U	T	E	R
T	H	E	T	T	O	W	N	B	E	N	I
S	O	H	G	E	E	K					
S	A	M	M	O	J	O	C	E	L	I	A
C	L	O	T	S	E	A	M	R	U	S	S
R	O	T	E	O	F	T	E	N	M	A	C
A	N	T	R	A	F	E	T	A	P	A	I
G	E	O	R	G	E	E	R	Y	C	I	S
H	E	R	S	C	O	O					
L	O	C	A	L	E	P	O	R	T	M	A
D	E	V	A	S	V	I	E	U	T	B	E
U	N	A	P	T	E	R	R	B	E	L	L
B	A	L	E	L	E	T	A	R	L	E	N

8	9	2	6	3	7	4	1	5
1	4	6	8	5	9	3	7	2
7	3	5	4	1	2	6	9	8
2	8	1	7	6	3	5	4	9
4	6	3	9	2	5	7	8	1
5	7	9	1	4	8	2	6	3
6	5	4	2	8	1	9	3	7
9	2	8	3	7	6	1	5	4
3	1	7	5	9	4	8	2	6

Are You A Victim of Domestic Violence, Sexual Abuse or Physical, Emotional or Sexual Assault?

Call Toll Free Hotline
1-800-753-5308

We can see individuals from Hansford County anytime upon request. Call 435-5008 or 1-800-753-5308 to set up an appointment in Hansford County. We operate a safe place for victims and their children to stay in times of crisis.

Battering Intervention & Anger Management Available

Panhandle Crisis Center
Serving Hansford, Lipscomb & Ochiltree Counties
301 S. Ash - Perryton, TX
Memorials Accepted

GET YOURS TODAY! E-SUBSCRIPTION

to the
Hansford County Reporter-Statesman

Delivered to your e-mail each Thursday for only \$35/year.
Purchase online at
www.spearmanreporter.com
Call 806-659-3434 or e-mail
reporter@spearmanreporter.com
for details.

Shirley Howard Properties
Shirley Howard
Howard

We NEED listings!
Call us now to help YOU sell your home for top dollar!

1108 Dressen - Spearman:
1,400 sqft - 4 bed, 1 3/4 bath, CACH, Carport, Storm Shelter!

Shirley Howard, Broker/Owner
806-886-6536, Cell

Melinda McCullough, Realtor
(806) 733-5678

We would LOVE to sell your HOUSE!
CALL US!



Memorial Hospital of Texas County
Guymon, OK
LPN - Internal Medicine Clinic
Sign-on Bonus
Other RN positions available
Call Human Resources at 580-338-6515
EOE

TEXAS STATEWIDE CLASSIFIED ADVERTISING NETWORK

TexSCAN

TexSCAN Week of February 27, 2011

AUCTIONS
HUGE PUBLIC AUCTION 300+ Travel Trailers, Mobile Homes & Camp Houses. No minimum price! Online bidding available, Saturday, March 12 at 10am. Carencro, LA. www.hendersonauctions.com 1-225-686-2252, Lic #136

DRIVERS
DRIVER: CDL-A: Texas regional run, mainly I-35 with great miles and excellent home time. Competitive rates & benefits. Must have CDL-A, 8 month OTR experience 1-888-730-9312.
DRIVERS-OWNER/OPERATORS Solo, teams, fleets. At least 2,800 miles per week. Home every 10-14 days. We have more freight than available trucks. 1-877-901-8591.
DRIVERS-FOOD TANKER Drivers needed OTR positions available now! CDL-A with Tanker required. Outstanding pay & benefits! Call a recruiter today; 1-877-882-6537 www.oakleytransport.com
DRIVERS-FLATBED owner operators up to \$1000 sign-on bonus. Earn \$1.85/mile or more! No age restriction on tractors /trailers. CRST Malone 1-800-743-0435, www.JoinMalone.com
DRIVERS-PAID CDL training and a stable career! No credit check, no experience required! Trainers earn 49¢/mile! 1-888-417-7564, CRST Expedited, www.JoinCRST.com
DRIVERS-STUDENTS looking for a new career/guaranteed job? FFE is offering free tuition at our FFE driver academy in Fort Worth, Texas. Call 1-800-569-9232 or e-mail: recruit@ffe.net
NEED CDL DRIVERS A or B with 2 years recent commercial experience to transfer motor homes, straight trucks and tractors. www.mamotransportation.com; 1-800-501-3783

FINANCIAL
CASH NOW! CASH for your structured settlement or annuity payments. Call J.G. Wentworth. 1-866-494-9115 Rated A+ by the Better Business Bureau.

HEALTH
IF YOU USED Type 2 diabetes drug Avandia between 1999- present and suffered a stroke, heart attack or congestive heart failure you may be entitled to compensation. Attorney Charles Johnson 1-800-535-5727

HELP WANTED
ABLE TO TRAVEL Hiring 10 people. Free to travel all states, resort areas. No experience necessary. Paid training & Transportation. Start ASAP. 1-303-895-8579

REAL ESTATE
\$106 MONTH BUYS land for RV, MH or cabin. Gated entry, \$690 down. (\$6900/10.91%/7yr) 90 days same as cash. Guaranteed financing. 1-936-377-3235
18.95 ACRES, Kinney County. Oaks, heavy brush, deer, turkey, exotics, hogs. \$1700/acre, long term owner or TX vet financing. 1-800-876-9720. www.texasranchland.com
676 ACRES-REEVES County, 15 Miles North Pecos. River frontage. Call Jack 1-214-755-6224.

SCHOOLS/TRAINING
AIRLINES ARE HIRING Train for high paying aviation career. FAA approved program. Financial aid if qualified, job placement assistance. Call Aviation Institute of Maintenance, 1-877-523-4531
HIGH SCHOOL DIPLOMA graduate in 4 weeks! Free brochure! Call now! 1-866-562-3650, ext. 55. www.southeasternHS.com

STEEL BUILDINGS
STEEL BUILDINGS at a fraction of the price! Display locations needed in your area. Various sizes available, limited quantities. Call now 1-800-991-9251, www.usbuildingsystems.com

Run Your Ad In TexSCAN!
Statewide Ad\$500
301 Newspapers, 942,418 Circulation
North Region Only\$230
98 Newspapers, 263,811 Circulation
South Region Only\$230
101 Newspapers, 366,726 Circulation
West Region Only\$230
102 Newspapers, 311,881 Circulation
To Order: Call this Newspaper direct, or call Texas Press Service at 1-800-749-4793 Today!

NOTICE: While most advertisers are reputable, we cannot guarantee products or services advertised. We urge readers to use caution and when in doubt, contact the Texas Attorney General at 1-800-621-0508 or the Federal Trade Commission at 1-877-FTC-HELP. The FTC web site is www.ftc.gov/bizop

Hotline for Priority Seating - 435-3945

MONKEYS

BBQ & STEAK HOUSE

We Are THPLC-2-B

14 SE 3rd Ave Perryton, TX

Stan and Donna Zepp

New, Updated Menu Same Great Service

Proudly Celebrating Two Years

FRONTIER FENCING & CONSTRUCTION

FF

NOW OFFERING OVER 20 YEARS OF THE HIGHEST QUALITY FENCING EXPERIENCE

Barbed Wire Fencing Pipe Fences Corrals Metal Buildings - Prefabs & Pole Barn Residential Fence Various Construction & Carpentry Projects

Contact - Brandt Oquin (806) 202-2208

Extend your advertising reach with TexSCAN, your Statewide Classified Ad Network.

Hansford County Basketball



by Dorothy Hudson

Out at the Lake

Jim Derington
Palo Duro River Authority
P.O. Box 99
Spearman, TX 79081
806-882-4401
pdra@dishmail.net



This picture was taken from the Spearman side of the bridge. Part of the bridge washed out in the June, 2010 flood.

Lake Level--February 28, 2011--44.83 feet (-0.33)

For anyone interested in seeing the snow geese, they have come back, but not in the numbers we formerly had. Jim has not been seeing the eagles, but he isn't sure that they have left early. He says all kinds of ducks are around, but they are hard to spot without a scope.

Sunday was a terrible day, because of the wind and fires. Jim said he was going to put out the fire ban signs for the Park area today.

I have been seeing quite

a few basketball games lately. The high winds yesterday made me think of an anecdote from *The Worst Hard Time* by Timothy Egan. Many of you have probably read this account of the Depression/Dust-bowl time. The small schools around here did not have money to build gyms for their basketball teams, so the game was played on outdoor courts. According to Egan, the coach of the girls' team at Boise City would park his Model T by the side of the court. When the wind captured the ball and blew it faster than a player could run, the coach

would hop in his car and retrieve it before it got out of sight. This was especially important as one ball was all that some of the schools could afford. The headlights of the Model T also came in handy if darkness fell before a game was over.

Two pictures of outdoor basketball courts in the early days of Spearman schools are on pages 39 and 40 of Volume 1, Hansford County 1876-1979. In 1918 the Lynx were wearing long-sleeved black sweaters as part of their uniforms. Apparently, they played on some days when the weather was cold.



Cas Birdwell Elementary OPEN HOUSE BINGO!

FAMILY BINGO NIGHT
MARCH 8, 2011

YOU ARE INVITED TO FAMILY BINGO NIGHT AT THE ELEMENTARY FOR OPEN HOUSE FROM 5-6 P.M.

PARENTS ARE INVITED TO COME PLAY BINGO WITH THEIR CHILDREN AND GRANDCHILDREN. EACH HOMEROOM TEACHER WILL SPONSOR SOME TYPE OF BINGO GAME (GRADE AND SUBJECT APPROPRIATE). PARENTS AND STUDENTS CAN COME AND GO AND JOIN OTHER BINGO GAMES, IF DESIRED.

PRIZES WILL BE GIVEN. COOKIES WILL BE FURNISHED BY THE PTO.

SAVE THE DATE

POT O' GOLD

Dinner & Dance

To Benefit The O'Loughlin Center

SATURDAY 8:00 MARCH 26, 2011 8:00 7PM

Enjoy Tenderloin & All the Fixings

Dance to Insufficient Funds

Win your Pot O' Gold!!!

\$2500 Grand Prize,

Consolation Prizes and Much More!

\$60 per person

Call 806-659-3030 or any Board Member for tickets.