



HANSFORD COUNTY ★ THE REPORTER-STATESMAN ★

CELEBRATING 104 YEARS OF SERVICE TO HANSFORD COUNTY
HANSFORD COUNTY'S ONLY NEWSPAPER

THURSDAY,
MAY 19, 2011

75¢

WWW.SPEARMANREPORTER.COM

VOLUME 104 • ISSUE 20

REPORTER@SPEARMANREPORTER.COM

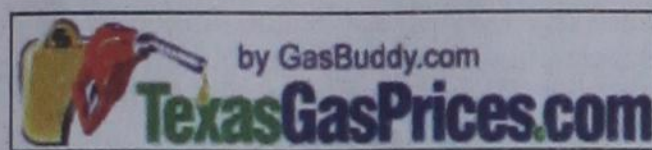
May 14th Election

The City of Spearman, Spearman ISD and Gruver ISD held elections on Saturday, May 14, 2011.

The City of Spearman had five people running for three Alderman positions. Results are as follows: Tobe Shields 266, Mike Schnell 226, Kathy Boyd 186, Mark Earp 57, John E. Woodward 46

Spearman ISD had three people running for two positions. Results are as follows: Joel Shields 387, Mikal Willimon 297, Dwayne Mitchell 199

Gruver ISD had four people running for two positions. Results are as follows: Teague Winger 166, Greg Haight 130, Tracy Venneman 107, Chad Logsdon 51



Weekly Update

Texas, May 16- Average retail gasoline prices in Texas have risen 2.1 cents per gallon in the past week, averaging \$3.84/g yesterday. This compares with the national average that has increased 0.3 cents per gallon in the last week to \$3.93/g, according to gasoline price website TexasGasPrices.com.

Including the change in gas prices in Texas during the past week, prices yesterday were \$1.10/g higher than the same day one year ago and are 10.9 cents per gallon higher than a month ago. The national average has increased 12.9 cents per gallon during the last month and stands \$1.05/g higher than this day one year ago.

GasBuddy operates GasBuddy.com, TexasGasPrices.com, and over 225 other local gasoline pricetracking websites that follow prices at over 125,000 gasoline stations in the United States and Canada. GasBuddy also uses Facebook (facebook.com/gasbuddy) Twitter (twitter.com/gasbuddy), and phone apps to keep motorists ahead of changing gasoline prices. GasBuddy.com was named one of Time magazine's 50 best websites and to PC World's 100 most useful websites of 2008.

Burn Ban

On Monday, March 7, 2011, Hansford County Judge, Benny Wilson issued a Burn Ban, effective for 7 days.

The Hansford County Commissioners Court voted to extend of the Burn Ban on Monday, March 14, during their regular Commissioners Court meeting. The extension will last an additional ninety days. Unless rescinded, the burn ban will be effective through June 14th.

For more information about the burn ban in Hansford County, contact Judge Benny Wilson at 806-659-4100.

Weather Forecast

THURSDAY NIGHT - Mostly clear. Windy. Lows in the upper 40s. Southwest winds 20 to 30 mph becoming south around 15 mph after midnight.

FRIDAY - Mostly sunny. Windy. Highs in the mid 80s. Southwest winds 20 to 30 mph.

FRIDAY NIGHT - Mostly clear. Windy. Lows around 50.

SATURDAY - Mostly sunny. Highs in the mid 80s.

SATURDAY NIGHT - Mostly clear. Lows in the lower 50s.

SUNDAY - Sunny. Highs in the upper 80s.

SUNDAY NIGHT - Mostly clear. Lows in the mid 50s.

MONDAY - Mostly sunny. Highs in the upper 80s.

MONDAY NIGHT - Clear. Lows in the mid 50s.

TUESDAY - Mostly sunny. Highs in the lower 80s.

Read more: <http://www.city-data.com/forecast/w-Spearman-Texas.html#ixzz0xgJSWqkT>

Texas Crop & Weather

The following specific livestock, crop and weather conditions were reported by Panhandle Extension directors: A few counties got from a trace to slightly more than 1 inch of rain. In some areas, there was only enough rain to settle the dust, and the storms also brought high winds and above-average temperatures. High wildfire danger was ongoing. Irrigators were actively watering, trying to keep up with crop-water demands. High winds made it difficult for producers to irrigate newly planted crops. Cotton and peanut planting was in progress. Rangeland was mostly in very poor condition. Cattle were reported to be in good to fair condition with continued supplemental feeding. There were reports of wheat-streak mosaic in some irrigated wheat.

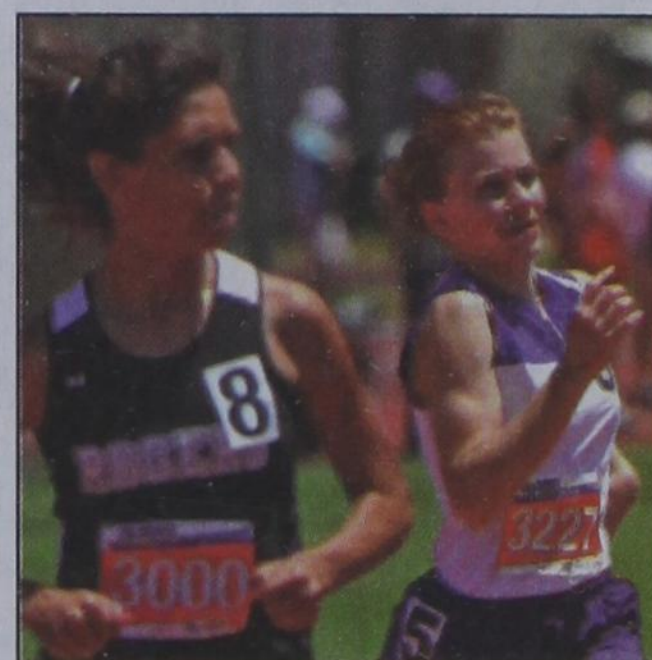
Hansford County Athletes Compete at State Track Meet



Jerrod Collier competed in the Class A State 400 Meter Dash Final at 1:55 on Saturday, May 14th in Austin. He placed 8th with a time of 51.76. (Photo by Travis Harsch)



Shelley Gibson continued to set and break records on her way to Austin. Shelley broke her record in the 3200 at Regionals with a time of 11:55.48, and broke that record again at State with a third place finish of 11:44.06. Shelley lowered her personal best in the 1600 meter run with a third place finish of 5:22.55, which bested her Regional time of 5:25.51. (Photo by Travis Harsch)



Sarah Snider exploded out of the blocks at the State Track meet. (Photo by Travis Harsch)

Mishap Does Not Keep Snider Down

by Coach Stephen Rodman

On Saturday, May 14, 2011 Sarah Snider was ready for the biggest race in her life as of yet. She had put in the miles, gone through the start, literally ran each phase of the 800 meter race both physically and mentally.

The weather at the state track meet in Austin was a cool 80 degrees with minimal winds. Perfect! As the race was about to begin you could see the meet officials escorting the girls 800m runners to their blocks, and of course Sarah had that big Texas smile as she made her way to her lane.

At the firing of the gun, Sarah exploded out of the blocks to take the lead that she normally does, but this time the pack of competitors would not break, and Sarah whose lead time in the 800 would be challenged as she was forced to the back of the pack.

For a lap and a half Sarah would remain there until 200 meters out and then Sarah began to make her move. Passing 8th, 7th, 6th, weaving to the inside on the curve blowing by 5th, and then she split 4th and 3rd on the inside of the track when the unthinkable happened. With less than 150 meters left in the race Sarah's foot stumbles on the racer beside her causing Sarah to stumble onto a metal rail marking the inside of the track. She then fell on the rail and landed off the track.

At that moment you could hear the fan reactions as their hearts fell with the Spearman competitor. Most people would have laid there in pain and sorrow, but not Sarah. Just like a machine, Sarah rose and ran in the last 100 meters as fast as she could. As a matter of fact, her time that she ran (even with falling) would have been fast enough to qualify her for the regional track meet.

You can talk to her about the race and she will tell you there is no blame, shame or fault. Just faith! Spearman was represented well by the character of this young lady, and that is why Sarah is our champion.

Sutton Named Heritage Day Queen

Hansford County has many outstanding citizens who, in their livelihood of daily work, find time to help others in time of need.

The Stationmaster's Museum is sponsoring one such person to represent the county as Hansford Heritage Day Queen for 2011 - Kathleen Sutton. She and late husband Tom lived in Hansford County 50+ years. Their family consists of son Omar and wife Sharon, and daughter Noreen, all of Spearman; Darleen and husband Jerry Lasley of Springfield, MO; one granddaughter, Kristi and husband Johnnie Williams of Gruver; three grandsons, Brandon Sutton and Drew and Chase Lasley; two great-granddaughters, Shelby and Madison Williams; and one deceased grandson, Jamie Sutton.

Kathleen was the daughter of the late Mr. and Mrs. E.A. Greever, who were long-time pioneer settlers. They were also the parents of Kathleen's only brother, the late W.R. Greever. Kathleen grew up just across the line in Ochiltree County beginning her schooling at the Black School, and transferred to Spearman in the sixth grade, graduating from Spearman High School.

As many might remember, her mother was a dedicated pastor for many years at the Apostolic Faith Church. She composed and published three small hymn books. She was given the tunes, but needed someone to transcribe this to the words for publication. Kathleen worked for many



months to accomplish the task. To continue her music ability, Kathleen gave piano lessons for a number of years and was also the pianist for over 50 years at Apostolic Faith Church.

An active member of the First United Methodist Church, she teaches a Sunday school class, Bible study class, heads the committee to organize the meals for funeral families, a chime ringer and works with meals on wheels. These are just a few of her volunteer works.

Join Kathleen and other members of The Gladiola Flower Club on Saturday, May 21st at 10 a.m. at the Zulu Building for coffee and greeting before the parade.

Gladiola Flower Club Honored at Hansford Heritage Days

Organizations and clubs come and go in the life of a town. Members move away, get involved in other activities, lose interest, perhaps even die. All of this can cause an organization to dissolve.

In Spearman's 90+ years, three flower clubs have been active at various times. Dahlia, Jonquil, and Gladiola, with the latter still active after almost 63 years. Now that's a record!

On December 3, 1948, the Jonquil Flower Club met in the home of Dolly McWhirter to organize the Gladiola Flower Club. The first celebration float was entered in 1949, taking 2nd place. After that, each year the club participated, winning 1st and 2nd places, which included entries in Guymon Pioneer Days.

The Club's Medical Scholarship began in May 1971 with Carol Booth, daughter of Mr. and Mrs. John Booth, receiving \$150. This scholarship continues to this day with an increase to \$1000. The schol-

arship is paid with monies from the Home Tour Project. Thank you hosts!

The Club is a community service organization. Through the years they have made donations to the Boy & Girl Scouts, Stationmaster's Museum, Bingo, memorials and flowers at Hansford Manor, Meals on Wheels, Volunteer Fire Department, Empty Stocking Fund, Project Graduation, and many others.

Though they are fewer in number and a "little" older, they continue to be very active and community oriented.

Charter members still on the roll include Dorothy Buzzard, Betty Davis, Estelle Jackson, and Gwen Smith. The current president is Margaret Evans.

The Stationmaster's Museum is honoring the Gladiola Flower Club during Hansford Heritage Days Celebration. Come by the Zulu Building for coffee and cookies at 10 a.m., before the parade, and say hello to these dedicated Gladiolas.

6 Acres in Kiowa Cree - A Restoration Story

"6 Acres in Kiowa Cree--A Restoration Story" will be the topic for Lunch & Learn, Tuesday, May 24, from 12:00 - 1:00 p.m. in the Fellowship Hall of Spearman Church of Christ. Dr. Lew Hunnicutt, Dean of Frank Phillips College Allen Campus, from Perryton will present the program. Participants will learn about a Kiowa Cree Restoration project as well as view a digital herbarium of all the flora present on an eastern panhandle property.

Dr. Hunnicutt will inform the audience about the restoration of his property in

Lipscomb county and the plants he has documented, rescued, relocated, and otherwise enjoyed since purchasing the property 4 years ago. The talk includes some wonderful photography to graphically demonstrate the beauty of Kiowa Cree as well as Texas panhandle skies and plants.

This free program is sponsored by the Texas AgriLife Extension Service and Extension Education clubs. Donations for lunch will be accepted. Call Peggy Winegarner at 659-4131 for more information.

CONGRATULATE YOUR GRADUATE!

WITH AN ADVERTISEMENT IN THE REPORTER-STATESMAN!

The 2011 Graduation Section will be published on May 26th.

The advertising deadline will be Monday, May 23rd at 5 p.m.

Ads will appear in the May 26th Edition and online at www.spearmanreporter.com. CALL 659-3434, OR E-MAIL REPORTER@SPEARMANREPORTER.COM



PROCLAMATION

Jake Ryan Willimon Day May 15, 2011

WHEREAS, Jake Ryan Willimon is a dedicated and accomplished young man who has been a faithful member of the Spearman Community; and

WHEREAS, Jake Ryan Willimon has exhibited hard work and devoted many hours of service and raised almost \$9,000 to design and implement a memorial sign and monument in memory of Major Samuel B. Cornelius, MIA; and

WHEREAS, Jake Ryan Willimon envisioned this memorial for Major Cornelius and all other service men and women still MIA to be located at the Major Samuel B. Cornelius Field airport underneath a flagpole with the United States of American flag flying proudly; and

WHEREAS, Jake Ryan Willimon has passed the rigorous requirements to attain the Boy Scouting's highest rank of Eagle Scout.

THEREFORE I resolve, that I, Brian Gillispie, Mayor, and on behalf of the City Council and the citizens of Spearman, Texas, do hereby proclaim May 15, 2011, as

"Jake Ryan Willimon Day" and respectively ask all citizens to join him and pay homage at his Eagle Court of Honor.

Dated this 11th day of May, 2011.
Mayor Brian Gillispie

Wolf Creek Heritage Museum Notes

by Virginia Scott
MUSEUM HAPPENINGS

Spring has finally arrived, but it is still very chilly. Our new flower garden is surviving the wind and the temperatures and the lack of rain, however. Watch for sprinklers when you visit the museum we are constantly watering the grass and the flower beds, and with placement just right, we try not to water our guests.

The photography project continues in full swing and they are making great progress. This project is allowing the reorganization of our collection into better categories, the elimination of duplicates of the same photograph, and the placement of each photograph in archival sleeves and notebook boxes. This will allow us to find and locate our photographs much easier. When this is completed, we will have almost our entire collection of artifacts in archival safe material. When you visit next time,

ask for a tour of our archive room. You will be very impressed with the work of our volunteers.

We need volunteers to assist us with all of our projects, so if any school-age children over 16 want to explore the museum behind the scenes this summer give us a call.

Historical Musings

I should know better than to tell you in my articles that next week I will write about a particular item, because I usually forget. That is why I have started rereading my article every so often. In my March 14 article I stated that I would describe the April 17, 1913 newspaper article entitled, "A trip on the 'Rubber Neck Car Betsy.'" I didn't, so here it is:

The editor, C.A. Skaggs, describes his trip by car through the farm land of Lipscomb County. Here are his words:

For sights, pleasure and

a general good time, take the scenic route to the north on board the "Betsy" and behold the beauties of our old county as it is. Hop right on at station 'twenty-two' three steps to the right of the Lipscomb Drug Co.'s store, then one straight up and you're gone. Gliding over the road with a grace equal to the ease of "Black Diamond Special" until you come to the crossing of Wolf Creek where your eye will come in contact with visions more attractive and pleasing than you have met with in many a day. At this point you are given a half minute to get your breath while the man at the 'wheel' hooks her up another notch and then you go winding in and out the gates on most every section.

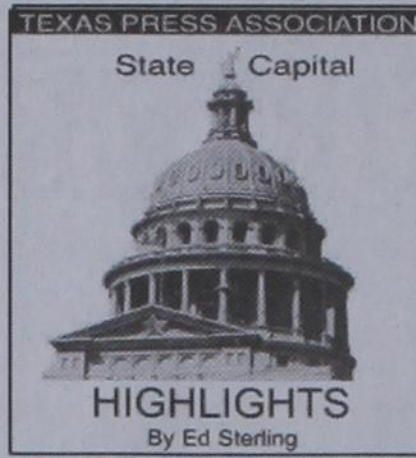
The first thing of interest to your left will be the home and pleasant surroundings of J.B. Turner. A little further back just visible to your eye the homes of P.R. Wheatly and C.D. Hill and to be seen while yet a birdseye view of Wm. Rabe's country home can be caught by some stretching; and on your right depicted plainly upon the level blanket of green J. R. Townsden's commodious home looms up another spurt through the winding trail that crosses and recrosses the running rivulets that flow so freely, you will notice a herd of thoroughbred cattle grazing on one side while on the other a group of plump horses and mules are feeding leisurely upon the wild grasses. A few more pulls around up through a canyon and then you drop right down in front of the cozy home of W.R. Hill whose house and buildings are sheltered by a prominent cliff. An orchard in full bloom with its blue tinted blossom throwing off a sweet fragrance that fans you in the face while 'Betsy' stops for water.

Your course takes you through the McDonald pasture... covered with its wealth of grasses then as you look with your optics to the left... is the home of another of Lipscomb's young-old men, J.K. Paine and as you move along the home of John Payne.

Just as you leave the McDonald pasture along the trail to the left you pass the pleasant place of Earl Douglas. Straight ahead once more for another run of fifteen minutes and then a turn to the right and once more to the right and you are at the end of the trip, Mr. Green's home.

On one of these nice days, try recreating this trip with our current county roads. The roads have changed and are somewhat better, but fortunately the scenes are much the same—our green pastures, grazing cattle and horses, and our nice homes.

Enjoy your week.



2012-2013 state budget remains unfinished

AUSTIN — Rarely does final passage of a state budget turn out to be anything other than an end-of-session frenzy. This legislative session is shaping up to be no different.

Lawmakers have until May 30 to pass that all-important document, the state's financial blueprint for the 2012 and 2013. If they don't make the deadline, the governor may order a special session.

Now, to achieve completion in the present, Republicans, who hold numerical majorities in both House and Senate, will have to find some way to agree with each other on how to cut up a smaller than usual pie. In 2009 they had a \$180 billion pot to work with; this session, it's around \$160 billion, give or take.

House Republicans, in step with the wishes of Gov. Rick Perry, insist on no new taxes and no raiding of the Rainy Day Fund. So far, they've gotten their way, thanks to the GOP's 101 seats to the Democrats' 49. Senate Republicans at first launched a plan to use a third of the \$9 billion Rainy Day Fund to lessen the blow of cuts to education and healthcare. They revised the plan after identifying accounting and tax collection measures they believe would short-circuit the need for Rainy Day funds.

This week, if the full Senate brings up the budget, members will attempt to attach amendments to it during floor debate. There's no telling what the final product will look like. Eventually, however, Texans will get to compare the Senate and House versions. The House version axes tens of thousands of jobs from the state payroll, lops off billions of health care dollars and generally cuts or slows spending in most ways imaginable.

Option to fed health in hopper

Attorney General Greg Abbott and other state attorneys general suing to have the federal Patient Protection and Affordable Care Act of 2010 declared unconstitutional, say the act violates states' rights in forcing citizens to buy health insurance.

Rep. Lois Kolkhorst of Brenham and Sen. Jane Nelson of Flower Mound, both Republicans, are

STATE CAPITAL HIGHLIGHTS



by Ed Sterling

working on an alternative to the federal plan: House Bill 5, already approved by the House and poised for consideration by the full Senate.

Their legislation would "authorize Texas to participate in a multi-state effort to secure the consent of Congress, via an interstate compact, to regulate health care, free of federal interference," according to the legislature's official bill analysis.

HB 5 would establish an "Interstate Advisory Health Care Commission" to make non-binding recommendations on health care delivery. The bill also enables member states to receive federal dollars through a formula outlined in the compact, without federal conditions.

New CHL requires e-fingerprints

The Texas Department of Public Safety on May 12 announced it no longer accepts hard-copy fingerprint cards from applicants for a concealed handgun license (CHL).

Applicants must be fingerprinted electronically as part of the standard criminal background check.

The DPS said it tries to use fingerprints on file for current permit holders who are applying for renewal, but if existing prints do not meet quality standards, electronic prints must be submitted.

And speaking of those

permits, Texans licensed to carry concealed handguns would be allowed carry their weapons on college campuses and in campus buildings under a measure tentatively approved by the Senate on May 9. Of course, the House must approve too.

Sen. Jeff Wentworth of San Antonio, author of the measure (which was attached to a higher education finance bill) says students, faculty and staff, if legally armed, could help prevent shootings like the 2007 massacre at Virginia Tech.

Concealed handgun permit applicants must be at least 21 years old and complete an approved CHL permit course.

Helo hog-hunting bill OK'd

In other action, the Senate on May 12 approved HB 716 by Rep. Sid Miller, R-Stephenville — legislation to allow the Texas Parks and Wildlife Department to create guidelines for hunting feral hogs and coyotes from helicopters.

According to the bill's Senate sponsor Troy Fraser, R-Horseshoe Bay, an estimated 2 million feral hogs are not only free-ranging across rural Texas; they are encroaching on big cities. Sen. Eddie Lucio, D-Brownsville, before voting against the bill, said that shooting from a helicopter takes the sport out of the hunt.

Words from Faith & Grace



by Cecil R. Biggers, Lutheran Lay Minister

During the fifth week of the Season of Easter, we study Acts 5: 55-60, Psalm 31: 1-5, 15-16, 1 Peter 2: 2-10, and John 14: 1-14.

Luke tells the story of the stoning of Stephen. Stephen was one of the seven disciples chosen to serve as deacons in caring for the widows; he also proclaimed the gospel. His proclamation led to him being seized by the Jews and brought before the High Priest. Stephen defends himself by narrating the history of Israel's relationship with God and the many times Israel turned away from God. He tells the High Priest and his cohorts, "You are the ones that received the law as ordained by angels, and yet, you have not kept it." Whereupon, Stephen was seized, dragged from the city and was stoned. As he was dying, Stephen prayed, "Lord, receive my spirit". Then he knelt down and cried with a loud voice, "Lord, do not hold this sin against them." When he had said this, he died.

The Psalmist sings a song of trusting in the Lord, no matter what. In the midst of adversity, the Psalmist sang, "Into your hand I commit my spirit; you have redeemed me, O Lord, faithful God." These words were quoted by Jesus on the cross and by Stephen while being stoned by the mob. The disciple followed his Master even to death.

Peter compares Christians to "living stones," building material for a spiritual house. He tells the new Christians, "But you are a chosen race, a royal priesthood, a holy nation, God's own people, in order that you may proclaim the mighty acts of him who called you out of darkness into his marvelous light." If Jesus is the "cornerstone" of God's plan, then we as his followers are "living stones" in that plan.

Jesus is reassuring his disciples that since they know him, they know the Father. He reassures them that he is going to prepare a place for them. Thomas, ever honest, asks, "Lord we do not know where you are going. How can we know the way?" Jesus answered, "I am the way, and the truth, and the life. No one comes to the father except through me. If you know me, you will know my Father also."

Dear believer, of the Apostles, tradition tells us that only John died a natural death; the others were all killed in Christ's service. Being a Christian is not all peaches and cream. Today churches in Egypt, Sudan, Iraq, Ethiopia, Ivory Coast, Indonesia, Pakistan, and elsewhere in this world are being violently attacked. Christians are dying for their faith, even today. Is your faith worth dying for?

The message of Easter, God's steadfast love for us gave us Jesus who died for us, that we might live. Christ is risen!

May the Holy Spirit assure you of the steadfast love of God for you that you may live the disciple life in good times and in bad. Christ is risen, indeed!

SUDOKU PRESENTED BY VolunteerMatch.org Where volunteering begins.

	8					4	6	3
3						7	9	
4			9				8	5
	5	3	6	7	1		4	
9		7	4	3	2	6		8
	4		5	9	8	3	1	
6	2				9			1
	3	8						4
1	9	5						3

© StatePoint Media answer on classified page
Fill in the blank squares in the grid, making sure that every row, column and 3-by-3 box includes all digits 1 through 9.

THE FIFTIES

ACROSS

- Panorama or scene
- Its pilots flew with the U.S. in Korean War
- Elizabeth Gilbert's "Eat, Love"
- These accompany pains
- Right-angle building extension
- "Die Lorelei" poet
- Mangles
- Water in Paris
- Acrylic fiber
- Actor/Director Sydney
- Like hot lava
- Laurence Olivier star of Richard III
- Raunchy
- British sci-fi doctor
- Fall to win
- Famously filed for bankruptcy in 2008
- Argo's propellers
- "For ___ the Bell Tolls"
- Actress Watts
- Small stream
- "Hang-out spot"
- Sauce base of fat and flour
- Small porch
- Actress Rogers
- 100 centavos in Mexico
- Do this through the tulips?

DOWN

- Offensively curious
- Bear's room
- Double reed woodwind
- "Sock ___," a.k.a. dance
- Emerson: "___, proud world, I'm going home"
- "From Here To Eternity" Oscar winner
- "Bullwinkle to Boris," e.g.
- 2nd largest bird
- Slobber
- Corpulent
- Opposed Wade
- Bar by estoppel
- Fender-bender damage
- Drunkard
- Mouthpieces
- Femme fatale
- International Civil Aviation Organization
- Synagogue
- "He ___ it like it is"
- Lash out
- Smell badly
- ___ carte
- Narrow water-filled gorge
- Saucy
- Irritate
- "At another time" to Shakespeare
- Japanese monetary

- unit
- "He thought a lot of people were phony"
- "The Lonely ___" by David Riesman
- Pooh's "wise" friend
- Resembling the king of the animals
- Not at all good
- "Francois Duvalier came to power on this West Indies island"
- The lowest deck
- Door-stopping wedge, e.g.
- It has a neck and strings
- Made cow sound
- Make somebody laugh
- "Vice President for most of decade"
- One-armed bandit
- Office communicative
- Revered Hindu
- "Type of skirt"
- ___ and flow
- Distant, yet within sight
- Inspections of court documents in hearings
- Break down or analyze
- Hurtful remark
- "Pop it in the ___!"
- Kiln for hops
- Edible fat
- Carrying bag

These games are brought to you by the Hansford County Reporter-Statesman

CROSSWORD

1	2	3	4	5	6	7	8	9	10	11	12	
13					14			15				
16					17			18				
19					20			21	22			
23					24							
25	26	27		28	29			30	31	32	33	34
35		36		37				38		39		
40					41			42		43		
44					45			46		47		
48					49			50		51		52
53					54			55		56		
57	58	59			60					61	62	63
64					65	66				67		
68					69					70		
71					72					73		

PRESENTED BY VolunteerMatch.org Where volunteering begins.

© StatePoint Media answer on classified page

The Hansford County Reporter-Statesman
Mailing Address - 213 Main Street • Spearman TX 79081
Physical Address - 310 Barkley Street • Spearman TX 79081
Phone - (806) 659-3434 • Fax - (806) 398-9080
www.spearmanreporter.com • reporter@spearmanreporter.com
Mon-Thurs. 9 a.m.-12 p.m., Mon-Wed. & 1-5 p.m.
Closed Thurs. afternoon and all day Fri., Sat. & Sun.

Gary Smith - Publisher Catherine Smith - Editor
Contributing Writers: Dorothy Hudson, Jim Derington, Merry Sparks, Cecil Biggers
Contributing Photographers: Charlie Johnson, Lisa Johnson Tammy Batton, Bonnie Bergan

Subscription Rates
In Hansford County - \$30.00 • Out of County - \$40.00
E-Mail Subscription - \$35.00

The Hansford County Reporter-Statesman (USPS 529660) is published weekly in Spearman, TX. Periodical postage paid in Spearman, TX. **POSTMASTER:** Send address changes to: The Hansford County Reporter-Statesman, 213 Main Street, Spearman, TX 79081.

Publication Policy
The deadline to submit news and advertising to The Hansford County Reporter-Statesman is Monday at 5 p.m. Items submitted after the deadline will be published at a later date, as time and space permit. Publication of all items is at the discretion of the editor.

Advertising
Open Display rates are \$4.00 per column inch. Classified Ads are \$6 for the first 25 words and 10¢ per word for each additional word. (Additional charge for boxed classifieds.) There is a \$1 charge per week if billed.

Member of
Gruber Chamber of Commerce
Spearman Chamber of Commerce
Texas Press Association and Panhandle Press Association

Happy Birthday!

May 19
Birthdays - Yvette Miller, S.J. Wells, Cora Lee Frantz, Wayne Ellsworth, Bettie Davis, Debbie Schumann, Nita Burger, Lori Scroggs, Ricky Deluna, Joanne Blodgett, Sandi Pearson, Beatrice Self, Mary Delarosa, Brandi Allen, Otho Gammill, Brandy Morris, Linda Cummings, Cami Winegarner, Kate Haruch
Anniversary - M/M Terrell Evans, Shorty & Carol Hestor, M/M Tom Fanning, M/M Tim Smith

May 20
Birthdays - Donna Ralston, April Graham, Barbara Kenney, Ronny Smith, Cindy Scribner, Beatrice Ellsworth, Jacob Harbour, Vernon Gardner, Beatrice McCloy, Lanasa Washburn
Anniversary - M/M Steve Stedje, M/M Pete Stafford, M/M Donnie Davis, Richard & Donna Trantham, Shawn & Dynell Moore, Brooks & Debbie Beck

May 21
Birthdays - Steven Foster, Holly Holt Key, Jenny Hart, Brad Johnson, Mae McLoughlin, Dennis Baker, Mike Kizzar, Carolyn McDaniel, Judy Vela, Faye Schmehr, Tracy Kirkpatrick, Veronica Gomez, Michael Quillin, Gaby Briones, James Martin
Anniversary - M/M Francisco Borunda

May 22
Birthdays - Kaitlyn Poole, Sorrele Blevens, Geneva Eddleman, Tamra Gammon, Kathryn Gumfory, Jo Copeland, Amy Gumfory Seagler, Lacey Morris, Alan Shields, James Osbourne, Joe Garza, Maria Vela, Vickie Genn, Flossie Boyd, Cassie Myatt, Carla Woodington, Detsi Vera
Anniversary - Irvin & Helen Boyd, M/M Steve Reed, M/M Rex Reid

May 23
Birthdays - Stefan Dorman, Clifford George, Brad Womble, Monet Lassiter, Scott Alfred, Lloyd Poole, Gladys Mitchum, David Collins, James Ooley, Bernie Olivare, Dorothea Keys
Anniversary - M/M Otho Gamil, M/M Tom Latta, M/M J.P. TeBeest, M/M Brent Stedje

May 24
Birthdays - Roy Edwards, Steve Gross, Faye Harris, Patti Bellows, Wanda

May 19
Anniversary - Earl & Trudi Goodheart, Pamela & Gary Cates, M/M Dwain Weller

May 25
Birthdays - Brett Rudolph, Mrs. J.C. Rhea, Ozy Osbourne, Bart Baker, Waurayne Cope, Betty Uptergrove, Kara Lee, Becky Myers, Alfanzo Munez, Kimberly Groves, Brandi Burch, Lynette Campbell, Lindsey Wright, Josh Reed, Dan Wheelock
Anniversary - Andy & Sheila Watley, M/M James Terry, M/M Curtis Covington

May 26
Birthdays - Garrett Gumfory, Tessa Dawn Thoreson, Roger Buchanan, Gloria Arjona, Mike Owens, Don Savage, Marc Morris, G.A. Rodriguez, Michelle Robinson, Jason Varnon, Wanda Gift, Manda Michelle Lewis, Louis Miesner
Anniversary - Don & Teresa England, M/M Jesus Favela, M/M Nick Holt, Mark & Margy Schoenhals

May 27
Birthdays - Jamie Casdorff, Rachele Holt, Andee Salmans, Julie Stedje, Chris Tomlinson, Julie Latta, Mary Ann George, Darrell West, Debbie Cook, Cindy Hendrick, Roy Black, Jim Myers, Ronnie Thompson, Gloria Perez, Laurcen Williams, Bonnie Thompson, Christian Fisher
Anniversary - M/M Allen Davis, M/M James George, M/M Herb Hager, M/M Jerry Moore, Bobby & Kay Snider

May 28
Birthdays - Randy Brown, Lee Schubert, Kevin Nelson, Ramiro Arjona Sr., Nita Barnes, Brandi Blodgett, Martin Ketron, Barbara Sharp, Connie Gammill, Vera Dominguez, Gloria Perez, Crystal Miller, Victoria Vela
Anniversary - M/M Sammy Don Jones, Jr. & Nita Barnes, Lewis & DeLores Moreno, Dr. & Mrs. Scot Martin

School May Calendars

Gruver ISD
 19 - HS Baccalaureate Practice, 1-2 p.m., Auditorium; HS/JH FFA Banquet, 6:30-8:30 p.m.
 20 - HS Sr. Trip
 22 - HS Baccalaureate, 7-8 p.m., Auditorium
 26 - JH Graduation
 27 - SISD Classes dismissed at 12 noon; HS Graduation, 8-9:30 p.m., Auditorium

Pringle-Morse ISD
 19 - PMCID Classes Dismissed at 12 noon; Parent Conferences
 20 - Bad Weather Day/No School
 24 - 8th Grade Graduation
 26 - 18 - PMCID Classes Dismissed at 12 noon

Spearman ISD
 19 - Diabetes Walk, 1 p.m.
 20 - 5th Grade Field Trip to Palo Duro State Park, 8 a.m.; 8th Grade Field Trip to Oklahoma City
 21 - Spearman BIGS Fun Run at Purple Park, 8:30 a.m.
 22 - Baccalaureate, 7 p.m., SHS Auditorium
 23-25 - Elementary Noon Release for Parent Conferences
 23 - District Retirement Reception, 3-5 p.m., HS Library; Canvass School Board Election, 7 p.m., HS Library
 25 - HS Final Exams (1A, 2A, 3A); SHAC Meeting, 4 p.m., HS Library
 26 - Elementary Awards Assembly (1st & 2nd Grade), 11:45 a.m.; Elementary Awards Assembly (3rd-5th Grade), 11:15 a.m.; HS Final Exams (1B, 2B, 3B); Jr. High Graduation, 6:30 p.m., HS Auditorium
 27 - Kindergarten Graduation, 9 a.m., Elementary; HS Final Exams (4th & 5th); Last Day of School, 1 p.m. release; HS Graduation, 7 p.m., Auditorium; Project Graduation, 10 p.m.-6 a.m.
 30 - Memorial Day Holiday, Offices Closed
 31 - First Day of Elementary Summer School

Notice of Appraised Value to be Sent to Property Owners

State law requires county appraisal districts to notify property owners about changes in their property's value. Around May 15, the Hansford County Appraisal District will mail property owners notices showing their 2011 proposed appraised value.

Sonya Shieldknight, Chief appraiser of the district reminds property owners that the letter of appraised value is not a tax bill.

Shieldknight emphasized the importance of this letter and the key information that it contains. "If an informal agreement cannot be made with the appraisal district, the property owner has the right to appeal to the Hansford County Appraisal Review board of any disagreement with the property's value. The notice includes instructions on how and when to file a protest and protest form.

What should a property owner carefully review? "Look at the proposed value for 2011," Shieldknight said. "The letter states the land's value and any improvement value for the property for the current year." The letter also includes current year information on exemptions granted on the property. It provides last year's value also.

Letters to property owners will also include estimated taxes. These taxes are based on the new taxable value and the taxing unit's tax rate from the prior year. Final tax amounts may vary from the "estimated" amounts.

Shieldknight asks property owners to check the legal description and mailing address to be sure there are no mistakes. "If the letter has an old address, please let the appraisal district know. The post office forwards mail to a new address for a short time, and tax bills do not go out until October," Shieldknight said.

A property owner is responsible for informing the appraisal district of the correct mailing address, and is also liable for additional penalties and interest on a tax bill that is not paid on time.

Property owners are encouraged to contact the appraisal district with any questions. Please call the office at 806-659-5575.



Dunn's FISH FARM

P.O. Box 85 Fittstown, OK 74842
 www.dunnfishfarm.com
 (800) 433-2950

Delivery of Channel Catfish, Bass, Hybrid Bluegill, Re-dear Bream, Coppernose Bluegill, Fathead Minnows, Black Crappie and Triploid Grass Carp are now available for Pond and Lake Stocking. 10 days notice and permit required for the purchase of Triploid Grass Carp.

- Live Delivery Guaranteed!
- Discounts/Special Deliveries are on large orders.
- Turtle Traps, Fish Feeders, Fish Traps
- Decorative Fountains, Aerators, Windmill Aerators!
- Vegetation Control, Pond Fertilizers, Floating Docks!

Delivery will be Tuesday, May 24, 2011 at Spearman Equity, 104 Collard Street, in Spearman between 7-8 a.m.

To place your order or for more information, call one of our Aquatic Consultants, local dealer, or email sales@dunnfishfarm.com.
 Mon-Fri 7 a.m.-6 p.m. • Sat. 8 a.m.-4 p.m. - CST
1-800-433-2950 Fax 580-777-2899
www.dunnfishfarm.com



REMEMBERING THEIR SACRIFICE

Memorial Day Service
Gruver Cemetery
May 29, 2011
3:00 P.M.
Honoring 7 local, fallen WW II Veterans.

MONUMENTS

Boxwell Brothers Funeral Home

519 Evans • Spearman
 659-3802

Dear friends,
 When you buy a monument from us we make sure it is exactly what you want at a price you can afford. If it is not right, we will make it right. And you will not have to search the countryside to find us. We are here when you have a need.
 Sincerely,
 Bob Boxwell

Donate A Boat or Car Today!

Boat Angel

"2-Night Free Vacation!"
1-800-CAR-ANGEL
www.boatangel.com

Offer good while supplies last. One free hat per customer. Must be at least 18 years of age or accompanied by an adult. Some restrictions apply.

VISIT COLORADO, GET A FREE HAT!

Order yours at COLORADO.COM/HATGIVEAWAY and pick it up when you visit any Official Colorado Welcome Center.

IN A LAND CALLED COLORADO



dish NETWORK

FREE HD FOR LIFE!

FOR 12 MONTHS
 Local Channels Included Everywhere!
 FOX CW

CALL NOW!
1-866-799-8039

Offer ends 05/17/11. Restrictions apply. Call for details.

DIRECTV

Direct Sat TV
1-800-360-1395
 Local Installers!

285+ Channels
 160+ HD Channels

Packages Start At
\$29.99 Mo.

2 FREE Upgrades - HD DVR & HD Receiver - Ask How!
HBO SHOWTIME starz cinemax
 For 3 Months

visit FAMILYPOOLFUN.COM

- Our pools create Generations of Memories everyday, vacations never end!
- Aboveground & Inground pools at WHOLESALE PRICING
- SIMPLE DIY Pool Kit Assembly
- SAVE MONEY on All Pool Supplies & Accessories. Ships Fast

Call Today! **800-950-2210**

Replenish the seed of faith through . . .

DAILY BIBLE READING, PRAYER & REGULAR CHURCH ATTENDANCE

Spearman Apostolic Faith Church 822 S. Dressen • 659-2870 Sunday School: 10 a.m. Worship Service: 11 a.m. Sun. Eve.: 6 p.m. Wed. Prayer Mtg: 7 p.m. Pastor - Jack Cornell First Assembly of God 401 N. Bernice • 659-2295 Sunday School: 9:30 a.m. Worship: 10:40 a.m. Evening Worship: 6 p.m. Wed. Youth: 7 p.m. Pastor - Brad Smith First Christian Church (Disciples of Christ) 29 S. Bernice • 659-2036 Sunday School: 9:45 a.m. Worship: 10:50 a.m. Minister - First Baptist Church 123 N. Bernice • 659-5557 Sunday School: 9:45 a.m. Worship: 11 a.m. Evening Worship: 7 p.m. Men's Bible Study - Wed., 7 a.m. Children's Choir - Wed, 6 p.m. Adult Choir - Wed, 7 p.m. Wed. Bible Study: 7 p.m. Pastor - Jim Medley Church of Christ 121 S. Haney • 659-3244 Sunday Bible Class: 9:45 a.m. Worship: 10:30 a.m. Evening Worship: 6 p.m. Bible Study Wed.: 7:30 p.m.	Sacred Heart Catholic Church 901 Roland • 659-2166 Sat. Night Mass: 5:30 p.m. Sun. Mass: 9 a.m. - English Sun. Mass: 11:30 a.m. - Spanish Rev. Gregory Bunyan First United Methodist 407 S. Haney • 659-5503 Sunday School: 9:45 a.m. Worship: 8:30 & 11 a.m. Jr. High Youth: 5 p.m. Sunday High School: 6 p.m. Sunday Kids Club: 3 p.m. Wed. Pastor - Toni Bailey Grace Presbyterian Church (Worships with Faith Lutheran Church) 1101 Bernice • 659-2033 Faith Lutheran Church (ELCA) 1101 Bernice • 659-2252 Sunday School: 9:45 a.m. Worship: 11 a.m. (Worships with Grace Presbyterian Church) Pastor - Cecil Biggers, PLM Union Church 31 S. Endicott • 659-2644 Sunday School: 10:00 a.m. Worship: 11:00 a.m. Bible Study: 7 p.m. Wed. Youth Service: 6 p.m. Wed. Pastor - Don Baltazor Fellowship Baptist 1102 S. Archer • 659-2783 Sunday School: 10 a.m. Worship: 11 a.m. Sun. Evening Worship: 6 p.m. Sun. Evening Spanish Worship: 7 p.m. Youth/Adult Service: 7:30 Wed. Pastor - Philip Hudson	Primera Mision Bautista 502 E. 7th • 659-3991 Sunday School: 9:45 a.m. Worship: 11 a.m.; Evening: 6 p.m. Wed. Prayer Meeting: 7 p.m. Thurs. Visitation: 7 p.m. Pastor Joe Garcia Jr. El Aposento Alto U.P.C.I. 1105 S. Roland Domingos: Escuela-Domical - 10 a.m. Culto Evangelistico - 7 p.m. Jueves: Oracion - 8 p.m. Mier: Estudio Biblico - 7 p.m. Pastor - A.G. Martell (806) 659-2153	Gruver United Methodist Broadway & Garrett 733-2651 Sunday School: 9:45 a.m. Worship: 8:30 & 10:50 a.m. Eve. Worship & UMY: 6 p.m. Pastor - George Price Spanish Cristo Redentor Church Hwy 15 806-659-2166 Gruver, TX Sun. Mass: 1:30 p.m. - Spanish Rev. Gregory Bunyan Oslo Oslo Lutheran Church (ELCA) 6 Miles West & 12 Miles North of Gruver 339-7646 Sunday School: 9:45 a.m. Worship: 11 a.m. Pastor - Arlen Lloyd Morse Morse Baptist Church 733-2757 Pastor - Gary Stevens Waka Church of Christ 300 Rogers Ave. 202-7126 Sunday School: 9:30 a.m. Sunday Worship: 10:30 a.m. & 6 p.m. Wednesday Bible Study: 7 p.m. Preacher - Ed Jenkins
--	--	--	---

He has showed you, O man, what is good. And what does the LORD require of you? To act justly and to love mercy and to walk humbly with your God. Micah 6:8

This feature is made possible through the sponsorship of these civic minded businesses:

Deakin ELECTRIC OILFIELD • RESIDENTIAL • COMMERCIAL 321 S. MAIN • SPEARMAN 1-800-999-1506 Chris Deakin (806) 659-5016 President	Bartlett's Lumber & Hardware 105 W. Broadway • Gruver, TX (806) 733-2404	BERRY CLEANERS Ann & Vernon Pipkin - Owners Phone 659-3122 • P.O. Box 1017 207 Main St. • Spearman, TX	Morse Implement & Auto Supply "Join us in church" Tom Dortch 733-2668 Box 89 • Morse, TX 79062
PRAIRIE MOTORS INC. Hwy. 207 South • P.O. Box 430 Spearman, TX 79081 • (806) 659-2541 www.prairiemotors.com	MurMur's Cafe 100 Roland St Spearman, TX. 659-3580	Hansford County Reporter-Statesman "Proudly Serving Hansford County Since 1907" (806) 659-3434 310 Barkley • Spearman, TX	INTERSTATE BANK, ssb www.interstatebank.net 322 Main • P.O. Box 146 Spearman, TX • 659-2559

HYI

FOR YOUR INFORMATION

Project Graduation 2011
Continuing with tradition, the parents of the Spearman Class of 2011 are planning a post-graduation event known as "Project Graduation". This event is an all-night, chaperoned alcohol and drug-free party that takes place after the graduation ceremony. The Class of 2011 will be provided with food, entertainment, sports, and lots of fun...not to mention memories that will last a lifetime! All this fun with the peace of mind that the Class of 2011 will be safe and having a night they will not soon forget. We are asking for help to support this event. If any business or community member, would like to donate to further defray the cost, we would be very appreciative. We will gladly accept prizes, gift certificates, and cash donations. Donations will be received until May 6th. Every dollar raised and donated goes directly towards the cost of the party. If you have any questions please contact Tammy Benton at 659-3071. Please make checks payable to Project Graduation 2011 Mail to: SHS Project Graduation 2011; C/O Tammy Benton; P.O. Box 415; Spearman TX 79081.

2nd Annual Heritage Days Skate Competition
The Skatepark Fundhouse, Inc. invites you to come hang out and watch our local and area skaters battle it out for Heritage Days Skate Champion. Judges include local and Palo Duro Skatepark founder, Chad Wilkerson, all the way from Lubbock, Texas, Mr. Steve Forcade, and Amarillo resident, Big Kris Barnings. The event will be held at 1 p.m. on May 21, 2011. Entry fees are \$5. (All patrons must sign a waiver of liability) Prizes of cash, decks, T-shirts and more will be awarded. Skaters will be divided into their specific ability and age groups. Highest cumulative score of 3 runs will win their divisions contest. Participant will have 1 minute, 30 seconds to shred. The \$5 entry fee will enable the skater to participate in the Bowl, Street, and Best Trick.

Spearman Big Fun Run
The 2nd Annual Spearman Big Fun Run and Family Fun Walk will be held Saturday, May 21st at 8:30 a.m. starting at the Purple Park (403 East 11th) in Spearman. A Family Fun 1 Mile Walk immediately follows at 9:00 a.m. Proceeds will benefit Big Brothers Big Sisters in Perryton, Spearman, and Gruver. This will be the first race of a two race series. The second race will be held August 20th in Perryton. Male and female first and second place prizes will be awarded in four divisions: 14 & under, 15-25, 26-40, and 41+. Medals will also be awarded for runners who compete in both events. Registration is \$25/single race or \$40 if competing in both races. Members of SWFTR or Lone Star Runners Club pay \$20. Family Fun Walk Package (family of 4) is \$90. To register for the 5K Big Fun Run or the One Mile Family Fun Walk, call the BBBS office at 434-0016. Registration will be available the day of the event. T-shirts will be guaranteed to the first 75 entries per event.

Stationmaster's House Museum Drawing
The Stationmaster's House Museum will hold a drawing for a 42" Samsung LED TV. The drawing will be held at 2:30 p.m. on May 21st on the lawn of Hansford County Courthouse, during the Heritage Days Celebration. Tickets may be purchased for \$5 each from any museum member, or from Doris Breeden at the Zulu Museum Building.

Circle of Friends May 20
You are invited to the area Circle of Friends on May 20 at 6:30 PM at the Museum of the Plains in Perryton.

Jordan Chapel Builders to Hold Dedication Service
Jordan Chapel Builders will hold a Dedication Service at the newly completed Chapel at the Rufe Jordan Prison Unit of the Texas Department of Criminal Justice, on Wednesday, May 25, 2011, at Pampa, Texas. A light lunch will be served by the Jordan Unit staff, beginning at 11:30 a.m., followed by the Dedication Ceremony at 1 p.m. Since the entire Panhandle has interest in the Jordan Unit, we are calling your attention to this event. If you and/or any members of your staff wish to attend for an on-site report, please RSVP to my email address, giving the name and last four digits of the Driver's License number of each person attending, at least 24 hours in advance. In order to comply with TDCJ security regulations, you will also need to bring your Driver's License or Photo ID. No cell phones, firearms, knives, or purses are allowed. Please lock your car.

Gruver Police Department to Host 2nd Annual Cook-Out
Gruver Police Dept will be hosting their 2nd Annual Gruver Police Week Cook-out. Friday, May 20th 12-2 p.m. All Hansford County deputies, Spearman PD, Stinnet PD, Gruver PD, local Highway patrol, dispatchers, 1st responders etc. are coming to remember and honor those who lost their lives and to celebrate the ones who still serve. Chief Gregory will give out gifts and door prizes to all active duty officers. After the meal all officers will be pampered with massages from a traveling massage team from Amarillo. We are trying to shed more light on the importance of our officers and the struggles and dangers they face daily.

Seeking Information for Website
Hansford Hospital is currently looking for literature or photographs regarding the history of the hospital for our up and coming website. If anyone has any materials or information that they would like to contribute please contact Christina Dettmer at 659-2535, ext. 3239.

Don't Text and Drive Decals
If you would like to purchase a lime green 'AMT 1994-2009 Don't Text and Drive' window decal in memory of Ali Tyler, please contact Stephanie Tyler at 806-736-0019. All proceeds go to the Ali Tyler Memorial Scholarship Fund. Decals are also available at Hansford County Floral Company on Main Street in Spearman.



Engagement Announcement

Debbie McManus of Amarillo and David McManus of Lanett, AL wish to announce the engagement of their daughter, Meredith Lee McManus, to Steven Vasquez. Steven is the son of Rejino and Rita Vasquez of Spearman. Debbie is the granddaughter of Ronnie and Peggy McManus of Lanett, AL, and the late Ray and Doris Cummings of Lanett, AL. Steven is the grandson of Ascencion Guzman and Edmundo Guzman of Dalton, GA and the late Sebastian and Luisa Vasquez of Durango, Mexico.

The couple plan to wed on July 30, 2011 at Westminster Presbyterian Church in Amarillo, TX. A reception will be held at the Renaissance Event Center in downtown Amarillo immediately following the ceremony.

Meredith graduated from Tascosa High School with honors in 2004. She received an Associates Degree from Amarillo College. She currently attends West Texas A&M University, where is majoring in pre-medicine with a minor in education. She is the office manager at Amarillo Superior Ironworks, Inc. and a full-time student.

Steven graduated from Spearman High School in 2001. He attended Amarillo College and West Texas A&M University. He is currently employed by San Antonio Restaurant located in Bell Helicopter.

For more information, please visit their website at: www.theknot.com/ourwedding/MeredithMcManus&StevenVasquez



**Lynxettes Summer Basketball
5th & 6th Grade Girls
Thank You Agco and McCattle for Sponsoring Us!**

(Back, L-R) Macy Walker, Lily Patterson, Halston Kenney, Baylee Baker, Finley Garnett; (Front, L-R) Brantly Shields, Maia Saenz, KD McCloy, Maren Garnett, Calli Pearson

Gordon's
Your place for
Bridal Registry

- Couples Currently Registered**
- Lizet Camacho & Miguel Olmos - 6/14
 - Cara Gwin & Lance Baker - 6/4
 - Kendra Sharke & T Jay Sherrill - 6/11
 - Jenna McElroy & Chance Riggins - 6/25
 - Jennifer Gillespie & Jose Moreno Jr. - TBA
 - Kamryn & Dane Harbour
 - Morgan Templeton & Dustin Mackie
 - Saylee Flowers & Ryan Renick
 - Vanessa Sullivan & Chase Schubert
 - Tanya Starkey & Jared George
 - Sharon Haney & Aaron Anderson
 - Jessica Blan & Joseph Elsheimer
 - Tabatha Shields & Matt Jones
 - Dana Lewis & Cass Cooper
 - Rossilyn Bulls & Andrew Reed

- Baby Registry**
- Baby Girl of Nikki & Brady Hart - 5/21
 - Baby Girl of Richelle & Lupe Mendoza - 6/11
 - Baby Boy of Courtney Baca
 - Phynlee (Girl) & Payne (Boy) - Twins of Kristie & Reagan Renner
 - Ava Nicole - Baby Girl of Kaitlyn Poole
 - Lane (Girl) & Sloan (Boy) - Twins of Erika & Scott Stedje

Gordon's - 659-2141
314 Main Spearman

WOW!

Home Security System!
\$850 Value! ONLY \$99!
Call Now and Help Protect Your Family!

1-888-437-1972

At no cost to you for parts and activation with only a \$99 installation fee and the purchase of alarm monitoring services. Call for Terms & Conditions.

Thrill Dad this Father's Day!

45393JW Thrill The Grill Combo
2 (6 oz.) Filet Mignons
2 (6 oz.) Top Sirloins
4 (4 oz.) Boneless Pork Chops
4 (4 oz. approx.) Boneless Chicken Breasts
4 (4 oz.) Omaha Steaks Burgers
4 (5 1/2 oz.) Stuffed Baked Potatoes **\$49.99**
Reg. \$152.00 | Now Only.....

2 Free Gifts FREE 6-Piece Cutlery Set & Cutting Board with purchase.

2 packages and 1 FREE Cutlery Set & Cutting Board per address. Standard S&H will be applied per address. Expires 6/19/11. ©2011 OCG | Omaha Steaks, Inc. | 12382

To order call: 1-888-443-2603
www.OmahaSteaks.com/fd08

MITCHELL THEATRES.COM
GUYMON, OK • LIBERAL, KS • NEWTON, KS

NORTHRIDGE 8
Guymon, Oklahoma
www.northridge8.com
580-338-3281

SOUTHGATE 6
Liberal, Kansas
www.southgate6.com
620-624-5573

SEQUOYAH 8
Garden City, Kansas
www.sequoyah8.com
620-275-2760

CHISHOLM TRAIL 8
Newton, Kansas
www.chisholmtrail8.com
316-283-0555

FRESH POPCORN EVERYDAY!
-PARTY ROOM & ARCADE-

FPC
Frank Phillips College

REGISTRATION
for **SUMMER 2011 CLASSES** is underway
at the ALLEN CAMPUS
(2314 S. Jefferson, Perryton, Texas).
Classes begin June 1st (Summer 1)
and July 11th (Summer 2).

SO...
WHAT
ARE YOU
WAITING
FOR?

WHY SHOULD YOU CHOOSE THE FPC ALLEN CAMPUS?

- Close to Home!
- Small Class Size!
- Affordability!
- Quality Education!
- Transferability of Classes!

With our **AFFORDABILITY** and **GUARANTEED TRANSFERABILITY** of **CORE CURRICULUM COURSES (IT'S THE LAW!)** to other **PUBLIC COLLEGES AND UNIVERSITIES IN TEXAS (PROVIDED YOU MAKE A GRADE OF "C" OR BETTER)** it just makes "CENTS" to take classes at Frank Phillips College.

Call (806.648.1450) or stop by the Allen Campus to complete your paperwork. You can download an Allen Campus class schedule as well as a full schedule of classes offered by FPC by accessing our website:
www.fpctx.edu

Writing Matters
AT FRANK PHILLIPS COLLEGE
www.fpctx.edu
Ask us about this!!

Hansford County 4-H Qualifies Two Livestock Judging Teams for State



Junior Livestock Judging Team (Back, L-R) Jade Red, Carter Burgin, Tyler Stedje, Tate Tyler, Jonathon Crowl, Maggie Pipkin; (Middle, L-R) Reed Anderson, Rayel Anderson, Dustyn Kelley, Jaci Burgin, Kaycee Anderson; (Front, L-R) Burt Williams and Bret Burgin

Senior Livestock Judging Team (Back, L-R) Travis Stedje, Audrey Lieb, Jennifer Crowl, Callie Stedje, Jace Lane, Brenna Reid; (Front, L-R) Burt Williams, Jacob Lieb, Bret Burgin, John Bergin

The 4H livestock teams competed in two contests in April. They traveled to Clarendon on April 2 and to West Texas A&M on April 15 for the District 1 competition. At Clarendon, the senior team placed 4th overall out of 17 teams, winning 3rd in sheep and 4th in reasons. Individually,

Callie Stedje won the high individual overall award. She beat 75 individuals and placed in each species, winning 4th in swine, 4th in sheep, 8th in cattle, and 8th in reasons. John Bergin placed 10th overall and was recognized for 2nd in swine. Brenna Reid came in 12th overall and 10th in

reasons. Jacob Lieb earned 21st place overall and Audrey Lieb placed 7th in cattle. In the Junior division, Hansford County placed 10th overall out of 22 teams.

The WT Nance Ranch was the site for the District 1 competition. 142 contestants representing 38 teams were present for the Junior division. The Hansford County youth placed 2nd as a team, earning species awards for 2nd in cattle, 3rd in sheep, and 4th in goats. Individually, Jaci Burgin was awarded the high individual overall award and placed 1st in sheep, 2nd in cattle, and 2nd in swine. Jonathon Crowl placed 25th overall and 21st in cattle. Rayel Anderson earned 7th in sheep. Carter Burgin was recognized for 8th in sheep. Other members of the Hansford County Jun-

iors are Tyler Stedje, Kaycee Anderson, Tate Tyler, Maggie Pipkin, Dustyn Kelley, Reed Anderson, Jade Red, Cooper Lieb, and Thaxton Boyd.

In the Senior Division, Hansford County had two of the 10 teams competing for three qualifying spots for the State contest. Hansford One, made up of mostly seniors, won swine and reasons on their way to placing first and securing a trip to State. Hansford Two, made up mostly of freshmen, won sheep and placed third in cattle, goats, and reasons before finally settling out in third place and nailing down the last trip to State. This was the first time a county in District 1 had qualified two teams for State. Each of the eight Hansford judges were recognized individually. Brenna placed 3rd overall

out of the 48 contestants. Additionally she was 1st in swine and 4th in reasons. Audrey placed 4th overall as well as 2nd in goats and 3rd in cattle. Jace Lane placed 5th overall, 3rd in goats, 5th in cattle, and 10th in swine. John placed 7th overall, 4th in swine, 5th in goats, and 7th in reasons. Jacob placed 10th overall, 2nd in swine, and 6th in reasons. Callie earned 14th individual overall honors.

Jennifer Crowl was recognized for 7th in sheep and Travis Stedje brought home a 5th in sheep.

The team will continue practicing for the State Contest held at Texas A&M June 15. County Extension Agent Burt Williams and Coach Bret Burgin would like to thank Nick Slough for his help in preparing the students for the District Contest.

Thank You!

The Gruver High School Cheerleaders would like to thank our wonderful parents, fans, and businesses in the community for advertising in the Top of Texas Football magazine. This is the main fundraiser of the year for the cheerleaders and the money is used to purchase uniforms, attend summer camp, and purchase homecoming and spirit items. Every year we challenge ourselves to increase the number of advertisers we have so that the Gruver section of the book is even larger. Every year our goals are met because of your support and generosity. Thank you VERY much!

The Tri- Sponsors:

Kimberly Irwin, Stacie Armes & Troy Seagler

Tournament of Roses Parade

Plus Grand Canyon and Las Vegas!

10 Days from \$1149*

Departs Friday December 30, 2011

This tour is an all time favorite among our guests. Enjoy an exclusive 123rd Tournament of Roses Parade VIP program and presentation of the floats followed by the Tournament of Roses Parade up close and personal the next day. Enjoy the brilliant colors and the fragrance of thousands of flowers from your reserved Grand Stand seats. After the parade, you will head to Nevada, Arizona and Utah. See the South Rim of the Grand Canyon, one of the most magnificent views in the world, and have the option to explore Zion National Park. Visit the entertainment capital, Las Vegas for more fun than should be allowed. You'll fly home from Las Vegas echoing this years Rose Parade Theme, "Just Imagine..."

*\$999 plus \$149 tax, service and gov't fees. Air add-on available.



Call for details! 1-888-817-0454

Promo Code: TN111648

HOME PHONE SERVICE

NO Pre-Payment • NO Deposit Required!

Rates from \$6.99 per month*

(\$17/month including approximate taxes & fees)

FREE 1st Month of Service

Caller ID & Call Waiting included in Packages**

New-Talk 866.934.3448

*\$0.99/month with auto pay **Requires silver or gold package



The Original

"Hip-Hop" Festival!

May 19-22

Copperas Cove City Park

FAMILY FUN

Music • Food

CARNIVAL • ARTS & CRAFTS

COPPERAS COVE, TEXAS

254-547-7571 • WWW.RABBITFEST.COM



Kirk Weatherford

8126 FM 3395
Sanford, TX 79078

(806) 336-2820

Toll Free: 1-800-585-6047

Email: kirk@weatherford-construction.com

Prices Good Thru 6/11/11

305 W. Kenneth
Spearman • 659-3135

101 Main Ave.
Gruver • 733-2953

We Have Everything
You Need For The Perfect
Picnic

BAR-S FRANKS
8 CT. PKG. AND
TENDER CRUST
HOT DOG BUNS
8 CT. PKG.
\$1.99

6 PACK CANS
PEPSI
1 @ REG. PRICE OR
2 \$4
FOR

ALLSUP'S ICE
8 LB. BAG
\$1.79

ALLSUP'S 24 OZ.
WHEAT OR WHITE
BREAD
1 @ REG. PRICE OR
2 \$1
FOR
MIX OR MATCH

RED DIAMOND TEA
SWEET OR UNSWEET GALLON
1 @ REG. PRICE OR
2 \$5
FOR

TOM'S CHIPS
& SALTY
SNACKS

BAR-S ASSORTED
DELI
MEATS
TURKEY, HONEY HAM
OR SMOKED HAM

DORITOS, FRITO OR RUFFLES
TAPATIOS
\$2.49

CONDIMENTS
KETCHUP,
MIRACLE WHIP,
MUSTARD, RELISH,
PICKLES AND
HOT SAUCE

PLATES, NAPKINS
OR SPOONS
PAPER
GOODS

Come In To See Our
Other Great Sale Items

DAVID
SUNFLOWER SEEDS
5.25 OZ. PKG.
99¢

ASSORTED
JACK LINKS JERKY
3.25 OZ. PKG.
\$4.99

FRITO LAY
CHIPS &
SALTY SNACKS



Ford Prototype Engines Preserved by Cecil Ralston, Now on Display at Piquette Plant Museum

1906 Ford Model N Prototype Engine

In reminiscences of his days at Ford Motor Company, an early employee noted that Mr. Ford did not like engineering drawings. He much preferred something three dimensional and tangible to get an impression of whether a particular design or idea had merit. What you see before you is an example of just such a thing.

At first glance, this is a typical Ford Model N Engine. Closer inspection reveals however, that this is simply a mock-up and was never a running engine. It has no crankshaft, connecting rods or pistons. But, it was a valuable tool to Henry Ford and his early designers and engineers that eventually allowed them to produce the final design of the "N-R-S" family of Ford engines beginning in 1906.

For an engine that has never run, it has travelled many thousands of miles. This "engine" had its beginnings in this very building. It was a design concept model used by Henry Ford and his design team. Many years later, it was purchased, at auction, by early Ford enthusiast Cecil Ralston. He realized that this artifact was truly something more than an ordinary early Ford engine and bought it simply to maintain it and prevent it from being parted out.

After many years, Mr. Ralston passed away. His good friend, Les Schuchardt of Spearfish, SD, also knew that this engine was special. Following his good friend's lead, he purchased the engine to continue its preservation and care.

In July of 2010, Mr. Schuchardt generously invited the attendees of the Model T Ford Club International to visit his collection during their annual "International Tour." As an attendee of that tour, the engine caught the eye of a Detroit area collector, Jerry VanOoteghem. Being an active volunteer at the historic Piquette Plant, it occurred to Jerry that this engine should return to its birthplace and be displayed as part of the story of Henry Ford, the Model T and the Ford Motor Company. A deal was made with Les to buy the engine with the provision that it be on display at the Piquette Plant, thereby fulfilling the desires of Mr. Ralston.

1908 Ford Prototype Engine

"People thought you couldn't build an engine with a removable cylinder head which wasn't going to leak... They thought it was crazy to build a detachable head. We tested that out on the Model N. We built that N just that way to find out..."

Reminiscences of Joe Galamb, Piquette era employee

Henry Ford's simple and nimble Model N was a huge success for the fledgling Ford Motor Company. More than being a good seller, it was confirmation of Ford's strategy to build a cheap sturdy car for the masses. By 1907/1908 it was becoming evident that

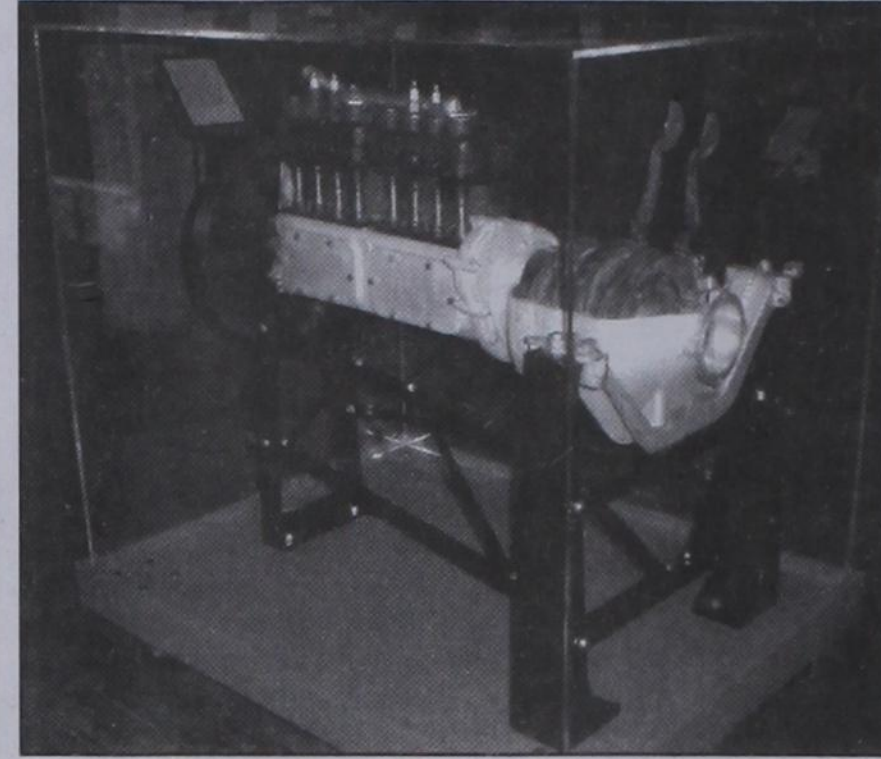
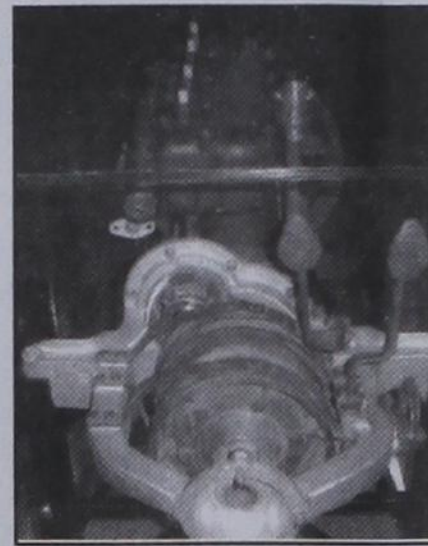
a new model would be needed. It would be the culmination of all that was good about the Model N and its sister cars, the "R" & "S." While a success, the N did have its weak areas. These would be addressed in designing the new model.

Automotive manufacturing standards of the day dictated an engine designed with its cylinders closed at one end. Though more difficult to manufacture and service, it ensured that the combustion pressure would be positively sealed. To make a removable cover, or head, over the formerly closed end of the cylinder,

would be to introduce a possible leak for high pressure combustion gasses, and coolant, to escape.

Given the numbers of cars Henry Ford envisioned producing, he most likely could not ignore the economy of making engines with cylinders open at both ends. The engine you see before you is Henry Ford's "test bed" for just such an innovation. This engine, most likely the very first Ford engine with a detachable cylinder head, was produced at Piquette using a stock Model N engine. It was part of Ford's plan to produce the single most important car in history, the Model T Ford. This engine represents an automotive engineering milestone.

Just at its "sister" engine, the Model N prototype, it is only through the foresight of early collectors such as Cecil Ralston and Les Schuchardt that this engine is available for visitors of Piquette to view today.



HANSFORD CEMETERY CLEANUP



Attention all Hansford Cemetery property owners: We will be doing a cemetery clean-up beginning May 16th. If you have anything you need to pickup please do so before May 16th. All flowers not picked up will be disposed of permanently. If you have any questions please call 659-3082.

Thank you for your assistance.
The Hansford Cemetery Board



CONGRATULATE YOUR GRADUATE!

WITH AN ADVERTISEMENT IN THE REPORTER-STATESMAN!



The 2011 Graduation Section will be published on May 26th. The advertising deadline will be Monday, May 23rd at 5 p.m.

CALL 659-3434. OR E-MAIL REPORTER@SPEARMANREPORTER.COM FOR DETAILS.

Ads will appear in the May 26th Edition and online at www.spearmanreporter.com.



If you're in here...



don't you hope someone is in here?

VOLUNTEER
659-2524

58-195 (01-10/10)
(41.41, 41.70)

Property Tax Protest and Appeal Procedures

The law gives property owners the right to protest actions concerning their property tax appraisals. You may follow these appeal procedures if you have a concern about:

- the market or appraised value of your property
- the unequal appraisal of your property
- the inclusion of your property on the appraisal roll
- any exemptions that may apply to you
- the qualification for an agricultural or timber appraisal
- the taxable status of your property
- the local governments which should be taxing your property
- the ownership of property
- the change of use of land receiving special appraisal
- any action taken by the chief appraiser, appraisal district or appraisal review board that applies to and adversely affects you.

Informal Review

If you wish to have an informal review of your property with our staff, please come to our office in Spearman M-F 8:30 a.m. to 5 p.m. except holidays.

Review by the Appraisal Review Board

If you can't resolve your problem informally with the county appraisal district (CAD) staff, you may have your case heard by the appraisal review board (ARB).

The ARB is an independent board of citizens that reviews problems with appraisals or other concerns listed above. It has the power to order the CAD to make the necessary changes to solve problems. If you file a written request for an ARB hearing (called a notice of protest) before the deadline, the ARB will set your case for a hearing. You'll receive written notice of the time, date and place of the hearing. If necessary, you may request a hearing in the evening or on a Saturday or Sunday. Prior to your hearing, you may ask to review the evidence the CAD plans to introduce at the hearing to establish any matter at issue. The CAD might ask you for a copy of the evidence you plan to present. The law provides that before a hearing on a protest or immediately after the hearing begins, you or your agent and the CAD shall each provide the other with a copy of any written material intended to be offered or submitted to the ARB at the hearing. To the greatest extent practicable, the hearing will be informal. You or a designated agent may appear in person to present evidence or you may send notarized evidence for the ARB to review at your hearing. The CAD representative will present evidence about your case. You may cross-examine the CAD representative. The ARB will make its decision based on the evidence presented. In most cases, the CAD has the burden of establishing the property's value by a preponderance of the evidence presented.

In certain protests where the owner has submitted an independent appraisal before the hearing, the chief appraiser has the burden of proving the property's value by clear and convincing evidence. You can get a copy of a protest form from the appraisal district office at

709 W 7th Ave Spearman, Texas 79081.

Note: You shouldn't try to contact ARB members outside of the hearing. The law requires ARB members to sign an affidavit saying that they haven't talked about your case before the ARB hears it.

Review by the District Court or an Arbitrator or SOAH

After it decides your case, the ARB must send you a copy of its order by certified mail. If you're not satisfied with the decision, you have the right to appeal. If you choose to go to court, you must start the process by filing a petition within 60 days of the date you receive the ARB's order. In certain cases, as an alternative to filing an appeal in district court, you may file, not later than the 45th day after you receive notice of the ARB order, a request for binding arbitration with the county appraisal district. In certain cases originating in certain counties, as an alternative to filing an appeal in district court, you may appeal to the State Office of Administrative Hearings (SOAH). An appeal to SOAH is initiated by, not later than the 30th day after you receive notice of the ARB's order, filing with the chief appraiser of the county appraisal district a notice of appeal with the applicable filing fee.

Tax Payment

You must pay either the amount of taxes due on the portion of the taxable value not in dispute or the amount of taxes due on the property under the order from which the appeal is taken.

More Information

You can get more information by contacting the Hansford County Appraisal District at (806) 659-5575 or 709 W 7th Ave, Spearman, TX 79081-3407. You can also get a pamphlet describing how to prepare a protest from the Appraisal District or from the State Comptroller's Property Tax Division, PO Box 13528, Austin, TX 78711-3528.

Deadline for Filing Protests with the ARB*

Usual Deadline

On or before May 31 (or 30 days after a notice of appraised value was mailed to you, whichever is later).

Late protests are allowed if you miss the usual deadline for good cause. Good cause is some reason beyond your control, like a medical emergency. The ARB decides whether you have good cause.

Late protests are due the day before the ARB approves records for the year. Contact your appraisal district for more information.

Special Deadlines

For change of use (the appraisal district informed you that you are losing agricultural appraisal because you changed the use of your land), the deadline is not later than the 30th day after the notice of the determination was mailed to you.

For ARB changes (the ARB has informed you of a change that increases your tax liability and the change didn't result from a protest you filed), the deadline is not later than the 30th day after the notice of the determination was mailed to you.

If you believe the appraisal district or ARB should have sent you a notice and did not, you may file a protest until the day before taxes become delinquent (usually February 1) or no later than the 125th day after the date you claim you received a tax bill from one or more of the taxing units that tax your property. The ARB decides whether it will hear your case based on evidence about whether a required notice was mailed to you.

* The deadline is postponed to the next business day if it falls on a weekend or holiday.

HELP WANTED

HELP WANTED: Experienced automotive technician needed. Good working environment, holiday pay, health insurance. Also service department helper needed. Apply in person at Prairie Motors in Spearman. (806) 659-2541 or 1-800-692-4657. TFN(12/2/10)B

HELP WANTED: Now seeking a temporary full/part time dependable salesperson to operate Spearman store. Duties: Assisting customers, maintaining plants, and operating cash register. Starting pay: \$8.00/hour - 40 hour work week. No experience necessary. Hiring begins April 1st. Send resume to D&C Greenhouse, 36 Nelson Drive, Spearman TX 79081. 8(3/31/11)B

HELP WANTED: Deakin Electric is looking for an individual to join their office team. Candidate must possess basic computer skills, good phone and organizational skills and must be willing to learn Quickbooks or have previous knowledge of the program. Some additional responsibilities include filing and other secretarial/office duties. Pay depending upon qualifications. Apply in person at 321 Main Street, Spearman TX 79081. TFN(3/31/11)B

HELP WANTED: Deakin Electric is currently for someone dependable to clean the offices weekly. Please apply in person at 321 Main Street, Spearman TX 79081. TFN(3/31/11)B

HELP WANTED: Dean Cluck Feedyard in looking for Feed Truck Drivers and Mill Manager/Operator. Please apply in person or fax resume to 806-733-2244, Attn: Chad Grimes. TFN(4/14/11)B

HELP WANTED: Stratford Hospital District is seeking a District Business Manager to be responsible for the successful oversight of the District Businesses including Elk Pharmacy, Stratford Family Medical Clinic, Stratford Emergency Medical Service and Coldwater Manor Nursing Home. Necessary skills needed: Accounting knowledge, multi-tasking, computer skills, proficient in Quickbooks, HR experience, public relations, team player. Stratford is a small town in the northern Texas Panhandle. Send resume to Board President, Stratford Hospital District, gssw05@xit.net, or PO Box 1189, Stratford TX 79084. Phone 806-396-5568. EOE 3(5/12/11)B

HELP WANTED: Mission Petroleum Carriers. Accepting Applications. Class 8 Diesel Mechanic. Paid Weekly, Vacation, 401K, Medical, Life, Full Time/Class C Drivers License Required. Contact: DeAnna Bales 800-737-9982 ext. 1207 or dbales@mipe.com. To Apply in Person, Stop By: 1101 North Dumas Ave. Dumas, TX 79029 Mon-Fri 8am-5pm. EOE. 2(5/12/11)B

SERVICES

HOOCHY POOCHY PARLOR
Call us for all your pet's grooming and boarding needs. Call now for reservations! 806-273-2724.
TFN(11/2/07)B

TIERED OF GARAGE SALE PRICES? Let me buy your good used furniture! 2nd Chance Antiques & Furniture, Don 806-648-1480; 806-202-1391 cell. TFN(1/20/11)B

GARAGE SALE

BIG, BIG GARAGE SALE: Saturday, May 14th, 1112 Townsend St., 8 a.m.-2 p.m.; Furniture, kitchen "stuff," decorating items, outdoor furniture, lamps, bedding - to many items to mention!
1(5/12/11)

PUBLIC NOTICE

LEGAL NOTICE
Hansford County Commissioner's Court will receive bids until 4:00 p.m. on Friday, May 13, 2011 on one new 2011 1/2 ton or 3/4 ton regular cab, 4-wheel drive pickup with/without trade-in for Precinct 3. Bids will be opened and reviewed prior to Monday, May 23, 2011's regular Commissioners' Court meeting beginning at 10:00 a.m.
Specifications are available in the County Judge's Office or the County Auditor's office in the Hansford County Courthouse in Spearman. The Court reserves the right to accept or reject any or all bids.
Benny Wilson
Hansford County Judge
3(5/5/11)B

French & Co., Realtors
273-7355

Country Living in Morse
4 BR, 2 B, located on 1.06 acres - \$129,000.
Call for immediate showing
806-683-2267

French & Co., Realtors
273-7355

Beautiful 3 BR, 2B home in Morse, Texas. 1.66 acres. Updates: Cabins, Corrugated tile & wood floors, stainless steel, custom paint, 2bx33 garage & separate shop.
Call Michele for details.
806.273.7355

French & Co., Realtors
273-7355

SHERMAN CO., TX - 627 acres, choice land, four 1/4 mile sprinklers, fully developed, one 1/4 mile off Hwy. 287 on paved CR - CC, 3 phase electricity, new irrigation well drilled in 2010.
AMARILLO, TX. - 4 MI. N. OF LOOP 335 - development potential (wind energy, comm., res.) 4872.8 ac. +/- of beautiful ranch country, pvt. on four sides. Deer, quail & dove. 50% MINERALS!
CASTRO CO, TX. - on pvmt., 1808 ac. +/-, permitted for 7,200 cows (4,000 milking), pre-con. pens w/permit, sprinklers, irr. wells, employee housing, barns.
DEAF SMITH COUNTY SECTIONS - Three adjoining sections east of Hereford, Texas, dryland farm, stock water, good fence.
WEST OF DUMAS on pvmt. 606 ac. +/-, 17 tower sprinkler, four irr. wells, excellent location for residential or commercial development.
BUDDY CLINE ROAD - Moore Co., TX. - 1/2 section choice land, two wells (one new) and sprinklers.
MOORE CO., TX - 800 ac. with 1/2 section rigged for sprinkler plus 480 acres of CRP, 1 1/2 miles out of Dumas with pvmt. on two sides.
1200 SOW FALLOW TO FINISH OPERATION - Moore Co., TX - PRICE REDUCED! Two separate units can be divided - Please contact broker for info package and price info.
SEE OUR WEBSITE OR CALL US!
www.scottlandcompany.com
Shawn Gillispie 806/922-5532
Ben G. Scott, Broker
1-800-933-9698 day/eve
TFN(5-12-11)

LEGAL NOTICE NOTICE OF PUBLIC HEARING SPEARMAN PLANNING AND ZONING COMMISSION

Date: May 25, 2011
Time: 9:00 a.m.
Place: City Council Chambers, 30 S. W. Court, Spearman, Texas.
Purpose: To consider in public hearing the rezoning of the property listed below plus one-half of all bounding streets, alleys and public ways from Single Family Residential District to Mobile Home Residential District.
Legal Lots 7, 8, 9, 10, 11 & 12, Etter Subdivision, City of Spearman; Hansford County, Texas, being addressed as the even side of the 400 block of S. Hazelwood St.
If the Planning and Zoning Commission favorably considers the request the City Council will hold a public hearing to consider the amendment as follows:
Date: June 21, 2011
Time: 7:00 a.m.
Place: City Council Chambers, 30 S. W. Court, Spearman, Texas.
For additional information call 659-2524.
/s/ Cheryl Gibson-Salgado, City Secretary
2(5/5/11)B

REQUEST FOR QUALIFICATIONS (RFQ) FOR COMMUNITY SHELTER(S) CONSTRUCTION MANAGER-AGENT

Hansford County, on behalf of the Pringle-Morse Consolidated School District (CISD), is seeking to contract with a qualified firm or individual to provide construction management services in conjunction with the construction of a community storm shelter in Morse, Texas.
Firms interested in responding to this opportunity must submit a Statement of Qualifications (SOQ) indicating their capability and capacity to perform the necessary services. This RFQ process is being coordinated through the CISD. To obtain a copy of the RFQ packet, contact Kent Hargis with the CISD by mail at Box 109, Morse, TX 79062; or by phone at: (806) 733-2507; or by email at: kent.hargis@region16.net.
SOQs must be received by the CISD no later than 4:00 p.m. on Monday, May 16, 2011, to be considered. Hansford County reserves the right to negotiate with any and all firms or individuals that submit SOQs, as per the Texas Professional Services Procurement Act and Office of Management and Budget Circular No. A-102.
Hansford County is an Affirmative Action/Equal Opportunity Employer.
2(5/5/11)B

hchd
Hansford County Hospital District
Openings at Hansford Hospital
Home Health/Hospice RN and LVN: Provide general nursing care to patients in resident setting. Interacts with patients and patient's families, Medical Staff members and other departments of HCHD on a continuous basis.
Openings at Hansford Manor
CNA: CNA certification required. Must be able to provide assigned residents with routine daily nursing and services in accordance with the residents assessment and care plan, and as may be directed by your supervisor.
Great working environment and staff, quality facility providing opportunities for professional growth. Great benefit package. Apply at 707 S. Roland, Spearman, TX or contact Jackie Nelson at 806-659-5841. Download application at www.hchd.net
EEOE
(4/28/11)

French & Co., Realtors
273-7355

Country Living in Morse
4 BR, 2 B, located on 1.06 acres - \$129,000.
Call for immediate showing
806-683-2267

French & Co., Realtors
273-7355

Beautiful 3 BR, 2B home in Morse, Texas. 1.66 acres. Updates: Cabins, Corrugated tile & wood floors, stainless steel, custom paint, 2bx33 garage & separate shop.
Call Michele for details.
806.273.7355

Sergio's Auto Sales
We appreciate your support!
Sergio Vargas
120 W Kenneth Ave • Spearman TX 79081
(806) 659-9971 - day • (806) 330-0173 - night
Canyon Location Phone Number: (806) 231-8388

SERGIO'S AUTO SALES
SERGIO VARGAS
120 W. KENNETH AVE. SPEARMAN, TX 79081
806 659 9971 CEL. 806 330 0173

See us for:
AUTO • HOME • CROP HAIL • FARM & RANCH • MULTIPERIL • LIVESTOCK

INSURANCE
BORT AGENCY, INC.
510 Main St. • Gruver, TX
(806) 733-2456

VISTA RAF PRAY
ACHES ELL HEINE
MAULLS EAU ORLON
POLLACK MOLTEN
SIR LEWD
WHO LOSE LEHMAN
OARS WHOM NAOMI
RILL DINER ROUX
STOOP MIMI PESO
TIPTOE NOSY DEN
OBOE HOP
GOOBY SINATRA
RIVAL EMU DROOL
OBESSE ROE ESTOP
DENT SOT REEDS

5	8	9	2	1	7	4	6	3
3	6	1	8	4	5	7	9	2
4	7	2	9	6	3	1	8	5
8	5	3	6	7	1	2	4	9
9	1	7	4	3	2	6	5	8
2	4	6	5	9	8	3	1	7
6	2	4	3	8	9	5	7	1
7	3	8	1	5	6	9	2	4
1	9	5	7	2	4	8	3	6

TEXAS STATEWIDE CLASSIFIED ADVERTISING NETWORK
TexSCAN

TexSCAN Week of May 15, 2011 AUCTIONS

LAKE PROPERTY AUCTION Lake Cypress Springs, June 4th, 20 Acres, all or part. Details at TexasLakeLotsAuction.com, 1-888-300-0005; United Country C&P, Lic#13489

DRIVERS

DRIVER CDL-A: Texas regional, outstanding opportunity. We care about drivers. Get home often and get the paycheck you need. CDL-A, 8 month, OTR experience. 1-888-730-9312

DRIVER COMPANY/OWNER Operators. Tango Transport hiring solos and teams. Consistent miles, competitive pay, great benefits, all new trucks. CDL-A and 15 months experience. www.drivefortango.com; 1-877-826-4605

DRIVER DEDICATED DRIVERS average \$1000-\$1200 per week. Consistent home time. CDL-A with 1 year tractor-trailer experience required. Call 1-888-362-8603 or apply online AVERITTcareers.com EOE

DRIVERS-DEDICATED DRIVERS. Start at 35¢ cpm with stop pay. BC/BS benefits package. Mon-Fri with some Saturday. CDL-A with 1 year experience and Hazmat required. Call 1-888-595-9720 or apply at AVERITTcareers.com. EOE.

DRIVERS-NO EXPERIENCE. No problem. 100% paid CDL training. Immediate benefits. 2V/10 program. Trainers earn up to 49¢ per mile! CRST Expedited. 1-800-326-2778, www.joinCRST.com

DRIVERS-OWNERS OPERATORS. lease purchase. Earn up to \$5K weekly. Off every weekend. Run Texas only. Money! Money! \$1000 sign-on bonus! 1-877-290-9492; www.NorthAndSouthExpress.com.

DRIVERS-OWNER/OPERATORS Solo, teams. Fleets. \$1.28 per mile (includes FSC) 900 mile average length haul. We have more freight than available trucks! 1-800-817-3962.

DRIVERS-PAY INCREASE! Regional MEYERS CANYON Ranch #53, West Texas, Van Drivers start at 37¢ cpm with 1 year 178.9 acres, deer, dove, blue quail. Good draw; experience. Training available for drive North side fenced. \$350/acre, with owners with less experience. Great benefits/ financing. Ron Wyatt, Broker, 1-210-844-home weekly. Call 1-888-362-8608 or visit 3546. www.westernexasland.com

AVERRITTCareers.com, EOE.

DRIVERS-STUDENTS Get your CDL and pull your first load within 18 days from start to finish. Free tuition at FFE Driver Academy. recruit@fex.net. 1-855-378-9333.

OWNER OPERATORS Needed for regional flatbed runs. Guaranteed home weekly, 2500 miles average weekly. Up to \$1.80 for all miles. Call 1-888-903-6594; www.wylictrucking.com

YOU GOT THE drive, we have the direction. OTR drivers. APU Equipped. Pre-Pass, EZ-pass. Pets / passenger policy. Newer equipment. 100% NO touch. 1-800-528-7825

FINANCIAL

CASH NOW! CASH for your structured settlement or annuity payments. Call J.G.Wentworth. 1-866-494-9115. Rated A+ by the Better Business Bureau.

REAL ESTATE

10.1 ACRES. Duval County. Brush, deer, hogs, quail. \$29,500, owner financing or Texas Veterans Land Board financing. Toll free, 1-866-286-0199. www.westernexasland.com

\$106 MONTH BUYS land for RV, MH or cabin. Gated entry, \$690 down, (\$6900/10.91%/7yr) 90 days same as cash. Guaranteed financing. 1-936-377-3235

ABSOLUTELY THE BEST VIEW Lake Medina/Bandera 1/4 acre tract, central W/S/E. RV/motor home/house. OK only \$830 down \$235 month (12.91%/10yr). Guaranteed financing, more information call 1-830-460-8354

AFFORDABLE RESORT LIVING on Lake Fork. RV and manufactured housing OK! Guaranteed Financing with 10% down. Lots starting as low as \$6900. Call Josh, 1-903-878-7265

Run Your Ad In TexSCAN!

Statewide Ad\$500
301 Newspapers, 942,418 Circulation

North Region Only\$230
98 Newspapers, 263,811 Circulation

South Region Only\$230
101 Newspapers, 366,726 Circulation

West Region Only\$230
102 Newspapers, 311,881 Circulation

To Order Call this Newspaper direct or call Texas Press Service at 1-800-749-4793 Today!

NOTICE: While most advertisers are reputable, we cannot guarantee products or services advertised. We urge readers to use caution and when in doubt, contact the Texas Attorney General at 1-800-621-0508 or the Federal Trade Commission at 1-877-FTC-HELP. The FTC web site is www.ftc.gov/hzop

Extend your advertising reach with TexSCAN, your Statewide Classified Ad Network.

The JOYS of Summer

Available all year!

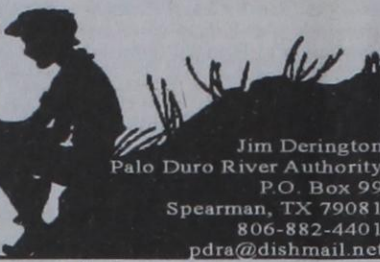
SNOW CONE STAND

Monday-Friday 2-8 p.m.

MURMUR'S CAFE
100 S. Roland • Spearman
659-3580

by Dorothy Hudson

Out at the Lake



Jim Derington
Palo Duro River Authority
P.O. Box 99
Spearman, TX 79081
806-882-4401
pdra@dishmail.net



This is a female Varied Thrush, photographed in the P.D.R.A. office yard.

Lake Level--May 16, 2011--41.27 feet (-0.33)

The office gauge showed .68 inch from the rain the morning of May 11. However, since the Lake had .82 inch the week before, the Park has really greened.

Gruver and Morse had around 2 inches from the May 11 rain. Both creeks ran from it, but neither made it to the Lake.

Last weekend a church affiliated group of 12 RVs and 2 other camping outfits from Sunray and Dumas were visitors. One of the Sunray visitors commented that the Park was so much greener than they were at Sunray.

The Spearman school cancelled its trip to the Park due to the rain. They plan to come this week. Perryton and Stinnett were able to make their visits.

The Shelter was rented both Saturday and Sunday. A going away party was held for Pete Ochoa as he is leaving soon for Afghanistan to work for a contractor there. Sunday the Spearman Church of Christ began their summer once a month meetings at the Shelter.

Last week Peggy Winegarner brought out a 4-H group of five young ladies who are studying Photography. After Jim showed them some of his wildlife photo-

graphs, they had a chance to shoot some pictures of their own. I hope they had a chance to use the Blue Grosbeak family and the Bullock's Oriole family as subjects. Jim has seen both of these unusual bird families near the office. The column would welcome some pictures from these new

photographers.

Jim's picture this week is of a female Varied Thrush. He had noticed the bird outside of the office with some robins. I was amused by the description of this bird in The Sibley Guide to Birds. "Potbellied, long-necked, and short-tailed, with intricate wing patterns and bold supercilium can be confused with only the American Robin." Supercilium is the side of the head above the eye.

Jim had fun identifying this rare bird. His first bird book did not have this thrush, but he found it in one published by the National Geographic. Kenneth Seyffert writes in his Birds of the Texas Panhandle that only one had been recorded as having been seen in the Texas Panhandle. It was seen in Amarillo in February and March of 1964

Blodgett Park Update

by Lynn Woolley

Work is continuing at the Blodgett Park. Twelve trees have been planted. Olie Bergan with Panhandle Anchors helped dig holes. Jose Mendoza, Cameron Meddock and Eulises Mendoza helped get them in the ground and anchored. To keep them watered, a drip system will be installed.

Sidewalks from the pavilion to the walking track and playground equipment will be next. The City is paying for the cement, but volunteers will install the concrete walkway.

The ground will once again be leveled out and then grass seed put down. This area will be roped off during that time. Please use the sidewalks.

We appreciate the community's understand while

work has been done. We hope the end results will be worth the inconvenience.

To date, the community has contributed \$5817. Our expenses are projected to be around \$6500. If you would

like to give monetarily, you can donate to the Blodgett Park Renovation at First National Bank.

If you wish to assist with this effort, please call Joey @ 330-1997.



Celebrate!

Heritage Days May 21st

- 8:30 a.m. - Big Brothers, Big Sisters 5k Run & Family Fun Walk
Purple Park Walking Trail, Call 434-0016 for more information
- 9:30 a.m. - Old Settlers Reunion at Stationmasters House Museum
- 11 a.m. - Parade will begin at Alco parking lot
Booths will open for business
- 12 noon - Boy Scouts will be cooking Hamburgers & Hotdogs
Courthouse Lawn, call 659-2554 for more information
- 1 p.m. - Skate Board Competition at Palo Duro Skate Park
- 2-Person Golf Scramble at Hansford Golf Course
- Aztec Dancers
- 1:30-3 p.m. - Kid's Carnival - Inflatable Games & Bouncers
- 3 p.m. - Karate Demonstrations
- Watermelon Eating Contest
- 8-11 p.m. - Street Dance

Hansford Hospice GOLF SCRAMBLE GUYS & GALS

WHEN: Saturday, June 4, 2011
(shotgun start 8:30 a.m. & 1:30 p.m.)

WHERE: Hansford Golf Club

FEE: \$50.00 per player
(Includes green fees)

Lunch: Hamburgers - \$5
Provided by Boy Scouts

FORMAT: 2-person scramble
(Players must be at least 18 with no high school eligibility left. Players furnish own carts)

PRIZES: Cash Payback
Closest to Pin on 4 & 14; Hole-in-One on 7 & 16; Longest Drive

RAFFLE: Tickets are \$5 each
Webber Gas Grill Donated by B&B Sales (retail \$849)
Need Not Be Present To Win

Lots of Door Prizes to Be Given Away!

Call one of these numbers to register your team:
Pat Sutterfield - 659-3637 Verna Lee Shirley - 659-5345
Hansford Hospice - 659-5811

All Proceeds to Benefit Hansford Hospice

Tong's Chinese Restaurant

(806) 644-2838
22 Archer Street • Spearman

Daily Buffet

Lunch - 11 a.m.-2:30 p.m. • Dinner - 5:30-9 p.m.
Open Wednesday-Monday - Closed Tuesday

NEW
Sushi on Sunday Buffet

Gordon's DRUG

iPad

Drawing May 28th at 12:00 Noon

Give-A-Way

One entry for each prescription filled in May Refills, New & Transfers!

314 Main Spearman
806-659-2141

Come in and visit us for all your prescription and over-the-counter needs!

IT'S GRADUATION TIME AGAIN!

No time to shop?
Don't know what to buy your favorite seniors?
Gordon's Drug has made it easy for you!

Come see our new gift displays for Spearman & Gruver seniors!

May Special!
20% Off All Gifts (Gift Department Only)
Come in and let us help you with all your gift needs!

Gordon's DRUG Where gift-giving is effortless & FUN!
Free Wrapping & Gift Pickup/Delivery

314 Main Spearman
806-659-2141