

THURSDAY
NOVEMBER 14, 2002

REPORTER STATESMAN

213 MAIN ST • SPEARMAN, TX 79081

NEWS • SPORTS • PICTURES

SERVING HANSFORD COUNTY SINCE 1907

COMP
HANSFORD COUNTY LIBRARY
0122 MAIN ST
SPEARMAN TX 79081

75¢

VOL. 94 • ISSUE 46

NOTICE

The Hansford County Reporter-Statesman office will be **CLOSED** November 26th-29th for the Thanksgiving holiday.

The deadline for publication in the Thanksgiving issue will be Thursday, November 21st at 5 p.m.

For more information, please contact Catherine Smith at 659-3434, or e-mail me at CathyRSmit@aol.com.

FUMC Chancel Choir Community Thanksgiving Dinner

The Chancel Choir of the First United Methodist Church will be hosting their annual Community Thanksgiving Dinner in the fellowship hall on November 21, 2002 from 11:30 a.m.-1:00 p.m. Tickets are \$6.00 each and under 6 years old free and can be purchased from any choir member or at the door.

We will be serving turkey, dressing and all the trimmings plus tasty pie.

For carry-outs please call 659-5504 by 10:00 a.m. and pick-up through the double glass doors at the front of the church.

Don't miss this wonderful meal!!!! Come join us for fun, good food and great fellowship on Thursday November 21st.

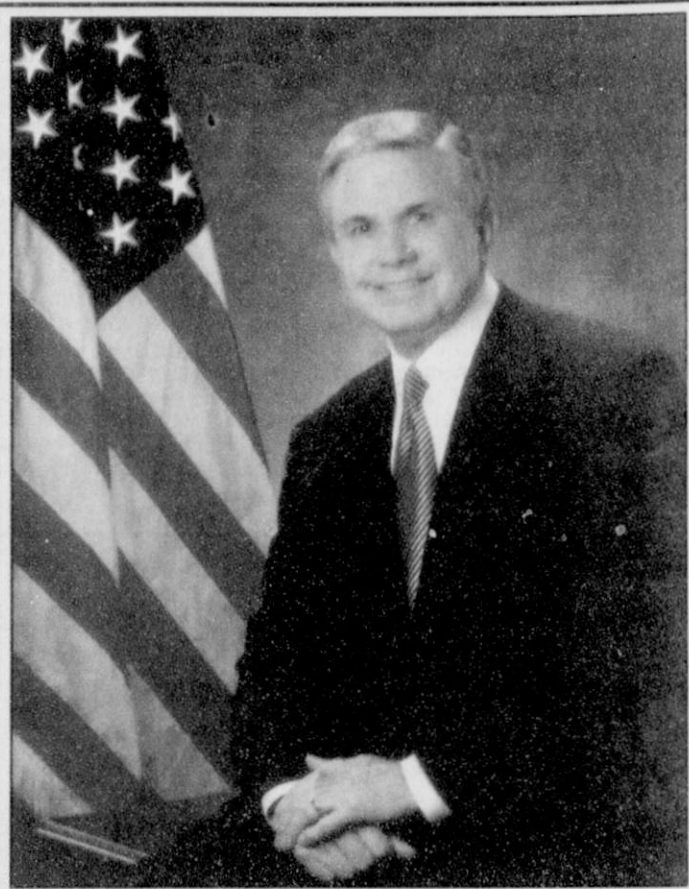
Texas Historical Commission Seeks Nominations for T.R. Fehrenbach Award

The Texas Historical Commission (THC) will accept nominations for its annual T.R. Fehrenbach Book Award until December 31, 2002. The THC will award up to three \$1,000 cash prizes to authors of Texas history books published in 2002.

The book award encourages original research of Texas history. The award is named for historian and THC commissioner emeritus T.R. Fehrenbach of San Antonio, one of the state's leading authorities on Texas history and the author of 18 books.

For guidelines and a nomination form, visit the THC web site at www.thc.state.tx.us or contact the Marketing Communications Division at 512/463-6255.

The Texas Historical Commission is the state agency for historic preservation. The agency administers a variety of programs to preserve the archeological, historical and cultural resources of Texas.



Combest to Resign in May

U.S. Rep. Larry Combest, R-Lubbock, released the following statement Tuesday:

"There have been a number of events that have happened to Sharon and me in the last year that have made us realize how fragile life and health are. They certainly caused us to rearrange our priorities and we want to spend as much time together while we have our life and health. In order for us to be able to spend that time together, I will submit my resignation from Congress effective on May 31, 2003. That should provide ample time for individuals who wish to run for the office to make their intentions known and for there to be a special election to fill the seat.

"Through ten elections, the people of the 19th Congressional District have been very kind to us and words cannot express our appreciation for the confidence they have shown in us. We have so many wonderful friends and are looking forward to being at home in Lubbock to enjoy their friendship even more."

Open Letter

Larry Combest has been a statesman and a tireless advocate for agriculture during his service in Congress. He will be missed by his constituents in the 19th District and by farmers and ranchers all over the state.

Larry's leadership in agriculture reached far beyond his own district, touching the lives of farm and ranch families everywhere. His leadership during the debate on the 2002 Farm Bill was indispensable, and he deserves much credit for its eventual passage.

This legislation, so important for the economically depressed agricultural industry, will stand as a large part of his legacy.

Texas Farm Bureau members are grateful that Larry Combest gave two decades of his life in service to his country. We wish him the best. Donald Patman, President Texas Farm Bureau

Wind Energy Proposal Overcomes First Hurdle

by Harletta Carthel

Great Plains Wind energy overcame the first hurdle in the possible construction of wind turbines in the county as Hansford

County Commissioners voted to offer a 95% abatement for years 1-3, a 90% abatement for years 4 and 5, a 70% abatement for years 6 and 7, and 0% for year 8.

The vote represented a major step in making the proposal by Great Plains Wind energy of California closer to reality.

Hansford County Banker Mike Schnell seemed to express the view of the dozen or more interested county residents present for the meeting when he stated his belief that the turbine construction would diversify and stabilize the tax base of the county while possibly offering a lowering of taxes in the future.

"With minerals on the tax base being depleting and varying in price, we must diversify the tax base," Schnell said, citing the only other taxing sources in the county being land, home, and businesses.

"It would be nice to have taxes coming from outside Hansford County for a change," Schnell said.

The lack of demand by the proposal for new or expanded infrastructures such as schools, hospitals, and law enforcement were other positive factors mentioned by Schnell.

Hansford Hospital Administrator Steve Hartgraves agreed, "It is a loss of opportunity if we don't move forward," Hartgraves said. "The benefits outweigh any risk. It is a good opportunity, and I support it."

A report by Jay Lobitt of Great Plains Wind energy emphasized that wind energy is the fastest-growing segment of the electrical power industry in the United States.

Citing his company's two decades of experience in contract development, Lobitt gave a report of the background work that had been completed.

With the initial phase studies completed, Great Plains is now structuring financing plans and seeking bids from large construction companies.

Giving an overview of the functioning of wind energy fields, Lobitt stated that a major problem that of finding a connection system to transmit the energy produced was already in place.

"With the merger of Southwest Public Service and Public Service of Colorado, the Federal Energy Regulation Committee required the building of a connecting transmission system," Lobitt said.

The system, unlike old systems, is capable of transmitting the 240 megawatts of power expected to be produced by the Hansford County field with no problems.

Comparing the proposed energy field to the White Deer field, Lobitt stated that over 160,000,000 gallons of water are saved by the use of wind energy in comparison to thermal-produced energy since water is used to cool thermal equipment. The proposed Hansford wind energy field, which will be three times the size of the White Deer field, would in turn, save 4,800,000,000 gallons of water compared to thermal energy production.

Reminding commissioners of the proposal's advantages, Lobitt listed an increase in the tax base with possible lower taxes in the future, a diversity in the economy, and the lack of pollutants or odors. Although few workers will be needed upon completion of the energy

field, Lobitt stated a boost to the local economy during the construction phrase for local goods and services.

"Wind energy is simple," Lobitt said, "It doesn't use a lot of water, there is no pollution by having to haul fuels to and from the energy producing source, and there is no environmental permitting required."

"It's an incredible opportunity," Clay Schnell said of the wind energy proposal.

While the tax abatement offered by Hansford County Commissioners marks the first hurdle in making the turbine field a reality, the biggest hurdle may lie ahead as Great Plains Wind energy works with the Gruver Independent School System.

While both GISD and Great Plains Wind energy have expressed a desire to work together, any tax abatement given by GISD must be financial sound for the school system while also being attractive to investors in the project.

In addition, any abatement proposal by GISD is complicated by both the Texas school financing law that has caps on taxes that may be kept by school districts and House Bill 1200 which was passed last January to deal with new industries in the school districts. Since HB 1200 is so new, only one Texas school, Crockett County, has had any experience with wind turbine fields and school taxation under its provisions. And even Crockett County has not had sufficient experience with the new bill to offer conclusive results.

You are cordially invited to attend the Lighting of the Hansford Hospice Lights of Love Tree and Open House

Monday, December 2, 2002, 6:30-7:30 p.m.

Beginning in the Living Room at Hansford Manor and moving to the Hospice Gazebo at Hansford Hospital. Refreshments will be served.



Peggy Winegarner, Hansford County Extension Agent, is pictured above with Ross Renner. Ross was the keynote speaker for this year's Veterans Day Program, which is sponsored by the Extension Education Clubs of Hansford County. Renner joined the United States Marine Corps following his graduation in 1987 from Gruver High School. His time of active duty was spent stationed in Washington, D.C., where he was one of four Marines selected to serve at the West Wing of the White House in 1992.

You are invited to attend the Community Thanksgiving Worship Service

Sunday, November 24th • 7 p.m.

First United Methodist Church

Honoring Emergency Personnel of Hansford County

Bill Sparks - Speaker

Dessert Fellowship Following Service

All attending churches are asked to bring finger food for fellowship after the service.

Laugh and Live

by Catherine R. Smith
CathyRSmit@aol.com



My friend Deborah Jacobs sent me the following entitled "Keys for Living." (I think I need to read them daily!) I hope you enjoy them.

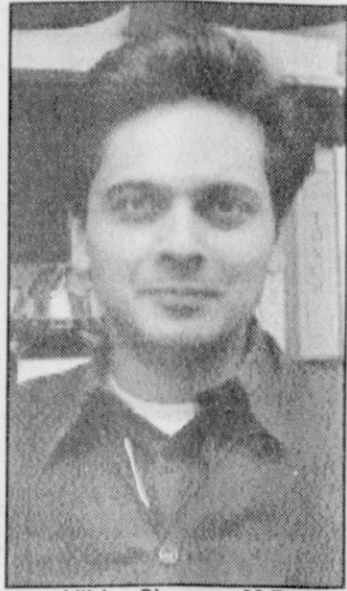
Keys for Living

1. The best way to get even is to forget...
2. Feed your faith and your doubts will starve to death...
3. God wants spiritual fruit, not religious nuts...
4. Some folks wear their halos much too tightly...
5. Some marriages are made in heaven, but they ALL have to be maintained on earth...
6. Unless you can create the WHOLE universe in 5 days, then perhaps giving "advice" to God isn't such a good idea!
7. Sorrow looks back, worry looks around, and faith looks up...
8. Standing in the middle of the road is dangerous. You will get knocked down by the traffic from both ways.
9. Words are windows to the heart.
10. A skeptic is a person who, when he sees the handwriting on the wall, claims it's a forgery.
11. It isn't difficult to make a mountain out of a molehill just add a little dirt.
12. A successful marriage isn't finding the right person-it's being the right person.
13. The mighty oak tree was once a little nut that held its ground.
14. Too many people offer God prayers, with claw marks all over them.
15. The tongue must be heavy indeed, because so few people can hold it.
16. To forgive is to set the prisoner free, and then discover the prisoner was you.
17. You have to wonder about humans, they think God is dead and Elvis is alive!
18. It's all right to sit on your pity pot every now and again. Just be sure to flush when you are done.
19. You'll notice that a turtle only makes progress when it sticks out its neck...
20. If the grass is greener on the other side of the fence, you can bet the water bill is higher.

May God bless and keep you; May He make his face to shine upon you, and be gracious to you; May the Lord lift up his countenance upon you, and give you peace.
Numbers 6:24-26

Catherine :)

From The Doctor's Desk



Vibhu Sharma, M.D.
710 Roland St.
Spearman, Texas

COPD (Chronic Obstructive Airway Disease)

COPD is an often-used acronym for "Chronic Obstructive Airway Disease" which is the end result of many different lung diseases that

end up damaging the tubes and bags of the lungs.

Anything from Asthma to Cystic Fibrosis to Cigarette smoking, if not cared for appropriately, can end up with COPD. In the past when appropriate treatment for Asthma was not available, COPD developed in these people just as if they had smoked for years. In people who do not smoke, lung function declines slowly over the years, so some shortness of breath on exertion in an 85 year old is probably normal (depending on the state of his/her overall health of course).

People who smoke end up with a significantly faster decline in Lung Function resulting in shortness of breath at a much earlier age (60 for example in somebody who has smoked for 40-45 years). What is fascinating is that only 15-20% of smokers end up developing COPD. Winston Churchill smoked up to the time he died without significant symptoms!

Up to 14 million persons in the United States are thought to be afflicted with COPD. Most cases are because of Lung damage consequent to long term Cigarette Smoking. In most cases symptoms are a chronic productive cough, shortness of breath and occasion-

ally, a bluish discoloration of the fingers ("cyanosis"). Most people present to the doctor with a cough that won't go away, or increasing shortness of breath enough to limit activities previously enjoyed (e.g. golfing, swimming, walking, etc). Diagnosis is usually evident if physicians take a good history and obtain a chest x-ray although specialized testing (called Pulmonary Function Testing, offered here at Hansford County Hospital) is usually necessary to confirm the diagnosis.

What can be done about this? The obvious solution to the problem is quitting smoking, which is in the majority of cases easier said than done. A good working relationship with your physician is paramount to successful quitting as that is the only intervention that will slow the otherwise rapid deterioration in Lung Function. Once that has been achieved, an assessment of severity is important as is an assessment for other conditions that may be causing shortness of breath, such as heart disease which not infrequently coexists with Lung Disease in heavy smokers. An assessment of severity is only possible through Pulmonary Function Testing (PFT), which is offered at Hansford Hospital. It is important

to understand that significant amount of damage to the Lungs should have occurred before symptoms appear, hence the importance of obtaining PFTs to characterize the severity of disease. Frequently, demonstration of severity on PFTs is the impetus needed for smokers to finally quit.

Your physician will also want to evaluate you to see if you have concomitant asthma, heart disease, evidence of congenital lung diseases, or Lung Cancer, which, as is common knowledge, more frequent in smokers. Your physician will also evaluate the need for Oxygen, whether or not you will benefit from a sleep study or a study of your oxygen levels when you sleep to determine needs for interventions that will help you breathe better.

If unfortunately, you are found to have severe Lung Disease, your physician can also evaluate your eligibility for surgical treatment of the Lung Disease, which MAY be of some benefit. Most patient with COPD will benefit from an exercise program, inhalers to help open up bronchial tubes and decrease mucus production as well as interventions to prevent Pneumonia, Influenza etc. An occasional patient will benefit from withdrawal of blood (just like donating blood) to help decrease the load on the heart from an expanded blood volume.

Let us replenish the seed of faith through . . . DAILY BIBLE READING, PRAYER & REGULAR CHURCH ATTENDANCE

Spearman

Apostolic Faith Church
822 S. Driessen • 659-2870
Sunday School: 10 a.m.
Worship Service: 11 a.m.
Sun. Eve. 6 p.m.
Wed. Prayer Mtg. 7 p.m.
Pastor - Roland Haney

First Assembly of God
401 N. Bernice • 659-2295
Sunday School: 9:30 a.m.
Worship: 10:35 a.m.
Kid's Church: 10:35 a.m.
Evening Worship: 7 p.m.
Wed. Worship: 7:30 p.m.
Youth: 7:30 Wednesday
Pastor - Walter Greaser, Jr.

First Christian Church (Disciples of Christ)
29 S. Bernice • 659-2036
Sunday School: 9:45 a.m.
Worship: 10:50 a.m.
Minister - Gary Smith

First Baptist Church
123 N. Bernice • 659-5557
Sunday School: 9:45 a.m.
Worship: 11 a.m.
Evening Worship: 7 p.m.
Wed. Fellowship Meal: 6 p.m.
Wed. Disc. Time: 6:30 p.m.
Wed. Youth Mtg.: 8 p.m.
Pastor - Patrick Six

Church of Christ
121 S. Haney • 659-3244
Sunday Bible Class: 9:45 a.m.
Worship: 10:30 a.m.
Evening Worship: 6 p.m.
Bible Study Wed.: 7:30 p.m.
KRDF Radio Program
Living With Christ: 7:50 a.m.
Minister - Leonard Harper

Sacred Heart Catholic Church
901 Roland • 659-2792
Sat. Night Mass: 5:30 p.m.
Sun. Mass: 9 a.m. - English (aired on KRDF-FM 98.3)
Sun. Mass: 11:30 - Spanish
1:30 p.m. - Gruver - Christo Rendtorf Mass - Spanish
Rev. Guillermo Morales

Trinity Fellowship Church
717 W. 7th Ave. • 659-2671
Sunday School: 9:30 a.m.
Worship Service & Children's Church: 10:30 a.m.
Pastor - Dennis Alger

First Presbyterian Church (Worships with Lutheran)
1021 Cotter • 659-2033
Sunday School: 9:45 a.m.
Worship: 11 a.m.
(alternates monthly between Lutheran & Presbyterian Church bldg.)
Pastor - Beverly Cook

Faith Lutheran Church (ELCA)
1101 Bernice • 659-2252
(Worships with First Presbyterian Church)
First United Methodist
407 S. Haney • 659-5503
Sunday School: 9:45 a.m.
Worship: 8:30 & 11 a.m.
Jr. High Youth: 5 p.m. Sunday
High School: 6 p.m. Sunday
Kids Club: 3 p.m. Wed.
Pastor - Ken Cole

Union Church
31 S. Endicott • 659-2644
Sunday School: 9:45 a.m.
Worship: 10:45 a.m.
Evening Worship: 6 p.m.
Bible Study: 7 p.m. Wed.
Pastor - Bill Sparks

Fellowship Baptist
1102 S. Archer • 659-2783
Sunday School: 10 a.m.
Worship: 11 a.m.
Sun. Evening Worship: 6 p.m.
Youth/Adult Serv.: 7:30 Wed.
Pastor - Gene Foster

Primera Mision Bautista
502 E. 7th • 659-3991
Sunday School: 9:45 a.m.
Worship: 11 a.m.
Evening: 6 p.m.
Wed. Prayer Meeting: 7 p.m.
Thurs. Visitation: 7 p.m.

El Aposento Alto U.P.C.I.
1105 S. Roland Domingos
Escuela-Dominical - 10 a.m.
Culto Evangelistico - 7 p.m.
Jueves: Oracion - 8 p.m.
Mier. Estudio Biblico - 7 p.m.
Pastor - A. G. Martell
(806) 659-2153

Waka

Waka Church of the Brethren
435-4598

Gruver

First Baptist Church
402 E. Broadway • 733-2411
Sunday School: 9:45 a.m.
Worship: 10:50 a.m.
Disciple Training: 6 p.m. Sunday
Prayer Meeting: 7:30 p.m. Wednesday
Pastor - Scott Curry

Church of Christ
209 King • 733-2760
Sunday School: 9:30 a.m.
Worship: 10:20 a.m.
Evening Worship: 6 p.m.
Wed. Worship: 7:30 p.m.

First Christian Church
519 King • 733-2960
Sunday School: 10:00 a.m.
Sunday Worship: 11 a.m.
Youth: 7:30, Sunday
Adult Bible Study: 7:30, Sun.
Wed. Bible Study: 8:00 p.m.
Pastor - Gary Gumfroy

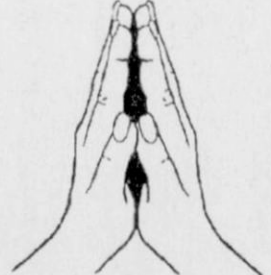
Oslo Lutheran Church (ELCA)
6 Miles West & 12 Miles North of Gruver
339-7709
Sunday School: 9:45 a.m.
Worship: 11 a.m.
Pastor - Paul Fiske

Gruver United Methodist
Broadway & Garrett
733-2651
Sunday School: 9:45 a.m.
Worship: 8:30 & 10:50 a.m.
Eve. Worship & UMY: 6 p.m.
Pastor - Jerry Moore

Spanish Cristo Redentor Church
Sunday Mass: 1:30 p.m.
Friday Evening Mass
Summer - 8:00 p.m.
Fall/Winter - 7:30 p.m.

Morse

Morse Baptist Church
733-2757
Pastor - Mike Martin



This feature is made possible through the sponsorship of these civic minded businesses.

NTIS
North Texas Information Systems
Spearman, Texas
Scott Ermis • 664-3233
Computer Sales, Service & Repair
Computer Networking
House Calls, Pick up & Delivery
References Available
• Microsoft Certified Professional •
• CompTIA Certified Professional •
Member Spearman Chamber of Commerce

CORNER SERVICE STATION
We pay attention to Details!
Oil & Filter Changes
Minor Repairs
Vehicle Detail (by appointment)
Free pick up & delivery
101 Main Street • Spearman, Texas
(806) 659-2722 • Joe & Nita Bynum

Compliments of . . .
AGCO
of Spearman, Inc.
"See you in Church"
659-3751

PRAIRIE
MOTORS INC.
Hwy. 207 South • P.O. Box 430
Spearman, TX 79081 • (806) 659-2541
www.prairiemotors.com

BOXWELL
BROS.
FUNERAL HOME

Compliments of
G&G
FOODLINER
516 Main • Gruver, TX
733-2471

COLUMBIA
Medical Center of Pampa
One Medical Plaza
Pampa, Texas 79065
(806) 665-3721

Palo Duro
Supper Club
22 S. Archer • Spearman
659-2232

Bartlett's Lumber
& Hardware
105 W. Broadway • Gruver, Texas
(806) 733-2404

BERRY CLEANERS
Ann & Vernon Pipkin - Owners
Phone 659-3122 • P.O. Box 1017
207 Main St. • Spearman, TX

Morse Implement
& Auto Supply
"Join us in church this week"
Tom Dortch 733-2668
P.O. Box 89 • Morse, TX 79062

Gruver Cablevision
308 Main
Gruver, TX 79040
733-5295

Deakin
ELECTRIC
OILFIELD • RESIDENTIAL • COMMERCIAL
321 S. MAIN • SPEARMAN
1-800-999-1506 Chris Deakin
(806) 659-5016 President

Interstate
Bank, ssb
322 Main • P.O. Box 146
Spearman, TX • 659-2559

The Hansford County Reporter-Statesman
213 Main Street
Spearman, TX 79081
Phone - (806) 659-3434
Fax - (806) 659-3368
CathyRSmit@aol.com
Mon.-Thurs. (Closed Fridays)
9 a.m.-12 p.m. & 1-5 p.m.

Gary Smith - Publisher
Catherine Smith - Editor
Harletta Carthel - Assist. Editor
Contrib. Writers: Helen Fisher, Jeff Beady,
Dorothy Hudson, Dwayne Mitchell
Contrib. Photographer: Charlie Johnson

Subscription Rates
In Hansford Co. - \$25.00
Out of County - \$30.00

The Hansford County Reporter-Statesman (USPS 529660) is published weekly in Spearman, TX. Periodical postage paid in Spearman, TX. POSTMASTER: Send address changes to The Hansford County Reporter-Statesman, 213 Main Street, Spearman, TX 79081.

Publication Policy
The deadline to submit news and advertising to The Hansford County Reporter-Statesman is Monday at 5:00 p.m. Items accepted after the deadline will be published at a later date, as time and space permit. Publication of all items is at the discretion of the editor.

Letter Policy
The Hansford County Reporter-Statesman welcomes letters to the editor on any subject. All letters must be signed and will be published with the name of the writer. Letters must include an address and telephone number for verification. Letters should be kept at a reasonable length. The editor reserves the right to edit all letters. Any letter may be rejected for publication without reason. Letters that are libelous and/or slanderous will not be published. The deadline to submit letters is noon on Monday. Letters in support or opposition to political candidates will not be published. Persons wishing to publically support political candidates in this newspaper are invited to purchase an ad.

Advertising
Open Display rates are \$4.00 per column inch. Classified Ads are \$5 for the first 25 words and 10¢ per word for each additional word. (Additional charge for boxed classifieds.)

Member of
Texas Press Association and
Panhandle Press Association

Texas Press Association
AWARD WINNER

Happy Birthday!

Editor's Note: This Happy Birthday list is run as a public service by the Hansford County Reporter-Statesman. We apologize if any names are misspelled. If you know of a name that needs to be changed, added or deleted, please call 659-3434. Thank you, Catherine

November 14
Birthdays - Lill Fletcher, Lisa Melyn Johnson, Luke Johnson, Missy Johnson, Ray Martin, Ricky Sharp, Carl Kunselman, Rhonda Tope, Norma Payne, Dolly McWhirter, Sandy Morris, Roy Pipkin, Mark Love, Jessica Crossland, Cora Knutson, Adela White, John Patterson, Judy Yarbrough, Luis C. Rodriguez, Sylvia Hodge, Shelby Ann Sasser
Anniversaries - Mr. & Mrs. Benny Bradwick, Mr. & Mrs. Nathan Hanson, Mr. & Mrs. Dave Barkley

November 15
Birthdays - Pam Shearer, Debbie Clawson, Virginio Ortega, Rudy Zamora, Kiki Kelp Connelly, Carolyn Sadler, Jeremy Hunter, Rue Sanders, Brenda Vassar, Francis Balderama, Maria Tarango
Anniversaries - Mr. & Mrs. Richard Pipkin

November 16
Birthdays - Felipe Alvarez, Charles Bell, Don Heddins, Chandler Miner, Angela Overbey, Clint Patterson, Charlotte Pearson, Karen (Kenney) Bonath, Keith Goodman, David McGuire, Ryan Quillin, Alexa Thoreson, Lindsey (Smith) Savage, Callie Smith
Anniversaries - Bertha & Francisco Martinez

November 17
Birthdays - Pam Cassady, Janyth Hart, Francis Pipkin, Curtis Gross, Abby Winegarner, Bill Sparks
Anniversaries - Mr. & Mrs. Corky Kizzar, Mr. & Mrs. Marvin Jones, Bernie & Kelly Kjos

November 18
Birthdays - Bryn Lowe, Gwen Parker, Kevin Rodriguez, Arnold Stork, Amanda Taylor, Jennifer Johnson, Steven Tindell, Rose Mary Tartar, Chris Taylor, Kashey Brown, Rita Underwood, Clayton Fox, Jennifer Nelson, Freida Burgess, Mona Lisa Garcia, Steven Cummings, Gabbi Boyd, Pepe Marquez, Eva Jo Pittman, Jill Clement, Marie Beck, Casie Butt
Anniversaries - Mr. & Mrs. Pete Vera, Mr. & Mrs. Rex Casdorff, Mr. & Mrs. David Imke

November 19
Birthdays - Cherri Sherill, David Hall, James Davis, Brian

Beck, Tim Gikas, Sharon Barkley, Aaron Shawn Moore, Jeff Jackson, Kasey Harris
Anniversaries - Mr. & Mrs. Brice Lewis

November 20
Birthdays - Scott Davis, Jr. Rodriguez, Johnny Lee, Mrs. Ray McCammond, Jerry Wayne Dunaway, Danny Close, Ron Riley, Garland Dahl, Brenda Ferguson, Freda Sheets, Tammy Batton, Carie Tidwell, Casey Villines, Jason Payne, Josh Purvines
Anniversaries - Mr. & Mrs. Phillip Turner, Mr. & Mrs. Ramon Garcia Jr., Mr. & Mrs. Jesse Renteria, Mr. & Mrs. Roberto Tarango

November 21
Birthdays - Kaysha Cluck, Jackie Wilson, Jim Burch, Robert Janzen, Jody Robertson, Mark Pearson, Mrs. Jake Vernon, James Owens, Angie Salgado, Margie Alford, Matt Burnam, Denise Rojas, Victor White, Haley Coomen, Dawn Loomis, Brittanie Osbourne, Jody Robertson
Anniversaries - Mr. & Mrs. Johnny White, Mr. & Mrs. J.L. Griffin, Ted & Cheryl Whitefield, Jose & Sylvia Tarango

November 22
Birthdays - Garret Miner, Kevin Russell, Rusty Reed, Bonita Reimer, Phillip Janzan, David Miser, Lesly Hayes, Nancy Morris, Russell Sheets, John David Bergin, Emily Lilley
Anniversaries - Mr. & Mrs. Steven Francis, Randy Karlin, Kim Venneman, Klint Venneman, Wanda Widener, Ronald Swan, LaDell Scroggs, Delores Rylant, Sara George, Mary Hart

November 23
Birthdays - Steven Francis, Randy Karlin, Kim Venneman, Klint Venneman, Wanda Widener, Ronald Swan, LaDell Scroggs, Delores Rylant, Sara George, Mary Hart
Anniversaries - Lesly & Maurene Stinson, Mr. & Mrs. Jesse Francis, Mr. & Mrs. Val Winger, Mr. & Mrs. Greg Stork, Mr. & Mrs. Steve Mitchell, Andy & April DeLaRosa

November 24
Birthdays - Brady Hart, Pablo Perez Jr., Danna Sue Floyd, Helen Gibson, Patty Younger, Duane Hart, James Jackson, Dana Garza, Lashera Snider, Jamie Dawn Hanson, Stephanie Villalobos, Raymond Fairbank, Brianne Burkhammer, Georgia Holt, Teresa Page, Dennis Stedje, Linda Weller, Elvin Wright, Sharon Arrington, Whitney Maestas
Anniversaries - Mr. & Mrs. Pete Vera, Mr. & Mrs. Rex Casdorff, Mr. & Mrs. David Imke

Our Deepest Sympathy

H.M. FRAZIER JR.

GRUVER - H.M. Frazier Jr., 73, died Tuesday, October 29, 2002. Services were at 3 p.m. on Thursday, October 31, 2002 in Gruver United Methodist Church with the Rev. Jerry Moore officiating. Burial was in Gruver Cemetery by Boxwell Brothers Funeral Home of Spearman.

Mr. Frazier was born July 11, 1929, in Hansford County. He was a lifetime resident of Gruver. He married Bertie Neuse on August 7, 1951, in San Marcos. He was a farmer and rancher. He attended Gruver United Methodist Church. He was a member of Gruver Masonic Lodge No. 1326 A.F. & A.M. He was a 32nd Degree Mason, a member of Khiva Shrine Temple in Amarillo and was a Khiva Temple Jester and greeter. He was secretary of Gruver Masonic Lodge and was employed by Phillips Petroleum Co. from 1952 to 1964. He was a United States Air Force Veteran of the Korean Conflict.

Survivors include his wife; four children, Donna Denise Frazier Kwiatkowski and husband, Bob, of Colorado Springs, Colo., Debra Faye Knight and husband, Bruce, of Arlington, Dustin C. Frazier and wife, Deborah Sue, of Amarillo and Diane Elaine Frazier Lyon and husband, James, of Amarillo; a sister, Veta Faye Allaway of Gruver; and his grandchildren, April Knight of College Station, Anissa Jones Clary of Conifer, Colo., Aaron Knight of Arlington, R.J. Jones of Amarillo, Amber Knight Abney of Lubbock, Marli Kwiatkowski of Colorado Springs, and Dustin Frazier, Katharine Frazier, Seth Frazier, Matthew Frazier, Joshua Frazier, Daniel Frazier, Mary Frazier, Jennifer Frazier, Abigail Frazier, Anna Frazier, Margaret Frazier and John Frazier, all of Amarillo.

The family suggests memorials be to Scottish Rite Children's Hospital in care of Khiva Temple in Amarillo.

MONUMENTS

Boxwell Brothers Funeral Home
 519 Evans • Spearman
 659-3802

Dear friends,
 When you buy a monument from us we make sure it is exactly what you want at a price you can afford. If it is not right, we will make it right. And you will not have to search the countryside to find us. We are here when you have a need.

Sincerely,
 Bob Boxwell

LYRIC Cinema

113 Main Spearman, Texas (806) 659-2812

On the Web @: www.antden.com/newweek.asp
 Children 3 thru 11 - \$4.00 Adults - \$6.00
 Sr. Patrons (65 & older) - \$4.00

**** Movies at 7:00 p.m. - 7 Days A Week ****
 Showing: November 15th thru November 21st

| | |
|---|---|
| <p>Screen 1</p> <p>Harry Potter</p> <p>Chamber of Secrets</p> <p>Rated PG</p> <p><small>For Scary Moments, Some Creature Violence & Mild Language</small></p> | <p>Screen 2</p> <p>Santa Clause</p> <p>2</p> <p>Starring: Tim Allen</p> <p>Rated G</p> |
|---|---|

For Ratings Conscience Parents: www.screenit.com

Listen to

KRDF - 98.3 FM

Hot Country Stereo
 'Till Midnight

Order your Thanksgiving Centerpiece Today

from

Prairie Garden Flowers

209 Main Street
 Spearman, TX
 659-2212
 659-3329

Congratulations to these winners:
 Hope Kemp (Beta Fish)
 June Edwards (Christmas Wreath).

Palo Duro Supper Club

Daily Lunch Buffet
 Sunday-Friday,
 11:00 a.m. - 2:00 p.m.

\$5⁹⁷

Friday Buffet - Fresh Water Catfish
 Kitchen Closes at 8:00 p.m.

Palo Duro Supper Club
 22 S. Archer • 659-2232 • Spearman, TX

HANSFORD HAPPENINGS

Methodist Church Chancel Choir Thanksgiving Dinner
 The Chancel Choir of the First United Methodist Church will be having their annual Community Thanksgiving Dinner in the fellowship hall on November 21, 2002 from 11:30 AM-1:00 PM. Tickets are \$6.00 each and under 6 years old free and can be purchased from any choir member or at the door. We will be serving turkey, dressing and all the trimmings plus tasty pie. For carry-outs please call 659-5504 by 10:00 AM and pick-up through the double glass doors at the front of the church. Don't miss this wonderful meal!!!! Come join us for fun, good food and great fellowship on Thursday, November 21st.

Gruver First Christian Church Cookbooks
 The First Christian Church in Gruver now has additional cookbooks for sale. The price is \$12.00 and you can pick one up at the Gruver Cablevision or contact Alice Peddy, Pat Bratton, Reba Hunter, Pat Morley, Margaret Ralston, Sandra Gumfory or any other church member. They are going fast so be sure to get yours soon. All proceeds are going to David and Hershelene Turner to assist with their medical expenses.

Careers in Agriculture Scholarship Program
 The Careers in Agriculture scholarship program sponsored by Agrilience, CROPLAN GENETICS and Land O'Lakes Farmland Feed annually awards \$1,000 scholarships to 50 high school seniors interested in livestock or agronomy-related studies. Candidates should: be a high school senior planning to enroll in a two- or four-year livestock or agronomy-related curriculum in the fall following high school graduation; demonstrate leadership and academic performance; and write an essay describing why he or she is interested in an agricultural career. To apply, print and complete the application form and mail it to the address on the form. Applications must be postmarked by March 3 of the student's senior year. Winners will be notified a few months later in early May.

Ministerial Alliance Thanksgiving Service
 The Annual Community Thanksgiving Service, sponsored by the Spearman Ministerial Alliance, will be held on Sunday, November 24th at 7 p.m. in the First United Methodist Church. The speaker will be Rev. Bill Sparks. The offering from this service will go to the Angel Tree and Crisis Center.

You're Never Alone - Narcotics Anonymous Group
 Open meetings will be held on Thursday night from 7-8 p.m. at the First Christian Church (29 S. Bernice in Spearman) for the "You're Never Alone" group of Narcotics Anonymous. Anyone interested is invited to attend.

Campbell's Soup Donation
 Campbell's Soup is donating a can of soup (up to 5 million) to area food banks just by clicking on a football helmet at their website. It's quick, easy and can be done once a day. http://www.chunky.com/click_for_cans.asp

Open Forum Concerning Social Security Benefits for Teachers
 An Open Forum concerning Social Security benefits for teachers upon retirement will be held on Saturday, November 9, 2002 at 2 p.m. in the Williams Intermediate Cafeteria in Perryton. Speakers will be Roy Pennington, who is the past curriculum director for Perryton I.S.D. and the immediate Past President for District 16 Retired Teachers. Also speaking will be Dwain Walker, Chairman of the Health Care Committee for District 16 Retired Teachers. This event is being sponsored by the Eta Alpha Chapter of Delta Kappa Gamma Society. All interested persons are welcome to attend. For more information, contact Bobette Doerrie at 6588-2264.

Hansford County Library Memorial Fund Established
 A Memorial Fund has been set up at the Hansford County Library for the purpose of purchasing a microfilm reader/printer for student & genealogy research at the library. If you would like to donate to this fund please contact Sheri Benton at 659-2231.

Register Tapes for Education
 The Spearman 7th and 8th Grade Gifted & Talented class will be accepting register tapes from Lowe's Marketplace from September 1, 2002 until March 31, 2002. These tapes will be turned into valuable and important educational equipment, free of charge, for the Spearman Junior High campus. Tapes may be given to any Spearman Junior High student, or may be taken to the Spearman Junior High office.

Area Agency on Aging Seeks Volunteers
 The Nursing Home Ombudsman program of the Area Agency on Aging of the Panhandle is actively seeking individuals to serve as advocates for residents of area nursing homes. Volunteer opportunities are available throughout the Panhandle. Ombudsmen promote resident rights, quality of life and quality of care by identifying and resolving complaints by or on behalf of residents. To learn more about this rewarding volunteer opportunity, please contact Jeff Price or Tanya Mock of the Area Agency on Aging of the Panhandle at (800) 642-6008.

Commissioners' Court Warns About Penalties For Destruction/Theft of Signs
 Due to numerous signs being taken or destroyed in the County, the Hansford County Commissioners' Court would like to make it's citizens aware of the penalty for this action. This is a Class B Offense, punishable with a fine of up to \$2,000 and a possible jail term of up to 180 days.

Texas Commission for the Deaf & Hard of Hearing
 The Texas Commission for the Deaf and Hard of Hearing has several programs for people with deafness and hearing loss. In order to see if you qualify, please contact Mark Dickson, Regional Specialist at C.S.D. of Texas, 4310 Lola Street, Lubbock, TX 79407, or call (806) 788-8940.

Public Education in Texas
 Public education in Texas is for every child. Don't leave any child behind. The children of Texas come in all sizes, shapes, colors, and abilities. They do not all learn the same way, but they ALL do learn. Do you know of an infant, child, or young adult who does not learn easily or has an impairment that might affect his/her success in life? Do you know that public school programs can serve these children from birth to age 21? For more information, call Marsha Murphy, Special Education Director, at (806) 435-4412.

Child Find
 Child find is the ongoing process of locating children (ages infant-21 years) with disabilities for special education services. If you know a child who shows signs of development delay, ongoing behavioral or medical problems that interfere with learning, find out how you can help by calling Gruver ISD at 733-2031, Spearman ISD at 659-2565, Pringle-Morse CISD at 733-2507, or the Child Find coordinator at Region 16 Education Service Center at (806)376-5521.

Panhandle Crisis Center Outreach Office
 Panhandle Crisis Center (PCC) now has an Outreach Office in the Pittman-Shieldknight Building, 511 SW 11th Avenue, Suite 105, in Spearman. Jamie Casdorff, Outreach Caseworker, is scheduled to be at that location each Tuesday, Thursday and Friday, and Children's Advocate, Marsha Neely, will continue to be in Spearman each weekday. In case of emergencies, please continue to call the hotline, 1-800-753-5308. To schedule an appointment with a worker in Hansford County, please call 659-3391 to leave a message, or call the hotline number above. Panhandle Crisis Center serves victims of domestic violence and sexual assault. Please call for more information regarding PCC's services.

Nomination Forms Available for Governor's Volunteer Award
 The Texas Commission on Volunteerism and Community Service (TxCVCS) is accepting nomination forms for the 2003 Governor's Volunteer Awards. These awards, administered in partnership with the Office of the Governor, acknowledge Texans whose commitment to community and service to others is exemplary. Individuals may nominate themselves or others in one of 11 award categories. Finalists will be chosen by a governor-appointed blue ribbon panel in March. Each recipient will receive a \$1,000 donation to their charity of choice courtesy of H-E-B. Recipients will be honored at a recognition ceremony in Austin on May 1, 2003 during National Volunteer Week. For more information or to download a nomination form, visit www.txserve.org or call the Governor's Volunteer Awards Hotline at 5120-475-4432. Forms must be received by 5 p.m. on December 31, 2002.

Spearman Bands Participate In Five States Band Auditions

The Spearman Lynx high school and junior high band students participated in the Five States Honor Band auditions held in Guymon, Oklahoma on Saturday, November 9, 2002. Approximately 800 students representing 15 schools ranging from 1A-5A participated.

Spearman placed five students in the honor band, as well as six students as alternates. Nic Avila, trombone, is a member of the Junior High Honor Band. Crystal Bridwell, clarinet; Cesar Macias, trombone and Clayton Smith, French horn, were named alternates. Jessica Blan, clarinet; Bertha Ortiz, clarinet; Aleisha Sweat, clarinet; and Carlos Hernandez, trumpet, are members of the high school honor band. Megan Dorton, contra-bass clarinet; Steven Vaquera, tuba; Josh Chambers, percussion, and Si Li Tang, flute, are alternates.

"This was a really good day for the Spearman band students," commented SISD Band Director Anna Marie Holland. "We had a lot more students participate this year, and they placed much higher into the sections than they did last year. There were as many as 50 students in some sections, and placing that high among the large schools was really an accomplishment."

"Most of our high school students are freshmen and sophomores - this is very good experience for them. They are learning what kind of effort it takes to compete. They only get one chance in front of the judge and they are learning what it takes to be able to perform with consistency so they can do well with their one shot."

Junior high students who participated were: Jessica Diaz, Caitlin Garcia, Halee Trammell, Crystal Bridwell, Lizet Camacho, Wendy Gaytan, Jesse Moreno, Marcus Ochoa, Colby Odegaard, Anthony Renteria and Megan Evans. High school students who participated were: Melissa Lesly, Kyla Trammell, Alejandro Rios, Eric Diaz, Javier Frayre, Gerardo Ruiz, Jarick Howard and Michael Torres.

"All of these students have worked hard," concluded Ms. Holland. "I expect them to do even better in the All-Region auditions coming up in December!"

High Plains Public Radio Now On Air at 89.5-FM

High Plains Public Radio's broadcast service is now available to nine counties in the Northeast Texas Panhandle and surrounding areas of Oklahoma over KTOT-FM, a new non-commercial radio station at 89.5 FM.

The newly constructed station broadcasts 24 hours a day at a power of 100,000 watts from a 1,000 foot tower located in the far southwest corner of Ochiltree county.

HPPR programming heard over KTOT-FM includes comprehensive international, national and regional news, classical, jazz and folk music, a variety of other arts and entertainment programs, as well as coverage of regional events and issues. As a member of National Public Radio and Public Radio International, HPPR carries award-winning news and entertainment programs such as All Things Considered, Morning Edition, Car Talk, A Prairie Home Companion, This American Life, and BBC World Service.

HPPR programming heard over KTOT-FM includes comprehensive international, national and regional news, classical, jazz and folk music, a variety of other arts and entertainment programs, as well as coverage of regional events and issues. As a member of National Public Radio and Public Radio International, HPPR carries award-winning news and entertainment programs such as All Things Considered, Morning Edition, Car Talk, A Prairie Home Companion, This American Life, and BBC World Service.

build a sustainable future. It pursues this mission through public radio broadcasting because the medium is economical and accessible to nearly everyone. HPPR began broadcasting in 1980 in Southwest Kansas. Over the past 22 years it has incrementally expanded its service to reach all of Western Kansas, portions of Southeastern Colorado, the Oklahoma Panhandle, as well as the immediate Amarillo area.

HPPR first started broadcasting in the Texas Panhandle in January of 1998 with two low power translator stations in Amarillo at 94.9 and 91.3 FM. Planning and engineering studies for a "Top O' Texas" station began that same year. In January, 1999 applications for construction permits were filed with the FCC and FAA. After clearing delays caused by competing applications, the permits were issued in August of 2000 and the call sign of KTOT-FM was granted.

At about the same time, a highly competitive construction grant of nearly \$437,000 was awarded by the Public Telecommunications Facilities Program. An area capital campaign was conducted in early 2001 which raised \$310,000 in private funds to match this grant and cover additional construction and start-up costs. Major grants were

provided by the Don & Sybill Harrington Foundation and the Mary E. Bivins Foundation both of Amarillo, the David D. & Nona Payne Foundation of Pampa, and the ConocoPhillips Petroleum Company of Borger.

Contributions were also received from over 150 individuals, businesses and other foundations in KTOT's broadcast area.

During this time period a better and rent-free tower site was also offered by the Courson Family Land Partnership of Perryton, TX.

Applications were filed to modify the FCC and FAA permits for the new site and construction began as soon as the new permits were received in June of this year. Construction of the 1000 foot tower was completed in mid-October and test transmission at

full power were begun on October 28th.

High Plains Public Radio is operated by the Kanza Society Inc., non-profit 501(c)3 corporation. The board of directors of the Kanza Society is elected by the contributing members of HPPR. Five of the 13 current board members are from Texas Panhandle area including Dr. Douglas Hyde, Keith Jones, Claudia Stravato and Sandy Webb of Amarillo and Paul Coleman of Canyon.

For more complete schedule listings and additional information about High Plains Public Radio call 1-800-678-7444, visit the website at www.hppr.org or write HPPR, 210 N. 7th Street, Garden City, KS 67846.

You are invited to a
Bridal Shower
for
Suzanne Sanders
(bride-elect of Luke Bellsnyder)
on Saturday, November 23, 2002
from 10:00 - 11:30 a.m.
at the home of Tom & Linda Latta
1101 Barkley • Spearman, TX

You are invited to a
Wedding Shower
honoring
Kent & Julie (Jones) Hendrix
on Saturday, November 23, 2002
6:30 p.m.
Morse Community Building

Bridal Registry

Julie (Jones) & Kent Hendrix - Nov. 23 (Morse)
Suzanne Sanders & Luke Bellsnyder - Nov. 23

Misti Hand & Jimmy Gaytan
Brenda & Brian Watley
Haley Farber & Allen Hartford
Terri Schroyer & Evan Stubbs
Trilby Baldwin & Jeff Hutchison

Celebrate

Gifts for all your celebrations!
203 Main St. • Spearman, TX
(806) 659-3350 1-800-663-8026

It's A Girl!

Albert Vargas and Amanda Gilbert of Amarillo wish to announce the birth of their daughter, Caitlyn M'Kenzi Vargas. Caitlyn was born on November 5, 2002 at 2:06 a.m. in Amarillo. She weighed 5 pounds, 12 1/2 ounces and was 18 1/2 inches long.

Proud grandparents are Alonso Gilbert of Gruver, Gaynelle Babcock of Canyon and Esther and Arturo Vargas of Spearman.

You are cordially invited to attend the
80th Birthday
Party
honoring
Marie Beck
Sunday, Nov. 17, 2002
2-4 p.m., Come and Go
First State Bank
Hospitality Room
No Gifts Please



The UltraFlex Annuity

A flexible-premium, tax-deferred annuity issued by AIG Annuity Insurance Company

8.50% First Year!*
4.65% Guaranteed Second Year!*
Your money grows tax-deferred!

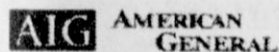
* Current effective rates as of July 1, 2002, which includes a 4.0 percent bonus payable the first year only, on the initial premium. Rates subject to change.

Withdrawals made during the first nine years in excess of the free withdrawal amounts will incur an early withdrawal charge (9%, 8%, 7%, 6%, 5%, 4%, 3%, 2%, 0%). Withdrawals prior to age 59 1/2 may result in a 10 percent federal income tax penalty. Consult your tax advisor regarding your specific situation.

For complete information about this product, including current interest rates and other details, contact:

Troy W. James, LUTCF
13121 County Rd. 18
Spearman, TX 79081
(806) 659-3004

UltraFlex Annuity
Policy Number A137-9L 8339-96
Distributed by:
AIG Annuity Insurance Company
Member of American International Group, Inc.



AIG Annuity Insurance Company was formerly known as American General Annuity Insurance Company. AIG Annuity Insurance Company's name change is subject to pending regulatory approval in certain jurisdictions. The underwriting risks, financial obligations and support functions associated with the products issued by AIG Annuity Insurance Company are solely its responsibility. AIG Annuity Insurance Company is responsible for its own financial condition and contractual obligations.

Come to Celebrate for Open House

Saturday, November 16th
9:30 a.m.-5:30 p.m.

Drawings & Tastings

Sunday, November 17th
1:00-5:00 p.m.

featuring
Tenderloin by Jolaine
Sauces by Celebrate
Sunday Only

Celebrate

Gifts for all your celebrations!
203 Main St. • Spearman, TX
(806) 659-3350 • 1-800-663-8026

Register to receive one of four
\$50 gift certificates.

just in time for
CHRISTMAS
"Home for the Holidays"
Christmas Open House
Home Interiors & Gifts
620 S. Endicott • Spearman
Saturday, November 23, 9 a.m.-6 p.m.
Sunday, November 24, 1-6 p.m.
Door Prizes & Drawings
Large Selection of Merchandise
20% - 50% Off
Come see all the new
Christmas merchandise
& ideas for your home!
Kristina Howell • 659-5654

SPECIALS
Christmas
Decorating
& Free Gift
Wrapping

For The Bride & Groom

Come by and let us help you
set up your special gift table

Couples Currently Registered

Suzanne Sanders & Luke Bellsnyder - Nov. 23
Brenda & Brian Watley
Jeff Hutchison & Trilby Baldwin

314 Main
659-2141

Gordon's
DRUG

Spearman,
Texas

Out At The Lake

by Dorothy Hudson



Charles and Floyd Laxton with Friday's catch.

Lake Level--November 12, 2002--30.60 feet

Jim said the little Veterans Day shower added .17 to the yearly moisture total.

Fishing at the Lake has been spectacular for the last 10 days, but Jim thinks it ended after the front came through.

Charley Laxton and his son Floyd from Perryton had a big day Friday. They were catching both blues and channel cats. I learned that there is a limit of 25 keepers on a catfish catch.

On Saturday Kent Ruble had one of the glory days that come so rarely for fishermen. Jim did not get a picture of his fish, but he had caught even more than the Laxtons.

Victor White also had 2 good days. One day he caught a 16# and a 11# catfish, so the next day he brought his wife, and they both had fun fishing when the fish are biting.

There has been some confusion on my Turkey Track stories.

The Turkey Track Ranch headquarters are down on the Canadian and owned by the Whittenburg family, too, but the Turkey Track on the Palo Duro is the division south of Gruver.

Today I happened to notice where Gwenfred Lackey had written the 6 family owners.

1. Guy Allan McKay
2. Higginbotham
3. Cook and Davis
4. Howard Wilson
5. W. T. Coble
6. Whittenburg

When the Tom Coble's only surviving child married Jim Whittenburg, the ranch later moved into that branch of the Whittenburg family.

The name Gus for Guy McKay was my mistake in last week's column.

Among The Neighbors

by Helen Fisher

Pauline McGee drove back Thursday from Abilene after a several days stay with her son and his family. While there, they attended a football game where she proudly watched her 7th grade grandson make three touchdowns.

Both her son and wife are employed by the school.

Prior to her trip to Abilene, her daughter and husband from Cincinnati, Ohio, had spent several days here with her.

Ruby Riley was taken to Lubbock by her son and wife where she was hospitalized for removal of a skin cancer on her leg. It was successful surgery, and she will not have to return to Lubbock. Any further treatment will be done in Amarillo. She feels that she is completely healed, though she isn't driving yet.

Ruby expresses appreciation to all who have been so caring and helpful to her. She states that she has given thanks to the Lord for each and every one and hopes all will realize that she can't personally thank them, but remembers them in her prayers. She feels blessed to live in Spearman where there are such caring people.

W.E. Sparks and brother, Junior Sparks of Stinnett, spent Monday through Wednesday in Albuquerque, where they met their sisters from California. Betty Jo Kelly and Mary Ann Snodgrass are both from Bakersfield.

Joining them was an old friend and classmate from Borger, Jaynelle Steinkoenig.

Eloise Renner and daughter Diane Maxwell recently met her other daughter, Amy Holland, in Oklahoma City. Amy lives in Austin, and had flown in to meet them. They drove around in

Oklahoma City to places of interest, including the Bombing Memorial.

They then leisurely drove to Eureka Springs, Arkansas. They spent a few days enjoying the spectacular foliage.

Although there was light rain every day, it did not hamper their enjoyment.

Much appreciation is expressed to those who made the Veteran's Day service possible. Included are First National Bank, Hansford Extension Agency, KRDF-FM for broadcasting, Spearman ISD, James Cunningham, and to Ross Renner for his thoughtful message.

Thanks to the anonymous Samaritan who left the good apples and corn on my porch.

Two seniors from Spearman High School were among those honored at the annual District 4-H Gold Star Banquet at West Texas A&M University on Saturday.

Congratulations to Dustin Mackie, son of Glen Ray and Laura Mackie, and Kyna Shields, daughter of Lonnie and LeAnn Shields.

Don Allen is expected to be well enough to return home here by the end of the week. Don fell in his

home week before last and broke some ribs. He was treated at Hansford Hospital before being taken to Baptist St. Anthony's in Amarillo.

Family members report that recovery is slow because of his physical condition.

His wife, Mary, is with him.

19 tired youths returned Sunday afternoon from a busy but pleasant trip to Lubbock. They left early Saturday morning on the Methodist Church bus with Verlin Winegarner driving.

The group consisted of First Methodist junior high students (grades 6, 7 & 8). First they did some shopping, then attended the Texas Tech football game.

Sunday morning they attended the Westminster Presbyterian Church, then left for home, arriving about three o'clock.

Sponsors in addition to Verlin were Margy Schoenhals, Youth Director, Bonnie Bergan and Stephanie Crossland.

The group plans a luncheon on December 8th at the church. Details will be provided at a later date.

Weather for the week of November 4th through 7 a.m. on November 11th: the high was on November 8th at 78; the low was on November 4th at 27; no moisture.

Thank You

Spearman Jr. High had a great week October 21-25 celebrating being drug free. Many thanks go to Cindy Blackman, KRDF, Celebrate, Hansford County Library, Texas Prevention Center, The High School Art Class, Jane Henton, Krista Baird, Jr. High Faculty, Students, and Parents. Thank you for helping us in our campaign to promote a healthy, drug-free lifestyle.

Sincerely,
Bill Wiggins, Principal and
Karen Hartgraves, Counselor

Thank You

I would like to take a moment to thank several people for helping to

make our Red Ribbon Week/Drug-Free Campaign a success. A huge thank you to Mrs. Rhonda Ward and the high school cheerleaders for assisting with prize distribution, making banners, and decorating, also, thank you to Mrs. Mica Beem and the junior high cheerleaders for their help with decorating and making posters. Finally, thank you to Mrs. Renea Swink, Sammi Johnson, Lucy Trejo, and the junior high cheerleaders for their help with the elementary students' display. Of course, the staff, teachers, and students who participated in the week-long activities are appreciated, as well.

I am grateful for their efforts and involvement to help keep our students drug-free!!

Sincerely,
Wendy Branstine,
Gruver ISD Counselor

James R. Jackson, CPA

announces the opening of his office at
407 S. Davis in Spearman • (806) 659-3869
Tuesdays, 8:30 a.m. - 5:00 p.m.

Services include tax preparation,
bookkeeping and advisory services.

LATEST DEVELOPMENT FOR FEMALE STERILIZATION

Breakthrough Technology for Permanent Birth Control

- Micro-surgical
- No incisions
- No scars
- Does not contain hormones
- Can be performed without general anesthesia
- Rapid recovery - typically discharged 45 minutes after procedure

For more information on the latest FDA approved birth control option, call for an appointment.

Bill Settle, M.D., FACOG
1753 N. Roosevelt
Guymon, Oklahoma
Phone: (580) 338-2637

The Set Rate Annuity

A single-premium tax-deferred annuity with market value adjustment issued by AIG Annuity Insurance Company

5.50% Guaranteed for 9 Years!*
Your money grows tax-deferred!

* Current rate effective as of July 1, 2002. Rate is subject to change. Withdrawals made during the first seven years in excess of the free withdrawal amounts will incur an early withdrawal charge (7%, 6%, 5%, 4%, 3%, 2%, 1%) and will be subject to a market value adjustment.

Annuities are long-term contracts subject to early withdrawal charges. Withdrawals prior to age 59½ may result in a 10 percent federal income tax penalty. Consult your tax advisor regarding your specific situation.

For complete information about this product, including withdrawal charges, market value adjustment and other details, contact:

Troy W. James, LUTCF
13121 County Rd. 18
Spearman, TX 79081
(806) 659-3004

The Set Rate Annuity
Policy Number AIG-98
Disclosed by:

AIG AMERICAN GENERAL

AIG Annuity Insurance Company
Member of American International Group, Inc.

AIG Annuity Insurance Company was formerly known as American General Annuity Insurance Company. AIG Annuity Insurance Company's name change is subject to pending regulatory approval in certain jurisdictions.

The underwriting risks, financial obligations and related functions associated with the products issued by AIG Annuity Insurance Company are solely its responsibility. AIG Annuity Insurance Company is responsible for its own financial condition and contractual obligations.

DIVINE RESTORATION

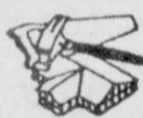
Carpet & Air Duct Cleaning,
Home & Auto Upholstery, Spot Removal,
Tile & Grout Cleaning, Tile Grout Coloring & Sealing
(stain proof 10 yr. warranty), Small Handyman Work

Change the look of your floors - stain proof grout
Over 400 colors to choose from

Call Jade: 806-366-2840 Mobile: 806-753-6848



**SERVANTEZ
ESTATE
REPAIR**



Tree Service
Topping, Pruning
Cleaning, Removal

Carpenter Work
Painting, Siding,
Metal & Shingle Roofing
Porches, Fences & Decks
Remodel Work

Cell (806) 886-7885

Home (806) 659-5073

Table Presence.

Autumn Pitcher
Bouquet

Gracefully falling leaves individually hand-painted on our thickly glazed ceramic pitcher and a cornucopia of fresh fall flowers make for a truly one-of-a-kind gift. For delivery anywhere in the U.S., call or visit our shop.

Thanksgiving is
Thursday,
November 28.



Prairie Garden Flowers
209 Main Street • Spearman, TX
659-2212 • 659-3329



Christmas Open House
Sunday, November 17th
1:00-5:00 p.m.

Enjoy a fun afternoon of
Christmas Shopping in Gruver

Refreshments
Christmas Shopping Specials
Drawings At Each Store

| | |
|---------------------------------------|--|
| Main | Little |
| Street Store | Tiffanies |
| 506 Main Gruver, Texas 733-5040 | 103 E. Broadway Gruver, Texas 733-5290 |

The Gruver Grapevine

by Harletta Carthel

GHS Seniors Play Final Football Game

Seven Gruver High School seniors played in their final football game as Greyhounds in a district contest Saturday afternoon in Sunray.

The senior Hounds are Wade Stewart, son of Donna and Sparky Stewart; Hunter Beville, son of Tracy and Steve Beville, David Puebla, son of Celestino and Maria Puebla; David Hernandez, son of Francisco and Maria Hernandez; Dan Villegas, son of Jesus and Manuela Villegas; Brandon Casdorff, son of Jamie and Rex Casdorff, and Aaron Boyd, son of Diane and Lynn Boyd.

Have Trees, Will Adopt

The Gruver Chamber of Commerce is sponsoring their second annual "Adopt a Christmas Tree in the Park" project.

Evergreens in the park may be adopted by groups or individuals to adorn in memory or in honor of a loved one.

Signs will be placed by adopted trees identifying the person being honored or memorialized.

To adopt a tree, call or stop by City Hall and register the tree or trees of your choice and inform City Manager Linda Weller or City Secretary Tencha Cazares of the name to be imprinted on the designation sign.

The lights will be turned on the evening of November 29th at dusk.

The Gruver Chamber of Commerce is urging Gruver families to adopt a tree and adorn it with lights as part of their Thanksgiving celebration.

Last year 22 trees were adopted. Residents are reminded that they must furnish their own lights and also take down the lights after the holidays. Electricity will be run to

each of the adopted trees by city employees.

Outdoor Home Decorating Contest Slated

The Gruver Chamber of Commerce is looking for the best dressed homes in Gruver in their annual outdoor home lighting contest. Three winners will be awarded \$50 in Gruver bucks for their efforts.

Judging by out-of-town judges will be the night of December 22nd. For those who have won in the past and do not want to be considered in this year's contest, please inform City Hall.

Resident's Son-in-Law Has Painting in Periodical

A painting of the Gruver skyline by Don Sahli, the son-in-law of Corky and Lou Chapman, was included in the July 2002 issue of Southwest Art.

The Gruver elevator, now leased by Sunray Coop, provided the background for a golden field of wheat in the painting. The painting was made from pictures Sahli made on a Thanksgiving visit to Gruver.

Sahli, a professional painter, and his wife Cindy live in Evergreen, Colorado. More of his works and information are available at his website www.sahlistudio.com.

City to Test Warning System

The city of Gruver will begin weekly testing of the outdoor warning system, Wednesday, November 20, 2002 at 12:00 noon. The siren will be set to test every Wednesday at noon, thereafter.

Harvest Resumes

After a bout of freezing rain and drizzle, area farmers have returned to their fields to complete milo harvest.

The Gruver Branch of Sunray Coop had received 185,000 bushels of milo by Monday, November 11. According to Lisa King, there is a larger milo crop than was expected. The quality and test rates of the crop are termed good, with the moisture testing slightly higher than last year.

A total of 1,582,000 bushels of corn have been brought to the elevator. This figure compares to 400,000 bushels harvested last year. The quality of the corn was also termed good.

Community Prayers

The prayers of the Gruver community are with Tom Razor and his family. Tom is in hospice care in Spearman.

Prayers of the community are requested for Damian Robless, the infant son of Esmirelda (Bravo) and Manuel Robless and the grandson of Jose and Mercedes Bravo. The infant was airlifted last week to Children's Medical Hospital in Dallas. The infant has improved somewhat, but may be facing a possible heart transplant.

Farmers Breakfast Scheduled

Sylvia Borunda, Gruver Schools Migrant Education Coordinator, has scheduled a farmers breakfast for Gruver farmers and feedlot managers, at 7:00 a.m., Wednesday, November 20, in the school cafeteria.

The purpose of the meeting is to help identify children of migrant workers in order to enroll them in educational preparatory programs and to explain the program to the group.

If you are a farmer or feedlot manager in the Gruver School District, please call Sylvia Boraunda, 733-2364 or 733-2031.

Thanksgiving Plays Slated

At least two Thanksgiving plays have been scheduled at Gruver Elementary.

"Stone Soup," a perennial favorite by the second grade class will be presented Monday, November 25. The play will also be presented for residents of Hansford Manor.

The first grade will present a Thanksgiving play on Thursday, November 21.

Junior High and Elementary Students to Compete

Gruver Elementary and Junior High students will be competing in the district UIL Academic contest, Tuesday, November 19 at Stratford.

Blood Drive Set

The FCCLA of Gruver High School will sponsor a blood drive Thursday, November 14, from 9:30-3:00, at the high school library.

Community to Observe Thanksgiving

Gruver schools will dismiss at 12:30 p.m., Tuesday, November 26, for the Thanksgiving holidays. Classes will resume Monday, December 2.

The annual community Thanksgiving service will be held at the First Baptist Church, Sunday November 17, at 7:00 p.m.

Angels Ready for Adoption

The names of Gruver angels available for adoption will be displayed on the Christmas tree at Main Street store.

The angels are Gruver children who are in need clothing for the winter season and/or a toy for Christmas.

Wrapped gifts for the angels may be returned to Main Street for Christmas distribution.

The Gruver community has had a 100% adoption rate for angels in the past.

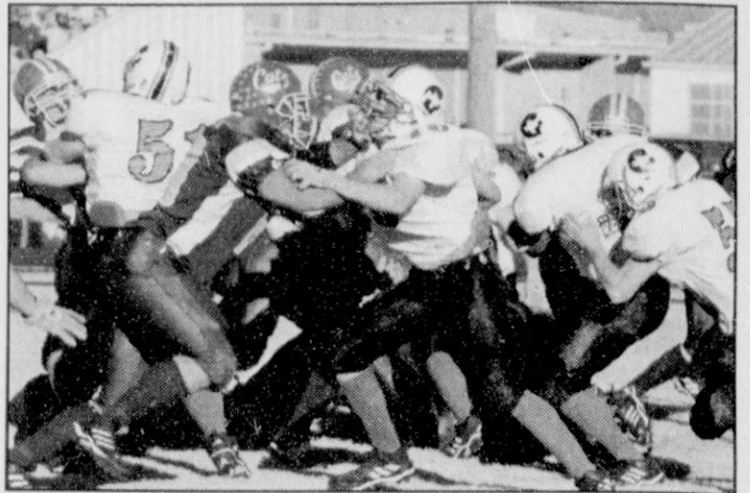
Do A Good Deed

Have you performed an anonymous act of kindness this week?

If not, there is still time to participate in Random Acts of Kindness Week which continues through

Saturday.

If you are the recipient of a random act of kindness, please share your experience with me.



The Gruver Greyhound defense converge on the Sunray Wildcats during Saturday's game in Sunray.

Thank You!

Pringle-Morse Cougar Pride wants to thank our Fall Carnival contributors. We appreciate your support!

- | | |
|---------------------|---------------------------|
| Little Tiffanies | Cates Men & Boys |
| Hansford Supply | Gordon's Drug |
| Morse Implement | Prairie Garden Flowers |
| Paula's Creation | Berry Cleaners |
| KMOR - Paige Speck | Celebrate |
| KRDF-FM | Patsy Dixon; Frames, Etc. |
| First State Bank | Dean & Linda Lieb |
| First National Bank | Five Star Equipment |
| Lady Fair | B&B Sales |
| Kid's Stuff | Hansford Implement |
| Hickerson Jewelers | Naomi Schrayner |

Holiday Open House

Saturday, November 16th & Sunday, November 17th

Hickerson Jewelers

721 W. Seventh

Nov. 16: 9:30 a.m.-5:30 p.m.

Nov. 17: 1-5 p.m.

Jo's This 'N That

214 Main

Nov. 16: 9 a.m.-5 p.m.

Nov. 17: 1-5 p.m.

Celebrate

203 Main

Nov. 16: 9:30 a.m.-5:30 p.m.

Nov. 17: 1-5 p.m.

Jeanette's Sweet Creations

315 1/2 Main

Nov. 16: 9 a.m.-5 p.m.

Nov. 17: 1-5 p.m.

All Occasion Flowers

202 N. Bernice
(North of Post Office)

Nov. 16: 9:30 a.m.-5:30 p.m.

Nov. 17: 1-5 p.m.

Gordon's Drug

314 Main

Nov. 17: 1-5 p.m.

Prairie Garden

Flowers

209 Main

Nov. 17: 1-5 p.m.

These Spearman merchants invite you to join them in celebrating this Holiday Season!

Meetings & Minutes

Eta Alpha Chapter of Delta Kappa Gamma Meets

On Saturday morning, September 14, 2002 the Eta Alpha Chapter of Delta Kappa Gamma met at the Bank of the Southwest Community Room.

Opening thought was given by Maurine Flathers followed by the initiation of new members. Those members joining the Eta Alpha Chapter were Renee Lee, Melissa Hardy, Jane Stollings, Carrie Hargues and Gayle Butler.

The meeting was called to order by President Bobette Doerrie.

Following the business meeting a salad luncheon was held and committee members met to plan the activities for the year.

Members are from Perryton, Booker, Darrouzett and Spearman. Thirty members attended the luncheon.

The Eta Alpha Chapter of Delta Kappa Gamma met on Tuesday, October 8th at Gus Birdwell Elementary School in Spearman, TX.

The meeting was called to order by President Bobette Doerrie. Bev Burger introduced special guests Ed and Aurora Hunt of Perryton. Mr. Hunt is the coordinator of the

Reading Enrichment for Adult Development program in Perryton. He gave an overview of the R.E.A.D. program to those members present. He stated that the purpose of the program is to teach adults to read. He outlined the qualifications and responsibilities of tutors and informed the members that there is a great need for tutors for the R.E.A.D. program in Perryton. A question and answer session followed his presentation, followed by the business meeting.

Hostesses for the meeting were Wilma Clark, Krista Baird, Minty Wilson, Bev Burger and Carolyn Newcomb. Twenty-one members attended the meeting.

Shields. Dustin and Kyna will be honored at the District 4-H Gold Star Banquet November 9th in Canyon.

Dwayne Smith was recognized for his 35 years of support for 4-H events and activities.

Jessica Schmidt received the Horse award and Austin and Cody Benton received Swine awards for completing a record book for district competition.

Photography awards were presented to Justin Thompson, Austin Benton and Kallie Smith for their participation in the district and state photography contest.

Top salesman in the 4-H fund raising activity were recognized. They were Brienne Jordan, Hannah Haddock and Austin and Cody Benton.

4-H members who devoted their time and efforts to participate in district contests were recognized. These members were Emily Hood, Hannah Haddock, Jessica Schmidt, Tori Sheets, Anna Garnett, David Pipkin, Kyna Shields, Mackenzie Crane, Britta Vanderburg, Sharon Haney, Abby Winegarner, Justin Thompson, Bailey Reid, Brenna Reid, Tucker Williams, Taylor Williams, Charlie Slough, Casey Cator, Dakota Cator, Austin Benton, Cody Benton, Jessica Jarvis, Dustin Mackie, Lance Williams, Nick Slough and Clete Vanderburg.

Year pins were presented by teen leaders Travis, Tracy, Kali, Britta, Lance and Clete to 4-H youth completing a project during the 2001-2002 year. 4-H gate signs were presented to all first-year members.

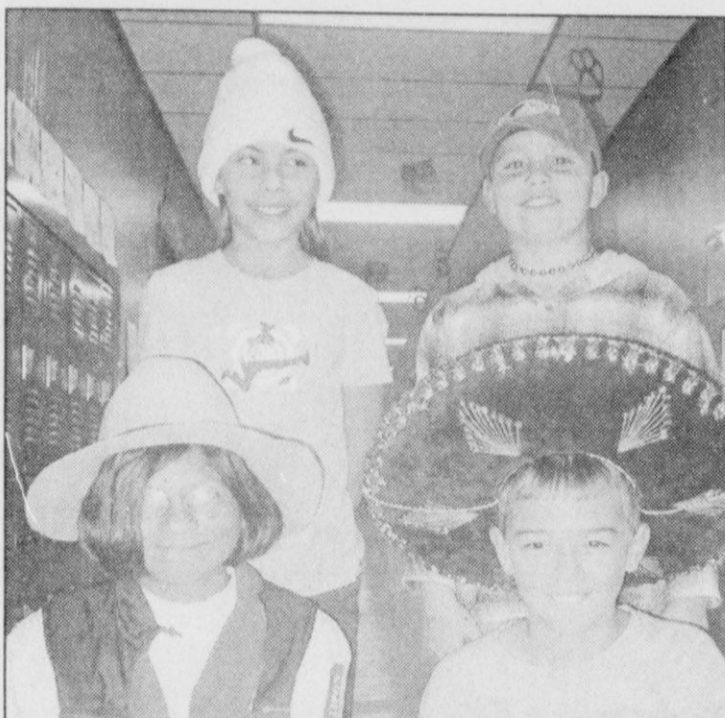
Hansford County 4-H Awards Banquet Held

The Hansford County 4-H Awards Banquet was held Sunday, August 25, 2002 at the Fellowship Hall of Spearman Church of Christ. 4-H youth, their parents, volunteer leaders and supporters of the 4-H program were in attendance.

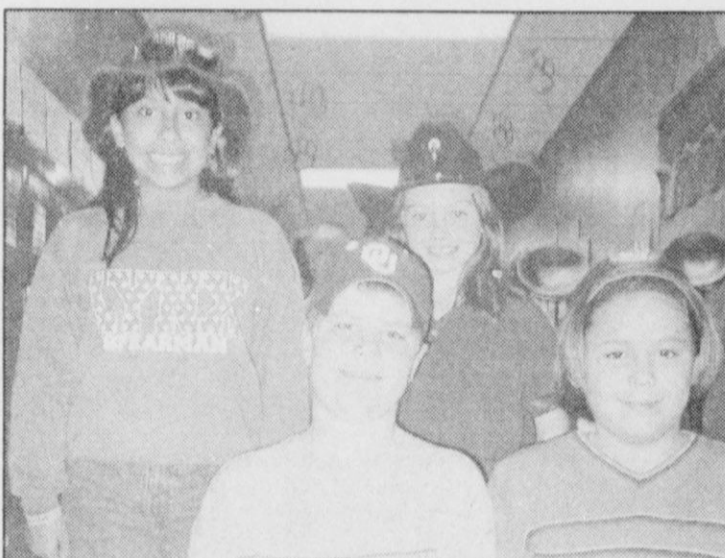
Dustin Mackie and Kyna Shields presided over the event, which carried out the theme "4-H the Power of YOUth."

Bailey Reid led the Pledge of Allegiance and Jessica Schmidt led the 4-H Motto and Pledge. Rachelle Holt gave the welcome and Nick Slough introduced the guests. Lance Williams recognized parents and volunteer leaders.

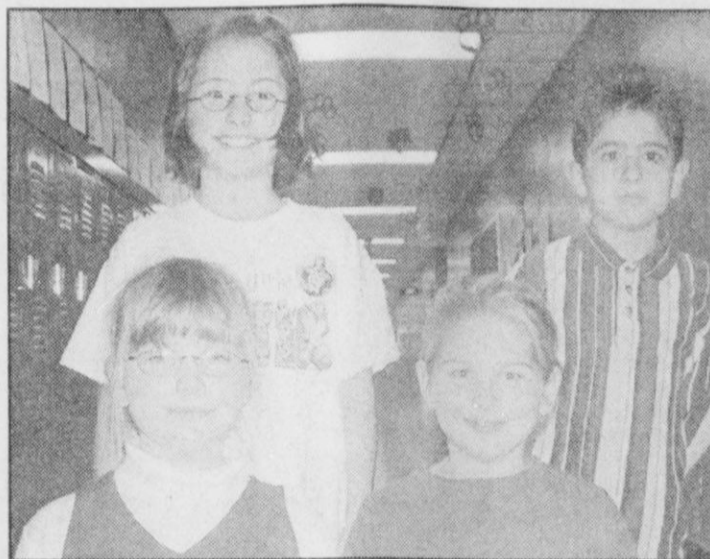
This year's Gold Star recipients were Dustin Mackie and Kyna Shields. Dustin is the son of Glen Ray and Laura Mackie. Kyna is the daughter of Lonnie and LeAnn



Gus Birdwell Elementary Red Ribbon Week Poster Contest Winners: 5th Grade - (Back, L-R) Britani Vasquez and Zack Hughes; (Front, L-R) Rosa Ortiz and Tate Batton



Gus Birdwell Elementary Red Ribbon Week Poster Contest Winners: 4th Grade - (Back, L-R) Jessica Bueno and Shylah Sparks; (Front, L-R) Blayne Schroeder and Jessica Pinon



Gus Birdwell Elementary Red Ribbon Week Poster Contest Winners: 3rd Grade - (Back, L-R) Chandler Short and Jose Salazar; (Front, L-R) Lauren Ferguson and Tara Duke

The UltraMYG Annuity

A single-premium, tax-deferred annuity with a multi-year guaranteed rate issued by AIG Annuity Insurance Company

8.90% First Year!*

4.90% Guaranteed for Years 2-6!*

Your money grows tax-deferred!

* Current effective rates as of July 1, 2002. Rates subject to change. Withdrawals made during the first nine years in excess of the free withdrawal amounts will incur an early withdrawal charge (9%, 8%, 7%, 6%, 5%, 4%, 3%, 2%) and will be subject to a market value adjustment.

Annuities are long-term contracts subject to early withdrawal charges. Withdrawals prior to age 59½ may result in a 10 percent federal income tax penalty. Consult your tax advisor regarding your specific situation.

For complete information about this product, including withdrawal charges, market value adjustment and other details, contact:

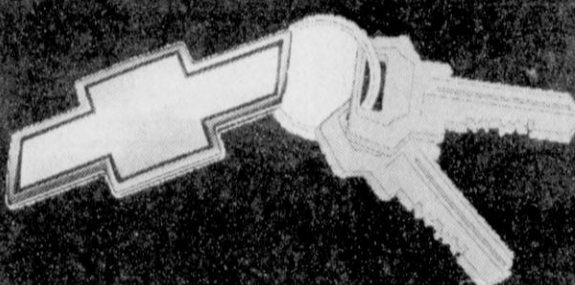
Troy W. James, LUTCF
13121 County Rd. 18
Spearman, TX 79081
(806) 659-3004

UltraMYG Annuity
Policy Number: A88-96, 1338-95
Distributed by:

AIG Annuity Insurance Company
Member of American International Group, Inc.

AIG Annuity Insurance Company was formerly known as American General Annuity Insurance Company. AIG Annuity Insurance Company's name change is subject to pending regulatory approval in certain jurisdictions. The underwriting, risks, financial obligations and support functions associated with the products issued by AIG Annuity Insurance Company are solely its responsibility. AIG Annuity Insurance Company is responsible for its own financial condition and contractual obligations.

AIG AMERICAN GENERAL



DRIVE AWAY TODAY

WE HAVE THE MAKE, MODEL & PAYMENT FOR YOU!

All 2002 vehicles MUST GO!

They have been slashed down to their lowest prices - no hassles, no negotiating necessary!

2002 Chevy Silverado 1500 Extended Cab

#22252, 4WD, Victory Red, LS Pkg., Z71 Pkg. List \$32,381⁰⁰
Prairie Motors Price

YOU SAVE \$4,929⁰⁰ **\$27,452⁰⁰****

2002 Chevy TrailBlazer Ext. LT 4WD

#22231, Sandalwood Metallic, LT Pkg., Loaded List \$34,175⁰⁰
Prairie Motors Price

YOU SAVE \$4,043⁰⁰ **\$30,132⁰⁰****

2003 Chevy Silverado 1500 Reg. Cab

#23027, 2WD, Light Pewter TX/OK Pkg., Auto. List \$20,866⁰⁰
Prairie Motors Price

YOU SAVE \$3,289⁰⁰ **\$17,577⁰⁰****

2002 Chevy Monte Carlo SS Coupe

#22089, Black, Black Leather, 3.8 V6, Sunroof List \$25,995⁰⁰
Prairie Motors Price

YOU SAVE \$4,987⁰⁰ **\$21,008⁰⁰****

2002 Chevy Silverado 2500HD Ext. Cab

#23002, Victory Red, LS Pkg., 6000 V8 & More! List \$34,097⁰⁰
Prairie Motors Price

YOU SAVE \$5,073⁰⁰ **\$29,024⁰⁰****

2003 Chevy Tahoe 4WD

#23040, Black, Z71 Off-Road Pkg., Fully Loaded! List \$44,562⁰⁰
Prairie Motors Price

YOU SAVE \$6,110⁰⁰ **\$38,452⁰⁰****

Solid Pre-Owned Savings!

2002 Dodge 1500 Quad Cab 2WD

Black, V8, SLT Pkg., 20" Wheel Pkg.!
\$22,900

1999 Pontiac Grand Prix Sedan

Bright Red, SE Pkg., 3.8 V6, Price Reduced!
\$11,900

2002 Buick LeSabre

Custom Sedan, Light Bronze Mist, 3.8 V6 & More!
\$19,500

"IF YOU DON'T COME SEE US TODAY"

PRAIRIE MOTORS INC.

"WE CAN'T SAVE YOU ANY MONEY"

1-800-692-4657

Visit www.prairiemotors.com to see ALL in-stock vehicles!
Hwy. 207 South • Spearman
(806) 659-2541



All Prices Plus Tax, Title & License **Prairie Motors Price after GM Cash Back plus GM Bonus Cash - WAC on All Remaining 2002 GM Vehicles.

J&M Service Center & Fronk Oil Co., Inc.

would like to announce that a 24-Hour, seven-day-a-week credit card system has been installed at the station. The system will accept Fronk Oil Company Cards, Cart Blanc, MasterCard, Discover, Visa, Voyager, and Wright Express. We hope this will be an added convenience for retail customers. Both companies appreciate your business and hope to better serve your needs in the future!

J&M Service Center

415 Collard • Spearman
(806) 659-5519

Red Ribbon Week Held October 21-25

by Karen Hartgraves, Spearman Junior High Counselor
 Red Ribbon Week was held October 21-25 at Spearman Junior High. Each day of the week was given an anti-drug theme.
 Monday - "Tie One On Against Drugs" (wore a tie to school).
 Tuesday - "I Turn My Back On Drugs" (wore clothes backward).
 Wednesday - "Hugs Not Drugs" (brought a stuffed animal to school to hug instead of doing drugs).
 Thursday - "Team Up Against Drugs" (wore favorite team jersey or clothing).
 Friday - "Wash Out Drugs" (donated toiletry items for the Court House food pantry).
 The students participated well in celebrating being drug-free. I am so proud of each one of them.



Junior High All-Region Choir: (L-R) Lisa Espinosa, Natalie Quintero, Clara Kern and Amanda Snider



Jo and Bob Farr hold one of the quilts made for the boys of Jefferies home at Cal Farley's Boys Ranch.



Front Row: Jose Anaya, Pedro Anaya, Justin Doby; Back Row: Destiny Fisher, ChaTae Avila, Courtney Baca, Elena Vargas, Natalie Lopez, T.J. Worley



6th Grade Honor Choir: (Back Row, L-R) Tyler Harper, Gabriel Moreno, Sabrina Cantu and Destiny Fisher; (Front Row, L-R) Dustin Frost and Ashley Close

Quilters Stitch Holiday Gifts

Christmas is the season of giving and the spirit of Christmas has arrived at Jo's This n' That.

On Saturday, November 9, fellow quilters and friends of Bob and Jo came together volunteering to make special quilts. These quilts will be Christmas gifts for the 15 boys of Jefferies home at Cal Farley's Boys Ranch who have come to know Bob and Jo as Granny and Grandpa.

Everyone enjoyed the pot luck lunch and visiting while making these special gifts from the heart.

Participating were Kathy Biggs, Byrnie Callaway, and Georgianne Hutchison of Spearman, Brownie Kendrick, Kiyomi Kume, Naoka Nakada, and Chiemi Takada of Perryton, Ruth Ann Hickerson and Julie Ortega of Boys Ranch, Betty Kirk of Stinnett, and Luann Shields of Morse.

Greg and Blake Farr and Jordon Brockman, son and grandsons of Bob and Jo provided errand service, drinks, and moral support.

The Boys Ranchers will receive their quilts at their Home Christmas Party on December 20.

The last day to work on the quilts will be December 4th at 9:00 a.m. If you are interested in volunteering, please call Jo at 659-3999.



Thornton Graduates From Basic

Colton James Thornton (King) graduated from the United States Air Force Basic Training on Thursday, October 18, 2002, at Lackland AFB in San Antonio, Texas. He served the 745th Flight of Unit 323 while in training.
 Colton is the son of Ronnie and Lisa King and is a 2002 graduate of Gruver High School. He is currently serving at the Sheppard Air Force Base, Wichita Falls while he attends technical school where he will graduate at the end of the year. He is studying as a Munitions Systems Apprentice.

Colton James Thornton

Machine Quilting and Monogramming available at **Jo's This 'N' That**
 214 Main St. • Spearman
659-3999

Personalization & Custom Computer Designs Available

MARY KAY
 Beauty Consultant
Leann Gillaspie
659-3889
 America's best selling brand

Eat & Be Merry At

MONEY'S

BBQ & STEAK HOUSE

Hotline for Friday & Saturday Nights - 435-3945

We offer Priority Seating! Give us a call before leaving, and we will save you a place in the seating line. When you arrive, check in with the hostess.

14 SE 3rd Ave. Perryton, TX


New Menu (10 new items)
Wed. Night - All-You-Can-Eat Catfish

Frank Phillips College

Start Here ... Go Anywhere!

Whether you are taking classes in order to transfer to a four-year school, planning to directly enter the job market, or you're interested in retaining or learning a new skill, Frank Phillips College has what you are looking for!

December 2002 Mini-Term
Pre-Registration for Spring 2003
Wednesday & Thursday, November 20 & 21
8 a.m. to 6 p.m. • FPC Library



Frank Phillips College
 PO Box 5118 • Borger, TX 79008
 (806) 274-5311 • www.fpc.cc.tx.us
 FPC is an equal opportunity community college.

A Bounty Of Bargains

Simplicity. Choice. Value.
 Call On Someone You Know

Take Us Along with one of our All New Plans

Now through Thanksgiving
 Cigarette lighter adapter, leather case & hands-free kit - **ONLY \$15⁰⁰** (Regularly \$69⁰⁰)
With any \$40 plan or higher, available only for new activation or plan upgrade.

\$35
 3900 Min. Per Month
 Western Advantage Plan

\$30
 3850 Min. Per Month
 Local Plan

\$45
 3950 Minutes Per Month
 National Plan

\$40
 4300 Minutes Per Month
 Local Plan

FREE
 Voice Mail
 Incoming Text Messaging
 on ALL plans

\$20
 Partner Plans Available

FREE
 120 Motorola
 (plus \$25 mail-in rebate)
 with any plan \$40 or more

Check Out Our Cellular Phone Accessories

CELLULARONE

Authorized Dealer
 Clear Across America

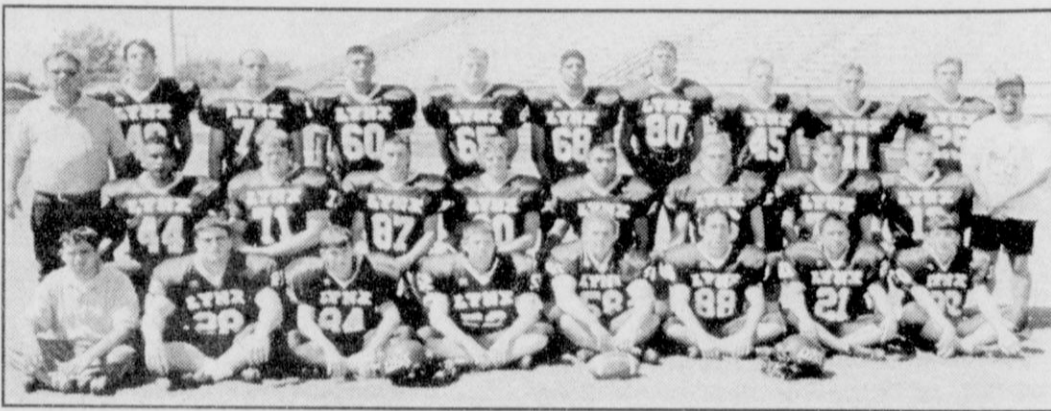
Highway 207 S.
 Spearman, TX 79081
 (806) 659-2541
 1-800-692-4657

See us Today!
Country Cellular Communications

WE'RE PROUD OF YOU!



**SPEARMAN GRUVER
LYNX GREYHOUNDS**



| | | | | |
|--|--|--|---|---|
| <p>First National Bank Spearman, TX • 659-5544 member FDIC</p> | <p>Spearman Chamber of Commerce Spearman, TX • 659-5555</p> | <p>Sunray Co-Op Gruver Branch Gruver, TX • 733-2481</p> | <p>Golden Spread Sales Co. Spearman, TX • 659-3776</p> | <p>Dr. James Pinkerton, DDS Spearman, TX • 659-3315</p> |
| <p>Watley Seed Co. Spearman, TX • 659-3838</p> | <p>Golden Spread Carpet Spearman, TX • 659-3068</p> | <p>Berry Cleaners Spearman, TX • 659-3122</p> | <p>Boxwell Brothers Spearman, TX • 659-3802</p> | <p>First State Bank Spearman, TX • 659-5565 member FDIC</p> |
| <p>Lytic Cinema Spearman, TX • 659-2812</p> | <p>Spearman Booster Club Spearman, TX</p> | <p>Hansford Implement Co. Spearman, TX • 659-2568</p> | <p>Gruver State Bank Gruver, TX • 733-5061 member FDIC</p> | <p>Bartlett's Ace Hardware Gruver, TX • 733-2404</p> |
| <p>Vicky's Beauty Salon Spearman, TX • 659-3531</p> | <p>Gigot Agra Products Inc. Spearman, TX • 659-3121</p> | <p>Gruver Farm Supply Gruver, TX • 733-2427</p> | <p>Five Star Equipment Spearman, TX • 659-3743</p> | <p>Rod Sumner Spearman ISD Superintendent</p> |
| <p>Palo Duro Supper Club Spearman, TX • 659-2232</p> | <p>Sergio's Body Shop Spearman, TX • 659-5217</p> | <p>John L. Hutchison, Atty. Spearman, TX • 659-3703</p> | <p>Hi-Plains Auto Spearman, TX • 659-2506</p> | <p>Little Tiffanies Gruver, TX • 733-5290</p> |
| <p>H&H Water Well Spearman, TX • 659-5577</p> | <p>Kid's Stuff Spearman, TX • 659-2608</p> | <p>Cates Men & Boys Spearman, TX • 659-3426</p> | <p>Corner Service Station Spearman, TX • 659-2722</p> | <p>Gruver Cablevision Gruver, TX • 733-5295</p> |
| <p>Lowe's Marketplace Spearman, TX • 659-2522</p> | <p>Lady Fair Spearman, TX • 659-3215</p> | <p>Panhandle Diner & Deli Spearman, TX • 659-3864</p> | <p>J&M Service Center Spearman, TX • 659-5519</p> | <p>Pizza Hut Spearman, TX • 659-2547</p> |
| <p>Frontier Feedyard Spearman, TX • 882-4251</p> | <p>Transpetco I Spearman, TX • 659-2596</p> | <p>Hansford County Reporter-Statesman Spearman, TX • 659-3434</p> | <p>MurMur's Cafe Spearman, TX • 659-3580</p> | <p>Main Street Store Gruver, TX • 733-5040</p> |
| <p>Jo's This N' That Spearman, TX • 659-3999</p> | <p>Sparks Brothers Spraying, Inc. Gruver, TX • 733-2972</p> | <p>Hickerson Jewelers Spearman, TX • 659-3566</p> | <p>White House Lumber Spearman, TX • 659-3792</p> | <p>G&G Foodliner Gruver, TX • 733-2471</p> |
| <p>El Vaquero Restaurant Gruver, TX • 733-2407</p> | <p>Gruver Dairy Queen Gruver, TX • 733-2913</p> | <p>Hansford County Farm Bureau Spearman, TX • 659-3133</p> | <p>Gordon's Drug Spearman, TX • 659-2141</p> | <p>Junior Lusby Cats Spearman, TX • 659-3766</p> |
| <p>H&H Credit Union Stinnett, TX • 878-2452</p> | <p>Spearman Equity Spearman, TX • 659-2420</p> | <p>Hansford County Hospital District Spearman, TX • 659-2535</p> | <p>Morse Implement Morse, TX • 733-2668</p> | <p>Hansford County Hospital District Spearman, TX • 659-2535</p> |
| <p>Hansford Supply Gruver, TX • 733-2469</p> | <p>Dairy Queen Spearman, TX • 659-3324</p> | <p>Hansford County Hospital District Spearman, TX • 659-2535</p> | <p>Celebrate Spearman, TX • 659-3350</p> | <p>All Occasion Flowers Spearman, TX • 659-5180</p> |
| <p>Simple Simon's Anita's Video Madness 659-9991 • 659-5046</p> | <p>Gruver Insurance Agency Gruver, TX • 733-2421</p> | <p>Rocking F Boot & Saddle Shop Spearman, TX • 659-3342</p> | <p>Main Street Barber Spearman, TX • 659-2280</p> | <p>First Christian Church Spearman, TX • 659-2036</p> |

November Declared Home Care, Hospice Month



Hansford Hospice Volunteers present check to Steve Hartgraves, HCHD CEO. In the picture, (L-R), Joann McClellan, June Jackson, Doyle Jackson, Steve Hartgraves, Verna Lee Shirley, and Rosetta Barrera, Hospice LVN. The check, in the amount of \$15,000, is to be placed in the Hospice Endowment Fund which is restricted to Hansford Hospice use only. Hansford County Hospital District, its Board of Directors and Administration, gratefully acknowledge this donation and the efforts of Hansford Hospice Volunteers for the benefit of Hansford County residents.

The National Association of Health Care and the National Hospice and Palliative Care Organization are declaring November as National Home Care Month and National Hospice Month.

The national organizations are using this opportunity to raise awareness of the fact that most home care and hospice services are covered under Medicare.

"Medicare home health benefits have been underused since the Balanced Budget Act of 1997, when Medicare eliminated coverage for long-term chronic conditions." "Since then, they've loosened up some of their definitions of home-bound status, such that a person who drives occasionally to a physician's appointment is not disqualified. But people got the perception that Medicare coverage for home health care is no longer

available." Many people also are unaware that most health insurance policies cover home health care and hospice care for end-of-life needs.

"Home is the preferred place to receive care whenever possible, so they can be surrounded by their family, friends and pets, and have their care provided on their own

schedule and their own terms."

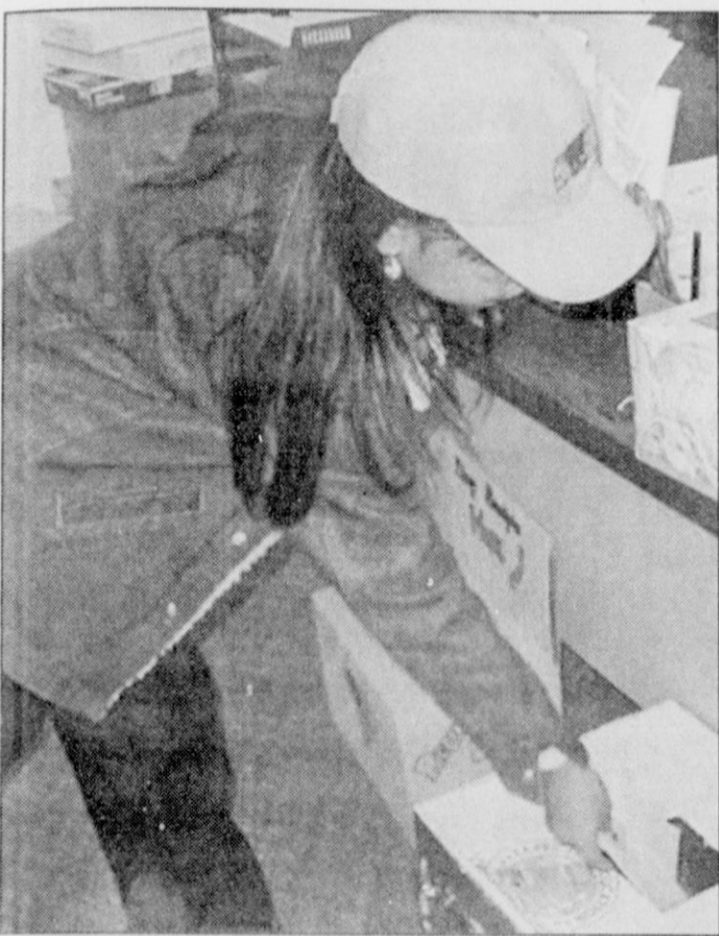
Home care can provide care following surgery, for recovery from a prolonged illness and even for some acute care. Home care also is provided to infants requiring nursing care, oxygen and monitoring for developmental problems. Home Care also offers Home Health Aides, Physical Therapy,

Occupational Therapy, Speech Therapy and if needed a Medical Social Worker.

"Hospice is for what we consider terminal care when life expectancy probably is six months or less." "It provides palliative care when there is no medical cure, which involves control and management of symptoms relating to a terminal illness, such as pain management, respiratory distress and other comfort measures."

Hospice focuses on quality of life. The backbone of hospice in this country has been caring volunteers who go into the home to help the patient and family, as well as nurses, home health aides who are trained to provide personal care, social workers who assist in end-of-life planning and hospice chaplains for spiritual support.

Most hospice programs have a bereavement program for family members for a year following the death of their loved one, and in some cases the hospice can provide respite for family members and caregivers "to enable them to continue giving care as long as needed."



Maria Pena, a 2nd grader at Gus Birdwell Elementary in Spearman, places a Lowe's cash register receipt in a collection box. Elementary students have collected \$59,000 of receipts in two months. These tapes will be turned into valuable and important educational equipment, free of charge. Tapes will be collected through March 31, 2003.

Hospice Lights of Love

The Christmas Season is celebrated around the world with lights - big lights and little lights, bright lights, and colored lights. Lights of warmth, hope, joy, and especially Lights of Love.

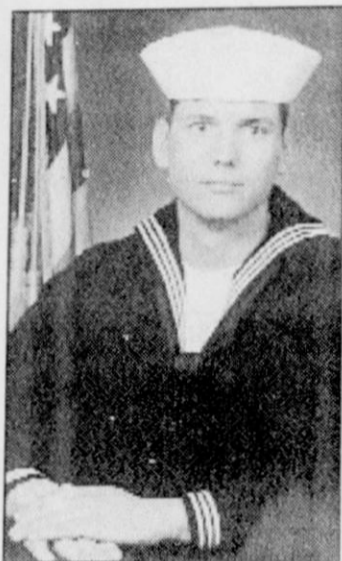
During this year's Holiday season, sparkling lights will adorn our Christmas tree, courtyard, and gazebo at Hansford Hospital, giving a festive air to the grounds and adding a touch of cheer for everyone who passes by.

You can help Hansford Hospice turn on the Christmas Lights and at the same time, honor and remember special people by making a gift to illuminate the Lights of Love.

Names of all honorees will be displayed on the Christmas tree at various banks and acknowledgment of the gift will be sent to donors, honorees, and/or their family.

May your Christmas also be brighter for helping us brighten the lives of others during the season of Lights of Love.

Hughes Advances in Rank



MA3 B.J. Hughes

Hughes was advanced to Petty Officer Third Class, MA3 that day. (The MA stands for Master-at-Arms and the 3 indicates third class.)

Following the excitement of that news, B.J. learned that he had been selected to have dinner with the Chairman of the Joint Chief of Staff, General Myers.

Said Hughes, "What a great experience. He's the highest ranking officer in the military and I'm just a small town Joe."

MA3 Hughes is stationed in Bahrain where his duties include base security. He is scheduled to be home on leave in December. Following a 30-day visit, he will be reassigned to Korea.

"I'm looking forward to coming home and seeing everyone," said Hughes. Family members include his mother Jan Ellsworth; sister and brother-in-law Jennifer and Ramon Lozano; nephew Corbin Hughes and niece Lauren Lozano; grandmother Evelyn Burch and Gary Ellsworth.

"October 29, 2002 was a pretty special day for me," commented B.J. Hughes.

Panhandle Diner & Deli

217 Main Street • 659-3864 • Spearman, TX

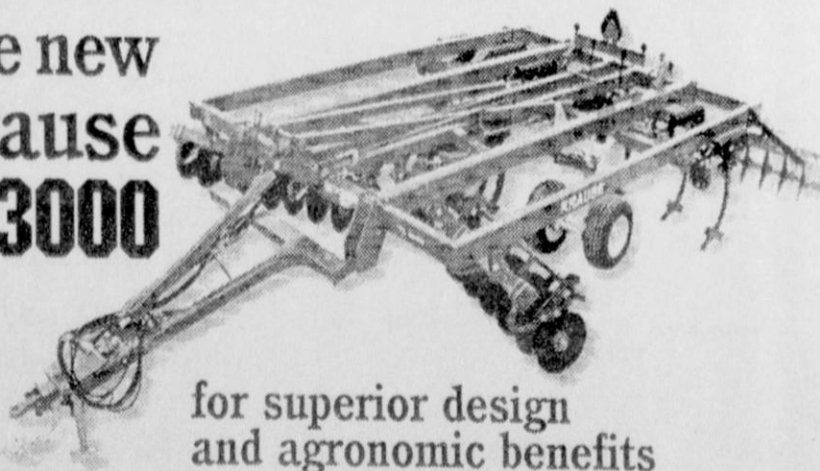
Hap-Pie Hour

Friday - 4:00-6:00 p.m.
Biti Pies & Cakes- 2 for \$5⁰⁰

Now taking orders for Thanksgiving Pies.

Hours: Mon., Tues. & Wed.: 8 a.m.-2 p.m.; Thurs. & Fri.: 8 a.m.-8 p.m.; Sat.: 8 a.m.-2 p.m.; Sun.: 11 a.m.-2 p.m.

The new Krause TL3000



for superior design and agronomic benefits

Superior Agronomic Benefits

- Staggered front disc gang eliminates residue streaking
- Ten-inch winged points shatter and relocate compacted soil
- Front and rear disc gangs adjust hydraulically

Superior Features

- 5-shank rigid to 9-shank folding; match tractors up to 500 hp.
- Massive frames; 5-shank frame rated for over 400 hp!
- Exclusive Cushion Hitch option reduces frame and drawbar stress with tracked tractors

Hansford Implement
Highway 207 S • Spearman, TX
659-2568



Early-Bird Savings



Complete 1.8 GHz Compaq Computer



• 15" Monitor with JBL Sound
Dual Cartridge Hewlett Packard Printer

Plus NO Interest Financing Until January 2004* (available on all models)

Also check out our Extensive Compaq/Hewlett Packard Laptops

* WAC, some restrictions apply



RadioShack
You've got questions. We've got answers.

CELLULARONE
Authorized Dealer



COMPAQ

123 S. Main • Perryton, TX
(806) 435-4812

Shop with us online at www.rsdealer.com/c080-pos/

CLASSIFIED ADS

CALL TODAY!
(806) 659-3434

REAL ESTATE FOR SALE

FOR SALE IN GRUVER: 3BR, 2B home, 2,000+ sq ft., new central H/A, roof, new siding, 201 Van Kurt. Call after 6 p.m. 468-1778 or David Bergin at 435-4071. TFN(8-8-02)B

FOR SALE: Large 3BR, 1 1/2B, formal living & dining, den w/fireplace, large finished basement w/fireplace, double garage, fenced corner lot. Blankenship Real Estate at 659-3052. TFN(9-19-02)B

FOR SALE: Best little house in town! 3BR, 1 1/2B, new DustStopper doors/windows, new exterior paint, central H/A/C, ash cabinets in kitchen, large fenced backyard. Call 806-659-3838. TFN(10-31-02)B

FOR SALE: 2BR, 1B, 1C detached garage, fenced yard. Call 659-2162. 2(11-7-02)B
FARM FOR LEASE: 1/4 section irrigated land, 4 miles west of Spearman. Call Jim Finley at (806) 944-5567. 4(11-14-02)P

PRICED TO SELL: 3BR, 1B, living room, extra room for bedroom or den, fenced backyard 705 Cotter - close to schools & swimming pool. Call 659-3122, ask for Ann, or 664-5124 after 6 p.m.

FOR RENT/LEASE

FOR RENT: 1BR apartment. Call 659-5519. TFN(8-8-02)B

FOR RENT: 1BR apartment. Call 659-3260. TFN(8-8-02)B

FOR RENT: 2BR apartment. Call Larry O'Neal at 659-9971. TFN(8-8-02)B

FOR RENT: Large 3BR apartment. Call Larry O'Neal at 659-9971. TFN(11-14-02)B

FOR RENT: 3BR, 1B home w/carpport, fence, W/D hookups, Central H/A. Located at 1010 Dressen. \$350/month, \$150 deposit. Call 659-9945 or (806) 293-7879. TFN(8-29-02)B

HELP WANTED

HELP WANTED: Growing company needs help. Work from home PT/FT. Full training. Free booklet. www.letsstakeaction.com 888-238-3943. 3(11-7-02)P

HELP WANTED: Senior Village Nursing Home - Perryton has a position open for a DON. If you are an RN or LVN and have administrative qualities, call Vera Dominguez, RN, DON at (806) 435-5403, or fax resume to (806) 435-5055. 2(11-14-02)B

HELP WANTED: CNA's, are you certified and not working? Or would you like to become a CNA? If so, join our healthcare team and we will get you certified. Call Vera Dominguez, RN, DON, Senior Village Nursing Home, Perryton, at (806) 435-5403. Our goal is to maintain high ratios of CNA's to residents. 2(11-14-02)B

CAREER OPPORTUNITY

NEED A CAREER? Become a Licensed Vocational Nurse! Make plans to enter Frank Phillips College's Nursing Program today. 12 month, TASP waived program with financial aid available to those who qualify. Clinical training sites in Borger, Dalhart, Dumas, Guyton, Pampa and Perryton. Frank Phillips College's LVN program prepares you to function as a vital member of the health care team. Please call (806) 274-5311 or 1-800-687-2056, ext. 745 for testing dates or for more information. 4(11-14-02)B

FOR SALE

FOR SALE: Hide-A-Bed couch and love seat blue. Call 659-3215. TFN(11-14-02)B

FOR SALE: Exercise equipment: Walk Fit 5000 by Nordic Track - \$400; Air Strider dual action walker - \$100; Tomy Little's ABS only machine w/video - \$50. Call 659-5066. (11-14-02)P

VEHICLES

FOR SALE: 1995 LS Suburban - blue & autumn, 2-wheel drive, power w/l, CD/cassette, rear air, power driver seat, towing package. Excellent condition - \$8,000. Call 659-3993. TFN(10-10-02)

FOR SALE: 1995 Plymouth Grand Voyager LE. Loaded, good condition, low mileage. Call 659-3207 after 6 p.m. TFN(10-31-02)B

FOR SALE: 2001 Corvette 01Z06, Black, 13,000 miles, like new. \$42,000. Call 659-2888. 2(11-7-02)B

SERVICES

I'M MAD... at banks who don't give house loans because of bad credit, problems or new employment! I do. Call L.D. Kirk, Homeland Mortgages (254) 947-4475. 1(11-14-02)P

ARTS & CRAFTS SHOW: Sunday, November 17th, 11 a.m. - 5 p.m., Gruver Golden Age Center. Spaces still available. Contact Gina McDowell at 733-5436 or 664-7249. 1(11-14-02)P

New Selections for Fall & Winter Clothing & Shoes Garage Sale Prices

Everything \$15 or LESS
Saturday, November 16
Shop 9 a.m.-5 p.m.
Old Video Hut/Bld., next to Lowe's
Lady Fair, Kid's Stuff and Footprints

LEGAL NOTICE

RAILROAD COMMISSION OF TEXAS OFFICE OF GENERAL COUNSEL DISTRICT 10
CASE NO. 0232468
October 23, 2002

TEXAS STATEWIDE CLASSIFIED ADVERTISING NETWORK



TexSCAN Week of November 10, 2002

ADOPTION
Note: It is illegal to be paid for anything beyond medical and legal expenses in Texas adoption.
A LOVING COUPLE looking to adopt a baby into our warm, loving and large family. Legal medical expenses paid. Linda and Joe, 1-888-718-2900. Our attorney, 1-800-213-7441.

ANTIQUES/ COLLECTIBLES
ANTIQUE EXTRAVAGANZA
FOR Collectors - auctions, stores and traders - buy or sell to reach millions! Buy & Trade Malls, L.L.C. Santa Fe, NM. Go to www.BUYandSELLAntiques.com
1-800-460-0606
www.birthtraumalaw.com

DRIVERS!
ARE YOU LOOKING FOR STABILITY?
• Respect & Integrity! • Friday Paydays!
• Family Voicemail! • Consistent Miles!
• In-Cab E-Mail! • 401K Plan!
2-Hour Processing!
800-727-4374 www.continentalx.com

Fen-Phen® & Redu®
Diet drugs cause serious disease related to the heart and lungs. You may not have symptoms now, but you may still have problems if you take either of these drugs. If you have taken either of these drugs and want to protect your legal rights, you MUST have an echocardiogram evaluated by a cardiologist by Jan. 3, 2003. Our office is currently paying for and arranging echocardiograms for our clients. For information about your rights, contact Krebs & Webre, LLC with offices in Austin, TX and Lafayette, LA. We have a medical doctor on staff to answer your questions.
NOT CERTIFIED BY THE TEXAS BOARD OF LEGAL SPECIALIZATION.
3.75 Billion Dollar Settlement Approved
PROCRASTINATORS, DO NOT DELAY ANY LONGER!
FINAL DEADLINE IS JANUARY 3, 2003
Ryan A. Krebs, MD, JD (Doctor Extraordinary - Still (use Law Practice))
Scott Webre
1-800-495-1340
www.krebsandwebre.com

DRIVERS WANTED
A CAREER OPPORTUNITY
Lisa Motors Lines is hiring student drivers. Our affiliated school offers quality training to get you hired and on the road. 1-866-367-9933
DRIVER - A \$2000 Sign-On! Up to 38 cpm + \$40 tarp pay 6 months OTR. OTR's up to 90 cpm. Melton Trucking Line, 1-800-635-8669.
DRIVER-COVENANT TRANS-
PORT - Hiring experienced teams, school/unions, OTR/Weekdays/83 cents. We are looking for experienced teams to run priority dispatch. Call 1-888-MORE PAY (1-888-667-3729).
DRIVERS - MORE MILES, more money, 90% no touch, late model assigned conventionals. No experience? Tuition reimbursement available. USA TRUCK, 1-800-237-6422.
DRIVERS- NO EXPERIENCE? Low or no cost CDL Training available. Meals, lodging and transportation provided. Tuition reimbursement \$1000 bonus. OTR, Regional, Dedicated Freight, Swift Transportation. 1-800-231-5209.
DRIVER - TRUCKERS! FFE Will get you home, FFE - Will get you paid, FFE - Will get you miles. Call 1-800-569-9232. Open all day every day, including holidays.
DRIVERS - SW REGIONAL home on weekly basis. Teams start 34 cpm. OTR start 32 cpm. 6/8 months OTR experience w/CDL-A. Ask for Harold/Rob. National Freight, 1-800-666-0380.
DRIVER - \$10,000 BONUS! Solog up to 39 cents. Teams up to 41 cents. OTR's up to 72 cents. All Condo. Contact KLLM, 1-800-925-5556 or KLLM.com. EOE.
ROKUL TRANSPORT - VAN, Flatbed and Curtainside Drivers needed for all fleets. Great home time and pay! E.O.E. Call today. 1-877-865-7991. www.rokul.net

OWNER OPERATORS - TIRED of competing with Company trucks? CHECK UP on stores in your local area. No experience necessary. Great income, benefits, part or full time. Call toll-free, AHP, 1-888-478-1342. Ext. 3345.

TRAVEL & MAKE \$5555. 30K+ potential delivering new cars, vans and R.V.'s locally or nationwide. 18 years or older. Call free - Worldwide Job Referral, 1-772-520-1007. Ext. 6034.

SEKING TANKER DRIVER to deliver diesel in Fort Worth area. 3 to 5 years experience, days, base pay \$40,000. benefits. Call Simons Petroleum, 1-800-256-2056.

3.37 FOR 1-YEAR experience. You deserve this much. Plus hometime! More experience means more pay. 12 months OTR required. Heartland Express 1-800-441-4953. www.heartlandexpress.com.

FINANCIAL SERVICES
SSCASHSS - IMMEDIATE CASH for structured settlements, annuities, real estate notes, private mortgage notes, accident cases, and insurance payouts. J.C. Wentworth, 1-800-794-7310.

HIGH QUALITY - LOW PRICES, Wolff Tanning Beds. Payments from \$25/month. Home delivery. Free color catalog. Call today. 1-888-839-8160. www.np-stelan.com

SAW MILL \$3895, NEW Super Lum-berno 2000. Larger capacities, more options. Manufacturer of sawmills, loggers and skidders. Norwood Saw-mills, 252 Sonvil Drive, Buffalo, NY 14225. 1-800-578-1363. Ext. 800-N.

HELP WANTED
JOIN OUR TEAM and make a difference. In the Texas Army National Guard you can get money for college and career training. Call 1-800-GO-GUARD.

SPECIAL SHOPPERS CHECK UP on stores in your local area. No experience necessary. Great income, benefits, part or full time. Call toll-free, AHP, 1-888-478-1342. Ext. 3345.

COLORADO RANCH SALE. 35 acres - \$59,900. Magnificent mountain ranch at 8,000 elevation. Mix of meadows with spring-fed ponds, a spa, and pines. Stunning views, virtually surrounded by federal lands. Nearby Telluride. Must see! Good terms. Call Colorado Land & Ranches, 1-866-351-1809.

LAKE LOT SACRIFICE - 5 Acres - \$24,900. Beautiful lake property w/access to 260 acre private lake. Perfect getaway, retirement, horse property. World class fishing. Gated entrance. Stunning views. Call Texas Land & Ranches, 1-888-676-5253.

NEW MEXICO MOUNTAINS. 140 Acres - Only \$49,900. Gorgeous grasslands, mature tree cover, 6,300' elevation. Mountain views, year-round roads and electric. Perfect for horse lovers. Adjacent to national forest. Excellent financing. Call today. This won't last! SW Properties of NM, Inc., 1-866-899-5263.

100 ACRES - \$44,900. Trophy whitetails (5 deer hms). Tree covered hills and draws. Abundant turkey, quail, small game. Good access. More acreage available. E-Z terms. Call 1-866-899-5263. Texas Land & Ranches.

MARTIN & ASSOCIATES REALTY
Hansford County's ONLY locally owned and operated Realty.
Julie Martin: Broker - 659-2425
Kym Williams: Assoc. - 733-5163

NEW LISTING
322 S. Dressen - 2/3 plus 1BR apt. This house has lots of charm with income possibilities!

IN SPEARMAN
Country Home - Pens, barns, pool approx. 80 acres. 14 mi. NE of Spearman 716 Townsend - 2-Story 4BR, 2 1/2B 905 Wilmetth Dr. UNDER CONTRACT

1016 S. Haney - 2/1+1 carport, brick, nice corner lot
320 S. Bernice - 2/3 wood floors large rooms, charming!
708 Gibner - 3/1 1/2, hardwood floors!
235 S. Snider - 2/1 w/basement

IN GRUVER
306 Garrett - 3/2/basement, 1902 sq. ft.

We'd Like Your Listing FOR QUALITY & SERVICE CALL US TODAY!
Equal Housing Opportunity

Real Estate & Rental

Spearman Property
19 N. Hoskins - 2BR, 2B, Carport
702 E. Bernice - 3BR, 1B, 1CG

Gruver Property

202 Richardson - 2-3BR, 1 1/2B, 2 car garage, utility, sun room
SACRIFICE - 514 Cluck - 2-3BR, 1 1/2B, carport, brick, fruit trees, metal roof, corner lot
802 Womble - 2-3BR, carport, corner lot

UNDER CONTRACT
1201 Cator - 4BR, 2 1/2B, 2CG, 2nd, sunroom, REDUCED
115 N Cliff - Harris Edition
607 Cator - 3BR, 1 1/2B, central H/A, new metal roof
611 S. Evans - 2-3BR, 1 1/2B, 1CG, central H/A wall unit

Rural Property
12 mi E on 759, Cty Rd 5 - 3B, 2B, w/acres

Rental Property
2BR, 1B Home in Country
401 Cluck in Gruver

Real Estate & Rental for all your real estate needs!
Melinda McCullough, Assoc. (806) 733-5678
Dawn Brown, Assoc. (806) 274-3568
Chris Scroggs, Broker Toll Free: 1-877-664-5050

Let Us Sell Your Property!

HOMETOWN REALTY

Call Debra Wood 659-3491

NEW LISTING
712 Cotter. Very nice, 2/3BR, 2B home. Large living room w/dining area, office, sewing room, 2 car carport & additional RV carport, sunroom w/storage area, very large backyard w/covered patio and storage building. Call for details. PRICE REDUCED!
322 S. Haney. Lovely 2BR, 1B, beautiful yard, detached double garage, storage sheds, finished craft room. Includes separate 1BR apartment. Come take a look! Call for details. PRICE REDUCED!
1102 Linn. Spacious 4BR, 2B home with finished basement room that could be 5th BR. Also has office and nice utility room. The over-sized garage can fit 2 Suburbans easily. Nice backyard with patio, basketball area and large trees. Priced well under tax appraisal. Call for details.

COMMERCIAL PROPERTY
For Sale - 517 & 519 Plains Shopping Center. Great location, ready for business. Call for details.
For Rent. Nice office space. Downtown location, off Main.

Debra Wood Spearman, 659-3491
Diana Hoover, Broker, 658-9113
Rex Hoover, Broker, 866-755-4291

Visit us at www.hometownagent.com

DIABETICS!

IF YOU HAVE MEDICARE OR PRIVATE INSURANCE, YOU MAY BE ELIGIBLE TO RECEIVE YOUR DIABETIC SUPPLIES AT LITTLE OR NO COST! We also carry Impotence & Nebulizer Supplies

FOR INFO., CALL EASY ACCESS MEDICAL SUPPLY, INC.

1-800-679-1623

*CERTAIN RESTRICTIONS MAY APPLY - NO HMO'S, PLEASE

Sunny Side Up - Rubber Side Down?

CFI IS NOW HIRING

• Company • Owner Operators •
• Singles • Teams •

Loads with miles available immediately!

ASK ABOUT OUR SPOUSE TRAINING PROGRAM

1-800-CFI-DRIVE cfidrive.com

SAVE UP TO 70%

ON YOUR PRESCRIPTIONS FROM CANADA DIRECT TO YOU!

American Company • Arizona Office Toll Free
1-888-794-5377
www.prescriptiondrugscanada.com

Prescription Drugs Canada LLP

Families & Individuals

Ask for Free, no obligation information on:

Health Insurance*
@ Affordable Rates!

** A company whose A.M. Best rating is "A-Excellent,"***
** You cannot be singled out for a rate increase.*
** You cannot be singled out for cancellation.*
** Allows you to choose your doctors and hospitals.*
** Flexible programs to fit your needs and your budget.*
** PLUS meet 100 valuable business benefits through association membership*
** Licensed insurance agents will contact you. team not be available in all states*

Call Today! - Toll-free: 1-888-829-8509

**Independent analysts who evaluate insurance companies. Ratings are reviewed and adjusted annually.

AUTISM NO FEE FOR FIRST VISIT

New medical evidence shows children diagnosed with autism may have developed this disease as a result of a mercury preservative used in children's vaccines. Decades of science show that mercury causes harm to children's neurological development. Call us for professional insight.

Ryan A. Krebs, MD, JD
Doctor-Lawyer in full time Law Practice
Richard A. Dodd, L.C.
Timothy R. Cappolino, P.C.
Board Certified Personal Injury Trial Law & Civil Trial Law, Texas Board of Legal Specialization
Criminal, Drugs

1-800-460-0606
www.birthtraumalaw.com

DRIVERS!
ARE YOU LOOKING FOR STABILITY?

• Respect & Integrity! • Friday Paydays!
• Family Voicemail! • Consistent Miles!
• In-Cab E-Mail! • 401K Plan!
2-Hour Processing!
800-727-4374 www.continentalx.com

Fen-Phen® & Redu®

Diet drugs cause serious disease related to the heart and lungs. You may not have symptoms now, but you may still have problems if you take either of these drugs. If you have taken either of these drugs and want to protect your legal rights, you MUST have an echocardiogram evaluated by a cardiologist by Jan. 3, 2003. Our office is currently paying for and arranging echocardiograms for our clients. For information about your rights, contact Krebs & Webre, LLC with offices in Austin, TX and Lafayette, LA. We have a medical doctor on staff to answer your questions.
NOT CERTIFIED BY THE TEXAS BOARD OF LEGAL SPECIALIZATION.

3.75 Billion Dollar Settlement Approved
PROCRASTINATORS, DO NOT DELAY ANY LONGER!
FINAL DEADLINE IS JANUARY 3, 2003
Ryan A. Krebs, MD, JD (Doctor Extraordinary - Still (use Law Practice))
Scott Webre
1-800-495-1340
www.krebsandwebre.com

NOTICE OF HEARING
NOTICE IS HEREBY GIVEN to the public and to all interested persons that under the legal authority and jurisdiction of Title 3, Oil and Gas, Subtitles A, B, and C of the Texas Natural Resources Code, Chapters 26, 27 and 29 of the Texas Water Code, and TEX. GOV'T CODE ANN. art. §§ 2001 et seq. (2002), the RAILROAD COMMISSION OF TEXAS will hold a hearing on NOVEMBER 20, 2002, at 9:00 a.m. at the William B. Travis State Office Building, 1701 N. Congress Avenue, Austin, Texas. This hearing will be conducted in conformity with the TEX. GOV'T CODE ANN. art. §§ 2001 et seq. (2002). For room assignment, on the date of the hearing please check the bulletin board in the 1st Floor lobby. Persons planning to attend this hearing are urged to contact the applicant (see service list) immediately prior to the hearing date to be sure that the hearing will proceed on the scheduled date.

The Commission will consider the application of Devan Energy Production Co., LP for a spacing exception permit under the provisions of 16 Texas Administrative Code § 3.37 (Railroad Commission Statewide Rule 37) and a density exception permit under the provisions of 16 Texas Administrative Code § 3.38 (Railroad Commission Statewide Rule 38) to drill Well No. 2, Anna Cooper Lease, 639.65 Acres, Section 16, Block P, H&GN RR Co./P.M. Woodring Survey, A-908, Gruver, N. (Hepler), Gruver, North (Mississippi) and Wildcat Fields, Hansford County, being 5 miles north from Gruver, Texas.

The location of this well is as follows: "1200 from the south line and 2327" from the west line of lease and survey.

This well is to be completed at an approximate depth of 8,000 feet. If you have questions regarding this application, please contact the Applicant's representative, Cathy S. Roark, at (405) 562-4527. If you have any questions regarding the hearing procedure, please contact the Railroad Commission, Office of General Counsel, at (512) 463-6848.

IF A CONTINUATION IS NECESSARY this hearing will proceed at the William B. Travis State Office Building, Austin, Texas, and, to the extent possible, on subsequent working days. The room number and exact time of the continuation will be announced on the record in this proceeding and recorded with Docket Services, Office of General Counsel, Railroad Commission of Texas.

PURSUANT TO SAID HEARING, the Commission will enter such rules, regulations, and orders as in its judgment the evidence presented may justify, including placement of the proposed well at a different location from that requested by applicant, and the establishment of the amount of acreage on the applicant's tract that can reasonably be considered to be productive of hydrocarbons for the purpose of assigning an allowable.

ANY REQUEST FOR POSTPONEMENT of this hearing must be received no later than five (5) working days prior to the scheduled date shown above. Copies of such request must be forwarded to all parties shown on the service list.

TO APPEAR IN SUPPORT OF OR IN OPPOSITION TO THIS PROCEEDING, a party other than the applicant must file with Docket Services, Office of General Counsel, at least five (5) working days in advance of the hearing date, a notice of intent to appear.

IF ANY PARTY DESIRES A WRITTEN TRANSCRIPT of the hearing, that party should notify the Court Reporter's office at (512) 463-6926, at least five (5) working days in advance of the hearing date. If a written transcript is requested, the Commission may assess the cost of the transcript to one or more parties. Unless any party requests a written transcript, the record will be made by audio tape recording.

ANY INDIVIDUAL WITH A DISABILITY who needs auxiliary aids and services in order to have an equal opportunity to effectively communicate and participate in this hearing must request such aids or services at least two weeks prior to the scheduled hearing by notifying the Personnel office of the Railroad Commission of Texas by mail at P.O. Box 12967, Austin, Texas 78711-2967, or by telephone at (512) 463-7327 or TDD No. (512) 463-7284.

ALL EXHIBITS FILED AS A PART OF THE RECORD IN THIS CAUSE MUST BE SUBMITTED IN DUPLICATE. DATA IN COMMISSION RECORDS MAY BE INCORPORATED BY REFERENCE, BUT THE REFERENCE MUST BE SPECIFIC, AND IF IT INCLUDES EXHIBITS FILED IN PRIOR PROCEEDINGS BEFORE THE COMMISSION, A COPY OF SUCH EXHIBIT PROPERLY IDENTIFIED SHALL BE SUBMITTED FOR THIS RECORD.

4(10-24-02)B

CITATION BY PUBLICATION THE STATE OF TEXAS
TO: SERGIO GARCIA, Individually and MARIA LUISA DARTE, Individually - Respondent GREETINGS

YOU ARE HEREBY COMMANDED TO APPEAR by filing a written answer to the Plaintiff's Petition at or before ten o'clock a.m. of the first Monday after the expiration of forty-two days from the date of the issuance of this citation, same being Monday the 18th day of DECEMBER, 2002, before the Honorable 84th Judicial District Court, of Hansford County, at the Courthouse, in said County in Spearman, Texas. Said Plaintiff's Petition was filed in said court, on the 18th day of JULY, 2002, in cause 4571 and styled:

PETE HERRERA - Plaintiff
vs.
SERGIO GARCIA, Individually, and MARIA LUISA DARTE, Individually - Defendants

A brief statement of the nature of this suit is as follows: to-wit: See PLAINTIFF'S ORIGINAL PETITION as is more fully shown by Plaintiff's Petition on file in this suit.

The name and address of the attorney for the Plaintiff is: CECIL R. BIGGERS, PO BOX 342, SPEARMAN, TX 79081.

The officer executing this process shall promptly execute the same according to law, and make due return as the law directs.

Issued and given under my hand and the Seal of said Court, at office in Spearman, Texas, this 6th day of NOVEMBER 2002.

Kim V. Vera, District Clerk
84th Judicial District Court
Hansford County, Texas
4(11-14-02)B

LEGAL NOTICE

Hansford County Commissioners' Court will receive sealed bids until 4 p.m. on Friday, November 22, 2002 on the following insurance policies: COMMERCIAL GENERAL LIABILITY; AUTOMOBILE LIABILITY; PUBLIC OFFICIALS LIABILITY; LAW ENFORCEMENT OFFICERS LIABILITY; INSURANCE ON COUNTY COURTHOUSE; COUNTY AG BARN IN SPEARMAN AND IN GRUVER; MAINTENANCE BARN IN SPEARMAN; and WORKER'S COMP. to be effective on January 1, 2003. Bids will be for one year.

Bids should be sent to Hansford County Judge, PO Box 367, Spearman, Texas 79081-0367 or taken to the office of the County Judge at the Hansford County Courthouse, Spearman, Texas and should be marked "Insurance Bids" on the outside of the envelope. Bids will be opened during Commissioners Court on Monday, November 25, 2002 and will be awarded at the regular meeting to be held Monday, December 9, 2002.

The Court reserves the right to accept or reject any or all bids.

Jim D. Brown
Hansford County Judge
3(11-7-02)B

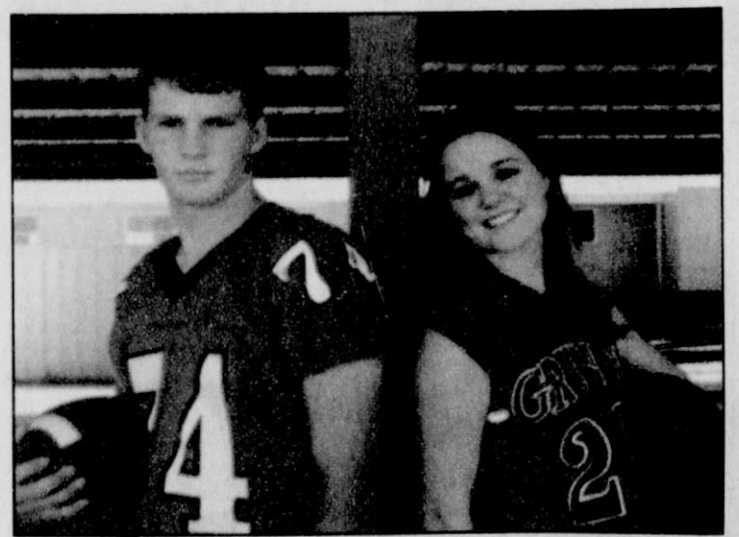
Call this Newspaper to Advertise Statewide or Regionally, or Call 512-477-6755.



Richard Varnon of Spearman is pictured above with Victoria Lomas of Shallowater. They are cheerleaders at Wayland Baptist University in Plainview.



Frances Pool Pipkin received her Master of Science Degree with an emphasis in Speech Communication Sciences and Disorders from Texas Woman's University in Denton, Texas on August 10, 2002. Frances participated in the three-year program and completed 72 graduate hours and 350 practicum hours. She maintained a 4.0 GPA throughout the program.



Aaron Boyd (left) and Christi Clift have been named Gruver High School's Wendy's Heisman nominees. The Gruver seniors are among those high school seniors nationwide who have learned to collaborate and appreciate the interrelation of academics, athletics, and community service. The two local nominees will compete with students from over 23,000 high schools for state and national recognition.

Subscribe to the
Hansford County Reporter-Statesman.
Call 659-3434 for details.

Are You A Victim of Domestic Violence, Sexual Abuse or Assault . . . Physical, Emotional or Sexual?

Call Toll Free
1-800-753-5308

We can see individuals from Hansford County anytime upon request. Call 435-5008 or 1-800-753-5308 to set up an appointment in Hansford County. We operate a safe place for victims and their children to stay in times of crisis.

Panhandle Crisis Center
Serving Hansford, Lipscomb & Ochiltree Counties
317 S. Main • Perryton, TX
Memorials Accepted

See us for:
AUTO • HOME • CROP HAIL • FARM & RANCH • MULTIPERIL • LIVESTOCK

INSURANCE

BORT AGENCY, INC.
510 Main St. • Gruver, TX
(806) 733-2456

November What's Coming Up

November 14
Elementary PTO/Parent Meeting, Elementary Library, 7 p.m.
November 14-16
Canadian JU Basketball Tournament (girls only)
November 17-23
American Education Week
November 19
Elementary/JH UIL Academic Meet, Panhandle ASUAB Test (all juniors), High School
November 20
Elementary/JH UIL Academic Meet, Boys Ranch
November 21-23
Perryton 9th JU Basketball Tournament (girls only)
November 26
Two Hour Early Release for Holiday
Elementary THAS Celebration (4th-6th grade), Cafeteria
November 27-29
No School/Thanksgiving Holiday

Dr. Rick Sheppard, D.D.S.
1-800-687-2010
•Family Dentistry •Braces
146 Pioneer • Booker, TX
TEETH FOR A LIFETIME

First State Bank

"Showing community support, dedication and service."

First State Bank Christmas Cash Loans up to \$500 "INTEREST FREE" for 12 Months*

Strength Is Our Tradition

SERVICE Our Goal

Serving Hansford County Since 1917



* Morse

First State Bank
Spearman

Proceeds are issued in the form of

"First State Bank Christmas Cash Certificates"

redeemable at participating Hansford County Merchants

FSB

First State Bank

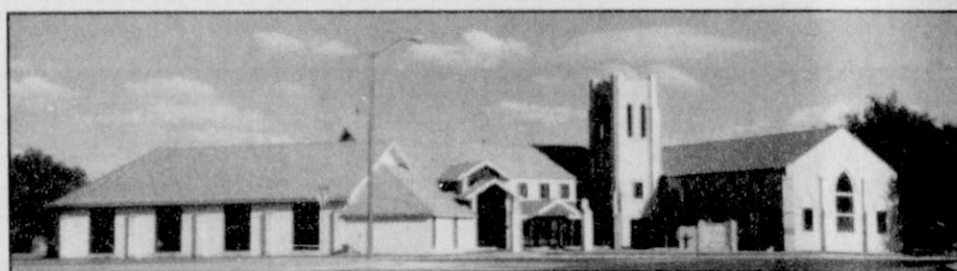
1 NE Court • Spearman

(806) 659-5565

Call or stop by for details

Member FDIC

*\$500, 0% APR, 11 monthly payments of \$41.66 and one payment of \$41.74, with approved credit



Why I love our church –

Since our boys left home it has been necessary for us to do a good deal of travelling. We visited many churches, but none of them felt like home. We love our home church!

Peggy Varnon

First Christian Church, Spearman

Time is short – Come Join The Family

**First Christian Church
(Disciples of Christ)**

29 S. Bernice • Spearman • (806) 659-2036

Sunday School - 9:45 a.m.
Sunday Worship - 10:50 a.m.

