

SCR2
COMP
HANSFORD COUNTY LIBRARY
0122 MAIN ST
SPEARMAN TX 79081-2064



HANSFORD COUNTY THE REPORTER-STATESMAN

THURSDAY,
OCTOBER 7, 2010

CELEBRATING 103 YEARS OF SERVICE TO HANSFORD COUNTY
HANSFORD COUNTY'S ONLY NEWSPAPER

75¢

WWW.SPEARMANREPORTER.COM

reporter@spearmanreporter.com

VOLUME 103 • ISSUE 40



City of Spearman Takes on Large Scale Infrastructure Improvement Projects

submitted by Ed Hansen, City Manager for the City of Spearman

Over the past couple of years much discussion and planning has gone into the City of Spearman undertaking some extremely needed large scale infrastructure improvement projects. These projects involve aspects of increasing our water production and delivery system, as well as improving the flow of sewer water to the wastewater treatment plant.

Spearman is not unlike many of our neighbors throughout not just the panhandle but the whole country, which must address the problem of an aging infrastructure. There are a couple of problems that immediately came to the forefront, and need action.

These are the lift station and water wells. The lift station along Third Avenue has been in the ground for many decades. When it was placed into service Spearman did not stretch much farther south than Fifth Avenue. Through generations this cog of our sewer system has transported wastewater out to the treatment plant while remaining virtually unnoticed. It has served the townspeople well but it is showing its age. Some components are now so old that replacement parts are not being manufactured. The load on the unit has grown exponentially as our town has grown. There is no backup for this piece of equipment. So when it breaks down, take a guess at what is backing up.

Our sewer issues are not just the lift station; many sewer lines are in need of repair and or replacement. During the extreme rains in June water laden heavy ground collapsed the aged main outfall line to the treatment plant. This line carries nearly 100% of the raw sewer water out to the city landfill, for treatment. The

flow was kept open by utility workers babysitting a portable pump that lifted wastewater up and around the damage area and back into the sewer system at a flowing manhole. This was maintained until a replacement section of pipe could be fitted into place.

Also for Spearman a point of need is our need for an additional water source. A new water well has not been drilled and brought on line in over 30 years.

Currently Spearman operates on five water wells, two ground storage tanks and two elevated storage tanks. Our five wells are divided into two production fields. One to the north and one to the south, our first problem is that these two fields are not connected. They operate independent of each other. This sounds good at first until you realize that the north field has our most productive wells, the south field is our weakest. There is no way to move water from the north field into the south tanks or vice versa. A line connecting the two ground storage tanks is needed.

Also what is needed is an additional water source. Test holes have been drilled around town and a decent site has been identified. This well will provide some needed production for home use and fire protection. Yet it is not the complete answer over the coming years we will need to invest in a water field much like some of our neighbors are doing but not on the scale of Amarillo.

Why is now the time? The cost of these large capital projects has dropped. In the paper was a story that even as large as the water project of Amarillo's is they are \$10

million under budget. The cost of borrowing money is now at nearly all time lows.

How this will be paid for is through and increases in utility prices and an adoption of a new water usage rate. The council thought that everyone uses water so all should pay for it. This is a main reason that the property tax rate has remained the same for three years.

The minimum water bill will be \$16.00 per month this will include up to three thousand gallons of water. Then with additional usage that customer will be billed at the following different rates.

4,000 to 10,000 gallons is \$1.75/1,000
11,000 to 25,000 gallons is \$2.00/1,000
26,000 to 50,000 gallons is \$2.25/1,000
51,000 to 100,000 gallons is \$2.50/1,000
101,000+ is \$2.75/1,000

There will be additional public notices about the process of going out for Certificates of Obligation in the papers. We need to lay a course that will provide water and sewer service for the coming generation of citizens. We can't wait until we turn on the tap and nothing comes out, or we flush and nothing goes away.

The city staff will be providing updates as we go through the financial process of issuing the certificates of obligation and the ensuing construction process.

Closed Notice

The Hansford County Reporter-Statesman office will also be closed October 14th-18th. The office will reopen at 9 a.m. on Tuesday, October 19th.

The deadline for the October 21st edition will be Tuesday, October 19th at 12 noon. Items submitted after the deadline will be published at a later date, as time and space permit.

Items may be submitted by phone (806-659-3434), fax (807-398-9080), mail (Reporter-Statesman, 213 Main Street, Spearman TX 79081), in person (310 Barkley Street, Spearman) or e-mail (reporter@spearmanreporter.com).

COME TO THE GAME

SPEARMAN LYNX vs **Dimmit**
on 10/8, 7:30 p.m.

Gruver Greyhounds at **Clarendon**
on 10/8 7:30 p.m.

Spearman Lynx
The Jr. High football teams (7th - 5 p.m., 8th - 6:15 p.m.) will play Dimmit in Spearman on 10/7. The JV football team will play Dimmit in Dimmit on 10/7 at 6 p.m. The Jr. High football teams (7th - 5 p.m., 8th - 6:15 p.m.) will play Abernathy in Abernathy on 10/14. The JV football team will play Abernathy in Spearman on 10/14 at 6 p.m.

Gruver Greyhounds
The 7th Grade (5 p.m.), 8th Grade (6:15 p.m.) and JV (7:30 p.m.) football teams will play White Deer in Gruver on 10/7. The 7th Grade will play Vega at 5 p.m. in White Deer and the 8th Grade will play Booker at 6:15 p.m. in Booker. The JV will not play on October 14th.

CROSS COUNTRY

Gruver Greyhounds/Lady Hounds
The Gruver Cross Country teams will compete in the Bill Lathrop Memorial Cross Country Invitation hosted by West Texas A&M on Saturday, October 9th.

Spearman Lynx/Lynxettes
The Spearman Jr. High, JV and Varsity Lynx & Lynxettes will compete in the Bill Lathrop Memorial Cross Country Invitation hosted by West Texas A&M on Saturday, October 9th.

Weather Forecast

THURSDAY NIGHT - Mostly clear. Lows in the lower 50s. South winds 5 to 10 mph.
FRIDAY - Mostly sunny. Highs in the upper 80s. South winds 10 to 20 mph.
FRIDAY NIGHT - Mostly clear. Lows in the upper 40s. Southwest winds 10 to 15 mph.
SATURDAY - Partly cloudy. Highs in the mid 80s.
SATURDAY NIGHT - Partly cloudy. Lows in the upper 40s.
SUNDAY - Partly cloudy. Highs in the lower 80s.
SUNDAY NIGHT - Partly cloudy. Lows in the upper 40s.
COLUMBUS DAY - Partly cloudy. Highs in the mid 80s.
MONDAY NIGHT - Partly cloudy. Lows in the upper 40s.
TUESDAY - Partly cloudy. Highs in the upper 70s.
TUESDAY NIGHT - Mostly cloudy. Lows in the lower 40s.
WEDNESDAY - Mostly cloudy. Highs around 70.
Read more: <http://www.city-data.com/forecast/w-Spearman-Texas.html#ixzz0xgJSWQkT>

Texas Crop & Weather

The following specific livestock, crop and weather conditions were reported by Panhandle Extension directors: Temperatures were above average for most of the week. Soil moisture was mostly short. The corn harvest was ongoing, with the crop rated fair to good. Wheat planting continued. Rangeland and pastures were mostly poor to fair. Cattle were in good condition.

Hansford County 4-H News

The Spearman 4-H Club will meet on Monday, October 11, 2010 at 7 p.m. in the Spearman County Barn.
The Gruver 4-H Club will meet on Tuesday, October 12, 2010 at 7 p.m. in the Gruver County Barn.
The program will be Show Animal Selection and feeding your show animals. Please come to the meeting if you plan on showing an animal.
Smoke Meat forms are due October 18th in the office - please get out and sell. We are receiving lots of calls of no one coming by customers homes, so please get out and sale.
For more information, contact the Hansford County Extension Office at 806-659-4130 or hansford@ag.tamu.edu

Perryton Man Dies in Accident

By Joe Gamm, Amarillo Globe-News
A 26-year-old Perryton man died in a single-vehicle motorcycle accident early Saturday evening in rural Ochiltree County.
Ivan Gallardo died about 6 p.m., when the motorcycle he was riding southbound on County Road U, about eight miles south of Perryton near Wolf Creek, entered a curve and left the roadway, according to the Department of Public Safety.
The motorcycle struck a barbed-wire fence.
A justice of the peace pronounced Gallardo dead at the scene.
No other details were available Sunday.

Spearman HS Cross Country

The Spearman Varsity Lynxettes competed in the McNeil High School Invitational Cross Country Meet at Round Rock on Saturday, October 2nd.
The Lynxettes tied with Sanger for first place, but lost the tiebreaker and ended up in 2nd with 167 points. Liberty Hill was 3rd with 169.9 and Perryton was 9th with 268.
The Lynxettes were led by Tylo Farrar who came in 6th with a time of 12:30.72. She was followed by 19. Gately Garnett, Spearman, 12:53.70; 28. Sarah Snider, Spearman, 13:07.84; 59. Malory Martin, Spearman, 13:37.72; 67. Shelby Hanna, Spearman, 13:42.71; 84. Itzel Meza, Spearman, 14:04.59; 113. Kylee Hegstrom, Spearman, 14:26.02; and 129. Cynthia Mendoza, Spearman, 14:32.96.

Gruver HS Cross Country

The Gruver Varsity Boys and Girls Cross Country Teams competed in the Guymon Cross Country Meet.
The Varsity Hounds were led by Luis Mendoza, who came in 4th with a time of 17:55.29. Eddie Mendoza came in 44th (21:33.42) and Gerardo Monroy came in 45th (21:34.75).
The Varsity Lady Hounds were led by Shelley Gibson, who came in 1st with a time of 12:53.43, Madison McLain in 2nd (12:54.71) and Taylor Felderhoff in 3rd (13:07.43). Other Gruver runners were: Angelica Valverde, 10, 13:35.37; Daniela Luciano, 22, 14:24.71; Makenzie Crane, 23, 14:26.74; Calie Stedje, 30, 14:47.02; Maggie Gaspar, 38, 15:12.21; Hannah Speck, 57, 16:02.37; Macy McLennan, 68, 16:21.68; Emilyynn Robinson, 73, 16:36.43; Kaysha Bass, 74, 16:39.37; and Alex Logsdon, 75, 16:42.49.
The Lady Hounds came in 1st with 38 points, followed by Perryton (45), Boise City (62), Stratford (162), Guymon (167), Hooker (213), Texhoma (231), Boys Ranch (306), and West Texas (372).

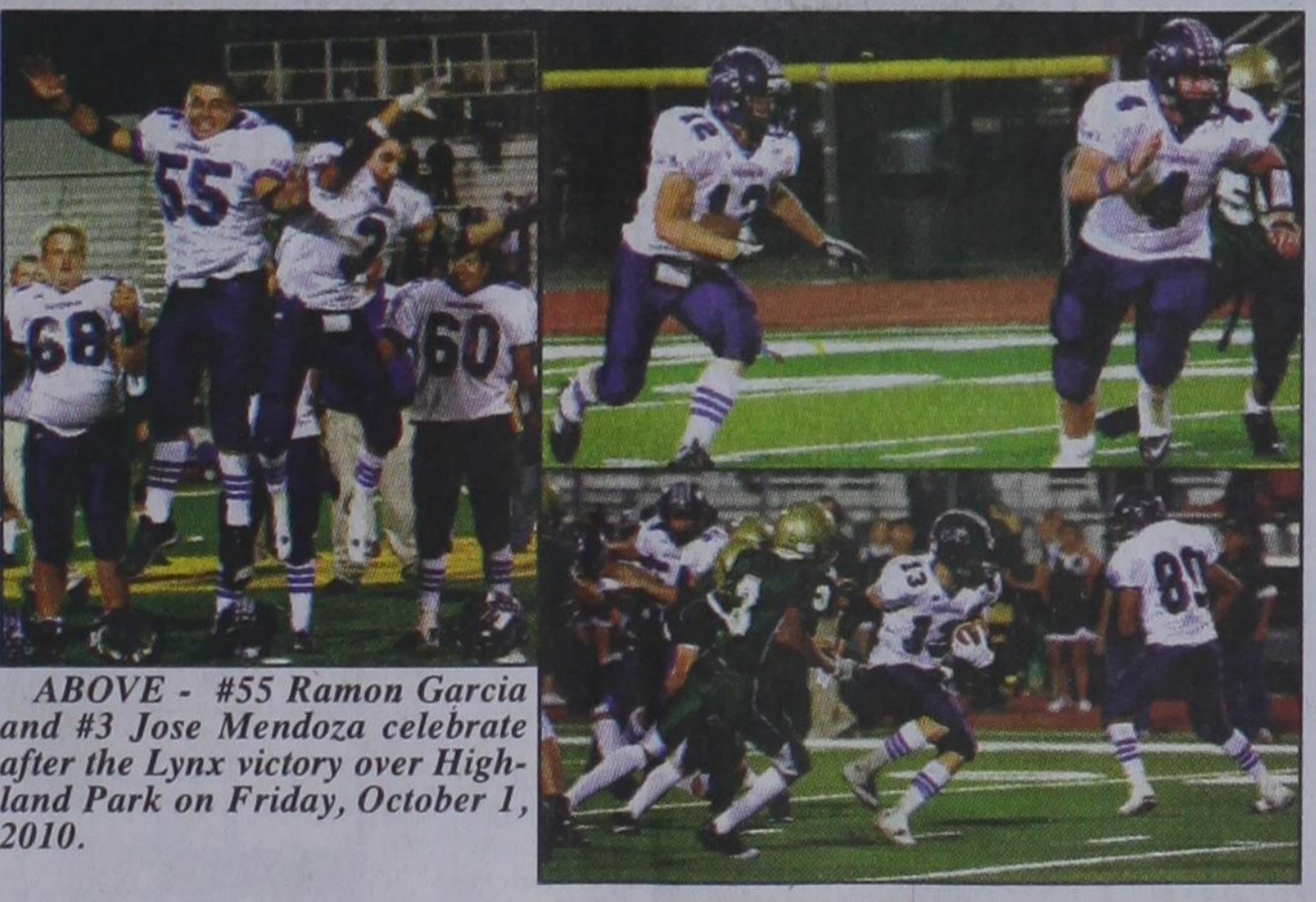
Lynx Swat Hornets

The Spearman Lynx improved their record to 1-1 in District play on Friday, October 1st when they defeated the Highland Park Hornets 32-0.
See related story on page 5

TOP LEFT - #4 Blayne Schroeder blocks for #12 Justin Rindlisbacher as he prepares to score against the Highland Park Hornets.

BOTTOM LEFT - #80 Joel Mendoza blocks for #13 Jace Lang-Swan as he tries to gain yards for the Spearman Lynx.

(Photos by Tami Hargrove. Pictures available at <http://spearmansports.smugmug.com>)



ABOVE - #55 Ramon Garcia and #3 Jose Mendoza celebrate after the Lynx victory over Highland Park on Friday, October 1, 2010.

Greyhounds Defeat Shamrock

The Gruver Greyhounds easily defeated the Shamrock Irish on Friday, October 1, 2010 in Gruver.
See related story on page 5

Payton Thoreson (2) carries the ball for the Greyhounds as Dallas Reynolds (53), Justin Bass (55) and Trey Franses (52) block for him during Friday night's game against Shamrock.
(Photo by Charlie Johnson)



Wolf Creek Heritage Museum Notes

by Virginia Scott
MUSEUM HAPPENINGS
A nice productive week. The core team is seeing the light at the end of the tunnel with finishing the accession items on hand. The work room is looking better. We are just waiting on the shelves for the archive room.

The board met on Wednesday afternoon with 10 present out of 16. From what I learned at the conference, that is good. The board is appointed by the County Judge and approved by the Commissioners Court and submitted to the Texas Historical Commission. It is officially recognized as the Lipscomb County Historical Commission and members are appointed to 2 year terms. The commission also serves as the board for the museum which is the non-profit arm of the commission.

Business discussed this quarter ranged from the History Book update, security systems, and our 2011 goals. The meetings are open to the public and minutes are available to review in the museum office.

One item on the agenda was new hours for the museum: **Please make the following changes:**

1. The Museum is open Monday thru Friday, 10 a.m.-4 p.m. We are no longer open on Sunday afternoons. To discontinue our Sunday hours was based on lack of volunteers and attendance.

2. The Museum will be closed for the Month of December. This is to allow Lovella and myself to have a vacation.

The museum as always will be available by appointment during December and on Saturdays and Sundays.

As with any of our changes, it will be evaluated at our quarterly meeting and revisions made as needed.

The 2011 goals drafted at the meeting include continuing the building project, reactivating the October County Festival, and establishing a committee to perform a preservation survey.

October is Texas Archeology Month. Brochures with the statewide Calendar of Events is available at the museum. We will host a program entitled "Kiowa Traditions" by Kenneth Parton on Saturday, October 16 at 4 p.m. This is the Fall Foliage Weekend, so plan to join us.

HISTORICAL MUSINGS

The team has again found some newspaper jewels that I want to share. I can't tell what paper or year that they appeared because they were clippings and didn't have the dates, etc. on them. The first clip is after the discovery of the internet. It is a list of home remedies using inexpensive, common household products.

Title: What's your problem?

Headaches- Drinking two glasses Gatorade will relieve almost immediately. No Gatorade? Use plain water or cut a lime in half and rub it on your forehead.

Burns- Colgate toothpaste makes a good salve for burns. (Why Colgate? Your guess is as good as mine.)

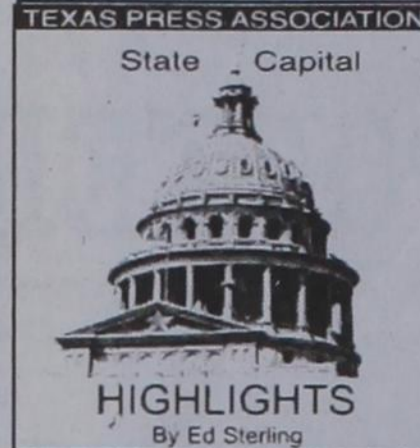
Splinters- When you have a small splinter pour a drop of Elmer's glue over the splinter, let it dry and peel the dried glue off the skin. The splinter sticks to the dried glue. Scotch tape works, too.

Bruises- soak a cotton ball in white vinegar and leave on bruise for an hour. The vinegar reduces the color.

These are only four out of 28. I will share more periodically.

I leave you this week with a little article that someone wrote about their parents.

"After graduation, Dad found work with a defense contractor, which enabled him and Mom to move into barracks-like apartments at the Iowa Ordnance Plant west of Burlington. There they began (some say furiously) to make a family. First Cheryl, then Randall, Rhonda, and Doug, all in five years. Soon after, Daddy got fixed." Have a good week.



Perry, White, wage digital battle in final month of campaign

AUSTIN — Voter registration ended Oct. 4, and now, less than a month remains until the general election on Nov. 2.

The 10-day period to early vote in person runs Oct. 18-29.

Election polls show incumbent Republican Gov. Rick Perry continuing to hold a margin of 6 points or so on Democratic candidate Bill White, the former mayor of Houston.

Meanwhile, the Austin American-Statesman, Houston Chronicle, The Dallas Morning News and KLRU-TV in Austin, are sticking with their plan to host an Oct. 19 debate between Perry and White. The two have not yet hashed out their differences the old fashioned way — eye to eye in public — since winning their party primaries in March.

The Perry and White campaigns do conduct modern digital call-and-response type interaction through social media messages and their websites, www.rickperry.org and www.billwhitefortexas.com

Historic surveys to go public

A collection of historically significant land surveys unavailable for more than 50 years will soon be made accessible to the public.

Willis Day Twichell's surveys of tens of millions of acres of public and private lands in West Texas, recently were donated to the Texas General Land Office by four oil companies operating in the Midland area.

Included are field books, working sketches, 200 finished maps, and about 50,000 pages of correspondence that document surveying work performed in Texas, Oklahoma, New Mexico, Arizona and northern Mexico.

Land Commissioner Jerry Patterson said the goal, after digital archiving is completed, is to have the Twichell Papers available to researchers by January.

Twichell laid out more than 40 towns and provided surveying work in 165 of 254 counties in Texas. His surveys, critical to the exploration of oil and gas in West Texas, helped in giving rise to the XIT Ranch, funding the building of the State Capitol, building railroads and funding public



Student dies in apparent suicide

A masked gunman walked on to the UT-Austin campus and fired shots from the AK-47 assault rifle he was carrying on the morning of Sept. 28.

Police chased the man, identified as University of Texas sophomore Colton J. Tooley, 19, of Austin, into a campus library.

Tooley was found dead on the building's 6th floor of an apparent self-inflicted gunshot wound, police said.

Economist: Texas leads nation

The Governor's Office on Sept. 28 announced economist Meredith Whitney, who predicted the national banking crisis, listed Texas as the national leader in state financial health in a report issued about the condition of most state governments.

Of the 15 largest states, only Texas and Virginia earned overall positive rankings in Whitney's calculations.

"The best state is actually Texas, by a mile," Whitney said in a CNBC television interview. "They've been a very conservative state ... a small-government state. Low taxes, their pension funds are fully funded. Housing is not an issue. They've got great population trends. Great employment."

Texas beaches get fall cleaning

More than 8,815 volunteers showed up on Sept. 25

for the 24th Annual Texas General Land Office Adopt-A-Beach Fall Cleanup, the agency reported.

Volunteers removed nearly 172.7 tons of trash off more than 167 miles of Texas coast.

Land Commissioner Jerry Patterson said his agency's efforts "to reach surfers, fishermen — people who care about the beach — through Facebook and other online media is really starting to have an effect."

The next cleanup will be the Spring Adopt-A-Beach effort set for April 30.

One Click, One Call debuts

The Texas Department of Transportation on Sept. 30 announced the launching of a new reporting system to make it easier and faster for Texans to report maintenance issues on Texas highways.

The new system will make use of several million additional pairs of eyes to help TxDOT crews identify problems.

The "Report a Pothole" initiative is online at www.txdot.gov or via toll-free number at 888-885-8248. With just a click of a mouse or a quick phone call, citizens can report a pothole, including the location of the damage.

Operators will answer phone lines from 8 a.m. to 5 p.m. on weekdays. Evening and weekend calls will go to voice mail and be returned the next morning or on the first working day of the following week.

WIECK'S MAZE & PUMPKIN'S
2 Miles North of Etter - Watch for Signs
(from Sunray, 4 Miles North on I19 to CR CC, 6 Miles West to CR 13, 1 Mile North)
Walk-Through Maze - Now Open Daily
(through Nov. 1st)
Sun. 1-6 p.m., Mon.-Thurs. 9 a.m.-7 p.m.,
Fri. & Sat. 9 a.m.-8 p.m.,
For more information, call 806-922-3720.
www.wieckmazeandpumpkins.com

ABSOLUTE AUCTION
24± Commercial Acres Selling On Site in Fannin County, Benham, TX
Thursday, October 21 at 12:07 PM CDT
Selling in 4 tracts or as a whole
Call for More Information **ROEBUCK AUCTIONS**
888.763.2825
www.RoebuckAuctions.com

Go Painlessly
Back, Neck, Arthritis
THERA-GESEIC
For Real Pain Therapy...
Thera-Gesic Pain Cream
It Really Works...Compare and SAVE.

AUCTION
COMMERCIAL REAL ESTATE
• 875' of Frontage on I-27
• 5 Commercial Buildings
• 250,000± sq/ft on 41± Acres
• Offered in 12 Tracts
14201 Interstate 27, Amarillo, TX
2:00PM Thursday, October 28
ASSITER AUCTIONS assiter.com 806-655-3900

Central Texas Beefmaster Breeders
24th Annual BEEF ON FORAGE BEEFMASTER PERFORMANCE BULL SALE
Saturday, October 16, 2010 • 1 p.m.
Selling 100 Bulls
WASHINGTON COUNTY FAIRGROUNDS, BRENHAM
For information call Gary Frenzel 254-721-2214

The Hansford County Reporter-Statesman
Mailing Address - 213 Main Street • Spearman TX 79081
Physical Address - 310 Barkley Street • Spearman TX 79081
Phone - (806) 659-3434 • Fax - (806) 398-9080
www.spearmanreporter.com • reporter@spearmanreporter.com
Mon.-Thurs. 9 a.m.-12 p.m., Mon.-Wed. & 1-5 p.m.
Closed Thurs. afternoon and all day Fri., Sat. & Sun.
Gary Smith - Publisher Catherine Smith - Editor
Contributing Writers: Dorothy Hudson, Jim Derington, Merry Sparks, Cecil Biggers
Contributing Photographers: Charlie Johnson, Lisa Johnson, Tammy Batton, Bonnie Bergan
Subscription Rates
In Hansford County - \$30.00 • Out of County - \$40.00
E-Mail Subscription - \$35.00
The Hansford County Reporter-Statesman (USPS 529660) is published weekly in Spearman, TX. Periodical postage paid in Spearman, TX. POSTMASTER: Send address changes to: The Hansford County Reporter-Statesman, 213 Main Street, Spearman, TX 79081.
Publication Policy
The deadline to submit news and advertising to The Hansford County Reporter-Statesman is Monday at 5 p.m. Items submitted after the deadline will be published at a later date, as time and space permit. Publication of all items is at the discretion of the editor.
Advertising
Open Display rates are \$4.00 per column inch. Classified Ads are \$6 for the first 25 words and 10¢ per word for each additional word. (Additional charge for boxed classifieds.) There is a \$1 charge per week if billed.
Member of
Gruver Chamber of Commerce
Spearman Chamber of Commerce
Texas Press Association and Panhandle Press Association

See us for:
AUTO • HOME • CROP HAIL • FARM & RANCH • MULTIPERIL • LIVESTOCK
INSURANCE
BORT AGENCY, INC.
510 Main St. • Gruver, TX
(806) 733-2456

THE 1980's
ACROSS
1. Competently
5. Not a friend
8. 1985 movie "The Breakfast ___"
12. One of 1989's "The Fabulous Baker Boys"
13. Refuse to comply
14. Tiananmen Square Massacre location
15. Radar object
16. Lacks refinement
17. Haven
18. Walkman accessory, pl.
20. Curse substitute
21. A Hawkeye
22. VA hospital's patient
23. Farewells
26. No free rides in this
30. '80s Australian band "___ At Work"
31. He portrayed the Gipper and later became President
34. Disparaging remark
35. Prayer leaders in mosques
37. Coltrane's instrument
38. Retail location
39. ___ contendere, law
40. Piercing cry
42. By way of
43. State of disgrace
45. Decorate
47. Mother Teresa, e.g.
48. Shinbone
50. New Zealand fruit
52. Famously introduced during '84 Super Bowl
56. 1 of 4 Cs, but with a K
57. Related
58. Thought
59. Linen tape used for trimming
60. Tolkien's object of desire
61. Wedding promises
62. Work area
63. Short for England
64. At one time
DOWN
1. A French abbot
2. Lugosi or Bartok
3. Batman's cave, e.g.
4. Young urban professional
5. Flora partner
6. Of time long past
7. Gets with great effort; Commonly used with "out"
8. Chart maker
9. She and Bart debuted in 1987 on "The Tracey Ullman Show"
10. ___ of measurement
11. Degrees in arts
13. Surf
14. A book, as opposed to a scroll
19. 168 per week
22. Soccer mom's ride
23. Type of acid in protein
24. Retire from military
25. Altogether
26. New York noise maker?
27. Garlic form
28. Derived from gold
29. Popular '80s dance
32. Pale gray
33. Needlefish
36. Jackson's popular dance move
38. Coil of yarn
40. Steve Nash, e.g.
41. Gradual decline
44. To the greatest extent, completely
46. A category of nouns
48. "___" it easy?
49. "___ on the cake"
50. His dying word was "rosebud"
51. Irritates
52. Stud's companion
53. Scent
54. Stitches
55. "Thou ___ made me, and shall thy work decay?"
56. Cassidy's partner in crime

SUDOKU
PRESENTED BY
VolunteerMatch.org
Where volunteering begins.
9 3 5 8
6 7 9 2
2 1
7 2 9 4 3 1
5 4 8 2 9
7 8
5 3 9 4 2
2 8
1 6 4 5 3
© 2010, StatePoint Media, Inc. answer on classified page
Fill in the blank squares in the grid, making sure that every row, column and 3-by-3 box includes all digits 1 through 9.

These games are brought to you by the **Hansford County Reporter-Statesman**
CROSSWORD
1 2 3 4 5 6 7 8 9 10 11
12 13 14
15 16 17
18 19 20
21 22
23 24 25 26 27 28 29
30 31 32 33 34
35 36 37 38
39 40 41 42
43 44 45 46
47 48 49
50 51 52 53 54 55
56 57 58 59 60 61
62 63 64
PRESENTED BY
VolunteerMatch.org
Where volunteering begins.
© 2007, StatePoint Media, Inc. answer on classified page

HYI

FOR YOUR INFORMATION

Medical Fund for Bruce Duncan

A medical fund has been established for Bruce Duncan at First National Bank, Spearman. If you would like to make a donation you may make a deposit with any teller or mail a donation to First National Bank, Bruce Duncan Medical Fund, PO Box 337, Spearman TX 79081.

Hansford Gun Club Rifle Shoot

The Hansford Gun Club holds a .22 rifle shoot on the second Sunday of each month, starting at 1:30 p.m. at the gun range (located on Hwy. 15 between Spearman and Gruver). Everyone is invited to join the fun.

Fire Department Donations

Persons wishing to make donations to the Fire Departments in Hansford County may do so at the following addresses: Spearman Fire Dept., Box 37, Spearman TX 79081; Gruver Fire Dept., Box 947, Gruver TX 79040 or Morse Fire Dept., Box 28, Morse TX 79062.

Hospice Volunteer Class

Hansford Hospice Volunteer Classes began on Tuesday, October 5th. They will be held from 6:30-8:30 p.m. at the First United Methodist Church Fellowship Hall in Spearman. If you are interested in becoming a volunteer, or wanting to learn more about how to deal with death and dying, please call 806-659-5811 or 806-659-3846. Please leave your name and phone number. (You are not required to be a Hospice Volunteer to take the Hospice Volunteer Class. Classes are open to anyone interested in learning more about Hospice Care.)

Care Packages

If you would like to help with Care Package Drop Offs, please contact Less Sullivan at lessullivan@hotmail.com. Less is collecting items for care packages in conjunction with AmericaSupportsYouTexas.com. Journals are also located at the O'Loughlin Center, Spearman High School, and Gus Birdwell Elementary for anyone wishing to sign them. For more information, contact Less at 330-0973.

4-H Smoked Meat Sale

4-H members across Hansford County (Spearman, Gruver & Morse) are selling smoked meats for their annual fund raising efforts. Products available include smoked & spiral hams (\$28), Turkey (\$23), peppered Turkey breasts (\$21), smoked or peppered bacon (\$14), beef (\$15) or chicken (\$13) fajitas, chicken tenders (\$16), tamales (\$16), pork patties (\$14) pork chub (\$10), sausage links (\$15), pecan cobbler (\$13), pulled pork BBQ (\$13), little porkies Wraps (\$14), sausage gravy (\$), Hunters Package (pancake mix, Canadian bacon, peppered pork loin & jalapeno cheese summer sausage (\$23) and pumpkin roll (\$13). Funds benefit the awards program, contest and recognition banquet for all 4-H members. Orders must be received by October 18th, with a delivery date before Thanksgiving. Please contact a 4-H member or call the County Extension Office 659-4130 or 733-2901, fax 659-4133 to place your order. If email would be easier hansford@ag.tamu.edu.

Spearman FFA Meat & Cookie Fundraiser Sale

Spearman FFA will be having their Meat & Cookie Fundraising Sale from October 4th thru October 15th. Spearman FFA and Jr. FFA members will be taking orders on these dates. The delivery of these items will be during the week of November 1st-5th. Proceeds will contribute support to the Spearman FFA's Chapter Activities. For any further information or questions, please contact Josh Brockman at 659-2584. Thank you for your support of the Spearman FFA Chapter.

Chili Supper

The Spearman High School Choir is hosting a Chili Supper on Friday, October 8th from 5-7 p.m. The money raised from this fundraiser will go to benefit the Spring Choir Trip. Your support in this worthy endeavor is greatly appreciated. Following the Chili Supper is a home game against the Dimmitt High School Bobcats. Come out and show your support for the students and athletes of Spearman High School. Tickets are \$5 in advance from Choir Students, and \$7 at the door. For more information, contact Ken Shore at 806-570-8166.

Perryton Area Parkinson's Disease Support Group

The Perryton Area Parkinson's Disease Support Group will meet Friday, Oct. 8, 2010 at the Mennonite Church, 2821 S. Ash, for a noon lunch that will be provided. Anyone who has Parkinson's Disease or has a family member with it, is welcome to attend. Annette Bynum, Massage Therapist, will give a program on how massage will help relax the muscles and body. For more information call Bev Burger at 435-0579.

October is Archeology Awareness Month

Caprock Canyons State Park and Trailway invites you and your family to partake in all the fun activities during Archeology Awareness Month. Throughout the month of October, Caprock Canyons State Park is promoting archeology awareness with many interpretive programs including: "Spear Throwing with the Atlatl" at 10:00 a.m. and 5:00 p.m., Saturday, October 9, "Coronado, Conquistador and Explorer" at 7:45 p.m., Saturday, October 9, "Archeology of the Canyonlands" at 7:45 p.m., Friday, October 15, "Flintknapping, an Ancient Art" at 6:00 p.m., Saturday, October 16, a "Trail Ride through the Canyon" from 10:00 a.m. to noon, Saturday, October 23, and "Ramblings of a Buffalo Hunter" at 7:00 p.m., Saturday, October 23. Park entrance fees apply: adults, \$3; seniors, \$2; children under 12, free. All programs are free with paid park entrance fee. Call 806-455-1492 for more information.

Rushing Wind Emmaus Community Meeting

Rushing Wind Emmaus Community will meet Saturday, October 9, at 6 p.m. in the Waka Christian Center, in Waka, Texas. A nursery will be provided.

Rainbow Kids Klub is Back!!

Our new building if finished and we are inviting all children Kindergarten -Fifth grade to join Rainbow Kids Klub. This is a weekly after school program with snacks, recreation, character building Bible lessons, memorization, music, games and its all free. Rainbow Kids Klub begins Wednesday, September 8, after school until 5 p.m. at the First United Methodist Church, 407 S. Haney in Spearman. For more information call 659-5503.



Engagement Announcement

Wade and Meli Burgess of Spearman, TX would like to announce the engagement of their daughter, Channing Burgess of Amarillo, to Brian Close of Amarillo.

Channing models for Diane Dick Legends, where she has modeled numerous times for the U.S. Air Force "Vapor Super Car." She also coaches tumbling and trampolining while attending Amarillo College.

Brian, the son of Roger and Diane Close of Spearman, is currently Retail Sales Manager of Interstate Battery in Amarillo. He also enjoys hunting and spending time with family.

A wedding ceremony will be held October 16, 2010. After returning from their honeymoon in the Bahamas, the couple will reside in Amarillo.

A bridal shower will be held on Sunday, November 7th in the home of Danielle and Jeff Jackson, 908 Townsend in Spearman.

Apostolic Faith Church Welcomes Cornells as Pastors



Rev. Jack and Kathryn Cornell are the new pastors of the Spearman Apostolic Faith Church, 9th and Dressen, in Spearman. The Cornells came to Spearman from Logan, OK, having pastored the Midway Country Church for the past 10 years. Other churches pastored in OK were: Guymon, Hardesty, Balko, Midway, Laverne and Woodward. They have pastored churches in Follett, Canyon and Alvin in Texas. Pastor Cornell was superintendent of the Apostolic Faith Bible College in Baxter Springs, KS for eight years. Kathryn was on the college teaching staff.

Jack was born in Waka, TX and is a 1956 graduate of Guymon, OK. His wife, Kathryn Booth Cornell was born in Hardesty, OK and is a 1957 graduate of Hardesty High School. Both attended and are graduates of the Apostolic Faith Bible College.

The Cornells have a daughter, Tonya Roby who lives in Oklahoma City, OK and a son, Kevin who lives in Tulsa, OK. They have six grandchildren and 8 great-grandchildren.

Pastor Cornell says, "We are happy to be living in Spearman and have found the people here to be very friendly. We invite you to visit our church. We have a friendly group of people to worship with. All are welcome to come!"

Gordon's



Couples Currently Registered

- Amanda (Bowers) & Clayton Wilkerson - Oct 9th
- Channing Burgess & Brian Close - TBA
- Taleigh Lechinger & Lance Smith
- Xylee Howard & Jeremy Frost
- Callie Hargis & Brian Hensley
- Kathryn Murphy & Christopher Allen
- Adrienne Hood & Kevin Baker
- Shea Lowe & Brian Lair
- Luci Alvarez & Gerardo Hernandez

Baby Registry

- Charlotte & Tim Bynum - Oct 17th
- DeeDee DeLaRosa & Michael Ortega - Nov 6th
- Jennifer & Clint Jackson - Nov 6th
- Betsy & Tucker Henson
- Tanya & Brett Widener
- Brandy Luther & Mario Salazar
- Gina Biggers
- Morgan Templeton & Dustin Mackie
- Kellye & Roger Buchanan

Gordon's 659-2141
314 Main Spearman

Happy 50th Birthday!

Half a Century?

(Wow, that sounds really old!)

It might be a "Miner" Problem!

Happy Birthday, Tiny!

Oct. 7th



You are invited to a

Bridal Shower

honoring

Clayton & Amanda Wilkerson

Saturday, October 9, 2010

from 10:00-11:30 a.m.

at The O'Loughlin Center

502 S. Brandt Spearman TX

You are invited to a

Baby Girl Shower

honoring

Tim & Charlotte Bynum

Sunday, October 17, 2010

from 2:00-3:30 p.m. at the First

Christian Church Fellowship Hall

29 S. Bernice Spearman TX

MITCHELL THEATRES.COM

GUYMON, OK • LIBERAL, KS • NEWTON, KS

NORTHRIDGE 8

Guymon, Oklahoma
www.northridge8.com
580-338-3281

SOUTHGATE 6

Liberal, Kansas
www.southgate6.com
620-624-5573

SEQUOYAH 8

Garden City, Kansas
www.sequoyah8.com
620-275-2760

CHISHOLM TRAIL 8

Newton, Kansas
www.chisholmtrail8.com
316-283-0555

FRESH POPCORN EVERYDAY!

-PARTY ROOM & ARCADE-

Make the Call!

Digital TV from PTCI

\$29.99*

per month for 6 months!

Amarillo Networks in HD
Real Local Channel 2
OKC & Amarillo Networks

*includes Basic & Expanded Basic Pkgs.
requires 2-year commitment
monthly rate returns to \$61.00 at 7th month.

www.ptci.net

721 W 7th in Spearman

prices subject to change not available in all areas some restrictions may apply

800-562-2556

Fire Prevention Week • October 2010

Smoke Alarms: A sound you can live with




We like to learn about the newest...  ...technology developed for fire prevention and for fighting fires. 

Newspaper Fun!

www.readingclubfun.com AnniMills LLC © 2010 V7-N32

Fire Prevention and Safety!

Do you know who we are? 

We are your community's firefighters. We visit schools to talk to students about fire prevention and safety. We show the special clothing we wear to protect us from the smoke and heat of fire. We may look a bit scary, but we are not. We are here to help you.

This is a chart for you to use to talk with your family about fire prevention and safety. Cut it out and hang it on your refrigerator!

Find the 12 "fire safety" words or phrases in bold to the left, then circle them below in the puzzle.

Family Fire Safety Checklist

- Only cook in the kitchen when an adult is helping you.
- Don't touch matches, lighters or candles. They are for adult use only.
- Do you have **smoke detectors** on every level of your home? Test them monthly and change the batteries at least once a year.
- Do you know **two** or more ways out of the house?
- Never use elevators (stairs are much safer) if there is a fire.
- Smoke rises, so if there is a fire, stay low: **crawl** under the smoke.
- Have you picked a place to **meet** the rest of your family once you are all out of the house?
- Once you are out of the house, **stay out** of the house.

Free Puzzles, Reading Log and Certificate!

For extra fun, print out our free 5th Anniversary puzzles: Fire Prevention and Safety word search, and Let's Rock! crossword puzzle. The new Fall reading log and certificate set are ready too!

www.readingclubfun.com

Word Search:
T Y N H W P M E E T F
A H O D X O S G R V A
L U S F N F P G F Y D
K Q S R K Q P D H G U
U O M P Y H G Y D S L
Q E O R F Z C I O T T
M D K E S H B V P V U
P B E V K S J B I Q S
J H D E E I A P H Y E
Z F E N O Z T F T M O
B G T T I U W C E O N
T I E I C R L Y H T L
W S C O N W K X D E Y
I X T N W J N V Q J N
R Z O N K J X Q L P S
D C R A W L D X M B Y
V Y S T J W Q K O I Y
T Y P P R O T E C T U
Z H I L H B P J L T J
E J H I T W O S F V A
L Z T M A R L J P C T
D H A W J I L I O W A
R V X X K I S W U O P
S U E R F E T Q A O P I Y R F S D
A S T A Y O U T M D S H A S E J Q
V H X I A I G S T A I R S T G J S


A SALUTE TO OUR FIREFIGHTERS

SPEARMAN VOLUNTEER FIRE DEPARTMENT
Fire Chief-John Kunselman
Ron Antalek
Mike Bates
Joe Birch
Justin Bowman
Dwayne Comp
Steven Dettmer
Bret Burgin
Roger Close
Sergio Dominguez
Dink Dorton
Isaac Herndon
Jason Herrera
Rodney Howell
John Kunselman
Cesar Moreno
Rodney Nickel
Jim Reeves
Daniel Renfro
Kimie Rivera
Ramon Rivera
Toby Shields
Bruce Stinson
Brad Turner

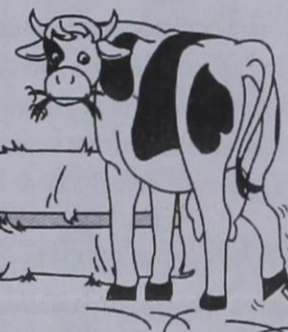
Matt Wood
Jim Younger
Amanda Zehr

GRUVER VOLUNTEER FIRE DEPARTMENT
Sam Gruver
Jake McCullough
Benny McCullough
Robert Blevins
Lynn Boyd
Matt Johnson
Billy Kelly
Chris Johnson
Shane Goodson
Diane Boyd
Aaron Boyd
Autumn Gruver
Todd Williams
Travis McDowell
Zack Christian
Melinda McCullough
Daniel Harris
Caleb Schultz
T. J. Vasquez
Cason Finley

MORSE VOLUNTEER FIRE DEPARTMENT
Gary Urban
Emit Schmidt
Lonnie Clemmons
Evan Schmidt
Roney Clark
Riley Urban
Joel Lopez
J.R. Sanchez
David Mock
Tom Dortch
And many others who just respond as needed



The Great Chicago Fire (And the Lessons We Learned)

Whoopsie! 

Read about the fire to fill in the crossword puzzle:

- Have you ever heard of the Great Chicago _____ (1871)?
- It was a fire so big and out of control that it burned almost 4 square miles of the _____ and even jumped across the Chicago River!
- One story says that it started when a woman, named Mrs. O'Leary, went to her barn to milk a cow and the cow kicked over her _____ (The story was made up by a reporter; the start of the fire is unknown.)
- The buildings in the city were mostly made of _____ and were built very close together so it was easy for the fire to spread.
- It is said that people didn't react right away and that the _____ were tired from fighting a different fire the day before and made some mistakes.
- The blaze grew so big that it destroyed the pumps for the waterworks (the place that supplied the water to fight the fire) and the _____ was cut off.
- Finally, after two days, the fire burned itself out, after destroying over 17,000 _____, killing hundreds of people and leaving about 90,000 others homeless.
- Oddly, one of the buildings that didn't _____ was the waterworks tower. It is still there today!
- Today, we space buildings in the city farther apart and use more _____ materials like metals.
- Our firefighters are better trained and have _____ that helps them fight fires more quickly.

Crossword Puzzle:

Across: 1. wood, 2. lantern, 3. city, 4. fire, 6. burn, 8. water, 10. firefighters

Down: 1. buildings, 2. fireproof, 3. equipment, 4. buildings, 5. wood, 7. buildings, 9. buildings

Learning From the Past and Doing Better!

Studying past fires, their causes and the problems we had fighting them has led to many advances in materials, training and equipment. To learn more, check out these books from your favorite library!

Triangle Shirtwaist Factory Fire by Sabrina Crewe & Adam Schaefer
Account of a terrible fire in a garment factory in 1911 that killed 146 people.

The Great Fire by Jim Murphy
Story of the great Chicago fire of 1871: works to separate fact from legend.

Catching Fire by Gena K. Gorell
Firefighting: from bucket brigades, through the years, up to modern firefighting technology.

Firefighting: Behind the Scenes by Maria Mudd Ruth
Tools and techniques used to fight fires now and in the past.

My Fire Inspection Checklist

Become an official Safety Inspector!
Make sure your home is safe and inspect for risks. Ask a grown-up for help.

- Electrical cords are in good condition (not damaged).
- The clothes dryer has a clean vent and filter (no lint build-up).
- Appliances and lights are plugged into separate electrical outlets.
- A grown-up always stays in the kitchen whenever food is cooking on the stovetop.
- All smoke alarms work when tested by a grown-up.
- All extension cords are used safely (not under carpets or across walking areas).
- All escape routes are clear of clutter and easily accessible.
- Portable space heaters are 3 feet away from anything that can burn.
- Curtains and other things that can burn are away from the stovetop.
- The furnace has been inspected in the past year.
- Portable space heaters are off whenever a grown-up leaves the room and goes to sleep.
- The chimney has been inspected and cleaned in the past year.

Parent Signature: _____

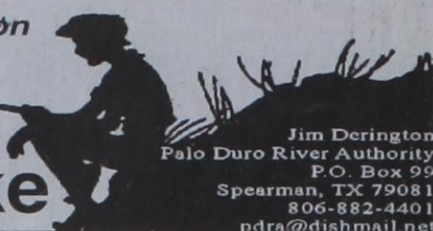
Check out Smarter Fire Tools® at smartertools.org

BROUGHT TO YOU BY THESE SPONSORS

Adobe Walls Gin, LP Spearman • 659-2574	Cargill Ag Horizons Spearman • 659-3554	Frank Phillips College Allen Campus Perryton • 648-1450	Hansford County Feeders Gruver • 733-5025	Jarvis Law Office, P.C. Spearman • 659-2554	Rocking F Boot & Saddle Shop Spearman • 659-3342
Aeroflight Publications Gruver • 733-2483	Cates Men & Boys Spearman • 659-3426	Frontier Feedyard Spearman • 882-4251	Hansford County Floral Co. Spearman • 644-4000	J&S Signs & Engraving Spearman • 736-7020	Sergio's Body Shop Spearman • 659-5217
AeroTan Gruver • 733-2483	City Cafe & Donuts Spearman • 644-6444	Gigot Agri Products Spearman • 659-3121	Hansford County Hospital District Spearman • 659-2534	Lowe's Marketplace Spearman • 659-2522	Simple Simon's Spearman • 659-9991
All Occasion Flowers Spearman • 659-5180	Delinda McLaughlin Photo Solutions Spearman • 659-2800	Golden Spread Carpet Spearman • 659-3068	Hansford County Reporter-Statesman Spearman • 659-3434	M&D Aerial, LLC Spearman • 806-202-2360	Spearman Chamber of Commerce Spearman • 659-5555
Bartlett's Ace Hardware Gruver • 733-2404	Dr. James Pinkerton, DDS Spearman • 659-3315	Golden Spread Sales Co. Spearman • 659-3776	Hansford County Vet Clinic Spearman • 659-2100	Mark Sheets Truck, Inc. Spearman • 659-2773	Speartex Grain Co. Spearman • 659-3711
Berry Cleaners Spearman • 659-3122	Dreamers Spearman • 659-9907	Gordon's Drug Spearman • 659-2141	Hansford Pharmacy Spearman • 659-2226	Money's Perryton • 435-3945	Sunray Co-Op Gruver Branch Gruver • 733-2481
Bob & Cathy Davis Gruver • Spearman	El Vaquero Restaurant Gruver • 733-2407	Gruver Ford Gruver • 733-2431	Hi-Plains Auto Supply, Inc. Spearman • 659-2506	Morse Implement Morse • 733-2668	Tong's Chinese Food Spearman • 644-2838
Bort Agency Gruver • 733-2404	Equity Exchange Spearman • 659-2420	Gruver State Bank Member FDIC Gruver • 733-5061	Hoochy Poochy Parlor Borger • 273-2724	MurMur's Cafe Spearman • 659-3580	Video Madness Spearman • 659-5046
Boxwell Brothers Funeral Home Spearman • 659-3802	First State Bank Spearman • 659-5565 member FDIC	H&H Credit Union Stinnett • 878-2452	Hungry Cowboy Spearman • 659-5151	North Plains Electric Coop 806-435-5482 • 800-272-5482	Xcel Energy Responsible By Nature Perryton • 806.435.4052
Brown, Graham & Co. Spearman • 659-2538	Five Star Equipment Spearman • 659-3743	H&H Water Well Spearman • 659-5577	Interstate Bank, ssb Spearman • 659-2559	Pizza Hut Spearman • 659-2547	
The Bunkhouse Restaurant Spearman • 659-2089		Hansford Abstract Co. Spearman • 659-2516	Kirk Insurance Agency Spearman • 659-2794	Prairie Motors Spearman • 659-2541	

by Jim Derington

Out at the Lake



Jim Derington
Palo Duro River Authority
P.O. Box 99
Spearman, TX 79081
806-882-4401
pdra@dishmail.net



Picture of a bald eagle eating something west of the bridge near the Palo Duro Creek.

October 4, 2010 - Lake Palo Duro level - 52.21 feet

Lake Palo Duro has more water today, than it has had in over ten years! Though we have lost some water since mid June, the lake still is in better shape than I realized. It has not been this

high, since August of 2000. The lake still covers over 1,100 surface acres, with almost 19,000 acre-feet of water. I record the level each morning, and we lose about .08 of a foot, each day. That should slow down, as we get into colder weather.

Today's picture of a bald eagle, was taken near the Palo Duro Creek, west of the bridge. It is eating something, probably a fish. I saw another eagle in flight, today, in the same area. It makes me wonder if we have a pair of eagles that nest here, and possibly raise their young. November through March, in past years, are the months that we have seen them the most. The last two years, one eagle at a time, has been seen occasionally in the warmer months.

I chauffeured NRCS employees Rick Harrell, Eric Kaiser, and Thomas Reed by boat, on Wednesday, to map, photograph, and prioritize the debris around the shore. Their Emergency Watershed Protection Program may have money available to assist in the cleanup. It was a beautiful day, and I think we all enjoyed the tour of the lake.

The group shelter was used on Saturday. Four campers on each side, enjoyed the cooler weather over the weekend or preceding week.

I am still not hearing of many fish being caught. Fishermen throwing nets are finding shad to use for bait. I did see one channel cat on Saturday. More stories of "a good bite" are being told, so maybe they will start catching them as the water cools.

10/10/10

Play it SAFE with FNB



For 10 weeks beginning October 10 you can rent any size safe deposit box for \$10 until January 2012*



Member FDIC
www.fnb Spearman.com
806-659-5544

*New box customers only
While supplies last
Regular rent applies thereafter

Gordon's DRUG



The folks at Gordon's Drug would like to thank all of their valued customers for being so patient during these very difficult times.

Please know that we are open
Monday-Friday, 7:30 a.m. - 6 p.m.
Saturday, 7:30 a.m. - 4 p.m.

Pharmacy open with Pharmacist
Monday-Friday, 9 a.m. - 6 p.m.

Gordon's Drug

Where gift-giving is effortless & FUN!

314 Main • Spearman • 806-659-2141

HOSPICE: Living Life to the Fullest



Fall 2010 Volunteer Training Presented by Hansford Hospice

HOSPICE EDUCATIONAL SERIES

A class for anyone interested in becoming a hospice volunteer, learning more about hospice care, and/or desiring personal growth. (You are not required to be a Hospice Volunteer to take this class. Classes are open to anyone interested in learning more about Hospice Care.)

Beginning October 5th, 6:30-8:30 p.m.
(10 Class Sessions)

First United Methodist Church Fellowship Hall

Please call 659-5811 to enroll.

Location of class to be announced. Training is free of charge.

Think Pink Photo Contest

- ▶ We want to see your photos that contain the color pink
- ▶ Entries accepted October 11-22. Entry fee is \$5.00 per photo
- ▶ Any age may enter. Amateur photographers only.
- ▶ Photos must be printed at the Photo Shoppe. We will print a 5x7 and display them for your friends, family & coworkers to vote on their favorite photo between October 25-29.
- ▶ A percentage of entry fee will go to Breast Cancer Awareness.
- ▶ Come join the fun!! You could win!!
- ▶ For more details come by the Photo Shoppe or call Edith @ 273-2541
- ▶ The Photo Shoppe
Corner of 8th & Deahl
Borger, Tx. 79007 photoshoppe@sbcglobal.net



Annual Community Health Fair

Thursday October 14, 2010 7:00 a.m. -- 1:00 p.m.
The O'Loughlin Center 502 S. Brandt, Spearman TX

Flu Shot	25.00
Pneumonia	50.00

Screening Lab Tests (at Greatly Reduced Prices!)

Fasting for 10 hours prior to test is recommended. We can accept cash or check for payment of blood work. Results will be mailed to the patient.	
Thyroid Panel	Thyroid Function
Lipid Profile	Cholesterol Level, Cardiac Risk Profile The identification and treatment of individuals who may be at risk for heart disease at an earlier age offers the possibility to prevent or delay the progression of the disease.
Prostate Specific Antigen (PSA)	Prostate Health
Comprehensive Metabolic Profile	Screens for Several Diseases, Including Diabetes
Complete Blood Count (CBC)	Screens for Many Conditions, Including Anemia and Infection

Health Fair Price

Men \$45.00 Women \$35.00

In addition to flu shots and laboratory tests, there will be opportunities to talk with Hansford County Hospital District Healthcare Providers, as well as many providers of health-related services in the area.

Co-sponsored by



GOLDEN SPREAD SENIOR CITIZENS CENTER
O'LOUGHLIN CENTER
PTCI

PRE-REGISTRATION - 806-659-5833

SEE 5 OR MORE VENDORS, GET A FREE T-SHIRT