



The Hansford County

# REPORTER STATESMAN

213 Main St • Spearman TX 79081  
reporterstatesman@valornet.comCelebrating 100 Years of  
Service to Hansford County(806) 659-3434 • (806) 398-9080 fax  
Proudly Serving Hansford County Since 1907

VOLUME 100 • ISSUE 18

THURSDAY, MAY 3, 2007

## Reporter-Statesman goes online

After 100 years of newspaper service to Hansford County, the Reporter-Statesman has launched two new Internet websites. Spearmanreporter.com and spearmentexas.biz are up and running.

Both of these websites are intended to be a support tool for the businesses and citizens of Hansford County.

Spearmanreporter.com will feature local, regional and national news, along with a local weather report, history, humor, comment and more. Spearmentexas.biz is a site dedicated to local businesses. It will feature a Hansford County Business Directory along with local business features.

As anyone who has ever attempted web based advertising will tell you, newspapers, television and radio are more effective forms of advertising. It is for this reason that government entities are required to place their public notices in newspapers and not on the World Wide Web. The web does, however, offer a unique form of information sharing and viewing. It is for this reason that we are now offering this service.

Spearmanreporter.com and spearmentexas.biz are not "for profit" ventures. These sites are designed to let folks know how wonderful a place is our little community. While we will gladly publish your information on these sites, please don't expect great advertising results. As one businessman recently told me about another website that "claims" almost a million hits, "I spent my hard earned money on that thing and never got one phone call."

Of course, the Reporter Statesman will continue with its print edition. We will also gladly share your information on the Internet, free of charge. If you have information for us to publish, you may call us at 806-659-3434 or email us at reporter@spearmanreporter.com.

## 2007 Elections

Spearman ISD, the City of Spearman and the City of Gruver will all hold elections on May 12, 2007. Gruver ISD and Pringle-Morse CISD will not hold elections at this time.

Spearman ISD has five candidates vying for three positions. Incumbents Bob Boxwell and Will Jarvis have refiled and Stephanie Crossland has not filed for reelection. Other candidates filing are Dr. Mark Garnett, Travis Patterson and Jimmy Kenney. (Other board members are Dwayne Mitchell, Carol Dunning, Maria Sibley and Glen Ray Mackie.)

The City of Spearman has three positions open. Incumbents Kathy Boyd and Ron Antalek have filed for reelection, but incumbent Sergio Vargas did not file. Other candidates filing include Mike Schnell and Craig Schumann. (Other councilmen are Charles Elliott, Jon Garnett, and Mayor Brian Gillispie.)

The City of Gruver will hold an election for Mayor. Mark Irwin has filed for reelection, with one opponent, Kevin McNett. Councilmember Johnnie Williams has also filed for reelection, with no opponent. (Chad Logsdon is the other councilman.)

An election will also be held at the Hansford County Courthouse for a Constitutional Amendment.

Early voting will be held between April 30th and May 8th.

## WEATHER FORECAST

**THURSDAY NIGHT** - Partly cloudy. Areas of fog through the night. Lows in the lower 50s. South winds 10 to 15 mph.

**FRIDAY** - Partly cloudy. Areas of fog in the morning. Highs in the mid 80s. Southwest winds 10 to 20 mph.

**FRIDAY NIGHT** - Partly cloudy. Lows in the lower 50s. South winds 10 to 20 mph.

**SATURDAY** - Partly cloudy. A 20 percent chance of showers and thunderstorms in the afternoon. Highs in the mid 80s. South winds 10 to 20 mph.

**SATURDAY NIGHT** - Mostly cloudy with a 30 percent chance of showers and thunderstorms. Lows around 50.

**SUNDAY** - Mostly cloudy with a 30 percent chance of showers and thunderstorms. Highs in the lower 70s.

**SUNDAY NIGHT** - Mostly cloudy with a 30 percent chance of showers and thunderstorms. Lows in the upper 40s.

**MONDAY** - Mostly cloudy with a 20 percent chance of showers and thunderstorms. Highs in the lower 70s.

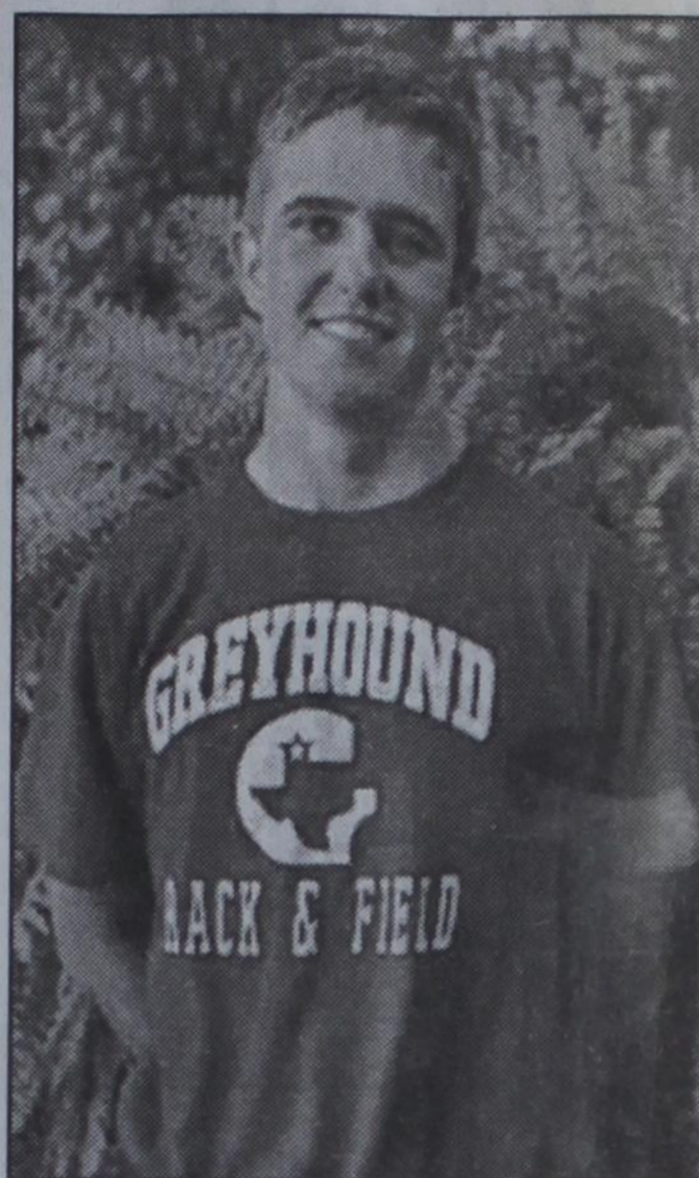
**MONDAY NIGHT** - Mostly cloudy with a 30 percent chance of showers and thunderstorms. Lows around 50.

**TUESDAY** - Mostly cloudy with a 20 percent chance of showers and thunderstorms. Highs in the mid 70s.

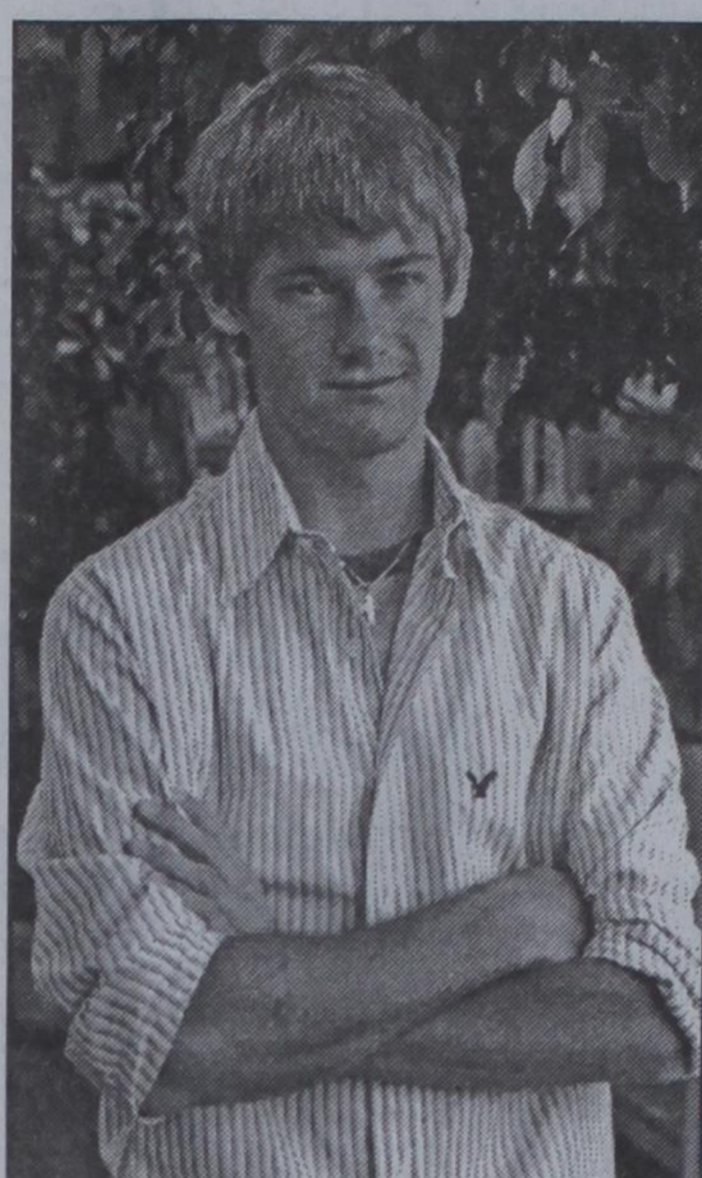
**TUESDAY NIGHT** - Partly cloudy. Lows in the upper 40s.

**WEDNESDAY** - Partly cloudy. Highs around 80.

## Hansford County State Competitors



Justin Thompson will be competing at the State UIL Academic Meet this Saturday, May 5th. Justin was 1st in Science at the Regional UIL Meet, two weeks ago. Good Luck, Justin!



Tucker Williams was Regional runner-up in the Regional Tennis Tournament last week. He will be competing in Austin for the state championship on May 7th and 8th. Congratulations and good luck in Austin!



Stuart Martin was the top medalist at the 2A Regional Golf Tournament in Shady Oaks Golf Course in Baird on April 23rd and 24th. Martin claimed the title with a score of 69-73=142. He will compete in the State Tournament May 7th & 8th.

## Regional Track



Devlin Reynolds took 3rd place in the triple jump (34'2") at the Regional Competition. This jump surpassed her personal best by 11 inches.



The Spearman Lynx Golf Team will compete in the State Golf Tournament on May 7th and 8th in Austin. They took first place at the Regional Tournament in Baird last weekend. Pictured are (Front, L-R) Coach Doug Bowles, Collin Gillaspie, Jordan Ashmore and Stuart Martin; (Back, L-R) Cullie Cooper, Rhett Renner and Tyler Harper.

## Garnett Heads to State in Pole Vault

Brynr Garnett catapulted 15 feet to clear the pole vault and take first place in the Regional Track meet in Abilene last week. This earned him a trip to the State Track Meet, May 11 & 12 in Austin.

Other competitors included Pole Vault - 4th Bond Pittman, 4th, 9-06; 5th Christy Lang, 5th, J9-06 and 3200 Meter - Suttan Garnett, 5th, 12:30.85.

## Finley Takes Second in Kansas Meet

Oklahoma Christian University pole vaulter Blythe Finley placed second in the Southwestern College Relays in Winfield, Kan., April 28.

Finley, who won the Sooner Athletic Conference pole vault event April 21, vaulted 10-6 to equal her season best performance for the 2006 outdoor season.

A 2005 graduate of Gruver High School Finley also won the pole vault even at the 37th Annual Ray Vaughn Classic in Oklahoma City, April 7.

A biology major, Blythe is the daughter of Rickey and Sharolyn Finley of Gruver, Texas.

## Changes at Hansford County Library

Once again change is in the air at Hansford County Library. In a recent board meeting, Maria Carbajal and Margaret Ruttman were named as co-directors to share the head position for an indefinite period. Carbajal has been with the local library for three and a half years and served as director for the past year and a half. Ruttman has been a library assistant for eight years.

In another staff change, the board accepted the resignation of assistant Kay Bowles, who has been with the library for eighteen months. Kay is moving from the area with her husband, Doug, who has accepted a coaching position in Oklahoma. Resumes are now being accepted for Bowles' position.

While change seems to be inevitable at the local library, some things still remain constant. The recycling program that began in February of 2006, continues to be a huge success. The public is reminded to continue to deposit used printer cartridges, cell phones, laptops and PDAs in the drop boxes located throughout the community, or to bring them by the library. Also, donations and memorials continue to be a wonderful way to honor a loved one, as funds collected are used to purchase books or other designated items for use by library patrons.

Books are still available from the book sale that began in April. While at least half of the books are gone, a good selection of fiction and romance grab bags, as well as a large number of hardback books remain.

And don't forget - the summer reading program for children age 5 through second grade will be held each Tuesday morning in June.

The Hansford County Library is located at 122 Main St, Spearman, TX 79081. Regular hours are 9:30 a.m.-5:30 p.m., Monday-Friday. Summer hours are 10 a.m.-5 p.m., Monday-Friday. You may call 806-659-2231 for more information.

## DEADLINE

The deadline to submit news and advertising to the Hansford County Reporter-Statesman is Monday at 5 p.m. Items submitted after the deadline will be published at a later date, as time and space permit. For more information, please contact Catherine Smith at 659-3434, or e-mail cathysmith@valornet.com.

You are invited to a  
**Violin Recital**  
of  
**John & Laura McCloy**  
students of Dr. Keith Redpath  
on Sunday, May 13, 2007  
at 3:00 p.m.  
First Baptist Church,  
Morse, Texas

## Lullabies Legends and Lies

by Parson Smith, The Prime Minister of Laughter

I love food. I eat too much of it and it makes me fat, but I love it all the same.  
When I ran across these little bits of fluff about food, I thought that I would share them with you. Bon Appétit!

**Food quotes and quips**  
Food quotes, quips, and thoughts . . .

"Artichokes ... are just plain annoying ... After all the trouble you go to, you get about as much actual 'food' out of eating an artichoke as you would from licking thirty or forty postage stamps. Have the shrimp cocktail instead." -- Miss Piggy

"The most remarkable thing about my mother is that for 30 years she served the family nothing but leftovers. The original meal has never been found." --Sam Levinson

"This recipe is certainly silly. It says to separate two eggs, but it doesn't say how far to separate them." -- Gracie Allen

"I've been on a constant diet for the last two decades. I've lost a total of 789 pounds. By all accounts, I should be hanging from a charm bracelet." -- Erma Bombeck

"I told my doctor I get very tired when I go on a diet, so he gave me pep pills. Know what happened? I ate faster." -- Joe E. Lewis

"I will not eat oysters. I want my food dead -- not sick, not wounded -- dead." -- Woody Allen

"Food is an important part of a balanced diet." -- Fran Lebowitz


"Health food makes me sick." -- Calvin Trillin

"Watermelon -- it's a good fruit. You eat, you drink, you wash your face." -- Enrico Caruso

"Old people shouldn't eat health foods. They need all the preservatives they can get." -- Robert Orben

### SUDOKU

PRESENTED BY



**VolunteerMatch.org**  
Where volunteering begins.

	6	3						9
4			7	6				5
7					1	8	4	
	9	2	8	1				7
5			6		3			8
8				2	4	1	6	
	7	8	5					4
	4			8	2			9
	2					6	8	

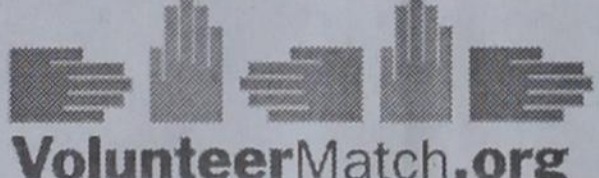
© 2007, StatePoint Media, Inc. answer on classified page  
Fill in the blank squares in the grid, making sure that every row, column and 3-by-3 box includes all digits 1 through 9.

These games are brought to you by the  
**Hansford County Reporter-Statesman**

### CROSSWORD

1	2	3	4	5	6	7	8	9	10	11		
12				13				14				
15				16				17				
18				19				20				
				21				22				
23	24	25				26			27	28	29	
30			31		32	33			34			
35			36			37			38			
39				40				41		42		
43				44				45		46		
				47				48	49			
	50	51				52				53	54	55
56						57				58		
59						60				61		
62						63				64		

PRESENTED BY



**VolunteerMatch.org**  
Where volunteering begins.

© 2007, StatePoint Media, Inc. answer on classified page

## Rock 'N' Roll

ACROSS

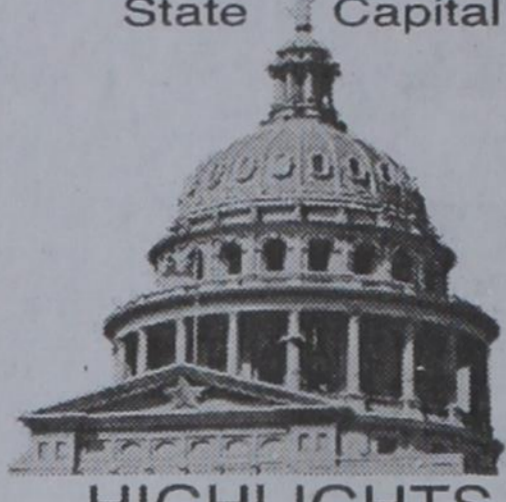

- "Get out of jail" money
- Elvis did it before crying over you
- A French abbot
- Cuzco valley empire
- Dick's friend
- Eskimo boat
- Blessing or benefit
- Distinctive elegance
- Past, present or future
- Dick Clark's "American \_\_\_\_"
- Impulse
- Bridal path
- Currently headed by Robert Mueller
- Blank gap or missing part
- They cover the tips of boots
- Female sheep
- Resides behind home
- Having the means
- Dry streambed in Africa or Middle East
- Consumed
- Antonym of afar
- Iraq neighbor
- Reflexive of "it"
- Tropical American cuckoo
- Data hosts
- Petroleum workers
- One of Indiana Jones' quests
- Rocker Chuck
- "\_\_\_\_ and shine!"
- Weighting down with a load
- It died February 3, 1959
- Sanjaya won't be one
- Internal picture
- Administer
- Whirlpool
- African chieftain
- Opposite the flat surface of a hammerhead
- What the good old boys were drinkin'
- Precedes going out of business

DOWN

- Supports the trestlebeams, nautical
- Dwarf buffalo
- Religious painting
- Oscar-winning actor Martin
- North American purple berry
- Mindless
- Be inclined
- Don McLean's pie
- Crooner who teamed with David Bowie on a Christmas song
- 1st, 2nd or 3rd in baseball
- Increase
- Ship's floating wreckage
- This company sued YouTube over domain name
- Type of head infection
- Not a friend
- A great ball of fire?
- Fully informed
- Mothball substitute
- Ash or elm, e.g.
- At right angle to length of ship
- One of many at JFK
- European finch
- Light taps
- Possessive of "it"
- '60s British occurrence in Rock 'n' Roll
- Aflame
- Irritate
- Haughty and prideful manner
- Put up
- Wildcats valued for fur
- Rock 'n' Roll legend killed in plane crash
- Wear away
- "\_\_\_\_ of thumb"
- \_\_\_\_ of Man in the Irish Sea
- Casket stand
- 1963 Shirley MacLaine character
- Victim of nervous biting
- Curlicue
- Often folded with a key

### TEXAS PRESS ASSOCIATION

State Capital

**HIGHLIGHTS**  
By Ed Sterling

## DOZENS OF BILLS ALREADY AWAIT GOVERNOR'S SIGNATURE

AUSTIN - Out of those thousands of bills lawmakers have filed in the 80th Regular Session of the Texas Legislature, about 150 already are on their way to the governor, having passed both House and Senate.

Hundreds more will land on Gov. Rick Perry's desk before the Legislature adjourns on May 28. Perry will have a 10-day period following adjournment to sign, veto or ignore legislation on his desk. Bills he chooses not to sign or veto will take effect without his signature.

Here are just a few bills of general interest awaiting action by the governor.

- HB 5 by Rep. Leo Berman, R-Tyler, cuts the homestead property tax of the elderly and disabled.
- HB 1098 by Rep. Dennis Bonnen, R-Angleton, prohibits immunization against human papillomavirus as a condition for admission to public school.
- HB 2061 by Rep. Jim Keffer, R-Eastland, provides that a county or district clerk is not liable for the disclosure of a living person's Social Security number contained in a document filed with the county or district clerk.
- SB 90 by Leticia Van de Putte, D-San Antonio, establishes a pilot program to provide ballot by electronic mail to military personnel serving overseas.
- SB 112 by Sen. John Carona, R-Dallas, allows a peace officer to confiscate an individual's firearms and ammunition during a state of disaster.
- SB 369 by Sen. Tommy Williams, R-The Woodlands, makes it a misdemeanor punishable by a fine to alter or obscure a motor vehicle's license plate.

HB 1892, which achieved Senate approval on April 27, slows down by two years the governor's plan to close the deal on the Trans Texas Corridor, a 50-year, statewide toll road-building project.

The bill, by Rep. Wayne Smith, R-Baytown, and sponsored in the Senate by Williams, passed 27-4. "No" votes were cast by senators who hoped to get started on plans to relieve traffic congestion, or wanted to keep all options active and on the table.

After the vote, Lt. Gov. David Dewhurst, who presides over the Senate, said, "I believe privately financed road projects play an essential role in our transportation future."

But, Dewhurst added, a two-year moratorium would give the people of Texas and lawmakers time to make sure such projects "actually work and benefit all Texans."

Property tax protest bill passes

The House on April 27 passed a measure to give landowners more flexibility to postpone and reschedule their property appraisal protest hearings.

HB 538 by Rep. Bill Callegari, R-Katy, allows a land owner to postpone their property tax protest at least once without showing cause, and lets a land owner make additional postponements upon demonstration of reasonable cause.

The bill also increases the amount of time for the postponement of a protest hearing from 15 to 30 days.

Under current law, appraisal districts may choose to allow a land owner to postpone their appraisal protest hearing if the owner or their agent show good cause for the postponement. A hearing may be postponed by no less than five days, and no more than 15. The law does not allow additional postponements.

House OKs govt spending site

A proposal to create a "one stop shop" on the Internet where citizens would find a detailed accounting for all Texas state government expenditures earned tentative approval of the House.

HB 3430 by state Reps. Mark Strama, D-Austin; Bryan Hughes, R-Marshall; Corbin Van Arsdale, R-Houston; Juan Garcia, D-Corpus Christi; and Ken Paxton, R-McKinney, is modeled after federal legislation passed last year by U.S. Sens. Barack Obama, D-Ill., and Tom Coburn, R-Okla.

"Direct citizen access to information has already created a powerful additional check and balance on government and the media," Strama said.

The Web site would be accessed through TexasOnline and maintained by the state comptroller.

Dog bite legislation is OK'd

HB 1355 by Rep. Dan Gattis, R-Georgetown, would increase penalties to owners who fail to reasonably secure their dog, if the dog makes an unprovoked attack on a person, resulting in serious bodily injury or death.

The House passed the bill, and it has been assigned to the Senate Criminal Justice Committee for further consideration.

## STOP LEG CRAMPS BEFORE THEY STOP YOU.

Calcet's triple calcium formula is designed to help stop low calcium leg cramps. Just ask your pharmacist.



**Mission**  
Pharmaceutical

CAL-06901 Rev. 005360 © 2006 Mission Pharmaceutical Company. All rights reserved.

## REAL ESTATE AUCTION!

**GALVESTON ISLAND/HOUSTON OVER 40 PROPERTIES**  
TUESDAY, MAY 22 - 6:00 P.M.

Ballroom Auction conducted at:  
**RENAISSANCE HOUSTON HOTEL**  
6 GREENWAY PLAZA - HOUSTON, TX 77046

INCLUDING:  
\$550,000 CONDO SELLING REGARDLESS OF PRICE  
600 CONDOS, Ponce de Leon, Club of the Isles, San Luis & More - (7) HOUSES, Waterfront and island interior & (1) ranch style - (12) ISLAND LOTS; (2) sailing regardless of price, plus beachfront & more  
48,000 SQ. FT. OFFICE WAREHOUSE; on 3.5 acres in Houston with assumable 750k note \$5391 per month

INSPECTION: Sat. & Sun. May 12th & 13th, 19th & 20th. See website for details!  
For more info visit [www.pmi-auction.com](http://www.pmi-auction.com), or [www.galvestonislandrealty.com](http://www.galvestonislandrealty.com) or call 713-691-4401.  
Lisa Miles Broker #0122294 - Auctioneer Mark Thomas #13784

**PMI-Real Estate Auction Services Division**  
A Division of PLANT & MACHINERY INC.

P.O. Box 18163 - Houston, TX 77224 - Fax: (713) 672-7905 - E-mail: [pmi@pmi-auction.com](mailto:pmi@pmi-auction.com)

## Tejas Art & Book Festival

Catch the Spirit in Rockdale, Texas!  
May 11 and 12, 2007

May 11—7:30 p.m. - 10 p.m.  
Wine and Cheese Stroll, Preview and Presale of Art and Books.

May 12—9 a.m. - 5 p.m.  
Tejas Art & Book Festival, Sale of Juried Art by Artisans, Signing and Sale of Books by Noted Authors.

**Texas Yes!**  
Texas Department of Agriculture  
Big State. Big Backyard.  
Come Play!

## Art Splash on the Square 2007

- National Art Competition  
- Artisans selling their creations & demonstrating their skills  
OPEN TO THE PUBLIC & IT'S FREE OF CHARGE!

Saturday, May 19, 2007 - 10 a.m. - 5 p.m.  
Courthouse Square - Graham, TX  
[www.art-splash.com](http://www.art-splash.com) - 800-549-0401

## SIGN UP FOR A FREE SCOOTER

One Scooter Given Away Each Month

Toll Free **800-606-9860**

**Med Care**  
MEDICAL SUPPLY  
[www.medcaremedicalsupply.com](http://www.medcaremedicalsupply.com)

So Hablar Español

## real estate auctions

Beginning Tue. May 15th

Selling 38 homes throughout Texas

Opening bids from \$1,000  
Inspections 1-4pm Saturday or Sunday before sale date

[williamsauction.com](http://williamsauction.com)  
800.801.8003

**WILLIAMS & WILLIAMS**

1901 Wimbledon Drive, Arlington

TX RE LIC 0612361 DEAN C. WILLIAMS BROKER, RE LIC 0234107 TOMMY ASHTER BROKER, W&W RE LIC 0425337, AUC LIC 0206104 TOMMY ASHTER AUCTIONEER

## Sun's Out!

Let's go to the beach.  
Island Style.

**Port Aransas**  
MUSTANG ISLAND

361-749-5919 • 800-45-COAST  
[www.portaransas.org](http://www.portaransas.org)

## The Hansford County Reporter-Statesman

213 Main Street • Spearman, TX 79081  
Phone - (806) 659-3434 • Fax - (806) 659-3368  
[cathysmith@valormet.com](mailto:cathysmith@valormet.com)  
Mon.-Thurs. (Closed Fridays) 9 a.m.-12 p.m. & 1-5 p.m.

**Gary Smith - Publisher** Catherine Smith - Editor  
Contributing Writers: Dorothy Hudson, Jim Derington, Merry Sparks, Cecil Biggers  
Contributing Photographer: Charlie Johnson


**Subscription Rates**  
In Hansford County - \$30.00 - Out of County - \$40.00

The Hansford County Reporter-Statesman (USPS 529660) is published weekly in Spearman, TX. Periodical postage paid in Spearman, TX. **POSTMASTER:** Send address changes to: The Hansford County Reporter-Statesman, 213 Main Street, Spearman, TX 79081.

**Publication Policy**  
The deadline to submit news and advertising to The Hansford County Reporter-Statesman is Monday at 5 p.m. Items submitted after the deadline will be published at a later date, as time and space permit. Publication of all items is at the discretion of the editor.

**Advertising**  
Open Display rates are \$4.00 per column inch. Classified Ads are \$6 for the first 25 words and 10¢ per word for each additional word. (Additional charge for boxed classifieds.) There is a \$1 charge per week if billed.

Member of  
Gruber Chamber of Commerce  
Spearman Chamber of Commerce  
Texas Press Association and Panhandle Press Association



2000



# HYI

FOR YOUR INFORMATION

**You're Never Alone - Narcotics Anonymous Group**  
 Each year individuals struggling with drug and alcohol addiction make the resolution to quit using drugs. For many of them it is a resolution that they cannot keep. Narcotics Anonymous can help. Open meetings are held on Monday and Thursday nights from 8-9 p.m. at the First Christian Church (29 S. Bernice in Spearman) for the "You're Never Alone" group of Narcotics Anonymous. Anyone interested is invited to attend. Drug addiction can leave you feeling helpless and out of control - we can help.

**Spearhead AA Group**  
 The Spearhead AA Group meets every Tuesday at 8 p.m. in the Pittman-Shieldknight building. Alcoholics Anonymous is a fellowship of men and women who share their experience, strength and hope with each other that they may solve their common problem and help others to recover from alcoholism. The only requirement for membership is a desire to stop drinking. There are no dues or fees for AA membership; we are self-supporting through our own contributions. Our primary purpose is to stay sober and help other alcoholics to achieve sobriety. For more information, call 662-1111.

**Al-Anon**  
 If you are concerned with someone else's drinking or addiction, the Al-Anon program can help you. Each Al-Anon Family Group has but one purpose - to help families and friends of alcoholics and addicts. The Spearhead Al-Anon Group meets every Tuesday night at 8 p.m. in the Pittman-Shieldknight Building, 511 SW 11th Avenue, Spearman. For more information, call 806-330-0349.

**Panhandle Crisis Center Outreach Office**  
 Panhandle Crisis Center (PCC) has an Outreach Office and Resale Store at 306 Hancock, in Spearman. In case of emergencies, please continue to call the hotline, 1-800-753-5308. To schedule an appointment with a worker in Hansford County, call 659-3391 to leave a message, or call the hotline number above. Panhandle Crisis Center serves victims of domestic violence and sexual assault. Call for more information regarding PCC's services. Hours for the Resale Store in Spearman are: Monday, Tuesday, Thursday & Friday from 10 a.m.-5 p.m.

**Project Graduation**  
 The parents of the Spearman High School Senior Class of 2007 will sponsor and host a "Project Graduation Party" following commencement exercises Friday, May 25th. Graduates will be provided with food, games, activities, and fun! In addition, to encourage the graduates to stay the entire night, door prizes are awarded throughout the evening. The graduation party will culminate with the distribution of grand prizes. Prizes, gift certificates, and cash are needed for the evening's gifts. If you would like to make a donation, please contact Teresa Maestas, 659-1025, or Lynna Renner, 659-3587. Contributions can be mailed to: Teresa Maestas, PO Box 337, Spearman, TX, 79081.

**Tuesday Night Golf Scrambles**  
 The Spearman Golf Course has begun their Tuesday Night Scrambles. Tee-time will be at 6 p.m. sharp. For more information, or to sign up, call 270-0157 or 659-2233.

**Rushing Wind Emmaus**  
 The Rushing Wind Emmaus community will meet on Saturday, May 12, at the Waka Christian Center. A potluck meal will be served at 6 p.m. followed by a praise and worship service. Families and friends are invited to attend. A nursery will be provided.

**Lunch & Learn**  
 "Backyard Native-Scaping," will be the topic for Lunch & Learn, Tuesday, May 8, from 12:00 - 1:00 p.m. in the Fellowship Hall of Spearman Church of Christ. Dr. Lew Hunnicutt, Dean of Frank Phillips College Allen Campus, from Perryton will present the program. Participants will learn how to make the most out of native and 'naturalized' ornamental grasses, flowers, and shrubs. Dr. Hunnicutt will inform the audience about the plants he has had the most success with as well as those that have failed. The talk includes some wonderful photography to graphically demonstrate the beauty of Texas panhandle plants in the backyard native-escape. He will also have some living examples of panhandle grasses including some that recovered from the Pampa wildfire of 2006. This free program is sponsored by the Texas Cooperative Extension Service and Extension Education clubs. Donations for lunch will be accepted. Call Peggy Winegarner at 659-4131 or 733-2901 for more information.

**County holds extended hours voting**  
 The Hansford County Courthouse will hold extended hours voting on Thursday, May 3rd, and Tuesday, May 8th, from 8 a.m.-8 p.m. This is for the County Election (Constitutional Amendment) and will be held at the Courthouse and Gruver City Hall.

**Gordon's DRUG**

Your place for

**Bridal Registry**

**Couples Currently Registered**

- Janae Watley & Kyle Igo - 515
- Kristi Carbajal & David Valdez - 5126
- Daniele Catron & Randy Duffy - 619
- Charlotte Procter & Tim Bynum - 619
- Amy Boorigie & Doran Schoenhals - 619
- Bethany Harris & Nick Peterson - TBA
- Laura Gomez & Richardo Plascencia - TBA
- Brooke Salmans & Michael Condry
- Jenni Beck & Josh Winegarner
- Staci Leonhard & Lee Jarvis
- Jesse & Brooke (Trantham) Allen
- Rowena May Apacible & Dustin Wade Parks
- Julie Gumfory & Gregory Sherrod
- Daniel & Wendy (Woolley) Jarvis
- Matt & Allison (Haney) Rodgers

**Baby Registry**

- Linzi McCubbin - 5126
- Nekisha Whitefield - 6110
- Dana Sharp

**Gordon's DRUG** 659-2141  
 314 Main Spearman

# Open Letter

HELP! Memorial Day is coming.....

HELP! Memorial Day is coming and I would like to ask for help for our local cemeteries. Memorial Day was started to remember our service folks and the price they paid. It has changed somewhat as we also remember ALL of the friends and relatives who have passed on. We usually do this by buying some flowers to take to the cemetery and maybe picking up some old flowers and a stick or two and just generally spend a few minutes at those graves and pay our respects. I would like for you to think a little further this year and consider helping the cemeteries where you go. If you sent half of your flower money to support the cemetery it would help, actually, if you sent anything it would help.

The local cemeteries are without an income to maintain the water system, roads, fences, do the mowing, pruning, weed-eating, and all the things they do to have a nice place for you to put your flowers. In the past a few very generous people gave every year to help and at one time the county also helped some. These people are no longer with us and the next generation has not picked up the slack. A lot of small donations are needed to make up for the large ones that are no longer there.

Doyle Jackson at the Holt, Don Maize and Ron Willis at Hansford, and I am sure folks at Lieb and Gruver are in the same spot... they use their trucks, pay for their own gas and are available in all kinds of weather to make it work. Sometimes the local jail can supply labor at Hansford but they have to be watched and so it is not completely free even though it is appreciated. What have YOU done to help.

There was a cleanup day at Hansford and 3 people showed up. Have you given any money? Everyone cannot, but some can. There is NO pay for the people working to keep it going. I have not even mentioned their wives and others who do the book work, keep the records, maintain the bank accounts, and sometimes even pay bills out of their own pocket.

THIS year let's make it a point to help in some way. Either labor or money or both.

Some people buried there have no family left here, they still need care. Some people have family but they don't care, their graves still need care. Some people buried there have family that care very much but they spend all their money on flowers, benches, photos, and rocks and do not support the basics of the cemetery. Still others have family buried there who do not go out there or see the graves because of the personal pain, even these folks could write a check.

I am asking everyone to look at their own situation and do what they think is their part. To do nothing is just not responsible and is wrong. There are too many addresses to list them here but it is easy to find out where to send money to help. Another thing is to think about graves in other places.

Are you helping to maintain them?  
 One last thing, a "Thank You" to the folks keeping things going won't cost you anything and I promise you it will help. If anything is wrong at your loved ones grave site, these are the people you will call and chew out. Please do something to help this year and make it an annual habit. Someone will need to take care of your site some day.  
 Thank You, Jerry Sheets

Advertise Your Business or Your Event

**STATEWIDE**

Ads only \$1100

Contact this newspaper for more information or visit [www.texaspress.com](http://www.texaspress.com)

Regions available.

Women's Division Spearman Chamber of Commerce presents.....

**2007 Miss Hansford Scholarship Pageant**

June 5, 2007 at 7:00p.m.  
 Spearman High School Auditorium  
 Pageant Deadline is May 18, 2007

Age Divisions:

Little Miss (4-8)	Junior Miss (7-9)
Preteen (10-12)	Teen (13-16)
Miss Hansford (17-21)	

Entry forms available at Dreamer's Salon and Spearman Chamber of Commerce  
 In Gruver at the Chamber of Commerce Office

**The art of celebrating Mom.**

**Teleflora's Fenton Art Glass Bouquet**

An exquisite bouquet. An art glass vase designed by world-famous Fenton Art Glass, charmingly decorated with hand-painted flowers. This delightful gift, created exclusively for Mom, is one she'll keep forever. For nationwide same-day delivery, call or visit our shop.

teleflora.

Mother's Day is Sunday, May 13

**Spearman Prom - May 12**

**Prairie Garden Flowers**  
 209 Main Street Spearman  
 659-2212 659-3329

**Spearman Elementary Kindergarten Roundup**

Kindergarten Roundup for the 2007-2008 school year is scheduled for May 8th and May 10th at Spearman Elementary School (511 S. Townsend). We will provide free vision, hearing and speech screening for your child. If you have a child, or know of a child, who will be 5 years of age on or before September 1, he or she will be eligible for kindergarten.

You will need to bring the following items to roundup:

1. Your child's social security card
2. Your child's birth certificate
3. Your child's updated immunization records

May 8, 8:00-11:00 a.m. Last names A - M; 1:00-3:30 p.m. Last names N - Z  
 May 10, 8:00-11:00 a.m. Last names N - Z; 1:00-3:30 p.m. Last names A - M

If you cannot come to school on one of these two days please call the elementary office at 659-2565 to pre-register.

Inscripciones para Kinder para el ano 2007-2008 sera el 8 de Mayo y el 10 de Mayo en la escuela elemental de Spearman (511 S. Townsend). Estrameos ofreciendo un examen de vista gratis junto con un examen de poder escuchar y de hablar correctamente para su nino/a. Si usted tiene un nino/a, o conoce un nino/a que cumplira los 5 anos de vida antes o el mero DIA 1 de Septiembre, el o ella calificara para Kinder.

Necesitara traer las siguientes cosas para la inscripcion:

1. La tarjeta del seguro social de su nino
2. Acta de Nacimiento de su nino
3. La tarjeta a de vacunas que esten al tanto

8 de Mayo: 8-11 a.m. - Apellidos de las letras A-M; 1-3:30 p.m. - Apellidos de las letras N-Z  
 10 de Mayo: 8-11 a.m. - Apellidos de las letras N-Z; 1-3:30 p.m. - Apellidos de las letras A-M

Si usted no puede venir a la escuela en uno de esos dos dias por favor de hablar a la oficina de la elemental al 659-2565 para poder inscribirse.

Advertise Your Business or Your Event in

**TexSCAN**

Statewide Classifieds

For only \$450

Contact this newspaper for more information or visit [www.texaspress.com](http://www.texaspress.com)

Regions available.

You are invited to a **Bridal Shower** honoring **Janae Watley** (bride-elect of Kyle Igo) on **Saturday, May 5, 2007** from 2:00-3:30 p.m. in the home of **Marsha Lowe** 2 Miles East, Hwy. 15 Gruver

**Celebrate**

Gifts for all your celebrations!

**Bridal Registry**

**Shower Dates**

- Janae Watley & Kyle Igo - 515
- Kristi Carbajal & David Valdez - 5126
- Daniele Catron & Randy Duffy - 619
- Charlotte Procter & Tim Bynum - 619
- Amy Boorigie & Doran Schoenhals - 619
- Jennifer Watts & Jay Tracy - 619
- Bethany Harris & Nicholas Peterson - TBA
- Wendy (Woolley) & Daniel James
- Lynsee Williams & Ross Womble
- Julie Gumfory & Greg Sherrod
- Staci Leonhard & Lee Jarvis
- Brooke (Trantham) & Jesse Allen
- Rowena Apacible & Dustin Parks
- Jenni Beck & Josh Winegarner
- Mindee Gillaspie & Trampus Woodward
- Brooke Salmans & Michael Condry
- Allison (Haney) & Matt Rodgers

**Baby Registry**

- Linzi McCubbin - 5126
- Nekisha Whitefield - 6110
- Dana Sharp

**Celebrate**

203 Main St. Spearman, TX  
 (806) 659-3350 1-800-663-8026

# Analysis of Proposed Constitutional Amendment for May 12, Election

This is an analysis of Proposed Constitutional Amendment for the May 12, 2007, Election. It was prepared by the Staff of the Texas Legislative Council and published by the Texas Legislative Council.

The mission of the Texas Legislative Council is to provide professional, nonpartisan service and support to the Texas Legislature and legislative agencies. In every area of responsibility, we strive for quality and efficiency.

The proposed Constitutional Amendment will authorize the legislature to provide for a reduction of the limitation on the total amount of ad valorem taxes that may be imposed for public school purposes on the residence homesteads of the elderly or disabled to reflect any reduction in the rate of those taxes for the 2006 and 2007 tax years.

### General Information

At the beginning of the 2007 regular session, the 80th Texas Legislature passed a joint resolution proposing a constitutional amendment that will be offered for ratification on the May 12, 2007, election ballot.

The Texas Constitution provides that the legislature, by a two-thirds vote of all members of each house, may propose amendments revising the constitution and that proposed amendments must then be submitted for approval to the qualified voters of the state. A proposed amendment becomes a part of the constitution if a majority of the votes cast in an election on the proposition are cast in its favor. An amendment approved by voters is effective on the date of the official canvass of returns showing adoption. The date of canvass, by law, is not earlier than the 15th or later than the 30th day after election day. An amendment may provide for a later effective date.

Since adoption in 1876 and through April 2007, the state's constitution has been amended 439 times, from a total of 618 proposed amendments, 615 of which were submitted to the voters for their approval. The proposed amendment approved by the 80th Legislature as of April 2007 brings the total number of amendments passed by the legislature to 619.

The following table lists the years in which constitutional amendments have been proposed by the Texas Legislature, the number of amendments proposed, and the number of those adopted. The year of the vote is not reflected in the table.

The remaining section of this publication contains the ballot language, an analysis of the proposition, and the text of the joint resolution proposing the constitutional amendment that will appear on the May 12, 2007, ballot.

The analysis includes background information and arguments for and against the proposed constitutional amendment.

### Wording of Ballot Proposition:

The constitutional amendment authorizing the legislature to provide for a reduction of the limitation on the total amount of ad valorem taxes that may be imposed for public school purposes on the residence homesteads of the elderly or disabled to reflect any reduction in the rate of those taxes for the 2006 and 2007 tax years.

### Analysis of Proposed Amendment:

Subsection (d), Section 1-b,

Article VIII, Texas Constitution, provides that the total amount of ad valorem taxes imposed for general elementary and secondary public school purposes on the residence homestead of a person who is 65 or older or is disabled may not be increased. The constitutional amendment proposed by Senate Joint Resolution No. 13 amends Section 1-b of Article VIII by adding a new Subsection (d-1).

The proposed Subsection (d-1) authorizes the legislature by general law to provide for the reduction of the amount of a tax limitation for an elderly or disabled person provided by Subsection (d) applicable to a residence homestead for the 2007 tax year to reflect any reduction from the 2006 tax year in the tax rate for general elementary and secondary public school purposes applicable to the homestead. In addition, a general law enacted under the proposed Subsection (d-1) may also take into account any reduction in the tax rate for those purposes from the 2005 tax year to the 2006 tax year if the homestead was subject to the tax limitation in the 2006 tax year. Finally, the proposed Subsection (d-1) would authorize a general law enacted to provide for a reduction in the tax limitation to apply the reduced tax limitation to the residence homestead in subsequent tax years until the limitation expires.

### Background

Section 1, Article VIII, Texas Constitution, provides that taxation shall be equal and uniform and that all real property and tangible personal property, unless exempt as required or permitted by the constitution, shall be taxed in proportion to its value. Any exception to these fundamental constitutional rules that is not granted or authorized by the Texas Constitution is void. Accordingly, unless authorized by the constitution, neither the legislature nor a school district may limit the amount of school district ad valorem taxes that a property owner is required to pay to an amount less than the amount computed by applying the school district's tax rate to the current value of the person's property.

Subsection (d), Section 1-b, Article VIII, Texas Constitution, is an exception to the general principles that ad valorem taxes must be equal and uniform and must be imposed in proportion to value. Subsection (d) provides that the total amount of ad valorem taxes imposed for general elementary and secondary public school purposes on the residence homestead of a person who is 65 or older or is disabled may not be increased. However, Subsection (d) does not authorize or require a reduction in ad valorem taxes for school purposes based solely on a reduction in the ad valorem tax rate for those purposes. The taxes for school purposes imposed on the homestead of an elderly or disabled person are equal to the lesser of the amount computed by applying the current tax rate to the current value of the property or the amount as limited by Subsection (d) of Section 1-b, Article VIII. If any reduction in the school district tax rate since the year in which an elderly or disabled homeowner qualified for the limitation is offset by an increase in the value of the property since that year, an elderly or disabled homeowner does not receive a tax reduc-

tion. Major legislation enacted by the 79th Legislature, 3rd Called Session, 2006, provides new state aid to school districts for tax rate reduction, in addition to the state aid already provided to school districts each year, and requires a corresponding reduction in the roll-back tax rate of each school district. House Bill No. 1 provides a mechanism for reducing each school district's ad valorem tax rate from the tax rate for the 2005 tax year by 11.33 percent in 2006 and 33.33 percent in 2007 and includes provisions permitting additional reductions in later years.

House Bill No. 1 also proposed to amend Section 11.26, Tax Code, which is the enabling legislation for Subsection (d), Section 1-b, Article VIII, Texas Constitution, to provide for the reduction of the limitation on tax increases on the residence homestead of an elderly or disabled person in proportion to the reduction in the school district ad valorem tax rate.

Because such a reduction is not currently authorized by Subsection (d) of Section 1-b, the proposed amendment to Section 11.26 was contingent on a constitutional amendment proposed by House Joint Resolution No. 26, 79th Legislature, 3rd Called Session, 2006. However, the amendment to Section 11.26 did not take effect because the legislature did not adopt the joint resolution proposing the constitutional amendment. As a result, although school district tax rates were reduced under H.B. No. 1 in 2006 and are scheduled to be reduced further in 2007, many elderly and disabled homeowners, particularly those who qualified for the limitation on school district ad valorem taxes many years ago when their homes were appraised at values much lower than current values, did not see a reduction in their 2006 school district taxes and probably would not receive a reduction in 2007 either.

Senate Joint Resolution No. 13 proposes to amend Section 1-b, Article VIII, Texas Constitution, by adding Subsection (d-1). The proposed Subsection (d-1) authorizes the legislature by general law to provide for the reduction of the amount of the school district tax limitation for the elderly and disabled provided by Subsection (d) of Section 1-b and applicable to a residence homestead for the 2007 tax year to reflect any reduction from the 2006 tax year in the applicable school district ad valorem tax rate. In reducing the school district tax limitation for 2007 on a homestead, the general law may also take into account any reduction in the applicable school district tax rate from the 2005 tax year to the 2006 tax year if the homestead was also subject to the school district tax limitation in the 2006 tax year. The general law may also provide that, except to the extent the taxes are increased because of improvements, a limitation as reduced continues to apply to the residence homestead in subsequent tax years until the limitation expires because the property is no longer the homestead of a person eligible for the limitation. Under the constitutional amendment proposed by S.J.R. No. 13, if a school district adopted a tax rate in 2006 or adopts a tax rate in 2007 that is lower than the district's tax rate in 2005, elderly and dis-

abled homeowners in the district will receive a reduction in their 2007 school district taxes regardless of any changes in the value of their homes that have occurred since they first qualified for the limitation on school district taxes.

House Bill No. 5, which is currently pending in the 80th Legislature, Regular Session, 2007, would if enacted implement the reduction authorized by S.J.R. No. 13 in the limitation on school district taxes on the residence homesteads of the elderly and disabled. House Bill No. 5 is contingent on the approval by the voters of the constitutional amendment proposed by S.J.R. No. 13 and, if that amendment is approved, the bill will take effect beginning with the current (2007) tax year. House Bill No. 5 amends Section 11.26, Tax Code, to implement the reduction in the limitation on school district taxes authorized by S.J.R. No. 13. House Bill No. 5 also makes conforming amendments to the Education and Government Codes that are necessary to protect school districts against any resulting loss in ad valorem tax revenue.

### Arguments For:

1. Under H.B. No. 1 enacted by the 79th Legislature, 3rd Called Session, 2006, most homeowners received a reduction in the school district ad valorem taxes imposed on their homes in the 2006 tax year and are likely to receive a further reduction in those taxes in the 2007 and subsequent tax years. However, many elderly and disabled homeowners, particularly those who have occupied their homes for many years, did not receive a reduction in the 2006 school district taxes on their homes. Senate Joint Resolution No. 13 and its enabling legislation promote fairness in taxation by ensuring that all homeowners benefit from the reduction in school district ad valorem taxes provided by H.B. No. 1. In fact, unless the amendment is approved, elderly and disabled homeowners would probably find that their total tax burden has increased because the school district tax relief legislation enacted by the 79th Legislature, 3rd Called Session, 2006, funded the reduction in school district ad valorem taxes in H.B. No. 1 by increasing certain state taxes, and a portion of those increased state taxes will be directly or indirectly passed on to elderly and disabled homeowners. The amendment is necessary to ensure that all homeowners receive the same proportionate reduction in the school dis-

trict taxes on their homes.

Under S.J.R. No. 13 and the enabling legislation, elderly and disabled homeowners would continue to receive a reduction in their taxes in future years even if tax rates subsequently increase. Protecting elderly and disabled homeowners from future school district tax increases is essential because many such persons live on fixed incomes and face medical and other expenses that exceed those of other homeowners. Subjecting elderly and disabled homeowners to school district tax increases, even if only to the level at which those taxes were originally limited, could make it difficult for them to continue to afford to live in their homes.

2. The added tax relief for the elderly and disabled proposed by S.J.R.

No. 13 will not harm school districts because the Texas Constitution in Subsection (c), Section 1-b, Article VIII, requires the legislature to provide for formulas to protect school districts against all or part of the revenue loss incurred by the implementation of the limitation on school district ad valorem taxes on the residence homesteads of the elderly and disabled, and H.B. No. 5, if enacted, will protect school districts against any loss in ad valorem tax revenue resulting from the reduction in the limitation on those taxes. Compared to the amount of state funds being directed to provide school district ad valorem tax relief to other taxpayers, the amount of state funds to be used to implement tax relief for elderly and disabled homeowners under the proposed amendment is modest.

### Arguments Against:

1. House Bill No. 1 was intended in part to provide school district tax relief to homeowners whose taxes have increased in recent years as a result of increasing valuations and tax rates. Elderly and disabled homeowners whose taxes were already limited under current law were protected from those tax increases. Elderly and disabled homeowners who would not receive a reduction under H.B. No. 1 in the school district taxes on their homes are already receiving such a substantial tax benefit by virtue of the tax limitation provided by current law that they would not receive any benefit from a reduction over a two-year period in school district maintenance and operations tax rates of 33 percent. It is difficult to justify additional tax relief for homeowners who are

already receiving substantial tax savings and who are not necessarily needy.

If such a reduction were justified, it should be based on the reduction authorized by H.B. No. 1 in the school district maintenance and operations ad valorem tax rate. However, because the reduction in the school district tax limitation under S.J.R. No. 13 is based on the reduction in the total school district tax rate, not just the maintenance and operations tax rate, elderly and disabled homeowners would also benefit from any reduction in the tax rate for bonds and other debt, which might decline for reasons totally unrelated to H.B. No. 1.

Furthermore, the primary justification that has been offered for reducing the limitation on school district ad valorem taxes on the homes of the elderly and disabled is that they should enjoy the same tax relief as other homeowners. However, if school district tax rates subsequently increase, the taxes on the homes of the elderly and disabled will remain frozen at the level to which they have been reduced under the proposed amendment while the taxes on other homeowners increase. The taxes on the homes of the elderly and disabled will not even increase back to the level at which they were formerly frozen. Elderly and disabled homeowners, who already enjoy a limitation on the school district taxes on their homes regardless of their incomes, should not receive a permanent additional reduction in those taxes regardless of the reason for the reduction in the tax rate and regardless of whether the taxes on the homes of other taxpayers continue to be reduced.

2. The Legislative Budget Board estimates that the cost to the state's general revenue fund for the next five state fiscal years of implementing H.B. No. 5, the enabling legislation for S.J.R. No. 13, is almost \$750 million. Elderly and disabled homeowners already receive a substantial tax benefit by virtue of the limitation on school district ad valorem taxes on their homes provided by current law. Although the state government is currently enjoying a surplus, that may not continue and Texas has many other pressing needs for its limited tax resources. Spending such a large amount to provide additional tax relief to all elderly and disabled homeowners, including those who are not needy, is not the most appropriate use of state funds.



## MAY SPECIALS

**Buy One Yankee Candle at regular price and Buy 2nd Candle at 50% Off!**

**Spring Wreaths 25% Off**


Offers good May 1-31, 2007

**Spend \$75 or more on gifts and receive 25% Off Entire Purchase!**



**Where gift-giving is effortless & FUN!**

314 Main Spearman 806-659-2141



# VOTE!

for  
**Mike Schnell**  
for  
**Spearman City Council**

# VOTE!

Saturday,  
**May 12th**

Early Voting through May 8th  
**Spearman City Hall**

Political Ad paid for by Mike Schnell

## 2007 Texas Corn Acreage to Increase, Declines in Cotton Forecasted

by Blair Fannin, 979-845-2259, b-fannin@tamu.edu

Fueled by ethanol demand and strong export sales, U.S. corn acreage is predicted to be the largest since 1944 with Texas plantings to increase by as much as a quarter of a million acres in 2007, the U.S. Department of Agriculture reported Friday.

Cotton, the state's number one cash crop, is predicted to drop in acreage by 11 percent or more than 600,000 acres, according to the report. Cotton producers across the state are expected to plant just over 5.73 million acres compared to 6.43 million acres in 2006.

"The first thing to say about it is this is sort of a benchmark on acreage and nobody should take it as a final deal," said Dr. John Robinson, Texas Cooperative Extension small grain marketing economist.

Weather so far has not been a determining factor for agriculture production in Texas, but lack of rain could alter the number of crop acres planted and yields. State agriculture producers are hoping there isn't a repeat of 2006 when crops across the state were ravaged by drought.

"Things have already changed in the last 30 days (regarding weather)," Robinson said. "It's gotten drier in the mid-south. There's a whole lot of variables between now and the next (USDA acreage report) on June 30 when they go out and survey actual acreage."

Prospective corn plantings statewide are predicted to be 2 million acres compared to 1.76 million acres in 2006, according to estimates.

"If we get a good crop year, it could provide some good returns to producers," said Dr. Mark Waller, Extension economics program leader. "In terms of dryland production, we hope it gets the moisture it needs. The moisture situation has improved since last fall, but we don't have a lot of sub-soil reserves. It sounds like things are getting (planted) in the lower part of the state, but we still need good moisture."

Though Texas corn acreage is on the increase, Waller advises producers not to rest on their laurels if they're anticipating high returns on a large crop.

"While it looks like we'll be planting more corn this year and we've got some good potential in prices, producers need to be thinking about what to do in terms of production and price insurance," he said. "If you've planted a lot more corn, don't just sit back and think (prices) will keep going up. Watch the market. When you get some decent pricing opportunities, take advantage of them."

Texas produced more than \$561 million worth of corn for grain in 2006, according to agriculture department data. That figure could increase dramatically in 2007 with the potential for larger yields and record-high corn prices.

"I expect to see a corn crop we haven't seen in a while," said Dr. Travis Miller, Extension program leader for soil and crop sciences. "There's rains in the Plains (region), today and the (Central Texas) Blacklands. If people have got it planted, that's perfect timing."

U.S. corn growers intend to plant 90.5 million acres of corn in 2007, up 15 percent from 2006 and 11 percent higher than 2005, the agriculture department reports. By comparison, it would mark the highest number of acres since 1944 when 95.5 million acres were planted. Expected acreage is up in nearly all states as high corn prices are encouraging farmers to plant more acres in corn.

Nationally, Illinois farmers are predicted to plant a record-high 12.9 million acres of corn this spring, up 1.6 million acres from a year ago, while North Dakota (increased 910,000 acres) and Minnesota (increased 600,000 acres) as growers are expected to plant a record number of corn acres.

The drop in Texas cotton acres is in response to the change in corn acreage and the trickle effect on other planted commodities including sorghum and soybeans, economists said.

Some Texas farmers are shifting cotton acreage to corn acreage in the Central Texas Blacklands, Wharton and Lower Rio Grande Valley regions to take advantage of the prices, Robinson said.

"But mainly, it's a question of shifting to grain sorghum or wheat," said Robinson, noting the demand for corn is altering the number of planted acres for other commodities, thus changing the supply-demand equation. Electronic cotton market contracts were trading above 60 cents early Friday.

"The market is still going to grind on and in the short term, there could be a price rally," Robinson said. "If someone were forward-pricing, they may be able to lock something in. To my way of thinking, we need a rally of up to three to four cents for it to be a meaningful opportunity."

U.S. cotton plantings for 2007 are expected to total 12.1 million acres, 20 percent below 2006 levels and the lowest since 1989, the agriculture department reports. Growers intend to decrease acreage in all states with the largest acreage declines in Arkansas, Georgia, Louisiana, Carolina, Mississippi and Texas.

## Texas Wheat Crop Strengthened by Rainfall

by Blair Fannin, 979-845-2259, b-fannin@tamu.edu

The 2006 drought led to the smallest number of wheat acres harvested in Texas since 1925, but this year's crop is showing promise thanks to timely rains, a small grains expert said.

"(Rainfall) in the High Plains and other parts of the state over the past couple of weeks have increased yield expectations," said Dr. Gaylon Morgan, Texas Cooperative Extension small grains specialist. "Statewide, most of the wheat is considered to have good to excellent yield potential due to (available) soil moisture and relatively low disease pressure."

About 6 million winter wheat acres have been planted as part of the 2007 crop, according to the U.S. Department of Agriculture-National Agricultural Statistics Service.

Texas producers have renewed optimism after the 2006 drought devastated wheat and other crops throughout the state, resulting in \$2.5 billion in losses, according to Extension economists.

The value of the 2006 Texas wheat crop was \$153 million compared to \$330 million in 2005 and \$362 million in 2004, according to USDA data. Last year's drought not only led to millions in losses in revenue for farmers, but sales proceeds from harvested wheat in 2006 led to just \$42,000 in Texas Wheat Board allocations for research initiatives. About \$211,000 was allotted in 2005 by comparison.

The only disappointments so far are the Southern Rolling Plains and the Concho Valley with late-planted wheat, Morgan said. Yield potential is expected to be low and much of the wheat "grazed-out or baled for hay, despite recent rains," he said.

Meanwhile, rain and warm weather is helping the crop to progress rapidly, Morgan said. In South Texas, the wheat crop is heading and flowering. In the Blacklands region, wheat is beyond the boot stage (the seed-head enclosed within the sheath of the flag leaf) to early flowering.

"In these areas, the crop ranges from late-jointing to early heading," he said. "Most of the wheat on the High Plains is at the jointing stage."

Meanwhile, weed management is another issue that needs attention from growers, Morgan said. Mustards and broadleaf weeds become a problem for some producers as the growing season progresses, he said.

"Late-season broadleaf weed options exist. However, no herbicides should be applied after boot stage," Morgan said.

Examples of herbicides that may be applied up to the boot stage include MCPA, 2,4-D, Ally, Buctril and Finesse.

"If your wheat crop is beyond the boot stage and heavy weed infestations will negatively affect harvest and grain quality, several harvest aids do exist," Morgan said. "However, the harvest aids can't be applied until after the wheat crop is in the hard-dough stage or beyond. If wheat for seed will be kept from a field receiving a harvest aid application, a seed germination test is strongly encouraged because harvest aids can negatively affect seed germination."

Wheat producers are also keeping a watchful eye on crop disease. South Texas wheat is heading with relatively low leaf rust pressure, Morgan said. In the Blacklands, leaf rust pressure is relatively low, "but powdery mildew is still present on susceptible hard wheat varieties."

"Leaf rust is being observed at concerning levels on very susceptible varieties, such as Cutter, Jagelene and 2145," he said. "However, varieties with moderate resistance, such as Coronado, only have low levels of leaf rust at this time."

Fannin says his resistance to leaf rust, he said, while stripe rust levels remain at very low levels throughout South Texas and the Blacklands regions.

"These low foliar disease levels may be the result of a very dry February and early March and fungal inoculum did not build up," Morgan said. "Nonetheless, as warm moist conditions have returned to much of the state, foliar diseases can increase quickly and warrant observation."

Producers with susceptible varieties to leaf rust and considering use of fungicide can review variety resistance ratings on the Web at <http://varietytesting.tamu.edu/wheat/index.htm#diseases>.

## Ethanol, Corn to Weigh Heavily on Future of Livestock Industry

by Blair Fannin, 979-845-2259, b-fannin@tamu.edu

Future ethanol production and demand for distiller's grains will leave cattle prices lower and lead to higher consumer meat prices, a Texas Cooperative Extension economist said.

Dr. David Anderson, Extension livestock marketing economist, gave an overview of the interaction between renewable energy production and the livestock industry at the recent 2007 Texas Ag Forum in Austin. Livestock producers should keep these possibilities in mind as ethanol production grows across the country, Anderson said:

- Higher feed costs.
- Feeder cattle and calf prices adjusted to the price of corn.
- Reduced production in terms of cattle weights and profitability.
- A livestock industry that is less competitive in the world market.

The boom in the number of ethanol plants is primarily centered in the Corn Belt, Anderson said, leading to large supplies of distiller's grains, the byproduct which is used primarily as livestock feed.

"Supply of distiller's grains is expected to increase to well over 30 million tons per year," he said. "At that rate of growth, supplies will exceed demand, leading to lower distiller grains relative to corn."

For each 56-pound bushel of corn used to make ethanol, about 17 pounds of distiller's grains is produced, Anderson said.

"While the starch is taken out of the corn to make ethanol, the remaining nutrients are concentrated in the distiller's grains," he said. "It has more protein and energy than corn, per pound. The energy comes from the fat that was in the corn."

Portions of phosphorus, potassium and sulfur are increased as well, he said, noting if the corn used to make ethanol had aflatoxin, "it too is concentrated three times in the resulting distiller's grains."

Thus, distiller's grains "presents a number of management issues related to handling and storing," Anderson said.

"It's a highly variable product," he said. "At that rate of growth, supplies will exceed demand, leading to lower distiller grains prices relative to corn."

Overall, Anderson predicts livestock producers will see higher-priced feed and "lower returns and reduced profitability."

"It results in a less competitive livestock industry in world markets and regionally in the U.S. It will also result in higher food prices for consumers," Anderson said.

Editor's Note: The following are some facts about corn as it relates to ethanol production and livestock feeding. This information can be used in a breakout box:

- Products of wet corn milling: One bushel of corn can equal up to 31.5 pounds of starch, which can be further processed into 33 pounds of sweetener or 2.5 gallons of ethanol; 13.5 pounds of gluten feed, 2.5 pounds of gluten meal, 1.6 pounds of corn meal.
- Corn gluten can be wet or dry with moderate crude protein between 16 percent and 23 percent; it looks like oatmeal.
- Products of dry corn milling: One bushel of corn yields 2.75 gallons of ethanol; 17-18 pounds of distiller's grains and solubles; distiller's grains are one-third the weight of the corn and but the starch is concentrated into this one-third.

Source: Dr. David Anderson, Texas Cooperative Extension

Subscribe to the Reporter-Statesman.  
Call 659-3434 for details.

### YOUR ROAD TO A NEW CAREER!

- Paid CDL Training!
- No Experience Needed!
- Earn \$40 - \$75K Yearly!



Stevens Transport offers the best comprehensive training program for new drivers! Get your career rolling and enjoy exceptional earnings and great benefits from the #1 premier transportation carrier!

For more information, call  
**800-333-8595**



WWW.STEVENSTRANSPORT.COM

**BROADBAND**  
**VERY, VERY FAST LANE**

**HIGH-SPEED BROADBAND**  
**\$24.95 PER MONTH WITH BUNDLE**

IT'S THE FASTEST, MOST RELIABLE SPEED FOR THE MONEY!

PHONE BROADBAND DIGITAL TV

FREE ACTIVATION  
FREE MODEM (AFTER REBATE / WITH AGREEMENT)

HOP ON TODAY & GET **2 MONTHS FREE**

1.877.312.WIND | WINDSTREAM.COM

windstream grow places

**DIRECTV FREE**  
**4 Room System!**  
Personal Checks Accepted!  
250+ Channels!  
Starts \$29.99/month!  
**FREE HBO/Cinemax!**  
**FREE DVR/HD Receiver!**  
Call 1-800-214-7110

**Hansford Implement Company**  
**Power and performance you demand**

**John Deere 5025 Series Tractors**

- Up to 99 engine hp for hauling heavy loads
- Exclusive optional 540E PTO offers real fuel savings
- Standard open station or deluxe cab features comfort, easy-functioning controls, and unmatched visibility

**John Deere 6030 Premium Series Tractors**

- Up to 95 PTO hp
- Optional GreenStar™ guidance applications reduce operator fatigue and operating costs
- Premium hydraulic systems, visibility, and comfort

**John Deere 568 Round Baler**

- Easily build perfect 5'x6' bales
- DiamondTough™ triple-deck belts provide greater durability
- BaleTrak™ PRO monitor-controller gives you true look-ahead baling

**Low financing available!**  
**Visit us today for huge savings.**

Dumas, TX • 939 N. Dumas Ave • (806) 935-7720  
Perryton, TX • South Loop Road • (806) 435-4036  
Pampa, TX • 12098 E. Frederic Ave • (806) 663-1888  
Spearman, TX • South Highway 207 • (806) 659-2568

**JOHN DEERE** www.yourandyourbrand.com

**VISIT US IN TEXAS:**

<b>ANDREWS</b> 112 SW 31st Street 432-523-3323	<b>DALHART</b> 330 Rock Island Avenue 806-249-1100	<b>PERRYTON</b> 301 S. Amherst Street 806-435-2050	<b>SEYMOUR</b> 400 N. Main Street 940-888-1220	<b>SUGAR LAND</b> 8306 Highway 90A 281-490-9422	<b>TEKARKANA</b> 2315 Richmond Road, Suite 103 903-223-4688
--	--	--	--	---	--

Reliable Safe • Secure

## Regional Tennis Tournaments Held Gruver High School

The Gruver Greyhounds and Lady Hounds Tennis Teams attended the Regional Tennis Tournament last weekend, April 25th and 26th. Following are the results.

**MIXED DOUBLES** - Matt Salazar and Sydney Been lost the first round in Regional Mixed Doubles and seeded 2nd in the tournament.

**GIRLS SINGLES** - Laura Vela lost in the first round in Girls' Singles

**BOYS SINGLES** Taylor Williams (seeded 4th in tourney) proceeded to finals with 2 wins (6-2)(6-2)---(6-0)(6-3)

Tucker Williams (seeded 2nd in tourney) proceeded to finals with 2 wins (6-1)(6-0)---(6-0)(6-0).

Both boys played 2 games the first day, winning both. They proceeded to the finals on Thursday.

Tucker Williams won his 1st game (6-0)(6-0) and lost 2nd game to No. 1 seed (3-6) (3-6). Tucker was named the 2nd Place Winner, advancing to the State Tournament May 7th and 8th in Austin.

Taylor Williams lost his 1st game (2-6)(3-6) and lost 2nd game to No. 3 seed (2-6)(4-6). Taylor Williams was 4th.

## Spearman High School

The Spearman Lynx and Lynxettes attended Tennis Regional Tournament in Abilene at Abilene Christian University on April 25th and 26th. Following are the results.

**GIRLS SINGLES** - Sara Barnes lost Callie Woerner (COMFORT) 6-0, 6-0. (Woerner was the eventual Regional Tournament Champion.)

**GIRLS DOUBLES** - Kelece Rex - Kendall Schneider defeated Webb - Wells (HAWLEY) 3-6, 6-0, 6-2 and lost to Crouch - Radtke (MASON) 6-0, 6-0 in the Quarterfinals. (Crouch - Radtke were the eventual Regional Tournament Champions.)

**MIXED DOUBLES** - Saylee Flowers-Brynn Garnett defeated Norman - Nava (POST) 6-3, 7-5 and lost to Henrich - Buist (MASON) 6-1, 6-2 in the Quarterfinals. (Henrich-Buist were the eventual Regional Runner-Up Champions.)



The Gruver FFA will compete in the State Judging Contest, placing 18th out of more than 60 teams. Tucker Williams took 11th place of more than 260 competitors. Pictured are Weston Born-FFA Instructor, Charlie Slough, Jordan Hicks, Tucker Williams, Jimmiee McCloy.



(L-R) Matt Salazar, Lynn Vela, Sydney Been, Tucker Williams, Taylor Williams competed at the Regional Tennis Tournament. Tucker Williams placed 2nd (seeded 2nd in tourney) Single Boys Division. Taylor Williams placed 4th (seeded 4th in tourney) Single Boys Division. Matt Salazar/Sydney Been (seeded 2nd in tourney) Mixed Doubles Division. Lynn Vela - Girls Singles (Only the top two advance to State Tournament)



The Reporter-Statesman has launched two new Internet websites. Spearmanreporter.com and spearmantexas.biz are up and running. Both of these websites are intended to be a support tool for the businesses and citizens of Hansford County.

Spearmanreporter.com will feature local, regional and national news, along with a local weather report, history, humor, comment and more. Spearmantexas.biz is a site dedicated to local businesses. It will feature a Hansford County Business Directory along with local business features.

Of course, the Reporter Statesman will continue with its print edition. We will also gladly share your information on the Internet, free of charge. If you have information for us to publish, you may call us at 806-659-3434 or email us at reporter@spearmanreporter.com.

The Hansford County  
**REPORTER STATESMAN**  
213 Main St • Spearman TX 79081  
reporterstatesman@statesman.com

Celebrating 100 Years of  
Service to Hansford County  
(806) 659-3434 • (806) 358-9080 fax  
Proudly Serving Hansford County Since 1907

*One day only*  
**COMMUNITY-WIDE GARAGE SALE**  
**Downtown Borger**  
**Saturday, May 5th**  
**8:30 a.m. - 2:30 p.m.**

# Mother's Day Specials

Lampe Berger Bottles - 25% Off (May 5th-12th)

Lampe Berger *Scent of the Month* - **Gardenia**

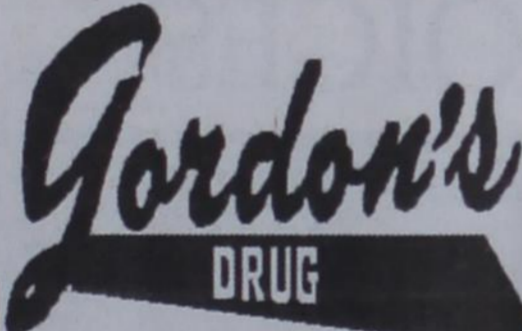
(reg. price - \$18.50, now \$16.95, May 1-31)

**ALL jewelry - 25% Off (May 5th-12th)**

**Mothers: We have a Mother's Day gift for you!**

Come by May 11th or 12th to receive yours!

314 Main  
Spearman  
806-659-2141



Where  
gift-giving  
is effortless  
& FUN!

Thank you for your business!  
Best prices in town!

oil change  
brake job  
minor repairs  
tune-up  
transmission work  
clutch work  
all car models  
**FREE ESTIMATES**

## JIM'S Speedy Lube



Hwy. 15 West  
Spearman  
659-2323



**VOTE MAY 12th**

Travis Patterson  
for  
Spearman ISD  
Board of Trustees

Saturday, May 12th  
Polls open 7 a.m. to 7 p.m.

Early voting through May 8th

political ad paid for by Travis Patterson



## Huddleston named April BBBS Volunteer of the Month

Lance Huddleston has been named April Volunteer of the Month by Big Brothers Big Sisters. Huddleston, a senior at Spearman High School, has been matched with his Little Brother, Harley, since September 2005 through the Bigs in Schools program at Spearman Elementary.

This award recognizes a "Big" who has connected with the "Little" in a special way or gone above and beyond to establish and nurture the relationship. It is designed to acknowledge the dif-

ference the volunteer is making in the child's life.

Through Bigs in Schools, the school based mentoring program of Big Brothers Big Sisters, a volunteer mentor is matched with a student who may be experiencing academic, behavioral or social problems or who simply needs extra attention and support. The match meets once a week on the school campus during the school year. They often read, do homework, play games or just talk. Research shows that these intentional friendships lead to improvements in grades, attitude and behavior.

During their meetings, Huddleston and Harley play games or cards. Their favorites are UNO and Sorry. "We like to build stuff and then crash into them with cars," Harley added.

"My Little Brother is the best," Huddleston said. "He is awesome. I enjoy visiting him every week. We play games or just sit around and talk. It's great!"

"He is awesome," Harley said

of his Big Brother. "He has a good sense of humor. He knows how to have fun. He comes every week. I can talk to him about school or other stuff. There are too many good things to say about him."

"Lance has been wonderful to Harley," his mother said. "He considers him his best friend. He feels important and special to get to have Lance in his life. He is someone he looks up to. This relationship is helping my son mature. Now he really likes school and is doing better and I think that has a lot to do with Lance."

"We are really grateful," she added. "Lance does not have to do this. He has made a real difference in Harley's life."

Harley is one of 100 children matched through Big Brothers Big Sisters programs in Spearman, Perryton and Booker; there are more children ready to be matched. Anyone interested in learning more about the program may call Kimberley Lopez, program coordinator, at 434-0016.

## SHS holds Art Show

Spearman High School held their Spring Art Show on Thursday, April 26th. Ryan Ramon's pastel "Chief" was named Best of Show.

Winners are listed below.

**Pencil Drawing:** 1st - Ivan Terrazas, "Through the Abis"; 2nd - Juan Ibarra, "Dreaming"; 3rd - Justine Rosales, "Feminine Feet"; Honorable Mention: Martin Barajas, "Portrait", Ivan Terrazas, "Warriors", Amy Brown

**Ink/Marker Drawing:** 1st - Jessica Jarvis, "Musical Lines"; 2nd - Ryan Ramon, "Figure in Contour"; 3rd - Christina Hunter, "My Lab"; HM - Sergio Jacquez, "Rough Rider"

**Mixed Media:** 1st - Andres Mendez, "Still Life Plus"; 2nd - Marlon Robledo, "Textures in Red & Green"; 3rd - Gladis Aranas, "Tweeie"; HM - Ryan Ramon, "Bird w/Red Feathers"

**Pastels:** 1st - Ryan Ramon, "Chief"; 2nd - Esmeralda Bernal, "Sunset"; 3rd - Emmanuel Mendoza, "Deer"; HM - Luis Almanza, "Rabbit"; Amy Brown, "Lynx"

**Glass Etching:** 1st - Justine Rosales, "Rose"; 2nd - Jessica Jarvis, "My Horse"; 3rd - Esmeralda Bernal, "Angel Fish"; HM - Luis Almanza, "Horse"

**Acrylic/Tempra Painting:** 1st - Juan Ibarra, "Castle by the Lake"; 2nd - Sandi Carbajal, "Running Free"; 3rd - Christina Hunter, "Metal Pitcher"; HM - Zack Nollner, "Trees in Early Winter"

**Sculpture:** 1st - Ryan Ramon, "The Hand"; 2nd - Casey Cator, "Buffalo"; 3rd - Irma Hernandez, "Swan with Baby"

**Watercolor Painting:** 1st - Christina Hunger, "On the Prairie"; 2nd - Trevor Tindell, "Desert"; 3rd - Emily Buko, "Beach"; HM - Sandi Carbajal, "Old Buildings"

**Pottery:** 1st - Sandi Carbajal, "Wheel Thrown Pot"; 2nd - Casey Cator "Wheel Pot"; 3rd - Miriam Mendoza, "Cool Clay Pot w/Hat"; HM - Amy Brown, untitled



**MITCHELL THEATRES**  
**NORTHRIDGE CINEMA 8**

Guymon, Oklahoma

Movies beginning 5/4

ON TWO SCREENS

**SPIDERMAN 3**

PG-13 -- Tobey Maguire, Kirsten Dunst  
Midnight showing on Thurs., May 3rd

**FRACTURE**

R -- Anthony Hopkins, Ryan Gosling

**NEXT**

PG-13 -- Nicholas Cage

**THE CONDEMNED**

R -- "Stone Cold" Steve Austin

**KICKIN IT OLD SCHOOL**

PG-13 -- Jamie Kennedy

**THE REAPING**

R -- Hilary Swank

**DISTURBIA**

PG-13 -- Shia LaBeouf

**MEET THE ROBINSONS**

G -- Animated

FRESH POPCORN EVERYDAY!

-PARTY ROOM & ARCADE-

Call for Showtimes

580-338-3281

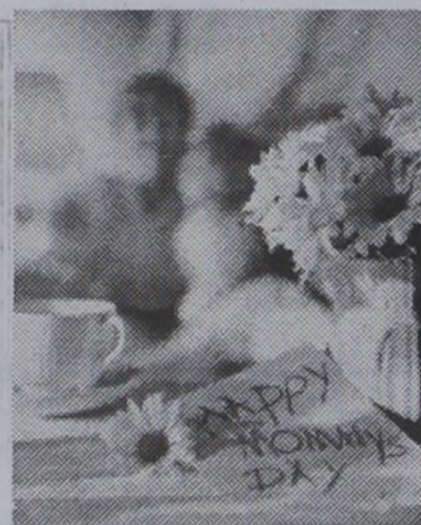
www.northridge8.com

Office -- 580-338-8969

CASH & CREDIT CARDS ONLY

THANK YOU!

**Spearman Prom**  
**May 12th**  
**Order your corsage**  
**& boutonniere**  
**today!**



**Mother's Day**  
**is**  
**May 13th**

**All Occasion Flowers**

202 N. Bernice (across from the Post Office)

659-5180 • Spearman

# IT'S GRADUATION TIME AGAIN!

No time to shop?

Don't know what to buy  
your favorite seniors?

**Gordon's Drug**

has made it easy for you!

Come see our new gift displays for Spearman & Gruver seniors!

(in the back by the pharmacy)

**Gordon's**  
**DRUG**

Where  
gift-giving  
is effortless  
& FUN!

314 Main  
Spearman

806-659-2141



## MORE POWER, MORE PRODUCTIVITY, AND NOW, MORE CHOICES



**\$0 DOWN,**  
**0% A.P.R.**  
**FINANCING**  
**FOR 12,\* 24\*\* OR**  
**36\*\*\* MONTHS**



## PANHANDLE IMPLEMENT CO

710 NORTH MAIN STREET • PERRYTON, TX • 806-435-6508

**Kubota**  
EVERYTHING YOU VALUE

\*\$0 down, 0% A.P.R. financing for terms up to 24 months available through June 30, 2007, on all new Kubota 2 Series (except 224, 2330D), 3 Series (except 324), 4 Series (except 420V/480), 5 Series (except 520, 5400, 5440, 5460, 5480), and 6 Series (except 620D-3) in inventory at participating dealers. Example: a 24-month repayment term at 0% A.P.R. requires 24 monthly payments of \$27.76 per \$1,000 borrowed. 0% A.P.R. financing is available to customers if no dealer documentation preparation fee is charged. Dealer charges for document preparation fee shall be in accordance with state laws. Financing is available through Kubota Credit Corporation, U.S.A., subject to credit approval. Some exceptions apply. See your local Kubota dealer for details on these and other financing options or go to www.kubota.com for more information.





**REAL ESTATE FOR SALE**

**FOR SALE 712 Wilbanks Dr., Spearman:** 3BR, 2B, 2CG, newly fenced backyard wished. Call 605-484-1705.  
**TFN(1-18-07)B**  
**FOR SALE 907 Archer, Spearman:** 3BR, 1B home. Call Larry O'Neal at 580-772-5617.  
**TFN(02-08-07)B**  
**FOR SALE OR LEASE 703 E. 2nd, Spearman:** 3BR, 1 1/2B, 1CG, 13,000+ sq. ft., refrigerator - \$49,000. Will lease for \$500/month plus \$500 deposit. Owner financing available. Call Cindy at Century 21, 806-435-5444 or Cathy at 903-714-2638 for more information.  
**4(04-12-07)P**  
**FOR SALE 422 Haney, Spearman:** 3BR, 1B, utility room, nice location and price. Call 659-5913 after 5 p.m., or 659-5544.  
**2(05-03-07)B**

**FOR RENT/LEASE**

**FOR LEASE: 729 Acres of Land in Ochiltree County** - taking offers - dryland or irrigated, section 23, west Ochiltree County. Call 903-725-6733, Howard Swink.  
**TFN(9-28-06)B**  
**OFFICE SPACE FOR RENT, SPEARMAN:** Pittman-Shieldknight building - all sizes available. Call 659-5588 or 659-3399 for more information.  
**TFN(01-27-05)B**  
**FOR RENT:** 2BR apartment, \$375.00 per month, water paid, Call Larry O'Neal at 580-772-5617.  
**TFN(7-06-06)B**  
**FOR RENT:** 1BR apartment - \$300/month, \$300 deposit. Call 940-631-0894.  
**TFN(12-07-06)B**

**EMPLOYMENT**

**HELP WANTED:** Cates Men & Boys is looking for a motivated individual to work part-time. Apply in person at Cates Men & Boys, 221 Main Street, Spearman.  
**TFN(4-26-07)B**  
**HELP WANTED:** Technician for Case IH dealership. Excellent pay and benefit package. Apply at Five Star Equipment, Highway 15 West, Spearman, 806-659-3743.  
**TFN(3-29-07)B**  
**HELP WANTED:** Have an opening for an additional sprinkler repair technician. Excellent pay and benefit package. Apply at Five Star Equipment, Highway 15 West, Spearman, 806-659-3743.  
**TFN(3-29-07)B**  
**HELP WANTED:** Frontier Feedyard has job openings for qualified people in the following positions: Pen Riders, feed Truck Drivers, Equipment Operators, Mill Operators, and Processors. Frontier Feedyard offers excellent benefits, health, insurance and competitive starting pay. EOE.  
**TFN(5-03-07)B**

**HELP WANTED:** First State Bank, Spearman, has a full-time position open for a Teller. Applicant must have a high school diploma or equivalent, typing and some ten-key skills required, customer relation and telephone skills are very important. Background in accounting, word processing and spreadsheets is helpful but not required. Benefit program includes group hospitalization insurance, retirement, vacation pay, sick leave pay and holiday pay. Apply with Ginger Turner at First State Bank, PO Box 247, Spearman TX 79081, telephone # (806) 659-5565. An Equal Opportunity Employer.  
**TFN(4-26-07)B**  
**HELP WANTED:** Hansford County Feeders has a position open for a vehicle mechanic. Wages contingent on experience and knowledge. Benefit package also provided. Send resume to: Hansford Co. Feeders, 13800 Co. Rd. 19, Spearman TX 79081, or apply in person. Call 806-736-9533.  
**2(4-26-07)B**

**HELP WANTED:** Guyton Tire and Auto have openings for full-time and part-time tire service techs. Full-time position offers great benefits - health insurance, paid vacation and 401k. Must have valid driver's license. Stop by store for application at 1018 Hwy. 54, Guyton OK 73942. For more information, call 580-338-2516.  
**2(4-26-07)B**  
**HELP WANTED:** Housekeeper need - full-time. Call or come by Nursanickel Motel, Hwy. 207 S., Spearman, 806-659-3737.  
**4(4-26-07)P**  
**HELP WANTED:** Immediate opening for experienced backhoe operator in the Borger area. CDL license required. Competitive pay, retirement and uniforms. Send resume to: Operator % Borger News Herald, PO Box 5130, Drawer C, Borger TX 79008.  
**2(5-3-07)B**

**SERVICES**

**STUMPF CANVAS REPAIR:** Repair trampoline mats - all sizes. 1 Standard trampoline, new mat - \$150. 114" round trampoline, new mat - \$250. 1 swing set, large - \$75. 1 boys bike - \$35. New trampoline mats, any size. 301 W. 12th Street, Spearman, (806) 659-2109.  
**TFN(4-05-07)B**  
**WANTED:** Responsible party to take on small monthly payments on high Definition Big Screen TV. 1-800-398-3970.  
**2(4-26-07)P**

**GARAGE SALE**

**GARAGE SALE:** 8 a.m. - 6 p.m., Friday, May 4th and 8 a.m. - 6 p.m., Saturday, May 5th at 9999 FM 520, Spearman - furniture, household, ladies mens and baby clothes, kitchen items, jewelry, misc.

The starting salary will be \$10.22-13.31 per hour. A completed application is required and applications will be accepted until 5 p.m., Friday, May 11, 2007. For further application information, including a complete job vacancy notice, contact the nearest Texas Department of Transportation. Information may also be accessed via the Internet at [www.txdot.gov/careers/](http://www.txdot.gov/careers/). Mailed applications should be postmarked the day the job vacancy closes and sent to: 5715 Canyon Drive; Amarillo TX 79110; Attn: Human Resources. If more information is needed or if an applicant needs an accommodation in order to apply for this job, contact Barbara Franks at (806) 356-3232.  
**TXDOT IS AN EQUAL OPPORTUNITY/AFFIRMATIVE ACTION EMPLOYER.**  
**1(05-03-07)B**

**LEGAL NOTICE**

Hansford County Commissioners Court will receive bids for the purchase of two trucks, 2000 model or newer, with 600,000 miles or less, with day cab, 12 liter or greater, 180 inches or less, twin screw, and a wet kit.

Also, the Court will receive bids for the purchase of two new 40' side-dump trailers with tandem axles, with tarps.

Bids will be received until 4:00 p.m. on May 11, and will be opened during the regular Commissioners' Court meeting on May 14, beginning at 10:00 a.m.

The County reserves the right to accept or reject any or all bids.  
 Benny Wilson  
 Hansford County Judge  
**3(04-26-07)B**

**NOTICE TO CONTRACTORS OF PROPOSED TEXAS DEPARTMENT OF TRANSPORTATION (TxDOT) CONTRACTS**

Sealed proposals for contracts listed below will be received by TxDOT until the date(s) shown below, and then publicly read.

**CONSTRUCTION/ MAINTENANCE/BUILDING FACILITIES CONTRACT(S)**

Dist/Div, Amarillo  
 Contract 6161-47-001 for FOG SEAL in HARTLEY County, etc will be opened on May 23, 2007 at 2:00 pm at the District Office for an estimate of \$239,148.00.

Plans and specifications are available for inspection, along with bidding proposals, and applications for the TxDOT Prequalified Contractor's list, at the applicable State and/or Dist/Div Offices listed below. If applicable, bidders must submit prequalification information to TxDOT at least 10 days prior to the bid date to be eligible to bid on a project. Prequalification materials may be requested from the State Office listed below. Plans for the above contract(s) are available from TxDOT's website at [www.txdot.gov](http://www.txdot.gov)

[www.dot.state.tx.us](http://www.dot.state.tx.us) and from reproduction companies at the expense of the contractor.  
**NPO: 23373**

**State Office**

Constr./Maint. Division  
 200 E. Riverside Dr.  
 Austin, Texas 78704  
 Phone: 512-416-2540

**Dist/Div Office(s)**

Amarillo District  
 District Engineer  
 5715 Canyon Dr  
 Amarillo, Texas 79105-2708  
 Phone: 806-356-3283

Minimum wage rates are set out in bidding documents and the rates will be part of the contract. TXDOT ensures that bidders will not be discriminated against on the grounds of race, color, sex, or national origin.  
**2(04-26-07)B**

**NOTICE OF DRAFT FEDERAL OPERATING PERMIT**

**DRAFT PERMIT NO.: 02547 APPLICATION AND DRAFT PERMIT.** DCP Midstream, L.P., 6120 South Yale Avenue, Suite 1100, Tulsa, Oklahoma 74136, a Natural Gas Transmission facility, has applied to the Texas Commission on Environmental Quality (TCEQ) for a Significant Revision of Federal Operating Permit (herein referred to as Permit) No. 02547, Application No. 9223 to authorize operation of the Holt Booster Station. The area addressed by the application is located at approximately 3.5 miles south of Gruver, off Farm-to-Market Road 2018, east of highway, Gruver, Hansford County, Texas. This application was received by the TCEQ on November 3, 2006.

The purpose of a federal operating permit is to improve overall compliance with the rules governing air pollution control by clearly listing all applicable requirements, as defined in Title 30 Texas Administrative Code § 122.10 (30 TAC § 122.10). The draft permit, if approved, will codify the conditions under which the area must operate. The permit will not authorize new construction. The TCEQ Executive Director has completed the technical review of the application and has made a preliminary decision to prepare a draft permit for public comment and review. The Executive Director recommends issuance of this draft permit. The permit application, statement of basis and draft permit are available for viewing and copying at the TCEQ Central Office, 12100 Park 35 Circle, Building E, First Floor, Austin, Texas, the TCEQ Amarillo Regional office, 3918 Canyon Drive, Amarillo, Texas 79109-4933, and the Hansford County Library, 122 Main Street, Spearman, Texas.

At the Central and Regional Office, relevant supporting materials for the draft permit, as well as the New Source Review permits which have been incorporated by reference, may be reviewed and copied. Any person with difficulties obtaining these materials due to travel constraints may contact the TCEQ Central Office file room at (512) 239-1540.

**PUBLIC COMMENT/NOTICE AND COMMENT HEARING.** Any person may submit written comments on the draft permit. Comments relating to the accuracy, completeness, and appropriateness of the permit conditions may result in changes to the draft permit.

A person who may be affected by the emission of air pollutants from the permitted area may request a notice and comment hearing. The purpose of the notice and comment hearing is to provide an additional opportunity to submit comments on the draft permit. The permit may be changed based on comments pertaining to whether the permit provides for compliance with 30 TAC Chapter 122 (examples may include that the permit does not contain all applicable requirements or the public notice procedures were not satisfied). The TCEQ may grant a notice and comment hearing on the application if a written hearing request is received within 30 days after publication of the newspaper notice. The hearing request must include the basis for the request, including a description of how the person may be affected by the emission of air pollutants from the application area. The request should also specify the conditions of the draft permit that are inappropriate or specify how the preliminary decision to issue or deny the permit is inappropriate. All reasonably ascertainable issues must be raised and all reasonably available arguments must be submitted by the end of the public comment period. If a notice and comment hearing is granted, all individuals that submitted written comments or a hearing request will receive written notice of the hearing. This notice will identify the date, time and location for the hearing.

Written public comments and/or requests for a notice and comment hearing should be submitted to the Office of the Chief Clerk, MC-105, TCEQ, PO Box 13087, Austin, Texas 78711-3087 and received within 30 days from the date of newspaper publication of this notice. A notice of proposed final action that includes a response to comments and identification of any changes to the draft permit will be mailed to everyone who submitted public comments, a hearing request, or requested to be on the mailing list for this application. This mailing list will also provide instructions for public petitions to the U.S. Environmental Protection Agency (EPA) to request that the EPA object to the issuance of the proposed permit. After receiving a petition, the EPA may only object to the issuance of a permit which is not in compliance with the applicable requirements or the requirements of 30 TAC Chapter 122.

**MAILING LIST:** In addition to submitting public comments, a person may ask to be placed on a mailing list for this application by sending a request to the TCEQ Office of the Chief Clerk at the address above. Those on the mailing list will receive copies of future public notices (if any) mailed by the Chief Clerk for this application.

**INFORMATION:** For additional information about this permit application or the permitting process, please contact the TCEQ Office of Public Assistance at MC-108, TCEQ, PO Box 13087, Austin, Texas 78711-3087 or Toll Free, at 1-800-687-4040. General information about the TCEQ can be found at [www.tceq.state.tx.us](http://www.tceq.state.tx.us). *Is deesa informacion en Espanol, puede llamarmar al 1-800-687-4040.*

Further information may also be obtained for DCP Midstream, L.P., by calling Mr. Martin W. Smith at (303) 605-1721.  
**1(05-03-07)B**

**Are You A Victim of Domestic Violence or Sexual Abuse?**

**The Panhandle Crisis Center Can Help**

Call Toll Free - Hotline  
**1-800-753-5308**

301 S. Ash - Perryton  
**435-5008**

Battering Intervention & Anger Management Available  
**Memorials Accepted**

**Are You A Victim of Domestic Violence, Sexual Abuse or Physical, Emotional or Sexual Assault?**

Call Toll Free Hotline  
**1-800-753-5308**

We can see individuals from Hansford County anytime upon request. Call 435-5008 or 1-800-753-5308 to set up an appointment in Hansford County. We operate a safe place for victims and their children to stay in times of crisis.

Battering Intervention & Anger Management Available

**Panhandle Crisis Center**  
 Serving Hansford, Lipscomb & Ochiltree Counties  
 301 S. Ash - Perryton, TX  
 Memorials Accepted

**Blankenship Real Estate**  
**659-3052 - 670-3774**

**NEW LISTING** - 3/2/1 brick home - central h/a, hardwood floors, large yard with storage building. Low maintenance. Great location!

**Crawford Addition - Seller Anxious** - 3/2/2 with fireplace and **SOLD** on large lot. Nice home! **PRICE REDUCED 2ND TIME!**

**Crawford Addition** - 3/2 oversized detached 2-car garage, stormshelter!

**BRICK 3/1/1** - good carpet, new paint. Ready to move in! **PRICE REDUCED!**

Eulalia Blankenship - Sales  
 Eschol Blankenship - Broker

**NEW LISTINGS WANTED!**

**MARTIN & ASSOCIATES REALTY**

Serving Hansford County for 14 years  
 Julie Martin: Broker - 659-2425

**IN SPEARMAN**  
 422 S Barkley - 3/1 1/2 - newly remodeled, extra lg. corner lot, new furnace, fixtures & more  
 703 Collier - 3/1/1 - nice brick home, central air/heat, deluxe gas stove.

We'd Like Your Listing  
**FOR QUALITY & SERVICE CALL US TODAY!**  
 Equal Housing Opportunity

**PUBLIC NOTICE**

**TRANSPORTATION MAINTENANCE TECHNICIAN II JOB REQUISITION NUMBER: 011615**

The Texas Department of Transportation will be accepting applications for two full-time positions at the Ochiltree County Maintenance Office located at 1103 SH 15, Perryton, Texas.

The applicant must have one (1) year experience in maintenance, construction or an equipment operation-related field. (Experience requirements may be satisfied by full-time experience or the prorated part-time equivalent.)

**HANSFORD CO.** - 315 acres, 2 pivots, cattle pens, good water, on pavement.  
**MOORE CO.** - 1766 acres, fully developed with wells & sprinklers & really nice home on all-weather road, priced to sell!  
**SHERMAN CO.** - 1900 acres, PERMITTED, fully dev. with wells & sprinklers, brick home, pavement - **WILL DIVIDE**.  
**SHERMAN CO.** - three choice sections, 2 homes, barn, fully dev. with wells & sprinklers, pavement - **WILL DIVIDE** - **ADJOINS PERMITTED 1900!**  
**HORSEMAN'S PLEASURE/CATTLEMAN'S DELIGHT** - NW OF GRUVER - 80 acres 1/2, nice 4,000 sq. ft. brick home, metal roof, fireplace, two car garage, irr. well 1/2 mile sprinkler, Quonset barn, pipe-rail pens, covered working area.  
 Choice milk processing and dairy sites available in Dallam, Hartley, Moore, Oldham, Sherman and Hutchinson Counties.  
**SEE OUR WEBSITE OR GIVE US A CALL!**  
[www.scottlandcompany.com](http://www.scottlandcompany.com)  
 Shawn Gillispie 806/922-5532  
 Ben G. Scott, Broker  
 1-800-933-9698 day/eve  
**2(3-29-07)**

**hchd**  
 Hansford County Hospital District

**Immediate Full-Time Openings at Hansford Hospital**

Maintenance person with a wide knowledge of the maintenance field in carpentry, painting, plumbing, electrical H/A, grounds care and welding.

**Openings at Hansford Manor**

**RN** - full-time.  
**LVN** - full-time.

Must all be licensed by the State of Texas.

**CNA's** - full-time and part-time.  
**Housekeeping** - full-time.

Great working environment and staff, quality facility providing opportunities for professional growth. Great benefit package. Apply at 707 S. Roland, Spearman, TX or contact Jackie Nelson at 806-659-5841. Download application at [www.hchd.net](http://www.hchd.net)  
**EEOE**  
**2(4-19-07)B**

2	6	3	4	5	8	7	9	1
4	8	1	7	6	9	3	5	2
7	5	9	2	3	1	8	4	6
6	9	2	8	1	5	4	3	7
5	1	4	6	7	3	9	2	8
8	3	7	9	2	4	1	6	5
3	7	8	5	9	6	2	1	4
1	4	6	3	8	2	5	7	9
9	2	5	1	4	7	6	8	3

BAIL	SIT	ABBE
INCA	JANE	UMIAK
BOON	ELAN	TENSE
BANDSTAND	URGE	
AIISLE	FBI	
LACUNA	TOECAPS	
EWEMPIRE	ABLE	
WADIS	ATE	ANEAR
IRAN	ITSELF	ANI
SERVERS	OILMEN	
ARK	BERRY	
RISE	BURDENING	
MUSIC	TDOL	XRAY
ALLOT	EDDY	EMIR
PEEN	RYE	SALE

**FSB First State Bank**  
**P.O. Box 247 Spearman, TX 79081**  
**Telephone 806-659-5565**  
 Member FDIC

Planning to buy a home, but not sure if you can get an affordable mortgage?  
 Interest too high on your present mortgage?  
 Want to do business with a local bank?

**We can help!**

**Come by First State Bank, Spearman.**  
 Check out our competitive fixed and adjustable rate mortgages for terms up to 30 years.  
 We can work with you to find a mortgage that fits your needs and help you buy or refinance your home.  
 Contact Ginger Turner and find out more.

**The BEST of The BEST**

**The Bunkhouse Restaurant**  
 Spearman's place for steak!

Steaks, Salads & Sandwiches  
 Fri. & Sat. - Prime Rib by reservation

**Come & Get It!**

**DAILY LUNCH SPECIAL**  
 Tues.-Sat., 11:00 a.m. to 1:30 p.m.

**Sunday Lunch Buffet**  
 11:30 a.m. to 1:30 p.m.

**The Bunkhouse Restaurant**  
 212 Main Street • Spearman • (806) 659-2089  
 Hours: Tues.-Thurs. 11 a.m.-8 p.m.;  
 Fri. & Sat. 11 a.m.-9 p.m.; Sun 11 a.m.-2 p.m.; Mon. Closed

by Dorothy Hudson  
**Out At The Lake**

Lake Level--April 30, 2007--21.08 feet (-0.16)

I was eager to call Jim for his Lake report. We were wondering how much the lake level would have risen with the Sunray rains. You can imagine my disappointment when Jim told me that the run-off again did not reach the Lake. This time it did at least reach into the Park boundaries.

Jim found where the rise had reached a tumbleweed dam near the Ace Powers house. It made its way through the dam and on about a mile north before it soaked its way into the ground.

Joel Lee Lackey told me this morning that the rushing waters had left quite a stack of tumbleweeds on his cement crossing. He

was wondering about burning them.

Activity at the Lake picked up with the good weather this weekend. There were 2 RVs back of the dam and one on the office side. A group of Cub Scouts came from Amarillo to camp in tents on Friday night.

Fishermen were out, but Jim didn't hear of any good catches.

A new activity at the Park in recent years is mountain biking. Ben Butler, who with his wife the former Jill Lusby, live on a farm a few miles east of the Lake, has done quite a bit of work laying out biking trails in the Park. This week he and 5 other men had fun riding the trails near the entrance of Horse Creek.

Sunday's Amarillo Globe-News carried the obituary of Lenora Rivers Brown Stavlo, age 96, of Dumas. She grew up on the banks of the Palo Duro Creek 26 miles west of Morse. Born in 1910, she became motherless at three years of age. She had a sister ten months younger, and a brother born in 1913 just 2 months before their mother died of appendicitis. When she was five, their father moved his motherless family to a two section ranch in Sherman County. She began cooking at age 5 and by the time she was 12 could drive a four horse team. When she was eighty years old, she wrote a book "Remembering My Life in the Texas Panhandle." I found this to be a charming little book.



Tumbleweed Dam near the Ace Powers house.

**SHS Golf Teams compete at Regionals**



The Spearman High School Varsity Boys and Girls Golf Teams competed in the 2A Regional Golf Tournament April 23 & 24, 2007 in Baird, Texas. The Girls placed 13th and the Boys came in 1st and will advance to the State Golf Tournament May 7 & 8. Girls Golf Team (Front Row, L-R) Kyla Reed, Cara Gwin, Crystall Bridwell, Mattie Davis, Emily Hood and Hannah Haddock. Boys Golf Team (Back Row, L-R) Jordan Ashmore, Collin Gillaspie, Stuart Martin, Rhett Renner, Cullie Cooper and Tyler Harper.

The Spearman Varsity Boys Golf Team captured the 2A regional title at Shady Oaks Golf Course in Baird April 23rd & 24th. The event finished in the dark after a lengthy rain delay. Stuart Martin tied for the individual title after shooting a 1-under 69 in Monday's opening round.

Martin sank a 30-foot birdie putt at the final hole for a 1-under 69 and the individual lead on Monday. Martin tied for the individual lead at the end of the tournament on Tuesday.

The Lynx shot 324 and were tied for first on Monday. They pulled ahead on Tuesday, to come away as the Regional Champions.

The Lynx will compete in the State Golf Tournament May 7th and 8th in Austin.

Team Final Scores: 1. Spearman 640. 2. Sonora 644. 3. (tie) Coleman, Kermit 661. 5. Childress 668. 6. Ozona 670.

Individual: Stuart Martin 69-73-142 - Top Medalist, Rhett Renner 84-82-166; Collin Gillaspie 82-81-163; Tyler Harper 89-80-169; Jordan Ashmore 89-88-177

The Spearman Lynxette Golt Team placed 13th in the Regional Tournament.

Team Final Scores: 1. Wall 617 2. San Saba 680 3. Kermit 725 4. Comfort 767 5. Ozona 772 6. Shallowater 795 13. Spearman 862

Individual: Cara Gwin 122-96-218, Crystla Bridwell 108-112-220, Kyla Reed 112-115-227, Mattie Davis 112-120-232, Hannah Haddock 103-104-207

**A Time to Celebrate**  
**Spearman High School**  
**Class of '07**

Luis Almanza	Cruz Hernandez
Gladis Atocha Arana	Karina Hernandez
Karla Lizeth Baca	Emily Dawn Hood
Sara Elizabeth Barnes	Lance Garrett Huddleston
Casey Robert Cator	Christina Ann Hunter
Callie Lee Cazares	Jordanna Rachelle Lozano
Nicholas Lackey Cenicerias	Julio Cesar Macias
Eduardo Hernandez	Wilhma Elizabeth Macias
Chairez	Aaron Erik Maestas
Brandon Scott Cogdill	Stuart John Martin
John Forrest Desha	Zackery Jett Nollner
Gabriel Enriquez	Mirna J. Ortiz
James Britt Fleetwood	Ryan Tindle Ramon
Roberto Flores	Rhett Reed Renner
Saylee McCall Flowers	Anthony L. Renteria
Jonathan Brynr Garnett	Kelcee Anne Rex
Cindy George	Drifitin Ray Roberts
Collin Chase Gillaspie	Noemi Lunan Rodriguez
Cara Niciole Gwin	Eduardo Jose-Antonio Soto
Hannah Hope Haddock	Keith Gilleland Sumner
Sharon Rose Haney	Bryan Worth Thomas
Trudy Kathleen Hart	Trevor Lee Tindell

*The Seniors have made their gift selections - now it's your turn to help make their wishes come true.*

**Celebrate**  
Gifts for all your celebrations!  
203 Main St. • Spearman, TX  
(806) 659-3350 1-800-663-8026

**A Time to Celebrate**  
**Gruver High School**  
**Class of '07**

Sydney Been	Jimmilee McCloy
Jose (Pedro) Bonilla	Travis McDowell
Conrad Curry	Maria Mendoza
Bonnie Frick	Artemio Mundo
Baldomero Garcia	Beatriz Ortiz
Roman Gaspar, JR.	Edna Pastrana
Drew Grotgut	Mariah Rodriguez
Genesis Hernandez	Codie Scoggin
Graciela Hernandez	Charles Slough
Mayra Hernandez	Jesus (Noe) Soto
Travis Hodge	Justin Thomposon
Brian Johnson	Mattie (Lauren) Urban
Charlene Lopez	Victoria Vela
Gloria Lora	Heriberto (Eddie)
Diego Luciano	Villanueva
Ramona (Isela) Martinez	Tucker Williams

Stop by and see our wide selection of graduation gifts.

**Celebrate**  
Gifts for all your celebrations!  
203 Main St. • Spearman, TX  
(806) 659-3350 1-800-663-8026

**Michele Davis, PA-C**

Hansford County Hospital District is proud to announce its Medical Staff's newest member, Michele Davis, PA-C (Certified Physician Assistant). She begins her practice in Spearman under the medical direction of Mark Garnett, D.O.

Extended hours are offered in Ms. Davis' clinic, which are Monday through Wednesday, 8:00 a.m. until 6:00 p.m.

To schedule an appointment, please call Clinic 1 at (806) 659-2846.

Michele Davis, PA-C  
Certified Physician Assistant

"Internet and telephone service are mission critical..."  
-Bill Carson, North Plains Electric Cooperative

"Cooperatives are all about service, and PTCI has always been there to help us out."

At PTCI®  
**You're**  
our priority!

**PTCI**  
Bringing Your World... Home.

721 W. 7th Spearman 1-800-562-2556  
www.ptci.net