

#5 CITY STREETS  
CITY ROUTE 2

Hansford Library  
120 Main  
Spearman, Tx 79081-2064

INSIDE

- Chamber Chatter.....2
- Gruver mock disaster.....8
- Classifieds.....11
- Obituaries.....12

# The Hansford County Reporter-Statesman

Serving All of Hansford County

12 pages

WEATHER			
Day	Hi	Lo	Precip
Thu	89	60	0.00
Fri	96	67	0.00
Sat	92	66	0.00
Sun	85	67	0.00
Mon	92	65	0.34
Tue	92	64	0.20
Wed	-	63	-
Precip to date			13.03

Vol. 83, No. 43

213 Main

Spearman, Hansford County, Texas

25¢

Thursday, August 22, 1991

Approximately \$220,000 . . .

## PDRA budget set

by JoAnn Morton  
Editor

A local maintenance budget of approximately \$220,000 for fiscal year 1991-1992 was approved at the Aug. 13 meeting of the Palo Duro River Authority.

According to PDRA General Manager Johnnie Lee, the PDRA board also received bids for fencing at the dam area, but tabled a decision on awarding a contract until bids have been examined. The board also decided to table a decision on an operation and maintenance manual for the PDRA.

Lee said a manual is required, but

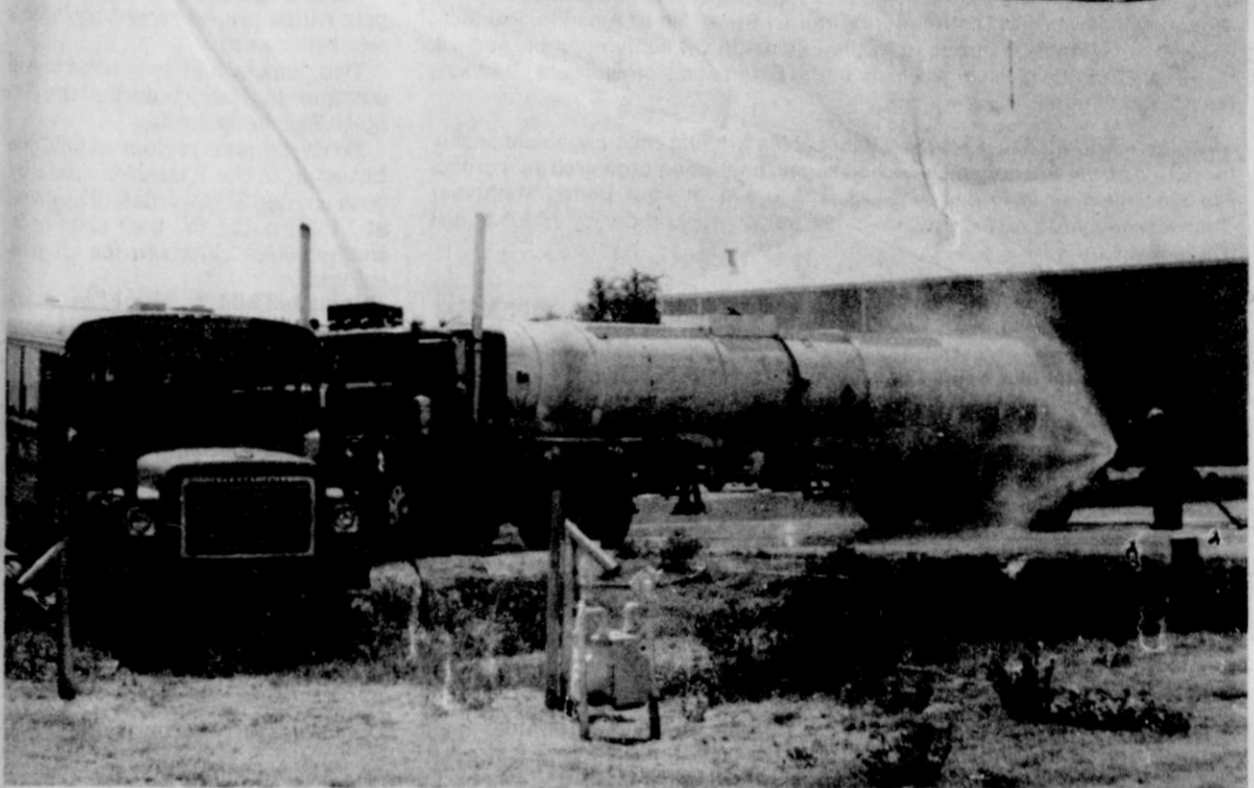
will apparently be quite expensive. He noted that Freese and Nichols engineering firm would provide an operation and maintenance manual, but that the cost for that manual would be \$16,000. "We might be able to have one done for less than that," said Lee.

In other business, the PDRA board authorized the purchase of a 1/2-ton pickup, and is in the process of locating one. Also approved was a tax abatement in Moore County for Maxus Energy Corp. Maxus is scheduled to construct a gas processing plant in Moore County, and that county had decided to grant a tax

abatement for the company so it would locate its plant there. As a taxing entity in Moore County, the PDRA decided to go along with Moore County in the decision for abatement.

Approval was given to a property transfer concerning right-of-way for a new highway which will provide access to the Palo Duro Dam and lake area. Board members also conducted a general discussion of the project.

Regular business included approval of minutes of the last meeting, receiving the treasurer's report, and approval of claims for payment.



"This could happen in Gruver," said Police Chief Steve Gaines about the mock disaster staged in Gruver on Friday, Aug. 16. Pictured

here is a Gruver fireman spraying water to dilute the anhydrous ammonia that leaked when the transport collided with a school bus.

## Gruver City Commission sets public hearing on city budget

by JoAnn Morton  
Editor

Thursday, Aug. 29 at 7 p.m. is the date and time set for a public hearing concerning the City of Gruver's 1991-92 budget.

The Gruver City Commission set the public hearing at its Aug. 14 meeting, said City Manager A.J. Ratliff.

The public hearing will be conducted at the Gruver City Hall, said Ratliff. Citizens of Gruver are invited and encouraged to attend the meeting to provide input to the budgeting process.

A public hearing was held at the Aug. 14 meeting to discuss application for a Community Development

Grant from the Texas Department of Commerce, but no Gruver residents attended the hearing to provide comment. The City Commission then voted to authorize Mayor Keith Gibson to submit a grant application.

If the grant is approved, the money will be used to drill a water well for the city of Gruver, said Ratliff.

In other business, commission members discussed the Hansford County Appraisal District's budget for fiscal year 1991-92, but took no action. Approval was given to a contract with the HCAD for the collection of taxes in the coming fiscal year.

A sewer line in the Fred Cooper Addition of Gruver was the subject of

some discussion, and the matter was tabled for further discussion at a later date. Ratliff noted that the sewer line was installed in 1974, and that the City of Gruver had agreed to pay half the cost of installation, but had not yet paid its share.

Commission members discussed the emergency management exercise, scheduled for Friday, Aug. 16. Gruver Police Chief Steve Gaines attended the meeting to explain the exercise to commission members.

Regular business for the Gruver City Commission included approval of minutes of its July 10 and July 31 meetings, and approval of accounts payable for the month of July.

## Snider to lead local MDA effort

Billy Snider has been named Spearman chairperson of the 1991 Jerry Lewis Telethon to benefit the Muscular Dystrophy Association (MDA), announced Karen Lane, district director of the national voluntary health agency's Panhandle Chapter.

"We're proud to have caring individuals like Billy working closely with MDA and its supporters," said Lane. "Our Telethon team is dedicated to making this year's show another record breaker." Telethon '90 was the most successful in the show's history, raising over \$44 million in pledges.

The 26th annual Labor Day Telethon will be broadcast by KFDA-TV, starting at 8 p.m. Sunday, Sept. 1 and continuing to 6 p.m. Monday, Sept. 2. The 22-hour extravaganza will originate live from the Sahara Hotel in Las Vegas, and will be carried through the country by some 200 "Love Network" stations.

The hosts of the local portion of the Telethon this year will be Kari King, John Hagerty and Mary Lyn Halley. This year's show is being broadcast

live from the Fifth Season Inn West Hotel in Amarillo.

Children wishing to collect door-to-door for "Jerry's Kids" are asked to come by the pledge center location at the Spearman Fire Department no later than noon on Labor Day to pick up an official badge and canister.

Special phone numbers, 659-5511 or 659-5512, have been assigned for the people of Spearman to phone in their pledges. Phones will be answered from 8 p.m. Sunday to 6 p.m. Monday. Anyone wishing to volunteer to answer phones or help at the pledge center in any other way should call Billy Snider as soon as possible at either of those numbers.

Money raised through the efforts of Telethon "Love Network" affiliates helps fund MDA's full range of research, patient service, and public and professional education programs. Some 500 research teams supported by MDA worldwide are making groundbreaking discoveries in their effort to determine the causes of 40 neuromuscular diseases and develop treatments or cures for them.

Other activities planned for Spearman on Sunday, Sept. 1 includes the annual "Fill the Boot" campaign conducted by the Spearman Volunteer Fire Department, which will be continued on Monday, Sept. 2.

Also on Monday, kids who wish to collect door-to-door should be at the fire station between 8 and 11 a.m. to pick up their official canisters. Each child collecting for MDA will receive a free personal pizza, according to Snider.

From 9 a.m. to noon on Monday, a dunking board will be set up at the fire station, and dunks can be attempted for a donation. Those interested in water polo can participate in that event for a donation. Water polo will be held during the day Monday at the fire station. Free coffee will be available that day as well.

A talent show is scheduled for 1 to 5 p.m. on Monday, Sept. 2. Snider says anyone interested in contributing their talent to the show should contact him to have a time set for their performance.

In addition, visitors to the fire station can register for free door prizes.

## Hansford County Fair scheduled

The Hansford County Fair is set for Sept. 26, 27, 28 and 29. Entries should be planned and ready to enter.

Entry is open to every adult, school child, 4-H member, FFA and FHA member who lives in Spearman, Gruver, or Pringle/Morse Independent School District. The jackpot show is open to all bonafide 4-H or FFA members from any state, county, or school district.

In addition to agriculture, antiques, art, baked goods, food preservation, china painting, clothing construction, flowers, horticulture,

needlework, quilting, tole painting, crafts/hobbies, and photography, a new category has been added to this year's roster. Literary art is a new category this year for any and all aspiring writers. Entries must be postmarked by Sept. 25 or hand delivered to the Hansford County Extension Office in Spearman by Sept. 26. Manuscripts must be the original work of the entrant.

Age groups are: Junior Division, 12 years and under; Senior Division, 13 to 18 years; Adult, 19 years and over; and in some categories, professional

(anyone who makes a living by selling his entries).

A petting zoo, lamb and steer show, variety show, dance, and roping are planned for the weekend, as well as lots of good food, interesting exhibits, craft booths, and a number of unusual and interesting happenings.

More information about the fair can be obtained from the Hansford County Extension Office at 659-2030, Troy Morris at 733-6273, Janie Jeffries at 733-2946, or any fair board member. Fair books are located at various businesses in Hansford County.

## Well completions reported

AUSTIN - Texas oil and gas operators reported 267 gas and 468 oil completions in July, according to Railroad Commission Chairman Lena Guerrero. In June the total was 247 gas and 440 oil completions. July 1990's total was 260 gas and 437 oil completions.

Gas completions in July included nine in the San Antonio area, 34 in the Refugio area, 26 in Southeast Texas, 53 in deep South Texas, 14 in East Central Texas, 38 in East Texas, 18 in West Central Texas, 41 in the San Angelo area, 11 in the Midland area, one in the Lubbock area, 12 in North Texas, and 10 in the Panhandle, according to Guerrero.

Oil completions included 73 in the San Antonio area, 21 in the Refugio area, 55 in Southeast Texas, 21 in deep South Texas, nine in East Central Texas, 15 in East Texas, 58 in West Central Texas, 31 in the San Angelo area, 84 in the Midland area, 51 in the Lubbock area, 44 in North Texas, and six in the Panhandle.

Total completions reported in July included 468 oil, 267 gas, and 57 service completions. In July 1990, operators filed 437 oil, 260 gas, and 48 service completion reports.

In the first seven months of 1991 the Commission has recorded a total of 4,722 well completions, a 9 percent increase from the 4,332 well completions recorded during the same period of 1990.

Guerrero said operators reported

1,247 holes plugged in July, compared to 1,249 in June. A total of 200 dry holes were reported in July, compared to 226 in June.

A total of 1,111 drilling permits were issued by the Commission in July, according to Guerrero. In June, the total was 1,025. July 1990's total was 1,166.

The July total included 627 permits to drill new oil and gas tests, 45 to re-enter existing well bores, 50 to deepen existing holes, 146 to plugback existing holes, and 97 for other wells. Operators were also issued 146 amended drilling permits.

Guerrero said permits issued for new oil and gas holes in July included 33 in the San Antonio area, 27 in the

Refugio area, 44 in Southeast Texas, 56 in deep South Texas, 20 in East Central Texas, 49 in East Texas, 99 in West Central Texas, 83 in the San Angelo area, 66 in the Midland area, 49 in the Lubbock area, 91 in North Texas, and 10 in the Panhandle.

In the first seven months of 1991, the Commission has issued 8,397 drilling permits, a 4 percent decrease from the 8,712 issued during the same period of 1990.

The 1,111 permits issued in July included 534 oil permits, 153 gas permits, 362 oil and gas permits, 22 injection permits, 17 disposal permits, and 23 other permits.

## Lions sell hot dogs

The Spearman Lions Club will be at Jack and Jill Supermarket on Saturday, Aug. 24, selling hot dogs and giving away free Pepsi to raise money to buy glasses for needy adults and children in Spearman.

According to Harry Stumpf, the club will start selling the dogs for 50 cents each at 11 a.m. and will quit at 2 p.m. He further stated that fixins to put on the dogs will be there as well.

All the money from the hot dog sales goes into the Lions Club fund used to purchase glasses for the needy in Spearman. Some glasses are

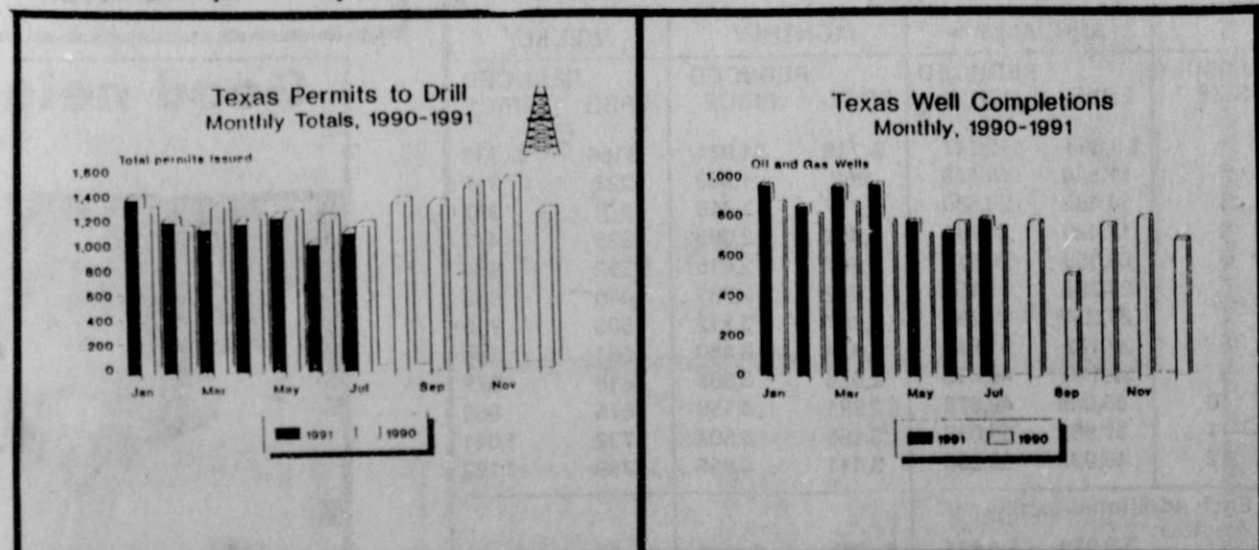
bought for adults but most of the glasses are purchased for children. According to Stumpf the school nurse or teacher will recommend a child to the club. Arrangements are then made for the child to have his or her eyes tested. Glasses are then purchased out of the fund.

The fund has almost been depleted said Stumpf. In an effort to build it back up, the Lions are selling hot dogs. Two weeks ago they sold 300 dogs at the Spearman Thriftway Market. Stumpf indicated the club hopes to do much better this weekend.



It's line up and smile for the camera on the first day of school at Gruver Elementary School. Pictured here are some of the

kindergarteners, first graders, their teachers and parents.



# Hansford Happenings

The Spearman High School graduating class of 1941 will have a 50th anniversary reunion Saturday, Sept. 14 at the Fifth Seasons East in Amarillo. Class members and friends are invited to attend the all-day event. The whereabouts of class members Warren Killian and Vance Prutsman are unknown. Anyone with information about them is asked to call Dolly McWhirter or Garland Hopper.

**The Hansford County Bake Show** is set for Wednesday, Aug. 28. Several divisions are open to all area youth. Clover Kids (K through 2nd grade) will make cookies. Juniors (3rd grade through 13 years of age) will make any muffins with at least 1/3 whole wheat flour. Seniors (14 years by Jan. 1 through 19 years of age) will bake a yeast product of at least 1/3 whole wheat flour. A list of requirements is available in the Extension Office. Juniors and seniors may also compete with a project record book for a separate award. Two juniors and two seniors will advance to District during the Tri State Fair in Amarillo. Products and recipes should be turned in to the Extension Office by noon on Aug. 28, and awards will be given at 4:30 p.m. in the Extension Homemakers clubroom for all who entered.

Mothers who wish to breastfeed their babies will find encouragement and information at the **Spearman La Leche League**, now being organized as a group. The first meeting is Friday, Aug. 23 at 9:30 a.m. at First United Methodist Church nursery room. **Nursing babies** are welcome. For more information, call 659-2962.

A **dance is scheduled for Saturday, Aug. 24** from 9 p.m. to 1 a.m. at the Moose Lodge for members and guests. G.E. & Company will play.

**Back To School Skate Night** is scheduled for Saturday, Aug. 24 from 7 to 9 p.m. at Hansford Activity Center. Skaters can bring their own skates or rent skates at the activity center.

**Racquetball and the weight room at the Hansford Activity Center will reopen Monday, Aug. 26.** Racquetball and weight room will be available Mondays, Wednesdays and Fridays. For more information contact Frank Dominguez for racquetball at 359-2691, and Robbie Dewberry for weight room at 659-2535 or 659-3915.

## At the movies . . .

At the Lyric Theatre in Spearman Friday, Aug. 23 through Thursday, Aug. 27, "Terminator 2: Judgement Day" is showing on Screen 1 at 8 p.m. Held over for the second hilariously heartwarming week is "City Slickers" on Screen 2 at 7:45 p.m.

Superstar Arnold Schwarzenegger is back as a "killing machine" from the future in "Terminator 2: Judgement Day."

This sequel to the monumentally successful 1984 sci-fi thriller has Arnold once again appearing as the unstoppable robot. But, he won't be playing the villain this time around.

Instead, the cyborg is kidnapped by the human rebel forces (the good guys), reprogrammed, and sent back in time to earth to protect the love child produced in the original film, who will ultimately save the planet from the evil robots.

With Arnie's help, the kid may fulfill his destiny and save mankind. It sounds sort of like a high-tech version of "My Bodyguard," but you can bet there'll be plenty of action and some dark humor thrown in for good measure.

"Terminator 2: Judgement Day" is rated R.

### PUBLIC NOTICE

SPEARMAN I.S.D. today announced its policy for providing free and reduced price meals for children served under the National School Lunch Program, Commodity School Program and/or School Breakfast Program. Each school and/or the central office has a copy of the policy, which may be reviewed by any interested party.

The household size and income criteria identified below will be used to determine eligibility for free and reduced price benefits. Children from households whose income is at or below the levels shown are eligible for free or reduced price meals. Foster children that are the legal responsibility of a welfare agency or court may also be eligible for benefits regardless of the income of the household with whom they reside. Eligibility for the foster child is based on the child's income.

Application forms are being distributed to all households with a letter informing households of the availability of free and reduced price meals for their children. Applications also are available at the principal's office in each school. To apply for free and reduced price meals, households must fill out the application and return it to the school. Applications may be submitted anytime during the school year. The information households provide on the application will be used for the purpose of determining eligibility and verification of data. Applications may be verified by the school officials at any time during the school year.

For school officials to determine eligibility for free and reduced price benefits, households receiving food stamps or AFDC only have to list their child's name, food stamp or AFDC case number and an adult household member must sign the application. Households who do not list a food stamp or AFDC case number must list the names of all household members, the amount and source of the income received by each household member, how often the person received it and the social security number of either the primary wage earner responsible for the care of the child or the social security number of the adult household member who signs the application. If neither household member has a Social Security number, the household member must indicate that a social security number is not available. The application must be signed by an adult household member.

Under the provisions of the free and reduced price meal policy the FOOD SERVICE DIRECTOR will review applications and determine eligibility. Parents or guardians dissatisfied with the ruling of the official may wish to discuss the decision with the reviewing official on an informal basis. Parents wishing to make a formal appeal for a hearing on the decision may make a request either orally or in writing to President of the Board of Trustees, 403 E. 11th, Spearman, Texas 79081, Phone 659-2116.

Households that list a food stamp or AFDC case number must report when the household no longer received these benefits. Other households approved for benefits based on income information must report increases in household income of over \$50 per month or \$600 per year and decreases in household size. Also, if a household member becomes unemployed or if the household size increases, the household should contact the school. Such changes may make the children of the household eligible for benefits if the household's income falls at or below the levels shown above.

In the operation of child feeding programs administered by the U.S. Department of Agriculture, no child will be discriminated against because of race, color, sex, national origin, age, handicap, religion or political preference. If any member of a household believes they have been discriminated against, they should write immediately to the Secretary of Agriculture, Washington, D.C. 20250.

#### 1991-92 INCOME ELIGIBILITY GUIDELINES

FAMILY SIZE	ANNUALLY		MONTHLY		WEEKLY		
	FREE	REDUCED PRICE	FREE	REDUCED PRICE	FREE	REDUCED PRICE	
1	\$ 8,606	\$12,247	\$ 718	\$1,021	\$166	\$ 236	
2	11,544	16,428	962	1,369	229	316	
3	14,482	20,609	1,207	1,718	272	397	
4	17,420	24,790	1,452	2,066	335	477	
5	20,358	28,971	1,697	2,415	392	558	
6	23,296	33,152	1,942	2,763	448	638	
7	26,234	37,333	2,187	3,112	505	718	
8	29,172	41,514	2,431	3,460	561	798	
9	32,110	45,695	2,676	3,809	618	879	
10	35,048	49,876	2,921	4,158	675	960	
11	37,986	54,057	3,166	4,507	732	1,041	
12	40,924	58,238	3,411	4,856	789	1,122	
Each additional family member:		\$ 2,938	\$ 4,181	\$ 245	\$ 349	\$ 57	\$ 81

# Karen's Kozy Korner

The Hansford County Bake Show is set for Wednesday, Aug. 28. Several divisions are open to all area youth.

Clover Kids (K through 2nd grade) will make cookies. Juniors (3rd grade through 13 years of age) will make any muffins with at least 1/3 whole wheat flour. Seniors (14 years by Jan. 1 through 19 years of age) will bake a yeast product of at least 1/3 whole wheat flour. A list of requirements is available at the Extension office.

Two juniors and two seniors will advance to District during the Tri State Fair in Amarillo.

Products and recipes should be turned in to the Extension office by noon on Aug. 28. Awards will be given at 4:30 p.m. in the Extension Homemakers clubroom for all who entered.

**Talking to Children About Repeating a Grade**  
Many children, especially boys, have a difficult time in the early grades, not because they have a low IQ or are in some way deficient, but because they are simply not developmentally ready for the grade in which they are placed. Children with late birthdays are particularly prone to being unready for kindergarten or first grade because of immature social, emotional and physical behavior.

The early years of school are critical times for young children. Children who do not compete successfully in school are likely to develop problems in living and in coping with the environment. Therefore, retaining an immature child in a grade level for a second year is often a wise move.

Retention is typically positive for immature children because they like school better and are more confident and successful. The children may feel that the "weight of the world" has been lifted from their shoulders. And in the long run, their self-esteem will be enhanced, not hurt.

Grade retention, however, is not for everybody. Retention seldom has a positive effect on school achievement for children with serious academic difficulties. But for developmentally immature children, you may do them a favor by retaining them if they are not ready - socially, emotionally or physically - for the next grade.

The decision to retain a child is not made easily. Parents should consult with the child's teacher and possibly with a psychologist or counselor. If repeating a grade is decided upon, the earlier it is done the better.

How the child responds to grade retention depends to a large extent on how parents break the news. Parents should calmly tell the child that they - the parent - made a big mistake. They started the child in school before the child was ready. Saying something like: "No wonder you don't like school and get tired and find it hard to finish your work. Isn't it lucky we discovered that you started school too soon, because now you can stay another year. You'll probably be one of the oldest, happiest - and possibly smartest - pupils in your class."

Once the child is convinced that repeating the grade is a good thing,

that the fault (if any) lies with the parent, and that nobody is disappointed or mad at the child, then the biggest part of the battle is won. In most cases the child continues in school with feelings of success and accomplishment rather than a continuing sense of failure.

**Sizing Inconsistency**  
Most of us know what our clothing "size" is - or do we? Perhaps you too have wondered why a size 12 dress in one store will fit perfectly, yet another store's size 12 is too small or too large. This size variation can even occur in the same basic type of garment when it is made by different manufacturers. Be assured that your body weight and measurements are not mysteriously fluctuating. The problem lies with an inconsistency of a sizing standard throughout the apparel industry.

There are sizing standards; however, each apparel manufacturer is responsible for its own based on the designer's concept of fit. The National Bureau of Standards, which sets all standards of measurement for the purpose of encouraging commerce and industry, has also been involved in establishing clothing size standards. Overall, the apparel industry and standard-setting organizations are attempting to improve communications to consumers regarding size and fit.

A manufacturer establishes sizes by creating a model form that it feels reflects its customer. Therefore this means that Company A's size 12 fits a different figure silhouette from Company B's size 12. While model forms may be similar, the drape, shape, fit or dimensions could be adjusted at the discretion of the designer and the fabric utilized.

Human shapes vary. Style sometimes prevents standard garment sizes from being maintained. U.S. apparel manufacturers strive towards this consistency and similar sizings even when most bodies vary considerably in height, weight and shape. This inconsistency also extends to the letter-type size labels. Again each manufacturer has its own size standards as well as its own perception of what a "small" dimension should be, based on the garment it manufactures.

## Letter to the editor

This is an open letter to the people of Spearman. The Spearman chapter of NHS is very grateful to the community for their cooperation in our aluminum can drop this summer.

It is because of your cooperation that we have been able to collect a lot of cans. We would also like to remind you to keep up the good work. After all, the benefits from the sale of the cans go to help the not-so fortunate families of our community.

The locations of the can drop-offs are in the white barrels at the corner of Seventh and Townsend and at the white barrels between the high school and the field house.

Sincerely,  
- Alfonso Martinez  
NHS President

**At The Lyric Theatre . . .**  
Friday, August 23 - Tuesday, August 27  
Bargain Nights Mon. & Tue. All Seats \$3  
Closed Wednesday & Thursday

Screen 1 - 8:00  
Screen 2 - 7:45

**SCHWARZENEGGER**  
It's Nothing Personal.  
**TERMINATOR 2 JUDGMENT DAY**

**"THIS SUMMER'S BLOCKBUSTER COMEDY HIT!"**  
**CITY SLICKERS**

113 Main, Spearman

**Good neighbors with good advice for saving energy**

Power lines help bring you a clean, reliable source of energy, but they're dangerous to touch - with anything. Downed power lines are especially dangerous. If you see a downed line, stay clear of the area and notify your local TNP office or law enforcement official.

To learn more about electrical safety, call or visit your local TNP office and ask for the free brochure, "Straight Talk About Electrical Safety."

Larry Whitford, Perryton, Texas, line foreman.

**Texas-New Mexico Power Company.**

# Chamber Chatter

by Cindy Blackman

After spending a long weekend in the cool mountains of Red River, it's back to work!

The chamber of commerce is sponsoring the fourth annual Panhandle Relays, which will be held Saturday, Oct. 19. The race will start in Borger and will end in Spearman. For further information you can call the chamber office.

Have you driven by the ALCO store? I can't believe how much progress they have made in such a short period of time.

Don't forget the Women's Division Ice Cream Social, honoring all volunteer services and to introduce the new teachers. Kevin Schaffer, the new choir teacher, came by the office the other day. He already loves Spearman and said everyone was really friendly here. I think the kids

are going to like him. Sounded like he had some fun ideas!

Something fun is going to take place in Spearman on Aug. 28 at 9:30 a.m. Fiesta Texas is a new theme park which will open in San Antonio in 1992. They are sending out a team to collect dirt from each county in Texas. We will get our dirt from the courthouse square and County Judge Jim Brown will help the theme park. The public is invited to attend.

The membership luncheons are scheduled to start again in September. Watch the paper for more information. All chamber members are urged to attend and to bring a new member with you. We will have a program and a noon meal. The luncheon is scheduled for Friday, Sept. 13.

## Police Files

**Spearman Police Department**

The Spearman Police Department logged 61 calls for service during the week of Aug. 12-18.

Included in that total were a burglary report, two theft reports, two reports of vandalism, one DUI, seven reports of disorderly conduct and two traffic violations.

One runaway was reported, and eight calls were received, reporting suspicious activity. Two dog bites were reported, and nine miscellaneous officer calls were received. There were eight vehicle lockouts called in, and officers served one warrant. Two family fights were investigated, and two follow-up investigations were conducted. There were 12 calls for animal control during the week.

A police incident report stated that Wanda Archer reported a storage

building and breaker box stolen from her residence in the 400 block of Barkley on Aug. 13. Value of the missing items was estimated to be \$290.

Also on Aug. 13, a 61 year old man was arrested for DUI at 5th and Archer. Time of the arrest was given as 5:30 p.m.

A 59 year old man was arrested Aug. 13 on a Hutchinson County warrant for probation violation.

A burglary in the 500 block of West Second was reported on Aug. 14. Nothing was reported missing.

Two juvenile males were suspected of shoplifting at Spearman Jack and Jill on Aug. 15.

William Swarthout reported keys and a keyring stolen on Aug. 18 from the 300 block of North Brand. Time of the report was 1:50 a.m.

## Crisis Center reports

by Mary Frances Ellzey

You readers familiar with us may skip this paragraph and start with the next one. The PCC offers services to men or women who are victims of domestic violence, whether verbal or physical. We give counseling, support, and information to these victims, plus a shelter to those who feel themselves to be in danger at home. These services are free of charge. If you want information only, call us at the office from 9:00 a.m. to 5:00 p.m. We are available for help at any time, 24 hours a day. Our number is 435-5008. For those of you who must call us long distance, we have a toll-free number: 1-800-753-5308.

Say, have you been watching Channel 5 on cable TV? You'll find the PCC advertised there! Furthermore, public service announcements are being made on KEYE in Perryton and on KRDF in Spearman.

Anyone interested in helpful support for suicides and/or their friends and relatives should call the PCC. You'll find it there.

And watch this column for the announcement of the beginning of step-parenting classes. In second marriages step-parenting is a frequent and difficult adjustment to make. Nowadays, with second marriages so prevalent, a crying need for help in such adjustments has come to the fore. If you qualify as a step-parent, be sure to take advantage of these classes.

We at the PCC are very excited about the launching of a Batterer's Program, beginning Oct. 1. This will be the first Batterer's Program in the entire Panhandle, and one of the first of 25 such programs sponsored by a Crisis Center in the state of Texas.

The Rev. Harrol Waterbury has volunteered to oversee it, and those of you who have experienced his expertise know how beneficial his counseling is. The only expense for the participants is \$10 for the necessary books. The program will require 12 weeks of faithful attendance. Referrals will come from the District Attorney's office, the Probation

Office, and pastors. Though self referrals will also be accepted, if the current class is full, a person who is self-referred may have to wait until the next class. However, a means of working in new students may be devised.

The program will be financed by monies from the fines imposed on probationers. Already \$109.00 has been provided by the Seminar held by the Police Department last July.

We are most fortunate to have such cooperation from the District Attorney and the local Adult Probation Officers. We had been warned that it might be necessary to employ pressure by the citizens to persuade those in office to adopt this procedure, as demonstrated by the experiences in other locations. But the PCC has always found more cooperation in these strategic points than probably any other Crisis Center in Texas.

So. Now that we have this newly developing opportunity, let's take full advantage of it. It has proved to be successful in those areas where it is already in effect. Remember, if only one in 50 is redeemed from battering, the program is worth it.

**The Hansford County Reporter-Statesman**  
"Serving All Of Hansford County"

USPS 50966  
213 Main, Box 458, 659-3434  
Spearman, TX 79081

Published Weekly at  
213 Main, Spearman, Texas

Owned and Operated by:  
Texas Independent Newspapers, Inc.  
15915 Alsace  
San Antonio, TX 78232  
(512) 545-1739

Second Class postage paid at Spearman, Texas 79081.

Any erroneous reflection upon the character of any person or firm appearing in these pages will be gladly and promptly corrected upon being brought to the attention of the management.

Publisher - Robert M. Hulet  
Editor - JoAnn Morton  
Bookkeeper - Sheila LaRochelle

Subscription Rate: Hansford County, \$19.95; out of county, \$24.95 annually.

Postmaster: Send address changes to Hansford County Reporter-Statesman, Box 458, Spearman, TX 79081.

The publisher reserves the right to revise or reject at its option any advertisement which it deems objectionable, either in subject or phraseology, or which it may deem detrimental to its business.

Advertising and Story Deadlines: Tuesday, 12:00 p.m.

**T-A MEMBER TEXAS PRESS ASSOCIATION**

## Crawford works at Lions Camp

Janet (Jan) D. Crawford of Spearman is working as a counselor at the Texas Lions Camp in Kerrville this summer.

While at camp, counselors are concerned with every aspect of the campers' physical and social well-being. They are often mother, father, best friend and coach to over 230 children who are blind, deaf, diabetic or have physical disabilities who attend the camp each session.

Counselors undergo a rigorous seven-day counselor training and orientation before camp begins. They learn sign language, first aid, and CPR, as well as other skills needed to care for the special children who at-

tend the Texas Lions Camp.

The Texas Lions Camp has served children who are blind, deaf, diabetic or have physical disabilities for over 40 years. Activities are adapted when necessary so every child can participate.

The Texas Lions Camp is a non-profit organization funded by donations. This allows services to be offered free of charge to eligible children. For more information, or if you know of someone who can benefit from these programs, call the local Lions Club or write Texas Lions Camp, P.O. Box 247, Kerrville, TX 78029-0247 (512-896-8500).



JANET (JAN) D. CRAWFORD

## Girl Scout troops begin year

by Carolyn Cummings

I don't know how everyone else feels but for me it seems as if school just ended. However, just as it's back-to-school time - it's back-to-Girl Scouts, also.

Girl Scouts offer a wide range of activities from their 5 Worlds: World of the Out-of-Doors, World of the Arts, World of Well-Being, World of People and World of Today & Tomorrow. Girls learn about themselves and help others, make crafts, learn songs and dances, film making and plants and animals. Then there's camping, canoeing, archery, stargazing, computers, science and technology and much more. You meet and make new friends in your town or in your council. If these things interest you - then GIRL SCOUTING is for YOU - no matter what your age.

In March Girl Scouting will be celebrating its 80th Anniversary and plans are already being made for a very special year.

We start off the year with a Poster Contest. They will be judged locally with the winners going on to the Council level. Another judging takes place at the Council level with the winners advancing to the National

level.

Daisy Girl Scouts are our newest and youngest Girl Scouts. This troop is named for our founder, Juliette "Daisy" Low. They will begin learning about scouting from the new Daisy leader, Dee Dee Longoria. These girls will be doing crafts, cooking, nature activities and will go on some local outings. Those eligible for Daisy members are girls in kindergarten and who are 5 or 6 years old. Dee Dee really needs an assistant. Someone give her a call.

Brownies kick off their year with a Fun Day (Council Wide) at Perryton on Sept. 14. Each registered girl attending this will receive a badge that day. Brownies are girls in the 1st, 2nd and 3rd grades and ages 6, 7, and 8 years old. Brownie leaders for our two troops are Barbara Fight, Carma Dorton and Melba Olsen. We still need one more helper.

Junior activities for the year haven't been planned as of yet. However if it's like last year they did modeling, learned about makeup and skin care, some girls went camping and visited First National Bank and Hansford Manor and Hospital. At Thinking Day they saw the Kwahadi Indian Dancers (Boy Scout Troop 80, Amarillo), the Little Flower Folk dancers from Oklahoma City and learned crafts and dances from around the world. They put on a T.V. program and video taped it. They also hosted a Council Fun Day and helped the Amarillo Little Theater set up for its production.

As you can see there's lots to do. And if you're in the 4th, 5th and 6th grades you can join in on the fun, too. And parents, it's never too late to be a Scout - just call Carolyn Cummings as we need a Junior helper.

Registration for Drisy, Brownie and Junior troops will be August 29 at

Spearman Little House located at 22 S. Endicott from 6:30 to 7:30 p.m. Drop by, have refreshments and register your daughter.

The other troops in Spearman are our Cadette and Senior troops. Cadettes are in the 6th, 7th, 8th and 9th grades. Seniors are in 10th, 11th and 12th grades. Leaders are Myrna Biggers and Mary K. Harbour. These troops will start off their year by attending the Atomic Energy Merit Badge hosted by Pantex in Amarillo starting Sept. 28. It ends with a trip to New Mexico in November.

Registration for Cadettes and Seniors will be Tuesday, September 10 at the Spearman Little House at 6:30 p.m. At this meeting Mrs. Biggers will explain program plans to Scouts and parents.

Come join the fun! If you miss these dates you can still register by calling a leader!



The Hansford Division of the American Heart Association received three prestigious awards at the Texas Affiliate annual meeting in July. Awards included the Heart and Torch Award, the Outstanding Division Award, and the Outstanding Development Award. Displaying the award plaques and representing the Hansford Heart Association are (l-r) Tommy Gumfory, Kory Brown and Carla Gumfory. The Gumforys, of Gruver, are co-presidents of the

Hansford Division of the American Heart Association. Brown, age 16, is the son of Jim and Rosemary Brown of Spearman. He underwent open heart surgery in June to correct a congenital heart defect. His recovery is proceeding well, he says, and he even has plans to be a part of the Spearman Lynx football team next year. This year, Brown will serve as team manager.

(photo by JoAnn Morton)

## Fair to offer two free shows

AMARILLO - The 1991 Amarillo Tri State Fair, scheduled for Sept. 16-21, will offer two nights of free shows in the Coliseum with regular gate admission to the grounds.

On Monday, Sept. 16, the first annual Tri State Fair Talent Search contest will be held in the Coliseum and on Thursday, Sept. 19, the Maines Brothers will appear for a concert and dance. Both shows will begin at 8 p.m.

The Tri State Talent Search will feature amateur talent who will compete for \$2,000 in cash and prizes.

Auditions of all contestants will be conducted at Westgate Mall Shopping Center on Saturday, Sept. 7. At the auditions, judges will select five acts each from three age groups to appear in the Coliseum for the finals on Sept. 16, the first night of the fair. No tickets will be required to attend the talent finals in the Coliseum.

Tickets for the Maines Brothers show are available without cost at Gebo stores. The Maines Brothers Band has been a Lubbock institution since the 1960s. But the current edi-

tion makes "aggressive country" music - a style that combines spirited country with rock 'n' roll elements and some pop touches as well. There are four brothers in all, plus three other guys, all picking and singing like crazy.

Both shows are free with regular gate admission of \$4 for adults and \$1 for children 6-11 years of age. Under 6 years old is free. Additional information about these acts is available from the fair office at 806-376-7767 or by writing to Tri State Fair, P.O. Box 31087-1087, Amarillo, TX 79120.

## Motorists need to watch for children

Vacations are ending and children are returning to school. Major V.J. Cawthon, regional commander of the Texas Department of Public Safety, says that this will create not only a change for our children, but the motoring public must also make some changes as well.

During the summer months, drivers often get out of the habit of being alert for both school zones and school buses. Major Cawthon says that now is the time to get familiar with posted school times in the area. It's important to remember that school zones can be posted by blinking yellow lights or in some areas just a sign posting the school zone times. Either way, it's the driver's duty to be alert for young children, some of whom are attending school for the first time and others who have moved to the neighborhood during the summer months and who may be unfamiliar with the area.

State law requires drivers on the same roadway as a school bus that has stopped to load or unload school children, to stop and remain stopped until one of three things happen: the bus driver signals the driver to go on

by; they turn off the flashing red lights; or the bus itself resumes motion. This law applies whether the driver is meeting the bus or going in the same direction. The only exception is for drivers on the opposite side of a divided highway (roadways separated by a physical median). These drivers are not required to stop when meeting the bus.

Motorists who must back their vehicles into the path of pedestrians or bicyclists should use extreme caution, noting that the driver's line of sight is very limited in a backing maneuver. It's a good idea for drivers to physically inspect what's behind their vehicle prior to backing and while backing. Backing should be done slowly, and drivers should sound their horn, if necessary to ensure safety.

"Let's all work together to make this a safe school year for our children by observing the speed limits in school zones and being alert for increased pedestrian traffic in neighborhoods at the beginning and ending of each school day," concluded Major Cawthon.

## Labor Day weekend means more traffic

Labor Day weekend is a sure sign of things to come. Among them is the fact that another summer is about to pass. Labor Day represents the last three-day weekend which has both local and state public safety officials concerned.

"We anticipate a large number of Texas motorists will take advantage of an extra day off to make that one last summer trip before winter," stated Major V.J. Cawthon, regional commander of the Texas Department of Public Safety.

"This means Texas drivers will be sharing the roadways with more vehicles, driving more miles than

usual, and encountering drivers who are probably more fatigued than usual," he added.

"Our troopers will be aggressive in combating the speeding and DWI problem because these violations continue to be the leading factors in fatal accidents," stated Major Cawthon.

Major Cawthon concluded by asking Texas drivers to do their part in making this a safe holiday by remaining alert, adjusting speed to match the existing road conditions, avoiding the use of alcohol and using safety belts, no matter how short the trip.

## Hansford County Hospital District Presents

HANSFORD HOME CARE is your home town home health agency.

The program is an extension of the HANSFORD COUNTY HOSPITAL DISTRICT and is governed by the HCHD Board of Directors. The agency is Medicare certified and licensed by the Texas Department of Health.

The agency is directed by Carol Hergert, R.N., and employs professional people skilled in nursing and physical therapy. There are also home health aides available as needed.

Skilled nursing by registered and licensed nurses is available in your home if you are homebound because of illness or injury.

If physical therapy is required, Carol Dunnihoo, a registered physical therapist, can come to your home for prescribed physical therapy.

HANSFORD HOME CARE utilizes the interdisciplinary professional staff and health care system of the HANSFORD COUNTY HOSPITAL to bring a complete service to you.

Please call 659-2535, ext. 111, for more information. We are here to serve your needs.

**BEEF COUNTRY BASKET**  
 TIME AT DAIRY QUEEN!

\$1.99

ON SALE AUG. 19, THRU SEPT. 1, 1991  
 FOUR FINGERS PLUS TAX

This week's DQ Value: a delicious Country Basket!  
 Four steak fingers with fries, gravy and Texas toast for a low DQ price! Or six steak fingers for \$2.99!  
 Only at Dairy Queen!

DO IS VALUE COUNTRY

© Reg. U.S. Pat. & Tm. Off. Am. D.Q. Corp. \*TM Reg. U.S. Pat. & Tm. Tx. D.Q. Op. Coun. © Tx. D.Q. Op. Coun. At participating Dairy Queen stores.

GILLASPIE

AUTO & TRUCK CENTER, INC.  
 Highway 207 South P.O. Box 427 (808) 659-2541  
 SPEARMAN, TEXAS 79081

Announces  
**Nita Bynum, Parts Manager**

25 yrs. Experience  
 9 yrs. GM Parts Experience

Keep That Great GM Feeling  
 With Genuine GM Parts.

Mr. Goodwrench

# Among the Neighbors

by Helen Fisher

Woodrow and Lois Gibner have resumed their normal schedule now that their guests have returned to Portland, Ore.

Their grandchildren, Alyssa, Lindsey and Kelly with their mother, Karen spent a pleasant week here. Linn was unable to come at this time.

Wanda and Hershal Jones took their vacation last week in Sun Valley, Colo. near South Fork. They found the fishing to be just so-so, but did enjoy the weather and the rest.

On their return they picked up grandchildren Justin and Jill in Amarillo, who spent the weekend here. They are Roger Jones's children.

For 24 days Alton and Peggy Ellsworth, accompanied by their 12 year old granddaughter, Kacey Smith, were on a trip that took them to Alaska.

They took Highway 83 all the way to the Canadian boundary, then went through Manitoba, Saskatchewan, Alberta and British Columbia. After leaving Yakson Creek they entered Alaska at Yok and continued on the Alcan Highway. This route is dreadfully rough, though it is constantly being repaired.

They stopped at many well known places - Fairbanks, Anchorage, Valdez, Mt. McKinley, the glaciers. The Valdez seaport and the fishing industry caught their interest. The highlight of their trip was a visit with Garland Hale from Gruver, who is employed in the emergency room at the hospital at Palmer. He has been there several years and likes living in Alaska.

The daylight lasts many hours and the tourist season was in full swing. Accommodations were scarce and since they traveled without reservations, they experienced some difficulty; one night they had to sleep in their car.

They returned by a somewhat different route so Kacey would enjoy places of note, among them Glacier National Park and Yellowstone Park.

They drove 9,100 miles.

Bill Turner is back at the post office - as pleasantly accommodating as ever after a week's vacation. He slept late, relaxed and worked around their home. He and Lil did spend a few days at Stillwater, Okla., where their son David is attending the university.

The J.B. Buchanans, Burl Buchanans, Jana and Roger Buchanan attended the funeral of Marian Ging Gray, sister of Lia Mae. Mrs. Gray, former Spearman resi-

dent, passed away Wednesday. Services were held in Chickasha on Friday with interment at Norman.

All four of the Ging children, also formerly of Spearman, survive - Opal, Lola Mae, Buddy and Willis Ray.

Results from the American Canadian River Cutting Horse Association held in Canadian recently include - Open Class - first place - Chipaway Peppy - Tim Weldon-Boyd Rice; 100,000 Non-Pro-First - A.D. Reed in a 3-way tie with Boon Bar Billy; 25,000 Non-Pro class - Second place - Doc Son-Bailey Patterson; 1500 Novice Class - first - Taco Peppa - Danny Poole-Boyd Rice.

Obituaries include that of Luella Snider, 91, of Midland on Aug. 13. Graveside services were at Canyon. Mrs. Snider, widow of E.K. Snider, was a former Spearman resident as were her survivors. They are Phillip Snider and Marilyn of Midland, and Patricia of Oriental, N.C.

Friends Frances Cudd and Colleen Yeary attended the services.

Owen and Olive Pendergraft returned Saturday from a 16 day cool and restful vacation at Beuna Vista, Colo. They joined 10 friends from Kansas. Food, fellowship and fishing occupied the 16 days.

They returned just in time to attend a birthday party on Sunday for their 22 year old great-grandson, Freddie Tucker of Amarillo.

His grandparents, Mr. and Mrs. Richard Gaines, hosted the family gathering at their rural home.

Others enjoying the party were Mr. and Mrs. Bob Gaines of Oklahoma City, who had been visiting the Gaineses; Opal Purcell, Mr. and Mrs. Greg Purcell of Stinnett; the Allen Varnon family and Troy Brown of Spearman.

Sympathy is extended to the family of James Sparks. Graveside services were held at the Holt Cemetery on Sunday afternoon.

The 50th annual Hutchinson county Pioneers reunion was held Sunday at the high school in Stinnett. There was a good number present though their number is dwindling year by year.

Woodville and Verna Jarvis attended, and he was honored as the oldest pioneer present.

Matilda Entrekina also attended as her aunt, Lois (Mrs. Hugh) Reimer received the award for having the most generations present - four.

Interesting visitors in Spearman recently were Mike Key and his son, Micah. They were visiting Mike's mother, Mrs. Okla Mae Key, at the Hansford Manor. His aunt, Verna and Woodville Jarvis, also enjoyed having a visit with them. Mike is a missionary at Togo, West Africa and has been about 20 years. He was on leave and was enrolling Micah in Baylor University. He recently finished high school in Africa. The leave will be over Aug. 22.

Mary Lou and Steve Mathews, together with members of her family - Del and Barbara Cluck, Gruver; Andy and Patsy Burleson and Mike and Sammie Hurt of Amarillo, co-hosted a birthday party for her mother, Faye Cluck of Gruver.

Two close friends of Gruver, Jean Holland and J.C. Harris, whose birthdays coincide, were also honored guests.

The affair was held at the Harvey Hotel on Aug. 10 at 6:30 p.m. The table was decorated with outstanding floral arrangements, compliments of Dr. Ted Nicklaus, Amarillo; Mary Rae Lamb, Gruver;

and Lou Cluck, Amarillo. After the Happy Birthday song to each, Mrs. Cluck cut the beautiful cake, which was served by granddaughters.

The entire group gathered the evening before and attended "Texas." In addition to the honorees and the hosts, attending were Nanette and Tom Haines and daughters, Roswell; DeDe and Tim Cummins and daughter, and Kristy Hurt of Garland; Marcy Tow and two children, South Bend, Ind.; Ester Burleson, College Station; Matt Bratovik and children, Dallas; Paige Pittman, Jana and Cole Ivey and son, Lubbock; Mr. and Mrs. Ralph Bort, Mary Rae Lamb, Rhonda Williams, Gruver; Mark Mathews, Robin Snider and daughter, Spearman; Brad and Mary Cluck, Matt Hurt, Lou Cluck, Amarillo.

In addition to the party in Amarillo, a forty-two party was held in Gruver for the same birthday people in the home of Jean Holland.

Friends enjoying the games and wishing them Many Happy Returns were Marguerite and Archie Nelson, Bill and Juanita Logsdon, Vireta and Carl Knight, Ada Joyce and James Stedje, Del and Barbara Cluck, Frances Murrell, Pauline Winger, Doris Cluck and Vinita Womack.

Maxine Banister and Janice Banister spent the weekend in Brady. All except one of Maxine's grandchildren gathered with her to meet for the first time a great-granddaughter from Austin. She is the daughter of Brett Banister, son of the late P.K. Banister.

In the near future, this paper will carry a detailed account of the memorable Archer-Biczo wedding last Saturday.

The account will detail the description of the wedding gown of the lovely bride, Andrea Archer, daughter of Ann and Bobby. It will describe the dresses of the bridesmaids, the bride's mother, the groom's mother and the groomsmen.

This is as it should be and the neighbors will look forward to reading it. However, there is one essential, but shadowy member whose appearance is always ignored - the father of the bride.

To avoid even the appearance of reverse discrimination, an effort should be made to give him equal time. So - it might read like this-

"The father of the bride was respectful in a carefully designed dark tuxedo with the coat draped over the shoulders and falling to the waist line. The trousers were secured delicately by a sturdy leather belt, designed by Gucci. They were shaped to allow for pockets - one of which bore the faint outline of his depleted wallet. His white shirt contrasted with the black coat, and the dark tie was daintily knotted to follow the curve of his Adam's apple. He wore no adornments in his hair; neither headpiece nor hairpiece. His ensemble was complete with a white boutonniere in the lapel - color coordinated to blend with the hue of his countenance....."

Seriously, no written account can do justice to the impressive ceremony - the gathering of family and friends to share in this milestone in their lives. In the still, cool dusk - with the hills outlined in the distance - it will long be in the memory of all. Congratulations are due for each one involved.

Saturday luncheon guests of Mae and Dale Wofford were Rev. Jerry and Judy Wilson and 4 children, Pampa; Alan and Shirill Wofford and 4 children, Portales; Arnis and Connie Pape and 2 children, local minister of Church of Christ and Rev. LaVern and Dean Draper, local minister of the First Christian Church.

# McWhirter, Francis united

Kellie Shay McWhirter and Travis Lance Francis were married on Saturday, Aug. 10 at the First Baptist Church in Spearman. The Rev. Russ Gibbs officiated the double-ring ceremony.

The bride is the daughter of Mr. and Mrs. Steve Benton of Spearman and Lloyd McWhirter of Denver, Colo. The groom is the son of Mr. and Mrs. E.W. Francis of Pasadena, Texas.

Candlelighters were Brady Woolley of Spearman and David Cannefax, cousin of the bride, of San Antonio. "I Will Be Here" was sung by Jamie McBride of Wichita Falls, and "The Lord's Prayer" was performed by Vicki Gibbs of Spearman. Both were accompanied by Carol Pack of Spearman. Guests were registered by Megan Woolley of Spearman.

The bride wore a white full-length peau de soie gown featuring a portrait neckline with a beaded bodice of iridescent sequins and seed pearls. The headpiece was a white lace headband with a veil attached, designed by the bride using parts of her mother's headpiece and veil. She carried a bouquet of white roses, greenery and babies' breath atop her mother's white lace-covered Bible.

Serving as matron of honor was Jana Pittman Ivey of Amarillo. Bridesmaids were Tara Francis, sister of the groom, of Pasadena, and Jamie McBride of Wichita Falls.

Best man was Brent Vaughan of Richardson, Texas. Groomsmen were Travis Jagers of Pasadena and Bud Landrum of Houston. Ushers were Mark Allen and Clint Patterson, both of Spearman.

Ring bearer was Nicholas Benton, brother of the bride, of Spearman, and flower girl was Macy Harbour, cousin of the bride, also of Spearman.

A reception followed the ceremony in the fellowship hall of the church. Assisting with the reception were Cindy Womble Buechner of San Antonio, Julie Latta Stedje of Gruver, Sunny Irby of Dallas, Mechelle Graham of Spearman, Meli Floyd, cousin of the bride, of Spearman, and Salina and Meredith Benton, sisters of the bride, of Spearman.

The bride is a 1987 graduate of Spearman High School and a senior at Baylor University in Waco, majoring in marketing. The groom is a 1987 graduate of Sam Rayburn High School in Pasadena and a senior at Baylor University majoring in finance.

The groom's parents hosted a rehearsal dinner for the wedding party and out-of-town guests, catered by Claudine Clark, in the fellowship hall of the church.

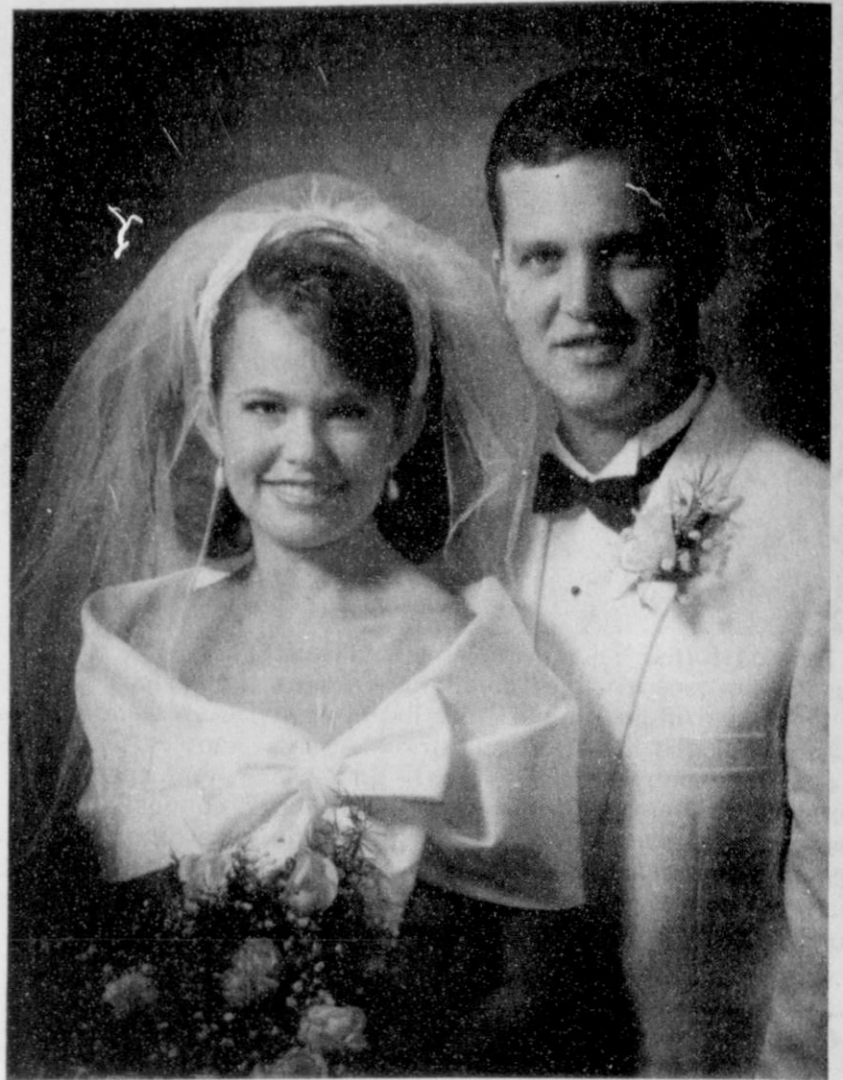
After their honeymoon on Paradise Island, Bahamas, the couple will reside in Waco until their graduation in December, after which they plan to reside in the Houston area.

## Brown, Jarvis exchange vows in June

April Leigh Brown and Robert Tyree Jarvis, both of Spearman, were married June 8 in First Baptist Church of Spearman with Russ Gibbs, pastor, officiating.

Parents of the couple are Aaron and Beth Brown and Tom and DoraLee Jarvis.

The bride is a student at Spearman High School. The groom is a Spearman High School graduate and attended Frank Phillips College and West Texas State University. He is self employed as a farmer and truck driver. The couple resides south of Spearman.



MR. AND MRS. TRAVIS LANCE FRANCIS

## Club News

### Dahlia Flower Club

The Dahlia Flower Club met Aug. 19 at the home of Sara Dossett. President Marjorie Curtis led the group in the pledge to the flag and club collect. Minutes of the last meeting were read and approved and corrected.

Roll call was answered by members naming a very unusual wild flower. Marjorie Curtis read a letter from Louis Archer who resigned due to poor health. With regrets it was voted and approved. Also it was voted to donate \$50.00 to the museum for their hospitality on a recent tour taken by the club.

Hollie Riley; Ruth Mary Whitson and Cleo Denman were appointed to nominate officers for next year.

The meeting was turned over to Marjorie Curtis, who gave a very interesting program on Wild Flowers of Texas.

Refreshments were served to members Louise Archer, Cleo Denman, Sada Hoskins, Hollie Riley, Frances Williams, Marjorie Curtis, Ethel Ellsworth, Ruth Marjorie Curtis, Ruth Mary Whitson, two guests, Charlotte Bollinger and Holly Boll-

inger, and hostess Sara Dossett. Next meeting will be Sept. 16 with Cleo Denman as hostess.

### HANSFORD LODGE

Right Worshipful Carl Unlaub D.D.G.M. of Masonic District 102 of the Most Worshipful Grand Lodge of Texas AF & AM will make his official visit to Hansford Lodge No. 1040 in Spearman on Monday, Aug. 26. Unlaub is from Dumas.

Also scheduled to attend are District Education Officer Raymond Taylor, District Public Relations Officer Raymond Renfro, and District Instructor Royce Beasley. Taylor is from Fritch, while Renfro and Beasley are from Borger. There will be a light meal prior to the meeting, starting at about 7:15 p.m. Lodge meeting is at 8 p.m.

Worshipful Master Dwayne Smith urges members of Hansford Lodge to attend if at all possible for the official visit of the District Deputy, and invites all Master Masons to attend as well.

Last Monday night District Deputy Unlaub made his visit to Gruver Lodge 1326.

## Lookin' back

### 5 YEARS AGO...

Thursday, August 7, 1986  
Hansford County won second place in high points at the State 4-H Horse Show in Abilene. Mark Eakin won second in stake racing and fourth in barrel racing. Other members attending were Bonnie Jarvis, Matt Archer, Anne Marie Jarvis, Deana Turner and Matt Eakin.

### 10 YEARS AGO...

Thursday, August 6, 1981  
William Cope, son of Mr. and Mrs. Wayne Cope, received a \$300 scholarship and Tamara Scroggs, daughter of Mr. and Mrs. Ted Scroggs, received a \$200 scholarship. They will be attending WTSU.

### 20 YEARS AGO...

Thursday, August 5, 1971  
All brands and marks on Texas

livestock must be re-recorded with the county clerk after August 30, 1971, according to a new law passed. This must be done every ten years.

## Birth announcement

Dennis and Judy Nelson of Spearman announce the birth of their first grandchild, a girl, on Monday, Aug. 12 at 6:12 p.m. at St. Mary's Hospital in Lubbock.

Jocelyn Anne Kennedy, daughter of Doug and Kim Kennedy of Pampa, weighed 8 pounds, 7 ounces and was 21 1/4 inches long at birth. The Kennedys' first child, Jocelyn Anne was born on her grandmother Judy Nelson's birthday.

**Thank You**

I would like to THANK each and every one of you for the prayers, food, cards, phone calls, and visits during my recent illness and treatments.

Thanks to all,  
**Julie Adams**

You are invited to a  
*Bridal Shower*  
Honoring  
*Carrie Hart*  
bride-elect of  
*Mark Guthrie*  
Saturday August 24th  
2:30 to 4:00 p.m.  
In the home of  
*Ron & Poretta Cook*  
714 Gibner  
Spearman

**Thank You**

To the people that showed respect to our wife, mother, sister, sister-in-law, grandmother and great-grandmother through the years in so many ways we thank you, especially during the last two weeks through prayers, visits, calls, concern, prayergrams, flowers, food and love shown her and her family.

To the ambulance crew for getting to her home so quick. To Russ Gibbs, Todd Dyess, Vicki Gibbs and Eddie Martin for the special service.

To the Union Church, and First Baptist Church for the special meal. To the Methodist Church for their help and concern. Words can't express our deep appreciation.

She will be deeply missed by her family and friends who depended on her willingness and helpfulness she so graciously gave. Since she had such loving care at Amarillo Hospice, P.O. Box 950, Amarillo, TX 79176-0001, if that be your wish for donations in memory of Mildred Martin.

Thank You,  
Elvin Martin  
Ray & Judy Martin  
Charolette Ford  
Kent, Tammy & Austin Benton  
Darren, Kamala, Kenzee & Bray Goodheart  
Steve, Rajan, Jessie & Chance Trafton  
Scot, Julie, Garrett & Stuart Martin  
Roger & Mary Ann Morris  
Ray, Yvetta & Zack McCammond

When the joys are still remembered  
But the sorrow has quietly gone  
There will always be a special place  
In the heart where love lives on.

**THANK YOU**

First State Bank - Spearman  
Gruver State Bank  
G & G Foodliner - Gruver  
Bill Logsdon - Gruver  
Jack and Jill Grocery  
Thriftyway Grocery  
Gruver Insurance Agency  
Hansford Supply - Gruver

We thank you for your contribution to the Hansford Ladies Golf Tournament held Tuesday, August 13, at the Hansford Golf Course.

Hansford Ladies Golf Association



FAY AND BETTY SAVAGE IN 1941

## Savages to observe Golden anniversary

Fay and Betty Savage of Waka will observe their Golden Wedding Anniversary with their family in Red River, N.M. on Friday, Aug. 23. They were married Aug. 23, 1941 in a Baptist parsonage in Pampa. For their honeymoon, they took a trip to Red River.

Fay, son of Ed and Anna Savage, was born in Cedarvale, Kan. As a young child in the early 1920s, he moved to the oil boom town of Borger, where his father was a contractor.

Betty Clark's parents, Althea and Ernest Clark, taught school in several Panhandle towns. The descendant of a long line of Texas pioneers, Betty graduated from Canadian High School and attended Texas Tech.

After the couple married, they farmed and ranched in the Notia community south of Perryton. They had three children, Betty Fay (deceased), Don and Sue Ann. The Savages encouraged their children's participation in 4-H clubs, church and school activities and other interests, to include showing horses with the Texas Quarter Horse Association and American Quarter Horse Association.

They have also been active in community work. Fay was a charter director of the Rural Electric Association, helping to gain rights-of-way for the rural electric lines. He also served as an Ochiltree County commissioner. Betty, along with her daughter Sue Ann, owned and managed two women's clothing stores called "Betty's" in Perryton and Stratford.

After Betty Fay's death, the couple

## Clawson, Cooney to marry in October

Max Clawson of Gruver announces the approaching marriage of his daughter, Tina Karlyne Clawson, to John William Cooney, son of Mr. and Mrs. John Cooney of Somerset, N.J. The bride-elect is presently employed by IBM Credit Corp. in Stamford, Conn.

adopted her two sons, Russ and Dustin. Betty Fay also left a daughter, Glynda Sell.

The Savages purchased land in the Waka community in Ochiltree County, where they raised their second family. They were once again forced to accept a tragic loss at the time of Dustin's death.

Russ, who attended West Texas State University, now lives in Perryton. Don and his wife Carolyn, of Spearman, are the parents of four children, Tammy, Michelle, Misty and Britt. Sue Ann and her husband Jack Kile, of Perryton, have two children, Robby and Cindy. Fay and Betty also have five great-grandchildren.

## Morrison settles in Texas

**Editor's note:** The following was submitted by Dee Renteria at the request of Joy Henderson. It is a brief story of early-day Hansford County residents.

by Dee Renteria

Harvey hadn't been in Austin long. It was warm, much warmer than Tennessee, but he had to move on. Harvey bought a horse for \$32.50, a little steep but it was a good horse. The trip to Waco took two weeks due to rain, which made the going slow. He arrived on Jan. 14, 1870.

Texas was a new state abounding in opportunity for those willing to brave the hardships. Those early pioneers came full of hope, with big dreams and big ideas. It was a fresh start for anybody, and those that

The prospective groom is employed as a commodity trader in New York.

The couple will exchange vows Saturday, Oct. 12 at 1:30 p.m. in Trinity Lutheran Church of Guymon, Okla.

### To Our Friends

Friends are those who help in times of trouble. We thank our friends for their donations to Malea's medical expenses, prayers, balloons, stuffed animals, plants, visits, or working on or attending a benefit. Whatever you have done, we greatly appreciate the love and help you've given us.

Special thanks to Leon Lothman and the Living Word church for their extra support. And to the Moon Man, Make-A-Wish and Pokey the Clown, thanks for making our trip to Disney World possible.

May God bless you as you've blessed us,

**Chad and Lisa Wilson**  
Malea's parents

## Golden Age Center repairs completed

Renovations and repairs to the Gruver Golden Age community center have been completed. The roof of the building has received new supports and new shingles, and the floors have been sanded and refinished.

Other work done in the remodeling and refurbishment of the building included installation of new ceiling tile and lighting, new mini blinds for the windows, new tile in the entryway and new floor covering in the bathrooms and kitchen.

Some of the building repairs were financed with a \$5,000 grant from Pioneer Hi-Bred International. Keith Gibson, the company's local sales rep and Gruver's mayor, worked with Gruver leaders to secure the funds

through the company's Community Investment Committee.

Contributions were also made by Gruver residents, and much of the work was performed by employees of the City of Gruver.

The center, built in 1949, was closed to the public during the winter of 1990 after snow buildup on the roof damaged the building. The center serves many functions on a daily basis, including a meeting place for senior citizens, volunteer ambulance attendants, Boy Scouts and Girl Scouts.

The building belongs to the Golden Age group and is managed by the City of Gruver for easy bookings and access from City Hall.

## Shower held Sunday for Brenda Wright

A miscellaneous bridal shower honoring Brenda Wright, bride-elect of Brian Hoel, was held in the Gruver home of Gene and Fran Duncan on Sunday, Aug. 18. The couple's wedding is scheduled to take place Saturday, Aug. 24 in the Gruver Baptist Church.

As guests arrived, they registered in a beaded lace bride's book, made and given to Ms. Wright by her grandmother. The registration table was centered with a Sonja rose arrangement. Guests were greeted and registered by Jill Odom and Amy Gillispie.

The hostesses presented the honoree with a white daisy and Sonja rose corsage. Mrs. Mack Hoel, mother of the prospective groom, and Mrs. Thomas Wright, the bride-elect's mother, were presented with corsages of white daisies with peach ribbon.

Dainty peach long-stemmed roses of icing decorated the cake squares and mints, which were served with creamy banana punch. The refreshments were served from a table covered with a peach underlay and a handmade white cut-work and embroidered linen cloth. A bouquet of peach and country blue silk

flowers centered with peach tapers served as the centerpiece. An antique crystal punch set and silver coffee service completed the table setting.

Regina and Lacy Barkley, Jill and Gina Hoel, cousins and friends of the groom, served refreshments to the guests. A daisy bouquet adorned the gift table, and gifts were listed by Debby Odom.

Out-of-town guests included the honoree's mother, Pat Wright of Odessa and her daughter, Valinda Wright of Lubbock; the prospective groom's great-grandmother, longtime Hansford County resident Pearl Shapley; Norma Jean Mackie, aunt of the groom; Michelle and Misha Davis, Laura and Leah Mackie, Lynna Renner and Martha Haden, cousins of the groom of Spearman; and Judy Park of Amarillo.

As the event was winding down the prospective groom, along with his father, Mack Hoel, his grandfather, George Odom, and his brother, Matthew, dropped in to take a look at the gifts. Fifty-eight guests participated in the afternoon of visiting and viewing the gifts. Fifty-five friends of the couple hosted the shower.

## On The Go With Joy

by Joy Henderson

Several weeks ago, I learned that there is a connection between Melba (Morrison) Rasor, some of the Shapleys and Margaret Fry, Jerry Virden, and their mom. I visited with Margaret and she told me that Dee (Virden) Renteria was in the process of doing some research on the matter and I asked her to do a story about the Morrisons.

Since she has submitted the story for this week's paper, I will cut my column short. I am also trying to relax after an unusual week of company and a visit to the doctor.

Well, we are back to school. While I was making the rounds, the halls were nice and quiet - all the kids were in their classrooms. However, some of the school personnel were looking a little glassy-eyed and some of them couldn't be located. Hiding out already?

Glenda Renner has recuperated real well from her foot surgery, but seems that cooking for two Marines, two college students, Viva, and Hubby B.J. part time for a week has about made her anxious to get back to her job at school. Rho and Tulle Green from Abilene popped in for a couple of days to visit the two Marines, Ross and Don. Then another cousin, Ron Green, arrived in town for a week's visit with his parents, Weldon and Elene Green. Ron drove his mother home after she

had spent some time with new granddaughter, grandson and Mittie and Dale Blackburn.

Visiting with Ralph and Beulah Bort is their daughter Peggy, who is giving TLC to Mom.

Wishing Auntie Vi a Happy Birthday were Dave Karlin and family and church members. Auntie Vi and Uncle Johnny Shaw were visiting from Modesto, Calif.

Other visitors in Gruver were Marianna Lively and daughter Courtney from Arlington in the home of her mother Dorris Cluck. The Mike Garrett family of Rosebud, Texas, were guests of the Wayne Garretts. The Fletcher families enjoyed visits from Harold and Margaret Orman of Borger and the David Fletcher family of Dimmitt.

Brenda Wright of Lubbock, who is the bride-elect of Brian Hoel, visited in Gruver over the weekend. Charles Hanna of Tyler, Texas, was guest in the home of his daughter, Katy Nelson.

Maude Alexander is hoping to come home soon after spending a few days in High Plains Baptist Hospital in Amarillo.

Stacy Williams is scheduled to undergo knee surgery this week. Word was received that Bill Thiele was transferred to Dallas in order to receive rehabilitation.

## 90th birthday party honors Sadie Sutton

by Joy Henderson

Longtime Gruver resident Sadie Sutton recently celebrated her 90th birthday.

Sadie Sutton was born in Ford County at Crowell, Texas, in the year 1901. Sadie is the sixth child of 10 children, and the only one still living.

Sadie married Roy Sutton, who was born in 1897. To this marriage, there were two children born: Mildred Aitkin and Bob Sutton. They came to Gruver in December of 1950 and she has been here ever since.

Roy passed away the 30th of December, 1967.

Sadie celebrated her birthday with a party given in the home of Verna Finley. Hostesses in addition to Verna Finley were Rosalie Cator and Dessie (Butch) Jackson. Those attending the party were Rebecca Westfield, Winnie Vernon, Ida Hendricks and Maude McClellan.

After cake, ice cream and punch were served, the ladies spent their time playing canasta.

## Cummingses reunite

by Joy Henderson

The descendants of Levi David and Carrie Faye Cummings held their annual reunion Aug. 5. In conjunction with the visiting and fellowship, a worship service was conducted on Sunday. Of the original 13 children, there are six still living.

The three boys include Dee Cummings of Panhandle, Walter Cummings of Levelland and Cecil Cummings of Amarillo. Cecil Cummings is the 13th child of the family, and being the youngest, he is 72.

The three girls are Loretta Belderswell, Lena Chapin of Panhandle and Beulah Ivie of Dimmitt. There were a total of 130 people present and over 100 present at the Sunday worship services.

The reunion is financed by an auction in which members of the family bring things they have made, and often items of sentimental value to the Cummings family members. The items are auctioned off and they bid against each other.

This auction is always held on Saturday afternoon and the proceeds go for the expenses for the following year. Another highlight for Saturday evening is the talent show.

James Cummings of Spearman and Josephine Ayers of Gruver are descendants of L.D. and Carrie Cummings.

"I've built a lot of homes with Dual Fuel Heat Pumps. I know they're economical and efficient."



David Johnson of Lake Tanglewood

Professional builder, David Johnson, is building quality into his own home, nestled in a lake setting. Like the homes he builds for others, David's own home is heated and cooled with a Dual Fuel Heat Pump.

**Dual Fuel Heat Pump** Right for any home.

*Mr. and Mrs. Thomas Leo Wright*

and

*Mr. and Mrs. Johnny Mack Hoel*

*invite you to share in the joy*

*of the marriage of their children*

*Brenda Juanita*

and

*Brian Marshall*

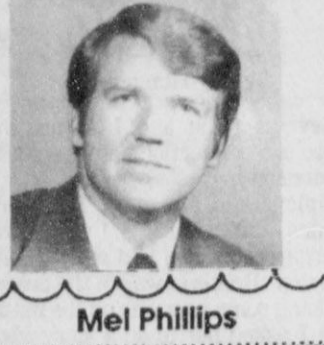
*on Saturday, the twenty-fourth of August*

*at two o'clock in the afternoon*

*First Baptist Church Gruver, Texas*

*Reception following*

**SOUTHWEST  
OUTDOORS**



Mel Phillips

Just returned from attending the "Hunters Extravaganza" in Ft. Worth. It was a dirty job but someone from this area must attend these hunting shows. I am delighted to share with you some of the newest and best products from an outstanding show that attracted some 40,000 people during a three day exhibition.

Without a doubt, the best new product of the 1991 Hunting show was "Instaflame." John Wofford of Texas and Bill Fisher of Maine have invented and patented a solution to man's age old problem - starting a fire. Their system is inexpensive, waterproof, unbreakable, reusable, and just might save your life!

Now starting a fire is not hard unless ... it is raining, the matches are wet, lost, or never packed in the first place. Knowing that many outdoorsmen have quit smoking, the need to have a fire can pose unique problems. Priced at under \$10.00, "Instaflame" is a tribute to the ingenuity of a couple of "good ole boys" who have found a new use for ordinary items.

"Instaflame" is a small hunk of pitch pine (four inches long and one inch square) with a special flint that is hot glued to the pine. It takes about thirty seconds to scrape off a small pile of pine shavings, about the size of a quarter. Then use the knife on the special flint to ignite these shavings. Presto, fire.

If the right person with the Boy Scouts sees this idea, chances are excellent that the Scouts will have their best money making idea since the Girl Scouts started selling cookies.

**BASS TOURNAMENT** - This Saturday, Aug. 24, Lake Baylor, near Childress, will be the site of a Big Bass Tournament. Entry fee is \$60.00, and based on 100 entries, the winner will take home \$2,500. Each hourly winner takes home up to \$100. Ranch House Motel, and Walmart are the sponsors for this event. For more information, call 806-353-3654.

**COVE KILLS** - The killing of every fish in a cove "in order to improve fishing" reminds Playa Pete of the medieval practice of using leeches to bleed sick people "in order to improve their health." Modern society has stopped using leeches and many anglers believe that Texas Parks and Wildlife biologists should have stopped using "cove kills" years ago.

Playa Pete's reply to the shrill, rambling lady who placed that late night anonymous phone call and complained that ole Pete is not an ichthyologist (a college type who studied fish): "Madam, one does not need to be a biologist, ichthyologist, or even a journalist in order to ask about 'cove kills.' In America, any citizen has the right to ask questions about the actions of government agents."

**August is busy month at Hansford Golf Club**

The Hansford County Golf Club has had a busy August, hosting a tournament each of the first three weekends of the month.

On Saturday, Aug. 3, First State Bank of Spearman sponsored a 27

hole junior tournament. According to tournament organizer David Boyd, all proceeds from the tournament went to the Spearman High School golf teams.

The team of Cass Lasater and Dar-

ren Hawkins posted the lowest scores to win the championship bracket of the tournament. They were closely followed by the team of Brady Reed and Toby Thompson, who finished second in the bracket. The third place team was C. Phillips and W. Leman.

The A flight bracket was led by the team of Justin Boyd and Richard Kyger. The second and third place teams were K. Phillips and T. Maxfield, and J. Sutterfield and C. Jenkins.

The team of Molly Blackman and Rainey Whittington topped the B flight competitors. They were followed by Tracy Martin and Schane Schneider. The third place team was Chris Brooks and T. Martin.

On Aug. 10 and 11, the L.M. Womble Two Man - Low Ball tournament was held. The team of Bob Hardy and Kurt Ashmore posted the lowest scores to finish number one in the championship flight. Finishing second in that flight were Dale Hendrick and Frank Wilmeth.

At the top of the first flight was the team of Bill and Andy Jett. They were followed by the team of Kelly Fuller and Don Schroeder.

Winner in the second flight was the team of Hank Sutterfield and Johnnie Williams. Earl Goodheart and David Boyd made up the second place team in the flight.

The Spearman Servitors sponsored a junior-adult tournament last weekend. Each two person team was made up of a junior player and an adult player. The teams were flighted according to the junior player's age.

Finishing number one in the 11 and under flight was the team of Linda and Afton Messenger. They were followed by the team of Coby Kyger and Ned Kyger Sr. The team of C. Stavlo and B. Davis finished third in the flight.

The 12 and 13 year old flight was won by the team of Clint Faries and Dan Faries. Damon Goodheart and Brit Savage finished second. Third place was nailed down by Keith Hight and Eric Cudd.

The father and son team of Richey and Toby Thompson finished first in the 14 and 15 year old age flight. They were followed by the teams of Cass and Butch Lasater, and Wes and Larry Babbs.

In the 16 to 18 year old age flight the first place spot was taken by Todd Bessner and Donald Gooch. Second place was taken by Ryan and Judd Kygar.

The tournaments continue this weekend with the Hansford Golf Club's Day and Night Fun Tournament. The tournament will be held on Saturday.

**HLGA has tourney**

Thirty-two women from Spearman, Gruver, Perryton, Stratford, Clarendon, Borger, Amarillo, Booker, Dumas, Morse, Sunray and Guymon entered the tournament.

Hansford Ladies Golf Association held its annual Partnership Scramble Tournament Tuesday, Aug. 13 at Hansford Golf Course.

Neither rain, cold, wind nor fog kept them from their appointed rounds. Despite the adverse weather conditions, the competitors managed to turn in some pretty good scores.

Following are scores for the top teams:

**Championship Flight**  
First place - Faye Cunningham, Spearman, and Bonnie Crofford, Amarillo, 75; second - Ginger Huggins, Perryton, and Velma Barton, Booker, 77; third - Anne Sanders and Tammie Kygar, Spearman, 78.

**Oil & gas report**

**Intentions to Drill**

**GRAY (PANHANDLE)** Malouf Abraham, Inc., Suzi (40 ac) Sec. 132,3,1&GN, 5 mi southerly from Pampa, PD 3450' (Box 301, Pampa, TX 79066) for the following wells:

#1, 330' from South & 900' from West line of Sec.  
#2, 2200' from South & 2140' from West line of Sec.

**HARTLEY (PANHANDLE Red Cave)** Cosmstock Oil & Gas, Inc., #8-8H Bivins (20 ac) 1250' from South & 2625' from West line, Sec. 8,25,EL&RR, 9 mi east from Channing, PD 3000' (5005 LBJ Freeway, Suite 1150, Dallas, TX 75244)

**HEMPHILL (WILDCAT & URSCHEL Kansas City)** Maxus Exploration Co., #4-49 Urschel (1942 ac)

1400' from North & 1270' from East line, Sec. 49,1,G&M, 3 1/2 mi south from Glazier, PD 8560' (Box 400, Amarillo, TX 79188)

**HEMPHILL (WILDCAT & S.E. CANADIAN Douglas)** Maxus Exploration Co., #6-49 Urschel (1942 ac) 660' from South & 1320' from East line, Sec. 49,1,G&M, 3 1/2 mi south from Glazier, PD 7350'.

**HEMPHILL (WILDCAT & S.E. CANADIAN Douglas)** Maxus Exploration Co., #6-3 Urschel (1942 ac) 1320' from North & East line, Sec. 3,-,TTRR, 5 mi south from Glazier, PD 7400'.

**MOORE (PANHANDLE Red Cave)** Cosmstock Oil & Gas, Inc., #1-42M Bivins (20 ac) 660' from South & West line, Sec. 42,0-18,D&P, 8 mi westerly from Masterson, PD 2450'.

**OLDHAM (HRYHOR Granite Wash)** Rio Petroleum, Inc., #16 Aurora (90 ac) 2200' from North & 800' from East line, League 316,SCL Survey, 13 mi NE from Vega, PD 7500' (600 South Tyler, Suite 12013, Amarillo, TX 79101)

**POTTER (ERT Granite Wash)** Horizon Oil & Gas Co., #1-3 Bivins Ranch (21656 ac) 1760' from South & 745' from West line, Sec. 3,4,ACH&B, 9 mi northerly from Amarillo, PD 7600' (Box 7, Spearman, TX 79061)

**Application to Plug-Back**  
**HUTCHINSON (WEST PANHANDLE)** Jiro, #1 Stewart (160 ac) 2310' from South & 330' from East line, Sec. 21,M-16,AB&M, 8 mi NW from Stinnett, PD 3246' (Box 1567, Fritch, TX 79036)

**Application to Re-Enter to Deepen**  
**OCHILTREE (WILDCAT & S.E. SHARE Upper Morrow)** Harken Exploration Co., #117-2 Davol '10' (640 ac) 660' from North & 1980' from East line, Sec. 59,4,GH&H, 2 mi NE from Waka, PD 8300' (Box 1045, Woodward, OK 73801)

**Amended Intentions to Drill**  
**SHERMAN (TEXAS HUGOTON)** Phillips Petroleum Co., #1R Kroth (650 ac) 1250' from North & 1470' from West line, Sec. 64,3-B,GH&H, 25 mi SE from Stratford, PD 3600'. Amended to change well location.

**Anadarko Petroleum Corp., #1-50 Sneed 'N', Sec. 50,6-T,T&NO, elev. 3522 df, spud 8-23-90, drlg. compl 9-4-90, tested 8-6-91, pumped 80.5 bbl. of 41.8 grav. oil + no water, GOR -, perforated 3318-3378, TD 3378' - Deepened**

**Gas Well Completion**  
**LIPSCOMB (NORTHTRUP Cleveland)** Maxus Exploration Co., #1 Miles 'A', Sec. 553,43,H&TC, elev. 2580 gr, spud 3-5-91, drlg. compl 3-27-91, tested 7-13-91, potential 1425 MCF, rock pressure 1482, pay 7657-7667, TD 10450', PBTD 9265' - Form 1 filed in Unit Petroleum

**LIPSCOMB (NORTH MAMMOTH CREEK Cleveland)** Mewbourne Oil Co., #3 Akers, Sec. 877,43,H&TC, elev. 2282 kb, spud 6-11-91, drlg. compl 6-22-91, tested 7-29-91, potential 2100 MCF, rock pressure 2186, pay 7573-7594, TD 7825', PBTD 7782' -

**ROBERTS (CREE FLOWERS Lower Albany Dolomite)** Wallace Oil & Gas, Inc., #3 Flowers, Clay County School Land, elev. 2729 gr, spud 6-27-91, drlg. compl 6-28-91, tested 7-11-91, potential 2200 MCF, rock pressure 580, pay 3654-3672, TD 4310', PBTD 3760' - Plug-Back

**SHERMAN (TEXAS HUGOTON)** Phillips Petroleum Co., #1R Property, Sec. 45,1-C,GH&H, elev. 3405 rkb, spud 4-23-91, drlg. compl 4-30-91, tested 7-25-91, potential 46 MCF, rock pressure 61.3, pay 2878-2948, TD 3506', PBTD 3435' -

**Plugged Wells**  
**CARSON (PANHANDLE)** Dakkar Production Co., Ford, Sec. 241,B-2,H&GN, spud unknown (oil) - for the following wells:

#1, plugged 7-12-91, TD 3402' -  
#2, plugged 7-18-91, TD 3500' -  
#3, plugged 7-16-91, TD 3450' -  
#4, plugged 7-19-91, TD 3428' -

**CARSON (PANHANDLE)** Energy Agri Products, Inc., Henry, Sec. 242,B-2,H&GN, spud unknown (oil) - for the following wells:

#2, plugged 6-3-91, TD 3439' -  
#3, plugged 6-11-91, TD 3499' -  
#4, plugged 6-1-91, TD 3425' -

**CARSON (PANHANDLE)** Energy Agri Products, Inc., Kimberlin, Sec. 241,B-2,H&GN, spud unknown (oil) - for the following wells:

**CARSON (PANHANDLE)** Ed Myatt Oil Co., McConnell, Sec. 187,3,1&GN (oil) - for the following wells:

#1, spud 9-28-67, plugged 7-25-91, TD 3350' -  
#2, spud 4-27-34, plugged 8-1-91, TD 3417' - Form 1 filed in Herrogan Oil Corp.

**CARSON (WEST PANHANDLE)** APX Corp., #1-60 Burnett Estate, Sec. 60,5,1&GN, spud 5-3-31, plugged 7-9-91, TD 2677' (gas) -

**CHILDRESS (WILDCAT)** Larance Engineering Co., #2 L. McSpadden, Sec. 379,H,W&NW, spud 6-23-91, plugged 7-4-91, TD 5840' (dry) -

**GRAY (PANHANDLE)** Oilwell Operators, Inc., Merten, Sec. 87,3,1&GN (oil) - Form 1 filed in Cree Oil, Inc., for the following wells:

#5, spud 11-9-55, plugged 7-23-91, TD 3275' -  
#6, spud 5-4-59, plugged 7-12-91, TD 3270' -

**GRAY (PANHANDLE)** Phillips Petroleum Co., #5 Joe Dan, Sec. 88,B-2,H&GN, spud 6-21-29, plugged 6-25-91, TD 3192' (oil) -

**GRAY (PANHANDLE)** Phillips Petroleum Co., #3 James Foxx, Sec. 36,3,1&GN, spud 6-14-30, plugged 6-12-91, TD 3125' (oil) -

**GRAY (PANHANDLE)** Phillips Petroleum Co., #4W Johnson Ranch Unit, Lot 7,-,Rockwall Co. School Lands, spud 9-25-89, plugged 7-24-91, TD 750' (water well) -

**HARDEMAN (WILDCAT)** Kirkland Cisco Reef Marbil Oil, Inc., #2 R.O. Nippert, Sec. 381,H,W&NW, spud 7-7-91, plugged 7-14-91, TD 4711' (dry) -

**MOORE (WEST PANHANDLE)** APX Corp., #1-34 Brown, Sec. 34,6-T,T&NO, spud 8-4-39, plugged 7-16-91, TD 2842' (gas) -

**MOORE (WEST PANHANDLE)** APX Corp., #1-33 Sneed, Sec. 33,6-T,T&NO, spud 6-16-31, plugged 7-12-91, TD 2587' (gas) -

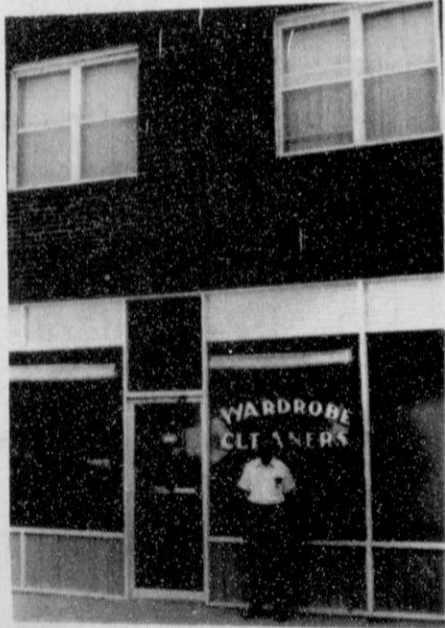
**MOORE (WEST PANHANDLE)** APX Corp., #1-43 Sneed, Sec. 43,6-T,T&NO, spud April 1937, plugged 7-11-91, TD 3150' (gas) -

**WHEELER (WILDCAT)** Marsh Operating Co., #1-5 Paris, Sec.



When weighing precious stones, there are about 142 carats in an ounce.

**Oscar and Frankie Donnell  
announce  
Oscar's retirement and the closing of**



**Wardrobe Cleaners  
after 44 years of ownership.**

We wish to thank our friends and customers in Spearman and Gruver for their many years of patronage. Friday, August 30, 1991 will be our last day open, and patrons may pick up any dry cleaning on or before that date. Business hours through August 30 are 8 a.m. to 6 p.m.

Oscar Donnell, owner  
Pat Brown Rosa Blann



**WARDROBE CLEANERS**  
302 Main Spearman, Texas  
659-2953

*Weatherby*  
"You've Always Wanted One!"

Buy any new Weatherby Firearm by August 30, 1991 and we'll give you an in store credit for up to \$50.00.

Call or visit us for details.

**BOSTON'S**  
Elmwood, OK • 405-625-4896

**We need you.**

American Heart Association

**BEHNE ELECTRIC & CONSTRUCTION**

Electrical Repairs & Handy Man Service  
Reasonable Rates

**CALL 659-3404**



Spearman and Gruver junior high cheerleaders participated in the Spearman cheerleader camps Tuesday, Wednesday and Thursday of last week.

## Spearman Lynx to scrimmage Wheeler

The Spearman Lynx play host to Wheeler Friday, Aug. 23 at 6:30 p.m., for their first scrimmage.

"We are basically a senior team," said Don Mullins, head coach. He expects that eight of his 13 seniors will start on both offense and defense. "These seniors have a lot of experience. They have been starters since they were sophomores," said Mullins.

These players are very familiar with the Lynx offense and defense. "The offense and defense will be the same as last year, but better," said Mullins. He anticipates being able to do more. With the return of running back standouts Brian Beck and Tim Dooley he expects to be able to set up a good passing game by making opponents fear the run.

Mullins indicated he is going to rely on Kris Kelp's leadership at the

quarterback position to run the offense again this year. Kelp will have teammates Dallas Trosper and Cody Pipkin as targets for his passes. The Lynx quarterback may also make some passes to his running backs. "We are going to be a little harder to defense than in the past," said Mullins.

The Lynx defense will be a split 6 defense, with four down linemen, two linebackers, two cornerbacks and three defensive backs. "We will be moving around a lot on defense," said Mullins.

Mullins feels that this scrimmage will be a good test for the team. Wheeler is ranked in the top 10 in most of the state 1A polls. They are returning 15 starters from last year. "They are tough and aggressive, with the right people in the right places," concluded Mullins.

## Gruver Greyhounds to scrimmage BR

It will be an experienced Greyhound team that takes the field tonight as Gruver hosts Boys Ranch for their first scrimmage, against another team, of the 1991 season.

According to Barry Haensch, Greyhound head coach, the festivities will get under way at 6:30 p.m. The JV Hounds will scrimmage first, followed by the varsity at approximately 7:30 p.m.

The varsity Hounds are a team loaded with experienced players. Haensch indicated that there are 28 players out of a total of 55 that were varsity starters at some time last season. "We are going to be able to play a lot of people on Friday nights," said Haensch.

Quarterback position was one example that Haensch uses to show the depth his team has. At that position he has last year's varsity starter, Matthew Hoel, and his back up from last year, Shannon Pool, back this year. Besides those two, Haensch has the services of last year's JV quarterback to call on.

On defense, Haensch indicated

that with the returning starters from last year he expects to have a lot of depth there, too. Among those returning are all-district defensive back Pool and all-district linebacker Crockett Tidwell.

The Greyhound team may not get off to as quick a start as their experience might indicate they would. The Hounds will be using a different offense and defense than they have in the recent past. On offense, Haensch said the Hounds will be more of a running team. On defense, the Hounds will employ a 4-3 defense.

Haensch said he is expecting to have a good blocking offensive line to open holes for the Hound runners. He indicated that that line will be made up of three seniors. They are Garrett Gurnford, Rex Ralston, and Clint Bell. He also mentioned junior Carey Kauffman as the fourth member of that offensive line.

Haensch sees this scrimmage as the start of a good year for Gruver football. "We can be as good as anybody we play," said Haensch.



Gruver Junior High School students stacked up at the front door waiting to start their first day of classes on Monday, Aug. 19.

## School menu

### GRUVER LUNCHROOM Aug. 26-30

**Monday** - fish sticks/tartar sauce, macaroni/cheese, green beans, fruit, cornbread, milk

**Tuesday** - cheese sandwiches, tater tots, fruit, chocolate chip cookies, milk

**Wednesday** - chicken patties, mashed potatoes/gravy, carrots, jello, hot rolls, milk

**Thursday** - western burgers, corn, fruit, milk

**Friday** - chili cheese dogs, french fries, fruit, cookies, milk

### BREAKFAST

**Monday** - cereal, juice, milk

**Tuesday** - blueberry muffins, fruit, peanuts, milk

**Wednesday** - cowboy bread, fruit, peanuts, milk

**Thursday** - toast, peanut butter/jelly, fruit, milk

**Friday** - cinnamon rolls, fruit, peanuts, milk

Salad bar starts Sept. 2.



## Tax rebates down

City sales tax rebates for August have been sent to Spearman and Gruver from the state comptroller's office, with Spearman receiving a check for \$16,365.20 and Gruver receiving \$4,278.62.

This month's rebate checks are down for both cities, Spearman's by 24.37 percent and Gruver's by 2.80 percent as compared with the amount received one year ago. Rebate checks in August of last year totaled \$21,638.28 for Spearman and \$4,402.03 for Gruver.

Payments to date for Spearman total \$108,048.64, while Gruver has received \$30,065.72 in city sales tax rebates. This year's total receipts for Spearman are down 9.86 percent from the total of \$119,871.01 that was received through August, 1990. 1991 total receipts for Gruver are 4.17 percent less than the \$31,374.22 received during this same period last year.

Statewide local sales tax rebates showed an average increase of 5.2 percent over last year's total rebates at this time.

## School lunch, breakfast menus

### SPEARMAN JH/ELEMENTARY Aug. 26-30

**Monday** - meat sauce/spaghetti, mixed vegetables, pear halves, bread sticks, milk

**Tuesday** - fish sticks, macaroni/cheese, fresh raw vegetables/ranch dressing, mixed fruit, cornbread, milk

**Wednesday** - chicken patty, 1/2 baked potato, cut broccoli, hot roll, peanut butter blend, milk

**Thursday** - burritos, whole kernel corn, spinach, peach cobbler, milk

**Friday** - hamburgers, french fries, lettuce/tomato/pickle/onion, birthday cake, milk

### MORSE SCHOOL Aug. 26-30

#### BREAKFAST

**Monday** - toast, cereal, milk, orange juice

**Tuesday** - waffles, sausage, apple juice, milk

**Wednesday** - muffins, toast, grape juice, milk

**Thursday** - cheese toast, honeybuns, orange juice, milk

**Friday** - bacon, eggs, toast, asst. juice

#### LUNCH

**Monday** - Mex rice casserole, salad, mixed vegetables, no bake cookie, milk

**Tuesday** - chicken fried steak fingers, salad, potato/gravy, black-

eyed peas, rolls, fruit, milk

**Wednesday** - hamburgers, tater tots, trimmings, fruit, milk

**Thursday** - ham & macaroni/cheese, green beans, wheat rolls, cherry over cake, milk

**Friday** - pizza, salad, ice cream, fruit, milk



The globefish staves off predators by gulping a large quantity of water, till it becomes simply too large to be swallowed by its enemies.

### SPEARMAN HIGH SCHOOL Aug. 26-30

**Monday** - meat sauce/spaghetti, mixed vegetables, (pear halves) salad bar, bread sticks, milk

**Tuesday** - fish, macaroni/cheese, fresh raw vegetables, salad bar, cornbread, milk

**Wednesday** - chicken patty, 1/2 baked potato, (cut broccoli) salad bar, hot roll, peanut butter blend, milk

**Thursday** - burritos, whole kernel corn, salad bar, peach cobbler, milk

**Friday** - hamburgers, french fries, salad bar, birthday cake, milk



## SEPTEMBER 16-21

SHOWS	Show Time	No. Tickets	Ticket Price	Total Money
MONDAY, SEPTEMBER 16 TRI-STATE TALENT SEARCH	8 p.m.		FREE SHOW SPONSORED BY KRGV, TALKING TONIGHT FM 98 and AMARILLO GLOBE NEWS	
			Box Seats \$12.50	
			Gen. Adms \$10.00	
TUESDAY, SEPTEMBER 17 PAM TILLIS & DOUG STONE	8 p.m.		Box Seats \$12.50	
			Gen. Adms \$10.00	
WEDNESDAY, SEPTEMBER 18 SHENANDOAH	8 p.m.		Box Seats \$12.50	
			Gen. Adms \$10.00	
THURSDAY, SEPTEMBER 19 THE MAINES BROS.	8 p.m.		FREE SHOW SPONSORED BY GEBO'S and KMMI RADIO	
			Box Seats \$12.50	
			Gen. Adms \$10.00	
FRIDAY, SEPTEMBER 20 CHAMPIONSHIP BULL RIDING	8 p.m.		SPONSORED BY COORS OF AMARILLO and BOOTS & JEANS	
			Box Seats \$12.50	
			Gen. Adms \$10.00	
SATURDAY, SEPTEMBER 21 CHAMPIONSHIP BULL RIDING	8 p.m.		SPONSORED BY COORS OF AMARILLO and BOOTS & JEANS	
			Box Seats \$12.50	
			Gen. Adms \$10.00	
TICKETS FOR MAINES BROTHERS AVAILABLE ONLY FROM SHOW SPONSOR				
Total Ticket Amount \$				
Handling Charge \$1.00				
Total Amount Enclosed \$				

Enclosed is a check or money order made payable to:  
Tri-State Fair. Please send tickets to:

NAME \_\_\_\_\_  
ADDRESS \_\_\_\_\_  
CITY/STATE/ZIP \_\_\_\_\_

Buy early for reserved box seats. Purchase all show tickets in advance for free admission to fairgrounds on day of show.

Mail orders will be accepted and processed beginning July 15. Tickets will go on sale across the counter at Boots & Jeans and the Tri-State Fair Office on September 7.

TRI-STATE FAIR, Box 31087 Amarillo, TX 79120

### PUBLIC NOTICE HANSFORD COUNTY TEXAS COMMUNITY DEVELOPMENT PROGRAM

Hansford County will hold a second public hearing at 5:00 p.m. on August 26, 1991, in the Deliberation Room of the Courthouse in regard to the submission of an application to the Texas Department of Commerce for a Texas Community Development Program (TCDP) grant. Topics to be discussed will include the application for sewer system improvements in the amount of \$227,390.00 (approximate) and the estimated amount of funds proposed for activities that will benefit low and moderate income persons. The application will be available for review at the County Judge's office during regular business hours. Handicapped individuals that wish to attend this meeting should contact Judge Brown to arrange for assistance.  
August 22, 1991

**ALLSUP'S**

ALL VARIETIES  
**COCA-COLA**  
6 PACK/12 OZ. CANS

**\$2.29**

---

ALLSUP'S  
**HOMO MILK**  
GALLON

**\$1.89**

ALL FLAVORS  
**BIG LEAGUE**  
CHEW

**59¢**

---

ALL VARIETIES  
**CANDY BARS**

**3 \$1**

NABISCO  
**OREO COOKIES**  
20 OZ. PKG.

**\$1.79**

ALLSUP'S  
**CORN DOGS**  
FOR

**2 89¢**

---

ALLSUP'S  
**BREAKFAST BURRITOS**  
MEDIUM OR LARGE

**79¢**

**MELLO CRISP BACON**  
1 LB. PKG.

**99¢**

---

ALL VARIETIES  
**FITTI DIAPERS**

**\$5.99**

MARDI GRAS  
**PAPER TOWELS**  
JUMBO ROLL

**69¢**

---

OCEAN SPRAY  
**JUICE COCKTAILS**  
48 Oz. Bottle

**\$2.29**

MARDI GRAS  
**PAPER TOWELS**  
One roll

**69¢**

---

**HOT FOODS MENU** AVAILABLE AT ALL ALLSUP'S LOCATIONS

BARBECUE BEEF SANDWICH	99¢	9 PIECE BOX CHICKEN	\$4.99
BARBECUE PORK RIBS (L.B.)	\$3.99	BEEF & CHEESE CHIMICHANGA (MEAD)	\$1.19
BARBECUE WHOLE CHICKEN	\$3.99	CORN DOG DELICIOUS HAMBURGER	69¢
ALLSUP'S BURRITO	79¢	WILSON HOT LINKS	99¢
BREAKFAST BURRITO	99¢	SAUSAGE ON A STICK	\$1.59
BURRITO BEEF & SALSA	\$1.19	SAUSAGE & BISCUIT	79¢
DELICIOUS CHEESEBURGER	79¢	SAUSAGE, EGG & BISCUIT	\$1.09
CHICKEN FRIED STEAK	\$1.59	SAUTEYA SAUSAGE	\$1.09
3 COUNT CHICKEN STRIPS	\$1.49	4 COUNT STEAK FINGERS	\$1.00
W/POTATO WEDGES/CHICKEN (2 PCS)/BISCUIT	\$1.99		

CALL-IN ORDERS WELCOME CHECK OUR WEEKLY SPECIALS

**CAMPBELL'S CUP-A-SOUP**  
2.19 Oz. **2/\$1.00**

**SHURFINE DOG FOOD**  
25 Lb. Bag **\$4.99**

**OREO COOKIES**  
20 Oz. Pkg. **\$2.29**

**PRICES EFFECTIVE AUGUST 18-24, 1991**

**305 W. KENNETH, SPEARMAN 101 MAIN, GRUVER**

**ALWAYS THE BEST PRODUCTS AT THE BEST PRICES! SHOP & SAVE**

# Shopping intense

COLLEGE STATION - Shopping for children's clothing gets intense twice a year - Christmas and right about now, when clothes for school are in high demand.

"Clothing is probably the most expensive item on parents' school supply list," said Dr. Ann V. Beard, clothing specialist with the Texas Agricultural Extension Service.

A U.S. Department of Agriculture study indicates that middle-income urban families in the South each year spend about \$780 on clothing for each child age 15 to 17, \$330 per child between 12 and 14, and \$500 on each younger school-age child.

Shopping a variety of sources for children's clothes can help reduce back-to-school expenses, Beard said. By planning ahead, consumers can find bargains at outlets, thrift stores, discount stores and garage sales.

When shopping for clothes, she suggests following these steps:

- Make a list - Look over your child's wardrobe and note the items needed. Consider the garment desired, color and fabric.
- Budget spending - Before you go shopping, know exactly how much you can afford and what you can spend on each item.
- Take your child shopping - Before you go, prepare the child for what you are looking for, and shop only for him or her, not for the entire family, since young children get tired easily.
- Know sizes - Take along your child's measurements and a tape measure. You cannot always depend on sizes to be accurate.
- Consider the child's growth patterns - Don't buy more than what's needed. Children grow rapidly and may outgrow what you buy before the school year is over.
- Consider purchasing two or three outfits that can be mixed and match-

ed for a more useful wardrobe.

- Consider what special clothing will be needed for your child's activities. Decide if parts of these garments could be worn with regular school clothing as a wardrobe extender. Less expensive tops such as brightly colored t-shirts can add variety to a wardrobe.
- Choose styles and fabrics that will grow with the child. Raglan sleeves, cuffs on pants, adjustable straps and waistbands, large hems in dresses and tops can add to the wear-life of a garment.
- Also, consider the care factors. Knits, especially cotton or cotton/polyester, are easy to care for and stretch for comfort. Choose durable fabrics such as denim and corduroy to withstand children's activities and repeated laundering.

Buying from discount sources can save money, but you need to be careful, Beard said. To make sure you are satisfied with what you buy and getting a good deal, ask yourself these questions before buying the merchandise:

- Are all parts of the garment the same size? One sleeve may be smaller than the other.
- Are collar and lapel points the same length?
- Is the lining the correct size for the garment?
- Will wrinkles press out?
- Are the top and bottom the same size and color?
- Are ties and belts the right size and a good color match?
- Is the fabric design pleasing?
- Are there defects in the fabrics - holes, runs and imperfections? Hold the garment up to the light and find out.
- Is the fabric durable and suitable for the child's activities?
- If there are flaws or worn spots, can you repair them easily?



Emergency Medical Technicians and Gruver firefighters work to move a mock victim from the staged wreck of a school bus, as an observer looks on.

## Boys Ranch Rodeo Labor Day weekend

Approaching at a gallop is another exciting rodeo at Cal Farley's Boys Ranch, where more than 200 young cowboys and cowgirls will compete over the Labor Day weekend.

This 47th annual event will be held Sunday, Sept. 1, and Monday, Sept. 2 at the Ranch, 36 miles northwest of Amarillo. In hopes of winning belt buckles or All-Around Cowboy honors, boys of all ages will be riding calves, bulls, broncs and steers.

Also competing for awards and recognition will be young cowgirls from the campuses of Girlstown, U.S.A. at Whiteface and Borger. The girls will join the boys and area riding clubs in the Grand Entries. Both Girlstown residents and Boys Ranch staff daughters will participate in rodeo events.

Especially enjoyable will be this year's rodeo clowns, about eight boys who have worked hard to earn this position. A two-day seminar, con-

ducted by professional rodeo clown Dustin Brewer of Elk City, Okla., helped prepare the boys for the rigorous job of clowning. While gaining a knowledge of safety, the boys also acquired new antics to humor the rodeo fans.

Up to 10,000 people are expected to fill the rodeo grandstands, most of which are covered. Tickets for children (6-12) are \$1.00; general admission, \$2.50; and reserved bleacher seats, \$3.50. Barbecue plates, prepared and served by the boys at noon each day, will be sold for \$3.50. Rodeo action begins at 2:30 p.m.

The Boys Ranch Rodeo is the Panhandle's largest Labor Day weekend event, and is the only rodeo of its kind in the nation. Additional information and reservations are available by calling (806) 372-2341, or by writing P.O. Box 1890, Amarillo, TX 79174.



Gruver Police Chief Steve Gaines reported that several firefighters were nearly overcome by heat exhaustion Friday, Aug. 16 as they participated in the Gruver mock emergency.



A Gruver firefighter works to give first aid to three Gruver school students who volunteered to play the parts of injured students.

### OWEN'S STEAMWAY

Call us TOLL-FREE

1-800-522-1813

for the Best in Upholstery, Drapery and Carpet Cleaning

Owen & Jean Stephens  
Owners & Operators

1613 N. James  
Guymon, Oklahoma 73942

### 1991 Property Tax Rates in Pringle-Morse CISD

This notice concerns 1991 property tax rates for PRINGLE-MORSE CISD. It presents information about three tax rates. Last year's tax rate is the actual rate the taxing unit used to determine property taxes last year. This year's effective tax rate would impose the same total taxes as last year if you compare properties taxed in both years. This year's rollback tax rate is the highest tax rate the taxing unit can set before taxpayers can start tax rollback procedures. In each case these rates are found by dividing the total amount of taxes by the tax base (the total value of taxable property) with adjustments as required by state law. The rates are given per \$100 of property value.

Last year's tax rate:	
Last year's operating taxes	\$ 621,833
Last year's debt taxes	\$ -0-
Last year's total taxes	\$ 621,833
Last year's tax base	\$ 104,862,226
Last year's total tax rate	\$ .593 /\$100

This year's effective tax rate:	
Last year's adjusted taxes (after subtracting taxes on lost property)	\$ 621,733
÷ This year's adjusted tax base (after subtracting value of new property)	\$ 103,710,488
= This year's effective tax rate	\$ .5994 /\$100
× 1.03 = maximum rate unless unit publishes notices and holds hearing	\$ .61738 /\$100

This year's rollback tax rate:	
Last year's adjusted operating taxes (after subtracting taxes on lost property)	\$ 621,733
÷ This year's adjusted tax base	\$ 103,710,488
= This year's effective operating rate	\$ .5994 /\$100
× .72 for school district (or zero)	\$ -0-
× 1.08 (or add \$.08 for schools) = this year's maximum operating rate	\$ .08 /\$100
+ This year's debt rate	\$ -0- /\$100

(A school district must insert the following lines)	
= This year's rollback rate before adjustment	\$ .08000 /\$100
+ Rate to recoup lost revenue	\$ .23632 /\$100
= Adjusted rollback rate	\$ .31632 /\$100
= This year's rollback rate	\$ .31632 /\$100

#### SCHEDULE A: Unencumbered Fund Balances

The following balances will probably be left in the unit's property tax accounts at the end of the fiscal year. These balances are not encumbered by a corresponding debt obligation.

Type of Property Tax Fund	Balance
M60	-0-

#### SCHEDULE B: 1991 Debt Service

The unit plans to pay the following amounts for long-term debts that are secured by property taxes. These amounts will be paid from property tax revenues (or additional sales tax revenues, if applicable).

Description of Debt	Principal or Contract Payment to be Paid	Interest to be Paid	Other Amounts to be Paid	Total Payment
Total required for 1991 debt service		NONE		
- Amount (if any) paid from funds listed in Schedule A				
- Excess collections last year				
= Total to be paid from taxes in 1991				
+ Amount added in anticipation that the unit will collect only ___% of its taxes in 1991				
= Total Debt Service Levy				

This notice contains a summary of actual effective and rollback tax rate calculations. You can inspect a copy of the full calculations at HANSFORD APPRAISAL DISTRICT

Name of person preparing this notice ALICE PERRY  
Title CHIEF APPRAISER  
Date prepared 8-20-91

### 1991 Property Tax Rates in Gruver ISD

This notice concerns 1991 property tax rates for GRUVER ISD. It presents information about three tax rates. Last year's tax rate is the actual rate the taxing unit used to determine property taxes last year. This year's effective tax rate would impose the same total taxes as last year if you compare properties taxed in both years. This year's rollback tax rate is the highest tax rate the taxing unit can set before taxpayers can start tax rollback procedures. In each case these rates are found by dividing the total amount of taxes by the tax base (the total value of taxable property) with adjustments as required by state law. The rates are given per \$100 of property value.

Last year's tax rate:	
Last year's operating taxes	\$ 1,891,288
Last year's debt taxes	\$ 203,152
Last year's total taxes	\$ 2,094,440
Last year's tax base	\$ 221,540,089
Last year's total tax rate	\$ .9454 /\$100

This year's effective tax rate:	
Last year's adjusted taxes (after subtracting taxes on lost property)	\$ 2,087,876
÷ This year's adjusted tax base (after subtracting value of new property)	\$ 226,866,524
= This year's effective tax rate	\$ .9203 /\$100
× 1.03 = maximum rate unless unit publishes notices and holds hearing	\$ .9479 /\$100

This year's rollback tax rate:	
Last year's adjusted operating taxes (after subtracting taxes on lost property)	\$ 1,885,360
÷ This year's adjusted tax base	\$ 226,866,524
= This year's effective operating rate	\$ .83100 /\$100
× .72 for school district (or zero)	\$ .11100
× 1.08 (or add \$.08 for schools) = this year's maximum operating rate	\$ .19100 /\$100
+ This year's debt rate	\$ .09170 /\$100

(A school district must insert the following lines)	
= This year's rollback rate before adjustment	\$ .28270 /\$100
+ Rate to recoup lost revenue	\$ .09236 /\$100
= Adjusted rollback rate	\$ .37506 /\$100
= This year's rollback rate	\$ .37506 /\$100

#### SCHEDULE A: Unencumbered Fund Balances

The following balances will probably be left in the unit's property tax accounts at the end of the fiscal year. These balances are not encumbered by a corresponding debt obligation.

Type of Property Tax Fund	Balance
M60	\$ 750,000
16S	4,000

#### SCHEDULE B: 1991 Debt Service

The unit plans to pay the following amounts for long-term debts that are secured by property taxes. These amounts will be paid from property tax revenues (or additional sales tax revenues, if applicable).

Description of Debt	Principal or Contract Payment to be Paid	Interest to be Paid	Other Amounts to be Paid	Total Payment
Total required for 1991 debt service		\$ 24,470	\$ 700	\$ 205,170
- Amount (if any) paid from funds listed in Schedule A				-0-
- Excess collections last year				-0-
= Total to be paid from taxes in 1991				\$ 205,170
+ Amount added in anticipation that the unit will collect only .98% of its taxes in 1991				\$ 4,187
= Total Debt Service Levy				\$ 209,357

This notice contains a summary of actual effective and rollback tax rate calculations. You can inspect a copy of the full calculations at HANSFORD APPRAISAL DISTRICT

Name of person preparing this notice ALICE PERRY  
Title CHIEF APPRAISER  
Date prepared 8-20-91



Courtesy of Make-A-Wish . . .

# Wilson family takes Disney World trip

by JoAnn Morton  
Editor

Sharon and Leon Wilson of Gruver recently accompanied their granddaughter Malea and her parents, Lisa and Chad Wilson, of Guymon, Okla., on a trip to Disney World - courtesy of the Make-A-Wish Foundation.

The exciting six-day trip began July 9, when the family traveled to Amarillo for the first leg of their journey. "Those Make-A-Wish people took care of absolutely everything!" exclaimed Sharon Wilson. "They arranged for us to stay at the LaQuinta Inn in Amarillo that first night, they took pictures, they sent us balloons, fruit, t-shirts and treated us to a meal at the Big Texan."

The next morning the dream trip began in earnest, when representatives of the Make-A-Wish Foundation met the family at the Amarillo airport to assist with travel and boarding arrangements. "They had told Chad (Sharon and Leo's son) not to bring any money. They paid for everything and even gave him money to buy souvenirs!" she said.

Make-A-Wish Foundation helps terminally ill youngsters fulfill their fondest dreams by making those dreams come true. The Wilsons' granddaughter, Malea, age 2½, has been under doctors' care since April because of a tumor found at the base of her brain. It is thought to be inoperable.

Because of Malea's young age, her family had a difficult time deciding what would be a suitable wish for the Make-A-Wish Foundation to grant. The trip to Disney World was made at the suggestion of the Foundation representatives, said Sharon.

When the travelers arrived at the airport in Orlando, Fla. more representatives of Make-A-Wish greeted Malea with a huge banner welcoming her to Orlando. They also assisted the family in getting situated in their quarters and helped throughout the entire stay.

The first day was spent at Epcot Center, the second day at the Magic Kingdom, the third day was dedicated to touring Universal Studios, and the fourth day was spent enjoying SeaWorld.

"Malea's very favorite place was the Magic Kingdom," recalled Sharon. "She loved it when the Disney characters came and visited there. She even got to meet Mickey Mouse in person and got to visit with him in his dressing room!"

Naturally, Malea enjoyed all the rides, including boat rides, as any youngster would. Her grandmother said she seemed fascinated by all the activity and the colorful surroundings at the resort. "She even loved the airplane ride to and from Orlando!" observed Sharon.

During their trip, the Wilsons stayed at Kids Village in Orlando. Kids Village is part of an entire compound of accommodations furnished through Make-A-Wish. Kids Village was built by Holiday Inn specifically for recipients of Make-A-Wish Foundation. There is no charge for recipients and their families to stay there.

Within Kids Village is a very special place called the Gingerbread House, where the family took their meals (also furnished by Make-A-Wish). Sharon explained that the Gingerbread House was Malea's favorite place. That may have been because twice while dining there, the Wilsons were visited by Disney characters including Pluto, Chip and Dale, Mickey and Minnie Mouse and Snow White.

Upon their return to Amarillo, the group was once again met at the airport by Make-A-Wish personnel, making their trip complete.

Malea has been back to see her doctors in Oklahoma City twice since that trip, said Sharon. She underwent a magnetic resonance imaging (MRI) scan again on Friday, Aug. 16, which revealed that the tumor at the base of her brain has not grown in size since the last scan. "And she's been feeling pretty good lately," added Sharon.

Sharon said Malea has been taking steroids to ease swelling of the tumor and surrounding tissue, and to reduce fluid buildup in the area. "But



Malea

**MALEA**

Could you just maybe take the time  
To say my name in prayer?  
And ask all those around you,  
"Would you her burden share?"  
For the doctors say that shortly  
I'll be living up above -  
Tho I'm quite too small to understand  
The "Land of Total Love" -  
And I seem to hear a whisper:  
"Faith will answer fervent prayer ..."  
God, my Father, is just waiting  
For arrival over there  
Of an old gray headed grandma or  
A vibrant, brilliant man ...  
Perhaps a bearded grandpa or  
A tender child of ten who  
Will be the author of the prayer  
That gives me health again.  
I know God let them whip poor Jesus  
Just for healings such as these -  
And they come when true believers  
Call His name on bended knees.  
So ... would you take the moment  
Just to call my name in prayer?  
For it could be yours He'll answer  
When He hears it over there.

Joan Clifton Costner  
Guymon, Oklahoma

Reporter-Statesman  
**CLASSIFIEDS 659-3434**

\*\*\*\*\*  
It's Two Stores  
In One  
**SEARS Catalog**  
Sales Agent  
plus  
Plumbing Supplies and Repairs  
Roto Rooter Service  
Gas, Water, Sewer Lines  
Replaced or Repaired  
Septic Tank System & Repair  
License No. 714  
Trenching & Backhoe Service  
**C.O.'S SUPPLY CO.**  
301 S. Davis • Spearman • 659-3781  
\*\*\*\*\*

she can only take so much of the steroids," said Sharon. At a certain dosage level, the steroids' effectiveness begins to diminish and higher doses can not be given, she explained.

So close monitoring of Malea's condition is required by both her doctors and her parents.

During the past few weeks, Malea's family's hopes have been buoyed by the discovery of a neurosurgeon in New York who may possibly be able to operate and remove the tumor.

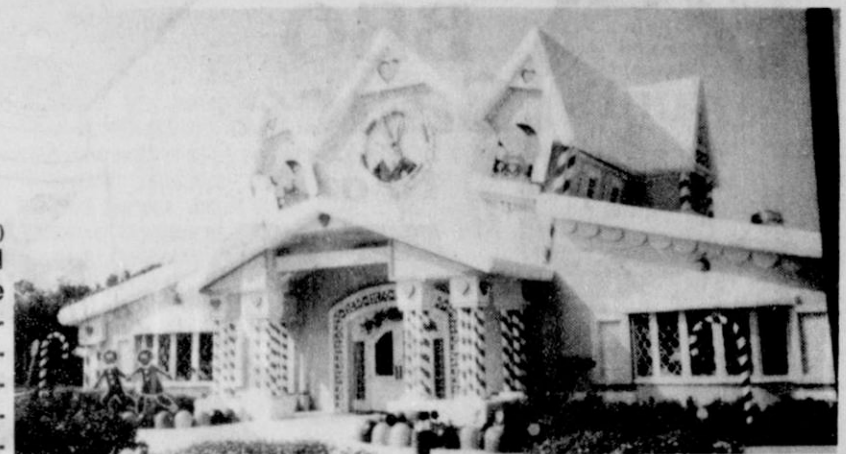
Sharon said, "We found this surgeon almost by accident. We heard that he had been on television, and there was also a story about him in a recent ladies' magazine. They said that several years ago he had done surgery for a little boy, and that surgery was very similar to what Malea needs. He saved the little boy's life."

She said that Malea's doctors in Oklahoma City checked on the New York neurosurgeon and verified the information. Immediately, the process began whereby Malea's records will be sent to New York for the surgeon to examine.

Sharon said his opinion is expected within a few days. Meanwhile, the family is hoping for the best.



(photo courtesy Sharon Wilson)  
Gathering for good times at the Gingerbread House were (front) Pluto, Chip and Dale, (back row, l-r) Leon and Sharon Wilson, Malea, held by her mom, Lisa Wilson, Mickey Mouse, Chad Wilson, and Snow White.



(photo courtesy Sharon Wilson)  
This is the Gingerbread House, Malea's favorite place in Kids Village. Built by Holiday Inn for Make-A-Wish Foundation recipients, the Gingerbread House is part of an entire compound of accommodations furnished through Make-A-Wish.

THE AMERICAN HEART  
ASSOCIATION  
MEMORIAL PROGRAM  
  
American Heart Association  
This space provided as a public service.

**HENSON CHIROPRACTIC**  
410 S. Davis Spearman, TX  
Call For Appointment 659-5603  
Office Hours: Mon., Wed., Fri. 8:30-5:00  
Tue., Thu. 8:30-11:30

**1991 Property Tax Rates in Spearman ISD**

This notice concerns 1991 property tax rates for SPEARMAN ISD. It presents information about three tax rates. Last year's tax rate is the actual rate the taxing unit used to determine property taxes last year. This year's effective tax rate would impose the same total taxes as last year if you compare properties taxed in both years. This year's rollback tax rate is the highest tax rate the taxing unit can set before taxpayers can start tax rollback procedures. In each case these rates are found by dividing the total amount of taxes by the tax base (the total value of taxable property) with adjustments as required by state law. The rates are given per \$100 of property value.

Last year's tax rate:	
Last year's operating taxes	\$ .86198
Last year's debt taxes	\$ .10095
Last year's total taxes	\$ 2,371,904
Last year's tax base	\$ 246,321,539
Last year's total tax rate	\$ .96293 /\$100
This year's effective tax rate:	
Last year's adjusted taxes (after subtracting taxes on lost property)	\$ 2,347,500
+ This year's adjusted tax base (after subtracting value of new property)	\$ 235,229,415
= This year's effective operating rate	\$ .99796 /\$100
x 1.03 = maximum rate unless unit publishes notices and holds hearing	\$ 1.0278 /\$100
This year's rollback tax rate:	
Last year's adjusted operating taxes (after subtracting taxes on lost property)	\$ 2,101,397
+ This year's adjusted tax base	\$ 235,229,415
= This year's effective operating rate	\$ .89333 /\$100
- .72 for school district (or zero)	\$ .17333
x 1.08 (or add \$.08 for schools) = this year's maximum operating rate	\$ .25333 /\$100
+ This year's debt rate	\$ .10008 /\$100

(A school district must insert the following lines)

= This year's rollback rate before adjustment	\$ .35341 /\$100
+ Rate to recoup lost revenue	\$ .04205 /\$100
= Adjusted rollback rate	\$ .39546 /\$100
= This year's rollback rate	\$ .39546 /\$100

**SCHEDULE A: Unencumbered Fund Balances**

The following balances will probably be left in the unit's property tax accounts at the end of the fiscal year. These balances are not encumbered by a corresponding debt obligation.

Type of Property Tax Fund	Balance
M&O	\$ 653,895
I&S	-0-

**SCHEDULE B: 1991 Debt Service**

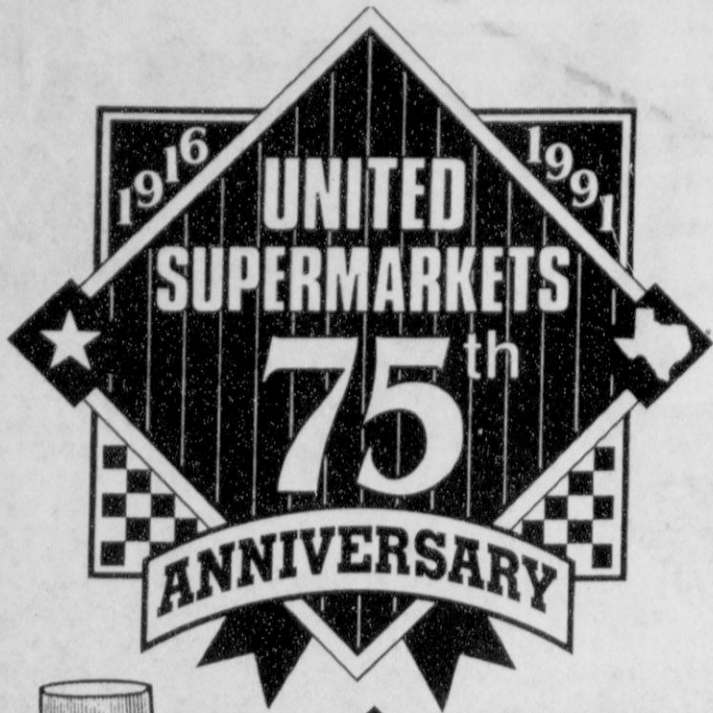
The unit plans to pay the following amounts for long-term debts that are secured by property taxes. These amounts will be paid from property tax revenues (or additional sales tax revenues, if applicable).

Description of Debt	Principal or Contract Payment to be Paid	Interest to be Paid	Other Amounts to be Paid	Total Payment
1988 SERIES	\$ 90,000.00	\$ 144,337.50	-0-	\$ 234,337.50
Total required for 1991 debt service			\$ 234,338	
- Amount (if any) paid from funds listed in Schedule A			\$ 234,338	
- Excess collections last year			\$ 7,594	
= Total to be paid from taxes in 1991			\$ 226,744	
+ Amount added in anticipation that the unit will collect only 90% of its taxes in 1991			\$ 9,448	
= Total Debt Service Levy			\$ 236,192	

This notice contains a summary of actual effective and rollback tax rate calculations. You can inspect a copy of the full calculations at HANSFORD APPRAISAL DISTRICT

Name of person preparing this notice ALICE PEDDY  
Title CHIEF APPRAISER  
Date prepared 8-20-91

**FARM EQUIPMENT AUCTION**  
ROY DEEDS AND C. C. HEATH, Owners  
Tuesday, August 27, 1991 — 10:00 A.M.  
LOCATION: From Gruver, TX, 1 mile West on Highway 15 (Stratford Highway)



# United Spirit Shining Through 75 Years!

GOOD THRU AUGUST 27th  
IN PERRYTON ONLY.



Hunts  
**BBQ Sauce**

18 oz.

**.79**

PRICES GOOD THRU TUES, AUGUST 27TH

WED	THUR	FRI	SAT	SUN	MON	TUES
21	22	23	24	25	26	27

We accept Food Stamps  
and WIC Cards



French's  
**Mustard**

Squeeze Bottle 16 oz.

**.99**



Doritos  
**Chips**

Assorted

9.5 oz. **2 for \$3**



Jumbo California  
**Peaches**

lb. **.59**



**Coke,  
7Up or  
Dr. Pepper**

6\12 oz. cans

**\$1.59**

Wilson  
**Meat  
Franks**

12 oz. pkg.

**.75**



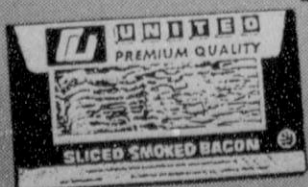
United  
Extra Lean  
Boneless  
**Top Sirloin  
Steak**

lb. **\$2.78**

United Premium Quality  
**Bacon**

12 oz. pkg.

**.98**



USDA Choice  
Top Sirloin  
Steak

lb. \$3.19

**DOUBLE COUPONS**

7 days a week  
See store for details

## Heat detector maker must refund money

from the Spearman Fire Department

A federal court has ordered the maker of Vanguard heat detectors to pay at least \$7.5 million - and perhaps up to almost \$50 million - to compensate consumers for misleading advertising claims it made about the devices.

The Federal Trade Commission ruled in April 1986 that Figgie International Inc. misrepresented to consumers that the heat detectors, which sold for about \$170 each, could give them enough advance warning to escape safely in most residential fires. The company also misrepresented that a combined system of heat detectors and smoke detectors could provide significantly greater warning than smoke detectors alone, according to the FTC's ruling.

The U.S. District Court for the Central District in California has ordered

Figgie to deposit a minimum of \$7.5 million in an escrow account to provide full refunds to consumers who purchased the heat detectors between May 17, 1980 and July 20, 1987.

If the refunds do not total \$7.5 million, the leftover funds should be used for corrective advertising or fire safety research and consumer education, the court said. Depending on claims submitted, the compensation could total up to \$49.95 million.

Consumers who purchased Vanguard heat detectors during the times specified should send proof of purchase to: Department J, Federal Trade Commission, 11000 Wilshire Boulevard, Suite 13209, Los Angeles, CA 90024.

The Federal Trade Commission noted that actual redress may not take place for some time because appeals may be filed by Figgie International.

## New Maxus plant to process Hansford gas

DALLAS - Maxua Energy Corporation (NYSE: MXS) said that its previously announced Texas Panhandle natural gas processing plant will be built in Moore County, Texas. The 30-acre tract is located about 12 miles northeast of Dumas, Texas.

ABB Randall Corp. of Houston has been named general contractor for the plant site. The facility, which is scheduled for completion in January 1993, will have a processing capacity of approximately 160 million cubic feet of gas per day.

The new plant will use cold-box technology, which will allow natural gas liquids recovery, nitrogen rejection and helium recovery from the gas. The cold box will be manufactured by the Linde Division of Union Carbide Industrial Gases Inc. of Tonawanda, N.Y. Compressors for the plant will be packaged by KCI Inc. of Tulsa, while the engines and compressors will be supplied by The Ajax-Superior Division of Cooper

Energy Services of Springfield, Ohio.

"Construction of our own gas processing plant follows Maxus' strategy of optimizing the company's extensive gas-gathering and processing system in the Texas Panhandle," said K. Delmar Rumph, general manager of Maxus' Mid-Continent Division in Amarillo. "The new plant will process gas from eight counties in the panhandle, including Moore, Sherman, Hansford, Ochiltree, Lipscomb, Hemphill, Roberts and Hutchinson counties."

Pending approval of various state and federal permits, ground breaking is scheduled for January 1992.

Dallas-based Maxus Energy is one of the largest independent oil and gas exploration and production companies in the United States. The company operates an extensive gas-gathering system in the mid-continent area, including 2,155 miles of pipeline in the Texas Panhandle and 60 miles of pipeline in Western Oklahoma.

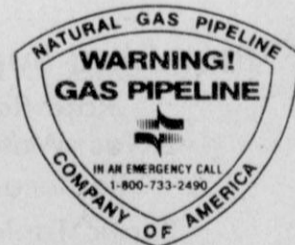
### Help us spot and prevent gas pipeline emergencies!

Natural Gas Pipeline Company transports natural gas along thousands of miles of underground steel pipelines. And we take great care to install and maintain our system in the safest manner possible. That's because we're committed to protecting everyone who lives and works along our pipeline route.

But despite all our safeguards, emergencies occur, primarily through outside forces, such as natural disasters and damage by persons working near our lines. We need your help to spot and report pipeline emergencies so we can react promptly. Better yet, we need everyone's cooperation to prevent accidents from taking place.

#### How to prevent a pipeline accident:

- Call BEFORE you dig, drill or doze.
- Watch for our signs at road, railroad and river crossings, at fence lines, ditches and other sites.
- For no-cost location of ALL underground facilities, call the Texas Excavation Safety System (TESS) at 1-800-DIG-TESS. Please call 48 hours in advance.



#### Signs of a pipeline emergency:

- Hissing or shrill SOUND.
- Unusual BLOWING dirt or dust.
- Persistent BUBBLES in water.
- DYING PLANTS amid healthy ones.
- FIRE or EXPLOSION near pipeline.

#### How to report a pipeline emergency:

- Phone 1-800-733-2490, our toll-free, 24-hour line.

#### How to respond to a pipeline emergency:

- Evacuate the area immediately.
- Avoid potential ignition sources.
- Warn others to stay away.



Natural Gas Pipeline Company of America  
A MIDCON CORP. COMPANY

**NOTICE**  
 Deadline to place or cancel classified line ads is Tuesday noon for Thursday insertion.  
**CLASSIFIED RATE**  
 \$4.00 first insertion  
 \$3.00 each additional insertion (30 words or less)  
 13¢ each word over 30  
 Legal Notices: 15¢ per word  
 Ads must be paid in full in cash before publication, unless advertiser has established credit with the Reporter-Statesman.  
 Payment for out of state classifieds must be in the form of a money order or cashier's check.  
 No tearsheets provided for classified ads.  
 Tearsheets provided on request for legal notices.

# WANT ADS Work Wonders!

Count on the Classifieds to Do the Job

**REAL ESTATE**  
**SMALL EQUITY** - Low interest assumable loan. Nice three bedroom, two bath home. Sunken living room, fireplace, fenced back yard, two car garage. Very nice location for children, 1120 Archer, Spearman. Call 659-2306. S32-RTN

**BOB HARDY REALTY**  
 803 WILMETH DR.  
 659-3440  
**NEW LISTINGS**  
 906 LINN DR. - Qualified 1-1/2 ly. 4 BR, 2 1/2 Bath, 2 Car Garage. **RE-REDUCED!** Fenced, S. Term. Exceptional Quality.  
 526 S. TOWNSEND - 4 B/R, 2 Bath, Basement.  
 Colorado Property For Sale.  
**ROBERT HARDY - BROKER**

**AA Realty**  
 Allen Alford-Broker-659-3034  
 Julie Martin-Sales-659-2425  
 Dennis Nelson-Sales-659-3608  
 Lamy Trosper-Sales-659-3491  
 605 S. Archer-Lot & Trailer-Great Buy!  
 217 N. James-3 1/4-Dbl. Garage  
 729 Collier Dr.-3 1/4-Dbl. Garage  
 1121 Dessen-Neat-3 1/4-garage  
 221 S. Barkley-Good Investment-REDUCED  
 515 Evans-3 BR-2 Bath  
 416 W. 13th-3/2-Dbl. Garage  
 Trailer Court-13 Hookups-4th & Roland  
 Homes to Show Not Listed  
 Just Call For Showings  
**FOR QUALITY & SERVICE CALL US TODAY**  
 Equal Housing Opportunity

**Century 21**  
**GOLDEN SPREAD REALTY**  
 Janye Helton Pointer, Broker Owner, 435-5444  
 Jennifer Nollner, Sales Associate 659-5243  
 821 Dessen - 5/2, lots of house for the money! Call today!  
 701 Wilbanks - 3/2, price slashed! Must see!  
 700 Collier - 3/1 1/4, pool and game room add to the desirability of this home!  
 407 W. 12th - 4/1 1/4, quiet street, carport!  
 605 Archer - 3/2, large rooms plus deck and hot tub!  
 515 S. Bemice - 4/1 1/4, extra large lot & close to school!  
 18 S. James - 3/2, include base-ment and swimming in back!  
 118 Townsend - 4/2, apartment included. Price slashed!  
 505 Haney - 3/1 1/4, owner will sell or rent!  
 703 E. Second - 3/1 1/4, great location!  
 1109 Haney - UNDER CONTRACT nice!  
 13 S. Brandt - 3/1, Farmers Home property, call for details!  
 116 James - Fractured price!  
 205 Lonita - 3/1, starter home!  
 308 Hazelwood - 2/1, for the thrifty!  
 611 S. Evans - 3/1 1/4, affordable!  
 Bam Off County Road - For sale!  
 315 1/2 N. Bemice - Lot for sale!  
\*and \*\* trademarks of Century 21 Real Estate Corporation. Equal Housing Opportunity. INDEPENDENTLY OWNED AND OPERATED.

**ADVERTISING PROVISIONS**  
 1. Publisher reserves the right to reject, edit, revise and properly classify any advertisement at his sole discretion.  
 2. Advertiser assumes all liability for advertisements printed pursuant to his instruction and shall indemnify and hold the publisher harmless from and against any and all claims and damages, including all costs incurred by publisher in connection therewith. Advertiser represents that all advertising copy is truthful and not misleading. Advertiser shall indemnify and hold publisher harmless from any claim against publisher arising out of or in connection with publication of advertising (except for modifications made by publisher without Advertiser's approval) including, but not limited to, claims for libel, invasion of privacy, commercial appropriation of one's name or likeness, copyright infringement, trademark, trade name or patent infringement, commercial defamation, false advertising, or any other claim whether based in tort or contract, or on account of any state or federal statute, including state and federal deceptive trade practices acts. If advertiser claims copyright ownership in any of the advertising published, advertiser must include proper notice of its copyright claim in the body of the advertisement, otherwise copyright ownership shall remain in publisher.  
 3. Advertiser agrees to check advertisement in the first issue in which it appears and report any error at once as publisher assumes no responsibility for errors after the first insertion. For any error which is the fault of the publisher and of which publisher has been timely notified, publisher will reprint the corrected advertisement for one extra insertion or refund the proportionate cost of the advertisement containing the error. Publisher shall have no responsibility for errors appearing in the copy submitted by advertiser.

**REAL ESTATE**  
**FOR SALE:** 4 bedroom, 1 1/2 bath brick home with basement and detached garage, large corner lot near school. Call after 5 p.m., 659-3944. S39-5tc

**HOUSE FOR SALE:** 110 South Brandt, Spearman. Two bedrooms, one bath, two corner lots, storm cellar, garage. Any serious offer considered, must sell. 733-2914 or 733-2097. S41-4tc

**FOR SALE:** 3 Bedroom, 2 bath home. Sunken living room, parquet floors, fireplace, covered patio, 2 car garage, sprinkler system, 2193 sq. ft. living space, excellent location. Call 659-3587 or 659-5022. S33-RTN

**NICE HOUSE** on 1 1/2 lots. Fence, 3 bedrooms, 1 1/2 baths, study, utility room, lots of cabinet storage, garage, huge driveway, central air/heat, 1500 sq. feet. \$42,000. 727 Wilbanks. 659-3970 or 659-3838. S24-3tpRTN

**SUPER PRICE!** Nice 3 bedroom, 1 bath brick home, close to schools and parks, with garage, storage shed, fenced backyard. Call 659-2962. S37-RTN

**FOR SALE** - 2100 sq. ft. (living space) home, 3 large bedrooms, 2 1/2 baths, large kitchen, living room and den. Attached garage, fireplace, large yard with trees. 224 Barkley, call Bob Boxwell at 659-3802 for appointment to see. S37-RTN

**HOMES FOR SALE** by government agencies. \$1.00 (U-repair) or \$1600 (move-in). 1-805-564-6500 Ext. HA12373 for immediate response. S42-4tp

**FOR LEASE:** 10 acres on the edge of town, has city water. Call (806) 935-7405. S43-2tp

**FARM:** 489 acres, 3 miles south of Dickens, 1 mile west on 1868, 2 wells on 320 acres, \$275 an acre, 29% down, 10 year balance.  
**FARM & PASTURE:** 450 acres, 1 1/2 mile southwest of Spur, \$350 an acre.  
**NICE** 3 BR, 2 bath, brick on 12 acres in northwest Spur, outside city limits.

**DWAYNE MOSES REAL ESTATE RALLS, TX 806-253-2945**

**FOR RENT:** large mobile home lot, storage bldg., sidewalk and 2-car parking slab. 6 ft. wood privacy fence. 1 block from swimming pool and close to schools. Call 659-2954, leave name and phone number. S35-RTN

**MOBILE HOME SPACES** in Spearman for rent \$50 per month. Call Bill Bailey, 435-5080. S38-RTN

**APARTMENTS FOR RENT.** One and two bedrooms, furnished. Call J.P. at 659-2117. S25-2tpRTN

**REPORTER-STATESMAN CLASSIFIEDS WORK!**

**Today's Best Buys**  
**OREO COOKIES** 20 Oz. Pkg. \$2.29  
**ALLSUP'S CONVENIENCE STORE**

**WILSON MEAT FRANKS** 12 Oz. Pkg. 75¢  
**UNITED SUPERMARKET-PERRYTON**

**UNITED MILK** 1/2 Gallon 99¢  
**UNITED SUPERMARKET-PERRYTON**

**COKE, 7UP OR DR. PEPPER** Six 12 Oz. Cans \$1.59  
**UNITED SUPERMARKET-PERRYTON**

**WANT TO BUY**  
**WANT TO BUY:** Baby play pens - doesn't have to be nice. Call after 5 p.m. 733-2286. S43-2tp

**HOUSEHOLD GOODS**  
**GREAT BUY** - King size waterbed with bookcase headboard. Hibernation Series, extra firm, complete. 659-2960. S42-2tp

**SPECIAL NOTICE**  
**FUND-RAISER** sure to put money in your group's bank account! Earn 40 percent profit! Excellent prize program. Suited to your group. Call 659-2989. S42-2tp

**BACK TO SCHOOL!** For a new fall look, make-up workshop. Cost \$15. You'll receive a personalized color make-up kit (\$25 retail value), plus personal training instructions. Call 659-2989 to reserve your spot. S43-2tp

**SERVICES**  
**JACK OF ALL TRADES!** We do anything and everything! Painting, tree trimming, mowing, yard work & clean up, landscaping, roofing, fence building (all types). You need it done, call David Pearson at 659-3352. S43-1tcRTN

**Bob Williams**  
**435-4835**  
**Sweep Air Seeder**  
 \$6/A -200 Acres  
 \$50/A -+200 Acres  
**HANDYMAN** - YOU WANT it done and can't or don't want to do it yourself!! Call Uncle Ed (Pearson) 659-3328 anytime! House, yard, fence, car, mower, bicycle, air conditioner, etc... Anything!! S37-RTN

**Stay in touch!** with **G&G ELECTRONICS** Cellphone USA \*2-way Radio \*Mobile Telephones \$35/month No Air Time \*Repeater Spaces \*Pagers \*Satellite Work  
 Call Bruce Duncan (806) 659-3673

**NOTICE**  
**Wallace Monument Co.**  
 Monuments, Curbing, Grave Covers  
 1-800-999-9506  
 Local Representative  
**LEONARD JAMESON**  
 Spearman, Texas  
 35s-rtn

**OSGOOD MONUMENT CO.**  
 Amarillo, Texas  
 Dealers of Rock of Ages Granite, as well as all colored granites, marble and bronze memorials.  
 represented by  
**BOXWELL BROS. FUNERAL HOME**  
 519 S. Evans  
 659-3802

**Are You A Victim of Physical Abuse?**  
 Call Toll Free 1-800-753-5308  
 We are in Spearman on the 1st and 3rd Wednesdays of each month from 9:30 to 11:30 a.m. Call for an appointment. Also, we can come to Spearman at any time upon request. We also operate a safe place for victims and their children to stay in times of crisis.  
**Panhandle Crisis Center**  
 Serving Hansford, Lipscomb and Ochiltree Counties  
 317 S. Main Perryton, TX

**FARM PRODUCTS/LIVESTOCK**  
**BLACK-EYED PEAS.** Call Carolyn Shields at 405-545-3417 after 7 p.m., or call 659-3832 after 4 p.m. S43-2tp

**PETS**  
**AKC REGISTERED** Rat Terrier puppies for sale. 6 weeks old. Black & tan. Two females. 733-5273. S43-2tp  
**FREE SIAMESE KITTENS:** Four seal point, one red point. Phone after 5:30 p.m., 659-3490. S43-2tp

**MISC. FOR SALE**  
**TROMBONE** for sale. 659-2285. S43-1tc  
**For Sale** - SMALL REPO PIANO - Like new - Can Be Seen Locally - Small Monthly Payments Available - Brier & Hale Music - PH. 316-624-8422. S43-4tc

**NEW TRAMPOLINES**  
 Mats and springs. Resew trampoline mats. Make new boat covers.  
 Call 806-659-2109  
 Hany Stumpf  
 301 W. 12th  
 Spearman, Texas

**JAN'S ETC. NEW & USED & ANTIQUES TOO**  
 Everything for home and family. Plains Shopping Center in Spearman. Open Monday - Saturday, 9:30 a.m. to 6:00 p.m. S16-RTN

**SERVICES**  
**OWEN'S STEAMWAY** of Guyton, OK now has a toll-free number for your convenience. Call 1-800-522-1813 for all your carpet, upholstery, drapery and other cleaning needs. Owen & Jean Stephens, Owners/Operators. S43,45,47,49c

**CUSTOM EMBROIDERY** - We sell personalized and customized T-shirts, jackets, caps, towels, sweaters, laundry bags, golf shirts - Put your logo on anything! Quantity discounts available. Hi Plains Sports, Northridge Shopping Center, Guyton, Oklahoma, 405-338-3063. MC & VISA S42-3tc

**CALL YOUR LOCAL Used Cow Dealer** for 7 days a week dead stock removal. 659-3544 or 1-800-692-4043. Serving Cattlemen for the past 20 years. G51-RTN

**FOR REASONABLE, QUALITY** guaranteed gearhead repair, call 806-435-4900, 8-12 Monday-Friday. 806-435-3939 after 6 p.m. and weekends. Loaner gearheads available in most cases. S37-RTN

**MAKE A FRIEND...FOR LIFE!** Scandina- vian, European, Yugoslavian high school exchange...students...arriving August...HOST FAMILIES NEEDED! URGENT! Visa deadlines! Call now! American Intercultural Student Exchange. Toll-free 1-800-SIBLING.

**ATTENTION HOME BUYER.** Special factory discount undersell anyone!!! Lowest prices on ordered Palm Harbor, Fuqua, Oak Creek or Skyline manufacturer homes or \$100.00 cash. CALL NOW: 1-800-275-1161.

**BECOME A PARALEGAL.** Join America's fastest growing profession. Work with attorneys. Lawyer instructed home study. The finest paralegal program available. Free catalogue. 800-362-7070 DEPT.LJ72202.

**WOLFF TANNING BEDS:** new commercial-home units from \$199. Lamps, lotions, accessories. Monthly payments low as \$18. Call today. FREE new color catalog. 1-800-462-9197.

**FOREIGN EXCHANGE STUDENT,** Fernando, from Spain, 17. Become an AISE hostfamily. Extremely urgent! Visa deadlines here. Call Diana Cooley, 713-933-8649, or 1-800-SIBLING NOW!

**HAPPY JACK FLEAGARD:** All metal patented device controls fleas in home without chemicals or exterminators. Results overnight! At farm feed drug & hardware stores.  
**AUTO FINANCE!!** Bad credit OK - no down payment. 1987-1991 models. Make low monthly payments on financially distressed vehicles. 1-800-274-8141 information 24 hrs.  
**FRIENDLY HOME PARTIES** has openings for demonstrators. No cash investment. No service charge. Highest commission and hostess awards. Three catalogs, over 800 items. Call 1-800-488-4875.  
**SHARE AMERICA!** Walls must fall! Visa deadlines here! AISE high school exchange students await family call for August. 31 countries/local representative. Just food, bed, sharing! Exciting! Rewarding! Relevant! Lifetime! 1-800-SIBLING.

**GARAGE SALES**  
**THREE FAMILY** garage sale, August 24, 8:00 a.m. - & 1 1/2 miles west of Gruver on Hwy 15. Antiques, crafts, new materials, double knit, household items, cross-bed pickup tool box, wet-dry vac, boys clothing. S43-1tp

**HELP WANTED**  
**APPLICATIONS** are being taken at Watley Seed Co. for a full time general laborer. Apply in person at Watley Seed Co., Hwy 15 East, Spearman. S43-2tc

**HIRING NOW** - Part-time or full time career opportunities as dealer for Tupperware Home Parties. Unlimited potential. Call 316-598-2232 for interview or information. S41-3tp

**FIFTY-EIGHT BED** acute care healthcare facility is now taking applications for a Chief Operating Room Technician. Position offers competitive salary and great benefits. Relocation assistance is available. Interested persons should send resume to Personnel Department, 520 Medical Drive, Guyton, Oklahoma 73942. E.O.E. S42-3tc5.59

**WANTED: SALES REPRESENTATIVE** for Ag Chemical Distributor. Co-op background helpful. Send resume to P.O. Box 53175, Lubbock, TX 79453. S42-2tp

**PUBLIC NOTICES**  
**NOTICE TO BIDDERS**  
 The Spearman Independent School District will be taking invitations to bid to secure a list of suppliers for gasoline and diesel fuel for the 1991-92 school year.  
 Information concerning this can be picked up at the Business Office located at 403 East Eleventh Street or by calling 659-2116.  
 The District reserves the right to accept or reject any/all bids, and to waive all formalities in bidding. S43-2tc10.50

**SPEARMAN INDEPENDENT SCHOOL DISTRICT**  
**NOTICE OF BUDGET HEARING**  
 The President of the Board of Trustees of the Spearman Independent School District, pursuant to Section 23.45 of the Texas Education Code and Article 29e, V.A.T.S., has called a meeting of the Board of Trustees for the purpose of adopting a preliminary budget for the 1991-1992 fiscal year of the District, that shall cover all expenditures for the fiscal year.  
 The meeting shall be held on the 26th day of August, 1991 at 7:00 p.m. at Spearman High School Board Room in Spearman, Texas.  
 Any taxpayer of the District may be present and participate in the hearing. S42-2tc16.05

**\$\$\$ CLASSIFIED ADS \$\$\$**  
**PAY OFF!**

**TexSCAN**  
 Statewide Classified Advertising Network  
 Advertise in 293 Texas newspapers for only \$250.  
 Reach 3 MILLION Texans. Call this newspaper for details.

**MAKE A FRIEND...FOR LIFE!** Scandina- vian, European, Yugoslavian high school exchange...students...arriving August...HOST FAMILIES NEEDED! URGENT! Visa deadlines! Call now! American Intercultural Student Exchange. Toll-free 1-800-SIBLING.

**ATTENTION HOME BUYER.** Special factory discount undersell anyone!!! Lowest prices on ordered Palm Harbor, Fuqua, Oak Creek or Skyline manufacturer homes or \$100.00 cash. CALL NOW: 1-800-275-1161.

**BECOME A PARALEGAL.** Join America's fastest growing profession. Work with attorneys. Lawyer instructed home study. The finest paralegal program available. Free catalogue. 800-362-7070 DEPT.LJ72202.

**WOLFF TANNING BEDS:** new commercial-home units from \$199. Lamps, lotions, accessories. Monthly payments low as \$18. Call today. FREE new color catalog. 1-800-462-9197.

**FOREIGN EXCHANGE STUDENT,** Fernando, from Spain, 17. Become an AISE hostfamily. Extremely urgent! Visa deadlines here. Call Diana Cooley, 713-933-8649, or 1-800-SIBLING NOW!

**HAPPY JACK FLEAGARD:** All metal patented device controls fleas in home without chemicals or exterminators. Results overnight! At farm feed drug & hardware stores.  
**AUTO FINANCE!!** Bad credit OK - no down payment. 1987-1991 models. Make low monthly payments on financially distressed vehicles. 1-800-274-8141 information 24 hrs.  
**FRIENDLY HOME PARTIES** has openings for demonstrators. No cash investment. No service charge. Highest commission and hostess awards. Three catalogs, over 800 items. Call 1-800-488-4875.  
**SHARE AMERICA!** Walls must fall! Visa deadlines here! AISE high school exchange students await family call for August. 31 countries/local representative. Just food, bed, sharing! Exciting! Rewarding! Relevant! Lifetime! 1-800-SIBLING.

**PUBLIC NOTICES**  
**NOTICE OF PUBLIC HEARING**  
 The City of Gruver will hold a Public Hearing on August 29, 1991 to discuss the proposed 1991-1992 Annual Budget. The hearing will be held at the Gruver City Hall, 108 East Broadway Street, at 7:00 p.m.  
 The proposed Annual Budget is on file at the office of the City Clerk at the City Hall and is available for public inspection.  
 A.J. Ratiff  
 City Manager  
 S43-1tc

**LEGAL NOTICE**  
 Hansford County Commissioners' Court will hold a budget hearing at its regular meeting at 10:00 a.m. on Monday, August 26, 1991 on a proposed budget for 1992 (October 1, 1991 through September 30, 1992) in the amount of \$2,098,532, including a salary increase of 4% for all elected and full time employees paid on a monthly basis.  
 Jim D. Brown  
 Hansford County Judge  
 S43-1tc8.70

**Classifieds**  
**Advertising Pays \$\$\$\$**  
 Call 659-3434  
 or  
 1-800-395-9482

**reach more than 3 million Texans for only \$250**  
 Now you can run your classified ad in newspapers all across Texas for \$250.  
 That's right—a 25 word ad costs only \$250 to run in 280 newspapers with a combined circulation of more than 3 million readers throughout the Lone Star State.  
 One call to this newspaper, that's all. We'll place your ad in 280 newspapers. All you have to do is get ready for results.  
 This new sales opportunity is brought to you by this newspaper and the Texas Press Association member newspapers.  
 Call this newspaper for details:  
**TexSCAN**  
 Statewide Classified Advertising Network

**TexSCAN**  
 Statewide Classified Advertising Network  
 Advertise in 293 Texas newspapers for only \$250.  
 Reach 3 MILLION Texans. Call this newspaper for details.

**MAKE A FRIEND...FOR LIFE!** Scandina- vian, European, Yugoslavian high school exchange...students...arriving August...HOST FAMILIES NEEDED! URGENT! Visa deadlines! Call now! American Intercultural Student Exchange. Toll-free 1-800-SIBLING.

**ATTENTION HOME BUYER.** Special factory discount undersell anyone!!! Lowest prices on ordered Palm Harbor, Fuqua, Oak Creek or Skyline manufacturer homes or \$100.00 cash. CALL NOW: 1-800-275-1161.

**BECOME A PARALEGAL.** Join America's fastest growing profession. Work with attorneys. Lawyer instructed home study. The finest paralegal program available. Free catalogue. 800-362-7070 DEPT.LJ72202.

**WOLFF TANNING BEDS:** new commercial-home units from \$199. Lamps, lotions, accessories. Monthly payments low as \$18. Call today. FREE new color catalog. 1-800-462-9197.

**FOREIGN EXCHANGE STUDENT,** Fernando, from Spain, 17. Become an AISE hostfamily. Extremely urgent! Visa deadlines here. Call Diana Cooley, 713-933-8649, or 1-800-SIBLING NOW!

**HAPPY JACK FLEAGARD:** All metal patented device controls fleas in home without chemicals or exterminators. Results overnight! At farm feed drug & hardware stores.  
**AUTO FINANCE!!** Bad credit OK - no down payment. 1987-1991 models. Make low monthly payments on financially distressed vehicles. 1-800-274-8141 information 24 hrs.  
**FRIENDLY HOME PARTIES** has openings for demonstrators. No cash investment. No service charge. Highest commission and hostess awards. Three catalogs, over 800 items. Call 1-800-488-4875.  
**SHARE AMERICA!** Walls must fall! Visa deadlines here! AISE high school exchange students await family call for August. 31 countries/local representative. Just food, bed, sharing! Exciting! Rewarding! Relevant! Lifetime! 1-800-SIBLING.

**PROVEN RESULTS.** Save money. Surplus aircraft tires eliminate most flats on cotton trailers, grain carts. Use your own wheels. 1-800-828-3350. GENSCO, Box 14628, Houston, TX 77221.

**URGENT!! GERMANY'S THOMAS** anxiously awaits Host Family call to A.I.S.E. Texas. Swimming, piano, "popular", "friendly". TIME RUNNING OUT for Thomas, others!! Diana Cooley, 713-933-8649, 1-800-SIBLING.

**EXCELLENT BUSINESS** in peaceful Highland Lakes area. High cash flow returns on your investment. Partial owner financing. 512-693-7167. 512-693-5303 Joy only, Marble Falls, Texas.  
**COVENANT TRANSPORT.** Hiring tractor trailer drivers; 1 yr. O.T.R. experience; -Single 19-22c; -East coast pay; -Incentive pay; -Benefits package; -Minimum age 23; -Teams 27-31c. 1-800-441-4394.  
**ANTELOPE, DEER AND ELK** hunts guided and drop camps. Guaranteed licenses, have 1991 openings. 303-731-4190. Backcountry Outfitters Inc., Box 4190, Pagosa Springs, CO 81157.  
**DRIVERS: KLLM INC.,** Dallas and Houston terminals are now hiring drivers and teams with one year recent Tractor Trailer experience! Call 1-800-925-5556 or 1-800-765-8493.  
**LAND BONANZA!** Hurry, offer ends 8/31/91. 4% interest, 30-yr term, avg-10 ac. \$92/mo. Have your own part of Texas. Country living. 800-275-REPO.  
**LOVING COUPLE** LONGING for new-born to hold, love and protect for life. Help fill a lifetime dream. Please call collect Joe and Rosanne 802-235-2312.  
**ADOPTION: HAPPINESS, LOVE** and financial security awaits your child. Please take the first step and call Leslie/Chris collect 201-994-3563. Legal/confidential. Medical expenses paid.  
**ADOPTION: HAPPY, LOVING** couple wish to devote their lives to your newborn. Caring country home, complete financial security, lots of cousins to play with. Confidential. Medical expenses paid. Call Jane/Tom Collect 212-509-5117.

**Obituaries**

**Luella Hart Snider**  
MIDLAND - Graveside services for Luella Hart Snider of Midland were conducted Friday, Aug. 16 at Dream Land Cemetery in Canyon with Paul Nichols, pastor of the Permian Church of Religious Science, officiating.

Services were under the direction of Ellis Funeral Home of Midland. Mrs. Snider died Tuesday, Aug. 13 at her residence.

She was born July 15, 1900 in Dane, Okla. and was reared in Canton and Longdale. She married Eldon K. Snider in Longdale in 1920, and in 1924 they moved to Spearman.

They moved to Lubbock in 1941, and to Canyon in 1960. Her husband died in 1979 and she moved to Midland in 1981. She attended the

Permian Church of Religious Science.

She is survived by one son, John Phillip Snider of Midland; two daughters, Patricia Pezzoli of Oriental, N.C., and Marilyn Walker of Midland; one brother, J.P. Hart of Oklahoma City, Okla.; seven grandchildren; and 12 great-grandchildren.

**Fern Nollner Breeze**  
Fern Nollner Breeze, 80, died Saturday, Aug. 10.

Mrs. Breeze, born in Moscow, Kan., was a Spearman resident from 1947 to 1969. She also had lived in Carter, Okla., and in Los Angeles. She married Carl Nollner in 1928 at Liberal, Kan. He died in 1961. She married Earsey Breeze in 1969 at

Borger. He died in 1970. She was a homemaker and a nurse. She was a member of First Baptist Church in Carter.

She is survived by a son, Don Nollner of Los Angeles; a sister, Cleo Little of Carter; and two grandchildren.

Graveside services were conducted Saturday, Aug. 17 at Hansford Cemetery with the Rev. David Furlow, associate pastor of First Baptist Church, officiating.

**James L. Sparks**  
James L. Sparks, 78, of Spearman died Thursday, Aug. 15.

Mr. Sparks was born in Hansford County, and was a lifetime resident. He married Lometa Buchner in 1934 at Spearman. He was a farmer and a member of Hansford Lodge No. 1040 AF&AM.

Survivors include his wife; three sons, Jerry Sparks of McLean and Larry Sparks and Evan Sparks, both of San Antonio; two brothers, W.E. Sparks of Spearman and Litch Sparks Jr. of Stinnett; three sisters, Owassa Valdez, Mary Ann Snodgrass and Billie Jo Kelly, all of Bakersfield, Calif.; three grandchildren; and three great-grandchildren.

Graveside services were conducted Sunday, Aug. 18 in Holt Cemetery with the Rev. LaVern Draper, pastor of First Christian Church, officiating.

**Immunization rules changed**

The Texas Department of Health (TDH) reminds all parents and school or day care administrators that immunization rules for Texas children recently have been changed. In efforts to stop recent resurgences of so-called childhood diseases, the Texas Board of Health, in both 1990 and 1991, modified existing immunization requirements.

TDH urges parents to ensure that their children's immunization records comply with those rules. Physicians and local health departments can supply detailed information about the requirements. Low-cost or free back-to-school immunizations are offered throughout the year in many Texas communities.

One of the newest immunization rule changes eases restrictions against persons other than a child's parents who seek vaccinations for children in their care. Now, parents and legal guardians may formally delegate authority for signing immunization consent forms to other adults, such as a child's grandparent.

Other recent rule changes include a mandatory second dose of measles vaccine for all Texas school children by age 12. Also, children who are younger than 5 must be vaccinated against Haemophilus influenzae type b (Hib disease), a common cause of meningitis in children, and pertussis (whooping cough).

Wes Hodgson, epidemiology coordinator for the TDH Immunization Division, said, "The continuing measles outbreaks which began in 1988 underscore the tragic results of

incomplete vaccinations. In recent years, some parents failed to protect their children against vaccine-preventable diseases, while some school and day care operators failed to keep adequate records so that inadequately immunized children went unnoticed. The result has been a growing number of insufficiently immunized children and young adults - all of whom are now vulnerable to infection."

Hodgson said that state law requires all children entering Texas schools or day care to show proof of immunizations at certain ages against polio, tetanus, measles, rubella (German or three-day measles), mumps and diphtheria. Younger children must also give proof of immunity to whooping cough

and Hib disease. "The law allows for some exceptions to these requirements," Hodgson added, "but each case must be considered individually."

He stressed that since a child's age and medical history are factors in which vaccines and "boosters" the child needs, parents should consult their family physicians about the required immunizations for each child.

Hodgson said that, beginning in 1992, college students enrolled in health related courses, and medical or dental schools will be required to have certain immunizations against rubella, mumps, measles, tetanus, diphtheria and hepatitis B. Veterinary students will need current vaccinations against rabies.

**Payee duties listed**

PAMPA - Most older people can manage their own money very well, some can't act in their own best interest and require a relative or friend to act as a representative payee. A representative payee will only be appointed if it is determined that the beneficiary is unable to manage his or her funds.

When a person agrees to be a representative payee, he or she becomes responsible for someone's Social Security and/or Supplemental Security Income (SSI) benefits. The payee receives Social Security mail and checks on behalf of the beneficiary and uses the money to meet the living expenses of the beneficiary.

The most important duty of a representative payee is to make sure that the beneficiary's current needs are being met. These needs include food, shelter, clothing and medical attention.

Money that remains after current needs are met must be saved for the beneficiary. Once a year, the payee files a report for Social Security showing how funds were used.

If any changes occur that would affect the person's Social Security or SSI eligibility, the representative payee must report them to Social Security. There is a list of changes which have to be reported and addi-

tional information about being a representative payee in the leaflet, "Your Duties as a Representative Payee," available from Social Security.

For more information contact your nearest Social Security office or call the toll-free telephone number, 1-800-234-5772.

**Hospital Notes**

**ADMISSIONS**

Thursday, Aug. 15 - none  
Friday, Aug. 16 - Mabel Wisian, Katrina Cole  
Saturday, Aug. 17 - Darrel West  
Sunday, Aug. 18 - none  
Monday, Aug. 19 - Minnie Chesser  
Tuesday, Aug. 20 - Sharon Whitefield

**DISMISSALS**

Thursday, Aug. 15 - none  
Friday, Aug. 16 - Leonard Jameson  
Saturday, Aug. 17 - none  
Sunday, Aug. 18 - Katrina Cole, R.E. Sanders, John Campbell, Mabel Wisian  
Monday, Aug. 19 - Darrel West  
Tuesday, Aug. 20 - none

**PATIENT CENSUS**

Wednesday, Aug. 21 - Silas Dozier, Minnie Chesser, Sharon Whitefield

**Quitting Business Sale!**  
**Starting August 26th**  
**at 9:00 a.m.**

Bath Rugs & Accessories  
Wooden Furniture  
Kitchen Linens, Etc.  
In-stock Dishes & Crystal  
30% to 50% Off  
**Everything!**  
(Except Brides' Tables)  
Potpourri  
Cards  
Children's Gifts  
Towel Sets

*The Gift Registry*  
103 E. Broadway  
Gruver



**TEXAS**  
*It's Like A Whole Other Country.*

**Tulip Quilt Class**  
**Sept. 7th 9:00 a.m.**  
**Jean McCarley - Instructor**

For more information call or come by  
**Jo's This n' That**  
**216 Main 659-3999**  
**Spearman, Texas**

**YOU'RE INVITED**

Chips Cokes To A FREE Ice Cream  
First 2000 people

**HAMBURGER COOK OUT**  
**Sunday, August 25 1:30 - 3:30 p.m.**  
**Honoring 40 years of service by**



**Ernest Butler July 2, 1951**



**Raye Gibson Aug. 22, 1951**

**We appreciate you, our many customers.**

**THRIFTWAY**  
Plains Shopping Center • Spearman, Texas