

**INSIDE**

At the Movies	2	Out at the Lake	5
Among the Neighbors	4	School Lunch Menus	2
Extension News	6	Dr. Dobson	9

**Obituaries**

Page 9

**Honor Rolls**

Page 6 & 7

**The Hansford County**

**Reporter-Statesman**

Serving Hansford County Since 1907

Volume 88 • Issue 3

213 Main • Spearman, Texas 79081

HANSFORD COUNTY LIBRARY  
0120 MAIN ST.  
SPEARMAN, TX 79081-  
EXPIRES 04/01/1996 THANK YOU

Thursday, January 18, 1996

**Lions Club to host District 2-T1 Mid Winter Conference, Jan. 20th**

On Saturday, January 20th, the Spearman Lions Club will be hosting the District 2-T1 Mid Winter Conference at the O'Laughlin Community Center located 502 Brandt Street in Spearman.

There will be many featured guest at the Conference. Local artist, Gina Davis, will present her art exhibits for all to enjoy. Gina has been involved in all mediums of art since an early age. She is known for her fantastic murals and is currently engaging in furniture art.

Her work is currently on display in Guymon, Spearman, Perryton,

Amarillo, and Dallas.

The past International Director Marshall Cooper of Beaumont, Texas will be the guest speaker at the Conference. He is the current director of the Boys School in Beaumont. He was the executive director of the Girl's Town Whiteface Campus from 1964 to 1988. He has even served as President of the Lions Cripple Children's Camp in Kerrville 1987 to 1988, and Chairman of the Texas Juvenile Probation Committee from 1986 to 1990.

Another special guest speaker, Len Slesick of Amarillo, will be guest

speaker and present his work for the ladies of District 2-T1. Len's twenty-five years of continual work and study in variety of art forms has developed a touch which is sensitive to the rich color of the Southwest. The unique use of pure colors fits easily with Len's stylized visual paintings as well as nonobjective contemporary works.

The sign up fee is only \$10.00. For Lion members, sign up will be at 8:30 a.m., and the registration for the art program will be at 10:00 a.m.

Of course, the delicious meals that the Lion's Club cooks up will be served.



**MR. WIZARD'S TUG OF WAR** - Last Tuesday afternoon, the students at Spearman Elementary were treated with the magic of the Mr. Wizard's programs. Tim Angurle, Mr. Wizard's official assistant, showed the kids many things that simple science can do. All of the students learned about air pressure, and some, like Tyson and Jeremy in the photo above, learned that with just a little air pressure some thing become a little tight. The program was very educational and fun for all. (Photo by Chad Davis)

**Capture memories at The Reporter**

Well, the new year is upon us, and it seemed as though 1995 blew by in a hurry. It was a year full of surprises, tragic stories, and other remembrances.

At almost every event that occurred in Hansford County, the Reporter-Statesman was there. Snapping shots or taking down information for a story was just one of the many things that we do down here.

We were there when your child's

picture needed to be taken for something they did well at school. We were there when the wrecks around town happened. We were there when the Lynx and the Hounds battled it out every Friday night on the grid-iron.

Why not take these memories home with you? As of Friday, January 20th, the Reporter-Statesman will be selling back issues, pictures, and any other materials that have been printed in the paper over the

last 12 months. We even have some materials from 1994.

**Dr. Dobson to appear in Hansford newspaper**

For the enjoyment of the readers of The Hansford County-Reporter Statesman, this newspaper will begin featuring the insightful and thought provoking question and answers column by Dr. James C. Dobson, Ph.D.

Dr. Dobson, who's columns deal with real problems of the world and are taken from his book *Dr. Dobson Answers Your Questions*, is a well known psychologist, author and president of Focus on the Family - a nonprofit organization dedicated to the preservation of the home. He takes the problems of troubled families and tries to give them a way to solve their worries in a Christian way.

Thanks to the help of Leann Gillaspie, of Gillaspie Auto and Truck, B & B Sales Co., Ivey's Hungry Cowboy, and Cunningham Insurance Agency, Dr. Dobson will be able to spread his good word to the readers of Hansford County.

For those of you who are not familiar with Dr. Dobson, here is a little background on the man who will now be a featured columnist of

this publication.

James C. Dobson, Ph.D., is founder and president of Focus on the Family, a non-profit organization that produces his nationally syndicated radio programs, heard daily on more than 2,500 radio facilities in North America and on over 3,000 facilities in over 40 countries.

He was for 14 years an Associate Clinical Professor of Pediatrics at the University of Southern California School of Medicine, and served for 17 years on the Attending Staff of Children's Hospital of Los Angeles in the Division of Child Development and Medical Genetics. He has earned Ph.D. from the University of Southern California (1967) in the field of child development, an Honorary Doctor of Laws from Pepperdine University (1983), an Honorary Doctor of Humanities from Franciscan University of Stebenville, Ohio (1988), and Honorary Doctor of Humane Letters

from Seattle Pacific University (1988), an Honorary Doctor of Humane Letters from Asbury Theological Seminary (1989), an Honorary Doctor of Humane Letters from Mid America Nazarene College (1992), and Honorary Doctor of Letters from Liberty University (1993), and Honorary Doctor of Humane Letters from Campbell University (1994), and an Honorary Doctor of Humane Letters from Point Loma Nazarene College (1994).

Dr. Dobson was chosen as Layman of the Year by the National Association of Evangelist in 1982. He was honored in 1987 as "The Children's Friend" by CHILDHELP, an organization devoted to the prevention of child abuse. He received the Alumni Merit Award, 1989, from the University of Southern California General Alumni Association. He was also given the Humanitarian Award by the California State Psychological Association, 1988. He is a clinical member of the American Association for Marriage and Family Therapy. In 1994, he received the "Phillip Award" from the United Methodist Church.

His first book for parents and teachers, *DARE TO DISCIPLINE*, has now sold over two million copies and was selected as one of 50 books to be rebound and placed in the White House Library. It has now been revised and updated, and is entitled *THE NEW DARE TO DISCIPLINE*. His subsequent eleven books for the family are also best-sellers: *HIDE OR SEEK*, *WHAT WIVES WISH THEIR HUSBANDS KNEW ABOUT WOMEN*, *THE STRONG-WILLED CHILD*, *PREPARING FOR ADOLESCENCE*, *STRAIGHT TALK TO MEN AND THEIR WIVES*, *EMOTIONS: CAN YOU TRUST THEM?*, *DR. DOBSON ANSWERS YOUR QUESTIONS*, *LOVE MUST BE TOUGH*, *PARENTING ISN'T FOR COWARDS*, *LOVE FOR A LIFETIME*, *CHILDREN AT RISK*, *WHEN GOD DOESN'T MAKE SENSE*, and *LIFE ON THE EDGE*.

His first film series, "Focus on

the Family," has now been seen by over 70 million people. His second film series, "Turn Your Heart Toward Home," was released in January, 1986, and continues in circulation internationally. A third 7-part series, entitled "Life on the Edge," is designed to help late teens bridge the gap between adolescent and young adulthood was released in early 1994.

Dr. Dobson has been heavily involved in governmental activities related to the family. He served on the task force which summarized the White House Conference on the Family and received a special commendation from President Jimmy Carter in 1980. He was appointed by President Ronald Reagan to the National Advisory Commission to the office of Juvenile Justice and Delinquency Prevention, 1982-84. From 1984-87 he was regularly invited to the White House to consult with President Reagan and his staff on family matters. He served as co-chairman of the Citizens Advisory Panel for Tax Reform, in consultation with President Reagan, and served as a member and later chairman of the United States Army's Family Initiative, 1986-88.

He was appointed to Attorney General Edwin Meese's Commission on Pornography, 1985-86. Dr. Dobson was also appointed in the Spring of 1987 to the Attorney General's Advisory Board on Missing and Exploited Children, and to Secretary Otis Bowen's Panel on Teen Pregnancy Prevention, within the Department of Health and Human Services. In October 1987, he received the Marian Pfister Anschutz Award in recognition of his contribution to the American family. A videotaped message of congratulation was sent by President Reagan. He also consulted with President George Bush on family related matters. In December, 1993, Dr. Dobson was appointed by Senator Robert Dole to the Commission on Child and Family Welfare.

Dr. Dobson is married, the father of two grown children, and resides in Colorado.

**Hansford Happenings**

**Heart Association**

The American Heart Association will have their Board of Directors Meeting at Noon on Wednesday, January 24th at The Picnic Place. All Members are urged to be there and be sure to bring your auction items with you.

**EMT Classes**

The Spearman Voluntary Ambulance Service will be starting basic EMT classes approximately January 29, 1996. Pre-registration for the classes will be January 8 at 7:00 p.m. The pre-registration and the classes will both meet at 513 S. Hazelwood. Persons interested in more information about these classes need to contact Michelle Davis at 659-4165 or 659-3411 or Paul Moore at 659-5298.

**Gruver Classroom Teachers' Association**

The Gruver Classroom Teachers' Association will be awarding their annual college scholarship next August to an education major having completed 60 or more college hours. Applications are being taken now. To apply, contact Gruver I.S.D. Superintendent's Office, P.O. Box 747, Gruver, Texas 79040. Phone 733-2001. Application deadline is July 1.

**Windbreak Trees**

The Hansford Soil and Water Conservation District will have "Earth Mat" available for the 1996 plantings. Orders for these seedling trees will be taken from now through March 8, 1996. Contact HSWCD at 659-2330 for more information.

**Clinic Moving**

October 1, 1995, the Texas Department of Health transferred operation of their Spearman clinic to Texas Tech University Health Sciences Center will manage the clinic under a contract with the Department. The clinic's office will remain in the same location and many of the same health care staff have been retained by Texas Tech. For more information, please call the clinic at (806) 659-3996.

**Lunch and Learn**

The Lunch and Learn Program will be January 23 at noon in the Fellowship Hall of Spearman Church of Christ. Cynthia Shattles, Ochiltree County Extension Agent, will present the program on Vest Ideas and Embellishments, demonstrating a variety of techniques using metallic or unusual threads, ruffling, fabric and ribbon flowers, etc. Light lunch served. Program open to everyone. Contact Peggy Winegamer at 659-4130 or 733-2901 for more information.

**Hamburger Supper**

The Senior Class is having a hamburger super Tuesday, January 23rd at the Jr. High cafeteria from 5-7 and the cost is \$5.00 per person. All proceeds will benefit the senior class.

**Volunteer Training Class**

Hansford Hospice will begin a new volunteer training class on Monday, February 5. Thirty hours of classroom instruction are required to receive certification. The class will meet from 6 p.m. to 9 p.m. on Mondays and Thursdays for approximately 5 weeks. The class will be held in the Doctor's Lounge of Hansford Hospital. Deadline for registration will be Thursday, January 25. For more information, contact Cheryl Sherrill, 659-2535 or 733-2954, Ext. 107.



DR. JAMES DOBSON



# Lifestyles

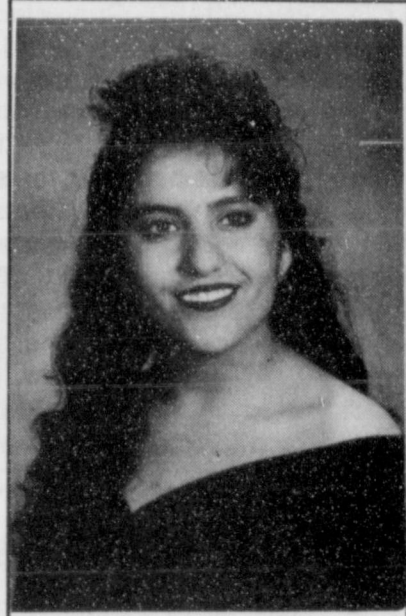
## Alvarado to perform with All-State Choir

Carol Alvarado, a member of Spearman High School Choir, will perform with the Texas All-State Choir in San Antonio, Saturday, February 17, 1996 as part of the 1996 Texas Music Educators Association Clinic/Convention meeting. She was chosen for the honor in competitive auditions held this year across the state at district, region, and area levels.

Alvarado is a student of Rose Marie Scott and plays at school under the direction of Denice Bridges, who is a member of the Texas Music Educators Association, an 8,000 - member group headquartered in Austin. This is her third time to perform as a member of a TMEA All-State group.

Her other interests at school include art, advanced micromputer, and Spanish II. She is also active in church at Sacred Heart Catholic Church, and enjoys singing, playing piano, drawing, dancing, and cooking as well.

She is the daughter of Elva Angelina and Rodolfo Alvarado, who reside at 502 Davis in Spearman.



CAROL ALVARADO

## Hill finishes graduate study at Tarleton State

Neta Yvonne Hill, a graduate of Spearman High School, graduated December 16th from Tarleton State University with a Bachelor of Science Degree in Interdisciplinary Studies.

Nita, the daughter of Bill and Ruby Burger of Spearman, has certainly had her hands full in her college career. Her list of activities and awards include: members of Tarleton Professional Educators, distinguished student award for Spring of '94 and Fall of '95, member of Alpha Chi, A Honor Roll, nominated for Kappa Delta Pi, graduated Magna Cum Laude with a 3.89 GPA, nominated for Bill Elliot Award for outstanding student teaching performance, nominated for Outstanding graduate from the Department of Education and Psychology for Academic Excellence, and she was also hired for a position at Tennyson Middle School teaching grades 6,7, and TAAS math.



NETA YVONNE HILL

## Angelo State names Dean's List

Two Spearman area students attending Angelo State University in San Angelo, are listed on the Dean's List for the Fall semester at the University.

Those listed include Joy D'Aun Gafford, a Kinesiology major, and Brandon Heath Rex, a Kinesiology major all from Spearman.

To be eligible for the Dean's List, a student must be enrolled as a full time student and have at least a 3.25 grade point average.



The most massive single issue of a newspaper has been of the Sunday New York Times, which weighed 12 pounds and contained 1,612 pages, on September 14, 1987.

### DR. AHMED IQBAL, M.D. Board Certified - Internal Medicine

CONGRATULATIONS  
on your recent Board Certification  
From Staff and Friends at  
Hansford County Hospital District

### INTERNAL MEDICINE and GENERAL PRACTICE

Clinic located across from Hansford Hospital in Spearman, TX.  
(806)659-2846

### DR. RAUL C. TAMAYO, M.D. Board Certified - Pediatrics

CONGRATULATIONS  
on your recent Board Certification  
From Staff and Friends at  
Hansford County Hospital District

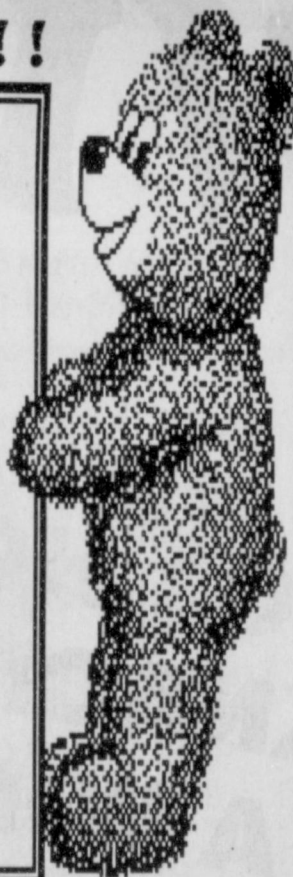
### PEDIATRICS and GENERAL MEDICINE

Clinic located across from Hansford Hospital in Spearman, TX.  
(806)659-5234

### YOU'RE INVITED !!!

It's a  
Baby Shower  
honoring  
**BRETT COLTON  
DAVIS**  
son of  
**CHAD & TARA DAVIS**

January 20, 1996  
2 p.m. to 3 p.m.  
1108 Archer  
Selections at Kids' Stuff



### Order early for your SUPER BOWL PARTY



Orders • Veggie Trays  
Dips • Cookies • Sweet Trays  
and MUCH MUCH MORE !!!  
Debbie's Ready  
Or Not  
315 1/2 Main • 659-3328

You are cordially invited to a  
Bridal Shower  
honoring

**Traci Peden**  
Bride-elect of  
**Shawn Cook**

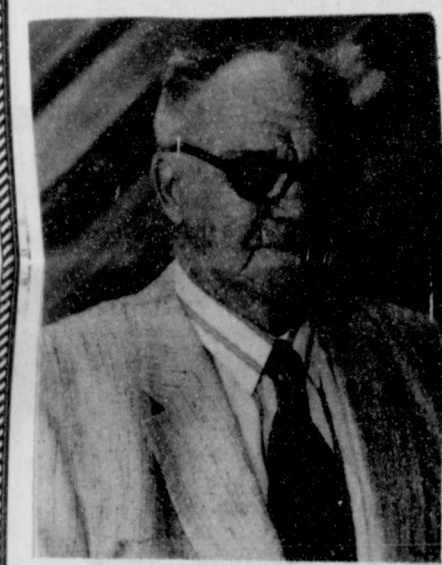
Saturday, January 27, 1995

2:30 to 4:00 p.m.

1108 S. Bernice

in the home of Verna Strawn

Selections at Gordon's and Celebrate



### A celebration of STANLEY FRERIKS' 80TH BIRTHDAY

will be held at the First  
Baptist Church in  
Stinnett on January  
28th, from 2:00 - 4:30  
p.m., hosted by his  
wife, Connie, and sons,  
Rex and Kevin.

They look forward to having former students,  
as well as many other friends, come by.  
**EVERYONE IS INVITED!**

Let your presence be your gift.

### Gordon's BRIDAL GIFT REGISTRY

COME BY & LET US  
HELP YOU SET UP YOUR  
SPECIAL GIFT TABLE

Couples Currently  
Registered

Sally Donahue & Lance Swan  
Clint & Emily DeArmond  
Shawn Cook & Traci Peden

\* Date of the Bridal Shower

314 MAIN  
PHONE  
659-2141

**Gordon's**  
BRUG  
SPEARMAN  
TEXAS



**HAPPY 30TH JULIE**

From your Family

We want to Thank You for  
the many prayers,  
prayergrams, cards, calls,  
memorials, flowers and words  
of comfort we have received  
in memory of "Bud King".  
God Bless Each of You,

Leona King  
Jerry, Roena, Amanda, Mark and Mariah Day  
Buddy, Jean, Kari and Lori King  
Pete and Aeta Fisher



# School Lunch Menus

## SPEARMAN ISD LUNCH MENU

**Monday, January 22**  
Beef stew, grilled cheese sandwich, dill spears, peaches, and milk

**Tuesday, January 23**  
Chicken fajitas, flour tortillas, refried beans, sauteed bell pepper, onion, spanish rice, sour cream, taco sauce, pineapple tidbits, and milk

**Wednesday, January 24**  
Ham and cheese hot pockets, whole kernel corn, steamed carrots, banana bread, and milk

**Thursday, January 25**  
Steak fingers, broccoli with cheese sauce, hot rolls, jelly, butter, mixed fruit, and milk

**Friday, January 26**  
Cheeseburger, french fries, shredded lettuce, sliced tomato, pickle, onion, pears, and milk

**BREAKFAST**  
**Monday -** Breakfast pizza, fruit, and milk  
**Tuesday -** Cinnamon roll, fruit, and milk

**Wednesday -** Ham and egg, breakfast taco, fruit, and milk

**Thursday -** French toast sticks, fruit, and milk

**Friday -** Biscuit, sausage, cream gravy, fruit, and milk

## GRUVER ISD LUNCH MENU

**Monday, January 22**  
Sausage pizza, salad, corn, and fruit, and milk

**Tuesday, January 23**  
Taco salad, cheese, edible bowl, lettuce, pineapples, and milk

**Wednesday, January 24**  
Macaroni, meat sauce, corn,

fruit, garlic bread stick, and milk.  
**Thursday, January 25**  
Chicken noodle soup, carrot sticks, cheese sticks, fruit, cinnamon roll, and milk

**BREAKFAST**  
**Monday -** Cereal, donut, juice, and milk

**Tuesday -** Two pancakes, juice, and milk

**Wednesday -** Biscuit, sausage, juice, and milk

**Thursday -** Breakfast pizza, juice, and milk

**Friday -** 2 Cinnamon roll, juice, and milk

## PRINGLE-MORSE LUNCH MENU

**Monday, January 22**  
Meat loaf, mac and cheese, black eye peas, salad, roll, cookies, and milk

**Tuesday, January 23**  
Taco, burrito, cornbread, beans, salad, dessert, and milk

**Wednesday, January 24**  
Hamburgers, french fries, fruit, and milk

**Thursday, January 25**  
Chicken tetrazzini, salad, roll, fruit, and milk

**Friday, January 26**  
No School

**BREAKFAST**  
**Monday -** Cheese toast, juice, and milk

**Tuesday -** Cereal, toast, juice, and milk

**Wednesday -** Sausage, pancake, juice, and milk

**Thursday -** Cinnamon roll, toast, juice, and milk

**Friday -** No school



**CITIZEN OF THE MONTH** - The following students were selected as "Citizen of the Month" for the Gruver Junior High: Rachel Abernathy, Sara Bass, Holly Hart, and Janae Watley. Students were nominated by their teachers as the students who best exemplifies those qualities necessary to be a good citizen. These students daily exhibit qualities of proper attitude, self-motivation, friendliness, and the drive to succeed in whatever is presented to them.

## At the movies...

Showing at The Lyric Theatre Friday, January 19 through Tuesday, January 23 on Screen 1 beginning at 7:30 p.m. is "The American President", and on Screen 2 beginning at 7:45 p.m. is "Jumanji".

In "The American President", Michael Douglas stars as the love-sick president. Along his way through office, he discovers the lovely Anette Beney who soon be-

comes his girl friend. Michael J. Fox and Richard Dryfuss are just two of the many well-known stars in this one.

"The American President" is rated PG-13.

In "Jumanji", the classic kid book receives a fresh interpretation with Robin Williams as a character not on the printed page.

"Jumanji" is rated PG.

## At The Lyric Theatre...

Friday, January 19- Tuesday, January 23

**Bargain Nights Mon. & Tue. Adults - \$4**  
**Fri., Sat., Sun., Adult \$5 - Child \$3 every night**  
**Closed Wednesday & Thursday**

SCREEN 1 • 7:30 PM    SCREEN 2 • 7:45 PM

The American

Jumanji

President  
(PG-13)

(PG)

113 Main • Spearman

**OPENING**  
**FEB. 5TH**



## Little Lynx Day Care

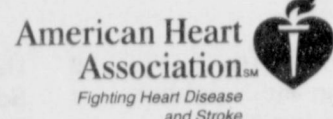
Open 7 a.m. to 6 p.m.

Monday - Friday

\$12/day • \$1.50 hr./under 8 hrs.

Call today to reserve your child a spot...  
(806)659-3851

Medical miracles  
start with research



## COMING CLASSES

3rd in Log Cabin Series...

Cripple Creek • Jan. 20th  
Fantastic Start • Feb. 3rd

4th in Log Cabin Series...

Ozark Log Cabin • Feb. 17th  
Star Spin • March 9th

Summer Sampler will start June 4th

For more information call or come by

**Jo's This N' That**

216 Main • Spearman, TX 79081  
(806) 659-3999

Bring this ad in and get an extra  
10% OFF your class supplies.

## NEW BUSINESS

**Southwest Electric,**

**Heating & Air**

**Kyle Nollner - Owner**

659-5243 • Mobile # 662-1282

Ask about energy savings, rebates,  
& financing on a heat pump.

**TRANE DEALER**

## -Guymon to hold first quilters guild meeting

A brand new quilt guild is now forming in Guymon. The first meeting will be held Saturday, January 27 at the Victory Memorial United Methodist Church's Family Enrichment Center at the corner of 6th and Quinn Streets.

This guild will be having quarterly meetings aimed at enhancing the other quilt groups to which you already belong. The upcoming meetings will be April 27, July 27, and October 26. Everyone interested in the art of quilting is invited to participate. Be sure to invite your friends to come with you.

The purpose of this guild is to educate and share the love of quilting. There will be educational programs and hands-on workshops aimed at increasing our knowledge

and experience of quilting.

We need a name for this new quilt guild and are asking for your help by submitting your idea when you register at the door. The person submitting the winning name will be given a year's free membership.

Everyone is invited to come to Guymon's new Quilt Guild Meeting, Saturday, January 27 at the Victory Memorial United Methodist Church's Family Enrichment Center, 6th and Quinn Streets. The meeting is scheduled for 10 a.m. to 3:30 p.m. with all attending asked to bring their favorite potluck luncheon dish for the noon buffet. For more information, contact, Mary Anne Mayer at (405) 338-6123 or Cheryl Ashpaugh at (405) 338-3677.

Consider the hour glass: there is nothing to be accomplished by rattling or shaking; you have to wait patiently until the sand, grain by grain, has run from one funnel into the other.

—Christian Morgenstern

## MEAT SALE

20 lb. Pork Pack • \$29<sup>50</sup>

25 lb. Family Pack • \$32<sup>50</sup>

25 lb. Beef Pack • \$39<sup>50</sup>

50 lb. Freezer Pack • \$79<sup>50</sup>

**SUNRAY LOCKER • (806)948-4403**

## The Hansford County Reporter-Statesman

Serving all of Hansford County  
Spearman • Gruver • Morse

USPS 509660 • 213 Main, Box 458 • Spearman, Tx. 79081  
(806) 659-3434 • 1-800-395-9482 • FAX (806) 659-3368

Published weekly at 213 Main, Spearman, Texas  
Owned & Operated by  
Texas Independent Newspapers, Inc.

16607 Blanco Road #100 • San Antonio, Tx. 78232

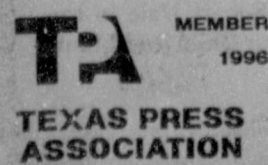
(210) 492-8907

Second class postage paid at Spearman, Texas 79081

Any erroneous reflection upon the character of any person or firm will be gladly and promptly corrected upon being brought to the attention of the management.

Publisher - Deziree Torres  
Editor/Advertising - Chad Davis  
Gruver Correspondent - Bob Bort

The publisher reserves the right to revise or reject at its option any advertisement which it deems objectionable, either in subject or in any way deemed detrimental to its business.



Subscription Rate: Hansford County, \$19.95; out of county, \$24.95 annually.  
Postmaster: Send address changes to Hansford County Reporter-Statesman, Box 458, Spearman, Tx. 79081.  
Advertising & Story Deadlines  
Monday, 5:00 p.m.

## \$ JOBS FOR ALL AGES \$

- Extra Money
- No Experience Necessary
- Schedule Your Own Days and Hours

For more information send

\$5 and a SASE to:

P.O. Box 93623

Albuquerque, NM 87499-3623

The best way to  
lose weight is on its way!



Weight Watchers  
Community Meetings  
are coming soon!

COME SEE WHAT WEIGHT WATCHERS IS ALL ABOUT!!  
ATTEND A FREE MEETING IN SPEARMAN, MONDAY, JAN. 22  
6:00 P.M. - O'LOUGHLIN COMMUNITY CENTER - 520 BRANDT

Pre-registration required on JANUARY 22 for the next  
SERIES beginning MONDAY, JANUARY 29

This time, it's all the way with Weight Watchers  
Fat & Fiber Plan! Cut the fat, not the food.

10 weeks for only \$79 with 20 or more participants

CALL NOW 1-(800)-651-6000

Weight Watchers

10 weeks for \$79 with 20 or more participants; 8 weeks for \$79 with  
16-19 participants; 6 weeks for \$79 with 12-15 participants.

Weight Watchers is a registered trademark of WEIGHT WATCHERS INTERNATIONAL, INC.  
©Weight Watchers International, Inc. 1995. Offer valid only for community meeting listed above.



# Out at the Lake



**JUDGING TEAM** - Hansford County 4-H Livestock Judging Team placed second at the State 4-H Livestock Judging contest held in June. Team members included Galen Slough, Scott Stedje, Kathy Slough, and Jared Johnson.

## Hansford County 4-H Livestock Judging Team places second

The Hansford County 4-H Livestock Judging Team placed 2nd at the State 4-H Livestock Judging contest held in June at State 4-H Roundup held at Texas A&M University. Team members are Galen Slough, Scott Stedje, Kathy Slough, and Jared Johnson.

Scott Stedje was the 2nd high individual in the entire contest, winning 4th high individual in reasons, 5th HI in swine, and 6th HI in sheep. Scott is the son of Dennis &

Kathy Stedje of Gruver. He is a junior at Gruver High School.

Kathy Slough was 5th HI in the contest. Kathy placed 2nd HI in sheep and 8th HI in swine. She is the daughter of Kenneth and Alice Slough of Gruver and is a sophomore at Gruver High.

Galen Slough placed 4th HI in swine judging. Jared is a sophomore at Gruver High. This is his first year to judge. He is the son of Kenton & Janice Johnson of Morse.

Coaches for the team are Bret Burgin, Bill Carson, and Burt Williams, Hansford County Extension Agent.

The Hansford County 4-H Livestock Judging Team will represent Texas at the National Western Livestock Shows Judging Contest which will be held on January 19, 1996 at the National Western Stock Show in Denver, Colorado. The contest in Denver is a national contest which will be represented by one team from each state.

Lake Depth - January 15, 1996 - 25 feet

Manager Jim Derington reports that a Texas Parks and Wildlife employee had been at the Lake last week doing a survey of the waterfowl and other birds. There are quite a few geese and ducks on the Lake now. Usually 20 to 30 snow geese are mixed in the Canada geese. The ducks are mainly pintails and mallards. At a small lake on the East county line, the biologist has seen 38 to 40 bald eagles.

Most of the ice on the Lake has melted, but there is still some on Horse Creek. Jim warns that it is easy to get stuck around the edge of the Lake.

Every time we visit Sarcoxie, Missouri, Don's brother Lee will ask if the armadillos have come to our country, and I will answer "Not that I know of." They are in southern Missouri now. Some people suspect they have ridden in on lumber trucks, and others think it is a continuing northern migration.

This fall I heard some armadillo stories, but they all involved Hutchinson County. The, before Christmas, news came that Joel Lackey had seen one just south of Gruver, and since then I've been collecting stories about these little armored pigs.

Gruver Chief of Police Nick Jordan has grandparents that live in East Texas. He helped them get rid of armadillo that was tearing up their yard. He commented that despite the animals little stubby legs, they can run fast and get in their burrows so quickly that they are hard to catch. The practice there is to run exhaust gas from a car into the burrow until the armadillo comes out groggy. Then it is caught and removed to the country.

Last week, I had an offer of a live one that Craig McCloy of Pringle

had helped catch. My grandchildren knew that I had wished we had some out at the Park. Not having permission, I regretfully turned the offer down. Now I am wondering how bad they would be in the Park north of the dam where they could be more easily seen. Jim reminded me this morning that we have drip, gas, and electrical lines buried there that could be rooted and dug up quite easily.

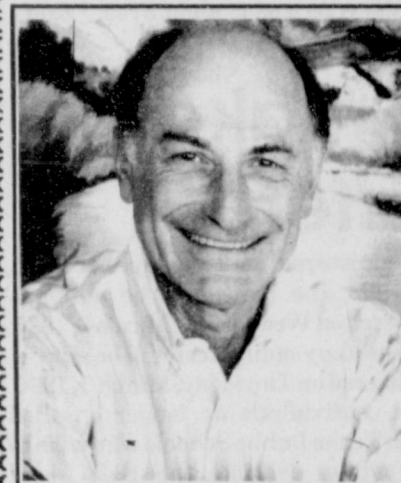
Perhaps there is a place for beavers, porcupines, and armadillos in wildlife area on the side of the road. I have fought prairie dogs too many

years to include them in the list, but these other animals may have some benefits that outweigh their downside.

More on armadillos next week.



The country with the leading number of newspaper readers is Sweden, where 580 newspapers are sold for every 1,000 people.



You are cordially invited to an **ART APPRECIATION EXHIBIT AND LUNCHEON** with **ARTIST LEN SLESICK**

Len's twenty-five years of continual work and study in variety of art forms has developed a touch which is sensitive to the rich color of the southwest. The unique use of pure colors fits easily with Len's stylized visual paintings as well as nonobjective contemporary woks.

**PLEASE JOIN US**  
The O'Loughlin Center • 502 S. Brandt • Spearman, TX  
Saturday, January 20, 1995  
10:00 a.m. to 1:00 p.m.  
Luncheon and Art Exhibit \$10

## Friendship Guild holds regular meeting for month of January

The Friendship Quilters Guild met January 10th at the First Methodist Church. Cynthia Shattles, the County Extension Agent, presented a program called "Ruching."

Ruching is an old technique that turns a strip of fabric or ribbon into a three-dimensional ruffled flower. Cynthia demonstrated how to make flowers from fabric and ribbon to decorate pillows, vests, picture frames. Written instructions were given to all members. Members made flowers to take home.

The meeting was called to order by President, Margie Fagan. She called the meeting to order and read the minutes. Bonita Campbell gave the treasurers report. Members were asked to bring any feed sack quilts they have to the next

meeting. Ilene Floyd will give the February program on feedsack quilts. Wednesday the 24th, the guild will begin getting supplies ready for the school project.

A committee of Jean Powell and Ronda Canaday will review books for the guild to choose from for our library.

Ronda Canaday's completed Dresden plate blocks were brought back by Round Robin members. Caroline Lowery gave out her kits for her pattern selection. Thelma Stark's name was drawn for the next months selection.

The nametag drawing was won by Zella May Wauhob, doorprize was won by Ronda Canaday.

For Show and Share, Judy Whitehead had a vest made from recycled jeans, Bonnie Reeves a vest from men's ties, Zella Ma Wauhoba a sweat shirt jacket from her daughter, Vila Cone a cross stitched quilt she made in the 60's, Louise Chase showed a box of lovely fabrics from the quilt works in Oklahoma City. She joined their "Blocks of the Month". Lois Bartz showed her new Teddy Bears and shirt and Reta Baldwin showed her parents 40th anniversary family album quilt and a patch work quilt she made for her son and several others of her brothers.

Friendship Quilters meet the 2nd and 4th Wednesday of each month at 9 a.m. at the First Methodist Church. Everyone interested is invited to attend.

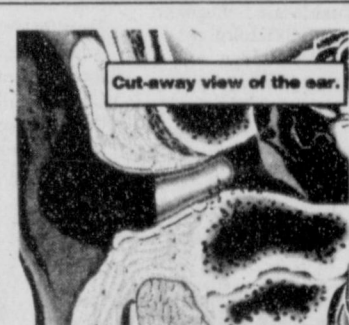
One of the finest accomplishments is making a long story short.

—Kin Hubbard

### The Hansford County Reporter-Statesman

Dedicated to serve the communities of Spearman, Gruver, & Pringle-Morse

213 Main • 659-3434  
1-800-395-9482



### Miniscopic Deep-Canal Hearing Instrument Now Available

Our office is happy to announce that we are currently fitting a completely in-the-canal hearing instrument. This remarkable new hearing instrument is discreet and comfortable to wear. It's placement deep in the canal of the ear (see illustration at top) makes it barely visible. Others may not recognize you are wearing a hearing aid.

The Miniscopic is the smallest hearing instrument ever manufactured by NU-EAR. Call now to schedule an appointment for your hearing assessment and consultation.

Hearing aids are for hearing aid selection and not for medical diagnosis of hearing loss.

© 1994 NU-EAR/ADSD102/0494A

**HIGH PLAINS HEARING AID CENTER**  
Golden Spread Senior Citizens Room in the O'Loughlin Community Center  
Every 2nd & 4th Tuesday  
2:00 p.m. to 4:00 p.m.  
274-5311  
1-800-753-1696  
659-3866

## Control your cholesterol

If your blood cholesterol is 240 or greater, you have more than twice the risk of experiencing heart disease as someone whose number is 200.

Fortunately, high blood cholesterol is one of the major risk factors for heart disease that you can do something about. The Change of Heart of newsletter will help you get started.


Heart disease is the leading cause of death in the United States. But research has shown that a diet low in fat and cholesterol can lower blood cholesterol and reduce the risk of heart disease.

The Change of Heart newsletters will help you learn how to shop, cook, and eat to lower your blood cholesterol.

The newsletter is provided free of charge through the Texas Agricultural Extension Service, Hansford County. Call Peggy Winegarner at 659-4130 or 733-2901 to enroll in the six letter series.

Take charge of your health today!

Educational programs of the Texas Agricultural Extension Service are open to all citizens without regard to race, color, sex, disability, religion, age, or national origin.



**SAVE 6%**  
By February 15

**SAVE 4%**  
By March 15

Buy seed from  
**CARGILL GRAIN DIVISION**  
and get a cash discount on every bag, plus volume discounts. Paying less per bag can save you a pile of cash.

**CARGILL GRAIN DIVISION**  
659-3554 Spearman, TX  
Brent Emch -- Manager

IS  
ar  
ts  
ar  
JO  
ts  
k-  
ble  
r):  
lin

own.  
at 1  
659-

uary  
GOD

LS



# Among The Neighbors

by Helen Fisher

**Editors Note:** Last week, this newspaper left out a very important part of this column. We knew and realized that Friday, January 12th, was Spearman's best neighbor, Helen Fisher, birthday. We regret that we were not able to tell Helen happy birthday in advance, and although it is belated, Happy Birthday Mrs. Fisher.

Last week-end a delightful family observance, hosted by Sylvia and Ray Robertson, honored Sybil and Billy Miller on their 50th wedding anniversary.

Both couples spent the week-end at the Ramada Inn in Amarillo, and were joined by Brenda and Claud Annedn, with Cody and Sage, from Nazareth and Danny and Donna Robertson from Midland.

The anniversary dinner was in the Steak and Ale Restaurant.

Billy and Sybil Miller were married January 12, 1946 in the home of his parents, Bill and Faye Miller. Sam Malone, pastor of the Baptist Church, officiated, with Virginia Cates as pianist. In addition to the families, friends present were Buddy Brockus and the late Ruby and Elma Gunn.

Billy had just returned from wartime duty with the Marines, and it was said that Billy married "the prettiest girl in town".

The Millers still live in the house where they began their marriage. How could they leave it when it bears the imprint of so many of their friends who assisted in the renovation during a time of scarcity of materials and workmen - among them were J.D. Wilbanks, Rue Sanders, Jerry Jacobs, Arlan Wombel, Garland Head, Ray Valette Converse.

After half a century of marriage, it may be true that Billy remarked

that at home he ruled the roost, but his wife ruled the rooster! As for Sybil's sentiments - well, their would be more 50th anniversaries of holy wedlock instead of unholy deadlock if husbands understood wives, and wives understood football.

Billy and Sybil, here's wishing you many more anniversaries!

Darlene Howell and sister, Edna Cunningham of Perryton, returned Friday from four days in Phoenix, Arizona. They flew out to visit their sister, Helen and Pete Rawls. He was seriously ill and had expressed a desire to see them.

He passed away a day after they left Arizona and services were set for Tuesday, January 16. In addition to his wife, he is survived by two daughters. He had visited in Spearman many times and had friends here.

Guests of Mr. and Mrs. E.J. Copeland for several days last week were their children. Joe Lynn Leland came from Broomfield, Colorado and Kim and Velma Copeland, with son Kit, are from Austin.

Two recent deaths are of interest to Hansford County folk. Faye Kirk Stowell, of Pampa, grew up south of Spearman. She was the daughter of the D.B. Kirks. Survivors include brothers Raymond Kirk and Herbert Kirk, and nephew Randy Kirk. Her obituary is elsewhere.

C. Otto Mangold, of Pampa, husband Willie Mae Wilson, former resident of Spearman, daughter of the late Cassie and Clinton Wilson, who is also the cousin of R.L. and Wilson McClellan.

He had been a high school coach

at three Panhandle towns and an official for sports for many years. He was known in Spearman by many in the wagon train of several years past.

The Amarillo News mentions that Shamrock had more than twice its normal moisture of 15.01 inches for 1995. They report 35.2 inches.

The amount of moisture for Spearman in 1995 is not available, but if it were to show more than normal, it would probably be due to the 3 1/2 inches of rain that fell at one time, as it was generally considered a dry year. Wonder what the highest and lowest temperatures for the year were.

But regardless of the cold, dry nights lately, the sunrises and the sunsets have been spectacular, brilliant, beautiful...

Several times recently the weather bureau has predicted snow, which failed to come to the Panhandle. That may be the reason, the weather bureau could be classified as a "non-prophet organization" - oops!

The published reports of the 7th performance of the Western Stock Show rodeo in Denver list 3rd place winners in the team roping as being Kevin Huddleston - Memphis and Waide Jewell, Spearman with time of 14.3.

Notes of those hospitalized: Lynda Bodey underwent surgery at High Plains Hospital last Tuesday. She returned to their home in Spearman and is recovering. However, she will be returning to Amarillo for further treatment.

Randy Kirk is recovering at home from knee surgery which was performed on January 3rd. The sports

specialist surgeons did the operation at Surgical Clinic. It was necessitated by an old sports injury and aggravated in working cattle.

Randy expects to be back at his duties at Interstate S & L soon.

Athalie Trayler was taken to Amarillo by a friend, Nadine Cochran, for tests at High Plains Baptist hospital early last week. She expected to return in a few hours but unexpectedly underwent surgery.

On Sunday evening she reported that she was recovering rapidly and expected to leave the hospital early this week.

She expects to stay at Hansford Manor until she is more able to look after herself.

A family member reports that Barbara McClellan is doing nicely and is in good spirits. She was strong enough to walk to a private room from I.C.U. where she had been since undergoing major surgery. All of their family have been with her and R.L., but will be returning to their homes as she continues to recover.

Barbara is touched and appreciative by all the calls, visits, cards, and other expressions of concern. She is in room 463 at High Plains Baptist Hospital.

In response to the many inquiries, VI Hornsby reports that latest word from Al and Juanita Tucker is that at last they are nearly settled in their new home in San Angelo. They were delayed as the house wasn't ready. As soon as they get a telephone, they will send the number. But one situation that is well settled for them is the enjoyment they are having with their grandsons.



**CROSSING GUARD** - Gruver Independent School District has implemented a Crossing Guard Program. Students in Gruver Junior High and High School volunteered to help students combat the traffic to and from school each day. These students received training from Police Chief Nick Jordan and Officer Brian Brogden. As a reward, the students will be allowed to go on patrol with the police officers on weekends. The students are gaining valuable experience in responsible decision making as well as job training that will look very nice on future job applications. Gruver ISD is very proud to have such responsible students that care about other's safety. Pictured are (l to r): Manuel Luciano, James Crow, Kasey Harris, Johnny Lopez, (middle) Brady Hart, Chase Stapleton, David Villegas, Justin Johnson, and (back) Jesus Magallanes.

## A "Center" Piece

Seniors 55 and over "whet" your appetite and join others at the Golden Spread Senior Citizens at 502 Brandt St. on January 23rd between 6 and 6:30 p.m. The First State Bank will be frying fish for our evening meal. After eating you are invited to stay and play a form of dominoes (usually forty-two), pitch, or skip-bo. The games are played for fun and companionship with old and new friends.

Thursday, January 18th there will be a meeting to correlate ideas and plans for the year. If anyone would like to make group trips out of town to perhaps the Amarillo Little Theater, an opera or perhaps an European cruise or another place

of choice, let your wishes be known. You may come to 18th meeting at 1 p.m. or call Pearl Pierce at 659-3866.

**HAPPY BIRTHDAY** to January babies of all ages! **MAY GOD BLESS OUR COUNTRY**

**American Heart Association**  
Fighting Heart Disease and Stroke

AMERICAN HEART ASSOCIATION  
MEMORIALS & TRIBUTES

1-800-AHA-USA1

This space provided as a public service. ©1994 American Heart Association

# MOVING SALE

**CLOTHING HOUSEHOLD ITEMS  
KNICK-KNACKS & BABY ITEMS  
PLUS A WHOLE LOT MORE**

# DON'T MISS OUT

**JAN'S ETC.**

**Plains Shopping Center • Spearman, Texas**

**9:00 a.m. to 6:00 p.m.**

**Thursday, January 18**

**EVERYTHING MUST GO!**

JUDGING  
4-H Livestock  
Stedje, Katt

Han  
Judg

The Hansford  
stock Judging  
the State 4-H  
contest held in  
Roundup held  
iversity. Team  
Slough, Scott  
and Jared Job

Scott Sted  
individual in  
winning 4th  
sons, 5th HI in  
sheep. Scott

Frier  
mee

The Frier  
Guild met Ja  
Methodist  
Shattles, th  
Agent, pres  
"Ruching."

Ruching  
turns a strip  
a three-dim  
Cynthia der  
flowers from  
decorate p  
frames. W  
given to a  
made flowe

The mee  
by Preside  
called the  
read the m  
gave the t  
bers wre  
sack quilt

Col  
you  
cho

If you  
or greater  
the risk  
ease as s  
200.

Fortu  
terol is o  
for hear  
somethi  
Heart o  
get star

Hear  
cause of  
But res  
low in fi  
blood c  
risk of l

The  
ters wil  
cook, a  
cholest

The  
of char  
cultur  
ford C  
ner at  
roll in

Tal  
day!

Ed  
Texas  
vice a  
regar  
religi







# Extension News

By Peggy Winegarner  
Hansford County Extension Agent

For some new ideas and latest sewing techniques plan to attend the January Lunch & Learn program. Tuesday, January 24, at 12 noon in the Fellowship Hall of Spearman Church of Christ, Cynthia Shattles, Ochiltree County Extension Agent, will present a program on Vest Ideas and Embellishments.

She will demonstrate a variety of techniques including ruching, fabric, and ribbon flowers, and use of metallic or unusual threads, etc. A light lunch will be served. Regardless of whether you sew or not, this program may give you some

new wardrobe ideas! The American Home Sewing & Craft Association recently commissioned a study that revealed the stress-relieving benefits of sewing. The women who sewed - experienced, as well as novice sewers - showed a significant drop in both heart rate and blood pressure - two key factors in the measurement of stress.

Sewing just might be the perfect antidote to stress! Other ways to reduce or manage stress include \*Talk with a trusted friend \*Learn to breathe properly \*Eat a balanced diet \*Get a good night's rest \*Exercise regularly.

## TEAMS/TAAS make-up tests to be offered

Students who are no longer enrolled in school and have not previously passed both sections of the TEAMS Test or the three sections of the TAAS Test, but have met all graduation requirements may retake the section(s) not passed.

The TEAMS mathematics test will be administered on Wednesday, March 6, 1996, and the English language arts tests will be administered on Thursday, March 7, 1996.

The TAAS writing test will ad-

ministered on Tuesday, March 5, 1996; the math will be administered on Wednesday, March 6, 1996; and the reading test will be administered on Thursday, March 7, 1996.

Individuals no longer enrolled in Texas Public Schools who wish to register to take the Exit Level TEAMS or TAAS tests may pick up a registration packet at the Spearman High School Counselor's Office. Registration forms must be completed and mailed by January 30, 1996.

## SHS to offer concurrent FPC computer class

Spearman High School has obtained permission to offer a computer applications class for concurrent credit through Frank Phillips College. Students who elect to enroll, concurrently, with Frank Phillips and earn college credit hours can earn four semester hours for Microcomputer Applications and three semester hours for Business Computer Applications. These courses are in addition to the three semester hours for concurrent English which has previously been offered.

The date of registration will be January 19, 1996. Students who are presently enrolled in microcom-

puter applications should enroll in Course #1402. Students enrolled in business computer applications will enroll in Course #2305. Students enrolled in English will enroll in Course #1302. The fee for Course #1402 will be \$145.00. The fee for Course #2305 will be \$121.00. The fee for Course #1302 is \$101.00. Students who enroll in more than one course can deduct \$25.00 from the cost of the second course. The \$25.00 is an out-of-district fee and is a one time fee.

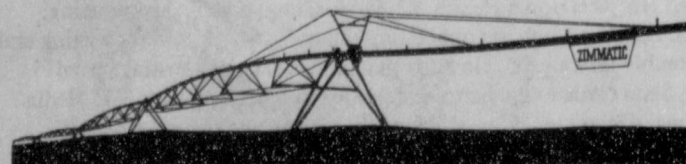
This is an excellent opportunity for students to earn college credit. If you have any questions, please feel free to contact Sam Atwood or Glenda Guthrie at 659-2584.



The Arctic Ocean is the smallest ocean in the world, less than a tenth the size of the Pacific Ocean.

## SPRING AVAILABILITY WITH ZIMMATIC RELIABILITY

Zimmatic center pivot systems are available for spring installation from your Lindsay dealer.



Lindsay Manufacturing Co. has the manufacturing capacity to respond to the needs of the American grower. During our growth, Lindsay has developed a working relationship with vendors and raw material suppliers to get materials needed for increased capacity. Availability is just one reason for Zimmatic to be the answer to your irrigation needs. Get the rest at your full service Lindsay Dealer.

**ZIMMATIC** The Raining Champion.

★ ★ FIVE STAR EQUIPMENT, INC. ★ ★  
SPEARMAN, TEXAS

(806) 659-3743



# We Support Academic Excellence in Hansford County

## Gruver Junior High

### PRINCIPAL'S HONOR ROLL SIXTH

Kade Carthel

### PRINCIPAL'S HONOR ROLL SEVENTH

Holly Hart  
Brooke Salmans  
Chad TeBeest  
Brooke Bevell

### ALL A'S SIXTH GRADE

Kade Carthel  
Beth Yanke  
Brian Goad  
Brittany Morris  
Dallas Robinson

### ALL A'S SEVENTH GRADE

James Crow  
Holly Hart  
Brooke Salmans  
Chad TeBeest  
Tessa Yanke  
Brooke Bevell  
Monalisa Garcia  
Brad Holt  
Shea Lowe  
Gisela Soto  
Miranda Thoreson

### SEVENTH GRADE

ALL A'S AND 1 B  
Clayton Acker  
Jr. Balderrama  
Cory Schneider  
Richard Stewart

### FRESHMAN ALL A'S

Teresa Crow  
Jennifer Duggan

### ALL A'S EIGHTH GRADE

Kyler Barkley  
Dallas Henson  
Annie Mayhew  
Mary Puebla  
Cayla Simon  
Janae Watley

### ALL A'S AND 1 B FIFTH GRADE

Ashleigh Sherrill  
Julie may  
Aaron May  
Aaron Boyd  
Curry Porter

### ALL A'S AND 1 B SIXTH GRADE

Daniel Perez  
Steve Salazar  
Elizabeth Duncan

### ALL A'S AND 1 B EIGHTH GRADE

Lucas Johnson  
Holly McCloy  
Lauren Miller  
Wesley Miser  
Jason TeBeest  
Matt Watlington

## Gruver Elementary

### PRE-KINDERGARTEN

Rey David Gaspar  
Natalie Lopez  
Roberto Mendoza  
Arturo Trejo

### KINDERGARTEN

Sorrelle Blevins  
Iaela Borunda  
Mollie Burnam  
Calli Cazares  
Audrey DeLuna  
Cason Finley  
Yadira Garcia  
Bayley Garland  
Brenda Ibarra  
Chase Jones  
Chandler Miner  
Malissa Montgomery  
Maydeli Ortiz  
Ruben Ortiz  
Yvette Ruiz  
Fernando Saldana  
Tanner Sherrill  
Diana Solis  
Seth Thompson  
Leah Vanderpol  
Denise Villegas  
Lindy Weldon  
Emily Williams  
Abbi Yanke

### FIRST GRADE

Rebecca Abernathy  
Mason Fletcher  
Bonnie Frick  
Drew Grotgut  
Travis Hodge  
Jeremy Hopkins  
Brian Johnson  
Kasha Lewis  
Travis McDowell  
Britney Montgomery  
Charles Slough  
Justin Thompson  
Victoria Vela  
Tucker Williams  
Courtney Wood

### SECOND GRADE

Sheldon Atwood  
Timber Barkley  
Lauren Bergin  
Brad Clawson  
Rachelle Holt  
Justin Horton  
Kelly Jones  
Matt Messer  
Samantha Myatt  
Rafael Perez  
Allison Reid  
Stephen Salazar

### THIRD GRADE

Christopher Abernathy  
Valerie Burnam  
Blythe Finley  
Brock Irwin  
Jessica Montgomery  
Mark TeBeest  
Ben Williams  
Lance Williams  
Ryan Winger

### FOURTH GRADE

Teal Armes  
Kalee Crawford  
Courtney Goad  
Jenny Hart  
Scott Houghton  
Garrett Miner  
Cassie Myatt  
David Puebla

### PRINCIPAL'S HONOR ROLL FIFTH GRADE

Sammie Johnson  
Amy Watley

### ALL A'S FIFTH GRADE

Sammie Johnson  
Lori Swink  
Amy Watley

## Gruver High School

### ALL A'S AND 1 B FRESHMAN

Jennifer Lopez  
Charlei Stavlo

### ALL A'S AND 1 B SOPHOMORES

Stephanie Flores  
Cesar Garcia  
Buster McLain

### ALL A'S AND 1 B JUNIORS

Erikka Barrera  
Erin Derington  
Joshua Mayhew

### ALL A'S AND 1 B SENIORS

Daniel Bort  
Travis Ferguson  
Joni Hart  
Memory Ross  
Jason Ward

### SOPHOMORES ALL A'S

Weslyn Maupin  
Jill Odum  
Steffany Simon

### JUNIORS ALL A'S

John Duncan  
Kristin Evans  
Amy Gillispie  
Mary Henson  
Tucker Henson  
Amber Murrell

### SENIORS ALL A'S

Imelda Arzate  
Bailey Barkley  
Kiki Carthel  
Roxane Holt  
Scott Jarvis  
Kris Kanczewski  
Vanessa Klett  
Cristy Marquez  
Wylee Maupin  
Sahala McCloy  
Tara Shapley  
Tye Womble

## Spearman Junior High

### SIXTH GRADE

Tammy Backus  
Tanner Beedy  
Erin Boxwell  
Lura Camacho  
Monica Cantu  
Matthew Dunnihoo  
Leann Earle  
Amber Elliott  
Behany Furlow  
Sarah George  
Cheryl Gibson  
Laura Gillaspie  
Steven Haney  
Michael Kiasiah  
Marty Miesner  
Chad Scarborough  
Tashinana Schumann  
Clara Shieldknight  
Jessica Volden  
Audrey Winegarner

### SEVENTH GRADE

Travis Atwood  
Timothy Bynum  
Cary Cates  
Daniel Ellis  
Andrew Jacobs  
Jared Freeman  
Coley Griffin  
Jacob Harbour  
David Holt  
Dibrell KirkHaley Lombard  
Nicole Lozano  
Junior Moreno  
Chelsea Nollner  
Denise Paschel  
Angela Pipkin  
Kara Pipkin  
Sally Pittman  
Jennifer Schnell  
Adrienne Simpson  
Richard Varnon  
Chelsey Villines  
Dusty Vinson  
Brady Wooley

### EIGHTH GRADE

Dustin Barber  
Halee Beasley  
Brandi Campbell  
Tommie Dewberry  
Cynthia Goodman  
Kelsey Henton  
Bookie Lesly  
Jeremy Mackie  
Lacey Miesner  
Kathryn Murphy  
Amber Ramon  
Reagan Renner  
Stephen Salgado  
Audra Sanders  
Mickey Schoenhals  
Camille Smith  
Sydney Woodington  
Mribel Martinez  
Zach McCommond  
Brooke Trantham

### FIRST GRADE A AVERAGE

Nicholas Avila  
Joshua Bullard  
Amber Backus  
Virginia Dunn  
Whitly Franis  
Cody Eslick  
Megan Evans  
Griselda Fraire  
Laura Goinez  
Yasnnai Gutierrez  
Hannah Haddock  
Kanna Hernandez  
Jessica Jarvis  
Jordanna Lozano  
Stuart Martin Rhett Renner  
Anthony Renteria  
Jessica Riley  
Ryan Ramon  
Drifin Roberts  
Trevor Tindell  
Bryan Thomas  
Josh Tuttle  
Charles Walsh

### SECOND GRADE ALL A HONOR ROLL

Kamran Ahmed  
Jessica Brown  
Jena Cherry  
Andrew Correll  
Callie Hargis  
Lance Henderson  
Jarick Howard  
Janet Mayo  
Maribel Moreno  
Melissa Ann Pape  
Silvia Pinon  
Melissa Richards  
Alejandro Rios  
Taysia Stephens  
Brooke Thomas  
Britta Vanderburg  
Steven Vaquera  
Jeff Whitworth  
Abby Winegarner

### THIRD GRADE ALL A HONOR ROLL

Jessica Freeman  
Macy Harbour  
Dana McLaughlin  
Melissa Quillen  
Cayla Smith

### THIRD GRADE A AVERAGE

Rossilyn Bulls  
Joclin Baca  
Eric Flores  
Wayne Gibson  
Caleb Gillaspie  
Felicia Martinez  
Lizzi McCubbin  
Kathleen Reed  
Amy Powers

### ALL "A" HONOR ROLL

Jamie Brown  
Danielle Close  
Saylee Flowers  
Collin Gillaspie  
Sharon Haney  
Emily Hood  
Zack Nollner  
Kelece Rex  
Tarin Rice  
Noemi Rodriguez

### FOURTH GRADE A HONOR ROLL

Chriss Cudd Jentry Edwards  
Diana Flores  
Ashlee Flowers  
Keilee Goodheart  
Phillip Lozano  
Garrett Martin  
Homero Martinez  
Tatum Rice  
Russel Sheets  
Taylor Tuttle  
Claudia Vaquera  
Jayson Walser  
Meggan Whitworth

### FOURTH GRADE A AVERAGE

Juan Carmona  
Isabel Gutierrez  
Tanner Hand  
Marshall Hearon  
Selina Hernandez  
Cristina Salgado  
Sara Beth Sawyer  
Brittany Vera

### FIFTH GRADE ALL A

Lance Baker  
Kevin Beedy  
Travis Brown  
Brianna Burkhammer  
Adam Cherry  
Jessica Crossland  
Ryan Dewberry  
Matthew Francis  
Garrett Martin  
Wesley Hathaway  
Rodeney Howell  
Dustin Mackie  
Colton Miller  
Daniel Pape  
David Pipkin  
Nicole Ramon  
Zachary Renteria  
Colby Sawyer  
Kallie Smith  
Lance Smith  
Jeffrey Swan

### FIFTH GRADE A AVERAGE

Paul Bynum  
Anna Fraire  
Mindee Gillaspie  
Christopher Hearon  
John Thomas  
Lucia Villa

## Spearman High School

### FRESHMAN ALL A'S

Brittini Beedy  
Kristin Beedy  
Kristal Burkhammer  
Betay Holt  
Dawn Loomis  
Lisa Swink  
Brandi Willis

### SOPHOMORE ALL A'S

Mac Butts  
Lena Harbour  
Brian Howell  
Shayla Barber  
Samantha Beasley  
Kelly Goodman  
Dillon Miller  
Candice Pipkin

### JUNIORS ALL A'S

Erin Atwood  
Cari Babbitzke  
Regan Boxwell  
Matt Gafford  
Jarod Huddleston  
Cody McLeod  
Katherine Pipkin  
Martin Sanders  
Phillip Sanders  
Amy Schoenhals  
Jason Villines

### SENIORS ALL A'S

Blake Beedy  
Zach Furlow  
Bruce Howell  
Amanda Lomeli  
Orlando Ortiz  
Britt Savage  
Crystal Boyd  
Carrie Burton  
Haley Farber  
Lee Jarvis  
Gabriel Rodriguez

### FRESHMAN ALL'S AND 1 B

Doran Schoenhals  
Quentin Shieldknight  
Cami Winegarner

### SOPHOMORE ALL A'S AND 1 B

Mike Butts  
Misha Davis  
Teresa Gomez  
Clint Goodman  
Amber Morgan  
Karen Paschel  
Jamie Townsen

### JUNIOR ALL A'S AND 1 B

Blake Beedy  
Zach Furlow  
Bruce Howell  
Amanda Lomeli  
Orlando Ortiz  
Britt Savage

### SENIORS ALL A'S AND 1 B

Crystal Boyd  
Carrie Burton  
Haley Farber  
Lee Jarvis  
Gabriel Rodriguez

**GRUVER STATE BANK**  
GRUVER, TEXAS 79040  
PHONE (806) 733-5061

**First State Bank**  
One N.E. Court, (79081)  
659-5565  
Spearman, Texas

## Basketball

Lynxette  
Monday 1  
Spm 6  
Str 3  
Spm - J  
Whitefield -  
Lozano - 2.

Lynxette  
Monday 1  
Spm 2  
Str 10  
Spm - Lo  
Adams - 2.

Lynxette  
Monday  
Spm 0  
Str 8  
Spm - K  
Camille Sm  
4, Brooke L

Synopsis  
close this ga  
the awesom  
by Kathryn  
just missed

Lynxette  
Monday  
Spm 6  
Str  
Spm - B

-5, C. Villin  
K. Beasley  
Synopsis  
played the I  
they did ag  
Lynxette se  
player. T  
Carbajal's  
5 points.

Lynxette  
Monday  
Spm  
Str  
Spm - C

Lynxette  
Tuesda  
Spm  
ByR  
3-Point  
Pickin.

Spm - i  
7 Holton

DRIV  
Indep  
814

Sai  
De  
Jen  
Bl  
Ka  
Jer  
Ta  
To  
Ty

Br  
Cl  
H

S

3



# Obituaries

## FAYE KIRK STOWELL

NAMPA - Faye Kirk Stowell, 92, of Nampa, Idaho and formerly of Pampa, Texas, died on Thursday, January 11, 1996 at a Nampa care center. Services will be conducted at 11 a.m. Monday, January 15, 1996 at the Holt Cemetery near Spearman. Services are under the direction of the Boxwell Brothers Funeral Home in Spearman.

Faye Kirk Stowell was born on June 2, 1903 in North Hutchinson Co., Texas, the daughter of early Texas pioneers, Dib and Minnie Kirk. She was reared and educated in Texas. She received a B.A. Degree in Education from West Texas State College. She and her husband, Charles resided in Pampa for over 70 years. She was an elemen-

tary school teacher in Texas for 40 years. She held local and national offices in Kappa Iota. Faye was an active member of the First Christian Church in Pampa for over 50 years.

Faye is survived by her son and daughter-in-law, Dib and Dana Stowell, Nampa, ID; 1 sister, Mrs. Dorris Fayer, Lubbock, TX; 3 brothers, Buster Kirk, Borger, TX, Herbert Kirk, Stinnett, TX and Raymond Kirk, Spearman, TX; 2 grandchildren, Sheryl McIntyre, Denver, CO, and Chuck Stowell, Nampa, ID; 2 great grandchildren, Mathew and Monty McIntyre and a number of nieces and nephews. She was preceded in death by her husband, 3 brothers, a sister and a grandson, Monty Stowell.

## Dr. Dobson answers your questions . . .

**QUESTION:** My 4-year-old frequently comes running home in tears because she has been hit by one of her little friends. I have taught her that it is not right to hit others, but now they are making life miserable for her. What should I tell her about defending herself?

**DR. DOBSON:** When youngsters play together, they each want to have the best toys and determine the ground rules to their advantage. If they find they can predominate by simply flinging a well-aimed fist at the nose of their playmate, some are likely to get hurt.

I'm sure there are people who disagree with me on this issue, but I believe you should teach your child to defend himself or herself when attacked. Later, they can be taught to "turn the other cheek," which even mature adults find difficult to implement.

I recently consulted with a mother who was worried about her small daughter's inability to reject herself from aggression. There was one child in the neighborhood who would crack 3-year-old Ann in the face at the slightest provocation. This little bully, named Joan, was very small and feminine, but she never felt the sting of retaliation, because Ann had been taught not to fight back.

I recommended that Ann's mother tell her to return Joan's attack if Joan hit first. Several days later, the mother heard a loud altercation outside, followed by a brief scuffle. Then Joan began crying and went home.

Ann walked into the house with her hands in her pockets, and casually explained, "Joan socked me, so I had help her remember not to hit me again." She and Joan have played much more peacefully since that time.

Generally speaking, a parent should emphasize the foolishness of fighting. But to force a child to stand passively while being clobbered is to leave him at the mercy of his cold-blooded peers.

**QUESTION:** I am 13 years old, and I feel miserable about myself. Is there anything I can do?

**DR. DOBSON:** First, you need to understand that you are not alone. When you go to school tomorrow, quietly watch the students who are coming and going. I assure you, many of them have the same concerns that trouble you. They

reveal these doubts by being very shy and quiet, by being extremely angry and mean, by being silly, by being afraid to participate in a game or contest, by blushing frequently or by acting proud or "stuck up."

You'll soon learn to recognize the signs of inferiority, and then you'll know it's a very common disorder. It will give you more confidence to know that everyone is afraid of embarrassment and ridicule - that we're all sitting in the same leaky boat, trying to plug the watery holes.

Second, I advise you to look squarely at the worries that keep gnawing at you from the back of your mind or from deep within your heart, causing a black cloud to hang over your head day and night. Then list all the things which you most dislike about yourself. Nobody is going to see this paper except the people you choose to show it to, so you can be completely honest. Write down everything that's bothering you.

Identify your most serious problems as best as possible. Whatever concerns you, write it down the best you can. Then when you're finished, go back through the list and put a mark by those items that worry you the most - the problems you spend the most time thinking and fretting about.

Third, think about each item on the list. Give your greatest creative thought to what might be done to change the things you don't like. If your wish, you might share the paper with someone in whom you have confidence. That person can then help you map out a plan for improvement. You'll feel better for having faced your problems.

The key to mental health is being able to accept what you cannot change. After you've done what you can to deal with your problems, I feel you should take the paper on which the most painful items are written, and burn it in a private ceremony.

These questions and answers are excerpted from the book *Dr. Dobson Answers Your Questions*. Dr. James Dobson is a psychologist, author and president of Focus on the Family, a nonprofit organization dedicated to the preservation of the home. Correspondence to Dr. Dobson should be addressed to: Focus on the Family, P.O. Box 444, Colorado Springs, CO 80903. (c), 1982 Tyndale House Publishers, Inc.

This column is brought to you each week by these fine businesses:

**MARY KAY**  
FACE-TO-FACE BEAUTY ADVICE™  
**Leann Gillaspie**  
Beauty Consultant  
659-3889

---

**Gillaspie Auto and Truck**  
Dick Gillaspie - Owner  
Hwy. 287 S. • 659-2541

**Ivey's Hungry Cowboy**  
Jim and Kay Ivey - Managers  
Hwy. 287 • 659-5151

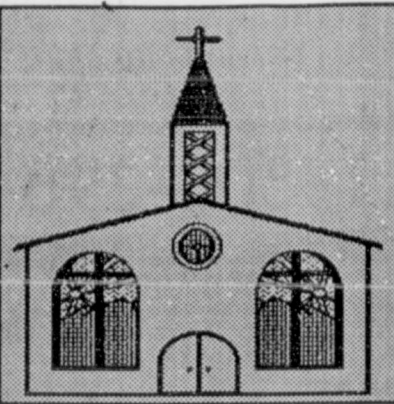
---

**Cunningham Insurance Agency**  
James Cunningham - Owner  
1187 S. Bernice • 659-3549

---

**B & B Sales Co.**  
Judy Tindell - Manager  
285 Dillion • 659-2662

## Let us replenish the seed of faith through... REGULAR CHURCH ATTENDANCE, DAILY BIBLE READING & PRAYER



**Curtis' Hot Oilers**  
806-659-3432  
"Taking Service to Perfection"  
806-659-2912 P.O. Box 714  
800-821-6714 Spearman, TX 79081

**Palo Duro Supper Club**  
22 S. Archer  
659-2232

**C.O.'S SUPPLY CO.**  
Plumbing & Tire Sales & Service  
421 W. Kenneth • Spearman  
659-3781 or 659-3555

**Bartlett's Ace Hardware**  
105 W. Broadway  
733-2404

**GILLASPIE**  
AUTO & TRUCK CENTER, INC.  
CHEVROLET • OLDS • PONTIAC • BUICK  
CHRYSLER • PLYMOUTH • DODGE  
Hwy 207 South • P.O. Box 430 (806)659-2541  
SPEARMAN, TEXAS 79081

**THE HANSFORD COUNTY REPORTER-STATSMAN**  
Serving The Communities Of Spearman, Gruver & Morse  
213 Main • 659-3434  
1-800-395-9482

**PORTER SATELLITE**  
TREY PORTER  
806-659-3057  
420 Davis  
Spearman, Texas 79081

**Gruver Cablevision**  
Quality Family Entertainment with  
"the Disney Channel"  
308 Main • 733-5295

**Morse Implement Company**  
"Join us in church this week"

**Boxwell Bros. Funeral Home**

**THE HANSFORD COUNTY REPORTER-STATSMAN**  
Serving The Communities Of Spearman, Gruver & Morse  
213 Main • 659-3434  
1-800-395-9482

**CORONADO HOSPITAL**  
Pampa, Texas  
(806)665-3721

Compliments of  
**G&G FOODLINER**  
516 Main • Gruver  
733-2471

If you are skiing out in the woods with an amiable companion, you can revel in the white beauty of the snow. If, on the other hand, you are on a city street, facing an icy wind, you may feel quite differently about the matter.

Isn't that the way it is with almost everything? The way we react to a situation so often depends upon the way it affects us personally. We aren't to be blamed for this; yet, we should stop to think that there are two sides to every story. We should not judge the merit of a viewpoint on whether or not it agrees with our own opinion.

God's House is used to different viewpoints, to controversy. It has lived with changing times and opinions for centuries, and it has never been more involved than it is today. The Church is changing as change is needed, ever ready to investigate and to explore the new. Have you been keeping up with it? Why not get involved with your church or synagogue now?

**It Depends**

SUNDAY	MONDAY	TUESDAY	WEDNESDAY	THURSDAY	FRIDAY	SATURDAY
MATTHEW 12:9-21	MATTHEW 12:22-32	MATTHEW 13:1-17	MATTHEW 13:18-23	MATTHEW 16:13-20	MATTHEW 16:21-28	MATTHEW 15:1-20

Scriptures Selected by The American Bible Society  
Copyright 1996, Kester-Williams Newspaper Services, P. O. Box 8005, Charlottesville, VA 22906

**In Spearman...**

**Apostolic Faith Church**  
822. S. Drensen • 659-2870  
Sunday School: 10 a.m.  
Worship: 11 a.m.  
Evening Worship: 6 p.m. Sun.  
Wed. Prayer Meeting: 7:30 p.m.  
Pastor James Brown

**First Assembly of God**  
401 N. Bernice • 659-2295  
Sunday School: 9:45 a.m.  
Worship: 10:50 a.m.  
Evening Worship: 7 p.m.  
Wednesday Worship: 7:30 p.m.  
Youth: 7:30 Wednesday  
Pastor Walter Greaser, Jr.

**First Christian Church (Disciples of Christ)**  
29 S. Bernice • 659-2036  
Sunday School: 9:45 a.m.  
Worship: 10:50 a.m.  
Evening Bible Study Worship: 6:30 p.m. Sundays.  
Pastor LaVern Draper

**First Baptist Church**  
123 N. Bernice • 659-5557  
Sunday School: 9:45 a.m.  
Worship: 11 a.m.  
Evening Worship: 7 p.m.  
Jr. High Youth: 6 p.m. Wed.  
High School Youth: 7 p.m. Wed.  
Youth Choir: 6 p.m. Sun.  
Pastor Kyle Henderson

**Church of Christ**  
121 S. Haney • 659-3244  
Sunday Bible Class: 9:45 a.m.  
Worship: 10:30 a.m.  
Evening Worship: 6 p.m.  
Bible Study Wed. 7:30 p.m.  
KRDF Radio Program  
Living With Christ 7:50 a.m. M-F  
Minister Arnis Pape

**Fellowship Baptist**  
1102 S. Archer • 659-2783  
Sunday School: 10 a.m.  
Worship: 11 a.m.  
Evening Worship: 6 p.m. Sunday/  
Youth & Adult Serv.: 7:30 Wed.  
Pastor Tim Luttrall

**Primera Mision Bautista**  
502 E. 7th • 659-3991  
Sunday School: 9:45 a.m.  
Worship: 11 a.m.; Evening: 6 p.m.  
Wed. Prayer Meeting: 7 p.m.  
Thurs. Visitation: 7 p.m.  
Pastor Isaias Martinez.

**Trinity Community Church**  
717 W. 7th Ave. • 659-2671  
Celebration of Praise 10:15  
Worship Service and Children's Church 10:30  
Sunday Evening 6:30 p.m.  
Wednesday evening: 7 p.m.  
Pastor Dan Carter

**Faith Lutheran Church (ELCA)**  
1101 Bernice • 659-2252  
(Worships with First Presbyterian Church)

**First Presbyterian Church**  
(Worships with Faith Lutheran Church)  
1021 Cotter • 659-2033  
Sunday School: 9:45 a.m. at Lutheran Church  
Worship: 11 a.m. (alternates monthly between addresses above)  
Pastor Beverly Cook

**First United Methodist**  
407 S. Haney • 659-5503  
Sunday School: 9:45 a.m.  
Worship: 11 a.m.  
Jr. High Youth: 5 p.m. Sun.  
High School: 6 p.m. Sun.  
Pastor Jeff Lust

**Union Church**  
31 S. Endicott • 659-2644  
Sunday School: 9:45 a.m.  
Worship: 10:45 a.m.  
Evening Worship: 6:00 p.m.  
Bible Study & Prayer Meeting: 7:00 p.m. Wed.  
Pastor Billy Stanford

**Sacred Heart Catholic Church**  
901 Roland • 659-2792  
Sat. Night Mass: 7 p.m.  
Sunday Mass: 8:45 a.m. - English (8:45a.m. Service on KRDF 98.3 FM)  
11:15 a.m. - Spanish  
1:30 p.m. - Gruver - Christo Rendontor Mass - Spanish Rev. Fernand Couture

**This feature is made possible through the Sponsorship of these Civic Minded Businesses**

**"WE SUPPORT OUR LOCAL CHURCHES"**  
**CAPROCK #1 & #2**  
Bill Park, Gen. Mgr.  
(806)733-5043 or 733-5025  
"Custom Cattle Feeding"

**In Gruver...**

**First Baptist Church**  
402 E. Broadway • 733-2411  
Sunday School: 9:45 a.m.  
Worship: 10:50 a.m.  
Disciple Training: 6 p.m. Sunday  
Prayer Meeting: 7:30 p.m. Wednesday  
Pastor Larry Miller

**Church of Christ**  
209 King • 733-2760  
Sunday School: 9:30 a.m.  
Worship: 10:20 a.m.  
Evening Worship: 6 pm.  
Wed. Evening Worship: 7:30 p.m.  
Minister Bob Setliff

**First Christian Church**  
510 King • 733-2960  
Sunday School: 9:45 a.m.  
Worship: 11 a.m.  
Wed. Bible Study: 7:30 p.m.  
Youth: 6:30 Wednesday  
Pastor Gary Gumfory

**Oslo Lutheran Church (ECLA)**  
West of Gruver on Hwy 15 & N. FM 1162  
339-7646  
Sunday School: 9:45 a.m.  
Worship: 11 a.m.  
Morning Prayer: 9 a.m. Wed.  
Pioneer Clubs (Grades 1-6): 4-5:30 p.m. Wednesday  
Pastor John R. Chandler

**Community Bible Church (Interdenominational)**  
Hwy. 15 • 733-2443  
Sunday School: 10 a.m.  
Worship: 11 a.m.  
Wed. Prayer Meeting: 7 p.m.

**First United Methodist**  
Broadway & Garrett • 733-2651  
Sunday School: 9:45 a.m.  
Worship: 8:30 a.m. & 10:50 a.m.  
Evening Worship: 6 p.m.  
Pastor Lewis Holland

**In Morse...**

**Morse Baptist Church**  
Pastor Mike Martin  
733-2757

**"Your Home Away From Home"**  
**Nursanickel Motel**  
815 Hwy. 207 S.  
Phone: (806)659-3737 P.O. Box 115  
Spearman, Texas 79081

**BERRY CLEANERS**  
DAN DESIMONE - OWNER  
Phone 659-3122 • P.O. Box 1017  
207 Main St. • Spearman, Tx. 79081

**GRUVER FORD**  
Ford FORD  
531 Main • Gruver • 733-2431

**Interstate Savings & Loan**  
322 Main • Spearman • 659-2559

**Deakin ELECTRIC**  
OILFIELD • RESIDENTIAL • COMMERCIAL  
321 S. Main  
Spearman, Texas 79081  
1-800-999-1506  
(806) 659-5016  
Chris Deakin  
President

**Gordon Drugs**  
Dependable Prescription Service  
314 Main • Spearman  
659-2141  
Jim Evans

Compliments of...  
**AGCO of Spearman, Inc.**  
"See you in Church"  
659-3751



# Johnson to run for the Texas Court of Criminal Appeals, Place Three

Austin attorney Cheryl A. Johnson has announced her candidacy for the Texas Court of Criminal Appeals, Place Three. When asked why she is seeking a seat on the Court of Criminal Appeals, Ms. Johnson replied that the current Court is seen as being split along ideological lines, resulting in long delays in deciding cases and no clear guidance to the courts below. "A judge must be an impartial advocate of the law, neither pro-state nor pro-defense. If a judge is not impartial, the system cannot work as it was designed to. As a judge on the Court of Criminal Appeals, I would work to keep the Court within the narrow bounds of its proper jurisdiction, which is to oversee the lower courts and to ensure that they apply the law as it was written by the legislature. If a law is seen as bad or as having unintended consequences, the appropriate arena for change is the legislature, not the courts."

Ms. Johnson, 49, is certified as a

specialist in criminal law by the Texas Board of Legal Specialization, and is licensed to practice law by the Texas Supreme Court, the federal trial courts in the Western District of Texas, the United States Court of Appeals for the Seventh Circuit, and the State of Illinois. She has been in private practice in Austin since 1984. Her husband is a lieutenant on the Austin Police Department. They have no children. Ms. Johnson is active in the United Methodist Church, Volunteer Legal Services of Central Texas, and the Austin - Travis County Community Justice Council, Committee on Offenders with Mental Impairments.

She will face John Bradley of Georgetown, J. Gary Trichter of Houston, and Tom Price of Richardson in the Republican primary on March 12, 1996. The incumbent is Frank Maloney, who is running for reelection unopposed in the Democratic primary.



CHERYL JOHNSON

## Lynyrd Skynyrd to appear

# Houston Livestock Show to be held in upcoming February

Houston Livestock Show and Rodeo officials today announced a phenomenal star line-up featuring 24 top-notch entertainers for the 1996 event.

Each of the 20 rodeo performances features PRCA rodeo action, the world's largest calf scramble, chuck wagon races and concert entertainment. Kicking off the incredible star line-up on Friday, Feb. 16, at 7 p.m. is Vince Gill. On Saturday, Feb. 17 at 11 a.m., the Houston Rodeo welcomes Travis Tritt and Rick Trevino to the Astrodome. Clay Walker headlines the 7 p.m. performance on Feb. 17. The first Sunday twilight performance at 4 p.m., Feb. 18, features Wynonna. The week continues with 7 p.m. performances: George Strait, Monday, Feb. 19; Clint Black performing both Tuesday and Wednesday, Feb. 20 and 21; Brooks and Dunn, Thursday, Feb. 22; and George Strait returns for the evening performance on Friday, Feb. 23. On Saturday, Feb. 24, the Show celebrates Black Heritage Day featuring a matinee performance beginning at 11 a.m. with Gladys Knight and Kool and the Gang. The Saturday 7 o.m. performance brings Toby Keith and Martina McBride to the Astrodome.

The second week of entertainment kicks off with Go Tejano Day and a 4 p.m. twilight performance on Sunday, Feb. 25, featuring Oscar de la Rosa and La Mafia, and La Differenzia. The premier concerts continue during the week beginning at 7 p.m. with Hank Williams Jr. and Lynyrd Skynyrd, Monday, Feb. 26. Tracy Lawrence and Tracy Bryd team up on Tuesday, Feb. 27; and Alan Jackson returns to the Astrodome stage on Wednesday, Feb. 28. The Thursday, Feb. 29, performance features entertainment from Alabama and Patty Loveless. Reba McEntire returns to Houston for three performances, Friday, March 1 at 7 p.m.; and for both performances, 11 a.m. and 7 p.m., Saturday, March 2. Tim McGraw and Emilio highlight the final 4 p.m. rodeo performance, Sunday, March 3.

Tickets are \$10 and are available at all Ticketmaster outlets including Blockbuster Music, Foley's, Sears, Fiesta and Randalls Food Markets locations, and at the Astrodome box office, beginning Saturday, Jan. 13, at 10 a.m. Sales at these locations are limited to the greater Houston area, Beaumont, Port Arthur, Orange and College Station on Jan. 13. Other state and out-of-state outlets will begin selling tickets Sunday, Jan. 14.

Tickets will be limited to 10 per person per performance on the first three days of ticket outlet sales, Saturday, Jan. 13, through Monday, Jan. 15. For fans wanting to purchase tickets at the Astrodome, wristbands will be given out starting at 7 a.m., Tuesday, Jan. 9, at the West Gate ticket booth. The West Gate ticket booth will be open 9 a.m. to 5 p.m. beginning Wednesday, Jan. 10. After hours, wristbands may be obtained from the

Astrodome security officer at the Murworth gate. The wristbands obtained at the Astrodome are valid only for the random drawing at the Astrodome box office. No wristbands will be distributed at the Astrodome after 8 a.m. Saturday, Jan. 13, as preliminary line-up for wristbands holders begins at that time.

The drawing at the Astrodome will be held at approximately 9 a.m., Saturday, Jan. 13, to determine the wristband number which will start the line for ticket purchases. For example, if 4,000 wristbands are distributed, and number 265 is drawn, the person with wristband number 266 will be first in line, followed in order by numbers 266, 267, 268, etc. Immediately after number 4,000, numbers 1, 2, 3 etc. will follow in order. Once the people holding wristbands have lined up, any latecomers may get in line.

Most other Ticketmaster locations in the Houston area also will be distributing wristbands/coupons, beginning at 8 a.m., Saturday, Jan. 13. Drawings will be held at each of the locations at approximately 9 a.m. to determine the wristband/coupon number which will start the line for ticket purchases. There will be a \$1 additional handling charge, in addition to the convenience charge, at all Ticketmaster outlets, to persons purchasing tickets on the first day of ticket sales.

At all ticket locations, wristbands/coupons will be available only to persons ages 12 and over, and each person will receive only one wristband. Wristbands that have been tapered with or removed will not be honored.

Starting at 10 a.m., Saturday, Jan. 13, tickets also may be charged by phone at (713) 629-3700. For one day only, Saturday, Jan. 13, a toll-free number will be available for ticket orders: (800) 762-1313. Ticketmaster also will be selling carnival value packs by phone beginning Saturday, Jan. 13. This \$19.80 value may be purchased for only \$10 if purchased by phone. VISA, MasterCard, American Express and Discover cards will be accepted for ticket purchases and for carnival value packs.

Houston Livestock Show and Rodeo fans also will be able to enjoy championship rodeo action and concert entertainment on pay-per-view television for only \$29.90 for the tree-event package. The first Rodeo Houston telecast is Friday, Feb. 23; the second broadcast will be Thursday, Feb. 29; and the final pay-per-view telecast on Sunday, March 3, will be a live broadcast of the rodeo finals in its entirety.

Rodeo Houston will be available nationwide on DIRECTV; on TVN Satellite Theaters in the United States and Canada; and on cable in Houston and the rest of a five-state area of Texas, Arkansas, Louisiana, New Mexico, and Oklahoma. Coupons for \$5 off the package will be available at Houston and Dallas area Kroger stores for cable television customers.

The 1996 Houston Livestock

Show and Rodeo opens with the World's Championship Bar-B-Que Contest Thursday, Feb. 8, and other Go Texan events are held Feb. 10-11 at the Astrodome complex. Horse Show competition begins Wednesday, Feb. 14, while the carnival and livestock show open Friday, Feb. 16. The first rodeo performance kicks off at 7 p.m., Friday, Feb. 16. All events conclude Sunday, March 3.

## Trichter announces candidacy

J. Gary Trichter announced today that he is running for Texas Court Criminal Appeals, Place 3.

J. Gary Trichter is 44 years old and practices law in Houston, Texas, with the law firm of Trichter & De La Garza. He is licensed by the State Bar of Texas (1980) and of Colorado (1987) and of the United States Supreme Court (1984). Mr. Trichter is also licensed before the United States Fifth (1980) and Eleventh (1981) Circuit Courts of Appeals and all federal district courts in Texas.

During his early legal career, Mr. Trichter taught as an adjunct professor of law at South Texas College of Law and the University of Houston Law School. His works have been published as legal journals and treatises over 25 times throughout Texas and the nation. Most recently, he was featured as guest speakers at a seminar held at Harvard Law School. Mr. Trichter has lectured judges, prosecutors, and defense attorneys in over 125 seminars in 14 states and the District of Columbia, as well as, lecturing in Mexico and in the British West Indies. He has lectured on behalf of 24 different legal bar organizations.

Prior to attending law school, Mr. Trichter graduated from Florida State University in 1973 with a B.A. Degree in Political Science and International Affairs. In 1977, he earned his M.A. Degree in Criminal Justice from the University of South Florida. Mr. Trichter received his law degree from South Texas College of Law in 1980. While in law school, Mr. Trichter was named winner of the American Bar Association's 1979 National Essay Competition on Medicine and the Law and was a member of the school's law journal.

Before practicing law, Mr. Trichter worked in law enforcement as a police officer with the City of Sarasota Police Department in Sarasota, Florida, and, as an administrative staff assistant with the Office of the State Attorney in the Tenth Judicial Circuit in Florida. While at the prosecutor's office, Mr. Trichter was responsible for the design and coordination of prosecutorial diversion and grant programs.

## BUSINESS REVIEW

NEWSPAPER SERVICES COMPANY

is solely responsible for sales, content and collections of the Review Section

## EDWARD D. JONES & CO.

GARY A. SCHNECK - INVESTMENT REPRESENTATIVE, BORGER  
BRIAN DIEDRICH - INVESTMENT REPRESENTATIVE, PERRYTON

EDWARD D. JONES & CO. offers two convenient locations to serve you at 605 W. 3rd, in Borger, phone (806) 274-7301 or toll free 1-800-658-6389 for Gary Schneck or in Perryton, just phone (806) 435-7173 or toll free 1-800-303-7173 for Brian Diedrich. has become one of the leading stock and bond brokers in the

Panhandle. Gary A. Schneck and Brian Diedrich, local investment representatives, realize that in order to have done this they had to have the whole-hearted and sincere support of the area of which they are a part. They invite you to call, or drop in anytime. They have dedicated themselves to aiding in every possible way

all those who rely on them. As a result, that much discussed word "SERVICE" finds true meaning in the friendly atmosphere that envelops everyone who comes to them. We, the editors of this 1996 Valentine's Business Review, commend them for their community-minded activities and interest in the people of this area.

## CAPROCK INDUSTRIES, INC.

BILL PARK - GENERAL MANAGER  
"SERVING THE PANHANDLE AREA FOR 23 YEARS"

CAPROCK INDUSTRIES, INC., Lot #1, located Southwest of Gruver and Lot #2, located Northeast of Gruver, phone 733-5025, specializes in commercial cattle feeding the year round. They feature all modern feed lots and experienced hands who are more than qualified to handle your stock. They feed only the best feed that can be had, to insure you of

MORE WEIGHT on your beef in the shortest period of time. Several customer service options are available, including: guaranteed fat cattle prices at anytime during the feeding, and ration prices can be locked in at anytime. Farmers and ranchers have been using the service rendered at these lots with the greatest satisfaction, knowing they can rely on this

feed lot to fatten their beef for market year after year. Contact Bill Park, Sid Sawyer or Justin Gifford, Customer Service Representative to help you with the services offered. CAPROCK INDUSTRIES, INC. would like to thank everyone for their continued patronage in 1995 and hope everyone has a Prosperous 1996!

## HARVEY'S PRECISION BODY SHOP

People in The Panhandle don't have to look far and wide for a firm which is capable of doing the highest quality auto body painting and repair work. HARVEY'S PRECISION BODY SHOP at 3026 Blackburn Street in Amarillo, phone 352-9662, can refinish or repaint any car or

truck, foreign or domestic. Their work is fast, economical and beautiful! When you bring your car to this outstanding body and paint shop, you can rest assured that the work will be done to your exact specifications and that the estimate will match the final statement. Insurance companies must

now permit you to choose the body shop you like best. We suggest you choose this one with employees totaling over 147 years of experience and customer satisfaction. The writers of this 1996 Business Review feel this will be the only stop you have to make for your needed repairs.

## GERALD'S OFFICE PRODUCTS

"SERVING THE PANHANDLE AREA FOR 8 YEARS"

Let GERALD'S OFFICE PRODUCTS show you their office furniture, equipment and supplies. Located at 607 N. Deahl in Borger, phone 273-9573 or toll free in Texas 1-800-281-9573, they are the leaders in the office equipment and supply business. You can save money and

reduce your office overhead by calling this firm for all of your office supplies. Drop in and choose from their large stock of supplies, office equipment and office furniture. We commend the management of this excellent office supplier for outstanding service to the business and profes-

sional people in The Panhandle and suggest that you, too become a regular customer. GERALD'S OFFICE PRODUCTS would like to thank all their customers for their patronage in 1995 and hopes everyone will have a Prosperous 1996.

## LORENE'S DRAPERY

"SERVING THE PANHANDLE AREA SINCE 1967"

Exciting, unusual custom made draperies await you at LORENE'S DRAPERY in Dumas at 1301 Dumas Avenue, phone 935-6044 for estimates. One of the largest selections of drapery fabrics in The Panhandle can be found at this fine establishment. Extensive selections of solids,

prints and drapery murals for every decorating scheme are featured. They will be pleased to discuss your color and texture needs at your home or in their shop. Decorative and hard fabrics are available for use in businesses and institutions. This respected specialty shop features the area's largest selection of Blinds and Draperies for

any and all windows. We are pleased to be able to recommend this outstanding Drapery Shop for the finest window treatments. LORENE'S DRAPERY would like to thank everyone in the area for their patronage in 1995 and look forward to serving them in 1996.

## BIG 4 PACKING & LOCKERS

"SERVING THE PANHANDLE AREA FOR 16 YEARS"

BIG 4 PACKING & LOCKERS is located in Perryton at 1602 South Cedar, phone 435-5679. This is the place you can buy your meat and save. They cut and process all meats for home freezers. They also do custom butchering and curing. They have the latest in modern equipment

and that, along with their many years of experience, enable them to give you the best possible service. They will butcher your meat so that you will get the most out of your hog or beef. They work on the principal that every customer must have the best and most expert service that can be

given. This service is available at all seasons of the year. The owner wishes to invite our readers to stop in any time and to also express his appreciation for your patronage in 1995 and hopes everyone has a Prosperous 1996!

## NATIONAL BANK OF COMMERCE

NATIONAL BANK OF COMMERCE is located at 1224 N. Hobart, in Pampa, phone 665-0022, and has been recognized as one of the outstanding banks in The Panhandle. They offer to the folks in The Panhandle every convenience of a large city bank yet maintain the under-

standing and personal interest in each customer to cope with their particular problems. They are interested in the small depositor and the small loan applicant as well as the larger accounts. A great amount of praise is due the officers and directors, for they have contributed to the strength of our area's economic structure. Each

depositor is insured up to \$100,000 by the F.D.I.C. and has encouraged each and every family to help secure their future with a sound savings plan. NATIONAL BANK OF COMMERCE would like to thank all their customers for their patronage in 1995 and wishes everyone a Prosperous 1996!

## TEXAS PIPE & METAL

TRACY YOUNG - MANAGER

Buying and selling scrap metal and iron is the job of TEXAS PIPE & METAL, located at 904 S. Florida in Borger, phone 274-2271. This established firm deals in all types of scrap metals and pays top dollar for all commodities. Specialists in iron, tin, aluminum, copper, batteries, ra-

diators, and many other materials. This well known scrap yard will pay cash by the pound or ton. You're doing service to the ecology and to your pocket book when you make it a point to take all excess metal to TEXAS PIPE & METAL. This well known firm is to be commended

for their significant contribution to the ecology of the Panhandle. Also see them first when you need any new or used pipe or tubing. They are well stocked and ready to serve you. The writers of this 1996 Business Review recommend TEXAS PIPE & METAL to all our readers.

## CORONADO HOSPITAL

There is nothing more important to the onward progress of any area than a modern hospital, such as CORONADO HOSPITAL, located at 1 Medical Plaza in Pampa, phone 665-3721. Presided over by those who are ready to serve the sick and the injured, with the best of care and

medical attention. The very finest equipment, careful nursing and the most able professional services are at your disposal when you are a patient at CORONADO HOSPITAL. They feature general hospital service such as: 24 hour emergency room, obstetrics, breast imaging center, speech, physical and respiratory therapy, ra-

diology, laboratory, one day surgery and home health. They take pride in their hospital and staff. When you or your family need hospital care, remember to call this hospital. We, the writers of this 1996 Business and Professional Review, recommend this outstanding hospital to all of our readers.

## SENIOR VILLAGE NURSING HOME

RITA HARGROVE - ADMINISTRATOR

Residents of this area can find the best care for those they care for the most when they learn first hand of the extensive facilities at SENIOR VILLAGE NURSING HOME affiliated with M.S.C. Associate of Lubbock-Non-Profit Organization located on Highway 83 South in Perryton, phone 435-5403. Those who have

reached the age of retirement and prefer the company of their own generation can find here the kind of pleasant relaxed atmosphere they've spent most of their lives EARNING. Twenty-four hour nursing care, rehabilitation therapy, physicians and pharmacists available, a health diet for all residents including special di-

ets. This is just a part of the service featured here where they add years to senior citizen's lives and LIFE TO THEIR YEARS. Programmed activities available. You will find that your loved ones will receive the best care here. We, the editors of this 1996 Business Review, recommend this outstanding firm to all our readers.

FAYE KIRK  
NAMPAL - I  
of Nampa, Id  
Pampa, Texa  
January 11, 1  
center. Servi  
at 11 a.m. M  
1996 at the  
Spearman. S  
direction of  
Funeral Home  
Faye Kirk  
June 2, 1903  
Co., Texas, 1  
Texas pioner  
Kirk. She wa  
in Texas. Sl  
gree in Educ  
State Colleg  
band, Charle  
over 70 year

## Dr. you

QUESTI  
frequently  
in tears be  
hit by one c  
have taught  
right to hit  
are makin  
her. What's  
defending  
DR. DO  
sters play to  
to have the  
the ground  
fate. If they  
nate by simp  
list at the r  
some in like

I'm sure  
disagree wit  
I believe you  
to defend h  
attacked. L  
to "turn th  
even matur  
implement.

I recent  
mother who  
small daug  
herself from  
one child in  
would crad  
face at the  
This little l  
very small  
never felt  
because An  
fight back.

I recor  
mother te  
attack if  
days later,  
altercator  
briefscuffl  
ing and we  
Ann we  
her hands  
ally explai  
I had help  
me again  
played mu  
that time.

Generi  
should en  
of fightin  
stand par  
bered is t  
his cold-b  
QUES  
old, and  
myself.  
do?

DR. I  
to under  
alone. V  
morrow,  
who are c  
my, mar  
concerns

This co

Gill  
Dic  
Hwy



**"IT'S FOR YOU"...**  
The Classifieds Have Something For Everyone!

The Home Seller...  
The Car Buyer...  
The Do-It-Yourselfer...  
The Mother's Helper...  
The Job Seeker...  
The Bargain Reaper...

When you want results, turn to The Classifieds.

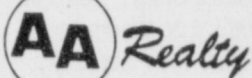
# The Hansford County Reporter-Statesman

Serving Hansford County Since 1907

Telephone: 1-800-395-9482 or (806)659-3434

**REAL ESTATE**

**REAL ESTATE**



**Spearman's ONLY locally owned and operated Realty.**

- Allen Alford - Broker - 659-3034
- Julie Martin - Broker - 659-2425
- 1103 S. Townsend - 3/1 1/2, good loc.
- 1010 Haney - 4/1/1 w/fireplace.
- Hanger & Storage - Old Airport REDUCED!!!
- 2 Lots at 7th & Barkley - Bldrs Dream
- 160 Acres - SE of county
- Gruver - 400 & 402 Front Street
- NEW LISTINGS
- 515 S. Evans - 3/2/1, two story
- 612 S. Endicott - 3/2/2, cozy & clean.
- 718 S. Bernice

We're like Your Listing  
FOR QUALITY & SERVICE CALL US TODAY!  
Equal Housing Opportunity

**FOR SALE:** Three bedroom, two full baths, two large living areas, two fireplaces brick country home on five acres. 2,700 sq. ft. Call 435-7279. S2, 2tc

**HOUSE FOR SALE:** Must see to appreciate, older victorian home, 2,800 sq. ft. and weight and suntan room and art room. Extra adjoining corner lot. 3 bedroom, 3 baths, and basement. Call (806)659-2117 or 3762, 104 S. Barkley, (new roof), in Spearman. S42, RTN

**FOR SALE:** 5 acre vacant lot, agriculture zoned, N.E. side of Spearman. Call (806)659-2117 or 3762. S42, RTN

**MAKE US AN OFFER:** Great brick home in great location. 2,200 sq. ft., 4 bedrooms, 3 baths, big den with fireplace, basement, double car garage. 702 Gibner. Call and let's make a deal! 659-3838 or 733-5555. S19, RTN

**HOMETOWN REALTY**  
Selling Spearman!  
List your home with the Real Estate Professionals that the BUYERS call!

- Rex Hoover - Broker - 800-755-4291
- Larry Troser - Sales - 659-3491
- Diana Hoover - Sales - 659-9113
- 711 Collier - 3 bedroom, 1 bath, garage, central heat, PRICED TO SELL!
- 6 1/2 Miles West of Spearman - 2,894 sq. ft., 3 bedrooms, fireplace, basement, UNDER CONTRACT
- 4 Miles South of Spearman - 320 acres irrigated Farm Land.
- 1013 Linn Drive - 2,000 sq. ft., 3 bed, 2 1/2 bath, fireplace, screened porch, UNDER CONTRACT
- 730 Gibner - 1,900 sq. ft., 2 bath, large, beautiful yard, storage building, UNDER CONTRACT

We need and appreciate your listings!

**OFFICE & BUILDING FOR SALE:** 2,600 sq. ft. office and 45x60 Morton Building setting on 2+ acres. Barn heated and fully insulated. Nice facility. Please call (806)659-2117 or 3762. Located in Spearman. S42, RTN

**FOR SALE BY OWNER:** Easy to buy nice brick 3 bedroom home for smaller family. Fenced, nice neighborhood. Assume loan at 6% interest \$2,000 to seller, \$320 payments, taxes and insurance included. Lease purchase option. Call (806)296-6727. S44, RTN

**FOR SALE:** Vacation at home: wet bar, golf course, swimming pool, hot tub, 3 bedroom, 3 baths. All this can be yours at an affordable price. Call to see today. Real Estate and Rental, (806)435-4623. S51, RTN

**FOR SALE:** 2,000 sq. ft. brick, 4 bedroom, 1 3/4 bath, double garage, central air/heat, lots of improvements, 18x27 Morton bldg in bak yard, new fence and gates. Call (home) 659-3071 or (work) 659-3027. S49, RTN

**FOR SALE OR LEASE:** Former Anthony Electric building. Call 659-2819. S51, RTN

**FOR SALE:** Lots 4 and 5, Unit 2, Tract 3, Crawford Addition - just north of Ag Farm - 10 feet tall chain linked outer fences, storage building, tack room, electric waters, sheds. Excellent facility for horses or any animals. Call (806)287-1538. S25, 3tp, RTN

**1117 TOWNSEND:** Price reduced to under \$50,000! New paint! New carpet! Affordable 3 bedroom, 1 3/4 bath, with game room and basement. Call Real Estate and Rental TODAY! 435-4623. S32, RTN

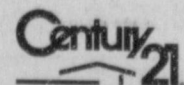
**FOR SALE OR RENT:** 3 bedroom, 2 bath house in Gruver with den, dining room, 2 car garage, washer and dryer connections, dishwasher, garbage disposal, fenced back yard, electric garage door opener, ceiling fans throughout, carpeted throughout. Owner will carry with good down. Price below market, negotiable. Near school, lots of closet space. Call 659-2761 or (806)372-6409. S2, 2tp

**FOR LEASE**

**FOR LEASE:** 2 1/2 acres fenced in yard. 50x70 building with crane, office space on front of building, located at industrial area by old airport. \$500 per month. For more information call 316-626-8906 or 316-624-5358. S38, RTN

MAKE THE MOST OF YOUR EXPERIENCE.

Our local office is part of the CENTURY 21® System. We can give you access to more buyers and sellers than any other real estate sales organization, along with training programs that can help broaden your specialization. Call today and ask for a free career consultation.



©1994 Century 21 Real Estate Corporation. Equal Opportunity Employer. EACH OFFICE IS INDEPENDENTLY OWNED AND OPERATED.

**FOR RENT**

**FOR RENT:** 1 bedroom efficiency apt. Call 659-3260. S49, RTN

**FOR RENT:** Furnished 1 bedroom house. Call Gus McLain at 659-2274. S3, RTN

**FOR RENT:** 3 bedroom, central air, 1 bath, fenced back yard, 1004 Townsend. \$350/mo., \$250 deposit. Call 659-2245. S2, RTN

**FOR RENT:** 4 bedroom, 1 bath, 1012 Bernice. Call 659-3734 or 659-2000. S3, 2tc

**FOR RENT:** Furnished 2 bedroom house, \$175/mo. and \$50 deposit. Put up own utility deposits and pay own bills. Located at 217 S. Endicott. Also an efficiency apartment for one person. Furnished, \$160/mo. and \$100 deposit. Located at 107 N. Endicott. Call 659-2404. S3, 2tp

**JOB OPPORTUNITIES**

**HELP WANTED:** Part-time dispatcher. Must have high school diploma and willing to work all shifts. Will train. Apply at Hansford County Sheriff's Department. S53, 3tc

**HELP WANTED:** Semi truck drivers, CDL required. Must be 25 yrs. old. Conventional's new hopper bottom trailers. McCarty Trucking, 806/362-4907. S10, RTN

**AUTOMOBILES**

**FOR SALE:** 1992 Suburban 4x4 Silverado fully loaded. Below loan value. White with gray interior. 733-2375. S51, RTN

**MUST SELL!!!!** 93 Ford XLT, R/C, loaded, V8, Auto, 36K. No old contract to assume. No back payments to make. Just need responsible person to make reasonable monthly payments. Ask for Kenneth, phone (806)935-6424 at Murphy Olds GMC, Dumas, TX. Terms up to 72 mo. w/app. credit. S3, 1tc

**FOR SALE:** 1984 Ford Truck with 20' van and V-8 diesel engine. Excellent condition. For more information call 659-3432 or 659-2912. S52, RTN

**MUST SELL!!!!** 94 Ford X-cab 1/2T, 6 CLY, 5 spd, AC, 22K. No old contract to assume. No back payments to make. Just need responsible person to make reasonable monthly payments. Ask for Kenneth, phone (806)935-6424 at Murphy Olds GMC, Dumas, TX. Terms up to 72 mo. w/app. credit. S3, 1tc

**FOR SALE:** Good dump truck for sale. If interested call after 6:00 p.m., (806)249-5827. S35, RTN

**MUST SELL!!!!** 95 Ford XLT X-cab, 8' Bed, V8, Auto, buckets, 22K. No old contract to assume. No back payments to make. Just need responsible person to make reasonable monthly payments. Ask for Kenneth, phone (806)935-6424 at Murphy Olds GMC, Dumas, TX. Terms up to 72 mo. w/app. credit. S3, 1tc

**Are You A Victim of Domestic Abuse . . .**  
Physical, Emotional or Sexual?  
Call Toll Free 1-800-753-5308

We are in Spearman on the 1st, 3rd, & 5th Wednesdays of each month at the First Presbyterian Church, 1021 Cotter. On the 2nd & 4th Wednesdays we are at the First Christian Church at 510 King in Gruver. We can come to Spearman & Gruver any time upon request. We operate a safe place for victims & their children to stay in times of crisis.

**Panhandle Crisis Center**  
Serving Hansford, Lipscomb & Ochiltree Counties  
317 S. Main Perryton, Tx.  
Memorials Accepted

**SERVICES**

**WITS CLEANED:** Dragline or Loader. Call LeeRoy Mitchell, 733-2384 or 733-2175. S47, 1tc/RTN

**J & M Service Center 24-Hour Service-415** Collard, Spearman 79081. 659-5519 or 659-3352. Tires, flats, oil & lube, wash, brakes, batteries and minor repairs. Now selling gas. S27, 1tc/RTN

**LAUNDRY SERVICE:** Special - 60¢ a pound. Mon., Wed., and Fri. Family Laundry. S40, RTN

**SERVICES:** Kathy's Gift & Accessory featuring Home Interior Items. Call 882-4466 and leave message. S40, RTN

**ROOF LEAKING?** We have the answer. Conklin Roofing Systems, 1-800-687-3102. S50, RTN

**REDUCE:** Burn off fat while you sleep. Take UPAL. Available at Gordon's Drug, 314 Main, Spearman. S2, 5tp

**WEIGHT WATCHERS** is now meeting every Monday in Spearman. For more information, please call 1-800-359-3131. S3, RTN

**FOR SALE**

**FOR SALE:** Queen size waterbed, good condition. Has headboard, mattress, pad, heater, and 12 underneath drawers. \$100. Call 659-2875 after 6 p.m. or leave message. S48, RTN

**FOR SALE:** Like new Necchi sewing machine. Call 659-2844. S3, RTN

**FOR SALE:** Seasoned oak firewood, cheap. Will deliver or pick-up in Ceiling, OK. Call Eddie Riggs at (405)922-3202. S3, 2tc

**FOR SALE:** Panasonic dot matrix color printer - \$200; Helitron USA tanning canopy - \$200; Zenith camcorder - \$300; darkroom equipment color and BW - \$1800. Or best offers. Call (806)659-3289. S2, 4tp

**FOR SALE:** Darkroom equipment, Beseler 230CL enlarger with dual Dichro 23 colorhead, PM3L color analyzer, Beseler stabilizer power supply, Beseler color processing drums, 11X14 and 8X10, Beseler color motor base agitator, gray lab darkroom timer, tanks, developing trays, easels, film proofer and other misc. darkroom equipment. Call (806)659-3289. S2, 4tp

**FOR SALE:** Matua and Gala Brome. Call 659-3838. S49, 12tc

**FOR SALE:** A Mobile Air electric oxygen machine. Low hours. Call 659-3332 or 659-3580. S46, RTN

**PUBLIC NOTICE**

**BID NOTICE**

The Gruver Independent School District will receive bids for networking computer workstations at all campus offices into the business office. The bid will include hardware, operating software, installation cost, and cabling, etc. Bids will be accepted until Tuesday, February 6, 1996, at 4:00 p.m. The Board of Trustees reserves the right to accept or reject any bid in the interest of the school district. Contact the Business Office for specifications at P.O. Box 650, Gruver, TX 79040 or stop by 601 Garrett Street, Gruver, TX. S3, 2tc

**OSGOOD MONUMENT CO.**  
Amarillo, Texas

Dealers of Rock of Ages Granite, as well as all colored granites, marble and bronze memorials.

Represented by **Boxwell Bros. Funeral Home**  
519 S. Evans  
659-3802

**WANTED**

**WANTING TO RENT:** Young family wanting to relocate in the Gruver and Spearman area. Must allow dog. (806)935-7607. S3, RTN

**PUBLIC NOTICE**

**NOTICE TO ALL PERSONS HAVING CLAIMS AGAINST THE ESTATE OF LOIS R. ALLISON**

Notice is hereby given that original Letters Testamentary for the Estate of Lois R. Allison were issued on December 29, 1995, in Cause No. 2147, pending in the County Court of Hansford County, Texas: to Donald Lee Allison. The residence of such Executor is Vassar, Kansas. The post office address is Rt. 1 Box 102, Vassar, Kansas 66543. All persons having claims against this Estate which is currently being administered are required to present them within the time and in the manner prescribed by law. Dated the 29th day of December, 1995. Cecil R. Biggers/Attorney for the Estate

**PUBLIC NOTICE**

**TO ALL INTERESTED PERSONS AND PARTIES**

Cargill, Inc. has made application with the Texas Natural Resource Conservation Commission for Air Quality Permit No 31242 to construct a Grain Elevator in Spearman, Hansford County, Texas. The location of the existing facility is 1,500 feet west of the intersection of Highway 207 and Highway 15 in Spearman. Additional information concerning this application is contained in the public notice section of this newspaper. This notice is to be published on January 18, 1996, and January 25, 1996. S3, 2tc

**JAN'S ETC.**  
NEW & USED & ANTIQUES TOO  
Everything for home and family. Plains Shopping Center in Spearman  
Open Monday - Saturday - 10 a.m. til 6 p.m.

**WANT TO RENT OR BUY A HOUSE**

in the Gruver Area (in town or in the country) with owner financing.  
**PLEASE CALL (405)652-2549**

**PUBLIC NOTICE**

**TO ALL INTERESTED PERSONS AND PARTIES**

You are hereby notified that Cargill, Inc. has applied for Texas Natural Resource Conservation Commission (TNRCC) Air Quality Permit No. 31242. This permit, if approved, will authorize operation of a Grain Elevator in Spearman, Hansford County, Texas. The location of the existing facility is 1,500 feet west of the intersection of Highway 207 and Highway 15 in Spearman. This facility will emit the following air contaminants: particulate matter, nitrogen oxides, carbon monoxide, sulfur dioxide, and unburned hydrocarbons. A copy of all materials in the public file is available for inspection and reproduction at the TNRCC Amarillo Regional Office, Air Program, located at 3918 Canyon Drive, Amarillo, Texas 79109-4996, telephone (806)353-9251, and at the TNRCC Central Office, 12100 Park 35 Circle, Austin, Texas 78753, telephone (512)239-1000. The facility's compliance file, if any exists, is available for public review in the Regional Office of the TNRCC. Inquiries about the permit application and any information concerning any technical aspect of this application can be obtained by writing Mr. Michael Wilson, TNRCC Office of Air Quality, New Source Review Division (MC-162), P.O. Box 13087, Austin, Texas 78711-3087 or the TNRCC Amarillo Regional Office. You may submit written comments concerning the permit application to the Office of Air Quality, New Source Review Division in Austin. All written comments received within 30 days after the second publication of this notice shall be considered by the TNRCC Executive Director in determining whether to issue or not issue the permit. All written comments will be made available for public inspection at the TNRCC Central Office in Austin. This notice is to be published on January 18, 1996, and January 25, 1996.

**PETS**

**TO GIVE AWAY:** Free to a good home. Small neutered half poodle dog, 1 year old. Good watch dog and good with children. 659-2255. S3, 1tc

**PUBLIC NOTICE**

**NOTICE TO ALL PERSONS HAVING CLAIMS AGAINST THE ESTATE OF GLENDON H. ETLING**

Notice is hereby given that original Letters Testamentary for the Estate of Glendon H. Etling were issued on January 9, 1996, in Cause No. 2148, pending in the County Court of Hansford County, Texas, to Kurt Karl Etling, Post Office Address - 6805 Stoneham, Amarillo, Texas 79109. All persons having claims against this estate, which is currently being administered, are required to present them within the time and in the manner prescribed by law. Dated the 9th day of January, 1996. John L. Hutchison/Attorney for the Estate

**NEW TRAMPOLINES**  
Mats & springs  
Resew trampoline mats.  
Make new boat covers.  
Call (806)659-2109  
Harry Stumpf  
301 W. 12th  
Spearman, Texas

★★★★★★★★★★★★★  
★ **FOR SALE** ★  
★ **UNBELIEVABLY AT** ★  
★ **BECKETT PRICE!** ★  
★ **Michael Jorian Rookie** ★  
★ **Card and/or set. Call** ★  
★ **659-3863 or 659-2912** ★  
★★★★★★★★★★★★★

any person who may be affected by emissions of air contaminants from the proposed facility may request the Commission to hold an informal public meeting and/or contested case hearing on the permit application pursuant to Section 382.056(d) of the Texas Health and Safety Code. The Commission is not required to hold a contested case hearing if the basis of a request is determined to be unreasonable. All requests for a contested case hearing must be received in writing within the 30-day comment period regardless of whether an informal public meeting has been held or scheduled on this matter. If you wish to request a public hearing, you must submit your request in writing. You must state (1) your name, mailing address and daytime phone number; (2) the permit number or other recognizable reference to this application; (3) the statement "I/we request a public hearing"; (4) a brief description of how you, or the persons you represent, would be adversely affected by the granting of the application; (5) a description of the location of your property relative to the applicant's operations; and (6) your proposed adjustment to the application/permit which would satisfy your concerns and cause you to withdraw your request for hearing. Requests for a public hearing on this application should be submitted in writing to Office of the Chief Clerk (MC-105), Texas Natural Resource Conservation Commission, P.O. Box 13087, Austin, Texas 78711-3087, telephone (512)239-3300. Before a permit can be issued for this facility, the applicant must demonstrate that all emission sources are in compliance with all TNRCC air quality rules and regulations and all applicable Federal regulations. This includes the application of "best available control technology" to each new or modified emission source and compliance with all ambient air quality standards. S3, 2tc