



Spearman Gruver REPORTER - STATESMAN

Volume 86 • Issue 35

213 Main • Spearman, Texas 79081

Thursday • June 23, 1994

News Briefs

The Lyric Theatre has changed its prices. Adult tickets are \$5 and children tickets are \$3. Monday and Tuesday night prices are \$4.00 for adults and \$3.00 for children.

Bill Beaty will be presented in concert Sunday, June 26 at 7 p.m. in the O'Loughlin Community Center. The community worship is sponsored by the Spearman Ministerial Alliance and will be held monthly.

The O'Loughlin Center will hold a grand opening on Monday, June 27. Office hours are Monday through Friday 9 a.m. to 4 p.m. For more information call Kathy Bryant at 659-3030.

What's Inside

Society Pages	4, 5
Hansford Happenings	2
Want Ads	10
Obituaries	11
At the movies	2
Out at the Lake	3
Chamber Chatter	3
"Center" Piece	7

Ad Index

Dairy Queen	9
Gordon's	5
Allsups	6
Church Page	11
Classified	10
Gillaspie Auto	8
SPS	2,7
Shugart's Studio	6
Community Worship	11
H.C. Hospital /Manor	3
Beedy's Furniture	12
Caprock Ind.	8
Lowe's Marketplace	9
Dobson Cellular	4

Weather

Day	Hi	Lo	Precip
Thu	99	70	.00
Fri	97	71	.00
Sat	93	69	.00
Sun	91	66	.00
Mon	93	65	.00
Tue	92	68	.09
Wed	--	69	.06
Total Precipitation			8.67

Spearhead Corporation announces opening of O'Loughlin Center June 27th

June 27th is the date set for the opening of The O'Loughlin Center located at 502 S. Brandt. At that time the Gibner Fitness and Workout Room along with the hot tubs, sauna and walking area, will be available to the public.

The Center consists of Meadows Hall, The Blodgett Room/Golden Spread Senior Citizen's Center, The Mabee Room, The Harrington Room and The Gibner Fitness Center.

Meadows Hall may be used for larger events such as banquets, family and class reunions, craft shows, dances, parties, fund raisers and antique shows just to name a few. A serving or catering kitchen is located just off Meadows Hall.

The Mabee and Harrington

rooms which are the smaller meeting rooms can be used for bridge parties, 42 tournaments, sorority meetings, seminars, receptions, bridal or baby showers as well as any group meeting.

The Gibner Fitness Center, hot tubs, sauna and walking in Meadows Hall will be open to the public for use during office hours as well as special hours early morning and evening. Those hours will be announced later.

The regular office hours are 9:00 A.M. - 4:00 P.M., Monday through Friday. Please call Kathy Bryant at 659-3030 for more information. Better yet, drop by for a cup of coffee and see what The O'Loughlin Center has to offer you and your family.



Bill Beaty will be performing a concert on June 26 during the all community worship service sponsored by the Spearman Ministerial Alliance.



The beautiful new O'Loughlin Community Center will open June 27, 1994. It will hold activities for all ages.

Gruver ISD holds regular meeting

In a regular meeting of the board on June 8, Gruver Independent School District accepted the resignation of Dave Karlin, and approved hiring of a special education teacher.

Karlin has been with the school for several years, the last ten as computer science teacher. Mrs. Tim Stedje has been hired as special education teacher. She worked the past year for the Spearman ISD.

A request of Business Manager Margaret Fry, the board authorized the purchase of a computer for mandated Texas Education Agency reports. The purchase of a high speed printer for end-of-year reports was also approved.

The board voted to enter into an agreement with the Region XVI Education Service Center for the bidding of microcomputers. There is no charge for this service to the district, and there is no obligation to purchase any products.

A waiver for staff development days was approved and with the granting of the waiver, Gruver teachers will be involved in staff development activities on August 11, September 6, and March 1, 2, and 3 in 1994-95. Those days will be holidays for students. Also, a waiver to exempt senior students from second semester final exams was approved. This action will allow second semester senior students to be exempted from final exams if

they have no more than three absences and an eighty average in each class.

The first reading of policy FDD (local) was held. This is a student attendance policy, and it makes minor changes in the policy the district now follows. FDD (local) as revised will allow students a period of time equal to the number of days of the absences plus one day to complete all make up work. For instance, if a child is absent five days, he would have six days, after his return to school, to complete the make up work. Also, while present policy requires a doctor's note for a

child to return to school after an extended illness, the proposed policy makes that note optional at each campus. The second reading and adoption of the policy will be held in the July meeting.

Bob Burgoon reported on the English as a Second Language Program. He informed the board that at the end of the school year, twenty two students were served in the district's ESL program, and that four of those students will exit the program next year.

Before adjourning, the board voted to pay bills totaling \$148,484.65.

Bike-a-thon proceeds to benefit children's hospital

A total of 88 riders raised more than \$4,000 in Gruver recently during a bike-a-thon for St. Jude Children's Research Hospital.

Five bicycles, a set of encyclopedias, 68 shirts, and 22 bags were awarded to participants. Bicycles were donated by Verna Lee Shirley of First State Bank of Spearman, Kenneth & Alice Slough of Gruver Agri Industries, Rita Williams & Mark Irwin of Little Tiffanias & Gruver Ford, Mike Heard of Caprock Industries and Dave & Dixie Karlin of Karlin &

Associates (Amway). The encyclopedias were donated by Ronnie & Donnie Williams of Gruver.

Bethany Yanke, Sammie Stavlo, Charlie Stavlo, Ben Williams, and Sammi Johnson were all awarded the new bicycles for their outstanding efforts. Allison Reid was the recipient of the encyclopedias.

Over the past five years over \$23,000 has been donated to the children's hospital.

Directors for the event were David & Dixie Karlin.



First grade winner Ben Williams accepts the bike donated by Caprock Industries of Gruver.

Hospital Report

June 15th - June 22th

Admissions

Wednesday - none
Thursday - Mildred Adams
Friday - none
Saturday - Mattie Reynolds and Nellie McDonald
Sunday - none
Monday - none
Tuesday - Louie Sampson

Dismissals

Wednesday - none
Thursday - none
Friday - none
Saturday - none
Sunday - none
Monday - Mildred Adams, Jane Yearly, Mattie Reynolds
Tuesday - none
Wednesday Census
Nellie McDonald & Louie Sampson

All community worship to feature concert by Bill Beaty

Bill Beaty, coach in the Spearman ISD, will be featured in the first community worship on Sunday night, June 26. The services will begin at 7:00 p.m.

The Spearman Ministerial Alliance announced its plans to continue monthly community worship services through the summer on the last Sunday night of the month.

"We believe that unity among Christians is one of the most important callings that Jesus gives to us," said Kyle Henderson, Pastor of First Baptist Church. "Too often people see the differences between Christians, but the Ministerial Alliance believes we must provide an opportunity for all people to see that the things that bring us together are greater than the things that separate us." There has been a long tradition of cooperation among the churches of Spearman, and the Ministerial Alliance hopes this effort will strengthen those bonds.

The monthly meetings will be held in the O'Loughlin Community Center. "We felt that this was the natural sight to bring the churches together at a neutral sight," said Dan Carter pastor of the Trinity Community for everyone to feel welcome and attend."

Bill was awarded the 1993 "Gospel Entertainer of the Year" award at the International Country Gospel Music Association. He has recorded 5 albums and one of his songs has reached #1 on the Euro-

pean Country Gospel Charts. His songs have been recorded by Susie Luchsinger, sister of Reba McEntire, and several others.

His newest album "The Road Less Traveled," is his best yet and will be for sale at the concert.

Bill is no stranger to this area. He was raised in Cheyenne, Oklahoma where he played on the runner-up State Championship team in 1968 and rode in the Professional Rodeo Cowboys Association.

Gruver approves contracts for emergency service, appraisal district

During the June 8 regular session Gruver City Commissioners approved a resolution to continue an ambulance service contract with Hansford County and Hansford Hospital District.

In other business a contract with Hansford Appraisal District was

approved for the assessment and collection of taxes for the fiscal year 1994-95. Commissioners also approved payment of bills for the month of May.

Present at the meeting were Archie Nelson, Buster Davis, Roy Mayhew, and A.J. Ratliff.

City Lites

by Kelvin Knaut,
Spearman City Manager

Different Strokes for Different Folks

Everyone has a guiding principle of life. They may not be able to explain what your principle of life is but they still have one. The philosophy of life determines how people see the world and society in general. While everyone has a special philosophy of life, some management consultants believe that there are four basic life orientations.

Each orientation provides certain personal goals and these goals determine how we act. A series of outer actions, all stemming from the same orientation, are labeled as "style."

The four orientations are: supporting/giving; conserving/holding; and adapting/dealing. I will describe each orientation and then show how it applies to city government.

People who have a **supporting/giving life orientation** try for excellence in all that they do. Their basic life philosophy is "If I prove my worth by hard work and pursuing excellence, the good things of life will come to me." The goals of the supporting/giving person are to prove their worth and to be helpful to others. These kind of people often have strong principles and are cooperative, dedicated, and in pursuit of excellence. They like other people to see them as a responsive and worthy person.

People who have a **controlling/taking life orientation** like action at work or home. Their basic life philosophy is "If I get results by being competent and seizing opportunity, the good things in life will be there for the taking." The goals of the controlling/taking person are to be competent and to get results. These kind of people are often persistent, initiate new ideas, act with a sense of urgency and often direct their people at work. They like other people to see them as active and competent in all they do.

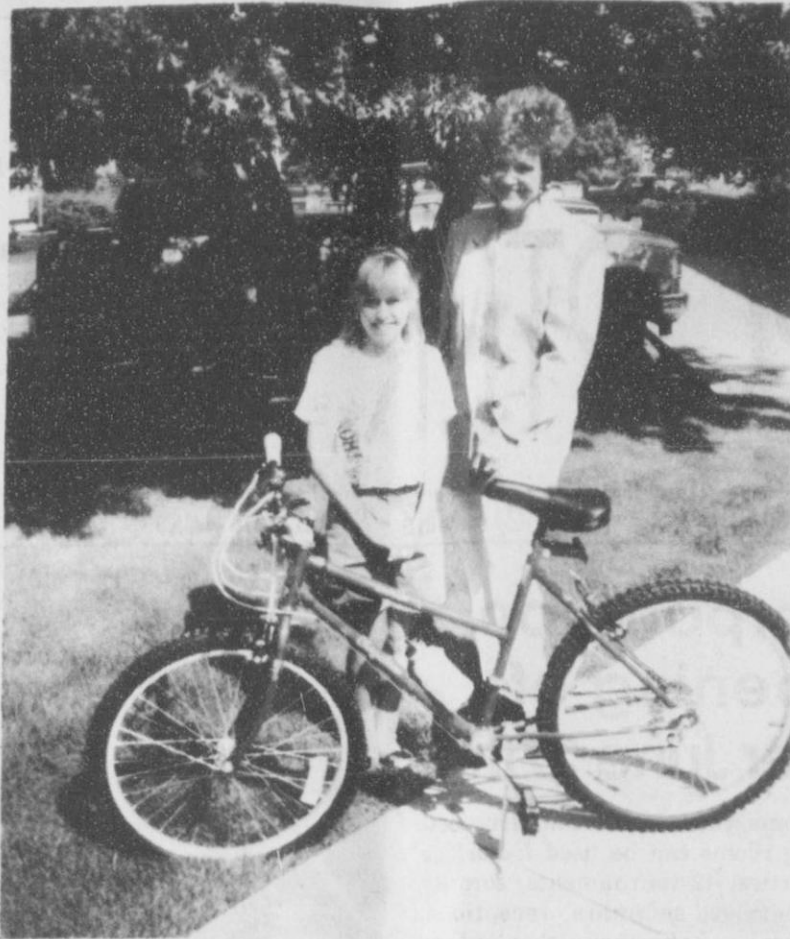
People who have a **conserving/holding life orientation** try to get what they want through the use of logic and reason. Their basic life philosophy is "If I think before I act and make the most of what I've got, I can build up my supply of the good

things in life." The goals of the conserving/holding person are to go slow and to be sure that they are doing the right thing. These kind of people often act systematically, are analytical in their thinking, like to maintain things the way they are and are tenacious in getting what they want. They want to see them as objective and rational.

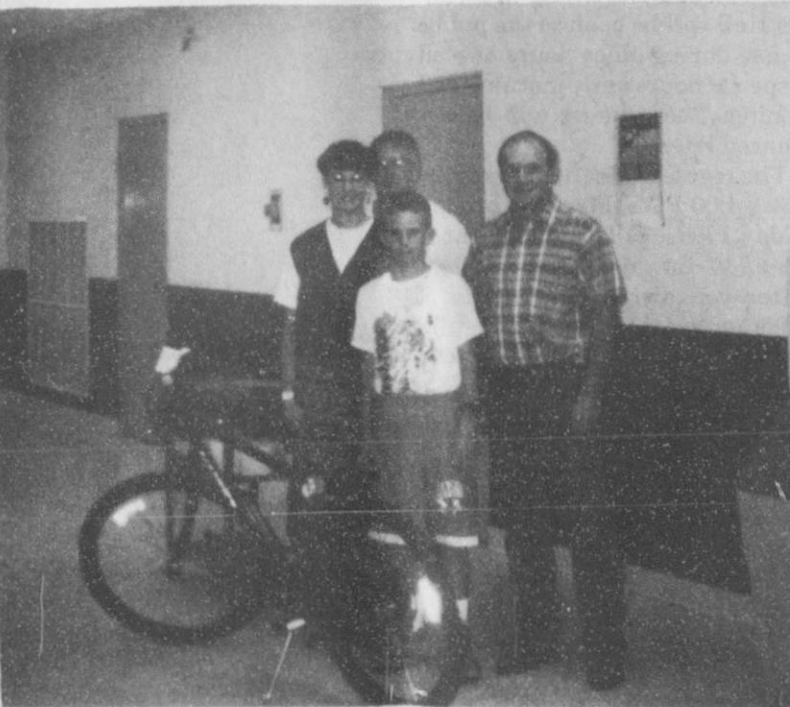
People who have an **adapting/dealing life orientation** like harmony in their relationships. Their basic philosophy is "If I please other people and fill their needs first, then I can get the good things in life I've wanted all along." The goals of the adapting/dealing person is to know people and get along with others. These kind of people are tactful, flexible and aware of other people's feelings. They want other people to see them as likable and popular.

Now, no one has only one of the four life philosophies. The fact is that we all have each of the four life orientations; it's just the way we vary as to which philosophy we prefer and the extent to which philosophy dictates how we act. Also, no life philosophy insures success over the others. Also, it takes all four philosophies to make organizations work become successful.

How do the four life philosophies apply to city government? City government is made up of all kinds of people: citizens, councilmembers, managers, and employees. Trying to get all these people to work together is the basic goal of city government. Whenever a problem develops then people tend to react to the problem based on their main life orientation. Each person has a perception of what the problem is and how to go about work together would be challenging in itself. Imagine the difficulty of getting 3, 197 citizens; 6 councilmembers; 1 city manager; and 25 employees to work together to fix a problem. Somehow, we at Spearman city hall manage to get the problems fixed. I like to think that we are able to fix problems because we respect each other's opinions, let each person have their own "style" and because we truly care about the community. I hope we never change this approach.



Verna Lee Shirley of First State Bank of Spearman presents 4th grade winner Bethany Yanke with a bike.



Rita Williams and Mark Irwin of Little Tiffanies and Gruver Ford present a bicycle to 7th grade winner Charlie Stavlo.

Club News

The Gladiola Flower Club was hosted by Judy Martin on June 16. President Dorothy Haner called the meeting to order.

Roll call was answered with "A place I'd like to visit" by those present.

The minutes were read and approved. Estelle Jackson gave the treasurer's report.

Winners of flowers judged were: home grown arrangement - Lorene Kunselman, specimen - Judy Martin and potted plant - Judy Martin. Kathleen Sutton presented the

program "Success with House Plants." The information included care of plants, plants mentioned in the Bible, state flowers and medicinal plants.

Attending were Charlsie Baker, Myra Berner, Rose Cummings, Margarette Evans, Dorothy Haner, Virginia Head, Estelle Jackson, June Jackson, Lorene Kunselman, Jo Larson, Judy Martin, Kathleen Sutton and Virginia Trindle.

Charlsie Baker will host the next meeting on July 7.

At the movies...

Showing at the Lyric Theatre in Spearman Friday, June 24, through Tuesday, June 28, are "City Slickers II" on screen #1 at 8:15 p.m. and "Getting Even with Dad" on screen #2 at 8:00 p.m.

In "City Slickers II" Billy Crystal and Jack Palance return in this sequel to the mega-hit western comedy. This time out, Crystal's Mitch leaves his home in the suburbs to hunt for the loot

from a train robbery after he finds a treasure map in the hatband of the late trail boss Curly.

"City Slickers II" is rated PG-13.

In "Getting Even with Dad" Macaulay Culkin plays an enterprising young boy who blackmails his ex-con father (Ted Danson) in order to get him to go straight.

"Getting Even with Dad" is rated PG.

At The Lyric Theatre...

Friday, May 20 - Tuesday, May 24

Bargain Nights Mon. & Tue. Adults - \$4
Fri., Sat., Sun., Adult \$5 - Child \$3 every night
Closed Wednesday & Thursday

SCREEN 1 • 8:15 PM SCREEN 2 • 8:00 PM

City Slickers II

(PG-13)

Getting Even with Dad

(PG)

113 Main, Spearman

HENSON CHIROPRACTIC

410 S. Davis • Spearman, Tx.

Call for Appointment • 659-5603

OFFICE HOURS:

Monday, Wednesday & Friday 9:00 to 5:00

Tuesday & Thursday 9:00 to 11:30

PEDRO R. HERNANDEZ, M.D., P.A.

Cardiovascular Diseases

announces office hours at the Borger Medical Clinic

104 N. Bryan

Borger, TX 79007

FOR APPOINTMENTS CALL: 274-9508

Hansford Happenings

Spearhead Corporation O'Loughlin Center will hold its grand opening on Monday, June 27th.

All Community Worship will feature Bill Bealy in concert on Sunday, June 26 at 7:00 p.m. at the O'Loughlin Community Center.

SPS Kids Cooking School will be held Tuesday, June 28 at 11:00 a.m. in the Gruver State Bank for grades one and up. Call 733-2333 for reservations.



Lifeguard Carrie Pearson slips into the shade for a break from the sun.

The Hansford County Reporter-Statesman

Serving all of Hansford County
Spearman • Gruver • Morse

USPS 509660 • 213 Main, Box 458 • Spearman, Tx. 79081

Published weekly at 213 Main, Spearman, Texas

Owned & Operated by

Texas Independent Newspapers, Inc.

16607 Blanco Road #100 • San Antonio, Tx. 78232

(210) 492-8907

Second class postage paid at Spearman, Texas 79081

Any erroneous reflection upon the character of any person or firm will be gladly and promptly corrected upon being brought to the attention of the management.

Publisher - Molly Zimmerman

Production Manager - Sheila LaRochelle

Ad Sales - Deziree Torres

Student Assistant - Traci Martin

The publisher reserves the right to revise or reject at its option any advertisement which it deems objectionable, either in subject or phraseology, or which it may deem detrimental to its business.



Subscription Rate: Hansford County, \$19.95; out of county, \$24.95 annually.

Postmaster: Send address changes to Hansford County Reporter-Statesman, Box 458, Spearman, Tx. 79081.

Advertising & Story Deadlines

Tuesday, 12:00 noon

What impression will you leave on our environment?

The first step in learning how to protect our environment is to learn to appreciate what we have.

Take a close look at the environment around you. It's very special and it takes special attention and care to keep it that way.

That's why we chose to power our plants with low sulphur coal and natural gas. You, too, can help preserve our environment and natural resources by cleaning up litter, recycling when possible and by making Smart Energy Choices.

Consider energy efficiency when purchasing a new electric appliance. Weatherize your home. Conserve energy where you can. And never forget where you live. The impression you leave will be a lasting one.

SMART ENERGY CHOICES

SPS SOUTHWESTERN PUBLIC SERVICE COMPANY

LaRoche and Snow win backstage passes to meet Motley Crue

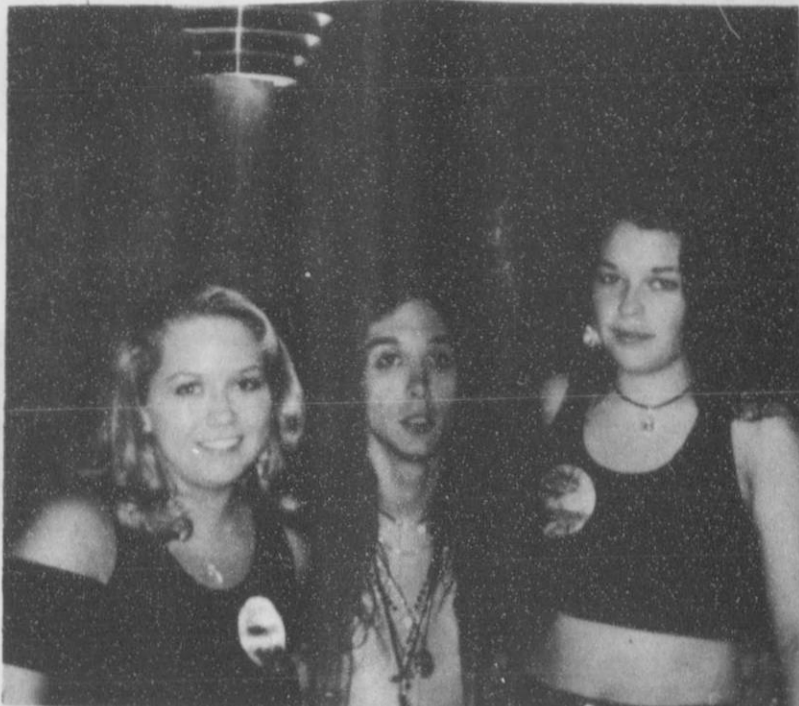
Two Spearman teens had a dream come true when they won backstage passes to the Motley Crue concert held Sunday, June 12 at the Amarillo Civic Center.

Amber LaRoche and Toni Snow went to Amarillo a few days before the concert to stay with Toni's sister, Tami, while anxiously awaiting the concert on Sunday. They listened to Z-93 Radio Station every chance they got, in hopes of winning backstage passes. Their determination paid off. On Friday, June 10 during a "Ninth Caller" contest, Toni won two backstage passes.

They watched the concert from the front row of a packed coliseum

floor. Brother Cane and Kings-X were the opening acts, followed by Motley Crue. The band members of Motley Crue include Nikki Sixx, bass; Tommy Lee, drums; Mick Mars, lead guitar and John Corabi, lead singer.

After the concert, a few lucky fans got to meet the band members and spent several hours with them. Pictures were taken, autographs were signed and an unforgettable night was etched into the memories of two young ladies from Spearman who commented, "It was the best concert we have ever been to and the most awesome experience that has ever happened to us."



Toni Snow (left) and Amber LaRoche (right) meet Motley Crue's lead singer, John Corabi, backstage.

Chamber Chatter

by Cindy Blackman

Spearman Chamber of Commerce Manager

Every couple of months, the Comptroller of Public Accounts office sends out a newsletter. The last issue on June 17, mentions our business communications for selling the minorities class. A representative from that office has been in contact with this office and wants me to keep him informed about the progress of the class. There are 37 people signed up for the class. If you are interested, call the chamber office, 659-5555.

Next week, I will be attending the Institute for Organization Man-

agement on the SMU campus in Dallas. The office will be open during the morning from 9:00 - 12:00 throughout the last week of June.

July Calendar

- 04 - Office closed
- 07 - Board meeting, Palo Duro Cafe
- 20 - W.D.S.C.C. meeting
- 20,21 - Defensive Driving Slow month!!! July is Membership Breakfast Month. Watch for date and sponsors to be announced.
- The Chamber Golf Tournament will be held August 20th.



The word "commando" is of South African origin, used by the Boers at the end of the last century to designate a mobile body of armed men.



Ronnie and Donnie Williams of Gruver present a set of Young Science encyclopedias to kindergarten winner Allison Reid.

Out at the Lake

The hot dry winds and lack of rain have lowered the lake level to 24.2 on Monday. The water in the lake is still murky and cloudy from the run-off and with natural food, the fish are biding their time.

Father's Day weekend brought a lot of families - enjoying picnics and the lake.

The group shelter was reserved for Friday and there are several reservations for the coming week. There were a number of tent campers during the weekend.

The rains in the area and the recent rise in the lake depth has brought inquiries regarding the location of rainfall that affects the lake. Many are of the opinion that rains in Stratford, Dumas or Stinnett are in the water-shed, but not so.

A map can be useful in pinpointing the area. The North Fork of the Palo Duro Creek begins by just nicking the northeast corner of Hartley County and the southeast corner of Dallam County. This fork then winds in and out of the county line between Sherman and Moore County, entering Hansford in the southwest corner. The fork of the Palo Duro Creek is on the Jack Hart ranch two miles north of Morse. Those who remember the location of the old stone two story Tyler house will recollect the fork was less than a quarter of a mile

southeast of the house.

The South Fork is west of Dumas, almost at the edge of Moore County, traverses a corner of Hutchinson County and eventually joins the North Fork.

Horse Creek, the second major contributor to the lake, heads a short distance in the northern part of Hutchinson County and eventually flows into the lake.

Two draws that add to the waterflow are Hannas Draw and Farwell Draw. Farwell sort of defines the south boundary of Gruver. About a mile west of Gruver, near Rick Barkley's house, it forks with both forks running west but ending close to the western edge of the county.

Hannas Draw heads west of Caprock No. 1, D.G.C. Feeders and the old Homer Cluck house. It enters the Palo Duro just a mile or so north of historical Turkey Track rock house.

The four towns that are in the 614 square mile water-shed are Spearman, Gruver, Morse and Sunray.

Contrary to some opinions, the Coldwater drains into the Beaver River and Hackberry Creek drains into the Palo Duro Creek beyond the dam.

DRY CLEANING

Shirts & Jeans
Laundered With or Without Starch.
FREE Pick-up and Delivery
1-800-232-5370
"It's not how cheap but how good"
Perryton Cleaners

HANSFORD COUNTY HOSPITAL DISTRICT

Summer sun and fun and it's effect on skin

The recent dramatic rise in skin cancer in this country is directly related to the increasing amount of time people spend in the sun. Other changes occur when people are over-exposed to the sun. Blood vessels and tissue are damaged, wrinkles are deepened and the skin becomes dry and leathery in appearance. It's a sad fact that our skin registers every minute and hour of all the ultraviolet exposure we've had during our lifetimes. It's important to remember that a suntan, although it may look good, is really the body's visible defense against further damage from ultraviolet radiation.

Ultraviolet light produced by the sun is divided into three frequency categories: A, B and C. Ultraviolet B radiation is the main cause of sunburn and of long-term ill effects. Ultraviolet A slowly causes tanning, but it, too, can harm the skin. In the past, ultraviolet C was absorbed by the ozone layer in the atmosphere and have virtually no harmful effects on the body. Today the increasing amount of chemicals put into the atmosphere is depleting the protective ozone layer. Since 1973, the incidence of melanoma, the most serious form of cancer, has risen about 4 percent a year. Of course this does not mean that everyone who goes out in the sun will automatically ruin their skin or develop skin cancer. In a recent study, Texas researchers suggested that ironically, sunscreens may be partly responsible for the rising rate of melanoma, since they allow people - especially fair-skinned ones - to stay in the sun longer before burning and give sunbathers a false sense of security.

Be Sun Smart

* Avoid long sun exposure, even if you are wearing a sunscreen. Minimize sun exposure between 10 A.M. and 2 P.M., when the sun is the strongest. Avoid sunburn like poison.

* When you're outdoors, wear protective clothing and a hat with a wide brim. A beach umbrella is worth the money.

* When you're in sunlight for more than a few minutes protect exposed skin by applying a water-proof sunscreen with a sun protection factor (SPF) of 15 or higher.

* Choose a product that protects against both UVA and UVB radiation. Most screens protect primarily against UVB rays (the SPF rating pertains only to UVB). The compound avobenzene offers the fullest protection against UVA rays. So far, the FDA has approved only two products that contain it. One is Photoplex, the other is Shade UVAGUARD. Both protect against UVB as well as UVA, and both have an SPF of 15. Other sunscreens that are labeled "broad-spectrum" are less protective. They contain oxybenzone or some other ingredient that blocks only a portion of the UVA spectrum.

* Put sunscreen on half an hour before you get out. If you're perspiring or swimming, apply it frequently

and generously.

* Protect your lips, nose, and other sensitive areas with an opaque sun block, such as one containing zinc oxide, which blocks both UVA and UVB.

* Keep babies and toddlers in the shade as much as you can.

* Never use a sunlamp or tanning parlor.

* Examine your skin on a regular basis. Any mole that changes shape, color, or size, any sore that doesn't heal, or any persistent patch of irritated skin or small growth may be a sign of cancer and needs professional evaluation.

Even in the winter, you can protect your skin by applying a good moisturizing lotion. With common sense and proper sun protection, most people can continue their normal outdoor activities. Suggestions and information in this column are intended as guidelines, not as specific protocols. Every actual medical situation - emergency or non-emergency - is unique and requires the clinical judgment of a qualified physician.

Frances Ortega is named June Employee of the Month



Frances Ortega is employee of the month of June. Frances has worked for Hansford Hospital for 20 years. She is married to Virgilio Ortega. They have four sons and seven grandchildren. Frances enjoys listening to music and cooking.

Frances is a member and historian for the Women's Guild. She enjoys her job very much. Hansford County Hospital District is proud to have Frances as an employee. Thanks for all your hard work over the years! You are much appreciated.

A note from Activities by Debra Sanford

It is said that time flies when you're having fun. We are inclined to agree as we look up and realize it is June already!

We are anticipating a month full of activities. We celebrated the first day of summer with a "Shades of Summer" party on the 21st, with hot dogs cooked on the grill and a summer fashion show. Our June birthday party was held the 17th, with live entertainment provided by the Charles Brillhart Band. Our Christian Buffet was on the 20th and was sponsored this month by Spearman's First Christian Church. Our Tuesday night Bingo sponsor was the Rho Rho Sorority.

The First State Bank will be barbecuing for us on the 23rd. They are super cooks and our residents always look forward to them coming. Hope everyone enjoys the fast approaching days of summer.



Birthdays in June

- Jimmy Hicks - 10th
- Norma Jean Howe - 16th
- Orville Nash - 24th
- Maude Bull - 28th

Welcome New Manor Residents

- Sarah Hamilton
- John Bishop
- Leonard Cash
- Norma Jean Howe

New Employees

- Antonio Ortiz - Housekeeping
- Jeri Evans - Dietary
- Kevin McNett - Maintenance
- Missy Kuhlman - GVN
- Kasee Grover - GVN
- Naomi Rosales - Housekeeping



Solid Gold Selections Jane Meek named June Resident of the Month at Manor

Our featured resident this month is Jane Meek. Jane was born in Chicago, Illinois on November 1, 1911. Her parents were Frank and Ruth Swenson. Frank was a lawyer and Ruth was a school teacher. Jane's sister, Dorothy, graduated from the University of Arizona with a law degree. Dorothy became a law partner with her father in the firm Swenson and Swenson.

Jane's mother passed away when Jane was nine years old. Jane traveled with her father and stepmother to England, France, and Belgium between the eighth grade and high school. Jane graduated from Phoenix Union High School and went to Manhattan, Kansas to college. She met and married Norris R. Meek in February 1932.

Norris and Jane had two children. Judith Jane (Meek) Martin was born in Phoenix, Arizona and Robert Swenson Meek was born in Denver, Colorado. Norris worked as a construction supervisor. He

was sent to Honolulu, Hawaii in 1941 with the Corps of Engineers for extended enlistment obligation to the Armed Services. Jane stayed in Phoenix during this time.

They moved to Spearman in February 1946 to take over management of the family farm. Norris passed away on May 16, 1951 from a heart attack. Both of their children married and live here in Spearman presently.

Jane has been an active member of the First United Methodist Church. She served as a past director for the Golden Spread Senior Citizens Center. She has served for several years on the administrative board for the Methodist Church.

Jane moved to the Hansford Manor February 10, 1994. When asked about living in Hansford Manor, Jane said, "I like it just fine! We are lucky to have such a fine facility in our small town." Jane is a delightful resident, and she keeps the staff on their toes!

Winger and Simmons united in marriage

Manda Marie Winger and Troy Andrew Simmons were united in marriage on Saturday, June 11, 1994, in the Alpha Delta Pi Lodge in Lubbock, Texas.

Manda is the daughter of Val and Marlene Winger of Gruver and Troy is the son of Charles Simmons of Amarillo and Mary Evelyn Sorrell of El Paso.

Conducting the double ring ceremony was Terry Brown, minister of Greenlawn Church of Christ of Lubbock.

Presiding at the guest book and greeting guests was Kelly Stidham of Houston.

The couple pledged their vows before a brass heart archway entwined with greenery and flanked on each side with brass candelabras. Lighting the candles were Valerie Burnam, niece of the bride and Ryan Winger, nephew of the bride, both of Gruver.

The pianist offering the musical setting for the nuptials was Jennifer Welch. She also accompanied Shea Buchanan of Plainview, cousin of the bride, as she sang "At Dawning," a song that was also sung at her parents' and her sister's weddings, and "Because."

Attending her sister as matron of honor was Marva Burnam of Gruver. Bridesmaids were Wendy Wickard of Silver City, New Mexico, Tracie Johnson of Dallas, and Michelle Murray of Austin. The honor attendants were identically attired in purple dresses. They were off the shoulders, with fitted bodices and full tea length skirts. They carried a single white rose arrangement with baby's breath and tied with a white satin bow.

Attending the groom as best man was John Armour of Houston. Groomsmen were Joey Palguta, step-brother of the groom, Joseph Landers, and Doug Barefield, all of Amarillo.

Guests were seated by Michael Smith, brother-in-law of the groom, of Fullerton, California, and Clay Gillispie of Gruver.

Men of the wedding party wore black tuxedos with white pleated shirts complimented by black bow ties and white rosebud boutonnières.

The mother of the bride chose an ivory dress with a pleated chiffon skirt and a brocade jacket accented with pearl trim. The mother of the groom chose a navy palazzo pant suit. Each mother wore a white rose corsage.

Ring bearer was Reid Winger, nephew of the bride. He carried a heart-shaped white satin pillow trimmed with white lace. It was accented with strings of pearls and white satin ribbon streamers to which the ring was tied.

Flower girl was Mollie Burnam, niece of the bride. She carried a basket designed of netting and trimmed with lace. It was filled with white rose petals which she dropped as she walked down the aisle.

Valerie Burnam and Ryan Winger also served as junior attendants.

Valerie and Mollie wore identical white chiffon dresses with puffed sleeves. The full skirts were accented with bands of white satin and satin bows. They were tied in the back with white satin bows.

As the pianist played the traditional wedding march, the bride was escorted in on the arm of her father and given in marriage by her parents.

For their special day, the bride selected a white satin gown by the designers of Sweetheart gowns. The princess bodice was styled with an open off the shoulder neckline and a portrait collar. Delicate Schiffler lace embellished with pearls and sequins accented the romantic look of the gown. A fitted basque waistline allowed the ballgown skirt to float gracefully to the floor. She carried a cascading bouquet of white roses, accented with purple freesia, and tied with white satin ribbons atop her father's white Bible. It was the same Bible her mother and sister carried on their wedding days. The bouquet was a gift from the groom.

In carrying out the traditions she wore a new wedding gown and veil. Her something borrowed was a pair of pearl earrings. The old was her father's Bible, and blue was her mother's blue garter. She also had a five pence with her birth date and a sixpence with her parent's wedding date. They were given to her by her late maternal grandmother, Alma Gruver.

Special guests attending the wedding were the bride's paternal grandmother, Mrs. Pauline Winger; the groom's paternal grandmother, Mrs. Leola Simmons of Amarillo; and the groom's maternal grandparents Mr. and Mrs. Ben Sorrell of Conroe.

Other members of the bride's family attending were Davin, Teague, and Leigh Anne Winger of Gruver; Darin, Tanya, and Zachary Winger of Boyd; Lonnie and Landrie Burnam of Gruver; Monty and Marie Harbour of Spearman; Kay and Clay Hobbs of Gruver; Bret Hobbs of Lubbock.

Other members of the groom's family attending were Charles Simmons and Gail Denny of Amarillo; Tiffany and Alex Smith of Fullerton, California; Anthony and Haven Palguta, Leza Palguta, Don and Glenda Abston of Amarillo; Buford and Kathie Waldrop, Heather Parker of Rockwell; Jim, Nathalie, Sarah and Devin Walsh of Austin; and Mike, Sharon and Marcie Miles of Wheeler.

Approximately ninety family and friends enjoyed the special occasion. The newly married couple were driven to and from the reception in a chauffeur driven limousine.

The reception was held in the Hospitality Room of the Sheraton Inn. The ballroom tables were laid with white linen cloths and decorated with arrangements of purple iris and baby's breath atop mirrors. The piano was graced with purple corn husk paper bridesmaid dolls and a white bride doll. They were made and given by the bride's sister-in-law, Tanya Winger. Each attendant received a bridesmaid doll.

The bride's cake was four tiers with rolled fondant white icing and rosebuds. It was adorned with pearl streamers and silver leaves and topped with a white musical porcelain bride and groom. The groom's cake was chocolate with chocolate icing and topped with chocolate-dipped strawberries.

Silver punch bowl, silver coffee service and crystal appointments complimented the serving tables.

During the reception hours the bride's cake, the groom's cake, assorted fruit, finger sandwiches, mints, nuts, champagne, coffee, and punch were served.

Servers at the reception were Michelle Williams of Austin, Denise Presley of Houston, Marci Roberts and Teague Winger of Gruver.

Pianist Jennifer Welch and violinist David Kozamchak played duets of classical and easy listening music throughout the reception.

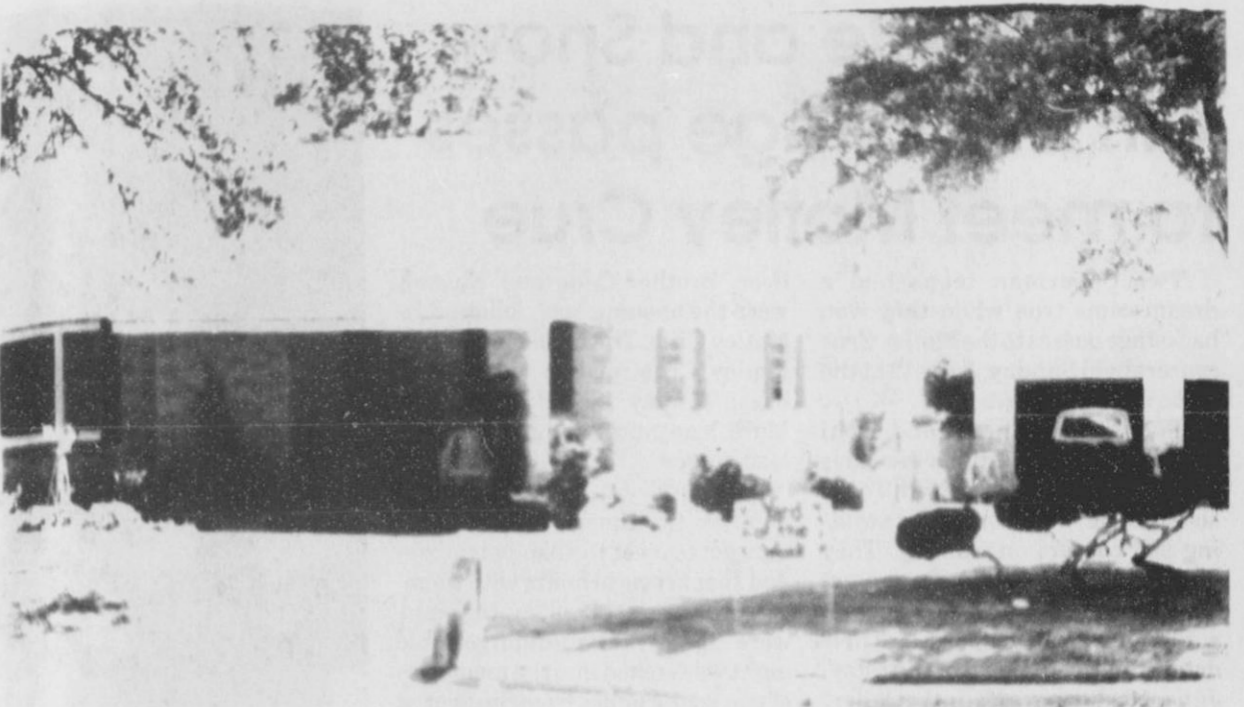
Valerie and Mollie Burnam, Ryan, Reid, and Leigh Anne Winger gave each guest a satin rosebud with birdseed to throw as the newlyweds left the reception.

Manda graduated from Gruver High School in 1990 and was received a bachelor of arts degree from Texas Tech University in Lubbock. She is a member of Alpha Delta Pi sorority and plans to attend graduate school.

Troy graduated from Amarillo High School in 1989 and has received a bachelor of arts degree from Texas Tech University in Lubbock. He is employed by Canyon Creek Restaurant.

Following their honeymoon, to Cozumel, the couple will make their home in Lubbock.

A rehearsal dinner honoring Troy and Manda was hosted Friday evening, June 10, 1994, by the groom's parents, Charles Simmons and Mary Evelyn Sorrell at The Depot in Lubbock.



Mr. and Mrs. Dan Carter, 612 S. Endicott

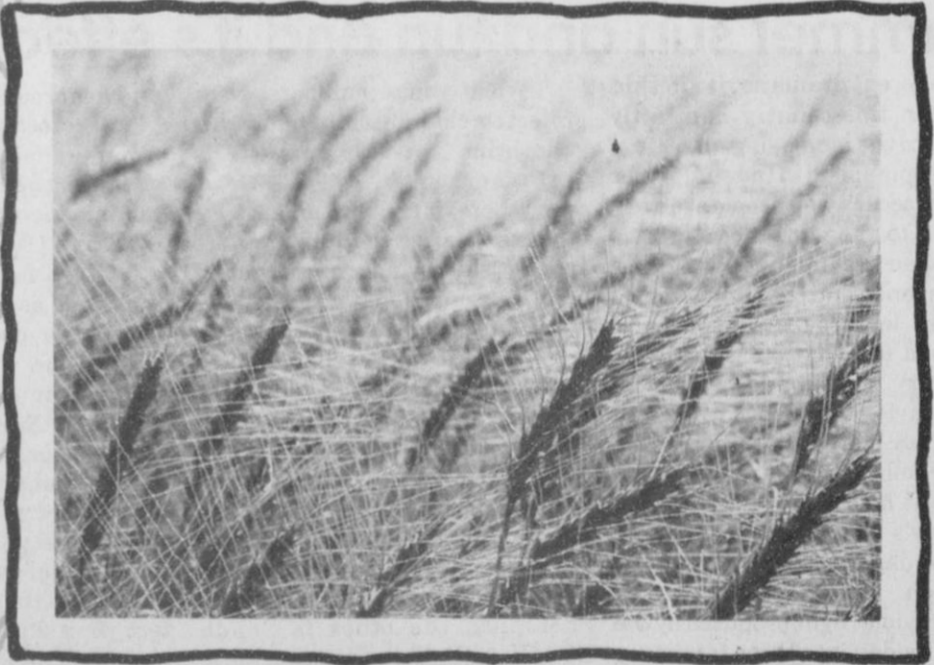
Chamber announces Yards of the Week



Josephine Schneider, 115 Hazelwood

Yard of the week winners for the week of June 15 are: Zone 1 - Vera May Hays, 122 W. 2nd; Zone 2 - Josephine Schneider, 115 Hazelwood; Zone 3 - Mr. & Mrs. Dan Carter, 621 S. Endicott; and Zone 4 - Mike and Pat Cudd, 22 Golden Circle.

Your Need For A Difference Maker Is Growing.



Day after day, the world from the cab of your combine looks the same: Same hot days, long hours and old questions—"What's the weather forecast?" "What are today's market prices?" "While I'm here is any work getting done back at my place?" To turn those same old questions into some fast new answers, you need **The Difference Maker**—a cellular phone and service from Dobson Cellular Systems.

Harvest time... All the time... your need for The Difference Maker is growing. To make a difference in the way you live and work, get **The Difference Maker** from Dobson Cellular.

Want to know more? Call 1-800-882-4154 and ask for your FREE Dobson Difference brochure.

The Difference Maker.



Call 1-800-882-4154 today!

Authorized Dobson Agents:

Gruver Chamber funds drive

It's not too early to begin thinking about our 4th of July celebration. As you know, what was shared as an every other year event is now put on every year by the Gruver Chamber of Commerce. We would like to remind everyone that this is a non-profit event that can only be successful through the generosity of Gruver's citizens. You will see our donation jars placed around town or you can take your donation to the Gruver City Hall. As always, your generosity and support are greatly appreciated and what makes Gruver a wonderful place to live.

Useless laws debilitate those that are necessary.
—Montesquieu

*The Children of
Mr. and Mrs. Ed Haner
request the pleasure of your company
at a Reception in honor of the
Fiftieth Anniversary
of the marriage of their parents
on Sunday, June twenty-sixth
nineteen hundred and ninety-four
at two o'clock in the afternoon
First Christian Church
Spearman, Texas*

*Your Friendship is our cherished gift We desire
no other*

Among The Neighbors

by Helen Fisher

If every person who has received a favor or a helping hand from Jesse Davis, gathers on June 26 at the First State Bank Hospitality room, the building can't hold the crowd.

The occasion is to share in the observance of Jesse's 90th birthday. It will be from two to four in the afternoon. His daughters, Mary Lou Wysong and Delia Kaye Sampson will be hosting the reception. Everyone is invited, friends and enemies (if one of those can be found).

Doris Beck returned home on Friday after undergoing back surgery on Monday, June 6, at High Plains Baptist Hospital. She is making good recovery, being under the watchful eyes of Jane Waugh of Buffalo, Oklahoma and Teresa Barkley of Gruver, her daughters. And if they need back-up, her sisters are available.

Lola and Charles Newcomb returned Friday from two weeks in California. They flew to Riverside where their son Larry and Darlene and family live. They went to attend the high school graduation of their grandson, Tony.

While there they drove to Phoenix to visit their granddaughter, Gia and Jim Phelps and children. After their return to Riverside, they attended a gathering of Charles' sisters and families.

The sisters, Marcella, Lanelle and Mary Beth, at one time were residents of Spearman. The reunion was held in the home of Marcella's daughter in Monroeville. In addition to their children and grandchildren, the children and grandchildren of Charles' brother were there. The gathering included four generations, including Charles and Lola's great-grandchild. There were 35 attending.

Frances Williams was taken to Amarillo by her son Larry last Monday. She underwent technical heart tests in High Plains Baptist Hospital. He brought her home on Friday. Larry lives in Amarillo.

Helen Etter spent a pleasant weekend in Santa Fe. Her brother Arnold Richardson of Lubbock, and his son Phil of Houston, accompanied her.

Few had a busier or more pleasant weekend than did Betty and R.L. Uptergrove. Their guests arriving on Friday were Clovis and Lorene Uptergrove and their daughter Juddy and Larry Tuttle, all of Towner, Colorado; Clovis' son Joe Edd and Karen Uptergrove with Jason of Carlsbad.

On Saturday, the descendants of the late E.S. and Cula Uptergrove of Spearman held a reunion at the Opportunity Center in Borger. There were 56 present including, in addition to Clovis and R.L. and their families, Beth and Jay Miller, Borger; Hubert and Laverne Uptergrove, Colorado City and all their families.

Returning to Spearman with Betty and R.L. for the balance of Father's Day weekend their children and grandchildren: Alan and Donna Uptergrove and family, Coppell, Texas; Lee Ann and Stan

Josephson and family, Albuquerque; Valorie and Jeff Clark, Dallas; Staci McLain, Vancouver, Washington and Irene Parks, Amarillo, Beth's mother.

Mrs. Maxine Cain returned to her home in Tyrone after a week here in the home of her daughter Kandi and Travis Wolf. She was assisting her grandson, Conner Odell, to adjust to his new world. He observed his first Father's Day on Sunday with, in addition to his father Travis, his other grandparents, Mr. and Mrs. Butch Wolf of Goodwell.

Other guests were Kandi's sister - Mr. and Mrs. Bill Gibson with daughters Buffy and Bambi of Lindsay, Oklahoma.

It is with regret that the many lifelong friends of Matilda Reimer Entrekin learned of her intention to leave Spearman. She will be living at The Clairmont, a retirement center in Amarillo.

Matilda was born in Hansford County and lived here all her life. Her husband, Joe Entrekin, died in 1959.

Matilda is sorry to leave Spearman, but due to her declining health and the stress of maintaining her home, has decided it is best.

It is the wish of her family as she will be near her daughter, Bertha Jane McFarland, who teaches Dental Hygiene at Amarillo College. Her granddaughter, Crystal Ward, a nurse at Northwest Texas Hospital, will also be near-by.

Edith Eddleman, another daughter, is planning to leave Spearman for San Antonio.

All the neighbors wish Matilda the best of luck and hopes she keeps in touch.

Billy and Sybil Miller have been out of circulation for more than a week due to a zealous yard improvement attempt that backfired.

Sybil, as trained by Billy, was trimming a tall cedar tree back of their tool shed, and couldn't reach the top. So ever helpful Billy climbed the ladder to finish the trim. He lost his footing and Whoosh, Splat, he fell a good 10 feet, squarely on Sybil. She, considerate wife that she is, cushioned his fall, but struck the back fence. He landed on her, but a portion of his anatomy landed on the upturned rake.

After a few minutes, finding each other alive and conscious, and being aware they would never be found wedged between the shed and back fence, they painfully maneuvered each other into the house.

Inside they have remained since except Billy did manage to go for x-rays but Sybil isn't even up to that.

Two conclusions can be drawn - Billy is grateful that he never insisted that Sybil diet - and Sybil will never consider Billy as a labor saving device.

The report from John Bishop is that he had hip surgery on Saturday at St. Anthony's Hospital. He is recovering and no complications are expected. John, 91, was taken by ambulance on Thursday after breaking his hip in a fall at Hansford Manor.

Earlier in the week, two of his

nieces had been here several days. They were Flora May Gilbert, Kansas and Gail and Don Bennett of Colorado.

Beuna Lyon is still savoring her memories of her trip abroad when she spent ten days in France and England.

She, her daughter Catherine Lusby and 14 year old granddaughter Allison of Canadian, joined a tour group of Canadian folk, including some students.

They flew to Paris the day after D-Day and had a complete tour of Paris. The tour director was a very capable French woman who kept all running smoothly with no wasted time.

Next they toured the south of France, including Normandy and Brittany. They then took a steamer at Cherberg and went to London. They visited Oxford, Stratford-on-the-Avon, and other interesting places. Beuna was fascinated by all the monasteries, chapels, museums - historical places she had read about for years and could hardly believe she was actually in them.

Birth announcement

Reese Allen was born June 9, 1994 to Roney and VeAnn Clark of Morse. He weighed 8 lbs. 1 1/2 ozs. and was 21 1/2 inches.

Grandparents are Mr. and Mrs. Tom Allsworth of LaJunta, Colo. and Mr. and Mrs. Albert Clark of Spearman.

Great-grandparents are Stella Harrington of Kim, Colo. and Bob and Hattie Sabin of Canyon City, Colo.



Kenneth and Alice Slough of Gruver Agri Industries present a bike to 5th grade winner Sammie Stavlo.



Sammi Johnson, 3rd grade winner, accepts a bike from Dave and Dixie Karlin of Karlin & Associates (Amway) of Gruver.

Pipkin makes A&M honor list

Texas A&M University has named its honor students for the 1994 spring semester, recognizing several thousand students for outstanding academic performance.

The "Distinguished Student" honor roll recognizes students who have earned a 3.25 to 3.74 GPA.

Among those recognized were Cody Scott Pipkin of Spearman.

Patterson selected for Who's Who

Clinton Branch Patterson, son of Ms. Pat Patterson, and student at Rice University, has been selected as one of the country's most outstanding campus leaders by Who's Who Among Students in American Universities and Colleges editorial staff. He will be included in the 1994 edition of Who's Who Among Students in American Universities and Colleges, an annual directory of outstanding students first published in 1934.

A campus nomination committee and editors of the publication have included the name of this student based on his academic activities and potential for continued success. He joins an elite group of students selected from institutions of higher learning in all 50 states, the District of Columbia and several foreign nations.

Charles H. Ridge, M.D.

710 S. Roland Street

Office Hours:

Monday - Friday

8:30 a.m. - 12 p.m. & 1-5p.m.

For appointments call: 659-3395

The family of Jesse Davis invite you to help celebrate his 90th birthday Sunday, June 26 from 2:00 - 4:00 p.m. in the Hospitality room at the First State Bank.

Bridal Shower

honoring

Sara Hardwick

(nee Sara Sanders)

Tuesday June 28

7:00 p.m. - 8:30 p.m.

home of

Laretta Cook

714 Gibner

Selections at Gordon's and Celebrate

Gordon's
DRUG

Bridal Gift Registry

COME BY & LET US HELP YOU SET UP YOUR SPECIAL GIFT TABLE

Couples Currently Registered

Jeremy & Melanie Willingham
Lisa Collins & David West *June 4
Allen Gardiner & Leslie Crowder *June 18
Cam Butts & Terry Wright *June 18
Gwen Benson & Kurt Wayne Cummings
James Tindell & Carman Edgar
Sara Sanders and Gunnar Hardwick

* Date of the Bridal Shower

314 MAIN
PHONE
659-2141

Gordon's
DRUG

SPEARMAN
TEXAS

Bridal Shower

honoring

Brandy Robinson

and

Slavin Sparks

Saturday June 25

2:30 - 4:00

Home of Shirley Lowe

907 Cluck St.

Gruver, TX

Baby Shower

for Conner Odell Wolf

son of

Travis and Kandi Wolf

Tuesday, July 5

7:00 - 8:30 p.m.

home of Cindy Blackman

900 Maple Dr.

given by hostesses

For The Sport Of It

by Bob Bort

COMMENTARY: I am sick about the O. J. Simpson shocker, and its effect on young America. If he is guilty, it is worse than the Mike Tyson fiasco - ten times worse. It would be the worst case of a true sports hero letting down the youth of America in the history of sports. If he is guilty, perhaps we should reevaluate the way we think of our sports heroes, and pay more attention to the kind of men and women they really are, in their off-the-field lives. The evidence, if you believe the media and the district attorney, is overwhelming.

But remember, he is still to be found guilty, and as of this past Sunday, still proclaims innocence. I almost feel embarrassed to be a writer and a member of the press, after the way the media and the tabloids have already tried and convicted O. J. The upcoming trial has been made nearly impossible - How are they going to select jurors?

If he is not guilty, Lord help us all in the media. The press can be brutal, and in this case, they nearly created a tragic suicide situation on top of the tragic double murder, and the tragedy of the remaining families, including the two children of O. J., who will suffer.

I try so hard to be accurate when I write - then I see an unbelievable television mini-series production this past Friday night (and I watched six continuous hours of it, flipping channels), which you would think could only have been happening in Hollywood, not real life. But it was real life, and already the networks were getting competing armchair psychiatrists and other celebrities giving their analysis on how such a seemingly perfect role model could really be a psychologically unstable, wife beating, double murderer.

The nearest comparison to national coverage of an event like this was the kidnapping of the Charles Lindbergh baby on March 1, 1932; the murder of that 20-month old baby, and the execution of the kidnapper in 1936. Lindbergh, as much a national hero as Simpson, had to go live in Europe with his wife and other child to find privacy. Perhaps he will eventually confess, or be found guilty - and I will look foolish, just another sucker for O.J., the celebrity. But I hope O.J. is found innocent, then let the bricks fall where they may.

The Gruver Lady Hounds Basketball Camp, with director - Lady Hounds head coach Steve Myatt, was held this past week, June 11-17 here at Greyhound Gym for the seniors, and the Elementary Gym for the juniors. There were 61 girls registered and participating, 50 from Gruver-Morse and 11 from Stratford, aged 8-14.

For the seniors, Coach Jim Davis of the Lady Hounds was in charge. He was assisted by former Lady Hounds Wynn Maupin, Traci Crawford, and Mika McLain; and former Stratford Ellette Jolina Garoutte. The juniors were headed up by New Deal ladies head coach Pam Grifis, and former Lady Hounds Sara Jones and Shanna Jarvis.

Here are some major awards, presented at the conclusion of the camp on Friday. For the seniors: **Most Outstanding Campers** - Kathy Slough, Jennifer King of Stratford, and Weslyn Maupin. **Free Throw Champion** - Weslyn Maupin. **Free Throw Champion** - Weslyn Maupin. **Ball Handling Champion** - Kathy Slough. **Hot Shot Champion** - Jill Odom.

For the juniors: **Most Outstand-**

ing Campers - Amy Watley, Mikala Reiswig of Morse, and Sara Bass. **Free Throw Champion** - Mikala Reiswig. **Ball Handling Champion** - Amy Watley. **Hot Shot Champion** - Lauren Hoel. **Block Shot Champion** - Teal Armes.

There were some very impressive performances by some of these young Lady Hounds, Stratford Elkettes, and Morse Lady Cougars.

Jace Dawson, Eric Wright and Sammy Renteria, three prominent Hounds footballers and basketballers, are playing America's favorite pastime this summer. All three are participating in American Legion Baseball, playing for the Hooker, OK, team. Their current record is 23-11, according to Jace, and I will let you know how they do in the American Legion state playoffs later this summer.

Jim Potts is playing Babe Ruth baseball, for River Road in the North Randall County League as a 13-year old, and they are currently 16-0, as of this past Sunday. He has to travel to Amarillo for his games. River Road, unfortunately though, will not be able to advance in the Babe Ruth regional and national playoffs later this summer.

COMMENTARY: One of my major gripes about living in Gruver is that they don't give these budding stars the experience of team baseball, forcing them to travel unreasonably to gain that experience in their chosen sport. Up until recently, they did have Babe Ruth summer baseball for 13-15 year olds, but no longer. I still say we need high school UIL baseball for these players who want to play beyond Little League, but then I am just a dreamer, I guess.

Here is some AAU information. Jarrod Hoel and Brant Armes are on the Amarillo Texans team that is going to Nationals July 2 in Phoenix, as I wrote about last week, and I listed the other team members also. One of those players was listed as Kaleb Meek of Briscoe. Thanks to Dorothy Hudson who informed me, I found that Kaleb's mother is Annette Helton, formerly of Gruver, and who married Mark Meek. Annette graduated in 1969 from GHS, and I graduated from GHS in 1967 with Annette's older sister Ida Lou. I am really sorry I didn't catch that last week. Good

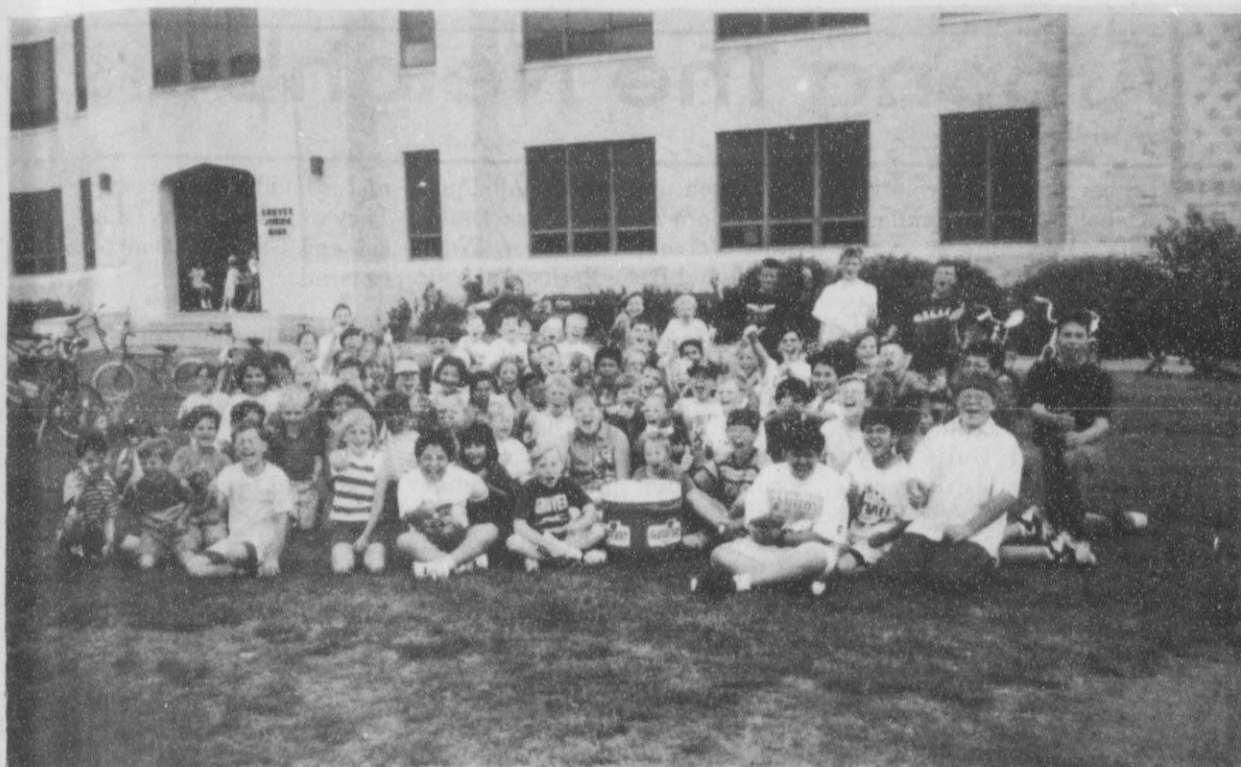
luck to Jarrod, Brant, and Kaleb - and all the rest of the Amarillo Texans team at Phoenix!

An update on Jim Potts and the 13-and-under AAU team, the Shooting Stars. The qualifying tournament they were supposed to play in this past weekend in Lubbock was cancelled, but, they played in Amarillo, playing up with 14-year olds. According to their coach, Mark Chancler of River Road, they can still go to Nationals in St. Cloud, Minnesota (not St. Paul as I wrote last week) August 3-9, if the parents choose to go.

In early World Cup action, there have already been some major upsets. The United States opened with an exciting 1-1 tie with Switzerland, and they have one point. They would probably need four points to advance to the second round, which means they would have to have a win in one of their remaining two first round games - with Colombia or Romania. If they don't advance to the second round, it would be a tremendous disappointment. Among the early upsets, Romania beat Colombia 3-1, Ireland beat Italy 1-0, South Korea stunned Spain with two late goals and a 2-2 tie, and Mexico was shocked by Norway 1-0. The U.S. played Colombia Wednesday, June 22. Germany did manage an unimpressive 1-0 victory over Bolivia.

Wednesday, June 22, was a big day, as the Houston Rockets and New York Knicks met in the 7th and final game of the NBA playoffs. I had picked the Rockets all the way, with Hakeem Olajuwon leading the way, and you will know if I was accurate by the time this issue of the Reporter-Statesman is published. New York already has one championship, as the Rangers beat the Vancouver Canucks four games to three in the NHL playoffs last week, for their first Stanley Cup in 54 years (since 1940).

In Major League Baseball this summer, Perryton's Mike Hargrove and his Cleveland Indians are in first place, and as of Sunday, had won an unbelievable 18 consecutive home games in their new stadium, Jacobs Field. Hargrove, a local hero here in the Panhandle, is working on Manager of the Year in MLB.



The 88 Gruver Bike-a-Thon riders pause to pose for a picture. This dedicated group raised over \$4000 in their efforts.

ALLSUP'S
WIN EASY
MONEY

WIN FREE FOOD!

Come in and Start Winning Today!

WIN UP TO \$1000 INSTANTLY!

Pick up your free game ticket today!

PRICES EFFECTIVE
JUNE 19-25, 1994
Gruver and Spearman only

HOMOGENIZED
ALLSUP'S MILK
GALLON
\$1.99

SAVE ON
WILSON FRANKS
12 OZ. PKG.
69¢

FREE GAS FOR A YEAR WINNER!
VICTOR E. PEREZ
ALBUQUERQUE, NEW MEXICO

\$1,000 WINNER!
VICTORIA A. MATTHEWS
LAS VEGAS, NEW MEXICO

TOM'S REG. OR RIPPLED
POTATO CHIPS
6 OZ. BONUS BAG
99¢

SAVE ON
THUMB SUCKERS
WITH GUM CENTERS
2 FOR 89¢

BUBBLE TAPE
BUBBLE GUM
6 FOOT
79¢

SHURFINE
FROZEN ORANGE JUICE
12 OZ. CAN
99¢

VLASIC HAMBURGER
DILL CHIPS
32 OZ.
\$1.59

ALL TYPES
PEPSI-COLA
6 pk. • 12 oz. cans
\$1.99

STORE SPECIALS

SHURFINE FRESH PACK DILL PICKLES	32 OZ.	\$1.59
SHURFINE BLACK-EYED PEAS	15 OZ.	39¢
SHURFINE LEAF SPINACH	15 OZ.	39¢
SHURFINE PEANUT BUTTER	18 OZ.	\$1.99

ALLSUP'S 1.5 LB. LOAF
SANDWICH BREAD
88¢ EACH OR
2 \$1.09

ALLSUP'S
SAUSAGE, EGG & BISCUIT
FOR ONLY
\$1.09

1- 10x13 (Wall Photo)
1- 8x10
2- 5x7
2- 3x5
16- King Size Wallets
8- Regular Size Wallets

30 Color Photos

99¢ Deposit
\$11.00 Due at Pick up (plus tax)

\$11.99

WE USE KODAK PAPER

Kids' Stuff
719 West 7th
Wed. June 29
ONE DAY ONLY
9:00 - 5:00

Shugart's inc.

Group charge 99¢ per person

We use **Kodak PAPER** for a Good Look
FOR CREATIVE COLOR PORTRAITS

Win Your Share of \$75,000 in Cash Prizes!

A "Center" Piece

The board of the Golden Spread Senior Citizens met Monday June 20. Those present were Charles Newcomb, Bob Boxwell, Gene Cudd, Arbeta Nobles, Helen Etter, Roselee Butts, Sherri Benton, and Pearl Pierce. The Radio Auction was the major topic of discussion. Crafters and Artisans have been very generous with offers of items to auction. The date set for the auction day is August 5. Board members will now be contacting businesses. The desire is that by the next meeting a list of donations can be compiled. They want to let the public know some of the items donated so decisions can be made early for something you might want to bid on.

Also discussed was contracts with the O'Laughlin Community Center that pertain to the Senior Citizens. Even though plans are for the Seniors to move to the new center, there will still be expenses for the organization to maintain. Therefore, the need for dues exists. The quilters and crafters work hard on fund raisers to also help with the expenses. IT IS NOW TIME FOR MEMBERSHIP RENEWAL!

MAY GOD BLESS OUR ORGANIZATION AND OUR COUNTRY



Lloyd Mardis takes a break outside Gopher's in Gruver.

Bicycling across Texas at 65

65 year old Lloyd Mardis of Austin is accomplishing what a lot of people dream about, but few have the guts to attempt - especially in the sweltering heat of what promises to be a long, hot Texas summer. Mardis who has had many occupations, is a retired minister of 15 years, and most recently real estate agent. He left Austin March 29 on this, his third such trip, and the thrill of a lifetime.

Mardis' transportation on this trip, which he is making alone - is a 21-speed Novara Randonnee touring bicycle, costing about \$650.00.

The scene was Gopher's Convenience Store in Gruver this past Friday morning, June 17, and Mardis was taking a momentary respite from his travels, very willing to talk about his adventure to a disbelieving reporter.

As stated, this is the third trip for Mardis. He had taken two previous trips from his home in the capital city, one to Pecos, and one to Jacksboro, and back to Austin. He began this trip on his 65th birthday, March 29, was driven by a friend to Big Bend National Park, and took off, totally disregarding the fact that he was pursuing a younger man's game, for sure. But Mardis is certainly not your typical 65 year old.

From the Big Bend National Park, and Alpine, Mardis pedaled east and followed the Rio Grande River. He rode out to the surf to Boca Chica up the coast, then to Corpus Christi and Galveston Island, riding along the Sea Wall. From Point Bolivar, he went north to Beaumont, then through East Texas through the Sabine and Angelina National Forests, and on to Texarkana, where he had his bike overhauled. From there he followed Highway 82 through Wichita Falls, to Childress, and on north through the Panhandle, to Follett, Spearman and then Gruver.

The first thing any inquisitive admirer would want to know is, "How does he do it, especially at his age?"

Mardis' response is unreal, on another 100 degree day in Gruver. "The heat doesn't bother me," stated Mardis. "My day is a 12-hour day, and at this stage I'm pretty well used to everything - nothing bothers me anymore."

Mardis did mention that he has a bad hip, though it hasn't bothered him on the trip, and he plans to have hip replacement surgery the first thing when he arrives back in Austin.

Mardis, who has three college degrees, packs his camping gear, and food and water, and tries to stay at highway picnic areas, rest stops, and city parks - many of which he raves about in this part of Texas. He averages \$11 per day in expenses (food, supplies, repair), and his average distance per day is 50-60 miles traveled. From Gruver, he is on to Stratford and Texline, then south and eventually to El Paso, which is enduring one of its hottest summer seasons ever. Then he will travel east and back to Austin, expecting to arrive on/about Midsummer, August 1. Yes, regarding "A Midsummer Night's Dream", it is certainly a dream trip that Shakespeare would have noted, if he had lived in this time.

Mardis is divorced, has five grown children and eight grandchildren. He writes to them, but of course they can't write to him.

Mardis commented, "I am really pleasantly surprised with all the towns up here in this region. My thought is - Boy, I could live there!! I had the idea it was all desolate, but it is one of my favorite areas. You can see for miles, the air is clean, and the people are friendly."

Mardis, who is travelling alone, has not had any experience with crime, or the criminal type.

The highlights of his trip are the Big Bend - the Black Gap National Wildlife Refuge, which he says is all desert, and one can walk and walk; seeing the desert plants; the Sand Hills near Midland/Odessa on a previous trip; his most exhilarating moment - riding all across

South Texas and finally riding his bike onto the surf at Boca Chica, through rain squalls, which he described as great; riding along the Sea Wall; the Sabine National Forest, and especially Highway 353 out of very old San Augustine.

Mardis continued about East Texas, and talked about Caddo Lake. "It is a huge swamp," said Mardis. "The Parks and Wildlife Department estimated there are 45 miles of trails, and you can get lost there. There are cypress trees growing, and the water looks like tannic acid."

He described heading into the Panhandle from Childress. "It was a great feeling to go into the Panhandle. The wind direction changed from NW-N-NE-SE-S, all in one ride. There were two storms which passed, without any rain. There was sunshine, and it was cool."

In order to stay clean, after he sets up his tent, he gets inside and seals it. Once inside, he takes an alcohol bath, with rubbing alcohol, both at night and in the morning. Mardis stated he hadn't had a shower in 15 days.

"I drink 2 gallons of water per day," said Mardis, "and it is all perspired away. I lost 25 pounds on each of my first two trips, and four inches off my waist." Mardis weighed 190 on March 29, when this trip began.

Mardis is planning on writing a book upon his return, titled "Waving at Pickups." He says he waves at everyone along the way. He would also like to write some romance novels centered in the 1800's, and a Book of Essays about his observations.

It is only a shame that all of Gruver did not have the chance to meet this most interesting of travelers, here only for a brief moment in time, and on to further adventures, leaving those of us here to return to our normal everyday lives.

Gruver FFA attends conference

Clarendon College hosted its 13th annual Area I FFA Leadership Conference June 13-15. A total of 51 FFA Chapters and 25 members and ag teachers from the Amarillo, Greenbelt, Littlefield, Lubbock, Plainview, and Top-O-Texas districts attended the three-day conference entitled "The Legacy Continues". The Area I Officers: President Jeremy Roark, Amarillo; Toby Tomsu, Kress; Leigh Ann Wyatt, Higgins; Krisse Pigg, Valley; Shanna Wise, Roosevelt; and Jessica Smith, Friona; assisted by several district and state officers, conducted workshops that emphasized the importance of team work, values, and effective communications. In addition to attending the different workshops FFA members competed in ag olympics, participated in a basketball and volleyball tournament and attended several mixers to help attendees get to know each other better.



Gruver FFA members attended the Area I Leadership Conference held at Clarendon College June 13-15. Those attending were (L to R): Justin Carthel, Nathan Kirk, Brady Tidwell and Cori Lowe.

Sports Briefs

Locker-room bugs

HOUSTON - If you've made the decision to join a health club, don't let locker-room bugs take a bite out of your workout. Bacteria and fungi invade locker rooms and cause painful skin infections, most of them preventable.

"Even the cleanest-looking clubs are incubators for germs," said Dr. Ted Rosen of Baylor College of Medicine in Houston.

Germ thrive and multiply in warm, moist places; hot tubs and heated pools are a source of spread.

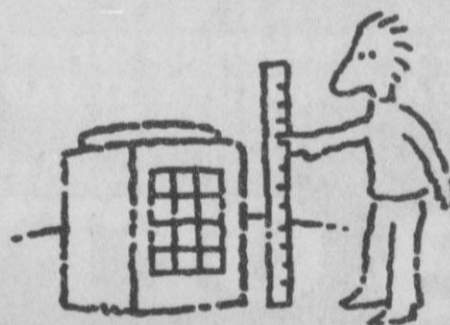
Rosen suggests that you:
* Shower before entering the hot tub. Avoid sitting near hot-tub jets.
* Wear shower shoes in the shower, sauna or locker room.
* Completely dry between toes after swimming or bathing. Use a blow dryer on feet and toes.
* Towel well after bathing, and wear cotton underwear. Underwear made from synthetic materials tends to trap moisture and heat.

Dr. Ridge's office will be closing the end of June. Please let our office know to whom you would like your records sent. Allow five (5) working days for completion of this process. We have really enjoyed serving the people of this area.

Sincerely,
Dr. Charles Ridge
& Staff

Sizable Ways To Save Energy.

At Texas-New Mexico Power Company, we deliver reliable electric power, plus we help you determine the right size air-conditioning and heating equipment for your home. * Equipment that is too large or small won't heat and cool your house efficiently. * If you're planning to build a new home or replace an existing system, call your local Texas-New Mexico Power Company office for assistance.



Texas-New Mexico Power Company.

KIDS COOKING SCHOOL

Free demonstration featuring recipes and tasting for kids 1st grade and up. Choose only one session.

Tuesday, June 28 - 11:00 a.m.

Gruver State Bank

#3 Main Plaza - Gruver

Please call 733-2333 for reservations.

Presented by:



CHRISTY FROST
SPS Home Economist



SOUTHWESTERN PUBLIC SERVICE COMPANY

Make the smart energy choice - use electricity wisely!

P3585-5-94-930.1

Rocking

F

Boot & Saddle Shop

Your Boot & Saddle Repair Specialist

416 Main • Gruver

Mon-Fri.

730 a.m. - 530 p.m.

(In Spearman drop-off or pick-up only at 26 S. Archer • 6-8 p.m.)

SPSC hosts Spearman swim meet

Girls 8 & under
 Jentry Edwards, Abby Winegarner, Keilee Goodheart, Kaylee Golaz -- 1st, 100 free relay -- 1:36:69
 Jentry Edwards -- 1st, 25 free -- 19:14; 2nd, 25 breast -- 26:17; 1st, 25 fly -- 24:31
 Abby Winegarner -- 4th, 25 back -- 32:94; 4th, 25 fly -- 30:69
 Keilee Goodheart -- 1st, 25 breast -- 25:18; 2nd, 25 fly -- 24:34; 1st, 100 IM -- 2:04:15

Boys 8 & under
 Mason Edwards, Taylor Simpson, John Cooper, Michael Pichauskie -- 4th, 100 free relay -- 2:02:58k
 Taylor Simpson -- 1st, 25 back -- 25:77; 1st, 25 fly -- 24:07; 5th, 100 IM -- 2:12:66

Girls 9 & 10
 Audrey Winegarner, Alexa Ruehl, Amber Ramon, Cassie Luther -- 3rd, 200 free relay -- 3:07:54
 Winegarner, Ruehl, Ramon, Luther -- 3rd, 200 medley -- 3:19:34
 Amber Elliot -- 1st, 50 free -- 36:91; 2nd, 50 back -- 45:04; 1st, 100 free -- 1:25:74
 Audrey Winegarner -- 4th, 50 breast -- 49:81; 5th, 100 IM -- 1:49:80

Boys 9 & 10
 Travis Brown, Colton Miller, Charles Davis, Brandon Harvey -- 4th, 200 free relay -- 3:09:57
 Colton Miller, Charles Davis, Travis Brown, Chad Scarborough -- 3rd, 200 medley -- 3:34:98
 Colton Miller -- 4th, 50 free -- 41:22; 3rd, 50 fly -- 49:55; 3rd, 100 free -- 1:32:27
 Travis Brown -- 1st, 50 breast -- 49:74; 2nd, 50 fly -- 48:94; 2nd, 100 IM -- 1:44:79
 - 2:47:34

Brooke Trantham, Candice Pipkin, Michelle Elliot, Ashley Brown -- 2nd, 200 medley relay A --
 Ryan Dewberry -- 6th, 100 free -- 1:40:64
Girls 11 & 12
 Amber Ramon, Adrienne Simpson, Audra Sanders, Jenny Longoria -- 2nd, 200 free relay A -- 2:33:10

Kara Pipkin, Darcy Golaz, Sara Anderson, Amelia Partain -- 5th, 200 free relay B -- 3:12:09
 Ramon, Simpson, Sanders, Longoria -- 2nd, medley relay A -- 2:46:27 (new pool record)
 Pipkin, Golaz, Anderson, Partain -- 6th medley relay B -- 3:37:35
 Adrienne Simpson -- 3rd, 100

 Slight not what's near through aiming at what's far.
 —Euripides

free -- 1:22:50; 2nd, 50 back -- 39:32 (new pool record); 2nd, 50 fly -- 40:69
 Andrea Sanders -- 5th, 100 free -- 1:22:50; 4th, 50 fly -- 42:67
 Amber Ramon -- 5th, 200 free -- 3:38:48; 4th, 50 breast -- 48:99
Boys 11 & 12
 Tommie Dewberry, Timmy Bynum, Aaron Winegarner, Eric Smith -- 3rd, 200 free relay -- 2:39:02
 Micah Edwards, Aaron Winegarner, Timmy Bynum, Tommie Dewberry -- 4th, 200 medley relay -- 3:17:56

Aaron Winegarner -- 2nd, 50 free -- 34:81; 1st, 100 free -- 1:17:54; 1st, 50 back -- 38:30
 Tommie Dewberry -- 6th, 50 back -- 46:42
Girls 13 & 14
 Candice Pipkin, Brooke Trantham, Michelle Elliot, Jocelyn Edwards -- 1st, 200 free relay A -- 2:22:88
 Cami Winegarner, Ashley Brown, Lindsey Smith, Amber Pichauskie -- 6th, 200 free relay B -- 2:42:19
 Jocelyn Edwards, Cami Winegarner, Lindsey Smith, Grace Davis -- 5th, 200 medley relay B -- 3:06:49
 Michelle Elliot -- 3rd, 50 free -- 31:98; 2nd, 100 free -- 1:13:07; 2nd, 100 back -- 1:22:46
 Brooke Trantham -- 1st, 200 free -- 2:44:91; 1st, 100 fly -- 1:18:69

(new pool record); 1st, 200 IM -- 2:56:58
Boys 13 & 14
 Landon Miller, Michael Lusby, Chuck Grayson, Mason Ruehl -- 2nd, 200 free relay A 0-- 2:15:02
 Miller Lusby, Grayson, Ruehl -- 1st, 200 medley relay -- 2:37:84
 Michael Lusby -- 2nd, 50 free -- 31:40; 3rd, 100 breast -- 1:34:88; 2nd, 100 fly -- 1:24:17
 Landon Miller -- 4th, 50 free -- 33:25; 2nd, 200 free -- 2:51:02; 5th, 100 breast -- 1:41:44
 Chuck Grayson -- 5th, 100 free -- 1:20:54; 4th, 100 back -- 1:41:23
 Mason Ruehl -- 2nd, 100 back -- 1:34:41

Girls 15-18
 Mandi Lusby -- 1st, 50 free -- 33:92; 2nd, 100 free -- 1:18:31; 2nd, IM -- 3:22:20
Boys 15-18
 Greg Elliot, Dillon Miller, Clayton Hergert, Josh Winegarner -- 2nd, 200 free relay -- 1:59:41 (new pool record)
 Elliot, Miller, Hergert, Winegarner -- 2nd, 200 medley relay -- 2:19:47
 Dillon Miller -- 4th, 50 free -- 28:41; 5th, 100 free -- 1:12:31; 3rd, 100 breast -- 1:30:77
 Josh Winegarner -- 1st, 200 free -- 2:53:59
 Clayton Hergert -- 2nd, 50 free -- 28:41; 3rd, 100 free -- 1:07:11; 4th, 100 breast -- 1:34:35



Twentieth Century Club Donation -- The Twentieth Century Club donated a decorative screen to the Hansford Hospice this month. Shown are Karen Babitzke, Mac Wilmeth - historian, Verna Gail Keim, Dorothy Woolley - president, Jody Harnish - Hospice Director, and Anita Anthony.

Twentieth Century Club Donation

The Twentieth Century Club donated a screen to the Hansford Hospice this month. Members of this club are: Karen Babitzke, Mac Wilmeth - Historian, Verna Gail Keim, Kathleen Sutton, Dorothy Woolley - President, Jody Harnish - Hospice Director, and Anita Anthony.

LA GRONE MONUMENT CO.

Cleta Casdorff
Local Representative
Gruver, Texas
(806)733-2154

Garre LaGrone
901 E. 27th
Amarillo, Texas
1-800-658-6117

JACKSON WELDING SERVICE
 * All types of welding
 Call Roy Jackson
 659-2137 or
 659-5129

Mae Wofford CTC says, "We still have the ability to provide you with Southwest Airline tickets."
D&M Travel
 659-5233

Driver's Education

For more information contact Independent Driving School Perryton
 Lanny Hargrove instructor
 (806) - 435 - 2579

AUCTION

A.L. & Howard Swink & Others
July 26, 1994

Consignments Welcome
 Advertisement Deadline June 26, 1994

DALE REAGAN
384-2066
TX-040-0619

Reagan & Brown
Auctioneers, Inc.
"Complete Auction & Appraisal Service"
OFFICE PHONE 806/249-6776

BOB BROWN
249-4038
TX-040-0618

For more information call associate Howard L. Swink, TX-6829 (806-435-7279)

Mary Ann's

CLOTHING-ACCESSORIES GIFTS
1206 S. CEDAR • BORGER, TEXAS

1/3 OFF

SPRING & SUMMER

SALE STARTS
JUNE 27

CUSTOM HAY HAULING
 Chip Eckhardt
733-2870
 Big Round Bales and Little Square Bales

Caprock Industries

Feedyards 1 and 2
 contracting high moisture corn daytime harvesting.

For bids call
Gary Gentry
 OR
Julie Williams
at 733-5043.

Super Summer Sizzling Sell Down at Gillaspie Auto & Truck Center

1992 Ford P/U, V-6 Automatic transmission, Bright Red, A/C, Long Wide Bed, 19,000 miles, One owner!	\$11,900

1993 Plymouth Grand Voyager S.E., Red with Maroon cloth interior, V-6 Automatic, A/C, Power windows and door locks, 15,000 miles, Transferable Factory Warranty	\$17,500

1993 Chevrolet Caprice, V-8 Automatic, Power windows and door locks, AM/FM stereo with cassette, 22,000 miles, White, Factory Warranty Remaining	\$14,900
1993 Chevrolet Lumina, V-6 Automatic, Power windows and door locks, tilt, Cruise, AM/FM cassette, 20,500 miles, Factory Warranty Remaining	\$12,500
1993 Chevrolet Corsica, 4 door, V-6 Automatic, Air, AM/FM cassette, tilt, Cruise and many more options. Bucket seats, Maroon, Factory Warranty Remaining	\$10,995
1993 Oldsmobile Achieva, 4 door, Automatic transmission, tilt, Cruise, AM/FM cassette, White with Maroon interior, Factory Warranty Remaining	\$10,995
1993 Buick Skylark, V-6 Automatic, A/C, AM/FM cassette, power door locks, tilt - cruise, Maroon with Maroon interior, Factory Warranty Remaining	\$11,900
1993 Chevrolet Cavalier (2 to choose from), 4 door, Chevrolet Best Selling Nameplate, Blue or Gray, air conditioning, power door locks, tilt, Cruise AM/FM cassette GREAT GAS Mileage, your choice	\$9,995
1993 Buick Century, 4 door, white with Maroon interior, AM/FM cassette, power windows and door locks, much, much, more	\$12,500
1993 Chevrolet Beretta, 2 door, bright red, V-6 Automatic, A/C AM/FM cassette, Factory Warranty Remaining, bucket seats	\$10,995
1993 Oldsmobile Ciera, 4 door, V-6 Auto transmission, tilt, Cruise, A/C, AM/FM cassette, Power windows and door locks, White with Blue interior, Factory Warranty Remaining	\$12,300
1992 Dodge Dakota, 4 wheel drive, V-6, 5 speed, A/C, L.E. Package, One Owner, White with Grey interior, toolbox, Ready to go To Work	\$9,995
1993 Buick Regal, V-6 Automatic, A/C, AM/FM cassette, Power windows and locks, White, 18,000 miles, Factory Warranty Remaining	\$13,500
1979 Cadillac, 72,000 original miles * NICE CAR! SEE TO BELIEVE *	\$4,500

ACCELERATED EARNINGS NETWORK
 Up to **10%**
 On Parts & Service

The GM Card

GILLASPIE
 AUTO & TRUCK CENTER, INC.
 CHEVROLET, OLDS, BUICK, PONTIAC,
 CHRYSLER, PLYMOUTH, DODGE
 Highway 207 South • P.O. Box 430
 Spearman, Texas 79081
 659-2541 1-800-692-4657

Judging team places 4th at State

(COLLEGE STATION, TX) The Hansford County 4-H Livestock Judging Team placed fourth overall at the State Livestock Contest held June 8 at Texas A&M University. Team Members are Galen Slough, Scott Stedje, and Kathy Slough.

Team members evaluated sheep, swine and cattle and then presented oral reasons for their placings to livestock specialists. The team had a very consistent day, finishing fifth in cattle, sixth in sheep, sixth in swine, and fourth in reasons. Coach Bill Carson states, "This was a very impressive showing because we judged with only three members and did not get to drop a score." Teams in the state competition are allowed to judge four members and count the three highest scores.

Galen Slough was the first high individual in swine, first high indi-

vidual in sheep, sixth high individual in oral reasons, and the second high individual in the entire contest. Galen has been a member of the 4-H Livestock Judging Team for 2 years. He will be a senior at Gruver High School this fall. Galen is the son of Kenneth and Alice Slough.

Scott Stedje was third high individual in beef cattle. He was recently high individual in the District I contest. Scott will be a sophomore at Gruver High School this fall. Scott is the son of Dennis and Kathy Stedje of Gruver.

Kathy Slough was the eighth high individual in sheep reasons. This is Kathy's first year to judge. She will be a freshman at Gruver High School in the fall. She is the daughter of Kenneth and Alice Slough of Gruver.

County Extension Agent Burt Williams gives special thanks to Bret Burgin and Bill Carson for spending many hours and miles coaching the team this year. Bret and Bill are both former members of the Texas A&M Livestock Judging Team.

The livestock team began working last fall with numerous workouts and a few regional contests. In April, they qualified for state by winning the District I contest at Canyon. Late nights and long hours are typical. The work paid off as Hansford County had their first top ten finish in Livestock Judging at state. "I am very excited for this team and optimistic about next year," says Coach Burgin. "All three of these judges return plus we have four very talented Jr. Division judges who will be old enough to judge in the Sr. Division next year. If we work hard and stay focused, we have the potential to win State next year."

The team left Spearman on Saturday, June fourth and went to RisingStar to judge Limousin cattle at Peyton Scott's. Sunday found the team in Stephenville judging sheep and at Brownwood judging hogs. On Monday, the team practiced on Carolais, Brahman, Angus, Hereford, and Brangus cattle in the Madisonville/Franklin area. The contest was held on Wednesday.

The top ten teams in the state contest are as follows:

- | | |
|--------------|---------------|
| 1. Brazos | 6. Tom Green |
| 2. Gillespie | 7. Nacodoches |
| 3. Waller | 8. Deaf Smith |
| 4. Hansford | 9. Dewitt |
| 5. Hockley | 10. Fisher |



The Hansford County 4-H Livestock Judging Team from left to right: Kathy Slough, Galen Slough and, Scott Stedje.

106th rodeo to be held in Canadian July 1 thru July 4

The cowboys who rode the top of the Texas Panhandle had a serious argument to settle, and Ellison Carroll squared off against black cowboy Albert Phillips, on the main street of Canadian, located in the lush river valley on the Canadian River. They duelled with ropes on Independence Day in 1888, the town's first anniversary, and, as far as the cowboys were concerned, the debate about who was the greatest calf roper in the West ended forever. Along with the steer roping, tying down, horse racing, and tournament races were also held. Ellison Carroll won and was promptly proclaimed the champion rodeo roper of the world since Canadian was convinced it had just hosted the first "public performance" rodeo ever held on American soil. Maybe so. These days, Pecos, Texas and Prescott, Arizona, both claim the same honor. But that doesn't bother the beautiful little city of Canadian, which grew up in the cattle tracks along the Santa Fe.

Canadian knows what happened that Independence Day in 1888, and nothing interferes with the pride it has in its western heritage. Ellison Carroll later recalled that there had been few rules, no grand-

stands, no pens, and that the rodeo took place right on the main street of town in front of the courthouse, which was generally as wild as the livestock. Hundreds of early settlers lined the street and risked dangers as great as those confronted by the cowboys. The rodeo historian who interviewed Carroll wrote, "There were no ready referees to halt the plunging ride as a timer's gun blasted an end to ten seconds in the leather. Contestants rode until either horse or man was proved the better and risked hazards of plunging into buildings, railings, or spectators."

Rodeo remains important to Canadian. For more than a hundred years, working cowboys, and then professional cowboys, have all gathered down beside the river each July Fourth to carry on the 1888 tradition of Ellison Carroll and Albert Phillips, regardless of what Pecos and Prescott may say about it. Today, the rodeo is one of the finest amateur performances in the country.

Plans are under way for the 106th Fourth of July Celebration and Rodeo to be held in Canadian on July 1, 2, 3 and 4. The chamber can be reached at (806) 323-6234 for more information.

SUMMER SALE STARTS

JUNE 27TH

30% OFF THE BUNKHOUSE

(806) 659-2617 • 212 S. Main • Spearman, TX

Selection of mens jeans \$10.00

ATTENTION!

When using your mobile or cellular telephones to call the 911 emergency number remain calm & identify the TOWN and LOCATION you are calling from so the 911 operator may direct your call properly.

This is a public service message from this newspaper and your local police department.

GET THE ALCO Advantage



FREE

EVERY TUESDAY!

SECOND SET OF PRINTS

Receive a second set of 3" prints FREE with any exposure roll of 35mm, disc, 110 or 126 color print film left for developing and printing at our everyday prices! C-41 process only. Excludes larger 4" size prints, and photo galaxy.



Store Wide 4th of July Sale
15% off
 trunks, clothes, collar swags,
 afghans, house numbers and
 lots more
 June 27 - July 1

CHAROLETTE FORD TRUNKS
 313 MAIN, SPEARMAN, TEXAS 79081 • 806-659-3027

DUKE'S CHIROPRACTIC CENTER
 EVENING HOURS AVAILABLE

<input type="checkbox"/> Headaches / TMJ	<input type="checkbox"/> Family Health Care
<input type="checkbox"/> Neck Pain / Stiffness	<input type="checkbox"/> Pediatrics
<input type="checkbox"/> Low Back Pain	<input type="checkbox"/> Athletic Injuries
<input type="checkbox"/> Shoulder / Arm Pain	<input type="checkbox"/> Numbness
<input type="checkbox"/> Hip / Leg Pain	<input type="checkbox"/> Gentle Treatment

AUTO ACCIDENTS • WORK INJURIES
 (Most Insurance Accepted)

659-5505

11 W. Kenneth Spearman, Tx.

Darrell D. Duke DC

Three New Flavors!

Try Cherry Cheesecake, Peanut Butter & Jelly, and Fudge Pecan Brownie!
 Three delicious new Blizzard® Flavor Treat and Breeze® Frozen Yogurt Treat flavors have blown into Dairy Queen®. Try one today!

©Reg. TM Am. D.Q. Corp. ©Tx. D.Q. Op. Coun. At participating Dairy Queen stores.

Jan's Etc.
STOCK LIQUIDATION SALE

Glass and Cookware 1/2 off lowest price
 Books -10 for \$1.00 • All Dresses - \$1.00
 Women's Jeans - 50¢
 June 20 - 25 10 a.m. - 6 p.m.
 Jan's Etc.
 Plains Shopping Center Spearman

MARKETPLACE
 505 Plains Shopping Center
 Spearman, Texas 79081

PRESENTS FRONTIER ADVENTURES

COME INTO LOWE'S for your FREE Ticket for STAGECOACH RIDES

Friday June 24th

Relive the enchantment of the Old West during

LOWE'S CRAZY DAYS!!!

Authentic horsedrawn stagecoach rides in the parking lot

Friday, June 24

Lowe's Marketplace

505 Plains Shopping Center in Spearman
10 a.m. - 1 p.m & 3 p.m. - 6 p.m.

Bring the whole family - This may be a once in a lifetime experience!

Pete Paulson - Frontier Adventures
 Las Cruces, NM

Obituaries

Sadie M. Sutton

GRUVER - Sadie M. Sutton, 92, to Gruver 45 years ago from Tucumcari, N.M. She was a homemaker and a member of the First Baptist Church. She was preceded in death by a daughter, Mildred Aiken, in 1986.

Survivors include a son, Bob Sutton of Enid, Okla.; five grandchildren, 13 great-grandchildren; and three great-great-grandchildren.

Mrs. Sutton was born in Clarksville, Tenn., and had moved to Gruver 45 years ago from Tucumcari, N.M.

To live happily with other people one should only ask of them what they can give.

—Tristan Bernard

PUBLIC NOTICE

PUBLIC NOTICE CITY OF GRUVER

Texas Community Development Program The City of Gruver will hold a public hearing at 2:30 p.m. on June 29, 1994 at Gruver City Hall in regard to the submission of an application to the Texas Department of Housing and Community Affairs for a Texas Community Development Program (TCDP) grant. The purpose of this meeting is to allow citizens an opportunity to discuss the citizen participation plan, the development of local housing and community development needs, the amount of TCDP funding available, all eligible TCDP activities, and the use of past TCDP funds. The City encourages citizens to participate in the development of this TCDP application and to make their views known at the public hearing. Citizens unable to attend this meeting may submit their views and proposals to A.J. Ratliff, City Manager at the City Hall. Handicapped individuals that wish to attend this meeting should contact City Hall to arrange for assistance.

S35, 1tc

 * World Book - *
 * Childcraft *
 * Encyclopedias *
 * Donna Williams *
 * 733-2765 *

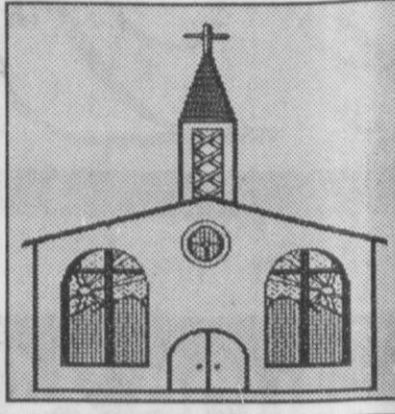
OSGOOD MONUMENT CO.
 Amarillo, Texas

Dealers of Rock of Ages Granite, as well as all colored granites, marble and bronze memorials.

Represented by
Boxwell Bros. Funeral Home
 519 S. Evans
 659-3802

Let us replenish the seed of faith through...

REGULAR CHURCH ATTENDANCE, DAILY BIBLE READING & PRAYER



HI-PLAINS AUTO SUPPLY, INC.
 Mobile Oil for Irrigation & Industrial Purposes
 118 Main • Spearman
 659-2506 • (800)657-8742

Palo Duro Supper Club
 22 S. Archer
 659-2232

C.O.'S SUPPLY CO.
 Plumbing & Tire Sales & Service
 421 W. Kenneth • Spearman
 659-3781 or 659-3555

Bartlett's Ace Hardware
 105 W. Broadway
 733-2404

GILLASPIE
 AUTO & TRUCK CENTER, INC.
 1059 S. Main • Spearman, Texas 79081

THE HANSFORD COUNTY REPORTER-STATESMAN
 Serving The Communities Of Spearman, Gruver & Morse
 213 Main • 659-3434
 1-800-395-9482

Paschel Irrigation
 (806)659-5228 • 1-800-659-6580
 Corner Airport Rd. & Hwy 15 West Spearman, Tx.

Gruver Cablevision
 Quality Family Entertainment with "the Disney Channel"
 308 Main • 733-5295

Morse Implement Company
 "Join us in church this week"

Boxwell Bros. Funeral Home

THE HANSFORD COUNTY REPORTER-STATESMAN
 Serving The Communities Of Spearman, Gruver & Morse
 213 Main • 659-3434
 1-800-395-9482

CORONADO HOSPITAL
 Pampa, Texas
 (806)665-3721

Compliments of
G&G FOODLINER
 516 Main • Gruver
 733-2471

FIRST STEPS...

Have you ever watched a baby learning to walk? Its first steps are hesitant. It often falters, but, slowly gains more confidence. Soon, mother can no longer keep up.

First steps of spiritual growth are like this, too. Our faith, at first, is quite uncertain, but as we become more certain of God's love, we gain more confidence. Soon our faith plays a part in every decision we make. Faith in God becomes the guiding principle of our whole life.

You can help others to take their first step toward God. Help them understand that God can make a difference in their lives, too. Invite a friend to visit your church or synagogue with you. This could well be just the support they need.

Sunday 1 Thessalonians 5:1-11	Monday 1 Thessalonians 5:12-28	Tuesday 2 Thessalonians 2:13-17	Wednesday 2 Thessalonians 3:1-18
		Thursday 1 Timothy 1:1-11	Friday 1 Timothy 1:12-20
Saturday 1 Timothy 4:1-15			

*Scriptures Selected by The American Bible Society
 Copyright 1994, Keister-Williams Newspaper Services, P. O. Box 8005, Charlottesville, VA 22906*

In Spearman...

Apostolic Faith Church 822. S. Dressen • 659-2870 Sunday School: 10 a.m. Worship: 11 a.m. Evening Worship: 6 p.m. Sun. Wed. Prayer Meeting: 7:30 p.m. Pastor James Brown	Trinity Community Church 717 W. 7th Ave. • 659-2671 Celebration of Praise 10:15 Worship Service and Children's Church 10:30 Sunday Evening 6:30 p.m. Wednesday evening: 7 p.m. Pastor Dan Carter
First Assembly of God 401 N. Bernice • 659-2295 Sunday School: 9:45 a.m. Worship: 11 a.m. Evening Worship: 7 p.m. Wednesday Worship: 7:30 p.m. Youth: 7:30 Wednesday Pastor Ray Cook	Faith Lutheran Church (ELCA) 1101 Bernice • 659-2252 (Worships with First Presbyterian Church)
First Christian Church (Disciples of Christ) 29 S. Bernice • 659-2036 Sunday School: 9:45 a.m. Worship: 10:50 a.m. Women's Bible Study: 2 p.m. Wed. Youth: Wed. 6 p.m. & Sun. 5 p.m. Pastor LaVern Draper	First Presbyterian Church (Worships with Faith Lutheran Church) 1021 Cotter • 659-2033 Sunday School: 9:45 a.m. at Lutheran Church Worship: 11 a.m. (alternates monthly between addresses above) Pastor Beverly Cook

First Baptist Church 123 N. Bernice • 659-5557 Sunday School: 9:45 a.m. Worship: 11 a.m. Evening Worship: 7 p.m. Jr. High Youth: 6 p.m. Wed. High School Youth: 7 p.m. Wed. Youth Choir: 6 p.m. Sun. Pastor Kyle Henderson	Union Church 31 S. Endicott • 659-2644 Sunday School: 9:45 a.m. Worship: 10:45 a.m. Evening Worship: 6:30 p.m. Bible Study: 7:00 p.m. Wed. Pastor Billy Stanford
Church of Christ 121 S. Haney • 659-3244 Sunday Bible Class: 9:45 a.m. Worship: 10:30 a.m. Evening Worship: 6 p.m. Bible Study Wed. 7:30 p.m. KRDF Radio Program Living With Christ 7:50 a.m. M-F Minister Arnis Pape	Sacred Heart Catholic Church 901 Roland • 659-2166 Sat. Night Mass: 7 p.m. Sunday Mass: 9:00 a.m. - English (9 a.m. Service on KRDF 98.3 FM) 11:30 a.m. - Spanish Rev. Fernand Couture

Primer Mission Bautista
502 E. 7th • 659-3991
Sunday School: 9:45 a.m.
Worship: 11 a.m.
Pastor Guadalupe Carranza, Jr.

Fellowship Baptist
1102 S. Archer • 659-2783
Sunday School: 10 a.m.
Worship: 11 a.m.
Evening Worship: 6 p.m. Sunday
Youth & Adult Serv.: 7:30 Wed.
Pastor Rick Fincher

"WE SUPPORT OUR LOCAL CHURCHES"

CAPROCK #1 & #2
 Mike Heard, Gen. Mgr.
 (806)733-5043 or 733-5025

AGCO
 of Spearman, Inc.
 "See you in Church"
 659-3751

Compliments of...
AGCO
 of Spearman, Inc.
 "See you in Church"
 659-3751

In Gruver...

First Baptist Church
402 E. Broadway • 733-2411
Sunday School: 9:45 a.m.
Worship: 10:50 a.m.
Disciple Training: 6 p.m. Sunday
Prayer Meeting: 7:30 p.m. Wednesday
Pastor Larry Miller

Church of Christ
209 King • 733-2760
Sunday School: 9:30 a.m.
Worship: 10:20 a.m.
Evening Worship: 6 pm.
Wed. Evening Worship: 7:30 p.m.
Minister Bob Settiff

First Christian Church
510 King • 733-2960
Sunday School: 9:45 a.m.
Worship: 11 a.m.
Wed. Bible Study: 7:30 p.m.
Youth: 6:30 Wednesday
Pastor Gary Gumfory

Oslo Lutheran Church (ECLA)
 West of Gruver on Hwy 15 & N. FM 1162
 339-7646
 Sunday School: 9:45 a.m.
 Worship: 11 a.m.
 Morning Prayer: 9 a.m. Wed.
 Pioneer Clubs (Grades 1-6):
 4-5:30 p.m. Wednesday
 Pastor John R. Chandler

Community Bible Church (Interdenominational)
 Hwy. 15 • 733-2443
 Sunday School: 10 a.m.
 Worship: 11 a.m.
 Wed. Prayer Meeting: 7 p.m.

First United Methodist
 Broadway & Garrett • 733-2651
 Sunday School: 9:45 a.m.
 Worship: 8:30 a.m. & 10:50 a.m.
 Evening Worship: 6 p.m.
 UMY: 6 p.m.
 Pastor Lewis Holland

In Morse...

Morse Baptist Church
 Pastor Mike Martin
 733-2757

Henton & Co., P.C.

Certified Public Accountants
 221 Sanders • Spearman • 659-2518

BERRY CLEANERS
 DAN DESIMONE - OWNER
 Phone 659-3122 • P.O. Box 1017
 207 Main St. • Spearman, Tx. 79081

GRUVER FORD

Ford FORD
 531 Main • Gruver • 733-2431

Interstate Savings & Loan

322 Main • Spearman • 659-2559

Hagerman Services
 Backhoe • Dozer • Welding
 North Hwy. 15 • Spearman
 659-5131

Gordon Drugs
 Dependable Prescription Service
 314 Main • Spearman
 659-2141
 Jim Evans

ALL COMMUNITY WORSHIP

Featuring a
FREE Christian Country Concert

1993 Gospel Entertainer of the Year

BILL BEATY

First All-Public Event
 O'Loughlin Community Center
 (600 Brandt - Behind the Pool)

Sunday
June 26 ♦ 7:00PM

Sponsored by
 Spearman Ministerial Alliance &
 the Spearman Community of Churches

Summertime Bargains

Sale Starts Friday, June 24 • 9 a.m.
Closed Thursday, June 23rd Tagging for Sale

**Three tier cherry
Corner Table**
Regular
\$189.50

**Cash & Carry
\$89.95**

**Oak
Gossip Bench**
Regular
\$379.50

**Cash & Carry
\$150.00**

**Country French
Rush Seat
Bench**
Regular
\$675.00

**Cash & Carry
\$299.00**

**Gold & Black Laquer
Decorator Chair**
Regular
\$679.50

**Cash & Carry
\$198.50**

**Beige/White
Column Curio**
Regular
\$1,495.00

**Cash & Carry
\$699.00**

**Fruitwood
Tea Cart**
Regular
\$179.50
**Cash & Carry
\$98.50**

**Solid Oak Corner
Entertainment
Center**
Regular
\$895.00

**Cash & Carry
\$398.50**

**Brushed Oak Armoire
Entertainment
Center**
Regular
\$1395.00

**Cash & Carry
\$699.00**

**Large Oak Armoire
Entertainment
Center**
Regular
\$1150.00

**Cash & Carry
\$599.00**

**White Metal 24"
Bar Stools**

**Two
Only!** Regular
\$39.95 ea.
**Cash & Carry
\$19.95 ea.**

**RCA 25" Stereo
Table TV**

**One
Only!** Regular
\$569.50
**Cash & Carry
\$399.00**

**Hours:
Mon. - Fri.
8:30 - 5:30
Sat.
8:30 - 5:00**

<i>Living Room</i>		
	Regular	Sale
7 pc Black vinyl sofa, loveseat, 3 tables and 2 lamps	1095.00	7 pc 819.50
Striped blue velvet sleeper	789.50	598.50
Herculon print sofa, loveseat & chair	1350.00	3 pc 995.00
7 pc beige & blue print sofa, loveseat, 3 tables & 2 lamps	1895.00	7 pc 1429.50
Beige & blue velvet sleeper	889.50	659.50
Southwest black & mauve print sofa & loveseat	1495.00	2 pc 1129.50
Blue velvet rocking recliner sofa	1375.00	995.00
Blue country print sofa, loveseat & recliner	1675.00	3 pc 1250.00
Mauve & blue stripe wing sofa & loveseat	1560.00	2 pc 1150.00
La-Z-Boy recliner rockers	419.50	299.50
Blue leather match sofa by La-Z-Boy	1995.00	1495.00
Beige print loveseat sleeper	619.50	465.00
Southwest print sofa	1020.00	765.00
Southwest print sofa & loveseat	1495.00	2 pc 1095.00
Southwest print sofa & loveseat (rust, blue, beige)	1795.00	2 pc 1260.00
2 pc black vinyl sectional consisting of 2 recliners w/ console & sleeper sofa	2250.00	2 pc 1675.00
5 pc brown velvet sectional consisting of 2 recliners and sleeper	2495.00	5 pc 1850.00
Large 5 pc velvet sectional consisting of 1 recliner, 1 chaise lounge & sleeper w/corner table	2750.00	5 pc 1950.00

<i>Bedroom</i>		
	Regular	Sale
Oak triple dresser, mirror, door chest queen headboard and 1 nite stand	1019.00	5 pc 749.50
Triple dresser, trifold mirror, 5 drawer chest, queen headboard	1698.00	4 pc 1273.50
Twin/full metal bunk bed	299.00	224.50
Twin/full metal bunk bed w/ full futon (pad)	589.50	439.50
Twin/full metal bunk bed	279.50	209.50
Oak student desk	339.50	198.50
Knotty pine double dresser, mirror, chest, queen headboard w/ footboard & rails	2099.50	4 pc 1575.00
Scrubbed oak triple dresser, trifold mirror, king headboard, armoire & 2 nite stands	2682.00	6 pc 1995.00
Oak triple dresser, mirror, queen headboard, six drawer chest & 1 nite stand	2250.00	5 pc 1595.00
White double dresser, mirror, chest & full/queen headboard	1337.00	4 pc 995.00
White student desk	289.50	199.95
White lingerie chest	349.50	259.50
Black lacquer triple dresser, mirror, chest, queen headboard & 1 nitestand	895.00	5 pc 675.00

<i>Bedding</i>	
Twin mattresses starting at	89.95 ea
Full mattress & boxsprings sets starting at	199.00set
Queen mattress & boxsprings sets starting at	299.00set
King mattress & boxsprings sets starting at	399.00set
Queen wool bed sets (The Ultimate Sleep)	629.50set
King wool bed sets (The Ultimate Sleep)	795.00set

<i>Dining Room</i>		
	Regular	Sale
42" round butcher block & black table & 4 chairs	869.50	5 pc 599.00
42" round marbelized table & 4 black chairs	669.50	5 pc 469.00
White rectangular table & 4 white vinyl swivel chairs on casters	875.00	5 pc 629.50
42" round Southwest style table & 4 swivel chairs on casters	1095.00	5 pc 795.00
White & natural table & 4 chairs	479.50	5 pc 359.50
White & natural hutch	849.50	639.50
Hunter green & cherry table & 4 chairs	629.50	5 pc 469.50
Oak pedestal table & 6 chairs	1330.00	7 pc 998.50
Hunter green & cherry oval table & 6 chairs	939.50	7 pc 699.50
48" round pedestal table w/formica top & 6 chairs by Tell City	2195.00	7 pc 1495.00
Glass front oak china cabinet by Tell City	1995.00	1395.00
White & Oak kitchen center	398.50	299.00
White & Oak mission cart	298.50	225.00

<i>Appliances</i>		
	Regular	Sale
Roper large capacity heavy duty washer & dryer	808.00	pr 669.00pr w/t
Roper 18 cu. ft. frost free refrigerator	699.00	569.00 w/t
Roper electric range (1 only - almond)	379.00	299.00 w/t
Roper gas range	369.00	315.00 w/t
Whirlpool super capacity washer	539.00	449.00 w/t
Whirlpool extra large capacity dryer	439.00	369.00 w/t
Whirlpool built-in dishwasher	359.00	289.00
Whirlpool 22 cu. ft. designerstyle refrigerator w/icemaker (1 only - almond)	1179.00	949.00 w/t
Whirlpool electric self-cleaning range	679.00	529.00 w/t
Whirlpool gas range w/sealed burners	629.00	479.00 w/t

<i>Electronics</i>		
	Regular	Sale
RCA 9" AC/DC Colortrak TV w/remote	379.50	279.00
RCA 13" Colortrak TV w/remote	309.00	249.00
RCA 26" Colortrak Plus TV Console w/full color picture-in-picture (2 cabinet styles)	748.00	569.00
RCA 35" Home Theatre Console	2229.00	1749.00
RCA 27" Colortrak Plus Table Model TV w/full color picture-in-picture	749.00	599.00
GE 2-head VCR	279.00	219.00
RCA 25" Colortrak Console	699.00	499.00
RCA 4-head VCR	339.00	279.00
RCA Jam Box w/CD player	169.95	139.00
RCA 5 Disc CD player	219.95	189.95

<i>Daybeds</i>		
	Regular	Sale
White waterfall arm	169.50	119.50
Ivory Waterfall arm w/ porcelain knobs	179.50	129.50
Ivory cast iron trim	399.50	279.50

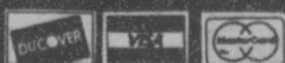
**All La-Z-Boy
& Benchcraft
Recliners**
Reduced 30%
or more

**All Wall
& Table
Accessories
on Sale**

**All
Bedspreads
on Sale**

**All Table &
Floor Lamps
on Sale**

Financing available with approved credit:
Mastercard • Visa • Discover



Whirlpool Financial Corporation • Bank Rate Financing
All items subject to prior sale - No Approvals - All Sales Final

Boody

FURNITURE CO.

723 w. 7th spearman, texas