



REPORTER STATESMAN

COMP
HANSFORD COUNTY LIBRARY
0122 MAIN ST
SPEARMAN TX79081

75¢

THURSDAY
AUGUST 8, 2002

213 MAIN ST • SPEARMAN, TX 79081

VOL. 94 • ISSUE 32

NEWS • SPORTS • PICTURES

SERVING HANSFORD COUNTY SINCE 1907

Inside This Week

- August School Activity Schedule
- SHS, GHS Spring Students of the Month
- Building Character in Families
- Kid's Inc., WTAMU to host VolleyFest

At A Glance

Big Country Wheat Conference Set

The Big Country Wheat Conference sponsored by Texas Cooperative Extension is set for Aug. 22 in the Abilene Civic Center. This year's theme is "Wheat Profitability—Is it Possible?"

Registration opens at 7:30 a.m. for the day-long program, which begins at 8 a.m. Three Texas Department of Agriculture continuing education units (CEUs) will be offered. The day's keynote is State Rep. Rick Hardcastle of Vernon, who will speak at noon on agriculture and the legislature.

The conference is sponsored by the Extension offices in Taylor, Callahan, Shackelford, Jones, Nolan, and Fisher counties.

The program opens with a price and crop outlook delivered by Dr. Mark Waller, Extension grain economist from College Station. Other speakers will discuss topics that include wheat niche markets, bio-terrorism, the 2002 farm bill, and a variety of wheat management issues ranging from insects, Karnal Bunt and other plant diseases to grazing and conservation tillage.

Pre-registration by Aug. 16 is \$7.50 per person. Late registration is \$15 per person. Both fees include lunch.

For further information contact the Cooperative Extension office in Taylor County at (915) 672-6048.

Opening Youth Rally Set For Go Tell Celebration

An opening Youth Rally for the Rick Gage Go Tell Celebration will be held August 21st at 7 p.m. in the Borger High School Auditorium.

One of the main objectives of the Rick Gage Go Tell Celebration ministry team is to reach the youth of the community and its surrounding area. Three of the major events dates have been established as youth emphasis nights. The first is the youth rally on Wednesday night, August 21st.

Jay Louder, who teams with Rick Gage as the primary Youth Evangelist for the nationally acclaimed "On Track" assembly program, will be the speaker. Worship will be led by Aaron Mercer, of the Cornerstone Church in Borger.

Fellowship, Food and fun are a part of the night's activities and several free door prizes are to be given away. Each student will receive a ticket at the door for the drawing and must be present to win.

The Go Tell Celebration with Evangelist Rick Gage is the Texas panhandle's premier evangelistic event, and it's happening August 25th through the 28th, that's Sunday through Wednesday 7 p.m. nightly at Borger Bulldog Stadium.

There are well over 50 area churches now involved in the united effort. Dru Grogan, Crusade General Chairman, stated that "there is still plenty of room for other churches to come on aboard and join the event and reap the joyful benefits and spiritual renewal for many of their own members."

For more information, call Pastor Todd Clark at 806-274-3643. For more information about becoming a Counselor during the Rick Gage Go Tell Celebration call Rhonda Register, at 806-273-9942.

Texas Plains Region One Step Closer To Becoming Designated Heritage Trail

The Texas Historical Commission (THC) and the Tulia Chamber of Commerce held an organizational meeting on May 14th to assist the Texas Plains Trail Region prepare its application for designation as an official Texas Heritage Trail.

"The meeting was a huge success. All kinds of people from museum directors to county extension agents attended. This diverse group has one thing in common," said Janie Headrick, director of the THC's Texas Heritage Trails Program, "They are all interested in working together to develop the

region as a heritage tourism destination."

Gina Gillispie, Spearman Chamber of Commerce Executive Director, attended the meeting. Spearman is part of the Texas Plains Trail Region, and historic and cultural sites such as windmills and a museum will benefit from this regional tourism initiative.

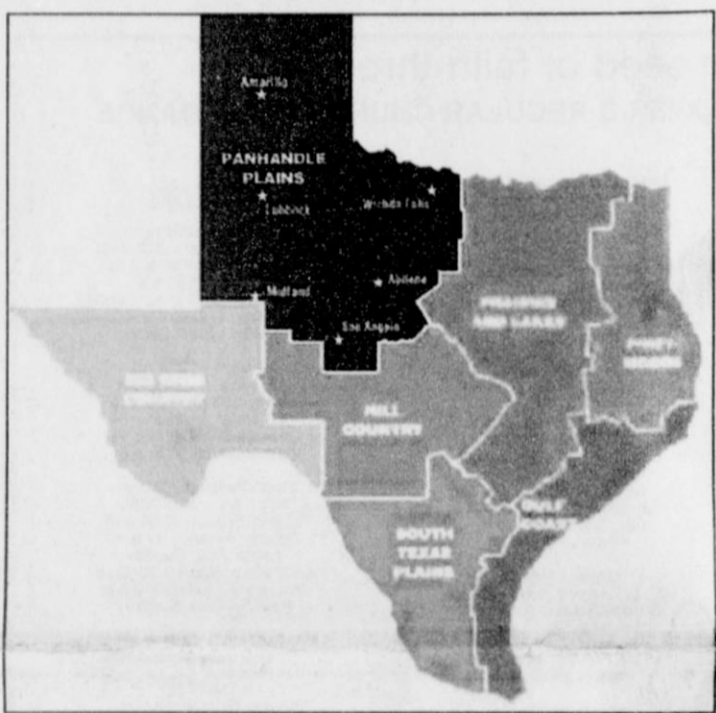
Headrick talked about the benefits of heritage tourism to the local economy, discussed the application process and explained the Texas Heritage Trails Program to the nearly 80 people in attendance.

The next meeting will be held in Tulia on Tuesday, June 25th from 10 a.m. to noon at Swisher Memorial Building located at 127 SW Second Street.

The Texas Plains Trail Region covers the following counties in North West Texas: Armstrong, Bailey, Borden, Briscoe, Carson, Castro, Childress, Cochran, Collingsworth, Cottle, Crosby, Dallas, Dawson, Deaf Smith, Dickens, Donley, Floyd, Foard, Gains, Garza, Gray, Hale, Hansford, Hardeman, Hartley, Hemphill, Hockley, Howard, Hutchinson, Kent, King, Knox, Lamb, Lipscomb, Lubbock, Lynn, Mitchell, Moore, Motley, Ochiltree, Oldham, Parmer, Potter, Randall, Roberts, Scurry, Sherman, Swisher, Terry, Wheeler and Yoakum.

The Texas Heritage Trails Program is a regional tourism initiative of the Texas Historical Commission. The program helps Texas communities promote tourism, revitalize local economies and foster community leadership through historic preservation.

For more information on the Texas Heritage Trails Program, contact Janie Headrick at 512-463-5754. For more information on the meeting, contact Lana Barnett at the Tulia Chamber of Commerce at 806-995-2296.



Sewing Fair To "Sew American" On August 12th In Amarillo

by Pam Dillard and Cheryl Brewer

AMARILLO—"Sew American," this year's Sew Fair theme, will cover an array of creative ideas, sewing techniques and demonstration; featuring a wide variety of textiles, some decidedly red, white and blue.

The Aug. 12 event will be held at the Texas A&M Research and Extension Center, 6500 Amarillo Blvd. West. Sponsors include Extension in Potter County and the Extension Education Association.

The public is invited to attend in separate afternoon and evening sessions, or both, said Cheryl Brewer, family and consumer science agent with Texas Cooperative Extension in Potter County. Registration for each program will begin at 1 p.m. and 6 p.m., respectively. The cost will be \$5 per program, or \$7.50 for combined sessions.

Afternoon presentations include such topics as making chenille, machine embroidery, a 'Christmas in August' trunk show, and a 'no sew' afghan technique.

The evening session will include discussions on mystery quilts, needle punch techniques, crazy quilts and holiday bazaar ideas.

Exhibits will feature the needlework talents of several Potter County Extension Education Club members: Vests by Judy Love; Bead Work by Jenelle Brock, Counted Cross-Stitch by Odell Wheeler; Creative Garments by Virginia Roksandich, Recycled Log Cabin Quilts by Alby Peters and Redwork by Georgi Ames and Cheryl Brewer.

Alby Peters, who chairs this year's event, also encouraged participants to take part in an apron contest. Prizes will be awarded—one for the oldest and another for the most unusual apron.

"Participants are also encouraged to bring skeins of embroidery floss," Brewer said. For every five skeins contributed, a ticket will be placed in a special prize drawing. The thread will be donated to third world countries for economic development where women create and sell needlework.

For more information, contact Cheryl Brewer by calling (806) 373-0713 at the Texas Cooperative Extension office in Potter County.

THC Heritage Tourism Program Information

The Texas Historical Commission's (THC) Heritage Tourism program encourages travelers to visit historic and cultural attractions across Texas. Partnering the preservation community with the tourism industry encourages economic development and the preservation of Texas' rich cultural landscape.

Program staff provide technical assistance to organizations statewide that are working to enhance or develop historic sites or regional heritage tourism programs. Staff members assist county historical commissions, convention and visitors bureaus, chambers of commerce and other interested groups to identify and promote historic corridors to increase tourist visitation and preserve historic sites.

Mission Statement: To foster economic development through the statewide preservation and promotion of historic sites, historic landscapes and heritage events.

A Five-Point Plan For Heritage Tourism

1. Research - Begin with an honest appraisal of local assets to capitalize on them. Identify defining themes.
2. Interpretation - Interpret the links between themes and resources to develop the best way to tell the local story. The heritage traveler seeks authentic and unique experiences.
3. Community - Involve a broad range of the community for successful development of cultural and heritage tourism initiatives.
4. Marketing - After identifying and developing an area's cultural and historical resources, implement a marketing plan to increase visitorship to cultural and historic attractions.
5. Collaboration - Form partnerships, essential elements for developing cultural and heritage tourism destinations. Consider partnering with regional sites, tourism industry associates, local and regional media and preservation organizations to promote heritage tourism.

Five Principles Of Heritage Tourism

Use these principles to guide the development of a heritage tourism program in your community:



Chance Pack (left) and Zack Hughes (right) attended the Division II Swim Meet in Manhattan, Kansas July 26-28, 2002.

Chance placed 1st in the 50 Back, 50 Free and 200 Free Relay; 2nd in the 100 Free, 50 Butterfly, 100 Back, and 200 Medley Relay; 4th in the 100 Butterfly; 10th in the 100 Breast; and 16th in the 50 Breast.

Zack placed 4th in the 200 Free Relay; 6th in the 200 Free; 8th in the 50 Back; and 17th in the 100 Free and 50 Breast. He also swam in the 100 Back, 50 Free and 100 Breast.

Congratulations to these swimmers on a great meet!

Extension Recreation, Park and Tourism Sciences at Texas A&M University.

* Send representatives to the Texas Grant Writing Workshops sponsored by the Texas Historical Commission and held in Austin each year.

* Attend the Texas Agriculture Extension Service's Annual Festival and Event Management Workshop at Texas A&M University or schedule a local festival and event management workshop in your area.

* Send promotional brochures to the Texas Department of Transportation's (TxDOT) Travel Information Centers. Contact travel counselors regarding showing promotional videos of your site.

* Make sure your site is listed in the Texas State Travel Guide published by TxDOT and that your special events are included in the Texas Events Calendar.

* Take a serious look at infrastructure needs. Increased tourism brings increased pressure on existing resources. Does your site have infrastructure in place to support increased visitorship? Is parking sufficient for large buses? Are there enough public restroom facilities? Are restaurants plentiful?

* Ensure sufficient signage exists. Directional and on-site signage should lead tourists to your city and to your attraction. Tourism destinations need directional signage from major highways and heavily traveled streets, as well as on-site signage.

* Cross-promote and network with area and regional attractions.

* Partner with non-heritage attractions in the area.

* Capitalize on nature tourists and winter Texans by providing exciting recreational opportunities.

* Keep regular hours of operation, including Sundays.

* Use one name consistently in all literature and promotion. This name or signature line should communicate the nature of the attraction.

* Have a brochure that includes the name, address, phone number, web address, admission fees and hours of operation. Be sure to include the area code; omitting it suggests to the tourist that the site is strictly a local attraction.

* Have a phone number that will be answered during business hours even if the site is not open.

* Establish a web site or at least a presence on a community web site.

Ways To Attract Heritage Tourists

To Your Community

* Develop a specific plan of action for tourism development. Involve the chamber of commerce, Main Street program, county historical commission, heritage societies, city and county parks and recreation departments and any other interested parties.

* Contact the tourism development staff of the Texas Department of Economic Development (TxED) to arrange a community tourism assessment. This is a free service and focuses solely on tourism development. For more information, see the links in the menu to the right.

* Attend a regional tourism workshop hosted by TxED.

* Conduct hospitality training for front-line personnel on a regular basis. For further information on becoming a qualified instructor or to obtain a list of qualified instructors in your area, contact the Texas Hospitality Training Program,

COMING NEXT WEEK!

Back-To-School information Including:

School Calendars

Fall Sport Schedules

Back-to-School Ads

EARLY DEADLINE!

The deadline for news and ads for the August 22nd issue of the Hansford County Reporter-Statesman will be Monday August 12th at 5 p.m. Anything submitted after that date will be published in the August 29th issue. (The deadline for the August 15th issue will also be Monday, August 12th at 5 p.m.)

From The Doctor's Desk

Laugh
and
Live



by Catherine R. Smith
CathyRSmit@aol.com

Fern Fulkerson passed away a little over a week ago. Her family shared a poem that she had written in 1989 while taking a Creative Writing class at Phoenix College. I would like to share it with you.

The Gift of Life

Now, no longer an inanimate object of bone, sinew, and flesh
Within me beats a heart - pulsing, pounding,
The fire of my being fills with ecstasy my soul
Kindled by a master's interpretation
Of an ageless melody -
By the fire and brightness of an evening star
Shining brightly in the canopy above,
The veil's withdrawn for man to view
It's glittering majesty.

My soul breathes deeply in awe of God's handiwork,
As the fire of day burns low in the West,
The reflected colors of its embers glowing
In the billowy clouds
And stroked by the capricious brush of nature
across the canvas sky
For a fleeting moment, wondrous beauty
For those who will lift their eyes up high.

The flame of a lover's demanding kiss
The tenderness of a husband's arms,
The vibrant twang of my heartstrings remembered
When I held the child,
Made and molded within the deep recesses of my being
Born to light and life
A new entity, with mind, heart, body, and will to carry on
The unending process of life.

Warmed by quiet peace in moments of communion
With a mystic Presence, who alone
Knows the promise of tomorrow.
Love, happiness, fear, sorrow - even death's fierce sting?
What does it matter
What the morrow may bring?
In this perfect moment - my cup is full.

May God bless and keep you; May He
make his face to shine upon you, and be gracious to you;
May the Lord lift up his countenance upon you, and give you peace.
Numbers 6:24-26
Catherine :)



Mark Garnett, D.O.
712 Roland St.
Spearman, Texas
806-659-1778

Sports Helmets Essential for Safety

Summertime is almost over and children are hard at play. Just make sure that your kids are safe when riding their bikes or skateboards. "Sports helmets are essential for keeping young riders safe," said

Mark H. Garnett, D.O., a physician on the medical staff at Hansford County Hospital District.

"Wearing a sports helmet can help reduce the risk of brain injury by as much as 88 percent and reduces the risk of injury to the face by 65 percent," he said.

"The reason many children do not wear helmets is because it may not be fashionable, it's hot or their parents do not seriously require it," Dr. Garnett said.

Dr. Garnett said these tips can help reduce the chances of having a bike- or skateboard-related injury.

- Always wear a helmet for every ride, no matter how short. Adults should wear a helmet for safety and as a role model.
- Talk with your child about why he does not want to wear a helmet, if needed.
- Buy a helmet that meets national safety standards and is the right size.
- Position the helmet on the top of the head so that it is level, not tilted back.
- Adjust the straps for a snug and comfortable fit. Teach children to keep the helmet straps buckled when riding.
- Always follow the rules of the

road. Ride on the right side with traffic. Obey traffic signs and signals. Stop at all intersections, even if not marked. Wear reflective clothing when riding or skating at

night.
• Sports helmets are designed for use while riding or skating and not for use on playground equipment.

New Books in Our Library



- Don't Look Back/ Quick, Amanda
- The Company/Littell, Robert
- Not Guilty/ MacDonald, Patricia
- Daddy's Little Girl/ Clark, Mary Higgins
- Jolie Blon's Bounce/Burke, James Lee
- Freedom's Ransom/ McCaffrey, Anne
- Fire Ice/Cussler, Clive
- Taste if Honey/Goudge, Eileen
- The Beach House/Patterson, James
- Summer in Tuscany/Adler Elizabeth
- Hard Eight/Evanovich, Janet
- Night Moves/ Taylor, Janelle
- Chopping Spree/ Davidson, Diane Mott
- Truth Hurts/ Pickard, Nancy
- The Mulberry Tree? Deveraux, Jude
- Sunset in Saint Tropez/ Steel, Danielle
- Between Friends/ Macomber, Debbie
- Breathing Room/ Phillips, Susan Elizabeth
- Dead Run/ Spindler, Erica
- In This Mountain/ Karon, Jan
- The Cabinet of Curiosities/ Preston
- The Emperor of Ocean Park/ Carter
- High on a Hill/ Garlock, Dorothy
- The Survivors Club/ Gardner, Lisa
- Gone for Good/ Coben Harlan

Let us replenish the seed of faith through . . . DAILY BIBLE READING, PRAYER & REGULAR CHURCH ATTENDANCE

Spearman

Apostolic Faith Church
822 S. Drexler • 659-2870
Sunday School: 10 a.m.
Worship Service: 11 a.m.
Sun. Eve.: 6 p.m.
Wed. Prayer Mtg.: 7 p.m.
Pastor - Roland Haney

First Assembly of God
401 N. Bernice • 659-2295
Sunday School: 9:30 a.m.
Worship: 10:35 a.m.
Kid's Church: 10:35 a.m.
Evening Worship: 7 p.m.
Wed. Worship: 7:30 p.m.
Youth: 7:30 Wednesday
Pastor - Walter Greaser, Jr.

First Christian Church
(Disciples of Christ)
29 S. Bernice • 659-2036
Sunday School: 9:45 a.m.
Worship: 10:50 a.m.
Minister - Gary Smith

First Baptist Church
123 N. Bernice • 659-5557
Sunday School: 9:45 a.m.
Worship: 11 a.m.
Evening Worship: 7 p.m.
Wed. Fellowship Meal: 6 p.m.
Wed. Disc. Time: 6:30 p.m.
Wed. Youth Mtg.: 8 p.m.
Pastor - Patrick Six

Church of Christ
121 S. Haney • 659-3244
Sunday Bible Class: 9:45 a.m.
Worship: 10:30 a.m.
Evening Worship: 6 p.m.
Bible Study Wed.: 7:30 p.m.
KRDF Radio Program
Living W/Christ: 7:50 a.m.
Minister - Leonard Harper

Sacred Heart Catholic Church
901 Roland • 659-2792
Sat. Night Mass: 5:30 p.m.
Sun. Mass: 9 a.m. - English
(aired on KRDF-FM 98.3)
Sun. Mass: 11:30 - Spanish
1:30 p.m. - Gruver - Cristo
Redentor Mass - Spanish
Rev. Scott Raef

Trinity Fellowship Church
717 W. 7th Ave. • 659-2671
Sunday School: 9:30 a.m.
Worship Service &
Children's Church: 10:30 a.m.
Pastor - Dennis Alger

First Presbyterian Church
(Worships with Lutheran)
1021 Cotter • 659-2033
Sunday School: 9:45 a.m.
Worship: 11 a.m.
(alternates monthly between Lutheran &
Presbyterian Church Bldg.)
Pastor - Beverly Cook

Faith Lutheran Church (ELCA)
1101 Bernice • 659-2252
(Worships with
First Presbyterian Church)

First United Methodist
407 S. Haney • 659-5503
Sunday School: 9:45 a.m.
Worship: 8:30 & 11 a.m.
Jr. High Youth: 5 p.m. Sunday
High School: 6 p.m. Sunday
Kids Club: 3 p.m. Wed.
Pastor - Ken Cole

Union Church
31 S. Endicott • 659-2644
Sunday School: 9:45 a.m.
Worship: 10:45 a.m.
Evening Worship: 6 p.m.
Bible Study: 7 p.m. Wed.
Pastor - Bill Sparks

Fellowship Baptist
1102 S. Archer • 659-2783
Sunday School: 10 a.m.
Worship: 11 a.m.
Sun. Evening Worship: 3 p.m.
Youth/Adult Serv.: 7:30 Wed.
Pastor - Gene Foster

Primera Mision Bautista
502 E. 7th • 659-3991
Sunday School: 9:45 a.m.
Worship: 11 a.m.
Evening: 6 p.m.
Wed. Prayer Meeting: 7 p.m.
Thurs. Visitation: 7 p.m.

El Aposento Alto U.P.C.I.
1105 S. Roland
Domingos.
Escuela-Dominical - 10 a.m.
Culto Evangelistico - 7 p.m.
Jueves: Oracion - 8 p.m.
Mier. Estudio Biblico - 7 p.m.
Pastor - A.G. Martell
(806) 659-2153

Waka
Waka Church of the Brethren
435-4598

Gruver

First Baptist Church
402 E. Broadway • 733-2411
Sunday School: 9:45 a.m.
Worship: 10:50 a.m.
Disciple Training: 6 p.m. Sunday
Prayer Meeting: 7:30 p.m. Wednesday
Pastor - Scott Curry

Church of Christ
209 King • 733-2760
Sunday School: 9:30 a.m.
Worship: 10:20 a.m.
Evening Worship: 6 p.m.
Wed. Worship: 7:30 p.m.

First Christian Church
510 King • 733-2960
Sunday School: 10:00 a.m.
Sunday Worship: 11 a.m.
Youth: 7:30, Sunday
Adult Bible Study: 7:30, Sun.
Wed. Bible Study: 8:00 p.m.
Pastor - Gary Gurnfory

Oslo Lutheran Church (ELCA)
6 Miles West & 12 Miles
North of Gruver
339-7709
Sunday School: 9:45 a.m.
Worship: 11 a.m.
Pastor - Paul Fiske

Gruver United Methodist
Broadway & Garrett
733-2651
Sunday School: 9:45 a.m.
Worship: 9:30 & 10:50 a.m.
Eve. Worship & UMY: 6 p.m.
Pastor - Jerry Moore

Spanish Cristo Redentor Church
Sunday Mass: 1:30 p.m.
Friday Evening Mass
Summer - 8:00 p.m.
Fall/Winter - 7:30 p.m.

Morse

Morse Baptist Church
733-2757
Pastor - Mike Martin



This feature is made possible
through the sponsorship of
these civic minded businesses.

Compliments of . . .
AGCO
of Spearman, Inc.
"See you in Church"
659-3751

PRAIRIE
MOTORS INC.
Hwy. 207 South • P.O. Box 430
Spearman, TX 79081 • (806) 659-2641
www.prairiemotors.com

BOXWELL
BROS.
FUNERAL HOME

Compliments of
G&G
FOODLINER
516 Main • Gruver, TX
733-2471

COLUMBIA
Medical Center of Pampa
One Medical Plaza
Pampa, Texas 79065
(806) 665-3721

Palo Duro
Supper Club
22 S. Archer • Spearman
659-2232

Bartlett's Ace
Hardware
105 W. Broadway • Gruver,
Texas
(806) 733-2404

BERRY CLEANERS
Ann & Vernon Pipkin - Owners
Phone 659-3122 • P.O. Box 1017
207 Main St. • Spearman, TX

Morse Implement
& Auto Supply
"Join us in church this week"
Tom Dortch 733-2668
P.O. Box 89 • Morse, TX 79062

Gruver Cablevision
308 Main
Gruver, TX 79040
733-5295

Deakin
ELECTRIC
OILFIELD • RESIDENTIAL • COMMERCIAL
321 S. MAIN • SPEARMAN
1-800-999-1506 Chris Deakin
(806) 659-5016 President

Interstate
Bank, sbb
322 Main • P.O. Box 146
Spearman, TX • 659-2559

CORNER SERVICE STATION

We pay attention to Details!

Oil & Filter Changes
Minor Repairs
Vehicle Detail (by appointment)
Free pick up & delivery

101 Main Street • Spearman, Texas
(806) 659-2722 • Joe & Nita Bynum

The
Hansford County
Reporter-Statesman
213 Main Street
Spearman, TX 79081
Phone - (806) 659-3434
Fax - (806) 659-3368
CathyRSmit@aol.com
Mon.-Thurs. (Closed Fridays)
9 a.m.-12 p.m. & 1-5 p.m.

Gary Smith - Publisher
Catherine Smith - Editor
Harletta Carthel - Assist. Editor
Contrib. Writers: Helen Fisher, Jeff Beedy,
Dorothy Hudson, Dwayne Mitchell
Contrib. Photographer: Charlie Johnson

Subscription Rates
In Hansford Co. - \$25.00
Out of County - \$30.00

The Hansford County Reporter-Statesman (USPS 529660) is published weekly in Spearman, TX. Periodical postage paid in Spearman, TX. POSTMASTER: Send address changes to The Hansford County Reporter-Statesman, 213 Main Street, Spearman, TX 79081.

Publication Policy
The deadline to submit news and advertising to The Hansford County Reporter-Statesman is Monday at 5:00 p.m. Items accepted after the deadline will be published at a later date, as time and space permit. Publication of all items is at the discretion of the editor.

Letter Policy
The Hansford County Reporter-Statesman welcomes letters to the editor on any subject. All letters must be signed and will be published with the name of the writer. Letters must include an address and telephone number for verification. Letters should be kept at a reasonable length. The editor reserves the right to edit all letters. Any letter may be rejected for publication without reason. Letters that are libelous and/or slanderous will not be published. The deadline to submit letters is noon on Monday. Letters in support or opposition to political candidates will not be published. Persons wishing to publically support political candidates in this newspaper are invited to purchase an ad.

Advertising
Open Display rates are \$4.00 per column inch. Classified Ads are \$5 for the first 25 words and 10¢ per word for each additional word. (Additional charge for boxed classifieds.)

Member of
Texas Press Association and
Panhandle Press Association

TEXAS PRESS ASSOCIATION
AWARD WINNER

Happy Birthday!

Editor's Note: This Happy Birthday list is run as a public service by the Hansford County Reporter-Statesman. We apologize if any names are misspelled. If you know of a name that needs to be changed, added or deleted, please call 659-3434. Thank you, Catherine

August 8
Birthday - Faye Cluck, Billy Pat Underwood, Ed Berner, Junior Vela, Hosa Casas, George Young, Frankie Dominguez, Elsie Lamb, Kathy Boyd, Jenna Abernathy, Ryan Schnell
Anniversary - Mr. & Mrs. Leonard Garrard

August 9
Birthday - Dody Banks, Christopher Layton, Reba Miser, Inell Trahan, Roy Dunaway, Karla Latta, Anita Garrard, Bob Rylant, Holly Pipkin, Aurora Vela
Anniversary - Mr. & Mrs. Buddy Dossett, Mr. & Mrs. Steve Bevil

August 10
Birthday - Clint Bell, Kyle Deeds, Monica Garcia, Ralph Mireles, Bob Tolleson, Jamie Gomez, David Hagar, Ronnie Burke, Tim Woodington, Chris Strawn, Karen Moyer, Danna Iribek, Abbey Edwards, Christopher Vela, Art Salazar
Anniversary - Mr. & Mrs. Lucio Vela, Mr. & Mrs. Riche Randall, Mr. & Mrs. J.L. Brock, Mr. & Mrs. Erwin Wright, Mr. & Mrs. Felipe Alvarez, Jim & Karen Johnson, Mr. & Mrs. Keith Lamb

August 11
Birthday - Howard Barkley, Autumn Bateman, Jake McCullough, Clint DeArmond, Ray Robertson, Jody Rex, Dean McLain, Tootsie Scroggs, Simon Nelson, Kam Taylor, Hank Sutterfield, Tammy Herndon, Tayshia James
Anniversary - Mr. & Mrs. Gary Johnson, Mr. & Mrs. Ervin Wright, Mr. & Mrs. Junior Crossland

August 12
Birthday - Hix Spivey, Norma Swink, Verna Gail Keim, Angela Gaither, Judy Nelson, Randy Hargis, Julian Rodriguez Sr., Wade Nobles, Devonna Boyd, Janice Bannister, J.C. Harris
Anniversary - Mr. & Mrs. Rudy Saldavar, Mr. & Mrs. Albert Tucker

August 13
Birthday - Brendy Brown, Kirkland, Mike Coomer, Denise Karlin, Charles Phillips, Blake Trantham, Wanda Jones, Max Baggerly, Anne Foster, Adrian Robertson, Lorrie Bowen, Oliver Barnes, Joe Dean Clement, Ethel Ellsworth, Jim Miller, Crystal Boyd

August 14
Anniversary - Mr. & Mrs. Gary Flowers, Mr. & Mrs. Gerald TeBeest

August 15
Birthday - Leslie Latta, Jimmy Nicholson, Mike Pack
Anniversary - Mr. & Mrs. Monty Lusby, Mr. & Mrs. Charles Lilley

August 16
Birthday - Kelly Armes, Rita Cluck, Mary Jane Henson, Ryan Winger, Buddy Gaiter, Cole Umphress, Sara Butt, Ruby Burger, Vanessa Ortega, Dub Womble, John Booth
Anniversary - Mr. & Mrs. Billy Baker, Mr. & Mrs. David Hall, Mr. & Mrs. Buddy Murrell, Mr. & Mrs. Billy Logsdon Jr., Mr. & Mrs. James Nicholson

August 17
Birthday - Christy Brown, Guy Paul Hindergart, Allison Reid, Dean Sparks, Dodie Beedy, Delinda McLaughlin, Halee Rice, Bo Bensinger, Kimberly Boyd
Anniversary - Betty & Dub Womble, Mr. & Mrs. Danny Jackson, Mr. & Mrs. Don Allen, Mr. & Mrs. Wayne Ware, Kitty & Frank Edwards

August 18
Birthday - Brenda Dahl, Carla Gurfory, Heather Murrell, Jack Weldon, Tina Wilmeth, Jerry Beth Prachar, Tammy Welch, Kenneth Burke, Bob Cook, Robbin Keetch, Pat Miller, Jeanie Bennett, Glen Ward, Andrew Correll, Janet Mayo
Anniversary - Mr. & Mrs. David Link, Mr. & Mrs. Dennis Baker, Mr. & Mrs. Charles Deakin

August 19
Birthday - Diana Bradshaw, Buddy Murrell, Kenton Odum, Linda Tidwell, Carey Bridges, Perry Dixon, Mary Lou Mathews, Chris Trout, Lisa Collins, Teddy Lynn Whitefield, Melissa Harvey, Joshua Miller, Jordan Fisher
Anniversary - Mr. & Mrs. Kelly Smith, Mr. & Mrs. Dean McClenagan, Mr. & Mrs. Larry Hicks, Mr. & Mrs. Jim Bartimus

August 20
Anniversary - Mr. & Mrs. Billy Logsdon Jr., Mr. & Mrs. James Nicholson

August 21
Birthday - Cory Chapman, Ed Fry, Ronny Womble, Wayne Burchar, Ben Dunaway, Sondra Younger, Felix Sandaval, Chuck Eaton, Tyce Hergert, Teresa Cook, Sharon Ross, Jason Villines, Lillie Love, Kathy Love, Nicholas Vinson, Ruben Gomez, Donetta Greene, Carlos Hernandez
Anniversary - Mr. & Mrs. Bill Sparks

August 22
Birthday - Robert "Bob" Crawford, 73, passed away on Tuesday, August 6, 2002 in the Richards Memorial Hospital in Rockdale.
 Memorial services were held at 2 p.m. on Wednesday, August 7, 2002 in the Phillips and Luckey Funeral Home in Rockdale with the Rev. Weldon Belew of Rockdale Christian Church officiating. A memorial service will be held in Hansford County at a later date.
 Bob had been a resident of Rockdale since 1990, moving from Gruver. He was born on September 18, 1928 in Spearman to Robert Martin and Lura Belle (Raney) Crawford.
 Bob was baptized into the First Christian Church in Gruver on September 12, 1953. He was a member of the Rockdale Christian Church in Rockdale.
 He was the owner of an auto parts and implements store and a rancher. He married Ruth Jones on March 20, 1949 in Shamrock, Texas. He was the president of the Automotive Wholesalers Association of Texas from 1977-1978.
 He was preceded in death by his parents, and a sister, Elsie McCocq.
 Survivors include his wife, Ruth Crawford of Rockdale; one son and daughter-in-law, Jay and Jayne Crawford of Austin; two daughters and sons-in-law, Sue and Gary Prince of Arlington and Linda and Jim Culverson of Yazoo City, MI; two brothers and sisters-in-law, Mark and Kay Crawford of Dumas and Paul and Cleola Crawford of Amarillo; and several grandchildren.

August 23
Birthday - Robert "Bob" Crawford, 73, passed away on Tuesday, August 6, 2002 in the Richards Memorial Hospital in Rockdale.
 Memorial services were held at 2 p.m. on Wednesday, August 7, 2002 in the Phillips and Luckey Funeral Home in Rockdale with the Rev. Weldon Belew of Rockdale Christian Church officiating. A memorial service will be held in Hansford County at a later date.
 Bob had been a resident of Rockdale since 1990, moving from Gruver. He was born on September 18, 1928 in Spearman to Robert Martin and Lura Belle (Raney) Crawford.
 Bob was baptized into the First Christian Church in Gruver on September 12, 1953. He was a member of the Rockdale Christian Church in Rockdale.
 He was the owner of an auto parts and implements store and a rancher. He married Ruth Jones on March 20, 1949 in Shamrock, Texas. He was the president of the Automotive Wholesalers Association of Texas from 1977-1978.
 He was preceded in death by his parents, and a sister, Elsie McCocq.
 Survivors include his wife, Ruth Crawford of Rockdale; one son and daughter-in-law, Jay and Jayne Crawford of Austin; two daughters and sons-in-law, Sue and Gary Prince of Arlington and Linda and Jim Culverson of Yazoo City, MI; two brothers and sisters-in-law, Mark and Kay Crawford of Dumas and Paul and Cleola Crawford of Amarillo; and several grandchildren.

August 24
Birthday - Robert "Bob" Crawford, 73, passed away on Tuesday, August 6, 2002 in the Richards Memorial Hospital in Rockdale.
 Memorial services were held at 2 p.m. on Wednesday, August 7, 2002 in the Phillips and Luckey Funeral Home in Rockdale with the Rev. Weldon Belew of Rockdale Christian Church officiating. A memorial service will be held in Hansford County at a later date.
 Bob had been a resident of Rockdale since 1990, moving from Gruver. He was born on September 18, 1928 in Spearman to Robert Martin and Lura Belle (Raney) Crawford.
 Bob was baptized into the First Christian Church in Gruver on September 12, 1953. He was a member of the Rockdale Christian Church in Rockdale.
 He was the owner of an auto parts and implements store and a rancher. He married Ruth Jones on March 20, 1949 in Shamrock, Texas. He was the president of the Automotive Wholesalers Association of Texas from 1977-1978.
 He was preceded in death by his parents, and a sister, Elsie McCocq.
 Survivors include his wife, Ruth Crawford of Rockdale; one son and daughter-in-law, Jay and Jayne Crawford of Austin; two daughters and sons-in-law, Sue and Gary Prince of Arlington and Linda and Jim Culverson of Yazoo City, MI; two brothers and sisters-in-law, Mark and Kay Crawford of Dumas and Paul and Cleola Crawford of Amarillo; and several grandchildren.

Our Deepest Sympathy

CLAUDE "BURLO" CAIN

LEFORS - Claude "Burlo" Cain, 85, died Tuesday, August 6, 2002 in Amarillo.
 Graveside services will be held at 4 p.m. on Friday, August 9, 2002 at the Edith Ford Cemetery in Canadian, with Rev. Bill Sparks, pastor of the Union Church of Spearman, officiating. Arrangements are under the direction of Carmichael-Whitley Funeral Directors of Pampa.
 He was born February 12, 1913 in Montague County, Texas. He had been a resident of Lefors since 1930 where he was a rancher for 40 years.
 He was preceded in death by his first wife, Lorene May Bridwell Cain in 1979, and his second wife, Betty Reed Cain in 1989.
 Survivors include three sons, Richard Cain of Gage, OK, Dean Cain of Ranier, WA and Tom Cain of Spearman; one sister, Toots Windick of Fresno, CA; three brothers, Nelson Cain and Dickey Cain, both of Fresno, CA and Stiner Cain of Amarillo; 13 grandchildren; and 16 great-grandchildren.

ROBERT "BOB" CRAWFORD
 ROCKDALE - Robert "Bob" Crawford, 73, passed away on Tuesday, August 6, 2002 in the Richards Memorial Hospital in Rockdale.
 Memorial services were held at 2 p.m. on Wednesday, August 7, 2002 in the Phillips and Luckey Funeral Home in Rockdale with the Rev. Weldon Belew of Rockdale Christian Church officiating. A memorial service will be held in Hansford County at a later date.
 Bob had been a resident of Rockdale since 1990, moving from Gruver. He was born on September 18, 1928 in Spearman to Robert Martin and Lura Belle (Raney) Crawford.
 Bob was baptized into the First Christian Church in Gruver on September 12, 1953. He was a member of the Rockdale Christian Church in Rockdale.
 He was the owner of an auto parts and implements store and a rancher. He married Ruth Jones on March 20, 1949 in Shamrock, Texas. He was the president of the Automotive Wholesalers Association of Texas from 1977-1978.
 He was preceded in death by his parents, and a sister, Elsie McCocq.
 Survivors include his wife, Ruth Crawford of Rockdale; one son and daughter-in-law, Jay and Jayne Crawford of Austin; two daughters and sons-in-law, Sue and Gary Prince of Arlington and Linda and Jim Culverson of Yazoo City, MI; two brothers and sisters-in-law, Mark and Kay Crawford of Dumas and Paul and Cleola Crawford of Amarillo; and several grandchildren.

FERN FULKERSON
 SPEARMAN - Wilma Fern Fulkerson, 88, passed away Thursday, August 1, 2002 at Hansford Hospice.
 Services were held at 2 p.m. Saturday, August 3, 2002 at the First Christian Church in Spearman with the Rev. Gary Smith officiating. Interment followed at Hansford Cemetery, under the direction of Henson-Novak Funeral Directors of Guyton.
 Fern was born December 8, 1913 to Patsy and Elmer Gibbons on her grandfather's farm, five miles south of Harrisburg, Ill. She was united in marriage to Woodrow Fulkerson on December 24, 1933 in Evansville, Ind. She and her husband moved to Spearman in August of 1980.
 She worked as a private secretary and bookkeeper for many years and was a loving mother and grandmother. She was very active in church activities, and was a member of the First Christian Church of Spearman.
 Survivors include her husband of 68 years, Woody, of the home; two daughters, Sue Carpenter and her husband Jim, of Belton, Mo and Bobbie Novak and her husband Earl, of Spearman; two sisters, Ina Cain of Harrisburg, Ill. and Betty Raley of Houston; four grandchildren, Jay Carpenter of Belton, Mo.; Sherrie Carpenter Chevalier of Belton, Mo., Hunter and Bonnie Novak of Guyton, Okla., Ginda Novak Haruch of Jonesboro, Georgia; five great-grandchildren, Molly and Caleb Chevalier, Ethan and Griffin Novak, and Kate Haruch.
 The family suggests memorials be to Hansford Hospice or First Christian Church of Spearman and may be mailed to Henson-Novak Funeral Home, PO Box 1306, Guyton, OK 73942.

MONUMENTS
 Boxwell Brothers Funeral Home
 519 Evans • Spearman
 659-3802
 Dear friends,
 When you buy a monument from us we make sure it is exactly what you want at a price you can afford. If it is not right, we will make it right. And you will not have to search the countryside to find us. We are here when you have a need.
 Sincerely,
 Bob Boxwell

Are You A Victim of Domestic Violence, Sexual Abuse or Assault . . .
 Physical, Emotional or Sexual?
 Call Toll Free 1-800-753-5308
 We can see individuals from Hansford County anytime upon request. Call 435-5008 or 1-800-753-5308 to set up an appointment in Hansford County. We operate a safe place for victims and their children to stay in times of crisis.
 Panhandle Crisis Center
 Serving Hansford, Lipscomb & Ochiltree Counties
 317 S. Main • Perryton, TX
 Memorials Accepted

Machine Quilting and Monogramming
 available at
Jo's This 'N' That
 214 Main St. • Spearman
659-3999
 Personalization & Custom Computer Designs Available

LYRIC Cinema
 113 Main Spearman, Texas (806) 659-2812
 On the Web @: www.antden.com/newweek.asp
 Children 3 thru 11 - \$4.00 Adults - \$6.00
 Sr. Patrons (65 & older) - \$4.00

Palo Duro Supper Club
 Daily Lunch Buffet
 Sunday-Friday,
 11:00 a.m. - 2:00 p.m.
\$5.97
 Buffet is all-you-can-eat, and includes salad bar
 Friday Buffet - Fresh Water Catfish
 Kitchen Closes at 8:00 p.m.

Palo Duro Supper Club
 22 S. Archer • 659-2232 • Spearman, TX

HANSFORD HAPPENINGS

Rushing Wind Emmaus Community To Meet
 The Rushing Wind Emmaus Community will meet at the First United Methodist Church in Borger, TX on August 10, 2002 at 6 p.m.
 A special invitation is extended to all new members, Chrystalis members, family and friends. Remember to invite new community members and new pastors in your community. Sponsors' training will be offered. Mark your calendar to attend! Potluck meal and a nursery will be provided for the children.

2002 Calendar for Rushing Wind Emmaus: (Community meetings are from 6:00 p.m. to 9:00 p.m.) September 14 - Follett, UMC, October 12 - Grace Through Faith, Dumas; November 9 - Waka, Thanksgiving, December 14 - Higgins, FUMC.
 2002 Walk Calendar: (All walks are scheduled at the Waka Christian Center.) Women's #29 Sept. 26-29 Pam Lehman, LD, Larry Holder, SD; Men's #30 Oct. 24-27 Barry Harp, LD.

Gruver First Christian Church Cookbooks
 The cookbooks being sold by the First Christian Church in Gruver have all been sold. We are taking special orders now for the people that wanted to purchase some for Christmas gifts. Because the reorder price more than doubled on us, the cost for the books will be \$12.00 unless we can order more than the minimum of 100. Orders may be turned in to Alice Peddy, Pat Morley, Pat Bratton, Sandra Gumfory, Margaret Ralston or any other church member.

Check Out Your Closets!
 The Spearman band department is looking for instruments that have been checked out to students over the past 10 years. With the amount of director turnover, it was hard to keep up with check-outs and some instruments were not returned. If your child was in band, check under the beds and in the back of the closet for a lost instrument. Maybe you have an instrument they have forgotten about. If you do, please return it to the office at the high school or junior high. Thanks, and good hunting!

National Multiple Sclerosis Society Announces MS Walk
 The National Multiple Sclerosis Society, Panhandle Division is pleased to announce this year's Moore County MS Walk. The Panhandle Division serves some 640 MS families in the Texas and Oklahoma panhandles and the four eastern counties of New Mexico. The event will be held on Saturday, September 28, 2002, with registration beginning at 8:30 a.m. and the Walk getting underway at 10 a.m. The first Moore County MS Walk was held last year, raising in excess of \$18,000. The Walk concludes with a great hamburger cookout as a small token of thanks to all the walkers and volunteers. Ralph Bynum, the MS Walk Coordinator, extends a cordial invitation to everyone in Hansford County to join Dumas, Sunray, Cactus/Etter, Stratford and Dalhart walkers in this year's fundraising effort. Details for forming a Walk Team and other volunteer activities can be obtained by contacting Bynum in Dumas at 935-4208, Kevin Bynum at 659-2162, or the Amarillo office of the National Multiple Sclerosis Society at 468-7500. Anyone who is interested in participating is urged to call Kevin Bynum at 659-2162 for more information.

College-Bound High School Students Should Register for ACT Exam by August 23rd
 The next ACT Assessment will be administered on September 28, 2002. College-bound high school students must register for the college admissions exam by August 23rd - the deadline for having the registration postmarked. There is a late registration postmark deadline of September 6th, but an extra fee is charged for late registrations. Students can get registration packets from their high school counselors or register online at www.act.org.
 ACT scores are accepted by virtually all U.S. colleges and universities, including all Ivy League schools. The ACT is not an aptitude test - it is an academic achievement test that measures students on what they learned in high school. Because it is curriculum-based, colleges use ACT scores for more than admissions decisions - they use scores to place freshmen into classes that the students are academically prepared to handle. For admissions decisions, colleges use ACT scores along with a student's high school grade point average, college prep courses taken, extracurricular activities and other information. The test fee is \$25.
 ACT's website (www.act.org) has helpful information, sample tests and the opportunity to order test prep materials such as ACTive Prep, an interactive CD-ROM that contains practice tests with instant scores and study plans to prepare for the real test. A free sample test is available from high school counselors in a brochure called *Preparing for the ACT Assessment*.

Area Agency on Aging Seeks Volunteers
 The Nursing Home Ombudsman program of the Area Agency on Aging of the Panhandle is actively seeking individuals to serve as advocates for residents of area nursing homes. Volunteer opportunities are available throughout the Panhandle.
 Ombudsmen promote resident rights, quality of life and quality of care by identifying and resolving complaints by or on behalf of residents.
 To learn more about this rewarding volunteer opportunity, please contact Jeff Price or Tanya Mock of the Area Agency on Aging of the Panhandle at (800) 642-6008.

Spearman ISD District-Wide Open House
 Spearman ISD will hold a District-Wide Open House on Thursday, August 15th to allow students the opportunity to meet their teachers. Open House will be held at the following times: Elementary - 5-6 p.m.; Junior High - 6-7 p.m.; High School - 6:30-7:30 p.m.

Family Crusade
 The First Assembly of God Church in Spearman will host a "Family Crusade" on Sunday, August 11th at 6 p.m. and Monday-Wednesday, August 12-14 at 7 p.m. Nightly programs will be presented by 2Talk42 Ministries Inc. Anyone interested is invited to attend and enjoy prizes, stories, songs, puppets and a ventriloquist. The First Assembly of God Church is located at 401 N. Bernice.

Hansford County Circle of Friends
 The Hansford County Circle of Friends will host a membership party in support of the Don and Sybil Harrington Cancer Center on August 22, 2002 at 7 p.m. The event, featuring a steak dinner and raffle, will be poolside at the home of Jackie and Benny Wilson, 104 Cliff Ave., 1 1/4 mile west of Gruver on Highway 15. Funds raised through the membership party will go to support the patient care programs of Harrington Cancer Center. The Circle of Friends is a non-profit volunteer organization founded to support the philosophy and goals of the Don and Sybil Harrington Cancer Center. For more information, or reservations, please contact Pat Irwin at 733-2285 before August 19th.

Hansford County Library Upgrading Computer System
 The Hansford County Library will be upgrading our computer system during the week of August 12, 2002. We will be open during this week, but we will not be able to circulate items until the latter part of that week (hopefully by Thursday). Internet will be available on public access terminals, and patrons may return items to the library, but no items will be checked out until our new system is "up and running."

Lions Club Teacher Appreciation Night
 The Spearman Lions Club will host their Annual Teacher/Staff Appreciation night on Tuesday, August 27th at 6 p.m. at the Swimming Pool Park. All teachers and school employees, as well as their families, are invited to attend.

Pringle-Morse CISD Pre-Kindergarten Program
 The Pringle-Morse CISD will be providing a Pre-Kindergarten program for all students who will be four years old by September 1, 2002. The program will serve children of non-English speaking families and children from economically disadvantaged households. Children who do not meet the criteria will also be accepted using the same process as all incoming transfers. To enroll, or for additional information, call (806) 733-2507.

Public Education In Texas
 Public education in Texas is for every child. Don't leave any child behind. The children of Texas come in all sizes, shapes, colors, and abilities. They do not all learn the same way, but they ALL do learn. Do you know of an infant, child, or young adult who does not learn easily or has an impairment that might affect his/her success in life? Do you know that public school programs can serve these children from birth to age 21? For more information, call Marsha Murphy, Special Education Director, at (806) 435-4412.

Building Character in Families

The Josephson Institute in California has developed a model for teaching character in schools and communities called Character Counts! This program is built around a consistent set of ethical values which are not politically, religiously or racially biased. This set of ethical values is called the "Six Pillars of Character." The list includes trustworthiness, respect, responsibility, fairness, caring and citizenship. While these are normally interpreted for individuals, they can be helpful as a basis for building character in families.

Trustworthiness: Parents who hope to have families that teach character can work on several

areas. One of these is to demonstrate integrity. Parents need to tell the truth to their children. They can also model this by not lying for their children. Children need to know that their parents will not send an excuse to school for their child if they are not really ill. One way to help children to be honest is to let them know that they are in more trouble for lying than if they tell the truth about misbehavior.

Parents need to keep promises they make to their children. Try not to make a promise that may be difficult to keep. It is important to make sure that children keep promises that they make to their family or friends.

Another aspect of trustworthiness is learning to be loyal. All members of the family need to make sure that their first allegiance is to the family. The family and special family events should be more important than other activities in the community.

Responsibility: Each family member should have responsibilities. Parents are responsible for the care and well-being of their children. Children should have jobs around the house. They can begin to do these as soon as they are old enough to pick up toys and put them away or take dishes to the sink. One of the best methods of building a child's self-esteem is to provide jobs for the child and praise his accomplishments.

Children should also be accountable for their actions. Parents can help children by making sure they face consequences when they break the rules. Children who are brought up in a home where there are no consequences in their actions, have difficulty adjusting to a society that does have expectations.

Respect: All family members should be granted respect. Parents need to respect their children by the way they talk to them and treat them. Children also need to show respect to their parents and their brothers and sisters. Violence in any form should not be tolerated in the home.

One aspect for family members is for those who are different. Parents should show respect to people of other races, religions and beliefs and also teach their children to behave in the same manner. Children need to learn that even when you don't agree with another person, you can respect that person and see other people as having value.

Fairness: Parents can help their children learn fairness by treating their children fair. All children in the family need to be treated in the same manner by the parents. Family members need to listen to each other and be concerned about each other's needs. Children can also be taught fairness by learning how to play games by the rules.

Caring: It is important for family members to treat each other in caring manners. Family members need to be loving toward each other and care about each other's needs. Family members also need to be considerate of one another and learn to be unselfish toward each other. All of these aspects can be carried from the family out into the community.

Citizenship: Children can learn a lot about citizenship by the way their parents are involved in the community. Parents who vote and talk to their children about political issues can help their children mature into good citizens. Also, families can become involved in the community through volunteer efforts to help those in need. Finally, parents need to show respect for authority and law. Their attitude toward obeying laws, such as speed limits, can have a great influence on their children.

Character is important for the citizens of any community. People of character treat others with respect and dignity and contribute to their community. Families are the beginning and basic structures for teaching children how to become mature individuals who have abilities to make a difference in their world. This can be accomplished through making the family a place of character development.

August School Activities Slated

With both football workouts and band practice beginning on Monday, August 5, the official start to the 2002-2003 school year is rapidly approaching. Several important dates for school activities have been announced and are as follows.

- August 5-9** - Lynxette Basketball Camp: Session I is for girls entering 5th & 6th grades, 8-10 a.m. Cost - \$40. Session II is for girls entering 2nd, 3rd & 4th grades, 1-2 p.m. Cost - \$20.
- August 7-9** - SHS Band marching practice, 9 a.m.-12 p.m.
 - SHS Band playing rehearsal, 1-3 p.m.
- August 12** - New student registration at Gruver Schools, 8:30 a.m.-12:30 p.m.
 - Class schedules ready for pick-up in high school office: Seniors 9-10 a.m.; Juniors 10-11 a.m.; Sophomores 1-2 p.m.; Freshmen 2-3 p.m.
- August 12-14** - SHS Band marching & playing practice, 9 a.m.-12 p.m.
- August 12-14** - SHS Staff Development Day
- August 12-16** - PMCISD Staff Development
- August 13** - GISD Board of Trustees to meet in regular session
 - SISD Teacher Workday
 - SISD Seniors can pick up class schedules, 9:30-11:30 a.m.
 - SISD Juniors can pick up class schedules, 1:30-3:30 p.m.
- August 14** - Assembly for all Gruver teachers and beginning of in-service days.
- August 15** - SISD Sophomores can pick up class schedules, 9:30-11:30 a.m.
 - SISD Freshmen can pick up class schedules, 1:30-3:30 p.m.
 - SISD District-Wide Open House, Elementary - 5-6 p.m.; Junior High - 6-7 p.m.; High School - 6:30-7:30 p.m.
- August 15-16** - SHS Band marching practice, 9 a.m.-12 p.m.
 - SHS Band playing rehearsal, 1-3 p.m.
- August 16** - SHS Band Family Night Picnic (Presentation of Band Camp Awards, short concert & marching demonstration. Each family needs to bring food for themselves. Drinks provided), 6 p.m.
 - SISD Teacher Workday/Staff Development Day
 - SISD New Student registration, 9:30-11:30 A.M.
 - SISD Students who were unable to pick up their schedules at assigned times can pick up schedules, and new student registration
- August 17** - First football scrimmage - Spearman vs. Gruver, in Spearman
- August 19** - First day of school, Spearman, Gruver & Morse

99 Cents

by Harletta Cartheil

I've got a beef with McDonald's - which is more than an American farmer or beef producer can say.

Americans who used to ask "Where's the beef?" may now want to ask "Where's the American beef?"

It seems the giant burger place has decided to put Aussie meat rather than good ol' American beef between their buns.

McDonald's, which loves to promote their All-American image, has said goodbye to US produced beef and hello to imported Australian meat.

Because American beef is renown for being the most tender, flavorful meat in the world, McDonald's is seeking to give their decision a favorable spin by declaring Australian range cattle products are healthier.

The strict regulations imposed on the beef industry make it virtually impossible that meat from another country where standards are lax or lacking could be "healthier." And if McDonald's wants hormone-free beef, there are countless American ranchers and feeders who would be more than happy to oblige.

As far as taste goes, if you have ever tasted range-fed meat, you're probably in stitches from laughter as you fathom how a boot-tough, ill-tasting steak from a prairie critter could ever share the same plate much less palate with its juicy, flavorful grain-fed US-produced cousin.

With the gleam of a penny's extra profit in their eyes, McDonald's is hoping its All American image with a little ketchup and a pickle will camouflage the Aussie accent of their meat.

In a new Clintonesque style television commercial, McDonald's now proclaims "We use only 100% beef."

Sounds great, but one little word is missing - American.. While their meat may be 100% beef, it is 0% American.

It would appear that McDonald's decision to go down under for beef would be a great opportunity for Burger King, Wendy's, or other McDonald's competitors to make inroads with ads proclaiming "We use only 100% American beef!"

The next time you're tempted to pull into the Golden Arches, you might just want to keep in mind that the same McDonald's that wants your good ol' American dollars doesn't support good ol' American farmers and ranchers.

While a Big Mac can be pretty tempting, the vision of the empty pockets of our American cattlemen in contrast to the pouch of some kangaroo padded with American bucks just kind of ruins my appetite.

And I hope the feeling is McDittos with other Americans.

McCOWN PEST CONTROL
Total Pest Control Service
 Serving Spearman & Area for 22 Years
 Specializing in home pest control
 and farm rodent control
 (806) 935-7648

IT'S THAT TIME AGAIN!
 Pre-School is just around the corner.
 Kid's Korner, Inc.
 Will be offering
 Pre-K classes for your
 3, 4 & 5 year old
 beginning
 September 3, 2002.
 Give your child the foundation for
 SUCCESS!
 Call Kid's Korner today for more
 information!
 659-3179

SERVANTEZ ESTATE REPAIR

Tree Service
 Topping, Pruning
 Cleaning, Removal

Carpenter Work
 Painting, Siding,
 Metal & Shingle Roofing
 Porches, Fences & Decks
 Remodel Work

Cell (806) 886-7885 Home (806) 659-5073

Send a little refreshment to someone special with a floral arrangement from **All Occasion Flowers**

202 N. Bernice (across from the Post Office)
 659-5180

You are invited to a **Bridal Shower** honoring **Elizabeth Pipkin** bride-elect of **Jim Alexander, Jr.** on **Friday, August 9, 2002** from 6:00 - 7:30 p.m. in the Country Home of **Marti Garnett Spearman, Texas**

Bridal Registry

Autumn Bateman & Eric Ratterree - Aug. 3
 Elizabeth Pipkin & Jim Alexander, Jr. - Aug. 9
 Krista (Boyd) Dement & Christian Mericle - Aug. 10
 Mandy Jumper & Nathan Kitchens - August 11
 Mandy Vernon & Doug Reynolds - August 24
 Christa Bergan & Brad Turner

Celebrate
 Gifts for all your celebrations!
 203 Main St. • Spearman, TX
 (806) 659-3350 1-800-663-8026

For The Bride & Groom

Come by and let us help you set up your special gift table

Couples Currently Registered

Elizabeth Marie Pipkin & Jim Alexander - Aug. 9
 Mandy Jumper & Nathan Kitchens - Aug. 11
 Mandy Vernon & Doug Reynolds - Aug. 24
 Christa Bergan & Brad Turner
 Jamie & Emily (Bomer) Townsen

Gordon's DRUG
 314 Main 659-2141 Spearman, Texas

Among The Neighbors

by Helen Fisher

The weekend was a pleasure for Dixie and Everette Tracy as their son, Richard, arrived on Thursday and stayed through Monday. He lives in Waco.

Other guests were his daughter and son-in-law, Katy and Aaron Abel of Socorro, NM. She teaches school there and Aaron is in school, finishing his Master's Degree.

Richard's son, Jay Tracy of Austin, also joined them. He is a student at the University of Texas in Austin.

Joe and Betty-Glee Close attended the 20th Annual High Country Arts and Crafts Festival last week in Eagle Nest, NM. More than 200 entries from many states and also Peru exhibited. It was a juried show with each item judged on originality, workmanship and creativity.

Joe received a second place award on a pair of his handmade spurs, which were mounted on three troy ounces of sterling silver, and 40 grams of turquoise.

Betty-Glee and Joe make many kinds of western items for the home including spurs, conchos, turquoise, and silver jewelry. Also included are chairs, coat and hat racks, and boot jacks using horse-shoes and carved wood.

They enjoyed their stay in Eagle Nest, greeting old friends and making new acquaintances.

Those who have missed Judy Tindell at B&B Sales, and Rusty at Golden Spread Sales, learn that they spent the week visiting their daughter, Sonya, in South Dakota.

Their son and daughter-in-law, James and Karama Tindell, came up from Belton and accompanied them.

Their daughter, Sonya, teaches at the Rose Bud Indian Reservation, the Lakota-Sioux tribe. Her residence is at near-by St. Francis.

The Tindells found little difference in the weather there and here - hot and dry.

Freddie Largent, sharp-eyed as usual, finds no problems with the result of laser eye treatment last week. It was done in Liberal, and after a few days, she has no difficulty in driving.

Sympathy is extended to the family of Fern Fulkerson. Interment was at Hansford Cemetery. A gracious, amiable lady, she will be sorely missed by friends and family. Sincere sympathy is extended to her husband, Woody, and daughter and son-in-law, Bobbie and Earl Novak, and other family members.

Mary and Buford Baker may have been tempted to delay returning home to this hot, dry area after their cool, pleasant and often rainy vacation. They drove to Cody, Wyoming to visit her sister, and enjoyed some rain every day. They were able to visit the huge Buffalo Bill Cody Museum there. They also drove to Yellowstone Park, and made a side trip to Bear Tooth Mountains. Mary did manage to squeeze in some shopping.

Oklahoma State University at Stillwater listed Brooke Trantham among the 2002 Spring graduates. She was a 1998 graduate of Spearman High School. Richard and Donnie Trantham of Spearman attended the graduation exercises.

Brooke is now in Dallas, where she is employed by Target-Marvinis Corp. Her degree was in Management.

Kyle and Jennifer Nollner are reunited after taking separate vacations where one went south and one went north.

Jennifer spent time in Ft. Worth with their daughter, Chelsea, who

is getting settled for the fall term at Texas Christian University. This is her second year.

Kyle and their son, Zack, flew north to Alaska. They were guests of Rick Alexander, who lives in Kenai. He has been there several years and is employed by a pipeline company. He was a fellow Spearman High School graduate of Kyle's.

They fished on the Kenai River, where there were many fishermen as the salmon were migrating. Kyle caught a good many salmon, but Zack was the outstanding fisherman there. He caught two King Salmon, one weighed 49-pounds and the other 55-pounds. Even the local fishermen were impressed.

They returned Sunday.

John Buchanan of Missouri City paid a short visit in Spearman with his Uncle J.B. Buchanan and Aunt Helen Fisher. He was well pleased with the care the Hansford Cemetery receives. His three aunts in Amarillo were also pleased that he called on them.

John, a native of Spearman, spent his early years in school here. He is the son of the late Wilson and Millie Buchanan.

In spite of the dry heat, Sara Dossett has made a most enjoyable summer, and is still finding pleasure.

First her son and daughter-in-law, Buddy and Becky, and their three daughters, visited from near Harlingen. They brought their trailer and parked it at Palo Duro Park for ten days. Among other activities, they attended "Lone Star Rising" at the other Palo Duro Park.

In the middle of July, her grandson, Ricky Neeley, spent the night with her. He was traveling from Lubbock to Omaha, where he had taken his daughters to spend two weeks with their grandmother, Diane Carter.

She and the girls came to Spearman a little later, and during their visit, they attended "Lone Star Rising." The guests were much impressed. Sara, having seen

it four times, may be qualified to try out for a role in it.

During the past weekend, two-year-old Slade Michael Knowlton visited in the home of his grandfather (Papa), Gary Ellsworth. His parents, Jana and Chad Knowlton of Houston, brought him. They also visited in the home of his great-grandparents, Peggy and Alton Ellsworth.

On Saturday evening, Peggy and Alton hosted a family cook-out at their home. Shortly after the meal was finished, Slade accidentally touched the still hot grill with both hands. He received severe burns on both palms and all fingers.

At the emergency room at Hansford Hospital, medication and treatment eased the pain somewhat. With all the tape and gauze, his little hands resembled boxing gloves.

Others attending the cook-out were Gayle and Archie Smith of Spearman and Stacy and Randy Sharp of Amarillo.

Congratulations to Katie Booth, granddaughter of John and LoRee Booth of Spearman, and daughter of Richard and Becky Booth of Amarillo. Katie received one of the President's Congressional Intern scholarships from Texas Tech University's Office of the

President in Lubbock. She is a senior finance and economics major at Texas Tech.

Juan Rojas, who is stationed at Camp Lajeune, NC, was home on leave the first part of July. He arrived in Amarillo on the 1st, and left on the 6th.

While in Spearman, he attended a Fourth of July party at his grandmother's home, Aurora Vela, which was attended by more than 40 family members.

Juan is the son of Barbara and Eddie Rojas. They left with Juan on the 6th, following him as far as Memphis, and returning to Spearman on July 8th.

Dwayne Smith, weather recorder, is apparently in a rut. The report for the week of July 29th through 7 a.m. on August 5th shows: High on August 1st at 103; Low on July 30th at 64; Moisture - wet the bottom of the gauge with .06.

Gladiola Flower Club

The Gladiola Flower Club met in the home of Gwen Smith on August 1st at 9:30 a.m.

President Verna Brown called the meeting to order. Roll call was answered by telling where your parents were born.

Margarette Evans gave an interesting program on her family history. She gave information about where she had been able to obtain some history from various places.

Home-grown arrangement was won by June Jackson and Estelle Jackson. Specimen was won by Virginia Trindle and Muriel Boyd. Pot Plant was won by Gwen Smith.

It was noted that the Flower Club is responsible for Bingo on Monday nights in August.

Members present were Gwen Smith, Muriel Boyd, Wanda Brown, Estelle Jackson, Virginia Trindle, Verna Brown, June Jackson, Eloise Renner, Betty Davis, Dorothy Buzzard, Kathleen Sutton, Norma Jean Mackie, Margarette Evans, and former member Rose Cummings of Amarillo.

The next meeting will be held on August 15th at 6:30 p.m. at the Hungry Cowboy.

Small Taxing Unit Notice

The City of Gruver will hold a meeting at 5:00 PM on August 15, 2002 at City Hall to consider adopting a proposed tax rate for tax year 2002. The proposed tax rate is 0.3521 per \$100 of value.

The proposed tax rate would increase total taxes in City of Gruver by 43.71 percent.



**305 W. Kenneth
Spearman • 659-3135**

**101 Main Ave.
Gruver • 733-2953**

TALLSUP
32 OZ.
89¢

GET A FREE 5 STICK PACK OF WRIGLEY'S GUM

TAMPICO PUNCH
GALLON / REG. \$1.99
99¢

CITRUS, MANGO OR TROPICAL

TOM'S SUNFLOWER SEEDS
2.5 OZ.
2 \$1 FOR 1

PEPSI MOUNTAIN DEW, REG. OR DIET
\$1.69
3 LTR.

PEPSI MOUNTAIN DEW, REG. OR DIET
\$1.79
6 PACK

LANA'S PORK EGG ROLLS
REG. \$1.29
2 \$1.29 FOR 1

TOM'S CORN CHIPS OR PUFF CHEESE
REG. 99¢
89¢

BAR 5 HOT CAJUN STYLE SAUSAGE
12 OZ.
99¢

ALLSUP'S ADVANTAGE CARD
No Connection Fee!



Don Honesto
TARJETAS TELEFONICAS PREPAGADAS



PREPAID PHONE CARD
CoinSaver
Great for Long Calls!



ALLSUP'S "MOO"
BUY 12 GALLONS OF FRESH ALLSUP'S MILK... GET ONE FREE!

ALL KODAK FILM
\$1.00 OFF

Kodak GOLD

ALLSUP'S COMBO MEALS

COMBO NO. 1	2 BURRITOS & 32 OZ. TALLSUP	\$2.29
COMBO NO. 2	CHICKEN BITES & 32 OZ. TALLSUP	\$2.59
COMBO NO. 3	BBQ SANDWICH, HOWLERS & 32 OZ. TALLSUP	\$2.49
COMBO NO. 4	BREAKFAST BURRITO, HASHBROWN & 16 OZ. COFFEE	\$1.99

The Gruver Grapevine

by Harletta Carthel

Gruver Schools Earn Exemplary Rating
Gruver schools were among only a handful of panhandle schools to receive an exemplary rating for all schools in the district.

The ratings, released last week by the Texas Education Agency, rank schools and districts according to test scores on the Texas Assessment of Academic Skills (TAAS), attendance, and dropout rates.

The exemplary rating is given to schools and districts with 90 percent or more of the students passing all sections of the TAAS and a dropout rate of one percent or less.

The next highest ranking is recognized school districts which have 80 to less than 90 percent of the students passing TAAS and a dropout rate of 2.5 percent or less.

In statistics given by Joel Lynch, Gruver schools interim superintendent, students in Gruver elementary in the third and fourth grades had a reading score this year of 100 percent passing, up from 97 percent in 2001; 100 percent passing in mathematics in 2002, up from 98.5 percent, and 100 percent passing in writing in 2002 compared to 90.9 percent in 2001.

In Gruver Junior High in grades 5-8, the percent passing in reading was 98.1, up from 96.5 in 2001; in mathematics, 98.1 percent passed, up from 95.7 in 2001; the 100 percent passing in writing, remaining the same as the 100 percent passing in 2001, and the 94.6 percent passing in social studies was up from 92.3 in 2001.

In high school the percentage passing was up in reading and mathematics while the percent passing writing dropped five percent but stayed above the 90 percentile.

In reading, the 2002 passing rate was 90.9 percent, up from 89.1 percent in 2001, in mathematics the passing rate was 97.1 percent an increase from 96.8 in 2001, and in writing, 91.1 percent had passing

scores which was down from 96.8 percent in 2001.

"The accountability rating received from the Texas Education Agency for the Gruver ISD was exemplary. Each campus was also rated exemplary. These ratings reflect the commitment of the school staff and parents to high goals for the students of the district. This rating is something the community should be especially proud of."

"We must continue to work together to maintain the high standards achieved in the past year," Lynch said.

Hounds Begin Workouts
The 2002 Hounds began pre-season workouts Monday with 43 athletes reporting, according to Bruce Bryant GHS head football.

That number is up five from last year's first day total of 38 and down five from the 2000 first day total of 48.

Coach Bryant states that he expects several additional athletes to return to Gruver this week.

Condolences Extended
The sympathy of the community is extended to Lanesa Washburn, whose brother Loren Murphy of Borger died last week.

Three Attend Knight Camp
Cody Mac Been, Tucker Williams, and Drew Grotgut attended the Bobby Knight Red Raider Basketball Camp last week in Lubbock.

Christy Family Moves to Canyon
Chris and Thre Christy and their children Christopher and Lauren have moved to Canyon. The family had made their home for several years in the country west of Gruver.

The community wishes them much happiness in their new location.

It Ain't So Bad
If you think it's hot this summer, try remembering July 2001 when the city of Gruver reported 15 days of 100 plus degree highs.
This July only two days, July 26 and 27, reported hitting the three-digit zone with 100 and 101 degrees respectively.

Meet the Hounds, Lady Hounds
The annual Meet the Hounds and Lady Hounds night sponsored by the Gruver Booster Club is slated for Tuesday, August 27 at 6:30 p.m. in Greyhound Stadium.

At that time, members of the GHS cross country team, the junior high, junior varsity and varsity football teams, and the junior high and high school cheerleaders will be presented to the public.

Homemade ice cream will be served, and the Hound sound Band will present selections.

For those wishing to join the Gruver Booster Club, a booth will register members with fees being \$10 per family or \$20 per business.

A business meeting of the Boosters will conclude the night's events.

Volunteers wishing to bring homemade ice cream, may call Janet Williams, 733-2396 after 5 p.m.

Swimming Pool Lists Hours
The Gruver City Pool's last regular season day of operation will be Sunday, August 18 with after-school hours planned through the month of August.

The plan to have the pool open each day after school will continue through August, providing attendance is good. According to City Manager Linda Weller, at least 15 swimmers per day are needed in order for the pool to remain open. It will be open after-school on a day-to-day basis depending on the response of the community.

New Students Enroll August 12
Registration for new students to the Gruver school system is set for Monday, August 12. Registration will be in the child's respective school office, elementary, junior

high or high school.
Students need to bring their birth certificate, social security card, immunization record, and report card and withdrawal from the previous school.

'Meet Your Teacher' Set at Elementary

Parents and teachers are invited to a 'Meet Your Teacher' time from 11-11:30 a.m. Friday, August 16 in the elementary building.

Classes will be posted at that time in the entry of the school, and parents may bring bulky supplies to their child's classroom. A hot dog cookout is slated for 11:45 a.m. - 12:30 p.m. for all elementary parents and students.

Cheerleaders Learn the Ropes
The Gruver Junior High cheerleaders are involved in a mini-camp this week to work on cheerleading techniques.

Paula Williams, gymnastics instructor, is conducting the camp.

Gruver Good Guys Noted
They are the youngest ever to be nominated for the Gruver Good Guy award, but their example and ambition is worthy of imitation by all ages.

A quartet composed of Shelby, Madison, Ashley, and Carson Williams have formed a new club known as the "Do Gooders Club."

The goal of the club is to do good deeds each day. On Monday, the club approached City Manager Linda Weller "asking" permission to pick up litter in the city park. In short time, the park was cleaned of all litter.

While some children may spend their summer in pursuit of fun, Gruver applauds the "Do Gooders" and their efforts in making Gruver the best place in the world to live.



by Dorothy Hudson

Lake Depth--August 5, 2002--33.16 feet

To my surprise, Jim reported the lake level down only 1.5 inches this week. Two showers of .22 and .09 and some water from Horse Creek that raised the level an inch all helped offset the hot days.

Again the edges of the Lake are deceptive, and several people got stuck last week.

Fishing was slow with a few crappie and catfish being caught. During the heat there is not much activity, but about 6 o'clock in the evening, people start arriving, and by night there are several lights on the Lake.

Roy and Debbie Mayhew of Gruver camped one night during the week. They invited family members out for a picnic in honor of daughter Annie's birthday.

The first Baptist Church of Spearman had the shelter Sunday evening.

Jim mentioned a lady telling him she had seen some small fawns. She remarked that it was unusual to see small ones this time of the summer.

Ticks continue to make news in the Amarillo Globe-News. Dr. Bob Ballinger, a veterinarian who came

to Amarillo to practice in 1984, was quoted as saying this was the worst year he had seen for dog ticks. The mild winter is supposed to be back of it. Two dogs actually needed blood transfusions. It takes a lot of ticks to cause that.

The same paper had an article from Canadian on tularemia being diagnosed in a dead rabbit from the Gene Howe Wildlife Management Area where officials had found 16 dead rabbits and 5 dead squirrels.

"The infection is transmitted by direct contact with infected animals, by tick bites and by airborne particles. Symptoms of infection include: fever, painful swollen lymph glands if bitten by a tick; abdominal pain if ingested; and pneumonia-like symptoms if inhaled."

Pauline Hale told me that years ago in the Panhandle many people would not eat rabbits unless there was snow on the ground. Our family ate young jack rabbits or cottontails occasionally--mostly in the summer. I can remember that at one of the Hoyt fish fries, there was some young rabbit fried up.

The recommendation is that any wild rabbit or wild game should be cooked thoroughly.

Thank You

My thanks goes out to all my very good friends who sent cards and were so very good to me at my brother's death. I love you all. Special thanks to Gary Smith, for his words of comfort.
Georgia McLeod

Dreamer's Salon
306 Hancock
presents
Krystal McDonald
Stylist
Nail Tech

Services offered:
- Haircuts
- Styles
- Perms
- Color
- Highlights or Foil
- Manicures & Pedicures
- Acrylic Nails
- Facial Wax

Call 659-9907 for appointments.
Walk-ins welcome!

Subscribe to the
Hansford County Reporter-Statesman
Call 659-3434 for details.

Back-To-School Savings!

221 MAIN ST. SPEARMAN, TX 806-629-3426
STORE HOURS: MON-SAT. 9:00-6:00
OWNERS: ALFRED & CINDY AVILA

NO SALES TAX COLLECTED ON PURCHASES MADE ON FRIDAY & SATURDAY AUGUST 2-3 (EXCEPT FOR JEWELRY, BUCKLES, WALLETS, OR ANY ITEMS SELLING FOR \$100.00 OR MORE)

ALL MEN, WOMEN, & BOYS SUMMER CLOTHING 30% OFF

ALL MENS POLO & TOMMY JEANS \$39.95

CINCH JEANS \$32.95

SALE MENS LEVI JEANS 550 - 560 501 PREWASH 30% OFF

ALL MEN SHORTS-POLO-TOMMY-LEVI-BD BAGGIES-NO FEAR- 30% OFF

ASSORTMENT OF BOOT & SHOES (DR. MARTEN, BASS, DEXTER, AIRWALK, ADIDAS, RED WING) 1/2 OFF

DR. MARTEN BOOTS, SHOES--\$99.00 SANDALS--\$79.00 KIDS SIZE (3-5) 25% OFF

ALL BOYS SUMMER S/S SHIRTS & SHORTS-20X-LEVI-- 30% OFF

ALL BOYS JEANS-LEVI-WRANGLER-CINCH-(STUDENT-SLIM-REGULAR-HUSKY) 20% OFF

ALL WOMEN CLOTHES-SHIRTS-PANTS-JEANS-(POLO-LEVI-ETC)-- 30% OFF

STRAW HATS WESTERN & FASHION 30% OFF

ADIDAS MEN-WOMEN-YOUTH 30% OFF

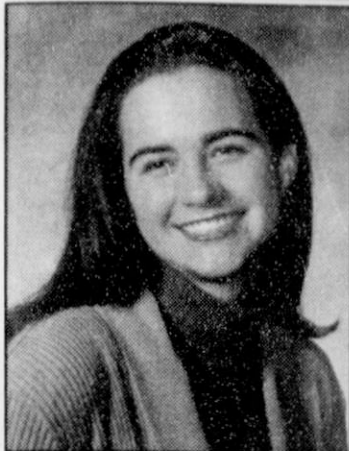
"I have a friend who takes me to all my favorite movies and never talks during the show."

"No doubt about it, my life's a little better with Classic. With all the movie choices, there's always something to watch. I mean, there's comedy, drama, thrillers, adventure, even romance. Classic is always ready to go to the movies and doesn't hog the popcorn like some people I know."

Classic CABLE
STAY HOME. GO FAR.
www.classic-cable.com

Get Classic Basic and Expanded Cable for just \$25 a month for three months, and just \$9.95 installed. Call 800.999.6845 and ask for the Stay Home offer.

GHS Students of the Month



Brittany Morris, 2002 graduate of Gruver High School, is the May Student of the Month.

Morris has been active in 4-H and FFA all four years of high school and has served as secretary, vice president, and council president of the Hansford County 4-H. She was a 2001 winner of the Gold Star Award.

In FFA, she has served as parliamentarian, secretary, and president of the Gruver chapter and as district secretary. She holds the Lone Star Farmer Degree.

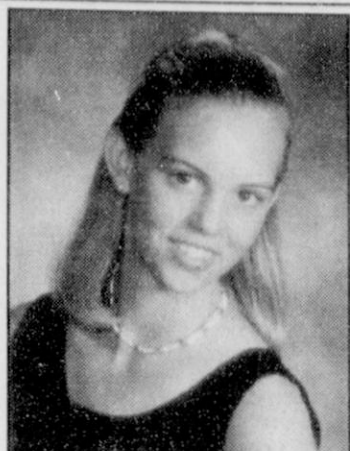
She has also been active in the GHS band for three years, serving as drum major for two of those years.

Having competed in the UIL academic contests in current history, prose and one-act play, she was named to the honorable mention cast and the all-act play cast this year.

She played basketball for two years and was named to 'Who's Who among American High School Students' four years.

She is an active participant in farming and ranching and has been a member of the Great Plains Ag Credit for two years.

The daughter of Joe and Nancy Morris, she will attend Texas A&M University.



Kaylee Holt, Gruver High School's April Student of the Month, is the salutatorian of the 2002 graduating class.

During high school, Holt served as student council secretary and was a member of the National Honor Society.

She is active in rodeo where she is a member and captain of the Wrangler All Star Team and recently earned the All Around Girl's Title for the Tri State Rodeo season.

She has been active in 4-H and has competed in numerous stock shows and all major Texas stock shows.

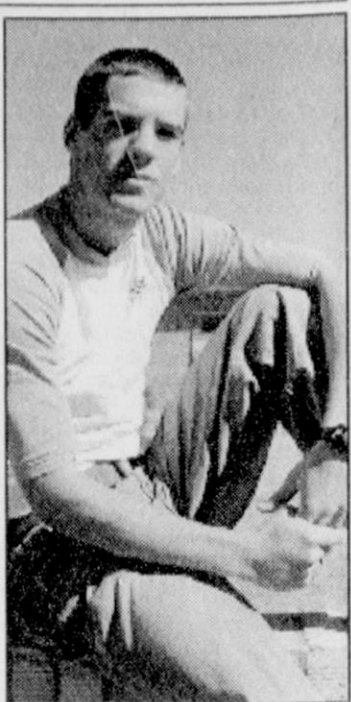
Competing in basketball for four years, she has been named to the district honorable mention list and served as a captain of the Lady Hound Basketball team her senior year.

The daughter of Kevin and Rhonda Holt, she will attend Oklahoma State University this fall.

Brandi Griffin has been named March Student of the month at Gruver High School.

During high school, Griffin has been active in basketball and track, and was named to the all district basketball team this year.

Griffin will be a senior at Gruver High School this fall.



Ryan Abernathy has been selected Gruver High School student of the month.

In high school, Ryan has been a four-year member of the GHS band, and a four year member of the football team where he served as captain and was all district his senior year.

He competed in basketball two years and was named to the honorable mention list his senior year. A junior class favorite, Ryan was runner up for Friendliest Boy and runner up for Most Likely to Succeed.

Ryan, who has been on four mission trips, plans to travel with a band doing mission work this summer and later enroll in Bible college in Switzerland.

He enjoys playing guitar, snow boarding, water and snow skiing, driving, and being with friends.

He is the son of Kerry and Jenny Abernathy.

Toxic Mold or Ordinary Mildew?

by Linda Anderson, (979) 862-1460, lw-anderson@tamu.edu

By now most Texans know their homeowner's insurance is going up, by how much and when. The why is also well known: Most have heard horror stories of how some residents have been driven from their homes by something as common and ordinary as mold. And many are wondering how that can happen.

Not all molds are created equal, according to Janie Harris, Texas Cooperative Extension housing and environment specialist. "While some molds can be a serious health threat, others - like the ones responsible for creating cheese and penicillin - are beneficial," she said.

"All mold are fungi. Molds produce microscopic cells called 'spores,' which spread easily through the air. Mold spores are present everywhere - in indoor as well as outdoor air."

"However, something like 10 percent of the population develop severe allergies to mold," she said. These allergies produce flu-like symptoms, including breathing problems, nasal and sinus congestion, watery eyes, coughing and sore throat, and skin irritations.

"Some of these allergies can trigger asthma attacks," Harris went on.

"Children, the elderly, pregnant women, people with existing respiratory sensitivities and those whose immune systems are impaired are at higher risk for adverse health effects from mold," Harris said.

And not all reactions to mold are the same either. "Some people are affected when exposed to very little mold, while others may show no adverse health symptoms when exposed to mold. Exposure to high mold spore levels can cause development of an allergy to mold," she continued. "People can react to mold whether it is living or dead.

Even when mold has dried out and has stopped growing, the toxins can still be harmful."

The most common problem-causing mold is called "black mold, or *Stachybotrys atra* (*S. chartarum*)," Harris said. This black mold, which grows on wet cellulose-containing materials, contains a toxic substance (endotoxin) that can cause serious illness and death in children, especially infants, and some adults," she said.

Because of this and other potential health problems caused by mold, "it is not safe to live in houses with high mold levels," Harris said.

Most people can't afford to pack up and move because of mold. So how do they protect their families' health and their homes? To eliminate mold in the home, homeowners must understand what mold needs to grow and survive. "Mold needs a food source, moisture, mild to warm temperatures, and mold spores to grow," Harris said.

Food sources for mold include "anything organic, such as dust, books, paper and paper products, animal dander, soap scum" - anything that contains organic materials, she said.

"The best way to fight mold is to thoroughly clean the areas where it might grow," Harris pointed out. Experts who studied mold and mildew in homes "found that mold and mildew contamination was significantly reduced in treatment homes where surfaces were routinely cleaned and disinfected," she said.

These experts suggested steps for controlling mold growth:

- Control the amount of moisture in the home's air by maintaining and repairing the plumbing system, air conditioning, roof, etc.

- Clean up potential mold food sources, such as dust and soil.

- After cleaning a site where mold has been found, use an appropriate disinfectant to prevent

it from growing back. - Prevent mold from entering the house again by keeping possible sites cleaned and disinfected.

- Since people react to mold whether it is living or dead, mold needs to be removed," Harris said. "Small areas of mold - less than a couple of square feet - can be cleaned by the homeowner. Extensive contamination - 30 or more square feet - should be assessed by an experienced health and safety professional and remediated by personnel with training and experience handling environmentally contaminated material."

First things first, she said. Since moisture is necessary for mold to grow, any leaks or constantly moist areas must be repaired. "To get rid of the mold for good, it is necessary to solve the moisture or leakage problem. Since there are some mold spores everywhere, and since mold grows on any wet organic surface, the only way to prevent mold growth is to keep things dry."

"The underlying moisture problem must be identified and fixed!" Harris said.

Dr. Chip Lee, Extension plant pathologist in Stephenville, agreed. "Points to consider in the prevention of house mold deal primarily with the prevention of free moisture in the house," he said. "The most common moisture traces from bottom to top in the house must be investigated and the specific source eliminated before any control or remediation is attempted."

For more information on preventing mold growth from the ground up, visit Lee's Web site at <http://stephenville.tamu.edu/~clee/> and click on the links to Prevention of House Mold.

To test your knowledge, visit this Web site: <http://fcs.tamu.edu/housing/iaq/iaq.htm> and click on the link to Mold Mini-Course.

LEGAL NOTICE

STATE OF TEXAS

COUNTY OF HANSFORD

BUDGET HEARING

WHEREAS, the Board of Directors of Hansford County Hospital District have caused to be prepared an annual budget for the fiscal year beginning October 1, 2002, and ending September 30, 2003, Notice is hereby given that a public hearing on said proposed budget will be held on Monday, August 19, 2002, at 6:15 p.m. in the Board Room of Hansford Hospital, 707 Roland, Spearman, Hansford County, Texas.

Steve L. Hartgraves,
CEO/Administrator

Notice of Public Hearing on Tax Increase

The HANSFORD COUNTY HOSPITAL DISTRICT will hold a public hearing on a proposal to increase total tax revenues from properties on the tax roll in the preceding year by 7.9770 percent. Your individual taxes may increase at a greater or lesser rate, or even decrease, depending on the change in the taxable value of your property in relation to the change in taxable value of all other property and the tax rate that is adopted.

The public hearing will be held on August 19, 2002, at 5:30 p.m. at HANSFORD HOSPITAL BOARD ROOM, 707 S. ROLAND, SPEARMAN TX.

FOR the proposal: Helen Holt, Pat Irwin, Val Winger, Randy Reid, S. Randall Sauer

AGAINST the proposal: None

PRESENT and not voting: None

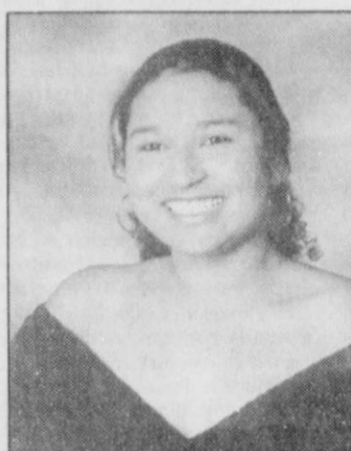
ABSENT: Ginger Pittman

The following table compares taxes on an average home in this taxing unit last year to taxes proposed on the average home this year. Again, your individual taxes may be higher or lower, depending on the taxable value of your property.

	Last Year	This Year
Average residence homestead value	\$38,923	\$39,004
General exemptions available (amount available on the average homestead, not including senior citizen's or disabled person's exemptions)	\$7,785	\$7,800
Average taxable value	\$31,138	\$31,204
Tax rate (per \$100)	0.32360	0.34720
Tax	\$100.76	\$108.34

Under this proposal, taxes on the average homestead would increase by \$7.58 or 7.52 percent compared with last year's taxes. Comparing tax rates without adjusting for changes in property value, the tax rate would increase by \$0.0236 per \$100 of taxable value or 7.29 percent compared to last year's tax rate. These tax rate figures are not adjusted for changes in the taxable value of property.

SHS Spring 2002 Students of the Month



Laura Camacho is Spearman High's February Student of the Month.

A 2002 graduate, Camacho was listed on the all A or all A and one B honor roll for four years, and has received the English award, the advanced word processing award, and the integrated physics and chemistry award.

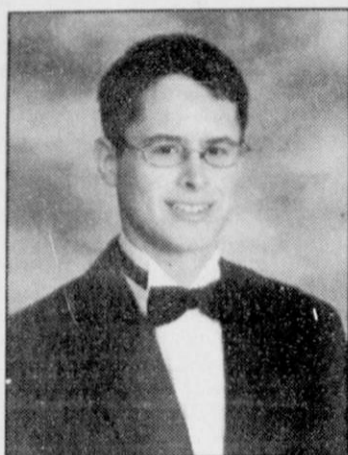
A member of the National Honor Society for three years, Camacho served as an office aide during the school year.

The daughter of Artemio and Araceli Camacho, Laura will attend West Texas A&M University in the fall and major in nursing.

She lists Mrs. Whitefield as her most influential teacher.

He was a candidate for Homecoming King, a member of the regional-qualifying golf team, and was on the honor roll for the first, second and third six weeks of the 2001-2002 school year.

Beady plans to attend Texas A&M University and major in International Communications to become a multilingual diplomat for the United States. He cites Mrs. Harbour as his most influential teacher.



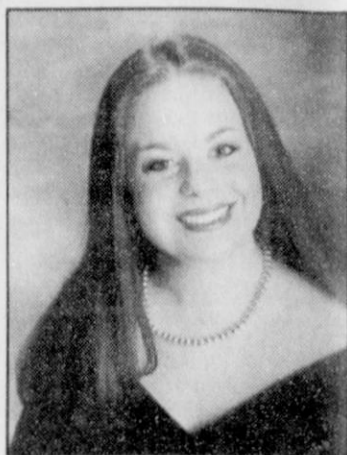
Steven Haney, a 2002 graduate of Spearman High School, has been named the March student of the month.

The son of Marty and Sandy Haney, Steven has participated in band for three years, in FFA for two years, and Land Judging for one year.

He received the English II AP award and the World Geography award.

He is a three-year member of the National Honor Society and a drummer for the Spearman Union Church.

He plans to attend the Apostolic Faith Bible College in Baxter Springs, Kansas. His most influential teacher was Mr. Orr.



Tashi Schumann is the March Student of the Month at Spearman High.

The daughter of Craig and Denise Schumann, she served as cheerleader for three years, was a Homecoming Queen candidate, and was voted Best Personality.

She competed in basketball for two years, golf for two years, FFA for two years, and UIL for two years.

Winning awards in One-Act play competition in which she has been involved for four years, Tashi has been involved in community theater at the Panhandle Diner.

The Miss Teen Hansford 1998, she is a certified EMT-Basic and has been listed on the all A and one B honor roll.

She will attend Amarillo College enroute to becoming an EMT-Intermediate and then attending paramedic school.

She will major in Pre-Physical Therapy and later attend Physical Therapy school. Mrs. James was listed as her most influential teacher.

The daughter of James and Debbie George, Sarah has been a member of FCCLA for three years and band for three years.

She competed in five-states band competition, won awards in English and FCCLA, and has been listed on the honor roll.

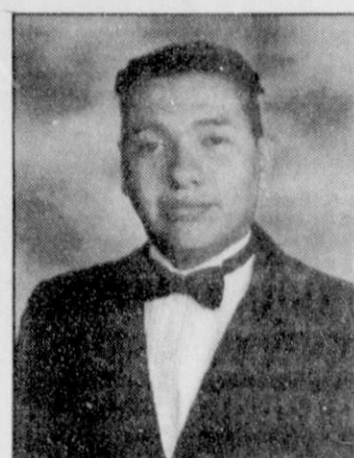
She plans to enter the Army for four years, and then to attend college to become a child psychologist. Mrs. Whitefield was named as her most influential teacher.



Monica Cantu, the daughter of Ramon and Debbie Cantu, is the Spearman High May student of the Month.

The 2002 graduate of Spearman High is a three-year member of the National Honor Society and an active member of the First Baptist Church Youth Group. She served as a teacher's aide for the first grade this year and has worked for two years at Cate's Mens and Boys Wear.

She will attend West Texas A&M this fall majoring in psychology and minoring in Spanish. She hopes to establish a private practice in counseling families and individuals. Her most influential teacher is Sandee Smith.

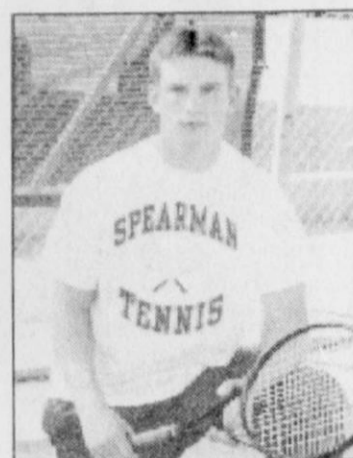


Hector Diaz, the son of Hector and Julie Diaz, is the April student of the month at Spearman High School.

The 2002 graduate participated in football for three years, in band for three years, and in ag for two years.

The two-year member of FCCLA was an office aide for two years.

Diaz plans to attend Frank Phillips and then attend West Texas A&M University to major in education. He lists Mr. McGaha and Mrs. Kidder.



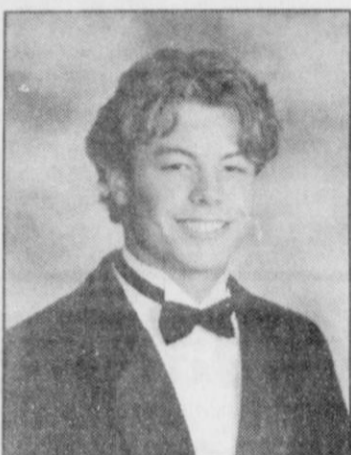
Kevin Beedy, who will be a senior at Spearman High School, is the May Student of the Month.

The son of Scott and Becky Beedy, Kevin is a member of National Honor Society, student council, and served as a class officer.

He and his partner Adam Cherry are the Class 2A Doubles Tennis Champs. He was also the class 2A state tennis singles champ in 2001, and was the state runner-up in singles his freshman year.

Beedy is a three-year letterman in football and a two year letterman in basketball.

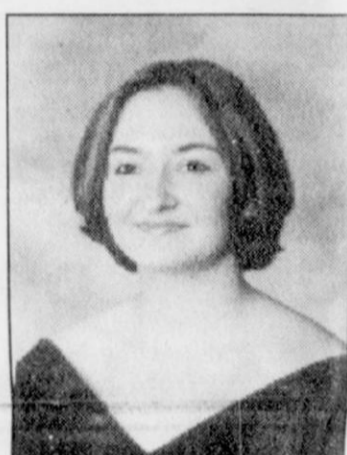
He plans to attend college after graduation and become a CPA. His most influential teacher is Coach Lamb.



Tanner Beedy, the son of Jeff and Shelly Beedy, is the February Student of the Month at Spearman High School.

A 2002 graduate, Beedy was named second team linebacker, honorable mention receiver for the 2001 football season, and academic all district and all state in football and basketball.

MARY KAY
Beauty Consultant
Leann Gillaspie
659-3889
America's best selling brand



Sarah George has been named the Spearman High April Student of the Month.

See us for:
AUTO • HOME • CROP HAIL •
FARM & RANCH • MULTIPERIL •
LIVESTOCK
INSURANCE
BORT AGENCY, INC.
510 Main St. • Gruver, TX
(806) 733-2456

This could be you. Today!
Port Aransas
MUSTANG ISLAND
Texas-Island Style
1-800-45-COAST • www.portaransas.org

Antalek Independent Services
Check out our website!
www.antden.com
Celebrating Spearman and our community!
Antden Online Services
Providing FAST Wireless Internet Service to Hansford County
(806) 659-2045
The Fastest ISP in Hansford County!

GOT YOUR EARS ON?
CFI NOW HIRING:
* Company
* Solo & Teams!
* Owner Operators
* Loads With Miles Available Immediately!
*ASK ABOUT OUR SPOUSE-TRAINING PROGRAM.
1-800-CFI-DRIVE www.cfidrive.com

Medical & Death Cases NO FEE FOR FIRST VISIT
Medical mistakes can cause severe injuries, and sometimes even death. Because of medical complexities and provider unity, neglect may hide without professional insight. Call us.
Ryan A. Krebs, MD, JD
Doctor-Lawyer in full time Law Practice
Richard A. Dodd, L.C.
Timothy R. Cappolino, P.C.
Board Certified Personal Injury Trial Law & Civil Trial Law, Texas Board of Legal Specialization
1-800-460-0606
www.medicalnegligencelaw.com

FEN-PHEN Pondimin & Redux
LAW SUIT FILING DEADLINES RUNNING SOON!
HEART PALPITATIONS, RACING HEART, SWELLING IN FEET & ANKLES, SHORTNESS OF BREATH, FATIGUE
If you took these diet drugs for 2 months or longer AND you are having any of these symptoms, then call for a FREE CONFIDENTIAL CONSULTATION. If eligible, a FREE ECHOCARDIOGRAPHIC TEST (non-invasive) will be set up for you and your test results will be kept confidential.
WILLIS LAW FIRM BOARD CERTIFIED
DAVID P. WILLIS Attorney at Law PERSONAL INJURY TRIAL LAWYER
Houston, Texas
Call 1-800-883-9858 or 713-654-4040

GET A **\$400** WARN WINCH OR PLOW for just \$69.95
Grizzly 660
PLUS
0.0% INTEREST 0 DOWN AND 0 PAYMENTS FOR 6 MONTHS
Five Star Equipment, Inc.

Spearman, TX 659-3743
2000 lb. Warn Winch/Plow offer available through participating Yamaha dealers only. June 14, 2002 - Dec. 31, 2002. Offer good on all new 2002 (or new prior year) Grizzly 660, Kodiak 450, Kodiak 400 4wd/2wd, Big Bear 400 4wd/2wd. Dealer participation may affect this offer. Installation not included. Finance offer available through participating Yamaha dealers only. July 1, 2002 - Dec. 31, 2002. Good on any 2002 (or new prior year) Yamaha ATV. On the Yamaha card, subject to credit approval. Finance charges will not be imposed on this purchase and payments will not be required during the 6 months promotional period if your account is kept current. Standard Rate 17.9% APR. For accounts not kept current, the Default rate 21.9% APR will be applied to all balances. Minimum finance charge \$1.00. For the Yamaha dealer nearest you call: 1-800-88-YAMAHA. Visit our website at www.yamaha-motor.com
ATVs with engine sizes of 90cc or greater are recommended for use only by those age 16 and older. Yamaha recommends that all ATV riders take an approved training course. For safety and training information, see your dealer or call the ATV Safety Institute at 1-800-887-2887.

Spearman Chamber of Commerce
Annual 3 Person Scramble
Saturday, August 10th
Calcutta following 1st round
Sunday, August 11th
Hansford County Golf Course
\$45 per person plus cart
#7 Hole in 1 Prize
4 FOUR WHEELERS FROM FIVE STAR EQUIPMENT
Additional Hole in 1 prizes include
*Set of Wilson Staff Irons
*Vacation Package
*DVD CD Player
(Hole in 1 Prizes Saturday Only)
Call Charlie @ 659-2233 Call Justin @ 659-3875 Call Gina @ 659-5555 for details, registration, or to reserve your carts (# of carts ltd.)

THE REBIRTH OF 'TEXAS FIRST'
SHAKESPEARE FESTIVAL
★ODESSA, TEXAS★
FAMOUS GLOBE THEATRE
AUGUST 29 THROUGH SEPTEMBER 8
CALL 915-580-3177 FOR RESERVATIONS
ONLINE @ WWW.GLOBESW.ORG

Health Benefits For The Entire Family
only **\$74** Per Month (With No Deductible)
FLAT RATE - GUARANTEED ACCEPTANCE!
SELF-EMPLOYED OR NOT - NO INCREASE!
MEDICAL DISCOUNTS:
* DOCTOR * DENTAL * VISION * RX & MORE!
Call Toll-Free: 1-888-829-8509

CLASSIFIED ADS

CALL TODAY!
(806) 659-3434

REAL ESTATE FOR SALE

PRICE REDUCED: 3BR house with basement, garage and shop on 10.5 acres. Located 1 1/2 miles west of Gruver. Call 733-2250. (8-8-02)B

FOR SALE: 3BR, 1 1/2B, 1CG, large kitchen/utility room, wood-burning stove, Central H/A, sprinkler system, storage building w/office, fenced yard. Great location - excellent condition. Call 659-2628. TFN(7-18-02)B

FOR SALE: 3BR, 2B home on 5 acres of land in Gruver School District. Storm shelter, mature trees, 2-car garage, new roof, septic system, two water heaters, house well pump. Call 662-3968. (8-1-02)B

FOR SALE BY OWNER: 3BR, 1 1/2B home w/finished basement and large living area. Fenced backyard, sprinkler system, double car garage, carport. Call 659-3477 for appointment.

FOR SALE: 3BR, 2B home, 2,000+ sq. ft. new central H/A, roof, new siding, 201 Van Kurt, Gruver. Call after 6 p.m. 468-1778 or David Bergin at 435-4071. TFN(8-8-02)B

NEED MORE ROOM? 4BR, 1 1/2B, 2 living areas w/freestanding fireplaces. Great backyard, corner lot in good neighborhood. Call Blankenship Real Estate at 659-3052. TFN(8-8-02)B

FOR RENT/LEASE

FOR RENT: 1BR apartment. Call 659-5519. TFN(8-8-02)B

FOR RENT: 1BR apartment. Call 659-3260. TFN(8-8-02)B

FOR RENT: 2BR apartment. Call 659-9971. TFN(8-8-02)B

HELP WANTED

HELP WANTED: Immediate opening for Custodial Substitute. Involves cleaning gyms and cafeteria at Junior High campus. Heavy lifting and physical labor required. Could turn into full-time job. Apply in person at Spearman ISD Business Office, 403 11th Street. TFN(8-8-02)B

TAKING ORDERS NOW

for Colorado Sweet Corn Peaches and Nectarines. Call 659-3816 or 659-2786, 6(7-11-02)B



MARTIN & ASSOCIATES REALTY

Hansford County's ONLY locally owned and operated Realty.

Julie Martin: Broker - 659-2425
Kym Williams: Assoc. - 733-5163

NEW LISTING

708 Gibner - 3/1 1/2, hardwood floors!
706 Collier - 3/1 1/2, shop in back
235 S. Snider - 2+1 w/basement

IN SPEARMAN

716 Townsend - 2-Story, 4BR, 2 1/2B
18 S. James - 3+1 1/2B, basement
905 Wilmet Dr. - Call for details
1010 Haneey - 4/1, fireplace
105 Wanda - UNDER CONTRACT!
217 Barkley - UNDER CONTRACT!

IN GRUVER

306 Garrett - 3/2, basement, 1902 sq. ft.

We'd Like Your Listing FOR QUALITY & SERVICE CALL US TODAY!
Equal Housing Opportunity

RR

Real Estate & Rental

Spearman Property
19 N. Hoskins - 2BR, 2B, Carport
702 E. Bernice - 3BR, 1B, 1CT

Gruver Property

- 809 Richardson - 2-3BR, 2B, carport, ready to move in
 - 202 Richardson - 2-3BR, 1 1/2B, 2 car garage, utility, sun room
 - 514 Cluck - 2-3BR, 1 1/2B, carport, brick, fruit trees, corner lot
 - 802 Womble - 2-3BR, carport, corner lot
 - 311 Chase - 2-3BR, 1B, carport & garage
 - 120 N Cooper - 4BR, 2 1/2B, 2CG, deck, sunroom - REDUCED
 - 115 N Cliff - Harris Edition
- Rural Property**
12 mi E on 759, City Rd 5 - 3B, 2B, w/acres
- Rental Property**
available in Gruver

Real Estate & Rental for all your real estate needs!
Melinda McCullough, Assoc. (806) 733-5678
Dawn Brown, Assoc. (806) 274-3568
Chris Scroggs, Broker Toll Free: 1-877-664-5050
www.realestateandrental.com

SERVICES

HOUSE SETTLING? Cracks in brick or walls? Doors won't close? Call Childers Brothers Stabilizing & Foundation Leveling 1-800-299-9563 or 806-352-9563 Amarillo, TX.

WANTED: Silage Harvesting and hauling. JD 6810 and 6950, 6-row kempers. 8870 push tractor available. Kevin Sallabedra, Stafford, KS, (620) 727-1968 or (620) 234-5511.

4(8-8-02)B

VEHICLES

FOR SALE: 1999 Suburban - 40,000 miles. Contact Ric or Sandee at 659-5041. TFN(8-8-02)B

FOR SALE

FOR SALE: Wolfe 24-bulb tanning bed - \$800. Call 733-2809. 3(7-25-02)B

FOR SALE: Clarinet - good condition - 2 years old. Call 659-2365 or 659-2617. 1(8-8-02)B

WANTED

WANTED: Two cute kittens for good home. Call 753-4423.

GARAGE SALE

3-FAMILY GARAGE SALE: 1104 Bernice, Fri. Aug. 9th, 5-7 p.m.; Sat., Aug. 10th, 9 a.m.-12 noon. Patio table set, double oven, trumpet, stereo, baby clothes, bikes, misc. 1(8-8-02)B

GARAGE SALE: 1004 Bernice, Sat., Aug. 10th, 8 a.m.-2. Large upright freezer, good 19" TV, household items. In Morse - refrigerator, nice dinette, large dresser, electric stove, portable dishwasher, twin bed. 1(8-8-02)B

New Ladies & Children's Clothing & Shoes from Lady Fair & Kid's Stuff (values to \$100, all under \$15) Sat., Aug 10 Sat., Aug 24 9 a.m.-4 p.m. Old Video Hut Bld., next to Lowe's

Hansford County, TX - 210 Acres divided by Hwy. 207, two irrigation wells and U.G. pipe, nice farm

Moore, Texas - 1388 acres, two 1/2 mile sprinklers, 6 irr wells, fully fenced w/barbed wire & steel post, good help house, 3 mi. hwy. frontage.

www.scottlandcompany.com
Ben G. Scott - Broker
1-800-933-9698 - day/night

LEGAL NOTICE

NOTICE TO BIDDERS
Sealed proposals for a one year contract for bulk fuel will be received by the City of Spearman, Texas, until 11:00 a.m., August 16, 2002, and then publicly opened and read.

The City reserves the right to reject any or all bids, to waive informalities and to accept the bid deemed to be the most advantageous to the City. All bids received after the above closing hour will be returned unopened.

All bids shall be sealed and marked on the outer envelope "Bulk Fuel."

Specifications and bidding documents may be secured from PO Box 37, Spearman, Texas 79081. 2(8-1-02)B

NOTICE TO ALL PERSONS HAVING CLAIMS AGAINST THE ESTATE OF THOMAS LEE SPIVEY, DECEASED

Notice is hereby given that Original Letters Testamentary for the Estate of THOMAS LEE SPIVEY were issued on the 17th of July, 2002, in Cause No. 2369, pending in the County Court of Hansford County, Texas, to:

Jennifer M. White

The residence of the Agent for such Independent Executrix is in Amarillo, Texas. The post office address is: % Donald Conley, PO Box 1605, Amarillo, Texas 79105.

All persons having claims against this Estate which is currently being administered are required to present them within the time and in the manner prescribed by law.

Dated the 30th day of July, 2002.
Donald Conley
State Bar No. 04664000
Attorney for the Estate
1(8-8-02)B

LEGAL NOTICE

Hansford County County Commissioner's Court will hold a budget hearing at 10 a.m. on August 12, 2002 in the Law Library of the Hansford County Courthouse, Spearman, Texas on a proposed budget for 2003 (October 1, 2002 through September 30, 2003) in the amount of \$2,830,990. The Proposed Budget is on file with the County Clerk for examination.

Jim D. Brown
Hansford County Judge
1(8-8-02)B

Listen to
KRDF-FM - 98.3
Hot Country Stereo
'Till Midnight

NT North Texas Information Systems
Spearman, TX 664-3233
Computer sales, service, & repair.
Networking, house calls, pick up and delivery available.
*References available.

IS *Microsoft Certified Professional
*CompTIA Certified Professional
Member Spearman Chamber of Commerce

E&S Services

Heating • Air-Conditioning
Refrigeration • Restaurant Equipment
(806) 273-5554

We sell and service all major brands.
Installations • Maintenance Contracts
Financing Available • Senior Discount
Local to Hansford County!
Residential, Commercial, Industrial

TACLA017813C

Happy Birthday!

Let them know you care with an arrangement from

Prairie Garden Flowers

209 Main Street • Spearman, TX
659-2212 • 659-3329

Eat & Be Merry At

MOVIE NIGHTS

BBQ & STEAK HOUSE

Hotline for Friday & Saturday Nights - 435-3945

We offer Priority Seating!
Give us a call before leaving, and we will save you a place in the seating line.
When you arrive, check in with the hostess.

New Menu (10 new items)
Wed. Night - All-You-Can-Eat Catfish

14 SE 3rd Ave.
Perryton, TX

PUBLIC NOTICE OF NONDISCRIMINATION IN CAREER & TECHNOLOGY EDUCATION

2002-2003

The Spearman Independent School District offers Career & Technology Education programs in Agricultural Science, Business Education, Technology Education and Marketing Education. Admission to these programs is based on classification of student, age or prerequisites in some programs.

Business Education, Technology Education and Marketing Education. La admisión a estos programas esata basada en la edad y la prebia preparacion del estudiantie en aread relacionadas con los ya mencionados oficios.

Es norma de Spearman ISD no discriminar por motivos de raza, color, origen nacional, sexo o impedimento, en sus programas, sevicios o actividades vocacionales, tat como lo requieren el Titulo VI de la Ley de Deprechos Civiles de 1964, según enmienda; el Titulo IX de Vvas Emmiendas en la Educación, de 1972, y las Seccion 504 de la Ley de Rehabilitacion de 1973, según enmienda.

Es nonna de Speannan ISD no discriminar por motivos de raza, color, origen nacional, sexo, impedimenta o edad, en sus procedimientos de empleo, tat como lo requieren el Titulo VI de la Ley de Derechos Civiles de 1964, según enmienda; el Titulo IX de las Enmiendas en la Educación, de 1972, la ley de Discriminación por Edad, de 1975, según enmienda, y la Sección 504 de la Ley de Rehabilitación de 1973, según enmienda.

Spearman ISD will take steps to assure that lack of English language skills will not be a barrier to admission and participation in all educational and vocational programs.

Spearman ISD tomará las medidas necesarias papa asegurar que la falta de habilidad en el uso de las lengua inglés no sea un obstaculo para la admisión y participación en todos los programas educativos y vocacionales.

Para informacion sobre sus derechos o procedimientos para quejas, comuniquese con el Coordinador del Titulo IX, Bill Wiggins, en 505 S. Townsend, Spearman, Texas 79081, (806) 659-2563, y/o el Coordinador de la Sección 504, Bill Wiggins, en 505 S. Townsend, Spearman, Texas 79081, (806) 659-2563.

El Distrito Independiente de Spearman ofrece programas vocacionales en Agricultural Science.

Gary Stevens
Director, External Affairs

Texas Needs Pro-Investment Broadband Policy

Texas has suffered immensely from the recent technology meltdown. The Texas Workforce Commission recently reported the state lost over 38,000 high-tech jobs in 2001.

Recovery won't happen overnight, but there may be good news ahead. Broadband deployment can be an important catalyst for getting the Texas economy on track. But that won't happen unless the Texas Legislature adopts a state policy encouraging ongoing broadband investment.

Broadband is the technology that makes faster Internet connections possible. With broadband, a Bastrop business can videoconference with Dallas clients. A San Saba entrepreneur can run a distribution business from her home. The possibilities are endless.

Unfortunately, broadband investment isn't happening the way it could. Companies like SBC Southwestern Bell are eager to bring broadband's benefits to customers. While our flagship broadband offering is Digital Subscriber Line (DSL), we partnered with a satellite vendor to ensure greater availability of high-speed Internet access.

Investment has stalled due to Texas' uneven regulations. Cable companies, our chief competitors, operate almost regulation-free, helping them corner almost 70 percent of the high-speed market. Meanwhile, companies offering DSL must comply with rules intended for the traditional telephone business — a disparity that makes DSL more expensive to deploy and an uncertain investment.

The effect of the disparity is DSL isn't being made available to many communities that would otherwise be attractive candidates for new investment.

For more information about high-speed Internet access, please visit www.connecttexas.org

SBC
Southwestern Bell

Gary Stevens
Gary Stevens
Director, External Affairs

Kid's Inc., WTAMU To Host VolleyFest

Kids, Incorporated and WTAMU Lady Buff Volleyball bring the ultimate in outdoor volleyball to Amarillo with the first annual Volleyfest to be held August 23 and 24 at John Stiff Memorial Park - Southwest Park Softball Complex. Registration for the 2002 Volleyfest is scheduled to begin at 5 p.m., Friday, August 23, with games beginning at 7pm. Play will resume on Saturday,

August 24, at 9 a.m. Volleyfest is open to male and female players, both adult and youth. Youth divisions will use a 4 v 4 format (five players maximum on the team, four players and a sub). The adult divisions will use a 3 v 3 format (four players maximum per team, three players and a sub). Teams will be grouped into divisions with teams of similar playing ability, and are guaranteed

a minimum of three (3) games. Each player receives a complimentary Volleyfest t-shirt. Youth divisions include 10 & Under, 12 & Under, 14 & Under, and 16 & Under. Youth must be at least nine (9) years of age on or before August 23, 2002. The registration fee for youth teams is \$120. Adult divisions include men's, women's, and coed. The registration fee for each adult team is \$96. The adult divisions will consist of

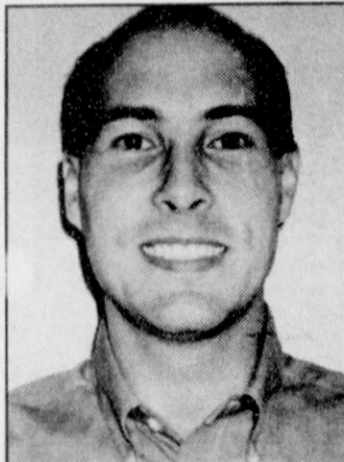
open, competitive and recreational. Male players may play on a team in the coed division and male division. A female player may play in the coed division and female division. Players choosing to do this must play at the same level of play or higher. Players may not be on more than one team in the same division. Prizes will be awarded to players from the 1st and 2nd place teams in each division. Entry forms will be available at

Kids, Incorporated (27th & Osage), WTAMU Fieldhouse, Buck's Sporting Goods and the Kids, Incorporated website at www.kidsinc.org. All proceeds from the 2002 Volleyfest will benefit Kids, Incorporated and WTAMU Lady Buff Volleyball. For more information regarding the 2002 Volleyfest, or to request an entry form, please contact Kids, Incorporated at 376-5936.

Duncan Named VP of Consulting Firm

Steve E. Duncan, a graduate of Gruver High school and the son of Gene and Fran Duncan and grandson of Joyce Duncan, all of Gruver, has been promoted to the vice-presidency of Pledger Kalkomey, Inc., an engineering consulting firm with offices in Brenham, Bryan, and Rosenberg. The firm has been selected and completed the storm water drainage study and grounds landscaping for the Bush Family Burial area at the George Bush Library in College Station and is also providing civil design services for the utility improvements in the University Ranch/Traditions Golf Course project in the city of Bryan. A resident of College Station, Duncan and his wife, Dr. Kathy Duncan, have two children. He is active in the Bryan Noon Lions Club

and is a deacon of Parkway Baptist Church and is involved in numerous other civic activities.



Dr. Rick Sheppard, D.D.S.

1-800-687-2010

•Family Dentistry •Braces

146 Pioneer • Booker, TX

TEETH FOR A LIFETIME

Panhandle Diner & Deli

217 Main Street • 659-3864 • Spearman, TX

Join Us Every Friday For

Hap-Pie Hour

Biti Pies & Cakes- 2 for \$5⁰⁰
4:00-6:00 p.m. (beginning July 11th)

It's A Pity Not To Buy A Biti!

New Summer Hours:

Monday, Tuesday & Wednesday: 8 a.m.-2 p.m.

Thursday & Friday: 8 a.m.-8 p.m.

Saturday: 8 a.m.-2 p.m.; Sunday: 11 a.m.-2 p.m.

CLOSED Sunday, August 11th

KID'S STUFF
719 WEST 7TH
SPEARMAN, TX

FRIDAY
AUG. 16

PHOTO HOURS
10-1 & 2-5

\$ 12⁹⁹

plus tax
due at pick-up
1 - 10X13
1 - 8X10 \$1.99 sitting fee
2 - 5X7s per person
2 - 3X5s
16 King Size Wallets
8 Regular Size Wallets



WE USE KODAK PAPER, FILM & CHEMISTRY

NOTICE OF PUBLIC MEETING TO DISCUSS BUDGET AND PROPOSED TAX RATE

The Spearman ISD will hold a public meeting at 7:00 PM, August 12, 2002 in the high school library located at 403 East Eleventh Street in Spearman, Texas.

The purpose of this meeting is to discuss the school district's budget that will determine the tax rate that will be adopted. Public participation in the discussion is invited.

The tax rate that is ultimately adopted at this meeting or at a separate meeting at a later date may not exceed the proposed rate shown below unless the district publishes a revised notice containing the same information and comparisons set out below and holds another public meeting to discuss the revised notice.

Comparison of Proposed Rates with Last Year's Rates

	Maintenance & Operations	Interest & Sinking Fund*	Total	Local Revenue Per Student	State Revenue Per Student
Last Year's Rate	\$1.2604	\$0.0742	* \$1.3346	\$4,926	\$3,833
Rate to Maintain Same Level of Maintenance & Operations Revenue & Pay Debt Service	\$1.7328	\$0.0009	* \$1.7337	\$6,494	\$2,300
Proposed Rate	\$1.5000	\$0.0875	* \$1.5875	\$4,719	\$2,166

* The Interest & Sinking Fund tax revenue is used to pay for bonded indebtedness on construction, equipment, or both. The bonds, and the tax rate necessary to pay those bonds, were approved by the voters of this district.

Comparison of Proposed Levy with Last Year's Levy on Average Residence

	Last Year	This Year
Average Market Value of Residences	\$36,963	\$36,981
Average Taxable Value of Residences	\$21,963	\$21,981
Last Year's Rate Versus Proposed Rate per \$100 Value	\$1.3346	\$1.5875
Taxes Due on Average Residence	\$293.12	\$348.95
Increase (Decrease) in Taxes		\$55.83

Under state law, the dollar amount of school taxes imposed on the residence homestead of a person 65 years of age or older or of the surviving spouse of such a person, if the surviving spouse was 55 years of age or older when the person died, may not be increased above the amount paid in the first year after the person turned 65, regardless of changes in tax rate or property value.

Notice of Rollback Rate: The highest tax rate the district can adopt before requiring voter approval at an election is \$1.9048. This election will be automatically held if the district adopts a rate in excess of the rollback rate of \$1.9048.

Fund Balances

The following estimated balances will remain at the end of the current fiscal year and are not encumbered with or by a corresponding debt obligation, less estimated funds necessary for operating the district before receipt of the first state aid payment:

Maintenance and Operations Fund Balance(s)	\$1,364,462
Interest & Sinking Fund Balance(s)	\$0

Back-to-School SAVINGS

Our system is now digital with Amarillo included in Home Area! Stop by and upgrade your plan!
Analogue phones will be charged roaming in Amarillo. Analogue Partner Plans Still Available

Simplicity. Choice. Value. Call On Someone You Know

Take Us Along with one of our All New Plans

- \$45* 3950 Minutes Per Month National Plan
- \$20* Partner Plans Available
- \$40* 4300 Minutes Per Month Local Plan
- \$35* 3900 Min. Per Month Western Advantage Plan
- \$30* 3850 Min. Per Month Local Plan

FREE Voice Mail Incoming Text Messaging on ALL plans

FREE 120 Motorola or 9100 Audiovox with any plan \$40 or more

CELLULARONE®

Authorized Dealer
Clear Across America

See us Today!
Country Cellular Communications
We do contract renewals

Highway 207 S.
Spearman, TX 79081
(806) 659-2541
1-800-692-4657

Check Out Our Cellular Phone Accessories