

Hansford County Library  
120 Main  
Spearman, Tx 79081-2064

INSIDE

Columns ..... 2  
Family reunions..... 5  
Sports ..... 8,9  
Classifieds ..... 11  
Obituary ..... 12

# The Hansford County Reporter-Statesman

Serving All of Hansford County

12 pages

WEATHER			
Day	Hi	Lo	Precip
Wed	67	62	0.00
Thu	79	61	0.00
Fri	80	59	0.00
Sat	89	64	0.00
Sun	94	65	0.00
Mon	94	63	0.00
Tue	96	65	0.00
Precip to date			12.45

Vol. 83, No. 40

213 Main

Spearman, Hansford County, Texas

25°

Thursday, August 1, 1991

1991-92 budget . . .

## GISD board sets hearings

The Gruver School Board will hold public hearings on its proposed \$3,167,250 budget for the 1991-92 school year on Wednesday, Aug. 7 at 1 p.m. at Gruver High School.

According to Tom Cathey, GISD superintendent, this budget is 1.4 percent higher than last year's. "We dipped into our reserve funds for \$60,000 last year," Cathey said. "We are not going into that fund balance again this year," he added.

Cathey said most of the increase in the budget resulted from state mandated teacher and administrator raises. As an example he mentioned that all but a couple of the teachers in the school system would receive a \$1,100 step raise.

Cathey reports the budget could have been higher. During budget workshops in July, the board made several cuts in the budget prepared by Cathey and his staff. The biggest single cut came in personnel salaries.

The board cut \$26,000 out of the budget by eliminating a kindergarten teaching position. Cathey said that enrollment figures

indicate there will be only 30 kindergarten students in school this year. By cutting the teaching staff from three to two, the district saved that salary and still maintained an acceptable pupil-teacher ratio. "If kindergarten enrollment jumps to 40, I will beat the door down to get that teacher back," said Cathey.

The next biggest cut came in the building and maintenance budget. A total of \$17,000 was cut out of this part of the budget. Miscellaneous construction and improvements and plant maintenance each lost \$8,500.

The total co-curricular activities budget was cut by \$13,000. These activities include UIL academic and sports competitions.

The board reduced the amount budgeted to take students to UIL competitions above district level from \$10,000 to \$3,000. Cathey said he expects to have to ask for more money for that part of the budget later on. "I feel like our kids are going to do real good this year in UIL competition," he explained.

The coaches' training budget was

cut by two-thirds. According to Cathey, because of the cut the coaches will be able to go to only one coaches' clinic.

Instructional supplies was cut by \$6,800. These include paper supplies, repairs to equipment, and \$400 to purchase additional equipment.

Other areas to suffer cuts included \$5,500 from the superintendent's office and board expenses, \$3,000 from transportation, and \$200 from library services.

According to Cathey, if this budget is adopted by the board on Wednesday and the county education district tax rate is set at \$.73 per \$100 valuation, then the overall school tax rate in Gruver will have to be as high as \$1.02 per \$100 valuation to fund this budget for the school year. Cathey said he can not be definite about what the tax rate may be because he is not sure how much money the district will receive from the CED or the state.

Cathey said he expects to have a public hearing to set the tax rate in late August or early September.



Winners in the Hansford County Farm Bureau Queen Contest are (l-r) Kyla Nelson, second runner up; Billie Jo Moore, Queen, and Amy Gumfory, first runner up. These girls were the top three of seven contestants who competed Monday, July 29.

## SISD 1990-91 budget compared with others

AUSTIN - Last year trustees in the 1,047 Texas school districts voted a billion dollar increase in school budgets. Local school property taxes were increased by a half a billion dollars. School budgets totaled \$15.3 billion expended for the 3,377,223 children enrolled last October, for an average of \$4,524 per pupil.

The figures come from the latest issue of "Bench Marks 1990-91 School District Budgets in Texas," an annual publication of the Texas Research League, an Austin-based, educational corporation engaged in governmental research.

An average of \$3,775 per student for current operations was budgeted last year plus \$316 for repayment of debt and \$433 per student for capital outlay.

Spearman ISD's budget provided \$4,067.70 per student for current operations, \$263.79 for debt service, and \$28.32 per student for capital outlay based on the 864 students enrolled in October 1990.

The average base salary for classroom teachers paid by Spearman ISD in October 1990 was \$27,433 plus supplements for the career ladder. The average for administrators was \$45,076, and \$31,669 for other professional support employees (librarians, counselors, nurses, supervisors, etc.).

Four dollars in each five were spent for salaries. Statewide payroll expense averaged \$3,067 per student, as compared to \$3,222.62 in Spearman ISD. Payroll expense is determined by salary levels and staffing patterns.

Taxpayers provided one teacher

for 13.8 students in Spearman ISD while the statewide pupil-teacher ratio was 16.4 to one.

The average school district imposed a property tax at the rate of \$1.088 per \$100 of appraised value, which value averaged 98.0% of market value (selling price). The "true tax rate" was \$1.066 (\$1.088 times 98.0%) statewide. Locally, the Spearman ISD imposed a rate of \$.963 while property was appraised at 104.2% of its market value making the true rate \$1.003 per \$100 of market value (selling price).

The report points out that the calculation of a true tax rate based on market value rather than on appraised value is necessary to make a valid comparison of tax levels with other schools.

The tax on a house that would sell for \$80,000 in Spearman ISD would have been \$866. If the homeowner were eligible for homestead exemptions, the tax would have been \$509, and if owned by a person 65 years or older, the tax on an \$80,000 house in this district would have averaged \$412, or less if subject to a tax freeze. That compares with statewide tax bills of \$871, \$771 and \$586 respectively for an \$80,000 house.

Last year Spearman ISD's revenue from the property tax increased by 3.3 percent for 1990-91 as compared to a 8.7 percent increase statewide. Local property taxes plus state aid totaled \$3,949 per student in Spearman ISD as compared to \$3,661 statewide.

Under the new school finance system, the state and the new county education districts will fund the total

cost of the foundation program, which averaged \$2,458 per student last year and was \$2,726 in Spearman ISD. Local school districts can levy property taxes to enrich the foundation program. Enrichment last year

averaged \$95 per pupil to which the state added an average of \$207 per student to guarantee the tax yield in property-poor districts. Enrichment by the Spearman ISD was \$1,223; the state guarantee added no money.

## Accident victim is listed as critical

Bill Thiele of Gruver was in critical condition on Wednesday, July 31 in Northwest Texas Hospital's intensive care unit, with head injuries resulting from a July 24 accident at the Northern Natural Gas plant southeast of Spearman.

Hansford County EMS Director Michele Davis, one of the EMS personnel who first treated Thiele, said it was a miracle he survived the accident. "It was the worst injuries that I have ever seen a person survive," said Davis. She described his injuries as "severe cuts to the scalp and lower head area."

Donna Johnston, director of critical care and hospital supervisor

at Northwest Texas Hospital, reported Wednesday morning that Thiele was still in intensive care and on life support. She said he is responding as best he can, and that his condition looks pretty good, now. "He is stable but still critical," said Johnston.

As of press time, Northern Natural Gas plant officials had not given a statement regarding the accident. Davis said that the EMS unit was called to the plant at 2:02 p.m. last Wednesday. She said it was her understanding that Thiele's injuries were caused by a large ventilation fan on the plant grounds.



Kyla Nelson (left) was selected as the talent winner at the Hansford County Farm Bureau Talent Find Contest. Clint Patterson (right) was first runner up.

## Last year's GISD budget outlined

Gruver ISD's budget provided \$5,248.34 per student for current operations, \$383.35 for debt service, and \$193.20 per student for capital outlay based on the 533 students

enrolled in October 1990. The average base salary for classroom teachers paid by Gruver ISD in October 1990 was \$27,148 plus supplements for the career ladder. The average for administrators was \$42,340 and \$30,111 for other professional support employees (librarians, counselors, nurses, supervisors, etc.).

Four dollars in each five were spent for salaries. Statewide payroll expense averaged \$3,067 per student, as compared to \$3,946.21 in Gruver ISD. Payroll expense is determined by salary levels and staffing patterns.

Taxpayers provided one teacher for 11.3 students in Gruver ISD while the statewide pupil-teacher ratio was 16.4 to one. Because of the existence of small classes, especially at the high-school level, and abbreviated teaching schedules, many classes have more than the average number of students.

The average school district imposed a property tax at the rate of \$1.088 per \$100 of appraised value, which value averaged 98.0 percent of market value (selling price). The "true tax rate" was \$1.066 (\$1.088 times 98.0 percent) statewide. Locally, the Gruver ISD imposed a rate of \$.945 while property was appraised at 104.9 percent of its market value making the true rate \$0.992 per \$100 of market value (selling price).

The report points out that the calculation of a true tax rate based

See GISD page 12

## Budget figures for P-MCISD listed

Pringle-Morse CISD's budget provided \$10,379.64 per student for current operations, none for debt service, and \$983.99 per student for capital outlay based on the 81 students enrolled in October 1990. In 1990-91, Pringle-Morse CISD was a "budget balanced" district.

The average base salary for classroom teachers paid by Pringle-Morse CISD in October 1990 was \$26,019 plus supplements for the career ladder. The average for administrators was \$49,000, and \$30,111 for other professional support employees (librarians, counselors,

nurses, supervisors, etc.) Four dollars in each five were spent for salaries. Statewide payroll expense averaged \$3,067 per student, as compared to \$6,581.42 in Pringle-Morse CISD. Payroll expense is determined by salary levels and staffing patterns.

Taxpayers provided one teacher for 6.8 students in Pringle-Morse CISD while the statewide pupil-teacher ratio was 16.4 to one.

The average school district imposed a property tax at the rate of \$1.088

See Morse page 12

## Auditions scheduled

The Palo Duro Players will hold auditions this month for two productions to be presented in September.

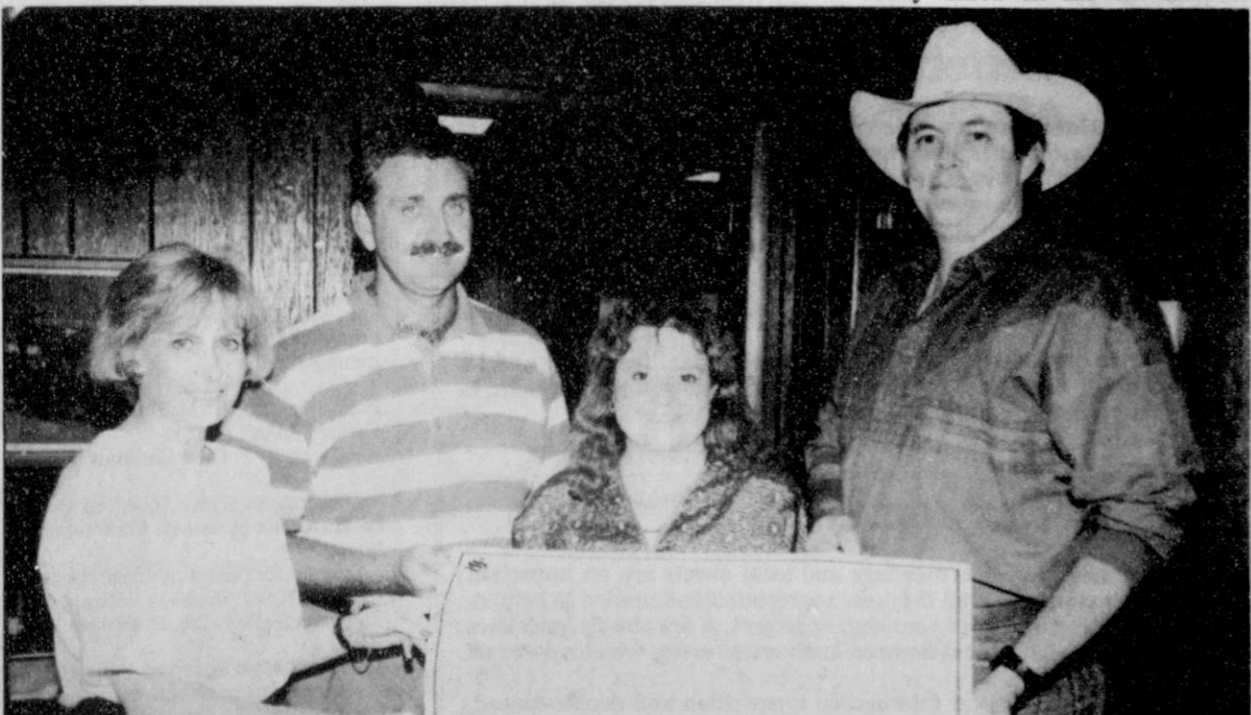
On Thursday, Aug. 8, auditions will be held for all junior high and high school students in Hansford County, for the musical "Grease." On Aug. 17 and Aug. 24, auditions will be held for anyone interested in acting in short plays to be presented as part of the variety show at the Hansford County Fair.

The auditions for "Grease" will be held at the Spearman High School auditorium from 7 to 9 p.m. Interested students should come prepared to sing, act and dance at the audition. It is recommended by the director, Linda Butt, that the

auditioner have a song already prepared to sing.

"Grease" is a rock and roll musical that tells the story of a group of students in their last year of high school at mythical Rydell High. The time frame and the music of the show is all set in the 1950s rock and roll style.

The auditions for the county fair variety show will be held in Gruver and Spearman. The Gruver audition will take place at the Gruver High School auditorium on Saturday, Aug. 17, starting at 7:30 p.m. The Spearman audition will be on Saturday, Aug. 24, at the Spearman Chamber of Commerce office. There are plenty of parts, according to Mike Hulett, assistant director.



Cindy Blackman (left), Spearman Chamber of Commerce director, and chamber president Lenis Simpson present a check to Cindy and Craig Clyburn. The check represents the \$10,000 grand prize won by the Clyburns when their ticket was the last one drawn Saturday at the \$10,000 Bash in Spearman. Other winners in-

cluded Jim Turner, Freddy Shieldknight and Bill Pittman, who each won \$100. Two groups of four people split \$100. They were Denise Nelson, Bob Smith, Randy Kirk, Burt Sheppard, Joey Woolley, Reagan Baker and Scot Martin. A \$400 travel voucher was won by Holly Simpson.

## Hansford Happenings

Athletics physicals for Spearman 7th and 9th grade students have been set. Physicals for freshmen are set for Tuesday and Wednesday, Aug. 6 and 7, at 9 a.m. each day. Physicals for 7th graders will be conducted Tuesday and Wednesday, Aug. 13 and 14, at 9 a.m. each day. Forms for the physicals are available at Dr. Ridge's office.

Congressman Bill Sarpalius has scheduled a town hall meeting for Monday, Aug. 12 at 11 a.m. at the Hansford County Courthouse.

Shoes and socks will be issued to Spearman football players on Wednesday, Aug. 7. Juniors and seniors are scheduled for 9 a.m. to noon. Sophomores and freshmen are scheduled for 2 p.m. to 5 p.m. Two-a-days will begin Monday, Aug. 12 at 9 a.m.

SWPS Kid's Cookin' School will be held Tuesday, Aug. 6 at 2 p.m. in the LaCasita Room of the Gruver State Bank. Reservations can be made by calling the Hansford County Extension Office at 659-2030 or 733-2901, or Southwestern Public Service Company at 733-2333 by Aug. 5.

Registration for Gruver High School students has been set. Seniors will register Monday, Aug. 12 from 1 to 4 p.m. Juniors will register Tuesday, Aug. 13 from 1 to 4 p.m. Sophomores will register Wednesday, Aug. 14 from 1 to 4 p.m. Freshmen will register Thursday, Aug. 15 from 1 to 4 p.m. All high school students new to the district will register Friday, Aug. 16 from 1 to 4 p.m. New students to the district should bring a copy of their birth certificates, immunization records, and their social security numbers with them to registration. Registration will be conducted in the high school office at 600 Garrett St. in Gruver.

Athletics physicals for Gruver school students are scheduled for Aug. 7 and 8. Boys' physicals will be conducted Wednesday, Aug. 7 from 1 to 5 p.m. at Dr. Behney's office in Spearman. Girls' physicals will be conducted Thursday, Aug. 8 from 1 to 5 p.m. at Dr. Behney's office in Spearman. Transportation will be furnished. A bus will leave the school at 12:30 p.m. each day. Physicals are free of charge.

Commodities will be distributed to those eligible on Wednesday, Aug. 21 at the county barn in Spearman. No new applications will be taken on that date.

The Spanish Dagger Gallery, 433 Main, Gruver, will show paintings by Ruth and Nathan Hanson from Aug. 1-15. A reception in their honor is planned for Sunday, Aug. 4 from 2 to 5 p.m. at the gallery. The public is invited to attend. The Hansons are from the Oslo community. Continuous showing of paintings at the gallery are by Eloise Hackett, June Carbone and Joyce Johnson; and photographs from Thailand by Charlie Johnson.

## At the movies . . .

Showing at the Lyric Theatre Saturday, Aug. 6 through Tuesday, Aug. 9 will be "The Naked Gun 2½: The Smell of Fear." The movie will be shown on the Lyric's Screen 1 at 8 p.m.

In "Naked Gun 2½," Los Angeles cop Frank Drebin is back on the case, generating sight gags, bad puns and overall stupid behavior in

his efforts to expose a corrupt government energy policy.

Those who remember television's "Police Squad" and the feature film "The Naked Gun" will remember Leslie Nielsen as Drebin, who seems to know nothing about anything but comes out smelling like a rose as he busts crime accidentally.

Well "Frank Drebin is back - just accept it."

Nielsen stars in the sequel along with Priscilla Presley, O.J. Simpson, George Kennedy and Robert Goulet.

David Zucker and Pat Proft wrote the script, with Zucker directing. "The Naked Gun 2½" is rated PG-13.



Hoyt Wilhelm, the first relief pitcher in the Hall of Fame, registered 143 wins and 227 saves.

## BEHNE ELECTRIC & CONSTRUCTION

Electrical Repairs  
& Handy Man Service  
Reasonable Rates

CALL 659-3404

## At The Lyric Theatre . . .

Saturday, August 3 - Tuesday, August 6  
Bargain Nights Mon. & Tue. All Seats \$3

Closed Wednesday & Thursday

Screen 1 - 8:00



113 Main, Spearman

## Chamber Chatter

by Cindy Blackman

I guess you have all heard by now that Craig and Cindy Clyburn are our \$10,000 winners. It was lots of fun delivering good news like that, even if we did have to track them down.

I want to thank everyone who helped sell tickets for the bash. That is hard work and sometimes not very pleasant, but you did a good job and the bash was a success. I really want to thank my food committee. They did a great job and everyone said it was good.

Those girls are Stephanie Crossland, Brenda Pierson, Loretta Cook, Donna Murray, Kathy Boyd and "her friend" who helped us at my house Friday night. We also found out that Monty and Ron Cook

are pretty handy with carrots. Clay Schnell was chairman this year.

Next on the agenda is our Retail Merchant flea market. There are going to be some great bargains on August 2 and 3, so mark your calendars. You might even be able to start your Christmas shopping then!

Women's Division of the Chamber of Commerce is planning their ice cream social for August 27 at 7:00 p.m. at the swimming pool park. We will be honoring our volunteer community services - firemen, ambulance personnel, EMTs - and our new teachers. More information will be available as the time nears.

Thanks again to everyone who helped with our \$10,000 bash.

## Karen's Kozy Korner

by Karen Babitzke

### SHRINKAGE NO SMALL PROBLEM

Shrinkage can be a difficult problem that often leads to big consumer dissatisfaction. It isn't always easy to know why a garment doesn't fit as well as it used to and who or what is actually responsible for any shrinkage.

Sometimes the garment has not shrunk. The individual may put on a few pounds over a period of time causing a garment to fit snugly.

Garment shrinkage is generally related to the nature of the fiber and/or fabric construction. Shrinkage can be a continuous process that develops through several launderings or can be the immediate result after the initial cleaning.

Relaxation shrinkage occurs with knit fabrics that have been stretched and the loops elongated during manufacture or during storage on the bolt. Wearing, washing or drying may release this strain and allow the loops to relax so they become shorter and wider.

Relaxation shrinkage is often progressive. Some relaxation may happen with the initial cleaning and then continue to occur on the next two or three cleanings. This delayed shrinkage may be noticed in older garments which have been cleaned several times previously without losing shape or size.

Another type of shrinkage is felting, which is confined to wool. Felting results in a noticeable change in appearance and texture. The texture is usually quite harsh. Felting is caused by a combination of excessive mechanical action a garment receives while in the presence of excessive moisture or high temperatures. Machine washing a "dry-clean only" woolen garment often results in felting shrinkage.

Proper shrinkage control should be built into the garment. Shrinkage control is obtained by various procedures in the processing of the cloth. Some fabrics receive specific heat-setting treatments while others are treated with resin or other special coatings to stabilize the fabric.

Even with careful handling, some amount of distortion of the fabric or shrinkage can be expected with repeated wear and care. However, following the care label will minimize shrinkage and distortion.

### RECYCLING IS EASIER THAN YOU THINK

If your community doesn't have a curbside pick-up program, you will need to drop off recyclable once or twice a month at a recycling center nearest you. Check with your local county extension office or the local government to find out where recycling centers are located. You might be able to organize a neighborhood cooperative, where several families get together and take turns hauling the group's recyclable items to the

center.

If you live in a rural area with no easy access to recycling centers or have other conditions limiting your ability to haul off recyclable items, consider in-home recycling. Books and magazines can be donated to public libraries or nursing homes. Packaging materials can be saved and reused. Before you throw something out, try to think of any other ways you can use it. Take your own string, canvas, paper or plastic bags to the supermarket when you shop. Many supermarkets are now collecting paper and plastic bags for recycling. Check with the supermarket manager.

You also can reduce the amount of waste you generate by purchasing and using products wisely. When possible, buy rechargeable or refillable items. Buy products with the smallest amount of packaging materials. Look for products that carry three arrows in a loop and the words "made from recycled materials," or "this product can be recycled."

Everyone should look for and request recycled products. Recyclers are paying less for some recyclable materials now because more people are recycling than are buying recycled goods. Find out what businesses in your community are doing to stock and use recyclable products or goods made from recycled materials.

If you cannot find such products when you shop, ask the manager or owner why they are not available. As consumers come to trust products made from recycled materials, the demand for recycled products will increase. Then the demand and price paid for recyclable products should also do up, giving consumers more incentive than ever to recycle.

## Hospital notes

### ADMISSIONS

Thursday, July 25 - Rosa Rojas, Marguerite Jenkins

Friday, July 26 none

Saturday, July 27 - none

Sunday, July 28 - Lynda Underwood

Monday, July 29 - Edward Bernal, James Hamilton

Tuesday, July 30 - Agnes Cook, Ramon Terrazas, Billy Jarvis

### DISMISSALS

Thursday, July 25 - Anastasia Mendoza, J.W. Jenkins

Friday, July 26 - Rosa Rojas

Saturday, July 27 - none

Sunday, July 28 - Lynda Underwood

Monday, July 29 - none

Tuesday, July 30 - James Hamilton

### PATIENT CENSUS

Wednesday, July 31 - Silas Dozier, Billy Jarvis, O.V. Walker, Edward Bernal, Marguerite Jenkins, Agnes Cook, Ramon Terrazas

## Spiritually Speaking

by Martin Gauby, pastor  
Waka Church of the Brethren

Last week I was in a store in another city, and overheard two people complaining about the Church. They were saying that the Churches insist on their own way and discredit other churches. I wanted to tell them it wasn't that way in our Spearman area, but they were pretty intent and I didn't think I could change their minds, as a stranger.

I am happy that I can be a part of an area like Spearman, where the Christians cooperate so well, to the glory of God and the good of all involved. There is always room for improvement, I am sure, but it feels to me like we have a wonderful group of ministers and churches. The Spearman Ministerial Alliance is well supported and shows the sense of unity that God wants among His people. I am happy to be a part of the ministry of that group.

The Ministerial Alliance is sponsoring a city-wide revival emphasis on Sept. 8-11, with each church choosing to participate in a renewal emphasis according to their own tradition. This shows an openness to one another and to God. We pray God's blessings upon that emphasis in our churches and in our community. We all need renewal. Is there any among us that never gets tired, indifferent, or loses our enthusiasm for God and His

Kingdom here on earth?

The Ministerial Alliance is also sponsoring a CROP Walk, to be held in Waka on Sept. 22 at 2:00 p.m. This is an activity that has been held in Perryton for the past four years, and it is now being moved to our area. The Spearman community will receive a portion of the funds raised by the Walk for helping the people in our own community. The rest will go to various agencies for helping feed hungry people and helping people help themselves in areas of need.

Another program sponsored by the Alliance is the Chaplancy at the Spearman Manor and Hospital, which the Pastors take turns giving leadership for, with the help of our people. I have found the attitude of people working at these institutions marvelous. It is a joy to be a part of such a ministry. It may be that many of us do not realize how fortunate we are to be a part of the good ministries and services of the Spearman community.

Of course we need to continue to work toward harmony, cooperation and the good of all, in the Spirit of our Lord Jesus Christ. The body of Christ has too often been seen as those two people in a store in another state indicated, but I regret that they do not know the rest of the story. Let us help tell the story of God's love, lived out in our daily service together for all God's people.

## Police Files

### Gruver Police Department

On Monday, July 22, the Gruver Police Department received a report of criminal mischief in the 100 block of Main Street. The case was cleared and restitution was made for damage.

On Tuesday, July 23, Gruver police were called to unlock a vehicle in the 300 block of Main Street.

On Wednesday, July 24, a traffic accident occurred on East Highway 15 when a vehicle struck a calf in the roadway.

On Thursday, July 25, police received a report of criminal mischief at the concession stand at the Little League ballpark, in the 700 block of East 10th Street. The case was cleared and restitution for damage was made by the juvenile involved.

On Friday, July 26, police were called to unlock a vehicle in the 300 block of Cooper.

On Saturday, July 27, Gruver police executed a warrant in the 300 block of Richardson. Fayoff was made and the subject released from custody.

Also on July 27, police received a report of an open door on a residence in the 400 block of Cator. The door was secured and the owner was contacted.

On Monday, July 29, police responded to a sick call regarding the health of a child. No transport was made by the ambulance.

Also on July 29, Gruver police received a report of a possible DWI, traveling west on Highway 15 from Spearman. They were unable to locate the vehicle.

### Gruver Ambulance

On Wednesday, July 24, the Gruver ambulance responded to a call from the 300 block of Wornble. The patient was transported to Hansford Hospital.

On Monday, July 29, the ambulance was called to Caprock Feedlot No. 2, where a man had been injured on the job. He was transported to Hansford Hospital.

### Spearman Police Department

On Tuesday, July 23, the Spearman Police Department received a report of disorderly conduct in the 200 block of S. Townsend.

On Wednesday, July 24, a 17 year

old man was arrested on a warrant issued from the Justice of the Peace Court. The arrest was made in the 300 block of East 4th Street.

A vandalism was reported in the 400 block of South Hazelwood on Thursday, July 25. Evidence was recovered.

Fidel Rodriguez Ortiz of Spearman reported his wallet lost in the 100 block of Hancock on July 25. Value of the wallet and its contents was placed at \$20.

Another vandalism report was received, this time in the 100 block of North Hazelwood on Saturday, July 27. Windows were broken out by unknown means.

At 3:23 a.m. on Sunday, July 28, a vehicle driven by a 19 year old man struck a tree at the Hansford County Courthouse. According to a police incident report, the driver left the scene of the accident and was subsequently charged. Damage to the tree was estimated at \$50.

The Spearman Police Department logged a total of 46 calls during the week of July 22-28. Included in those calls was one report of larceny, one assault, a vandalism, four reports of disorderly conduct and three traffic complaints.

Also recorded were six reports of suspicious activity, one report of a lost person, two found persons, one hit and run and one alarm. There were five miscellaneous officer calls and one vehicle lockout logged.

Spearman police provided one backup and served one warrant. There were 14 calls for animal control, two follow-up investigations and one motorist assist.

## The Hansford County Reporter-Statesman

"Serving All Of  
Hansford County"

USPS 509600  
213 Main, Box 458, 659-3434  
Spearman, TX 79081

Published Weekly at  
213 Main, Spearman, Texas

Owned and Operated by:  
Texas Independent  
Newspapers, Inc.  
15915 Alsace  
San Antonio, TX 78232  
(512) 545-1739  
Second Class postage paid at Spearman, Texas 79081.

Any erroneous reflection upon the character of any person or firm appearing in these pages will be gladly and promptly corrected upon being brought to the attention of the management.

Publisher - Robert M. Hulett  
Editor - JoAnn Morton  
Bookkeeper - Colleen Burkhammer

Subscription Rate: Hansford County, \$19.95; out of county, \$24.95 annually.

Postmaster: Send address changes to Hansford County Reporter-Statesman, Box 458, Spearman, TX 79081.

The publisher reserves the right to revise or reject at its option any advertisement which it deems objectionable, either in subject or phraseology, or which it may deem detrimental to its business.

Advertising and Story Deadlines:  
Tuesday, 12:00 p.m.

MEMBER  
TEXAS PRESS ASSOCIATION

## TO ALL INTERESTED PERSONS AND PARTIES:

AGCO of Spearman, Inc. has made application with the Texas Air Control Board for continuance of Permit Nos. R-4159 and R-4034A for Grain Elevator Facilities in Spearman, Hansford County, Texas. The Facilities are located at the ATSF Railroad Siding on the North Edge of Spearman and five miles South of Spearman on Highway 760, respectively. Additional information concerning this Application is contained in the Public Notice Section of this Newspaper.

511 West Eleventh  
Phone 806/659-3751



P.O. Box 566  
Spearman, Texas 79081

## Letters to the Editor

The Reporter-Statesman welcomes letters to the editor on subjects of interest to its readers. Short letters are most likely to be chosen for publication, but the use of any material is at the discretion of the editor. Editing may be necessary for space and clarity or to avoid obscenity, libel or invasion of privacy, but ideas will not be altered.

Upon request, editors will use initials only, but only rarely and for compelling reasons. A signed letter carries more weight with readers.

Letters do not necessarily reflect the editorial policies or beliefs of this newspaper.

All letters must bear the handwritten signature of the writer and include address and phone number(s) for verification purposes (address and phone number will not be printed).

## Your stories appreciated . . .

Stories concerning club meetings and local events are an important part of the newspaper, and they are appreciated and needed to help inform the community about your club or project. A few simple guidelines are requested to help us cut down on inadvertent errors which appear on occasion.

Please submit stories or information typewritten and double-spaced. Handwritten stories, due to the disparity in penmanship, often leave interpretation lacking. When listing names, be sure to give both the first and last names. First names alone cannot be printed.

Help with this can help you get a more error-free article. We cannot be responsible for errors caused when these simple guidelines are not followed.

Readers who live outside Spearman are reminded the Reporter-Statesman has a toll-free number, 1-800-395-9482, to call with local events.



(photo courtesy PSU)

The final fall pre-enrollment clinic was recently held at Panhandle State University at Goodwell, Okla. Texas students enrolling included (front row, l-r) Carissa Roach, Dalhart;

Michelle Fuentes, Gruver; Amy Cross, Pampa; Rosa Dominguez, Booker; (back row, l-r) Randy Barnes, Perryton; Smoke Baldwin, Dumas; and Chris Archibald, Pampa.

## PSU sets enrollment Aug. 20

GOODWELL, Okla. - Oklahoma Panhandle State University is ready for the new school year. Enrollment for the fall semester will be Tuesday, Aug. 20 at 9 a.m. in the Student Union.

Two hundred eighty-four new students, freshmen and transfer students, have pre-enrolled for the fall semester. The freshmen can expect a fun and exciting weekend Sunday, Aug. 18 through Tuesday, Aug. 20. The peer counseling center has planned activities, information sessions, and some meals.

The agenda for freshman orientation is as follows, but is subject to change. Sunday, Aug. 18 at 1 p.m. the dorms will open for freshmen and transfer students. At 3 p.m. there will be a parent orientation in Hughes-Strong auditorium. All parents are strongly urged to attend this meeting even if their child is commuting. The orientation will discuss the rules of the dorm, meals, and campus life. The parents will have their questions answered, and will become better informed with the university and how it functions.

Sunday evening there will be a cookout for new students and parents in the plaza by the student union, sponsored by the area churches. At 6:30 p.m. there will be a get-together with the counselors and group members in the center of the plaza, followed by planned activities.

Monday, Aug. 19 at 9 a.m. there will be a check-in at Hughes-Strong auditorium for those unable to attend on Sunday. A general session will follow at 9:30 a.m. A time has been set aside for group tours and general business at 10:45 a.m. which includes picking up parking permits, books, and student I.D.'s. Lunch will be provided in the cafeteria at noon. Two workshops will be held at 1 p.m. and 2 p.m. At 3 p.m. the ASSET entrance exam will be given. Dinner will be provided in the cafeteria at 5 p.m., followed by general activities.

## Parade set for last day of fair

AMARILLO - The big parade that normally marks the opening of the Amarillo Tri State Fair will be held on Saturday, Sept. 21, the last day of the fair this year.

This change was necessary because of a changed public school schedule whereby Amarillo public schools will be in session on the first day of the fair.

Marching bands, floats, military units, clowns and horses will march down Polk Street in downtown Amarillo beginning at 10 a.m. The theme of the parade is "God Bless America."

Winners are determined by a panel of judges selected by John Kuhn, parade chairman. Winners will be presented awards at 5:30 p.m. on Saturday, Sept. 21 on the outdoor stage at the fair.

Leading this year's parade and serving as honorary parade marshal will be Amarillo attorney and Lt. General Selden Simpson, U.S. Army (Retired).

Tuesday, Aug. 20, freshman orientation will continue with testing of the residual ACT at 8 a.m. for those who have not already taken this test. Enrollment for those not already enrolled will begin at 9 a.m. and last until 4 p.m. Another general session will be held at 10 a.m. The freshman orientation will conclude with lunch followed by tours of the McKee Library.

The PSU Student Senate has also organized an all campus hamburger fry for Tuesday, Aug. 20 at 5:30 p.m., sponsored by the Guymon Ambassadors, and an ice cream social on Wednesday, Aug. 21, sponsored by the Ministerial Alliance of Texhoma. Both functions will be held in the plaza.

Students may pick up their books in the Student Union Bookstore on Aug. 20 from 8 a.m. to 4 p.m. Each student will need a copy of his/her class schedule to make locating books easier.

Student I.D. pictures will be taken on enrollment day, Aug. 20 from 9 a.m. to 4 p.m. for new students and those who did not pre-enroll.

Panhandle State University offers both baccalaureate and associate degree programs. Admission standards are shown below:

**Baccalaureate degree programs**  
1. Must be a high school graduate.  
2. Must meet all high school curricular requirements: English (4 units), lab science (2 units), math (3

units), history (2 units)  
3. Must score an ACT of 18 or better composite SAT 940 - or - be in the top 60% of graduating class and have a high school GPA of 2.7

**Associate degree programs**  
1. Students lacking curricular requirements and/or ACT performance standards are admissible to associate degree programs but must remove the deficiencies at the earliest possible time.  
2. Students who have not completed the above requirements may remove deficiencies by completing zero-level courses or by successfully completing examinations. Such courses will not count toward a degree.

Applicants who do not meet regular admission standards as noted above may be eligible for special admission as adult students. High school seniors may also be eligible for admission under the Oklahoma State Regents concurrent enrollment policy. Standards for adult admission and concurrent enrollment are available upon request.

Transfer students must meet current retention standards as applied to PSU continuing students. For more information concerning general admission to PSU, contact the PSU Office of Admissions at (405) 349-2611, Ext. 274 or 375, or write to PSU, Office of Admissions, Box 430, Goodwell, OK 73339.

## School supply lists given

### Spearman Kindergarten

- 1 box (24 count) crayons
- 5 #2 lead pencils - (regular size) sharpened
- 1 box (8 count) crayons (fat size)
- 1 pair good scissors - (some are not good, please check them)
- 1 folder
- 2 bottles Elmer's glue
- 2 glue sticks
- 1 box Kleenex (200 count) water colors
- school box (plastic) eraser
- No pencil sharpeners
- \$5.00 will be taken up each semester for cooking/art supplies.
- Please put names on ALL supplies.

### Spearman Grade One

- 1 pair of good quality, sharp pointed scissors
- 6 soft lead #2 pencils
- 1 box crayons (8 colors, regular size)
- 1 eraser (not artgum)
- Elmer's glue (1 small plastic bottle)
- 1 glue stick
- 2 boxes facial tissues
- school box
- pocket folder - (NO trapperkeeper, totebag, or backpack because of storage shortage)
- tennis shoes for P.E. (white rubber soles and washable)
- watercolors (good quality)
- Please put name on everything.

### Spearman Grade Two

- 1 set non-permanent markers with broad tips
- 2 packages notebook paper
- sharp pointed scissors (small sewing scissors)
- 6 pencils (#2 soft lead)
- 2 red grading pens or pencils ruler (12 inches and metric system)
- crayons (box of 16)
- large size eraser (not artgum)
- Elmer's glue
- facial tissues (2 large boxes)
- school box
- water colors (8 colors)
- tote bag
- Please do not purchase a book satchel or backpack due to limited storage space.
- Tennis shoes for P.E. (washable with white rubber soles)
- 1 spiral notebook

### Spearman Grade Three

- Do not purchase notebooks, satchels, pencil sharpeners, or backpacks!
- 8 broad line Crayola Markers
- 4 pencils (soft lead #2)
- Sharp pointed scissors
- Wooden ruler (12" with centimeters)
- Crayons
- Wide ruled notebook paper (200 sheets) Please leave in package.
- Kleenex (2 large boxes)
- School box
- 2 red lead pencils
- 1 cardboard portfolio (Mead brand for example)
- 1 - 10 1/2" x 8" spiral notebook (wide ruled)
- Elmer's Glue-All (no school glue)
- Tennis shoes for P.E. with white rubber soles. These should be washable.

### Spearman Grade Four

- 1 set washable Magic Markers (Primary Colors)
- Scissors - orange or red handle sewing scissors
- 6 pencils #2 soft lead
- 4 Ink pens (RED only)
- 12" Ruler
- Crayolas
- Eraser (not artgum)
- Notebook paper and 6 Folders with brads (to hold paper) in different colors
- Elmer's glue (med. size)
- Map colors
- Assignment book
- 2 boxes Kleenex (200 count)
- Art box (shoebox will do)
- \$4.00 to cover party expense
- \$2.75 for Weekly Reader
- Tennis shoes with white rubber soles (washable)

### Spearman Grade Five

- Map color pencils
- Scissors - orange or red handle sewing scissors
- 6 pencils #2
- 1 green pen
- 1 red ink pen
- 1 black or blue ink pen
- 12 inch ruler (centimeter and inches)
- eraser (not artgum)
- Notebook paper and 4 folders to hold the paper (with brads and pockets)
- Trapper Keeper (optional)
- Elmer's glue (med. size)
- 1 box (400 count) Kleenex
- 1 small spiral for vocabulary

### notebook

\$1.50 for Weekly Reader  
You will learn from P.E. teachers what is required for P.E. class in the way of clothing. If you purchase tennis shoes before school starts, please make sure they are washable and have white rubber soles.

### Spearman Special Education

- 2 Boxes Kleenex
- 6 pencils
- 1 eraser
- 1 pair scissors
- 1 glue stick
- 24 crayons
- plastic glass
- 1 tube of toothpaste
- 1 toothbrush

**Advertising Pays \$\$\$\$**  
Call 659-3434  
or  
1-800-395-9482

**IT'S DOUBLE VALUE TIME AT DAIRY QUEEN!**

**\$2.99**

**FULL MEAL DEAL™**  
1/4 lb. + Hungr-Buster, french fries, drink & a small sundae.

**\$1.99**

**FUN BUNCH MUNCH™ KID'S MEAL**

A meal just for kids! Your choice of hot dog, Hungr-Buster™ Jr., corny dog or two steak fingers, plus drink, french fries and a fun prize!

**ON SALE JULY 29 - AUG. 13, 1991**

**THIS WEEK'S DQ VALUE**

**DENZEL TEVIS AUCTION & REALTY**  
P.O. Box 861  
Perryton, TX 79070  
(806) 435-2768  
TXS-7498

© 1991 U.S. Pat. & Trad. Off. All Rights Reserved. Dairy Queen stores. Pre-cooked weight.

**★ AMARILLO TRI-STATE FAIR ★**

**SEPTEMBER 16-21**

SHOWS	Show Time	No. Tickets	Ticket Price	Total Money
MONDAY, SEPTEMBER 16 TRI-STATE TALENT SEARCH	8 p.m.		FREE SHOW SPONSORED BY KGNC TALKRADIO 710/KLITE FM 96 and AMARILLO GLOBE NEWS	
			Box Seats \$12.50	
			Gen. Adms. \$10.00	
TUESDAY, SEPTEMBER 17 PAM TILLIS & DOUG STONE	8 p.m.		Box Seats \$12.50	
			Gen. Adms. \$10.00	
WEDNESDAY, SEPTEMBER 18 SHENANDOAH	8 p.m.		Box Seats \$12.50	
			Gen. Adms. \$10.00	
THURSDAY, SEPTEMBER 19 THE MAINES BROS.	8 p.m.		FREE SHOW SPONSORED BY GEBQ'S and KMML RADIO	
			Box Seats \$12.50	
			Gen. Adms. \$10.00	
FRIDAY, SEPTEMBER 20 CHAMPIONSHIP BULL RIDING	8 p.m.		SPONSORED BY COORS OF AMARILLO and BOOTS & JEANS	
			Box Seats \$12.50	
			Gen. Adms. \$10.00	
SATURDAY, SEPTEMBER 21 CHAMPIONSHIP BULL RIDING	8 p.m.		SPONSORED BY COORS OF AMARILLO and BOOTS & JEANS	
			Box Seats \$12.50	
			Gen. Adms. \$10.00	
			Total Ticket Amount \$	
			Handling Charge \$1.00	
			Total Amount Enclosed \$	

Enclosed is a check or money order made payable to: Tri-State Fair. Please send tickets to:

NAME \_\_\_\_\_  
ADDRESS \_\_\_\_\_  
CITY/STATE/ZIP \_\_\_\_\_

Buy early for reserved box seats. Purchase all show tickets in advance for free admission to fairgrounds on day of show.

Mail orders will be accepted and processed beginning July 15. Tickets will go on sale after the counter at Boots & Jeans and the Tri-State Fair Office on September 7.

**TRI-STATE FAIR Box 31087 Amarillo, TX 79120**

**ANNOUNCING**

The Law Office Of  
**David T. Scott, P.C.**

Civil Litigation • Wills • Bankruptcy • Divorce  
Real Estate • Oil & Gas • Criminal

417 S. Amherst, Suite Two • Perryton, Texas  
Office (806) 435-6121 • Residence (806) 435-6005

Licensed by the Texas Supreme Court for the General Practice of Law Not Board Certified by the Texas Board of Legal Specialization a professional corporation

# Among the Neighbors

by Helen Fisher

Oscar and Frankie Donnell spent a week vacationing in the mountains last week. They went by Raton for the races, then on to Creed, Colo. The constant rain and some hail spoiled the fishing, so they went on to Shaw Lake - near Wolf Creek where the fishing was reported to be good. No rain or hail there - just snow. They decided to go river rafting down the Rio Grande - just the two of them. There was hard rain, but they decided they had fun, anyway.

A pleasant meeting for them was running into Jim and Virginia Fowler at Beaver Lake. The Fowlers, formerly of Spearman, now of Amarillo, are in fair health and all is well with them.

Tynelle and David Jordon of Houston visited her father, T.D. Sanning, for a recent weekend. During their visit, they drove out to Palo Duro Dam and Tynelle was amazed at the size and also the amount of water.

Bobbie and Earl Novak returned Sunday after a cool pleasant vacation in the mountains. They spent some time in Colorado Springs and Estes Park, traveling with friends from Perryton. They went on to Pikes Peak and were pleased to have beautiful weather the whole trip.

At Cuchara, Colo. they met their son, Hunter and Bonnie and little son from Guymon and shared some time with them.

Dr. Novak, who had been looking down at the mouths and feeling that dentists are often driven to extraction, is no doubt glad to be back at the old grind!!

Virginia Head returned the early part of the week after attending the Head family reunion at Red River. Her daughter, Delinda and Danny McLaughlin and the children accompanied her. Her son, Ronnie Head, of Roswell also was there.

There were about 41 at the reunion, coming from several near-by states and as far away as Atlanta, Ga.

Jerry Pat Davis appeared very knowledgeable and poised on a Channel 7 newscast one evening last week. The topic was in connection with the

ostrich farm and was very interesting. Adults as well as children are fascinated by going out and looking at the ostriches.

Mike Crawford, now a geologist from Rangely, Colo. spent part of the weekend with his aunt, Maxine Banister. He had presented a paper in connection with his work at a convention in Midland. After leaving here, he went on to McLean to visit his son, Shawn, and family.

A guest of Nina and Don Hendricks last weekend was Joyce Armstrong of Higgins.

Adam, Damron, Ben and Loren Queener were exchanging greetings with many school friends the last two Sundays when they attended the First Baptist Church here. They are visiting their grandmother, Mrs. Doris Queener, in Perryton and expect to be here several more weeks.

A couple of years ago they, with their parents, Cora and Robert Queener, moved from Spearman to Oneida, Tenn.

Many friends and relatives gathered on Sunday to celebrate the 93rd birthday of that indestructible nonagenarian, Chip Martin. Enjoying the birthday cake and ice cream, all those attending spent the time greeting him and his wife, Willella. Since it would require a mighty big cake and a mighty blast to handle 93 candles, there were three cakes with the numerals 93 on them.

Many Happy Returns, Chip, old friend. Keep in mind that the sure fire formula for reaching 100 is to just keep breathing!

Selma Reneau welcomed her son, Willie, last Monday and his wife Cyndy and son Windell on Friday. They are from New Orleans and plan to be here a couple more weeks.

Last Sunday they all went to White Deer and enjoyed the day with Selma's daughter, Lynda and Mike Short and children as well as Cyndy's family. They will spend part of their vacation with her people in White Deer.

Alva and Ed Garner have had a

pleasant week with guests. Their daughter Kathy and Roger Brown of Canyon spent a couple of days with them. Earlier Earline Chambers, formerly of Spearman, now of Lubbock, visited them. She had driven up with the Rev. and Mrs. Frank Oglesby.

Another visitor was Frances Hudson, who also visited in the homes of other old friends. Frances has moved from Oklahoma and now lives in Pampa.

Todd and Christy Brock of Dallas announce the birth of Mackenzie Meredith on July 26 at Presbyterian Hospital. She weighed 8 lbs, 11 ozs. and was 20 inches long. She joins two sisters - 2 year old Meryl Leigh and 4 year old Margaret Ann.

Grandparents are Mary and J.L. Brock and Barbara and Bob Collier, all of Spearman.

Great-grandparents are Ada and Lester McLain, and Christine and D.W. Lewter of Lubbock.

Mrs. Collier is with the family in Dallas at this time and the Brocks plan to go this weekend for an introduction to their 9th grandchild.

Ray and Sylvia Robertson have had a busy but pleasant July, mostly grandparenting. In the early part of the month, their granddaughter, Saige Annen of Dimmitt spent a week with them. She is the daughter of Brenda, the Robertsons' daughter.

When Granddad Ray took her to Amarillo to go home, he picked up grandsons Duncan and Steve Robertson, Danny's sons, of Dallas. After a week, Danny came for them and stayed a few days.

Ray and Sylvia then spent six days in East Texas, enjoying the scenery and very pleasant weather. They were in Longview, Jefferson, Pittsburg and other places.

At this time, another grandson, Cody Annen of Dimmitt, is visiting them.

Virginia White is back at home after visiting her mother, sister and brothers in Dallas. Her mother, though nearly 90, still lives alone and is in fairly good health. During her Dallas visit, she and her sister at-

tended the musical starring Debbie Boone - "Meet Me in St. Louis."

An especially nostalgic occasion for Virginia was again attending the gathering and lunch at the old Coats Cemetery in Range County. The cemetery, about 70 miles southeast of Dallas and in a remote wooded area, is the cemetery of Virginia's ancestors - and dates back to 1862. The day certainly brought back memories for Virginia. As a child she went with her parents to these cemetery work days and lunch. She stood beneath the very same old oak tree she used to climb, still in full leaf. It is reputed to be at least 800 years old.

She returned by Denton where her daughter lives, and brought 6 year old granddaughter, Erin Petterson, with her for a short visit.

The family of Jewel Pearson gathered at the home of Mr. and Mrs. Wayne Ware on Friday evening for an evening of fellowship.

Those family members participating were Mr. and Mrs. Loren Patton, with Valerie, Steven and Kelli, Las Vegas, Nev.; Mr. and Mrs. Ken Bridgeman, with Scott, Corpus Christi; Bill Bishoff with Marc and Kelli, Las Vegas, Nev.; Mr. and Mrs. Kengle Pearson, with Kristi and Kyle; Mr. and Mrs. Kelly Brown with Laura and Toby, all of Perryton.

Denise Ware, Stinnett; Betty Burk, Morse; Mr. and Mrs. Buster Brown, Farnsworth; from Spearman - Mr. and Mrs. Dan Pearson, Mrs. Mark Pearson, Jerry Pearson, Todd Ware, Mr. and Mrs. E.J. Copeland and the host couple, Mr. and Mrs. Wayne Ware.

A houseful to overflowing of people and never a dull moment lasted from Thursday to Monday for Beverly and Craig Vinson and family.

Beverly's family - her mother, Mrs. Jeanette Newsome, Brownfield; her sister Betty Merrick and two children, Lamesa; her brothers - Mr. and Mrs. Curtis Alvis and family, Morton; and Mr. and Mrs. Mark Alvis and family of Pep, Texas - made 18 total.

All enjoyed food, fellowship, frolic, fun and family.

# PTA board meets

The Executive Board of the Spearman PTA met Tuesday, July 23 at the Casa Alvarez restaurant with President Marlene Miller presiding.

Program plans for the upcoming school year were discussed. The first PTA meeting will be Monday, Sept. 23 at 7 p.m. in Spearman High School auditorium. The program topic will be "Good Fitness and Nutrition for Children and Teens" and will feature a panel discussion by local professionals.

Also discussed at the board's planning session were prospective dates for the PTA's annual Fall Festival, and the need for a tank for the dunking board. Members decided to con-

sult the official school calendar before finalizing the event date and to research the possibility of renting a dunk tank from another organization.

The next executive board meeting will be Monday, Sept. 16.

Officers present at last week's meeting were Marlene Miller, president; Jean Ann Behney, vice president; Joan Brown, membership; Teresa Kirk, special projects; and Jen Howard, treasurer.

Also present were D'Dee Ellis, Candi Delozier, Tina Wilmeth, Melba Olsen, Lyn Woolley and DeLinda McLoughlin.

# Club News

## RAINBOWS & RANGLERS

Spearman Rainbows and Ranglers square dance club traveled to Red River, N.M. last week.

Members square danced to the calls of Murry Beasley of Texhoma, Okla., and Gary Schick of Borger. Beasley is club caller for Rainbows & Ranglers. Schick is club caller for Boots & Calico square dance club.

Members attending included Joe and Wanda Archer, Charles Bartz, Ronnie and Vicky Bullard, Alvin Byers, Jimmy and Donetta Greene, Danny and Debbie Herrington, Gordon and Janet Holley, Becky Lusby, Jim and Kathy Morley, Duwayne and Martha Thurman, Rusty and Judy Tindell and Becky Byers Keating.

# Hometown News

Marine Pvt. James L. Clements, son of Sandra L. Atkinson of Lipscomb, Texas, has completed recruit training at Marine Corps Recruit Depot, San Diego, Calif.

Clements is the nephew of J.B. Buchanan and Helen Fisher of Spearman, and the grandson of Virginia Cates, also of Spearman.

During the 13-week training cycle, Clements was taught the basics of battlefield survival. He was introduced to the typical daily routine that he will experience during his enlistment

and studied the personal and professional standards traditionally exhibited by Marines.

He participated in an active physical conditioning program and gained proficiency in a variety of military skills, including first aid, rifle marksmanship and close order drill. Teamwork and self-discipline were emphasized throughout the training cycle.

A 1990 graduate of Crowley High School, Clements joined the Marine Corps in March, 1991.

# Simpson joins firm

Brown, Graham & Company, P.C. announces the addition of Holly Simpson, C.P.A. as a shareholder in the firm. Simpson, a graduate of Panhandle State University, met the requirements to practice as a certified public accountant in 1984 and has been associated with the Spearman office of Brown, Graham & Company, P.C. since that time.

Brown, Graham & Company, P.C. operates from 11 offices located in Amarillo, Hereford, Tulia, Friona, Spearman, Canyon, Dimmitt, Shamrock, Perryton, Pampa, and Georgetown and serves more than 6,000 clients in Texas, Oklahoma, and New Mexico. The Spearman office has been in operation for over 25 years and currently has a professional staff of four certified public accountants consisting of Jack Oakes, Monty Blackman, Holly Simpson, and Travis Wolf.



SIMPSON

# Quilt show scheduled

BORGER - The Hutchinson County Museum's annual Quilt Show will begin Thursday, Aug. 1 and run through Saturday, Aug. 31. The show, now in its 10th year, has been a popular arena for many local quilters.

Quilts entered in the competition will be judged according to the following categories: Best Modern Quilt, Best Antique Quilt, Most Unique Quilt, Best Hand Quilted, and Best Machine Quilted. \$100 in prize money and ribbons will be awarded by the Magic Plains Arts Council, sponsor of the show.

The 1990 show was termed "a great

success," with more than 60 entries and over 1,000 visitors. This year's event is attracting attention in other parts of the state as well. Author Jan Gilmore Rushing and photographer Kathy Hinson will be viewing the quilts on display, the Museum's collection, and the McCormick House quilt with the intention of including selected pieces in their upcoming book, "Pieces of the Plains." It will be a "coffee table photostudy" of the quilting history and traditions in West Texas, to be published by Texas Tech University Press (1994). The Hutchinson County Museum is located at 618 N. Main in Borger.

**HENSON CHIROPRACTIC**  
410 S. Davis Spearman, TX  
Call For Appointment 659-5603  
Office Hours: Mon., Wed., Fri. 8:30-5:00  
Tue., Thu. 8:30-11:30

## Tribal dances set

BORGER - The Adobe Walls Dancers' fifth annual Summer Ceremonials will be held Thursday, Friday and Saturday, Aug. 1-3, at the Lake Meredith Amphitheater. Sponsored by the Magic Plains Arts Council in cooperation with the National Park Service, dances are scheduled for 8 p.m. each day. The Summer Ceremonials are being held in conjunction with the 75th anniversary of the National Park Service. Snakes are used in the Hopi dance because it is believed they are in touch with the earth and rain. Part of the dance requires carrying a reptile in the dancer's mouth, said Hutchinson County Museum Director Ed Benz. "The principal figure in the Adobe Walls attack dance is Isatai, a Comanche medicine man who cast a spell over Adobe Walls and was said to have magic powers," Benz said. For the dance, a mock building will be on stage to represent Adobe Walls. According to Benz, the building will be set afire, the male dancers will dance wildly with guns, lances and bows, while the women sport scalp poles with scalps hanging off them. The dancers will also perform the Zuni Comanche dance, based on an historical event where the Zunis and Comanches battled. The Adobe Walls Dancers Summer Ceremonials is an educational program of the Hutchinson County Historical Museum. The main participants are members of Explorer Post 565. Tickets will be available at the door, priced at \$3 for adults and \$1 for students. Groups of six or more will be \$7 for each group. Benz encourages all scouting groups to attend.

**JG's**  
**Anniversary Sale**  
Monday, Aug. 5 • Tuesday, Aug. 6  
7 A.M. to 7 P.M.  
**70% OFF** Summer Merchandise  
306 Hancock • Spearman, Texas  
659-3424

**Further Reductions**  
**75% Off**  
**Spring & Summer Fabric**  
**New Additions To Our**  
**50% Off Table**  
**Country Stitches**  
715 W. 7th Spearman 659-2080

Mr. and Mrs. Charles Eaton  
and  
Mr. and Mrs. Mott Schroeder  
request the honour of your presence  
at the marriage of their children  
Cayla Leonda  
and  
Gary Don  
on Saturday, the third of August  
Nineteen hundred and ninety-one  
at six o'clock in the evening  
First Baptist Church  
Spearman, Texas  
Reception following Fellowship Hall



(photo by Joy Henderson)

A baby shower was held recently, honoring Denise Karlin. At the serving table are (l-r) great-grandmother Margaret Buchanan, grandmother Dixie Karlin, the honoree, and grandmother Rose Lopez.

## Shower honors Karlin

by Joy Henderson

Saturday morning July 27, 1991, a baby shower honoring Denise and Rod Karlin was given by friends. The registration table was covered with white cloth and in addition to the baby book, there was a bear ceramic planter containing ivy and silk flowers.

The serving table was covered with lace net cloth over pink organza. A fresh bouquet of garden flowers complimented the silver coffee service and crystal punch bowl. Lime sherbet punch and bundt cakes were served along with assorted nuts and mints. Napkins with Teddy Bear designs were used.

Corsages were presented to grandmothers Dixie Karlin and Rose Lopez and great grandmother Margaret

Buchanan. Dave Karlin's sister, Rose Ortega from San Diego, was in attendance.

Hostesses for the occasion were Reta Gross, Harletta Carthel, Charmian Lyle, Marie Bell, Kay Hobbs, Reatta Gammon, Marlene Winger, Jenni Morris, Rita Williams, Pat Burnam, Sue Smith, LaNetta Shapley, Elene Green, Glenda Renner, Connie Burgoon, Diane Brown, Mara Jo Cluck and Rita Cluck.

### It's A Boy!

It is with great pleasure to announce the arrival of Rod and Denise's little boy. He was born Sunday about midnight at Dumas Memorial Hospital weighing 6 lbs. 2 oz. and was 19" long. Congratulations!



(photo by Joy Henderson)

Mr. and Mrs. Robert Stayton were honored recently with a reception to celebrate their Golden Wedding Anniversary.

## Ayres family reunites

by Joy Henderson

The Ayres Family Reunion began Friday evening July 12 at the Harvey Hotel in Amarillo. Approximately 122 registered for the two day event which included a luncheon catered by the hotel and a talent show.

Seven families were represented and each family received a color coded button with individual names. The Talent Extravaganza was the Friday evening program with Trevor Williams as Master of Ceremonies. Prizes were awarded to various individuals and groups: 1st place - "The Chicken Song" performed by Valerie and Molly Burnam, Lance Williams, Tucker and Taylor Williams and Ryan and Reid Winger. Best Female Vocalist: Jill (Riley) Lae who played guitar and sang a song she wrote; Best Male Vocalist: Trevor Williams; Best Group Singers: Vivian Green, Pauline Winger, Charmian Lyle and I.W. Ayres who performed "Devilish Mary" and "Little Maude, Little Maude."

Other performers included Les and Sharon Barkley who sang as a group with Rick and Carolyn Finley. Blythe Finley also sang a solo. Glenda Renner gave a humorous story and Bo Green sang a comedy song. Nathan and Abigail Rix sang with parents Charles and Jenni Rix. Charles also performed a piano solo.

The Rix family from Red Bank, New Jersey also had the distinct honor of traveling the farthest. Jenny Rix is the daughter of John and

See Ayres page 7

### Correction

Ben Cluck of Amarillo was among family members attending the 34th annual Cluck family reunion in Elk City, Okla.

His name was omitted from the list of family members which was provided to the Reporter-Statesman.



MRS. CHRIS MORRIS (nee Lynelle Patton)

## Patton, Morris wed

Lynelle Cherise Patton of Sunray and Christopher Vance Morris of Gruver were married Saturday, July 27 at 1:30 p.m. in the Sunray Church of Christ. Bob Phillips, minister, officiated the double-ring ceremony.

Parents of the couple are Mr. and Mrs. Howard Patton of Sunray and Mr. and Mrs. V.B. Morris of Gruver.

Maid of honor was Angela Shinkle of Sunray, and bridesmaid was Keila Barbor of Sunray. Junior bridesmaid was Angela Patton of Sunray, sister of the bride. Amy Harper of Lake Jackson, Texas, cousin of the bride, was flower girl.

Best man was Grant Eby of Reed Spring, Mo., and groomsman was Jack Rodman of Dumas, brother-in-law of the groom. Junior groomsman was Andy Morris of Gruver, brother of the groom. Ethan Patton of Tulia, cousin of the bride, was ring bearer.

Guests were registered by Melanie Rodman, sister of the groom, and ushers were Sherrol Patton of Tulia, uncle of the bride, Lon Schindler of Amarillo, Chuck Dooley of Sunray and Luke Miller of Gruver.

Given in marriage by her father, the bride was attired in a formal wedding gown of white satin with a lace-trimmed high neckline. The Schiffl lace bodice was accented with seed pearls and sequins, with a Basque waistline. The Renaissance sleeves were accented with lace. Schiffl lace beaded motifs accented the front skirt and the back of the cathedral train. Her fingertip veil of illusion, accented with pearls and lace, was secured with a pearl leafed tiara.

She carried a bouquet of white silk

lilies accented with tiny pink puffs, atop a white lace Bible.

In keeping with the tradition of "something old, something new, something borrowed and something blue," the bride carried her maternal grandfather's baby ring in the white lace Bible, which she borrowed from her aunt. She wore new earrings, a wedding gift from the groom, along with the traditional blue garter. In her shoe, she carried a penny minted in the year of her birth.

Following the ceremony, a reception was held in the Sunray Community Building. Servers at the bride's and groom's tables were Stephanie Bradshaw, Stephanie Fox, Kim Chisholm, Brittney Taylor, Marsha Morris, Christi Buse and Denise Wilson.

After a wedding trip to Denver, Colo., the couple will make their home in Wichita Falls, Texas.

A 1991 graduate of Sunray High School, the bride will enter Midwestern State University in Wichita Fall, majoring in business.

The groom is a 1988 graduate of Gruver High School and attended Midwestern State University for two years. He is currently employed at Carfonics in Wichita Falls.

A rehearsal dinner for members of the wedding party was hosted Friday night at the Sunray Community Building by the groom's parents.

Special guests were grandparents of the bride, Mr. and Mrs. Perry Smith of Dumas and Mr. and Mrs. Kenneth Patton of Tulia; great-grandmother of the bride, Mrs. Mae McClendon of Tulia; grandparents of the groom, Mr. and Mrs. Vance Morris of Gruver; and great-grandparents of the groom, Mr. and Mrs. James Wisinger of Dumas.

## On The Go With Joy

by Joy Henderson

Now that we have been on our own with 15 month old Dustin, I'm feeling real old and worn out. I wonder if we will make it through the next five days. And that reminded me of a story that I've seen in several different versions and the author and source unknown:

This is for those born before 1945 and let me tell you, we are survivors! Consider the changes we have witnessed! We were born before television, before penicillin, polio shots, and frozen foods, Xerox, plastic, contact lenses, Frisbees and the Pill. We were before radar, credit cards, split atoms, laser beams and ballpoint pens. Before pantyhose, dishwashers, clothes dryers, electric blankets, air conditioners, drip dry clothes...and before men walked on the moon.

We got married first and "then" lived together. How quaint can you be? In our time, closets were for clothes, not for "coming out of." Bunnies were small rabbits and rabbits were not Volkswagens. Designer Jeans were scheming girls named Jean and having a meaningful relationship meant getting along with our cousins. (That was even hard for me to do.)

We thought fast food was what you ate during lent, and outer space was the back of the Lyric Theater. We were before house-husbands, gay rights, computer dating, dual careers and commuter marriages. We were born before the daycare centers, group therapy and nursing homes. We never heard of FM radio, tape decks, electronic typewriters, artificial hearts, word processors, yogurt and guys wearing earrings. For us time sharing meant togetherness...not computers and condominiums. A chip meant a piece of wood, hardware meant hardware and software wasn't even a word.

## Meals on Wheels to benefit from cans

Xi Psi Kappa sorority has painted a dumpster and placed it at the intersection of 4th and Main Streets in Gruver, for the purpose of collecting aluminum cans for the benefit of Gruver Meals on Wheels.

Cans donated to date have raised a total of \$236.75 for the program.

Residents are asked to remember to place their aluminum cans in the dumpster to benefit the environment and the Gruver Meals on Wheels program, which feeds about 12 people in Gruver three times a week.

Back then the term "making out" referred to how you did on your exam. Pizzas, McDonalds and instant coffees were unheard of. We hit the scene where there were 5 and 10 cent stores where you bought things for five and ten cents. Sanders or Wilsons sold ice cream cones for a nickel or a dime. For one nickel, you would ride a street car, make a phone call, buy a soda pop or enough stamps to mail one letter and two postcards. You could buy the car to see the U.S.A. for \$600...but who could afford one? A pity too, because gas was 11 cents a gallon!

In our days, GRASS was mowed, COKE was a cold drink and POT was something you cooked in, ROCK MUSIC was a Grandma's lullaby and AIDS were helpers in the principal's office. We certainly were not before the difference between the sexes were discovered, but were surely before the sex change. We made do with what we had. And we were the last generation that was so dumb as to think you needed a husband to have a baby.

No wonder we are so confused and there is such a generation gap today. But we survived! What better reason to celebrate? This does get you to thinking, huh?

Boy! Last week, it seemed like old times. Alicia and Wayne Thomas of Amarillo decided to pay us a visit. We spent the whole day doing their laundry. Since we were "pooped" from doing at least six loads I asked Alicia how much it cost her to do her laundry at the laundromat and she replied \$20-\$25. No wonder she takes turns at the relatives. At least she furnished her own soap, bleach etc.

Then Scott, Paula and Dustin dropped in for a weekend visit. They dropped the grandson off at Grannie and Grandpa's house so they could find a place in Lubbock to live. Of course, I haven't given them permission to move yet. Permission may be granted next week though.

Donald, Doris and Dusty Cotter spent a few vacation days in Colorado. I can't remember if the sun-burned noses were from a day of fishing in the sun or maybe from the eclipse.

I guess the college kids are preparing for the next school year. Jeanne Potts has been around home this summer as have several that had jobs in the hometown area.

Visitors in Gruver recently have been Inell and Blake Trahan, with children Amy and Keith Grubbs.

After the Willmon Family Reunion, Andrew and James Brownlee of Dumas visited in the home of Virginia and Dewey Taylor last week. Also visiting part of the time was Jeff Coates of Spearman. They are the sons of Fred and Lola Brownlee of Dumas. Fred's aunt, Ruth Eubank of Sunray, came to pick the boys up. Ruth Eubank has some connection to Jessie Spivey.

## Willmon reunion held

The annual Willmon family reunion was held July 18, 19 and 20 at Oak Dale Park in Glen Rose, Texas. A total of 104 person attended this year's reunion.

Clarence Willmon of Stratford, who will be 84 on Aug. 16, was the oldest family member present. The youngest was one of his great-great-nieces, about 3 months of age, from Clyde, Texas.

Also attending were Clarence's brother, Walter Willmon of Fritch, and Walter's son and daughter-in-law, Frank and Linda Willmon, of Amarillo.

Also there were Clarence's daughter, Virginia Taylor of Gruver, grandson Kenneth Taylor of San Antonio, and two of his great-grandchildren, Rachael Taylor, daughter of Kenneth and Vickie, and Jeff Coates of Spearman, son of Galen Coates.

Rachael flew in June 29 for a visit with her grandparents, Dewey and Virginia Taylor, as well as her aunt and uncle, Gail and Galen Coates of Spearman. She traveled with Virginia to the reunion, where her parents met her.

Also traveling with Virginia was her grandson Jeff Coates. Walter's grandsons, Andrew and James Brownlee, sons of Fred and Lola Brownlee of Dumas, also traveled with Virginia.

On her way home from Glen Rose, Virginia visited briefly with Dewey's nephew, Burl Mitchell of Reed, Okla., who is recovering from bypass surgery. She also visited in the homes of Mary Taylor, a sister-in-law, and her son James Taylor Jr., both of Vinson, Okla.

*Mr. and Mrs. Tony Shapley*  
*and*  
*Mr. and Mrs. Bobby Jenschke*  
*request the honor of your presence*  
*at the marriage of their children*  
*Carmi Dyan*  
*and*  
*Brian Keith*  
*on Saturday, the third of August*  
*nineteen hundred and ninety one*  
*at seven o'clock in the evening*  
*Gruver United Methodist Church*  
*506 Broadway*  
*Gruver, Texas*  
*Reception following ceremony Church Fellowship Hall*

# Rappin' Recipes

## KID'S COOKING SCHOOL

Kids 1st through 8th grade are invited.  
FREE demonstration, recipes and tasting.

### Tuesday, August 6


### 2:00 p.m.

## Gruver State Bank

#3 Main Plaza — Gruver


For reservations please call the Hansford County Extension Service  
at 659-2030 or 733-2901.

Presented by:



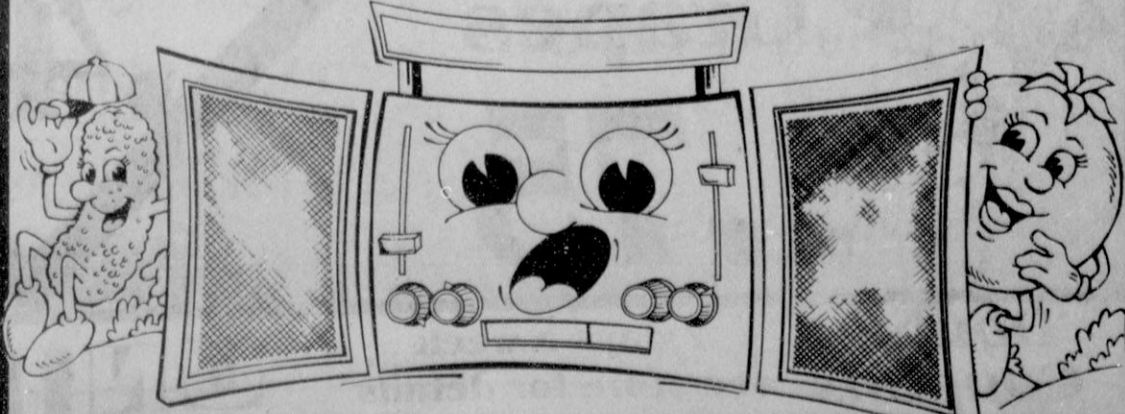
CHRISTY FROST  
SPS Home Economist

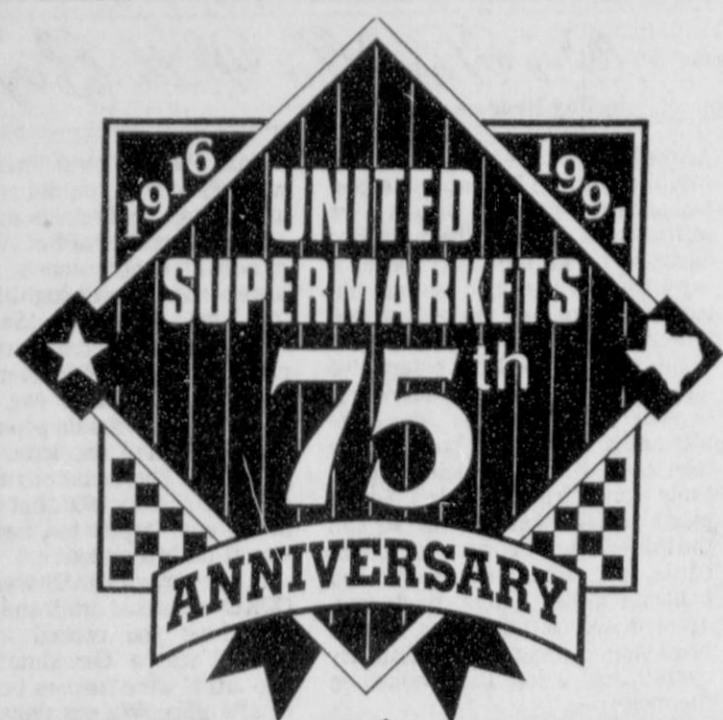
Electricity — efficient use  
makes for a wise choice!



SOUTHWESTERN PUBLIC SERVICE COMPANY

PR1836-6-91-930.1





# United Spirit Shining Through 75 Years!

PRICES GOOD THRU TUES. AUGUST 6TH

WED.	THUR.	FRI.	SAT.	SUN.	MON.	TUES.
31	1	2	3	4	5	6

Quantity Rights Reserved. No Sale to Dealers.



Betty Crocker  
**Cake Mix**

Assorted 18.5 oz.

**.75**

Good Thru August 6  
in Perryton Only



Gold Medal  
**Flour**

5 lb. bag

**.75**



Del Monte  
**Green Beans**

Cut or French Style 16 oz.

Limit 6 Cans thereafter .49 each

**3 for \$1**



Folgers  
**Coffee**

**.75**

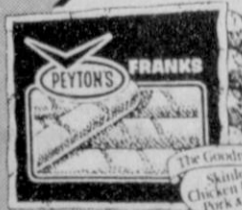
13 oz. bag



Lays  
**Potato Chips**

Assorted  
6.25-6.50 oz.

**.75**



Peyton's  
**Meat Franks**

12 oz. pkg.

**.75**



Tyson  
Grade A

**Whole Fryers**

Limit 3 Please

lb.

**.49**



Red Seedless  
**Grapes**

**.75**

Double Coupons 7 days a week see store for details

**UNITED**

## PUBLIC NOTICES

**NOTICE TO THE PUBLIC OF INCREASE BY HIGH PLAINS NATURAL GAS COMPANY IN RATES TO BE CHARGED ITS RESIDENTIAL AND COMMERCIAL CUSTOMERS FOR NATURAL GAS IN THE INCORPORATED AND UNINCORPORATED AREAS OF THE CITIES OF CANADIAN, HIGGINS, AND MOBEETIE, AND THE UNINCORPORATED AREAS OF LIPSCOMB, OCHILTREE, HEMPHILL, WHEELER, AND HANSFORD COUNTIES**

Pursuant to the notice requirements of Section 5.08, Gas Utility Regulatory Act (GURA), High Plains Natural Gas Company (High Plains) hereby gives this notice to the public of its intent to change the residential and commercial rates presently being charged for natural gas and natural gas service in the above listed areas served by High Plains. On June 14, 1991 and July 5, 1991, respectively, statements of intent to change residential and commercial rates were filed with the respective cities and the Railroad Commission of Texas. The proposed change in rates will increase High Plains' revenues by approximately 5.8% and constitutes a major change as defined in Section 5.08b of GURA. The proposed rates in the unincorporated areas will not become effective until similar changes have become effective within the nearest incorporated city served by High Plains. The proposed rates will increase a 10 MCF residential bill by \$13.51, a 10 MCF commercial bill by \$13.99, and increase residential deposits by \$15.00. Approximately 1,503 residential and 298 commercial customers will be affected by this change. Details concerning the proposed rates may be obtained by contacting High Plains Natural Gas Company, 411 S. Second, P.O. Box 777, Canadian, Texas 79014-0777, and any affected person may file in writing comments or a protest concerning the proposed change in the environs rates with the Director of the Gas Utilities Division, Railroad Commission of Texas, P.O. Drawer 12967, Capitol Station, Austin, Texas 78711-2967.

High Plains Natural Gas Company  
S374tc

### INVITATION TO BID

The Board of Trustees, Gruver Independent School District, will receive bids to furnish regular gasoline for the school vehicles and diesel for the small tractor for the school year 1991-92.

Bid sheets and general information is available in the School Business Office, 600 Garrett, Gruver, TX. Deadline for submitting bids is Tuesday, August 6, 1991 at 4:30 p.m. Bids will be opened at the regular meeting of the Board of Trustees, Wednesday, August 7, 1991 at 1:00 p.m.

The Board reserves the right to accept or reject any or all bids, and to waive all technicalities.

Board of Trustees  
Gruver Independent School District  
S39-2tc

### NOTICE TO ALL PERSONS HAVING CLAIMS AGAINST THE GUARDIANSHIP ESTATE OF ERNEST NEWCOMB

Notice is hereby given that original Letters of Guardianship for the Guardianship Estate of Ernest Newcomb, incompetent, were issued on July 23, 1991, in Docket No. 2000, pending in the County Court of Hansford County, Texas, to Charles Newcomb. The residence of the guardian is Spearman, Texas, and his post office address is 305 W. 12th St., Spearman, Texas 79081. All persons having claims against this guardianship estate which is currently being administered are required to present them within the time and in the manner prescribed by law.

DATED the 23 day of July, 1991.

John L. Hutchison  
Attorney for the Estate

S40-1tc18.75

### NOTICE TO BIDDERS

The City of Spearman, City of Gruver, Spearman Independent School District, Hansford County, and Soil Conservation District will be holding a public auction on August 15, 1991, beginning at 10:00 a.m. at

607 East D Avenue at the City Warehouse. Equipment can be viewed at the auction site on August 14 between the hours of 1:00 and 5:00 p.m. No minimums, no reservations, no bid ins, or buy backs. Terms and conditions of the sale are:

1. Settlement. Full settlement shall be made on the day of the sale.

2. Payment. Payment for purchases may be made by cash, cashier's check, personal or company check with proof of identity.

3. Sales tax. Sales tax will be collected unless you execute a Certificate of Resale with your tax number.

4. No Warranty. All descriptions used in advertising and cataloging are believed to be correct, however, neither those descriptions nor any oral statements made by the Owner or the Auctioneers concerning any item shall be construed as a warranty, either expressed or implied. All items are sold "As is - where is."

5. Removal. All items become your responsibility when sold. Buyer assumes all risk of loss and damage to property from time of purchase. Owner and the Auctioneers agree that merchandise may remain on sale site until the date by which all merchandise must be removed from sale site as announced by the Auctioneers sale day. Items left after this date may be sold for storage.

6. Disputes. The Auctioneer shall designate the Buyer after each item is sold. If a dispute arises between two or more bidders, the Auctioneer may, at his discretion, reopen the bidding. His designation of a Buyer shall be final.

7. Injury. Bidder agrees to hold Owner and the Auctioneers harmless for any personal injury to himself or his agents, and any property damage incurred on sale premises.

For further information concerning the auction, sales brochures may be obtained from City Hall, 30 S.W. Court, Spearman, Texas. S40-2tc50.10

### PUBLIC NOTICE

The City of Spearman will hold a public hearing concerning the proposed budget for the 1991-1992 fiscal year. Also, a public hearing will be held concerning amending the budget for the 1990-1991 fiscal year. The hearings will be held in the Council Chambers of City Hall, 30 S.W. Court, Spearman, Texas, at 7:30 p.m. on August 20, 1991. All local taxpayers may attend and participate in the hearings. S40-1tc10.95

Count on the  
Classifieds  
to Do the Job

Fishing  
For  
Results?



Drop Your Line  
In The Classifieds!

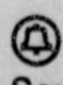
## Public Notice

On April 9, 1991, Southwestern Bell Telephone Company filed an application with the Public Utility Commission of Texas to request that the optional feature "Call Transfer Disconnect" be available to all PLEXAR I customers by including the feature in Southwestern Bell's PLEXAR I tariff. Currently, this optional feature is available only on a customer requested basis.

Call Transfer Disconnect (CTD) is an optional feature that allows PLEXAR I customers the ability to transfer a call to another telephone number within or outside their PLEXAR I system, hang up, and permit the two remaining parties to continue with the call. The PLEXAR I user is then free to place or accept another call. CTD is not intended to be used to avoid toll charges. Therefore, CTD will not be available to PLEXAR I customers subscribing to optional Extended Metropolitan Service or Extended Area Calling Service.

If the company's application is approved, the monthly rate for CTD will be \$4.00 for each PLEXAR I station line. Prior to the June 19, 1991, interim rate approval, Southwestern Bell was billing customers who receive the service \$1.50 for each station line equipped with this feature. In addition, under Southwestern Bell's proposed tariff, every line within the PLEXAR I system must be equipped with this feature. The nonrecurring charge for the additional lines which must be equipped with CTD will be waived for existing CTD customers. The tariffed monthly rate will apply to all existing and future CTD customers.

Persons who wish to intervene or otherwise participate in these proceedings should notify the commission as soon as possible. A request to intervene, participate, or for further information should be mailed to the Public Utility Commission of Texas, 7800 Shoal Creek Boulevard, Suite 400N, Austin, Texas 78757. Further information may also be obtained by calling the Public Utility Commission Consumer Affairs Division at (512) 458-0256, or (512) 458-0221, teletypewriter for the deaf.

 Southwestern Bell  
Telephone

**Hansford County**  
 provided by Keith Martin  
**ASCS News**

**Acres reduction set**

The U.S. Department of Agriculture is requiring a 5-percent acreage reduction for the 1992 Wheat Program, according to Jerry Harris, chairman of the Texas State ASC Committee. This compares to the 15 percent acreage reduction required for the current wheat crop.

"This level was chosen to maintain competitiveness in world markets while balancing the risks of excessive supplies or possible shortages," Harris said.

Wheat producers who comply with the acreage reduction requirement will be eligible for target price pro-

tection at \$4.00 per bushel, the same as this year. Harris said the program will not have a paid land diversion.

The 1991/92 wheat crop is projected at 2.0 billion bushels, down 26 percent from last year's 2.7 billion-bushel harvest. The decline reflects an 8-million-acre reduction in planted area and lower yields. "This year, decisions to plant fewer acres were based on higher acreage reduction requirements, new flexibility provisions in the 1990 farm legislation, and lower wheat prices," the ASCS official said.

**Payments not increased**

WASHINGTON - The U.S. Department of Agriculture announced there will not be any increased deficiency payments for the 1990-crop wheat, barley and oats programs because the 12-month national weighted average market prices for these crops exceeded the basic price support.

Keith Bjerke, executive vice president of the U.S. Department of

Agriculture's Commodity Credit Corporation, said the national average prices per bushel received by producers from June 1990 through May 1991 for wheat, barley and oats were, respectively: \$2.61, \$2.14 and \$1.14. The basic price support rate for each of these commodities was, respectively: \$2.44, \$1.60 and \$1.01. Thus, no increased payments, also known as "Findley" payments, were earned.

**Support prices announced**

WASHINGTON - Support prices for wool and mohair for 1991 marketings will be \$1.88 per pound for shorn wool and \$4.48 per pound for mohair, a U.S. Department of Agriculture official announced.

Mohair is being supported at 85 percent of the percentage of parity at which shorn wool is supported, or \$4.48 per pound.

Keith Bjerke, executive vice president of USDA's Commodity Credit Corporation, said the wool on unshorn lambs will be supported at a level determined by a formula based on the hundredweight of live, unshorn lambs marketed.

Details will be published in the Federal Register in the near future.

**Tanks need to be registered**

The Texas Water Commission has announced that, beginning immediately, owners of underground and aboveground storage tanks who have not yet registered their tanks with the state agency may do so without penalty for late registration until Oct. 15, 1991.

"Many individuals or small business owners who own and operate tanks, or who have unused tanks on their property, have not registered the tanks with the TWC because of lack of knowledge regarding registration requirements or a fear of penalties for late registration," said TWC Executive Director Allen Beinke. "Because our main goal is for every tank to be properly registered in order to protect the environment, we are granting this short 'grace period' for owners to voluntarily comply with the law."

Owners of underground storage tanks that contain petroleum and other hazardous substances have

been required since 1987 to register those tanks with the Texas Water Commission. Tanks not currently in use, but not properly closed out according to TWC standards, also must be registered. In addition, aboveground storage tanks that contain motor fuel-type petroleum products have been required to register with the Commission since 1990.

Only owners of registered petroleum storage tanks are eligible for clean-up reimbursement from the state's petroleum storage tank remediation fund in the event their tanks leak and result in environmental contamination.

After the tank "amnesty" period ends on Oct. 15, owners with unregistered tanks are subject to fines of up to \$10,000 per day. The



(photo by Joy Henderson)

The youngest family member attending the recent Ayres family reunion was R. Jake Barkley, son of Barry and Kerri Barkley and grandson of I.W. Ayres.

**Texas County YF&R bucket calf show set**

TEXHOMA, Okla. - The Panhandle Expo, along with the Texas County Young Farmers and Ranchers, will hold their annual Bucket Calf competition Thursday, Sept. 12 at 3:30 p.m. in the Texas County Activity Center at Guymon.

Rules for the competition are as follows:

1) The calf being exhibited must be an orphan or newborn and may be either male or female, dairy, beef or cross, and the calf must be bottle or bucket fed.

2) The calves are to be shown at halter in the special bucket calf class. Classes may be split if the numbers warrant, according to the age of the

child: age 3-5, age 6-8, and age 9-11.

3) The calf must be born on or after March 15, 1991 and be owned by the exhibitor prior to Aug. 1, 1991.

4) The calves will not be judged on confirmation, but emphasis will be on showmanship and grooming.

5) The entry deadline for each exhibitor will be 1:30 to 3 p.m. Pre-entry forms will be available at the Texas County Activity Center office. Entry forms are also available by writing to P.O. Box 1749, Guymon, OK 73942, or by calling the office at (405) 338-5446.

6) Exhibitor must be at least 3 years old prior to Aug. 1, 1991.

7) Judge has the right to remove any animal that cannot be handled by the exhibitor.

8) Judging will begin at 3:30 p.m.

Premiums will be paid to the top two exhibitors in each class. Premiums are furnished by the Texas County Young Farmers and Ranchers committee.

The Texas County Young Farmers and Ranchers invite any child between the ages of 3 and 11 to bring their calves and participate in the event. More information is available from Monte Smith, P.O. Box 756, Texhoma, OK 73949, (405) 423-7762.

Ayres from page 5  
 Virginia Alley and the granddaughter of Vivian Green. Jake Barkley received the honor of being the youngest member of the Ayres family and is the great-grandson of I.W. Ayres.

Those registering from Vivian Green's family were Joel and Adeline Wheeler from Albuquerque; Kay Shem, Jan and Venetia Wheeler and friend Robert Stroud. Weldon and Elene Green, Dr. Dee and Susan Green, Matt and Eric of Childress; Genna Dunlap Reney and Michelle from Amarillo and Ron Green from Abilene; John and Virginia Alley of Springfield, Mo.; Charles, Jenny, Nathan and Abigail Rix of Red Bank, N.J.; B.J. and Glenda Renner, Gruver and Ross Renner of Washington D.C.

Representing R.C. Green's family were Ralph and Amy Hixon and Barry Green all of Webster; also Dean, Beth, Emilie and Jessica Boyd of Garland. Bo and Be, Lenna and Rho Green of Abilene completed this part of the family.

Registering from Charmian Lyle's group were George and Margaret Odum, Dan Odum, Mack and Darlene, Brian and Matthew Hoel, L.A. and Farene Williams, all of Gruver.

Representing J.M. Ayres family were Ruby Ayres, James Ayres and friend Ana Noe, all of Amarillo.

From Pauline Winger's family, those registering were Joette Riley, George and Pati, Mica and Jori Buchenau, all of Amarillo; Jill Riley Lae and from Irving were the Rona Riley Kirk, Brent Crable and Jordan Kirk. Monte and Marie Harbour; Roy and Denise Harbour and children Macy and Dane; David and Mary K, Lena and Jacob Harbour, all of Stinnett. Val and Marlene Winger, Manda Winger, Davin and Teague, Ryan and Reid Winger, all from Gruver; Darin Winger from

Keller; Lonnie and Marva Burnam, Valerie and Mollie from Friona; Kay Hobbs from Gruver and Brett Hobbs from Lubbock.

Decendants of Aline Henderson were members of Valine Lunn's family; Helen Lunn and children Adam, Zack and Tyler of Wichita Falls. Members of Rita and Jerry Williams family were Todd and Janet Williams with son Lance, Ty, and Paula, Tucker and Taylor Williams; Trevor and Cynthia Williams and friend Tim Caddell.

Rounding out the decendants would be I.W.'s family. Registering were I.W. and Maelyn; Dean and Rosie and Benny, Brian McClenagan and friend Paul Riggins; also, Warren, Marian and Ryan McClenagan of Darrrouzett. Others were Les and Sharon, Barry and Kerri, Alicia and Jake, Rick and Sharolyn, Blythe and Cason Finley of Amarillo.

All thought Mack and Darlene Hoel along with George Brian Odum did a wonderful job with planning the activities etc. The next family reunion will be in 1993 in Amarillo and it is thought that Marva Burnam, Teague Wionger and possibly Dr. Dee Green will be in charge.

Let's give a big round of applause for the entertainers who did volunteer,

So we could have a wonderful evening and who knows... They may have started a new career!

Now, if these performers have made you brave, and on the opposite page your name doesn't appear,

We really do want you to share your talent, so just step forward and we will cheer.

May you leave this years reunion with good thoughts and a wonderful memory,

And a desire and resolve in your heart that you will be here again in 1993.

**Better Roofing**

**Watson or Watson**  
 Residential Roofing, etc.  
 Box 730 (806) 733-2455  
 Gruver, Texas 79040

**Jobless rate at 3.6 percent**

The June unemployment rate in Hansford County was 3.6 percent, down from May's rate of 4 percent, according to the Texas Employment Commission.

TEC figures for June indicate that the county had a total labor force of 3,714 persons. Of that number, 3,582 persons were employed and 132 were jobless. In comparison, there was a total labor force of 3,687 in May, with 3,521 employed and 146 jobless that month.

The statewide jobless rate for June was 6.1 percent, according to Commissioner Mary Scott Nabers. The statistics remain almost unchanged both from a month earlier and a year ago. Contrary to some months past, however, the state is now showing a moderate gain in the total number of employed individuals and slight decrease in the number of Texans out of work.

Nabers is the Texas Employment Commissioner that represents all Texas employers. The TEC serves as the state's official employment agency serving both employers and employees.

**ATTENTION**

Don't miss our Open House at **DONAHUE DITCHING** to introduce the new **LOCKWOOD MODEL 2000 Sprinkler system.**

**Starts at 10:00 a.m. Saturday, August 3rd.**

**Hamburgers and ice cold watermelon will be served for lunch.**

**Donahue Ditching & Backhoe**  
 W. County Road, Spearman, TX  
 659-2798 or 659-2449 - Mobile 659-5865

**LITTLE SCHOOL**

ENROLL NOW FOR FALL PRE-SCHOOL CLASSES

2-5 year olds  
 2 year olds - once a week  
 3-5 year olds - twice a week

**CLASSES LIMITED**  
 State Certified  
 Sept. - April


FUN

For more information call Donna Trantham 659-2046

ARTS and CRAFTS  
 SELF ESTEEM  
 MUSIC  
 LANGUAGE DEVELOPMENT  
 SOCIAL INTERACTION  
 STORY TIME  
 MOTOR SKILLS

**Dr. Laurence Behney and Staff**

**wish to thank you, Hansford County, for three wonderful years, and look forward to serving your medical needs in the years to come.**



**Laurence W. Behney, M.D.**  
 Member,  
 American Academy of Family Physicians

**Betty Pugh      Helen Prachar, L.V.N.**  
**Darlene Pierce      Elizabeth Duncan, R.N.**  
**Liz Sumner, G.V.N.**

"... an ounce of prevention is worth a pound of cure."

**HANSFORD FAMILY MEDICINE CLINIC**  
 702 S. Roland Spearman 659-2846

Hansford County 4-H Junior Rodeo . . .

# Eakin 7 and under All-Around winner

Marty Eakin of Spearman was named All-Around Cowboy in the boys' 7 and under age division of the Hansford County 4-H Junior Rodeo, held July 20 at Oscar Archer Arena in Spearman.

Marty earned a total of 19 points on his way to winning the All-Around buckle. His brother Monty Eakin was named Reserve All-Around Cowboy in the boys 8-10 division, with a total of 13 points.

Other winners included Randus London of Freedom, Okla., who won the girls' All-Around saddle. She was entered in the 7 and under age group and won with 20 points with the highest number of first place finishes. Reserve All-Around in the girls 7 and under was Julie Dawson of Arnett, Okla. with 20 points.

Reserve All-Around winner in the 7 and under boys was Cooper Adams of Plains, Kan., with 18 points. Candy Dean of Hammon, Okla. was the winner of the 8-10 girls All-Around bracelet. Reserve winner in that age group was Jacee Richardson of Goom.

Winning a buckle as All-Around Cowboy in the 8-10 boys age group was Levi London of Freedom, Okla. The bracelet for All-Around Cowgirl in the 11-13 age group was Sequin Downey of Amarillo, and reserve winner in that age group was Sonya Coy of Hammon, Okla.

Winner of a saddle as All-Around in the 11-13 boys age division was Brandon Brown of Dumas, who earned 20 points. Reserve All-Around in that age group was H.G. Adams V of Plains, Kan.

Lori Keathley of Sweetwater, Okla. won the girls All-Around bracelet in the 14-18 age category. Reserve winner was Chasity Rickman of Hereford.

Randy McEntire of Sweetwater, Okla. won a buckle as All-Around winner in the 14-18 boys age group through entering the most events. Reserve winner in that division was Jered Norris of Canadian.

Winners in each event by age division follow.

**BREAKAWAY ROPING**

**11-13 Boys**

1. H.G. Adams V, Plains, Kan.; 2. Brandon Brown, Dumas; 3. Ty Raven, Beaver, Okla.; 4. B.J. Koch, Canadian; 5. Rusty Slavin, Higgins; 6. Thaniel Jennings, Stinnett.

**8-10 Boys**

1. Dustin Winfrey, Plains, Kan.; 2. Dustin Lanham, Dumas; 3. Travis Hill, Higgins.

**11-13 Girls**

1. Sonya Coy, Hammon, Okla.; 2. Sequin Downey, Amarillo; 3. Julie Richardson, Groom; 4. Tamsen Blackwell, Clayton, N.M.; 5. Nicole Pate, Boise City, Okla.; 6. Nikki Nettles, Liberal, Kan.

**GOAT RIBBON**

**7-under Girls**

1. Julie Dawson, Arnett, Okla.; 2. Kristin Elam, Dalhart; 3. Teddi Winfrey, Plains, Kan.; 4. Brittany Morris, Gruver; 5. Randus London, Freedom, Okla.; 6. Krista Hawkins, Guymon, Okla.

**7-under Boys**

1. Cooper Adams, Plains, Kan.; 2. Weston Winfrey, Plains, Kan.; 3. Marty Eakin, Spearman; 4. Cody

Wilson, Boise City, Okla.; 5. Bryson Short, Goodwell, Okla.; 6. Jesse Young, Buffalo, Okla.

**BARRELS**

**7-under Girls**

1. Randus London, Freedom, Okla.; 2. Kristin Elam, Dalhart; 3. Julie Dawson, Arnett, Okla.; 4. Tia Kincannon, Boise City, Okla.; 5. Carol Wilson, Boise City, Okla.; 6. Teddi Winfrey, Plains, Kan.

**7-under boys**

1. Cooper Adams, Plains, Kan.; 2. Marty Eakin, Spearman; 3. Cody Wilson, Boise City, Okla.; 4. Jesse Young, Buffalo, Okla.; 5. Bryson Short, Goodwell, Okla.; 6. Weston Winfrey, Plains, Kan.

**8-10 Boys**

1. Levi London, Freedom, Okla.; 2. Pake Maynes, Guymon, Okla.; 3. Monty Eakin, Spearman; 4. Roper Slavin, Higgins; 5. Dan Hendricks, Logan, Okla.; 6. Dustin Winfrey, Plains, Kan.

**8-10 Girls**

1. Holly Sanders, Two Buttes, Colo.; 2. Candy Dean, Hammon, Okla.; 3. Stormy Schoemaker, Kenton, Okla.; 4. Jacee Richardson, Groom; 5. Casey Coy, Hammon, Okla.; 6. Cassie Salzbrenner, White Deer.

**BARRELS**

**11-13 Boys**

1. Cody Charmasson, Woodward, Okla.; 2. Stormy Nettles, Liberal, Kan.; 3. Brandon Brown, Dumas; 4. Heath Hefley, Two Buttes, Colo.; 5. H.G. Adams, Plains, Kan.; 6. Craig Seely, Lefors.

**11-13 Girls**

1. Julie Richardson, Groom; 2. Jody Avent, Stinnett; 3. LeAnn Keathley, Sweetwater, Okla.; 4. Nikki Nettles, Liberal, Kan.; 5. Nicole Pate, Boise City, Okla.; 6. Sonya Coy, Hammon, Okla.

**FLAGS**

**7-under Boys**

1. Cooper Adams, Plains, Kan.; 2. Evan Schmidt, Morse; 3. Marty Eakin, Spearman; 4. Cody Wilson, Boise City, Okla.; 5. Bryson Short, Goodwell, Okla.; 6. Weston Winfrey, Plains, Kan.

**7-under Girls**

1. Randus London, Freedom, Okla.; 2. Julie Dawson, Arnett, Okla.; 3. Brittany Morris, Gruver; 4. Teddi Winfrey, Plains, Kan.; 5. Carol Wilson, Boise City, Okla.; 6. Kristi Hawkins, Guymon, Okla.

**8-10 Boys**

1. Jamie Mears, Miami, Texas; 2. Stormy Schumacker, Kenton, Okla.; 3. Jacee Richardson, Groom; 4. KK Marchel, Liberal, Kan.; 5. Stephanie Daniel, Laverne, Okla.; 6. Kari Jo Couch, Goodwell, Okla.

**CALF RIDING**

**7-under Boys**

1. Bryson Short, Goodwell, Okla.

**POLES**

**8-10 Boys**

1. Levi London, Freedom, Okla.; 2. Roper Slavin, Higgins; 3. Pake Maynes, Guymon, Okla.; 4. Monty Eakin, Spearman; 5. Dustin Winfrey,

Plains, Kan.; 6. Dustin Lanham, Dumas.

**8-10 Girls**

1. Holly Sanders, Two Buttes, Colo.; 2. Candy Dean, Hammon, Okla.; 3. Cassie Salzbrenner, White Deer; 4. Brandy Brown, Dumas; 5. Stephanie Daniel, Laverne, Okla.; 6. Katie Brittain, Stinnett.

**11-13 Boys**

1. Cody Charmasson, Woodward, Okla.; 2. Brandon Brown, Dumas; 3. Heath Hefley, Two Buttes, Colo.; 4. H.G. Adams V, Plains, Kan.; 5. Craig Seely, Lefors; 6. Jody Mears, Miami, Texas.

**11-13 Girls**

1. Sequin Downey, Amarillo; 2. Jody Avent, Stinnett; 3. Nicole Pate, Boise City, Okla.; 4. Nicole Salzbrenner, White Deer; 5. Nikki Nettles, Liberal, Kan.; 6. Tamsen Blackwell, Clayton, N.M.

**7-under Boys**

1. Marty Eakin, Spearman; 2. Jesse Young, Buffalo, Okla.; 3. Cody Wilson, Boise City, Okla.; 4. Evan Schmidt, Morse; 5. Weston Winfrey, Plains, Kan.

**7-under Girls**

1. Randus London, Freedom, Okla.; 2. Julie Dawson, Arnett, Okla.; 3. Kristin Elam, Dalhart; 4. Carol Wilson, Boise City, Okla.; 5. Kayle Holt, Gruver; 6. Brittany Morris, Gruver.

**STEER RIDING**

**8-10 Boys**

1. Dan Hendricks, Logan, Okla.

**GOAT TYING**

**8-10 Girls**

1. Jacee Richardson, Groom; 2. Candy Dean, Hammon, Okla.; 3. KK Marchel, Liberal, Kan.; 4. Melody Seely, Lefors; 5. Casey Coy, Hammon, Okla.; 6. Stormie Schumacker, Kenton, Okla.

**8-10 Boys**

1. Monty Eakin, Spearman; 2. Cody Lawrence, Dalhart; 3. Roper Slavin, Higgins; 4. Dustin Winfrey, Plains, Kan.; 5. Levi London, Freedom, Okla.; 6. Ryan Farrow, Dumas.

**11-13 Boys**

1. Brandon Brown, Dumas; 2. Rusty Slavin, Higgins; 3. H.G. Adams V, Plains, Kan.; 4. Stormy Nettles, Liberal, Kan.; 5. Cody Charmasson, Woodward, Okla.; 6. Cody McLeod, Spearman.

**11-13 Girls**

1. Sonya Coy, Hammon, Okla.; 2. Chantel Ivey, Hammon, Okla.; 3. Nikki Nettles, Liberal, Kan.; 4. Sequin Downey, Amarillo; 5. Tamsen Blackwell, Clayton, N.M.; 6. Shvonne Farrow, Dumas.

**TIE DOWN ROPING**

**14-18 Boys**

1. Randy McEntire, Sweetwater, Okla.; 2. Monte Carlson, Sweetwater, Okla.; 3. Marty McCloy, Morse; 4. Daniel Gruhkey, Adrian; 5. Sage Brittain, Stinnett; 6. Brady Pool, Gruver.

**BREAKAWAY ROPING**

**14-18 Girls**

1. Lori Keathley, Sweetwater, Okla.



Marty Eakin of Spearman was named the All-Around Cowboy in the 7 and under age division of the Hansford County 4-H Junior Rodeo on Saturday, July 20. Eakin was one of several Hansford County cowboys and cowgirls who competed and performed well in the rodeo.

**14-18 Boys**

1. Jered Norris, Canadian; 2. Seth Fiel, Canadian; 3. Sage Brittain, Stinnett; 4. Daniel Gruhkey, Adrian; 5. Brady Pool, Gruver; 6. Rowdy Slavin, Higgins.

**CHUTE DOGGING**

**14-18 Boys**

1. Monte Carlson, Sweetwater, Okla.; 2. Seth Fiel, Canadian; 3. Tanner Barnes, Perryton; 4. Rowdy Slavin, Higgins; 5. Billy Pillars, Beaver, Okla.; 6. Mark Eakin, Spearman.

**BARRELS**

**14-18 Girls**

1. Chasity Rickman, Hereford; 2. Bobbi Spillers, Elk City, Okla.; 3. Ky Munsell, Woodward, Okla.; 4. Kimberly Cloud, Elk City, Okla.; 5. Shayla Sanders, Two Buttes, Colo.; 6. Leslie Morton, Fritch.

**POLE BENDING**

**14-18 Girls**

1. Chasity Rickman, Hereford; 2. Shayla Sanders, Two Buttes, Colo.; 3. Lori Keathley, Sweetwater, Okla.; 4. RaJeana Thompson, Amarillo; 5. Catherine Foster, Fritch; 6. Leslie Morton, Fritch.

**RIBBON ROPING**

**14-18 Boys**

1. Randy McEntire, Sweetwater, Okla.; 2. Marty McCloy, Morse; 3. Jered Norris, Canadian; 4. Matt Eakin, Spearman; 5. Billy Pillars, Beaver, Okla.; 6. Brook Bearden, Dumas.

**GOAT TYING**

**14-18 Girls**

1. and 2. (tie) Kimberly Cloud, Elk

**PUBLIC NOTICES**

LEAD, DRINKING WATER AND YOU!

Dear Water Customer:

This notice is being furnished as required of all public water systems by the Environmental Protection Agency in 40 CFR 141.34.

The United States Environmental Protection Agency (EPA) has adopted requirements that all public water systems notify their customers about lead exposure. This notification is intended to educate and inform consumers on this issue in light of the fact that your drinking water may be a potential source of lead exposure. This is being done even though your water system is not in violation of the current standard. There are also other potential sources of lead contamination in the environment.

The following specific language is required by EPA in this notice:

The United States Environmental Protection Agency (EPA) sets drinking water standards and has determined that lead is a health concern at certain levels of exposure. There is currently a standard of 0.050 parts per million (ppm). Based on new health information, EPA is likely to lower this standard significantly.

Part of the purpose of this notice is to inform you of the potential adverse health effects of lead. This is being done even though your water may not be in violation of the current standard.

EPA and others are concerned about lead in drinking water. Too much lead in the human body can cause serious damage to the brain, kidneys, nervous system, and red blood cells. The greatest risk, even with short-term exposure, is to young children and pregnant women.

Lead levels in your drinking water are likely to be highest:

1. if your home or water system has lead pipes, or
2. if your home has copper pipes with lead solder, and
  - if the home is less than five years old, or
  - if you have soft or acidic water, or
  - if water sits in the pipes for several hours.

Water purchased by you from the City of Spearman contains less than 0.020 parts per million (ppm) lead, based upon our most recent chemical analysis. As the City becomes aware of any source of lead contamination within the City's distribution system, corrective measures will be taken.

If your drinking water is determined to have high levels of lead, or if you suspect lead contamination, you can do the following to minimize exposure.

1. Flush each cold water faucet until the water is as cold as it will get before using the water for drinking or cooking.
2. Do not use hot tap water for drinking or cooking. Hot water dissolves lead faster than cold water. Especially avoid using hot tap water to make baby formula.
3. Make certain only materials conforming to the federal law regarding lead content are used for any plumbing repairs or new plumbing work in your home.

Dissolved lead cannot be seen in water. Testing by a qualified private laboratory using approved EPA methods is the only way to determine if your water has high levels of lead.

For more information contact one of the following:  
 U.S. EPA - 1-800-426-4791  
 City of Spearman - (806) 659-7524  
 Texas Department of Health - (806) 655-7151

**For all your electrical needs**  
**Industrial Home Oil Fields**  
*Anthony Electric Inc.*  
**Licensed Master Electricians**  
**Complete Product Lines in:**  
 Decorative light bulbs & switch covers  
 Fuses Lamp parts Light fixtures  
 Air filters  
 Some small Appliances  
 Open Monday - Friday 8a.m. - 5p.m.  
**Call or Come By**  
 519 S. Plains Mall - Spearman (806)659-2441

## News From Home

It's nice to read news from home, in a letter or in a hometown newspaper like

**THE HANSFORD COUNTY REPORTER-STATESMAN**

You can send news from home to your college-bound student this fall with our special 9-month subscription rate.

He or she can get all the local news you might forget to mention in your letters. The subscription is timed to begin when the student arrives at school and expire at the end of the school year.

And, with our special 9-month rate of only \$18.72\*, you won't break your tuition budget!

To send news from home, just complete the coupon below and send it, along with a check or money order in the amount of \$18.72, to:

**HANSFORD COUNTY REPORTER-STATESMAN**  
**BOX 458**  
**SPEARMAN, TX 79081**

Name: \_\_\_\_\_  
 Address: \_\_\_\_\_  
 City: \_\_\_\_\_  
 State: \_\_\_\_\_ Zip: \_\_\_\_\_

\* For addresses within the continental U.S. Call 659-3434 or 1-800-395-9482 for rates outside the U.S.

City, Okla. and Ky Munsell, Woodward, Okla.; 3. Lori Keathley, Sweetwater, Okla.; 4. Jessica Dean, Hammon, Okla.; 5. RaJeana Thompson, Amarillo; 6. Bobbi Spillers, Elk City, Okla.

**STEER STOPPING**

**14-18 Boys**

1. Jered Norris, Canadian; 2. Billy Pillars, Beaver, Okla.; 3. Randy McEntire, Sweetwater, Okla.; 4. Mark Eakin, Spearman; 5. Jason Sloan, Perryton; 6. Heath Mitchell, Wheeler.

### Reunion set for 71st Infantry Division

The "Farthest East" 71st Infantry Division, which met with Russian forces at the Enns River near Steyr, Austria in 1945 will hold a Reunion in Columbus, Ga., September 28-29.

Men and mules who served with the Division at Fort Carson, Hunter Liggett, Fort Benning, in Europe can get details of the reunion and association membership from 71st Division Association, 14801 Grapeland Avenue, Cleveland, Ohio 44111.

Units of the Division included 5th, 14th, and 68th Infantry Regiments; 607th, 608th, 609th, and 564th Field Artillery Battalions; 71st Division Headquarters and Headquarters Company; 71st Cavalry Recon Troop; 251st Quartermaster Company; 271st Engineer Battalion; 371st Medical Battalion; 571st Signal Company; 581st Anti-Tank Battery; 731st AAAMG Battalion and 771st Ordnance Company.

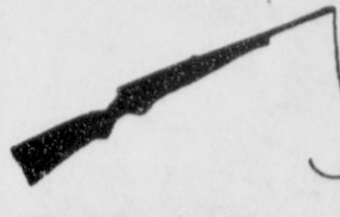
**Farm & Ranch Property For Sale**

- 305 ac. of irrigated farmland. Located North of Farnsworth. Good 8" irrigation well. Farm fully allotted.
- 320 ac. of irrigated farmland. Located North of Farnsworth. Good 8" irrigation well. Farm fully allotted.
- 543 ac. of grassland near Darrouzett. Livewater creek. **Reduced Price.**
- 310 ac. located North of Farnsworth. 200 acres of irrigated farmland, 85 acres in CRP, and 25 acres native grass.
- 1300 ac. of excellent dryland wheatland. Located Southeast of Perryton.
- 640 ac. of grassland. 420 acres in CRP, 220 acres of native grass and lakebottom. Located Southwest of Perryton. (Ochiltree and Hansford Counties.)
- 600 ac. of land. Located Southeast of Booker. 400 acres farmland and 200 acres grassland. **Reduced price.**

**FARM & RANCH DIVISION**  
**NEAL FLATHERS**  
 DEPT. MANAGERS/SALES ASSOC.  
 Phone 806-435-7015  
 Evenings 806-658-4418  
**BETH DEHTAN**  
 Evenings 806-658-9358  
  
**GOLDEN SPREAD REALTY**  
 200 S. Main - Perryton  
 435-5444



**SOUTHWEST  
OUTDOORS**



Mel Phillips

**WATCH OUT FOR THE  
CHEATERS**

Any fishing tournament, open to the public, that does not have a polygraph will sooner or later attract a scoundrel who will cheat the honest fishermen. Polygraphs may cost the promoter a little money, but it is one of the best ways to have an honest fishing tournament.

Both Redman and B.A.S.S. have partner-draw systems that help protect against cheating. Open tournaments for individuals are risky, but handled properly and honestly, are great fun. Watch out for those tournaments that do not protect against the cheaters. As the tournament director of Fun Tournaments, I insist on honest competition and wouldn't put my name on any open fishing tournament without a polygraph. Think about it.

The Dallas Cowboys are at camp; can dove season be far behind? Early reports indicate that the dove season should be excellent, but count on an early cold front pushing our birds to the south. It happens three out of four years.

One of the best gifts to give a young hunter is a hunter safety course. Effective Sept. 1 of this year, all hunters born between Sept. 2, 1971 through Aug. 31, 1975, must have completed a certified hunter education course to hunt legally in Texas. Call the Texas Parks and Wildlife at 1-800-792-1112 for the nearest safety class.

Don't just send the youngster to the course, take it with him/her. Make it a special event by adding a trip to the gun range to sight in the rifles. The hunter education course will take some 10 hours, but the memories of those first hunts will last a lifetime. Every hunter and fisherman fondly remembers the thrill and anticipation of their early trips. Why not make the end of the safety course even more special by having a victor

**Oil & gas report**

WEEK ENDING JULY 26

**Intentions to Drill**

**HANSFORD (WILDCAT)** Jones Energy, #1-91 Dorcas Collard (160 ac) 1390' from North & West line, Sec. 91,4-T&NO, 2 mi west from Spearman, PD 5300' (210 West Park Ave., Suite 2300, Okla. City, OK 73102)

**SHERMAN (CARLANDER)** Morrow & CARLANDER (Marmaton) Phillips Petroleum Co., #3 Bush 'C' (160 ac) 660' from South & 1100' from East line, Sec. 212,1-T&NO, 2 mi south from Stratford, PD 5600' (Box 358, Borger, TX 79008)

**Applications to Plug-Back**

**OCHILTREE (FARNSWORTH-CONNER)** Des Moines Natural Gas Anadarko Co., #1-20 Pletcher (160 ac) 1250' from South & West line, Sec. 20,12,H&GN, 5 mi southwesterly from Perryton, PD 8800' (Box 809, Perryton, TX 79770)

**OCHILTREE (HAYWOOD)** Atoka Natural Gas Anadarko Co., #1-89 Tamlin (160 ac) 1320' from North & East line, Sec. 82,13,T&NO, 11 mi southerly from Farnsworth, PD 9300'

**Oil Well Completions**

**CARSON (PANHANDLE)** XET, Inc., #3 J.C. McConnell, Sec. 65,4,I&GN, elev. 3206 gr, spud 5-8-91, drig. compl 5-14-91, tested 7-16-91, pumped 23.3 bbl. of 42 grav. oil + 23

bbls. water, GOR 1288, perforated 2978-3464, TD 3525', PBTD 3483' -  
**HUTCHINSON (PANHANDLE)** J.M. Huber Corp., #6-5 Huth, Sec. 5,M-24,TCRR, elev. 3366 kb, spud 3-19-91, drig. compl 3-26-91, tested 7-10-91, pumped 22 bbl. of 40 grav. oil + 12 bbls. water, GOR 4000, perforated 3123-3347, TD 3450', PBTD 3425' -

**WHEELER (PANHANDLE)** Phillips Petroleum Co., #10 A.K. Lela, Sec. 49,24,H&GN, elev. 2536 rkb, spud 4-2-91, drig. compl 4-29-91, tested 7-4-91, pumped 100 bbl. of 37.7 grav. oil + 6 bbls. water, GOR 60, perforated 2283-2770', TD 2770' -

**Gas Well Completions**

**HEMPHILL (WILDCAT)** Upper Morrow) Maxus Exploration Co., #3-U Urschel '49', Sec. 49,1,G&M, elev. 2618 kb, spud 10-28-90, drig. compl 2-10-91, tested 6-13-91, potential 2600 MCF, rock pressure 5677, pay 11615-11632, TD 16560', PBTD 13010' - Dual Completion  
**OCHILTREE (ALPAR-PEARSON)**

Brown Dolomite) Alpar Resources, Inc., #8 Pearson '109', Sec. 109,13,T&NO, elev. 3048 gr, spud 10-7-90, drig. compl 10-15-90, tested 7-2-91, potential 123 MCF, rock pressure 623, pay 3292-3329, 4785-4796, 5117-5130, 5475-5482, TD 5650', PBTD 3564' -

**SHERMAN (WILDCAT)** above 6800') Alpar Resources, Inc., #4B Collins '145', Sec. 145,1-T&NO, elev. 3658 gr, spud 5-10-91, drig. compl 5-26-91, tested 6-21-91, potential 1150 MCF, rock pressure 1075, pay

4857-5782, TD 6700', PBTD 4900' -

**Plugged Wells**

**LIPSCOMB (STABEL)** Tonkawa) Courson Oil & Gas, Inc., #1-988 McCartor 'A', Sec. 988,43,H&TC, spud 5-23-91, plugged 6-6-91, TD 6700' (dry)

**OCHILTREE (LINE BUTTE)** Cleveland) Maxus Exploration Co., #2-140 McGarraugh-Edwards 'A', Sec. 140,13,T&NO, spud 6-6-75, plugged 6-13-91, TD 9218' (oil) - Form 1 filed in Diamond Shamrock

**Oil & Gas Reporting Service**

Box 2052 Pampa, TX 79065

Providing the Oil & Gas Report for Hansford County Readers

Doris Harrisor

Phone 665-5800

dinner or presenting the new hunter with that first gun?

If you haven't been to the gun range, it is time to go. While there, check out the newest concept in target shooting: sporting clays. Using a little imagination, the boys at the range can have the clay birds coming at you, going straight up, bouncing on the ground, or can send a darting pair of mini targets that would make even the elusive white wing dove a little jealous. Sporting clays are fun and, by improving your shooting, will make this year's first trip even more productive.

**TIP OF THE WEEK:** Tired of trying to read the little + or - signs on the old boat battery? A can of red spray paint can make charging the batteries lots easier. Just spray some on the positive post side of the battery. This idea really comes in handy when setting up the charger in the dark of night.

**Swinford introduces  
TV legislation**

**AUSTIN** - As legislators continued to meet in special session to trim the fat from the state's budget, District 88 Rep. David Swinford, R-Dumas, introduced legislation which would eliminate the growth of in-house television studios within state agencies.

"What we have seen over the past few years is a growth in the number of in-house television studios within state agencies," said Swinford. "Every time an agency wants to produce a TV spot, they have used our tax money to create their own personal studio rather than contracting with private sector television production facilities for the work." Swinford added that this bill is an

attempt to eliminate some of the duplicity within state agencies and to eliminate part of the massive bureaucracy of state government by contracting with the private sector for television production services.

"I believe that if we contract with the private sector for television production services we can save taxpayers' money and at the same time generate business and dollars in the private sector. We know that dollars generated in the private sector will boost the economy while dollars which are simply transferred within state government do not boost the economy to the same degree," he concluded.

PRICES EFFECTIVE JULY 28-AUGUST 3, 1991

305 W. KENNETH, SPEARMAN  
101 MAIN, GRUVER



HOMOGENIZED  
**ALLSUP'S MILK**  
GALLON  
**\$1.89**

FAMOUS  
**ALLSUP'S BURRITOS**  
**2 FOR 89¢**

TORTILLA CHIPS AND  
JALAPENO CHEESE SAUCE  
**NACHO PRONTO**  
6 OZ. SIZE  
**\$1.29**

**HERSHEY'S**  
MILK CHOCOLATE  
ALL VARIETIES  
**HERSHEY CANDY BARS**  
**3 FOR \$1**

**PEPSI**  
ALL TYPES  
**PEPSI-COLA**  
6 PACK 12 OZ. CANS  
**\$1.69**



**BAR-S FRANKS**  
12 OZ. PKG.  
**69¢**

ALL FLAVORS  
**OCEAN SPRAY JUICES**  
10 OZ. BTL.  
**59¢**

COOKED FRESH 24 HRS. A DAY		HOT FOODS MENU		AVAILABLE AT ALL ALLSUP'S LOCATIONS
BARBECUE BEEF SANDWICH	99¢	9 PIECE BOX CHICKEN	\$4.99	
BARBECUE PORK RIBS (LB.)	\$3.99	BEEF & CHEESE CHIMICHANGA (MEAT)	\$1.19	
BARBECUE WHOLE CHICKEN	\$3.99	CORN DOG	69¢	
ALLSUP'S BURRITO	79¢	DELICIOUS HAMBURGER	59¢	
BREAKFAST BURRITO	99¢	WILSON HOT LINKS	99¢	
BURRITO BEEF & SALSA	\$1.19	SAUSAGE ON A STICK	\$1.59	
DELICIOUS CHEESEBURGER	79¢	SAUSAGE & BISCUIT	79¢	
CHICKEN FRIED STEAK	\$1.59	SAUSAGE EGG & BISCUIT	\$1.09	
3 COUNT CHICKEN STRIPS	\$1.49	SAUTEYEA SAUSAGE	\$1.09	
W/POTATO WEDGES/ CHICKEN (2 PCS) BISCUIT	\$1.99	4 COUNT STEAK FINGERS	\$1.00	

CALL-IN ORDERS WELCOME CHECK OUR WEEKLY SPECIALS

**CAMPBELL'S RAMEN NOODLE SOUP**  
CHICKEN OR BEEF  
3 Oz. Pkg.  
**10/\$1.00**

**MARDI GRAS PAPER TOWELS**  
JUMBO ROLL  
**69¢**

**BATHROOM TISSUE ANGEL SOFT**  
4 ROLL PKG.  
**99¢**

**OCEAN SPRAY JUICE COCKTAIL**  
ALL FLAVORS  
48 Oz.  
**\$2.49**

**HUNT'S ALL NATURAL BARBECUE SAUCE**  
18 Oz. Bottle  
**99¢**

**SHURFINE FROZEN ORANGE JUICE**  
16 Oz.  
**\$1.19**

**SHURFINE PITTED SMALL OLIVES**  
Net. dr. wt. 6 Oz.  
**\$1.19**

**\$1000 WINNER**  
WILLIAM HATCHER, ROSWELL, N.M.  
**\$100 WINNERS**  
GABRIEL MENDOZA, FLOYDADA, TX  
LUPE ZAMBRANO, VERNON, TX  
MISTY ROSS, LOS LUNAS, N.M.  
THOMAS FRANKLIN, ALBUQUERQUE, N.M.  
**GAS FOR A YEAR WINNERS**  
ROCKY SMITH, PADUCAH, TX  
JESUS MALDONADO, HEREFORD, TX  
JOY HILL, JAL, N.M.  
SHANNON ROSS, SPRINGTOWN, TX  
DEL FRED WAUNEKA, GALLUP, N.M.  
LISA CLARDY, QUITAQUE, TX.

<b>SAUSAGE &amp; BISCUIT</b>	EACH	<b>59¢</b>
<b>SHURFINE FROZEN ORANGE JUICE</b>	16 OZ. CAN	<b>\$1.29</b>
<b>GARDETTO'S SNAK-ENS</b>	6 OZ. PKG.	<b>99¢</b>

NO PURCHASE NECESSARY See Store for Complete Rules and Odds.

**PLAY TODAY**  
**Convenient Cash**  
Pick Up Your FREE Instant Win Scratch-Off Game Ticket

**Over 325,000 Chances to win CASH, FREE PRODUCTS & FREE FOOD**

Enter Our Second Chance Sweepstakes and  
**Cruise The Caribbean**

OR Be one of 9 lucky people who will win **FREE GAS FOR A YEAR\*** (\*8 Gallons a week for 52 weeks)

7 Day Cruise For Two Can Be Yours (a \$5000 Value) With **\$300 Spending Money!**

A little scratch will cure that

Itch to Buy at

The Spearman Merchants'



Dog Days of Summer

**Flea Market**

Old Crawford Building  
Main Street, Spearman  
August 2nd & 3rd  
10 a.m. - 6 p.m.

Participating Merchant

ChaLor's · Country Stitches · Lady Fair · Adela's

· JG's Ladies Wear · La Kay's Merle Norman Studio

· Kids' Stuff · The Bunkhouse · Krazy Corner Antiques

· Jo's This-n-That · Attie Antiques · Celebrate

Avon · Prairie Garden

# SUMMER CLEARANCE SALE



We've got a "Bumper Crop" of very nice "Factory Program" cars & late model used cars & trucks! We've cut our prices, so that you can reap the savings! All of our used cars & trucks from both dealerships will be located at Hergert Ford, 2322 S. Main, in Perryton. We have over 60 vehicles in stock with more trade-ins arriving daily. If you are looking for a nice used car or truck for yourself or a great school car for your son or daughter, then check our inventory. For your shopping convenience we have GMAC, Ford Motor Credit and bank financing available... (we have been known to take cash too!) Open Saturdays until noon.



**\*91 Cadillac Sedan DeVille 4-Doors - 3 to pick from!**  
Light Auburn (leather) 10,000 miles! White (cloth) 9,000 miles! Light Sapphire Blue (Leather) 8,000 miles! All are equipped with Michelins & mags, power seats, AM/FM cassette, graphic equal, cruise, tilt & rear defogger. Balance of 4 yr./50,000 mile warranty with zero deductible transferrable automatically. **YOUR CHOICE \$23,500.00**

**\*91 Buick Skylark 4 Doors - 2 to pick from!**  
White - 4,500 miles! Ice blue - 5,200 miles! Both are equipped with Michelins, 4 cyl EFI, auto., air, tilt, power windows & rear defogger. Balance of 3 yr./50,000 mile warranty. **YOUR CHOICE \$9,950.00**

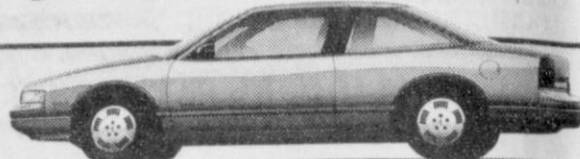
**\*91 Pontiac Sunbird LE 4 Door - Bright Red**  
Only 5,900 miles! 4 cyl EFI, mag wheels, auto., air, tilt, AM/FM stereo, rear defogger. Balance of 3 yr./50,000 mile warranty. **CASH \$8,950.00**

**\*91 Olds Cutlass Supreme 4-Dr. - White (Gray Cloth)**  
Only 12,000 miles! Olds mags & Michelins. V6, power windows & locks, tilt, cruise, AM/FM cassette, balance of 3 yrs./50,000 mile warranty transferrable automatically. **CASH \$13,500.00**

**\*91 Pontiac Grand Prix LE 4-Dr. - White (Blue Cloth)**  
Only 12,000 miles! V6, power windows & locks, tilt, cruise, AM/FM cassette. Balance of 3 yr./50,000 mile warranty. **CASH \$13,500.00**

**\*90 Buick Park Avenue 4-Dr. - Ruby Red (Burgundy Cloth)**  
Only 17,000 miles! V6, Michelins, power seats & recliner, tilt, cruise, AM/FM cassette, concert sound & rear defogger. Balance of 3 yr./50,000 mile warranty. **CASH \$15,900.00**

**90 GMC 1/2 Ton Short Bed Extended Cab - White (Red Cloth)**  
350 EFI, V8, Sierra Classic, 60/40 seat, windows & locks, tilt, cruise, AM/FM cassette, new steel radials, rally wheels plastic bedliner. **CASH \$10,900.00**



**\*91 Lincoln Town Car 4-Dr. - 2 To Pick From!**  
Charcoal (burgundy leather) 14,000 miles, dark met. blue (grey leather) 11,000 miles! Lincoln mags & Michelins, power seats, windows, locks, tilt, cruise, AM/FM cassette, defogger & more! \*Balance of 4 yr./50,000 mile warranty remaining. **YOUR CHOICE \$21,900.00**

**\*91 Taurus GL Station Wagon 4-Dr. - Dove Grey (Red Cloth)**  
Only 7800 miles! 3.8 V6, Mag wheels, luggage rack, third seat, windows, locks, tilt, cruise, AM/FM stereo & more. **CASH \$15,500.00**

**\*91 Taurus GL 4-Dr. - Crystal Blue (5100 miles) Gold (16,000 miles)**  
V6, mags, windows & locks, tilt & cruise, AM/FM stereo, rear defogger. **YOUR CHOICE \$12,900.00**

**\*91 Thunderbirds - Met. Red (8,800 miles) Bright Red (8,500 miles)**  
3.8 V6, power bucket seats, windows & locks, tilt, cruise, AM/FM stereo, rear defroster. **YOUR CHOICE \$12,900.00**

**\*91 Mercury Sable GS 4-Dr. - Light Crystal Blue (Blue Cloth)**  
Only 6,500 miles! 3.8 V6, mags, windows, locks, tilt, cruise, AM/FM stereo, rear defogger. **CASH \$12,900.00**

**\*91 Mercury Cougar LS 2-Dr. - White (Burgundy Cloth)**  
Only 15,000 miles! 3.8 V6, power bucket seats, windows, locks, tilt, cruise, AM/FM, rear defogger. **CASH \$13,500.00**

**\*91 Tempo GL 4-Dr. - Bright Red (Burgundy Cloth)**  
11,000 miles! 4 cyl. EFI, auto., air, windows, locks, tilt, cruise, AM/FM cassette, rear defogger. **CASH \$9,250.00**

**\*91 Ford 1/2 Ton 4x4 Explorer XL - Silver (Burgundy Cloth)**  
Only 8,000 miles! 4.0 V6, auto, air, tilt, cruise, windows, locks, AM/FM cassette, rear defogger, luggage rack. **CASH \$17,900.00**

**\*91 Ford Aerostar XLT Extended Van - Light SandStone/Brown**  
Only 11,400 miles! Just in time for vacation! Mag wheels, luggage rack, lumber seats, center & third seats, rear air, windows, locks, tilt, cruise, AM/FM cassette, rear defogger. **CASH \$17,500.00**

\*Balance of Factory Warranty Transferable Automatically.



**\*91 Lincoln Town Car 4-Dr. - 2 To Pick From!**  
White (red leather) 14,000 miles, silver rose (burgundy cloth) 13,900 miles! Keyless entry, Lincoln mags & Michelins, power seats, windows, locks, tilt, cruise, AM/FM cassette, defogger & more. \* Balance of 4 yr./50,000 mile warranty remaining. **YOUR CHOICE \$23,900.00**

**\*90 Lincoln Continental 4-Dr. - Gold (Tan Leather)**  
15,000 miles. 3.8 V6, leather power seats, AM/FM cassette, defogger. **CASH \$18,900.00**

**\*90 Ford Tempo 4-Dr. - Dark Metallic Blue (Blue Cloth)**  
(10,000 miles) mag wheels, auto, air, tilt, cruise, AM/FM, rear defogger. **CASH \$8,250.00**

**88 Lincoln Continental 4-Dr. - Gold (Tan Cloth)**  
Only 43,000 miles! 3.8 V6, power seat, windows, locks, tilt, cruise, AM/FM cassette, rear defogger. **CASH \$12,900.00**

**88 Chevy 1/2 Ton Scottsdale - Light Sandtone/Brown**  
305 V8, auto, air, tilt, cruise, AM/FM stereo. New steel radials, rally wheels. **CASH \$7,950.00**

**87 Ford 3/4 Ton 4x4 XLT - White/Blue**  
351 V8, auto, new steel radials, windows, locks, tilt, cruise, AM/FM cassette. Great truck for farm or ranch! **CASH \$8,950.00**

**86 Pontiac 6000 STE 4 Door - Gold (Tan Cloth)**  
70,000 miles, V6, auto, air, Pontiac mags, power seats & recliner, windows & locks, tilt & cruise. You must see the stereo on this one! **CASH \$5,950.00**

**85 Cadillac FWD Fleetwood Br. - 4-Dr. - Black Cherry Pearlmist**  
High mileage but looks & runs great! We sold new! Wire wheels, BOSE stereo & loaded with equipment. **CASH PRICE \$6,750.00**

## BARGAIN CORRAL

**86 Ford 1/2 Ton Ranger - Silver (Burgundy Cloth)**  
2.0 4 cyl., 5 speed, AM/FM cassette. This one would make you a good economical work truck! **CASH \$3,950.00**

**85 Olds 98 Regency Brougham 4-Dr. - Light Met. Blue/Dark Blue**  
Only 77,000 miles! 3.8 V6, wire wheels, new steel radials, power seats, BOSE stereo, windows, locks, tilt, cruise, luggage rack. **CASH \$5,500.00**

**85 Buick LeSabre Limited 2-Dr. - Creme Beige/Tan (Tan Cloth)**  
307 V8, Landau top, AM/FM stereo, cruise & tilt. High mileage but looks & runs great. **CASH \$3,250.00**

**85 Pontiac Grand Prix Brougham 2-Dr. - 2 Tone Silver**  
305 V8, Landau top, power seat, windows, locks, tilt, cruise, AM/FM cassette. Good school car! **CASH \$3,850.00**

**85 Plymouth Reliant 4-Door - Metallic Blue**  
Only 67,000 miles! Michelins, 4 cyl., automatic, air, AM/FM cassette. This car would be economical & dependable! **CASH \$2,750.00**

**85 Chevy Impala 4-Door - Burgundy (Burgundy Cloth)**  
4.3 EFI V6, auto, air, tilt & cruise, AM/FM stereo. Only 58,000 miles! This car would make good economical transportation! **CASH \$3,750.00**

**84 Lincoln Town Car 4 Dr. - 2 to pick from!**  
Gold (Saddle Tan Cloth), Tan/Gold (Saddle Tan Cloth) 302 V8, wire wheels, power seats & loaded with equipment! **YOUR CHOICE \$4,950.00**

**84 Buick LeSabre Limited - 4-Dr. - Dark Met. Blue (Blue Cloth)**  
Only 75,000 miles! 307 V8, wire wheels, power seats & recliner, windows & locks, tilt & cruise, AM/FM cassette. **CASH \$3,750.00**

**83 Olds 98 Regency Br. - 2-Dr. - Light Met. Brown/Burgundy**  
Only 78,000 miles! Burgundy cloth, power seats, windows & locks, tilt & cruise, AM/FM cassette. **CASH \$3,500.00**

**82 Ford 1/2 Ton Conversion Van - Silver/Blue**  
302 V8, chrome wheels, running boards, AM/FM cassette, air, tilt, cruise, luggage rack. **CASH \$3,950.00**

**82 Olds 98 Regency Brougham 2-Dr. - Light Redwood/Burgundy**  
307 V8, wire wheels, tilt, cruise, windows, locks, power seat, AM/FM cassette. **CASH \$2,500.00**

**81 Toyota Corolla 4-Dr. Wagon - Silver**  
4 cyl., auto, air, AM/FM cassette. This would make a good fishing wagon! **CASH \$1,450.00**

**81 Buick Park Ave. 4 - Door - Light Met. Brown/Tan**  
High mileage but great mechanically! Power seats & recliner, windows & locks, tilt & cruise, AM/FM cassette. **CASH \$2,250.00**

**80 Pontiac Bonneville 2-Dr. Metallic Red/Burgundy**  
350 V8, wires, air, tilt & cruise. This car drives great! **CASH \$2,250.00**

**80 Pontiac Trans Am - Black (Tan Cloth)**  
"Smokey & The Bandit" car! Pontiac mags & great steel radials, windows, locks, tilt, cruise, AM/FM stereo. Economical 301 V8! Good first car for school! **CASH \$2,500.00**

**79 Ford LTD Landau 4-Dr. - Pastel Yellow (Tan Cloth)**  
302 V8, wire wheels, power seat, windows, locks, tilt, cruise, AM/FM stereo. Good work car! **CASH \$1,450.00**

**79 Olds Toronado 2 Dr. - White (Red Cloth)**  
Only 76,000 miles! 350 V8, power seats, windows & locks, tilt & cruise, AM/FM cassette. **CASH \$2,500.00**

**79 Ford Thunderbird 2-Dr. - White (Blue Cloth)**  
Only 85,000 miles. This car looks & runs great! 302 V8, Landau top, AM/FM 8 track, air, cruise and tilt. Would make excellent school car. **CASH \$2,950.00**

**79 Ford Conversion Van - Brown/Gold**  
302 V8, mags, captain chairs, sofa bed, front & rear air, tilt, cruise, AM/FM cassette. **CASH \$3,250.00**

**78 Mercury Cougar 2-Dr. - Light Turquoise/White.**  
Wire wheels, power seats, windows & locks, tilt, cruise, AM/FM cassette, Landau padded roof. **CASH \$950.00**

**73 Chevy Caprice Classic 4-Dr. - Dark Met. Brown/Tan**  
If you need a good work car in excellent condition, this is the one for you. It's loaded with equipment! **CASH \$1,500.00**

**73 Chevy 3/4 Ton Suburban - Almond Tan**  
This is the work wagon to haul your crew to & from work. Would also make good hunting or fishing wagon! **CASH \$1,000.00**

**67 Chevy 2 1/2 Ton Wrecker - Dark Met. Brown/Tan**  
This is our wrecker we have built up. We no longer need it, but you might! It's stickered & tagged with lights, etc., Tulsa wrench, oilfield steel bed, Mr. Goodwrench 350 motor, 4-speed, 2-speed axle, & Imron paint job. It would be excellent for oilfield, farm, ranch, mechanic or body shop business! **CASH \$5,750.00**

**48 Ford Flatbed Truck with Grain Sides**  
This truck has been refurbished & in excellent condition. Like new with very recent overhaul! Looks & runs great! **CASH \$2,500.00**

Hergert Ford  
2322 S. Main  
Perryton, TX  
(806) 435-7676



Don Hergert Motors  
420 S. Main  
Perryton, TX  
(806) 435-3686

•Don Hergert •Darl Hergert •Donnie Hergert •Leo Meyers



Count on the Classifieds to Do the Job

WANT ADS Work Wonders!

NOTICE: Deadline to place or cancel classified ads is Tuesday noon for Thursday insertion. CLASSIFIED RATE \$4.00 first insertion...

REAL ESTATE

OLD HANSFORD ADDITION - 3 Bd, 2 Bath, 5 acres, brick, landscaped, large double car garage. \$85,000. Please call 659-3004 for appointment. S38-4tc

OWNER MUST SELL: 3 bedroom, 1 1/2 bath, Morgan building, gas grill, hardwood floors. Assumable loan. Call 659-3057 for appointment. 703 E. 2nd. S35-2tpRTN

SUPER PRICE! Nice 3 bedroom, 1 bath brick home, close to schools and parks, with garage, storage shed, fenced backyard. Call 659-2962. S37-RTN

FOR SALE - 2100 sq. ft. (living space) home, 3 large bedrooms, 2 1/2 baths, large kitchen, living room and den. Attached garage, fireplace, large yard with trees. 224 Barkley, call Bob Boxwell at 659-3802 for appointment to see. S37-RTN

AA Realty: Allen Aikoff-Broker-659-3034, Julie Martin-Sales-659-2425, Dennis Nelson-Sales-659-3608, Lamy Trooper-Sales-659-3491. Listings include 605 S. Archer-Lot & Trailer-Great Buy!, 217 N. James-3/1 1/4-Dbl. Garage...

Century 21 GOLDEN SPREAD REALTY: Janey Helton Pointer, Broker Owner, 435-5444; Jennifer Nollner, Sales Associate 659-5243. Listings include 821 Dessen - 5/2, lots of house for the money! Call today!...

ADVERTISING PROVISIONS: 1. Publisher reserves the right to reject, edit, revise and properly classify any advertisement at his sole discretion. 2. Advertiser assumes all liability for advertisements printed pursuant to his instruction...

REAL ESTATE

FOR SALE: 4 bedroom, 1 1/2 bath brick home with basement and detached garage, large corner lot near school. Call after 5 p.m., 659-3944. S39-5tc

NICE HOUSE on 1 1/2 lots. Fence, 3 bedrooms, 1 1/2 baths, study, utility room, lots of cabinet storage, garage, huge driveway, central air/heat, 1500 sq. feet. \$42,000. 727 Wilbanks. 659-3970 or 659-3838. S24-3tpRTN

BOB HARDY REALTY 803 WILMETH DR. 659-3440. NEW LISTINGS: 906 LINN DR. - Qualified buyers only. 4 BR, 2 1/2 Baths, Jacuzzi, 3 Car Garage, Landscaped, Fenced, Sprinkler System. Exceptional Quality. Price Reduced - \$113,500. 526 S. TOWNSEND - 4 B/R, 2 Bath, Basement \$65,000. Colorado Property For Sale. ROBERT HARDY - BROKER

SMALL EQUITY - Low interest assumable loan. Nice three bedroom, two bath home. Sunken living room, fireplace, fenced backyard, two car garage. Very nice location for children. 1120 Archer, Spearman. Call 659-2306. S32-RTN

FOR SALE: 3 Bedroom, 2 bath home. Sunken living room, parquet floors, fireplace, covered patio, 2 car garage, sprinkler system, 2193 sq. ft. living space, excellent location. Call 659-3587 or 659-5022. S33-RTN

NEW HOMES. 100% financing to qualified buyers. New loan program. 1-800-872-7412. S40-2tp

FOR RENT

NICE TWO BEDROOM 14 X 70 trailer house. Air cond., off-street parking, private lot, nice yard, good neighborhood, \$250/mo., \$150 deposit, no pets. 659-3657, leave message. S38-cRTN

MOBILE HOME SPACES in Spearman for rent, \$50 per month. Call Bill Bailey, 435-5080. S38-RTN

FOR RENT or sale (pay like rent) inexpensive; older 10 x 56 two bedroom mobile home. Ideal for couple with no more than 2 children. Corner lot is completely fenced. 2-car off-street parking slab. 1 block from swimming pool. Close to all schools. Call 659-2954 and leave name and phone number. S25-RTN

FOR RENT: large mobile home lot, storage bldg., sidewalk and 2-car parking slab. 6 ft. wood privacy fence. 1 block from swimming pool and close to schools. Call 659-2954, leave name and phone number. S35-RTN

APARTMENTS FOR RENT. One and two bedrooms, furnished. Call J.P. at 659-2117. S25-2tpRTN

HOUSEHOLD GOODS

REPO PIANO - Excellent Condition - Assume Low Payment Balance - Can Be Seen Locally - Ph. 316-624-8422 - Brier & Hale Music - Liberal, Ks. S39-3tc

Today's Best Buys

CAMPBELL'S RAMEN NOODLE SOUP Beef or Chicken 3 Oz. 10/\$1 ALLSUP'S CONVENIENCE STORE

COKE, 7UP, DR. PEPPER Six 12 Oz. Cans \$1.29 UNITED SUPERMARKET-PERRYTON

CRISCO SHORTENING 3 Lb. Can 2/\$4.00 UNITED SUPERMARKET-PERRYTON

CHICKEN OF THE SEA TUNA 6 1/2 Oz. Can 2/\$1.00 Limit 6 UNITED SUPERMARKET-PERRYTON

HOUSEHOLD GOODS

FOR SALE: very nice, almost new Bassett baby bed, \$75.00. 659-2875. S40-1tp

MISC. FOR SALE

PIANO FOR SALE. Wanted: Responsible party to assume small monthly payments on piano. See Locally. Call credit manager 1-800-447-4266. S40-3tp7.18

JAN'S ETC. NEW & USED & ANTIQUES TOO Everything for home and family. Plains Shopping Center in Spearman. Open Monday - Saturday, 9:30 a.m. til 6:00 p.m. S16-RTN

PIANO FOR SALE. Wanted: Responsible party to assume small monthly payments on piano. See Locally. Call credit manager 1-800-447-4266. S38-3tp5.18

NEW TRAMPOLINES Mats and springs. Resew trampoline mats. Make new boat covers. Call 806-659-2109 Harry Stumpf 301 W. 12th Spearman, Texas

FARM MACHINERY

FOR SALE Two 1982 Mack trucks Two 1980 40-ft. Timpte twin hopper trailers Now accepting bids at Dumas Co-Op through August 14 at 12:00 noon. Call 935-6440 for details. S39-3tc

SERVICES

FOR REASONABLE, QUALITY guaranteed gearhead repair, call 806-435-4900, 8-12 Monday-Friday. 806-435-3939 after 6 p.m. and weekends. Loaner gearheads available in most cases. S37-RTN

CALL YOUR LOCAL Used Cow Dealer for 7 days a week dead stock removal. 659-3544 or 1-800-692-4043. Serving Cattlemen for the past 20 years. G51-RTN

HANDYMAN - YOU WANT it done and can't or don't want to do it yourself!! Call Uncle Ed (Pearson) 659-3328 anytime! House, yard, fence, car, mower, bicycle, air conditioner, etc... Anything!!! S37-RTN

NOTICE Wallace Monument Co. Monuments, Curbing, Grave Covers 1-800-999-9506 Local Representative LEONARD JAMESON Spearman, Texas 35s-rtn

Are You A Victim of Physical Abuse? Call Toll Free 1-800-753-5308. We are in Spearman on the 1st and 3rd Wednesdays of each month from 9:30 to 11:30 a.m. Call for an appointment. Also, we can come to Spearman at any time upon request. We also operate a safe place for victims and their children to stay in times of crisis. Panhandle Crisis Center Serving Hansford, Lipscomb and Ochiltree Counties 317 S. Main Perryton, TX

AUTOMOBILES

1978 SHORT WIDE 350 GMC pickup, power windows and locks. Call 659-2163. S40-2tp

FOR SALE: 1979 white LTD II. Good fixer-upper. Good tires and stereo. Call 659-3725. S39-1tpRTN

FOR SALE: 1985 Ford pickup/topper, fishing boat & motor. Call 659-3449. S38-3tp

GARAGE SALES

THREE FAMILY garage sale Aug. 1, 2, & 3, 9:00-? Lots of goodies, good school clothes for girls, different sizes. 503 Oklahoma, last street on left side on 7th St. S40-1tp

BIG GARAGE SALE! Several families, Saturday, August 3, 8:30 - ?, 805 S. Archer. Shoes, clothes (some with price tags still on), cook tops (elec. & gas), small appliances, much, much more. S40-1tp

EARLY BIRD garage sale: 7 a.m.-? Aug. 3, 320 S. Bernice. Gas stove, full size mattress & box springs, baby bed, high chair, lots of children's & women's clothing. S40-1tp

GARAGE SALE Saturday, August 3, 9-5, 802 Dissen. Mattress set, clothes, games, toys, silverware, much more. S40-1tp

HELP WANTED

LOOKING FOR EXTRA work during your vacation? We need truck or tractor drivers during corn harvest. August 20 through October 10, or any part thereof. 806-878-2672. S39-2tc

NURSERY KEEPER for Gruver Methodist Church, Sunday mornings 9:45 a.m. to 12:00 noon. Call 733-2651 or 659-3965. S40-1tcRTN

REPORTER-STATESMAN CLASSIFIEDS WORK!

SERVICES

Bob Williams 435-4835 Sweep Air Seeder \$6/A \$50/A -200 Acres +200 Acres

Stay in touch! with G&G ELECTRONICS Cellphone USA \*2-way Radio \*Mobile Telephones \$35/month No Air Time \*Repeater Spaces \*Paggers \*Satellite Work Call Bruce Duncan (806) 659-3673

OSGOOD MONUMENT CO. Amarillo, Texas Dealers of Rock of Ages Granite, as well as all colored granites, marble and bronze memorials. represented by BOXWELL BROS. FUNERAL HOME 519 S. Evans 659-3802

HELP WANTED

THE HANSFORD COUNTY ASCS Office will be taking applications for a temporary or full time program assistant. Secretarial and computer skills needed. Applications will be accepted August 1-7, 1991 from 12:00 Noon to 5:00 P.M., Monday-Friday. Applicants can apply at the Hansford County ASCS Office at 711 West 7th Spearman, Texas.

The Hansford County ASCS is an equal opportunity employer established under law without regard to race, color, religion, age, sex, handicaps, nation origin, marital status, political affiliation or other non merit factors. ASCS is an Equal Employment Opportunity Employer. S40-1tc13.65

JOB OPENING

The City of Spearman is now accepting applications for a laborer position in the Street Department. A person who qualifies for the laborer position will be one who can perform semi-skilled tasks of a physical nature. Examples of work performed are repair of streets, aid in repair and sign placement, and park maintenance.

Ten years of formal school training or its equivalent in education, work experience, passing a physical examination will be required and a Texas commercial drivers license is preferred.

The City has an excellent fringe benefit program which includes retirement, group hospitalization insurance, vacation pay, holiday pay, and sick leave pay.

Applications will be received until 5:00 p.m. on August 12, 1991. Applications may be obtained at City Hall, located at 30 S.W. Court The City of Spearman is an Equal Opportunity Employer. S40-2tc5.07

PUBLIC NOTICES

NOTICE OF SALE OF OIL AND GAS LEASE

The City of Spearman, Texas, will receive sealed bids until August 20, 1991, 7:30 p.m., at which time the bids for paid-up Oil and Gas Lease on the following described lands will be publicly opened and read. A fifteen-acre tract of land out of the West one-half of Section 66, Block 4-T, Texas and New Orleans Railroad Company Survey. The primary term of the lease may not exceed three (3) years. The lease may provide for pooling. The City reserves the right to reject any or all bids, to waive informalities and to accept the bid deemed to be the most advantageous to the City. All bids received after the above closing hour will be returned unopened.

PUBLIC NOTICES

TO ALL INTERESTED PERSONS AND PARTIES:

You are hereby notified of the opportunity for written public comment concerning the application for continuance of Permit Nos. R-4159 and R-4034A by AGCO of Spearman, Inc. for its grain elevator facilities in Spearman, Hansford County, Texas. The facilities are located at the ATSF railroad siding on the north edge of Spearman and five miles south of Spearman on Highway 760, respectively. These facilities are emitting the following air contaminants: particulate matter, particulate matter 10, volatile organic compounds, nitrogen oxides, sulfur dioxide and carbon monoxide.

A copy of all materials submitted by the applicant is available for public inspection at the Texas Air Control Board (TACB) Lubbock Regional Office at Biencroft South #1, 5302 South Avenue Q, Lubbock, Texas 79412, telephone (806) 744-0090, and at the TACB, 12124 Park 35 Circle, Austin, Texas 78753. All interested persons may inspect these materials and submit written comments to the Executive Director of the TACB. Any person who may be affected by emissions of air contaminants from the facilities may request a contested case hearing from the Board on the application for continuance pursuant to Section 382.056(d) of the Texas Health and Safety Code. All comments and hearing requests may be received in writing by August 15, 1991. All written comments submitted to the Executive Director shall be considered in determining whether to continue the permit. All comments will be made available for public inspection at the TACB office in Austin. S39-2tc36.60

NOTICE TO ALL PERSONS HAVING CLAIMS AGAINST THE ESTATE OF MAUDINE PATTERSON

Notice is hereby given that original Letters Testamentary for the Estate of MAUDINE PATTERSON, Deceased, were issued on July 23, 1991, in Docket No. 2001, pending in the County Court of Hansford County, Texas, to John Bailey Patterson and Larry Pat Patterson. The residence of John Bailey Patterson is Hutchinson County, Texas and his address is HCR 1 Box 42A Spearman Texas 79081. The residence of Larry Pat Patterson is Hansford County, Texas, and his address is HCR 2 Box 1A, Spearman, Texas 79081. All persons having claims against this estate which is currently being administered are required to present them within the time and in the manner prescribed by law. DATED the 23 day of July, 1991. John L. Hutchinson Attorney for the Estate S40-1tc20.55

LEGAL NOTICE

The Palo Duro River Authority will accept sealed bids to construct approximately 16 miles of barbed wire fence by 4:00 P.M., Monday, August 12, 1991. The bids will be opened at their regular meeting on Tuesday, August 13, 1991 at 2:00 P.M. Specifications are available in the Palo Duro River Authority office, 511 S.W. 11th St., Spearman, Texas. The Palo Duro River Authority reserves the right to accept or reject any or all bids. S38-3tc11.40

TexSCAN Statewide Classified Advertising Network Advertise in 293 Texas newspapers for only \$250. Reach 3 MILLION Texans. Call this newspaper for details. MAKE A FRIEND...FOR LIFE! Scandinavian, European, Yugoslavian high school exchange students arriving August...HOST FAMILIES NEEDED! URGENT! Visa deadlines! Call now! American Intercultural Student Exchange. Toll-free 1-800-SIBLING. MOBILE HOME BUYER: FUQUA homes. Low prices. Single, double & triplewides. See our 3 + 2 doublewide FUQUA bargain, \$26,900, delivered w/air. Visit factory outlet. 1-800-275-1161. LOCAL ROUTE \$ Handling Frito Lay, Nabisco, etc. Full company support. Census shows earnings of \$39,000 NET per year. Requires cash investment of \$18,320. 1-800-225-9733, Operator 2. GEOS CORPORATION IS EXPANDING its environmental network. Only dedicated individuals experienced in retail petroleum and convenience store sales apply. P.O. Box 3289, Lufkin, TX 75903. 409-634-9432. LAND BONANZA! 14% fixed interest. Only five weeks left. Average 10-acres, 0-down, \$92-monthly, 360-months, most areas. Homesites, getaway, hunting, or great investment. 1-800-275-REPO. COVENANT TRANSPORT. Hiring tractor trailer drivers; -1 yr. O.T.R. experience; -Single 15-22c; -East coast pay; -Incentive pay; -Benefits package; -Minimum age 23; -Teams 27-31c. 1-800-441-4394. SHARE AMERICA! Walls must fall! Visa deadlines here! AISE high school exchange students await family call for August. 31 countries/local representative. Just food, bed, sharing! Exciting! Rewarding! Relevant! Lifetime! 1-800-SIBLING. HAPPY JACK FLEAGARD: All metal patented device controls fleas in home without chemicals or exterminators. Results overnight! At farm feed drug & hardware stores. FRIENDLY HOME PARTIES has openings for demonstrators. No cash investment. No service charge. Highest commission and hostess awards. Three catalogs, over 800 items. Call 1-800-488-4875. NEED CASH?? Receiving mortgage payments? We buy owner financed mortgages locally and nationwide. Ask for Donna at Diversified Funding Corporation today!! Call 1-800-950-4112. BECOME A PARALEGAL. Join America's fastest growing profession. Work with attorneys. Lawyer instructed home study. The finest paralegal program available. Free catalogue. 800-362-7070 DEPT. LJ722. DEER HUNTERS SPECIAL: 50 acres, \$595/acre, wooded, excellent hunting, county road, Texas veteran or owner financing, prime acreage. Fox Real Estate, 500 Buchanan Dr., Burnet, Texas. 512-756-6066. IMMEDIATE OPENING. Lucrative sales opportunity for reliable, hardworking person. Must have own transportation. Excellent monthly income. FAX resume to ACE PRO-motions. 409-634-9460. TRAVEL WITHOUT LEAVING home, share a dream. See the world through the eyes of a foreign exchange student. Host families needed immediately. Call HEF 1-800-365-0555. HOTEL - 1-800-6-MOTEL-6 (Ext. 400) We'll pay you to run your own business. Motel 6 seeks live-in management teams for nationwide opportunities. Free, furnished one bedroom apartment, paid utilities, paid training, generous health and retirement plans. Must have no dependents and be willing to relocate. Call 1-800-666-8356. Ext. 400. EOE. ANYONE HAVING KNOWLEDGE of anyone injured at any time in the past by free fall of persons or property from FMC (Linkbelt) crane, please call 1-800-544-0481. LOOKING FOR 7-PEOPLE who want to earn an excellent income while contributing to the well-being of the planet, organic biodegradable products, call 512-620-1051. LOOKING FOR A LATE model conventional, cabover, or work truck? I have over 2,000 power units in stock and deal in volume. Call Jim at 1-800-827-7690 and find out how much money you can save. ADOPTION: PROFESSIONAL COUPLE with lots of love and affection seeks newborn to share our happy & secure home. Medical expenses paid. Confidential. Call collect 718-897-2545. ADOPTIVE PARENTS TO BE: Sandy & Jim, caring, affectionate couple with love filled home. A bedroom saved for someone special. Medical expenses paid. Confidential. Call collect 914-591-3246.



Otis McMillan Jr., retiring Spearman postmaster, introduces Barbara Lamb, the new postmaster. McMillan is retiring this week after 30 years with the U.S. Postal Service. Lamb officially takes over the Spearman Post Office today. She has most recently been Postmaster at the Boise City, Okla. station, but has served most of her 11 years with the postal service in the South Plains and the Texas Panhandle.

Morse from page 1

per \$100 of appraised value, which value averaged 98.0% of market value (selling price). The "true tax rate" was \$1.066 (\$1.088 times 98.0%) statewide. Locally, the Pringle-Morse CISD imposed a rate of \$.593 while property was appraised at 106.9% of its market value making the true rate \$.628 per \$100 of market value (selling price).

The report points out that the calculation of a true tax rate based on market value rather than on appraised value is necessary to make a valid comparison of tax levels with other schools.

The tax on a house that would sell for \$80,000 in Pringle-Morse CISD would have been \$442. If the homeowner were eligible for homestead exemptions, the tax would have been \$224, and if owned by a person 65 years or older, the tax on an \$80,000 house in this district would have averaged \$247, or less if subject to a tax freeze. That compares with statewide average tax

GISD from page 1

on market value rather than on appraised value is necessary to make a valid comparison of tax levels with other schools.

The tax on a house that would sell for \$80,000 in Gruver ISD would have been \$705. If the homeowner were eligible for homestead exemptions,

Obituary

Beuna Hays  
Beuna Hays, 89, of Spearman died Wednesday, July 24.

Mrs. Hays, born in Hutchinson County, was a longtime resident of Spearman. She married Floyd Hays in 1920 at Amarillo. He died in 1986. She was a beauty operator for 60 years.

Survivors include two grandsons, Larry Hays of Eufala, Okla., and Jimmy Palmer of Perryton; four great-grandchildren; and three great-great-grandchildren.

Graveside services were conducted Saturday, July 27 in Hansford Cemetery with the Rev. LaVern Draper, pastor of First Christian Church, officiating.

bills of \$871, \$771 and \$586 respectively for an \$80,000 house.

Last year Pringle-Morse CISD's revenue from the property tax increased by 3.1 percent for 1990-91 as compared to a 8.7 percent increase statewide.

Local property taxes plus state aid totaled \$8,251 per student in Pringle-Morse CISD as compared to \$3,661 statewide.

Under the new school finance system, the state and the new county education districts will fund the total cost of the foundation program, which averaged \$2,458 per student last year and was \$4,163 in Pringle-Morse CISD. Local school districts can levy property taxes to enrich the foundation program. Enrichment last year averaged \$95 per pupil to which the state added an average of \$207 per student to guarantee the tax yield in property-poor districts. Enrichment by the Pringle-Morse CISD was \$4,098; the state guarantee added no money.

the tax would have been \$517, and if owned by a person 65 years or older, the tax on an \$80,000 house in this district would have averaged \$422, or less if subject to a tax freeze. That compares with statewide average tax bills of \$871, \$771 and \$586 respectively for an \$80,000 house.

Last year Gruver ISD's revenue from the property tax increased by 4.3 percent for 1990-91 as compared to a 8.7 percent increase statewide. Local property taxes plus state aid totaled \$5,106 per student in Gruver ISD as compared to \$3,661 statewide.

Under the new school finance system, the state and the new county education districts will fund the total cost of the foundation program, which averaged \$2,458 per student last year and was \$3,382 in Gruver ISD. Local school districts can levy property taxes to enrich the foundation program. Enrichment last year averaged \$95 per pupil to which the state added an average of \$207 per student to guarantee the tax yield in property-poor districts. Enrichment by the Gruver ISD was \$1,724; the state guarantee added \$0.

"The challenge to the Texas school finance system continues in district court," said Gary Wood, President of the Texas Research League, "but presumably SB 351 will go into effect for the coming school year."



Congressman Bill Sarpalius will have a "town hall meeting" at 11 a.m. on Monday, Aug. 12 at the Hansford County Courthouse in Spearman. The congressman said the meeting is designed to give Hansford County residents an opportunity to share their views and concerns with him and to ask him questions about the activities of their federal government. "We are living in momentous time," Sarpalius said. "Congress is going to make some extremely important decisions during the next two years, decisions that could have a big effect on people in Hansford County and throughout the 13th Congressional District. "I want to make sure our voices are heard in Washington, and that's where these town hall meetings can help. It gives everyone a chance to exchange ideas and to decide what is most important to us in our part of Texas. Our government really does work best when we work together. I look forward to seeing everyone in Spearman on Aug. 12," he said.

Clothes beat heat

by Sandra Avant  
Texas A&M Extension Service  
COLLEGE STATION - If you're looking for ways to keep cooler in the Texas summer heat, a clothing specialist suggests taking a look at your wardrobe.

The type of clothing you wear can make a big difference in how comfort-

table you are indoors and outdoors, said Dr. Ann V. Beard with the Texas Agricultural Extension Service.

"Color, design, fiber, finishes and the fit of a garment are factors that affect clothing's ability to keep you cool," Beard said. "Choosing clothes that allow your body heat to escape, and those that reflect rather than absorb radiation in direct sunlight will make you more comfortable."

Clothes can absorb moisture through evaporation - the primary means of body heat loss - to help keep you cool. However, if moisture stays on the surface of the fabric, you will feel hot and sticky, Beard said.

When selecting outfits to wear on hot summer days, keep these tips in mind:

- Absorbent fibers such as cotton, linen, silk, rayon and wool are good choices, although wool is seldom worn during summer months in Texas.

- Soil-release finishes increase absorbency while stain-resistant and wrinkle-resistant finishes decrease absorbency.

- Open-weave and open-knit fabrics allow for ventilation unless they are so open that they require additional layers of inner garments. Lightweight fabrics are more comfortable than heavy or bulky ones.

- Smooth-textured fabrics are cooler than rough ones. And fabrics that do not cling to the body are more comfortable because they allow air to circulate.

- White and light colors reflect the sun's rays, so wearing these colors makes you cooler. Dark colors absorb heat and will be warmer.

- Loose-fitting clothing is cooler because it allows for air circulation and the evaporation of body moisture. Look for garments with open or large necks and armholes. Wear full skirts or pants with straight rather than fitted legs. Wear shirts and blouses outside skirts and pants for maximum comfort. Avoid anything that fits tightly. One layer is cooler than several.

- Inner garments, accessories and cleanliness of clothing affect heat retention, too. Wear absorbent inner garments and be sure to keep all clothing clean. Choose loose, lightweight accessories that do not restrict air flow.

"By making the right clothing choices," Beard says, "you'll be a step ahead in beating the Texas heat this summer."

Jaye, Kathy and Judy invite you to Main Street Store Gruver, Texas

Introducing "Bushwacker, U.S.A." Trunk Showing

Friday, August 2, 1991 • 9:30 a.m. - 3:30 p.m.

Presentations at 10:00 a.m., 12:00 p.m. & 2:00 p.m.

Register for drawing

REPORT OF CONDITION

Consolidating domestic subsidiaries of the

FIRST NATIONAL BANK of SPEARMAN City

In the state of Texas, at the close of business on June 30, 1991, published in response to call made by Comptroller of the Currency, under title 12, United States Code, Section 161. Charter Number 18609 Comptroller of the Currency Southwestern District

Statement of Resources and Liabilities

ASSETS		Thousands of dollars
Cash and balances due from depository institutions:		
Noninterest-bearing balances and currency and coin	785	
Interest-bearing balances	4,557	
Securities	7,009	
Federal funds sold	375	
Securities purchased under agreements to resell	0	
Loans and lease financing receivables:		
Loans and leases, net of unearned income	20,674	
LESS: Allowance for loan and lease losses	251	
LESS: Allocated transfer risk reserve	0	
Loans and leases, net of unearned income, allowance, and reserve	20,423	
Assets held in trading accounts	0	
Premises and fixed assets (including capitalized leases)	473	
Other real estate owned	0	
Investments in unconsolidated subsidiaries and associated companies	0	
Customers' liability to this bank on acceptances outstanding	0	
Intangible assets	0	
Other assets	733	
Total assets	34,355	
Losses deferred pursuant to 12 U.S.C. 1823(j)	N/A	
Total assets and losses deferred pursuant to 12 U.S.C. 1823(j)	34,355	
LIABILITIES		
Deposits:		
In domestic offices:		
Noninterest-bearing	31,118	
Interest-bearing	2,767	
Federal funds purchased	28,351	
Securities sold under agreements to repurchase	0	
Demand notes issued to the U.S. Treasury	0	
Other borrowed money	0	
Mortgage indebtedness and obligations under capitalized leases	0	
Bank's liability on acceptances executed and outstanding	0	
Subordinated notes and debentures	0	
Other liabilities	301	
Total liabilities	31,419	
Limited-life preferred stock and related surplus	0	
EQUITY CAPITAL		
Perpetual preferred stock and related surplus	0	
Common stock	1,000	
Surplus	1,000	
Undivided profits and capital reserves	936	
LESS: Net unrealized loss on marketable equity securities	0	
Total equity capital	2,936	
Losses deferred pursuant to 12 U.S.C. 1823(j)	N/A	
Total equity capital and losses deferred pursuant to 12 U.S.C. 1823(j)	2,936	
Total liabilities, limited-life preferred stock, equity capital and losses deferred pursuant to 12 U.S.C. 1823(j)	34,355	

We, the undersigned directors, attest to the correctness of this statement of resources and liabilities. We declare that it has been examined by us, and to the best of our knowledge and belief has been prepared in conformance with the instructions and is true and correct.

1, LYMANNE MAIZE Name  
VICE PRESIDENT AND CASHIER Title  
of the above-named bank do hereby declare that this Report of Condition is true and correct to the best of my knowledge and belief.

Richard B. Holton  
Lymanne Maize  
Date: July 29, 1991

GILLASPIE

AUTO & TRUCK CENTER, INC.

Highway 207 South P.O. Box 427 (808) 659-2541  
SPEARMAN, TEXAS 79081

Announces  
Nita Bynum, Parts Manager

25 yrs. Experience  
9 yrs. GM Parts Experience

Keep That Great GM Feeling  
With Genuine GM Parts.

GM QUALITY SERVICE PARTS

Mr. Goodwrench

A Good Cents home keeps heated and cooled air in its place:  
In your home

Homes that aren't built to Good Cents standards waste energy by letting heated and cooled air leak outside the home, into the attic and even beneath the house. A Good Cents home keeps the heated and cooled air where it belongs — in the living area of your home.

For more information about buying or building a Good Cents home, call or visit your local Texas-New Mexico Power Company office.

Good Cents

Texas-New Mexico Power Company.