



# The Hansford County Reporter Statesman

PROUDLY SERVING HANSFORD COUNTY SINCE 1907

SCR2  
COMP  
HANSFORD COUNTY LIBRARY  
0122 MAIN ST  
SPEARMAN TX 79081-2064

reporter@spearmanreporter.com

VOLUME 101 • ISSUE 7

WWW.SPEARMANREPORTER.COM

THURSDAY, FEBRUARY 14, 2008

## March 4th Republican Primary

Early voting will begin Monday, February 19th, and will continue through Friday, February 29th (8 a.m.-5 p.m.) at the Hansford County Courthouse in Spearman and the branch office in Gruver City Hall.

Late night voting will be held on February 21st and 28th at the Hansford County Courthouse. Voting on these two days will be from 8 a.m.-8 p.m.

Applications for ballots by mail must be received on or before Tuesday, February 26th.

The primary election day will be Tuesday, March 4, 2008 from 7 a.m. to 7 p.m. Polling places will be as follows: Precinct 1-City Hall, 30 SW Court Spearman; Precinct 2-Renner Ranch, 10175 Co Rd H Spearman; Precinct 3-Cristo-Redentor Catholic Church, 202 Hwy 15 Gruver; Precinct 4-City Hall, 204 E Broadway Gruver; Precinct 5-Assembly of God Church, 401 N. Bernice Spearman; Precinct 6-Oslo Lutheran Church, 8605 Co Rd F Oslo; Precinct 7-Early Vote-Clerk's Office, #15 NW Court Spearman; Precinct 8-Branch Office City Hall, 204 E Broadway Gruver; and Precinct 9-Pringle Morse Community Bldg., 301 Main Morse.

The position of Hansford County Sheriff is the only locally contested race. Current Sheriff Gary Evans and former Hansford County Deputy Lance Swan have both filed for the position.

Other candidates filing for office include: **84th Judicial District Judge:** William D. (Bill) Smith, Incumbent; **84th Judicial District Attorney:** Mark W. Snider; **Hansford County Attorney:** John L. Hutchison, Incumbent; **Tax Assessor/Collector:** Linda Cummings, Incumbent; **Hansford County Sheriff:** Gary Evans, Incumbent and Lance Swan; **Republican Chairman:** Dorothy Cator; **Hansford County Commissioner, Precinct 1:** Ira G. "Butch" Reed; **Hansford County Commissioner, Precinct 3:** Tim Stedje.

There will not be a Democratic primary election in Hansford County.

## Weather Forecast

**THURSDAY NIGHT** - Mostly cloudy. Breezy. Lows around 19. North winds 15 to 25 mph decreasing to 10 to 15 mph after midnight.

**FRIDAY** - Mostly cloudy. Highs in the mid 40s. Northeast winds around 10 mph.

**FRIDAY NIGHT** - Mostly cloudy. Chance of rain and slight chance of light freezing rain in the evening - then a chance of light freezing rain after midnight. Lows in the lower 20s. East winds around 10 mph in the evening becoming light and variable. Chance of precipitation 30 percent.

**SATURDAY** - Cloudy. Chance of light freezing rain in the morning - then a chance of rain and light freezing rain in the afternoon. Highs in the mid 30s. Northeast winds around 10 mph shifting to the southwest in the afternoon. Chance of precipitation 50 percent.

**SATURDAY NIGHT** - Mostly cloudy. Chance of snow and rain in the evening - then a chance of snow after midnight. Lows in the mid 20s. Chance of precipitation 40 percent.

**SUNDAY** - Partly cloudy. Highs in the upper 40s.

**SUNDAY NIGHT** - Mostly cloudy. Lows in the mid 20s.

**PRESIDENTS DAY** - Mostly cloudy. Highs in the lower 50s.

**MONDAY NIGHT** - Partly cloudy. Lows in the mid 20s.

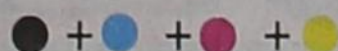
**TUESDAY** - Partly cloudy. Highs in the upper 50s.

**TUESDAY NIGHT** - Partly cloudy. Lows in the lower 30s.

**WEDNESDAY** - Mostly cloudy. Highs in the upper 50s.

## Texas Crop & Weather

The following specific livestock, crop and weather conditions were reported by Panhandle Extension directors: Temperatures varied from near average to slightly above average. Part of the area received some moisture early in the week. High winds caused soil erosion. Soil moisture ranged from very short to adequate, with most areas reporting short to very short. Wheat conditions continued to decline because of extremely dry conditions. Wheat ranged from very poor to good, with most areas reporting fair to poor. Range conditions were rated very poor to good, with most areas reporting poor. Wildfire danger remained high. Cattle were in fair condition, with supplemental feeding continuing.



The Spearman Lynxettes defeated the Friona Squaws 51-49 on Monday, February 11, 2008 for the Bi-District Championship. The Lynxettes will now advance to the Area Play-Offs, where they will face Slaton.



Tyler Harper comes in for a lay-up during Spearman game in Canadian on Tuesday, February 12, 2008. The Lynx defeated Canadian 53-20. They will now advance to the Bi-District Play-Offs on Tuesday, February 20th at 7:30 p.m. at Randall High School against Dimmitt.

## Lynxettes Win Bi-District, Advance in Playoffs

By Greg Jaklewicz, Amarillo Globe-News

One team was going home hugely disappointed. The first night of the Class 2A girls basketball playoffs pitted a Spearman team that won 24 regular-season games and earned a top-20 ranking against Friona, which had state tourney qualifier Panhandle all but beat last year before losing on a last-second 3-pointer.

It was no surprise that Monday's bidistrict game at the Caprock Activity Center was a gem, with Spearman rallying from a 48-47 deficit with 1:18 to go to win, 51-49, before 550 fans.

The Lynxettes (25-4) will play Slaton (24-5) at 8 p.m. Friday at Wayland Baptist University.

Friona trailed the entire second half until a 3-pointer by Sasha Estrada tied the game at 39 with 4:27 left. In the game, there would be six ties and six lead changes, the last coming with a minute left.

A jump shot by Miranda Frye gave the Squaws (17-15) a 48-47 lead. Spearman's Kendall Schneider tied the game for the last time with a free shot with 44 seconds to go, then fed teammate Kylee Howard under the hoop for the go-ahead basket with 28 seconds to play.

Friona's Hollis Gurley missed one of two free shots with 15 seconds to go to make it 50-49. Schneider hit another foul shot for a two-point Spearman lead and the Lynxettes harassed Regan Anthony into two close-in misses to end the game.

"That was a little too close," Spearman coach Nan Cook said. "I'm proud of the way the girls hung in there."

First-year Friona coach Mike Hurley also liked what he saw in his team, which trailed 10-2 early but was back in the game by halftime.

"I don't think anyone expected us to be that close," he said. "This was a brand-new team with few players with varsity experience. This far exceeded our expectations."

Schneider finished with a game-high 14 points for Spearman while Gurley had 12 for Friona.

### Spearman Lynx

The Spearman Lynx will play Dimmitt on Tuesday, February 20, 2008 at 7:30 p.m. at Randall High School.

### Gruver Lady Hounds

The Lady Hounds will play Quanah on Thursday, February 14th in the Area Round of the basketball playoffs. The game will be at Amarillo High School at 6:00 p.m.

### Gruver Greyhounds

Immediately following the girls' game, the Greyhounds will play a practice game against Memphis at approximately 7:30.

## Walk for Kids' Sake Fundraiser Held

Walk for Kids' Sake, the annual fundraiser benefiting Big Brothers Big Sisters, held February 9th, raised nearly \$50,000. Pledges collected by 30 teams of walkers combined with sponsorships from over 200 area businesses and organizations.

The money will be used to make and nurture matches in Perryton, Spearman and Booker; this involves recruiting, screening, training and supporting volunteers. The money raised also underwrites match activities and scholarships for high school mentors as well as provides games and other activities for Bigs in Schools matches. The satellite office receives no funds from the national organization or hub agency in Amarillo and all of the money is used to support the local program.

**Editor's Note:** More information will appear in next week's issue of the Hansford County Reporter-Statesman.



Spearman High School students Caleb Odegaard, Mattie Davis, Kim Bergan and Austin Benton participated in the Walk for Kids' Sake Fundraiser.

# Lullabies, Legends & Lies

by Parson Smith, the Prime Minister of Laughter


The New Supermarket. Isn't modern science wonderful? I love going to the city to see what kind of new inventions they have. I go to some stores and the doors open for me automatically. There is one street that I drive down that all the lights change to green as I approach them. There is this supermarket that has just been remodeled and it is something else...

simply fantastic, this newly remodeled grocery store. This new supermarket has an automatic mister to keep the produce fresh. Just before it goes on, you hear the sound of distant thunder and smell fresh rain. When you approach the milk cases, you hear cows mooing and smell the scent of fresh hay. When you approach the egg case, you hear hens

clucking and cackling and the air is filled with the pleasing aroma of bacon and eggs frying. The veggie department features the smell of fresh buttered corn. I don't buy toilet paper there any more.


Until the next time,  
May God Bless.

## State Capital



### HIGHLIGHTS

#### SENATE COMMITTEES QUESTION TxDOT OVER FIINANCES



by Ed Sterling

# TEXAS Health Matters

## Take Steps to Protect Yourself from Heart Disease

If an apple a day keeps the doctor away, then what does it take to avoid getting heart disease? Try combining the apple with four other servings of fruits and vegetables and a healthy dose of exercise. Heart disease has been the leading cause of death in Texas for more half a century so it's important to know the risk factors for heart disease and take actions to protect yourself. Several factors such as high blood cholesterol, smoking, family history of heart attack, race, physical inactivity, being overweight and diabetes can increase a person's chances of having heart disease. African-Americans, Mexican-Americans and American Indians are at greater risk. The more risk factors a person has, the greater the chances of developing heart disease. "There are many risk factors that we can't control, such as our family history," says Dr. David Lakey, the state's health commissioner. "That makes it all the more important to take action to reduce those risk factors that we can control." The Texas Department of State Health Services (DSHS) has developed the Five A Day Five A Week program to emphasize the importance

cardiovascular health and wellness. It's a four-week program to encourage eating five servings of fruits and vegetables each day and being physically active at least five days a week. "With our busy lifestyles, it's getting harder to pay attention to what we eat and adjust our schedules," Dr. Lakey says. "With that in mind, it's important for Texans to take charge of their diet and find the time to exercise." Cardiovascular disease refers to a group of diseases including heart disease, stroke and congestive heart failure. In 2004 heart disease accounted for almost 50,000 adult deaths in Texas. But there are steps you can take to reduce your risk of heart disease: Control your blood pressure if you have hypertension. Quit smoking. Lower your cholesterol. Lose weight if you're overweight. Be physically active, getting 30 minutes of moderate activity per day. Eat a healthy diet with more fresh fruits and vegetables. Cut back on foods high in saturated fat and salt. Be aware that early detection, improved delivery of care and better self-management are essential for preventing complications from diabetes.

For more information on the Five A Day Five A Week program and cardiovascular disease, go to the Texas Department of State Health Services website at [www.dshs.state.tx.us/wellness](http://www.dshs.state.tx.us/wellness) or call 512-458-7200.


AUSTIN - Higher-ups at the Texas Department of Transportation sat in front of two state Senate committees for about three hours and tried to answer questions about how the agency got to where it is, in a financial sinkhole. At a Feb. 4 meeting, lawmakers in a joint meeting of the Senate Finance and Transportation Committees questioned TxDOT Executive Director Amadeo Saenz Jr., interim chair of the Texas Transportation Commission Esperanza "Hope" Andrade and others. The officials said TxDOT committed a \$1.1 billion bookkeeping error and scheduled more road projects than the agency could afford to fund. This resulted

in road project freezes and cutbacks. Lawmakers expressed disdain over how that could happen. They asked if this was a political stunt to push the state closer to public-private roadbuilding projects or just a case of incompetent management. Sen. Tommy Williams, R-The Woodlands, called for an independent audit of TxDOT's financial records. Sen. Kirk Watson, D-Austin, serves as vice chair of the Senate Committee on Transportation and Homeland Security. "Fortunately, legislators from both parties, every region and all backgrounds, are equally fed up with TxDOT," Watson said. "Not only will there be some major reforms on tap for the next legislative session, but the Sunset Commission is reviewing the agency from top to bottom."

The Democratic presidential candidates, U.S. Sens. Barack Obama, D-Ill., and Hillary Clinton, D-N.Y., had nearly matching delegate counts after Super Tuesday and other state primaries held Feb. 6-10. As of Feb. 11, Obama had captured 19 states and Clinton, 12. Both candidates are expected to spend time and advertising dollars in the delegate-rich Lone Star State as March 4 approaches. Group studies gaps in education Texas schools serving mostly poor and minority students often have less of everything that matters in education - especially strong teachers. That finding was published in January by The Education Trust, a Washington, D.C.-based non-profit that promotes "high academic achievement for all students, pre-kindergarten through college." The Education Trust found that "Instead of providing these students with the kind of teachers they need to catch up to other students, low-income, Hispanic and African-American students in Texas are:

### SUDOKU

PRESENTED BY



Where volunteering begins.

4								7	
				4				3	
	6				7	8			
	7				6	1			9
8	3		9					2	7
2		9	7						8
			3	6					1
			5		2				
			8						3

© 2008, StatePoint Media, Inc. answer on classified page  
Fill in the blank squares in the grid, making sure that every row, column and 3-by-3 box includes all digits 1 through 9.

These games are brought to you by the  
Hansford County Reporter-Statesman

[www.spearmanreporter.com](http://www.spearmanreporter.com)

## THE OSCARS


- ACROSS**
- Talcum powder ingredient
  - Equals 100 pounds
  - Necessary thing
  - Non-written exam
  - Make hot and dry
  - Mist or steam
  - Austin Powers' -Me
  - Greek muse of history
  - Incongruity between what is expected and what occurs
  - Nominated again for playing Queen Elizabeth
  - Cotton \_\_\_\_, pl.
  - Metrical unit in poetry
  - Did it come before or after the chicken?
  - Wall plaster
  - Clayton in "Michael Clayton"
  - What all Oscar nominees want to do
  - Concerning this
  - Load up
  - To accept without question
  - Between E and NE
  - Loathing
  - Baptism, e.g.
  - Undo a snap
  - High or low card
  - Malicious coward
  - Made heavy
  - Even (poetic)
  - Reject, as in advances
  - Dumbo's were huge
  - "Ratatouille," e.g.
- DOWN**
- Resting place of unknown soldier
  - Seed cover
  - Oscar nominee Turner
  - Healthcare facility
  - Famous person
  - "Time \_\_\_\_ for no one"
  - Faster than a walk
  - Daisy-like yellow or orange flower
  - "Once \_\_\_\_ a Time in America"
  - Daughters' brothers
  - "The old college \_\_\_\_"
  - Jerk
  - "Eastern Promises" nominee
  - Computer storage space
  - Orlando Bloom in "Lord of the Rings" trilogy
  - Sod
  - Shinbone
  - Used for measuring, pl.

- Half the width of ems in printing
- Washed off
- Verdi's "La Traviata," e.g.
- Vase for ashes
- Graduate
- "The Tortoise and the Hare" author
- Deer horn
- Expressive of contempt
- Heaped
- \_\_\_\_ Grey
- A in A=ab
- Related
- Hawkeye state
- "Hot as an \_\_\_\_"
- Ridiculed for studying excessively
- Communications agency

### CROSSWORD

1	2	3	4		5	6	7		8	9	10	11		
12					13					14				
15					16					17				
18				19						20				
				21						22				
23	24	25					26			27	28	29		
30					31		32	33			34			
35					36			37			38			
39							40			41		42		
43					44					45		46		
					47					48	49			
					50	51				52		53	54	55
56										57			58	
59										60			61	
62										63			64	

PRESENTED BY



Where volunteering begins.

© 2008, StatePoint Media, Inc. answer on classified page

### The Hansford County Reporter-Statesman

213 Main Street • Spearman, TX 79081  
Phone - (806) 659-3434 • Fax - (806) 398-9080  
[www.spearmanreporter.com](http://www.spearmanreporter.com)  
[reporter@spearmanreporter.com](mailto:reporter@spearmanreporter.com)  
[cathysmith@valomet.com](mailto:cathysmith@valomet.com)  
Mon.-Thurs. 9 a.m.-12 p.m., Mon.-Wed. & 1-5 p.m.  
Closed Thurs. afternoon and all day Fri., Sat. & Sun.

Gary Smith - Publisher Catherine Smith - Editor  
Contributing Writers: Dorothy Hudson, Jim Derington, Merry Sparks, Cecil Biggers  
Contributing Photographer: Charlie Johnson


**Subscription Rates**  
In Hansford County - \$30.00 • Out of County - \$40.00

The Hansford County Reporter-Statesman (USPS 529660) is published weekly in Spearman, TX. Periodical postage paid in Spearman, TX. POSTMASTER: Send address changes to: The Hansford County Reporter-Statesman, 213 Main Street, Spearman, TX 79081.

**Publication Policy**  
The deadline to submit news and advertising to The Hansford County Reporter-Statesman is Monday at 5 p.m. Items submitted after the deadline will be published at a later date, as time and space permit. Publication of all items is at the discretion of the editor.

**Advertising**  
Open Display rates are \$4.00 per column inch. Classified Ads are \$6 for the first 25 words and 10¢ per word for each additional word. (Additional charge for boxed classifieds.) There is a \$1 charge per week if billed.

Member of  
Gruber Chamber of Commerce  
Spearman Chamber of Commerce  
Texas Press Association and Panhandle Press Association



# Happy Birthday!

Editor's Note: This Happy Birthday list is run as a public service by the Hansford County Reporter-Statesman. We apologize if any names are misspelled. If you know of a name that needs to be changed, added or deleted, please call 659-3434.

Thank you, Catherine

## February 14

**Birthday** - Alice Goodman, Nick Nelson, Janice Holt, C.W. Kirk, Tommy Thomas, Laura Umphress, Bubba Smith, Donna Ball, Lena Kathryn Harbour, Betsy Sutterfield, Kenneth Baker, Josiah Lee Vasquez, Courtney Wood

**Anniversary** - M/M Kip Francis, M/M Roney Clark, Ricky & Cindy Dowdy, Hal & Jeanie Bennett, Terry & Tammy Burch, M/M Omar Sutton, M/M Salomon Tarango, M/M Tony Swink, M/M Rod Holland, M/M Delfino Parra, Rev. & Rev. Joseph Weaks, Garrett & Mika Gumfory

## February 15

**Birthday** - Lee Bradford, Heath Gammon, Donnie Thoreson, Claude Sheets Jr., Lynn Sheets, Brenda White, Marlane Nollner, Laura Dahl, Toby White, J. P. Prouty, Juanna Rosales, Colby Bedell, Rick Finley, Colleen Burkhammer, Steve Hartgraves

## February 16

**Birthday** - Johnny Pat O'Connell, David Parker, Mike Larson, Lynda Owens, Ismael Vela, Timothy Peck, Maylynn Ayers, Cliff Lang, Brittany Claxton, Diana Pepper, Rex Reid

**Anniversary** - M/M Jesus Espinosa, M/M Charles Chritton, M/M Augustine Mejia, M/M Bobby Hohertz, M/M Gene Fletcher, Eschol & Eulalia Blankenship

## February 17

**Birthday** - Katie Jones, Manuel Ruiz Jr., Mark Guthrie, Lee Ann Schrader, T.H. Rodriguez, Ernest Wayne Jr., Ric Smith, Isela Huerta

## February 18

**Birthday** - Vickie Bullard, Carla Jo Riggins, Luke Stroud, Beau Roberts, Buck Sell, Edith Breland, Blane Rutherford, J.D. Poer

## February 19

**Birthday** - Melissa Quillin, Delphine Etling, Bob Womble, Stephanie Hays, Bennie Brogdon, David Kellum, Sylvia Rosales, Niki Taylor, Robert Dean Meire, Chuck Ball, Sylvia Taranto

## February 20

**Birthday** - Brant Armes, Ed Mayfield, Greg Stork, Tessa Yanke, Kathy Brown, John Antalek, Terry Morris, Melissa Holt, Brenda Moyer, Steve Shields, Clayton Hergert, Bill Volden, Cody Brandvick, Rosemary McKee, Jeannie Folwen, Pauline McGee,

Richey Thompson  
**Anniversary** - M/M Wilson Bruning, M/M Charles Evans, M/M Jon Hart

**February 21**  
**Birthday** - Sandra Proffitt, Walter McDade, Lisa Meisner, Raul Ortega, Ann Thomas, Chandler Adkins, Tom Speck, C.J. Renteria

**Anniversary** - Ken & JoAnn Schneider

**February 22**  
**Birthday** - Russell Dahl, Rhonda Hicks, Betty Mathews, Ryan Mathews, Sherri Hall, Tim Cook, Bobby Jo Grayson, Paul Reimer, Sonny Kell, DeAnn Sparkman, Derryla Stedje, Connie Davis, Linda Coombs, Jack Sparks, Brenda Winegarner, Kreisun Dominguez

**Anniversary** - M/M Jason Bass, M/M Freddy Walton

**February 23**  
**Birthday** - Hailey Lamb, Randy Reid, Dave Clement, Janyth Smith, Cynthia Miller, Phil Larson, Aaron Hager, Kacey Smith, Elizabeth Pipkin, Jim McMahan, Maxine Cline, Jason Bartimos, Edoliina Garcia, Tommy Reger, Daryl Noble, Mollie Burnam, Alan Jones,

**Anniversary** - M/M Richard Razor, M/M Joe Rodriguez, M/M Tommy Boone

**February 24**  
**Birthday** - Lori Messer, Linda Scroggs, Adam Holladay, Mani Noble, Tiffany Goodrich, Chuck Morgan, Sherry Boyd, Fernando Saldana, Glenda Close, Barbara Townsen, David Swink, Frances Davis

**Anniversary** - M/M Tom Cathey Sr., M/M Quentin Hart, Andrea & Gary Woolley

**February 25**  
**Birthday** - Marian Tomlison, Lynna Renner, Don Schmer, Mike Brown, Leslie Paul, Crystal Carson, Loree Viola, Tabettha Thoms

**Anniversary** - Bob & Jackie Pearson

**February 26**  
**Birthday** - Debbie Davis, Bruce Knight, Suzie Womble, Burl Buchanan, Pam Edwards, Margie Schubert, Lynn Pierce, Marinell Webster, Deziree Hughes, Carol Poole, LaQuita Evans, Bob Meier, Kip Francis, Denise Paschel, Tony Holquin, Nicholas Avila, Kay Ann Miller

**Anniversary** - Britt & Linda Jarvis

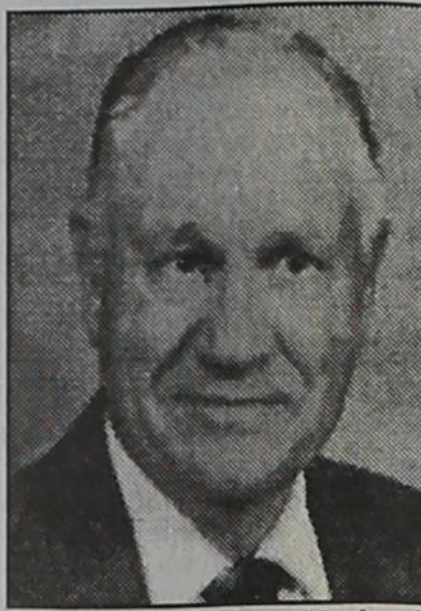
**February 27**  
**Birthday** - Roy Diaz, Colby Weldon, Sharon Sutton, Cindy Jenkins, Adrian Barrera, Rosie Jackson, Melinda Hall, Winnie Vernon, Clint Goodman, Lance Wood, Vanessa Vela, Lacey Salgado

**February 28**  
**Birthday** - Robert Blount, Max Davis, Karen Sparks, Shannon Bowling, Debbie Carter, James Lair, Sammy Don Jones, Edna Anderson, Willie Shields, Hal Bennett, Davis Nash, Parker Grotegut

**Anniversary** - M/M Gilbert Salgado

**February 29**  
**Birthday** - Clifton Harden, Michael Holt

## WELDON GREEN



**GRUVER** - Weldon Green, 83, died Wednesday, February 13, 2008.

Funeral services will be held Friday, February 15 at 3 p.m., in the Gruver Church of Christ with Gaylord Cook officiating. Burial will follow in Gruver Cemetery, under the direction of Boxwell Brothers Funeral Home of Spearman.

Weldon was born to Coleman and Vivian Green on August 30, 1924 in Calisburg, Texas. He graduated from Gainesville High School and Abilene Christian College.

He married Elene Harland on July 27, 1948. Weldon served the Lord as an Elder of Gruver Church of Christ. He served as a Hansford County Commissioner for six years and Hansford County Auditor for 29 years.

He is survived by his wife Elene; two sons, Dee and wife Susan Green of Childress and Ron Green of Plano; two daughters, Genna Dunlap of Amarillo and Mittie and husband Dale Blackburn of Abilene; two brothers, R.C. and wife Betty Green of League City, TX and Bo and wife Becky Green of Abilene; three sisters, Adeline Wheeler of Albuquerque, NM, Virginia and husband John Alley of Springfield, MO, and Glenda Renner of Gruver; seven grandchildren; and 5 great-grandchildren.

The family request memorials to be to High Plains Children's Home, P.O. Box 7448, Amarillo TX 79114.

## Cecil L. Reynolds

**SPEARMAN** - Cecil L. Reynolds, 86, died Tuesday, February 12, 2008.

Funeral services will be Saturday, February 16, at 10:30 a.m., at the First Christian Church with Jim Reeves officiating. Burial will be in Hansford Cemetery, under the direction of Boxwell Brothers Funeral Home of Spearman.

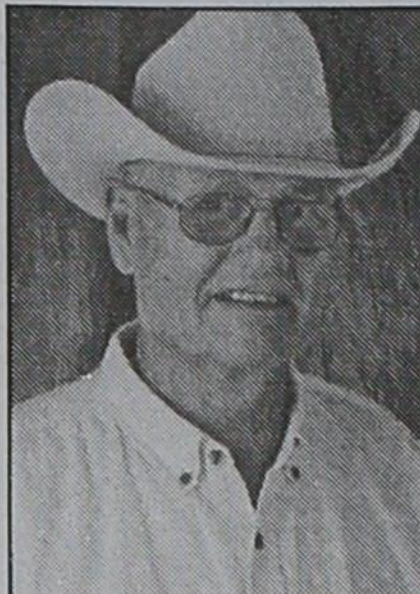
Cecil was born on October 29, 1921 in Booker, TX. He married Ellen Hash on February 4, 1947.

Cecil was a member of the First Christian Church of Spearman. He farmed and ranched for a few years before becoming a licensed plumber in 1953. He was a plumbing contractor until his retirement in 2000. He was an Army veteran, serving in World War II and the Korean Conflict. He was awarded a Bronze Star for Valor.

He was preceded in death by his parents, Dallas & Mattie Reynolds; his wife, Ellen Reynolds; a son, Virgil Reynolds; a daughter, Becky Peterson; and two sisters, Evelyn Yancey and Gertrude Reynolds.

He is survived by one daughter, Katherine and Mark Coventry of St. Charles, MO; three granddaughters, Michelle and Danny Griffith of Camp Hill, AL, April and Jason Stephens of Amarillo and Tasha and Rudy Rodriguez of Fort Worth; one grandson, Barry Goodall of St. Charles, MO; three great-granddaughters, Katherine Griffith of Camp Hill, AL, Bonny York of Amarillo and Rane Rodriguez of Fort Worth; 11 great-grandsons, Brian and Brandon Ahlstrom of Camp Hill, AL; Kurtis and Jake Griffith of Camp Hill, AL, Chase Stephens of Amarillo, Christopher Goodall of Kansas, Camron Goodall of Indianapolis, IN, Alex, Rane and Nickolas Rodriguez of Fort Worth; three brothers, Olanda and Anita Reynolds of Borger, Leslie and Billie Reynolds of San Antonio and Gene and Ramona Reynolds of Gruver; two sisters, Nathalie Turner and Dallsene Reynolds, both of Spearman. Memorials may be made to the benefit of the family at First State Bank, P.O. Box 247, Spearman, TX 79081.

## B.J. RENNER



**GRUVER** - B.J. Renner, 76, died Tuesday, February 12, 2008.

Funeral services will be Friday, February 15, 2008 at 11 a.m., in the Gruver Church of Christ, with Gaylord Cook officiating. Burial will be in Gruver Cemetery under the direction of Boxwell Brothers Funeral Home of Spearman.

B.J. was born in Hansford County on September 13, 1931. He married Glenda Green on June 25, 1964, in Gruver.

He was preceded in death by his parents, Boyd and Velma Renner, and one grandson, Boyd Leslie Pierson

He was a farmer and rancher, an Elder of the Gruver Church of Christ. He graduated from Abilene Christian College in 1958. B.J. served as a Hansford County Commissioner for 16 years. He was a veteran of the U. S. Army, serving in the Korean Conflict.

He is survived by his wife, Glenda; two daughters, Viva Pierson of Amarillo and Anise Renner of Ada, OK; one son, Ross Renner of Amarillo; four sisters, Bobby Sue Dempsey of White Deer, Beryl Reynolds of Amarillo, Wanda Jo Russell of Round Rock, and Laveta Neal of Amarillo; two grandsons, Brit Pierson and B. W. Renner, both of Amarillo; three granddaughters, Sydney Pierson, Sabrina Pierson, Kelley Horner, all of Amarillo; and two great-grandsons, Sean and Clay Horner of Amarillo.

The family request memorials be to the High Plains Children's Home, P.O. Box 7448, Amarillo TX 79114 or McCall's Community, 13546 Co. Rd. 3600, Ada OK 74820.

## MESOTHELIOMA ALERT

Millions of hardworking people in the United States worked with and around asbestos and asbestos containing products from 1940-1980, including Boilermakers, Navy Personnel, Shipyard Workers, Plumbers, Pipe Fitters, Electricians, Machinists, Laborers, Construction Workers, Drywallers, Auto Mechanics, Factory Workers, HVAC Workers, Steamfitters and Carpenters. If you or someone you know has been diagnosed with Mesothelioma, call the lawyers at James Rolhouse & Associates toll free at 1-800-598-4197 or visit us online at [www.303meso.com](http://www.303meso.com).

Lawyers at Rolhouse & Associates practice law in Minnesota with principal offices in Burnsville, MN.

**Rolhouse & Associates**  
Personal Injury Attorneys

CALL TOLL FREE 1-800-598-4197

## MONUMENTS

### Boxwell Brothers Funeral Home

519 Evans • Spearman

659-3802

Dear friends,  
When you buy a monument from us we make sure it is exactly what you want at a price you can afford. If it is not right, we will make it right. And you will not have to search the countryside to find us. We are here when you have a need.

Sincerely,  
Bob Boxwell

### Med Care MEDICAL SUPPLY

Ask us if you qualify for a **POWER CHAIR** at little or no cost to you.

*In most cases, Medicare, Medicaid & Insurance will cover 100% of the cost for your Power Chair.*

**Toll Free 800-606-9860**  
[www.medcaremedicalsupply.com](http://www.medcaremedicalsupply.com)

## Replenish the seed of faith through . . . DAILY BIBLE READING, PRAYER & REGULAR CHURCH ATTENDANCE

### Spearman

**Apostolic Faith Church**  
822 S. Dressen • 659-2870  
Sunday School: 10 a.m.  
Worship Services: 11 a.m.  
Sun. Eve.: 6 p.m.  
Wed. Prayer Mtg.: 7 p.m.  
Pastor - Roland Haney

**First Assembly of God**  
401 N. Bernice • 659-2295  
Sunday School: 9:30 a.m.  
Worship: 10:35 a.m.  
Kid's Church: 10:35 a.m.  
Evening Worship: 6 p.m.  
Wed. Worship: 7 p.m.  
Wed. Youth: 7 p.m.  
Pastor - Bob Elder

**First Christian Church**  
(Disciples of Christ)  
29 S. Bernice • 659-2036  
Sunday School: 9:45 a.m.  
Worship: 10:50 a.m.  
Minister -

**First Baptist Church**  
123 N. Bernice • 659-5557  
Sunday School: 9:45 a.m.  
Worship: 11 a.m.  
Evening Worship: 7 p.m.  
Men's Bible Study - Wed. 7 a.m.  
Children's Choir - Wed. 6 p.m.  
Adult Choir - Wed. 7 p.m.  
Wed. Bible Study: 7 p.m.  
Pastor - Jim Medley

**Church of Christ**  
121 S. Haney • 659-3244  
Sunday Bible Class: 9:45 a.m.  
Worship: 10:30 a.m.  
Evening Worship: 6 p.m.  
Bible Study Wed.: 7:30 p.m.

**Sacred Heart Catholic Church**  
901 Roland • 659-2792  
Sat. Night Mass: 5:30 p.m.  
Sun. Mass: 9 a.m. - English  
Sun. Mass: 11:30 - Spanish  
1:30 p.m. - Gruver - Christo  
Fondator Mass - Spanish  
Rev. Guillermo Morales

**First United Methodist**  
407 S. Haney • 659-5503  
Sunday School: 9:45 a.m.  
Worship: 8:30 & 11 a.m.  
Jr. High Youth: 5 p.m. Sunday  
High School: 6 p.m. Sunday  
Kids Club: 3 p.m. Wed.  
Pastor - Neely Landrum

**Grace Presbyterian Church**  
(Worships with Faith Lutheran Church)  
1101 Bernice • 659-2033  
Pastor - Beverly Cook  
**Faith Lutheran Church (ELCA)**  
1101 Bernice • 659-2252  
Sunday School: 9:45 a.m.  
Worship: 11 a.m.  
(Worships with Grace Presbyterian Church)  
Pastor - Beverly Cook

**Union Church**  
31 S. Endicott • 659-2644  
Sunday School: 9:45 a.m.  
Worship: 10:45 a.m.  
Evening Worship: 6 p.m.  
Bible Study: 7 p.m. Wed  
Pastor - Dr. Timothy Minor

**Fellowship Baptist**  
1102 S. Archer • 659-2783  
Sunday School: 10 a.m.  
Worship: 11 a.m.  
Sun. Evening Worship: 6 p.m.  
Youth/Adult Service: 7:30 Wed.  
Pastor - James Washburn

**Primera Mision Bautista**  
502 E. 7th • 659-3991  
Sunday School: 9:45 a.m.  
Worship: 11 a.m.;  
Evening: 6 p.m.  
Wed. Prayer Meeting: 7 p.m.  
Thurs. Visitation: 7 p.m.  
Pastor Joe Garcia Jr.

**El Aposento Alto U.P.C.I.**  
1105 S. Roland  
Domingos: Escuela-Domical - 10 a.m.  
Culto Evangelistico - 7 p.m.  
Jueves: Oracion - 8 p.m.  
Mier: Estudio Biblico - 7 p.m.  
Pastor - A.G. Martell  
(806) 659-2153

### Gruver

**First Baptist Church**  
402 E. Broadway • 733-2411  
Sunday School: 9:45 a.m.  
Worship: 10:50 a.m.  
Disciple Training: 6 p.m. Sunday  
Prayer Meeting: 7:30 p.m. Wednesday  
Pastor - Scott Curry

**Church of Christ**  
209 King • 733-2760  
Sunday School: 9:30 a.m.  
Worship: 10:20 a.m.  
Evening Worship: 8 p.m.  
Wed. Worship: 7:00 p.m.  
Minister - Gaylord Cook

**First Christian Church**  
510 King • 733-2960  
Sunday School: 10:00 a.m.  
Sunday Worship: 11 a.m.  
Youth: 7:30, Sunday  
Adult Bible Study: 7:30, Sun.  
Wed. Bible Study: 8:00 p.m.  
Pastor - Gary Gumfory

**Gruver United Methodist**  
Broadway & Garrett  
733-2651  
Sunday School: 9:45 a.m.  
Worship: 8:30 & 10:50 a.m.  
Eve. Worship & UMY: 6 p.m.  
Pastor - George Price

**Spanish Cristo Redentor Church**  
Sunday Mass: 1:30 p.m.  
Friday Evening Mass  
Summer - 8:00 p.m.  
Fall/Winter - 7:30 p.m.

### Oslo

**Oslo Lutheran Church (ELCA)**  
6 Miles West & 12 Miles  
North of Gruver  
339-7646  
Sunday School: 9:45 a.m.  
Worship: 11 a.m.  
Pastor - Arlen Lloyd

### Morse

**Morse Baptist Church**  
733-2757  
Pastor - Mike Martin

He has showed you, O man, what is good. And what does the LORD require of you? To act justly and to love mercy and to walk humbly with your God.  
Micah 6:8

### STOP LEG CRAMPS BEFORE THEY STOP YOU.

Calcet's triple calcium formula is designed to help stop low calcium leg cramps. Just ask your pharmacist.

Calcet's Triple Calcium Formula is designed to help stop low calcium leg cramps. Just ask your pharmacist.

### FREE DIRECTV 4 ROOM SYSTEM! CHECKS ACCEPTED!

250+ CHANNELS!  
Starts \$29.99  
Over 85 HD Channels!  
FREE HBO+Cinemax+  
Showtime+Starz 3 Months!  
FREE DVR/HD!  
We're Local Installers!  
**1-800-214-7110**

## Mesothelioma

EXPERIENCE COUNTS  
Lawyers with over 85 years combined experience.

may occur 30 to 50 years after exposure to asbestos. Many workers were exposed from the 1940s through the 1970s. Industrial maintenance and operators are among those at risk for mesothelioma, throat cancer or lung cancer. Call us for professional insight.

Ryan A. Krebs, M.D., J.D. District Lawyer in Full-time Law Practice  
Richard A. Dodd, L.C.  
Timothy R. Cappolino, P.C. Board Certified Personal Injury Trial, Law and Child Custody Law by the Texas Board of Legal Specializations  
NO FEE FOR FIRST VISIT  
CAMERON, TEXAS

**1-800-460-0606**  
[www.AsbestosLaw.com](http://www.AsbestosLaw.com)

## SIGN UP FOR A FREE SCOOTER

One Scooter Given Away Each Month

Toll Free **800-606-9860**

**Med Care MEDICAL SUPPLY**  
[www.medcaremedicalsupply.com](http://www.medcaremedicalsupply.com)

### Deakin ELECTRIC

OILFIELD • RESIDENTIAL • COMMERCIAL  
321 S. MAIN • SPEARMAN  
1-800-999-1506 Chris Deakin  
(806) 659-5016 President

### Bartlett's Lumber & Hardware

105 W. Broadway • Gruver, Texas  
(806) 733-2404

### BERRY CLEANERS

Ann & Vernon Pipkin - Owners  
Phone 659-3122 • P.O. Box 1017  
207 Main St. • Spearman, TX

### Morse Implement & Auto Supply

"Join us in church"

Tom Dortch 733-2668  
Box 89 • Morse, TX 79062

### PRAIRIE MOTORS INC.

Hwy. 207 South • P.O. Box 430  
Spearman, TX 79081 • (806) 659-2541  
[www.prairiemotors.com](http://www.prairiemotors.com)

### MurMur's Cafe

100 Roland St  
Spearman, TX.  
659-3580

### Hansford County Reporter-Statesman

"Proudly Serving Hansford County Since 1907"

(806) 659-3434  
310 Barkley • Spearman, TX

### INTERSTATE BANK, sss

[www.interstatebank.net](http://www.interstatebank.net)  
322 Main • P.O. Box 146  
Spearman, TX • 659-2559

# HYI

FOR YOUR INFORMATION

### March 4th Primary Early Voting

Applications for ballots by mail for the March 4th Republican Primary must be received on or before Tuesday, February 26th. Early voting will be held at the Hansford County Courthouse in Spearman and the branch office in Gruver City Hall from February 19th through 29th, from 8 a.m.-5 p.m. Late night voting will be held on February 21st and 28th at the Hansford County Courthouse. Voting on these two days will be from 8 a.m.-8 p.m. The primary election day will be Tuesday, March 4, 2008 from 7 a.m. to 7 p.m.

### Gruver PTO Fundraiser

The Gruver Elementary students are selling Seitz cookie dough and pies for \$13.00 each. The cookie dough is pre-portioned and comes in a variety of flavors. Sales will continue through February 28, with an expected delivery date of March 11. Thank you for supporting Gruver PTO. (Scott Stejda is our local Seitz representative.)

### TX-OK Panhandle Genealogy Society

Carl Williamson of Miami will be guest speaker at the TX-OK Panhandle Genealogy Society meeting on February 18, at 6 p.m. in the Gramstorf Room of the Perryton Memorial Library in Perryton. Williamson will discuss his new book, "Battle of Buffalo Wallow," which includes the story of Billy Dixon as an army scout, Amos Chapman, and a small group of soldiers who defended the area near Canadian. Mr. Williamson is past president of the Gray County Genealogy Society. The public is invited to attend.

### Lunch & Learn

"Cajun Cooking," will be the topic for Lunch & Learn, Thursday, February 28, from 12:00 - 1:00 p.m. in the Fellowship Hall of Spearman Church of Christ. Kerry Symons, owner of Perryton Office Supply, will present the program. Participants will learn food preparation tips, take home recipes, and enjoy Cajun cuisine. Kerry and his wife Cynthia teach Cajun Cooking classes for Frank Phillips College Allen Campus and enjoy sharing their experiences of living in Louisiana. This free program is sponsored by the Texas AgriLife Extension Service and Extension Education clubs. Donations for lunch will be accepted. Call Peggy Winegarner at 659-4131 or 733-2901 for more information.

### GHS Geometry Quilt Winner

Congratulations to Marilyn Yanke for winning the GHS Geometry quilt. Thank you to all who supported the raffle. The GHS Math Department will be able to award \$1000 in scholarship money this May.

### Book Fair

A combined Elementary and Junior High Book Fair is being held in the Gruver Junior High Library, through 4 p.m. on February 15th. Everyone is invited.

### Project Graduation

The parents of the Spearman High School Senior Class of 2008 will sponsor and host a "Project Graduation Party" following commencement exercises Friday May 23rd. To encourage the graduates to stay the entire night, door prizes are awarded throughout the evening. In addition, graduates can earn paper monies through their participation in various games so that prizes can be purchased. The graduation party will culminate with the distribution of grand prizes. Prizes, gift certificates, and cash are needed for the evening's gifts. If you, the community, who supported and encouraged these seniors these past 13 years of school, would be willing to share in this final "Class of 2008" memory, making this project "special", please call Bonnie Bergan at 659-5529, Tammy Benton at 659-3071, or Gina Gillispie 659-5341. Contributions can be mailed to: Project Graduation Gina Gillispie, P.O. Box 633, Spearman, TX. 79081 Thank you in advance, for your support!

### Perryton ISD Students Seeking Memories of World War II

Students in Perryton are seeking individuals to interview for the KACV WWII/Texas Panhandle Outreach Project. Participants who are eligible to be interviewed are those that have memories from 1938-1946, especially World War II Veterans. Persons who would like their stories from WWII to be recorded on film should contact Lauren Carroll at (806) 434-0389.

### Out-of-School Examinee Registration

Individuals who are no longer enrolled in school and who have not previously met minimum expectations on all sections of the TAAS or TAKS tests, but have met all other graduation requirements, may retake the necessary sections. The TAAS and TAKS retests will be given on March 4 (ELA TAKS; Writing TAAS), March 5 (Math TAKS, Math TAAS), March 6 (Science TAKS; Reading TAAS), and March 7 (Social Studies TAKS). A student can register for the TAAS or TAKS tests online by accessing the web site at <http://k12testing.tx.ncspearson.com> or by completing a registration form. Registration forms may be picked up at the high school counselor's office between the hours of 8:00 a.m. - 4:00 p.m. Registration packets are due in Austin no later than 5:00 p.m. on January 25, 2008. Please Contact Krista Baird at 659-2584 if you have any questions.

Los individuos que ya no están matriculados en la escuela y que todavía no han cumplido los requisitos mínimos en todas las secciones del examen del TAKS, pero han cumplido todos los otros requisitos necesarios para graduarse pueden volver a tomar los exámenes necesarios del TAKS. Daremos el examen el 4 de Marzo ( ELA TAKS; Escritura TAAS); 5 de Marzo (Matemáticas TAKS; Matemáticas TAAS) el 6 de Marzo (El TAKS de ciencia; Lectura TAAS), 7 de Marzo (el TAKS de estudios sociales). Un alumno se puede registrar para el examen de TAAS y de TAKS en el sitio <http://k12testing.tx.ncspearson.com> o también puede completar una forma de registracion. Las formas de registraciones se pueden recoger en la oficina de la conejera en la escuela preparatoria entre las horas de 8:00 a.m. hasta las 4:00 p.m. Los paquetes de registraciones tienen que estar en Austin antes de las 5:00 p.m. del día 25 de Enero del 2008. Por favor si tiene alguna pregunta comunicarse con Krista Baird al 659-2584 si tiene alguna pregunta.

### Gruver Elementary Collecting Register Tapes

Gruver Elementary is again participating in the Lowe's Supermarket Register Tapes for Education program. Please help us earn free educational equipment by collecting register tapes from Lowe's. Only tapes dated September 1, 2007 through March 31, 2008 are eligible. You can deposit your tapes in boxes in the Gruver Elementary Lobby, Gruver Library, Gruver City Hall, Nite & Day Beauty Salon and Hitchin' Nails. Jo Alice Clawson is also collecting tapes at 711 Womble, or they may be mailed to PO Box 488, Gruver. Please call 733-2247 if you have tapes you would like to have picked up, or for more information.

## Words from Faith & Grace

by Cecil R. Biggers, Lutheran Lay Minister

As we examine ourselves in this Season of Lent, we learn something of what faith is as we study Genesis 12: 1-9, Psalm 121, Romans 4: 1-17, and John 3: 1-17. Abraham is told by God to leave his country, his extended family, and his father's house to go to a place the Lord would show him. God promises Abraham that he will be blessed by a large "family", he will be blessed by a land, and he will be blessed by the continued presence of God throughout his life. God said that the world would be blessed by Abraham. Consider dear Christian, that Abraham is the father of all who place their faith in God whether they be Jew, Christian, or Muslim. So as you examine your faith, do you love God more than your country, your family, your home?

The Psalmist sings a "travelling" song. Where does our help come from? The Lord! If you have faith God will be with you forever!

Paul explains to the Romans, Jew and Gentile, that Abraham was reckoned righteous by God because of his faith. It was God's grace that made Abraham righteous. Abraham was God's own for fourteen years before the rite of circumcision was started and many, many years before the law was given to Moses; therefore Paul declares Abraham the father of all who have faith such as Abraham's. It is God's intent that all the world be able to share in His grace.

The story of Nicodemus meeting with Jesus gives us cause for reflection. Nicodemus was rich, was a member of the Sanhedrin, was a rabbi (teacher), was a Pharisee; yet, Nicodemus believed that Jesus was sent by God and wanted to know more. Jesus told Nicodemus that he must be born from above (some translate "born again") meaning that Nicodemus must be born of the Holy Spirit through faith. Note dear Christian, that this "birth from above" is a pure gift from the Holy Spirit; it is not deserved, it is not earned. Embracing Jesus Christ as Lord does not mean becoming a better person; it means becoming a new person. The initiative for salvation lies with God. God loves all the world, it is His desire that all be reconciled to Him. St. Augustine described God's love, "God loves each one of us as if there is only one of us to love." Therefore, dear Christian, the question is not what you know, but whom you love.

May the Holy Spirit enter you life so that you may be born from above.



## Engagement Announcement

Mr. Danny Close of Spearman and Mr. and Mrs. Robert Bach of Amarillo are pleased to announce the engagement of their daughter, Danielle Nicole to Jeffrey Zane Jackson, son of Mr. and Mrs. Roy Jackson of Spearman.

The bride-elect is a 2007 graduate of Randall High School of Amarillo. The prospective groom is a 2006 graduate of Spearman High School.

Danielle is the granddaughter of Mr. and Mrs. Gary Kimbrough of Spearman and Mr. and Mrs. Keith Meddock of Waka. Jeffrey is the grandson of Mr. and Mrs. Bill Jackson of Spearman and Mr. Zane Hall of Pampa.

Wedding vows will be exchanged on March 1, 2008 at the First United Methodist Church of Spearman at 6 o'clock in the evening.

### Thank You!

Thank you from the family of Floyd Hull for the prayers, the food, the visits, the flowers and the memorials. We appreciated the help and support you provided Floyd. He was lucky to have such great friends and neighbors.

Wilbur and Lois Hull, Allen and Donna Hull, Rodney and Heidi Hull, Adam and Valerie Guerra

### Thank You!

We, the family of Marilyn Cain, would like to express their heartfelt thanks for all the food, flowers, cards and many other acts of kindness shown during the loss of our loved one. Thanks for your love, support and prayers. We are so grateful to live in such a loving community. Thanks for everything!

The John Hughes Family, The Buck Hughes Family, The Tom Cain Family

You are invited to a  
**Baby Girl Shower**  
honoring  
**Amber & Jason TeBeest**  
on Saturday, February 23, 2008  
from 10:00-11:30 a.m.  
in the home of Debby Odom  
303 Broadway Gruver

**BUY HERE! PAY HERE!**  
Starting as low as \$500 down!  
**CLASSIC USED CARS, INC.**  
Devin Cook  
Manager  
(806) 878-3944  
724 S. Main Street  
PO Box 1254  
Stinnett TX 79083

**Gordon's**  
*Your place for*  
**Bridal Registry**  
**Couples Currently Registered**  
Kandace Boyd & Manolito Cruz - 2/23  
Laura Geer & Cory Jumper - 3/2  
Heather Jumper & Jared Mahan - 3/8  
Brianna Holmberg & John Thomas - 3/28  
Christen Imhof & Michael Lozano - 4/5  
Nicole Sander & Bobby Crawford - 4/20  
Danielle Close & Jeff Jackson - TBA  
Betsy Holt & Shad Kalisiak - TBA  
Audra Evans & Kyle McLaughlin  
Detsi Vera & T.J. Evans  
**Baby Registry**  
Jason & Amber TeBeest - 2/23  
Chelsey (Villines) Farmer & Kirk Westfall - 2/23  
Quentin & Kristin Shieldknight - TBA  
Jody & Cami (Winegarner) Meason  
Kellyn King & Jeremy Fry  
**Gordon's** 659-2141  
314 Main Spearman

**Land Close - Out Sale!**  
**River Access Acreage Homesites**  
58 Acre River Park, Swimming Pool, Tennis Court & Walking Trails. New Braunfels Most Sought After Acreage Community.  
**Bring your best offer! • No Closing Costs**  
Take a Tour by 2/29/08.  
**Call Today 800-541-4693**  
[Land.riverchasetx.com](http://Land.riverchasetx.com)

**Celebrate**  
Gifts for all your celebrations!  
**Bridal Registry**  
**Shower Dates**  
Kandace (Boyd) & Manolito Cruz - 2/23  
Laura Geer & Cory Jumper - 3/2  
Heather Jumper & Jared Mahan - 3/8  
Brianna Holmberg & John Thomas - 3/28  
Christen Imhof & Michael Lozano - 4/5  
Nicole Sander & Bobby Crawford - 4/20  
Betsy Holt & Shad Kalisiak - TBA  
Danielle Close & Jeff Jackson - TBA  
Jennifer (Oller) & Clint Jackson - TBA  
Tobi Barrera & Chris Guana - TBA  
Detsi Vera & T.J. Evans

**Baby Registry**  
Chelsey (Villines) Farmer & Kirk Westfall - 2/23  
Amber & Jason TeBeest - 2/23  
Sara Barnes & Roman Rodriguez  
Kristin & Quentin Shieldknight  
Kellyn King & Jeremy Fry

**Last Chance**  
for Holiday Clearance  
**UP TO 70% OFF!**  
**Celebrate**  
203 Main St. Spearman, TX  
(806) 659-3350 1-800-663-8026

**Tong's Chinese Restaurant**  
511 S. Hwy. 207 • 659-2838 • Spearman  
**All-You-Can-Eat Buffet Specials**  
Tuesday - Steak \$7.99  
Thursday - BBQ Ribs \$6.50  
Friday - Shrimp \$6.50  
Saturday - Catfish \$6.50  
Mon., Wed. & Sat. \$5.50  
Buffet Hours: 11 a.m.-2:30 p.m. & 5:30-Close

# Our Sympathy

## HENRY "TED" FOWLER

AMARILLO - Henry "Ted" Fowler, 67, of Amarillo, died Saturday, February 9, 2008.

Services were at 2 p.m. Wednesday, February 13, 2008 in Amarillo South Church. Arrangements were by Cox-LaGrone Funeral Directors, 4180 Canyon Drive.

Mr. Fowler was born Feb. 14, 1940, in Amarillo, to Henry Ray and IvaLee Fowler. He graduated from Canyon High School in 1958. Ted enlisted in the Navy and spent 12 years serving for his country. He was stationed on the USS Ranger as an Air Traffic Controller. Ted earned the Meritorious Unit Commendation Ribbon, The Gold Star and The Navy Achievement Medal. After his military career, he returned home where he worked as a painter for the Amarillo Independent School District and retired after 25 years. He married Pat Stallings on Nov. 21, 1986, in Amarillo. Ted enjoyed NASCAR, fishing and, of course, the Dallas Cowboys. He loved to spend time with his family. Henry was dearly loved and will be deeply missed by all that knew him.

He was preceded in death by his parents and two sisters, Elizabeth Talley and Debbie Kelley.

Survivors include his wife, Pat Fowler; four brothers, Michael Fowler and Roy Fowler, both of Goosecreek, S.C.; Gene Fowler and Richard Fowler, both of Amarillo; two sisters, Cookie Blakely of Spring and Teresa Jeffroy and husband Joe of Amarillo; a stepdaughter, Lisa Giles of Spearman; and a stepson, Michael Darter of Amarillo.

## ALMA WALKER

SAN ANGELO, TX. - Alma Walker, 81, died Friday, February 8, 2008, in San Angelo, Texas.

Services were at 10:30 a.m., Tuesday, February 12, 2008 at Oslo Lutheran Church, Gruver, Texas, with Pastor Arlen Lloyd officiating. Burial was in Oslo Lutheran Cemetery with arrangements made by Henson-Novak Funeral Directors of Guymon, Oklahoma.

Alma was born October 20, 1926, in Hansford County to Peter and Florence Dahl. She married Joseph Walker on June 3, 1948, at Oslo Lutheran Church after attending West Texas A&M University (formerly West Texas State College) for two years.

She lived 71 years in the Oslo community, Hansford County, Texas before moving to San Angelo in 1997. In retirement she enjoyed being a demo person for Sam's Club where she took pleasure in meeting and visiting with people and meeting many new friends.

Survivors include her son and daughter-in-law, Raymond and Coletta Walker of Homer, Alaska; son and daughter-in-law, Floyd and Sherry Walker of Colton, Oregon; son and daughter-in-law, Milton and Debbie Walker of Guymon, Oklahoma; and daughter and son-in-law, Anita and Dan Gray of Wasilla, Alaska; one brother and sister-in-law, Elmo and Fay Dahl of Gruver, Texas; one sister, Pauline Fischer of Optima, Oklahoma, and one sister, Adeline Berkenkamp of Douglasville, Georgia; seven grandchildren, seven great-grandchildren, and many friends.

She was preceded in death by her parents, husband, Joseph Walker in 1978; one son, Alfred Glen Walker, in 1984; a sister, Viola Monroe and a brother, Fred Dahl.

The family suggests memorials be to West Texas A&M University scholarships in care of the Henson-Novak Funeral Directors, P.O. Box 1306, Guymon, OK 73942.

## JUNE LEARY

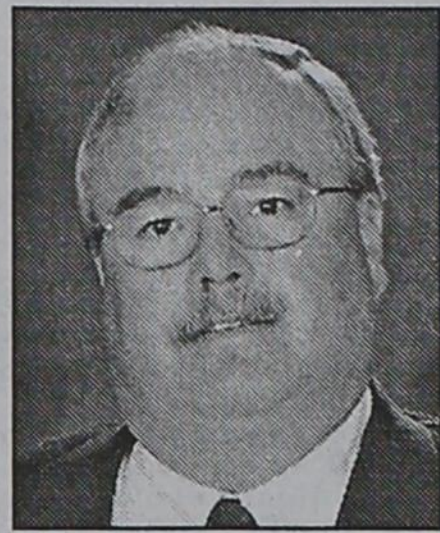
MEMPHIS - June Leary, 88, died Friday, February 8, 2008.

Services were at 2 p.m. Wednesday, February 13, 2008 in First United Methodist Church with the Rev. Gary Boles officiating. Burial was in Fairview Cemetery by Hughs Funeral Home.

June was born on Aug. 10, 1919, in Fort Worth, to the late Mr. Forrest Power and Mrs. Gladys Denny Power. She was a 1936 graduate of Memphis High School and went on to attend West Texas State University. She married Don Leary on Nov. 21, 1948, in Memphis in the First Presbyterian Church. He preceded her in death on Aug. 6, 1983. She was a lifelong resident of Memphis and a member of the Red River Red Hatters Club. She was also a member of the First Presbyterian Church and later became a member of the First United Methodist Church.

Survivors include three nieces, Betty Rogers of Dallas, Cathy Leary of New Orleans, La., and Susan Leary of Childress; six nephews, Paul Garner of San Diego, Calif., Bob Williams of Montgomery, Ala., Don Leary of Venezuela, Michael Leary of Seattle, Wash., Marvin Leary of Portland and Ed Leary of Childress; a sister-in-law, Kathleen Leary of Seattle, Wash.; special friend, Tom Bob Harrison of Memphis; four cousins, Linda Jane Davis of Greensboro, N.C., Carol Tollison of Gruver, Denny Roberts of Georgetown and Courtney Crisler of Amarillo; and many friends, neighbors and church family.

## THOMAS DAVID HAINES JR.



ROSWELL, NM - A funeral service was held at 10:30 a.m. on Friday, January 11, 2008 at First United Methodist Church for Thomas David Haines Jr., 51, of Roswell, who passed away January 8, 2008 at Eastern New Mexico Medical Center. Rev. Archie Echols and Rev. Steve Chappel officiated. A graveside service was held at 10:30 a.m. central time, Saturday, January 12, 2008 at Gruver Cemetery, in Gruver, Texas.

He was born on October 30, 1956 in Dallas, TX to Thomas David Haines Sr. and Carol Mullins Haines. They survive him in Oklahoma City, Oklahoma.

Tom married Nanette Cluck in Gruver, TX on March 1, 1986. She survives him at the family home.

Tom is also survived by his daughters: Bennett Haines and Maison Haines both of Roswell; his sister: Beth Haines of Denver, CO; his nephew: Samuel Cluck of Amarillo, TX; his niece: Maddie Cluck of Amarillo; his mother-in-law: Barbara Cluck of Gruver, TX; his brother in law: Brad Cluck and wife Mary of Amarillo, TX; and an aunt: Linda Frihart of Pittsburg, Kansas. He was preceded in death by his father-in-law Del Cluck.

Tom graduated from Del City High School. He was a Boys State delegate, serving as insurance commissioner, and was the assistant drum major in the Del City High School Band. He received his B.S. Degree in Political Science from Oklahoma State University in 1979 and was a member of the OSU Marching Band where he played the baritone. He received his J.D. Degree from the University of Oklahoma Law School in 1982. Following graduation, he joined Hinkle, Hensley, Shanor & Martin, L.L.P. as an associate. He became a partner in the firm in 1988. Tom loved his colleagues and his work. His love for the firm was evident in his gregarious presence, easy laugh, and caring personality. His colleagues will greatly miss the infectious joy and enthusiasm he brought to the firm. They will miss the fun of seeing Tom wearing a Santa suit joking with all as he handed out Christmas gifts at the firm's annual Christmas party, or wearing a clown wig as he read funny poems that he wrote as tributes to people in the firm for various reasons. Tom's enthusiasm was evident in his work as well. His commitment to his clients, his eye for detail, his careful research and preparation, and his thoughtful approach to his cases will be sorely missed. The legal community of New Mexico has lost a great friend and an excellent attorney.

Tom was a member of the Chaves County, New Mexico, and Oklahoma Bar Associations. He was admitted to practice before the United States Court of Appeals for the Tenth Circuit, the United States District Court for the District of New Mexico, the New Mexico Supreme Court, and the Oklahoma Supreme Court. He was a member of the New Mexico Defense Lawyers Association and Defense Research Institute. Tom was past President of the Chaves County Bar Association. The State Bar of New Mexico named the Chaves County Bar Association the Outstanding Local Bar Association for its work when Tom was President. Tom also served on the Local Rules Committee for the Chaves County Bar Association, and was a New Mexico Bar Foundation High School Mock Trial Judge.

He was a member of the George L. Reese, Jr., American Inn of Court. He also served on the Medical Legal Panel of New Mexico, and was a member of the Continuing Legal Education Committee of the Young Lawyers Division of the State of New Mexico. He served on the Chaves County Bar Association Law Day Committee and was a contributing editor to the New Mexico Tort and Worker's Compensation Reporter. He was also a contributing editor to the Employment Law Desk Book for New Mexico Employers, published by M. Lee Smith Publishers, L.L.C. (1997). He was a past Distinguished Secretary 1993-1995 and President 1998-1999 of the Roswell Kiwanis Club. He served as Chairman of the Administrative Council, Trustee, Stewardship Committee, and Youth Advisor at the First United Methodist Church of Roswell.

He was selected for inclusion in Who's Who in America, 54th Edition, (2000), Who's Who in American Law, Sixth edition, 1990-1991, and Outstanding Young Men of America, (1990). Tom enjoyed golfing, watching Oklahoma State University sports, and lady rocket volleyball.

Pallbearers will be Al Pitts, Greg Nibert, Rich Olson, Lee Rogers, Kelly Cassels, Glen Mattlage, Mark McClellan, and Jess Eckel. Honorary Pallbearers are the Attorneys and Staff of the Hinkle Law Firm.

Donations can be made in Tom's name to the Cowboy Bell Scholarship Fund or the Music Ministry Fund at First United Methodist Church or the Charity of your choice.

Arrangements have been entrusted to Ballard Funeral Home and Crematory. An online Registry can be accessed at [www.ballardfuneralhome.com](http://www.ballardfuneralhome.com)

## CARMA SUE SMITH

BORGER - Carma Sue Smith, 71, died Friday February 8, 2008 at home in Borger, Texas.

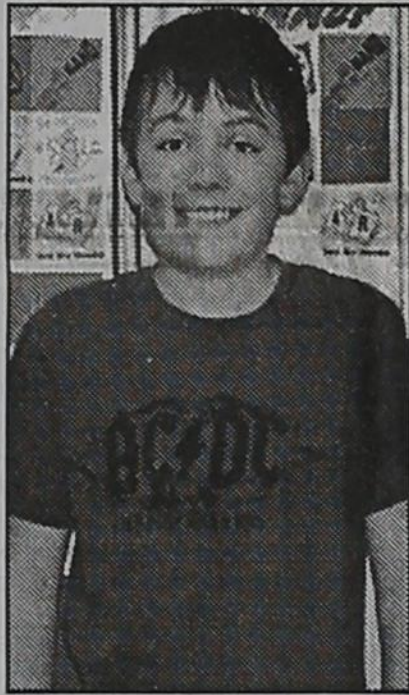
Memorial Services will be at 11:00 a.m. Wednesday at Minton Memorial Chapel with Rev. Leonard Forsythe, pastor of Bible Baptist Church officiating. Arrangements are under the direction of Minton/Chatwell Funeral Directors of Borger.

Carma was born on October 8, 1936 in Clebert, OK to Euwin and Cora Bell Herin. She married Montie Smith and was a devoted housewife to him and their six children. She was a lifelong resident of the Borger and Fritch areas. Carma's passions were yardwork and loving her grandbabies.

She was preceded in death by her parents, husband, 6 brothers and sisters and 2 grandbabies.

Survivors include 3 sons - Ricky Smith and Robert Reilly both of Borger and Darwin Ashford of Caddoap, Ark; 3 daughters - Tammy Mercer and husband Steve and Pam Garcia and husband Eugene all of Borger and Rosa Duquette of Fritch; 2 brothers - Kenneth Herin of Fritch and Jerry Herin of Spearman; a sister - Linda Herin of Arkansas; 9 grandchildren and 5 great grandchildren.

## Willimon Wins Spelling Bee



Jake Willimon

Monday, February 11, 2008, the Hansford County Spelling Bee was held at Pringle/Morse School District. Seventeen students 5th grade through 8th grade represented Spearman, Gruver and Pringle/Morse.

The winner was Jake Willimon, 7th grader from Spearman Jr. High, with the winning word ceramics. Michaela Davis, 5th grader from Gruver Elementary, was the runner-up.

Jake is the son of Mikal and Carla Willimon. Michaela is the daughter of Buster and Krista Davis.

Jake will go on to represent Hansford County at the regional spelling bee which will be held Saturday, March 22nd at West Texas A&M University Branding Iron

Theater in Canyon.

Other Hansford County participants were:  
 5th grade - James Layton - Morse, Mason McLain - Gruver, Rayel Anderson - Gruver  
 6th grade - Lalo Jurado - Spearman, Alec Centieros - Morse, Marti Frazier - Gruver, Zoe Cantrell - Gruver, Madi Teal - Gruver  
 7th grade - Hannah Speck - Morse, Maggie Key - Gruver, Damian Pierce - Gruver, Rachelle Hamilton - Gruver  
 8th grade - Evelyn Pastrana - Gruver, Mariana Mendoza - Gruver

## ALLSCAPE LAND CLEARING



Hydro-Ax Tree and Brush Mulching Tractors and Dozers

- Cedar - Oil Field - Seismic
- Utilities - Pipeline - Right of Way
- Hunting Leases - Ranch
- New Construction
- No Burning or Stacking
- Environmentally Friendly
- Leaves Topsoil Mulched And Intact For Erosion Protection

361.645.2923 E-mail: [allscapelandclearing@hughes.net](mailto:allscapelandclearing@hughes.net) Visit us at [www.allscapelandclearing.com](http://www.allscapelandclearing.com)

Department of Homeland Security  
 Border Patrol, Marfa Sector  
**NOW HIRING!**  
**(888) 536-6204**

U.S. Customs and Border Protection

A Career With Borders, But No Boundaries.

## Thank You!

Many thanks to Hansford County Vet. Hospital for purchasing my pig at the Ochiltree County Jr. Livestock Show.

## Heaven Snyder

## PAID CDL TRAINING!

**NO EXPERIENCE NEEDED!**

Stevens Transport, the premier refrigerated carrier in the US, sponsors the total cost of your CDL training! In 17 short days you will earn your CDL and begin your paid on-the-job training! Earn \$40K first year and up to \$150K fifth year! Excellent benefits and 401K!

For more information, call **800-333-8595**

[www.becomeadrivers.com](http://www.becomeadrivers.com)

Are You A Victim of Domestic Violence, Sexual Abuse or Physical, Emotional or Sexual Assault?

Call Toll Free Hotline **1-800-753-5308**

We can see individuals from Hansford County anytime upon request. Call 435-5008 or 1-800-753-5308 to set up an appointment in Hansford County. We operate a safe place for victims and their children to stay in times of crisis.

Battering Intervention & Anger Management Available

Panhandle Crisis Center  
 Serving Hansford, Lipscomb & Ochiltree Counties  
 301 S. Ash - Perryton, TX  
 Memorials Accepted

## You'd Better Hang On!

PTCI's Internet speeds will blow you away!

# Up to 6 Meg!

Faster Downloads  
 Online Gaming  
 Video Streaming

**PTCI**  
 Communication & Broadband Solutions

www.ptci.net

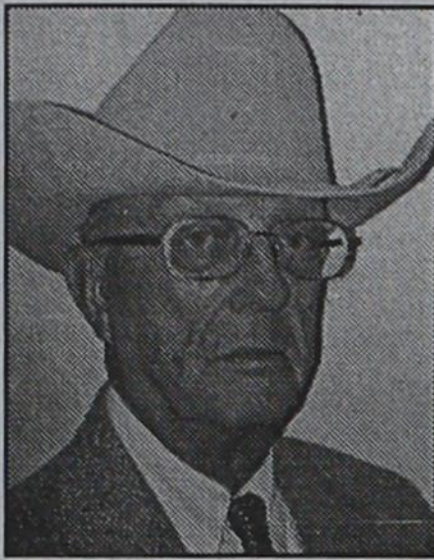
721 W 7th in Spearman 1-800-562-2556

DIGITAL TV

Some restrictions apply.

# HANSFORD COUNTY SHERIFF CANDIDATES

**Editor's Note:** The Hansford County Reporter-Statesman presented a questionnaire to each contested candidate in the March 4th Primary for Hansford County. The only contested race this year is for Hansford County Sheriff. Below is the response for incumbent Gary Evans and challenger Lance Swan.



**GARY EVANS**

**Family Members:** Nelle Evans, wife of 36 years; Will, Jennifer and Ava Evans of Ft. Worth; Weston, Kristin and Hudson Born of Gruver

**Place of Employment:** Hansford County Sheriff's Department

**Position/Occupation:** Sheriff of Hansford County

**Background/Education:** life-time resident of Hansford County; 28 years in law enforcement with the Hansford County Sheriff's Dept.; 2341 hours training; Master Peace Officer and Master Jailer

**What clubs/organizations do you presently belong to and what positions do you hold with them, if any?**

Sheriff's Association of Texas, Panhandle Peace Officer's Association, Board of Directors for the 911 phone system through Panhandle Regional Planning Commission, American Legion, National Rifle Association, 2007 Chairman of the Board of Trustees and current member of Finance Committee for the Gruver United Methodist Church

**Church affiliation:** Active member of the Gruver United Methodist Church

**Hobbies/Interests:** spending time with family, hunting, knife-making, hunting Indian artifacts, wood-working, ranching.

**Excluding the Bible, name at least three books you have read within the**

last year. **What newspapers, magazines, television or radio programs or internet sources do you regularly access for news?** Books-One Ranger, Letters from Dad, They Call Me Ranger Ray; news sources-Amarillo Globe News, ABC World News, Pro News 7.

**What do you view as the role of the Sheriff?** The sheriff is the conservator of the peace, protects and serves all citizens of the county, and keeps a safe and secure jail.

**What special qualities or qualifications do you possess which would make you an efficient Sheriff?**

With 28 years of service in the Hansford County Sheriff's Department, I have the experience needed to run the office proficiently. I have earned the titles of Master Peace Officer and Master Jailer. Currently, I have earned 2341 hours of training. Learning is an ongoing process, and I frequently attend trainings to better equip me to combat the ever-changing law enforcement challenges. Honesty and fair treatment to all citizens is my focus. I have the integrity that is necessary for a well-managed department and have earned the trust of the citizens of Hansford County.

**If elected, what criteria would you use to determine if you are successful in your position? Explain your answer.** One measure of success is the number of cases cleared, arrests made and convictions obtained. Lowered crime rates are also a good indication of the effectiveness of the law-enforcement officers. Another way to measure success is by the feedback received from you, the citizens of Hansford County.

**Name the most important problem you will face if elected and describe how you will seek to solve it.**

The most important problem faced will be drugs and the problems therewith. I will seek to solve this problem by making Drug Awareness Programs available to the citizens of Hansford County through civic organizations. In the past three years since I have been sheriff, the DARE program has been implemented in the fourth grade in Spearman. We hope to implement the DARE program in Gruver and Morse as well. Drug interdiction through traffic stops and the use of informants are more

strategies used to fight the drug problem. An important asset in the fight against drugs is the citizens who report suspicious activities possibly leading to arrests and convictions. Together we can fight the drug problem and make our streets and communities safer.

**Additional Comments:** In the past three years since I have been sheriff, I have made many accomplishments. We have received grants of approximately \$50,000. The money received was used to purchase the following equipment for all deputies: in-car computers, digital cameras, body armor, portable breathalyzers and tasers. A thermal imager was also purchased with grant money. We have implemented a commissary program in the jail with the proceeds used to purchase security cameras for the jail. The sheriff's department has sponsored two trainings: regional bomb school and taser training for local law enforcement officers. We have gotten 30 felony indictments: 7 drugs, 2 sexual assault, 3 aggravated assault, 6 burglary of a building, 2 theft by check, 1 credit card abuse, 1 tampering with government record, 3 forgery, 4 DWI's, and 1 unauthorized use of a motor vehicle. Two of the drug indictments were a result of a meth lab bust in which 800 grams of meth were seized. This does not include the numerous misdemeanor arrests for various offenses. We also assisted the Amarillo Police Department in gathering information which resulted in the seizure of \$25,000 cash and 8 arrests with indictments. On October 1, 2007, the Gruver Police Department consolidated with the Sheriff's Department resulting in an additional deputy. The entire staff of the Hansford County Sheriff's Department is highly trained in their field and work as a team to protect the citizens of Hansford County! Thank you for allowing me to serve you as the sheriff for the past three years. I am looking forward to serving you for many more.

Are You A Victim of Domestic Violence or Sexual Abuse?  
 The Panhandle Crisis Center  
 Can Help  
 1-800-753-5308  
 301 S. Ash - Perryton  
 435-5008  
 Battering Intervention & Anger Management Available  
 Memorials Accepted



**LANCE A. SWAN**

**Family Members:** Sally, wife; sons Reid, 8 years old and Chance, 6 months old

**Place of Employment:** Ochiltree County Sheriff's Department

**Position/Occupation:** Deputy Sheriff

**Background/Education:** Spearman High School Graduate, 1989; WTAMU graduate, 1996 - Bachelor of Science; OPSU graduate, 1997, Bachelor of Science, Exercise Sports Science; Amarillo College 79th Police Academy graduate, 1999

**What clubs/organizations do you presently belong to and what positions do you hold with them, if any?**

member of the Sheriff's Association of Texas  
 Church affiliation: Church of Christ

**Hobbies/Interests:** Leatherwork, woodworking, shooting, hunting, fishing and spending time with my family

**Excluding the Bible, name at least three books you have read within the last year. What newspapers, magazines, television or radio programs or internet sources do you regularly access for news?** Dean Koontz - Mr. Murder, Nelson DeMille - Wildlife, Hands of Fate - Frank Humphrey, Hansford County Reporter-Statesman, Amarillo Globe-News, Police Qui, All local channels, Fox News, MSNBC and 98.3 KXDJ, Sat. Radio - Fox, MSNBC, CNN & Amarillo local radio channels.

**What do you view as the role of the Sheriff?** I will do my best to see that the citizens of Hansford County receive fair and consistent law enforcement. As Sheriff, it will be my job to set the standard for all law enforcement in this county. I intend to set my standard high and set a positive role model for all to follow.

**What special qualities or qualifications do you pos-**

**sess which would make you an efficient Sheriff?**

I will make the Sheriff's Office a reflection of my values and work ethics. I will provide quality investigators and will work hard to meet the expectations of the citizens of Hansford County. I hold two Bachelor Degrees from two outstanding colleges. I have the background in law enforcement and continue to take specialized classes in criminal justice and stay current with the latest trends and technology. I have reputation as a fair and impartial officer.

**If elected, what criteria would you use to determine if you are successful in your position? Explain your answer.** The criteria I will use to determine the success of the Department includes both the officers and the citizens of Hansford County. First, I want each officer to be able to end each shift knowing that they gave their all morally, ethically and professionally. Second, I want each citizen to have confidence that this department is here to serve and protect them and their families to the fullest extent.

**Name the most important problem you will face if elected and describe how you will seek to solve it.** The biggest problem I see is change. My plan is to make this department a proactive rather than a reactive department. All law enforcement offices face similar challenges in fighting drugs, alcohol and crime. Changing times call for a different approach to law enforcement. It is time to bring Hansford County up to the highest standards possible. Changes take time, effort and commitment. I am committed to making the Hansford County Sheriff's Department an educated, honest and experienced department. If you are committed to following the road to change, then I am the right person at the right time.

**Additional Comments:** I would appreciate your consideration in the March 4, 2008 Republican Primary.

**MITCHELL THEATRES**  
**NCS**  
 GUYMON, OKLAHOMA  
**MITCHELL THEATRES**  
**NORTHBRIDGE CINEMA 8**  
 Guymon, Oklahoma  
 Movies beginning 2/14  
**THE SPIDERWICK CHRONICLES**  
 PG -- Freddie Highmore  
**JUMPER**  
 PG-13 -- Samuel L. Jackson  
**STEP UP 2, THE STREETS**  
 PG-13 -- Briana Evigan  
**DEFINITELY, MAYBE**  
 PG-13 -- Ryan Reynolds, Abigail Breslin  
**FOOL'S GOLD**  
 PG-13 -- Kate Hudson, Matthew McConaughey  
**WELCOME HOME ROSCOE JENKINS**  
 PG-13 -- Martin Lawrence  
**THE EYE**  
 PG-13 -- Jessica Abila  
**VEGGIE TALES: THE PIRATES**  
 G -- Animated  
**THE BUCKET LIST**  
 PG-13 -- Jack Nicholson, Morgan Freeman  
**FRESH POPCORN EVERYDAY!**  
**-PARTY ROOM & ARCADE-**  
**Call for Showtimes**  
**580-338-3281**  
**www.northridge8.com**  
 Office -- 580-338-8969  
**CASH & CREDIT CARDS ONLY**

**HOW TO MAINTAIN YOUR TIRES**  
 Looking for ways to "go green" without spending a lot of money? Here's a tip—check your tire pressure each month. Maintaining proper inflation can increase your gas mileage and save you money at the pump, while also reducing carbon emissions. Get started with the step-by-step checklist in How to Maintain Your Tires. This free booklet is from Bridgestone/Firestone North American Tire, LLC and the Federal Citizen Information Center. For your copy, send your name and address to the Federal Citizen Information Center, Dept. 567R, Pueblo, CO 81009. Or call toll-free 1 (888) 8 PUEBLO, that's (1-888-878-3256), and ask for Item 567R. And visit www.pueblo.gsa.gov to read or print this and hundreds of other FCIC publications for free.

**March 4th Primary**  
 Early voting will begin Monday, February 19th, and will continue through Friday, February 29th (8 a.m.-5 p.m.) at the Hansford County Courthouse in Spearman and the branch office in Gruver City Hall.  
 Late night voting will be held on February 21st and 28th at the Hansford County Courthouse. Voting on these two days will be from 8 a.m.-8 p.m.  
 Applications for ballots by mail must be received on or before Tuesday, February 26th.  
 The primary election day will be Tuesday, March 4, 2008 from 7 a.m. to 7 p.m. Polling places will be as follows: Precinct 1-City Hall, 30 SW Court Spearman; Precinct 2-Renner Ranch, 10175 Co Rd H Spearman; Precinct 3-Cristo-Redentor Catholic Church, 202 Hwy 15 Gruver; Precinct 4-City Hall, 204 E Broadway Gruver; Precinct 5-Assembly of God Church, 401 N. Bernice Spearman; Precinct 6-Oslo Lutheran Church, 8605 Co Rd F Oslo; Precinct 7-Early Vote-Clerk's Office, #15 NW Court Spearman; Precinct 8-Branch Office City Hall, 204 E Broadway Gruver; and Precinct 9-Pringle Morse Community Bldg., 301 Main Morse.  
 The position of Hansford County Sheriff is the only locally contested race. Current Sheriff Gary Evans and former Hansford County Deputy Lance Swan have both filed for the position.  
 Other candidates filing for office include: **84th Judicial District Judge:** William D. (Bill) Smith, Incumbent; **84th Judicial District Attorney:** Mark W. Snider; **Hansford County Attorney:** John L. Hutchison, Incumbent; **Tax Assessor/Collector:** Linda Cummings, Incumbent; **Hansford County Sheriff:** Gary Evans, Incumbent and Lance Swan; **Republican Chairman:** Dorothy Cator; **Hansford County Commissioner, Precinct 1:** Ira G. "Butch" Reed; **Hansford County Commissioner, Precinct 3:** Tim Stedje.  
 There will not be a Democratic primary election in Hansford County.

**Alva Monument Co.**  
 Formerly Liberal Monument & Memorial Company  
**New Location:**  
**33 Tucker Road**  
**Liberal, Kansas**  
 North of the New Wal-mart  
 Serving Kansas, Oklahoma & Texas for 93 years  
 (316) 624-4211 toll free # 888-654-9318

**PRINGLE-MORSE CONSOLIDATED ISD**  
**STATEMENT OF REVENUES, EXPENDITURES, AND CHANGES IN FUND BALANCE**  
**GOVERNMENTAL FUNDS**  
**FOR THE YEAR ENDED AUGUST 31, 2007**

Data	10	Total
Control	General	Governmental
Codes	Fund	Funds
<b>REVENUES:</b>		
5700	Total Local and Intermediate Sources	\$ 2,498,777 \$ 26,665 \$ 2,525,442
5800	State Program Revenues	226,679 10,278 236,957
5900	Federal Program Revenues	419 109,040 109,459
5020	Total Revenues	2,725,875 145,983 2,871,858
<b>EXPENDITURES:</b>		
<b>Current:</b>		
0011	Instruction	826,511 48,323 874,834
0012	Instructional Resources and Media Services	39,554 - 39,554
0013	Curriculum and Instructional Staff Development	8,154 11,281 19,435
0023	School Leadership	65,870 - 65,870
0031	Guidance, Counseling and Evaluation Services	230 - 230
0033	Health Services	10,590 - 10,590
0034	Student (Pupil) Transportation	120,645 - 120,645
0035	Food Services	- 99,962 99,962
0036	Cocurricular/Extracurricular Activities	17,973 - 17,973
0041	General Administration	158,521 - 158,521
0051	Facilities Maintenance and Operations	220,060 - 220,060
0053	Data Processing Services	71,207 - 71,207
<b>Intergovernmental:</b>		
0091	Contracted Instructional Services Between Schools	1,083,341 - 1,083,341
0093	Payments to Fiscal Agent/Member Districts of SSA	9,777 14,947 24,724
6030	Total Expenditures	2,632,433 174,513 2,806,946
1100	Excess (Deficiency) of Revenues Over (Under) Expenditures	93,442 (28,530) 64,912
<b>OTHER FINANCING SOURCES (USES):</b>		
7915	Transfers In	- 28,530 28,530
8911	Transfers Out (Use)	(28,530) - (28,530)
7080	Total Other Financing Sources (Uses)	(28,530) 28,530 -
1200	Net Change in Fund Balances	64,912 - 64,912
0100	Fund Balance - September 1 (Beginning)	1,737,344 - 1,737,344
3000	Fund Balance - August 31 (Ending)	\$ 1,802,256 \$ - \$ 1,802,256

# Wolf Creek Heritage Museum Notes

by Virginia Scott

## MUSEUM HAPPENINGS

An interesting week. While working on our annual report and answering a number of requests for family research, it dawned on me that we do not track this activity. We have numerous outside requests for information on family members from individuals that are doing genealogical research. Each request involves at least one volunteer and a time commitment of at least 30 minutes researching our cemetery, obituary and history books. We often research other books and newspaper also. Out of curiosity, I will try to informally count this year. Let you know the results in December.

My husband, Ed, drove me to Lubbock this past Thursday to take two of our artifacts to the Southwest Collections on the Texas Tech Campus for consultations. This is a group of professionals that are the caretakers of some very rare books, literary letters, and other rare collections that have been given to the University. They also offer conservation assistance to those of us who need it. I took them our original issue of the Amarillo Globe News from April 11, 1947 with the initial report on the tornado. They are going to incapsulate it by page so it will be preserved and we will be able to read it without damaging it.

The second item was our 1886 survey map of Wolf Creek. Unfortunately, they were uncomfortable with it and stated it was too fragile for their expertise. They are going to find us a conservator with the needed expertise.

The visit was educational for us to see what a well equipped lab for paper restoration and preservation looks like. It was amazing.

Our tour of their collections library was also amazing. If you are on the Tech campus go by the library, they have beautiful exhibits

of rare collections.

If you have visited the museum lately, you have noticed that our flower beds are being prepared for spring planting. Decorative stones have been placed to map out the placement of various flowers come planting time. The problem is this, someone is helping their self to the stones. Being on the highway, does not help in securing things. We have full security lights but the grounds are still easily accessible to anyone. If you see anyone helping themselves to our stones, please tell. If you are the person, please return our stones. These are all donated to the museum and volunteers are working hard on the beds. The museum belongs to the citizens of the county and we ask that everyone respect the grounds and the work that is occurring as your own because it is.

## HISTORICAL MUSINGS

February is full of historical activities with Black History month, President Birthdays and Celebrations, and Valentine's Day. I hope you will look around your present day and see how you can learn from these activities and how these events influence our lives. Does your child's school class have valentine parties. Some do not because they don't consider it appropriate. Who decides when tradition becomes inappropriate?

In researching our county censuses to identify our demographics, we are finding our a lot about our beginnings as well as our language of the past. The first census of record was June, 1880, the categories that the census takers were interested in were: Name, Color, Sex, Age, Marital status, Occupation, Birth Place and Birth place of Parents. In this census there were two men recorded as Black. One recorded only his first name "Henry", 20 years old, single and occupation was a Cook and birth place was Texas. The second was

George Jenkins, 18 years old, single and occupation as a herder. Birth place was listed as Texas.

12 listed Mexico as birthplace, 2 from Scotland, 2 from Ireland, and 2 New Foundland. All were listed as white. One female listed herself as MU (I think this was mixed race, not sure). Total census was 60. The other interesting fact is that almost everyone was a herder or farmer. Two stated occupation as Rancheros. One was a beef raiser.

Valentines Day is considered by many as a commercial holiday and one that can be overlooked. In 1929, the Lipscomb Lime Light made this observance about this holiday:

Every now and then some special festival or holiday is announced and in one way or another particular observance is made, with often a suspension of general business affairs and concentrated effort to mark the occasion.

Saint Valentine's Day, however, will not be a holiday for anybody. It has for years been dreaded by the post office department, for Cupid, the first lieutenant of the good old saint, has a way of sending his darts by mail to an alarming extent.

February 14, chosen as a time when even the bashful swain may express his burning affection without hesitancy- in verse or worse- is just a little ahead of spring-time in most localities, and therefore "saying it with flowers" is rather expensive.

There is no harm in the observance of such an anniversary, and the fact that so many take note of the opportunity and mark it with a special act or deed, is proof that the world is still young.

I hope you took the time to send a valentine to someone you admire, love, like, or just wanted to "Make their Day". It is always nice to do something to brighten someone's day. Keep history and tradition alive.

by Jim Derington

# Out at the Lake

Lake Level--February 11, 2008--19.58 feet (-.37)

Jim's news was scant this morning. He said the geese were gone, and he was seeing the cranes fly north. However, 4 eagles were still with us, and there were a scattering of ducks on the Lake.

## More on Ferruginous Hawks

Before Deanna and Rex Williams contacted me about the dead Ferruginous Hawk with the band, Carolyn Fletcher had told our daughter Nancy Sambalew about a big bird flying over her that was white underneath.

Now that I have been reading more on this hawk, I think her bird was probably a light phase Ferruginous Hawk. Their legs are rust colored and make almost a V of color against the white.

This bird and the Rough Legged Hawk are the only ones that are known as boot-

ed, meaning that their feathers grow on down to their feet.

Identifying these hawks can be confusing, as there are two phases or colors. Most of them are the light phase, with rusty colored feathers on top of the body, wings, head, and tail with white underneath. The dark phase are black or reddish black above and below the body, but the wings have white on the outer edges as seen from below. Only 10% of Ferruginous Hawks are dark phase.

Back in 1997 Pauline Hale was enthused over a big hawk at Old Hansford.

She found out that it was a dark phase Ferruginous Hawk and gave me an article entitled "Regal Hawk of the Prairie." Then one day she called and said that the hawk had been injured and her sons Selden and Garland were going to try to capture it and get help for it.

They had been unable to get in touch with Mike Wheat, our game warden. I went to see the bird. It could fly about 3 or 4 feet high and go about 15 feet at a time. Selden was able to catch the hawk by throwing a blanket over it as it went into the tumbleweeds banked on the highway fence.


Mike Wheat picked up the hawk that evening, saying that if it were the rare dark phase Ferruginous Hawk he would probably send it to a center in San Antonio to be rehabilitated. He determined that it was indeed the rare hawk, but the wing was infected so badly that the hawk was put to sleep.

To me the beautiful reddish black bird resembled a small size golden eagle with the same formidable talons

## Hoochy Poochy Parlor

Professional Award  
Winning Stylist

Carmon Baker



and Missy  
"The Hoochy Poochy"

A true professional and award winning creative groomer. Carmon has earned numerous awards for her excellent work and demonstrated professional technique. She has served the Texas Panhandle for the past 37 years. Catering to the small to medium pampered pet, we always do our best. Please visit us for a free estimate on your pet care needs.

Hours:  
Mon-Fri., 8 a.m. until done  
Saturday by appointment only

806-273-2724  
806-674-5409  
116 Madison  
421 E. 10th St.  
Borger, TX 79007  
hoochypoochy@aol.net

First State Bank  
will be closed  
on Monday,  
February 20th, in  
observance of



**PRESIDENT'S DAY**



The Bank that has the  
Tradition of Strength  
and Service

One NE Court  
Spearman, Texas  
(806) 659-5565  
member FDIC



Prices Good Thru 2/23/08



**BLUE BUNNY ASSORTED ICE CREAM**  
64 OZ. **\$3.49**



**32 OZ. TALLSUP**  
**59¢**

305 W. Kenneth  
Spearman • 659-3135

101 Main Ave.  
Gruver • 733-2953

**ASSORTED BROWNIE BAKER MUFFINS**  
**2 \$3.00 FOR 3**

**BUY 12 GALLONS OF FRESH ALLSUP'S MILK... GET ONE FREE!**

**HOT, BACON CHEDDAR, JALAPENO & CHEDDAR, HOT PEPPERJACK OR CHILI CHEESE TOM'S FRIES**  
**2 \$3.50 FOR 3**

**ASSORTED DORITOS®**  
**\$3.29**



**MILD OR HOT TAMALES**  
**\$1.39**



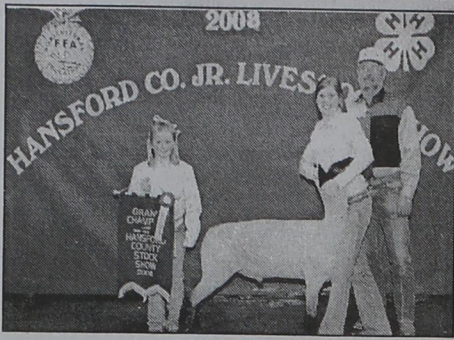
### COMBO MEALS

COMBO NO. 1	BACON/EGG BISCUIT & 16 OZ. COFFEE	\$1.99	COMBO NO. 6	3 TAMALES, HOWLERS & 32 OZ. TALLSUP	\$2.59
COMBO NO. 2	SAUSAGE/EGG BISCUIT & 16 OZ. COFFEE	\$1.99	COMBO NO. 7	2 HOT LINKS WITH BREAD & 32 OZ. TALLSUP	\$2.49
COMBO NO. 3	BBQ SANDWICH & 32 OZ. TALLSUP	\$1.99	COMBO NO. 8	2 CORN DOGS & 32 OZ. TALLSUP	\$2.59
COMBO NO. 4	HOMESTYLE POPCORN CHICKEN & 32 OZ. TALLSUP	\$2.69	COMBO NO. 9	CHIMICHANGA & 32 OZ. TALLSUP	\$2.39
COMBO NO. 5	SPICY POPCORN CHICKEN & 32 OZ. TALLSUP	\$2.69	COMBO NO. 10	2 BEEF & BEAN BURRITOS & 32 OZ. TALLSUP	\$2.59

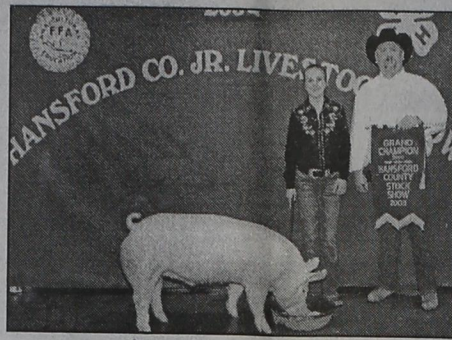
### MORE SPECIALS

BLUE BUNNY TURTLE SUNDAE BAR	\$1.59
JACK LINKS ASSORTED JERKY 3.5-3.65 OZ.	\$3.99
CAMPBELL'S TOMATO OR CHICKEN NOODLE SOUP	2 FOR \$2.00
NISSIN SOUP BEEF, SHRIMP OR CHICKEN	49¢
CHEER OR GAIN LAUNDRY SOAP 2X LIQUID	\$3.99
TURKEY CREEK PORK SKINS ASSORTED	79¢
PUFFS TISSUES 96 CT. OR 132 CT.	2 FOR \$3.00
BAR-S BACON 12 OZ.	2 FOR \$5.00
RED DELICIOUS APPLES 3 LB. BAG	\$2.99
PLAINS DIPS FRENCH ONION OR GREEN CHILI 12 OZ.	2 FOR \$3.00
MARS CANDY BARS SELECT GROUP SNICKERS, M&M'S PEANUTS, 3 MUSKETEERS OR STARBURST REGULAR SIZE	79¢

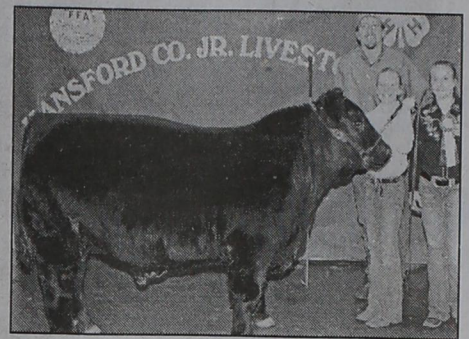
# Congratulations!



Grand Champion Lamb  
Tara Shields, Spearman 4-H



Grand Champion Swine  
Callie Stedje, Gruver 4-H



Grand Champion Steer  
Callie Stedje, Gruver 4-H

## Thank You!

The Hansford County Reporter-Statesman would like to thank Rick Barkley for the use of his pictures from the Hansford County Livestock Show.

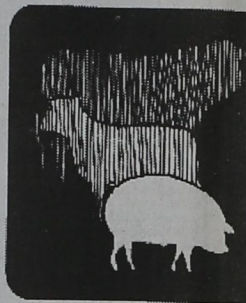
Congratulations to all participants in the Hansford County Junior Livestock Show and Sale.

We salute our ag teacher, Keith Park, and the good things our kids do!



Spearman Independent School District and Board of Trustees

## Congratulations



4-H & FFA on a job well done!

H&H Water Well Service Inc.  
Gruver Highway • Spearman TX  
659-5577

## CONGRATULATIONS!

WE ARE PROUD TO SUPPORT OUR AREA YOUNGSTERS!



4200 South Main  
Perryton, Texas 79070  
Office: 806-435-5935

# HATS OFF

to all the boys and girls in 4-H & FFA who participated in the



Hansford County Livestock Show & Sale!



AMARILLO CREDIT OFFICE PERRYTON CREDIT OFFICE  
5700 West 45th Street 506 South Main  
Amarillo, Texas 79109 Perryton, Texas 79070  
806-353-6688 806-435-4319  
806-353-7389 Fax 806-435-4280 Fax

## We're Proud Of You!

We are proud of the young people -- FFA and 4-H youth -- adults and sponsors who participated in and helped with the 2008 Hansford County Livestock Show.

Five Star Equipment, Inc.  
Spearman, Texas ★★★★★ (806) 659-3743

## CONGRATULATIONS

4-H & FFA Members!

First State Bank is proud to be involved in various community activities, such as The Hansford County 4-H & FFA Livestock Show. We would like to congratulate all of the participants.

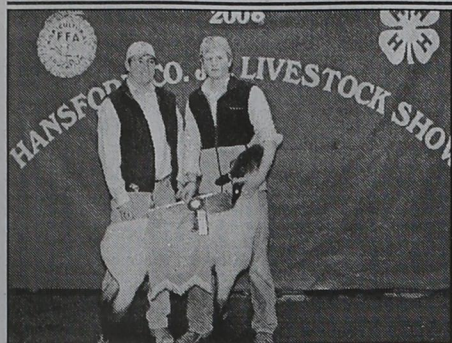


from  
First State Bank

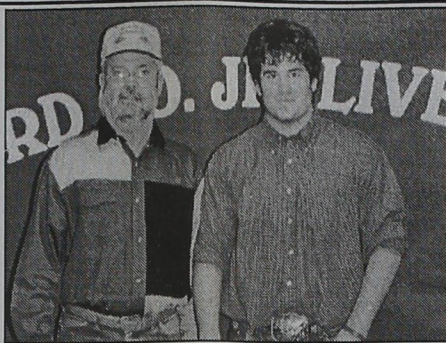
"The Good Ag Bank"

1 NE Court • 806-659-5565 • Spearman, Texas 79081  
member FDIC





Reserve Grand Champion Lamb  
Blayne Baker, Spearman 4-H



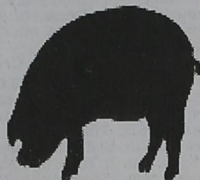
Reserve Grand Champion Swine  
Cory Graves, Gruver FFA



Reserve Grand Champion Steer  
Jacob Lieb, Morse 4-H

**Congratulations to all participants in the Hansford County Junior Livestock Show & Sale!**

Supporting  
all the  
participants  
in the Hansford County  
Livestock Show



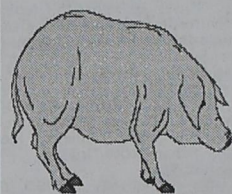
**Lowe's Marketplace**

Plains Shopping Center • Spearman  
(806) 659-2522

We salute all the  
participants of the  
2008 Hansford County  
Livestock Show

**B&B Sales Co.**

205 Dillon • 659-2662 • Spearman



Proud to  
support  
events like  
the Hansford  
County Livestock Show that  
promote strong family ties.

**Celebrate**

203 Main St. Spearman, TX  
(806) 659-3350 1-800-663-8026



**Gigot Agra  
Products, Inc.**

*"Committed to making things  
better in and out of the field."*

Congratulations to all the  
exhibitors in the  
Hansford County  
Livestock Show & Sale.

Gigot Agra Products, Inc.  
506 Hwy. 207 South  
Spearman, Texas  
(806) 659-3121



**CONGRATULATIONS!**

*We are proud to support our area  
youngsters who showed in the  
Hansford County Livestock Show!*



**Hi-Plains Auto**

Spearman • 659-2506



We are proud to support  
Hansford County youth involved  
in the Livestock Show and Sale.

**Golden Spread Sales Co.**

414 S. Hwy. 207 • Spearman TX  
(806) 659-3776

**CONGRATULATIONS**

**FFA & 4-H Members!**

*We salute you  
on all your  
hard work!*



**Hansford Implement Co.**

Hwy 207 • Spearman, TX • 659-2588  
Hours: 8 a.m. to 6 p.m. Monday-Friday

**Congratulations!**

to all the youth who  
participated in the  
Hansford County Junior  
Livestock Show & Sale.



*We believe in the future  
of farming and ranching!*

from the employees, officers and directors of



**Gruver State Bank**

3 Main Plaza • (806) 733-5061 • Gruver, TX  
member FDIC

# Hansford County Livestock Show Results

## MARKET STEER RESULTS

### 01 Lightweight

1, Jace Lane, Morse 4-H, Pringle-Morse CISD, 9th Grade; 2, Eva McCloy, Morse 4-H, Gruver High School, 12th Grade; 3, Tate Batton, Spearman 4-H, Spearman High School, 10th Grade; 4, Wil McCloy, Morse 4-H, Gruver High School, 9th Grade

### 02 Medium weight

1, Bailey Stedje, Gruver 4-H, Gruver Jr. High, 5th Grade; 2, Taylor Williams, Gruver FFA, Gruver High School, 11th Grade; 3, Audrey Lieb, Morse 4-H, Pringle-Morse CISD, 7th Grade

### 03 Heavy weight

1, Callie Stedje, Gruver 4-H, Gruver Jr. High, 7th Grade; 2, Jacob Lieb, Morse 4-H, Gruver High School, 9th Grade; 3, Brenna Reid, Gruver FFA, Gruver High School, 9th Grade; 4, Reese Clark, Morse 4-H, Pringle-Morse CISD, 7th Grade

## MARKET LAMB RESULTS

### 01 Fine Wool

1, Steve Couch, Spearman FFA, Spearman High School, 9th Grade; 2, Nikki Boyd, Spearman FFA, Spearman High School, 9th Grade; 3, Amy Boyd, Spearman FFA, Spearman High School, 12th Grade; 4, Shyloh Sparks, Spearman FFA, Spearman High School, 9th Grade

### 02 Medium Wool

1, Bailey Stedje, Gruver 4-H, Gruver Jr. High, 5th Grade; 2, Cory Graves, Gruver FFA, Gruver High School, 10th Grade; 3, Brandy Shields, Spearman 4-H, Gus Birdwell Elementary, 3rd Grade; 4, Sarah Snider, Spearman 4-H, Spearman Jr. High, 8th Grade; 5, Rayel Anderson, Gruver 4-H, Gruver Jr. High, 5th Grade; 6, Hunter Kenney, Spearman 4-H, Gus Birdwell Elementary 4th Grade; 7, Saira Rivera, Morse 4-H, Pringle-Morse CISD, 7th Grade; 8, Shakota Field, Morse 4-H, West Texas Middle School, 6th Grade; 9, Sheldon Field, Morse 4-H, West Texas Middle School, 10th Grade

### 03 Medium Wool

1, Jennifer Crowl, Morse 4-H, Pringle-Morse CISD, 6th Grade; 2, Cason Finley, Gruver 4-H, Gruver High School, 12th Grade; 3, Tylo Farrar, Spearman 4-H, Spearman Jr. High, 8th Grade; 4, Makayla Wheelock, Gruver 4-H, Gruver Elementary, 3rd Grade; 5, Kyler Cator, Spearman 4-H, Spearman Jr. High, 8th Grade; 6, Sabrina Butman, Gruver 4-H, Gruver Jr. High, 6th Grade; 7, Allison Brown, Spearman 4-H, Spearman Jr. High, 7th Grade; 8, Braxton Crane, Gruver 4-H, Gruver Elementary, 3rd Grade

### 04 Medium Wool

1, Richard Jarvis, Spearman 4-H, Spearman Jr. High, 6th Grade; 2, Jace Lane, Morse 4-H, Pringle-Morse CISD, 6th Grade; 3, Addam Ferguson, Spearman 4-H, Spearman High School, 11th Grade; 4, Tyan Hight, Spearman 4-H, Gus Birdwell Elementary, 5th Grade; 5, Romero Rivera, Morse 4-H, West Texas High School, 11th Grade; 6, Dakota Cator, Spearman FFA, Spearman High School, 10th Grade; 7, Reese Clark, Morse 4-H, Pringle-Morse CISD, 7th Grade; 8, Katelyn Wilson, Morse 4-H, Pringle-Morse CISD, 8th Grade; 9, Dustyn Kelley, Spearman 4-H, Gus Birdwell Elementary, 4th Grade

### 05 Medium Wool

1, Tara Shields, Spearman 4-H, Spearman High School, 12th Grade; 2, Taos Anderson, Gruver 4-H, Gruver Jr. High, 7th Grade; 3, Kelsey DeLuna, Gruver 4-H, Gruver High School, 9th Grade; 4, Maggie Pipkin, Spearman 4-H, Gus Birdwell Elementary, 4th Grade; 5, Bailey Rae Poer, Gruver 4-H, Gruver Jr. High, 5th Grade; 6, Wyatt Poer, Gruver 4-H, Gruver Elementary, 3rd Grade; 7, Travis Stedje, Gruver 4-H, Gruver Jr. High, 6th Grade

### 06 Medium Wool

1, Lauren Ferguson, Spearman 4-H, Spearman Jr. High, 8th Grade; 2, Dani Wheelock, Gruver 4-H, Gruver High School, 11th Grade; 3, Megan Stedje, Gruver 4-H, Gruver High School, 4th Grade; 4, Brenna Reid, Morse 4-H, Gruver High School, 9th Grade; 5, Kevin Ruiz, Spearman 4-H, Spearman High School, 8th Grade; 6, Halston Kenney, Spearman 4-H, Gus Birdwell Elementary, 3rd Grade; 7, Emilyynn Robinson,

Morse 4-H, Pringle-Morse CISD, 6th Grade; 8, Matthew Jarvis, Spearman 4-H, Spearman High School, 9th Grade 07 Medium Wool

1, Blayne Baker, Spearman 4-H, Spearman High School, 12th Grade; 2, Tate Batton, Spearman 4-H, Spearman High School, 10th Grade; 3, Callie Stedje, Gruver 4-H, Gruver Jr. High, 7th Grade; 4, Makenzie Crane, Gruver 4-H, Gruver High School, 9th Grade; 5, Preslee Baker, Spearman 4-H, Spearman High School, 10th Grade; 6, Hadlee Spivey, Gruver Jr. FFA, Gruver Elementary, 4th Grade; 7, Beau Brown, Spearman 4-H, Gus Birdwell Elementary, 5th Grade; 8, Trenton Finley, Gruver 4-H, Gruver Elementary, 4th Grade; 9, Lexi Batton, Spearman 4-H, Spearman Jr. High, 8th Grade

## MARKET SWINE RESULTS

### Duroc

#### 01 Duroc

1, Zane Patterson, Spearman 4-H, Pringle-Morse CISD, 3rd Grade; 2, Jordan Hicks, Gruver FFA, Gruver High School, 11th Grade; 3, Macy Haight, Gruver Jr. FFA, Gruver Elementary, 3rd Grade; 4, Mabry Sutterfield, Spearman 4-H, Spearman Jr. High, 7th Grade

#### 02 Duroc

1, Seth Thompson, Gruver 4-H, Gruver High School, 12th Grade; 2, Megan Stedje, Gruver 4-H, Gruver High School, 10th Grade; 3, Kyler Cator, Spearman 4-H, Spearman Jr. High, 8th Grade; 4, Dax Haight, Gruver Jr. FFA, Gruver Jr. High, 5th Grade; 5, Kelsey DeLuna, Gruver 4-H, Gruver High School, 9th Grade; 6, Halston Kenney, Spearman 4-H, Gus Birdwell Elementary, 3rd Grade; 7, Cotton Cator, Spearman 4-H, Gus Birdwell Elementary, 4th Grade

#### 03 Duroc

1, Allison Brown, Spearman 4-H, Spearman Jr. High, 7th Grade; 2, Ashley Williams, Gruver Jr. FFA, Gruver Jr. High, 7th Grade; 3, Sawyer Sutterfield, Spearman FFA, Spearman High School, 9th Grade; 4, Molly Lieb, Morse 4-H, Pringle-Morse CISD, 6th Grade; 5, Brock Schroeder, Spearman 4-H, Gus Birdwell Elementary, 5th Grade

### Hampshire

#### 04 Hampshire

1, Lexi Batton, Spearman 4-H, Spearman Jr. High, 8th Grade; 2, Dustyn Kelley, Spearman 4-H, Gus Birdwell Elementary, 4th Grade; 3, Seth Coates, Spearman FFA, Spearman High School, 11th Grade; 4, Lauren Williams, Gruver 4-H, Home School, 7th Grade; 5, Kate Lieb, Morse 4-H, Pringle-Morse CISD, 4th Grade; 6, Jennifer Crowl, Morse 4-H, Pringle-Morse CISD, 6th Grade; 7, Richard Jarvis, Spearman 4-H, Spearman Jr. High, 6th Grade

#### 05 Hampshire

1, Madison McLain, Gruver Jr. FFA, Gruver Jr. High, 8th Grade; 2, Lindy Weldon, Gruver FFA, Gruver High School, 12th Grade; 3, Cason Finley, Gruver FFA, Gruver High School, 12th Grade; 4, Kennedy Venneman, Gruver 4-H, Gruver Elementary, 3rd Grade; 5, Travis Boyd, Gruver FFA, Gruver High School, 11th Grade; 6, Preslee Baker, Spearman 4-H, Spearman High School, 10th Grade; 7, Greyson Karlin, Gruver Jr. FFA, Gruver Jr. High, 7th Grade

#### 06 Hampshire

1, Kevin Ruiz, Spearman 4-H, Spearman High School, 8th Grade; 2, Jace Lane, Morse 4-H, Pringle-Morse CISD, 6th Grade; 3, Guadalupe Trejo, Morse 4-H, West Texas High School, 9th Grade; 4, Blake Fitzgerald, Gruver FFA, Gruver High School, 10th Grade; 5, Addie Williams, Gruver 4-H, Home School, 5th Grade; 6, Romero Rivera, Morse 4-H, West Texas High School, 11th Grade

#### 07 Hampshire

1, Lauren Patterson, Spearman 4-H, Spearman Jr. High, 8th Grade; 2, Rily Urban, Gruver FFA, Gruver High School, 10th Grade; 3, Nikki Boyd, Spearman FFA, Spearman High School, 9th Grade; 4, Hudson Williams, Gruver 4-H, Home

School, 10th Grade; 5, Sabrina Butman, Gruver 4-H, Gruver Jr. High, 6th Grade; 6, Gus Lopez, Spearman FFA, Spearman High School, 10th Grade

### 08 Hampshire

1, Cory Graves, Gruver FFA, Gruver High School, 10th Grade; 2, Parker Grotegut, Gruver FFA, Gruver High School, 10th Grade; 3, Madison Williams, Gruver Jr. FFA, Gruver Jr. High, 6th Grade; 4, Makenzie Crane, Gruver FFA, Gruver High School, 9th Grade; 5, Reese Clark, Morse 4-H, Pringle-Morse CISD, 7th Grade; 6, Beau Brown, Spearman 4-H, Gus Birdwell Elementary, 5th Grade

### 09 Hampshire

1, Wyatt Poer, Gruver 4-H, Gruver Elementary, 3rd Grade; 2, Hadlee Spivey, Gruver Jr. FFA, Gruver Elementary, 4th Grade; 3, Carson Williams, Gruver Jr. FFA, Gruver Jr. High, 5th Grade; 4, Braxton Crane, Gruver 4-H, Gruver Elementary, 3rd Grade

### Yorkshire

#### 10 Yorkshire

1, Jack Karlin, Gruver FFA, Gruver High School, 9th Grade; 2, Dakota Cator, Spearman FFA, Spearman High School, 10th Grade; 3, Chandler Miner, Gruver FFA, Gruver High School, 11th Grade; 4, Emilyynn Robinson, Morse 4-H, Pringle-Morse CISD, 6th Grade

#### 11 Yorkshire

1, Callie Stedje, Gruver 4-H, Gruver Jr. High, 7th Grade; 2, Jacob Lieb, Morse 4-H, Gruver High School, 9th Grade; 3, Tanner Baird, Spearman 4-H, Gus Birdwell Elementary, 5th Grade; 4, Ryan Schnell, Spearman 4-H, Spearman Jr. High, 6th Grade; 5, Trenton Baird, Spearman 4-H, Gus Birdwell Elementary, 3rd Grade; 6, Seth Salgado, Spearman FFA, Spearman High School, 9th Grade

### Cross

#### 12 Cross

1, Trace Patterson, Spearman 4-H, Gus Birdwell Elementary, 4th Grade; 2, Audrey Lieb, Morse 4-H, Pringle-Morse CISD, 7th Grade; 3, Shakota Field, Morse 4-H, Spearman Jr. High, 6th Grade; 4, Bryce Jarvis, Spearman 4-H, Spearman Jr. High, 8th Grade; 5, Gabi Boyd, Gruver FFA, Gruver High School, 9th Grade; 6, Cooper DeArmond, Spearman 4-H, Gus Birdwell Elementary, 5th Grade

#### 13 Cross

1, Ashlynn Miner, Gruver Jr. FFA, Gruver Jr. High, 7th Grade; 2, Jaci Bergan, Spearman 4-H, Gus Birdwell Elementary, 4th Grade; 3, Brantly Shields, Spearman 4-H, Gus Birdwell Elementary, 3rd Grade; 4, Tara Shields, Spearman FFA, Spearman High School, 12th Grade; 5, Brenna Reid, Morse 4-H, Gruver High School, 9th Grade; 6, Reagan Karlin, Gruver FFA, Gruver High School, 10th Grade; 7, Tyann Hight, Spearman 4-H, Gus Birdwell Elementary, 5th Grade

#### 14 Cross

1, Trenton Finley, Gruver 4-H, Gruver Elementary, 4th Grade; 2, Kennedy King, Gruver Jr. FFA, Gruver Elementary, 4th Grade; 3, Reagan Haynes, Gruver Jr. FFA, Gruver Jr. High, 5th Grade; 4, Blayne Baker, Spearman FFA, Spearman High School, 12th Grade; 5, Matthew Jarvis, Spearman FFA, Spearman High School, 9th Grade; 6, Bailey Rae Poer, Gruver 4-H, Gruver Jr. High, 5th Grade; 7, Blayne Schroeder, Spearman 4-H, Spearman High School, 9th Grade

#### 15 Cross

1, Mason McLain, Gruver Jr. FFA, Gruver Jr. High, 5th Grade; 2, Travis Stedje, Gruver 4-H, Gruver Jr. High, 6th Grade; 3, Tanner Sherrill, Gruver FFA, Gruver High School, 12th Grade; 4, Sheldon Field, Morse 4-H, West Texas High School, 10th Grade; 5, Jordan Snider, Spearman FFA, Spearman High School, 10th Grade

#### 16 Cross

1, Bailey Stedje, Gruver 4-H, Gruver Jr. High, 5th Grade; 2, Miles Messer, Gruver FFA, Gruver High School, 11th Grade; 3, Malory Martin, Spearman 4-H, Spearman Jr. High, 8th Grade; 4, Tate Batton, Spearman 4-H, Spearman High School, 10th Grade; 5, Carson Pearson, Spearman 4-H, Spearman Jr. High, 6th Grade; 6, Amy Boyd, Spearman FFA, Spearman High School, 12th Grade



We're proud to support Hansford County youth involved in the Livestock Show and Sale

**MurMur's Cafe**

100 Roland St. Spearman (806) 659-3580

**Simple Simon's Salutes**

the 4-H and FFA youth for demonstrating personal responsibility, exhibiting high standards in animal care and promoting production agriculture.

**SIMPLE SIMON'S PIZZA**

312 Main St. Spearman (806) 659-9991

**CONGRATULATIONS!**

to all the boys and girls in FFA and 4-H on a great job in the 2008 Hansford County Livestock Show.

**Hungry Cowboy**

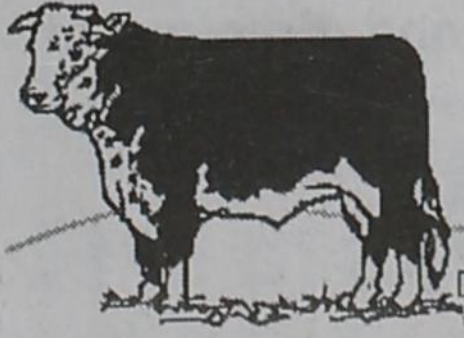
Hwy. 207 S. • Spearman 659-5151

**Working For The FUTURE**

Supporting the Youth of Hansford County

We want to take this opportunity to recognize the farming and ranching youths of our area.

Your hard work was very evident when you displayed your animal projects at the Hansford County Livestock Show.



HANSFORD COUNTY'S ONLY NEWSPAPER

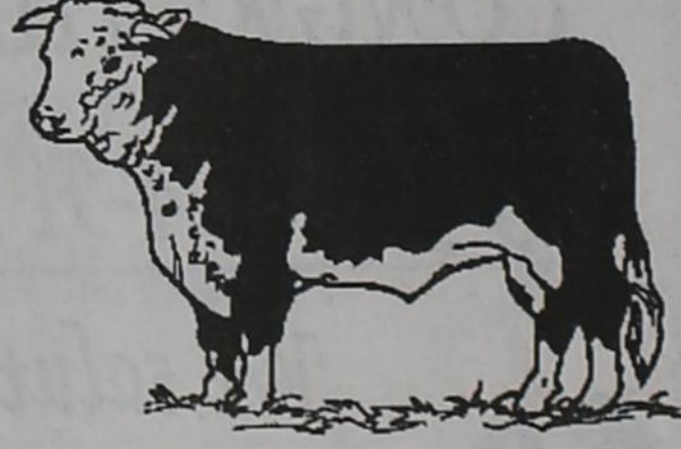
100 Years

The Hansford County Reporter Statesman

FOUNDED 1907

www.hansfordreporter.com

We're proud to support Hansford County youth involved in the Livestock Show and Sale



**FN BANK**

First National Bank

Spearman, Texas 79081 Dumas, Texas 79029

806-659-5544 806-934-8455

800-583-4196 866-583-4196

Member FDIC

REAL ESTATE

**WILL BUY YOUR FARMLAND** for cash and lease it back to you for reasonable rate. Call 806-595-0724 or 806-273-2328.

**LEASING:** I am taking per acre annual lease bids on 695 acres of native grass north west of Spearman. Bidding open to 2/29/08. (806) 659-2068. TFN(2-14-08)B

FOR RENT/LEASE

**FOR RENT:** 2BR apartment, \$375.00 per month, water paid. Call Larry O'Neal at 580-772-5617 or 580-819-0007. TFN(7-06-06)B

AUTOMOBILES

**FOR SALE:** 1996 Lincoln Town Car Great School Car, Work Car, Trip Car, Family Car! Super comfortable ride. Leather seats, Huge Trunk. Power everything, 22 miles per gallon. Local car. 175,000 miles. \$2795. Call 806-330-0076. TFN(2-14-08)B

HELP WANTED

**HELP WANTED:** Manager needed for apartment complex in Perryton. Must be honest, dependable and have management experience. Fax resume to 817-732-7716 or call 817-732-1055. 4(2-14-08)B

**HELP WANTED:** Shop help needed. Come by Trencor, 1103 W. 7th in Spearman or call 659-3911. 2(2-7-08)

SERVICES

**HOOCY POOCY PARLOR** Call us for all your pet's grooming and boarding needs. Call now for reservations! 806-273-2724. TFN(11-2-07)

**ELM FIREWOOD** - Split and cured. \$150/cord, \$75/rick. You haul. Call 806-273-7705. 3(1-17-08)

**FOR SALE:** Full Size mattress set, Brand New, still in package. Sell for \$125. 806-341-6233 TFN(1-31-08)

**FOR SALE:** Brand Name King pillow top mattress set, new in plastic w/warranty. Must sell - \$250. 806-341-6233 TFN(1-31-08)

**FOR SALE:** All new QUEEN pillow top set - \$150. NEW in plastic. 806-341-6233 TFN(1-31-08)

**FOR SALE:** QUEEN ORTHOPEDIC Mattress Set, New, still in plastic w/Warranty - \$140. 806-341-6233 TFN(1-31-08)

**FOR SALE:** A great deal! NASA memory foam mattress set. Never used. Sacrifice for \$350. 806-341-6233 TFN(1-31-08)

**FOR SALE:** Twin mattress set new w/warranty - \$100. 806-341-6233 TFN(1-31-08)

PUBLIC NOTICE

**NOTICE TO CONTRACTORS OF PROPOSED TEXAS DEPARTMENT OF TRANSPORTATION (TXDOT) CONTRACTS**

Sealed proposals for contracts listed below will be received by TXDOT until the date(s) shown below, and then publicly read.

**CONSTRUCTION/ MAINTENANCE/BUILDING FACILITIES CONTRACT(S)**

Dist/Div: Amarillo Contract 0904-00-124 for THERMOPLASTIC STRIPING IN POTTER COUNTY, etc will be opened on March 05, 2008 at 1:00 pm at the State Office.

Plans and specifications are available for inspection, along with bidding proposals, and applications for the TXDOT Prequalified Contractor's list, at the applicable State and/or Dist/Div Offices listed below. If applicable, bidders must submit prequalification information to TXDOT at least 10 days prior to the bid date to be eligible to bid on a project. Prequalification materials may be requested from the State Office listed below. Plans for the above contract(s) are available from TXDOT's website at www.dot.state.tx.us and from reproduction companies at the expense of the contractor.

NPO: 26038

State Office Constr/Maint. Division 200 E. Riverside Dr. Austin, Texas 78704 Phone: 512-416-2540

Dist/Div Office(s) Amarillo District District Engineer 5715 Canyon Dr. Amarillo, Texas 79105-2708 Phone: 806-356-3283

Minimum wage rates are set out in bidding documents and the rates will be part of the contract. TXDOT ensures that bidders will not be discriminated against on the grounds of race, color, sex, or national origin.

2(2-07-08)B

What are you waiting for?

Come take advantage of the most attractive sales opportunity in the panhandle area. Send resume to Aflac Regional Office 2600 Paramount, Suite H3, Amarillo, TX 79109 or email wildwest@megapathdsl.net

Are You A Victim of Domestic Violence or Sexual Abuse?

**The Panhandle Crisis Center Can Help**  
1-800-753-5308  
301 S. Ash - Perryton 435-5008  
Battering Intervention & Anger Management Available  
Memorials Accepted

T	A	L	C	C	W	T	M	S	T
O	R	A	L	S	E	A	R	V	A
M	I	N	I	C	L	I	O	I	R
B	L	A	N	C	H	E	T	T	G
T	A	M	B	S	E	G	G		
S	T	U	C	C	O	C	L	O	D
W	I	N	H	E	R	E	O	F	L
A	B	I	D	E	E	N	E	O	D
R	I	T	E	U	N	S	N	A	P
D	A	S	T	A	R	D	L	E	A
E	E	N	S	P	U	R	N		
E	A	R	S	A	N	I	M	A	T
F	A	R	G	O	K	I	L	N	L
C	R	E	E	P	I	D	E	A	E
G	L	A	D		N	E	D	R	A

4	8	1	3	6	9	7	5	2
9	5	7	8	4	2	3	6	1
3	6	2	5	1	7	8	9	4
5	7	4	2	8	6	1	3	9
8	3	6	9	5	1	4	2	7
2	1	9	7	3	4	5	8	6
7	4	3	6	9	8	2	1	5
1	9	5	4	2	3	6	7	8
6	2	8	1	7	5	9	4	3

**Blankenship Real Estate**  
659-3052 - 670-3774

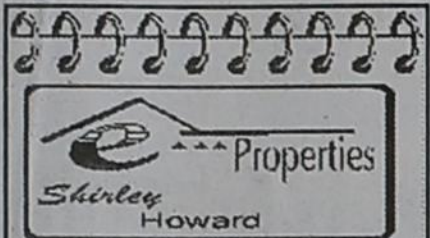
**3/1** - Lots of storage inside & out, center lot. Close to schools. UNDER CONSTRUCTION

**3/2** - Brick, 2 living areas, fenced w/storage. UNDER CONSTRUCTION

**2/2** - Brick, fenced w/storage

**NEW LISTINGS WANTED!**

Eulalia Blankenship - Sales  
Eschol Blankenship - Broker



Shirley Howard Properties

115 Nelson Rd, SPEARMAN - 2/2/2 - 1,900 sq ft, 1/2 acre land - Country & City all at once!

I would LOVE to sell your HOUSE!  
Call ME!  
Cell: 806-886-6536



MARTIN & ASSOCIATES REALTY

Serving Hansford County for 14 years  
Julie Martin: Broker - 659-2425

**IN SPEARMAN**  
1111 S. Townsend - Split level, 3/2! Are you looking for a home with that brand new feeling? This home has been redone throughout: all new flooring, paint, fixtures, baths, remodeled kitchen w/new appliances, granite countertops, split level deck. \$134,000  
703 Collier - 3/1! investment property, subject to lease  
1114 S. Dressen - 3/1! sprinkler system, CACH

We'd Like Your Listing FOR QUALITY & SERVICE CALL US TODAY!  
Equal Housing Opportunity

**OCEANS OF WATER II** - Hansford Co., Texas - 4 sections, strong water, dev. with sprinklers, wells, leedyard, home, barns, pvtmt., 2 mi. hwy. frontage.

**HARTLEY CO** - 640 acres with nice home, landscaped, barns & sprinklers.

**PRIME LOCATION FOR DAIRY, FARMING & CATTLE** - East of Dalhart, on pvtmt., 3 1/2 sections, strong water area, wells & sprinklers, nice home, barns and preconc. pens.

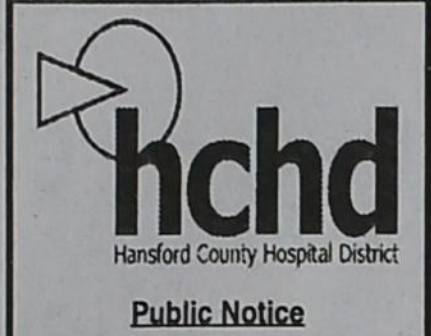
**SPEARMAN DAIRY** - permitted for 3,600 hd., (1,400 milking), 320 acre operation, milking started as construction nears completion.

**HANSFORD CO.** - 315 acres, 2 pivots, cattle pens, good water, on pavement.

**MOORE CO.** - 1766 acres, fully developed with wells & sprinklers & really nice home on all-weather road, priced to sell!

Choice milk processing and dairy sites available in Dallam, Hartley, Moore, Oldham, Sherman and Hutchinson Counties.

SEE OUR WEBSITE OR GIVE US A CALL!  
www.scottlandcompany.com  
Shawn Gillispie 806/922-5532  
Ben G. Scott, Broker  
1-800-933-9698 day/eve  
TFN(11-17-07)



hchd  
Hansford County Hospital District

**Public Notice**  
Hansford County Hospital will be taking bids starting February 18, 2008 thru February 29, 2007 for painting various rooms and hallways inside the hospital. For more information contact John Kunselman 806-659-5838. Mail bids to 707 Roland Spearman, Tx 79081 attn: John Kunselman.

2(2-14-08)B



hchd  
Hansford County Hospital District

**Openings at Hansford Hospital**

**Maintenance Person:** Performing duties for maintenance of the building, grounds, including carpentry, painting, plumbing, electrical work, air conditioning, gardening, furniture repair, welding, etc.

**Insurance/Billing Clerk:** Responsibilities include filing and follow up of insurance claims, assisting with admissions and discharges.

**Openings at Hansford Manor**

**Housekeeping:** Providing a clean, neat and sanitary facility for the comfort of our patients, residents and staff.

**Certified Nurse Aide:** Assisting RN and LVN with the care of our residents.

**LVN:** Must be licensed in the State of Texas

**RN:** Must be licensed in the State of Texas

Great working environment and staff, quality facility providing opportunities for professional growth. Great benefit package. Apply at 707 S. Roland, Spearman, TX or contact Jackie Nelson at 806-659-5841. Download application at www.hchd.net  
EEOE  
2(2-14-08)B

**Golden Spread Realty**

**1105 Haney, SPEARMAN** - 3BR, 1B, 1 attached garage - \$30,000.

**1118 Barkley, SPEARMAN** - 3BR, 1 1/2B, 2 attached garage - \$45,000.

**1104 Dressen, SPEARMAN** - 3BR, 1B, 1 attached garage - \$62,500.

*Gina Deal, Realtor*  
(806) 435-5444, office  
(806) 202-0348, cell

**1110 Dressen, SPEARMAN** - 3BR, 1 1/2B, 1 attached garage. **Price Reduced!**  
*Deana Foster, Realtor*  
(806) 435-5444, office  
(806) 202-1061, cell

INDEPENDENTLY OWNED & OPERATED.  
©1992® and TM Century 21 Real Estate Corporation. Equal Housing Opportunity.  
EOW(1-11-06)B

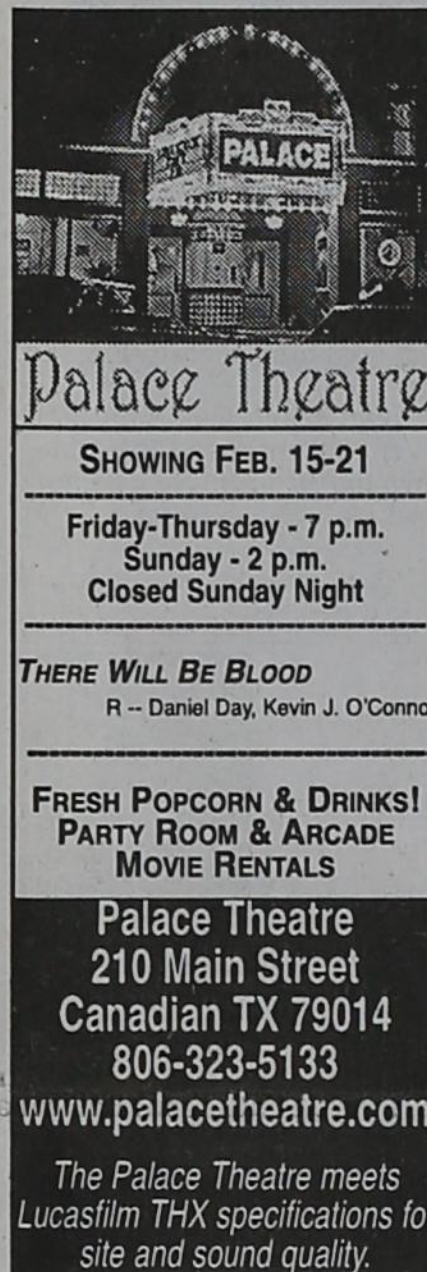


**Real Estate & Rental**

**PROPERTY OF THE WEEK**  
**Spearman Property**  
306 Davis - Great store-front in desirable location.  
1106 S. Haney - 3BR, 1B, 1C attached garage. Ready to move into.  
114 S. Barkley - 2BR, 1B, 2CG - basement area/bedroom office  
EX- 504 Roland - 3BR, 2B, storm shelter, stg bldg.  
222 S. Haney - 2BR, 1B, newly remodeled

**Gruver Property**  
802 Womble - 2-3BR carpenter shop

**Real Estate & Rental** for all your real estate needs!  
*Melinda McCullough, Realtor*  
(806) 733-5678



**Palace Theatre**  
210 Main Street  
Canadian TX 79014  
806-323-5133  
www.palacetheatre.com

**SHOWING FEB. 15-21**  
Friday-Thursday - 7 p.m.  
Sunday - 2 p.m.  
Closed Sunday Night

**THERE WILL BE BLOOD**  
R - Daniel Day, Kevin J. O'Connor

**FRESH POPCORN & DRINKS! PARTY ROOM & ARCADE MOVIE RENTALS**

**Palace Theatre**  
210 Main Street  
Canadian TX 79014  
806-323-5133  
www.palacetheatre.com

The Palace Theatre meets Lucasfilm THX specifications for site and sound quality.

**We will be closed on Monday, February 20th, in observance of**



**\$ Interstate Bank, ssb**  
A Full Service Bank - FDIC Insured  
322 Main Street • Spearman, TX 79081  
Phone - (806) 659-2559 • Fax - (806) 659-3276

**We will be closed on Monday, February 20th, in observance of**



**FN BANK**  
A Full Service Bank

729 W. 7th Spearman, Texas 79081 (806) 659-5544 1-800-583-4196 www.fnbspearman.com

1500 Guylane Plaza Dumas, Texas 79029 (806) 934-8455 1-866-583-4196 MEMBER FDIC



**MONEY'S BBQ & STEAK HOUSE**  
435-3945



Stan and Donna Zepp

**Under New Ownership**  
**Same Great Service & Menu!**

14 SE 3rd Ave. Perryton, TX



**FSB First State Bank**  
P.O. Box 247 Spearman, TX 79081 Telephone 806-659-5565 Member FDIC


Planning to buy a home, but not sure if you can get an affordable mortgage?  
Interest too high on your present mortgage?  
Want to do business with a local bank?

**We can help!**



**Come by First State Bank, Spearman.**  
Check out our competitive fixed and adjustable rate mortgages for terms up to 30 years.  
We can work with you to find a mortgage that fits your needs and help you buy or refinance your home.  
Contact Ginger Turner and find out more.

**TEXAS STATEWIDE CLASSIFIED ADVERTISING NETWORK**



**TexSCAN Week of February 3, 2008**

**BUSINESS OPPORTUNITIES**  
ALL CASH CANDY Route. Do you earn \$800 in a day? Your own local candy route. 30 machines and candy. All for \$9,995. 1-888-625-5481. Multi Vend. LLC.

**AMERICA'S FAVORITE COFFEE** distributor. Guaranteed accounts. Multi-billion \$\$ industry. Unlimited profit potential. Free information 24/7. 1-800-729-4212. Continental Coffee

**DRIVERS**  
DRIVER. O/O'S. NEW pay scale, plus fuel surcharge. Company Drivers. \$5000 signing bonus. Minimum 1 yr. experience. Lots drop & hook! American Eagle Lines, www.ael.com. 1-800-387-1011

**DRIVERS- CDL-A THE Grass is Greener** at PTL. Students welcome - excellent training program. Company drivers earn up to 46¢ pm. Owner operators earn \$1.21 pm. 22 yrs of age, 12 mos OTR. No forced northeast! Company drivers call: 1-866-606-6200. Owner operators call: 1-877-774-3533. www.ptl-inc.com

**DRIVERS- DRIVE A big rig!** Tuition reimbursement available! Possible \$40K 1st year! \$5000 Sign-on with 1 year OTR experience. www.feeinc.com. Call FFE, Inc. 1-800-569-9232.

**DRIVERS- IMMEDIATE OPENING** for regional & OTR drivers! CDL-A with tanker required. Premium pay & benefits. Call 1-877-810-1041 or visit www.oakleytransport.com

**DRIVERS: LOVE YOUR job!** Bonus & paid orientation 36-43 cpm. Earn over \$1000 weekly. Excellent benefits. Class A and 3 months recent OTR required. Mellon Truck Lines. 1-800-635-8669.

**EXAM / PREP**  
POST OFFICE NOW Hiring. Avg. Pay \$20/hour or \$57K/yr. Including Federal Benefits, OT Offer placed by Exam Services, not affiliated with USPS which does hiring. 1-866-918-1182

**EDUCATION / SCHOOLS**  
HVAC/REFRIGERATION TECHNOLOGY train for your future in El Paso. Learn skills for success. Financial aid available to those who qualify. 1-866-313-6511 or www.wto-ep.edu

**FINANCIAL**  
CASH IMMEDIATE CASH for structured settlements, annuities, law suits, inheritance, mortgage notes & cash flows. J.G.WENTWORTH #1. 1-866-494-3711.

**HOMES FOR SALE**  
BUY HUD HOMES! 3BR/3BA or 3310 a month or \$38,671. 4BR/2BA \$200 a month or \$14,110. Only 5% down, 20 years @ 8%. For listings: 1-800-544-6258 ext. 5633

BUY FORECLOSURES! 3BR/2BA \$11,869 OR \$199/mo! 4BR/2BA \$25,300 or \$215/mo! 5% down, 20 years @ 8% Must see for listings. 1-800-544-6258 x T303

FORECLOSURES & BANK REPOS! 4BR/2BA \$30,357 OR \$245/mo! 3BR/2BA \$10,300 OR \$199/mo! (5% down, 20 years, buy @ 8%) These homes won't last! For listings call 1-800-544-6258 Ext. 9847

**MEDICAL SUPPLIES**  
SCOOTERS & POWER WHEEL CHAIRS. Did you know in most cases Medicare, Medicaid and Insurance pay 100% of the cost? Call Melissa or Jon for details. 1-800-606-9860. www.medicaidmedicalsupply.com.

**MISCELLANEOUS**  
ATTEND COLLEGE ONLINE from home. Medical, Business, Paralegal, Computers, Criminal Justice. Job placement assistance. Computer available. Financial aid if qualified. Call 1-866-858-2121. www.OnlineTidewaterTech.com

**AIRLINES ARE HIRING** - Train for high paying aviation maintenance career. FAA approved program. Financial aid if qualified, job placement assistance. Call Aviation Institute of Maintenance. 1-888-349-5387

**SAWMILLS FROM ONLY \$2,990.00!** Convert your logs to valuable lumber with your own Barwood portable band sawmill. Log skidders also available. www.norwoodsawmills.com/300N. Free information: 1-800-578-1363-Ext.300-N.

**REAL ESTATE**  
ACREAGE ON POSSUM KINGDOM Lake. Big Winter Savings! www.thehillabovevpk.com

**MEYERS CANYON, WEST Texas** near Sanderson, 178.9 acres, good hunting, 562.615, with 5% down, seller financing or TX Net. 1-866-286-0199. www.ranchcenterrealty.com

**NEAR RUIDOSO NEW MEXICO**, 140 acres ranch parcels. Great views of Sierra Blanca. Good horse property. Power & gravel roads. Borders national forest, may split. 1-888-812-5810. www.swpproperties.com.

**SOUTHERN COLORADO RANCH** Sale. 35 acres - \$29,900. Spectacular rocky mountain views year round access, electricity/ telephone included. Excellent financing available with low down payment. Call Red Creek Land Co. Today! 1-866-696-5263 x 3473.

**Run Your Ad in TexSCAN!**  
Statewide Ad ..... \$450  
301 Newspapers, 1,009,878 Circulation  
North Region Only ..... \$195  
97 Newspapers, 271,480 Circulation  
South Region Only ..... \$195  
102 Newspapers, 489,530 Circulation  
West Region Only ..... \$195  
102 Newspapers, 252,398 Circulation

To Order: Call This Newspaper direct, or call Texas Pages Service at 1-800-748-4793 Today!

**Extend your advertising reach with TexSCAN, your Statewide Classified Ad Network.**

## Tipton Named One of Five Picks for Texas Association of Basketball Coaches Hall of Fame

The Texas Association of Basketball Coaches announced today the class of 2008 for induction into its Hall of Fame. The induction luncheon will take place on May 3 at 2 p.m. at the El Tropicano Riverwalk Hotel in San Antonio as part of TABC annual convention and clinic. Luncheon tickets are \$25 dollars and can be purchased by contacting the TABC office at 281-313-8222 before April 25.

The three-day clinic at San Antonio's Municipal Auditorium and El Tropicano will include a lineup of top collegiate men's and women's coaches as speakers, which will be announced in the coming weeks.

The inductees are selected by a committee from within the membership.

Members of the new class include: former Houston Yates High School and University of Houston standout Monica Lamb; legendary Texas Tech coach Marsha Sharp, who guided the Lady Red Raiders to the 1993 national championship; 700-game winner and current TABC Executive Director Rick Sherley; high school coaching legend and current Texas Girls Coaches Association Director Sam Tipton; and Chester Story, who was a head coach on the high school and college levels for 38 years, including a national championship season in 1999.



Sam Tipton

### 2008 TABC Hall of Fame Inductee Bios

**Sam Tipton** - He played at Gruver High School for father Wayne Tipton and earned all-state honors in 1964, '65 and '66. The Greyhounds were third in the state in 1965 and state champions in 1966. He was a successful high school coach for 24 years - eight as a boys coach and 16 as a girls coach - with 13 at Frenship High School. He has served as executive director of the Texas Girls Coaches Association since 2001.

**Monica Lamb** - She started for Houston's Yates High School Lady Lions for three years, being selected all-state in 1982-83. The 1983 squad won the state championship. Lamb went on to star at the University of Houston and the WNBA's Houston Comets.

**Marsha Sharp** - A graduate of Tulia High School and Wayland Baptist University, she coached at Lockney High School winning three district titles. Her 25 years at Texas Tech were highlighted by the 1993 national championship. Her high school and college coaching record was 696-250.

**Rick Sherley** - He coached for 32 years with 27 as a varsity coach, including 25 at Allie Hastings High School. He is a past president of TABC and coached in the McDonald's All-Star game in 2000 in Boston. He compiled a 702-260 career head coaching record. For the past six years, has served at the executive director of TABC.

**Chester Story** - Coached basketball for 42 years serving as a head coach for 38 on both the high school and college levels. His 19 years as a high school coach produced five play-off teams and he led Richland College of Dallas to the NJCAA Division III national championship and a 34-game winning streak in 1999. His career record was 695-324 as a head coach.



Gruver's Cross-Examination Debate Team took first place at district competition. Lynn Vela and Leigh Anne Winger placed 1st. Roman Rodriguez and Zach Saylor took 3rd place, and Gabriela Barrera and Mariela Barrera placed 5th. Lynn and Leigh Anne will compete at the State competition in Austin next month. Pictured from left to right are: Lynn Vela, Leigh Anne Winger, Mariela Barrera, Gabriela Barrera, Zach Saylor, and Roman Rodriguez.

**ELECT**  
**Lance Swan**  
for  
**Hansford County Sheriff**



**"THE RIGHT VOTE**  
**AT THE RIGHT TIME"**

**March 4th Republican Primary**  
**Early Voting February 19th-29th**

Political ad paid for by Sally L. Swan Treasurer, 1111 S. Bernice Spearman, Tx 79081

**ELIJA**  
**LANCE A. SWAN**  
para



**SHERIFF DEL CONDADO DE HANSFORD**

*"Tengo la experiencia y la educación de ser un líder acertado para el condado de Hansford."*

**Educación y experiencia:**

- Sheriff Diputado de Condado de Hansford - 1999 - 2005
  - Jefe de policía del Departamento de policía del Spearman 2005 -2006
  - Oficial de las Policías de Seguridad - Ministerio de Energía - Pantex y administración nuclear nacional de la seguridad - 2006 -2007
  - Sheriff Diputado de Condado de Ochiltree - 2007 - presente
  - Bachelor of Science - Kinesiología - universidad del oeste de Tejas A&M - 1996
  - Bachelor of Science - Ejercicio deportivo de ciencia - universidad de estado de Panhandle de Oklahoma - 1997
  - Graduado de en la 79th Academia de policía - Universidad de Amarillo - 1999
- Soy VOTO DERECHO en ¡TIEMPO DERECHO!!!**  
**¿Qué puede USTED hacer para ayudar?**
- **VOTE** Cisne de la lanza para Hansford Condado Sheriff en el primario republicano del marzo de 2008.
  - Digale a todos sus miembros de la familia, sus amigos, y companeros de trabajo y a cualquier otra persona al votar en la campana.

El anuncio político pagado por Lance Swan para el condado de Hansford de Sheriff, Sally L.Swan, tesoro, 1111 S.Bernice, Spearman, Tejas 79081

**LAST CALL** for  
**2007 Dodge Vehicles**  
at  
**Prairie Motors in Spearman**

**2007 DODGE 1 TON REGULAR CAB & CHASSIS 4x4**  
6.7L Cummins Diesel Engine, Manual Transmission  
Was: \$34,885.00, Less PM Discount: \$2,958.00 & Rebate: \$2,000;  
**Your Cost: \$29,927.00**

**2007 DODGE 1 TON REGULAR CAB & CHASSIS**  
6.7L Cummins Diesel Engine, Automatic Transmission  
Was: \$37,080.00, Less PM Discount: \$3,341.00 & Rebate: \$2,000;  
**Your Cost: \$31,739.00**

**2007 DODGE NITRO SXT - Nicely Equipped**  
Was: \$22,545.00, Less PM Discount: \$515.00 & Rebate: \$3,250;  
**Your Cost: \$18,780.00**

"IF YOU DONT COME SEE US TODAY"

**PRAIRIE MOTORS INC.**

Hwy. 207 South  
Spearman, TX  
79081

"WE CANT SAVE YOU ANY MONEY"  
**1-800-692-4657**

**(806) 659-2541**

[www.prairiemotors.com](http://www.prairiemotors.com)



**CASE IH**  
AGRICULTURE

**0% FOR**  
**48 MONTHS**  
**OR FREE LOADER**

**GET READY**  
**PRE-SEASON SALES EVENT**

**0% FINANCING FOR 48 MONTHS ON CASE IH**  
**MAXXUM TRACTORS OR A FREE LOADER**

Get a jump on spring: Take advantage of fantastic season savings on all Case IH Maxxum Series tractors with models ranging from 90 to 120 PTO hp (67 to 90 kW). Efficient power and a standard high-visibility panel in the cab roof make Maxxum Series tractors perfect for loader work. With these great financing deals, our reliable parts and our expert service, there's never been a better time to talk to your Case IH dealer. Stop by today or visit [www.caseih.com/na](http://www.caseih.com/na) for more information.

**Five Star Equipment, Inc.** **CAPITAL**  
LEASING | LOANS | CREDIT CARDS | INSURANCE

Hwy. 15 West  
Spearman  
**(806) 659-3743**

Hurry! Offer ends soon.

\*For commercial use only. Subject to customer credit qualification and approval by CNH Capital America LLC. See your Case IH dealer for details and eligibility requirements. Down payment may be required. Offer good through 2/29/2008. Not all customers/applicants may qualify for this rate/terms. CNH Capital America LLC's standard terms and conditions will apply. Taxes, freight, set-up, delivery, additional options or attachments not included in suggested retail price. Offer subject to change or cancellation without notice. ©2008 CNH America LLC. All rights reserved. Case IH and CNH Capital are registered trademarks of CNH America LLC. [www.caseih.com](http://www.caseih.com)