



# The Hansford County Reporter Statesman

PROUDLY SERVING HANSFORD COUNTY SINCE 1907

reporter@spearmanreporter.com

VOLUME 101 • ISSUE 25

WWW.SPEARMANREPORTER.COM

THURSDAY, JUNE 26, 2008

SCR2  
COMP  
HANSFORD COUNTY LIBRARY  
0122 MAIN ST  
SPEARMAN TX 79081-2064

## Be Careful with Fireworks Use

For many, fireworks are an exciting part of Fourth of July celebrations. But the colorful fun they provide can easily turn into a dangerous situation if proper and safe use is not followed.

"It only takes a spark to start a wildfire," said Tom Spencer, fire risk assessment coordinator for Texas Forest Service. "Fireworks, especially aerial fireworks, can be the source of that spark."

Much of the state is experiencing drought. As a result, the grasses in these areas have dried and are easily ignited. Spencer recommends keeping fireworks use well away from dry grass and other flammable vegetation, to prevent accidental fires.

The Texas Forest Service recommends the following precautions for safe fireworks use-

- Adhere to all county and city fireworks laws and restrictions
- Use fireworks outdoors, away from dry grass and buildings.
- Follow label instructions on how to properly discharge fireworks.
- Only use fireworks with close adult supervision.
- Keep a bucket of water, wet towels and a garden hose nearby.
- Discard used fireworks; never try to relight them.
- Allow used fireworks to cool thoroughly before handling to avoid possible burn injuries.

Caution is advised on fireworks use because of the potential they pose for starting wildfires. Texas Forest Service urges those celebrating the Fourth of July with fireworks to plan ahead and limit use of fireworks to areas where accidental fire starts will not occur.

"Everyone doing their part will help make sure we all have a happy and safe Independence Day holiday," said Spencer.

## Weather Forecast

FRIDAY - Partly cloudy. Highs in the upper 90s. South winds 10 to 15 mph.

FRIDAY NIGHT - Mostly cloudy in the evening then becoming partly cloudy. A 20 percent chance of showers and thunderstorms. Lows in the lower 60s. Southeast winds 10 to 15 mph.

SATURDAY - Partly cloudy. Highs in the lower 90s.

SATURDAY NIGHT - Partly cloudy in the evening then becoming mostly cloudy. A 20 percent chance of showers and thunderstorms. Lows in the mid 60s.

SUNDAY - Mostly cloudy. Highs in the upper 80s.

SUNDAY NIGHT - Partly cloudy with a 20 percent chance of showers and thunderstorms. Lows in the mid 60s.

MONDAY - Partly cloudy. Highs in the lower 90s.

## Texas Crop & Weather

The following specific livestock, crop and weather conditions were reported by Panhandle Extension directors: Temperatures were near to slightly above average. Thunderstorms brought rain to most counties. Soil moisture varied from surplus to very short, with most areas reporting short. Corn was rated fair to good, with most areas reporting fair. There were reports of spider mites. Cotton was in excellent to very poor condition with most areas reporting fair to poor. High thrips counts caused some producers to start spraying. Peanut, sorghum and soybeans were mostly in fair condition. Wheat was in fair to poor condition, with most areas reporting poor. The wheat harvest continued. Oats were rated good. Range conditions were rated fair to very poor, with most reporting poor. Cattle were in fair condition.

## Hansford County Residents Make a "Ton" of Difference in the Environment

### Recycle Centers Receive Recognition for Recycling Efforts

The Gruver Recycle Center and the Spearman Recycle Center were recently presented with a Certificate of Recognition for Outstanding Recycling Efforts in 2007 by the Cooperative Teamwork and Recycling Assistance Center (CTRA) in Austin. Gruver was recognized for recycling 45.68 tons in 2007. Spearman was recognized for recycling 57.87 tons in 2007.

103.55 tons of recycling means 207,100 pounds of material that stayed out of the landfill and was actually sold, with the proceeds then being used for City projects and programs to help reduce the tax burden on local residents.

CTRA Executive Director, Rachel Perry, recently toured recycling centers in the Panhandle and recognized communities for their recycling efforts. CTRA works with the Panhandle Environmental partnership to cooperatively market and transport recyclable materials to mills throughout the nation. "This cooperative effort allows smaller, rural communities, like Gruver, to realize greater proceeds for their efforts and those funds go right back into the projects and programs in Gruver," says Elizabeth True from the Regional Services Division of the Panhandle Regional Planning Commission.

True also states Panhandle Residents don't realize the "green" impact they have on the environment. "For every ton of trash we recycle, we save 7000 gallons of water and seventeen trees," says Ms. True. "What Panhandle farmer, water skier or for that matter, any Panhandle resident wouldn't want to conserve our water resources, and trees." And there is more good news! For every ton of recycled trash, Panhandle residents also reduce air pollution and save electricity, gasoline and landfill fees.

Gruver's Recycle Center is located at 104 East Broadway and is open 24 hours a day. Items currently accepted for recycle in Gruver are: Corrugated cardboard, lumber, plastic, newspaper, office paper, magazines, aluminum cans, tin cans, motor oil & filters, yard waste and appliances. For more information about the Gruver Recycle Center, please contact City Hall at 733-2424.



Gruver City Manager Linda Weller (second from left in front row), and Spearman City Manager (second from left in back row), were honored for their recycling efforts.



Ray Marchman, Senior Volunteer and Brady Hart, Gruver City Employee, are pictured at the City of Gruver Recycling Center.



Dylan Kemp (left) sold the winning ticket for Wednesday's drawing for \$300 in gas. Conner Holton (right) sold the most tickets - 220. Not pictured is Seth Carson, second high salesman with 180. Congratulations, swimmers.

Congratulations to Carla Woodington, winner of the \$300 in gas from Golden Spread Sales which was given away by the Spearman Stingrays Swim Team. Carla bought her winning ticket from Dylan Kemp (left). Winner of the prize for selling the most tickets was Conner Holton (right). He sold 220 tickets. Second high salesman was Seth Carson who sold 180. Well done, swimmers. Swim Team wants to thank everyone who supported the team by purchasing tickets in this give-away. This generous support helps make the success of our home meet possible. The Spearman home meet will be Saturday, July 12. Mark your calendar!

## Closed Notice

The Hansford County Reporter-Statesman will be closed July 16-22. The deadline for the July 24th issue will be Tuesday, July 15th at 5 p.m. Items submitted after the deadline will be published at a later date, as time and space permit.

Items may be submitted by phone (806-659-3434), fax (806-398-9080), mail (Reporter-Statesman, 213 Main Street, Spearman TX 79081), in person (310 Barkley Street, Spearman) or e-mail (reporter@spearmanreporter.com).

## Spearman Exercises Emergency Management

On the hot afternoon of Tuesday, June 24 Spearman, performed a full-scale exercise to determine what deficiencies, if any, that responders might encounter in an expanding incident.

The drill incorporated law enforcement, fire, EMS, city employees and hospital personnel in response to a simulated fire and explosion at 2nd and Coble. To further complicate the efforts of the responders, a simulated vehicle accident was included. In all, the responders had to deal with one simulated casualty and six people being transported to Hansford Hospital. It took a little over an hour for the incident to successfully conclude. Following the exercise, an evaluation was performed at the Hansford County Courthouse Courtroom with all participants.

This being the first full-scale exercise in many years, the drill went quite well, especially when you consider the limited number of responders due to the timing. The exercise showed a few deficiencies that the responders plan to correct in future meetings.

The Wheeler County Emergency Management Coordinator (EMC) Daughtry and Moore County EMC Tommy Brooks acted as observers and evaluators.

Also included in the planning and evaluation were Joann Schneider, Director of Nurses of Hansford Hospital, Spearman City Manager Ed Hansen, Spearman Director of Public Works John DeSha, Gary Garrett, Hansford County Deputy, Hansford County EMC Ron Antalek and Hansford County Judge Benny Wilson.

Judge Wilson and Ron Antalek would like to thank all who participated, as well as those citizens who were inconvenienced due to traffic obstructions.

## Hansford County Circle of Friends to Host a Membership Party

The Hansford County Circle of Friends will host a membership party in support of The Don & Sybil Harrington Cancer Center on August 23, 2008 at 7:00 p.m. The party will be held at the O'Loughlin Center at 502 South Brandt in Spearman, Texas. Come and join us for a great time for a great cause. The cost is \$20/single and \$35/couple.

This year the Hansford County Circle of Friends will also begin a new tradition as they hold the first Hansford County 5K Run/Walk to benefit the Don & Sybil Harrington Cancer Center on August 16, 2008. The run/walk will begin in the parking lot of the Gruver High School Stadium. If you are interested in participating and volunteering please contact Holly McLain (806) 733-2268 (hollymclain13@yahoo.com) or Erika Stedje (806) 733-2509.

The Circle of Friends is a non-profit organization dedicated to helping cancer patients and their families in times of need. Through its affiliation with Harrington Cancer Center, the Circle of Friends develops and implements fund raising activities to provide financial assistance and patient care and support programs for those affected by cancer. The Circle of Friends also works with Harrington Cancer Center to provide cancer educational opportunities for people throughout the region. Examples of Circle of Friends support of Harrington Cancer Center patients includes:

- Two furnished apartments for out-of-town patients to use when going through treatment
- Pediatric Patient/Family Gatherings (a day at

Wonderland Park, Christmas Party, etc.)

- Supplies for weekly support groups
- Materials for chemotherapy classes, new patient books
- Refreshments for patients during treatment
- Assistance with patients' travel, insurance premiums, rent or mortgage payments, medication, nutritional supplements, utilities and breast prosthesis

We are currently looking for committee members to help with these two events. For more information on the Hansford County Circle of Friends or if you are interested in attending and/or volunteering to help with the event please contact Holly McLain (806) 733-2268 (hollymclain13@yahoo.com) or Erika Stedje (806) 733-2509.

Spearman Chamber of Commerce's

## Yard of the Week

**Salamon Tarango**  
204 Brandt  
**Jason Holton**  
710 Lee Dr.  
**Bart Baker**  
1120 S. Archer

If you have a yard you would like to nominate, please contact the Spearman Chamber of Commerce at 659-5555.

# Lullabies, Legends & Lies

by Parson Smith, the Prime Minister of Laughter

Spearman lost a good friend last Saturday. Dwayne Smith, the voice that we heard so often on KRDF radio passed away in Pampa. Dwayne truly cared for people. An unassuming man, he always had a kind word for folks that he met. He was a veteran of the U.S. Navy and served his country

with pride. One thing that many people did not know about Dwayne was his amazing enthusiasm. You could hear the enthusiasm in his voice when he was making announcements on the radio. But in person, he really came to life. I used to love going to the theater when Dwayne was

there. He would interact with the actors on stage as if he was up there with them. Dwayne was a Mason. He was the kind of a man and Mason who would never break his vows to be honest and loyal. He was a good man. *Until the next time, May God Bless.*

## Wolf Creek Heritage Museum Notes

by Virginia Scott

### MUSEUM HAPPENINGS

Busy week getting ready for our first summer program. A good crowd assembled to listen to Rita Sell's slide show of the flowers and animals that reside along Wolf Creek. Besides slides she also had the songs of the birds to entertain us with their melodies. It was a beautiful show and everyone present was amazed at the beauty and variety that we have in our landscape. Before and after the show, everyone enjoyed the exhibit of wildflowers from various artists and photographers in our area. The photos and art pieces made us forget the heat outside and the lack of rain. We hope the wheat harvest is over soon so we can pray for rain. Our flower beds were in almost full bloom for the reception and received a lot of complements.

Everyone had so much fun, we forgot about our silent auction. The group will evaluate the project on Wednesday and will let you know on its status next week. Our membership drive is off to a good start. If you would like to be a member of our museum go to our website or call us, write us, or visit us and we will provide you with the membership information. This gives you a subscription to our newsletter that is published at least three times a year and four if I am on schedule.

We will be taking down and putting up a new exhibit next week in the art room. It will feature the work of Gwen Ferguson of Follett. We will also have a book signing on Saturday, July 19th for Elaine Littau and her book "Nan's Journey." Mark your calendars now.

### HISTORICAL MUSINGS

Last Thursday was a holiday celebrated as "Juneteenth". This was the day in 1865 that Union General Gordon Granger read the Emancipation

Proclamation (originally issued by Abraham Lincoln in 1863) in Galveston. This delayed the freeing of 250,000 slaves in Texas by two years. The event has become a day of thanksgiving ceremonies, public entertainment, picnics, and family reunions. Some communities have set aside land, known as Emancipation Parks, for celebrations on Juneteenth. It was in 1979 that Governor William P. Clements signed an act making the day a state holiday. The first state-sponsored celebration took place in 1980. Most communities had their celebrations this year on Saturday.

Another event that took place in June, was in 1971 when Southwest Airlines began service out of Dallas's Love Field. The airlines first flight took place after three years of legal battles with rivals Braniff Airways, Continental Airlines, and Trans-Texas Airways that included a 1970 decision by the US Supreme Court upholding Southwest's right to fly.

Southwest became embroiled in yet another legal controversy in 1972, when the new Dallas-Fort Worth Regional Airport and the cities of Dallas and Fort Worth sued in an attempt to force the carrier to move to the new airport. Southwest eventually won the right to remain at Love Field as long as the field was a commercial airport, and the company's low fares continued to attract customers and force other airlines to discount their fares. Ironic that Southwest Airlines is the only one still in operation, today.

On the home front, The Panhandle Interstate reported the following on June 24, 1887: *We visited the Thomas Haines' farm, on Mammoth creek, one day last week and concluded after looking his crops over that the creek ought to be re-named, and again called Mammoth, on account of the*

*big crops that can be grown on its rich lands.*

*When we met him that day he was just in from a fishing trip, and had a nice string of bass and catfish. He first took us to his garden, of which he had about an acre. We found growing potatoes, as large as hens eggs; cabbage plants by the hundreds, as large as a hat; peas, beans, turnips, onions, and lettuce all growing rank; and a radish patch, of the small round variety, but several of them had grown until they were as large as big turnips. He put out 1,500 sweet potato plants, and has a big patch of water and muskmelons.*

*He then showed us his corn field, or rather, his several corn fields. His choice field has about twelve acres in it, and the corn stands neck high to a great tall man. It is thick on the ground, great big stalks, and black as tar. He raised last year on the same ground, without half so favorable a season, five hundred bushels of corn. He would not give any man a nickle to assure him seventy-five bushels to the acre. He showed us one field that he broke among the sand hills, and the corn on that was good enough. He has planted and sown fifty-six acres of corn, ten of sorghum, five of millet and one of alfalfa. His crops all look fine, and his third year in the Panhandle bids fair to be a very profitable one.*

*I wish us all a good crop like Mr. Haines, so keep watering.*

**Wolf Creek Heritage Museum**  
 Museum Hours: Monday thru Friday 10 a.m. to 4 p.m., Sunday 2 to 4 p.m. Special hours upon request.  
 Museum Information: 13310 Hwy 305, Box 5, Lipscomb TX 79056; telephone: 806-852-2123; email: wolfcreek@amaonline.com; website: www.wolfcreekheritagemuseum.com

## State Capital HIGHLIGHTS

AUSTIN - The state of Texas is working with the U.S. Border Patrol to catch and prosecute commercial truckers who smuggle illegal weapons, drugs or humans across the Texas-Mexico border.

The name for this new joint operation is "Texas Hold 'Em."

A news release from the governor's office says "Texas border security operations have put mounting pressure on Mexican crime cartels and other crime organizations to find alternate ways of smuggling contraband into the state. This includes recruiting commercial drivers to transport contraband, including drugs and humans, across the border in return for bribes."

The Border Patrol will work with the DPS, making sure the agency receives the necessary court documents to suspend violators' driver licenses upon a felony smuggling conviction.

In the first eight months of fiscal year 2008, Border Patrol agents in Texas intercepted 423 tractor trailers resulting in the detainment of more than 1,800 undocumented immigrants and more than 112,000 pounds of illegal drugs. In the Laredo area, 330 truck drivers have been caught smuggling drugs or humans into Texas in the last 18 months, the governor's office reported June 19.

The Border Patrol is pursuing similar agreements with other states to expand the program nationwide.

### AG supports federal 'shield' law

Texas Attorney General Greg Abbott on June 20 wrote to U.S. Senate Majority Leader Harry Reid, D-Nev., and Minority Leader Mitch McConnell, R-Ky., in favor of S. 2035, legislation to create a federal reporter's shield law.

The purpose of such a law would be to protect media reporters from being forced to identify their sources, under certain conditions.

"As attorney general," wrote Abbott, "I have consistently supported a qualified reporter's privilege that would allow journalists to conceal their confidential sources under specific - and appropriate - circumstances."

In 2005, we filed a brief with the United States Supreme Court arguing that

## SECURITY EFFORT BY DPS BORDER PATROL TO TARGET COMMERCIAL TRUCKERS



by Ed Sterling

the federal courts should recognize a common-law reporter's privilege. Urging the high court to recognize this protection for journalists, we wrote that 'an informed citizenry and the preservation of news information sources are of vital importance to a free society.'

"Preserving sources' identities would strengthen the constitutionally protected freedoms of the press and expression by ensuring that government cannot unilaterally compel reporters to reveal confidential sources. As Texas' chief law enforcement official, however, I believe that any legislation creating a reporter's privilege must be balanced with law enforcement and national security interests."

"With that in mind, I urge the Senate to pass legislation creating a qualified federal reporter's privilege. The Congress should ensure that independent third parties evaluate on a case-by-case basis when governmental access to confidential sources is necessary to protect our nation. Thus, when authorities want access to journalists' confidential sources, they should have a mechanism that renders that information accessible - but only after satisfying an independent arbiter that the government met the burden established by the Congress."

"If passed, a reporter's shield bill would preserve our nation's longstanding commitment to freedom of the press while also protecting our ability to protect our fellow citizens," Abbott concluded in his letter.

### Official seeks security audit

Allan Polunsky, chairman of the Texas Public Safety Commission, on June 19 said he would ask the U.S. Secret Service to analyze the security of state buildings.

This follows a June 8 arson fire that gutted the governor's mansion.

It's been reported that some of the security cameras were not working and the security detail was inadequate at the governor's mansion when the fire occurred.

Texas Crime Stoppers is offering a \$50,000 reward for information leading to the arrest of the person or persons who started the fire.

### State banking chief resigns

Randall S. James, Texas banking commissioner, on June 16 announced his retirement from the Texas Finance Commission. In that role for the last 16 years, James has held supervisory and regulatory authority over 330 state-chartered banks with control over \$153 billion in assets.

SUDOKU PRESENTED BY

Where volunteering begins.

				9	2			
5			1	6				
			6	5				
				5				
		3			4			
8			9			6		
6		4		1		7		
4	8						3	1
2	9							

© 2008, StatePoint Media, Inc. answer on classified page  
 Fill in the blank squares in the grid, making sure that every row, column and 3-by-3 box includes all digits 1 through 9.

## INDEPENDENCE DAY

These games are brought to you by the Hansford County Reporter-Statesman

- ACROSS**
- Mistake in print
  - CSI network
  - Helps with digestion
  - \*Cannon's sound
  - Italian money
  - Praise
  - Stare amorously
  - Bird, Latin
  - Choose by a vote
  - \*Independence Day\* star
  - Pompous or pretentious talk
  - Circus walking stick
  - Past tense of "is"
  - What bullies do
  - \*Between "life" and pursuit of "happiness"
  - U.N. labor agency
  - Having a sleeve with slanted seams from armpit to neck
  - Cellist Ma
  - Gold coating, pl.
  - Fled
  - Cover with wig
  - '02 Winter Olympics state
  - Fruit dipped in hot sauce
  - Tropical American cuckoo
  - Fashionable men's wig of 17th and 18th centuries
  - Vernaculars
  - Tyrannosaurus
  - Loathe
  - Against, prefix
  - \*Sign of the 4th
  - Expression of contempt

- Drug abuser
- An affirmative response
- Weak-\_\_\_ in the leg
- A late time of life, pl.
- North Atlantic organization
- Knitter's ball
- Bruce or Spike
- \*Washington chopped it down

- Eurasian tree with orange-red fruit
- Binding
- Bear and Berra
- Rum cut with water
- Computer network
- \*Number of colonies in 1776
- First floor in relation to second floor

- Something craved
- Guides to your seat
- \_\_\_ Science
- Different spelling for "aroint"
- Theater passage
- Rummer Godden's "In This House of \_\_\_"

- Tolstoy's heroine Karenina
- Contraction of not ever
- Energy drink
- Back of military formation
- Actress Hudson
- Sneaker or pump
- \*Fireworks are seen here

- DOWN**
- Think or believe, archaic
  - Yankee great Berra
  - \_\_\_ Mall, London
  - Alternatively
  - Type of war within a country
  - Recently retired Packers quarterback
  - Window frame
  - Center of target
  - Lightbulb over head?
  - \_\_\_ Ness, Nessie's home
  - Right coast time
  - Thin plate or layer, especially of bone
  - Shish \_\_\_
  - \*They're spangled on banner
  - \*What the colonists did in the Revolutionary War
  - \_\_\_ some dirt on him!"
  - Last 8 in college basketball
  - One of twelve in mouth
  - \*O'er the \_\_\_

CROSSWORD

1	2	3	4	5	6	7	8	9	10	11	
12				13				14			
15				16				17			
18				19				20			
			21				22				
23	24	25				26		27	28	29	
30			31		32	33		34			
35			36			37		38			
39				40			41		42		
43				44			45		46		
			47			48	49				
50	51					52			53	54	55
56						57			58		
59						60			61		
62						63			64		

PRESENTED BY

Where volunteering begins.

© 2008, StatePoint Media, Inc. answer on classified page

**The Hansford County Reporter-Statesman**  
 213 Main Street • Spearman, TX 79081  
 Phone - (806) 659-3434 • Fax - (806) 398-9080  
 www.spearmanreporter.com  
 reporter@spearmanreporter.com  
 cathy.smith@valormet.com  
 Mon.-Thurs. 9 a.m.-12 p.m., Mon.-Wed. & 1-5 p.m.  
 Closed Thurs. afternoon and all day Fri., Sat. & Sun.

Gary Smith - Publisher Catherine Smith - Editor  
 Contributing Writers: Dorothy Hudson, Jim Derington, Merry Sparks, Cecil Biggers  
 Contributing Photographer: Charlie Johnson

Subscription Rates  
 In Hansford County - \$30.00 • Out of County - \$40.00

The Hansford County Reporter-Statesman (USPS 529660) is published weekly in Spearman, TX. Periodical postage paid in Spearman, TX. POSTMASTER: Send address changes to: The Hansford County Reporter-Statesman, 213 Main Street, Spearman, TX 79081.

Publication Policy  
 The deadline to submit news and advertising to The Hansford County Reporter-Statesman is Monday at 5 p.m. Items submitted after the deadline will be published at a later date, as time and space permit. Publication of all items is at the discretion of the editor.

Advertising  
 Open Display rates are \$4.00 per column inch. Classified Ads are \$6 for the first 25 words and 10¢ per word for each additional word. (Additional charge for boxed classifieds.) There is a \$1 charge per week if billed.

Member of  
 Gruver Chamber of Commerce  
 Spearman Chamber of Commerce  
 Texas Press Association and Panhandle Press Association

# Happy Birthday!

**Editor's Note:** This Happy Birthday list is run as a public service by the Hansford County Reporter-Statesman. We apologize if any names are misspelled. If you know of a name that needs to be changed, added or deleted, please call 659-3434.

Thank you, Catherine

**June 26**  
**Birthdays** - Paula Kelly, Mike Blanton, Bill McClellan, Omar Sutton, Carla Harper, Doris Pinkerton, Teresa Bennett, Ann Vela, Ronnie Ring, Ashley Baker, Vanessa Cease, Paul Bynum, Joe Ruthlin, Chelsea Nollner, Trevor Shields  
**Anniversaries** - Will & Tiffany Crane, M/M Garry Hathaway, M/M Joe Lopez, M/M Verlin Beck

**June 27**  
**Birthdays** - Max Frick, Clint Irwin, Steve Baggerly, Elden Allen, Allen Cook, Tyler Scott, Charlie Lopez, Karen Johnson  
**Anniversaries** - M/M Bill Turner, M/M Randy Coombs, Judy & Darl Hergert

**June 28**  
**Birthdays** - Carson Womble, Linda Rowland, Don Allen, Ernie Vanderberg, Terril Brummet, Helen Hand, Mrs. A.F. Loftin, Trent England, Meghan Jade Snider  
**Anniversaries** - Harvey & Sandra Proffitt, M/M Cecil Biggers, M/M Jim Derington, M/M Bruce Knight

**June 29**  
**Birthdays** - Ira Gross, Hazel Taylor, Scott Strawn, Gary Johnson, Sandra Gumbory, Monica Blackman, Rajan Traften, June Tucker  
**Anniversaries** - M/M Charles Bell, M/M Amadeo Cazares

**June 30**  
**Birthdays** - Mike Minter, Ricky Thompson, Esmeralda Vela, John Snider, Margaret Evans, Kyle Brock, Jeff Hohertz, Keri Lou Schneider, Willie Vera, Paige Burgin, Daniel Crug, Ed Cook, Austin Benton, Katelyn Villarreal, Shari (Smith) Githens  
**Anniversaries** - Ishmael & Anna Vela, M/M Claude Sheets Jr., M/M D.A. Cator, M/M Walter Murrell, M/M Paul Stavio, M/M S.J. Wells, M/M Carl Kunselman, Joe & Elvia Avila

**July 1**  
**Birthdays** - Ida Hendrick, Pauline Lopez, Pauline

Jackson, Rosa Rojas, James Cunningham, Manlene Cook  
**Anniversaries** - M/M Dee Mayfield, M/M Jerry Hart, Kevin & Ronda Bynum, Clay & Pam Schnell

**July 2**  
**Birthdays** - Lou Chapman, Janet Irwin, Luis Hermsillo, Joe Hermsillo, Keri George, Channing Burgess, Gary Ellsworth  
**Anniversaries** - M/M Jimmy Valandingham, Burt & Lynell Williams, Ron & Loretta Cook, John & Debbie DeLaRosa

**July 3**  
**Birthdays** - Julie Gumbory, Randy Lowe, Todd Williams, Charlie Lopez, Audene Beck, Lynn Sheets, Trudie Gordon, Meredith Benton, Ronda Gibson, Gene Reynolds, Trevor Shipley, Debra Gallimore, Verlin Behne, Bill Porter, Cheryl Salgado, Hennifereta Andrews  
**Anniversaries** - Bill & Verna Strawn

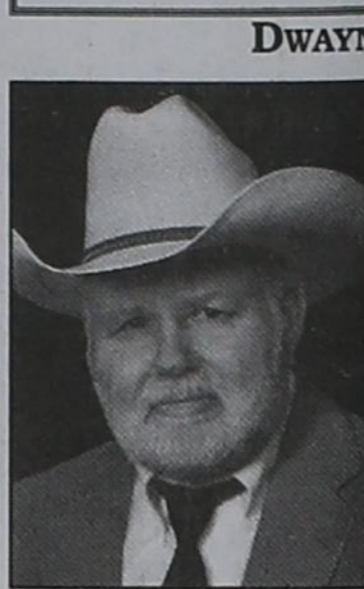
**July 4**  
**Birthdays** - Barry Barkley, Donna Been, Gene Durcan, Mary Weldon, Farene Williams, Faye Cunningham, James Umphress, Ofelia Vela, June Patterson, Melvyn Bradley, Kim Swink  
**Anniversaries** - Mike & Kathy Peck, M/M Walter Postoak, M/M Jerald Ray Scribner

**July 5**  
**Birthdays** - Sydney Clawson, Kent Benton, Mrs. George Rook, Mack McLain, Linda Walker, Jamie Davis, Tom Dortch, Dawn Bridges, Connie Gibson, Dixon, Blayne Schrader, Alfonso Martinez, Melanie Elliott  
**Anniversaries** - M/M Bill Been, Mike & Kathy Brown, M/M Anthony Wilkerson

**July 6**  
**Birthdays** - Alan Biggers, Scott Attwood, Monte Beck, Rickey Shields, Gene Dennis, Kimberly Ann Vasquez, Cody Benton

**July 7**  
**Birthdays** - Pat O'Connell, Steve Benton, Brenda Sue Bowling, Greg Meisner, Steve Lesly, Virginia Reyes, Magda Rivera, Brian Sparks, Justin Bowman, Daniel Ward, Karen Pierce, Mattie Davis, B.J. Hughes, Reid Swan  
**Anniversaries** - M/M Kenny Bratton, Kelly & Johnie Fuller

# Our Sympathy



**DWAYNE LEIGH SMITH**  
 PAMPA - Dwayne Leigh Smith, 67, died Saturday, June 21, 2008.

Memorial services will be at a later date. Arrangements are by Carmichael-Whalley Funeral Directors of Pampa.

Mr. Smith was born July 1, 1940, in Pampa, to Irl and Irene Franklin Smith. He attended West Texas State University in Canyon, majoring in speech and theater, and Elins Radio Institute in Dallas.

Dwayne served in the U.S. Navy during the Vietnam War. He began working in broadcasting at KFDA-TV and KVII-TV in Amarillo, and then worked as newscaster and sportscaster for Coy Palmer at KBMF-FM in Spearman, which later became KRDF-FM.

He was a member of the First United Methodist Church of Pampa and the Aldersgate Sunday school class. He was a member of Top O'Texas Masonic Lodge No. 1381 in Pampa, served as Worshipful Master of the Hansford Masonic Lodge No. 1040 in Spearman for 13 years, and was a member of Gruver Masonic Lodge No. 1326.

He was a past commander of the Borger Chapter Council and Commandery and was a member of the Khiva Shrine Temple in Amarillo and the Lubbock Scottish Rite Consistory. He loved theater and sports.

He was preceded in death by his father in 1994 and his mother in 1996.

Survivors include a sister, Rochelle Lacy and husband Calvin of Pampa; two nieces, Gail Threet and husband Johnny of Lubbock and Glenna Bowman and husband Rick of Austin; a nephew, Greg Wilkins and wife Pyeper of Rockwall; a cousin, Darrel K. Franklin and wife Ann of Pampa; three aunts, Mae Louise Franklin of Pampa, Cleo Nix of Groom and Ladine O'Connor of Sun City, Ariz.; an uncle, Everett Butler of Pampa; two stepnieces, Janet Bilyeu and husband John of Pampa and Debi Musick and husband Roger of Weatherford, Okla.; two special friends, Carolyn Cummings and Cecil Biggers, both of Spearman; and several other cousins, great-nieces and great-nephews.

The family suggests memorials be to Spearman Scholarship Fund, c/o Spearman Independent School District, 403 E. 11th Ave., Spearman, TX 79081; or First United Methodist Church, P.O. Box 1981, Pampa, TX 79066-1981.

Sign the online guest book at [www.carmichael-whatley.com](http://www.carmichael-whatley.com).

**VERNA IVAN VERNON-ALLEN**  
 SPEARMAN - Verna Ivan Vernon-Allen, 90, died Thursday, June 19, 2008.

Graveside services were at 11 a.m. Saturday, June 21, 2008 in Hansford Cemetery by Boxwell Brothers Funeral Home of Spearman.

Ivan was born May 18, 1918, in Bullard. She moved from Texas to Oklahoma several times and had settled in Littlefield when, at 16, she made the decision to become a hairdresser.

She attended school in Lubbock and upon graduation relocated to Amarillo to begin her career.

Floyd Hays owned a barbershop with an area perfect for a beauty shop and perfect for a girl just like Ivan. So one day, Floyd walked into the shop where she was working and said he needed someone to go to Spearman to work in his shop. And Ivan said, "I'm your girl!"

The very first night Ivan spent in Spearman, she went to a dance escorted by a handsome barber from Floyd's shop. They danced all night long! Two months later, Ivan married G.N. "Pete" Vernon, who was 18 years her senior. They were happily married from 1941 to 1978. Ivan and Pete had three children who were the pride of their lives, Jan Sheets, Eldon Vernon and Terry Vernon.

Ivan remarried in 1982, to Delbert Allen of Gruver.

Ivan also worked as a hair dresser in several of her own beauty shops, as well as many others for 70 years, retiring at the age of 87. She was an employee at Boxwell Brothers Funeral Home as a hostess for 20 years, retiring at age 89.

She had many talents as well, such as creating beautiful beaded jewelry and hand crocheting delicate dollies. Many family members and friends treasure these gifts from Ivan.

It has been said that every lady in Spearman and the surrounding counties must have at least one piece of Ivan's hand-beaded jewelry. Probably several pieces!

Ivan was a lifetime member of First Christian Church in Spearman.

She was preceded in death by her husbands, Pete in 1978 and Delbert in 1989; her parents, two sisters; four brothers; and a grandson, John Banister.

Mamaw, we love and will miss you, but now release you to a glorious new beginning, until we meet again.

Survivors include her three children, Jan Sheets and husband Jerry of Spearman, Eldon Vernon and wife Joan of Oklahoma City and Terry Vernon and wife Rita of McLean; 13 grandchildren; 18 great-grandchildren; a great-great-granddaughter; her faithful friend, Phyllis Owens; and Ivan's beloved dog, Misty.

The family suggests memorials be to Hansford Hospice, 703 S. Rolland St., Spearman, TX 79081, or Hansford Cemetery Association, 707 E. Second Ave., Spearman, TX 79081.

**JOHN H. HORN**  
 CLAUDE - John H. Horn, 88, formerly of Claude, died Saturday, June 14, 2008, in Astoria, Ore.

Services were at 2 p.m. Thursday, June 19, 2008 in First United Methodist Church in Claude with the Rev. Janet Edwards, pastor, officiating. Burial was in Claude Cemetery by Boxwell Brothers at Claude.

John was born Dec. 15, 1919, in Haskell to Joseph and Bertha Horn. In 1940, he graduated from Spearman High School.

He served in the U.S. Army Air Forces from 1942 to 1946. He spent most of his life working as a fireman.

Survivors include a daughter, Edith Louise Hornby of Concord, N.H.; a son, Brad Horn of Warrenton, Ore.; a sister, Onetta Key of Amarillo; six grandchildren; and three great-grandchildren.

The family suggests memorials be to children's fund, Khiva Shrine Temple, P.O. Box 328, Amarillo, TX 79105.

Viewing will be from 10 a.m. to 12:30 p.m. at the funeral home chapel.

**KIDNEY FAILURE LINKED TO DRUG USED DURING SURGERY**  
 Trasylol®, a drug used to control bleeding during surgery, has been linked to kidney failure, dialysis and death. If you or a loved one had surgery and then developed kidney failure, call us now at 1-800-THE-EAGLE for a free consultation. We practice law only in Arizona, but associate with lawyers throughout the country.  
**GOLDBERG & OSBORNE**  
 1-800-THE-EAGLE  
 (1-800-843-3245)  
 www.1800theeagle.com  
 Open 7 days a week

**MONUMENTS**  
**Boxwell Brothers**  
**Funeral Home**  
 519 Evans • Spearman  
 659-3802  
 Dear friends,  
 When you buy a monument from us we make sure it is exactly what you want at a price you can afford. If it is not right, we will make it right. And you will not have to search the countryside to find us. We are here when you have a need.  
 Sincerely,  
 Bob Boxwell

LET'S TALK COLORADO  
 LET'S TALK FREE T-SHIRTS.  
 6 designs to choose from. Order yours today at COLORADO.COM, then pick it up at an official Colorado Welcome Center.  
 Offer good while supplies last. One free shirt per customer. Must be at least 18 years of age, under 21 and bring printed confirmation.

**FREE DIRECTV 4 ROOM SYSTEM!**  
 NOW 95 HD CHANNELS!  
 265+ CHANNELS!  
 Pkgs. start at \$29.99  
 FREE HBO + Showtime + Starz  
 FREE DVR/HD!  
 No Start up costs!  
 We're Local Installers!  
 1-800-214-7110

**Help Wanted**  
 Check out the neighborhood; apply for a job; post a resume or application and we will network for you. Positions available for all skill levels.  
 Find your next job. Find a better way to live. Find yourself.  
**hometownrecruiter.com**  
 Career • Community • Family • Life

**PAID CDL TRAINING!** YOUR FUTURE BEGINS HERE  
**NO EXPERIENCE NEEDED!**  
 Stevens Transport, the premier refrigerated carrier in the US, sponsors the total cost of your CDL training! In 17 short days you will earn your CDL and begin your paid on-the-job training! Earn \$40K first year and up to \$150K fifth year! Excellent benefits and 401K!  
 For more information, call **800-333-8595**  
 www.becomeadrivers.com

Replenish the seed of faith through . . .  
**DAILY BIBLE READING, PRAYER & REGULAR CHURCH ATTENDANCE**

**Spearman**

**Apostolic Faith Church**  
 822 S. Dressen • 659-2870  
 Sunday School: 10 a.m.  
 Worship Service: 11 a.m.  
 Sun. Eve.: 6 p.m.  
 Wed. Prayer Mtg: 7 p.m.  
 Pastor - Roland Haney

**First Assembly of God**  
 401 N. Bernice • 659-2295  
 Sunday School: 9:30 a.m.  
 Worship: 10:35 a.m.  
 Kid's Church: 10:35 a.m.  
 Evening Worship: 6 p.m.  
 Wed. Worship: 7 p.m.  
 Wed. Youth: 7 p.m.  
 Pastor - Bob Elder

**First Christian Church**  
 (Disciples of Christ)  
 29 S. Bernice • 659-2036  
 Sunday School: 9:45 a.m.  
 Worship: 10:50 a.m.  
 Minister -

**First Baptist Church**  
 123 N. Bernice • 659-5557  
 Sunday School: 9:45 a.m.  
 Worship: 11 a.m.  
 Evening Worship: 7 p.m.  
 Men's Bible Study - Wed., 7 a.m.  
 Children's Choir - Wed., 6 p.m.  
 Adult Choir - Wed., 7 p.m.  
 Wed. Bible Study: 7 p.m.  
 Pastor - Jim Medley

**Church of Christ**  
 121 S. Haney • 659-3244  
 Sunday Bible Class: 9:45 a.m.  
 Worship: 10:30 a.m.  
 Evening Worship: 6 p.m.  
 Bible Study Wed.: 7:30 p.m.

**Sacred Heart Catholic Church**  
 901 Roland • 659-2792  
 Sat. Night Mass: 5:30 p.m.  
 Sun. Mass: 9 a.m. - English  
 Sun. Mass: 11:30 - Spanish  
 1:30 p.m. - Gruver - Christo  
 Rector Mass - Spanish  
 Rev. Guillermo Morales

**First United Methodist**  
 407 S. Haney • 659-5503  
 Sunday School: 9:45 a.m.  
 Worship: 8:30 & 11 a.m.  
 Jr. High Youth: 5 p.m. Sunday  
 High School: 6 p.m. Sunday  
 Kids Club: 3 p.m. Wed.  
 Pastor - Neely Landrum

**Grace Presbyterian Church**  
 (Worships with Faith Lutheran Church)  
 1101 Bernice • 659-2033  
 Pastor - Beverly Cook

**Faith Lutheran Church (ELCA)**  
 1101 Bernice • 659-2252  
 Sunday School: 9:45 a.m.  
 Worship: 11 a.m.  
 (Worships with Grace Presbyterian Church)  
 Pastor - Beverly Cook

**Union Church**  
 31 S. Endicott • 659-2644  
 Sunday School: 9:45 a.m.  
 Worship: 10:45 a.m.  
 Evening Worship: 6 p.m.  
 Bible Study: 7 p.m. Wed.  
 Pastor - Dr. Timothy Minor

**Fellowship Baptist**  
 1102 S. Archer • 659-2783  
 Sunday School: 10 a.m.  
 Worship: 11 a.m.  
 Sun. Evening Worship: 6 p.m.  
 Youth/Adult Service: 7:30 Wed.  
 Pastor - James Washburn

**Primera Mision Bautista**  
 502 E. 7th • 659-3991  
 Sunday School: 9:45 a.m.  
 Worship: 11 a.m.  
 Evening: 6 p.m.  
 Wed. Prayer Meeting: 7 p.m.  
 Thurs. Visitation: 7 p.m.  
 Pastor Joe Garcia Jr.

**El Aposento Alto U.P.C.I.**  
 1105 S. Roland  
 Domingos: Escuela-Domical - 10 a.m.  
 Culto Evangelistico - 7 p.m.  
 Jueves: Oracion - 8 p.m.  
 Mier: Estudio Biblico - 7 p.m.  
 Pastor - A.G. Martell  
 (806) 659-2153

**Gruver**

**First Baptist Church**  
 402 E. Broadway • 733-2411  
 Sunday School: 9:45 a.m.  
 Worship: 10:50 a.m.  
 Disciple Training: 6 p.m. Sunday  
 Prayer Meeting: 7:30 p.m. Wednesday  
 Pastor - Scott Curry

**Church of Christ**  
 209 King • 733-2760  
 Sunday School: 9:30 a.m.  
 Worship: 10:20 a.m.  
 Evening Worship: 6 p.m.  
 Wed. Worship: 7:00 p.m.  
 Minister - Gaylord Cook

**First Christian Church**  
 510 King • 733-2960  
 Sunday School: 10:00 a.m.  
 Sunday Worship: 11 a.m.  
 Youth: 7:30, Sunday  
 Adult Bible Study: 7:30, Sun.  
 Wed. Bible Study: 8:00 p.m.  
 Pastor - Gary Gumbory

**Gruver United Methodist**  
 Broadway & Garrett  
 733-2651  
 Sunday School: 9:45 a.m.  
 Worship: 8:30 & 10:50 a.m.  
 Eve. Worship & UMY: 6 p.m.  
 Pastor - George Price

**Spanish Cristo Redentor Church**  
 Sunday Mass: 1:30 p.m.  
 Friday Evening Mass  
 Summer - 8:00 p.m.  
 Fall/Winter - 7:30 p.m.

**Oslo**

**Oslo Lutheran Church (ELCA)**  
 6 Miles West & 12 Miles  
 North of Gruver  
 339-7646  
 Sunday School: 9:45 a.m.  
 Worship: 11 a.m.  
 Pastor - Arlen Lloyd

**Morse**

**Morse Baptist Church**  
 733-2757  
 Pastor - Mike Martin

He has showed you, O man, what is good. And what does the LORD require of you? To act justly and to love mercy and to walk humbly with your God.  
 Micah 6:8

This feature is made possible through the sponsorship of these civic minded businesses.

**Deakin ELECTRIC**  
 OILFIELD • RESIDENTIAL • COMMERCIAL  
 321 S. MAIN • SPEARMAN  
 1-800-999-1506 Chris Deakin  
 (806) 659-5016 President

**Bartlett's Lumber & Hardware**  
 105 W. Broadway • Gruver, Texas  
 (806) 733-2404

**BERRY CLEANERS**  
 Ann & Vernon Pipkin - Owners  
 Phone 659-3122 • P.O. Box 1017  
 207 Main St. • Spearman, TX

**Morse Implement & Auto Supply**  
 "Join us in church"  
 Tom Dortch 733-2668  
 Box 89 • Morse, TX 79062

**PRAIRIE MOTORS INC.**  
 Hwy. 207 South • P.O. Box 430  
 Spearman, TX 79081 • (806) 659-2541  
 www.prairiemotors.com

**MurMur's Cafe**  
 100 Roland St  
 Spearman, TX.  
 659-3580

**Hansford County Reporter-Statesman**  
 "Proudly Serving Hansford County Since 1907"  
 (806) 659-3434  
 310 Barkley • Spearman, TX

**INTERSTATE BANK, ssb**  
 www.interstatebank.net  
 322 Main • P.O. Box 146  
 Spearman, TX • 659-2559

**Man Builds Record-Size Tree House After Using Thera-Gesic®**  
 BEXAR COUNTY- Tom W. applied Thera-Gesic® on his aching knee, then built a monster 1650 sq. ft. tree house on his friend's ranch while his friend was on vacation. When asked why he built the tree house, especially knowing his friend had no kids, he painlessly replied: "None of your dang business!"  
 Go painlessly with Thera-Gesic®

# HYI

FOR YOUR INFORMATION

### Lunch & Learn

Ponds & Fountains in the Home Landscape, will be the topic for Lunch & Learn, Tuesday, July 8, from 12:00 - 1:00 p.m. in the Fellowship Hall of Spearman Church of Christ. Ken Pirtle, Master Gardener from Amarillo and member of the Amarillo Botanical Garden Education Committee, will present the program. Participants will learn tips on constructing and caring for ponds and fountains in the home landscape. This free program is sponsored by the Texas AgriLife Extension Service and Extension Education clubs. Donations for lunch will be accepted. Call Peggy Winegarner at 659-4131 or 733-2901 for more information.

### Spearman First Baptist Church Groundbreaking Ceremonies

Groundbreaking ceremonies for the Spearman First Baptist Church Family Life Fellowship Building will be during the 11:00 A.M. morning worship service on Sunday, June 29. Construction of the new building is scheduled to start July 7. The more than 10,000 square foot Family Life Center will be attached to the north end of the present education building and will contain a recreation area, a kitchen, a fellowship area and a second-story youth worship and classroom area. The public is invited to attend the groundbreaking.

### Foreign Investors Notification

The Agricultural Foreign Investment Disclosure Act requires all foreign owners of U.S. agricultural land to report their holdings to the Secretary of Agriculture. The Farm Service Agency administers this program for USDA. Foreign persons who have purchased or sold agricultural land in the county are required to report the transaction to FSA within 90 days of the closing. Failure to submit the AFIDA form could result in civil penalties of up to 25 percent of the fair market value of the property. County government offices, realtors, attorneys and others involved in real estate transactions are reminded to notify foreign investors of these reporting requirements.

### Breast Cancer Screening Clinic

The Don and Sybil Harrington Cancer Center Comprehensive Breast Center will conduct a Breast Cancer Screening Clinic at Hansford County Hospital, 707 S. Roland, in Spearman on June 26, 2008. Breast cancer affects one in eight women. The key to winning the battle against cancer is early detection by having an annual breast exam, mammogram and performing a breast self-exam each month. Funding is available through the Texas Department of Health for Texas residents who qualify for assistance. All exams are done by appointment only. Call (806) 356-1905 or 1-800-377-4673 for more information or to schedule an appointment.

### Tri-City Community Concert Association

Janie Kunselman is the representative for the Tri-City Community Concert Association of Borger, and is selling memberships to attend five special concerts in the 2008-2009 season. Contact Janie Kunselman at 659-2631 for more information.

### Liberal Community Concert Association

Janie Kunselman is the representative for the Liberal Community Concert Association of Liberal, KS. The Liberal Community Concert Association is selling memberships to attend five special concerts in the 2008-2009 season. Contact Janie Kunselman at 659-2631 for more information.

### Free Booklet from Narconon

Narconon reminds you that there is hope for those struggling with addiction and recovery is possible. Call today to receive a free booklet entitled The Life Cycle and Mechanics of Addiction. We offer free counseling, assessments and referrals to centers nationwide. Log on to www.stopaddiction.com or call 800-468-6933 before it's too late.

### You're Never Alone - Narcotics Anonymous Group

Each year individuals struggling with drug and alcohol addiction make the resolution to quit using drugs. For many of them it is a resolution that they cannot keep. Narcotics Anonymous can help. Open meetings are held on Monday and Thursday nights from 8-9 p.m. at the First Christian Church (29 S. Bernice in Spearman) for the "You're Never Alone" group of Narcotics Anonymous. Anyone interested is invited to attend. Drug addiction can leave you feeling helpless and out of control - we can help.

### Spearhead AA Group

The Spearhead AA Group meets every Tuesday at 8 p.m. in the Pittman-Shieldknight building. Alcoholics Anonymous is a fellowship of men and women who share their experience, strength and hope with each other to help solve their common problem and help others to recover from alcoholism. The only requirement for membership is a desire to stop drinking. There are no dues or fees for AA membership; we are self-supporting through our own contributions. Our primary purpose is to stay sober and help other alcoholics achieve sobriety. For information, call 662-1111.

### Al-Anon

If you are concerned with someone else's drinking or addiction, the Al-Anon program can help you. Each Al-Anon Family Group has but one purpose - to help families and friends of alcoholics and addicts. The Spearhead Al-Anon Group meets every Tuesday night at 8 p.m. in the Pittman-Shieldknight Building, 511 SW 11th Avenue, Spearman. For more information, call 806-330-0349.

### Panhandle Crisis Center Outreach Office

Panhandle Crisis Center (PCC) has an Outreach Office and Resale Store at 306 Hancock, in Spearman. In case of emergencies, please continue to call the hotline, 1-800-753-5308. To schedule an appointment with a worker in Hansford County, call 659-3391 to leave a message, or call the hotline number above. Panhandle Crisis Center serves victims of domestic violence and sexual assault. Call for more information regarding PCC's services. Hours for the Resale Store in Spearman are: Monday, Tuesday, Thursday & Friday from 10 a.m.-5 p.m.

## Come & Get It!

### HAPPY HOUR

3-5 p.m., Monday-Friday

ALL FOUNTAIN DRINKS **69¢**

### MURMUR'S CAFE

100 S. Roland • 659-3580 • Spearman

## Miss Vicky's Soul Food

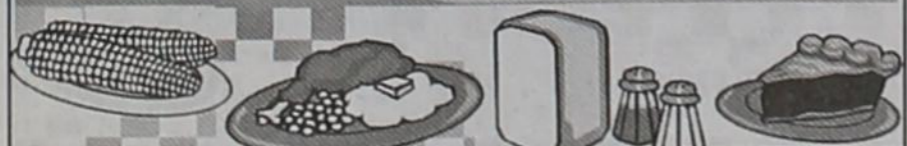
817 SW 5th Street (Corner of 6th & Adams)  
Amarillo TX • (806) 372-2247

### Down Home Cooking at it's Best!

#### All-You-Can-Eat

Chicken, Pork Chops, Ribs,  
Cheese Meat Loaf Fish, Smothered  
Chicken, Chicken 'n Dumplings,  
and Much More!  
Vegetables, Home-Made Desserts  
Kook-Aid

Hours: Monday-Tuesday, 11 a.m.-3 p.m.  
Wednesday-Sunday, 11 a.m.-5 p.m.



## Engagement Announcement

Crystal Milburn and Brandon Vanderburg are pleased to announce their engagement. The couple plans to wed at the home of Cecil and Marie Gill in Miami, TX on August 23, 2008.

Crystal is employed at W-B Supply Company in Pampa. She is the mother of Mackenzy, Tristen and Conner. She is the daughter of Ron and Kay Swart, and the granddaughter of Cecil and Marie Gill, all of Miami, TX, and the late Alene DeLeon of Amarillo.

Brandon is an employee of Roberts County. He is the son of Joe and Kim Vanderburg of Spearman and Chris and Tammy White of Fritch. He is the grandson of Herman and Beverly Boone of Miami, TX.

The couple plan to honeymoon at Playa del Carmen and intend to reside in Miami.

**Alva Monument Co.**  
Formerly Liberal Monument & Memorial Company

**New Location:**  
111 Tucker Road  
Liberal, Kansas

North of the New Wal-mart

Serving Kansas, Oklahoma & Texas for 93 years  
(316) 624-4211 toll free # 888-654-9318

# Celebrate

Gifts for all your celebrations!

## Bridal Registry

- Tobi Barrera & Chris Guana - 6/28
- Audrey Winegarner & Braden Gibson - 7/12
- Jessica Adams & Kevin Black - 7/19
- Shanda Graham & Doug Kerr - 8/23
- Sammie Stavlo & Wade Harkey - 9/6
- Kacee Smith & Joshua Ivy - TBA
- Delma Martinez & Andy McElhannoni - TBA
- Kendra (Hicks) & Jason Cantrell
- Meghan Blaneck & Kevin Williams
- Claudia Vaquera & Scott Sauer
- Cortney Chambers & Keith Winegarner
- Jentry Edwards & Clinton Williams
- Brooke Bevill & Andrew McMurry
- Jennifer (Laxson) & Anthony Smith
- Megan Dorton & Justin Rayner

## Baby Registry

- Amilia & Karl Cox - 7/12
- Danielle (Close) & Jeff Jackson - 7/12
- Stephnie (Bowling) & Chris Barclay - 7/13
- Bryn (Lowe) & Aaron Weller - 9/6
- Rowena & Dustin Parks - TBA
- Radar & Betty Garcia - TBA
- Amy Travis - TBA
- Cristina (Cricket) Salgado & Ray Banaban
- Adriane Watts & Corey Rex

**Celebrate**

203 Main St. Spearman, TX  
(806) 659-3350 1-800-663-8026

## Elders Accept Pastorate in Springfield, MO

Rev. Bob and Kerri Elder, along with their children Hunter Gabriel, 3, and Hannah Grace, 4 months, have accepted the pastorate of Webster Park Assembly of God Church located at 1905 N. Yates Avenue in Springfield, Missouri. The Elders have served as Senior Pastor of Spearman First Assembly of God Church since March 23, 2003. Pastor Bob has also worked with the Hansford Hospice program as a volunteer Chaplain for 5 years. In May of 2003 he began a 5 year stint as the volunteer Chaplain for the Spearman volunteer Fire Department. About 4 1/2 years ago, Pastor started a special Thursday service at the Hansford Manor. This service will continue to be offered by First Assembly of God Church with help from others in the faith community.

Pastor and Kerri want to thank Spearman for accepting them and welcoming them into the community as young pastors. Bob was 26 when they started at First Assembly and Kerri was 22. Pastor says, "The city of Spearman has given sacrificially to our ministry in time, money, and abilities that we did not possess. Without the support of other ministers, Christian laity, and community leaders we could not have accomplished much. If we have done anything good it's been because Jesus did it through us and you helped."

The Elders will be leaving Spearman on July 15, 2008. They can be visited at their home on 401 N. Bernice (right behind the church) or at the upcoming Singspiration Service on Sunday June 29, 2008 at 6:00 PM at the Apostolic Faith church on 9th and Dressen. Pastor Bob started the Singspiration services in February of 2004 with the support of the Spearman Ministerial Alliance. He would like to thank every minister that has stood with him to see the body of Christ stand up together and proclaim Jesus is Lord. Pastor is very excited to see Spearman gearing up for the Main Event which will be held on August 21 to 24 and wishes that he could be here to see one of the greatest moves of God that Spearman has ever seen. The churches of Spearman are united in vision and in their love for God. Psalm 133:1, 3b says, "How good and pleasant it is when brothers live together in unity...For there the Lord bestows his blessing, even life forevermore." (NIV) The body of Christ may have different beliefs and ideas but it has the same Lord and Savior Jesus Christ and the same loving Heavenly Father.

If you have talked to Pastor Bob about officiating at your funeral service, rest assured that 530 miles is not too far to come and honor your life. He will gladly come back to comfort your loved ones and offer words of hope to the community of faith. Don't take this as goodbye but rather see you later as the Elders will be visiting their extended family of Spearman Texas in the future. Pastor Bob Elder says, "You will always be part of us and we will always be part of you. Our lives have not been joined for a season but for an eternity. One day, if we remain faithful to Jesus, He will unite us in heaven and we will never have to say goodbye again." If you need to contact the Elders in Springfield Missouri, their cell phone number will remain the same and they will send their new address as soon as they close on the home that they are in the process of purchasing. Further information can be obtained from Spearman First Assembly of God Church.

visit "Caught on Camera" at  
[www.spearmanreporter.com](http://www.spearmanreporter.com)

**Gordon's**

Your place for

**Bridal Registry**

### Couples Currently Registered

- Audrey Winegarner & Braden Gibson - 7/12
- Sammie Stavlo & Wade Harkey - 9/6
- Kendra Hicks & Jason Cantrell - TBA
- Jennifer Ferrel & Jeff Coates - TBA
- Alma Martinez & Andy McElhannon - TBA
- Kacee Smith & Josh Ivy - TBA
- Jessica Adams & Kevin Black - TBA
- Jennifer Laxson & Anthony Smith
- Miranda Barnhill & Travis Brown
- Jaqueta Dunn & Drew Clyburn
- Claudia Vaquera & Scott Sauer
- Meghan Blaneck & Kevin Williams
- Cortney Chambers & Keith Winegarner
- Jentry Edwards & Clinton Williams
- Lourdes Vega & David Puebla
- Brooke Bevill & Andrew McMurry
- Megan Dorton & Justin Rayner

### Baby Registry

- Jeffrey & Danielle Jackson - 7/12
- Karl & Amelia Cox - 7/12
- Chris & Stephnie (Bowling) Barclay - 7/13
- Dustin & Rowena May Parks - 7/22
- Aaron & Bryn (Lowe) Weller - 9/6
- Radar & Betty Garcia - TBA
- Jessica Villarreal & Isaac Herndon
- Kyle & Audra McLaughlin
- Cristina (Cricket) Salgado & Ray Banaban

**Gordon's** 659-2141  
314 Main Spearman

**HANSFORD COUNTY  
ORDER NO. 02-2008  
CONCERNING BURN BAN  
June 16, 2008  
EXECUTIVE ORDER OF  
HANSFORD COUNTY JUDGE**

*This is the revised burn ban passed June 16th. According to the Legislative Laws passed, Hansford County does not currently meet the requirements to prohibit fireworks. This new burn ban will in effect for 90 days.*

WHEREAS, by proclamation issued November 20, 2007 the County Judge of Hansford County declared a state of disaster for Hansford County, resulting from:

THE POTENTIAL THREAT OF WILDFIRES DUE TO DROUGHT AND ADVERSE WEATHER CONDITIONS

WHEREAS, said state of disaster requires that certain emergency measures be taken pursuant to the Texas Disaster Act of 1975 relating to Emergency Management;

THE COMMISSIONER'S COURT OF HANSFORD COUNTY, TEXAS NOW THEREFORE, orders the following regulations shall take effect immediately upon issuance of this order and shall remain in effect until the state of disaster is terminated:

1. THE USE OF COMBUSTIBLE MATERIALS IN AN OUTDOOR ENVIRONMENT BY ANY PERSON IS PROHIBITED.

a. Any individual gainfully employed in a trade or profession that involves the use of combustible materials or use of possible fire sources in the outdoor environment directly related to the successful operation of the business's goals and/or objectives may continue to conduct business as usual utilizing the materials and/or potential fire sources in the outdoor environment as they deem necessary; provided that the individual shall take all necessary safety precautions to prevent the ignition of any fire or fires that are not essential to the conducting of day to day business activities. Any business owner, operator or individual involved in any business operation citing this section of this order that has not taken the necessary safety precautions and as a result, damage occurs from a fire caused by their business operations, shall be liable for any and all damages that may occur and they shall be issued a citation and fined as allowed by law.

In an effort to combat high diesel prices, the Hansford County Commissioners Court will allow control burns with the following conditions:

a. Control burns permitted only for planting or harvesting of agriculture crops.

b. Prior to burn, Central Dispatch must be notified with precise directions to the field to be burned.

c. Dispatch will then page all three Fire Departments about the proposed control burn.

d. Farmer should call back 30 minutes after initial call. If no protest by any Fire Chief or Next-In-Command, then the control burn may be initiated.

2. THIS ORDER SHALL NOT APPLY TO AN OFFICIALLY AUTHORIZED PUBLIC DISPLAY.

In accordance with the Local Government Code, a person who knowingly or intentionally violates this order commits a Class C Misdemeanor, punishable by a fine of up to \$500.00.

THE PURPOSE OF THIS ORDER IS THE MITIGATION OF THE PUBLIC SAFETY HAZARD POSTED BY WILDFIRES DURING THE CURRENT DROUGHT AND SEVERE WEATHER CONDITIONS BY CURTAILING THE USE OF ALL COMBUSTIBLE MATERIALS.

Burn Ban extended as of June 16, 2008.

Burn Ban extended as of April 14, 2008.

Benny Wilson,  
Hansford County Judge

**Gladiola Flower Club News**

**March 13, 2008**

The Gladiola Flower Club met on March 13, 2008 at the Bunkhouse Restaurant for the Spring luncheon.

Chairman Dorothy Buzzard called the meeting to order. Margarette Evans presented the 2008 yearbook.

Muriel Boyd made a motion to give \$50 to Project Graduation, Betty Jean Davis seconded, motion carried.

Chairman Buzzard asked for additional ideas to use club money and discussed ways to help with city clean-up.

Project Chairman Estelle Jackson began sign-up for April Meals on Wheels.

Kathleen Sutton read a thank you from the Stationmaster's House Museum.

Dues were collected.

Hosts were Norma Jean Mackie, Judy Yarbrough, June Jackson, Virginia Trindle, Dorothy Buzzard, Estelle Jackson, Ann Allen, Betty Jean Davis and Gwen Smith.

Guests were Muriel Boyd, Margarette Evans, Ann Flowers, Helen Holt, Sabrina Landrum, Eloise Renner, Pam Schnell and Kathleen Sutton.

**April 3, 2008**

The Gladiola Flower Club met in the home of Ann Flowers on April 3, 2008.

The meeting was called to order by Chairman Dorothy Buzzard.

Roll Call was answered with "An Easter Tradition."

Muriel Boyd made the motion to change the Scholarship to \$500 per semester. Pam Schnell seconded; the motion carried. Some additional ideas were discussed for applications. No action was taken.

Muriel Boyd won Home Grown Arrangement.

Judy Yarbrough gave the program on "Irish Folding," with each participating making an apple.

Those present were Pam Schnell, Betty Jean Davis, Muriel Boyd, Gwen Smith, Ann Allen, Eloise Renner, Judy Yarbrough, June Jackson, Dorothy Buzzard, Estelle Jackson, Sabrina Landrum and Ann Flowers.

**April 17, 2008**

The Gladiola Flower Club met in the home of Estelle Jackson on April 17, 2008.

Chairman Dorothy Buzzard presided. Roll Call was answered with "A Need in Our Community."

The Meals on Wheels volunteer calendar was completed.

Suggestions were made to update the scholarship application forms. Completed applications were given to each member. The selection will be made on May 1st.

The plant winner was Estelle Jackson.

Estelle Jackson also gave the program on the "History of Hansford County."

Those present were Ann Allen, Eloise Renner, Dorothy Buzzard, Muriel Boyd, Betty Jean Davis, Norma Jean Mackie, Judy Yarbrough, June Jackson, Sabrina Landrum, Estelle Jackson and Margarette Evans.

**May 1, 2008**

The Gladiola Flower Club met in the home of Muriel Boyd on May 1, 2008.

Chairman Dorothy Buzzard presided. Roll Call was answered by "Best Buy I Ever Made."

Kathleen Sutton read a thank you from Project Graduation.

Estelle Jackson reported she had talked to City Hall and asked what the Club might do help with city-wide clean-up.

Muriel Boyd made a motion that the scholarship of \$500 per semester be effective immediately, seconded by June Jackson, motion carried.

A very interesting program on fresh and artificial flower arrangements, courtesy of All Occasion Flowers, was given by Ted TeBeest.

Flower winners were: Arrangement - June Jackson, Specimen - Ann Flowers, House Plant - Muriel Boyd.

Those present were Dorothy Buzzard, Betty Jean Davis, Gwen Smith, Eloise Renner, June Jackson, Estelle Jackson, Muriel Boyd, Helen Holt, Kathleen Sutton, Ann Flowers, Margarette Evans, and guest Kay Wade.

**Words from  
Faith & Grace**



by Cecil R. Biggers, Lutheran Lay Minister

In our study of the Spirit, we come to ponder the meaning of "discipleship" as we study Jeremiah 28:5-9, Psalm 89:1-4, 15-18, Romans 6: 12-23 and Matthew 10: 37-42. Jeremiah is called to prophesy in Jerusalem at approximately the same time Ezekiel is called to prophesy in Babylon. Both prophets tell their segment of the people of Israel, there is no salvation without repentance! Hananiah, the false prophet, tells the King that the vessels of the house of the Lord will be restored and the former Kingdom restored. Jeremiah is wearing an ox-yoke made of wood to symbolize the defeat of the Kingdom of Israel. Hananiah breaks the yoke to emphasize the "salvation" about to come. Jeremiah counters with a yoke of iron, and predicting that the false prophet Hananiah will die. Hananiah dies. From this we learn that the measure of a true prophet is whether the prophet's message is true. We may also consider whether the prophet's message is consistent with the prior words of God. The true disciple proclaims the word that is given by God.

The Psalmist sings a song of coronation of a King, but in this song he praises God for His steadfast love and emphasizes the covenant made by God to David. The Psalmist sings that the love of God prevails as long as the King belongs to the Holy One of Israel.

Paul having told the Romans that through baptism we are "marked" as Christ's forever, now leaves the more "mystical" explanation of our relationship as disciples to a more practical explanation. We having been freed from our sins by our baptism into Christ Jesus, must not allow sin to dominate our lives because of our love for Christ Jesus. We are still vulnerable to sin, but as we are in Christ Jesus, He has the power to overcome sin within us. If we are "slaves" of Christ we cannot be "slaves" to sin. Discipleship is a way of life. It is a day to day struggle against our own sinful nature. Wherefore, God has granted us the Spirit who resides within us and enables us to persevere.

Chapter 10 in Matthew is a textbook on 'discipleship'. Jesus tells us as disciples we must love Him more than our family; as disciples we must take up our cross and follow Him. We are told that anything that we do for another in the name of Christ is worthy of reward. The term translated as "reward" actually means "paid in full". In the talk of "receiving" or "welcoming", depending on the translation you read, Jesus is indicating that we, as disciples, are "ambassadors" of the Kingdom of God. By welcoming such an 'ambassador', the greeter is welcoming God.

May the Holy Spirit abide in you and lead you in loving discipleship.

visit "Caught on Camera" at  
[www.spearmanreporter.com](http://www.spearmanreporter.com)

Are you wanting to begin your college career? Have you been out of school for a while, or did you graduate in May? Are you home from college for the summer and bored?

Want to gain academic credit to take with you (or back with you) to college in the fall?

Why not take advantage of classes in your own backyard?

**FPC**

Frank Phillips College

Allen Campus

**Summer II Classes**

Dates: July 9th-August 14th

Course offerings include —

Economics, English, History, Math, Physical Education, Sociology, Speech... and many more.

Registration:

Now through July 8th  
Late Registration Begins: July 9th

For information, call (648-1450) or come by (2314 S. Jefferson) the Allen Campus.

FRANK PHILLIPS COLLEGE IS AN EQUAL OPPORTUNITY COMMUNITY COLLEGE.

See how John Deere precision can turn into payday for you.

Great financing options!



WE MAKE PRECISION PAY

There's never been a better time to put the time, money, and fuel saving advantages of a John Deere GreenStar™ Guidance System to work for you. Stop in and see just how easy and affordable it is to put the power of a guidance system to work in your operation!



Nothing Runs Like A Deere™

GREENSTAR™ 2 GUIDANCE SYSTEMS



Let Hansford Implement Company put together a hands-free guidance system that's right for your operation and your budget.

HELPFUL GUIDANCE



Start saving on fuel and other input costs while reducing wear and tear on your equipment. Start being more productive and less worn out.

Superior Innovation

Features That Matter

VISIT HANSFORD IMPLEMENT COMPANY TODAY!

[www.JohnDeere.com/Homeowners](http://www.JohnDeere.com/Homeowners)

12098 East Frederic Ave.  
Pampa, TX 79065  
(806) 665 - 1888

939 North Dumas Ave.  
Dumas, TX 79029  
(806) 935 - 7720

**HANSFORD**  
IMPLEMENT CO.

South Loop Rd.  
Perryton, TX 79070  
(806) 435 - 4036

South Highway 207  
Spearman, TX 79081  
(806) 659 - 2568

John Deere's green and yellow color scheme, the leaping deer symbol, and JOHN DEERE are trademarks of Deere & Company. 074BUB0802-AMS-HAND-10062HCR-bw-0024789

# Spearman Stingrays Swim Results

The Spearman Stingrays Swim Club traveled to Scott City, Kansas for the first meet of the season. We had great results for our first meet! The Spearman Stingrays team placed 2nd overall in the meet. (Again this year our team has members from Dumas and Pampa.)

Following is a list of the results for our Spearman Stingray swimmers.

### Girls 8 & Under

**100 Free Relay:** A Relay, 2nd - Maren Garnett, Finley Garnett, Lilly Patterson,

**25 Free:** Maren Garnett, 2nd; Finley Garnett, 5th; Lilly Patterson, 15th; Calli Pearson, 16th; Haley Byers, 38th

**25 Butterfly:** Lilly Patterson, 2nd; Maren Garnett, 3rd; Finley Garnett, 4th

**25 Back:** Maren Garnett, 4th; Finley Garnett, 7th; Lilly Patterson, 10th; Calli Pearson, 28th; Haley Byers, 43rd

**25 Breast:** Finley Garnett, 2nd; Lilly Patterson, 3rd; Calli Pearson, 4th

**50 Free:** Maren Garnett, 1st; Finley Garnett, 2nd; Lilly Patterson, 3rd; Calli Pearson, 7th

**100 IM Relay:** A Relay, 2nd - Finley Garnett, Lilly Patterson, Maren Garnett

### Boys 8 & Under

**100 Free Relay:** A Relay, 1st - Bo Butler, Aiden Garnett; B Relay, 3rd - Chaz Patterson, Jack Wilkerson, Levi Garnett

**25 Free:** Bo Butler, 7th; Aiden Garnett, 10th; Levi Garnett, 15th; Chaz Patterson, 17th; Jack Wilkerson, 19th

**25 Back:** Bo Butler, 7th; Aiden Garnett, 14th; Jack Wilkerson, 16th; Levi Garnett, 17th; Chaz Patterson, 18th

**50 Free:** Bo Butler, 4th; Aiden Garnett, 9th; Levi Garnett, 13th

### Girls 9-10

**200 Free Relay:** A Relay, 1st - Halston Kenney, Payton Harrell, Taylor Varnon

**50 Free:** Taylor Varnon, 1st; Payton Harrell, 5th; Halston Kenney, 9th; Ashley Vasquez, 21st

**50 Fly:** Taylor Varnon, 1st; Payton Harrell, 3rd; Halston Kenney, 6th

**50 Back:** Halston Kenney, 10th

**50 Breast:** Taylor Varnon, 1st; Payton Harrell, 2nd; Halston Kenney, 9th

**100 IM:** Taylor Varnon, 1st; Payton Harrell, 5th

**100 Free:** Halston Kenney, 3rd

**200 Medley Relay:** A Relay, 1st - Taylor Varnon, Payton Harrell, Halston Kenney

### Boys 9-10

**50 Free:** Dylan Kemp, 2nd

**50 Fly:** Dylan Kemp, 1st

**50 Back:** Dylan Kemp, 2nd

**50 Breast:** Dylan Kemp, 1st

**100 IM:** Dylan Kemp, 2nd

### Girls 11-12

**50 Free:** Hannah Patterson, 5th; Kelsi Sumner, 8th; Klara Keim, 20th; Delise Sibley, 21st

**50 Fly:** Hannah Patterson, 5th

**50 Back:** Hannah Patterson, 7th; Kelsi Sumner, 12th; Klara Keim, 16th; Delise Sibley, 21st

**50 Breast:** Hannah Patterson, 1st; Kelsi Sumner, 12th; Klara Keim, 14th; Delise Sibley, 17th

**100 Free:** Kelsi Sumner, 6th; Klara Keim, 8th; Delise Sibley, 13th

**200 Free:** Kelsi Sumner, 3rd; Klara Keim, 4th

**200 Free Relay:** 4th - Delise Sibley, Hannah Patterson, Kelsi Sumner

**200 Medley Relay:** 3rd - Kelsi Sumner, Hannah Patterson

The 2007-2008 Gruver High School Athletic Banquet was held May 13, 2008. The banquet was provided by the Greyhound Boosters. The food was prepared by Richard and Wanda Wagner.

Cason Finley gave the invocation and Mike Grotegut welcomed the guests and athletes.

Coach Troy Seagler presented the **Scholastic Awards** to Abbi Yanke and Seth Thompson.

Coach Rod Been presented achievements in cross country, basketball, and track.

**Outstanding Cross Country Girl** - Katie Gibson

**Outstanding Cross Country Boys** (shared) - Jeronimo Trejo and Gonzalo Vega.

**Bob Bailey Fighting Heart Girls Basketball Award** - Diana Solis

Coach Terry Felderhoff presented achievements in

football. **Varsity Football Back/Receiver Award** (shared) - Tony Lora and Seth Thompson

**Varsity Football Lineman Award** (shared) - Tanner Sherrill and Lorenzo Torres

**Varsity Football Fighting Spirit Award** - Jake Willis

**Bob Bailey Fighting Heart Football Award** - Chandler Miner

Coach Cody Martindale presented the track awards.

**Boys Track Fighting Heart Award** (shared) - Chandler Miner and Seth Thompson

**Girls Track Fighting Heart Award** - Katie Gibson

Coach Troy Seagler also presented achievements in boys basketball and tennis.

**Bob Bailey Fighting Heart Boys Basketball Award** - Taylor Williams

**Rex Shapley Fighting Heart Tennis Award**, Girl - Lynn Vela

**Rex Shapley Fighting Heart Tennis Award**, Boy - Taylor Williams

Coach Rod Been presented achievements in golf.

**Rex Shapley Fighting Heart Golf Award**, Girl - Amy Tolleson

**Rex Shapley Fighting Heart Golf Award**, Boy - Reagan Karlin

Coach Felderhoff presented the all-around achievements.

**Greyhound Spirit Award** - Mattie Yank Tanner Sherrill

**Bob Bailey Outstanding Achievement in Athletics** - Katie Gibson and Chandler Miner

Darrell Messer presented the **Outstanding Greyhound Booster Award** to Barbara Cluck.

The varsity boys football team presented Coach Felderhoff with a signed helmet and ball, as a goodbye to a man they admired greatly.

Coach Terry Felderhoff will be missed by all of his Football boys and their parents. Gruver and the athletic program has benefited greatly from this man's integrity and love for the game of football. Coach Felderhoff added the spice back into our football program that was needed.

He could ask anything of his boys and they would give him ALL plus more. This comes from him standing good to his word and giving back to them as much as he asked of them.

The town of Valley View is to be his and his family's new home. He may be leaving, but he is leaving our boys with more than just football techniques - he is leaving them with life changing values. For that, Coach, we thank you from the bottom of our hearts! Gruver will miss much!

# GHS Academic Banquet Held

Gruver High School held its Academic Banquet on Monday, April 28 at the First Baptist Church. The meal was hosted by the PTO, catered by the Wagners and served by the top ten academic 8th graders.

Following the induction of the new NHS candidates, awards were given out to the top students of the classes offered this year. Students were also recognized for their participation in UIL, Student of the Month, and Volunteer work. The program ended with acknowledgement of our 2008 Honor Graduates.

### NHS Inductees

Seniors - Dalila Santillan, Eva McCloy  
 Junior - Saul Hernandez  
 Sophomores - Mary Barron, Fatima Borunda, Carmen Dahl, Katie Gibson, Cory Graves, Mary Beth Hargis, Gabriel Mendoza, Caleb Miller, Drew Mireles, Megan Stedje, Leigh Anne Winger, Mattie Yanke

### Honor Graduates

Maydell Ortiz  
 Valedictorian, Abbi Yanke - Salutatorian, Seth Thompson - Historian, Sorrele Blevins, Yadira Garcia, Eva McCloy, Chandler Miner, Whitney Moffett, Morgan Ross, Dalila Santillan, Tanner Sherrill, Diana Solis, Adriana Soto, Emily Williams

### Academic Excellence Awards

**English I** - Gabriela Barrera  
**English II** - Katie Gibson

**English III** - Lynn Vela  
**English IV** - Jake Willis  
**Advanced English IV** - Abbi Yanke

**English I SOL** - Uriel Ortega  
**English II SOL** - Adrian Ortega

**Communication Applications** - Jack Karlin

**Reading** - Eunice Guereca  
**Art I** - Abbi Yanke

**Music Theory** - Drew Mireles  
**Math Models** - Enrique Esparza

**Algebra I** - Jacob Beasley  
**Algebra II** - Shelby Williams

**Geometry** - Katie Gibson  
**Pre-Calculus** - Lynn Vela  
**AP Calculus AB** - Abbi Yanke

**Health** - Jesus Lopez  
**Integrated Physics & Chemistry** - Mary Beth Hargis

**Biology** - Shelby Williams  
**AP Biology** - Abbi Yanke  
**Chemistry** - Katie Gibson  
**Physics** - Veronica Teal

**Anatomy & Physiology** - Veronica Teal  
**BCIS I** - Lynn Vela  
**BCIS II** - Matt Salazar  
**Accounting I** - Veronica Teal

**Telecommunications & Networking** - Diana Solis  
**Business Image Management & Multimedia** - Yadira Garcia  
**U.S. History** - Cody Dahl  
**Advanced U.S. History** -

Veronica Teal  
**Government** - Morgan Ross

**Economics** - Jake Willis  
**Advanced Government** - Abbi Yanke

**Advanced Economics** - Maydell Ortiz  
**World Geography** - Katie Gibson

**World History** - Jesus Lopez  
**Spanish I** - Fatima Borunda

**Spanish II** - Lizette Ortiz  
**Spanish III** - Marisol Hernandez

**Personal & Family Development** - Yadira Garcia

**Nutrition & Food Science** - Lizette Ortiz  
**Preparation for Parenting** - Mary Barron

**Food Science & Technology** - Adriana Soto  
**Interior Design** - Maydell Ortiz

**Ready, Set, Teach! I** - Marisol Hernandez  
**Ready, Set, Teach! II** -

Amy Tolleson  
**Introduction to World Agricultural Science & Technology** - Jesus Lopez

**Applied Agricultural Science & Technology** - Jacob Lieb

**Plant & Animal Production** - Caleb Miller

**Introduction to Agricultural Mechanics** - Blake Fitzgeard

**Agricultural Structures Technology** - Miles Messer

**Agricultural Metal Fabrication Technology** - Jordan Hicks

**Wildlife & Recreation Management** - Tanner Sherrill

**Home Maintenance & Improvement** - Alfredo Bonilla

**Agricultural Mechanics I** - Seth Thompson

**Agricultural Power Technology** - Taylor Williams

**Landscape, Design, Construction & Maintenance** - Travis Boyd

**Oklahoma State Announces Spring 2008 Graduates**

A total of 2,608 students representing 42 states and numerous countries were awarded degrees from Oklahoma State University in Stillwater at the end of the 2008 spring session, according to the Office of the Registrar.

Graduates are listed by the towns they have designated as their hometowns, along with degree and subject area. Degrees earned with distinction--summa cum laude, magna cum laude or cum laude--are designated below the degree earned.

Claudia Vaquera, a 2004 Spearman HS graduate, graduated Summa Cum Laude with a BS degree in Human Development and Family Science.

**Are You A Victim of Domestic Violence, Sexual Abuse or Physical, Emotional or Sexual Assault?**

Call Toll Free Hotline  
**1-800-753-5308**

Battering Intervention & Anger Management Available

**Panhandle Crisis Center**  
 Serving Hansford, Lipscomb & Ochiltree Counties  
 301 S. Ash - Perryton, TX  
 Memorials Accepted

Hotline for Priority Seating - 435-3945

**MONEL'S**

**BBQ & STEAK HOUSE**

We Are THPLC-2-B

14 SE 3rd Ave. Perryton, TX

Stan and Donna Zepp

Under New Ownership  
 Same Great Service & Menu!

"Stick With The Best Food In Town"

**Flying X Steakhouse**  
 By Reservation Only

From Stinnett: Go West on Hwy. 152  
 17 miles - Turn Left at Big Red Cactus  
 (About 2 miles on Gravel Road)

From Dumas: Go East on Hwy. 152  
 16 miles - Turn Tight at Big Red Cactus  
 (About 2 miles on Gravel Road)

(806) 935-9427  
 Sheree & Eddie Burgess

**Hoochy Poochy Parlor**

Professional Award  
 Winning Stylist

Carmon Baker

and Missy  
 "The Hoochy Poochy"

A true professional and award winning creative groomer, Carmon has earned numerous awards for her excellent work and demonstrated professional technique. She has served the Texas Panhandle for the past 37 years. Catering to the small to medium pampered pet, we always do our best.

Please visit us for a free estimate on your pet care needs.

Hours:  
 Mon.-Fri., 8 a.m. until done  
 Saturday by appointment only

806-273-2724  
 806-674-5409  
 116 Madison  
 421 E. 10th St.  
 Borger, TX 79007  
 goingtothedogs@cablone.net

**NOTICE OF PUBLIC HEARING OF THE APPRAISAL REVIEW BOARD**

**APPRAISAL REVIEW BOARD FOR THE HANSFORD COUNTY APPRAISAL DISTRICT, TEXAS**

Notice of Public Meeting of the Appraisal Review Board:

Notice is hereby given that a public meeting of the Appraisal Review Board of the Hansford County Appraisal District will convene at 9:00 am on July 7, 2008, at the conference room in the appraisal district offices located at 709 West 7th Avenue, Spearman, Texas.

The board will hear and determine taxpayer and taxing unit appeals on all matters permitted by TEX.PROPERTY TAX CODE.

The Appraisal Review Board will be in session, notice for which will be duly posted, until all timely filed appeals are heard and resolved.

This notice is given pursuant to the Open Meetings Act, Chapter 551, Government Code.

*[Signature]*  
 Chairman, Appraisal Review Board

**FOR SALE/RENT/LEASE**

**FOR SALE:** 601 Womble Gruver, App.4600 Sq. Ft.: 1 Block from school. \$177,500 OBO. (806)733-2223 or (806) 736-1439. TFN(6-01-08)B

**FOR RENT:** 2BR apartment, \$400.00 per month, water paid. Call Larry O'Neal at 580-772-5617 or 580-819-0007. TFN(7-06-06)B

**FOR SALE:** 711 Townsend, 1735 sq ft, 3 BR, 2 bath, 2 living area, fireplace, 2 car garage, central heat/air, fenced backyard, 1 block from school, 659-1037 or 330-1004. 2(6-19-06)P

**HELP WANTED**

**HELP WANTED:** First United Methodist Church is accepting applications for a maintenance/janitorial employee. Job requires a minimum of 20 hours per week, with flexibility for more hours at certain times. Salary will be based on applicant's skills and experience. Please apply in person at First United Methodist Church, 501 S. Haney, Spearman, or by mail at First United Methodist Church, P.O. Box 547, Spearman, TX, 79081. TFN(4-10-08)B

**HELP WANTED:** First State Bank has a position open for an Assistant Chief Financial Officer/Compliance Officer. Required is a degree in Accounting or Finance and some experience. Prefer the applicant having gone to Graduate School of Banking or Bank Compliance School. Job includes accounting, board reports, accounts payable, operations, compliance monitoring and reporting and additional management responsibilities if qualified. Some training available. Apply with Clay Schnell at First State Bank, 1 NE Court, Spearman, TX 79081 or call 806-659-5565. An Equal Opportunity Employer. 2(6-26-08)B

**WANTED:** Loader/Equipment Operator needed at Wolf Creek Feedyard, Perryton, TX. Training will be provided for this position in new, updated equipment. This position includes an excellent wage, health insurance, uniforms, bonus and an excellent retirement plan. Please call 435-5697, ask for Gilbert or come by the office for an application and interview. 2(6-26-08)B

**SERVICES**

**HOCHY POOCHY PARLOR** Call us for all your pet's grooming and boarding needs. Call now for reservations! 806-273-2724. TFN(11-2-07)

**FOR SALE OR TRADE**

**FOR SALE:** MATTRESS \$100 TWIN SIZE set. In perfect condition. Never used 806-341-6233 TFN(1-31-08)

**FOR SALE:** Brand New full size mattress set in plastic with warranty Sell \$125 806-341-6233 TFN(1-31-08)

**FOR SALE:** New Visco Memory Foam Mattress & Box. Sealed in plastic with manufacturers warranty. Must move \$375 806-341-6233 TFN(1-31-08)

**FOR SALE:** \$140 Brand new queen size mattress set. Still in factory plastic, has warranty. 806-341-6233 TFN(1-31-08)

**FOR SALE:** Bed New Queen, pillow-top mattress set. In plastic, Warranty. Sacrifice \$150 806-341-6233 TFN(1-31-08)

**FOR SALE:** MATTRESS-All New KING set Pillowtop. In plastic w/warranty \$250 806-341-6233 TFN(1-31-08)

**ESTATE SALE**

**ESTATE SALE, Spearman:** Friday, June 27th, 4-8 p.m.; Saturday, June 28th, 9 a.m.-3 p.m., 3 miles N or Spearman on Hwy. 760. Furniture, clothing, antiques, lots of misc. 2(6-19-08)P

**PUBLIC NOTICE**

**PUBLIC NOTICE**  
Spearman Independent School District's Board of Trustees are accepting bid proposals until 1:00 pm September 6, 2006 TO SALE the following: 1967 CLARK 4000LB CAPACITY FORKLIFT, HOUSE TO BE MOVED AT 421 DRESSEN STREET; OUTBUILDING TO BE MOVED AT 421 DRESSEN STREET (house and outbuilding must be removed within thirty days

after notice of bid award); EVAPORATIVE AIR CONDITIONER AT 421 DRESSEN STREET; KITCHEN EQUIPMENT AT THE OLD JHEL CAFETERIA; TWO EXTERIOR WALK-IN FREEZERS 1972 MODEL AND 1999 MODEL AT THE JHEL CAFETERIA (all equipment/freezers must be removed within five days after notice of bid award). The District reserves the right to reject any and/or all bid proposals, to make awards as they may appear advantageous to the District and to waive all formalities in the bid proposal process. Please mail or deliver all bid proposals to Spearman ISD, Larry Murphy, 403 E. 11th Avenue, Spearman, TX 79081. 2(6-26-08)B

**LEGAL NOTICE**

Hansford County Commissioners' Court will receive bids until 4:00 on Friday, July 11, 2008 to paint the District Courtroom and to install new carpet. Bids should be submitted to the Hansford County Judge's office, 16 Northwest Court, Spearman, Texas 79081-2052. Please contact County Judge for specifics.

Bids will be opened on Monday, July 14, 2008 during the Commissioners' Court meeting in the Law Library of the Hansford County Courthouse, Spearman, Texas. Meeting will begin at 10:00 a.m.

Hansford County reserves the right to accept or reject any or all bids.

Benny Wilson  
Hansford County Judge  
806-659-4100  
3(6-12-08)B

**PUBLIC NOTICE**

Pursuant to Sec. 152.905 of the Texas Local Govt. Code, on the 2nd day of July, 2008 at 3 p.m., a public hearing will be held at the Hutchinson County Courthouse in Stinnett, Texas, in the 316th District Courtroom. The purpose of the hearing will be to hear testimony concerning the salary of the 84th District Court Reporter. The public is invited to attend. 1(6-26-08)B

**LEGAL NOTICE**

Hansford County Commissioners' Court will receive bid proposals until 4:00 p.m. on Friday, July 25, 2008 for General Audit for Hansford County for the period of October 1, 2006 through September 30, 2007. Proposals will be opened on Monday, July 28, 2008 at the regular Commissioner's Court meeting, beginning at 10:00 a.m.

The Court reserves the right to accept or reject any or all bids.  
BENNY D. WILSON  
Hansford County Judge  
3(6-26-08)B

**Panhandle Crisis Center  
Spearman Resale Store**

**You're Invited!**

**NEW & USED ITEMS**

household goods  
toys  
clothes

306 Hancock Spearman

Great Bargains!

Open to the Public  
Mon., Tues., Thurs. & Fri.; 10 am - 5 pm

**Century 21**

**Golden Spread Realty**

**32 N. James, SPEARMAN - 2BR, 1B, 1 detached garage.**

**Gina Deal, Broker/Owner**  
(806)435-5444  
www.century21.com

INDEPENDENTLY OWNED & OPERATED.  
©1992® and Century 21 Real Estate Corporation. Equal Housing Opportunity. EOW(2-14-08)B

**FOR SALE**

**Ben Franklin Variety, Craft & Dollar Store is For Sale in Stratford, TX.**

For details, contact Ben Franklin Representative David Larson at 1-800-992-9307, ext. 402. TFN(6-19-08)B

**TURNER ENERGY SERVICES**  
A COMPLETE PRODUCTION SERVICE COMPANY

**TRANSPORT DRIVERS & WINCH TRUCK DRIVERS**

These full-time positions are immediately available in our Perryton location. Previous experience and a valid CDL drivers License required.

**COMPETITIVE WAGES & EXCELLENT BENEFITS!**

- Health Insurance
- Dental Insurance
- Life Insurance
- STD/LTD Insurance
- Safety Bonus
- Vacation/Sick Leave
- Paid Holidays
- Uniforms
- 401(k) with up to 4% Match

Interested Candidates please apply at our Perryton yard  
12625 FM 1267 Perryton, TX / 806-435-1190  
EOE / Drug Free Workplace

**hchd**  
Hansford County Hospital District

**Openings at Hansford Hospital**

**Maintenance Person:** Performing duties for maintenance of the building, grounds, including carpentry, painting, plumbing, electrical work, air conditioning, gardening, furniture repair, welding, etc.

**Home Health RN:** Must be licensed in the State of Texas

**Openings at Hansford Manor**

**LVN:** Must be licensed in the State of Texas

**Housekeeping, Part Time:** Keeping a clean environment for our residents.

Great working environment and staff, quality facility providing opportunities for professional growth. Great benefit package. Apply at 707 S. Roland, Spearman, TX or contact Jackie Nelson at 806-659-5841. Download application at www.hchd.net EEOE 2(6-26-08)B

6	8	1	7	4	3	9	2	5
4	5	7	2	1	9	6	8	3
9	3	2	6	8	5	7	1	4
2	9	6	1	5	7	3	4	8
5	7	3	8	6	4	1	9	2
8	1	4	9	3	2	5	6	7
3	6	5	4	2	1	8	7	9
7	4	8	5	9	6	2	3	1
1	2	9	3	7	8	4	5	6

**MARTIN & ASSOCIATES REALTY**

Serving Hansford County for 14 years  
Julie Martin: Broker - 659-2425

**IN SPEARMAN**

1111 S. Townsend - Split level, 3/2/1 Are you looking for a home with that brand new feeling? This home has been redone throughout: all new flooring, paint, fixtures, baths, remodeled kitchen w/new appliances, granite countertops; split level deck. **REDUCED!** 703 Collier - 3/1/1. Call today - Let's Make a Deal!! 1005 S. Bernice - 3 bed, 2 bath, 1000 sq ft w/wireplac

**UNDER CONTRACT**

We'd Like Your Listing FOR QUALITY & SERVICE CALL US TODAY! Equal Housing Opportunity

**OCHILTREE CO** - Choice dairy location, strong water area, three phase electricity, 776.5 acres more or less of choice land (Pullman Clay Loam - almost all "A" slope) with two pivot points for sprinklers, two irrigation wells, preconditioning pens with indoor working area, grain, hay and fuel storage.

**OCEANS OF WATER II** - Hansford Co., Texas - 4 sections, strong water, dev. with sprinklers, wells, feedyard, home, barns, pvt., 2 mi. hwy. frontage.

**HARTLEY CO** - 640 acres with nice home, landscaped, barns & sprinklers.

**MOORE CO.** - 1766 acres, fully developed with wells & sprinklers & really nice home on all-weather road, priced to sell!

Choice milk processing and dairy sites available in Dallam, Hartley, Moore, Oldham, Sherman and Hutchinson Counties.

SEE OUR WEBSITE OR GIVE US A CALL!  
www.scottlandcompany.com  
Shawn Gillispie 806/922-5532  
Ben G. Scott, Broker  
1-800-933-9698 day/eve  
TFN(6-26-08)

**Blankenship Real Estate**  
659-3052 - 670-3774

3/1/1 - Lots of storage, inside & out, corner lot. Close to schools.  
3/2/1 - Brick, 2 living areas, fenced w/storage  
2/2/1 - Brick, fenced w/storage

**NEW LISTINGS WANTED!**  
Eulalia Blankenship - Sales  
Eschol Blankenship - Broker

**Properties**  
Shirley Howard

**Gruver Property**  
310 Cluck - 3BR, 2B, fenced yard, 2CG, apartment in back.  
715 Cluck - 3 Bed, 1 3/4 bath, 1,435 sq ft, CACH, \$70,000

**Spearman Property**  
EX- 504 Roland - 3BR, 2B, storm shelter, stg bldg.  
24 Archer/501 W. Kenneth - Restaurant - ready to open  
115 Nelson Rd - 2/2/2 - 1,600 sq ft, UNDER CONTRACT Country & City all at once!

**Shirley Howard, Broker/Owner**  
806-886-6536, Cell  
**Melinda McCullough, Realtor**  
(806) 733-5678

We would LOVE to sell your HOUSE!  
Call US!

**FSB First State Bank**

P.O. Box 247  
Spearman, TX 79081  
Telephone 806-659-5565  
Member FDIC

Planning to buy a home, but not sure if you can get an affordable mortgage?  
Interest too high on your present mortgage?  
Want to do business with a local bank?

**We can help!**

**Come by First State Bank, Spearman.**  
Check out our competitive fixed and adjustable rate mortgages for terms up to 30 years.  
We can work with you to find a mortgage that fits your needs and help you buy or refinance your home.  
Contact Ginger Turner and find out more.

**TEXAS STATEWIDE CLASSIFIED ADVERTISING NETWORK**

**TexSCAN**

TexSCAN Week of June 22, 2008

**BUSINESS OPPORTUNITIES**

**ALL CASH CANDY ROUTE.** Do you earn \$800 in a day? Your own local candy route. 30 machines and candy. All for \$9,995. 1-888-625-5481. Multi Vend, LLC

**DRIVERS**

**CDL-A TEAMS WANTED.** Split \$1.06 per mile. \$1100/week minimum per driver. O/O teams \$2.45/mile. \$1,000 bonus. 1-800-835-9471 ext 229.

**DRIVERS-CDL-A** The grass is Greener at PTL. Students with CDL welcome - excellent training program. Company drivers earn up to 46¢ cpm. Owner Operators earn \$1.41 cpm. meet age requirement. 12 mos OTR. No forced northeast! Company drivers call: 1-866-606-6200. Owner operators call: 1-877-774-3533. www.ptl-inc.com

**DRIVERS: COMPANY DRIVERS & O/O's wanted!** Dry van, no hazmat. Class A-CDL required! 48 state carrier. Call Guy 1-800-387-1011. www.aecal.com

**DRIVERS-FRESH START.** Teams needed Sign-On bonus 35-42cpm. Earn over \$1000 weekly. Excellent benefits. Need CDL-A & 3 months recent OTR. 1-800-635-8069, Melton Truck Lines.

**DRIVERS WE HAVE** miles and freight Positions available ASAP! Class A-CDL with tank endorsement required. Top pay and premium benefits. Call 1-877-484-1041, or visit www.oakleytransport.com.

**DRIVERS STUDENTS:** START your new career with sponsored training or tuition reimbursement! Possible \$40K 1st year. Experienced drivers, ask about \$5000 sign-on! www.fline.com. 1-800-569-9232

**NOTICE:** While most advertisers are reputable, we cannot guarantee products or services advertised. We urge readers to use caution and when in doubt contact the Texas Attorney General at 1-800-621-4508 or the Federal Trade Commission at 1-877-FTC-HELP. The FTC web site is www.ftc.gov/bizop

**Extend your advertising reach with TexSCAN, your Statewide Classified Ad Network.**

**EDUCATION**

**INCREASE YOUR RAILROAD** hiring potential! Train at NARS, Overland Park, KS. Complete training 4-8 weeks. Average salary \$63K. Lender information available. Conductor, Electrical/Mechanical, Freight Car, Signal, Welder. 1-800-228-3378. www.RailroadTraining.com

**TEENS FROM AROUND** the world need host families for next school year. Students are from 30 countries and families may choose their student. SHARE! 800-941-3738/www.sharesouthwest.org

**HELP WANTED**

**SOUTHERN CARE, INC.,** a national Hospice company has current Healthcare positions available. Visit our website www.southernicare.com for locations, details and opportunities.

**HOMES FOR RENT**

**5BR/2 BA HOME** only \$425/month! 3BR/2BA only \$200/month! More 1-4 BR homes from \$199/month! For listings & info, 1-800-604-8389.

**HOMES FOR SALE**

**FORECLOSURES!** 5BR/2.5BA HOME only \$47K! 3BR/2BA home only \$18K! Financing referrals available! Listings & info, 1-800-604-8389

**MISCELLANEOUS**

**AIRLINES ARE HIRING** Train for high paying aviation career! FAA predicts severe shortage. Financial aid if qualified. Job placement assistance. Call Aviation Institute of Maintenance, 1-888-349-3387.

**ATTEND COLLEGE ONLINE** from home. Medical, Business, Paralegal, Computers, Criminal Justice. Job placement assistance. Computer available. Financial aid if qualified. Call 1-866-858-2121, www.CenturaOnline.com

**WANTED: OLD GUITARS** \$100-\$50,000 Paid! Collector/Musician wanting 1930's-1970's Fender, Gibson, Martin and Gretsch. These brands only. Free Call. 1-866-759-3585.

**REAL ESTATE**

**4.9 ACRES COUNTRY,** country living north of Brady, water, electricity, oak, elm, and mesquite trees, \$33,500, owner or TX Vet financing. 1-800-876-9720. www.texasranchland.com

**COLORADO RANCH FORECLOSURES** 100 Acres just \$59,900 Other ranches available Year-round roads, access to utilities. Excellent Financing Available. 1-866-696-5263 X.4288. www.TXlovesCO.com

**LAKEFRONT SACRIFICE \$69,900.** 3rd largest lake in Texas. Views, trees, easy highway access from DFW. Must sell! EZ terms. Call 1-888-316-5253.

**MONTANA'S BEST PROPERTY** June land sale! 20AC - County Road and Utilities. \$49,900. 160AC Tracts Starting at \$650/AC. 300-1000AC ranch lands for cattle, horses, and the best elk and deer area - Under \$900/AC. North of Billings, MT. Access to thousands of BLM. Owner financing or pay cash and receive discount. Call 1-888-361-3006 or visit www.WesternSkiesLand.com

**NEW TO MARKET** Colorado Mountain Ranch. 35 Acres-\$39,900. Priced for quick sale. Overlooking a majestic lake, beautifully treed, 360 degree mountain views, adjacent to national forest. EZ Terms. 1-866-353-4810.

**TIME-SHARES REALES!** The cheapest ways to buy, sell and rent Time-shares. No commissions, or broker fees. Call or go to 1-888-446-6208 www.buyatimeshare.com

**Run Your Ad In TexSCAN!**

Statewide Ad	\$450
303 Newspapers, 1,017,914 Circulation	
North Region Only	\$195
98 Newspapers, 276,853 Circulation	
South Region Only	\$195
103 Newspapers, 488,823 Circulation	
West Region Only	\$195
102 Newspapers, 252,398 Circulation	

To Order, Call This Newspaper Director, or call Texas Press Service at 1-800-749-4793 Today!

by Dorothy Hudson

# Out at the Lake



Jim Derington  
Palo Duro River Authority  
P.O. Box 99  
Spearman, TX 79081  
806-882-4401  
pdra@dishmail.net



Horse Creek running after Friday, June 20 rains.

Lake level--June 23, 2008--16.07 feet (-0.10)

I was eager to get Jim's report this morning. We had about an inch and a quarter from the rains on Friday night here in Gruver, and we could see on the Doppler maps that there was some rain over the watershed. The sad news was that the Park only had .35 inch of rain. Palo Duro Creek ran only as far as the Gibner place, where it filled a rather large hole in the creek and then gave out. Horse Creek ran, but it quit 200 feet before reaching the Lake. However,

the three-quarter inch rain on Sunday night boosted it on in.

If you visit the Lake, notice we have 2 lakes. The area that was dug out below the shop to help build the dam is isolated from the rest of the water now. It is being fished, too.

The level of the Kids' Pond has dropped one and a half feet. This is because the trickle of water through the dam has stopped. You can look at the volunteer cottonwoods and tell where the Lake edge used to be.

Jim said it was a slow weekend, but 3 RVs and 2

tent campers were out. Day fishermen came and there was a report of a big catfish.

Next weekend the Moose Club with people from Amarillo, Pampa, and Spearman will visit.

Bucks usually stay hidden this time of year, but some are being seen now. Fawns were spotted, too.

An armadillo was out on Saturday evening. Jim tried to get a picture but discovered these apparently slow moving creatures move at a good speed when they don't want their picture made.

## Senator Cornyn Announces Statewide Leadership Team Billy Brown Leads Hansford County Effort

U.S. Senator John Cornyn's campaign today announced the names of their statewide organization team members in each of Texas' 254 counties. Each team member has committed to supporting Senator Cornyn's campaign in their respective county by dispensing campaign information, recruiting volunteers and encouraging their neighbors to vote for Senator Cornyn in November. Organization members include grassroots activists, veterans, ag leaders, small business owners and bipartisan elected officials.

"From Harris to Loving, Anderson to Zavala, Dallam to Cameron and everywhere in between, Texans from all walks of life and every corner

of the state are standing up and making their voices heard," Campaign Manager Rob Jesmer said. "Senator Cornyn is honored that so many are so enthusiastically lending their time and talent to his re-election effort. Senator Cornyn has made his intentions clear about the type of grassroots campaign he is going to run, and this is just the latest example of that."

Senator Cornyn's Hansford County statewide organization team member is Billy Brown. He will be assisted by

Hansford County GOP Chair Dorothy Cator.

The county chairs are the latest announcement exemplifying the wide range of support Senator Cornyn is receiving from all over Texas. Last week Senator Cornyn received the endorsement of more than 30 past and present elected officials, business and civic leaders from the border region, the majority of which were Democrats.

See the complete list of all 254 county chairs at [www.johncornyn.com](http://www.johncornyn.com).

visit "Caught on Camera" at [www.spearmanreporter.com](http://www.spearmanreporter.com)

### Speak Out Spearman

Spearman has a new voice - Speak Out Spearman Blog, at <http://www.spearmanreporter.com/blog1/>

The following is a comment that has been posted on the site. Post your response today!

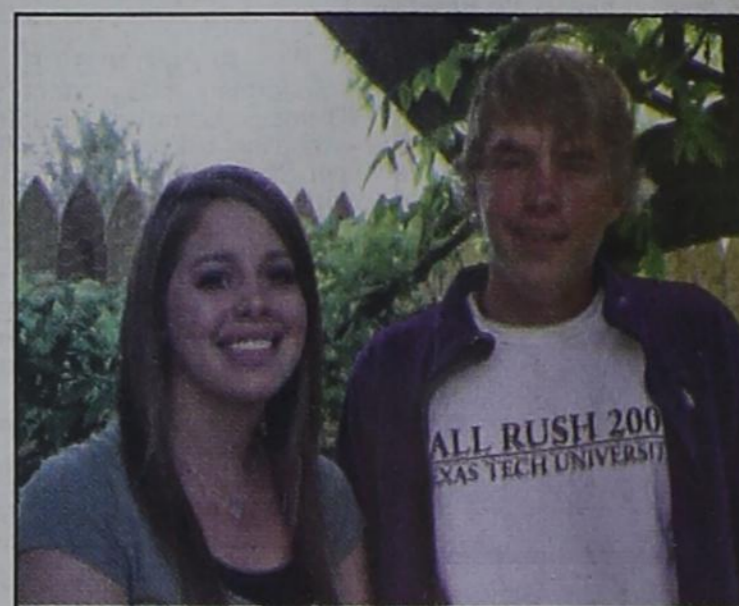
*We all need to take a moment today and thank the Supreme Court for this week's ruling and congratulate Exxon Mobile.*

*The court decided that Exxon would not have to pay the 2.5 billion dollars in punitive damages in the Exxon Valdez case. Now Exxon will not have to give up 2% of its profit in cleaning up its own mess.*

*Even though American citizens decided in court that the company that is responsible for giving us \$4.00 a gallon gasoline while making the largest profits in history should have to pay for the damages that they do, the Supreme Court says, "No Way."*

*Can we really not see that the real reason for packing the courts with 'conservative' justices is not about gay marriage or abortion. It's all about giving money to cronies. None dare call it corruption.*

### Spearman ISD Students of the Month



Mattie Davis & Blaine Barton

The May Students of the Month at Spearman High School are seniors, Mattie Davis and Blaine Barton.

Mattie is the daughter of Brian and Gina Gillispie and Jerry Pat and Christy Davis and the granddaughter of Irvin and Betty Davis. She has one older sister/brother-in-law, Justin and Grace Calvert, and one older brother, Charles Davis. Mattie is a member of National Honor Society, Varsity Cross Country, Golf, and a member of the First United Methodist Church. Mattie currently serves as the President of the Spearman National Honor Society. She has also received the Award of Excellence in science, HOBY delegate nomination her sophomore year, Homecoming Queen candidate her senior year, Outstanding English 1 and 2 Student of the Year, Anatomy and Physiology Student of the Year, and she will graduate as the Salutatorian of the Class of 2008. In her spare time, Mattie enjoys traveling, hanging out with friends, and going to the lake. Her future plans include attending college at Texas A & M University and majoring in biology and then eventually becoming a dentist. Mattie states the best thing about Spearman is, "I love that everyone knows everyone and everyone cares about everyone." The best thing about Spearman High School is, "I love the teachers and my friends." Mattie's most influential teachers during her school years are Mrs. Beckee Baker and Mrs. Kelly Hart.

Blaine is the son of Danny Barton and Misty Barton. He has one older brother, Blake Barton and a twin sister, Brooke Barton. Blaine is active in Varsity football and UIL Current Events. Blaine has been named Academic All-District in football his senior year, and Academic All-District in football, basketball, track, and tennis his junior year. In his spare time, Blaine likes to fish and hang out with his friends. Blaine plans on attending college at South Plains College and then transferring to Texas Tech. Blaine plans on majoring in radiology. Blaine states the best thing about Spearman is, "all of the nice people." Blaine says the best thing about Spearman High School is, "the nice teachers and faculty." Blaine's most influential teacher during his school years is Coach Fletcher at Canadian High School.

Congratulations Mattie and Blaine on being named the Spearman High School May Students of the Month.

brought to you by these sponsors:

**Properties**  
Shirley Howard  
806-886-6536

**CASE III Zimmatic**  
FIVE STAR EQUIPMENT, INC.  
HIGHWAY 15 WEST • BOX 650  
SPEARMAN, TEXAS 79081  
PHONE # (806) 859-3743  
HOME # (806) 859-3648  
CELL # (806) 350-0261  
800-878-2758

**Honoring Those Who Serve**  
The Hansford County Reporter-Statesman would like to thank those who are actively serving in the military.

Sgt. Juan Rojas  
VMM-162, S-2  
Unit 77041  
APO AE 09509-7041  
[www.motomall.us](http://www.motomall.us)  
Parents: Barbara & Eddie Rojas

Lt. Col David McNulty  
US Air Force  
Active Guard Reserves  
Otis ANGB, MA  
In-laws: Gary & Cathy Smith

TSGT Raul Ortega  
PO Box 18968  
Tucson, AZ 85731  
Parents: Virgino & Francisca Ortega

Sr.A. John Clement  
US Air Force  
Dover Air Force Base, DE  
Parents: Jolene Clement, Dave Clement

Grandparent: Willie Clement

Spec. Paul Bynum  
US Army  
Ft. Bragg, NC  
Parents: Lella & Kurt Bynum

Grandparents: Nita & Joe Bynum

If you have a name you would like added to this list, please contact Catherine Smith at the Hansford County Reporter-Statesman.  
806-659-3434.  
or e-mail to [reporter@spearmanreporter.com](mailto:reporter@spearmanreporter.com).

**MITCHELL THEATRE'S NORTHRIDGE CINEMA 3**  
Guymon, Oklahoma

FRESH POPCORN EVERYDAY!  
-PARTY ROOM & ARCADE-  
Call for Showtimes  
580-338-3281  
[www.northridge8.com](http://www.northridge8.com)

See us for:  
AUTO • HOME • CROP HAIL • FARM & RANCH • MULTIPERIL • LIVESTOCK

**INSURANCE**

**BORT AGENCY, INC.**  
510 Main St. • Gruver, TX  
(806) 733-2456

**3 LARGE Single Topping PIZZAS \$19.99**

**SIMPLE SIMON'S PIZZA**

312 Main Street • Spearman, TX  
(806) 659-9991

Mon.-Thurs. - 11:30 a.m.-9 p.m.  
Fri. - 11:30 a.m.-10:30 p.m.  
Sat. - 12 noon - 10:30 p.m.  
Sun. - 12 noon - 9 p.m.

**Palace Theatre**

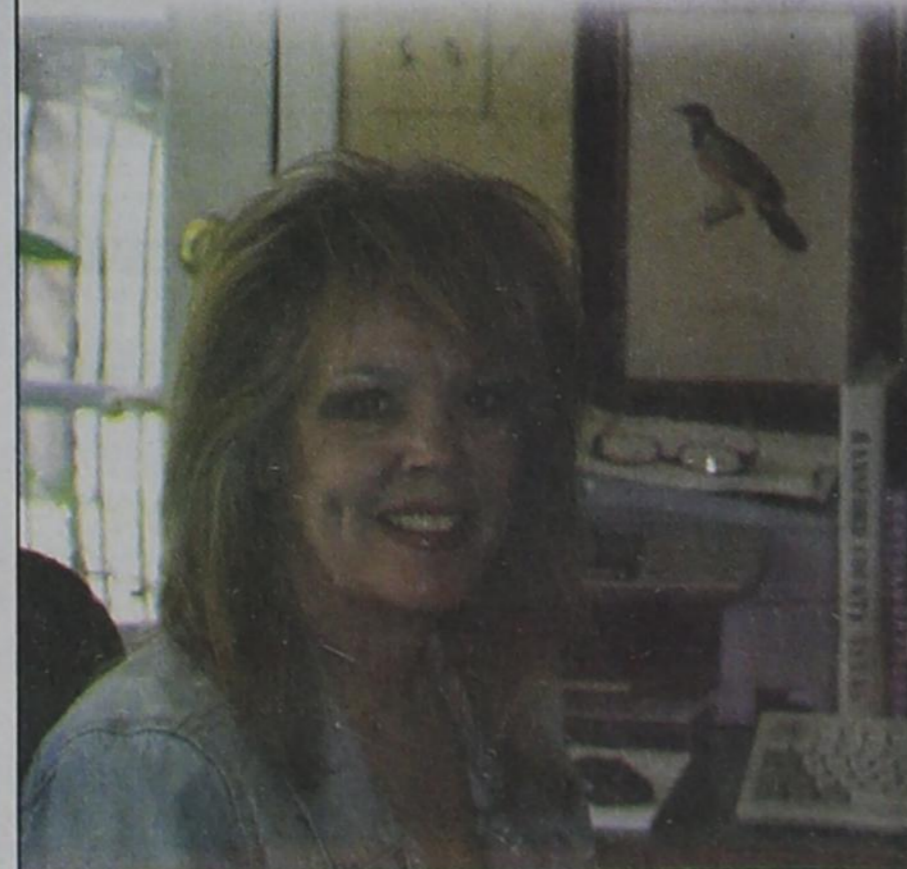
MOVIE SHOW TIMES  
Friday-Thursday - 7 p.m.  
Sunday - 2 p.m.  
Closed Sunday Night

FRESH POPCORN & DRINKS!  
PARTY ROOM & ARCADE  
MOVIE RENTALS

Palace Theatre  
210 Main Street  
Canadian TX 79014  
806-323-5133  
[www.palacetheatre.com](http://www.palacetheatre.com)

The Palace Theatre meets Lucasfilm THX specifications for site and sound quality.

"I honestly could not do what I do without PTCI." ~Gina Gillispie  
Editor, High Plains Observer  
[www.highplainsobserver.com](http://www.highplainsobserver.com)



**HIGH PLAINS OBSERVER**

**CODE RED**

**PTCI**  
Communication & Broadband Solutions

PTCI Internet has speeds up to 6 MBps.

"We have used PTCI as our Internet Service Provider for almost two years now. ...it's fast, it's easy, and the service is great!"

"My favorite thing about PTCI? They're involved in everything that goes on, whether it's high school sports or a business promotion. Any time there's a need in the community, they're willing to be a part of it."



721 W. 7th in Spearman 1-800-562-2556 [www.ptci.net](http://www.ptci.net)