

# THE HANSFORD COUNTY Reporter-Statesman

Serving Hansford County Since 1907

Look for Spearman on the Internet at <http://www.webtex.com:80/Spearman>

THURSDAY, APRIL 25, 1996

213 MAIN • SPEARMAN, TEXAS, 79081

VOLUME 89, ISSUE 17

## Hansford Happenings

### Attention Swimmers

If you are interested in being on the Spearman Swim Team this summer, please contact Michelle Goodheart at 659-5611 or 659-3424 or Kitty Edwards at 659-3773. You don't have to be a super swimmer. Beginners are very welcome. Come join the team and have fun.

### Medical Fund

A medical fund has been established for Betty Oltman at the First National Bank in Spearman. To make a donation, go by the bank at 729 West 7th or call 659-5544.

### Spearman Heritage Throws

The Spearman Heritage Throws have been reordered. Delivery of blankets will be around April 9th. If you would like one of the Heritage Throws reserved for you, call the Chamber at 659-5555. All throws are navy.

### Extra Trees

The Gruver Chamber of Commerce has received extra trees. If you would like to purchase trees, call the Gruver Chamber of Commerce at 733-5114 and they will tell you what trees are available.

### Scout Merit Badge Counselors Needed

Do you have an interesting job? How about a fun hobby? Would you like to help a future Eagle Scout earn a merit badge? Here is your chance! Spearman Boy Scout Troop 551 is looking for merit badge counselors. To become a counselor, you must be over 18, fill out a merit badge counselor form, and fill out an adult leader application. It costs you nothing to become a counselor. A list of requirements for each merit badge will be provided for the counselor. The role of merit badge counselor is basically for one year. Then if you wish to continue as a counselor, you need only to reapply. The merit badges cover a wide range of topics and activities, giving Boy Scouts the opportunity to discover all sorts of interesting things about the world they live in. You can help a future Eagle Scout - become a merit badge counselor today! For more information or an application, please call Andy Scarborough, Assistant Scout master, at 659-3882.

### "Miss Hansford County Pageant"

"Miss Hansford County Pageant" entry forms are available at Michele's, Lady Fair, Kid's Stuff, Main Street in Gruver, and the Chamber of Commerce office. The entry deadline is April 30th. Call Cindy Avila or the chamber office for more information. Scholarships are awarded to Miss Hansford, the 1st Runner-Up and the 2nd Runner-Up.

### "Cristo Es Vida! Para Ti!"

Te invitamos a celebrar vida y disfrutar a CRISTO! El 25-28 de Abril a la Primera Iglesia Bautista, 502 E. 7th Ave. Spearman, Texas a las 7:00 p.m. con el evangelista Sammy Fuentes. Sammy Fuentes es un evangelista internacional que ha proclamado "La Vida Abundante en Cristo" pro los Estados Unidos y en 12 paises del mundo. "Dios quiere llegar a tu vida! Para llenarte de Gozo, Paz, y Vida Eterna!"

### Pet Vaccination Week

The week of May 6th through May 11th is "Pet Vaccination Week." The Hansford County Veterinary Hospital and the Police Department will conduct a week long rabies/vaccination clinic at the Veterinary Hospital. Fees for the vaccinations and tests for dogs and cats will be discounted. The fee for a rabies vaccination will be \$7.00, Distemper-Parvo will be \$17.00, Heartworm Check - \$18.00, Feline Leukemia - \$14.00, Feline Rabies and Distemper - \$17.00, and a Feline Leukemia Test will be \$20.00. Please have your pets vaccinated.

### Hansford Hospice Garage Sale

Hansford Hospice Volunteers need donations of items for their annual garage sale on May 10th and 11th. We need clean, wearable clothing, furniture, kitchen and household items, garden and yard items, books, toys, tools, etc. Please bring these items to Kay Hamilton's Old Cafe on Main Street in Spearman on the following dates: Saturday, April 27th from 12:00-2:00 p.m.; Saturday, May 4th from 12:00-2:00 p.m. For large item pick-up, call the Hospice office at 659-2535 or call 659-2285. All funds raised by the garage sale will be used to take care of Hospice patients. The garage sale will be held on May 10th from 2:00-5:00 p.m. and on May 11th from 10:00 a.m.-5:00 p.m.

### Morse Community Building Garage Sale

The citizens of Morse are hosting a Garage Sale on Saturday, May 4th, beginning at 9:00 a.m. The purpose for the garage sale is to raise money for a new Community Building. Item donations will be accepted May 2nd and 3rd. For more information, or to donate, call 733-2323 or 878-2776.

### Pringle-Morse 4-H Club Secret Pals Dinner

The Pringle-Morse 4-H Club would like to invite all of their Secret Pals to Dinner on May 11, 1996 at 7:00 p.m. at the Pringle-Morse School. For more information call Sadie at 733-2263. If you have been a 4-H pal in the past, please join us.

### Memorial Wreaths

The Golden Spread Senior Citizens has Memorial Wreaths for sale. Special orders will be taken until April 30th.

### Panhandle Crisis Center Hosts Lunch & Learn

The Panhandle Crisis Center is hosting a lunch and learn from 12:00-1:00 p.m. at Ivy's Hungry Cowboy on Thursday and Friday, April 25th and 26th. Thursday's speaker will be Deputy Allen Mires from the Hansford County Sheriff's office. He will present law enforcement's response to domestic violence. Friday's discussion will be presented by the PCC staff on sexual assault.

## In The Panhandle

### Cal Farley U.S. Postage Stamp Dedication

A ceremony dedicating the Cal Farley U.S. postage stamp will be held at 3:30 p.m. on April 26th in the Grand Plaza of the Amarillo Civic Center. Featured speakers are Gemie Farley Harriman, Cal Farley's daughter, and Amarillo postmaster Jim Pridmore.

### Pioneer Days Celebration - Guymon, Oklahoma

The Pioneer Days Celebration will run April 24th through May 5th in Guymon, Oklahoma. Highlights of the event include a PRCA Rodeo beginning at 8:00 p.m. on May 3rd in the Pioneer Arena; an Old Timer's Chuck Wagon Breakfast at sunup May 4th, followed by the Pioneer Days Parade at 10:30 a.m. Arts & Crafts shows, Western dress contests and other events are scheduled throughout the week. For more information, call (405) 338-3376.

### Guymon Community Theatre presents "Who's On First?"

The Guymon Community Theatre will present the comedy "Who's On First?" by Jack Sharkey, on April 26th, and 27th at 8:00 p.m., and April 28th at 2:00 p.m. The cost is \$5.00 per person. For more information, or reservations, call (405) 338-0019.

### OPUS Spring Concert Slated

The Oklahoma Panhandle State University department of music will present its annual spring concert at 8:00 p.m. on April 30th in the Student Union Ballroom. The concert will feature the University Concert Choir, Madrigal Singers and PIZZAZZ.

## Municipal Judge Introduces 4MY TEEN Program

### Municipal Court Judge Gary Ellsworth introduces 4MY TEEN to Spearman and Hansford county

and will begin using the 4 MY TEEN - teen drivers monitoring service in his court as an alternative sentencing tool.

4MY TEEN, a teen drivers monitoring service, founded by Tom Deats, an Arlington Police Officer, is celebrating its second year of service to parents, teens, and communities throughout the State of Texas. The service allows parents of teen drivers to register their teen with 4MY TEEN. Information about the teen and the car(s) they drive is entered into the 4MY TEEN data base and the parents are given a bumper sticker for placement on the teen's car which reads "HOW'S MY DRIVING - CALL - 1-800-4MY TEEN". Citizens note teen driving behaviors, compliments or complaints, and report the behavior to the 1-800 hot line. As matches are made by the database, a report is generated describing the teen's driving

behavior, and forwarded to the parents of the registered teen. Parents can review the report and then take any action they deem appropriate. The program is being used by Municipal Courts around the state as an alternative sentencing option for deferred adjudications. Teens who have traffic citations may request deferred adjudication, and in exchange for registration in the program and any other conditions the court may require, will be given the opportunity to have the citation dismissed. Judge Ellsworth stresses that teens do not have to be referred by the court to participate in the program. We prefer to see teens participating in the program on a voluntary basis as a visual symbol of their commitment to safe driving.

Tom Deats, founder of the service, and father of two teenage sons, says that hundreds of teens are registered with the service and interestingly, he has received

six (6) times as many calls reporting compliments on teen drivers than complaints. "We want to let people know that not all teens are bad drivers and that many of them are very responsible drivers," says Deats. A recent survey of 200 participants revealed a paranoia on behalf of the teens displaying the bumper sticker. Deats says, "If that's what the program is doing, then it is working...We want the kids to think about their driving."

Judge Ellsworth is encouraging civic sponsorship of the program to help get the word out and make

a difference among our teen drivers while promoting good community relations. 4MY TEEN can be used by school PTA's, insurance companies, car dealerships, church youth groups, Booster clubs, or any other organization concerned with the safety and welfare of driving teens.

The cost for registration in the program is \$25.00 per year. If displaying a 4MY TEEN sticker prevents just one teen driving accident, injury, or death, then it's best \$25.00 a parent could spend on their teen driver.



(Back Row, L-R) Jorge Soto Guzman, Ginger Turner, Teresa Rey Carrasco, and Edith Schruon Arteaga. (Front Row, L-R) Father Fern and Elena Torres Seguel. Members of the Chilian Rotary Club District 340 visited Spearman on Tuesday, April 23rd during a visit to the High Plains Rotary District. They spent five days in Big Spring, five days in Lubbock, two days in Borger, one day in Spearman, and two days in Perryton. They will return to Santiago, Chili on Friday, April 26, 1996. The women are members of the Rotary Club Calicanto. This is the second rotary club in the world founded for women, and is currently the largest women's rotary club. Jorge is a member of the Rotary Club Providencia. Edeth commented, "This is a very attractive land, and the people are very kind." Next year members of the High Plains Rotary District will travel to Chili.

## Hansford Hospice Seeking Donations

Hansford Hospice Volunteers need donations of items for their annual garage sale on May 10-11. We need clean, wearable clothing, furniture, kitchen and household items, garden and yard items, books, toys, tools, etc.

Please bring these items to Kay Hamilton's Old Cafe on Main

Street, Spearman, on the following dates: Saturday, April 27 - 12:00-2:00 p.m., Saturday, May 4th - 12:00-2:00 p.m.

For large item pick-up call Hospice office 659-2535 or call 659-2285. All funds raised by the garage sale will be used to take care of Hospice patients.

## Hansford Golf Course Hires New Superintendent



Kelley Cornelson by Angela Wright

It has been said that change is for the better. Following this belief changes are being made at the Hansford Golf Club. Kelley Cornelson has been hired as the new course superintendent. "To my knowledge, Cornelson is the first one at the Hansford Golf Club to have a degree in turf management," stated Billy Kelly, director. "We are excited about having him here."

Cornelson has been involved in the golfing industry for several years. He worked at the Ross

Rogers Golf Course in Amarillo for three years. It was in Amarillo he became interested in Golf Course Turf Management and decided to attend Western Texas College at Snyder to further his knowledge in the subject. While attending classes he studied landscape construction, soil analysis, chemical application, and turf disease and insects. He also studied leveling, surveying, and efficient watering practices.

After two years he graduated with an Associate Arts Degree in Applied Science. He then went to work as course superintendent for Littlefield Golf Course in Littlefield, Texas. From there he moved to Garden City, Kansas, where he worked as a greens keeper at Buffalo Dunes, which is one of the top 50 municipal courses in the United States. Before coming to Hansford County, Cornelson was the course superintendent for the Cimmaron Valley Golf Course in Satanta, Kansas.

Upon coming to Hansford

County, Cornelson has set some goals for the golf course. He stated, "The course has fallen into a slight state of disrepair. I want to get the course in the best condition possible with the resources that are available, the main priority being the greens and tees." Although Cornelson is licensed with the state of Kansas to apply pesticides and other chemicals, he will have to test for a Texas license. He is planning on taking the test in April.

He is also planning some other changes. The golf shop will be open Tuesday through Sunday from 8 a.m. until dusk. Cornelson's wife, Jackie, will be operating the shop. Gradually they are planning to put basic golf merchandise in the shop.

Other plans include keeping golf balls for the driving range, making soft drinks and refreshments available at the course, and renting golf carts. Cornelson has also contacted P.G.A. Club Professional Emil Hale from the Comanche Trail Golf Course in Amarillo in regards to teaching golf clinics. According to Cornelson, Hale has agreed to conduct golf clinics once a month beginning in May.

While Cornelson has been setting goals, so has the Hansford Golf Club Board. In March approximately 70 trees were purchased from the National Arbor Foundation and through the Spearman Chamber of Commerce. The trees, which range from Colorado blue spruce to

silver maple, were purchased through membership donations, according to Mark Thomas, treasurer. Some of these trees have already been planted on the course, while others were placed in a tree nursery until they are large enough to be moved to the course.

So far in April the club has completed spiking the tees. They are also planning to aerate the greens, according to Cornelson. "This year we will deep tine the greens to a depth of 12 inches." He continued, "In this process a core approximately 1 inch wide and 12 inches deep in removed and then filled with a very fine sand. With sand being mixed with the existing soil more oxygen and water will get into the ground thus promoting a vigorous root system which is essential for healthy green."

It was also reported that during the fall all greens on the course have had the sprinklers automated and sprinklers have been added to the No. 2 fairway.

While changes have been made at the golf course, there have also been changes for the Cornelson family. The children (Bax - 12, Joshua - 11, Seth - 9, and Zedeki - 8) have changed schools and are attending classes in Spearman. According to Cornelson the school system was one of the reasons for coming to Hansford County. He also liked that it is a small community and having opportunity to use his skills to make a difference at the Hansford Golf Club.

## Cub Scout Fund Raiser

Spearman Cub Scouts began selling Pizza Hut coupons on April 15th to earn money for summer camp. Coupons will be sold until May 31, 1996.

The coupons will be sold for \$10.00 each and the cub scout pack will receive \$6.00 per coupon back from Pizza Hut. Coupons will be

honored at Pizza Huts in Spearman, Perryton, Guymon, Canadian, and Liberal.

Each scout receives a free order of breadsticks for each coupon sold. Additional prizes for top sellers will be given when the sell is over.





Cynthia Ann Winn and David Lyn Gray were united in marriage March 23, 1996 at 3:00 p.m. in the Sunset Lane Baptist Church, in Guymon, OK with Rev. Lloyd Riddles of Guymon officiating. The bride is the daughter of Bill and Nelda Winn of Gruver, TX. The groom's mother Vicki Gray, of Amarillo was also present.

The church was decorated with puffs and cascades of white tulle accented with royal blue bows and white wisteria. There were two large arrangements of white wisteria on two white Gujian columns.

Given in marriage by her father Bill Winn of Gruver, the bride wore a white satin formal gown. The bodice featured a printed waistline and sweetheart neckline accented with seed pearls. The skirt swept into a long train. A crown of seed pearls held her elbow-length veil of tulle.

The bride's bouquet of white roses, baby orchids stepharrotis and ivy was carried atop a satin-covered Bible which her mother carried when she was married. Inside the bouquet was a gold "Love-Knot" pin belonging to her maternal Great-Great Grandmother for something old. Something new was her bridal dress. Something borrowed was a

## Wedding Announcement

pearl necklace with a gold heart-shaped locket belonging to her maternal grandmother and she wore a blue garter. She was given a penny to put in her shoe for good luck by her father.

Matron of honor was Katie Robinson, a lifetime friend of Gruver, TX. Best man was Eric Hines of Dallas, TX, a friend of the groom. Ushers were Paul Winn, brother of the groom of Littlefield, TX, and Buddy

Burrows, cousin of the groom of Liberal, Ks.

A reception was held with the bride's table graced by a four-tier white cake with blue accents, a silver punch bowl and silver candelabras on a white lace tablecloth with white skirt and two blue chiffon puffs.

The grooms cake was a large chocolate cake with pecan fudge icing, silver coffee service and candelabra belonging to the

bride's paternal grandmother.

The bride is a 1991 graduate of Gruver High School. She graduated in 1995 from West Texas A&M University with a degree in Special Education. The groom graduated from Tascosa High School and is attending West Texas A&M University majoring in psychology, planning to graduate in May. He is employed by Headsets, Inc., Amarillo, TX

The couple will reside in Amarillo.

## Hansford County Historical Society Met

by Joanne Eaton

The Hansford County Historical Society met Monday, April 1, 1996 at Fort Zulu, 28 S. Townsend.

Members present were Joel Lee Lackey, Clementine Renner, Gus Renner, Helen Boyd, Rubyjo Wilbanks, J.D. Wilbanks, Johnnie Lee, Cindy Blackman, and Joanne Eaton.

The minutes were read, corrected, and approved.

J.D. Wilbanks, of the Hansford Preservation Committee, reported that Rubyjo Wilbanks, Clementine Renner, and Barbara Rojas attended the Northwest

Texas Museum District meeting in Borger. Museum associate, Bill Greene, gave a talk on how to display items in the library to make them more interesting to visitors.

Clementine Renner reported that she has found some less expensive Mylar to use in the preservation of articles and documents at the Museum.

The Museum has received a display case from the library. It will be used in Fort Zulu.

Barbara Daniels, of Amarillo, has loaned a settee and two chairs that were in Judge Beck's house. These date back to the late 1800's or early 1900's.

Cindy Blackman, of the Hansford Appreciation Committee, reported that the grant papers are about ready to go. She has researched several foundations to see who could help the quickest to find available money to add property holdings to the Museum expansion.

The First Christian Church donated an addressograph, mimeograph, and a couple other machines to the Museum.

Sylvia Robertson, of the Hansford Appreciation Committee, has finished the Gruver Cemetery census. This census will be combined with the other cemetery rosters.

## Nollner Wins Equestrian Honors

Chelsea Nollner participated in the Double E Hunter/Jumper Horse Show on Saturday and Sunday, April 20th and 21st in Amarillo.

Chelsea placed 1st in Youth Equitation, 1st in Youth Hunter under Saddle, 2nd in Low Hunter Under Saddle, 2nd in Hunter Hack X-Rail, and 5th in Intermediate Hunter under Saddle.

Chelsea is a 7th grader at Spearman Junior High. She is the daughter of Kyle and Jennifer Nollner. She has one brother, Zack, who is in the 1st grade.

## OPSU Workshop

Oklahoma Panhandle State University will be hosting a cheerleading workshop on Friday, April 26 from 5:30 to 8:30 p.m. in the OPSU Field House.

Co-ed Cheerleading tryouts for OPSU will be held on Saturday, April 27 at 11:00 a.m. in the OPSU Field House. Scholarships will be awarded to all cheerleaders who are selected.

If there are any questions, please contact Lora Haasl at 349-2611 ext. 268.

## Five Under Par Wins Scramble

The winning team in the Tuesday Scrambles at the Hansford Golf Club scored 5 under par 30. Play this week was from the back nine blue tees.

Members of the team were: Billy Kelly, Debra McNeely, Earl Goodheart, and Jimmy Morley.

## OSGOOD MONUMENT CO. Amarillo, Texas

Dealers of Rock of Ages Granite, as well as all colored granites, marble and bronze memorials.

Represented by **BOXWELL BROS. FUNERAL HOME**  
519 S. Evans • Spearman  
659-3802

## Jay's Waterwell Domestic Waterwell Sales & Service



Submersibles, Windmills, Pressure Pumps & Systems

(806) 659-3908

Mobile: 898-3294

(806) 435-2986

# SATURDAY, APRIL 27, 1996 AUCTION 10:00 A.M.

## ANTIQUQUE, ESTATE & REAL ESTATE AUCTION

416 W. 13th • Spearman, TX

Location: Approximately 1/2 mile E. of John Deere House - 1st house on left

### - REAL ESTATE SELLS AT 1:00 P.M. - 416 W. 13th Spearman, Texas



The Lois Allison Estate Will Offer The Following Real Estate At Auction. Real Estate Being Described As A 75'x100' Lot Out Of Sec. 88, Blk 4, T&NO RR Survey, Spearman, Hansford County Texas. Property Consists Of A 3 Bedroom, 2 Bath Home With 2074 Total Sq. Ft. - 480 Sq. Ft. In Garage. Sunroom, Vaulted Living Room Ceilings, Fireplace, Double Car Garage With Lighted & Ventilated Tornado Cellar, 6' Fenced Yard, Central Heat & Air, 2 Year Old Roof.

TERMS: 10% of purchase price will be deposited in escrow the day of sale. Seller will furnish title insurance. Purchaser will have 10 days to examine title at purchaser's expense & 30 days to produce letter of commitment from a lending institution. Balance upon closing. Standard Texas Real Estate Contract will apply. Closing costs will be split 50-50 between buyer and seller. 1995 and prior taxes paid by the seller. 1996 taxes prorated to day of closing.

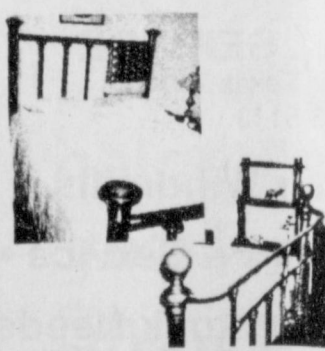
Cecil Biggers, Closing Agent.  
Every effort has been made to assure the accuracy of the information with no guarantee of authenticity. Any announcements made day of sale supersede all other announcements or advertising.

For Showing Or More Information Call Bozeman Auction Company, (806) 435-4472. Sale Subject To Confirmation And Acceptance Of High Bid By Seller.

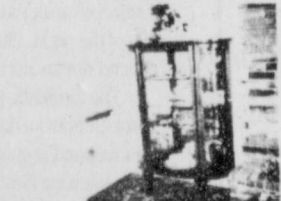
### ANTIQUES



9 Pc. Dining Room Suite, Buffet, China Cabinet, 6 Chairs. Mahogany Finish w/ 3 10" leaves. 44x60 Table



4 - Brass Double Beds - Nice



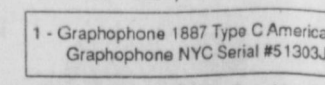
1 - Lg. Oak Curved Glass China Cabinet 62"x44"x3 Glass Shelves, Mirrored Back, 1 Door, Claw Feet



1 - Oak Small Roll Top Desk, Nice Sculptured



1 - Marbled Top 4 Drawer Dresser w/Mirror, 41" wx6" - Cherrywood



1 - Graphophone 1887 Type C American Graphophone NYC Serial #51303J

1 - Matching Sofa & Chair (2 cushions)  
1 - French Provincial Round Cocktail Table



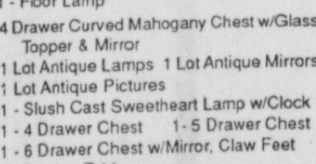
2 - Tiffany Style Lamps - Original Glass Panels



1 - Tiffany Style Ceiling Light Fixture - Nice 29" across-10 Main Panels, 10 Secondary Panels



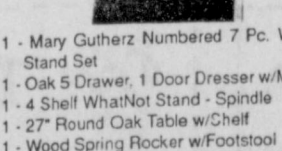
1 - Lg. Oak & Stained Glass Bar Lamp  
1 - Tiffany Lamp Shade - 2 Panels Missing  
8 - Bentwood Chairs 3 - Magazine Stands  
1 - Waterbury Mantel Clock 21" High - Oak Case



1 - Floor Lamp  
4 - Drawer Curved Mahogany Chest w/Glass Topper & Mirror  
1 - Lot Antique Lamps 1 Lot Antique Mirrors  
1 Lot Antique Pictures  
1 - Slush Cast Sweetheart Lamp w/Clock  
1 - 4 Drawer Chest 1 - 5 Drawer Chest  
1 - 6 Drawer Chest w/Mirror, Claw Feet  
1 - Sewing Table



1 - Mary Guthertz Numbered 7 Pc. Wash Stand Set  
1 - Oak 5 Drawer 1 Door Dresser w/Mirror  
1 - 4 Shell WhatNot Stand - Spindle  
1 - 27" Round Oak Table w/Chef  
1 - Wood Spring Rocker w/Footstool  
1 - Lot Glassware 1 - Lot Dishes & China  
1 Lot - Pre-War China - Nipon  
1 Lot Depression & Carnival Glass  
G357 Rosenthal White w/Gold Band 8-3 Pc. Place Settings (No Cups & Saucers, Soup Tureen, Gravy Boat, Veg. Bowl, Meat Platter)



1 - French Provincial Round Cocktail Table

- 1 Lot - Old Cookbooks
- 1 - CocCoo Clock - German Made
- 1 - Copper Boiler w/Lid
- 1 - Black Metal Steamer Trunk
- 1 Lg. Lot - Cast Iron Skillets
- 1 - Whitehouse Automotive French Fry Slicer
- 1 Lot - Antique Magazines & Antique Journals
- 1 Lg. Lot - Old Records

### KITCHEN

- Hotpoint Harvest Gold Fridge
- General Electric Upright Freezer
- Magic Chef Microwave w/Turntable
- General Electric Harvest Gold Matching HD Washer & Dryer
- 1 Lot - Kitchen Appliances Toaster Oven
- 1 Lot - CorningWare Sunbeam MixMaster
- 1 Lot - Cookware
- 1 Lot - Glass Baking Dishes
- 1 Lot - Kitchen Utensils
- 1 - Bread Box 1 Lot - Glasses
- 1 Lot - Misc. Dishes
- Sm. Round Kitchen Table w/Leaf
- 1 Lg. Lot - Aluminum Stock Pots
- 1 - 60 Cup Miro Matic Coffee Pot
- 1 Lg. Lot - Canning Jars
- 1 Lot - Coolers

### FURNITURE & TV'S

- Howard Miller Grandfather Clock
- RCA Home Theatre 24" Console TV w/Remote, Like New
- SR3000 Portable TV w/Remote
- 1 - VCR
- 1 Lot - End Tables
- 1 - Coffee Table
- Orange Rocker Tan Rocker
- Tan Recliners
- 1 Lot - Pictures & Wall Decorations
- 1 Lot - Silk Flowers
- 1 - Brass Quilt Rack
- 1 - 4 Drawer Chest
- 1 - Suit Hanger/Chair
- 1 - 5 Drawer Wood Desk - Nice
- TI Calculator
- 1 Lot - Linens
- 1 - Vanity Chair
- 1 Lot - Luggage
- 1 - Elec. Fan
- 1 Metal Legged Footstool
- 1 Lot - TV Trays
- 1 Lot - Books
- 1 Stetson Hat & Box from Ray Bears - Topeka, KS
- 1 Lot - Sewing Notions
- 1 Seca Bathroom Scales - 330 lbs.

### JEWELRY, TOOLS & MISC.

- Mr. Allen was an avid lapidarist & silversmith and we will have his tools, silver polisher, raw turquoise, agate rocks, gemstones, belt buckles, rings and bracelets in various stages of completion.
- 1 - Sm. Anvil
- 1 Lot - Mallets
- 1 - Ring Sizer
- 1 - Jewelers Loop
- 1 - Omega Polisher
- 1 Lot - Upholstery Tools
- 1 - Enamel Cabinet
- 1 Lot - Garden Tools

TERMS: CASH DAY OF SALE. NOTHING TO BE REMOVED UNTIL SETTLED FOR - NO EXCEPTIONS - WE MUST HAVE POSITIVE I.D. ON ALL CHECKS - ALL ANNOUNCEMENTS SALE DAY SUPERSEDES ALL PRIOR ADVERTISING. NOT RESPONSIBLE FOR ACCIDENTS - THE DESCRIPTION AND CONDITION AS SET FORTH ON EACH ITEM IS IN NO WAY A WARRANTY OR GUARANTEE - WE ARE AGENTS & AGENTS ONLY.

# Bozeman Auction Co. & Appraisal Service

Kenneth Bozeman - Auctioneer  
Certified Appraiser

Texas License - 9275

P.O. Box 786  
Perryton, Texas 79070

(806) 435-4472



## Our Sympathy

### Billy Ray McDowell

Billy Ray McDowell, Mannford, Okla., died Tuesday, April 16, 1996, in Amarillo.

Services were held at 10 a.m. today in Carmichael-Whitley Funeral Directors Colonial Chapel at Pampa, Texas, with the Rev. Mark Fleming, pastor of Kingsgate Fellowship Church at Lexington, officiating. Burial will be in the Mobeetie Cemetery at Mobeetie, TX, with full military graveside rites by the Army of Fort Hood, TX.

Mr. McDowell was born and raised in Pampa. He retired from the Army in 1978 and worked for Phillips Petroleum for 10 years. He moved to Mannford two years ago from Pampa. He was a member of Kingsgate Fellowship Church.

Survivors include a son, Robert McDowell of Magazine, Ark.; three daughters, Elizabeth Calloway of Dallas, Melissa Collier of Caulksville, Ark., and Mary Catherine Cohlma of Enid; three sisters, JoWanna Shackleford of Pampa, Mary Annette Hunter of Fletcher, Aleshia Crow of Amarillo; two brothers, Rodney McDowell of Gruver, Texas, and Sonny McDowell of Amarillo; 1 grandchild; and special friend, Bernice Jones of Mannford.

The family suggests memorials be to a favorite charity.

### Malcom Frank "Mack" Whirtz

Malcolm Frank "Mack" Wirtz, 88, well-known longtime Guymon businessman died early Monday, April 8th at the Hansford Manor in Spearman, TX.

The son of Anna L. (Gregory) and Edward Walter Wirtz, he was born September 3, 1907 in Oklahoma, MS. The Wirtz family moved to Brownsville, TX, where Mack spent his early

years. He was united in marriage to Vernon "Raye" Crossland on May 31, 1930 in Lovington, NM. Mr. Wirtz worked in construction in the Dallas area for several years before moving his family back to Brownsville in 1932. In 1938, Mack and his brother Walter, became partners in the construction business in Amarillo, Texas and the partnership later purchased Manard Lumber, renamed Amarillo Lumber Co., starting Mr. Wirtz' career in the lumber business.

The Wirtz family moved to Guymon in 1965 where he bought the Long Bell Lumber Company and later purchased Youtsler Lumber Company which was grown into Wirtz Lumber company and Ace Hardware. Mr. Wirtz was always active in civic affairs; he was past president of Amarillo Lions Club and was a Paul Harris Fellow and past president of the Guymon Rotary Club, where he was instrumental in the design and construction of the Rotary Pavillion at Sunset Lake park. He was a member of the Mr. & Mrs. Garden Club, the Guymon Parks Board and the Presbyterian Church, Guymon.

Survivors include his wife of 66 years, Mrs. Raye Wirtz of Guymon; two sons - Douglass Wirtz and wife, Betsy of Guymon and Joe Wirtz and wife, Linda of Washington, Maine; two sisters - Mary Louine Bayless of Pampa, TX, and Edna Pauline Johnson of Ft. Worth, TX; a brother - Robert Byron Wirtz of Grants Pass, Oregon; 5 grandchildren - Kim and husband, Dr. Michael Bloss of Lakewood, CO; Larry Wirtz and wife, Shelley, of Guymon; Sharron Wirtz of Portland, Maine; and 4 great-grandchildren - Natalie and Cassie Bloss of Lakewood, CO; Ian Simmons of Walboro, Maine and Molly Wirtz of Guymon.

He was preceded in death by his parents and three brothers - Walter Ewing Wirtz, Howard Gregory Wirtz and George Ben Wirtz.

Graveside funeral services were held April 12th at 10:30 a.m. at Elmhurst Cemetery, with Rev. Jim Jacobson, pastor of the Presbyterian Church, officiating and Rev. Dick Powell, retired Wesleyan minister assisting. Services are under the direction of Henson-Novak Funeral Directors of Guymon.

The family has requested that memorial donations be made to the Presbyterian Church in lieu of floral tributes. Memorials will be accepted at Henson-Novak Funeral home, Box 1306, Guymon, OK 73942.



## NEW WORSHIP SERVICE

**8:30 A.M.  
BEGINS MAY 26!**

**Mark your calendars!!**

**First United Methodist Church,  
407 S. Haney, Spearman, 659-5503**

## Happy Birthday & Happy Anniversary

April 25

**Birthdays** - Jerry Orr, Tina Clawson, Bob Potts, Robert Hagerman, Keith Lewis, Pat Underwood, Donna Hill, Meagan Burrell, Mia Burrell, Greg Breland, Mary Bayless, Jodi Martin, Joshua Nash, and Roy Garcia  
**Anniversaries** - Mr. and Mrs. Randy Mitchell and Mr. and Mrs. Lewis Hill Jr.

April 26

**Birthdays** - DeeDee Johnson, Juanita Logsdon, Benny McClenagan, Angie Rimmel, Kenny Slough, Susie Hand, Bette Morris, Lyndee Cook, Linda Garcia, Ricky Ellsworth, Juan Rojas, Bob Marsh, Mike Burnam Jr., and Sumner Riggins  
**Anniversaries** - Mr. and Mrs. Keith Lamb, Mr. and Mrs. Ray Robertson, and Mr. and Mrs. Pete Vera.

April 27

**Birthdays** - Hart Derrington, Tek Ferguson, Archie Nelson, Sis Stanton, Mitzi Myers, Jerry Ross Jr., Marie Snider, Simona Rayes, April Tennessee, Elva Sullivan, Jean Burgess, Veronica Favela, Wilma Reese, and Alan Hutchinson  
**Anniversaries** - Mr. and Mrs. Victor White

April 28

**Birthdays** - Kodie Carthell, Wade Dahl, Jerry Duncan, Pat Harris, Jody Irwin, Krysanne Johnson, Shirley Lowe, Elvin Martin, Scott Swan, Kerry McMullan, Tammy Savage,

Vernon Tindell, John Henry Hughes, Sambo Connelly, Clark Bridges, Victoria Vela, and Jessica Mayo

**Anniversaries** - Mr. and Mrs. Roy Riley, James and Linda Owens, Mr. and Mrs. Bill Gaither, and Robbie and Valerie Shield.

April 29

**Birthdays** - Jill Garrett, Clay Hobbs, Betty Roberts, Estelle Jackson, Britton Benge, Burton Williams, Robbie Shields, Christine Harnish, Dora Alvarez, Greg Odegard, Ila Willis, and Randi Atwood.

April 30

**Birthdays** - Golda Mae Dunnihoo, Debra Cook, Ed Garner, Shawn Martin, M.A. Brand, Robert Cantu, Cora Lee Jarvis, and Hector Hermosillo.

May 1

**Birthdays** - Eva Dozier, Josie Kiser, Cori Lowe, Marti Garnett, Jarett Swan, April Jarvis, Gina Hamilton, Earl Spencer, James Sterling, Hayden

Shook, Ryan Attwood, Christine States, Angela Coombs, Devin Delozier, Victoria Renteria, and Allan Thompson.

**Anniversaries** - Mr. and Mrs. Bobby Smith and Ronnie and Coleen Schaefer.

May 2

**Birthdays** - Michael Booth, Hack Johnson, Roy Kauffman, Whitney Lillie, Chad Logsdon, Roscoe Nelson, Marsha Shaver, Carolyn Gressett, Melodie Schuman, Bryan Jenkins, Dalene Baker, Nick Renteria, Rex Shook, Lynn Davis, Keith Gibson, Connie Poppy, and Annie Torres.  
**Anniversaries** - Mr. and Mrs. Jose Vaquera.

May 3

**Birthdays** - Gilbert Perez, Jon Tolleson, Roy Wells, Patty Sheppard, Cruz Garcia, Rita Reed, Kendra Ivy, Linda Deluna, Derek George, Jason Harnish, April LaFarr, Michael Sparkman, Anna Marie Stedje, and Jewel Thomas.

**We Salute You!**

The Pringle-Morse PTA and community are extremely proud of their school system. If you know any of the teachers, staff, administrators, volunteers, or school board members, please congratulate them for their work and support of this fine school district.

**PTA Teachers  
Appreciation Week  
May 6th-10th**

Let us replenish the seed of faith through...

**DAILY BIBLE READING, PRAYER & REGULAR CHURCH ATTENDANCE**

### Focus On The Family

**QUESTION:** My wife is a full-time homemaker, and we have three children under 6 years of age. She often gets depressed, especially when she can't keep up with everything expected of her. But I have my hands full too, and am required to put in a lot of overtime. What can I do to help my wife cope with these busy years?

**DR DOBSON:** Let me make two suggestions to you: 1. For some reason, human beings (and particularly women) tolerate stresses and pressures much more easily if at least one other person knows they are enduring it. This principle is filed under the category of "human understanding," and it is highly relevant to homemakers.

The frustrations of raising small children and handling domestic duties will be more manageable for your wife if you will let her know that you comprehend it all. Even if you can do nothing to change the situation, simply your awareness that she did an admirable job today will make it easier for her to repeat the assignment tomorrow.

Instead, the opposite usually occurs. At least 8 million husbands will stumble into the same unforgivable question tonight: "What did you do all day, dear?" The very nature of the question implies that she had been sitting on her back-side watching television and drinking coffee since arising at noon! She could kill him for saying it!

Everyone needs to know that he is respected for the way he meets his responsibilities. Husbands get this emotional nurture through job promotions, raises in pay, annual evaluations and incidental praise during the workday. Women at home get it from their husbands—if they get it at all. The most unhappy wives and mothers are often those who handle their fatigue and time pressure in solitude, and their men are never very sure why they always act so tired.

2. Husbands and wives should constantly guard against the scourge of over commitment. Even worthwhile and enjoyable activities become demanding when they consume the last ounce of energy or the remaining free moments in the day.

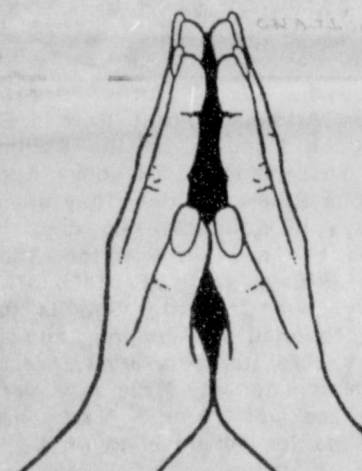
Though it is rarely possible for a busy family, everyone needs to waste some time every now and then—to walk along kicking rocks and thinking pleasant thoughts. Men need time to putter in the garage, and women need to pluck their eyebrows and do the girlish things again.

But as I have described, the whole world seems to conspire against such reconstructive activities. Even our vacations are hectic: "We have to reach St. Louis by sundown or we lose our reservations."

I can provide a simple prescription for a happier, healthier life, but it must be implemented by the individual family. You must resolve to slow your pace; you must learn to say "no" gracefully; you must resist the temptation to chase after more pleasures, more hobbies, more social entanglements; you must "hold the line" with the tenacity of a tackle for a professional football team.

In essence, three questions should be asked about every new activity that presents itself: Is it worthy of our time? What will be eliminated if it is added? What will be its impact on our family life?

My suspicion is that most of the items in our busy day would score rather poorly on this three-item test.



This feature is made possible through the sponsorship of these civic minded businesses.

**Boxwell Bros. Funeral Home**

**CORONADO HOSPITAL**  
Pampa, Texas  
(806) 665-3721

Compliments of **G&G FOODLINER**  
516 Main • Gruver, TX  
733-2471

**Bartlett's Ace Hardware**  
105 W. Broadway • Gruver, TX  
733-2404

**BERRY CLEANERS**  
DAN DESIMONE • OWNER  
Phone 659-3122 • P.O. Box 1017  
207 Main St. • Spearman, TX

"WE SUPPORT OUR LOCAL CHURCHES"  
**CAPROCK #1 & #2**  
Bill Park, Gen. Mgr.  
(806) 733-5043 or 733-5025  
"Custom Cattle Feeding"

- In Spearman . . .**
- Apostolic Faith Church**  
822 S. Dessen • 659-2870  
Sunday School: 10 a.m.  
Worship: 11 a.m.  
Evening Worship: 6 p.m., Sun.  
Wed. Prayer Meeting: 7:30 p.m.  
Pastor - James Brown
  - First Assembly of God**  
401 N. Bernice • 659-2295  
Sunday School: 9:45 a.m.  
Worship: 10:50 a.m.  
Evening Worship: 7 p.m.  
Wed. Worship: 7:30 p.m.  
Youth: 7:30 Wednesday  
Pastor - Walter Greaser, Jr.
  - First Christian Church (Disciples of Christ)**  
29 S. Bernice • 659-2036  
Sunday School: 9:45 a.m.  
Worship: 10:50 a.m.  
Evening Bible Study  
Worship: 6:30 p.m., Sun.  
Pastor - LaVern Draper
  - First Baptist Church**  
123 N. Bernice • 659-5557  
Sunday School: 9:45 a.m.  
Worship: 11 a.m.  
Evening Worship: 7 p.m.  
Jr. High Youth: 6 p.m., Wed.  
High School Youth: 7 p.m., Wed.  
Youth Choir: 6 p.m., Sun.  
Pastor - Kyle Henderson
  - Church of Christ**  
121 S. Haney • 659-3244  
Sunday Bible Class: 9:45 a.m.  
Worship: 10:30 a.m.  
Evening Worship: p.m.  
Bible Study Wed.: 7:30 p.m.  
KRDF Radio Program  
Living With Christ: 7:50 a.m., M-F  
Minister - Arnis Pape
  - Sacred Heart Catholic Church**  
901 Roland • 659-2792  
Sat. Night Mass: 7 p.m.  
Sunday Mass: 8:45 a.m. - English  
(8:45 a.m. Service on KRDF 98.3 FM)  
Sunday Mass: 11:15 - Spanish  
1:30 p.m. - Gruver - Christo  
Renditor Mass - Spanish  
Rev. Fernand Couture
- In Gruver . . .**
- Trinity Community Church**  
717 W. 7th Ave. • 659-2671  
Worship Service & Children's Church: 10:30 a.m.  
Sunday Night School: 5:30 p.m.  
Wed., Night Youth: 7 p.m.  
Interim Pastor - Richard Humphries
  - First Presbyterian Church (Worships with Faith Lutheran Church)**  
1021 Cotter • 659-2033  
Sunday School: 9:45 a.m. at Lutheran Church  
Worship: 11 a.m. (alternates monthly between Lutheran and Presbyterian Church Buildings)  
Pastor - Beverly Cook
  - Faith Lutheran Church (ELCA)**  
1101 Bernice • 659-2252  
(Worships with First Presbyterian Church)
  - First United Methodist**  
407 S. Haney • 659-5503  
Sunday School: 9:45 a.m.  
Worship: 11 a.m.  
Jr. High Youth: 5 p.m. Sunday  
High School: 6 p.m. Sunday  
Rainbow Kids Club: 3:00 Wednesday  
Pastor - Jeff Lust
  - Union Church**  
31 S. Endicott • 659-2644  
Sunday School: 9:45 a.m.  
Worship: 10:45 a.m.  
Evening Worship: 6 p.m.  
Bible Study & Prayer Mig.: 7 p.m., Wed.  
Pastor - Billy Stanford
  - Fellowship Baptist**  
1102 S. Archer • 659-2783  
Sunday School: 10 a.m.  
Worship: 11 a.m.  
Evening Worship: 6 p.m. Sunday  
Youth & Adult Serv.: 7:30 Wed.  
Pastor - Tim Luttrall
  - Primera Mision Bautista**  
502 E. 7th • 659-3991  
Sunday School: 9:45 a.m.  
Worship: 11 a.m.; Evening: 6 p.m.  
Wed. Prayer Meeting: 7 p.m.  
Thurs. Visitation: 7 p.m.  
Pastor - Isaias Martinez
  - First Baptist Church**  
402 E. Broadway • 733-2411  
Sunday School: 9:45 a.m.  
Worship: 10:50 a.m.  
Disciple Training: 6 p.m., Sunday  
Prayer Meeting: 7:30 p.m., Wednesday  
Pastor - Larry Miller
  - Church of Christ**  
209 King • 733-2760  
Sunday School: 9:30 a.m.  
Worship: 10:20 a.m.  
Evening Worship: 6 p.m.  
Wed. Evening Worship: 7:30 p.m.  
Minister - Bob Setliff
  - First Christian Church**  
510 King • 733-2960  
Sunday School: 9:45 a.m.  
Worship: 11 a.m.  
Wed. Bible Study: 7:30 p.m.  
Youth: 6:30, Wednesday  
Pastor - Gary Gumfory
  - Oslo Lutheran Church (ELCA)**  
West of Gruver on Hwy. 15 & N. FM 1162  
339-7646  
Sunday School: 9:45 a.m.  
Worship: 11 a.m.  
Morning Prayer: 9 a.m., Wednesday  
Pioneer Clubs (Grades 1-6): 4-5:30 p.m., Wed.  
Pastor - John R. Chandler
  - Community Bible Church (Interdenominational)**  
Hwy. 15 • 733-2443  
Sunday School: 10 a.m.  
Worship: 11 a.m.  
Wed. Prayer Meeting: 7 p.m.
  - First United Methodist**  
Broadway & Garrett • 733-2651  
Sunday School: 9:45 a.m.  
Worship: 8:30 a.m. & 10:50 a.m.  
Evening Worship: 6 p.m.  
Pastor - Lewis Holland
  - In Morse . . .**
  - Morse Baptist Church**  
733-2757  
Pastor - Mike Martin

**Morse Implement Company**  
"Join us in church this week"

**Gruver Cablevision**  
Quality Family Entertainment with "The Disney Channel"  
308 Main • 733-5295

**GILLASPIE**  
AUTO & TRUCK CENTER, INC.  
CHEVROLET • OLDS • PONTIAC • BUICK  
CHRYSLER • PLYMOUTH • DODGE  
Hwy. 207 South • P.O. Box 430  
Spearman, Texas 79081  
(806) 659-2541

**C.O.'S SUPPLY CO.**  
Plumbing & Tire Sales & Service  
421 W. Kenneth • Spearman, TX  
659-3781 or 659-3555

**Palo Duro Supper Club**  
22 S. Archer  
659-2232

**GRUVER FORD**  
Ford FORD  
531 Main • Gruver • 733-2431

**Interstate Savings & Loan**  
322 Main • Spearman • 659-2559

Compliments of... **AGCO** of Spearman, Inc. "See you in Church" 659-3751

The Hansford County Reporter-Statesman Serving The Communities Of Spearman, Gruver & Morse 213 Main • Spearman, TX (806) 659-3434

**Deakin ELECTRIC**  
OILFIELD • RESIDENTIAL • COMMERCIAL  
321 S. MAIN • SPEARMAN  
1-800-999-1506 (806) 659-5016  
Chris Deakin President



# Congratulations

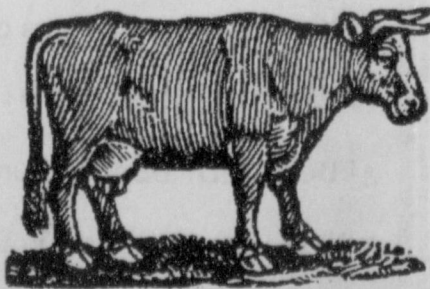
to the Young Eagle Flyers at the  
1996 Spearman Fly In  
April 20, 1996



## BUYERS

- |                           |                              |
|---------------------------|------------------------------|
| Gruver State Bank         | McCloy Rodeo                 |
| C.A. & Jerri Davis        | Frontier Feedyard            |
| Hansford Implement        | Cluck Flying                 |
| Perryton Equity           | Mr. & Mrs. Boots Williams    |
| Agco                      | Spearman Cattle Feeders      |
| H & H Water Well          | Tom & Linda Latta            |
| First State Bank          | Hickerson Jewelers           |
| Bud, Shirley & Randy Lowe | Hansford Agency              |
| First National Bank       | Hereford Bi-Products         |
| Five Star Equipment       | Lone Star Service Center     |
| Willard & Mary Murrey     | JK Farm & Ranch Supply       |
| Caprock                   | Kevin & Ronda Holt           |
| Purina Mills              | Upjohn Animal Health         |
| Gruver Agri               | Larry's Welding              |
| Attebury Grain            | Panhandle Implement          |
| Donahue Ditching          | Palo Duro Feedyard           |
| Hi-Plains Auto            | G & G Foodliner              |
| First Bank Southwest      | Britt Jarvis                 |
| Cargill of Spearman       | Sunray Co-op, Gruver Branch  |
| Guymon Livestock          | David Armes                  |
| Carl Cooper               | Pat Holt                     |
| John Pipkin               | Berry Grain                  |
| Gigot Agri Products       | Sparks Bros. Spraying        |
| Hansford Vet Clinic       | L & M Bodyworks              |
| Vance & Ruth Morris       | Pittman & Sons               |
| Renner/Pearson            | Montgomery Girls             |
| Tommy & Sharon Saltzman   | Gruver Redi-Mix              |
| Bartlett's Ace Hardware   | Joe & Nancy Morris           |
| Bob Cluck                 | Pool Chemical                |
| Aero Flight Publications  | Little Tiffany's             |
| Clint & Jody Irwin        | Clark Bridges                |
| Morris Stock Farm         | Rhone-Poulene Chemical       |
| Archie Smith              | Slough Children              |
| Grotegut Farms            | Winger Cattle Co.            |
| Hi-Pro                    | Batman Grain                 |
| D & D Cattle Hauling      | Leon Red                     |
| Clay Reid                 | L & H Farms                  |
| Phillip Renner            | Red Hamilton                 |
| Wes Maupin                | Gruver Mafia                 |
|                           | Perryton & Spearman Redi-Mix |

The Hansford  
County Livestock  
Association would  
like to thank the  
Buyers, Goat  
Shares, Donors,  
and others who  
helped make this  
year's Livestock  
Show a success.



## GOAT SHARES

- |                          |                                |
|--------------------------|--------------------------------|
| Al McNeely               | Bill Hunter                    |
| Dennis Stedje            | Mrs. Gordon Stedje             |
| Tracy & Regina Vernon    | Aubrey Rasor                   |
| Jesus Renteria           | Billy Kelly, Jr.               |
| Richard Pipkin           | Tommy & Sharon Saltzman        |
| Kenton Johnson           | Billy Britt Jarvis             |
| Sparks Brothers Spraying | Loyall Turner                  |
| Elaine Herrington        | Kevin Williams                 |
| Burt Williams            | Bob Davis                      |
| Earl's TV & Appliance    | Michele's                      |
| Little Red Caboose       | Brad Hart                      |
| Robert Whitaker          | Clay Montgomery                |
| B & B Sales Co.          | Main Street Store              |
| McCloys                  | Pittman & Sons                 |
| Danny Herrington         | Enron Corp.                    |
| Gillespie Auto           | Richard Wagner                 |
| J.C. Harris              | Interstate Savings & Loan      |
| SPS                      | High Plains Federal Land Bank, |
| North Plains Chemical    | Perryton                       |
| Rick Harrell             | Tri-State Chemical - Dumas     |

## DONORS & Others

- |                          |                         |
|--------------------------|-------------------------|
| Gruver State Bank        | Hansford Supply, Inc.   |
| Gruver Ford              | Lowe's Market Place     |
| First National Bank      | Brock Insurance Agency  |
| First State Bank         | Archie Smith Concrete   |
| Gruver Agri-Ind., Inc.   | Construction            |
| Phillip Renner           | Gruver Farm Supply      |
| JK Farms & Ranch Supply  | James Schnell           |
| David Armes              | Cathy Boone             |
| Gruver Redi-Mix          | Monty Black             |
| Larry's Welding          | Britt Jarvis            |
| Richard & Wanda Wagner   | Frank Edwards           |
| Ty Williams              | Peggy Winegarner        |
| Norma Jean Mackie        | Todd Williams           |
| Joe T. Venneman          | Teri Montgomery         |
| Greg Odegaard            | Roger Odegaard          |
| Bobby Hicks              | Jimmy Greene            |
| L & L Coffee             | Extension Homemakers    |
| Flint Rock Land & Cattle | Caprock I               |
| Caprock II               | DGC                     |
| McCloy Feedyard          | Palo Duro Feeders       |
| Frontier Feedyard        | Spearman Cattle Feeders |
|                          | Joe & Nancy Morris      |



## GISD Students To Attend State



Joni Hart



KiKi Carthel

Ten Gruver High School students attended the Regional UIL Academic Qualifiers meet in Abilene on Saturday, April 20th.

Those participating were: **Scott Jarvis** - Alternate in Prose Interpretation, **Doug Gumfory** - Literary Criticism, **Joni Hart** - Editorial Writing, and Alternate for News Writing, **Amber Murrell** - Ready Writing, **Kris Kanczewski** - Alternate in Mathematics, **Cody Cazares** - Current Issues & Events, **Roxane Holt** - Editorial Writing, **Tara Shapley** - Feature Writing, **KiKi Carthel** - Feature Writing, News Writing and Headline Writing,

**Mary Dawin Henson** - Alternate in Ready Writing, and **Tucker Henson** - Alternate in Lincoln-Douglas Debate.

**KiKi Carthel** placed 2nd in Headline Writing and 6th in Feature Writing, **Joni Hart** placed 3rd in Editorials, **Doug Gumfory** placed 7th in Literary Criticism, and **Cody Cazares** placed 8th in Current Issues & Events.

**KiKi** and **Joni** will attend the State UIL Academic meet on May 3rd and 4th in Austin, Texas. **KiKi** will participate in Headline Writing, and **Joni** will participate in Editorials.

## Tri-State HSRA Results

The Tri-State High School Rodeo Association qualifies the contestant for the finals by a system of points that is calculated every week. Through Sunday, April 14 those from Hansford County were: **Holly McCloy**, 11th in break-away roping; **Sahala McCloy**, 7th in goat tying; **Quentin Harper**, 3rd in calf roping; **Travis**

**Holland**, 1st in heading; **Randy Maness**, 4th in heeling; **Pake Maynes**, 5th in heeling; **Pake Maynes**, 4th in Rookie boy all around. Results for Saturday Rodeo at Canyon: **Travis Holland-Ferron Lucero, Jr.** 2nd team roping; **Holly McCloy**, 8th goat tying; **Shala McCloy**, 3rd breakaway roping; **Holly McCloy**, 7th breakaway roping.

## TOPS Update

After weigh in **Connie Gammill** had us say our TOPS (Take Off Pounds Sensibly) pledge.

**Louise Evans** had roll call which we answer with our loss or gain. Nine weighed in and seven stayed for the meeting.

**Reba Hunter** drew a name for a gift. It was **Rosalie Cator** who picked a gift since she had lost.

**Reba** read an inspiration "Out of The Darkness."

**Connie Gammill** read her food menu for last week. We concluded our meeting by singing "Deny Yourself."

If anyone wants to join our TOPS we weigh in by 8:30 every Tuesday morning at the First Christian Church in Gruver.

## Lunch Menu

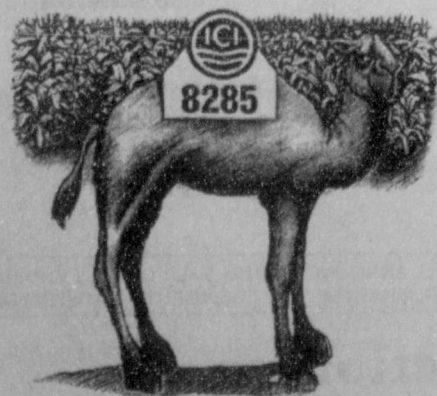
### Gruver School Menu

**BREAKFAST**  
April 29  
Cereal, Muffin, Juice/Milk  
April 30  
Breakfast Burrito, Juice/Milk  
May 1  
Two Pancakes, Syrup, Juice/Milk  
May 2  
2 Slices Toast, Juice/Milk  
May 3  
Two Cinnamon Rolls, Juice/Milk

### LUNCH

April 29  
Chicken Nuggets, French Fries, Green Beans, Roll, Pudding, Milk  
April 30  
Frito Pie, Salad, Fruit, Crackers, Milk  
May 1  
Sausage Pizza, Corn, Fruit, Jell-O, Milk  
May 2  
Pig-In-A-Blanket, Baked Beans, Fruit, Cowboy Bread, Milk  
May 3  
Hamburger, Cheese, Lettuce, Pickle, French Fries, Vanilla Ice Cream, Milk

A HYBRID THAT TOLERATES THE HEAT. THAT SHOULD PUT YOU OVER THE HUMP.



Nothing survives hot weather quite as well as ICI 8285. You see, this hybrid is heat tolerant. As a result, it can take high temperatures without losing its cool. So, give ICI 8285 a try. You'll see why it's such a hot seller.

Seeds  
DELIVERING TECHNOLOGY TO YOUR FIELD.  
**Darrell West • 659-3800**  
Ask about our 0% Interest Financing.

# Gruver News

## Gruver "HOUNDSOUND" Receives I

The Gruver High School "HOUNDSOUND" Band attended the Region I Concert band contest this past Tuesday, April 16 and placed First division in the Contest. This Superior rating is the highest a concert band can achieve at region contest and the first time in twelve years the band has made a "T" at this contest.

Band members were elated and are looking forward to future performances. The next performance on the band's schedule is a long awaited trip to the Musical Carousel music festival in San Antonio. The Band

will travel May 3, 4, 5, & 6 and tour downtown San Antonio and Fiesta Texas as well as their performance at the music festival.

Spring concert in our own auditorium is scheduled for Tuesday, May 14, at 7:00 p.m. featuring all Gruver Bands.

Gruver Fifth, Sixth, and Seventh grade bands will be attending the Dumas middle school festival Saturday, May 11. They will be performing their concert band music as well as solos and small ensembles in competition for trophies and medals.

## National Volunteer Week

During National Volunteer Week, April 21-27, 1996, Hansford Hospice recognizes the dedicated services provided by its volunteers. Hospice care offers a very special kind of care for terminally ill persons and their families and is one of the fastest growing health care services in the United States.

"Since 1991, Hansford Hospice has bought dignity and quality to the lives of hospice patients due in large part to our hardworking volunteers," said **Erin Bergin**, Director. "We applaud and thank each one of our volunteers for the wealth of time and compassion they give to the entire community," she said.

Hospice seeks to enable patients to carry on an alert, pain-free life so that their last days may be spent with dignity. Hospice care is provided through an interdisciplinary, medically directed team which typically includes a physician, a nurse, a counselor, a spiritual caregiver/clergy, and a home health aide. While Hansford Hospice employs paid

professionals, it relies on volunteers to provide assistance at all levels of skill.

Nationally, more than 95,000 hospice workers are volunteers. Last year these volunteers gave over 5 million hours of their time to serve terminally ill persons and their families. Locally, 45 persons donated their service to Hansford Hospice during the last year. Since 1991, 55 patients and families have been served by Hansford Hospice.

To find out how you can be a volunteer, contact Hansford Hospice at 659-2535 or 733-2954, extension 107.



**DIAMOND M**

**WATER WELL SERVICE**  
Box 917 • Gruver, Texas 79040  
(806) 733-5113

- Submersibles • Windmills •
- Complete Repairs & Service •
- For Home and Livestock Needs •

**Bo-da'-shus SALE!**

**\$99**

Offer Expires May 31, 1996

Golden Knot 10K Gold

Now, if you don't think this just isn't the spiffiest ring around, just clip it out and cut (carefully!) along the dotted line and give it a test run.

ARTCARVED

**Dunlavy Jewelry, Inc.**  
209 S. Main St. • Perryton, TX  
(806) 435-3136

## Out At The Lake

by Dorothy Hudson

Lake Depth--April 22, 1996--22 feet and 5.5 inches

Jim's report--I saw nine mule deer grazing by the road near the office when I came to work this morning. There are big white birds on the Lake--not pelicans, maybe egrets. A Hereford family and a family from Booker met each other at the Lake on Friday for a camping and fishing time.

John Wallinghoff of Hugoton, Kansas, caught a six pound walleye during the week. A Canadian couple came over with a boat and a fish finder for first time visit. Their fish finder is one that shows the size of the fish. They were finding big fish but were unable to catch them.

There were four campers in the R.V. Park this weekend, and quite a few people enjoyed the Park on our beautiful Sunday. The fish skunked the fishermen though.

Frances Alexander Murrell, who lives with her husband **Buddy** on a ranch on the Coldwater Creek in the north part of the county, told me an intriguing snake story. On a trip to Red River, New Mexico, when Frances was 13, a group of young people were shooting ground

squirrels near a trash collection point, when they spied a moderate size snake. They were too interested in the snake to shoot it, and as they were looking at it, the snake opened its mouth, and all of these little 6 inch snakes came out! Finally the snake overcame its fear of the young people and began catching and swallowing the young snakes again.

Frances and I both thought we had heard that snakes sometimes swallow their young to protect them. Hoping to find if this were true, I did some research at the Gruver Library. Two different books mentioned that people often thought this, but both books said it was not true. The myth had started from people seeing big snakes swallow little snakes. Some species of snakes (the King snake is one) are cannibals, and they are making a meal out of baby snakes.

A female snake that gives birth to her little ones may occupy the same spot for awhile with them before they crawl their different ways, but she does not take care of them in anyway. A baby that is hatched or born is at that time ready to make its way in the world, but it needs to watch out for all the creatures, including other snakes, that want to eat it.

## OPSU Rodeo Results

The Oklahoma Panhandle State University's Rodeo team participated in the NIRA Rodeo in Guymon, OK. Team results are as follows: Men's Team-3rd-PSU 240 points.

**Josh McIntyre**, OPSU Rodeo, placed 3rd in Steer Wrestling.

The regional results after this rodeo are as follows: OPSU Women's Team - 4th, OPSU Men's Team - 2nd.

**The Mutt Hutt Grooming Salon**  
Small & Large Dog Grooming  
Monday-Friday ¥ 9:00-5:00 ¥ Call 659-3354

## Put pivot control in the palm of your hand.



Use any touch-tone phone or business band radio to instantly check the status of your pivot. Start, stop, change direction and run wet or dry from your home or pickup. Utilize off-peak rate programs without getting up in the middle of the night. Plus, R-MAC is programmed to automatically send out an alarm in the event of trouble.

The Zimmatic R-MAC gives you the ability to monitor your pivot 24 hours a day, without setting a foot in the field. You can respond immediately to the status of your pivot for efficient system operation. Ask your Zimmatic dealer how R-MAC can help you monitor your field 24 hours a day.

### R-MAC CASH-BACK REBATE\*

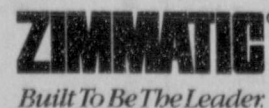
Purchase an R-MAC system between April 1 and May 31, 1996, to be installed no later than July 31, 1996, for tremendous payoffs:

- R-MAC for AIMS Basic...\$400 Cash Rebate
- R-MAC for competitive pivots...\$400 Cash Rebate
- R-MAC for AIMS Advance...\$200 Cash Rebate

\*Subject to dealer participation.

### Five Star Equipment, Inc.

Spearman, Texas ★★★★★ (806) 659-3743



Built To Be The Leader

Lindsay Manufacturing Company • P.O. Box 156 • Lindsay, Nebraska 68644 • 1-800-829-5300





by Joanne Eaton

Hansford County has had only twelve different Sheriffs since it was declared a county. On display at the Stationmaster's House is a case holding some Sheriff memorabilia, most of it donated or loaned by our present sheriff, R.L. McFarlin, Jr. The case itself was donated in memory of Harry Shedeck.

Each year an award is given to the Texas Lawman of the Year, the Greg McFarlin - Max Banks award, in memory of Greg McFarlin. It is presented by the Sheriffs' Association of Texas. Sheriff McFarlin was the president of this association in 1985-1986. One of these awards, a boxed 357 Colt Magnum, is on display.

A badge belonging to J.B. Cooke, a plaque of J.B. Cooke, a sheriff's patch, a collapsible drinking cup with lid, old, reading glasses with case, a Five State Peace Officers' ribbon, and a Hopkins & Allen .32 caliber pistol dated 1801 are some of the other items in the case.

One thing that particularly caught my eye was an old set of jail keys. They didn't look a thing like I thought they would. They are flat! Sheriff McFarlin said they possibly could have come from the first jail, a one-room place that sat next to the

present jail. It was not an inviting place, having very little light. Maybe that's what we need today to keep people on the straight and narrow. If the jail was a place they really dreaded to be, they might not want to go there.

Recently, a man released from jail told Sheriff McFarlin that he was going to sue him for "his breakfast being late." It had been a very busy day and night at the jail. He told him to go ahead! Maybe the man thought he was in a motel.

Jesse Hancock was sheriff during World War I. He was also on the draft board. Ladies would go to his house and cry when their husbands or sons had to go to war.

Sheriff Bob Martin did not have a jail when he was sheriff. He would take the prisoners to his house and chain them to a bed. Sometimes, he took them by horseback to the Canadian jail. He was paid 25 cents a mile. Sheriff Martin was the only sheriff killed in the line of duty in Hansford County.

Sheriff Hix Wilbanks was sheriff when Hansford County's most famous murder trial took place. I call it the Red Shoe Murder. A complete article of this murder is in the Hansford County History Book, Volume II. Sheriff McFarlin said it was quite good

## Museum usings

detective work considering what was available to lawmen in 1941 to solve cases. They did not have a network of computers or ballistic experts to help them.

The Sheriffs of Hansford County and their deputies put their life on the line every day for all of us. We need to tell them thank you each time we see them. Let's make sure we make their lives a little easier instead of a little harder.

Hansford County Sheriffs: 1889-1890 - J.H. McGee, 1890-1892 - J.L. Cator, 1893-1894 - B.O. Cator, 1901-1907 - B.O. Cator, 1899-1901 - A.E. Powers, 1895 - 1897 - Z.A. Curtis, 1909-1911 - R.E. Martin, 1911-1914 - Joe R. Spivey, 1915-1918 - J.C. Hancock, 1919-1922 - H.L. Wilbanks, 1928-1945 - H.L. Wilbanks, 1923; 1925-1927 - Alvino Richardson, 1945-1973 - J.B. Cooke, 1973- R.L. McFarlin, Jr.

Pictures of these men can be seen in the Hansford County History Books. They are also on display at the Hansford County History Books. They are also on display at the Hansford County Sheriff's Office.

Russell Sheets won the \$5.00 for the Elementary quiz. This time it was wool carders. Thanks for coming by Russell!

We still have a few copies of Jeanne William's book, *Prairie*

*Bouquet*, for sale at the Museum. This is the paperback copy of *Lady of No Man's Land*. This is the book that mentions Fort Zulu and Jim Cator. It is no longer in print and would be an excellent gift, as it is autographed. I talked to Jeanne Saturday. She is between books at the moment. Several ideas are running in her mind, but the one hasn't taken hold yet.

Very soon, the Museum will be going to computer. Monte Blackman is going to donate one of his for our use. Some of the ladies who have never used one are very dubious. I reminded them that I use one!

We're getting closer to the Hansford Heritage Days. I will be doing an article on Ollie Jarvis, our queen, before that time. I have so many ideas for articles in my head. Someone asked me the other day if I was about to run out of ideas. I'm sure I gave them a blank look. The only thing I run out of in my life is time. Well, money too!

I went to the Museum over the weekend to rearrange a few things. I certainly did not know a buffalo-head skeleton was so heavy.

He (the buffalo head) needs a dentist too. We have a new display at Fort Zulu. Ivan Vernon loaned us her doll house, complete with furniture. All big and little girls will love this.

## Pringle-Morse Honor Roll

### SUPERINTENDENT'S HONOR ROLL

**2nd Grade**  
Tyler Lane, Jessica Schmidt, Tonya Witherspoon, Trae Dixon, Blane Tolleson, Denelle Crowl, Samuel Mendoza, Gregory Feeler, Jenna Beth Kiser, Andrew Young, Tabatha Shields, Kade Shoulders, Anglea Hampton

**3rd Grade**  
Brennan Eudy, Chase Phillips

**4th Grade**  
Sarah Martin

**6th Grade**  
Mikala Reiswig, Evan Schmidt.

### ALL A HONOR ROLL

**2nd Grade**  
Denelle Crowl, Trae Dixon, Gregory Jacops, Jenna Beth Kiser, Tyler Lane, Samuel Mendoza, Jessica Schmidt, Tabatha Shields, Kade Shoulders, Blane Tolleson, Tonya Witherspoon, Andrew Cain

**3rd Grade**  
Brennan Eudy, Missael Mendoza, Chase Phillips, Bailey Reid

**4th Grade**  
Michel Huffaker, Sarah Martin

**6th Grade**  
Andrew Martin, Mikala Reiswig, Evan Schmidt, August Schuman.

### A AVERAGE HONOR ROLL

**2nd Grade**  
Angela Hampton, Trae Dixon, Samuel Mendoza, Blane Tolleson, Denelle Crowl, Gregory Jacops,

Jenna Beth Kiser, Andrew Cain, Tabatha Shields, Kade Shoulders, Tony Witherspoon, Tyler Lane, Jessica Schmidt

**3rd Grade**  
Dora Mendoza, Leonel Mendoza, Missael Mendoza, Lisah Whitefield, Seth Clemmons, Bailey Reid, Kaley Barnes, Krystal Sage, Brennan Eudy, Chase Phillips

**4th Grade**  
Michel Huffaker, Sarah Martin

**5th Grade**  
Ross Womble

**6th Grade**  
August Schuman, Andrew Martin, Mikala Reiswig, Evan Schmidt

**7th Grade**  
Kayce Howe, Kirby Johnson, Donnie Davis

**8th Grade**  
Tap Giblin

### A-B HONOR ROLL

**2nd Grade**  
Angela Hampton

**3rd Grade**  
Kaley Barnes, Seth Clemmons, Stormy Evans, Dora Mendoza, Leonel Mendoza, Krystal Sage, Lisha Whitefield

**5th Grade**  
Ross Womble

**6th Grade**  
Amber Crowl

**7th Grade**  
Donnie Davis, Kayce Howe, Kirby Johnson

**8th Grade**  
Tap Giblin, Aaron Huffaker, Natalie Tarango.

## Alco Announces 1995 Sales

Duckwall-ALCO Stores, Inc. (NASDAQ: DUCK) announces results for the fourth quarter and twelve months ended January 28, 1996.

For the fourth quarter ended January 28, 1996, the Company reported a \$4.6 million increase in sales to \$78.1 million, over sales of \$73.5 million in the fourth quarter of last year. Net earnings for the quarter increased by \$52,000 over the prior year to \$2.9 million.

For the year ended January 28, 1996, the Company reported a \$14.4 million increase in sales to \$256.5 million, over sales of \$242.1 million in the prior fiscal year. Net earnings for the fiscal year advanced by \$1.0 million to \$5.1 million from the \$4.1 million earnings of last year.

Glen L. Shank, President and Chief Executive Officer, said "I am pleased with the Company's continued growth in earnings.

During these difficult times for retailers, we were able to control expenses and manage our inventories, achieving a \$1.0 million, or 24.2% increase in our earnings for the year. I am particularly pleased with the Company's ability to raise our return on sales percentage to 2%, an increase of 29 basis points over last year, doubling the rate of just two years ago."

Shank continued, "During the year we opened 21 stores, all in non-competitive markets. At year end we had 110 or 71% of our 156 stores located in non-competitive markets. This growth is significant in that we were able to leverage our fixed costs as well as improve the mix of stores. We are looking to continue this trend by increasing store openings to 29 for this fiscal year."

Duckwall-ALCO Stores, Inc. is a leading regional retailer which operates 159 stores in the central United States.

## RE-ELECT RICHARD PIPKIN for SISD Board of Trustees

- Life Long Resident •
- Self Employed •
- Concerned Tax Payer •
- Parent of Students on Each Campus •
- Three Years Experience on Board •
- Business Background •

There are difficult problems that arise concerning the financial matters of our school system. I believe my past experience on the board will give insight to help make the most beneficial decisions for our schools.

I would appreciate your vote on May 4th for School Board Trustee.

Political Ad Paid for by Richard Pipkin

The Real Dish on Satellite TV

# GET MORE CABLE CHANNELS THAN YOU GET WITH CABLE.



### WITH DIRECTV YOU GET:

- Up to 175 channels with digital quality picture & sound.
- More cable channels than any other mini-dish system.
- Over 55 different pay-per-view movies every night.
- Up to 13 NFL games every Sunday during the regular season.
- More NBA, NHL, Major League Baseball and NCAA games than you'll find on any other mini-dish system.
- 31 exclusive commercial-free music channels.
- An interactive on-screen program guide.
- A variety of financing options are available for qualified applicants.



**DIRECTV**  
SATELLITE TV AT ITS BEST

Visit us on the World Wide Web at <http://www.directv.com>. Blackout restrictions apply to sports programming. For sports programming and to order by remote, a continuous landline phone connection to DSS receiver and a DIRECTV subscription are required. A \$2.00 assistance fee is applied to phone orders. Hardware and programming sold separately. Programming packages and pricing subject to change. Pay-per-view and certain sports programming are for private viewing only. Commercial signal theft is subject to civil and criminal penalties. ©1996 DIRECTV, Inc. DIRECTV, DSS, and "DIRECTV. Satellite TV At Its Best." are official trademarks of DIRECTV, Inc., a unit of Hughes Electronics Corporation.

ACCEPT NO SUBSTITUTES - VISIT ANY OF THESE LOCAL RETAILERS FOR A FREE DIRECTV DEMONSTRATION.

Broxson's Sunray	Hy Tech Communications Borger	Sims Western Auto Dumas
Circle N Appliance Amarillo	L&F Repair Wheeler	Sound Systems LTD Amarillo
Don's Hi-Fidelity Amarillo	OK Radio & TV Plainview	Standard Vending Amarillo
Earl's TV & Appliance Perryton	Beedy Furniture Co. Spearman	VL Taylor & Co. Amarillo
Furniture Fashions Dalhart	Sanders Satellite Systems Amarillo	WH TV & Appliance Hereford and Friona







# Laugh and Live

by Gary Smith

gcs@arn.net



April is National Anxiety Month. Some folks have anxiety. Some folks are a cause of it. Have you ever noticed how some people just can't be satisfied? No matter what you do it is just not good enough. I think that is the way my cousin Louis felt when Miss Gertrude walked into the restaurant where he was working.

She ordered a scoop of vanilla ice cream, a scoop of strawberry ice cream and a scoop of chocolate ice cream and Cousin Louis says, "Miss Gertrude, we have no chocolate." So she says that's okay she will have a vanilla milk shake, a strawberry milk shake and a chocolate milk shake.

Once again Cousin Louis tells her "Ma'am, we have no chocolate!" And once again Miss Gertrude changes her order and says she will have vanilla cake, strawberry cake, and chocolate cake.

This time Louis is mad and shouts "Miss Gertrude, we have no chocolate. Let me try to explain this to you. Do you see the word van in the word vanilla?"

She replies, "Yes."

He then asks her if she sees the word straw in the word strawberry and she once again replies yes.

Then he asks her if she sees the word stink in the word chocolate and Miss Gertrude says, "There's no stink in chocolate."

And Cousin Louis exclaims, "Exactly! Miss Gertrude, that's what I've been trying to tell you. THERE'S NO STINKIN' CHOCOLATE!!!!!"

Until the next time,  
May God Bless



## Engagement Announcement

Glenda Purcell and Mike Close both of Spearman will unite in marriage on June 8, 1996.

The bride-to-be works at Hansford Hospital as a Respiratory Therapist.

The groom-to-be works at Phillips Petroleum.

## Thank You

Thank you from the Blades Family. We would like to express appreciation for your visits, calls, and prayers. We are lucky to have such wonderful neighbors and friends.

We would like to thank Clay Neff and Kent Hargis, for putting out the fire and to Michelle Goodheart for keeping our kids. And a special thank you to Terrell and Sherril Evans for everything. We would also like to thank the E.R. Staff and the ambulance crew. Randy, Monte, Michelle, and Lela.

God bless all of you.  
The Blades Family  
Dione Stoney, Lauren, Alyssa and Logan

## At The Movies

**Oliver & Company (G)** - Release most notable as the Disney cartoon that preceeded the hit Little Mermaid. (Suitable for all ages.)

**Up Close And Personal (PG-13)** - "Broadcast News" with even prettier people: Michelle Pfeiffer and Robert Redford. (Romantic issues, prison riot, natural disasters.)

## Thank You

My family and I would like to express our deep appreciation to everyone for all the cards, food and flowers. We would also like to sincerely thank everyone for all your thoughts, prayers and support. You've all made this very difficult time much easier to handle.

Thank you,  
The Hodges' Family  
Janette, Trevor, Hailey and Tiffany

## Thank You

A very special thank you for all the cards, calls, visits, prayer gram's and special prayers during my stay in the hospital and since I have been home. My recovery has certainly been great because of your thoughtfulness.

May God bless each of you.  
Dora Womble  
When a friend asks, there is no tomorrow.



## Wedding Announcement

They got hitched, in their back yard! With a car trailer for a platform, facing family and friends, Sam & Debbie exchanged vows, with longtime friend Joe Garcia officiating.

Standing up with Debbie was Grace McDade. Sam's best-man was Doug Wallin from Elk City.

A reception was held in the shop area, followed by dancing. The couple would like to thank some special people for their help: Terry Schneider for taking pictures, Vickie Genn for preparing the food, George Rex for playing the music & matchmaker, and the Krankers Kar Klub for comic entertainment.

Leaving for their Oklahoma Honeymoon, Sunday afternoon and being sabotaged by an empty tank of gas, the Abston's were forced to detour by way of Zion, Las Vegas, the Grand Canyon, and much more in between.

"We be tired, but we be happy!"

Mr. and Mrs. Craig Vinson  
request the pleasure of your company  
at the wedding reception of their daughter  
**Heather Ann**

and  
Mr. Cling Jerrome Sasser  
on Friday, the third of May  
nineteen hundred and ninety-six  
at seven o'clock in the evening  
The O Loughlin Center  
502 S. Brandt  
Spearman, Texas

## The Hansford County Community Calendar

April 25-May 4

- Monday, April 22-Friday, April 26  
Chamber of Commerce Week  
National Secretaries Week
- Monday, May 6-Friday, April 10  
National PTA Teacher Appreciation Week
- Wednesday, April 24-Thursday, April 25  
High School Regional Tennis Tournament - Abilene, Texas
- Thursday, April 25-Saturday, April 27  
High School Regional Track Meet - Abilene, Texas
- Thursday, May 2-Saturday, May 4  
High School State Academic Meet - Austin, Texas
- Thursday, May 2-Saturday, May 4  
High School State Solo and Ensemble Contest - Austin & San Marcos, Texas
- Thursday, May 9-Saturday, May 11  
High School State Tennis Tournament - Austin, Texas
- Thursday, May 9-Saturday, May 11  
High School State Track Meet - Austin, Texas
- Thursday, April 25  
8:00 a.m. - Spearman ISD Kindergarten Round-Up, - Spearman Elementary  
9:15 a.m.-12:00 p.m. and 1:00-3:45 p.m. - DPS Driver's License Personnel at Spearman City Hall  
7:00 p.m. - Spearman Fire Department meets - Spearman Fire Station, 513 Hazelwood
- Friday, April 26  
Spearman ISD - NO SCHOOL
- Tuesday, April 30  
2:00 p.m. - Historical Commission meets - Stationmasters Museum  
5:00 p.m. - Heritage Meeting - Chamber of Commerce Office
- Wednesday, May 1  
12:00 noon - Retail Merchant's Meeting - Palo Duro Cafe
- Thursday, May 2  
7:00 p.m.-8:00 p.m. - FCA Meeting - FUMC
- Friday, May 3  
1:00 p.m. - Pringle-Morse Pewee Track Meet
- Saturday, May 4  
9:00 a.m. - Morse Community Building Garage Sale

To place an event in the Community Calendar,  
please call the Reporter-Statesman at (806) 659-3434

We listen to

# KRDF

98.3 FM

Hot Country  
Stereo 'Till  
Midnight

The Hansford County  
**Reporter-Statesman**  
213 Main St. • Spearman, TX 79081  
Open Monday-Friday, 9:00 a.m.-12:00 p.m. & 1:00 p.m.-5:00 p.m.  
Closed Wednesday Afternoon (1:00 p.m.-5:00 p.m.)

Serving Spearman, Gruver and Morse  
and all of Hansford County  
Published weekly in Spearman, TX  
Owned and operated by Gary and Catherine Smith

Gary Smith - Publisher • Catherine Smith-Editor  
Barbara Rojas - Assist. Editor • Cari Babitzke - Student Assist.  
Second Class postage permit USPS 509660  
Postage paid in Spearman, TX

**TA** MEMBER 1995  
**TEXAS PRESS ASSOCIATION**

Annual Subscription Rates  
In Hansford County, \$20.00  
Out of County, \$25

Advertising and Story Deadlines  
Tuesday 12:00 noon

## At the Lyric Theatre..

Friday, April 26 - Tuesday April 30

Bargain Nights Mon. & Tues. Adults - \$4  
Fri., Sat., Sun., \$5 - Child \$3 every night  
Closed Wednesday & Thursday

7:30 SCREEN I	7:45 SCREEN II
---------------------	----------------------

Up Close & Personal (PG-13)	Oliver & Company (G)
--------------------------------	-------------------------

213 MAIN \* SPEARMAN

## For The Bride & Groom

Come by and let us help you set up  
your special gift table

### Couples Currently Registered

Liz Sumner & Jan Hartsell • May 4'  
Heather Vinson & Clint Sasser • May 18'  
Yana Vietman & Doug Hohertz • May 21'  
Marcie Womble & Matt Barnes • Morse - June 8'  
Spearman - June 15'

Dawn McCullough & Troy Brown • June 22'  
Martha Arias & Allan Howell  
Cinda Turner & Jack Wolf  
Shanna DeArmond & Jimmy Kenney  
Sunshine Smith & Harold Davis

\*Date of Bridal Shower

314 Main Gordon's Spearman, Texas  
659-2141



Happy Secretaries Week

*Jenny Neff*  
Thanks for all that you do!  
From Mr Hargis and the Elementary Staff

Thanks to all  
Secretaries,  
Dispatchers, and  
Account Clerks  
We appreciate all of your hard work!  
From the City of Spearman

A Special Thanks to  
**Phyllis Collins**  
for her hard work.  
Have a Happy Secretaries' Day  
From Larry Morris and the Junior  
High Staff

*Molly, Sharon,  
& Mary*  
We Appreciate a Job Well Done!  
From Speartex Grain

Thank You  
Elaine  
Cook  
First Assembly of God Church

Thank you to our wonderful secretaries from  
Spearman Cattle Feeders  
Cecilia Hill  
Teri Montgomery  
Regina Diercks  
June Tucker

*Martha, Cindy,  
& Linda*  
The office couldn't function without  
you. You are GREAT deputies!  
Helen Dry, Tax Assessor-Collector

HH Water Well Services, Inc  
says thanks our wonderful secretary...  
Pat  
Sutterfield

**Rosi &  
Betty**  
Have a Happy Secretaries' Day  
We Appreciate Your Hard Work  
Golden Spread Sales Company

Thank you to our wonderful secretaries from  
First National Bank  
Tami Kunselman  
Maria Sumner  
Heather Vinson  
Elain Cook

**Mary  
Baker**  
Thanks from  
The First Baptist Church

Thank you to our wonderful secretaries from  
Hansford Vet Clinic  
Cynthia Floyd  
Carolyn Gressett  
Kerry Poer  
Teresa Watts

*Debbie Hornsby  
Sally Vaquera  
Mona Slater  
Shannon Scroggs  
Dave Carlin*  
We Appreciate a Job Well Done!  
From the Sheriff's Office

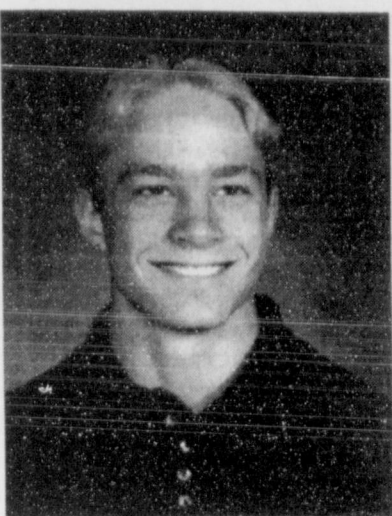
The Hansford Agency  
says thanks to  
Linda Meddock  
and  
Barbara Scoggs

*Dixie Pool*  
You're Doing a Great Job!  
Thank You from Lusby Cats

Lau  
ar  
Liv  
by Gar  
gcs  
Apr  
have anx  
Have you  
be satisf  
good enc  
Louis fel  
restaurat  
She orc  
of straw  
ice crea  
"Miss G  
that's o  
strawbe  
On  
have no  
change  
cake, s  
Th  
Gertrud  
explain  
word  
SH  
H  
the w  
yes.  
T  
the w  
"Ther  
A  
Gertr  
THEP



## Beedy Receives Scholarship



selected on the basis of scholarship in the humanities or social sciences, leadership, and community service.

Blake Beedy will receive his Xerox Award on May 15 during the Awards Assembly at Spearman High School. Blake also will be eligible for a special Xerox Scholarship at the University of Rochester located in Rochester, NY.

The Xerox Award in the Humanities/Social Sciences recognizes the academic achievements of outstanding students and seeks to emphasize the importance of a broad educational background in preparing students for future careers. The awards program recognizes students at high schools in all 50 states.

Blake Beedy, a junior at Spearman High School, will receive the Xerox Award in the Humanities/Social Sciences, presented by Xerox Corporation. Xerox Award winners are

Blake is to be commended for all of his hard work and effort. Blake is the son of Jeff and Shelly Beedy of Spearman.



(Back Row, L-R) Ryan Rhoades, Marcia Shieldknight, Debbie Stopper, (Front Row, Left) Don Townsen, (Front Row, Right) Barbara Townsen, look on as Kara Townsen signs a National Letter of Intent to attend West Texas A&M University.

## Townsen Signs With WTAMU

Kara Townsen signed a National Letter of Intent with West Texas A&M University in Canyon on Thursday, April 18th.

She received a four-year scholarship in basketball, under coach Bob Schneider. WTAMU won the 1996 Lone Star Conference Championship.

Kara, who will begin attending WTAMU in the fall, plans to study Kinesiology. She is the daughter of Don and Barbara Townsen of Spearman. She has two sisters, Tamri and Eric Savage of Tulsa, OK, and Kimbre Townsen, and two brothers, Clint Townsen and Jamie Townsen. Kimbre is a Junior at Cameron University in Lawton, OK, Clint is a Junior at WTAMU, and Jamie is a Sophomore at Spearman High School.

## Extension News

by Peggy Winegarner, County Extension Agent

Staying fit involves a variety of food in moderate serving sizes AND staying physically active.

Strength training has traditionally been associated with young men, but now it is being recommended for older women. This is especially of interest because at age 45 we begin losing 6.6 lbs. of muscle mass per decade.

Research on strength training in women shows benefits in increasing hip bone density, increasing muscle mass and strength, decreasing fat and improving balance.

While strength training is beneficial to preventing falls and broken bones, aerobic exercise is beneficial for the cardiovascular

system. Walking, climbing stairs and gardening are examples of aerobic exercise.

Check with your doctor before starting a new exercise program. Begin slowly and increase your time and activity. The following tips on strength training were given in an article titled "You're not getting older - You're getting stronger" by Dr. Evans of Tufts university.

1) Try to exercise 3 to 4 times per week.

2) Choose a weight that you can lift 8 to 12 repetitions.

3) The weight you choose should be 80% of the heaviest weight you can lift one time. For example - if you can lift 30 pounds one time, then 80% of that would be (30 x 0.80) = 24 pounds.

4) Keep retrying your strength

on the heaviest weight that you can lift as time passes.

5) Warm up and stretch for at least 10 minutes to prevent injury.

6) Begin each exercise session with repetitions without weights.

7) In the beginning concentrate on muscles in the shoulder, arms and thighs.

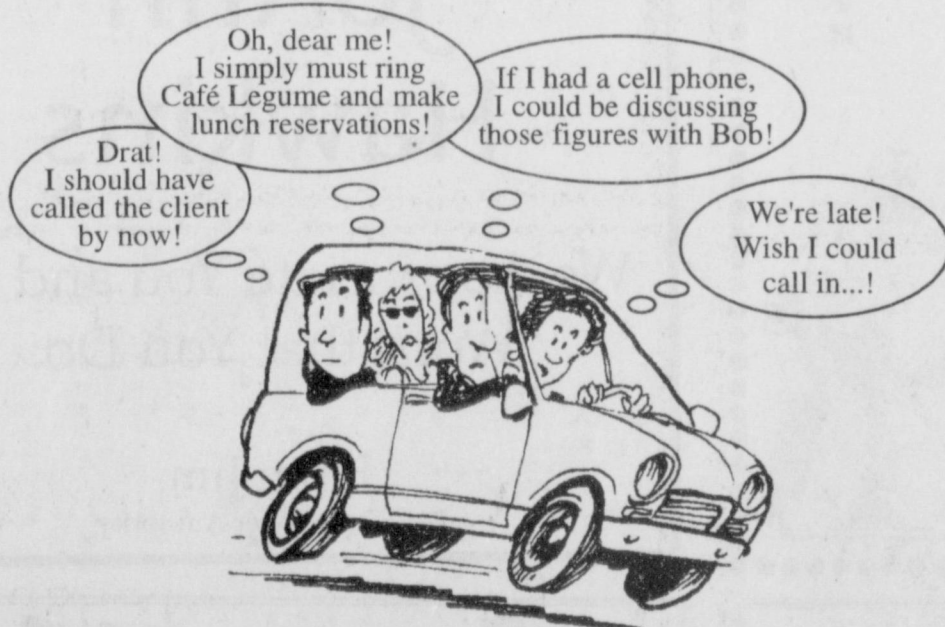
8) Alternate the muscle groups that you exercise. Exercise the upper-body muscles during one session and lower-body muscles the next.

9) Perform strength building movements slowly. Take 6 to 9 seconds per each repetition. Rest for a few seconds between each lift.

10) Inhale before you lift, exhale as you lift, and then inhale again as you lower the weight.

## You're Not Still Living Without Cellular?!

(gasp!)



Fed up with the stress, the anxiety and the valuable time lost because you're out of touch? Time to call CELLULARONE of the Panhandle! Your local CELLULARONE representative or agent is ready to help you select the cellular phone or service plan that best suits your needs. Call us...you know the name. Make sure it's CELLULARONE of the Panhandle. There is a difference!

**Up to 3 Months Free Service**  
(if you switch your service to CellularOne of the Panhandle)

**FREE**  
**Mitsubishi Handheld**  
(price \$33.75, rebate \$33.75)

**No Activation Fee**  
(with first-time sign up with CellularOne of the Panhandle)

**Motorola 3-yr. Warranty**  
**Tote Phone for \$19.95**

**CELLULARONE**® of the Panhandle  
Authorized Agent:

**Country Cellular**  
Box 430 Spearman, TX 79081  
659-2541 • 800-530-4335

## SISD UIL Regional Results

Twelve Spearman High School students attended the Regional UIL Academic Qualifiers meet in Abilene on Saturday, April 20th.

Those participating were: Zach McCammond - Ready Writing, Maggi Carter - Poetry, Amy Schoenhals - Literary Criticism, Martin Sanders - Calculator, Regan Boxwell - Poetry and Literary Criticism, Britt Savage - Number Sense and Mathematics, Brent Collins - Calculator; (Front Row, L-R) Lisa Swink - Calculator, Cari Babitzke - Literary Criticism, Erin Atwood -

Headline Writing, Haley Farber - Spelling/Vocabulary, Teresa Gomez - News Writing and Headline Writing.

Teresa Gomez placed 1st in Editorial Writing, Zach McCammond placed 4th in Ready Writing, Maggi Carter placed 6th in Poetry Interpretation, Erin Atwood placed 6th in Headline Writing, and Cari Babitzke placed 5th in Literary Criticism.

Teresa will attend the State UIL Academic Meet on May 3rd and 4th in Austin, Texas. She will participate in Editorial Writing.

## School Lunch Menus

### Spearman School Menu

#### BREAKFAST

April 29

Sausage Link, Toast, Fruit, Milk

April 30

Cheese Toast, Fruit, Milk

May 1

Cereal, Toast, Fruit, Milk

May 2

Sausage Pattie, Crumbled Egg, Toast, Fruit, Milk

May 3

Breakfast Burritos, Fruit, Milk

LUNCH

April 29

Charbroiled Chopped Beef w/Mushroom Gravy (optional),

Scalloped Potatoes, Sweet Peas, Hot Rolls, Peaches, Milk

April 30

Chicken Fried Pork Steak on a Bun, Shredded Lettuce, Sliced Tomato, Potato Wedges, Mixed Fruit, Milk

May 1

Tuna Sandwich, Vegetable Soup, Fried Okra, Cinnamon Rolls, Fresh Fruit, Milk

May 2

Choice of Pizza Hot Pockets or French Bread Pizza, Whole Kernel Corn or Corn on Cob, Sliced Apples, Milk

May 3

Cheeseburger, French Fries, Shredded Lettuce, Sliced Tomato, Pickle, Onion, Peas, Milk

# ALLSUP'S

EFFECTIVE APRIL 21-27, 1996

305 W. Kenneth • 659-3135

SAVE ON  
**Pepsi-Cola**  
3 Liter or 6 Pack  
\$1.99



24 Pack - \$5.99

## QUALITY & VALUE WITH ADDED CONVENIENCE!



ALLSUP'S  
**SAUSAGE & BISCUIT**  
FOR ONLY  
**79¢**



GRAB BAGS  
**CHEE-TOS® & LAY'S®**  
REGULAR 75¢ EA.  
**2\$1**  
FOR



DECKER  
**MEAT BOLOGNA**  
12 OZ. PKG.  
**69¢**

DECKER  
**COOKED HAM**  
10 OZ. PKG.

**\$1.99**

COOL TUBES OR HOMEMADE VANILLA BARS

**BLUE BUNNY NOVELTIES**

3 OZ. BAR  
**39¢**



NABISCO  
**PREMIUM CRACKERS**

1 LB. BOX  
**99¢**



JOHNNY  
**RIB SANDWICH**  
EACH  
**99¢**

**SAVE!**

### STORE SPECIALS

VALLEY FARE  
Bath Tissue..... 4 HOLL. PKG. **79¢**  
SHURFINE GRAVY OR CHUNK STYLE  
Dog Food..... 20 LB. BAG **\$3.99**  
POLAR CHUNK LIGHT  
Tuna..... .61 OZ. **69¢**  
ASSORTED FRITO LAY®  
Crackers..... REG. 3¢ EA. **4 FOR \$1.00**

Ajax Laundry Detergent  
(2 lbs.)  
**99¢**

Homogenized  
Milk  
**\$2.39**

## ALLSUP'S MONEY ORDERS... UP TO \$299.00 FOR 29¢



## Wedding Announcement



In a double ring ceremony Janelle Rae Haefner and Rickey Wayne Bates were united in marriage Saturday March 30, 1996 at 6 o'clock in the evening at the First Christian Church in Amarillo, TX with the Rev. Gary Gurfory of Gruver, Texas officiating.

The bride is the daughter of Mr. & Mrs. Francis Haefner of Gruver, TX, parents of the groom are Mr. & Mrs. Ellsworth Crowley of Amarillo, TX and the late Bob Bates.

The altar was decorated with candelabrum intertwined with ivy. Coral satin bows accented the pews along the aisle.

The bride escorted to the altar and given in marriage by her father wore a formal length gown of candlelight satin and lace. Seed pearls and sequins adorned the off the shoulder sweetheart neckline and elongated bodice. The straight full length gown and long flowing train were applied with pearls and sequins. Her fingertip headpiece of imported illusion fell from a cascade of rosettes and pearls.

She carried a European bouquet of fresh spring multi-colored flowers. She also carried the handkerchief that was carried by her grandmother, Laverna Miller, at her mother's wedding. Her jewelry was a drop pearl necklace and pearl earrings.

Matron of honor was Kim Hodges, of Austin, TX., bridesmaids were Holly Venneman, Fort Worth, TX, Amy Mounds of Stephenville, TX, and Brendy Brown of Lubbock, TX, all friends of the bride. They wore off the shoulder coral satin tea length dresses fashioned from the same design as the brides dress and accented with bows and pearl buttons on the sleeves. They wore pearl earrings and drop pearl necklaces, gift from the bride. They carried European bouquets of fresh spring multi-colored flowers with ivory bows.

The groom wore a Christian Dior black tuxedo with a houndstooth vest. His boutonniere was a single ivory rose.

Attending the groom as best man was David Stone of Amarillo, TX, a friend of the groom. Groomsmen were Jason

Haefner of Windsor, California, brother of the bride, Lance Kenedy and Paul Cook, both of Amarillo, TX, and friends of the groom. They wore Christian Dior double breasted houndstooth jackets and black tuxedo pants and a single coral accented rose boutonniere.

Flower girls were Alyssa and Ashley Bates, Westminster, Colorado, nieces of the groom. They wore candlelight satin tea length dresses accented with lace and carried baskets filled with multi-colored flowers.

Ringbearer was Joseph Fisher of Herington, KS, cousin of the bride. He was dressed identical to the groom and carried a candlelight satin pillow with the bride's and groom's names monogrammed on it.

Soloists were Carson Soapes of Amarillo, TX, a cousin of the groom who sang "The Parents Prayer" as the parents were seated. Randy Cain of Little Rock, Arkansas, cousin of the bride, sang "I'll Be There" as the couple was lighting the unity candle. Amy Gurfory, Plainview, TX, friend of the bride, sang "Go There With You."

Candlelighters were Nathan and Justin Cain, Wichita, KS, cousins of the bride. They were dressed identical to the groomsmen. Seating guests were Dr. Kirk Henrichs of Dodge City, KS, cousin of the bride, Wes Babbs of Gruver, TX, friend of the bride, Mitch Hutchens and Brian Flemening both of Amarillo, TX, and friends of the groom. They were in tuxedos identical to the groomsmen and wore a single coral carnation boutonniere.

Special guests were Mr. & Mrs. Harry Miller of Herington, KS, and Mrs. Evelyn Haefner of Lost Springs, KS, grandparents of the bride and Mrs. Ina Soapes of Gruver, TX, grandmother of the groom.

Madeline Bates of Amarillo, TX, sister of the groom, attended the guest book. Lara and Emily Shafer, Stratford, TX, handed out small bottles of bubbles that were blown as the bride and groom left the church for the reception in a

chauffeur driven limousine.

A reception and buffet were held in the Atrium at the Holiday Inn. The brides table featured a four tier cake on pillars and topped with a Precious Moments bride and groom with four satellite cakes decorated with greenery and fresh spring multi-colored flowers.

The groom's cake was red velvet cake decorated with cars and motorcycles. All the cakes were made and decorated by Doris Cain, McPherson, KS. She was assisted by Delores Fisher, Herington, KS, both aunts to the bride.

Servers at the table were Jill Henrichs, Dodge City, KS, Gina Muhlig, Herington, KS, and Cathy Brownell, Wichita, KS, all cousins of the bride.

Following the reception and buffet a dance was held of which the first dance featured the newlywed couple followed by the bride and her father.

All the flowers were done by Billie Heikes, Roswell, NM, a friend of the bride.

Out of the state guests attending were Tom & Doris Cain, McPherson, KS, Al & Delores Fisher, Riff & Carol Riffel, David, Donna, Joseph & Amanda Fisher, Bob & Gina Muhlig, Raymond, Gloria & Susie Martin, all of Herington, KS, Rick, Nathan & Justin Cain, David & Cathy Brownell, Wichita, Ks., Kirk, Jill, Kyle & Kody Henrichs of Dodge City, KS, Lavelle, Marge & Teri Haefner of Derby, KS, Ted & Angie Trenton of Perry, OK, Henry & Billie Heikes of Roswell, NM, Bobby, Michele, Alyssa & Ashley Bates of Westminster, CO, Wayne, Vicky and Ana Richardson of Clovis, NM.

The bride graduated from Gruver High School and attends Amarillo College. The groom graduated from Panhandle High School and also attends Amarillo College. The bride works for Ricks Formal Wear and Electric Beach in Amarillo, TX. The

groom is presently employed with the Auto Baron of Amarillo, TX.

After a honeymoon to Cancun, Mexico, the couple will reside in Amarillo, TX.

A rehearsal dinner honoring the couple was hosted March 29, by the grooms parents at "All the Fixins" in Amarillo, TX.

## Hohertz-Foltin Honored



nationally distributed newsletters, news releases, and fact sheets. The CNRC is the only federally funded human nutrition research center dedicated to investigating the nutritional needs of children from infancy through adolescence and pregnant and lactating women. Ms. Hohertz-Foltin is able to make the results of nutrition research by scientists and dietitians "reader friendly". A previous award winner for her journalism talents, she writes, designs, and produces the Center's quarterly newsletter, *Nutrition and Your Child* which reaches thousands of consumers.

Ms. Hohertz-Foltin has the special ability to translate medical science for the lay person so that the benefits of the work of the medical community can be understood by all.

Ms. Hohertz-Foltin, the daughter of Mr. and Mrs. Bob Hohertz, graduated from Spearman High School in 1970. She completed her bachelors' degree at Texas Tech University and attended graduate school at Deakin University, Geelong, Australia. She and her husband Andy have one son, Dane.

The Texas Dietetic Association is a professional organization of over 3,500 registered/licensed dietitians.

Lynn Hohertz-Foltin received the Media Award from the Texas Dietetic Association (TDA) on Saturday April 20, 1996. This award is presented to a individual who has been instrumental in spreading the word about health and nutrition which Ms. Hohertz-Foltin certainly has done by reaching local and national audiences with the message of good nutrition and the value of registered dietitian.

Currently the Senior Communications Specialist with the Children's Nutrition Research Center at Baylor College of Medicine in Houston, Texas, she has produced

Vote For

**ROBBIE DEWBERRY**

Spearman Independent School District Board of Directors  
May 4th, 1996

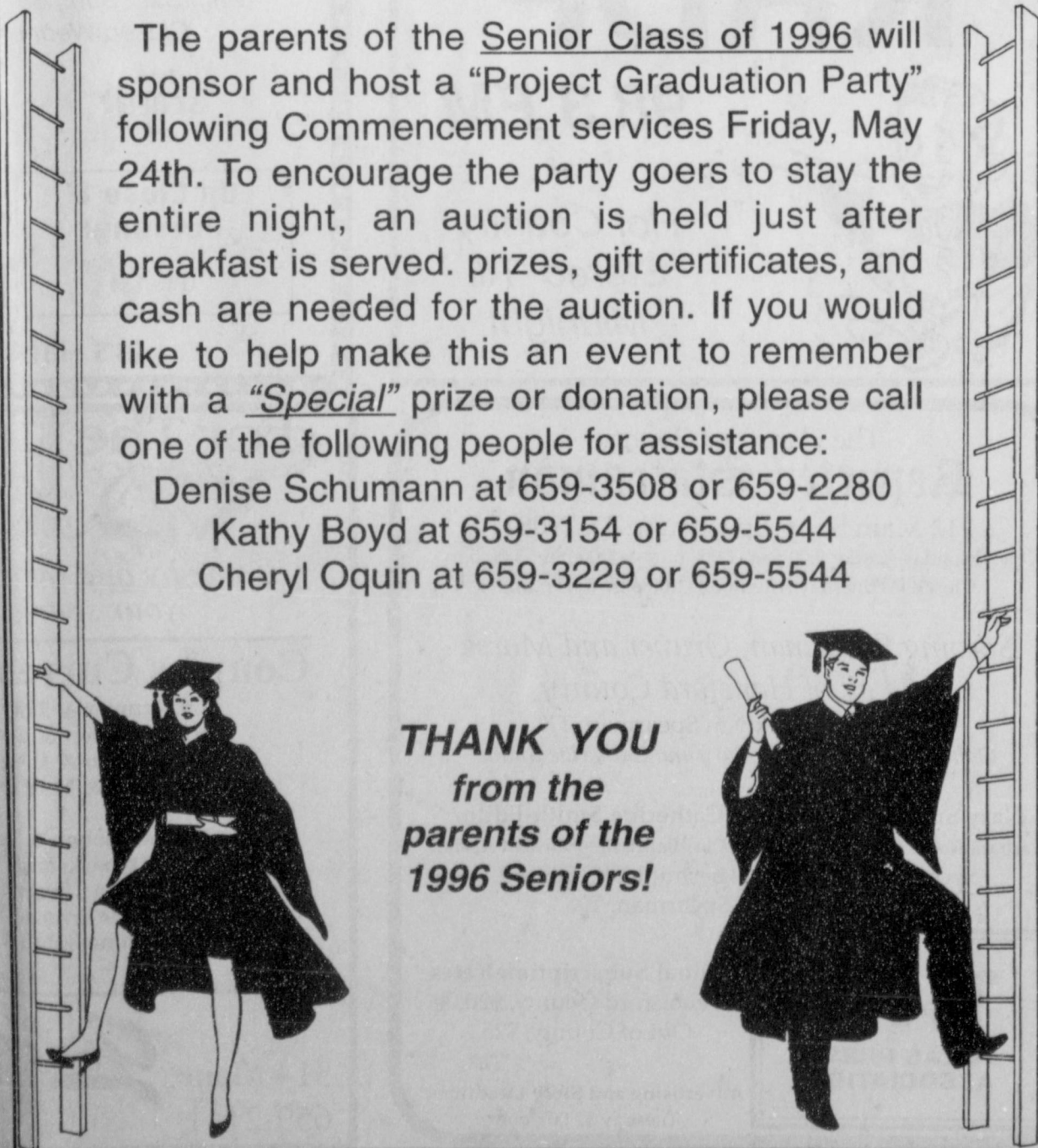
Political Ad Paid for by Robbie Dewberry

# PROJECT GRADUATION 1996

The parents of the Senior Class of 1996 will sponsor and host a "Project Graduation Party" following Commencement services Friday, May 24th. To encourage the party goes to stay the entire night, an auction is held just after breakfast is served. prizes, gift certificates, and cash are needed for the auction. If you would like to help make this an event to remember with a "Special" prize or donation, please call one of the following people for assistance:

Denise Schumann at 659-3508 or 659-2280  
Kathy Boyd at 659-3154 or 659-5544  
Cheryl Oquin at 659-3229 or 659-5544

THANK YOU  
from the  
parents of the  
1996 Seniors!



## BAD TV RECEPTION? NOT ENOUGH CHANNELS?

**WHY PUT UP WITH HAVING ONLY A FEW, POOR-RECEPTION CHANNELS TO CHOOSE FROM?**

Starting at about \$1 a day and a one-time installation fee you can get PRIMESTAR and your favorite channel choices: all the best basic cable channels, premium service like HBO and The Disney Channel, and pay-per-view channels. Plus you'll get a razor sharp picture, CD-quality digital sound and more!

Nothing to buy! Forget about spending a

small fortune on an expensive mini-dish. With PRIMESTAR, you can rent everything and look what you get:

- Packages start at about \$1 a day for equipment and programming
- No-hassle, professional installation is just \$199
- 100 page monthly guide
- Worry-Free Warranty
- One call. One bill!

**PRIMESTAR**  
PRIMESTAR BY TCI

**CALL 1-800-716-0004 OR CALL THIS RETAILER IN YOUR AREA:**

Audio Video Electronics 800-279-4904

ABC, CBS, NBC, PBS and FOX channels are available only for homes (1) which cannot receive an acceptable picture from local ABC, CBS, NBC, PBS and FOX affiliates via a conventional, outdoor, rooftop receiving antenna; and (2) which have not subscribed to cable television in the last 90 days. Additional charges for complex installations may occur. ©1995 PRIMESTAR BY TCI P8010

## Beedy F



Blake Beedy Spearman High School graduate receives the Xerox Humanities Award presented by Xerox Awards.

by Peggy W.

Extension Agent Staying fit of food in mo AND staying Strength traditionally with young being recom women. The interest because losing 6.6 lbs decade. Research o women st increasing strength, c improving b While st beneficial to broken bone beneficial fo

Yo



# Legal Notice

## LEGAL NOTICE

Rules and regulations adopted and promulgated by the Board of Directors of the Palo Duro River Authority under the powers and provisions of House Bill No. 1531, Chapter 483, Acts of 1973, 63rd Legislature.

Sec. 13 (a) The Board of Directors of the Authority shall have the power to adopt and promulgate all reasonable regulations to secure, maintain and preserve the sanitary condition of all water in and to flow into any reservoir owned by the Authority to prevent waste of water or the unauthorized use thereof, to regulate residence, hunting, fishing, boating and camping, and all recreational and business privileges, along or around any such reservoir or any body of land, or easement owned by the Authority.

(b) Such Authority may prescribe reasonable penalties for the breach of any regulation of the Authority, which penalties shall not exceed fines of more than Two Hundred Dollars (\$200.00) or imprisonment for not more than thirty (30) days, or may provide both such fine and such imprisonment. The penalties hereby authorized shall be in addition to any other penalties provided by the laws of Texas and may be enforced by complaints filed in the appropriate court of jurisdiction, provided, however, that no rule or regulation which provides a penalty for the violation thereof shall be in effect, as to enforcement of the penalty, until five (5) days next after the Authority may have caused a substantive statement of the particular rule or regulation and the penalty for the violation hereof to be published, once a week for two (2) consecutive weeks in the county in which such reservoir is situated, or in any county in which it is partly situated. The substantive statement so to be published shall be as condensed as is possible to afford an intelligent direction of the mind to the act forbidden by the rule or regulation; one (1) notice may embrace any number of regulations; there must be embraced in the notice advice that breach of the particular regulation, or regulations, will subject the violator to the infliction of a penalty and there also shall be included in the notice advice that the full text of the regulations sought to be enforced is on file in the principal office of the Authority, where the same may be read by any interested person. Five (5) days after the second publication of the notice hereby required, the advertised regulation shall be in effect, and ignorance of any such regulation shall not constitute a defense to a prosecution for the enforcement of a penalty and, the rules and regulations authorized hereby, after the required publication, shall judicially be known to the courts and shall be considered of a nature like unto that of valid penal ordinance of a city of the state.

**LAKE PALO DURO AND PARK PALO DURO RIVER AUTHORITY OFFICE AND ENTRANCE REQUIREMENTS**  
The main office of the Palo Duro River Authority is located on the South side of the lake on a high promontory near the confluence of Horse Creek and the main body of the Reservoir. Office hours are maintained the year round and additional information and assistance may be obtained from the office.  
All vehicles that enter project properties of the Palo Duro River Authority are required to display a current permit on the windshield as applicable or on another readily visible area on the vehicle. An ANNUAL PASS is valid until the end of the calendar year in which it was purchased. For ANNUAL PASS holders, who own other vehicles, a multiple use pass is available for an additional fee. Passes are available at the main office of the Palo Duro River Authority and at self service dispensers at park main entrances.  
Taxpayers of the Palo Duro River Authority District are eligible for a taxpayer permit which will permit entrance to the Project Properties. This is an entrance permit only. R.V. w/ utilities, camping, and boating permits are required of all users.  
Campers are required to have a park entrance permit, plus a camper's permit, which must be displayed at the campsite.

### BOATING AND WATER SPORTS

A \$2.00 boat fee is required plus entrance fee of \$2.00. Annual boat permit is available for \$30.00.

### PICNICKING

Areas available below the dam and on the south side of the lake. Covered group shelter below the dam: reservation only.

### DUMP STATION R.V. park below dam and park area on South side of lake.

### FISHING

Florida Bass, Blue Catfish, Channel Catfish, Bluegill, White Crappie, Yellow Perch, Largemouth Bass, Smallmouth Bass, Arkansas Walleye

### WILDLIFE

NO HUNTING ALLOWED. Wildlife: Deer, turkey, geese, bald eagles, golden eagles

### DRINKING WATER, TOILETS, AND TRASH RECEPTACLES

Trash receptacles located various locations. Drinking water available from faucets in park areas.

### RESTROOMS

Restrooms are located below the dam and South side of lake. Portable restrooms are located at various locations.

### FOOD, FUEL, CHURCHES AND MEDICAL FACILITIES

Spearman, Texas  
**FIRST AID**  
Emergency assistance can be obtained from park rangers or from the Palo Duro River Authority office. Ambulance service may be summoned from City of Spearman—Phone No. 659-3707, or the Sheriff's Office—Phone No. 659-4140, or call 911. A hospital is located in Spearman, 11 miles South of lake.

Lake Palo Duro has been built by and is being maintained for the enjoyment of the citizens of the Palo Duro River District and other welcome visitors. A hearty welcome is extended to all who come as visitors for the purpose of enjoying the facilities and the outdoor activities that are permitted at this lake.

### PARK FEES

DAILY ENTRY: \$ 2.00 per car up to 4 persons. Additional persons \$1.00 each. Twelve and under-free.  
DAILY BOAT: \$ 2.00 + entry fee  
DAILY CAMPING: \$ 4.00 + entry fee  
R.V. w/hookups: \$10.00  
extra tent \$ 4.00  
Camping permits expire at 2:00 P.M. on the following day.  
ANNUAL FAMILY ENTRY PERMIT: \$30.00  
ANNUAL INDIVIDUAL ENTRY PERMIT: \$15.00  
ANNUAL BOAT PERMIT: \$30.00  
Lost permit replacement: \$2.00  
SHELTER RENT (by reservation only)---\$25.00  
Cleanup Deposit: \$25.00. Entry fee required with shelter use. \$ 2.00 daily

### PALO DURO RIVER AUTHORITY REGULATIONS FOR PUBLIC USE OF LAKE PALO DURO AND ADJACENT LANDS

These rules and regulations shall be applicable to the land, waters, structures and equipment, hereinafter referred to as "project properties" of the Palo Duro River Authority, hereinafter referred to as "PDRA" and shall be enforced fairly and equitably to all persons who enter upon said project properties.

#### I. VEHICLES

a. Vehicles means typical machines for conveyance, but not limited to, automobiles, trucks, motorcycles, mini-bikes, snowmobiles, dune buggies, all-terrain vehicles, trailers, campers, motor homes, bicycles and other such equipment.  
b. All vehicles shall be operated and/or parked on designated roadways and parking areas only, unless authorized exceptions are granted by the General Manager of the Palo Duro River Authority, hereinafter referred to as General Manager.  
c. Proceeding with a vehicle through, around or beyond a restrictive sign, recognizable barrier, fence or other control device is strictly prohibited.  
d. No person shall operate any vehicle carelessly, recklessly or negligently in any manner that will endanger any person, property or environmental feature.  
e. The maximum speed limit on any Park Road upon project properties shall not exceed 25 miles per hour and may be further reduced in heavily used areas or areas where a lesser speed limit is deemed to be safe. Operators of all vehicles are expected to abide by the maximum speed limit or as advised according to posted signs.

#### II. VESSELS

a. Vessels means watercraft or flotation devices such as, but not limited to, motor-powered boats of all kinds, barges, sailboats, rowboats, canoes, kayaks, jetskis and other floating devices, whether in motion or at rest.  
b. Vessels and other watercraft may be operated on the waters, except in restricted or prohibited areas as designated by the General Manager. All operators of vessels and other watercraft shall become familiar with and abide by the speed limits in the various areas that may be posted on signs or contained in information brochures that are available from the General Manager's office.  
c. Careless, negligent or reckless operation of any vessel or watercraft in any manner that endangers persons, property, animals or environmental features is strictly prohibited.  
d. All vessels, when in use, shall comply with Federal, State of Texas and Local Regulations with regards to safety devices, flotation equipment and emergency equipment aboard.  
e. Water skis, parasails, ski-kites and other such devices may be operated in designated areas only. Ski patterns shall be counter-clockwise; boats towing skiers shall stay at least 150 feet from the shore and must have an observer on board, in addition to the operator of the boat.  
f. All vessels, when not in use, shall be removed from project waters and lands, unless securely moored or stored in designated areas that are approved by the General Manager.

#### III. AIRCRAFT

a. Aircraft means all aircraft including, but not limited to airplanes, seaplanes, helicopters, motorized hang-gliders, non powered gliders, hot-air balloons and other such flight devices.  
b. Operation of aircraft shall be operated on project lands or waters, only in areas that are designated by the General Manager.  
c. No person shall operate any aircraft on or above project lands or waters in any manner that shall endanger persons, property or environmental features.  
d. All Federal, State of Texas and Local regulations regarding the operations of aircraft on or above waters and land shall apply.

#### IV. SWIMMING

a. Swimming, diving, snorkeling and scuba diving at one's own risk, is permitted in the waters, except at boat launching sites, designated mooring sites and other places so marked and restricted by the General Manager. Diving from bridges or other structures that cross above project waters is prohibited. Divers are further cautioned to search, prior to diving, proposed diving areas for depth, obstructions and hazards that may not be visible from the surface.  
b. An international diving flag is required to be displayed while underwater activities are in process.

#### V. PICNICKING

a. Day-use activities such as picnicking are permitted on project lands and waters, except where prohibited by the General Manager.

#### VI. CAMPING

a. Camping is permitted only in sites and/or areas so designated by the General Manager and only for 14 days during any 30-consecutive-day time period.  
b. Any unauthorized placement of person(s), camping equipment or other items on a campsite for the purpose of reserving the site for future occupancy is prohibited.  
c. Campsites shall be used with the least amount of damage to plants, land surface and all other environmental features as possible. No digging, leveling or rearrangement of natural features is permitted.

#### VII. FISHING, HUNTING AND TRAPPING

a. Fishing is permitted in accordance with State of Texas and Local Laws. Troutlines or jugs are not allowed.  
b. No hunting or trapping is allowed unless authorized by the Manager.

#### VIII. SANITATION

a. All garbage, trash, rubbish, litter, sewage and any other solid or liquid waste that is generated by human or animal, shall either be removed from the project properties or be disposed of in the proper receptacles or facilities as defined in the Texas State Health Department Regulations.  
b. It is strictly prohibited to bring any household or commercial garbage, dead animals, litter or other waste onto project properties for dumping or disposal without the written permission of the General Manager.  
c. It is a violation of these rules if any spilling, pumping, or other discharge of pollutants, human or animal wastes, petroleum, industrial and commercial products or by-products occurs on project lands or waters. The cost of cleaning up such spills or pollution shall be borne by the violator.  
d. All campers, picnickers and other persons using project properties shall keep their respective sites free of trash and litter during occupancy and shall remove all personal items and equipment when departing.  
e. The discharge or placement of any pollutants, sewage, galley waste, garbage or trash from any watercraft into project waters or onto project lands, except in proper disposal facilities, is prohibited.  
f. Reference is made to the State of Texas Health Department Regulations regarding sanitation. The standards and requirements of said regulations shall be maintained or exceeded upon project properties.

#### IX. FIRES

a. All gasoline, diesel, propane or any other fuel that is brought onto project properties shall be contained in the vehicle tanks or portable containers that are designed for that purpose and only in amounts that are sufficient for vehicle operation, camping or picnicking activities. No storage of such fuels on project properties shall be done without the written permission of the General Manager.  
b. Fires shall be contained in grills, fireplaces or other facilities designed for such purposes and only in those areas that are designated by the General Manager. No fire shall be left unattended. All fires shall be fully extinguished prior to departure. The burning of materials that produce toxic fumes or excessive smoke, including, but not limited to plastics, tires, chemically treated wood or other such items is prohibited.

#### X. ANIMAL CONTROL

a. All dogs, cats and other pets that are brought into developed recreation areas must be penned, caged, confined within a vehicle or kept on a leash no longer than 6 feet. All pets and other animals are prohibited from swimming beaches and sanitary facilities, except properly trained animals (such as seeing-eye dogs) that are used to assist handicapped persons. Animals that are unattended or unclaimed are subject to immediate impoundment and disposal in accordance with State of Texas and Local Laws.  
b. Persons who bring or allow pets in public use areas shall be responsible for picking up and properly disposing of any and all wastes that are produced by such animals.  
c. All large domestic animals such as, but not limited to, horses, cattle, sheep, goats and other such livestock, shall not be brought into camping, picnicking, swimming or other recreational areas, except as designated by the General Manager.  
d. Livestock may, with written permission from the General Manager, be allowed to range, graze and water upon project properties in designated areas that must be defined in a lease contract.  
e. All unauthorized livestock upon project properties are subject to immediate impoundment and disposal in accordance with Federal, State of Texas and Local Laws. If such impounded animals are confined in a designated location pending a claim and retrieval by the rightful owner, the General Manager may assess and collect a reasonable fee prior to the release of said animals.

#### XI. RESTRICTIONS

a. The General Manager may establish and post schedules of visiting hours and/or restrictions regarding the public use of the project properties or any portion of same. When it is in the public interest for reasons of public health, public safety, maintenance or construction, the General Manager may close or restrict the use of project properties or any portion thereof. Entering, using or trespassing upon project properties in any manner that is contrary to posted schedules, restrictions or closures is prohibited.  
b. Quiet time shall be maintained in all public use areas between the hours

of 10:00 p.m. and 6:00 a.m. or those hours so designated by the General Manager. Excessive noise that unreasonably disturbs other people during those times is prohibited.

c. Any activity or behavior by any person which impedes, interferes or disrupts the use of project properties by other person(s) is prohibited. Boisterous, rowdy or disorderly individuals whose acts disturb the peace on project properties may be requested to leave.  
d. The operation of any audio or other sound producing device including, but not limited to, radios, televisions, musical instruments, vehicles, vessels or equipment in any manner that unreasonably annoys, endangers persons at any time or exceeds noise guidelines established by Federal, State of Texas or Local Laws is prohibited.

e. User permits, licenses, leases or other such privileges may be revoked or denied to repeated violators of any of these rules and regulations. A repeated violator is defined as any person who has been issued three written citations, within any twelve month period, for violating any of these rules and regulations or for violating any Federal, State of Texas or Local Law that pertains to orderly conduct upon project properties.

#### XII. EXPLOSIVES, FIREARMS, OTHER WEAPONS AND FIREWORKS

a. The possession or use of loaded firearms, ammunition, loaded projectile firing devices, bows and arrows, crossbows, explosives, explosive devices (including fireworks) is prohibited unless: (1) in the possession of Federal, State or Local Law Enforcement Officers; (2) being used for hunting or fishing as properly permitted under Section VII, provided that firing devices are not loaded when being transported to, from or between hunting and fishing sites; (3) being used at authorized shooting ranges; or (4) written permission has been granted by the General Manager.

#### XIII. PUBLIC PROPERTY

a. Defacement, destruction, injury, alteration or removal of public property including, but not limited to, developed facilities, natural formations, minerals, historical or archaeological features and vegetative growth is prohibited unless written permission is granted by the General Manager.  
b. The cutting or gathering of live trees, parts of trees or any other vegetation for and/or removal from project properties is prohibited, unless written permission is granted by the General Manager.  
c. Gathering of dead wood that is on the ground for use as firewood in designated areas and devices is permitted.

#### XIV. ABANDONMENT AND IMPOUNDMENT OF PERSONAL PROPERTY

a. Personal property of any kind shall not be abandoned, stored or left unattended upon project properties. Personal property that is left unattended for 24 hours or after a posted closure time of the project or any part thereof, shall be presumed to be abandoned and may be impounded and stored by the General Manager at a place designated by the General Manager, who may assess a reasonable impoundment fee. Such impoundment fee must be paid prior to returning the property to the rightful owner.  
b. The General Manager shall, by public or private sale or other dispersal, dispose of all lost, abandoned or unclaimed personal property that comes into custody of the PDRA. Such property shall not be so disposed of until diligent effort has been made to find the owner, heirs, next of kin or legal representatives. If the owner, heirs, next of kin or legal representatives are ascertained, but not found or located, the property may not be disposed of until after the expiration of 120 day after the date when notice, giving the time and place of the intended sale or disposition, has been sent by certified or registered mail to that person at the last known address. When diligent efforts to ascertain the owner, heirs, next of kin or legal representatives are unsuccessful, the property may be disposed of 90 days after it is received at the storage point designated by the General Manager. The net proceeds from the sale of property under this section shall be deposited into the Park Fund of the Palo Duro River Authority as miscellaneous receipts.

#### XV. LOST AND FOUND ARTICLES

a. All articles of unknown ownership or origin that are found on project properties shall be turned into the Palo Duro River Authority office or to a ranger and shall be disposed of in accordance with the rules in Section XIV.

#### XVI. ADVERTISEMENT

a. Advertisement by using signs, billboards, markers, handbills, circulars, posters, audio devices or other means is prohibited unless written permission has been granted by the General Manager. Vehicles and vessels that display permanent or semipermanent painted or installed signs are exempt, provided that they are used for authorized recreational activities and comply with all other rules and regulations that pertain to vehicles and vessels.

#### XVII. COMMERCIAL ACTIVITIES

a. Any person or entity desiring to engage in or solicit business on project properties shall first have written permission from the General Manager. All commercial activities without prior approval are strictly prohibited.

#### XVIII. PERMITS

a. It shall be a violation of these regulations for any person who has been granted a permit under these regulations to refuse to or fail to comply with the fee requirements or any other terms and conditions of the permit.

b. Permits for any floating structures or devices shall be granted at the discretion of the General Manager. Such permits must be acquired prior to the construction upon or launching into the waters of the project.

#### XIX. SPECIAL EVENTS

a. Special events including, but not limited to boat regattas, water carnivals, dramatic presentations, music festivals or special recreational programs are prohibited unless-written permission is granted by the General Manager. An appropriate fee may be charged and collected prior to such permit being granted.

#### XX. STATE OF TEXAS AND LOCAL LAWS

a. Except as provided herein or by any Federal, State of Texas or Local law or regulation, the laws and regulations of said governmental entities shall apply upon project properties in regards to, but not limited to:  
(1) Operation and use of motor vehicles, vessels and aircraft.  
(2) Hunting, fishing and trapping.  
(3) Use and/or possession of firearms or other weapons.  
(4) Civil disobedience and criminal acts; and  
(5) Littering, sanitation and pollution.

#### XXI. VIOLATIONS OF RULES AND REGULATIONS

a. An individual adjudged guilty of a violation of any rule promulgated by the PDRA, unless otherwise specifically provided herein, shall be punished by a fine not to exceed \$200.00.  
b. An individual adjudged guilty of a violation of Section IX or XIII, as promulgated by the PDRA, shall be punishable by a fine not to exceed \$500.00; confinement in the Hansford County Jail for a period not to exceed 30 days, or both such fine and confinement.

#### XXII. STATE OF TEXAS AND LOCAL LAWS

a. Except as provided herein or by any Federal, State of Texas or Local law or regulation, the laws and regulations of said governmental entities shall apply upon project properties in regards to, but not limited to:  
(1) Operation and use of motor vehicles, vessels and aircraft.  
(2) Hunting, fishing and trapping.  
(3) Use and/or possession of firearms or other weapons.  
(4) Civil disobedience and criminal acts; and  
(5) Littering, sanitation and pollution.

#### XXIII. THESE STATE AND LOCAL LAWS AND ORDINANCES ARE ENFORCED BY THOSE STATE AND LOCAL ENFORCEMENT AGENCIES THAT ARE AUTHORIZED AND ESTABLISHED FOR THAT PURPOSE.

In the public interest of effective management and enjoyment of the water resources of the State of Texas and particularly of the Palo Duro River Water District, these rules and regulations have been established and adopted by the Board of Directors of the Palo Duro River Authority. Your observance of these rules and regulations while visiting the project properties will make your visit and the visit of others more pleasant and enjoyable.

#### ADOPTED IN THE PALO DURO RIVER AUTHORITY BOARD OF DIRECTORS MEETING ON APRIL 9, 1996.

#### XXIII. INTERFERENCE WITH PALO DURO RIVER AUTHORITY EMPLOYEES

a. It shall be a violation of these regulations to forcibly assault, resist,

oppose, impede, intimidate or interfere with any employee of the PDRA while said employee is engaging in his/her assigned duties relating to project properties. Any such action may constitute a crime under the laws of the State of Texas and the offender may be liable for prosecution under said laws.

b. Any failure to comply with a lawful order of an employee of the PDRA acting pursuant to these regulations shall be considered to be an interference with that employee while engaged in the performance of their official duties. Such interference with a PDRA employee includes failure to provide a correct name and address or other identification upon request from a PDRA employee when that employee is acting on the authority of the General Manager and these regulations to issue a citation for violation of these regulations.

#### XXIV. VIOLATIONS OF RULES AND REGULATIONS

a. An individual adjudged guilty of a violation of any rule promulgated by the PDRA, unless otherwise specifically provided herein, shall be punished by a fine not to exceed \$200.00.  
b. An individual adjudged guilty of a violation of Section IX or XIII, as promulgated by the PDRA, shall be punishable by a fine not to exceed \$500.00; confinement in the Hansford County Jail for a period not to exceed 30 days, or both such fine and confinement.

#### XXV. STATE OF TEXAS AND LOCAL LAWS

a. Except as provided herein or by any Federal, State of Texas or Local law or regulation, the laws and regulations of said governmental entities shall apply upon project properties in regards to, but not limited to:  
(1) Operation and use of motor vehicles, vessels and aircraft.  
(2) Hunting, fishing and trapping.  
(3) Use and/or possession of firearms or other weapons.  
(4) Civil disobedience and criminal acts; and  
(5) Littering, sanitation and pollution.

#### XXVI. THESE STATE AND LOCAL LAWS AND ORDINANCES ARE ENFORCED BY THOSE STATE AND LOCAL ENFORCEMENT AGENCIES THAT ARE AUTHORIZED AND ESTABLISHED FOR THAT PURPOSE.

In the public interest of effective management and enjoyment of the water resources of the State of Texas and particularly of the Palo Duro River Water District, these rules and regulations have been established and adopted by the Board of Directors of the Palo Duro River Authority. Your observance of these rules and regulations while visiting the project properties will make your visit and the visit of others more pleasant and enjoyable.

#### ADOPTED IN THE PALO DURO RIVER AUTHORITY BOARD OF DIRECTORS MEETING ON APRIL 9, 1996.

#### XXVII. INTERFERENCE WITH PALO DURO RIVER AUTHORITY EMPLOYEES

a. It shall be a violation of these regulations to forcibly assault, resist,

oppose, impede, intimidate or interfere with any employee of the PDRA while said employee is engaging in his/her assigned duties relating to project properties. Any such action may constitute a crime under the laws of the State of Texas and the offender may be liable for prosecution under said laws.

b. Any failure to comply with a lawful order of an employee of the PDRA acting pursuant to these regulations shall be considered to be an interference with that employee while engaged in the performance of their official duties. Such interference with a PDRA employee includes failure to provide a correct name and address or other identification upon request from a PDRA employee when that employee is acting on the authority of the General Manager and these regulations to issue a citation for violation of these regulations.

#### XXVIII. VIOLATIONS OF RULES AND REGULATIONS

a. An individual adjudged guilty of a violation of any rule promulgated by the PDRA, unless otherwise specifically provided herein, shall be punished by a fine not to exceed \$200.00.  
b. An individual adjudged guilty of a violation of Section IX or XIII, as promulgated by the PDRA, shall be punishable by a fine not to exceed \$500.00; confinement in the Hansford County Jail for a period not to exceed 30 days, or both such fine and confinement.

#### XXIX. STATE OF TEXAS AND LOCAL LAWS

a. Except as provided herein or by any Federal, State of Texas or Local law or regulation, the laws and regulations of said governmental entities shall apply upon project properties in regards to, but not limited to:  
(1) Operation and use of motor vehicles, vessels and aircraft.  
(2) Hunting, fishing and trapping.  
(3) Use and/or possession of firearms or other weapons.  
(4) Civil disobedience and criminal acts; and  
(5) Littering, sanitation and pollution.

#### XXX. THESE STATE AND LOCAL LAWS AND ORDINANCES ARE ENFORCED BY THOSE STATE AND LOCAL ENFORCEMENT AGENCIES THAT ARE AUTHORIZED AND ESTABLISHED FOR THAT PURPOSE.

In the public interest of effective management and enjoyment of the water resources of the State of Texas and particularly of the Palo Duro River Water District, these rules and regulations have been established and adopted by the Board of Directors of the Palo Duro River Authority. Your observance of these rules and regulations while visiting the project properties will make your visit and the visit of others more pleasant and enjoyable.

#### ADOPTED IN THE PALO DURO RIVER AUTHORITY BOARD OF DIRECTORS MEETING ON APRIL 9, 1996.

#### XXXI. INTERFERENCE WITH PALO DURO RIVER AUTHORITY EMPLOYEES

a. It shall be a violation of these regulations to forcibly assault, resist,

oppose, impede, intimidate or interfere with any employee of the PDRA while said employee is engaging in his/her assigned duties relating to project properties. Any such action may constitute a crime under the laws of the State of Texas and the offender may be liable for prosecution under said laws.

b. Any failure to comply with a lawful order of an employee of the PDRA acting pursuant to these regulations shall be considered to be an interference with that employee while engaged in the performance of their official duties. Such interference with a PDRA employee includes failure to provide a correct name and address or other identification upon request from a PDRA employee when that employee is acting on the authority of the General Manager and these regulations to issue a citation for violation of these regulations.

#### XXXII. VIOLATIONS OF RULES AND REGULATIONS

a. An individual adjudged guilty of a violation of any rule promulgated by the PDRA, unless otherwise specifically provided herein, shall be punished by a fine not to exceed \$200.00.  
b. An individual adjudged guilty of a violation of Section IX or XIII, as promulgated by the PDRA, shall be punishable by a fine not to exceed \$500.00; confinement in the Hansford County Jail for a period not to exceed 30 days, or both such fine and confinement.

#### XXXIII. STATE OF TEXAS AND LOCAL LAWS

a. Except as provided herein or by any Federal, State of Texas or Local law or regulation, the laws and regulations of said governmental entities shall apply upon project properties in regards to, but not limited to:  
(1) Operation and use of motor vehicles, vessels and aircraft.  
(2) Hunting, fishing and trapping.  
(3) Use and/or possession of firearms or other weapons.  
(4) Civil disobedience and criminal acts; and  
(5) Littering, sanitation and pollution.

#### XXXIV. THESE STATE AND LOCAL LAWS AND ORDINANCES ARE ENFORCED BY THOSE STATE AND LOCAL ENFORCEMENT AGENCIES THAT ARE AUTHORIZED AND ESTABLISHED FOR THAT PURPOSE.

In the public interest of effective management and enjoyment of the water resources of the State of Texas and particularly of the Palo Duro River Water District, these rules and regulations have been established and adopted by the Board of Directors of the Palo Duro River Authority. Your observance of these rules and regulations while visiting the project properties will make your visit and the visit of others more pleasant and enjoyable.

#### ADOPTED IN THE PALO DURO RIVER AUTHORITY BOARD OF DIRECTORS MEETING ON APRIL 9, 1996.

#### XXXV. INTERFERENCE WITH PALO DURO RIVER AUTHORITY EMPLOYEES

a. It shall be a violation of these regulations to forcibly assault, resist,

oppose, impede, intimidate or interfere with any employee of the PDRA while said employee is engaging in his/her assigned duties relating to project properties. Any such action may constitute a crime under the laws of the State of Texas and the offender may be liable for prosecution under said laws.

b. Any failure to comply with a lawful order of an employee of the PDRA acting pursuant to these regulations shall be considered to be an interference with that employee while engaged in the performance of their official duties. Such interference with a PDRA employee includes failure to provide a correct name and address or other identification upon request from a PDRA employee when that employee is acting on the authority of the General Manager and these regulations to issue a citation for violation of these regulations.

#### XXXVI. VIOLATIONS OF RULES AND REGULATIONS

a. An individual adjudged guilty of a violation of any rule promulgated by the PDRA, unless otherwise specifically provided herein, shall be punished by a fine not to exceed \$200.00.  
b. An individual adjudged guilty of a violation of Section IX or XIII, as promulgated by the PDRA, shall be punishable by a fine not to exceed \$500.00; confinement in the Hansford County Jail for a period not to exceed 30 days, or both such fine and confinement.

#### XXXVII. STATE OF TEXAS AND LOCAL LAWS


a. Except as provided herein or by any Federal, State of Texas or Local law or regulation, the laws and regulations of said governmental entities shall apply upon project properties in regards to, but not limited to:  
(1) Operation and use of motor vehicles, vessels and aircraft.  
(2) Hunting, fishing and trapping.  
(3) Use and/or possession of firearms or other weapons.  
(4) Civil disobedience and criminal acts; and  
(5) Littering, sanitation and pollution.

#### XXXVIII. THESE STATE AND LOCAL LAWS AND ORDINANCES ARE ENFORCED BY THOSE STATE AND LOCAL ENFORCEMENT AGENCIES THAT ARE AUTHORIZED AND ESTABLISHED FOR THAT PURPOSE.

In the public interest of effective management and enjoyment of the water resources of the State of Texas and particularly of the Palo Duro River Water District, these rules and regulations have been established and adopted by the Board of Directors of the Palo Duro River Authority. Your observance of these rules and regulations while visiting the project properties will make your visit and the visit of others more pleasant and enjoyable.

## Be A Good Neighbor!

When mowing your lawn, please compost the clippings. If you can't compost, then please put the clippings inside the dumpster and not beside the dumpster. Your neighbors will appreciate the courtesy.



Paid for by the City of Spearman.

the  
med  
ly of  
ce in  
  
s are  
ially  
find  
Girl  
ether  
Girl  
ng or  
decide  
  
leader,  
Please  
cs.  
Scout  
to your  
  
he  
  
JGH  
ustee  
Man



## Chamber Chatter

The deadline for entering this year's Miss Hansford County Pageant is fast approaching. Contestants must turn in their completed form no later than 5:00 p.m. on Tuesday, April 30. This year's pageant, headed by Cindy Avila, Jodie Hight, Davonna Daharsh, and Kathy Boyd, will be held Tuesday, June 4.

There will be five age groups again this year with a Little Miss Hansford, open to girls between the ages of four and six. The Junior Miss, for those seven to nine years old. Pre-Teen Miss Hansford for ages ten to twelve. Miss Hansford Teen open to girls between the ages of thirteen and sixteen. And Miss Hansford open to ages seventeen to twenty-one.

There is a limit of ten girls for the categories of Little Miss, Junior Miss, Pre-Teen and Miss Teen. Miss Hansford is unlimited to the number of entrants. It is open to ages seventeen to twenty-

one. (All ages apply as of June 1, 1996.)

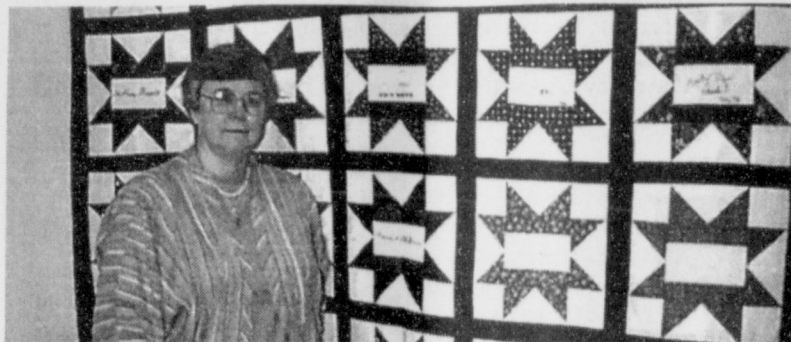
Each girl who enters will be responsible for their own sponsor. The entry fee will be \$35 for Little Miss, Junior Miss and Pre-Teen, and \$50 for the Miss Teen and Miss Hansford Categories.

For the winner of the 1996 Miss Hansford Pageant, a \$500 residence hall scholarship will be offered to West Texas A&M University. There will also be the offer of an \$800 scholarship to Frank Phillips College. Also included in the scholarship package will be a \$300 scholarship to Clarendon to the winner and a \$200 to the first and second runner-up.

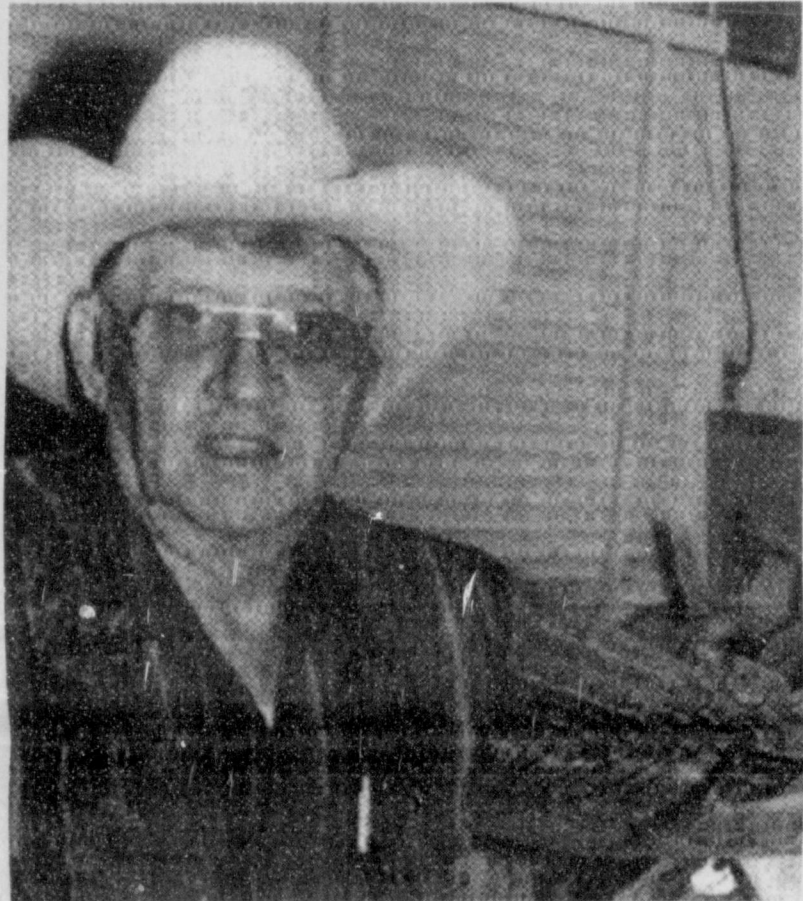
The theme for this year's pageant is "Celebration". For further information, contact any Women's Division Chamber Member or call the Chamber Office in Spearman at 659-5555.



Ann Sanders of Spearman participated in the Panhandle Piecemakers Quilt Guild "A Spring Festival of Quilts" Quilt Show on Saturday, April 20th in Pampa. She placed 1st in the Piece Category with her quilt, "Mariner's Compass." She placed 2nd in the Applique Category with the "Rose of Sharon." She also placed 2nd in the Baby Quilt Category with her "Baby Star" machine quilted quilt. Jo Farr and Winnie Carroll, also of Spearman, had several items on display. Their items were not judged as they were quilted by professionals.



Jo Farr is pictured above with a "Friendship Star Quilt" that was given to her by her students. Each square was done by a student and then pieced together to form the quilt. The quilt was presented to her on Monday, April 15th.



Austin "Slim" Green of New Mexico, son of the late A.C. and Eugie Green of Spearman, is featured in Charles Kuralt's America book. Mr. Kuralt discusses his saddry and some of his famous customers, such as Errol Flynn, Gene Autry, and Robert Redford. Slim has two cousins still living in Hansford County. They are Weldon Green of Gruver and Altha Groves of Spearman.

## Bullard Graduates From NRTC

Navy Petty Officer 1st Class Ronald S. Bullard, son of Ronnie W. and Vicky L. Bullard of Spearman, Texas, recently graduated from the Navy's Recruiter Training Orientation Course.

During the four-week course taught with Navy Recruiting orientation Unit, Naval Air Station, Pensacola, FL, Bullard learned recruiting techniques and personal interviewing skills, up-to-date information concerning the Navy's training and education programs, administrative requirements, and

enlistment procedures.

As a Navy recruiter, Bullard joins a select group of men and women who have demonstrated their outstanding ability to excel in serving on the Navy-Marine Corps team. Whether assigned to ships, squadrons or shore commands around the world, men and women like Bullard are making a difference as they work to improve their knowledge and skill as part of the most highly technical naval force in history.

The 1982 graduate of Spearman High School joined the Navy in April 1984.

## Pringle-Morse UIL Results

The students of the Pringle-Morse Consolidated School District attended the District UIL Literary Meet on Friday, April 12th in Miami. Listed below are the results of this meet.

**SECOND GRADE**- Storytelling-6th-Tyler Lane; Creative Writing-5th-Tabatha Shields; **THIRD GRADE**- Spelling-3rd-Chase Phillips; Storytelling-3rd-Seth Clemmons; Storytelling-4th-Brennan Eudy; Ready Writing-5th-Seth Clemmons; **FOURTH GRADE**- Oral Reading-6th-Sarah Martin; Spelling-1st-Sarah Martin; Picture Memory-3rd-Crystal Martinez, Nekisha Whitefield, Michel Huffaker, Sarah Martin; Number Sense-6th-Sarah Martin; Ready Writing-3rd-Sarah Martin; **FIFTH GRADE**- Ready Writing-1st-Ross Womble; Listening-2nd-Ross Womble; **SIXTH GRADE**- Oral Reading-4th-Andrew Martin; Ready Writing-4th-Mikala Reiswig; Number Sense-6th-Evan Schmidt; Spelling-2nd-Mikala Reiswig; Calculator-4th-August Schuman, 5th-Evan Schmidt, 6th-Andrew Martin; Listening-

4th-Andrew Martin, 4th-Evan Schmidt; Music Memory-1st-August Schuman, Mikala Reiswig, Andrew Martin, Evan Schmidt; Maps, Graphs, & Charts-6th-Andrew Martin; **SEVENTH GRADE**- Oral Reading-1st-Kirby Johnson-3rd-Kaycee Howe; Ready Writing-4th-Donnie Davis; Number Sense-4th-Hugo Hernandez; Calculator-5th-Felix DeLaCruz; Listening-1st-Allen Thomas, 5th-Donnie Davis; Dictionary-4th-Donnie Davis; Science-3rd-Kirby Johnson, 5th-Donnie Davis; Impromptu-1st-Kirby Johnson, 2nd-Donnie Davis, 6th-Kaycee Howe; Modern Oratory-3rd-Donnie Davis, 5th-Allen Thomas; **EIGHTH GRADE**- Oral Reading-5th-Natalie Tarango; Ready Writing-2nd-Tap Giblin, 3rd-Aaron Huffaker; Calculator-4th-Tap Giblin; Listening-tied for 2nd-Tap Giblin and Aaron Huffaker; Science-5th-Tap Giblin; Impromptu-1st-Aaron Huffaker, 2nd-Natalie Tarango, 5th-Tap Giblin; Modern Oratory-2nd-Tap Giblin, 3rd-Aaron Huffaker.

## Girl Scout Leadership Day

by Jo Biddle, Public Relations, Yucca Girl Scout Councils

Anyone can be Girl Scout leader. Anyone, that is, who is patient, fun-loving, understanding, enduring, inspirational, cooperative, sympathetic, creative, fair, organized, caring and who can find tremendous personal satisfaction and growth in helping young girls seek wonder and fulfillment in their lives.

Yes, ma'am--and sir--we guess you could say that Girl Scout leaders are very, very, special kind of people.

Girl Scouts certainly think so. That's why they honor their leaders on Girl Scout Leader's

Day, April 22, and cherish the involvement of the concerned women and men who give freely of their time to make a difference in girls' lives.

Today's Girl Scout leaders are highly-motivated, specially trained individuals who find they get as much out of Girl Scouting as they give, whether it's accompanying Daisy Girl Scouts on their first outing or helping a Senior Girl Scout decide on a career.

If you know a Girl Scout leader, today is her--or--his day. Please take a moment to say thanks.

And, if you are a Girl Scout leader, our caps are off to you! Enjoy your day!

## Gladiola Flower Club News

The Gladiola Flower Club met April 18, in the home of Betty Davis.

President Dorothy Buzzard presided over the business meeting. A report was given on the Spring Fling Garden Show, and Virginia Trindle passed around pictures of the club members demonstrations.

Dorothy Buzzard won "Home Grown Division" and Betty Jean Davis won "Pot Plant Division."

Margarette Evans presented the program "Pots by Maggie," and several ways to use them.

Members attending were: Charlie Baker, Wanda Brown, Dorothy Buzzard, Rose Cummings, Margarette Evans, Ann Flowers, Virginia Head, June Jackson, Lorene Kunselman, Jo Larson, Gwen Smith, Kathleen Sutton and Virginia Trindle.

Next meeting will be May 2nd in the home of Wanda Brown.

**Prairie Garden Flowers**

209 Main Street  
Spearman  
659-2212  
659-3329

# HELP!

**Spearman Little League needs volunteers for Umpires!**

Call Mike Cudd at 659-2568 - Days, or 659-5030 - Nights.

League play begins April 22nd.

Training will be provided.

The Hansford County Hospital District is now accepting applications for the Summer Youth Program.

This will be a nine week program beginning June 3rd and ending August 2nd with a weekly schedule of 24 hours per week. Applicants must attend Hansford County Schools and be between 16 and 18 years of age.

Apply at the personnel office before May 17, 1996. Call (806) 659-2535 and ask for Jay Gordon.

# JoAnn Hawkins

We Appreciate You and the Work that You Do.

From Jim  
Palo Duro River Authority

# May 4th

VOTE
VOTE

**A Vote For ANDY SCARBOROUGH**  
Spearman ISD School Board Trustee

**Means:** Involved Parent  
Concerned Family Man  
Honest  
Capable  
Open Minded  
Willing To Listen  
Education First

Political Ad Paid for by Andy Scarborough

LEG  
Rules and re promulgated b of the Palo I under the pos House Bill N Acts of 1973, 6 Sec. 13 (a) T the Authority adopt and pr regulations to preserve the water in a reservoir own prevent wa unauthorized residence, hu camping, ar business pri any such re land, or ea Authority.  
(b) Such reasonable p any regulati penalties shu than Two F or imprisor thirty (30) c such fine a penalties he addition provided t may be enf the appor provided, regulation for the vi effect, as t until five Authority substantiv rule or req the violat once a w weeks in reservoir in which substant publishe possible director forbidde one (1) no of regula in the nc particular, will su inflictio shall be that the sought princip where interest the sec hereby regulat ignorar not c prosec penaly author public to thar a natu ordina LAK PALC C

The River South prom Hors Rese mair addi may Al proj Aut curr app visi AN of t pur hol mu ad the At dis At ta: er Th w p e w c l e F





**HOMES To Live In**

**HOMETOWN REALTY**

**Selling Spearman!**  
List your home with the Real Estate Professionals that the BUYERS call!

Rex Hoover - Broker • 800-755-4291  
Larry Trosper - Sales • 659-3491  
Diana Hoover - Sales • 658-9113

**NEW LISTING: 160 Acres of Dryland** - Southeast of Spearman, 1/2 of 1996 Wheat Crop

**NEW LISTING: 202 S. Endicott** - Rental property, make offer

**NEW LISTING: 801 Wilmeth Drive** - 2 vacant lots. Priced to sell.

**NEW LISTING: 200 Acres Farm Ground**; 1/2 of Minerals; Close to Spearman.

**711 Collier** - 3 bedroom, 1 bath, garage, central heat, PRICED TO SELL!

We need and appreciate your listings!

**COUNTRY HOME FOR SALE**

By Owner  
Available In July  
3334 Total Sq. Ft.  
3/4 (+) Acre Lot

**3 Bedroom - 3 1/2 Bath**  
Sunken Living Room w/Fireplace  
Balcony & Cathedral Ceiling  
Two Story - Formal Dining Room  
Office - Basement - Utility  
Fenced Back Yard - Lots of Storage  
Garage - Patio - 2 Storage Bldgs.  
Central Heat & Air  
Private Water Well - New Septic System  
Satellite System

**806-659-3289**  
By Appt. Only - Serious Inquiries Only

**Building For Rent**

3400 square ft. (1 large room, 3 smaller rooms, 2 storage rooms and 1 small kitchen). 13 adjacent lots for sale (each lot is 25 ft. x 125 ft.). Located in Gruver at 600 Main Street, adjacent to hardware store. Price is negotiable. Call 733-2332.

**- REAL ESTATE SELLS AT 1:00 P.M. -**

**416 W. 13th Spearman, Texas**



The Lois Allison Estate Will Offer The Following Real Estate At Auction:

Real Estate Being Described As A 75'x100' Lot Out Of Sec. 88, Blk. 4, T&NO RR Survey, Spearman, Hansford County, Texas. Property Consists Of A 3 Bedroom, 2 Bath Home With 2074 Total Sq. Ft. - 480 Sq. Ft. In Garage. Sunroom, Vaulted Living Room Ceilings, Fireplace, Double Car Garage With Lighted & Ventilated Tornado Cellar, 6' Fenced Yard, Central Heat & Air, 2 Year Old Roof.

TERMS: 10% of purchase price will be deposited in escrow the day of sale. Seller will furnish title insurance. Purchaser will have 10 days to examine title at purchasers expense & 30 days to produce letter of commitment from a lending institution. Balance upon closing. Standard Texas Real Estate Contract will apply. Closing costs will be split 50-50 between buyer and seller. 1995 and prior taxes paid by the seller. 1996 taxes prorated to day of closing.

Cecil Biggers, Closing Agent.  
Every effort has been made to assure the accuracy of the information with no guarantee of authenticity. Any announcements made day of sale supersede all other announcements or advertising.

For Showing Or More Information Call Bozeman Auction Company, (806) 435-4472. Sale Subject To Confirmation And Acceptance Of High Bid By Seller.



**Spearman's ONLY**  
locally owned and operated Realty.

Julie Martin  
Broker 659-2425

404 S. Hazelwood - 2/1/2, beautifully landscaped  
1103 S. Townsend - 3 1/1/1, good location.  
Hanger & Storage - Old Airport, REDUCED!!!  
160 Acres - SE of County  
702 S. Bernice - 3/1/1, very clean  
515 S. Evans - 3/2/1, two story  
621 S. Endicott - 3/2/2, clean & cozy  
807 S. Haney - 3/1 1/2, great home, large lot  
1025 S. Townsend - 3 1/1/1, must see  
718 S. Bernice - CONTRACT

We'd Like Your Listing  
**FOR QUALITY & SERVICE**  
CALL US TODAY!  
Equal Housing Opportunity

**FOR SALE:** Country Home, Brick, 3BR, 2B, 2 Car Garage on 5 Acres. Lots of storage, storm shelter. Nice sized home - large living area. Located between Sunray and Gruver, in Gruver School District. \$80,000. Call Ad Rem Land Co. at (806) 935-7364 or, evenings, Tom Ferguson, (806) 935-7408.

**Century 21**  
GOLDEN SPRING REALTY  
200 S. Main - Perryton, TX  
806-435-5444

**GOLDEN SPRING REALTY**  
JAYNE HELTON POINTER, BROKER OWNER  
435-5444

205 Hazelwood - Great buy, excellent condition  
315 1/2 N. Bernice - Lot for sale  
East 7th Street - Mobile Homes, lots to lease!!!  
Hwy. 207 South - Great potential for new or existing business!

© and TM trademarks of Century 21 Real Estate Corporation. Equal Housing Opportunity  
INDEPENDENTLY OWNED AND OPERATED

**Customer Notice**

On February 15, 1996, GTE Southwest Incorporated (GTSW) filed a tariff with the Public Utility Commission of Texas for Advanced Credit Management (ACM). If approved by the Commission, ACM will provide a toll limit for all new and existing medium and high risk single line residence and business customers based upon their credit and payment history. If a toll limit is reached, the customer's telephone number will be subject to having its outgoing long distance, collect, third number billed, and GTE calling card calls blocked until payment has been made. ACM has no monthly charge or nonrecurring charge associated with it. This filing has been assigned Docket No. 15372.

Persons who wish to intervene or comment on this filing should notify the Commission by June 21, 1996. Requests for further information should be mailed to the Public Utility Commission of Texas, 7800 Shoal Creek Boulevard, Suite 400N, Austin, Texas, 78757, or you may call the Public Utility Information Office at (512) 458-0223 or (512) 458-0227, or (512) 458-0221 teletypewriter for the deal.

**GTE**

**UPHOLSTERY**

Home Furnishings and Office, Cars, Pickups, Trucks and Tractors  
Recovering seats, headliners, etc.

**B.G.'s Upholstery**  
(806) 659-3879

**Harshman's**  
VCR & Camcorder Repair  
**274-4704**

No Charge For In Shop Estimates  
Fast Service • Great Rates  
Berger, TX 10 a.m. - 6 p.m., Mon.-Sat.  
Also Stereos, CD's, Cassettes & More

**LR ELECTRONICS**  
Sales & Service

Leelyn Rock • 806-435-1112

**"UP CLOSE & PERSONAL IS THE FIRST GREAT MOVIE OF 1996!"**

Joe Seple, KNX 1310

"Up Close & Personal" is simply sensational - my favorite romantic movie of the year!"  
Gus Hall, THOR, 330-TV

ROBERT REDFORD MICHELLE PFEIFFER

**UP CLOSE & PERSONAL**

© 1995 MCA Home Video. All Rights Reserved.

**Lyric Theatre**  
Spearman, TX  
Fri.-Tues. - April 25-30  
Screen 1 - 7:30 p.m.

**KNAPP SHOES**  
Call or write Flavil Ayers at  
(806) 733-5292  
P.O. Box 823  
Gruver, TX 79040

**PRIMESTAR**  
Authorized by Tei agent  
Mini-dish satellite tv, starting at about a dollar a day  
No equipment to buy  
No equipment to maintain  
Digital quality picture and sound  
Worry free Warranty  
Call Today! 1-800-279-4904

**DRIVER EDUCATION CLASSES**  
Independent Driving School  
814 S. Main • Perryton  
(806) 435-2579  
Lanny Hargrove

**NEW TRAMPOLINES**  
Mats & Springs  
Resew Trampoline Mats  
Make New Boat Covers

Call (806) 659-2109  
Harry Stumpf  
301 W. 12th  
Spearman, TX

# WANT ADS

## Public Notice

**REAL ESTATE**

**MAKE US AN OFFER:** Great brick home in great location, 2,200 sq. Ft., 4 bedrooms, 3 baths, big den with fireplace, basement double car garage. 702 Gibner. Call and let's make a deal! 659-3838 or 733-5555. RTN(2-15-96)B

**FOR SALE:** 2,000 sq. Ft. Brick, 4 bedroom, 1 3/4 bath, double garage, central air/heat, lots of improvements, 18x27 Morton building in back yard, new fence and gates. Call (home) 659-3071 or (work) 659-3072. RTN(2-15-96)B

**FOR SALE:** 3 Bedroom, 1 1/2 Bath. 703 E. 2nd. \$6500 below appraisal. (806) 273-2768 after 6:00 p.m., or (806) 273-3793 during the day - leave message. RTN(3-28-96)B

**RENT LOT:** Trailer house lot for rent or sale. Call 659-2245. RTN(2-22-96)B

**FOR SALE:** 12x65 trailer, furnished - \$4500. Call Richard Pipkin at 659-2810. 4(4-18-96)B

**FOR SALE:** Mobile home and lot's. Carport, fence, storm shelter, storage building, garage apartment, 109 & 113 Townsend. Call 659-3458. 2(4-18-96)B

**FOR SALE:** 2 Bedroom, 1 bath with storage shed in back, 23 N. Endicott. 806-935-6794 or 659-4140. 2(4-25-96)P

**COMMERCIAL PROPERTY**

**FOR SALE OR LEASE:** Former Anthony Electric building. Call 659-2819. RTN(2-15-96)B

**FOR SALE:** Commercial building in Spearman shopping center. Call (405) 924-3512. 5(3-28-96)B

**FOR SALE**

**FOR SALE:** Barn heated and fully insulated. Nice facility. Please call (806) 659-2117 or 3762. Located in Spearman. RTN(2-15-06)B

**CONSOLE/SPINET PIANO:** Line new - small monthly payments - see locally. Phone 1-800-658-1724, Brier & Hale Music - Liberal. 3(4-18-96)B

**FOR SALE:** Sears rototiller - 2 years old. Like new - 20 hours use only. Call 659-3458. 2(4-18-96)B

**FOR SALE:** AKC Registered Rottweiler puppies, 6 weeks old. Ready now, call 659-3458. 2(4-25-96)B

**FOR RENT/LEASE**

**FOR RENT:** 1 Bedroom furnished house, 321 S. Endicott, call Gus McLean at 659-2274. RTN(4-25-96)B

**FOR RENT:** Furnished 1 Bedroom House, Furnished 1 Bedroom Apartment. Call 659-3260. RTN(4-1-96)NC/B

**HOUSE FOR LEASE:** 3BR, 1 1/2B, den w/fireplace, central heat/air, large fenced yard. \$250 deposit, \$400/month. Call 659-5108 after 5:00 p.m. for appointment. 2(4-18-96)B

**HELP WANTED**

**HELP WANTED:** Semi truck drivers, CDL required. Must be 25 years old. Conventional new hopper bottom trailers. McCarty Trucking, 806/362-4807. RTN(2-15-96)B

**HELP WANTED:** HOUSE OF LLOYD, a party plan company, is currently looking for demonstrators in this area. Work own hours. No investment. Free training. For details call 659-3705. 3(4-11-96)P

**HELP WANTED:** Part-time help wanted with elderly and disabled in Gruver area. Call Kay at 372-8480. 2(4-18-96)B

**HELP WANTED:** Experienced diesel mechanic. Farm equipment background helpful - top wages and benefits. Send resume to: Panhandle Implement Co., 710 N. Main, Perryton, TX. 79070. 3(4-25-96)B

**HELP WANTED:** Parts counterperson - apply in person at Gillaspie Auto & Truck Center, Hwy. 207 South.

**AUTOMOBILES**

**FOR SALE:** 1992 Suburban fully 4x4 fully loaded. Below loan value. White with gray interior. 733-2375. RTN(2-15-96)B

**FOR SALE:** Loaded 1986 Chev. Station Wagon. Call 659-3802. See at 519 Evans, 9 a.m. to 5 p.m. RTN(3-28-96)B

**FOR SALE:** 1991 Ford F-150 XLT Lariat, Ext. Cab, 87K, Call 659-5185. 2(4-18-96)B

**SERVICES**

**LONELY? AFRAID? DEPRESSED?** Call CONTACT: 1-800-886-4351. Free, Confidential, Anonymous - 24 hours per day.

**LAUNDRY SERVICE:** Special - 60 cents a pound. Mon., Wed., and Fri. Family Laundry. RTN(2-15-96)B

**BUY & SELL:** Furniture, appliances, antiques, collectibles... Second Time Around, 801 N. Main (338-1481); 502 N. Main (338-5878), Guymon, Oklahoma. 4(4-18-96)B

**LOOKING FOR WORK**

**LOOKING FOR WORK:** Lots of computer experience, can type - 10 keys by touch, telephone skills, receptionist skills. Have references. Can start at any time. Call 659-3518. 2(4-18-96)NC

**VACANCY ANNOUNCEMENT**

Bus driver for Pringle-Morse Consolidated School, \$10.00-12.50 per route. 180 days - beginning August of 1996. One or all of the following: Morning southwest route, afternoon southwest route. Experience is preferred, at least 18 years of age, CDL license with passenger endorsement, an acceptable driving history record, an acceptable criminal history record, and acceptable physical examination for bus driver, an acceptable knowledge and skill regarding the safe and effective operation of school buses.

Bus driver shall be registered for the first available basic (20-hour training) certification course as determined by the training agency, drive route/routes and supervise students on the bus.

District employees: Apply in Main Office

Outside Applicants: Pringle-Morse CISD, Box 109, Morse, TX 79062, 806-733-2507. Application deadline is June 1, 1996.

**VACANCY ANNOUNCEMENT**

Pre-K/Title I Teacher, Pringle-Morse Consolidated Schools. Salary Range: State base plus local increment

Length of Work Year: 185 days.

Position Summary: serve as Pre-K teacher in morning. Serve Title I students in the afternoon.

Position Requirements: Elementary Teacher Certification & early childhood certification, experienced preferred.

Duties/Responsibilities: Job description available upon request.

Application Procedures: District Employees: Letter of request to Superintendent; Outside Applicants: Applications available from school office. Application deadline is May 24, 1996.

**VACANCY ANNOUNCEMENT**

Summer help at Pringle-Morse Consolidated School, \$4.75 /hour for 10 weeks. Will assist custodial manager in summer repairs and cleaning. Experience preferred. Duties will be as assigned by custodial manager. File application at main office. Position will be filled ASAP.

**WANTED**

Unique Items At Affordable Prices

See The Classifieds

# TEXAS SCAN

Statewide Classified Ad Network. Over 300 Texas newspapers for \$300. Reach more than 3 MILLION Texans. Call this newspaper for details.

**ADOPTION**

**ADOPT/AFFECTIONATE, HAPPY,** financially secure couple want to share their love with a newborn. Call Nancy/Ben 1-800-448-7746 or our agency: days 1-800-841-8553, evenings 1-800-848-5287. *It's illegal to be paid for anything beyond legal/medical expenses.*

**ADOPTION: LOVING FAMILY** wish to adopt your newborn. Allowed expenses paid. Call anytime Jackie & John at 1-800-927-8668. *It's illegal to be paid for anything beyond legal/medical expenses.*

**ANTIQUES**

**SCOTT ANTIQUE MARKET** adjacent north & south facilities, 2,400 booths - May 10-12. 2nd weekend every month. Atlanta Expo Centers - Atlanta, Georgia, 1-285 at Jonesboro Road, 614-569-4112.

**BUSINESS OPPORTUNITY**

**FRITO LAY/HERSHEY** route, excellent cash business, top local sites, no selling involved. \$1,500 per week potential, minimum investment \$4,000. 1-800-617-6430. Open Sun-Fri.

**DRIVERS WANTED**

**DRIVER - CALL NOW** and get it... great pay/benefits, late model equipment, generous bonus programs, experienced, owner operator and inexperienced drivers. Burlington Motor Carriers. 1-800-JOIN-BMC EOE.

**DRIVERS - CALARK INTERNATIONAL** offers great pay, benefits and the chance to get home more often! Must be 22 with CDL and HazMat endorsement. 1-800-950-8326.

**DRIVERS ... EPES HAULING** offers great pay, new conventional, top benefits, bonuses, vacations, and more to experienced flatbed drivers. Call 1-800-248-6337 or 1-800-221-9620. Owner operators welcome!

**DRIVERS EXPERIENCED** OR Inexperienced North American Van Lines has owner operator openings (single-op & double-op) in relocation services & blanket wrap divisions. Tractor purchase programs, no trailer maintenance expenses, pay for performance, safety & longevity. Bonuses. Tuition-

**PUBLIC NOTICE**

First State Bank, Spearman, Texas, is accepting sealed bids for a 1985 Ford Thunderbird, as is. All bids must be received on or before Friday May 3, 1996. Bids will be accepted at 1 N.E. Court, or mailed to P.O. Box 247, Spearman, Texas 79081. First State Bank reserves the right to accept or reject any or all bids. The property hereinabove described may be inspected during normal business hours at the address mentioned above. For any further information, please contact Bret Burgin at (806) 659-5565.

**PUBLIC NOTICE**

Gruver ISD will take bids for ditching to lay computer cable encased in PVC pipe to connect the campus offices to the Business Office (bid is for ditching service only). Map and specifications may be picked up in the Business Office located in the High School at 601 Garrett St. Contractor must be bonded. Bids are to be returned by Wednesday, May 8, and will be awarded at the 6:00 p.m. School Board Meeting on May 9.

**Amanda's Novelty Shoppe**

307 Main Street • Spearman, TX  
659-3060

Jewelry & Clothes  
Ceramics & Furniture  
Etc.

**COUPON**

10% OFF\*

Expires May 31, 1996

\*Excluding Furniture

**ADOPTION**

**ADOPT/AFFECTIONATE, HAPPY,** financially secure couple want to share their love with a newborn. Call Nancy/Ben 1-800-448-7746 or our agency: days 1-800-841-8553, evenings 1-800-848-5287. *It's illegal to be paid for anything beyond legal/medical expenses.*

**ADOPTION: LOVING FAMILY** wish to adopt your newborn. Allowed expenses paid. Call anytime Jackie & John at 1-800-927-8668. *It's illegal to be paid for anything beyond legal/medical expenses.*

**ANTIQUES**

**SCOTT ANTIQUE MARKET** adjacent north & south facilities, 2,400 booths - May 10-12. 2nd weekend every month. Atlanta Expo Centers - Atlanta, Georgia, 1-285 at Jonesboro Road, 614-569-4112.

**BUSINESS OPPORTUNITY**

**FRITO LAY/HERSHEY** route, excellent cash business, top local sites, no selling involved. \$1,500 per week potential, minimum investment \$4,000. 1-800-617-6430. Open Sun-Fri.

**DRIVERS WANTED**

**DRIVER - CALL NOW** and get it... great pay/benefits, late model equipment, generous bonus programs, experienced, owner operator and inexperienced drivers. Burlington Motor Carriers. 1-800-JOIN-BMC EOE.

**DRIVERS - CALARK INTERNATIONAL** offers great pay, benefits and the chance to get home more often! Must be 22 with CDL and HazMat endorsement. 1-800-950-8326.

**DRIVERS ... EPES HAULING** offers great pay, new conventional, top benefits, bonuses, vacations, and more to experienced flatbed drivers. Call 1-800-248-6337 or 1-800-221-9620. Owner operators welcome!

**DRIVERS EXPERIENCED** OR Inexperienced North American Van Lines has owner operator openings (single-op & double-op) in relocation services & blanket wrap divisions. Tractor purchase programs, no trailer maintenance expenses, pay for performance, safety & longevity. Bonuses. Tuition-

**ADOPT/AFFECTIONATE, HAPPY,** financially secure couple want to share their love with a newborn. Call Nancy/Ben 1-800-448-7746 or our agency: days 1-800-841-8553, evenings 1-800-848-5287. *It's illegal to be paid for anything beyond legal/medical expenses.*

**ADOPTION: LOVING FAMILY** wish to adopt your newborn. Allowed expenses paid. Call anytime Jackie & John at 1-800-927-8668. *It's illegal to be paid for anything beyond legal/medical expenses.*

**ANTIQUES**

**SCOTT ANTIQUE MARKET** adjacent north & south facilities, 2,400 booths - May 10-12. 2nd weekend every month. Atlanta Expo Centers - Atlanta, Georgia, 1-285 at Jonesboro Road, 614-569-4112.

**BUSINESS OPPORTUNITY**

**FRITO LAY/HERSHEY** route, excellent cash business, top local sites, no selling involved. \$1,500 per week potential, minimum investment \$4,000. 1-800-617-6430. Open Sun-Fri.

**DRIVERS WANTED**

**DRIVER - CALL NOW** and get it... great pay/benefits, late model equipment, generous bonus programs, experienced, owner operator and inexperienced drivers. Burlington Motor Carriers. 1-800-JOIN-BMC EOE.

**DRIVERS - CALARK INTERNATIONAL** offers great pay, benefits and the chance to get home more often! Must be 22 with CDL and HazMat endorsement. 1-800-950-8326.

**DRIVERS ... EPES HAULING** offers great pay, new conventional, top benefits, bonuses, vacations, and more to experienced flatbed drivers. Call 1-800-248-6337 or 1-800-221-9620. Owner operators welcome!

**DRIVERS EXPERIENCED** OR Inexperienced North American Van Lines has owner operator openings (single-op & double-op) in relocation services & blanket wrap divisions. Tractor purchase programs, no trailer maintenance expenses, pay for performance, safety & longevity. Bonuses. Tuition-

**NOTES, ANNUITIES, LOTTERIES.** Receiving payments? Get cash now! Colonial Financial, the nationwide leader since 1984. 1-800-969-1200.

**FOR SALE**

**GARDEN TILLERS, TROY-Bilt Rear-Tine Tillers,** at low, direct from the factory prices. For free catalog with prices, special savings now in effect and model guide, call toll free 1-800-535-6001, Dept. 19.

**PRESSURE CLEANERS** PSI 1150-599, 2000-5339, 3500-5899, Honda contractor 4000-\$1,199, complete, factory direct, tax free, lowest prices guaranteed, catalog, 24 hours, 1-800-931-9274.

**WOLFF TANNING BEDS.** Tan at home. Buy direct and save! Commercial/home units from \$199.00. Low monthly payments. Free color catalog. Call today 1-800-842-1305.

**HEALTH**

**RAPID WEIGHT LOSS.** "Only 17.95." Burns fat, calories, stops hunger. Lose 3-5 pounds/week. Money back guaranteed. Call for information. United Pharmaceutical 1-800-733-3288 (C.O.D.'s accepted).

**NEW YOUTH.** Most explosive patented, scientific breakthrough in 20 years! For sneak preview 1-800-665-4197, access code 222-3333, then call me Maria Leal at 1-800-267-9361.

**REAL ESTATE**

**GOT A CAMPGROUND** membership or timeshare? We'll take it. America's most successful resort resale clearinghouse. Call Resort Sales information toll free hotline 1-800-423-5967.

**HILL COUNTRY HOMESITES** - one acre lots adjacent Delaware Springs Golf Course, Burnet, hospital, fifteen minutes to five lakes, airport, excellent hunting, owner finance. Fox Real Estate, 1-800-726-3699.

**HUNTERS, FISHERMEN:** 100 acres, 30 miles north of Del Rio, electricity, stock water, minutes from Lake Amistad. Trophy deer, turkey, quail, \$315/acre, owner terms. 210-257-5572.