

<b>INSIDE</b>			
Lunch Menus	2	At the Movies	2
Among the Neighbors	5	Out at the Lake	3
Chamber Chatter	3	Museum Musings	8
Library Book Notes	2	City Lites	2
Recycling Words	2	Extension News	4
For the Short of It	7		

# State Track Meet Results

Page 6 & 7

WEATHER FOR WEEK OF 5-11 THRU 5-17							
Day	Hi	Lo	Precip	Day	Hi	Lo	Precip
Thu	75	46	.00	Mon	84	47	.00
Fri	85	57	.00	Tue	85	56	.00
Sat	85	48	.00	Wed	--	55	.00
Sun	73	43	.00	Total Precipitation			5.42

HANSFORD COUNTY LIBRARY  
0120 MAIN ST.  
SPEARMAN, TX 79081-2064  
EXPIRES 04/15/1996 THANK YOU

# The Hansford County Reporter-Statesman

Serving Hansford County Since 1907

Volume 87 • Issue 20

213 Main • Spearman, Texas 79081

Thursday • May 18, 1995

## SPS files settlement agreement with PUC

Southwestern Public Service Company filed a settlement agreement with the Public Utility Commission of Texas that supports SPS's acquisition of properties in the Texas Panhandle currently owned by Texas New Mexico Power Company.

SPS is seeking PUCT approval of the acquisition. In the settlement, the intervening parties agree to either support approval or agree not to oppose approval. Intervenor include the staff of the PUCT, the affected cities, the City of Amarillo, the State of Texas, TNP, and El Paso Electric Company.

SPS and TNP announced late

last year an agreement to sell the Panhandle properties to SPS for \$29.2 million. The communities involved are Spearman, Perryton, Booker, Follett, Higgins, and Darrouzett.

The communities involved requested the sale because of the disparity of rates between TNP and other area suppliers of electricity. As part of SPS's purchase, rates to the affected communities will immediately be reduced by 10%. Other rate decreased would follow over a ten-year period until the new customers are at the same rates as SPS's other customers in its Texas

service area.

SPS Vice President of Rates and Regulation Gerald Diller said he is hopeful final approval from the PUCT can come within six weeks.

The final regulatory step before the transaction can be completed and before lower rates can take effect is approval from the Federal Energy Regulatory Commission, Diller said. "We hope that will come before mid-summer," he said. "We will continue to work diligently to achieve these regulatory approvals so we can bring the benefits of lower rates to these customers."

Southwestern Public Service Company is a regional utility that

primarily provides electric service to a population of about one million people in a 52,000 square-mile area comprising eastern and southwestern New Mexico, the South Plains and Panhandle of Texas, the Oklahoma Panhandle and southwestern Kansas. Through its Utility Engineering Corporation and Quixx Corporation subsidiaries, the company also provides engineering, design and construction management services to a variety of industries and is involved in a number of non-utility power generation projects. Corporate headquarters is in Amarillo, Texas.



**GOLD MEDAL WINNERS** - Junior Moreno and Kristi Wall were just two of many students who competed at the Dumas Junior High Band Festival. Moreno added his nine gold medals, the most won, to the 262 gold medals that sixth, seventh, and eighth grades won. The team also received two of three available outstanding band trophies.

## Gruver I.S.D. holds board meeting

A Board Meeting for Gruver ISD was held on May 10, 1995.

The first order of business was to administer the oath of office to the newly elected board members. Buddy Lowe, Kevin Holt, and Marguerite Nelson were all sworn in to three year terms.

Board officers were re-elected for the 1995-1996 school year. Stan Seagler was selected to serve the body as president, Buddy Lowe will serve as vice-president, and Leon (Corky) Chapman will be the secretary.

The Board accepted the resignation of Mrs. Georgia Davidson. She has taught High school English at Gruver High School for 25 years and has taught for a total of 32

years.

Stan Seagler presented Mrs. Davidson with a plaque. This plaque was in appreciation of the board for her many years of service to the district. He also informed her that she will be missed, but that he wished her well during her retirement.

Gruver ISD also received \$11,500 from the Texas Education Agency to install a T-star satellite and receiver in the Gruver schools. This amount will cover the purchase and installation of the satellite dish, satellite receiver equipment, computer equipment, a color TV and VCR, and the audio return system needed to make the T-star interactive.

This equipment will make it possible to receive programming from TEA, as well as other satellite programming to which the district may subscribe. This programing is interactive, and it will benefit students, teachers, and board members.

The Board voted to accept the grant and to amend the school budget to reflect the receipt and future expenditure of the funds.

Coach Tim Garland met with the board to discuss extending the hours of the Activity Center. He reported that he had met with Nick Jordan, Gruver's Police Chief, and Jordan had agreed to have the officer on duty lock the AC each night. Garland also said that the basketball coaches would check on the activities in the building. The board voted to extend the hours of the AC on a trial basis. The new hours are as follows: 7:30 A.M. - 10:00 P.M. on Monday-Thursday, 7:30 A.M. - midnight on Friday and Saturday, and 1:00 P.M. - 10:00 P.M. on Sunday. The gym will be closed from 6:00

P.M. - 8:00 P.M. on Wednesday and Sunday evenings.

The board also voted to contract with the Region XVI Education Service Center during the 1995-1996 school year to provide educational services to the district.

Additionally, the board decided to request that supplemental materials for the health class be sent to the district. To receive materials this year, they just be requested and reviewed by the board before use in the classrooms.

Julie Williams was granted permission to sign and send the cafeteria report to TEA in Austin.

Students of the Month were also recognized. The Student of the Month for April was Cori Lowe. May's Student of the Month is Mary Dawn Henson. Stan Seagler thanked the girls and their for the contributions they make to their school.

The Board also voted to pay bills totaling \$53,745.01 before adjourning the meeting at 4:55 P.M.

## Pringle-Morse C.I.S.D. meets in regular session

The Pringle-Morse CISD Board of Trustees met in regular session on May 9.

Board members present were: Alan Leach, Betty Womble, Charlie Kiser, Ron Womble, Lonnie Clemmons, Clay Reid, and Clyde McCloy. Superintendent Beryl F. Sears, Business Manager Paige Speck, and new board member Pete Schuman were also present. Others present: Sadie De La Cruz and Debbie Tolleson.

The meeting was called to order at 8:05 P.M. by Alan Leach, and the Board first took up the Action Items on the agenda.

The ballots from the May 6, 1995 election were canvassed and a motion was made by Clyde McCloy and seconded by Charlie Kiser to accept the election results. This motion passed 6-0.

The oath of office was next administered to Pete Schuman and Betty Womble by Paige Speck.

Ron Womble was elected Board President, Lonnie Clemmons-Vice President, and Betty Womble-Secretary.

Motion was next made by Lonnie Clemmons and seconded by Clay Reid to approve the April 11th minutes. Passed 6-0.

Motion was then made by Clyde McCloy and seconded by Clay Reid to pay the May expenditures in the amount of \$18,064.25. This motion passed 6-0.

A motion was made by Lonnie Clemmons and seconded by Clyde McCloy to table the purchase of new playground equipment until the board can be met with a company representative from PlayWell.

Motion was made by Clyde McCloy and second by Lonnie Clemmons to take bids for replacing the concrete walkways in front of the old building. This motion passes 7-0.

A motion was made by Ron Womble and seconded by Betty Womble to take applications for a full time custodian beginning July 1, 1995. This passed 6-0.

Then a motion was made by Betty Womble and seconded by Clay Reid to approve the adopt of Policy DBBA (local) covering the testing of bus drivers for drug and alcohol abuse. This motion passed 7-0.

The Board then moved into closed session, and after returning, a motion was made by Betty Womble and seconded by Clyde McCloy to

See BOARD, page 10

## Hansford County bands participate in festival

This past Saturday, May 13th, a very large group of Hansford County band members made their way to Dumas to participate in an area-wide Jr. High Band festival, in which several competing county students did a most impressive job.

Who says the band in Spearman is dead? With it only being his second year as the new band director in Spearman, Mr. Randy Willis has more than filled his job adequately. Willis came into the town of Spearman with the idea in mind to get the band back on its feet. Well, just one year later the band has grown much larger, and thanks to the encouragement and dedication of Willis, not only has the band become larger, but also quite well, as was evident in the contest.

There were only three outstanding band trophies to be given at the festival, and out of the three, Spearman received two - the 6th grade band and 7th grade band. In addition, all three of 6th, 7th, and 8th grade bands received the Sweepstakes. As if that were not enough, an amazing 262 first place medals were brought back by the band, including 9 that were won by Junior Moreno. So many medals were handed out to the Spearman kids that sponsors of the program were forced to go to the high school to get more medals.

Unfortunately, no individual information was available for Spearman.

On the Gruver side, a total of 13 Ensembles and 11 Solos, which were all First Divisions, were given out by the mighty Hounds' band. Not to mention, a First Division in Concert Band for the 5th and 6th grades.

On the Ensembles, several kids made their way through a tough group of competitors to received their hard-earned First Divisions. Those making it were: the quartet of Junior Balderrama, Johnny Lopez, Manuel Luciano, and Richard Stewart, a Septet of Kasy Harris, Ben Hendershott, Chase Lamb, John Lopez, Seth Tebeest, Taos Welson, and Aaron Weller, another

Septet of James Crow, Chase Lamb, Shea Lowe, Cory Schneider, Anthony villalobos, Kasey Harris, and Clint Swink, yet another Septet of Clayton Acker, Brooke Bevell, Kimberly Boyd, Hooly Hart, Brooke Salmans, Sammie Stavlo, and Tessa Yanke, a Quintet of Cassie Bridwell, James Crow, Mon Garcia, Ryn Robinson, and Mia Rodriguez, a Septet of Ashleii Barrera, Brady Hart, Tyn Robinson, Mia Rodriguez, Daniel Hernandez, Chelsie Hicks, T.J. Johnson, Lacie Osbourne, Gilbert Perez, Jesus Rodriguez, Cayla Simon, and Lindy Tolleson, a Septet of Ricky Arreola, Randi Atwood, Candace Barrera, Esmerelda Bravo, Amada Griffin, Mary Puebla, and Brenda Soto, a Quartet of Israel Arzate, Kade Carthel, Eric Munoz, and Steven Salazar, a Quintet of Luci Cruz, Judy Luciano, Sarah Miser, Dallas Robinson, and Sandra Soto, a Quartet of Sara Bass, Britanny Morris, Jacinda Perez, and Beth Yanke, a Sextet of Frankie Aldaco, Elizabeth Duncan, Joel Hendershott, Annie Hu-oughton, Gariel Lopez, and Jaime Lopez, finally a Duet of Frankie Aldaco and Joel Hendershott.

For the solos, Sandra Soto on her Clarinet, Judy Luciano on her Flute, Annie Houghton on her French Horn, Arnoldo Borunda on his Tenor Saxophone, Elizabeth Duncan on her Clarinet, Britanny Morris on her Flute, Brooke Salmans on her Alto Saxophone, Holly Hart on her Clarinet, Gisela Soto on her Cornet, Ashleii Barrera on her Clarinet, and Cory Schneider on his Snare Drum, all took home gold medals for their jobs well done.

Spearman and Gruver are both lucky to have such outstanding band students, and hopefully all of these kids will further their interest in this fun activity that doesn't limit any student like many school related projects do.

## Hansford Happenings

### Memorial Wreaths

Memorial wreaths are available from the Senior Citizens at the O'Loughlin Community Center in the Blodgett Room.

### Pringle-Morse Graduation

Pringle-Morse will have 8th grade graduation Thursday, May 18, 1995 at 7:00 p.m. in the auditorium. The public is invited.

### Arts and Craft Show

Spearman Study Club will be having an Arts and Craft Show in conjunction with Celebration of Spearman's Heritage Days on June 10, 1995. The show will be an outside show on the Courthouse Square from 10 a.m. to 4 p.m. Along with the Craft Show, there will be a parade, car show, barbaque, country opera, and other activities on Main Street. Profit made will go back into the community or local project. Persons interested in obtaining a booth for the Show in June or if more information is needed, call or write Claudine Hardy, 803 Wilmett Dr., Spearman, 806/659-3440 after 4 p.m.

### Certified Nurse Aide Classes

Hansford Manor will begin classes for certified nurse aides June 5 at 8:30 a.m. Classes will be daily 8:30 to 5:30, Monday thru Friday, June 5-20. Deadline to register for the classes is May 29. For more information or to apply, contact Linda Sanders, Personnel Director, Hansford County Hospital District, 707 S. Roland, Spearman, TX 79081, 806/659-2235. EOE.

### 4-H Horse Show

Ochiltree County 4-H will be sponsoring an Open Horse Show on Sunday, May 21 at the Ochiltree County Fairgrounds Arena. Books open at 1 p.m. with books closing 2 classes before the actual class begins. For more information call 806/435-4501.

### Spearman High School Graduation

Spearman High School will hold commencement exercises Friday, May 26, 1995 at 8:00 p.m. at the Lynx Stadium. In case of bad weather, graduation will be held in the high school auditorium.

### Gruver High School Graduation

Gruver High School will hold its graduation on Friday, May 26, 1995 at 8:00 in the high school auditorium.

### Spearman Junior High Graduation

Spearman Junior High Graduation will be held Thursday, May 25, 1995 in the Spearman High School Auditorium at 7:30 p.m.

### Gruver Junior High Graduation

Gruver Junior High will its graduation on Thursday, May 25, 1995 in the Gruver High School Auditorium at 8:00 p.m.



# School Lunch Menus

GRUVER ISD LUNCH MENU	SPEARMAN ISD LUNCH MENU
<b>Monday, May 22</b> Chicken with gravy, rice, corn, peach cobbler, biscuit, and milk.	<b>Monday, May 22</b> Chicken fried steak sandwich, French fries, salad, blueberry crisp, and milk.
<b>Tuesday, May 23</b> Hot dog, chips, pickles, fruit juice bar, and milk (K-2). Baked potato, sour cream, butter, cheese, pinto beans, fruit, blueberry muffin, and milk (3-12).	<b>Tuesday, May 23</b> Salmon croquettes, macaroni & cheese, sweet peas, corn, blueberry muffin squares, and milk.
<b>Wednesday, May 24</b> Cook's choice meat, fruit, vegetable, bread, and milk.	<b>Wednesday, May 24</b> Turkey or roast beef sandwich, whipped potatoes, green beans, bread, jello, and milk.
<b>Thursday, May 25</b> <b>Last Day of School</b> Sack lunches, roast beef, ham, or peanutbutter and jelly sandwich, carrot stick, pickle, chips, raisins, juice, and milk.	<b>Thursday, May 25</b> Cheeseburger, fries, salad, pudding, and milk.
<b>BREAKFAST</b> <b>Monday</b> -Cereal, muffin, juice, and milk. <b>Tuesday</b> -Cereal, bread, juice, and milk. <b>Wednesday</b> -Cook's choice, juice, and milk. <b>Thursday</b> -Cook's choice, juice, and milk.	<b>BREAKFAST</b> <b>Monday</b> -Hash browns, scrambled eggs, fruit, and milk. <b>Tuesday</b> -Breakfast pizza, fruit, and milk. <b>Wednesday</b> -Breakfast burrito, sausage, fruit, and milk. <b>Thursday</b> -Smorgasbord. <b>Friday</b> -Breakfast pizza, fruit, and milk.

# Library Book Notes

by Sheri Benton  
Librarian

Our Long Range Planning Committee has completed their task by making five recommendations to the Hansford County Library Board that will enhance the functions and services of our library. Those recommendations are:

1. Establish a "Friends of the Library" group
2. Establish an endowment fund program
3. Establish some type of worker recognition program for the Thrift Shop workers
4. Establish additional advertising for the library and the Thrift Shop
5. Establish additional hours

The committee was also asked to mention up to five areas of concern for the library, and those were as follows:

1. Expansion of collection in terms of space
2. Need for an oral readers program and possibly a book cart at the hospital, manor and senior citizens center
3. Collection of the Month program should be reinstated
4. Staffing in emergency situations

This committee put in a lot of work on this project, and are to be commended for their efforts. Those who served were Jean Ann Behney, James Cunningham, Marsha

Murphy, Myrna Biggers, Alan Hutchison, Patty Sheppard, Robbie Reid, Alfred Avila, Worley Smith, Mike Ladd, Pam Cobb, Bob Boxwell, and Claudine Hardy.

The time for Summer Reading Program is quickly approaching! We will begin this program with elementary school tours on Wednesday, May 24, so that we can tell all of the children in grades K through 5 about the activities we have planned. Jean Ann Behney and Jennifer Keim will be assisting with this program, and our theme this year is "Once Upon a Planet". If you have children in grades K through 5, be sure to watch for the information they will bring home about this opportunity to do something besides sit in front of the TV all summer! We have six businesses who have agreed to sponsor this program so that each child who reaches his or her reading goal will receive a book for a prize. Those businesses are:

- Five Star Equipment
  - First State Bank
  - Hansford Implement
  - First National Bank
  - Brock Insurance Agency
  - The Hansford Agency
- Without these businesses, we would not be able to afford books as prizes so our sincere thanks go out to them.

# Recycling Words

By MARGIE FAGAN

Spearman-Gruver Recycling Co-ordinator

Recycling Scoreboard  
Spearman  
It is always good to know where you stand, so direct from our main man in city sanitation comes the top eight (hey it's a small town) recycled products from the community recycling center for March and April in pounds.

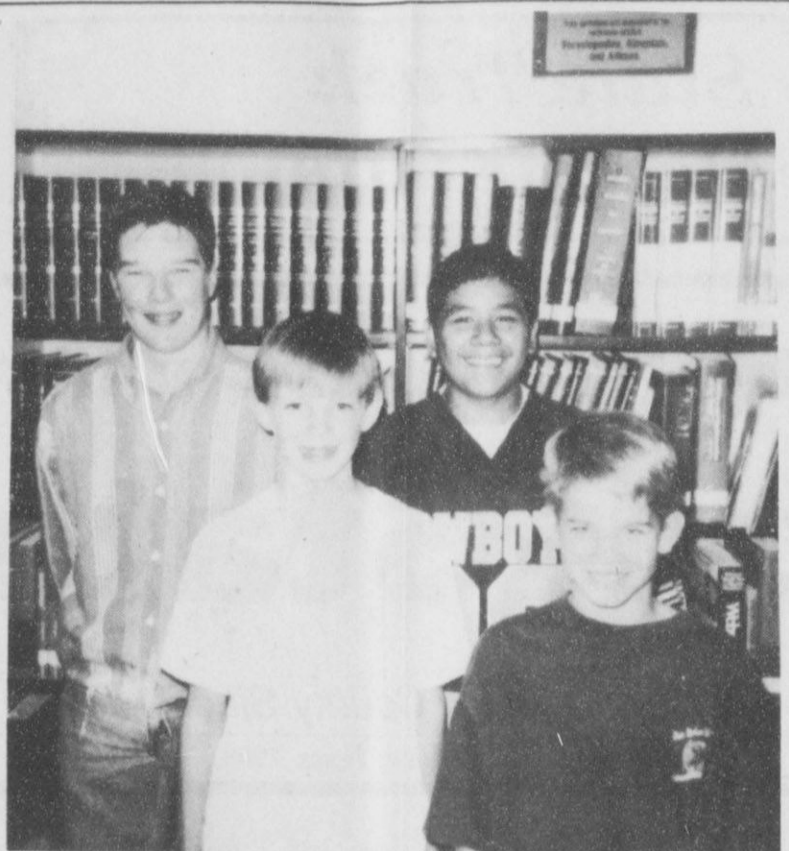
- Aluminum 72
- Clear Glass 2,400
- White Goods 8,000
- Newsprint 37,525
- White Paper 4,900

- Mixed Paper 2,100
- Plastic 540
- Totals 55,537

That is nearly one ton a day recycled in Spearman. Who is responsible for all this? Citizens who care! Are you one?

Why should you care? In September, Spearman will no longer have the luxury of a landfill. (Yes, it is true. Landfills now ran with

See RECYCLING, page 9



**CITIZEN'S OF THE MONTH**-The following students were nominated by their teachers as the students who best exemplifies those qualities necessary to be a good citizen. These students exhibit qualities of proper attitude, self-motivation, friendliness, and the drive to succeed in whatever is presented to them. The students are: fifth grade, Zackery Christian; sixth grade, Brad Holt; seventh grade, Jesus Rodriguez; and eighth grade, T.J. McClure.

# Bivins Rehabilitation Center announces "First Swing" clinic

AMARILLO TEXAS-Bivins Center for Physical Medicine and Rehabilitation (a facility of High Plains Baptist Health Systems) announces a "First Swing" Golf Clinic for the physically challenged.

This clinic will be held on Saturday, May 20th, 1995, and is offered Free Of Charge to the physically challenged in and around Amarillo. It is designed to introduce a healthy, outdoor leisure activity to the physically challenged individual. Professionally trained instructors will teach participants how to hit a golf ball utilizing adaptive training techniques and equipment.

Instruction will be provided throughout the day from 9 a.m. until 3 P.M., with a break for lunch.

Comanche Trail Municipal Golf Course Driving Range, where instructions will be provided, is wheelchair accessible.

If you, or a loved one, has experienced an amputation, spinal cord injury, stroke, or other physical challenge and have an interest, new or old, in golf, come and participate in this event. If you're not too sure, come and watch. This program is for anyone, young or old, male or female, that is facing a physical challenge.

Please call 356-2908 and reserve a time for your instruction. Reservations are not required but will allow the instructors to better coordinate this event.

# City Lites

by Kelvin Knauf,  
Spearman City Manager

This summer, the City will begin a program to make Spearman look better. The program will have three parts: cleaning up property, condemning dangerous buildings, and creating color spots around town.

Cleaning up property is an important part of how a community looks. High weeds, junk and trash thrown around, and junk cars make a neighborhood ugly and really turns off people who are looking at it. The Police Department has begun issuing citations to junk car owners. High weed notices will be going out this week.

Condemnation is a way that the city has to get rid of buildings that are a fire hazard or may fall down or are a public nuisance. Already, the City Council has condemned four buildings in residential areas of the city. The owners of these

buildings have six months to either fix up their buildings or have them torn down. I expect that the City Council will be condemning more buildings in the next few months.

This summer, City employees will be planting flowers in the traffic islands around town. Last winter, we planted five trees in Holton Park and four trees in Eska Park. You may have noticed the barrels on Main Street. These barrels will have flowers planted in them to help make Main Street more attractive.

By cleaning, condemning and coloring our aim is to make Spearman a much more attractive place to work and live. By the end of this summer, I hope that there will be a noticeable difference in the way the community looks.

# At the movies...

The Lyric Theatre is now in full force! Showing at The Lyric Theatre Friday, May 19 through Tuesday, May 23 on Screen 1 beginning at 8:15 p.m. is "Outbreak", and on Screen 2 beginning at 8:00 p.m. is "A Goofy Movie".

In "Outbreak", scientist try to stop an outbreak of a killer virus in a small town before the U.S. government steps in and kills everyone. Dustin Hoffman, Rene Russo and Morgan Freeman star. "Outbreak" is rated R.

In "A Goofy Movie", one of Disney's greatest actors, Goofy, stars in the must see children's movie. Join all of Goofy's friends in this animated full motion length picture. "A Goofy Movie" is rated G.

# At The Lyric Theatre...

Friday, May 19 - Tuesday, May 23

Bargain Nights Mon. & Tue. Adults - \$4  
Fri., Sat., Sun., Adult \$5 - Child \$3 every night  
Closed Wednesday & Thursday

SCREEN 1 • 8:15 PM SCREEN 2 • 8:00 PM

Outbreak

(R)

A Goofy Movie

(G)

113 Main • Spearman

# Take A Bow Graduate...

You deserve it!!!!!!

We will all be there,  
Some in Spirit  
& Some in person

**WE ARE PROUD OF YOU KRISTI**

Love,  
The Heddins Clan  
& all your friends

# SCORE A BASKET AT DQ!



Chicken Strip Country Basket\* \$2.99 4-piece

Steak Finger Country Basket\* \$1.99 4-piece

On sale May 15-28, 1995

Hurry to your nearest DQ now and score baskets for less! Choose juicy, tender steak fingers or big, plump chicken strips. Each served with crisp fries, creamy country gravy and a big slice of Texas toast. Either way, you can't miss!

NOBODY BEATS DQ TREATS & EATS

At participating Dairy Queen stores. ©Reg. U.S. Pat. & Tm. Off. Am. D.Q. Corp. \*Reg. TM Tx. D.Q. Op. Coun.

**The Hansford County Reporter-Statesman**  
Serving all of Hansford County  
Spearman • Gruver • Morse  
USPS 509660 • 213 Main, Box 458 • Spearman, Tx. 79081  
(806) 659-3434 • 1-800-395-9482 • FAX (806) 659-3368  
Published weekly at 213 Main, Spearman, Texas  
Owned & Operated by  
Texas Independent Newspapers, Inc.  
16607 Blanco Road #100 • San Antonio, Tx. 78232  
(210) 492-8907  
Second class postage paid at Spearman, Texas 79081  
Any erroneous reflection upon the character of any person or firm will be gladly and promptly corrected upon being brought to the attention of the management.  
Publisher - Deziree Torres  
Sports Editor/Photographer - Chad Davis  
News Editor/Photographer - Wade Atwood  
Student Assistant - Erin Atwood  
The publisher reserves the right to revise or reject at its option any advertisement which it deems objectionable, either in subject or phraseology, or which it may deem detrimental to its business.

**Subscription Rate:** Hansford County, \$19.95; out of county, \$24.95 annually.  
**Postmaster:** Send address changes to Hansford County Reporter-Statesman, Box 458, Spearman, Tx. 79081  
**Advertising & Story Deadlines**  
Monday, 5:00 p.m.

**TEXAS PRESS ASSOCIATION**

**DUKE'S CHIROPRACTIC CENTER**  
EVENING HOURS AVAILABLE

- Headaches / TMJ
- Neck Pain / Stiffness
- Low Back Pain
- Shoulder / Arm Pain
- Hip / Leg Pain
- Family Health Care
- Pediatrics
- Athletic Injuries
- Numbness
- Gentle Treatment

AUTO ACCIDENTS • WORK INJURIES  
(Most Insurance Accepted)

**New Hours:**  
2-6 p.m. Mon. thru Fri.  
**659-5505**

Darrell D. Duke DC  
11 W. Kenneth • Spearman, Tx.



# Lifestyles

## Fedric and Mayfield announce engagement

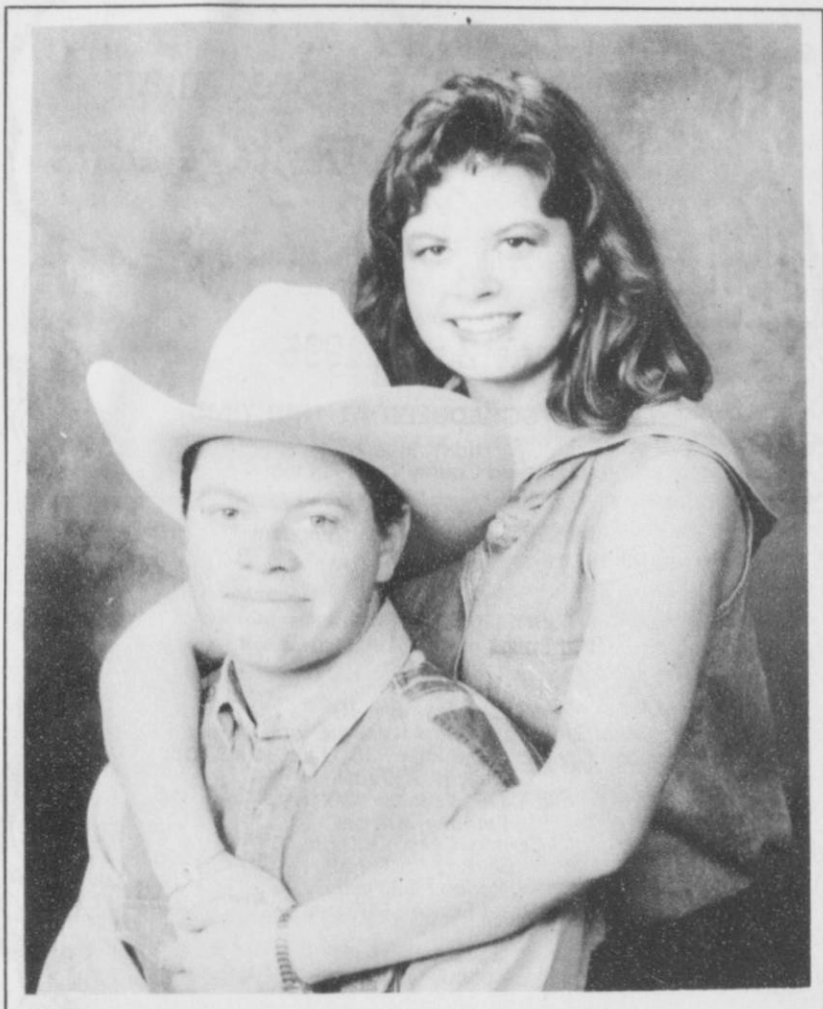
Claude and Leonda Fedric of Stratford, are pleased to announce the engagement of their daughter, Sheila Fedric to Dee Mayfield.

Dee is the son of Fred and Janice Mayfield of Spearman.

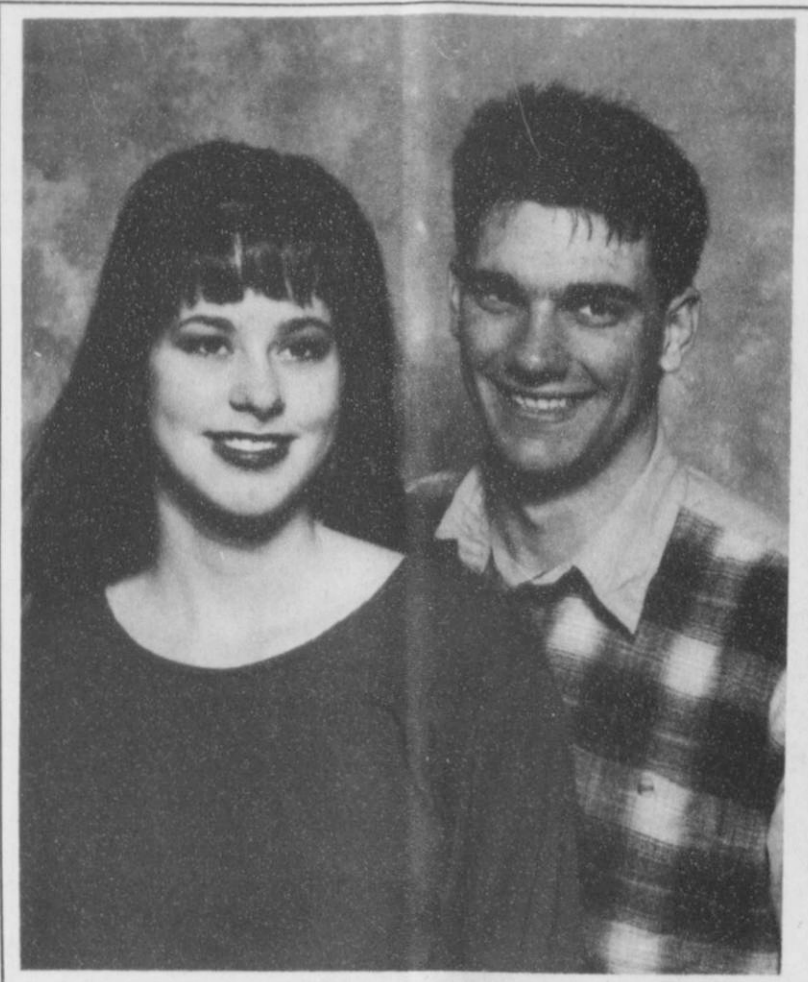
The couple plans to be married July 1, 1995 in a garden wedding at Stratford, Tx.

The bride-elect plans to attend Oklahoma Panhandle State University in the fall to major in accounting.

The prospective groom is a freshman at Oklahoma Panhandle State University majoring in Farm and Ranch Management.



SHEILA FEDRIC and DEE MAYFIELD



MELISSA STEWART and BRADY ROGERS

## Stewart and Rogers exchange vows

Melissa Dawn Stewart and Brady Gene Rogers were united in marriage April 29, 1995 at Calvery Baptist Church in Shawnee, Oklahoma.

The parents of the bride are Kenneth and Letha Stewart of Gruver,

Texas.

The parents of the groom are Terry Rogers and Wendy Lamom of Enid, Oklahoma.

Melissa and Brady are residing in Shawnee, Oklahoma.

## HENSON CHIROPRACTIC

300 S. Ash • Perryton, TX

Call for Appointment • 435-7525

OFFICE HOURS:

Monday, Wednesday & Friday 9:00 to 5:00  
Tuesday & Thursday 9:00 to 11:30

A heart-felt **THANKS** to each of you for cards, prayer grams and calls both here and Dallas with words of encouragement when Joe Bob received his kidney transplant. Thanks most of all for all the prayers offered up for all of us. May God bless each of you,  
*The Grayson Family*

## THANK YOU

We would like to thank everyone for their concern, prayers, calls, visits, flowers, cards, & gifts during the hospitalization and rehabilitation of Ed Whitefield.

He is still in rehab at St. Anthony's hospital, and he is doing great!

May God Bless You All,  
Ed Whitefield & Family

## Chamber Chatter

by Cindy Blackman  
Chamber Manager

Plans are being finalized for "Spearman Heritage Days," June 2-11. The Chamber of Commerce wants to send a special invitation to all Spearman residents and friends to attend all scheduled events.

The Comin' on Band, from Spearman, will be the entertainment for the Street Dance starting at 9:00 P.M. on Saturday, June 10. This dance is for the whole family and it seemed to be enjoyed by all the Chamber Office. First State Bank is helping with the dance. Other businesses will be sponsoring this event and will be recognized when the list is competed.

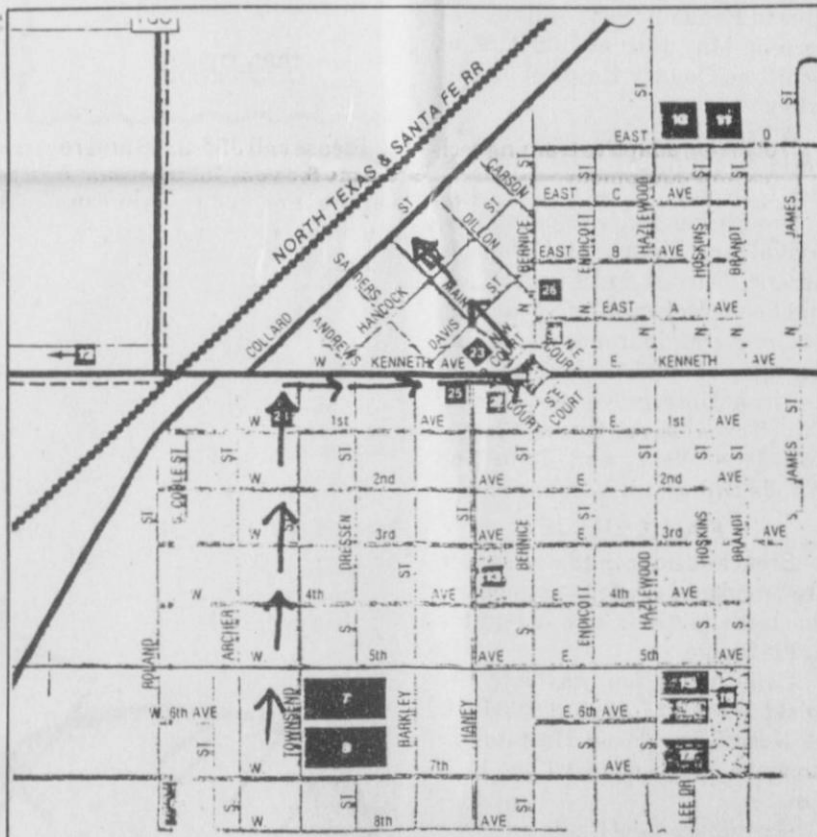
Remember, the Antique Car Show and the Arts & Crafts Show start the morning of June 10. The Country Opry will begin on the Court House lawn as soon as the parade is finished. We want everyone to bring their lawn chairs and

sit back and enjoy several different entertainers who will be singing great country hits.

The Spearman Volunteer Fire Department will be providing good Bar-B-Q again this year. This is the major fund raiser that the volunteers promote. Several other groups will be having different booths and activities so all ages will be able to find something to do. A lot of the clubs use this event as a fund raiser so come out and support them with their food and activities.

We want to remind the residents of the "Old Timers Reunion" that will start at 2:00 P.M. at the Station Masters House Museum. All of these events are scheduled for the 10th of June.

The parade is being sponsored by First National Bank. Rodeo and Hansford Co. team roping sponsors will be featured as soon as the list is completed.



**PARADE ROUTE**-The parade for the Spearman Heritage Days festival will be held on June 10th at 3:00 P.M. The line up for the parade will be at 2:00 P.M. at the Junior High School parking lot. Shown above is a map of the Heritage Days parade route so you can find the perfect spot to watch the event.

## Out at the Lake

Lake Depth, May 15, 1995- 23 feet and 6 inches

The recent rain brought the lake level to 24 feet. The past weekend brought campers and picnickers out in good numbers. The lake rise slowed the catch for the fishermen.

Rabies have been on the rise in Texas, and clinics have been set up to vaccinate the dogs. In San Angelo a center has been set up to try to contain rabies in gray foxes. When I hear of rabies, the story of Idros Wright always comes to mind.

Before Huff Wright came to Hansford County and started the town of Hansford, he and his wife Araminta Maize Wright and their only child, a daughter named Idros, lives near Tom and Molly Bugbee on Bugbee Creek, which joins the Canadian River on the north side. Although the Bugbees arrived in 1876, stopping off at the Cator brothers' dugout in a blizzard before they got to their new home, we don't think that Huff and Mel Wright came until 1877. The brothers established homes fairly near each other.

In the spring of 1879, Huff and Minta made the 200 mile trip to Dodge City on business. Mel and his wife Atarah, who were still child-

less, kept Idros. Their dugout, as did many of the dugouts of that era,

See LAKE, page 8

**The Hansford County Library Board and staff would like to thank the following individuals who recently served on our Long Range Planning Committee:**

- |                             |                            |
|-----------------------------|----------------------------|
| Alfred Avila                | Mike Ladd                  |
| Bob Boxwell                 | Pam Cobb (Secretary)       |
| Myrna Biggers (Ex-officio)  | Jean Ann Behney (Co-chair) |
| Marsha Murphy               | Worley Smith               |
| Claudine Hardy              | Patty Sheppard             |
| James Cunningham (Co-chair) | Robbie Reid                |
| Alan Hutchison              | Sheri Benton (Ex-officio)  |

**The purpose of this committee was to make recommendations to the board to enhance the functions and services of the library, and they did an excellent job. We appreciate the time and energy that each one of them devoted to this project, and we will give serious consideration to their recommendations and concerns.**



COME BY & LET US  
HELP YOU SET UP YOUR  
SPECIAL GIFT TABLE

**Couples Currently Registered**

- Slaid Jones & Julie Bolin
- Neal Earle & Toni Davis
- Angula Sintas & Jesse Anzaldua
- Billie Jo Moore & Wayne Pierson \*June 17
- Trever Pool & Diane Milacek \*May 27
- J Garnett & Brooke Bivins \* August 25

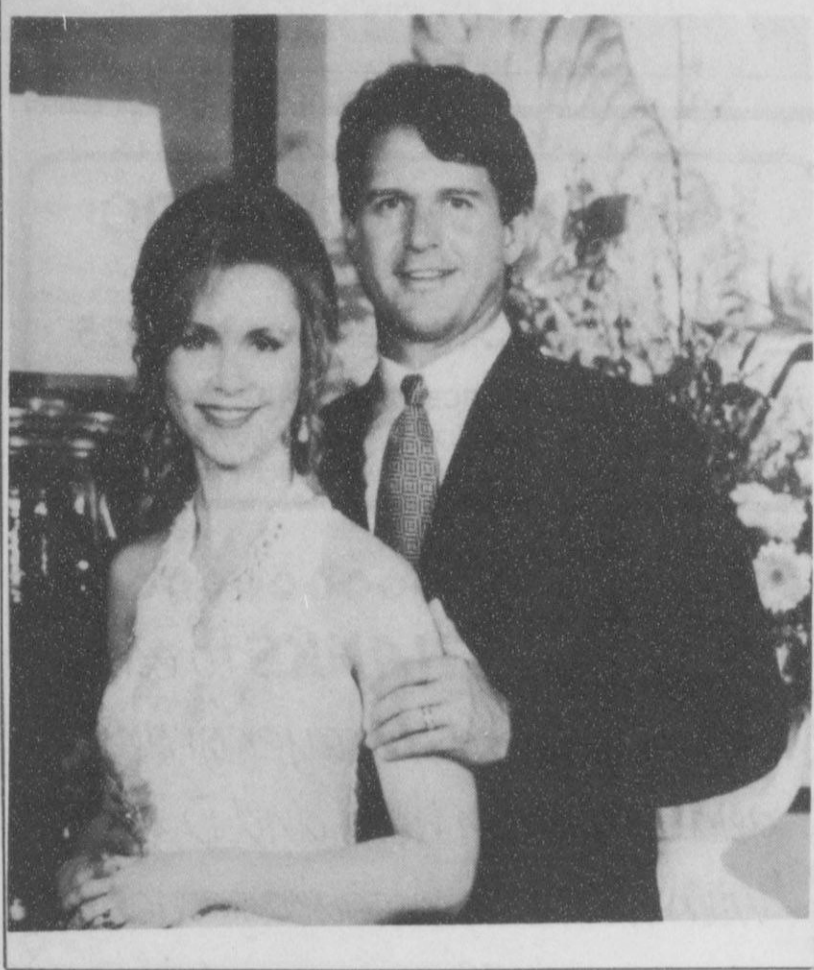
\* Date of the Bridal Shower

314 MAIN  
PHONE  
659-2141

**Gordon's**  
DRUG

SPEARMAN  
TEXAS





BRETTE MANALE and CRIS McCLELLAN

## Manale and McClellan marry in California

Cris Dee McClellan of Spearman and J'ai Brette Manale of Fort Worth were married on February 3 at Lake Tahoe, California. A reception in honor of the marriage was held on April 15 at Ridgelea Country Club in Fort Worth.

Cris is a graduate of Spearman high school and holds a BS from West Texas State University. He is employed as a Senior Marketing Representative for Boehringer Mannheim Pharmaceuticals and has been in the pharmaceutical industry for the past seven years.

Brette attended Western Hills High School in Fort Worth and has a BA and an MBA from the University of Chicago. She is a Senior Product Manager for Alcon Laboratories, where she has been employed since 1987. The couple will reside in Fort Worth.

The bride's parents, Mrs. Harley Puff and Mr. Bullet Manale, are from Fort Worth. The groom's parents, Wilson and Joan McClellan, are long-time residents of Spearman.

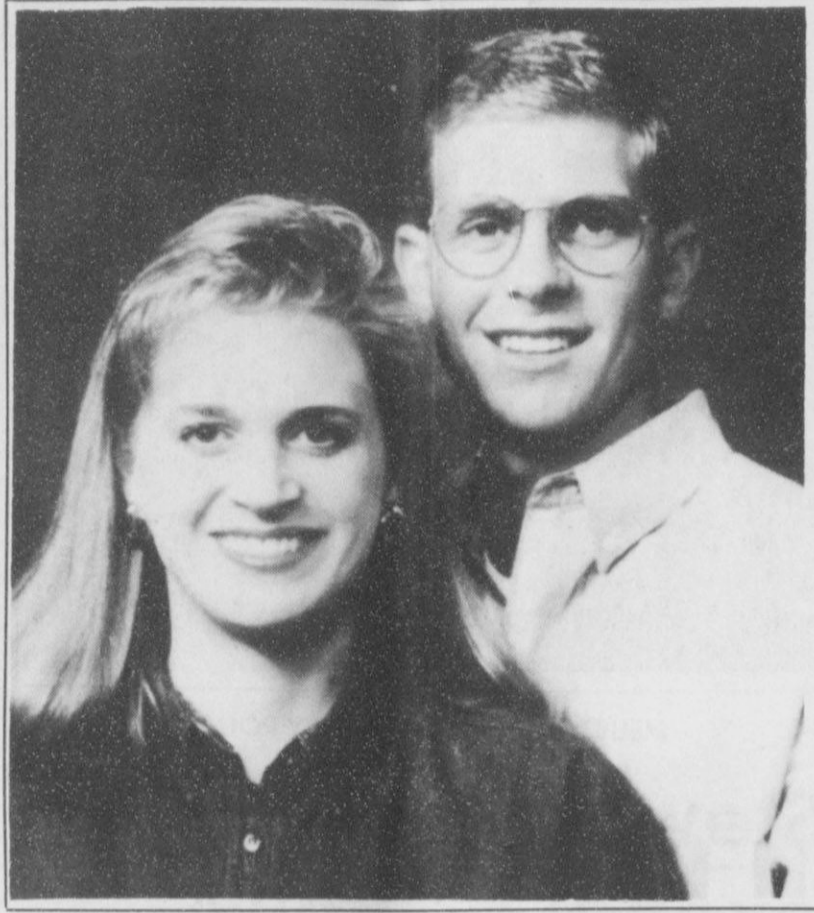
## Garrett and Mariott make wedding plans

Mr. and Mrs. Wayne Garrett announce the engagement of their daughter, Jill Denise Garrett, to Dean Alan Mariott of Midland.

The couple will marry on July 1 at the First Baptist Church in Gruver, Texas.

The bride-elect is a graduate of Gruver High School and Texas Tech University with a Bachelor of Arts

in Mathematics. She is currently employed by the Lubbock Independent School District. The future bridegroom is a graduate of Greenwood High School in Midland and Texas Tech University with a Bachelor of Business Administration in Marketing and Management. He is currently employed by Lubbock Glass & Mirror.



JILL GARRETT and DEAN MARIOTT

### Birth Announcement

#### ALLISON RENAE BROWN

Mark and Carla Brown (Greene), of Spearman, are proud to announce the arrival of their new daughter Allison Renae Brown. Allison was born on May 15th at 7:00 A.M. at Ochiltree County Hospital in Perryton.

Allision made her way into the world as a 8 pound 9 1/4 ounce 21 inch baby girl.

Proud Grandparents of this new arrival are Jimmy and Donetta Greene, Darrell and Lynda West, and Bobby Brown, all of Spearman.

Great-grandparents are Edna Scroggs of Waka, Hubert and Laverna Uptergrove of Colorado City, Texas, Joyce Crum, Charlie and Jena West, and John and Wanda Brown, all of Spearman.

#### CALLIE STEDJE

Brent and Julie Stedje of Gruver are proud and excited to announce the birth of their new daughter Callie Stedje.

Callie made her way into the world on April 17, 1995 at 8:03 P.M. at Northwest Texas Hospital in Amarillo. She weighed 7 lbs. 11 1/2 oz.

Grandparents of Callie are Mike and Judy Stedje of Gruver, Cleve Rousser of Sunray, and Marshall and Linda Ridgon of Amarillo.

Proud great-grandparents are Ada Joyce and James Stedje of Gruver, and Will and Ethel Price of Sun City West, Arizona.

Callie also has one great-great-grandparent, Jesse Spivey of Gruver.

## Extension News

By Peggy Winegarner  
Hansford County Extension Agent

4-H members of Hansford 4-H clubs held their regular monthly meetings at local parks in May. Youth enjoyed the opportunity to 'build their own blizzard', elect club officers, and visit or play on park equipment.

Spearman 4-H club met Monday, May 8 at the Swimming Pool Park and elected the following officers: Jana Ellsworth-President; Candice Pipkin-1st Vice President; Lena Harbour-2nd Vice President; Ashley Brown-3rd Vice President; Leah Mackie-Secretary; Kacey Smith-Treasurer; Clancy Vanderburg-Reporter; Mandy Vernon-Parliamentarian; and Josh Bynum-Council Delegate.

Gruver 4-H club met Tuesday, May 9 at Gruver City Park and elected the following officers: Cori Lowe-President; Scott Stedje-1st Vice President; Kathy Slough-2nd Vice President; Autumn Bateman-3rd Vice President; Brandy Morris-Secretary; Jared Johnson-Treasurer; Erika Salmans-Reporter; James Sursa-Parliamentarian, and Brant Armes-Council Delegate.

Summer activities for 4-H include area jackpot shows, a Super

Sitter Clinic to train young baby-sitters, and basic sewing construction workshops. Steer validation will take place in June and the 4-H Horse Club will sponsor a 4-H Rodeo in July or August.

### Local students graduate from AC in 65th commencement

The Amarillo College recently held their 65th annual commencement ceremonies. With over 900 graduates honored this year, this is Amarillo College's largest graduating class ever.

Students in this area who were honored were Hector DeSantiago of Gruver. Hector earned an associate in applied science degree in Physical Therapist Assistant.

Kayla Dawn Russell Pletcher of Farnsworth earned an associate in applied science degree in Nursing.

Lee Ann Bynum of Spearman earned an associate in applied science degree in Nursing.

# BARRY R. MARON, M.D.

Board Certified in Orthopaedic Surgery  
with hospital fully equipped for orthopaedic surgery!

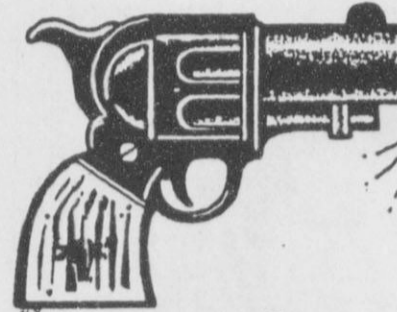
Specializes in:  
Problems of the Spine  
Arthroscopic Surgery  
Sports Injury  
Joint Replacements

Office Hours by Appointment  
Call: (806)273-3002 • 202 S. McGee, Borger

## PERRYTON CLEANERS & LAUNDRY

Furs & Woolens  
Cleaned and then stored in our temperature and humidity controlled locked vault.

CALL FOR DETAILS  
1-800-232-5370



Spearman  
Heritage Days

June 2 - 11, 1995

### EVENTS SCHEDULED AT THIS TIME

Friday, June 2  
Hansford County Team Roping

Tuesday, June 6  
Miss Hansford Scholarship Pageant  
7:00 p.m.

Friday, June 9  
Duck Soup Softball Tournament  
Teen Dance at the O'Loughlin Center  
9:00 p.m.

Saturday, June 10  
Main Street Craft Fair - 10:00 a.m. to 4:00 p.m.  
Antique Car Show and Rally - 10:00 a.m. to 4:00 p.m.  
Rally at 9:00 a.m.  
Old Times Reunion - 2:00 p.m.  
Parade - 3:00 p.m.  
Country Opry - 3:00 p.m.  
Bar-B-Q - 5:00 p.m.  
Rodeo - 6:30 p.m.  
Street Dance - 9:00 p.m.

Sunday, June 11  
Rodeo - 2:00 p.m.

For More Information Call:  
Spearman Chamber of Commerce  
659-5555

IT'S SAVINGS WEATHER



## It's A Hail Sale!

You Don't  
Want to Miss this  
Fantastic Sale of the Year.

Come Buy Today!

## GILLASPIE

AUTO & TRUCK CENTER, INC.  
CHEVROLET • OLDS • PONTIAC • BUICK  
CHRYSLER • PLYMOUTH • DODGE  
Highway 287 South • P.O. Box 430 (806) 659-2541  
Spearman, Texas 79081  
1-800-892-4657



# Among The Neighbors

by Helen Fisher

Carolyn Gressett returned Friday from a marvelous trip to Europe. On May 4th she flew from Dallas directly to Frankfurt, Germany on an almost 11 hour flight. Their son Jeffroy met her there, and as he was on holiday, they toured some of Germany.

By train they went along the Rhine River to Cologne, which they found interesting. Jeff had spent some of his college time in Hanover, which was their next stop. That is where Jeff studied the German language. Burgdorf is near Hanover, so they visited the Grobecker family there. Jeff lived with them when he was an exchange student.

They took the express train to Salzburg, Austria and toured that area. At Munich among other sights, they were fascinated by the famous Heidleburg Castle. After their return to Frankfurt, she flew home and Jeff returned to Jeddah, Saudi Arabia. He is teaching English for the Aramco company there. Jeddah is on the Red Sea and the country, people, customs and life styles continue to interest Jeff and he finds his work enjoyable.

Joe Bob Grayson and his parents, Mr. and Mrs. B.J. Grayson, returned Wednesday where, six weeks ago, he received a kidney transplant.

Thrilled is the word for the family's reaction to the success of the surgery. Joe Bob is doing well and very optimistic about his future. He will return to Dallas this week for a check-up, and each week for awhile. Then he will return once a month for a year.

The family has the utmost confidence in the surgeon who performed the transplant as this was 1380 which he has done.

Mr. and Mrs. Grayson alternated staying with Joe Bob during his hospitalization at the Methodist Medical Center.

All the neighbors are very relieved by the success of the procedure and wish for him continued healing.

The HANSFORD HISTORICAL ASSOCIATION could not have made a better choice for the Queen of the Hansford Heritage Celebration than Fannie Venneman. Fannie is a native of Hansford County and has been an active participant in the development for all these years.

More details will be mentioned at a later date.

Lily Love accompanied Donna and Leroy Farris to the graduation ceremony at Frank Phillips College in Borger on May 5th.

Her daughter, Sue Love, of Borger was one of the graduating

students. Another was Larry K. Byrd, the husband of her granddaughter, the former Sherri Hall of Spearman.

Also on May 5th, the Best of Southwest Spring Art Exhibit closed at the Boatman's Bank in Amarillo.

Mrs. Love's son, Larry Love, of Pampa placed second in his scenic acrylic painting. He also won an Honorable Mention with his oil painting. It was a portrait of his sister, Shirley Love, of Borger.

Mrs. Love was delighted to have all her children with her on Mother's Day with the exception of one son.

An interesting event on Sunday afternoon was a surprise to many in Spearman, calls to the Police Department reporting two swarms of bees. One was at 105 E. 12th, the home of Coleen Burkhammer, and the other at 1108 Bernice, the home of the Bill Strawns.

Fortunately, the City Sanitation Foreman, Gaylon Coates, has handled bee swarms and was available to ease the predicament. Mr. Coates has been called for bees swarming here on an average of once a year for the last seven years. He has the protective garb and expertise and has little or no difficulty.

He reports that the bees in Spearman are Italian bees and considered tame. In fact, his bee book states that bees will not sting while swarming, but he has learned "that not all the bees have read the book", so he goes prepared.

On Sunday he had an empty hive, so with a stick brushed some of the bees into a paper sack. They had formed a solid mass about 10 by 11 inches and after they were in the hive, he cut off the limb and herded the rest into the hive.

He had no idea where they had left their own hive, but says there are many in old vacant buildings in Spearman. He even has hives of his own and produces honey.

Mr. Coates is very knowledgeable and interesting about bees, and space does not permit all of his informative comments here. Youth groups interested in nature and occupations would find his explanations fascinating.

Harvey K. Whitefield of Canadian spent Saturday and Sunday with his parents, LaRue and Harvey Whitefield. They report that another son, Ed Whitefield, is now in rehab at St. Anthony's Hospital in Amarillo. He is very slowly recovering from injuries in a serious accident with his horse.

Jo and Marcus Larson left a week ago Thursday for Ft. Worth, where they were joined by son Mike and Rita Larson. They continued to

Lexington, Missouri. Mike had attended Wentworth Military Academy there in 1964-66 and this was the first time he had returned.

The occasion was ceremonies relating to the retirement of the Commandant. The "Roast" was hilarious and they thoroughly enjoyed it.

They returned on the following Tuesday, by way of Ft. Worth, covering many, many miles in five days.

Cecil Slater returned to Amarillo on Monday expecting to begin physical therapy. He had undergone surgery for a torn rotator cuff on May 4th at High Plains Hospital.

Cecil, who had retired from his repair shop, needing to keep busy had been doing some outside work when the mishap occurred. He expects it may be six weeks before he can return to work.

His wife, Mona, who is employed at the sheriff's office has trained him a dab in self-sufficiency, and fortunately he is right-handed, and his left shoulder is injured, so he expects to survive.

On Thursday of last week, Olive Pendergraft drove by Gray, Oklahoma and picked-up Mrs. Ruby Blair. They went to Beaver to the home of Mr. and Mrs. Clyde Kile where they were joined by Mrs. Vera Gray from Ulysses, Kansas.

The four ladies are of the group of six who were class mates at college in the 1930's and who have met every year since. Mrs. Mendenhall passed away in March and the other is confined to a rest home.

The following Saturday, Olive attended the graduation exercises of W.T. A&M at the college coliseum. Becky Tucker, wife of her grandson Freddie Tucker, received

See NEIGHBORS, page 8



at participating NAPA AUTO PARTS STORES

SALE ENDS MAY 31, 1995

Introducing NAPA SENA-TRAC® SHOCKS and STRUTS

FREE LONG-DISTANCE CALLING CARD! When you buy 2 NAPA SENA-TRAC® struts or 4 SENA-TRAC® shocks. Card good for one hour of long-distance calls!

TRUCK 37000 Series - \$39.99 each

STRUTS 71000 Series As low as \$43.99 to \$109.00 each

Register to WIN a SEA DOO WATERCRAFT

NO PURCHASE REQUIRED

\$2999 EACH \*CAR 5800 Series

NAPA INDOOR/OUTDOOR 50' EXTENSION CORD

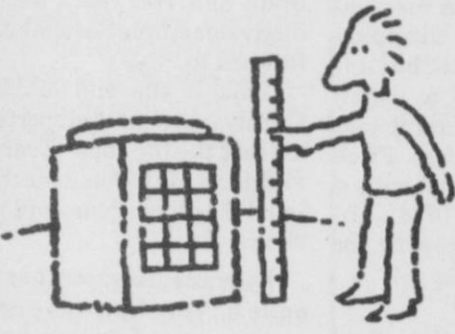
Flexible, durable and resistant to temperature extremes.

\$999 #8815158

SEE PARTICIPATING STORES FOR DETAILS

## Sizable Ways To Save Energy.

At Texas-New Mexico Power Company, we deliver reliable electric power, plus we help you determine the right size air-conditioning and heating equipment for your home. ★ Equipment that is too large or small won't heat and cool your house efficiently. ★ If you're planning to build a new home or replace an existing system, call your local Texas-New Mexico Power Company office for assistance.



Texas-New Mexico Power Company.

## SATURDAY MAY 20, '95 AUCTION 10:00 A.M.

- REAL ESTATE SELLS AT 1:00 P.M. -

730 Cotter Spearman, Texas

The J.C. Hickerson Estate Will Offer The Following Real Estate At Auction Real Estate Being Described As:

**SPEARMAN** - Lots 17, 18 and the South 1/2 of Lot 19, Block 4, Bloopgett Addition, Hansford County, Texas Commonly Known as 730 Cotter, Spearman, Texas. Spearman Property Consists of an Exceptional 4 Bedroom, 2 3/4 Baths, Fireplace, 1803 Square Foot Brick Home With Partial Basement, 1170 Square Foot Car Garage and 1217 Square Foot Covered Patio, Fenced Yard, Exceptional Yard w/Sprinkler System and Large Fenced Garden Area. This House is Located in The Southeast Part of Spearman Close To The High School, Swimming Pool and City Park.

**WHITE DEER** - Lot 12, Block 18, Original Town Survey, White Deer, Carson County, Texas Commonly Known As 211 Paul, White Deer, Texas. No Minimums and Reservations On This Tract.

TERMS: Owner financing available. 10% of purchase price will be deposited in escrow the day of sale. Seller will finance qualified buyer for 10% down, 20 years at 9% fixed interest. Seller will furnish title insurance. Purchaser will have 10 days to examine title at purchasers expense. Balance upon closing if seller finance is not used. Standard Texas Real Estate Contract will apply. Closing costs will be split between buyer and seller. \*1994 and prior taxes paid by the seller. \*1995 taxes prorated to day of closing. Cecil Biggers, Closing Agent. Every effort has been made to assure the accuracy of the information with no guarantee of authenticity. Any announcements made day of sale supersede all other announcements or advertising.

\* For Showing Or More Information Call Bozeman Auction Company, 806-435-4472. Sale Subject To Confirmation And Acceptance Of High Bid By Seller.

## Valley Summer Dealin' Days

\$1200*	CASH BACK	ON ORDERS PLACED MAY 15 - JUNE 15
\$1000*	CASH BACK	ON ORDERS PLACED JUNE 16 - JULY 31

(OR)

7.75% FIXED APR	3 YRS
8.25% FIXED APR	5 YRS

\*Based on a new 8 lower Valley 8000.

Get a quote. Get a thermos. FREE

Rugged. Handsome. Unbreakable. This 34 oz. Alladin thermos is yours FREE with a new quote all summer long. Program ends July 31st, 1995.



1st payment due January 1, 1997  
Low down payment -- \$150/tower  
No prepayment penalty

## Super "Cash Flow" Financing

No payment until January 1, 1997  
Low down payment -- \$150/tower  
Interest waived until March 1, 1996  
No prepayment penalty

ON NEW ORDERS ONLY. DELAYED DELIVERY OPTIONAL. Limited time/quantity offer. Subject to change without notice - financing (available only in the U.S.A.) subject to credit approval - certain restrictions apply. See your Valley dealer for full details today! For your nearest Valley dealer call 1-800-853-9268.

"SERVING TEXAS, OKLAHOMA & KANSAS WITH VALLEY CENTER PIVOTS-20 YRS"

GIGOT AGRA PRODUCTS, INC.

HWY 54 EAST P.O. BOX 1413 GUYMON, OK 73942 405-338-2536 JIM BARKER	AIRPORT RD P.O. BOX 95 SPEARMAN, TX 79081 806-659-3121 MACK KEMP	HWY 51 EAST P.O. BOX 486 HUGOTON, KS 67951 316-544-4343 GARY HINDS
--	--	--




## Low 7.9% APR Financing

The numbers are in your favor

A John Deere Residential Front Mower easily maneuvers around just about any obstacle, thanks to its 7 1/2-inch turning radius and out-front, low-profile mower. And with the John Deere Credit Revolving Plan's affordable rates, and fast, on-the-spot financing, owning an F500 Series Mower is as easy as operating one.

See your local John Deere dealer about the great low rates on John Deere front mowers.



JOHN DEERE CREDIT  
You Deserve Credit For Buying The Best

HANSFORD IMPLEMENT  
Highway 207 South Spearman 659-2568 733-2088

\*Subject to approved credit. 15% down payment required. 7.9% APR financing available on selected products with a repayment term of 24 months. A \$9.50 per month minimum finance charge may be applied to unpaid balances. Other special rates and terms apply. At participating dealers only. For commercial use only. Offer ends June 30, 1995.



# Sports



IT'S OUTTA HERE - Gruver Hound, senior Aaron Frick, participated in the discus competition at the 1995 State Track Meet at Austin on Friday, May 12. Frick's best toss at the meet was 173' 3", which was his second best toss of the year, but it was good enough to earn him a silver. As seen here Frick is throwing his best toss at the Abilene Regional Track Meet, in which he threw 175' 11" - the all-time GHS record. Frick did throw 180' or better, but he scratched by the slimmest of margins, or he would have taken the event. (Photo by Mindy Davis)

## Hansford athletes rough 'em up at state meet

The magnificent three, Gruver's Aaron Frick and Spearman's Britt Savage and Kara Townsen, went into last weekend's State Track Meet with big dreams and high hopes. Hopes not only to do well, but hopes for medals and glory. That's exactly what they received, as they walked away knowing that they did their best in their events.

For Frick, this was his last of last trips in athletics for this proud senior, and what a year it was. Who could forget those highlights in football? From the moment he busted over the line for the first time, one certainly got the feel of how this talented athlete's season would go. Although he is more remember more for his football than basketball, Frick did have some moments in the roundball sport as well.

Frick may have come only 3 feet from his goal in the disc, but he still does feel good about doing so well, and he deserves that right. He did have a better throw than his rival at the meet, defending champion Matthew Brown of Idalou, but unfortunately, he wanted to watch that good throw land, and it cost him the entire 180 or so feet. Frick went on to win the silver with a tosses of 171' 8" and 170' 4". In addition, he will be throwing for Sam Houston in the fall.

The youngest of Hansford County State qualifiers sure doesn't have nothing to hang his head about. High-flying Lynx, Savage, ended his sophomore sports year with a big vault in the Pole Vault. It has been a long time since anyone

this young has been to State, but Savage showed that he had what it takes at this age, as he finished with a 7th place vault. Going to State and two years left is definitely something Savage has to look forward to.

This is the end of Hansford County school related sports events, at least the big ones. Every Coach and player alike has done their best in all that have done, and it surely shows.

Lynxette, Townsen, has also had quite a year. She was a sensation on this year's Lynxette basketball team, as she was usually top scorer on the team and averaged awesome points for this year. How about tennis? She may have been nipped out of a gold and silver at State, in a hard bracket of players, but she

still shinned at the discus. Thanks to the help of Coach Ric Smith, Townsen, after tennis, started improving her spin technique. She must have got it down, as this junior all-around athlete finished with a bronze and a best throw of 126' 10". She pretty much knew the entire time that's where she would finish, as all of her throws in the finals kept her in the bronze spot. No worry for her though, she will be

## GJH tennis players place in top 2

A hard-fighting Gruver 7th and 8th grade tennis team was in action this past Friday, May 5th at their own tournament in Gruver. They were among three teams, Dumas, Boys Ranch, and Gruver, to go head to head for this pre-high school tournament, and 3 of these exceptional youngsters made their mark for the

To start it off, Annie Mayhew kept the Mayhew tennis tradition alive with a second place in the tournament. She took the silver right behind Dumas' Axrienne Pendergrass in the 7th grade girls' singles competition.

Mayhew then went on to team up with Krystle Deeds to take the top notch in the 7th grade girls' doubles. The quick-thinking duo opened up some hard tennis against

silver medalist Adrine Pendergrass and Anisa Valaquez of Dumas to take the honor.

Another set of fine players to finish well in the tournament were Matt Watlington and Clayton Henson. This combo was just edged out of a gold by another Dumas team, Kevin Edwards and Matt Coggins. Nevertheless, they grabbed a silver at tournament's end.

## At The Buzzer

By Chad Davis

What can you say about this year? What a year it has been. From the Gruver vs. Spearman football game to the Lynxettes' vs. Lady Hounds' basketball games and to Josh Mayhew, who could wickedly hit a backhand, and Aaron Frick's last big toss at the State Track Meet, not mention Kara Townsen's and Britt Savage's performances in the same meet, it has been to say the least, quite a year.

How about the town of Gruver? Not only did they have one or two kids signing for their future in college, but they had FOUR kids signing letters of consignment! That's not bad for a town of its size. It's good to know that Aaron Frick, Ryon Atwood, Victor Lopez, and Joe Bravo will be furthering their terrific sports skills, and plus, get an education at the same time.

I would like to take a "time-out" and thank all of the athletes, coaches, parents, teachers, and fans for all of their help in this my first year of writing. With all of their help, it was rather fun covering, attending, and writing about these events. Although most of my stuff this year has been turned in **At the Buzzer** before press time, I tried to put in everything I received this year. If something was not in print, please accept my apology, but it is hard to get everything in.

ATB

I want to just sneak in on this spot and wish my little girl happy birthday. Kaitlyn will turn 2 May 22, and I would just like to say Happy Birthday to a really special little girl!

ATB

I can't say want a real thrill it is to be coaching a baseball team. I can remember the days of my dad helping me out on my batting and pitching, and now I'm showing the same things he taught me to my kids. Time really does fly.

By the way the my team's name is the Rangers, and there are several other teams out there too. Allen and Richard Varnon are coaching the A's, who are sponsored by Beedy Furniture, Gary Ellsworth and Phillip LaRue are coaching the Bluejays, who are sponsored by First State Bank, Bobby Smith and Toby Thomson are coaching the Mariners, who are sponsored by Enron Gas, Robbie Dewberry is coaching the Orioles, who are sponsored by First National Bank, and the Rangers are being coached by myself and co-worker Wade Atwood, and we are being sponsored by Golden Spread Sales. We are in the major league of the little league program, but there are several other teams as well. I am going to try and run box scores of every game, from T-Ball to Softball to Babe Ruth, if I can.

I know from just the first three weeks what a tough job this can be, getting all the umpires, checking the equipment, trying to keep players attention, as well as keep them happy. However, after I really started getting into it, I really don't mind the work. I can remember when I was a kid, so when I think of the fun that these kids are now having, I really enjoy being a coach, but it's kind of weird to be in a coach's box instead of playing third base.

It is real important, no matter what team your kid is on, to come out to these games and support these upcoming athlete's in all that they do.

### Tri-City track

The Tri-City Track Meet was held last April 21st, and here are some results of some fast Hansford County 4th grade girls:

- 50 Meter Dash**
- J. Crossland 2nd
- B. Burkhammer 3rd
- T. Hendricks 4th
- 75 Meter Dash**
- B. Burkhammer 4th
- J. Crossland 2nd
- T. Hendricks 3rd
- N. Ramon 4th
- 100 Meter Dash**
- T. Hendricks 4th
- N. Ramon 5th
- 200 Meter Dash**
- B. Burkhammer 1st
- J. Crossland 2nd

There was also a meet this past April 13th, and in the same category as before are:

- 50 Meter Dash**
- A. Moore 1st
- E. Vargas 3rd
- T. Hendricks 2nd
- J. Crossland 2nd
- B. Burkhammer 1st
- 75 Meter Dash**
- A. Moore 2nd
- T. Hendricks 4th
- J. Crossland 3rd
- B. Burkhammer 2nd
- 100 Meter Dash**
- A. Moore 1st
- T. Hendricks 3rd
- J. Crossland 4th
- B. Burkhammer 3rd

## 90 days same as cash

### Monthly payments that are easy to handle

You just can't go wrong buying a John Deere STX38 gear-drive lawn tractor. You get great features like a hard-working 12.5-hp engine and a sturdy 38" mower deck. And if that wasn't enough, the John Deere Credit Revolving Plan will start you off right with fast, on-the-spot financing and low monthly payments.



See your John Deere dealer today.

**\$40 PER MONTH**  
Just \$1,999 + tax

**JOHN DEERE CREDIT**  
You Deserve Credit For Buying The Best

**HANSFORD IMPLEMENT**

Highway 207 South Spearman 659-2568 733-2088

\*Subject to approved credit. 10% down payment required. After promotional period, finance charge will begin to accrue at 14.9% APR. Rate may vary. Tax, freight, set-up and delivery charges could increase monthly payment. \$30.00 per month minimum finance charge may be applied to unpaid balances. For non-commercial use only. Offer ends June 30, 1995. LDO5

## Mother's Day markdowns

EFFECTIVE MAY 14-20, 1995

Spearman, Gruver, Perryton, & Booker Only



ALLSUP'S SAUSAGE EGG & BISCUIT FOR ONLY **99¢**



ASSORTED REGULAR \$1.39  
**LANCE CHIPS ... EACH 99¢**



ALLSUP'S CORN DOGS



**2.99 FOR**

REGULAR OR THIN ALL FLAVORS DORITOS® **\$1.49**  
TORTILLA CHIPS REG. \$2.09



ASSTD. FLAVORS  
**ALLSUP'S ICE CREAM**  
1/2 GALLON  
**\$1.49**

### IN-STORE SPECIALS

- HORMEL LIGHT & LEAN SLICED HAM OR TURKEY ..... 8 OZ. **\$1.59**
- XTRA LIQUID LAUNDRY DETERGENT 32 OZ. **\$1.99**
- ALL FLAVORS GATORADE ..... 32 OZ. **\$1.29**
- SHURFINE DOG FOOD ..... 13.2 OZ. CANS **39¢**
- ALLSUP'S 1.5 LB. LOAF SANDWICH BREAD ..... 69¢ EACH OR 2 FOR **\$1.00**
- DIXIE 16 OZ. PARTY CUPS ..... 20 CT. **99¢**

SAVE ON PEPSI-COLA SOFT DRINKS  
12 pk. • 12 oz. cans  
**\$2.99**



**LOOK FOR IT... IT'S NEW! IT'S EXCITING!!**  
**Get Your Lucky Charm Ready!**

### HELP WANTED

Now accepting applications for assistant manager and all shifts. full and part time. Retired people feel free to apply. Allsup's is currently operating in New Mexico, Texas and Oklahoma with over 300 stores. We offer employee incentive programs, profit sharing plan, group health, life and dental insurance and personal development through our on-going training program. Come by and meet the new supervisors--Bill and Vicki from Artesia, NM.





**A SWING AND A MISS** - Tanner Beedy, seen here batting, is just one of the many players competing in this year's little league games. Beedy is a member of the Rangers, who won their opener last Tuesday night against the Orioles by a nip, 1-0. Ball games for all teams are played usually every Tuesday and Thursday night, with some exceptions. (Photo by Erin Atwood)

## For the Sport of it

by Bob Bort

(Answer to Last Week's Trivia Question): Hats off to Anita States and Darla Armes, the two Gruver Lady Hounds who share the all-time single game scoring record for a Lady Hound in a basketball game.

(Note: It was tough last week that one former Lady Hound may have scored 51 points in a game, but that was found to have been in error. Only two hold the record, Anita and Darla, and that is 44 points.)

The best single game point total for a Lady Hound in history has been done 3 times. The Lady Hound who did it first is Anita (States) Albright, who scored 44 points in a 55-23 district 1-A victory over the Panhandle Pantherettes on January 29, 1965 at Panhandle. Anita scored 44 of the 55 points, and she matched her number, as she wore number 44. Before that she also held the record, as she had scored 42 twice, the first time in a 50-29 bi-district playoff game win against Wellington on February 26, 1963 in Amarillo, a total which included 20 free throws, and a game in which Anita scored 31 of the 33 second half points by the Lady Hounds. Anita scored 42 of the 50 points in that game. Anita was the first to mention Lanetta (Blankenship) Shapley as one of the main cogs on that team, a forward, who consistently got the ball to Anita for the score. Anita graduated from GHS in 1965, and will be back here in Gruver later this year for her 30th class reunion. Anita is married to Mel Albright, and the family lives just outside Balco, Oklahoma, and includes a daughter who will graduate this year who was nearly as prolific a scorer as Anita during her high school career in Balco.

That record by Anita was tied by Darla (Armes) Ford her senior year in 1979-80 - 5 man basketball, and she did it twice that year. She scored 44 against the Lady Rattlers at Stinnett on February 1, 1980, to tie the record, a 67-52 win, in a game in which Darla was 12-12 from the free throw line. In her final game of that season on February 12, 1980, Darla added 40 points against the Sunray Lady Cats at Gruver in an 80-47 win, to go with her two 44 point games. What a season! Darla was a Converse All-American, and a Carnation All-American in 1980. Darla is the aunt of 1994-95 Hounds freshman point guard sensation Brant Armes, and she now lives with her family in Lockney, Texas.

The question I have - Is there anyone on the 1995-96 Lady Hounds basketball team under Coach Steve Myatt capable of breaking Anita and Darla's record??? My thought is that it is approachable. This past year Kiki Carthel knocked down 26 against El Paso High, and Molly McLain scored 25 against Stratford, and they will both return as seniors in 1995-96, but they are a long way short of 44!

Who are some of the other Lady Hound greats of the past? Well, here are a handful, to go with the two greats just listed, Anita States and Darla Armes.

3. Jo (Arthur) Wilson was the star of her era, and she graduated in 1959. Jo consistently scored in the 20's, but doesn't recall ever making the 30's. Jo now lives in Fritch.

4. Callie (Barkley) Borger was a star of the late 70's. Callie scored 38 in the Stratford Tournament against Dalhart in 1978-79. What a team that was, as Darla Armes played with Callie that year. Unfortunately, there was Jill Rankin-Schneider (the present coach of the Borger Lady Bulldogs), an All-American with the Phillips Lady Blackhawks, and in that era still only one team made the playoffs, and that was Phillips. Callie went on to play for Abilene Christian.

5. Gwendolyn (Cator) McLain was the leading scorer on her team, and what a team that was! It was back in the era when the whole Lady Hounds team only scored in the 20's and 30's, and all the games were close. Gwen graduated in 1948 with other greats such as guard Lera (Barkley) Beasley, who went on to play for the Wayland Baptist Flying Queens as a running guard (full court for Lera), and forward Maxine (Cooper) Cline. Twice this team advanced to the state girls tournament at Hillsboro, the only two Gruver Lady Hounds teams to make it to the state tournament. Gwen consistently scored in double figures. Gwen is the grandmother of Lady Hounds Mika and Molly McLain and Hound Buster McLain.

6. Debbie Chisum played four years, 1966-70, and she was truly a star. Debbie scored 29 points in one game, but may have scored more than that a time or two, as the reporting is sparse. Debbie's senior year 1969-70 was Judith Logsdon's sophomore year, and the two of them really traded leading point totals consistently throughout the year.

7. Jolinda (Ellison) Wilson and Jo (Arthur) Wilson married brothers - Jo graduated in 1959 and Jolinda in 1960. Like Jo, Jolinda scored consistently in the 20's, but not making the 30's. The 1960 team, on which Jolinda was a se-

nior, won district, but lost to White Deer in bi-district. Another key forward of that team was Cathryn Peddy, who also graduated in 1960. Jolinda now lives in Dalhart. She names Texie Barkley, though, - a guard most of the time, as one of, if not the one, star of the team. That is three Barkley's named in this resume of great Lady Hounds.

8. Judith Logsdon was the big scorer of the early '70's, when it was also six on six basketball, and she consistently scored in the mid-20's. Her big game was 41 points against White Deer her senior year (1971-72). Judith also scored 38 against Sanford-Fritch the same year.

9. Lou (McClellan) Chapman graduated in 1947 and was a member of the Lady Hounds first state tournament team at Hillsboro. She consistently scored in double figures. Remember, the girls at that time were only allowed one bounce, one dribble, before they had to shoot or get rid of the ball. So you had hook shots, underhanded shots, overhanded shots - you understand! Lou was the star as a senior in 1946-47, and she really combined with forwards Gwen Cator and Maxine Cooper, juniors, well.

10. Anne Potts consistently scored in the 20's in her career in the mid-1980's, but never scored in the 30's. Anne played 5-man basketball of course, and just graduated from Law School.

11/12. Jessie (Smith) Gheen and Lucy (Smith) Boggs, sisters, played on the same team one year (1974-75), and Lucy was the better scorer, averaging in the 20's, but she did score in the 30's a couple of times in 1976-77, as a senior. Both times, it was against Phillips, and one time she scored 39 against the Lady Hawks, including 19-20 free throws. The other time she scored 35 against the Lady Hawks. Again that was with only three forwards in the 1970's.


13. Krista (Stedje) Davis scored 34 her junior year (1987-88) against Highland Park, and 31 her senior year (1988-89) against Hartley. Krista lives in Gruver.

14. Jeanette (Thoreson) Allen was a prolific scorer who had a beautiful hook shot, but she is not believed to have broken the 20's, maybe the 30's, in a single game. That's if you go back to the early 1950's, when they had only three forwards as was the case with Anita. And they also didn't score nearly as many points in a ball game in that era.

15+. (Lady Hounds 1991-95). It is impossible not to list this entire collection of players. They were a team. In one game at Hartley on December 8, 1992 - a 93-38 Lady Hound victory - Mika McLain had 25, Holly Venneman 21, Wynn Maupin 16, Sara Jones 16, and Julie Meyer 6. No superstars, just a collection of very unselfish players who each could have been a superstar on any other team where they were the only talented player. The record of the Lady Hounds 1991-95, four years, was 91-33. In that

See SBORT, page 9

**AgriPro SEEDS** **LOSE YOUR WHEAT TO THE FREEZE?**  
 NEED A REPLACEMENT CROP FOR YOUR GHOST ACRES?  
**AGRIPRO SEEDS HAS THE 20% DISCOUNT ANSWER**  
 THAT'S RIGHT, IF YOU LOST YOUR WHEAT CROP TO THE FREEZE. AGRIPRO SEEDS WILL GIVE YOU A 20% DISCOUNT ON ANY AGRIPRO HYBRIDS (EXCEPT SOYBEANS) THAT YOU PLANT YOUR GHOST ACRES TO. TO FIND OUT MORE ON THIS EXCITING PROGRAM AND THE LOCATION OF YOUR CLOSEST AGRIPRO DEALER CONTACT:  
 AGRIPRO REGIONAL OFFICE • 1-800-858-4603  
 OR  
 LARRY TURNER/DISTRICT SALES MGR. • 806-935-7320

**FISH**   
 Now is the time for Pond and Lake Stocking of Hybrid Bluegill, Florida Hybrid Bass, Channel Catfish, Fathead Minnows, Triploid Grass Carp and Black Crappie.  
 The Hybrid Bluegill can REACH the weight of 2 1/2 to 3 lbs.  
 We furnish you Hauling Containers. We guarantee live delivery.  
 Supplies - Fish Feeders, Turtle Traps, Fish Traps, Liquid Fertilizer, Commercial fish Cages.  
 Delivery will be Tuesday, May 23, at the times listed for the following towns and locations:  
 Spearman - Spearman Equity • 659-2420 • 7:30-8:30 a.m.  
 Texhoma - Texhoma Wheat Growers • 827-7261 • 10-11 a.m.  
 Etter - Hi-Pro Feed • 966-5113 • 12-1 p.m.  
 Dalhart - Stockman's Feed Bunk • 800-433-2950 • 2-3 p.m.  
 Texline - Texline Feed & Ranch Supply • 362-4351 • 4-5 p.m.  
 To Place Your Order Call: **DUNN'S FISH FARM**  
 405-777-2202 • 800-433-2950 P.O. Box 85  
 Fax 405-777-2899 Fittstown, OK 74842

## JUMP-N-CARRY

A Portable Jumpstarter at 18 LBS

**\$199**



14.5" tall, 12" wide, and 3.5" deep

JUMPSTART ANYWHERE, WITHOUT AN AC CORD!

- 23 Inches of #4 Welding Cable (Superior to Jumper Cable)
- Volt Gauge Shows Battery Status
- Built-in Charger - Plugs into any AC Extension Cord to Recharge Jump-N-Carry's Battery
- 12 Volt Accessory Outlet powers cellular phones, lights, portable radios, plus more!
- Recharge Jump-N-Carry through the optional accessory outlet with optional cord from vehicle.
- Heavy Duty Polyethylene Case
- Maintenance Free Sealed Battery
- Store JUMP-N-CARRY in any Position without Acid Leakage

Model	JUMP-N-CARRY	COMPETITION
Output	400 Amps	320 Amps
Charger	Built-in Charger, Plugs into any AC Cord	Easy to Lose External Charger
Jumper Cable Length	23" #4 Welding Cable	20-3/4" #6 Jumper Cable
Grips	Side/Top Post Batteries	General Use

Based on Manufacturer's testing

**GILLASPIE**  
 AUTO & TRUCK CENTER, INC.  
 CHEVROLET, OLDS, BUICK, CHRYSLER,  
 PLYMOUTH, DODGE, PONTIAC  
 Highway 207 South P.O. Box 430 (806) 659-2541  
 SPEARMAN, TEXAS 79081

Estimated Battery Life	
# of Jumpstarts between recharging	Discharge and Recharge Cycles
1	1000+
5	700+
10	500+

**MONEY RATES**  
**Interstate Savings & Loan Association**  
 301 S. Main • P.O. Box 947 Perryton, TX 322 S. Main • P.O. Box 146 Spearman, TX  
**ALWAYS Offers You Competitive C D Rates!**  
 Annual Percentage Yields (APY) are effective as of 5-17-95

6 MONTHS	5.25%	5.25%	5.40%	5.75%
	APY	APY	APY	APY
	\$2,500	\$20,000	\$40,000	\$100,000
12 MONTHS	5.65%	5.65%	5.90%	6.25%
	APY	APY	APY	APY
	\$500	\$20,000	\$40,000	\$100,000
18 MONTHS	5.93%	6.15%	6.25%	6.45%
	APY	APY	APY	APY
	\$500	\$20,000	\$40,000	\$100,000
INDIVIDUAL RETIREMENT ACCOUNTS				
Fixed and Variable Rates				
18 MONTHS	5.93%	6.15%	6.25%	6.45%
	APY	APY	APY	APY
	\$50	\$20,000	\$40,000	\$100,000

Stated minimum balance must be maintained to earn the corresponding APY. A penalty may be imposed for early withdrawal. Your deposit is Federally Insured to \$100,000.

Other rates & terms available, call us at (806)435-4071 • Perryton or (806)659-2559 • Spearman 1-800-757-4071



# Museum Musings

by Joanne Eaton

It's not the latest in fashion, but the style is very nice. Can you even imagine wearing a bear-skin coat? Go to Fort Zulu and look this one over. You will appreciate all modern fabrics.

I'm sure in its "younger" days this coat was not so stiff. Not it gives the impression that something is living in it. It also has to be the heaviest and warmest coat ever made. (Except for the moutons some of us ladies had in high school.) The coat is on loan from Bill K. Jackson. At one time it belonged to F.W. Brandt who wore it when he lived in old Hansford.

Bill K. also brought lye soap that is on display. It always amazes me how you can make soap with a lot of

grease and still get your clothes clean. Bill K. said the lye does the cleaning. I'm afraid I like the modern way of life too much. It's easier to dump the cheer in the washing machine and push buttons. But, it's nice to be able to see how it used to be done.

I'm looking forward to seeing our 1995 Heritage Days Queen Fannie Venneman, ride in the parade on June 10. She's such a lovely person and very deserving to be Queen. I hope we'll have a big turnout to enjoy the parade. This year it will be at 3:00 P.M. so you'll have plenty of time to get there.

At 2:00 P.M. on June 10th, the

Old Timers Reunion will be at the Museum. It will be a good time to visit with old friends and to look around at all the improvements.

Museum hours are Tuesday through Saturday from 1 until 5 P.M. Special tours can be arranged by calling J.D. or Rubyjo Wilbanks at 659-3084, Clementine Renner at 659-2335, or Juanita Pierce at 659-5100.



## NEIGHBORS

CONTINUED FROM PAGE 5

her Bachelor of Science Degree. Others attending were the Allen Varnons, Betty and Richard Gaines, Clenda Purcell and son, Justin, and Mike Close.

Lois and Woody Gibner are expecting more than usual activity at their home this summer since their granddaughter, Lysse Gibner, will be with them all summer.

She is the daughter of Lynn Gibner and has visited her grandparents many times. She arrives from Portland, Oregon on May 29th.

Lysse was a freshman at B.Y.U. at Provo, Utah and is employed here at the First State Bank. She likes indoor and outdoor activities, including volley ball and is looking forward to an interesting summer. She is a member of The Church of Latter Day Saints.

It is likely that the youth of Spearman will welcome her and demonstrate some of that warm, Panhandle hospitality and her summer will long be remembered.

Mindi Patterson received her Bachelor of General Studies Degree in the graduation at W.T. A&M coliseum in Canyon on Saturday evening.

Her parents, Nell and L.M. Patterson, were present at the ceremony. Others attending were her sister, Cindi Russell, and two children of Stratford.

Mindi's exact plans are indefinite at this time. She has been employed for the last year and a half at the Amarillo Globe-News and finds it very interesting.

Betty and Richard Gaines met his brother, Bob and Marge Gaines, at Foss Lake last week. They are from Chickasha, Oklahoma, and he is a former resident of Spearman. The fishing results were just

mediocre, but the fellowship made up for that.

John and Juanita Japp returned to their home in Caspar, Wyoming late Sunday after a week here in the home of their daughter, Julie and Scott Martin. They were here to assist the other grandparents, Ray and Judy Martin, in the care of their grandchildren while the parents were in England.

While here, they not only shared Mother's Day, but witnessed the dedication of baby granddaughter, Mallory, in a ceremony in the First United Methodist Church on Sunday.

Dr. Scott and Julie Martin with a group of 40 veterinarians and wives were guests of a pharmaceutical company who were rewarding their best customers.

Their flight left Dallas on Saturday and went directly to London. They relaxed on Sunday for a busy Monday which was V.E. Day and constant celebration. The group toured many famed places, among which were The Tower of London, Hyde Park, and St. Paul's Cathedral. Julie and Scott, with one other couple bravely climbed the stairs to the top of that famous spire (which resulted in their strong desire for wheel chairs the next day!)

On Tuesday their day long motor trip through the beautiful, colorful countryside and a visit to Oxford University filled the day.

Wednesday they had another tour of historical places including the mysterious and impressive Stone Henge and old city of Bath.

Thursday Scott and other vets were driven to several places of agricultural interest. The ladies saw Windsor Castle and Buckingham Palace.

Friday was devoted to the ladies

favorite pastime-shopping-but never before in such a place as the enormous and world renowned Harrods.

There was a variety of entertainment, and Julie's favorite was theatrical productions. She attended three, and Scott one. She feels they were the highlight of her entire trip.

They returned Saturday.

The magnificent display of Russian military armor and troops as shown on T.V. on V.E. Day, and the newspaper reports that they had spent millions to make the parade

## LAKE

CONTINUED FROM PAGE 3

had a buffalo skin fastened to the door opening, as the skin was much easier to come by than a wooden door.

In the night Idros was bitten by a skunk. Family history does not tell us where Idros was bitten or how Mel recognized the skunk was rabid. After the skunk was dispatched, the wound treated, and his best horse saddled, he put Idros in front of him and began the seventy-five mile ride to Fort Elliott.

The post doctor did not give Mel much hope, but he did hold out that sometimes, if a madstone was available, a patient survived. A telegraph was sent to Fort Supply and on to Fort Dodge to see if Huff and Minta could get a madstone and start on the road to Fort Elliott with it. Mel borrowed or rented a hack and started on the road with Idros to Dodge City. They met somewhere along the road, but the little gravestone in the black iron fenced plot in the Hansford Cemetery tells us the treatment was not successful. The stone reads Idros M. Wright dau of J.H. and A.M. Wright died

and events spectacular, coupled with their determination to continue the carnage on the little country that is trying to win its independence-all causes one to wonder-how much of all this comes from the millions being donated to them by the American taxpayer-and they are asking for billions more...

Another word in the new vocabulary-as used in the newspaper and whose meaning is unknown to your neighbor-echobelly. The article states that some, but not all Americans enjoy echobelly. Is it art, food, a movement, a belief?

May 27, 1879 8 yrs 6 mos 17 das. After Huff Wright developed the town of Hansford and a cemetery was begun on the present location, her remains were transferred to the Hansford Cemetery.

Louis Pasteur of France was to cure his first patient, a little boy, of rabies in 1882.

## SATURDAY AUCTION 10:00 A.M.

ESTATE AUCTION - J.C. HICKERSON  
730 COTTER DRIVE, SPEARMAN, TEXAS

Real Estate in Spearman and White Deer. Vehicles, Household, Antique Clocks, Watches, Pocket Watches and Estate Jewelry  
Real Estate Sells At 1:00 p.m. Followed By Vehicles And Estate Jewelry  
(J.C. Hickerson Was A Well Known Jeweler in the Clarendon, Spearman Area For Many, Many Years)

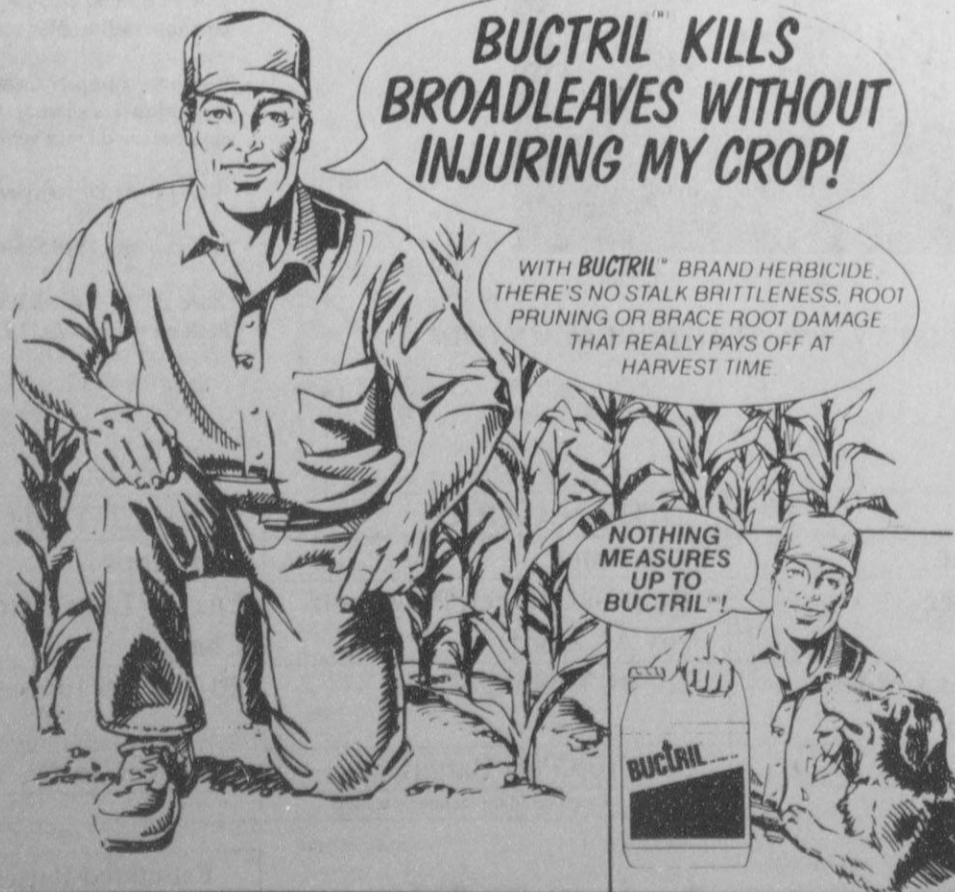
- REAL ESTATE SELLS AT 1:00 P.M. -  
730 Cotter  
Spearman, Texas



The J.C. Hickerson Estate Will Offer The Following Real Estate At Auction (Real Estate Being Described As):  
**SPEARMAN** - Lots 17, 18 and the South 15' of Lot 19, Block 4, Blodgett Addition, Hansford County, Texas Commonly Known as 730 Cotter, Spearman, Texas. Spearman Property Consists of an Exceptional 4 Bedroom, 2 3/4 Baths, Fireplace, 1803 Square Foot Brick Home With Partial Basement, 1170 Square Foot 3 Car Garage and 1217 Square Foot Covered Patio. Fenced yard. Exceptional Yard w/Sprinkler System and Large Fenced Garden Area. This House is Located in The Southwest Part of Spearman Close To The High School, Swimming Pool and City Park.  
**WHITE DEER** - Lot 12, Block 18, Original Town Survey, White Deer, Carson County, Texas Commonly Known As 211 Paul, White Deer, Texas. No Minimums and Reservations On This Tract.  
**TERMS:** Owner financing available. 10% of purchase price will be deposited in escrow the day of sale. Seller will finance qualified buyer for 10% down, 20 years at 9% fixed interest. Seller will furnish title insurance. Purchaser will have 10 days to examine title at purchaser's expense. Balance upon closing if seller finance is not used. Standard Texas Real Estate Contract will apply. Closing costs will be split between buyer and seller. 1994 and prior taxes paid by the seller. 1995 taxes prorated to day of closing. Cecil Biggers, Closing Agent. Every effort will be made to assure the accuracy of the information with no guarantee of authenticity. Any announcements made in any of our newspapers, magazines, or advertising.  
For Showing Or More Information Call Bozeman Auction Company, (806) 435-4472. Sale Subject To Confirmation And Acceptance Of High Bid By Buyer.

- |   |  |   |  |
|---|--|---|--|
| 1983 GMC Caballero 350 Auto. Elec. DWV 78,000 One Owner Miles Nice  | Duebenhampner, Waltham, Elgin, Logie, Cubano, Rosew. Co. Etc.) These Watches Are in Various Degrees Of Repair  | Metal Picnic Basket<br>Butter Mold<br>Snuff Glasses<br>1 - Arcade Crystal #4 Coffee Grinder<br>Horse Collars<br>Milk Can<br>1 - Lot Old Jars<br>Old Cast Iron Hog Waterer<br>Underwood Typewriter       | 1 - GE No Frost Refrigerator<br>Key To Butter Living Freezer<br>1 - Nice Round Maple Pedestal Table w/ 2 leaves & 4 Chairs On Trailers<br>2 - Loveseat Hide-a-Bed<br>3 Pc. Coffee Table & End Tables Gold Leaf<br>3 Pc. Bedroom Set w/Triples Dresser Nightstand<br>Wooden Rocker<br>Wood Hall Tree<br>Footstools<br>1 - Lot Elec. Heaters<br>1 - Lot Kitchen Appliances<br>Utensils<br>Dishes<br>1 - Lot Linens<br>1 - Lot Handwork<br>1 - Lot Pictures, Prints, Oils & Wall Decorations<br>1 - Lot Telephones, CB's, Turntable Tape Decks<br>Zuhari Video Summit System<br>1 - Lot Yard & Garden Tools<br>2 - Lawnmowers, rickshaws, Hand Waterer<br>4x4 Metal Storage Box<br>Wood Stained Top Table |
| <b>ANTIQUE CLOCKS</b><br>French Mobir Wall Clock w/Repeater<br>2 - Regulator Type Wall Clocks (1 Reported from Clovis Train Station)<br>3 - Wood Cased Wall Clocks<br>3 - Mantel Clocks. Seth Thomas Kitchen Clock. Art Deco Mantel Clock<br>2 - Black Marble Mantel Clocks<br>1 - Modern Grandfather Clock | Dozens of Wrist Watches From The 40's up<br>New Wrist Watches (Older Model Seiko, Bulova Etc.)<br>1 - Lot Estate Jewelry, Pocket Watches Cameo Pins, Etc.                      | <b>GUNS</b><br>1 - Model 20 JC Higgins 16 Gauge Pump<br>1 - Excel 410 Single Shot Shotgun   | <b>HOME MEDICAL</b><br>Electric Hospital Bed<br>3 - Walkers<br>2 - Potty Chairs<br>Portable Oxygen Unit<br>Hosp. Bed Serving Tray<br>2 - Exercise Bikes<br>1 - Exercise Machine  |
| 1 - New Kleminger Wall Clock Jeweled Movement In Custom Made Wood Case  | <b>WATCHEs &amp; ANTIQUE POCKET WATCHES</b><br>Dozens Of Old Pocket Watches Key Wines Enamel Faces, Double and Triple Dials - Hammond, Harvard, James - W. - Peters Liverpool. | <b>ANTIQUES</b><br>1 - Lot Carnival Glass<br>1 - Lot Depression Glass<br>1 - Lot Figurines<br>Spode Cup<br>Sm. Antique End Table<br>Cedar Chest<br>Lg. Lot Dolls (60's & 70's)<br>Oak Wood Desk & Chair | <b>HOUSEHOLD</b><br>1 - White French Provincial Headboard & 4 Drawer Chest<br>1 - Early American Double Bed w/6 Drawer Chest & Nightstand<br>1 - King Waterbed   |

Bozeman Auction Co. & Appraisal Service  
Texas License - 9275  
Kenneth Bozeman - Auctioneer  
P.O. Box 786  
Perryton, Texas 79070  
(806) 435-4472  
Cecil Biggers Attorney for Real Estate Auction



**RHONE-POULENC**  
RHONE-POULENC AG COMPANY  
P.O. Box 12014, 2 T.W. Alexander Drive  
Research Triangle Park, NC 27709  
1-800-334-9745

As with any crop protection chemical, always read and follow instructions on the label. BUCTRIL is a registered trademark of Rhone-Poulenc. © 1989 Rhone-Poulenc Ag Company



# RECYCLING CONTINUED FROM PAGE 2

Cadillacs and cruises, only the rich get to ride.) All the waste generated in Spearman will be hauled to another landfill for burial. I'm sure if you can kick your imagination into high gear, you can see how expensive this will be. It also puts a great deal of wear and tear on the trash trucks and employees.

What can you do? Businesses can make a commitment to recycle white paper (green and blue bar computer paper is white paper) and cardboard. (40% of the waste stream is paper) Individuals can recycle all the products listed above. In additional yard waste can be diverted from the landfill through Don't Bag It.

How can you do it? Pick up a recycling guide or a Don't Bag It brochure at City Hall or the Extension Office of the County Courthouse.

Spearman Schools

Spearman Schools' recycling program is spearheaded by the dedicated Charles Elliott Mr. Elliott said the efforts have resulted in the School district switching from a daily trash pickup to a twice weekly schedule for next fall.

Here are their year to date scores in pounds.

• Newspaper	2,137
• Steel Cans	3,375
• Mixed Paper	2,250
• White Paper	6,300
• Mixed Records/Books	7,000
• Cardboard	1,500
<b>Total</b>	<b>22,562</b>

Lowe's Grocery allows the school district to bale their cardboard at the store and recycle it with store's cardboard. The district would not be able to recycle cardboard without this service. Hats off to Lowe's for great community cooperation.

Gruver

Gruver wins First prize in the Recycling Center Beauty Contest. After tearing down a community eye sore, the city erected a shelter to protect recyclable materials from inclement weather and painted their dumpsters. All the beauty is apparently attracting a swarm of recyclers of Gruver residents ranked high as caretakers of the earth. The location next to City Hall is ideal for constantly monitoring the program for contaminants.

Gruver's scores year to date in pounds.

• Glass	3,000
• Newspaper	13,500
• Mixed Paper	23,637
• Cardboard	9,987
• Aluminum	1,410
<b>Totals</b>	<b>51,534</b>

Gruver started collecting most of these materials at the end of February. Several businesses (Dairy Queen, Allsup's, the grocery and lumber store) are committed to recycling cardboard which the city picks up on an as needed basis. Gruver encourages other businesses to recycle their cardboard as well.

The trailer containing plastics and steel cans has yet to make the journey to Borger for unloading, but is filling fast.



HERE IT COMES - The Orioles, Jimmy Gayton, is seen here rearing back to pitch the ball to a waiting Ranger batter. Gayton pitched a no hitter, and played a big part in keeping the score so close. The Orioles will play again next Tuesday night against the A's, while the Rangers will play this Thursday against the Mariners at 7:30. (Photo by Erin Atwood)

## SBORT

CONTINUED FROM PAGE 7

game versus Hartley, Holly was a senior, Mika, Wynn and Sara were juniors, and Julie was a sophomore. Of those five girls, every one of which scored in double figures regularly, Holly had the highest single game point total - 31 at Highland Park on January 12, 1993, in a game in which Holly scored 2 points the first half, and 29 points in the second half. It was a 65-53 victory, but Coach Myatt was not a happy camper at halftime, as the Lady Hounds were being upset by the Lady Hornets.

Remember, it is up to you, the readers, to provide the additional information I may have overlooked. I try hard, but I am human. What I would especially like is any Lady Hound I've overlooked, with some credentials...

Last week's question was too

easy! This week's needs to be more difficult. Ha, Ha, Ha. . .

Trivia question for this week: What was the best Gruver Greyhounds boys basketball team in history, by won-lost record (percentage), over one season? Name the year, the nickname of the Hounds that year, and if you are really good, the won-lost record and the coach. Two hints - the Hounds had the best won-lost record of any team, any classification, in the Texas Panhandle that year; and no, it wasn't either the 1950 or 1966 State Championship teams. Answer next week. I will supply all the details - you have to supply the basics.

GET THE **ALC10** Advantage

**FREE**  
SECOND SET OF PRINTS EVERY TUESDAY!

Receive a second set of 3" prints FREE with any exposure roll of 35mm, disc, 110 or 126 color print film left for developing and printing at our everyday prices! C-41 process only. Excludes larger 4" size prints, photo galaxy or kodalux finishes.

DAILY: 9 a.m. to 8 p.m.      SUNDAY: 12 p.m. to 5 p.m.  
521 Hwy 207 S. • Spearman, TX

## Graduation party to be held after SHS ceremony

PROJECT GRADUATION '95, an all-night, parent sponsored party, will be held for the graduating seniors of Spearman High School immediately after the conclusion of the graduation ceremonies.

Entertainment, food, outdoor games, and casino type indoor games are planned for the party.

During the casino games, play money will be given to the students, and any money they then win can be traded in for tickets to be used in an auction for various prizes.

All prizes will be purchased from Spearman area merchants.

Donations, in-lieu of graduation gifts for graduating seniors, can be given to: Cindy Blackman at the Chamber of Commerce office; Lynna Renner at P.O. Box 188, Spearman, TX 79081; or First National Bank in care of PROJECT GRADUATION '95 account

**EATON PAINT & SUPPLY**

is having a

# PAINT SALE

May 18 through May 27  
**10% OFF ALL PAINT!**

Cash Sales  
8:30 a.m. to 12 p.m.  
and 1:00 to 5:30 p.m.  
Monday - Friday  
8:30 a.m. to 12 p.m.  
Saturday

**321 HWY 207 S.  
Spearman, TX  
(806)659-3734**

# AUCTION

Saturday, MAY 20 '95 - 10:00 a.m.  
**MRK STORAGE YARD**

LOCATION: Hwy 15 and 6th, Perryton, TX • 10 Day Equipment Removal

**VEHICLES** -- 1984 Dodge Conversion Van, 62,000 mi., power/air, TV, CB, icebox, nice; 1983 Pontiac Bonneville, auto, power, air; (2) 1982 & 1981 Chev. crew cabs, 4 sp., power, air, 1 tons; (2) 1992 Ford Crown Victoria, power, air, cruise; 1985 Ford Ranger PU, auto; 1980 Chev. C10 PU, V8, power, air, rebuilt transmission; 1948 Chev. grain truck, 6 cyl., 4 sp., 13' bed; 1959 Chev. grain truck, 4 sp/2 sp, 13' bed; 1950 Ford truck (no title).

**COMBINE, TRACTORS, CART, ROWHEAD** -- 1972 JD 4430, 5,800 hrs, 3 pt., pto; Cisco 540 grain cart; JD 655A rowhead 6-40's; MF 20' header w/home pickup reel; JD Model A tractor; IH Case 1370 WB gas loader.

**TILLAGE** -- (8) Noble 2,000 deep hole drill w/transport, accuplant pt., marker; (3) Noble D-K5 deep hole drills; Richardson 5-5 sweep plow, pickers, NH3 attach; Richardson 5-5 sweep plow; Richardson 3-6 sweep plow; Miller 18' offset disc, 3 bar, 22" disc; Sunflower 21" disc; JD PK 14' offset disc; Lilliston 6 row cultivator; Woods 214 540 mower; Kuger 300 gal. 3 pt. sprayer w/cab controls; Ford 534 irrig. eng., w/stand (not running); NH57 3 pt. hay rake; 4 bottom plow; 3 sec. springtooth; 3 graham hoeme chisels; (5) JD71 planters.

**CATTLE-LIVESTOCK** -- 1960 Ford 1 ton, 292 eng., heavy duty, V8 on LP w/farmhand grinder mixer; Lyndale 2 horse side by side trailer; WW 16' stock trailer; (3) Boyd buld feeders; EZ roll wire roller; Lot T posts; Lot elect. posts; Lot elect. wire; Stock tanks; Round bale trailer; Lot wire mesh panels; Truck slide-in-racks; Pickup slide-in-racks.

**LAWN, GARDEN, MOWERS** -- JD 430, Dsl. riding belly mower, hydro, 5', 3 pt., pto, 3 hyd; Montgomery Ward riding mower, 11 HP, 38" cut, electric start; MTD riding mower, 11 HP, 32" cut; AC-B-207 riding mower.

**NON-CLASSIFIED** -- Elect. winch; 100 gal. field tank; Chrome grill guard - Ford; Jenson Pump; Sears power saw; (12) 58" x 34" windows, metal frames; 500 gal. propane, 200 PSI; (1) 7.5 x 20 8 hole tractor tire & wheel; (1) 12 volt winch; (1) front blade for garden tractor; (1) 24.5 bud wheel; (1) set stock racks; (1) 12 volt grain fill auger; (1) NOVD gas engine; (1) pickup hitch; (1) tail gate lift; (1) 700 gallon butane tank; (1) 87 gallon butane tank; (1) 500 gallon water tank; (1) 3 section harrow; (1) large metal rack; (1) pull type mower; (1) 300 gallon diesel tank & stand; (1) utility bed; (3) road drags; (1) sprayer; (1) Tulsa winch; (4) 400 gallon gas tanks; (1) 500 gallon water tank; (1) 6" x 6" x 1' x 18" angle iron; (8) 10.00 x 22 tires & wheels; (1) 3x3x6 sq. beam; (1) 3x3x7 sq. beam; (1) pickup headache rack; (1) 8" x 8" x 4' H beam; (1) lot of 10" x 2 3/4 x 3/16 H beams; (1) lot galv. tower frame; (1) lot 2" line pipe; (1) lot 3" line pipe; (1) lot of 4 1/2 pipe; (1) lot of 1 1/4 solid shaft; (1) lot sucker rod; (1) 60 gallon tank; (1) 41 gallon butane tank.

**NAYLOR**  
AUCTION and REALTY, INC.  
RT 1 BOX 84 BALKO, OK 73931 (405) 646-3548

Broker: Dale Naylor - OK 107486 - TX 7285 (405) 646-3548 - Balko, OK

# FIELDERS CHOICE

OFFER ENDS MAY 31, 1995

## FREE R.A.M.S. Computerized Control Panel

WITH THE PURCHASE OF A 7+ TOWER REINKE SYSTEM.

OR

**FINANCE IT!**

**8% 3yr.**  
FIXED APR

**8.75% 5yr.**  
FIXED APR

**9.25% 7yr.**  
FIXED APR

**LOW DOWN PAYMENT**

TEN PERCENT DOWN ON THREE AND FIVE YEAR LOAN, FIFTEEN PERCENT DOWN ON SEVEN YEAR PROGRAM. NO PREPAYMENT PENALTIES. FIRST PAYMENT DUE JANUARY 1, 1996

OFFER ENDS MAY 31, 1995

LIMITED TIME / QUANTITY OFFER: SUBJECT TO CHANGE WITHOUT NOTICE. FINANCING (AVAILABLE ONLY IN USA) SUBJECT TO CREDIT APPROVAL, CERTAIN RESTRICTIONS APPLY.

**Paschel Irrigation Inc.**

Hwy 15 W. • P.O. Box 69

Spearman, TX 79081

*a generation ahead!*

**REINKE**

IRRIGATION SYSTEMS

P.O. Box 566 • Deshler, Nebraska 68340 • (402) 365 7251



# BOARD

CONTINUED FROM PAGE 1

hire Cindy Lieb to teach Pre-kindergarten and Chapter I for 1995-96. This passes 7-0. Carla Martin will move to teach Kindergarten next year.

Finally, the finance report was given by Superintendent Sears. Also, reports were given covering school board training, the PEEWEE Track Meet Thursday at 1:00, the PTA Teacher and Volunteer Appreciation Banquet, 8th grade

graduation Thursday May 18, at 7:00 P.M. School will be dismissed for the year Friday, May 19th at 3:30 P.M. The T-Star Satellite System will be installed this summer that will provide local programming for students, staff development programs for teachers, and training programs for school board members.

The meeting was adjourned at 10:40 P.M.

## World Championship Ranch Rodeo coming

AMARILLO-The first ever World Championship Ranch Rodeo will be held November 14, 15, and 16, 1996, in Amarillo. Selected for its Western Heritage, community support and facilities, Amarillo also secured the event for 1997 and 1998.

Governed by the Working Ranch Cowboys Association, the World Championship Ranch Rodeo will show case ranches and cowboys from across the nation, competing in various events for the World Champion Ranch Rodeo Team title.

"As the new home of the WRCA, the Board of Directors believed Amarillo should host the premiere event," Terry Rich, WRCA President said.

Formed in March 1995, WRCA is dedicated to preserving the lifestyle of the American ranch cowboy. Twelve ranch rodeos across

the United States are currently being considered for WRCA sanctioning.

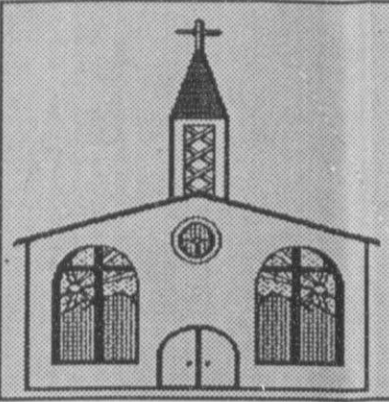
The WRCA is offering a limited number of founding memberships for \$200. Founding members receive a custom-made silver and gold lapel pin and a limited edition, hand-signed print by Western artist Gary Morton.

WRCA memberships are available on a variety of levels. Memberships will support programs such as a proposed scholarship fund for the children of working ranch cowboys and a benefit fund for cowboys in need, from industry-related injuries.

For WRCA membership or additional information, please contact WRCA at (806)-358-7382 or by writing WRCA, 6900 I-40 West, Suite 250, Amarillo, TX 79106.

Let us replenish the seed of faith through...

## REGULAR CHURCH ATTENDANCE, DAILY BIBLE READING & PRAYER



**Curtis' Hot Oilers**  
806-659-3432  
"Taking Service to Perfection"  
806-659-2912 P.O. Box 714  
800-821-6714 Spearman, TX 79081

**Palo Duro Supper Club**  
22 S. Archer  
659-2232

**C.O.'S SUPPLY CO.**  
Plumbing & Tire Sales & Service  
421 W. Kenneth • Spearman  
659-3781 or 659-3555

**Bartlett's Ace Hardware**  
105 W. Broadway  
733-2404

**GILLASPIE**  
AUTO & TRUCK CENTER, INC.  
SPEARMAN, TEXAS 79081

**Deakin ELECTRIC**  
OILFIELD • RESIDENTIAL • COMMERCIAL  
519 Plains Shopping Center  
Spearman, TX 79081  
1-800-999-1506 (806)659-5016

**PORTER SATELLITE**  
TREY PORTER  
806-659-3657  
420 Davis  
Spearman, Texas 79081

**Gruver Cablevision**  
Quality Family Entertainment with  
"the Disney Channel"  
308 Main • 733-5295

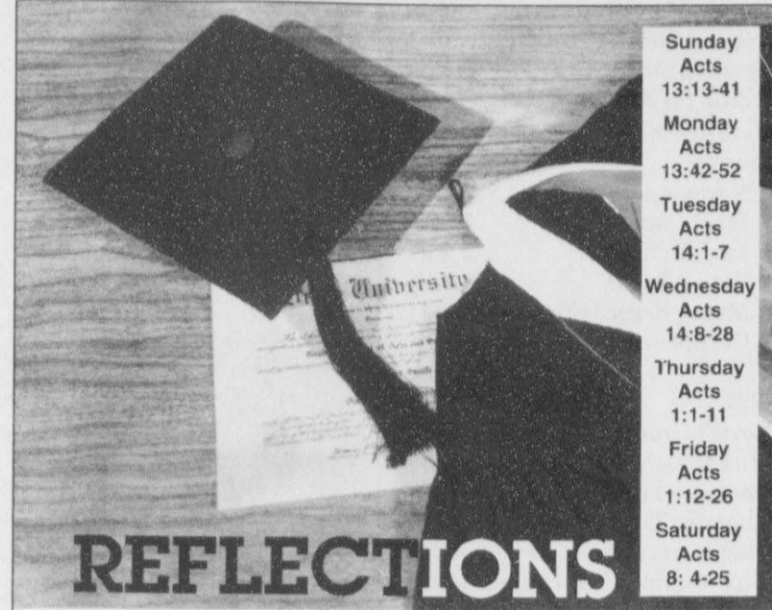
**Morse Implement Company**  
"Join us in church this week"

**Boxwell Bros. Funeral Home**

**THE HANSFORD COUNTY REPORTER-STATESMAN**  
Serving The Communities Of Spearman, Gruver & Morse  
213 Main • 659-3434  
1-800-395-9482

**CORONADO HOSPITAL**  
Pampa, Texas  
(806)665-3721

Compliments of  
**G&G FOODLINER**  
516 Main • Gruver  
733-2471



Sunday Acts 13:13-41  
Monday Acts 13:42-52  
Tuesday Acts 14:1-7  
Wednesday Acts 14:8-28  
Thursday Acts 1:1-11  
Friday Acts 1:12-26  
Saturday Acts 8:4-25

### REFLECTIONS

Graduation ... is it a beginning, an ending, or possibly, a stop along the way?

Graduation is a beginning ... of life as a young adult charting an unfamiliar course; a beginning of new friendships and fresh concepts, of higher education or a fulfilling occupation. Certainly, graduation is a beginning.

Graduation may also bring endings ... to familiar surroundings and comfortable routines, to old friendships, a setting aside of childlike fears and secondhand ideas. Yes, graduation may signify endings.

Perhaps, graduation is a significant stop along the way ... a preparatory pause ... a fork in the road. Indeed, the word itself means a gradual transition, a step on life's ladder ... a time to remember the past, to ponder the present, and to dream of the future.

Whatever graduation means to you, feel proud of your accomplishment, and praise God for providing you with strength and guidance. Worship Him regularly, so that you may continue to receive His direction during this most meaningful time in your life.

CONGRATULATIONS GRADUATES!

Copyright 1995, Keister-Williams Newspaper Services, P. O. Box 8005, Charlottesville, VA 22906

### In Spearman...

**Apostolic Faith Church**  
822 S. Dessen • 659-2870  
Sunday School: 10 a.m.  
Worship: 11 a.m.  
Evening Worship: 6 p.m. Sun.  
Wed. Prayer Meeting: 7:30 p.m.  
Pastor James Brown

**First Assembly of God**  
401 N. Bernice • 659-2295  
Sunday School: 9:45 a.m.  
Worship: 10:50 a.m.  
Evening Worship: 7 p.m.  
Wednesday Worship: 7:30 p.m.  
Youth: 7:30 Wednesday  
Pastor Todd Lillard

**First Christian Church (Disciples of Christ)**  
29 S. Bernice • 659-2036  
Sunday School: 9:45 a.m.  
Worship: 10:50 a.m.  
Women's Bible Study: 2 p.m. Wed.  
Youth: Wed. 6 p.m. & Sun. 5 p.m.  
Pastor LaVern Draper

**First Baptist Church**  
123 N. Bernice • 659-5557  
Sunday School: 9:45 a.m.  
Worship: 11 a.m.  
Evening Worship: 7 p.m.  
Jr. High Youth: 6 p.m. Wed.  
High School Youth: 7 p.m. Wed.  
Youth Choir: 6 p.m. Sun.  
Pastor Kyle Henderson

**Church of Christ**  
121 S. Haney • 659-3244  
Sunday Bible Class: 9:45 a.m.  
Worship: 10:30 a.m.  
Evening Worship: 6 p.m.  
Bible Study Wed. 7:30 p.m.  
KRDF Radio Program  
Living With Christ 7:50 a.m. M-F  
Minister Arnis Pape

**Fellowship Baptist**  
1102 S. Archer • 659-2783  
Sunday School: 10 a.m.  
Worship: 11 a.m.  
Evening Worship: 6 p.m. Sunday  
Youth & Adult Serv.: 7:30 Wed.  
Pastor Tim Luttrall

**Primera Mision Bautista**  
502 E. 7th • 659-3991  
Sunday School: 9:45 a.m.  
Worship: 11 a.m.; Evening: 6 p.m.  
Wed. Prayer Meeting: 7 p.m.  
Thurs. Visitation: 7 p.m.  
Pastor Isaias Martinez.

**Trinity Community Church**  
717 W. 7th Ave. • 659-2671  
Celebration of Praise 10:15  
Worship Service and Children's Church 10:30  
Sunday Evening 6:30 p.m.  
Wednesday evening: 7 p.m.  
Pastor Dan Carter

**Faith Lutheran Church (ELCA)**  
1101 Bernice • 659-2252  
(Worships with First Presbyterian Church)

**First Presbyterian Church**  
(Worships with Faith Lutheran Church)  
1021 Cotter • 659-2033  
Sunday School: 9:45 a.m. at Lutheran Church  
Worship: 11 a.m. (alternates monthly between addresses above)  
Pastor Beverly Cook

**First United Methodist**  
407 S. Haney • 659-5503  
Sunday School: 9:45 a.m.  
Worship: 11 a.m.  
Jr. High Youth: 5 p.m. Sun.  
High School: 6 p.m. Sun.  
Pastor Jeff Lust

**Union Church**  
31 S. Endicott • 659-2644  
Sunday School: 9:45 a.m.  
Worship: 10:45 a.m.  
Evening Worship: 6:00 p.m.  
Bible Study & Prayer Meeting: 7:00 p.m. Wed.  
Pastor Billy Stanford  
**Sacred Heart Catholic Church**  
901 Roland • 659-2792  
Sat. Night Mass: 7 p.m.  
Sunday Mass: 8:45 a.m. - English (8:45a.m. Service on KRDF 98.3 FM)  
11:15 a.m. - Spanish  
1:30 p.m. - Gruver - Christo Rendentor Mass - Spanish Rev. Fernand Couture

**This feature is made possible through the Sponsorship of these Civic Minded Businesses**

"WE SUPPORT OUR LOCAL CHURCHES"  
**CAPROCK #1 & #2**  
Bill Park, Gen. Mgr.  
(806)733-5043 or 733-5025  
"Custom Cattle Feeding"

### In Gruver...

**First Baptist Church**  
402 E. Broadway • 733-2411  
Sunday School: 9:45 a.m.  
Worship: 10:50 a.m.  
Disciple Training: 6 p.m. Sunday  
Prayer Meeting: 7:30 p.m. Wednesday  
Pastor Larry Miller

**Church of Christ**  
209 King • 733-2760  
Sunday School: 9:30 a.m.  
Worship: 10:20 a.m.  
Evening Worship: 6 p.m.  
Wed. Evening Worship: 7:30 p.m.  
Minister Bob Setliff

**First Christian Church**  
510 King • 733-2960  
Sunday School: 9:45 a.m.  
Worship: 11 a.m.  
Wed. Bible Study: 7:30 p.m.  
Youth: 6:30 Wednesday  
Pastor Gary Gumfroy

**Oslo Lutheran Church (ECLA)**  
West of Gruver on Hwy 15 & N. FM 1162  
339-7646  
Sunday School: 9:45 a.m.  
Worship: 11 a.m.  
Morning Prayer: 9 a.m. Wed.  
Pioneer Clubs (Grades 1-6): 4-5:30 p.m. Wednesday  
Pastor John R. Chandler

**Community Bible Church (Interdenominational)**  
Hwy. 15 • 733-2443  
Sunday School: 10 a.m.  
Worship: 11 a.m.  
Wed. Prayer Meeting: 7 p.m.

**First United Methodist**  
Broadway & Garrett • 733-2651  
Sunday School: 9:45 a.m.  
Worship: 8:30 a.m. & 10:50 a.m.  
Evening Worship: 6 p.m.  
Pastor Lewis Holland

### In Morse...

**Morse Baptist Church**  
Pastor Mike Martin  
733-2757

"Your Home Away From Home"  
**Nursanickel Motel**  
815 Hwy. 207 S.  
Phone: (806)659-3737 P.O. Box 115  
Spearman, Texas 79081

**BERRY CLEANERS**  
DAN DESIMONE • OWNER  
Phone 659-3122 • P.O. Box 1017  
207 Main St. • Spearman, Tx. 79081

**GRUVER FORD**  
531 Main • Gruver • 733-2431

**Interstate Savings & Loan**  
322 Main • Spearman • 659-2559

**Hagerman Services**  
Backhoe • Dozer • Welding  
North Hwy. 15 • Spearman  
659-5131

**Gordon Drugs**  
Dependable Prescription Service  
314 Main • Spearman  
659-2141  
Jim Evans

Compliments of...  
**AGCO of Spearman, Inc.**  
"See you in Church"  
659-3751

Don't Miss Another Issue!

SUBSCRIBE NOW

\$19.95 in county  
\$24.95 out of county

Spearman Gruver  
**REPORTER-STATESMAN**

213 Main • P.O. Box 458 • Spearman, Tx. 79081  
(806)659-3434 • 1-800-395-9482

Come join the fun ...



it's a day of Bridge!

Saturday, May 20, 1995  
The O'Loughlin Center  
502 South Brandt  
Spearman, Texas

Registration and Coffee at 9:30 a.m.  
Play from 10:00 a.m. to 4:00 p.m.

RSVP on or before May 19, 12:00 Noon  
(telephone numbers below)

This day of fun is only \$12.00 including:  
A Wonderful Luncheon  
Cash Prizes

Great Door Prizes

For more information, please call  
Kathy Bryant at the O'Loughlin Center  
806-659-3030 or  
Judy Nelson at 806-659-3608.



**"IT'S FOR YOU"...**  
The Classifieds Have Something For Everyone!

The Home Seller...  
The Car Buyer...  
The Do-It-Yourselfer...  
The Mother's Helper...  
The Job Seeker...  
The Bargain Reaper...

When you want results, turn to The Classifieds.

# The Hansford County Reporter-Statesman

Serving Hansford County Since 1907

Telephone: 1-800-395-9482 or (806)659-3434

**REAL ESTATE**

**AA Realty**

Allen Alford - Broker - 659-3034  
Julie Martin - Sales - 659-2425  
Larry Trosper - Sales - 659-3491

1017 Townsend: 3/2/1 - New lower price!  
1103 S. Townsend - 3/1 1/2, 1, good loc.  
613 Kenneth - 5 BR, 2 story, rock house  
1107 S. Barkley - 3, 1 1/2  
Good Hanger & Storage - Old Airport

NEW LISTINGS  
2 LOTS at 7th & Barkley - Bldrs. Dream  
204 S. Dressen-3/1 1/2

FOR QUALITY & SERVICE CALL US TODAY  
We Need Your Listing.

**REAL ESTATE**

**Century 21**  
GOLDEN SPREAD REALTY  
Janey Helton Pointer, Broker Owner  
435-5444

1117 Dressen - 4/2/1, Large home w/basement. Corner fireplace, covered patio...  
712 Collier-2/1/2, Owners anxious to sell  
Crawford Addition: Under Contract  
2 - 1 1/2 - Will look at all offers!  
2 - 1 - Small and affordable!

205 Hazelwood - Great buy, excellent condition  
211 Hazelwood - 3/1, Make an offer.  
315 1/2 N. Bernice: Lot for sale.  
East 7th Street - Mobile homes, lots to lease!!  
412 Roland - 3/1/1, comfort you can afford!  
104 Townsend - Central air/heat, big carport, fenced in back yard, washer and dryer.

© and ™ trademarks of Century 21 Real Estate Corporation. Equal Housing Opportunity INDEPENDENTLY OWNED AND OPERATED

Three Bedroom Brick, two baths, double garage, lots of trees, 1.8 acres, horse barn, 26 by 36 shop. 205 E. 10th, Gruver, Texas. Call J.W. Whitaker at 733-2433. Also 1983 Coachman Motor-home. S30, 1tp/RTN.

**FOR SALE OR RENT:** Old City Hall building, 221 Sanders. Call 659-2518. S3, RTN

**HOUSE FOR SALE:** 2,167 sq. ft. brick, 4 bedroom, 1 3/4 bath, double garage with two openers, central air/heat, 18'x27' workshop in backyard. Call 659-3027 work or after 4 p.m. at 659-3071. Close to pool, parks, O'Loughlin Center and High School. Well taken care of. Affordable, 707 Lee Dr. S17, 4tp

1117 TOWNSEN: Reduced Price! New paint! New carpet! Seller will pay closing costs. Affordable 3 bedroom, 1 3/4 bath, with game room and basement. Call Real Estate and Rental TODAY! 435-4623. S15, RTN

**THREE ADJACENT HOUSES FOR SALE:** A. 620 S. Bernice, 2400 sq. ft., \$30,000 - currently occupied by seller. B. 620 1/2 S. Bernice, 1200 sq. ft., \$15,000. C. 618 S. Bernice, 1500 sq. ft., \$27,500 - currently rented at \$300/mo. Properties A & B together, \$39,500; all three properties as a unit, \$65,000. Assumable loans. For more information contact Ed Pearson at 806/659-3851. S10, RTN

**MAKE US AN OFFER:** Great brick home in great location. 2,200 sq. ft., 4 bedrooms, 3 baths, big den with fireplace, basement, double car garage. 702 Gibner. Call and let's make a deal! 659-3838 or 733-5555. S19, RTN

**FOR SALE:** 3 bedroom, 2 bath house, large living area. 2,100 sq. ft., 9 Golden Circle. Call 659-2096. S18, 3tp

**HOUSE FOR SALE:** 3 bedroom, 1 bath, attached garage, nearly new heating & cooling unit with major appliances & furniture. 408 S. Barkley. Call 659-3464. S16, 8tp

**HOUSE FOR SALE:** 1,906 sq. ft. living area and double car garage, 3 bedroom, 2 bath, recreation room, sprinkler system, nice neighborhood. 719 Wilbanks. Call 659-3761. S18, RTN

**EXTRA SPECIAL 5 BEDROOM HOME:** Room to roam. Updated! Great neighborhood, 1017 Wilmeth. Call Real Estate and Rental at (806)435-4623. S20, RTN

**FOR RENT**

**FOR RENT:** One bedroom newly decorated, furnished apartments, utilities paid. Call 659-3260. S47, RTN

**FOR RENT:** Trailer park spaces for rent. Located on S.E. 7th and Loop road, Spearman. \$30 per month. Call 435-5080. S23, 1tp/RTN.

**FOR RENT:** 2 bedroom house. 659-3260. S60, RTN

**FOR RENT:** 3 bedroom, 1 bath, washer/dryer hook-ups, carport, fenced back yard, \$275 per month. Call 659-3844 anytime. S16, RTN

**AUTOMOBILES**

**FOR SALE:** 1984 Ford Truck with 20' van and lift. V-8 diesel engine. Excellent condition. For more information call 659-3432 or 659-2912. S52, RTN

**FOR SALE:** 85 Chevy Suburban, runs good and very clean, \$4,995 or best offer. 659-2700. S19, RTN

**FOR SALE**

**MUST SELL:** 486 SX Gateway 2000 full system with CD ROM, Inkjet printer, transferable warranty 251096, \$1,200. Also good work truck, 77 Ford, 1 owner, \$650. New Nordic Track, \$200. Call 733-2577. S20, 2tc

**FOR SALE:** Completely rebuilt 605 International and HD 800 Moline Irrigation engines. Call 733-5263 or 659-5036 7:30 a.m. to 5:30 p.m., Monday thru Friday, 7:30 a.m. to 12 p.m. Saturdays. S4, RTN

**FARM PRODUCTS**

**200 ACRES FARMLAND:** 6 miles south/west of Spearman, irrigation well, no mineral rights. Seller reserves right to approve buyer. Bob Hardy Realty, 659-3440, Robert Hardy, Broker. S59, RTN

**FARMERS:** Seed growers needed for Sorgum, Sorgum-Sudan, Pearl Millet, Cane, Black-eyed peas, Purple whole peas, and others. Call Production Plus at (806)293-3103. S20, 2tc

**PETS**

**FOR SALE:** Registered American Eskimo pups ready for sale 6115195. Papers and 1st shots. Call 659-3949 for appointment to view pups. 2 males and 2 females. UKC registered with "PR" title. S19, 3tc

**WANTED**

**WANTED:** Responsible party to take on small monthly payments on big screen T.V. Good credit a must. Call 1-800-398-3970. S20, 2tc

**WANTED:** Nice 3 bedroom 2 bath house to rent for doctor and family. Contact Hansford County Hospital District, 707 Roland, 806/659-2535. S19, 3tc

**MISCELLANEOUS**

**GOLF LESSONS:** Toby Thompson - golfer at McMurry University. Learn entire game of golf: etiquette and rules plus basic skills, or just improve your own game. Call after 6:00 p.m. at 659-3846 or 659-3225. S20, 2tc

Discouraged with diet aids of the past? Look forward to a more satisfying future with **FORMULA THREE**...all-natural and amazing. See Jim Evans - 659-2141 or 659-3379. S60, RTN?

**CLASSIFIED RATE**  
\$4.00 first insertion  
\$3.00 each additional insertion (30 words or less)  
13¢ each word over 30  
Legal Notices: 15¢ per word

**Are You A Victim of Domestic Abuse . . .**  
Physical, Emotional or Sexual?  
Call Toll Free  
1-800-753-5308

We are in Spearman on the 1st, 3rd, & 5th Wednesdays of each month at the First Presbyterian Church, 1021 Cotter. On the 2nd & 4th Wednesdays we are at the First Christian Church at 510 King in Gruver. We can come to Spearman & Gruver any time upon request. We operate a safe place for victims & their children to stay in times of crisis.

**Panhandle Crisis Center**  
Serving Hansford, Lipscomb & Ochiltree Counties  
317 S. Main  
Perryton, Tx.  
Memorials Accepted

**SERVICES**

**PITS CLEANED:** Dragline or Loader. Call Lee Roy Mitchell, 733-2384 or 733-2175. S47, 1tp/RTN.

**Free Bible Correspondence Course.** Write P.O. Box 604, Perryton, TX 79070. S46, RTN

**CALL YOUR LOCAL Used Cow Dealer** for days a week stock removal. 659-3544 or 1-800-692-4043. Serving Cattlemen for the past 20 years. G51/RTN.

**WEIGHT WATCHERS** is now meeting every Monday in Gruver. For more information, please call 1-800-359-3131. S11, RTN

**J & M Service Center 24-Hour Service-415** Colliard, Spearman 79081. 659-5519 or 659-3352. Tires, flats, oil & lube, wash, brakes, batteries and minor repairs. Now selling gas. S27, 1tp/RTN.

**CLIFCO WINDSHIELD REPAIR SERVICE:** Don't replace your damaged windshields. Local area toll free call at 930-1704. Home phone: 435-9149. Ask for Clifford Cox. S43, RTN

**HELP WANTED**

**HELP WANTED:** Now taking applications for position in law office. Contact Britt Jarvis at 806/659-2554, or send resume to P.O. Box 515, Spearman, TX 79081. S20, 1tc

**HELP WANTED:** Semi truck drivers, CDL required. Must be 25 yrs. old. Conventional's new hopper bottom trailers. McCarty Trucking, 806/362-4807. S10, RTN

**JOB OPENING:** The position of Hansford County Auditor will be open May 31, 1995. Inquiries and resumes may be sent to William D. Smith, 84th District Judge, P.O. Box 489, Spearman, TX 79081-0489. Applicants should have auditing and accounting experience and reside in Hansford County. S18, 4tc

**HELP WANTED:** Operate a fireworks stand 6/24 through 7/4 outside Spearman. Make up to \$1,500. Must be over 20. Phone 10 a.m. - 5 p.m., 1-800-364-0136. S19, 5tc

**HELP WANTED:** The Hansford County CFSA office, (formerly ASCS) is now taking applications for permanent employment. If you are interested, application forms are available at the County Office located at 711 West 7th, Spearman, TX. Applications will be accepted through May 22, 1995. Candidates will be considered without discrimination because of race, color, religion, national origin, sex, political affiliation, physical or mental disability, age, marital status, or other nonmerit factors. S19, 2tc

**HELP WANTED:** Hi Plains Auto Supply needs a parts person. Experience preferred. No phone calls. Apply in person at 118 N. Main, Spearman. S18, RTN

**JOB OPPORTUNITIES**

**OWN YOUR OWN APPAREL OR SHOE STORE, CHOOSE:** Jean/sportswear, bridal, lingerie, westernwear, ladies, men's, large sizes, infant/preteen, petite, dancewear/aerobic, maternity, or accessories store. Over 2000 name brands. \$25,900 to \$37,900: inventory, training, fixtures, grand opening, etc. Can open 15 days. Mr. Loughlin (612) 888-6555. S1, 3tp

**PUBLIC NOTICE**

**LEGAL NOTICE**  
The Spearman Independent School District will receive bids until 1:00 p.m. on June 5, 1995 in the Business Office located at 403 East 11th Avenue, Spearman, Texas 79081 for a Bank Depository for the 1995-97 school years.  
The Spearman Independent School District reserves the right to accept or reject any or all bids or parts of bids; and to waive any formalities and technicalities. Detailed instruction and specifications on the above may be secured by calling the School Business Office, (806)659-2116. S20 & S22

**PUBLIC NOTICE**

**BIDS ON HIGHWAY CONTRACT ROUTE**  
The Postal Service is accepting bids for a Highway Contract Route from May 1, 1995 thru May 31, 1995. Information is available at your local post office. S18, 4tc

**PUBLIC NOTICE**

**LEGAL NOTICE**  
First State Bank, Spearman, Texas, is accepting sealed bids for a 1983 Buick Regal Limited, as is. All bids must be received on or before Friday, May 26, 1995. Bids will be accepted at 1 N.E. Court, or mailed to P.O. Box 247, Spearman, Texas 79081. First State Bank reserves the right to accept or reject any or all bids. The property hereinabove described may be inspected during normal business hours at the address mentioned above. For any further information, please contact Worth Whitworth at (806)659-5565. S19, 3tc

**NEW TRAMPOLINES**  
Mats & springs  
Resew trampoline mats.  
Make new boat covers.  
Call (806)659-2109  
Harry Stumpf  
301 W. 12th  
Spearman, Texas

**OSGOOD MONUMENT CO.**  
Amarillo, Texas

Dealers of Rock of Ages Granite, as well as all colored granites, marble and bronze memorials.

Represented by  
**Boxwell Bros. Funeral Home**  
519 S. Evans  
659-3802

**Hansford County Hospital District has the following positions available:**

**RN:** House supervisor in skilled nursing facility. Rehab and IV therapy and long-term care. Challenging and rewarding. Days and occasional weekends.

**LVN:** Charge nurse in long-term care/skilled nursing facility. Will train in LTC, management and supervision. Looking for someone with leadership potential.

**BENEFITS:** Sign-on/moving allowance; mileage reimbursement; salaries well above average; educational opportunities.

Friendly, crime-free community with excellent schools, low-cost housing, and tip-notch health facilities.

Linda Sanders, Personnel director, Hansford County Hospital District, 707 S. Roland, Spearman, Texas 79081, 806/659-2535.

**JAN'S ETC. NEW & USED & ANTIQUES TOO**

Everything for home and family. Plains Shopping Center in Spearman

Open Monday - Saturday  
10 a.m. til 6 p.m.

**Can I Help?**

Precision Sweep Airseeding  
Accurate (down to 1.25 #/A)  
Minimum Tillage  
-200 A (\$6.50/A)  
+ 200 A (\$6/A)  
**Bob Williams 435-4835**

\*\*\*\*\*  
★ **FOR SALE** ★  
★ **UNBELIEVABLY AT** ★  
★ **BECKETT PRICE!** ★  
★ **Michael Jordan Rookie** ★  
★ **Card and/or set. Call** ★  
★ **659-3863 or 659-2912** ★  
\*\*\*\*\*

Are you a **Smoke Detector Neglector?**

Test your smoke detector regularly and change the battery once a year.

A fire prevention message from your local fire department.

**Must sell house NOW!**

Beautifully decorated 2,000 sq. ft. brick home on double corner lot, centrally located, fenced yard, with 3 br., 2 baths, 2 liv. areas, 2-car garage. Cent. air and allergy-filtered furnace. Recently remodeled garage apt. with bed/bath. All kit. appliances, window treatments, ceiling lights/fans, play-yard equip. to stay. Yard features cov. patio, fountain, large trees, playground. Available: **JULY 15TH!**

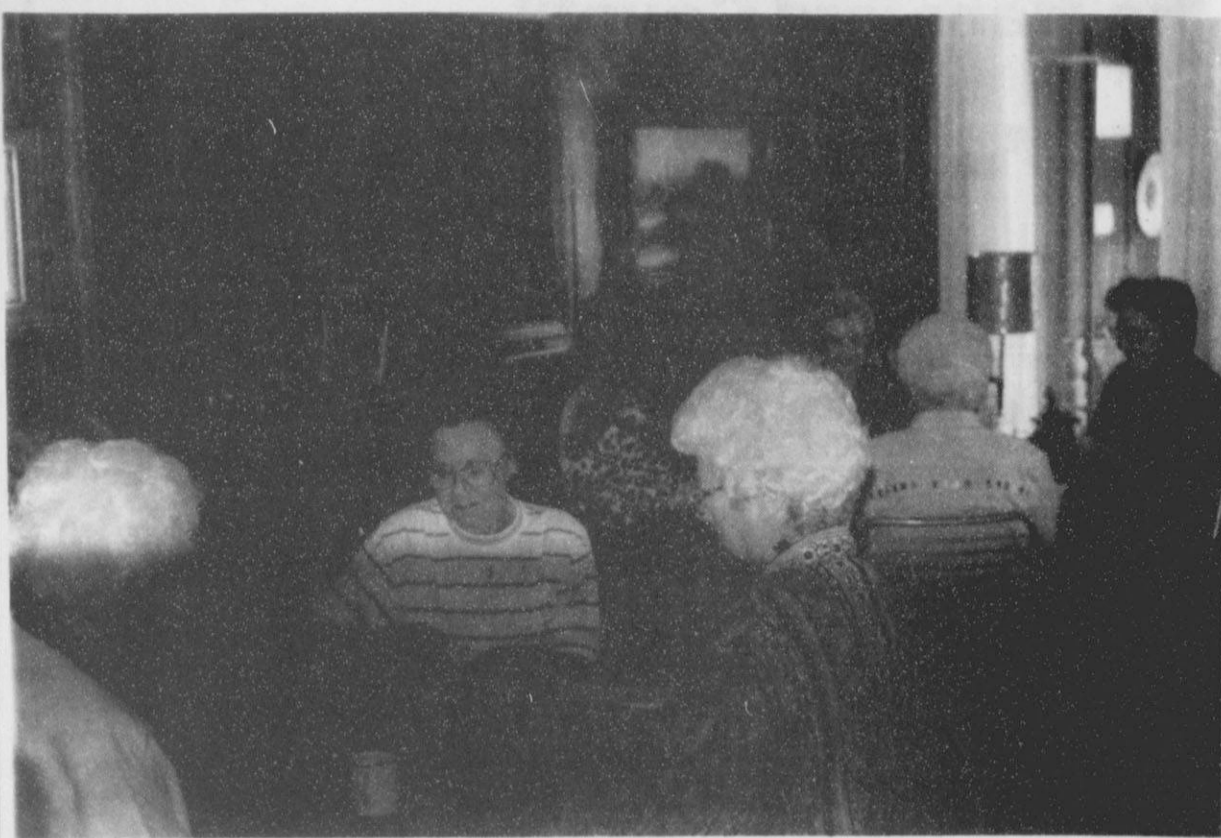
**OWNER WILL SELL FOR \$60,000 OR LEASE-TO-OWN**  
(\$5,000. down payment plus low monthly payments, taxes & insurance.)  
**CALL FOR APPOINTMENT:**  
659-3272 OR 659-2846

**Don't Miss Another Issue**  
*Subscribe Now*

\$19.95 yr. in county      \$24.95 yr. out of county

**Spearman REPORTER-STATESMAN**  
213 Main • P.O. Box 458 • Spearman, Tx. 79081  
(806)659-3434 • 1-800-395-9482





**PRACTICE MAKES PERFECT**-Charlotte Pearson, Kathleen Sutton, Rosalee Butt, Elizabeth Holton, Barbara McClellan, Virginia Head, Helen Etter, and Frances Cudd are sharpening up their bridge skills for the upcoming Day of Bridge at the O'Loughlin Center to be held Saturday, May 20th. All area bridge players are cordially invited to participate in the Day of Bridge. Committee members planning the benefit for the O'Loughlin Center are Judy Nelson, Chairman; Frances Cudd, Elizabeth Holton, and Jo Larson.

## "Watch up for safety" launched by Southwestern Public Service Co.

SPS NEWS RELEASE - Ball fields are filling up; yard work is in full force; the skies are full of severe weather. All are signs of spring.

With the increase of outdoor activities that comes with spring, Southwestern Public Service Company reminds its customers to "watch up for safety."

One of the places where electrical accidents can occur is the farm, according to Ronnie Walker, SPS Panhandle Division Safety and Claims Specialist. "Quite often people forget to look up when they're lifting irrigation pipes, antennas or other metal objects," he said. "It's important to always 'watch up' and know where the electric lines are."

Walker said that same warning applies to others on the job, particularly those who are working above street level. "Roofers need to

be extra careful; that extra height could be just enough to bring them in contact with electrical lines." In fact, Walker said, federal and state safety regulations require the electric company to be notified if contractors work near electric lines.

Customers also need to be careful during the severe weather that often occurs in spring.

"If an outage occurs at your home during a storm," said Walker, "call your local SPS 'repair' or 'service' number listed in the phone book. SPS has employees who are trained and equipped to correct the problem and restore service."

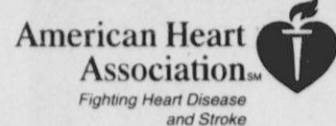
If you see a fallen power line on the ground, call SPS and keep people away from the line. Do not touch the line or anything it is touching, such as a car or fence, Walker said. "Assume every line is 'live' and dangerous," he said.

Many of the service problems that occur during a storm are the result of fallen tree limbs or lightning. Besides causing outages, lightning can also be dangerous to people involved in outdoor activities. If you are outdoors as a lightning storm approaches, remember that trees do not protect you from lightning and, in fact, attract it.

Parents should take the time to teach their children to avoid electrical facilities when playing outdoors. Fly kites and model airplanes in open areas, far from power lines. If a ball is hit over a neighborhood substation fence, don't try to retrieve the ball yourself, Walker said. Call the electric company instead.

For additional information on electrical safety, contact your local SPS office.

Medical miracles start with research



## Weight Watchers Welcomes You To Our Next Community Meeting.

Come see what Weight Watchers is all about!!!  
Attend a free meeting in Gruver!!  
Monday, May 22 -- 6:00 p.m.  
Pre-registration required on May 22 for the next 8-week series beginning Monday, May 29, 1995.  
Must have at least 20 members for a community meeting.

Try Weight Watchers New Fat & Fiber Plan!  
Cut the fat, not the food.  
8 weeks for only \$69  
Call Now 1-800-359-3131



*Weight Watchers*

Valid in Community Meetings only. Weight Watchers is a registered trademark of WEIGHT WATCHERS INTERNATIONAL, INC. © Weight Watchers International, Inc. 1995.



### Miniscopic Deep-Canal Hearing Instrument Now Available

Our office is happy to announce that we are currently fitting a completely in-the-canal hearing instrument. This remarkable new hearing instrument is discreet and comfortable to wear. It's placement deep in the canal of the ear (see illustration at top) makes it barely visible. Others may not recognize you are wearing a hearing aid. The Miniscopic is the smallest hearing instrument ever manufactured by NU-EAR. Call now to schedule an appointment for your hearing assessment and consultation.

Hearing tests are for hearing aid selection and not for medical diagnosis of hearing loss.  
© 1994 NU-EAR/ADS10420494A

**HIGH PLAINS HEARING AID CENTER**  
Golden Spread Senior Citizens Room in the O'Loughlin Community Center  
Every 2nd & 4th Tuesday  
2:00 p.m. to 4:00 p.m.  
274-5311  
1-800-753-1696  
659-3866

# Your Need For A Difference Maker Is Growing.



Day after day, the world from the cab of your combine looks the same: Same hot days, long hours and old questions— "What's the weather forecast?" "What are today's market prices?" "While I'm here is any work getting done back at my place?" To turn those same old questions into some fast new answers, you need **The Difference Maker**—a cellular phone and service from Dobson Cellular Systems.

Harvest time... All the time... your need for The Difference Maker is growing. To make a difference in the way you live and work, get **The Difference Maker** from Dobson Cellular.

Want to know more? Call 1-800-882-4154 and ask for your FREE Dobson Difference brochure.

The Difference Maker.

**DOBSON**  
CELLULAR SYSTEMS



Call 1-800-882-4154 today!

Authorized Dobson Agents:

Look Who's Turning 2!



We Love You Kaitlyn

From your Daddy, Grandma, Grandpa, Uncle Brian, Grams & Great Grandpa and Grandma