

INSIDE

Society Pages	4, 5
Sports	8, 9
Obituaries	10
Hansford Happenings	2
Political point of view	7
Want Ads	11
City Lites	2
Sorority Sweethearts	6

The Hansford County Reporter-Statesman

Serving Hansford County Since 1907

12 PAGES

VOL. 85, NO. 16

213 Main Spearman, Texas

50¢ THURSDAY, FEBRUARY 11, 1993

WEATHER

Day	Hi	Lo	Precip
Thu	42	28	.00
Fri	44	30	.00
Sat	63	24	.00
Sun	69	30	.00
Mon	59	29	.00
Tue	68	34	.00
Wed	--	--	.00
1993 Precip			1.20

February 15 - March 17, time to apply for place on ballot

Monday, Feb. 15, is the first day to apply for a place on the ballot for expiring terms in the cities and the school districts. These applications will be accepted during regular business hours through Wednesday, March 17.

In the City of Gruver, interested persons may apply for two positions. Those terms expiring are Mayor, which is currently held by Keith Gibson and one 2-year commissioner term, which is currently held by Mark Irwin.

The City of Spearman has three, 2-year terms for alderman. Ed Garner, Mike Cudd and Steve Benton's terms are expiring. Contact Cheryl Gibson, secretary, to apply.

All three school districts have board of trustee positions coming up for re-election.

The terms of Clyde McCloy, Clay Reid and Nathan Sargent are expiring at Pringle-Morse C.I.S.D. Each of these positions are elected for 3-year terms.

Two Spearman Board of Trustees positions are up for re-election. These positions are currently held by Carl Kunselman and Craig Schumann. Both of these positions are for a 3-year term.

In the Gruver Independent School Board of Trustees two positions are expiring. Stan Seagler and Corky Chapman are currently serving in these positions. Chapman has served one year on the board, while Seagler has served for six. Both of these positions are for a 3-year term.

Anyone interested in applying for a position on the ballot for these entities should contact the business office during business hours.

Another position coming open is on the Board of Directors of Education Service Center, Region XVI. This is an organization which provides educational services to 66 school districts in the north 26 counties of the Texas Panhandle. Anyone wanting to file for a position may do so at the office of the Executive Director located at 1601 S. Cleveland in Amarillo during regular office hours.

Filing began on Monday, Feb. 1, and will continue through Friday, Feb. 19. Those who are interested may file in person or, upon request, may receive a filing form by mail. These forms must be postmarked no later than 5 p.m. on Saturday, Feb. 20.

For more information on the positions and requirements please contact them at 376-5521 or Box 30600, Amarillo, Texas 79120.



The Annual Hansford County Heart Association Banquet attendees await the start of the Saturday evening auction at the Gruver Elementary Gym.

Governor proclaims...

February as board recognition month

SPEARMAN—Texans benefit every day from the dedicated energies and countless hours devoted by a group of more than 7,000 men and women in every community across the state. These public servants are elected to serve by local constituents and receive no compensation for their tireless efforts.

These men and women are the local school board members of Texas.

This month (February), more than 1,000 Texas communities will honor the dedicated service of public school trustees during **School Board Recognition Month**. The goal is to build awareness and understanding of the important func-

tion an elected board of education plays in communities and schools, according to the release. Governor Ann Richards has called upon all Texas citizens to recognize the important contributions of these men and women and focus attention on the vital role these public officials play in the education of Texas' children.

The men serving Spearman I.S.D. are: Dr. Tom Latta, Mr. James Schnell, Mr. Craig Schumann, Mr. Kerry Henton, Mr. Carl Kunselman, Mr. Archie Smith, and Mr. Bob Boxwell.

Local school board members are dedicated, educated, responsible citizens who carry out the trust form of representative government—volunteer public service, stated the release. School board service perhaps is the purest form of grassroots

democratic principals upon which our nation was founded, it stated.

Our school districts oversee multimillion dollar budgets providing education for nearly 3.5 million students in prekindergarten through grade 12 on 59,976 school campuses statewide, staffed by 205,832 teachers, 10,621 campus administrators, 6,490 central administrators, and 21,240 professional support, 31,208 educational aides, and 114,813 auxiliary staff for a total work force of 390,204, according to the release.

In these difficult times, school board members are called on to be the policymakers for the state's 1,050 plus school districts and are often called upon to make tough decisions, the release stated. Feb-

See Board page 12

TAAS and TEAMS, spring out-of-school registration

During regular exit level test Administration, individuals who are no longer enrolled in school and who have not previously met minimum expectations on all sections of the TEAMS or TAAS tests, but who have met all other graduation requirements, may retake the necessary section(s). Below is a schedule of testing dates and times for the TEAMS and TAAS.

TEAMS

English Lang. Arts—May 4
Mathematics—May 5

TAAS

Writing—March 11

Reading—May 4

Mathematics—May 5

The TESTING LOCATION is Spearman High School. TESTING

TIME is 8:20.

Individuals who are no longer enrolled in a Texas public school and who wish to register to retake the exit level TEAMS or TAAS test(s) may pick up a registration packet at Spearman High School. The test registration form must be completed and returned in the pre-addressed envelope and must be received in IOWA CITY, IOWA no later than 5 p.m. on these dates:

TAAS Writing test—Feb. 18.

TAAS reading, mathematics, or either TEAMS test—April 12.

REGISTRATION PACKETS CAN BE PICKED UP FROM THE COUNSELOR'S OFFICE AT SPEARMAN HIGH SCHOOL.

by Jean Ann Behney

"I thought it was extremely successful and very pleasant," Gruverite Barbara Stavlo said, summarizing Saturday evening's annual Hansford County American Heart Association Banquet.

Stavlo worked with other local heart association board members, including co-presidents Jim and Rosemary Brown of Spearman, to put on the event. Two hundred fifty Hansford County residents attended the dinner at the Gruver Elementary School's gym.

Heart association board members spent many hours in the weeks before the banquet planning and carrying out elaborate decorations along the theme "Hearts of Gold." Tables featured white cloths, red napkins and cups and centerpieces of gold foil-wrapped plant pots containing gold, white and red balloons. One wall of the gym was decorated with cut-out hearts with names of the banquet's underwriters written on them. A large gold heart made of twinkle lights was suspended from above the auctioneer's podium. It was made by Ed Haner, Carla Gumfory, June Parkley and Danny Womble. Red heart-shaped balloons floated above each basketball hoop in the room.

Banquet chairperson Stavlo made opening remarks and recognized several heart association board members and donors. Ed Haner said the invocation following Stavlo's short speech. Although there was not official guest speaker, Gruver's Jerry Williams came to the podium after the auction to personally report the progress his nine-month-old granddaughter is making following her open heart surgery last week in Lubbock. The child, Brooks Williams, was the

Hansford County American Heart Association's first poster child this year.

Featured at the gala were 22 live auction items and 27 silent auction items. "Our number of auction donations was up this year," reported Rosemary Brown. All auction items sold, she said, and explained that the heart association uses funds generated from the auction as well as the banquet tickets to support the American Heart Association and its research efforts. Auctioneer was Ed Dear of Spearman.

Seven "surprise" items were added to the auction list at the end of the evening after a patron requested to purchase one of the waiter's aprons. The aprons were

quickly snapped up for \$25 or more apiece.

The banquet itself, which featured steak and all of the trimmings with cheesecake for dessert, was prepared by the Spearman Sacred Heart Catholic Church's Knights of Columbus and served by more than a dozen "celebrity waiters"—prominent local citizens. Cost of the meal was underwritten by thirty Hansford County businesses and individuals.

"This number was up, too," commented Brown. "I guess it was just word-of-mouth!" Gruver's Mrs. Harley Alexander, a longtime heart association supporter, was recognized as the "diamond" donor again this year.

Entertainment before and during the meal was provided by pianists Janie Kunselman and Bonita Reimer and singers Danny and D'dee Ellis, all of Spearman. Their selections included many romantic songs to tie the evening in with hearts and Valentine's Day.

Adding some spice to the event were six name-drawings for door prizes. Door prizes were won by the following ticket holders: Rick Barkley, Gail Vanlandingham, Jim Shirley, Newell Allen, Erin Burgin and Fran Duncan. These prizes were donated by two beauty salons.

Although the money is still being counted, Brown reports, "We

See Heart page 12

Hansford County Heart Association Banquet chairperson Barbara Stavlo (l) is joined by Jim Brown, co-president of the organization and Carly Gumfory, board member, at the annual banquet Saturday, Feb. 6.

Heart Association hosts annual banquet

Spearman City Council...

discusses park grant application

by Angela Jones
Editor

Spearman City Council members met in special session on Wednesday, Jan. 27, to discuss a park grant application.

Kelvin Knauf, city manager, explained that resolution #1-93 was for the park grant application for the empty lots north of the swimming pool. He added that the improvements being requested included handicap accessible picnic tables, playground equipment, soccer field and goals, water fountain, and walking/jogging track. The resolution designated the City Manager, Knauf as the official representative for the city and authorizes him to make application to the Department of Wildlife and Recreation for the grant on the swimming pool park.

Courtney Sharp, Panhandle Re-

gional Planning Commission, was present and stated the grant is in the amount of \$87,146 with the city's match being 50%. Also, he explained the grant is asking for the value of the land to count as all or part of the city's match.

Steve Benton made a motion to adopt Resolution #1-93. It was seconded and the motion carried unanimously.

Knauf then stated that ordinance #614 was a more clear policy on paying a utility deposit in order to receive a utility service. The ordinance clarifies the 'old ordinance.' For example, the new ordinance states that every new resident and every new business is required to put up a deposit for the utility service. The deposit is \$90 for gas and \$40 for water and totals \$130 for residents. Businesses vary.

The ordinance also states that

the city manager can no longer waive deposits. It must now be taken before the council. Alderman Ed Garner made a motion to adopt ordinance #614, amending Chapter 15, Public Utilities of the Spearman Municipal Code, and to be effective January 27. Charles Elliott seconded it and the motion carried unanimously.

In other business Mayor Burl Buchanan was appointed as the city's elected official to serve on the Region 2 Sub-Division Solid Waste Committee.

For a final item of business, Mayor Buchanan asked Knauf to speak with the owner of Tri-State Metals about cleaning up around his business.

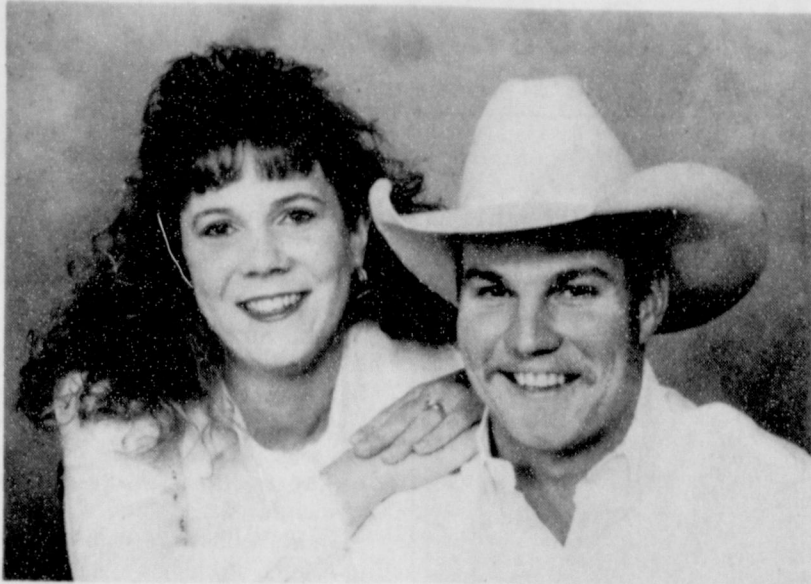
The meeting adjourned at 3:26 p.m.



Congressman Lary Combest (l) talks with Hansford County resident, Woody Gibner, at the "town hall meeting" held by Combest Tuesday, Feb. 9 at First State Bank, Spearman. Combest opened the meeting by saying it was good to be back in the panhandle of Texas where he was born and raised. He went on to say that he wanted to encourage the residents of Hansford County to call and write him about what they think he should be doing in Congress. He went a step further in saying that each individual needed to encourage everybody he knows to write their congressman about issues that are important to the area. In general Combest stated he was for less government and lower taxes but expects both to go up with the new administration now in the Presidential Office. To read more about what Combest believes see the story on page 7.

AD INDEX

Dairy Queen	3	Church ad	10
Mission Cable	9	Beedy Furniture	12
Pioneer-brand products	6	Stanton W. Cobb, DDS	12
Dobson Cellular Systems	6	Gillaspie Auto &	
Allsup's	7	Truck Center	8
All Occasion Flowers	7	Hansford Hospital	8
Valentine Personals	6		



Fitzgerald and Hill announce engagement — Mr. and Mrs. Benny Fitzgerald of Spur, Texas, announce the engagement of their daughter, Audrey Dale, to Dusty Allen Hill, son of Mr. and Mrs. Bob Hill of Spearman. The bride-elect will graduate in May from Texas Tech University with a degree in Early Childhood Development. The prospective groom graduated from Texas Tech University with a Bachelor of Science Degree in Agronomy/Entomology. He is a self-employed consultant in Lubbock. The couple plan to be married March 13, 1993, in the First Baptist Church of Spur.

Dennis and Hedgecoke... announce wedding plans

Mr. William C. and Deanne Miller of Canadian announce the engagement of their daughter, Melinda Ann, to Edward Lee Hedgecoke, son of Mr. Dale and Erna Hedgecoke of Canadian.

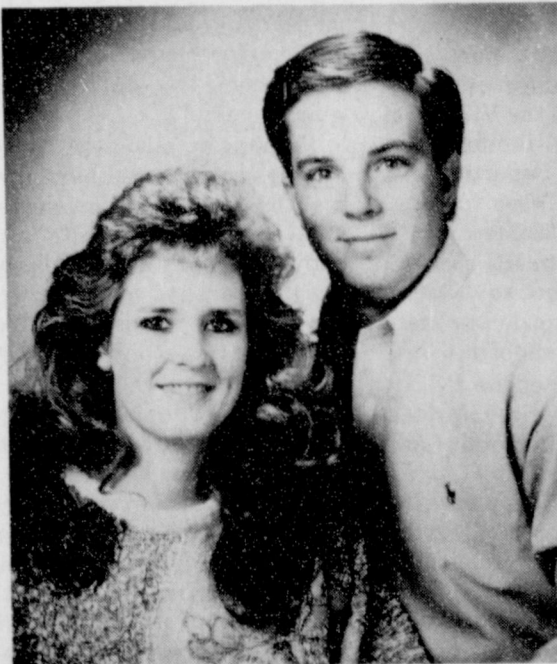


The bride-elect attended school at West Texas State University. She is presently a teacher at Fort Elliott C.I.S.D. Her grandmother is Olga Gafford of Spearman.

The prospective groom attended Texas Tech University. He is the Chief Juvenile Probation Officer for the 31st Judicial Court.

The couple plans to be married on Saturday, June 5th at St. Thomas, U.S. Virgin Islands.

Odegaard, Holly... announce engagement



Mr. Roger and Elaine Odegaard of Spearman announce the engagement of their daughter, JoAnne to Mark Lee Holly, son of Mr. Dale Holly of Huntsville, Texas and Katie Gomez of Cortez, Colo.

The bride-elect is a graduate of Spearman High School and has received a Bachelor of Science Degree in Photography and General Business from Sam Houston State University. She works in accounts receivable at Mark's Pharmacy in Huntsville.

The prospective groom is a graduate of Huntsville High School. He is attending Sam Houston University working towards a Bachelors Degree in Business. He is currently employed at Myer's Security Firm in Huntsville.

Both, Mark and JoAnne, are members of the Church of Christ in Huntsville.

The couple plan to be married at 2 p.m. Saturday, March 6 in the Elkins Lake Baptist Church at Huntsville.



Needham achieves highest rank — The Highest Rank of Boy Scouting has been achieved by Robert Needham. Robert was presented with his Eagle Rank Badge on January 23, 1993, at the First United Methodist Church in Spearman. Robert is the son of Leslie Needham of Spearman and Don Needham of North Highlands, Calif.

Muriel and Granville Boyd spend a pleasurable weekend in Brownfield. They were guests of her son Larry and Mrs. Fryer and daughter Mandy. On Saturday evening they attended the annual Brownfield Chamber of Commerce banquet as Larry was the outgoing president.

Guests of Mrs. and Mrs. James Riley for a couple of days last week were their daughters. Betty Jean Davis is from Beaver and Pauline Hines comes from Laverne, Oklahoma.

Doris Kitchens enjoyed a belated birthday when their daughter Sandra and Burton Williamson came to observe it. Christy and Matthew came with them and they spent the weekend. They are from Broken Arrow and returned by way of Stillwater where they visited their other daughter Amy who is in

college there...Of course T.C. enjoyed the weekend also, tho he had no birthday to share.

Wayne Ferguson from Lewisville visited his cousins here a couple of days last week. He stayed with Don and Lynanne Maize, and visited Pearl Pierce and Idela Randall. He was here Thursday and Friday.

Also visiting them was Jack McKay. He was enroute from California to their home at Cedar Creek Lake and swung by here for a short stay. In addition to those above he visited Helen Etter and a former Spearman classmate, Worley Smith.

Cecil and Ellen Reynolds flew back from Yuma, Arizona early last week. They were guests of her cousin, Sammy and James McNulty, during the month of January. The McNultys had spent Christmas here and the Reynolds drove back with them. In the early part of their stay in Arizona, heavy rains, a rarity there, flooded the country side. However, they enjoyed the entire time.

Lois Allison, a patient in Guymon Memorial Hospital, is reported by relatives to be improving and expected back the latter part of the week.

Another patient from Spearman is Bill Martin who has been at the Ochiltree General Hospital at Perryton for more than three weeks. It is expected that he will be able to return home the latter part of this week.

Cathy Brown spent the weekend here with her parents, Alva and Ed Garner. Cathy lives in Canyon.

Delia Kaye and C.M. Sampson flew back to their home in Marco Island, Florida on Saturday. After spending several days here with her father, Jesse Davis, they went to Moreland, Oklahoma to be with his mother for a couple of days.

Five days of hard, but rewarding, work ended on Friday for R.L. McClellan, Bob Meek and Forest Reichen. They were in Baldwin, Louisiana and flew back on Sunday. In co-operation with the United Methodist Churches in Louisiana the Pampa and Amarillo Districts joined in repairing some homes damaged by Hurricane Andrew last year.

31 members from Canadian, Dalhart, Borger, Stinnett, Amarillo and Spearman which included four wives and five ministers left the previous weekend. Three church vans were their transportation. They stayed in the Sager-Brown Center in Baldwin, on the Gulf Coast, and worked in the impoverished area. There were Methodists from over most of the United States assisting in the projects.

They had good weather and their work was mostly on the exterior of the homes. However, on Friday there was rain.

A fringe benefit for R.L. was a visit with an old friend from Abbyville, near by. They were fellow-officers in the navy during World War II.

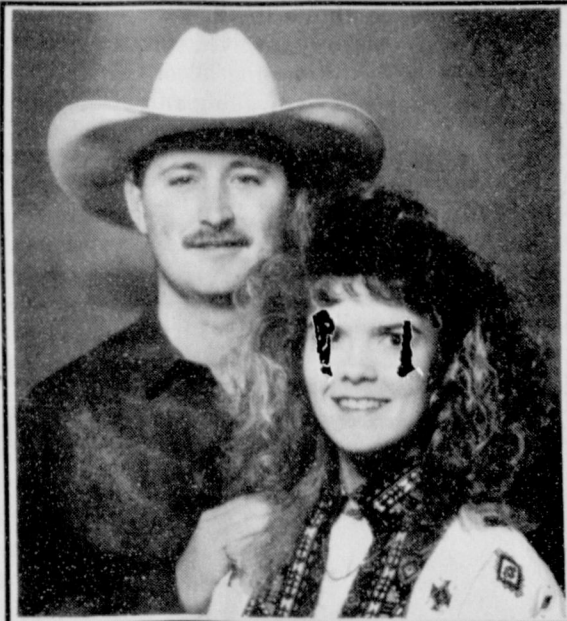
Herrmann, Reimer to wed

Lisa Ann Herrmann, daughter of Richard and Vickie Herrmann of Union City, Okla. and Gregory Howard Reimer, son of Mick and Karen Reimer of Spearman would like to announce their engagement.

The bride-elect graduated in 1986 from Union City High School, and she attended Southwestern Oklahoma State University. She is now employed in Dallas at Lone Star Boot as assistant manager.

The prospective groom is a 1986 graduate of Spearman High School, and, and 1991 graduate of Southwestern Oklahoma State University in Weatherford, OK. He is employed as an assistant manager with K-Mart in Dallas.

The couple plan to be married April 24, 1993 in Elk City, Okla. at the Old Pioneer Chapel. They will reside in Mesquite, Texas after the marriage.



Boy Scouts meet

The Spearman Cub Scouts held their monthly pack meeting at the county barn on January 30.

Information on how to help the scouting program using "The Friends of Scouting system" was presented. To continue the scouting program and training district wide financial support from the community and parents is needed. Any size donation would be welcomed and an individual could be billed monthly if he wished. For more information please contact Jimmy Vanlandingham.

Advancements and Achievements were presented. Those receiving Aquanaut and Citizen were Sean Baker and Glen Powers. Jake Coates, Chris Schmehr, David Parker and Arron Thompson were awarded Aquanaut, Citizen, and Device. Josh Lackey received Citizen and Device.

Other advancements and achievements presented were to Chad Scarborough, Steven Rogers,

Eric Vasquez, David Crouse, Ryan Warren and Eric Moore — 3 Silver Arrows; Jeff Coats — 4 Silver Arrows; Ryan Dewberry and Scott Saur — 2 Silver Arrows; Terrance Torres — 1 Silver Arrow; and B.J. Hughes-Bowling Loop and Swimming Loop.

Highlight of the evening was the Annual Rain Gutter Regatta. Judges this year in the appearance category were Larry Trospser, Kelvin Knauf, Steve Kurg and Bob Farr. Their help was greatly appreciated.

Winners in appearance were Christopher Schmehr-1st; Chad Scarborough-2nd; Jake Burch-3rd; Steven Rogers-4th and Arron Thompson-5th.

Race winners were Ricky Goodson-1st; Christopher Schmehr-2nd; Taylor Simpson-3rd; Jared Schufeldt-4th; and David Sharp-5th.

All the Cub Scout Leaders would like to thank the parents and cub scouts for their hard work and enthusiasm at the Regatta.

The children & grandchildren of Bill and Miller would like to celebrate their 36th wedding anniversary.

Goodness gracious sakes alive



still looks good at 45!

Happy Birthday



Look Who's 50!

Your sympathy and thoughtfulness with all the love, concern and prayers during my sister Margaret Stinsman's illness and death will always be remembered and appreciated. May God bless each of you. Verlin & Audene Beck & Family

Bridal Shower
for
Lori Wattier
bride-elect of
Joe (Cookie) Acevedo
Come N Go
Thursday, Feb. 11
7-8:30
in home of
Julie Adams
719 Gibner

Bridal Shower
for
Joanne Odegaard
and
Mark Holly
February 13, 1993
10:30 a.m. to noon
in the home of
Francis Biles
104 Wanda Drive
Gift selections at:
Gordon's, Alco, &
Celebrate

Hansford Happening

Orders for 1993 Girl Scout Cookie will be taken by any Girl Scout. Advance sales began on Friday, Jan. 29, and will continue through Sunday, Feb. 14. The cookies will be delivered in mid-March.

Chemical & Weed Seminar - Hansford County Extension office is sponsoring a Chemical & Weed Seminar on Monday, Feb. 15, starting at 9 a.m. in the Golden Age Center, 105 E. Broadway, Gruver. This course is worth 5.0 credits towards recertification of a private applicators license. For more information contact Burt Williams, County Extension Agent at 659-2136 or 733-2901.

The Gruver Chamber of Commerce Annual Banquet has been scheduled for Monday, March 1. It will be held in the Gruver school cafeteria. The guest speaker will be Texas Tech's Head Football Coach Spike Dykes. The tickets will go on sale in a couple of weeks. They will be \$10 each and may be purchased at Gruver City Hall or from any chamber board member.

Individuals who are no longer enrolled in school and who have not previously met minimum expectations on all sections of the TEAMS or TAAS tests, but have met all other graduation requirements, may retake the necessary section(s). Registration packets can be picked up from the counselor's office at the Spearman High School.

Pringle-Morse PTA meeting Monday, Feb. 15, at 6:30 p.m. The topic for the meeting is HIV-Aids. Guest speaker for the night is Dr. Catherine Phillips, Amarillo VA Hospital. This is a question and answer panel discussion targeted for adults only, but children are welcome at their parents discretion.

A spaghetti luncheon will be held Friday, Feb. 19, from 11:30 a.m. to 1:30 p.m. In the Extension Homemakers Club room, 309 N. Bemice. The luncheon is sponsored by the Town & Country and happy Homes Extension Homemaker Clubs. Contact any club member or extension office for advance tickets. Tickets will also be available at the door.

Spearman La Leche League Group will meet Friday, Feb. 26, at 9:30 a.m. in the nursery room of First United Methodist Church, 407 S. Haney. The Group informally discusses different phases of breast-feeding, and offers mother-to-mother help, including the latest medical research. The topic for this meeting is Breast-feeding: The Healthy Choice. Expectant mothers are especially encouraged to attend. All women who are interested in breast-feeding are invited, as are their babies. For further information about the Spearman La Leche Group, call 659-2962. League information and helpful suggestions for any mother having difficulties is also available at 659-2962.

The Gruver Practice Stock Show is set for Saturday, Feb. 13, starting at 10 a.m. in the Gruver County Barn.

The Spearman Practice Stock Show is set for Saturday, Feb. 20, starting at 10 a.m. in the Spearman County Barn.

Through the efforts of millions of American Heart Association volunteers, Americans have become more aware of how they can live healthier lives. Much has been accomplished, but much more remains to be done. Cardiovascular diseases remain the nation's leading killers. Recognizing the need for all Americans to take part in the continuing battle against heart disease, since 1963 the U.S. Congress has mandated that the President issue a proclamation annually designating February as American Heart Month.

Noonlifting—Do you have 10 lbs. to lose? Come join us and learn the sensible way to eat and exercise. We will be starting new classes in Gruver on Tuesday, Feb. 16 in the LaCasita Room of Gruver State Bank. Classes begin in Spearman on Thursday, Feb. 18 in the E.H. Clubroom, 309 N. Bemice. All classes meet at noon. Cost is \$25 per 15 week course. Contact Karen Babitzke at Hansford County Extension office for details at 659-2030 or 733-2901.

It is with rivers as it is with people: the greatest are not always the most agreeable nor the best to live with.
—Henry Van Dyke

At The Lyric Theatre . . .

Friday, Feb. 12 - Tuesday, Feb. 16
Bargain Nights Mon. & Tue. All Seats \$3
Closed Wednesday & Thursday

SCREEN 1 - 7:45 PM SCREEN 2 - 7:30 PM

Home Alone 2:
Lost in New York

Tom Cruise & Jack Nicholson in A FEW GOOD MEN

113 Main, Spearman

As the Texas Legislature begins the long process of considering proposed legislation, I will briefly outline those issues which have been supported by the City of Spearman, either directly or through the Texas Municipal League.

The most important issue to the City and the Texas Municipal League is to stop the practice of the legislature balancing the State of Texas budget by increasing state fees on cities or by creating new fees on cities. Two years ago, the state budget was balanced by, among other actions, tripling the disposal ("tipping") fees and increasing the fees for utility inspections. The practice of charging cities more fees without giving more services in return is simply a state tax disguised as a city fee increase. If the State needs more money, then the Legislature ought to stand up to citizens and admit that State agencies are increasing the fees rather than letting city officials take the heat for fee increases.

Also important to the City and the TML are the costs of complying with new environmental regulations. The City and the Texas Municipal League will support legislation which will make the Legislature consider the cost of implementing environmental regulations before the legislation is passed. Laws which are required by the federal government would be exempt from the cost calculation requirement.

The City and the Texas Municipal League are supporting legislation which would let general la-

City Lites

by Kelvin Knauf
Spearman City Manager

(Spearman is a general law city) annex adjacent territory if, in addition to meeting the requirements of the current law, the city is providing the area to be annexed with water or sewer service (current law requires that the city has to provide water and sewer service). While the City is not at this time considering annexing any property which has water and/or sewer service, we think that general law cities should have the same annexing authority as home rule cities.

The Texas Municipal League also is supporting a bill (H.B. 562 by Representative Seidlits) which would require that any legal action brought in the county in which the city is located. Current law allows legal action to be brought in counties other than where the city is located. The City of Spearman supports this legislation.

The TML and the City of Spearman are also supporting legislation (H.B. 444 by Representative Junell) which would limit the liability of city officials. H.B. 444 provides that the liability of a municipal employee or officer will not exceed \$100,000 if the city either indemnifies the individual or provides insurance coverage for the individual's acts or omissions performed in the scope of duty. This bill would also require that the plaintiff in a lawsuit must elect to sue either the city or the individual officer or employee, but not both.

The TML and the City are supporting legislation which would rededicate revenue to the Local

Parks Fund. In the past, the Local Parks Fund has been funded by the cigarette tax. Two years ago, the Legislature decided to keep the cigarette tax money for themselves rather than fund local parks projects. Also, the City of Spearman will support legislation which would return the bank franchise tax to cities. Two years ago, the Legislature also decided to keep the bank franchise tax for the State budget rather than letting cities have it. The City loses about \$20,000 each year by the State keeping the bank franchise tax.

In addition to supporting legislation, the Texas Municipal League and the City will oppose any legislation which would take away local government authority. Each legislative session, there are hundreds

A "Center" piece

February second was a fun night with a covered dish dinner and a good crowd. The group was surprised when it was announced that a door prize would be awarded. Eva Adkison was the happy recipient of a cute valentine doll. This was the creation of Byrnic Callaway and Emma Lou Collins.

The decision has been made for a door prize to be given the first Tuesday of each month. The prize will be a surprise for everyone attending the game night. Two city ladies, Beulah Abston and Lois Newcomb are the chair persons for this event.

The Thursday Craft group has been busy making pretty sachet bags for the residents at the Manor. A lot of good fellowship is involved in the project. Anyone wishing to participate is welcome. If transportation is a problem, call the Center. We will try to reach a solution.

The Board of Directors meets the second Monday of each month. They are open to any suggestions to help improve the membership.

Letter to the editor

"Delphine Kopke". I don't agree with the gay lifestyle and there are more important issues that the president needs to address. When war was declared on Japan in Dec. 1941, there was a urgent call for thousands of people to serve in the armed forces. There wasn't a lot of questions asked about your sexual preference and some were different than most of us thought, but everyone that was in service took the same pledge of allegiance to serve and protect the freedom of the United States and all its people. There was a lot of those people died for that freedom along with others who also believed in that freedom that you have today. Abortion should be one of those freedoms of choice and conscience.

Charles Ball

At the movies . . .

Showing at the Lyric Theatre in Spearman Friday, Feb. 12, through Tuesday, Feb. 16, is "Home Alone 2: Lost in New York" on screen 1 at 7:45 p.m. and held over is "A Few Good Men" on screen 2 at 7:30 p.m.

"Home Alone 2: Lost in New York" stars Macaulay Culkin, Joe Pesci, Daniel Stern, Catherine O'Hara, John Heard and Tim Curry. It is directed by Chris Columbus.

Kevin McCallister (Culkin) is back in "Home Alone 2." And it is just as funny and spicy as the original.

Unlike the original, in "Home Alone 2: Lost in New York" at least Kevin makes it to the airport with the rest of the family, but there he makes a mistake. While the rest of the family is taking off for Miami Beach, Kevin boards a coach for New York. When he arrives in New York with his dad's brief case and credit cards, he decides to make the best of the situation. He checks into the Plaza Hotel. He indulges and orders room service.

Elsewhere on the east coast the two bandits (Pesci and Stern) have just escaped from prison and they are about to bump into Kevin. In

the meantime, Kevin is evicted from the Plaza. He holes up in his relatives' townhouse which is the process of being renovated. This is where the action takes place.

"Home Alone 2: Lost in New York" is as spicy as the original. Kevin's venture is funny and fast-paced.

"Home Alone 2: Lost in New York" is rated PG.

"A Few Good Men" stars Jack Nicholson, Tom Cruise and Demi Moore. It is directed by Rob Reiner.

In "A Few Good Men," director Reiner crafts a classic military courtroom drama. Nicholson stars as Colonel Nathan Jessup, a tough-as-nails Marine commander on Guantanamo Bay, Cuba.

The plot of "A Few Good Men" revolves around two Marines accused of killing member of their platoon in an unsanctioned disciplinary action. The drama of this film lies in the development of Navy lawyer Daniel Kaffee (Cruise). Kaffee's interest in the case begins to develop, as does Colonel Jessup's drive and motive to cover up the truth.

"A Few Good Men" is rated R.

THANK YOU TO OUR FEBRUARY SUBSCRIBERS

We would like to take this opportunity to thank these people for their continued support of the newspaper and to remind them that their subscription expires in February. If you would like to renew your subscription by mail, please cut out the coupon at the bottom of this thank you and return it with a check to the newspaper. Subscriptions cost \$19.95 for Hansford County residents and \$24.95 for residents outside of Hansford County.

Names of people who's subscriptions expire in February:

Steve Benton	O.C. Holt	David Swinford
Orvil Brummett	C.W. Kirk	Terry Sherrill
Blanche Greene	Chris McClellan	Mark or Charlotte Sheets
Bob or Connie Burgoon	Wilson McCloy	
E.J. Copeland	Monte Morris	
James Cummings		
Congressman Larry Combest		
James Deakin	N. Plains Chemical	John Trindle
Pauline Hale	Billy K. Nollner	Bill O. Turner
Hansford Soil & Water Cons.		Joe Turner
Bobby Hicks		Glen Ward
J.C. Harris	Randy Reid	Sue Woolley
	Paul Reimer	Cassie Wilson
	Melvin Ross	

Subscription renewal for:

Name: _____
Address: _____
City: _____ State: _____ Zip: _____

Prairie Gardens

FOR A SPECIAL VALENTINE

Celebrate love's bloom with a gift of flowers.

SPECIAL VALENTINE HOURS
SAT. 8-5:30
SUNDAY, FEB. 14
12-5 pm

209 Main Street • Spearman
659-2212 or 659-3329

of bills which would limit the authority of cities to economically provide basic public services. The City, along with the TML, will actively work to defeat these bills.

I urge Spearman citizens to join with the City in supporting those bills which would reduce the cost of services, and oppose those bills which would increase the cost of services. In the House of Representatives, Spearman is represented by the honorable Warren Chisum and in the Senate by the Honorable Teel Bivins. Mr. Chisum's address is Texas Capitol, Austin, Texas 78701 and his telephone number is (512)463-0736. Mr. Bivins' address is 200 One Capitol Square, Austin, Texas 78701 and his telephone number is (512)463-0131. Your letters and telephone calls to our representatives mean a lot towards getting a bill passed or defeated. Spearman, your voice is needed!

Chamber Chatter

by Cindy Blackman

A big thank you to everyone who helped with our chamber banquet. We had a really good time. A special thanks to the Women's Division for all their time and help. Congratulations to Helen Melton for our 1992 Citizen of the Year and to Dwayne Smith for being selected as the Rotary Employee of the Year.

The board of directors did a great job (we finally got Stan out of his tights!) The evening was a success with the appearance of Steve Stutsman who was the Rev. "Bubba" Bookout from Dallas. George Finley was the master of ceremonies and LaQuita Evans did a good job as our special entertainment. The meal was catered by Ivey's Hungry Cowboy.

Membership Drive will be the end of February. Lots going on. Call the Chamber office before you set the date for fund raisers.

USDA Commodities will be distributed on Wednesday, Feb. 17, at the County Barn from 1 to 5 p.m. If you wish to receive USDA Commodities you **MUST** be certified before the day of distribution. You can be certified on the 12th, 15th or 16th, but **NOT** on the 11th since they will be out of the office.

The Hansford County Reporter-Statesman "Serving All Of Hansford County"

USPS 509660
213 Main, Box 458, 659-3434
Spearman, TX 79081
Published Weekly at
213 Main, Spearman, Texas
Owned and Operated by:

Texas Independent Newspapers, Inc.
15915 Alsace
San Antonio, TX 78232
(512) 545-1739

Second Class postage paid at Spearman, Texas 79081.

Any erroneous reflection upon the character of any person or firm appearing in these pages will be gladly and promptly corrected upon being brought to the attention of the management.

Publisher - Robert M. Hulett
Editor - Angela Jones
Bookkeeper - Sheila LaRochelle

Subscription Rate: Hansford County, \$19.95; out of county, \$24.95 annually.

Postmaster: Send address changes to Hansford County Reporter-Statesman, Box 458, Spearman, TX 79081.

The publisher reserves the right to revise or reject at its option any advertisement which it deems objectionable, either in subject or phraseology, or which it may deem detrimental to its business.

Advertising and Story Deadlines: Tuesday, 12:00 p.m.

MEMBER
TEXAS PRESS ASSOCIATION

Senator Teel Bivins

Reports



AUSTIN - When you walk into the Senate chamber or the House chamber when either body is in session your first thought is: How can they get anything accomplished amidst all this chaos?

After watching for a minute, people usually find their eyes focused on the dais where the presiding officer of the body stands. The lieutenant governor in the Senate and the Speaker in the House wield the gavel and preside over what appears to be mass confusion. It's worse in the House because there are five times as many participants as in the Senate.

There's a key player in all this who almost always goes unnoticed by the unsophisticated observer. In both the House and the Senate, there is a person seated immediately to the left of the Speaker and the lieutenant governor. If one watches closely, he can see this character quietly mouthing words to the presiding officer. On occasion, you'll see the presiding officer lean over for brief private conversations with this unobtrusive participant.

Few people realize this key player, the parliamentarian, plays a vital role in the operations of their respective legislative houses. As the title implies, the parliamentarian's formal role is to ensure that the body operates within the rules it has adopted for itself. This sounds deceptively simple. House and Senate rules can often be intricately complex and confusing. The parliamentarian, much like a judge, is guided by precedents. The effort here, of course, is to attempt to interpret the rules in a matter consistent with the past.

When I first arrived in the Senate, then-Lt. Gov. Bill Hobby, who had himself served as the Senate parliamentarian under Lt. Gov. Ben Ramsey, told me I would rarely need to refer to the Senate rules. But he went on to say that when I do, it'll be a life-or-death situation. Thus, acquiring a good working understanding of the Senate rules became one of my goals. However, you can't really accomplish that goal by simply reading the rules over and over again. It helps to have some outside counsel.

The obvious place to turn for such

counsel is the parliamentarian. This is where the job of parliamentarian becomes bigger than the title implies. There is a long-standing tradition in the Texas Legislature of absolute confidentiality on the part of the parliamentarian in both the House and the Senate. In fact, Bob Johnson, the current parliamentarian of the Senate, is the only man in Texas to have ever served as parliamentarian in both the House and Senate.

When a member is attempting to develop a strategy for passage of a bill and contemplates potential rule problems, he or she can sit down with Bob Johnson and discuss the issues with assurance that the discussion will not go beyond the four walls of the parliamentarian's office. This is true whether the member is a Democrat or Republican.

During the 72nd regular session, in the midst of the war over congressional redistricting, Bob Johnson assisted Senators Ratliff and Sibley and myself in developing what we refer to as a "tag-team filibuster" strategy. A filibuster generally can only go so long as a single member is able to stay on his or her feet to talk. With the help of Bob Johnson, however, we developed a strategy that would have enabled us to carry the filibuster much further than anyone dreamed we could. Though we ultimately decided not to execute the strategy, there was a period of about four days when it was "in play." During that time, there was never even a shred of evidence that anyone other than we co-conspirators had any knowledge of the plan.

While Bob Johnson works for Bob Bullock, he places great importance in the tradition of confidentiality between himself and the 31 members of the Texas Senate. The same can be said for the parliamentarians during Bill Hobby's tenure as lieutenant governor.

So the next time you come into the Senate or House chamber, after looking around at all the chaotic activity, pay a little attention to the quiet man sitting to the left of the presiding officer.

Column No. 6
February 5, 1993

Government wants to mind your business

by U.S. Representative Larry Combest

This week, the United States Congress will tell Americans it knows best the type of leave benefits they need. It is precisely that arrogance behind Mandated Family Leave which makes the scheme of government requiring unpaid leave so unworkable. An employer with 50 or more workers must provide up to 12 weeks of unpaid leave for the serious medical conditions of those employees or their child, spouse or parent as well as leave for the birth, adoption or foster care of a child.

Although the leave is unpaid, when employees come back to work, their company must reinstate them in their old job. The company will also pay unemployment compensation to the worker who had been fired to fill in for the employee on leave. To further complicate a company's bookkeeping, for medical leave, an employee has a right to set their own work hours and change that schedule at will.

As now proposed, the law will only touch 5 percent of the workforce. Yet, once unpaid mandated leave is in place, its supporters will push to widen the coverage and seek to force companies to pay employees during their time off.

There were many bills the Democrat-controlled Congress passed that President Bush wisely vetoed, and with the backing of a conservative coalition of Congress, the Bush vetoes were upheld. Those in control in Congress scoffed at this check on regulations as "gridlock." Now, as Mandated Family Leave is al-

most assured of passage by Congress and signature from the new president, we have another regulation coming from Washington onto an already overregulated economy. I am afraid this is the first of many instances in which those who advocate more government will burden us with more government. In that case, I foresee only a short while before the American people wish for some return to "gridlock."

At stake is the ability of the private sector to continue providing well-paying, full time jobs. I hope a business can have a voluntary family leave program. In my small business, I provided leave for employees. But if business cannot provide leave, the government should not mandate such a costly program. When government mandates higher wages and benefits, the final result takes more people out of work.

Additionally, not every worker can afford three months off without pay. Others whose parents are no longer living, or those who are single or who are the parents of grown children will receive no benefit from government's Big Brother benevolence.

Government should be providing tax incentives to encourage companies that offer the type of leave time that Congress wants to mandate but doesn't want to pay for. When the House of Representatives brings Mandated Family Leave to a vote this week, I will oppose it. Congress should mind its own business, not yours.

Texas Senate Week in Review

AUSTIN—The Texas Senate convened on Monday, February 1 to pass S.B. 171, by John Montford of Lubbock. The bill relates to the issuance of general obligation bonds for projects relating to state prisons and to an emergency appropriation to the Texas Department of Criminal Justice for the operation of state prisons, discretionary grants and payments to counties for holding state prisoners. The emergency appropriation will also add 10,000 beds to comply with the Alberti court order, including 4,000 beds at Chase Naval Air Station at Beeville and also funds a 400 bed parole violator facility in Harris County.

The Senate met briefly Tuesday morning to refer bills to committees and to confirm gubernatorial nominations. Also on this day, the Senate adopted S.C.R. 12 by Sen. Royce West and other Dallas area State Senators to commemorate the Dallas Cowboys' recent Super Bowl victory over the Buffalo Bills. In other Senate business Tuesday afternoon, the Senate Finance Committee continued their mark-up

sessions on the Senate appropriations bill.

The Senate met Wednesday morning and passed S.B. 30 by Sen. Bill Sims of San Angelo. This bill creates a boll weevil eradication program for the state to help cotton farmers control the insect which causes \$25 million a year in damages. The bill establishes a program to attack the boll weevil shortly after the cotton harvest and before the first frosts, when the boll weevil is most vulnerable.

The Senate met Thursday morning and passed C.S.S.B. 130 by Sen. John Montford. The bill creates an employment training program that will emphasize higher skilled, higher paying employment opportunities for Texans. The Senate also passed S.B. 129 by Sen. John Leedom of Dallas which relates to reports required to be adopted by public retirement systems and reports to be submitted to the state pension review board.

The Senate was adjourned until 11 a.m., Monday, Feb. 8.

A man must not swallow more beliefs than he can digest.
—Havelock Ellis

Trustee Candidate meeting offers information and insight

AMARILLO—Area school board candidates will have the opportunity to learn more about the challenges of board service at a school board candidate workshop February 22, 6:30-8 p.m., Education Service Center Region XVI, 1601 South Cleveland, Amarillo.

The workshop will provide school board candidates and other interested citizens an understanding of what is involved in being elected and serving as a trustee. An experienced school board member and a representative from the Texas Association of School Boards (TASB) will explain board members' key responsibilities and outline the qualities necessary for effective service.

Topics to be covered include the role of a board member, ethics in board service, campaigning for office, and the importance of board membership in community service. Participants will also view "A Call To Service," a new video highlighting many aspects of board service and featuring several experienced school trustees.

All those interested are invited to attend the workshop. Admission is free. For more information please call TASB Leadership Team Services, 800-580-8272.



MARY KAY
FACE-TO-FACE BEAUTY ADVICE™
Leann Gillaspie
Beauty Consultant
659-3889

Show Your Sweetheart HOW MUCH YOU CARE

Dozen Roses in Vase \$50 to \$55 (extra fancy)
Porcelain Collectables \$250 & \$450
Balloons, Candy & Bear Gift Sets \$20.00
Talking Stuffed Animals \$10.00

10% Discount on Flower Orders Received by Tuesday, February 9

ALL OCCASION FLOWERS
MARY MOORE, OWNER
OF FLOWERS-BY-WIRE
517 Plains Shopping Center • Spearman, TX. • (806)659-5180



The top of your home affects the bottom of line of your energy bill. Without proper insulation and airtight ductwork in your attic or crawl space, you're paying for heated and cooled air that never reaches the living areas of your home.

To keep heated and cooled air from leaking out of ductwork, seal your ductwork with tape and wrap it with foil- or vinyl-backed duct insulation.

For more information about fighting energy waste by insulating ductwork, call or visit your local Texas-New Mexico Power Company office and ask for the free brochure, "Straight Talk about Ductwork."

Take your fight against energy waste to the top.

Texas-New Mexico Power Company.

FEBRUARY IS AMERICAN HEART MONTH

For more information, contact your local American Heart Association or call 1-800-AHA-USA1.

American Heart Association

PRICES EFFECTIVE FEB. 7-13, 1993
305 W. KENNETH, SPEARMAN 659-3135
101 MAIN, GRUVER 733-2953

ALL TYPES 6 pack 12 oz cans COCA-COLA or 3 Liter Bottle \$1.99

SAUSAGE, EGG & BISCUIT EACH 79¢

FAMOUS ALLSUP'S BURRITOS 2 FOR 99¢

FRITO-LAY DORITOS® GRAB BAGS 2 \$1

ALLsup's Homogenized Milk \$1.99 gallon

DUBUQUE MEAT FRANKS 12 OZ. PKG. 69¢

MELLO-CRISP BACON 1 LB. PKG. 99¢

HOMOGENIZED ALLSUP'S MILK GALLON \$1.99

GRANULATED SHURSAVING SUGAR 4 LB. BAG \$1.49

COMBO OF THE MONTH TALLSUP & 2 CHIMICHANGA OR 2 BEEF & SALSA BURRITOS FOR ONLY \$1.99

LAUNDRY DETERGENT 32 OZ. BOX \$1.49

V-8 Vegetable Juice Spicy, light'n tangy, original 32 oz. bottle \$1.49

Brocks' Assorted Candy 3 oz. bag 3/\$1.00

HOTFOODS MENU

BARBECUE BEEF SANDWICH	99¢	8 PIECE BOX CHICKEN	\$5.99
BARBECUE PORK RIBS (LB.)	\$3.99	BEEF & CHEESE CHIMICHANGA (MEAT)	\$1.19
BARBECUE WHOLE CHICKEN	\$3.99	DELICIOUS CORN DOG	69¢
ALLSUP'S BURRITO	79¢	DELICIOUS HAMBURGER	69¢
BREAKFAST BURRITO	99¢	WILSON HOT LINKS	99¢
BURRITO BEF & SALSA	\$1.19	SAUSAGE ON A STICK	\$1.39
DELICIOUS CHEESEBURGER	89¢	SAUSAGE & BISCUIT	79¢
CHICKEN FRIED STEAK	\$1.59	SAUSAGE EGG & BISCUIT	\$1.00
3 COUNT CHICKEN STRIPS	\$1.49	SAUTEED SAUSAGE	99¢
W/POTATO WEDGES/ CHICKEN (2 PC.)	\$1.99	4 COUNT STEAK FINGERS	\$1.00

CALL IN ORDERS WELCOME CHECK OUR WEEKLY SPECIALS

Spearman Sororities name their 1993 Valentine Sweethearts



Preceptor Upsilon is proud to honor Shelly Beedy as their 1993 Valentine Queen.

Shelly has lived in Spearman most of her life and is a 1976 graduate of Spearman High School. She attended Texas Tech University. Shelly's parents are Mary Schumann and the late Don Schumann. She is the wife of Jeff Beedy and is the mother of three children: Blake, 8th grade, Brittini, 6th grade and Tanner a 3rd grader. She is active in the Church of Christ and helps with education ministry in the church. Shelly is a substitute teacher in the Spearman School District.

Her hobbies include sports, reading, and being involved in her children's activities. She has served as recording secretary of her sorority chapter and on numerous committees.



Xi Zeta Sorority has chosen Marlene Miller for their 1993 Valentine Queen. Marlene is the daughter of E.M. Moore and the late Mary Moore of Wheeler, Texas. She attended Southwest Texas State University in San Marcos for 2 years and graduated from Southwest Oklahoma State University in 1977 with a B.S. in elementary education.

Marlene is married to Jim Miller of Allison. Jim is the pharmacist at Hansford Hospital. They have 3 sons, Dillon 14, Landon 11, and Colton 7.

Before moving to Spearman, Marlene owned Marlene's Dance Space in Shamrock where she taught tap, ballet, jazz and aerobics for 6 years. She has had 20 years of dance training.

Marlene has been a member of Beta Sigma Phi for 14 years. She has served as President, Vice President, Corresponding Secretary and Extension Officer. She has also served as social chairman and ways and means chairman. Before moving here she represented her sorority as their sweetheart and woman of the year.

Marlene is presently serving as President of P.T.A. and was President last year as well.

Since living in Spearman, Marlene has been involved with youth sports events, coached a Tri-City Youth track team for 3 years and helped her husband coordinate the Spearman Activity Center. She and her family are also actively involved with the Spearman Swim Club.

Marlene enjoys attending all of her children's school and sports activities. They enjoy travelling and attending major league baseball games.

Xi Zeta is honored to present Marlene Miller as their Valentine Queen.



Linda Latta is Laureate Gamma Gamma's Valentine Queen for 1993.

Linda has been a member of Beta Sigma Phi for 25 years, has served in every office capacity over the years and is currently serving her chapter as Treasurer.

Linda and her husband, Tom, are members of the First United Methodist Church and are currently serving as Youth coordinators. They are also the parents of four daughters and have three grandchildren.

Linda's hobbies are reading, playing bridge, stockshows, and doing things with her family.

Panhandle Crisis Center

by Mary Frances Ellzey
The PCC offers services free of charge to men or women who are victims of domestic violence, whether physical or "merely" verbal. We give counseling, support, and information to victims, plus a shelter to those who feel themselves to be in danger at home. We are available for help 24 hours a day, at 435-5008. If you want information only, call us from 9 a.m. to 5 p.m. For those who must call us long distance, use the toll-free number: 1-800-753-5308.

the wondering comment, "Why doesn't she get out? Hasn't she any guts?"

It seems to easy to outsiders! A thousand and one things make escaping this trap difficult, not the least of which is the prevailing idea that "if she'd be the wife she ought to be, he wouldn't abuse her."

Usually a long time must elapse before she realizes that she really is in such a situation. Sometimes, if she's come from a psychologically or physically abusive situation, maybe has even thrown out on the street, she readily consents to being taken in and "cared for". She may think it's better than nothing. Possibly she even thinks that she deserves the abuse. Oh, wow! So she stays. Or, like many of the rest of us in much less abrasive situations, she denies that the situation exists. "I'm sure he won't do that again," carried to extreme. Some of oldie-goldies can remember when the maxim, "You've made your bed, now lie in it," was only beginning to die away. And when churches actually taught (and some still do) that a woman's duty is to accept all her husband's moods and tempers, no matter what.

Probably all of you were keenly disappointed that the Mexican Pile-on scheduled for February 22 was called off. But here's good news: It is now rescheduled for Sunday, March 7, 12:00 noon to 2:00 p.m. at the First Christian Church. Be assured that the chili and all the picante sauce is mild. Those of us who like more heat can add jalapeno peppers. All paid-for tickets for the first scheduled Pile-on will be honored. New tickets are now on sale, but of course at you can buy one at the door.

A recent survey showed that since the PCC has been founded, we have sheltered 240 adults and their 361 children in addition to those clients who have not required sheltering. Further we've served 898 clients who were outside of Ochiltree, Lipscomb and Hansford Counties. Add to that the 1,496 persons to whom we've given information and referrals. The numbers are impressive. News is that the Texas Human Services Budget plans to cut its Violence portion by 63%. The 1992-93 budget cut eliminated \$13,953 from the Victims of Crimes Act (federal funding) and \$1,114 from Texas Department of Human Services (Texas funding) from our income. Despite the current community support, how can we continue to function so well with yet another large cut in our state funding? Please call one of the above telephone numbers of the PCC to learn how you can write to protest this action on the part of our own Legislature.

Meantime, all of you, please buy as many tickets as possible for this delightful community Pile-on affair.

A recent conversation with a client made me again realize that most of the rest of us don't understand the difficulty of escaping an abusive situation. So often I hear

Overcoming this background is the easy stuff. Next comes the hard stuff. The husband wields an incredible amount of power over her: "You'll never see your children again." "I'll kill you if you tell." (We read about those men who succeeded in doing just this to their run-away wives.) Besides making dire threats, possibly he closely guards her every move, won't allow her even to grocery shop alone. Can you imagine how cowed a woman can become by such constant "guardianship"?

Perhaps he allows her to work. Why doesn't she tell her co-workers? Oh, the humiliation and terror of telling! Remember, he may be baby-sitting, if you can call knocking them around baby-sitting. He can certainly pick up the children at school. But even if, despite her not-telling, her co-workers are somewhat aware of what is going on, they have no idea of how to go about actually helping her. "If there's anything we can do..." "When you're ready to leave I'll..." After all, how is it possible for the abused wife to collect her children and herself and get out of there? Especially if the abuser doesn't allow her a car. And if anyone set on rescue should drive up...oh, the lies and sweet talk!

So please, if you have any suspicions about any of your co-workers or friends, get in touch with the Panhandle Crisis Center and see what suggestions you can garner from them. Let's all help put a stop to this.

There is nothing harder than the softness of indifference.

—Juan Montalvo

REPORTER-STATESMAN Valentine Personals

ALFRED, ROSES ARE RED VIOLETS ARE BLUE HOPE THE FISHING IS GOOD FOR YOU.

LOVE YA LOTS, BRENDA

RICHARD, FOR MORE INFORMATION LOOK IN THE outhouse!

HAPPY VALENTINE'S DAY, LORI

HAPPY VALENTINE'S DAY TO MY FAMILY I HOPE YOU KNOW HOW MUCH YOU MEAN TO ME.

MOM/SHE

SUE TINDELL, BE OUR VALENTINE. WE LOVE YOU

CAFETERIA GIRLS



Rho Chapter of Beta Sigma Phi has chosen Kandi Wolf to be the 1993 Valentine Queen. Kandi is the daughter of Mr. and Mrs. Glenn Cain of Tyrone, Oklahoma. Kandi is employed by Brock Insurance Agency and her husband, Travis, is a CPA for Brown, Graham, & Co. They have lived in Spearman for 3 1/2 years.

Kandi graduated from Tyrone High School in 1984. She attended Panhandle State University and is a 1988 graduate with a double major—secondary business education and secretarial science with a minor in business administration.

Kandi and Travis attend the First Baptist church where she works with the children's choir. Kandi is an active member of the Women's Division of the Chamber where she is on the executive board. She has served as the past treasurer of Rho Rho and is currently the president of that chapter.

Valentines Day February 14

School menu

Spearman School Menu February 15-19 LUNCH

Monday—Pizza, whole kernel corn, fruit, cake, milk.

Tuesday—Tacos, Spanish rice, cheese cup-taco sauce, lettuce-tomato salad, pinto beans, fruit cobbler, milk.

Wednesday—Corndog, macaroni & cheese, sweet peas, cinnamon roll, purple plums, milk.

Thursday—High School—Fried chicken

Junior High and Elementary—Chicken strips.

Whipped potatoes, gravy optional, seasoned green beans, biscuits, butter and jelly optional, milk.

Friday—Hamburger, french fries, lettuce-tomato, pickle-onion, cookie, milk.



Dobson Cellular is Offering You and Your Valentine a 'Sweetheart' of a Deal: A Cellular Phone for just \$199!*

Love. Security. Being close to that special someone. These are what Valentine's Day -- and Dobson's remarkable \$199* cellular phone offer -- are all about.

With a cellular phone from Dobson, you'll not only stay in-touch with your Valentine, but provide a real sense of security, too. And with the purchase of a phone and service, Dobson will give you a Valentine bonus: a scrumptious FREE bouquet of chocolate roses!

Show 'that special someone' just how special they really are. Take advantage of the \$199 Valentine's Day offer from Dobson Cellular!

DOBSON CELLULAR SYSTEMS
1-800-882-4154

* Available at all Dobson Cellular Systems' stores and from participating Dobson Authorized Agents. Certain terms and conditions apply. Subject to credit approval.

Authorized Agent:
Cellular Communications

Jerry Pat Davis
659 - 2848

NOTICE

Sears Roebuck and Company announces the closing of its' retail catalog store at 301 S. Davis • Spearman. The final day of business will be Saturday, Feb. 20, 1993.

It's A Special Simpsons Valentine!

THEIR FATE IS IN YOUR HANDS.

Will Martin and Gina get back together?

Tonight, you decide.

MARTIN

Simpsons lets call in and tell us who should apologize first: 1-900-820-2281 (75¢ per call) to make Gina beg for forgiveness, or 1-900-820-2282 (75¢ per call) to make Martin grovel as he begs.

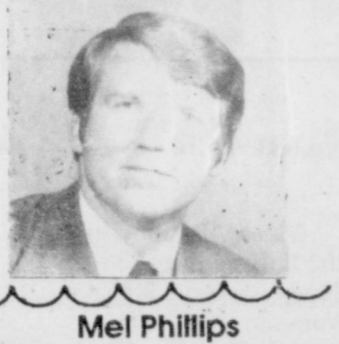
TONIGHT AT 7:00 CABLE CH. 22 GRUVER / 14 SPEARMAN

TONIGHT AT 7:30



These new inductees (first two rows) are nervously waiting for the start of the annual National Honor Society's Induction Ceremony, held on Thursday, Feb. 4 at Spearman High School. The seniors meeting the qualifications for induction this year are Mike Hager, Sherman Jones and Landon Swan. Juniors being inducted are Mandi Carter, Cass Lasater, Tommi Latta, Clint Schnell, Toni Snow, Nikki Strawn and Rainey Whittington. Sophomores being inducted are Carey Beaty, Molly Blackman, Kortney Henton, Josh Howard, Mika Pipkin, Kistina Poole, Heather Reimer and Sandi Rich. Other people participating in the ceremony were Cody Pipkin, Holly Jarvis, Robert Needham, Mr. Kevin Schaffer, Laura Pearson, Mary Cook and Mrs. Sharon Hargrove.

SOUTHWEST OUTDOORS



Mel Phillips

GETTING OLDER

Twenty-five years ago navy doctors warned me and other navy pilots that "it" would happen to us. Their studies proved that although we were in perfect health, a deterioration was certain to happen to each of us. For some "it" would happen when they were in their twenties or thirties. For the lucky few, the problem would wait until they reached forty-something.

My first symptom was revealed during deer hunting season when I had difficulty counting the number of points on a trophy white-tailed buck. Perhaps my scope needed repair.

The second and much more serious symptom involved my sudden inability to thread my fishing line through the eye of my favorite fishing lures.

It was this double whammy affecting both my fishing and hunting that forced me to take drastic action. After nearly a half century of perfect vision, I now wear glasses and not just regular glasses but BIFOCALS. The impact on my psyche is similar to the blow delivered by an unknown pretty young girl who, several years ago, appreciated me opening a door by saying "Thank you, sir".—Oh, the cruelty of getting older.

One good thing about getting older is that I have learned that having fun does not necessarily have to be expensive. In fact, some of my best outings have cost the least money.

If your family also enjoys bargains, then make plans to visit OUTDOOR WORLD '93 at the Amarillo Civic Center during Valentine's weekend, February 12, 13, and 14. In addition to all the terrific hourly seminars on hunting (deer, elk, caribou, or bear) and fishing (bass, trout, crappie, wall-eye, salmon, and northern pike), the list of free prizes is amazing.

Register to win: a fishing boat from Tanglewood Marine, a Raven pickup topper from Camper Roundup, and a guided stripper trip for two on Lake Texoma from Curgus Lowe. Because Outdoor World happens on Valentine's weekend, make sure that your sweetheart registers to win the romantic weekend for two at Moreno Ranch near Eagle Nest, New Mexico. Some sweetheart will win a trout fishing trip for four courtesy of the 6D Ranch in beautiful Cimmaron, New Mexico.

As a special deal for readers of



It's Like A Whole Other Country.

Lynx, Lynxettes nail down playoff spots

The Varsity Lynx and Lynxettes basketball teams nailed down playoff spots this week.

The Lynxettes took the district championship and the number one seed with wins over Stratford Friday, Feb. 5 and Highland Park Tuesday, Feb. 9. The Lynx went one and one against the same schools to take second place in the district and the second seed in the playoffs.

The Lynxettes kept their district record perfect by beating Stratford 60-23 and Highland Park 50-39. In the Stratford game the Lynxettes were led in scoring by Laura Pearson. Her strong inside play accounted for 15 points. In the Highland Park game Jill Lusby was hot from the outside, scoring on 4 three point shots to lead the

team with 14 points.

The Lynxettes have one more regular season game against Sunray this Friday before starting post-district play. But on Wednesday, Feb. 10 Richard North, Lynxettes head coach was already in contact with the Lynxettes bi-district opponent, Wellington. North indicated that the bi-district game will be played Thursday, Feb. 18 at a location in Amarillo. Both the particular gym and time of the game were not settled at press time.

The Lynx were assured of a place in the State Tournament when they defeated Stratford Friday, Feb. 5 by a score of 73-56. On Tuesday, Feb. 9 the Lynx lost their bid for a tie in district by losing to Highland Park 49-66.

In both games Cody Pipkin was

one of the high scoring Lynx with 20 points against Stratford and 14 points against Highland Park. Also scoring 20 points against Stratford was Russell Shaver.

The Lynx will have to wait until the outcome of Friday's game between Wellington and Memphis to know who they will play in the playoffs. If Memphis can beat Wellington at home the two teams will be tied for their district championship. If Wellington wins they will be district champions and the

Lynx will face Memphis for their bi-district game.

The Lynx must play their final district game against Sunray this Friday night. Lynx Coach Wendell Neff was busy lining up practise games for the week between the

Friday night Sunray game and the bi-district game. Neff has tentatively scheduled a game against Petersburg on Monday, Feb. 15 and Chilicothe on Saturday, Feb. 20. Times and locations were unsettled at press time.

The Friday night Sunray games will be Home Coming for the Lynx and Lynxettes. A school wide pep rally will be held at 2:15 p.m. on Friday. At the pep rally the Basketball King and Queen will be crowned and the Lynxettes seniors and their parents will be recognized. The senior Lynx will also be recognized at the pep rally.

At the game the King and Queen will be introduced and the seniors on the Lynx and Lynxettes team will be recognized.

Spearman S.I.S.D. Basketball Roundup

Varsity Lynxettes at Highland Park SPR 50 - HP 39

Lusby -14, Cook-5, Garnett-10, Ki Townsen-7, Ka Townsen-4, Pearson-10
3 Pt: Lusby-4, Cook Record 24-3 (12-0)

vs. Stratford SPR 60 - STR 23

Ashly Shieldknight-2, Jill Lusby-6, Mary Cook-4, Michelle Garnett-12, Kimbre Townsen-7, Kara Townsen-6, Sara Sanders-2, Holly Jarvis-2, Tracy Tigrett-2, Laura Pearson-15, Carrie Pearson-2.

J.V. Lynxettes at Highland Park SPR 49 - HP 29

OQuin-16, Strawn-6, Bruning-2, Beaty-16, Baker-2, Latta-7
vs. Stratford SPR 27 - STR 12
Telie OQuin-13, Nikki Strawn-5, Tiffany Bruning-6, Kortney Henton-2, Crystal Boyd-1.

Freshman Lynxettes at West Texas SPR 33 - W.T. 34

Carrie Burton-6, Kortney Henton-4, Mika Pipkin-4, Tammi Ricke-17.

8th Grade Lynxettes at West Texas SPR 21 - W.T. 33

Shayla Barber-8, Samantha Beasley-6, Macy Shieldknight-3, Marissa Rodriguez-2, Kacey Smith-2.

7th Grade Lynxettes at West Texas SPR 37 - W.T. 12

Lindsey Smith-11, Keisha OQuin-2, Misha Davis-5, Rebecca Howard-19, Tara Bruning-2.

7th Grade B Lynxettes at West Texas

SPR 9 - W.T. 4

Lena Harbour-6, Andy McGaha-1, Kristi Mocabey-2.

8th Grade Girls 2/4/93 vs. Perryton SPR 25 - PER 19

Lana Martin-2, Gina Kunselman-2, Lena Harbour-8, Krista Mocabey-7, Andy McGaha-2, Jocelyn Edwards-4.

2/8/93 vs. West Texas SPR 11 - W.T. 3

Lena Harbour-6, Andy McGaha-1, Krista Mocabey-2, Maribel Martinez-2.

This ended the season.

Varsity Lynx vs. Stratford SPR 73 - STRAT 56

Toby Thompson-2, Wes Dyess-4, Brady Reed-13, Jason Varnon-12, Troy Law-2, Cody Pipkin-20, Russell Shaver-20.

at Highland Park SPR 49 - HP 66

Thompson-4, Cass Lasater-3, Dyess-3, Reed-3, Varnon-6, Law-5, Pipkin-14, Shaver-8, Justin Boyd-3

Record 20-7 (10-2)

J.V. Lynx at Highland Park SPR 54 - HP 36

Chad Wilkerson-9, Clint Schnell-10, Jason Swink-1, Dee Mayfield-4, Matt Archer-16, Brad Law-3, Brandon Vanderburg-3, Justin Tucker-1, Chuck Cook-6

9th Grade Lynx vs West Texas Tourny 4-6-93 vs. Fritch SPR 49 - FRI 45

Archer-1, Collins-7, Sanders-11, Blan-9, Neff-4, Tigrett-8, Huddleston-4, OQuin-5

vs Gruver SPR 34 - GRU 48

Archer-4, Collins-14, Sanders-5, Huddleston-9, OQuin-2

vs West Texas SPR 25 - WT 41

Collins-3, Sanders-3, Pittman-6, Huddleston-8, Butler-2, Burnett-3

vs West Texas 2/8/93 SPR 32 - WT 31

Collins-9, Sanders-10, Blan-1, Tigrett-4, Huddleston-6, Butler-2

8th Grade Lynx vs West Texas SPR 47 - WT 34

Blake Beedy-2, Jake Howard-18, Dillon Miller-17, Britt Savage-9

8th Grade B Lynx

vs West Texas SPR 42 - WT 27

Vera-6, Lair-2, Bedell-4, Baker-2, Whitten-12, Salazar-2, Furlow-8, Lopez-2, Kirk-4

7th Grade Lynx vs West Texas SPR 49 WT 15

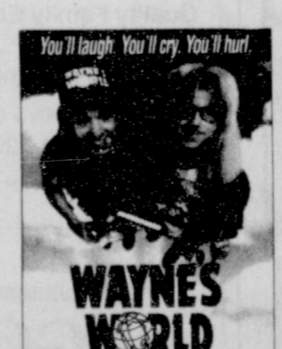
Mac Butts-3, Alan Huddleston-10, Jamie Townsen-12, Nick Vinson-3, Cody Williams-10

7th Grade B Lynx vs West Texas SPR 24 - WT 27

Bynum-6, Vasquez-10, Header-6, Raper-2.



Here are five good reasons why now is a great time to subscribe to cable TV and/or HBO...



and here is the sixth: Receive installation on cable TV and/or HBO for only \$10.00! That's a savings of up to \$30.00!

CALL MISSION CABLE TODAY AT 659-3363 Offer expires 2/26/93 1993 Home Box Office®

TEXAS
It's Like A Whole Other Country

Make a point to save 6% on all Pioneer® products.

Pioneer Days, February 8-13

This year Pioneer Days is bigger than ever. Why? Just check out the performance of Pioneer's brand products in 1992. Then consider the superior agronomic service and support that only Pioneer can offer. Then put a pencil to it. You'll see how big 6% can be.

BILLY LOGSDON, SPEARMAN, TEXAS 806-733-2803
ANDY WATLEY, SPEARMAN, TEXAS 806-659-3838

PIONEER
BRAND PRODUCTS

*Pick up a free jacket when you make a qualifying purchase from a participating Pioneer sales representative.
All sales are subject to the terms of labeling and sale documents.
® Registered trademark of Pioneer Hi-Bred International, Inc., Des Moines, Iowa, U.S.A.

©1993 Home Box Office, a division of Time Warner Entertainment Company, L.P. All rights reserved. ® Service mark of Time Warner Entertainment Company, L.P.

Gruver Lady Hounds defeat Sunray 62-57, playoff-bound

by Bob Bort
The Gruver lady Hounds were challenged this week with two pressure basketball games, and they came out victorious in both of them. The result of the victories over Highland Park and Sunray is an 8-2 district record, good enough for 2nd place behind the Spearman Lynxettes in district 1-AA, and a playoff trip against the Panhandle team, champions of district 2-AA, and the defending state AA champions. The bi-district game with Panhandle will probably be Friday, the 19th, probably at Borger. There will be a warm-up game or two prior to the bi-district game. The Lady Hounds are 15-8 overall, and they won 10 of their last 11 games, losing only to the Lynxettes 38-32. They beat Panhandle 40-36 earlier this year in the Stratford Tournament. Prior to that, in the Lake Meredith Classic in December, Panhandle beat Gruver 59-53. For the boys, they split their last two ball games, finishing with a 8-4 district record, good enough for

3rd place in district 1-AA, and a 15-10 overall record. It is the first year in the past five that the Hounds will stay home for the playoffs. Bobcat Gymnasium in Sunray was like a pressure cooker this past Tuesday, Feb. 9, packed to the rafters. Andy why shouldn't it have been - this was as close to a playoff game as they come. With the score tied between the Lady Hounds and Lady Cats 57-57, and 1:09 showing on the scoreboard clock, Sara Jones floated home a pretty 3-pointer to give the Lady Hounds the victory. Jones added a free throw, and Holly Venneman also added a charity toss in the last minute, and the final score was 62-57. The Lady Hounds jumped out quickly in this game to a 9-point lead, but somehow you just knew this one would go down to the wire. There was too much intensity in the play of both teams. So much intensity, in fact, that 3 Lady Hounds starters fouled out - Wynn Maupin, Tisha Ralston, and Julie Meyer. Meyer had an outstanding game with 17 points and some very aggressive play. Kenda Chisum for Sunray hit 3 clutch 3-pointers, and was 7-7 from the foul line, for a stellar performance. She scored 24 points. Besides Maupin's four treys, Sara Jones had two, and Cora Meyer one. Meyer's trey put Gruver up 22-12 in the 2nd quarter, their larg-

est lead of the game. Gruver was 14-22 from the foul line. The Hounds weren't as fortunate Friday night as the girls were. They ran into a green machine - otherwise known as the Highland Park Hornets, the top team in district 1-AA this year, and a bonafide contender for the state crown. The final score was 83-37. Kevin Spivey scored 23 points, but this was not the Hounds night. In the 2nd quarter the Hounds were outscored 18-4, and in the fourth they were outscored 21-3 - other than that they didn't look so overmatched. But overmatched is what they were in the end. Luvirt Wells, number 44, had 23 points, and tall Joe Thompson, number 40, shipped in with 16.

Gruver up 42-38. The final score was 43-38. Gruver was a beautiful 7-11 from 3-point range, but shot horrendously from elsewhere, hitting only 4 buckets other than the 3-pointers, and shooting barely 10%. Besides Maupin's four treys, Sara Jones had two, and Cora Meyer one. Meyer's trey put Gruver up 22-12 in the 2nd quarter, their larg-

est lead of the game. Gruver was 14-22 from the foul line. The Hounds weren't as fortunate Friday night as the girls were. They ran into a green machine - otherwise known as the Highland Park Hornets, the top team in district 1-AA this year, and a bonafide contender for the state crown. The final score was 83-37. Kevin Spivey scored 23 points, but this was not the Hounds night. In the 2nd quarter the Hounds were outscored 18-4, and in the fourth they were outscored 21-3 - other than that they didn't look so overmatched. But overmatched is what they were in the end. Luvirt Wells, number 44, had 23 points, and tall Joe Thompson, number 40, shipped in with 16.

est lead of the game. Gruver was 14-22 from the foul line. The Hounds weren't as fortunate Friday night as the girls were. They ran into a green machine - otherwise known as the Highland Park Hornets, the top team in district 1-AA this year, and a bonafide contender for the state crown. The final score was 83-37. Kevin Spivey scored 23 points, but this was not the Hounds night. In the 2nd quarter the Hounds were outscored 18-4, and in the fourth they were outscored 21-3 - other than that they didn't look so overmatched. But overmatched is what they were in the end. Luvirt Wells, number 44, had 23 points, and tall Joe Thompson, number 40, shipped in with 16.

Gruver Basketball Roundup

- Gruver JV Girls (8-8) vs Stratford**
2-2-93 at Stratford
STRAT 28-GRU 16
Hailey Lamb-4, Josie Pool-4, Kayce Haenisch-3, Kim Venneman-3, Jana McCloy-2.
- Gruver JV Boys (6-12) vs Stratford**
2-2-93 at Stratford
GRU 31-STRAT 25
Fabian Salazar-10, Kevin McNett-8, Roma Tomlinson-6, Ricardo Soto-3, Victor Lopez-2, Jake McCullough-2.
- Gruver Varsity Girls (13-8) vs Stratford**
2-2-93 at Stratford
GRU 44-STRAT 40
3-pointers- Sara Jones. Wynn Maupin-10, Molly McLain-8, Holly Venneman-8, Julie Meyer-6, Tisha Ralston-6, Jones-3, Cora Meyer-2, Wendy Rodriguez-1.
- Gruver Varsity Boys (14-9) vs Stratford**
2-2-93 at Stratford
GRU 55-STRAT 47
3-pointers-Jeffrey Price-3, Kevin Spivey-2. Price-21, Jace Dawson-10, Aaron Frick-8, Spivey-8, Brady Pool-4, Tek Ferguson-2, Will Etheredge-1, Carey Kauffman-1.
- 9TH GRADE TOURNAMENT AT WEST TEXAS at Plemons**
Gruver Boys (14-2) vs West Texas 2-4-93
GRU 43-WT 34
3-pointers-Phil De La Cruz. Wylee Maupin-12, Bailey Barkley-10, Travis Ferguson-10, Max Frick-6, De La Cruz-3, Doug Gumfory-1, Sammy Renteria-1.
- Gruver Girls (3-9) vs West Texas 2-4-93**
WT 26-GRU 22
Virginia Barrera-10, Cristy Marquez-7, Joni Hart-3, Robbi Mathews-2.
- Gruver Boys (15-2) vs Spearman 2-5-93**
- GRU 48-SPREAR 34**
3-pointers-Phil De La Cruz, Sammy Renteria. Renteria-14, Wylee Maupin-12, Travis Ferguson-11, Max Frick-4, De La Cruz-3, Bailey Barkley-2, Daniel Bort, Jason Ward-1.
- Gruver Girls (4-9) vs River Road 2-5-93**
GRU 41-RR 33
Virginia Barrera-20, Cristy Marquez-10, Robbi Mathews-4, Sahala McCloy-3, Myriam Alvarez-2, Joni Hart-2.
- Gruver Boys (16-2) vs Sanford-Fritch 2-6-93**
Championship Game
GRU 45-S.F. 42
3-pointers- Barkley, Ferguson, M. Frick, De La Cruz. Maupin-11, M. Frick-10, Barkley-9, Ferguson-9, De La Cruz-3, Renteria-2, Scott Jarvis-1.
- Gruver Girls (4-10) vs Sanford-Fritch 2-6-93**
S.F. 33-GRU 17
Barrera-6, Mathews-5, Marquez-5, Hart-1.
- Gruver JV Girls (8-9) vs Highland Park**
2-5-93 at Greyhound Gym
HP 39-GRU 38
3-pointer-Tara Shapley. Shanna Jarvis-17, Hailey Lamb-7, Shapley-5, Kim Venneman-4, Kayce Haenisch-3, Josie Pool-2.
- Gruver JV Boys (6-13) vs Highland Park**
2-5-93 at Activity Center
HP 28-GRU 18
Fabian Salazar-6, Grant Odom-4, Paul Renteria-4, Ricardo Soto-2, Eric Wright-2.
- Gruver Varsity Girls (14-8) vs Highland Park**
2-5-93 at Greyhound Gym
GRU 43-HP 38
3-pointers- Wynn Maupin-4, Sara Jones-2, Cora Meyer.
- Gruver Varsity Boys (14-8) vs Highland Park**
2-5-93 at Greyhound Gym
GRU 43-HP 38
3-pointers- Wynn Maupin-4, Sara Jones-2, Cora Meyer. Maupin-20, Holly Venneman-7, Jones-6, C. Meyer-4, Julie Meyer-3, Molly McLain-2, Tisha Ralston-1.
- Gruver Varsity Boys (14-10) vs Highland Park**
2-5-93 at Greyhound Gym
HP 83-GRU 37
3-pointers-Jeffrey Price-2, Kevin Spivey-2. Spivey-23, Price-6, Brady Pool-4, Matt Etheredge-2, Carey Kauffman-2.
- Gruver 7th Grade Boys (10-6) vs Stratford**
2-8-93 at Greyhound Gym
STRAT 25 - GRU 21
3-Pointers-Brant Armes. GRU-Brant Armes-12, Buster McLain-4, Juan Bravo-3, Rob Murrell-2.
- Gruver 8th Grade Boys (12-4) vs Stratford**
2-8-93 at Greyhound Gym
GRU 40 - STRAT 35
3-Pointers-Josh Mayhew-2, Jarrod Hoel.
- Gruver 8th Grade Girls (15-1) vs Stratford**
2-8-93 at Stratford
GRU 48 - STRAT 16
3-Pointers-Crystal Christian. GRU-Amber Murrell-11, Cara Hathaway-10, Mary Dean Henson-10, Kaysha Cluck-8, Erika Barrera-4, Crystal Christian-3, Kelly Boone-2.
- Gruver 9th Grade Boys (17-2) vs Perryton**
2-8-93 at Perryton
GRU 46 - PER 34
3-Pointers-Travis Ferguson-2, Sammy Renteria. GRU-Travis Ferguson-12, Wylee Maupin-9, Sammy Renteria-8, Max Frick-6, Scott Jarvis-5, Bailey Barkley-4, Tye Womble-2.

See Gruver page 10

With a Valentine Gift to Tickle the Fancy or to Satisfy that Sweet Tooth

BALLOONS PARTY FAVORS BIG COOKIES

DECORATED COOKIES & CAKES
BAKING PANS & SUPPLIES

FREE DELIVERY ON ORDERS \$5 & UP

Debbies Ready Or Not

315 1/2 Main • Spearman Open all day Saturdays

Save A... Stack of Change on a New or Used Car or Truck Today

NEW 1992'S STILL IN STOCK

1992 Extended Astro Van SOLD \$22,114 Close out Price \$18,850	1992 Buick Park Avenue List \$28,196 Now \$22,950
1992 Buick Roadmaster SOLD \$24,410 Now \$20,350	1992 Dodge Diesel 3/4 Ton L.E. Was \$20,946 Now \$17,225
1992 Chevy Diesel 3/4 Ton Silverado List \$22,236 Now \$18,595	

USED CARS & TRUCKS

1988 Mercu SOLD quis - One Owner•Extra Nice•39,000 mi.	\$8500
1989 Mazda 626 - 68,000 mi. •Auto•PS•PB•A/C	\$7950
1989 Chevrolet Astro Van - V6•Auto•Cassette•Nice•69,000 mi.	\$8950
1992 Chevrolet Corsica - 11,000 mi. •A Wise Buy	\$9995
1992 Buick Regal - Maroon•Lots of Extras•17000 mi.	\$12,900
1992 Buick Regal - Gray•Lots of Extras•1700 mi.	\$12,900
1992 Pontiac Grand Prix LE - 4 dr. •11,900 mi.	\$17,400
1992 Oldsmobile Cutlass Ciera - Red•4dr. •Lots of Extras•12,000 mi.	\$11,700
1986 Chevrolet Suburban - 2 wdr.	\$8500
1987 Chevrolet 1 Ton Dually Silverado - Red•Leather Int. •59,000 mi.	\$10,500
1988 GMC Suburban - 4 wdr. •Loaded	\$12,500
1988 Chevrolet Suburban - 4 wdr. •Loaded	\$10,500
1988 GMC Suburban - 2 wdr. •Gray/Maroon•64,000 mi.	\$10,700
1991 Pontiac Trans Sport - Blue•Extra Nice	\$14,900
1988 Chevy Sport Side P.U. - Red•Extra Nice	\$7950

GILLASPIE AUTO & TRUCK CENTER, INC.
CHEVROLET • OLDS • PONTIAC • BUICK
CHRYSLER • PLYMOUTH • DODGE
Highway 207 South - P.O. Box 430 (806) 79-2541
SPEARMAN, TEXAS 79081

HEART Smart

Because we care about the people of Hansford County here are 5 ways to be "Heart Smart" and eat healthy from first course to dessert.

- First Course** Before dinner, fill up with a salad or fruit plate. You'll be less likely to over indulge in a dinner entree or dessert that is higher in calories and fat.
- Main Course** Try replacing ground red meat with a leaner meat such as ground turkey in casseroles, Mexican dishes or even chill. And if it's sausage you're craving, go for lean meats such as chicken, veal or turkey.
- Vegetables** Sodium can be reduced in canned vegetables by rinsing them thoroughly before cooking.
- Desserts** When your recipe calls for white sugar, substitute maple sugar, corn sweeteners or syrup. You can use less of these more powerful sweeteners with the same results.
- Dining Out** When ordering chicken, you can cut back on fat by approximately 30% by asking for the skin to be removed in the kitchen.

WORKING HARD TO SERVE THE MEDICAL NEEDS OF HANSFORD COUNTY

- Hansford Hospital**
659-2535 or 3746
- Hansford Manor**
659-5535
- Hansford Hospital Pharmacy**
659-2226 or 2647
- Hospice & Home Health Care**
659-2535 or 733-2954
- Mammography**
- Chemotherapy**
- Durable Medical Equipment**
- Physical Therapy**

HANSFORD COUNTY HOSPITAL DISTRICT
707 South Roland • Spearman



RADICAL LIVING

By Dan Carter, Pastor
Trinity Community Church

ONE OF LIFE'S IDIOT LIGHTS

It was the day before Thanksgiving and my family and I were making our annual trek from Capitan, NM, to Lubbock, TX. We'd spend the next couple of days with my family at my sister's home. Somewhere west of Tatum our 1984 Chevy began to buck. Then, there on the dash, a light came on saying, "Check Engine." Nothing else, just "Check Engine."

I dutifully stopped the car, pulled the hood latch, got out and checked the engine. It was there alright. Everything I could check was fine. We bucked on into Lubbock. Later I found out our car needed a new brain. It had had a stroke.

Like my Chevy, God has designed us with warning devices in our lives. Anger is a primary signal that something has, or could malfunction. Ignoring anger's presence in our spirit is foolish. It can only lead to disastrous results.

Moses, by failing to deal righteously with his anger toward people of Israel (Num. 20), found that his outburst of rage cost him dearly. He would not enter the promised land. Likewise, if you and I fail to resolve our anger correctly, it will cost us something in terms of God's blessings.

Next time your anger light flashes consider Scripture's counsel (Eph. 4:25-32): 1. It's not prudent to ignore anger. If you stuff it down, or become vengeful, you give the devil an opportunity in your life. 2. It's not sin to be angry. Anger becomes sinful only if it is incorrectly vented. 3. Remember to continue communicating with God, and others with whom you are angry. Speaking the truth in love the means of rightly dealing with anger. 4. Deal with anger quickly, before bedtime, and 5. Show mercy to those that anger you. That is how God has dealt with His wrath toward us, in the death of Christ Jesus.

To paraphrase Proverbs 14:29, "Wise people check out warning signals, but idiots ignore the flashing lights."

Sponsored by Trinity Community Church, 717 W. 7th, Spearman

Karen's Kozy Korner

by Karen Babitzke Extension Agent

set by the Metropolitan Life Insurance Company in the early 1940s. Evidence at that time associated being overweight after age 35 with decreased life expectancy among insured persons.

The tables were revised in 1959 with weights termed "desirable". Frame sizes were designated but no method for determining frame size was given.

Metropolitan updated the tables in 1983 and titled them simply "Height and Weight Tables." They included instructions for measuring elbow breadth to determine frame size.

The 1990 USDA Dietary Guidelines of "acceptable weights" offer an expanded weight range that places women and men in the same category and allows a higher weight for persons age 35 and over. Men are generally expected to be at the higher end of the weight ranges in each age category.

There are many valid criticisms of height and weight tables. A 1987 article in the *Journal of the American Medical Association* stated that of 25 major studies of optimal weight, none was free of flaws. Weights in the insurance tables were never shown to be ideal weights. They were the weight ranges of the people who lived longest in the group studied. The group studied was insured people, and people who buy life insurance may be unlike others in terms of their health.

Weights used were the weight at

the time the insurance application was made, not weight at death. Also, some weights were never checked. (How many people would tell you their actual weight if it were not going to be confirmed on the scales?)

Frame size and its determination is another point of contention. But which bone can be measured to indicate fat-free mass? The wrist and ankle seem to be associated least with total body fat—not the elbow bone! The frame types in the life insurance tables were created simply by dividing the weight distributions of the data into three groups labeled "small", "medium" and "large", but elbow breadths were not measured on the population reported.

Smoking skewed the results in the 1983 tables.

So, which table should you use? The 1985 National Institutes of Health

Conference suggested the 1959 life insurance tables if you have a family history of or current indications of diseases or risk factors complicated by obesity—especially high blood pressure, high blood cholesterol or high blood triglycerides and diabetes. If you don't have such risk factors, use the more liberal 1983 tables.

Height and weight tables were intended to encourage you to keep your weight below the average for your height. Before the development of the tables, maintenance of average weight for height was believed to be optimal for health, and it was considered normal to gain weight as you get older.

Some researchers have suggested that minimum mortality occurs at relative weights at least 10% below the U.S. average.

Other measures of body size and composition may be used. Body mass index (BMI) is one indicator of obesity. BMI is the weight in kilograms divided by the square of the height in meters. The resulting ratio is reasonably constant across all heights for a given body weight and cut-off points can be set for defining overweight and obesity. However, people who are muscular or who have larger frames may have a BMI that exceeds the cutoff points. The BMI can be used to quantify and compare data and is well accepted by researchers. But, it is difficult to translate the BMI concept meaningfully to the public, and it is not easy to use in a weight-loss program.

Another problem with BMI is that consistent cutoff points to define degrees of obesity have not yet been determined. It is still a mea-

sure of weight and height, not fatness.

Measuring body fat as a percent of total body weight would be ideal, and there are several methods for measuring percent body fat. All methods require either special materials, training or equipment.

Some body fat is necessary for insulation, cushioning and energy, but just how much body "fatness" is healthy still is debatable. At the lowest, you may see recommendations as low as 8% for men and 14% for women, and at the highest 25% for men and 30% for women. Ideal percent of body fat depends on the individual; a professional athlete, an Alaskan fisherman or a woman of child-bearing age would each have different acceptable percentages of body fat. More research is needed to develop easier, more reliable techniques for determining percent of body fat and a consensus on acceptable ranges.

More experts are becoming concerned with "fat patterning." Where fat is distributed on the body seems to make a difference on health risks and to affect the pattern of weight loss. Obesity in the central part of the body is associated with an increased risk of cardiovascular disease. Hence, the apple or pear calculation is part of the lesson activity. It is more important for "apples" to lose weight, since this will reduce their risk of cardiovascular disease.

It is unfortunate that we have taken height-weight recommendations so seriously. At best they are a general guideline. Someone wanting an authoritative answer to "how much should I weigh?" cannot be answered. With health as a value, you have a starting point. Too much weight will adversely affect athletic performance, fertility and longevity. Within the healthy range, weight is an individual choice. Many moderately overweight middle-aged adults freed from the rigid confines of the tables will feel better about themselves as they discover that they are in better shape than they thought!

Noonlighting is a way of getting back in control of your eating and exercise program. Several in the past 3 classes have lost up to 20 lbs., others have only lost 3 to 4. The most satisfied are the ones who have lost 7 to 8 lbs. in the 15 week period. It is recommended that you lose 1/2 to 1 lb. a week and that's what we like to see happen. Come join us if you have at least 10 lbs. to lose. For more information, call Karen Babitzke at the Hansford County Extension Office at 659-2030 or 733-2901.

Weights and Measures . . . How much should I weigh?

We look at height/weight tables routinely to see how we compare. To use these tables properly, it is important to understand how they are developed. Health care professionals and researchers also use other measures to evaluate body weight.

The first "ideal weights" were

School menu

Pringle-Morse School Menu
February 15-19
LUNCH

Monday—Frito pie, french fries, salad, fresh donuts, milk.

Tuesday—Chicken fry steak, potatoes, gravy, black-eyed peas, salad, rolls, cake, milk.

Wednesday—Hamburger, trimmings, french fries, fruit, milk.

Thursday—Turkey and dressing, potatoes, gravy, green beans, salad, rolls, milk.

Friday—Stew and grill cheese, pears, ice cream, milk.

BREAKFAST

Monday—Toast, cereal, apple juice, milk.

Tuesday—Muffins, cinnamon toast, orange juice, milk.

Wednesday—Pancakes, sausage, grape juice, milk.

Thursday—Honey buns, cheese toast, apple juice, milk.

Friday—Biscuits, sausage, orange juice, milk.

Police Files

GRUVER POLICE REPORT

During the reported period running from Tuesday, Jan. 12, through Sunday, Feb. 7, 21 activity reports were filed at the Gruver Police Department.

In this time period officers unlocked six vehicles, responded to two sick calls, escorted one funeral, checked on one 911 hang-up and served civil papers.

Other calls during the period were as follows:

January 12, Tuesday—Officers investigated a report of a traffic problem in the 600 block of Garrett. No problem was found.

January 14, Thursday—A suspicious vehicle was reported in the 100 block of Winder. No vehicle matching the description was found in the area.

January 22, Friday—The department received a theft report, someone shoplifting at Allsup's. It was reported that cigarettes had been taken by a juvenile. The juvenile was identified and the case was referred to the Municipal Court.

Then a complaint of disorderly conduct was received from the 100 block of W. 7th. This incident involved a vehicle driving by a residence several times and revving the engine. It was disturbing the people.

February 1, Monday—There was a report of a possible vandalism to a fence in the 600 block of Cluck.

February 2, Tuesday—The department assisted the Sheriff's Department by investigating an abandon vehicle approximately two miles west of Gruver. It was blocking both lanes. According to Police Chief Steve Gaines, the vehicle had apparently been left in neutral and rolled into the road. It was pushed out of the road.

Also a disturbance was reported

from Allsup's. A man who was apparently angry was abusing the pay phone outside the store. He was using foul language. When the officer arrived on the scene the man was already gone.

February 5, Friday—A complaint was received from a G.I.S.D. bus driver. He reported that a lady tried to pass his bus while he was unloading children on N. Highway 136. He reported the license number. The driver was identified and will be contacted, stated Gaines.

Then there was a complaint from the 500 block of Richardson regarding a teenage girl making obscene gestures. Her mother was contacted and advised of the incident, according to Gaines.

February 7, Sunday—There was a suspicious vehicle behind the Gruver auditorium. A resident reported that a vehicle was backed up to the auditorium. An officer was dispatched and found that it was a D.J. loading his equipment after a dance.

GRUVER EMS

January 16, Saturday—Transferred a 76-year-old female from Hansford Hospital to High Plains Baptist Hospital in Amarillo.

January 17, Sunday—Transferred a 1-year-old male to Hanford Hospital with reported seizure activity.

January 23, Saturday—A 79-year-old female was transferred to Golden Plains Hospital at Borger.

January 27, Wednesday—Transferred a 78-year-old male from residence to Hansford Hospital then to High Plains Baptist Hospital.

Another 78-year-old male was transferred from High Plains Baptist Hospital to Hansford Hospice.

February 3, Wednesday—The Gruver EMS transferred a 14-year-old male from Hansford Hospital to St. Anthony's Hospital in Amarillo.

SPEARMAN POLICE REPORT

During the reporting period running from Monday, Feb. 1, to Sunday, Feb. 7, the Spearman Police Department filed 36 activity reports.

February 1, Monday—Family disturbance in the 600 block of Evans, no charges filed. Three miscellaneous calls and one animal control call.

February 2, Tuesday—One suspicion call in the 400 block of Brandt. According to Police Chief Joe Raper, the area was checked and everything seemed to be OK. One animal control report was filed.

February 3, Wednesday—Officers assisted on one ambulance call in the 1100 block of Haney. Two miscellaneous calls were received.

February 4, Thursday—A complaint was received regarding dirt bikes around Golden Circle. Raper reported that they had already left the area when the officer arrived.

A suspicion call was reported from the 200 block of N. Hoskins. The person was identified and everything was OK, stated Raper.

Also a suspicious vehicle was reported in the 10 block of E. Highway 15. Upon investigation the officer discovered that they were having vehicle problems. One miscellaneous call was received.

February 5, Friday—The department received a report of a possible drunk driver. Raper said that the officer was unable to locate the vehicle.

There were four animal control calls and two lockouts reported.

February 6, Saturday—A reckless damage report was filed at Taylor's. It was reported that a man failed to remove the gas nozzle before driving off. The damage to the

pump was estimated at \$2,100.

A vandalism was reported from the 300 block of W. 5th. Raper said, a window was broken by a 12-year-old throwing rocks. The case was referred to juvenile probation.

Then the department received a report of some children with bb guns in the 1000 block of S. Bernice. The individuals were contacted as well as their parents.

February 7, Sunday—An accident at Allsup's was reported to the department. Raper said that the accident occurred on the 5th, but was not reported until the 7th. He added that a vehicle had struck a sign on the north east corner of the lot. The damage was estimated in excess of \$500.

Officers also assisted on a fire call in the 200 block of S. Endicott. Raper said the fire involved grass and a small storage shed.

Other reports received were one reckless driving call but the vehicle was not located, one miscellaneous call, two animal control calls and one false 911 call.

MODERN WOODMEN OF AMERICA Fraternal Life Insurance

Seek individuals with outstanding sales management potential. Our rapid growth has created exceptional opportunities.

No insurance experience necessary; comprehensive 24 month training program available. Excellent starting income. If you consider yourself a high caliber individual, investigate this opportunity.

For interview write (Manager's name and address) giving past experience, address and phone number. Replies confidential.

SHOE SALE

1/2 PRICE WOMEN'S SHOES FROM FOOTPRINTS OF PAMPA

FOR A LIMITED TIME ONLY

AT

KIDS' STUFF

719 W. 7TH

Selected styles for kids 1/4 to 1/2 off

DQ Treats & Eats

Country Basket
Four Steak Fingers, Country Gravy, Fries and Texas Toast

Sundaes (5-oz.)
Your choice of chocolate, strawberry and other great topping flavors!

\$1.99

49¢

On Sale February 8-21, 1993

Reg. TM Am. D.Q. Corp. Reg. TM TX D.Q. Op. Coun. ©Tx. D.Q. Op. Coun.

For a Perfect Wedding

It takes careful planning to make your wedding perfect. We can help with our complete line of wedding invitations and accessories

by Carlson Craft

See us today for all your wedding stationery and accessory needs.

Celebrate

203 Main Street
P.O. Box 402 • Spearman, Texas 79081
(806) 659-3350

Obituary

OLENA MAE SHELTON SPEARMAN - Olena Mae Shelton, 76, died Tuesday, Feb. 2, 1993.

Services were held at 2 p.m. Monday, Feb. 4, in the Church of Christ at Hedley with Bright Newhouse, minister, officiating. Burial was in the Rowe Cemetery

Give light, and the darkness will disappear of itself.
—Erasmus

by Boxwell Brothers Funeral Home.

Mrs. Shelton was born in Hedley and moved to Spearman three years ago from Corsicana. She married L.M. Shelton in 1971 at Guymon. She was a retired printing technician and a member of the Church of Christ.

Survivors include her husband; a brother, J.C. Hickerson of Spearman; and a nephew, Elbre Hickerson of Spearman.

Gruver from page 8

Gruver 9th Grade Girls (4-11) vs Perryton
2-8-93 at Perryton
PER 35 - GRU 34
GRU-Virginia Barrera-15, Robbi Mathews-9, Myriam Alvarez-5, Joni Hart-5.

Gruver JV Girls (9-9) vs Sunray
2-9-93 at Sunray
GRU 55 - SUN 23

3-Pointers-Shanna Jarvis, Tara Shapley.
GRU-Kayce Haenisch-18, Shanna Jarvis-16, Hailey Lamb-8, Josie Pool-6, Tara Shapley-5, Jana McCloy-2.

Gruver JV Boys (6-14) vs Sunray
2-9-93 at Sunray
SUN 63 - GRU 32
GRU-Kevin McNett-8, Eric Wright-8, Grant Odom-5, Victor Lopez-4,

Ricardo Soto-4, Paul Renteria-2, Jake McCullough-1.

Gruver Varsity Girls (15-8) vs Sunray
2-9-93 at Sunray
GRU 62 - SUN 57

3-Pointers-Sara Jones.
GRU-Julie Meyer-17, Holly Venneman-16, Wynn Maupin-12, Cora Meyer-6, Sara Jones-5, Tisha Ralston-5, Wendy Rodriguez-1.

Gruver Varsity Boys (15-10) vs Sunray
2-9-93 at Sunray
GRU 62 - SUN 48

3-Pointers-Kevin Spivey.
GRU-Kevin Spivey-21, Brady Pool-11, Jeffrey Price-9, Cody Barkley-4, Aaron Frick-4, Carey Kauffman-3, Jace Dawson-2, Matt Etheredge-2, Will Etheredge-2, Heath Gaines-2, Kenton Odom-2.

End Regular Season.



Manor Employees of the Month for January and February were presented with plaques Thursday, January 28. Presenting the plaques is Robbie Dewberry (middle), chairman of the employee of the month committee. On the right is employee of the month for the month of Feb., nurse Liz Sumner. On the left is Sandra Grove, employee of the month for Jan.

HENSON CHIROPRACTIC

410 S. Davis • Spearman, TX

Call for Appointment • 659-5603

Office Hours: Mon, Wed, Fri - 9:00 to 5:00
Tue, Thu - 9:00 to 11:30

"HEART to HEART"



Everywhere you look, there are hearts ... plain hearts, fancy hearts, big hearts, tiny hearts, foil hearts, paper hearts, and candy hearts. Red is the color and love is the reason for the season. Yes, soon we will celebrate Valentine's Day.

There are as many varieties of hearts as there are people. Some people have "big hearts," while others are "soft-hearted." There are those who are said to "wear their hearts on their sleeve,"

and "sweethearts" ... well, need I say more? Whether it be your friend, your spouse, your parent, your child, or a lonely neighbor, open your heart this Valentine's Day and have a "heart to heart" with someone you love or care for. Share your heartfelt sentiments ... the most welcome gift.

Most importantly, as you worship this Sabbath, thank God for His love for you as He dwells within your heart.

Sunday	Monday	Tuesday	Wednesday	Thursday	Friday	Saturday
Psalm 52	Isaiah 54:1-10	Isaiah 63:1-14	Jeremiah 9:17-24	Hosea 2:14-23	Hosea 3:1-5	Hosea 14:1-9

Copyright 1993, Kestler-Williams Newspaper Services, P.O. Box 8005, Charlottesville, VA 22906
Scriptures selected by the American Bible Society

LET US REPLENISH THE SEED OF FAITH THROUGH... REGULAR CHURCH ATTENDANCE, DAILY BIBLE READING AND PRAYER

IN SPEARMAN

Trinity Community Church
717 W. 7th Ave. 659-2671
Sunday School and Children's Church: 9:45 a.m.
Worship: 11:00 a.m.
Sunday Evening: 6:30 p.m.
Wednesday evening: 7 p.m.
Pastor Dan Carter

Union Church
31 S. Endicott 659-2644
Sunday School: 9:45 a.m.
Worship: 10:45 a.m.
Evening Worship: 6:30 p.m.
Bible Study: 7:30 p.m. Wed.
Youth: 7:30 p.m. Wed.
Pastor Jeff L. Burress

First United Methodist

407 S. Haney 659-5503
Sunday School: 9:45 a.m.
Worship: 11 a.m.
Jr. High Youth: 5 p.m. Sun.
High School: 6 p.m. Sun.
Pastor Todd Dyess

Faith Lutheran Church (ELCA)
1101 Bernice 659-2252
worships with
First Presbyterian Church
1021 Cotter 659-2033
Sunday School: 9:45 a.m. at Lutheran
Worship: 11 a.m. (alternates monthly between addresses above)
Pastor Beverly Cook

IN GRUVER

First Baptist Church
402 E. Broadway 733-2411
Sunday School: 9:45 a.m.
Worship: 10:50 a.m.
Disciple Training: 6 p.m. Sun.
Prayer Meeting: 7:30 p.m. Wed.
Pastor Larry Miller

Church of Christ
209 King 733-2760
Sunday School: 9:30 a.m.
Worship: 10:20 a.m.
Evening Worship: 6 p.m.
Wed. Evening Worship: 7:30 p.m.
Minister Bob Setcliff

First Christian Church
510 King 733-2960
Sunday School: 9:45 a.m.
Worship: 11 a.m.
Wed. Bible Study: 7:30 p.m.
Youth: 6:30 Wed.
Pastor Gary Gumfory

Oslo Lutheran Church (ECLA)

West of Gruver
On Hwy 15 & N. FM 1162
339-7646
Sunday School: 9:45 a.m.
Worship: 11 a.m.
Morning Prayer: 9 a.m. Wed.
Pioneer Clubs (Grades 1-6): 4-5:30 p.m. Wed.
Pastor John R. Chandler

Community Bible Church (Interdenominational)
Hwy. 15 733-2443
Sunday School: 10 a.m.
Worship: 11 a.m.
Evening Worship: 7 p.m.
Wed. Prayer Meeting: 7 p.m.
Pastor Zane Gray

First United Methodist
Broadway & Garrett 733-2651
Sunday School: 9:45 a.m.
Worship: 8:30 a.m. & 10:55 a.m.
Sunday Evening: 7 p.m.
UMY: 6 p.m.
Pastor Lewis Holland

This Feature is made possible through the Sponsorship of these Civic Minded Businesses.

IN SPEARMAN

Apostolic Faith Church
822 S. Dressen 659-2870
Sunday School: 10 a.m.
Worship: 11 a.m.
Evening Worship: 6 p.m. Sun.
Wed. Prayer Meeting: 7:30 p.m.
Pastor James Brown

First Assembly of God
401 N. Bernice 659-2295
Sunday School: 9:45 a.m.
Worship: 11 a.m.
Evening Worship: 7 p.m.
Wednesday Worship: 7:30 p.m.
Youth: 7:30 Wednesday
Pastor Ray Cook

First Christian Church (Disciples of Christ)
29 S. Bernice 659-2036
Sunday School: 9:45 a.m.
Worship: 10:50 a.m.
Women's Bible Study: 2 p.m. Wed.
Youth: Wed. 6 p.m. & Sun. 5 p.m.
Pastor LaVern Draper

Sacred Heart Catholic Church
901 Roland 659-2166
Sat. Night Mass: 7 p.m.
Sunday Mass: 9:30 a.m.
C.C.D.: 10:30 a.m. Sun.
Father Edward Kieran

Church of Christ
121 S. Haney 659-3244
Sunday Bible Class: 9:45 a.m.
Worship: 10:30 a.m.
Evening Worship: 6 p.m.
Bible Study Wed. 7:30 p.m.
KRDF Radio Program
Living With Christ 7:50 a.m. M-F
Minister Arnis Pape

Fellowship Baptist
1102 S. Archer 659-2783
Sunday School: 10 a.m.
Worship: 11 a.m.
Evening Worship: 6 p.m. Sun.
Youth & Adult Serv.: 7:30 Wed.
Pastor Rick Fincher

First Baptist Church
123 N. Bernice 659-5557
Sunday School: 9:45 a.m.
Worship: 11 a.m.
Evening Worship: 7 p.m.
Jr. High Youth: 6 p.m. Wed.
High School Youth: 7 p.m. Wed.
Youth Choir: 6 p.m. Sun.
Pastor Kyle Henderson

Primera Mission Bautista
502 E. 7th 659-3991
Sunday School: 9:45 a.m.
Worship: 11 a.m.
Pastor Guadalupe Carranza, Jr.

HI-PLAINS AUTO SUPPLY, INC.

Mobile Oil For Irrigation & Industrial Purposes
118 Main • Spearman
659-2506 • (800)657-8742

Lemon, Shearer, Ehrlich, Phillips and Good

"Attorneys and counselors at Law"
Box 1066 • Perryton 79070
(806)435-6544

GSB GRUVER STATE BANK
FDIC
Gruver, Texas 79070
733-5061

J & G S LADIES READY TO WEAR
306 Hancock • Spearman
659-3424

C.O.'S SUPPLY CO. Plumbing & Tire Sales & Service

301 S. Davis • Spearman
659-3781

GILLASPIE
AUTO & TRUCK CENTER, INC.
CHEVROLET * OLDS * PONTIAC * BUICK
CHRYSLER * PLYMOUTH * DODGE
Highway 207 South • P.O. Box 427 (800)659-2541
SPEARMAN, TEXAS 79061

FLOWERS ALL OCCASION FLOWERS
MARY MOORE
OWNER
MON. - FRI. 9 a.m. - 5 p.m.
Sat. 9 a.m. - 12 noon
PLAINS SHOPPING CENTER
Spearman, TX • 659-5180

GOLDEN SPREAD CARPET CLEANING
Don Moore
659-3068
"Not Forsaking The Assembling of Ourselves Together"
HEBREWS 10:25

GRUVER CABLEVISION
Quality Family Entertainment With
"The Disney Channel!"
308 Main • Gruver
733-5295

B and B 205 DILLON SPEARMAN, TX.
SALES (806)659-2662
FARM AND HOME SUPPLIES
Attend The Church of Your Choice

BOXWELL BROS. FUNERAL HOME

SPEARTEX GRAIN COMPANY
405 Collard • Spearman
659-3711

GOLDEN SPREAD SALES CO.
Petroleum Products
Gasoline, Diesel, Propane, Farm Fertilizer
LPG Bottle Filling
414 S. Hwy. 207 • Spearman
659-3776
"Attend the Church of your Choice."

Compliments of
G & G FOOD LINER
516 MAIN • GRUVER
733-2471

Compliments of...
AGCO of Spearman, Inc.
"See you in Church"
659-3751

GORDON DRUGS
Dependable Prescription Service
314 Main • Spearman
659-2141
Jim Evans

"WE SUPPORT OUR LOCAL CHURCHES"
CAPROCK #1
Richard Winter, Manager
(806)733-5043
CAPROCK #2
Jeff Rudolph, Manager
(806)733-5025
"Custom Cattle Feeding"

HENTON & COMPANY
P.C. Certified Public Accountants
221 Sanders • Spearman
659-2518

BERRY CLEANERS
DAN DESIMONE, OWNER
Phone 659-3122 • P.O. Box 2817 • 797 Main St.
SPEARMAN, TEXAS 79061

GRUVER FORD
Ford FORD
531 Main • Gruver, TX.
(806)733-2431

Interstate Savings & Loan
322 Main • Spearman
659-2559

GRUVER PRINTING COMPANY
"We put our customers FIRST!"
434 MAIN • GRUVER
(806)733-2662

Nite & Day Beauty Shop
Open 8 a.m. - 5 p.m.
Walk - Ins are WELCOME
518 S. Main • Gruver
733-2640

On The Go With Joy

by Joy Henderson

It has happened again! We left home last Friday morning with a brief stop-over at a doctor's office planned. Then we were going on to Lubbock for a fun weekend with our kids and grandkids. Never mind that a month ago, I didn't really want any more "fun" with a certain someone. However someone forgot to show me the newspaper where I mentioned no more Dustin attacks. Well, on with the story.

We were about thirty minutes away from home and nearing Stinnett at about 6:30 a.m. when I began to have some pain across my back and above the waist line. Thinking it was due to the fact that I hadn't taken my diuretic along with my other medicine, I decided to stop in Fritch to take it when I got to enough light to find my pills and get water to swallow them with. Just in case this was some heart problem, I began a program of nitrostat. Neither the Lasix nor the Nitrostat was helping. As we neared Amarillo, the pain had traveled to the front and I was getting really uncomfortable. I also checked my blood-sugar and since it was way too high, I took my shot of insulin. However, even that was not helping.

As I was waiting on M.H. with his appointment in the doctor's office, I was bending over and groaning and nearly in tears. I couldn't concentrate on a magazine or anything else. But then waiting on him was over and we proceeded to see my cardiologist with an emergency visit. I was put in an examination room to wait for him to arrive. Meanwhile, they checked my blood pressure, took an EKG and got my story and symptoms. When he arrived, he poked around on my abdomen and muttered things like "large ulcer" and was I up to having some stomach x-rays? I told him I didn't feel like doing anything else unless a large dose of Maalox would help. Now remember that word Maalox because it will be used again later on.

Next, I heard "Upper G.I." and since I hadn't had anything to eat but a peanut butter cracker, they decided an upper G.I. could probably be performed and be successful. So, I headed for the hospital to wait in line for this. Since I mainly kept bent over and groaning and crying in between talking and visiting with Bobby Sue (Renner) Dempsey, I began to worry about my large dose of insulin and no food. We were really trying to show the radiology department the importance of working me in quickly, but they just assumed that if I got into trouble and had to go eat (I couldn't anyhow) I'd just have to postpone the test.

They finally called me and I drank my Barium Soda, had the upper G.I. done, drank some more junk, had the x-ray done and prepared to leave. Since I needed to eat, M.H. pushed me toward the cafeteria but I turned all shades of green and backed away. I was told to meet my doctor back at his office at 1:45 and that meant two more hours of pain before learning the results and getting some treatment.

I toughed it out and even got a little nap. I had been awake since 4 a.m. that morning, so I was anx-

ious for some sleep. I also took a couple of turns with vomiting and filling the kidney shaped bed pan. You all know all about them. The time of 4:45 came and went. Finally, the nurses informed me doctor got caught having to perform an emergency heart cath. Couple of hours later, I heard him down the hall and thought "O Boy!" I learn my fate. You see! I was still hoping for a quick fix and I could be on my way to Lubbock.

Well, I got my fate. The news of "no perforations" was good, but what I had was a "rip-roaring" case of gastritis. It would probably take a week to heal but with proper diet, lots of rest, and expensive medications, I would be OK. By the way! I was supposed to take 3 or 4 large doses of Maalox (did you remember?) or any other good antacid a day. They gave me the medication then and some samples to take home with me.

I didn't tell them that I didn't plan on going home, but to a motel for the night. I wanted to see for sure that I was going to be okay because I was threatened with a hospital visit and a tube down my nose to get the Maalox down. By 10 p.m. I was certain that I would have to go to the hospital as by that time I still couldn't eat, was still vomiting up my medicine plus blood was coming up too. However I rolled over and went to sleep. When I woke up around 3 a.m. the pain had eased up and the swelling going down, but I still couldn't eat.

About 8:30, I did eat a couple of bites and drink a cup of hot tea. I proceeded to Lubbock and I've felt fairly good since then (even made a quick trip to Wally-wood.)

People - I'm laughing about this now, but it really is no joke. M.H. had this same problem back in August when he entered the hospital for "heart problems" but stayed a week before finding out it was a painful case of gastritis. When will we ever learn. We are a nation of physically sick people, but what is worse is that a big majority of us are spiritually sick too.

Just how sick? In the FBC bulletin, minister Larry Miller was in contact with Steve Ellis, a former resident in Gruver. As I understand it, Steve was in a group of 546 men, women and children who had gathered for prayer for the life of unborn babies. Thousands had gathered at the arena to pray, but two abortion clinics called on the police to be prepared to enforce a city ordinance against "picketing with more than 30 people in a given block." When police warned the people of the church in Easley, S.C. the police were informed the people did not intend to picket or block the abortion clinics in anyway, they simply intended to have a public prayer meeting - nothing more. After 546 met across the street, all of them were arrested. The parents were charged with "contributing to the delinquency of a minor" because they allowed them to pray on a public sidewalk. As Larry wrote in his church bulletin, "It seems lawful to kill an unborn child, but not to allow one to pray publicly. Religious freedom? Something like this does not draw the national news media, but the battering of

one homosexual does." And the list goes on and on.

On to our local items of interest. Since I was gone over the weekend, I'm not sure what all happened. Was the weather good? It was to be a nice warm day in Lubbock and the Scott Henderson family had plans for doing some cleaning around some property. I call it Dustin's Farm and he took his little green tractor out there along with the garden cart. Grandpa and Grannie left about 1 p.m. but promised to go back soon and help plant the squash.

Several of the UMC and FBC members have returned from a mission trip to Phoenix. A list of those from UMC were June Barkley, Joe Potts, Corky Kizziar, Archie and Marguerite Nelson. From FBC were Les and Sharon Barkley, Barry Barkley, Rodney Dale and Angie Clawson, Richie and Carolyn Fletcher, Wayne and Lou Garrett, Bob and Kathy Gillispie, Darrell and Lori Messer, Kermit and Rosemary McKee, Richard Schad, Jerry Virden, Teresa Weldon, Doris Armes, Jack and Mary Weldon, Stan and Sharon Seagler, James

and Ann Dorman, Larry Miller, Charlie Parrish and Wayne Fleming from Perryton, Jim and Virginia Fowler from Amarillo (parents of Sandra Gumfory), and Pat Harris joined up with them at Albuquerque and went on to Phoenix. Also, Mike and Judy Stedje from the Oslo Lutheran Church was part of the mission team.

Several visitors here for the weekend were some of the college students. The Seagler clan and some extra friends etc., Matthew Hoel, Kyle Irwin and friend Brain Shippee.

Kenneth Lee from Irving is here visiting with his mother Violet Lee and will be helping her with some business affairs.

Some of those who are ill or had surgery are Kelly Armes, Melvin Ross (tests for heart problems), Mozelle McClellan (heart attack and at High Plains).

Congratulations to Chad and Julie Logsdon on the birth of their new son.

Our sympathy to Bessie Mitts and other family members on the death of her brother.

Allsworth and Clark...

set wedding date, Feb. 14th



Mr. and Mrs. Tom Allsworth of La Junta, Colo., are proud to announce the engagement and approaching marriage of their daughter VeAnn to Roney Clark, son of Mr. and Mrs. Albert Clark of Spearman.

The couple plan to be married at 2 p.m. Sunday, Feb. 14, in the First Baptist Church in Morse. A Reception and dance will follow the ceremony.

The bride-elect attended Otero Junior College in La Junta and Panhandle State University at Goodwell, Okla. She is a bookkeeper at D & D Cattle Hauling in Spearman.

The prospective groom attended Clarendon College in Clarendon. He is currently employed by McCloy Feedlot and McCloy Rodeo Company.

Grandparents of the bride are Mrs. Stella Harrington (and the late Jake Harrington), of Kim, Colo.; and Mr. Bob and Hattie Sabin, (and the late Ross Allsworth), of Canyon City, Colo. The grandparents of the groom are the late Mr. and Mrs. Claude Jackson of Spearman, and the late Mr. and Mrs. Ed Clark of Lazbuddie.

The couple plans to reside in Morse after the wedding.

Kyle, Herz exchange vows



Barbara L. Kile and Alan J. Herz exchanged wedding vows Saturday, Jan. 16, 1993 at the Immaculate Conception Catholic Church. Father John Ostdiek and Father Gilbert Ostdiek, uncles of the groom, performed the ceremony.

The bride's parents are Harvey and Cavita Kile of Perryton. The groom's parents are Ralph and Mildred Herz of Lawrence, NE.

Jennifer Hubbard attended her mother as maid of honor. Leland Herz, brother of the groom, served as best man.

The altar and piano were adorned with bouquets of navy and peach silk flowers. Musical selections were played by Kathy Allred on the organ. Cynthia Powell sang "This is the Day" to begin the ceremony and during the lighting of the Unity candle she sang "There is Love."

The bride wore a formal length ivory gown featuring a Victorian neckline of illusion and Juliette lace. The full length skirt attached to the bodice was adorned with sequins and pearls and a train overlaid with ivory lace. The silk bridal bouquet was composed of ivory tea roses, peach and navy miniature roses and greenery.

As something old, the bride wore an opal ring given her at age 13 by her Great Aunt, something new was her gown, something borrowed was a veil of illusion from Mary Johnson and something blue was the traditional garter.

The maid-of-honor, the bride's daughter, wore a navy street length dress. The mother of the bride wore a navy street length dress. The groom's mother wore a navy and purple floral dress with a navy jacket.

The grandmother of the bride, Gladys Thurman of Perryton, was a special guest in attendance.

H. C. welcomes Stacey home with open arms

by Angela Jones
Editor

Hansford County, though it is sparsely populated the people here bond together in times of crisis making those in need feel as though there are thousands of residents in this small community.

When Stacey Williams returned home to Hansford County after spending five months and seven days in the Craig Hospital at Englewood, Colo., the business windows in Gruver were filled with welcome home messages. Stacey, who was involved in an automobile accident on July 4, says, "All the people in Hansford County helped me a lot with my attitude by sending all the cards, the phone calls, the visits and the prayers. I couldn't have made it without them. I probably would have given up a long time ago."

She continued, "When I was at the hospital I'd get about 19 cards a day." She referred to the support she was getting from the community and said, "No one else had what I had."

Even with all of the support Stacey's life and her outlook on things has changed since the accident. "Life is precious and that is how I see it," Stacey stated. "I get

reports of people going fast and I don't understand it. All it takes is one second. I don't think they understood that until they saw me," she added.

Since the accident Stacey has been through a lot both emotional and physically. While at Craig she attended several classes - physical therapy, wheelchair class, speech therapy, fit class (weight lifting), occupational therapy and aerobic. Of these classes Stacey said the physical therapy was the hardest. But she quickly added that being at Craig wasn't so bad because there were a lot of kids there her age. "The hardest part was being away from my friends here," she concluded.

When we spoke about the attitudes of those at Craig, Stacey said, "The older people had a problem dealing with it. The younger ones always went to do something to keep our minds off of it." Some of the activities that kept them busy were attending a Denver Bronco game and going shopping, according to Stacey. "It also helped that we were so close," she added, "We knew what the others were going through and we could talk to each

See Stacey page 12



Gruver Elementary First Graders show off their Robots along with their teacher Mrs. Haight. Pictured here with Haight are Cassie Myatt, Lourdes Vega, Carmen Lopez, Troy TeBeest, Teal Armes, Rachel Arreola, Jose Rodriquez, Garrett Miner, Rosio Cruz, Kalee Crawford, T. Jay Sherrill, and Dimna Cruz. Other classes and their robots will be featured in coming issues of this paper.

School Lunch Menu

Gruver School Menu
February 15-19
LUNCH
Monday—"No School." Staff Development Day.
Tuesday—Nachos with meat, beans, fruit, corn bread, milk.
Wednesday—Turkey, mashed potatoes with gravy, corn, jello, hot rolls, milk.
Thursday—Tacos (hard shell), lettuce & cheese, fruit, milk.
Friday—Chicken patty on a bun, french fries, pickle spears, cookies,

milk.
No salad bar — Tuesday-Friday, Feb. 15-19.

BREAKFAST
Monday—"No School." Staff Development Day.
Tuesday—Cereal, juice, muffins, milk.
Wednesday—Donuts, fruit, milk.
Thursday—Toast, peanut butter & jelly, fruit, milk.
Friday—Cinnamon rolls, fruit, milk.

Hometown News

Trent Randolph Seagler of Gruver was among more than 2,700 Texas Tech University students who qualified for the academic honors lists at the end of the 1992 fall semester. Seagler was named to the President's List.

Student's on the President's List earned a perfect 4.0 (A) grade point average while enrolled in 12 or more semester hours of classwork. Students finishing 12 or more hours with a grade point average of 3.5 to 3.9 qualified for the Dean's List.

THANK YOU

The Hansford County American Heart Association would like to thank all those who support the A.H.A. through memorials, the "neighbor-to-neighbor" letters, "Jump Rope for Heart" and especially through the annual banquet which involves many volunteers and donors. Because of our efforts together Hansford County is well known for its public education and involvement in the treatment and cure of Heart Disease and related disorders.

We appreciate Hansford County.

Advance Notice

Farm Equipment
Consignment Auction

Sponsored by
GRUVER LIONS CLUB

Conducted by
Reagan & Brown Auctioneers

March 26th • Gruver, Tx

Items need to be consigned by

February 25, 1993

To Consign or for Information call

(806) 733-2421

(806) 733-2988

(806) 249-6776

(Originally scheduled for March 19 rescheduled for March 26)

Stacey from page 4

other." Though she has returned home everything is not the same. Stacey attends classes in Amarillo every Monday, Wednesday and Friday. Her classes in Amarillo consist of gate training from 1 to 2 p.m. (Stacey explained that in this class she is learning to walk again.) Then from 2 to 3 p.m. she is in a warm swimming pool where she does strengthening exercises. "It not only changes my life, it changes everyone around me. We have to plan where we are going. Is

it wheelchair accessible?" Stacey said of her accident. Other things have changed. She gave an example, "If I want to be some where at 10, I have to start getting ready at about 7." Stacey says that in a way the accident has changed her outlook on life, but when she is around other people it doesn't. "I think that if people see that I can accept it, then it will be easier for them to accept it," she stated. "This is what I've got and I have to do the best with what I've got," she added.

Mike Utley of the Detroit Lions was at Craig the same time as Stacey. "I got to know him really well," she stated. "To see a professional football player going through the same thing I was and his attitude was great. He kept me up," Stacey said. Stacey and her family have grown closer than ever. "We were close before the accident, but now it is like nothing can come between us," she said. With the support of her family and friends, Stacey is looking to-

wards the future. Her first goal for the future is to walk. She also wants to attend Lubbock Christian University. The interview was concluded by Stacey thanking everyone in Hansford County and saying, "Craig is one of the best hospitals in the world."



D.E.A.R. Day held at Pringle-Morse C.I.S.D. — Pringle-Morse C.I.S.D. held D.E.A.R. Day Friday, Feb. 5. Pictured above is guest readers Travis Wolf of Brown, Graham & Co. He is reading to the kindergarten and first grade students. Other readers from the community during the day were Holly Simpson, Val Winger, Paula Clemmons, Dana Hamilton, Nanelle Kiser, Alan Leach, Clyde McCloy, Jean Ann Behney, Superintendent Beryl Sears, Benny Bradvik, Debbie Davis, Tom Dortch, Denice Hutchison and Lavern Parks. The featured speaker was Jo Ellen Moses of Amarillo. D.E.A.R. Day is incorporated with the Read-a-thon which runs through Wednesday, Feb. 17.

Hometown news

Dusty Victoria Cotter of Gruver was among more than 3,300 Texas A&M University graduates that received diplomas during December commencement ceremonies. Dusty received a Bachelor of Science degree in Veterinary Science. The degrees were presented at three separate ceremonies. Featured speakers at the ceremonies were Joshua I. Smith, one of the nation's top entrepreneurs and civil leaders. Marvin Runyon, U.S. Postmaster General and Dr. E. Dean Gage, Texas A&M's senior vice president and provost.

Heart from page 1

already know we did very well on the live auction this year." She said the association's treasurer, Margaret Ralston, will report on the banquet's fund-raising results at the next meeting of the board. "Our year-long goal is \$27,000," Brown said. "And we've still got one fund-raiser to go. The Jump Rope for Heart will be done at Spearman, Gruver and Morse schools in the spring."

Board from page 1

February has been declared State Board Recognition Month in Texas, a time for educators and citizens across the state to salute these unpaid volunteers who serve public education on behalf of their communities. It seems fitting that at least once a year we thank them for their time and dedication, stated the release. Being an effective school board member is no easy task, says the release. It added, lay school leaders need to be knowledgeable about many complex educational and social issues. Board members govern individual school districts, establish local policies, approve educa-

tional programs, provide necessary physical facilities, oversee hiring of properly certified professional and classified employees, and share in costs by raising necessary local funds along with state funds to operate district educational programs. School board members' service ensures that decisions about our public schools are made as close to the needs of our children and communities as possible. Further, our local board members serve as examples for our young people of the excellent tradition of volunteering that is a hallmark of our society, the release concluded.

Thank You Hansford County

February is National Children's Dental Health Month. We would like to take this time to thank our patients for supporting our practice. Our dedication to family dentistry, treating children and adults has allowed our practice to enjoy continued growth over the last 9 years drawing patients from five states and across the panhandle to our community. We would enjoy treating you and your family and are accepting new patients. Your insurance is welcome at our office and we look forward to continued service to this community.

Stanton W. Cobb, DDS
Family Practice & Orthodontics
802 S. Roland, Spearman, TX
659-5515

Valentine Weekend

Fri., Feb. 12th • 8 p.m. - Midnight

VALENTINE DANCE

SAT., Feb. 13th • 9 p.m. - 1 A.M.

Music by **WEST WIND** **Mr. C's**

\$4 PER PERSON 721 1/2 N. Main • 435-6664

Hometown news

Five students from Hansford County received degrees during December commencement exercises at Texas Tech University. More than 1,300 students participated in the exercises. Spearman students were: Monte Verlin Beck—Bachelor of Arts in Advertising; Tracy Jo Logsdon—Bachelor of Arts in English and

Lori Lynette Williams—Bachelor of Arts in Human Development and Family Studies. Gruver students were: Raquel Mathews—Bachelor of Business Administration in Human Development and Family Studies and Holly Kaye Meyer—Bachelor of Business Administration in Human Development and Family Studies.

LAST 2 DAYS WINTER CLEARANCE SALE FRIDAY & SATURDAY FEB. 12 & 13

**Brown Velvet
SWIVEL ROCKER**
By La-Z-Boy

\$150⁰⁰

Reg. \$389.50

BEDDING

Twin Mattresses — Each	\$ 89.95
Full Mattresses — Each	\$ 119.50
Twin Sets — Set	\$ 149.50
Full Sets — Mismatched — Set	\$ 199.95
Queen Sets — Mismatched — Set	\$ 299.95
King Sets — Mismatched — Set	\$ 399.95
King Set (One Only) — Set	\$ 249.50

**Brown Velvet High Back
RECLINING SOFA**

\$399⁰⁰

Reg. \$899.00

LUGGAGE RACK

\$29⁹⁵

Reg. \$59.95

**Red Metal Lifestyles
CHILDREN'S DESK**

\$29⁹⁵

Reg. \$64.50

APPLIANCES

Whirlpool Compactor (One Only)	REG. \$ 549.00	SALE \$ 299.00
Roper Electric Range (White or Almond) — With Trade	\$ 359.00	\$ 279.00
Roper 18 Cu. Ft. Refrigerator — With Trade	\$ 699.00	\$ 539.50
Whirlpool 22 Cu. Ft. Designerstyle Refrigerator with Icemaker — With Trade	\$1179.00	\$955.00

LIVING ROOM

Blue Velvet Sofa	REG. \$ 499.00	SALE \$ 369.00
Striped Mauve Velvet Reclining Loveseat	\$1079.00	\$ 499.00
Mauve & Teal Striped Sofa	\$ 499.00	\$ 369.50
Blue Striped Velvet Sofa	\$ 499.00	\$ 369.50
5-Pc. Mauve, Beige & Blue Southwest Woven Print Sectional with 2 Recliners & Sleepers	\$1995.99	\$1495.00
2-Pc. Burgundy Corner Sectional	\$1350.00	\$ 949.50

BEDROOM

White Full or Queen Headboard, Desk and Nite Stand — 3 Pc	REG. \$ 628.50	SALE \$ 399.50
Almond Dresser, Mirror, Chest, Queen Headboard and One Nite Stand — 5 Pc	\$1595.00	\$ 995.00
Oak Double Dresser, Mirror, Chest and Queen or Full Headboard — 4 Pc	\$1234.00	\$ 899.00
Dark Oak Triple Dresser, Mirror, Door Chest, Queen Bookcase, Headboard and Two Nite Stands — 6 Pc	\$2250.00	\$ 1595.00

ELECTRONICS

RCA 31" Direct View Console with Picture-in-Picture	REG. \$1749.00	SALE \$1399.00
RCA 35" Direct View Table TV with Matching Stand and Advanced Picture-in-Picture	\$2944.50	\$1799.00
RCA Stereo Console — Choice of 3 Styles	\$769.00-\$789.00	\$ 599.00
RCA C-Size Camcorder	\$1059.00	\$ 799.00

SLEEPERS

Blue Velvet with Oak & Brass Trim (Queen Size)	REG. \$1050.00	SALE \$499.50
Full Size Herculon Stripe	\$ 759.50	\$359.50
Queen Size Mauve & Teal Stripe	\$ 649.50	\$498.50
Queen Blue & Mauve Southwest Woven Print	\$ 798.50	\$399.50

DAYBEDS & BUNKBEDS

Matt Black Metal Lifestyles Daybed	REG. \$239.50	SALE \$ 169.50
Solid Oak Cathedral Back Daybed	\$479.50	\$339.50
Matt Black & Pine Daybed	\$429.50	\$309.50
Ivory Metal Daybed	\$169.50	\$ 129.50
Twin Full Red Bunkbed	\$289.50	\$209.50

DINING ROOM

Large Black Lacquer Bar Entertainment Center, Complete with Light Bridge and 2 Glass Side Cuno Cabinets — 5 Pc	REG. \$1375.00	SALE \$ 699.00
Black and Ostrich Top Table and Four Chairs — 5 Pc	\$ 699.50	\$ 519.50
White Table with Four White Frame and Mauve Padded Chairs on Casters and Swivel — 5 Pc	\$ 859.00	\$ 598.50
Oak Dining Game Square Table with Leaf and Four Chairs on Casters — 5 Pc	\$1159.00	\$ 599.50

Twin Metal HEADBOARDS

\$40⁰⁰

Values to \$198.50 Your Choice EA.

Black & Gold DECORATOR CHAIR

\$299⁰⁰

Reg. \$679.50 Slightly Damaged

Boody

FURNITURE CO.

723 W. 7th
Spearman, Texas 79081

8:30 a.m.-5:30 p.m. Mon.-Sat.

TERMS:
Mastercard — Visa — Discover

90 Days Same as Cash.
Bank Rate Financing
Whirlpool Financial Corp.

No Approvals, All Sales Final.

EVERY ITEM IN STORE ON SALE.

ALL ITEMS SUBJECT TO PRIOR SALE

Stacey from page 4

other." Though she has returned home everything is not the same. Stacey attends classes in Amarillo every Monday, Wednesday and Friday. Her classes in Amarillo consist of gate training from 1 to 2 p.m. (Stacey explained that in this class she is learning to walk again.) Then from 2 to 3 p.m. she is in a warm swimming pool where she does strengthening exercises. "It not only changes my life, it changes everyone around me. We have to plan where we are going. Is

it wheelchair accessible?" Stacey said of her accident. Other things have changed. She gave an example, "If I want to be some where at 10, I have to start getting ready at about 7." Stacey says that in a way the accident has changed her outlook on life, but when she is around other people it doesn't. "I think that if people see that I can accept it, then it will be easier for them to accept it," she stated. "This is what I've got and I have to do the best with what I've got," she added.

Mike Utley of the Detroit Lions was at Craig the same time as Stacey. "I got to know him really well," she stated. "To see a professional football player going through the same thing I was and his attitude was great. He kept me up," Stacey said. Stacey and her family have grown closer than ever. "We were close before the accident, but now it is like nothing can come between us," she said. With the support of her family and friends, Stacey is looking to-

wards the future. Her first goal for the future is to walk. She also wants to attend Lubbock Christian University. The interview was concluded by Stacey thanking everyone in Hansford County and saying, "Craig is one of the best hospitals in the world."



D.E.A.R. Day held at Pringle-Morse C.I.S.D. — Pringle-Morse C.I.S.D. held D.E.A.R. Day Friday, Feb. 5. Pictured above is guest readers Travis Wolf of Brown, Graham & Co. He is reading to the kindergarten and first grade students. Other readers from the community during the day were Holly Simpson, Val Winger, Paula Clemmons, Dana Hamilton, Nanelle Kiser, Alan Leach, Clyde McCloy, Jean Ann Behney, Superintendent Beryl Sears, Benny Bradvik, Debbie Davis, Tom Dortch, Denice Hutchison and Lavern Parks. The featured speaker was Jo Ellen Moses of Amarillo. D.E.A.R. Day is incorporated with the Read-a-thon which runs through Wednesday, Feb. 17.

Hometown news

Dusty Victoria Cotter of Gruver was among more than 3,300 Texas A&M University graduates that received diplomas during December commencement ceremonies. Dusty received a Bachelor of Science degree in Veterinary Science. The degrees were presented at three separate ceremonies. Featured speakers at the ceremonies were Joshua I. Smith, one of the nation's top entrepreneurs and civil leaders. Marvin Runyon, U.S. Postmaster General and Dr. E. Dean Gage, Texas A&M's senior vice president and provost.

Heart from page 1

already know we did very well on the live auction this year." She said the association's treasurer, Margaret Ralston, will report on the banquet's fund-raising results at the next meeting of the board. "Our year-long goal is \$27,000," Brown said. "And we've still got one fund-raiser to go. The Jump Rope for Heart will be done at Spearman, Gruver and Morse schools in the spring."

Board from page 1

ruary has been declared **State Board Recognition Month** in Texas, a time for educators and citizens across the state to salute these unpaid volunteers who serve public education on behalf of their communities. It seems fitting that at least once a year we thank them for their time and dedication, stated the release.

tional programs, provide necessary physical facilities, oversee hiring of properly certified professional and classified employees, and share in costs by raising necessary local funds along with state funds to operate district educational programs.

School board members' service ensures that decisions about our public schools are made as close to the needs of our children and communities as possible. Further, our local board members serve as examples for our young people of the excellent tradition of volunteering that is a hallmark of our society, the release concluded.

Hometown news

Five students from Hansford County received degrees during December commencement exercises at Texas Tech University. More than 1,300 students participated in the exercises. Spearman students were: Monte Verlin Beck—Bachelor of Arts in Advertising; Tracy Jo Logsdon—Bachelor of Arts in English and

Lori Lynette Williams—Bachelor of Arts in Human Development and Family Studies. Gruver students were: Raquel Mathews—Bachelor of Business Administration in Human Development and Family Studies and Holly Kaye Meyer—Bachelor of Business Administration in Human Development and Family Studies.

Thank You Hansford County

February is National Children's Dental Health Month. We would like to take this time to thank our patients for supporting our practice. Our dedication to family dentistry, treating children and adults has allowed our practice to enjoy continued growth over the last 9 years drawing patients from five states and across the panhandle to our community. We would enjoy treating you and your family and are accepting new patients. Your insurance is welcome at our office and we look forward to continued service to this community.

Stanton W. Cobb, DDS
Family Practice & Orthodontics
802 S. Roland, Spearman, TX
659-5515

Valentine Weekend

Fri., Feb. 12th • 8 p.m. - Midnight

VALENTINE DANCE

SAT., Feb. 13th • 9 p.m. - 1 A.M.

Music by **WEST WIND** **Mr. C's**

\$4 PER PERSON 721 1/2 N. Main • 435-6664

LAST 2 DAYS WINTER CLEARANCE SALE FRIDAY & SATURDAY FEB. 12 & 13

Brown Velvet
SWIVEL ROCKER
By La-Z-Boy

\$150⁰⁰

Reg. \$389.50

BEDDING

Twin Mattresses — Each	\$ 89.95
Full Mattresses — Each	\$ 119.50
Twin Sets — Set	\$ 149.50
Full Sets — Mismatched — Set	\$ 199.95
Queen Sets — Mismatched — Set	\$ 299.95
King Sets — Mismatched — Set	\$ 399.95
King Set (One Only) — Set	\$ 249.50

Brown Velvet High Back
RECLINING SOFA

\$399⁰⁰

Reg. \$699.00

LUGGAGE RACK

\$29⁹⁵

Reg. \$59.95

Red Metal Lifestyles
CHILDREN'S DESK

\$29⁹⁵

Reg. \$84.50

APPLIANCES

Whirlpool Compact (One Only)	REG. \$ 549.00	SALE \$ 299.00
Roper Electric Range (White or Almond) — With Trade	\$ 359.00	\$ 279.00
Roper 18 Cu. Ft. Refrigerator — With Trade	\$ 699.00	\$ 539.50
Whirlpool 22 Cu. Ft. Designerstyle Refrigerator with Icemaker — With Trade	\$1179.00	\$955.00

ELECTRONICS

RCA 31" Direct View Console with Picture-in-Picture	REG. \$1749.00	SALE \$1399.00
RCA 35" Direct View Table TV with Matching Stand and Advanced Picture-in-Picture	\$2944.50	\$1799.00
RCA Stereo Console — Choice of 3 Styles	\$769.00-\$789.00	\$ 599.00
RCA C-Size Camcorder	\$1059.00	\$ 799.00

LIVING ROOM

Blue Velvet Sofa	REG. \$ 499.00	SALE \$ 369.00
Striped Mauve Velvet Reclining Loveseat ..	\$1079.00	\$ 499.00
Mauve & Teal Striped Sofa	\$ 499.00	\$ 369.50
Blue Striped Velvet Sofa	\$ 499.00	\$ 369.50
5-Pc. Mauve, Beige & Blue Southwest Woven Print Sectional with 2 Recliners & Sleepers	\$1995.99	\$1495.00
2-Pc. Burgundy Corner Sectional	\$1350.00	\$ 949.50

BEDROOM

White Full or Queen Headboard, Desk and Nite Stand — 3 Pc	REG. \$ 628.50	SALE \$ 399.50
Almond Dresser, Mirror, Chest, Queen Headboard and One Nite Stand — 5 Pc	\$1595.00	\$ 995.00
Oak Double Dresser, Mirror, Chest and Queen or Full Headboard — 4 Pc	\$1234.00	\$ 899.00
Dark Oak Triple Dresser, Mirror, Door Chest, Queen Bookcase Headboard and Two Nite Stands — 6 Pc	\$2250.00	\$ 1595.00

SLEEPERS

Blue Velvet with Oak & Brass Trim (Queen Size)	REG. \$1050.00	SALE \$499.50
Full Size Hercules Stripe	\$ 759.50	\$559.50
Queen Size Mauve & Teal Stripe	\$ 649.50	\$498.50
Queen Blue & Mauve Southwest Woven Print	\$ 798.50	\$599.50

DAYBEDS & BUNKBEDS

Matt Black Metal Lifestyles Daybed	REG. \$239.50	SALE \$ 169.50
Solid Oak Cathedral Back Daybed	\$479.50	\$339.50
Matt Black & Pine Daybed	\$429.50	\$309.50
Ivory Metal Daybed	\$169.50	\$ 129.50
Twin Full Red Bunkbed	\$289.50	\$209.50

DINING ROOM

Large Black Lacquer Bar Entertainment Center, Complete with Light Bridge and 2 Glass Side Curio Cabinets — 5 Pc	REG. \$1375.00	SALE \$ 699.00
Black and Ostrich Top Table and Four Chairs — 5 Pc	\$ 674.50	\$ 519.50
White Table with Four White Frame and Mauve Padded Chairs on Casters and Swivel — 5 Pc	\$ 859.00	\$ 598.50
Oak Dining Game Square Table with Leaf and Four Chairs on Casters — 5 Pc	\$1124.00	\$ 599.50

Twin Metal
HEADBOARDS

\$40⁰⁰

Values to \$198.50 Your Choice

Black & Gold
DECORATOR CHAIR

\$299⁰⁰

Reg. \$679.50 Slightly Damaged

FURNITURE CO.

723 W. 7th
Spearman, Texas 79081

8:30 a.m.-5:30 p.m. Mon.-Sat.

TERMS:
Mastercard — Visa — Discover

90 Days Same as Cash.
Bank Rate Financing
Whirlpool Financial Corp.

No Approvals, All Sales Final.

EVERY ITEM IN STORE ON SALE.

ALL ITEMS SUBJECT TO PRIOR SALE