



100
The Hansford County
Reporter Statesman

PROUDLY SERVING HANSFORD COUNTY SINCE 1907

reporter@spearmanreporter.com

SCR2
COMP
HANSFORD COUNTY LIBRARY
0122 MAIN ST
SPEARMAN TX 79081-2064

VOLUME 102 • ISSUE 38

THURSDAY, SEPTEMBER 17, 2009

COME TO THE GAME

SPEARMAN LYNX VS **West Texas**
9/18
7:30 p.m.
at Stinnett

Gruver Greyhounds 9/18 VS **Clarendon**
7:30 p.m. at Gruver



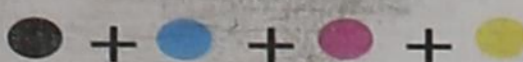
Jerrod Collier, a sophomore at Gruver High School, was selected as the Amarillo Globe-News 1A Player of the Week. He carried 15 times for 118 yards and one touchdown, a 56-yard run, in the Greyhounds' victory over favored Panhandle. He also was in on 10 tackles. He currently leads the Greyhounds in rushing with 226 yards on 32 carries for a 7.06 average. On defense he has been in on 17 tackles including 12 solos. (Photo by Charlie Johnson)

Weather Forecast

FRIDAY - Partly cloudy. Highs in the upper 70s. Light and variable winds becoming east around 10 mph in the afternoon.
FRIDAY NIGHT - Partly cloudy. Lows in the mid 50s.
SATURDAY - Partly cloudy. Highs in the lower 80s.
SATURDAY NIGHT - Partly cloudy in the evening then becoming mostly cloudy. Lows in the upper 50s.
SUNDAY - Partly cloudy. Highs in the lower 80s.
SUNDAY NIGHT - Partly cloudy in the evening then becoming mostly cloudy. Lows in the mid 50s.
MONDAY - Mostly cloudy. Highs in the upper 70s.
MONDAY NIGHT - Partly cloudy. Lows in the lower 50s.
TUESDAY - Partly cloudy. Highs around 80.

Texas Crop & Weather

The following specific livestock, crop and weather conditions were reported by Panhandle Extension directors: Most of the region saw cooler weather, but rain was needed to complete crops and raise soil-moisture levels for wheat planting. For the most part, corn approached being harvest-ready. In some areas, corn was already 10 percent harvested. Storage may be a problem for corn growers as most elevators were still holding wheat, and feed yards have not had a demand for corn due to fewer cattle on feed. Silage harvest was in full swing with 25 percent of the crop harvested. Yields were average to slightly above average. Harvest of grass hay and forage sorghum were in full swing, with above average yields and good quality for both dryland and irrigated fields. Peanuts looked good and producers were digging dryland Spanish peanuts. Sorghum was 95 percent to 100 percent headed and 45 percent to 80 percent colored. Soybeans were reported in good condition. Cotton bolls were set with from 5 percent to 50 percent open, but the crop needed more heat units to progress. Cattle were in good shape and local markets have remained soft. Rangeland was in fair to good condition.



Mandi Lusby Receives Heart, Lung Transplant

Mandi Lusby of Spearman received a heart and lung transplant on Sunday, September 13, 2009 in the Transplant Center of Houston Methodist Hospital. Mandi and her mother, Donita, have been living in Houston since August of 2008 waiting for a transplant. Mandi was diagnosed in 2003 at the age of 26 with Primary Pulmonary Hypertension, a disease that causes high blood pressure in the lungs. The heart is also affected by having to work extremely hard against the pressure. Mandi was told at the time there was no cure. The only solution would be a double lung and heart transplant. For the last five years she has had a catheter inserted into her heart with a pump supplying continuous medicine. At the time of the diagnosis there were only three options of medication available. Now there are four or five options, but still no cure. After several years of adjusting her medications and treatments, she is now left with the last option of a double lung transplant. Mandi and her family were notified on Saturday afternoon that a match had been found from a young man between 18-25 years old. They were notified on Sunday morning that the donor organs were perfect, which began the actual transplant process. The surgery only took three hours from the time Mandi was taken into the operating room until she was taken to ICU. By Sunday night she was already doing 70% of her own breathing with the ventilator helping out the other 30%. The doctors left her chest open to allow for swelling and to watch for bleeding,

but at 11:45 on Monday were able to close her chest back up. Mandi had difficulties with antibodies before her move to Houston, and continued to fight them during her stay. She received Plasma Phoresis treatments to get rid of the antibodies. She received two more treatments since the transplant. Mandi's sister, Jill and her husband Ben, and Mandi's brother, Michael, and his wife Jess, drove down to Houston as soon as they received news of the transplant. They arrived about 7 p.m. on Sunday evening. Mandi had a good night on Monday. The ventilator was turned off and she is now breathing all on her own. Tuesday morning they removed several IV lines, including the vent tube from her throat, as well as two of the four drain tubes in her back. It is hoped that she will be moved out of ICU onto the Transplant Floor by the end of the week. On Tuesday morning Mandi told Jill and Jess, "Tell the kids Aunt Mandi isn't sick anymore!" Mandi sat up and enjoyed a big breakfast early on Wednesday morning. Between breakfast and the 11 a.m. visiting hours, she walked down the hall and back. "This was quite a feat," said her mother, Donita, "since she hasn't walked in four weeks. She said her legs were shaking like a newborn kitten's." Mandi was told she would be moved out of ICU on Wednesday, but they didn't have a bed they could move her to. In the meantime, Mandi's family have moved her and Donita to a new apartment. The new address is: Mandi or



Mandi Lusby (right) with her daughter, Taylor Varnon.

Donita Lusby, DOMAIN at KIRBY, 1333 Old Spanish Trail, Apt. 3104, Houston TX 77054.

Mandi and her family feel very blessed that she has already overcome some of the initial problems following surgery. They also expressed great appreciation for all of the support they have received from family and friends and stated that they can't wait to get back to the Panhandle. "I have a need to express the overwhelming outpouring of love and support everyone has given us," said Donita. "Prayers are being answered and Mandi was blessed with the GIFT OF LIFE. I am so anxious to see what God has planned for her." Mandi has an 11-year-old daughter, Taylor, who attends Spearman Junior High. Taylor will be going to Houston to see her mom as soon as it is safe for Mandi. They have been able to talk on the phone a couple of times, though, and after she moves back to the transplant floor, they will be able to talk on the web cam. The first words Mandi wrote after her surgery (while she was still on the ventilator) were, "Tell Tay I luv her. Hang in there. So proud of her."

Mandi can't wait to get back home and become a part of her everyday life and activities again!

Borger Police Department Makes Arrest for Indecency, Sexual Assault

By Brooke Huff, Associate Editor, Borger News Herald
On September 4, 2009, Borger Police Department caused two warrants of arrest to be issued on Jesse William Browning, 42, for the offenses of aggravated sexual assault of a child and indecency with a child. The arrest, according to Lt. Anthony Griffin with BPD, was the result of an investigation involving child victims in at least two different households in the City of Borger. Additional information on the ongoing case is not currently available. BPD is working on trying to identify other victims in the area. Browning is a previously convicted sex offender released out of Oklahoma, Griffin said. His previous charges out of Oklahoma include six charges of "lewd molestation" and one charge of "rape by instrument" (Oklahoma arrest titles). He currently resides in Spearman, and, according to official records, is listed as a "low risk" offender. With the assistance of the Hansford County Sheriff's Department, Browning was arrested in Hansford County and was transported to the Hutchinson County Courthouse in Stinnett, where he is currently incarcerated in the Hutchinson County Jail. His bond, Griffin said, is set at \$300,000. Additional information on Browning's sex offender status, and other sex offenders, can be found on the Texas Department of Public Safety's web site at: www.txdps.state.tx.us



Jesse Browning

City of Spearman Announces Drop in Natural Gas Price

During the regular council meeting on Tuesday, September 15, 2009, Spearman City Council voted to enter into new terms with West Texas Gas to provide natural gas service for the City of Spearman. Currently, Spearman customers are paying \$10.05 per mcf. The new cost will be \$8.00 per mcf. This is a decrease of \$2.05 per mcf. The new price goes into effect beginning in October and will be reflected on the invoices mailed out on the first of November. The new agreement runs through August of 2010.

FSB Welcomes Werner



Eric Werner, vice-president and commercial lender at First State Bank of Spearman.

First State Bank of Spearman recently hired Eric Werner as a vice-president and commercial lender. He comes to Spearman from Elkhart, KS, where he lived and worked for five years. After earning his BA from Oklahoma Panhandle State University, Eric began his banking career in 1996 in lending at Farm Credit Services. He worked at First State Bank in Stratford prior to moving to Elkhart. His 13 years of banking experience has been centered in agriculture. "We are pleased to have Eric," said Tim Cooper. "He brings good ag experience to the bank." Eric and his wife grew up in the area around Boise City, OK. He is married to Connie and they have two children - Steffan, a freshman, and Belle, a 7th grader. Connie currently works for Area Mental Health in Elkhart as a youth counselor, but is hoping to find similar employment in the Panhandle.

Spearman Chamber Holds Ribbon Cutting for M.A.L.'S 2 Restaurant



The Spearman Chamber of Commerce held a ribbon cutting M.A.L.'S 2 Restaurant on Thursday, September 10, 2009 at 1 p.m. M.A.L.'S 2, located at 217 Main Street in Spearman (formerly the Panhandle Diner & Deli) opened for business on August 4, 2009. They will offer hamburgers, sandwiches, fish, Mexican food, home-made chicken fried steak and daily lunch specials, as well as a children's menu. Hours of operation are Monday through Saturday from 11 a.m. - 8 p.m. and Sunday from 10 a.m. - 3 p.m. They plan to open at 5:30 a.m. for breakfast after they hire a breakfast chef. M.A.L.'S 1 is located in Stinnett on Hwy. 207 South. Stop by and enjoy the down-home cooking at M.A.L.'S 2 - "Where friends meet to eat!"

Spearman Welcomes Computer Business

Tim Justice of Pampa is the newest business owner in Spearman. Tim and his wife, Amy, opened Greener Geek Computer Services in the Plains Shopping Center located at 511 C.S. Hwy. 207. (The office is located in the breezeway between the clothing store and Sreenzy Message.) Hours of operation for Greener Geek Computer Services will be Tuesday and Wednesday, 10 a.m.-5 p.m.; Thursday, 3:30-7 p.m.; and Monday, Friday and Sat-

urday by appointment. Their phone number is 644-GEEK (644-4335). Greener Geek Computer Services will offer pc repair, networking, virus scan, as well as equipment and refurbished computers, and will be available for contract work. He hopes to offer free computer classes at Hansford County Library in the near future. "If it exists, we can order it," commented Tim. "I have several resources

and am able to meet or beat most prices offered by chain stores. Tim, who is attending Oklahoma Panhandle State University, will receive a BBA in Computer Information Systems in December. Tim and his wife Amy have six children - Destiny, Murron, Tobie, Alannah, Quinn and Joshua. He and his family hope the business is successful enough to require them to move to Spearman.

by Dorothy Hudson

Out at the Lake

Jim Derington
Palo Duro River Authority
P.O. Box 99
Spearman, TX 79081
806-882-4401
pdra@dishmail.net



Willow Baccharis, also called Great Plains False Willow or Groundsel Tree.

Lake Level--September 14, 2009--18.76 feet

Labor Day Weekend is the last big camping time of the year. Jim reported eight campers on the office side and 14 behind the dam.

This weekend there were only two.

Living out at the Lake as the Deringtons do makes them cautious drivers as deer use the roads, too. Last Thursday morning on her way to teach at the Spearman High School, Mandy and a mule deer had an encounter. Unfortunately, the deer died, and

the car suffered some damage, but Mandy was not hurt, and she was able to continue to school. The incident happened on Park land not far from the south entrance.

Rick Harbinson called Jim this morning to ask if there were any mountain biking trails at the Park. Some will remember when Rick lived in Gruver and did skilled carpentry work. He gave it up to become an attorney. For the last 15 years he has lived at Guymon. He also owns the Guymon Title Company. He and his wife have taken up road bicycling but are

now interested in mountain biking and wondered if there were any trails at the Lake. Jim was happy to let him know there were fine trails that some of the fans were saying were better than the ones in Palo Duro Canyon.

To find the trails, cross the dam going east and turn right at the end of it. It is the spot where if you turn left you go down to the camping area behind the dam. There are two covered picnic tables where the trails start. It sounds like fun, but I don't have a mountain bike.

We have a line of shrubs growing on reclaimed land just west of the now smaller Lake. Linda Weller asked Jim for the name. As it was a new plant to Jim, he asked Rick Harrell of the Farm Service Agency in Spearman about it. Rick sent the name and a history of this shrub that is growing in sporadic bands on the west side of the lake.

Willow Baccharis, commonly called "Great Plains False Willow" and "Groundsel Tree" belong in the Sunflower family. Attaining a height of 3 to 6 feet, it has tan to white flowers that bloom May to July. The fruit has feathery hairs that mature in August and give it a fuzzy look. It is fair browse for deer and livestock. It is good cover for quail and small mammals, but it can be a major problem in some areas.



Les Sullivan and Justice of the Peace Bob Davis take a moment to reflect at the Hansford County war memorial. The flag was lowered to half-mast and a memorial wreath placed at the memorial in honor of Friday, September 11, 2009.



Sept. 11, 2009 in Spearman

A dedication ceremony was held on Friday, September 11, 2009 at 4 p.m. at Hansford County Courthouse for a tree that had been planted in honor of the United States military troops. Spearman resident Les Sullivan originated the idea and enlisted the Boy Scouts for the dedication of a red oak on the east lawn.

Those present were: Hansford County Sheriff Gary Evans, DPS Trooper Ed Longoria, Deputy Dee Mayfield, Police Chief Jim West, EMT Heather Garcia, Paramedic Diane Boyd, Hansford County Judge Benny Wilson, Fire Chief John Kunselman, Assistant Chief Bret Burgin, Les Sullivan, and Spearman Boy Scouts Seth Carson, Peyton Garnett, Jake Willimon, Connor Willimon, Dustin Kelley and Alex Valles.

Spearman Boy Scouts Seth Carson, Dustin Kelley, Jake Willimon, Connor Willimon, Peyton Garnett and Alex Valles listen as Hansford County Judge Benny Wilson talks at a tree dedication ceremony held on Friday, September 11, 2009 on the east lawn of the Hansford County Courthouse.

Hansford County emergency personnel and Spearman Boy Scouts take a moment to pay their respects on Friday, September 11, 2009.



It's A Girl!

Bailey Marie Walton was born August 27, 2009 to Meg and Ben Walton. She weighed 7 pounds, 8 ounces and was 20 1/2 inches long. They live in Mays Landing, NJ.

Proud grandparents are Joey and Lyn Woolley of Spearman. Great-grandparents are Beth and Wes Daniel of Spearman.



AVAILABLE NOW!
E-SUBSCRIPTION
to the
Hansford County Reporter-Statesman

It's time to take our "hats off" to the myths that surround breast cancer and get the facts! Join the Amarillo Area Breast Health Coalition and special guests, **Dr. Mark Arredondo** and **Nurse Navigator, Nancy Rudolph** as they present this enlightening, educational and interactive program.

"Hats Off" to Breast Cancer Myths

October 5, 2009, 6:00 pm
The O'Loughlin Center
502 S. Brandt St. in Spearman, TX.

Get the facts...

- Can you be too old to worry about breast cancer?
- What about family history and breast cancer?
- Does ethnic origin matter?
- Do only "well endowed" women have to be concerned about breast cancer?

Presented by the Amarillo Area Breast Health Coalition
www.aabhc.org

AABHC is the recipient of a grant from Komen for the Cure, Greater Amarillo Affiliate, that supports this program.

Hansford Hospice Volunteers
Phone...806-659-2285 for more information

STATIONMASTER'S HOUSE MUSEUM
30 S. TOWNSEND
SPEARMAN TX
806-659-3008

GARAGE SALE SAT., OCT. 17, 2009 8 A.M. - 5 P.M.

The Stationmaster's House Museum is planning a Garage Sale on Saturday, October 17, 2009 from 8 a.m.-5 p.m. in the Museum Annex Building (30 S. Townsend, Spearman). The Museum is holding this fundraiser to raise money for operations and repairs to the existing buildings.

The Museum is in need of donated items for th sale. (No clothing, please!) Donations will be accepted at the Museum during regular business hours, Tuesday-Saturday, from 1-5 p.m.

For more information, contact Doris Breeden at the Museum, 659-3008.

NOW OPEN!

Greener Geek Computer Services

PC Repair • Sales • Networking
Virus Scan • Training • Contract Work

511 C.S. Hwy. 207, Spearman

Hours: Tues. & Wed., 10 a.m.-5 p.m.
Thurs., 3:30-7 p.m.
Mon., Fri. & Sat. by appointment

Specializing in one-of-a-kind mums.

Matching mums and armbands, custom-made for you and your date.

HOME COMING 2009

Gruver Homecoming October 9

Spearman Homecoming September 25

All Occasion Flowers

202 N. Bernice
(across from the Post Office)
659-5180 • Spearman

Faithfully serving Hansford County since 1992.

LYNX

2009 Homecoming

Spearman High School
Gruver High School

HANSFORD COUNTY FLORAL COMPANY

300 MAIN • SPEARMAN
806-644-4000

WHERE EXPERIENCE COUNTS

COME TO THE GAME

Sept. 25th
Oct. 9th