



HANSFORD COUNTY THE REPORTER-STATESMAN

CELEBRATING 104 YEARS OF SERVICE TO HANSFORD COUNTY
HANSFORD COUNTY'S ONLY NEWSPAPER

WWW.SPEARMANREPORTER.COM

REPORTER@SPEARMANREPORTER.COM

75¢



HANSFORD COUNTY LIBRARY
0122 MAIN ST
SPEARMAN TX 79081-2064
COMP
SCR2

VOLUME 105 • ISSUE 12

THURSDAY, MARCH 29, 2012

Deadline Notice!

The deadline to submit news and advertising to the Hansford County Reporter-Statesman is Monday at 5 p.m. Items submitted after the deadline will be published at a later date, as time and space permit.

The Hansford County Reporter-Statesman will be closed April 10-22, 2012. We will resume regular business hours on Monday, April 23rd. (Regular hours are Monday-Wednesday, 9 a.m.-12 noon and Monday-Tuesday, 1-5 p.m. We are closed on Wednesday afternoon through Friday.) **The deadline for the April 12th and 19th issues will be Friday, April 6th.**

Items may be submitted by phone (806-659-3434), fax (806-398-9080), mail (Reporter-Statesman, 213 Main Street, Spearman TX 79081), or by e-mail (reporter@spearmanreporter.com).

For more information, please contact Catherine Smith at 806-659-3434, 806-584-4879, or reporter@spearmanreporter.com

Xcel Energy Texas Customers to See Lower Bills April 1st



Xcel Energy has gained approval from the Public Utility Commission of Texas (PUCT) to lower typical Texas residential bills of 1,000 kilowatt-hours by \$3.53, or 3.7 percent, starting April 1.

The savings will be even more when summer rates take effect June 1. A typical residential bill of 1,000 kilowatt-hours will drop by \$4.81 or 4.5 percent.

Xcel Energy originally sought a winter savings of \$1.78 when the company filed for a new fuel-cost factor in January, but natural gas prices continued to fall, leading the company to revise its projected fuel costs downward.

The lower bills, even in the face of rising demand, are a result of cost decreases in natural gas used to fuel area power plants. Additionally, increasing demand for electricity is being partially offset by

the efficiency of some natural gas generators.

"Our customers are benefitting from the lower cost of natural gas and from significant investments we have made, and are making, throughout our system," said Riley Hill, president and CEO of Southwestern Public Service Company, an Xcel Energy company.

"These significant up-front investments are critical to hold down costs over time," Hill said. "Included are environmental controls, efficient power plants, an upgraded distribution system and new high-voltage transmission lines to tap additional supplies of low-cost power outside our area."

About 40 percent of the energy used by Xcel Energy customers in Texas is derived from natural gas-fueled power plants. In 2008, Xcel Energy began purchasing power from the Hobbs Generating Station near Hobbs, N.M., a plant that is 40 percent more efficient than older natural gas-fueled plants. Additionally, the company opened a new, efficient natural gas-fueled generating unit at its Jones Generating Station near Lubbock last year. A fourth unit is planned at Jones for 2013.

Xcel Energy (NYSE: XEL) is a major U.S. electricity and natural gas company with regulated operations in eight Western and Midwestern states. Xcel Energy provides a comprehensive portfolio of energy-related products and services to 3.4 million electricity customers and 1.9 million natural gas customers through its regulated operating companies. Company headquarters are located in Minneapolis. More information is available at www.xcelenergy.com.

This news release includes forward-looking statements that are subject to certain risks, uncertainties and assumptions. Such forward-looking statements are intended to be identified in this document by the words "anticipate," "estimate," "expect," "projected," "objective," "outlook," "possible," "potential" and similar expressions. Actual results may vary materially. Factors that could cause actual results to differ materially include, but are not limited to: general economic conditions, including their impact on capital expenditures; business conditions in the energy industry; competitive conditions in the marketplace, etc.

Black Sunday Remembered



The dust bowl is a very important part of the history in the Oklahoma Panhandle. We have several opportunities to learn more about the Dust Bowl in April.

The 1930s were times of tremendous hardship on the Great Plains. Settlers dealt not only with the Great Depression, but also with years of drought that plunged an already-suffering society into an onslaught of relentless dust storms for days and months on end. They were known as dirt storms, sand storms, black blizzards, and "dusters." It seemed as if it could get no worse, but on Sunday, the 14th of April 1935, it got worse. The day is known in history as "Black Sunday," when a mountain of blackness swept across the High Plains and instantly turned a warm, sunny afternoon into a horrible blackness that was darker than the darkest night. Famous songs were written about it, and on the following day, the world would hear the region referred to for the first time as "The Dust Bowl."

The wall of blowing sand and dust first blasted into the eastern Oklahoma panhandle and far northwestern Oklahoma around 4 pm. It raced to the south and southeast across the main body of Oklahoma that evening, accompanied by heavy

blowing dust, winds of 40 mph or more, and rapidly falling temperatures. But the worst conditions were in the Oklahoma and Texas panhandles, where the rolling mass raced more toward the south-southwest - accompanied by a massive wall of blowing dust that resembled a land-based tsunami. Winds in the panhandle reached upwards of 60 MPH, and for at least a brief time, the blackness was so complete that one could not see their own hand in front of their face. It struck Beaver around 4 pm, Boise City around 5:15 pm, and Amarillo at 7:20 pm.

April is the perfect month to remember the Dust Bowl.

Main Street Guymon is hosting a Dust Bowl Afternoon on Sunday, April 1, at RC Party Room on 5th and Main. The afternoon begins at 1:30 with a wonderful homemade Depression Dinner made by Virgil Gibson. Then at 2:00 Dr. Sara Richter and others from OPSU are doing a Readers Theater of the play "I Only It'd Rain." They are not giving the full play, but a portion, with the full production that evening at OPSU.

Following the Readers Theater at the Main Street event, there will be a short Dirty 30s Sing-A-Long.

Tickets for the afternoon are \$15 per person and you can pick them up from Main Street Board Members or at the Main Street Guymon office, 116 NE Fifth.

The OPSU production times for Richter's play are Sunday, April 1, at 7:30 pm; Monday, April 2, at 7:30 pm; and same time on Tuesday, April 3. All performances are in the Hughes-Strong Hall in Goodwell.

Swan to Play NCAA Division II Football for Eastern New Mexico



Lynx Quarterback #13, Jace Lang-Swan has announced his decision to play NCAA Division II football for the Eastern New Mexico Greyhounds.

at Portales. Jace, a three year varsity starter for the Lynx, will be attending Eastern New Mexico majoring in Health and Physical Education and double minoring in coaching and Social Studies.

His long term goals include teaching Social Studies and coaching Texas high school football. While attending Spearman High School Jace received many academic and football awards.

Most importantly he would like to thank the lynx family "coaches and teammates" for the great memories that have been made his past three years of high school. He would also like to thank each parent and student who wrote letters each and every Friday, and last but not least the support from the community. Nothing Feels better than running out of the helmet and seeing a packed house on a Friday night.

Weekly Update

Texas, March 26- Average retail gasoline prices in Texas have risen 4.9 cents per gallon in the past week, averaging \$3.77/g yesterday. This compares with the national average that has increased 4.5 cents per gallon in the last week to \$3.86/g, according to gasoline price website TexasGasPrices.com.

Including the change in gas prices in Texas during the past week, prices yesterday were 31.8 cents per gallon higher than the same day one year ago and are 22.3 cents per gallon higher than a month ago. The national average has increased 21.9 cents per gallon during the last month and stands 29.5 cents per gallon higher than this day one year ago.

"The national average has risen twenty one consecutive days, according to our data, a troubling sign. Typically we expect such increases to occur more so in April," said GasBuddy.com Senior Petroleum Analyst Patrick DeHaan. "We're 31-cents per gallon ahead of our year ago pace, and I'm seriously contemplating revising my January forecasts upward having seen things race higher, faster than expected. If there's any ounce of good news for motorists, it's that such high prices so quickly may mean prices will peak in April rather than May," DeHaan said.

GasBuddy operates, TexasGasPrices.com, and over 225 other local gasoline pricetracking websites that follow prices at over 125,000 gasoline stations in the United States and Canada. GasBuddy also uses Facebook (facebook.com/gasbuddy), Twitter (twitter.com/gasbuddy), and phone apps to keep motorists ahead of changing gasoline prices.

Texas Crop & Weather

The following specific livestock, crop and weather conditions were reported by Panhandle Extension directors for March 27, 2012: The region was windy with above-average temperatures. Most counties received some much-needed moisture. Soil-moisture levels varied from adequate to very short, with most reporting very short to short. Wheat was in fair to very poor condition, with most counties reporting poor. Farmers continued to prepare for spring planting. Rangeland was in good to very poor condition, with most counties still reporting very poor to poor. Weeds were beginning to be a problem in rangeland and pastures. Ranchers were still providing supplemental feed for cattle.

Weather Forecast

THURSDAY - Partly cloudy. A 20 percent chance of showers and thunderstorms in the afternoon. Highs in the mid 80s. Southwest winds 10 to 15 mph.

THURSDAY NIGHT - Partly cloudy with a 20 percent chance of showers and thunderstorms. Lows in the upper 40s. South winds 10 to 15 mph.

FRIDAY - Partly cloudy. Highs in the lower 80s.

FRIDAY NIGHT - Partly cloudy. Lows in the upper 40s.

SATURDAY - Mostly sunny. Highs in the mid 80s.

SATURDAY NIGHT - Mostly clear. Lows in the mid 40s.

SUNDAY - Mostly sunny. Windy. Highs in the mid 80s.

SUNDAY NIGHT - Mostly clear. Windy. Lows in the lower 40s.

MONDAY - Mostly sunny. Cooler. Highs in the mid 60s.

MONDAY NIGHT - Mostly clear. Lows in the upper 30s.

TUESDAY - Mostly sunny. Highs in the lower 70s.

Read more: <http://www.city-data.com/forecast/w-Spearman-Texas.html#ixzz1qNKcCzm9>

Spearman Holy Week Services

Spearman Holy Week Services starting on April 2nd ending on April 6th. Location is First Christian Church, Spearman. The program/lunch will be open from noon to one.

Scheduled to host:
Monday - First Baptist Church, Jim Medley
Tuesday - Union Church, Steve Hinshaw
Wednesday - First Christian Church, Daniel Kovaly
Thursday - Faith Lutheran/Apostolic Faith, Cecil Biggers
Friday - Assembly of God, Brad Smith



AVAILABLE NOW!

E-SUBSCRIPTION

to the
Hansford County
Reporter-Statesman

Delivered to your e-mail each
Thursday for only \$35/year.

Purchase online at
www.spearmanreporter.com

Call 806-659-3434 or e-mail reporter@spearmanreporter.com for details.



Tax Return Filing Tips for the Approaching April 17th Due Date

The Internal Revenue Service has some tips for those hurrying to finish their tax forms - double-check your return for accuracy, use the free IRS resources if you need tax help, consider electronic options for filing and paying, and don't miss the filing deadline - Tuesday, April 17.

"Resist the temptation to put off your taxes until the very last minute," advised Clay Sanford with the IRS in Dallas. "Rushing to meet the filing deadline may cause you to overlook potential sources of tax savings and will likely increase your risk of making an error."

Go to IRS.gov and make "1040 Central" your first stop to check for the latest news and find answers to your questions about tax filing.

Let Free File do the hard work with brand-name tax software or online fillable forms. It's available exclusively at www.irs.gov. Everyone can find an option to prepare their tax return and e-file it for free. If you made \$57,000 or less, you qualify for free tax software that is offered through a private-public partnership with manufacturers. If you made more than \$57,000 and/or are comfortable preparing your own tax return, there's Free File Fillable Forms, the electronic versions of IRS paper forms. Visit www.irs.gov/freefile for options.

Try IRS e-file. Last year, 79 percent of taxpayers - 106 million people - used IRS e-file, which is the safest, easiest and most common way to file a tax return. If you owe taxes, you can file immediately and pay later (by the April 17 tax deadline). Using e-file in combination with Direct Deposit is the fastest way to get your refund.

Taxpayers may file and pay on time electronically until midnight of the deadline day. E-filers may pay by authorizing a no-fee electronic funds withdrawal from a checking or savings account. Taxpayers using electronic returns using a personal computer enter the data from the forms into the electronic filing software

themselves. This is similar to the attachment of Forms W-2, W-2G, and 1099-R to the face of paper tax returns.

"Another benefit of e-filing your taxes is that you do not need to send your W-2 or 1099 forms, but you should keep them in a safe place with a copy of your tax return," Sanford added.

People who file on paper should check their math on all computations, especially subtractions, and should be sure to get the correct tax amount from the tax table. The other numbers to be most careful about are the identification numbers - usually Social Security numbers - for each person listed on the return. Be sure to sign the tax return; both husband and wife must sign a joint return, even if only one had income.

If you are mailing your return, be sure to attach all W-2 forms received, plus any 1099 forms showing taxes withheld, to the front of the Form 1040 or 1040A. All other forms or schedules should be placed with the 1040 or 1040A, according to the attachment sequence number in the upper right corner. Put the federal return in the envelope addressed to the IRS and any state return in the envelope addressed to the state tax agency.

Get your envelopes to the local post office before the last pickup of the day. Check with your post office to see how late they will remain open if you plan on waiting until April 17.

The penalty for failing to file on time is five percent per month of the balance owed. If a taxpayer files more than 60 days late, the minimum penalty is \$100 or the balance due, whichever is less. The penalty for paying late is 0.5 percent per month of the balance owed. This rate drops to 0.25 percent per month for an individual who files on time and enters into an installment agreement with the IRS to pay the balance owed. There is no late filing penalty on a refund return, but a taxpayer who fails to claim a refund within three years of the filing deadline generally loses the right to that refund.

"If you can't pay the full amount of taxes you owe by the mid-April deadline, you should still file your return by the deadline and pay as much as you can to avoid penalties and interest," Sanford stressed. "More than 75 percent of taxpayers eligible for an Installment Agreement can apply using the web-based Online Payment Agreement application available at www.irs.gov."

To find out more about this simple and convenient process, type "Online Payment Agreement" in the search box at www.irs.gov. You can also contact the IRS to discuss your payment options.

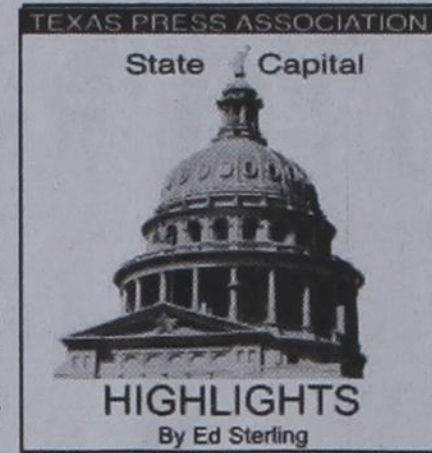
An installment agreement is a payment option for those who cannot pay their entire tax bill by the due date. The Fresh Start provisions give more taxpayers the ability to use streamlined installment agreements to catch up on back taxes and also more time to pay.

The new threshold for requesting an installment agreement has been raised from \$25,000 to \$50,000. This option requires limited financial information, meaning far less burden to the taxpayer. The maximum term for streamlined installment agreements has been raised to six years from the current five-year maximum.

If your debt is more than \$50,000, you'll still need to supply the IRS with a Collection Information Statement (Form 433-A or Form 433-F). You also can pay your balance down to \$50,000 or less to qualify for this payment option.

With an installment agreement, you'll pay less in penalties, but interest continues to accrue on the outstanding balance. In order to qualify for the new expanded streamlined installment agreement, you must agree to monthly direct debit payments.

Request an extension of time to file - but pay on time. If the deadline clock is ticking, you can get an automatic six-month extension through Oct. 15. However, this extension of time to file, which must be filed or postmarked by the April 17 deadline, does not give you more time to pay any taxes due. If you have not paid at least 90 percent of the total tax due by the April deadline you may also be subject to an estimated tax penalty. You can obtain an extension through Free File at www.irs.gov/freefile. Or, file Form 4868, Application for Automatic Extension of Time to File U.S. Individual Income Tax Return, available for downloading at www.irs.gov or by calling 800-TAX-FORM (800-829-3676) to have a paper form mailed to you. Allow at least 10 days for mailed forms and publications.



STATE CAPITAL HIGHLIGHTS

By Ed Sterling



by Ed Sterling

Drought, wildfire impact, persist as big issues

AUSTIN — Even with better-than-normal rainfall in many locales in the last quarter of 2011 and the first quarter of 2012, lake and reservoir levels remain low and widespread concern about drought and wildfire remains high.

Meanwhile, Agriculture Commissioner Todd Staples on March 21 announced agricultural losses attributed to the 2011 drought had reached \$7.62 billion. Texas AgriLife Extension Service economists said last year's drought was the costliest on record for the state.

At a March 22 interim meeting of the House Natural Resources Committee, Drew DeBerry of the state agriculture department said the \$7.62 billion figure does not include some \$3.4 billion in timber losses, and that wildfires burned off the vegetation on more than 4 million acres of land.

With the threat of high winds and drought continuing, Gov. Rick Perry last week extended two disaster proclamations, one for drought affecting the state's 254 counties and one for wildfire affecting 86 West Texas counties. Perry originally issued the drought emergency disaster proclamation on July 5, 2011, and the wildfire emergency disaster proclamation on Dec. 21, 2010.

There's a State Drought Preparedness Plan for emergency responses to severe drought, but future, large-scale needs are addressed in the Texas Water Development Board's 2012 state water plan. Graphs in the plan show the state's population nearly doubling in the next 50 years and the water supply correspondingly decreasing. Recommendations six years in the making - the input of more than 400 people and 16 regional water development boards - are in place for new water conservation and management measures needed to deal with persistent drought conditions.

Included in the water plan is a Jan. 5 "letter to the People of Texas" by Water Development Board Chairman Edward G. Vaughan. "As the state continues to experience rapid growth and declining water supplies," Vaughan wrote, "implementation of the plan is crucial to ensure public health, safety, and welfare and economic development in the state."

Supreme Court to hear case

Monday through Wednesday of this week (March 26-28) the U.S. Supreme Court is scheduled to hear oral arguments in Florida v. United States Department of Health and Human Services. The court is expected to render a ruling on the case in late June.

Texas is one of 25 states joining Florida in the case petitioning the high court to declare unconstitutional the national health care law, the Patient Protection and Affordable Care Act of 2010. The states' main objection stems from a mandate in the law that beginning in 2014 will require an individual to purchase health care coverage if their employer does not offer it.

Gov. Perry, Attorney General Greg Abbott, U.S. Sen. John Cornyn and other prominent Republicans have expressed opposition to the law, asserting that it violates states' rights and individual rights.

March 23 was the second anniversary of President Obama's signing the act into law. The Austin-based, non-partisan Center for Public Policy Priorities published a paper on March 23 to point out a few things the law is already doing, such as:

- 7.5 million Texans no longer have a lifetime limit on their health insurance.
- More than 300,000 Texans under age 26 are allowed to stay on their parents' policy.
- 3.8 million Texans with

private insurance can get preventative care with no co-pay or deductible.

Texans asked to visit parks

Texas Parks and Wildlife Department last week reported a \$4.6 million budget gap brought on by devastating wildfires, record drought and a corresponding decrease the number of state park visitors.

Carter Smith, executive director of the Texas Parks and Wildlife Department, launched an appeal on March 22, asking more Texans to visit the parks and help erase the budget deficit.

Texans are pitching in already. The agency reported it had received \$1.4 million since early December through the Texas Parks and Wildlife Foundation and contributions from a new program allowing Texans to donate to state parks when registering motor vehicles.

Nuclear waste disposal OK'd

The Texas Low-Level Radioactive Waste Disposal Compact Commission on March 23 voted unanimously to approve rules allowing low-level radioactive waste from 38 states to be shipped to Texas and stored at an underground site in Andrews County.

Final approval must be granted by the Texas Commission on Environmental Quality for shipments to begin.

SUDOKU
PRESENTED BY

VolunteerMatch.org
Where volunteering begins.

		9	7	4					
			6	3		1	8		
5					8				
		1					2	4	7
6	4	7					3		
				3					9
	6	2			8	5			
				9		7	5		

© StatePoint Media answer on classified page
Fill in the blank squares in the grid, making sure that every row, column and 3-by-3 box includes all digits 1 through 9.

Thank You!

Dear Citizens of Spearman

As we bring our bond and ties to the city of Spearman to a close, we again want to say thank you to all who have been a good family friend for the past sixty five years. Thank you to all who sent flowers and food. Thank you to Pastor Jack, Kathryn and the congregation of Apostolic Faith Church for your prayers and visits. Thank you First Christian Church for opening your doors to us. Thanks to Hansford Hospital Staff and Dr. Garnett for your gentle loving care during the last days. Last but not least to Hansford Manor for giving our Mother a home away from home for a year. We may be gone but memories live on forever. We will never forget you.

Sincerely,
The Children of James and Ruby Riley
Betty & Tommy Davis, Paula Riley, Pauline Heinz,
Lois & Mike McCaskill, Callie & David VanKleeck

The Hansford County Reporter-Statesman

Mailing Address - 213 Main Street • Spearman TX 79081
Physical Address - 310 Barkley Street • Spearman TX 79081
Phone - (806) 659-3434 • Fax - (806) 398-9080
www.spearmanreporter.com • reporter@spearmanreporter.com
Mon.-Thurs. 9 a.m.-12 p.m., Mon.-Wed. & 1-5 p.m.
Closed Thurs. afternoon and all day Fri., Sat. & Sun.

Gary Smith - Publisher Catherine Smith - Editor
Contributing Writers: Dorothy Hudson, Jim Detriton, Merry Sparks, Cecil Biggers, Virginia Scott, Ed Sterling, Rod Sumner
Contributing Photographers: Lisa Johnson, Sami Hargrove, Tammy Batton, Bonnie Bergan, Rod Sumner

Subscription Rates
In Hansford County - \$30.00 • Out of County - \$40.00
E-Mail Subscription - \$35.00

The Hansford County Reporter-Statesman (USPS 529660) is published weekly in Spearman, TX. Periodical postage paid in Spearman, TX. **POSTMASTER:** Send address changes to: The Hansford County Reporter-Statesman, 213 Main Street, Spearman, TX 79081.

Publication Policy
The deadline to submit news and advertising to The Hansford County Reporter-Statesman is Monday at 5 p.m. Items submitted after the deadline will be published at a later date, as time and space permit. Publication of all items is at the discretion of the editor.

Advertising
Open Display rates are \$4.00 per column inch. Classified Ads are \$7 for the first 20 words and 15¢ per word for each additional word. (Additional charge for boxed classifieds.) There is a \$1 charge per week if billed.

Member of
Gruver Chamber of Commerce
Spearman Chamber of Commerce
Texas Press Association and Panhandle Press Association

PRIMETIME TV

<p>ACROSS</p> <ol style="list-style-type: none"> *Usually second half of "Law & Order" Nada Do, re or mi All plants and animals Dental group ____ of Honor On the move Scottish hero Rob Egg-shaped object *What survivors and losers have in common ____ of Honor Often considered wise Makes feathers stick "The ____ of Life," movie Pipe material Forbidden Crushed grain of various cereals *What "CSI" does on CBS on Wed. nights Original Cohiba producer It's delayed in summer Christmas season *In search of an apprentice Italian money Remote in manner Attorney's bargain Disparaging remark Praying insect Not in favor of 	<ol style="list-style-type: none"> Printing unit, pl. Scoff *They know drama? *What Aguilera judges *One show has 60 of these Laughing predator *Everybody used to love this actor. Visual or picture Related to oats Overnight lodging Water wheel "Odyssey," e.g. Approximated landing time *He was the dad in "Family Ties" <p style="text-align: center;">DOWN</p> <ol style="list-style-type: none"> Type of ski lift "____ and shine!" Tiny amount Like Tower of Pisa Cowboy's rope catcher "Not a" or "never a" *Bachelor's last words? Extra shirt, e.g. *Actress Campbell, formerly of "Party of Five" Smell Mai ____ Old age, archaic *Like the Pritchetts Parcel of land Drumstick 	<p style="text-align: center;">These games are brought to you by the Hansford County Reporter-Statesman</p> <ol style="list-style-type: none"> *They salsa and rumba Oscar nominee _____ Famous king of Thebes Stomach reflex Rembrandt's medium Nimble Monotonous hum *They salsa and rumba One-armed bandit Prayer's end Singer LaBelle Fiji native Part of a min. The 9th in baseball, e.g. Fear-inspiring Cancer symptom Obama's right Singles Asian starling Tropical edible root Knight's chest plate Neptune's domains Gardening tool High-pitched bark Marching insect
---	---	--

These games are brought to you by the
Hansford County Reporter-Statesman

VolunteerMatch.org
Where volunteering begins.

© StatePoint Media answer on classified page

Happy Birthday!

March 29
Birthday - Lacy Barkley, Dixie Karlin, Joshua Kirby, Jessica Stork, Josephine Salgado, Scott Beedy, Melissa Taylor, Tiki Farrar, Chad Guthrie, David West, Marg Cook, Janis Maupin, Josh Harris, Jeann Thompson, Scot Martin, Ruth Shields, Ramon Garcia Jr., Greyson Karlin

March 30
Birthday - Jesus Favela, Loni Lamb, Vi Hornsby, Mrs. Elmer Longley, Nikki Strawn, Grady Cline, Denae Baker, Jimmy Blain, Heather Cline, Krystal (Burkhammer) Puentes, Shane Atwood, Mike Schick, Marvin Sparks, Dorothy Longley
Anniversary - M/M Ruben De Santiago

March 31
Birthday - Reaetta Gammion, Crystal Gruver, Ken Jones, Comfort Winders, Kay Patterson, Nellie Buchanan, Dionne Pencille, Santiago Tercero Jr., Johnny Vernon, Cheryl Linde, Jolinda Wilson, David Flowers, Courtney Valdez, Teresa Carter, Weston Castillo, Kenton Johnson
Anniversary - M/M Chuck Sparkman, M/M Daniel Miser, M/M Jim Bass, M/M Dan Carthel, M/M Allan Beasley

April 1
Birthday - Cynthia Henson, Matt Messer, Chris Stork, Wayne Ware, Bob Hertz, Lorie Acevedo, Jack Duncan, Tanner Brown, Elizabeth Duncan, Ashlynn Miner
April 2
Birthday - Margaret Odom, Dorothy O'Connell, Norma Hermsillo, Kyle Keim, Steve Templeton, Pam Barber, Phillip Turner, Amy Schoenhals, Paulene Galvon, Eugene Sadler
Anniversary - Bob & Debra Dennis

April 3
Birthday - Bob Gillispie, Don Rimmel, Brenda Rudolph, Pam Buzzard, Teri Taylor, Bill Gaither, Doris Beck, Jeff Williamson, Eric Varnon, Ryan Noble, Jared Bass, Tracy Graham, Katie Baehler, Betty Davis
April 4
Birthday - Frank Pittman, Sandy TeBeest, Glenn Mackie, Billy Snider, Lola Salgado, Monte Morris, Randall Schnell, Mark Landon Brown, Carlos Lopez, Midge Mahaffy, Don Ladd, Ramona Reynolds, Violet Lee, Brandon Traylor, Ayana Rosales
Anniversary - Rick & Elanie Morris

April 5
Birthday - Becky Cassidy, Jimmy Finley, Carrie Pressley, Vana Stapleton, Carla Brown, Dickie Allen, Juanita Rodriguez, Deann Green, Deanne Ochoa, Paul Welch, Jimmie Davis, Irene Auld, Darla Jenkins, Leon Bagwell, Wendell Ralston, Kelcee Rex, Sara Jenkins, Vanna Reid

Anniversary - M/M Jack Weldon
April 6
Birthday - Margaret Ralston, Trey Roberts, Jerry Sparks, Eddie Rogers, Cindy Patterson, Bailey Lee Patterson, Redonna Moore, Cameron Kunsleson, Douglas Barnes, Tim Wooley, Ann Sheets, Oberto Balderama Jr.
Anniversary - Dale & Onie Moyer, Kenny & Brenda Red, M/M Skipper Beal, M/M Emit Schmidt

April 7
Birthday - Margaret Bell, Kallie Cluck, Will Evans, Jeannie (Potts) Dawkins, Sharlet Slough, Sammie Stavlo, Shawn Thompson, Kyle Winter, Kenneth Brown, Jo McLaughlin, Wallace Berner, Jo Nell Grayson, Michael Brogdon, Beth Lesly, Denise Torrea, Tashaia Duncan, Linda Winegarner, Laurie Beth Stedje, Seth Clemmons, Joshua Scott Bullard, Lorene Fulce, Denise Apodaca, Mason Fletcher, Greg Evans
Anniversary - M/M Donald Jackson, M/M Monty Cassidy

April 8
Birthday - Cami Shapley Jenschke, Damon Goodheart, Julie Ortega, Shenell Taylor, Brandon Vanderburg, Barbara Ellsworth, Ramona Garcia, Isaac Herndon, Jennifer Laxson, Jim Deakin, Dalton Ortega
April 9
Birthday - Julie Martin, Phyllis Atwood, T.J. Bayless, Diane Brown, Jeremy Harris, Colby Hunt, Dan Odom, June Kelp, Annette Pope, Patti Schnell, Pepper Collingsworth, Cease Riley, Lori Young, Sims Reddin, Kara Womble, Clyde Hodge, April Butts, Robin Castillo, Maggie Pipkin
Anniversary - M/M Keith Burgess

April 10
Birthday - Bill Been, Mack Hoel, Matthew Hoel, Sally Jones, Blane Tolleson, Donita Lusby, J.L. Pierce, Mary Lou Wysong, Jan Halladay, Mac Sheppard, Penny Cummings, Shelby Lopez, Ramon Garcia Sr., Aaron Maestas
Anniversary - M/M Donnie Osbourne
April 11
Birthday - Harlan Gerardy, Darrell Harvey, Billy Logsdon, Tammie Jo Simpson, Mike Stewart, David Pope, Wardell Volden, Robert Brisen, Slavin Sparks, Bill Baker, Dana McLaughlin, Mickie Fanning, Courtney Sheets, Austin Munoz, Jamie Renteria

April 12
Birthday - Jennifer Lopez, Alice Slough, Mary TeBeest, Earl Taylor, Chance Jackson, Lelia Reyes, Paul Lopez Jr., Tara Butt, Sonya Messer, Tammy Red, Keith Hight, Helen Soto, Lilla Villa, Lauren Ferguson
Anniversary - M/M Sonny Nollner

Our Sympathy

MARY HUNT JOHNSON
SPEARMAN - Mary Hunt Johnson, 94, of Spearman, formerly of Childress, died Thursday, March 22, 2012.

Graveside services will be at 2 p.m. Monday in Childress Cemetery with Jon Garnett officiating. Arrangements are by Boxwell Brothers Funeral Home of Spearman.

Mrs. Johnson was born March 20, 1918, in Childress. She married Carol Hunt in 1935. He preceded her in death in 1969. She married Charlie H. Johnson in 1971. He died in 1989. She was a homemaker and a Methodist. She also was preceded in death by five brothers and four sisters.

Survivors include two sons, Jerry Hunt and Tom Hunt, both of Gruver; seven grandchildren; and nine great-grandchildren.

The family suggests memorials be to Hansford Manor or Hansford Hospice, 707 S. Roland St., Spearman, TX 79081.

EARL SPENCER

SPEARMAN - Earl Spencer, 73, of Spearman, died Tuesday, March 20, 2012.

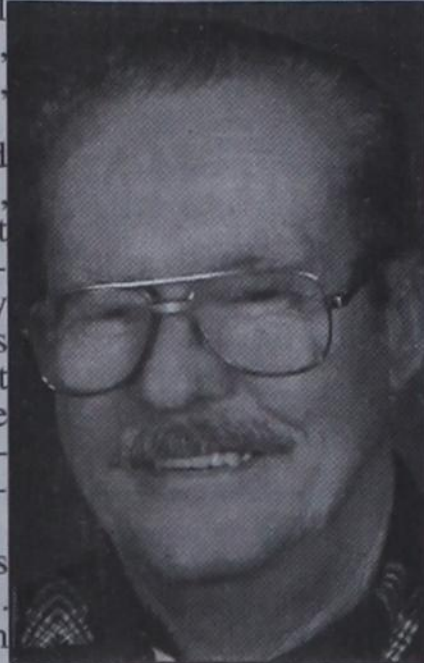
Funeral services were held at 11 a.m. on Saturday, March 24, 2012 at the First Christian Church of Spearman with Rev. Dan Kovaly and Rev. Danny Hendricks officiating. Interment was at Holt Cemetery, under the direction of Boxwell Brothers Funeral Home of Spearman.

Earl was born in Texas County, MO on May 1, 1938. He married June Randall on December 19, 1964 in Spearman.

He was a member of the First Christian Church. He worked for KTM Drilling Co. in Guymon, OK for 11 years. Then he worked for Baker & Taylor Drilling Co. for many years, from 1976-1993. He worked for Delozier Welding and Speartex until his retirement in 2003.

Survivors include his wife, June Spencer of Spearman; a daughter, Earla Spencer of Amarillo; a son, Jeff Spencer of Kyle, TX; three brothers, Charles Spencer of Deepwater, MO, Carl Spencer of Graves Mill, MO and Carl Spencer of Greenville, MS; a sister, Vera Greer of Willis Springs, MO; three grandsons, Andrew Spencer of Omaha, NE, and Kyle Spencer and Michael Spencer of Kyle, TX; a granddaughter, Michelle Spencer of Kyle, TX; and a great-grandson, Randy Spencer of Kyle, TX.

The family requests memorials to Hansford Manor, 707 S. Roland Street, Spearman TX 79081, or to St. Jude Children's Children Research Hospital, 501 St. Jude Place, Memphis TN 38105.



Words from Faith & Grace

by Cecil R. Biggers, Lutheran Lay Minister



The Season of Lent concludes as we enter Palm Sunday/Passion Sunday. Many Christian churches celebrate the triumphal entry of Jesus The Christ into Jerusalem as he prepares to celebrate the Passover and submit to the Cross. Those who recall the passion of Jesus the Christ study Isaiah 50: 4-9, Psalm 31: 9-16, Philippians 2: 1-13, and Mark 15: 1-39.

Isaiah tells of the Suffering Servant who has been given the tongue of a teacher to sustain the weary with a word. The servant is struck on the back and his beard is plucked from his cheeks. The servant is insulted and spat upon. The servant remains true to God and it is God who helps him through this time of trial. We, Christians, see an image of Jesus The Christ, gentle and loving, who is led to a horrible death on a cross.

The Psalmist sings a song of personal suffering; yet, he sings, "But I trust in you, O Lord; I say, 'You are my God.'" Verse 6 of this Psalm was cited by Jesus The Christ on the cross, "Into your hand I commit my spirit"; not spoken was "you have redeemed me, O Lord, faithful God."

Mark 14:1 - 15: 47 is the moving story of the trial and crucifixion of Jesus the Christ. Read this prayerfully. I cannot express this story any more powerfully than Mark. Our Lenten Journey has taken us from a time of introspection, of testing, to a cross.

On behalf of the Spearman Ministerial Alliance, We invite you to our Community Holy Week Services to be held at noon each day from April 2nd to April 6th. Soup, sandwiches and desserts will be provided each day at noon by our host churches. The location is the First Christian Church, Spearman, Texas. The host churches and speakers are as follows:

Monday: First Baptist Church, Pastor Jim Medley; Tuesday: Union Church, Pastor Steve Hinshaw; Wednesday: First Christian Church, Pastor Daniel Kovaly; Thursday: Faith Lutheran and Apostolic Faith, Pastor Cecil Biggers (Faith Lutheran); Friday: Assembly of God, Pastor Brad Smith. Join us!

MONUMENTS

Boxwell Brothers Funeral Home

519 Evans • Spearman
659-3802

Dear friends,
 When you buy a monument from us we make sure it is exactly what you want at a price you can afford. If it is not right, we will make it right. And you will not have to search the countryside to find us. We are here when you have a need.

Sincerely,
 Bob Boxwell

FIREWOOD FOR SALE

Cedar firewood for sale. Call (806) 658-2573.
 Delivered & stacked, or self pickup.

Replenish the seed of faith through . . .

DAILY BIBLE READING, PRAYER & REGULAR CHURCH ATTENDANCE

Spearman

Apostolic Faith Church
 822 S. Drexler • 659-2870
 Sunday School: 10 a.m.
 Worship Service: 11 a.m.
 Sun. Eve.: 6 p.m.
 Wed. Prayer Mtg.: 7 p.m.
 Pastor - Jack Cornell

First Assembly of God
 401 N. Bernice • 659-2295
 Sunday School: 9:30 a.m.
 Worship: 10:40 a.m.
 Evening Worship: 6 p.m.
 Wed. Worship: 7 p.m.
 Wed. Youth: 7 p.m.
 Pastor - Brad Smith

First Christian Church
 (Disciples of Christ)
 29 S. Bernice • 659-2036
 Sunday School: 9:45 a.m.
 Worship: 10:50 a.m.
 Minister -

First Baptist Church
 123 N. Bernice • 659-5557
 Sunday School: 9:45 a.m.
 Worship: 11 a.m.
 Evening Worship: 7 p.m.
 Men's Bible Study - Wed., 7 a.m.
 Children's Choir - Wed., 6 p.m.
 Adult Choir - Wed., 7 p.m.
 Wed. Bible Study: 7 p.m.
 Pastor - Jim Medley

Church of Christ
 121 S. Haney • 659-3244
 Sunday Bible Class: 9:45 a.m.
 Worship: 10:30 a.m.
 Evening Worship: 6 p.m.
 Bible Study Wed.: 7:30 p.m.

Sacred Heart Catholic Church
 901 Roland • 659-2166
 Sat. Night Mass: 5:30 p.m.
 Sun. Mass: 9 a.m. - English
 Sun. Mass: 11:30 a.m. - Spanish
 Rev. Gregory Bunyan

First United Methodist
 407 S. Haney • 659-5503
 Sunday School: 9:45 a.m.
 Worship: 8:30 & 11 a.m.
 Jr. High Youth: 5 p.m. Sunday
 High School: 6 p.m. Sunday
 Kids Club: 3 p.m. Wed.
 Pastor - Toni Bailey

Grace Presbyterian Church
 (Worshippers with Faith Lutheran Church)
 1101 Bernice • 659-2033

Faith Lutheran Church (ELCA)
 1101 Bernice • 659-2252
 Sunday School: 9:45 a.m.
 Worship: 11 a.m.
 (Worshippers with Grace Presbyterian Church)
 Pastor - Cecil Biggers, PLM

Union Church
 31 S. Endicott • 659-2644
 Sunday School: 10:00 a.m.
 Worship & Kid's Church: 11:00 a.m.
 Wednesday Evening Worship and Bible Study Service: 7 p.m. Wed.
 Pastor - Steve Hinshaw
 www.unionchurchonline.org

Fellowship Baptist
 1102 S. Archer • 659-2783
 Sunday School: 10 a.m.
 Worship: 11 a.m.
 Sun. Evening Worship: 6 p.m.
 Sun. Evening Spanish Worship: 7 p.m.
 Youth/Adult Service: 7:30 Wed.
 Pastor - Phillip Hudson

Primera Mision Bautista
 502 E. 7th • 659-3991
 Sunday School: 9:45 a.m.
 Worship: 11 a.m.
 Evening: 6 p.m.
 Wed. Prayer Meeting: 7 p.m.
 Thurs. Visitation: 7 p.m.
 Pastor Joe Garcia Jr.

El Aposento Alto U.P.C.I.
 1105 S. Roland
 Domingos: Escuela-Dominical - 10 a.m.
 Culto Evangelistico - 7 p.m.
 Jueves: Oracion - 8 p.m.
 Mier: Estudio Biblico - 7 p.m.
 Pastor - A.G. Martell
 (806) 659-2153

Gruver

First Baptist Church
 402 E. Broadway • 733-2411
 Sunday School: 9:45 a.m.
 Worship: 10:50 a.m.
 Disciple Training: 6 p.m. Sunday
 Prayer Meeting: 7:30 p.m. Wednesday
 Pastor - Scott Curry

Church of Christ
 209 King • 733-2760
 Sunday School: 9:30 a.m.
 Worship: 10:20 a.m.
 Evening Worship: 6 p.m.
 Wed. Worship: 7:00 p.m.
 Minister - Gaylord Cook

First Christian Church
 510 King • 733-2960
 Sunday School: 10:00 a.m.
 Sunday Worship: 11 a.m.
 Youth: 7:30, Sunday
 Adult Bible Study: 7:30, Sun.
 Wed. Bible Study: 8:00 p.m.
 Pastor - Gary Gumfory

Gruver United Methodist
 Broadway & Garrett
 733-2651
 Sunday School: 9:45 a.m.
 Worship: 8:30 & 10:50 a.m.
 Eve. Worship & UMY: 6 p.m.
 Pastor - George Price

Spanish Cristo Redentor Church
 Hwy 15 806-659-2166
 Gruver, TX
 Sun. Mass: 1:30 p.m. - Spanish
 Rev. Gregory Bunyan

Oslo

Oso Lutheran Church (ELCA)
 6 Miles West & 12 Miles
 North of Gruver
 339-7646
 Sunday School: 9:45 a.m.
 Worship: 11 a.m.
 Pastor - Arlen Lloyd

Morse

Morse Baptist Church
 733-2757
 Pastor - Gary Stevens

Waka

Church of Christ
 300 Rogers Ave.
 202-7126
 Sunday School - 9:30 a.m.
 Sunday Worship: 10:30 a.m. & 6 p.m.
 Wednesday Bible Study: 7 p.m.
 Preacher - Ed Jenkins

He has showed you, O man, what is good. And what does the LORD require of you? To act justly and to love mercy and to walk humbly with your God.

Micah 6:8

This feature is made possible through the sponsorship of these civic minded businesses:

Deakin ELECTRIC
 OILFIELD • RESIDENTIAL • COMMERCIAL
 321 S. MAIN • SPEARMAN
 1-800-999-1506 Chris Deakin
 (806) 659-5016 President

Bartlett's Lumber & Hardware
 105 W. Broadway • Gruver, TX
 (806) 733-2404

Money's
 Stan & Donna Zepp - Owners
 Phone 435-3945
 14 SW 3rd Ave, Perryton TX

Morse Implement & Auto Supply
 "Join us in church"
 Tom Dortch 733-2668
 Box 89 • Morse, TX 79082

PRAIRIE MOTORS INC.
 Hwy. 207 South • P.O. Box 430
 Spearman, TX 79081 • (806) 659-2541
 www.prairiemotors.com

MurMur's Cafe
 100 Roland St
 Spearman, TX.
 659-3580

Hansford County Reporter-Statesman
 "Proudly Serving Hansford County Since 1907"
 (806) 659-3434
 310 Bartley • Spearman, TX

INTERSTATE BANK, sss
 www.interstatebank.com
 322 Main Street • Spearman, TX
 (806) 659-2559

dish AUTHORIZED RETAILER
 30 premium movie channels FREE
 HBO CINEMAX SHOWTIME Starz
 PLUS FREE
 1-800-298-4509 www.infinitydish.com

Mesothelioma EXPERIENCE COUNTS
 Lawyers with over 100 years combined expertise.
 Ryan A. Krebs, M.D., J.D. Doctor-Lawyer in Full-time Law Practice
 Richard A. Dodd, L.C.
 Timothy R. Cappolino, P.C.
 Board Certified Personal Injury Trial Law and Civil Trial Law by the Texas Board of Legal Specialization
 NO FEE FOR FIRST VISIT
 CAMERON, TEXAS
 1-888-MESO-FIRM
 (1-888-637-6347)
 www.MesoFirm.com

Visit **FAMILYPOOLFUN.COM**
 • Our pools create Generations of Memories everyday, vacations never end!
 • Aboveground & Inground pools at WHOLESALE PRICING
 • SIMPLE DIY Pool Kit Assembly
 • SAVE MONEY on All Pool Supplies & Accessories. Ships Fast
 Call Today! 800-950-2210

Full Dispersal Cattle Ranch Auction
 SELLS WITHOUT RESERVE
 Friday, April 20 at 12pm
 Working Cattle Ranch - Gainesville, TX
 1,400+ Ac in 16 Parcels Plus Homes, Barns & Working Pans, Equipment and 400+ Cow/Calf Pairs
 Open Sunday 1-4pm!
 williamsauction.com/starnes • 800.801.8003

WMI

FOR YOUR INFORMATION

Medical Fund for Francis Scroggs Pond

A Medical Fund that has been set up at FNB for Francis (Scroggs) Pond, she has been Diagnosed with cancer and will begin chemotherapy in Amarillo (and possibly surgery in Dallas in the near future).

Spearman Food Bank 1st Thursday

If you would like to help the Spearman Food Bank, they need help unloading the truck at 11:30 each 1st Thursday of each month. Contact Cecil Biggers for more information.

Hansford Co. Library Thrift Shop Accepting Donations

Alley Katz (Library Thrift Shop) is accepting donations of quality items. You may ask for the key to the Thrift Shop at the library desk during regular hours (9:30 a.m.-5 p.m., Monday-Friday). Alley Katz is open from 10 a.m.-4 p.m. each Wednesday.

March of Dimes Chili Cook-off & Fun Day

The 3rd Annual March of Dimes Chili Cook-off and Fun Day and 2nd Annual "5K Bustin for Justin and the Perryton Premies" Fun Run/Walk is being held Saturday, March 31, 2012 at Whigham Park on Main St. in Perryton. Race registration is 9-9:30 am and race start is 10 am. Chili cook-off begins at 8 am. Chili tasting, Fun Day with inflatables and bungee trampoline by Martin Entertainment Extreme, games, food, and craft booths from 12-4 pm. For more information and/or entry forms for chili entries, 5k, and craft booths go to www.bustinforsjustin.org or call 228-5745. All proceeds benefit the local McGaughy Family March of Dimes Team, 5K Bustin for Justin.

Spearman 4-H Club Meeting

The Spearman 4-H Club will meet on Tuesday, April 3rd in the Spearman County Barn at 7:00 p.m. The program will be Leather craft (make and take project).

Caring for Those You Care About

Caring for Those You Care About, "Road Maps for the Journey," a 5 part Lunch & Learn Series, will be held at The O'Loughlin Center, 502 Brandt, Spearman from 12-1 p.m. Sessions will include: Long Term Care - March 28th, and Protecting Against Scams & Frauds - April 18th. This event is sponsored by Texas AgriLife Extension. Registration Fee for the series is \$10. Participants may attend one or all of the five programs in the series for the one time fee of \$10. Lunch will be provided, followed by speaker and question/answer session. Call Peggy Winegarner, Hansford County Extension Agent, for more information, 806-659-4131.

Our Diamond Miss Pageant

Our Diamond Miss will be hosting their annual preliminary pageant in Borger on Saturday, April 14, at the Borger Johnson Park Youth Center. The pageant is currently in its 31st year and has served many young ladies in the community. The pageant is open to young ladies ages 0-19 years old. Babies are divided into three age divisions for competition: 0-12 months, 13-24 months, and 25-35 months. The baby contestants are eligible to compete in World of Babies, Beautiful Baby, Sportswear, Photogenic, and Portfolio. Contestants 3-19 years old are divided into six age divisions: Tiny Miss (3-4), Petite Miss (5-6), Junior Miss (7-9), Young Miss (10-12), Teen Miss (13-15), and Elegant Miss (16-19). Contestants in Tiny through Elegant Miss compete in the age group based on their age as of January 1, 2012. Categories for these young ladies include Modeling in party dress and sportswear, Talent, Glamour, Photogenic, and Portfolio. You are not required to enter all the categories to be in the pageant. No experience is necessary. For more information, please call 275-0455 or 274-4536.

PEAB Webinar

A Parenting Webinar will be held at 7:30 p.m. on Thursday, March 29, 2012. Viewing also available at the Amarillo College Main Campus, 2nd Floor of the College Union Building, (across from Library). Featuring Dr. James Garbarina.

Child Abuse Prevention Advocates

The 12th Annual Child Abuse Prevention Conference will be held in Amarillo on Thursday, March 29, 2012 from 8:30 a.m.-4:30 p.m. The seminar is entitled "Wounded Spirits & Healing Paths: Untreated Traumatized Children & the Scary Adults They Become" with Dr. James Garbarino. The cost is \$20.

Sports & Athletic Field Workshop

The Texas AgriLife Extension Service in Potter County will be holding its annual Sports and Athletic Field Education event on March 30 at the Texas AgriLife Research and Extension Center, 6500 W. Amarillo Blvd., Amarillo. Registration will begin at 8 a.m. with the event starting at 9 a.m. and ending by 2:30 p.m., said Brandon Boughen, AgriLife Extension agricultural and natural resources agent for Potter County. The cost will be \$40, which includes educational materials and lunch. Pre-registration is required. The course will provide an overview of turfgrass selection, best management practices, weed identification and control and managing sports fields during drought conditions, Boughen said. Three pesticide applicator continuing education units will be offered to Texas Department of Agriculture license holders. Participants must preregister by March 26 by going to <http://potter.agrilife.org/forms>. Contact Boughen at 806-373-0713 for more information.

Firefighters Wanted

The Spearman Volunteer Fire Department is actively recruiting new members. Both men and women age 18 and over are welcome. The number of volunteers has dropped to dangerously low levels and the roster needs to be increased. If you have an interest in helping to keep your community safe, the SVFD would like to talk to you. All new candidates will have access to the best training available. All interested parties should either come to the fire station located at 513 S Hazelwood or call Kimmi Rivera at 806-202-6374. The SVFD meets every Thursday night at 7 PM. Bring a friend and come join the team.

Voter Registration Cards

Due to the redistricting issues, every voter in Texas is currently holding an expired voter registration card. Once the maps are drawn and approved and the primary date set, voter registration cards will be mailed out. However you may vote, this year, with the expired card. For further information please call 806 659-4120.

Hansford Hospice

Volunteering for Hospice is very flexible and easy to work into your schedule. Our volunteers provide important services to the people we serve, whether it is: providing companionship to patients and their families; helping with clerical duties in the office; helping with special projects such as cooking food, baking, running or helping with community outreach. If you are interested in being a Hansford Hospice Volunteer, please contact us at 806-659-5811.

Texas SNAP Benefits Assistance

Need help applying for SNAP benefits? We can help! High Plains Food Bank is providing application assistance for Texas SNAP benefits (Food Stamps) in your area. Telephone application assistance is available. If you need to apply for benefits, please call us today at 806374-8562 or 1-800-774-8564.

Don't Text and Drive Decals

If you would like to purchase a lime green 'AMT 1994-2009 Don't Text and Drive' window decal in memory of Ali Tyler, please contact Stephanie Tyler at 806-736-0019. All proceeds go to the Ali Tyler Memorial Scholarship Fund. Decals are also available at Hansford County Floral Company on Main Street in Spearman.

Help Available for Breast Cancer Survivors

Any woman who has had breast cancer surgery and cannot afford undergarments and prosthetics can get help from the American Cancer Society through a grant from Susan G. Komen for the Cure®. The Amarillo Area Breast Prosthesis and Lymphedema Accessory Program will provide financial help to women in need of breast forms or prostheses, mastectomy bras and accessories to help with lymphedema, which is swelling of the arm caused by a build-up of lymph fluid. For more information, call the American Cancer Society office in Amarillo at (806) 353-4307 or 1-877-227-2345.

Heather Ford, Garrett Martin Wed



Mrs. Garrett Martin

Heather Michelle Ford and Garrett Ray Martin were united in marriage on March 10, 2012 at seven o'clock in the evening at Christ Chapel Bible Church in Fort Worth. Dr. Doug Cecil officiated, with music provided by Karen Hopkins, organist, and Kara DuBose, soloist. A reception followed at Ridgela Country Club, where friends and family enjoyed dinner and danced to music by the Ice House Band of Dallas. On the eve of the wedding, the groom's parents hosted a rehearsal dinner at Lonesome Dove Western Bistro.

The bride is the daughter of Mr. and Mrs. Tony Clay Ford of Fort Worth, Texas. She is the granddaughter of Mr. and Mrs. Byron Ford of Lockney, Texas and Mr. and Mrs. Thomas Marr of Plainview, Texas. The bride graduated from Texas A&M University, where she received a Bachelor of Business Administration degree in Marketing. She was a member of Chi Omega sorority and is currently employed as a first grade teacher in Spring Branch Independent School District in Houston, Texas.

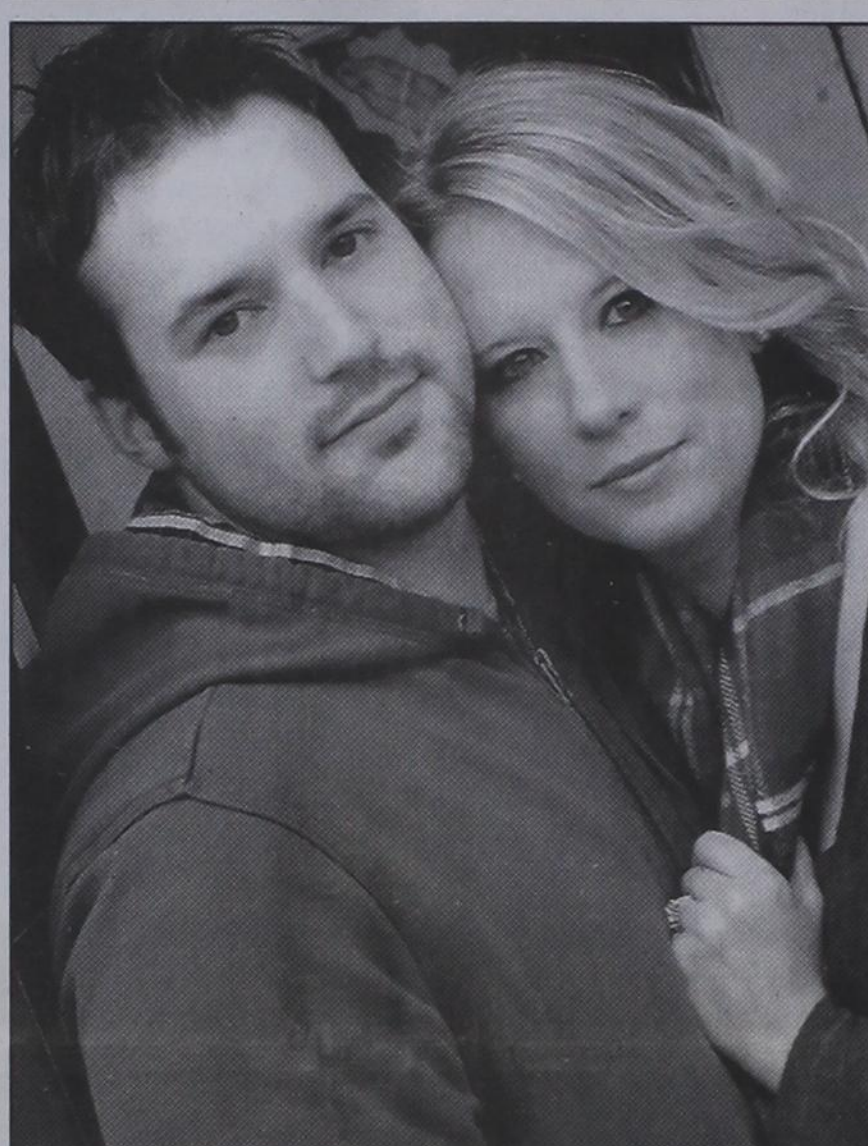
The groom is the son of Dr. and Mrs. Scot Meek Martin of Spearman, Texas. He is the grandson of Mr. and Mrs. Ray J. Martin of Spearman and Mr. and Mrs. John Japp of Casper, Wyoming. The groom graduated from Texas A&M University in College Station, where he received a Bachelor of Science degree, Cum Laude, in Petroleum Engineering. He was a member of Phi Delta Theta fraternity. Garrett is employed as a Reservoir Engineer by Devon Energy in Houston, Texas.

Escorted to the altar by her father, the bride wore an ivory, solid lace wedding gown with a chapel length train. The dress had a plunging V-neck bodice with scalloped lace along the neckline. A champagne satin ribbon embellished with ivory tulle flowers and pearls was tied at the waist. To complement her gown, she wore a veil of tulle with scattered lace along the edges.

Matron of honor was Jenny Lee Mayo and maid of honor was Ann Marie Francese. Bridesmaids were Whitney Brooke Landers, Malory Jane Martin, Caroline Anne Mitchell, Maurie Leeann Myers, Mary Elizabeth Nichols, Nicole Leigh Thompson, Laura Elizabeth Transom, Laura Elizabeth Vaughn, and Rachel Lee Walter. Honor attendants included Megan Jerke Crownover, Annelise Lane Ford, Eileen Marie Ford, and Adair Bartek Perciull.

Stuart John Martin and Mark Andrew Hohenberger served as the best men. Groomsmen were Collin Parker Coale, Christopher Lee Cudd, Travis Glenn Denny, Matthew Clay Ford, Wesley Wade Ford, John Colby Kramer, Holden Bay Mayo, Austin Johnson Price, and John Matthew Tuggle. Ushers included Jordan Blake Rea, Joshua James Groner, Phillip Michael Lozano, and Andrew Arthur Winston. The ring bearers were Doak and Hayes Neill.

After a honeymoon to Antigua, the couple will reside in Houston.



Engagement Announcement

Mandie Hunter of Spearman TX is engaged to marry Josh Duggan of Canyon, TX on May 19, 2012 at the Westminster Presbyterian Church in Amarillo, TX. A reception will follow at Bar Z Winery.

Mandie is the daughter of the late Ed Hunter and Lu Ann and Robert Blount of Spearman. Josh is the son of Bryon and Gay Duggan of Amarillo.

Mandie is a graduate of Spearman High School and West Texas A&M. She is a teacher at Dumas ISD.

Josh is a graduate of Canyon High School. He is a senior service technician for Atmos Energy.

M&D Aerial, LLC

David & Megan George
P.O. Box 520 David: (806) 202-2360
Spearman, Texas 79081 Megan: (806) 202-2358
mdaerial@yahoo.com

The **Jays of Summer**

Available all year!

SNOW CONE STAND

Monday-Friday
1:30-8 p.m.

MURMUR'S CAFE

100 S. Roland • Spearman
659-3580

You are invited to a
Bridal Shower Tea Party
honoring
Charity Burton
bride-elect of James Diaz
on Saturday, March 31, 2012
from 11 a.m. - 1 p.m.
in the home of Suzie Schubert
1007 Archer Spearman, Texas
Selections at Gordon's Drug,
Wal-Mart and Bed, Bath & Beyond
Wear your best hat for a prize!

PROJECT GRADUATION 2012

The parents of the Spearman High School Senior Class of 2012 will sponsor and host a "Project Graduation Party" following commencement exercises Friday May 25th. To encourage the graduates to stay the entire night, door prizes are awarded throughout the evening. In addition, graduates can earn paper monies through their participation in various games so that prizes can be purchased. The graduation party will culminate with the distribution of grand prizes.

Prizes, gift certificates, and cash are needed for the evening's gifts. If you, the community, who supported and encouraged these seniors these past 13 years of school, would be willing to share in this final "class of 2012" memory, making this project "special," please call: Tili Farrar at (806) 270-0818, Jean Snyder at 659-3009, or Guenda Hanna at 659-9949. Contributions can be mailed to: Project Graduation Guenda Hanna, 403 S. Endicott St., Spearman, TX 79081

WHEN DOES YOUR SUBSCRIPTION EXPIRE?

SCR1
03/12 EXPIRES
JOHN Q. PUBLIC
PO BOX 123
SPEARMAN TX 79081

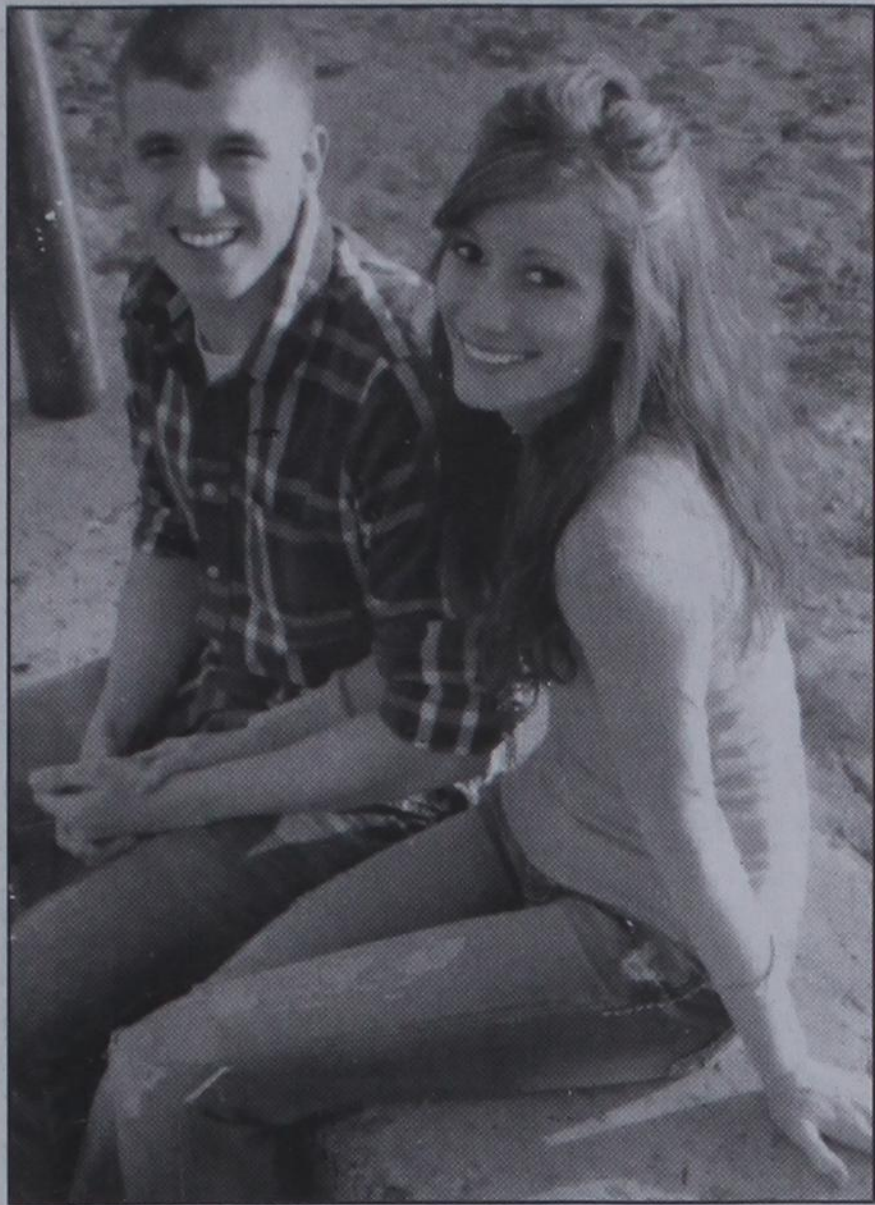
Expiration dates are printed on the top of all mailing labels. Our readers can help keep the cost of subscriptions down by mailing in renewals in the appropriate month.

Thank you, Catherine Smith

THE HANSFORD COUNTY REPORTER-STATESMAN
213 Main Street • Spearman, TX 79081

Annual Subscription Rates

In Hansford County - \$30
Out of County - \$40
E-Subscription - \$35 (sent through e-mail)



Engagement Announcement

Bobby and Reta Lesly of Spearman would like to announce the engagement of their daughter, Melissa Dawn Lesly to Kyle James Harshbarger of Knoxville, IL.

Melissa is also the daughter of Richard and Sharon Lesly of Canyon Lake, TX and Ken and Jackie Ward of Lavale, MD. Grandparents include Hazel Lesly of Spearman, SB Sheets of Spearman, Eura Rose of Arkansas, and Hilda Andrassy of Ohio.

Kyle is the son of Tracey Harshbarger of Desi Harshbarger. His grandparents are James and Elizabeth Harshbarger, and the late Jess and Dolores Clewell, all from Illinois.

The future bride is a 2006 graduate of Spearman High School, and is currently employed at Mayfield Paper Company as a web and graphics designer.

The groom is a 2007 graduate of Knoxville Senior High School in Illinois, and is currently serving in the United States Army. He is stationed in Fort Grabb, North Carolina, set to deploy this fall.

The two will wed on May 26, 2012.

Railroad Commission Reminds Texans to Transport Propane Cylinders Safely

Now that spring is here and barbecue grills are coming out of storage, thousands of 20-pound propane cylinders are being carried to and from Texas propane dealerships to be filled or exchanged. The Railroad Commission-Texas' state agency in charge of propane safety-reminds outdoor cooks that there is a right way and a wrong way to transport propane cylinders in a vehicle.

"To be safe, remember to close the valve of propane cylinders completely and ensure they are leak-free before moving them," said Commission Chairman Barry Smitherman. "Carry the cylinder with the relief valve upright, and secure the cylinder in an upright position with a tie-down or bungee cord while it's in the car trunk or pickup bed."

Commissioner David Porter said, "Propane cylinders should spend as little time as possible in a car or in the bed of a pickup. Take refilled cylinders directly to your home or business, and remember to store them outdoors, in a shady location."

Always extinguish smoking materials while transporting or using propane cylinders. And make sure cylinders are stored away from dryer or furnace vents or children's play areas.

The Railroad Commission also has approved the use of composite propane cylinders for outdoor use. These cylinders made of specialty composite material, don't rust, are lighter in weight and offer consumers the advantages of transparency, which allows the user to see how much propane is left in the tank.

For more information on how to use propane safely, contact the Railroad Commission's Alternative Energy Division at (800) 64-CLEAR or visit www.propane.tx.gov and click on "Home Safe Home-Propane Safety Tips."

Hansford County Library News

Library Receives Grants

Once again, great things are happening at Hansford County Library. Not only was the "Technology Tune-Up" on March 20 a success, but recently the library was named the recipient of two grants that will benefit the library as well as the community.

In December, the library was awarded a \$48,500.00 grant from the Amarillo Area Foundation to improve the current flat roof. The contract to install a sloped, metal roof on top of the existing flat roof was issued to local builder Charles Elliott. That work began in early March and will soon be completed.

"There were leak issues with the roof in a number of areas, and this will be quite an improvement," commented Margaret Ruttman, library director. Color coordinated and very pleasing to the eye, the addition is evident from the street and is something for the public to be proud of.

A Tocker Foundation grant in the amount of \$4,000 was presented to the library in mid March to be used to enhance the nonfiction book collection. "With these funds, we will be able to make a much needed update in the nonfiction area," added Ruttman. Approximately 200 books in a variety of areas will be ordered in April and May and will be appearing on the shelves by mid summer.

"Small libraries can only continue to exist with a lot of community support but grants from outside sources are tremendous boosts for which we are very grateful," said Ruttman.

Please continue to visit and support your local library. Operating hours are 9:30 a.m. to 5 p.m., Monday through Friday.

Clean House to Clear Library Fines

submitted by Margaret Ruttman

In celebration of National Library Week featured in April of each year, Hansford County Library is kicking off a month long "Clean House to Clear Library Fines" campaign to benefit both the library and Alley Katz.

Beginning April 2 and continuing to April 30, the library will accept quality merchandise (no clothing, shoes, canned goods or perishable items) in exchange for accumulated library fines. You may call the library if you are unsure if you have a recent or outstanding fine. Items should be brought to the librarians who will clear the fines and transfer the merchandise to Alley Katz.

So, get busy and CLEAN! Be good to yourself and to your community as this program will only extend through the month of April.

Hansford County Library is open Monday through Friday from 9:30 to 5.

FIREWOOD FOR SALE

Cedar firewood for sale. Call (806) 658-2573.
Delivered & stacked, or self pickup.

AVAILABLE NOW!
E-SUBSCRIPTION
to the
Hansford County Reporter-Statesman
Delivered to your e-mail each Thursday for only \$35/year.
Purchase online at www.spearmanreporter.com
Call 806-659-3434 or e-mail reporter@spearmanreporter.com for details.

Prices Good Thru 04/21/12

305 W. Kenneth Spearman • 659-3135
101 Main Ave. Gruver • 733-2953

bloomin' SPRING SAVINGS

BLUE BUNNY Premium Ice Cream
56 OZ. OVALS
ALL FLAVORS
\$4.49

On Sale! 3/31 - 6/30

ENERGY DRINKS WIRED
16 OZ.
2\$2 FOR

On Sale! 4/1 - 4/7

SHURFINE GRADE A LARGE EGGS
DOZEN
99¢

BAR 5 FRANKS
12 OZ.
99¢

BUY 12 GALLONS OF FRESH
ALLSUP'S MILK
GET ONE
FREE!

ALL FLAVORS STRIDE GUM
EACH
\$1.39

BLUE BUNNY ICE CREAM SANDWICHES
6 OZ.
79¢

SELECT VARIETIES PEPSI PRODUCTS
20 OZ.
99¢

Allsup's Sandwich Bread	24 oz. 89¢ each or	2\$1.59 FOR
Allsup's Wheat Bread	24 oz. \$1.09 each or	2\$1.89 FOR
Kellogg's Cereal Cups	each	99¢
Rock Star Energy Drink	16 oz.	2\$3 FOR
Pepsi Products	12 pack, 12 oz. cans	\$3.99
Gatorade	20 oz.	99¢
Ocean Spray Juice	15.2 oz.	2\$3 FOR

JACK LINK'S Beef Sticks
EACH
\$1.59

Spitz Seeds
6 OZ.
\$1.59

NOW SERVING! Market Fresh Sandwiches

OVEN ROASTED TURKEY & CHEESE, ALBACORE TUNA SALAD, RANCH CHICKEN SALAD OR SMOKED HAM AND CHEESE FOR HEARTY APPETITES. CHOOSE A BREADED SANDWICH - EITHER SMOKED HAM & CHEESE OR SMOKED TURKEY & CHEESE.

GHS UIL

Gruver High School students competed in the Academic UIL District meet at Amarillo College in Amarillo on Friday, March 23rd. Thirty-seven students competed in 19 events. Currently Gruver High School is in 3rd place in the meet standing with 183 points. The final point tabulation will occur when the One Act Plays are finished with competition. More detailed information can be found on the UIL web site at www.uilutexas.org

GHS teachers and administrators are very proud of each student and every student that competed in the meet. Preparation for the competition is above and beyond classroom and homework requirements and these events are designed to motivate students in their quest for higher levels of knowledge.

The following students competed in each listed event:

Accounting: Fatima Barrera, Taylor Felderhoff, Kramer King, Daniela Luciano and Rocio Terrazas

Calculator Applications: Nikki Beasley, Taylor Felderhoff, Shelley Gibson, Reagan Haynes & Korbin Irwin

Current Issues: Jerrod Collier, Kramer King, Karen Tarango and Rocio Terrazas

Computer Applications: Noemy Guereca, Reagan Haynes, Korbin Irwin and Alex Logsdon

Editorial Writing: Fatima Barrera, Micaela Davis and Yesenia Monroy

Feature Writing: Maggie Key and Damian Pierce

Headline Writing: Fatima Barrera and Maggie Key

Informative Speaking: Vanessa Garcia

Literary Criticism: Maggie Gaspar, Madi Teal and Rachel Teal

Mathematics: Nikki Beasley, Taylor Felderhoff and Shelley Gibson

Number Sense: Nikki Beasley, Shelley Gibson and Griselda Lopez

News Writing: Micaela Davis, Maggie Key, Yesenia Monroy and Damian Pierce

Persuasive Speaking: Brandi Brown and Emily Harris

Poetry Interpretation: Irasema Soto

Prose Interpretation: Cale Curry, Jace Lane, Macy McLennan and Madison Williams

Ready Writing: Mason McLain

Science: Micaela Davis, Shelley Gibson, Reagan Haynes, Jace Lane, Halli Mans, Madison McLain and Travis Stedje

Social Studies: Ben Book, Zoe Cantrell, Dax Haight, Damian Pierce and Madi Teal

Spelling and Vocabulary: Nikki Beasley, Zoe Cantrell, Cassie McKay and Hannah Speck

Fifteen students will be advancing to the Academic UIL Regional meet scheduled for April 20, in Leveland. In order to advance you had to be one of the top three finalist or the 1st place team. Those students advancing are as follows.

Accounting - Taylor Felderhoff/2nd place

Calculator Team - Nikki Beasley/4th place; Taylor Felderhoff/5th place; Shelley Gibson/2nd; Reagan

Haynes/alternate; and Korbin Irwin/5th place

Computer Applications - Alex Logsdon/alternate

Editorial Writing - Micaela Davis/1st place; Fatima Barrera/3rd place

Informative Speaking - Vanessa Garcia/3rd place

Persuasive Speaking - Brandi Brown/1st place

Prose Interpretation - Jace Lane/2nd place

Ready Writing - Mason McLain

Spelling and Vocabulary - Nikki Beasley/3rd place and Zoe Cantrell/alternate

Students that placed in the top six but will not be advancing in the event included:

Literary Criticism - Rachel Teal/5th place

Mathematics - Shelley Gibson/6th place

Prose Interpretation - Madison Williams/6th place

SHS UIL

Spearman High School students competed in the Academic UIL District meet at West Texas A&M University in Canyon on Thursday, March 22nd. Spearman placed 2nd overall.

"Spearman students were the best dressed and best behaved students at the contest," commented Mandy Derington. "I have never been more proud of a group of kids in all my years teaching."

Following is a list of the students who competed, the coaches, as well as the results of the meet. (*Denotes Regional Qualifiers)

Accounting: Treva Braun: Sarah Snider 3rd*, Luis Vela 4th, 2nd place team

Calculator, Sherry Johnson: Elsa Adkins 2nd*, Molly Lieb 3rd*, Martin Juardo*, 1st Place Team

Number Sense, Sherry Johnson: Derrick Zimmerman 4th*, Martin Juardo 6th*, Seth Carson 7th*, Gena Gillispie 10th*, 1st Place Team

Literary Criticism, Cheryl Whitefield: Adriana Corralejo 4th

Science, Kristin Shield-knight: Malory Martin 2nd place Chemistry, Brody Hargrove 2nd place physics

Ready Writing, Cheryl Whitefield: Lexie Batton 2nd*, Gately Garnett 3rd*, Tylo Farrar 4th

Spelling, Sandra Blankenship: Crystal Cantu 1st*, Klara Keim 2nd*, Gena Gillispie 3rd*, Tyann Hight 6th*, 1st Place Team

Computer Apps, Treva Braun: Peyton Garnett 4th

Persuasive Speaking, Glenn Robinson: Cristina Vargas 3rd*

Mathematics, Sherry Johnson: Derrick Zimmerman 2nd*

Headlines, Otis Chunn: Shelby Hanna 1st*, Sadye Hanna 6th

News Writing, Otis Chunn: Taylor Williams 2nd*, Katie Miesner 4th

Feature Writing, Otis Chunn: Ashley Keim 2nd*, Taylor Williams 3rd*

Editorial Writing, Otis Chunn: Klara Keim 3rd*, Tyann Hight 4th, Crystal Cantu 6th, 1st Place Journalism Team

Borger 85; 4. Spearman 82; 5. Panhandle 55; 6. Perryton 10.

800: 1. Trent McAnear, Pampa, 2:05.56; 2. Emory Loble, Dalhart, 2:06.32; 3. Pierre Valencia, Dalhart, 2:09.09; 4. Lane Newcomb, Borger, 2:12.53; 5. Zach Bell, Dalhart, 2:13.16; 6. Christian Fisher, Spearman, 2:17.29.

110 Hurdles: 1. Reid Miller, Pampa, 15.40; 2. Tone Gonzales, Dalhart, 15.53; 3. Cameron Wolf, Spearman, 15.78; 4. Carlos Cornado, Dalhart, 18.17; 5. Conner Killough, Borger, 18.19; 6. Jace Lang-Swan, Spearman, 18.40.

300 Hurdles: 1. Joseph Vizciano, Pampa, 44.21; 2. Christian Fisher, Spearman, 44.91; 3. Tone Gonzales, Dalhart, 45.71; 4. Carlos Cornado, Dalhart, 46.16; 5. Conner Killough, Borger, 46.87; 6. Seth Witt, Panhandle, 49.44.

100: 1. Zane Robles, Pampa, 11.34; 2. Kody Maddox, Pampa, 11.37; 3. D'Marlon Jones, Borger, 11.61; 4. Justin Rindlisbacher, Spearman, 11.63; 5. Heath Dorman, Perryton, 11.67; 6. Uriel Orona, Borger, 11.78.

400 Relay: 1. Pampa 44.31; 2. Dalhart 45.21; 3. Spearman 46.53; 4. Panhandle 46.72; 5. Borger 46.81.

800 Relay: 1. Dalhart 1:34.93; 2. Pampa 1:35.32; 3. Borger 1:40.21; 4. Panhandle 1:46.07.

1600 Relay: 1. Borger 3:36.43; 2. Dalhart 3:38.45; 3. Pampa 3:42.28; 4. Spearman 3:42.43; 5. Panhandle 3:48.28.

High Jump: 1. Christian Fisher, Spearman, 5-10; 2. Hayden Smith, Dalhart, 5-8; 3. Caleb Dickson, Borger, 5-6.

Pole Vault: 1. Allen Channing, Dalhart, 13-0; 2. Rene Pena, Spearman, 12-6; 3. Cameron Wolf, Spearman, 12-0; 4. Brett Troxell, Pampa, 11-6; 5. Dustin Vance, Dalhart, 11-0; 6. Jordan Robertson, Borger, 9-6.

Triple Jump: 1. Stefan Cook, Spearman, 41-0; 2. Conner Wolf, Spearman, 40-0; 3. Guillermo Davila, Dalhart, 38-9; 4. Hayden Smith, Dalhart, 38-1 1/2; 5. Brenden Ponce, Pampa, 38-1; 6. Jesus Cabrales, Pampa, 35-9 1/2.

Comanche Relays at West Texas High in Stinnett

Boys

Team results: 1. Sunray, 163.5; 2. Stratford, 140.75; 3. Boys Ranch, 112; 4. West Texas High, 86; 5. Sanford-Fritch, 44.75; 6. Gruver, 41; 7. Follett, 23.

100: 1. Colten Rendon, Stratford, 11.47; 2. Michael Spaulding, Sunray, 11.66; 3. Tyler Hoff, West Texas High, 11.84; 4. Victor Serrano, Gruver, 12.02; 6. Connor Chamberlain, West Texas High, 12.18.

200: 1. Jerrod Collier, Gruver, 22.80; 2. Justin Mungia, Stratford, 23.15; 3. Trey Bell, Boys Ranch, 23.52; 4. Andrew Reynolds, Sanford-Fritch, 23.79; 5. Sterling Audrain, Stratford, 24.02; 6. Darrell Hanson, Sanford-Fritch, 24.93.

400: 1. Jerrod Collier, Gruver, 52.59; 2. Talon Dooley, Sunray, 54.47; 3. Jorge Arroyo, Sunray, 55.22; 4. Justice Barnes, Boys Ranch, 55.79; 5. Justin Holmberg, West Texas High, 58.87; 6. Con-

nor Chamberlain, West Texas High, 59.22.

1600: 1. Eddie Fierro, Sunray, 5:07.84; 2. Loya Julio, Sunray, 5:11.89; 3. Jorge Cruz, Boys Ranch, 5:20.52; 4. Cirino Gonzales, Sunray, 5:22.27; 5. Alex Wittmer, Boys Ranch, 5:26.67; 6. Taos Anderson, Gruver, 5:31.54.

Long jump: 1. Jerrod Collier, Gruver, 20-8; 2. Colin Coleman, West Texas High, 20-7 1/2; 3. Alex Ramirez, West Texas High, 19-8 1/2; 4. Kato Robinson, Boys Ranch, 19-6 1/2; 5. Corey Tyson, Follett, 19-2 1/2; 6. Colten Rendon, Stratford, 18-9 1/2.

Pole vault: 1. Brice Martin, West Texas High, 12-0; 2. Preston Burr, Stratford, 11-6; 3. Carson Williams, Gruver, 11-0.

Girls

Team Results: 1. Sunray, 173; 2. West Texas, 128; 3. Stratford, 119; 4. Gruver, 65; 5. Sanford-Fritch, 58; 6. Follett, 36; 7. Boys Ranch, 35.

100: 1. Autumn Card, Stratford, 13.56; 2. Tiffany Taylor, Sunray, 13.84; 3. Maddi Stuart, Follett, 13.87; 4. Daja Smith, Follett, 13.87; 5. Echo E'Brien, West Texas, 16.66; 6. Patty Garcia, Gruver, 14.78.

400: 1. Kaley Green, Sunray, 1:06.02; 2. Katelyn Wilson, West Texas, 1:06.52; 3. Tiffany Taylor, Sunray, 1:07.81; 4. MaKeena Hatfield, Sunray, 1:08.84; 5. Bailey Stedje, Gruver, 1:10.03; 6. Gregg Danielle, Boys Ranch, 1:10.87.

800: 1. Ariel Warrior, Boys Ranch, 2:38.15; 2. Reagan Haynes, Gruver, 2:41.34; 3. Noemy Franco, Stratford, 2:44.88; 4. Miriam Mendoza, Sunray, 2:52.68; 5. Vilma Rangel, Sunray, 2:52.96; 6. Christian Gonzalez, Sunray, 2:53.00.

1600: 1. Shelley Gibson, Gruver, 5:48.56; 2. Ariel Warrior, Boys Ranch, 6:09.62; 3. Mayra Trejo, Sunray, 6:09.75; 4. Melissa Corbin, Sunray, 6:14.02; 5. Noemy Franco, Stratford, 6:18.50; 6. Miriam Mendoza, Sunray, 6:36.31.

3200: 1. Shelley Gibson, Gruver, 12:43.29; 2. Mayra Trejo, Sunray, 13:13.41; 3. Nohemi Ruedas, Stratford, 13:16.50; 4. Christian Gonzalez, Sunray, 13:21.16; 5. Emlynn Robinson, Gruver, 13:25.74; 6. Melissa Corbin, Sunray, 13:30.28.

800 Relay: 1. Sunray, 1:53.00; 2. West Texas, 1:55.60; 3. Gruver, 1:55.66; 4. Stratford,

1:58.32; 5. Sanford-Fritch, 2:01.50; 6. Boys Ranch, 2:02.97.

1600 Relay: 1. Sunray, 4:20.28; 2. Gruver, 4:26.37; 3. West Texas, 4:32.40; 4. Stratford, 4:40.22; 5. Boys Ranch, 4:43.62.

Discuss: 1. Sarah Pipkin, Sunray, 113-1; 2. Bethany Everett, Stratford, 103-6; 3. Cheyenne Tull, West Texas, 97-7; 4. Alexa Peregrino, Stratford, 96-4; 5. Nicki Beasley, Gruver, 94-5; 6. Kaitlyn Scroggins, Sunray, 89-9.

61st Amarillo Relays Meet of Champions

Girls

Team Totals: 1. Randall 89, 2. Amarillo High 70, 3. Tascosa 65, 4. Canyon 63, 5. El Paso Chapin 60, 6. Lubbock Coronado 56, 7. Lubbock Monterey 35, 8. Lubbock High 32, 9. Spearman 30, 10. Clovis 28, 11. Dumas 23, 12. Hereford 22, 13. (tie) Perryton 15, 13. (tie) Caprock 15, 15. Palo Duro 10, 16. (tie) Bushland 2, 16. (tie) Farwell 2

Long Jump: 1. Sydney Walton, Perryton 17-7 1/2; 2. Karolyne McMillian, Lubbock Monterey 17-2 1/4; 3. Gately Garnett, Spearman 16-9 1/2; 4. Tae'lor Hodge, Amarillo High 16-6 1/2; 5. Jaycee Booth, Amarillo High 16-5; 6. Jerica Heyd, Dumas 16-3 1/2.

Pole Vault: 1. x-Morgan Moore, Randall 11-7; 2. Kimmi Moreau, Lubbock Coronado 10-0; 3. Brooke Lindstrom, Coronado 10-0; 4. (tie). Gately Garnett, Spearman 9-0; 4. (tie). Birgin Adams, River Road 9-0; 4. (tie). Brittany Costancio,

Randall 9-0; 4. (tie). Elizabeth Angong, Caprock 9-0; 4. (tie). Kati Culpepper, Randall 9-0

800: 1. CJ Frizzell, Canyon 2:18.65; 2. Emily Craft, Randall 2:18.93; 3. Vivial Diaz, El Paso Chapin 2:20.51; 4. Sarah Snider, Spearman 2:23.35; 5. Chelsea Bass, Farwell 2:23.83; 6. Kameron Johnston, Randall 2:23.91

100 Hurdles: 1. Gately Garnett, Spearman 15.52; 2. Patrice Daniels, El Paso Chapin 15.73; 3. Chelsea Hearn, Lubbock High 15.86; 4. Jenna Sievers, Clovis 16.49; 5. Lacey Herbert, Perryton 16.50

300 Hurdles: 1. Karolyne McMillian, Monterey 47.52; 2. Gately Garnett, Spearman 48.24; 3. Jasmine Mings, Randall 48.33; 4. Wynter Taylor, Amarillo High 48.42; 5. Megan Modersitzki, Amarillo High 49.19; 6. Jenna Sievers, Clovis 49.49

JV Team Totals: 1. Bushland 132, 2. Canyon 90, 3. Amarillo High 83, 4. Lubbock Coronado 62, 5. Randall 42, 6. Lubbock Monterey 41, 7. Caprock 37, 8. Palo Duro 34, 9. Clovis 31, 10. Tascosa 22, 11. Hereford 18, 12. Highland Park 10, 13. Spearman 9, 14. Vega 2, 15. Holy Cross 1

100: 1. Zane Robles, Pampa, 11.34; 2. Kody Maddox, Pampa, 11.37; 3. D'Marlon Jones, Borger, 11.61; 4. Justin Rindlisbacher, Spearman, 11.63; 5. Heath Dorman, Perryton, 11.67; 6. Uriel Orona, Borger, 11.78.

400 Relay: 1. Pampa 44.31; 2. Dalhart 45.21; 3. Spearman 46.53; 4. Panhandle 46.72; 5. Borger 46.81.

800 Relay: 1. Dalhart 1:34.93; 2. Pampa 1:35.32; 3. Borger 1:40.21; 4. Panhandle 1:46.07.

1600 Relay: 1. Borger 3:36.43; 2. Dalhart 3:38.45; 3. Pampa 3:42.28; 4. Spearman 3:42.43; 5. Panhandle 3:48.28.

High Jump: 1. Christian Fisher, Spearman, 5-10; 2. Hayden Smith, Dalhart, 5-8; 3. Caleb Dickson, Borger, 5-6.

Pole Vault: 1. Allen Channing, Dalhart, 13-0; 2. Rene Pena, Spearman, 12-6; 3. Cameron Wolf, Spearman, 12-0; 4. Brett Troxell, Pampa, 11-6; 5. Dustin Vance, Dalhart, 11-0; 6. Jordan Robertson, Borger, 9-6.

Triple Jump: 1. Stefan Cook, Spearman, 41-0; 2. Conner Wolf, Spearman, 40-0; 3. Guillermo Davila, Dalhart, 38-9; 4. Hayden Smith, Dalhart, 38-1 1/2; 5. Brenden Ponce, Pampa, 38-1; 6. Jesus Cabrales, Pampa, 35-9 1/2.

Comanche Relays at West Texas High in Stinnett

Boys

Team results: 1. Sunray, 163.5; 2. Stratford, 140.75; 3. Boys Ranch, 112; 4. West Texas High, 86; 5. Sanford-Fritch, 44.75; 6. Gruver, 41; 7. Follett, 23.

100: 1. Colten Rendon, Stratford, 11.47; 2. Michael Spaulding, Sunray, 11.66; 3. Tyler Hoff, West Texas High, 11.84; 4. Victor Serrano, Gruver, 12.02; 6. Connor Chamberlain, West Texas High, 12.18.

200: 1. Jerrod Collier, Gruver, 22.80; 2. Justin Mungia, Stratford, 23.15; 3. Trey Bell, Boys Ranch, 23.52; 4. Andrew Reynolds, Sanford-Fritch, 23.79; 5. Sterling Audrain, Stratford, 24.02; 6. Darrell Hanson, Sanford-Fritch, 24.93.

400: 1. Jerrod Collier, Gruver, 52.59; 2. Talon Dooley, Sunray, 54.47; 3. Jorge Arroyo, Sunray, 55.22; 4. Justice Barnes, Boys Ranch, 55.79; 5. Justin Holmberg, West Texas High, 58.87; 6. Con-

nor Chamberlain, West Texas High, 59.22.

1600: 1. Eddie Fierro, Sunray, 5:07.84; 2. Loya Julio, Sunray, 5:11.89; 3. Jorge Cruz, Boys Ranch, 5:20.52; 4. Cirino Gonzales, Sunray, 5:22.27; 5. Alex Wittmer, Boys Ranch, 5:26.67; 6. Taos Anderson, Gruver, 5:31.54.

Long jump: 1. Jerrod Collier, Gruver, 20-8; 2. Colin Coleman, West Texas High, 20-7 1/2; 3. Alex Ramirez, West Texas High, 19-8 1/2; 4. Kato Robinson, Boys Ranch, 19-6 1/2; 5. Corey Tyson, Follett, 19-2 1/2; 6. Colten Rendon, Stratford, 18-9 1/2.

Pole vault: 1. Brice Martin, West Texas High, 12-0; 2. Preston Burr, Stratford, 11-6; 3. Carson Williams, Gruver, 11-0.

Girls

Team Results: 1. Sunray, 173; 2. West Texas, 128; 3. Stratford, 119; 4. Gruver, 65; 5. Sanford-Fritch, 58; 6. Follett, 36; 7. Boys Ranch, 35.

100: 1. Autumn Card, Stratford, 13.56; 2. Tiffany Taylor, Sunray, 13.84; 3. Maddi Stuart, Follett, 13.87; 4. Daja Smith, Follett, 13.87; 5. Echo E'Brien, West Texas, 16.66; 6. Patty Garcia, Gruver, 14.78.

400: 1. Kaley Green, Sunray, 1:06.02; 2. Katelyn Wilson, West Texas, 1:06.52; 3. Tiffany Taylor, Sunray, 1:07.81; 4. MaKeena Hatfield, Sunray, 1:08.84; 5. Bailey Stedje, Gruver, 1:10.03; 6. Gregg Danielle, Boys Ranch, 1:10.87.

800: 1. Ariel Warrior, Boys Ranch, 2:38.15; 2. Reagan Haynes, Gruver, 2:41.34; 3. Noemy Franco, Stratford, 2:44.88; 4. Miriam Mendoza, Sunray, 2:52.68; 5. Vilma Rangel, Sunray, 2:52.96; 6. Christian Gonzalez, Sunray, 2:53.00.

1600: 1. Shelley Gibson, Gruver, 5:48.56; 2. Ariel Warrior, Boys Ranch, 6:09.62; 3. Mayra Trejo, Sunray, 6:09.75; 4. Melissa Corbin, Sunray, 6:14.02; 5. Noemy Franco, Stratford, 6:18.50; 6. Miriam Mendoza, Sunray, 6:36.31.

3200: 1. Shelley Gibson, Gruver, 12:43.29; 2. Mayra Trejo, Sunray, 13:13.41; 3. Nohemi Ruedas, Stratford, 13:16.50; 4. Christian Gonzalez, Sunray, 13:21.16; 5. Emlynn Robinson, Gruver, 13:25.74; 6. Melissa Corbin, Sunray, 13:30.28.

800 Relay: 1. Sunray, 1:53.00; 2. West Texas, 1:55.60; 3. Gruver, 1:55.66; 4. Stratford,

1:58.32; 5. Sanford-Fritch, 2:01.50; 6. Boys Ranch, 2:02.97.

1600 Relay: 1. Sunray, 4:20.28; 2. Gruver, 4:26.37; 3. West Texas, 4:32.40; 4. Stratford, 4:40.22; 5. Boys Ranch, 4:43.62.

Discuss: 1. Sarah Pipkin, Sunray, 113-1; 2. Bethany Everett, Stratford, 103-6; 3. Cheyenne Tull, West Texas, 97-7; 4. Alexa Peregrino, Stratford, 96-4; 5. Nicki Beasley, Gruver, 94-5; 6. Kaitlyn Scroggins, Sunray, 89-9.

61st Amarillo Relays Meet of Champions

Girls

Team Totals: 1. Randall 89, 2. Amarillo High 70, 3. Tascosa 65, 4. Canyon 63, 5. El Paso Chapin 60, 6. Lubbock Coronado 56, 7. Lubbock Monterey 35, 8. Lubbock High 32, 9. Spearman 30, 10. Clovis 28, 11. Dumas 23, 12. Hereford 22, 13. (tie) Perryton 15, 13. (tie) Caprock 15, 15. Palo Duro 10, 16. (tie) Bushland 2, 16. (tie) Farwell 2

Are You A Victim of Domestic Violence, Sexual Abuse or Physical, Emotional or Sexual Assault? Call Toll Free Hotline 1-800-753-5308

MITCHELL THEATRES.COM GUYMON, OK • LIBERAL, KS • NEWTON, KS NORTHTRIDGE 8 Guymon, Oklahoma www.northridge8.com 580-338-3281 SOUTHGATE 6 Liberal, Kansas www.southgate6.com 620-624-5573 SEQUOYAH 8 Garden City, Kansas www.sequoyah8.com 620-275-2760 CHISHOLM TRAIL 8 Newton, Kansas www.chisholmtrail8.com 316-283-0555 FRESH POPCORN EVERYDAY! -PARTY ROOM & ARCADE-

TEXAS 2x2 DISPLAY ADVERTISING NETWORK Reach Millions of Texas consumers with just one phone call! CALL 1-800-749-4793

Here's how... COMPLETE THE FORM on this page and fax it to Texas Press Service, 512-477-3231 or contact your local newspaper. YOUR STATEWIDE ADVERTISEMENT will be sent to all participating newspapers for publication during the week you specify. The cost for a 2x2 Statewide ad is \$1,100 (over 2 million readers), or you can order regional placement (north, south or west) for only \$450 per region. The cost for a 2x4 Statewide ad is \$2,400 (over 2 million readers), or you can order regional placement (north, south or west) for only \$650 per region. ALL ADS ARE PAYABLE prior to publication and may be charged to your credit card. AD COPY WITH PAYMENT must be received at Texas Press Association by 5 p.m. Monday for ads to appear in the following week's ad placement. PLEASE E-MAIL AD COPY in PDF format to shawnjones@texaspress.com, or send a sharp, black-and-white camera-ready-slick to Texas Press Association, 718 W. 5th St., Austin, TX 78701. We recommend avoiding type sizes smaller than 8 point to insure good reproduction. TPA will also typeset your artwork for a \$45 charge. TEXAS PRESS SERVICE guarantees your ad will be distributed to all participating newspapers for publication on a "space-donated" basis. Audits show 85% to 90% of participating newspapers publish TEXAS 2x2 and TEXAS 2x4 ads during any given week. It's Easy, Affordable, Effective!

Hotline for Priority Seating - 435-3945 MONEYS BBQ & STEAK HOUSE We Are THPLC-2-B 14 SE 3rd Ave, Perryton, TX Stan and Donna Zepp New, Updated Menu Same Great Service

REAL ESTATE

FOR RENT: 1BR furnished apartment, all bills paid. Call 659-2247. TFN(11/10/11)B

HELP WANTED

HELP WANTED: Oilfield work, must have drivers license. Good pay and benefits. Call 806-659-3911 or come by at 1103 West 7th, Spearman. Trench Enterprises, Inc. TFN(11/10/11)B

HELP WANTED: \$5,000 Sign-On Bonus! Tons of runs! Frac Sand Hauling, Owner Operators need tractor, pneumatic trailer, blower. 800-397-2338 1(3/29/12)P

HELP WANTED: The Hansford County Soil & Water Conservation District in Spearman is now hiring for a clerical position. Responsibilities will include payroll, answering phones, and other secretarial duties. Computer skills preferred. Stop by the USDA building at 909 West 9th Avenue in Spearman to pick up an application. 3(3/29/12)B

SERVICES

HOOCHY POUCHY PARLOR Call us for all your pet's grooming and boarding needs. Call now for reservations! 806-273-2724. TFN(11/2/07)B

TIERED OF GARAGE SALE PRICES? Let me buy your good used furniture! 2nd Chance Antiques & Furniture, Don 806-648-1480; 806-202-1391 cell. TFN(1/20/11)B

PUBLIC NOTICE

NOTICE TO MEMBERS OF NORTH PLAINS ELECTRIC COOPERATIVE

The Nominating Committee, appointed by the Board of Directors of North Plains Electric Cooperative, Inc., met at the Cooperative's headquarters located in Perryton, Texas, on February 29, 2012. Three Directors shall be elected by and from the members at the 68th annual meeting of the Cooperative to be held on April 16, 2012, for a term of three years.

WTG FUELS INC. 518 SE LOOP 143 PERRYTON TX 79070 Phone: 806-435-5426 Fax: 806-435-4437 E-MAIL: crawlins@windstream.net

Full-time drivers available, competitive pay based on experience, insurance, benefits, 401K, must have CDL w/hazmat, and tanker endorsements, bonus pay/overtime, guaranteed hours, come by our office or call, send us an e-mail, or fax your resume. TFN(3/22/12)B

Check our websites for other properties.

DUMAS FARMS II - 1280 acres deeded, 320 ac. for lease with purchase of property, nice 2 bdrm, mobile home w/concrete foundation, mud room and patio, 2 all-steel barns w/concrete floors, 7 irrigation wells, UG pipe, on pvmt. and all weather road.

VALLEY VIEW RANCH - Lipscomb Co., TX - 177 ac w/extraordinary 5404 sq. ft. +/- home overlooking the property w/ beautiful views of live creek, trees, wildlife (deer, quail, & turkey), covered horse training facilities, stables, excellent cattle working facilities & pens, commercial dog kennels, employee housing. We can divide (10 ac. w/main residence or 167 ac. +/- w/other improvements)

SHERMAN CO., TX - 627 acres, choice land, four 1/4 mile sprinklers, fully developed, one 1/4 mile off Hwy, 287 on paved CR - CC, 3 phase electricity, new irrigation well drilled in 2010.

WEST OF DUMAS on pvmt. 606 ac +/-, 17 tower sprinkler, four irr. wells, excellent location for residential or commercial development.

BUDDY CLINE ROAD - Moore Co., TX - 1/2 section choice land, two wells (one new) and sprinklers.

1200 SOW FARROW TO FINNISH OPERATION - Moore Co., TX - New 5 yr. lease with major hog company. Two separate units, can be divided - Please contact broker for info package and price. www.scotlandcompany.com www.texascrp.com

Shawn Gillispie 806/922-5532 Ben G. Scott, Broker 1-800-933-9698 day/eve TFN(2-2-12)

ALL STATE REALTY 806 435-SOLD (7653)

All State Realty Sherrie E. Rima 806-435-SOLD (7653)

322 S. DRESSEN Corner Lot, 3 or 4 bedrooms, 2 Living spaces, 3 baths. Newly Remodeled & Priced To SELL!!

We have Buyers but We Need Listings! Call Us Today & Let us put the Two of you together!

The committee has prepared and posted at the Cooperative headquarters a list of nominations for Directors to be elected, listing separately the nominee(s) for each directorate district. Those nominated include:

- District 2 - Jimmy Greene District 3 - Jim Hagg District 5 - Jerel Norris

The actions of this Committee in no way shall prevent additional nominations by petition as provided for in Section 4.06 of the Cooperative Bylaws. Any fifteen (15) or more members of the Cooperative, acting together, may make additional nominations in writing over their signatures, listing their nominee(s) in like manner, not less than fifteen (15) days prior to the annual meeting and the Secretary shall post such nominations at the same place where the list of nominations made by the committee is posted.

2(3/22/12)B

PUBLIC NOTICE Request Formal Bid & Qualification Statement for CONTRACTORS interested in a Hospital Renovation Construction Project.

The HANSFORD COUNTY HOSPITAL DISTRICT Board of Spearman, Texas, is publicly requesting Bid & Qualification Statements from General Contractors that are interested in the hospital renovation project. Renovation will include reworking the current patient wing of the existing hospital and adding a small addition to accommodate Central Sterile Supply. Qualification Statements are required and should be submitted with the General Terms and Conditions for an Agreement. A Construction Schedule shall commence in mid-2012 and shall be integrated with this procurement to allow the hospital to remain functional throughout the term of the project. The General Contractor will be required to meet all plans and specification requirements. Only general contractors having provided three or more licensed hospital projects in separate and distinct geographic locations and having brought these projects to full licensure within the last five years will qualify as a GENERAL CONTRACTOR.

Plans and Specifications are available on April 2, 2012. The deadline for all written requests for information is April 9, 2012 at 2:15pm (Central). All RFI are to be sent to kfredrickson@projxllc.com and copied to ideal@projxllc.com. Entitle your email subject line: "Bid & Qualification Statement HCHD Spearman TX". All parties are to state: Contacting person's full name; Firm's full name and address; Firm's phone number; and confirm the Contacting person's Email address for correspondence within the email's content. All site visitations shall be coordinated through the Project Architect. Contacting the Board or the Hospital directly for such visitations may result in disqualification.

Blankenship Real Estate 659-3052 - 670-3774

LET US HELP YOU SELL YOUR HOME.

NEW LISTINGS WANTED! Eulalia Blankenship - Sales Eschol Blankenship - Broker

Shirley Howard Properties

We NEED listings! Call us now to help YOU sell your home for top dollar!

1026 Townsend - Spearman: 2,883 sq ft, 4 bed, 1 1/2 bath, LARGE Family Room!

1016 S Barkley - Spearman: 4,081 sq ft, 4 bed, 4 bath 3 lvg areas, 2 Att gar, Fireplace, Corner Lot! REDUCED AGAIN!

710 Front - Gruver: \$145,000 - @ 2,177 sqft, 3 bed, 2 3/4 bath, NEW Metal roof, NEW CACH, NEW Outside Stucco, and NEW Kitchen!

Shirley Howard, Broker/Owner 806-886-6536, Cell 806-648-4444, Work Melinda McCullough, Realtor (806) 733-5678

We would LOVE to sell your HOUSE! CALL US!

Formal submissions are due on or before 2:15 PM (Central) on April 17, 2012. All bids will be opened 5 minutes after the submission deadline.

From this date forward through the BID, GENERAL CONTRACTORS submitting any collateral materials to any parties affiliated with the Hospital's Administration or Board will be disqualified for consideration for this procurement. Submissions must conform with the Documents and Specifications which can be obtained from ProjX LLC. ProjX LLC phone number is 615-277-1178 or e-mail kfredrickson@projxllc.com. 2(3/22/12)B

ROUTINE MONITORING VIOLATION TOTAL COLIFORM RULE

Palo Duro River Authority/Lake Palo Duro I.D. # 0980011 failed to collect the required number of bacteriological samples for coliform monitoring of the water distribution system during December, 2011. This monitoring is required by the Texas Commission on Environmental Quality's "Drinking Water Standards" and the federal "Safe Drinking Water Act," Public Law 95-523.

Bacteriological samples are used to monitor water quality and indicate if the water is free of coliform bacteria. Our water system is required to submit one (1) bacteriological sample each month. Failure to collect all required bacteriological samples is a violation of the monitoring requirements and we are required to notify you of this violation.

Two samples were submitted and approved by the City of Amarillo Laboratory on November 30th, 2011, January 24th, 2012, February 21st, 2012, and March 20th, 2012. If you have any questions regarding this violation, you may contact Palo Duro River Authority/Lake Palo Duro, Jim Derington, General Manager at (806)882-4401. 2(3/29/12)B

ECONOMIC DEVELOPMENT DIRECTOR

The City of Spearman is seeking an Economic Development Director. This individual will be responsible for new business development, help improve existing businesses, tourism development, and improve the overall local economy. Salary depends on experience and qualifications. Possible benefit package included. Please send a resume to: City of Spearman, Box 37, and Spearman, TX 79081 2(3/29/12)B

EMPLOYMENT OPPORTUNITY Pringle-Morse CISD, Head Custodian

The head custodian is a high-energy self-starter responsible for building, transportation and grounds maintenance, including, but not limited to routine custodial duties and minor repairs. Salary is commensurate with experience. Excellent benefits

MARTIN & ASSOCIATES REALTY

Serving Hansford County Since 1990

209 & 213 N. Bernice: 2 houses, garage and storage bldg. Call for details.

34 N. Snider: 3 bed, 1 3/4 bath, CHA w/cornturf, Imp. 10' x 12' garage. Must see!

301 Hazelwood: 3 bed, 3 bath, fire, 10' x 12' garage yard UNDER CONTRACT

Julie Martin: Broker - 659-2425

We'd Like Your Listing! FOR QUALITY & SERVICE CALL US TODAY!

hchd Hansford County Hospital District

OPENINGS AT HANSFORD HOSPITAL LAUNDRY SUPERVISOR: Supervising laundry functions, ensures department compliance with established standards, orient new employees, over see laundry personnel, assign duties and schedule hours and maintains department records.

OPENINGS AT HANSFORD MANOR CNA: Daily nursing care in accordance with the resident's assessment and care plan, and as may be directed by the supervisor. Must be certified by the State of Texas.

Great working environment and staff, quality facility providing opportunities for professional growth. Great Benefit package. Apply at 707 S Roland, Spearman, TX or contact Jackie Nelson, HR 806-659-5841. Download application at hchd.net EEOE (3/29/12)

including district housing. Please apply at Pringle-Morse CISD, 100 Fifth Street, Morse, Texas 79062 or phone 806-733-2507. The District does not discriminate in employment in its programs and activities. Superintendent Kent Hargis is the District's Title IX and 504 Coordinator. 2(3/29/12)B

EMPLOYMENT OPPORTUNITY Pringle-Morse CISD, Counselor

Three years school teaching experience and counselor certification required for the position. Salary is commensurate with experience. Please apply at Pringle-Morse CISD, 100 Fifth Street, Morse, Texas 79062 or phone 806-733-2507. The District does not discriminate in employment in its programs and activities. Superintendent Kent Hargis is the District's IX and 504 Coordinator. 2(3/29/12)B

NOTICE OF APPLICATION FOR COMMERCIAL OIL AND GAS WASTE DISPOSAL WELL PERMIT

JCB II Enterprises, LLC, PO Box 752, Perryton TX 79070 is applying to the Railroad Commission of Texas for a permit to dispose of produced salt water or other oil and gas waste by well injection into a porous formation not productive of oil or gas.

The applicant proposes to dispose of oil and gas waste into the Panhandle Lime & Brown Dolomite Formations Perez Lease, Well Number 1 SWD. The proposed disposal well is located 3 miles East of Spearman, TX in the Hansford (Morrow, Lower) Field, in Hansford County. The waste water will be injected into strata in the subsurface depth interval from 3110 to 3600 feet.

LEGAL AUTHORITY: Chapter 27 of the Texas Water Code, as amended, Title 3 of the Texas Natural Resources Code, as amended, and the Statewide Rules of the Oil and

Gas Division of the Railroad Commission of Texas.

Requests for a public hearing from persons who can show they are adversely affected or requests for further information concerning any aspect of the application should be submitted in writing, within fifteen days of publication, to the Environmental Services Section, Oil and Gas Division, Railroad Commission of Texas, PO Box 12967, Austin TX 78711 (Telephone 512/463-6792). 1(3/29/12)B

CITATION BY PUBLICATION THE STATE OF TEXAS: TO ALL PERSONS INTERESTED IN THE ESTAT OF RUE SANDERS, DECEASED

Cause No. P02662, County Court of Hansford County, Texas, Amanda Michele Adams Casady, Applicant in the above-numbered and entitled estate, filed an Application for Determination of Heirship and for Appointment of Independent Administrator and Issuance of Letters of Independent Administration of the said Rue Sanders, Deceased, and their respective shares and interests in this estate.

Said application will be heard and acted on by said Court at 10:00 o'clock A.M. on the first Monday next after the expiration of ten days from date of publication of this citation, at the Court Courthouse, in Spearman, Texas.

All persons interested in said estate are hereby cited to ap-

1 8 9 7 5 4 6 3 2
7 2 4 6 3 9 1 8 5
5 3 6 2 1 8 7 9 4
8 9 1 5 6 3 2 4 7
2 5 3 4 7 1 9 6 8
6 4 7 8 9 2 3 5 1
4 7 5 3 2 6 8 1 9
9 6 2 1 8 5 4 7 3
3 1 8 9 4 7 5 2 6

pear before said Honorable Court at said above-mentioned time and place by filing a written answer contesting such application should they desire to do so.

The offer executing this writ shall promptly serve the same according to requirements of law, and the mandates hereof, and make due return as the law directs.

ISSUED UNDER MY HAND AND THE SEAL OF SAID COURT at office in Spearman, Texas, this the 23rd day of March, 2012.

KIM V. VERA, Clerk County Court Hansford County, Texas by Carla Woodington, Deputy 1(3/29/12)B

NOTICE TO ALL PERSONS HAVING CLAIMS AGAINST THE ESTATE OF JOHN D. SUTTERFIELD, DECEASED

Notice is hereby given that original Letters Testamentary for the Estate of John D. Sutterfield, were issued to Patsy L. Sutterfield, in the County Court of Hansford County, Texas, in Cause No 2659, on the 27th day of March, 2012. All persons having claims against this estate which is currently being administered, are required to present them within the time and manner prescribed by law. All claims should be sent to Patsy L. Sutterfield, 1010 Linn Drive, Spearman TX 79081. John L. Hutchison PO Box 506 Spearman TX 79081 Attorney for the Estate 1(3/29/12)B

DRACO AWW PSST
RURAL BAA BOWER
ALIBI ERR AGATE
BELOVED DOROTHY
TIC ESPY
NAP ALEX SOLOED
ALEE ACHE NACRE
WORM THATS SHIA
AHEMS OUCH SECT
BAZAAAR SHAM RAH
MUTT RIO
ULYSSES DICKENS
KYOTO ATE RAMIE
ELGIN RAM OPINE
SEAR SRI NITER

TEXAS STATEWIDE CLASSIFIED ADVERTISING NETWORK TexSCAN

TexSCAN Week of March 26, 2012 AUTOS

CASH FOR CARS We buy any car or truck running or not. Damaged, wrecked, salvaged OK. Get top dollar instant offer today. 1-800-273-9194

CABLE/SATELLITE AT&T V-UVERSE for just \$29.99/month! Save when you bundle Internet+Phone+TV and get up to \$300 back! (Select plans). Limited time call now! 1-877-577-4394

DRIVERS AVERITT STARTS REGIONAL CDL-A drivers at 37¢ cpm with 1 year experience. 4-12 months experience? Then we have a paid refresher course. 1-888-362-8608 or visit AVERITTCareers.com EOE

CLASS-A TEAM DRIVERS dedicated runs to Morton, IL. \$1000/week. \$500 sign-on bonus. Home weekly, consistent miles/freight. Day one medical. 1-866-331-3335

DRIVER TANGO TRANSPORT now hiring Regional, OTR, team. Top pay, plenty of miles. Great home time. Family Medical/dental. 401K, paid vacations. Call 1-877-826-4605 or www.drivefortango.com

DRIVERS- \$2000 SIGN ON bonus. Get miles/home weekends, SW regional. Top pay/benefits. Paid orientation and training. 3 month OTR and CDL required. 1-800-545-1351. www.cypresstruck.com; CHamblen@cypresstruck.com

DRIVERS - HOMETIME Choices: Express lanes 7 on 7 off, 14 on 7 off weekly. Full and part-time. Dry and Refrigerated. New Trucks! CDL-A 3-months recent experience required. 1-800-414-9569 www.driveknight.com

DRIVERS-REGIONAL FLATBED home every weekend, 40¢-45¢ cpm. Class CDL-A required. Flatbed load training available. 1-800-992-7863 ext. 185. www.McElroyTruckLines.com

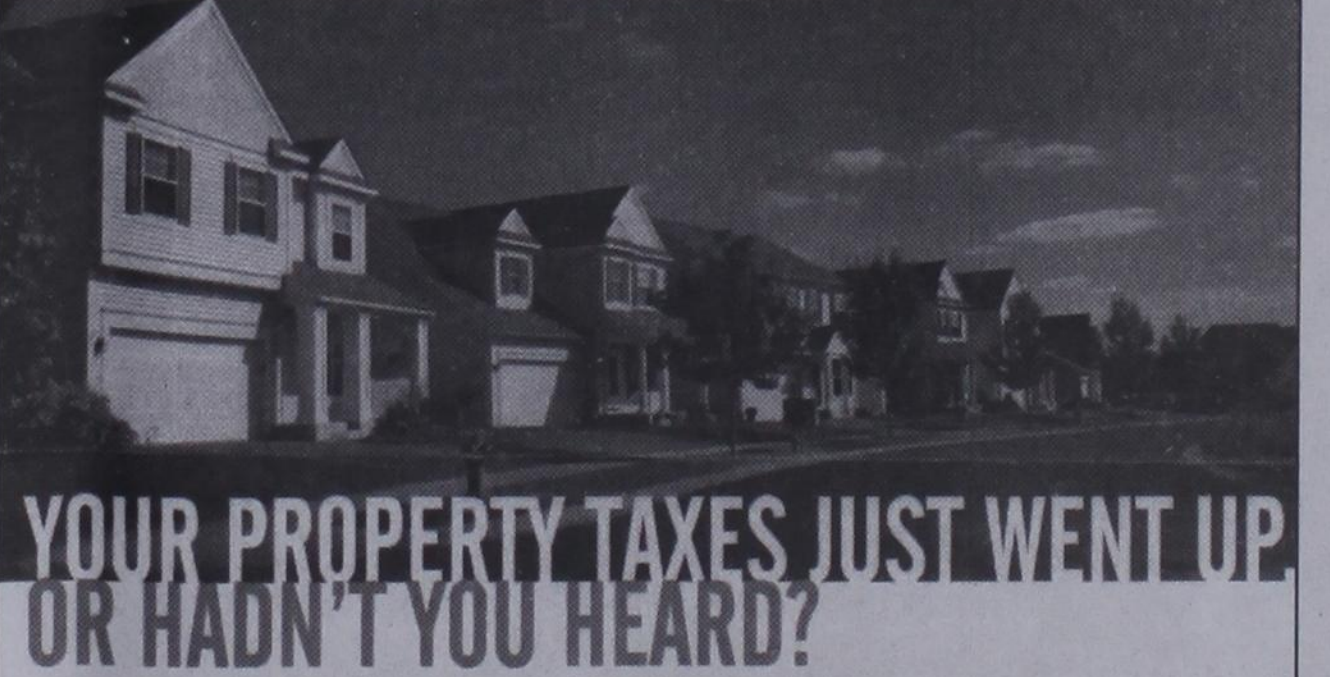
EARN \$1000-\$3200 a month to drive our new cars with ads. www.PaidDriver.com

EXPERIENCED FLATBED DRIVERS: Regional opportunities now open with plenty of freight and great pay. 1-800-277-0212 or prmetinc.com

PAID CDL TRAINING! No experience needed. Stevens Transport will sponsor the cost of your CDL training. Earn up to \$40K first year and \$70K third year. Excellent benefits! EOE. 1-800-333-8595. www.becomeadrivers.com

LEASE 2012 KW or FL. Great money, \$500 fuel credit. Full warranty, no surprise maintenance plan. Owner operators, company drivers welcome. 1-888-440-2465 or www.drivenc.com. Call Apply today!

NOTICE: While most advertisers are reputable, we cannot guarantee products or services advertised. We urge readers to use caution and when in doubt, contact the Texas Attorney General at 1-800-621-0508 or the Federal Trade Commission at 1-877-FTC-HELP. The FTC web site is www.ftc.gov/bizopp. Extend your advertising reach with TexSCAN, your Statewide Classified Ad Network.



YOUR PROPERTY TAXES JUST WENT UP OR HADN'T YOU HEARD? KEEP THE LIGHT ON PUBLIC NOTICES

The Hansford County Reporter-Statesman

by Dorothy Hudson

Out at the Lake

Jim Derington
Palo Duro River Authority
P.O. Box 99
Spearman, TX 79081
806-882-4401
pdra@dishmail.net



On Saturday, March 24, Connor Willimon presented his Eagle Scout project, a flagpole and two benches, to the Palo Duro River Authority.

Lake Level--March 26, 2012--29.60 feet (-0.03)

The rains last week meant a lot to us who live in Hansford County. Jim's gauge at the office showed one and a half inches. The

rain fell slowly, and there was not much runoff to raise the lake level, but we almost held even for the week.

Springlike weather brought in 2 campers on the office side and 5 north of the dam. More fisherman were out. One, who was fishing from a boat, caught 12 catfish with the largest weighing in at 12 pounds.

There was another story of a 22 pound catfish.

Jim has seen the first of the returning buzzards. Visitors at the lake this weekend were able to see 25 big, white pelicans. Maybe they will stay awhile.

Flag Pole and Benches Presented

As part of the process of becoming an Eagle Scout,

Connor Willimon led a project to install a flag pole and benches at the Lake. First Connor and the Boy Scouts of Troup 551 held a work day to dig sod, spread sand, lay a concrete pad, and install benches near the Pavillion north of the dam. Later they erected a flag pole. Then, Saturday evening at 7 o'clock the Scouts held a ceremony. They presented keys to the flag pole to Don Travis, a PDRA director, and Jim Derington, manager. Connor gave a talk on the United States Flag and its history. The Scouts showed how to retire a worn flag by burning. New flags of the United States and Texas were then raised.

Engagement Announcement



Miss Milo Noel Hall would like to announce the engagement of her mother, Jill Noel Hall, to Gary Clayton Smith, II. Jill is the daughter of Craig and Donelle Hall of Granbury, TX. Clayton is the son of Gary and Catherine Smith of Spearman.

Jill is the granddaughter of James Quigg of Energy, TX, the late Joy Dell Quigg and the late George and Louise Hall. Clayton is the grandson of Gerald and Sandra Ritchie of Granbury and the late Jerry and Lottie Smith.

The bride-elect attended Hollywood High School, graduating from City of Angels in Los Angeles. She attended Pierce College in Woodland Hills, CA and The Conservatory for Performing Artists at California State University. She has been a member of the Screen Actors Guild for 21 years and is a teacher at Lake Granbury Montessori School.

The prospective bridegroom graduated from Top of Texas Accelerated Education in Perryton. He is a student at Tarleton State University in Stephenville, TX, majoring in Education and Business. He is a self-taught, avid musician and has played in several bands in the Dallas/Fort Worth area.

The couple plans to marry June 5, 2012 in New Orleans, LA. The family plans to make their home in Spearman.





Weatherford Construction
Septic Systems

Kirk Weatherford (806) 336-2820
8125 FM 3395 Toll Free: 1-800-585-6047
Spearman, TX 79078 Email: kirk@weatherford-construction.com

See us for:
AUTO • HOME • CROP HAIL •
FARM & RANCH • MULTIPERIL •
LIVESTOCK

INSURANCE



BORT AGENCY, INC.
510 Main St. • Gruver, TX
(806) 733-2456

Spearman Lynx & Lynxettes

<http://spearmansports.smugmug.com/>

Photos available of Spearman Lynx and Lynxette athletic events.





(806) 644-2838
22 Archer Street • Spearman

Daily Buffet

Lunch - 11 a.m.-2:30 p.m. • Dinner - 5:30-9 p.m.
Open Wednesday-Monday - Closed Tuesday



NEW
Sushi on Sunday Buffet

VENOM

Football With A Bite!

Saturday, March 31, 2012



VENOM vs **West Texas Roughnecks**

GIVEAWAYS! Autographed Mini-Venom Footballs
Opening Ceremonies • **THEME: Ag Night and College Night**

Join us for all Venom AWAY Game
Watch Parties at Mulligan's Sports Pub.
2711 Paramount Blvd. #1, Amarillo, Texas

Schedule & Giveaways Subject to Change - All Home Games Are Played
At Amarillo Civic Center Four Light Field - Kickoff @ 7PM

GAME DAY SPONSORS




FLAINS AERIAL, INC.

Contact Us To Reserve Your Seat Today!

901 S. Buchanan, Amarillo, TX 79101
806-350-7277

facebook.com/AmarilloVenom • www.govenom.com



Taqueria La Hacienda

Hwy. 207 S., Plains Shopping Center
(behind Lowe's Marketplace)
Spearman TX • (806) 644-4500
7-Days-A-Week, 10 a.m. - 9 p.m.

Taqueria La Hacienda invites you to come celebrate their first anniversary!

Anniversary Special
Tacos - 99c each
(April 4th-7th only)

-COUPON-

Get \$5 Off Purchase of \$30
or More (excluding taxes)
(Expires April 7th)
