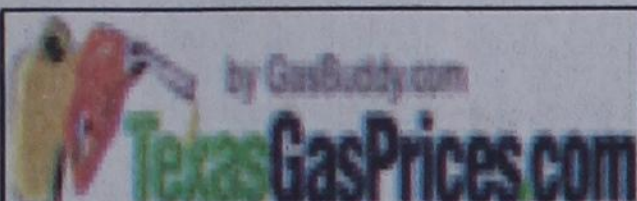




### Reminder

With Easter coming this weekend, the City of Spearman would like to remind everyone that chicks and ducklings are illegal inside the city limits. As cute as they are to give for Easter, the City will be watching out for them. Fowl and other undomesticated animals are illegal and carry a fine up to \$200.00. So stick with the chocolate bunnies and colored eggs for your child's Easter basket.



### Weekly Update

Texas, April 2- Average retail gasoline prices in Texas have risen 3.4 cents per gallon in the past week, averaging \$3.82/g yesterday. This compares with the national average that has increased 3.2 cents per gallon in the last week to \$3.89/g, according to gasoline price website TexasGasPrices.com.

Including the change in gas prices in Texas during the past week, prices yesterday were 27.1 cents per gallon higher than the same day one year ago and are 23.5 cents per gallon higher than a month ago. The national average has increased 18.6 cents per gallon during the last month and stands 26.8 cents per gallon higher than this day one year ago.

"The national average has finally showed some signs of slowing down, and gasoline prices in dozens of areas have virtually stabilized after rising for two to three consecutive weeks," said GasBuddy.com Senior Petroleum Analyst Patrick DeHaan. "The rally in gasoline prices started in March, we could have dubbed it March Madness, to coincide with the flurry of college basketball games, but as the tournament winds down, gasoline prices too have slowed their increase, and maybe- just maybe- gasoline prices are closer to a peak than we initially expected," DeHaan said, noting that GasBuddy last week revised its gasoline price forecast slightly higher.

The revision can be found at <http://www.scribd.com/doc/86920341/Revised-Gasoline-Forecast-Media-Mar-27-2012>

GasBuddy operates, TexasGasPrices.com, and over 225 other local gasoline pricetracking websites that follow prices at over 125,000 gasoline stations in the United States and Canada. GasBuddy also uses Facebook ([facebook.com/gasbuddy](http://facebook.com/gasbuddy)) Twitter ([twitter.com/gasbuddy](http://twitter.com/gasbuddy)), and phone apps to keep motorists ahead of changing gasoline prices.

### Texas Crop & Weather

Rain continued to push back the Texas drought, with most of the northeastern, central, southeastern and eastern parts of the state either out of the drought or merely abnormally dry, according to the U.S. Drought Monitor status report of March 27.

With soil moisture boosted by frequent rains, and above-average temperatures bringing warm-season grasses out of dormancy, many producers were already fertilizing pastures. (Texas AgriLife Extension Service photo by Robert Burns)

But as much as 67 percent of the state remained under one stage of drought or another, according to the monitor.

More information on the current Texas drought and wildfire alerts can be found on the AgriLife Extension Agricultural Drought Task Force website at <http://agrillife.tamu.edu/drought/>.

The following specific livestock, crop and weather conditions were reported by Panhandle Extension directors for April 3, 2012: The region had unseasonably warm weather. Soil-moisture levels were from adequate to very short, with most counties reporting short. Wheat was rapidly growing thanks to warmer weather, irrigation and recent rains. Ratings of wheat varied from excellent to very poor, with most areas reporting fair to poor. Farmers continued preparing for spring planting. Rangeland and pastures were very poor to fair condition, with most reporting very poor to poor. Cattle grazing on wheat made excellent gains. However, most cattle on rangeland still required supplemental feeding.

## Shelby Hanna Selected as 2012 State Farm Texas Scholar



The State Farm® Texas Scholar Award Program recognizes high school seniors throughout Texas who exhibit leadership and good citizenship through excellence in their academics while maintaining an active profile in co-curricular and extra-curricular activities in their schools and communities. Most importantly, a Texas Scholar is an individual whose academic progress and success serves as a priority as they prepare to continue their education in colleges or universities across the country.

Students selected for this program are nominated by their high school counselors, varsity coaches, program moderators, or school administrators.

The Texas Scholar Award program is definitely not a popularity contest. But that doesn't mean you can't have some fun supporting your favorite High School.

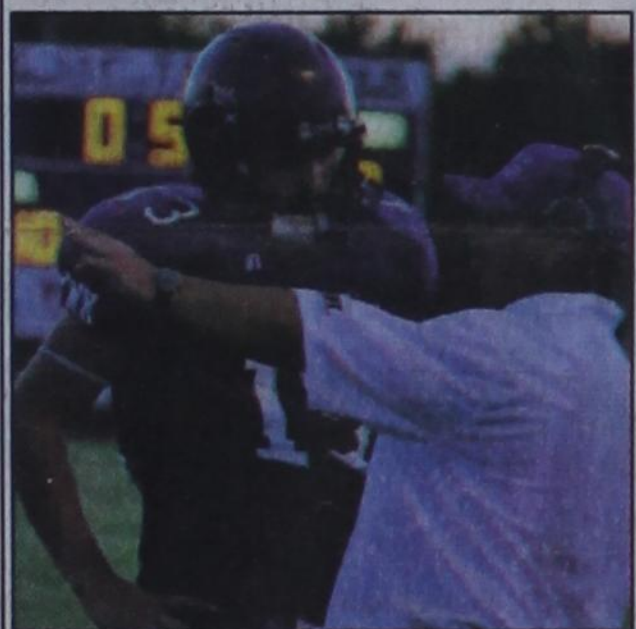
Everyone can cast a vote for his/her favorite High School or Texas Scholar. Only those high schools that nominated a 2012 Texas Scholar are included in the voting.

The High School with the most votes will win a \$1,000 donation by the Texas Scholar Award Program on behalf of the Texas Scholar.

The competition will run from March 29, 2012 through April 30, 2012.

To vote and for more information go to <http://www.texascholaraward.com/>

### Swan to Play NCAA Division II Football for Eastern New Mexico



Lynx Quarterback #13, Jace Lang-Swan has announced his decision to play NCAA Division II football for the Eastern New Mexico Greyhounds at Portales. Jace, a three year varsity starter for the Lynx, will be attending Eastern New Mexico majoring in Health and Physical Education and double minoring in coaching and Social Studies.

His long term goals include teaching Social Studies and coaching Texas high school football. While attending Spearman High School Jace received many academic and football awards.

Most importantly he would like to thank the lynx family "coaches and teammates" for the great memories that have been made his past three years of high school. He would also like to thank each parent and student who wrote letters each and every Friday, and last but not least the support from the community. Nothing feels better than running out of the helmet and seeing a packed house on a Friday night.



### Dr. Latta Serving as President of Academy of Veterinary Consultants

June of 1968, upon graduating from Oklahoma State university, Dr. Tom Latta and his family moved to Spearman, TX. Dr. Latta went to work for Panhandle Veterinary Clinics under the mentorship of Dr. H.B. Rinker. Dr. Rinker was a pioneer in the feedlot consulting business.

Dr. Latta has been a feedlot consultant for the past 30 years and now has the privilege of serving as the President of Academy of Veterinary Consultants. The Academy of Veterinary Consultants is an international organization of veterinarians, established in 1972, whose primary practice focus is on beef productions. With

over 800 members in the United States, Canada, Australia and Mexico, they influence herd health, well-being and production of over 80% of the beef cattle in the United States. It is recognized as one of the most science-based veterinary medical organizations.

Dr. Latta is in phase three of a four-year term of office. In 2004 Dr. Latta was awarded Consultant of the Year. This year's spring meeting will be held in Washington, DC with Thursday's meeting being a reception-meeting with congressional representatives.

### O'Loughlin Center Receives Donation from Monsanto Fund

Local Farmer Directs \$2,500 through America's Farmers Grow CommunitiesSM Campaign



Participants in the America's Farmers Grow Communities check presentation, from the Monsanto Fund, for Hansford County, Texas, included (from left to right): Marty McCloy; Debbie Goodheart, Executive Director, O'Loughlin Center; Molly McCloy; Buster McLain; Holly McLain; and Ben Matthews, Monsanto. Photo courtesy of Debbie Goodheart.

Spearman's very own O'Loughlin Center just received special thanks from an area farmer, via the America's Farmers Grow CommunitiesSM campaign.

Grow Communities gives farmers the opportunity to win \$2,500 for their favorite local non-profit organizations. Mike

McLain was name the winning farmer in Hansford County; and he directed the donation to the O'Loughlin Center.

"The Center is used for community events, especially activities and exercise programs for the elderly, so it's a worthy cause for this money. It's funded by volunteers," McLain said.

The organization also will use the \$2,500 to help with its "Kids Kamp" program, slated for this summer.

In a ceremony held Saturday, March 24, 2012, at the O'Loughlin Center's Pot of Gold event in Spearman, McLain got the chance to present the organization's leadership with the \$2,500 donation.

Through America's Farmers Grow Communities:

- Farmers in 1,245 eligible counties have the chance to win \$2,500 for their favorite community nonprofit organizations.
- The Monsanto Fund has invested more than \$3.1 million to rural communities this year alone.
- A list of all winners and more information can be found at [www.growcommunities.com](http://www.growcommunities.com)

Grow Communities is part of a broad commitment by the Monsanto Fund to invest in farm communities such as Hansford County. It aims to highlight the important contributions farmers such as McLain make every day to our society.

#### About the Monsanto Fund

The Monsanto Fund, the philanthropic arm of the Monsanto Company, is a non-profit organization dedicated to strengthening the farm communities where farmers and Monsanto Company employees live and work. Visit the Monsanto Fund at [www.monsantofund.org](http://www.monsantofund.org).

## Deadline Notice!

The deadline to submit news and advertising to the Hansford County Reporter-Statesman is Monday at 5 p.m. Items submitted after the deadline will be published at a later date, as time and space permit.

The Hansford County Reporter-Statesman will be closed April 10-22, 2012. We will resume regular business hours on Monday, April 23rd. (Regular hours are Monday-Wednesday, 9 a.m.-12 noon and Monday-Tuesday, 1-5 p.m. We are closed on Wednesday afternoon through Friday.) **The deadline for the April 12th and 19th issues will be Friday, April 6th.**

Items may be submitted by phone (806-659-3434), fax (806-398-9080), mail (Reporter-Statesman, 213 Main Street, Spearman TX 79081), or by e-mail ([reporter@spearmanreporter.com](mailto:reporter@spearmanreporter.com)).

For more information, please contact Catherine Smith at 806-659-3434, 806-584-4879, or [reporter@spearmanreporter.com](mailto:reporter@spearmanreporter.com)

### Sacred Heart Catholic Church

## Women's Guild Bake Sale

Friday, April 6



8:30 AM at Lowes Supermarket  
Proceeds go towards the Sacred Heart Women's Guild to benefit the Scholarship Fund

Lots of baked goods, yummy and homemade!





# Wolf Creek Heritage Museum Notes

by Virginia Scott

## MUSEUM HAPPENINGS

I apologize that we did not provide a column last week. Georgia and I hit the road on Monday morning to travel to San Antonio for the annual meeting of the Texas Association of Museums. It was my intention to write the column that evening at our motel, but I could not get internet reception from our hotel nor in San Antonio. I would receive the message "too weak to transmit." So I never got through.

Our trip was clear weather the whole way with the bluebonnets at peak bloom. They were thick and beautiful throughout the state. The state was also beautifully green - a wonderful contrast to the black and brown landscape that we saw last year.

Our meetings were full of new ideas, new technology, and wonderful information that we can use in planning our exhibits and goals for future projects. One of our keynote speakers was Susan Raymond, PhD, who is an economist and specialist in the economics for

non-profits. She spoke on strategies that non-profits should consider during hard economic times. Nice advice, especially for all volunteer groups.

On the Sunday before we left, the museum hosted a reception for Rebecca Ashley. It was a nice day, so the crowd was good. The paintings of Rebecca's were well received and she had a very productive day with multiple sells. It is always rewarding when our community supports our artists through their attendance and their purchases. We thank each and every one of you for supporting our program for local artists.

Rebecca's art will be on display until the end of April.

Lastly, the Board for both the Lipscomb County Historical Commission and the Museum will meet at the museum on Tuesday, April 10 at 2:30 p.m. The public is welcome to attend. The meeting is a way to obtain an overview of what our group does, and we are in need of volunteers that want to assist with our projects and programs.

## HISTORICAL MUSINGS

The Wednesday Core Team is filtering through some old issues of Lipscomb County Newspaper for obituaries and other interesting articles and tidbits. One of these items was encouraging women to make War Bread. The article gives the following directions:

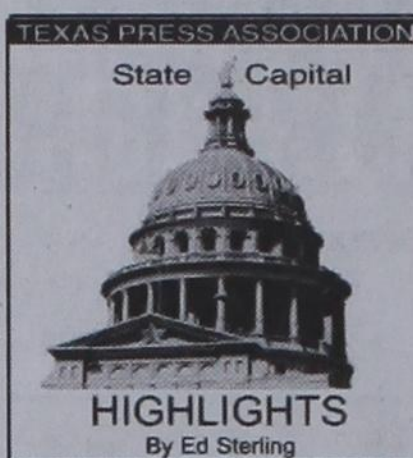
One cup sweet milk, 1 cup white flour, 1 cup maize, kafir or feterita flour, 2 Tablespoons fat, 2 tablespoons sugar, 4 teaspoons Baking powder (level), 1/2 teaspoon salt, 1 egg. Sift dry material first, Beat all together thoroughly, pour into well greased muffin pans and bake in quick oven.

It further instructs: In making the WAR BREADS, it is necessary to use a part white flour as the other flours lack in gluten and do not stick together well and as it is necessary to conserve the white flour, we urge all housekeepers to START NOW making the WAR BREADS. You will find them not only healthful but delicious.

I wonder if this was true. We also have an edition of the Woman's Cook Book for Wartime Cooking. Recipes utilizing the ration portions of eggs, sugar, etc. We recognize the military veterans of our wars, we also need to recognize and thank the women, children, and men that were on the home front doing all they could for the war effort.

If anyone has maize, Kafir, or feterita, bring them to us and we will make some WAR BREAD for our next reception.

Thought for the week: "It takes as much energy to wish as it does to plan." Eleanor Roosevelt.



## Wait for Supreme Court ruling begins

AUSTIN — Texans and all other Americans have until late June to guess how the U.S. Supreme Court will rule in the multi-state case seeking to have the federal Patient Protection and Affordable Care Act declared unconstitutional on account of federal overreach.

Last week, oral arguments were put before the high court. Lawyers, pundits and officials expressed an array of opinions about what happened in those question-and-answer sessions and attempted to divine how a ruling might affect the cost, quality and accessibility of health care, the impact on state budgets and potential effects on the November general election.

State Comptroller Susan Combs, who administers the state budget, said the Texas Legislature would "have a hard time finding future state budgets if the Obama administration's federal health care rules are implemented."

But some of the two-year-old, 2,400-page law, which is introduced in stages, already is in effect. The individual mandate — the part of the law that requires nearly all citizens to purchase health insurance — is not scheduled to take effect until 2014. One of the questions before the court is whether the individual mandate and other parts of the health care law could stand alone as constitutional issues.

For Combs, however, the concern she expressed on March 26 was with Medicaid spending. She pointed out that 20 percent of the state's general revenue goes to Medicaid and that mandates in the federal health care law would cause the state to spend 37 percent of its general revenue on Medicaid alone by 2023.

While it is unclear what condition state finances will be a decade in the future, the health care law as it is today expands coverage, covers pre-existing conditions, offers discounts on prescription medications and gives tax credits to small businesses that offer health insurance to employees.

## Capitol gets new monument

March 29 marked the unveiling of The Tejano Monument, a set of 11 life-sized bronze sculptures mounted on a massive chunk of pink granite on the south lawn of the Capitol.

# STATE CAPITAL HIGHLIGHTS



by Ed Sterling

Sculpted by Armando Hinojosa of Laredo, the monument pays tribute to the Tejanos — Spaniards and their descendants — who dwelled on the land between the Rio Grande and the Red River, and the Sabine River on the east to the Rocky Mountains, for three centuries before statehood and forward to the present day.

Necessary steps culminating in the installation of the monument were achieved through legislation passed in 2001, 2005, 2006, 2007 and 2009.

## AG chief: about that beef

Texas Agriculture Commissioner Todd Staples on March 29 joined Gov. Rick Perry and a group of other governors at a Nebraska meat packing plant to address recent public concern about a beef product nicknamed "pink slime."

While Native American cultures of the Great Plains have long been praised for using every bit of the bison they hunted, the presence of pink slime in ground beef sold and consumed in the United States prompted news reports that the product comes from less esthetic cuts disinfected in an ammonia solution before grinding.

Staples, referred to the product as "lean, finely textured beef" and said beef production has been slowed because of canceled orders resulting from negative media. "If these myths are allowed to persist, hard-working Americans will

lose their jobs permanently, forcing us to be more dependent on foreign food sources to meet growing consumer demand for lean ground beef," Staples said.

Perry said "retailers are effectively discarding 10 to 12 pounds of high-quality protein per head at the same time an historic drought in the Southwest has significantly reduced herd size. That's a formula for a fairly significant price hike in beef, again, for no valid reason."

## Unemployment drops again

The state's seasonally adjusted unemployment rate dropped to 7.1 percent in February, down from 7.3 percent in January, the Texas Workforce Commission announced on March 30. A year ago, in February 2011, the unemployment rate was calculated at 8.0 percent.

## Higher speed for some stretches

The Texas Transportation Commission last week announced its approval of 80 mph designations for 54 miles of roadway in the Austin area: State Highway 130 from Georgetown to Mustang Ridge and State Highway 45SE from Mustang Ridge to Interstate 35 in south Travis County.

This was made possible by House Bill 1201, legislation that allows the Texas Department of Transportation to set speeds of up to 85 mph on certain highways designed to accommodate such speeds.

# Thank You!

Dear Citizens of Spearman

As we bring our bond and ties to the city of Spearman to a close, we again want to say thank you to all who have been a good family friend for the past sixty five years. Thank you to all who sent flowers and food. Thank you to Pastor Jack, Kathryn and the congregation of Apostolic Faith Church for your prayers and visits. Thank you First Christian Church for opening your doors to us. Thanks to Hansford Hospital Staff and Dr. Garnett for your gentle loving care during the last days. Last but not least to Hansford Manor for giving our Mother a home away from home for a year. We may be gone but memories live on forever. We will never forget you.

Sincerely,

The Children of James and Ruby Riley  
Betty & Tommy Davis, Paula Riley, Pauline Heinz,  
Lois & Mike McCaskill, Callie & David VanKleeck

## Editors Note...

Freedom of speech is one of the guarantees of the First Amendment of our Constitution, so we encourage readers to express themselves, even if we don't agree with what is said. However, freedom involves responsibility. Therefore, the only letters we will consider publishing are from individuals who are willing for their names to appear with the letter. Letters must contain the telephone number, address and a personal signature of the writer (for verification purposes only).

We will not knowingly publish any letter containing libelous or slanderous statements, or factually incorrect information. Letters containing language or content that we feel is inappropriate will not be published.

Examples of content that will cause letters to be rejected include the following: Confusing or unclear points; Crude language; Poor taste; Disrespectful comments regarding a group's or individual's ethnicity, gender, religion, culture, sexual orientation or race; Other incendiary language or remarks; Endorsements for or complaints about individually named commercial products or services.

"Letters To The Editor," like all materials submitted to this newspaper, are subject to editing for space and clarity. The publication of any letter or article is the decision of the Editor and Publisher.

We welcome your input. You may write to us by using the online form, e-mail - reporter@spearmanreporter.com; fax - 806-398-9080; or regular mail - Letters to the Editor, c/o Hansford County Reporter-Statesman, 213 Main Street, Spearman TX 79081.

The Hansford County Reporter-Statesman

## The Hansford County Reporter-Statesman

Mailing Address - 213 Main Street • Spearman TX 79081  
Physical Address - 310 Barkley Street • Spearman TX 79081  
Phone - (806) 659-3434 • Fax - (806) 398-9080  
www.spearmanreporter.com • reporter@spearmanreporter.com  
Mon.-Thurs. 9 a.m.-12 p.m., Mon.-Wed. & 1-5 p.m.  
Closed Thurs. afternoon and all day Fri., Sat. & Sun.

Gary Smith - Publisher Catherine Smith - Editor  
Contributing Writers: Dorothy Hudson, Jim Detrition, Merry Sparks, Cecil Biggers, Virginia Scott, Ed Sterling, Rod Sumner  
Contributing Photographers: Lisa Johnson, Tami Hargrove, Tammy Batton, Bonnie Bergan, Rod Sumner

Subscription Rates  
In Hansford County - \$30.00 • Out of County - \$40.00  
E-Mail Subscription - \$35.00

The Hansford County Reporter-Statesman (USPS 529660) is published weekly in Spearman, TX. Periodical postage paid in Spearman, TX. POSTMASTER: Send address changes to: The Hansford County Reporter-Statesman, 213 Main Street, Spearman, TX 79081.

### Publication Policy

The deadline to submit news and advertising to The Hansford County Reporter-Statesman is Monday at 5 p.m. Items submitted after the deadline will be published at a later date, as time and space permit. Publication of all items is at the discretion of the editor.

### Advertising

Open Display rates are \$4.00 per column inch. Classified Ads are \$7 for the first 20 words and 15¢ per word for each additional word. (Additional charge for boxed classifieds.) There is a \$1 charge per week if billed.

Member of  
Spearman Chamber of Commerce  
Spearman Chamber of Commerce  
Texas Press Association and Panhandle Press Association



## Wolf Creek Heritage Museum

Museum Hours: Monday thru Friday 10 a.m. to 4 p.m., Special hours upon request.

Museum Information:  
13310 Hwy 305, PO Box 5,  
Lipscomb TX 79056; telephone: 806-852-2123; e m a i l : wolfcrk@amaonline.com; website: www.wolfcreekheritagemuseum.org

See us for:  
AUTO • HOME • CROP HAIL • FARM & RANCH • MULTIPERIL • LIVESTOCK

## INSURANCE



BORT AGENCY, INC.  
510 Main St. • Gruver, TX  
(806) 733-2456

## KINGS & QUEENS

### ACROSS

- \*In 1957 this group honored MLK Jr.
- Berate or annoy
- "The \_\_\_ Thing" movie
- Islam's Supreme Being
- Short for Elijah
- Indulgent shopping trip
- Shabby and tatty
- \*Kingdom of \_\_\_ in Northern Morocco
- Mothball substitute
- \*Last king of Lydia
- \*Queen's lead
- Greed, e.g.
- Skin opening
- \*Tutankhamun, e.g.
- Mine is yours?
- Some use gas, others are electric
- 3rd and 5th in Manhattan
- 2 more than eagle, pl.
- \*John Philip Sousa, aka The \_\_\_ King
- \_\_\_ market
- \_\_\_ -la
- "The Dark Knight" actor
- Permit
- America's choice
- Strikebreaker
- To close again
- Like an ear infection
- Estimated arrival

- Wildcat
- Spelling competition
- Special anniversary
- \*Queen Elizabeth II's grandson
- Wombs
- Pastrami on \_\_\_
- Tightly-twisted cotton thread
- Shermans in World War II
- Victory sign
- Administrative
- "\_\_\_ So Fine"
- "Yakety \_\_\_"
- Lays in peace

### DOWN

- Narcotics lawman
- Having wings
- Lowest female singing voice
- Actress Phoebe \_\_\_
- Laxative
- Fair-play watchdogs
- A in IPA
- Gadget
- Specification
- Pakistan's official literary language
- End of the line
- Like a ghost
- Munch's masterpiece "The \_\_\_"
- Unfit or inappropriate
- "To \_\_\_ is human"
- Self-contradiction
- \*Brunhoff's green-clad king
- Immature ovum
- Hollers
- Hindu woman's dress
- Picks up, as in suspect
- \*Actress turned princess
- Pomp
- \*Queen of this land paid Solomon a visit
- \_\_\_ gin
- One-armed bandit
- Defendant's excuse
- \*She cost Edward VII his throne
- NaOH
- Used for storage
- In a tense state
- Omit
- Sticks out
- Home to the Jazz
- "Well" to Sofia Loren
- Irritates
- 7 days
- Doctrines
- Same as alighted
- \_\_\_ room
- Affirmative response

SUDOKU PRESENTED BY

Where volunteering begins.

		6	4		7				
		9					7	3	
5	3								6
9			8		4				2
			3		1				
2			9		6				7
6									8 5
	1	8					9		
			6		8	2			

© StatePoint Media answer on classified page  
Fill in the blank squares in the grid, making sure that every row, column and 3-by-3 box includes all digits 1 through 9.

These games are brought to you by the Hansford County Reporter-Statesman

CROSSWORD

1	2	3	4	5	6	7	8	9	10	11	12			
13					14			15						
16					17			18						
19				20			21	22						
23														
25	26	27		28		29		30		31	32	33	34	
35			36			37			38			39		
40					41				42			43		
44				45		46						47		
48				49		50			51			52		
				53		54			55			56		
57	58	59	60					61				62	63	64
65						66	67			68				
69						70				71				
72						73				74				

PRESENTED BY

Where volunteering begins.

© StatePoint Media answer on classified page



# Happy Birthday!

**April 5**  
**Birthday** - Becky Cassidy, Jimmy Finley, Carrie Pressley, Vana Stapleton, Carla Brown, Dickie Allen, Juanita Rodriguez, Deann Green, Deanne Ochoa, Paul Welch, Jimmie Davis, Irene Auld, Darla Jenkins, Leon Bagwell, Wendell Ralston, Kelcee Rex, Sara Jenkins, Vanna Reid  
**Anniversary** - M/M Jack Weldon

**April 6**  
**Birthday** - Margaret Ralston, Trey Roberts, Jerry Sparks, Eddie Rogers, Cindy Patterson, Bailey Lee Patterson, Redonna Moore, Cameron Kunsleman, Douglas Barnes, Tim Wooley, Ann Sheets, Oberto Balderama Jr.  
**Anniversary** - Dale & Onie Moyer, Kenny & Brenda Red, M/M Skipper Beal, M/M Emit Schmidt

**April 7**  
**Birthday** - Margaret Bell, Kallie Cluck, Will Evans, Jeannie (Potts) Dawkins, Sharlet Slough, Sammie Stavlo, Shawn Thompson, Kyle Winter, Kenneth Brown, Jo McLaughlin, Wallace Berner, Jo Nell Grayson, Michael Brogdon, Beth Lesly, Denise Torrea, Tashaia Duncan, Linda Winegarner, Laurie Beth Stedje, Seth Clemmons, Joshua Scott Bullard, Lorene Fulce, Denise Apodaca, Mason Fletcher, Greg Evans  
**Anniversary** - M/M Donald Jackson, M/M Monty Cassidy

**April 8**  
**Birthday** - Cami Shapley Jenschke, Damon Goodheart, Julie Ortega, Shenell Taylor, Brandon Vanderburg, Barbara Ellsworth, Ramona Garcia, Isaac Herndon, Jennifer Laxson, Jim Deakin, Dalton Ortega

**April 9**  
**Birthday** - Julie Martin, Phyllis Atwood, T.J. Bayless, Diane Brown, Jeremy Harris, Colby Hunt, Dan Odum, June Kelp, Annette Pope, Patti Schnell, Pepper Collingsworth, Cease Riley, Lori Young, Sims Reddin, Kara Womble, Clyde Hodge, April Butts, Robin Castillo, Maggie Pipkin  
**Anniversary** - M/M Keith Burgess

**April 10**  
**Birthday** - Bill Been, Mack Hoel, Matthew Hoel, Sally Jones, Blane Tolleson, Donita Lusby, J.L. Pierce, Mary Lou Wyszong, Jan Halladay, Mac Sheppard, Penny Cummings, Shelby Lopez, Ramon Garcia Sr., Aaron Maestas  
**Anniversary** - M/M Donnie Osbourne

**April 11**  
**Birthday** - Harlan Gerardy, Darrell Harvey, Billy Logsdon, Tammie Jo Simpson, Mike Stewart, David Pope, Wardell Volden, Robert Brisen, Slavin Sparks, Bill Baker, Dana McLaughlin, Mickie Fanning, Courtney Sheets, Austin Munoz, Jamie

**April 12**  
**Birthday** - Jennifer Lopez, Alice Slough, Mary TeBeest, Earl Taylor, Chance Jackson, Lelia Reyes, Paul Lopez Jr., Tara Butt, Sonya Messer, Tammy Red, Keith Hight, Helen Soto, Lilla Villa, Lauren Ferguson  
**Anniversary** - M/M Sonny Nollner

**April 13**  
**Birthday** - Lindsay Barkley, Ashley (Wagner) Bezner, Chad Clawson, Norma Jean Mackie, Elaine Morris, Robbie Randall, Maria Cole, Greg Black, Rebecca Cruse, Sarah Miser, Paula Labrier, Clete Vanderberg, Billy Logsdon, Dedee Ellis, Sara Paschel, Shelby Reiswig, Gaylord Cook  
**Anniversary** - M/M Rey Burgess

**April 14**  
**Birthday** - Ross Bulls, Cynthia Floyd, Verla Kunsleman, Dorsey Perez, Ryan Perez, Cameron Meddock  
**Anniversary** - M/M Ronnie Lusby, M/M Daniel Harvey

**April 15**  
**Birthday** - Cathy Boone, Jim Roberts, Danny Knox, Dorothy Faye Baggerly, Michelle Beedy, Eva Mae Reger, Kenneth Pierce, Emma Garcia, Margie Crockett, Stephanie Campbell, Nicole Ramon Neumeier, Jeff Coates, Austin Gross, Wesley Thompson, Skyler Sumner  
**Anniversary** - M/M Victor Soto, M/M Wally Berner, Monte & Jennifer Beck

**April 16**  
**Birthday** - Rod Barkley, Amber Knight, Anise Renner, Clayton Thompson, Cathy Patterson, David Knox, Edward Beck, Walter Jones, Alice Rodriguez, Tylan Pearce, Vernon Morris, G.W. Robinson, Jim Tucker, Joann Baca, Dorsey Perez, Matt Anderson  
**Anniversary** - M/M Mitch Hoover

**April 17**  
**Birthday** - Tim Garland, Gary Smith, Bill Porter, Linda Mosier, Anissa Ryan, Edgar Nava, Cheryl Hill, Kendra Jones, Jimmy Tope, Alfred Avila, Albert Avila, Tavo Hermissillo, Jenifer DeLaCruz, Norma Reis, Maurine Stenson, Ann Pape, Callie Stedje, John Smith, Katie Reed, Wendy Frick, Cassie Swan  
**Anniversary** - M/M Julian Rodriguez, M/M Bruce Bailey, M/M Tim Garland, M/M Henry Garcia, M/M Bill Hunter

**April 18**  
**Birthday** - Billy Kelly Jr., J.D. McCoy, Gregg Farr, Victor Rios Jr., Cacy Vaughn, Jena Cherry, Cha'tae Avila, Jennifer Gonzales, Elmo Dahl, Jeb Lee, Israel Arzate  
**Anniversary** - M/M Steve TeBeest

# Our Sympathy

**JIMMY RAY CASTOR**  
 GRUVER — Jimmy Ray Castor of Haskell, Okla., died March 21, 2012.

Graveside services with military rites will be at 10 a.m. Saturday in Gruver Cemetery in Gruver with the Rev. Gary Gumfroy officiating. Arrangements are by Henson-Novak Funeral Directors of Guymon, Okla.

Mr. Castor was born May 22, 1939, in Coweta, Okla. Jim served in the Marine Corps from 1956 to 1959.

Survivors include his wife, Kay of Haskell; three sons, Russ Castor of Guymon and Kirt Castor and Kent Castor, both of Dallas; a daughter, Kelly Keenan of Dumas; a stepdaughter, Alana Wilson; two stepsons, Craig Wilson and "Cotton" Fields, both of Haskell; a brother, Ron Castor of Porter; two sisters, Carol Marlow of Haskell and Karen Batty of Jay; and many grandchildren and great-grandchildren.

The family suggests memorials be to Humane Society or Don and Sybil Harrington Cancer Center Research, in care of the funeral home, P.O. Box 1306, Guymon, OK 73942.

**AMBROSIA TORRES GUERRA**  
 PLAINVIEW — Ambrosia Torres Guerra, 79, of Plainview died Sunday, March 25, 2012.

Rosary will be said at 7 p.m. today in Bartley Funeral Home. Mass will be celebrated at 11 a.m. Wednesday in Our Lady of Guadalupe Catholic Church in Plainview with the Rev. Raymundo Manriquez as celebrant. Burial will be in Plainview Memorial Park. Arrangements are by Bartley Funeral Home of Plainview.

Mrs. Guerra was born Dec. 7, 1932, in Goliad to Gabriela Benitez and Julio Torres. She married Rosendo Guerra in 1954 in Victoria.

Survivors include four sons, Vincent Guerra, Julian Guerra and Albert Guerra, all of Plainview, and Henry Guerra of Hereford; four daughters, Yolanda Borrego of Hereford, Rosalinda Arroyos of Lubbock, Rebecca Anima of Spearman and Stella Guerra of Plainview; a brother, Gilbert Rivera of Victoria; two sisters, Janie Nieto and Vincenta Reyes, both of Victoria; 21 grandchildren; and 20 great-grandchildren.

# Words from Faith & Grace

by Cecil R. Biggers, Lutheran Lay Minister



We have experienced the journey of Christ to the cross during our Community Holy Week Services. We now see the completion of God's extraordinary grace in the resurrection of Jesus The Christ. Truly our hope is built on nothing less than Jesus blood and righteousness as we study Acts 10:34-43, Psalm 118: 102,14-24, 1 Corinthians 15: 1-11, and John 20: 1-18.

Luke shows us the conclusion reached by Peter after his two visions which he announced at his visit to the house of the Roman Centurion, Cornelius. "I truly understand that God shows no partiality, but in every nation anyone who fears him and does what is right is acceptable to him". We may not all agree, as believers, on the proper order of service, on certain matters of doctrine, or the design of our houses of worship; but, we all declare Jesus as Lord. The Good News of the Gospel is that redemption, forgiveness of sins, and eternal life are granted by God to all who believe in Jesus The Christ.

The Psalmist sings a song of individual praise which expands to include others in the chorus of praise. Verse 22 is often quoted as referring to Jesus, "The stone that the builders rejected has become the chief cornerstone". God's plan of salvation, begun at creation, comes to fruition in the resurrection of Jesus Christ. Truly we can sing with the Psalmist, "This is the day that the Lord has made; let us rejoice and be glad in it."

Paul gives the Corinthians a reminder of the Good News! Verses 1-2 tell us why Paul's message should be accepted. Verses 3-4 tell us that Christ died for our sins. Verses 5-8 recited the post-resurrection appearances of Jesus, reinforcing the truth that he is alive. Verses 9-10 tell us what type of apostle Paul is. This message reinforces the Good News.

The gospel of John opens with a scene of creation; then shows Jesus asking some disciples of John, "Whom are you looking for". After the crucifixion, Mary remains alone at the tomb of Jesus. She is weeping. Jesus comes to her and asks, "Who are you looking for?" Mary, mistaking Jesus for a gardener says, "Sir, if you have carried him away, tell me where you have laid him, and I will take him away." Jesus says, "Mary!" Mary then recognizes Jesus and at his instruction goes to tell the disciples, "I have seen the Lord!" Thus, the first bearer of the Good News; the first 'evangelist' was a woman!

So, dear reader, whom are you looking for? May the Holy Spirit enable you to truly see and hear the Good News!

## MONUMENTS

### Boxwell Brothers Funeral Home

519 Evans • Spearman  
659-3802

Dear friends,  
When you buy a monument from us we make sure it is exactly what you want at a price you can afford. If it is not right, we will make it right. And you will not have to search the countryside to find us. We are here when you have a need.

Sincerely,  
Bob Boxwell

## FIREWOOD FOR SALE

Cedar firewood for sale. Call (806) 658-2573.  
Delivered & stacked, or self pickup.

## Replenish the seed of faith through . . . DAILY BIBLE READING, PRAYER & REGULAR CHURCH ATTENDANCE

<p><b>Spearman</b></p> <p><b>Apostolic Faith Church</b> 822 S. Drexler • 659-2870 Sunday School: 10 a.m. Worship Service: 11 a.m. Sun. Eve. 6 p.m. Wed. Prayer Mtg. 7 p.m. Pastor - Jack Cornell</p> <p><b>First Assembly of God</b> 401 N. Bernice • 659-2295 Sunday School: 9:30 a.m. Worship: 10:40 a.m. Evening Worship: 6 p.m. Wed. Worship: 7 p.m. Wed. Youth: 7 Pastor - Brad Smith</p> <p><b>First Christian Church</b> (Disciples of Christ) 29 S. Bernice • 659-2036 Sunday School: 9:45 a.m. Worship: 10:50 a.m. Minister -</p> <p><b>First Baptist Church</b> 123 N. Bernice • 659-5557 Sunday School: 9:45 a.m. Worship: 11 a.m. Evening Worship: 7 p.m. Men's Bible Study - Wed. 7 a.m. Children's Choir - Wed. 6 p.m. Adult Choir - Wed. 7 p.m. Wed. Bible Study: 7 p.m. Pastor - Jim Medley</p> <p><b>Church of Christ</b> 121 S. Haney • 659-3244 Sunday Bible Class: 9:45 a.m. Worship: 10:30 a.m. Evening Worship: 6 p.m. Bible Study Wed.: 7:30 p.m.</p>	<p><b>Sacred Heart Catholic Church</b> 901 Roland • 659-2166 Sat. Night Mass: 5:30 p.m. Sun. Mass: 9 a.m. - English Sun. Mass: 11:30 a.m. - Spanish Rev. Gregory Bunyan</p> <p><b>First United Methodist</b> 407 S. Haney • 659-5503 Sunday School: 9:45 a.m. Worship: 8:30 &amp; 11 a.m. Jr. High Youth: 5 p.m. Sunday Kids Club: 3 p.m. Wed. Pastor - Toni Bailey</p> <p><b>Grace Presbyterian Church</b> (Worships with Faith Lutheran Church) 1101 Bernice • 659-2033</p> <p><b>Faith Lutheran Church (ELCA)</b> 1101 Bernice • 659-2252 Sunday School: 9:45 a.m. Worship: 11 a.m. (Worships with Grace Presbyterian Church) Pastor - Cecil Biggers, PLM</p> <p><b>Union Church</b> 31 S. Endicott • 659-2644 Sunday School: 10:00 a.m. Worship &amp; Kid's Church: 11:00 a.m. Wednesday Evening Worship and Bible Study Service: 7 p.m. Wed. Pastor - Steve Hinshaw www.unionchurchonline.org</p> <p><b>Fellowship Baptist</b> 1102 S. Archer • 659-2783 Sunday School: 10 a.m. Worship: 11 a.m. Sun. Evening Worship: 6 p.m. Sun. Evening Spanish Worship: 7 p.m. Youth/Adult Service: 7:30 Wed. Pastor - Philip Hudson</p>	<p><b>Primera Mision Bautista</b> 502 E. 7th • 659-3991 Sunday School: 9:45 a.m. Worship: 11 a.m. Evening: 6 p.m. Wed. Prayer Meeting: 7 p.m. Thurs. Visitation: 7 p.m. Pastor Joe Garcia Jr.</p> <p><b>El Aposento Alto U.P.C.I.</b> 1105 S. Roland Domingos: Escuela-Domical - 10 a.m. Culto Evangelistico - 7 p.m. Jueves: Oracion - 8 p.m. Mier. Estudio Biblico - 7 p.m. Pastor - A.G. Martell (806) 659-2153</p> <p><b>Oslo</b></p> <p><b>Oslo Lutheran Church (ELCA)</b> 6 Miles West &amp; 12 Miles North of Gruver 339-7646 Sunday School: 9:45 a.m. Worship: 11 a.m. Pastor - Arlen Lloyd</p> <p><b>Church of Christ</b> 209 King • 733-2760 Sunday School: 9:30 a.m. Worship: 10:20 a.m. Evening Worship: 6 p.m. Wed. Worship: 7:00 p.m. Minister - Gaylord Cook</p> <p><b>First Christian Church</b> 510 King • 733-2960 Sunday School: 10:00 a.m. Sunday Worship: 11 a.m. Youth: 7:30, Sunday Adult Bible Study: 7:30, Sun. Wed. Bible Study: 8:00 p.m. Pastor - Gary Gumfroy</p>	<p><b>Gruver United Methodist</b> Broadway &amp; Garrett 733-2651 Sunday School: 9:45 a.m. Worship: 8:30 &amp; 10:50 a.m. Eve. Worship &amp; UMY: 6 p.m. Pastor - George Price</p> <p><b>Spanish Cristo Redentor Church</b> Hwy 15 806-659-2166 Gruver, TX Sun. Mass: 1:30 p.m. - Spanish Rev. Gregory Bunyan</p> <p><b>Morse</b></p> <p><b>Morse Baptist Church</b> 733-2757 Pastor - Gary Stevens</p> <p><b>Waka</b></p> <p><b>Church of Christ</b> 300 Rogers Ave. 202-7126 Sunday School: 9:30 a.m. Sunday Worship: 10:30 a.m. &amp; 6 p.m. Wednesday Bible Study: 7 p.m. Preacher - Ed Jenkins</p>
--	---	--	---

Calcet® helps stop low calcium leg cramps. Just ask your pharmacist.

**Calcet**  
Dual Calcium + Vitamin D3  
More calcium and Vitamin D3  
More calcium and Vitamin D3  
More calcium and Vitamin D3

Helps fight leg cramps    For those with milk allergies    Fights osteoporosis

**dish** AUTHORIZED RETAILER

**FREE** 30 premium movie channels

**HBO** **CINEMAX** **SHOWTIME** **stargz**

Promotional prices start at **\$19.99** a month (plus tax)

**PLUS** BLOCKBUSTER @HOME (for 3 mcs. Offer based on the discounted price for Blockbuster @home. Offer ends 4/11/12. See store for details.)

**FREE** 2 Room HD DVR Upgrade (HD DVR - 150 DVRs) (with qualifying package)

**1-800-298-4509** WWW.INFINITYDISH.COM

### HIP IMPLANT RECALL

EXPERIENCE COUNTS  
Laywers with over 95 years combined experience.

Johnson & Johnson has recalled the DePuy ASR hip socket implant system due to an unacceptably high failure rate. Some patients will need expensive and painful surgery to replace the implant. If you have a DePuy hip implant and are having problems, contact us for professional insight.

Ryan A. Krebs, M.D., J.D.  
Distinguished Attorney at Law  
Richard A. Dudd, L.L.C.  
Timothy R. Cappolino, P.C.  
Board Certified Personal Injury Trial Law and Child Trial Law by the State Board of Legal Specialization  
NO FEE FOR INITIAL CONSULTATION  
CAMERON, TEXAS

**1-800-460-0606**  
www.DefectiveDrugsLaw.com

Visit **FAMILYPOOLFUN.COM**

Our pools create Generations of Memories everyday, vacations never end!

Aboveground & Inground pools at **WHOLESALE PRICING**

**SIMPLE DIY Pool Kit Assembly**

**SAVE MONEY on All Pool Supplies & Accessories. Ships Fast**

Call today! **800-950-2210**

He has showed you, O man, what is good. And what does the LORD require of you? To act justly and to love mercy and to walk humbly with your God. Micah 6:8

This feature is made possible through the sponsorship of these civic minded businesses:

<p><b>Deakin ELECTRIC</b></p> <p>OILFIELD • RESIDENTIAL • COMMERCIAL 321 S. MAIN • SPEARMAN</p> <p>1-800-999-1506 Chris Deakin 806) 659-5016 President</p>	<p><b>Bartlett's Lumber &amp; Hardware</b></p> <p>105 W. Broadway • Gruver, TX (806) 733-2404</p>	<p><b>Money's</b></p> <p>Stan &amp; Donna Zepp - Owners Phone 435-3945 14 SW 3rd Ave, Perryton TX</p>	<p><b>Morse Implement &amp; Auto Supply</b></p> <p>"Join us in church" Tom Dortch 733-2668 Box 89 • Morse, TX 79062</p>
<p><b>PRAIRIE MOTORS INC.</b></p> <p>Hwy. 207 South • P.O. Box 430 Spearman, TX 79081 • (806) 659-2541 www.prairiemotors.com</p>	<p><b>MurMur's Cafe</b></p> <p>100 Roland St Spearman, TX. 659-3580</p>	<p><b>Hansford County Reporter-Statesman</b> "Proudly Serving Hansford County Since 1907" (806) 659-3434 310 Barkley • Spearman, TX</p>	<p><b>INTERSTATE BANK, ssb</b> www.interstatebankssb.com</p> <p>322 Main Street • Spearman, TX (806) 659-2559</p>



# FBI

FOR YOUR INFORMATION

### Medical Fund for Francis Scroggs Pond

A Medical Fund that has been set up at FNB for Francis (Scroggs) Pond, she has been Diagnosed with cancer and will begin chemotherapy in Amarillo (and possibly surgery in Dallas in the near future).

### Gruver ISD Picture Day

Gruver ISD's next picture day will be Thursday, April 12. We will be photographing Pre-K through 8th memory mates; spring sports; remaining organizational pictures; homecoming queen court; and whatever else is left! Please dress accordingly!

### 2011-2012 Yearbooks On Sale

The 2011-2012 yearbooks are now on sale! Reserve your book at the low rate of \$40.00 before April 27th. Any orders after that will be \$50.00. Contact Kelly Hart at 733-2477 ext 1110 or pick up an order form in the business office or the high school principal's office.

### Rushing Wind Emmaus Community Meets

Rushing Wind Emmaus Community will meet Saturday, April 14 at the Waka Christian Center starting at 6 p.m. Friends and families are welcome to come to the potluck dinner followed with a praise and worship service. A nursery will be provided, and training will be available for new sponsors.

### Spearman Food Bank 1st Thursday

If you would like to help the Spearman Food Bank, they need help unloading the truck at 11:30 each 1st Thursday of each month. Contact Cecil Biggers for more information.

### Hansford Co. Library Thrift Shop Accepting Donations

Alley Katz (Library Thrift Shop) is accepting donations of quality items. You may ask for the key to the Thrift Shop at the library desk during regular hours (9:30 a.m.-5 p.m., Monday-Friday). Alley Katz is open from 10 a.m.-4 p.m. each Wednesday.

### Caring for Those You Care About

Caring for Those You Care About, "Road Maps for the Journey," a 5 part Lunch & Learn Series, will be held at The O'Loughlin Center, 502 Brandt, Spearman from 12-1 p.m. The last session will be: Protecting Against Scams & Frauds - April 18th. This event is sponsored by Texas AgriLife Extension. Registration Fee for the series is \$10. Participants may attend one or all of the five programs in the series for the one time fee of \$10. Lunch will be provided, followed by speaker and question/answer session. Call Peggy Winegarner, Hansford County Extension Agent, for more information, 806-659-4131.

### Our Diamond Miss Pageant

Our Diamond Miss will be hosting their annual preliminary pageant in Borger on Saturday, April 14, at the Borger Johnson Park Youth Center. The pageant is currently in its 31st year and has served many young ladies in the community. The pageant is open to young ladies ages 0-19 years old. Babies are divided into three age divisions for competition: 0-12 months, 13-24 months, and 25-35 months. The baby contestants are eligible to compete in World of Babies, Beautiful Baby, Sportswear, Photogenic, and Portfolio. Contestants 3-19 years old are divided into six age divisions: Tiny Miss (3-4), Petite Miss (5-6), Junior Miss (7-9), Young Miss (10-12), Teen Miss (13-15), and Elegant Miss (16-19). Contestants in Tiny through Elegant Miss compete in the age group based on their age as of January 1, 2012. Categories for these young ladies include Modeling in party dress and sportswear, Talent, Glamour, Photogenic, and Portfolio. You are not required to enter all the categories to be in the pageant. No experience is necessary. For more information, please call 275-0455 or 274-4536.

### Firefighters Wanted

The Spearman Volunteer Fire Department is actively recruiting new members. Both men and women age 18 and over are welcome. The number of volunteers has dropped to dangerously low levels and the roster needs to be increased. If you have an interest in helping to keep your community safe, the SVFD would like to talk to you. All new candidates will have access to the best training available. All interested parties should either come to the fire station located at 513 S Hazelwood or call Kimmi Rivera at 806-202-6374. The SVFD meets every Thursday night at 7 PM. Bring a friend and come join the team.

### Voter Registration Cards

Due to the redistricting issues, every voter in Texas is currently holding an expired voter registration card. Once the maps are drawn and approved and the primary date set, voter registration cards will be mailed out. However you may vote, this year, with the expired card. For further information please call 806 659-4120.

### Hansford Hospice

Volunteering for Hospice is very flexible and easy to work into your schedule. Our volunteers provide important services to the people we serve, whether it is: providing companionship to patients and their families; helping with clerical duties in the office; helping with special projects such as cooking food, baking, running or helping with community outreach. If you are interested in being a Hansford Hospice Volunteer, please contact us at 806-659-5811.

### Texas SNAP Benefits Assistance

Need help applying for SNAP benefits? We can help! High Plains Food Bank is providing application assistance for Texas SNAP benefits (Food Stamps) in your area. Telephone application assistance is available. If you need to apply for benefits, please call us today at 806374-8562 or 1-800-774-8564.

### Don't Text and Drive Decals

If you would like to purchase a lime green 'AMT 1994-2009 Don't Text and Drive' window decal in memory of Ali Tyler, please contact Stephanie Tyler at 806-736-0019. All proceeds go to the Ali Tyler Memorial Scholarship Fund. Decals are also available at Hansford County Floral Company on Main Street in Spearman.

### Help Available for Breast Cancer Survivors

Any woman who has had breast cancer surgery and cannot afford undergarments and prosthetics can get help from the American Cancer Society through a grant from Susan G. Komen for the Cure®. The Amarillo Area Breast Prosthesis and Lymphedema Accessory Program will provide financial help to women in need of breast forms or prostheses, mastectomy bras and accessories to help with lymphedema, which is swelling of the arm caused by a build-up of lymph fluid. For more information, call the American Cancer Society office in Amarillo at (806) 353-4307 or 1-877-227-2345.

### Friendship Quilter Guild

The Friendship Quilter Guild of Perryton, Texas would like to invite you to their meetings. The Day Guild meets the 2nd Wednesdays of each month at 9 a.m. in the Community Worship Center, 2210 SW 15th, Perryton. The Night Guild meets the 2nd Tuesday of each month at 6 p.m. in the Community Worship Center, 2210 SW 15th, Perryton. Annual dues are \$15. (To receive only the newsletter \$7.50/yr.) Visitors are welcome. For more information, contact Cynthia Shattles at 806-435-2765 or Marilyn Robins at 806-624-2691.

### Fire Department Donations

Persons wishing to make donations to the Fire Departments in Hansford County may do so at the following addresses: Spearman Fire Dept., Box 37, Spearman TX 79081; Gruver Fire Dept., Box 947, Gruver TX 79040 or Morse Fire Dept., Box 28, Morse TX 79062.

### Take Off Pounds Sensibly

Take Off Pounds Sensibly meets on Tuesday mornings at 8:30 a.m. at the First Christian Church in Gruver. For more information, contact Marilyn Been at 806-733-2087.

### SPWA Seeks Volunteers

The Southwest Pioneer Windmill Association is seeking the next generation of volunteers to continue the work of restoring and maintaining the windmills of the SPWA. If you have an interest in windmills and their upkeep, and/or maintenance of the park, you are needed. For information, call Dwayne Mitchell, 270-0291 or Don Reed 330-0745.

## Big Brothers Big Sisters Walk for Kids' Sake

Walk for Kids' Sake, the annual fundraiser benefiting Big Brothers Big Sisters held March 24th, and what a great day it was, raising \$72,838! Pledges collected by 39 teams totaling 320 walkers combined with sponsorships from 202 area businesses and organizations to make this the biggest walk in the 15 year history!

"Every child helped through Big Brothers Big Sisters is touched by the donations from corporate and individual donors," said Lynda Underwood, local agency director. "Of course, they are helped through their relationship with their Big Brothers and Big Sisters, but without our volunteer fundraisers, the matches between these mentors and at-risk children would not be possible. The walkers that turn out for our Walk year in and year out and the sponsors who donate each year make our program possible."

"We had 320 participants this year - the most we have ever had! The money raised by the walkers was 40% of our total!" Underwood said. "This is the 2nd year to have a traveling plaque for the Student Body that raised the most money from the schools in Gruver, Perryton, and Spearman. Perryton High School won bragging rights this year by raising over \$1,700. PHS will have the plaque to display until next year's Walk. PHS National Honor Society and Student Council combined in a BIG way to take possession of the plaque from last year's winner, Perryton Junior High."

Underwood goes on to say, "Perryton Kinder had 25 team members and won the The "BIG"-est Staff award. The awards for The "BIG"-est Team and also The Most \$\$\$ Raised Team were won this year by the mega-member team, Bo's Bug, led by team captain, Julie Lamm. Bo's Bug team had 71 members and raised over \$8900. This team had a large Facebook following and team members auctioned off baked goods and crafts in order to raise money. The team was formed in memory of one of our Little's Daddy, Bo, who passed away recently. Team members proudly wore buttons with Bo and his Bug - truly a touching tribute!"

Dance for Kids Sake was held Saturday evening at the Perryton Club. Entertainment was provided by the Oklahoma City band, SuperFreak, who delighted attendees with great music from the 70s and 80s. Sponsoring the event were: Kym and Mark Adair, Paula and Rod Alexander, Kim and Z Allen, Nancy and Jason Allen, Pat and Brent Allen, Marci and Jeff Barnhart, Tammy and Stephen Batton, Tiffany and Jeff Bietz, Kristin and Mike Blackshear, Teresa and Alan Brown, Dena and Loyd Cator, Amber and Cody Contreras, Christy and Craig Cooper, Krista and Kirk Courson, John Daniel, Kristen and Brandon Davis, Johnanna and Bobby Dear, Kam Dodson, Melissa and Ross Donahue, Jennifer and Curtis Feger, Annelle and Al Garcia, Tanya and Ritchie Gastineau, Gretchen Good, Sherry and Greg Good, Angie and John Graves, Jennifer and Lee Bob Harper, Tammie and Ren Hensley, Marcell and Bill Hobbs, Traci and J.D. Lane, Colette and Ben Matthews, Carrie and Mack McLain, Sam Pender, Mendy and Chad Riggins, Amanda and Nathan Rudd, Janet and Terry Slaughter, Reola and Rick Smith, Jessica and Phil Symons, Terrie and Clarke

Swinney, Malissa and Kimmy Thomas, Sarah and Blake Tregellas, Lynda and Billy Underwood, Katie and Ryan Williams, and Jerilyn and Craig Wright. A silent auction for a Home Theater Projector, donated by Roger Wright of Wright Trucking/Foster Testing, was held during the Dance and won by Mike Blackshear. Together, the dance and auction brought in an additional \$1515.

The top four individual money raisers won grand prizes all donated by Panhandle Anchors of Spearman. Leo and Max Harper, Gruver Elementary Students, were the top money raisers (\$1276); they won a 32" flatscreen TV. Ashley Haberthor raised the second largest amount (\$1179) and won a \$100 WalMart gift card. The third highest total was raised by Pam Chisum (\$1000); she won a Flip Video Camera with accessory package. Nancy Williamson collected the fourth highest amount (\$700) and won a Nook Simple Touch e-reader.

Walkers who raised at least \$100 won a beautiful Little River inscribed black frame purchased by Big Brothers Big Sisters with help from Expressions. They were: Loretta Alaway, Kay Allison, Max Allison, Sheila Barnes, Bonnie Bergan, Pat Bilson, Stacey Brown, Candy Butler, Farron Cowen, Tracey Cowan, Kristen Davis, Lori Dollar, Annette Dorman, Foy Dorman, Kendra Dorman, Marilyn Dorman, MaKenlee Evans, Robin Farney, Ruth Farney, Kim Garber, Tammy Garton, Carol Hayden, Marlen Hernandez, Kim Herring, Marcell Hobbs, Lew Hunnicutt, Katie Krienke, Shane Lamm, Diane Landeros, Donna Mann, Rhonda Merrick, Mabel Mills, Jacqueline Naylor, Darla Rhoden, Frank Rhoden, Sherrie Rima, Meagan Rogers, Becky Smith, Niki Stark, Julie Stedje, Kaitlyn Stedje, Roxi Stewart, Lori Tharp, Joel Thompson, Shawn Thompson, Rita Tregellas, Cynthia Turner, Elizabeth Turner, Mason Turner, Sam Turner, Amy Valdez, Mary Vela, Wanda West, and Brandy Williamson.

Walkers who raised at least \$200 won the tray and also a \$25 gift certificate to their choice of Charlotte's, Expressions, or Taylor's Old Time Shoppe donated by Panhandle Anchors and Big Brothers Big Sisters. They were: Shawn Bogard, Bev Burger, Shawn Campbell, Amber Childress, Pam Chisum, Gina Deal, April Dorman, Ashley Dorman, Hayley Dorman, Renee Dorman, Leo & Max Harper, Julie Lamm, Ben Malone, Margie Ramsey, Laura Reynoso, Lindsey Rowlan, Carol Rutz, Judy Stedje, Parker Swinney, Jo Ann Tatum, Claire Underwood, Cole Underwood, Patsy Unruh, Maribel Villa, Aaron Wertz, Macy Wertz, Malee Wertz, Brandon Williamson, and Nancy Williamson.

Continued on Page 5

You are invited to a  
**Bridal Shower**  
honoring  
**Melissa Lesly**  
bride-elect of Kyle Harshbarger  
on Saturday, April 14, 2012  
from 2 p.m. - 3:30 p.m.  
in the home of Church of Christ Parlor  
121 Haney St. Spearman, Texas  
Selections at Gordon's Drug,  
Target, Walmart and Kohls

**Gordon's**  
Bridal Registry

**Couples Currently Registered**

Mattie Davis & Cody Been - 4/21 (Sp) & 5/15 (Gr)  
Laci Fitzgerald & Chris Sutton - 4/21  
Amy Brown & Jon D'Zamko - 4/29  
Sara Cooper & Craig McCloy - 5/15  
Erika Offer & Ryan Ramon - 5/12  
Shelbi Roberts & TJ Vasquez - TBA  
Melissa Lesly & Kyle Harshbarger - TBA  
Clara Kern & Caleb Smith - TBA  
Jill Hall & Clayton Smith - TBA  
Heather Ford & Garrett Martin  
Dana McLaughlin & Justin Hendrick  
Kylie Knight & Tatum Rice  
Shelby Begnaud & Chase Farrar  
Jena (Cherry) & Charles Davis  
Mandie Hunter & Josh Duggan  
Jennifer Baldrige & Dustin Beck  
Christy Lang & Chuck Salisbury  
Lindsey Mireles & Daniel Gale  
Charity Burton & James Diaz

**Baby Registry**

Baby Girl of Dana & Cass Cooper  
Baby Girl of Christina & Travis Loomis

**Gordon's** 659-2141  
314 Main Spearman

WHEN YOU SEE THIS SIGN...

**WARNING**

FOR THE SAFETY OF YOUR FAMILY, BUSINESS, AND COMMUNITY, BEFORE YOU EXCAVATE OR DIG NEAR A BP AMERICA PRODUCTION CO. PIPELINE OR PROPERTY, PLEASE CALL THE NUMBER LISTED. REMEMBER TO CALL BEFORE YOU DIG, (Including Agriculture), 1-800-DIG-TESS.

**NATURAL GAS CAN -**  
... BE TRANSPORTED IN UNDERGROUND PIPELINES  
... CONTAIN HIGH PRESSURE

**NATURAL GAS IS -**  
... COLORLESS, ODORLESS, LIGHTER THAN AIR

**IF A NATURAL GAS LEAK IS SUSPECTED**  
... WALK AWAY FROM IT  
... NEVER IGNITE A FLAME  
... DO NOT TURN ON A LIGHT SWITCH, MOTOR, OR ANY EQUIPMENT (AN EXPLOSION COULD RESULT)

BEFORE ANY TYPE OF EXCAVATION (Including Agriculture) OR IN AN EMERGENCY CALL COLLECT (806) 948-5167 DUMAS (24 hours)

**BP** AMERICA PRODUCTION COMPANY ANADARKO ASSET

SI LISTED VE ESTE ANUNCIO... (TUBERIA DE GAS NATURAL)

**WARNING**

PARA SEGURIDAD DE SUS FAMILIA, DE SUS NEGOCIOS Y DE SU COMUNIDAD, POR FAVOR LLAME A LA COMPANIA BP AMERICA PRODUCTION COMPANY. A LOS NUMERO INDICADOS ABAJO, EN ESTE ANUNCIO, ANTES DE ESCARBAR, DE DESMONTAR, DE ARRASAR, O DE HACER CUALQUIER TIPO DE TRABAJO CERCA DE LAS TUBERIAS DE BP AMERICA PRODUCTION COMPANY (INCLUSO AGRICULTURA) 1-800-DIG-TESS

**EL GAS NATURAL PUEDE -**  
... SER TRANSPORTADO EN TUBERIAS BAJO TIERRA  
... CONTENER ALTA PRESION

**EL GAS NATURAL -**  
... NO TIENE COLOR  
... NO TIENE OLO  
... PESA MENOS QUE EL AIRE

**SI SOSPECHA QUE HAYA FUGA DE GAS**  
... ALEJESE DE ALLI CAMINANDO  
... NUNCA ENCIENDA UNA FLAMA  
... NO PRENDA LUCES, NI MOTORES, NI MAQUINARIA ALGUNA (PUEDEN CAUSAR UNA EXPLOSION)

BEFORE ANY TYPE OF EXCAVATION (Including Agriculture) OR IN AN EMERGENCY CALL COLLECT (806) 948-5167 DUMAS (24 hours)

**BP** AMERICA PRODUCTION COMPANY ANADARKO ASSET



## Big Brothers Big Sisters Walk for Kids' Sake

Corporate sponsors made up the other 60% of our Walk, and we wouldn't have a Walk for Kids Sake without their support!

Shift sponsors were Nabors Well Services, Panhandle Anchors, and Panther Energy. These three companies made the largest corporate donations.

Corporate sponsors donating \$2000 and over were: Badger Resources, Foster Testing/Wright Trucking, Nabors Well Services, Panhandle Anchors, and Panther Energy.

Corporate Sponsors donating \$1000-\$1999 were: Courson Oil & Gas, Ehrlich & McCallie, Lane's Locker Room, Texas Farm, and Tregellas Family Farms.

Sponsoring \$500 were: Adobbe Walls Gin, Bort Agency, Champion Technologies, Connelly Farms, Crone Oil Co., Dean Cluck Feedyard, Farnsworth Seed, First National Bank, First State Bank, FirstBank Southwest, Graves Operating, Jet Well Service, Kevin McGarraugh Farms, Moore County Gin, Perryton National Bank, Phil Dollar Oilfield Service, Texas Farms, United Supermarket, Vermejo, Western Hot Oil, and Xcel Energy.

Sponsoring \$300-\$499 were: Brandvik Pipe & Equipment, Century 21, Drilling Fluids, Frank Phillips College - Allen Campus, Hulsey Insurance, LaMaster Insurance Agency, Perryton Rotary Club, Preferred Beef Group, and PTSL.

Sponsoring \$100-\$299 were: 4S Farms, Aeroflight Tech Data, AGCO, All State Realty, Area Eye Center, B&B Sales Co., Barnett Insurance, Bartlett's Hardware of Perryton, Bill Pittman, Bob Jay's of Perryton, Boxwell Brothers Funeral Home, Inc., Brown, Graham & Co Spearman, Bruce Roberson, Attorney at Law,

Caprock Supply Co., Childers-Siewert Clinic, Clark Dirt Contractor, Covenant Title Co., Cowan & Hooten, Crop Chasers, Current Electric, Davis Farms, DeWitt Construction, Duvall Ag Services, Enerpurs, Equity Family Laundry, Five Star Equipment, Globe, Golden Spread Sale Co., Gruver Ford, Gruver State Bank, H&H Waterwell Service, Hansford Aviation, Hansford County Veterinary Hospital, Hargues Custom Application, Interstate Bank, Jason Duvall Farms, Jennifer Salon, Jim Seybert Homes, Jim's Tire Service, Junior Lusby Cats, Kirk Insurance Agency, Larry's Welding, Lasater & Co., Lemon, Shearer, Phillips & Good, Lile's Hearing Aid Service, Luther Fire Extinguishers, M C Cattle Co., M&D Aerial, LLC, Miguel's Copier Repair, Morse Implement & Auto Supply, MTR Tire Service, N5 Wireline Service, Neelley Armes Photography, North Plains Chemical, North Plains Electric Cooperative, North Plains Insurance Agency, Ochilree General Hospital, Palo Duro Feedyard, PATCON, Perryton Furniture, Prairie Motors, Rex L. Mann, M.D., Rudd Welding, Schilling Electric, Spearman Lions Club, Spearman Ro-

tary, Speartex Grain Co., Stratland Exploration, TA Wellhead, Total Wellhead & Rental Tools, LLC, Underwood Welding, Waide's Pharmacy, Watley Seed, Watonga Cheese Factory, WB Supply Co., Williams Plumbing, Heating & A/C, Willis Boyd Dirt Service, and Zephyr Wind Power.

Sponsoring from \$25-\$99 were: Ace Commercial Radio, Bartlett's Hardware of Gruver, Beckman Well Servicing, Bill's Pest & Termite Control, Blade's, Brock Insurance Agency, E-Properties, Edward Jones Investments, Fronk Oil/Imo's, Gordon's Drugs, Hometown Realty, J&S Signs & Engraving, Jazz It Up, Jennie June Club, John Hutchison - Attorney, Perryton Cleaners, Remnant Energy, and Schneider Welding.

Door prizes were donated by: AB-Normal Sweets 'n Antiques, Aero Tan, ALCO of Perryton, ALCO of Spearman, All Seasons Quality Plants, the Ambassador Inn Amarillo, Andrade's Lube & Gas Station, Animal Clinic, Attitudes Salon, B&B Sales Co., Beall's, Blade's, Cates Men & Boys, Charlotte & Co., Chihua's, Clint & Sons White Deer, Custom Maid Service, Dreamer's Salon, Dunlavy Jewelry, Edna's Flowers, El Vaquero Restaurant, Expressions Flowers-n-Accents, Farm Supply & Service, FirstBank Southwest, Gordon's Drug, Graham Brothers Jewelers, Hansford County Floral Co., Hart Love Photography, Hungry Cowboy, Irwin Auto of Perryton, J & L Trucking, Katlyn's Cabana,

Luxury Nails & Spa, Lyric Cinema, Margarita's, Mary Kay w/Patricia Cano, Maverick Books, JoAnn McCoy, Money's BBQ & Steak House, Mur Mur's Café, North Plains Electric Cooperative, Olive Garden, O'Reilly Auto Parts, Patti & Bill Peil, Peppermill Catering, Perryton Club, Perryton Herald, Perryton Office Supply/Radio Shack, Pizza Hut of Spearman, Prairie Gardens, Rhinestone Gals, Sammy's Beauty Salon, Scentsy w/Stephanie Brock, Scentsy w/Heather Dumcum, Scentsy Photography, Silpada w/Teresa Siewert, Sonic, Sparrow Photography, Sudzy Springs, Sunray Co-op, Taylor's Old Time Shoppe, Texas Farm, The Main Cup, The Pit Stop, The Rib Joint, The SportZone, and Touch of Heaven.

Kathy Childress was the winner of a raffle held in conjunction with the event. The prize, donated by Perryton Office Supply/Radio Shack, was an Apple i-Pad 2. The raffle raised \$3,420 for Walk for Kids Sake.

Walkers received T-shirts printed by sponsor, Lane's Locker Room, featuring a design by Underwood. T-shirts were purchased by Nabors Well Services.

The walkers also enjoyed food and beverages during their shifts. The food court was supplied by Pizza Hut (Perryton), Subway, The Little Bakery, The Grocery Store in Gruver, and Lowe's Supermarkets (Perryton and Spearman), and members of our Advisory Committee.

Walkers dance, walked, and were entertained by the sounds of DJ Darin Clark with help from his son, Weston.

In-kind contributions were made by Perryton Printing, Ochilree County Commissioners, Hickerson Jewelers, Perryton Herald, Hansford County Reporter Statesman, High Plains Observer Perryton/Spearman, KEYE, and KXDJ.

"The staff, board members, and myself were overwhelmed at the overwhelming support we received for this year's Walk," Underwood states. "We just can't say THANK YOU enough to each and every sponsor, team captain, and walker!"

The money will be used to make and nurture matches in Perryton, Spearman, and Gruver; this involves recruiting, screening, training and supporting volunteers. The money raised also underwrites match activities and scholarships for high school mentors as well as provides games and other activities for Bigs in Schools matches. The satellite office receives no funds from the national organization or hub agency in Amarillo and all of the money is used to support the local program.

The mission of Big Brothers Big Sisters is to create special friendships between children and caring adult/high school mentors. These relationships, or matches, help children develop positive life skills and social values.

Anyone interested in learning more about the Big Brothers Big Sisters program is encouraged to call 434-0016.

### MACULAR DEGENERATION

Imagine A Pair Of Glasses That Can Help You See Better!

Ever look through a pair of field glasses or binoculars? Things look bigger and closer, and easier to see. Dr. Larry Chism is using miniaturized binoculars or telescopes to help people who have decreased vision, to see better.

In many cases, special telescopic glasses can be prescribed to enhance visual performance. He often can help people read, watch TV, and sometimes drive.

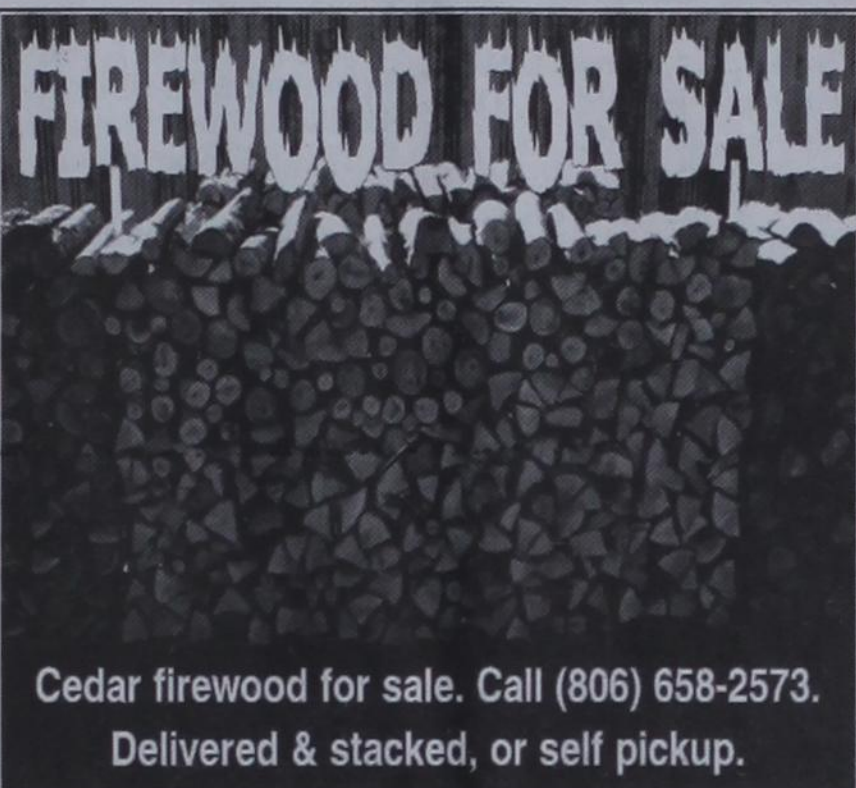
Although telescopic glasses cost between \$1900-\$2500, it is a small price to pay for the hours of enjoyment with better vision and more independence.

For information and a FREE telephone interview call:

1-888-243-2020

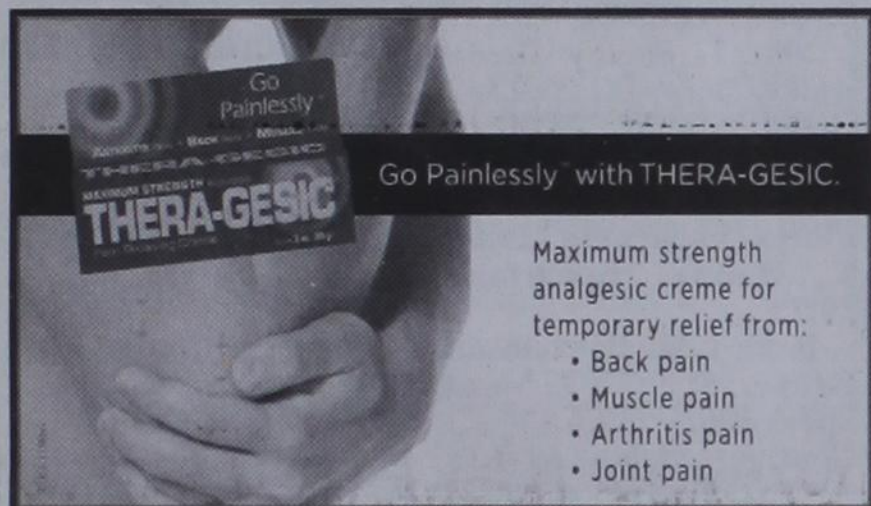
Dr. Larry Chism, Optometrist

Abilene • Austin • Fort Worth • Georgetown • Houston  
Plano • San Antonio • Tyler  
www.chismlowvision.com www.IALVS.com



**FIREWOOD FOR SALE**

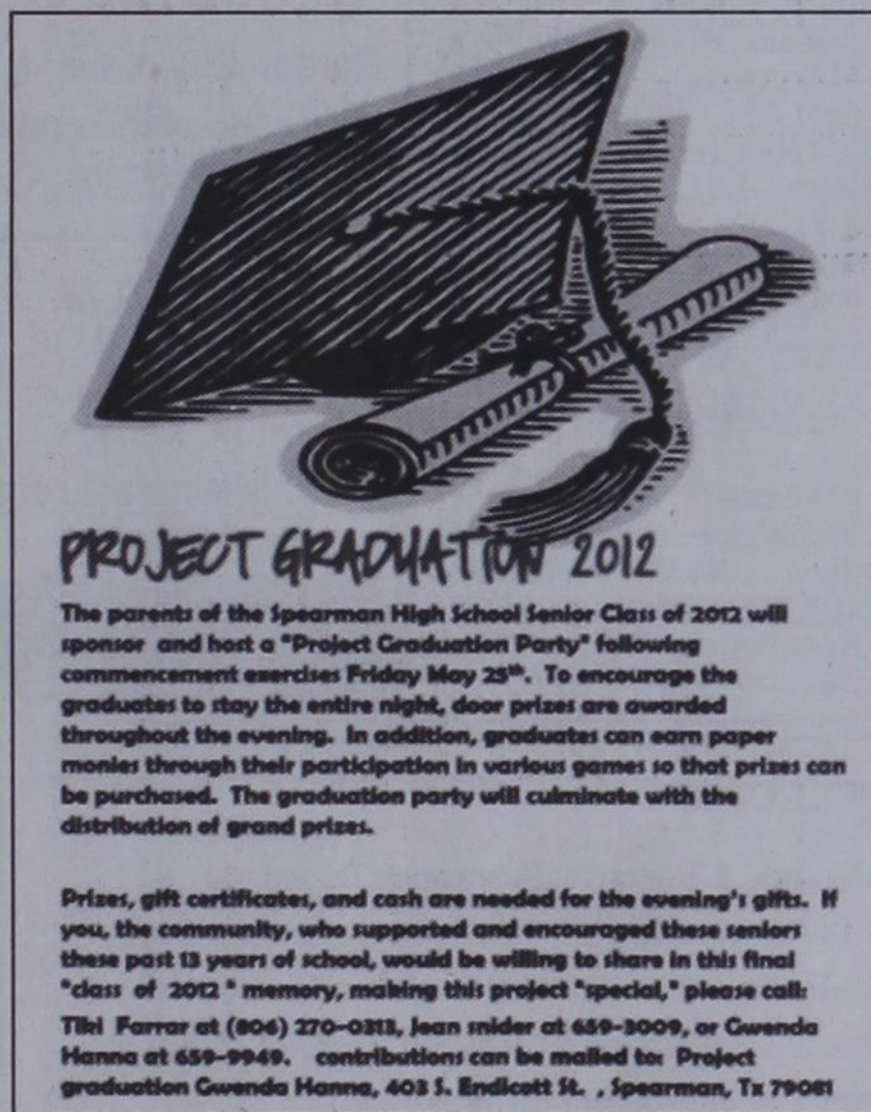
Cedar firewood for sale. Call (806) 658-2573.  
Delivered & stacked, or self pickup.



Go Painlessly with THERA-GESIC.

Maximum strength analgesic creme for temporary relief from:

- Back pain
- Muscle pain
- Arthritis pain
- Joint pain



**PROJECT GRADUATION 2012**

The parents of the Spearman High School Senior Class of 2012 will sponsor and host a "Project Graduation Party" following commencement exercises Friday May 23<sup>rd</sup>. To encourage the graduates to stay the entire night, door prizes are awarded throughout the evening. In addition, graduates can earn paper monies through their participation in various games so that prizes can be purchased. The graduation party will culminate with the distribution of grand prizes.

Prizes, gift certificates, and cash are needed for the evening's gifts. If you, the community, who supported and encouraged these seniors these past 13 years of school, would be willing to share in this final "class of 2012" memory, making this project "special," please call: Tihl Farrar at (806) 270-0313, Jean Inlder at 659-3009, or Gwenda Hanna at 659-9949. Contributions can be mailed to: Project graduation Gwenda Hanna, 403 S. Endicott St., Spearman, Tx 79081

*Memorial Hospital of Texas County*

## Spring Health Fair 2012

**Saturday, April 28, 2012**

**Mark Your Calendars!**

More information to be provided at a later date.  
520 Medical Drive Guymon, OK

The *Jays* of Summer

Available all year!

**SNOW CONE STAND**

Monday-Friday  
1:30-8 p.m.

**MURMUR'S CAFE**

100 S. Roland • Spearman  
659-3580

*Memorial Hospital of Texas County*

## Feria De Salud De Primavera 2012

**Saturday, April 28, 2012**

**Marque su Calendario!**

Más información a ser proporcionada en una fecha posterior.  
520 Medical Drive Guymon, OK



**Spearman Tennis Tournament A Success**

submitted by Starla Whiteley

Spearman hosted their annual tennis tournament on March 28 & 29. Fifteen schools brought almost 200 players to enjoy beautiful weather and participate in the tournament. On Wednesday, the boys' singles, boys' doubles and mixed doubles took the court. Shelby Hanna and Luis Vela from Spearman won the mixed doubles championship in three sets over Wilson/Mynear from White Deer (4-6, 6-4, 6-2). Also in mixed doubles, Cassidy Odegaard and Derrick Zimmerman from Spearman finished as the third place medalists. Twenty-two mixed doubles teams participated in the tournament.

Also on Wednesday, sixteen boys' singles were entered in the tournament. Boys' singles top three medalists were Weissel from Perryton (1st), Smith from Panhandle (2nd) and Galvan from Booker (3rd). In boys' doubles, twenty-four teams came to play with Stephens/Navaratte from Perryton winning the championship over Montgomery/Collins of White Deer. Third place medalists were King/Blankenship of Gruver.

Thursday was set aside for the two girls' divisions of singles and doubles. Twenty-eight girls' singles were entered in the tournament with Dalhart's Steyl defeating Kyla Walker of Spearman for the championship (6-3, 6-3). Third Medalist will be determined at a later date between two Perryton players, Terhune and Hulsey. Spearman's Slade Garnett fought her way through the consolation bracket to win the girls' singles consolation championship over Hinejos from Wheeler (8-1).

Spearman's Paige Pierson and Katy Miser won the large, thirty team bracket of girls' doubles by defeating Watts/Pelham of Canadian in two sets (6-2, 7-5). Panhandle's team of Ewing/Urbanczyk defeated Armstrong/Villareal of White Deer for the third place medal. The consolation championship was won by Ochoa/Long of Canadian over Craig/Brown of White Deer (8-6).

Other Spearman players that participated this week were Tyler Robinett, Gil Molina, John Holloway, Peyton Garnett, Clay Jackson, Brody Hargrove, Tanner Baird, Brent Hansen, Conner Wolf, Vanessa Vela, Anne Marie Comp, Jayme Pack and Cynthia Mendoza.

Special thanks to Mrs. Baird and her student council volunteers for selling drinks at the tournament, Damon Sibley and crew for preparing the courts and Coach Walker for facilitating the tournament on Wednesday.

**The District Tennis Tournament will be held on Thursday, April 5th,**

beginning at 9 a.m., in Spearman.

**Lynx, Lynxette Begin District Golf**

The Spearman Lynx and Lynxette Golf Teams played the opening round of the District 1-2A Golf Tournament on April 2, at Clarendon Country Club on what turned out to be a very nice day for golf. The Lynxettes shot a team score of 419 and lead River Road by one shot. Lynxette players and scores are as follows: Malory Martin 81, Mabry Sutterfield 111, Klarissa Vela 113, Tyann Hight 114 and Kelsey Porter 137. Malory is in first place in the individual medalist contest.

The Lynx shot a team score of 312 and trail River Road by one shot going into the final round on Wednesday, April 4. Bushland posted a team score of 331 and is in third place. This is the best team score the Lynx have posted so far this year and they appear to be peaking at just the right time. Lynx players and scores are as follows: Connor Willimon 74, Blaine Pack 78, Jake Willimon 78, Carson Pearson 82 and Brock Schroeder 92. Connor is in second place, two shots behind the leader, Zack Jackson, of River Road. Blaine and Jake are tied for fourth place going into the final round.

**Gruver Girls Take Lead in District Golf**

By - Ricky Treon, Amarillo Globe-News

Gruver's Madi Teal shot a 91 on Thursday in the first round of the District 7-1A girls golf tournament at Phillips Golf Course in Borger, taking the individual lead and helping Gruver take the team lead.

Gruver has a 53-stroke lead over second-place Vega, which shot a 434.

Teal has a four-shot lead over teammate Halli Mans (95). Vega's Katelynn Brorman is third with a 96.

District 7-1A girls First of two rounds, at Phillips Golf Course, Borger

**Team results: 1. Gruver, 381; 2. Vega, 434; 3. White Deer, 481; 4. Vega B, 520.**

**Medalists: 1. Madi Teal, Gruver, 91; 2. Halli Mans, Gruver, 95; 3. Katelynn Brorman, Vega, 96; 4 (tie). Alex Logsdon, Gruver, 97; 4 (tie): Rachel Teal, Gruver, 97.**

**Gruver (381):** Halli Mans, 95; Alex Logsdon, 97; Greyson Karlin, 103; Maggie Key, 98; Madi Teal, 91.

**Vega (434):** Katelynn Brorman, 96; Paeton Caudle, 118; McKenzie Waters, 103; Abi Blasingame, 126; Macee Hatfield, 117.

**White Deer (481):** Kathy Stover, 105; Riley Mitchell, 121; Jessie Taylor, 125; Karlee Vigil, 130.

**Vega B (520):** Jaci Wagner, 122; Remi Black, 131; Paige Brorman, 124; Madison Knox, 143; Megan Tarbet, 150.

**Individuals: Rachel Teal, Gruver, 97; Maci Merket, Canadian, 98; M.Martinez, Booker, 109; Hailee Flaharity, West Texas High, 116; Mirando Meldondado, Boys Ranch, 123; Brittany Law, Stratford, 127; Brittney Robinson, Wheeler, 127; Kristen Ferguson, West Texas High, 131; Emily Jones, Panhandle, 131; Kaitlyn England, West Texas High, 132; Megan Reed, Wheeler, 135; H.Yara, Booker, 135; Taylor Wright, Stratford, 138; Dani Johnson, Wheeler, 147.**

**Lynx Relays**

**Boys**

**Team results:** 1. Sunray, 149; 2. West Texas High, 107; 3. Highland Park, 104; 4. Borger, 102; 5. Spearman, 91; 6. Gruver, 21; 7. San Jacinto, 20; 8. Shamrock, 2.

**Triple jump:** 1. Talon Dooley, Sunray, 40-2½; 2. Alex Ramirez, West Texas High, 39-11; 3. Cook, Spearman, 38-9; 4. Cele, Sunray, 37-4; 5. Blankenship, Gruver, 37-3½; 6. Purl, Sunray, 37-3.

**High jump:** 1. Shay Wilkins, Sunray, 5-10; 2. Christian Fisher, Spearman, 5-8; 3 (tie). Dickson, Borger, 5-6; 3 (tie). Justin Holmberg, West Texas High, 5-6.

**Long jump:** 1. Colin Coleman, West Texas High, 20-4½; 2. Jerrod Collier, Gruver, 19-7½; 3. Talon Dooley, Sunray, 19-2; 4. Spalding, Sunray, 18-6½; 5. Alex Ramirez, West Texas High, 18-5; 6. Brice Martin, West Texas High, 18-4.

**Pole vault:** 1. Pena, Spearman, 12-6; 2. Brice Martin, West Texas High, 11-6; 3. Morgan, Highland Park, 10-6; 4. Perez, Gruver, 10-6; 5. Hunt, Shamrock, 10-6.

**Discus:** 1. Galloway, Sunray, 120; 2. Jace Lang-Swan, Spearman, 112-5½; 3. Williams, Sunray, 110-11; 4. Jeter, Borger, 106-3½; 5. Ewing, West Texas High, 102-11½; 6. Martinez, Spearman, 102-1½.

**400 relay:** 1. West Texas High, 45.13; 2. Sunray, 45.83; 3. Spearman, 46.04; 4. Borger, 46.71.

**800:** 1. Burns, Highland Park, 2:06.85; 2. McDonald, Highland Park, 2:08.80; 3. Robertson, Borger, 2:10.62; 4. Newcomb, Borger, 2:10.94; 5. Nettles, San Jacinto, 2:14.54; 6. Perez, Gruver, 2:15.75.

**110 hurdles:** 1. Cele, Sunray, 16.26; 2. Shay Wilkins, Sunray, 16.35; 3. Brashears, West Texas High, 16.81; 4. Killough, Borger, 18.16; 5. Jace

Lang-Swan, Spearman, 19.02.

**100:** 1. Unruh, San Jacinto, 11.29; 2. Spalding, Sunray, 11.41; 3. Justin Rindlisbacher, Spearman, 11.59; 4. Orona, Borger, 11.67; 5. Serano, Gruver, 11.80; 6. Tomarins, Borger, 11.94.

**800 relay:** 1. Sunray, 1:35.92; 2. West Texas High, 1:35.99; 3. Spearman, 1:36.49; 4. Borger, 1:38.42.

**300 hurdles:** 1. Christian Fisher, Spearman, 42.42; 2. Cele, Sunray, 42.44; 3. Killough, Borger, 46.44.

**200:** 1. Kennedy Prescott, Highland Park, 22.99; 2. Uhrich, San Jacinto, 23.11; 3. Jeter, Borger, 24.41; 4. Stefanski, Borger, 24.43; 5. Jerrod Collier, Gruver, 24.78; 6. Velasquez, Borger, 24.79.

**1600:** 1. Borger, 3:32.87; 2. Spearman, 3:36.58; 3. West Texas High, 3:38.76; 4. Highland Park, 3:39.20; 5. Sunray, 3:39.85; 6. Gruver, 3:47.89.

**Girls**

**Team results:** 1. Spearman, 188; 2. Sunray, 180; 3. Shamrock, 83; 4. Gruver, 73; 5. Highland Park, 56; 6. Borger, 15; 7. San Jacinto, 8; West Texas High, 0.

**High jump:** 1. Shelby Greenwalt, Shamrock, 5-0; 2. Patterson, Spearman, 4-10; 3. Hatfield, Sunray, 4-6.

**Triple jump:** 1. Snider, Spearman, 33-6; 2. Walker, Spearman, 31-8; 3. Hanna, Spearman, 29-5; 4. Embers, Borger, 29-2; 5. Barefoot, Shamrock, 28-6; 6. Jiles, Highland Park, 26-11.

**Long jump:** 1. Shelby Greenwalt, Shamrock, 17-0; 2. Gately Garnett, Spearman, 16-3; 3. Taylor, Sunray, 17-4-9/2; 4. Garnett, Spearman, 14-5; 5. Hanna, Spearman, 14-4; 6. Unruh, Shamrock, 13-10.

**Pole vault:** 1. Gately Garnett, Spearman, 10-0; 2. Taylor, Sunray, 8-0; 3 (tie). Pruett, Highland Park, 7-0; 3 (tie). Anderson, Sunray, 7-0; 5. Morgan, Highland Park, 7-0; 6. Unruh, Shamrock, 7-0.

**Shot put:** 1. Whitney Shaffer, Highland Park, 34-10; 2. Miller, Spearman, 34-9½; 3. Sarah Pipkin, Sunray, 31-2½; 4. Batenhurst, Shamrock, 29-2½; 5. Beasley, Gruver, 27-7½; 6. Ocker, Shamrock, 26-5.

**Discus:** 1. Sarah Pipkin, Sunray, 105-11; 2. Beasley, Gruver, 97-2½; 3. Patterson, Spearman, 96-1½; 4. Scroggins, Sunray, 88-9; 5. Batton, Spearman, 88-3; 6. Terrazas, Borger, 87-0.

**3200:** 1. Tylo Farrar, Spearman, 12:31.96; 2.

Meza, Spearman, 12:54.24; 3. Gonzalez, Sunray, 13:12.51; 4. Rodriguez, Borger, 13:40.51; 5. Corbin, Sunray, 13:43.70; 6. Robinson, Gruver, 14:31.26.

**400 relay:** 1. Sunray, 53.40; 2. Gruver, 53.99; 3. Shamrock, 54.31; 4. Highland Park, 56.41; 5. Spearman, 56.63.

**800:** 1. Snider, Spearman, 2:22.52; 2. Tylo Farrar, Spearman, 2:25.99; 3. Murray, San Jacinto, 2:34.24; 4. Haynes, Gruver, 2:37.88; 5. Hernandez, Highland Park, 2:43.95; 6. Rangel, Sunray, 2:48.18.

**100 hurdles:** 1. Gately Garnett, Spearman, 15.67; 2. Taylor, Sunray, 17.48; 3. Anderson, Sunray, 17.55; 4. Servano, Gruver, 17.82; 5. Walker, Spearman, 18.21; 6. Saenz, Sunray, 18.36.

**100:** 1. Taylor, Sunray, 13.41; 2. Garcia, Gruver, 13.99; 3. Yarbrough, Shamrock, 14.20; 4. Perez, Sunray, 14.52; 5. Mendoza, Gruver, 14.68; 6. Vela, Spearman, 14.70.

**800 relay:** 1. Sunray, 1:53.55; 2. Highland Park, 2:00.36; 3. Shamrock, 2:00.58; 4. Spearman, 2:00.73.

**400:** 1. Shelby Greenwalt, Shamrock, 58.82; 2. Snider, Spearman, 61.37; 3. Madison McLain, Gruver, 64.41; 4. Taylor, Sunray, 66.23; 5. Murray, San Jacinto, 66.71; 6. Hatfield, Sunray, 37.04.

**300 hurdles:** 1. Gately Garnett, Spearman, 47.18; 2. Anderson, Sunray, 50.68; 3. Perez, Sunray, 53.52; 4. Walker, Spearman, 54.96; 5. Saenz, Sunray, 55.00; 6. Pack, Spearman, 58.28.

**200:** 1. Shelby Greenwalt, Shamrock, 25.92; 2. Green, Sunray, 28.26; 3. Hatfield, Sunray, 29.14; 4. Unruh, Shamrock, 29.45; 5. Flores, Spearman, 29.60; 6. Hanna, Spearman, 29.73.

**1600:** 1. Shelley Gibson, Gruver, 5:39.77; 2. Meza, Spearman, 5:56.61; 3. Gonzalez, Sunray, 6:04.33; 4. Hernandez, Highland Park, 6:09.07; 5. Rodriguez, Borger, 6:09.79; 6. Hargrove, Spearman, 6:11.05.

**1600 relay:** 1. Spearman, 4:11.77; 2. Sunray, 4:21.15; 3. Gruver, 4:24.61; 4. Highland Park, 4:42.61; 5. Borger, 4:49.24.

**Wildcat Relays**

**Girls**

**Team results:** 1. Wellington, 106.5; 2. Canadian, 106; 3. Panhandle, 102.5; 4. Perryton, 86; 5. Spearman, 78.5; 6. West Texas High, 39.5; 7.

Booker, 34; 8. Memphis, 32; 9. Follett, 15; 10. Perryton B, 13; 11. Highland Park, 4; 12. Wheeler, 3. Did not score: Miami, Shamrock.

**Long jump:** 1. Jordan Molnar, Panhandle, 18-0; 2. Sydney Walton, Perryton, 17-5¼; 3. Brook Wiley, Canadian, 15-8¾; 4. Gately Garnett, Spearman, 15-6¼; 5. Devin DeLapp, West Texas High, 15-6; 6. Natalie Andrews, Wellington, 15-5¼.

**High jump:** 1. Starr Monroe, Memphis, 5-3; 2. Cayli Yarbrough, Memphis, 5-2; 3. Carri Yarbrough, Memphis, 5-0; 4. Shaniah Fronk, Booker, 4-10; 5. Sydney Walton, Perryton, 4-10; 6 (tie). Hannah Patterson, Spearman, 4-8; 6 (tie). Elyssa Snider, West Texas High, 4-8.

**Discus:** 1. Sarah Kelly, West Texas High, 101-10½; 2. Addison Monroe, Memphis, 95-6; 3. Hannah Patterson, Spearman, 95-4; 4. Sarai Pedraza, Perryton, 93-9; 5. Keylee Mayfield, Panhandle, 91-2½; 6. Bond Abby, Wheeler, 85-½.

**Shot put:** 1. Shaligh Price, Panhandle, 35-1½; 2. Kelly Duckett, Panhandle, 30-9; 3. Kelsea Miller, Spearman, 30-0; 4. Devian McDowell, Canadian, 29-9½; 5. Rhae Harris, Wellington, 29-3½; 6. Sarah Kelly, West Texas High, 29-0.

Continued on Page 8

**MITCHELL THEATRES.COM**  
 GUYMON, OK • LIBERAL, KS • NEWTON, KS

**NORTHRIDGE 8**  
 Guymon, Oklahoma  
 www.northridge8.com  
 580-338-3281

**SOUTHGATE 6**  
 Liberal, Kansas  
 www.southgate6.com  
 620-624-5573

**SEQUOYAH 8**  
 Garden City, Kansas  
 www.sequoyah8.com  
 620-275-2760

**CHISHOLM TRAIL 8**  
 Newton, Kansas  
 www.chisholmtrail8.com  
 316-283-0555  
 FRESH POPCORN EVERYDAY!  
 -PARTY ROOM & ARCADE-

**NOTICE OF ELECTION**

In accordance with the provisions of the Texas Agriculture Code, Chapter 74, Subchapter D, and 4 Tex. Admin. Code, Chapter 3, Subchapter A, the Texas Department of Agriculture (the Department) will conduct a board election in the Panhandle Boll Weevil Eradication Zone, in order to select a representative of the above-referenced zone to serve on the Texas Boll Weevil Eradication Foundation Board of Directors. The board is charged with administering the boll weevil eradication program in Texas.

The Panhandle Boll Weevil Eradication Zone consists of all of Carson, Dallam, Hansford, Hartley, Hemphill, Hutchinson, Lipscomb, Moore, Ochiltree, Oldham, Potter, Roberts and Sherman counties.

Any cotton grower having planted cotton in the year 2011 within the zone defined above is eligible to vote, and, if he or she resides in the Panhandle Zone and has at least seven years experience as a cotton grower, can have his or her name placed on the ballot as a candidate in the board member election. A cotton grower is defined as a person who grows cotton intended to be commercial cotton. The term includes an individual who, as owner, landlord, tenant or sharecropper, is entitled to share in the cotton grown and available for marketing from the farm, or share in the proceeds from the sale of the cotton from the farm or from an indemnity or other payment received from or related to the planting, growing, or failure of the cotton. Any person eligible to vote in the board member election that resides in the Panhandle Zone and meets the seven-year experience requirement may place their name in nomination for election to the Texas Boll Weevil Eradication Foundation Board by written application to the Department at the address provided below. Nomination forms are provided by the Department and must be signed by the nominee and at least ten other eligible voters. The nomination form must be received by the Department at its office located in Austin by April 23, 2012, and must provide the legal residence of the applicant. A nomination form may be obtained by contacting the Department office or any county agent located in the voting area.

The board election will be held by mail balloting. Ballots will be mailed to cotton growers by May 8, 2012. All ballots cast by mail must be postmarked no later than May 23, 2012, in order to be valid.

For more information regarding the referendum and election, or if you are a cotton grower in the above-referenced area and do not receive a ballot, please contact the Texas Department of Agriculture, P.O. Box 12847, Austin, Texas, 78711, telephone 512-463-3285.

**WHEN DOES YOUR SUBSCRIPTION EXPIRE?**

SCR1  
 03/12 EXPIRES  
 JOHN Q. PUBLIC  
 PO BOX 123  
 SPEARMAN TX 79081

Expiration dates are printed on the top of all mailing labels. Our readers can help keep the cost of subscriptions down by mailing in renewals in the appropriate month.

Thank you, Catherine Smith

**THE HANSFORD COUNTY REPORTER-STATESMAN**  
 213 Main Street • Spearman, TX 79081

**Annual Subscription Rates**  
 In Hansford County - \$30  
 Out of County - \$40  
 E-Subscription - \$35 (sent through e-mail)



**HELP WANTED**

**HELP WANTED:** Oilfield work, must have drivers license. Good pay and benefits. Call 806-659-3911 or come by at 1103 West 7th, Spearman. Trencor Enterprises, Inc. TFN(11/10/11)B

**HELP WANTED:** We buy Frac Sand trucking companies and complete sand rigs; tractors, blowers & pneumatic trailers. Call now! 800-397-2338 1(4/4/12)P

**HELP WANTED:** The Hansford County Soil & Water Conservation District in Spearman is now hiring for a clerical position. Responsibilities will include payroll, answering phones, and other secretarial duties. Computer skills preferred. Stop by the USDA building at 909 West 9th Avenue in Spearman to pick up an application. 3(3/29/12)B

**SERVICES**

**HOOCY POOCY PARLOR**  
Call us for all your pet's grooming and boarding needs. Call now for reservations! 806-273-2724.  
TFN(11/2/07)B

**WTG FUELS INC.**  
518 SE LOOP 143  
PERRYTON TX 79070  
Phone: 806-435-5426  
Fax: 806-435-4437  
E-MAIL:  
crawllins@windstream.net  
Full-time drivers available, competitive pay based on experience, insurance, benefits, 401K, must have CDL w/hazmat, and tanker endorsements, bonus pay/overtime, guaranteed hours, come by our office or call, send us an e-mail, or fax your resume.  
TFN(3/22/12)B

**Check our websites for other properties.**

**DUMAS FARMS II** - 1280 acres deeded, 320 ac. for lease with purchase of property, nice 2 bdrm. mobile home w/concrete foundation, mud room and patio, 2 all-steel barns w/concrete floors, 7 irrigation wells, UG pipe, on pvm. and all weather road.

**VALLEY VIEW RANCH** - Lipscomb Co., TX - 177 ac. w/extraordinary 5404 sq. ft. +/- home overlooking the property w/ beautiful views of live creek, trees, wildlife (deer, quail, & turkey), covered horse training facilities, stables, excellent cattle working facilities & pens, commercial dog kennels, employee housing. We can divide 10 ac. w/main residence or 167 ac. +/- w/other improvements!

**SHERMAN CO., TX** - 627 acres, choice land, four 1/4 mile sprinklers, fully developed, one 1/4 mile off Hwy. 287 on paved CR - CC, 3 phase electricity, new irrigation well drilled in 2010.

**WEST OF DUMAS** on pvm. 606 ac. +/-, 17 tower sprinkler, four ir. wells, excellent location for residential or commercial development.

**BUDDY CLINE ROAD** - Moore Co., TX. - 1/2 section choice land, two wells (one new) and sprinklers.

**1200 SOW FARROW TO FINNISH OPERATION** - Moore Co., TX - New 5 yr. lease with major hog company. Two separate units, can be divided - Please contact broker for info package and price.  
www.scotlandcompany.com  
www.texascrp.com  
Shawn Gillispie 806/922-5532  
Ben G. Scott, Broker  
1-800-933-9698 day/eve  
TFN(2-2-12)



**All State Realty**  
Sherrie E. Rima  
806-435-SOLD (7653)

**322 S. DRESSEN**  
Corner Lot, 3 or 4 bedrooms, 2 Living spaces, 3 baths. Newly Remodeled & Priced To SELL!!

**We have Buyers but We Need Listings!**  
Call Us Today & Let us put the Two of you together!

**TIRED OF GARAGE SALE PRICES?** Let me buy your good used furniture! 2nd Chance Antiques & Furniture, Don 806-648-1480, 806-202-1391 cell.  
TFN(1/20/11)B

**PUBLIC NOTICE**

**LEGAL NOTICE**  
Hansford County Commissioners' Court will receive bids until 4:00 on Friday, April 20, 2012 on up to 1000 tons of A-3 and B-4 gravel, F.O.B. the plant and F.O.B. the site (Gruver and Spearman Precinct Barns). Bids should be submitted to the Hansford County Judge's office, 16 Northwest Court, Spearman, Texas 79081-2052.

Bids will be opened on Monday, April 23, 2012 during the Commissioners' Court meeting in the Law Library of the Hansford County Courthouse, Spearman, Texas. Meeting will begin at 10:00 a.m.  
Hansford County reserves the right to accept or reject any or all bids.  
Benny Wilson  
Hansford County Judge  
3(4/4/12)B

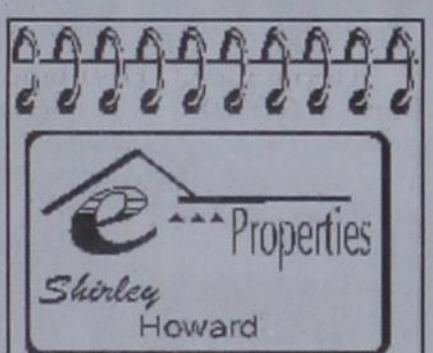
**PUBLIC NOTICE**

**2nd Request Formal Bid & Qualification Statement for CONTRACTORS interested in a Hospital Renovation Construction Project**  
The HANSFORD COUNTY HOSPITAL DISTRICT Board of Spearman, Texas, is publicly requesting Bid & Qualification Statements from General Contractors that are interested in the hospital renovation project. Renovation will include reworking the current patient wing of the existing hospital and adding a small addition to accommodate Central Sterile Supply. Qualifica-

**Blankenship Real Estate**  
659-3052 - 670-3774

**LET US HELP YOU SELL YOUR HOME.**

**NEW LISTINGS WANTED!**  
Eulalia Blankenship - Sales  
Eschol Blankenship - Broker



**We NEED listings! Call us now to help YOU sell your home for top dollar!**

**1026 Townsend - Spearman:** 2,883 sq ft, 4 bed, 1 1/2 bath. LARGE Family Room!

**1016 S Barkley - Spearman:** 4,081 sq ft, 4 bed, 4 bath 3 lvg areas, 2 Att gar, Fireplace, Corner Lot! **REDUCED AGAIN!**

**710 Front - Gruver:** \$145,000 - @ 2,177 sqft, 3 bed, 2 3/4 bath, NEW Metal roof, NEW CACH,NEW Outside Stucco, and NEW Kitchen!

**Shirley Howard, Broker/Owner**  
806-886-6536, Cell  
806-648-4444, Work

**Melinda McCullough, Realtor**  
(806) 733-5678

**We would LOVE to sell your HOUSE! CALL US!**

tion Statements are required and should be submitted with the General Terms and Conditions for an Agreement. A Construction Schedule shall commence in mid-2012 and shall be integrated with this procurement to allow the hospital to remain functional throughout the term of the project. The General Contractor will be required to meet all plans and specification requirements. Only general contractors having provided three or more licensed hospital projects in separate and distinct geographic locations and having brought these projects to full licensure within the last five years will qualify as a GENERAL CONTRACTOR.

Plans and Specifications are available on April 2, 2012. The deadline for all written requests for information is April 9, 2012 at 2:15pm (Central). All RFI are to be sent to kfredrickson@projxllc.com and copied to jdeal@projxllc.com. Entitle your email subject line: "Bid & Qualification Statement HCHD Spearman TX". All parties are to



*Serving Hansford County Since 1990*

**209 & 213 N. Bernice:** 2 houses, garage and storage bldg. Call for details.

**34 N. Snider:** 3 bed, 1 3/4 bath, CHA wood floor, IMPROVEMENTS. Must see!

**301 Hazelwood:** 3 bed, 1 bath, fireplace, large yard

Julie Martin: Broker - 659-2425  
**We'd Like Your Listing!**  
FOR QUALITY & SERVICE CALL US TODAY!  
Equal Housing Opportunity



**RN 7p-7a:** Provide nursing care, assessment, planning, implementation, and evaluation of each assigned patient of HCHD. Work to promote a safe environment by coordinating plans of care and supervising subordinate personnel. Key orders to EMR. Shift differential included. Licensed by the State of Texas. BCLS, ACLS, and TNCC preferred. CPR required

**LVN 7p-7a:** Providing prescribed medical treatment and personal care services to patient. Assist RN in patient care plans. Licensed by the State of Texas. Must be a great communicator and team player.

**LAUNDRY SUPERVISOR:** Supervising laundry functions, ensures department compliance with established standards, orients new employees, over see laundry personnel, assign duties and schedule hours and maintains department records.

**OPENINGS AT HANSFORD MANOR**

**CNA:** Daily nursing care in accordance with the resident's assessment and care plan, and as may be directed by the supervisor. Must be certified by the State of Texas.

Great working environment and staff, quality facility providing opportunities for professional growth. Great Benefit package. Apply at 707 S Roland, Spearman, TX or contact Jackie Nelson, HR 806-659-5841. Download application at hchd.net  
EEOE  
(4/4/12)

state: Contacting person's full name; Firm's full name and address; Firm's phone number; and confirm the Contacting person's Email address for correspondence within the email's content. All site visitations shall be coordinated through the Project Architect. Contacting the Board or the Hospital directly for such visitations may result in disqualification.

Formal submissions are due on or before 2:15PM (Central) on April 17, 2012. All bids will be opened 5 minutes after the submission deadline.

From this date forward through the BID, GENERAL CONTRACTORS submitting any collateral materials to any parties affiliated with the Hospital's Administration or Board will be disqualified for consideration for this procurement. Submissions must conform with the Documents and Specifications which can be obtained from ProjX LLC. ProjX LLC phone number is 615-277-1178 or e-mail kfredrickson@projxllc.com 1(4/4/12)B

**INVITATION TO COMMENT ON PROPOSED WIRELESS TELECOMMUNICATIONS FACILITY**

Interested persons are invited to comment on the wireless telecommunications facility proposed to be constructed at 15190 Hitchland Rd, Gruver, Hansford County, Texas 79040, with respect to impacts on historical properties located at or near this facility, if any. The facility will consist of 80' monopole. Comments regarding potential effects to historical properties should be submitted by mail to White Buffalo Environmental, Inc., 6321 E. 102nd St. S., Tulsa OK 74137, 918-660-0999. Questions about this facility or this notice may also be directed to that address or phone number. This notice is provided in accordance with the regulations of the Federal Communications Commission, 47 C.F.R. Part 1, Subpart I and Appendices B and C. 1(4/4/12)B

**NOTICE TO ALL PERSONS HAVING CLAIMS AGAINST THE ESTATE OF JOHN D. SUTTERFIELD, DECEASED**

Notice is hereby given that original Letters Testamentary for the Estate of John D. Sutterfield, were issued to Patsy L. Sutterfield, in the County Court of Hansford County, Texas, in Cause No. 2659, on the 27th day of March, 2012.

All persons having claims against this estate which is currently being administered, are required to present them within the time and manner prescribed by law. All claims should be sent to Patsy L. Sutterfield, 1010 Linn Drive, Spearman Texas 79081.  
John L. Hutchison  
PO Box 506  
Spearman Texas 79081  
Attorney for the Estate  
1(4/4/12)B

**Deadline Notice!**

The deadline to submit news and advertising to the Hansford County Reporter-Statesman is Monday at 5 p.m. Items submitted after the deadline will be published at a later date, as time and space permit.

The Hansford County Reporter-Statesman will be closed April 10-22, 2012. We will resume regular business hours on Monday, April 23rd. (Regular hours are Monday-Wednesday, 9 a.m.-12 noon and Monday-Tuesday, 1-5 p.m. We are closed on Wednesday afternoon through Friday.)

Items may be submitted by phone (806-659-3434), fax (806-398-9080), mail (Reporter-Statesman, 213 Main Street, Spearman TX 79081), or by e-mail (reporter@spearmanreporter.com).

For more information, please contact Catherine Smith at 806-659-3434, 806-584-4879, or reporter@spearmanreporter.com

N	A	A	C	P	R	A	G	S	U	R	E	1	8	6	4	3	7	5	2	9
A	L	L	A	H	E	L	I	S	P	R	E	4	2	9	1	6	5	7	3	8
R	A	T	T	Y	F	E	Z	C	E	D	A	5	3	7	2	8	9	1	4	6
C	R	O	E	S	U	S	M	E	R	C	U	9	6	1	8	7	4	3	5	2
S	I	N	P	O	R	E	8	7	5	3	2	1	6	9	4					
B	O	Y	C	A	S	A	R	A	N	G	E	2	4	3	9	5	6	8	1	7
A	V	E	S	P	A	R	S	M	A	R	C	6	9	2	7	1	3	4	8	5
B	U	L	L	T	R	A	L	A	B	A	L	7	1	8	5	4	2	9	6	3
A	L	L	O	W	I	D	O	L	S	C	A	3	5	4	6	9	8	2	7	1
R	E	S	E	A	L	O	T	T	I	C	E									
L	Y	N	X	B	E	E														
J	U	B	I	L	E	E	W	I	L	L	I									
U	T	E	R	I	R	Y	E	L	I	S	L									
T	A	N	K	S	V	E	E	A	D	M	I									
S	H	E	S	Y	A	K	R	E	S	T	S									



**TexSCAN Week of March 26, 2012**

**AUTOS**  
CASH FOR CARS We buy any car or truck running or not. Damaged, wrecked, salvaged OK. Get top dollar instant offer today! 1-800-273-9194

**CABLE/SATELLITE**  
AT&T U-VERSE for just \$29.99/month! Save when you bundle Internet+Phone+TV and get up to \$300 back! (Select plans). Limited time call now! 1-877-577-4394

**DRIVERS**  
AVERITT STARTS REGIONAL CDL-A drivers at 37¢ cpm with 1 year experience 4-12 months experience? Then we have pay refresher course. 1-888-362-8608 or visit AVERITTcareers.com EOE

**CLASS-A TEAM DRIVERS** dedicated routes to Morton, IL \$1000/week. \$500 sign-on bonus. Home weekly, consistent miles/freight. Day one medical. 1-866-331-3335

**DRIVER TANGO TRANSPORT** now hiring Regional, OTR, team. Top pay, plenty of miles. Great home time. Family Medical dental. 401K, paid vacations. Call 1-877-826-4605 or www.drivertango.com

**DRIVERS- \$2000 SIGN ON bonus.** Get miles/home weekends, SW regional. Top pay/benefits. Paid orientation and training. 3 month OTR and CDL required. 1-800-545-1351. www.cypresstruck.com; CHamblee@cypresstruck.com

**DRIVERS - HOMETIME Choices:** Express lanes 7 on 7 off, 14 on 7 off weekly. Full and part-time. Dry and Refrigerated. New Trucks! CDL-A 3-months recent experience required. 1-800-414-9569 www.driveknight.com

**DRIVERS-REGIONAL FLATBED** home every weekend, 40¢-45¢ cpm. Class CDL-A required. Flatbed load training available. 1-800-992-7865 ext. 185. www.McElroyTruckLines.com

**EARN \$1000-\$3200** a month to drive our new cars with ads. www.PaidDriver.com

**EXPERIENCED FLATBED DRIVERS:** Regional opportunities now open with plenty of freight and great pay. 1-800-277-0212 of primetinc.com

**PAID CDL TRAINING!** No experience needed. Stevens Transport will sponsor the cost of your CDL training. Earn up to \$40K first year and \$70K third year. Excellent benefits! EOE. 1-800-333-8595. www.becomeadrivers.com

**LEASE 2012 KW or FL.** Great money, \$500 fuel credit. Full warranty, no surprise maintenance plan. Owner operators, company drivers welcome. 1-888-440-2465 or www.drivenci.com. Apply today!

**NEW TO TRUCKING?** Your new career starts now! \$0 tuition cost, no credit check, great pay & benefits. Short employment commitment required. Call: 1-866-297-6598 www.joinCRST.com

**OWNER OPERATOR OPPORTUNITIES** brought to you by Greatwide! \$2,500 Sign-On, dedicated runs, industry leading pay, CDL-A, lease purchase program, down payment assistance. 1-866-904-9230. www.driveforgreatwide.com

**YOU GOT THE DRIVE,** we have the direction. OTR drivers, APU Equipped, Pre-Pass, EZ-pass, Pets/passenger policy. Newer equipment. 100% NO touch. 1-800-528-7825

**EDUCATION**  
AIRLINES ARE HIRING Train for high paying aviation career. FAA approved program. Financial aid if qualified, job placement assistance. Computer available. Aviation Institute of Maintenance. 1-888-886-7315

**ATTEND COLLEGE ONLINE** from Home, Medical, Business, Criminal Justice, Hospitality, job placement assistance. Computer available. Financial aid if qualified. SCHEV certified. Call 1-888-205-8920, www.CenturaOnline.com

**HIGH SCHOOL DIPLOMA** graduate in 4 weeks! Free brochure! Call now! 1-866-562-3650, ext. 55. www.southeasternHS.com

**GUN SHOWS**  
WORLD'S LARGEST Gun Show, March 31st and April 1st, Tulsa, Oklahoma fairgrounds, Saturday 8-6, Sunday 8-4. WANENMACHER Productions. Free appraisals. Bring your guns! www.tulsagunshow.com

**HELP WANTED**  
CAN YOU DIG IT? We will train, certify and provide lifetime assistance landing work. Hiring in Texas. Start digging as a heavy equipment operator. 1-866-362-6497

**PURPLE WAVE,** a leader in internet auctions of equipment, is hiring an equipment territory manager in Amarillo, TX and Texas Panhandle position, details at http://pw.purplewave.com/careers/

**MISCELLANEOUS**  
SAWMILLS FROM ONLY \$3997.00. Make and save money with your own bandmill! Cut lumber any dimension. In stock ready to ship. Free information/DVD: www.NorwoodSawmills.com 1-800-578-1363 Ext. 300N

**REAL ESTATE**  
2.4 ACRES in Crystal River, FL. Next to world famous Plantation Inn and Golf Resort and faces Kings Bay. Zoned for commercial or multi-family. Call Jack 1-214-755-6224.

3 TRACKS TOTALING 693 acres in Reeves County, 15 miles North Pecos, river frontage. Call Jack 1-214-755-6224

**10.1 ACRES,** Duval County. Heavy South Texas brush cover. Deer, hogs, quail. Private vate roads, locked gate. \$3550/acre, owner financing. Toll-free 1-866-286-0199. www.westernTEXASland.com

**25 ACRE RANCH BARGAIN!** This one has it all! 100 yr. old live oaks, pond with great water well. Historic rock walls, pasture areas for horses/livestock. Asphalt road, concrete ribbon curb, electricity, more. Ag exempt - incredibly low taxes! Just \$199,900/acre! The Best Priced Ranch in the Hill Country. Call now 1-866-999-6697, ext 71

**95.43 ACRES,** Sonoma/Del Rio. Deep canyon, joint's large ranch, endless views, Whitehall, axis, aóudad, hogs, turkey. \$895/acre. 20 year owner financing. 1-830-257-5572. www.hillcountryranches.com

**ABSOLUTELY THE BEST VIEW** Lake Medina/Bandera, 1/4 acre tract, central W/S/E, RV/motor home/house, OK! 1-830-830 down, \$235 month (12.91¢/10yr). Guaranteed financing, more information call 1-830-460-8354

**AFFORDABLE RESORT LIVING** on Lake Fork. RV and manufactured housing OK! Guaranteed financing with 10% down. Lots starting as low as \$6900. Call Josh, 1-903-878-7265

**\$106 MONTH BUYS** land for RV, MH or cabin. Gated entry, \$690 down. (\$6900/10.91¢/7yr) 90 days same as cash. Guaranteed financing, 1-936-377-3235

**FORECLOSED HILL COUNTRY HOME** on 13.93 acres. 3BR/2BA furnished home with incredible hill top views. Canopied amid 100 year old live oaks! Includes 1800's settlers home, 2 water wells, shed, storage barn, fenced animal stalls & pond. Originally \$499,900, liquidation price: \$399,900. Call now! 1-866-999-6697, ext 24

**WANTED TO BUY**  
\$5000 SIGN-ON bonus! Tons of runs, Frac Sand hauling. Owner operators need tractor, pneumatic trailer, blower. 1-800-397-2639

**Run Your Ad In TexSCAN!**  
Statewide Ad ..... \$500  
301 Newspapers, 942,418 Circulation  
North Region Only ..... \$230  
98 Newspapers, 263,811 Circulation  
South Region Only ..... \$230  
101 Newspapers, 366,726 Circulation  
West Region Only ..... \$230  
102 Newspapers, 311,881 Circulation  
To Order: Call this Newspaper direct, or call Texas Press Service at 1-800-749-4793 Today!

NOTICE: While most advertisers are reputable, we cannot guarantee products or services advertised. We urge readers to use caution and when in doubt, contact the Texas Attorney General at 1-800-621-0508 or the Federal Trade Commission at 1-877-FTC-HELP. The FTC web site is www.ftc.gov/bizop

**Extend your advertising reach with TexSCAN, your Statewide Classified Ad Network.**

Hotline for Priority Seating - 435-3945

**MONEY'S**

**BBQ & STEAK HOUSE**

**We Are THPLC-2-B**

**14 SE 3rd Ave. Perryton, TX**

**Stan and Donna Zepp**

**New, Updated Menu Same Great Service**

**YOUR PROPERTY TAXES JUST WENT UP OR HADN'T YOU HEARD?**

**KEEP THE LIGHT ON PUBLIC NOTICES**

When local governments want to increase tax revenues, they are required to publish notices in the newspaper so that you will know. But that right to know could disappear.

Local governmental entities across the state want to hide their public notices on little seen, rarely visited government websites.

What you don't know will affect you personally!

**If it is not in the newspaper, you won't know about it.**

**The Hansford County Reporter-Statesman**



### Hansford County 4-H Competes in Clarendon

The Hansford County 4H livestock judging team competed at the Clarendon College Contest on March 24. Nine senior teams and seventeen junior teams participated in the contest. The juniors making the trip were Kaycee Anderson, Maggie Pipkin, Carter Burgin, Tyler Stedje, Reed Anderson, Saxie Ralston, Jade Red, Tate Tyler, and Ansley Red. In the junior team competition, Hansford placed 4th in cattle and 7th in sheep before winding up 6th place team overall. Individually, Kaycee won 8th in sheep and 12th overall. Maggie earned 18th overall and Carter placed 8th in cattle.

The senior team was made up of Callie Stedje, Jennifer Crowl, Travis Stedje, Audrey Lieb, Jaci Burgin, and Rayel Anderson. When the tabulation was finished, Hansford Senior 4H had won 1st in cattle, 4th in sheep, 4th in reasons, and a 3rd place overall team award. There were a few Hansford county youth recognized for individual accomplishments. Callie won cattle and placed 8th in reasons, 10th in swine, and 9th overall. Jennifer placed 3rd in sheep and 10th high overall. Travis earned 4th in cattle and Jaci placed 6th in swine.

The team will continue practicing and competing at different contests to prepare for District which will be held at West Texas A&M on April 20. Bret and Burt would like to give special thanks go to Nick Slough for helping to train the team.

### Out at the Lake

by Dorothy Hudson



Jim Derington  
Palo Duro River Authority  
P.O. Box 99  
Spearman, TX 79081  
806-882-4401  
pdra@dishmail.net



American White Pelicans resting at Lake Palo Duro.

April 2, 2012 - Lake Palo Duro Lake Level - 29.41 feet

The parks at Lake Palo Duro are green! We are even mowing some. The recent rains have really changed everything here. Let's hope they continue. The fire ban here at the lake has been lifted. You may now have a campfire and cook with charcoal. The unusually warm weather will quickly dry everything if we don't get more rain. Please watch for the "No Fire" signs, which will again be posted if necessary.

We are enjoying the new flagpole and benches, at the group shelter, behind the dam. This was an Eagle Scout project, by Connor Willimon. Connor planned the project, raised the funds to pay for it, and with help from parents, Scout leaders, and Scouts, completed the project. We can all now enjoy it, for years to come. My favorite view of the flags is late at night, when illuminated by the light.

A lone bald eagle has been seen flying over the park each day. Ramon and Alfredo showed it to me, last week. Perhaps there is a nesting pair close by. Ramon saw it carrying a fish big enough that it was difficult to fly with it. They are hoping it will perch on the flagpole, for a picture!

Buzzards and Cormorants are numerous now. Great blue herons can also be seen, here. The deer seem to be in large groups,

lately. The bucks are shedding their antlers. Ramon and I have both seen bucks with just one antler.

I am hearing of more fish being caught. Catfish are usually the story, though an occasional crappie is mentioned. More anglers are trying to find them. No walleye have been caught, that I know of. In past years, mid to late April, has been a good time for bass.

More campers are coming out, each week. We had nine RV campers for the week. Our restrooms and showers are now open for the season. Please call Krystal at the office for your RV or shelter reservations. The number is 806-882-4401.

### Wildcat Relays

**Continued from Page 8**

**800:** 1. Sarah Snider, Spearman, 2:22.36; 2. Alina Spescia, Perryton, 2:23.05; 3. Tylo Farrar, Spearman, 2:23.13; 4. Maggie Langford, Wellington, 2:31.68; 5. Lupita Martinez, Perryton, 2:35.93; 6. Landry Davis, Canadian, 3:37.29.

**110 hurdles:** 1. Gately Garnett, Spearman, 15.32; 2. Lacey Herbert, Perryton, 15.71; 3. Amber Covin, Canadian, 16.48; 4. Shaniah Fronk, Booker, 17.02; 5. Erin Richardson, Wellington, 17.26; 6. Taylor Lindsey, Wellington, 18.02.

**300 hurdles:** 1. Gately Garnett, Spearman, 48.39; 2. Lacey Herbert, Perryton, 49.63; 3. Erin Richardson, Wellington, 50.69; 4. Chloe O'Rear, Wellington, 56.45; 5. Kendra Reining, Panhandle, 57.78; 6. Rayan Kirby, West Texas High, 57.82.

**1600:** 1. Sarah Snider, Spearman, 5:44.91; 2. Tylo Farrar, Spearman, 5:52.96; 3. Macy Hubbard, Perryton, 6:00.01; 4. Hernandez, Highland Park, 6:24.17; 5. Lupita Martinez, Perryton, 6:24.95; 6. Haley Neeley, Wellington, 6:26.61.

**1600 relay:** 1. Wellington, 4:11.44; 2. Perryton, 4:14.52; 3. Canadian, 4:17.28; 4. Spearman, 4:21.31; 5. Panhandle, 4:34.19; 6. Perryton B, 4:56.41.

## Tong's Chinese Restaurant

(806) 644-2838  
22 Archer Street • Spearman

### Daily Buffet

**Lunch - 11 a.m.-2:30 p.m. • Dinner - 5:30-9 p.m.**  
Open Wednesday-Monday - Closed Tuesday

## NEW

### Sushi on Sunday Buffet

## Spearman Lynx & Lynxettes

<http://spearmansports.smugmug.com>

Photos available of Spearman Lynx and Lynxette athletic events.

# You're Invited

to a Retirement Reception

honoring

## Jim Davis and Frances Hathaway

Wednesday, April 18, 2012

11 a.m. - 1 p.m.

Gruver High School Commons  
601 Garrett

## La Hacienda

Mexican Restaurant  
Hwy. 207 S., Plains Shopping Center  
(beside Lowe's Marketplace)  
Spearman TX • (806) 644-4500  
7-Days-A-Week, 10 a.m. - 9 p.m.

La Hacienda invites you to celebrate their 1st anniversary!

Anniversary Special

Tacos - 99¢ each

(April 4th-7th only)

-COUPON-

Get \$5 Off Purchase of \$30 or More (excluding taxes)

(Expires April 7th)