

# The Hansford County Reporter Statesman

PROUDLY SERVING HANSFORD COUNTY SINCE 1907

reporter@spearmanreporter.com

VOLUME 101 • ISSUE 8

WWW.SPEARMANREPORTER.COM

THURSDAY, FEBRUARY 21, 2008

## March 4th Primary

Early voting will begin Monday, February 19th, and will continue through Friday, February 29th (8 a.m.-5 p.m.) at the Hansford County Courthouse in Spearman and the branch office in Gruver City Hall.

Late night voting will be held on February 21st and 28th at the Hansford County Courthouse. Voting on these two days will be from 8 a.m.-8 p.m.

Applications for ballots by mail must be received on or before Tuesday, February 26th.

The primary election day will be Tuesday, March 4, 2008 from 7 a.m. to 7 p.m. Polling places will be as follows: **Precinct 1**-City Hall, 30 SW Court Spearman; **Precinct 2**-Renner Ranch, 10175 Co Rd H Spearman; **Precinct 3**-Cristo-Redentor Catholic Church, 202 Hwy 15 Gruver; **Precinct 4**-City Hall, 204 E Broadway Gruver; **Precinct 5**-Assembly of God Church, 401 N. Bernice Spearman; **Precinct 6**-Spearman High School, 403 E. 11th Ave., Spearman; **Precinct 7**-Oslo Lutheran Church, 8605 Co Rd F Oslo; **Precinct 8**-Early Vote-Clerk's Office, #15 NW Court Spearman; **Precinct 9**-Pringle Morse Community Bldg., 301 Main Morse.

The position of Hansford County Sheriff is the only locally contested race. Current Sheriff Gary Evans and former Hansford County Deputy Lance Swan have both filed for the position.

Other candidates filing for office include: **84th Judicial District Judge:** William D. (Bill) Smith, Incumbent; **84th Judicial District Attorney:** Mark W. Snider; **Hansford County Attorney:** John L. Hutchison, Incumbent; **Tax Assessor/Collector:** Linda Cummings, Incumbent; **Hansford County Sheriff:** Gary Evans, Incumbent and Lance Swan; **Republican Chairman:** Dorothy Cator; **Hansford County Commissioner, Precinct 1:** Ira G. "Butch" Reed; **Hansford County Commissioner, Precinct 3:** Tim Stedje.

There will not be a Democratic primary election in Hansford County.

## Weather Forecast

**THURSDAY NIGHT** - Mostly cloudy. Chance of rain - light freezing rain and light sleet in the evening - then a chance of light freezing rain and light sleet after midnight. Lows in the mid 20s. Northeast winds 10 to 15 mph in the evening becoming light and variable. Chance of precipitation 40 percent.

**FRIDAY** - Mostly cloudy. Highs in the mid 50s. Light and variable winds becoming south around 10 mph in the afternoon.

**FRIDAY NIGHT** - Mostly cloudy. Lows in the upper 20s.

**SATURDAY** - Partly cloudy. Breezy. Highs around 60.

**SATURDAY NIGHT** - Partly cloudy. Lows around 30.

**SUNDAY** - Partly cloudy. Highs in the mid 60s.

**SUNDAY NIGHT** - Partly cloudy. Lows in the lower 30s.

**MONDAY** - Partly cloudy. Breezy. Highs in the lower 60s.

**MONDAY NIGHT** - Mostly cloudy in the evening then becoming partly cloudy. Lows in the upper 20s.

**TUESDAY** - Partly cloudy. Highs in the lower 50s.

## Texas Crop & Weather

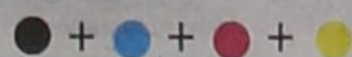
The following specific livestock, crop and weather conditions were reported by Panhandle Extension directors: Temperatures were near average most of the week. Some land preparation for spring crops was in progress. Soil moisture continued to decline with all areas reporting short to very short. Wheat condition continued to be mostly poor to very poor. Cattle were being supplemented or sold because of lack of available grazing. Rangeland conditions were mostly fair to poor. Wildfire danger remained high. Cattle were in fair condition, with producers continuing supplemental feeding at high rates.

## Deadline Notice!

The deadline to submit news and advertising to the Hansford County Reporter-Statesman is Monday at 5 p.m. Items submitted after the deadline will be published at a later date, as time and space permit.

Items may be submitted by phone (806-659-3434), fax (806-398-9080), mail (Reporter-Statesman, 213 Main Street, Spearman TX 79081), or e-mail (reporter@spearmanreporter.com).

For more information, please contact Catherine Smith at 659-3434, or e-mail to reporter@spearmanreporter.com



The Spearman Lynx defeated Dimmitt 56-54 with 2.3 seconds left in the game to claim the Bi-District trophy on Thursday, February 14, 2008.



The Gruver Hounds defeated Quanah 50-31 to claim the Bi-District trophy on Thursday, February 14, 2008.



The Gruver Lady Hounds defeated Quanah 50-31 to claim the Area trophy on Thursday, February 14, 2008. (see story on page 8)

## Lynx, Hounds Win Bi-District

### SPEARMAN LYNX

Spearman 56, Dimmitt 54: Behind the 19 points of Jordan Ashmore, Spearman rallied for a victory against Dimmitt in a Class 2A bi-district playoff.

The Lynx (21-6) trailed by eight entering the fourth quarter, but put together a 25-point period to pull out a victory. Tyler Harper added 11 for Spearman. Spearman will face Idalou in the area round.

**Spearman** 6 20 31 56  
**Dimmitt** 11 23 39 54

S-Jordan Ashmore 19, Tyler Harper 11, D-Kaden Griffith 18, Javier Sanchez 13. Records: Spearman 21-6, Dimmitt 19-14.

The Lynx will play Idalou at 7:30 p.m. on Friday, February 22 at Canyon High School.

### GRUVER GREYHOUNDS

Gruver 43, Hale Center 30: The Greyhounds never trailed in a Division I victory at the Amarillo Activity Center.

Gruver (11-14) advances to play Wellington at 7 p.m. Thursday at the Tascosa Activity Center.

Gruver led 25-19 at halftime after what coach Troy Seagler called a "sluggish" first half. The Greyhounds outscored Hale Center by seven points in the third quarter to add to their lead as Taylor Williams hit the final bucket.

Riley Urban led all scorers with 13 points for Gruver, while Gabriel Ruiz had 11 for the Owls (19-9).

**Gruver** 8 17 26 43  
**Hale Center** 4 15 19 30

G-Riley Urban 13, Rey David Gaspar 11, Taylor Williams 10, HC-Gabriel Ruiz 11. Records: Gruver 11-14, Hale Center 19-9.

The Hounds will play Wellington at 7 p.m. on Thursday, February 21, 2008 at Tascosa High School.

### SPEARMAN LYNXETTES

In Plainview, Uniqua Wilson scored a team-high 14 points, and the Tigerettes advanced to a Class 2A regional quarterfinal with a victory.

With the win, the Tigerettes (25-5) advance to face Shallowater at 7:30 p.m. Tuesday at the Rip Griffin Center in Lubbock.

A 12-2 run by the Lynxettes (25-5) cut the lead to 50-49 with 2:36 remaining in the game, but the Tigerettes were able to hold Spearman at bay the rest of the way.

**Spearman** 15 24 37 55  
**Slaton** 15 27 45 59

Kendall Schneider led Spearman with 17 points. Tara Shields added 14 points and Kylee Howard 12.

### GRUVER LADY HOUNDS

Wellington 47, Gruver 38: At the Amarillo High Activity Center, Wellington made a second-half run to win its Division I regional quarterfinal against Gruver.

The Lady Hounds had a narrow 10-9 lead at the end of the first quarter and extended its lead to eight points at halftime. Wellington (27-6) shut down the Gruver offense, holding it to zero points in the third quarter, while scoring 13 of its own to take a 31-26 lead.

Wellington's Skyler Warrick scored 19 points and Kayla Ashmore added nine to lead the Lady Skyrockets.

**Wellington** 9 18 31 47  
**Gruver** 10 26 26 38

W-Skyler Warrick 19, Kayla Ashmore 9, G-Mattie Yanke 19, Lynn Vela 11. Records: Wellington 27-6; Gruver 20-11.

## Mr. & Ms. Hansford Manor Elected

submitted by Mery Sparks

Albert and JoAnne Graves were elected as the new Mr. and Ms. Hansford Manor King and Queen. Ballot boxes were stuffed with ballots voting for each one's favorite by family, friends, staff and Residents of Hansford Manor. The competition was stiff and the turnout of votes was large but a clear winner emerged in the end.

Mr. & Mrs. Graves were married in 1951. They moved to Wichita, Ks. where Albert spent 6 years with Boeing Aircraft before moving to Manhattan, Ks. to do research on wheat for the U.S.D.A. They then moved to Raleigh, North Carolina as Albert was still working for the U.S.D.A. in tobacco research. After retirement, the couple moved back to Spearman where they assumed their management of the Baker Hotel and Albert held a Judge position.

Kenneth Turner was 1st Runner Up and Ramon Cantu was 2nd Runner up for the king's crown while Lola Newcomb was 1st Runner Up and Claudine Clark and Joyce Jennings tied for 2nd Runner Up for the queen's crown. Included in the King's Court was Chuck Newcomb, Lyndle Cook, George Young, Ralph McCune, Robert Yanke, Glen Mackie, I.W. Ayers, Kim Cluck, Clarence Willmon, and Lee Crawford. Included in the Queen's Court was Sara Cole, Marie Sparks, Marjorie McCune, Irene Edwards, Ruth Benefield, Maylynn Ayers, Evelyn Wiseman, Lola Salgado, Bonnie Mears, and Vi Hornsby.

The Residents of Hansford Manor were honored with a Valentine's party where the new King and Queen were crowned. Verna Strawn provided music for the occasion. The serving table was laid with roses, cakes, cookies, dipped strawberries, and punch for all to enjoy.



JoAnne and Albert Graves - 2008 Mr. & Ms. Hansford Manor

During the party the secret valentines for the Residents were revealed. The Residents thoroughly enjoyed all of the festivities. Their secret Valentines have been showering the Residents with Valentines, candy, and stuffed animals the past several days. It was

so much fun to watch them try to guess who their Valentine was.

Many thanks go out to the caring staff of Hansford Manor and the volunteers for making Valentine's such a special event.

# Lullabies, Legends & Lies

by Parson Smith, the Prime Minister of Laughter

Three things in life that, once gone, never come back - 1. Time, 2. Words, 3. Opportunity

Three things in life that can destroy a person - 1. Anger, 2. Pride, 3. Unforgiveness

Three things in life that you should never lose - 1. Hope, 2. Peace, 3. Honesty

Three things in life that are most valuable - 1. Love, 2. Family & Friends, 3. Kindness

Three things in life that are never certain - 1. Fortune, 2. Success, 3. Dreams

Three things that make a person - 1. Commitment, 2. Sincerity, 3. Hard work

Three things that are truly constant - Father - Son - Holy Spirit

I ask the Lord to bless you, as I pray for you today; to guide you and protect you, as you go along your way. God's love is always with you, God's promises are true.

And when you give God all your cares, you know God will see you through.

Until the next time, May God Bless.

## State Capital



### HIGHLIGHTS



by Ed Sterling

### SENATE COMMITTEES QUESTION TxDOT OVER FINANCES

AUSTIN - Reflecting the importance of Texas in the political landscape, U.S. Sens. Hillary Clinton and Barack Obama opened campaign offices here on Feb. 16.

Both candidates, who are competing for the Democratic presidential nomination, have begun airing campaign ads in many Texas markets.

And, the two are scheduled to engage in a Feb. 21 debate at the University of Texas. Admission for students, members of the university community and the public was by invitation only due to security restrictions.

**Voter education drive begins**  
With the March 4 Texas primaries only days away, a May election on the horizon

and the 2008 general election coming up in November, the move is to increase the public knowledge about the right to vote.

Texas Secretary of State Phil Wilson on Feb. 11 launched "VOTEXAS," a statewide voter education program funded through the federal Help America Vote Act of 2002.

Wilson, the state's chief elections officer, described the initiative as "Pretty much everything you could ever want to know about voting in Texas."

Information is available at VOTEXAS.org. Early voting runs Feb. 19 to Feb. 29.

**Heart screening program begins**  
The Texas Education Agency on Feb. 14 awarded a \$1 million contract to Championship Hearts Foundation to screen sixth-graders for heart conditions that can cause sudden and unforeseen death.

The Early Cardiovascular Detection Pilot Program, created in 2007 by Senate Bill 7, will screen about 12,750 students enrolled at public schools across Texas, beginning this month.

The contractor will select schools that are geographically and ethnically diverse, the Texas Education Agency said.

**AG: watch out for refund scam**  
The Office of the Attorney General has received complaints from Texans who have received unsolicited electronic mail and telephone calls from purported IRS agents claiming that the taxpayers are eligible for "Bush refunds."

Scammers demand taxpayers' Social Security and bank account numbers, claiming the IRS will use the information to directly deposit "rebate checks" into the taxpayers' accounts.

The IRS does not call or e-mail taxpayers unexpectedly to demand personal information for direct deposits, the AG's office said.

To report this kind of solicitation, call the Attorney General's Consumer Protection Hotline, (800) 621-0508, or the Internal Revenue Service, (800) 829-

1040.

**Wimberley pays 'Robin Hood'**  
Wimberley Independent School District, about 35 miles southwest of Austin, made headlines across the state last fall when it refused to send its "Robin Hood" tax revenue share to Austin.

But the school district's board of trustees put the issue to a vote Feb. 14 and decided 6-1 to pay "under protest" about 15 percent of the \$2.4 million owed.

The Wimberley school district is considered property wealthy under state law, but school officials have maintained that the district could not afford to send the money.

**Crime lab grants are awarded**  
Gov. Rick Perry on Feb. 12 awarded grants totaling nearly \$900,000 to nine forensic crime labs.

The money is awarded through the federal Coverdell National Forensic Sciences Improvement Act fund and is distributed by the Governor's Criminal Justice Division.

"Texas must provide law enforcement with the latest in forensic science technology in order to protect our citizens while ensuring our criminal justice system does not wrongfully convict the innocent," Perry said.

Receiving grants are Bexar, Dallas, Harris, Jefferson and Tarrant counties, and the cities of Austin, Fort Worth, Houston and Pasadena.

**Comptroller upgrades Web site**

Texas Comptroller Susan Comb's Web and graphic design teams have redesigned and re-organized the "Window on State Government" home page to make it more action-oriented, cleaner and easier to navigate.

The address for the page is [www.window.state.tx.us](http://www.window.state.tx.us).

Users are asked what they want to do - pay taxes, find a tax form, search for unclaimed property or locate other information - and a quick click takes the user to the right location.

A recent addition is "Where the Money Goes," a link to in-depth information about how the state spends taxpayer dollars.

## TEXAS Health Matters

### State Services Help Many Maintain Independent Lifestyle

It was March 1986. Rene Villarreal was riding his motorcycle on his day off when he had an accident that put him in a coma for three months.

After coming out of his coma, Rene began the long rehabilitation process by seeking help from the Department of Assistive and Rehabilitative Services (DARS) Independent Living Services program.

Rene could not pay for someone to take care of him and did not want to move in with relatives. With help from DARS, he got the help he needed to continue living independently.

DARS Independent Living Services modified Rene's van so he could drive himself and take his power chair to go shopping, to church and to movies. Rene's home also was modified to enhance his mobility and independence.

"These items made it possible for me to get into the shower, use my restroom, and go to the store and shopping," he said. "There is no public transport to the store or church in my community, so the vehicle modification was great."

The DARS Independent Living Services program helps people like Rene and others who have a wide range of physical and mental disabilities achieve self-sufficiency. Participants receive equipment and training to help them find suitable employment and live more independently. They can decrease their dependence on family members or attendant services as they learn to perform daily living activities, enjoy improved mobility and communication, and experience enhanced personal and social adjustment.

Independent Living Services participants may

receive an array of services, including:

Counseling and guidance. Training and tutorial services.

Telecommunications, sensory, and other technological aids for people who are deaf.

Vehicle modification. Assistive devices such as artificial limbs, braces, wheelchairs and hearing aids.

Independent Living Services for individuals with significant visual impairment or blindness also are available through DARS.

These services focus on adjustment to blindness and allow individuals to remain independent. This goal is achieved by training in preparing meals, identifying money, using systems to record and retrieve information, traveling safely, participating in family and community and other independent living skills.

To qualify for the Independent Living Services program, an individual meets with a DARS counselor, who must determine that the person has a significant disability that causes a substantial impediment to his or her ability to function independently. The counselor also must determine that the program's assistance can be expected to result in more independence for the person.

The goal of DARS Independent Living Services is to help participants regain their confidence and independence so they can enjoy life. Rene Villarreal offers living proof of the program's success.

"DARS opened doors for me when I had an accident and had traumatic brain injuries," Rene says. "I was able to get to work and retire from a second job. Now I am in my apartment, close to my family, and that helps me a lot. DARS has made it possi-

ble for me to continue to be in my own place and go wherever I want. I have children in San Antonio, and with the vehicle modification, I was able to see them after many months."

To apply for the DARS Independent Living Services program, call DARS at 1-800-628-5115. More information about the program is available online at [www.dars.state.tx.us](http://www.dars.state.tx.us).

SUDOKU  
PRESENTED BY

**VolunteerMatch.org**  
Where volunteering begins.

		4	7						
	1			3		9			4
				6	1		8		
	9			2		3	7		
1	2						4	5	
	5	3		1				9	
	7		2	5					
2		6		4				5	
					6	2			

© 2008, StatePoint Media, Inc. answer on classified page  
Fill in the blank squares in the grid, making sure that every row, column and 3-by-3 box includes all digits 1 through 9.

These games are brought to you by the  
**Hansford County Reporter-Statesman**

## SHAKESPEARE

- ACROSS**
- Thunder and audiances do it
  - Likely or inclined
  - Spiritedness
  - Do over
  - Strauss' "Danube"
  - Shylock demanded a pound of it
  - Affirm with confidence
  - Yesteryear
  - A in AV
  - Capulets' rivals
  - British tax
  - "Welcome to our humble"
  - Follows Nov.
  - Halloween icon
  - Not much ado about it
  - King Kong, e.g.
  - Opposite of victory
  - "White Wedding" Billy
  - River in Hades whose caused forgetfulness
  - Hawaiian welcome
  - Middle of back
  - Black and white cookie
  - Four quarts
  - South American tuber
  - "Shakespeare in Love" star
  - "\_\_\_ your seat-bells"
  - \_\_\_ Paulo
  - Chewy candy
  - More than once around
  - Time of Shakespeare's fairy-
- DOWN**
- To study last minute
  - Russian left
  - Port in Yemen
  - Entry point to the Web
  - Not silently
  - Put through a blender
  - Golf pegs
  - Component of S&P 500
  - Communists
  - Ostris' wife
  - Exclamation of surprise
  - Past or former
  - Polished surface of gem
  - Follow rules
  - \_\_\_-com company
  - Lively dance in duple time
  - Verdi's opus
  - East Indian pepper
  - Victim of nervous biting
  - Dostoevsky's "The \_\_\_"
  - The present occasion

equivalent

- Harsh grating sounds
- Representative of something else
- Shinbone
- Decorate or add beauty
- Shakespeare's famous king
- Physical or mental ability
- '60s British teenagers
- A spy
- "Love looks not with the \_\_\_ but with the mind" -- Shakespeare
- Ginger or carrot, e.g.
- 17th letter of Greek alphabet

CROSSWORD

1	2	3	4		5	6	7		8	9	10	11
12					13				14			
15					16				17			
18					19				20			
			21					22				
23	24	25					26			27	28	29
30				31		32	33			34		
35			36			37			38			
39					40				41		42	
43					44				45		46	
				47			48	49				
	50	51				52				53	54	55
56						57				58		
59						60				61		
62						63				64		

© 2008, StatePoint Media, Inc. answer on classified page

**The Hansford County Reporter-Statesman**  
213 Main Street • Spearman, TX 79081  
Phone - (806) 659-3434 • Fax - (806) 398-9080  
[www.spearmanreporter.com](http://www.spearmanreporter.com)  
[reporter@spearmanreporter.com](mailto:reporter@spearmanreporter.com)  
[cathysmith@valomet.com](mailto:cathysmith@valomet.com)  
Mon.-Thurs. 9 a.m.-12 p.m., Mon.-Wed. & 1-5 p.m.  
Closed Thurs. afternoon and all day Fri., Sat. & Sun.

Gary Smith - Publisher Catherine Smith - Editor  
Contributing Writers: Dorothy Hudson, Jim Derington, Merry Sparks, Cecil Biggers  
Contributing Photographer: Charlie Johnson

**Subscription Rates**  
In Hansford County - \$30.00 • Out of County - \$40.00

The Hansford County Reporter-Statesman (USPS 529660) is published weekly in Spearman, TX. Periodical postage paid in Spearman, TX. **POSTMASTER:** Send address changes to: The Hansford County Reporter-Statesman, 213 Main Street, Spearman, TX 79081.

**Publication Policy**  
The deadline to submit news and advertising to The Hansford County Reporter-Statesman is Monday at 5 p.m. Items submitted after the deadline will be published at a later date, as time and space permit. Publication of all items is at the discretion of the editor.

**Advertising**  
Open Display rates are \$4.00 per column inch. Classified Ads are \$6 for the first 25 words and 10c per word for each additional word. (Additional charge for boxed classifieds.) There is a \$1 charge per week if billed.

Member of  
Gruber Chamber of Commerce  
Spearman Chamber of Commerce  
Texas Press Association and Panhandle Press Association

# Happy Birthday!

*Editor's Note: This Happy Birthday list is run as a public service by the Hansford County Reporter-Statesman. We apologize if any names are misspelled. If you know of a name that needs to be changed, added or deleted, please call 659-3434.*

Thank you, Catherine

## February 21

**Birthday** - Sandra Proffitt, Walter McDade, Lisa Meisner, Raul Ortega, Ann Thomas, Chandler Adkins, Tom Speck, C.J. Renteria

**Anniversary** - Ken & JoAnn Schneider

## February 22

**Birthday** - Russell Dahl, Rhonda Hicks, Betty Mathews, Ryan Mathews, Sherri Hall, Tim Cook, Bobby Jo Grayson, Paul Reimer, Sonny Kell, DeAnn Sparkman, Derryla Stedje, Connie Davis, Linda Coombs, Jack Sparks, Brenda Winegarner, Kreisun Dominguez

**Anniversary** - M/M Jason Bass, M/M Freddy Walton

## February 23

**Birthday** - Hailey Lamb, Randy Reid, Dave Clement, Janyth Smith, Cynthia Miller, Phil Larson, Aaron Hager, Kacey Smith, Elizabeth Pipkin, Jim McMahan, Maxine Cline, Jason Bartimos, Edollina Garcia, Tommy Reger, Daryl Noble, Mollie Burnam, Alan Jones

**Anniversary** - M/M Richard Raso, M/M Joe Rodriguez, M/M Tommy Boone

## February 24

**Birthday** - Lori Messer, Linda Scroggs, Adam Holladay, Mani Noble, Tiffany Goodrich, Chuck Morgan, Sherry Boyd, Fernando Saldana, Glenda Close, Barbara Townsend, David Swink, Frances Davis

**Anniversary** - M/M Tom Cathey Sr., M/M Quentin Hart, Andrea & Gary Woolley

## February 25

**Birthday** - Marian Tomlison, Lynna Renner, Don Schmer, Mike Brown, Leslie Paul, Crystal Carson, Loree Viola, Tabetha Thoms

**Anniversary** - Bob & Jackie Pearson

## February 26

**Birthday** - Debbie Davis, Bruce Knight, Suzie Womble, Burl Buchanan, Pam Edwards, Margie Schubert, Lynn Pierce, Marinell Webster, Deziree Hughes, Carol Poole, LaQuita Evans, Bob Meier, Kip Francis, Denise Paschel, Tony Holquin, Nicholas Avila, Kay Ann Miller

**Anniversary** - Britt & Linda Jarvis

## February 27

**Birthday** - Roy Diaz, Colby Weldon, Sharon Sutton, Cindy Jenkins, Adrian Barrera, Rosie Jackson, Melinda Hall, Winnie Vernon, Clint Goodman, Lance Wood, Vanessa Vela, Lacey Salgado

## February 28

**Birthday** - Robert Blount, Max Davis, Karen Sparks, Shannon Bowling, Debbie Carter, James Lair, Sammy Don Jones, Edna Anderson, Willie Shields, Hal Bennett, Davis Nash, Parker Grotegut

**Anniversary** - M/M Gilbert

Salgado

## February 29

**Birthday** - Clifton Harden, Michael Holt

## March 1

**Birthday** - Lori Swink, Justin Ooley, David Stafford, Michael Rosales, Gary Cates, Ruby Mitchell, Mary Saldavar, Nora Baca, John Duncan, Peggy Robinson, Caleb Miller, Danny Parker

**Anniversary** - M/M Robbie Dewberry, M/M Harold King, Nolan & Linda Winegarner

## March 2

**Birthday** - Wynn (Maupin) Essler, Justin Thompson, Tonni Yanke, Olive "Babe" Pendergraft, Wayne Barber, Matthew Baker, Carma Dorton, Bob Farr, Robin McCullough, Rachelle Moreno, Josh Winegarner, Ryan Hill, Sammy Renteria

**Anniversary** - M/M Joel Lackey

## March 3

**Birthday** - Sue Smith, Jackie Womble, Vicky Papay, Doris Brogdon, Kim Scroggs, Kelley Hart, Cass Lasater, Andy Scarborough, Brian Black, Darla Black, Amber Fox, Allan Taylor, Denise Schuman, Crystal Harris, Richard Melton, Paxton Pittman, Matti Wheelock, Pam Schnell

## March 4

**Birthday** - Evelyn Dahl, Don Evans, Tanner Sherrell, Tommy Hahn, Jon Garnett, Virgil Jones, Chuck Taylor, Jose Renteria, David Harbour, Ron Fox, Judy Park, Brenda Red, Ronald Kirby, Heather Hamilton, Lucio Vela, Carrie Guthrie, David Rosser

## March 5

**Birthday** - Ron Dunning, Beth Swink, Barry Beck, Brooks Beck, Mark Garnett, Mary Garza, Mike Cowan, Trixie Pearson, Mike Garrard, Alexis Johnson, Benny Brandwick, Steve TeBeest, Shelby Williams, Ramon Garcia, JJJ Anaya

**Anniversary** - M/M Ramiro Morales

## March 6

**Birthday** - Brenda Hart, Charlie Slough, Marcie Womble, Bobby Archer, Tommy Barkley, Travis Patterson, Janet Reger, Doran Dulana, Kenneth Slough, Lindsey Clift, Nancy Evans, Mick Sharp

**Anniversary** - M/M A.R. Cazares

## March 7

**Birthday** - David Imke, Dee Dee Shelton, Mike Garnett, Molly Turner, Bernice McBride, Viola Boyd, Donald Lane, Beulah Harris, Howard Thompson

**Anniversary** - M/M Danny Bass, M/M Anres Ortiz, Pete & Juanita Vera

## March 8

**Birthday** - Patty Cator, Drew Grotegut, Mike McLain, Bill Harnish, Melvin Swene, Kirby McAdams, Deana Shields, Dee Allen, Steve Cruse, Candi Delozier, Ben Cook, Colby Red, Eric Olsen, Rae Lynn Cook, Cindee Thomas, Christi Clift, Michelle Schick

**Anniversary** - M/M Richard Wagner

## Words from Faith & Grace

by Cecil R. Biggers, Lutheran Lay Minister

Introspection, testing, leading to repentance and amendment of life, the purpose of Lent. We study Exodus 17: 1-7, Psalm 95, Romans 5:1-11 and John 4: 5-42. The people who have experienced God's saving power have a temporary shortage of water and start to question Moses' ability to lead and question whether God is present or not. God responds to Moses by providing water in the desert from a rock! Moses calls this place "Meribah" and "Massah", which is "quarreling" and "testing" respectively. The presence of God's grace transforms us.

The Psalmist sings a song of worship. The joy of communal worship, the awe of approaching the presence of God, the warning that the worshipers must not harden their hearts against God as at Meribah and Massah or they will not see the peace of God.

We are justified by faith by the grace of God through Jesus Christ. Our sin is like our shadow, no matter how we twist and turn, we cannot lose it. Jesus Christ has changed our status from sinner to child of God = justification. Jesus Christ has changed our state from condemned to redeemed = sanctification. Note that our salvation is from the "wrath of God"; yet, the means of this salvation is God's grace. God cannot tolerate sin, yet He loves sinners. The presence of God's grace transforms us.

Jesus has been walking in the heat and stops at Jacob's well to rest. The well is over one hundred feet deep and he has no bucket or rope. Jesus asks a Samaritan woman to give him some water. Shock! A rabbi speaks to a woman who is a stranger! Shock! A rabbi speaks to a Samaritan whom the Jews have hated for four hundred years! Shock! A rabbi speaks to an adulteress! Shock! An adulteress spreads the word of the gospel! Many believe. The presence of God's grace transforms us. Ponder this dear Christian.

May the Holy Spirit make you aware of the presence of God's grace in your life.

## Our Sympathy

### BOBBY LEE HICKS

GRUVER - Bobby Lee Hicks, 71, died Saturday, February 16, 2008, in Spearman.

Services were at 2 p.m. Monday, February 18, 2008 in Gruver United Methodist Church with the Rev. George Price officiating. Burial was in Gruver Cemetery by Boxwell Brothers Funeral Home of Spearman.

Mr. Hicks was born Oct. 28, 1936, in rural Grayson County. Bobby graduated from Hale Center High School. He participated in the Hale Center Summer Baseball League and was an active member. He married Carolyn Ballard on Sept. 5, 1954, in Hale Center. In 1963, Bobby and Carolyn and children moved to a farm near Plainview. He was a member of the Evening Lions Club.

In 1967, the family moved to Gruver, where Bobby enjoyed playing on the men's volleyball team. He also participated in the American agriculture farm strike. He was an avid fan of his children's school activities. Bobby's favorite pastime in later years was going to the domino parlor and the Dairy Queen with the coffee bunch. He was a member of Gruver United Methodist Church.

He was preceded in death by his parents; and two infant sons.

Survivors include his wife; two sons, Larry Hicks and wife Rhonda of Gruver and Bobby Dale Hicks of Amarillo; a daughter, Susan Lancaster of Amarillo; a sister, Linda Mahagan of Hale Center; three granddaughters, Brandea Allen and husband Mark of Spearman, Chelsea Hicks of Perryton and Amanda Lancaster of Lubbock; two grandsons, Jordan Hicks of Gruver and Austin Lancaster of Amarillo; and two great-grandsons, Max Wright of Perryton and Matt Allen of Spearman.

The family suggests memorials be to Hansford Hospice, 707 Roland St., Spearman, TX 79081.

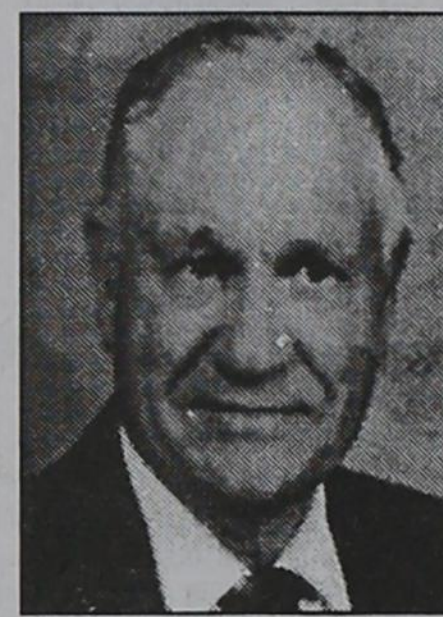
### WELDON GREEN

GRUVER - Weldon Green, 83, died Wednesday, February 13, 2008.

Funeral services were held Friday, February 15 at 3 p.m., in the Gruver Church of Christ with Gaylord Cook officiating. Burial followed in Gruver Cemetery, under the direction of Boxwell Brothers Funeral Home of Spearman.

Weldon was born to Coleman and Vivian Green on August 30, 1924 in Calisburg, Texas. He graduated from Gainesville High School and Abilene Christian College.

He married Elene Harland on July 27, 1948.



Weldon served the Lord as an Elder of Gruver Church of Christ. He served as a Hansford County Commissioner for six years and Hansford County Auditor for 29 years. He was a World War II veteran, serving in the Navy.

He is survived by his wife Elene; two sons, Dee and wife Susan Green of Childress and Ron Green of Plano; two daughters, Genna Dunlap of Amarillo and Mittie and husband Dale Blackburn of Abilene; two brothers, R.C. and wife Betty Green of League City, TX and Bo and wife Becky Green of Abilene; three sisters, Adeline Wheeler of Albuquerque, NM, Virginia and husband John Alley of Springfield, MO, and Glenda Renner of Gruver; seven grandchildren; and 5 great-grandchildren.

The family request memorials to be to High Plains Children's Home, P.O. Box 7448, Amarillo TX 79114.

**PAID CDL TRAINING!** YOUR FUTURE BEGINS HERE

**NO EXPERIENCE NEEDED!**

Stevens Transport, the premier refrigerated carrier in the US, sponsors the total cost of your CDL training! In 17 short days you will earn your CDL and begin your paid on-the-job training! Earn \$40K first year and up to \$150K fifth year! Excellent benefits and 401K!

For more information, call **800-333-8595**

[www.becomeadrivers.com](http://www.becomeadrivers.com)

**MONUMENTS**

**Boxwell Brothers Funeral Home**

519 Evans • Spearman

659-3802

Dear friends,  
When you buy a monument from us we make sure it is exactly what you want at a price you can afford. If it is not right, we will make it right. And you will not have to search the countryside to find us. We are here when you have a need.

Sincerely,  
Bob Boxwell

**Land Close - Out Sale!**

**River Access Acreage Homesites**

58 Acre River Park, Swimming Pool, Tennis Court & Walking Trails. New Braunfels Most Sought After Acreage Community.

**Bring your best offer! • No Closing Costs**

Take a Tour by 2/29/08.

**Call Today 800-541-4693**

[Land.riverchasetx.com](http://Land.riverchasetx.com)

## Replenish the seed of faith through . . .

**DAILY BIBLE READING, PRAYER & REGULAR CHURCH ATTENDANCE**

<p><b>Spearman</b></p> <p><b>Apostolic Faith Church</b> 822 S. Drassen • 659-2870 Sunday School: 10 a.m. Worship Service: 11 a.m. Sun. Eve.: 6 p.m. Wed. Prayer Mtg: 7 p.m. Pastor - Roland Haney</p> <p><b>First Assembly of God</b> 401 N. Bernice • 659-2295 Sunday School: 9:30 a.m. Worship: 10:35 a.m. Kid's Church: 10:35 a.m. Evening Worship: 6 p.m. Wed. Worship: 7 p.m. Wed. Youth: 7 Pastor - Bob Elder</p> <p><b>First Christian Church</b> (Disciples of Christ) 29 S. Bernice • 659-2036 Sunday School: 9:45 a.m. Worship: 10:50 a.m. Minister -</p> <p><b>First Baptist Church</b> 123 N. Bernice • 659-5557 Sunday School: 9:45 a.m. Worship: 11 a.m. Evening Worship: 7 p.m. Men's Bible Study - Wed. 7 a.m. Children's Choir - Wed. 6 p.m. Adult Choir - Wed. 7 p.m. Wed. Bible Study: 7 p.m. Pastor - Jim Medley</p> <p><b>Church of Christ</b> 121 S. Haney • 659-3244 Sunday Bible Class: 9:45 a.m. Worship: 10:30 a.m. Evening Worship: 6 p.m. Bible Study Wed.: 7:30 p.m.</p>	<p><b>Sacred Heart Catholic Church</b> 901 Roland • 659-2792 Sat. Night Mass: 5:30 p.m. Sun. Mass: 9 a.m. - English Sun. Mass: 11:30 - Spanish 1:30 p.m. - Gruver - Christo Rendometer Mass - Spanish Rev. Guillermo Morales</p> <p><b>First United Methodist</b> 407 S. Haney • 659-5503 Sunday School: 9:45 a.m. Worship: 8:30 &amp; 11 a.m. Jr. High Youth: 5 p.m. Sunday High School: 6 p.m. Sunday Kids Club: 3 p.m. Wed. Pastor - Neely Landrum</p> <p><b>Grace Presbyterian Church</b> (Presbytery with Faith Lutheran Church) 1101 Bernice • 659-2033 Pastor - Beverly Cook</p> <p><b>Faith Lutheran Church (ELCA)</b> 1101 Bernice • 659-2252 Sunday School: 9:45 a.m. Worship: 11 a.m. (Worships with Grace Presbyterian Church) Pastor - Beverly Cook</p> <p><b>Union Church</b> 31 S. Endcott • 659-2644 Sunday School: 9:45 a.m. Worship: 10:45 a.m. Evening Worship: 6 p.m. Bible Study: 7 p.m. Wed. Pastor - Dr. Timothy Minor</p> <p><b>Fellowship Baptist</b> 1102 S. Archer • 659-2783 Sunday School: 10 a.m. Worship: 11 a.m. Sun. Evening Worship: 6 p.m. Youth/Adult Service: 7:30 Wed. Pastor - James Washburn</p>	<p><b>Primera Mision Bautista</b> 502 E. 7th • 659-3991 Sunday School: 9:45 a.m. Worship: 11 a.m.; Evening: 6 p.m. Wed. Prayer Meeting: 7 p.m. Thurs. Visitation: 7 p.m. Pastor Joe Garcia Jr.</p> <p><b>El Aposento Alto U.P.C.I.</b> 1105 S. Roland Domingos: Escuela-Dominical - 10 a.m. Culto Evangelistico - 7 p.m. Jueves: Oracion - 8 p.m. Mier: Estudio Biblico - 7 p.m. Pastor - A.G. Martell (806) 659-2153</p>	<p><b>Gruver United Methodist</b> Broadway &amp; Garrett 733-2651 Sunday School: 9:45 a.m. Worship: 8:30 &amp; 10:50 a.m. Eve. Worship &amp; UMY: 6 p.m. Pastor - George Price</p> <p><b>Spanish Cristo Redentor Church</b> Sunday Mass: 1:30 p.m. Friday Evening Mass Summer - 8:00 p.m. Fall/Winter - 7:30 p.m.</p>
<p><b>Oslu</b></p> <p><b>Oslu Lutheran Church (ELCA)</b> 6 Miles West &amp; 12 Miles North of Gruver 339-7646 Sunday School: 9:45 a.m. Worship: 11 a.m. Pastor - Arlen Lloyd</p>	<p><b>Gruver</b></p> <p><b>First Baptist Church</b> 402 E. Broadway • 733-2411 Sunday School: 9:45 a.m. Worship: 10:50 a.m. Disciple Training: 6 p.m. Sunday Prayer Meeting: 7:30 p.m. Wednesday Pastor - Scott Curry</p> <p><b>Church of Christ</b> 209 King • 733-2760 Sunday School: 9:30 a.m. Worship: 10:20 a.m. Evening Worship: 6 p.m. Wed. Worship: 7:00 p.m. Minister - Gaylord Cook</p> <p><b>First Christian Church</b> 510 King • 733-2960 Sunday School: 10:00 a.m. Sunday Worship: 11 a.m. Youth: 7:30, Sunday Adult Bible Study: 7:30, Sun. Wed. Bible Study: 8:00 p.m. Pastor - Gary Gumfory</p>	<p><b>Morse</b></p> <p><b>Morse Baptist Church</b> Pastor - Mike Martin</p>	<p>He has showed you, O man, what is good. And what does the LORD require of you? To act justly and to love mercy and to walk humbly with your God. Micah 6:8</p>

**FREE DIRECTV 4 ROOM SYSTEM!**

**CHECKS ACCEPTED!**

250+ CHANNELS!  
Starts \$29.99

Over 85 HD Channels!  
FREE HBO+Cinemax+  
Showtime+Starz 3 Months!  
FREE DVR/HDI!  
We're Local Installers!  
**1-800-214-7110**

**PAXIL** EXPERIENCE COUNTS

is commonly used to treat depression. Paxil may be associated with birth defects in women who took it during pregnancy. Paxil may also be associated with suicide in teens. If you or your loved ones took Paxil while pregnant and the child had any birth defects, or if you believe a teen suicide or suicide attempt may have been caused by Paxil, call us for professional insight.

Ryan A. Krebs, M.D., J.D.  
Doctor-Lawyer in Full-time Law Practice  
Richard A. Dodd, L.C.  
Timothy R. Cappolino, P.C.  
Based Certified Personal Injury Trial Law and Child Trial Law by the Texas Board of Legal Specialization  
NO FEE FOR FIRST VISIT  
CAMERON, TEXAS

**1-800-460-0606**  
[www.DefectiveDrugsLaw.com](http://www.DefectiveDrugsLaw.com)

**SIGN UP FOR A FREE SCOOTER**

One Scooter Given Away Each Month

Toll Free **800-606-9860**

**Med Care MEDICAL SUPPLY**

[www.medcaremedicalsupply.com](http://www.medcaremedicalsupply.com)

**Med Care MEDICAL SUPPLY**

Ask us if you qualify for a **POWER CHAIR** at little or no cost to you.

In most cases, Medicare, Medicaid & Insurance will cover 100% of the cost for your Power Chair.

Toll Free **800-606-9860**

[www.medcaremedicalsupply.com](http://www.medcaremedicalsupply.com)

**Deakin ELECTRIC**

OILFIELD • RESIDENTIAL • COMMERCIAL  
321 S. MAIN • SPEARMAN  
1-800-999-1506 Chris Deakin  
(806) 659-5016 President

**Bartlett's Lumber & Hardware**

105 W. Broadway • Gruver, Texas  
(806) 733-2404

**BERRY CLEANERS**

Ann & Vernon Pipkin - Owners  
Phone 659-3122 • P.O. Box 1017  
207 Main St. • Spearman, TX

**Morse Implement & Auto Supply**

"Join us in church"

Tom Dortch 733-2668  
Box 89 • Morse, TX 79062

**PRAIRIE MOTORS INC.**

Hwy. 207 South • P.O. Box 430  
Spearman, TX 79081 • (806) 659-2541  
[www.prairiemotors.com](http://www.prairiemotors.com)

**MurMur's Cafe**

100 Roland St  
Spearman, TX  
659-3580

**Hansford County Reporter-Statesman**

"Proudly Serving Hansford County Since 1907"

(806) 659-3434  
310 Barkley • Spearman, TX

**INTERSTATE BANK, sss**

[www.interstatebank.net](http://www.interstatebank.net)  
322 Main • P.O. Box 146  
Spearman, TX • 659-2559

# HYI

FOR YOUR INFORMATION

### March 4th Primary Early Voting

Applications for ballots by mail for the March 4th Republican Primary must be received on or before Tuesday, February 26th. Early voting will be held at the Hansford County Courthouse in Spearman and the branch office in Gruver City Hall from February 19th through 29th, from 8 a.m.-5 p.m. Late night voting will be held on February 21st and 28th at the Hansford County Courthouse. Voting on these two days will be from 8 a.m.-8 p.m. The primary election day will be Tuesday, March 4, 2008 from 7 a.m. to 7 p.m.

### Gruver PTO Fundraiser

The Gruver Elementary students are selling Seitz cookie dough and pies for \$13.00 each. The cookie dough is pre-portioned and comes in a variety of flavors. Sales will continue through February 28, with an expected delivery date of March 11. Thank you for supporting Gruver PTO. (Scott Steed is our local Seitz representative.)

### Lunch & Learn

"Cajun Cooking," will be the topic for Lunch & Learn, Thursday, February 28, from 12:00 - 1:00 p.m. in the Fellowship Hall of Spearman Church of Christ. Kerry Symons, owner of Perryton Office Supply, will present the program. Participants will learn food preparation tips, take home recipes, and enjoy Cajun cuisine. Kerry and his wife Cynthia teach Cajun Cooking classes for Frank Phillips College Allen Campus and enjoy sharing their experiences of living in Louisiana. This free program is sponsored by the Texas AgriLife Extension Service and Extension Education clubs. Donations for lunch will be accepted. Call Peggy Winegarner at 659-4131 or 733-2901 for more information.

### Project Graduation

The parents of the Spearman High School Senior Class of 2008 will sponsor and host a "Project Graduation Party" following commencement exercises Friday May 23rd. To encourage the graduates to stay the entire night, door prizes are awarded throughout the evening. In addition, graduates can earn paper monies through their participation in various games so that prizes can be purchased. The graduation party will culminate with the distribution of grand prizes. Prizes, gift certificates, and cash are needed for the evening's gifts. If you, the community, who supported and encouraged these seniors these past 13 years of school, would be willing to share in this final "Class of 2008" memory, making this project "special", please call Bonnie Bergan at 659-5529, Tammy Benton at 659-3071, or Gina Gillispie 659-5341. Contributions can be mailed to: Project Graduation Gina Gillispie, P.O. Box 633, Spearman, TX. 79081 Thank you in advance, for your support!

### Perryton ISD Students Seeking Memories of World War II

Students in Perryton are seeking individuals to interview for the KACV WWII/Texas Panhandle Outreach Project. Participants who are eligible to be interviewed are those that have memories from 1938-1946, especially World War II Veterans. Persons who would like their stories from WWII to be recorded on film should contact Lauren Carroll at (806) 434-0389.

### Out-of-School Examinee Registration

Individuals who are no longer enrolled in school and who have not previously met minimum expectations on all sections of the TAAS or TAKS tests, but have met all other graduation requirements, may retake the necessary sections. The TAAS and TAKS retests will be given on March 4 (ELA TAKS; Writing TAAS), March 5 (Math TAKS, Math TAAS), March 6 (Science TAKS; Reading TAAS), and March 7 (Social Studies TAKS). A student can register for the TAAS or TAKS tests online by accessing the web site at <http://k12testing.tx.ncspearson.com> or by completing a registration form. Registration forms may be picked up at the high school counselor's office between the hours of 8:00 a.m. - 4:00 p.m. Registration packets are due in Austin no later than 5:00 p.m. on January 25, 2008. Please Contact Krista Baird at 659-2584 if you have any questions.

Los individuos que ya no están matriculados en la escuela y que todavía no han cumplido los requisitos mínimos en todas las secciones del examen del TAKS, pero han cumplido todos los otros requisitos necesarios para graduarse pueden volver a tomar los exámenes necesarios del TAKS. Daremos el examen el 4 de Marzo ( ELA TAKS; Escritura TAAS); 5 de Marzo (Matemáticas TAKS; Matemáticas TAAS) el 6 de Marzo (El TAKS de ciencia; Lectura TAAS), 7 de Marzo (el TAKS de estudios sociales). Un alumno se puede registrar para el examen de TAAS y de TAKS en el sitio <http://k12testing.tx.ncspearson.com> o también puede completar una forma de registracion. Las formas de registraciones se pueden recoger en la oficina de la consejera en la escuela preparatoria entre las horas de 8:00 a.m. hasta las 4:00 p.m. Los paquetes de registraciones tienen que estar en Austin antes de las 5:00 p.m. del día 25 de Enero del 2008. Por favor si tiene alguna pregunta comunicarse con Krista Baird al 659-2584 si tiene alguna pregunta.

### Gruver Elementary Collecting Register Tapes

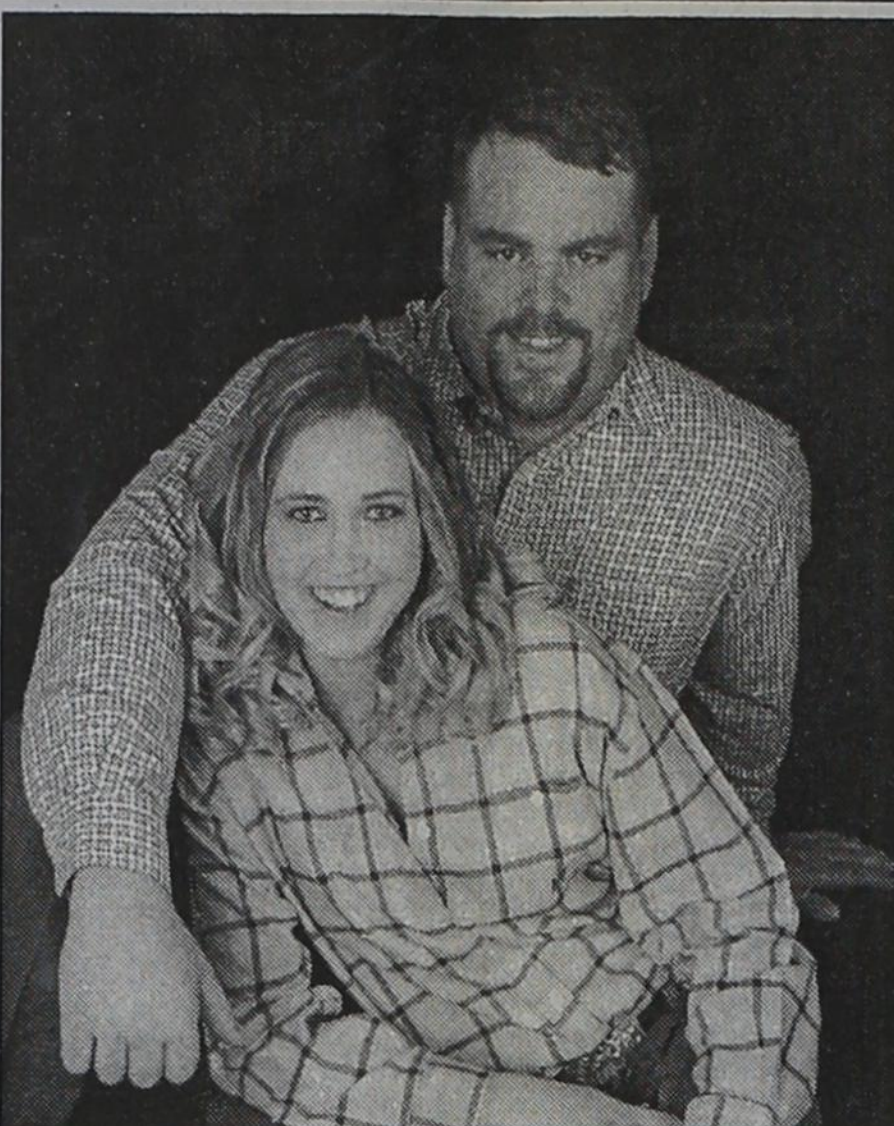
Gruver Elementary is again participating in the Lowe's Supermarket Register Tapes for Education program. Please help us earn free educational equipment by collecting register tapes from Lowe's. Only tapes dated September 1, 2007 through March 31, 2008 are eligible. You can deposit your tapes in boxes in the Gruver Elementary Lobby, Gruver Library, Gruver City Hall, Nite & Day Beauty Salon and Hitchin' Nails. Jo Alice Clawson is also collecting tapes at 711 Womble, or they may be mailed to PO Box 488, Gruver. Please call 733-2247 if you have tapes you would like to have picked up, or for more information.

### You're Never Alone - Narcotics Anonymous Group

Each year individuals struggling with drug and alcohol addiction make the resolution to quit using drugs. For many of them it is a resolution that they cannot keep. Narcotics Anonymous can help. Open meetings are held on Monday and Thursday nights from 8-9 p.m. at the First Christian Church (29 S. Bernice in Spearman) for the "You're Never Alone" group of Narcotics Anonymous. Anyone interested is invited to attend. Drug addiction can leave you feeling helpless and out of control - we can help.

### Spearhead AA Group

The Spearhead AA Group meets every Tuesday at 8 p.m. in the Pittman-Shieldknight building. Alcoholics Anonymous\* is a fellowship of men and women who share their experience, strength and hope with each other to help solve their common problem and help others to recover from alcoholism. The only requirement for membership is a desire to stop drinking. There are no dues or fees for AA membership; we are self-supporting through our own contributions. Our primary purpose is to stay sober and help other alcoholics achieve sobriety. For information, call 662-1111.



## Engagement Announcement

Mr. and Mrs. Rick Sander announce the engagement of their daughter, Nicole Marie Sander.

Crawford is the son of Mr. and Mrs. Bobby Carroll Crawford of Rusk, TX and Mrs. Sherwin Joyce Crawford of Saginaw, TX.

The couple plan to wed May 24, 2008 at First United Methodist Church in Spearman.

The bride-elect is a 2005 graduate of Spearman High School. She attends College at Oklahoma Panhandle State University and teaches at Carrier Elementary School in Guymon, OK.

The prospective groom graduated in 1995 from Rusk High School and works for Flow CO2 in Guymon, OK.

## World Day of Prayer

The 2008 World Day of Prayer will be held on Friday, March 7, 2008 at the First United Methodist Church, 407 S. Haney in Spearman. Activities will begin with coffee and fellowship at 9:30 a.m., followed by the worship service at 10.

World Day of Prayer is a worldwide ecumenical movement of women of many faith traditions who come together to observe a common day of prayer each year on the first Friday in March. Each year a different country serves as the writer of the World Day of Prayer worship service. For 2008, the World Day of Prayer Committee of Guyana developed the theme, God's Wisdom Provides New Understanding.

This year, First United Methodist Church is the host church in Spearman. Everyone in the community is invited to the service and the coffee and fellowship time.

You are invited to a  
**Baby Girl Shower**  
honoring  
**Amber & Jason TeBeest**

on Saturday, February 23, 2008  
from 10:00-11:30 a.m.  
in the home of Debby Odom  
303 Broadway Gruver

**Gordon's**  
Your place for  
**Bridal Registry**

### Couples Currently Registered

- Kandace Boyd & Manolito Cruz - 2/23
- Laura Geer & Cory Jumper - 3/12
- Heather Jumper & Jared Mahan - 3/18
- Brianne Holmberg & John Thomas - 3/28
- Christen Imhof & Michael Lozano - 4/15
- Nicole Sander & Bobby Crawford - 4/20
- Danielle close & Jeff Jackson - TBA
- Betsy Holt & Shad Kalisiak - TBA
- Audra Evans & Kyle McLaughlin
- Detsi Vera & T.J. Evans

### Baby Registry

- Jason & Amber TeBeest - 2/23
- Chelsey (Villines) Farmer & Kirk Westfall - 2/23
- Quentin & Kristin Shieldknight - TBA
- Jody & Cami (Winegarner) Meason
- Kellyn King & Jeremy Fry

**Gordon's** 659-2141  
314 Main Spearman

## Out at the Lake

by Jim Derington

Lake Level--February 18, 2008--19.50 feet (-0.08)

Jim's gauge showed .64 inches of rain after the storms on Saturday. Despite the weather, one camper parked his RV at the edge of the Lake and did some fishing.

Late February is a good time to catch the big blue catfish ordinarily, but few people are fishing as yet, and Jim is not getting any reports of fish caught.

Continuing with the Ferruginous Hawks that have been our topic, most of my sources mentioned that one such hawk lived to be 20 years old. The banded hawk that Rex William found had lived to be 10 years old, and that was considered to be old for a hawk. Now Rex has received more material from Dr. Houston in Saskatchewan. One of the stories in it is of the hawk that lived to be 20.

Some of you may have known W. V. Shouse, a wholesale and retail oil dealer of Booker, Texas. Back in 1917, Mr. Shouse and his

family lived on a homestead ten miles from Clayton, New Mexico. On January 7, 1917 Shouse caught a large bird in one of his coyote traps. The hawk, uninjured, was turned loose, but not until a leather collar with a small bell attached had been placed around his neck. On a key ring name plate fastened to the collar, he scratched the following. Write to W. V. Shouse, Jan. 7, 1917, Clayton, N.M.

In 1936, an eighteen year old Norwegian boy, Orvald Amrud, living near Strongfield, Saskatchewan, found the hawk dead, apparently of natural causes. The bird and its mate had been nesting in the same tree each summer for the past 5 years. Amrud wrote Shouse at Clayton, but the letter was returned. He then wrote the Clayton postmaster for help, and Shouse was located at Booker.

As the hawk was an adult when it was collared, the experts believed it was fledged in 1916 and therefore at least 20 years old when it died.

### WINDMILL SUITES OF ARIZONA - SUITE DESERT DEALS!

**TRUE SUITES PRIVATE BEDROOM**

Your "home base" for Spring Training...  
~ TRUE Suites with private bedroom, wet bar, microwave, mini-fridge, in-room coffee, Wi-Fi Internet and more.  
~ Enjoy a generous breakfast each morning.  
~ Children under 18 stay free in adult's suite  
~ Convenient to local ball parks

To learn more or find out about specials, please call us toll free or check online...

PHOENIX - SURPRISE - CHANDLER - TUCSON  
(800) 547-4747 www.windmillinns.com ID: T021108X

Put the **Ache** in PAIN RELIEF

**Pain relief for arthritis, back pain and muscle soreness**

- \* ARTHRITIS PAIN
- \* BACK PAIN
- \* MUSCLE PAIN

MAXIMUM STRENGTH ANALGESIC  
**THERA-GESIC**  
Pain Relieving Cream

# Celebrate

Gifts for all your celebrations!

## Bridal Registry

### Shower Dates

- Kandace (Boyd) & Manolito Cruz - 2/23
- Laura Geer & Cory Jumper - 3/12
- Heather Jumper & Jared Mahan - 3/18
- Brianne Holmberg & John Thomas - 3/29
- Christen Imhof & Michael Lozano - 4/15
- Nicole Sander & Bobby Crawford - 4/20
- Betsy Holt & Shad Kalisiak - TBA
- Danielle Close & Jeff Jackson - TBA
- Tobi Barrera & Chris Guana - TBA
- Detsi Vera & T.J. Evans

## Baby Registry

- Chelsey (Villines) Farmer & Kirk Westfall - 2/23
- Amber & Jason TeBeest - 2/23
- Kristin & Quentin Shieldknight
- Kellyn King & Jeremy Fry

## AFTER CHRISTMAS

### 75% OFF SALE

Ends February 23rd at 5 p.m.

# Celebrate

203 Main St. Spearman, TX  
(806) 659-3350 1-800-663-8026

## Tong's Chinese Restaurant

511 S. Hwy. 207 • 659-2838 • Spearman

### All-You-Can-Eat Buffet Specials

- Tuesday - Steak \$7.99
- Thursday - BBQ Ribs \$6.50
- Friday - Shrimp \$6.50
- Saturday - Catfish \$6.50
- Mon., Wed. & Sat. \$5.50

Buffet Hours: 11 a.m.-2:30 p.m. & 5:30-Close

### Big Brothers Big Sisters Walk For Kids' Sake

Walk for Kids' Sake, the annual fundraiser benefiting Big Brothers Big Sisters, held February 9th, raised nearly \$50,000. Pledges collected by 30 teams of walkers combined with sponsorships from over 200 area businesses and organizations.

The money will be used to make and nurture matches in Perryton, Spearman and Booker; this involves recruiting, screening, training and supporting volunteers. The money raised also underwrites match activities and scholarships for high school mentors as well as provides games and other activities for Bigs in Schools matches. The satellite office receives no funds from the national organization or hub agency in Amarillo and all of the money is used to support the local program.

The mission of Big Brothers Big Sisters is to create special friendships between children and caring adult mentors. These relationships, or matches, help children develop positive life skills and social values. The program currently serves over 110 children.

"Every child helped through Big Brothers Big Sisters is helped by a volunteer," said Kimberley Lopez, local agency case manager. "Of course they are helped through their relationship with their mentors, but without the help of our volunteer fundraisers, the walkers that turn out year after year to support us, not one of the matches would be possible."

The theme of this year's event was "Real People. Real Heroes. No Tights." "Our volunteers really are everyday heroes," Lopez said. "You don't have to have super powers to help a child. You just have to be there."

The top four individual money raisers won grand prizes. Frank Rhoden was the top money raiser bringing in \$1145. He won a side of beef donated by Jimmy and Sharon Graves and Big 4 Packing. Stacy Tickner won a "Trip to Amarillo" which includes two nights at the Ambassador Inn, dinner at the Olive Garden and movie tickets from UA Amarillo Star Stadium 14. Elvia Rascon was the third place money raiser and won an "Automotive package" - \$100 free gas from Ito's, 10 free car washes from Ranger Car Wash, and an oil change and spring maintenance check up from The Pit Stop. Tracy Hillman was the fourth place money raiser and she won \$250 of dry cleaning from Berry Cleaners.

Walkers who raised at least \$100 won either a Willow Tree trinket box or wall cross supplied by Taylor's Old Times Shoppe. They were: Rosalee Bueno, Stormy Ray, Brittany Busch, Glenna Pool, Ashlea Skipper, Trish Carroll, Heather Dumcum, Debora Cowan, Leann Carson, Cheryl Hill, Stacy Tickner, Bobette Doerrie, Pat Ellis, Pam Harvey, Amber Leicht, Roxanne Schaefer, Afton Kratky, Donna Tarango, Teresa Brown, Vickie Barby, David Landis, Debbie Beck, Erika Lopez, Peggy Lehman, Nita Carter, Vicky Lilly, Starla Whiteley, Alexis Beck, Macy Holton, Janelle Cochran, Beckie Sampson, Candy Butler, Tracy Hillman, Elvia Rascon, Mary Garza, Rita Tregellas, Kathy Gray, Shelly Merkel, Donna Wright, Frank Rhoden, Esmeralda Vaquera, Valinda Dodson, Susie Estrada, Mona Carrasco, Pam Chisum, Briana

Brown, Tanya Garcia and Mabel Mills.

Walkers who raised at least \$200 also won a \$20 Sonic Card donated by Sonic Drive-In. They were: Leann Carson, Cheryl Hill, Stacy Tickner, Vickie Barby, Peggy Lehman, Nita Carter, Vicky Lilly, Macy Holton, Janelle Cochran, Candy Butler, Tracy Hillman, Elvia Rascon, Frank Rhoden, Pam Chisum and Mabel Mills.

Event sponsors were Courson Oil & Gas and KentKwik Convenience Stores/Waterhole 83. Shift sponsors were Lemon Law Office, Jack and Marguerite Allen, Badger Resources and Wright Trucking/Foster Testing.

Corporate sponsors were United Supermarkets, Texas Farm, Ochiltree General Hospital, Kim Thomas Disposal Company, Samson Resources, Jet Well Service, XCEL Energy, Western Hot Oil Service, Moore County Gin, Willis Boyd Dirt Service, FirstBank Southwest, Windstream Communications, Booker Christian Church, Caprock Supply Co., Drilling Fluids Technology, First State Bank of Spearman, Graves Operating, Hansford Air, Renco Tool Co., Perryton National Bank, Adobe Walls Gin and Graham Brothers Jewelers.

Extra Mile Sponsors were: Brandvik Pipe & Equipment, Booker Lions, First National Bank of Spearman, Hansford County Feeders, Hansford County Vet Hospital, Hi Plains Hull, Interstate Bank, Perryton Rotary Club, PTCI, Pioneer Trucking, and Janet & Rocky Tregellas.

Mile Markers were 2 E's Lawncare, AGCO of Spearman, Alexander Oil Field Service, Allred Construction, All State Realty, Area Eye Center, Arkhoma Transports, Barenburg & Washer, Barnett Insurance, Batman Grain Fertilizer, Barlett's Hardware, Beautech, Bob Jay's of Perryton, Bookwell Brothers, Brown, Graham & Co.-Perryton, Brown, Graham & Co. - Spearman, C & R Petroleum, Cargill, Carson County Gin, Childers/Siewert Clinic, Clark Dirt Contractors, Covenant Title, Current Electric, DeWitt Construction, Duvall Ag Services, Economy Furniture, Enerpipe, Farmers Ag Supply, Farnsworth Seed, Five Star Equipment, Golden Spread Sales Company, Hansford Drug Company, Hansford Implement, Herring Tank, Hometown Realty, Howard Drilling, Innovative, J & S Exchange, Jade Cattle Feeders, Johnson Good Samaritan Funeral Service, Kirk Insurance, Junior Lusby Cat, Jennifer Salon, Johnson Grain, LaMaster Agency, Leicht Farm - Jeff & Tara Leicht, Liquid Control Systems, Luther Fire Extinguishers, Mark Sheets Truck & Automotive, McGarraugh Farms - Kevin & Paula McGarraugh, Midwest Inspection Service, N5 Wireline, North Plain Electric Cooperative, Ochiltree Farm Bureau-Billy Stephens, Orr Enterprises, PatCon, Perryton Aviation Aerial Spraying, Perryton Equity, Perryton Feeders, Perryton Furniture, Dr. James Pinkerton, Preferred Beef Group, Brian Pshigoda Farms, Ranger Pump, Roberson Wireline, Shaner Welding Service, Spearman Lions, Spearman Rotary, Security Insurance, Seybert Construction, Speartex Grain, State Farm Insurance - Aaron Ghanbarpour, Stonecreek Properties, Strat Land Exploration, Sudzy Springs,

Terhune Flying Service, Transpetco Transport, Total Wellhead, Trencor, WB Supply, Wheatheart Mini-Warehouses, and Wolf Creek Feeders. Step-up Sponsors were: Alpar Energy, Basic Energy, Bill's Pest Control, Cowan & Hooten, Edward Jones Investments, Entech Laboratory System, Hansford County Farm Bureau - Bob Gillespie, Hargues Custom Application, Harvey's Electric, Hergert Ford, Hixson Hot Oil, Hulsey Insurance, J. Kenny Norris Law Office, Jennie June Club, MGE Resources, Money's, Motorparts of Perryton, North Plains Insurance, Perryton Herald, Profit Producers, Bill Mac Tregellas - Locksmith, Wheatheart Realty and Waide's Pharmacy.

Door prizes were donated by Alco (Perryton), Alco (Spearman), Axle Publishing, B & B Sales, Bealls, Blades, Buckets of Fun, Cabana Tans, Caprock Supply Co., Cates, Celebrate, ds Design, Dairy Queen, Dunlavy Jewelry, Edna's Flowers, Ellis Theater, Expressions, Farm Supply & Service, Dr. Annette Garcia, Janet K's Hallmark, Hansford Drug Company, Hi Plains Auto Supply, Hickersons, His Corner Bookstore & Coffee Cafe, Hungry Cowboy, Jackies, Jessica Lynn Photography, Lifeway Therapies, Mary Kay - Patricia Cano, JoAnn McCoy, Motor Parts, Movie Gallery, New Wave Hair Design, North Plains Electric Cooperative, O'Reilly Auto Parts, 180, Pak-a-Sak, Palace Theater, Peppermill Catering, Perryton Chamber of Commerce, Perryton Cleaners, Perryton Club, Perryton Office Supply/Radio Shack, Pizza Hut of Spearman, Rib Joint, Sammy's Beauty Shop, Wall's Bargain Center, Silpada Designs-Teresa Schwier, United Supermarket, Urban Stylez, Valero, Wonderland Park and Zulu Art Academy.

A raffle was held in conjunction with the event. The prize was five days and four nights at the Riviera Hotel and Casino in Las Vegas. The prize was donated by KXDJ Radio. The raffle raised \$1630 for the event. The drawing for the winner will be held on air on February 13th.

Walkers received T-shirts printed by sponsor, dsDesign, featuring a design by Scott Trotter of Vector Studio. The walkers also enjoyed food and beverages during their shifts. The food court was supplied by Pizza Hut (Perryton), Subway, Carroll Trucking, The Little Bakery, Daylight Donuts, Booker Grocery, and Lowe's Supermarkets (Perryton and Spearman). Music and entertainment were provided by Terry Peak and Brad Herring.

In-kind contributions were made by Perryton Printing, Perryton Chamber of Commerce, Taylor Foster, and Perryton ISD. Anyone interested in learning more about the BBBS program is encouraged to call 434-0016.

### Wolf Creek Heritage Museum Notes

by Virginia Scott

#### MUSEUM HAPPENINGS

A quiet week with new Wednesday volunteers. They brightened our day and provided us with a new perspective of our functioning. Thank you ladies and hurry back.

We are progressing on our projects. Georgia put the documents we copied in Lubbock in frames and oh are the beautiful. They exhibit is progressing well and I will be hinting about it until May. The exhibit will be for Memorial Day. First hint. Lavaun, Lovella, and I have been busy researching various topics and projects. I will address two of these topics in my history topics. Kellie is continuing to enter our records into the computer and has us on treasure hunts to validate our records. Sometimes we can not locate the item and it makes our list of "What did we do with it?" These items drive us nuts until we find them.

Visitors brought us items of interest this week. If you haven't read about the "Wall" coming to Perryton, it is. The traveling version of the Vietnam War Wall will be in Perryton at the Whigham Park from March 6 thru March 9, 2008. There will be various programs and ceremonies. There are posters posted throughout the area

with the schedule. You can also call the Perryton Chamber of Commerce for information. This is a great exhibit and moves you to tears. Please plan to visit.

There is one week left for Jo Le Tennison's exhibit so if you want to see it, please plan your visit soon. She has beautiful paintings of area lakes: Marvin and Vincent as well as Palo Duro Canyon.

Next Month is time for our Student Art Exhibit. I hope everyone is preparing their pieces. The children always surprise us with their creativity and talent.

#### HISTORICAL MUSINGS

I am learning how to research our county through the official United States Censuses. Last week, I summarized the 1880 census with a population of 60. The next available census is the 1900 census. Our county had grown to a population of 300. All were identified as white and the occupations had shifted to farmer/stockman and ranchers. There were also an influx of Swedes coming out of Kansas.

Another update, LaVaun took the list of early settlers that I wrote about a couple of weeks ago and researched them in the Panhandle Interstate Newspaper. She found them all. The articles report that all seemed to be

solid citizens and assisted in the building of Lipscomb County by running for sheriff and commissioner. Two served on juries for murder trials. If you have our newspaper book, you will enjoy reading about these gents, they ranged from rusler to carpenter to storekeeper.

This week is President's Day holiday with George Washington's birthday on Thursday. One of the reasons we recognize and celebrate George's birthday beside the fact that he was our first official president is that he organized and built the "White House." He held a contest for the architectural design of a "President's Palace." Thomas Jefferson submitted his own design anonymously, signed only as "A.Z." The winner was an Irish architect named James Hoban who won \$500, a piece of land, and of course the honor.

The Americans called the house the "President's House" because the word "palace" reminded them of the monarchy that they recently broke away from. The official name was the "Executive Mansion" from 1818-1902. The name the "White House" is unclear as to its origin. Some say that people began calling it the White House after being painted white after it had been burned by the British in 1812. Others stated that George Washington named it after his wife's house in the state of Virginia.

Unfortunately, George never got to live in it. He died on December 14, 1799 one year before the White House was completed. Enjoy the week.

**Wolf Creek Heritage Museum**  
**Museum Hours:** Monday thru Friday 10 a.m. to 4 p.m., Sunday 2 to 4 p.m. Special hours upon request.  
**Museum Information:** 13310 Hwy 305, Box 5, Lipscomb TX 79056; telephone: 806-852-2123; email: wolferk@amaonline.com; website: www.wolfcreekheritagemuseum.com

**BUY HERE! PAY HERE!**  
 Starting as low as \$500 down!  
**CLASSIC CLOSED CARS, INC.**  
 Devin Cook  
 Manager  
 (806) 878-3944  
 724 S. Main Street  
 PO Box 1254  
 Stinnett TX 79083

**got sunflowers?**  
 you could be missing an extra \$480 per acre  
 California Oils Corporation is currently contracting both NuSun and High Oleic oilseed sunflowers with local delivery options. This is an excellent alternative for current energy prices and fertility costs.  
 Call today and inquire about the benefits of oilseed sunflowers.  
**California Oils Corporation**  
 ask about early planting premiums  
 Kerry Ham  
 Office 806-249-2416  
 Cell 806-220-4650  
 kerryham@windstream.net  
 www.caloils.com

**MITCHELL THEATRES**  
**NCS**  
 GUYMON, OKLAHOMA  
**MITCHELL THEATRES**  
**NORTHBRIDGE CINEMA 8**  
 Guymon, Oklahoma  
 Movies beginning 2/21  
**VANTAGE POINT**  
 PG-13 -- Dennis Quad, Sigourney Weaver  
**THE SPIDERWICK CHRONICLES**  
 PG -- Freddie Highmore  
**JUMPER**  
 PG-13 -- Samuel L. Jackson  
**STEP UP 2, THE STREETS**  
 PG-13 -- Briana Evigan  
**DEFINITELY, MAYBE**  
 PG-13 -- Ryan Reynolds, Abigail Breslin  
**FOOL'S GOLD**  
 PG-13 -- Kate Hudson, Matthew McConaughey  
**WELCOME HOME ROSCOE JENKINS**  
 PG-13 -- Martin Lawrence  
**VEGGIE TALES: THE PIRATES**  
 G -- Animated  
**THE BUCKET LIST**  
 PG-13 -- Jack Nicholson, Morgan Freeman  
**FRESH POPCORN EVERYDAY!**  
**-PARTY ROOM & ARCADE-**  
 Call for Showtimes  
 580-338-3281  
 www.northridge8.com  
 Office -- 580-338-8969  
 CASH & CREDIT CARDS ONLY

Department of Homeland Security  
 Border Patrol, Marfa Sector  
**NOW HIRING!**  
**(888) 536-6204**  
  
 U.S. Customs and Border Protection  
 A Career With Borders, But No Boundaries.

Are You A Victim of Domestic Violence, Sexual Abuse or Physical, Emotional or Sexual Assault?  
 Call Toll Free Hotline  
**1-800-753-5308**  
 We can see individuals from Hansford County anytime upon request. Call 435-5008 or 1-800-753-5308 to set up an appointment in Hansford County. We operate a safe place for victims and their children to stay in times of crisis.  
 Battering Intervention & Anger Management Available  
**Panhandle Crisis Center**  
 Serving Hansford, Lipscomb & Ochiltree Counties  
 301 S. Ash • Perryton, TX  
 Memorials Accepted

**You'd Better Hang On!**  
 PTCI's Internet speeds will blow you away!  
 Up to 6 Meg!  
 Faster Downloads  
 Online Gaming  
 Video Streaming  
  
 www.ptci.net  
 Communication & Broadband Solutions  
 721 W 7th in Spearman 1-800-562-2556  
 DIGITAL TV  
 Some restrictions apply.

# BASKETBALL HOOPLA

**02/08/08**  
**Lynx**  
**Stratford** 10 23 34 55  
**Spearman** 11 31 48 67  
 St-Kaleb Horsford 20.  
 Luis Ortega 14. Sp-Jordan  
 Ashmore 37. Brett  
 Winegarner 8. Tyler Schnell  
 8. Records: Stratford 13-8,  
 5-4; Spearman 19-6, 7-2

**JV Lynx**  
**Stratford** 32  
**Spearman** 36

**Lady Hounds**  
**Gruver** 9 24 28 42  
**River Road** 15 26 30 50  
 G-Mattie Yanke 12, Emily  
 Williams 9, RR-Tori  
 Velasquez 16, Shelby  
 Willingham 12. Records:  
 Gruver 17-10, River Road  
 21-9.

**2/11/08**  
**Lynxettes**  
**Spearman** 10 24 36 51  
**Friona** 4 21 34 49  
 SPEARMAN (25-4): Bond  
 Pittman 3 0-0 6, Kyla Reed  
 3 4-4 10, Christy Lang 0 0-  
 0 0, Courtney Chambers 1  
 0-0 2, Tara Shields 1 1-2 3,  
 Brittney Bradley 1 0-0 2,  
 LeAnna Espinosa 2 1-2 5,  
 Kendall Schneider 4 5-8 14,  
 Kylee Howard 2 4-4 9.  
 Totals 17 14-20 51.

FRIONA (17-15): Ashley  
 Ingram 0 0-2 0, Michelle  
 Martin 2 2-2 6, Regan  
 Anthony 1 0-0 2, Sasha  
 Estrada 3 2-2 9, Miranda  
 Frye 5 0-0 10, Jordan  
 Monroe 0 3-4 3, Hollis  
 Gurley 4 3-4 12, Briar  
 Barnett 2 0-0 4. Totals 18  
 10-14 49.  
 3-point goals: Spearman  
 3 (Shields, Schneider,  
 Howard), Friona 3 (Estrada,  
 Frye, Gurley). Total Fouls:  
 Spearman 16, Friona 19.  
 Fouled Out: None.  
 Technicals: None.  
 Attendance: 550.

**2/12/08**  
**Lynx**  
**Spearman** 23 27 39 53  
**Canadian** 10 12 14 20  
 S-Jordan Ashmore 14,  
 Austin Benton 12, Tyler  
 Schnell 12. C-Clint Cockrell  
 6, Zach Knight 6. Records:  
 Spearman 20-6, 8-2.  
 Canadian 9-7, 5-5. JV:  
 Spearman 35, Canadian 25.

**JV Lynx**  
**Spearman** 35  
**Canadian** 25

**2/15/08**  
**Spearman** 15 24 37 55  
**Slaton** 15 27 45 59  
 In Plainview, Uniqua  
 Wilson scored a team-high  
 14 points, and the  
 Tigerettes advanced to a  
 Class 2A regional quarterfi-

nal with a victory.  
 With the win, the  
 Tigerettes (25-5) advance to  
 face Shallowater at 7:30  
 p.m. Tuesday at the Rip  
 Griffin Center in Lubbock.

A 12-2 run by the  
 Lynxettes (25-5) cut the  
 lead to 50-49 with 2:36  
 remaining in the game, but  
 the Tigerettes were able to  
 hold Spearman at bay the  
 rest of the way.

Kendall Schneider led  
 Spearman with 17 points.  
 Tara Shields added 14  
 points and Kylee Howard  
 12.

**Amarillo Globe-News  
 Athlete of the Week  
 February 11, 2008**

**Jordan Ashmore  
 Spearman Basketball**  
 On the Court: The junior  
 guard helped Spearman  
 clinch a playoff berth with  
 55 points, 17 rebounds and  
 13 assists in District 1-2A  
 victories against Panhandle  
 and Stratford. Against the  
 Elks, Ashmore tallied 37  
 points.

Coach Junior Ashmore:  
 "Jordan did a great job of  
 helping his team be suc-  
 cessful last week. He  
 rebounded well and did a  
 good job spreading the ball  
 around. In his third year on  
 varsity, he provides leader-  
 ship on a team that doesn't  
 have a lot of experience."

Jordan Ashmore: "We  
 weren't too nervous going  
 into last week, and we knew  
 we could beat them. In big  
 games, I try not to do too  
 much and just let things  
 happen. Making the playoffs  
 took a lot of pressure off of  
 us."

Favorite Athlete: Michael  
 Jordan.

Bet You Didn't Know: "I  
 play a lot of golf."

Favorite Sport to Watch:  
 College basketball.

Parents: Junior and  
 Cindy Ashmore.

Favorite Thing About  
 Basketball: "Having fun  
 with my teammates."

**Amarillo Globe-News  
 Athlete of the Week  
 Honor Roll  
 February 18, 2008**

**Lynn Vela  
 Gruver Basketball**  
 Lynn Vela of Gruver was  
 named to the Amarillo  
 Globe-News Basketball  
 Honor Roll Honorable  
 Mention for the week of  
 February 18th. The junior  
 scored a game-high 17  
 points in a victory against  
 Quanah to help the Lady  
 Hounds advance to the  
 Class 1A regional quarterfi-

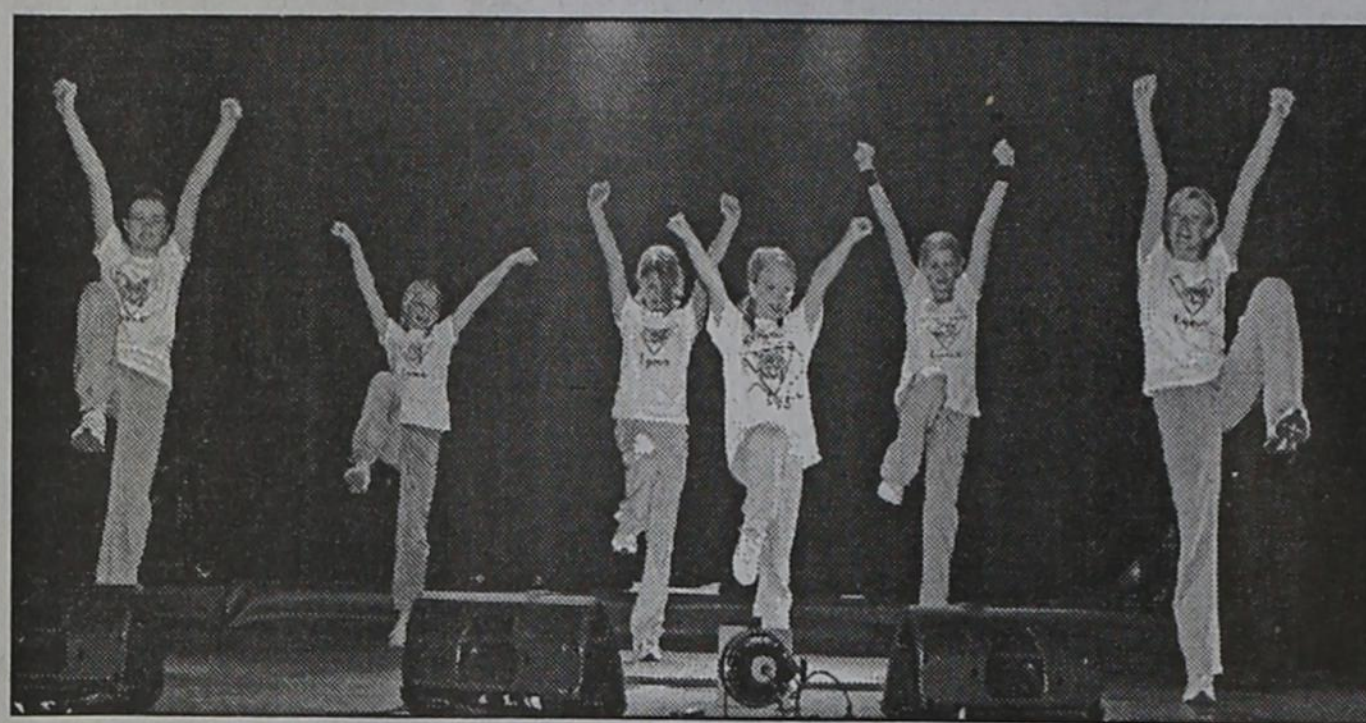
## Lynx Cheer Team in "The Norwegian Youth Festivals of Art"

Seven young girls from  
 Fetsund, Norway partici-  
 pated in the Norwegian Youth  
 Festivals of Art under the  
 name "Lynx Cheer Team."  
 The team performed "SOS," a  
 combined dance/cheerlead-  
 ing performance.

The Norwegian Youth  
 Festivals of Art is a cultural  
 initiative for children and  
 youngsters from the age of  
 10 to 20. The objective of the  
 initiative is to stimulate  
 young people to be creative  
 and active, and to develop  
 and make their cultural  
 activity visible.

All young people between  
 the ages of 10 and 20 are  
 welcome to participate in the  
 Festivals, which include  
 events such as sample beats  
 & loops, dance traditional  
 folk dance, carve wooden  
 sculptures with their  
 Chainsaw, play classical  
 music on the piano or make  
 3-D animated films on their  
 PC.

The Festivals are divided  
 into three levels: the local  
 festivals, the regional festi-  
 vals and the national festi-  
 val. Everyone who registers  
 for a local festival is eligible  
 to advance. The jury's selec-  
 tion is based upon elements  
 such as originality, creativ-  
 ity, the performers' ability to



Members of the "Lynx Cheer Team" from Fetsund, Norway are: (L-R) Pia Madelene Fjeldstad (12), Eirin Ovren Sveine (11), Marthe Bugge Eriksen (11), Anne Martine H. (12), Ida Karoline H. (11), Marianne Stubbsveen Andresen (12), and Linn Elisabeth Borge Thogersen (12).

create rapport with the audi-  
 ence, as well as quality. The  
 selection is to reflect the  
 breadth of the local festivals,  
 both in terms of modes of  
 expression and age.

The "Lynx Cheer Team"  
 kicked up a storm with their  
 performance in the local festi-  
 val in Fetsund, and were  
 selected for the Regional  
 gathering to be held in April.

They will have the opportu-  
 nity to qualify for the nation-  
 al festival at the Regional  
 competition.

The girls chose the name  
 "Lynx Cheer Team" and had  
 T-shirts made based on the  
 original Spearman Lynx  
 through their connection  
 with Elisabeth's grandpar-  
 ents, Dwight and Anita  
 Sumner. The Sumner's had

the pleasure, along with  
 Michael and Missie Bates, of  
 visiting the Thogersen's in  
 Norway this last July. Terje,  
 Elisabeth's father was a fore-  
 ign exchange student in  
 Spearman in 1984. He has  
 remained close to the  
 Sumner family, returning to  
 Spearman in 2005 to attend  
 a surprise birthday party for  
 Dwight

## FPC Allen Campus to Host College Night for Parents

Frank Phillips College will  
 host a college night for par-  
 ents on Thursday, February  
 28th, at 6:30 pm in the  
 Conference Center of the  
 Allen Campus located at  
 2314 S. Jefferson in  
 Perryton. The purpose of  
 this event is to present to  
 parents a guide to college  
 preparation and to highlight  
 all that FPC has to offer to  
 their children.

Topics to be covered  
 include scholarship informa-  
 tion; concurrent credit (the  
 greatest thing since sliced

bread). Panhandle  
 WorkSource opportunities,  
 and the FPC scholarship  
 drive; as well as information  
 on Top of Texas Tech Prep  
 credit.

Representatives from  
 FPC's Student Financial  
 Services office will discuss  
 the requirements for federal  
 pell grants, student loans  
 and the federal work-study  
 program and most impor-  
 tantly to parents...how to fill  
 out the dreaded (they really  
 aren't that bad) federal  
 financial aid forms.

Student support services  
 will also be present and will  
 discuss FPC's free tutoring,  
 book loan program, transfer  
 counseling and more.

Parents, don't miss this  
 opportunity. Classes taken  
 at FPC easily transfer to  
 other colleges and universi-  
 ties in Texas and beyond. If

you have been checking out  
 the cost of higher education,  
 give FPC a chance to show  
 you how to get the biggest  
 bang for your higher educa-  
 tion buck. And remember at  
 Frank Phillips College, start  
 here, go anywhere, isn't just  
 our motto, it's our promise.

## College Corner

### 2007 Fall President's List

West Texas A&M recently announced the Fall 2007  
 President's List.

Among those listed were: **Gruver:** Matt D. Messer, a  
 Junior Finance major. **Spearman:** Andrew L. Eudy, a  
 Sophomore Sports/Exercise Sciences major; and  
 Jonathan C. Klemme, a Sophomore Pre-Veterinary  
 Medicine major.

### 2007 Fall Dean's List

West Texas A&M recently announced the Fall 2007  
 Dean's List.

Among those listed were: **Gruver:** Gabriela Rosales, a  
 Senior Nursing major; Stephen A. Salazar, a Junior Pre-  
 Physical Therapy major; Victoria G. Vela, a Sophomore  
 Mass Communication-Broadcasting major; and Dan  
 Villegas, a Senior Graphic Design major. **Spearman:**  
**Gerardo O. Ruiz, Senior Pre-Physical Therapy major.**

### 2007 Fall Graduates

West Texas A&M recently announced the Fall 2007  
 Graduation List.

Among those listed were: **Gruver:** Frank W Garcia, who  
 received a Bachelor of Arts in Theatre and Bethany S.  
 Yanke received a Bachelor of Science in Nursing.

Are You A Victim of Domestic Violence or Sexual Abuse?  
**The Panhandle Crisis Center Can Help**  
 1-800-753-5308  
 301 S. Ash - Perryton - 435-5008  
 Battering Intervention & Anger Management Available  
 Memorials Accepted

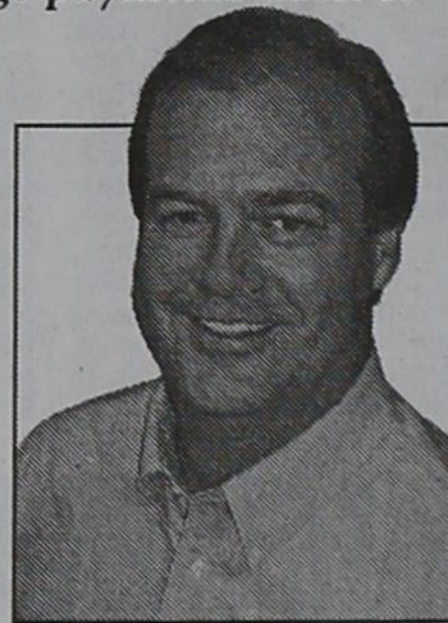
## Hansford County Livestock Show

- |   |   |  |
|---|---|--|
| <b>Grand Champion Market Lamb</b><br>Tara Shields, Spearman 4-H         | <b>Reserve Breed Champion Duroc</b><br>Zane Patterson, Spearman 4-H     | <b>Showmanship Awards</b><br>Senior Showman contestants are High School<br>Age Students<br>Junior Showman contestants are Junior High<br>School or Elementary Students |
| <b>Reserve Grand Champion Market Lamb</b><br>Blayne Baker, Spearman 4-H | <b>Breed Champion Hampshire</b><br>Cory Graves, Gruver FFA              | <b>Market Lambs</b><br>Tara Shields, Spearman 4-H - Sr. Showman<br>Lauren Ferguson, Spearman 4-H - Jr. Showman   |
| <b>Grand Champion Steer</b><br>Callie Stedje, Gruver 4-H                | <b>Reserve Breed Champion Hampshire</b><br>Parker Grottegut, Gruver FFA | <b>Market Steers</b><br>Taylor Williams, Gruver FFA - Sr. Showman<br>Callie Stedje, Gruver 4-H - Jr. Showman   |
| <b>Reserve Champion Steer</b><br>Jacob Lieb, Morse 4-H                  | <b>Breed Champion Yorkshire</b><br>Callie Stedje, Gruver 4-H            | <b>Market Swine</b><br>Lindy Weldon, Gruver FFA - Sr. Showman<br>Malory Martin, Spearman 4-H - Jr. Showman   |
| <b>Grand Champion Swine</b><br>Callie Stedje, Gruver 4-H                | <b>Reserve Breed Champion Yorkshire</b><br>Jack Karlin, Gruver FFA      |  |
| <b>Reserve Grand Champion Swine</b><br>Cory Graves, Gruver FFA          | <b>Breed Champion Cross</b><br>Bailey Stedje, Gruver 4-H                |  |
| <b>Breed Champion Duroc</b><br>Seth Thompson, Gruver 4-H                | <b>Reserve Breed Champion Cross</b><br>Mason McLain, Gruver Jr. FFA     |  |

## Generous Patronage Sets Us Apart

"Unlike traditional lenders, we offer  
 generous patronage payments back to  
 our borrowers."

We don't have to get all  
 your business, just the  
 part where you'd like  
 to save money. We're  
 experts at real estate and  
 other ag-related loans.  
 We've got rates that will  
 compete with anybody  
 in this area, plus you get  
 money back!"



Johnny Schmucker,  
 Great Plains Loan Officer

1315 E. 1st Street  
 Dumas, Texas  
 (806) 935-6851



greatplainsagcredit.com

GREAT PLAINS...GOOD PEOPLE

## North Plains ELECTRIC COOPERATIVE

The Home Team Advantage

### Electric Irrigation Information Meeting Ochiltree County EXPO

Thursday February 28<sup>th</sup> from 10 am until 12 noon. A barbeque  
 lunch will be served after the meeting.

Ochiltree County Extension Agent Scott Strawn will assist with  
 the meeting and will offer 2 CEU's for pesticide applicators.

Planned topics of discussion include: an update on the state of the NPEC Electric System, soft  
 start equipment, IMPORTANT CHANGES for the 2008 Irrigation Load Management Pro-  
 gram, Irrigation Management by Scott Strawn, and a question and answer session.

Please RSVP @ 800-272-5482

"Stick With The Best Food In Town"

## Flying X Steakhouse

By Reservation Only

From Stinnett: Go West on Hwy. 152  
 17 miles - Turn Left at Big Red Cactus  
 (About 2 miles on Gravel Road)

From Dumas: Go East on Hwy. 152  
 16 miles - Turn Tight at Big Red Cactus  
 (About 2 miles on Gravel Road)



(806) 935-9427

Sheree & Eddie Burgess

**REAL ESTATE**

**WILL BUY YOUR FARMLAND** for cash and lease it back to you for reasonable rate. Call 806-595-0724 or 806-273-2328. 4(2-07-08)B

**LEASING:** I am taking per acre annual lease bids on 695 acres of native grass north west of Spearman. Bidding open to 2/29/08. (806) 655-2068. TFN(2-14-08)B

**FOR RENT/LEASE**

**FOR RENT:** 2BR apartment, \$375.00 per month, water paid. Call Larry O'Neal at 580-772-5617 or 580-819-0007. TFN(7-06-06)B

**AUTOMOBILES**

**FOR SALE:** 1996 Lincoln Town Car Great School Car, Work Car, Trip Car, Family Car! Super comfortable ride. Leather seats. Huge Trunk. Power everything. 22 miles per gallon. Local car. 175,000 miles. \$2795. Call 806-330-0076. TFN(2-14-08)B

**HELP WANTED**

**HELP WANTED:** Manager needed for apartment complex in Perrinton. Must be honest, dependable and have management experience. Fax resume to 817-732-7716 or call 817-732-1055. 4(2-14-08)B

**HELP WANTED:** Panhandle Health Care, Inc. is accepting applications for an Administrative Assistant with advanced computer skills, payroll experience, filing and also multitasking. Please call us at 806-659-3110. 4(2-14-08)B

**SERVICES**

**HOOCHY POOCHY PARLOR** Call us for all your pet's grooming and boarding needs. Call now for reservations! 806-273-2724. TFN(11-2-07)

**FOR SALE:** Full Size mattress set, Brand New, still in package. Sell for \$125. 806-341-6233 TFN(1-31-08)

**FOR SALE:** Brand Name King pillow top mattress set, new in plastic w/warranty. Must sell - \$250. 806-341-6233 TFN(1-31-08)

**FOR SALE:** All new QUEEN pillow top set - \$150. NEW in plastic. 806-341-6233 TFN(1-31-08)

**FOR SALE:** QUEEN ORTHOPE-DIC Mattress Set. New, still in plastic w/warranty - \$140. 806-341-6233 TFN(1-31-08)

**FOR SALE:** A great deal: NASA memory foam mattress set. Never used. Sacrifice for \$350. 806-341-6233 TFN(1-31-08)

**FOR SALE:** Twin mattress set new w/warranty - \$100. 806-341-6233 TFN(1-31-08)

**PUBLIC NOTICE**

**NOTICE OF RECEIPT OF APPLICATION AND INTENT TO OBTAIN AIR QUALITY STANDARD PERMIT REGISTRATION**

**PROPOSED AIR QUALITY REGISTRATION NO. 77081L010 APPLICATION** Brandon Reid Construction in Texas, LLC, has applied to the Texas Commission on Environmental Quality (TCEQ) for an Air Quality Standard Permit, Registration No. 77081L010, which would authorize construction of a Concrete Batch Plant located on the south side of FM 2349, 4.4 miles west of the intersection of County Road F and Highway 136 intersection, 13.4 miles north of Gruver, Hansford County, Texas. The proposed facility will emit the following air contaminants: particulate matter including (but not limited to) aggregate, cement, road dust and particulate matter less than 10 microns in diameter.

This application was submitted to the TCEQ on January 31, 2008. The application is available for viewing and copying at the TCEQ central office, the TCEQ Amarillo regional office, and the Hansford County Library, 122 Main Street, Spearman, Hansford County, Texas. The facility's compliance file, if any exists, is available for public review in the Amarillo regional office of the TCEQ.

The TCEQ executive director has determined the application is administratively complete and will conduct a technical review of the application. **PUBLIC COMMENT/PUBLIC MEETING** You may submit public comments, a request for a public meeting, or request a contested case hearing to the Office of the Chief Clerk at the address below. The TCEQ will consider all public comments in developing a final decision on the application. The deadline to submit public comments is 15 days after newspaper notice is published.

The purpose of a public meeting is to provide the opportunity to submit comments or ask questions about the application. A public meeting about the application will be held if the executive director determines that there is a significant degree of public interest in the application or if requested by a local legislator. A public meeting is not a contested case hearing.

If only comments are received on the application, the response to comments, along with notice of the executive director's action on the application, will be mailed to everyone who submitted comments or is on the mailing list for this application.

If a hearing request is timely filed, the executive director will complete the technical review, issue a preliminary decision on the application, and a Notice of the Application and Preliminary Decision will be published and mailed to those who are on the mailing list for this application. That notice will contain the final deadline for submitting public comments.

After the final deadline for public comments following any required Notice of Application and Preliminary Decision, the executive director will consider the comments and prepare a response to all relevant and material, or significant public comments. If any comments are received, the response to comments, along with the executive director's decision on the application, will then be mailed to everyone who submitted public comments or who is on a mailing list for this application.

**OPPORTUNITY FOR A CONTESTED CASE HEARING** You may request a contested case hearing. A contested case hearing is a legal proceeding similar to a civil trial in state district court. Unless a written request for a contested case hearing is filed within

15 days from this notice, the executive director may approve the application. If no hearing request is received within this 15-day period, no further opportunity for hearing will be provided. A contested case hearing will only be granted based on disputed issues of fact that are relevant and material to the Commission's decision on the application. Further, the Commission will only grant a hearing on those issues raised during the public comment period and not withdrawn.

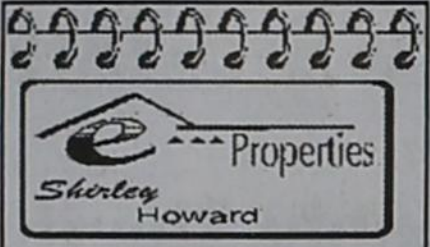
A person who may be affected by emissions of air contaminants from the facility is entitled to request a hearing. To request a hearing, a person must actually reside in a permanent residence within 440 yards of the proposed plant. If requesting a contested case hearing, you must submit the following: (1) your name (or for a group or association, an official representative), mailing address, daytime phone number, and fax number, if any; (2) applicant's name and Registration Number; (3) the statement "[w]e request a contested case hearing;" (4) a specific description of how you would be adversely affected by the application and air emissions from the facility in a way not common to the general public; (5) the location and distance of your property relative to the facility; and (6) a description of how you use the property which may be impacted by the facility. If the request is made by a group or association, the one or more members who have standing to request a hearing, and the interests which the group or association seek to protect, must also be identified. Requests for a contested case hearing must be submitted in writing within 15 days following this notice to the Office of the Chief Clerk, at the address below.

If a hearing request is timely filed, additional notice will be provided. Following the close of all applicable comment and request periods, the executive director will forward the application and any requests for contested case hearing to the TCEQ Commissioners for their consideration at a scheduled Commission meeting. If a hearing is granted, the subject of a hearing will be limited to disputed issues of fact relating to relevant and material air quality concerns raised during the comment period. Issues such as property values, noise, traffic safety, and zoning are outside of the Commission's jurisdiction to address in this proceeding.

**MAILING LIST** In addition to submitting public comments, you may ask to be placed on a mailing list to receive future public notices for this specific application mailed by the Office of the Chief Clerk by sending a written request to the TCEQ Office of the Chief Clerk at the address below.

**INFORMATION** Written public comments or requests for a public meeting or contested case hearing should be submitted to the Office of the Chief Clerk, MC-105, TCEQ, P.O. Box 13087, Austin, Texas 78711-3087. For more information about this permit application or the permitting process, please call the Office of Public Assistance, Toll Free, at 1-800-687-4040. Si desea información en Español, puede llamar al 1-800-687-4040. General information regarding the TCEQ can be found at [www.tceq.state.tx.us](http://www.tceq.state.tx.us).

Further information may also be obtained from Brandon Reid Construction in Texas, LLC, 3620 North Prince Street Suite D, Clovis, New Mexico 88101-9786 or by calling Mr. Shane Self, Enviro-Ag Engineering, Inc. at (806) 353-6123. Issuance Date: February 6, 2008 (12-21-08)B



115 Nelson Rd, SPEARMAN - 2/2/2 - 1,900 sq ft, 1/2 acre land - Country & City all at once!

I would LOVE to sell your HOUSE! Call ME! Cell: 806-886-6536

**MARTIN & ASSOCIATES REALTY**  
Serving Hansford County for 14 years  
Julie Martin: Broker - 659-2425

**IN SPEARMAN**  
1111 S. Townsend - Split level, 3/2/1 Are you looking for a home with that brand new feeling? This home has been redone throughout: all new flooring, paint, fixtures, baths, remodeled kitchen with new appliances, granite countertops; split level deck. \$134,000  
703 Collier - 3/1/1 investment property, subject to lease  
1114 S Dressen - 3/1/1 sprinkler system, CACH  
We'd Like Your Listing FOR QUALITY & SERVICE CALL US TODAY!  
Equal Housing Opportunity

**OCEANS OF WATER II** - Hansford Co., Texas - 4 sections, strong water, dev. with sprinklers, wells, leedyard, home, barns, pvt., 2 mi. hwy. frontage.  
**HARTLEY CO** - 640 acres with nice home, landscaped, barns & sprinklers.  
**PRIME LOCATION FOR DAIRY, FARMING & CATTLE** - East of Dalhart, on pvt., 3 1/2 sections, strong water area, wells & sprinklers, nice home, barns and preon. pens.  
**SPEARMAN DAIRY** - permitted for 3,600 hd. (1,400 milking), 320 acre operation, milking started as construction nears completion.  
**MOORE CO.** - 1766 acres, fully developed with wells & sprinklers & really nice home on all-weather road, priced to sell!  
Choice milk processing and dairy sites available in Dallam, Hartley, Moore, Oldham, Sherman and Hutchinson Counties.  
SEE OUR WEBSITE OR GIVE US A CALL!  
[www.scottlandcompany.com](http://www.scottlandcompany.com)  
Shawn Gillispie 806-922-5532  
Ben G. Scott, Broker  
1-800-933-9698 day/eve  
TFN(1-17-07)



**Public Notice**  
Hansford County Hospital will be taking bids starting February 18, 2008 thru February 29, 2007 for painting various rooms and hallways inside the hospital. For more information contact John Kunselman 806-659-5838. Mail bids to 707 Roland Spearman, Tx 79081 attn: John Kunselman.  
2(2-14-08)B

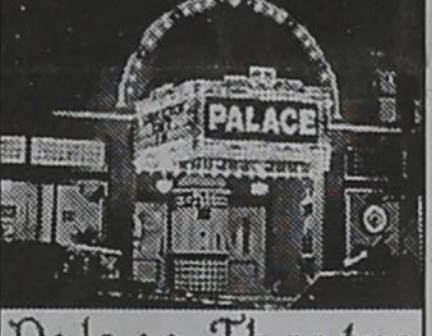


**Openings at Hansford Hospital**  
**Maintenance Person:** Performing duties for maintenance of the building, grounds, including carpentry, painting, plumbing, electrical work, air conditioning, gardening, furniture repair, welding, etc.  
**Insurance/Billing Clerk:** Responsibilities include filing and follow up of insurance claims, assisting with admissions and discharges.

**Openings at Hansford Manor**  
**Housekeeping:** Providing a clean, neat and sanitary facility for the comfort of our patients, residents and staff.  
**Certified Nurse Aide:** Assisting RN and LVN with the care of our residents.  
**LVN:** Must be licensed in the State of Texas  
**RN:** Must be licensed in the State of Texas  
Great working environment and staff, quality facility providing opportunities for professional growth. Great benefit package. Apply at 707 S. Roland, Spearman, TX or contact Jackie Nelson at 806-659-5841. Download application at [www.hchd.net](http://www.hchd.net)  
EEOE  
2(2-14-08)B

**Blankenship Real Estate**  
659-3052 - 670-3774  
3/1/1 - Lots of storage inside & out, 2nd floor. Close to schools.  
3/2/1 - Brick 2 living areas, fenced w/storage  
2/2/1 - Brick, fenced w/storage

**NEW LISTINGS WANTED!**  
Eulalia Blankenship - Sales  
Eschol Blankenship - Broker



**Palace Theatre**  
SHOWING FEB. 22-MAR. 6  
Friday-Thursday - 7 p.m.  
Sunday - 2 p.m.  
Closed Sunday Night

27 DRESSES PG-13 - Katherine Heigl

**FRESH POPCORN & DRINKS! PARTY ROOM & ARCADE MOVIE RENTALS**

**Palace Theatre**  
210 Main Street  
Canadian TX 79014  
806-323-5133  
[www.palacetheatre.com](http://www.palacetheatre.com)  
The Palace Theatre meets Lucasfilm THX specifications for site and sound quality.

What are you waiting for? Come take advantage of the most attractive sales opportunity in the panhandle area. Send resume to Aflac Regional Office 2600. Paramount, Suite H3, Amarillo, TX 79109 or email [wildwest@megapathdsl.net](mailto:wildwest@megapathdsl.net)

C	L	A	P	A	P	B	R	I	O			
R	E	D	O	B	L	U	E	F	L	E	S	
A	V	E	R	Y	O	R	E	A	U	D	I	O
M	O	N	T	A	G	U	E	S	G	E	S	
A	B	O	D	E	D	E	C					
G	O	B	L	I	N	N	O	T	H	I	N	G
A	P	E	D	E	F	E	A	T	I	D	O	L
L	E	T	H	E	L	E	J	S	P	I	N	E
O	R	E	O	G	A	L	L	O	N	O	C	A
P	A	L	T	R	O	W	F	A	S	T	E	N
S	A	O	T	A	F	F	Y					
L	A	P	S	M	I	D	S	U	M	M	E	R
R	E	B	O	P	O	B	O	E	B	O	Y	O
H	A	L	T	S	D	I	R	T	O	L	E	O
O	R	E	S	S	A	N	L	E	S	T		

8	6	4	7	9	5	1	2	3
7	1	5	8	3	2	9	6	4
9	3	2	4	6	1	5	8	7
6	9	8	5	2	4	3	7	1
1	2	7	3	8	9	6	4	5
4	5	3	6	1	7	8	9	2
3	7	9	2	5	8	4	1	6
2	8	6	1	4	3	7	5	9
5	4	1	9	7	6	2	3	8

**Hoochy Poochy Parlor**  
Professional Award Winning Stylist  
Carmon Baker  
and Missy "The Hoochy Poochy"

A true professional and award winning creative groomer, Carmon has earned numerous awards for her excellent work and demonstrated professional technique. She has served the Texas Panhandle for the past 37 years. Catering to the small to medium pampered pet, we always do our best. Please visit us for a free estimate on your pet care needs.

Hours:  
Mon.-Fri., 8 a.m. until done  
Saturday by appointment only

806-273-2724  
806-674-5409  
116 Madison  
421 E. 10th St.  
Borger, TX 79007  
[hoochypoochy@att.net](mailto:hoochypoochy@att.net)

TEXAS STATEWIDE CLASSIFIED ADVERTISING NETWORK



**TexSCAN Week of February 17, 2008**  
**ADOPTION**  
ADOPTION: PREGNANT? CONSIDERING adoption? Lifetime of love awaits your newborn in a financially secure, stable home. Let us help each other. Expenses paid. Call Deb, 1-800-354-4709.

**APARTMENTS FOR RENT**  
AFFORDABLE 1-4 BEDROOM home from \$199/month! Banks repos & foreclosures! For listings & info: Foreclosure Agency: 1-800-604-8389.

**BUSINESS OPPORTUNITIES**  
ALL CASH CANDY Route. Do you earn \$800 in a day? Your own local candy route. 30 machines and candy. All for \$9,995 1-888-625-5481. Multi Vend, I.L.C.

**AMERICA'S FAVORITE COFFEE** distributor. Guaranteed accounts. Multi billion \$\$ industry. Unlimited profit potential. Free information 24/7. 1-800-729-4212, Continental Coffee

**TIME-SHARES RESALES!** The cheapest ways to buy, sell and rent Time-shares. No commissions, or broker fees. Call or go to 1-866-901-9796 [www.buytimeshare.com](http://www.buytimeshare.com)

**CARS FOR SALE**  
\$500! POLICE IMPOUNDS & Reps! 94 Ford Explorer \$1,400! 95 Chevy Camaro \$950 obo! Both Run good! Cars from \$500! For listings 1-800-544-1092 x 1750

**DRIVERS**  
DRIVER- O/O'S. NEW pay scale, plus fuel surcharge. Company drivers. \$5000 signing bonus. Minimum 1 yr. experience. Lots drop & hook! American Eagle Lines, [www.aeal.com](http://www.aeal.com), 1-800-387-1011

**DRIVERS- CDL- A** The grass is Greener at PTL. Students welcome - excellent training program. Company drivers earn up to 46¢ pm. Owner operators earn \$1.21 pm. 22 yrs of age, 12 mos OTR. No forced northeast! Company drivers call: 1-866-606-6200. Owner operators call: 1-877-774-3533. [www.ptl-inc.com](http://www.ptl-inc.com)

**MEDICAL SUPPLIES**  
SCOOTERS & POWER WHEELCHAIRS. Did you know in most cases Medicare, Medicaid and Insurance pay 100% of the cost? Call Melissa or Jon for details. 1-800-606-9860. [www.medicaremedicalsupply.com](http://www.medicaremedicalsupply.com)

**MISCELLANEOUS**  
ATTEND COLLEGE ONLINE from home. Medical, Business, Paralegal, Computers, Criminal Justice. Job placement assistance. Computer available. Financial aid if qualified. Call 1-866-858-2121, [www.OnlineTidewaterTech.com](http://www.OnlineTidewaterTech.com)

**DRIVERS- DRIVE A big rig!** Tuition reimbursement available! Possible \$40K 1st year! \$5000 Sign-on with 1 year OTR experience. [www.lfeinc.com](http://www.lfeinc.com). Call FFE, Inc. 1-800-569-9232.

**EXAM / PREP**  
POST OFFICE NOW Hiring. Avg. Pay \$20/hour or \$57K/yr. Including Federal Benefits. O.T. Offer placed by Exam Services, not affiliated with USPS which does hiring. 1-866-918-1182

**HOMES FOR RENT**  
5 BEDROOM 2 BATH home only \$425/month! 3 bedroom, 1 bath only \$200/month! More 1-4 bedroom homes from \$199/month. For listings & info. Foreclosure Agency: 1-800-604-8389.

**HOMES FOR SALE**  
BUY FORECLOSURES! 3BR/2BA \$10,590 or \$199/Mo! 4BR/2BA \$20,300 or \$215/Mo! 5% down, 20 yrs @ 8 1/4! Must see! For listings 1-800-544-6258 x 1503

**BUY HUD HOMES!** 5BR/3BA \$310/Mo or \$38,671! 4BR/2BA \$200/Mo or \$14,110! Only 5% down, 20 yrs @ 8 1/4! For listings 1-800-544-6258 Ext. 5633

**FORECLOSURES & BANK Reps!** 4BR/3BA \$30,357 or \$245/mo! 3BR/2BA \$10,600 or \$199/mo! (5% dwn, 20 years, buy @ 8%) These Homes Won't last! For listings call 1-800-544-6258 Ext. 9847

**FORECLOSURES!** 5 BEDROOM 2.5 bath home only \$30K! 3 bedroom, 2 bath home only \$18K. Financing referrals available! Listings & info. Foreclosure Agency: 1-800-604-8389.

**SAWMILLS FROM ONLY \$2,990.00.** Convert your logs to valuable lumber with your own Norwood portable band sawmill. Log skidders also available. [www.norwoodawmills.com](http://www.norwoodawmills.com) 300N. Free information: 1-800-578-1363-Ext.300-N.

**REAL ESTATE**  
3.14 ACRES in the heart of Texas. North of Brady, electricity, central water. Oaks, mesquite trees, \$24,500. Owner financing or TX Vet financing. 1-325-456-4678. [www.hillcountryranches.com](http://www.hillcountryranches.com)

**ACREAGE ON POSSUM KINGDOM Lake.** Big Winter Savings, [www.thehillcountryranch.com](http://www.thehillcountryranch.com)

**MEYERS CANYON, WEST Texas** near Sanderson, 178.9 acres, good hunting, \$62,615, with 5% down, seller financing or TX Vet financing. 1-325-456-4678. [www.hillcountryranches.com](http://www.hillcountryranches.com)

**NEAR RUIDOSO NEW MEXICO.** 140 acre ranch parcels. Great views of Sierra Blanca. Good horse property. Power & gravel roads. Borders national forest, may split. 1-888-812-5830. [www.swproperties.com](http://www.swproperties.com)

**SOUTHERN COLORADO RANCH** Sale. 35 acres - \$29,900. Spectacular rocky mountain views year round access, electricity, telephone included. Excellent financing available with low down payment. Call Red Creek Land Co. Today! 1-866-696-5263 x 3473.

**Run Your Ad In TexSCAN!**  
Statewide Ad .....\$450  
303 Newspapers, 1,017,914 Circulation  
North Region Only .....\$195  
98 Newspapers, 276,893 Circulation  
South Region Only .....\$195  
103 Newspapers, 488,623 Circulation  
West Region Only .....\$195  
102 Newspapers, 252,398 Circulation

To Order: Call This Newspaper direct, or call Texas Press Service at 1-800-749-4793 Today!

**FSB First State Bank**  
P.O. Box 247  
Spearman, TX 79081  
Telephone 806-659-5565  
Member FDIC

Planning to buy a home, but not sure if you can get an affordable mortgage?  
Interest too high on your present mortgage?  
Want to do business with a local bank?  
We can help!

Come by First State Bank, Spearman.  
Check out our competitive fixed and adjustable rate mortgages for terms up to 30 years.  
We can work with you to find a mortgage that fits your needs and help you buy or refinance your home.  
Contact Ginger Turner and find out more.

NOTICE: While most advertisers are reputable, we cannot guarantee products or services advertised. We urge readers to use caution and when in doubt contact the Texas Attorney General at 1-800-621-0508 or the Federal Trade Commission at 1-877-FTC-HELP. The FTC web site is [www.ftc.gov/bizop](http://www.ftc.gov/bizop)  
**Extend your advertising reach with TexSCAN, your Statewide Classified Ad Network.**

## Cat Tests Positive for Rabies in Hansford County

A stray cat showed up at a house outside of Spearman and "adopted" the family in January. After a few days, the property owners decided to take the cat to the veterinarian for neutering and vaccination.

All went well, until a couple of days later when it had

difficulty walking, couldn't eat, and wanted to be petted but would bite anyone who tried. The property owner took it back to the veterinarian for observation. It became vicious, and was euthanized and submitted for testing.

On February 6, 2008, Hansford County received official notice that the cat tested positive for rabies.

One animal tested positive for rabies in Hansford County in 2007. A total of six people have been exposed through these animals.

## Lady 'Hounds run away from Quanah, 50-31

By Austin Corder, Amarillo Globe-News

The Gruver Lady 'Hounds advanced to the regional quarterfinals Thursday night, beating Quanah, 50-31, in a Class 1A Division I area playoff at Amarillo High Activity Center.

Trailing 23-17 at halftime, Quanah narrowed the deficit with two buckets, but Gruver regrouped.

The Lady 'Hounds increased their defensive pressure to hold Quanah at bay while the offense scored eight consecutive points for a 34-21 lead.

"I thought it was key that we extended that lead when they got within three," Gruver coach Rod Been said. "I was getting nervous, no doubt about it. We don't have enough experience to be too confident. (Quanah) did a good job. They really feed off of their 3s, and when they get some shots to go down, they really gain some momentum."

Quanah tried to chip away at the lead, but Gruver matched the Lady Indians point for point with the help of junior Lynn Vela, who scored 12 points down the stretch.

"She's been a solid player for us throughout district," Been said. "She's been our most consistent player, and she just had a really good

season. It doesn't surprise me that she stepped up tonight."

Gruver will face Wellington in next week's regional quarterfinals.

GRUVER (20-10): Eva McCloy 1 3-4 5, Katie Gibson 2 0-0 4, Emily Williams 1 0-0 3, Diana Solis 2 1-2 6, Lindsey Mireless 0 0-0 0, Devlin Reynolds 1 0-0 2, Lynn Vela 7 2-2 17, Mattie Yanke 5 2-2 13.

QUANAH (16-10): Taylor Fischer 0 0-0 0, Erin

Loveless 0 0-0 0, Kylie Watson 5 0-1 11, Tara Riley 1 0-0 2, Gigi Jalomo 3 0-0 7, Michelle Harmon 0 3-6 3, Stephanie Ditmore 0 0-1 0, Lauren Veal 2 0-0 4, Kenslea Young 2 0-0 4.

Gruver 15 23 32 50  
Quanah 6 17 23 31

3-pointers: Gruver 4 (Williams, Solis, Vela, Yanke), Quanah 2 (Watson, Jalomo). Total Fouls: Gruver 13, Quanah 14. Fouled out: Mireless. Technical Fouls: none.

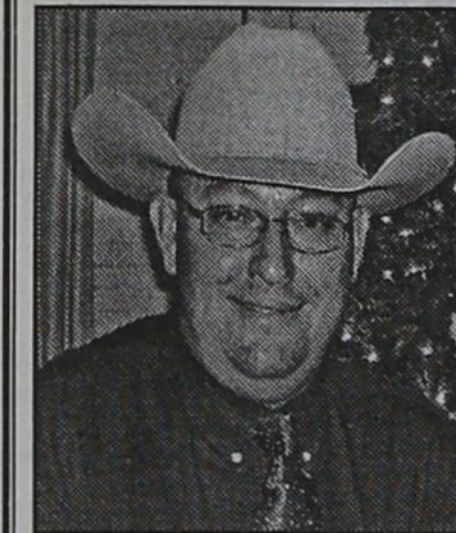
## Enjoy OPSU Hospitality this Friday in Guymon

OPSU's Guymon Classroom is the place to be on Friday, February 22 from 5:00-6:30 p.m. for "Business After Hours," a monthly event held by members of the Guymon Chamber of Commerce. Everyone is invited to attend this casual gathering and enjoy a light supper by OPSU's food service provider, Sodexo, and sign up for some great OPSU giveaways including an OPSU jacket. The menu includes Italian sausages, ham sandwiches, a cheese and cracker tray, fresh fruit, cake and iced tea, coffee and water. OPSU faculty and staff members as well as members of the Chamber's Education Committee will be on hand to answer questions.

Located at 5th and Roosevelt, there's plenty of parking right next to the building, and thanks to Victory Memorial United Methodist Church, guests may use their parking lot right across the street. Plan now to join the friendly OPSU staff for Business After Hours this Friday!



Congratulations to Jeff Beedy (left) and Dick Gillaspie (right) of Prairie Motors! GM Service Technical College would like to acknowledge the achievement of Prairie Motors for their participation in the GM STC program with the objective of successfully completing current Service Training Standards. These requirements enable each "Mr. Goodwrench" to "Fix it right the first time" and increase customer satisfaction. Prairie Motors successfully achieved 100% of the 2007 Service Training Standards. Since the 1991 model year, General Motors Car and Truck Divisions have designated the minimum service training required for a dealer to properly diagnose, repair and service GM products. The minimum number of service technicians who need to be trained at a dealership varies.



## ELECT LANCE SWAN for Hansford County Sheriff

"THE RIGHT VOTE AT THE RIGHT TIME"

March 4th Republican Primary  
Early Voting February 19th-29th

Political ad paid for by Sally L. Swan Treasurer, 1111 S. Bernice Spearman, Tx 79081

**CASE IH AGRICULTURE**

**GET READY PRE-SEASON SALES EVENT**

0% FOR 48 MONTHS OR FREE LOADER

0% FINANCING FOR 48 MONTHS ON CASE IH MAXXUM TRACTORS OR A FREE LOADER

Get a jump on spring: Take advantage of fantastic season savings on all Case IH Maxxum Series tractors with models ranging from 90 to 120 PTO hp (67 to 90 kW). Efficient power and a standard high-visibility panel in the cab roof make Maxxum Series tractors perfect for loader work. With these great financing deals, our reliable parts and our expert service, there's never been a better time to talk to your Case IH dealer. Stop by today or visit [www.caseih.com/na](http://www.caseih.com/na) for more information.

**Five Star Equipment, Inc.** **CAPITAL**  
LEASING | LEASING | CREDIT CARDS | INSURANCE

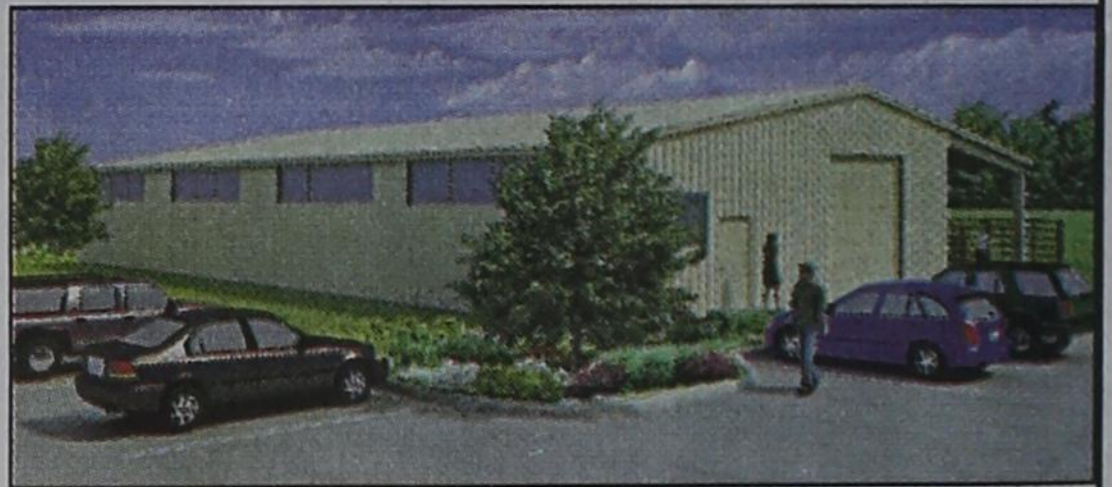
Hwy. 15 West  
Spearman  
(806) 659-3743

Hurry! Offer ends soon.

\*For commercial use only. Subject to customer credit qualification and approval by CNH Capital America LLC. See your Case IH dealer for details and eligibility requirements. Down payment may be required. Offer good through 2/29/2008. Not all customers/applicants may qualify for this rate/terms. CNH Capital America LLC's standard terms and conditions will apply. Taxes, freight, set-up, delivery, additional options or attachments not included in suggested retail price. Offer subject to change or cancellation without notice. ©2008 CNH America LLC. All rights reserved. Case IH and CNH Capital are registered trademarks of CNH America LLC. [www.caseih.com](http://www.caseih.com)

## PROPERTY WANTED

For several years the Spearman Independent School District Board of Trustees has been talking about ways to make improvements to our current ag-farm facility located at



Crawford Pens #19. The Board of Trustees appointed an ag-committee to make recommendations on whether or not to relocate the current ag-facility to another location and to design a new ag-barn/facility for the school district.

After much discussion and input from the ag-committee the Spearman ISD Board of Trustees voted to purchase land to build a new ag-barn/facility on. The driving need from the administration, ag-committee and Board of Trustees was to find property that was more visible than the current location due to concerns about student safety and property that would have access to water and city utilities (to prevent the district from having to drill a water well and put in a septic tank system).

While the need for finding property to locate this facility has become a major concern, the ag-committee continued to work with an architect to design a facility that would meet the needs of our FFA program. Money has been allocated in the past two school district's budget cycles to fund this project. An artist rendition of the design of this new ag-barn/facility has been developed.

Currently, Spearman Independent School District is looking for property to purchase to locate this new ag-barn/facility. At the February 13, 2008, School Board Meeting the Board of Trustees directed the Superintendent to advertise for property on which this new facility could be located. This property should be (+ or -) 10 acres in size and be contiguous to the city limits of Spearman.

Interested property owners should contact Larry Murphy, Asst. Superintendent at (806) 659-3233 for more specifics and for the process to submit a proposal for the District to consider!

