



Happy Thanksgiving

HANSFORD COUNTY LIBRARY
120 MAIN
SPEARMAN TX 79081-2064

The Hansford County Reporter-Statesman

Serving Hansford County Since 1907

12 PAGES

VOL. 85, NO. 5

213 Main Spearman, Texas

50¢ THURSDAY, NOVEMBER 26, 1992

INSIDE

Society Pages	4, 5
Sports	8, 9
Post Scripts	2
Hansford Happenings	2
Want Ads	11
Obituaries	10

WEATHER

Day	Hi	Lo	Precip
Thu	48	37	.08
Fri	44	42	.00
Sat	38	30	.12
Sun	48	25	.09
Mon	37	29	.00
Tue	--	--	.00
Wed	--	--	.00
1992 Precip			20.33

Spearman City Council members... discuss sidewalk improvements

by Angela Jones
Editor

A discussion on sidewalk improvements in the downtown area was one of the main items on the agenda for the Spearman City Council meeting held Tuesday, Nov. 17, 1992.

City Manager, Kelvin Knauf, showed the council a video he had taken of the sidewalks on Main Street. This video showed the chipping, cracking and deteriorating concrete. Knauf also brought up the need for handicap ramps. The

council asked Knauf to get estimates on repairing the sidewalks and curbing on Main Street.

Other business at the meeting was the consideration of the Spearman Volunteer Fire Department's (SVFD) request to transfer city funds to the SVFD account. Randall Sauer, a representative of the SVFD, explained that the fund was actually SVFD money from their dues and various donations. He added that the SVFD has become incorporated by the

state and now has its own tax number. "By being incorporated they have better chances of acquiring grants," explained Mayor Burl Buchanan. It was motioned and seconded that the SVFD funds held by the city be transfer to their own account. The motion carried unanimously.

The council held a discussion on casting their ballot for a board member on the Texas Municipal League Group Benefits Risk Pool. Mike

See Spearman page 12

Cinda Turner... to compete at Corpus Christi

by Angela Jones
Editor

Cinda Gay Turner of Spearman is one of the contestants attending the 59th annual Texas Farm Bureau convention at Corpus Christi November 29 - December 2.

At the convention a Miss Texas Farm Bureau will be chosen along with talent find and free enterprise speech winners. Ms. Turner is entered in the talent find competition.

The talent find winner receives a \$2,000 scholarship and the runner-up receives a \$1,500 scholar-

ship.

Miss Turner won the Spearman talent contest in July. She then went on to compete in the District contest in Amarillo in August. She won the talent find category there and is now going to compete in Corpus Christi.

Cinda graduated from Spearman High School in 1992. She is now a freshman at Oklahoma Christian University in Oklahoma City.

Her parents are Mr. Phillip and Molly Turner of Spearman.



Casino Nite a success

by Angela Jones
Editor

Snow covered roads and winter snow warnings did not dampen the attendance at the Spearman Chamber of Commerce Casino Nite held Saturday evening.

"We will definitely do it again," said Chamber Manager Cindy Blackman. "It was a huge success," she added.

According to Blackman around 80 tickets were sold in advance and then they sold several more at the

door that night.

The evening consisted of dinner, a silent auction, gambling (with play money) and a drawing.

As everyone finished their meal, the games began. The Shriners from Perryton set up the "Las Vegas gambling scene." Blackjack, roulette and "craps" were some of the games played during the evening. Yells could be heard throughout the building as someone "hit it big."

At 10:30 p.m. everyone turned

in their money for tickets and a drawing was held. Various donated items were given to the individuals who held the lucky winning numbers.

As the evening came to an end with the announcement of the individuals which had purchased the items in the silent auction.

"We will try to make it an annual event," exclaimed Blackman. She added quickly that they would probably try to have it earlier in the fall before the bad weather.



Silent Auction coordinators (l-r) Patti Schnell and Sheri Benton accept a bid from Mary Ann Lasater at the Spearman Chamber of Commerce Casino Nite.



These icicles hanging from Celebrates awning were formed by the first of two winter storms that swept through Hansford County this week. The first one came through Friday night, Nov. 20 and stayed all day Saturday. It left .21 inches of moisture in the form of rain changing to ice changing to snow. The second hit Tuesday with heavy amounts of snow and high winds creating blizzard conditions.

Compromise reached on burning issue at Nov. 11 meeting

(November 11, 1992--Plainview, Texas) In a meeting in Plainview, Wednesday, Nov. 11, the issue of burning has finally been resolved, at least for this year. Texas Air Control Board (TACB) officials, Texas Corn Producers Board (TCPB) staff, and other area officials were on hand at the meeting to give their opinions.

"All in all, this meeting was a good beginning. We now have a revised set of guidelines that must be followed before the burning of crop residue," stated Carl King, Executive Director of the Texas

Corn Producers Board.

Keith Martin, CED Hansford County ASCS, said, "It is going to affect us because of our farmers normal operating procedures." He explains, "If you are going to plant wheat after corn you have to burn the stubble. It is the same way with planting milo after wheat. There is no cost affective way you can plow it under and then plant milo." He added that these procedures depend on the amount of rain.

Martin went on to say that it was going to make it harder for the

farmers. "It is going to put a financial burden on the farmers. They'll have to purchase new machinery that will plant in stubble," said Martin. He added that row irrigated crops would be affected if they are planted over stubble.

Martin conclude with a comment on the deadline and the conditions that need to be met. He stated that a farmer has to let them know five days prior to burning and all of the set conditions have to be met before the farmer can burn. He asks

See Burning page 12

TFB to hold annual convention

WACO - The Texas Farm Bureau (TFB) Resolutions Committee has completed its work and now it's the voting delegates' turn to give final approval to the state resolutions and national recommendations at the 59th annual TFB convention in Corpus Christi according to Elmo Dahl, newly elected president of Hansford County Farm Bureau.

"As always, the 41-member Resolutions Committee has done an excellent job of taking the vast number of proposals (more than 600 from 105 county Farm Bureaus) and preparing them in a concise manner for our delegates to consider in the two days we will have at our Corpus Christi convention," stated Mr. Dahl.

He noted that county Farm Bureaus are becoming involved in governmental affairs as seen through the large number of issues surfaced recently at the Committee's meeting in Waco.

"Infringement on private ownership of land by non-profit organizations and government entities will be one issue that delegates will

be giving serious consideration to (on Dec. 1-2) Mr. Dahl observed. He also pointed out that county Farm Bureaus expressed a serious concern about "fiscal responsibility" by state and federal governments.

"Runaway spending at both the state and national level is of grave concern to all of us," he added.

Finding the means to finance public education while at the same time curbing rising administrative costs will be of major interest to the delegates, he pointed out.

Elmo cited the following issues as among the many proposals delegates will consider at Corpus Christi: term limits, high speed rail, the North American Free Trade Agreement with Mexico, GATT negotiations, taxes, plant variety protection act and animal health care.

State resolutions adopted in Corpus Christi will become policy for the TFB membership in 1993. National recommendations are for-

See Farm B. page 12

Mission cable... to donate toys to children

Mission Cable will be donating toys to benefit needy children in this area, Rick Wall, Mission Cable Regional Manager announced today.

From November 30 until December 19, customers will have an opportunity to provide a gift for a child in this area as a Christmas gift. If customers donate a toy \$5.00 or more in value, Mission Cable

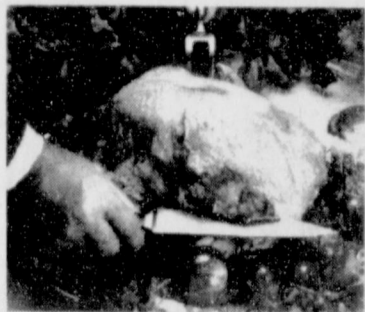
will install cable TV service at no charge.

"We are proud to support such a worthy cause," said Rick Wall, "and based on our past experience we anticipate donating a lot of toys. We are hopeful that we can exceed the amount collected last year."

If you would like to make a donation, please contact Mission Cable at (800) 783-5729.

Holiday Hints

Five Secrets For Perfect Turkey Carving



After removing the leg and last two wing joints, make a deep horizontal "base cut" into the breast, above the wing.



Then, slice in a vertical direction, down through the breast, to the horizontal "base cut."

This Thanksgiving or Christmas, you can stand at the head of the table and carve the holiday turkey with grace and ease, thanks to five simple secrets used by top professional chefs:

Secret #1: Cutting beautiful slices depends primarily on using a sharp, non-serrated carving knife. Serrated knives tend to tear meat, producing shreds instead of clean slices. New Chef'sChoice® Trizor™ Professional 10X™ Cutlery, introduced this year by EdgeCraft, is two to three times sharper and stays sharp up to ten times longer than leading European and domestic brands. EdgeCraft offers a slicing knife, paring knife, boning knife, chef's knife and sandwich knife to help you prepare the whole holiday dinner and make sandwiches from the leftovers! For a store near you which carries Chef'sChoice knives, call 800-342-3255.

Secret #2: Whatever knife you use, it's essential to keep it razor sharp in order to carve with grace and ease. Manual sharpening methods such as sharpening steels and stones are difficult to master and, incorrectly used, can even damage fine cutlery. Thankfully, there's a revolutionary knife sharpener that takes the guesswork out of sharpening and is

safe for the finest cutlery. The Chef'sChoice® Diamond Hone® Knife Sharpener from EdgeCraft uses 100% diamond abrasives to produce an incredibly sharp, long-lasting edge in minutes. It will sharpen virtually any knife along the entire length of the blade. Because it resharpenes with insignificant metal removal—some call it "only angel dust"—the sharpener helps preserve fine knives. For a store near you (or mail order catalog) which carries Chef'sChoice sharpeners, call 800-342-3255.

Secret #3: After the turkey is roasted, remove it from the oven and let it cool for 10 to 15 minutes. This makes the meat easier to slice.

Secret #4: Start carving by removing the drumsticks and thighs. Next remove the wings; but only the tip and center sections. Leave the last section of the wing attached to the breast. This provides a good broad base to help prevent the bird from tilting when you slice the breast.

Secret #5: When carving the turkey breast, start by making a deep horizontal (parallel to the platter) "base cut" into the breast, just above the wing bone. Then you can release nice even slices by cutting in a vertical direction down through the breast to the base cut.

'Post' Scripts

by George Finley
Spearman Postmaster

It has been a year since I came to Spearman as Postmaster, and I must say Spearman is my kind of place. People here are the kind you would like to see in every town in the United States. I'm glad and honored that I have been able to be your Postmaster this past year and hope to spend many more years with you.

It is getting to the busy time for the Postal Service. If you have not mailed your Christmas cards overseas, you need to do so. We want to encourage you to mail early this year. We have two of the best services in the world to help you. The first is priority mail. This is the advertisement you have seen about the 2 days \$2.90. You still have time to take advantage of this and it is a very good service. Also we have Express Mail. If it is something that has to be there the next day, this is the best and only way to guarantee it will be there. If you have a question on whether an article will get there the next day, just call. We will be glad to let you

know on the phone where you won't need to leave your business or home. On both these services we do furnish the envelopes or boxes you need to mail your item, so don't waste your money; use our free envelopes.

I would also like to let everyone know that the Christmas stamps are now available.

At this time we have Turkeys in the Post Office. I didn't mean us. We have Turkeys that were made by our two kindergarten classes. They are displayed on the wall in our lobby. Come by and see if you can pick out your son or daughter's turkey. Keep your eyes open, because the 2nd grade will have pictures of Christmas for us. If you missed the 1st grade Halloween pictures you missed some very creative pictures. We want to thank all the young adults and everyone who has a part in acquiring these for us. Keep up the good work.

Again from each of us here at the Spearman Post Office we want to remind you mail early and have a great Thanksgiving.

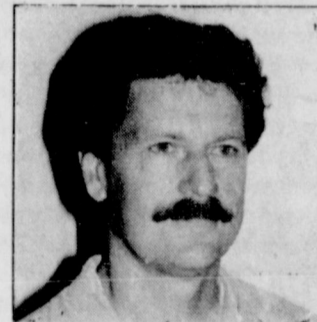
Turkey recipe hints given

TURKEY QUESADILLAS
8 8" flour tortillas
1 cup grated low-fat Monterey Jack cheese
1 1/2 small red onion, cut into long, thin strips
1 zucchini, halved and sliced
1 1/2 cups (12 oz.) cooked turkey, cut into thin strips
1/2 cup canned green chiles, cut into thin strips
1 large tomato, seeded and diced
2 tablespoons chopped cilantro
*Optional: 1 jalapeno, finely minced
Spray a cookie sheet with non-stick spray and place 4 tortillas on it. In a medium saute pan with 1/2 teaspoon oil, saute onions and zucchini for one minute over medium heat. Add chiles, tomatoes and jalapeno and cook for one minute, stirring frequently. Remove from

heat and let cool.
Spread onion and chili mixture on the 4 tortillas, sprinkle on turkey, cheese and cilantro. Cover each with another tortilla.
Bake in 350 degree oven 6-7 minutes. Serve with picante and guacamole. (Serves 4).

GUACAMOLE

1 avocado
1 1/2 cups low-fat cottage cheese
3 green onions, minced
2 canned green chilies, chopped
juice from 1 lime
1 clove of garlic minced
1 tablespoon finely chopped cilantro
1/2 teaspoon ground cumin
*Optional: 1 minced jalapeno
Combine all ingredients in a food processor blender and puree until smooth.



RADICAL LIVING

By Dan Carter, Pastor
Trinity Community Church

A JUDGMENT CALL Matthew 7:1-5 and 15-20

Every sport I know of has some kind of official, judge or referee. Their authority keeps the game within the bounds of what is acceptable, fair and/or safe. In a very real sense that is the purpose of God's Word in this world, through those upon whose heart it is written.

Christians, being salt and light are to set the standard for the world to follow. Of course, the world is not obligated to respond to our cries of foul or fair. And while it's true that Jesus did not come into the world to judge, He did say His words would be the judge.

So it is with the church. We are not to judge the world, or its ways. But if we fully, lovingly present God's truth, two things will transpire: 1. The world, presented with the truth, will be acquitted of guilt by belief in our presentation, or condemned by their unbelief and 2. Living in the truth, we will become more discerning (a type of judging), separating good and evil. That kind of judging enables us to reject the evil, cling to the good, and to walk unafraid of what the world may think of us.

Although we are not to pass judgment in the sense of condemning others, we are to be discerning. So, with the Bible as your source, and the holy Spirit as your strength, "call 'em as you see 'em."

Sponsored by: Trinity Community Church
1105 S. Roland

Police Files

Spearman Police Report

The Spearman Police Department reported a total of 23 reports had been filed for the reporting period starting Monday, Nov. 16, and running through Sunday, Nov. 22, 1992.

On Monday, a criminal trespass report was filed. According to Police Chief Joe Raper a woman report that someone had been in her house while she was out.

Also on Monday, officers had two follow-up investigation on a vandalism reports. Other activities during the day were one miscellaneous call and one lockout.

The following day, Tuesday, the department received one harassment report and a miscellaneous call.

Then on Thursday, Nov. 19, the department received one disorderly conduct call.

On Friday, the police department verified one 911 call, answered one miscellaneous call, unlock one vehicle and filed one report on a family disturbance.

The next day, Saturday, a hit and run accident was reported at 3:16 p.m. According to Raper the accident occurred around 1 p.m. in the 100 block of S. Bernice and

involved a 1990 Chevrolet pickup owned by Jeronimo Borunda of Gruver. This incident is still under investigation.

On Sunday, officers had one follow-up investigation on a vandalism. Other activities for the day was one report of a DWI, one miscellaneous call and officers opening one door.

There were six reports for animal control during the reporting period.

Spearman Fire Report

On Tuesday, Nov. 17, 1992, the Spearman Volunteer Fire Department responded to a grass fire at an equipment yard east of town. The fire was caused by stray sparks off of a cutting torch. The fire was quickly extinguished by the firefighters.

H.C. producers benefit from disaster program

Approximately 650 farmers requested disaster assistance under Phase I of this program, according to Keith Martin, CED Hansford County ASCS.

Keith explained that Hansford County is now eligible to receive disaster benefits under Phase II & III of this program. He added that Hansford County producers need

to review their farm production to see if they are eligible for any part of Phase II or III.

If a producer participated in Phase I he is also eligible to participate in Phase II or III. This disaster program was designed to help farmers receive disaster assistance for 2 out of 3 years, if the producer meets all program requirements. So any producer who feels that he could possibly have suffered enough loss to qualify will need to contact their local ASCS office by February 12, 1993. This will be the final sign-up date for the program.

Five compete in the H.C. food show

The Hansford County Food Show was held November 14 at the Extension Homemakers Clubroom. Five 4-H'ers participated in this end-of-year project contest. Those entered were Kimberly Boyd, Lauree Beth Stedje, Ashleigh Sherrill, Brianne Stedje and T. Jay Sherrill.

Kimberly prepared Zucchini Bread to enter the Junior Bread & Cereal division. Lauree Beth prepared Mexican Lasagna to enter the Junior Main Dish division. Ashleigh prepared Pepperoni Pin-wheels, Brianne prepared Onion and Apple Butter Crescents, and T. Jay prepared Red Hot Applesauce Jello. They were all entered in the Clover Kids division.

Kimberly and Lauree Beth will continue on to the District level with the foods they prepared. They also prepared project report forms and a daily menu to be scored along with their interview process.

The District I Food Show takes place at Randall High School on Saturday, December 5. It will also hold the Consumer Skills Contest for the District level.

25% Off ...

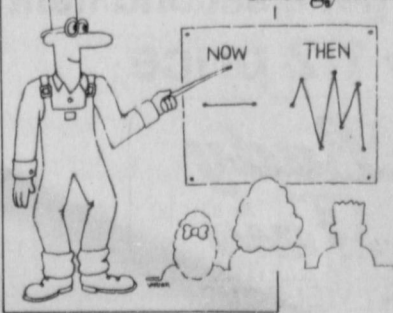
on every item in our store.*
Friday and Saturday, at our
after Thanksgiving sale.

*Does not include cosmetics or spring arrivals.



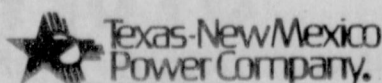
women's fashion 2701 paramount
358-2457 visa mc ex

Take charge of the ups and downs of your energy bills



Gain control of the highs and lows of your electric bill with the Budget Billing Plan from Texas-New Mexico Power Company. You'll be able to chart a plan for budget success by averaging the seasonal highs and lows of your bill so that you pay about the same amount each month. TNP will keep you advised of your actual monthly billing charges.

To see if your credit qualifies you for this plan, call or visit your nearest TNP office.



The Christmas Gift That Keeps On Giving...

The Hansford County
Reporter-Statesman
20% Off Subscription Rates Through The Month Of December!
\$15.96 per year
In Hansford County
\$19.96 per year Out-Of-County

Send coupon, along with check or money order, to:
Hansford County Reporter-Statesman, Box 458, Spearman, Tx 79081

Yes, I would like to send a year's subscription to:

Name: _____
Address: _____
City: _____
State: _____ Zip: _____

Yes, I would like a year's subscription for myself!

Name: _____
Address: _____
City: _____
State: _____ Zip: _____

Hansford Happening

The Pringle-Morse Christmas program will be held Thursday, Dec. 17th at 7 p.m.

The Hansford County Auxiliary will be holding a luncheon on Monday, Dec. 7, at 11:30 a.m. in the Union Church Fellowship Hall. Members need to bring a covered dish. Meat will be provided. The Hansford Hospital and Hansford Manor will be decorated.

A six foot Christmas tree decorated with handcrafted angels and silver bows, plus two handcrafted angels to stand by the tree—all made by Golden Spread Center Crafters will be raffled December 1st at the covered dish dinner. Raffle tickets are \$2.00 each available at the Center or from members. Join Crafters at the Center on Thursday at 10 A.M. for crafts and enjoy the covered dish lunch.

Hansford County Rotary Clubs is sponsoring a clothing drive for our community and Mexico. The Rotary is asking for serviceable (washed or cleaned and mended) clothing. The clothing will be accepted by any Rotary member or can be dropped off at the Hansford County Extension Homemakers office located in the basement of the courthouse. Clothing will be made available to organizations or charitable groups for individuals in our community needing assistance.

Area Arts & Crafts

The Final Market/Craft days for 1992, will be from 9 a.m. to 5 p.m. on Saturday, Dec. 5, in Stratford, Texas. There will be lots of neat items for the Christmas season. It will be held in the old county barn 1 block east off of South 287 or off the Farm to Market Road #15 East to Gruver. It is being sponsored by the Chamber of Commerce. For further information call the Stratford Chamber at 806/396-2260.

Perryton church offers "Bethlehem Marketplace"

The confines of Southside Baptist Church in Perryton will completely transform into a biblical time marketplace setting, Dec. 12 and 13. Everyone is invited to visit "Bethlehem Marketplace" and capture the real meaning of the Christmas season.

Rev. Bobby Roger and associate minister John Hillman are excited about the Christmas program. According to Roger, "You'll experience the birthplace of Jesus like you've never seen it before."

Focused on the wise men's search for the star in the east, "Bethlehem Marketplace" allows visitors to tour the city, see the marketplace, visit the shops and talk with the fisherman at the lake.

Food vendors will be offering tastings of their foods. Other shops in the marketplace will include basket and candle makers and the shoe cobbler. The animals will be corralled just outside the doors of the church.

Plan to spend from 30 to 45 minutes in the city, culminating with a brief musical production in the sanctuary of the church.

Saturday, Dec. 12, the marketplace will be open from 6 to 8 p.m. and Sunday it will be open from 2 to 4 p.m. Southside Baptist Church is located at 2122 S. Drake.

For further information, contact the Southside Baptist Church at (806) 435-2721.

"He who knows nothing is nearer the truth than he whose mind is filled with falsehoods and errors."

Thomas Jefferson

HENSON CHIROPRACTIC

410 S. Davis • Spearman, TX
Call for Appointment • 659-5603

Office Hours: Mon, Wed, Fri - 9:00 to 5:00
Tue, Thu - 9:00 to 11:30

1- 10x13 (Wall Photo) 30 Color Photos 99¢ Deposit \$11.00 Due at Pick up (plus tax)
1- 8x10
2- 5x7
2- 3x5
16- King Size Wallets
8- Regular Size Wallets
\$11.99
WE USE KODAK PAPER

GIVE OUR PICTURES FOR CHRISTMAS

AT
KID'S STUFF
TUESDAY,
DECEMBER 1



Shugart's inc.

Group charge 99¢ per person



Chamber Chatter

by Cindy Blackman
Chamber Manager

Those of you who missed the chamber Casino Nite will have to be sure and make the next one. We really had a good crowd in spite of the "chamber snow storm" that we had on Saturday night. I cannot thank everyone enough for all the hours and hard work that went into this fund raiser. I want to again thank Tim Cook of TLC Compressor for letting us use his shop, and the Texas New-Mexico Power Co. for letting us use their truck for decorating. By the phone calls I have received, I know everyone had a really good time. Don't worry, we will do it again. Thank you to all the businesses and sponsors, because without your donations we could not have had such a great success.

The Santa Claus suit that the chamber has will again be available for your Christmas parties. You need to call soon so your organization can use it.

The ballots have been mailed to all chamber members for election of our new board of directors: Names on the ballot are Steve Benton, Randy Hendrickson, Tindle Ramon, Lynna Renner and Kirk Fraizer. Outgoing directors are Brenda Pierson, Clay Schnell and Lenis Simpson. Ballots should be returned by Dec. 7.

Watch for the special Christmas promotion during the month of December from our local merchants.

Remember to support Spearman and shop at home for the holidays.

Spearman VFD visits Gus Birdwell Elementary

On Tuesday, November 11th, the Spearman V.F.D. visited the Elementary School at 2:00 p.m. during its regularly scheduled fire drill.

Fire Chief Ron Antalek brought four volunteer firemen, Randal Sauer, Keith Martin, Ray Cook and Bruce Stinson, to observe the manner and rapidity with which the Elementary School can evacuate the building when under the stop watch. All students, faculty and staff were out of the building, safely on the fenced playground, in less than 1:45—one minute and forty-five seconds! When one considers that at the Elementary School, there is a wheelchair student and one currently on crutches, they were impressed. Dr. Partney stated that he was very pleased with the thoroughness with which the V.F.D. monitored and checked every room throughout the entire building. "When the drill was set up with Chief Antalek, our intent was to demonstrate to him and his men that our first concern is for the safety of the students. He can now feel assured that we will remove all the students from the building so that he and his men can concentrate on their task, should that ever be an actual concern," reported Partney.

Later, after school was dismissed, Jim Younger, Ray Cook, Johnny Ring and Bruce Stinson returned to teach a "Fire Extinguisher Workshop" for the faculty and staff at the Elementary School. The Workshop began in the Library with an explanation of the types of fire extinguishers located in the building and the types of fires that each would extinguish. After a question and answer time, the group moved to

the concrete area in front of the Varsity Gym where it was hands-on time. One fireman, Bruce Stinson, was outfitted in his complete firefighting gear, standing by if needed, as a controlled and contained fire was set to demonstrate the effectiveness of the fire extinguisher. Freida Burgess, 4th/5th Grade Math teacher, showed the rest of the faculty and staff that she had paid attention to the lesson as she successfully extinguished the fire.

Gus Birdwell Elementary School thanks Fire Chief Ron Antalek and the other firemen for taking time from their own busy schedules to work with us during the drill and for teaching the workshop. Later in the school year, our students will be coloring an Emergency One "Firetruck for Your Town" picture. This is a contest conducted by E-One, a subsidiary of Federal Signal Corporation, with no strings attached, whereby the picture which wins, that student and his/her parents will be able to present to the Fire Chief with an International-Navistar Firetruck. The winner and parents will be given a trip to Dallas in August, 1993, to the International Association of Fire Chiefs Convention for the presentation. The weekend in Dallas will also include a visit to Six Flags Over Texas.

TEXAS

It's Like A Whole Other Country.

Karen's Kozy Korner

by Karen Babitzke
Extension Agent

COLOR SELECTION IMPORTANT FOR CLOTHING AND HOME

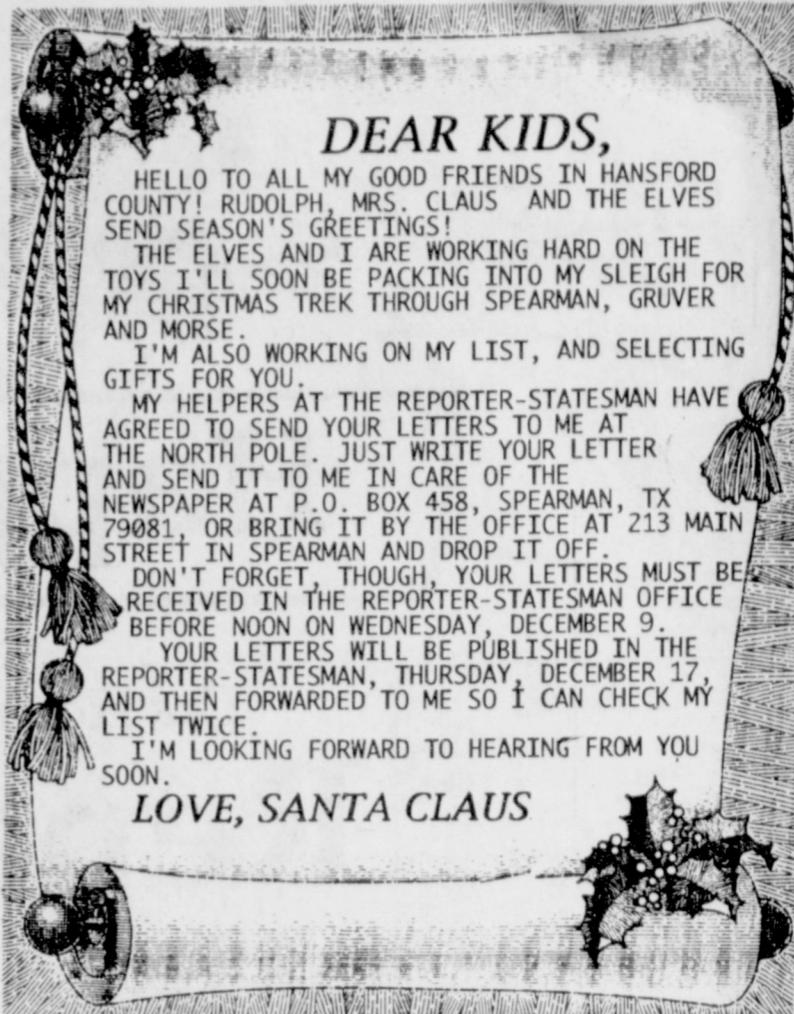
Have you ever wondered why butter and cheese must be colored yellow or people won't buy them? Why some people are edgy and irritable in a room with red walls while others are happily excited? Or why we notice the colors people are wearing before we see anything else about them?

Color is important. Colors cause physical and psychological reactions in people. Clothing colors send emotional messages about the wearer.

Colors chosen for home interiors and furnishings not only send emotional messages but affect comfort and activity levels.

Light colors are generally seen as cheerful, active and more feminine than dark colors. Dark colors are perceived as sophisticated, reserved and business-like. Bright, true colors are more exciting and cheerful than subdued or grayed colors.

Warm colors such as red, orange, and yellow are aggressive and seem to advance toward you. Blues, greens and neutrals appear to re-



DEAR KIDS,

HELLO TO ALL MY GOOD FRIENDS IN HANSFORD COUNTY! RUDOLPH, MRS. CLAUS AND THE ELVES SEND SEASON'S GREETINGS!

THE ELVES AND I ARE WORKING HARD ON THE TOYS I'LL SOON BE PACKING INTO MY SLEIGH FOR MY CHRISTMAS TREK THROUGH SPEARMAN, GRUVER AND MORSE.

I'M ALSO WORKING ON MY LIST, AND SELECTING GIFTS FOR YOU.

MY HELPERS AT THE REPORTER-STATESMAN HAVE AGREED TO SEND YOUR LETTERS TO ME AT THE NORTH POLE. JUST WRITE YOUR LETTER AND SEND IT TO ME IN CARE OF THE NEWSPAPER AT P.O. BOX 458, SPEARMAN, TX 79081, OR BRING IT BY THE OFFICE AT 213 MAIN STREET IN SPEARMAN AND DROP IT OFF.

DON'T FORGET, THOUGH, YOUR LETTERS MUST BE RECEIVED IN THE REPORTER-STATESMAN OFFICE BEFORE NOON ON WEDNESDAY, DECEMBER 9.

YOUR LETTERS WILL BE PUBLISHED IN THE REPORTER-STATESMAN, THURSDAY, DECEMBER 17, AND THEN FORWARDED TO ME SO I CAN CHECK MY LIST TWICE.

I'M LOOKING FORWARD TO HEARING FROM YOU SOON.

LOVE, SANTA CLAUS

Mayor signs proclamation

WHEREAS, in recognition of the dedicated men and women who provide hospice care to help terminally ill patients face natural death without feeling alone or unprepared; and

WHEREAS, these programs are helping to ensure that hospice care remains a positive, viable alternative for terminally ill individuals and their loved ones; and

WHEREAS, Hansford Hospice has been providing hospice care to families in Hansford and surrounding counties since it was established in May, 1991, along with hospice programs in all fifty states, providing care to more than 200,000 ter-

minally ill people and their families; and now, therefore, be it

RESOLVED, that the Gruver City Commission join with President Bush in proclaiming the month of November, 1992, as NATIONAL HOSPICE MONTH and to encourage recognition of and support for hospice care in Hansford County and the Nation.

SIGNED AND ENTERED IN THE OFFICIAL MINUTES OF THE CITY OF GRUVER, TEXAS, THIS ELEVENTH DAY OF NOVEMBER, 1992.

KEITH GIBSON,
MAYOR CITY OF GRUVER

Lake Meredith Aquatic & Wildlife Museum... holds Christmas bazaar

The Lake Meredith Aquatic & Wildlife Museum will be presenting its Annual Christmas Bazaar on December 5th and 6th. This event has become a very important part of the Museum to be able to have this for the community.

The Museum is asking for donations of hand crafted items, baked goods and cash donations for the Bazaar. There will be an area set aside for the adults to do their shopping and the annex room of the Museum will be set up for the children to do their shopping. Elf

helpers will be available to help the children pick out gifts for family and friends. After picking out the gifts, the gifts are then gift bagged and tagged and ready to go under the Christmas tree. All the gifts for the children to pick from will be under \$4.00.

Community support is a very important part of the Bazaar. If you can volunteer a few hours on Saturday or Sunday, please call the Museum at 857-2458. If you have items to donate for the Bazaar, please bring them to the Museum by December 4th.

The Hansford County Reporter-Statesman "Serving All Of Hansford County"

USPS 509660
213 Main, Box 458, 659-3434
Spearman, TX 79081
Published Weekly at
213 Main, Spearman, Texas
Owned and Operated by:
Texas Independent Newspapers, Inc.
15915 Alsace
San Antonio, TX 78232
(512) 545-1739

Second Class postage paid at Spearman, Texas 79081.

Any erroneous reflection upon the character of any person or firm appearing in these pages will be gladly and promptly corrected upon being brought to the attention of the management.

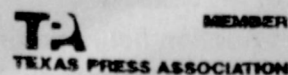
Publisher - Robert M. Hulett
Editor - Angela Jones
Bookkeeper - Sheila LaRochelle

Subscription Rate: Hansford County, \$19.95; out of county, \$24.95 annually.

Postmaster: Send address changes to Hansford County Reporter-Statesman, Box 458, Spearman, TX 79081.

The publisher reserves the right to revise or reject at its option any advertisement which it deems objectionable, either in subject or phraseology, or which it may deem detrimental to its business.

Advertising and Story Deadlines: Tuesday, 12:00 p.m.



At The Lyric Theatre . . .

FRIDAY, NOV. 27 - TUESDAY, DEC. 1

Bargain Nights Mon. & Tue. All Seats \$3
Closed Wednesday & Thursday

SCREEN 1 • 7:45 p.m.

LAST OF THE MOHICANS

Stars Daniel Day-Lewis & Madeleine Stowe

RATED R

113 Main, Spearman

MARY KAY
FACE-TO-FACE BEAUTY ADVICE™

Leann Gillaspie

Beauty Consultant

659-3889

Among the Neighbors

by Helen Fisher



In this picture Pam Cobb, Holly Simpson, Cindy Clyburn and Jo Dell Tigrett look over the silent auction items before submitting their bids.

Such a fascinating sight on Friday afternoon—about six miles south of Spearman just east of highway 207 at a playa lake—the hundreds and hundreds of geese, appeared to be Canadian Honkers. Each V shaped flock, with mournful honking, zeroed in at the water hole—apparently by pre-arrangement. The lake and ground were carpeted with them. Their electronic sensors probably warned them of the approaching storm. The same warning the hawks had received, perhaps, as they dived repeatedly along the fence rows, stockpiling mice.

It is a good time to attract and watch the migrating birds—so many species winging their way south. Many varieties make an annual stop at the rural home of Elaine and Roger Odegaard. She prepares a special drawing card for them, learned from the Amish in Minnesota. It consists of equal parts of sunflower and bird seed, peanut butter, oatmeal and lard. It is divided and hung on trees, after it hardens, and the birds are so grateful they leave small tips and promise to return.

Sara Dossett enjoyed a three day visit from her grandson, Ricky Neely. He lives in Denver and left on Friday to visit other relatives in Lubbock.

A couple of wedding accounts in the Sunday Amarillo News-Globe are of interest to local folk.

The marriage of Sarah Hale and Shawn Uselding on Saturday was that of a granddaughter of Pauline Hale. Selden B. and Janie Hale are her parents.

Also on Saturday the son of Charles and Claudine Laxton of Spearman, Lloyd Leroy Laxton

married Carol Lomenzo.

Several families here who have members in the Houston area were concerned about the tornados down there this weekend. So far as can be ascertained at this time, no injury or damage occurred to them. Jo and Marcus Larson spoke with their son Richard Sunday morning.

He lives in the area where the tornado struck, but fortunately his home escaped damage although there was a great deal near them. The tornado lifted over his home and reached the ground again just beyond. None of the family were in it at the time.

Jimmy Hicks was notified of the passing of his brother, W.T. Hicks, Jr. this week. He was the older son of the Reverend and Mrs. W.T. Hicks, pastor of the Methodist church here many years ago. Jimmy was unable to attend the services in Dallas, due to his poor health.

The many friends of Richard Melton are welcoming him back to Spearman after his three years at Texas City. Richard, who has been with Texas-New Mexico Power Company, is beginning a new career.

He is associated with the Hansford County Farm Bureau as an insurance agent and is enthusiastic about his new venture. He invites his friends to stop by for a chat.

For 34 years the customers of Murl Pearson's High Plains Conoco Station has appreciated his service and attention. Now, he is closing the business and retiring. During this 34 years his children from early childhood learned at the station how to work, to be dependable and accommodating.

The Pearsons feel if they are ever to travel or find pleasure in retirement, it must be done while their health is still good enough to enjoy it.

So best wishes for a comfortable and interesting retirement, Ann and Murl—your customers will miss you.

Another business closing and the owner retiring is the John R. Collard, Jr., Real Estate and Insurance. Even before Spearman started, at Hansford, there has been a Collard Real Estate and Insurance.

Preceding John R., Jr., there was his mother, and preceding her was his father John R., Sr.

John R. plans to move to Amarillo partly for medical attention.

Others leaving Spearman are Kari and Kevin Russell, who will be moving to Dalhart. Kevin who has been employed at the First State Bank for nine years has been appointed E.M.S. director for Dallam County. He will assume his duties on December 1.

Kari has agreed to stay on through the income tax season with a local C.P.A. firm.

Both Kari and Kevin were born and raised here. They regret leaving their families and friends, but feel that they are making a wise move. Too, Dalhart is just a whoop and holler away.

Indeed, 'tis a puzzlement—an item in the paper informs that during the administration of Governor Richards, 14,000 (that's three zeros) new jobs were added to the Texas state payroll. A separate item mentions that due to the more than expected lottery income, all state employees will get a 3% increase in salary. Still another subject getting a lot of attention, is a source of added revenue for Texas schools—where is it to come from?

Many in Spearman were interested in learning that Alan Sanders, M.D. of Los Angeles was the first place recipient of the annual Bingham Psychiatric Research Award. The presentation was made recently at the eighth annual awards ceremony in Louisville, Kentucky.

Alan is a native of Spearman, the son of the late Emmett Sanders and Elinore Sanders. He is also the grandson of Mrs. Pearl Seedig of Perryton.

These awards are given every year to encourage research in schizophrenia and to increase the levels of professional and public awareness regarding schizophrenia.

Alan is a graduate of the Baylor College of Medicine and is now serving his psychiatric internship in L.A.

How about that Millard Tucker? He won \$500 on a \$1.00 ticket in the lottery last week. His goal is now that \$10,000,000 lottery.



Over 100 Hansford County ladies turned out for the Spearman Style Show and Brunch held Saturday, Nov. 14. In the top picture model organizer Judy Nelson of J.G.'s (in the back) looks on as the models for Kids' Stuff wait their turn to "stroll the runway". The are (l-r) Leslie Holton, Grace Davis, Landon Jackson, Dana McLaughlin, Brooke Trantham, Clint Jackson and Sydney Woodington.

In the second these five lovely ladies await their turn to model the latest holiday fashions for Lady Fair. They are (l-r) Linda Lackey, Molly Blackman, Joce Harper, Marva Hohertz and Debbie Reed.

Birth announcement

MATTHEW WILLIAM JARVIS

Will and Kristi Jarvis of Spearman are proud to announce the birth of Matthew William, born November 7, 1992, in High Plains Hospital in Amarillo. Matthew weighed 8 lbs. 2 oz. and was 20 inches long. He will be welcomed home by a sister, Jessica, age 3.

Maternal grandparents are Ted and Paula Simpson of Early, Texas.

Paternal grandparents are Britt and Linda Jarvis of Spearman. Paternal great-grandparents are Nolan and Fay Holt of Spearman and Ollie Jarvis of the Pringle-Morse community.

GATLIN MATHEW GUTHRIE

Mark and Carrie Guthrie are proud to announce the birth of their son Gatlin Mathew Guthrie on Tuesday, November 10, 1992 at North West Texas Hospital in Amarillo. Gatlin Mathew weighed 7 lbs. 3 oz. and was 19 1/2 inches long.

Grandparents are Kent and Glenda Guthrie of Spearman and Donna Hart of Arizona.

Great-grandmothers are Rosa Lee Butt and Evelyn Guthrie both of Spearman.

Looking back - Spearman

5 Years ago

Hansford County Judge Roy McClellan, appointed county residents to serve on the Local Emergency Planning Commission—a group mandated by federal law. The LEPC was required to complete a hazardous material plan for emergency response to sites holding or using them. Asked to serve were Jeff Lackey, Dick Waterfield, Joe T. Venneman, R.L. McFarlin, Joe Raper, Bill Porter, Juan Viola, Burt Williams, Al LaRochelle, Larry Butler, George Young, James Jarrett, and Charles C. Franklin.

10 Years ago

The Chamber of Commerce Ambassadors were busy with ribbon cutting ceremonies for three new Spearman businesses: Shaes Family Fun Center; Two's Company & The Knack Shoppe.

15 Years ago

Bob Price a former U.S. Representative, campaigning for the runoff election against Bob Simpson for State Senator was in Spearman at the First State Bank. Also, Preston Smith of Lubbock, as a candidate for Governor of Texas planned a visit to Spearman.

Club news

Hospital Auxiliary holds meeting

The Executive Committee of the Hansford Hospital Auxiliary met Monday, November 16 at 10:30 a.m. in the Hansford Manor, Myrt Bohanan, Chairman.

A luncheon will be held on Monday, December 7 at 11:30 a.m. in the Union Church Fellowship Hall. Members need to bring a covered dish. Meat will be provided. Hansford Hospital and Hansford Manor will be decorated.

Those present were Myrt Bohanan, Margaret Evans, Eddy Largent, June Jackson and Eddie Smith.

School menu

Spearman School Menu November 30-December 4 Lunch

Monday—Chicken strips, mashed potatoes, green beans, hot rolls, butter, fruit, milk.

Tuesday—Chili dogs, tator tots, steamed mixed vegetables, birthday cake, milk.

Wednesday—Tacos, pinto beans, lettuce-tomato salad, taco sauce, diced onion, cheese cups, Spanish rice, purple plums, milk.

Thursday—Fish, macaroni & cheese, cut broccoli, buttered carrots, yeast batter bread, sherbert, milk.

Friday—Cheeseburgers, french fries, lettuce, tomato, pickle, onion, cookie, milk.

School Lunch Menu

Pringle-Morse CISD Menu

November 30-December 4 BREAKFAST

Monday—Muffins, cinnamon toast, orange juice, milk.

Tuesday—Cereal, toast, grape juice, milk.

Wednesday—Pancakes, sausage, apple juice, milk.

Thursday—Donuts, cheese toast, apple juice, milk.

Friday—Biscuits, sausage, orange juice, milk.

LUNCH

Monday—Mexican rice, salad, peas, corn bread, fruit, milk.

Tuesday—Salsbury steaks, potatoes, gravy, salad, rolls, green beans, cake, milk.

Wednesday—Hamburgers, tator tots, baked beans, pears, milk.

Thursday—Meat loaf, ravioli, buttered potatoes, raw vegetables, biscuits, milk.

Friday—Pizza, salad, fruit, ice cream, milk.

We would like to thank everyone for the many kindnesses that came our way while I was in the hospital and after I returned home. Thank you for the many calls, visits, flowers, delicious food, prayergrams and most of all your prayers lifted up on my behalf and also for my family. I can't express how much all of you mean to me. God bless each of you. Wanda and John Brown

Get Ready for Christmas SALE!

Up to 25% off Storewide

Friday, Nov. 27th & Saturday, Nov. 28th

Country Stitches

715 W. 7th

9:30-5:30

You are cordially invited to attend the Lighting of Hansford Hospice Lights of Love Tree and Open House

Monday, November 30, 1992 5:30 p.m.

First State Bank

1 N.E. Court

Spearman, Texas

You're Invited To CHAROLETTE FORD TRUNKS' Open House

Saturday, Nov. 28 • 10 a.m. - 4 p.m.

15% OFF EVERYTHING PLUS GIFT CERTIFICATES GIVEN AWAY



CHAROLETTE FORD TRUNKS

Publisher of Trunk Talk • Supplier and Restorer

313 Main • Spearman

(806)659-3027

On The Go With Joy

by Joy Henderson

Editor's Note: The first portion of Joy's Column is a reprint from last week. We regret the mistake and any inconvenience it may have caused.

Our community lost another citizen to the dreaded disease, cancer. Gordon Stedje was a gentle, soft spoken man who along with his wife Anna Marie, took me under their wing when I was a young bride of sixteen. Later on, some of our children were able to be guided in school by Anna Marie who had become a teacher.

What a surprise it was to learn that one of my favorite teachers while a fourth grader and then a short time in eighth grade at Spring Creek, Marie Stedje, sister to Gordon, James and Clifford Stedje, was a part of the Oslo community that I moved into in the late forties. All of the Stedjes welcomed us with open arms. However it was Gordon and Anna Marie that we seemed to have more in common since we had children close to the same age.

I can remember some of the special times when M.H. decided after having the first daughter that perhaps I needed to learn how to use a sewing machine and get some tips on cooking. After a few visits, I began the dressmaking career when M.H. bought my first sewing machine, a converted Singer portable that would run on electricity.

Another memory we have, is when we woke up in the middle of the night and found ourselves in a pitch black dust storm. About 9 o'clock the next morning we made it over to the Stedje's where the air was clearer and the breathing easier. I had experienced a little bit of the "Dirty 30's" but since I was so young, it did not seem such a disaster as we were having with this storm in the "50's." There was a lot more farm land in the Oslo area than we had in the Spring Creek location.

Another memory is being invited to their home for a night of watching a new fangled invention called

television. I had always enjoyed movies so this thing called T.V. fit into my life just fine. One of the best programs we watched that night was called "Life With Elizabeth" starring Betty White. I laughed till I ached and it wasn't long until we bought a T.V. to keep us entertained so we wouldn't have to drive 20-30 miles to see a movie.

On another visit, even though we had eaten supper before going to the Stedje's, they made their supper, which included potato pancakes and black-eyed peas, sound so delicious that I was wishing I could have some, but we declined their invitation since we were full already. But the next thing I knew, Gordon had fixed me a plate with the peas and potato pancakes and got me by the hand and guided me to the dining room, I guess he had seen me smacking my lips.

Even though the Hendersons and Stedjes were now residents of Gruver, the hustle and bustle of our everyday lives kept us from close contact and the last memory of Gordon's activity was for us to be having our morning walk at the activity center. I was trying to keep myself going when a stroke after heart surgery occurred and I needed re-hab. Gordon was the first person I had heard of that had undergone heart surgery and he was walking as a preventative for other heart problems. So we had opportunity for chats as we passed each other along the way.

It doesn't seem fair that we lose our best citizens to cancer, but it may make us work harder to help those who are involved in finding cures or extending support. This month of November is designated as Hospice month and the Hansford County Hospice organization has done a lot to establish a place in our Spearman hospital for families to be able to be near their loved ones. They have had many fund raising activities to be able to finance these projects.

We have had our first official

snowfall of the season and as we drove along the streets, I noticed a new covering of leaves which had fallen from the trees. I know some of you are tired of the effort it takes to get your lawns cleaned off, then have a whole new batch the next day, but I have good news—maybe you can leave them on the grass.

Once upon a time, you could just rake them into a large heap and touch a match to it. The resulting smudge filed the air with a familiar autumn smell. No more... it pollutes the air! Then there were the dozens of giant leafbags set out by the dumpster for the trash truck. But landfills are closing and many communities are restricting these materials from their pick ups. So what is a homeowner to do?

Leaving their leaves right where they are may be the best alternative as they are a storehouse of nutrients and minerals mined by the tree roots penetrating deep into the soil. However, they must be chopped into tiny pieces before they will decompose and return their goodness to your lawn. A mulching mower can shatter leaves into bits that settle deep into the turf, almost out of sight. If you don't own a mulching mower it may be necessary to make several passes with an ordinary rotary mower to achieve the same results.

Also, a good dose of fall fertilizer will help leaves break down quicker and provide your grass with the elements it needs to stay healthy over the winter. However, too much of a good thing should be avoided. Mulch only enough leaves to disappear as a heavy layer might shut off sunlight and lock up nitrogen, which is necessary for lawn growth, as they decompose. Collect the surplus for a garden compost pile. So, if you love fall, but hate the thought of raking, bagging, burning and dumping, then mulching leaves right on your lawn will save time, work and the environment.

Well, I was informed by an outside source that newspaper articles

needed to be ready early this week, so I'd better wrap this up early and get to Spearman.

Some of our visitors this past weekend include Bud and Ann Gill from Colorado Springs. They are the parents of Cathy Potts. Guest of Joby Cooper was Justin White.

Quite a few guests registering for the Commission Service at the FBC for Brad and Sally Womble of Ft. Worth and daughters, Emily, Ruth and Mary Beth; his mother Elsie Womble from Amarillo; brothers Brent and family and Mark and his son; sister Freda and husband Bill Mathews. Other guests were Bob Hewett and family of Amarillo, Kris Hanna of Shawnee, Oklahoma and friend Stephen Landes from Norman, OK. Kris is Freda's daughter. Elsie's sister Willie and Deacon Clements from Spearman were there.

Brad and Sally will be going to Africa as missionaries.

Word was received from David and Janie Steele that they are parents of a new daughter, Abby Lynn, and that Charlie and Shiloh Parrish have a new baby girl born awhile back. Call grandparents Corky and Paula Kizzar for more information.

Mavis Hart has a new grandson born to Terry and Kevin Breaux of Austin. The boy, Parker Kevin, was born Nov. 18th and weighed 9 lbs. 7 oz. and was 21½ inches long. Wow!

On the local scene, David and Erin Bergin have had a new son born recently. Grandparents T.J. and Charollette Bergin will enjoy giving details.

Some of our local ladies have recently returned from an exciting trip to New York. Frances Murrell, Lou Chapman and maybe Shirley Lowe and maybe others are those I've heard. Also some of the Spearman folk were on this tour.

We are happy to report that Josephine Ayers is home and trying to adjust getting around in her home in a wheel chair. She would enjoy having you visit her and helping cheer her up.

Oscar Lee is in High Plains Baptist Hospital and will be taking dialysis treatments. I don't know his prognosis yet, but imagine,

Morris and Boyd... announce engagement

Mr. and Mrs. Vance B. Morris of Gruver, Texas announce the engagement of their daughter, Sandra Renee to Billy Ray Boyd, Jr., son of Mrs. Mary Nell Boyd, of Canadian, Texas.

The wedding will take place in February 1993, in Amarillo, Texas.

Miss Morris is currently employed at Northwest Texas Hospital as the weekend charge nurse in the surgery department.

Mr. Boyd is a Third Class Petty Officer Radio Man in the United States Navy on board the USS La Salle, stationed in the Persian Gulf. He will be returning home in December of this year to crossover in to the United States Coast Guard.



knowing that he and Violet would be encouraged by visits and cards and prayers during this time.

It is hoped that Amanda Walters will be able to come home after a long stay in the hospital. That will be good news for her and her family. Everyone is looking forward to Stacey Williams returning home for a few hours on Thanksgiving Day. Even though she will need to return to Craig hopefully for just a short time, she anticipates getting to come back home soon.

We learned that a new student enrolled in Gruver Junior High this week. He is Jebediah Lee, an eighth grader from Guymon. He will be staying with the Rob Murrells. Welcome to Gruver.

Correction:

In Joy's Column last week we incorrectly printed Julie Stedje. It should have read:

New grandson added to the list for June Barkley is a boy born to daughter Julie Sledge on November 10th.

The staff at the Reporter-Statesman regrets any confusion or inconvenience this may have caused.

Looking back - Gruver 5 Years ago

Tim Fletcher and Brian Gillispie were Greyhound seniors. Both were named on honorable mention to the 1-AA all district team.

10 Years ago

Members of the Hansford County commissioners court addressed the shortest session of the court year. The one-item agenda was to renew the contract with both cities of Gruver and Spearman for the housing of municipal prisoners. The Hansford County facility was granted another consecutive certificate of compliance from the state agency on jail standards.

15 Years ago

The only husband and wife team in Hansford County law enforcement activities teamed up for duty. Johnny Pate was a member of the Gruver Police Department, and Shirley Pate was a member of the Hansford County Sheriff's Department. The Pates had returned to the county after completing six weeks basic training in law enforcement at Amarillo College.

School menu

Gruver School Menu
November 30-December 4
LUNCH

Monday—Steak fingers, mashed potatoes, carrots, pudding, hot rolls, salad bar, milk.

Tuesday—Frito Pie, salad, fruit, crackers, milk.

Wednesday—Chicken & gravy, rice, corn, cobbler, hot rolls, salad bar, milk.

Thursday—Pig-in-a-blanket, beans, fruit, cowboy bread, salad bar, milk.

Friday—Hamburgers, lettuce, pickles, french fries, rice krispie treats, milk.

BREAKFAST

Monday—Cereal, muffins, juice, milk.

Tuesday—French toast, syrup, fruit, milk.

Wednesday—Cowboy bread, fruit, milk.

Thursday—Toast, peanut butter & jelly, fruit, milk.

Friday—Cinnamon rolls, fruit, milk.

Special Thank You from the Lisa Lillard Benefit Ball Committee

Watley Seed Co.
Spearman I.S.D.
Commin' On Band
Enron
Lowe's Marketplace
KEYE Perryton
Palo Duro Feeders
Caprock I & II
Spearman Feeders
Interstate Savings & Loan
First State Bank Spearman

Perryton National Bank
Perryton Coca-Cola
Hansford Implement
Perryton I.S.D.
Perryton Activity Center
Hardees of Perryton
Spearman Moose Lodge
Stan Jenkins
John Woodward
Perryton Herald
Palo Duro Club
Gibson's of Perryton

Customer Appreciation Sale 4 DAYS ONLY

Friday & Saturday • Monday & Tuesday
November 27, 28 & 30 • December 1
9:30 a.m. - 5:30 p.m.

Buy any regularly priced item & get a second item of equal or lesser value for 1/2 price

KIDS' STUFF

719 W. 7th
Spearman

Lady Fair

FREE GIFT WRAPPING • LAYAWAY WELCOME

Thanks For Shopping Spearman...
Celebration Days

Saturday & Sunday
Nov. 27 & 28

\$100 DRAWING HELD EACH DAY

Daily Christmas Drawings Begin
November 30 for daily
Gift Certificates

MORE SPECIAL SHOPPING DAYS
IN SPEARMAN

Dec. 3 • Grandparents Day to Shop
Dec. 10 • Youth's Day to Shop
Dec. 17 • Men's Day to Shop

THANK YOU FROM THESE LOCAL MERCHANTS

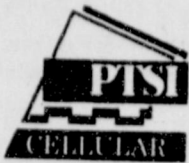
The Bunkhouse	Hi-Plains Auto
Kids' Stuff	J.G.'s
Lady Fair	Celebrate
Prairie Garden Flowers	Cates Men & Boys Wear
ALCO	Hickerson Jewelers
Jo's This N' That	Beedy Furniture
Lowe's Market Place	Five Star Equipment
First State Bank-Spearman	Gordon's Drug
Debbie's Ready or Not	Attic Antiques
Country Stitches	Interstate Savings & Loan

Shop Spearman & Save

Town & Country Review, continued

Panhandle

Telecommunication Systems, Inc. (PTSI)



This is a wholly owned subsidiary of Panhandle Telephone Cooperative, Inc. PTSI offers a wide range of services including business telephone systems, fax sales and service, a 24-hour answering service, a paging service, Rural TV satellite programming, and cellular telephone service. PTSI sells and services Comdial, Mitel, and the Meridian Norstar telephone systems, including the TIE line. PTSI is an authorized dealer for Ricoh fax machines for any size business including thermal and laser plain paper. PTSI has a 24-hour answering service for the medical profession, oil and gas field, utility companies, and small businesses. PTSI provides paging services to the Guymon and Hooker areas. PTSI provides cellular services to the Oklahoma Panhandle. PTSI provides one-stop shopping for satellite TV programming. For any of these services phone 1-800-327-7525.

Tucker Testing

Tucker Testing service & sales is located at 309 E. Russell in Hooker, phone (405) 652-2844. Here they specialize in grain elevator and feedlot moisture testers, service and sales on most late models. A business of this type is essential to the entire section of the Panhandle, by fair and honest methods, this concern has gained the confidence and patronage of the people in our area. A fine spirit of cooperation has always prevailed in every transaction and we in this Town and Country Review wish to recommend this firm to our readers. We take pleasure in commending the management for their part in forwarding the development and progress of the Panhandle.

Electric Motor Service Inc.

Repair-Rewind-Rebuild-Industrial Generators-Phase Convertors

Electric Motor Service located at 334 South Virginia in Liberal, phone (316) 624-1132 or 1-800-466-1140, is equipped to render you a complete electrical motor service. When you have electrical motor repair work to be done, you can rest assured that it will receive the attention of qualified personnel and the best service, if this firm is consulted. They are experienced, trained to do the job efficiently and use only the best materials. So, from the standpoint of thoroughness, the policies of this reliable company are of the best to be secured. Nothing in the way of an electrical motor is too small or too large. It is with great pleasure that we call your special attention to this firm and that you make this your headquarters for electrical motor work.

B & J Supply

B & J Supply, located at 707 E. Brillhart in Perryton, phone 435-7667 and at 439 South Kansas in Liberal, phone 316-624-0303. They feature pipe for all purposes including irrigation and water well casing, fittings, pipe threading and structural steel. B & J Supply is doing everything in their power to satisfactorily supply all their customers with pipe at reasonable prices. They carry a stock of used pipe for your convenience and economy. In this Review issue, we wish to bring attention to B & J Supply in Perryton and Liberal. They have built a fine reputation for square dealings and they have many satisfied customers through their honest efforts in serving the public and the Tri-state area. Be sure and see them for all your pipe needs.

Morse Implement Company

Morse Implement Company located off Highway 136, 1 mile off the road, on Main Street in Morse, phone 733-2668. They have had years of experience in furnishing just the right machine for the job. When you buy farm equipment you want to know that you are getting machines that will stand up to the job. The equipment here can be depended upon to give the maximum service per dollar invested. We wish to point to the fine reputation they have built. They are noted for square dealings and will stand behind every purchase. Trade with a firm you can depend upon and this is the one!

Perryton Feeders Inc.

DEPENDABILITY and Perryton Feeders go hand in hand, a fact well recognized in this area. Located 13 miles south of Perryton on Highway 70, phone 435-5466, this excellent firm offers a very wide service. They have been serving this area for many years. They feature custom cattle feeding specializing in the fast weight-gaining operation. They are there when you need them and will be happy to be of service to you. They are knowledgeable in their line of business and have the experience that enables them to serve their customers better. We are fortunate to have this reliable concern in our area and suggest you patronize them when in need of this service.

Texas New Mexico Power Company

It is a well known fact that there is no institution in this community that has done more toward the development and progress of this section than Texas New Mexico Power Co. They operate one of the finest equipped utility companies in the Panhandle. Texas New Mexico Power Co. Perryton district office is located at 222 South Amherst, phone 435-4077. The service furnished by them is rendered at the most reasonable rate. No Review of the business, agricultural, oil and industrial interests of this section of the Panhandle would be complete without prominent mention of Texas New Mexico Power Co. Almost everything can be powered by electricity—thus electricity is helping to conserve our natural resources. It's through their efforts that we're able to enjoy our modern life-style even more.

Senior Village Nursing Home

Rita Hargrove—Administrator

Residents of this area can find the best care for those they care for the most when they learn first hand of the extensive facilities at Senior Village Nursing Home affiliated with M.S.C. Associate of Lubbock located on HWY. 83 S. in Perryton, phone 435-5403. Those who have reached the age of retirement and prefer the company of their own generation can find here the kind of pleasant relaxed atmosphere they've spent most of their lives EARNING. Twenty-four hour nursing care, physicians and pharmacists available, a healthy diet for all residents including special diets. This is just a part of the services featured here where they add years to senior citizen's lives, and LIFE TO THEIR YEARS. Programmed activities available. You will find that your loved ones will receive the best care here.

Ochiltree General Hospital

Ochiltree General Hospital is located at 3101 Garrett Drive in Perryton, phone 435-3606. This totally integrated medical facility combines all of the technology currently available. The caring staff of M.D.'s and R.N.'s is supplemented by L.V.N.'s to provide you with the very best medical care. One of the area's finest medical staff provides the backbone for this outstanding hospital, and coupled with maternity, C.C.U., physical therapy, obstetrics, home health care and outpatient surgery, provides medical care which is equal to the finest in the Panhandle. They are dedicated to providing the ultimate in health care for the people of the area. We in this Review urge you to support this fine hospital, one of the cornerstones of the Panhandle. They recognize all Medicare, Blue Cross and approved insurance plans.

Buzz Equipment Inc.

Buzz Equipment is located at 17 S.E. 12th Ave. in Perryton, phone 435-2441 or 1-800-762-9641. They are the authorized Altronic dealer and do starters, alternators and magnets. These men are specialists in this field. It is their major field, not just a sideline, and they are capable and efficient in all work they do. You can depend on the reliability of this firm for they have built an envied reputation for themselves throughout this entire section. When you have work of this type call this firm first. They give free estimates gladly. Call them if you want the job done right.

Arkoma Transports Inc.

Well Treating Service

When you see you are going to need the services of a tank truck, your next thought should be Arkoma Transports in Perryton, located at 20 South Juniper, phone 435-2380. This well equipped trucking company with first class equipment and competent operators will handle your products just the way you want the job done. They offer vacuum truck service, pump trucks, transport trucks, Frac tanks and 24 hour hot shot service. Their crews are on call day or night and the trucks are equipped with 2-way radio communication. No matter where your lease is located or how far the product is to be hauled, they will give you good conscientious service and expedite the job to your complete satisfaction. We in this Review recommend them.

Minding Your Own Business

by Don Taylor, Director, PSBDC

The law of thanksgiving
I don't suppose I could have picked a better time for Thanksgiving than late November, had I been in charge. Thanksgiving and autumn are a natural match.

Crops are harvested and summer's fruits are stored away for winter enjoyment. God has painted the landscape with vibrant colors, as if to give us one last burst of glory before winter's bleakness.

Christmas is still a month away and the Halloween candy is all gone. The World Series is still a pleasant memory and the Super Bowl is an anticipated delight. It is a time for hayrides, bonfires, hot dogs, marshmallows and cuddling.

The mornings are nippy, but the sun warms the mid-day for football in the backyard and last minute chores around the house. Severe winter weather is usually a few weeks away and so are final exams. Yes, November is just the right time for Thanksgiving.

However, in this column I want to go beyond a discussion of Thanksgiving Day and get into the true meaning of the word thanksgiving. You see, there is a law of thanksgiving that goes far beyond the day or the season. If you understand the law, you can lead a more exciting and rewarding life every day of the year.

The stages of thanksgiving
The thanksgiving law has three elements. The first element is a warm feeling of the heart. This stage of thanksgiving is a personal one. It is a feeling of contentment. With me, it is a feeling that comes after hard work and knowing that I ac-

complished something worthwhile this day. It is a sense that all is well between me and my maker.

I often experience this stage of thanksgiving when I'm with family and friends. It occurs when we gather to eat or when we are relaxing and sharing memories.

The second stage of thanksgiving is the expression of thanks to others. Our expression may take the form of a card or letter. It may be a phone call or perhaps it's a gentle squeeze of the hand.

I'm convinced there is a shortage of this expression in our world today. Genuine thank you's are rare. We are too busy or too self-centered to experience the fulfillment that comes by expressing our gratitude.

Moving to this stage of thanksgiving is not only personally rewarding, but also helps others. Often my load is lightened, my attitude improved or my heart lifted by someone's simple expression of thanks. Like a sincere compliment, thank you's are a balm to the soul.

The ultimate thanksgiving
We are blessed as Americans. This truly is a land of plenty. We are blessed with freedom and a high standard of living. And through our blessings we have the ability to experience the ultimate thanksgiving.

This final state of thanksgiving is to give of yourself in return. To be thankful in your heart is pleasant. To express your thankfulness to others is important. To give of yourself is the ultimate form of thanks.

The Bible teaches that it is more blessed to give than to receive. It has taken a while for that message

to sink into my consciousness. Like most, my first nature is to get, not give.

However, in recent years I've observed that the happiest people are givers. The ones who give of themselves without thought of reward or payment. They may not possess material riches, but they have what money cannot buy. They have peace, contentment and joy.

Like the pilgrims of old, the givers can celebrate their blessings with those around them. However, for the givers, it is not just a day or a season, it is a lifestyle. To those of you who have arrived, let me express from those of us who are still on the journey, a heartfelt "Thank you."

One half of knowing what you want is knowing what you have to give up to get it.

—Sidney Howard



People who always feel the cold can ease their aches with the help of a fabric declared the world's warmest.

K-Bobs Steak House

For that special occasion or just an evening out, this Review suggests you take your guests to K-Bobs Steak House for some of the very best steaks in the Panhandle, located on Hwy. 83 S. in Perryton, phone 435-5573. Delicious steaks, cooked to order to suit the most discriminating tastes are featured here along with seafood and soup and salad wagon. Private rooms are available for you and your guest, party, or business meeting. Great atmosphere and service are also good reasons for recommending this fine restaurant to our many readers. For the best in dining pleasure, for the best steak you ever ate, for a meal that is unforgettable, you owe it to yourself to make the short drive to Perryton and see for yourself.

Dos Caballeros

For Mexican food, the people of the Panhandle go to Dos Caballeros located at 16 S.E. 15 Ave. in Perryton, phone 435-3597. Through the efforts of the management here to serve only true Mexican dishes with a real flavor of the country, as well as interesting Mexican decor, this restaurant has become a nice eating place. They employ Chefs that know how to prepare Mexican dishes as well as American food. Contrary to the belief that Mexican food is very hot, they serve all their dishes with the hot sauce and peppers on the side so that you can enjoy it the way you want it. For a place to eat authentic Mexican food in the same atmosphere and with friendly service, we suggest that you visit this restaurant.

Perryton Glass & Tile

People throughout this area agree, that when it comes to glass replacements the name Perryton Glass & Tile stands head and shoulders above the rest. Located at 11 E. Brillhart Ave. in Perryton, phone 435-2113, has established a record of dedicated service to the business people and homeowners, by serving their needs promptly and reliably. Whether it involves a store front, window in your home, shower doors or anything made of glass, this is one company that is in business to serve. They stock quality glass and can cut any weight needed to the exact size—double weight, thermopane, safety glass, mirrors, shower doors and many other specialties are offered. They also have indoor/outdoor carpet, linoleum, vinyl and sell and install garage doors. We recommend them.

Rayco Lease Service / Ace Plugging

Rayco Lease Service / Ace Plugging located on Dumas Hwy. in Stinnett, phone 878-3369, has years of field experience behind every service they may give your well. If it is casing plugging, well plugging or lease service, this is the firm to call. They maintain at all times a complete stock of oil field equipment to serve your well properly. Your lease is a valuable piece of property. It deserves the dependable service that only this firm offers at the very minimum in cost. Putting your confidence in them will pay big dividends for you and your well lease. They have served the Panhandle for years and will continue to serve with the same courteous dependability that has made it so outstanding. Try them once and you'll use them always.

Coldwater Manor

With some of the finest facilities anywhere Coldwater Manor has become the Panhandle preferred nursing home. They are located at 1111 Beaver in Stratford, phone 396-5568. Ideally suited for ambulatory and bed-fast patients, the patient can get the kind of attention and professional nursing care that's needed when health is failing. There's a staff dietician to keep a close eye on the patient's eating habits and the kitchen prepares individual meals to dietary specifications. Physical therapy, exercise, recreational activities and personal attention makes this nursing home a nice place to be as well. We highly recommend this fine nursing home to anyone needing the utmost in quality care.

Scott Crockett D.O.

Most people have fond memories of the caring treatment they received from their family doctor. From broken bones to routine check-ups, he was always there when you needed medical attention. Dr. Scott Crockett strives to maintain the combination of old fashioned skill and care with modern up-to-date knowledge and technology. Urgent care for burns, cuts or broken bones can be treated quickly. Viruses, including colds and influenza, often require immediate attention as well. That's when you need the reliable services of a family physician. Dr. Scott Crockett provides prompt, professional treatment for minor emergencies and complete family medical care. Dr. Scott Crockett is conveniently located at 1220 Purnell in Stratford, phone 396-5583 for an appointment.

Water Right Irrigation



In this Review we are happy to list Water Right Irrigation located in Texhoma, Oklahoma, phone (405) 423-7719 (nights 405-423-7515) as one of the most outstanding businesses in the Panhandle. The management of this firm can easily qualify for the Who's Who of outstanding business and professional personages of this area and we compliment them upon their excellent business methods and policies. This company is a valuable asset to the Panhandle. They offer many outstanding services including: domestic irrigation and stock water well drilling, pump selling and repair on all brands of pumps and gear head repair as well as the authorized dealers for Reinke Irrigation Systems. They give free estimates gladly.

Town & Country Review

Copyright 1992 by Connie Logan Advertising Company, Inc., Oklahoma City, Oklahoma, T.M. Reg. U.S. Patent Office, Washington, D.C. Newspaper Accounting Service is solely responsible for sales, contents and collections of this Review.

Spearman Tire Center

Where can you get the finest tires and save lots of money doing it? In this area, people go to Spearman Tire Center located at 421 W. Kenneth, in Spearman, phone 659-3056. Here the selection is larger, the service better and the prices lower. As your dealer for famous Farmland and Bridgestone quality tires, this reliable firm is in the tire business to serve. There are tires for cars, trucks, tractors and industrial equipment. Their selection is larger so that you can be assured of finding just what you want every time. Mounting, balancing, repairs and a host of other conveniences are featured to make this the area's complete tire center. We in this Review recommend them.

Randy's SAS Shoes

Randy's SAS Shoes in Amarillo, located at 2632 Woflin, phone 353-2404, is modern in every respect and features the famous SAS brand shoes. The personnel are efficient and experienced ensuring you of perfect fit in the shoe styles of your choice. They offer perfection fitting as well as shoe value you won't want to miss. Their stock includes SAS shoes for men and women, shoes at prices that are always reasonable. Here quality and style reign paramount and variety is cardinal. So, the next time you think of shoes think of Randy's SAS Shoes. Here you will always be assured perfect fit in the latest styles. This Review recommends them for excellence, courtesy and dependable service they provide for the people in the Panhandle.

The Pampered Lady

Louise Gipson—Owner

Distinctive creations await the women of the area at The Pampered Lady located at 2510 Paramount in Amarillo, phone 355-9486. This is one shop where fashion never takes a back seat! They feature outstanding designs and they'll show you some of the absolute latest in glamorous apparel. Quality is the prime concern at this reputable shop. They've been serving the needs of the area's most discriminating women for years and their dedication to supply you with nothing but the finest is your assurance that every garment purchased here will give you the kind of service that you're looking for! This Review urges all of our readers to stop here and look over the latest creations offered by this outstanding shop. "Shop early for Christmas."

J. Winston

"WHERE SMART WOMEN SHOP", one of the more renowned firms in this field of ladies ready-to-wear is J. Winston in Amarillo at 2701 Paramount, phone 358-2457. Here you will find a variety of ladies wearing apparel suited to every taste. The clientele of this firm is composed of the discriminating who demand satisfaction in their every purchase. Meeting this demand with high quality clothing and reasonable prices has been a prime factor in the rapid success of this firm. You are invited to make your selections here where you will be able to choose from a wide range of fine garments. In this Review, we suggest that you drop in to see them for anything in the ladies clothing line. Shop early for Christmas.

Shiver-Megert & Associates

One profession, the importance of which we do not often recognize, is that of the architect. Applying their skills to the design and planning of our commercial buildings, Shiver-Megert & Associates devotes themselves to providing basic structural soundness and practicality while preserving the beauty of our environment. We are not often made aware of the important contributions of the architectural firm because they do not generally publicize their services. The architect will design the building to be sound in structure, reasonable in cost and attractive in design utilizing modern advances in this highly specialized field. Shiver-Megert & Associates strives to complete each project with skill accuracy and expertise. You can reach them in their offices at 102 E. 9th; Suite 200 in Amarillo, phone 372-5662.

Beaver City Stockyard

"Where a handshake is still a contract"

Beaver City Stockyard—"Oldest livestock auction west of the Mississippi since 1919" is located at 20 Ave. 1 in Beaver, phone Bill Skaggs (405) 625-3051 or Berry Skaggs (405) 625-4564. They offer many advantages for the livestock rancher interested in getting the most for his product. Buyers from all over the Panhandle are in attendance at the sales and YOU are assured of getting absolute top dollar for your animals when you bring them here. It always pays to do business with a company that gives you a choice of markets for your livestock. This firm does just that and their reputation as the "CATTLEMAN'S BEST FRIEND" is your best guarantee of fair treatment and a good price! Livestock auctions are held every Wednesday at 11 A.M.

Borger 66 Federal Credit Union

Member-NCUA

Financial security doesn't come easily for most of us. We have to save for it and manage our money wisely. In Borger we have a friend who will help us with all of our money matters. It is Borger 66 Federal Credit Union located at 366 Borger Shopping Plaza, phone 273-9506. Saving, lending and financial counseling by knowledgeable financial people whose interest in their members comes first. Savings are insured to \$100,000 per account by NCUA. We should all improve our financial picture, these experts at Borger 66 Federal Credit Union have sound procedures for you to do so. If you or your group are not now a member of a credit union contact this fine credit union soon and find out about the many advantages offered by them.

Brad L. Steger O. D.

Brad L. Steger O. D. is located at 619 Deahl in Borger, phone 274-6341. This outstanding professional specializes in family eye care including the fitting and prescribing of contact lenses, daily wear and extended wear, eye diseases, learning disabilities, sports vision, children's vision and senior citizens vision. Where your eyes are concerned there is no substitute for quality care. Many times eye problems can interfere with learning, driving and your feeling of general well being. Don't put off your visit for an eye examination. Phone today for an appointment to see the professional that can give you a better and clearer outlook on life.



Edward D. Jones & Co.

Edward D. Jones & Co. located at 605 W. 3rd in Borger, phone 274-7301, has become one of the leading stock and bond brokers in the Panhandle. Gary A. Schneck, local investment representative, realized that in order to have done this, he had to have the whole-hearted and sincere support of the community of which they are a part. They invite you to call, or drop in anytime. They have dedicated themselves to aiding in every possible way all those who rely on them. As a result, that much discussed word "SERVICE" finds true meaning in the friendly atmosphere that envelopes everyone who comes to them. We commend them for their community-minded activities and interest in the people of this area.

Frank's Floor Covering & Carpet Care

Frank's Floor Covering & Carpet Care, located at 423 N. Main in Borger, phone 274-3929, offers you the best in floor coverings. They handle a complete line of carpets, besides a vast selection of Vinyls, tiles and wood. If you need new floor covering for your home or place of business call this reliable firm for a free estimate. A friendly representative will give you any advice you may need on your floor covering problems. This firm furnishes expert installations by master craftsmen that are guaranteed to please, also steam cleaning, water removal etc. So, for the finest quality and most reasonable prices this is the place to buy. Go in and look over their beautiful displays.

Morton Lumber Company

Morton Lumber Company in Borger at 211 N. Cedar, phone 273-6261, has a complete line of builders supplies and lumber in stock at all times. Above all, a firm must give the people what they want, when they want it. This is the reputation they have built in this area. They are providing for the public, the best in building materials at the most reasonable cost. Here you can obtain quality lumber, paint, builders hardware, plywood, windows & doors, carpenters tools, siding, roofing materials and more. Take your building problem to them and they will be more than happy to help you. We congratulate them for the reputation they have built serving the public. 7:30 A.M.-7 P.M. Mon.-Fri; 7:30 A.M.-5:30 P.M. Sat.; 1 P.M.-5 P.M. Sun.

Lorene's Drapery

Exciting, unusual custom made draperies await you at Lorene's Drapery in Dumas at 1301 Dumas Ave., phone 935-6044. One of the largest selections of drapery fabrics in this area can be found at this fine establishment. Extensive selections of solids, prints and drapery murals for every decorating scheme are featured. They will be pleased to discuss your color and texture needs at your home or in their shop. Decorative and hard fabrics are available for use in businesses and institutions. This respected specialty shop features this area's largest selection of blinds including vertical, mini blinds, micro blinds, pleated shades, roller shades and draperies for any and all windows. We in this Review are pleased to be able to recommend this outstanding merchant for the finest window treatments.

J.C. Penney Company Inc.

A shopping tour would not be complete without a stop at J.C. Penney Company located in the Borger Shopping Plaza in Borger, phone 273-9515. This is a modern family center where the shopper can fill many needs for the home and family. Here you will find items not found in other stores and each purchase will represent a savings that will assist you in living within your planned budget. Knowing the best source afforded by today's markets, the manager sees that all merchandise is of the best quality and at prices the customer can afford. The word "service" when applied to this firm takes on its full significance whether the purchase is large or small. We highly recommend this store to all our readers. "Shop early for Christmas."

The Tree House

Whether you're in need of a new outfit for a growing baby, a party dress for your little girl or rugged play clothes for that little boy, The Tree House is your one-stop center for clothing for children of all ages. Conveniently located at 624 Dumas Ave. in Dumas, phone 935-6353, is the Panhandles most complete children's store. You will find dress and play clothes in sizes to fit your children. The type of garments featured are just the styles that the kids want. So, whether you've got one child or "a little army" you'll find everything that you and your child will love. "Shop early for Christmas." Open 10 A.M.-6 P.M. Mon.-Sat. Will be open on Thurs. till 8 P.M. during the holiday.

Johnson Home Furnishings

QUALITY FURNITURE AT REASONABLE PRICES is a paramount feature at Johnson Home Furnishings at 1200 S. Dumas Ave. in Dumas, phone 935-2114. They feature a complete line of furniture and home accessories to create any desired interior regardless of how your taste may run. They are also your authorized dealer for Ashley wood products, Whirlpool, White, Westinghouse, Sharp and RCA. You will also find here an extensive line of glass, lamps, wall fixtures, and many other items of quality to add to the beautiful appearance of your home. Shop here and save, terms available to suit your budget. We compliment the management of this firm upon the high quality of their merchandise and their fair prices.

Built To Please

People in The Panhandle don't have to look far and wide for a firm which is capable of doing the highest quality auto body painting, repair work, restoration and customizing. Built To Please located on Highway 15 in Follett, phone 653-2066 can refinish, repaint, restore or customize any car or truck foreign or domestic. Their work is fast, economical and beautiful! When you bring your car to Built To Please in Follett you can rest assured that the work will be done to your exact specifications and that the estimate will match the final statement. Insurance companies must now permit you to choose the body shop you like best. We suggest you choose this one! Insurance claims welcome.

Gruver Agri-Industries Inc.



Familiar with soil conditions throughout the Panhandle, Gruver Agri-Industries located in Gruver, at 200 W. Broadway is ready, willing and able to provide a complete fertilizer service and Purina Feeds. Their fertilizers are guaranteed to produce better results for the farmers and cattlemen. For any information about your fertilizer problems, this Review suggests you call 733-5005 and they will be happy to assist you in anyway they can. Expert counseling is given and the best in custom fertilizer application can be expected if you consult these friendly folks. We the writers of this Review wish to recommend the services and products of Gruver-Agri Industries and their efforts to serve the farmers and ranchers of the Panhandle.

Palo Duro Feedyard

MR. RANCHER! You know that times aren't easy for the LIVESTOCK GROWER. Smart Cattlemen are utilizing the services offered by Palo Duro Feedyard to cut down on their costs and increase their profits. They are located 10 miles South of Gruver on Highway 136, phone 733-2416. You're assured of getting TOP DOLLAR when you turn your livestock over to this custom cattle feeding operation. Like to know more about what's involved in cattle feeding? TALK LIVESTOCK with an expert at this dependable feed lot. Their lot is the perfect answer for the best market price in the shortest possible time. We can say with confidence that your profits will increase when you let them handle your cattle growing chores! Contact Craig Clyburn-Gen. Mgr. or Dwayne Thompson-Mgr.

Caprock Industries

Richard Winter-Lot #1 Manager; Jeff Rudolph-Lot #2 Manager

Caprock Industries, Lot #1 Southwest of Gruver, phone 733-5043, Lot #2 Northeast of Gruver, phone 733-5025, specializes in commercial cattle feeding the year around. They feature all modern feed lots and experienced hands who are more than qualified to handle your stock. They feed only the best feed to insure you of MORE WEIGHT on your beef in the shortest period of time. Several customer service options are available, including: guaranteed fat cattle prices at anytime during the feeding and ratio prices can be locked in at anytime. Farmers and ranchers have been using the service rendered at these lots with the greatest satisfaction, knowing they can rely on this feed lot to fatten their beef for market. We in this Review are happy to recommend them.

Gruver Cablevision

Featuring channel after channel of brilliant reception, cable T.V. has become one of the favorite entertainments in the homes of this area. We're indeed fortunate in having a quality minded company like Gruver Cablevision in charge of cable T.V. in the area. Located at 308 Main in Gruver, phone 733-5295, they offer cable service for a small installation fee and a low, low monthly service charge...YOUR FAMILY can enjoy the unparalleled quality that cable television can provide. For your convenience, they offer free service on any problems that may occur with your cable T.V. Another major benefit of having cable T.V. is being able to select from many channels. Contact them today to find out how easily YOUR FAMILY can enjoy the many advantages of cable T.V.

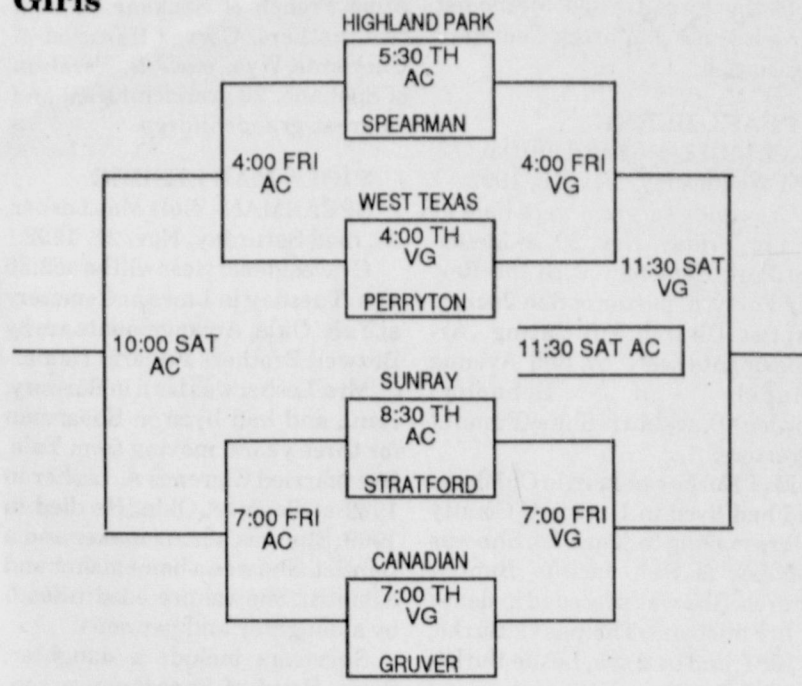
Panhandle Implement of Guymon

ZIMMATIC

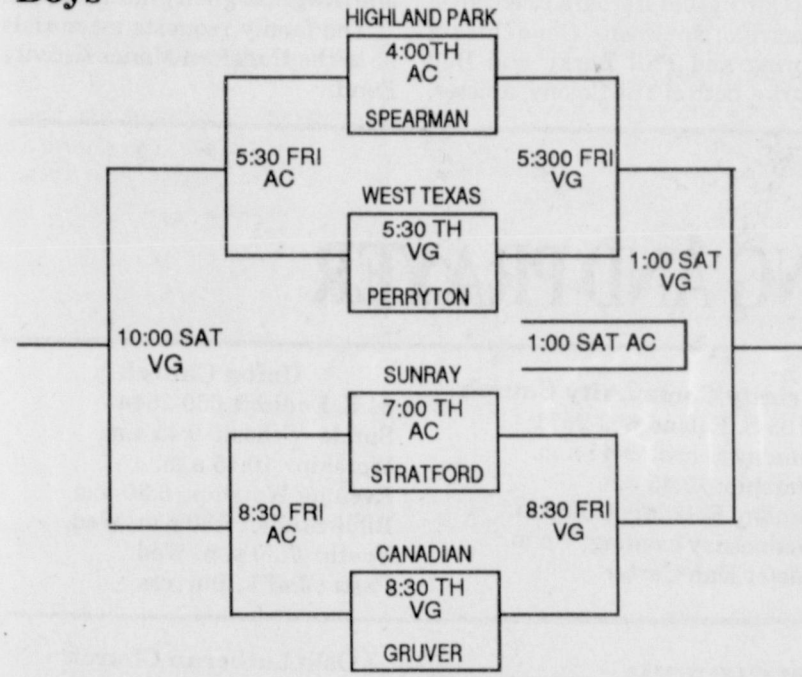
The Raining Champion.

Panhandle Implement of Guymon at 1108 N.E. 12th in Guymon, phone (405) 338-8511, is YOUR IRRIGATION HEADQUARTERS. A Zimmatic irrigation system benefits you in many ways. The dependability and economy of the drive train with 5 years or 5000 hours warranty on center drive and gear box is outstanding; equally important is the dependability and economy of the service. Let one of their representatives help you develop an irrigation system tailor-made to fit your needs. A properly developed irrigation system tailor-made to fit your needs. A properly developed irrigation system can reduce the gamble concerning rainfall, giving you your share of assurance in production results. They will advise you where irrigation is practical and recommend an efficient, economical system using just the right combination of pump and power for your needs. See them FIRST...information and estimates without obligation.

Gruver JV Tournament, Dec. 3, 4, 5
Girls



Boys



VG = Varsity Gym
AC=Activity Center

Gruver greyhounds... wins over Sanford-Fritch

by Bob Bort
The Gruver Greyhounds and the Gruver Lady Hounds varsity basketball teams each won their game with the Sanford-Fritch teams this past Friday, Nov. 20, and each of our teams looked good winning.

In the Lady Hounds game, they relied on a stifling defense which limited the Lady Eagles to only 9 points in the first half. Gruver fans are so used to seeing the boys play defense with their Houndball, that it is impressive for the Lady Hounds to take over and look super on defense too.

"I thought we played pretty good," said Gruver coach Steve Myatt. "We got into foul trouble, but didn't let it bother us. We did a good job of adjusting after Holly fouled out, and our bench played really well."

Myatt add, "Our defensive intensity was better, and we're executing our offense better. I think we made a good team look bad."

Again, as in the game with Miami, Wynn Maupin and Mika McLain were leading scorers, with 14 and 11 points respectively. Gruver took a 4-2 lead early in the game, as Julie Meyer hit from under the basket, and the Lady Hounds were never caught. Gruver held the S-F top gun, #20 DeShields, at bay and scoreless for the first half, as Gruver led 19-9 at the intermission. All in all, a very impressive win for the Lady Hounds.

The Hounds blew apart the Eagles 76-60, and won their 16th straight home game, dating back to Dec. 31, 1990. The last team to beat the Hounds at Greyhound Gym as the Borger Bulldogs.

"I thought we played hard, and I thought we played well," said

Gruver coach Tim Garland. "We did a lot of things good, including playing really well on defense. I was pleased after looking at the game on film."

The Hounds trailed in the first quarter 8-6, but with 3:50 left in the quarter, Kevin Spivey hit on a jumper for 3-points, and Gruver took the lead 9-8 and the Hounds were never caught.

Sanford-Fritch was not a bad team—like the ladies, the Gruver team just made a good team look bad. Gruver's largest lead was 23 points, 56-33, in the third quarter.

Jeffrey Price had a big game with 18 points, and Brady Pool added 17. But as a team, the Hounds are really looking super this year, as Coach Garland is substituting players liberally throughout each game, and everyone is playing well.

Here are the linescores: V. Girls (2-0) vs. Sanford-Fritch 11-20-92 at Greyhound Gym Gruver 51, Sanford-Fritch 37 3-pointer: Sara Jones.

Wynn Maupin-14, Mika McLain-11, Julie Meyer-7, Cora Meyer-6, Sara Jones-5, Tisha Ralston-5, Wendy Rodriguez-3.

V. Boys (2-0) vs. Sanford-Fritch 11-20-92 at Greyhound Gym Gruver 76, Sanford-Fritch 60 3-pointers: Kevin Spivey (3); Brady Pool; Jeffrey Price.

Jeffrey Price-18, Brady Pool-17, Kevin Spivey-13, Kenton Odom-9, Carey Kauffman-6, Jace Dawson-5, Aaron Frick-4, Cody Barkley-2, Matt Etheredge-2.

Scott's Chimney Sweep
PREVENT CHIMNEY FIRES
(806) 323-5859
Canadian, Tx
• Reliable • Friendly
• Clean Jobs
Serving the Panhandle area since 1981

Gruver basketball roundup

9th Grade Boys (2-0) vs. Booker 11-19-92 at Perryton Tourney Gruver 47, Booker 19

3-pointers: Scott Jarvis. Sammy Renteria-13, Travis Ferguson-10, Max Frick-8, Daniel Bort-4, Tye Womble-4, Scott Jarvis-3, Phil De LaCruz-2, Wylee Maupin-2, Bailey Barkley-1.

JV Girls (2-0) vs. S-Fritch 11-19-92 at Perryton Tourney Gruver 64, Sanford-Fritch 39

Kiki Carthel-14, Molly McLain-14, Shanna Jarvis-13, Kayce Haenisch-8, Jana McCloy-6, Tara Shapley-6, Kim Venneman-3.

JV Boys (1-1) vs. Sanford-Fritch 11-19-92 at Perryton Tourney Sanford-Fritch 51, Gruver 47

3-pointer: Jake McCullough. Grant Odom-10, Victor Lopez-9, Fabian Salazar-8, Jake McCullough-5, Michael Foster-4, Ricardo Soto-4, Andy Jones-2, Roma Tomlinson-2, Eric Wright-2, Kevin McNett-1.

9th Grade Boys (3-0) vs. H.P. 11-20-92 at Perryton Tourney Gruver 65, Highland Park 46

3-pointers: Max Frick, Scott Jarvis.

Sammy Renteria-13, Wylee Maupin-12, Bailey Barkley-11, Max Frick-10, Daniel Bort-8, Travis Ferguson-6, Scott Jarvis-3, Phil De LaCruz-2.

JV Girls (2-1) vs. Guymon 11-20-92 at Perryton Tourney Guymon 51, Gruver 41

Kiki Carthel-12, Molly McLain-12, Kayce Haenisch-9, Shanna Jarvis-4, Kim Venneman-4.

JV Boys (1-2) vs. Guymon 11-20-92 at Perryton Tourney Guymon 53, Gruver 45

3-pointers: Victor Lopez (2); Roma Tomlinson (2); Grant Odom. Victor Lopez-13, Roma Tomlinson-10, Grant Odom-7, Eric Wright-7, Ricardo Soto-4, Jake McCullough-2, Fabian Salazar-2.

9th Grade Boys (4-0) vs. Dalhart (Championship)

11-21-92 at Perryton Tourney Gruver wins by forfeit—Dalhart cancelled due to inclement weather conditions.

JV Girls (2-2) vs. Perryton (3rd Place)

11-21-92 at Perryton Tourney Perryton 51, Gruver 45

3-pointers: Kiki Carthel (2). Molly McLain-13, Shanna Jarvis-11, Kiki Carthel-8, Kayce Haenisch-8, Tara Shapley-3, Kim Venneman-2.

WORKING HARD TO... SERVE YOU BETTER

Golden Spread Sales Company Invites Conoco credit card holders to use their cards to buy PHILLIPS 66 products While they apply for a PHILLIPS 66 Card

PLUS

We now offer In The Field • On The Farm • 24 Hour A Day Truck and Tractor TIRE REPAIR SERVICE

GOLDEN SPREAD SALES CO.
Petroleum Products 414 S Hwy. 207 Spearman
Gasolr 3, Diesel, Propane, Farm Fertilizer
LPG Bottle Filling
"Serving the area for 25 years"

Phone 806/659-3776 806/659-3141

Beauty in things exists in the mind that contemplates them. —David Hume

PUBLIC NOTICE

GTE Southwest Incorporated (GTSW) and Contel of Texas Inc. (Contel) have filed an application with the Public Utility Commission of Texas to seek approval to provide two new private line services and to change rates for existing services. GTE's intraexchange DS1 Service will be offered pursuant to the rates proposed with this filing and will no longer be available through concurrence with GTE's interLATA access tariff rates which are lower. Contel's intraexchange DS1/DDS Service will be offered pursuant to the rates proposed with this filing and will no longer be available through Contel's current private line tariff rates. Existing customers with DS1/DDS Services will not be affected by these rate changes. DS1 1.544 Megabits per second (Mbps) Service and Digital Data Service (DDS) will normally be used for the transmission of data communications or large volumes of voice communications between two locations. These services are optional and will not affect the existing rates of customers who do not order these services. The estimated annual effect on GTE-SW's revenues in the first year is \$1,080,567. The estimated annual effect on Contel's revenues in the first year are \$42,383.

DS1 Service
DS1 Service is an intraLATA Private Line Service which provides a dedicated, high capacity channel which may be used for simultaneous two-way transmission of voice data or other digitally encoded customer information signals. DS1 Service provides a transmission speed of 1.544 Mbps and is designed to provide an average performance of at least 95 percent error-free seconds of transmission over a continuous 24-hour period.

DS1 Service is available in and between all exchanges of GTE-SW and Contel where digital facilities exist. DS1 Service is available on a point-to-point intralATA basis between two Customer Designated Locations (CDL) between a Serving Wire Center (SWC) and a CDL, between a CDL and a point of connection with another service provider or between two SWCs.

IntraLATA DS1 Private Line Service is comprised of three rate elements: DS1 Local Loop, DS1 Transport and DS1 Transport Termination. Each element is described below.

DS1 Local Loop
This rate element is for the cable facilities from the CDL to the SWC. The customer has two payment options for the purchase of DS1 Local Loops. There is a month-to-month plan or term contract Optional Payment Plan (OPP).

The month-to-month payment basis allows the customer to establish and disconnect DS1 Services, without penalty, other than to meet the minimum service interval of one month's service, as needed. Under the month-to-month service, the additional DS1 Local Loop rate applies only when the additional DS1 Local Loop (s) is (are) ordered at the same time and between the same two CDLs as the first DS1 Local Loop.

The OPP plan allows the customer to select a term of service (1 YR, 3 YR and 5 YR) with lower monthly rates associated with longer term contracts. If the customer selects an OPP, additional DS1 Local Loops may be ordered and installed at the Additional DS1 Local Loop rate between any SWC and CDL covered by the OPP, at any time during the term of that OPP.

DS1 Transport
This rate element is for the mileage sensitive charges for transporting a DS1 signal between Serving Wire Centers. Transport occurs only when the two CDLs being connected are served by two different SWCs.

DS1 Transport Termination
This charge applies only when DS1 Transport is required for the service configuration of the customer. One transport termination charge applies at each end of the DS1 Transport.

Proposed Rates and Charges for DS1 Service are as follows:

	Nonrecurring Charge	Monthly Rates
DS1 Local Loop		
Month-to-Month		
First System	\$ 1,000.00	\$ 298.00
12-month term	-0-	\$ 283.00
36-month term	-0-	\$ 255.00
60-month term	-0-	\$ 226.00
Additional System	\$ 130.00	\$ 130.00
DS1 Transport		
Per airline mile	-0-	\$ 16.00
DS1 Transport Termination		
Per Termination	-0-	\$ 40.00

Digital Data Service
Digital Data Service (DDS) is an intraLATA Private Line Service which supports synchronous, full-duplex transmission between the CDL and the SWC or the point of connection with another telephone company at transmission speeds of 2.4, 4.8, 9.6, 19.2 and 56 kilobits per second (Kbps). DDS provides a transmission path for digital data signals within the same LATA.

DDS Service is available in and between all exchanges of GTE-SW and Contel where digital facilities exist. DDS Service is available on a point-to-point intralATA basis between two CDLs or between a CDL and a point of connection with another service provider.

IntraLATA DDS Private Line Service is comprised of three rate elements: DDS Local Loop, DDS Transport and DDS Transport Termination. Each element is described below.

DDS Local Loop
This rate element is for the cable facilities from the CDL to the SWC. The customer may establish and disconnect DDS Local Loops without penalty other than the minimum service interval of one month's service, as his/her needs demand.

DDS Transport
This rate element is for the mileage sensitive charges for transporting a DDS signal between SWCs. Transport occurs only when the two CDLs being connected are served by two different SWCs.

DDS Transport Termination
This rate element is for the equipment to terminate DDS Transport at the SWCs. This charge applies only when DDS Transport is required for the service configuration of the customer. One transport termination charge applies at each end of the service.

Proposed rates and charges for DDS are as follows:

	Nonrecurring Charge	Monthly Rates
DDS Local Loop		
2.4, 4.8, 9.6, & 19.2 Kbps	\$ 85.00	\$ 85.00
56 Kbps	\$ 85.00	\$ 95.00
DDS Transport		
Per airline mile	-0-	\$ 1.60
2.4, 4.8, 9.6 & 19.2 Kbps	-0-	\$ 3.20
56 Kbps	-0-	\$ 3.20
DDS Transport Termination		
2.4, 4.8, 9.6, 19.2 & 56 Kbps	-0-	\$ 20.00
Per Termination	-0-	\$ 20.00

This filing has been assigned Consolidated Docket Nos. 11408/11435. The deadline to intervene in this docket is January 1, 1993.

Persons who wish to intervene or otherwise participate in these proceedings should notify the Commission. A request to intervene, participate, or for further information, should be mailed to the Public Utility Commission of Texas, 7800 Shoal Creek Boulevard, Suite 400N, Austin, Texas, 78757. Further information may also be obtained by calling the Public Information Division of the Public Utility Commission at (512) 458-0256, or (512) 458-0221 teletypewriter for the deaf.



Spearman I.S.D... basketball roundup

VARSITY LYNXETTES
at Borger 11/20/92
SPEARMAN 56-BORGER 28
A. Shieldknight-2; J. Lusby-10;
M. Cook-7; M. Garnett-10; Kimbre
Townsen-4; S. Crawford-4; Kara
Townsen-5; H. Jarvis-8; L. Pearson-
6.
3-pointers: Cook, Garnett, Lusby
(2).

VARSITY LYNX
at Borger 11/20/92
SPEARMAN 57-BORGER 70
T. Thompson-4; W. Dyess-10; B.
Reed-4; J. Varnon-6; T. Law-3; C.
Pipkin-19; M. Hager-4; R. Shaver-
7.
3-pointers: Dyess, Shaver, Law.

PERRYTON TOURNAMENT
NOVEMBER 19-21
J.V. LYNX

SPEARMAN 86-FOLLETT 33
S. Schneider-5; C. Lasater-5; C.
Wilkerson-5; B. Law-8; J. Swink-
10; A. Hutchinson-2; C. Cook-4; D.
Mayfield-10; C. Schnell-25; M. Ar-
cher-5; B. Vanderburg-7.
(Schneider with 1 3-pointer).

SPEARMAN 43-PERRYTON 66
Lasater-4; Wilkerson-5; Swink-
4; Cook-3; Mayfield-10; Schnell-16;
Vanderburg-1.

9TH GRADE LYNX
PERRYTON TOURNAMENT
SPEARMAN 38-PERRYTON 40
Archer-7; Collins-14; Sanders-2;
Blan-5; Pittman-5; Huddleston-4;
Butler-3.

SPEARMAN 30-PERRYTON
26 O.T.

SPEARMAN 24-WEST TEXAS
36
Archer-4; Collins-6; Sanders-1;

Blan-2; Pittman-2; Burnett-3.

J.V. LYNXETTES
PERRYTON TOURNAMENT
11/19-11/21
FINISHED SECOND
J.V. VS. FOLLETT
SPEARMAN 63-FOLLETT 13
T. O'Quinn-11; N. Strawn-6; T.
Bruning-7; C. Beaty-11; Mandi
Lair-3; T. Latta-4; K. Shieldknight-
4; K. Henton-2; L. Baker-10; C.
Burton-3.

J.V. VS. PERRYTON
SPEARMAN 52-PERRYTON 41
T. O'Quinn-10; N. Strawn-6; T.
Bruning-8; Martin-7; C. Beaty-5;
M. Lair-6; T. Latta-3
K. Shieldknight-2; L. Baker-2.

J.V. VS. GUYMON
SPEARMAN 29-GUYMON 36
T. O'Quinn-7; N. Strawn-2; T.
Bruning-3; Martin-2; C. Beaty-8;
M. Lair-2; T. Latta-2.

7TH GRADE LYNXETTES
AT PRINGLE-MORSE
SPEARMAN 21-P-M
Leah Mackie-11; Jocelyn
Edwards-2; Lena Harbor-4; Andee
McGaha-4.

Pringle-Morse B-ball roundup

7TH GRADE GIRLS
PRINGLE MORSE 34-
SPEARMAN 21
H. McCloy-2; A. Phillips-2; G.
Hernandez-4; M. Vargas-2; H.
Jones-4; H. Knox-10; B. Leach-10.

Southwest Outdoors

with Mel Phillips

LET IT SNOW

Area wheat farmers are smiling as the wet snow piles up on the hearty but thirsty winter wheat crops. Another group that is all smiles is our hunters.

The quail hunters know that the birds will stack up in the heaviest available cover. For the hunters willing to pay the price of trekking through the snow, the reward is some fantastic shooting at huge coveys of tasty quail.

Fresh snow causes the average deer hunter to become a stalk hunter. Nothing excites a serious hunter more than finding a fresh set of tracks that are twice the size of the other prints. Rarely is stalking the best way to put some meat on the table, but I have spent some of my most enjoyable hunting days in the snow while pursuing the vanishing trail of a huge trophy buck.

Duck hunters are the true believers in cold weather hunting. They are a strange lot. Always looking forward to getting up at 4:00 a.m. and rushing out to a damp, cold pit on the shores of a semi dry playa lake. In fact, shoveling out a few inches of fresh snow doesn't bother these guys because they know that the ducks will be waiting.

Last week's column omitted several items that this week's snow storm reminds me to include on our winter check list. A handy snow scraper will definitely do a better job than a Visa card. If you have not purchased the new style cable

chains, you are in for a treat. Correctly mounting the old style heavy link chains was a challenge, but these new lightweight cable devices go on in a jiffy and work just as well as chains. Cable chains make a great gift for that special outdoorsman and an extra set in her car is a good idea, too.

Now is also a good time to check your toolbox because tools always seem to sneak off during the summer. Not finding a complete set of the basic tools is always an aggravation, but during a snow storm can be the difference between a warm bed and an adventure on the side of the road. My tool box includes: an extra set of fuses/circuit breakers, electricians tape, two large pliers, a Phillips-head screwdriver, two sizes of regular screwdrivers, a large vice-grip, two 10-inch crescent wrenches, a set of box wrenches and a ratchet drive set.

One of my favorite Christmas presents was a portable air pump that plugs into the cigarette lighter and will inflate a tire enough to drive to the service station. Those foot-powered units might work, but after 30 minutes of pumping I threw my old one in the dumpster.

Spearman swimmers... win ribbons at invitational

More than 203 swimmers competed in the Amarillo Invitational held November 14 and 15. On Saturday the Spearman Swim Club had 9 swimmers competing and on Sunday 6 swimmers competed against the big teams.

Midland brought 89 swimmers (half of their team), Amarillo had 69 swimmers and Lubbock was represented by 24 swimmers.

Other swimmers competing were from Clovis/Cannon, Plainview, Pampa, and even from Oklahoma and Kansas. This was a very tough swim meet and all the more reason for pride in the swimmers from Spearman, said Richard Partney.

"Midland, Amarillo and Lubbock swim every day and those swimmers attending high school there is swim twice a day, so for our twice a week workouts at the Perryton Activity Center, I think that our swimmers did very well against the big cities," he added. Continuing he said, "One would also wonder what the Swim Club could do if all of the swimmers were able to participate at any given Invitational. However, the Spearman swimmers also run Cross Country

and play basketball and still swim when they have the opportunities."

For the extra effort by those who were able to swim at the Amarillo A/B/C Invitational, Spearman earned enough points to place 5th Overall in Team Placement. The boys 10 and Under Relay Team (Colton Miller, Travis Brown, Chad Scarborough and Roy Dee Martin) place 3rd in that event. In the final overall standings, C. Miller won 4th place and Brown won 6th place (Brown only got to swim on Saturday).

In addition to the overall placings, the Spearman swimmers won several ribbons. Courtney Partney got a 7th place ribbon (8&U-25 Butterfly) and clipped time off every event in which she competed. Adrienne Simpson swam "B" times and won two 7ths and an 8th place ribbon in the 10 and Under Girls' Division. Scarborough earned a 3rd place ribbon and Martin won a 3rd and a 7th place ribbon in the Boys' 10 and Under Division. C. Miller brought home the lion's share of ribbons, winning three 2nd place ribbons, a 3rd place

See Swimming page 12

Spearman swimmers stroke to ribbons, trophies at Lubbock

On Saturday, Nov. 7, the Spearman Swim Club, coached by Jill Lusby, took seven swimmers to Lubbock to compete in the Lubbock Y Pentathlon Invitational. Those seven swimmers earned points and ribbons to pace the Spearman Swim Club to the Third Place Overall Team Trophy in that competition.

Adrienne Simpson earned a Second Place Overall trophy among the Girls 10 and Under. Michelle Elliott won Second Place Overall trophy in the Senior Girls division and Josh Winegarner took the Second Place Overall trophy in the Senior Boys division.

To win these trophies, these swimmers had to earn more points than their competition during the

five required events.

Adrienne won a 1st, two 2nds, a 4th and a 6th place ribbon on her way to winning the 2nd Place Overall. Amber Elliott earned a 3rd, a 4th, two 7ths and an 8th place ribbon during the competition. Michelle E. represented Spearman in the Senior Girls' Division and gathered herself three 1st place ribbons, a 2nd and a 3rd earning her 2nd Overall in that division.

Chad Scarborough and his cousin Roy Dee Martin (who was swimming for Spearman) represented the Swim Club in the 10 and Under Boys' Division. Chad won two 6ths, a 7th and an 8th place ribbon while Roy Dee won three 5th place ribbons, a 6th and a 7th place ribbon

while earning points for the Swim Club.

Michael Lusby won one 1st, three 2nd and a 3rd place ribbon at the Pentathlon in the 11 and 12 Year Old Boys' Division.

Josh won a 3rd, two 4ths and two 5ths as he earned his points towards the 2nd Place Overall in the Senior Boys' Division.

Parents and the Spearman Swim Club are very proud of the extra effort of these swimmers at the Lubbock Y Pentathlon Invitational. Trophies have been awarded and ribbons will be distributed as soon as they are all sent to the Swim Club.

<p>ALL TYPES PEPSI-COLA 6 PACK 12 OZ. CANS \$1.89</p>	<p>CARRIZO ORCHARD CHERRY, RASPBERRY OR APPLE CIDER 12 OZ. BOTTLE 79¢</p>	<p>SHURFINE 10 TO 14 LB. WITH POP-UP TIMER YOUNG TURKEY HENS PER POUND 59¢</p>
---	---	--

Terrific Thanksgiving Values

<p>PRICES EFFECTIVE NOV. 22-28, 1992</p>		
--	--	--

YOUR HOLIDAY SHOPPING HEADQUARTERS
OPEN THANKSGIVING DAY FOR YOUR SHOPPING CONVENIENCE

<p>COMBO OF THE MONTH 2 SAUSAGE, EGG & BISCUIT AND A 22 OZ. CUP OF COKE FOR ONLY \$1.59</p>	<p>MONEY ORDERS 29¢</p> <p>305 W. KENNETH, SPEARMAN 101 MAIN, GRUVER SPEARMAN 659-3135 GRUVER 733-2953</p>	<p>MADE TO ORDER SAUSAGE & BISCUIT EACH 69¢ BBQ BEEF SANDWICH EACH 89¢</p>
--	--	--

<p>BATHROOM TISSUE NICE 'N SOFT 4 ROLL PKG. 99¢</p>	<p>SHURFINE PAPER TOWELS JUMBO ROLL 69¢</p>	<p>CHRISTMAS TREES</p> <p>NEW MEXICO MOUNTAIN AND SCOTCH PINE \$10.99 AND UP</p>
---	---	--

<p>Shurfine Chunklight Tuna 6 oz. can 35¢</p>	<p>Shurfine Dog Food 20 lb. bag \$3.99</p>	
---	--	--

<p>Shurfine Catchup 32 oz. bottle 2 FOR \$1.29</p>	<p>Assorted Vegetables 4 CANS \$1.00</p>	
--	--	--

While supplies last.

We're Expanding to Better Serve Your Auto Service Needs . . .

Tires • Tires • Tires

LEE & HANCOCK

AUTO & TRUCK TIRES

GOODYEAR TRUCK TIRE

Car & Truck Flats Fixed

FREE mounting & balancing
-w- tire purchase

FRONT END ALIGNMENTS

SHOCKS & BRAKE SERVICE

AIR CONDITIONER SERVICE

TRANSMISSION SERVICE

REGULAR MAINTENANCE

keep your car running great and help it last longer

COMPLETE LINE OF MOBIL & CHEVRON OIL PRODUCTS

HI - PLAINS AUTO SHOP

402 HANCOCK • SPEARMAN, TEXAS
659-2506 • (800)659-8742

9
1
G

F
B
3,
2,
J
11
G

14
H
S
J
11
S

F
M
R
T
M
9
11
G

J
:
M
F
F
L
J
11-
G
F
12,
J
J
11-
G
3
R
V
T
W
M
C
th

WANT ADS WORK WONDERS!

Reporter-Statesman CLASSIFIEDS 659-3434

NOTICE

Deadline to place or cancel classified line ads is Tuesday noon for Thursday insertion.

CLASSIFIED RATE

\$4.00 first insertion
\$3.00 each additional insertion
(30 words or less)
13¢ each word over 30
Legal Notices: 15¢ per word

Ads must be paid in full in cash before publication, unless advertiser has established credit with the Reporter-Statesman. Payment of out of state classifieds must be in the form of a money order or cashier's check. No tear sheets provided for classified ads. Tear sheets provide on request for legal notices.

REAL ESTATE



Allen Alford-Broker-659-3034
Julie Martin-Sales-659-2425
Dennis Nelson-Sales-659-3608
Larry Trosper-Sales-3491

714 Wilbanks-3/2- single car garage
1108 S. Archer-3/2/2-Nice!
712 Collier-2/2-REDUCED!
717 S. Steele-3-1 3/4-2, NICE!
703 E. 2nd-3-1 1/2
710 Lee Dr- 3 bedroom, 2 car garage
1115 S. Haney-3 Br-1 1/2 Bath, \$30,000
706 Collier-3-1 1/2-1. Nice shop!
717 Cotter-3/1/1. Very Cheap!!!
1114 Barkley- 3 BR, 1 3/4 bath

Homes to Show Not Listed
Just Call For Showings
FOR QUALITY & SERVICE CALL US TODAY



GOLDEN SPREAD REALTY
Janye Helton Pointer, Broker Owner,
435-5444

621 Roland - 3/2, Owners will pay \$1500 toward buyers closing cost!
207 James - Large bonus room with basement for play area!
322 Hazelwood - 3/1, hard to beat the price!
501 Okla - UNDER CONTRACT...! hard-wood floor, oil
206 Lonita - 2/1, Large kitchen, steel siding and cellar!
315 1/2 N. Bernice - Lot for sale!

GRUVER

102 Maupin - 3-1 3/4 large lot. Nice older home

Equal Housing Opportunity
Equal Housing Opportunity
INDEPENDENTLY OWNED AND OPERATED

FOR RENT

For Rent: Large 3 bedroom, 2 living areas, 2 bathrooms, 1 car garage, central heat and lots of closets. Across from the grade school. \$350. Call 405/338-5683 or 817/696-0433. S47-1tcRTN

For Rent: Very nice 3 bedroom, unfurnished home. Carpet, 2 storage built in. RENTED, \$300.00 month, \$150.00 deposit.

2 bedroom furnished house close to grade school. Nice. Will rent with bills paid or you pay. Deposit required. No pets. 214 S. Dressen. Available approximately Nov. 15th. Call 659-3657 or 659-3469. S02-1tc-RTN

For LEASE: 10 acres on north edge of city. \$600 per year. Call 806/935-7405. S04-2tp

House For Rent: 3 bedroom brick house with fenced back yard and carport. 1004 Townsend. Call 659-2245. S05-1tc RTN

FOR RENT: a 3 bedroom house at 311 Townsend-Spearman. Call after 6 p.m. 659-2000. S05-1tc

REAL ESTATE

Old Post Office Building in Spearman \$10,000. Call Gene E. Steed (806)435-6330 S03-4tp

3 bedroom house (2700 sq. ft.), 6 miles W. Spearman, TX. Cent. Air/Heat; Fireplace, 42.5 acres, barns, corrals, big arena \$137,500 (806)659-3445 or 525-4221, Jim Eakin. S03-1tcRTN

Good Ranchland for Sale: 320 acres - Stinnett, TX 5 miles NE Lake Meredith \$200/acre; 151 acres - Stinnett, TX 1 mile W, 1/2 mile N, 2 miles W \$210/acre. (806)659-3445 or 638-6739, Jim Eakin. S03-1tcRTN

4 Bedroom, 2 1/2 bath, 3 car attached garage with electric opener both ends, 2 story, cellar, brick, new carpet throughout, 1 refinished hardwood floor, central air & heat, huge kitchen, laundry, family, bath. Approximately 2800 sq. ft. Abundant storage, dust-stopper windows & doors. Must see. Asking \$65,000. Call 659-2918. S04-2tp

Reduced, Reduced, Reduced to sell. Very nice office complex building with completely finished living area in back. 2400 sq. ft. on Main, Gruver. Call 659-2441. S04-3tp

2 bedroom, 1 bath house for sale. Ceiling fans throughout on big lot with small storage building and storm cellar. Priced to sell. Call after 5 p.m. at 659-3915. Ask for Robbie or leave a message. S52-1tpRTN

4 BRM 1 1/2 bath home on large corner lot near school. Has detached garage, car port, basement, central heat. Priced in mid 40's. 659-3944 after 5 p.m. S46-4tc RTN

House and Barn for Sale
3 bedroom, 2 bath house - 2340 sq. ft. Plus 2500 sq. ft. barn on 3.4 acres. Located on Spearman - Gruver Highway. Asking \$65,000. Contact FNB Spearman - Brian Gillispie. 659-5544 S46-1tc

MISC. FOR SALE

Hay for sale. Good Deal! Call Tim Barkley 733-2395. S04-2t

FOR SALE: Whirlpool refrigerator, 22.2 cu. ft. w/icy ice foot-\$350; Bose 501 speakers-\$100; Arcade Size Pinball or Space Invaders-\$100 each; Motionless waterbed and pads-\$30; barbecue grill-\$75. Call 659-2918. S05-1tp

CLASSIFIED ADS PAY OFF!

NOTICE
Wallace Monument Co.
Monuments, Curbing,
Grave Covers
1-800-999-9506
Local Representative
LEONARD JAMESON
Spearman, Texas

LAYAWAY FOR CHRISTMAS
2 - 14 ft. Trampolines
For Sale
TRAMPOLINE REPAIR & SERVICE
Mats & springs.
Resew mats
MAKE NEW BOAT COVERS.
CALL (806)659-2109
Harry Stumpf
301 W. 12th
Spearman, Texas

Are You A Victim of Physical Abuse?

Call Toll Free 1(800)753-5308

We are in Spearman on the 1st, 3rd & 5th Wednesdays of each month at the 1st Presbyterian Church, 1021 Cotter. On the 2nd & 4th Wednesdays we are at the 1st Christian Church at 510 King-Gruver. We can come to Spearman & Gruver any time upon request. We operate a safe place for victims & their children to stay in times of crisis. **Panhandle Crisis Center**
Serving Hansford, Lipscomb & Ochiltree Counties
317 S. Main Perryton, TX.

AUTOMOBILES

79 Chevy Caprice Classic; '86 Bronco II V-6 4X4 XLT; '77 Chevrolet Wagon; '76 fullsize Chevy pickup; all clean, run good and priced low. Smith's Auto Sales, Perryton. Call 435-5844 or toll free 1-800-753-6330. S02-4tc

One Owner, Exceptionally nice 1984 Olds 98 Regency 4 door. All power and air - Electric windows and power seats. \$3,095. See at 803 Wilmet Drive after 6 p.m. S03-1tcRTN

SERVICES

HANDYMAN - You want it done and can't or don't want to do it yourself!!! Call Uncle Ed (Pearson), 659-3328 - Anytime - Anything!! House, yard, fence, car, garage, etc. (Cleanup, repair, paint, trim trees & bushes, etc.) S15-1tcRTN

Smith's Propane of Perryton offers watchdog (keep full service), tanks, vehicle conversion systems, parts, service, 30 day terms with good credit. 5% discount for cash with customer owned tanks. Call 435-5844 or 1-800-753-6330. S02-4tc

REDUCE; Burn off fat while you sleep. Take OPAL, available at Gordon's Drug. S02-5tp

HANDY MAN: We do anything and everything Painting, tree trimming, mowing, yard work & clean up, landscaping, roofing, fence building (all types). You need it done, call David Pearson at 659-3352. S43-1tcRTN

CALL YOUR LOCAL Used Cow Dealer for 7 days a week stock removal. 659-3544 or 1-800-692-4043. Serving Cattlemen for the past 20 years. G51-RTN

BICHSEL HOME BUILDERS

Remodel, repair, additions, cabinets-tops, and window replacements. 406 W. Brillhart, Perryton. 435-2364 or 435-0125. S37-1tcRTN

IS DRINKING AFFECTING your life negatively? Join us at AA or Al-Anon. Tuesdays at 8 p.m. at 30 Hwy 760 (Three blocks south of the Moose). Alateen meets Tuesdays at 7 p.m. at the same location. S50-13tp

Buff & Shine, Full Maintenance, specializing in stripping & waxing. Floor maintenance and carpet cleaning. Free estimates. (806) 435-5845. S02-4tp

LOSE WEIGHT! FEEL GREAT!

100% natural, burns fat, speeds metabolism, suppresses appetite and helps control stress - Guaranteed. Phone (806)353-5273.

OSGOOD MONUMENT CO.

Amarillo, Texas
Dealers of Rock of Ages Granite, as well as all colored granites, marble and bronze memorials.

Represented by
BOXWELL BROS. FUNERAL HOME
519 S. EVANS
659-3802

ADVERTISING PROVISIONS

1. Publisher reserves the right to reject, edit, revise and properly classify any advertisement at his sole discretion.
2. Advertiser assumes all liability for advertisements printed pursuant to his instruction and shall indemnify and hold the publisher harmless from and against any and all claims and damages, including all costs incurred by publisher in connection therewith. Advertiser represents that all advertising copy is truthful and not misleading. Advertiser shall indemnify and hold publisher harmless from any claim against publisher arising out of or in connection with publication of advertising (except for modifications made by publisher without Advertiser's approval) including, but not limited to, claims for libel, invasion of privacy, commercial appropriation of one's name or likeness, copyright infringement, trademark, trade name or patent infringement, commercial defamation, false advertising, or any other claim whether based in tort or contract, or on account of any state or federal statute, including state and federal deceptive trade practices acts. If advertiser claims copyright ownership in any of the advertising published, advertiser must include proper notice of its copyright claim in the body of the advertisement, otherwise copyright ownership shall remain in the publisher.
3. Advertiser agrees to check advertisement in the first issue in which it appears and report any error at once as publisher assumes no responsibility for errors after the first insertion. For any error which is the fault of the publisher and of which publisher has been timely notified, publisher will reprint the corrected advertisement for one extra insertion or refund the proportionate cost of the advertisement containing the error. Publisher shall have no responsibility for errors appearing in the copy submitted by advertiser.

LOST

LOST: One boys winter coat size 8, black with neon colors. Belongs to Nicholas Behney. Reward offered! Call 659-3272. S05-2tc

RVs & CAMPERS

Motor Homes and van rentals - Low winter rates. Vehicle towing-special rates. Call Smith's Auto Sales and Wrecker Service, Perryton, 435-5844 or toll free 1-800-753-6330. S02-4tc

PUBLIC NOTICE

Sale: Sheriff
NOTICE OF SALE: REAL PROPERTY THE STATE OF TEXAS, COUNTY OF HANSFORD

NOTICE IS HEREBY GIVEN that by virtue of a certain order issued out of the Honorable 84 District Court, Hansford County, 2 day of Sept. 1992 by Dist. Clerk of said Hansford County for the sum of \$7,891.00 and the costs of suit, under a Judgement, in favor of Pacesetter Corporation in a certain cause in said Court, No. 3901 and styled Pacesetter Corp. vs. Tom & Marilyn Cain placed in my hands for service, I, Dennis Cline as Deputy of Hansford County, Texas, described as follows, to Wit: Lot 11 & 12, Block 57 of 1st Edition, Hansford County and levied upon as the property of Tom & Marilyn Cain and that on the first Tuesday on December 1992, the same being the 1 day of said month, at the Court House door, of Hansford County, in the City of Spearman Texas, between the hours of 10 a.m. and 4 p.m., by virtue of said levy and said Judgement I will offer for sale and sell at public vendue, for cash, to the highest bidder, all the right, title and interest of the said property. And in compliance with law, I give this notice

JAN'S ETC.
NEW & USED & ANTIQUES TOO
Everything for home and family.
Plains Shopping Center in Spearman.
Open Monday - Saturday
10 a.m. til 6:00 p.m.

TREVA COOK
659-2670/659-3781

COMPARE BEFORE YOU BUY

Fletcher's Monuments
MARBLE & GRANITE
MONUMENTS & MARKERS
GRANITE, OK 73547

Stay in touch!
with
G & G ELECTRONICS
Cellphone USA
*2-way Radio - *Mobile Telephones
\$35/month No Air Time
*Repeater Spaces
*Pagers
*Satellite Work
Call Bruce Duncan
(806)659-3673

Homelite Products
Trash pumps, generators,
and chain saws.
Dewalt Power Tools
Commercial electric drills,
cordless drills & sanders.
C.O.'S SUPPLY CO.
301 S. Davis - Spearman
659-3781

PUBLIC NOTICE

by publication, in the English language, once a week for three consecutive weeks immediately preceding said day of sale, in the Hansford Reporter, a newspaper published in Hansford County. Witness my hand, this 9 day of November 1992.
R.L. McFarlin Jr., Sheriff Hansford County, Texas.
By Dennis Cline Deputy
S03-3tc

NOTICE TO BIDDERS

Sealed bids will be received by the Gruver School Board of Trustees for the school owned property at 405 Richardson, Gruver, Texas. Bids can be made for the house AND lots or bids can be made for EITHER the house OR the lots separately. If the bid is for the house only, the purchaser will be responsible for its removal from the site. The house and four lots are located at 405 Richardson (Lots 27-30, Blk 61, OT) Gruver, Texas. Property to the north and south is owned by the First Baptist Church. All bids will be received until 4:00 p.m. on December 8, 1992. Any bid received after that time and date will be returned unopened and not considered. Bidders are invited to be present at the bid opening at the regular Board Meeting, December 9, 1992, at 1:00 p.m. in the Board Room in the Gruver High School building. Please mail or deliver all bids to:
Gruver I.S.D. Business Office
P.O. Box 650
Gruver, TX 79040
The District reserves the right to reject any bid and/or all bids, to make awards as they may appear to be advantageous to the District and to waive all formalities in bidding. The award will be made without regard for race, color, sex, religion, sect, or creed. S04-2tc

PUBLIC NOTICE

NOTICE TO BIDDERS
Sealed bids for the purchase of two hundred domestic gas meters for the Gas Department will be received by the City of Spearman, Texas, up until 10:00 a.m., December 8, 1992, then publicly opened and read. The City reserves the right to reject any or all bids, to waive informalities and to accept the bid deemed to be the most advantageous to the City. All bids received after the above closing hour will be returned unopened. All bids shall be sealed and marked on the outer envelope of the type of bid being submitted. Specifications and bidding documents may be secured from City Hall, P.O. Box 37, Spearman, Texas 79081. S04-2tc

LEGAL NOTICE

The annual report for the fiscal year ended October 31, 1992 of the Silas Taylor and Eva May Dozier Foundation, Inc. is available for inspection at 201 Kenneth Street, Spearman, Texas during regular business hours, by any citizen who requests within 180 days after publication of this notice of its availability. The principal manager is Eva Dozier, Tele (806)659-2538. S05-1tc

REPORTER-STATESMAN CLASSIFIEDS WORK!

CUSTOM UPHOLSTERY

Custom made seat covers for pickups, trucks and tractor seats
Coverlay plastic dash covers - Like the Original - Coverlay replacement door panels - At half the cost of new
Nifty molded carpets and rubber floor mats
Jeep tops and accessories
Plastic marine fittings and ready made boat covers by Blimini
Hundreds of fabric and vinyl samples to choose from
CALL (806)733-5235 or VISIT
TEBEST UPHOLSTERY
304 Main (rear door) Gruver TX.

HOUSE FOR SALE BY OWNER

713 Cotter Drive - Spearman

Over 2400 sq. ft. of Living Area & Double Car Garage on 2 Lots. 4 BEDROOMS, 2 1/2 baths, formal living room & den -w- fireplace. LARGE KITCHEN & DINING ROOM. LARGE Screened in patio, sprinkler system, storage building & wooden fence. This house is tastefully decorated with too many AMENITIES TO LIST. PRICED FOR IMMEDIATE SALE! CALL DONNIE OR CAROL HERBERT FOR APPOINTMENT AT 659-3317 or 659-2535.

TexSCAN

Statewide Classified Advertising Network
Advertise in 299 Texas newspapers for only \$250.
Reach 3 MILLION Texans. Call this newspaper for details.

DEER HUNTERS SPECIAL: 25 acres, \$795/acre, wooded, excellent hunting, adjoins large ranch. Texas Veteran or owner financing, prime acreage. Fox Realty, 500 Buchanan Dr., BURNET, TX 78611, 1-800-725-3698.

HAROLD IVES TRUCKING hiring drivers. Earn up to 23¢ per mile. Assigned tractors with Motrols. Complete instruction, rider program, student's welcome, insurance, bonuses, call: 1-800-842-0853.

WE PAY CASH for owner financed notes nationwide. Call Mortgage Buyers for free quote - STOP collecting payments - Get cash. Phone 409-755-1243 or 1-800-484-9372 - give operator ext. 9765.

TEAM DRIVERS AND owner operators needed for 48 state carrier. Verifiable OTR experience, CDL, and clean MVR a must. Trailblazer Transportation 1-800-660-0343.

OWNER OPERATORS TANDEM tractors, mileage rates, weekly settlements. TX, OK, AR, LA, fuel card, home weekends. Steady work. Call Frank or Bill 1-800-324-5555.

DRIVER: DRIVE INTO the bucks. Get more money for your miles. J.B. Hunt Transport pays up to 28 cents a mile. Combine great pay with executive style benefits and plenty of available miles and there isn't any reason you shouldn't be driving for us. No experience is necessary and training is available. 1-800-2JB-HUNT. J.B. Hunt, The Best Run For The Money. EOE/Subject to drug screen.

SIGNS SIGNS SIGNS grand opening banner \$30.75, multi-colored pennants \$10.50, 300 portable sign letters \$64.95, magnetic vehicle signs \$53.00 set. Call for free catalog 1-800-783-5254. Thrifty Sign.

OTR DRIVERS TIRED of the same old garbage? Want to drive a nice tractor? Work with good people and get good benefits? Call 1-800-285-8267 E.O.E.

DRIVERS: WE PAY HUB miles, empty and loaded. Excellent employee benefits. Minimum age 21, one year long haul experience. 24 hour application service. Call 1-800-888-7735 E.O.E.

CHALLENGES IN YOUR LIFE? Free brochure teaches an Ancient Technique for Spiritual Insight. Call ECKANKAR, Religion of the Light and Sound of God, 1-800-762-4888 Dept. 621.

PIZZA INN SEEKING qualified franchisees. "Carry-over" delivery & full service restaurants. "Easy to open & operate." 110 franchises sold in the last 12

months. For information call 1-800-880-9955.

WOLFF TANNING BEDS: new commercial home units from \$199. Lamps, lotions, accessories. Monthly payments low as \$18. Call today, free new color catalog. 1-800-228-6292.

ARE YOU COLLECTING payments on real estate you've sold? We'll give you cash now for those payments! Call National Fidelity today! 1-800-364-1072.

HERSHEY'S DISTRIBUTORSHIP: NATIONAL manufacturing and distributing company seeks qualified local individuals to service established routes. No selling - restock displays and earn excellent income part time, full time. Training, equipment, established accounts. Minimum investment \$4k to \$12k. Call now! Harold 1-800-940-2299.

TIRED OF FLEA dips & sprays? Ask about Happy Jack Streaker! One streak down the back & stomach and around the neck, lasts 14 days. At Farm-Land Co-Op.

HOMEPORT-INGLESIDE AREA. 118 acres between Rockport and Aransas Pass. Excellent Mobile Home, RV, Subdivision location, even Golf Course. Land Investments Services, Box 881, Port-Land, Texas 78374. 512-643-2050, FAX 512-643-3252.

Obituaries

WARD V. NOLDER GRUVER—Ward V. "Bud" Nolder, 68, died Sunday, Nov. 15, 1992.

Services were held at 2 p.m. Friday, Nov. 20, in First Christian Church with the Rev. Gary Gumfory, pastor, officiating. Burial was in Gruver Cemetery by Boxwell Brothers Funeral Home of Spearman.

Mr. Nolder was born in El Reno, Okla. and moved to Gruver in 1945. He was a retired farmer and a member of the First Christian Church.

Survivors include a daughter, Shirley West of Garden City, Kan.; and a sister, Margaret Moss of

Landrum, S.C.; two nieces; and one nephew.

The family requests memorials be to the Hansford Hospice, 707 Roland St., Spearman, Texas 79081 or a favorite charity.

BEATRICE HOGUE
WHITE DEER—Beatrice Hogue, 78, died Thursday, Nov. 19, 1992.

Graveside services were held at 10:30 a.m. Saturday, Nov. 21, in the White Deer Cemetery with Lyneta Kennedy of the First Assembly of God Church, officiating. Arrangements were by Carmichael-Whately Funeral Directors of Pampa.

Mrs. Hogue, born in Erick, Okla.,

moved to White Deer in 1973. She was a member of the First Assembly of God Church of White Deer.

Survivors include three daughters, Sheila Fetty of Yuba City, Calif.; and Wanda Hogue and Debra Davis, both of White Deer; two sons, Howard Kitchens of Amarillo and James Hogue of Yuba City; two sisters Hazel Hogg of Gruver and Novella Mutchler of Elk City, Okla.; 15 grandchildren; and 10 great-grandchildren.

WILLIAM HICKS
DALLAS—William "Bill" Hicks, 74, died Friday, Nov. 20, 1992.

Services were held at 11 a.m. Monday, Nov. 23, in Restland Funeral Home Abbey Chapel with Dr. Michael Piazza officiating. Burial was in Restland Memorial Park.

Mr. Hicks was born in Canyon and had been an Amarillo resident. He lived in Dallas for 10 years. He was an accountant and a U.S. Army veteran, serving in WW II. He was also a Methodist and a Mason. He was preceded in death by his wife, Peggy, in 1972 and his son, Michael Hicks in 1982.

Survivors include a brother, James K. Hicks of Spearman; and two sisters, Jo Cockrell of Wichita Falls and Christine Ashlock of Garland.

FRANK STEPHENS
SHAMROCK—Frank Stephens, 91, died Friday, Nov. 20, 1992.

Services were held at 3 p.m. Saturday, Nov. 21, in the First United Methodist Church with the Rev. Julius Early, pastor of the San Jacinto United Methodist Church of Amarillo, officiating. Burial was in Shamrock Cemetery by Wright Funeral Directors.

Mr. Stephens was born in Huntington, Ark. and moved to Shamrock in 1926. He married Ila Whitman in 1926 at Paris, Ark. He was a farmer until retiring in 1973. He was a member of the First United Methodist Church.

Survivors include his wife; a son, S.S. "Buddy" Stephens of Amarillo; two daughters, Charlotte Bergin of Gruver and Shelah Lile of Lubbock; seven grandchildren; and eight great-grandchildren.

The family requests memorials

be to the First United Methodist Church or the Shamrock Cemetery Association.

PEARL BURKE
AMARILLO—Pearl Burke, 77, died Wednesday, Nov. 18, 1992.

Graveside services were held at 10 a.m. Friday, Nov. 20, in Memorial Park Cemetery with the Rev. Rex Forsyth, pastor of San Jacinto Baptist Church, officiating. Arrangements were by Bell Avenue Chapel of Schooler-Gordon-Blackburn-Shaw Funeral Directors.

Mrs. Burke was born in Childress and had lived in Hansford County before moving to Amarillo. She was member of San Jacinto Baptist Church. She was preceded in death by her husband, Thomas G. Burke, in 1981; and by a son, Leslie Burke, in 1948.

Survivors include three daughters, Margaret Land, Mildred McCarthy and Barbara Reed, all of Amarillo; three sons, Gene Ditto of Spring and Phil Burke and Bud Burke, both of The Colony; a sister,

Alma French of Spokane, Wash.; two brothers, Carver Haralson of Cheyenne, Wyo., and J.D. Haralson of Spokane; 20 grandchildren; and 24 great-grandchildren.

VIOLA MAE LESHER
SPEARMAN—Viola Mae Leshner, 85, died Saturday, Nov. 21, 1992.

Graveside services will be at 2:30 p.m. Tuesday in Lawson Cemetery at Yale, Okla. Arrangements are by Boxwell Brothers Funeral Home.

Mrs. Leshner was born in Roxbury, Kan., and had lived in Spearman for three years, moving from Yale. She married Clarence A. Leshner in 1922 at Pawnee, Okla. He died in 1969. She was a homemaker and a Baptist. She was preceded in death by a daughter and two sons.

Survivors include a daughter, Susie Hand of Spearman; a son, Marvin Leshner of Sweeney; 15 grandchildren; 24 great-grandchildren; and five great-great-grandchildren.

The family requests memorials be to the Hansford Manor Activity Fund.

Get Ready for the Holidays

BUFF & SHINE

full service maintenance
specializing in stripping & waxing
floor maintenance & carpet cleaning

Free Estimates (806) 435-5845

LET US REPLENISH THE SEED OF FAITH THROUGH... REGULAR CHURCH ATTENDANCE, DAILY BIBLE READING AND PRAYER

- IN SPEARMAN**
- Apostolic Faith Church**
822 S. Dressen 659-2370
Sunday School: 10 a.m.
Worship: 11 a.m.
Evening Worship: 6 p.m. Sun.
Wed. Prayer Meeting: 7:30 p.m.
Pastor James Brown
 - First Assembly of God**
401 N. Bernice 659-2295
Sunday School: 9:45 a.m.
Worship: 11 a.m.
Evening Worship: 7 p.m.
Wednesday Worship: 7:30 p.m.
Youth: 7:30 Wednesday
Pastor Ray Cook
 - First Christian Church (Disciples of Christ)**
29 S. Bernice 659-2036
Sunday School: 9:45 a.m.
Worship: 10:50 a.m.
Women's Bible Study: 2 p.m. Wed.
Youth: Wed. 6 p.m. & Sun. 5 p.m.
Pastor LaVern Draper
 - First Baptist Church**
123 N. Bernice 659-5557
Sunday School: 9:45 a.m.
Worship: 11 a.m.
Evening Worship: 7 p.m.
Jr. High Youth: 6 p.m. Wed.
High School Youth: 7 p.m. Wed.
Youth Choir: 6 p.m. Sun.
Pastor Kyle Henderson
 - Trinity Community Church**
1105 S. Roland 659-2671
Sunday School: 9:45 a.m.
Worship: 10:45 a.m.
Sunday Evening: 6:30 p.m.
Wednesday evening: 7 p.m.
Pastor Dan Carter
 - Union Church**
31 S. Endicott 659-2644
Sunday School: 9:45 a.m.
Worship: 10:45 a.m.
Evening Worship: 6:30 p.m.
Bible Study: 7:30 p.m. Wed.
Youth: 7:30 p.m. Wed.
Pastor Jeff L. Burress

Old Idea . . . New Setting

When the Pilgrims held their first Thanksgiving celebration, it wasn't a new idea. The idea was as old as people's awareness of their dependence on God.

But, it was a new setting. A group of people far from home, barely settled on a strange shore, surrounded by dangers real and imagined, facing their first New England winter. A remarkable time and place to say "thank you God."

Whenever earnest men and women pause to express gratitude to God, it's an old idea. But the setting is always new. For whatever we are, whatever the circumstances surrounding our lives, our faith reaches to the Almighty . . . realizing anew His power, His love.

Take time this week to say "thank you God." Worship with your family and friends and remember that first Thanksgiving celebration.

Copyright 1992, Keister-Williams Newspaper Services, P.O. Box 8005, Charlottesville, VA 22906
Scriptures selected by the American Bible Society

- Sacred Heart Catholic Church**
901 Roland 659-2166
Sat. Night Mass: 7 p.m.
Sunday Mass: 9:30 a.m.
C.C.D.: 10:30 a.m. Sun.
Father Al Bruening
- Church of Christ**
121 S. Haney 659-3244
Sunday Bible Class: 9:45 a.m.
Worship: 10:30 a.m.
Evening Worship: 6 p.m.
Bible Study Wed. 7:30 p.m.
KRDF Radio Program
Living With Christ 7:50 a.m. M-F
Minister Arnis Pape
- Fellowship Baptist**
1102 S. Archer 659-2448
Sunday School: 10 a.m.
Worship: 11 a.m.
Evening Worship: 7:30 p.m. Wed.
Youth: 7:30 Wed.
Pastor Rick Fincher
- Primera Mission Bautista**
502 E. 7th 659-3991
Sunday School: 9:45 a.m.
Worship: 11 a.m.
Pastor Guadalupe Carranza, Jr.
- Faith Lutheran Church (ELCA)**
1101 Bernice 659-2252
worshippers with
First Presbyterian Church
1021 Cotter 659-2033
Sunday School: 9:45 a.m. at Lutheran
Worship: 11 a.m. (alternates monthly between addresses above)
Pastor Beverly Cook
- First United Methodist**
407 S. Haney 659-5503
Sunday School: 9:45 a.m.
Worship: 11 a.m.
Jr. High Youth: 5 p.m. Sun.
High School: 6 p.m. Sun.
Pastor Todd Dyess

- Oslo Lutheran Church (ECLA)**
West of Gruver
On Hwy 15 & N. FM 1162
339-7646
Sunday School: 9:45 a.m.
Worship: 11 a.m.
Morning Prayer: 9 a.m. Wed.
Pioneer Clubs (Grades 1-6):
4-5:30 p.m. Wed.
Pastor John R. Chandler
- Community Bible Church (Interdenominational)**
Hwy. 15 733-2443
Sunday School: 10 a.m.
Worship: 11 a.m.
Evening Worship: 7 p.m.
Wed. Prayer Meeting: 7 p.m.
Pastor Zane Gray
- Gruver United Methodist**
Broadway & Garrett 733-2651
Sunday School: 10:50 a.m.
Worship: 8:30 a.m. & 10:50 a.m.
Sunday Evening: 6 p.m.
UMY: 6 p.m.
Pastor Lewis Holland
- IN GRUVER**
- First Baptist Church**
402 E. Broadway 733-2411
Sunday School: 9:45 a.m.
Worship: 10:50 a.m.
Disciple Training: 6 p.m. Sun.
Youth Happening: 6:30 p.m. Wed.
Prayer Meeting: 7:30 p.m. Wed.
Pastor Larry Miller
- Church of Christ**
209 King 733-2760
Sunday School: 9:30 a.m.
Worship: 10:20 a.m.
Evening Worship: 6 p.m.
Wed. Evening Worship: 7:30 p.m.
Minister Bob Setcliff
- First Christian Church**
510 King 733-2960
Sunday School: 9:45 a.m.
Worship: 11 a.m.
Wed. Bible Study: 7:30 p.m.
Youth: 6:30 Wed.
Pastor Gary Gumfory

Old Idea . . . New Setting

When the Pilgrims held their first Thanksgiving celebration, it wasn't a new idea. The idea was as old as people's awareness of their dependence on God.

But, it was a new setting. A group of people far from home, barely settled on a strange shore, surrounded by dangers real and imagined, facing their first New England winter. A remarkable time and place to say "thank you God."

Whenever earnest men and women pause to express gratitude to God, it's an old idea. But the setting is always new. For whatever we are, whatever the circumstances surrounding our lives, our faith reaches to the Almighty . . . realizing anew His power, His love.

Take time this week to say "thank you God." Worship with your family and friends and remember that first Thanksgiving celebration.

Copyright 1992, Keister-Williams Newspaper Services, P.O. Box 8005, Charlottesville, VA 22906
Scriptures selected by the American Bible Society

This Feature is made possible through the Sponsorship of these Civic Minded Businesses.

They deserve your support.

"WE SUPPORT OUR LOCAL CHURCHES"

CAPROCK #1
Richard Winter, Manager
(806)733-5043

CAPROCK #2
Jeff Rudolph, Manager
(806)733-5025

QUALITY CAPROCK'S BRAND

"Custom Cattle Feeding"

HELP SPONSOR THIS ENCOURAGING MESSAGE CALL ...

THE **Hansford County Reporter-Statesman**
659-3434 • (800)395-9482

SPEARTEX GRAIN COMPANY

405 Collard • Spearman
659-3711

C.O.'S SUPPLY CO.

Plumbing & Tire Sales & Service

301 S. Davis • Spearman
659-3781

GRUVER CABLEVISION

Quality Family Entertainment With
"The Disney Channel"

308 Main • Gruver
733-5295

Compliments of...

AGCO
of Spearman, Inc.

"See you in Church"
659-3751

COMPLIMENTS OF...

ATHENA ENERGY INC.

GILLASPIE

AUTO & TRUCK CENTER, INC.
CHEVROLET • OLDS • PONTIAC • BUICK
CHRYSLER • PLYMOUTH • DODGE
Highway 307 South, P.O. Box 427 (800)659-2641
SPEARMAN, TEXAS 79081

TRUE VALUE HARDWARE

B and B
205 DILLON SPEARMAN, TX.
(806)659-2662
FARM AND HOME SUPPLIES

Attend The Church of Your Choice

GORDON DRUGS

Dependable Prescription Service

314 Main • Spearman
659-2140
Jim Evans

HI-PLAINS AUTO SUPPLY, INC.

Mobile Oil For Irrigation & Industrial Purposes
118 Main • Spearman
659-2506 • (800)657-8742

Compliments of...

Texas-New Mexico Power Company.

300 Hancock • Spearman, TX.
79081
659-2336

BOXWELL BROS. FUNERAL HOME

Lemon, Shearer, Ehrlich, Phillips and Good

"Attorneys and counselors at Law"

Box 1066 • Perryton 79070
(806)435-6544

JIGS

LADIES READY TO WEAR

306 Hancock • Spearman
659-3424

"Compliments of..."

GOLDEN SPREAD CARPET CLEANING
Don & Mary Moore
659-3068

"Not Forsaking The Assembling of Ourselves Together"
HEBREWS 10:25

HELP SPONSOR THIS ENCOURAGING MESSAGE CALL ...

THE **Hansford County Reporter-Statesman**
659-3434 • (800)395-9482

Advertising Pays \$\$\$\$\$\$

Call 659-3434
or
1-800-395-9482

6
tr
3
pi
5
w
2
sl
31
10
ho
For 1
2 bat
lots o
\$350
\$47-
For 1
nise
age b
\$150.
2 bed
schoc
pay.
Dress
Call 6
\$02-1
For LI
\$600
\$04-2
House
with fe
Towns
\$05-1t
FOR F
Towns
2000.
\$05-1t
We mo
4th
Gru
req
In th
\$4
317

Burning from page 1

how the farmer going to know in advance if the conditions will be on any given day?

Until such time as a definitive policy is set for the future, the position of the TACB is that the farmer must send a written notification to the TACB regional office which certifies that there is no practical alternative, guarantees compliance with the seven conditions of Regulation I (listed below), and contains a map of the site including uses of adjacent lands. The notification must also indicate when the burn will occur. Such written notification must be received by the Regional Office at least five (5) days prior to the burn, and telephone verification of the continued intent to burn must be made to the Regional Office 24 hours prior to the burn. When it appears that several tracts of land are to be burned in the same area at the same time, it may be necessary for the TACB to require the scheduling of burn times over several consecutive days to avoid cumulative nuisance and traffic safety problems.

Compliance with the conditions specified in Section 111.103 will be required, and they are as follows:

- 1.) Burning shall be commenced only when the wind will carry the smoke away from any city, town, residential, recreational, commercial, or industrial area, navigable water, public road, or landing strip, and shall not be conducted when a shift of wind is predicted;
- 2.) Burning must be at least 300 feet from any adjacent properties which have residential, recreational, commercial, or industrial use;
- 3.) Burning shall commence after 9:00 a.m. and be completed on the same day as soon as is reasonably practical prior to 5:00 p.m.;
- 4.) Burning shall not commence when wind speed is predicted to be less than 6 m.p.h. or greater than 23 m.p.h.;
- 5.) Burning shall not be conducted during periods of actual or predicted low-level atmospheric temperature inversions;
- 6.) Burning must be outside the corporate limits of a city or town; and,

7.) Heavy oils, asphaltic materials, items containing natural or synthetic rubber, or any material which may produce unreasonable amounts of smoke must not be burned.

"The farmer is responsible for smoke that travels across non-public roads used for school bus routes or mail carriers, and the farmer must have flaggers on such roads," said Tamra-Shae Oatman, Small Business Ombudsman, TACB. Additionally, the Texas Corn Producers Board agrees that it is the responsibility of each farmer to notify adjacent neighbors of proposed burning, and limit the size of the burn so that wholesale burning will not be conducted.

The Texas Corn Producers Board stresses that failure to comply with the Regulation I conditions above, or the creation of a nuisance or traffic hazard will result in an agreed Texas Air Control Board order (ABO) with administrative penalties up to \$10,000 for each day or incident of violation. An ABO is a legally-binding document agreed to by the violator and issued by the TACB.

The address of the Regional Office for the 40 counties of the South Plains and Panhandle is TACB, 4630 50th Street, Suite 600, Lub-

bock, Texas, 79414. The telephone number for the Lubbock office is (806) 796-3494. The telephone number for the TACB Ombudsman's office is 1-800-824-7247.

Spearman from page 1

Cudd then made a motion to vote for incumbent Glen Metcalf, Canyon city manager. It was seconded and carried unanimously.

Another item of business surplus property owned by the city. The council voted unanimously to declare the following items as surplus property and authorized the sale of the items: 1 lot scrap iron, 1 lot scrap gas meters, 1 lot 1500 watt incandescent light fixtures, 1 lot assorted padlocks, 1 lot miscellaneous chlorinators and parts, 1 new wordperfect version 5.1 software and 1 37.180 base station radio. These items are to be sold or auction.

Regular business at the meeting was the reading and approval of the minutes from the regular meeting held Oct. 20. The monthly fire, ambulance, police, municipal court and animal control reports for October were approved. And the council approved the payment of the monthly bills in the amount of \$146,829.05.

Savings from cable TV bill will require more tax dollars

Cable television regulations recently passed by Congress may result in lower subscription rates, but a Texas Christian University communications professor said the savings will come at the expense of spending more tax dollars.

Dr. Ginger Clark noted the legislation will require the Federal Communications Commission to spend up to \$250 million over the next five years to implement and oversee the mandated changes.

Among the work to be accomplished will be conducting "mammoth-sized" studies to determine a fair and equitable rate structure for cable service and developing a method to evaluate whether or not cable companies are providing adequate service, she explained.

"I don't think the FCC is welcoming this change because it will im-

pose a great deal of new work on the agency and require more in terms of budgeting," she said.

Clark said the FCC's budget is relatively small compared to some larger regulatory agencies. Despite an FCC budget request for nearly \$150 million for fiscal 1993, Congress only allocated \$126 million. She added the FCC is facing such budget restrictions that the agency has considered requiring employees to take 14 days a year of unpaid leave.

"This whole telecommunications industry is one of the most rapidly-changing industries that we have and probably one that is in the greatest need of some sort of oversight, but the agency responsible for doing that is probably one of the lowest-budgeted agencies in Washington," she said.

Swimming from page 8

ribbon, two 5th place ribbons, a 6th and a 7th place ribbon—eight ribbons in all for C. Miller, and he also lowered his seeded times. Brown won a 1st place ribbon, two 3rd place ribbons and a 7th place ribbon during his one day in competition.

Swimming against fantastic competition were Landon and Eilon Miller, also clipping time from their seeded time logs, Candice Pipkin and Ashley Brown, said Partney. He added that these

swimmers can attest to the fact that the competition was incredible at the Amarillo A/B/C Invitational, and Spearman has many excellent representatives in the swim meets as well as in UIL competition. These students represent Spearman in sports while maintaining academic requirements that are also commendable. The Spearman Swim Club thanks all who support the team and its efforts.

Farm B. from page 1

warded to the American Farm Bureau Federation for consideration at the 73rd annual meeting Jan. 10-14 at Anaheim, Calif.

To know is nothing at all;
to imagine is everything.
—Anatole France

GET THE ALCO Advantage



FREE EVERY TUESDAY!
SECOND SET OF PRINTS

Receive a second set of 3" prints FREE with any exposure roll of 35mm, disc, 110 or 126 color print film left for developing and printing at our everyday prices! C-41 process only. Excludes larger 4" size prints, and photo galaxy.



*A Delicious Gift Idea
To Last The Whole Year*

THE COOKIE OF THE MONTH CLUB
A different cookie or assortment delivered each month of the year

Gift packages starting at \$60

CALL OR COME BY TODAY
Debbie's Ready Or Not
3151/2 Main • Spearman
659-3328

**Spearman Varsity Lynx
Miami Tomahawk Classic
Basketball Tournament
December 3-5, 1992**

Spearman Varsity Boys vs.
Kelton 4:30 Thursday in the New Gym.

First National Bank • Spearman . . .

has two ways to put presents under your tree

You First Bucks

- For every \$25 dollars of your Christmas shopping money spent at a Spearman Store you receive a You First Buck
- Fill it out and bring it to FNB-Spearman and put it in the drum in the lobby
- On December 23 three Bucks will be drawn and each will win

***** \$200 *****

8 ft. Stocking Contest

- Children ages 8 & under guess at how much money is in the Stocking Jar at the FNB Lobby
- The child that comes closest to the amount wins the money and a 6 ft. stocking full of toys and games

**The Grand Finale
FNB's Christmas Open House
Wednesday, Dec. 23
-w- Santa Claus • Refreshments
Drawings**




First National Bank Spearman

MEMBER FDIC
729 W. 7TH