



HANSFORD COUNTY LIBRARY  
0120 S. MAIN ST.  
SPEARMAN TX 79081  
1 comp



THE HANSFORD COUNTY

# Reporter - Statesman

Serving Hansford County Since 1907

Look for Spearman on the Internet at <http://www.webtex.com/Spearman>

THURSDAY, FEBRUARY 27, 1997

213 MAIN • SPEARMAN, TEXAS, 79081

VOLUME 90, ISSUE 9

## Hansford Happenings

### ACCORD To Meet

There will be a special meeting of ACCORD on Friday, March 7th at 7 p.m. at the Expo Center in Perryton. Come and support your neighbors in their fight against the Corporate Hog Farms.

### Waka Church of the Brethren To Hold Revival

The Waka Church of the Brethren is having a Revival, Thursday, February 27 - March 2; with services at 7:30 p.m. & 11 a.m. on Sunday. Speakers for the four services will be: Darwin Hartman, Beverly Cook, Tom Wicker, and Larry White. Everyone is welcome.

### Weatherization Assistance Program

The Texas Department of Housing and Community Affairs provides services to make homes warmer in the winter and cooler in the summer through the Weatherization Assistance Program of Panhandle Community Services. Other grants are leveraged with these funds and could assist in repairs such as: Caulking, Weather-stripping, Insulation, Repairing/replacing door/windows, Plumbing, roofing, etc. These weatherization services are for low-income families. Each eligible applicants house is assessed on a prioritized basis for allowable repairs. Call Panhandle Community Services' office at 435-2478 to see if you qualify.

### Blood Pressure/Blood Sugar Testing

There will be a Blood Pressure and NPHH (Blood Sugar) Testing at the Morse Cafe on March 4th from 9:30 a.m. - 11:30 a.m.

### Multiple Sclerosis Awareness Day Proclaimed

Borger-Mayor Judy Flanders signed a proclamation designating Monday March 3, 1997 as multiple sclerosis awareness day in Borger. The day will begin with a breakfast and local team captains for the MS walk and invited guests and will be held in the Mesquite Room at Frank Phillips College beginning at 7:00 a.m. The day will commence with a MS seminar beginning at 6:30 p.m. in the auditorium at Frank Phillips College. The auditorium is located in the fine arts building. Guest speaker will be Dr. Catherine Phillips. Dr. Phillips is well known throughout the Texas Panhandle as a speaker on MS and is director of research at the veterans affairs center in Amarillo and professor of immunology at the Texas Tech school of medicine in Amarillo. Subjects covered will be what is MS, who gets MS, the newest drugs used to fight MS and current research into finding a cure for MS. Also speaking will be Freddie Gans, director of chapter services at the local MS chapter in Amarillo. The auditorium is handicapped accessible from the rear of the fine arts building by entering through the cafeteria and continuing education credits will also be available for this seminar. Also, there is no charge to the public for this seminar.

### World Day Of Prayer

The 110th Annual World Day of Prayer - an international, ecumenical worship service - will be celebrated on Friday, March 7, 1997. Millions of women around the globe, from tiny rural communities in developing countries to large cities in industrialized nations, will join together on this day for "informed prayer and prayerful action". The observance will take place in this community at First Christian Church, 29 S. Bernice St. in Spearman, on March 7, 1997 at 9:30 a.m. The Christian Womens Fellowship (CWF) will be hosting with refreshments following the service. Child care will be provided. "We are excited about this year's study and worship, we look forward to being together with ladies from our community churches", says Sandy Russell, Chair of this year's observance. We will be joining with Christian women from all over the world in this day of prayer. Please come to worship and fellowship together.

### Spearman Elementary Turns Box Tops Into Extra Bucks

To help raise money for their school, local students at Spearman Elementary are participating in a unique program from General Mills, maker of popular cereals like Cheerios and Wheaties, called Big G Box Tops for Education. The school will receive 15 cents for every qualifying General Mills cereal box top collected between now and March 31, 1997. A qualifying box top is the top flap of any General Mills cereal box that has the 1996/1997 "Big G Box Tops for Education" symbol.

### Scholarship Deadline Approaching

High school students who are U.S. citizens and have a grade point average of 'B' or better are eligible for a \$1,000 college scholarship. To receive an application, send a request by March 15, 1997 to the Educational Communications Scholarship Foundation at 721 North McKinley Road, PO Box 5012, Lake Forest, IL 60045-5012; fax a request to (847) 295-3972; or e-mail a request to "scholar@ecif.com". All requests for applications must include the student's name, permanent home address, city, state, zip code, name of high school, approximate GPA, and year in school during the 1996-1997 academic year. Applications will be fulfilled by mail only, on or about April 11, 1997. One hundred and seventy-five (175) winners will be selected on the basis of academic performance, involvement in extracurricular activities and some consideration for financial need. A total of \$175,000 will be awarded.

### Lawman and the Ladies Fundraiser To Benefit Make-A-Wish

The Lawman and the Ladies have selected Make-A-Wish Foundation as the next recipient of their dinner theater production fundraiser. The Lawman and the Ladies, along with the Make-A-Wish Foundation invite you to enjoy another chapter of "Memories of Gold", March 15th at the Expo Center with dinner at 6:30 p.m. and the theater production to follow. Tickets go on sale February 1st and are \$20.00 per person. All proceeds go to the local chapter of the Make-A-Wish Foundation. Tickets may be purchased by calling Helen Etter at 659-2651 in Spearman and Mandy Derington at 733-2018 in Gruver.

## Sheriff's Office Prepares For Severe Weather

Once again, the Hansford County Sheriff's office is preparing for the approaching severe weather season. In March, the county weather watchers will meet to review procedures, learn about neighboring counties operations, and will conduct tests of mobile equipment. Also, during March, tests of the early warning system, known as the "Big Mouth," will be done for the current rural subscribers. Last year the Hansford County Sheriff's office introduced this warning device to rural residents. The system is designed to dial a residence on the telephone and give a recorded message warning the people about severe conditions in their area. The absence of sirens and cable systems place rural areas at a disadvantage when warnings are issued, so the Hansford County S.O. installed this computer system to supplement rural homes. Rural residents should be aware of the fact that because severe weather sometimes disturbs normal operations of phone and electrical services, they should not depend solely on the Big Mouth services for early warnings of storms. The purpose is to provide an extra way to alert rural residents and hopefully provide them time to become aware of severe conditions and to avoid injury from approaching storms. Residents in

the county can take advantage of this system by calling or coming into the Sheriff's office and picking up an application which comes with safety tips and emergency plans for households to activate during severe weather. The Hansford County S.O. will have many units out during severe weather. The Sheriff's office will have all available units out, along with Spearman and Gruver Police Department units. KRDF-FM Radio (98.3) will be notified at the same time the Hansford County Weather Watchers are. Sheriff's department units will be Sheriff McFarlin (unit 41), Chief Deputy Gary Evans (42), Deputy Allen Mires (43), Mike Davis (40), and Scott Davis (44). Weather watch coordinator Don Evans (66) and David Turner (31) will be in the Gruver area. In the Bernstein/Hitchland areas, Buck Tidwell (67) will be watching the weather. In the Oslo community, Chris Johnson (95), Jim Johnson (96), Joyce and Bill Johnson (units 97 and 98) will be called out. Units in the Morse area are Lynn Davis (37) and west of Morse units will be Joe Morris (65) and Len Morris (69). Lowell Turner (99) will be out in the old Hansford area and Joe Vanderberg (63) will be in the McKibbin vicinity. Also EMS and fire units from Spearman, Morse, and Gruver assist frequently during severe

weather outbreaks. All counties surrounding Hansford County are in radio contact with the Sheriff's office and give valuable information to the dispatchers concerning weather that is traveling into Hansford County.

The Hansford County sheriff's office hopes this will be another injury free weather season and also hopes that rural residents will take advantage of the "Big Mouth" program that is available to them.

## New Gruver Elementary Principal



Diane Brown

by Harletta Carthel

Diane Brown, thirteen-year veteran of the Gruver School system, has been named elementary principal for the 1997-98 school year. She will replace Bob Burgoon, who will be retiring at the end of the current school year.

Brown received her Bachelor of Science degree in 1969, from Texas Tech University and her Masters

Degree in Elementary Education from Wayland Baptist University in 1985. She has taught for 15 years in various grades at the elementary level, as well as English in junior high, and summer head start programs.

Besides serving as president of the local Classroom Teachers' Association, Brown was named Who's Who Among America's Teachers in 1996. She is also active in church and community activities. She has served as President of the United Methodist Women and directed children's musicals and the United Methodist Youth program. In addition, she has been Chairman of the Administrative Board of the United Methodist Church, and is past President of Alpha Mu Psi sorority.

Brown and her husband, Randy, have three children: Christy, 25, a practicing attorney in Ft. Worth; Chad, 23, a Texas Tech student, who will graduate in July with a degree in agriculture; and Brendy, 21, also a Tech student, who will graduate in December as a Registered Nurse.

## Congratulations & Good Luck, Greyhounds!

The Gruver Greyhounds defeated Lazbuddie, 52-41 on Tuesday, February 25th in area. They will travel to Levelland on Friday, February 28th to play Springlake-Earth in the Region 1-1A tournament in the Texan Dome at 1:30 p.m. The winner of this game will play the winner of the Roby/Paducah game at 9:30 a.m. on Saturday.

## Congratulations, Kara Townsen!



Lone Star Conference

Freshman of the Year

WTA&M Basketball

## "Blades In The Sky" Program

The Imagination Station will be hosting a special "Blades in the Sky" windmill exhibit beginning Monday, March 3rd from 7:00 to 8:30 p.m. at 202 N. Main in Stratford. This Family Night kick-off is open to all area residents. Refreshments will be served.

Highlights of this exhibit are thirteen framed photos from the book *Blades in the Sky* by T. Lindsay Baker; a historical video about windmills in Sherman County created by Marian Williams; actual windmill gears, working models, and demonstrations; and other hands-on learning activities.

Local and area schools have been invited to tour the exhibit during the month of March. The Depot Museum in Stratford is also planning a fine arts exhibit on windmills during March.

Other public openings are scheduled on Saturday, March 8th and 22nd from 10:00 a.m. to 2:00 p.m., and Sunday, March 9th and 23rd from 1:00 to 3:00 p.m.

Residents of all ages are invited to come and share this experience. The unique historical perspective shows the growth and settlement of this area after water resources were made available as a result of windmill technology.

## New CRP Rules To Be Explained

submitted by Rick Harrell

The new rules and regulations for the Conservation Reserve Program will be explained in a local meeting in Spearman on Monday, March 3rd. The meeting will be held at the O'Loughlin Center in Spearman at 10:00 a.m. It is important that CRP participants be in attendance. (This concerns existing contracts as well as new land to be bid into the program.)

Personnel from the Farm Service Agency (FSA) and the Natural Resources Conservation Service (NRCS) will be on hand to

provide information on the intricacies of the new program. The agencies will also answer as many individual questions as possible.

The sign-up period for the new program begins Monday, March 3rd and runs through Friday, March 28th. This period will be very important to local producers as Hansford County has contracts covering approximately 30,000 acres which are scheduled to expire September 30, 1997.

For more information, contact the NRCS office at 659-2330, or the FSA office at 659-3036.

## Amarillo PCA Stockholder Meeting

The Amarillo Production Credit Association will hold its 63rd Annual Stockholders' Meeting on Saturday, March 1, 1997 at the Branding Iron Restaurant in Dumas. The Business Meeting begins at 4:00 p.m. followed by a dinner. Entertainment will be provided by Greg Claassen of Kansas.

The association is a major agriculture lender providing credit and other services to its farmer and rancher stockholder borrowers primarily in twelve

Texas Panhandle counties. The Amarillo Production Credit Association has maintained its original ownership and operational structure since its inception in 1934. Mike McLain of Gruver is the Chairman of the Board. Other board members are Charles R. Hoover, Hereford; Vice Chairman; Joe Everett, Stratford; Howard Beauchamp, Jr., Dumas; David Doshier, Vega; and Pat Messenger, Amarillo. For additional information, contact either of the Association's offices in Amarillo or Dumas.

## Stratford Talent Show Postponed

The Community Talent Show sponsored by The Imagination Station and scheduled for March 1st in Stratford has been postponed. It will be rescheduled at a later date.

Thanks to everyone who expressed interest and support in

this community program. Local and area performers who signed up to participate will be given first priority when the show is rescheduled. Please call (806) 396-2380 for information or questions.









Amber Murrell adds two points to the Lady Hounds score during their game against the Swiftettes.

players as well as the fans. The Hounds were certainly hot and gave the Antelopes quite a sublim.

The game started off slowly. The two teams showed a superior defensive effort and held the score to 7-6 in favor of Gruver. However, this slow offensive game soon sparked and ignited the pyre prepared for Allison. This second quarter revealed an offensive exhibition led by Brant Armes. Brant accumulated 16 points in the second quarter, three of them coming from a half court buzzer beater. The Hounds hustled into the locker room with a 7 point lead.

The locker room talk was short and to the point. Defense was the subject, and the Hounds knew what was expected of them. They shut down Allison to only 5 points in the third quarter and extended their lead to 13 points. During the fourth quarter the Antelopes rallied back offensively, but the Hounds simply did it better. They outscored Allison 21-17 in the final quarter and won 66-49.

Later that night, the team went to a Mexican food restaurant. The table filled with smiling faces and laughter was complemented by a brilliant gold ball labeled "Bi-District Champions." The Hounds were truly the champions of the night, and a well deserved win and chance to play for Area were their pillage.

**Hounds vs. Allison Antelopes**  
**Hounds** 73 45 66  
**Allison** 62 7 32 49

**Three Pointers:** Brant Armes (4), Josh Mayhew (2)  
**Points:** Brant Armes - 27, Jim Potts - 12, Josh Mayhew - 10, Jared Johnson - 8, Buster McClain 8, Heath Tolleson - 1.

**Other:** Jim Potts - 9 Rebounds, Brant Armes - 8 Steals & 8 Assists.

**Lady Hounds Go Out With a Bang**  
*by Tucker Henson*

The past week has been quite an eventful time for the Lady Hounds. They faced Nazareth for Area on Tuesday and played brilliantly. The Ladies played a tight game with the Swiftettes, and led 17-16 at the half. The two teams continued to swap the lead, and Nazareth held a three point advantage after three quarters of play. The Ladies rallied back and played an almost perfect fourth quarter. In the final minutes, the Lady Hounds made some clutch free throws to maintain the lead. The final score rested in favor of Gruver, and the Ladies advanced to the regional tournament.

At the regional tournament, the Lady Hounds realized they must be prepared to play. They were certainly prepared for their first game versus Whitharral. Whitharral, the number two team in the state, looked to roll over the 19th ranked Lady Hounds. However, the Ladies

forgot to roll over and die. Instead they played a beautiful defensive game and shut down their opponent. They showed that rankings mean nothing and effortlessly defeated Whitharral 51-24. This win advanced them to the semi finals and brought them one step closer to glory.

In their second game of the regional tournament, the Ladies faced Spur. Spur, coming off a big upset over Meadow, ran away with an early lead of 18-4. The Ladies fought back and never admitted defeat. Every Lady Hound fought with determination, heart, and love for the game. They strove to overcome the first quarter deficit and put on one terrific show for the fans. The Ladies were down 18 points going into the fourth quarter, but they never gave up. They jumped into the press and quickly chipped away at Spur's lead. The Ladies were within three points at one time, and Spur began to stall. The Lady Hounds had to foul, and Spur converted on the free throws time and time again. The Ladies lost a heartbreaking, season-game by six points. Despite the painful loss, the ladies did go out swinging. In my opinion, their final quarter of the season was indeed their finest. The Ladies outscored Spur 28-16 and certainly frightened and astonished their

opponents. They refused to give up, and they gave an effort that makes fans proud to call the Lady Hounds their team.

**Lady Hounds vs. Nazareth**  
**Lady Hounds** 7 17 24 46  
**Nazareth** 12 16 27 43

**Points:** Weslyn Maupin - 18, Amy Gillispie - 10, Amber Murrell - 6, Cara Hathaway - 5, Autumn Bateman - 4, Janae Watley - 2, Mary Henson - 1.

**Other:** Weslyn Maupin - 7 Rebounds.

**Lady Hounds vs. Whitharral**  
**Lady Hounds** 9 15 36 51  
**Whitharral** 19 16 24

**Three Pointers:** Janae Watley (2), Cara Hathaway (2)

**Points:** Janae Watley - 14, Cara Hathaway - 10, Weslyn Maupin - 7, Amy Gillispie - 6, Autumn Bateman - 6, Jill Odom - 5, Kathy Slough - 3.

**Other:** Amber Murrell - 7 Assists, Cara Hathaway - 6 Rebounds.

**Lady Hounds vs. Spur**  
**Lady Hounds** 4 15 24 52  
**Spur** 18 27 42 58

**Three Pointers:** Janae Watley (4)

**Points:** Janae Watley - 18, Weslyn Maupin - 17, Amber Murrell - 5, Autumn Bateman - 5, Kathy Slough - 3, Amy Gillispie - 2, Jill Odom - 2.

**Other:** Amber Murrell - 8 Assists, Weslyn Maupin - 8 Rebounds.



Jim Potts shoots for two during the Hounds' Bi-District game against Allison.

**Good Luck, Hounds!**

**Hounds Breeze Through Bi-District**  
*by Tucker Henson*

The Pampa gym was uncommonly cold last Thursday night, but the Hounds did their best to warm up the crowd. By the end of the scorching, perspiration was dripping heavily from the

# Congratulations Lady Hounds, & Good Luck Hounds!

**HOT HOOPS**

The following businesses and individuals wish to congratulate you on an outstanding basketball season!

**HOT HOOPS**

<b>El Vaquero Restaurant</b> Gruver, TX • 733-2913	<b>G&amp;G Foodliner</b> Gruver, TX • 733-2471	<b>Gruver Greyhound Mothers</b>	<b>Gruver Cablevision</b> Gruver, TX • 733-5295	<b>Gruver Farm Supply</b> Gruver, TX • 733-2427
<b>Gruver Insurance Agency</b> Gruver, TX • 733-2421	<b>Gruver Ford, Inc.</b> Gruver, TX • 733-2431	<b>Hansford Supply</b> Gruver, TX • 733-2469	<b>J. Mack Hoel, CPA</b> Gruver, TX • 733-2781	<b>Sparks Brothers Spraying, Inc.</b> Gruver, TX • 733-2972
<b>Sunray Co-Op Gruver Branch</b> Gruver, TX • 733-2481	<b>Caprock Industries, Inc.</b> 733-5043 • 733-5025	<b>Gruver Chamber of Commerce</b> Gruver, TX • 733-5114	<b>Cousin's</b> Gruver, TX • 733-5420	<b>Hansford County Vet Clinic Inc.</b> Spearman, TX • 659-2100
<b>Little Tiffanies</b> Gruver, TX • 733-5290		<b>David, Kelly, Brandt, Bray, &amp; Teal Armes</b>		<b>First National Bank</b> Spearman, TX • 659-5544
<b>Bennie Wilson Electric</b> Gruver, TX • 733-2080		<b>Danny, Harletta, Justin, KiKi, &amp; Kade Carthel</b>		<b>Interstate Bank, SSB</b> Spearman, TX • 659-2559
<b>Gruver Body Shop</b> Gruver, TX • 733-2941		<b>Doc &amp; Charlotte Bergin</b>		<b>Five Star Equipment</b> Spearman, TX • 659-3743
<b>Gruver State Bank</b> Gruver, TX • 733-5061		<b>Chad, Julie, Zach, &amp; Alex Logsdon</b>		<b>Hansford Hospital</b> 659-2535 • Spearman, TX • 733-2954
<b>Hansford Implement</b> 659-2568 • Spearman, TX • 733-2088		<b>Richard &amp; Wanda Wagner</b>		<b>All Occasion Flowers</b> Spearman, TX • 659-5180
<b>Watley Seed Co.</b> Spearman, TX • 659-3838	<b>Val &amp; Marlene Winger</b>	<b>Main Street Store</b> Gruver, TX • 733-5040		

The Lyr season reall night when just right Champions New Deal I of victory e spot in Basketball trip to the on February Tuesday traveled to the New play of what they didn't offer Lynettes, somewhat exhibited but that w was a total Shayla B scoring w Tara Butt in a basket offense wa the hoop fo Second went on a Lady Lion regrouped Area Cha looked bac the board; and was 2 total of 8 Jennifer I found the

## The Gruver Grapevine

by Harletta Carthel

Both the Lady Hounds and the Lynettes experienced a weekend at their respective tournaments in which they knew "the thrill of victory and the agony of defeat." The Lady Hounds, who devastated number two ranked Whitharrel, and the Lynettes, who shocked number one rated Ozona, both suffered heart-breaking losses in play Saturday. The Lynx also ended their season after a hard-fought game with Clarendon. Although the loss of an important game is never forgotten (I know, I have a daughter who often re-agonizes a game with New Deal), the memories of a wonderful season and a truly outstanding post season will always be a source of pride for the players and our communities.

Two senior Lady Hounds were injured last week. Mary Dawn Henson suffered a freak fall and injured her knee when she tripped over luggage on the GHS bus headed to the regional tournament. Much to her disappointment, Mary Dawn was not able to play in her last games as a Lady Hound.

Cara Hathaway was injured in the semi-final game of the tournament when an opposing player's elbow hit her forehead with such force that a cut requiring 12 stitches resulted (no foul called). Cara missed a quarter and a half of play but was able to return to play with the aid of several butterfly bandages.

Strangely enough, Cara's sister, Debbie, of Kilgore also had stitches in her head this week following a minor traffic

accident. And we wonder why mothers are gray?

I was in attendance at the McMurry game in Abilene at the same time the Lynettes were playing in the regional finals. Josh Winegarner, a student at McMurry, was on hand to give the details of the Spearman game. Another Spearman graduate, Dana Barker, introduced herself to us. Dana is a McMurry alumna and is currently teaching elementary school in Wylie. We also visited with Kasey Foster who was spending the lovely day jogging.

I encountered several Gruverites at the "Make a Wish" Car Show in Amarillo Sunday afternoon where my son Justin had a car entered. Chris and Nicki Stork, Max Davis, Lee Stedje, the Rex Casdorph family, and former resident Kyle Irwin were enjoying the displays.

I was later greeted by a young man who asked, "Mrs. Carthel, do you know who I am?" I immediately recognized my former fourth grade student, Donnie (I think he's Don now) Hartranft. Donnie is the manager of Interstate Batteries in Amarillo. His company had a booth at the show, and Donnie also had a vintage auto in the show. He gave me an updated report on his grandmother, Ida Hendrick, who had surgery recently and is now doing well at home.

Bob and Karen Setliff were in Lubbock Saturday for the 40th. homecoming celebration of Lubbock Christian University. Their daughter, Toby, is an LCU cheerleader and was cheering in her last game of the season. They

also viewed the Master Follies presentation of the university where Toby's social club won an award for creativity.

A large contingent of former Gruver residents were on hand in Amarillo Tuesday night, Pampa on Thursday night, and Lubbock on Friday and Saturday to cheer for GHS teams. Being in the playoffs is the catalyst for great community reunions. Many students from WTAMU, Texas Tech, and South Plains College also came to support their alma mater.

Joe Potts and Johnny Bennett participated in a KAIROS walk at the Pampa prison this past weekend.

A flock of 50 or more beautiful azure bluebirds weathered the cold spell of Monday and Tuesday in our yard. I hope others have had these lovely visitors in their yards this week. Tommy Henson tells me the group that found their home were either not very intelligent or were very slow as their cats reduced them to piles of blue feathers.

Judy Stedje of the Oslo community was listed on the honor roll at Oklahoma Panhandle State University for her work in the fall semester.

A hearty welcome is extended to Jack and Mary Olsen who have moved to Gruver from Cimmaron, New Mexico.

Buck and Linda Tidwell have returned from a trip which took them to various locations in Oklahoma, Kansas, and Missouri. They visited Linda's hometown of Wakita, Oklahoma where the movie "Twister" was filmed, then on to Medford, Oklahoma, and Wellington, Kansas where they enjoyed the company of Gene and Rayma Jean Clack, former Gruver residents. Linda also reported an interesting visit to Carthage, Missouri, where the creator of the

Precious Moments figurines is building a Precious Moments Chapel in which figurines are used in Biblical context throughout the building.

Several GHS students won honors in the UIL academic tournament in Dumas recently. Cody Cazares placed second in current events and then teamed with Matt Watlington, and Jim Potts to take a second place team award in current issues and events.

Charlie Stavlo was fourth in number sense while he, Jason Tebeest, and Brant Armes took second as a team in number sense.

Coaches for the events are Amy Tebeest, current issues and events and science, and Sherry Johnson, number sense and calculator.

David Grotegut and his passengers were fortunate to escape injury when a young lady ran a stop sign and hit his pickup causing it to roll. The accident happened Sunday in Brenham where David and son Derrick were participating in the Houston Stock Show pig sift.

The 1998 GHS seniors will be presented their senior rings in a ring ceremony March 4.

Junior high and elementary students will have Memory Mates pictures made on March 5.

Observation of the week: I wonder if it is a sign of aging when a visit to an antique store is more like a trip down memory lane?

One store had these "antiques" for sale: a zippered notebook, cartridge pens, a Fanner 50 cap gun, roller skates that clamped on your shoes, Lennon Sisters paper dolls, Dick and Jane readers, Beatles albums and dolls, a blue glass Noxema jar, and real bicycles that had fenders where a friend could sit while you pumped, and a metal basket on front to carry your books or Barbie lunchbox.

## Gruver Boys Clubs Held Chili Cook-off



(Back Row, L-R) Mark Washburn and Ron Harris; (Front) Dustin Hodge

by Bob Adams

The Gruver Ezra Boys Clubs held their annual Chili Cook-off Competition at the Golden Age Center, Gruver on February 19, 1997. Each of the boys and their families made a special chili for the competition. Entertainment was provided by the Lone Chili Pepper - Rodney Dale Clawson as well as impromptu skits by the boys and their dads.

The chilies were judged by clubs for best tasting, hottest and most unusual.

**1st Grade Club**  
Best tasting - Cason Finley; 2nd - Tanner Sherrill; 3rd - Timothy Schultz.

**2nd Grade Club**  
Best tasting - Travis McDowell; 2nd Conrad Curry; 3rd - Travis Hodge.

**3rd Grade Club**  
Best tasting - Jose Torres; 2nd - Steve Villegas; 3rd - Ivan Briones.

**4th-5th Grade Club**  
Best tasting - Chris Clawson;

2nd - T.J. Sherrill; 3rd - Chris Abernathy.

**6th Grade Club**  
Best tasting - Dustin Hodge; 2nd - Hunter Bevell; 3rd - Eric Lopez.

**Hottest Chili**  
(among all the boys)  
1st - Tremayne Martinez; 2nd - Dan Villegas; 3rd - Tanner Sherrill

**Most Unusual Chili**  
(among all the boys)  
1st - Ramon Magallanes; 2nd - Luis Rodriguez; 3rd - Steve Villegas.

In addition to trophies and ribbons, each of the boys received a "cooking" patch and a 1997 chevron for their vest. Special thanks to Todd Parker for photography, Rodney Clawson for the music entertainment and all the parents who helped make this a great event.

Our next monthly family Gruver Ezra boys clubs event is the Catamaran boat races on March 26 at 6:30 pm at the County Ag Barn.

## Football

excellent job for he scored one as well as tying id offering one tes were 8 of 15 35%. The Lady r 75%. ynnette team well deserved ry for this Area This is a n that simply guts, they are r hearts!" eeps on seeing onquest will be from Ozona. ight is very the Lynettes the 1-2A two ate champs. She ttes have the selves now and given night is Shieldknight xtremely proud nd only praised termination and

Championship improved their 18-14. They will Lady Lions at 8 ght in Moody semi finals in Championship ers will play on m. for the 2A onship title.

- March 4 Beans, Carrot ait; Milk
- March 5 shed Potatoes reen Beans, ke, Hot Roll, r; Milk
- March 6 w/Crackers, lic Bread Sticks; lk
- March 7 n (Turkey & Pickles, Chips, Chip Cookie; lk

## FM

entry 'Till ght

ak oyed

cost less

se here. d MSA, call:

N

3118-1096 available in all states. us funding maximums.

**It happens to fine jewelry, too**

Fine jewelry gets dented, dinged, and damaged. And just like with a car, it doesn't make you look or feel all that great.

If you have fine jewelry that's, well, not so fine right now, bring it in today. We'll straighten it, polish it, and make it look like brand new.

Won't that feel better?

**Hickerson Jewelers**  
721 W 7th • 659-3566

**DATE CHANGE**

**FLEA MARKET & GARAGE SALE**

**Saturday, March 22nd • 9 a.m.-4 p.m.**  
O'Loughlin Center • 502 Brandt • Spearman, Texas

**SPACES AVAILABLE**

Deadline for reserving space  
Wednesday, March 19th

For more information, call Kathy Bryant at 659-3030.

**NOW IS THE TIME...**

Put a ZIMMATIC to work in your field with  
**SPECIAL REBATES OR 7.95% FINANCING**

Purchase a Zimmatic by March 3, 1997 and select either:

- Cash Rebates**  
\$100/Tower Rebate
- OR
- Special Financing**  
5 year Loan or Lease
  - 7.95% fixed APR
  - 5% Down Payment
  - 1st Payment in 12 Months

\*Certain restrictions and requirements apply. Subject to credit approval.

See your Zimmatic dealer for details.

**Five Star Equipment, Inc.**  
Spearman, Texas ★★★★★ (806) 659-3743

**ZIMMATIC**  
Leadership and strength you can depend on today and tomorrow.

**REAL DEAL SALE**

**3 DAYS ONLY**

**OPEN TO THE PUBLIC**

Friday 12-8 2/28/97  
Sunday 12-6 3/2/97  
Monday 12-8 3/3/97

**COMPANY SPONSORED SALE**  
**ALL NEW AND USED VEHICLES**  
**CLEARLY MARKED AND TAGGED**  
**DON'T MISS THIS!**

**CHRYSLER Plymouth** **Jeep Eagle** **Dodge Dodge Trucks** **FORD LINCOLN Mercury**

**Bob Johnson**  
**MOTOR COMPANY**

**ALWAYS OPEN SUNDAY 12-6 CLOSED SATURDAY**

**1300 WEST WILSON - BORGER, TX**  
**1-888-220-2545 - 273-7541**





**Into Society**

mez, Lena Harbour, Howell, Zach, Amber Morgan, Lindsey Smith, Trantham.

tion Ceremony be called to order by the given by Amanda and the direction of the song "I Am

current members and their par-recognized. The then inducted the and the NHS as led by Dillon

g the pledge, Miss Sanders, the State of the Texas Fed-College Republicans 2 graduate of SHS

ch.

Sander's speech, choir sang "This student body was and a reception for bers, their guests, ity was held in the

this year

by boyfriend Joe. Edwards. they no one. rea Archer. Mario Fuentes. never wants to. nd DeLozier. nifer Laxson.

**ff Box**

Mr. Rowland  
Mrs. Whitefield  
Teresa Gomez  
Maribel Martinez  
Staff  
Brandi Burch  
Jennifer Laxson  
Bucky Porter  
Julie Scroggs  
Brandi Willis  
Stacy DeLaCruz  
Rachel Burch  
Lacey Miesner

**Pringle-Morse CISD School Menu**

**Breakfast**  
Monday, March 3  
Muffins, Toast, Juice; Milk  
**Tuesday, March 4**  
Oatmeal, Toast, Juice; Milk  
**Wednesday, March 5**  
Cinnamon Toast, Toast, Juice; Milk  
**Thursday, March 6**  
Pancakes, Sausage, Juice; Milk  
**Friday, March 7**  
Eggs, Toast, Juice; Milk  
**Lunch**  
Monday, March 3  
(A) Burrito/Chili, (B) Senior Chicken, Salad, Cornbread; Milk

**Tuesday, March 4**  
(A) Baked Potato, (B) Hamburger Steak, Potatoes, Gravy, Broccoli, Salad, Rolls, Fruit; Milk  
**Wednesday, March 5**  
(A) Hamburger, (B) Hot dog (no chili) French Fries, Baked Beans, Jell-O; Milk  
**Thursday, March 6**  
(A) Spaghetti, (B) Chicken /Dressing, Salad, Whole Wheat Rolls, Fruit; Milk  
**Friday, March 7**  
(A) Pocket Sandwich, (B) Grill Cheese, Stew, Salad, Dessert; Milk

**Spearman ISD School Menu**

**Breakfast**  
Monday, March 3  
Cereal, Toast, Hot Pockets, Fruit or Fruit Juice; Milk  
**Tuesday, March 4**  
Cereal, Toast, Sausage, Egg, Biscuit, Fruit, Fruit Juice; Milk  
**Wednesday, March 5**  
Cereal, Toast, Donuts, Fruit or Fruit Juice; Milk  
**Thursday, March 6**  
Cereal, Toast, Elfin Loaf, Fruit or Fruit Juice; Milk  
**Friday, March 7**  
Cereal, Toast, Breakfast Burrito, Fruit or Fruit Juice; Milk  
**Lunch**  
Monday, March 3  
Tamales, Sausage Pizza, Hamburger Basket; Side Items: Refried Pinto Beans, Spanish Rice, Shredded Lettuce, Pineapple Tidbits, Grated Cheese, Croutons-Bacon Bits; Milk  
**Tuesday, March 4**  
Breaded Beef Patti on a Bun, Pepperoni Pizza, Hamburger Basket; Side Items: Tator Tots, Whole Kernel Corn, Peaches, Shredded Lettuce, Grated Cheese, Crackers, Croutons-Bacon Bits; Milk

**Wednesday, March 5**  
Chicken Nuggets, Sausage Pizza, Hamburger Basket; Side Items: Whipped Potatoes, Gravy, Seasoned Green Beans, Hot Rolls, Margarine-Jelly, Shredded Lettuce, Grated Cheese, Crackers, Croutons-Bacon Bits; Milk  
**Thursday, March 6**  
Shaved Turkey on a Bun, Pepperoni Pizza, Hamburger Basket; Side Items: Fried Okra, Tomato Soup, Cinnamon Roll, Shredded Lettuce, Grated Cheese, Crackers, Croutons-Bacon Bits; Milk  
**Friday, March 7**  
Fish, Tarter Sauce, Sausage Pizza, Hamburger Basket; Side Items: Crinkle Cut Fries, Sweet Peas, Shredded Lettuce, Birthday Cake, Grated Cheese, Crackers, Croutons-Bacon Bits; Milk

providing Property, Automobile and General Liability Insurance beginning March 5, 1997. Proposals will be received until 3:00 p.m. on March 3, 1997. Proposals should be addressed to Business Manager, Gruver ISD, 601 Garrett Street, P.O. Box 650, Gruver, Texas 79040. 2(2-20-97)B

**NOTICE TO BIDDERS**  
Sealed bids for the purchase of a full size four-door police sedan with heavy duty equipment will be received by the City of Spearman, Texas, up until 10:30 a.m., March 28, 1997, and then publicly opened and read.  
The City reserves the right to reject any or all bids, to waive informalities, and to accept the bid deemed to be the most advantageous to the City. All bids received after the closing hour will be returned unopened.  
All bids shall be sealed and marked on the outer envelope of the type of bid being submitted.  
Specifications and bidding documents may be secured from City Hall, P.O. Box 37, Spearman, Texas 79081. 2(2-20-97)B

**TEXAS FARM INC. ON-SITE TRUCK DRIVER**  
Join a winning team! Texas Farm, Inc. is looking for a DOT certified driver with a background in live animal transportation. Two years experience desired but not required. Our company offers immediate opportunity for advancement as we continue to grow.  
We offer an excellent work schedule with an opportunity for long-term employment. Our benefits package is unbeatable and includes

**TEXAS FARM INC. ON-SITE TRUCK DRIVER**  
Join a winning team! Texas Farm, Inc. is looking for a DOT certified driver with a background in live animal transportation. Two years experience desired but not required. Our company offers immediate opportunity for advancement as we continue to grow.  
We offer an excellent work schedule with an opportunity for long-term employment. Our benefits package is unbeatable and includes

**Public Notice**

Continued from Page 10

Medical and Dental benefits, prescription drug plan, vacation and sick leave and a Short Term Disability plan. Interested applicants should come by our main office to fill out an application or mail a resume to Texas Farm, Inc., #9 S.W. 2nd Ave., Perryton, Texas 79070, Attn: Human Resources Supervisor. EOE 1(2-27-97)B

by our main office to fill out an application or mail a resume to Texas Farm, Inc., #9 S.W. 2nd Ave., Perryton, Texas 79070, Attn: Human Resources Supervisor. EOE 1(2-27-97)B

**NOTICE OF APPLICATION FOR OIL AND GAS WASTE DISPOSAL WELL PERMIT**

J.M. Huber Corporation, 1900 West Loop South, Suite 1600, Houston, Texas 77027, is applying to the Railroad Commission of Texas for a permit to dispose of produced salt water or other oil and gas waste by well injection into a porous formation not productive of oil or gas. The applicant proposes to dispose of oil and gas waste into the Brown Dolomite Formation, Steele Collard A Lease, Well Number 3. The proposed disposal well is located 7 miles north of Spearman Wildcat (to be named) Field, in Hansford County. The waste water will be injected into strata in the subsurface depth interval from 3300 to 3500 feet. LEGAL AUTHORITY: Chapter 27 of the Texas Water Code, as amended, Title 3 of the Texas Natural Resources Code, as amended, and the Statewide Rules of the Oil and Gas Division of the Railroad Commission of Texas.

Requests for a public hearing from persons who can show they are adversely affected, or requests for further information concerning any aspect of the application should be submitted in writing, within fifteen days of publication, to the Environmental Services Section, Oil and Gas Division, Railroad Commission of Texas, P.O. Box 12967, Capitol Station, Austin, Texas 78711 (Telephone 512/463-6792). 1(2-27-97)B

**DO YOU BELIEVE IN PRAYER?**  
*We do, too!*  
Call the Church of Christ Prayer Line anytime to make a prayer request. **659-5334**. Requests kept confidential.

**FREE**  
Oooooooh,  
aaaahhh,  
& wow

Bring your fine jewelry in right now, and we'll polish, buff, and shine it up in a jiffy. All for the best price in the world: FREE. And you'll walk out of our store going, "Ooohh," "Aaaaahhh," and "Wow!!!"

Foundation of Fine Jewelry



South of Plains Shopping Center  
721 W. Seventh • Phone 659-3566  
Spearman, Texas 79081

**SPRING IS ARRIVING!**

Call for your lawn and outdoor projects.

Randy Davis

Spearman, TX • (806) 659-3818  
Since 1983

Mowing • Decks • Lawn Care  
Aerating • Patio Covers  
Thatching • Fence Building

**CONGRATULATIONS**  
Lynx & Lynxettes  
Hounds & Lady Hounds!

We're so proud of each and everyone of you!

from  
Prairie Garden Flowers

**Immediate** **INVENTORY LIQUIDATION**

The Most Dependable, Longest-Lasting Trucks.  
**CHEVY TRUCKS**  
Division of General Motors Corporation

1997 EXT CAB SWB FLEETSIDE PICKUP  
EXTERIOR EMERALD GREEN METALLIC  
INTERIOR GRAY CUSTOM CLOTH TRIM  
4 SPEED ELECTRONIC AUTOMATIC

STANDARD VEHICLE PRICE \$18,022.00  
Options Installed by Manufacturer 3,164.00

STANDARD EQUIPMENT  
Items Featured Below are included at NO EXTRA CHARGE in the Standard Vehicle Price Shown at Right  
OPERATING/DURABILITY FEATURES:  
• SPEED SENSITIVE PWR STEERING  
• FRONT STABILIZER BAR  
• INDEPENDENT FRONT SUSPENSION  
• 2 STAGE MULTI-LEAF RR SPRINGS  
• 5 - STEEL BELTED RADIAL TIRES  
• TACH-VOLT-TEMP-OIL GAGES  
• GRAVEL ANTI-CHIP PROTECTION  
• TWO SIDED ZINC COATED GALVANIZED STEEL SHEET METAL STAINLESS STEEL EXHAUST SAFETY FEATURES:  
• FOUR WHEEL ANTI-LOCK BRAKES  
• INTERMITTENT WIPERS  
• HALOGEN HEADLAMPS  
• DRIVER AND RIGHT FRONT PASSENGER AIR BAGS  
• STEEL SIDE DOOR BEAMS

• DAYTIME RUNNING LAMPS  
• PSIR SUPPRESSION SWITCH  
• CONVENIENCE FEATURES:  
• NO DEDUCTIBLE BUMPER-BUMPER  
• 3 YEAR/36,000 MILE LIMITED WARRANTY  
• "SCOTCHGARD" FABRIC PROTECTOR  
• DUAL CUPHOLDERS  
• AM/FM STEREO RADIO  
• SOLAR-RAY TINTED GLASS  
• 25 GALLON FUEL TANK  
• CHROME FRONT BUMPER  
• 7 LEAD TRAILERING HARNESS  
• REMOVABLE TAILGATE  
• FULL CLOTH HEADLINER  
• COLOR-KEYED RUBBER FLOOR CVR.  
• SWING OUT QUARTER WINDOWS  
• FRONT AND REAR SEAT HEADREST  
• ADJUST. HEIGHT SHOULDER BELTS

PREFERRED EQUIPMENT GROUP 1SB  
CONSISTS OF SAVINGS W/ MINIMUM PURCHASE OF:  
• SILVERADO DECOR INCLUDES:  
• AIR CONDITIONING  
• DUAL ELECTRIC MIRRORS  
• ELECTRONIC AM/FM STEREO RADIO W/SEEK-SCAN, STEREO CASSETTE AND DIGITAL CLOCK  
• CHROME REAR STEP BUMPER  
• CHROME REAR STEERING AND BODY SIDE MOLDINGS  
• COMFORTLT STEERING AND ELECTRONIC CRUISE CONTROL  
• POWER LOCKS AND WINDOWS  
• LEATHER WRAPPED STEERING WHEEL  
• COLOR KEYED FLOOR MATS

COMPARE THIS VEHICLE TO OTHERS IN THE FREE FUEL ECONOMY GUIDE AVAILABLE AT THE DEALER.

Compare this vehicle to others in the FREE FUEL ECONOMY GUIDE available at the dealer.

CITY MPG 15  
HIGHWAY MPG 19  
ESTIMATED ANNUAL FUEL COST: \$1125

ACTUAL MILEAGE WILL VARY WITH OPTIONS, DRIVING CONDITIONS, DRIVING HABITS AND VEHICLE'S CONDITION. RESULTS REPORTED TO EPA INDICATE THAT THE MAJORITY OF VEHICLES WITH ESTIMATED FUEL ECONOMY RATES OF 13 AND 16 MPG IN CITY AND 22 MPG ON HIGHWAY.

1997 C1500 PICKUP  
VIN 1GCEC19R1VE168602

STANDARD VEHICLE PRICE \$18,022.00  
Options Installed by Manufacturer 3,164.00

4 SPEED ELECTRONIC AUTOMATIC \$290.00  
VORTEC 5700 V8 SFI ENGINE \$1,195.00  
TRANSMISSION WITH OVERDRIVE \$970.00  
ELECTRONICALLY TUNED AM/FM STEREO RADIO W/SEEK-SCAN, STEREO SELECT, STEREO CASSETTE TONE SELECT, STEREO CASSETTE TAPE, COMPACT DISC PLAYER, DIGITAL CLOCK, AND THEFT DETERRENT (REPLACES RADIO IN OPTION PACKAGES) 252.00  
LOCKING DIFFERENTIAL-REAR AXLE 250.00  
CAST ALUMINUM WHEELS 240.00  
SIX-WAY POWER SEAT 140.00  
REMOTE KEYLESS ENTRY 135.00  
REAR AXLE - 3.73 RATIO 107.00  
DEEP TINTED GLASS 96.00  
HD AUXILIARY TRANSMISSION COOLING SYSTEM 50.00  
REAR TIRES P235/75R 15 STEEL BELT WHITE LETTER 50.00  
FRONT TIRES P235/75R 15 STEEL BELT WHITE LETTER 25.00  
SPARE TIRE P235/75R 15 STEEL BELT WHITE LETTER NO CHARGE  
SPLIT BENCH RECLINING FRONT SEAT FEDERAL NEW YORK/MASSACHUSETTS EMISSIONS NO CHARGE

TOTAL VEHICLE & OPTIONS \$24,986.00  
DESTINATION CHARGE 625.00  
TOTAL \$25,611.00  
FACTORY DISCOUNT -750.00  
STEVE'S DISCOUNT -2,916.00  
YOU SAVE \$3,666.00

**IRWIN AUTO CO.**  
Right on the Corner, Right on the Price.  
409 S. MAIN • PERRYTON, TX

**Tired of pushy salesmen???**  
NO SALESMAN, NO HYPE  
Just the Best Selection,  
Best Prices  
and Best Service  
in the Tri-State Area!

**MUST TAKE DELIVERY BY FEBRUARY 28, 1997**

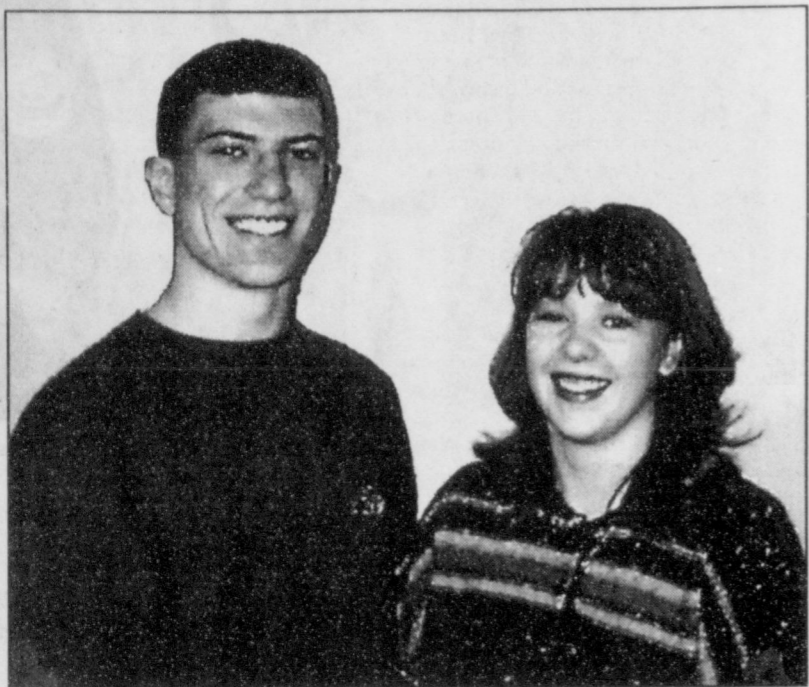




# Spearman Lynx Lines



A publication of the Spearman High School Journalism Department



## February Students of the Month Announced

By MARIBEL MARTINEZ

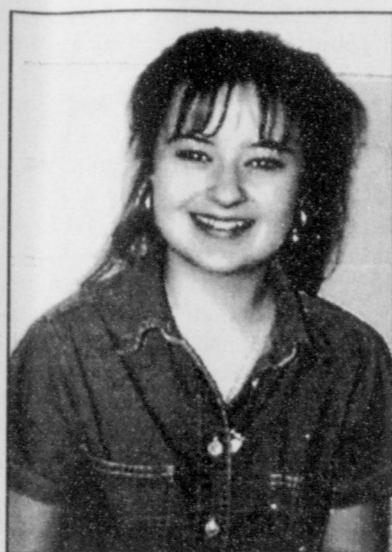
For the month of February, Spearman High School is very proud to announce Christa Bergan and Britt Savage as the students of the month.

Christa Bergan, a senior, is the daughter of Ole and Bonnie Bergan. Christa is an honor roll student. She received the Physical Education award last year and had perfect attendance as well. She also attended the FHA convention held at Austin last year. Christa believes that her sixth grade teacher Mrs. Swensrud has been her most influential teacher. Christa's future plans are to attend college at Tarleton State University. There she plans to major in Finance and become a loan officer.

Britt Savage, also a senior, is the son of Don and Carolyn Savage. Britt has been the class president for all four years in high school. He is also the NHS president, treasurer of the Stu-

dent Council, Mr. SHS, and was voted Most Likely to Succeed. Britt has received the Algebra I and II, Chemistry I and II, English II, and the U.S. Marines Corps Scholastic Excellence awards. Britt was also chosen to attend Boys State. He has participated in UIL Number Sense and Mathematics. During his sophomore year he placed first in Number Sense. In his junior year, he placed first in Mathematics and second in Number Sense. Britt is on the Varsity basketball, track, and football teams. He was named the All-District Secondary and Kicker and was the pole vault state finalist his sophomore year. Britt plans to attend Texas Tech University and major in Pre-Medicine. After that he plans to go to medical school to become an orthopedic surgeon.

SHS wishes the best to these outstanding individuals.



## Brandi Willis Makes I at U.I.L. Band Contest

By JENNIFER LAXSON

On January 18, Brandi Willis attended a U.I.L. solo and ensemble contest in Canyon, Texas. She performed a selection titled "Sonatinen" by Mozart. Two movements were played, Allegro and Trio. She played for a judge from Canyon and later received a I. "I feel great about my accomplish-

ment. I didn't think that I would make a I because it was a lot of work, and I have never competed in solo and ensemble before. I guess you can accomplish anything if you put your heart into it," said Brandi Willis. She hopes to keep this outstanding outcome for the rest of her high school years. Congratulations Brandi!



## Twelve Inducted Into National Honor Society

A total of twelve students were inducted into the Edna Hartman Chapter of the National Honor Society on February 5, 1997 in the SHS Auditorium.

To be inducted into NHS, a student in the second semester of his/her sophomore year must have a 3.9 or above GPA. Juniors and seniors must also have a 3.9 or above GPA. In addition, the student must be a good citizen, have a desire for scholarship and service, show leadership qualities, and be recommended by the NHS Admission Committee.

The new members are: Junior Ashley Brown and Sophomores Brittni Beedy, Kristin Beedy, Krista Boyd, Betsy Holt, Landon Miller, Doran Schoenhals, Quentin Shieldknight, Lisa Swink, Mandy Vernon, Brandi Willis, and Cami Winegarner.

Other NHS members are: Seniors Samantha Beasley, Blake Beedy, Kelly Goodman, Bruce Howell, Amanda Lomeli, Dillon Miller, Orlando Ortiz, Candice Pipkin, and Britt Savage and Juniors Mac Butts, Mike Butts, Misha Davis, Kasey Dunnihoo,

Teresa Gomez, Lena Harbour, Brian Howell, Zach McCammod, Maribel Martinez, Amber Morgan, Karen Paschel, Lindsey Smith, and Brooke Trantham.

The Induction Ceremony began with the call to order by Britt Savage followed by the invocation given by Amanda Lomeli. Dillon Miller then led the pledge to the flag, and the SHS Choir under the direction of Mrs. Byers sang "I Am America."

Next, the current members were introduced and their parents were recognized. The NHS officers then inducted the new members and the NHS Pledge was led by Dillon Miller.

Following the pledge, Miss Suzanne Sanders, the State Chairman of the Texas Federation of College Republicans and a 1992 graduate of SHS gave a speech.

After Miss Sander's speech, the SHS Choir sang "This Day." The student body was dismissed and a reception for NHS members, their guests, and the faculty was held in the cafeteria.

## DUMAS UIL ACADEMIC PRACTICE MEET RESULTS

FEBRUARY 1, 1997

### Accounting

Amber Morgan  
Lindsey Smith  
Misha Davis  
Blake Beedy  
Britt Savage

### Calculator

Blake Beedy-2nd  
Lisa Swink-4th  
Betsy Holt  
(Second Team)

### Current Events

Leann Swan  
Mark Mathews

### Editorial Writing

Maribel Martinez  
Zach McCammond  
Teresa Gomez-4th

### Feature Writing

Maribel Martinez  
Kathryn Murphy  
Lisa Swink

### Headline Writing

Lisa Swink-4th  
Teresa Gomez-5th

### Literary Criticism

Candice Pipkin  
Kelli Cummings

### Mathematics

Britt Savage-1st  
Tara Butt  
Blake Beedy

### News Writing

Maribel Martinez  
Becky Porter  
Teresa Gomez

### Number Sense

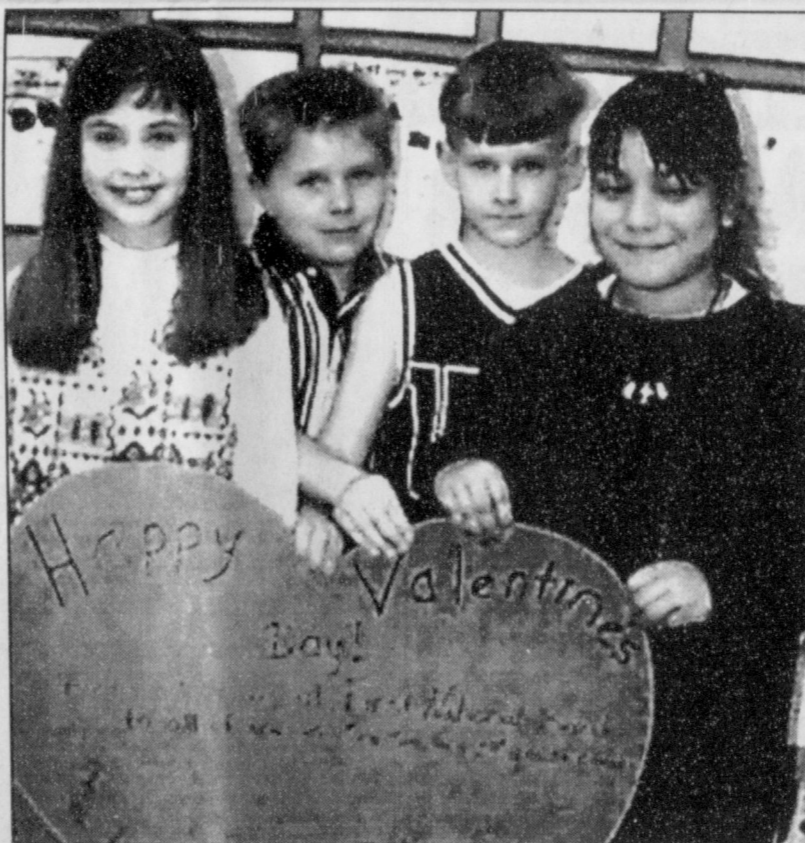
Britt Savage-1st

### Ready Writing

Zach McCammond

### Science

Dillon Miller  
Bruce Howell



These second graders at Gus Birdwell Elementary proudly show their valentine they received from First National Bank. First National Bank adopted the second grade as part of the program "Partners in Education." We will be including other sponsors and more information about this program in future issues of Lynx Lines.

## Coming Up Next

### MARCH

3-7 HIGH SCHOOL REGISTRATION DURING SCHOOL HOURS  
6 SPEARMAN HIGH SCHOOL FRESHMAN ORIENTATION  
7:00pm HIGH SCHOOL AUDITORIUM PARENTS ARE URGED TO ATTEND THIS WORKSHOP WITH THEIR STUDENT

10-14 NO SCHOOL  
SPRING BREAK  
27 DISTRICT U.I.L. ONE ACT PLAY IN CANYON  
28 NO SCHOOL  
EASTER BREAK

## YOU SAID IT

### We Asked:

Who is going to be your valentine this year?

### You Said:

Senior Kelli Cummings: My boyfriend Jr.  
Senior Dillon Miller: Jocelyn Edwards.  
Junior Lena Harbour: Absolutely no one.  
Junior Manuel Vasquez: Bren Archer.  
Sophomore Mandy Vernon: Mario Puentes.  
Sophomore Aaron Wittman: Whoever wants to.  
Freshman Randall Barck: Brad Deloizer.  
Freshman Casey Williams: Jennifer Laxson.

## Lynx Lines Staff Box



Publisher ..... Mr. Rowland  
Editor-In-Chief ..... Mrs. Whitefield  
Editor ..... Teresa Gomez  
Business Manager ..... Maribel Martinez  
News Editor ..... Staff  
Productions ..... Brandi Burch  
Jennifer Laxson  
Becky Porter  
Julie Scroggs  
Brandi Willis  
Reporters ..... Stacy DeLaCruz  
Rachel Burch  
Lacey Miesner



**Century 21**  
Golden Spread Realty  
200 S. Main Perryton, Texas  
806-435-5444

**GOLDEN SPREAD REALTY**  
JANYE HELTON POINTER, BROKER OWNER  
435-5444

**Sales Associates**  
Janice Flathers 435-2156  
Dana Burnett 435-2698  
Sherrie Ryna 435-3294  
Gina Deal 435-2772

**1013 Linn** - 3/1 1/2, Excellent value!  
**205 Hazelwood** - Great buy, excellent condition!  
**East 7th Street** - Mobile Homes, lots to lease!!!  
**Hwy. 207 South** - Great potential for new or existing business!  
**1117 Dressen** - 4/2, Finished Basement. Lowered Price!

**GRUVER**  
**503 E. 10th** - Affordable 4 BR, UNDER CONTRACT  
**18 Mi. N.W. of Gruver** - Three bedroom home on 5 acres!

© and ™ trademarks of Century 21 Real Estate Corporation. Equal Housing Opportunity. INDEPENDENTLY OWNED AND OPERATED



**Hansford County's ONLY locally owned and operated Realty.**

**Julie Martin**  
Broker - 659-2425  
**Kym Williams**  
Sales Assoc. - 733-5163

**160 Acres** - SE of County Lots: make your dreams come true - build your own home on one of several lots.  
**711 S. Collier** - 3/1 1/2, New Paint  
**811 S. Roland** - 3 bedroom, 1 bath. Let's make a deal  
**611 S. Evans** - 3/1 1/2 - priced to sell.

**NEW LISTINGS**  
**121 S. Dressen** - 2/1 central air/heating, double garage w/1 bed apartment

**NEW LISTINGS IN GRUVER**  
**Harris Addition** - 2 BR and mobile home - \$5,500  
**2212 Hwy. 15** - 3/2, brick, central air/heat  
**607 King** - 2/1, plus 1/1 efficiency apt.  
**400 Front St.** - 2/1, extra nice inside

We'd Like Your Listing  
**FOR QUALITY & SERVICE CALL US TODAY!**  
Equal Housing Opportunity

**For Sale By Owner**

**620 S. Bernice - 2000 Sq. Ft.**  
Upstairs - 2 BR, 1 B, large kitchen, family room, walk-in closets, hardwood floors, all wood cabinets, central H/A, storm windows, large utility porch with entrance to basement, 20x24 storage building, large driveway. Basement - 3 large finished rooms (tile, paneling, etc.), 1 large unfinished room (built to add 2nd bath).

**620 1/2 S. Bernice - 1200 Sq. Ft.**  
1 BR, 1 1/2 B, kitchen, dining & family room together in one large room. Currently rented @ \$245.00/month on HUD contract.

**Two houses on two lots - \$45,000.00**

**Call Edwin or Janice Pearson**  
**659-3851**

**HOMES FOR SALE**

**NEW LISTING:** 3 bedroom, 2 baths, central heat and air, recently remodeled kitchen, covered patio, attached garage, good location. Priced to sell. 1008 S. Barkley. Call 659-3847 nights. TFN(1-9-97)B

**FOR SALE:** 4 bedroom, 2 bath, home. Office, fireplace, basement, 2 car garage. Would consider trading for a smaller house. See at 1102 Linn Drive Call 659-3402 after 6:00 p.m. RTN(2-20-97)B

**FOR SALE:** 2700 sq. ft. split level brick home. 3 bedrooms, 1 3/4 bath, living room, large den with fireplace, playground, laundry room, 3 car garage, 2 central heat and air conditioning units, lots of storage, corner lot. Call 659-3052 or 659-3215. RTN(11-7-96)B

**MAKE US AN OFFER:** Great brick home in great location. 2,200 sq. Ft., 4 bedrooms, 3 baths, big den with fireplace, basement, double car garage. 702 Gibner. Call and let's make a deal! 659-3838 or 733-5555. RTN(2-15-96)B

**FOR SALE** - to be moved - 1984 Celtic double wide mobile home - 52' x 28' - 3 bedroom/2 bath with central heat and air (air conditioner new) all in very good condition - \$22,000.00 if interested please call 659-3123. TFN(11-14-96)B

**FOR SALE:** 2 BR, 2 B Mobile home w/or without lot. 214 Archer. 659-2288 or 659-2383. RTN(12-5-96)B

**FOR SALE:** 1506 sq. ft. framed home, 4 bedrooms, 1 3/4 bath, central heat hard wood floor living room and hall. Attached garage, fenced back yard with storage shed, located at 327 N. Hazelwood, call 659-3940 or 659-2378 after 5:00 p.m. RTN(2-6-97)B

**MOVE TO THE COUNTRY:** 1996 28x62 (1736 sq. ft.), 3BR, 2 B, Central AC/Heat, on 22 Acres. New sewer, new well, all improvements less than 1 year old. Located on Hwy. 759, 10 miles east of Spearman. Call 659-1725 or 898-5163. TFN(12-12-96)B

**FOR SALE:** 307 12th St. - 3 BR, 1 B, central heat and air, enclosed garage to be used for extra bedroom or den, fenced backyard, new roof. Call 659-3809. 4(2-13-97)B

**FOR SALE:** Very clean, cozy, 3 BR, 2 B, brick home. Complete with attached garage, central heat/air, large fenced backyard. 714 Wilbanks - close to swimming pool, activity center, and high school. Call 659-3431 or 659-2535, ext. 113. 2(2-27-97)P

**LOTS FOR RENT/SALE**  
**RENT LOT:** Trailer house lot for rent or sale. Call 659-2245. RTN(2-22-96)B

**FOR RENT**  
**FOR RENT:** Furnished 1 Bedroom Apartment & 2 Bedroom House. Call 659-3260. RTN(2-27-97)B

**FOR RENT:** 3 BR, 1 B, central heat/air, 1 car garage. Deposit required. Call 435-4442. RTN(2-27-97)B

**FOR SALE**  
**FOR SALE:** Phone system & cash register. Call 659-5016 or see at 315 Main. TFN(10-10-96)B  
**FOR SALE:** Branding Chute, 16'x8' Full Top Stock Trailer, T-Post, Electric Fence Post. Call Charles Caizon at 435-2084. RTN(2-20-97)B  
**FOR SALE:** Round feed seed stalk bales. \$20 each. Call 659-2129. 2(2-27-97)B

**EMPLOYMENT**

**HELP WANTED:** \*\$200-\$500 WEEKLY\* Mailing phone cards. No experience necessary. For more information send a self-addressed stamped envelope to: Global Communication, P.O. Box 5679, Hollywood, FL 33083. 12(1-23-97)B

**HELP WANTED:** Caprock Feedlot #2 needs a Mill Production Worker. Previous experience preferred. Contact Lonnie Busch or Tom Fanning at 733-5025. RTN(2-20-97)B

**HELP WANTED:** Hansford Manor is now accepting applications for CNA's - full time, part time RN positions available. Must have current certification. Please contact Jay Gordon, personnel, Hansford Hospital. 2(2-27-97)B

**HELP WANTED:** Valley Center Pivot dealer in S.W. Kansas, Oklahoma Panhandle, and Texas Panhandle needs additional service personal at all locations. Experience desired, but not required; we will train. Send resume to Gigot Agra Products, P.O. Box 1413, Guymon, OK 73942. 2(2-27-97)B

**SERVICES**

**PRIMESTAR SATELLITE TV SYSTEM:** \$149 down - 1st month programming free, with approved credit. Call for details. (806) 659-3068 or 800-279-4904. See display at All Occasion Flowers, 519 Plains Shopping Center. TFN(10-3-96)B

**LARGE APPLIANCE SERVICE & REPAIR:** Refrigerators, air conditioners, washers, dryers, etc. Call Randy Earle, 659-3803. 2(2-27-97)P

**HANDYMAN:** All types of jobs - painting, carpentry, yardwork, fencing, farm & residential, too much to mention. Honest and dependable. Call 733-5249. 1(2-27-97)P

**ATTENTION:** Never forget another special occasion or important date again - for the rest of your life. For more information, call 659-2827. 2(2-27-97)

**NOTICE**

**CHURCH OF CHRIST PRAYER LINE - 659-5334.** Requests kept confidential.

**AUTOMOBILES**

**FOR SALE:** '85 Jimmy and '83 Cougar, also have a brand new blue couch and love seat for sale \$500., come by 715 Collier after 6:00 p.m. RTN(2-6-97)NC

**FOR SALE:** 1995 4x4 Suburban. 42,500 miles. Loaded, excellent shape - consider good older pickup trade. Ready to sell - make an offer. Call (Days) 800-435-0370, or (nights) 806-435-5309. TFN(1-23-97)B

**FOR SALE:** 1989 Lincoln Town Car, 1986 Chevrolet Suburban. Both low mileage and in excellent condition. Also - Sears Lifestyle Exerciser. 722 Steele Dr., L.F. Hand, (806) 659-3162. 2(2-20-97)P

**FOR SALE:** '90 Buick Century, 4 door, low mileage. Call 659-2163. Would make excellent school car. 4(2-20-97)B

**BUSINESS OPPORTUNITY**

**MAKE MONEY** taking orders from friends and relatives for Avon. Call Billie Simmons, independent, advanced unit leader. 1-800-447-2967. TFN(1-23-97)B

**Jay's Waterwell Service**  
Domestic Well Troubleshooting Sales & Service Large Inventory on Hand

**2 Service Rigs in Spearman Area** Submersibles, Windmills, Solar Pumps, Pressure Tanks, Pressure Pumps, Complete Systems Available Prompt Service

**NEW SERVICE AVAILABLE** Live downhole video camera with recording, playback capability for almost all wellbores, for those problem waterwells

**Hansford, Sherman County Representative**  
**Spencer Correll, RFD**  
659-3908 or 659-2401

Thanks for your business!  
Call us anytime!  
Jay Cox, Perryton, owner

**CLASSIFIEDS**

**PERSON WANTED** to own and operate retail candy shop in Spearman area. Low investment. For information call Mrs. Burden's Gourmet Candy Company, Dallas, TX (972) 991-8239. 2(2-27-97)P

**LOST**

**LOST:** Fluffy, beige colored Siamese male cat with gray legs & paws, gray ears & face, with bright blue eyes. Strayed from 600 block of S. Bernice. Please call 659-2937 and leave message. Thank you. Reward is offered. 4(2-6-97)NC

**PUBLIC NOTICE**

**NOTICE OF APPLICATION**  
NOTICE IS HEREBY GIVEN that the Applicant, DISCOVERY OPERATING INC., 800 N MARIENFELD STE 100, MIDLAND TX 79701, has made application for a spacing exception permit under the provisions of Railroad Commission Statewide Rule 37 (16 Tex. Admin. Code Section 3.37). Applicant seeks exception to the lease line requirement to drill Well No. 1, O'Loughlin Jr A Lease, 653 Acres, Sec. 60, Blk. 45, H & TC RR CO/O'Loughlin Survey, A-1146, Wildcat, Twin (Morrow), Spearman E (Atoka), Twin (Des Moines), Twin (Cleveland), Twin (Marmaton), Spearman N (Lansing-KC), Twin E (Tonkawa), Twin (Tonkawa), Spearman NE (Douglas), Spearman E (Council Grove) and Spearman E (Morrow Middle) Field (s), Hansford County, being 12 miles in a northeast direction from Spearman, Texas. The location of this well is as follows:  
330' from the south line and 467' from the east line of lease.  
330' from the south line and 467' from the east line of survey.  
Field rules for the well,cat, Twin (Marmaton) Twin E (Tonkawa), Spearman NE (Douglas), Spearman E (Council Grove) and Spearman E (Morrow Middle) fields are 467'1200, 40 acres.  
Field rules for the Twin (Tonkawa) field are 990'1980, 640 acres. Field rules for the Spearman N (Lansing KC) field are 660'1650, 160 acres. Field rules for the Twin (Cleveland) field are 660'1320, 640 acres. Field rules for the Twin (Des Moines), Spearman E (Atoka) fields are 660'1320, 80 acres. Field rules for the Twin (Morrow) field are 660'1200, 40 acres. This well is to be drilled to an approximate depth of 7500 feet. PURSUANT TO THE TERMS OF Rule 37 (h) 2 (A), this application may be granted administratively if no protest to the application is received. An affected person is entitled to protest this application. Affected persons include owners of record and the operator or leasees of record of adjacent tracts and tracts nearer to the proposed well than the minimum lease line spacing distance. If a hearing is called, the applicant has the burden to prove the need for an exception. A protestant should be prepared to establish standing as an affected person, and to appear at the hearing either in person or by qualified representative and protest the application with cross-examination or presentation of a

direct case. The rules of evidence are applicable in the hearing. If you have questions regarding this application, please contact the Applicant's representative, W. Jeffrey Sparks/Vice President, at (915) 683-5203. If you have any questions regarding the hearing procedure, please contact the Commission at (512) 463-6748.

IF YOU WISH TO REQUEST A HEARING ON THIS APPLICATION, YOU MUST FILL OUT, SIGN AND MAIL OR DELIVER TO THE AUSTIN OFFICE OF THE RAILROAD COMMISSION OF TEXAS THE ENCLOSED NOTICE OF INTENT TO APPEAR IN PROTEST. A COPY OF THE INTENT TO APPEAR IN PROTEST MUST ALSO BE MAILED OR DELIVERED ON THE SAME DATE TO APPLICANT AT THE ADDRESS SHOWN ABOVE. THIS INTENT TO APPEAR IN PROTEST MUST BE RECEIVED IN THE RAILROAD COMMISSION'S AUSTIN OFFICE BY March 10, 1997. IF NO PROTEST IS RECEIVED WITHIN SUCH TIME, THE REQUESTED PERMIT WILL BE GRANTED ADMINISTRATIVELY, TO BE EFFECTIVE THE DAY FOLLOWING THE TERMINATION OF SUCH THREE-WEEK PERIOD. 4(2-6-97)B

**NOTICE OF SHERIFF'S SALE**

**THE STATE OF TEXAS COUNTY OF HANSFORD**  
Notice is Hereby Given That, by virtue of a certain Order of Sale issued out of the Honorable 84th District Court of Hansford County, November 12, 1996, by the District Clerk of said 84th District Court, under an Order Approving Sale and Modifying Decree of Partition and Distribution and Order of Sale of Real Property, in a certain cause in said Court, No. 3747 and styled in the Estates of James Nelson (J N) Lamb, deceased and Laura Lamb Johnson, deceased, placed in my hands for service, I, R.L. McFarlin, Jr., as Sheriff of Hansford County, Texas, did, on February 10, 1997, Levy on certain Real Property,

situated in Hansford County, Texas, described as follows, to wit:

Parcel #1: Lots 2 and 3, Block 2, McLain Subdivision of Out-Lot 37, lying adjacent to the Town of Spearman, Hansford County, Texas, as shown by Plat recorded in Vol. 30, page 84, Deed Records, Hansford County, Texas and described in Warranty Deed to Laura Ruth Lamb, dated 9/15/59, recorded in Vol.65, page 97, Deed Records, Hansford County, Texas.

Parcel #2: The real estate with improvements located on a portion of Out-Lot 38, lying adjacent to the City of Spearman, Hansford County, Texas, such portion being described in Deed dated 4/13/44 from Bert E. Briley et ux Edna Briley, found at Vol 48, Page 479 of the Deed Records of Hansford County, Texas, and a Deed from R.L. Baley et ux Ethel Baley, found at Vol. 53, Page 115 in the Deed Records of Hansford County, Texas

and levied upon as the property of the Estate of James Nelson (J.N.) Lamb, deceased and Laura Lamb Johnson, deceased and that on the first Tuesday in March, 1997, the same being the 4th day of said month, at the Courthouse door of Hansford County, in the City of Spearman, Texas, between the hours of 10:00 a.m. and 4:00 p.m., more specifically 1:00 p.m., by virtue of said Levy and said Order of Sale, I will offer for sale and sell at public venue for cash, to the highest bidder, all the right, title and interest of the said Estate in and to said property

And in compliance with the law, I give this notice by publication, in the English Language, once a week for three consecutive weeks immediately preceding said day of sale, in the Spearman Reporter, a Newspaper published in Hansford County

Witness my hand, this 10th day of February, 1997.  
R.L. McFarlin, Jr., Sheriff  
Hansford County, Texas  
By: Alan Mires, Deputy Sheriff  
3(2-13-97)B

**BID PROPOSALS**

Gruver ISD invites interested parties to make proposals for  
**Continued on Page 9**

**TEXAS STATEWIDE CLASSIFIED ADVERTISING SERVICE**

**TexSCAN**

**ANTIQUUE**  
SCOTT ANTIQUE MARKET, two mammoth facilities, 2,400 booths - March 7-9, 2nd weekend of every month, Atlanta Expo Centers - Atlanta, Georgia, I-285 at Jonesboro Road, 614-569-4112.

**BUSINESS OPPORTUNITIES**  
AN AMAZING OPP, Coke/Peppi, new machinery, 20 local & established sites, earn up to \$1,500 weekly, 1-800-321-7690, minimum investment \$3,500.00.

**DISCOVER WHY AMERICA'S** top financial leaders consider this \$200 to \$500 investment the best nutrition networking business for lifetime health and wealth. Call 1-800-567-9752 recorded message.

**LOCAL CANDY ROUTE**  
30 Vending machines. Earn apt. \$800/day. All for \$9,995. Call 1-800-998-VEND.

**DRIVERS WANTED**  
ARROW TRUCKING COMPANY \*flatbed and van operation \*regional or long haul \*four terminals in Texas \*assigned conventionals \*experienced drivers - owner operators. 1-888-277-6937, in-experienced training available. 817-246-3733. EOE.

**DRIVERS - BEEN THERE,** done that? Now it's time to come home to Dallas Carriers. You need a CDL-A and 1 year OTR. Call us today. Dallas (1-800-727-4374) Oklahoma City (1-800-224-6796).

**DRIVERS - BE A success** with Arctic Express, seeking company/regional drivers also lease purchase opportunities with no \$ down, call now 1-800-927-0431. EOE.

**DRIVERS. COVENANT TRAINERS** earn over \$70,000. Covenant teams earn over \$100,000 and run 225,000 miles a year. Make money and get the most miles. Call today. Experienced drivers and owner/operator teams 1-800-441-4394. Graduate students 1-800-338-6428.

**DRIVERS - FLATBED 48** state OTR. Assigned new conventionals, competitive pay, benefits. \$1,000. Sign on bonus, rider program, flexible time off. Call Roadrunner Trucking 1-800-876-7784.

**DRIVERS (OWNER/OPERATORS)** owner/operators needed to growing carrier dedicated to providing quality service and profitable miles. Call today! Tom or Liz, Parkway Transport, 1-800-765-3952

**DRIVERS WANTED E.L. POWELL & Sons, Tulsa, OK.** We offer late model equipment, good insurance, mileage pay. One year verifiable flat bed experience. 918-446-4447, 1-800-444-3777.

**HAROLD IVES TRUCKING** needs motivated individuals to enter our Training Program. Call 1-888-270-1676 for complete information. Ex-

perienced drivers call: 1-800-842-0853.

**OTR TRUCK DRIVERS** wanted! Experienced or non-experienced. Free training and 1st year income \$30K. Stevens Transport 1-800-333-8595, EOE.

**RAPID FREIGHT OF TEXAS,** a Texas based carrier seeking OTR teams & singles. 95 or newer conventionals. Call Chuck at 1-800-607-5695.

**WESTWAY EXPRESS, INC.** now hiring experienced OTR drivers up to .30 CPM starting base pay D.O.E. plus up to .06 CPM bonuses top pay benefits, and equipment. Now leasing owner/operators percent or mileage contract, min. down truck lease available on new 97 - no credit check. Call Cowboy 1-800-587-0029.

**EDUCATION**  
BE A PARALEGAL! Train now! Be part of one of today's fastest growing careers. Accredited, attorney instructed diploma/degree home study programs. Free catalog. 1-800-476-3316 ext. 19.

**EMPLOYMENT**  
EXCELLENT CAREER OPPORTUNITIES for RN's with 2+ years experience, consider expanding your career potential with Austin Diagnostic Medical Center, positions available for both staff and charge RN's call our toll free number 1-800-925-8899, Ext. 2701.

**JOB FAIR (MARCH 1st)** - Aircraft maintenance technicians urgently needed. In-state and out of state positions. Call for details 1-800-657-0997 and FAX resume to 1-800-240-0029.

**FINANCIAL SERVICES**  
...BEHIND ON BILLS? ... Get immediate relief ... Free debt management/consolidation ... reduced payments ... lower interest. Stop collection calls ... restore credit ... non-profit bonded. CCCCI toll free 1-888-455-2227.

**DEBT CONSOLIDATION:** CUT monthly payments up to 30-50%. Reduce interest. Stop collection calls. Avoid bankruptcy free confidential help NCCS non-profit, licensed/bonded. 1-800-955-0122.

**LUMP SUM CASH** for your owner financed real estate note. Closing costs paid. Free quotes. Buying other kinds of cash flow, too. Call now 1-800-687-8726.

**FOR SALE**  
FISH FOR STOCKING lakes & ponds: All types. Delivered or pickup in air bags, Alvarado, TX. Cee's Fish. For prices 817-790-7946, 817-783-8367. 817-790-5101 FAX.

**GOT ROACHES? BUY** Enforcer® Extremator plus 20 second ant & roach killer concentrate! This pro formula dis-solving pack is guaranteed or your money back! Available only at The Home Depot.

**NO DOWN PAYMENT! PROBLEM credit?** Own the home you need now, without a big down PAYMENT. Complete financing if qualified, DeGeorge Home Alliance, 1-800-343-2884.

**WOLFF/SUNMASTER** commercial/home systems. Our sunbats are larger, tan better, cost less. America's largest independent manufacturer. Easy payments. Free delivery. Free color catalog. 1-800-KEEP-A-TAN.

**WOLFF TANNING BEDS,** tan at home. Buy direct and save! Commercial/home units from \$199.00. Low monthly payments. Free color catalog. Call today 1-800-842-1310.

**HEALTH**  
DIABETIC? ARE YOU still paying for supplies? Why? For information on how you can receive supplies at little or no cost call 1-800-678-5733.

**DIABETIC (USING INSULIN)** Medicare pays for your supplies. We bill them, ship to you. Save money. Satisfaction guaranteed. Liberty Medical. 1-800-633-2001. No HMO members. Mention 261911.

**DO YOU HAVE diabetes?** Receive your glucose monitor & supplies at no cost to you! Call Rainbow Foundation toll-free 24 hours 1-888-429-1025.

**INTERNET**  
FREE HOME PAGE! DON'T miss out on this incredible offer for your business or service. Call today for details before this offer expires! 1-800-333-2121.

**MISCELLANEOUS**  
KAYAK POOLS, demo homesites wanted to display new maintenance free pool. Save thousands w/ this unique opportunity! 100% financing... Call 1-800-338-9919, 100 mile radius Dallas/Fort Worth.

**LOTTERY PLAYERS** \$275,557,200.10 unclaimed at various state lotteries last year! To check on past and current tickets call the National Lottery Line 1-900-933-1234, each call \$1.00 per min., avg. call 1-2 min. Proctor Services Corp.

**REAL ESTATE**  
GOT A CAMPGROUND membership or timeshare? We'll take it. America's most successful resort resale clearinghouse. Call Resort Sales Information toll free hotline. 1-800-423-5967.

**RUSTIC WESTERN RANCH** 112.2 ac - \$49,000 So. Colorado Rockies. Located in foothills of Sangre De Cristos. High meadows/spectacular views. Loaded w/ deer, elk, big horn sheep. Year round access w/power & tel. EOE. owner financing. Call now 719-782-5207 Majors Ranch.

**TIME SHARE UNITS** and campground membership. Distress sales - cheap! Worldwide selections. Call vacation network U.S. and Canada 1-800-543-6173. Free rental information 954-563-5586.

**Pain may be eliminated for millions**  
(SPECIAL) - A drug that is exciting researchers in the treatment of pain has been formulated into a new product known as "Arthur Itis," and is being called a "Medical Miracle" by some, in the treatment of debilitating conditions such as arthritis, bursitis, rheumatism, painful muscle aches, joint aches, simple backaches, bruises, and more. Although the mechanism of action is unclear, experiments indicate that Arthur Itis, relieves pain by first selectively attracting, and then destroying the messenger chemical which carries pain sensations to the brain, thus eliminating pain in the affected area. Arthur Itis, is available immediately without a prescription in an odorless, greaseless, non-staining cream or new easy applicator liquid form. Arthur Itis, is guaranteed to work or your money back.

Use only as directed  
© 1996, Vitale Health Products, Inc.

**AVAILABLE AT:**  
**Gordon's Drug**  
314 Main St. • (806) 659-2141  
Spearman, TX

Call this newspaper for details on how to advertise statewide.