



★ HANSFORD COUNTY ★

THE REPORTER-STATESMAN

CELEBRATING 104 YEARS OF SERVICE TO HANSFORD COUNTY

HANSFORD COUNTY'S ONLY NEWSPAPER

REPORTER@SPEARMANREPORTER.COM

WWW.SPEARMANREPORTER.COM

75¢



VOLUME 105 • ISSUE 7

THURSDAY, FEBRUARY 23, 2012

Spearman Lynxettes Regional Champs

Lynxettes Roll Past Lubbock Roosevelt 50-31

The Spearman Lynxettes will head the Region 1-2A girls basketball tournament for the second straight year after defeating Lubbock Roosevelt 50-31 in the regional quarterfinal game.

Spearman (22-6) tipped off against Lubbock Roosevelt (23-8) at 7:30 p.m. at Canyon High.

Spearman — which won District 1-2A — reached the region tournament last year by beating Littlefield, 48-45.

Roosevelt lost to Littlefield last year in the area round.

A win by Spearman set up a semifinal between the Spearman Lynxettes (23-6) and the Wall Lady Hawks (25-8) at 7:30 p.m. at the Midland College's Chaparral Center on Friday, February 24th.

Photo by Tami Hargrove



Greyhounds Area Champs

The Gruver Greyhounds advance to the quarter finals after defeating the Boys Ranch Rough Riders 46-37 on Tuesday, February 21st.

They will face Hale Center at 7 p.m. on Thursday, February 23rd at Canyon High School. Gruver will be the visiting team.

Photo by Kimberly Irwin



Gruver Lady Hounds Area Champs

The Lady Hounds were able to hold off an upset minded Lockney team on Friday night, February 10th to advance to the Region 1 Regional Quarter Final game. The game was tight throughout with both teams trading leads in the first half. Tough defense by LHB in the second half held the Lady Horns to 16% from the floor, enabling the Lady Hounds to earn their 31st win, but more importantly a spot in the next round of the State playoffs.

The Gruver Lady Hounds didn't have the best start to their Region I-1A Division I area playoff game Thursday night against the Lockney Lady Longhorns.

But their finish is what mattered.

Patience and fitness prevailed late as the No. 6 Lady Hounds earned a 45-31 win before about 500 fans at First United Bank Center in Canyon.

Gruver (31-3) advanced to a regional quarterfinal game at 6 p.m. Tuesday at Amarillo High Activity Center, where the Lady Hounds will face the winner of Friday's area game between Sunray and Clarendon.

Gruver coach Rod Been said he and his players weren't expecting the tight, pressure defense the Lady Longhorns (18-14) brought early, which kept the Lady Hounds out of rhythm offensively in the first half and forced them to take errant shots.

"I think they defended us better than I thought they would," Been said. "They're athletic, and I think the credit goes to them."

Gruver scored the first six points of the game and held a 9-3 lead with 5:44 left in the first quarter after a 3-pointer from senior guard Shelley Gibson.

Lockney closed the gap to 9-7 to end the quarter and seemed to have control of the game when senior Anissa Reyna hit a 3-pointer and jumper to give the Lady Horns an 18-13 lead with 3:08 left.

Gruver ended the half on a 7-1 run, though, capped by a 3-pointer from Nikki Beasley with about five seconds left — which Been said after the game was one of Gruver's ill-advised shots.

Gruver came out for the second half more patient on offense, which Lockney coach Lisa Schumacher said was a factor as the half wore on.

"They're just very patient about running an offense and taking care of the basketball," Schumacher said. "We weren't able to stop that from a defensive position."

"I'm very proud of my girls."

The game remained tight until the middle of the fourth quarter, and the Lady Hounds finally had control when Beasley hit a jumper with 2:22 remaining to give Gruver a 41-28 lead.

Gruver had two players reach double figures — seniors Kaysha Bass and Madison McLain, who scored 15 and 14, respectively.

Reyna led the Lady Longhorns with 11 points, all in the first three quarters — including eight in the second quarter.

Been gave credit to Gibson and her defensive play — a leader on Gruver's state championship cross country teams — for Reyna's lack of production in the second half, which was a key factor in Gruver's success.

"Shelley finally wore down Reyna, and she wasn't able to get to the paint as efficiently in the second half," Been said. "I think it came down to fitness, in that match-up, and that was huge to be able to keep her out of the paint."

No. 6 Gruver 45, Lockney 31
LOCKNEY (18-13): Sunny Williams 0 0-0 0, Tanae Ramos 1 0-0 2, SyAnn Foster 3 2-2 9, Anissa Reyna 4 2-4 11, Meagan Dunn 0 2-4 2, Ivette Davila 3 0-0 7. Totals 11 6-10 31.

GRUVER (31-3): Taylor Felderhoff 0 1-4 1, Ashlynn Miner 1 0-1 3, Shelley Gibson 2 1-1 6, Kaysha Bass 5 5-6 15, Madison McLain 5 4-5 14, Nikki Beasley 2 0-0 5, Reagan Haynes 0 1-2 1. Totals 15 13-19 45.

Lockney 7 19 27 31, Gruver 9 20 32 45

3-point goals: Lockney 3 (Foster, Reyna, Davila), Gruver 3 (Miner, Gibson, Beasley). Total fouls: Lockney 14, Gruver 12. Fouled out: Dunn. Technical fouls: None. Attendance: 500.

The Gruver Lady Hounds lost to Clarendon 36-40 on Tuesday, February 21, 2012. They ended their season with an impressive record of 31-4.

Photo by Kimberly Irwin



Lynx End Season

The Spearman Lynx ended their season on Tuesday, February 14th when they were defeated by Highland Park in the final game of the regular season, 52-49.

Their season came to an end, but Spearman's pride for you will never end. We are very proud of you!

Thomas Selected for Congressional Internship Program

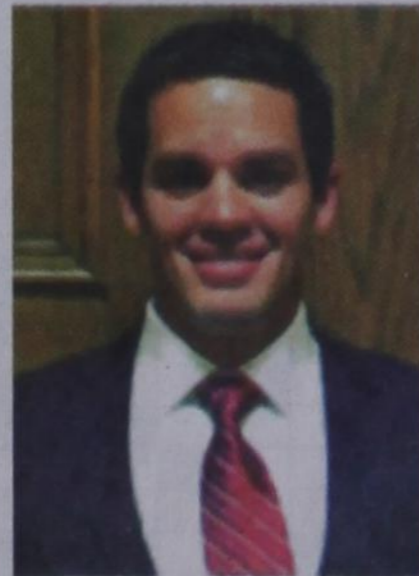
Bryan Thomas, Senior history major, at Texas Tech University has been selected for the Texas Tech University Congressional Internship Program. He will be serving as a Congressional Intern for Rep. Sam Johnson of Plano.

Texas Tech's Office of the President selects new students each semester to take part in educational service to the nation's capital through its Congressional Internship Program.

Students who complete the program observe how the government functions while working for senators and representatives. Interns are chosen through a competitive interview and application process.

"In many cases, our internship program has been a life-changing experience for the students," President Guy Bailey said. "Regardless of their career choice, the students will benefit from the experience of seeing first-hand how the political process will affect their futures."

The President's Congressional Internship Program is offered every Fall and Spring semester, as well as during the



Summer in conjunction with the regular summer school sessions. Each semester, approximately 10 students are chosen to participate as interns in the program. Interns live and work in Washington, D.C. for the duration of the semester-long internship for which they are chosen to participate. Interns are placed in either a Congressperson or Senator's office based on the intern's interests in issues, personality, hometown, and abilities. They work full-time, 40-50 hours per week based on the individual office, and the internships are unpaid. Each intern will receive a \$4,000 scholarship to help defray the costs associated with the internship and living in Washington D.C. The scholarship covers all housing costs, and any remaining amount can be used to cover day-to-day expenses while in D.C.

After receiving his scholarship and assignment to U.S. Rep. Sam Johnson, Bryan has learned of Rep. Johnson's great service and sacrifice for our country. Before U.S. Rep. Sam Johnson was elected to the U.S. Congress, he served 29 years

in the U.S. Air Force, flying sixty-two combat missions in Korea before his two tours of duty in Vietnam. In April, 1966, Col. Samuel R. Johnson, was shot down while flying his twenty-fifth mission over North Vietnam. Shortly after his capture and imprisonment in the infamous Hanoi Hilton, Col. Johnson and ten other prisoners resisted prison authority. Ho Chi Minh believed Johnson and the others were a serious threat to his war efforts and were banished to a high security prison unit. For two years Johnson and the other

ten endured leg irons, malnutrition, and appallingly primitive conditions while imprisoned in tiny cubicles built in the earthen walled facility in downtown Hanoi. Col. Johnson and his fellow American prisoners were released in February, 1973.

Bryan is the son of David and Suzanne Thomas of Spearman. His grandparents are F.W. and Betty Thomas of Spearman and the late Bill and Juanita Lane of Turkey, Texas.



Gruver Girls Receive Superior Ratings at Vocal Contest

For the first time in several years, Gruver had 2 girls attend vocal solo contest. Zoe Cantrell and Macy McLennan have been working very hard over the past months to be able to compete at contest. Not only did they compete, but both of these girls received superior ratings on their solos and Macy McLennan will be advancing on to state contest. We are very proud of these girls and we look forward to watching their vocal talents flourish!

Wolf Creek Heritage Museum Notes

by Virginia Scott

MUSEUM HAPPENINGS

Busy week! The Texas Plains Trail held their meeting in Muleshoe on Thursday. I journeyed down on Wednesday and made it home around 8 p.m. on Thursday. (This is the group that is sponsoring the Quannah Parker Arrow project.)

Another project soon to be released is a museum guide published by Travel Host for our 52 counties. This guide will have a listing and description of all the 50 plus museums in our area. We will have copies available at the museum. In the issue will be a passport that you can have stamped or signed when you visit a museum, and after a certain number visits you can send it in for a prize. The instructions will be explained

in the issue. I will keep you informed about the project.

The sports memorabilia is coming in. Thank you. We still can use more, so keep it coming.

It is the time of the year that we are preparing our annual reports and starting the new year. Our membership drive for 2012 will start in March, so watch for your invitation to become a museum supporter. It is through your support that we can keep the museum going and producing exhibits and programs.

We are planning programs for 2012, so if you know of good speakers or entertaining individuals that we could book for a program, call or email us their information.

The last week to view the Student Art will be next week, February 26 through Wednesday the 29th. The

next exhibit will feature Rebecca Ashley. So plan to come out and visit.

Reminders:

1. **The Lipscomb County Student Art Show is fully installed** and is very colorful. It seems the major theme is snow with snowmen and snowflakes. Maybe this will bring us moisture! Plan to visit and see your children's art.

2. **We need Sports Memorabilia** for an exhibit we are creating on sports in Lipscomb County (especially town teams).

HISTORICAL MUSINGS

On February 19, 1838, Indian captive Rachel Plummer was reunited with her husband after spending over a year with the Comanches. Born Rachel Parker in Illinois in 1819, she moved to Texas with her father, James W. Parker, and family and married Luther Plummer in 1833. In May 1836 their settlement was attacked by a large group of Indians. Five settlers were taken captive: Rachel and her son James Pratt Plummer, Cynthia Ann and John Parker, and Mrs. Elizabeth Kellogg.

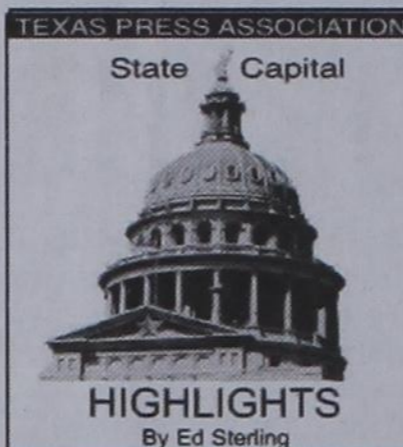
James Pratt was taken from Rachel, and she never saw him again. Rachel became a slave to the Comanches, and traveled thousands of miles with the band. She was pregnant at the time of her capture and bore a second son about October 1836. The Indians thought that the baby was interfering with Rachel's work, so they killed him when he was about six weeks old.

Rachel was ransomed by Mexican traders north of Santa Fe in June 1837. Several months later, Rachel's brother-in-law escorted her back to Texas, where she was reunited with her husband. In 1838 she published an account of her captivity, entitled *Rachael Plummer's Narrative*. It described the twenty one months of servitude as a prisoner among the Comanche Indians. This was the first narrative about a captive of Texas Indians published in Texas.

Rachel bore a third child in 1839 and died in Houston shortly thereafter; the child died two days later.

Source: Handbook of Texas Online by Texas State Historical Association.

Interesting contrast between Rachel's relationship with the Comanche and the one Cynthia Ann Parker developed.



STATE CAPITAL HIGHLIGHTS



by Ed Sterling

Redistricting solutions: One down, two to go

AUSTIN — Redistricting work continued last week and one part of the puzzle was solved.

State Sen. Wendy Davis, D-Fort Worth, on Feb. 15 announced an agreement with Texas Attorney General Greg Abbott that will keep her Senate District 10 boundaries as they were in 2001, instead of the version state lawmakers enacted last spring. Davis is plaintiff and Abbott defendant in one of three ongoing redistricting lawsuits. The GOP-dominated Legislature reconfigured SD-10 in a way that divided traditional communities of interest and would have made it nearly impossible for Davis, a freshman elected in 2008, to be reelected.

On Feb. 17, state Rep. Trey Martinez-Fischer, D-San Antonio, chair of the Mexican American Legislative Caucus, released a statement alleging discrimination against Latino and other minority voters in the creation of the state House and congressional plans, and added, "As such, MALC cannot set aside its principles for the sake of expediency."

So, still up in the air are Texas' U.S. congressional and state House district maps, the subjects of two consolidated multi-plaintiff lawsuits, both known as *Perez v. Texas*. If settled, those sets of maps, along with the agreed-upon state Senate district map, still must be submitted for pre-clearance in accordance with the U.S. Voting Rights Act. When or if that occurs, state party primaries could be set on a single date, and the path paved toward the picking of nominees who will face each other in the November general election.

But likelihood of this time-consuming litigation was forewarned during the regular session of the Texas Legislature when Democrats, in the face of a Republican supermajority, protested the drawing of maps that would not reflect the growth of minority populations, and Latinos most pointedly, between Census 2000 and Census 2010.

Republican majorities in both houses of the state Legislature nevertheless pushed through House, Senate and congressional redistricting maps that sparked federal lawsuits, and those maps have been in litigation ever since.

Two weeks ago, Attorney

General Abbott optimistically suggested that April primaries were still attainable. But, because of candidate filing periods and ballot printing deadlines — and because revised state House and U.S. congressional districts are not settled — and because the preclearance process through the U.S. Department of Justice and the D.C. Circuit Court of Appeals will need to be satisfied — it may be late May before the primaries can be conducted.

It's generally accepted that the earlier a state's primaries are conducted, the greater the influence on the presidential race because of momentum-building and fund-raising. But Texas' high-stakes battles for increased representation between partisan and non-partisan constituencies have pushed the primaries later and later on the calendar. Some say that the power of the Texas vote is diminished or even nullified. But with its 36 congressional seats and a winner-takes-all rule on election night in November, the importance of Texas can still pack a wallop in the presidential race.

Grading requirement on hold

Texas Education Commissioner Robert Scott last week announced his decision to allow school districts and charter schools not to implement a 15 percent grading requirement in the State of Texas Assessments of Academic Readiness end-of-course

examinations for the 2011-2012 school year.

The requirement, which would have made an end-of-course exam count as 15 percent of a student's grade, was included in the Texas Legislature's House Bill 3 enacted by the previous Legislature. The requirement was meant to enhance accountability, lawmakers said in 2009.

Scott said he made the decision to defer the requirement after receiving input from parents, educators, State Board of Education members, and statutory clarification from state leaders.

"For this school year, the ultimate decision whether to include end-of-course exam scores as part of course grades will be determined locally by school districts and charter schools," Scott said.

Ames-Jones resigns to run

Texas Railroad Commission Chairwoman Elizabeth Ames-Jones of Austin resigned from office last week, the state agency that regulates oil and gas announced last week.

A former member of the Texas House of Representatives and an RRC member since 2005, Ames-Jones is running against long-term incumbent and fellow Republican state Sen. Jeff Wentworth of San Antonio for Senate District 25, which runs from San Antonio to Austin. The district includes parts of Travis and Bexar counties and Kendall, Comal, Guadalupe and Hays counties.

Words from Faith & Grace

by Cecil R. Biggers, Lutheran Lay Minister



This Sunday marks the beginning of the Season of Lent. Lent is the time in the Church year which offers us the opportunity to search our conscience, to consider the implications of our baptism, and to assess which 'side' we are really on. We study Genesis 9: 8-17, Psalm 25: 1-10, 1 Peter 3: 18-22, and Mark 1: 9-15.

The story of Noah is at least two stories. The first is for children and shows God's love for his creation and animals; the innocent. The second is about a grieving God whose creation, man, was pronounced good, but who has chosen the path of sin over God's path. The second shows us the destruction of the evil; yet, the eight righteous are saved. At the end of this story, God makes a covenant with Noah that he will not destroy the earth again by water. We can take from this that God cares for us as sinners and that God has a way of calling us back to him; but, ignoring the call can lead to our destruction.

The Psalmist sings an individual lament. He sings that he lifts up to the Lord his soul (Heb. 'nephesh') and of God's steadfast love and faithfulness (Heb. 'hesed'). Verse 6 is the heart of this Psalm, "Be mindful of your mercy, O Lord, and of your steadfast love, for they have been of old". For me, and other sinners, Verse 7 is my prayer: "Do not remember the sins of my youth or my transgressions; according to your steadfast love remember me, for your goodness' sake, O Lord!"

Peter proclaims that Jesus the Christ suffered for the sins of all, in order to bring us to God; and that, baptism in Jesus' name saves us as an appeal to God for a good conscience, through the resurrection of Jesus Christ. The difficult part of the passage is verses 18b through 20. Here is where the Apostles' Creed recites "He descended into Hell." Christ proclaimed to the spirits in prison. Some believe that Jesus brought the Gospel to the rebellious angels who were imprisoned; hence, 'with angels, authorities and powers made subject to him.' Third Century church fathers made this into Jesus descending into hell to bring the Gospel to those who had died before the days of Noah (yet the source of this belief is the Gospel of Nicodemus, which was not widely adopted by the Church and is not today a part of our Bible). Learn from this that Christ descended into hell to save some, a part, of God's creation that went astray.

Mark shows us Jesus baptized, proclaimed by the Father to be His Son, and immediately driven into the wilderness to determine how he will accomplish his mission. He is in the wilderness "forty days" which is Hebrew short-hand for a 'long time'. We are told he was with the wild beasts and that the angels waited on him. This indicates that Jesus was in harmony with nature. Jesus is tempted by "The Adversary" who suggests ways for Jesus to accomplish his mission. Jesus comes forth from the wilderness proclaiming the Good News that the time of God is fulfilled and God's kingdom has come near. Repent and believe in the Good News.

May the Holy Spirit aid you in examining your conscience, in understanding the truths of your baptism, and to reveal you as a true disciple of Jesus The Christ.

See us for:
AUTO • HOME • CROP HAIL •
FARM & RANCH • MULTIPERIL •
LIVESTOCK

INSURANCE

BORT AGENCY, INC.
510 Main St. • Gruber, TX
(806) 733-2456

The Hansford County Reporter-Statesman
Mailing Address - 213 Main Street • Spearman TX 79081
Physical Address - 310 Barkley Street • Spearman TX 79081
Phone - (806) 659-3434 • Fax - (806) 398-9080
www.spearmanreporter.com • reporter@spearmanreporter.com
Mon.-Thurs. 9 a.m.-12 p.m., Mon.-Wed. & 1-5 p.m.
Closed Thurs. afternoon and all day Fri., Sat. & Sun.

Gary Smith - Publisher Catherine Smith - Editor
Contributing Writers: Dorothy Hudson, Jim Detriton, Merry Sparks, Cecil Biggers, Virginia Scott, Ed Sterling, Rod Sumner
Contributing Photographers: Lisa Johnson, Tami Hargrove, Tammy Batton, Bonnie Bergan, Rod Sumner

Subscription Rates
In Hansford County - \$30.00 • Out of County - \$40.00
E-Mail Subscription - \$35.00

The Hansford County Reporter-Statesman (USPS 529660) is published weekly in Spearman, TX. Periodical postage paid in Spearman, TX. **POSTMASTER:** Send address changes to: The Hansford County Reporter-Statesman, 213 Main Street, Spearman, TX 79081.

Publication Policy
The deadline to submit news and advertising to The Hansford County Reporter-Statesman is Monday at 5 p.m. Items submitted after the deadline will be published at a later date, as time and space permit. Publication of all items is at the discretion of the editor.

Advertising
Open Display rates are \$4.00 per column inch. Classified Ads are \$7 for the first 20 words and 15c per word for each additional word. (Additional charge for boxed classifieds.) There is a \$1 charge per week if billed.

Member of
Gruber Chamber of Commerce
Spearman Chamber of Commerce
Texas Press Association and Panhandle Press Association

THE GRAMMYS

These games are brought to you by the Hansford County Reporter-Statesman

ACROSS

- Desert survivors
- Orlando Bloom in "Lord of the Rings"
- Type of ski lift
- German destroyer
- "To Kill a Mockingbird" recluse
- Bob and _____
- Civil rights marches started here
- Clings plant
- Galactic path
- *Grammy Awards venue sponsor
- "Bruno Mars' hit
- Between "ready" and "fire"?
- Marie Antoinette's hairstyle
- "Time," e.g.
- Surrender
- Total bore, Yiddish
- One on a list
- Less than average tide
- "Queen of Mean"
- Head of hair
- Old European coin
- Panache
- Homer's classic
- Causes a pucker
- Pluribus
- Treating place
- Fan reaction
- Indicates maiden name
- Don't do it when someone's down

DOWN

- Spew profanities
- Aid and _____
- Jolt, e.g.
- Home to Buccaniers
- Right-leaning characters
- Goes with flows
- * _____ Rawls, Grammy-winning soul singer
- Forfeit
- Type of seabird
- Bottle to a baby?
- Like a devoted fan
- Network of nerves
- Full of grief
- Make corrections
- ____-D.M.C.
- NBC's logo
- Will Ferrell as G. W. Bush, e.g.
- ____ costs"
- Mozart and Einstein, e.g.
- ____ ex machina
- Often precedes "necessary"
- Baseball Hall of Famer Ryan
- Foolish
- *Recipient of most 2012 Grammy nomi-
- nations
- *Taylor Swift's hit
- *MusCares Person of the Year
- Type of fishing net
- Tiny antelope
- Formerly OSS
- Assuage or conciliate
- Hen's call
- Scallywag
- Done in loads
- *Grammy of sports
- Froze, as in kicker
- Basmati, e.g.
- *Stefani Joanne Angelina Germanotta's title
- Soviet gymnast Korbut
- Oaf
- They're average?
- Famous T-Rex

CROSSWORD

1	2	3	4	5	6	7	8	9	10	11	12
13					14			15			
16					17			18			
19					20			21			
					23			24			
25	26	27		28		29		30		31	32
35			36		37			38		39	
40				41				42		43	
44				45		46				47	
48					49		50			51	52
					53			54		55	56
57	58	59	60					61			62
65					66	67				68	
69						70				71	
72						73				74	

© StatePoint Media answer on classified page

Fill in the blank squares in the grid, making sure that every row, column and 3-by-3 box includes all digits 1 through 9.

PRESENTED BY

Where volunteering begins.

© StatePoint Media answer on classified page

Happy Birthday!

February 23
Birthdays - Hailey Lamb, Randy Reid, Dave Clement, Janyth Smith, Cynthia Miller, Phil Larson, Aaron Hager, Kacee Smith, Elizabeth Pipkin, Jim McMahan, Maxine Cline, Jason Bartimos, Edoliina Garcia, Tommy Reger, Daryl Noble, Mollie Burnam, Alan Jones,
Anniversary - M/M Richard Rasor, M/M Joe Rodriguez, M/M Tommy Boone

February 24
Birthdays - Lori Messer, Linda Scroggs, Adam Holaday, Mani Noble, Tiffany Goodrich, Chuck Morgan, Sherry Boyd, Fernando Saldana, Glenda Close, Barbara Townsen, David Swink, Frances Davis
Anniversary - M/M Tom Cathey Sr., M/M Quentin Hart, Andrea & Gary Woolley

February 25
Birthdays - Marian Tomlison, Lynna Renner, Don Schmer, Mike Brown, Leslie Paul, Crystal Carson, Loree Viola, Tabetha Thoms
Anniversary - Bob & Jackie Pearson

February 26
Birthdays - Debbie Davis, Bruce Knight, Suzie Womble, Burl Buchanan, Pam Edwards, Margie Schubert, Lynn Pierce, Marinell Webster, Deziree Hughes, Carol Poole, LaQuita Evans, Bob Meier, Kip Francis, Denise Paschel, Tony Holquin, Nicholas Ceniceros, Kay Ann Miller
Anniversary - Britt & Linda Jarvis

February 27
Birthdays - Roy Diaz, Colby Weldon, Sharon Sutton, Cindy Jenkins, Adrian Barrera, Rosie Jackson, Melinda Hall, Winnie Vernon, Clint Goodman, Lance Wood, Vanessa Vela, Lacey Salgado
Anniversary - M/M Gilbert Salgado, Tim & Jackie Nelson

February 29
Birthdays - Clifton Harden, Michael Holt

March 1
Birthdays - Lori Swink, Justin Cooley, David Stafford, Michael Rosales, Gary Cates, Ruby Mitchell, Mary Saldavar, Nora Baca, John Duncan, Peggy Robinson, Caleb Miller, Danny Parker, Colt Close
Anniversary - M/M Robbie Dewberry, M/M Harold King, Norlan & Linda Winegarner, Jeffrey & Danielle

March 2
Birthdays - Wynn (Maupin) Essler, Justin Thompson, Tonni Yanke, Olive "Babe" Pendergraft, Wayne Barber, Matthew Baker, Carma Dorton, Bob Farr, Robin McCullough, Rachelle Moreno, Josh Winegarner, Ryan Hill, Sammy Renteria
Anniversary - M/M Joel Lackey

March 3
Birthdays - Sue Smith, Jackie Womble, Vicky (Papay) Cummings, Doris Brogdon, Kim Scroggs, Kelley Hart, Cass Lasater, Andy Scarborough, Brian Black, Darla Black, Amber Fox, Allan Taylor, Denise Schuman, Crystal Harris, Richard Melton, Paxton Pittman, Matt Wheelock, Pam Schnell, Sandra Reeves

March 4
Birthdays - Evelyn Dahl, Don Evans, Tanner Sherrill, Tommy Hahn, Jon Garnett, Virgil Jones, Chuck Taylor, Jose Renteria, David Harbour, Ron Fox, Judy Park, Brenda Red, Ronald Kirby, Heather Hamilton, Lucio Vela, Carrie Guthrie, David Rosser, Don Townsen
Anniversary - M/M Ramiro Morales, Mark & Jamie Brown

March 6
Birthdays - Brenda Hart, Charlie Slough, Marcie Womble, Bobby Archer, Tommy Barkley, Travis Patterson, Janet Reger, Doran Dulana, Kenneth Slough, Lindsey Clift, Nancy Evans, Mick Sharp
Anniversary - M/M A.R. Cazares

March 7
Birthdays - David Imke, Dee Dee Shelton, Mike Garnett, Molly Turner, Bernice McBride, Viola Boyd, Donald Lane, Beulah Harris, Howard Thompson
Anniversary - M/M Danny Bass, M/M Anes Ortiz, Pete & Juanita Vera

March 8
Birthdays - Patty Cator, Drew Grotgut, Mike McLain, Bill Harnish, Melvin Swene, Kirby McAdams, Deana Shields, Dee Allen, Steve Cruse, Candi Delozier, Ben Cook, Colby Red, Eric Olsen, Rae Lynn Cook, Cindee Thomas, Christi Clift, Michelle Schick
Anniversary - M/M Richard Wagner

Our Sympathy

RYAN RUSSELL GIBBS

BATON ROUGE, LA - Ryan Russell Gibbs was born on September 5, 1981, at High Plains Baptist Hospital in Amarillo, Texas. Ryan, a resident of Baton Rouge, Louisiana, died on February 10, 2012, from injuries suffered in a tragic car accident near New Orleans. He was 30 years old.

Memorial services will be held at 2 p.m. on Tuesday, February 14, 2012, at Boxwell Brothers Funeral Directors, 2800 Paramount Blvd., Amarillo, TX. Dr. Gil Lane, pastor of Paramount Baptist Church, Amarillo, officiating.

Ryan was a Renaissance Man. His passion in high school was music. He loved the piano, played drums and percussion in his high school band and spent a summer touring with the Blue Knights Drum Corp from Denver, Colo., before graduating in 2000 from Plainview High School, Plainview, TX. With the intent to major in percussion performance at Baylor University, his interests changed to business and he graduated from Baylor in 2004 with a bachelor's degree in business administration, majoring in real estate and minoring in entrepreneurship.

After graduation, he worked in Austin for a few months before deciding to return to undergraduate studies at Texas Tech University to pursue a degree in writing. His studies at Texas Tech included spending two semesters studying abroad in Seville, Spain. Ryan graduated summa cum laude, Phi Beta Kappa, with a 4.0 GPA from Texas Tech in 2009. He received his Bachelor of Arts in English as a creative writing major with a double minor in Spanish and psychology.

As a Master of Fine Arts graduate student at Louisiana State University, Ryan served as the graduate assistant for The Southern Review for two years. He also taught English composition and a fiction workshop as a graduate instructor for the English department. In his final semester of study, Ryan was writing a screenplay for his master's thesis. In addition, Ryan was one of the premier photographers in Baton Rouge. His website, www.rgibbs.com, highlights his work.

Ryan loved reading, writing, watching movies and sports, playing golf, fly fishing, listening to music and playing trivia and chess. He sky dived over the Alps in Switzerland and snorkeled among the coral reefs in Jamaica. His life was full and meaningful. He deeply loved his family and friends. Ryan will be missed by all who knew him.

Ryan is survived by his parents, Russ and Vicki Gibbs of Bryan/College Station, TX; his grandparents, Marion and Jennie Gibbs of San Angelo, TX; his grandmother, Tady Heiskell of Amarillo, TX; his aunt, Jamie Johnson of Canyon, TX; his uncle, Steven Heiskell of Amarillo, TX; his uncle George Heiskell of Vancouver, WA; and numerous cousins along with a host of friends.

Memorials may be sent to the creative writing graduate program at Louisiana State University, Baton Rouge, LA.

Sign the online guest book at www.boxwellbrothers.com.

LESLIE "GLEN" TERRY

AMARILLO - Leslie "Glen" Terry, 82, of Amarillo died Friday, Feb. 17, 2012.

Memorial services will be at 2 p.m. Tuesday in First Baptist Chapel with Dr. Howard Batson officiating. Arrangements are by Schooler Funeral Home, 4100 S. Georgia St.

Glen was born Dec. 19, 1929, in Shamrock to Robert and Carmon Terry. He graduated from Shamrock High School in 1948 and Texas Tech University in 1952 with a degree in agriculture engineering. He married Eura Lee "Dink" Burns on Dec. 19, 1951, in Lela.

Glen was in the wholesale paint business. After his retirement, he moved to Angel Fire, N.M., where he volunteered with Angel Fire Search and Rescue and Guadalupe Fire Department. He enjoyed RC model airplanes, dirt-biking competitions, snowmobiling, snow-skiing, water-skiing and racquetball and was a ham radio operator. Glen was a member of First Baptist Church of Amarillo.

He was preceded in death by his parents; a brother, Bobby Terry and wife Jo; and three nephews, Wade Kidwell, Miles Henderson and Tom Buckley.

Survivors include his wife, Eura Lee "Dink" Terry; two daughters, Tomi Kerns and husband Ross of Amarillo and Cristi VanLandingham and husband Jeffrey of Marietta, Ga.; two sons, Micheal Glen Terry of Spearman and John Leslie Terry of Amarillo; a sister, Paula Jean Lambert and husband Don of Greenville, Miss.; a brother, Jimmy Terry and wife Clara of Colfax, La.; seven grandchildren, Victoria Glyn, Kristen and husband Josh, Adam and wife Cassie, Amy, Tyler, Michael and Alexandra; a great-grandson, Lawson; 10 nieces; and 15 nephews.

The family suggests memorials be to Alzheimer's Association, 401 W. Eighth Ave., Suite 300, Amarillo, TX 79101; or Olivia's Angels, in care of Baptist St. Anthony's Hospice, P.O. Box 950, Amarillo, TX 79105.

Sign the online guest book at www.schoolerfuneralhome.com.

Aubrey Earl "Pete" Yarbrough

CANADIAN — Aubrey Earl "Pete" Yarbrough, 70, died Saturday, Feb. 18, 2012, in Canadian.

Services will be at 2 p.m. today in Minton Memorial Chapel in Borger with Tim Hall, associate pastor of Grace Church, officiating. Burial will follow in Stinnett Cemetery. Arrangements are by Minton-Chatwell Funeral Directors of Borger.

Pete had lived in the Canadian area for 45 years. He was an oil field driller.

Survivors include his wife, Janice; two sons, Michael Yarbrough and David Yarbrough, both of Canadian; two daughters, Melinda Schoonover of Phoenix and Ruth Pollard of Shasta Lake, Calif.; a brother, Eugene of Spearman; a sister, Helen Martinez of Stinnett; 10 grandchildren and six great-grandchildren.

Thank You!

Thanks to everyone who helped support the junior high and elementary libraries by shopping at the book fair last week. Because of your generosity, we set a new record in sales, which means more books for our libraries!

MONUMENTS
Boxwell Brothers
Funeral Home
 519 Evans • Spearman
 659-3802

Dear friends,
 When you buy a monument from us we make sure it is exactly what you want at a price you can afford. If it is not right, we will make it right. And you will not have to search the countryside to find us. We are here when you have a need.
 Sincerely,
 Bob Boxwell

Weatherford Construction
 Septic Systems

Kirk Weatherford (806) 336-2820
 8125 FM 3395 Toll Free: 1-800-585-6047
 Sanford, TX 79078 Email: kirk@weatherford-construction.com

Replenish the seed of faith through . . .

DAILY BIBLE READING, PRAYER & REGULAR CHURCH ATTENDANCE

- Spearman**
- Apostolic Faith Church**
822 S. Dressen • 659-2870
Sunday School: 10 a.m.
Worship Service: 11 a.m.
Sun. Eve. 6 p.m.
Wed. Prayer Mtg: 7 p.m.
Pastor - Jack Cornell
 - First United Methodist**
407 S. Haney • 659-5503
Sunday School: 9:45 a.m.
Worship: 8:30 & 11 a.m.
Jr. High Youth: 5 p.m. Sunday
High School: 6 p.m. Sunday
Kids Club: 3 p.m. Wed.
Pastor - Toni Bailey
 - Grace Presbyterian Church**
(Worshippers with Faith Lutheran Church)
1101 Bernice • 659-2033
 - Faith Lutheran Church (ELCA)**
1101 Bernice • 659-2252
Sunday School: 9:45 a.m.
Worship: 11 a.m.
(Worshippers with Grace Presbyterian Church)
Pastor - Cecil Biggers, PLM
 - Union Church**
31 S. Endicott • 659-2644
Sunday School: 10:00 a.m.
Worship & Kid's Church: 11:00 a.m.
Wednesday Evening Worship and Bible Study Service: 7 p.m. Wed.
Pastor - Steve Hinshaw
www.unionchurchonline.org
 - Fellowship Baptist**
1102 S. Archer • 659-2783
Sunday School: 10 a.m.
Worship: 11 a.m.
Sun. Evening Worship: 6 p.m.
Sun. Evening Spanish Worship: 7 p.m.
Youth/Adult Service: 7:30 Wed.
Pastor - Philip Hudson
- First Baptist Church**
123 N. Bernice • 659-5557
Sunday School: 9:45 a.m.
Worship: 11 a.m.
Evening Worship: 7 p.m.
Men's Bible Study - Wed., 7 a.m.
Children's Choir - Wed., 6 p.m.
Adult Choir - Wed., 7 p.m.
Wed. Bible Study: 7 p.m.
Pastor - Jim Medley
- Church of Christ**
121 S. Haney • 659-3244
Sunday Bible Class: 9:45 a.m.
Worship: 10:30 a.m.
Evening Worship: 6 p.m.
Bible Study Wed.: 7:30 p.m.
- Sacred Heart Catholic Church**
901 Roland • 659-2166
Sat. Night Mass: 5:30 p.m.
Sun. Mass: 9 a.m. - English
Sun. Mass: 11:30 a.m. - Spanish
Rev. Gregory Bunyan
- Primera Mision Bautista**
502 E. 7th • 659-3991
Sunday School: 9:45 a.m.
Worship: 11 a.m.
Evening: 6 p.m.
Wed. Prayer Meeting: 7 p.m.
Thurs. Visitation: 7 p.m.
Pastor Joe Garcia Jr.
- El Aposento Alto U.P.C.I.**
1105 S. Roland
Domingos: Escuela Dominical - 10 a.m.
Culto Evangelistico - 7 p.m.
Jueves: Oracion - 8 p.m.
Mier. Estudio Biblico - 7 p.m.
Pastor - A.G. Martell
(806) 659-2153
- Gruver United Methodist**
Broadway & Garrett
733-2651
Sunday School: 9:45 a.m.
Worship: 8:30 & 10:50 a.m.
Eve. Worship & UMY: 6 p.m.
Pastor - George Price
- Spanish Cristo Redentor Church**
Hwy 15 805-659-2166
Gruver, TX
Sun. Mass: 1:30 p.m. - Spanish
Rev. Gregory Bunyan
- Oslo**
- Oslo Lutheran Church (ELCA)**
6 Miles West & 12 Miles North of Gruver
339-7846
Sunday School: 9:45 a.m.
Worship: 11 a.m.
Pastor - Arlen Lloyd
- Morse**
- Morse Baptist Church**
733-2757
Pastor - Gary Stevens
- Waka**
- Church of Christ**
300 Rogers Ave.
202-7126
Sunday School - 9:30 a.m.
Sunday Worship: 10:30 a.m. & 6 p.m.
Wednesday Bible Study: 7 p.m.
Preacher - Ed Jenkins

He has showed you, O man, what is good. And what does the LORD require of you? To act justly and to love mercy and to walk humbly with your God.

Micah 6:8

This feature is made possible through the sponsorship of these civic minded businesses:

<p>Deakin ELECTRIC OILFIELD • RESIDENTIAL • COMMERCIAL 321 S. MAIN • SPEARMAN 1-800-999-1506 Chris Deakin (806) 659-5016 President</p>	<p>Bartlett's Lumber & Hardware 105 W. Broadway • Gruver, TX (806) 733-2404</p>	<p>BERRY CLEANERS Ann & Vernon Pipkin - Owners Phone 659-3122 • P.O. Box 1017 207 Main St. • Spearman, TX</p>	<p>Morse Implement & Auto Supply "Join us in church" Tom Dortch 733-2668 Box 89 • Morse, TX 79062</p>
<p>PRAIRIE MOTORS INC. Hwy. 207 South • P.O. Box 430 Spearman, TX 79081 • (806) 659-2541 www.prairiemotors.com</p>	<p>MurMur's Cafe 100 Roland St Spearman, TX 659-3580</p>	<p>Hansford County Reporter-Statesman "Proudly Serving Hansford County Since 1907" (806) 659-3434 310 Barkley • Spearman, TX</p>	<p>INTERSTATE BANK, sss www.interstatebank.com 322 Main Street • Spearman, TX (806) 659-2559</p>

Visit **FAMILYPOOLFUN.COM**

Our pools create Generations of Memories everyday, vacations never end!

Aboveground & Inground pools at WHOLESALE PRICING

SIMPLE DIY Pool Kit Assembly

SAVE MONEY on All Pool Supplies & Accessories. Ships Fast

Call Today! 800-950-2210

dish AUTHORIZED RETAILER

FREE 30 premium movie channels for 1 mo.

HBO CINEMAX SHOWTIME STAZZ

Promotional prices start at **\$19.99** a month for 12 mos. (Reg. price \$24.99/mo.)

FREE BLACKBUSTER HOME for 3 mos. (One based on the discounted \$5 price for Blackbuster Movie Pass. One disc at a time. \$3.99 value)

FREE 2 Hours HD DVR Upgrade (1 HD DVR - 1 SD DVR) (SD/HD DVR Service fee applied. Available with qualifying packages)

1-800-392-8211 WWW.INFINITYDISH.COM

Alva Monument Co.
 Formerly Liberal Monument & Memorial Company

New Location:
 N Tucker Road
 Liberal, Kansas

North of the New Wal-mart

Serving Kansas, Oklahoma & Texas for 93 years
 (316) 624-4211 toll free # 888-654-9318

FYI

FOR YOUR INFORMATION

Medical Fund for Francis Scroggs Pond

A Medical Fund that has been set up at FNB for Francis (Scroggs) Pond, she has been Diagnosed with cancer and will begin chemotherapy in Amarillo (and possibly surgery in Dallas in the near future).

Spearman Food Bank 1st Thursday

If you would like to help the Spearman Food Bank, they need help unloading the truck at 11:30 each 1st Thursday of each month. Contact Cecil Biggers for more information.

Hansford Co. Library Thrift Shop Accepting Donations

Alley Katz (Library Thrift Shop) is accepting donations of quality items. You may ask for the key to the Thrift Shop at the library desk during regular hours (9:30 a.m.-5 p.m., Monday-Friday). Alley Katz is open from 10 a.m.-4 p.m. each Wednesday.

GHS Mid-Winter Band Concert & Chili Supper

The Gruver High School Mid-Winter Band Concert and Chili Supper has been rescheduled for February 27. The chili supper will be from 5-6:30 p.m. in the school cafeteria and it will be a free will donation. The 7th grade band members will be providing entertainment during the supper. The concert will be at 7 p.m. in the auditorium.

Gruver Track Meet - March 8 & 9

Gruver High School will be hosting their track meet on March 8th & 9th, and they will be needing many volunteers to help run the meet. Gruver has done a great job of running off a first class meet in the past, and has received many compliments from coaches at other schools. This would be possible without the help of volunteers from the school and community. The Junior High Track Meet will be on Thursday, March 8th, with field events beginning at 3:30 and the running events beginning at 5:30. The High School Meet will be on Friday, March 9th, with field events beginning at 12:30 and the running events beginning at 4:30. If you can help out in any way, please contact Coach Felderhoff at 806-736-0203 or by email at terry.felderhoff@gruverisd.net.

Caring for Those You Care About

Caring for Those You Care About, "Road Maps for the Journey," a 5 part Lunch & Learn Series, will be held at the O'Loughlin Center, 502 Brandt, Spearman from 12-1 p.m. Sessions will include: Coping with the Stress of Caregiving - March 1st, Talking with Your Doctor & Managing Medications - March 7th, Hard Choices for Loving Caregivers - March 21st, Long Term Care - March 28th, and Protecting Against Scams & Frauds - April 18th. This event is sponsored by Texas AgriLife Extension. Registration Fee for the series is \$10. Participants may attend one or all of the five programs in the series for the one time fee of \$10. Lunch will be provided, followed by speaker and question/answer session. Call Peggy Winegarner, Hansford County Extension Agent, for more information, 806-659-4131.

Schwan's & Project Graduation 2012 Team Up!

The seniors of Spearman High School will be taking orders for Schwan's foods from 23 Feb thru 2 March. Pick-up and/or delivery of items will be the 7 March. Pick-up of items will be in the Lowe's/Alco Parking Lot. Find someone from the Class of 2012 and order your favorite Schwan's items!! Thank you for your wonderful support!! For questions call: Kellye Buchanan at 330-0364.

Voter Registration Cards

Due to the redistricting issues, every voter in Texas is currently holding an expired voter registration card. Once the maps are drawn and approved and the primary date set, voter registration cards will be mailed out. However you may vote, this year, with the expired card. For further information please call 806 659-4120.

Ready, Set, Sew!

4-H Fashion & Fun begins in March with creative make and take projects. Participants must be 3rd grade and older. Please call County Extension Agent Peggy Winegarner at 659-4131 for more information.

Winter Landfill Hours

Due to a shortage of employees, the City of Spearman has decided to implement the winter hours at the landfill 2 weeks early. Normally it would not change until daylight savings time changes, but they implemented the winter hours beginning Tuesday, October 25, 2011. Winter Hours are: Tues-Sat, 8 a.m. - 5 p.m. Closed on Monday and Sun day. They will also begin the one garbage pickup. If you have any questions, please contact Spearman City Hall at 806-659-2524.

Gruver Elementary Register Tapes for Education

Gruver Elementary is participating in the Lowe's Supermarket Register for Tapes for Education. Please help us earn free education material and equipment by collecting register tapes from Lowe's. You can deposit your register tapes in the boxes at the Elementary School Lobby, or the south entrance, Gruver City Library, City Hall, Gruver Library, Night & Day Beauty Salon and Shear Style Salon. Call Jo at 733-2247 for pickup of tapes or for more information.

Hansford Hospice

Volunteering for Hospice is very flexible and easy to work into your schedule. Our volunteers provide important services to the people we serve, whether it is: providing companionship to patients and their families; helping with clerical duties in the office; helping with special projects such as cooking food, baking, running or helping with community outreach. If you are interested in being a Hansford Hospice Volunteer, please contact us at 806-659-5811. We are having a Volunteer Training Program in February 2012.

Timeless Treasures Quilt Group

The Timeless Treasures Quilt Group will meet on Jan. 28 at the First Christian Church Disciple Center on Quinn Street in Guymon starting at 9:30 for coffee and the meeting at 10:00. Please everyone bring your crazy quilts to this meeting. New or old, finished or unfinished, fancy or plain and anything in between is acceptable. Please do your part to make this a very interesting morning meeting. The more we have the more we can show the diversity of crazy quilts. And the more fun it will be. New members are welcome. Bring a guest. The afternoon program will include four demonstrations about: Curved Pieces, Embellishments, Brazilian Embroidery, and joining stitches. Please plan to participate in this program--it should be fun. Bring a salad for the noon luncheon.

Cross Country Rings

It is 2012 and time for me to begin asking for donations to the Lynxettes Cross Country ring fund. Already, many of you have given. We would appreciate any donations from members and businesses in our community. The Lynxettes are 4 time state champs and deserve recognition for this. All donations can be made to Stephanie Brock, Special at First National Bank.

Texas SNAP Benefits Assistance

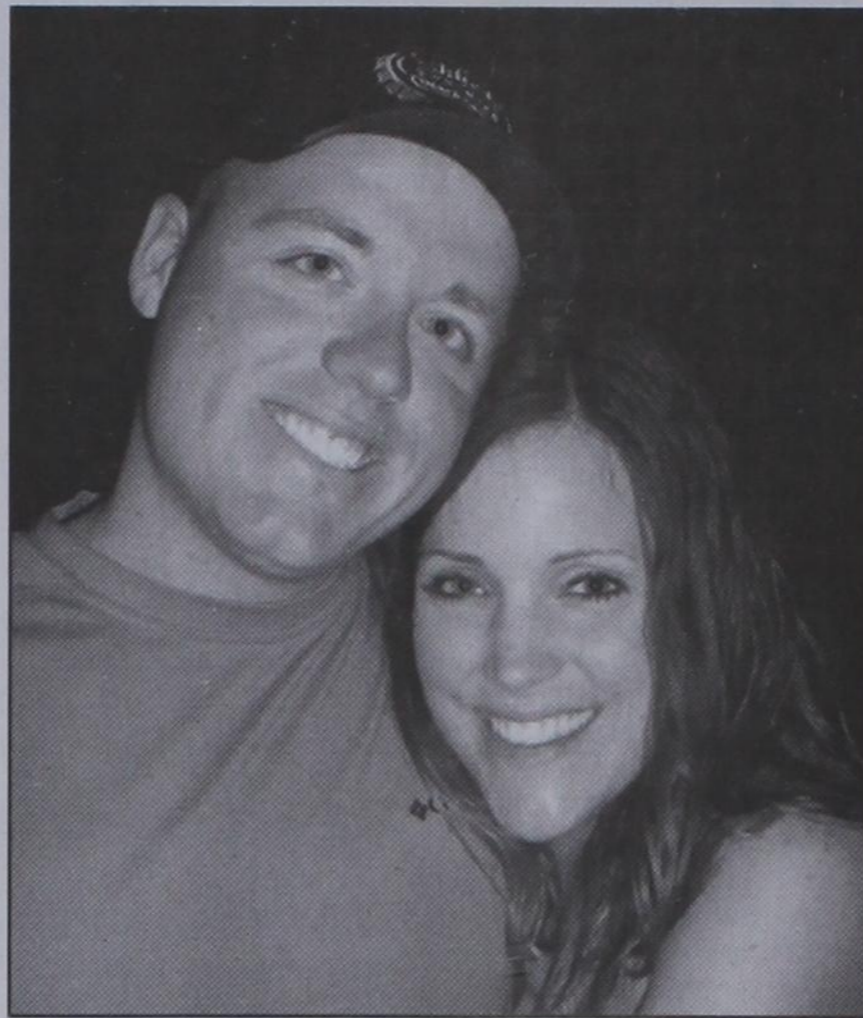
Need help applying for SNAP benefits? We can help! High Plains Food Bank is providing application assistance for Texas SNAP benefits (Food Stamps) in your area. Telephone application assistance is available. If you need to apply for benefits, please call us today at 806374-8562 or 1-800-774-8564.

Don't Text and Drive Decals

If you would like to purchase a lime green 'AMT 1994-2009 Don't Text and Drive' window decal in memory of Ali Tyler, please contact Stephanie Tyler at 806-736-0019. All proceeds go to the Ali Tyler Memorial Scholarship Fund. Decals are also available at Hansford County Floral Company on Main Street in Spearman.

Help Available for Breast Cancer Survivors

Any woman who has had breast cancer surgery and cannot afford undergarments and prosthetics can get help from the American Cancer Society through a grant from Susan G. Komen for the Cure®. The Amarillo Area Breast Prosthesis and Lymphedema Accessory Program will provide financial help to women in need of breast forms or prostheses, mastectomy bras and accessories to help with lymphedema, which is swelling of the arm caused by a build-up of lymph fluid. For more information, call the American Cancer Society office in Amarillo at (806) 353-4307 or 1-877-227-2345.



Wedding Announcement

Glenn and Jeanie Hollenbeck of Austin, TX proudly announce the engagement and approaching marriage of their daughter, Laurie Jennifer Hollenbeck, to Steven David Cummings, both of Bastrop. Grandmother of the bride is Ruth Shumate of Austin.

Parents of the groom are Marc and Sandy Earp of Spearman and the late David Cummings of Panhandle. Paternal grandparents are Nell Cummings and the late James Cummings of Amarillo. Maternal grandparents are Helen Yancey and the late Frank Yancey of Spearman, and the late Floyd Dry, also of Spearman.

The couple are planning to wed on March 11, 2012 in San Marcos, TX.

Laurie is a preschool teacher with Elgin ISD. Steven works in off drilling. They will reside in Bastrop, TX.

Spearman Academic Teams Advance

The Spearman Academic Teams traveled to Dalhart, Thursday, February 16, 2012 to compete in the TACS Academic Challenge.

Team members were: Crystal Cantu, Laura Anima, Victor Larios, Arik Mires, Jesus Guzman, and Caleb Chockley. Students are tested over math, science, social studies, and language arts. Each student was asked 20 questions and they had 15 seconds to answer each question without the use of paper or calculators.

The top three teams received scholarship money and the top five teams will compete at the state meet in Belton, TX on May 6, 2012. Mrs. Mandy Derington is the team coach. The team of Arik Mires, Jesus Guzman, and Caleb Chockley will compete at the state meet. Congratulations to both teams.

Hansford County Library 2nd Annual Art Exhibit Features Area Artists

Hansford County Library proudly presents its second annual art exhibit featuring area artists. On tap for February is the photography work of Sherry Beagle. Beagle is a native of Roy, New Mexico who now lives in Perryton and works for Green Country in Spearman. On exhibit are scenes from her European visits as well as many from the Hansford and Ochiltree areas. Of special interest to some will be her windmill and ranching photos.

In March, the library will host the work of Spearman High School art students under the direction of Elizabeth White. Monica Schmidt's Pringle-Morse students will show in April. The art exhibit will conclude in May with the showing of work from Donna Wright's art students of Gruver High School.

"I would like to invite everyone to view the talents of these county residents," stated Margaret Ruttman, library director. "The art show of 2011 was very successful and very well received, and we expect this one to do as well—we look forward to having you visit the library," added Ruttman.

The library is open 9 to 5, Monday through Friday. Congratulations to both teams.

You are invited to a
Wedding Shower
honoring
Kylie Knight

(bride-elect of Tatum Rice)
Sunday, February 26, 2012
from 2:00-3:30 p.m. at the
205 Etling Ave Gruver TX
Selections: Gordons Drug,
William Sonoma, and Bed, Bath & Beyond

Murr's Cafe

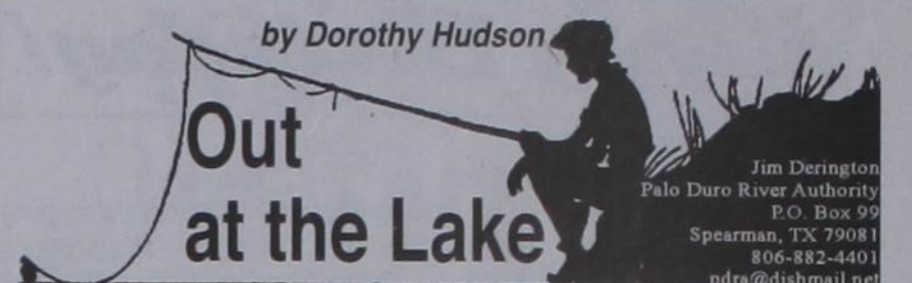
SPEARMAN LYNXETTES

We Support the You!

We will be closed on Friday,
September 24, 2012 so that we
may attend the Spearman Lynxettes
play-off game in Midland.

Good Luck Lynxettes!

100 S. Roland
Spearman
659-3580



Lake Level--February 20, 2012--30.29 feet (-0.10)

Monte George hikes in the Park with his dog. While getting his exercise, he likes to find the antlers shed by deer. He told Jim that the "shed" starts in a week or so.

Cougar Attacks Boy

The recent misty rains left .07 inch in the office gauge, but the damp cold didn't deter the Roy Deeds, Dwain Wellers, and James Reds from Gruver from using the RV hookups behind the dam this past weekend.

Some dedicated fishermen were out, too. Jim had a report of someone catching fish from a boat. With shad for a bait, four catfish were caught with the largest weighing 17 pounds.

This is the time of year to begin watching a change in the birds to be seen in the Park. Jim said he was seeing only 2 eagles. The geese numbers had dropped somewhat, but there were still lots of ducks.

Mandy and Jim recently saw a herd of mule deer south of their home at the Lake. One deer stood out as much lighter in color than the others. They wondered if the white mule deer fawn that was seen first in 2007 had grown up after all. I checked the columns and found that Jim had decided the fawn was a true mule deer and not an albino.

The lion was to be killed if found. He had earlier attacked another party and been driven off with a back pack.

A second report from an Austin paper on February 11 said Rivers was at Scott and White in Temple with the doctors trying to identify the bacteria that had infected his wounds. Surgery was involved with the treatment also.

FIREWOOD FOR SALE

Cedar firewood for sale. Call (806) 658-2573.
Delivered & stacked, or self pickup.

Gordon's

Bridal Registry

Couples Currently Registered

- Kylie Knight & Tatum Rice - 2/26
- Shelby Begnaud & Chase Farrar - 3/10
- Jena (Cherry) & Charles Davis - 3/24
- Lindsey Mireles & Daniel Gale - 3/31
- Amy Brown & Jon D'Zamko - 4/29
- Mandie Hunter & Josh Duggan - TBA
- Charity Burton & James Diaz - TBA
- Shelbi Roberts & TJ Vasquez - TBA
- Heather Ford & Garrett Martin
- Dana McLaughlin & Justin Hendrick

Baby Registry

- Baby Girl of Kendra & Jim Potts - 2/25
- Baby Boy of Adrienne & Kevin Baker
- Baby Boy of Brooke (Bevil) & Andrew McMurry

Gordon's

659-2141
314 Main Spearman

Our Sympathy

ALFRED WILLARD "SI" McCLOY

HANSFORD COUNTY
- Alfred Willard "SI" McCloy, 90 of rural Hansford County, passed away on Friday, February 10, 2012 in Dumas, Texas. Services are scheduled for 2:00 P.M. on Wednesday, February 15, 2012 at the First Baptist Church in Gruver, Texas. Rev. Barry Wood of Prosper, Texas will be officiating, assisted by Rev. Larry Miller of Albuquerque, New Mexico. Interment will follow in Lieb Cemetery in Morse, Texas. Arrangements are entrusted to Morrison Funeral Directors.

Willard was born on June 11, 1921 on the family homestead, west of the Lieb community, to McLeod Wilson and Leslie (Braly) McCloy. The family was early day settlers in Hutchinson County, as the result of the concern to acquire land in a productive area for their cattle, and the strong Christian faith to help establish churches in the newly developing counties of Texas and the West. Willard acquired the nickname of "SI" at an early age from one of the McCloy employees, and it was attributed to "Silas" in the old comics. The McCloy family was some of the first to produce wheat in the newly developing area.

Willard attended school first at Centerville, then Pringle, and then graduating at Morse High School in 1938. He went on to attend Texas Technological College (Texas Tech University) where he obtained a degree in Government in 1943. His studies were interrupted in 1942 when he volunteered to serve his country so his older brother could stay home on the farm and ranch and help his parents. "SI" failed the physical because of his eyesight and returned to college and finished his degree. He then returned to the McCloy family enterprise to work alongside his parents, while his three

brothers served their country in the war.

On December 7, 1947 Willard married Beatrice Ferguson, a teacher who came to Morse from Sunnyside, Castro County, Texas. Beatrice attended Wayland Baptist College, and started teaching in Morse in the fall of 1945. In January, 1948, the newlyweds moved to the present family home in Hansford County, approximately 10 miles northwest of Morse. It was here they raised their four children: Delbert - 1949, Monte - 1951, Cheryl - 1953, and Katina - 1956. Willard instilled the work ethic in his children, which was "finish what you start today because tomorrow may never come". In other words if you lack an hour finishing plowing a field at quitting time, finish it before you quit.

Willard was active in various college organizations. He was a lifetime member of Alpha Phi Omega. Upon returning from college, he was active in the Hutchinson County Farm Bureau, as well as the Morse Methodist Church, where he served in various positions. When SI and Bea moved to Hansford County, he became active in the Hansford County Farm Bureau, where he served in various positions and on some state positions. He served this organization in excess of 40 years before retiring in 1985. Willard was honored by the Texas Farm Bureau in 1996 by being named Pioneer Award Recipient for leadership and service to TFB and agriculture. Willard served on the Morse School Board for approximately 30 years and saw the consolidation with Pringle.

When the Methodist Church attendance dwindled, Willard started attending the Morse Baptist Church with his wife, and became a Deacon in 1965, serving until he took an inactive position. Willard maintained his membership here, but didn't regularly at-

tend because of medical problems. Instead, he watched First Baptist Church in Amarillo on TV diligently. After the passing of his beloved wife in 2008, he semi-regularly attended church with his son at the First Baptist Church in Gruver.

Willard answered his true calling when he was first elected to the Hansford County Soil and Water Conservation Board in 1962. Willard, "SI", held all of the leadership positions, and served this as President from 1988 to his retirement on December 15, 2011, when his health began to rapidly decline. He saw this organization go from meeting in the basement of the county court house to rented offices, to building its own office building. Willard was instrumental in the district expanding its building to house the FSA and make for a farmer oriented complex. Willard was involved in the funding of this project through First State Bank, and greatly anticipated being able to co-sign the check in June, 2009, to pay off this project. While serving on this board, "SI" also served in various area positions and saw the emphasis of the district change from controlling wind erosion and dry land farming to row irrigation, development of tail water return systems to conserve water, which promoted wildlife habitats, and now to the development of sprinkler use and GPS straddles in agriculture. There has also been the redevelopment of the use of the wind farms, which basically are just giant versions of the way early pioneering families had electricity. He has seen the change from clean tillage to summer fallow, limited tillage and to the use of no tillage and chemicals to control weeds and conserve moisture, fuel labor, and machinery.

Willard farmed and ranched from his home base in various locations in

Texas and New Mexico, and continued to implement various conservation practices in his operation until his partial retirement in 1999. Willard continued to be involved on a limited basis in the cattle industry, and still enjoyed watching the new calves until the Lord took him home.

Willard was also active in the Morse community. He was a charter member of the Morse Lion's Club, serving in all positions of leadership until his retirement from the club. He was involved with 4-H club work and through his and various other citizens of Morse in the early 1960's, helped establish the Morse Community Park. The 4-H raised the money to purchase the land, plant trees, set up playground equipment (acquired from the old Olso School), and had a water well drilled. Willard served on the park board until his passing.

Willard was preceded in death by his wife of 60 plus years, Beatrice; his parents, MW and Leslie McCloy;

sister, Marjorie Trumble and husband Tom; brother, Wilson McCloy; granddaughter, Laci Renee McCloy; brother-in-law, Norris W. Fulfer; and various aunts, uncles and cousins, along with Beatrice's parents and step-father.

Willard is survived by his two sons, Delbert McCloy of Morse, and Monte McCloy and wife Nan of Kalgary, TX; two daughters, Cheryl Peterson and husband Mike of Albin, WY, and Katina Lusby and husband Lonnie of Fayetteville, AR; grandchildren, Matt McCloy and wife, Ingrid of Albany, Clint McCloy and wife Amber of Nara Visa, NM, Mindy Joekel and husband John of Gering, NE, Lori Anderson and husband Brett of Cheyenne, WY, and Lee Peterson of Albin, WY; great-grandchildren, Miles & Mason McCloy, Hadley, Sara & Cody McCloy, and Hailey & Abigail Joekel; brothers, Carson McCloy and wife Evelyn of La Junta, CO, and Thane McCloy and wife Sue of

Morse; sisters-in-law, Nan McCloy of Amarillo and Ruby Fulfer of Claremont, CA; special nieces, Sue Brown and husband Jim of Gosnells, Australia, Margaret Sterud and husband Jermoe "Stu" of Deming, WA, Mary Leech of Bellingham, WA, and Betty Rowell and husband Doug of Curlew, WA; numerous cousins, nieces nephews, and special friends, including Sherry Morris, David Horton, Nell Henderson, Fay Dahl, Monica & Emit Schmidt, and Carol Short and his pets, Snoopy and Big Tom.

The family would like to express a special thank you to Accolade Home Health, Dr Dan Merki, Dr. Edilberto Miguel, Memorial Nursing Home and Memorial Hospice, which enabled Willard to reside in his home and make his days comfortable.

Memorials may be made to Morse Community Park, Inc. PO Box 38, Morse, TX 79062 or Memorial Hospice, 224 E. 2nd, Dumas, TX 79029.



Edna Hartman Chapter of the National Honor Society Induction Ceremony

By Lexi Batton

The Edna Hartman Chapter of the National Honor Society Induction Ceremony was held February 8, 2012, at Spearman High School.

New inductees were seniors: Ivette Briseno, Margarita Ibarra, and Derrick Zimmerman; juniors: Trayse Heater, Itzel Meza, Rene Pena, Maria Pena, and Audy Reed; sophomores: Vanessa Briseno, Seth Carson, Jennifer Crowl, Madison Earle, Gena Gillispie, Sadye Hanna, Tristian Hughes, Lexie Jackson, Ashley Keim, Molly Lieb, Sydney McDonald, Katie Miesner, Kelsea Miller, Carson Pearson, Taylor Williams, and Connor Willimon.

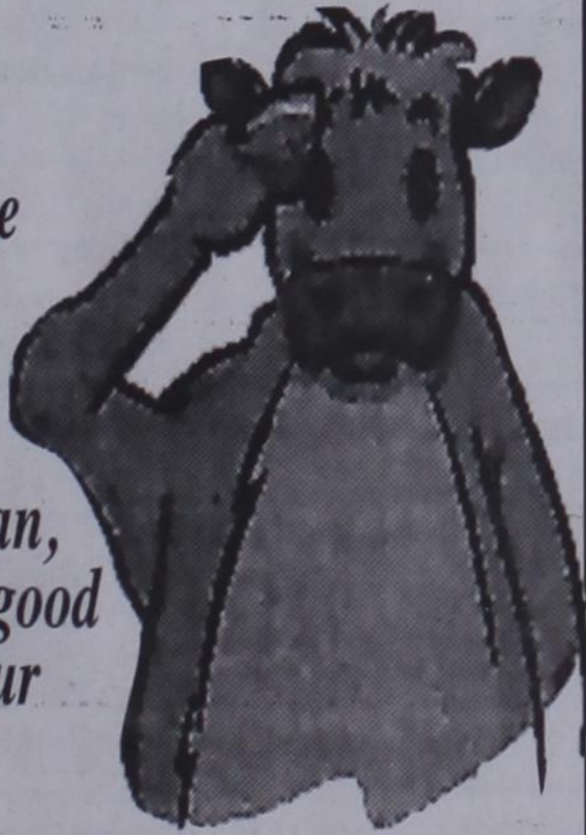
The address was given by Maribel Martinez, a 1998 Spearman High School graduate, who discussed the four ideals of NHS - scholarship, service, leadership, and character. Maribel is currently the Assistant Emergency Management Coordinator for Amarillo/Potter/Randall Office of Emergency Management.

She received a Bachelor of Science in Geophysics, a Master of Science in Atmospheric Science, and a Doctorate in Wind Science and Engineering all from Texas Tech University. She is the daughter of Homero and Maria Martinez, who still reside in Spearman.

Congratulations to all National Honor Society inductees, and a special thank you to Maribel for speaking at the ceremony!

Congratulations to all participants in the Hansford County Junior Livestock Show and Sale.

We salute our ag teacher, Joshua Brockman, and the good things our kids do!



Spearman Independent School District and Board of Trustees

Memorial Hospital of Texas County Spring Health Fair 2012

Saturday, April 28, 2012

Mark Your Calendars!

More information to be provided at a later date.

520 Medical Drive Guymon, OK

Memorial Hospital of Texas County Feria De Salud De Primavera 2012

Saturday, April 28, 2012

Marque su Calendario!

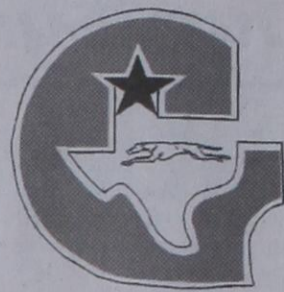
Más información a ser proporcionada en una fecha posterior.

520 Medical Drive Guymon, OK



SPEARMAN LYNX & LYNXETTES

GRUVER GREYHOUNDS & LADY HOUNDS



BASKETBALL TEAMS



Spearman Lynxettes 2A Area Champions
 (From left) Katy Miser, Mabry Sutterfield, Lexi Batton, Kyla Walker, Shelby Hanna, Sadye Hanna, Gately Garnett, Malory Martin, Morgan Ashmore, Cynthia Mendoza. (Not pictured: Hannah Patterson)

Gruver Lady Hounds 1A Area Champions
 Left to Right: Madison McLain, Nikki Beasley, Kaysha Bass, Ashlynn Miner, Daniela Luciano, Taylor Felderhoff, Shelley Gibson, Mari Serrano, Reagan Haynes

CONGRATULATIONS & GOOD LUCK!



Spearman Lynx
 (From left) Jeffrey Thomas, Junior Garcia, Jorge Caro, Blaine Pack, Jace Lang-Swan, Brody Hargrove, Stefan Cook, Kagen Breeden, Alex Mendoza, Brent Hansen.

Gruver Greyhounds
 Front Row from Left to Right: Beau Blankenship, Carson Williams, Kramer King, Diego Ortiz; Back Row from Left to Right: Reese Clark, Korbin Irwin, Forrest Lopez, Travis Stedje, Jace Lane

WE'RE PROUD OF YOU!

From These Local Businesses

Adobe Walls Gin, LP Spearman • 659-2574	Delinda McLaughlin Photo Solutions Spearman • 659-2800	Gruver State Bank Member FDIC Gruver • 733-5061	Interstate Bank, ssb Spearman • 659-2559	Pizza Hut Spearman • 659-2547
Aeroflight Publications Gruver • 733-2483	Dreamers Spearman • 659-9907	H&H Water Well Spearman • 659-5577	Kirk Insurance Agency Spearman • 659-2794	Prairie Motors Spearman • 659-2541
AeroTan Gruver • 733-2483	El Vaquero Restaurant Gruver • 733-2407	Hansford Abstract Co. Spearman • 659-2516	J&S Signs & Engraving Spearman • 736-7020	Rocking F Boot & Saddle Shop Spearman • 659-3342
All Occasion Flowers Spearman • 659-5180	Equity Exchange Spearman • 659-2420	Hansford County Feeders Gruver • 733-5025	Jarvis Law Office, P.C. Spearman • 659-2554	Sergio's Body Shop Spearman • 659-5217
AMA TechTel Gruver • 806-322-5500	First State Bank Spearman • 659-5565 member FDIC	Hansford County Floral Co. Spearman • 644-4000	Jim's Diamond Shop Borger • (806) 274-2370	Spearman Lynx & Lynxette Booster Club
Bartlett's Ace Hardware Gruver • 733-2404	Five Star Equipment Spearman • 659-3743	Hansford County Hospital District Spearman • 659-2534	Lowe's Marketplace Spearman • 659-2522	Spearman Chamber of Commerce Spearman • 659-5555
Bob & Cathy Davis Gruver • Spearman	Frank Phillips College Allen Campus Perryton • 648-1450	Hansford County Reporter-Statesman Spearman • 659-3434	M&D Aerial, LLC Spearman • 806-202-2360	Sunray Co-Op Gruver Branch Gruver • 733-2481
Bob & Jackie Pearson Gruver • Spearman	Gigot Agri Products Spearman • 659-3121	Hansford County Vet Clinic Spearman • 659-2100	Money's Perryton • 435-3945	Tong's Chinese Food Spearman • 644-2838
Bort Agency Gruver • 733-2404	Golden Spread Carpet Spearman • 659-3068	Hansford Pharmacy Spearman • 659-2226	Morse Implement Morse • 733-2668	Willis Boyd Dirt Services Spearman • 659-9848
Boxwell Brothers Funeral Home Spearman • 659-3802	Golden Spread Sales Co. Spearman • 659-3776	Hi-Plains Auto Supply, Inc. Spearman • 659-2506	MurMur's Cafe Spearman • 659-3580	Xcel Energy Responsible By Nature Perryton • 806-435-4052
The Bunkhouse Restaurant Spearman • 659-2089	Gordon's Drug Spearman • 659-2141	Hoochy Poochy Parlor Borger • 273-2724	North Plains Electric Coop 806-435-5482 • 800-272-5482	
Cates Men & Boys Spearman • 659-3426	Gruver Ford Gruver • 733-2431	Hungry Cowboy Spearman • 659-5151	Perryton Office Supply Perryton • (806) 435-4812	

REAL ESTATE

FOR RENT: 1 & 2 BR furnished apartments...

HELP WANTED

HELP WANTED: Oilfield work, must have drivers license...

HELP WANTED: \$5,000 Sign-On Bonus! Tons of runs! Frac Sand Hauling...

SERVICES

HOOCHY POOCHY PARLOR Call us for all your pet's grooming and boarding needs...

TIRED OF GARAGE SALE PRICES? Let me buy your good used furniture!

WANTED

WANTED: Horses to ride, train, exercise. 20+ years experience.

209 N. Bernice: 2 houses, garage and storage bldg. Call for details.

711 S. Townsend: darling 3 bed, 1 1/2 bath, central air, heat, dining and detached garage w/shop

301 Hazelwood: 3 bed, 1 bath, fireplace, large yard

Julie Martin: Broker - 659-2425

We'd Like Your Listing! FOR QUALITY & SERVICE CALL US TODAY!

Check our websites for other properties.

DUMAS FARMS II - 1280 acres deeded, 320 ac. for lease with purchase of property...

VALLEY VIEW RANCH - Lipscomb Co., TX - 177 ac. w/extraordinary 5404 sq. ft. +/- home overlooking the property...

SHERMAN CO., TX - 627 acres, choice land, four 1/4 mile sprinklers, fully developed...

WEST OF DUMAS on pvt. 606 ac. +/-, 17 tower sprinkler, four irr. wells, excellent location for residential or commercial development.

BUDDY CLINE ROAD - Moore Co., TX - 1/2 section choice land, two wells (one new) and sprinklers.

1200 SOW FALLOW TO FINNISH OPERATION - Moore Co., TX - New 5 yr. lease with major hog company. Two separate units, can be divided - Please contact broker for info package and price.

www.scottlandcompany.com www.texasrcp.com

Shawn Gillispie 806/922-5532 Ben G. Scott, Broker 1-800-933-9698 day/eve TFM(2-2-12)

ALL STATE REALTY 806 435-SOLD (7653)

All State Realty Sherrie E. Rima 806-435-SOLD (7653)

322 S. DRESSEN Corner Lot, 3 or 4 bedrooms, 2 Living spaces, 3 baths. Newly Remodeled & Priced To SELL!!

We have Buyers but We Need Listings! Call Us Today & Let us put the Two of you together!

FOR SALE

FOR SALE: PLAY STATION 2 with 27 games. Guaranteed to be in great condition...

PUBLIC NOTICE

LEGAL NOTICE ISABEL RIOS HAS MADE APPLICATION WITH THE TEXAS ALCOHOLIC BEVERAGE COMMISSION FOR A PACKAGE STORE PERMIT TO BE LOCATED AT 309 MAIN STREET, CITY OF SPEARMAN, COUNTY OF HANSFORD, D/B/A AMIGOS.

PUBLIC NOTICE

The Palo Duro River Authority is accepting bids on a shower addition to existing restrooms. Sealed bids will be received until 2:00 PM, March 13, 2012.

Blankenship Real Estate

659-3052 - 670-3774

LET US HELP YOU SELL YOUR HOME.

NEW LISTINGS WANTED!

Eulalia Blankenship - Sales

Eschol Blankenship - Broker

Shirley Howard Properties

We NEED listings! Call us now to help YOU sell your home for top dollar!

1026 Townsend - Spearman: 2,883 sq ft, 4 bed, 1 1/2 bath, LARGE Family Room!

1016 S Barkley - Spearman: 4,081 sq ft, 4 bed, 4 bath 3 lvg areas, 2 Att gar, Fireplace, Corner Lot! REDUCED AGAIN!

710 Front - Gruver: \$145,000 - @ 2,177 sqft, 3 bed, 2 3/4 bath, NEW Metal roof, NEW CACH, NEW Outside Stucco, and NEW Kitchen!

Shirley Howard, Broker/Owner 806-886-6536, Cell 806-648-4444, Work Melinda McCullough, Realtor (806) 733-5678

We would LOVE to sell your HOUSE! CALL US!

MITCHELL THEATRES.COM GUYMON, OK • LIBERAL, KS • NEWTON, KS

NORTHRIDGE 8 Guymon, Oklahoma www.northridge8.com 580-338-3281

SOUTHGATE 6 Liberal, Kansas www.southgate6.com 620-624-5573

SEQUOYAH 8 Garden City, Kansas www.sequoyah8.com 620-275-2760

CHISHOLM TRAIL 8 Newton, Kansas www.chisholmtrail8.com 316-283-0555

FRESH POPCORN EVERYDAY! -PARTY ROOM & ARCADE-

or reject any or all bids. Plans are available at the PDRA office at Spearman, TX. For more information call 806-882-4401.

2(2/23/12)B

INVITATION FOR BIDS

Sealed proposals addressed to the Honorable Mayor and City Commissioner of the City of Spearman, Texas, for the rehabilitation of a 500,000 gallon ground storage tank and associated appurtenances entitled: WATER STORAGE TANK REHABILITATION AVENUE D GROUND STORAGE TANK

will be received at the office of the City Manager of the City of Spearman at City Hall, 30 Southwest Court, Spearman, Texas, 79081 until: 2:00 P.M. March 14, 2012

A cashier's check, certified bond, or acceptable bidder's check or payable to the City of Spearman in an amount equal to not less than five percent of the bid submitted, must accompany each bid as guarantee that, if awarded the contract, the Bidder will, within fifteen days after receipt of Contract Documents, enter into a contract with the City of Spearman and will execute bonds on the forms provided

Lots of additional new brands and inventory for 2012---Special orders welcome anytime---New assortment of Tactical Knives---Everything discounted off regular retail prices---All at Country Market every Friday and Saturday.

2(2/23/12)B

ESTATE SALE

119 S Snider, Spearman Thursday-Saturday, March 1-3, 2012 10 a.m. - 6 p.m.

Furniture, Lawn Tools, Vacuum Cleaners, Linens (Twin), KnickKnacks, Crafts, NEW Washing Machine w/warranty, Lots of Misc. EVERYTHING MUST GO!

hchd Hansford County Hospital District

Maintenance: Perform duties as directed by the maintenance supervisor. Responsible for maintenance of buildings, grounds, and equipment to include carpentry, painting, plumbing, electrical work, air conditioning, gardening, furniture repair welding, etc.

Pharmacy Assistant/Bookkeeper: Day to day operations including, but not limited to, stockings, reconciling insurance reports, check in order daily, answer phone, run cash register, reconcile payments & invoices. Any and all instructions from the Pharmacist. Great customer service is a must.

Hospital Medical Records Clerk: Review and filing of medical records, review, report and maintain patient records, record retention plan, oversee flow of dictation.

Great working environment and staff, quality facility providing opportunities for professional growth. Great Benefit package. Apply at 707 S Roland, Spearman, Tx or contact Jackie Nelson, HR 806-659-5841. Download application at hchd.net

2(2/23/12)

in the Contract Documents. Any bid received after the time and date listed above will be returned unopened and will not be considered.

Bidders are expected to inspect the site of the work and inform themselves regarding all local conditions.

Contract Documents are on file and may be examined in the office of the City Manager, City of Spearman, 30 Southwest Court, P.O. Box 37, Spearman, Texas 79081, phone (806) 659-2524, and the office of Brandt Engineers, Consulting Engineers, 4537 Canyon Drive, Amarillo, Texas 79110, telephone (806) 353-7233.

Plans and Specifications may be obtained from the Engineers, Brandt Engineers, 4537 Canyon Drive, Amarillo, Texas 79110, phone (806) 353-7233 in the following manner:

Cost: One hundred dollars (\$100.00), non-refundable, for each set of plans and specifications.

Performance and Payment bonds shall be set forth in the Contract Documents.

The Owner reserves the right to reject any or all bids and to waive any informalities in the bidding. In case of ambiguity or lack of clearness, the Owner reserves the right to adopt such interpretations as may be most advantageous or to reject the bid as informal. No bid may be withdrawn until the expiration of 30 days from the bid opening date.

CITY OF SPEARMAN, TEXAS BRIAN GILLESPIE, MAYOR 2(2/23/12)B

LEGAL NOTICE NOTICE OF PUBLIC HEARING

Hazmat Tanker Drivers Job Fair Thursday, 2/23/2012 8:30-4:30 Best Western Inn 3505 S Main Street Perryton, Texas, 79070 Phone: 806/434-2850

SPEARMAN PLANNING AND ZONING COMMISSION

Date: March 13, 2012 Time: 6:00 p.m. Place: City Council Chambers, 30 SW Court, Spearman, Texas

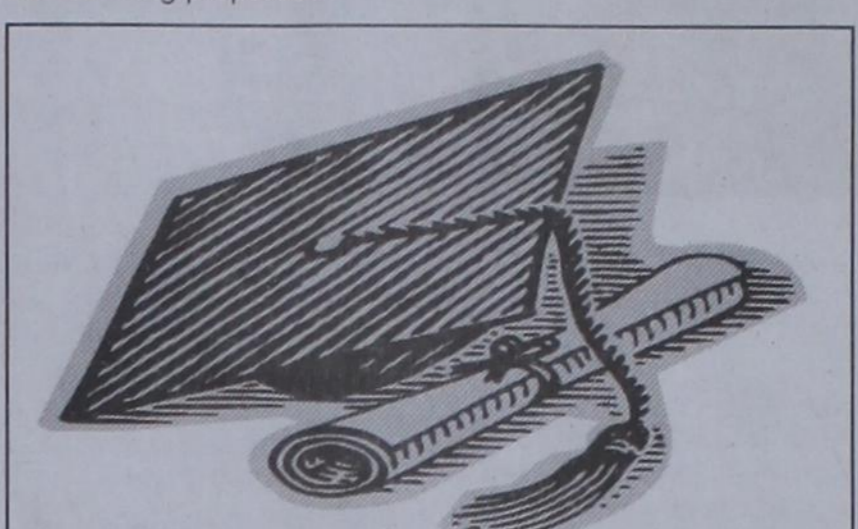
Purpose: To consider in public hearing a zoning variance on the property listed below:

Request a variance to waive the south side yard setback in order to make an addition to the following properties:

a) Lots 10, 11 & 12, Block 13, Reeves Addition, addressed as 822 Barkley.

Any interested party may attend the open meeting to speak for or against the proposed variances. For additional information call 659-2524.

/s/ Cheryl Gibson-Salgado Asst City Manager/City Secretary 2(2/23/12)B



Project Graduation 2012

The parents of the Spearman High School Senior Class of 2012 will sponsor and host a "Project Graduation Party" following commencement exercises Friday May 25th. To encourage the graduates to stay the entire night, door prizes are awarded throughout the evening. In addition, graduates can earn paper monies through their participation in various games so that prizes can be purchased. The graduation party will culminate with the distribution of grand prizes.

Prizes, gift certificates, and cash are needed for the evening's gifts. If you, the community, who supported and encouraged these seniors these past 13 years of school, would be willing to share in this final "class of 2012" memory, making this project "special," please call:

Tiki Farrar at (806) 270-0313, Jean snider at 659-3009, or Gwenda Hanna at 659-9949. contributions can be mailed to: Project graduation Gwenda Hanna, 403 S. Endicott St., Spearman, Tx 79081

8 7 4 9 3 2 1 5 6 2 6 9 7 1 5 3 8 4 1 3 5 8 4 6 9 2 7 6 2 8 1 9 4 5 7 3 4 1 3 5 6 7 2 9 8 9 5 7 2 8 3 6 4 1 5 4 2 6 7 1 8 3 9 7 9 6 3 2 8 4 1 5 3 8 1 4 5 9 7 6 2

CACTI ELF TBAR UBOAT BOO WEAVE SELMA BUR ORBIT 5 8 4 6 9 2 7 AIM POUF MAG CEDE NUDNIK ITEM NEAP LEONA MANE DUCAT ELAN ILLAND SOUR MARY CLINIC CLAP NEE KICK WAR WEIRDAL LLCOLLJ ASCI USA IGLLOO SPECK CUD FUGUE HYDE KEY YEATS

NORTH PLAINS GROUNDWATER Conservation District Attention All Producers of Groundwater in the North Plains Groundwater Conservation District Your 2011 production reports are due in the Dumas office by 5 pm on March 1st. For more information about 2011 production reporting, call the office at 806-935-6401 or log on to www.northplainsgcd.org

TEXAS STATEWIDE CLASSIFIED ADVERTISING NETWORK TexSCAN OWNER OPERATORS \$5000 Sign-on bonus. Tons of warm, prosperous South TX runs. Frac Sand Hauling. Must have tractor, pneumatic trailers and blower. 1-800-397-2639. SEMI DRIVERS WANTED to deliver Bobtails from either Garland OR Laredo. Get pre qualified by calling 1-866-764-1601 or www.qualitydriveaway.com. YOU GOT THE DRIVE, we have the direction. OTR drivers, APU Equipped, Pre-Pass, EZ-pass, Pets/passenger policy. Newer equipment. 100% NO touch. 1-800-528-7825. EDUCATION ATTEND COLLEGE ONLINE from Home. Medical, Business, Criminal Justice, Hospitality. Job placement assistance. Computer available. Financial aid if qualified. SCHEV certified. Call 1-888-205-8920. www.CenturaOnline.com. HIGH SCHOOL DIPLOMA graduate in 4 weeks! Free brochure! Call now! 1-866-562-3650, ext. 55. www.southeasternHS.com. DRIVERS - REGIONAL RUNS earn 32¢ - 45¢ per mile. Average 2,500-3,000 miles per week. Assigned Equipment, tuition reimbursement, deBoer Transportation, 1-800-825-8511; O/O's welcome. www.deboertrans.com. DRIVERS - STUDENTS 18 days from start to finish, earn your CDL-A. No out-of-pocket tuition cost. Step up to a New Career with FFE - www.driveff.com 1-855-356-7122. EXPERIENCED FLATBED DRIVERS Regional opportunities now open with plenty of freight and great pay. 1-800-277-0212 or princemc.com. HIRING EXPERIENCED/ INEXPERIENCED tanker drivers! Great benefits and pay. 20 ACRES Live on land now! 50 down, owner

Palace Theatre MOVIE SHOW TIMES Friday-Thursday - 7 p.m. Sunday - 2 p.m. Closed Sunday Night

FRESH POPCORN & DRINKS! PARTY ROOM & ARCADE MOVIE RENTALS

Palace Theatre 210 Main Street Canadian TX 79014 806-323-5133 www.palacetheatre.com The Palace Theatre meets Lucastilm THX specifications for site and sound quality.

Elliott Named Citizen of the Year



Charles Elliott was named the Citizen of the Year during this year's Spearman Chamber of Commerce Membership Banquet.

Charles was born and raised in Amarillo. He has been involved in the construction/home repair businesses for over 40 years. He started travelling to Spearman 1973, and he and his family to Spearman in 1977.

Charles worked at

Spearman ISD as head of the maintenance department from 1990-1996.

Over the years he has been involved in many community activities and organizations. He was a Jr. High Sunday School teacher for about four years, has been involved in the Spearman Booster Club and was the coach for the Spearman Swim Team from 1992-1996. He helps the Boy Scouts when they need anything.

He has also served on the City of Spearman, serving as Mayor pro-tim, and the Economic Development Corporation, serving as President. While serving in these capacities, he helped with bringing the cotton gin to Hansford County, as well as helping with the Spearman Fire Department.

"One of the things I am most proud of is that the due to the quality of our fire department, our local

insurance rates are lower than most towns of our size," stated Charles.

"The most rewarding thing I have done in my life was working with the Swim Team," commented Charles. "I have come to realize that you get more out of the things you do for free because they are the things you want to do and enjoy.

"I feel fortunate to have been able to help people in our church, schools and community," concluded Charles.

Charles is married to Melanie. They have four children, Taydawn Hawkins, of Spearman, Charles Gregory Elliott who went to live with his Heavenly Father in 1998, Michelle and husband Izzy Vasquez of Anthony, KS, and Amber and husband Zach Bigham of Haslet, Tx. They have 9 grandchildren.



B&B Sales Named Business of the Year

B&B Sales was named this year's Business of the Year during the Spearman Chamber of Commerce Membership Banquet.

B&B opened in 1963 on Main Street by Max Baggerly. The store moved to their present location in the mid 70's, and was sold to Sonny Kell and Judy Tindell in January of 1990.

When they opened, B&B focused more on farm equipment. After moving to their current location, they moved their focus more into hardware and home supplies. They added Radio Shack about 10 years ago.

Employees at B&B are Sonny Kell, Judy Tindell, Wayne McCubbin, Melissa Roberson, Jo Trejos, Jimmy Vanlandingham, Eddy Edwards, Margarita Ibarra, Ignacio Grajeda and

Manuel Mendoza.

Over the years, B&B Sales has been involved in and donated to the following community organizations: Spearman Swim Team, Spearman Little League, Hansford Hospice, Hansford Manor Christmas, Wounded Warrior Project, Boy Scouts, Hansford County Stock Show, Moore County Stock Show, Hutchison County Stock Show, Big Brothers Big Sisters, Tri-State High School Rodeo, Coaches vs. Cancer, Gideon's International, Project Graduation, Pokey's Junior Ranch Rodeo, America Supports You Texas, Morse Community Building, Cub Scouts, Pringle-Morse Halloween Carnival, American Diabetes, Panhandle Crisis Center, Golden Spread

Radio-thon, and Hardesty High School After Party, just to name a few.

"Our success can be contributed to the good people of Spearman and Hansford County who have always supported us," stated Judy Tindell. "We have always tried to supply the needs as best as we can, and we hope to continue for years to come!"

See us for:
AUTO • HOME • CROP HAIL • FARM & RANCH • MULTIPERIL • LIVESTOCK

INSURANCE

BORT AGENCY, INC.
 510 Main St. • Gruver, TX
 (806) 733-2456

Short Named Rotary Employee of the Year

by Paula Cooper & Danny Womble

This year's Rotary Employee of the Year is Carol Short.

Carol has been employed by Texas Farm Bureau in Spearman for 25 years. She has seen many employees come and go over the years such as: Rich Melton, Bob Gillispie, Troy James, Jason Cantrell, Melvin Bradly, Kelly Mahaney, Regan Baker and Oran Burton.

Carol has been faithful to her work, shown great responsibility and has a high standard of work ethic that is hard to come by in this day and age.

She always has a smile and is helpful to all - not only those who come into Farm Bureau but to those



that call in as well. She is always eager to help out in any way she can.

Carol has lived in many different places. She was born and raised in Gage, OK, lived in Midland, Odessa, Enid and even France, but chose to raise her family in Spearman. She has three daughters - Kathy Brown and husband

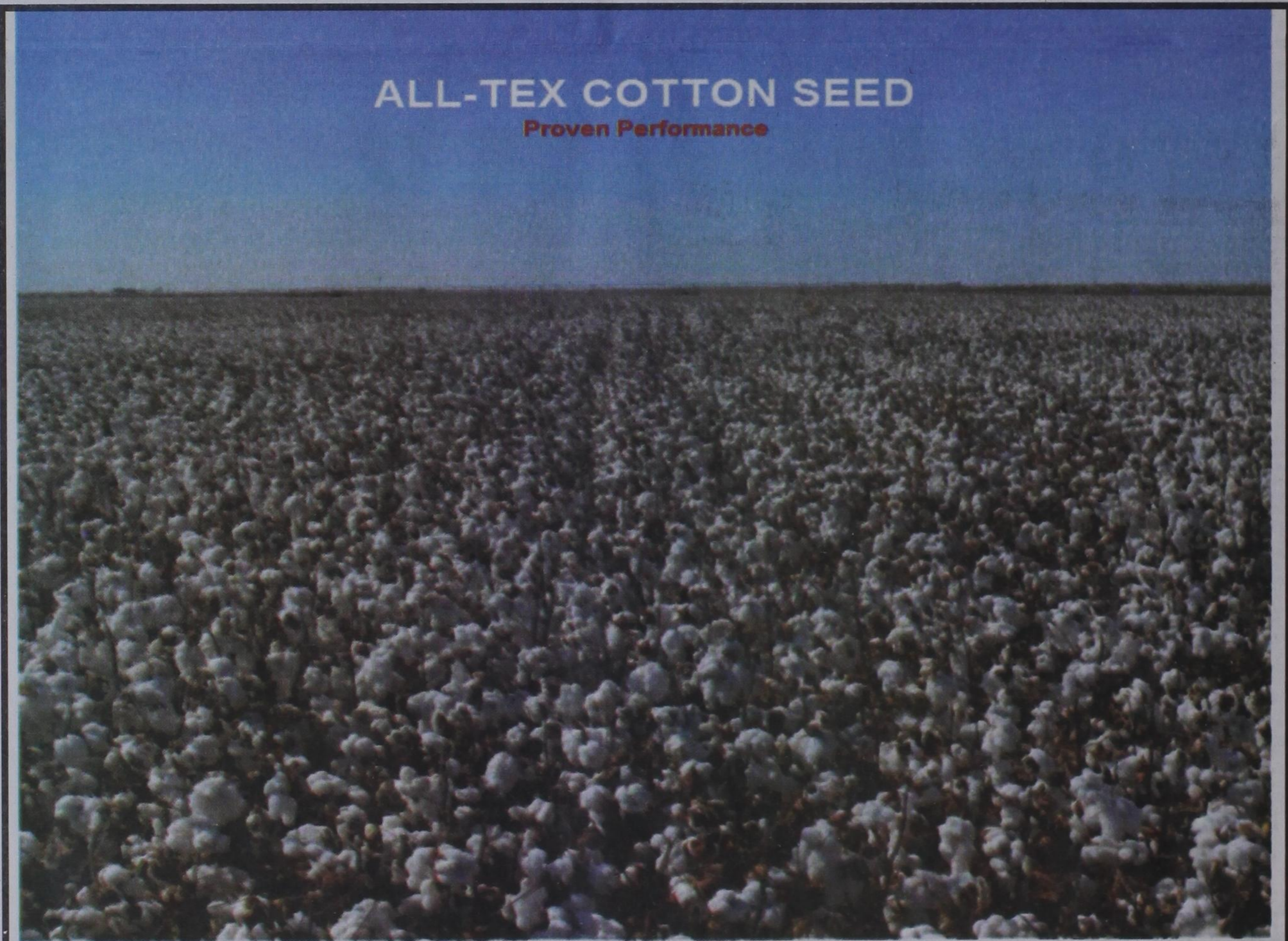
Doug of Spearman, Patti Schnell and husband Mike of Spearman, and Lori Scroggs of Amarillo; along with five grandkids - Jessica and Amy Brown, Tyler and Ryan Schnell, and Brace Scroggs.

It is a pleasure to honor Carol Short as this year's Rotary Employee of the Year.

Spearman Lynx & Lynxettes

<http://spearmansports.smugmug.com/>

Photos available of Spearman Lynx and Lynxette athletic events.



ALL-TEX COTTON SEED
 Proven Performance

2011 picture in Moore County Texas - 4.1 bales acre - 37% turnout - average loan 57.3

All-Tex Cottonseed dealer for North Texas & Oklahoma Panhandles

Rapid, Edge, Epic, Patriot, & Dinero, early to medium season, we have a variety that fits your farm.

We service what we sell.

Harbert & Calvert Partnership

Butch Harbert - 806-930-8905 Justin Calvert - 806-341-8666