



★ HANSFORD COUNTY ★
THE REPORTER-STATESMAN

CELEBRATING 104 YEARS OF SERVICE TO HANSFORD COUNTY
HANSFORD COUNTY'S ONLY NEWSPAPER

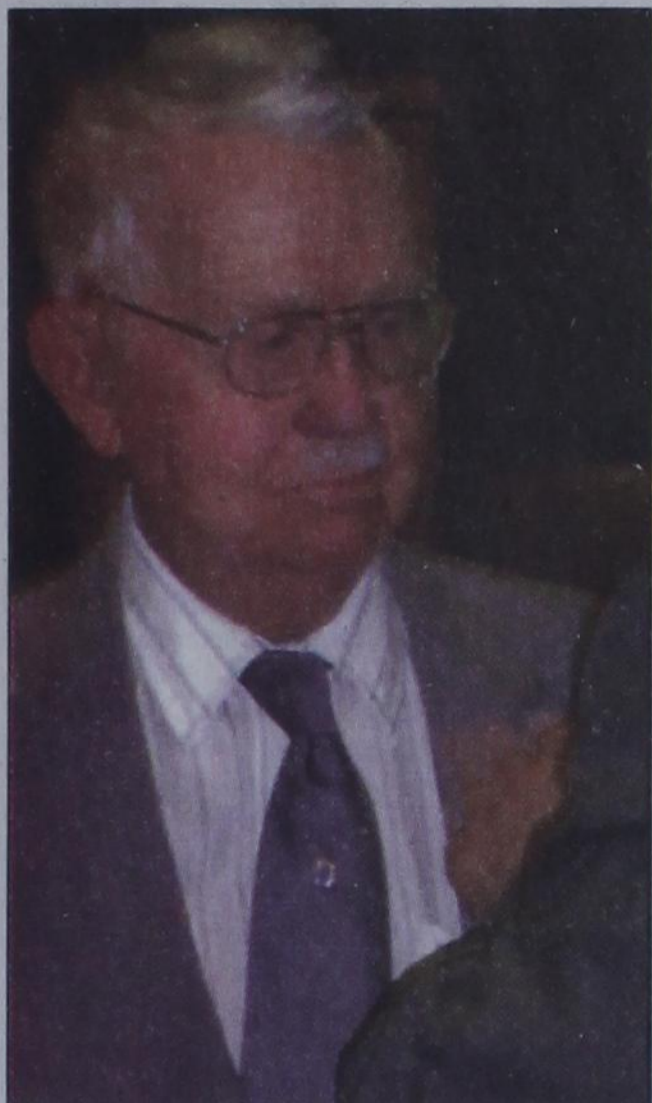
THURSDAY,
JULY 7, 2011

75¢

WWW.SPEARMANREPORTER.COM

VOLUME 104 • ISSUE 27

REPORTER@SPEARMANREPORTER.COM



**J.D. Wilbanks
Receives Masonic
Service Award**

On June 11, 2011, J.D. Wilbanks was presented with his seventy (70) year Masonic Service Award by Hansford Masonic Lodge #1040 at the re-located lodge location in Amarillo, Texas.

J.D. Wilbanks became a Mason in 1941 in Hansford Lodge # 1040 at Spearman, Texas. He is a Past Master of the Lodge in Spearman and also served as a District Deputy Grand Master in 1955 and acted to set Gruver Lodge #1326 to work. This year Hansford Lodge #1040 A.F. & A.M. celebrates its 100th anniversary. J.D. Wilbanks has served for 70 of those years.



Spearman 9 & 10 Year Old All Stars

The Spearman 9-10 All Star Team has been crowned District Champs for this area in Little League. They will be competing in the Sectionals Tournament held in Midland, Texas beginning this Saturday, July 9, 2011. This team is coached by Joel Shields, Rick Harrell, and Khri Kelp. The team members are: Bo Butler, Arturo Camacho, Edel Castaneda, Aiden Garnett, Reid Harrell, Keegan Kelp, Slade Knowlton, Brice McLaughlin, Eziquiel Munoz, Jackson Riggins, Reece Shields, and Thomas Speck. This team is very grateful for all the support that this community has shown them!

Photo by Beckee Baker of Sparrow Photography

**Disaster Survivors
Urged to Beware of
Recovery Scams**

The U.S. Small Business Administration is urging disaster victims seeking federal aid to be alert to scam artists posing as federal officials and to be cautious about any solicitations for fees to perform services that are available from federal agency staff for free.

In the wake of widespread flooding, wildfires and tornados in many areas across the country over the past few months, the SBA is particularly concerned about flyers that have appeared in tornado-damaged areas asking for non-refundable fees of up to \$450 to help disaster victims fill out their loan applications and as much as \$1,000 to verify losses and file loan applications. Federal agencies involved in disaster recovery will never ask for a fee or payment to file an application for financial assistance or to inspect damaged property.

"Historically, natural disasters bring out the very best in people, and there are countless stories of the selfless acts of helpful neighbors and volunteers," said SBA Administrator Karen Mills. "Unfortunately, we have also seen in the past individuals who attempt to take advantage of people who need assistance. Disaster survivors should be vigilant in protecting their personal assets, particularly in the stressful environment of a disaster recovery."

"The SBA will not tolerate the defrauding of those who have already lost so much in the aftermath of these devastating disasters," Mills said. "Those who are found taking advantage of disaster victims will be prosecuted to the fullest extent provided by law." If you suspect a person is posing as a local or federal agent, or encounter what you believe are fraudulent activities connected with disaster relief operations, contact your local law enforcement officials, phone the toll-free National Disaster Fraud Hotline at 866-720-5721, or send an email to disaster@leo.gov. The phone line is staffed by a live operator 24 hours a day, seven days a week. To register for federal help after a disaster declaration, visit www.DisasterAssistance.gov, or call FEMA at 800-621-3362 (800-426-7585 for the speech or hearing impaired). Disaster survivors may also visit one of the local recovery centers to get help with filing for assistance. To get help with the disaster loan application, contact the SBA by email at disastercustomerservice@sba.gov, or by calling 800-659-2955 (800-877-8339 for those with speech or hearing disabilities). Those affected by recent disasters may also file a loan application online by visiting SBA's secure website at <https://disasterloan.sba.gov/elal/>. The SBA makes low-interest, taxpayer-backed disaster loans to homeowners, renters, businesses and non-profit organizations of all sizes. More information about the disaster assistance program is available at www.sba.gov/disasterassistance.

**City of Spearman Releases
Water Quality Report**

submitted by Ed Hanson,
Spearman City Manager

Each week we go deeper into this drought we hear on the news of other cities going into different stages of their Drought Contingency Plan. Spearman is not yet taking that step. Still, even though our water is not expensive it is nothing to waste. Be aware of your water usage. I know that many of us have water sprinklers that spray out the water in a circle and we have a square or rectangular yard and there will be some water going onto the sidewalk. We are currently

using 1.5 million gallons of water a day.

As we begin the water project in the coming weeks there is the slight possibility that we might need to curtail usage for a few days. We will keep you advised and try to provide as much advance warning as possible.

Below is a chart showing Spearman's cost of water and sewer services as compared to other in the state and region. The information is provided by TML (TX. Municipal League) and the TRWA (TX Rural Water Assoc.).

WATER SYS.	5K/GAL/MO	10K/GAL/MO	SEWER RATE
Spearman	\$21.00	\$29.75	\$18.00
TX. AVG.	\$29.05	\$46.09	\$25.46
TRWA REGION 1 (SPEARMAN IS LOCATED IN THIS REGION)			
LOWER 10%	\$16.56	\$23.96	\$14.00
MED. AVG.	\$35.40	\$53.15	\$24.95
UPPER 90%	\$50.90	\$77.97	\$35.90

The water quality report went out with the July utility invoices, if you have any questions about it please call city hall.

**USDA-FSA to Host Webinars
on Hispanic and Women
Farmer and Rancher Claims**

USDA Farm Service Agency (FSA) State Executive Director Juan M. Garcia today announced four webinars (internet-based virtual meeting) to discuss the USDA Hispanic and Women Farmer and Rancher Settlement Claims Process and current FSA loan programs. These webinars are scheduled for July 14th, July 28th and August 11th at 7:00 PM.

On February 25, 2011, Secretary of Agriculture Tom Vilsack and Department of Justice Assistant Attorney General Tony West announced a process created to resolve the claims of Hispanic and women farmers and ranchers who assert they faced discrimination when seeking USDA farm loans during certain periods between years 1981 and 2000. The optional claims process offers a streamlined alternative to litigation and provides at least \$1.33 billion in compensation, plus up to \$160 million in farm debt relief, to eligible Hispanic and women farmers and ranchers.

The interactive webinars will provide an overview of the USDA Hispanic and Women Farmer and Rancher Claims Process as well as

FSA farm loan program updates. Farm loan program topics to be discussed include interest rates, terms, and eligibility and security requirements.

"I encourage producers who want more information about the claims process or about FSA farm loan programs to register for one of these webinars," said Garcia. "The webinars are free and open to the first 100 participants who register," he said. Garcia emphasizes that these webinars are intended as forums to discuss the general plan for the claims process and FSA webinar hosts will not be able to discuss the details of any individual claim during the course of the webinars.

To view the webinar schedule and register, please go to www.fsa.usda.gov/Internet/FSA_File/tx_hwwebinar_2011.pdf.

For more information regarding the USDA Hispanic and Women Farmer and Rancher Claims Process and FSA Lending Program webinars, please contact Eddie Trevino in the Texas State FSA Office at (979) 680-5221 or via email at eddie.trevino@tx.usda.gov.



Weekly Update

Texas, June 27- Average retail gasoline prices in Texas have fallen 5.9 cents per gallon in the past week, averaging \$3.46/g yesterday. This compares with the national average that has fallen 6.5 cents per gallon in the last week to \$3.58/g, according to gasoline price website TexasGasPrices.com.

Including the change in gas prices in Texas during the past week, prices yesterday were 87.4 cents per gallon higher than the same day one year ago and are 19.4 cents per gallon lower than a month ago. The national average has decreased 21.0 cents per gallon during the last month and stands 84.0 cents per gallon higher than this day one year ago.

GasBuddy operates TexasGasPrices.com, and over 225 other local gasoline pricetracking websites that follow prices at over 125,000 gasoline stations in the United States and Canada. GasBuddy also uses Facebook (facebook.com/gasbuddy) Twitter (twitter.com/gasbuddy), and phone apps to keep motorists ahead of changing gasoline prices.

Weather Forecast

THURSDAY NIGHT - Partly cloudy. Lows in the upper 60s. Southwest winds 10 to 15 mph.

FRIDAY - Partly cloudy. Highs around 106. Southwest winds 10 to 15 mph.

FRIDAY NIGHT - Partly cloudy. Lows in the upper 60s. Southwest winds 10 to 20 mph.

SATURDAY - Mostly sunny. Highs around 107. Southwest winds 10 to 20 mph.

SATURDAY NIGHT - Mostly clear. Lows in the upper 60s.

SUNDAY - Mostly sunny. Highs around 105.

SUNDAY NIGHT - Mostly clear. Lows around 70.

MONDAY - Partly cloudy. Highs around 101.

MONDAY NIGHT - Partly cloudy. Lows in the lower 70s.

TUESDAY - Partly cloudy. Highs around 103.

TUESDAY NIGHT - Partly cloudy. Lows in the lower 70s.

WEDNESDAY - Partly cloudy. Highs around 101.

Read more: <http://www.city-data.com/forecast/w-Spearman-Texas.html#ixzz1Q6k678dp>

Texas Crop & Weather

The following specific livestock, crop and weather conditions were reported by Panhandle Extension directors: The region's weather remained extremely hot, dry and windy with no moisture. The danger of wildfire was extreme. Soil moisture was mostly very short. All summer crops were struggling due to high temperatures, lack of moisture and wind. Irrigators were constantly watering all summer crops, but were having a hard time keeping up with the water demand. Rangeland and pasture conditions were mostly very poor. Livestock producers were either digging in and feeding cattle, hoping the drought breaks, or selling herds. There were reports of southwestern corn borers and armyworms.

AVAILABLE NOW!
E-SUBSCRIPTION NEWS
to the
Hansford County Reporter-Statesman
Delivered to your e-mail each Thursday for only \$35/year.
Purchase online at www.spearmanreporter.com
Call 806-659-3434 or e-mail reporter@spearmanreporter.com for details.

Wolf Creek Heritage Museum Notes

by Virginia Scott
MUSEUM HAPPENINGS

I apologize for not writing the column last week. (I am not sure I will make it in the July 7th edition either. I am confused on printing for holiday schedules.)

Last week I was on jury summons and spent Monday morning doing my civic duty. It is interesting and I have always wanted to serve on a jury, but never have made it and didn't this time either. There wasn't enough of us that qualified to make a legal pool so a mistrial was called. Anyway, by the time I arrived at the museum I wasn't in the mood to send in a column.

We had a great turnout for the reception for the Akers family. Pam Tyson, Sharon Hammond, Missy Tyson, and Monte Akers were all present to visit

with all who attended the event. We sold out all of Monte's books. I am ordering more and will announce their arrival in this column. Thanks to all of you who attended. We appreciate your support of our events and for your appreciation of our local talent.

On Wednesday, we spent the day setting up Camille Harrelson's quilts and paintings. They are very inspiring and you will enjoy viewing them. There will not be a reception for Camille at her request, but we are hosting a Donation Tea on July 30th.

The Donation Tea will feature Delores Cross who will present her clothing program entitled "Grandmother's Legacy." The tea will be from 2 pm till 4 p.m. with Delores' presentation at 3 pm. We request that

you call the museum and tell us you will be attending so that we can ensure enough tea and space. RSVP to 852-2123 from 10 a.m. to 4 p.m., Monday thru Friday.

MUSEUM HAPPENINGS

On July 4, 1845, the convention to consider the joint resolution of the United States Congress proposing the annexation of the Republic of Texas to the United States assembled in Austin. Thomas Jefferson Rusk was elected president of the convention, and James H. Raymond was secretary. By a vote of fifty-five to one, the delegates approved the offer of annexation. Richard Bache of Galveston was the lone dissenter. Of the fifty-seven delegates elected to the convention, eighteen were originally from Tennessee, eight from Virginia, seven from Georgia, six from Kentucky, and five from North Carolina. Considered the most able body of its kind ever to meet in Texas, the convention included men of broad political experience such as Thomas, J. Rusk, James Pinckney Henderson, Isaac Van Zandt, Hardin R. runnels, Abner S. Lipscomb, Nicholas H. Darnell, R. E. B. Baylor, and Jose Antonio Navarro. The convention prepared the Constitution of 1845 for the new state. The convention adjourned on August 28, 1845.

Enjoy this week of historical importance to our state and our country.

Wolf Creek Heritage Museum

Museum Hours: Monday thru Friday 10 a.m. to 4 p.m., Special hours upon request.

Museum Information: 13310 Hwy 305, PO Box 5, Lipscomb TX 79056; telephone: 806-852-2123; e-mail: wolfcrk@amaonline.com; website: www.wolfcreekheritagemuseum.org

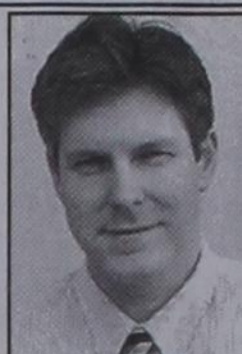
The Hansford County Reporter-Statesman is liable for errors and omissions in advertisements only when the newspaper fails to correct errors from the original layout and marked by the advertiser on a proof returned within the established time before publication. Liability of the newspaper for an alleged error in copy or publication shall not exceed the cost of the space occupied by the error.

Please report any errors in published advertisements immediately. Credit will be allowed for the first insertion only.

Notice of errors must be received in time for correction before the second insertion, or within three days of publication, or no claim for credit will be honored.



STATE CAPITAL HIGHLIGHTS



by Ed Sterling

Special session of Legislature ends with rough day

AUSTIN — The Texas Legislature accomplished much of what Gov. Rick Perry asked in the 1st called session of the 82nd Texas Legislature.

- Lawmakers passed:
 - Fiscal matters bills to facilitate a balanced state budget through Aug. 31, 2013, made possible through more than \$15 billion in overall cuts that included the paring down of public education funding by \$4 billion;
 - Congressional redistricting;
 - Health care funding; and
 - Texas Windstorm Insurance Association reform.

But they failed to pass hot-button sanctuary cities and "anti-groping" legislation.

Congratulatory behavior, relief and expressions of resentment swirled on the floor of the Texas House of Representatives on June 29, the final day of the special session.

Lt. Gov. David Dewhurst and the Texas Senate brought business to a close the day before, on June 28. But with the Senate gone, the House was left with a take-it-or-leave-it situation on SB 29, the so-called anti-groping bill meant to restrict pat-down searches by airport security workers and make violations a class A misdemeanor offense.

Feeling stuck, some House members openly expressed anger over the Senate's action. But Rep. David Simpson, R-Longview, the primary author of HB 41, the House version of the anti-groping legislation, implored his colleagues to vote in favor of the Senate version even though the bill had not gone through the rigorous House committee hearing process.

Simpson assured the body that: (1) the Texas attorney general's office had vetted state and federal legal issues that might be triggered by restricting pat-down procedures enforced by the U.S. Transportation Security Administration; and (2) his bill was not intended as a political message to gin up opposition to President Barack Obama or the Obama administration.

But the atmosphere on the House floor did not indicate a shift in Simpson's favor. When Simpson moved to suspend the constitutional rule requiring that bills be read on three several days, the motion failed. That action killed SB

29. Simpson, one of a class of more than 30 freshman House members, then was allowed by Speaker Joe Straus to make a personal privilege speech that lasted several minutes. In summary, Simpson said, "The defeat of this bill can only be laid at the feet of the leadership of this state."

After Simpson, Rep. Pete Gallego, D-Alpine, House Criminal Jurisprudence Committee chairman, spoke briefly on the matter. Gallego said the leadership and members in general had the ability to stop the anti-groping bill much earlier by calling a point of order on it based on the constitution's three-and-several-days rule, adding that it should be regarded as a gesture of courtesy for the bill to have been kept alive so long with little time left in the special session.

Governor reacts to session work

Gov. Perry on June 29 expressed disappointment over the failure of sanctuary cities legislation that would have prevented cities from adopting policies preventing police from inquiring as to a citizen's immigration status.

Nevertheless, Perry praised the Legislative branch for its service. "I'm proud of Lt. Gov. David Dewhurst, Speaker Joe Straus and lawmakers' principled leadership to pass a balanced budget that doesn't raise taxes and preserves

billions unspent in our Rainy Day Fund, leaving our state on firm fiscal footing for the future," Perry said.

"The decisions made were difficult, but lawmakers should take pride in the fact that they did what families all across Texas are doing: living within their means."

Some members have other plans

Rep. Fred Brown, R-Bryan, a car dealer by trade, announced his resignation from the House, sharing his plan to move to another district. Brown served more than 12 years.

Five-term Rep. Joaquin Castro, D-San Antonio, announced his candidacy for the Austin-San Antonio area U.S. congressional district seat held by U.S. Rep. Lloyd Doggett of Austin. (Castro's twin brother is San Antonio Mayor Julian Castro.)

Rep. Warren Chisum, R-Pampa, reminded House members on the last day of session that he plans to run for a seat on the three-member Texas Railroad Commission.

Lt. Gov. David Dewhurst, while a member of the executive branch, is also a member of the Texas Senate over which he presides. Dewhurst is expected to join the field of candidates to succeed U.S. Sen. Kay Bailey Hutchison, who has decided not to seek re-election.

PROCLAMATION

By Executive Order of the Honorable Brian Gillispie, Mayor of the City of Spearman, it is proclaimed:

WHEREAS, July 2010 marked the forty-second anniversary of the passage of the Civil Rights Act of 1968, which included Title VIII, the Fair Housing Law, for guaranteed equal housing opportunity for all citizen; and

WHEREAS, Fair housing is consistent with the principle of equality and justice for all, providing the challenge to combat discrimination, and to broaden the protection of the beliefs upon which our nation was founded; and

WHEREAS, This month provides an opportunity for all Americans to rededicate themselves to the principles of free choice and to acquaint themselves with the rights and responsibilities that are theirs under the Fair Housing Law.

NOW, THEREFORE, I, Brian Gillispie, Mayor of the City of Spearman, do hereby proclaim July 2011 as: **FAIR HOUSING MONTH IN THE CITY OF SPEARMAN**

and urge my fellow citizens to join me in reaffirming the obligation and commitment to fair housing opportunities for all people.

Editors Note...

Freedom of speech is one of the guarantees of the First Amendment of our Constitution, so we encourage readers to express themselves, even if we don't agree with what is said. However, freedom involves responsibility. Therefore, the only letters we will consider publishing are from individuals who are willing for their names to appear with the letter. Letters must contain the telephone number, address and a personal signature of the writer (for verification purposes only).

We will not knowingly publish any letter containing libelous or slanderous statements, or factually incorrect information. Letters containing language or content that we feel is inappropriate will not be published.

Examples of content that will cause letters to be rejected include the following: Confusing or unclear points; Crude language; Poor taste; Disrespectful comments regarding a group's or individual's ethnicity, gender, religion, culture, sexual orientation or race; Other incendiary language or remarks; Endorsements for or complaints about individually named commercial products or services.

"Letters To The Editor," like all materials submitted to this newspaper, are subject to editing for space and clarity. The publication of any letter or article is the decision of the Editor and Publisher.

We welcome your input. You may write to us by using the online form, e-mail - reporter@spearmanreporter.com; fax - 806-398-9080; or regular mail - Letters to the Editor, c/o Hansford County Reporter-Statesman, 213 Main Street, Spearman TX 79081.

The Hansford County Reporter-Statesman

The Hansford County Reporter-Statesman

Mailing Address - 213 Main Street • Spearman TX 79081
Physical Address - 310 Barkley Street • Spearman TX 79081
Phone - (806) 659-3434 • Fax - (806) 398-9080
www.spearmanreporter.com • reporter@spearmanreporter.com
Mon.-Thurs. 9 a.m.-12 p.m., Mon.-Wed. & 1-5 p.m.
Closed Thurs. afternoon and all day Fri., Sat. & Sun.

Gary Smith - Publisher Catherine Smith - Editor
Contributing Writers: Dorothy Hudson, Jim Derington, Merry Sparks, Cecil Biggers
Contributing Photographers: Charlie Johnson, Lisa Johnson Tammy Batton, Bonnie Bergan

Subscription Rates

In Hansford County - \$30.00 • Out of County - \$40.00
E-Mail Subscription - \$35.00

The Hansford County Reporter-Statesman (USPS 529660) is published weekly in Spearman, TX. Periodical postage paid in Spearman, TX. POSTMASTER: Send address changes to: The Hansford County Reporter-Statesman, 213 Main Street, Spearman, TX 79081.

Publication Policy

The deadline to submit news and advertising to The Hansford County Reporter-Statesman is Monday at 5 p.m. Items submitted after the deadline will be published at a later date, as time and space permit. Publication of all items is at the discretion of the editor.

Advertising

Open Display rates are \$4.00 per column inch. Classified Ads are \$6 for the first 25 words and 10¢ per word for each additional word. (Additional charge for boxed classifieds.) There is a \$1 charge per week if billed.

Member of
Gruver Chamber of Commerce
Spearman Chamber of Commerce
Texas Press Association and Panhandle Press Association



THE SIXTIES

- | | | | |
|---|---|------------------------------|--------------------------------|
| ACROSS | 64. Artist's tripod | locale | 60. Decades |
| 1. WWII villain | 65. Color quality | 26. Fool or hoax | 61. Abe's coin |
| 6. *Betty Friedan's org. | 67. *The Beatles went on them in '64, '65, '66 | 27. Bronze, e.g. | 62. Goes "tut-tut" |
| 9. "___ 'til you drop" | 69. Trinity | 29. Eagerness | 63. Psychoanalyst Erikson |
| 13. *Twiggy, e.g. | 70. Large coffee pot | 31. Marines' toys recipients | 66. University of Rhode Island |
| 14. "Without further ___" | 71. Ancient Romans' resort | 32. Gem State | 68. "___ it isn't so" '67. |
| 15. Round loaf, in Paris | 72. #1 Across' deputy | 33. With filaments | File a suit |
| 16. Prefix for earliest | 73. ___ or miss | 34. Fancy water ride | |
| 17. Diamond or ruby | 74. Bothersome | 36. In addition | |
| 18. Sicker | | 38. Russian left | |
| 19. Moves, as in a prowler | | | |
| 21. *"I Know Why the Caged Bird Sings" autobiographer | DOWN | | |
| 23. Maiden name indicator | 1. *Pete Townsend knocked it over on Smothers Brothers show | | |
| 24. Annoying biter | 2. Village, mostly in South Africa | | |
| 25. IRS employee | 3. Often described as either pleasant or offensive | | |
| 28. Level or dismantled | 4. Grant or imply | | |
| 30. Make it known | 5. * ___ Power | | |
| 35. ___ hoop | 6. Scolds | | |
| 37. Unit of life | 7. *Gentry's ___ to Billie Joe" (1967) | | |
| 39. Pulpits | 8. *"Oh, Pretty ___" by Orbison (1964) | | |
| 40. It will | 9. Under a foot | | |
| 41. "Roots" author | 10. Seed covering | | |
| 43. Bath powder | 11. Butter substitute | | |
| 44. Found at the gallows | 12. Heart of Inca empire | | |
| 46. *"One Life to ___" (1968-present) | 15. "Water for Elephants" tent | | |
| 47. Iranian monarch | 20. TV host Robin | | |
| 48. Whoever | 22. Form of Anna | | |
| 50. Standard | 24. Treating with gel | | |
| 52. Food morsel | 25. *Cultural Revolution | | |
| 53. Like a bug in a rug | | | |
| 55. Cranberry habitat | | | |
| 57. * ___ invasion | | | |
| 61. *"In Cold Blood" author | | | |

SUDOKU PRESENTED BY

Where volunteering begins.

2	1		6					
			7	8	3		1	
4					6	9	5	
5	6	1						
9	7	8	2	4	1		6	
				6	9	7		
8	7	5					1	
4		2	7	1				
			8		7	4		

© StatePoint Media answer on classified page
Fill in the blank squares in the grid, making sure that every row, column and 3-by-3 box includes all digits 1 through 9.

These games are brought to you by the Hansford County Reporter-Statesman

CROSSWORD

PRESENTED BY

Where volunteering begins.

© StatePoint Media answer on classified page

Happy Birthday!

July 7
Birthday - Pat O'Connell, Steve Benton, Brenda Sue Bowling, Greg Meisner, Steve Lesly, Virginia Reyes, Magda Rivera, Brian Sparks, Justin Bowman, Daniel Ward, Karen Pierce, Mattie Davis, B.J. Hughes, Reid Swan
Anniversary - M/M Kenny Bratton, Kelly & Johnnie Fuller

July 8
Birthday - Buddy Benton, Janna Nickles, Aaron Hart, Craig Morris, Gay Pipkin, Luis Martinez, Jody Fowler, Samantha Prouty, Loree Espinosa, Kathy Lindsey
Anniversary - M/M Rodney Clawson, Leo & Phyllis Cummings, M/M Rod Fulce, M/M Greg Miesner

July 9
Birthday - Edith Smith, Donna Farris, Johnny Jo Roach, Sally Swan, Kyle Kirk, Sean Travers Baker, Donna Custard, Sharolyn Finley, Darlene Hoel
Anniversary - M/M Richard Booth, M/M Dewey Taylor, M/M Jimmy Finley, Joanna (Moore) & Wayne Pierson, Kevin & Ann Rook, Mr. and Mrs. Leon Bagwell

July 10
Birthday - Steven Greever, Donna Sheets, Lorene Kunsleman, Carolyn Shields, Cathy Gafford, Mitch Gillian, Belinda Francis, Felex Lopez, Jolynda Vasquez, Justin Bass, Jerrill Key, James Sursa
Anniversary - M/M Randy Kirk

July 11
Birthday - Louis Schnell, Marvin Jones, Danny Pope, Juanita Paul, Sharon Archer, Scott Russell, Kenneth Schaeffer, Debbie George, Zeke Henson

July 12
Birthday - Carolyn Fletcher, Larry Hicks, Justin Horton, Jenie Kirkland, J.W. Jenkins, Cheryl Long, Glenda Guthrie, Olga Gafford, Lucas Biggs, Stan Josephson, Dustin Irlbeck, Charlie Spencer, Madison Schad, Colton Meek, Melinda Tidwell, Mandie Hunter
Anniversary - Harold & Joyce Crooks

July 13
Birthday - Mary Schroeder, Ron Clark, Gary Burke, Rounder Jackson, Clay Schnell, Claude (Junior) Crossland
Anniversary - Allen & Margie Alfred

July 14
Birthday - Scott Bullard, Jo Alice Clawson, Shelly Logsdon, Albert Baker, Linda Jarvis, Carrie Pear-

son, Rebecca Rosales, Butch Baker
Anniversary - M/M Roy Stinson, Betty & Kenneth Redwine, Tim & Charollette Bynum

July 15
Birthday - Julie Imke, Carol Pack, Chris Jenkins, Sonya Nitschke, Maude McClellan, Ryan Renick, Julie Stork, Hazle Britt, Clarence Zabel, Samantha Baker, Kayla Schrader, Nelva Snow, Galen Coates
Anniversary - Alvin & Becky Byers, M/M Jack Jackson, M/M Bob Gillispie, M/M Richard Shad, M/M Jerry Hayes

July 16
Birthday - Dave Barkley, Dorothy Hudson, Maria McCall, Clinton Tindell, Mary Ann Kenney Peters, Jay Pack, Pam Fairfield
Anniversary - Hal & Sara Shufeldt

July 17
Birthday - Holly Meyer, Debbie Tolleson, Wesley Jarvis, Michael Dodd, Dennis Nelson, Marie Jones, Dr. Tom Latta, Charlie Garcia, Cody Baskin, Karl Bynum, Julie Baca, Veronica Rosales, Kevin Quillin, Denise Smith, Michael Lusby, Coley Griffin
Anniversary - M/M Willie Wilkerson, M/M Dick Thompson, M/M Jim Fowler

July 18
Birthday - Trixie Holt, Lisa Salmans, Maria Vela Acevedo, Linda McCoy, Cris McClellan, Greg Meek, Sonny Patterson, Shanda Denee Graham, Kathryn Murphy
Anniversary - Jim & Laquita Evans, Scott & Marla Bullard, Tracy & Angela Graham, Mr. and Mrs. Jim Deakin, Kim & Steven Francis

July 19
Birthday - June Barkley, Joe Lopez Jr., Ronnie Williams, Vincent Garcia, Blake Beedy, Mark Avila, Pauline Nava, Opal Petree, Amber TeBeest
Anniversary - Ray & Judy Martin, Joey & Lyn Woolley, Don & Carolyn Savage, M/M Corky Chapman, M/M Arlo Shearer

July 20
Birthday - Elaine Rogers, Arlo Shearer, Vic Schuman, Virginia White, Thomas Reed, Cal Nava, Mary Barnes, Meli Floyd Burgess, Bruce Bailey, Neale Estes, Sylvia Herara, Cheryl Wall, Braxton Crane
Anniversary - Rick & Jan Howard, M/M Eric Brown, M/M Joe Archer Sr., M/M Mike Garnett, M/M F.W. Thomas

Our Sympathy

JEWELL EUGENIA KENYON

Funeral services for Jewell Eugenia Brandt Kenyon, 86, of Portales, were at 10 a.m., Saturday, July 2, 2011 in the Wheeler Mortuary Chapel with Rev. Michael Brunk officiating. Burial followed in the Portales Cemetery with Derrell Carter, Ryan Haun, Charles Mullins, Eric Kenyon, Gary Lucas and Danny Woodward serving as pallbearers. Members of Beta Sigma Phi and of the Roosevelt General Hospital Auxiliary will serve as honorary pallbearers.



Those desiring to make memorial contributions may send them to New Mexico Girls and Boys Ranches, 6209 Hendrix Rd NE, Albuquerque, NM, 87109.

Jewell Eugenia Kenyon was born March 17, 1925 in Spearman, TX to the home of Jewel and Fredrick W. Brandt, and died June 27, 2011 in Albuquerque, NM. After graduating from high school, Jewell attended West Texas State University in Canyon, TX where she graduated in 1946 with a degree in education. She taught for a year in Texas, before coming to Portales to teach in 1947. Soon after coming to Portales, she met W. G. "Bud" Kenyon, and they were married June 6, 1948 at the First Methodist Church. After her marriage, Jewell stayed at home to rear her children. When her son began high school in 1968, she returned to her teaching career and taught for 20 years.

While Jewell was in college, she was a member of Zeta Tau Alpha sorority, and later served as an advisor for the chapter at ENMU. She was a longtime and very active member of Beta Sigma Phi sorority, and also of the Roosevelt General Hospital Auxiliary. Jewell lived in Portales and was a well known and very loved member of the community. She lived a very joyful life that was filled with memories of friends and family.

She is survived by W. G. "Bud" Kenyon, her husband of more than 63 years of Portales; a son and daughter-in-law, Kim and Connie Kenyon of Powell, TN; a daughter and son-in-law, Charlotte and Charles Mullins of Albuquerque, NM; three grandchildren, Marla King of Albuquerque, NM, Chelsea (Ryan) Haun of Morristown, TN and Eric Kenyon of Powell, TN; and two great-grandchildren, Autumn King of Albuquerque, NM and Reagan Haun of Morristown, TN. She was preceded in death by her parents and a brother, William C. Brandt and a sister, Mary Jackson.

Arrangements are under the direction of Wheeler Mortuary of Portales. 575-356-4455

GILBERT M. SALGADO

SPEARMAN - Gilbert M. Salgado, 64, died on Wednesday, June 29, 2011.

Funeral services were held on Friday, July 1, 2011 at 1 p.m. at the Sacred Heart Catholic Church in Spearman with Rev. Gregory Bunyan officiating. Interment was in Hansford Cemetery under the direction of Boxwell Brothers Funeral Home of Spearman.

Gilbert was born in Stanton, TX on October 14, 1946. He married Ernestina Rodriguez on February 28, 1972. He worked for Baker and Taylor Drilling Co. for many years and for Hansford County Hospital District. He was a member of the V.F.W. He served in the American Infantry Division in Vietnam.



He was preceded in death by his father, Jose Salgado; and two brothers, Abelardo and Santiago Salgado.

Survivors include his wife, Ernestina Salgado of Spearman; three daughters, Olivia DeSantiago of Plano, Sonya Jensen of Katy, and Cristina Banaban of Melissa; his mother, Isadora Salgado of Stanton; three brothers, Frank Salgado of Spearman, Willie Salgado of San Antonio, and Joe Salgado of Greenwood; four sisters, Irma Porras and Linda Garcia, both of Odessa, Elodia Bravo of Stanton, and Mary Pena of Greenwood; and 7 grandchildren.

The family requests memorials be to Hansford Hospice, 707 S. Roland, Spearman TX 79081.

CHARLES EUGENE JOHNSON

GRUVER - Charles Eugene Johnson of Gruver, Texas, died Friday, July 1, 2011.



Born on June 17, 1942, in Guymon, OK, the second son to William Lewis and Billie Joyce Walker Johnson, he was raised in the Oslo Community. Called "Gene" as a young child, he later became known as "Charlie." He never married, but spent an interesting life traveling the world as a helicopter pilot, at one time as a civil instructor for U.S. Army pilots. He enjoyed telling stories about the 18 years he flew in Alaska for Era and Evergreen. In 1986 he and his brother, Chris, began the business Aeroflight Publications. Charlie's special interest was in photography and in his last years he especially enjoyed photographing Gruver High School athletic events.

He is survived by his mother, Joyce Johnson of Oslo; his brother James Elton Johnson of Oslo and his wife Karen; his sister Eloise Hackett and her husband, Doug, of Greenville, Texas; his brother Eric of Gruver; and his brother Chris of Oslo. He is also survived by his nieces and nephews, Susan (Hackett) Runnels, Bob Hackett, Justin Johnson, Missy (Johnson) Cartwright, Lucas Johnson, Lisa Johnson and several grand-nephews and a niece.

He was preceded in death by his father, William Lewis Johnson.

The funeral celebrating the life of Charles Eugene Johnson was held Wednesday, July 6, 11 a.m. at the Oslo Lutheran Church with Pastor Arlen Lloyd officiating. Interment was in Oslo Cemetery.

Memorials may be given to the Oslo Lutheran Church, c/o Henson-Novak Funeral Directors, P.O. Box 1306, Guymon, OK 73942. www.hensonnovak.com

www.spearmanreporter.com

MONUMENTS

Boxwell Brothers Funeral Home

519 Evans • Spearman
659-3802

Dear friends,
 When you buy a monument from us we make sure it is exactly what you want at a price you can afford. If it is not right, we will make it right. And you will not have to search the countryside to find us. We are here when you have a need.

Sincerely,
 Bob Boxwell

Donate A Boat or Car Today!

BoatAngel

"2-Night Free Vacation!"

1-800-CAR-ANGEL

www.boatangel.com

Sponsored by boat angel network centers STOP COBBED AGAINST CHILDREN

285+ Channels
160+ HD Channels

Packages Start At
\$29.99 Mo.

2 FREE Upgrades - HD DVR & HD Receiver - Ask How!

HBO SHOWTIME starz cinemax

For 3 Months

MAXIMUM CHOICES MINIMUM PRICES

EVERYDAY PRICE GUARANTEE UNTIL 2013

866-799-8039

Family Pool Fun.com

- Our pools create Generations of Memories everyday, vacations never end!
- Aboveground & Inground pools at WHOLESALE PRICING
- SIMPLE DIY Pool Kit Assembly
- SAVE MONEY on All Pool Supplies & Accessories. Ships Fast

call today! 800-950-2210

Urgent news for DIABETICS with BLADDER CANCER

The diabetes drug, ACTOS, has been linked to an increased risk of bladder cancer. If you or a loved one has been diagnosed with bladder cancer after taking ACTOS, ACTOplus met, ACTOplus MET, XR or ductact, call us now at 1-800-THE-EAGLE about monetary compensation. No fees or costs until your case settles. We practice law only in Arizona, but associate with lawyers throughout the U.S.

GOLDBERG & OSBORNE
 1-800-THE-EAGLE
 (1-800-843-3245)
 www.1800theeagle.com

Open 7 days a week

Replenish the seed of faith through . . .

DAILY BIBLE READING, PRAYER & REGULAR CHURCH ATTENDANCE

<p>Spearman</p> <p>Apostolic Faith Church 822 S. Drexler • 659-2870 Sunday School: 10 a.m. Worship Services: 11 a.m. Sun. Eve: 6 p.m. Wed. Prayer Mtg: 7 p.m. Pastor - Jack Cornell</p> <p>First Assembly of God 401 N. Bernice • 659-2295 Sunday School: 9:30 a.m. Worship: 10:40 a.m. Evening Worship: 6 p.m. Wed. Worship: 7 p.m. Wed. Youth: 7 Pastor - Brad Smith</p> <p>First Christian Church (Disciples of Christ) 29 S. Bernice • 659-2036 Sunday School: 9:45 a.m. Worship: 10:50 a.m. Minister -</p> <p>First Baptist Church 123 N. Bernice • 659-5557 Sunday School: 9:45 a.m. Worship: 11 a.m. Evening Worship: 7 p.m. Men's Bible Study - Wed., 7 a.m. Children's Choir - Wed., 6 p.m. Adult Choir - Wed., 7 p.m. Wed. Bible Study: 7 p.m. Pastor - Jim Medley</p> <p>Church of Christ 121 S. Haney • 659-3244 Sunday Bible Class: 9:45 a.m. Worship: 10:30 a.m. Evening Worship: 6 p.m. Bible Study Wed.: 7:30 p.m.</p>	<p>Sacred Heart Catholic Church 901 Roland • 659-2166 Sat. Night Mass: 5:30 p.m. Sun. Mass: 9 a.m. - English Sun. Mass: 11:30 a.m. - Spanish Rev. Gregory Bunyan</p> <p>First United Methodist 407 S. Haney • 659-5503 Sunday School: 9:45 a.m. Worship: 8:30 & 11 a.m. Jr. High Youth: 5 p.m. Sunday High School: 6 p.m. Sunday Kids Club: 3 p.m. Wed. Pastor - Toni Bailey</p> <p>Grace Presbyterian Church (Worships with Faith Lutheran Church) 1101 Bernice • 659-2033</p> <p>Faith Lutheran Church (ELCA) 1101 Bernice • 659-2252 Sunday School: 9:45 a.m. Worship: 11 a.m. (Worships with Grace Presbyterian Church) Pastor - Cecil Biggers, PLM</p> <p>Union Church 31 S. Endicott • 659-2644 Sunday School: 10:00 a.m. Worship: 11:00 a.m. Bible Study: 7 p.m. Wed. Youth Service: 6 p.m. Wed. Pastor - Don Baltazor</p> <p>Fellowship Baptist 1102 S. Archer • 659-2783 Sunday School: 10 a.m. Worship: 11 a.m. Sun. Evening Worship: 6 p.m. Sun. Evening Spanish Worship: 7 p.m. Youth/Adult Service: 7:30 Wed. Pastor - Phillip Hudson</p>	<p>Primera Mision Bautista 502 E. 7th • 659-3991 Sunday School: 9:45 a.m. Worship: 11 a.m.; Evening: 6 p.m. Wed. Prayer Meeting: 7 p.m. Thurs. Visitation: 7 p.m. Pastor Joe Garcia Jr.</p> <p>El Aposento Alto U.P.C.I. 1105 S. Roland Domingos: Escuela-Dominical - 10 a.m. Culto Evangelistico - 7 p.m. Jueves: Oracion - 8 p.m. Mier: Estudio Biblico - 7 p.m. Pastor - A.G. Martell (806) 659-2153</p>	<p>Gruver United Methodist Broadway & Garrett 733-2651 Sunday School: 9:45 a.m. Worship: 8:30 & 10:50 a.m. Eve. Worship & UMY: 6 p.m. Pastor - George Price</p> <p>Spanish Cristo Redentor Church Hwy 15 806-659-2166 Gruver, TX Sun. Mass: 1:30 p.m. - Spanish Rev. Gregory Bunyan</p> <p>Oslo</p> <p>Oslo Lutheran Church (ELCA) 6 Miles West & 12 Miles North of Gruver 339-7646 Sunday School: 9:45 a.m. Worship: 11 a.m. Pastor - Arlen Lloyd</p> <p>Morse</p> <p>Morse Baptist Church 733-2757 Pastor - Gary Stevens</p> <p>Waka</p> <p>Church of Christ 300 Rogers Ave. 202-7126 Sunday School - 9:30 a.m. Sunday Worship: 10:30 a.m. & 6 p.m. Wednesday Bible Study: 7 p.m. Preacher - Ed Jenkins</p>
--	--	---	---

Micah 6:8

He has showed you, O man, what is good. And what does the LORD require of you? To act justly and to love mercy and to walk humbly with your God.

This feature is made possible through the sponsorship of these civic minded businesses:

Deakin ELECTRIC

OILFIELD • RESIDENTIAL • COMMERCIAL
321 S. MAIN • SPEARMAN

1-800-999-1506 Chris Deakin
806) 659-5016 President

Bartlett's Lumber & Hardware

105 W. Broadway • Gruver, TX
(806) 733-2404

BERRY CLEANERS

Ann & Vernon Pipkin - Owners
Phone 659-3122 • P.O. Box 1017
207 Main St. • Spearman, TX

Morse Implement & Auto Supply

"Join us in church"
Tom Dortch 733-2668
Box 89 • Morse, TX 79062

PRAIRIE MOTORS INC.

Hwy. 207 South • P.O. Box 430
Spearman, TX 79081 • (806) 659-2541
www.prairiemotors.com

MurMur's Cafe

100 Roland St
Spearman, TX.
659-3580

Hansford County Reporter-Statesman

"Proudly Serving Hansford County Since 1907"

(806) 659-3434
310 Barkley • Spearman, TX

INTERSTATE BANK, sbb

www.interstatebank.net
322 Main • P.O. Box 146
Spearman, TX • 659-2559

HYI

FOR YOUR INFORMATION

Medical Fund Established At First National Bank for Dynell Moore

Shawn and Dynell Moore, children of Johnny and Brenda Vera and Terry Moore of Spearman, have recently relocated their family to the Dallas-Fort Worth area. In March, Dynell was diagnosed with stomach cancer. She will be receiving treatments at MD Anderson in Houston and Baylor Medical Center in Fort Worth. After the birth of their second child, three tumors were discovered, two of which contained malignant cells. The tumors were safely removed at Mary Washington Hospital in Fredericksburg, VA. At which time, Dynell began oral oncology treatment to keep the cancer from spreading. The Moore's made the decision after consulting with their physician to continue an aggressive treatment program at MD Anderson Cancer Center in Houston as well as their sister facility in Fort Worth. There has been a Medical Fund established for the Moore family at First National Bank in Spearman to aid in treatment expenses. The Moore's feel extremely blessed with the early diagnoses of Dynell's condition and the support they have received from family and friends.

Tri-City Community Concert Association

Janie Kunselman is the representative for the Tri-City Community Concert Association of Borger and Liberal, and is selling memberships to attend concerts for the 2011-2012 season. Concerts are as follows: Borger - The Shangri-La Chinese Acrobats - September 22nd, 7:30 p.m.; Guy Penrod, February 13th, 7:30 p.m.; Shawn Belton-Miller - TBA. Season memberships are: Adults - \$40, Sr. Adult - \$35, Students - \$20, and Family - \$100. For information, call Janie Kunselman at 659-2631. Tickets purchased from Tri-City Concert Association admit members to concerts in Pampa and Plainview.

Liberal Community Concert Association

Janie Kunselman is the representative for the Liberal Community Concert Association of Liberal, KS. The Liberal Community Concert Association is selling memberships to attend five special concerts in the 2011-2012 season. Concerts are as follows: October 4th - Deborah Henson-Conant; November 8th - The Indigo Ensemble; January 30th - Mark Masri; February 16th - Guy Penrod; April 26th - Shangri-La Chinese Acrobats. Season memberships are: Adults - \$50, Students - \$25, and Family Pass - \$125. For information, call Janie Kunselman at 659-2631 or James Jackson at 620-624-5995.

Texas SNAP Benefits Assistance

Need help applying for SNAP benefits? We can help! High Plains Food Bank is providing application assistance for Texas SNAP benefits (Food Stamps) in your area. Telephone application assistance is available. If you need to apply for benefits, please call us today at 806374-8562 or 1-800-774-8564.

Rushing Wind Emmaus Community

Rushing Wind Emmaus community will meet Saturday, July 9 at 6 p.m. at the Waka Christian Center. A potluck supper will be served followed by sponsors training and a praise and worship service. A nursery will be provided and family and friends are welcome.

Perryton Area Parkinson's Disease Support Group

The Perryton Area Parkinson's Disease Support Group will meet Friday, July 8, 2011 at the Perryton Mennonite Church, 2921 S. Ash (across from United). Lunch will be provided for the 12 noon meeting. Speaker, Jo Bidwell from Lubbock, (who was unable to come at the last minute last month) will be our guest. She will be able to answer any and all questions you might have dealing with PD. Anyone or any family member who has PD is welcome to attend. Contact Bev Burger at 435-3437 or 435-0579 for more information.

Spearman Food Bank

If you would like to help the Spearman Food Bank, they need help unloading the truck at 11:30 each 1st Thursday of each month. Contact Cecil Biggers for more information.

Don't Text and Drive Decals

If you would like to purchase a lime green 'AMT 1994-2009 Don't Text and Drive' window decal in memory of Ali Tyler, please contact Stephanie Tyler at 806-736-0019. All proceeds go to the Ali Tyler Memorial Scholarship Fund. Decals are also available at Hansford County Floral Company on Main Street in Spearman.

Help Available for Breast Cancer Survivors

Any woman who has had breast cancer surgery and cannot afford undergarments and prosthetics can get help from the American Cancer Society through a grant from Susan G. Komen for the Cure®. The Amarillo Area Breast Prosthesis and Lymphedema Accessory Program will provide financial help to women in need of breast forms or prostheses, mastectomy bras and accessories to help with lymphedema, which is swelling of the arm caused by a build-up of lymph fluid. For more information, call the American Cancer Society office in Amarillo at (806) 353-4307 or 1-877-227-2345.

Timeless Treasures Quilt Guild

The Timeless Treasures Quilt Guild of Guymon, Oklahoma meets four times a year -- the last Saturday in the months of January, April, July and October. Registration begins at 9:30 a.m. in the First Christian Church Disciple Center located at 9th & Quinn streets. The meeting starts at 10 a.m. Members bring a carry-in luncheon, which is served at noon. The afternoon program begins at 1 p.m. Programs include trunk shows, demonstrations, workshops, door prizes and much more.

Friendship Quilter Quilt Guild

The Friendship Quilter Quilt Guild of Perryton, Texas would like to invite you to their meetings. The Day Guild meets the 2nd Wednesdays of each month at 9 a.m. in the Community Worship Center, 2210 SW 15th, Perryton. The Night Guild meets the 2nd Tuesday of each month at 6 p.m. in the Community Worship Center, 2210 SW 15th, Perryton. Annual dues are \$15. (To receive only the newsletter \$7.50/yr.) Visitors are welcome. For more information, contact Cynthia Shattles at 806-435-2765 or Marilyn Robins at 806-624-2691.



Gruver Police Dept. has hired a new officer, Brian Stephens from Waxahachie, TX. Brian graduated from Waxahachie High School in 2006, and is a recent graduate of Navarro Police Academy. His parents, Tom and Cheryl Stephens and sister Christy are very proud of his achievements and excited for his new career to start here in Gruver. Brian will begin his shift Monday 27th, 2011. Please help us welcome this nice young man into our community.

Thank You!

The family of Jack Karlin would like to thank the many people who were a part in helping Jack and Austin starting the evening of June 17th to the present.

Thank you to James Connelly, Les and Sharon Barkley, and Rick and Sharolyn Finley for providing comfort and support for these two boys until medical help arrived. Your presence alone was greatly appreciated in a very critical and scary situation.

Thanks to the Gruver EMS personnel and the Gruver Volunteer Fire Department. These people have the toughest job not knowing what they may be facing, but despite all, volunteer their time and knowledge unselfishly not to be heroes and end up being heroes to so many. Thank you all for your service and dedication to our community.

Thank you to the Lifestar team and the excellent Dr. and nursing staff at N.W.H. Thanks to all the familiar faces that greeted Jack on his arrival to the ER. We are grateful for the time you

gave and the love you showed him until we arrived. As parents words can't express how comforting this was.

In the hours and days that followed we continued to be blessed by the many visitors, phone calls, texts, FB posts, and the most important expression of all... prayers! Thank you to all the Churches and individuals who were responsible for igniting an overwhelming and heartfelt outpour of prayers for Jack, Austin, and our family.

Thank you to all of Jack's friends who've continued to stop by just to visit, eat lunch, watch movies, drive him around, or whatever it took to keep him content. (Anyone who knows Jack knows this isn't an easy job.) John David Bergin, Ryan Schnell, Zack Hughes, and Justin Bass, you all have put in many hours... Thanks!

God bless each and every one who prayed for Austin and our family!

With love,
Rod, Denise, Reagan,
Jack, and Greyson

Words from Faith & Grace



by Cecil R. Biggers, Lutheran Lay Minister

In the fourth week of Pentecost we learn something of hope which produces faith that is enduring. We study Isaiah 55: 10-13, Psalm 65: 9-13, Romans 8: 1-11, and Matthew 13: 1-9, 18-23.

Isaiah speaks a life-giving word of hope to a captive people whose common sense tells them there is no hope. But there is strength in the Word of God; it is substantive and life-giving. Verse 12 says, "You will go out in joy..."; the phrase "go out" literally translated is "exodus". Where there is God there is hope, power, strength, life itself. And, dear Christian, God is everywhere.

The Psalmist sings of God's gifts to the earth; God's presence brings abundant, rich, teeming life for which His creation sings with joy. God is present in his Word.

Paul distinguishes two ways of life. One is the way of the 'flesh', by this term Paul does not mean just a physical body, but a life lived only to satisfy the pleasures of the body. Then there is the life of the Spirit. A life in which the total person, spirit and body, lives for Christ in a life of righteousness. There is no condemnations for those who are in Christ Jesus. As Christians struggling to live the disciple life, we still err, but we are in Christ forgiven daily.

Jesus is sitting in a boat speaking to a crowd that surrounds him on the shore. Jesus tells them the parable of the Sower and the Seed. The parable is aimed at those who 'hear' the Word of God. There are different ways to 'hear' (accept) the Word of God. Some hear sounds but listen with a shut mind; the Word avails them nothing. Some hear without understanding, without thinking and soon lose what meaning they had found. Some 'hear' but are so busy listening to other things, other problems that the Word gets drowned out. Some hear with an open mind, gain understanding, and they act upon the Word. Here is a lesson, the Word of God is a verb, it is action; if you hear the Word, you are transformed.

May the Holy Spirit enable you to hear the Word of God with understanding, applying it in your daily living.



Kirk Weatherford (806) 336-2820
8125 FM 3395 Toll Free: 1-800-585-6047
Sanford, TX 79078 Email: kirk@weatherford-construction.com

Alva Monument Co.

Formerly Liberal Monument & Memorial Company

New Location:
N Tucker Road
Liberal, Kansas

North of the New Wal-mart

Serving Kansas, Oklahoma & Texas for 93 years
(316) 624-4211 toll free # 888-654-9318

When I am home ALONE

Feel safe. I am protected. I have Life Alert®.

One touch of a button sends help quickly in the event of a medical emergency, fall, home invasion, fire or carbon monoxide poisoning.

New!
Now we have two systems available:
Life Alert Classic for seniors
Life Alert 50+ for people 50+

For a FREE brochure call:
1-888-439-4935

Life Alert

MITCHELL THEATRES.COM
GUYMON, OK • LIBERAL, KS • NEWTON, KS

NORTHRIDGE 8
Guymon, Oklahoma
www.northridge8.com
580-338-3281

SOUTHGATE 6
Liberal, Kansas
www.southgate6.com
620-624-5573

SEQUOYAH 8
Garden City, Kansas
www.sequoyah8.com
620-275-2760

CHISHOLM TRAIL 8
Newton, Kansas
www.chisholmtrail8.com
316-283-0555

FRESH POPCORN EVERYDAY!
-PARTY ROOM & ARCADE-

BlackBerry PlayBook.

Work Smarter.
Play Harder.

Introducing the world's first professional-grade tablet

1024 x 600 resolution display | 3 MP high-definition forward-facing camera | 5 MP high-definition rear-facing camera | 1080p HD video capture and HDMI video output

Now at PTCI!

Ask about our 12-month payment plan and discounted prices!

www.ptci.net

1280 x 800 HD resolution | 16:10 movie playback | 32 GB internal storage | Adobe® FLASH for PC-like viewing

Services not available in all areas. Some restrictions apply. www.ptci.net 721 W 7th in Spearman 800-562-2556

Texas Remains Under Severe Drought Conditions

A whopping 97 percent of the Lone Star State is in the midst of a drought, with almost three-quarters facing exceptionally bad conditions, according to a national report released Thursday.

The National Drought Monitor shows that most of Texas is at the highest intensity level registered for drought. State Climatologist John Nielsen-Gammon has said this is one of the worst droughts Texas has seen since 1895, when the state first began keeping records.

The drought has devastated land and forestry this year and aided in creating conditions that are ripe for wildfires. Since fire season began Nov. 15, 2010, almost 13,000 fires have burned 3.3 million acres in Texas.

Typically Texas sees more wildfires in July than June, according to Texas Forest Service Predictive Services Department Head Tom Spencer. With a hot, dry summer forecast across the state, the number of wildfires isn't likely to decrease.

"We expect fire activity to continue," Spencer said. "These are dangerous conditions."

Burning trash, gathering around a campfire, tossing out a lit cigarette and even driving a hot car through tall grass all can lead to an increase in wildfires when combined with vegetation that has been dried out by the summer sun.

With 90 percent of wildfires caused by humans, Texas Forest Service continues to urge Texans to use caution when doing anything outdoors that could cause a spark.

Disaster Assistance Available for Small Businesses

Small, non-farm businesses in all 254 Texas counties and neighboring counties in Arkansas, Louisiana, New Mexico and Oklahoma may now apply for low-interest disaster loans from the U. S. Small Business Administration (SBA). "These disaster loans offset economic losses because of reduced revenues caused by drought, excessive heat, high winds and wildfires that began January 1, 2011 in Texas," announced Alfred E. Judd, Director of SBA's Disaster Field Operations Center-West.

Primary and neighboring Texas counties: All 254 Texas counties; Neighboring Arkansas counties: Little River and Miller; Neighboring Louisiana parishes: Beauregard, Caddo, Calcasieu, Cameron, De Soto, Sabine and Vernon; Neighboring New Mexico counties: Curry, Dona Ana, Eddy, Lea, Otero, Quay, Roosevelt and Union; Neighboring Oklahoma counties: Beaver, Beckham, Bryan, Choctaw, Cimarron, Cotton, Ellis, Harmon, Jackson, Jefferson, Love, McCurtain, Roger Mills, Texas and Tillman.

"SBA eligibility covers both the economic impacts on businesses dependent on farmers and ranchers that have suffered agricultural production losses caused by the disaster and businesses directly impacted by the disaster," Judd said.

Small, non-farm businesses, small agricultural cooperatives and most private, non-profit organizations of any size may qualify for Economic Injury Disaster Loans (EIDL) of up to \$2 million to help meet financial obligations and operating expenses which could have been met had the disaster not occurred.

"Eligibility for these loans is based on the financial impact of the disaster only and not on any actual property damage. These loans have an interest rate of 4% for businesses and 3% for private, non-profit organizations, a maximum term of 30 years, and are available to small businesses and most private, non-profits without the financial ability to offset the adverse impact without hardship," Judd said.

By law, SBA makes EIDLs available when the U. S. Secretary of Agriculture designates an agricultural disaster. Secretary Tom Vilsack declared this disaster at the request of Governor Rick Perry.

Businesses primarily engaged in farming or ranching are not eligible for SBA disaster assistance. Agricultural enterprises should contact the Farm Services Agency (FSA) about the U. S. Department of Agriculture (USDA) assistance made available by the Secretary's declaration. However, in drought disasters nurseries are eligible for SBA disaster assistance.

Applicants may also apply online using the Electronic Loan Application (ELA) via SBA's secure Web site at <https://disasterloan.sba.gov/ela>.

Information and application forms are available from SBA's Customer Service Center by calling (800) 659-2955, emailing disastercustomer.service@sba.gov, or visiting SBA's Web site at www.sba.gov/services/disasterassistance. Hearing impaired individuals may call (800) 877-8339.

The deadline to apply for these loans is February 24, 2012.

For more information, visit SBA's Web site at www.sba.gov. SBA Field Operations Center - West, P.O. Box 419004, Sacramento, CA 95841

AgriLife Extension Experts: Heat- and Water-Stressed Corn Requires Extra Management

Record drought and air temperatures in the Texas Panhandle are causing a water deficit for corn, pushing producers to make some tough decisions, according to Texas AgriLife Extension Service specialists.

High Plains' irrigation farmers are finding themselves having to choose between corn and cotton crops when it comes to applying water. (Texas AgriLife Extension Service photo by Kay Ledbetter)

Practically all of the corn grown in the region is irrigated, typically requiring 18 to 24 inches of annual irrigation water to fully meet the water demand of the crop, according to Dr. Brent Bean, AgriLife Extension agronomist.

From the period of May 1 to June 26, total corn irrigation has been 13.2 inches, or 3.9 inches more than the previous six-year average, Bean said. Through June, much of the corn in the Panhandle has experienced up to a 7-inch deficit.

"Assuming a producer had the irrigation capacity to meet the increased water demand of 7 inches through June, increased pumping costs alone would add up to an additional \$35 per acre," he said.

In areas with moderate irrigation capacity, corn and cotton have become a very common crop rotation with seasonal water splitting, said Nich Kenny, AgriLife Extension irrigation specialist.

"During multiple conversations this season, considerations for abandoning the riskier crop to ensure a more water- and heat-stress tolerant cotton crop have been expressed," Kenny said. "This is a difficult decision since both crops offer exceptional economic benefits under current market conditions."

Daily corn water use during the two weeks prior to

and following silking over the last six years has been 0.34 inches, Bean said. But if weather conditions remain extreme, average water use during this time is expected to exceed 0.4 inch per day for extended periods.

Producers should keep this in mind as they determine their irrigation strategy during this critical time period, he said. Historically, producers have relied on stored soil moisture to get through the high water-use period during July and August.

"Drought and the abnormally high water demand during May and June have left many corn fields with less than ideal soil moisture storage as the crop is approaching its peak physiological water-use period," he said.

Producers basically have two corn management options if soil moisture is currently lacking and irrigation capacity is not sufficient to meet average daily water use of at least 0.34 inches or 6.5 gallons per minute/acre, Kenny said.

The options are to irrigate acres at less than full water use demand or strategically abandon a portion of corn acres to allow the remaining acres to be adequately irrigated, he said.

In areas north of the Canadian River where cotton has successfully been established, Kenny said water should exclusively be applied to the corn crop and the decision to abandon should be deferred until early to mid-July while the cotton crop is developing.

If no significant rainfall occurs prior to mid-July, serious consideration should be given to abandoning some corn acres for cotton or reduce overall corn target yields and focus on cotton, he said.

This decision is much more difficult in areas south of the Canadian River

where heat and water stress are more prevalent and irrigation capacities are generally lower, Kenny said. It may be wise to begin splitting water earlier and targeting lower grain yields and/or abandoning crops.

Bean and Kenny offer some considerations for producers to use in helping make the decision on when and whether to abandon a crop. That information can be found at: <http://amarillo.tamu.edu/files/2010/11/heat-waterstressed1.pdf>.

If the decision is made to

abandon some corn acres, the abandoned corn does have a value for silage or hay, Bean said. In a trial last year, the nutritional value of just-tasseled corn was similar to headed sorghum/sudangrass.

"It is recommended that pricing of the abandoned forage be secured prior to making the decision to abandon grain and economics be heavily considered in the final decision," he said. "Also, corn tends to be high in nitrate. Be sure and have it tested before feeding."

President Declares Major Disaster for the State of Texas

The U.S. Department of Homeland Security's Federal Emergency Management Agency (FEMA) today announced that federal disaster assistance has been made available to the state of Texas to supplement state and local recovery efforts in the area struck by wildfires during the period of April 6 to May 3, 2011.

Federal funding is available to state and eligible local governments and certain private nonprofit organizations on a cost-sharing basis for emergency protective measures, including direct federal assistance, in the counties of Andrews, Archer, Armstrong, Bailey, Baylor, Brewster, Callahan, Carson, Castro, Clay, Coleman, Concho, Cottle, Crockett, Dawson, Duval, Eastland, Garza, Glasscock, Hall, Hemphill, Hockley, Irion, Kent, King, Lynn, Martin, Mason, Mitchell, Moore, Motley, Pecos, Presidio, Scurry, Stephens, Sterling, Sutton, Terrell, Terry, Throckmorton, Tom Green, Trinity, Tyler, Val Verde, and Young.

Kevin L. Hannes has been named as the Federal Coordinating Officer for federal recovery operations in the affected area. Hannes said additional designations may be made at a later date if requested by the state and warranted by the results of further damage assessments.

Follow FEMA online at <http://blog.fema.gov>, www.twitter.com/fema, www.facebook.com/fema, and www.youtube.com/fema. Also, follow Administrator Craig Fugate's activities at www.twitter.com/craigatfema. The social media links provided are for reference only.

FEMA does not endorse any non-government websites, companies or applications.

FEMA's mission is to support our citizens and first responders to ensure that as a nation we work together to build, sustain, and improve our capability to prepare for, protect against, respond to, recover from, and mitigate all hazards.

WHEN DOES YOUR SUBSCRIPTION EXPIRE?

SCR1
07/11 EXPIRES
JOHN Q. PUBLIC
PO BOX 123
SPEARMAN TX 79081

Expiration dates are printed on the top of all mailing labels. Our readers can help keep the cost of subscriptions down by mailing in renewals in the appropriate month.

Thank you, Catherine Smith

THE HANSFORD COUNTY REPORTER-STATESMAN
213 Main Street • Spearman, TX 79081
Annual Subscription Rates
In Hansford County - \$30
Out of County - \$40
E-Subscription - \$35 (sent through e-mail)

Packages start at
\$29.99 mo.
The FAMILY package
EVERYDAY LOW PRICE

NO EQUIPMENT TO BUY!
NO START-UP COSTS!

Switch today! 1-888-864-3134

All programming and pricing subject to change at any time. All offers require 2 year agreement. Package pricing may vary in certain markets. Offer ends 7/20/11. Credit card required (except in MA & PA). New approved customers only. (lease required). \$19.95 Handling & Delivery fee may apply. Applicable use tax adjustment may apply on the retail value of the installation. Call for details. ©2011 DIRECTV and the Cyclone Design logo are trademarks of DIRECTV, Inc.

dish NETWORK.

FREE INSTALLATION With DVR! in up to 6 rooms!

CHOOSE **HBO** **cinemax** **stargz**
ONE Free for 3 Months!

FREE HD DVR Upgrade! (\$6/mo DVR service fee applies)

FREE BLOCKBUSTER for 3 months

FIVE PACKAGES UNDER \$50

Local Channels Included! Prices valid for first 12 months. Requires 24 month agreement.

Packages starting at:
\$24.99 MO For 12 months

FREE HD for life!
1-877-356-5528
Call 7 days a week 8am - 11pm EST Promo Code: MB0611

Digital Home Advantage plan requires 24-month agreement and credit qualification. Cancellation fee of \$17.50/month remaining applies if service is terminated before end of agreement. After 12 months of programming credits, then current price will apply. \$10/mo HD add-on fee waived for life of current account, requires 24-month agreement, continuous enrollment in Autopay with Paperless Billing. Premium Movie Package offer requires Autopay with Paperless Billing, after 3 months then current price applies unless you downgrade. DISH Platinum offer requires qualifying HD programming. Autopay with Paperless Billing, after 3 months you must opt to continue subscription. Free Standard Professional Installation only. All equipment is leased and must be returned to DISH Network upon cancellation or unreturned equipment fees apply. Limit 5 leased tuners per account. Upfront and monthly fees may apply based on type and number of receivers. HD programming requires HD television. Prices, packages and programming subject to change without notice. Offer available for new and qualified former customers, and subject to terms of applicable Promotional and Residential Customer agreements. Additional restrictions may apply. Offer ends 1/31/12. HBO, Cinemax and related channels and service marks are the property of Home Box Office, Inc. Starz and related channels and service marks are the property of Starz Entertainment, LLC. All new customers are subject to a one-time non-refundable processing fee.

Hoochy Poochy Parlor

Where Spearman Customers Get Priority!

Hoochy Poochy Parlor is happy to have Kim Reynolds as part of our grooming family.

Kim has 15 years experience as a vet tech and groomer. She knows just what to do to pamper your pooch!

Carmen is still be pampering pets on a request only basis.

Hoochy Poochy Parlor
421 E. 10th St.
Borger, TX 79007
806-273-2724
hoochypoochy@att.net
www.hoochypoochy.net
Hours:
Mon.-Fri., 8 a.m.-5 p.m.

We put the Hoochy in your Poochy

Morse Resident Named on OBU Honor Roll

Morse, TX, resident Marcus Wilson, a social science education major, was named to Oklahoma Baptist University's President's Honor Roll for the spring 2011 semester.

Students who achieved a semester grade point average of 3.7 or higher on a 4.0 scale are named to the President's Honor Roll. Those who achieved a grade point average between 3.4 and 3.69 are listed on the Dean's Honor Roll.

Located in Shawnee, Okla., OBU offers 10 bachelor's degrees with 84 fields of study. The Christian liberal arts university has an overall enrollment of 1,777, with students from 38 states and 19 other countries. OBU has been rated as one of the top 10 comprehensive colleges in the West by U.S. News and World Report for 19 consecutive years and has been Oklahoma's highest rated comprehensive college in the U.S. News rankings for 17 consecutive years. For 2011, Forbes.com ranked OBU as the top university in Oklahoma.

Local students earn degrees from Wayland Baptist University

Sharon Rose Haney from Spearman earned a Bachelor of Business Administration degree in Business Education from Wayland Baptist University in Plainview.

Founded in 1908 in Plainview, Texas, Wayland Baptist University has 14 campuses around the country, providing private Christian education for students of all ages and backgrounds. The Plainview headquarters campus serves a primarily traditional population with residence halls, athletics and student activities. The 13 external campuses -- located in Arizona, New Mexico, Alaska, Hawaii, Texas, Oklahoma and Kenya -- cater primarily to adult students and military personnel completing their degrees.

Hardin-Simmons University Graduates 282 Students in 70 Fields of Study

The following students were among the 282 graduates to receive degrees from Hardin-Simmons University during fall commencement ceremonies held Saturday, May 11, 2011, in Behrens Auditorium on the HSU campus:

Austin Beck, of Morse, TX, graduated with a Bachelor of Arts degree in biology from the HSU Holland School of Sciences and Mathematics during one of two commencement ceremonies.

With its 13:1 student-to-faculty ratio, students enjoy personal attention as they pursue over 70 fields of un-

dergraduate study, 20 fields of graduate study, and seven pre-professional programs.

For the 20th year, HSU guaranteed students a tuition rate that does not increase as long as full-time enrollment is maintained during consecutive fall and spring semesters. HSU also distributes approximately \$12 million each year in scholarships to students, and has an enrollment of approximately 2,300 undergraduate and graduate students.

Founded in 1891, HSU is affiliated with the Baptist General Convention of Texas and provides an academically challenging undergraduate education based on a liberal arts foundation. Combining a commitment to academic excellence with a concern for the development of the total person, Hardin-Simmons provides An Education Enlightened by Faith.

OPSU's Spring President's Honor Roll

Oklahoma Panhandle State University recently announced the Spring 2011 President's Honor Roll. To qualify for the President's Honor Roll, a student must carry at least 12 credit hours of university courses, have no "Fs" or incomplete courses and a 4.0 GPA for the semester.

Listed on the President's Honor Roll was Mallori Wilhelm of Gruver.

University Announces Honors Lists for Spring 2011 Semester

West Texas A&M University has named more than 1,100 students to honors lists for the spring 2011 semester. Of that total, 366 were named to the President's List and 753 students were named to the Dean's List.

Students named to the President's List must have a grade point average (GPA) of 4.00 and carry a minimum class load of 12 undergraduate hours.

Students from Gruver named to the President's List are: Anna J. Harris, Junior, Social Work; Megan Justine Stedje, Sophomore, Pre-Nursing; and Abbi A. Yanke, Senior, Pre-Medicine.

Those named to the Dean's List must have a GPA between 3.50 and 3.99 and carry a minimum of 12 undergraduate hours.

Veronica M. Teal, Senior, Biology of Gruver was named to the Dean's List. Students from Spearman named to the Dean's List are: Abbey L. Eudy, Sophomore, Education; Olivia Mendoza-Salgado, Senior, Generic Special Education; and Elena G. Vargas, Junior, Social Work.

Nurse Pinning Ceremony at OPSU

Eleven students in Oklahoma State University-Oklahoma City's Associate in Applied Science in Nurse Science Program based on the OPSU campus celebrated their accomplishment during a Pinning Ceremony on May 15 in the Centennial Theatre in Hughes-Strong Hall at OPSU. Students participating in the recent pinning ceremony included Darren Bowers (Guymon, OK), Judy Austin (Guymon, OK), Robyn Hensley (Rancho de Taos, NM), Cameron Manugh (Guymon, OK), Kathy Frantz (Balko, OK), Beverly Z Scott (Guymon, OK), Katie Shufeldt (Spearman, TX), Jacine Oakes (Guymon, OK), Kacey Silguero (Balko, OK) and Sherry Denton (Guymon, OK).

A large crowd gathered to share in the graduates' accomplishments. Administration and faculty from both campuses spoke at the event, as well as several student speakers. The audience enjoyed a slide show created by one of the students of the memories of the class of 2011. Traditional aspects of the program included the candle lighting, pinning and giving of roses to special support people in the students' journey through nursing school. Guests enjoyed a reception in the OPSU cafeteria following the event.

The 2011 class is the 13th graduating class from the distance learning program established between OSU-OKC and OPSU. During this 2 year program, students receive their curriculum via the internet and attend the OPSU campus for orientation, skills lab, group projects and exams. They complete their clinical training in area health care facilities. The program is accredited by the National League for Nursing Accrediting Commission (NLNAC) and the Oklahoma Board of Nursing. Current faculty members on the OPSU campus include assistant professor and on-site coordinator, Dawn Hemphill, MS, RN and instructor, Connie Belford, RN, BSN.

Following graduation, the students were eligible to take the NCLEX licensure exam to become Registered Nurses. Contact the Nursing Department at (580) 349-1520 for more information about the program or to receive an application packet.

Austin Buschman Earns Degree from LeTourneau University

Austin Buschman of Perryton, TX graduated summa cum laude with a Bachelor of Science-

Engineering Technology degree.

LeTourneau University is an interdenominational Christian university located in Longview, Texas, offering academic majors in aeronautical science, business, education, engineering, health care, the humanities and sciences. LeTourneau University also offers graduate and undergraduate degree programs for working adults online and at educational centers in Austin, Bedford, Dallas, Houston and Tyler.

Claiming every workplace in every nation as their mission field, LeTourneau University graduates are professionals of ingenuity and Christ-like character who see life's work as a holy calling with eternal impact.

SWOSU Chemistry Students Win Awards

Southwestern Oklahoma State University's Department of Chemistry recently honored its outstanding students at a banquet held on the Weatherford campus. Receiving honors for the 2010-11 academic year included: Natalie Simpson, Spearman TX, Department Chair's Award.

Local Students Named to Frank Phillips College Honor Rolls

Nine students attending the FPC Allen Campus in Perryton received academic honors for the Fall Semester 2010.

Three students from Perryton; Patrick Lemke, Ted Nelson, and Maria Ontiveros, earned a place on the President's List. To receive this honor, a student must be enrolled in 12 or more credit hours (this constitutes a full time load of classes) and have a grade point average (GPA) of 4.00, the highest attainable for the semester.

Five students from Perryton; Sonia Gutierrez, Jennifer Marshall, Viridiana Pereda, Heaven Snyder, and Rubi Soto, and one student from Spearman; Nikki Boyd, earned a place on the Dean's List. To receive this honor, a student must be enrolled in 12 or more credit hours and have a GPA between 3.50 and 3.99 for the semester.

The FPC Allen Campus takes great pride in congratulating each of these students for a job well done.

Local students earn academic honors at Wayland Baptist University

Local students were included in the academic

honor rolls at Wayland Baptist University for the fall 2010 semester.

The President's List includes students who achieved a perfect 4.0 grade point average for the term. The Dean's List includes students with between a 3.5 and 3.99 grade point average for that term.

Honorees from you area include:

Waka - Ginny Staton was named to the President's List.

Gruver - Lindsey Mireles was named to the Dean's List.

Spearman - Courtney Hickman and Marcos Navarrete were named to the Dean's List.

Wayland Baptist University is a private, Christian university located in Plainview, Texas. The university offers undergraduate degrees in 50 majors as well as several graduate degrees. Classes are offered online as well through the Virtual Campus. In addition to its home campus in Plainview, the university operates 12 external campus locations in Texas, New Mexico, Arizona, Oklahoma, Alaska and Hawaii, and in Kenya, Africa. The total system enrollment is 6,385.

For more information about Wayland Baptist University, visit the Web site at www.wbu.edu.

Oklahoma Panhandle State has announced their Fall 2010 Dean's Honor Roll

To qualify for the Dean's Honor Roll, a student must carry at least 12 credit hours of university courses, have no "Fs" or incomplete courses and have between a 3.50 GPA for the semester.

Kelly Stewart of Gruver and Christy Lang of Spearman were both listed on the Dean's Honor Roll.

To qualify for the President's Honor Roll, a student must carry at least 12 credit hours of university courses, have no "Fs" or incomplete courses and a 4.0 GPA for the semester.

Suzanne Frazier and Kimberly Moore of Gruver were both listed on the President's Honor Roll.

Texas A&M University-Corpus Christi Dean's List

The following students from your area have been named to the Dean's List at Texas A&M University-Corpus Christi for the 2010 fall semester:

Spearman: Ryan Ramon, College of Liberal Arts, Theatre.

To qualify, undergraduates must be enrolled full time with a minimum of 12 semester hours and must earn a grade point average of 3.65 or better on a 4.0 scale.

Texas A&M University-Corpus Christi is a four-year university and part of The Texas A&M University System. The student-oriented university has around 10,000 students and provided bachelor's, master's, doctoral degrees.

SWOSU Who's Who

One hundred thirty-one Southwestern Oklahoma State University students on the Weatherford campus have been named to the 2011 edition of Who's Who Among Students in American Universities and Colleges.

The Who's Who award is one of the biggest academic honors on campus, because the students are selected from among some 900 seniors at SWOSU.

Campus nominating committees and editors of the annual directory select the students based on academic achievements, service to the community, leadership in extracurricular activities and potential for continued success.

The SWOSU students will be honored at a reception on February 27 at 2 p.m. in the SWOSU Fine Arts Center on the Weatherford campus.

Students selected from SWOSU include Natalie Simpson of Spearman.

Sergio's Auto Sales
 We appreciate your support!
 Sergio Vargas
 120 W Kenneth Ave • Spearman TX 79081
 (806) 659-9971 - day • (806) 330-0173 - night
 Canyon Location Phone Number: (806) 231-8388

SERGIO'S AUTO SALES

SERGIO VARGAS
 120 W. KENNETH AVE. SPEARMAN, TX 79081
 806 659 9971 CEL. 806 330 0173

Steffan & Devin's Mowing Service

 Steffan Werner (620) 482-0763
 Devin Wells (806) 330-0752
 References available upon request.

Are You A Victim of Domestic Violence, Sexual Abuse or Physical, Emotional or Sexual Assault?
 Call Toll Free Hotline
 1-800-753-5308

We can see individuals from Hansford County anytime upon request. Call 435-5008 or 1-800-753-5308 to set up an appointment in Hansford County. We operate a safe place for victims and their children to stay in times of crisis.
 Battering Intervention & Anger Management Available

Panhandle Crisis Center
 Serving Hansford, Lipscomb & Ochiltree Counties
 301 S. Ash - Perryton, TX
 Memorials Accepted

Tong's Chinese Restaurant
 (806) 644-2838
 22 Archer Street • Spearman
Daily Buffet
 Lunch Buffet 11 a.m.-2:30 p.m.
 Dinner Buffet 5:30-9 p.m.
 Open Wednesday-Monday - Closed Tuesday

Hotline for Priority Seating - 435-3945

100 MONEYS 100
BBQ & STEAK HOUSE

 Stan and Donna Zepp
New, Updated Menu Same Great Service

We Are THPLC-2-B
 14 SE 3rd Ave. Perryton, TX

REAL ESTATE

FOR RENT: 2 Bedroom apartment, 822 S. Roland, \$425.00 month, 12 month lease, Water paid, NO PETS. Call Larry O'Neal at 405-285-8782 for application and to view apartment.
TFN(5/26/11)B
FOR RENT: 1BR & 2BR furnished apartment. All bills paid. Call 659-2247.
TFN(6/2/11)B

HELP WANTED

HELP WANTED: Experienced automotive technician needed. Good working environment, holiday pay, health insurance. Also service department helper needed. Apply in person at Prairie Motors in Spearman. (806) 659-2541 or 1-800-692-4657.
TFN(12/2/10)B

HELP WANTED: First State Bank, Spearman, has a full time positions open for a Teller and positions open in Book-keeping. Applicant must have a high school diploma or equivalent, typing and some ten-key skills required, customer relation and telephone skills are very important. Background in accounting, word processing and spreadsheets is helpful but not required. Benefit program includes group hospitalization insurance, retirement, vacation pay, sick leave pay and holiday pay. Apply with Ginger Turner at First State Bank, PO Box 247, Spearman, TX. 79081, telephone #(806) 659-5565. An Equal Opportunity Employer.
TFN(6/2/11)B

HELP WANTED: Apply at West Texas Gas Office, 204 Main St, Spearman. (Will be in and out. If not there, please check back.) To make an appointment, call 806-570-8857 between 8 a.m-5 p.m.
3(6/16/11)B

PETS

DOBERMAN PUPS FOR SALE: 3 female, 1 male, 6 weeks old, 1st shots, tails docked, full blood, parents on premises. Protective, but good with kids. \$200. Call 659-2393.
2(6/30/11)B

E-SUBSCRIPTION

The Hansford County Reporter-Statesman
Delivered to your e-mail
each Thursday for only \$35/year.
Purchase online at www.spearmanreporter.com
Call 806-659-3434 or e-mail
reporter@spearmanreporter.com



We NEED listings!
Call us now
to help YOU sell
your home for top dollar!

523 Barkley - Spearman: 2,074 sq ft, 4 bed, 2 bath, 2 UNDER - Hardwood Floors!

1016 S Barkley - Spearman: 4,081 sq ft, 4 bed, 4 bath 3 lvg areas, 2 Att gar, Fireplace, Corner Lot! **REDUCED!**

Shirley Howard, Broker/Owner
806-886-6536, Cell
806-648-4444, Work
Melinda McCullough, Realtor
(806) 733-5678

We would LOVE to sell
your HOUSE!
CALL US!

Check our websites for other properties.

SHERMAN CO., TX - 627 acres, choice land, four 1/4 mile sprinklers, fully developed, one 1/4 mile off Hwy. 287 on paved CR - CC, 3 phase electricity, new irrigation well drilled in 2010.

AMARILLO, TX - 4 MI. N. OF LOOP 335 - development potential (wind energy, comm., res.) 4872.8 ac +/- of beautiful ranch country, pvmt. on four sides. Deer, quail & dove. 50% MINERALS!

CASTRO CO, TX - on pvmt., 1845.6 ac +/-, sprinklers, irr. wells, employee housing, barns, cattle pens w/covered working area, hydraulic chute & truck/cattle scale.

DEAF SMITH COUNTY SECTIONS - Three adjoining sections east of Hereford, Texas, dryland farm, stock water, good fence.

WEST OF DUMAS on pvmt. 606 ac +/-, 17 tower sprinkler, four irr. wells, excellent location for residential or commercial development.

BUDDY CLINE ROAD - Moore Co., TX - 1/2 section choice land, two wells (one new) and sprinklers.

MOORE CO, TX - 800 ac. with 1/2 section rigged for sprinkler plus 480 acres of CRP, 1 1/2 miles out of Dumas with pvmt. on two sides.

1200 SOW FALLOW TO FINNISH OPERATION - Moore Co., TX - New 5 yr. lease with major hog company. Two separate units, can be divided - Please contact broker for info package and price.
www.scottlandcompany.com
www.texascrp.com
Shawn Gillispie 806/922-5532
Ben G. Scott, Broker
1-800-933-9698 day/eve
TFN(6-23-11)

SERVICES

HOOCHY POOCHY PARLOR
Call us for all your pet's grooming and boarding needs. Call now for reservations! 806-273-2724.
TFN(11/2/07)B
TIRED OF GARAGE SALE PRICES? Let me buy your good used furniture! 2nd Chance Antiques & Furniture, Don 806-648-1480; 806-202-1391 cell.
TFN(1/20/11)B

PUBLIC NOTICE

JOB REQUISITION NUMBER: 016122 GENERAL TRANSPORTATION TECHNICIAN II (K507)
The Texas Department of Transportation will be accepting applications for a full-time position in the following location:

Hansford County Maintenance Office located at 114 W SH 15, Gruver, Texas. The applicant must have one (1) year experience in engineering support, maintenance, construction, heavy equipment operation, transportation-related or roadway maintenance work. (Experience requirements may be satisfied by full-time experience or the prorated part-time equivalent.) The starting salary will be \$2094.33 - \$3246.25 per month.

A completed State of Texas application is required and applications will be accepted until 5:00 p.m., Monday, July 11, 2011. For further application information, including a complete job vacancy notice, contact the nearest Texas Department of Transportation. Information may also be accessed via the Internet at www.txdot.gov/careers. Mailed applications should be postmarked no later than Monday, July 11, 2011 and sent to: TxDOT, Attn: Human Resources, 5715 Canyon Drive, Amarillo, TX 79110. If more information is needed or if an applicant needs an accommodation in order to apply for this job, contact Human Resources at (806) 356-3231. TxDOT IS AN EQUAL OPPORTUNITY/AFFIRMATIVE ACTION EMPLOYER
2(6/30/11)B

LEGAL NOTICE

Gruver Independent School District has an Employment Opening for District Business Manager.
The starting date is August 1, 2011. A degree in Accounting or Finance is preferred. Position pays Teacher Pay Scale at 226 Days. Pay scale can be viewed at: www.gruverisd.net <<http://www.w.gruverisd.net>> District Link Policies Link
The Application Deadline is July 18, 2011. Applications can be downloaded at: www.gruverisd.net <<http://www.gruverisd.net>> District Link Employment Link
Send Applications and Resumes To: David H. Teal, Gruver Independent School District, Business Office, PO Box 650, Gruver TX 79040
2(7/7/11)B

EQUAL EMPLOYMENT OPPORTUNITY STATEMENT

The City of Spearman does

not discriminate on the basis of color, national origin, sex, religion, age and handicapped status in employment or the provision of services.
*The City of Spearman has adopted complaint and grievance procedures regarding its Texas Community Development- Disaster Relief Programs. These procedures outline the steps for a citizen to follow if s/he wishes to file a written complaint about proposed TXCDBG activities. The City will make every effort to respond fully to such complaints within fifteen (15) working days. Citizens may obtain a copy of these written procedures at the City Hall between the hours of 8:00 a.m. and 5:00 p.m. Monday through Friday. Citizens may also request the procedures be mailed to them by calling the City Manager at 806-659-2524.
1(7/7/11)B

INITIAL NOTICE OF POLICY OF NONDISCRIMINATION ON THE BASIS OF HANDICAPPED STATUS
The City of Spearman does not discriminate on the basis of handicapped status in the admission of, access to, or treatment of employment in its federally assisted programs or activities.
Ed Hansen, City Manager
City of Spearman
PO Box 37
Spearman, TX 79081
has been designated to coordinate compliance with the nondiscrimination requirements contained in the Department of Housing and Urban Development's (HUD) regulations implementing Section 504 (24 CFR Part 8 dated June 2, 1988).
1(7/7/11)B

PUBLIC SERVICE ANNOUNCEMENT: FAIR HOUSING, IT'S THE LAW
To promote fair housing practices, the City of Spearman encourages potential homeowners and renters to be aware of their rights under the National Fair Housing Law.
Title VIII of the Civil Rights Act of 1968, as amended, prohibits discrimination against any person on the basis of race, color, religion, sex, handicap, familial status or national origin in the sale or rental of units in the housing market.
For more information on fair housing or to report possible fair housing discrimination, call the U.S. Department of Housing and Urban Development's toll-free hotline at 1-800-669-9777.
1(7/7/11)B

PROCLAMATION
By Executive Order of the Honorable Brian Gillispie, Mayor of the City of Spearman, it is proclaimed:
WHEREAS, July 2010 marked the forty-second anniversary of the passage of the Civil Rights Act of 1968, which included Title VIII, the Fair Housing Law, for guaranteed equal housing opportunity for all citizen; and
WHEREAS, Fair housing is consistent with the principle of equality and justice for all, providing the challenge to combat discrimination, and to broaden the protection of the beliefs upon which our nation was founded; and
WHEREAS, This month provides an opportunity for all

See us for:
AUTO • HOME • CROP HAIL • FARM & RANCH • MULTIPERIL • LIVESTOCK

INSURANCE

BORT AGENCY, INC.
510 Main St. • Gruver, TX
(806) 733-2456

French & Co., Realtors
273-7355
Country Living in Morse
4 BR, 2 B, located on 1.06 acres - \$129,000.
Call for immediate showing
806-683-2267

French & Co., Realtors
273-7355
Beautiful 3 BR, 2B home in Morse, Texas. 1.06 acres.
Updates: Cabins, Corpgoat tile & wood floors, staining trim, custom paint, 28x33 garage & separate shop.
Call Michele for details.
806.273.7355

Blankenship Real Estate
659-3052 - 670-3774
LET US HELP YOU SELL YOUR HOME.

3BR, 2 1/2B, 2 living areas, dining area, brick, close to schools.

3BR, 1 1/2B, 1CG, central heat/air, all appliances stay.

3BR, 1B, 2C Detached Garage, gowr central heat/air and roof.

NEW LISTINGS WANTED!
Eulalia Blankenship - Sales
Eschol Blankenship - Broker

INSURED 6 Month CD
4.21% APY
Ask about our IRA & 401K Specials
1-800-371-9201
By appointment only
First Fidelity Financial Amarillo, LLC
1800 Washington, Suite 110
Amarillo, TX
First Fidelity Financial Amarillo, LLC is an Equal Opportunity Lender. All loans are subject to credit review. Lending is subject to credit review. First Fidelity Financial Group is a member of First Fidelity Financial Group, Inc. All services provided by First Fidelity Financial Group, Inc. (FFFG).
FFFG is an Equal Opportunity Lender.

ADOLF NOW SHOP
MODEL ADO BOULE
PROTO GEM ILLER
PROWLS ANGELLOU
NEE GNAT
CPA RAZE NOTIFY
HULA CELL PODIA
ITLL HALEY TALC
NOOSE LIVE SHAH
ANYONE NORM ORT
SNUG BOG
BRITISH CAPOTE
EASEL HUE TOURS
TRINE URN OSTIA
HESS HIT PESKY

3 2 1 9 6 5 4 8 7
5 6 9 4 7 8 3 2 1
7 4 8 2 3 1 6 9 5
2 5 6 1 9 7 8 3 4
9 3 7 8 2 4 1 5 6
1 8 4 3 5 6 9 7 2
8 7 5 6 4 9 2 1 3
4 9 2 7 1 3 5 6 8
6 1 3 5 8 2 7 4 9

EXPERIENCED TRUCK DRIVING POSITIONS AVAILABLE THROUGHOUT TEXAS
HOME DAILY OR WEEKLY
Hiring Solo and Team Drivers in Dedicated, Intermodal, Tanker and Van (OTR, Regional) Divisions
Experienced Drivers and Recent Driving School Grads Welcome
Paid orientation/training | Comprehensive, low-cost benefits plan including medical, dental, vision and 401(k) plan available
Apply at schneiderjobs.com/newjobs
Call 1-800-44-PRIDE for more information
SCHNEIDER

STOP LEG CRAMPS BEFORE THEY STOP YOU.
Calcet® is designed to help stop low calcium leg cramps. Just ask your pharmacist.
Helps fight leg cramps | For those with milk allergies | Fights osteoporosis
Mission
Petite Tablet with More Calcium & Vitamin D3
Calcet
Dual Calcium + Vitamin D3
More calcium per tablet
Mission
1-888-377-7537, www.suncoarriers.com 1-888-713-6020

TEXAS STATEWIDE CLASSIFIED ADVERTISING NETWORK
TexSCAN
TexSCAN Week of July 3, 2011
DRIVERS
CYPRESS TRUCK LINES Home weekends! Southwest regional, Top pay and great benefits. 1-year TT experience CDL-A with Clean MVR. Call 1-800-545-1351, www.cypresstruck.com
DRIVER-PAY RAISE just announced! Company, owner operators, solos and teams. Consistent miles, benefits, all new trucks, CDL-A and 15 months experience required. www.drivefortango.com, 1-877-826-4605
DRIVER-PAY UP TO 42¢ cpm, 2012 tractors arriving daily. No forced dispatch to NYC or Canada. CDL-A, 3 months recent experience required. 1-800-414-9569, www.drivelnight.com
DRIVER-STUDENTS Great career path, consistent freight and pay. No out-of-pocket tuition cost. Accelerated 18 day program. Earn CDE, recruit! ifex.net, 1-855-378-9333.
DRIVER-GOOD MILES! Regional truck drivers start at 37¢ cpm with 1-year experience. Home every week. Affordable family benefits. Call 1-888-362-8608 or visit AVERITCarriers.com. EOE
DRIVERS-CLASS A Heavy haul immediate need for experienced multi-axle company and owner operator drivers. We are busy all year long! 1-866-231-6472
DRIVERS-FLATBED 46¢/mile, paid vacations, 401K, free rider program, CDL training available. Call Prime Inc. today! 1-800-277-0212 or www.priminc.com
DRIVERS-NEEDED-Family company looking for experienced flatbed drivers. CDL-A required. Top pay benefits. Home 40/52 weekends. 1-877-724-4554.
DRIVERS-NEW PET POLICY! No touch freight and forced NE/NYC! No felony/DUI last 5 years. Ask about Lease Purchase Options. Call or text PTL to 424242 or call 1-877-740-6262, www.ptl-inc.com
DRIVERS-NO EXPERIENCE - No Problem, 100% Paid CDL training. Immediate benefits. 20/10 program. Trainers earn up

DRIVERS-SOUTHERN FLEET must live WANTED: LIFE AGENTS Earn \$500 a within 100 mile radius of Dallas. Refrigerated freight. 100% owner operator company, daily, liberal underwriting, leads, leads, run in Texas to Georgia, home weekly. Call leads. Life insurance license required. Call 1-888-377-7537, www.suncoarriers.com 1-888-713-6020
FRAC SAND HAULERS with complete bulk pneumatic rigs only. Relocate to Texas for tons of work. Great company/pay. Gas cards/Quick Pay available. 1-888-880-5918
PAID CDL TRAINING! No experience needed. Stevens Transport will sponsor the cost of your CDL training. Earn up to \$40K first year and \$70K third year. Excellent benefits! EOE, 1-800-333-8595, www.becomeadrivers.com
LOCAL DRIVING JOBS Big money, home daily, Class-A and 2 years experience required. More options in your area; Call Taylor today 1-866-687-5281 or www.taylorlogistics.com
Fleet Owner we have a \$\$\$ deal. EOE
TEAM DRIVERS dedicated team runs available. California to Texas or Northwest. All new equipment! \$1000 bonus, excellent pay. CDL-A, 1 year OTR. HazMat required. 1-888-459-3008, www.industrans.com
TOP PAY on excellent runs! Marten just raised pay/rates! Regional runs, steady miles, frequent home time. New equipment. CDL-A, 6 months experience required. EOE/AAP: 1-866-322-4039 www.Drive4Marten.com
YOU GOT THE drive, we have the direction. OTR drivers, APU Equipped, Pre-Pass, EZ-pass, Pets / passenger policy. Newer equipment. 100% NO touch. 1-800-528-7825

AIRLINES ARE HIRING Train for high paying aviation career. FAA approved program. Financial aid if qualified, job placement assistance. Call Aviation Institute of Maintenance. 1-877-523-4531
HEAT & AIR JOBS Ready to work? 3 week accelerated program. Hands on environment. Nationwide certifications and Local Job Placement Assistance. 1-877-994-9904.

REAL ESTATE
\$106 MONTH BUYS land for RV, MH or cabin. Gated entry, \$690 down, (\$6900/10 91¢/7yr) 90 days same as cash. Guaranteed financing. 1-936-377-3235
ABSOLUTELY THE BEST VIEW Lake Medina/Bandera 1/4 acre tract, central W/SE, RV/motor home/ouse, OK only \$830 down \$235 month (12.91%/10yr). Guaranteed financing. more information call 1-830-460-8354
AFFORDABLE RESORT LIVING on Lake Fork. RV and manufactured housing OK! Guaranteed Financing with 10% down. Lots starting as low as \$6900. Call Josh, 1-903-878-7265
DUAL COUNTY, 10.19 acres. Heavy brush, joins large ranch, 2950/2 acres. 20.37 acres, joins large ranch, thick south Texas brush, \$2850/acre. Deer, hogs, and quail. Owner or TX Vet financing. 1-866-286-0199, www.westertexasland.com
WEST TEXAS, 168+ acres, north of Dryden. Native game. \$265/acre. owner or Vet financing. 1-210-734-4009, www.westertexasland.com
STEEL BUILDINGS
CANCELLED ORDER BUILDINGS! Save thousands. Must go, easy payments. 16X20, 20X30, 35X40. Act now! 1-800-991-

Refreshments will be served

Hansford Hospice
20th Anniversary
Open House
Tuesday, July 19, 2011, 2-4 p.m.
Hospice Office
802 Roland St

hchd
Hansford County Hospital District

Central Supply Assistant: Assisting the Purchasing Director with daily activities. Responsible for checking and delivering all supplies in the district, all in-house risographing, copying, and auto-claving instruments.

Information Technology Assistant: Maintain daily system data backups, perform routine desktop backups, add users to domain, monitor AV log reports and/or any assigned duties by the IT Director.

Clinic Data Entry Clerk: Enter data, payments, etc, into patient account's daily.

Home Health/Hospice RN: Provide general nursing care to patients in resident setting. Interacts with patients and patient's families. Medical Staff members and other departments of HCHD on a continuous basis.

Great working environment and staff, quality facility providing opportunities for professional growth. Great Benefit package. Apply at 707 S Roland, Spearman, TX or contact Jackie Nelson, HR 806-659-5841. Download application at hchd.net
EEOE (6/23/11)

Americans to rededicate themselves to the principles of free choice and to reacquire themselves with the rights and responsibilities that are theirs under the Fair Housing Law.
NOW, THEREFORE, I, Brian Gillispie, Mayor of the City of Spearman, do hereby proclaim July 2011 as:
FAIR HOUSING MONTH IN THE CITY OF SPEARMAN
and urge my fellow citizens to join me in reaffirming the obligation and commitment to fair housing opportunities for all people.
1(7/7/11)B

INSURED 6 Month CD
4.21% APY
Ask about our IRA & 401K Specials
1-800-371-9201
By appointment only
First Fidelity Financial Amarillo, LLC
1800 Washington, Suite 110
Amarillo, TX
First Fidelity Financial Amarillo, LLC is an Equal Opportunity Lender. All loans are subject to credit review. Lending is subject to credit review. First Fidelity Financial Group is a member of First Fidelity Financial Group, Inc. All services provided by First Fidelity Financial Group, Inc. (FFFG).
FFFG is an Equal Opportunity Lender.

ADOLF NOW SHOP
MODEL ADO BOULE
PROTO GEM ILLER
PROWLS ANGELLOU
NEE GNAT
CPA RAZE NOTIFY
HULA CELL PODIA
ITLL HALEY TALC
NOOSE LIVE SHAH
ANYONE NORM ORT
SNUG BOG
BRITISH CAPOTE
EASEL HUE TOURS
TRINE URN OSTIA
HESS HIT PESKY

3 2 1 9 6 5 4 8 7
5 6 9 4 7 8 3 2 1
7 4 8 2 3 1 6 9 5
2 5 6 1 9 7 8 3 4
9 3 7 8 2 4 1 5 6
1 8 4 3 5 6 9 7 2
8 7 5 6 4 9 2 1 3
4 9 2 7 1 3 5 6 8
6 1 3 5 8 2 7 4 9

EXPERIENCED TRUCK DRIVING POSITIONS AVAILABLE THROUGHOUT TEXAS
HOME DAILY OR WEEKLY
Hiring Solo and Team Drivers in Dedicated, Intermodal, Tanker and Van (OTR, Regional) Divisions
Experienced Drivers and Recent Driving School Grads Welcome
Paid orientation/training | Comprehensive, low-cost benefits plan including medical, dental, vision and 401(k) plan available
Apply at schneiderjobs.com/newjobs
Call 1-800-44-PRIDE for more information
SCHNEIDER

STOP LEG CRAMPS BEFORE THEY STOP YOU.
Calcet® is designed to help stop low calcium leg cramps. Just ask your pharmacist.
Helps fight leg cramps | For those with milk allergies | Fights osteoporosis
Mission
Petite Tablet with More Calcium & Vitamin D3
Calcet
Dual Calcium + Vitamin D3
More calcium per tablet
Mission
1-888-377-7537, www.suncoarriers.com 1-888-713-6020

TEXAS STATEWIDE CLASSIFIED ADVERTISING NETWORK
TexSCAN
TexSCAN Week of July 3, 2011
DRIVERS
CYPRESS TRUCK LINES Home weekends! Southwest regional, Top pay and great benefits. 1-year TT experience CDL-A with Clean MVR. Call 1-800-545-1351, www.cypresstruck.com
DRIVER-PAY RAISE just announced! Company, owner operators, solos and teams. Consistent miles, benefits, all new trucks, CDL-A and 15 months experience required. www.drivefortango.com, 1-877-826-4605
DRIVER-PAY UP TO 42¢ cpm, 2012 tractors arriving daily. No forced dispatch to NYC or Canada. CDL-A, 3 months recent experience required. 1-800-414-9569, www.drivelnight.com
DRIVER-STUDENTS Great career path, consistent freight and pay. No out-of-pocket tuition cost. Accelerated 18 day program. Earn CDE, recruit! ifex.net, 1-855-378-9333.
DRIVER-GOOD MILES! Regional truck drivers start at 37¢ cpm with 1-year experience. Home every week. Affordable family benefits. Call 1-888-362-8608 or visit AVERITCarriers.com. EOE
DRIVERS-CLASS A Heavy haul immediate need for experienced multi-axle company and owner operator drivers. We are busy all year long! 1-866-231-6472
DRIVERS-FLATBED 46¢/mile, paid vacations, 401K, free rider program, CDL training available. Call Prime Inc. today! 1-800-277-0212 or www.priminc.com
DRIVERS-NEEDED-Family company looking for experienced flatbed drivers. CDL-A required. Top pay benefits. Home 40/52 weekends. 1-877-724-4554.
DRIVERS-NEW PET POLICY! No touch freight and forced NE/NYC! No felony/DUI last 5 years. Ask about Lease Purchase Options. Call or text PTL to 424242 or call 1-877-740-6262, www.ptl-inc.com
DRIVERS-NO EXPERIENCE - No Problem, 100% Paid CDL training. Immediate benefits. 20/10 program. Trainers earn up

DRIVERS-SOUTHERN FLEET must live WANTED: LIFE AGENTS Earn \$500 a within 100 mile radius of Dallas. Refrigerated freight. 100% owner operator company, daily, liberal underwriting, leads, leads, run in Texas to Georgia, home weekly. Call leads. Life insurance license required. Call 1-888-377-7537, www.suncoarriers.com 1-888-713-6020
FRAC SAND HAULERS with complete bulk pneumatic rigs only. Relocate to Texas for tons of work. Great company/pay. Gas cards/Quick Pay available. 1-888-880-5918
PAID CDL TRAINING! No experience needed. Stevens Transport will sponsor the cost of your CDL training. Earn up to \$40K first year and \$70K third year. Excellent benefits! EOE, 1-800-333-8595, www.becomeadrivers.com
LOCAL DRIVING JOBS Big money, home daily, Class-A and 2 years experience required. More options in your area; Call Taylor today 1-866-687-5281 or www.taylorlogistics.com
Fleet Owner we have a \$\$\$ deal. EOE
TEAM DRIVERS dedicated team runs available. California to Texas or Northwest. All new equipment! \$1000 bonus, excellent pay. CDL-A, 1 year OTR. HazMat required. 1-888-459-3008, www.industrans.com
TOP PAY on excellent runs! Marten just raised pay/rates! Regional runs, steady miles, frequent home time. New equipment. CDL-A, 6 months experience required. EOE/AAP: 1-866-322-4039 www.Drive4Marten.com
YOU GOT THE drive, we have the direction. OTR drivers, APU Equipped, Pre-Pass, EZ-pass, Pets / passenger policy. Newer equipment. 100% NO touch. 1-800-528-7825

AIRLINES ARE HIRING Train for high paying aviation career. FAA approved program. Financial aid if qualified, job placement assistance. Call Aviation Institute of Maintenance. 1-877-523-4531
HEAT & AIR JOBS Ready to work? 3 week accelerated program. Hands on environment. Nationwide certifications and Local Job Placement Assistance. 1-877-994-9904.

REAL ESTATE
\$106 MONTH BUYS land for RV, MH or cabin. Gated entry, \$690 down, (\$6900/10 91¢/7yr) 90 days same as cash. Guaranteed financing. 1-936-377-3235
ABSOLUTELY THE BEST VIEW Lake Medina/Bandera 1/4 acre tract, central W/SE, RV/motor home/ouse, OK only \$830 down \$235 month (12.91%/10yr). Guaranteed financing. more information call 1-830-460-8354
AFFORDABLE RESORT LIVING on Lake Fork. RV and manufactured housing OK! Guaranteed Financing with 10% down. Lots starting as low as \$6900. Call Josh, 1-903-878-7265
DUAL COUNTY, 10.19 acres. Heavy brush, joins large ranch, 2950/2 acres. 20.37 acres, joins large ranch, thick south Texas brush, \$2850/acre. Deer, hogs, and quail. Owner or TX Vet financing. 1-866-286-0199, www.westertexasland.com
WEST TEXAS, 168+ acres, north of Dryden. Native game. \$265/acre. owner or Vet financing. 1-210-734-4009, www.westertexasland.com
STEEL BUILDINGS
CANCELLED ORDER BUILDINGS! Save thousands. Must go, easy payments. 16X20, 20X30, 35X40. Act now! 1-800-991-

Refreshments will be served

Hansford Hospice
20th Anniversary
Open House
Tuesday, July 19, 2011, 2-4 p.m.
Hospice Office
802 Roland St

Red Devils Name Witten as Head Coach



New Texhoma head coach Aaron Witten, right, leads the team through warm-ups at the beginning of practice Wednesday in Texhoma. (photo by Greg Crews, Guymon Daily Herald)

by Greg Crews, Guymon Daily Herald, gdhsport@ptsi.net

There will be some fresh faces at Texhoma High School when school starts back up in the fall, and they won't only be new students.

The Red Devils have made two head coaching changes with another on the way.

Texhoma's new head football coach Aaron Witten wasn't sure how receptive his players would be to learning something new.

He was pleasantly surprised, though, as his players soaked up the newly implemented offense during the short spring practice period.

"The kids have done pretty well. We were able to go over some things that I didn't think we would get to that quickly," Witten said.

Witten replaces Reade Box, who resigned after accepting a coaching position in Hollis.

"Witten is young, energetic and he came highly recommended from some successful football coaches in Texas," Texhoma athletic director Greg Higgins said. "He's a players' coach. He is going to work with them and when they make mistakes they'll go on."

"He's just a very good, very offensive-minded coach."

Witten was the offensive coordinator at Dalhart (Texas) last season and is originally from Spearman, Texas.

His offense at Dalhart last season was dominant, posting 32.8 points per game, including six games in which the Wolves scored more than 40 points, while posting a record of 10-2.

Witten is implementing a Shotgun Wing-T offense. It is an offense designed to confuse defenses while utilizing the Red Devils' speed.

"They've seemed pretty excited about (the new system) since Day 1," Witten said. "When we were in the classroom going over it the first day, guys were in there with notebooks copying down everything."

"I think they like the idea of spreading it out," he added. "This program has kind of been built on '3 yards and a cloud of dust' football and I think they are ready to change that perception."

Witten hoped that the team would be able to get down the basics of the new offense before spring practice comes to a close.

That wasn't easy though, as the new system is complicated — involving a number of options, decoys and fakes in the running game — and quick, likely operating out of a no-huddle.

"It is complicated for the skill players but easy for the offensive linemen," Witten said. "It's mainly all run-oriented. When the defense loads up in the box, that's when we will throw the ball."

On the other side of the ball the Red Devils are hoping to get a grasp of the new defense: a 3-3 stack, which Witten hopes will be versatile enough to stop running teams as well as spread offense teams.

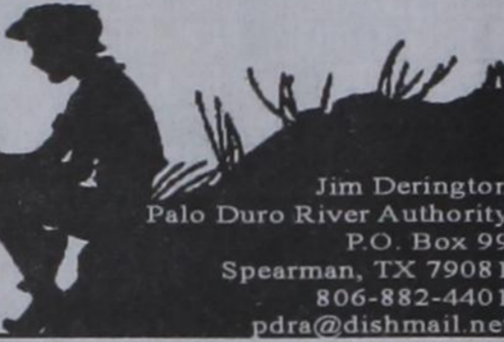
The key on both sides of the ball may be Texhoma's quickness.

"There is a lot of speed," Witten said. "We have pretty good experience returning; a returning quarterback and three running backs that played last year. The offensive line is going to have to step up ... but I think we've got some good pieces."

Texhoma hopes Witten can bring some of that success across the border after the Red Devils went 4-6 last season and failed to reach the playoffs.

by Jim Derington

Out at the Lake



Jim Derington
Palo Duro River Authority
P.O. Box 99
Spearman, TX 79081
806-882-4401
pdra@dishmail.net

July 5, 2011 - Lake Palo Duro level - 38.37 feet

July Fourth weekend was enjoyable, despite the heat and dry conditions. It did rain .13 inches on Sunday night. That settled the dust and made our attitude much better.

The campground behind the dam had fifteen RV campers, and the lake side camp had seven. A few tent campers and one camping trailer were by the lake, or under the park trees.

The campers and I were amazed on Sunday afternoon, to see a mule deer fawn run and frolic in the campground. He would run from one bit of shade to the next, hesitate, then take off again, only to disappear when I thought to get the camera.

Krystal Scribner and I

enjoyed a pair of Cardinals this morning, in front of the office, as we counted the weekend fees. They are regular visitors at Mandy's bird feeder, but not often seen at the office. Several cattle egrets have been seen lately near the Horse Creek boat ramp. It must be too hot to hang around the cattle.

Several boats were on the lake each day over the weekend. One of our regular campers and boaters, Ronnie Bolin, caught two bass on Horse Creek Saturday morning. The largest weighed four pounds. Some crappie are being caught, though most are small. The bank fishermen are catching some catfish, but fairly small ones.

I often walk to the office to check for messages, especially on the weekends.

When it is dark, I sometimes wonder if I might find a rattlesnake in my path. I intend to bring a flashlight, but I seldom remember it. Last night I walked over, and in the dim light, I could barely see a skunk in the office yard, about twenty yards in front of me. I decided that any message could wait until daylight.

Scooter, the lake dog, got in front of an internet installer's pickup as he eased into the driveway at the house on Thursday morning. A visit to Dr. Khrist Levis, showed a broken pelvis. I still don't know if he will make it, though he attempted to walk with his back legs for the first time, today. He has made Lake Palo Duro home, for at least the last twelve years.



"The Need is Big The Time is Now!"

- David Humphreys
President - CEO of Tamko

The Joplin Schools have suffered a major loss. We need your donations! We need to be sure the schools are open on August 17th. We must start the work on opening our schools now.

Consider these facts:

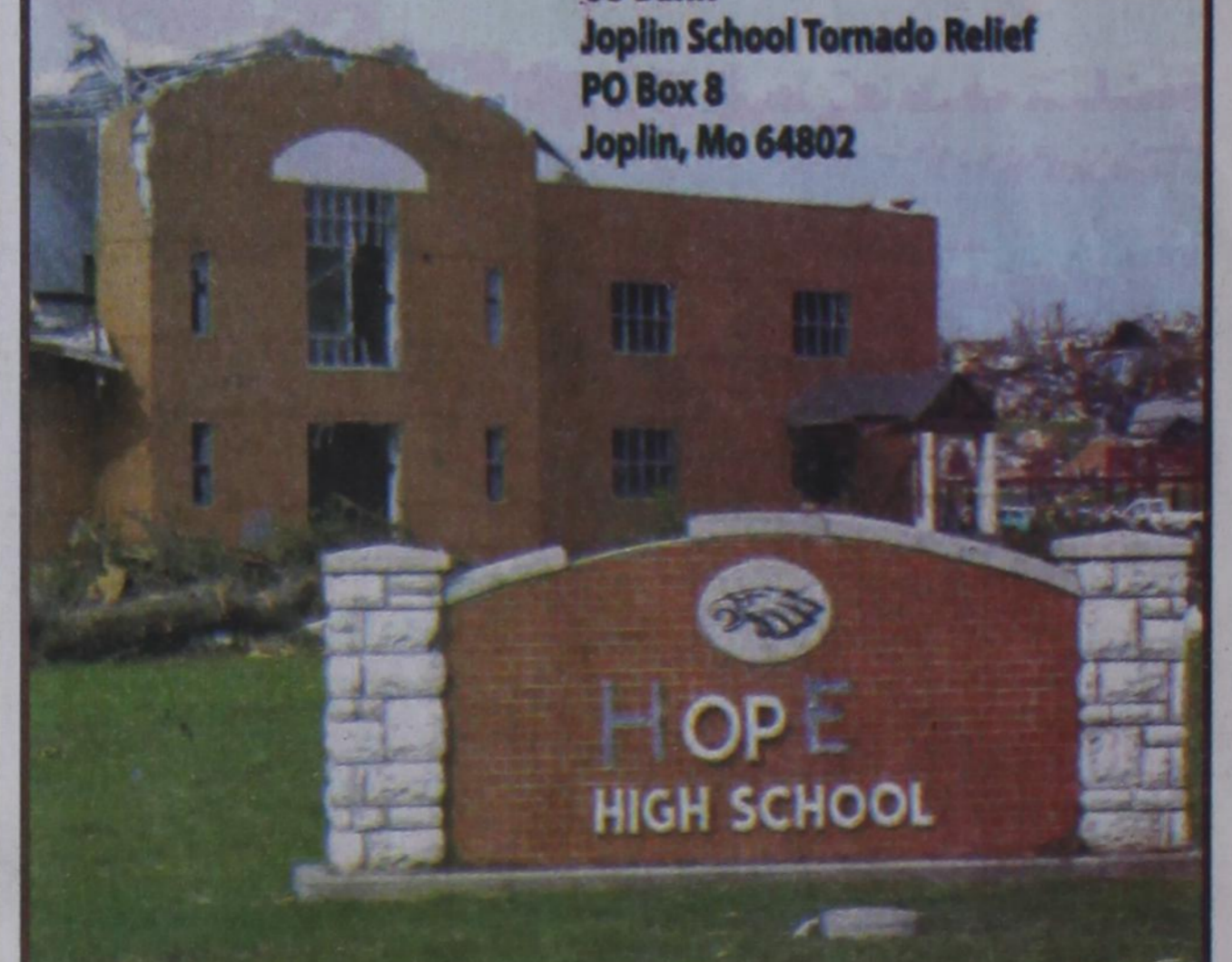
- 7 Students and One Teacher Died
- Joplin High School Destroyed
- Franklin Technology Center Destroyed
- Irving Elementary School Destroyed
- Five other elementary and middle schools damaged
- Damages over \$150 million dollars
- Over 4,000 Kids affected

"The future of our community depends on the education of our children!"

- Deborah Humphreys

If you want to help the kids who need it the most please send your donation to:

Joplin Schools Tornado Relief Fund
Attn: Joplin Globe
US Bank
Joplin School Tornado Relief
PO Box 8
Joplin, Mo 64802





Michael Kelley
Christian
Impressionist
Song Specialist

Friday, July 8th
at The Refuge
\$50 per plate includes
Rib Eye Steak Dinner



Saturday, July 9th at First Street - \$10 per guest includes desserts & drinks

You will not want to miss this * For Reservations call 934-4673

Many, many unique items to be raffled off including collectable Knives & paintings! All proceeds go to the Refuge Expansion Project being built at 1000 Bruce in Dumas.

The Joys of Summer

Available all year!



SNOW CONE STAND

Monday-Friday
2-8 p.m.

MURMUR'S CAFE

100 S. Roland • Spearman
659-3580