



The Hansford County

# Reporter

PROUDLY SERVING HANSFORD COUNTY SINCE 1907



# Statesman

reporter@spearmanreporter.com

SCH2  
COMP  
HANSFORD COUNTY LIBRARY  
0122 MAIN ST  
SPEARMAN TX 79081-2064

VOLUME 102 • ISSUE 14

THURSDAY, APRIL 2, 2009

## Crime Stoppers

The Hansford & Hutchinson County Crime Stoppers is seeking information about a high-speed chase during the early morning hours of January 17, 2009. A Spearman Police Office attempted to stop the driver of a 2004, Red, Jeep, Liberty, for a traffic violation. The driver lead the officer and a Deputy Sheriff from Ochiltree County over several miles in a high speed chase. The Jeep, which was stolen out of Amarillo, was found the next morning by Hansford County Sheriff's Deputies. Crime Stoppers is seeking information on the identity of the driver or other occupants of the Jeep.

Anyone with information about this crime, another crime or wanted person is asked to contact Chief Deputy Gary Garrett of the Hansford County Sheriff's Office at (806) 659-4140. If callers wish to remain anonymous, they can call the Hansford & Hutchinson County Crime Stoppers Hotline at (806) 659-4149. All callers are kept confidential and your tips could make you eligible for a cash reward. Remember Crime Stoppers doesn't want you, just your information.

## April Senior Seminar

With the U.S. population aging, recent estimates show that Alzheimer's disease affects between 2.4 and 4.5 million Americans. Of concern to many adults is whether or not their lapse of memory signals the beginning stages of Alzheimer's.

"Am I at Risk for Alzheimer's?" a Senior Seminar hosted by the Texas AgriLife Extension Service, is scheduled for 10 a.m. April 9 at the Amarillo Senior Citizen Center, 1220 S. Polk, Room 115, said Sue Church, AgriLife Extension family and consumer science agent for Potter County.

Dr. Stephanie McClure, director of the Amarillo Alzheimer's Academy, will be the seminar presenter. In addition to describing the changes that occur in the brain with the disease, McClure will discuss early signs and symptoms. The participants will be invited to engage in the presentation with an audience electronic-polling system.

"There are several excellent resources in the community to assist families dealing with Alzheimer's, among which the Alzheimer's Academy, affiliated with Texas Tech University Health Sciences, is one of the leading ones," Church said. "As director of the Academy, McClure brings her expertise in aging issues as she is board certified in geriatrics."

The Senior Seminars are open to the public and free of charge. For more information, contact the AgriLife Extension office in Potter County at 373-0713.

Door prizes will be donated by Scott's Flowers and the Potter Coalition on Aging.

Senior Seminars are sponsored by the Potter Coalition on Aging, Panhandle Area Health Education Center and Amarillo Senior Citizens' Association.

## Weather Forecast

**THURSDAY NIGHT** - Mostly clear. Lows around 30. East winds around 10 mph shifting to the south after midnight.

**FRIDAY** - Partly cloudy. Warmer. Highs in the mid 70s. South winds 15 to 20 mph.

**FRIDAY NIGHT** - Partly cloudy. Lows in the lower 40s. South winds 15 to 20 mph.

**SATURDAY** - Mostly cloudy with a 20 percent chance of rain showers. Windy. Highs in the mid 60s.

**SATURDAY NIGHT** - Mostly cloudy in the evening then becoming partly cloudy. Windy. Lows in the upper 20s.

**SUNDAY** - Partly cloudy. Highs in the mid 50s.

**SUNDAY NIGHT** - Partly cloudy. Lows in the upper 20s.

**MONDAY** - Mostly sunny. Highs in the lower 60s.

**MONDAY NIGHT** - Mostly clear. Lows in the lower 30s.

**TUESDAY** - Mostly sunny. Highs in the lower 60s.

**TUESDAY NIGHT** - Partly cloudy. Breezy. Lows in the upper 30s.

**WEDNESDAY** - Partly cloudy. Highs in the lower 60s.

## Texas Crop & Weather

The following specific livestock, crop and weather conditions were reported by Panhandle Extension directors: Cold weather, high winds and as much as 12 inches of snow came to the region, but soil moisture remained short. Producers continued field work until the blizzard put a halt to all activities. Winter wheat was stressed due to adverse weather conditions and increased insect activity. Producers sprayed some wheat for greenbugs and Russian wheat aphids. There were also signs of disease in wheat. Fields were pre-irrigated for corn plantings.

# Texas Tech School of Law Teams Earn National Competition Berths

Written by Leslie Cranford

For the first time since 2000, both Texas Tech University School of Law moot court teams have won regional rounds of the American Bar Association National Appellate Advocacy Competition, earning them bids to Chicago for the national finals in April.

Rob Sherwin, director of Advocacy Programs and coach of the teams, said the regional rounds, which took place March 12-14, attracted some of the top appellate advocacy talent in the country.

"Neither of our teams lost a round the entire weekend," Sherwin said. "It was a dominating performance by Texas Tech law."

The third-year-law trio of Vanessa Burgess, of Washington, D.C.; Julie Goen, of Seminole; and Sally Pittman (brief writer), of Spearman, defeated Atlanta's John Marshall Law School, Cornell University, Barry University (twice) and the John Marshall Law School in Chicago en route to its championship.

Their classmates - Rickie Cayton, of Killeen; Matthew Luensmann, of Saint Hedwig; and Brandon Durrett (brief writer) of Lubbock - all third-year law students - beat the University of Georgia, Atlanta's John Marshall Law School, Brigham Young University, University of Houston and Florida Coastal University to claim their trophy.

Individually, Durrett's brief placed third overall. Luensmann won the fourth-best oralist award, while Cayton won eighth.

Sherwin said the problem for this year's competition was incredibly complex, dealing



Members of the Third-Year-Law Moot Court Team were (L-R) Sally Pittman, Julie Goen, and Vanessa Burgess.

with the issues of war powers and whether congressmen have the ability to sue the president.

"The component of national security law provided us with a distinct advantage over other law schools that don't have the military law faculty that we do," Sherwin said. "I'm convinced that had it not been for the help of our amazing faculty, these two wins would not

have been possible." The competition started with 187 teams, the largest moot court competition ever. The national finals will play host to the four champions from each of the six regional competitions, for a total of 24 teams. Texas Tech and University of California, Hastings were the only two schools to qualify both of their squads for the national finals.

## Pre-Kindergarten Roundup Spearman ISD Gruver ISD

Spearman ISD is holding Pre-Kindergarten Roundup on Monday-Friday, April 6-10, at Gus Birdwell Elementary Office, 511 S. Townsend, Spearman. For more information, call 659-2565.

If your child will be 4 years of age on or before September 1, 2009, you are encouraged to apply.

- Eligibility standards are as follows:
- Unable to speak and comprehend the English language, or
  - Eligible for free and reduced meals
  - Homeless, or
  - The child of an active duty member of the armed forces of the United States, or
  - The child of a member of the armed forces of the United States, who was injured or killed while serving on active duty.

The Board of Trustees has asked that all 4 year olds apply regardless if they are eligible or not. After the registration period and a final tally is taken, the board will look at the total number of students interested in PK and will decide on whether or not they will consider open-enrollment for non-eligible students.

For more information, please call the elementary school office at 659-2565.

These are required items you will need to bring to roundup:

1. Your Child's Social Security Card
2. Your Child's Birth Certificate
3. Your Child's updated Immunization records
4. Proof of Income check stub or income tax record
5. Proof of Address

Gruver Elementary will hold Pre-K and Kindergarten Round-Up on Thursday, April 16, 2009 at the Gruver United Methodist Church Fellowship Hall.

To be eligible for the Pre Kindergarten program, your child must be 4 years old as of September 1, 2009, unable to speak or comprehend the English language, or be educationally disadvantaged or homeless.

For a student to be eligible for Kindergarten he/she must be 5 years old as of September 1, 2009.

We will administer the Dial 3 (Developmental Indicators for the Assessment of Learning: 3rd Edition) readiness assessment on all incoming Kindergartners. This assessment will help us know your child's abilities in Motor Skills, Concepts, and Language Development. Your child will also be screened for vision, hearing, and speech. The assessment will take approximately one hour. At the end of the process Mrs. Mayhew will go over your child's assessment with you. Feel free to ask any questions.

We will work with four children each hour. We will begin at 8:30 a.m. and conclude at 3:00 p.m. We will break for lunch from 11:00 - 12:00. To schedule an appointment, please call the elementary office at 733-2031 by Thursday, April 9th.

Bring your child's birth certificate, social security card and immunization records with you. We will register your child for the 2009-2010 school year at this time.

Remember to contact the elementary office 733-2031, to schedule an appointment.

## North Plains Groundwater Conservation District Board of Directors Meet

The Board of Directors of North Plains Groundwater Conservation District met on March 9 at the District offices in Dumas.

Show cause hearings for non-compliance with District rules that were scheduled for the morning were continued until the next meeting on May 5, 2009.

General Manager, Steve Walthour, reported to the Board on the District's progress with the incoming 2008 annual production reports. Approximately 93 percent of the reports were filed timely. The reports were due by March 1, 2009. The Board discussed the seriousness of timely filing the reports and set a \$500.00 penalty per report for those parties who are late filing their annual production paperwork providing the late reports are filed by April 9, 2009. After that date the Board directed the staff to begin enforcement proceedings.

The District continues to drill dedicated monitor wells to better monitor the conditions of the aquifers within the District. The Board voted to transfer \$100,000.00 from the District's Observation Well Network Construction Designated Fund to the Observation Well Capitol Expenses Fund to allow the monitor well coordinator to move ahead with plans to drill additional wells.

Walthour presented the board with a resolution regarding the Joint Planning Committee of Groundwater Management Area #1's proposed Desired Future Conditions for the Ogallala Aquifer. The Board unanimously voted to support the resolution.

In further business, the Board approved six new water wells as complete and active wells. There had been six wells drilled since the last Board meeting, of which four were in Dallam County, one was in Hartley County, and one was in Ochiltree County.

The Municipal and Public Water Supply Workgroup for the District met on February 12, 2009. Walthour reported that the group had requested that the Board consider forming an at-large position on the Board for a municipal representative. The Board discussed forming additional workgroups representing different interests within the District to advise the Board.

Texas AgriLife Extension representatives reported on research that has been conducted and plans for upcoming projects at the District's North Plains Research Field in Etter. Thomas Marek and Dr. John Sweeten reported on research that ranges from genetic engineering of drought tolerant crop species to research in the development and implementation of more efficient agricultural irrigation systems.

After reports from the individual Board members, and the General Manager's report, the meeting was adjourned. The next meeting will be at 8:00 AM on April 6, 2009 at the District offices at 603 East 1st Street in Dumas.

## Quote of the Month

"How soon we forget history... Government is not reason. Government is not eloquence. It is force. And, like fire, it is a dangerous servant and a fearful master." George Washington

## HANSFORD COUNTY SHERIFF'S OFFICE



# FAST FIFTY

(806) 659-4149 TIPLINE



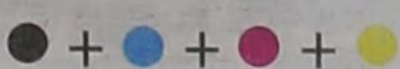
Here is this week's Fast Fifty. Remember a Fast Fifty dollars will be given to anyone providing information on the whereabouts of wanted persons. To provide information for the Fast Fifty, call the Crime Stoppers Tipline at (806) 659-4149 and follow the recorded instructions. Once the information is confirmed and the wanted person is arrested, you will receive the Fast Fifty. It's that simple! All callers are kept confidential. Remember, Crime Stoppers doesn't want you, just your information!

NAME	LAST KNOWN ADDRESS	CHARGE
Alma Chavez	114 S. Grinnell, Perryton, TX	Issuance of a Bad Check
Monty K. Danner	PO Box 362, Gruver, TX	Theft By Check
Sharla K. Fox	PO Box 4, Dalhart, TX	Theft By Check
Luis Lopez	210 N. Cliff, Gruver, TX	Sexual Assault
Richard Ramirez	501 Cooke #2, Spearman, TX	Theft By Check

## HANSFORD COUNTY SHERIFF'S OFFICE GARY EVANS—SHERIFF

10 NW COURT  
(806) 659-4140 OFFICE

SPEARMAN, TX 79081  
(806) 659-2025 FAX



# Lullabies, Legends & Lies

by Parson Smith, the Prime Minister of Laughter

So many people pray so many prayers. I have many as I am sure do you. All of these prayers must surely keep the good lord very busy.

Maybe little Johnny has the right idea...

Little Johnny and his family were having Sunday dinner at his Grandmother's house. Everyone was seated

around the table as the food was being served. When Little Johnny received his plate, he started eating right away.

'Johnny! Please wait until we say our prayer,' said his mother.

'I don't have to,' The boy replied.

'Of course, you do,' his mother insisted. 'We always

say a prayer before eating at our house.'

'That's our house,' Johnny explained. 'But this is Grandma's house and she knows how to cook!'

Just pray when you really have a need.

*Until the next time,  
May God Bless.*

## State Capital HIGHLIGHTS

AUSTIN - Through the week of March 23-27, the House Appropriations Committee and its various subcommittees toiled away at producing HB 1, a state budget for fiscal years 2010-2011. Hopes are that the budget bill may reach the House floor for debate in mid-April.

Appropriations Committee Chair Jim Pitts, R-Waxahachie, on March 27 said, "We are faced with very difficult and uncertain times in our economy. We have to make some difficult decisions."

Speaker Joe Straus said he's confident the narrowly divided 150-member House, composed of 76 Republicans and 74 Democrats, can work together to pass a budget without the necessity of a special session.

Despite the ponderous weight of passing a budget on House shoulders, the lower chamber did manage to vote out the committee substitute to Austin Rep. Dawnna Dukes' HB 873, a bill that recognizes Texas as behind other states in offering film incentives.

Intended to create movie industry jobs in Texas, HB 873 lowers the state grant threshold for a film or television program from a minimum of \$1 million in in-state spending to \$250,000 and lowers the percent that must be filmed in Texas from 80 percent to 60 percent.

**Senate bills advance to House**

The Texas Senate approved more than 60 bills during the week of March 23-27 and sent them on to the House for consideration.

Here are a few of those bills, to be scrutinized by House panels in the coming weeks:

- SB 158 by Rodney Ellis, D-Houston, requiring a school district to notify parents if a nurse is not assigned to a public school campus.
- SB 175 by Florence Shapiro, R-Plano, amending the "Top 10 Percent" law governing the number of students who may automatically be admitted to the University of Texas at Austin.
- SB 188 by Bob Deuell, R-Greenville, creating a hypodermic needle-exchange program to reduce the spread of communicable diseases, such as AIDS and hepatitis.
- SB 297 by Leticia Van de Putte, D-San Antonio, granting resident tuition rates and fees at public institutions of higher education for certain veterans and their spouses and children.
- SB 424 by Van de Putte, establishing and implement-

## BUDGET-WRITING HOUSE COMMITTEE CONTINUES WORK ON PLAN FOR 2010-2011



by Ed Sterling

ing school-based flu vaccination programs.

- SB 503 by Kevin Eltife, R-Tyler, requiring public notice of the name of each finalist for the position of superintendent of a public school district.
- SB 745 by Robert Duncan, R-Lubbock, authorizing a state agency to allow its employees to submit travel vouchers electronically.
- SB 476 by Jane Nelson, R-Lewisville, amending nurse staffing and overtime rules.
- SB 506 by John Carona, R-Dallas, restricting operation and movement of motorcycles during periods of traffic congestion.
- SB 572 by Shapiro, relating to transportation safety training requirements for certain child-care providers.
- SB 730 by Glenn Hegar Jr., R-Katy, relating to an employee's transportation and storage of firearms or ammunition while on certain property owned or controlled by the employee's employer.

**'Under God' remains in pledge**

A Dallas federal judge on March 27 ruled the phrase "under God" in the Texas Pledge of Allegiance is constitutional.

The court's decision re-

jected a lawsuit filed by a Dallas couple that argued that the state pledge violated the First Amendment's Establishment Clause. The Legislature added the words to the state pledge in 2007.

In support of the ruling, Texas Attorney General Greg Abbott said, "The U.S. Supreme Court has repeatedly held that patriotic acknowledgments of the Almighty are constitutional. Texans can rest assured that we will continue defending their children's ability to recite the state Pledge of Allegiance each morning."

**SBOE alters science language**

The State Board of Education on March 27 voted 13-2 to change teacher manual language said to cast doubt on the scientific theory of evolution with the assertion that the various schools of thought have strengths and weaknesses.

The new language promotes the use of empirical evidence, logical reasoning and experimental and observational testing, "including examining all sides of scientific evidence of those scientific explanations so as to encourage critical thinking by the students."



### Week in Review March 27, 2009

(Austin) The Senate passed a bill Wednesday that would cap the number of automatic admissions to state universities under the top-ten percent rule. The legislation was spurred by complaints from officials at the University of Texas at Austin, who say the rule that grants automatic admission to high-schoolers that graduate in the top ten percent of their class to a state college of their choice has filled incoming classes almost entirely with students admitted under this rule. UT officials estimate 81 percent of the 2008 incoming freshman class were top ten percent students, and worry that soon it will be the only criterion under which students get into the university.

SB 175, by Plano Senator Florence Shapiro, would cap admissions under the top ten rule at 60 percent of an incoming class. The remainder of students would be admitted using a holistic review process. Shapiro said this will give admissions officers more flexibility in picking who gets in and who doesn't. "Fifty percent of the students will still come in under the top-ten percent rule, but it opens up that window for more students to come in under other qualifiers besides being only in the top ten percent," she said.

The bill was amended by Senators Steve Ogden and Eddie Lucio to include a scholarship program for poorer students that graduate in the top ten percent. The amendments would permit a top-ten student who demonstrates need to receive a full-tuition scholarship to a state university. The bill now heads to the House for further consideration.

Tuesday, the Senate Government Organization Committee looked at a bill that would continue the operation

of the Texas Department of Insurance (TDI) for another 12 years. The bill, SB 1007 by Senator Glenn Hegar of Katy, would also make a number of reforms at the agency. These reforms include more clear regulations surrounding the state's file-and-use system of approving insurance rate changes. Currently, companies may submit rate change requests to the agency, but then go ahead and use those rates while officials consider them. Hegar advocated in favor of this system, saying it offers the right amount of protection to consumers. "Regulation may be beneficial to consumers when the correct things are monitored," he said. "Ensuring that a company can cover its claims is chief among these. File-and-use provides for this type of oversight and therefore the right kind of regulation."

The standards for accepting rate changes are unclear, said Hegar, and lead to lengthy negotiations before the changes are approved. His bill aims to streamline this process, and would require TDI to approve rate change requests within 30 days. It would also require preferred provider organizations to be licensed by the state, and would rearrange the Texas Windstorm Insurance Association board of directors to get tax-exempt status for that agency. The bill remains before the committee as Senators consider a number of proposed amendments to the

measure.

Senators on the Senate State Affairs Committee heard testimony Thursday on a bill intended to make group health insurance more affordable for small business owners and employees. The measure was spurred by a 2007 TDI report that found only 32 percent of businesses with 50 or fewer employees offer group health insurance, largely because of the high cost of premiums. SB 6, by Lubbock Senator Robert Duncan, seeks to decrease risk and increase predictability in the small business insurance market and drive down premiums. The bill would create a reinsurance fund that would reimburse insurers for up to 80 percent of a claim ranging between \$5,000 and \$75,000. Businesses would be eligible to get insurance under the measure if they have fewer than 50 employees, with about a third of employees at or below 300 percent of the federal poverty level. The bill remains pending before the committee.

The Senate will reconvene Monday, March 30 at 1:30 p.m.

**MITCHELL THEATRES NORTHBRIDGE CINEMA**  
 Guymon, Oklahoma

---

**FRESH POPCORN EVERYDAY!**  
**-PARTY ROOM & ARCADE-**  
 Call for Showtimes  
 580-338-3281  
 www.northridge8.com

**FREE DIRECTV 4 ROOM SYSTEM!**

265+ ALL DIGITAL CHANNELS!  
 130 HD CHANNELS!  
 FREE HBO, Showtime & Starz for 3 Months!  
 Packages Start only \$29.99  
 FREE DVR/HD  
 No Start Up Costs!  
 We're Local Installers!

**Toll Free 800-214-7110**

**Weatherford Construction**  
 Septic Systems

Kirk Weatherford (806) 336-2820  
 8125 FM 3395 Toll Free: 1-800-585-6047  
 Sanford, TX 79078 Email: kirk@weatherford-construction.com

**SUDOKU PRESENTED BY**

**VolunteerMatch.org**  
 Where volunteering begins.

4			1	6			
2	9	7			6	3	
	6	1					8
	4		3				5 8
	2						7
1	7			5			2
	8					9	1
	1	4			9	2	7
				6	7		
							3

© 2009, StatePoint Media, Inc. answer on classified page  
 Fill in the blank squares in the grid, making sure that every row, column and 3-by-3 box includes all digits 1 through 9.

**FAMOUS COUPLES**

These games are brought to you by the **Hansford County Reporter-Statesman**

**ACROSS**

- Ad campaign \_\_\_ it or ticket"
- Final month of year
- A deadly challenge
- Club used by police in India
- Retirement investment
- Owned apartment, not rented
- He bears the sky on his shoulders
- Cul de \_\_\_
- Articulate
- "She betrayed her lover by cutting his hair
- "Husband to #34
- Beak or snout
- Snake form
- "Priscilla Presley's famous hubbie recorded for this label
- Presidential right
- Distant friend
- Villain's rival
- River in Armenia
- Commonly used with "charger"
- Zeal or elegance
- "Harold's tragic love object
- Pilot's stunt
- River in Italy
- Neighborhood map
- "Cobain's love
- Tip of lion's tail resembles this
- League of \_\_\_ States
- Man's tasseled hat
- Salty drop
- Short for "politician"
- "Ozzie's other half
- 1st floor in relation to 2nd floor
- African chieftain
- Metal-bearing rock
- It often goes with cheese and peppers
- "He was "Superman" to Kidder's Lane
- Computer network
- Place in a grave or tomb
- Both extremities of something that has length
- Solution of sodium or potassium hydroxide
- Industrial center of the Ruhr in Germany
- Cruz, a.k.a "Queen of Salsa"
- Inhabitants of country just south of Iraq
- Mouse catcher
- Often goes with "void"
- "Burden of \_\_\_"
- "\_\_\_ and beyond"
- "She was half of Bennifer
- Dollar bills
- Sixth month of civil year
- A day's march
- Many might now do this later than expected
- "Farrah's Hollywood husband
- "Half of famous outlaw couple
- Circular island of coral
- What Tower of Pisa
- does
- The present location
- End of prayer
- "She played George Bailey's Mary in 'It's a Wonderful Life"
- RPMs
- "Well" in Italy
- Parts of a play
- "I \_\_\_ wed"
- It alerts others
- Everybody loved him on TV?

**DOWN**

- Clothed
- It's better than never?
- It will
- Prison gang
- 9th month of ecclesiastical year in Jewish calendar
- A particular item of food
- Geological time pe-

**CROSSWORD**

1	2	3	4	5	6	7	8	9	10	11	12		
13					14				15				
16					17				18				
19					20				21	22			
				23					24				
25	26	27			28			29	30	31	32	33	34
35					36				37				
40									42				
44					45				46				
48									49				
57	58	59	60						61				
65									66	67			
69									70				
72									73				

**PRESENTED BY**

**VolunteerMatch.org**  
 Where volunteering begins.

© 2009, StatePoint Media, Inc. answer on classified page

**The Hansford County Reporter-Statesman**  
 213 Main Street • Spearman, TX 79081  
 Phone - (806) 659-3434 • Fax - (806) 398-9080  
 www.spearmanreporter.com  
 reporter@spearmanreporter.com  
 cathysmith@valomet.com

**Mon.-Thurs. 9 a.m.-12 p.m., Mon.-Wed. & 1-5 p.m.**  
**Closed Thurs. afternoon and all day Fri., Sat. & Sun.**

**Gary Smith - Publisher** Catherine Smith - Editor  
 Contributing Writers: Dorothy Hudson, Jim Derington,  
 Merry Sparks, Cecil Biggers  
 Contributing Photographer: Charlie Johnson

**Subscription Rates**  
 In Hansford County - \$30.00 • Out of County - \$40.00

The Hansford County Reporter-Statesman (USPS 529660) is published weekly in Spearman, TX. Periodical postage paid in Spearman, TX. **POSTMASTER:** Send address changes to: The Hansford County Reporter-Statesman, 213 Main Street, Spearman, TX 79081.

**Publication Policy**  
 The deadline to submit news and advertising to The Hansford County Reporter-Statesman is Monday at 5 p.m. Items submitted after the deadline will be published at a later date, as time and space permit. Publication of all items is at the discretion of the editor.

**Advertising**  
 Open Display rates are \$4.00 per column inch. Classified Ads are \$6 for the first 25 words and 10¢ per word for each additional word. (Additional charge for boxed classifieds.) There is a \$1 charge per week if billed.

Member of  
 Gruver Chamber of Commerce  
 Spearman Chamber of Commerce  
 Texas Press Association and Panhandle Press Association

**TEXAS PRESS ASSOCIATION AWARD WINNER**





# Agricultural News

# Good Health Naturally

## USDA Extends Sign-Up for DCP & Acre Programs

Rick Hargrove, County Executive Director of USDA's Farm Service Agency in Hansford County announced today that USDA has extended the sign-up deadline from June 1, to Aug. 14, 2009, for both the Direct and Counter-cyclical Program (DCP) and the forthcoming Average Crop Revenue Election (ACRE) Program. This action extends the sign-up deadline by 10 weeks to give producers ample time to decide whether to participate in ACRE or remain in DCP.

"Extending the sign-up deadline for both these programs ensure that America's farmers have enough information and time needed to determine if ACRE is the right program for their operational needs," said Hargrove. "The DCP and ACRE programs play a critical role in the farm safety net and it is vital that we act to support the hard work of the farmers we depend on."

Sign-up for ACRE is expected to start in late April, with an official sign-up announcement to be made in the coming weeks. Producers can elect ACRE at their FSA county office after the sign-up period commences. The original June 1 deadline may have forced producers to rush their decision, which is why this extension gives producers more time to make an informed decision about staying with DCP for 2009 or participating in ACRE for crop year 2009 and beyond through 2012.

The ACRE program, authorized by the 2008 Farm Bill, provides eligible producers a state-level revenue guarantee, based on the 5-year state Olympic average yield and the 2-year national average price. ACRE payments are made when both state and farm-level triggers are met. By participating in ACRE, producers elect to forgo counter-cyclical payments, receive a 20-percent reduction in direct payments and a 30-percent reduction in loan rates. The decision to elect ACRE binds the farm to the program through the 2012 crop year, the last crop year covered by the 2008 Act.

For more information about ACRE, DCP and other price support programs, please visit your local USDA Service Center or your local FSA county office. You can also obtain information on-line at <http://www.fsa.usda.gov>.

## Cattlemen's Day

Cattlemen across Texas gathered in Austin today to discuss important issues critical to the cattle industry with the Texas Legislature. Members of Texas and Southwestern Cattle Raisers (TSCRA) and Texas Cattle Feeders (TCFA) were recognized in the House and Senate chambers as the Legislature designated April 1, 2009, as Texas Cattlemen at the Capitol Day.

"Every Texan knows the story of the legendary cattle drives of the Chisholm and Goodnight-Loving Trails. Certainly cattle production has played a prominent role in the culture and heritage of Texas; however that role isn't just in our history," TSCRA President Dave Scott said.

"The cattle industry in Texas is very much alive and well. Today, cattle in Texas have a direct impact of \$15 billion to the Texas economy and provide millions of Americans with safe and healthy beef. Our issues are not only important to cattle producers, but they are also important to the financial stability of our state."

Cattle theft, eminent domain, renewable energy and increasing the maximum allowable truck weight were a few topics discussed with lawmakers.

"One of the most important issues to cattle producers is increasing the penalty for cattle theft, which is on the rise in Texas. Between 2007 and 2008 theft of cattle in Texas tripled. The slumping economy and the lack of stronger penalties have enticed thieves to steal more frequently and repeatedly.

"Right now, theft of cattle less than 10 head is a state jail felony. We are working to increase that to a third degree felony. We believe that many of those professional thieves will think twice about stealing cattle if they know they can get serious time in prison," Scott continued.

Members recognized at the State Capitol were Dave Scott, Richmond, president, Texas and Southwestern Cattle Raisers Association; Monte Cluck, Gruver, chairman, Texas Cattle Feeders Association; Joe Parker, Byers, first vice president, Texas and Southwestern Cattle Raisers Association; Bo Kizziar, Spearman, vice chairman, Texas Cattle Feeders Association; Clay Birdwell, Canyon, second vice president, Texas and Southwestern Cattle Raisers Association; Jason Peeler, San Antonio, member of Legislative and Regulatory Committee, Texas Cattle Feeders Association; Dr. Dick Sherron, Beaumont, past president, Texas and Southwestern Cattle Raisers Association; and Arthur Uhl, San Antonio, director and chairman of Legislative and Tax Committee, Texas and Southwestern Cattle Raisers Association.

## Rainwater Harvesting

Billy Kniffen, Water Resource Specialist with the Texas AgriLife Extension Service, will be in Dumas on April 21 to conduct a free informational class on Rainwater Harvesting sponsored by North Plains Groundwater Conservation District. Mr. Kniffen travels the state of Texas promoting the use of rainwater as a source of optional water for homes, businesses, agricultural operations, and wildlife habitat.

Mr. Kniffen has worked for the Texas AgriLife Extension Service for 26 years and served as the president of the Texas Rainwater Catchment Association. He has also served in several roles for the American Rainwater Catchment Systems Association. He has assisted with several publications including Harvesting Rainwater for Wildlife, an AgriLife Extension booklet titled Rainwater Harvesting, and Rainwater Harvesting in West Texas. He also serves on AgriLife Extension's Rainwater Task Force.

Billy and his wife live in a home in Menard, Texas that is totally dependent on rainwater for all uses. Data that they have collected shows that they use 35 gallons of water per person a day in their home, and they have the ability to maintain their home on less than 9 inches of rainfall per year. He will answer questions from anyone interested in knowing more about putting in a home rainwater harvesting system.

For many home-owners who are not interested in providing for all of their home water needs with rainwater, installing a rain barrel system to capture water for landscape watering is an attractive option, and instructions for installing rain barrels will also be a topic during the Tuesday evening presentation.

Owners of agricultural operations who have barns or covered areas, such as those found in dairies, will also be surprised at how much water they can collect from a one inch rainfall. For every inch of rain, about 600 gallons of water can be collected from 1,000 sq.ft. of roof area. A typical home with 2000 sq.ft. of roof area in the Texas Panhandle can yield up to 20,000 gallons a year, water that would otherwise run off.

The Texas Water Development Board says that rainwater harvesting is enjoying a revival in popularity for two reasons: its inherently superior quality and an interest in reducing consumption of treated water. Rainwater has long been valued for its purity and softness. It is slightly acidic, and is free from disinfectant by-products, salts, minerals, and other natural and man-made contaminants. Furthermore, rainwater harvesting is valued as a water conservation tool to reduce demands on more traditional water supply sources.

Mr. Kniffen will conduct a two hour class, from 6:00 p.m. to 8:00 p.m. on April 21 at the Amarillo College Moore County Campus auditorium, at 1220 East 1st Street in Dumas. There will be free informational materials on all aspects of rainwater harvesting available as well. Persons interested in attending are encouraged to register for the class by calling North Plains Groundwater Conservation District at 806-935-6401 or by e-mailing to Rhonda Artho at [artho@npwd.org](mailto:artho@npwd.org). Registration is not mandatory, and everyone is welcome to attend, but registering will aid the District in planning for quantities of free informational materials to have on hand that evening.

by Darlene Hopkins

*I live in Hooker Ok. I am a mother and housewife by profession and a Master Herbalist by choice. I obtained my Herbalist and Master Herbalist Degrees from the School of Natural Healing in Springville Utah. Dr. John Ray Christopher started this school in 1953. I teach classes on Natural Health in Colorado, Kansas, Texas and Oklahoma.*

*If you have a question, you may e-mail me at theherblady01@yahoo.com.*

Some folks think that getting older means getting slower. Its true as we age we may find we can't walk quite as fast, we do not react in sports quite like we use to, we feel aches and pains as we try to climb the stairs we once could climb easily, however, we know that a healthy diet, regular exercise, clean water and good emotional health can make a HUGE difference in our health, strength and mobility as we age. This is true for our mental abilities as well. The good news is, just like our physical health, we can improve how we function mentally. Eating healthy foods and mental exercise can significantly increase our mental endurance; improve our memory and ability to focus.

Did you know that there are foods that can improve your memory? Scientists have discovered that there are foods that can actually improve the memory. "You are what you eat!" What have you been eating? Foods are made up of vitamins and minerals; we will talk about what vitamins help brain function.

Just remember that man made vitamins and GOD made vitamins are different so I suggest you stick to the natural vitamins and try getting

what you need through your foods. There is so much information that I want to cover on brain function and memory that I am going to do this in two parts. Next week I will finish this article. I believe this is an important issue for today's lifestyle, whenever I talk to folks about memory they get their pens out and seem to listen just a little better. Poor memory is something that seems to be affecting all of us and there is a reason for that.

I clipped this from web MD, thought you might find this of interest. There are reports that vitamins B, C, E, beta-carotene, and magnesium can boost brainpower. Noralyn L. Wilson, RD, a spokeswoman for the American Dietetic Association says: All of those substances are present in high amounts in real foods. Vitamin C can be found in citrus fruits, and beta-carotene in carrots, spinach, and other dark green, leafy vegetables. "There's a place for supplements and nutrients," she says, "but they're not substitutes for whole foods."

When we have certain vitamins in the body it helps us to think more clearly. Vitamin B1: Thiamine is essential for the health of the brain. Lack of B1 can cause mental confusion. Foods containing B1 are wheat germ, brewers yeast, green peas, bran, carrots, spinach and nuts. If you are diabetic please do not eat nuts after 2:00 pm and make sure you chew them well. Get raw nuts, not the ones that are roasted and have hydrogenated oil. Raw sunflower seeds are excellent; they have b1, b2, b3, b5 and b6, all of which will be mentioned in this article.

B2: Riboflavin is important in energy production and it helps with memory, b2 is needed, without b2; b3 and b6

cannot do their job effectively. Foods that contain b2 are Almonds, brewer's yeast, Spinach, Soybeans, Mushrooms, leafy green vegetables, sunflower seeds and wild rice

B3: Niacin, a deficiency of niacin produces memory failure. If you are a typical individual who eats healthy meals each day, you have no reason to worry about niacin deficiency. Some niacin rich foods include almonds and seeds, beans, Brown rice, green leafy vegetables, carrots, turnips and celery.

B-5: Pantothenic acid acts as an antioxidant. It helps release energy from food and keeps the nervous system and skin healthy. We've heard a great deal about antioxidants and their importance. Antioxidants help your immune system but they also enhance the activity of the brain. Foods that have B5 are Sunflower seeds, broccoli, cauliflower, beans and Mushrooms. When eating a well-rounded diet you'll get plenty of vitamin B5, however, processing and cooking destroys some of this vitamin. Dry heat cooking methods such as frying are more likely to deplete the vitamin content. Moist heat cooking such as stewing and poaching will not destroy as much of this vitamin.

B6: what can foods high in vitamin B6 do for you? Support a wide range of activities in your nervous system, promotes proper breakdown of sugar and starches, Vitamin B6 must be obtained from the diet because humans cannot synthesize it. Foods that contain B6 are bananas, spinach, potatoes, carrots and hazel nuts. If you feel fatigue, are anemic, convulsions or seizures and have eczema or dermatitis see if you are getting enough b6 in your diet, as this may be a contributing factor.

# Spearman Stingrays Swim Team

**Looking For A Great Way to Spend Your Summer?**

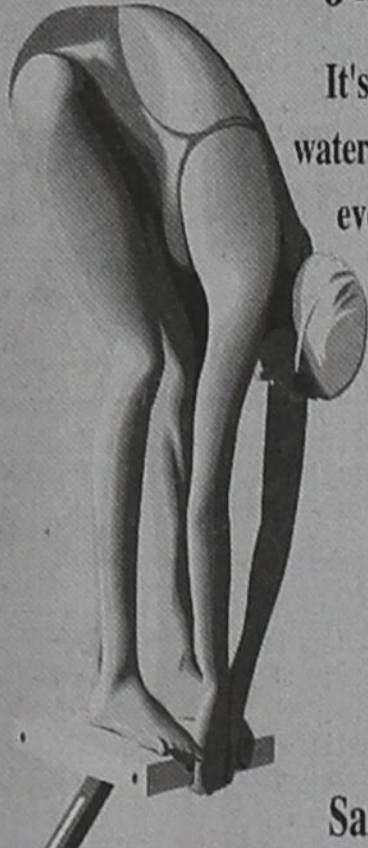
**Join the Spearman Stingrays Swim Team!**

It's time to start thinking about another exciting summer in the water. Joining the Spearman Swim Team is a great way to have fun, evolve into an all around better athlete, and most importantly become a part of the swim team family.

**Sign-Ups and Swim Suit Fitting**  
April 8, 2009, 6-8 p.m.

First United Methodist Church Fellowship Hall  
Kids in Spearman, Gruver, and Perryton welcome!

If you have any questions, please call  
Hope Kemp 659-5062, Macy Holton 659-5368  
Samantha Wilkerson 659-5739 or Jill Butler 435-2503



You are invited to an  
**Open House**  
of the  
**New Family Life Center**  
at First Baptist Church  
Sunday April 5, 2009  
2:00-3:30 -m.  
123 S. Bernice St.  
Spearman, Texas

# Bunkhouse Restaurant

The Bunkhouse would like to welcome our new cook, Phil Way. Phil will be cooking from 6 a.m.-2 p.m., Monday-Friday. Thursday nights will be "Phil's Night."

**New Hours, Beginning April 1st**

Sun-Fri, 6 - 10:30 a.m. - Breakfast; Sun-Fri 11 a.m. - 2 p.m. - Lunch (Lunch Buffet)  
Tue-Thu, 5-8 p.m.; Fri-Sat 5-9 p.m.

## Bunkhouse Restaurant

212 MAIN STREET • SPEARMAN • (806) 659-2089

HOURS: TUES.-THURS., 11 A.M.-9 P.M.; SAT., 11 A.M.-10 P.M.; SUN., 11 A.M.-2 P.M.



## Hansford County Sports

### Class 2A Golden Spread Super Team

**Boys Player of the Year: Jordan Ashmore, Spearman, 6-4, Sr., Guard** - Averaged more than 26 points and nearly 10 rebounds a game as the Lynx won 27 games and advanced to the regional quarterfinals before losing to state tournament qualifier Shallowater.

**Boys Coach of the Year: Steve Rhodes, Bushland** - At midseason, the Falcons were hovering near the .500 mark after battling injuries and inconsistency. After an opening loss in district play, they didn't lose again until the regional tournament semifinal against Eastland.

**Boys Team**  
Sawyer Cornelius, Bushland, 5-10, Jr., Guard: A good 3-point shooter who averaged more than 12 points per game for the 1-2A champion Falcons.

Michael Matthews, Bushland, 6-2, Jr., Forward: Outstanding leader who can score from inside or outside. He was at his best in the playoffs and big games.

Dontae Flemons, Childress, 5-10, Jr., Guard: The leading scorer for the Bobcats, who won 25 games during the regular season and finished second in District 2-2A.

Kalor Williams, Highland Park, 6-1, Sr., Forward: Averaged 14.5 points, seven rebounds and more than four steals for a team that won 20 games in the regular season.

Matt Smith, Panhandle, 5-10, Sr., Guard: Averaged more than 13 points per game for the Panthers, who finished third in District 1-2A.

**Girls Player of the Year: Callie Schniederjan, Dalhart, 5-6, Sr., Guard** - An outstanding player at both ends of the floor and an all-District 1-3A selection. She was the Lady Wolves' leading scorer and rebounder.

**Girls Coach of the Year: Kurt Richardson, Panhandle** - Guided the Pantherettes to the District 1-2A title and a win over Idalou in the area round of the playoffs. They won 21 games before losing to Appleton in the regional quarterfinals.

**Girls Team**  
Tori Velasquez, River Road, 5-7, Sr., Guard: The most valuable player in District 1-2A, she was the Lady Wildcats' leading scorer and their floor leader.

**Bond Pittman, Spearman, 5-5, Sr., Guard**: A playmaker and floor leader who was at her best in big games for the District 1-2A runner-up Lynxettes, who won 25 games and reached the regional quarterfinals.

Keslie Satterwhite, Panhandle, 5-9, Sr., Guard: A consistent player at both ends of the floor for the district champion Pantherettes, who reached the regional quarterfinals.

Lisa Adams, Bushland, 5-10, Sr., Post: Was injured for much of the season, but when she returned, the Lady Falcons were able to make the playoffs. Averaged nearly 18 points per game.

Hannah Mitchell, Panhandle, 5-9, Sr., Forward: Was a steady performer all season for the district champion Pantherettes. She was at her best in clutch situations.

### Class 1A Golden Spread Super Team

**Boys Player of the Year: Nicky Rowland, Nazareth** - Played in three state championship games during his career. His layup with less than a second to play lifted the Swifts past Vega in the regional championship game.

**Boys Coach of the Year: Zach Boxell, Nazareth** - His team was 8-11 in January before winning 15 of the next 16 games to reach the state tournament for the second time in his three seasons as head coach of the Swifts.

**Boys Team**  
Jared Messer, Wheeler, 6-4, Sr., Forward: Averaged nearly 24 points and 11 rebounds for 22-3 Mustangs, who were ranked No. 4 and reached the area round of the playoffs.

Sage Black, Nazareth, 6-2, Jr., Forward: Averaged more than 20 points and eight rebounds for the state runner-up Swifts.

Brady Harwell, Vega, 6-0, Sr., Forward: Averaged nearly 12 points and eight rebounds for the Longhorns, who were ranked No. 1 for much of the season.

Johnny Gaines, Clarendon, 5-7, So., Guard: The leading playmaker for the No. 3 Broncoes, who went unbeaten in district and reached the area round of the playoffs.

Trey Galbraith, Vega, 6-1, Sr., Guard: The Longhorns' leading scorer, he averaged more than 14 points as they reached the regional championship game.

**Girls Player of the Year: Teysha Matthews, Vega** - The leading scorer and floor leader for the Lady Longhorns as they reached the state tournament for the first time in 10 years.

**Girls Coach of the Year: Justin Shultz, Vega** - After struggling to find consistency early in the season, Shultz got his team playing its best when it counted most. Few followers gave them a chance to

reach the state tournament, but they did.

**Girls Team**  
Stormi Lancaster, Fort Elliott, 5-10, Sr., Forward: Averaged more than 20 points and 10 rebounds for the Lady Cougars, who reached the regional championship game.

Skyler Warrick, Wellington, 6-0, Jr., Post: Led the Lady Skyrockets in just about every category, averaging more than 16 points, 13 rebounds, four assists and nearly five steals.

Morgan Saul, Canadian, 5-8, Sr., Forward: Averaged 17 points, 6.5 rebounds, three assists and three steals for the Lady Wildcats, who were ranked No. 1 most of the season.

Ashlynn Knoll, Happy, 6-0, Jr., Forward: The Cowgirls' leading scorer and rebounder as they advanced to the regional quarterfinals before losing to state semifinalist Vega.

**Mattie Yanke, Gruver, 5-9, Sr., Forward**: The leading scorer for the Lady Greyhounds, who won 27 games and advanced to the regional tournament.

### Amarillo Globe-News Boys Track Honor Roll Thursday, March 26, 2009

**300 Hurdles**: Tyler Howard, Amarillo High 39.80; Christian Puschman, Amarillo High 40.15; Francisco Casanova, Dumas 40.55; Clint Cockrell, Canadian 40.89; Westin Williams, Wellington 41.23; Michael Stigler, Canyon 41.69; Leonel Avila, Canadian 42.17; Logan Stegall, Childress 42.53; Alexander, Boys Ranch 42.7; **Cameron Meddock, Spearman 42.83**; Brian Wayne, Palo Duro 43.07; Caleb McGuire, Bushland 43.08

**1600 Relay**: Amarillo High 3:25.10; Dumas 3:32.19; Canadian 3:32.21; Palo Duro 3:32.56; Tascosa 3:33.0; River Road 3:34.78; Hereford 3:34.78; Panhandle 3:35.72; Randall 3:36.62; Highland Park 3:37.59; **Spearman 3:38.18**; Dimmitt 3:39.14

**High Jump**: Reed Parvin, Booker 6-6; Aaron Gordon, Clarendon 6-4; **Riley Urban, Gruver 6-2**; Terrence Williams, Dumas 6-2; Chris Sigler, West Texas 6-2; Terrence Williams, Dumas 6-1; Ivan Castaneda, Amarillo High 6-0; Dalton Koller, Amarillo High 6-0; Beal, Boys Ranch 6-0; Zach Watson, Palo Duro 6-0; Andy Roberts, Tascosa 6-0; Tyler Puschman, Arbor Christian 6-0; Darren Bumpas, Sunray 6-0; Eric Beall, Boys Ranch 6-0

**Long Jump**: Eric Heyd, Dumas 21-5/4; **Keegan Garnett, Spearman 21-1**; Michael Sanchez, S-Fritch 21-

12.25; Kelsi Chadwick, Randall 12.27; Shelby McKnight, Wellington 12.34; Allison Martinez, Amarillo High 12.40; Katie Jones, Boys Ranch 12.63; Callie Haley, Tascosa 12.71; Brittney Walton, Borger 12.74; Jarae Ward, Hereford 12.78; Tara Tarrant, Randall 12.80; Alexis Stephens, Caprock 12.82; **Sarah Snider, Spearman 12.88**; Shelby McKnight, Wellington 12.91

**200 Meters**: Tara Tarrant, Randall 25.76; Madeline Williams, Randall 25.81; McKensie Rogers, Perryton 26.05; Sarah Snider, Caprock 26.05; Michelle Ratliff, San Jacinto 26.08; Mariah Williams, Highland Park 26.14; Callie Brisen, Amarillo High 26.43; Jordan Fowler, Amarillo High 26.52; **Sarah Snider, Spearman 26.61**; Natalie Parker, Pampa 26.84; Callie Haley, Tascosa 26.97; Kia Bryley, Clarendon 26.98

**800 Meters**: Kryssalee Saucedo, Hereford 2:24.02; Alex Allison, Amarillo High 2:25.00; Ana Lopez, Hereford 2:27.00; Briciana Garcia, Canyon 2:27.33; Karlee Kleiber, Randall 2:29.24; Thornberry, Sunray 2:30.01; Shelby Greenwalt, Shamrock 2:30.39; Olivia Martinez, Canyon 2:30.97; **Tylo Farrar, Spearman 2:32.02**; Caitlin Gilmore, Canyon 2:32.36; Halie Herbert, Perryton 2:33.05; Elissa Betts, Amarillo High 2:33.72

**3200 Meters**: Alyssa Diaz, Hereford 11:15.6; Jessica Blakely, Hereford 11:37.7; Aries Bazaldua, Canyon 11:46.24; Ana Lopez, Hereford 11:47.1; Melissa Velazco, Shamrock 12:04.24; Melina Morantes, Hereford 12:16.7;

### Amarillo Globe-News Girls Track Honor Roll Wednesday, April 1, 2009

**100 Meters**: Mariah Williams, Highland Park

PLAYER REGISTRATION  
**SPEARMAN LITTLE LEAGUE**  
TUESDAY, APRIL 7TH  
**SPEARMAN ELEMENTARY**

Taylor Sparks, Wheeler 12:22.0; Leslie Brummett, Canyon 12:24.11; Lindsey Taylor, Amarillo High 12:36.78; Halie Merket, Canadian 12:39.95; Smith, Sunray 12:41.82; **Sutten Garnett, Spearman 12:43.90**

**1600 Relay**: Canyon 3:59.00; Amarillo High 4:04.00; Hereford 4:10.42; Canadian 4:11.47; Sunray 4:11.98; Randall 4:19.59; River Road 4:20.63; Perryton 4:23.49; **Spearman 4:24.83**; Arbor Christian 4:27.60; Borger 4:27.84; Bushland 4:31.59

**High Jump**: Micah Nolan, Amarillo High 5-4; Marlee Reynolds, Dalhart 5-4; Sinead Everett, Stratford 5-3; Emily Nicklas, White Deer 5-2; Jaymee Schafer, Canadian 5-0; Victoria Ewulo, Amarillo High 5-0; Jenna Wilson, West Texas 5-0; Breann Gooch, Floydada 5-0; Wilson, West Texas 5-0; Christen Brandt, Canyon 4-11; Morgan Dean, Canyon 4-10; Natalia Hernandez, Booker 4-10; Chelsea Lee, Caprock 4-10; Carlee Hufstедler, Amarillo High 4-10; **Mallory Martin, Spearman 4-10**

**Pole Vault**: Eden Williams, Amarillo High 10-6; Kelsi Chadwick, Randall 10-6; Alex White, Tascosa 9-6; Valerie Miller, Lefors 9-0; Emilea Carter, Amarillo High 9-0; Lauren Ehle, Amarillo High 9-0; **Makenzie Crane, Gruver 9-0**; Gwen Anderson, Canyon 8-6; Kyndall Whitely, Sunray 8-6; Christa Hathaway, Canyon 8-6; Sharkita Morrison, Borger 8-4; Faith Trevino, Sunray 8-0; Tiffany Schumacher, Dalhart 8-0; Nicole Taylor, Tascosa 8-0; **Bond Pittman, Spearman 8-**

### SPRING SPORT SCHEDULES

**SHS TENNIS SCHEDULE**  
April 4 - JV District Tournament Spearman  
High School One Day Tournament- All Div.  
April 9-10 - District Tennis Tournament  
Amarillo Tennis Center TBA  
April TBA - Regional Qualifiers Tournament TBA  
April 21-22 - Regional Tennis Tournament  
Ratliff Stadium, Odessa College TBA  
May 11-12 - State Tennis Tournament  
World of Tennis at Lakeway TBA

**GISD TRACK SCHEDULE**  
April 4 - JH District Meet, Gruver  
April 6 & 8 - District Meet, Panhandle  
April 14 - Area Meet, Panhandle  
May 1 & 2 - Regional Meet, Levelland  
May 15 & 16 - State Meet, Austin

**GHS TENNIS SCHEDULE**  
April 15-16 - District Meet, Amarillo  
April 20-22 - Regional Meet, Levelland  
May 11-12 - State Meet, Austin

**GHS GOLF SCHEDULE**  
April 7 - District, Round One, Girls at Phillips Golf Course, Boys at Huber Golf Course  
April 13 - District Round Two, Girls at Phillips Golf Course, Boys at Huber Golf Course  
April 20 & 21 - Regional Tournament, Lubbock; Girls at Elm Grove Golf Course, Boys at Reese Golf Course  
May 11 & 12 - State Tournament, Morris Williams Golf Course

## Our Gift Department is Loaded with NEW ITEMS!

Kritina & Donna would love to help you find that perfect gift.

### Jon Hart Trunk Show & Sale

FREE monogramming on all orders placed April 1-11.

Our Graduation Sale is at the head of its class!

SALE PRICES until April 30th

**Gordon's DRUG**  
314 Main • Spearman • 659-2141

## NOW OPEN

# HANSFORD COUNTY FLORAL COMPANY

300 Main St Spearman 806-644-4000  
www.hansfordcountyfloralcompany.com  
Monday-Friday, 8 a.m.-6 p.m.; This Saturday, 8 a.m.-6 p.m.

**FRESH & SILK FLOWERS • LIVE & SILK PLANTS**  
**DECORATIVE ACCESSORIES**

Stan TeBeest Glenn Humphreys

### Palace Theatre

MOVIE SHOW TIMES  
Friday-Thursday - 7 p.m.  
Sunday - 2 p.m.  
Closed Sunday Night

FRESH POPCORN & DRINKS!  
PARTY ROOM & ARCADE  
MOVIE RENTALS

Palace Theatre  
210 Main Street  
Canadian TX 79014  
806-323-5133  
www.palacetheatre.com

The Palace Theatre meets Lucasfilm THX specifications for site and sound quality.



by Dorothy Hudson

# Out at the Lake



Jim Derington  
Palo Duro River Authority  
P.O. Box 99  
Spearman, TX 79081  
806-882-4401  
pdra@dishmail.net



These Spearman Scouts came to the P.D.R.A. office, Wednesday, March 25, for a waterfowl and wildlife discussion.

Lake Level--March 30, 2009--20.00 feet (-0.05)

Jim reported heavier snowfall at the Lake than we had here in Gruver. He and Ramon estimated it at between

10 and 12 inches. The office gauge showed 1.12 inch of water.

Jim had a meeting at Dumas last Monday and one at Amarillo on Tuesday. Wednesday and Thursday they prepared for the storm by moving the heavy equipment they might need to the office side and by putting chains on some vehicles. After the storm, they helped clear the county road near the Park and saw to it that their roads were open.

Last Wednesday K. C. Garnett, leader, and Nancy Kelly brought out 8 boys to the office for a visit with Jim. He showed them pictures taken at the Park. They asked the questions, and Jim gave the answers. Then they looked at the eagle nest site on the computer. They did not get to see the eaglet as the eagle on the nest just kept it warm.

As there were 3 eggs in the nest at the eaglecams site on Sooner Lake near Stillwater, Oklahoma, I kept wondering if another chick had hatched. I was off the internet until this morning and could not find

out. Today though I learned there had been marital discord between the new parents. The father had brought in an American Coot (better known here as a mudhen) as dinner for all. While he was busy with it and the chick had scrambled to the dead bird, the mother took the two unhatched eggs and buried them in the center of the nest. She then flew away.

The male promptly dug out the eggs and began brooding on them. He ignored the baby, but the little one had sense enough to bury in the male's feathers to stay warm.

I will try to find out how the female will get her way.

To view on the computer [www.suttoncenter.org/eaglecam.html](http://www.suttoncenter.org/eaglecam.html)

## WHEN DOES YOUR SUBSCRIPTION EXPIRE?

SCR1  
**02/09 EXPIRES**  
JOHN Q. PUBLIC  
PO BOX 123  
SPEARMAN TX 79081

Expiration dates are printed on the top of all mailing labels. Our readers can help keep the cost of subscriptions down by mailing in renewals in the appropriate month.

Thank you, Catherine Smith

THE HANSFORD COUNTY REPORTER-STATESMAN  
213 Main Street • Spearman, TX 79081  
**Annual Subscription Rates**  
In Hansford County - \$30  
Out of County - \$40

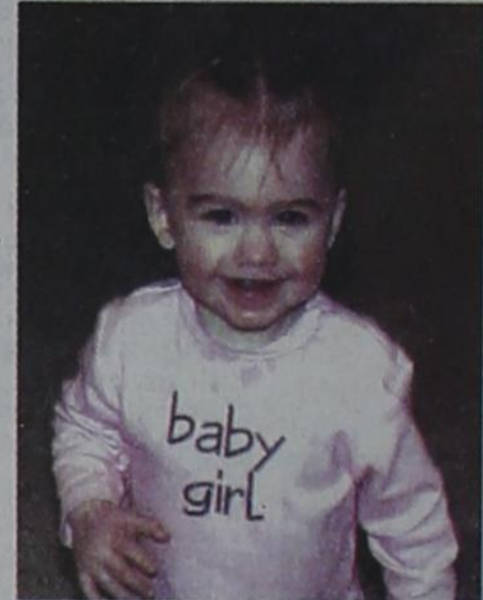
## Spearman Lynx & Lynxettes

<http://spearmansports.smugmug.com/>

Photos available of Spearman Lynx and Lynxette athletic events.

# Happy birthday Suzee

Suzee is 1 year old!



Bring coupon in for 40% off ONE gift item on Friday April 3 in celebration for Suzee's 1st birthday.

**Gordon's DRUG**

314 Main • Spearman • 659-2141

## McDowell's Custom Knives

**McDowell Knives**  
Osa McDowell & Osa McDowell Jr.  
300 Broadway 580-766-2086  
Fort Supply OK 73841  
[www.mcdowellknives.com](http://www.mcdowellknives.com)

## Tong's Chinese Restaurant

(806) 644-2838  
22 Archer Street • Spearman

### Buffet Specials

**Monday:** Chicken w/Spiced Salt, Mongolian Beef, Sweet & Sour Chicken, Fried Rice, Etc. - \$6.99  
**Tuesday:** CLOSED  
**Wednesday:** Fried Shrimp, BBQ Chicken, Pork Sub Gurn, Chop Suey, Lo Mein, Etc. - \$6.99  
**Thursday:** BBQ Pork Ribs, Pepper Chicken, Won Ton Soup, Seafood Bun, Etc. - \$6.99  
**Friday:** Shrimp w/Spiced Salt, Sesame Chicken, Broccoli Beef, Rice Noodles, Etc. - \$7.25  
**Saturday:** Catfish, Pepper Steak, Egg Drop Soup, Black Pepper Chicken, Etc. - \$7.25  
**Sunday:** Roast Beef, Potatoes & Gravy, Sugar Biscuits, Chicken-on-a-Stick, Etc. - \$7.25

Lunch Buffet 11 a.m.-2:30 (Wednesday-Monday)  
Dinner Buffet 5:30-9 p.m. (except Sunday & Tuesday)

2 Medium 2-Topping Pizzas \$14.99

Happy Hour Special  
**3 LARGE** Single Topping Pizzas 6-8 p.m. Only \$19.99

**SIMPLE SIMON'S PIZZA**

Mon.-Fri. - 11:30 a.m.-10 p.m.  
Sat. - 12 noon - 10:00 p.m.  
Sun. - 3-10 p.m.  
Deliveries 5-9 p.m.

Due to gas prices, a minimum order of \$10 is required for delivery. Please remember to tip our drivers.

312 Main Street  
Spearman, TX  
(806) 659-9991

NEW ITEMS  
Manicotti w/Bread - \$5.99  
Rib Tips w/Baked Potato, Bread, Lettuce & Tomato - \$8.99

## Three Falls COVE

From Sanford, take Hwy. 1319 across the Lake Meredith Dam. About 1/2 mile after crossing the dam, turn left on Hwy. 3395. Go 2 miles until you see a pond surrounded by beautiful cottonwood trees.  
For map, go to [www.threefallscove.com](http://www.threefallscove.com)

Shopping items and Gift Certificates available.

Kirk and Rebecca Weatherford  
8125 FM 3395  
Sanford TX 79078  
806-878-2366