

Spiritually Speaking

by Rev. Jeff L. Burress
Union Church

"Welcome Home, Soldiers! Great Job! Thanks!", the big yellow banner proclaimed. What a victory celebration! People turned out by the thousands to welcome home the troops. What a grand sight to see the families welcome home their soldiers. There were lots of tears of happiness, dancing, hugging and kissing. We all support our troops and are thrilled that they are on the way home.

Unanimous support for our troops was not surprising, but the media kept a close watch on how we supported the war. There are several factors included in why America by a vast majority supported the war. I believe the most important factor was that our leaders promised us victory.

No one likes to lose, especially when lives are at stake. We have been taught from birth to win. Even though there is a price to pay for victory, we must pursue it.

We want victory on the court. We want victory on the field. We want victory on the track. We just want to win.

If there is a team that wins every time, we like to be on that team. The guarantee of victory brings much support.

There is a team in life that wins every time. God has given those that follow him the victory. *But thanks be to God! He gives us the victory through our Lord Jesus Christ.* 1 Cor. 15:57 (NIV).

In the game of life, no one is exclusively a spectator. We are all in the game and are all players.

There are only two teams and each of us must be on one of those teams. For those who want to win there is only one team to be on. *"for everyone born of God overcomes the world. This is the victory that has overcome the world, even our faith. Who is it that overcomes the world? Only he who believes that Jesus is the Son of God."* 1 John 5:4&5. (NIV).

There is a cost for victory. Victory may have a high price, but many times losing has a much higher price.

If we lose at a board game, we usually get over it quickly. If we lose in sports, we find out what we need to do to win next time and get back on our feet and try our best to win.

Sometimes losing just bruises our ego. And sometimes we learn from our mistakes and are better for it. But in the game of life, losing is much more serious.

The victory or defeat is for eternity.

When we accept Jesus Christ, he puts our name on the roster of his Father's team (the winning team). The victory celebration will last forever. It will be even a greater celebration than the one welcoming our soldiers home.

If we reject Jesus, we are automatically placed on the losing team. That defeat will be more than just the loss of life. It will mean eternal separation from God and those you care the most for.

If you want to win, there is only one team to be on. Make that choice today. Be on the winning team. Accept Jesus Christ.

Minding Your Own Business

by Don Taylor Director, PSBDC

PURCHASING POWER

"Buy low and sell high" is good advice for the stock market and small business. However, purchasing is an area in which few business people have any direct training or education. It is a necessary and important function where a little common sense and practice can increase profits.

Businesses engage in two main types of purchasing. The first is buying items used by the business. The second is the acquisition of inventory for resale. Separate strategies should be used for each.

All businesses purchase products and services that are consumed during the course of doing business. These purchases are recognized as expenses, and savings here transfer directly to the bottom line. **Think Now, Buy Later**

Three questions should be asked before buying items to be used by the business. First, do we really need it? Second, can we really afford it? Third, which purchase represents the best value?

Give careful consideration to each major item to determine the actual need. What will this purchase do for the business? Will it save money? Will it save time? Will it attract more customers? Will it increase employee morale and productivity?

Consider the tax ramifications before buying larger items. A qualified CPA or tax accountant can point out the advantage and benefits of major purchases. If there is no cost/payback benefit, don't make the purchase.

Answer the second question by taking a quick look at cash flow projections and the current cash position. Many businesses are in a financial bind because of buying items they cannot afford.

The third area, finding the best value, is often neglected. Shop around. Compare prices and quality. Overbuying is common on major items such as telephone systems, computers, furniture and fixtures, copiers, leases and buildings.

Purchasing dollars are also wasted on small, day-to-day items. Remember that even small savings end up in your pocket. It makes learning the lesson a lot more fun. **Buying for Resale**

There are three key points to remember when purchasing for resale. 1) Buy what your customers want and need. 2) Find more than one source from which to buy. 3) Buy from the source that will give you the best combination of price, terms and quantities.

A common mistake is "buying what you like" for inventory. Even if you have impeccable taste, you may end up with a lot of dead or slow-moving merchandise on your shelves. Keeping your customers in mind will help in the selection of inventory that will sell.

Another error is not finding the best buying sources. Often, there are several suppliers for similar lines of merchandise. However, there may be big differences in pricing, order quantities, terms and delivery. Look for new and better suppliers in your trade journals, at trade shows and buyers' marts.

Once you have located several sources, look for the best combina-

tion of price, terms, order size, etc. Remember, the lowest price may not always be the best buy if order terms or quantities are not reasonable.

A few years ago, I got a terrific price on grass trimmers for our lawn and garden store. The catch was that we had to order a hundred units. For the next three years, we gave trimmers as Christmas and birthday gifts. We also promoted sales of garden tractors and movers by offering a free trimmer. We learned a costly but unforgettable lesson on purchasing the wrong quantity at a great price.

Take advantage of discount terms. A two-percent deduction taken for paying for inventory early can net an annual savings of nearly 37 percent. Another option, known as seasonal dating, can bring interest-free inventory into your store several months ahead of the selling season.

Now is a good time to take control of your purchasing. A penny saved is a penny earned.



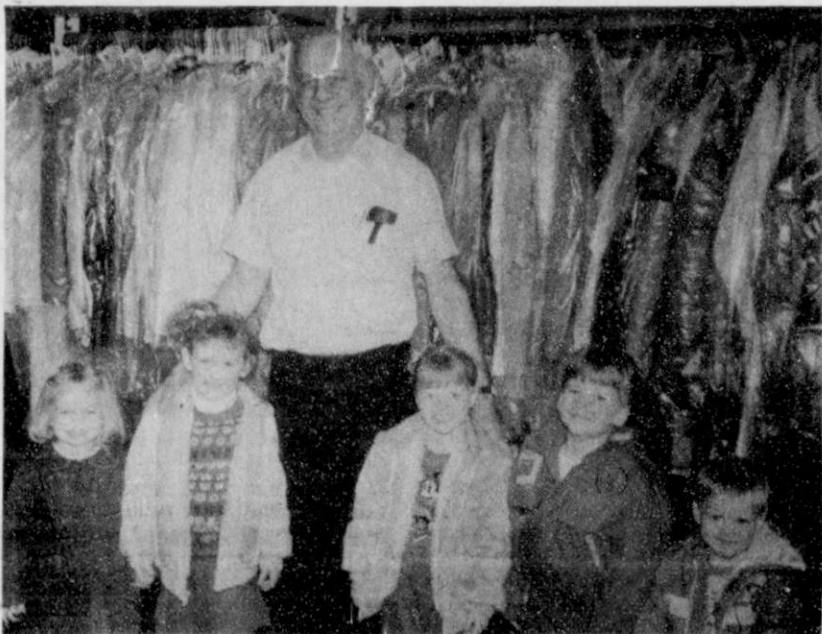
Members of the Palo Duro Players and volunteers pose for a post-Spearman Chamber of Commerce membership luncheon picture. They were part of the entertainment at the luncheon. They are (l-r) Mike Hulett (PDP), Dick Gillaspie (volunteer, Linda Butt (PDP) and Lenis Simpson (volunteer).

HENSON CHIROPRACTIC

410 S. Davis Spearman, TX

Call For Appointment 659-5603

Office Hours: Mon., Wed., Fri. 8:30-5:00
Tue., Thu. 8:30-11:30



Judy Hutchison's preschoolers toured Berry Cleaners on Friday, March 8. They include (l-r) Tessa Thoreson, Jentry Edwards, Jennifer Hutchison, Mason Edwards and Cody Hutchison. The big guy in the middle is Dan Desimone, owner of the business. The preschoolers will visit other businesses as part of their "Thinking about what we would like to be when we grow up" unit.

Hospital notes

ADMISSIONS

Friday, March 8: Louella Jones, Maudine Patterson

Sunday, March 10: Ester Weeks, Margaret Womble, Buster Schott

Tuesday, March 12: Jozie Goodman

DISMISSALS

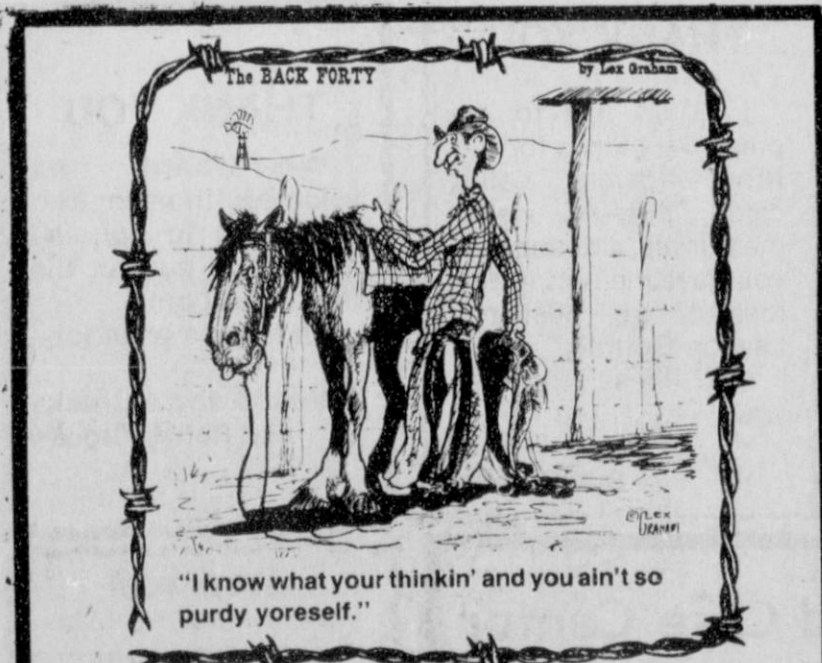
Thursday, March 7: Virginia God-

frey, William Russell

Friday, March 8: Marguerite Jenkins

Monday, March 11: Maudine Patterson, Louella Jones

Patients in the hospital are Ester Weeks, Buster Schott, Jozie Goodman, Margaret Womble



"I know what your thinkin' and you ain't so purdy yoreself."

If your mode of transportation isn't so "purdy" and you are thinking of changing it, come in to FIRST STATE BANK and talk to us about a low interest auto loan.

You'll feel good about our convenient payment plans.

FSB
First State Bank

One NE Court
659-5565

Member FDIC

UT M. D. Anderson Hospital

Cancer Information Service

1-800-4-CANCER

99¢ YOUR CHOICE

HUNGR-BUSTER* JR.

BIGGER THAN MOST REGULAR BURGERS

BLIZZARD®

FLAVOR TREAT 12-OZ.







BREEZE®

FROZEN YOGURT TREAT 12-OZ.

ON SALE
MARCH 4-24,
1991

THIS WEEK'S
DQ
VALUE

© Reg. U.S. Pat. & Tm. Off. Am. D.Q. Corp. TM Reg. U.S. Pat & Tm. D.Q. Op. Coun. © Tx. D.Q. Op. Coun.



Pictured here are some of the Spearman Elementary School students who entered the PTA Reflections program. They submitted entries in one of four categories - visual arts, music, photography and literature. Each of these categories was divided into four divisions based on school year.

SHS choir's year is successful

The Spearman High School choir has had an exciting and successful year so far, having participated in two concerts, four auditions and Solo and Ensemble Contest.

Seven choir students made the All-District Choir. Four students made the All-Region Choir. Ross Jarvis made the All-Area Choir and was selected as second alternate to the All-State Choir. Eleven high school students received first division ratings on their solos, and four students received second division ratings on their solos.

Future events for the choir include:

*March 19 - junior high choir clinic with Joan Weber of Canyon as the clinician.

*March 21 - high school clinic with Lewis Unger, director of Caprock High School choir, as clinician.

*March 26 - pre-contest concert at 7:30 p.m. at Spearman High School.

*April 9 - High School UIL Concert and Sight Reading Contest at West Texas State University.

*April 21 - Junior High/Middle School Concert and Sight Reading Contest at Amarillo High School.

*May 24 - Greater Southwest Music Festival at Amarillo.

*May 11 - Spearman Music Festival.

*May 16-17 - Showtime (Variety Show) at 7:30 p.m. at Spearman High

School auditorium.

*May 21 - Spring concert at 7:30 p.m. at Spearman High School.

Lynx choir members and directors say they appreciate the support of Spearman residents throughout the year, and invite everyone to visit the concession at the Spearman Invitational Track Meet.

Spearman choir to sell magazines

"Save Our Subscriptions" is the motto of the students in the Spearman High School Chorale.

By renewing subscriptions to magazines or purchasing new subscriptions to magazines, Spearman residents can help fund SHS choir activities.

Beginning Oct. 2, the choir members will sponsor a magazine subscription program under the auspices of QSP, Inc., a subsidiary of the Readers' Digest Association, Inc.

Choir members say they are looking forward to a successful drive and will use the funds for their Chorale trip and other activities.

With this program, 40 percent of the purchase price of each magazine subscription is retained by the school.

Chorale members ask that residents begin thinking now about magazine subscriptions, if a renewal or new subscription comes to mind, they are asked to save them for Spearman High School Chorale.

Reflections entries exhibited

Eighty-one Spearman students submitted 106 entries inspired by the theme, "If I Had a Wish," joining in thousands of children nationwide in participating in National PTA's Reflections program. Reflections is designed to encourage children to explore the cultural arts by expressing their thoughts and feelings through their four arts categories—visual arts, music, photography and literature. Four age divisions are recognized nationally within each of these arts categories—primary (grades 1-3), intermediate (grades 4-6), junior high (grades 7-9) and high school (grades 10-12); Texas PTA recognizes a fifth, pre-school.

PTAs in District 8, which encompasses the northern Panhandle including Amarillo, were allowed one district entry representing each age division within the four arts categories. In previous years three district entries per age and arts category were accepted. Selection committees, composed of qualified community members, were appointed to select district entries. Nationally-determined rules require that entries be selected on the basis of originality, creative ability and expression of the theme. Those agreeing to serve on selection committees were JoAnne Blodgett, Lometa Sparks, Karen Reimer, Helen Etter, Dean Draper, Fern Robinson, Mae Wofford, Penny Thomas, Ann Sanders and Wilma Clark.

"Each young person who entered Reflections is a winner in our eyes," said Spearman PTA Cultural Arts chairperson Candy Boxwell. "They can be extremely proud of their creative accomplishments." Ribbons will be awarded to each participant. Beginning this week, Reflections entries will be displayed in Spearman school libraries and Hansford County Library. KRDF-FM will be playing literature and music submissions later this month.

The following is a list of all Spearman children who submitted artistic works locally. Stars indicate those entries selected to advance to district.

PHOTOGRAPHY
Primary: Jordan Brock*, John Brock, Ryan Gibbs.

Intermediate: Janna Brock*, Mandy Kenney.

MUSIC
Primary: Jordan Brock*, Sara Olsen.

VISUAL ARTS
Pre-school: Jeffrey Brock*, Daniel Langoria, Tracy Brown.

Primary: Dibrell Kirk*, Tricia Morrison, K'Lyn Hataway, Catie Cobb, Daniel Pacheco, Randa Morris, Shae'la Pearson, Audrey Winegarner, Jennifer DeLaCruz, Bethanie Flores, Priscilla Reichen, JoBob Wrinkle, John Brock, Brandon Clyburn, Tammy Backus, Paul Bynum, Jessica Volden, Laura

Camacho, Sarah George, Rudy Zamora, Kris Cummings, Allison Behney, Clara Shieldknight, Chad Scarborough, Tony Wrinkle.

Intermediate: David Zabin*, Janna Brock, Leslie Holton, Sean Baker, Cami Winegarner, Quentin Shieldknight, Doran Schoenhals, Betsy Holt, Dallas Burgess, Jennifer Laxson, Dawn Loomis, Chrissy Bensinger, Landon Miller, Kristin Beedy. Brittini Beedy, Cassie Butt, Mandy Kenney, Lisa Swink, Grace Davis, Brian McLaughlin, Arnold Perez, Texana Clyburn, Holly Pipkin.

Junior High: John Holt*, Josh Howard.

LITERATURE
Primary: Monica Behney*, Adrienne Simpson, Dibrell Kirk, Chelsey Villines, Jared Freeman,

Michelle Laughlin, Chelsea Nollner, Angela Pipkin, Daniel Ellis, Richard Varnon, Cary Cates, Julie Bravo, Brandon Clyburn, Sally Pittman, Timmy Bynum, Jenn Schnell, Brady Woolley, Kara Pipkin, Cristina Alvarado, Nicole Lozano, Dusty Vinson, John Gage.

Intermediate: Holly Pipkin*, Dallas Burgess, Brittini Beedy, Dawn Loomis, Texana Clyburn, Cami Winegarner, Chrissy Bensinger, Landon Miller, Grace Davis, Janna Brock, Cassie Butt, Mandy Kenney, Kristin Beedy, Quentin Shieldknight, Betsy Holt, Lisa Swink, Doran Schoenhals, Arnold Perez, Brian McLaughlin, Derek George, Kristal Brukhammer.

Junior High: Alisha LaRochelle* and Robbie Hummer.



PTA Reflections district winners are (front row, l-r) Monica Behney, Janna Brock, Holly Pipkin, Jordan Brock, David Zabin, (back row, l-r) Josh Howard (non-district junior high entrant), John Holt and Alisha LaRochelle.



More of the PTA Reflections program entrants.

CATERPILLAR IRRIGATION POWER JUST GOT MORE AFFORDABLE

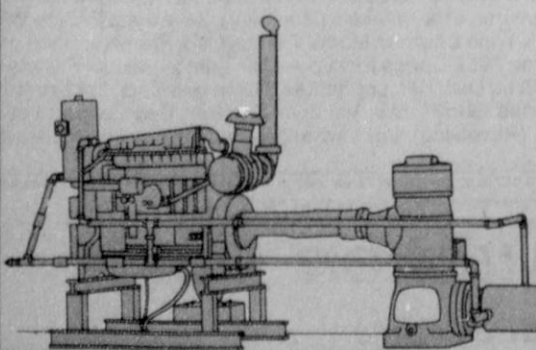
Caterpillar irrigation engines have always been the premier performer in the ag industry. It is the strength and durability of the Cat engine that has put it on top in terms of performance and dependability.

Now West Texas Cat has developed a flexible lease program that makes Cat irrigation engines one of the most affordable in the field. Our new lease program can actually put Cat power in your field for less than the cost of a similar diesel or gas engine.

From 50 horsepower and up, Cat engines deliver unequalled performance and economy and our flexible lease program gives you Cat power on your terms from one to five years. It also includes five year extended service coverage. You choose the program that suits your needs and your budget. Give us a call. We can compare your current irrigation costs with what a Cat engine would cost you under this new lease program.

Caterpillar Irrigation Power . . . Dependable Power Made Affordable.

Contact
Steve Akeroyd
1-800-284-2590
West Texas Equipment Co.
I-40 and FM 1912
Amarillo, Texas 79111



West Texas CAT Power Systems

Amarillo Abilene Midland Lubbock

A Very Open Invitation.

Join us at our Open House!

Century 21

Golden Spread Realty

200 S. Main - 435-5444

SUNDAY, MARCH 17, 1:00 - 4:00 P.M.

• 515 Haney • 701 Collier • 704 Wilbanks

Put your trust in Number One.

©1990 Century 21 Real Estate Corporation as trustee for the NAE and —trademarks of Century 21 Real Estate Corporation. Equal Housing Opportunity

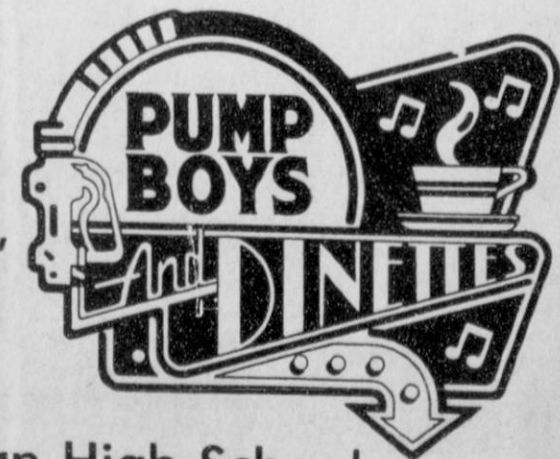
EACH OFFICE IS INDEPENDENTLY OWNED AND OPERATED.

The Amarillo Little Theatre presents

8 p.m.

Saturday,

April 6



Spearman High School Auditorium

Starring Spearman's Own Candy Boxwell

For Tickets, Call 659-3521

Proceeds benefit Golden Spread Center

Sponsored by: First State Bank, Spearman

SHS drama students to present play

by Jean Ann Behney
Spearman High School drama teacher Phyllis Kirkland and six of her students will present "Foiled by an Innocent Maid," a one-act play, at the PTA meeting Monday, March 18 at 7 p.m. and then again on Sunday, March 24 at 3 p.m.
Kirkland said the play will also be performed March 26 for the UIL competition in Stratford.
The general public is cordially invited to both the March 18 and March 24 performances, according to the drama coach, who describes the one-act play as "an old-fashioned melodrama."
"The appeal of this play for me was the comedy in it and the 'asides' the characters say," Kirkland said. "There are also several monologues, so each character can develop itself well," she added.

"Foiled by an Innocent Maid" is described in a play catalogue as "a riotous evening for actors and audiences," and the typical melodramatic plot includes funny "who's who?" mix-ups, an attempted kidnapping and an amnesia victim.
The cast of the one-act play includes:
Letitia Carruthers (a very old lady)...Kyla Nelson
Rachel Follansbee (middle-aged grieving daughter of Letitia)...Elizabeth Pipkin
Maude Filbert (a kindly neighbor)...Amber Cates
Faith Hopewell (the young innocent heroine)...Jennifer Covington
Jim (a stalwart young man and delivery boy)...Curtis Pearson
Ferguson Longfellow (the evil villain)...Chris Strawn



Spearman High School drama students will present their UIL One-Act Play "Foiled by an Innocent Maid" on March 18 and 24. Cast members include (l-r) Brad Butler, Curtis Pearson, Chris Strawn, Nikki Strawn, Amber Cates, Jennifer Covington, Kyla Nelson and Elizabeth Pipkin.

Obituaries

A.F. Holland
A.F. "Porky" Holland, 67, of Spearman died Thursday, March 7.
Mr. Holland, born in Muhlenberg County, Ky., had lived in Spearman 31 years, moving from Perryton. He married Norma Lawrence in 1946 in Abilene. He was employed by Northern Natural Gas Co. for 36 years, retiring in 1984. He was a U.S. Navy veteran of World War II and the Korean War. He was a member of First Baptist Church.
Survivors include his wife; two sons, David Holland of Houston and Jay Holland of Austin; his mother, Mary Spears of Powderly, Ky.; a sister, Wynola Tucker of Powderly; and four grandchildren.
Funeral services were conducted Saturday, March 9 in First Baptist Church with the Rev. Russ Gibbs, pastor, officiating. Burial was in Hansford Cemetery.
The family requests memorials be to the First Baptist Church Organ Fund or to a favorite charity.

Alta Mae Jones
HARDESTY, Okla. - Alta Mae Jones, 90, pioneer Hardesty area resident, died Thursday, March 7 in a Denver, Colo. hospital.
The daughter of Joseph and Nettie Wilkins, she was born Aug. 26, 1900 in the Indian Territory. She was married to Willard Jones on Dec. 24, 1938 in Boise City, Okla. An Oklahoma panhandle native, Mrs. Jones was involved in the family farming, ranching and horse business near Hardesty.
She was preceded in death by her husband, Willard, in 1966; and by one daughter, Florene Hogner and her husband, Jeff Hogner.
Survivors include two granddaughters, Trulene McCauley and her husband Tom of Burlington, Colo., and Tonia Hogner of Talequah, Okla.; one grandson, Jeffrey Hogner and his wife Leigh Ann of Hershey, Pa.; three great-granddaughters, Tryth McCauley and Hannah and Halee Hogner; one great-grandson, Truitt McCauley; and many nieces

and nephews.
Funeral services were conducted Saturday, March 9 at the Apostolic Faith Church in Hardesty with Dr. Ollie Kinser, pastor, the Rev. Marcus Adair, pastor of the Apostolic Faith Church of Canyon, and the Rev. Ted Barker, pastor of Panhandle Bible Center of Guymon, Okla. officiating. Burial was in Elmhurst Cemetery at Guymon under the direction of the Henson Funeral Home of Guymon.
An Alta Mae Jones memorial has been established. Memorials will be accepted at Henson Funeral Home.

Elizabeth Carroll
DUMAS - Elizabeth Carroll, 84, died Monday, March 11.
Mrs. Carroll was born in Brazos County. She had been a Dumas resident since 1980, moving from Bryan. She was a homemaker and a member of Primitive Baptist Church. She was preceded in death by her husband, Herman R. Carroll, in 1970.

Survivors include two sons, L.M. "Mitt" Carroll of Gruver and Glynn Carroll of Smyrna, Ga.; two daughters, Judy McKinney and Patsy Knouff, both of Dumas; a sister, Ellen Hartsfield of Bryan; 10 grandchildren; and nine great-grandchildren.
Funeral services were conducted Thursday, March 14 in Hillier Funeral Home Chapel at Bryan with Elder Louis Holder officiating. Burial was in Bryan City Cemetery at Bryan.

Ella C. Hahn
LEEDEY, Okla. - Former Gruver resident Ella C. Hahn, 76, died Wednesday, March 6 at Baptist Medical Center in Oklahoma City, Okla.
She is survived by one son, Tommy Hahn, of Leedeey.
Funeral services were conducted Saturday, March 9 at First Baptist Church of Leedeey. Burial was in Gruver Cemetery under the direction of Shaw Funeral Home of Leedeey.



To a chilled, halved grapefruit add a topping of cooked cranberries and a thin sprinkle of mint leaves.

THANK YOU

Thank you Spearman Fire Department for a quick and professional response to the grass fire on the Coldwater Ranch.

Your dedication and effort in maintaining a well coordinated department is greatly appreciated.

Dean Cluck
Cattle Co.

Make a difference with weatherstripping

For information on saving energy with weatherstripping, call or visit your local TNP office and ask for the fact sheet, "Straight Talk About Weatherstripping."

Texas-New Mexico Power Company

10c/90

Now, Start Talking—and Saving—with Dobson Cellular Systems.



Sign-up NOW and Save \$25 on the Cellular Telephone Service that will have Spearman Talking!

Soon, Dobson Cellular will activate cellular service here, throughout Western Oklahoma and the Texas Panhandle. But in the meantime, those who sign up with Dobson NOW can enjoy the calls and convenience of cellular roaming service in Oklahoma City, Tulsa, Lawton, Enid, Dallas, Amarillo and hundreds of other cities.

Talk Now, Save Now.

Early subscribers will not only enjoy complete use of their phone when they travel to other markets, but will receive **FREE Activation** (a \$25 value) and **NO** monthly service fees until the local system is activated.*

Call Dobson Cellular Systems or one of our authorized agents today!
Cellular Communications
659-2848

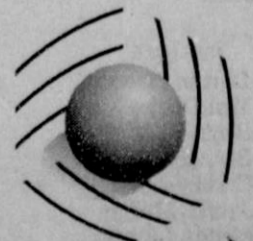
A Reputation of Innovation and Service.

There's never been a better time to discover the convenience, safety and prestige of a cellular phone than right now. Or a better cellular sales and service provider than Dobson Cellular Systems.

Dobson brings a 50-year history of telecommunications excellence to your cellular communication needs, with a genuine commitment to true customer satisfaction and technical innovation.

To learn more about the cellular service that has everyone talking, call Dobson Cellular Systems toll-free at **1-800-882-4154**.

DOBSON
CELLULAR SYSTEMS



1-800-882-4154

* Applicable roaming fees and any long distance charges will apply.

FmHA
FARMERS HOME ADMINISTRATION

Homes Priced to Sell
Now Available:

704 Wilbanks \$31,000
515 S. Haney \$21,300

Available Soon:

118 S. James
701 Collier
417 S. Haney
14 S. James

Financing Available on Excellent Terms

To Qualified FmHA Program Applicants:
Nothing down, 33 yr. financing,
8.75% APR with interest subsidy available.

To Nonprogram Applicants:
10% down, 10 yr. term
9.25% APR to non-occupant/investors
5% down 30 yr term
9.25% APR to owner/occupants

All rates & terms are subject to change without notice.
Contact your local FmHA office at 435-6859 or any real estate broker.

EQUAL HOUSING OPPORTUNITY

