



Spearman Gruver REPORTER - STATESMAN

Volume 86 • Issue 06

213 Main • Spearman, Texas 79081

Thursday • December 2, 1993

News Briefs

The Gladiola Flower Club will hold the Annual Home Tour Sunday, Dec. 5, from 2 to 5 p.m. Five homes are to be featured.

Hansford Hospital and Manor Auxiliary Christmas Party will be held on Monday, Dec. 6th, 11:30 a.m. at the First Christian Church.

The Gruver Music Club annual fund raiser stew and cornbread dinner will be held Tues. Dec 7 from 11 a.m. to 1:30 p.m. at the Gruver Methodist Church fellowship hall. Proceeds will benefit the Gruver Music Club Scholarship Fund. Tickets will be available at the door.

The piano students of Kristi Holt will present two Christmas recitals on Sunday, December 5. The first will begin at 2 p.m., and the second will begin at 3:30. Both recitals will be held in the former Country Stitches store at 715 W. 7. The public is invited to attend either or both recitals.

The Gruver I.S.D. School Board will hold their regular meeting in the high school board room at 1 p.m. Wednesday, Dec. 8.

The Gruver City Council will meet at 4:30 p.m. December 8 at city hall for their monthly meeting.

The Spearman I.S.D. Board of Trustees will be meeting on Monday, Dec. 13, at the High School Home Economics Room # 14.

The Spearman City Council will meet at 7:30 p.m. at City Hall on December 21.

Gruver First Baptist Church will be conducting a revival Dec. 5-8. There will be noon services Monday through Wednesday. Evening services will begin at 7 p.m.

What's Inside

Society Pages	4, 5
Sports	6, 7, 8
Hansford Happenings	12
Want Ads	13
Obituaries	14
Movies	2
Coffee Time	3
Chamber Chatter	2
Police Report	3
Post Scripts	3
A Center Piece	3
All District honors	8

Ad Index

Allsup's	6
Cates	12
Gordon's Drug	5
Church Page	14
United Supermarket	10
Santa Letters	4
Dobson Cellular	3
Gibson's	7
SPS-Festive Foods	4
Gillaspie Auto & Truck Center	11
Spearman Equity	8
SPS	5
Mission Cable	2
Perryton Equity	7
Hospital News	9



Santa and Mrs. Claus listen to the requests made by one of the many children that had their Christmas wish list ready Sat. Nov. 27.

Gruver I.S.D. Board of Trustees Discuss heating and air conditioning

The Gruver I.S.D. Board of Trustees discussed heating and air conditioning during the special meeting held Monday, Nov. 29. According to Superintendent Barry Haenisch, the board met with Therman James to discuss the proposed heating and air conditioning project for the high school and the air conditioning project in the elementary. It was reported that Mr. James' estimate of the project's cost was higher than the amount the district had set aside, but it had been noted by James earlier that energy efficient windows would help the project pay for itself. He gave an estimated cost (\$220,000) of replacing the windows in the high school and the windows in the elementary that are not presently efficient with insulated windows and panels.

The board was informed that the high school boiler has become less than dependable, with it having been down with one thing or another for most of the past two years. It was reported that because so few boilers are used for heating buildings today, repairs are costly. After a discussion, the board voted to employ James and Huseman, Inc. of Amarillo as the construction managers for the heating and air conditioning project in the high school and the air conditioning project in the elementary school. It was decided to install new windows as funds become available in the future.

James and Huseman, Inc. will prepare bid specifications, advertise for bidders and oversee the project to completion, if the board decides to award bids. It was reported that the bids should be opened in March of 1994. James reported that the work would begin the day after school ends in May and the job would be completed before school begins in the fall. In other business, the board voted to pay bills in the amount of \$12,083.75.

Holiday accidents injure three

by Angela Jones
Editor

Three individuals were injured in two accidents reported during the Thanksgiving holiday. On Saturday, Nov. 27, at approximately 1:30 a.m. a one vehicle roll over was reported 6 1/2 miles north of Spearman on the Hardesty highway. According to DPS Officer Tony Rocha, Jose Vargas of Spearman was driving a 1991 Ford pickup when he lost control of the vehicle going around a curve. The vehicle went into a ditch, rolled 2 1/2 times and came to rest on its top. Rocha reported that the driver was partially ejected and one passenger was ejected. He added that three of the individuals in the vehicle were not wearing seat belts and one was wearing a seat belt. Robert Hoffman, III of Fort Riley, Kans., was pinned in the vehicle and the jaws of life were used to free him, Rocha stated. Hoffman and Jesus Hinojos of Spearman were transported to Hansford County Hospital and Vargas showed up later in a private vehicle. The minor was not injured. Hoffman was stabilized and then flown to Northwest Texas Hospital in Amarillo where he is reported in serious but stable condition by the hospital staff on Tuesday, Nov. 30. The staff added that cards are well-

used to free him, Rocha stated. Hoffman and Jesus Hinojos of Spearman were transported to Hansford County Hospital and Vargas showed up later in a private vehicle. The minor was not injured. Hoffman was stabilized and then flown to Northwest Texas Hospital in Amarillo where he is reported in serious but stable condition by the hospital staff on Tuesday, Nov. 30. The staff added that cards are well-

Accident See pg 12



Those present at the ceremony to "Light the Lights of Love Tree" look on as Hansford Hospice Volunteer Organization president Verna Lee Shirley flips the switch, Sunday Nov. 28.

1993 Operation Christmas Greeting gets underway

Its that time of year again!! The Christmas Season!!! And the Hansford Hospital Auxiliary is asking you once again to give them the money you would spend sending Christmas cards so that they may buy gifts for the Hospital and the Manor. Since 1978, the Christmas Greeting Card drive has been the only fund raiser that the Auxiliary has had. You, the public, have been very supportive. Some of the items purchased the last few years have

been wheelchairs, overhead bed lights, window blinds, storage building, food processor, lawn chairs, serving trays, sound system, microwave oven, small refrigerator and many other gifts for the hospital and manor. We will greatly appreciate your support again this year. Please mail your checks to Mary Fern Terry, 906 Bernice, Spearman, Texas 79081. The Hansford County Reporter-Statesman will print your name telling that you have donated.

Christmas drawings underway Four lucky winners take home total of \$200 in gift certificates

The first of four "Home for the Holidays" drawings was held Saturday, Nov. 27 in Spearman and four lucky winners walked away smiling with gift certificates from Gordon's Drug, Jo's This n' That, Charolette Ford Trunks and Cates Men and Boys Wear. Santa and Mrs. Claus arrived just in time for the drawings and helped hand out prizes before they began their visits with the children. Pat Dear, Lynetta Shapley, Margaret Lair, and Linda Rowland each won a \$50 gift certificate from one of the participating merchants. Ten ticket numbers were called out that would have been winners had the holder of the ticket been present. Those numbers were: 213588, 448520, 452139, 212356,

213558, 452176, 452118, 444925, 444289, and 212113. If you are unable to make the drawings, you might log your numbers in a notebook and send the ticket stubs with someone who is planning on attending so they can claim the prize for you. Signs are posted on the doors of businesses who are giving the tickets and you should receive one ticket for each \$10 purchase. Place one part of the ticket in the designated area at participating stores and hang on to the other half. You do not need to fill in the back of the ticket as the number is all that will be called out. The next drawing will be Saturday, December 4 at 11 a.m. in front of ALCO.

Gruver PTA Sponsors Angel Tree

As a community service, the Gruver PTA is sponsoring a Christmas Angel Tree project. The Angel Tree is located at the Gruver State Bank and citizens may visit the bank anytime during business hours to select an angel to help this Christmas. The PTA, with the assistance of Gruver school teachers and administrators, have identified a number of needy children who's Christmas will be made much brighter with a gift of needed items. Citizens are asked to select an angel from the tree. Attached to each angel is a card listing the age, approximate sizes, and suggested needs of a needy child in the community. After purchasing the gift, please wrap the gift and attach the card for identification and return the gift to

the bank no later than December 20th. PTA officers and school administrators will deliver the gifts to the families in time for Christmas. Gifts for the Angels selected are not limited to the items listed on the cards. Donations will be accepted by PTA to purchase needed items for the children. For more information, call PTA President JoAlice Clawson at 733-2247 or Project Chairman Shannon Eckhardt at 733-2870. The Gruver PTA appreciates the Gruver school teachers and administrators for their assistance with this project and thanks, in advance, the citizens of Gruver for helping make Christmas bright for the needy children of the community.

Texas-New Mexico Power Company to close Jan. 1

Texas-New Mexico Power Company will close its Spearman office Jan. 1 and begin providing service to customers in the area from its Perryton office, according to company area manager David Hudson of Perryton. For the convenience of customers in the Spearman area, the company has a 24-hour toll-free number that customers can use to report outages or to request service such as connects and disconnects. The number is 1-800-852-3047. "Although we're closing this office, we're taking steps to make sure that Spearman customers will continue to receive the high level of service they expect from our company," Hudson said.

Much of the service for the area had been conducted from the Perryton office already, so the primary change to customers will involve billing services. Customers in Spearman who previously paid their bills in person may want to consider the convenience of paying by mail or through the company's Automated Bank Drafting service when the office closes, Hudson said. The automated drafting service lets TNP electronically draft customers' checking accounts for the amounts of their electric bills each month. For those who prefer to pay in person, the Perryton office at 222 S. Amherst will be the nearest payment center.

Karen's Kozy Korner

by Karen Habitzke
Extension Agent

Credit wise Christmas shopping

With the interest rates down on many credit cards, consumers may be tempted to run up bills for Christmas gifts, thinking the cost is lower. However it's best to shop wisely with credit.

Avoid cash advances on credit cards. They seem convenient, but

are costly. Interest starts accruing from the moment you take the advance. There is usually a special transaction fee of up to \$15. There is no grace period for cash advances. If you pay the balance in full by the due date, you still pay a high rate for the cash advance. One cash ad-

vance could cost you the money being saved for another gift!

Be on the look out for theft and fraud. Keep track of your cards. Watch each transaction carefully. Make sure the clerk returns your card, receipts and carbons. Tear up the carbons and save the receipts so you can check them carefully against your statements. Be careful who is given your card number. Don't write it on checks or give your number out over the phone if you did not initiate the call to make a purchase.

Watch out for minimum payments. Minimum payments have been lowered by many creditors. A new area for consumer credit use is in supermarkets. Buying \$50 of groceries a week using a credit card charging 18 percent interest, and making only the minimum payments would cost \$223.63 in interest the first year alone. Continuing to pay only the minimum balance would take you 12 years and three months to pay off the balance. You would have paid \$2,539 in interest for groceries that only cost \$2,600 in the first place... and they were eaten 12 years ago! Pay the most you possibly can on any credit card. Start with the lowest balance. Then put the amount you had paid on that card on the next lowest balance amount and keep going until all cards are paid off.

Avoid Skip payment offers. Many credit cards send you the present of being able to miss a payment during this budget stretching time. Interest continues to pile up when you skip the payment. Don't become the holiday turkey -- make payments on bills as much as you can and as fast as you can.

Limit credit use to the amount you know you can pay in full the next month when the payment is due.

Chamber Chatter

by Cindy Blackman
Spearman Chamber of Commerce Manager

A reminder to board members: December meeting will be Monday, Dec. 6, at 7 p.m. at 900 Maple Dr. This will also include the new directors.

Coffee Break will be at Jo's This 'n That, Friday, December 3. Stop by and sign up for the door prize.

The chamber will be sending out 1994 Membership statements soon. Keep in mind that work of the chamber is financed by the investment of the members who support it.

I cannot believe the progress of the community center. The weather has been pretty good and they have really been able to put in lots of

days on it. Maybe we will be in there by late March.

The next drawing for retail gift certificates will be Saturday, Dec. 4 in front of ALCO starting at 11 a.m. The Golden Spread Center will also be drawing for their Christmas tree and Santa that is on display at the chamber office.

The Defensive Driving course has been changed to Dec. 8 and 9.

A special thanks to Pete Wall and his crew for putting up the Christmas decorations. We depend on these guys every year to do this and we really appreciate it.



Mrs. Claus takes a break from the children and poses for the cameras as Mr. Claus continues to listen to their Christmas wish list.

Immunization clinics offer vaccines in December

Immunization clinics offering vaccines that give protection against several childhood diseases are scheduled for December.

The Texas Department of Health Office located at 720 Archer in Spearman will be offering a clinic on December 2 from 9-11:30 a.m. and 1-4 p.m.

Protection is against polio, diph-

theria, lock jaw (tetanus), whooping cough (pertussis), measles, rubella, mumps, and HIB (haemophilus Influenzae Type B).

The Texas Department of Health is charging money to help with the cost of keeping the clinic open. The amount of money charged will be based on family income and size, and the ability to pay.

City Lites

by Kelvin Knauf,
Spearman City Manager

Christmas Trees

One of the traditions of Christmas is decorating the Christmas tree. Generally, Christmas trees are natural (usually pine or fir) or artificial. Natural trees are generally cut on a tree farm and transported to retailers across the nation.

One of the hottest new trends in buying Christmas trees is to buy a live tree that has not been cut. These trees have their roots balled and burlaped. People take these live trees home and decorate them for Christmas. Once Christmas is over, the tree is then planted.

Many people see this practice as a way to save our forests and add to the number of trees in the community. For Spearman, this would be an excellent way to add beauty to our community. If citizens will buy a live tree that is balled and burlaped, the City will be glad to come get these trees after Christmas and plant them in City parks.

By buying a live tree instead of a cut tree, you can still enjoy the traditional Christmas tree and improve the beauty of Spearman at the same time. Please call me at 659-2524 if you have a live Christmas tree that you want the City to plant after the holidays.

When you rejoice over being young, and notice how well you feel, that is age.

—Jules Renard

The Hansford County Reporter-Statesman
"Serving All Of Hansford County"

USPS 509660
213 Main, Box 458, 659-3434
Spearman, TX 79081
Published Weekly at
213 Main, Spearman, Texas
Owned and Operated by:
Texas Independent Newspapers, Inc.
16607 Blanco Road #707
San Antonio, TX 78232
(210) 492-8907

Second Class postage paid at Spearman, Texas 79081.

Any erroneous reflection upon the character of any person or firm appearing in these pages will be gladly and promptly corrected upon being brought to the attention of the management.

Publisher - Molly Zimmerman
Editor - Angela Jones
Bookkeeper - Sheila LaRochelle
Ad Rep - Debra McNeely

Subscription Rate: Hansford County, \$19.95; out of county, \$24.95 annually.

Postmaster: Send address changes to Hansford County Reporter-Statesman, Box 458, Spearman, TX 79081.

The publisher reserves the right to revise or reject at its option any advertisement which it deems objectionable, either in subject or phrasing, or which it may deem detrimental to its business.

Advertising and Story Deadlines: Tuesday, 12:00 p.m.

MEMBER
TEXAS PRESS ASSOCIATION

Charles H. Ridge, M.D.

10 S. Roland Street

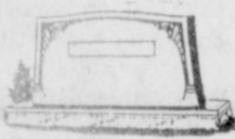
Office Hours:

Monday - Friday

8:30 a.m. - 12 p.m. & 1-5p.m.

For appointments call: 659-3395

LA GRONE MONUMENT CO.



Garrett Grone
901 Eighth
Amarillo, Texas
1-800-658-6117

Cleta Casdorff
Local Representative
Gruver, Texas
(806)733-2154

Finally,
A Saturday Night
You
Won't Regret
Sunday
Morning.

It's about time. A Saturday night that lives up to expectations. A great never-before-seen-on-HBO movie. 52 weeks a year, guaranteed. 8 PM ET/PT. Looking for a Saturday night you can count on? Just You Wait.



\$5.00 Connection to any premium channel
(When you donate a new toy to our local toy drive)
Call today 1-800-783-5729
(Some restrictions may apply)

HBO
Just You Wait.

At the movies...

Showing at the Lyric Theatre in Spearman Friday, Dec. 3, through Tuesday, Dec. 7 are "Rudy" on screen #1 at 7:45 p.m. and "Malice" on screen #2 at 7:30 p.m.

"Malice" stars Alec Baldwin, Nicole Kidman, Bill Pullman and Bebe Neuwirth. Directed by Harold Becker.

In "Malice" Dr. Jed Hill

(Baldwin) is the dashing new trauma surgeon. He is a hard drinker and a fast liver. Andy Safian is the wimpy assistant college dean. Safian's new wife, Tracy (Kidman) volunteers at the local hospital where she encounters Jed, who quickly becomes the Safian's new tenant. This suspense thriller is set against the rustic backdrop of a New England college town.

"Malice" is rated R.
"Rudy" stars Sean Astin, Ned Beatty, Charles S. Dutton and Lili Taylor. It was directed by David Anspaugh.

"Rudy" is about a scrappy Midwestern teen with drive and heart that just won't quit. His dream is to play in one football game at Notre Dame. The dream is fulfilled in this drama.

"Rudy" is rated PG.

Member of the Principal Financial Group

The Principal / Epler, Guerin & Turner, Inc.
Investment Broker
Member the New York Stock Exchange

Robin J. Muir
Investment Consultant

1803 S. Washington, Suite 115
Amarillo, TX 79107-2607
(806) 373-8361
1-800-612-6004

At The Lyric Theatre...

Friday, Dec. 3 - Tuesday, Dec. 7

Bargain Nights Mon. & Tue. All Seats \$3
Closed Wednesday & Thursday

SCREEN 1 - 7:45 PM SCREEN 2 - 7:30 PM

Ruay
(PG)

Malice
(R)

113 Main, Spearman

Coffee Time

The Coffee Time location for Friday, December 3 is Jo's This n' That.

For all you crafty people, Jo's This n' That is the place to be. Joan Farr has items for all your craft making and sewing needs. If you are needing gift ideas, Joan can help you.

Jo's This n' That is in the middle of a Christmas sampler and a Log Cabin sampler quilt classes. Be sure and call them for classes.

We do machine quilting and would be happy to get some done for you for Christmas.

They carry Bernina sewing machines and surgers and will give a free demonstration any time.

Don't forget to stop by Jo's This n' That on Friday from 10 to 11 a.m. for coffee and refreshments and register for a door prize.



Pictured above are (l/r) Pringle-Morse C.I.S.D. Band Director Denise Hutchinson, Michelle Schick, Stephanie De La Cruz, Holly McCloy, and Jared Johnson.

Lunch Menu

Gruver I.S.D.
Dec. 6 - Dec. 10
Lunch

Monday-Chicken patties, mashed potatoes with gravy, green beans, pudding, hot rolls, and milk.

Tuesday-Nachos with meat, beans, fruit, and milk.

Wednesday-Ham slices, mashed potatoes, carrots, cake, hot roll and milk.

Thursday-Chicken noodle soup, crackers, pickle spears, fruit, cinnamon rolls, and milk.

Friday-Sloppy joes, french fries, fruit, and milk.

Breakfast

Monday-Cereal, donut holes, juice, and milk.

Tuesday-Blueberry muffins, scrambled eggs, fruit, and milk.

Wednesday-Biscuit and sausage, fruit, and milk.

Thursday-Toast, peanut butter and jelly, fruit, and milk.

Friday-Cinnamon rolls, fruit, and milk.

Pringle-Morse C.I.S.D.
December 6 - 7
Lunch

Monday - Soft burrito, taco, refried beans, salad, cookie.

Tuesday - Steak fingers, potatoes and gravy, black eyed peas, rolls, fruit.

Wednesday - Hamburgers, tator tots, lettuce, brownie.

Thursday - Pot pie, salad, peach, shortcake.

Friday - Stromboli, french fries, salad, ice cream.

Breakfast

Monday - Muffins, toast, juice.

Tuesday - Honey buns, cheese toast, juice.

Wednesday - Pancakes, sausage, juice.

Thursday - Oatmeal, cinnamon toast, juice.

Friday - Eggs, toast, juice.

Five area students chosen for Five States Band

One Spearman High School student and several junior high school students from Spearman and Pringle-Morse participated in the Five-States Band tryouts held November 13 at Guymon High School.

The invitational all-region tryout was sponsored by Panhandle State University and included students from Texas, Oklahoma, Kansas, Colorado and New Mexico.

Eighth graders Camie Willingham and Amber Morgan of Spearman and Jared Johnson of Pringle-Morse and seventh graders Stephanie De La Cruz and Holly McCloy also of Pringle-Morse will go on to participate in the Five States Band Concert Saturday, December 11 in Guymon. The concert will begin at 7:00 p.m. at Guymon High School.

Eighth graders Teresa Gomez from Spearman, and Michelle Schick from Pringle Morse were chosen as alternates.

Also participating was Justin Tucker, a junior from Spearman High School.

Lunch Menu

Spearman I.S.D.
Dec. 6 - Dec. 10
Lunch

Monday-Jumbo corn dog, macaroni and cheese, sweet peas, birthday cake, fruit, and milk.

Tuesday-Beef stew, grill cheese sandwich, fruit, and milk.

Wednesday-Pizza-sausage, whole kernel corn, fried okra, fruit, and milk.

Thursday-Soft burritos, tortilla, seasoned ground beef, cheese cup, diced onion, refried beans, Spanish rice, fruit, and milk.

Friday-Chicken fried steak on a bun, lettuce, sliced tomato, french fries, pineapple upside down cake, and milk.

Breakfast

Monday-Waffles, sausage, fruit juice, and milk.

Tuesday-Biscuit, scramble eggs, fruit, and milk.

Wednesday-Cheese toast, hash browns, fruit juice, and milk.

Thursday-French toast sticks, ham slice, fruit, and milk.

Friday-Cereal, toast, fruit, and milk.

'Post' Scripts

by George Finley
Spearman Postmaster

Can you believe it's Christmas time again? The rush is on. Try to mail as early as possible. We want to make sure your Christmas package gets delivered on time.

Some dates to remember. If your mailing overseas, now thru Dec. 5 is the time to mail. If you are mailing parcel post rate, Dec. 10 is the time to look toward. After that we would recommend Priority Mail.

For those last minute shoppers there is Express Mail. We can get nearly anywhere in the United States in two days, and most of the

time in one. As for cards, we recommend you mail them early. Get them out so people can receive and enjoy them a few days before Christmas. Our theme this year is "You Get It Here, We'll Get It There."

We also want to let you know a few other things. We will be open Dec. 24 and Dec. 31. We will be having a food drive for our local Hansford Co. Food Bank, and we will have our Christmas tree again. Keep watching and we will let you know more on these items at a later date.

A "Center" Piece

It was so nice to see so many at the Thanksgiving dinner Nov. 16. The people associated with the First National Bank catered the delicious meal. It would certainly be nice to see such a crowd each Tuesday. It is such a nice way to visit with long time friends and make new ones. And who can enjoy life without friends?

The crafters are now working on decorations for the Center Christmas tree. Visitors are welcome to come join the Thursday fun. The decorations being made should make a pretty tree to be enjoyed by the membership.

Sorry, but because of unforeseen circumstances the raffle items could not be drawn for on the 27th. For a new date contact the Golden Spread Center Office. Anyone with tickets please, turn in as soon as possible.

Schedule of activities: Monday noon covered dish lunch, Tuesday 6:30 p.m. covered dish supper with games following, Thursday covered dish lunch with crafts beginning 10 a.m., Friday afternoon Bridge games.

May God continue to bless our community.

Police Files

Spearman Police Report

The Spearman Police Department filed 45 activity reports during the reporting period of Monday, Nov. 22 through Sunday, Nov. 28.

On Monday the department received a theft report at approximately 7:45 a.m. It was reported that approximately \$80 in cash was stolen from the 10 block of N. James.

According to Sergeant Steve Schmidt-Witcher the case is still under investigation.

A report of vandalism was taken at approximately 9:15 a.m. in the 700 block of Wilbanks. Schmidt-Witcher stated that four gas meters were reported damaged in the alley of the 700 block of Wilbanks. The incident is still under investigation.

At 6:35 p.m. a 1993 Cadillac was reported vandalized in the 500 block of Townsend. It is still under investigation.

Officer recovered stolen property at 4:15 p.m. Schmidt-Witcher said that a 20" Terra GT bicycle was recovered in the 600 block of S. Endicott. He added that it is being held pending the notification of the owner. It is still under investigation.

On Tuesday a runaway was reported to the department. According to Schmidt-Witcher at 12:25 a.m. it was reported that a juvenile

female had runaway from her residence in the 200 block of S. Endicott. Officers located the subject and she was returned to her parents. The case is closed.

A vandalism was reported on Wednesday. At 12:30 a.m. a 1991 Ford passenger car was vandalized in the 500 block of Townsend. The loss was estimated at \$52. The incident is still under investigation.

On Friday officers found property at approximately 12:45 a.m. a 26" 10 speed bicycle was found in the 500 block of S. Brandt. The bicycle is being held pending the notification of the owner.

On Saturday at approximately 12:25 a.m. an air tank was found in the 300 block of W. Kenneth. The item was returned to the owner and the case is closed.

On Sunday at 1:20 a.m. a disorderly conduct was reported. According to Schmidt-Witcher a "breach of peace" was reported in the 300 block of S. Hoskins. The suspects were identified and the case was closed.

An accident was reported on FM road 760 and the landfill road. It was turned over to the DPS office.

At 7:35 p.m. an intoxicated motorist was arrested in the 200 block of S. Hoskins. According to Schmidt-Witcher, the subject was charged with a D.U.I. The case is closed.

MARY KAY
FACE TO FACE BEAUTY ADVICE™
Leann Gillaspie
Beauty Consultant
659-3889

Oh! Buoy!
CAFE
531 N. Main
Downtown Borger, Texas
Open Monday - Saturday
9:00 a.m. - 3:00 p.m.
(806)273-5820
CHARLIE & JANELLE WILLIAMS NELLIE LOVATO

"Seeking Revival"
at
First Baptist Church Gruver!
December 5-8, 1993
Evening Services • 7:00 p.m.

Everyone is Invited!!!

Preacher
Claude Cone
Singers
Connie & Allison Ware
(A nursery will be provided)

Noon Services
(bring a dish)
12:00 p.m.

Everyone is Invited!!!

Cellular Phone Under 100 Bucks*
This Christmas.
Get a Motorola Phone for \$99 With a Holiday Gift Certificate From Dobson!

If you've got a pair of scissors and a nose for a great Christmas bargain, the Dobson Holiday Gift Certificate is for you (or someone on your List)! Just clip the Certificate below, present it to any Authorized Dobson Cellular office or agent and receive \$100 OFF the price of any cellular phone in stock!*

1-800-882-4154

ONE HUNDRED DOLLARS
The Dobson Cellular Holiday Gift Certificate
Presentation of this certificate entitles
NAME _____
to One Hundred (100) Dollars off the listed retail price of any cellular phone in inventory.

*Certain terms and conditions apply. Subject to credit approval. Discount offer good at all Dobson Cellular stores and participating Dobson Authorized Agents through December 31, 1993, or while supplies last. Certificate cannot be redeemed for cash.

Authorized Agent(s)
Bob Settiff
Gruver Cellular
733-2180
Jerry Pat Davis
Cellular Communication
659-2848

Nineteen Hansford County football players earn 1-2A All District honors

by Angela Jones
Editor

Nineteen Hansford County football players were chosen for District 1-2A All District honors according to a recent release.

Of these 19 players, eight received First Team All District honors.

Those individuals selected from the Spearman defense were Nick Renteria, senior, lineman; Chad Gardiner, senior, lineman; Cory Lesly, senior defensive end, Jason Varnon, senior, secondary, Shawn Moore, junior, line backer; and Radar Garcia, junior, line backer.

Aaron Frick, a Gruver junior, was the only member of their team to receive First Team honors. He received this honor as a kicker on the defense.

Spearman had five offensive players receive All District First Team honors. Those members are Varnon, quarterback; Brandon Vanderburg, senior, running back; Matt Archer, senior, center;

Gardiner, lineman; and Cory Lesly, tight end.

Nine members of the Hansford County teams were awarded Second Team All District honors.

On offense, Kenton Odom was the only Gruver player to receive this honor. As a Gruver High School senior, his position was a wide receiver.

Three Spearman players made the offense All District Team. These players were Garcia as a running back, Clay Scribner as a lineman, and Toby Thompson as a wide receiver.

Those receiving Second Team honors on defense for Gruver were Odom, secondary; Robert Whitaker, senior, lineman; A. Frick, line backer.

Second Team honors for Spearman on defense went to Vanderburg, secondary; and Joel Stark, lineman.

There were seven members of the Hansford County teams named to the Honorable Mention list.

Spearman's defensive end, Ar-

cher was the only member of their team to receive an Honorable Mention.

On the defensive team in Gruver Joe Bravo, junior, secondary; Max Frick, sophomore, line backer; and Chris Stork, senior, defensive end all received an Honorable Mention.

Three Gruver players received offense Honorable Mentions. These players are A. Frick, running back; Victor Lopez, senior, running back; and Wylee Maupin, sophomore, tight end.



Toby Thompson
2nd Team Offense



Shawn Moore
1st. Team Defense



Radar Garcia
2nd Team Defense
1st Team Defense



Jason Varnon
1st Team Offense
1st Team Defense



Brandon Vanderburg
1st Team Offense
2nd Team Defense



Chad Gardiner
1st Team Offense
1st Team Defense



Nick Renteria
1st Team Defense



Cory Lesly
1st Team Offense
1st Team Defense



Joel Stark
2nd Team Defense



Clay Scribner
2nd Team Offense



Matt Archer
1st Team Offense
HM Defense



Aaron Frick
1st Kickers
HM Offense
2nd Defense



Kenton Odom
2nd Defense
2nd Offense



Robert Whitaker
2nd Defense



Max Frick
HM Defense



Joe Bravo
HM Defense



Chris Stork
HM Defense



Victor Lopez
HM Offense



Wylee Maupin
HM Offense

DRY CLEANING
Shirts & Jeans
Laundered With or Without Starch.
FREE Pick-up and Delivery
800-232-5370
"It's not how cheap but how good"
Perryton Cleaners

Stopping Energy Waste Through Your Attic Is As Easy As ABC.

A Attic ventilation. Make sure that your attic is properly ventilated to prevent heat build-up in the summer and moisture accumulation in the winter.
B Batt or blow-in insulation in your attic should be the proper level for your area. Be sure all areas have proper coverage, and don't forget to insulate ductwork.
C Caulking is important tool. Remember to caulk around attic openings.

For more information about saving energy, call or visit your local TNP Office and ask for your free Energy Management Guide.

Texas-New Mexico Power Company

One Stop Does it All!

At Spearman Equity's All New Convenience Store

Snacks • Cigarettes • Fountain Drinks
Automotive Supplies • Gasoline
Unleaded • Super Unleaded
Ruby Premium diesel

Open Mon. - Fri. 7:00 a.m. to 6:00 p.m. Sat. 7:00 a.m. to 1:00 p.m.

EQUITY **Farmland**
"Better Farming. Better Food."

421 W. Kenneth • Spearman, Texas

B and B SALES 205 DILLON SPEARMAN, TX 79081
(806)659-2662 1-800-570-0520

Twas The Sale Before Christmas And All Through The Store Were Savings On Clothing, Bicycles And More!

 16" Boys Planet Earth Bike 160135 66⁹⁵ Reg. \$74.95	 20" Boys Nitro Bike 445312 66⁹⁵ Reg. \$74.95	 26" Mens or Ladies Mojave Gulch 10 Speed 445387/445395 99⁹⁵ Reg. \$729.99	 20" Girls Sweet Style 471334 66⁹⁵ Reg. \$74.95	 24" Girls Mojave Gulch 10 Speed 965459 94⁹⁵ Reg. \$119.95	 20" Boys Mud Slinger 471334 89⁹⁹ Reg. \$101.99
--	---	--	---	--	---

M
pe
pu
Ty
fr
W
po
an
Th
cri
na
Fr
fr
Mo
an
Tu
scr
We
fr
Th
an
Fr
mil
Mo
bea
Tue
and
frui
Wec
tots
Thu
sho
Fric
sala
Mo
Tue
toas
Wec
juic
Thu
toas
Fric

Among The Neighbors

by Helen Fisher

Phyllis Owens returned home last week from a hospital stay and some recuperation in the home of her daughter, Judy Elliott, in Amarillo. Phyllis expresses appreciation to all those who showed their concern by cards, letters, visits and other attention. She is slowly convalescing but needs to be quiet and inactive.

Last Saturday Freda Sheets attended a dinner honoring her sister-in-law Mrs. Rex Sheets on her 90th birthday. It was held in Woodward at the fellowship hall in the Methodist Church. Freda visited with nieces and nephews whom she hadn't seen in years.

She rode to Woodward with Peggy and Alton Ellsworth and Mrs. Ethel Ellsworth who visited her sister who lives there.

J.B. Buchanan suffered a broken thumb on Friday while assisting in an outdoor task at his farm. He was brought to Spearman for initial treatment then taken to Amarillo to an orthopedic facility.

Since he is left-handed, fortunately it was his right thumb.

Following is the list of some of those who shared Thanksgiving with families in Spearman:

Andrea and T.J. Bizco came from Austin to be with her parents, Tom and Bobby Archer. They flew in Tuesday in order to see the basketball game at Dalhart in which Matt Archer played.

On Thursday they all had Thanksgiving dinner with their grandmother, Dorothy Chevalier.

Marian Nollner had pre-Thanksgiving guests as her daughter, Sharon Adams and 13 year old son, Ryan, came from Albuquerque for several days visit. Husband and father Mike Adams was unable to come at this time but he and Ryan plan to return for pheasant hunting.

Mozelle Sparks guests were her son, Ted Sparks, and friend Denny Barnes of Lubbock. On Friday her daughter, Sheila Monday, came for a weeks visit. She lives in Branson, Colorado. She and Mozelle spent a couple of days in Amarillo with Gene and Beverly Sparks after Thanksgiving.

Cassiti and Jessica Van BusKirk paid a brief after Thanksgiving visit to Spearman with their grandparents, Ann and Roy Flowers and Sara and Fred Van BusKirk. They live in Liberal.

Guests of Kim and Gary Sherlock over Thanksgiving were her sister, husband and daughter of Grand Prairie. Also coming were both sets of parents from Plainview. They were all here from Tuesday until Sunday.

The home of Else Mathews was filled to overflowing for Thanksgiving dinner with Steve and Mary Lou Mathews, with Mark; Karen Farber with Haley; Robin and Billy Snider with Meghan and Amanda, Bret Burgin and Opal Barnes, all of Spearman; Rhonda and Ronnie Williams, and Faye Cluck, Gruver; Paige Pittman, Perryton; Jana and Cole Ivey with Cody and Courtney of Denver.

Jana and Cole Ivey and children returned to their home in Denver

after several days here with parents Mary Lou and Steve Mathews and the Jim Iveys. They will be moving to Spokane, Washington in the near future as he has been promoted and transferred by his company G.M.A.C.

Tho their time is completely taken with basketball, band, honor society, student council, studying and home duties, when Thanksgiving neared and memory of Grandmother's meals came back, Jennifer and Jason Cargill headed for Spearman. They and their mother, Karen Cargill, came from Denver City on Wednesday to be with her parents, Ray and Helen Gibson.

Others sharing and contributing to the meals were Cheryl and Ronnie Gibson, Spearman; Connie and Monte Dixon and children, Morse; Ronda Gibson with Megan, Amarillo.

The delicious food was so plentiful that plates were loaded and taken to several less fortunate folk.

Pastor and Mrs. Kyle Henderson, remembering last Thanksgiving when they were in a blizzard enroute to Arlington, invited relatives from Arlington to come up to the Panhandle.

Her parents, Adela and Bob Maddux, her sister, Debbie Crossnoe with daughter, Gabrielle, and her sister Teresa and husband Troy Kreichbaum, all of Arlington enjoyed the clear, brisk weather here and were thankful they missed the snow and ice at Arlington.

Earl and Trudie Goodheart had her sister, Mr. and Mrs. Troy Lucan and family of Perryton, their sons Darrin and Pamela and children of Amarillo and Damon of Spearman. Damon's family were visiting her sister at Quitman, Arkansas.

John and Edith Pipkin observed the day and all its blessings with daughter, Yvonda and Larry Stokes, with their son, Chris and Heidi with LuRea. Others were Krystal and Kevin Hare, Amarillo, Edith's sister, Edna Scroggs of Waka, and from Spearman, Richard and Lisa Pipkin and family.

Eddie and Cindy Butler came up from San Angelo to spend Thanksgiving with his mother, Raye Butler. On Friday Cindy went on to Darroulette to be with her parents.

On Sunday they returned to their home, where Eddie is employed by General Telephone Company. In the 25 years he has been with this firm he has made much advancement.

Susie Gatling of Amarillo spent Thanksgiving with her mother,

Floydeen Gatling and grandmother, Mrs. F.O. Crawford. They were joined by John and Diane Crawford and her three sons.

On Friday Susie and Floydeen started back to Amarillo in separate cars as Floydeen was going to spend Saturday with her. Between Stinnett and Sanford a young deer jumped in front of Floydeen's car and caused front-end damage. She was not injured but the car had to be left in Sanford and they returned to Spearman.

Thanksgiving was a sad time for Fred and Sarah Van Buskirk as they were called to Rush Springs, Oklahoma by the death of a grandson, 12 year old Chance Van BusKirk on November 22. Services were held in the First Baptist Church, Rush Springs, November 24. Chance had had leukemia for several years.

He was survived by his mother, Carol and brother, Sheldon, both of Rush Springs; his father, Greg Van BusKirk, Lamar, Colorado (formerly of Spearman). Other survivors are grandparents, in addition to the Van BusKirk's, Maxine and Gary Beard, of Reno, Oklahoma; and R.C. and Mattie Bentley, also formerly of Spearman.

Sheila LaRochelle with Alisha Amber and Albert III, spent the holidays with her parents in Big Spring, Texas. They returned on Saturday.

Sybil and Billy Miller joined Sylvia and Ray Robertson for Thanksgiving at Nazareth. They were guests in the home of Robertson's daughter, Brena and Claude Annen and family.

Steve and Sheri Benton, with son Nicholas, drove to Houston for Thanksgiving with daughter, Kelli and Travis Francis. They have just moved into their new home. Also sharing the first Thanksgiving in the new home was Sheri's father, Ray Cannefax. They had driven by Abilene for him to accompany them.

The Shieldknight family enjoyed a family Thanksgiving different from any previous. All went to College Station to spend the holidays with their college students - Haley Shieldknight and Carlee Rietchmeyer and her husband, Fred.

They attended the famed Pep Rally for A&M and the football game. Of course they did some shopping. The weather was cold and wet, but the icy conditions that were prevalent in the area missed them.

Those going from Spearman were Lois and Jim...

ily, Dick and Lynanne Gillaspie and family, Marsha Shieldknight, Charles Shieldknight with Ashley and Macy and Debbie Stopper.

House guest for the week of Dr. Larry and Jean Ann Behney was a college friend of his, John Greeshammer of Jefferson City, Missouri. On Wednesday they and the Behney children went to Red River for the holidays. The weather was clear, but cold. They are not as yet skiers but did enjoy sledding and mountain climbing.

Don and Carolyn Savage with son Britt, and accompanied by their daughter, Michele Goodheart with Keilee and Trent spent Thanksgiving in Quitman, Arkansas. They were guests of their other daughter, Misti and Shawn Martin, formerly of Spearman. Shawn's parents, Mr. and Mrs. James Martin, also of Quitman and also Eddie Gail Martin and his mother, Wilella completed the family Thanksgiving.

Thanksgiving afternoon little 16 month old Trent Goodheart fell against the wood-burning cast iron stove and badly burned his hand. He was taken to the emergency clinic for treatment.

They returned to Spearman on Sunday and Trent is recovering from his painful injury.

Inez Holland was thrilled to have her three sons with her for Thanksgiving. They all arrived on Wednesday. Jerry and Kathy came from Cedar Creek Lake; Terry and Debbie, with Jason from Houston; Johnie and Ingrid from Pueblo with Christopher and Brett. Family newly-weds, Charlotte and Ted Lewis of San Antonio, spent their first Thanksgiving with the rest of the family.

All left Saturday and the quiet around Inez is deafening!

Pearl Pierce flew to McAllen on Tuesday to spend the holidays with her son Mike and Susan Pierce, and son David. The weather was cold and drizzly but Pearl hardly noticed as she was highly entertained by her three year old grand-

GHS student to try-out for place in All-State Band

Junior Rivera, a senior at Gruver High School, has completed the qualifying round and will travel to Sundown on January 8, 1994 to try for a place in the All-State Band. This band, comprised of students from throughout Texas, will be performing in February of 1994 in San Antonio.



Junior Rivera

Who: Scott Wilkerson
Kelli Sutton

What: Bridal Shower

Where: Karla Flowers
1115 S. Townsend

When: Sunday, Dec. 5
2:00 - 3:30

Selections:
Celebrate
Gordon's

When decorating for Christmas, Make A Safety List And Check It Twice!

SAFETY LIST

- CHECK ALL CORDS for frayed or bare wires, cracked insulation, loose connections and damaged plugs or light sockets.
- TEST LIGHTS BEFORE STRINGING.
- UNPLUG LIGHTS BEFORE MAKING REPAIRS or replacing light bulbs.
- DON'T OVERLOAD CIRCUITS. Too many lights on one circuit can cause fire.
- NO LIGHTS ON METALLIC TREES.
- KEEP YOUR TREE FRESH. Trim the base and keep plenty of water in the tree stand.
- TURN OFF ALL LIGHTS BEFORE LEAVING or going to bed. You'll save money and be safer, too.
- DON'T USE INDOOR LIGHTS OUTSIDE.
- AVOID OUTDOOR ELECTRICAL LINES when hanging lights on the rooftop or in tall trees.
- USE WATERPROOF LIGHTING EQUIPMENT OUTDOORS. Also, hang sockets downwards and don't leave a socket empty.

Contact your local SPS office for more safety tips.

Wishing you a safe, happy holiday.

SPS SOUTHWESTERN PUBLIC SERVICE COMPANY

Thank You

I wish to thank everyone who sent cards, flowers, & food during my illness and also those who came to the hospital to see me before I was transferred to Amarillo. I appreciate each & everyone so much.
Phyllis Owens

Gordon's
Bridal Gift Registry

COME BY & LET US HELP YOU SET UP YOUR SPECIAL GIFT TABLE

Couples Currently Registered

- Matthew Stark & Jeanie Myers *Dec. 5
- Dana Welch & Johnny Petty
- Pete Ochoa & Mary Hernandez *Nov. 21
- Scott Wilkerson & Kelli Sutton *Dec. 5
- Cindy Elliot & Troy Franklin *Nov. 27
- Tim Willis & Stacy Artho *Nov. 20
- Jan Crawford & Chuck Picciuti *Dec. 18

*Date of the Bridal Shower

314 MAIN PHONE 659-2141

Gordon's SPEARMAN TEXAS

Lake Meredith Aquatic & Wildlife Museum

Plans Annual Christmas Bazaar

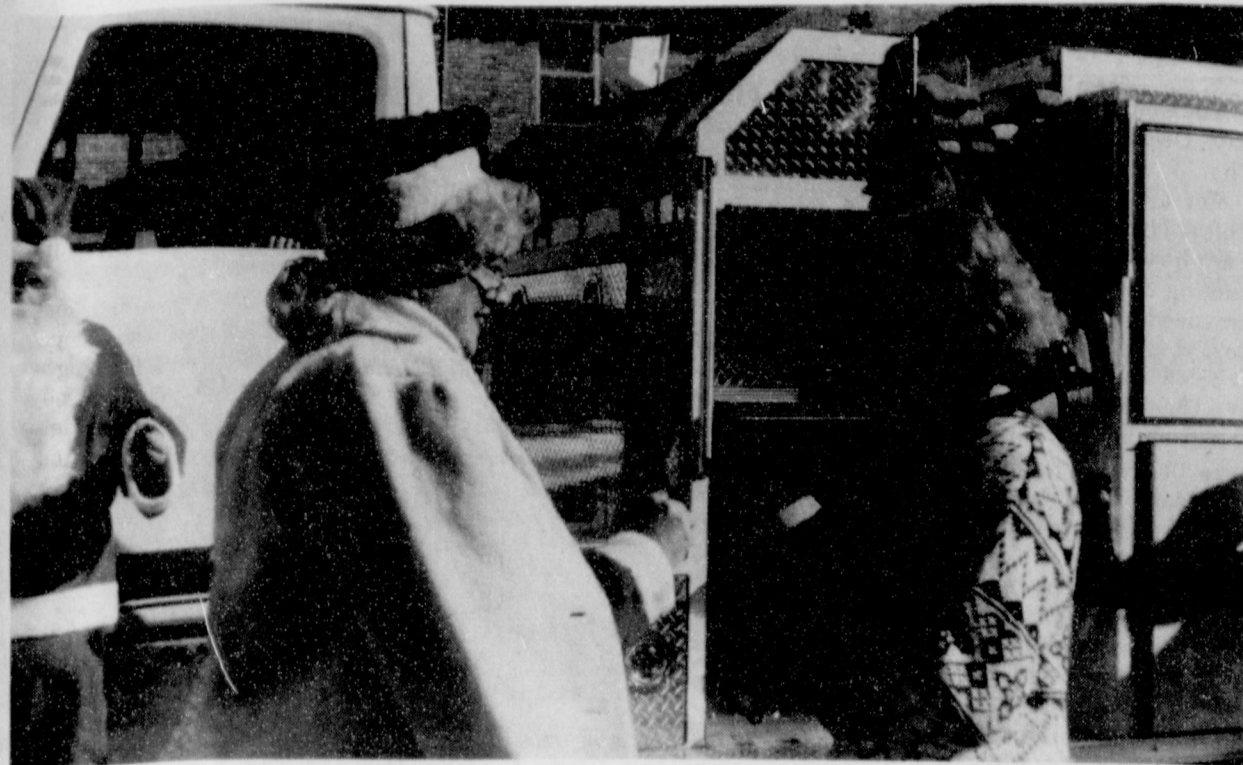
The Lake Meredith Aquatic and Wildlife Museum will be presenting its Annual Christmas Bazaar on December 3 and 4, Friday and Saturday from 8:30 a.m. until 5 p.m. This event has become a very important part of the Museum to be able to have this for the community.

goods and cash donations for the Bazaar. There will be an area set aside for the adults to do their shopping, and the annex room of the Museum will be set up for the children to do their shopping. Elf helpers will be available to help the children pick out gifts for family and friends. After picking out the gifts, the gifts are then gift bagged and tagged and ready to go under

the Christmas tree. All the gifts for the children to pick from will be under \$4.00.

Community support is a very important part of the Bazaar. If you can volunteer a few hours on Friday, Saturday or Sunday, please call the Museum at 857-2458. Anyone making a donation will have a chance to receive one of three framed Christmas card prints that LaNelle Poling has donated to the Museum. If you have items to donate for the Bazaar, please bring them to the Museum by December 2nd. Your support is greatly appreciated.

Evelyn Aderholt has donated a beautiful large crocheted doily that the museum will be accepting donations of \$1.00 for an opportunity to receive this wonderful donation. A drawing will be held on Sunday for the winner of the doily.



Linda Rowland was one of the lucky winners of a gift certificate to a local business. Mrs. Claus had the honor of awarding Linda with her prize.

**You are Invited to a
Wedding Shower Honoring
Matthew & Jeanie Stark
Sunday, Dec. 5, 1993
3:00-4:00 p.m.
Spearman Church of
Christ Parlor**

**Selections at Gordon's,
ALCO, & Celebrate**

Bridal Shower

10:00 - 11:30 a.m.
December 18, 1993
708 Wilmeth

(Jackie Pearson's home)

for
**Jan Crawford
and
Chuck Picciuti**
Selections at
Gordons & Celebrate

Reynolds and Sheets

exchange wedding vows

Mr. and Mrs. Dan Reynolds were united in marriage Friday, November 26, 1993, at the Coulter Road Baptist Church in Amarillo, Texas at 6 p.m. Brother Randy Caddell officiated at the wedding.

Parents of the bride are Mr. and Mrs. Claude Sheets, Jr. of Spearman. The groom's parents are Mr. and Mrs. Ed Reynolds of Amarillo. The bridesmaid was Lacey Reynolds, daughter of the groom. The best man was Shelby Reynolds, son of the groom.

Wedding music was played by Barbara Purcell. The bride sang "I'll Be There." Ushers for the wedding were: Mark Sheets, brother of the bride; and Keith and Barry Reynolds, brothers of the groom.

A wedding reception was held at the Knights of Columbus Building following the wedding. After the dinner the wedding cake and groom's cake and punch were served by Beth (Sheets) Ayres, sister of the bride and Janet (Reynolds) Macon, sister of the groom. The new couple will be residing at Yukon, Okla.



Thank You

The family of Bernice V. Brown wishes to thank all of those who showed their love for her through their prayers and their support. We are grateful for the doctors, her friends who were always there for her and her loving church and pastor. Bernice will truly be missed, but we were all blessed by knowing her.
The family of Bernice Brown

Former exchange student spends holiday in Gruver

Peter Royal and his son Johannsen, visited a few days during Thanksgiving with Jerry & Rita Williams.

Many of you will remember Peter when he was an exchange student from Germany. He lived with the Clark Winkler family and graduated with the Class of 1962. He makes his home in Germany with his wife and three children. He is currently in Los Alamos working on nuclear reactors.

Peter has many fond memories of Gruver and takes every opportunity to visit.

Minding Your Own Business

by Don Taylor

A Christmas Tradition

The story of "Unlucky Jimmy" has become a Christmas tradition for this column. Because we have added more than 200,000 new readers this year, I think it's worth bringing again.

It's a story my mother often read to me when I was small. It's about a little boy named Jimmy. Jimmy's family was very poor. His little sister was an invalid and had to spend most of her days in bed. Christmas held no hope or joy for either of the children.

As he trudged home from school each day, Jimmy would stop to look at the toys in the bright store windows. More than anything, he wanted a little red fire engine. Jimmy knew way down inside that he would never be lucky enough to get one. In fact, his only marble had rolled down a storm drain the previous week. He felt that he was the unluckiest boy alive. He even called himself Unlucky Jimmy.

Then, one night just before Christmas, Jimmy received an invitation to a Christmas party for the poor children in the neighborhood. A nice lady from a nearby church mission promised Jimmy a special gift. Jimmy grew excited as he drew near the mission. He couldn't believe his eyes when he saw the Christmas tree. It was covered with lights and surrounded by toys. Jimmy saw a bright red fire engine just like the one in the store window.

When it came time for each child to pick out a gift, Jimmy's heart nearly stopped. He was afraid that someone else would pick the fire engine. Fortunately, when his turn came, the little truck was still under the tree. As Jimmy reached for the engine, he thought of his frail little sister at home in bed. He stopped and turned to the mission lady. He asked softly if he might pick two gifts, one for himself and one for his sister at home. The lady

shook her head sadly and told Jimmy there were only enough presents for one per child.

Jimmy looked longingly at the little fire engine. Then he picked out the prettiest doll under the tree. It had blue eyes and curly blond hair just like his little sister. As he returned to his seat with the doll, the other children began to laugh and make fun of him. Unlucky Jimmy clutched the little doll and ran from the mission. He stopped crying by the time he reached home.

Jimmy began to feel better when he saw the look of surprise and delight on his sister's face. As she hugged the doll and cried with joy, Jimmy didn't feel so unlucky after all.

Later, as Jimmy sat by his little sister's bed, someone knocked on the door. When he opened it, the mission lady was there. In her arms, she held the red fire engine. She explained to Jimmy that the children were sorry they had laughed at him. They had not known about his sick little sister. After she told them why Jimmy had chosen the doll, the children asked her to bring the fire engine to Jimmy.

The True Meaning
I often think of Jimmy at Christmas time, usually when I'm feeling selfish. Would you join me this Christmas season in beginning a "Jimmy" tradition? We can make the coming year a joyous occasion for all the people in this community by giving of ourselves.

Volunteer time to your favorite church or charity. Make or bake something for someone less fortunate. Take time to listen to someone who needs you. Let's make this year a year of giving.

Remember the real reason we celebrate Christmas is Christ's birth. It is his life of giving we should emulate. Today, like 2,000 years ago, wise men and women still seek him.

Dear Kids,

Hello to all my good friends in Hansford County! Rudolph, Mrs. Claus and the elves send Season's Greetings!

The elves and I are working hard on the toys I'll soon be packing into my sleigh for my Christmas trek through Spearman, Gruver, and Morse.

I'm also working on my list, and selecting gifts for you.

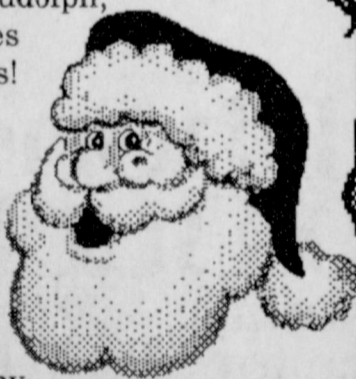
My helpers at the Reporter-Statesman have agreed to send your letters to me at the North Pole. Just write your letter and send it to me in care of the newspaper at P.O. Box 458, Spearman, Texas 79081, or bring it by the office at 213 Main Street in Spearman and drop it off.

Don't forget, though, your letters must be received in the Reporter-Statesman Office before noon on Thursday, December 9.

Your letters will be published in the Reporter-Statesman, Thursday, December 16, and then forwarded to me so I can check my list twice.

I'm looking forward to hearing from you soon.

Love,
Santa Claus



'tis the season for

Festive Foods Cooking School


Free demonstration featuring recipes and tasting.

Wednesday, Dec. 8
12:00 noon
Gruver State Bank
#3 Main Plaza

Reservations Required:
In Gruver, call SPS at 733-2333
In Spearman, call 659-2136.

Electricity — efficient use makes for a wise choice!

Presented by:



CHRISTYE FROST
SPS Home Economist

SPS
SOUTHWESTERN PUBLIC SERVICE COMPANY
P3436-11-93

Price support loans available

"Price support loans are available to all eligible producers who comply with applicable provisions of the 1993 farm programs," Keith Martin, CED of the Hansford County Agricultural Stabilization and Conservation Service, said.

Loan rates on 1993 crops are corn and sorghum.

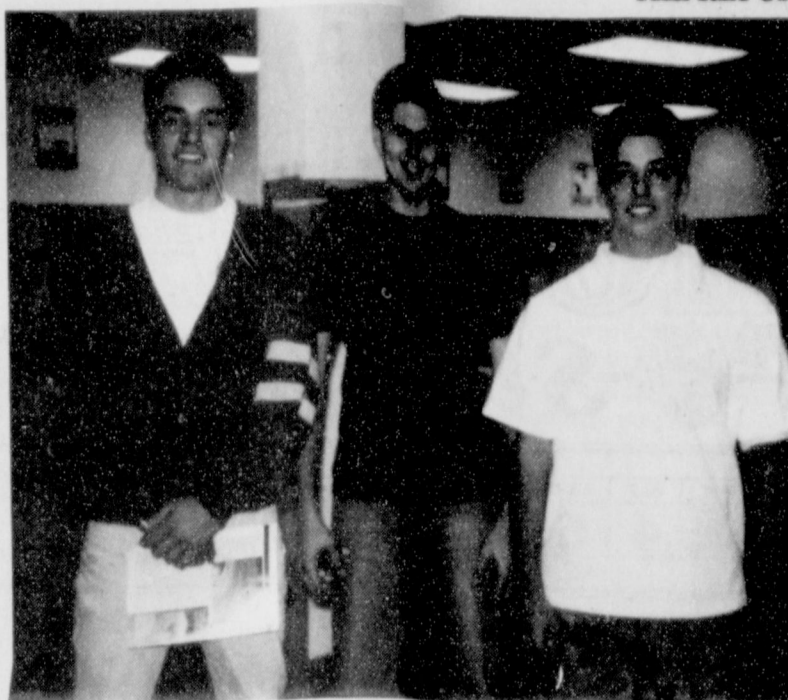
Keith said some producers may wish to store their crops after harvest to take advantage of future price increases, and a price support loan will provide operating cash for them.

The Commodity Credit Corporation (CCC) makes loans to eligible producers under the price support loan program. "Loans mature on demand, but no later than the last

day of the ninth month following the month in which the note and the security agreement is approved," Keith said. Stocks may be stored on the farm or in an approved commercial warehouse. The commodities serve as collateral for the loan.

"Producers who plan to commingle their 1993 and 1992 harvests must first contact our office," ASCS official Keith said.

Price support loans on wheat, canola, flaxseed, rapeseed and other small grains are available through March 31, 1994. Corn, sorghum, cotton, rice, mustard seed, safflower, sunflower seed and soybean loans are available until May 31, 1994.



Foreign Exchange Students Augusto Botelho, Fernando Oloveira, and Gustavo Camargo recently gave a special program regarding life in Brazil to their fellow students at Gruver High School.

Brazilian exchange students give J.H. special program

All semester, Gruver has had the privilege of foreign exchange students from Brazil. We have visited with them and many times only been able to say Welcome and Hello! However, this week the Gruver Jr. High was given a special program from Fernando Oliveria, Augusto Botelho, and Gustavo Camargo regarding life in Brazil.

Gruver students were told of the various climates, geography, and commerce of Brazil as well as the schools. Gruver students learned that private schools were definitely the way to go to school in Brazil. Rain forest preservation to enhance medical advancements was discussed as a promising outlook for Brazil as well as the world.

The boys say that they have missed home, but the cultural ex-

perience has been worth it. They have decided that there is not any place like the Panhandle. They invited the students to take any opportunity available to visit Brazil for a cultural exchange.

*Oh!
Buoy!*

ANTIQUES & GIFTS

531 N. Main
Downtown Borger, Texas
Open Monday - Saturday
9:30 a.m. - 5:30 p.m.
(806)273-5820

CHARLIE & JANELLE WILLIAMS DIEDRE HOOD

Hansford Hospital District News

National Home Care Week proclaimed Nov. 28 - Dec. 4

Hansford Home Care, along with agencies nationwide joins congress and the President in celebrating National Home Care Week, November 28 - December 4, 1993.

This year's theme, "Home Care: The People's Choice," reflects the unanimity of voice with which the American public chooses home care as the solution to the growing long-term care problem. Millions of Americans of all ages need long-term care services, either because of a chronic illness or a permanent disability that renders them without assistance. Currently, it is estimated that between 9 and 11 million Americans of all ages require long-term care. This number could double by the year 2030 to more than 19 million.

"Home care is an excellent and cost-effective alternative to institutional care, providing patients a way to recover in a familiar environment surrounded by their loved ones and treasured possessions," said Vera Dominguez RN Director of Hansford Home Care. Modern technology has developed to the point where virtually anything that is available in a hospital can be provided at home. Considering the spiraling costs of institutional care and the growing number of Americans in need of health care, home care is clearly an idea whose time has come.

Hansford Home Health Care was founded April 1992 and has been providing high-quality professional home health care services to Hansford County and surrounding areas. Since that time over 150 patients of all ages have been served. A combination of over 4,000 visits and over 15,

018 miles traveled. Employing nurses, therapists, home care aides, social workers, and other caregivers, the agency offers comprehensive home care from the most basic assistance with daily living to sophisticated high-tech medical treatment.

Hansford Home Care staff members are: Vera Dominguez, RN/Director; Lana Carter Patterson, RN; Sue Watts, LVN; Sherri Scroggs, CNA (Certified Nurses Aide); Tracy Scribner, CNA; and Lillian Cooksey, CNA.

If you have any questions about home health care call Hansford Hospital at 659-2535 and ask for the Home Health Department Est. 111.

Happenings at Hansford Manor

The holidays are here, and we are ready at the Manor with lots of Christmas cheer and a full activity schedule. The Trinity Community Church will sponsor our Christmas Buffet, December 13th. Our Tuesday night Bingo sponsor is the Methodist Church. We're looking forward to our annual Christmas Bazaar, which will be on December 10th. Everyone is welcome to come and do your Christmas Shopping! Our resident Christmas Party will be on the 17th. Rumor has it that we are expecting a visitor all the way from the North Pole! So keep your eyes open, and watch out for low flying reindeer! **Happy Holidays!**



Resident Birthdays

Melba Williams - 6th
Edna Bayless - 7th
Louie Sampson - 11th
Viola Hutton - 17th
Clara Conley - 17th
Nellie McDonald - 19th

Welcome New Residents!

Jo Richardson & Precious

New Employees

Jose Tarango - Dietary
Kari Peterson - CNA Manor

Solid Gold Selections

Resident of Month Ernest Newcomb

Our featured resident for the month of December is Ernest Newcomb. Ernest was born April 23, 1903 in Kent County, Texas. He moved to a homestead in Hansford County before he was a year old. He began his schooling in a one-room sod schoolhouse, and graduated from Panhandle State University. He moved to California and enlisted in the army in 1926. He served in Panama for approximately one year, and was discharged in New York. Ernest lived in New York until 1944, when he again joined the army and was sent to Panama. He served until his fathers death in 1945, when he returned to Spearman to care for his mother.



Ernest Newcomb

Ernest worked for the City of Spearman until retirement, and also served as the caretaker of the Stationmaster's House

Museum for 10 years. He came to Hansford Manor in June, 1991. Ernest always has an interesting story to tell, and has a wonderful sense of humor. We are glad to have him here with us.

Nursing Tips:

Helpful hits for fighting flu virus

As we near the height of the cold and flu season, some of the general symptoms experienced are general body aches, fever, loss of appetite, nausea and/or lack of energy.

Some suggested remedies to follow are:

1. Bed rest which is most important.
2. Plenty of fluids at least a small amount every hour if tolerated. Suggestions are water, ice chips, clear broth, hot tea, jello or juices as cranberry, grape or apple. Also 7-up is good for nausea.
3. Sometimes acetaminophen or ibuprofen is helpful in relieving body aches and fever.
4. Minimal amount of

activity.
5. If symptoms persist or do not improve and if a fever of 101 in adults or 102 or above in children that is persistent and hard to control, call your doctor or emergency for further information.

If you are uncertain about whether or not you have the flu, stay at home for 3-4 hours until the symptoms subside or become evident that it is the flu. This is to decrease exposure to others as flu and cold viruses are usually extremely contagious. The best prevention against the flu virus is to take a flu shot in early October or don't intentionally expose yourself to someone who is ill.

Annie Torres named Employee of the Month



Hospital Administrator Anne Snow (right) presents Employee of the Month award to Annie Torres.

The Hansford County Hospital District is pleased to present their employee of the month for December, Annie Torres. Annie started working part-time in Hansford Manor May 6, 1982. She became a full-time employee at the Manor in November of 1983.

Annie married Matiaz Torres October 1, 1966 in Houston. They moved to this area in 1978 to work for Wally Berner. Two years later, they moved to Waka to work for Charles Caison. They moved to Spearman in 1982.

Annie and Matiaz have 3 children: Jose, Maria, and Manuel. All of their children live in Spearman. When not working, Annie likes to spend her pastime crocheting, cooking, and playing with her grandbaby.

Annie is a hard-working, cheerful employee. Congratulations Annie, for a job well done!

Home is where the heart is

Health Care at home is viable choice for Hansford County residents

by Angela Jones Editor

It is said that "Home is where the Heart is", but it also a place for healing thanks to Home Health Care. Susie Hand, just one of Hansford County's Home Health Care patients, stated that the staff was so close to her that she thinks of them as part of her family.

It all began on October 26, 1992. Susie Hand was in the hospital with her mother practically day and night when she had a stroke. "I knew what was happening but I couldn't communicate. I lost the use of my left side and my speech," Susie said.

She was taken to Amarillo on October 29th and on October 30th the doctors found a brain tumor. "I had a lot of odds against me but I didn't have a choice," Susie said. The doctor told her she could possibly lose the use of her left side and/or her speech. The surgery was held on November 2 after several tests.

Susie remained in the hospital six days and then was in Bivins Rehab for three weeks. After that time Susie had to make a choice of whether to go to a nursing home facility or to have home health care. "My family and I decided that home health care was the best idea."

Sue Watts (LVN) and Traci Scribner (Home Health Care Aide) were the key members for Susie. Vera Dominguez (RN), the director of Home Health Care, made periodic supervisory visits. Other staff members involved with Susie's care were Terry Dewberry and Kay McFarlin. Carol Dunnihoo helped Susie with her physical therapy and exercises.

When Susie arrived at home she was bed ridden. Her husband, L.F. Hand, did most of the house keeping and took care of Susie in the evenings, while the home health care aides were in charge of baths, grocery shopping or anything else the patient may need.

"When I got where I could move

around I felt like a canary out of its cage," Susie exclaimed. "Despite the weather they were always here. They would call before they came if it was bad weather."

But this was short lived. On June 24, 1993 Susie broke her hip. She was in the hospital for 11 days and at Bivins Rehab for two weeks. She returned home on July 23, 1993. At this time Sherry Scroggs became her home health care aide.

As soon as Susie was home the home health care staff was back at her side, helping her with her recovery. "We are real fortunate to have a home health care and therapy facility in our area. I would have had to go to a nursing home and for therapy I would have had to travel to Amarillo and it would have been very difficult," Susie stated.

She continued, "It (Home health care) got the help coming to me instead of me having to go to them. It saves the patients having to travel to Amarillo or other area towns."

Sue Watts explained that with

home health care the staff can draw blood or perform other tests and then fax the test results to the doctor in another town. Then the doctor calls and tells the staff what to do.

Sue had this to say about Susie, "It makes a difference when the patient had the stamina and knows what has to be done." Susie answered, "I was determined that I wasn't going to be a vegetable. I am thankful that I can even talk."

Sue stated that Susie has come a long way overcoming all of the difficulties. Susie beamed that she had gotten to go to the grocery store for the first time in over a year (October 24, 1992). Her husband took her on November 18, 1993. But she claimed that she didn't get a lot of shopping done because of friends stopping to visit. She stated another reason, "My husband was pushing me too fast. He says that it saves money."

So is home health care a good idea? Well, Susie says that it is. "I

would highly recommend Home Health Care and it is my opinion that there are several individuals in nursing homes that could be helped with home health care." She

stressed another advantage, "You make new friends." Plus patients have the familiar setting of their own home.



Sue Watts (left) with Susie Hand, an LVN with the Hansford County Home Health Care.

For The Sport Of It

by Bob Bort

By the time you readers are reading this column, the Borger games will have been played, and you will know the results. It is the first really big game of the year for the Lady Hounds - a must win. Borger, Perryton and Spearman are opponents that the Lady Hounds must get over the stigma of losing to. Last year, the Gruver girls lost to Borger twice, in two games that they quite frankly, blew. The first one, at Borger, was played there because the scoreboards in the Gruver gym were out of whack, and the game had to be moved to Borger. The final was 44-39 - the Lady Hounds blew a big lead. The second game was at the Perryton Tournament in the championship game, as the Lady Hounds had advanced that far by upsetting Sanford-Fritch and Spearman. The final score was 42-40, and again the Lady Hounds played terribly.

It is not nearly so important that the boys win the Borger game, as it is important that the ladies win the Borger game. The boys are a young team that have a future,

and Borger is a class AAAA team. As long as they continue playing well against the AAA and AAAA competition, it is very encouraging. The girls are playing for right now, this year. They must make it happen this year, and they have four very talented seniors that are guiding them.

After the Borger game, there is much the same story with the opening games of the Lake Meredith Classic at Fritch against Perryton. Again - not imperative that the boys win, just that they play well against a class AAA team. But imperative that the girls win - last year, the Lady Hounds played at Perryton, and it may have been their worst effort of the year. They were beaten 52-43, but the Rangerettes blew the Gruver girls right out of the gym in the first few minutes of the game.

The fact is, the Lady Hounds are a much better team than either Borger or Perryton. They need to prove that on the basketball court this year. Then they can tend to matters with the Lynxettes.

If there is room in the December 16 issue of the Reporter-Statesman, you readers will get a treat. I will give you my collegiate bowl picks. That week there will be a lot of basketball to report, with three tournaments involving the JV boys and the varsity girls and boys, and also the big district opener against the Lynx and Lynxettes. Hopefully we can squeeze in my column that issue.

Here is some tournament scoop. In the Lake Meredith Tourney at Fritch this weekend, Dec. 2-4, there may be some changes, as Perryton is still in the football playoffs. They will have a football game somewhere down south while the basketball tourney is going on, which may cause the Rangers and Rangerettes to pull out - at least in some games - probably Friday or Saturday's games. Gruver teams open against Perryton on Thursday - girls at 5 p.m., boys at 6:30 p.m. Teams that are entered are Happy, Clarendon, Gruver, Perryton, Panhandle, Tulia, West Texas and Sanford-Fritch.

In the Kids Incorporated Tourney De. 9-11 at Amarillo High, the Lady Hounds will play a minimum of five games. The teams that are entered are Amarillo High, Amarillo Caprock, Amarillo Palo Duro, Amarillo Tascosa, El Paso High, El Paso Hanks, Happy and Gruver.

The Sport of It See pg 6

Gruver Lady Hounds come of age; Greyhounds still too young

by Bob Bort

The Gruver Lady Hounds are now a championship calibre team - they proved it once and for all this past Tuesday night at Greyhound Gym against the unbeaten, 7-0, class AAAA Lady Bulldogs of Borger. Gruver built the big lead, saw it diminished somewhat, then came back at the end to win by 17 points. It was a masterpiece.

Meanwhile the Hounds came out and built the big lead, saw the 4-2 Bulldogs come back on them, but still played a very good first half, trailing by ten at the intermission. But the Bulldogs were intent on running up the score in the second half, and they did so, winning by 37 points. Perhaps the Hounds will have a long memory.

Taking the contests in order, and looking at the Lady Hounds first, it was a monumental win. Borger's girls came out and took the early lead, 10-4, and it looked like the Lady Bulldog mystique might do in the Gruver girls again. But Gruver took their first lead on a Sara Jones three-pointer right at the end of the first quarter, 44-11. Borger came back to take the lead 15-14, but the Gruver girls took the lead for good as Molly McLain hit from under the basket, 16-15. Two key baskets were up-coming, as Jones hit another three-pointer with 5 minutes to go in the half, and it was 21-17. Then Wynn Maupin hit a driving lay-up, was fouled and sank the free throw, for a 24-17 lead with 4:23 to go in the half, and the Lady Hounds were well on their way to victory.

Gruver built their lead to 45-27 in the third quarter, but back came Borger, outscoring Gruver 16-6, to trail by eight, 51-43 early in the 4th

quarter. Gruver coach Steve Myatt must have had flashbacks to last year, when the Borger girls overcame a big Gruver lead at Borger to win 44-39.

But this is the 1993-94 Lady Hounds, and they put an end to the Borger mystique once and for all, by holding tough, and building the lead back up, to win by 17, 69-52. It was a very important win for the Gruver Lady Hounds.

Mika McLain had 18 points, Julie Meyer 16, and Wynn Maupin 12 for the balance scoring. Jones played a key role with her two three-pointers, scoring 8 points. Molly McLain had 9 points.

In the Hounds game, Gruver came out on fire, building an early 9-0 lead, as freshman Jarrod Hoel hit his first three shots, including a three-pointer, for a 7-0 lead - then Ryon Atwood made it 9-0 with a jumper. But the lead was short-lived, as the Bulldogs scored the next 14 points, for a 14-9 lead. The Hounds didn't quit though, tying the game at 16-16, and hanging tough for the entire first half. They trailed 46-36 at the intermission.

In the second half, it was race-horse basketball, with the Bulldogs piling up the points. These two teams will play again when the Hounds are a little more mature in their basketball skills, and the Hounds will remember this one. The final was 91-54, as the Bulldogs may have been shooting for 100.

Hoel scored 13 points, and sophomore Travis Ferguson played an excellent ball game, and came in with 10 points. Sophomore Wylee Maupin had 8, and junior Jace Dawson had 6. The early nine point run proves that this team is just a fraction away from being a powerhouse. There is a thin line that separates greatness from mediocrity, and the Hounds are toeing that line.

Next up the big Lake Meredith Tournament at Fritch Dec. 2-4; then games with Hartley at Greyhound Gym next Tuesday, Dec. 7.

JV Girls (2-4) vs Borger
TUESDAY 11-30-93
at Activity Center

Bor	14	24	46	59
Gru	11	22	30	45

3-Pointers - Tara Shapley, Lexy Spivey.
GRU - Cara Hathaway-10, Shapley-10, Hailey Lamb-8, Joni Hart-6, Kaysha Cluck-4, Spivey-3, Erika Barrera-2, Crystal Christian-2.

JV Boys (2-4) vs Borger

TUESDAY 11-30-93
at Greyhound Gym

Bor	13	36	50	72
Gru	16	29	43	55

3-Pointers - Bailey Barkley, Josh Mayhew.

GRU - Barkley-11, Juan Arreola-9, Eric Wright-7, Grant Odom-6, Fernando Oliveira-6, Mayhew-5, Tye Womble-5, Max Frick-4, Scott Jarvis-2.

Varsity Girls (4-0) vs Borger
TUESDAY 11-30-93
at Greyhound Gym

Bor	11	25	36	52
Gru	14	34	47	69

3-Pointers - Sara Jones (2).
GRU - Mika McLain-18, Julie Meyer-16, Wynn Maupin-12, Molly McLain-9, Jones-8, Wendy Rodriguez-5, Tisha Ralston-1.

Varsity Boys (1-3) vs Borger
TUESDAY 11-30-93
at Greyhound Gym

Bor	19	46	72	91
Gru	16	36	42	54

3-Pointers - Travis Ferguson, Jarrod Hoel.
GRU - Hoel-13, Tr. Ferguson-10, Wylee Maupin-8, Jace Dawson-6, Ryon Atwood-4, Tek Ferguson-4, Ricardo Soto-3, Phil De La Cruz-2, Aaron Frick-2, Victor Lopez-2.

7th Grade Girls (1-1)
vs West Texas
MONDAY 11-29-93
at Greyhound Gym

WT	3	15	25	29
Gru	4	13	26	41

GRU - Erika Salmans-16, Jennifer Dahl-15, Missy Johnson-3, Lauren Miller-3, Bobbie Christian-2, Kadie Grotegut-2.

8th Grade Girls (1-1)
vs West Texas
MONDAY 11-29-93
at Greyhound Gym

WT	7	13	21	33
Gru	17	25	34	46

GRU - Weslyn Maupin-26, Jeannie Swink-7, Jill Odom-4, Kathy Slough-3, Darby Johnson-2, Amber Roberts-2, Autumn Roberts-2.

7th Grade Boys - Red (1-2)
vs West Texas
MONDAY 11-29-93
at Plemons

Gru	4	11	xx	28
WT	14	20	xx	34

no stats available
7th Grade Boys - White (0-3)
vs West Texas
MONDAY 11-29-93
at Plemons

Gru	4	10	16	24
WT	16	18	34	48

GRU - Luke Johnson-13, Wesley Mizer-4, Rodney Grice-3, Adam Red-2, Gred Slough-2.

8th Grade Boys - Red (3-0)
vs West Texas
MONDAY 11-29-93
at Plemons

Gru	xx	xx	xx	34
WT	xx	xx	xx	30

GRU - Brant Armes-22, Juan Bravo-4, Cesar Garcia-4, Jody Robinson-4.

8th Grade Boys - White (2-1)
vs West Texas
MONDAY 11-29-93
at Plemons

Gru	2	8	9	19
WT	9	11	25	31

GRU - Kyle McNett-10, Travis Bayless-3, Erik Pando-3, Ralph Royval-3.

9th Grade Boys (0-5)
vs West Texas
MONDAY 11-29-93
at Plemons

Gru	2	10	10	24
WT	9	18	26	45

GRU - Matt Overbey-9, Tucker Henson-4, Heath Tolleson-4, Doug Gumfory-2, Jeb Lee-2, James Sursa-2, Blake Ferguson-1.

Gruver Greyhounds announce Academic All-District teams

The Gruver Greyhounds District 1-AA Cross Country All-Academic team consists of juniors Julie Meyer, Tisha Ralston, and Wendy Rodriguez; sophomores Tara Shapley, Joni Hart, Kiki Carthel, and Molly McLain; and freshman Amber Murrell.

Named to the District 1-AA Varsity Football Academic All-District team are seniors Justin Carthel, Hart Derington, Kenton Odom, and Robert Whitaker; juniors Jace Dawson, Aaron Frick, and Ricardo Soto; and sophomores Max Frick and Wylee Maupin.

HENSON CHIROPRACTIC
410 S. Davis • Spearman, TX
Call for Appointment - 659-5603
Office Hours:
Mon., Wed., Fri. - 9:00 to 5:00
Tue., Thu. - 9:00 to 11:30

The HOLIDAYS are here!

ALLSUP'S
Gruver & Spearman Only

PRICES EFFECTIVE NOV. 28-DEC. 4, 1993

ALL TYPES COCA-COLA 6 pk. • 12 oz. cans \$1.99

SAUSAGE, EGG & BISCUIT EACH **89¢**

BEEF & SALSA BURRITO FOR ONLY **89¢**

SHURFINE APPLE CIDER 64 OZ. BTL. **\$1.49**

SHURFINE PAPER TOWELS JUMBO ROLL **59¢**

JR. MINTS, SUGAR DADDY OR SUGAR BABIES REG. 55¢, NOW **3 \$1**

COOKED FOODS SPECIAL OF THE WEEK
ALLSUP'S CORN DOG & A 20 OZ. NR COKE FOR ONLY 99¢

COMBO OF THE MONTH
BBQ BEEF SANDWICH & A SMALL 16 OZ. COKE FOR ONLY 99¢

CHRISTMAS TREES
NEW MEXICO MOUNTAIN TREES & SCOTCH PINE STARTING AT **\$10.99** AND UP

GRANULATED SHURFINE SUGAR 4 LB. BAG **\$1.39**

ALLSUP'S 1.5 LB. LOAF SANDWICH BREAD 69¢ EACH OR **2 \$1**

NICE 'N SOFT BATHROOM TISSUE 4 ROLL PKG. **99¢**

Allsup's Homogenized Milk 1 gallon **\$1.99**

Assorted Shurfine Vegetables Corn, Green Beans, Peas **3/99¢**

Allsup's Ice Cream 1/2 Gallon Assorted Flavors **\$1.29**

Shurfine Dog Food 20 lb. bag **2/\$7**

Valley Fare Paper Towels **2/\$1**

AUCTION
V.F.W. Hall - Perryton
Sunday, Dec. 5
The following information was omitted from our auction flyer.
AUCTIONEER:
John Maslonka
License #10008
Homier Dist.
84 Commercial Rd.
Huntington, IN

NOW OPEN
Tri-State Warehouse
Cabinets, Carpets & Vinyl Floor Covering
101 S. Main • Perryton • (806)435-3409

Cellular Phone Under 100 Bucks*
This Christmas. Get a Motorola Phone for \$99 With a Holiday Gift Certificate From Dobson!

If you've got a pile of zeroes and a nose for a great Christmas bargain, the Dobson Holiday Gift Certificate is for you! Just clip the Certificate below, present it to any Authorized Dobson Cellular office, and receive \$100 OFF the price of any cellular phone in stock!

Bob Setliff • Gruver Cellular • 733-2180

ONE HUNDRED DOLLARS
The Dobson Cellular Holiday Gift Certificate
DOBSON CELLULAR SYSTEMS

State Comptroller releases Nov. sales tax rebate totals

State comptroller sent November sales tax rebates totaling \$188.4 million to Texas cities and counties—a 16.2 percent increase over last year.

Spearman received a monthly payment of \$19,568.47 for November 1993, up 12.71 percent from the November 1992 figure of \$17,361.71.

The \$4,870.77 payment to the city of Gruver for November 1993 was up 10.42 percent from the \$4,411.03 sent to the city for the same period last year.

Hansford County has received payments of \$204,880.75 to date compared to \$197,647.74 for the same period in 1992, an increase of 3.65 percent.

"The economic climate in Texas continues to show improvement," State Comptroller John Sharp said today as he sent a total of \$188.4 million in November sales tax rebates to 1,072 Texas cities and 109 counties, reflecting a 16.2 percent increase in consumer spending over the same period last year.

Texas cities received \$171.6 million, up 16 percent over last November's payment of \$147.8 million. Counties received a total of \$16.7 million for their November rebates, a 17.4 percent increase over their payment one year ago of \$14.3 million.

I not only use all the brains I have, but all I can borrow.

—Woodrow Wilson

"Our state's total employment has risen an impressive 2.2 percent in the past year," Sharp said, "with the Austin and San Antonio metro areas leading the pack in employment growth."

This month's sales tax payments include taxes collected by monthly filers on September sales and by quarterly filers for July, August and September, and reported to the Comptroller in October.

Private applicator licensing school to be held Dec. 10

For those needing a private applicator license, a training will be held on Friday, Dec. 10, in the Extension Homemakers Clubroom, 309 N. Bernice, Spearman. The training will begin at 9 a.m. with a slide presentation. There will be a break for lunch followed by testing by TDA at 1:30 p.m.

Books which can be used as study guides are available at the County Extension office. Come by the courthouse to pick one up or call 659-2136/733-2901 if you need one mailed to you.

Contact Burt Williams, County Extension Ag Agent if you have further questions.

Gladiola Flower Club to host home tours Sunday, Dec. 5

Co-Chairman, Estelle Jackson, reports that five homes will be featured this year during the Gladiola Flower Club Home tour which will be held on Sunday, Dec. 5.

The homes to be featured this year will be Mr. and Mrs. Ron Cook, Dr. and Mrs. Tom Latta, Mr. and

Mrs. Keith Hight, Mr. and Mrs. Mark Sheets, and Mr. and Mrs. Kirk Adams.

Tickets will be \$5.00 each. Proceeds will go toward medical scholarships, Girl Scouts, donations to Christmas tree lights and many other community projects.



This lovely two story home of Linda and Tom Latta, 1101 S. Barkley, will be on the Home Tour Sunday, Dec. 5.



The lovely home of Julie and Kirk Adams at 719 Gibner can be seen Dec. 5, during the Gladiola Flower Club Home Tour.

December designated Drunk and Drugged Driving Prevention month

December is Drunk and Drugged Driving Prevention month.

Every year, the holiday season ends in tragedy for some, tragedy that is avoidable.

Last December, 90 people were killed on Texas roads in alcohol-related crashes. This year, the Texas Department of Transportation (TxDOT) wants that number to drop by at least 5 percent.

"Of course, we'd like to see that number be a zero," said Gary Trietsch, director of TxDOT's Traffic Operations Division. "But every year, people who don't normally drink are going to parties and drinking more alcohol than they're accustomed to. Unintentionally, they become impaired drivers—and that's when they endanger themselves and others."

The safety message for TxDOT's December campaign is, "Texans Don't Let Friends Drive Drunk." The message encourages others to be responsible for themselves and others.

"If you are going to drink, know how to get home safely, by designating a sober driver, catching a cab, or calling a relative or friend to drive you home," said Trietsch. "Don't let your friends drive home if they've been drinking. They may not appreciate your intervening at the time, but they'll live to thank you the next day."

In the United States, traffic crashes are the greatest single cause of death for people ages 6-33. Impaired drivers are responsible for half of these accidents.

After a decade of the combined efforts of TxDOT, the news media and many other organizations and volunteers, Texas has had a 32 percent decrease in the number of people who die in alcohol-related crashes during December.

"The holiday season is a time of giving thanks for all the good things—family, friends and health," said Trietsch. "A crash caused by someone under the influence of alcohol or drugs destroys that celebration. Our message to all of Texas is, 'Enjoy the season and don't wreck your life.'"

Holiday season safety tips offered

While the Holiday Season is traditionally a time of joy, it has a dark side too. The police departments in our state's four largest cities report that crime rates soar during this time of year—particularly the number of home burglaries and car break-ins. Enjoy the holidays, but exercise a little extra caution. Don't let someone else "have themselves a Merry Little Christmas" at your expense.

Safer Shopping Sprees

The overwhelming majority of assaults occur when the victim is alone, so plan to shop with a friend or in a group. Let someone know where you're going, the route you'll be taking to get there, and when you expect to return. In case your car breaks down, keep a few quarters and a list of important phone numbers handy. If another motorist stops to offer assistance, say that the police have been called and are expected momentarily, then offer them a quarter and ask that they call someone on your list to let them know your whereabouts.

When you arrive at your destination, park in a well-lighted area. Lock your car and roll up the windows, even if you are only going to be gone for a few minutes. Don't leave packages visible in the car; lock them up safely in the trunk.

Once you're in the store, hold on tightly to your purse or wallet. Better yet, leave it at home and keep credit cards, your driver's license, and money in your pocket. Avoid carrying large amounts of cash; pay with a check or credit card whenever possible. Try to carry only those credit cards that you intend to use and make sure that you have all of your card numbers recorded and stored in a safe place at home. Teach

your children to go immediately to a store clerk or security guard if you become separated while shopping, and caution them never to go into a parking lot alone.

Children, of course are not the only ones who should avoid deserted parking areas. Don't be the last one to leave a store. Finish your shopping 30 to 45 minutes before the store closes and have your keys in hand when you return to the car. When taking your purchases from the car to your house, don't leave the car unlocked with packages inside—even for a minute.

Holiday Safety at Home

December is a peak month for home burglaries, so safeguard your home by taking some precautions. Don't display gifts where they can be seen from a window or doorway. Be diligent about locking your doors and windows every time you leave, even if it's only for a few minutes. When going out to holiday parties, turn on a few lights and a radio or television to make the house look occupied.

If you plan to travel during the holidays, take steps to protect your home while you're away:

- Get an automatic timer for your lights.
- Turn down the ringer on your phone.
- Arrange for a neighbor to accept packages while you're gone, or cancel all deliveries until you return.
- Store gifts out of sight, in a safe place, before you leave.
- Ask a neighbor to keep an eye on your house, pick up the mail and newspapers, and park a car in your driveway from time to time.

Finally, common sense crime prevention doesn't end when the Holiday Season is over. Start the New Year out right by marking your new gifts with your license number or some other form of identification.

Farmers responsible for quality of stored grain

Keith Martin, CED, of the Agricultural Stabilization and Conservation Service, said Hansford County producers are responsible for the quality of their farm-stored grain under loan, and urges them to check it regularly.

"Because farmers bear responsibility for the condition of this grain, they must check it for insects and mold growth, not only in warm weather, but during the fall and winter months as well," Keith said. Year round inspections are necessary to preserve the quality of stored grain destined for future markets.

The market value of infested grain may be substantially reduced if the number of insect-damaged kernels is sufficient to lower the grade of the grain. Discounts against the price paid per bushel are assessed by the buyer if live insects are present in the grain.

"To eliminate wasted grain and



lost profits, producers can use prescribed grain storage and handling methods," Keith said. He said before producers apply for a grain loan, they must check their storage structure to see that it is adequate to control insect infestation, and then apply an approved insecticide to the grain when it is placed in storage. "This treatment usually protects the grain from insect damage for almost one storage season. However, it is very important to inspect the grain regularly because the longer it is in storage the more likely it is to become infested."

The ASCS official said any time producers are in doubt as to the quality of farm-stored grain, whether it is in the commodity loan or the reserve program, they should contact the county ASCS office at once.

"Seeking Revival"
at
First Baptist Church Gruver!
December 5-8, 1993
Evening Services • 7:00 p.m.

Everyone is Invited!!!

Preacher
Claude Cone
Singers
Connie & Allison Ware
(A nursery will be provided)

Noon Services
(bring a dish)
12:00 p.m.

Everyone is Invited!!!

Santa Says...

**Don't let
Holiday Travel
Cramp Your Family's Style**

**And there's no need to when
Gillaspie Auto & Truck
Center is Having a
VAN SALE!**

<p>NEW - 1993 Plymouth Grand Voyager LE List Price \$23,457.⁹⁹ Closeout Price \$18,250.⁹⁹ Includes \$500 factory rebate Hail Damaged</p>	<p>NEW - 1993 Pontiac Grand Am Bright Blue - 4 dr. \$15,682.⁹⁹ List Price Special Closeout Price \$12,650.⁹⁹ Includes \$1500.⁹⁹ Factory Rebate</p>
<p>NEW - 1993 Chevrolet Sportside Pickup 350 Automatic Conversion by Travel Quest Loaded-Up. Must See! List Price \$22,653.⁹⁹ Special Closeout Price \$18,150.⁹⁹</p>	

**Visit Our Toy Selection
in the Parts Department**

**Official adult collectables,
cars, banks and "Heart
Throb" Trucks.**

Large Selection • Layaway Available

GILLASPIE
AUTO & TRUCK CENTER, INC.
CHEVROLET, OLDS, BUICK, PONTIAC,
CHRYSLER, PLYMOUTH, DODGE
Highway 207 South • P.O. Box 430
Phone (806) 659-2541 Spearman, Texas 79081

**Holidays! Extra Food!
Extra Stress! Extra Pounds!**

5 to 7 pounds between
Thanksgiving and New Years!

Schedule Fat-Burning, low impact aerobic
exercise - only 45 minutes - 3 to 5 times a
week. Bone-Building strength training
emphasized.

You are worth it!

Classes are at 5:30 EVERY DAY
upstairs at the Activity Center. Price is \$4 a
week for one to all 5 classes.

**Taught by Wanda Archer, 16 years
experience - certified by Y.M.C.A.**



your HOLIDAY store

United...
Celebrating
the tradition
of family
and friends

WED	THU	FRI	SAT	SUN	MON	TUE
1	2	3	4	5	6	7

Prices good December 1st through
December 7th in Perryton Only
Quantity Rights Reserved. No Sale to Dealers.

Compare
And Save

Hormel Chili
Without Beans; Regular or Hot
.98
19 oz.

GROCERY

PrePrice \$2.99
Doritos Corn Chips Regular or Thins **2 for \$4**

Van de Walle Picante Sauce Mild, Medium or Hot 16 oz. **.98**

Libby's Whole Peeled Tomatoes 2 16 oz. **.78**

Campbell's Chunky or Home Cookin' Soup From A Variety 4 19 oz. **\$5**

Pepsi or Slice
All Flavors
.79
2 Liter

Jolly Time Microwave Popcorn Asst. 10.5 oz. **2 for \$3**

Roman Meal Bread
24 oz. **.88**

Eagle Thins Potato Chips Asst. 14 oz. **2 for \$4**

Shawnee Mills Cornbread, Pancake or Corn Muffin Mix 6 oz. **5 for \$1**

Log Cabin Syrup Regular or Lite 24 oz. **2 for \$5**

Kellogg's Cereal
Low Fat Granola 14 oz., Raisin Bran 20 oz., Crispix 12.3 oz. or Rice Krispies 15 oz.
2 for \$4

Kellogg's Sugar Frosted Flakes 31 oz. **\$3.98**

United Cottage Cheese 24 oz. **\$1.58**

Country Crook Quarters Classic or Churn Style 1 lb. **2 for .88**

Ultra Surf Laundry Detergent Regular 42 load or With Bleach 33 load 98-103 oz. **\$4.98**

Texsun Orange Juice
12 oz. **.68**

Swanson 4-Compartment Dinners From A Variety 9-13.25 oz. **2 for \$3**

Green Giant Vegetables Whole Kernel Corn, Mixed Vegetables or Sweet Peas 2 28 oz. **\$3**

Eggo Waffles Asst. 11 oz. **4 for \$5**

Angel Soft Bath Tissue Pastels or Prints 4 ct. roll **.88**

Vaseline Intensive Care Lotion 15+5 oz. **BONUS FREE!** **\$3.19**

Old Spice After Shave Lotion Original or Fresh 4.25 oz. **\$4.49**

Maybelline Mascaras Great Lash, Fresh Lash or Ultra Lash each **\$2.99**

Sparkle Big Roll Paper Towels 1 ct. **.88**

Red & Green Leaf, Butter or Romaine Lettuce **2 for \$1**

Fresh Broccoli lb. **.79**

United Extra Lean Super Valu Pak BONELESS Arm Roast lb. **\$1.179** Single Pak lb. **\$1.89**

Red Ripe Roma Tomatoes lb. **.79**

Family Pak Fryer Thighs or Drumsticks lb. **.59**

United Extra Lean T-Bone Steak **\$3.69** lb. **USDA Choice lb. \$3.98**

Panhandle Crisis Center Report

by Mary Frances Ellzey

You readers familiar with us may skip this paragraph and start with the next one. The PCC offers services free of charge to men or women who are victims of domestic violence, whether physical or "merely" verbal. We give counseling, support, and information to these victims, plus a shelter to those who feel themselves to be in danger at home. We are available for help 24 hours a day, at 435-5008. If you want information only, call us from 9 a.m. to 5 p.m. For those who must call us long distance, use the toll-free number 1-800-753-5308.

With the October meeting of our Board, the PCC began a new fiscal year and elected a new Chairman of the Board: Braden Karber. Welcome, Braden! And many thanks to retiring Chairman Charles Van Tine for a job well done.

Thanks to the excellent work of our Grant Proposal writer, the Department of Human Services renewed their funding of our project. When I remember how much blood I used to sweat over writing the proposal, I stand amazed at (and very grateful for) Teresa, who does

it so well and apparently with ease! Statistics for the Shelter are: June, 3 clients and 5 children; July, 1 client; August, 4 clients and 6 children; September, ditto. One or two months of no-clients gave the Shelter Supervisor an opportunity to make the dust and feathers fly with some deep cleaning.

We've had 8 different speaking engagements with a total of 280 persons attending. One was in Hemphill County, 2 were in Ochiltree County and 5 were in Lipscomb County. A program on sexual assault and sexual abuse was held in the Friends' Church in Booker, resulting in a gift of \$150 and a lot of good information for recognizing and doing something about such situations.

Bernice Lawson, our director, and Sherry Sherrill went to Austin to attend a work Shop of the Texas Conference on Family Violence. They returned well informed and feeling an intensity of networking. Situations such as this are splendid occasions for sharing "What are you dealing with?" and "How are you handling so-and-so?"

Amarillo was the first of the Panhandle counties to have a Crisis Center. Next came T'ree of Pampa, almost simultaneously with us. Both these, of course, are larger than ours. Since we are the earliest of the smaller ones, we receive many calls, even from around the state, inquiring how we are doing this or that. Furthermore, our audit reports always give our bookkeeping the highest compliment permitted. And routine on-site checks from the government offices give us excellent reports. We are surely proud of what you have helped us to become.

We are disappointed that our batterers' program is getting off to such a slow start. To us, that, too, is of prime importance. Those who batter are in as sad a state as are their victims. Unfortunately all such programs are quite expensive, and most of us prefer to condemn (How can they do such a thing!) than to realize that they too need help.

On November 15 Bernice Lawson and I will be on Coffee Break. Watch for us! We'll see you in November.

People with healthier lifestyles can enjoy holidays

HOUSTON—(Nov. 22, 1993)—Holidays do not have to be hazardous for those who have recently adopted healthier lifestyles.

New habits of eating foods lower in fat and exercising regularly can help you survive the temptations of holiday parties and the stresses of holiday preparations, said Dr. John Foreyt, director of the DeBakey Heart Center's Nutrition Research Clinic.

"Renewing your commitment to eating less fat and planning ahead for holiday detours can keep you on the track of a healthier lifestyle," Foreyt said.

A behavioral psychologist and professor at Baylor College of Medicine in Houston, Foreyt offers these tips for maintaining healthy habits during the holidays:

•Remember that many "party" foods are high in fat. Survey the

refreshments and exercise your right to choose those lower in fat.

•Look ahead on your calendar. Acknowledge that you may consume more fat and total calories at a party or holiday meal than in your usual daily meals. Reduce the fat content of your meals on the days before the party to compensate.

•Do not skip meals. Eat a light, healthy snack or supper before going to an evening party. If you do not feel hungry, fat-laden foods will not be as appealing.

•Limit alcohol consumption. Try alternating an alcoholic beverage with a glass of water. While alcohol is not high in fat, it can make you feel hungry and create cravings for foods you would not ordinarily eat.

•Use your new knowledge of healthy eating and foot preparation to make family holiday treats healthier. Substitute low-fat ingredi-

dents when you can and cook without adding fat.

•Stick to your exercise routine. As holiday preparations and celebrations crowd calendars, taking time for daily exercise can be difficult. Try to combine exercise with holiday activities by walking the mall when you shop or taking the children on a walk around the neighborhood to view decorations.

•Empower yourself to maintain a lifestyle by sticking to an exercise routine and continuing low-fat eating habits is all most people need to survive the holidays without sabotaging a healthy lifestyle," Foreyt said.

The DeBakey Heart Center is a joint program of Baylor College of Medicine and The Methodist Hospital supporting cardiovascular research, treatment and education.



Members of the Spearman High School chorale group Celebrate perform during the lighting of the "Lights of Love Tree", Sunday, Nov. 28.

Heath Brief

Warnings sings of problem gambling

HOUSTON—For the compulsive gambler, the excitement of the big win is as addictive as alcohol or drugs.

"It usually begins with a big winning streak, and the person thinks maybe he or she can win a fortune," said Dr. Lauren Pate, a psychiatrist at Baylor College of Medicine in Houston.

She cited these danger signals of problem gambling:

• Neglect of personal, family or

job responsibilities in order to gamble.

• Depletion of finances.
• Need for increasingly larger stakes to achieve excitement.
• Gambling to win losses back.
• Frequent attempts to quit or cut down.

• Not being accountable for periods of time.

"People experiencing these problems can get help through treatment programs and support groups such as Gamblers Anonymous," Pate said.

Gruver postmaster to take oath of office in ceremony

Mike Floyd will be sworn in as postmaster of Gruver Thursday, Dec. 9, by Don Jones manager of post office operations from Lubbock. The ceremony will be at the post office at 10:00 a.m. The public is invited and refreshments will be served.

Floyd began his postal career in November, 1978, in Wichita Falls, Texas, as a letter carrier. He was promoted to supervisor of delivery and collections in Wichita Falls in 1990 and then to supervisor, customer services earlier this year. Floyd was awarded the Gruver postmaster position in April and assumed his duties on May 1.

"I'm happy to be here in Gruver and am looking forward to being a part of the community," Floyd said. "Being at the post office has given me the opportunity to meet a lot of nice people and I'm thankful for the hospitality that my wife and I have

been shown.

"The Postal Service has given me a trust in awarding me this position and I intend to provide Gruver with the best postal services that I possibly can," Floyd said.

Floyd is a member of the National Association of Postmasters of the United States, the National Association of Postal Supervisors and a past member of the National Association of Letter Carriers. He also has officiated basketball and softball and has been a member of the American Softball Association.

Floyd and his wife Kathy, have two children; Robert, of Perryton, and Rheana, of Wichita Falls.

Reaetta Gammon, formerly of Gruver, will be taking her Oath of Office in Beaver, Okla. on Dec. 7 as she takes the position of postmaster of the Beaver Post Office.

Hospital Report

NOV. 24 - 30

Admissions

Wednesday - none
Thursday - none
Friday - none
Saturday - Augustine Vargas, Ramon Hinojos, Genoeva Varrera and Charles Ball.
Sunday - Jose Sanchez
Monday - Daniel Sanchez
Tuesday - none

Dismissals

Wednesday - Larry Bonham
Thursday - none
Friday - none
Saturday - none
Sunday - Ramon Hinojos
Monday - Charles Ball, Cleo Denman.
Tuesday - Augustine Vargas, Paul Jones.

Weather

Day	Hi	Lo	Precip
Thu	30	09	.00
Fri	45	09	.00
Sat	57	19	.00
Sun	67	24	.00
Mon	60	29	.00
Tues	70	26	.00
Wed	--	34	.00
Total Precipitation			22.32

Accident

From pg 1
comed for patients in ICU, but plants are not permitted.

Vargas was released from Hansford County Hospital on Tuesday, Nov. 30 and Hinojos was released on Sunday, Nov. 28.

The incident is still under investigation.

DPS officer Rocha also investigated an accident at 1:10 p.m. on Sunday, Nov. 29. This accident occurred one mile north of Spearman on FM 760.

Rocha reported that a 1984 Freightliner tractor rig being driven by Carry Coombes and a 1981 Ford pickup being driven by David Bernhardt were travelling south on FM 760 when they collided. He stated that Bernhardt was attempting to make a right turn onto a county road. Coombes attempted to pass because he thought Bernhardt was turning left.

No injuries were reported; however, over \$500 in damage was reported to the vehicles. Citations were issued in the incident, Rocha stated.

Advertising Pays \$\$\$\$\$\$
Call 659-3434
or
1-800-395-9482

Quality Firewood

Seasoned Oak, Hickory, & Mesquite

Also slab firewood

\$100 to \$165 per cord

Delivery Available

Quality Construction

857-2035

GET THE **ALCO** Advantage

FREE EVERY TUESDAY!

SECOND SET OF PRINTS

Receive a second set of 3" prints FREE with any exposure roll of 35mm, disc, 110 or 126 color print film left for developing and printing at our everyday prices! C-41 process only. Excludes larger 4" size prints, and photo galaxy

Mens & Boys Wear

\$ave on Your Christmas Gifts!

Save on Your Christmas Gifts!

Men's Sportshirt Sale!

Arrow Sport, London Fog, Boulevard, Chapel Hill

REGULAR SIZES: Small to XLarge
TALL SIZES: Large to XXXLarge

20% Off

Men's DOCKERS

100% Cotton
Pleated Fronts • Comfort Fit
Waist sizes: 30 to 42

\$24.95

46 Waists & Larger.....\$29.95
Extra Long Lengths.....\$29.95

20% Off

All Men's Sweaters on Sale! Sweater Sale!

Jantzen, London Fog, Isle of Cotton, Shenandoah

REGULAR SIZES: Small to XLarge
TALL SIZES: Large to XXXLarge

20% Off

Men's Justin Kids Justin Lace Packers

Sizes 12.5 to 6

\$49.95

Wrangler

LARGE GROUP
Brushpopper, Painted Desert and Checotah Western Shirts

\$24.95

Values to \$48.95

Reebok

All Reeboks!!

20% Off

Justin Kids Justin Ropers

Kids sizes: 8 1/2 thru 13 1/2

\$39.95

Kids sizes: 1 thru 6

\$42.95

Levi's

Levi 550 **\$28.95**

Levi 560 **\$29.95**

Loose Fit Levis Waist 28 to 42

Mens Diamond J Ropers

COLORS: Brown, Black, Navy, Elephant Print, Shark Print

\$44.95

221 Main Street • Spearman, Tx. • 806-659-3426

Hours: Mon. - Fri. 8:30 a.m. - 6:00 p.m.
Sat. 8:30 a.m. - 7:00 p.m.

417 Gar 706 101 714 703 NEI 710 FOF

Home storm 3096 c 502-11

Buildr Gruver (806)7 S04-41

Want to cute abc 1014 H (evening) S05-6tp

25' X 12 1993. A the build Spearm: Russ an: S05-2tp

Lot for s: sell like re home for and fence 659-224E S03-11c

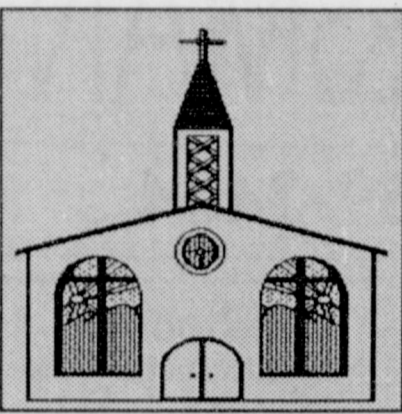
Go Janye

1009 Wi distinctic 316 Ber large roc Crawford 2-1 2-1 813 Han price! 315 19 N. Corporation INDEPEND

We are month 4th Wee Gruver. request in times Serv 317 S. I

Let us replenish the seed of faith through...

REGULAR CHURCH ATTENDANCE, DAILY BIBLE READING & PRAYER



HI-PLAINS AUTO SUPPLY, INC.
 Mobile Oil for Irrigation & Industrial Purposes
 118 Main • Spearman
 659-2506 • (800)657-8742

Palo Duro Supper Club
 22 S. Archer
 659-2232

C.O.'S SUPPLY CO.
Plumbing & Tire Sales & Service
 301 S. Davis • Spearman
 659-3781

Bartlett's Ace Hardware
 105 W. Broadway
 733-2404

GILLASPIE
 AUTO & TRUCK CENTER, INC.
 CHEVROLET • OLDS • PONTIAC • BUICK
 CHRYSLER • PLYMOUTH • DODGE
 Hwy 207 South • P.O. Box 430 (806)659-2541
 SPEARMAN, TEXAS 79081

FLOWERS
 ALL OCCASION FLOWERS
 MARY MOORE OWNER
 M-F 9 a.m. - 5 p.m.
 Sat. 9-Noon
 PLAINS SHOPPING CTR.
 Spearman, Tx. • 659-5180

THE HANSFORD COUNTY REPORTER-STATESMAN
 DEDICATED TO SERVE THE COMMUNITIES OF
 SPEARMAN, GRUVER & MORSE
 213 MAIN • 659-3434 • 1-800-395-9482

Gruver Cablevision
 Quality Family Entertainment
 with
 "the Disney Channel"
 308 Main • 733-5295

Morse Implement Company
 "Join us in church this week"

Boxwell Bros. Funeral Home

Speartex Grain Company
 405 Collard • Spearman
 659-3711

CORONADO HOSPITAL
 Pampa, Texas
 (806)665-3721

Compliments of
G&G FOODLINER
 516 Main • Gruver
 733-2471



Who says dogs and cats don't get along? It's all in how they are raised. The same is true in our emerging relationships with one another. Given the right influences in early years, we learn respect and tolerance, friendliness and forgiveness.

God's House is especially important in this aspect of raising a family. As part of their religious education, children learn that relationships with others are a practical expression of their relationship with God. Their reverence and growing faith begin to be reflected in the treatment of others at home, at school and in the community.

This vital area of every child's growth depends on the parents' awareness of their children's spiritual needs. Provide for their religious education. Your place of worship is eager to help.



Sunday	Monday	Tuesday	Wednesday	Thursday	Friday	Saturday
Revelation 4:1-11	Luke 17:11-19	1 Corinthians 11:17-34	Ephesians 2:1-10	Romans 6:1-14	Romans 6:15-23	Romans 7:1-13

Scriptures Selected by The American Bible Society
 Copyright 1993, Keister-Williams Newspaper Services, P. O. Box 6006, Charlottesville, VA 22906

In Spearman...

Apostolic Faith Church
 822 S. Dressen • 659-2870
 Sunday School: 10 a.m.
 Worship: 11 a.m.
 Evening Worship: 6 p.m. Sun.
 Wed. Prayer Meeting: 7:30 p.m.
 Pastor James Brown

Trinity Community Church
 717 W. 7th Ave. • 659-2671
 Celebration of Praise 10:15
 Worship Service and
 Children's Church 10:30
 Sunday Evening 6:30 p.m.
 Wednesday evening: 7 p.m.
 Pastor Dan Carter

First Assembly of God
 401 N. Bernice • 659-2295
 Sunday School: 9:45 a.m.
 Worship: 11 a.m.
 Evening Worship: 7 p.m.
 Wednesday Worship: 7:30 p.m.
 Youth: 7:30 Wednesday
 Pastor Ray Cook

Faith Lutheran Church (ELCA)
 1101 Bernice • 659-2252
 (Worships with First Presbyterian Church)

First Presbyterian Church
 (Worships with Faith Lutheran Church)
 1021 Cotter • 659-2033
 Sunday School: 9:45 a.m. at Lutheran Church
 Worship: 11 a.m. (alternates monthly between addresses above)
 Pastor Beverly Cook

First Christian Church (Disciples of Christ)
 29 S. Bernice • 659-2036
 Sunday School: 9:45 a.m.
 Worship: 10:50 a.m.
 Women's Bible Study: 2 p.m. Wed.
 Youth: Wed. 6 p.m. & Sun. 5 p.m.
 Pastor LaVern Draper

First Baptist Church
 123 N. Bernice • 659-5557
 Sunday School: 9:45 a.m.
 Worship: 11 a.m.
 Evening Worship: 7 p.m.
 Jr. High Youth: 6 p.m. Wed.
 High School Youth: 7 p.m. Wed.
 Youth Choir: 6 p.m. Sun.
 Pastor Kyle Henderson

Church of Christ
 121 S. Haney • 659-3244
 Sunday Bible Class: 9:45 a.m.
 Worship: 10:30 a.m.
 Evening Worship: 6 p.m.
 Bible Study Wed. 7:30 p.m.
 KRDF Radio Program
 Living With Christ 7:50 a.m. M-F
 Minister Arnis Pape

Fellowship Baptist
 1102 S. Archer • 659-2783
 Sunday School: 10 a.m.
 Worship: 11 a.m.
 Evening Worship: 6 p.m. Sunday
 Youth & Adult Serv.: 7:30 Wed.
 Pastor Rick Fincher

Union Church
 31 S. Endicott • 659-2644
 Sunday School: 9:45 a.m.
 Worship: 10:45 a.m.
 Evening Worship: 6:30 p.m.
 Bible Study: 7:30 p.m. Wed.
 Youth: 7:30 p.m. Wed.

Sacred Heart Catholic Church
 901 Roland • 659-2166
 Sat. Night Mass: 7 p.m.
 Sunday Mass: 9:00 a.m. - English.
 11:30 a.m. - Spanish
 Rev. Fernand Couture

Primera Mission Bautista
 502 E. 7th • 659-3991
 Sunday School: 9:45 a.m.
 Worship: 11 a.m.
 Pastor Guadalupe Carranza, Jr.

"WE SUPPORT OUR LOCAL CHURCHES"
CAPROCK #1 & #2
 Mike Heard, Gen. Mgr.
 (806)733-5043 or 733-5025
 "Custom Cattle Feeding"

In Gruver...
First Baptist Church
 402 E. Broadway • 733-2411
 Sunday School: 9:45 a.m.
 Worship: 10:50 a.m.
 Disciple Training: 6 p.m. Sunday
 Prayer Meeting: 7:30 p.m. Wednesday
 Pastor Larry Miller

Church of Christ
 209 King • 733-2760
 Sunday School: 9:30 a.m.
 Worship: 10:20 a.m.
 Evening Worship: 6 p.m.
 Wed. Evening Worship: 7:30 p.m.
 Minister Bob Setliff

First Christian Church
 510 King • 733-2960
 Sunday School: 9:45 a.m.
 Worship: 11 a.m.
 Wed. Bible Study: 7:30 p.m.
 Youth: 6:30 Wednesday
 Pastor Gary Gurfory

Oslo Lutheran Church (ECLA)
 West of Gruver on Hwy 15 & N. FM 1162
 339-7646
 Sunday School: 9:45 a.m.
 Worship: 11 a.m.
 Morning Prayer: 9 a.m. Wed.
 Pioneer Clubs (Grades 1-6):
 4-5:30 p.m. Wednesday
 Pastor John R. Chandler

Community Bible Church (Interdenominational)
 Hwy. 15 • 733-2443
 Sunday School: 10 a.m.
 Worship: 11 a.m.
 Wed. Prayer Meeting: 7 p.m.

First United Methodist
 Broadway & Garrett • 733-2651
 Sunday School: 9:45 a.m.
 Worship: 8:30 a.m. & 10:55 a.m.
 Sunday Evening: 7 p.m.
 UMY: 6 p.m.
 Pastor Lewis Holland

In Morse...
Morse Baptist Church
 Pastor Mike Martin
 733-2757

Henton & Co., P.C.
 Certified Public Accountants
 221 Sanders • Spearman • 659-2518

BERRY CLEANERS
 DAN DESIMONE - OWNER
 Phone 659-3122 • P.O. Box 1017
 207 Main St. • Spearman, Tx. 79081

GRUVER FORD
 Ford FORD
 531 Main • Gruver • 733-2431

Interstate Savings & Loan
 322 Main • Spearman • 659-2559

Hagerman Services
 Backhoe • Dozer • Welding
 North Hwy. 15 • Spearman
 659-5131

Gordon Drugs
 Dependable Prescription Service
 314 Main • Spearman
 659-2141
 Jim Evans

Compliments of...
AGCO
 of Spearman, Inc.
 "See you in Church"
 659-3751

Obituaries

BERNICE V. BROWN
SPEARMAN - Bernice B. Brown, 77, died Wednesday, Nov. 24, 1993. Services were on Friday, Nov. 26, in the First Baptist Church with the Rev. Kyle Henderson, pastor, officiating. Burial was in Ochiltree Cemetery by Boxwell Brothers Funeral Home.

Mrs. Brown, born in Amistad, N.M., had been a Spearman resident for 64 years. She attended Amarillo College. She married William E. Brown in 1948 at Dalhart. He died in 1988. She was a homemaker and a member of First Baptist Church, Home Demonstration Club, Calico Cow Belles and W.I.F.E.

Survivors include a son, William E. Brown Jr. of Spearman; a sister, Buena Lyon of Spearman; two brothers, H.J. Vernon of Spearman and J.P. Vernon of Winters; and three grandchildren.

The family requests memorials be to First Baptist Church Organ Fund or First Baptist Church Prayer Ministry, 123 Bernice, Spearman, Texas 79081.

PATRICIO M. BASALDUA
TULIA - Patricio M. Basaldua, 84, died Thursday, Nov. 25, 1993, in Hale Center.

Rosary was recited on Sunday, Nov. 28, in Wallace Funeral Home Chapel. Mass was celebrated at 10 a.m. Monday, Nov. 29, in the Church of the Holy Spirit with the Rev. John Salazar, pastor, officiating. Burial was in Rose Hill Cemetery.

Mr. Basaldua was born in Mexico and moved to Tulia in 1952 from Knox City. He had worked for T.C. Brothers, retiring in 1988. He was a member of the Church of the Holy Spirit and was a retired farmer. He married Manuela Vargas in 1930 in Mission. She died in 1974. He also was preceded in death by a son, David Basaldua, on Aug. 22.

Survivors include nine daughters, Maria Macias and Teresa Mireles, both of Tulia, Juanita Garcia of Hemingford, Neb., Lupe Ramirez of Dimmitt, Maria Granada of Dumas, Mary Lou Casias of Hale Center, Elva Reyna of Lubbock, Janie Fernandez of

Amarillo and Emma Garcia of Spearman; a son, Abel Basaldua of Tulia; three sisters, Josephine Vagas of San Antonio, Rosa Villareal of Arizona and Mary Cantu of California; two brothers, Santos Basaldua of Tulia and Uvaldo Basaldua of Dumas; 50 grandchildren; 79 great-grandchildren; and a great-great grandchild.

RAMON ROSALES
SPEARMAN - Ramon Rosales, 76, died Friday, Nov. 26, 1993. Services were held at 2:30 p.m. on Monday, Nov. 29, in Iglesia Pentecostal Unida with the Rev. Alfredo Martell, pastor, officiating. Burial was in Hansford Cemetery by Boxwell Brothers Funeral Home.

Mr. Rosales was born in Guadalupe, Mexico, and had been a resident of Juarez, Mexico. He married Juana Moreno in 1942 at Guadalupe. He was a retired construction worker and was a member of the Apostolic Church in Juarez.

Survivors include his wife; four sons, Inocencio Rosales and Castulo Rosales, both of Spearman, Roman Rosales of Fresno, Calif., and Alfredo Rosales of Juarez; a daughter, Elvira Chaires of Spearman; two brothers, Cruz Rico and Pablo Rick, both of El Paso; 22 grandchildren; and a great-grandchild.

JOSEPH WILLOUGHBY DOUGLAS
SPEARMAN - Joseph Willoughby Douglas, 78, died Thursday, Nov. 25, 1993. Services were held on Monday, Nov. 29, in the First Presbyterian Church with the Rev. Beverly Cook, pastor, officiating. Burial was in the Hansford Cemetery by Boxwell Brothers Funeral Home.

Mr. Douglas was born in Hansford County and had been a lifetime resident of Spearman. He married Deana May Sparks in 1936 at Perryton. She died in 1986. He was a contract mail carrier from 1936 until his retirement in 1987. He was a member of the First Presbyterian Church. Survivors include several nieces and nephews.

The family requests memorials be to Hansford Cemetery, Box 101, Spearman, Texas 79081.

Hansford Happenings
 The Gladiola Flower Club will hold the Annual Home Tour Sunday, Dec. 5, from 2 to 5 p.m. Five homes are to be featured.
 Four members of the Pringle-Morse Junior High School Band will be performing in the Five States Band Saturday December 11th in Guymon.
 Hansford Hospital and Manor Auxiliary Christmas Party will be held on Monday, Dec. 6th, 11:30 a.m. at the First Christian Church.
 Boy Scout Troop 551 will be selling Christmas Trees in the White Building behind the car wash at crazy corners.

The Gruver Music Club annual fund raiser stew and cornbread dinner will be held Tues. Dec 7 from 11 a.m. to 1:30 p.m. at the Gruver Methodist Church fellowship hall. Proceeds will benefit the Gruver Music Club Scholarship Fund. Tickets will be available at the door.
 The Hansford Gun Club will meet at the Spearman City Hall, Thurs., Dec. 16 at 7:30 p.m.

The piano students of Kristi Holt will present two Christmas recitals on Sunday, December 5. The first will begin at 2 p.m., and the second will begin at 3:30. Both recitals will be held in the former Country Stitches store at 715 W. 7. The public is invited to attend either or both recitals.

A private applicator licensing school is to be held Dec. 10 in the Extension Homemakers Clubroom at 309 N. Bernice in Spearman. Training will begin at 9 a.m.
 The Gruver I.S.D. School Board will hold their regular meeting in the high school board room at 1 p.m. Wednesday, Dec. 8.
 The Gruver City Council will meet at 4:30 p.m. at city hall on Wednesday, Dec. 8 for their monthly meeting.

The Hansford County Commissioner's Court will meet on Monday, Dec. 13, at the Hansford County Courthouse at 10 a.m.
 The Spearman I.S.D. Board of Trustees will be meeting on Monday, Dec. 13, at the High School Home Economics Room # 14.
 The Spearman City Council will meet at 7:30 p.m. at City Hall on Tuesday, Dec. 21.

The Pringle -Morse C.I.S.D. Board of Trustees will be meeting at 7 p.m. on December 14.
 Gruver First Baptist Church will be conducting a revival Dec. 5-8. There will be noon services Monday through Wednesday. Evening services will begin at 7 p.m.

Special Offer • Special Offer
Business Cards
 for only \$19.00
 Hansford County Reporter -Statesman
 806-659-3434 or 1-800-395-9482