



Celebrate Safely

The Hansford County Reporter-Statesman

Serving All of Hansford County

10 pages

WEATHER

Day	Hi	Lo	Precip
Thu	94	68	0.00
Fri	95	67	0.00
Sat	92	70	0.00
Sun	94	69	0.00
Mon	93	70	0.02
Tue	-	70	0.00
Precip to date			9.77

INSIDE

- Spiritually Speaking.....3
- New minister.....5
- Baseball.....7
- Obituaries.....10

Vol. 83, No. 36

213 Main

Spearman, Hansford County, Texas

25¢

Thursday, July 4, 1991

In September . . .

County to receive 9-1-1 system

by JoAnn Morton
Editor

When the Panhandle Regional 9-1-1 Network switches on in September, everyone in Hansford County with a telephone can "Dial 911" for emergency services.

Telephone company customers in Hansford County have been paying for the 9-1-1 network for the past two years, through the 50-cent emergency service charge and the 9-1-1 equalization surcharge on long distance calls. Both of these appear on monthly phone bills. For the past two years, that money has been going toward setting up a \$1.6 million regional 9-1-1 network to benefit all residents of the area. The regional program is administered by the Panhandle Regional Planning Commission.

Pamela Nielsen of the PRPC, program director for the Panhandle Regional 9-1-1 Network, and Daniel Odneal, program specialist, explained the process. Nielsen said, "The planning, designing the program and getting the money was what took most of the time. The fees paid by telephone customers for the past two years has been collected to start

things up."

"And the fees collected in the future will be used to maintain the service and equipment," added Odneal.

The PRPC representatives added that the surcharge on long-distance phone calls goes into a statewide "pool." Nielsen said that residents in large cities tend to pay more into that pool because they make more long-distance phone calls than residents of the Panhandle area, so the 9-1-1 network here came into being faster than if the money had been collected from Panhandle customers exclusively.

The area served by the network will include exchanges in the Spearman, Gruver, Morse, Hardesty and Guymon areas. The answering point will be at the Spearman Police Department. When a call is placed to 9-1-1, the dispatcher at the SPD will be able to assign the call to the proper responder (county sheriff, local police department, local fire department or ambulance service). As a backup, a secondary answering point will be established at the Hansford County Sheriff's Office.

Spearman Police Chief Joe Raper,

who is a member of the Panhandle Regional 9-1-1 Network Advisory Committee, said that when a call for assistance comes in to the dispatcher, the caller's telephone number will be displayed on a screen for the dispatcher's use. If needed, the dispatcher can request location information about the caller from the computer program, by entering the caller's telephone number, he said.

Raper explained that basic 9-1-1 service, now available to residents of Spearman, "Just allows callers to reach us (police) by dialing 9-1-1."

The new service is called "Enhanced 9-1-1" because of the ability to provide the caller's telephone number immediately, and other additional information in a very short time.

The system can provide information that emergency personnel should know about the location, such as listing residents with special health problems, whether there is a guard dog at the location, or whether there is a locked gate at the location.

"Telling who the caller is, is one of the primary benefits of the service," said Nielsen. "With basic 9-1-1 the dispatcher lacks location information. If the caller is unable to give directions, a trace can be done on the phone call, but that takes time. The enhanced service gives location information immediately."

She added, "Another benefit is that prank callers can be located, helping to eliminate that problem."

The Panhandle Regional 9-1-1 Network is now asking for help from the residents of Hansford County. This vital, perhaps lifesaving information cannot be entered into the computer program unless the residents of the service area provide it.

A form accompanies this article, which allows telephone customers to provide information for emergency personnel who will respond through 9-1-1. Residents and business operators are asked to complete one questionnaire for each telephone number on their premises and return it to the Panhandle Regional 9-1-1 Network, P.O. Box 9257, Amarillo, TX 79106.

Some residents may be concerned about the confidentiality of this information, and the PRPC has addressed this concern. "This information will be kept in strictest confidence," stressed Nielsen. "The only one who will see the information is the dispatcher. The only ones who will use the information are the emergency personnel who are sent to the scene. The

See 9-1-1 page 10



Wedding dresses and models of all ages appeared at Hansford Manor last Friday afternoon. Antique and modern wedding dresses were on display at the bridal fashion show held at the Manor. Models at the show included (l-r) Jamie Casdorff, Sarah Sanger, Grace Bennette, Brooke Adams and Lena Harbour.

May terminate franchise . . .

Council gives Mission 60 days

Mission Cable Company's franchise with the City of Spearman may be terminated in 60 days, if the company does not cure 14 "substantial breaches" in its franchise agreement with the city.

That decision was made unanimously by the Spearman City Council on Tuesday, July 2, shortly after a public hearing on the resolution was held.

During the public hearing Jim Murray, city manager, presented the city's side of the argument. Mission Cable Company was represented by Richard Taapkin and Ricky Wall. Both Taapkin and Wall stated that since they were local representatives of the company, they would not be able to give the council all the answers it wanted, but would answer any questions they could.

Murray began the hearing by outlining correspondence between the city and the corporate management of the cable company. In the correspondence, Murray indicated, the city had detailed 14 serious breaches of the franchise contract by the cable company. He added that the company had failed to produce complete evidence that any of these breaches had been cured.

Upon a request from Councilman Bob Boxwell, Murray gave a detailed

description of what the breaches are. The list included the cable company's failure to provide the city with records on its customer service and its equipment performance. Others problems dealt with the cable company's failure to install equipment to allow government and school access to the cable network, as promised in the city franchise. Murray also said that the company had promised in the franchise agreement to completely rebuild the cable system that serves the city of Spearman.

After Murray's presentation, several councilmen questioned the company representatives about the problems. Taapkin said he had turned over the reports requested by the city for which he is responsible, but that he did not know the whereabouts of reports generated by his predecessors. The latter, he said, would have to come from the corporate offices in Austin.

Boxwell asked Taapkin if the rebuild of the system could be completed in 60 days, thereby meeting the termination deadline. Taapkin said that it could. He added that preliminary work on rebuilding the system has begun. When results of a test run by the cable company showed that the system could handle 35 channels - the number the company

felt met the franchise requirements - the work was ordered halted by the Austin office, Taapkin said.

Murray pointed out that the city had seen no report on the results of that test.

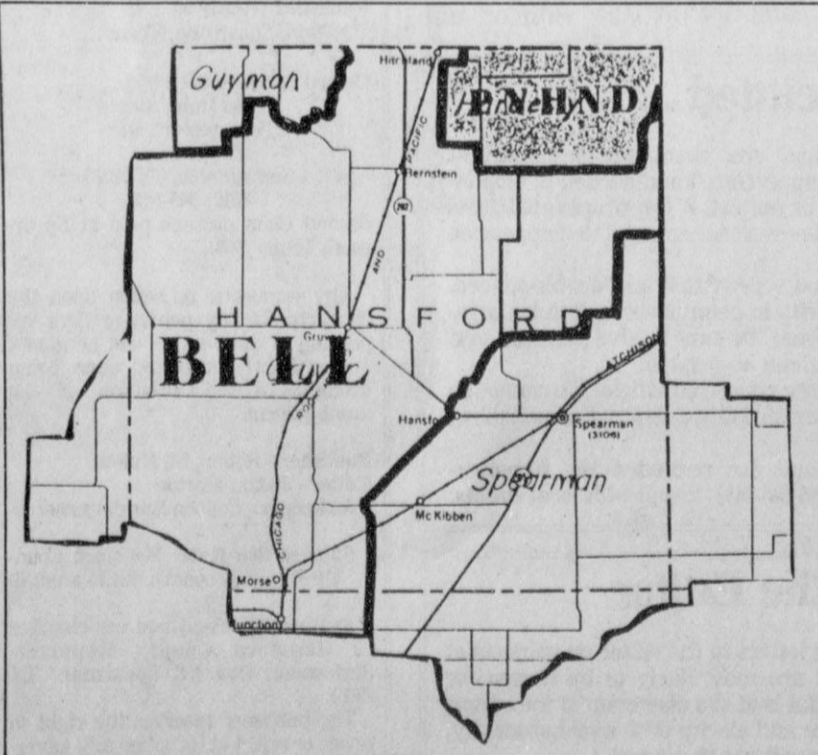
The final series of questions asked during the public hearing concerned what will happen if the cable company does not cure the breaches in the franchise contract within the 60 days allowed by the resolution, and the city council votes to terminate the franchise.

If the council votes to terminate, Murray said, the franchise contract requires Mission Cable Company to continue to provide uninterrupted cable service to Spearman customers between the time the franchise is terminated and the time at which the city can make other arrangements to provide cable service.

George Young asked if the city is physically able to take over operation of the system, should Mission Cable decide to cease operations in Spearman. Murray's response was that the city could seek a court order requiring Mission Cable to operate the Spearman system.

He also said that attorneys for the city have advised that such an action

See council page 3



Emergency calls from the Spearman, Guymon, Gruver and Hardesty exchanges will be routed to the Spearman Police Department through the Panhandle Regional 9-1-1 Network. A secondary answering point will be established at the Hansford County Sheriff's Office. It is anticipated that service will begin in September.

Police Files

Spearman Police Department

On Monday, June 24 at 8 p.m. the Spearman Police Department received a report of lost property from Travis Swink of Granbury, Texas. Swink reported he had lost a billfold, cash, a set of plastic keys and a 1925 silver dollar in the 700 block of Highway 207. Total loss was estimated at \$156.

A traffic accident was investigated Tuesday, June 25 at the municipal swimming pool. A 1986 Mercury owned by Sonya Jo Ooley of Spearman was parked at the swimming pool and was struck by another vehicle sometime between 3 p.m. and 6 p.m.

Spearman police arrested a 21 year old man on a charge of aggravated sexual assault following an incident reported on Wednesday, June 26 shortly after midnight. He appeared before Justice of the Peace Michele Davis and bond was set at \$10,000, according to the Spearman Police Department.

A fire extinguisher worth \$200 was reported taken from a pickup belonging to Amoco Production of Perryton. The report was made Tuesday, June 25.

A minor accident occurred Thurs-

day, June 27 at 8:16 a.m. at Hansford Hospital, when a 1979 Plymouth driven by James William Davis struck a parked vehicle.

On Thursday, June 27, a 38 year old Iowa woman was arrested on an outstanding felony warrant from Potter County. The charge was for theft over \$750.

Larry Eugene Miller of Oklahoma City reported the theft of electrical cord and a water tank from a vehicle. Total loss was estimated at \$550.

A traffic accident was reported at about 1 a.m. on Friday, June 28. A 1982 GMC pickup driven by Kirby Wilmont Taylor of Spearman struck a highway sign in the 900 block of Highway 207 when he apparently fell asleep while driving.

A 10 year old boy was bitten by a dog Friday, June 28, while riding his bicycle in the 200 block of Haney. The dog is impounded and under observation, according to a police incident report.

Sandra McClellan Foster of Gruver reported her purse stolen in the 300 block of Main, sometime between 11 a.m. and 1 p.m. on June 28. Value of the purse and contents was estimated at \$1,400.

A fire at the city landfill was reported June 29 at 4:12 p.m.

Entering through an unlocked garage door in the 200 block of Bernice, someone removed \$350 worth of property including tires and wheels, a wrench, and fruit and vegetables.

A two-vehicle accident occurred June 30 at 2:40 p.m. when Dean Raymond Bissell of Perryton was backing a 1980 Chevrolet flatbed from a parking space on Collard. He failed to see a 1991 Geo parked behind him and struck the vehicle, according to a police incident report.

A theft from a dwelling in the 200 block of Snider was reported June 30 by Nancy M. Castaneda of Big Spring. Taken in the theft were cash and a checkbook with a calculator, valued at \$230.

A pink and white Huffy bicycle was found in the 200 block of E. 7th Street on June 30.

During the week of June 24-30, the Spearman Police Department received a total of 50 calls for service, including one report of burglary, four reports of theft and one report of a sex offense. Five reports of disorderly conduct were listed, as was one violation of city ordinances and one report of suspicion.

Police responded to reports of two lost persons, one found person, one fire, three hit and run accidents, one ambulance call, 10 miscellaneous calls and four traffic accidents. Four vehicle lockouts were recorded, along with one warrant executed, one motorist assist and 11 calls for animal control.

Hansford Happenings

A representative of the Pampa Social Security office will be in Spearman Thursday, July 11 from 10 to 11:30 a.m. at the Hansford County Courthouse. No visits are scheduled for August or September.

Funds are still needed for the War Memorial improvements project. A total of \$4,000 is needed to make the improvements. The fund presently contains \$780. Donations can be made by contacting Rhonda North or Larry Troster at First State Bank of Spearman.

Spearman Study Club's 11th annual Arts and Crafts Show is scheduled for one day only, Saturday, Oct. 19 from 10 a.m. to 5 p.m. Arts and crafts including clothing, wood projects, ceramics, needle work and jewelry are expected to be offered by dealers from a wide area. Proceeds from the show are used for the club's community projects. Arts and crafts dealers interested in obtaining a booth, and anyone who needs more information, should contact Claudine Hardy, 659-3440, or Donna Tranham, 659-2046.

Spearman Chamber of Commerce urges all residents of Hansford County to attend the fireworks display at Greyhound Stadium in Gruver the evening of Thursday, July 4.

An immunization clinic is set for Thursday, July 11 from 10 a.m. to noon at the Texas Department of Health office, 720 S. Archer in Spearman. Vaccines offered include polio, diphtheria, tetanus, pertussis, measles, rubella, mumps and HIB (haemophilus influenzae type B). The Texas Department of Health is charging money to help with the cost of keeping the clinic open. The amount of money charged will be based on family income and size, and the ability to pay.

A program about agriculture's role in providing a healthier food supply will be presented Tuesday, July 16 at the Texas A&M Research & Extension Center, 6500 Amarillo Blvd. West, in Amarillo. Registration deadline is July 5, and the fee is \$2.50 per person. For a registration form contact the Hansford County Extension office at 659-2030 or 733-2901.

Guest artist for July at the Spanish Dagger Gallery in Gruver is Ann Lee Rogers of Perryton. A reception for Rogers is planned for July 7 from 2 to 5 p.m. at the gallery. Also on display at the gallery are paintings by Eloise Hackett, June Carbone and Joyce Johnson, and photographs by Charlie, Bill and Joyce Johnson. Gallery hours are Monday through Friday from 9 a.m. to 5 p.m.

Unemployment rises

by JoAnn Morton
Editor

Unemployment in Hansford County continued its upward trend in May, according to the Texas Employment Commission.

The TEC reports that the jobless rate in Hansford County stood at 4 percent in May, up from 3.7 percent in April and 3 percent in March.

Labor force estimates for May reflect that there was a total labor force of 3,667 persons, of whom 3,521 had jobs. A total of 146 persons were jobless in May. In comparison, TEC figures for April listed a total labor force of 3,661 persons. Of that number 3,526 were employed and 135 were not.

Despite the discouraging news, the unemployment rate in Hansford

County was significantly lower than the statewide rate of 6.3 percent in May. TEC Commissioner Mary Scott Nabers said that the 6.3 percent jobless rate for May was down from 6.9 percent in April.

However, she was quick to say that these numbers are not as encouraging when compared to the statistics of May 1990, when the rate was 6.2 percent.

Nabers explained that while the state's economic outlook for the past five years has not necessarily paralleled national trends, that has been the case in recent months. She said that Texas is being impacted by national recessionary trends, and she believes that Texas will only begin to show positive strides when the national statistics turn around.

At the movies ...

Showing at the Lyric Theatre Thursday, July 5 through Tuesday, July 9 are "Only the Lonely" on Screen 1 at 8 p.m. and "Thelma and Louise" on Screen 2 at 7:45 p.m.

"Only the Lonely" stars John Candy, Maureen O'Hara, Ally Sheedy, Anthony Quinn, James Belushi and Milo O'Shea. Candy is Danny Muldoon, a good-hearted Chicago cop who, with his partner, Sal (Belushi), drives around hoisting bodies (both dead and alive) into his police wagon.

Danny seems satisfied with his life, but beneath his sweet nature lies a great hole where his affections would like to be. Danny is lonely to the core. He'd like to meet a girl and settle down, but if he did, he'd have to confront his greatest problem: his acid-tongued mother, Rose (O'Hara), a woman who runs Danny's life as swiftly as she cooks his meals and makes his bed.

Trouble comes when Danny meets Theresa Luna, the shy daughter of a neighborhood undertaker. Theresa works in her father's funeral parlor giving make-up jobs to corpses. When she and Danny fall for each other they spark a chord going haywire in what used to be Rose Muldoon's controlled universe.

The problem isn't so much the venom that Mom spits out as she realizes she is losing her son; it is that Danny can't take a stand against his mother. He feels guilt and fear, afraid to live his own life and sever his ties with Rose.

"Only the Lonely" is rated PG-13. "Thelma and Louise" stars Geena Davis, Susan Sarandon and Harvey

Keitel. Thelma (Davis) is a bored housewife who covers beneath the scowl of her despicable redneck husband; Louise (Sarandon) is a level-headed coffee shop waitress suffering from the hidden scars of a rape several years earlier.

One day they decide to leave their man problems behind by going on a road trip to a friend's mountain cabin, a bold stride toward independence for Thelma - who slips away without giving her husband any prior notice. It appears at first that the film will be a fairly simple romp about gals on the go.

But before they can even get out of town, things turn dark. Stopping at a local cowboy bar for a quick one, Thelma gets very drunk and does some serious flirting with a guy who ultimately attempts to rape her. Louise breaks it up in time to shoot the guy dead, and then - convinced that no male-dominated justice system will believe their story - the two formerly law-abiding women gradually become spiritually charged by the thrill of life as fugitives.

"Thelma and Louise" is rated R.

Letter to the editor

Dear Editor:

Some of us in the Panhandle are worried about our Panhandle legislators from Amarillo and the Amarillo City Commission.

They have all been to Rocky Flats to find out for themselves what the folks in Colorado and the DOE operation there think of each other.

They returned from Colorado and reported in one way or another that they found DOE's pollution of air, ground and water at Rocky Flats was "in the past"; the facility is being cleaned up and, indeed, will restart operations in the near future; the water pollution DOE committed at Rocky Flats won't be a factor at Pantex because Rocky Flats was located on a hillside and Pantex is not; the safety shortcomings at Rocky Flats have been corrected; it seemed to them DOE's Rocky Flats personnel had changed and their relations with the Colorado community were greatly improved, and one Amarillo City Commissioner even drank the water at Rocky Flats;

The Washington Post National weekly edition of May 20, 1991, in an article titled "Damn the Standards-Full Speed Ahead," reported that the safety issues at Rocky Flats have not been resolved and that DOE was engaged in a crash effort to renew production of U.S. Nuclear weapons before it can meet federally mandated safety, health and environmental standards at the plant.

The same article reported the opposition of Colorado's Sen. Timothy Wirth and Congressman David Skaggs to DOE's efforts. Senator Wirth was quoted as saying, "What's the need, what's the rush?" since the Congressional Research Service has concluded such a rush is unnecessary.

Rep. Skaggs noted that the Energy Department spent \$6.2 million from 1984 to 1990 on plutonium processing facilities that never operated and now have been scrapped.

The article went on to list several uncorrected safety weaknesses gleaned from DOE documents that show the safety weaknesses at Rocky

Flats are not likely to be corrected for years. These included a \$4 million replacement of the fire alarm system slated to begin in 1993 with completion in 1997 and replacement of the critically alarm system, (which would warn of a possible nuclear chain reaction) that would not be completed before 1993.

Finally the article reported that if, in spite of all other problems, DOE was to successfully restart plutonium operations at Rocky Flats, they would have to shut down within 9 to 12 months since by then they would have reached the legal limits for "temporary" on site storage of plutonium wastes.

Two months ago (Thursday, April 4, 1991) the Denver Post reported that in Golden, Colorado, after an eleven-hour public hearing conducted by DOE on closing the Rocky Flats plant not one person spoke in favor of keeping it open, and "the biggest surprise of the hearing was the absence of any significant show of support from 6,500 Rocky Flats workers whose jobs are at stake."

Rev. Gilbert Horn, executive director of the Colorado Council of Churches, belittled DOE's statements that Rocky Flats wants to be a good neighbor by saying "Rocky Flats has not been a good neighbor. Good neighbors don't lie about what they're doing." The article contained several other quotes, all in the same vein.

The Bureau of Economic Geology at the University of Texas in a study contracted for by DOE concluded that our Ogallala Aquifer is recharged from the earth's surface, in our area primarily through playa lakes, therefore our area's water supply should be considered at risk of contamination as has been the case in Colorado.

Considering all these recent reports from such well established media sources, one has to wonder how Amarillo's leadership came to such favorable conclusions on Rocky Flats' standing in Colorado and the safety of its operations.

Gene Glazener
Canyon, Texas

Cowboy gathering to include Stan Cobb

Singer, songwriter, producer and cowboy poet Red Steagall has invited several of his cowboy friends - including Spearman's "Cowboy Jack Moody" - to join him for two days of humor and history at the outdoor amphitheatre overlooking Lake Meredith.

Red Steagall's Cowboy Gathering is set for Friday and Saturday, July 5 and 6. The event is sponsored by area chambers of commerce and will benefit tourism in the Texas Panhandle.

On Friday evening, authentic ranch chuck wagons will roll into Fritch Fort to set up for a ranch style cookoff on Saturday. Although there will be prizes for the winning chuck wagons, the public will be the major beneficiary by being able to eat off the chuck wagons, for a donation.

The meal will consist of meat, potatoes, beans, sour dough biscuits and dessert. Visitors will be able to watch six to 10 wagon chefs cook their food before the judging at 4 p.m.

There will be cowboy concerts on Friday, Saturday afternoon and Saturday evening, featuring cowboys sharing their stories set to rhyme and singing their Sons-of-the-Pioneers-type songs around the campfire at the outdoor am-

phitheatre. There will be 18 cowboy poets and singers such as Cowboy Jack Moody, Dennis Gaines, Larry McWhorter, Buster McLaury and Buck Ramsey helping Red Steagall entertain in three shows during the two day festival.

In addition to the entertainment and the food, there will be a western trades fair with artisans set up around the parking lot offering their western wares.

Lake Meredith National Recreation area will be celebrating the 75th anniversary of the National Park Service, and the Cowboy Gathering will be a part of that celebration.

Tickets to the event are available at The Bunkhouse in Spearman. For more information, call the Fritch Eagle Press at 857-3123.

Announcing New Ways To Hear Better



Finally, hearing technology that's affordable and effective. It's the Manhattan Circuit, a microscopic automatic signal processor, and it fits into your hearing aid to filter out background noise. This circuit filters out street noise, crowd noise - any annoying noises - to enhance rich, quality hearing. Call us or visit our office for information about the affordable Manhattan Circuit.

Manhattan™ Circuit
Automatic Signal Processor

High Plains Hearing Aid Center
Every 2nd & 4th Tuesday
2 p.m. to 4 p.m.
Golden Spread Center
14 S. Haney, Spearman
659-3521
1-800-333-4504

Advertising Pays \$\$\$\$

Call 659-3434
or
1-800-395-9482

Now Playing At The Lyric Theatre

Friday, July 5 - Tuesday, July 9

Bargain Nights Mon. & Tue. All Seats \$3

Screen 1 - 8:00
"THE BEST JOHN CANDY COMEDY IN YEARS!"
ONLY THE LONELY

Screen 2 - 7:45
Thelma & Louise
•Geena Davis
•Susan Sarandon

113 Main, Spearman

If You have a story to tell, Call us TOLL-FREE!

The Hansford County
Reporter-Statesman

213 Main Spearman, Hansford County, Texas 25*

1-800-395-9482

Dial 659-3434 in Spearman

Your stories appreciated ...

Stories concerning club meetings and local events are an important part of the newspaper, and they are appreciated and needed to help inform the community about your club or project. A few simple guidelines are requested to help us cut down on inadvertent errors which appear on occasion.

Please submit stories or information typewritten and double-spaced. Handwritten stories, due to the disparity in penmanship, often leave interpretation lacking. When listing names, be sure to give both the first and last names. First names alone cannot be printed.

Help with this can help you get a more error-free article. We cannot be responsible for errors caused when these simple guidelines are not followed.

Readers who live outside Spearman are reminded the Reporter-Statesman has a toll-free number, 1-800-395-9482, to call with local events.

Letters to the Editor

The Reporter-Statesman welcomes letters to the editor on subjects of interest to its readers. Short letters are most likely to be chosen for publication, but the use of any material is at the discretion of the editor.

Editing may be necessary for space and clarity or to avoid obscenity, libel or invasion of privacy, but ideas will not be altered.

Upon request, editors will use initials only, but only rarely and for compelling reasons. A signed letter carries more weight with readers.

Letters do not necessarily reflect the editorial policies or beliefs of this newspaper.

All letters must bear the handwritten signature of the writer and include address and phone number(s) for verification purposes (address and phone number will not be printed).

The Hansford County Reporter-Statesman

"Serving All Of Hansford County"

USPS 509690
213 Main, Box 458, 659-3434
Spearman, TX 79061

Published Weekly at
213 Main, Spearman, Texas

Owned and Operated by:
Texas Independent Newspapers, Inc.
15915 Alsace
San Antonio, TX 78232
(512) 545-1739

Second Class postage paid at Spearman, Texas 79061.

Any erroneous reflection upon the character of any person or firm appearing in these pages will be gladly and promptly corrected upon being brought to the attention of the management.

Publisher - Robert M. Hulett
Editor - JoAnn Morton
Bookkeeper - Colleen Burkhammer

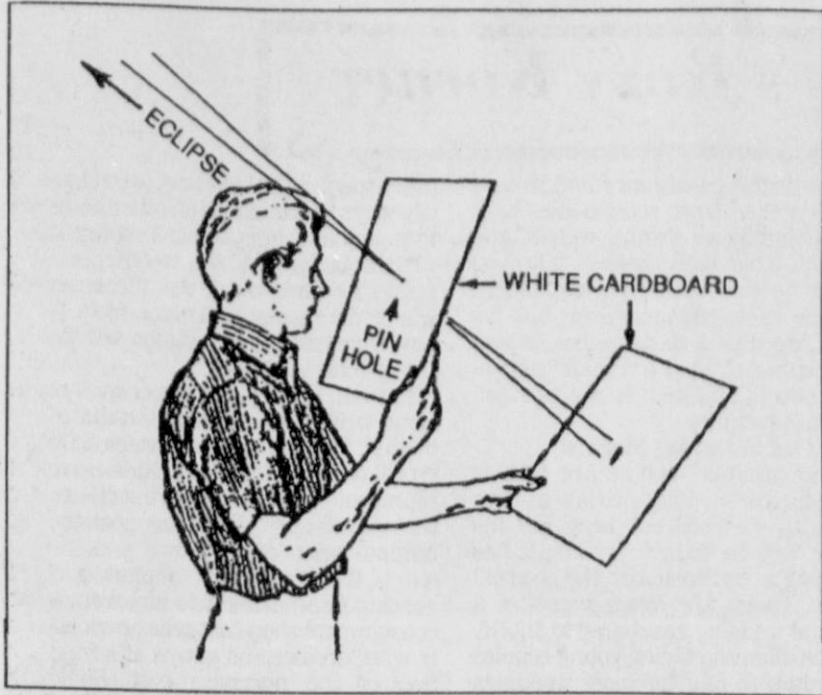
Subscription Rate: Hansford County, \$19.95; out of county, \$24.95 annually.

Postmaster: Send address changes to Hansford County Reporter-Statesman, Box 458, Spearman, TX 79061.

The publisher reserves the right to revise or reject at its option any advertisement which it deems objectionable, either in subject or phrasing, or which it may deem detrimental to its business.

Advertising and Story Deadlines: Tuesday, 12:00 p.m.

TA MEMBER
TEXAS PRESS ASSOCIATION



A simple device for viewing the eclipse safely can be constructed from two sheets of white cardboard. First, make a pinhole in the center of one of the pieces. Standing WITH YOUR BACK TO THE SUN, hold the pinholed sheet up so that the sun shines through the hole and on to the other sheet. A small image of the sun will be visible on the cardboard. Focus or change the size of the image by changing the distance between the sheets.

Fireworks injuries can be prevented

HOUSTON - Fireworks injure nearly 10,000 people every year. A Council from page 1

by the cable company could result in a class action suit being brought against the company, for damages due to the halt of cable service to their Spearman customers.

At the end of the public hearing several council members expressed the opinion that the central management of Mission Cable Company seems unwilling to cure the list of breaches without further action by the council.

After the vote on the Mission Cable resolution, the council heard a report by Bill Stephens of Stephens Management Consultants, Inc. Stephens's company conducted a survey for the council which compares salaries paid to Spearman City employees with salaries paid to city employees in other similar communities. He reported that Spearman's salary range is similar to that of other communities.

The council next voted to approve the emergency purchase of a well motor from A.B.B. Supply Company for \$3,733.

Murray next gave a status report on the Texas-New Mexico rate increase case, saying it is "back to square one." He said the administrative law judge on the case disallowed the company's case arguments, which forces the company to refile for a public hearing before the Public Utilities Commission. Therefore, Murray indicated, the hearing scheduled for July has been postponed until November. "Everything's on hold until they refile the case," Murray said.

Councilman Ed Garner asked Murray for an update on progress in hiring an assistant administrator for the city. Murray stated he had narrowed the list to two candidates and had entered into negotiations with both. They both had declined the job as of Monday afternoon.

"I am ready to punt to the new city manager now. I would not feel comfortable in going any farther down the list of applicants at this time," Murray said. He asked the council to show agreement with this action by a nod of heads. The council members appeared to all nod.

As a follow up to this discussion, Councilman Garner asked the management firm representative about progress in hiring a new city manager. Stephens said that his company has placed an ad with a professional publication, and that when the ad comes out they expect to receive several applications. He estimated it will take approximately 90 days to hire a new city manager.

Solar eclipse to be visible on July 11

A partial solar eclipse will be visible throughout the Southwestern United States on Thursday, July 11. In those states, the moon will cover about 60 percent of the sun. A full eclipse will be visible in Hawaii, making this the last total solar eclipse visible from the United States in the 20th century.

"Never look directly at the sun, not even for a second," warns Wayne E. Fung, MD, an ophthalmologist and spokesperson for the American Academy of Ophthalmology.

"Staring at the eclipse can burn the retina, the membrane at the back of the eye that senses light," Dr. Fung said. "Though you won't feel any pain, you may be permanently damaging your sight."

Dr. Fung likened the retina to film in a camera. Once the film is damaged, no pictures can be taken. "There is no treatment for the vision-impairing scarring and permanent blind spots that result from staring at the sun," he said.

He stressed that sunglasses (with or without ultraviolet-blocking coating), welding goggles or smoked glass WILL NOT protect the retina. Viewing the eclipse directly through a telescope or binoculars is even

more hazardous, since these devices increase the intensity of the light.

Watching the eclipse on television may be the safest way to enjoy this natural phenomenon, Dr. Fung said.

"Many planetariums, science museums, and university astronomy departments will use optical instruments to project large, bright, focused images of the eclipse from a telescope onto a screen," noted Bing Quock, assistant chairman of the Morrison Planetarium in San Francisco. "These eclipse watches are open to the public and are always supervised to ensure safety," he added.

The eclipse will last approximately two and a half hours. At maximum eclipse, the sun will appear as a crescent, with its "horns" pointing south. The time of maximum eclipse varies:

Albuquerque, N.M., 12:51 p.m.; Austin, 2:13 p.m.; Dallas, 2:12 p.m.; Flagstaff, Ariz., 12:41 p.m.; Houston, 2:18 p.m.; Los Angeles, Calif., 11:28 a.m.; San Diego, Calif., 11:30 a.m.; and San Francisco, Calif., 11:20 a.m.

The full shadow of the moon will move from Hawaii across the Pacific to the southern tip of Baja California, then through Mexico and Central America into central Brazil. For people living along this path, the sun will gradually be blocked from view as the moon slowly moves in front of it. The moon will completely cover the disc of the sun, leaving only its outer atmosphere or corona in view.

Chamber Chatter

by Cindy Blackman
General manager

Never let it be said that golfers in this area are not dedicated (or crazy) about the game of golf. The Spearman Chamber of Commerce hosted our first annual Chamber Golf Tournament this past weekend with 30 teams competing. In spite of the wind gusts to 50 MPH, we had a great tournament.

Craig Downing was chairman of the committee that organized the tournament. The other members of the committee were Kathy Boyd, Randy Kirk and Linda Andrew. Cindy Rice of the Womens Division, and Clay Schnell were a big help as well.

A special thanks goes to Ned and Tammy Kygar of the Hansford Golf Course for letting us have the tournament and helping the Chamber out with everything. Also we want to thank Ned Kygar Sr. for his help in the tournament.

A very special thank you needs to go to all the people who helped with the food and drinks. The junior high cheerleaders provided delicious sandwiches for lunch on both Saturday and Sunday. The Spearman Jack and Jill employees helped get the hamburger fixin's ready for the cook out on Saturday night. Thanks to First State Bank of Spearman for supplying the cooker and cook, Brett Bergin, at the cook out.

A final thanks to Thriftway Grocery, Travis Wolf, Mike Cudd and Stephanie Crossland.

We need you.

American Heart Association

Area Eye Center
Dr. Billy Nowlin
Optometrist
206 Main 659-3109
Hours: Tuesday 9-12 & 1-5 Friday 9-12
Selection of Frames and contact lenses
serving this area for 13 years.

Spiritually Speaking

by Lealand Grimmer
Apostolic Faith Church

Today I would like to share some thoughts about seeing is believing.

To use as a base for these thoughts, the scripture found in St. John 20:24-29. The portion we would like to use is in the 29th verse. It states that Thomas couldn't or wouldn't believe until he could see for himself, that Jesus was alive.

So when Jesus came back to the group Thomas was with them. Jesus walked toward Thomas, and invited him to touch the holes in His hands and the one in His side. Jesus made the remark, "I don't want you to be faithless but believing." To which Thomas replied, "My Lord and my God." Jesus then told Thomas, "Because you have seen me you believed; Blessed are they that have not seen and yet believed."

When we ministers were shown the Palo Duro dam site a few years ago, I thought to myself, "How in the world will it be possible to ever get it filled up?" Then they told me that water from Horse Creek and Palo Duro Creek would bring water enough to fill it in a short time if the annual rainfalls over the area would do the job.

Well, I thought Horse Creek ended near Spearman (but I was fooled). Driving west and south of Spearman I saw a bigger Horse Creek over southwest of Gruver than we have near our town. (Seeing is believing.) Then I thought of the Palo Duro Dam and knew it drained quite a bit of land, but I had no idea just how

much until I drove around some. (Seeing is believing.)

A few days after the dam was finished it started raining. The water flowed into the lake and almost before I knew it the water was over 30 feet deep in places. As the rains continued, the water came into the lake, and the waters deepened and spread out more (there is close to 40 feet measured in places). (Seeing is believing.) So I guess it will fill up in time and by the way. (Seeing is believing.)

Now getting back to our passage of scripture, because there are so many unbelievers in our work, and even our surrounding area, God needs people who are not ashamed to stand up and be counted as believers. We need to live the kind of life every day that people can see for themselves that God does have a people who live a good clean life each day. After all (seeing is believing.) Jesus said we would be blessed for our efforts.

BEHNE ELECTRIC & CONSTRUCTION

Electrical Repairs
& Handy Man Service
Reasonable Rates

CALL 659-3404

<p>BAR-S MEAT FRANKS 12 OZ. PKG. 69¢</p> <p>FILLED WITH YOUR FAVORITE FOUNTAIN DRINK ALLSUP'S HONCHO BIG 44 OZ. CUP 79¢</p>	<p>ALL TYPES COCA-COLA 12 OZ. CANS/6 PACK \$1.79</p>	
<p>PLAY TODAY Convenient Cash™ Pick Up Your FREE Instant Win Scratch-Off Game Ticket at:</p>		
<p>Over 325,000 Chances to win CASH, FREE PRODUCTS & FREE FOOD</p>		
<p>20% MORE FREE DAVID'S SUNFLOWER SEEDS 8.1 OZ. PKG. 89¢</p> <p>M & M's, STARBURST OR SKITTLES MARS CANDIES REG. 55¢ 3\$1 FOR</p>	<p>ALL FLAVORS ALLSUP'S OR BLUE BUNNY ICE CREAM 1/2 GAL. CTN. \$1.59</p>	<p>ALL VARIETIES RICH'S DONUTS MIX OR MATCH 3 \$1 FOR</p>
<p>PENNY SMART BATHROOM TISSUE 4 ROLL PKG. 79¢</p> <p>BREAKFAST ON THE RUN SAUSAGE, EGG & BISCUITS.....EACH 79¢ OLD FASHION CREME WAFERS..... 2 \$1</p>	<p>TOM'S CORN OR TORTILLA SNACKS REGULAR \$1.29 SIZE 99¢</p>	
<p>SHOP & SAVE 305 W. KENNETH, SPEARMAN 101 MAIN, GRUVER</p> <p>ALWAYS THE BEST PRODUCTS AT THE BEST PRICES! PRICES EFFECTIVE JULY 3-10, 1991</p>		
<p>Enter Our Second Chance Sweepstakes and Cruise The Caribbean</p> <p>OR Be one of 9 lucky people who will win FREE GAS FOR A YEAR! (*8 Gallons a week for 52 weeks)</p> <p>7 Day Cruise For Two Can Be Yours (a \$5000 Value) With \$300 Spending Money!</p> <p style="font-size: small;">NO PURCHASE NECESSARY See Store For Complete Rules And Odds</p>		
<p>\$1,000⁰⁰ WINNER: WILLIAM HATCHER, ROSWELL, N.M.</p> <p>\$100⁰⁰ WINNERS: GERALD GAULT, CLOVIS, N.M. RICKI GARCIA, LOVINGTON, N.M. SCOTTIE ROBERTSON, SEYMOUR, TEXAS CANDACE TAYLOR, NOCONA, TEXAS ELLEN CONTRERAS, KERMIT, TEXAS WAYNE CRUMP, SANTA FE, N.M. JEWELLA PAINTER, RUIDOSO, N.M. TRACY CAPITAN, SANTA FE, N.M.</p> <p>GAS FOR A YEAR: ROCKY SMITH, PADUCAH, TEXAS</p>		

CELEBRATE... **JULY 4TH** ...WITH SPECIAL SAVINGS

Our Summer Clearance Sale is Now in Progress!

30% - 50% OFF Selected

★ Tamaridge Ladies Sports Wear ★ Woolrich Shirts & Shorts
★ Rocky Mountain Jeans ★ Jockey Sports Wear

THE BUNKHOUSE
212 Main Spearman 659-2476

Among the Neighbors

by Helen Fisher

Bethany Lauersdorf and her son Carl are here visiting her father, Oscar and Frankie Donnell. She lives at Splendor, near Houston and teaches at nearby New Caney School District.

June and Earl Spencer are at home now from a week's vacation during which they drove to Belton, Mo. where they visited his brothers and their families. Then they went on to Willow Springs where Earl was raised. They enjoyed visiting the scenes of his childhood. On the return trip they stopped in Claremore, Okla. where they toured the Will Rogers Museum.

Their daughter, Earla and her little son Theron went with them. Earla is still stationed at Carswell Air Force Base at Fort Worth.

13 year old Jeremy Knudson flew to Amarillo on Tuesday from his home at LaCenter, Wash. He is visiting his father, John Knudson and his grandmother, Ruth Knudson. He expects to be here until July 30.

Jeremy attended school here several years ago and hopes to renew old friendships.

Members of the Spearman High School class of 1966 are grieved to learn of the passing of one of the graduates. Toni Morgan Grim of Lubbock was found dead in her home on Monday. She lives alone and apparently her death had occurred 10 days before. Memorial services were held at the mortuary chapel in Lubbock on Friday.

She, her mother, Mrs. Morgan, lived here a number of years ago where her mother was employed by Wardrobe Cleaners. There are no relatives here; she had two step-sisters, Stephanie and Jennifer Patton. She is survived by a daughter, mother and older sister.

She was a teacher in Lubbock and many of her former classmates kept in touch with her. She had received a number of awards in her teaching and attended the last school reunion here.

Mary and Henry Cornelius returned this week from a cool, invigorating trip to Kalispell, Mont. They flew to Albuquerque where they met their son Edwin, from Galveston. All then flew to Montana for a week of just relaxing and scenic drives. They started to take the

"Going to the Sun," a noted highway, but were delayed by a giant snow avalanche. Following the snow plows, they noted the piled snow 30 feet high on both sides. During their stay at St. Marys, on the other side of the mountain, there was a variety of weather - kept them guessing with snow, rain, hail, sun and even a cloudburst. On the whole, tho, the weather was near-perfect.

They sure notice the contrast in the weather here since their return.

Carrie Marie Berry had welcome guests for a couple of days last week. Her niece, Mrs. Allen Isbell and daughter, Alison, visited her from Clovis.

Freddie Largent spent last weekend in Lubbock in the home of her daughter, Pam and David Ortega. Then their children, Laci and Dalton, spent the week here with her and their other grandparents, Mr. and Mrs. Virginia Ortega. The Ortigas took the children home and will visit a few days.

Paul and Betty Hazelwood were in Red River a few days last week, prior to going for their usual month. Paul indicated he was checking his reaction (healthwise) to the altitude in accordance with his doctor. He may have been checking the altitude and he may have been checking the financial climate. Paul would enjoy his retirement if he could figure out how to spend time without spending money - now, he is not stingy, just pinches pennies (since he had to give up pinching girls).

Children of the Gary Evans, 11 year old Chris and 15 year old Matt, flew up from Houston to spend the week with their grandparents, Kenneth and Margaret Evans.

They also spent some time in Lubbock with their other grandparents.

Jim and LaQuita Evans spent several days last week at their place at Red River. They were joined by his sister and her husband from Providence, Ky. Jim, trying to refocus his eyes from the constant deciphering of doctors writing on prescriptions, just enjoyed the scenery and watched the others play golf.

He has yet to solve the mystery as to why the prescriptions from the doctors are illegible, but their

statements are so neatly typewritten.

Janie Kunselman with children Karla, Cameron and Dan had a highly enjoyable weekend at her family reunion south of Tulsa the previous week.

The reunion was special as it was also a celebration of the 85th birthday of her father, Clifford Goff of near Boise City.

Her brother and family of Guymon took him and her 82 year old mother. Janie's sister and family of Tulsa hosted the reunion at their palatial lodge, called Sugar Nan, complete with a private lake.

Janie is one of six and all were present at the reunion with their families as well as the families of some aunts and uncles, about 56 total. Family members came from many localities - one brother from Salem, Ore. and one sister recently returned to the U.S. from Singapore.

The children enjoyed swimming, catching grasshoppers for bait, fishing and other activities.

The birthday cakes were replicas of two dominos - one eight and the other five, noting the honored guest's favorite pastime of dominoes.

He entertained with lively tunes on his French harmonica. Mr. Goff is remembered in Spearman as one of the dancers at the Hansford County Sesquicentennial in 1986.

Notes from the ill:

T.C. Kitchens has been home from the hospital for a week now and is still making progress following surgery. He is pleased that at last he is able to leave the house for short periods.

Lucile Hagerman underwent surgery last Tuesday at St. Anthony's Hospital. The surgery was successful and she is hopeful of leaving the hospital on Monday. She will be staying with daughter Valarie Huber in Amarillo for a while.

Friends of Jeanne Graves Wilson have been in contact with her in Lubbock and report that she is back at home and doing very well. Recently and rapidly she developed a heart problem and underwent a double angioplasty (balloon) procedure on Tuesday at Methodist Hospital in Lubbock.

Word has been received directly by associates of Altha Groves that her knee surgery went well last week. She is expected to come home the latter part of this week.

Birth Announcement

Shonda and Greg Odegaard announce the birth of their second child, a son, born June 14 at Northwest Texas Hospital in Amarillo.

He weighed 6 pounds, 6 ounces and was 19 1/4 inches long at birth. He has been named Caleb Gregory.

Welcoming him home is older brother Colby, age 1 1/2. Grandparents are Roger and Elaine Odegaard of Spearman and Bob and Ann Corley of Sherman.

Great-grandparents are Carter and Marie Crawford of Spearman and Raymon and Gladys Odegaard of Gonvick, Minn.

Jana and Cole Ivey announce the birth of a son on June 21 at Methodist Hospital in Lubbock. He weighed 7 pounds, 2 ounces and was 21 inches long at birth. He has been named Cody Mike.

Grandparents are Mary Lou and Steve Mathews, Bill and Ginger Pittman, and Kay and Jim Ivey, all of Spearman.

Great-grandparents are Faye Cluck of Gruver, Ethel and Eris Pittman of Morse, Jack and Inez Softer of Tayson, Ariz., Elsie Mathews of Spearman and Ann White of Spearman.

Hospital Notes

ADMISSIONS

Thursday, June 27 - Benny Cooper
Friday, June 28 - none
Saturday, June 29 - none
Sunday, June 30 - Annie Allen, Margaret Womble, Courtney Baca, Buena Hays
Monday, July 1 - none

DISMISSALS

Thursday, June 27 - none
Friday, June 28 - Benny Cooper
Saturday, June 29 - none
Sunday, June 30 - none
Monday, July 1 - Courtney Baca

PATIENT CENSUS

Tuesday, July 2 - Thelma Mitchell, Jewel Turner, Buena Hays, Margaret Womble, Annie Allen

Karen's Kozy Korner

by Karen Babitzke

July 4th Holiday Food Safety

Don't let food poisoning ruin the Fourth of July holiday festivities. Safe food handling is important any time, but especially when outdoors in the summer heat on picnics and cookouts and when feeding large groups.

Bacteria that cause food poisoning grow most rapidly at warm temperatures. It can be spread with dirty hands, utensils, wraps and anything else that touches food.

To keep July 4th foods safe, follow these tips:

- Always keep perishable foods cold or hot. The dangerous zone is 40 degrees Fahrenheit to 140 degrees F. Foods should not be left in this temperature range longer than necessary during preparation, cooking or serving. Any leftovers should be chilled right away. For picnics, an ice chest is a necessity for perishable foods like meats, poultry, eggs, sandwich spreads, salads, milk and milk products.

- If purchasing foods from take-out, fast-food places or supermarket delicatessens, take precautions. When you purchase these foods, either eat them immediately or keep them cooled below 40 degrees F. Never leave them in a hot car.

- For cookouts, cleanliness and sanitation are especially important. When barbecuing, don't use the same plates or utensils for cooked meat that carried raw meat, unless you've washed them first. Away from home, moist hand wipes can help keep hands clean. Clean paper towels are one solution to the problem of dirty cloth towels harboring bacteria.

- For buffets or potluck dinners, wait as long as possible to prepare foods before serving, or prepare ahead of time and refrigerate until just before eating. Although it looks great to leave the food spread out on the picnic table, it's better to be safe by eating immediately and then storing leftovers promptly. In hot summer temperatures, it's best not to leave perishable foods out for more than one hour.

Because most food poisoning bacteria are odorless, colorless and tasteless, common sense is your best protection against foodborne illness.

Sizing Inconsistency

Most of us know what our clothing "size" is - or do we? Perhaps you too have wondered why a size 12 dress in one store will fit perfectly, yet another store's size 12 is too small or too large. This size variation can even occur in the same basic type of garment when it is made by different manufacturers. Be assured that your body weight and measurements are not mysteriously fluctuating. The problem lies with an inconsistency of a sizing standard throughout the apparel industry.

There are sizing standards; however, each apparel manufacturer is responsible for its own based on the designer's concept of fit. The National Bureau of Standards, which sets all standards of measurement for the purpose of encouraging commerce and industry, has also been involved in establishing clothing size standards. Overall, the apparel industry and standard-setting organizations are attempting to improve communications to consumers regarding size and fit.

A manufacturer establishes sizes by creating a model form that it feels reflects its customer. Therefore this means that Company A's size 12 fits a different figure silhouette from Company B's size 12. While model forms may be similar, the drape, shape, fit or dimensions could be adjusted at the discretion of the designer and the fabric utilized.

Human shapes vary. Style sometimes prevents standard garment sizes from being maintained. U.S. apparel manufacturers strive

towards this consistency and similar sizings even when most bodies vary considerably in height, weight and shape. This inconsistency also extends to the letter-type size labels. Again each manufacturer has its own size standards as well as its own perception of what a "small" dimension should be, based on the garment it manufactures.

The Cost of Getting Married

The summer months are just as popular for weddings today as they were in the good old days. But the price tag on today's weddings has nothing in common with the good old days. Today, the average cost of a formal wedding has soared to \$13,310.

The dilemma facing young couples planning to pay for most weddings themselves is that they face many other expenses at the same time. Home furnishings, automobile loans, student loans and new wardrobes can drain the budget, even when there are two earners. Squeezing in the wedding expenses is a major challenge. And with a wedding, expenses generally must be paid immediately, not stretched out, unless the couple has borrowed money to finance the wedding. With today's costs, financing a wedding on time can be as burdensome as an extra car payment.

The money squeeze means that couples must make some "wedding affordability" decisions and then shop carefully to get the best value for the goods and services they plan to purchase. Those who plan to get married should consult couples who have been married a year or two for advice on realistic ways to make the wedding more affordable.

First, decide what is most important, where you are willing to spend the most money and where you are willing to spend the least. If the reception location is the most impor-

tant aspect of the wedding, then identify ways to economize on other items that are less important. Prepare a written budget for the wedding expenses. Figure out from the onset where the money will come from to pay expenses. Keep tabs on bills to avoid "cost over-runs."

Formal gowns are expensive so some brides are renting instead of buying. The difference between a \$75 rental fee and a \$750 purchase price represents substantial savings. Rental fees will vary, depending upon the original price of the gown and the size of the community. Another purchasing alternative is to buy from a consignment shop that sells previously worn dresses and gowns at a fraction of the purchase cost. Some garments may be new - a result of canceled wedding plans.

The size of the wedding will affect total cost. Having fewer attendants lowers the cost of flowers and gifts. Having fewer guests lowers the cost of the reception.

Comparison shop on printing costs, contracts with caterers and reception sites, florists, photographers and other goods and services. Use the summer flowers at the ceremony and reception. Consider the least expensive time of day for a reception. Afternoon tea receptions are less costly than full meals. Use family cars instead of rented limos. Keep photography costs down by contracting with the best photographer, but taking the least expensive options offered. Supplement the photography by providing friends with film purchased in bulk to take candid photos.

One way of managing costs is to delay the wedding trip until cash flow is re-established. Couples should plan for wedding costs that fit within the budget so that married life does not begin with major debt from wedding expenses.

Study Club sets one day arts, crafts show

The Spearman Study Club has scheduled its 11th annual Arts and Crafts Show for Saturday, Oct. 19. The show is set for one day only, from 10 a.m. to 5 p.m.

Any arts and crafts dealer is welcome to the show for a small booth rent.

The Study Club is a non-profit organization, and the proceeds from the arts and crafts show are used for community projects.

The 1990 show featured a wide variety of dealers offering merchan-

dise such as clothing, wood projects, ceramics, needle work and jewelry, among others. Study Club members say they are looking forward to having all these dealers back, and to adding new ones.

Any dealer interested in obtaining a booth at the Spearman show in October, or anyone needing more information should contact Claudine Hardy, 803 Wilmeth, Spearman, TX 79081, 659-3440; or Donna Trantham, 820 Linn Dr., Spearman, TX 79081, 659-2046.

Dixon chosen for OYWA award

The Board of Advisors for the Outstanding Young Women of America awards program announced that Carlee Jane Dixon of Spearman has been selected for inclusion in the 1991 edition of "Outstanding Young Women of America."

The OYWA program is designed to honor and encourage exceptional young women between the ages of 21 and 40 who have distinguished themselves in fields of endeavor such as service to community, profes-

sional leadership, academic achievement, business advancement, cultural accomplishments, and civic and political participation.

Nominations for the award are received from political leaders, university and college officials, clergymen, business leaders and various civic groups and community organizations.

Dixon will be represented by her biographical entry in the annual awards publication.

Lookin' Back

20 YEARS AGO...

Thursday, June 10, 1971
The 31st annual American Legion Boys State was held on the campus of the University of Texas for 840 high school boys. Those attending from

Gruver were Billy Frank Mayhew and Jay Clinton Crawford. William Emmett Brown Jr., Ronald Ray Head and Kim McLain Brock attended from Spearman.

THANK YOU

Though these few words can't say it in the way I would like them to, I want my friends and neighbors to know I really appreciated their prayers, cards, calls, prayergrams, visits, food, flowers and taking care of my yard and garden during my hospital stay and since I came home.

May God Bless Each of You.

T.C. Kitchens

WE WOULD LIKE TO THANK THE FOLLOWING SPONSORS FOR MAKING OUR SWIM MEET POSSIBLE!

Northern Natural	Thriftway
Reliable Randy's Resort	Schneider Welding
Berry Cleaners	B&B Sales
First National Bank	Brown Graham & Co. P.C.
Schufeldt Rig Service	J.G.'s
Earl's TV & Appliance	Hansford Agency
Brock Insurance Agency	Henton & Co., P.C.
Phil Sander's Farms	C&C Transmission
Lusby Cats	Hickerson Jewelers
Spearman Safety Glass	McClure Paint & Supply
H&H Water Well Service	Sparks Brothers Spraying
Five Star Equipment	Golden Spread Sales
Hi-Plains Auto Supply	Martin & Phillip Sanders
Data Gas, Inc.	Laurence Behney, M.D.
The Bunkhouse	Cates Men & Boys Wear
Gillaspie Auto & Truck	First State Bank
North Plains Insurance	Spearman Auto Supply
B&B Farm Industry	Hansford Implement
Celebrate	Jo's This-N-That
Reporter-Statesman	Hansford Co. Farm Bureau
Ralph & Margie Griffith	Prairie Garden Flowers
Gordon's Drug	Herbert & Delma Winegarner
Agco, Inc.	ChaLor's
KRDF Radio Station	Fuller's Jewelry
	Kids' Stuff

Spearman Swim Team

You are cordially invited to a
Bridal Shower honoring
Carly Shieldknight
bride-elect of
Brent Riethmayer
Monday, July 8th
from 7:00 to 8:30 p.m.
in the home of
Mary Ann Lasater
1109 Linn Dr. Spearman
Gift registry at ChaLor's & Celebrate

You are cordially invited to a
Bridal Shower honoring
Kellie McWhirter
bride-elect of
Travis Francis
Saturday, July 13th
from 2:30 to 4:00 p.m.
in the home of
Dennis & Judy Nelson
Gruver Hwy. Spearman
Gift registry at ChaLor's & Celebrate



The Setliff family (seated, l-r) Karen, Bob, (standing, l-r) Toby and Mike, recently moved to from Claude to Gruver to begin work with the Gruver Church of Christ.

Setliffs begin work at Gruver church

by Joy Henderson

Bob, Karen, Mike and Toby Setliff have recently moved to Gruver from Claude to begin their ministry with the Church of Christ here.

Bob, who is 44 years old, graduated from Turkey High School and West Texas State University. He has been in various types of ministry over the past 21 years, with 15 of those years in pulp ministry and the balance as National Seminar instructor and coordinator for Ron Willingham Course, regional coordinator for development at L.C.U., and director of Golden Spread Counseling Center.

His wife Karen is also 44 years old, born and raised in Amarillo, and a graduate of Tascosa High School.

Karen was formerly employed as secretary for Judge Hugh Reed of Armstrong County. She is a homemaker and her hobbies include cooking and reading.

Son Mike, 19, has recently graduated from Claude High School. His plans for the future will be to enroll in the C.A.D. program this fall at T.S.T.C. His hobbies are hunting and fishing. He is currently a resident of Amarillo and works for Prime Equipment.

Toby is the Setliffs' 14 year old daughter and will be a freshman at Gruver High School. She loves all sports, especially basketball and gymnastics. In addition to basketball, Toby lists reading as a hobby.

George family reunites

The J.R. George family reunion was held on Saturday, June 8 and Sunday, June 9 at the county barn in Gruver.

Over 100 family members and friends were on hand to enjoy good food, visiting and reminiscing. The younger set played games of baseball and volleyball, and the Sunday noon meal was the highlight of the reunion. Following the meal, family pictures were taken.

Family members present included Arthur and Zora George, Nonie George and Darrel and Dorothy Utt of Walsh, Colo.; Charles George and Cecil and Lomae George of Springfield, Colo.; Helen Prachar of Spearman; and Clifford and Hazel George, Gruver.

Other descendants attending included Bill and Rama and Devlon Self and Deann, Lindsey and Lane Rothman of Springfield, Colo.; John, Debbie, Taryn, Quinten, Garrett, Jessica and Diedra George of Pritchett, Colo.; R.T. and Mary George of Celina, Texas; Vance and Beverly Alfrey of Vilas, Colo.; Brent, Coleen and Rafe Schroeder of Campo, Colo.; Tim, Karen, Brianne Courcamp and Kristie Hollar of Lamar, Colo.; Marshall, Kelly and Casey Cator, Terri, Robbie, Tommie and Ryan Dewberry, Nelva Show and Toni of Spearman; Durward Cator of Lubbock and Gary and Jerri Prachar and Nicole Brawner of Giddings, Texas.

Others included Bob, Bonnie and Emma Aubrey of Richardson, Texas; Ken Prachar of Arlington; Doug, Tammi, Chrissy, Amy, Greg and Sarah Holmes, Shonna Bell and Heather Gammon of Amarillo; D.A., Patty and Court Cator, Tina, Ricky and Audrey DeLuna, Jolene and Bobby Thompson, Ricky, Cheryl Lynn and Clayton Thompson of Gruver; C.W. and Lariece Copeland and Scott Daniel of Tennessee Colony, Texas; Bobby and Karen Coker, Dustin Glover and Jody Cook of Choctaw, Okla.; and Damon Coker and Angie of Jones, Okla.

Other relatives and friends included Sarah Belle Canning and Margie Cole of Wichita, Kan.; Red and Bobbie Wellman of Guyton, Okla.; Roland and Cecil Fern Cook, Clyde and Gayle Cook, Ivan and Lois Gruber, Ike and Ida Mae Ostein, Dean and Betty Cook and Neil and Erma Cook of Walsh, Colo.; Lorraine Duke of Pritchett, Colo.; Arden and Lillian Dillinger of Springfield, Colo.; Rachel and Carl Carter of Waka; Oscar and Freda Ostein of Ft. Morgan, Colo.; Joel Lee and Joyce Lackey of Gruver; Noble Watson of Stinnett; and Clyde and Ina Soapes of Gruver.

On The Go With Joy

by Joy Henderson

hogs he hasn't raised.

I'm no agricultural expert, but I understand the government makes these payments to farmers because of the huge surpluses. Well, Dave Wood and I got to wondering if there wasn't a similar situation in the writing game.

Think of it; sources say that 50,000 new books are published each year in the United States and then if you consider how many forests will need to be chopped down to make paper just to print them, that's too many books, don't you think?

And think of the surplus of newspaper columnists running around these days. Our little Hansford County newspaper has four or five of us giving the news, opinions and chit-chat every week. And that's not counting articles by the readers. Now, we have been in business several years and I wouldn't want to take responsibility for the ruination of our precious forests.

So, here is our suggestion: We would be willing to not write some columns if the Hansford County Reporter-Statesman would be willing to pay us not to. I write 52 a year of these chit-chat buggers and I get paid for them. Well, I certainly couldn't get along without my Wallywood wampum and other expensive tastes such as eating at least once a day. But if the checks would keep coming, I'd try harder to resist the temptation to write the columns.

I am really a tree lover and conservationist, and with effort would be willing not to write two columns each week for two checks rather than one. Now that I've decided on that course of action, I need to know what kind of word processor should I not type them on, or what kind of pen or pencil should I not use? Should I mix

them up a bit and not write one humorous and one serious?

The farmer worried about how difficult it would be keeping track of the hogs he didn't raise.

I don't worry, I've got all the figures in my head already. I won't worry about getting up tomorrow and meeting my noon deadline. I'll just collect my check for not writing. Uh! Oh! I don't think my plan is going to go over with the boss - he is out looking for more trees.

Well, wheat harvest about finished and most of us are busy making plans for the 4th. I don't know about you, but I still get teary-eyed thinking of Old Glory, Star-Spangled Banner, etc. This will be an extra special Liberty Day celebration for the ones who were involved in the recent war and we should be especially thankful to God. If you want to experience a shivering to the soul, listed to the Barkley Brothers' special rendition of "It's Time to Pray." I hope we will be able to hear them again this year at the program given before the fireworks display.

I have a request to make of you readers. I'm looking for the sheet music to "There's A Star Spangled Banner Waving Somewhere." I learned this song as a piano student during World War II, but the lower half has been torn off and lost. It was also recorded by Elton Britt, but I'm wanting the sheet music and words.

One of the recent Gruver High School students went from the frying pan into the fire. Only a brief vacation for Brice Goldsmith before going to Phoenix, Ariz. and entering P.I.T. He will be learning to repair computers in his Computer Technology course.

Bob and Connie Burgoon have returned from a couple of weeks of visiting Bob's folks at Sanger and

Connie's mom at Rhome.

It seems that Val and Marlene Winger are able to spend more time traveling this summer. After beginning the summer with a trip to Branson (I think they have now returned from London and Paris. Wonder how their Texas accents went over in the midst of those big cities?)

Pam and Jeff Whelchel have extended their visit with Pam's parents, the Gary Dotys. Toby Meason from Amarillo is guest of Brenda Bayless and Rachel Taylor from San Antonio is visiting grandparents Dewey and Virginia Taylor.

Jill Garrett brought her friend Kelly Damron from Lubbock for a visit with Jill's parents. Visiting grandparents Buddy and Frances Murrell are Chad and Keely Murrell of Perryton and Matthew and Michele Murrell from Amarillo. Joy Evans of Amarillo is having fun with grandparents Ted and Louise Evans. Lee Bob and Quentin Harper are spending some time with kinfolks. They are now from Illinois.

Lewis and Rita Ann Holland are hosting Rita Ann's sister Janice Hardin from Graham. Also visiting is Rita Ann's nephew Michael Farr from Graham.

Willie Vasquez is now home after spending a few days in Hansford Hospital. He was treated there after being bitten by a rattlesnake.

Theodore Bayless is recuperating after having a diseased kidney removed. Those of you who know them might like to send a card. He and Allene are former residents of Gruver.

Calvin and Darla Chapman, their son and daughter are visiting various friends here for a few days. The Chapmans are from Belle Fourche, S.D., where they are ministering with the Church of Christ there.

Williams competes in pageant



STACEY WILLIAMS

Stacey Williams of Gruver has been selected as a semi-finalist in the 1991 Miss Texas Cheerleader Pageant to be held in Irving on July 27. Williams, 17 year old senior at Gruver High School, is the daughter of Ronnie and Donna Williams.

If she wins the title, Williams will compete for the national title, Miss Cheerleader USA, in September. Her sponsors for the pageant are Little Tiffanies, Main Street, Gruver Farm Supply, Gruver State Bank and Gruver Insurance Agency.

Hometown News

The United States Achievement Academy announced that Yvette Miller of Gruver has been named an All-American Scholar.

All-American Scholars must earn a 3.3 or better grade point average, and Miller has earned a 4.0 GPA for the last two semesters. Nominations for the award are accepted from a school instructor, counselor or other qualified sponsor. Miller, who at-

tends Wayland Baptist University, was nominated by Willard Duvall.

She will appear in the "All-American Scholar Directory," which is published nationally.

Miller is the daughter of Mr. and Mrs. Larry Miller. Her grandparents are Mr. and Mrs. A.O. Dutton of Howe, Texas, and Mr. and Mrs. A.L. Miller of Albuquerque, N.M.

Panhandle Events

AMARILLO - The Panhandle Chapter of the National Multiple Sclerosis Society is taking registrations for the Wild West 150 Bike Tour.

The MS Bike Tour is set for July 27 and 28, and will be from Amarillo to the Salt Fork of the Red River.

Registration fee is \$20, and each rider must obtain a minimum of \$150 in pledges.

Interested persons should contact the MS office at 806-372-4429 for information and registration forms.

Cancer Information Service
1-800-4-CANCER



Let Us Help You Plan For:
* MORTGAGE * SAVINGS AND PROTECTION * RETIREMENT

through
OMNI-PLUS
UNIVERSAL LIFE
and other Modern Plans

WHOLE FAMILY SECURITY
ANNUITIES AND IRA'S
at HIGHLY COMPETITIVE INTEREST RATES

CONTACT
MARILYNN HART
District Deputy
P. O. Box 426
Gruver, TX 79040
806-733-2226
806-733-2066

Royal Neighbors of America
Fraternal Life Insurance
Since 1895

GUYMON, Okla. - \$5,000 will be given away in the second annual Guymon Talent Extravaganza, July 20, sponsored by the Guymon Chamber of Commerce.

For entry form contact the Guymon Chamber of Commerce, Rt. 3, Box 120, Guymon, Okla. 73942 or call 405-338-3376. Entry deadline is July 8.

Dine out on
the 4th.

Casa Alvarez
A generous taste of old Mexico
Offering the finest in south of the border cuisine
Open 11 a.m. - 9 p.m.
July 4th
Available for Parties
For carry out or reservations call 659-3422

Casa Alvarez
819 Hwy 207 S
Spearman, Texas
Mon.-Sat. 11am. - 9pm. Sunday 11am. - 8pm.



It's a privilege to be part of this great democracy... to be living the great American dream our forefathers fought for, so long ago. Let's show our pride on the 4th.

- ★ J.G.'s ★ Gordon's Drug
- ★ Charolette Ford Trunks

Come out and enjoy the Gruver celebration and Fireworks Display!

- ★ Caprock No. 1
- ★ Caprock No. 2
- ★ Gruver Redi-Mix
- ★ Hansford Supply

★ ★ ★ ★ ★ ★ ★

Holiday can result in traffic tragedy

Mention the words "Fourth of July" and many activities come to mind that are traditionally associated with this holiday; picnics, fireworks, flags, and hot weather are just a few. There is one more item that is also traditionally associated not only with this holiday but all others: traffic accidents. Yet, most people seldom give a second thought about traffic safety, especially during holidays, and therein lies the problem.

"Many people still believe they are immune from tragedy on our highways," stated Major V.J. Cawthon, regional commander of the Texas Department of Public Safety. "It's a fact, people will be killed and injured on our roads during this holiday period and you can bet none of them expected to be involved in a crash. The sad part is that most of these accidents could have been prevented by the motorist involved."

According to Major Cawthon, the Texas Department of Public Safety

wants Texas motorists to be aware of the increased hazards present on our highways during holiday periods. When asked to give the primary factor in highway vehicle accidents, Major Cawthon stated, "After reviewing all of our statistics, I would have to say driving while intoxicated is still a tremendous problem on our roads. The statistics indicate at least 50 percent of all traffic deaths are alcohol related."

Anyone who drinks can be a problem once they are on the highway. Many of these drivers may appear to be driving fairly well until they get into a tight situation requiring fast thinking and reactions, but a brain depressed by alcohol cannot think fast enough to keep them out of trouble.

If you intend on making a trip this holiday, Major Cawthon advises the following: "The best way to have a safe, accident free holiday is don't drink and drive, observe all laws and utilize safety belts."

DPS estimates 12 will die this 4th

AUSTIN - As many as 12 persons may be killed on Texas roadways during the 30-hour July 4th period, according to Department of Public Safety estimates.

DPS Director Colonel Joe Milner said the summer and vacation traveling holiday times will challenge motorists to avoid driving risks.

"The DPS and other law enforcement agencies throughout Texas will be working together to keep dangerous drivers off the local and rural streets," according to Colonel Milner.

During July 4th last year, which was also 30 hours in length, the DPS tabulated 15 deaths. Deaths due to critical injuries raised last year's final count to 19. This year's counting period begins at 6 p.m. Wednesday, July 3 and continues to midnight Thursday, July 4.

"In 1990, 89 percent of fatalities during July 4th occurred in accidents where speeding over the limits or

driving while intoxicated was a factor in this state," Milner added.

Of the 19 traffic deaths, 13 were persons in vehicles where seat belts could have been used.

Milner said additional troopers will be working in areas where high volumes of traffic could be anticipated.

"DPS officers will be watching for intoxicated drivers and speeders, the leading traffic death elements in Texas," Milner stressed.



Avoiding fireworks is safest choice

Independence Day 1991 will be a joyous celebration, marking the traditional holiday and the victory of the United States and its allies in the liberation of Kuwait. However, if Texans follow their traditional habits, July 4, 1991, will also be marked by tragic fires caused by the careless use of fireworks.

"Fireworks are a holiday tradition," said Claire Koriath, chair of the State Board of Insurance. "However, they traditionally are involved in needless fires, usually because someone chooses to use fireworks carelessly or thoughtlessly."

The State Fire Marshal's Office, which is a division of the State Board of Insurance, licenses companies and persons involved in manufacturing, storing and selling fireworks within the state. It also oversees fireworks technicians that design and operate large public displays of fireworks.

State Fire Marshal Ernest Emerson said that although most cities have banned the use of fireworks within city limits, fireworks are still easily available for sale to the public. He pointed out that fireworks require high temperatures to operate and that many discharged fireworks retain enough heat to start a fire or cause burns for hours after they are discharged. The result, he said, is that many fire departments will be called to battle fireworks-related fires this holiday.

"During 1989, fire departments in Texas reported that fireworks, including sparklers, caused more than 700 fires," Emerson said. "It is reported that these fires caused 13 injuries to fire fighters, one injury to a civilian and approximately \$75,000 in property damage."

Emerson added that another nine fires were caused by smaller explosive paper caps and party poppers, available for sale at stores without restrictions year round. These nine fires caused seven civilian injuries and \$30,000 in property damage. The statistics are taken from the Texas Fire Incident Reporting System, which includes 300 fire departments representing about 74 percent of the state's population.

Nationwide, more than 44,000 fires, about 20 deaths and \$41 million in property damage were caused by fireworks-related fires during 1988, the latest year for which national statistics are available.

The statistics gathered by the State Fire Marshal's Office on fireworks-related fires do not include fireworks injuries not related to fires. Such injuries include eye injuries, cuts and burns from contact with firework materials. The U.S. Consumer Product Safety Commission (CPSC) estimates that 12,400 fireworks-related injuries were reported to hospital emergency rooms during 1990.

The CPSC also reports that:

- Sixty-six percent of fireworks-related emergency-room injuries involved privately used devices that were legal under the federal law administered by the CPSC.
- Twenty-seven percent involved fireworks considered illegal under the federal law.

- Sparklers caused three-fourths of the injuries to children under 5 years old.
- Children under 19 years old suffered three of every five fireworks injuries. This means that children generally are more than four times as likely to be injured by fireworks as adults over 24 years old.

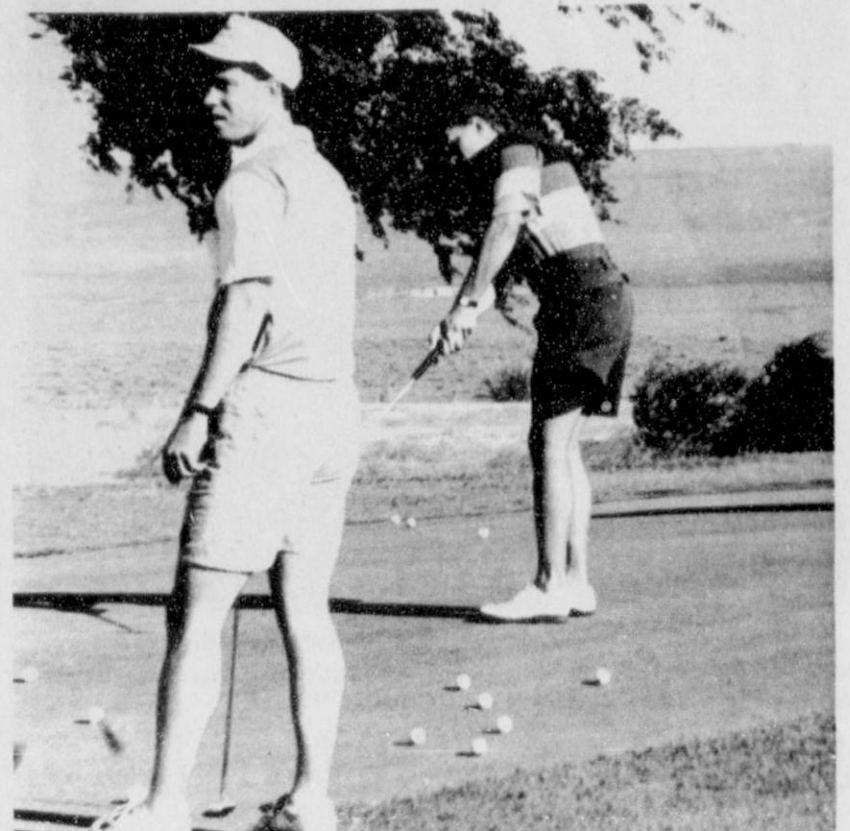
Using fireworks more safely can reduce the number of fires and injuries caused by fireworks. The State Fire Marshal's Office lists 10 recommendations for using fireworks as safely as possible:

1. Purchase fireworks only from a licensed vendor that displays a SFMO license certificate.
2. Remember that many cities and communities regulate the possession and use of fireworks. Contact the local fire department or law enforcement authorities for rules in your community.
3. Never let children use fireworks. Always designate a responsible, sober adult to ignite the fireworks.
4. Use fireworks outdoors only, in a clear area away from houses and flammable materials, such as grass, trees, gasoline cans or wooden decks. Be sure that fireworks, especially aerial fireworks, will not contact or land on potentially dangerous objects, such as power lines or automobiles.
5. Keep a bucket of water nearby while setting off fireworks. Use the water to douse any malfunctioning fireworks or accidental fires and to immerse minor burns.
6. Keep everyone, especially children under 5 years old, a safe distance away from the area where fireworks are ignited.
7. Read and follow the directions exactly. If you don't understand the instructions, don't take a chance by lighting the firework.
8. Never touch a firework after it has been lit. If the firework malfunctions, do not try to relight it or pick it up. Carefully douse all used fireworks with water.
9. Never experiment with fireworks. Don't take fireworks apart or mix anything with the contents. Never make fireworks at home. Don't set off fireworks in metal, glass or other types of containers.
10. After you have finished lighting fireworks, cool the remains with water. Then collect all used fireworks materials and put them in a metal container. Cover with water again to reduce the chance of an accidental fire.

Emerson made another suggestion for parents who allow children to use sparklers. "Keep a metal bucket nearby, and have the children put their used sparklers in the bucket," he said. "Be sure the children are wearing shoes to avoid burns from stepping on hot wires that are dropped accidentally."

The State Board of Insurance chair concluded that avoiding fireworks is the safest choice.

"Go to a local public fireworks display," Koriath said. "Or choose another method of celebrating the Fourth of July, such as organizing a neighborhood parade or participating in one of the many Operation Desert Storm commemorations that will be held across the state."



Tournament organizer Craig Downing (right) and his partner Don Shroeder (left) warm up their putting strokes on Saturday morning before going out and shooting a 78 in the first round of the Spearman Chamber of Commerce Golf Tournament.

60 golfers compete in chamber tourney

Sixty golfers braved the high winds at the Hansford Golf Course Saturday and Sunday to play in the first annual Spearman Chamber of Commerce golf tournament.

The team of Jim LaGrange and Mike Yell posted a two round score of 130 strokes to win the Championship Flight of the tournament. In order to post their two sub-par rounds of 70 and 60, LaGrange and Yell had to try and hit their golf shots with wind gusts up to 50 MPH buffeting them and the ball.

The second place team of Bob Hardy and Kurt Ashmore was able to keep pace with LaGrange and Yell on Saturday, but fell off the pace on Sunday when they posted a 66 for the round. The third place team of Ned Kygar Jr. and Melvin Bradley posted the lowest score of the top three teams on Saturday by shooting a 67. They fell victim to the wind on Sunday and posted a 71, which moved them into third place.

There were winners in three other flights. In Flight A, Craig Downing and Don Shroeder took first place with a combined score of 145. In Flight B, Pat Jackson and Richard

Mackie took first with a 152. Flight C was won by Mark Guthrie and Randy Hendrickson with a 166.

Besides the prizes awarded to the top three finishers in each of the flights, prizes were given to the golfer who could hit the longest drive on hole number 9 and closest to the pin on hole number 4. LaGrange hit the longest drive, while Larry Butts hit his first shot closest to the hole on 4.

A list of the top three finishers in the four flights of the tournament follows.

Championship Flight	Score	Score
LaGrange-Yell	70-60	130
Hardy-Ashmore	70-66	136
Kygar-Bradley	67-71	138
Flight A		
Downing-Shroeder		145
Larry Butts-Richie Thompson		148
Kyle Barnes-Ed Hosier		148
Flight B		
Pat Jackson-Richard Mackie		152
Billy Kelly-Bobby Mosies		156
Troy James-David Bowd		159
Flight C		
Guthrie-Hendrickson		166
Johnnie Williams-Hank Sutterfield		167
Linda Andrew-Andy Andrew		167



Dr. Stan Cobb of Spearman "really gets around." At the third annual National Cowboy Symposium & Celebration Cobb, also known as "Cowboy Jack," was an emcee and performer for the 8,000-10,000 visitors. He also became acquainted with actor Barry Corbin. Corbin is known for his work on the film "Lonesome Dove" and television's "Northern Exposure." Cobb's travels in June took him to Granbury, Texas; Beef Empire Days in Garden City, Kan.; and McClellan Creek Ranch in Groom, Texas. On his July schedule is the Red Steagall Cowboy Gathering at Fritch; along with two appearances in Colorado: the Great Pikes Peak Cowboy Poetry gathering, and LaVeta's Fort Francisco Museum Poetry Gathering for "Cowboy Life Magazine." His August agenda will include an appearance at Old West Days in Amarillo.

Cook Up A Fantastic Fourth



- ASSORTED SHURFINE SODA POP** 6-PK 12-OZ CANS **98¢**
- SHURFINE CREAM STYLE OR WHOLE KERNEL
- Golden Corn** OR FANCY CUT **16-OZ. CANS 3/99¢**
- NEW CROP CALIFORNIA
- Peaches or Red Plums** MIX OR MATCH **59¢/LB.**
- JUCY
- Sweet Cantaloupe** 2 LBS. **89¢**
- SHURFINE QUALITY
- Meat Franks** 12-OZ. PKG. **79¢**
- FAMILY PAK LEAN
- Ground Beef** LB. **\$1.69**
- STORE HOURS: 7 A.M. - 8 P.M.

THRIFTWAY
505 PLAINS SHOPPING CENTER
659-2522 • SPEARMAN, TEXAS

JULY 4th SALE

30% to 70% Off Selected Items

MAIN STREET
506 Main Av.
Gruver, Texas

BETTER SERVICE FOR YOUR HEARING AID...

...MEANS BETTER HEARING FOR YOU.

Ask For FREE Hearing Test

Be sure to visit our next Service Center.

Monday July 8, 1991

Chamber of Commerce
211 Main Street
Spearman, Texas
10:00 a.m. - 12:00 Noon

Golden Spread Hearing Aid
Formerly Beltone
27-B Medical Dr
Amarillo 352-8961

Just add water...

For Fun In The Sun!

1984 19 ft. Ebko Cutty Cruiser
-w- 470 hp. Mercruiser • Loaded -w- Extras!

1980 16 ft. Taylor
-w- 115 hp. Evinrude Outboard
Automatic Tilt & Trim • Very Nice!

20 ft. Landau Pontoon Boat
50 hp. Force Outboard • Automatic Tilt & Trim

Priced to Clear The Lot!
plus
Weatherby Rifles & Shotguns

Boston's Auto & Marine
Elmwood, Oklahoma (405) 625-4896

All stars play in Guymon



The Spearman Little League All-Stars include (standing, l-r) coach Jeff Beedy, Jake Howard, Michael Witten, Eric Varnon, Dillon Miller, Frankie Dominguez, coach Andy Francis, (middle row, l-r) coach Mike Cudd, Travis

Loomis, Britt Savage, Michael Lusby, Clint Faries, coach Rick Howard, (bottom row, l-r) Aaron Witten, Kevin Baker, Dallas Burgess and Eric Cudd.



The Gruver Babe Ruth baseball team concluded its regular season play by finishing second in the league tournament in Hooker, Okla. Nine of the Gruver players were named to the two league All-Star teams. The 13 year old All-Stars will play in the Oklahoma State Tournament in Broken Bow, July 19-21. The 15 year old All-Stars will play in the state tournament in Miami, Okla. on the same dates. Team members include Sammy Renteria, 13 year old All-Star; Max Frick,

13 year old All-Star; Brady Tidwell, Ryon Atwood, Wylie Maupin, 13 year old All-Star; Daniel Bort, 13 year old All-Star alternate; Bailey Barkley, 13 year old All-Star; Andy Jones, Roma Tomlinson, Andy Morris, Jace Dawson, 15 year old All-Star; Matt Etheredge, 15 year old All-Star; Aaron Frick, 15 year old All-Star; Kenton Odum, tournament Sportsmanship winner; Will Etheredge, 15 year old All-Star; and Kevin McNett.

City street sealcoating to begin

The City of Spearman will begin its annual sealcoat of city streets beginning Tuesday, July 9. It will take the contractor approximately five days to complete the work.

Residents who live on the streets listed below are asked for their cooperation on the following items during the sealcoating period:

- 1) Keep all vehicles and trailers off the street;
- 2) Park vehicles in driveways and as close to houses as possible;
- 3) Do not water front lawns for the next few days in order to keep water out of the curb and gutter areas.

Streets to receive sealcoating include:

- A portion of Davis between Main and N. Bernice
- A portion of East "A" Ave. between N. Bernice and N. Hoskins
- A portion of East Second between S. Brandt and S. James
- A portion of East Third between S. Bernice and S. Hazelwood
- A portion of East Fourth between S. Hazelwood and S. Brandt
- A portion of West Fourth between Townsend and Roland
- A portion of East Sixth between S. Endicott and S. Hazelwood
- A portion of West Seventh between Hwy. 207 and County Road #1
- A portion of Townsend between Eleventh and Twelfth
- A portion of Dressen between Tenth and Twelfth
- A portion of Barkley between Seventh and Twelfth
- A portion of Haney between Eleventh and Twelfth

City officials greatly appreciate

residents' cooperation in this matter.

Any questions regarding the sealcoating of city streets should be directed to City Hall at 659-2524.

A portion of Seventh between Hwy 207 and S. Hazelwood
A portion of Eleventh between Roland and Linn Dr.

All of Twelfth
A portion of Studer between Cotter Dr. and Collier Dr.
All of N. James and S. James
All of Roland

A portion of Evans between Fifth and Seventh and between Eighth and Eleventh
A portion of Archer between Twelfth and County Road #2

**For all your electrical needs
Industrial Home Oil Fields
Anthony Electric Inc.**

**Licensed Master Electricians
Complete Product Lines in:**

**Decorative light bulbs & switch covers
Fuses Lamp parts Light fixtures
Air filters**

Some small Appliances

Open Monday - Friday 8a.m. - 5p.m.

Call or Come By

519 S. Plains Mall - Spearman (806)659-2441

SOUTHWEST OUTDOORS



Mel Phillips

The Spearman Little League All-Star team traveled to Guymon Monday night to play the first game of the Guymon All Star tournament. Spearman lost to the home team by a close score of 3-2, according to coach Andy Francis.

"The teams were evenly matched. It was 3 up and 3 down for most of the game," said coach Francis.

Guymon was the first team to end the pitchers' duel. According to coach Francis, they scored one run in the third inning and two more in the fifth inning. Spearman's two runs came in the sixth inning off a home run by Jake Howard with Eric Cudd on base.

The pitchers for the Spearman all stars were Jake Howard and Eric Cudd. "Howard and Cudd pitched a good game and the rest of the team played an excellent game," said Francis.

The all stars' next game will be Friday night at 7 p.m. in Guymon. The coaches and the team are inviting everyone to come out and support the team.

"Summertime and the livin' is easy. Fish are jumping and the cotton is high." Ole George Gershwin painted a beautiful picture but he ignored the hazard of sunburn.

The 4th of July holidays kick off the start of our really hot weather. Watch out for the heat and the sun. Living and working in air conditioned homes and offices, it is easy to get too much sun during that first summertime trip to the great outdoors.

Years ago most people in our part of the world worked outside on the farm. Neither houses nor businesses had air conditioning. Everyone was conditioned to the temperature changes as the seasons changed. But now, even hot tubs are installed in air conditioned rooms, cars without A/C are considered museum pieces, and hard manual labor is done to aerobic music at the climate controlled health club. In short, a changed lifestyle has caused us to be unprepared for the shock of 100 + temperatures that can occur in the summer.

Get a good sunscreen and use it. Remember when sun tan lotions were oily and had the fragrance of cheap French aftershave? Modern sunscreens are odorless, greaseless, waterproof and more importantly, extremely effective at blocking harmful UV rays that prematurely age and wrinkle the skin and cause skin cancer to appear after a delay of some 20 or 30 years!

Check out the SPF rating. An SPF-2 indicates that one can stay in the sun for twice as long as without any lotion. An SPF of 15 indicates that one can enjoy the sun for 15

times the normal length. The length of protection varies for each person. Blue eyed people are at greatest risk.

My wife uses an SPF-15 even on trips to the grocery store. She mumbles something about not wanting ANY premature wrinkles and no skin cancer. If you are also concerned about the sun, a rating of SPF-15 should cover all but those really long days in the sun.

After looking over this column maybe it was better when Mr. Gershwin didn't have to worry about sunburn.

HOT HINTS - Try wearing a long-sleeve, loose-fitting shirt. Drink plenty of liquids and remember that alcoholic beverages will cause increased dehydration. Ice water or gatorade-type drinks do more good than colas on a hot day.

Fishing gives a double dose of UV because of water-reflected sun. Many successful anglers wash their hands with a special soap that eliminates any odors from their sunscreen. DR. JUICE has a special soap called "Hand and Lure Cleaner." It works and is worth adding to your tackle box.

NOW is a great time to visit that favorite deer country and offer to hunt some coyotes. Ranchers rarely say no and will usually invite the courteous hunter back for some deer hunting.

HAVE A SAFE 4TH OF JULY!

Correction

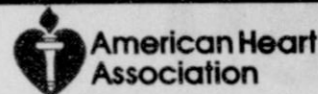
In the Hickerson Jewelers ad run on June 20, Joyce was incorrectly listed as an employee. The name should have been Pam.

UT M. D. Anderson Hospital

Cancer Information Service

1-800-4-CANCER

Volunteer.



NOTICE

Hi-Plains Auto Supply is back in the Auto Repair Business!

Shop Manager

Jim Morley

Invites all of

Hansford County to bring their cars to the shop for:

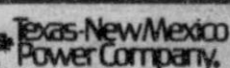
Front end alignment Tires AC repairs

Wheel bearing maintenance Brake Jobs

U-Joint Replacements

**Hi Plains Auto Repair
403 Hancock
(806) 659-2506**

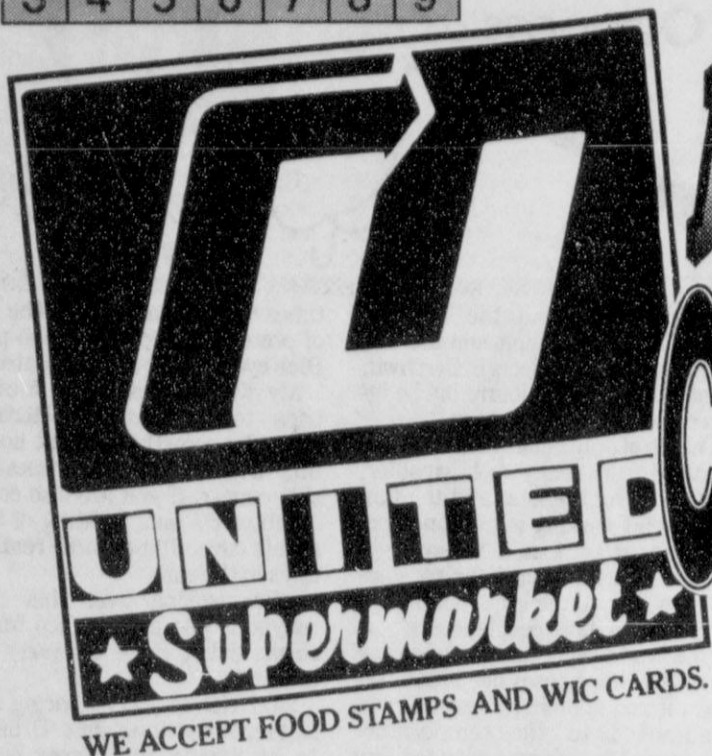
CRIME PREVENTION



The Nite-Liter from Texas-New Mexico Power Company is a bright way to prevent crime at your business.

PRICES GOOD THRU TUES. JULY 9TH

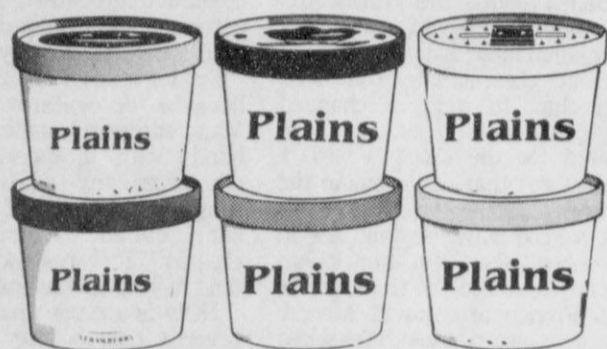
WED.	THUR.	FRI.	SAT.	SUN.	MON.	TUES.
3	4	5	6	7	8	9



UNITED Supermarket
★ WE ACCEPT FOOD STAMPS AND WIC CARDS.

AMERICA COMING HOME

GOOD THRU JULY 9TH
IN PERRYTON ONLY.



Plains

Ice Cream

All Varieties
1/2 gallon

\$1.89

Red Ripe Bing Cherries

Large Size



lb. **.98**



California Iceberg Lettuce

Large head untrimmed

lb. **.39**



Lay's Chips

Assorted

6.25 oz.
to 6.50 oz.

.99

United Hamburger Buns and Coney

3 for \$1

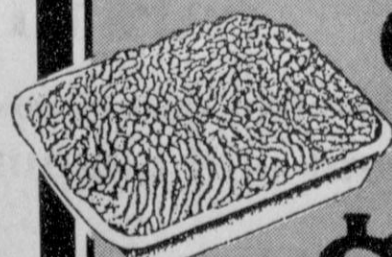
Double Coupons
7 days a week
See store for details



Oscar Mayer Meat Wieners

Limit 4

1 lb. pkg. **.89**



Super Valu Pak Ground Beef

5-7 lb. average

lb. **\$1.19**

Family Pak 3-5 lb. avg. lb. **\$1.29**

the personal touch

Cut income tax talk and cut government

by T. Boone Pickens

Members of Governor Ann Richards' Task Force on Revenue recently put a hefty 6 percent personal income tax and a 6.5 percent corporate income tax on the legislative table to satisfy the Texas Legislature's never-ending appetite for increased spending.

Make no mistake: The merits of an income tax will be a focal point of debate in this summer's special session on state spending and taxes. And while a few Texas business leaders have joined hands with the free-spending liberals in support of such a tax, you can count me out.

A personal and corporate income tax couldn't come at a worse time for most Texans or Texas business. If instituted, an income tax will further erode the earnings of the average Texas family and Texas business, and ultimately derail Texas' sputtering economic recovery.

As head of one of the nation's largest independent natural gas producers, I can testify that the pinch is still on. Texas is still picking itself up off the mat after the oil bust of the 1980s and the recent savings and loan debacle. The real estate, insurance, banking, oil and petrochemical industries remain depressed. The collapse in natural gas prices continues to impede the recovery of our state's energy industry. Small businesses, responsible for 92 percent of all jobs in Texas, have suffered greatly during this economic recession, and will suffer another blow if the income tax - or any other business or personal tax - is implemented.

Earlier this year, state lawmakers approved a reduction in state taxes collected from Texas' struggling horse racing industry to spur economic growth. Texans will no doubt have a hard time swallowing the notion that the reverse approach - increased state taxes - will have the same result.

The Texas Public Policy Foundation estimates that a personal income tax will further reduce personal income by as much as 9 percent. From 1965 to 1988, the personal income of Texas families fell from 21st place to 33rd in a 50 state comparison, and an income tax will hammer us further down the list.

Those who have jumped on the income tax band wagon maintain abandoning Texas' long-standing contempt for such a tax is "the right thing to do for Texas." The right thing for whom?

Consider this:

- * Texans have suffered three major state tax increases since 1985.
- * Taxpayers have just been tagged with a school financing bill that will increase property taxes by an average of 34 percent over five years.
- * Nationally, Texas has the second-highest combined state and local sales tax burden.
- * From 1980-1988, Texas ranked first as the state with the most rapid rate of increase in property taxes.
- * State tax collections rose 98.6 percent from 1980 to 1988 while the cost of living increased only 43.5 percent in the same period.

Why an income tax now? The state comptroller has already identified \$1.6 billion in potential state spending cuts. On top of that, it is estimated that the

GUEST COLUMN

by T. Boone Pickens

state will end the current biennium August 31 with a \$300 million surplus. Without any changes in the state tax system, or imposition of the cuts identified by the comptroller, there will be an additional \$2 billion available for the next biennium. That's enough extra revenue to increase state spending by 11 percent during the next two fiscal years. In these tough economic times, few Texas families or Texas businesses can increase spending at such a dramatic level. But in reality, the free-spenders in Austin aren't pushing an 11 percent increase in the state budget, they want a 25 percent growth budget.

Few economists will rise in defense of a state income tax or increased taxes of any sort. John Rutledge, chairman of Claremont Economics Institute, wrote recently that "taking additional money out of people's pockets so they can pay the IRS or a state treasurer is clearly no way to end the current slump and solidify the economy." But the career politicians have manufactured a "fiscal crisis" to justify the imposition of a state income tax and raise the prospect of higher, across-the-board taxes.

The real fiscal "crisis" is that state spending has skyrocketed 196 percent between 1976 and 1990, with the number of full-time state employees jumping from 76,330 in 1980 to 104,960 last year. The sad truth is that the budget gets more laden with fat every year. Growth in government spending outpaced growth in all industrial segments of the state economy in the 1980s, and yet the liberals and career politicians are still ratcheting state spending upward.

There is a compelling correlation between rising tax receipts and increased government spending. Just look at what has happened in Washington. The Office of Management and Budget says that in 1981 the federal government collected \$59 billion in taxes. By 1990, tax collections had increased by 66 percent to \$1.07 trillion. In the same period, spending shot up by 76 percent, and the estimated gross federal debt for 1991 is \$3.6 trillion.

So what makes anyone think the politicians in Austin would do any better, especially since the budget woes in Texas mirror this trend? It has been estimated that even a mere 4 percent income tax would hike state spending in Texas another 20 percent in the next decade.

In the eight states that have most recently instituted an income tax, state spending increased to record levels at a record pace. New York and California have income taxes. Currently, those states face a \$8 billion and \$13 billion budget deficit, respectively. Their predicament is hardly a ringing endorsement of the income tax as a cure-all for budget ills. Conversely, three western states that lack either a corporate or personal income tax are among the few states on a sound fiscal footing.

Texans do not want more taxes, more spending or more regulatory interference. The Legislature would do well to listen to what the people are saying.

Unfortunately, most of the liberals in Austin have never experienced what the business owner confronts every day of the week. Running a business is tough work. State government should make starting a successful business easier, not harder. An income tax will point Texas in the wrong direction.

The free-spenders and special interests have been hungering for a state income tax for a long time. This is their best opportunity to siphon more from the taxpayer for their pet projects. They have successfully painted the picture of a state perched on the precipice of financial disaster, and that is simply not the case.

More taxes means more spending, not fiscal stability. It's a vicious and unseemly cycle. Pulling in the reins on spending in Austin is the only solution. State agency performance reviews are on target, but more must be done. Concerned taxpayers must begin to demand tax and spending accountability from their legislators. The income tax must be stopped.

(T. Boone Pickens is general partner of Mesa Limited Partnership, one of the nation's largest independent natural gas producers. He has been an active supporter of the Republican Party at the national, state and local levels.)

Editor's note: The opinions expressed in this guest editorial are those of the writer and do not necessarily reflect the opinions of the Reporter-Statesman, its management or staff.

Mosquito Season Is Off With A Bang

Swarms of mosquitoes, with their tiny wings and big stings, are here—ahead of schedule and expected to be out in full force this summer season.

The reason: heavy rains and unusually warm temperatures have produced ideal breeding and hatching conditions in many parts of the country according to public health officials. Mosquitoes can breed in a quarter inch of water and the female can lay about 500 eggs in her lifetime. It takes from 7 to 10 days for the eggs to hatch and to reach adulthood. The life span of a mosquito is anywhere from 30 to 60 days.

It is the adult female that bites—she needs blood to nourish her eggs. The itchy, annoying bumps on your arms signal her arrival for the sum-

mer. What can you do to avoid the annoying, pesky little critters this season?

- Remove standing water from all areas around your home.
- Use a DEET-containing insect repellent such as OFF! or Deep Woods OFF!. The Federal Environmental Protection Agency recommends using DEET on skin and clothing for protection from mosquito, tick and other biting insects.
- Stay indoors during twilight and late-night hours when mosquitoes are most active.
- Wear light colors; dark clothing may be more attractive to biting insects.
- When possible (given the hot summer weather) and in heavily mosquito-infested areas, wear long sleeves and pants.

NOTICE
 Deadline to place or cancel classified line ads is Tuesday noon for Thursday insertion.
CLASSIFIED RATE
 \$4.00 first insertion
 \$3.00 each additional insertion (30 words or less)
 13¢ each word over 30
 Legal Notices: 15¢ per word
 Ads must be paid in full in cash before publication, unless advertiser has established credit with the Reporter-Statesman.
 Payment for out of state classifieds must be in the form of a money order or cashier's check.
 No tearsheets provided for classified ads.
 Tearsheets provided on request for legal notices.

WANT ADS Work!

Oil & gas report

WEEK ENDING JUNE 27

REAL ESTATE

SMALL EQUITY - Low interest assumable loan. Nice three bedroom, two bath home. Sunken living room, fireplace, fenced back yard, two car garage. Very nice location for children, 1120 Archer, Spearman. Call 659-2306. S32-RTN

OWNER MUST SELL: 3 bedroom, 1 1/2 bath, Morgan building, gas grill, hardwood floors. Assumable loan. Call 659-3057 for appointment. 703 E. 2nd. S35-2tpRTN

Century 21
GOLDEN SPREAD REALTY
 Janey Helton Pointer, Broker Owner, 435-5444
 Jennifer Nollner, Sales Associate 659-5243

200 Airport Road - Steel building w/office, large overhead door & concrete slab!
821 Dessen - 5/2, lots of house for the money! Call today!
515 S. Bernice - 4/1 1/4, extra large lot & close to school!
18 S. James - 3/2, extras include basement and large building in back!
605 Archer - 3/2, large rooms plus deck and hot tub!
704 Wilbanks - 3/1 1/2, details on this Farm **UNDER CONTRACT** property!
505 Haney - 3/1 1/2. New listing! Sell or rent!
611 S. Evans - 3/1 1/4, affordable!
118 Townsend - 4/2, apartment included. Price slashed!
315 1/2 N. Bernice - Lot for sale!
Bam Off County Road - For sale!

NEW LISTINGS!
 700 Collier
 13 S. Brandt
 1109 S. Haney
 14 S. James/U.C.
 116 S. James
 308 S. Hazelwood
 312 N. Hazelwood
 517 Haney/U.C.

AA Realty
 Allen Alford-Broker-659-3034
 Julie Martin-Sales-659-2425
 Dennis Nelson-Sales-659-3608
 Lamy Trosper-Sales-659-3491

605 S. Archer - Lot & Trailer - Great Buy!
217 N. James - 3/1 1/4 - Dbl. Garage
729 Cotter Dr. - 3/1 1/4 - Dbl. Garage
1121 Dessen - Neat 3/1 1/4 - garage
715 Steele - Cute 3/1 1/4 - garage - REDUCED
Country Home - 3/1 1/4 - Barns - 2 acres
221 S. Barkley - Good Investment - REDUCED
 Homes to Show Not Listed
 Just Call For Showings
 FOR QUALITY & SERVICE CALL US TODAY
 Equal Housing Opportunity

REAL ESTATE
FOR SALE: 3 Bedroom, 2 bath home. Sunken living room, parquet floors, fireplace, covered patio, 2 car garage, sprinkler system, 2193 sq. ft. living space, excellent location. Call 659-3587 or 659-5022. S33-RTN

NICE HOUSE on 1 1/2 lots. Fence, 3 bedrooms, 1 1/2 baths, study, utility room, lots of cabinet storage, garage, huge driveway, central air/heat, 1500 sq. feet. \$42,000. 727 Wilbanks. 659-3970 or 659-3838. S24-3tpRTN

BOB HARDY REALTY
 803 WILMETH DR.
 659-3440

NEW LISTINGS
 906 LINN DR. - Qualified buyers only. 4 BR, 2 1/2 Bath, 3 Car Garage. Priced, fenced, Sprinkler. Exceptional Quality. Price Reduced - Make Offer. Colorado Property For Sale.
ROBERT HARDY - BROKER

FOR RENT
APARTMENTS FOR RENT. One and two bedrooms, furnished. Call J.P. at 659-2117. S25-2tpRTN

FOR RENT or sale (pay like rent) inexpensive; older 10 x 56 two bedroom mobile home. Ideal for couple with no more than 2 children. Corner lot is completely fenced. 2-car off-street parking slab. 1 block from swimming pool. Close to all schools. Call 659-2954 and leave name and phone number. S25-RTN

FOR RENT: large mobile home lot, storage bldg., sidewalk and 2-car parking slab. 6 ft. wood privacy fence. 1 block from swimming pool and close to schools. Call 659-2954, leave name and phone number. S35-RTN

TWO BEDROOM HOUSE for rent with fenced back yard. 659-2506 or, after 6, 659-2327. S36-RTN

FOR SALE: 1985 Ford F-250 pickup. 4WD diesel. Contact Richie Fletcher 659-5544. 8 a.m. to 4 p.m. S36-1tc4.50

PERSONAL
IS DRINKING AFFECTING your life negatively? Join us at AA or Al-Anon. Tuesdays at 8 p.m., at 30 Hwy 760 (three blocks south of the Moose). S35-4tp

REAL ESTATE

FOR SALE: 3 Bedroom, 2 bath home. Sunken living room, parquet floors, fireplace, covered patio, 2 car garage, sprinkler system, 2193 sq. ft. living space, excellent location. Call 659-3587 or 659-5022. S33-RTN

NICE HOUSE on 1 1/2 lots. Fence, 3 bedrooms, 1 1/2 baths, study, utility room, lots of cabinet storage, garage, huge driveway, central air/heat, 1500 sq. feet. \$42,000. 727 Wilbanks. 659-3970 or 659-3838. S24-3tpRTN

BOB HARDY REALTY
 803 WILMETH DR.
 659-3440

NEW LISTINGS
 906 LINN DR. - Qualified buyers only. 4 BR, 2 1/2 Bath, 3 Car Garage. Priced, fenced, Sprinkler. Exceptional Quality. Price Reduced - Make Offer. Colorado Property For Sale.
ROBERT HARDY - BROKER

FOR RENT
APARTMENTS FOR RENT. One and two bedrooms, furnished. Call J.P. at 659-2117. S25-2tpRTN

FOR RENT or sale (pay like rent) inexpensive; older 10 x 56 two bedroom mobile home. Ideal for couple with no more than 2 children. Corner lot is completely fenced. 2-car off-street parking slab. 1 block from swimming pool. Close to all schools. Call 659-2954 and leave name and phone number. S25-RTN

FOR RENT: large mobile home lot, storage bldg., sidewalk and 2-car parking slab. 6 ft. wood privacy fence. 1 block from swimming pool and close to schools. Call 659-2954, leave name and phone number. S35-RTN

TWO BEDROOM HOUSE for rent with fenced back yard. 659-2506 or, after 6, 659-2327. S36-RTN

FOR SALE: 1985 Ford F-250 pickup. 4WD diesel. Contact Richie Fletcher 659-5544. 8 a.m. to 4 p.m. S36-1tc4.50

PERSONAL
IS DRINKING AFFECTING your life negatively? Join us at AA or Al-Anon. Tuesdays at 8 p.m., at 30 Hwy 760 (three blocks south of the Moose). S35-4tp

Today's Best Buys

SHURFINE POP
 All Flavors \$3.99/case
ALLSUPS CONVENIENCE STORE

COKE, 7UP OR DR. PEPPER
 6-Pack Cans \$1.49
UNITED SUPERMARKET-PERRYTON

KRAFT BARBECUE SAUCE
 18 Oz. 69¢
UNITED SUPERMARKET-PERRYTON

LAY'S POTATO CHIPS
 6 1/2 Oz. 99¢
UNITED SUPERMARKET-PERRYTON

FARM MACHINERY

1989 NEW HOLLAND round baler Model 855, 1982 JD 8820 combine 2,000 hrs, JD 520 3 pt. double disc drill, Krause 1480 19 ft. offset disc, 200 gal fuel tank with electric pump on trailer. Contact Don Townsen, FNB Spearman. 659-5544. 8 a.m. to 4 p.m. S36-1tc5.33

FOR SALE: 478 GMC irrigation motor, completely rebuilt with standard shaft and 30 thousand pistons. For information call 659-2506. S36-3tc

MISC. FOR SALE

JAN'S ETC. NEW & USED & ANTIQUES TOO
 Everything for home and family. Plains Shopping Center in Spearman. Open Monday - Saturday, 9:30 a.m. to 6:00 p.m. S16-RTN

NEW TRAMPOLINES
 Mats and springs. Resew trampoline mats. Make new boat covers.
 Call 806-659-2109
 Harry Stumpf
 301 W. 12th
 Spearman, Texas

SERVICES

CALL YOUR LOCAL Used Cow Dealer for 7 days a week dead stock removal. 659-3544 or 1-800-692-4043. Serving Cattlemen for the past 20 years. G51-RTN

SPEARMAN ELECTRIC - New work and rework. Residential & commercial. All work is guaranteed. Call (806) 659-2636 before 11 a.m. or after 3 p.m. S33-3tpRTN

Stay in touch! with **G&G ELECTRONICS**
 CellPhone USA
 *2-way Radio
 *Mobile Telephones
 *Repeater Spaces
 *Pagers
 Call Bruce Duncan (806) 659-3673

NOTICE
 Wallace Monument Co. Monuments, Curbing, Grave Covers
 1-800-999-9506
 Local Representative
LEONARD JAMESON
 Spearman, Texas
 35s-rtm

OSGOOD MONUMENT CO.
 Amarillo, Texas
 Dealers of Rock of Ages Granite, as well as all colored granites, marble and bronze memorials.
 represented by
BOXWELL BROS. FUNERAL HOME
 519 S. Evans
 659-3802

LOST & FOUND

LOST: 10 heifers weighing around 600 lbs. missing, 17 miles southeast of Spearman. Branded 4 on right hip. Belonging to Beck Bros. Call Verlin Beck at 659-2020 or Ed Beck at 659-5304. S35-4tp

HELP WANTED

EXPERIENCED SECRETARY WANTED. Experience in computer, typing, bookkeeping and invoice billing. References required. If no experience, please do not apply. Apply in person at Anthony Electric, Plains Shopping Center, Spearman. S36-2tc

JOBS IN KUWAIT/SAUDI Hiring \$37,500-\$150,000 yly. Construction/oil refinery/medical office/welders/most skills. Transportation, housing. Incredible opportunities. Call 1-206-736-7000 Ext. 8992W7. S36-1tp3.75

\$ EXTRA INCOME \$

Flexible daytime hours. National Apparel Co. seeks reliable person to inventory/reorder our products for one store every month. Send letter to: 8124 NW 80th, Oklahoma City, OK 73132. EOE S36-1tp4.35

PUBLIC NOTICES

NOTICE TO BIDDERS

Cafeteria of the Gruver Independent School District is receiving bids for all food items. Vendors interested in bidding should pick up specification sheets from the Business Office, 600 Garrett Street, Gruver, TX. Bid prices will be in effect until December 31, 1991. Bids must be received in the Business Office no later than 4:00 p.m., July 5, 1991. Envelope should be marked "Food Item Bid." Award will be made at the regularly scheduled Board Meeting, July 10, 1991 at 1:00 p.m. in the Board Room of the Gruver High School, 600 Garrett, Gruver, TX. The Board reserves the right to accept or reject in whole or part of any and all bids. S35-2tc

NOTICE TO ALL PERSONS HAVING CLAIMS AGAINST THE ESTATE OF LAWTON GUTHRIE, DECEASED

Notice is hereby given that original Letters Testamentary for the Estate of LAWTON GUTHRIE were issued on May 9, 1991 in Cause No. 3817 pending in the County Court of Hansford County, Texas, to: J.L. BROCK
 The residence of such Executor is Hansford County, Texas. The address is:
 J.L. Brock
 121 Main
 Spearman, Texas 79081
 All persons having claims against this Estate which is currently being administered are required to present them within the time and in the manner prescribed by law.
 DATED the 25th day of June, 1991.
 -s- Billy Britt Jarvis
 State Bar No. 10585000
 P.O. Box 515
 Spearman, Texas 79081
 (806) 659-2554
 ATTORNEY FOR THE ESTATE OF LAWTON GUTHRIE
 S36-1tc18.90

reach 3 million Texans for only \$250

Now you can run your classified ad in newspapers all across Texas for \$250.
 That's right—a 25 word ad costs only \$250 to run in 285 newspapers with a combined circulation of more than 1.6 million (that's more than 3 million readers) throughout the Lone Star State.
 One call to this newspaper, that's all. We'll place your ad in 285 newspapers. All you have to do is get ready for results.
 This new sales opportunity is brought to you by this newspaper and the Texas Press Association member newspapers.
 Call this newspaper for details
Tex SCAN
 Statewide Classified Advertising Network

Intentions to Drill
HEMPHILL (WILDCAT & MATHERS RANCH) Huntley Exploration Co., #3 Ursch 49' (633 ac) 200' from South & 2450' from East line, Sec. 49, 1, G&M, 6 mi S-SE from Glazier, PD 16625' (Box 400, Amarillo, TX 79188)

Application to Plug-Back
HUTCHINSON (SHIRLEY Tonkawa) Eagle Exploration Co., Inc., #1 Turkey Track Ranch (646 ac) 900' from South & 933' from West line, Sec. 17, M-22, TCRR, 17 mi NE from Stinnett, PD 7700' (Box 2526, Amarillo, TX 79105)

Oil Well Completions
HUTCHINSON (WEST ARRINGTON) Huntley Exploration Co., #14 West Turkey Track, Sec. 20, M-25, TCRR, elev. 2949 gr, spud 5-6-91, drlg. compl 5-24-91, tested 6-19-91, pumped 152.8 bbl. of 28.6 grav. oil + 7 bbls. water. GOR 6, perforated 7668-7688, TD 7800', PBTD 7868' - OCHILTREE (NORTH BULER Cleveland) American Exploration Co., #9 Parnell, Sec. 306, 43, H&TC, elev. 2000 gr, spud 4-15-91, drlg. compl 4-27-91, tested 6-13-91, pumped-flowed 306 bbl. of 40.5 grav. oil + 43 bbls. water thru no choke on 24 hour test, csg. pressure 2000' lbg. pressure 2004', GOR 1725, perforated 7040-7061, TD 7500', PBTD 7286' - SHERMAN (COLDWATER RANCH Marmaton) Phillips Petroleum Co., #2 Ivens 'T', Sec. 34, 3-B, G&H, elev. 3443 rkb, spud 4-24-91, drlg. compl 4-14-91, tested 6-8-91, pumped 48 bbl. of 38' grav. oil + 28 bbls. water. GOR 354, perforated 5491-5636, TD 6228', PBTD 5703' - WHEELER (PANHANDLE) Union Pacific Resources Co., #14 Williams, Sec. 49, 24, H&GN, elev. 2536 gr, spud 4-29-91, drlg. compl 5-6-91, tested 5-25-91, pumped 73 bbl. of 42.8 grav. oil + no water. GOR 480, perforated 2336-2686, TD 2686' PBTD 2686' -

Gas Well Completions
HANSFORD (WEST LIPS Cleveland) BHP Petroleum Co., Inc., #1 Conv 25, Sec. 26, R, B&E, elev. 3109 gr, spud 4-24-91, drlg. compl 4-24-91, tested 5-24-91, potential 300 MCF, rock pressure 500, pay 653-657, TD 8472', PBTD 7719' - Work-Over Well **HEMPHILL (GILL RANCH Sweetwater Sand)** Marsh Operating Co., #2-14-U Mather's, Sec. 14, A-2, H&GN, elev. 3007 kb, spud 4-24-91, drlg. compl 5-13-91, tested 5-11-91, potential 12900 MCF, rock pressure 3196, pay 8690-8755, TD 14310', PBTD 11850' - Dual Completion w/ #2-14-L Mather's **LIPSCOMB (LIPSCOMB Cleveland)** Strat Land Exploration Co., #1 Kirk, Sec. 340, 43, H&TC, elev. 2828 gr, spud 10-13-90, drlg. compl 11-10-90, tested 3-5-91, potential 12560 MCF, rock pressure 2541, pay 8380-8424, TD 11250', PBTD 9770' - **ROBERTS (CREE-FLOWERS)** Wolfcamp Dolomite Kaiser-Francis Oil Co., #1-78 Flowers, Sec. 78, C, G&M, elev. 2775 gr, spud 2-23-91, drlg. compl 3-2-91, tested 5-22-91, potential 535 MCF, rock pressure 669, pay 3708-3756, TD 4300', PBTD 3360' - **WHEELER (LOTT RANCH 14500')** Kaiser-Francis Oil Co., #1-5 Lee-Hefley, Sec. 5, C, S, R, Wiant Survey, elev. 2656 gr, spud 3-25-91, drlg. compl 5-14-91, tested 6-6-91, potential 2700 MCF, rock pressure 7569, pay 14342-14368, TD 15080', PBTD 14500' - Plug-Back

Plugged Wells
CARSON (PANHANDLE) Mon Corp., Sec. 231, B-2, H&GN, spud unknown (oil) - Form 1 filed in 3 W Oil, Inc., for the following wells:
 #2 Webster, plugged 5-29-91, TD 3170' - #5 Webster 'A', plugged 5-21-91, TD 3264' - **GRAY (PANHANDLE) Phillips Petroleum Co.**, #3 Doss, Sec. 141, B-2, H&GN, spud 6-7-69, plugged 5-25-91, TD 3156' (oil) - **GRAY (PANHANDLE) Phillips Petroleum Co.**, #7 Osborne, Sec. 101, B-2, H&GN, spud 7-31-65, plugged 5-30-91, TD 3130' (oil) -

HUTCHINSON (WILDCAT) Alpar Resources, Inc., #3C Patterson '15', Sec. 15, M-22, TCRR, spud 9-28-90, plugged 5-3-91, TD 7623' (dry) - Re-Entry **ROBERTS (WILDCAT) Zinke & Trumbo, Ltd.**, #1-56 Katie Wilde, Sec. 56, C, G&M, spud 3-16-91, plugged 5-20-91, TD 9800' (dry) - **ROBERTS (PAYNE RANCH Lower Douglas) Lasmo Energy Corp.**, #1 D.D. Payne, Clay County School Land, spud 1-27-90, plugged 2-16-91, TD 9300' (dry) - Re-Entry **WHEELER (PANHANDLE) Ricon Petroleum Co.**, #1D Porter 'D', Sec. 13, 27, H&GN, spud unknown, plugged 5-24-91, TD 300' (oil) - Form 1 filed in Johnny Grimm

Gas Well Completions
HANSFORD (WEST LIPS Cleveland) BHP Petroleum Co., Inc., #1 Conv 25, Sec. 26, R, B&E, elev. 3109 gr, spud 4-24-91, drlg. compl 4-24-91, tested 5-24-91, potential 300 MCF, rock pressure 500, pay 653-657, TD 8472', PBTD 7719' - Work-Over Well **HEMPHILL (GILL RANCH Sweetwater Sand)** Marsh Operating Co., #2-14-U Mather's, Sec. 14, A-2, H&GN, elev. 3007 kb, spud 4-24-91, drlg. compl 5-13-91, tested 5-11-91, potential 12900 MCF, rock pressure 3196, pay 8690-8755, TD 14310', PBTD 11850' - Dual Completion w/ #2-14-L Mather's **LIPSCOMB (LIPSCOMB Cleveland)** Strat Land Exploration Co., #1 Kirk, Sec. 340, 43, H&TC, elev. 2828 gr, spud 10-13-90, drlg. compl 11-10-90, tested 3-5-91, potential 12560 MCF, rock pressure 2541, pay 8380-8424, TD 11250', PBTD 9770' - **ROBERTS (CREE-FLOWERS)** Wolfcamp Dolomite Kaiser-Francis Oil Co., #1-78 Flowers, Sec. 78, C, G&M, elev. 2775 gr, spud 2-23-91, drlg. compl 3-2-91, tested 5-22-91, potential 535 MCF, rock pressure 669, pay 3708-3756, TD 4300', PBTD 3360' - **WHEELER (LOTT RANCH 14500')** Kaiser-Francis Oil Co., #1-5 Lee-Hefley, Sec. 5, C, S, R, Wiant Survey, elev. 2656 gr, spud 3-25-91, drlg. compl 5-14-91, tested 6-6-91, potential 2700 MCF, rock pressure 7569, pay 14342-14368, TD 15080', PBTD 14500' - Plug-Back

Oil & Gas Reporting Service

Box 2052 Pampa, TX 79065
 Providing the Oil & Gas Report for Hansford County Readers
Doris Harrison Phone 665-5800

Are You A Victim of Physical Abuse?
 Call Toll Free 1-800-753-5308
 We are in Spearman on the 1st and 3rd Wednesdays of each month from 9:30 to 11:30 a.m. Call for an appointment. Also, we can come to Spearman at any time upon request. We also operate a safe place for victims and their children to stay in times of crisis.
Panhandle Crisis Center
 Serving Hansford, Lipscomb and Ochiltree Counties
 317 S. Main Perryton, TX

Tex SCAN
 Statewide Classified Advertising Network
 Advertise in 291 Texas newspapers for only \$250.
 Reach 3 MILLION Texans. Call this newspaper for details.

DEER HUNTERS SPECIAL: 50 acres, \$595/acre, wooded; excellent hunting, county road, Texas Veteran or Owner financing, 10% down. Fox Real Estate, 500 Buchanan Dr., BURNET, Texas 512-756-6061.

OWN YOUR BUSINESS. Exceptional profits, start earning money now. No age limit. Knife/Scissor sharpening. Modern equipment, complete training. \$2,995 total. 1-800-451-3334 Free call!

SHARE AMERICA! Walls must fall! Deadlines near! AISE Exchange Students await family call for August. 31 countries/local representative. Just food, bad, sharing! Exciting! Rewarding! Relevant! Lifetime! 1-800-SIBLING.

FRIENDLY HOME PARTIES has openings for demonstrators. No cash investment. No service charge. Highest commission and hostess awards. Three catalogs, over 800 items. Call 1-800-488-4875.

ARE YOU RECEIVING payments on a real estate contract or deed of trust? We convert owner-financed contracts to cash. Call American Equity Funding, Inc. 1-800-874-2389.

WHAT'S SO DIFFERENT about the Happy Jack 3-X flea collar? It works!!! For dogs & cats! At Farmland & Double Circle Co-Ops & better feed stores.

OKA LOG HOMES are beautiful/affordable. Call/Write for information. Gasteau Log Homes, Box 248, Dept. 743, New Bloomfield, MO 65063, Telephone 800-654-9253.

NEED CASH??? Receiving mortgage payments? We buy owner financed mortgages locally and nationwide. Ask for Donna at Diversified Funding Corporation today!!! Call 1-800-950-4112.

1991 PALM HARBOR doublewides-5BR/3BA only \$34,900!!! 4BR/2BA only \$29,900!!! 3BR/2BA only \$24,900!!! Visit the factory, save thousands, FREE factory tours. Liberal financing. Call 1-800-880-SAVE.

AUTO LOANS!!! No credit check, no down payment. Guaranteed Approval. 1987-1991 models. 1-800-235-4487.

MOBILE HOME BUYERS. Drive a little save a lot. FUQUA clearance sale. Save thousands \$\$\$\$. Best built in Texas. Visit FUQUA Factory Outlet. 1-800-899-0440.

WOLFF TANNING BEDS: new commercial-home units from \$199. Lamps, lotions, accessories. Monthly payments low as \$18. Call today. Free new color catalog. 1-800-462-9197.

A WONDERFUL FAMILY experience. Australian, European, Scandinavian, Japanese high school exchange students arriving in August. Become a host family! American Intercultural Student Exchange. Call 1-800-SIBLING.

OWNEROPERATORS, TRACTORS Only for 48 state flatbed division. Late model tractors needed. 50% advance, instant settlements. 1st in 1st out dispatch. PFT Roberson 800-441-0689.

BECOME A PARALEGAL. Join America's fastest growing profession. Work with attorneys. Lawyer instructed home study. The finest paralegal program available. Free catalogue. 800-362-7070 Dept. LH 722.

PIONEER STEEL BUILDINGS 30X40X10...\$4,350; 30X50X12...\$5,495; 40X75X12...\$8,695; 50X100X12...\$12,995; 100X100X14...\$24,995. ALL SIZES. Mini-Storages. 1-800-635-5414.

MAKE THE RIGHT choice. Diets don't work. Body Wise does. reduce body fat, increase energy, lower cholesterol. Call 1-800-457-4099 for free information, no obligation.

LAND BONANZA! 4% interest on Texas forfeited land. Average 10 acres, \$0 down, \$92-monthly for 360 months. All areas. Homesite, getaway, hunting, investment. State authorized agent. 1-800-275-REPO.

ADOPTION: FULL-TIME MOM, loving dad and cuddly cat searching for special newborn to fill our hearts. Beautiful riverside home with garden, sandbox and jungle gym. Summers at the beach, vacations in Scandinavia, Christmases at Grandma's. Expenses paid. Please call Brenda and John collect anytime 1-212-928-9078.

Classifieds

ADVERTISING PROVISIONS

- Publisher reserves the right to reject, edit, revise and properly classify any advertisement at its sole discretion.
- Advertiser assumes all liability for advertisements printed pursuant to its instruction and shall indemnify and hold the publisher harmless from and against any and all claims and damages, including all costs incurred by publisher in connection therewith. Advertiser represents that all advertising copy is truthful and not misleading. Advertiser shall indemnify and hold publisher harmless from any claim against publisher arising out of or in connection with publication of advertising (except for modifications made by publisher without Advertiser's approval) including, but not limited to, claims for libel, invasion of privacy, commercial appropriation of one's name or likeness, copyright infringement, trademark, trade name or patent infringement, commercial defamation, false advertising, or any other claim whether based in tort or contract, or on account of any state or federal statute, including state and federal deceptive trade practices acts. If advertiser claims copyright ownership in any of the advertising published, advertiser must include proper notice of its copyright claim in the body of the advertisement, otherwise copyright ownership shall remain in publisher.
- Advertiser agrees to check advertisement in the first issue in which it appears and report any error at once as publisher assumes no responsibility for errors after the first insertion. For any error which is the fault of the publisher and of which publisher has been timely notified, publisher will reprint the corrected advertisement for one extra insertion or refund the proportionate cost of the advertisement containing the error. Publisher shall have no responsibility for errors appearing in the copy submitted by advertiser.

659-3434 puts you in the Classifieds



Dick Gillaspie (left) receives a plaque and a "well done" handshake from Fred Diaz, Chrysler Corporation factory representative. Gillaspie Chrysler received a 5-Star Service Quality award from Chrysler Corporation. Only 24 of 155 dealerships in this area earned this award. Gillaspie said he accepted the plaque on behalf of all the employees of Gillaspie Auto & Truck Center.

Obituaries

Susie Charlotte Sursa
 STINNETT - Susie Charlotte Sursa, 92, died Friday, June 28. Mrs. Sursa, born in Meridian, had been a Stinnett resident for 43 years. She was a member of First United Methodist Church. She was preceded in death by her husband, Marvin, in 1966, and two sons, Lloyd Sursa in 1961 and Cotton Sursa in 1986, and a daughter, Margie Sursa, in 1949. Survivors include six sons, Jim Sursa of Logan, N.M., M.J. Sursa and Johnnie Sursa, both of Stinnett; Harold Sursa of Quakertown, Pa.; H.E. Sursa of Chickasha, Okla.; two daughters, Charlene Dozier of Stinnett and Reba Hunter of Gruber; 7 grandchildren; 90 great-grandchildren; 23 great-great-grandchildren; and six great-great-grandchildren. Funeral services were conducted Monday, July 1 in First United Methodist Church with the Rev. Chris Taylor officiating. Burial was in

Highland Park Cemetery in Borger.
Margaret C. "Connie" Rook
 Margaret C. "Connie" Rook, 65, died Sunday, June 30. Mrs. Rook was born in 1926 in Canadian. She had lived in the Spearman area for 50 years. She married Clifford E. Smith in 1944 at Spearman. He died in 1960. She married Victor Rook in 1967 at Dumas. He died in 1984. She was a licensed vocational nurse and a member of First Baptist Church. Survivors include a son, Rich Smith of Spearman; two sisters, Claudine Sillivent of Amarillo and Betty Prater of Dalhart; a brother, Corky Kizzlar of Gruber; three grandchildren; and a great-grandchild. Funeral services were conducted Tuesday, July 2 in First Baptist Church of Spearman with the Rev. David Furlow, associate minister, officiating. Burial was in Hansford Cemetery.

Program to address ag-related concerns

Texas A&M Research & Extension Center in Amarillo will host a program entitled "Agriculture, Health and Risk: Balancing the Issues." The program will be presented in the center's auditorium, located at 6500 Amarillo Blvd. West on Tuesday, July 16. In spite of continued progress in providing a healthier food supply, many people just don't trust agriculture and science, according to the Hansford County Extension office. The program will help address concerns about agriculture-related risks by providing practical tips for effective risk communication and describing methods of risk assessment used to judge potential agricultural hazards, such as ground water contaminants or pesticide residues. The program will also promote agriculture's active role in providing a healthier food supply by sharing farmers' experiences and findings of university research in sustainable agriculture; and by describing currently (or soon-to-be) available foods produced with special healthful properties. The conference will take participants from a television studio to research laboratories to industry and to the farm with a blend of live presentations and video. Teaching demonstrations with supporting print materials will give programming resources. In addition, participants can call in questions for up-to-date information and instructional resources. Registration and check-in will be from 9:30 to 9:45 a.m., followed by a videoconference introduction at 10 a.m., featuring Larry Meiller and Susan Nitzke. At 10:05 a.m., "Risk Assessment and Communication" will be presented by Colin Jefcoate, Christine Bruhn, Bill Freudenburg and Steve Taylor. "Toward a Healthy and Sustainable Agriculture: Integrating Research and Experience" will be presented at 10:40 a.m. by Rick Klemme, Mike Cannell, Mike Casler, Steve Stevenson, Steve Diercks, Jeff Wyman, Alfrid and Sue Krusenbaum, Lee Cunningham, Josh Posner and Peter Nowak. Scheduled for 11:10 a.m. is "Modifying Traditional Foods for Health" featuring Norm Olson, Phillip Simon, Terry Etherton, Ed Jesse, Jo Handelsman and Larry Satter. Ending the program at 11:50 p.m. will be "Critical Thinking Approach" with Susan Nitzke and Larry Meiller. An optional wrap-up discussion is set for noon. Registration deadline for the conference is July 5, and the registration fee is \$2.50 per person. Registration forms can be obtained by contacting the Hansford County Extension office at 659-2030 or 733-2901.

Welon Burr Swink
 ASPERMONT, Texas - Welon Burr Swink, 83, of Aspermont died Monday, July 1 in a Lubbock hospital. Mr. Swink was born in Bryson, Texas and was a retired farmer and rancher. He was a member of the First United Methodist Church, a former school board member and had served on the Agriculture Stabilization and Conservation Committee. He married the former Ophelia McLaury on April 5, 1933 in Frederick, Okla. She preceded him in death in October, 1989. Survivors include two daughters, Lyeta Dickerson of Aspermont and Yvonne Shipp of Burnet, Texas; seven sons, Travis Swink of Spearman, Wayne Swink of Waco, Ivy Swink and Troy Swink, both of Aspermont, Bill Swink of Stanton, Texas, Donnie Swink of Crosbyton, Texas, and Jerry Swink of Breckenridge, Texas; two sisters, Tura Simmons of Bakersfield, Calif., and Sallie Collom of Cortez, Colo.; 20 grandchildren; and 15 great-grandchildren. Funeral services were conducted Wednesday, July 3 at First United Methodist Church of Aspermont with the Rev. Todd Rasberry officiating. Burial was in Aspermont Cemetery under the direction of McCoy Funeral Home of Aspermont.



Members of Wanda Archer's (right) aerobic dance exercise class received the President's Council of Physical Fitness and Sports Award for completing 50 hours of exercise class. Recipients included (l-r) Janice Fulce, Julie Moore, Jo Linda Hutchinson and Billie Willingham. Others receiving awards were Ann Rook, Betty Davis, Claudine Clark, Michele Goodheart, Reba Benge, Hope Moore, Carolyn Savage, Donetta Greene, Kathy Morley and Pam Cobb.

9-1-1 from page 1
 information will only be used when responding to a 9-1-1 emergency call. "Emergency personnel can only help people when they can find them. Many people live on farms or ranches in this area, and sometimes their homes can be hard to find. The 9-1-1 network will help assure that if the need arises for emergency services, the residents of Hansford County can get the help they need as quickly as possible," she said. Area residents who would like more information on the 9-1-1 network can call the Panhandle Regional Planning Commission at (806) 372-3381, or the Spearman Police Department at 659-3707.

IN CASE OF AN EMERGENCY, WILL WE BE ABLE TO FIND YOU?

In preparing to establish 9-1-1 service in your area, the Panhandle Regional 9-1-1 Network, in conjunction with local emergency service providers, is asking all residents and business operators to complete and return this form.

The information you provide will aid emergency service personnel in locating your residence or business operation and cut precious seconds or minutes off their response time. The information will be very beneficial in finding rural locations since many homes are generally not numbered and many rural roads are unnamed. The information should be periodically updated by the resident and/or business operator when changes occur.

The information will remain strictly confidential. It will only be used when responding to a 9-1-1 emergency call.

The following should be considered before completing and returning the form:

- If you have a telephone located elsewhere than just your business or residence, note this in the COMMENTS section. If it is a different number and within the vicinity of your residence, list that number also.
- When giving directions from the nearest city, rural residents should give the Highway number and begin routing directions from the city limits marker on that highway. If bad weather frequently causes the normal route to be impassable, include an alternate route.
- In the COMMENTS section, list any circumstances or situations that would be helpful in responding to an emergency, such as health problems, guard dogs, locked gates, flammable materials, etc.
- If you wish, include nearest relative or friend to contact in an emergency situation, including name, address and telephone number in the COMMENTS section.

Mail the completed form(s) to:

PANHANDLE REGIONAL 9-1-1 NETWORK
 P.O. BOX 8287
 AMARILLO, TEXAS 79108

Additional information may be attained by contacting your local law enforcement agency or by calling the Panhandle Regional Planning Commission at (806) 372-3381.

9-1-1 SERVICE WILL BE AVAILABLE IN THE SPEARMAN, GRUVER, GUYMON AND HARDESTY EXCHANGES IN SEPTEMBER 1991.

9-1-1 INFORMATION FORM

Please complete the following questionnaire for each telephone number.

Telephone Number: _____ Class of Service: _____
 (Business, Residence, Mobile, Coin)

Name: _____

Mailing Address: _____

City: _____ County: _____

Location (Rural residents should give directions from nearest city using existing highway intersections as landmarks): _____

Comments (Provide any information emergency personnel should know about the location, such as health problems, guard dog, locked gate, etc.): _____

South End of Main Street in GRUVER
 Starting at 8:30a.m.
 Come Celebrate the 4th with us.
 B.J.'s Petal Patch
 G&G Foodliner
 Main Street Store

Texas
 It's Like A Whole Other Country.

HENSON CHIROPRACTIC
 410 S. Davis Spearman, TX
 Call For Appointment 659-5603
 Office Hours: Mon., Wed., Fri. 8:30-5:00
 Tue., Thu. 8:30-11:30

Almost half the newspapers in the world are published in U.S. and Canada.

Summer Clearance
 Starts Wednesday, July 3rd
50% off
 Starts Wednesday, July 3rd
Spring & Summer Fabric
 Come in and see all the new patterns, books, notions and fabric we purchased at Quilt Market!
Country Stitches
 715 W. 7th 659-2080