

INSIDE

At the Movies	2	A Center Piece	2
Among the Neighbors	4	Out at the Lake	5
Letter to the Editor	2	School Lunch Menus	2
From Where I Sit	5	For the Short of It	10
Chamber Chatter	4	Extension News	5
Sports	6	Obits	12

**Football Contest
Winners**

Cindy Blackman 1st, Ann Flowers 2nd, Kathy Beck 3rd

Players of the Week

page 8

HANSFORD COUNTY LIBRARY
0120 MAIN ST.
SPEARMAN, TX 79081-2064
EXPIRES 04/15/1996 THANK YOU

The Hansford County

50¢

Reporter-Statesman

Serving Hansford County Since 1907

Volume 87 • Issue 45

213 Main • Spearman, Texas 79081

Thursday, November 9, 1995

Spearman Independent School District receives monetary award

Monetary awards in the amount of \$2,851.31 were made to Spearman Independent School District as part of the Texas Successful Schools Awards Program (TSSAS), Willard Murrey, superintendent of the Spearman Independent School District announced today. Gus Birdwell Elementary will receive \$1,825.05 and Spearman Junior High will receive \$1,026.26.

The schools are being recognized for gains in student performance in indicators that are part of the Academic Excellence Indicator System (AEIS), more commonly known as the state's school report card.

The Spearman schools are among 1,236 cash-winning schools statewide receiving awards for exemplary or recognized performance and 401 schools receiving awards for recording gains in their performance over last year.

The awards are based on schools' spring 1995 performance on the Texas Assessment of Academic Skill (TAAS) test, which measures performance in reading, writing, and mathematics. Schools also had to

meet performance standards for dropout and attendance rates.

Cash awards ranging from \$1,000 to \$10,000 per school were given. In the exemplary category, schools had at least 90 percent of all students and students in each student population group (White, African-American, Hispanic and economically disadvantaged) passing each section of the TAAS, a 1993-94 dropout rate of 1 percent or less for all students and each student group, and a 1993-94 attendance rate of 94 percent or greater. These schools also had to have passing rates on the TAAS tests given at Grades 3 through 8 and 10 that exceeded the spring 1995 state average for all students and student groups.

In the recognized category, schools had at least 70 percent of all students and those in each student group passing each section of the TAAS, a dropout rate of 3.5 percent or less for all students and each student group, and an attendance rate of at least 94 percent. The change in TAAS performance from 1994 to 1995 also had to be high enough so that the passing rate for

all students and those in each student group would be at least 90 percent within five years.

To be eligible for a significant gain award, schools had at least 25 percent of all student sin each student group passing each section of the TAAS. In addition, a school's gain in performance from spring 1994 to spring 1995 had to be in the top 20 percent of the school's demographic group on overall gain for all students and each student group and average at least 5 percent gain across all subject areas for all students and each student group.

Under law, the AEIS computes a demographic index based on campuses' percentages of minority, economically disadvantaged, limited English proficient, and highly mobile students and the wealth of the school's district. The index is used to array campuses and form 24 groups of roughly equal size. A school's performance is compared to other schools that are in its same demographic group.

A total of \$5 million is being awarded to schools this year under the TSSAS program.

Texas Successful Schools Program awards Gruver Independent School District

Monetary awards in the amount of \$1,000.00 were made to Gruver Junior High and Gruver Elementary in the Gruver Independent School Districts as part of the Texas Successful Schools Awards Program (TSSAS), Barry Haenisch, superintendent of the Gruver Independent School District announced today.

The school's are being recognized for gains in student performance in

indicators that are part of the Academic Excellence Indicator System (AEIS), more commonly known as the state's school report card.

The Gruver ISD schools are among 1,236 cash-winning schools statewide receiving awards for exemplary or recognized performance and 401 schools receiving awards for recording gains in their performance over last year.

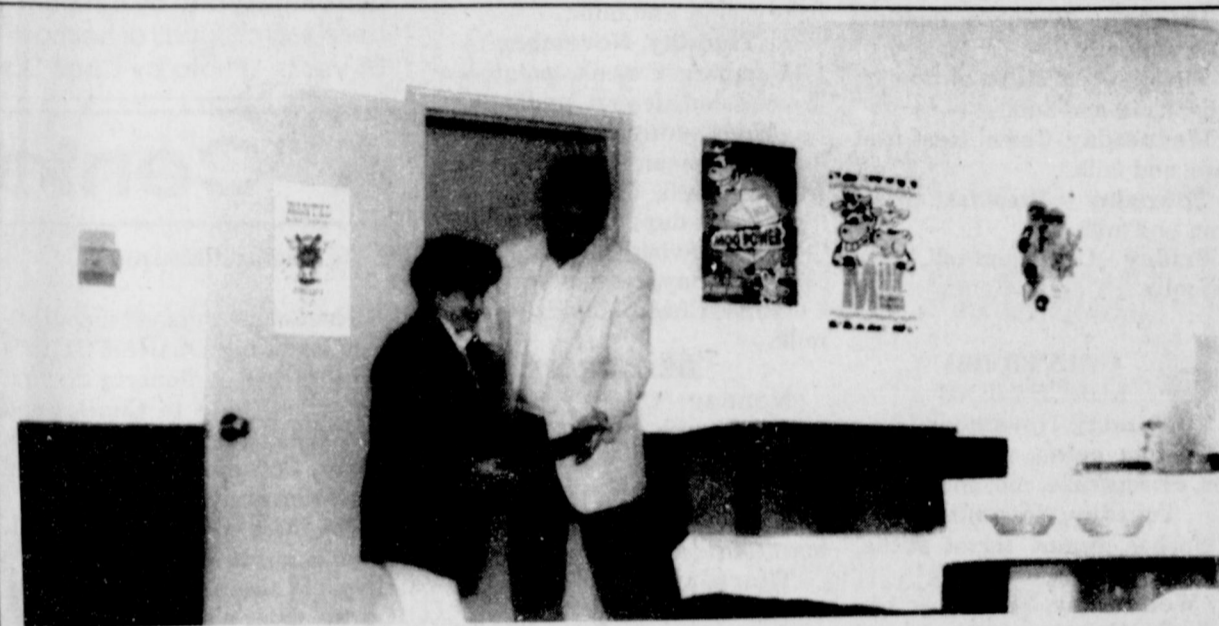
The awards are based on school's

and mathematics.

Under law, the AEIS computes a demographic index based on campuses' percentages of minority, economically disadvantaged limited English proficient, and highly mobile students and the wealth of the school's district. The index is used to array campuses and form 24 groups of roughly equal size. A school's performance is compared to other schools that are in its same demographic group.

A total of \$5 million is being awarded to schools this year under the TSSAS program.

spring 1995 performance on the Texas Assessment of Academic Skills (TAAS) test, which measures performance in reading, writing,



IN APPRECIATION - Last Friday night, November 3rd, members of the Gruver Chamber of Commerce and other citizens of Gruver gathered together for Gruver's 5th annual Chamber Banquet in the school cafeteria. In the photo above, past Chamber President, Linda Weller, is receiving a plaque from new Chamber President, Al McNeely for outstanding service to the Chamber. (Photo by Bob Bort)

Gruver C of C holds banquet

The Gruver Chamber of Commerce held its annual banquet this past Friday, November 3, at the Gruver School Cafeteria, and it was an enjoyable occasion for all who attended. Master of Ceremonies was Al McNeely, Manager of Southwestern Public Service in Gruver. Special recognition was given by Mr. McNeely to Linda Weller, outgoing president of the Chamber of

Commerce. Ms. Weller was presented a plaque in recognition of outstanding service to the organization. Mr. McNeely will be the incoming President of the Chamber of Commerce.

Other members taking office are Rodger Ferguson, Vice-President; Trisha Fitzgerald, Treasurer; and A.J. Ratliff, Secretary. Directors are David Bergen, Mike Floyd,

Lewis Holland, Nick Jordan, Rita Williams, and Jackie Wilson.

The Chamber was fortunate to have several guest from other communities in the Panhandle area. Mr. Ferguson introduced the guests, and following the chamber announcements by Mr. McNeely, the banquet was adjourned to the School Auditorium for the Gruver High School All School Play.

Veterans Day Program scheduled

This Monday, November 13th, Spearman Veterans will receive the honor and praise they deserve, as they will all gather into the gym at the junior high for the annual Veterans' Day Program.

The program, which will begin around 10:00 a.m., will feature the many talents of the Spearman Junior High and High School bands and choirs. The bands, under the direction of Mr. Randy Willis, will start the program off with the song, "American Variation", by the 7th grade band, "Echoes of the Civil War", by the 8th grade band, and "Military Salute" and "This Is My Country", by the High School Bands. The High School choir, under the direction of Denise Bridges, will also be performing with the high school band.

After the Pledge of Allegiance by the entire crowd, the 5th grade choir, under the direction of Danny Ellis, will perform "America" and "You're Grand Old Flag".

Then, the Master of Ceremonies, James Cunningham, will introduce the special guest speaker, Mr. Harry Stumpf. After the closing prayer by

Arnis Pape, the Spearman Boy Scouts will give the closing flag ceremony.

With a program like this one that has so much honor and dignity that pays tribute to our Veterans, it is hard to see why anyone would want to stay at home.

P-M C.I.S.D. meets

The Pringle-Morse Independent School District Board of Trustees met in special session last Monday, October, 23rd at the school.

One action item was discussed. The Board considered and approved the a motion to the 1995-96 transfer list. It passed 5-0.

The Board also held Superintendent's evaluation and site-based management workshops.

After general consent, the meeting was adjourned at 10:30 p.m.

Sales tax propositions succeed

Well, the citizens of Spearman have spoken up for what they want, and they have spoken loudly. The two Propositions have been officially announced, and its obvious voters want them. Both passed with an easy 2-1, for #1, and 3-1, for #2 ratio.

Proposition #1, which was designed to raise our taxes a half percent for economic growth, passed easily, as 286 voted for it and only 149 voted against.

Apparently, many home owners showed up at the polls. Proposition #2, which was designed to lower the property tax, passed by a huge margin. Voters were more than for this one, as 334 voted for it and only 90 people voted against it.

According to Spearman City Manager, Kelvin Knauf, "The voter turnout was excellent." A total of 435 people voted for Proposition #1 and 424 people voted for Proposition #2.



GRUVER OF HOSPICE MONTH - The City of Gruver, like most cities this month, is celebrating National Hospice Month. Gruver Mayor, Archie Nelson, was present last week in City Hall to make the occasion official, as he signed a proclamation proclaiming the month. Also seen with Mayor are (l to r) J.C. Harris, Connie Gammill, Anna Beth Wood, Carolyn Hicks, Roy Mayhew, and Buster Davis. (Courtesy photo)

Hansford Happenings

Hospice Meeting

Hansford Hospice will meet November 13 at First United Methodist Church in Gruver.

....

PTA Meeting

Pringle Morse C.I.S.D. will hold a PTA meeting November 14 at 7:00 p.m. in Morse.

....

Veteran's Day Program

The Veteran's Day Program will be Monday, Nov. 13 at 10:00 a.m. in the Varsity Gym.

....

Women's Division Style Show and Brunch

The Spearman Chamber of Commerce Women's Division Style Show and Brunch will be Nov. 11 at 10:30 a.m. at the O'Loughlin Center. Tickets are \$7.50, shopping spree tickets are \$2 each or 3 for \$5. Contact Cindy Rice at 659-3277 for gift & craft booths.

....

Financial Aid Seminar

Spearman High School and Spearman Chamber of Commerce will sponsor a Financial Aid Seminar on Monday, November 13 in the Spearman High School Auditorium. For more information call 659-2584 or 659-5555.

....

Book Fair

A book fair will be held at Birdwell Elementary School Library Media Center, 511 Townsend, November 13 through November 17. Daily hours will be 8 a.m. to 3:45 p.m. Money made from the sale of these books will be used for elementary library projects.

....

No Commodity Distribution in October

Hansford County Judge's office was informed this week that, due to a shortage, there will be no distribution of U.S.D.A. Commodities for the month of October. Next scheduled distribution is December 20.

....

November Immunization Clinic

An immunization clinic offering vaccines that give protection against several childhood diseases is scheduled for November 15 from 9 a.m. to 11:30 a.m. and 1 p.m. to 3 p.m. at the Texas Department of Health Office located at 721 S. Evans, Spearman. A fee will be charged to help with the cost of keeping the clinic open. The amount of money charged will be based on family income and size, and the ability to pay.

....



FAMILY FUN - Pictured are the family members who gathered at the Adams' home for the reunion held there.

Adams' family host family reunion

Kirk and Julie Adams and daughters Brooke and Amanda hosted a family gathering October 14, 1995 at their home located at 719 Gibner Drive here in Spearman.

The occasion was to honor the memorial birthday of their Grandmother Mary Donelson.

A very enjoyable day was spent reminiscing, taking snap shots, making videos and visiting.

Lunch was catered by IV's and supper was catered by Claudine Clark.

Those attending were Scott Adams, Phoenix, Arizona; Tommy and Nancy Bradford, Austin; Audy and Jan Donelson, Glenn Height; Rob Donelson, Rocket; Kevin Donelson, Oklahoma City, Oklahoma; Lance and Gena Donelson, Jeremy and Stephanie Donelson, Clinton, Oklahoma; Bud and Phyllis Donelson and son Mike, Raymond and Ducky Donelson, Arapaho, Oklahoma; Don and Cathy McIntyre and children Abbie and Britt, Dumas; Lavern Riley, Bettie Warlick, Jacque Riley, Angela Riley, Justin Lawrence, Nova Adams, Kay Donelson, Candice Azzalino, all of Amarillo; Shane and Melanie Simmons and son Seth, Arlington; Rue and Anne Sanders, Spearman.

Sherrill gets 50 points

Congratulations to Ashleigh Sherrill for being the first student to reach 50 points in Gruver Junior High's Accelerated Reader program. The annual goal for each student is 100 points. As you can see, Ashleigh is well on her way to reaching the goal. Students read books that are assigned point values and then take a computer-generated test that covers the book. To gain the points, the student must master the test. Ms. Kay Hobbs, 5th and 7th grade reading teacher, is initiating the program in her reading classes. Students are rewarded for incremental achievement to Amarillo Globe News in May. Ms. Hobbs hopes to take all fifth and seventh graders to Amarillo. The program involves in class and out of class reading for success to

occur. It is predicted that students who commit to this type of extended reading will gain two years reading improvement in one year. ment with the main goal being a



ASHLEIGH SHERRILL

C of C and SHS to host financial aid seminar

Are you financially prepared to send your child to college? Spearman High School and the Spearman Chamber of Commerce are co-hosting a Financial Aid Seminar on Monday, November 13, at 7:00 p.m. in the high school auditorium. The purpose of this seminar is to help parents plan for college costs.

Speakers of the seminar will include Jeanette head who is the Assistant Director of Financial Aid at West Texas A&M; Monty Blackman who is a CPA, representatives from First State Bank and first National

Bank, and Glenda Guthrie who is counselor at Spearman High School. Some of the topics that will be discussed at the seminar include the following: How to apply for financial aid, grants and loans, financial planning, and sources of financial aid.

The seminar is open to ALL parents and students. It's never too early to plan for your child's education. If you have any questions or need further information, please call Glenda Guthrie at 659-2584 or Cindy Blackman at 659-5555.

Brillhart gives 30 for SWCD

Charles Brillhart was recognized for 30 years of service on the Hansford Soil and Water Conservation District (SWCD) at the 55th annual meeting of the Texas Soil and Water Conservation District, held in Galveston October 16-18.

Brillhart was elected to the Hansford Soil Conservation district, which later became the Hansford SWCD, on October 5, 1965. He has

represented zone 2 of the district without interruption since that time.

Brillhart believes that soil and conservation programs should be structured to utilize the knowledge, experience, capabilities and the willingness of the landowners and operators to voluntarily carry out a sound conservation plan.

WDSCC to hold annual style show

Come enjoy a wonderful brunch while you watch our local models display the latest fashion ideas. Wonderful door prizes will be given away as well as a \$300 Spearman Shopping Spree. This year's MC's will be Mary Dixon and Barbara Collier.

Merchants participating are: Bunkhouse, Cates, Michele's, Kids Stuff, Lady Fair, Alco, Hickerson's and Main Street of Gruver.

Tickets for the Style show are \$7.50 and Shopping Spree tickets are \$2.00 or 3 for \$5.00 and can be purchased by any WDSCC member. Booths are available at no charge. Contact Cindy Rice for a booth at 659-3277.

Should you have any questions, please contact Jodie Hight or Becky Beedy at 659-2440 or Cindy Blackman at 659-5555. Come join the fun and see what's here!

GET THE **ALCÍO** Advantage

FREE
SECOND SET OF PRINTS EVERY TUESDAY!

Receive a second set of 3" or 4" prints FREE with any exposure roll of 35mm, disc, 110 or 126 color print film left for developing and printing at our everyday prices! C-41 process only.
(KODAK FINISHING SERVICES NOT INCLUDED)

DAILY: 9 A.M. TO 5 P.M. SUNDAY: 10 A.M. TO 5 P.M.
ADDRESS -- CITY NAME, ST

THANK YOU

The Crossland's
sincerely
THANK EVERYONE
for all the prayers, food,
cards, flowers, and
phone calls.

Junior, Stephanie and Jessica

Together with their parents
Ashley Shea Wagner
and
Joseph Mitchel Bezner
request the honour of your presence
when they exchange marriage vows
on Saturday, the twenty-fifth of November
Nineteen hundred and ninety-five
at two-thirty in the afternoon
St. Peter's Catholic Church
1206 North Quinn
Guymon, Oklahoma
and afterwards for a reception at
The Willows

ESCADA SPORT

ESCADA SPORT
Exclusively At...

j-winston
of amarillo
women's fashion • gifts
2701 paramount 368-2457 • visa • mc • a • ex

November Calendar
Nov. 10 Christmas Round-Up Style Show
Nov. 13-18 Holiday Open House
• Daily Specials
• Daily Door Prizes
• \$500 Gift Certificate
Nov. 16-17 Laurel Spring '96 Trunk Show
Nov. 24-25 Traditional After Thanksgiving Sale

Christmas is coming

Zoel G. Allen D.D.S.

Is pleased to announce the association
of
Zoel G. Allen II D.D.S.,
with his dental practice.

Office Hours:
Monday thru Friday
By appointment
19 S.E. 5th • Perryton, Texas
(806)435-5335

You are cordially invited to the
Marriage of
Tina Dawn Lozano
and
John Lynn Adams
Saturday, November 18, 1995
7:00 p.m.
at the O'Loughlin Center

Reception following

Thank you to everyone
for all the good wishes,
cards, visits, phone calls,
gifts, and all other kind
deeds, for making our
50th Anniversary
a happy one.
**GOD'S BLESSINGS TO
ALL OF YOU.**

Andrew and Jeanette Bort

Gordon's
BRUG

Bridal Gift Registry

COME BY & LET US
HELP YOU SET UP YOUR
SPECIAL GIFT TABLE

Couples Currently
Registered

Sally Donahue & Lance Swan *Dec. 9th
Clint and Emily DeArmond *Nov. 11th

* Date of the Bridal Shower

314 MAIN
PHONE
659-2141

Gordon's
BRUG

SPEARMAN
TEXAS

School Lunch Menus

SPEARMAN ISD LUNCH MENU

Monday, November 13
Salisbury Steak, green beans and new potatoes, hot roll, mixed fruit, and milk.

Tuesday, November 14
Grilled chicken on bun, potato wedges, shredded lettuce, sliced tomato, peaches, and milk.

Wednesday, November 15
Grilled cheese sandwich, beef stew, dill spears, pears, and milk.

Thursday, November 16
Fish sticks, tartar sauce, pinto beans, potato salad, cole slaw, cornbread, apricots, and milk.

Friday, November 17
Hamburger, french fries, pork 'n beans, shredded lettuce, sliced tomato, pickle-onion, english cookie bar, and milk.

BREAKFAST

Monday - Blueberry muffins, fruit, and milk.

Tuesday - 2 slices of cinnamon toast, fruit, and milk.

Wednesday - Cereal, toast, fruit juice, and milk.

Thursday - Breakfast pizza, fruit, and milk.

Friday - Cinnamon roll, fruit, and milk.

GRUVER ISD LUNCH MENU

Monday, November 13
Chicken pattie, mashed potatoes, carrots/peas, roll, and milk.

Tuesday, November 14
Nachos, beans, carrot sticks, fruit, soapapillas, and milk.

Wednesday, November 15
Turkey/dressing, mashed potatoes, corn, pumpkin pie, roll, and milk.

Letter to Editor

Dear Editor:

Facing the loss of a loved one is never easy. When we have fought for years to keep that person alive, and finally realize that death is the only release from pain and suffering that can be achieved, we often feel deserted. During the last weeks of my husband's life, Hospice helped me to endure the loneliness of that surrender.

Hansford Hospice made it possible for my husband, Jack Gramstorff, to be at home -- where he wanted to be -- during the last months of his illness. The care that was given to him by the nurses, the director, and the aides gave me the courage to face each day knowing that if he needed anything, all I had to do was to pick up the phone. The staff made frequent visits to be sure that everything was all right. They talked to us, observed us, and helped us to make his last weeks more comfortable. When I had to go to the grocery store, or to town on business, they made arrangements for Hospice volunteers to stay with

him. Jack loved to visit with friends, and these volunteers were truly friends. In consultation with our family doctor, the nurses saw that pain medication was adjusted in order to give Jack pain control that we had been unable to achieve before. Hospice equipment, care, just "being there" made him feel that we could handle the bad times, and he could die as he had lived on the farm he loved so much with his family and friends at his side. The Hospice nurse and director stayed through the last night -- care above and way beyond the call of duty.

Hospice programs bring dignity and understanding back to the fact of dying. Patients are no longer removed from familiar surroundings, and family and friends can hold their loved one in loving arms through the darkness. My family and I thank Hansford Hospice for making the experience of the loss of our husband and father a peaceful trip to his future in eternity.

Jeanne Gramstorff

PRINGLE-MORSE CISD LUNCH MENU

Monday, November 13
Goulash, salad, cornbread, no bake cookie, and milk.

Tuesday, November 14
Hamburger steak, potatoe w/ gravy, salad, dessert, and milk.

Wednesday, November 15
Barbaque sandwich, french fries, fruit, and milk.

Thursday, November 16
Thanksgiving Dinner.

Friday, November 17
Grilled Cheese, salad, fruit, and milk.

BREAKFAST

Monday - Cheese toast, toast, juice, and milk.

Tuesday - Cereal, toast, juice, and milk.

Wednesday - Bannana bread, toast, juice, and milk.

Thursday - Cinnamon toast, toast, juice, and milk.

Friday - Sausage, biscuits, juice, and milk.

BREAKFAST

Monday - Cheese toast, toast, juice, and milk.

Tuesday - Cereal, toast, juice, and milk.

Wednesday - Bannana bread, toast, juice, and milk.

Thursday - Cinnamon toast, toast, juice, and milk.

Friday - Sausage, biscuits, juice, and milk.



35 YEARS OF SERVICE - Frankie Donnell, formerly of First State Bank in Spearman, was recently given an appreciation retirement party by the bank. Seen here, Jim Shirley is giving her a watch for all of her hard work and dedication these last 35 years. (Photo by Chad Davis)

A "Center" Piece

By Garland Hopper

The Golden Spread Senior Citizens have a big THANK YOU for a delicious chicken dinner by the First State Bank and to Charles and Claudine Laxton for a delicious fish dinner. Both dinners were enjoyed by all who attended.

The most of our November calendar is about the same. On Mondays at 12 noon a covered dish lunch. On Mondays, Wednesdays and Fridays Exercise at 9:30 a.m. Arts and crafts with covered dish lunch happen on Thursdays at 10 a.m. Fridays at 1 p.m. is bridge. OOPS! Tuesdays happen to be game night and enjoying a covered dish meal at 6:30 p.m.

Something new has been added on each Tuesday from 9:30 to 11:30

a.m. Bridge lessons will be given. They will be free for adults of all ages.

Tuesday, November 14th the First National Bank will serve the Seniors their annual Thanksgiving Dinner at 6:30 p.m.

Thursday the 16th a recycling program will be given after a covered dish lunch. Margie Fagan will present the program.

Thursday 23rd and Friday 24th the Golden Spread Center will be closed for Thanksgiving.

Now is the time to mark your calendars!

Our condolences to Ethel Byers and Mytle DeArmond and their families on the loss of their loved ones.

MAY GOD BLESS EACH OF YOU

At the movies...

Last week, The Reporter-Statesman ran the movies "A Walk in the Clouds" and "Dangerous Minds". "A Walk in the Clouds" was listed as rated R, but should have been listed as rated PG-13, and "Dangerous Minds" should have been rated R. We regret the error.

Showing at The Lyric Theatre Friday, November 10 through Tuesday, November 14 on Screen 1 beginning at 7:45 p.m. is "The Big Green", and on Screen 2 beginning at 7:30 p.m. is "Seven".

In "The Big Green". Steve Guttenberg, in best role since "Police Academy 3" stars in this year's version of the "Mighty Ducks". However, this is a soccer movie.

In "Seven", Brad Pitt and Morgan Freeman investigate a bizarre series of murders that take their inspiration from the Seven Sins - greed, lust, etc.

Don't miss next week, as the Lyric will be bringing you the big new James Bond hit, "Goldeneye".

At The Lyric Theatre...

Friday, November 10 - Tuesday, November 14

**Bargain Nights Mon. & Tue. Adults - \$4
Fri., Sat., Sun., Adult \$5 - Child \$3 every night
Closed Wednesday & Thursday**

SCREEN 1 - 7:45 PM SCREEN 2 - 7:30 PM

The Big Green
(PG)

Seven
(R)

113 Main • Spearman

You are cordially invited to our **Holiday Open House**

Saturday Nov. 11th 9:30 to 5:30
Sunday Nov. 12th 1:00 to 5:00

Celebrate
203 Main • Spearman, Texas

...the Pageant you have been looking for

All Star

...across the Nation
SPEARMAN
NOVEMBER 18

Babe ★ Beau
BOYS & GIRLS
0-11 months ★ 12-23 months
24-36 months ★ 37-48 months

Beauty ★ Talent
BOYS & GIRLS
4-6 years ★ 7-9 years ★ 10-12 years
13-15 years ★ 16-18 years

PHOTOGENIC COMPETITION FOR ALL AGE GROUPS
CALL FOR ENTRY FORM...
806-659-2672 354-0520

If you are what you eat, why not cut back on fat?

American Heart Association
Fighting Heart Disease and Stroke

The Hansford County Reporter-Statesman
Serving all of Hansford County
Spearman • Gruver • Morse

USPS 509660 • 213 Main, Box 458 • Spearman, Tx. 79081
(806) 659-3434 • 1-800-395-9482 • FAX (806) 659-3368
Published weekly at 213 Main, Spearman, Texas
Owned & Operated by Texas Independent Newspapers, Inc.
16607 Blanco Road #100 • San Antonio, Tx. 78232
(210) 492-8907
Second class postage paid at Spearman, Texas 79081
Any erroneous reflection upon the character of any person or firm will be gladly and promptly corrected upon being brought to the attention of the management.

Publisher - Deziree Torres
Editor/Advertising - Chad Davis
Gruver Correspondent - Bob Borf

The publisher reserves the right to revise or reject at its option any advertisement which it deems objectionable, either in subject or phraseology, or which it may deem detrimental to its business.

Subscription Rate: Hansford County, \$19.95; out of county, \$24.95 annually.
Postmaster: Send address changes to Hansford County Reporter-Statesman, Box 458, Spearman, Tx. 79081.
Advertising & Story Deadlines
Monday, 5:00 p.m.

MEMBER 1995
TEXAS PRESS ASSOCIATION

Foundation of Fine Jewelry

Hickerson Jewelers

South of Plains Shopping Center
721 W. Seventh • Spearman, Texas 79081 • Phone 659-3566

You are cordially invited to the
"DESIGNER COLLECTION FROM MODAR"
"TRUNK SHOWING"
Sterling Silver with Gold Accents

Saturday, Nov. 11th and Monday, Nov. 13th
9 a.m. to 6 p.m.

NOBODY BEATS DQ BASKETS

Chicken Strip Country Basket* **\$2.99** 4-piece

Steak Finger Country Basket* **\$1.99** 4-piece

On Sale October 30 - November 19, 1995
Hurry to your nearest DQ® store now for a great deal on a big basket meal. Choose juicy, tender steak fingers or delicious chicken strips, each served with crisp fries, creamy country gravy and a slice of Texas toast. Now at DQ!

NOBODY BEATS DQ TREATS & EATS

At participating Dairy Queen® stores. ®Reg. U.S. Pat. & Tm. Off. Am. D.Q. Corp. *Reg. TM Tx. D.Q. Op. Coun.

FAM ired at

Sh

Congr Sherrill f to reach 5 High's A gram. T student i see, Ashl reaching books the ues and ti erated tes gain the master th 5th and 7 is initiat reading c warded f trip to An Ms. Hobb and seve The prog out of cla

C c

fin

Are you send your man High man Chan hosting a F Monday, N in the high purpose of parents pl Speake clude Jear sistant Di West Texa who is a Cl First Stat

Brill

Charl for 30 yer ford Soil District neal mee Water C in Galve

Brillh Hansford which la SWCD, o

WD

an

Come e while you display th Wonderfu away as w Shopping will be M Collier.

Mercha Bankhous Stuff, Lad and Main

GET THE

SEC

Receivi any exp print filr everyda (KODAK F

DAILY: 7 A.M. TO

Plan for 1996 tree planting

Yes, it is time to be planning your windbreaks and trees, that will be planted in 1996.

The Hansford Soil and Water Conservation District will have "Earth Mat" available for the 1996 plantings. This fabric will help control weeds, conserve the needed moisture for the tree seedlings, greatly decrease maintenance and help the survival rate of the trees. It will be available in 6 foot width in 300 foot lengths. Ask about this material, when ordering your windbreak trees.

Some of the trees that are available this year are: (1) Potted Evergreens - these are sold in multiples of 20 trees at a cost of \$30. Some of the species of trees in this group are: Austrian Pine, Pinyon Pine, Ponderosa Pine, Eastern Redcedar and Rocky Mountain Juniper. (2) Bareroot trees and shrubs - these are sold in multiples of 50 trees at a price of \$25. Some of the species in this group are: Aromatic Sumac, Catalpa, Desert Willow, Green Ash, Hackberry, Honeylocust, Honey-suckle, Mulberry, Nanking cherry

and Russian Olive. (3) Wildlife Packets - these are sold at \$50 each. The Quail & Pheasant packet consists of 25 Russian Olive, 25 Aromatic Sumac, 25 Nanking cherry, and 25 Honeysuckle. Be sure to start these seedling trees with a design and what species of trees are to be planted, with site-prep and protection recommendations.

The Hansford Soil and Water Conservation district will be taking your orders for these seedling trees now through March 8th, 1996. For technical assistance in the planning of windbreaks, or to place your order, contact the USDA - Natural Resources Conservation Service at 909 W. 9th, Spearman, Texas 79081 or call 659-2330.

Out at the Lake

By Dorothy Hudson

Lake Depth--November 6, 1995--26 feet and 9 inches.

This past week at the Lake was slow peoplewise, but interesting for those there that got to see a flock of forty to fifty white pelicans do a flyover. The bald eagle has been joined by three golden eagles. One morning brought a magnificent display of aerial acrobatics by two of the golden eagles.

One of the future projects at the Lake is to lay out some horseback trails that would also double as hiking trails. One day at a board meeting, Wilson Buchanan, genial senior member on the P.D.R.A. Board, looked at me and said he thought it was going to be up to us to get these trails mapped.

Wilson, who came to Old Hansford in 1911 at age three, had cowboied on the land that became the Park and had lived on the Lasater Ranch and the Gibner Ranch. He was well acquainted with the area--I was not--and neither one of us had a horse! His memory served well, though. He suggested starting a trail across the creek from where the Gibner house was and going south along the creek to the Ace Powers house and barn, then going east from there along the south boundary line of the Park until Horse Creek. Go down Horse-Creek north a ways and then loop back to the Gibner starting place.

These past three weeks I have

had a chance to hike part of this area and to drive another part of it. It would make a beautiful trail. One of the drawbacks is whether it is important to have a trail that you can take a team and a wagon on. One solution might be to have one trail that would work for all three activities and one that was rougher and unsuitable for wagons. The deep canyon on the south boundary line gives a chance to see the workings of the Sanders gravel pit. This might spoil it for some people, but it made it interesting to me, and I think this may be the loveliest canyon in the Park.

I hope we can get some feed back from others who would like to see these trails developed. Back some 30 to 40 years ago, the Community Bible Church had an annual trail ride along the Palo Duro Creek at different locations. It was about seven miles usually, and anyone was welcome. Sometimes Bob Cluck would drive a low wagon hitched to a mule. It was great fun for the kids without a horse to ride on the wagon. Sometimes kids with a horse traded just to get to ride on the wagon with Bob. Scenes I remember are Ona Faye Watkins riding Bubby Gruver's buckskin, Ethel Pittman and Chet riding together bareback on a white horse, Birdie Frazier getting dumped by a bronc one frosty morning, Rebecca Westerfield riding in the Joe and Nina Evans' wagon, and the faces of many happy youngsters.

Programs and services of the natural Resources conservation Service and Hansford SWCD are offered on a nondiscriminatory basis without regard to race, color, national origin, age, sex, religion, marital status or handicap.

Gladiola Flower Club convenes

Members of the Gladiola Flower Club are busy completing plans for their Annual Home Tour. This project allows the club to give a medical scholarship, assist local and area girl scouts, sponsor a month of bingo at Hansford Manor and other community projects.

The Home Tour will be Sunday, December 10, 1995 from 2:00 to 5:00 p.m. Homes this year are: Doris Armes, 407 Cluck, Gruver. This home was built in 1957 and recently purchased and remodeled by Doris; Stephanie and Junior Crossland, 303 S. Bernice, Spearman. This home was built in 1927 and purchased from John R. Colard and remodeled by the Crosslands; Jackie and Randy Willis, 706 Wilmeth Dr., Spearman. This home was built by Marion Glover.

We all invite you to visit with us on this special open house day. Tickets are \$5 and may be purchased from club members or at the homes.



PLANTING SEASON - Tree seedlings planted in a windbreak on the Wes Balentine farm, using the Earth Mat.

Extension News

By Peggy Winegarner
Hansford County Extension agent

Take the guesswork out of roasting a turkey. Following are guidelines for buying, thawing and roasting a turkey.

When buying a frozen turkey, allow 2 lbs. per person. Buy anytime, but keep frozen until ready to thaw. Allow 1 1/4 lbs. per person when buying a frozen pre-stuffed turkey. Keep frozen until ready to cook. Do not thaw. Buy a fresh turkey 1-2 days before cooking. Do not buy fresh turkey pre-stuffed. Allow 1 lb. per person.

Thawing a turkey in the refrigerator takes approximately 24 hours per 5 pounds for a whole turkey. Allow 30 minutes per pound

for thawing a whole turkey in cold water.

For thawing in the microwave, check the manufacturer's instructions for the minutes per pound and the power level to use. Cook immediately after thawing.

When roasting a turkey set the oven temperature no lower than 325 degrees.

Place turkey breast-side up on a rack in a shallow roasting pan. For uniform results, cook stuffing outside the bird. If stuffed, stuff loosely.

For safety and doneness, the internal temperature, as register on a meat thermometer, must reach a minimum of 180 degrees in the thigh

before removing from the oven. The center of the stuffing should reach 165 degrees after stand time. Do not rely on the pop-up timer alone.

Juices should be clear. Let the bird rest 20 minutes before removing stuffing and carving.

Use hot, soapy water to wash hands, utensils, sink and anything else that has contacted raw turkey.

When you're ready to store leftovers, debone turkey and refrigerate leftovers in shallow containers within 2 hours of cooking.

Use leftover turkey and stuffing within 3-4 days, gravy within 1-2 days, or freeze. Reheat thoroughly to a temperature of 165 degrees.

From Where I Sit

by Judge Gary Ellsworth

A few weeks back I wrote an article covering the new law governing the fines imposed on persons convicted of parking in a space designated for Handicap Parking. Since then I've been asked how a person with a disability can acquire a placard which would give

them permission to park in Handicap spaces. The Disabled Parking Placard may be applied for at the County tax Assessor - Collectors office located in the County Courthouse in Spearman. (Note: a person must apply in the county where he/she resides) There is a \$5.50 fee

for the placard and, except in certain instances, a person's first application must be accompanied by acceptable medical proof of their disability. For further information on this subject call the assessor-collector's office at (806) 659-4120.

DASH IN FOR A

Christmas Open House

Sunday, November 19, 1995
2:00 to 5:00 p.m.

Refreshments Served • Door Prizes

Prairie Garden Flowers

209 Main • Spearman

659-2212 • 800-753-2389

Gordon's Drug

314 Main • Spearman

659-2141

Complete selection of gifts & floral designs

HIGH TECH OR HIGH RISK.

PRIMESTAR IS THE ONLY MINI-DISH THAT WILL NEVER BE OBSOLETE.

Will your advanced mini-dish system become tomorrow's 8-track tape player? It won't if you get PRIMESTAR!

- PRIMESTAR offers the best digital satellite TV technology available
- With a dish custom sized to your area, there's no weather interference like the "one-size-fits-all" systems
- The only system that uses the 1996 digital TV standard
- When the technology changes, you get a free upgrade!

So your system never becomes obsolete! And...

- There's nothing to buy
- Nothing to maintain
- You get everything for about \$1 a day

Don't buy obsolete! Get PRIMESTAR and you get the best mini-dish technology available today...and tomorrow.

PRIMESTAR
PRIMESTAR BY TCI

Radio

Slide projector

Vinyl record

Movie projector

RCA dish

Beta max

Turn table

8-Track

TV with rabbit ears

In Spearman and surrounding areas,
CALL 1-800-716-0004
or call Audio Video Electronics at 249-5019
or Sanders Satellite at 353-6706 (Amarillo)
or Future Comm at 935-3482 (Dumas)
CALL TODAY AND ASK HOW TO SAVE \$60 MORE!

ABC, CBS, NBC, PBS and FOX channels are available only for homes (1) which cannot receive an acceptable picture from local ABC, CBS, NBC, PBS and FOX affiliates via a conventional outdoor rooftop receiving antenna; and (2) which have not subscribed to cable television in the last 90 days. Additional charges for complex installation may occur. © 1995 PRIMESTAR by TCI

Among the Neighbors

by Helen Fisher

A marriage of interest to three counties, Hansford, Ochiltree and Hutchison, was that of Ira Harbour and Rita Wilson of Perryton.

They were married October 6 in the Edna Ellis Chapel in Perryton with Reverend Roy King, pastor of the First Christian Church of Perryton, officiating.

Her three daughters, his two sons and a daughter attended the ceremony. Their wedding trip was to Cortez, Colorado and the area. His daughter, Ann Hindmarsh and family live at Cortez. They drove through the scenic countryside around Telluride and enjoyed the brilliant fall foliage.

Soon after their return to Spearman, they flew to Galveston to attend the annual convention of the National Soil Conservation Association. Ira was honored for his 45 years of service in the soil conservation interests. He was presented with a very impressive plaque. After several pleasant days in Galveston, they flew home.

On October 21 at the Perryton Club a reception was held for them with 150 attending.

Congratulations and best wishes are extended to this deserving couple.

Rita and Thomas Reed returned early last week from nine days in the Rockies in the Del Norte, Colorado country. Their children, Joan and Ken Schneider, with Schane Schneider, Spearman; Todd and Janet Williams, Gruver; and Judy Reed, Fritch made it a family affair.

Joining them later were Hal Shufeldt, Jeff Beedy and Kurt Adams. The purpose of the outing was for elk hunting, and hunt they did, high in the mountains. They used 4-wheelers, but also did a lot of hunting on foot. The weather was ideal, the fellowship, fun and food, made for a refreshing, genial trip, but the elk result was zilch.

Heartening information is that

of recent meetings of parents interested in developing a school band worthy of Spearman High's tradition. Time was when Spearman school bands were the envy and admiration of the whole area. No doubt this generation of students have equal ability of those if only given an opportunity. The knowledge and experience gained will stay with them through life, contrasted with other extra curricular activities that end with graduation.

The band's performance at the football game on Friday drew many compliments. Terry and Candi Delozier opened their home to the members after the game and served hot chocolate. This was a thoughtful attention after the cold half-time activities.

Maxine and Janice Banister spent last weekend at Brady where they visited Brent Banister. On Sunday, Maxine accompanied her grandson, Quinn and Wendy Banister, to Arlington for a time with Chad Boxford. Quinn lives at San Angelo.

Shanda and Greg Odegaard enjoyed weekend guests. Her sister Stephani and Ronnie Swan and their three daughters came from Vernon.

Sara Dossett received word that her son, Buddy R. Dossett, had been awarded a citation for distinguished service by the Texas Historical Commission. It was for contributions made in achieving the service for 1995, and was presented by the Executive Director of the Texas Historical Commission and the Chairman of the County Historical Commission.

Buddy and his family live in Harlingen where he has a law office.

Graveside services for Don DeArmond, 63, were held at the Holt Cemetery on Tuesday afternoon. His obituary is carried else-

where in this issue. He was a native of Spearman and lived here all his life. Deepest sympathy is extended to his mother, Myrtle, and other family members, and also to his longtime friends, Richard Smith and Robert Potts.

Newcomers to Spearman are Shirley and Gary Kimbrough from Johnson, Kansas. They are the parents of Tanya Close and say their main purpose in moving to Spearman is to be closer to their grandchildren.

Mrs. Kimbrough arrived on Sunday and will immediately begin her employment at Hansford Home Care. She is an R.N. and E.M.T.

Mr. Kimbrough, a maintenance superintendent will arrive in a couple of weeks. They have purchased the former home of Pete and Brenda Wall. Mrs. Kimbrough keeps busy with her work, home and family. He enjoys fishing and hunting. Their church affiliation is Baptist.

These future good citizens are welcomed by Spearman.

Janelle Womble Steinkoenig of Borger visited in Spearman on Monday. She belongs to the Historical Association there and plans to show some vintage post cards. They are in a collection left by her mother and owned by friends here.

Joan and Billy Brown and family narrowly missed what could have been a tragedy on Monday morning when their central heating malfunctioned and gas fumes were emitted throughout their home.

They discovered it in time and took their daughter, Ashley, to Hansford Hospital. Later Travis, who had gone to school, became ill and was also given oxygen at the hospital. Other members had headaches but didn't require treatments. The problem was corrected and needless to say, Billy has installed a gas detector.

Friends report that on Monday morning, Juanita Logan fell in her home and was taken by ambulance to Hansford Hospital. She was diagnosed as having a broken hip. She was taken to High Plains Baptist Hospital in Amarillo. Herniece, Jody Rex, of Guymon is with her. As of this writing, surgery was scheduled for Thursday afternoon. This is the second time she has

broken a hip.

Ethel and Johnny Waggoner enjoyed having their daughter, Karen Lair, with them several days last week. she came from Whitney, Texas to assist in the care of her mother who is recovering from bypass surgery.

Mrs. Waggoner underwent the surgery on October 23 at St.

Anthony's Hospital in Amarillo and

returned home a week ago on Monday. She is recovering and with the TLC of her husband expects to eventually be back to normal.

Mrs. Lair also had the pleasure of the company of her son, Tyler, who makes his home with his grandparents here. He is a junior in high school.

Historical Commission meets

The Hansford County Historical Commission met November 6 at the Zulu Stockade at 2:00 p.m.

Joel Lee Lackey, chairman, called the meeting to order and asked for committee reports.

Rubyjo Wilbanks, of the Historical Preservation Committee "Museum," reported that the new gasoline that was installed has cut down on utility bills. J.D. Wilbanks said the Palo Duro School Open House was a success. Matilde Entrekun, one of the former teachers, and six students came to the celebration.

Cindy Blackman, of the Historical Appreciation Committee, is looking into some funding to help with new projects. Sylvia Robertson mentioned the placement of some new signs.

Joel Lee Lackey, member of the Historical Marker Committee, said the committee is still working on getting the Zulu marker in a location that is suitable for viewing from the highway.

CLASSIFIED RATE

\$4.00 first insertion
\$3.00 each additional insertion
(30 words or less)
13¢ each word over 30
Legal Notices: 15¢ per word

Chamber Chatter

by Cindy Blackman
Chamber Manager

I would like to take this time to thank a lot of people who helped to

Congratulations go to Liz and Frost Hickerson. They were the winners of the grand prize trip to Las Vegas. Have fun!

November Calendar:
Wednesday - 1: Retail Merchants Meeting
Saturday - 4: Casino Night
Tuesday - 7: Election Day
Wednesday - 8: Sacred Heart Church Dinner
Thursday - 9: Board of Directors Meeting
Friday - 10: Pep rally 3:00 - Lynx vs. Boys Ranch
Saturday - 11: Women's Division Style Show - 10:30 a.m.
Monday - 13: Financial Seminar - 7:00 p.m. High School Auditorium
Tuesday - 14: Lunch Seminar on the Internet by WebTex
Wednesday - 15: W.D.S.C.C meeting and defensive driving class
Thursday - 16: Methodist Church Thanksgiving Dinner and defensive driving class
Thursday - 23: Thanksgiving Day
Friday - 24: Office closed

make the Chamber casino night a big success. Without these people, it would not have happened: The Knights of Columbus and the Ladies Guild of the Sacred Heart Catholic Church, dealers: Albert Avila, Brandi Schneider, Stacie Gardner, Michele Cros, Gary Ellsworth, Cindy Rice, Cathy Gafford, Ladd Gafford, Buddy Hopper, Dwayne Smith, Robbie Dewberry, George Young, Jeff Beedy, Sam Pierson, Jeff Rowland, and Donna Hendrickson; Judy Tindell, Tindle Ramon, Norlan Winegarner, Lynna Renner, Bret Burgin, Arbeta Nobles, Steve Benton, Travis Wolf, Don Schroeder, clean-up; Verlan Winegarner, Kathy Bryant, and Bart McDonald, Rusty Tindell, and Mark Thomas. Thanks to the merchants who donated merchandise to the auction and thanks to the auctioneer Denzel Tevis and Ed Dear. A big thank you to the people who attended the event. Your support is greatly appreciated.

HANSFORD COUNTY HOSPITAL DISTRICT



TENDER LOVING CARE - Pictured is one of the newest additions to Hansford County Hospital District. Dr. Raul C. Tamayo, who specializes in pediatrics, is holding three year old patient Mariah Heddins. Dr. Tamayo is known for his ability to relate with children and to make them feel comfortable in a medical environment.

Pshigoda... Solid Gold Selection

Our featured resident for the month of November, Pauline Pshigoda, was born April 2, 1926, in Shattuck, OK, to George and Julia Deal. Her parents farmed in the Shattuck area. She has twelve brothers and sisters. After she was graduated from high school she wanted so much to go to work at a hospital, but her mother didn't want her to leave home.

She married Fred Pshigoda in 1947. He farmed in Ochiltree County. For a few years she got her wish and worked at Ochiltree General Hospital. She has two sons, Duane, who farms in Ochiltree Co., and Vernon, who lives in Perryton. She has four grandchildren. Her hobbies are painting, playing dominoes, and yard work. She also loves cleaning house!

Pauline has lived at the Manor for seven months and says she feels real good here. "It's nice and clean, and the people are really good to me."



PAULINE PSHIGODA

FUN! FOOD! FELLOWSHIP!
FAMILY NIGHT!
MONDAY
NOVEMBER 13
5:30PM

H.C.H.D. Radiology Department received notice October 18, 1995, from the American College of Radiology that the Mammography Department is fully accredited.

I would like to thank Wanita Poulson and Nan Nicholson for the long hours and miles of paperwork they had to complete to be accredited by the American College of Radiology.

I would also like to thank Sue April, a former employee, for getting this started.
Jim Nicholson

A Note From Activities

The first of November finds us already in the midst of our holiday activities. We ended the month of October with another successful Halloween party. You wouldn't believe the "characters" that showed up at Hansford Manor on the 31st! I wonder if this is the one day of the year when an individual's "true personality" comes through. Ha!

We have lots to look forward to in November. Our bingo sponsor for the month is the Women's Division of the Spearman Chamber of Commerce. Our Christian Buffet will be hosted by the Apostolic Faith Church, with the date to be announced. Our Resident Birthday Party will be November 17, and as always will be hosted by the great ladies (and wonderful cooks!) of the Hospital Auxiliary.

The big event for the month will be Family Night, set for November 13. Manor Residents and their families will sit down to a delicious meal of Turkey and Dressing, with all the trimmings. For dessert we will feast on homemade pumpkin pie that the residents will be making in Cooking Club that very afternoon. This is an event that you won't want to miss. Our entertainment for the evening will be Gruver's own, Miss Amber Weller.

We would like to welcome to our line-up of regular visitors, the Kids from the Gruver Church of Christ. They are visiting the Manor on the last Wednesday evening of each month.

We are very excited about a new program that the Manor Residents will be working on with the Chamber of Commerce. The Residents have formed a group to visit and welcome new families to our community. We are calling ourselves "The Golden Gang". This is a way for us to give back to the community just a little of the great support we receive. And who better to welcome our new neighbors to town?!

Lesly named Employee of the Month

Beth Lesly, Director of Nurses at Hansford Manor, started working here in 1986 as LVN Charge Nurse and helped as needed in direct patient care. In 1989 Beth received her RN license. She has worked closely under previous DONs supervising all activities in the Manor and training new Nurses' Aides. In 1994 Beth acted as temporary DON and then as Assistant DON. In November of the same year, Beth accepted the position of DON.

Recently the Manor received a perfect grade from the annual State inspection team, and a large amount of the credit goes to Beth's dedication to her work. Skip, 16, and Brooke, 13, Beth's children, are her "other" main interest; she is very involved in their activities. We appreciate that they share their mother with us.

If you know of anyone recently moved to the area who needs welcoming, please notify either Cindy Blackman at the Chamber, 659-5555, or me, Debra Sanford, 659-5535.

We wish everyone a great month and a very HAPPY THANKSGIVING!

Resident Birthdays!
Jane Meek • 1st
Minnie Chesser • 11th
L.M. Shelton • 14th
Don Williamson • 25th

Welcome New Manor Residents
OTIS DRY is an 87 year old Spearman resident who moved into the Manor on Oct. 9th. Otis was retired from farming and ranching and had mowed lawns. Mr. Dry has a son, Floyd, who lives in Spearman.
WE WELCOME THIS NEW RESIDENT AND HIS FAMILY AND FRIENDS TO HANSFORD MANOR!

1995 SPEARMAN LYNX FOOTBALL SCHEDULES

Varsity

Sept. 8 - Panhandle, T	Oct. 13 - *Stratford, H
Sept. 15 - Memphis, H	Oct. 20 - OPEN
Sept. 22 - **Clarendon, H	Oct. 27 - *Gruver, T
Sept. 29 - Perryton, T	Nov. 3 - *West Texas, H
Oct. 6 - Fritch, T	Nov. 10 - *Boys Ranch, T

**Homecoming *District Games - 7:30 p.m.

Junior Varsity

Sept. 7 - Stratford, H	Oct. 12 - Stratford, T
Sept. 14 - Sunray, T	Oct. 19 - Sunray, H
Sept. 21 - Gruver, T	Oct. 26 - Gruver, H
Sept. 28 - West Texas, H	Nov. 2 - West Texas, T
Oct. 5 - Boys Ranch, T	Nov. 9 - Boys Ranch, H

Junior High

Sept. 14 - Sunray, T	Oct. 19 - Sunray, H
Sept. 21 - Gruver, T	Oct. 26 - Gruver, H
Sept. 28 - West Texas, H	Nov. 2 - West Texas, T
Oct. 5 - Boys Ranch, T	Nov. 9 - Boys Ranch, H
Oct. 12 - Stratford, T	

MEMPHIS AT PANHANDLE



MARKETPLACE - JOLLY ROGER - PAY-N-SAVE
CONVENIENCE STORES

1804 Hall Avenue
Littlefield, Texas 79339
In Spearman at 505 Plains Shopping Center

CHILDRESS AT RIVER ROAD



GRUVER STATE BANK

3 Main Plaza
Gruver, Tx. (806) 733-5061
Member FDIC



DEAN CLUCK CATTLE CO., LTD.

HCR 3, Box 47
Gruver, Tx. 79040
LOCKNEY AT ARBERNATHY (806) 733-5021

PLAINVIEW AT PALODURO

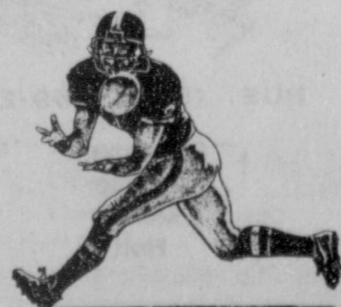


GILLASPIE
AUTO & TRUCK CENTER, INC.
CHEVROLET, OLDS, BUICK, PONTIAC
CHRYSLER, PLYMOUTH, DODGE
Highway 207 South • P.O. Box 430
Spearman, Texas 79081
(806)659-2541

See us for all your automotive needs:
**Sales
Service
Parts**



221 Main • Spearman
659-3426
212 S. Main • Perryton
435-4261



PERRYTON AT SANFORD-FRITCH

The Hansford County Reporter-Statesman

Serving Hansford County Since 1907
213 Main • Spearman, Texas 79081

1995 FOOTBALL CONTEST

--- RULES --- RULES --- RULES ---

1. In each advertiser's box you will find the name of a team playing this weekend. Place the team you think will win in the entry form below.
2. Fill in your name, address and phone number (please print) and sign the entry.
3. Entries in Spearman may be turned in at the Reporter-Statesman Office. Gruver Residents may turn in their entries at the Gruver City Hall or mail them to: Reporter-Statesman, Box 458, Spearman, Tx. 79081. Deadline for entries is 5 p.m. Friday and mailed entries must have an official U.S. Post Office postmark dated no later than Friday. Winners will be picked on Monday mornings after mail delivery.
4. No photocopies will be accepted.
5. The tie-breaker will be used to break ties. In the event of entries having the same tie-breaker then the winner will be determined by blind draw. The tie-breaker is the total number of points scored (combined - both teams) on the game of the week.

1st Prize - \$25
2nd Prize - \$15
3rd Prize - \$5



The Hansford County Reporter-Statesman

Serving Hansford County Since 1907
213 Main • Spearman, Texas 79081



Tie-Breaker: _____
Total points scored
in 'Game of the Week'

Lowe's Marketplace: _____
Gruver State Bank: _____
Dean Cluck Cattle Co.: _____
Gillaspie Auto: _____
Cates Men & Boys: _____
Main Street: _____
J&M Service Center: _____
Paschel Irrigation: _____
G&G Foodliner: _____
Little Tiffanies: _____
Caprock Industries: _____
Curtis' Hot Oilers: _____
Bunkhouse: _____
Gruver Ford: _____
Hi Plains Auto: _____
Hansford Implement: _____
Equity: _____
Name: _____
Address: _____
Town: _____
Phone: _____
Signature: _____

GRUVER AT WEST TEXAS HIGH

Main Street Store



506 Main Gruver, Tx. 733-5040

1995 GRUVER GREYHOUNDS FOOTBALL SCHEDULES

Varsity

Sept. 8 - Wheeler, H	Oct. 13 - *Boys Ranch, H
Sept. 15 - **Texhoma, H	Oct. 20 - Stratford, T
Sept. 22 - Highland Park, T	Oct. 27 - *Spearman, H
Sept. 29 - Booker, T	Nov. 3 - OPEN
Oct. 6 - Panhandle	Nov. 10 - *West Texas, T

**Homecoming *District Games - 7:30 p.m.

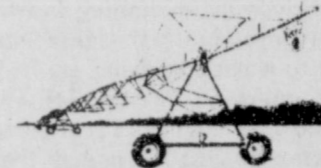
Junior Varsity

Sept. 7 - Boys Ranch, H	Oct. 12 - Boys Ranch, H
Sept. 14 - Stratford, T	Oct. 19 - Stratford, H
Sept. 21 - Spearman, H	Oct. 26 - Spearman, T
Sept. 28 - Sunray, T	Nov. 2 - Sunray, H
Oct. 5 - West Texas, T	Nov. 9 - West Texas, H

Junior High

Sept. 14 - Stratford, H	Oct. 19 - Stratford, T
Sept. 21 - Spearman, H	Oct. 26 - Spearman, T
Sept. 28 - Sunray, T	Nov. 2 - Sunray, H
Oct. 5 - West Texas, T	Nov. 9 - West Texas, H
Oct. 12 - Boys Ranch, T	

RANDALL AT DUMAS



Reinke is the leader in
Innovation in the Pivot Industry.

Paschel Irrigation Inc.

Richard & Arlene Paschel
(806)659-5228
Hwy 15 W. • P.O. Box 69
Spearman, TX 79081

© 1992 REINKE IRRIGATION CO. INC. RR# 9702



SAN FRANCISCO AT DALLAS

Tires • Flats • Oil & Lube • Wash • Brakes & Motor Repairs • Front End Alignments

J & M Service Center

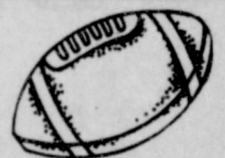
24 Hour Road Service

DAVID PEARSON - Owner
(806) 659-5519



415 Collard
Spearman, TX 79081
24 Hr. Service
(806) 659-3352

CHICAGO AT GREEN BAY



G&G FOODLINER

516 Main • Gruver
733-2471

Little Tiffanies

DIAMONDS - FINE JEWELRY
BRIDAL REGISTRY



CLEVELAND AT PITTSBURGH

"We Support Our Local Teams"

CAPROCK #1 & #2

BILL PARK, General Manager
(806) 733-5025

"Custom Cattle Feeding"



CLARENDON AT HIGHLAND PARK

Sports



IT'S LONELY AT THE BOTTOM - The Spearman Lynx played host to a determined West Texas Comanches team last Friday night in Spearman. The Lynx were looking for a hopeful playoff spot, but the Comanches were trying to win the district outright, and they did, 28-6. Seen here, a Lynx running back is at the bottom of pile, after he gets the much needed yardage. Spearman will travel all the way to Boys Ranch this Friday in their last game of the season against the Roughriders. (Photo by Chad Davis)

Spearman Lynx fall to the West Texas Comanches, 28-6

By Chad Davis

For Coyt Tigrett, Jeremy Blan, Brent Collins, Phillip Sanders, Greg Elliott, Cody Leicht, Cody McLeod, Mark Parker, Clay Neff, Joe Jenkins, Matt Gafford, Jason Holton, Lee Jarvis, and Martin Sanders, last Friday night's football game against the West Texas Comanches was not just a last chance shot at the playoffs, it was a matter of pride, as this set of fine Lynx seniors played their last home game on one of the coldest nights this season. This entire group of guys has been doing really terrific this year, and it showed in this game especially. Although the final score in this one was 28-6, the Lynx really played just as well as the Comanches, and they gave the home crowd really something to be proud of in the last time that these seniors will ever touch the Lynx Stadium ground as a football player for Spearman.

Instead of their normal first quarter jitters, Spearman really came out in the first quarter ready for action. Although the first series of downs ended in a punt, the drive was fairly well executed. Collins led the way for the Lynx to start off, as he grabbed 11 yards and a 1st down on the very first carry for the Lynx. Sanders helped matters, as blasted in for 2 more. However, on

the next two plays, which were pass attempts, Tigrett was pressured hard to throw the ball, and the Lynx received one of their first of many flags. This set up a 4th and 12 situation, and the Lynx were forced to punt.

Due to a fantastic punt by Collins, West Texas started to go to work on their own 23, but the work didn't last very long. The Lynx defense was to say the least awesome on this series and they held the Comanches to -5 yards. So, with 8:00 left in the first quarter, WT punted the ball back to the Lynx.

Spearman's Jake Howard, the main return man, took the ball for a nice gain and put Spearman on the 48. With that great field position, the Lynx offense was ready to get busy, and they did. Collins and Michael Witten got the call in the first two plays, as they combined for 3 yards. Then, Tigrett took a bootleg keeper for 8 more yards to give Spearman a 1st down with 6:41 left. Michael Lusby then came in to add some youth to this team and get 5 more yards, while Collins brought in 2 more. Things were going great until the Lynx were faced with a 4th and 3 situation. Not to worry, though, Lusby would knock in 3 more yards to give Spear-

man the first down. This really pumped the Lynx up, and on a 1st and 10 play, Collins blasted his way from 18 yards out for a would be Lynx touchdown, but a holding call quickly brought the ball back. However, Lusby and Blan would not let such a setback interfere with their plans of a Lynx score. After 3 yards by Lusby, and a great run of 30 yards on a reverse to Blan, Spearman was finally looking at the first real scoring opportunity of the night. Witten got the call, as he took a sweep from Tigrett for 3 yards for the touchdown with only 25 ticks on the clock. Unfortunately, the extra point was blocked, but Spearman was ahead, and they were ahead first, 6-0.

With only 18 seconds left, the Comanches took over on the 40. On the very first play, Gafford blasted through a huge tribe of Comanches and recovered a loose ball, to give Spearman the ball on the 36. After only one more play by Sanders, the quarter ended with Spearman on top, 6-0.

The Lynx then took control, and really drove the ball hard, for at least two plays. Witten was the main man on the first play, as he brought in a hard-earned 12 yards.

See LYNX, page 9

Hounds subvarsity teams win 2 of 3

The Gruver Greyhound 7th, 8th, and junior varsity teams played the Sunray Bobcats teams this past Thursday night, November 2, at Greyhound Stadium, and the Hounds won two of the three games. The 7th grade Hounds lost 34-6, as they were just the unfortunate victims of a hot Bobcat blitz. The 8th grade, however, pulled off a 24-12 victory, and it was really encouraging to see them play so well. The

junior varsity team will try to win this week and close out a 5-3-2 campaign, as they bombed the Bobcats 22-6 this past Thursday night.

In the JV game, according to Coach Duncan, it was a really good team effort. Jason Smith scored from about 15 yards out in the second quarter, to give the Hounds a 6-0 halftime lead. In the third quarter, Travis Bayless scored on about a 55-yard run, and Brant Armes

ran in for the two point conversion. Then Kyle McNett had a 20 yard run for a touchdown, and again Armes ran in for the two point conversion, to make the score 22-0. The Bobcats scored in the fourth quarter.

The sub-varsity teams will be playing host to the West Texas Comanches this Thursday, November 9, at Greyhound Stadium, beginning at 5 p.m.

REPORT OF CONDITION	
Consolidating domestic subsidiaries of the First National Bank of Spearman in the state of Texas, at the close of business on September 30, 1995, published in response to call made by Comptroller of the Currency, under Title 12, United States Code, Section 161. Charter Number 18609, Comptroller of the Currency, Southwest District.	
Statement of Resources and Liabilities Dollar Amounts in Thousands	
ASSETS	
Cash and balances due from depository institutions:	
Noninterest-bearing balances and currency and coin	444
Interest-bearing balances	6,044
Securities:	
Held-to-maturity securities	6,184
Available-for-sale securities	4,458
Federal funds sold	0
Securities purchased under agreements to resell	0
Loans and lease financing receivables:	
Loans and leases, net of unearned income	31,355
LESS: Allowance for loan and lease losses	367
LESS: Allocated transfer risk reserve	0
Loans and leases, net of unearned income, allowance, and reserve	30,988
Assets held in trading accounts	0
Premises and fixed assets (including capitalized leases)	646
Other real estate owned	0
Investments in unconsolidated subsidiaries and associated companies	0
Customers' liability to this bank on acceptances outstanding	0
Intangible assets	0
Other assets	1,383
Total assets	50,147
Losses deferred pursuant to 12 U.S.C. 1823(j)	0
Total assets and losses deferred pursuant to 12 U.S.C. 1823(j)	50,147
LIABILITIES	
Deposits:	
In domestic offices:	
Noninterest-bearing	3,880
Interest-bearing	41,844
Federal funds purchased	0
Securities sold under agreements to repurchase	0
Demanded notes issued to the U.S. Treasury	0
Trading liabilities	0
Other borrowed money:	
With original maturity of one year or less	0
With original maturity of more than one year	0
Mortgage indebtedness and obligations under capitalized leases	0
Bank's liability on acceptances executed and outstanding	0
Subordinated notes and debentures	0
Other liabilities	383
Total liabilities	46,107
Limited-life preferred stock and related surplus	0
EQUITY CAPITAL	
Perpetual preferred stock and related surplus	0
Common stock	1,000
Surplus	1,000
Undivided profits and capital reserves	1,983
Net unrealized holding gains (losses) on available-for-sale securities	57
Total equity capital	4,040
Losses deferred pursuant to 12 U.S.C. 1823(j)	0
Total equity capital and losses deferred pursuant to 12 U.S.C. 1823(j)	4,040
Total liabilities, limited-life preferred stock, equity capital, and losses deferred pursuant to 12 U.S.C. 1823(j)	50,147
We, the undersigned directors, attest to the correctness of this statement of resources and liabilities. We declare that it has been examined by us, and to the best of our knowledge and belief has been prepared in conformance with the instructions and is true and correct.	
<i>Bill Pittman</i> Bill Pittman	<i>Lynne Maize</i> Vice President & Cashier
<i>Don Johnson</i> Don Johnson	of the above-named bank do hereby declare that this Report of Condition is true and correct to the best of my knowledge and belief.
<i>Gene Cudd</i> Gene Cudd	<i>Lynne Maize</i> Signature
	10-30-95 Date

EFFECTIVE OCT. NOV. 5-11, 1995
STORE LOCATION

ALLSUP'S

SHURFINE YOUNG Turkey Hens

\$6.00

10 LB AVG.

SAVE ON Pepsi-Cola **GOTTA HAVE IT**

ALLSUP'S Breakfast Burritos

HAM, EGG & CHEESE OR SAUSAGE, EGG & CHEESE

99¢

ALL VARIETIES Fritos® Chips

79¢

REG. 99¢

ALLSUP'S Famous Burritos

GET 2 FOR 1 LOW PRICE

99¢

20 CT. LARGE OR 26 CT. MEDIUM Cuddles Diapers

YOUR CHOICE

\$4.99

THORN APPLE VALLEY Polish, Spicy or Smoked Sausage

12 OZ. PKG

99¢

STORE SPECIAL

COOKED FOOD FEATURE

JOHNNY'S RIB SANDWICH

99¢

EA.

STORE SPECIAL

SHURFINE BATH TISSUE

SHURFINE PAPER TOWELS

BEEF, LIVER OR CHICKEN JUMBO ROLL

BOLO DOG FOOD

ALL FLAVORS

GATORADE

STORE SPECIAL

4 ROLL PKG. **99¢**

59¢

14 OZ. **39¢**

32 OZ. **\$1.29**



#1 LYNX FANS - Although the Spearman Lynx were knocked out of their game last week against the Comanches, Travis Sander, Justin Eslick, Stewart Martin, Garrett Martin, and Tanner Hand manned the trailer that houses all of the Lynx's sirens to help out Spearman's cause. The boys stayed throughout the whole game, despite the cold weather, to let the Lynx know that they did have some fans. (Courtesy photo by Carolyn McLeod)

Lynx CONTINUED FROM PAGE 6

Then, Tigrett decided to keep the ball for a 7 yard gain. After a one yard loss by Spearman, Blan took a 4 yard pass from Tigrett, which put the Lynx in good field position. As usual, when things were going great, the Lynx more or less "shot themselves in the foot". On a third down play, the Lynx coughed up the ball, and WT recovered. Then, to add a bigger twist, the Comanches fumbled the ball on the run back of the fumble, in which Spearman quickly pounced on the ball. This should have brought up a 1st and 10 situation, since the ball did change possession, but instead it brought up 4th and a long 25. So, with 8:54 left in the first half, the Lynx decided to punt the ball away to WT.

Collins had another terrific punt. In fact, this one went all the way into the Comanches own end zone, which brought them back to the 20. Apparently, this did not make much

difference to the Comanches, as on the first play of their next drive, the main man for the Comanches, Jim Throckmorton, barreled down the field for a huge 75 yard gain. Then, with 8:21 still left in the half, Casey Scott went around the end to for the 5 yard score. Something was really strange about the score. On the run, Scott fumbled the ball into the end zone, but another Comanche recovered the ball, and it counted. Is that not the same thing the Lynx did when McLeod recovered a fumble against Stratford in the end zone, but it did not count? Nevertheless, the extra point after counted, and the Comanches pulled ahead only by one, 7-6.

A very bewildered and amazed Lynx team then took over on their 35. This drive saw that Lusby, Witten, and Blan would do most of the work. After being in a tight 2 and long predicament, Lusby took a well executed draw play and some-

how managed a 10 yard gain. This put the Lynx only 6 yards out from the first down marker. Again, Blan, who really showed his stuff last Friday night, took another reverse and blasted his way for a 45 yard gain. Witten then went to work, as he brought in a nice gain of 16 more yards, while Lusby brought in 6 more. Once again, just as things were going great, Spearman coughed up the ball, and WT's Scott made the quick recovery.

However, after a few short running plays by the Comanches, they punted the ball back to the Lynx with 1:32 left in the half.

Spearman took over on their 38, but the good field position really didn't matter, as on the third play of this drive, the Lynx coughed the ball up again.

The mighty Lynx defense then held West Texas to only 5 yards, which ended the half. Spearman was still easily in this one, with an

easy chance to win it, 7-6.

The first half really brought in some fantastic highlights. Blan, Witten, Lusby, and the entire Lynx defensive line were the big stars of the first half. At this point, it looked as though the Lynx were still in the running for the playoffs, but things would soon change.

That defense for Spearman would really shine as the 3rd stanza of play began. WT put on a 5 play drive that soon ended in a Comanche punt.

The Lynx took over way in the own territory, on the 15. Collins was the only Lynx who could manage any positive yards on this drive with 5. It was three and out for the Lynx, and they punted the ball away with 7:10 left in the quarter.

Collins did have another excellent punt, but WT seemed to man-

See LYNX, page 10

Many happy returns.

Give the gift that gives back more than you've given. For as little as \$25, you can give a piece of America to someone you care about.

Ask your banker for a gift certificate upon purchase.

Take Stock in America U.S. SAVINGS BONDS

A public service of this newspaper

TEXAS CONCEALED HANDGUN INSTRUCTOR

Classes beginning Oct. 30
4 Consecutive Evenings
\$100 Fee plus \$25 Perryton Rifle & Pistol Club

Ted B Dodd 435-4405 #4695
Perryton, TX
Davy Gurley 435-2998 #4726

Manor Empty Stocking Crafts Bazaar
December 8/ 9am-3pm
Hansford Manor Activity Room
All Proceeds will benefit the Empty Stocking Fund

Donations of Craft Items and Baked Goods are needed

Contact Debby Sanford for more information.
659-5535

ALPHA/OMEGA CONSTRUCTION

Roofing • Siding • Remodeling • Replacement Windows

Licensed • Bonded • Insurance

SAVE \$1000 with this ad!

FREE ESTIMATES
5 Year Written Warranty on Labor!

WILL BEAT ANY WRITTEN BID.
Call (806)383-6163

AFTER HARVEST AUCTION

SATURDAY, NOVEMBER 18, 1995
10:00 A.M.

Bonnie Ball & Others
• DIRECTIONS •

From Perryton, Texas - 7 mi. east on Hwy. 15, 3 1/2 north, 1/2 west, 1 north, 1/4 east.
From Booker, Texas - 7 mi. west on Hwy. 15, 3 1/2 north, 1/2 west, 1 north, 1/4 east.
From Bryan's Corner, Okla. - 8 mi. east on Hwy. 3, 7 south, 1/4 east.
From Elmwood, Okla. - 9 mi. west on Hwy. 3, 7 south, 1/4 east.

TRACTORS & COMBINES - 1986 IHC 1586, pt., PTO, DL Hyd. 18.4X38, rubber w/duals, 3,378 Hrs.; 1977 JD 8630 4X4, DL Hyd., bareback, good rubber; 1977 Case 2870 4X4, 4 Hyd., bareback, 30.52 32 rubber, 4K on eng. 1-1 1-1975 AC, DL Hyd., 95% 18.4X38 Rdl. rubber, PTO, 3 Pt., 350 hr. on eng., new paint, sharp.; 1976 JD 4630, power shift, DL Hyd., 3 Pt., PTO 5,567 hrs.; 1973 Case 1370, DL Hyd., 3 Pt., PTO, 90% rubber 18.4X38 2/loader, 5,665 Hrs.; 1980 IHC 1480 combine, 24' Hd., moniters, 30.5X32 drivers, 18.4X16.1 rear, 250 Hr. on eng., 3,450 Hr. on machine, excellent, maintained machine.; 1976 NH 1500 combine, 22', cab, air, Dst., chopper, 3208 cat. eng.

VEHICLES - 1977 Dodge 1/2 ton pickup, auto; 1976 Plymouth trailduster 4X4.

TRUCK, GRAIN CART, & TRAILER - 1962 Chev. C60, tilt cab, 16' bed, hoist; 1974 Ford 600, Tandem, 22' stl. bed, hoist, 5 sp, 2 sp, roll tarp, 9.00 rubber; 1974 IHC 1600 Tandem, 5 sp., 2 sp., 22' stl. bed, hoist, roll tarp, 9.00 rubber; 1971 Chev C50 Tandem, 5 sp, 2 sp, 20' stl. bed, hoist 9.00 rubber; Caldwell 700 grain cart, 700 bu., Hyd.; 1956 IHC Tandem grain, fuller, 4 sp, 2 sp, 9.00 rubber; 1970 IHC 4300 Conventional tractor truck, mack 13 sp, mack V8; 40' steel double deck cattle trailer; 1971 American 44' double deck alum. over steel cattle trailer; American 36' hopper bottom grain trailer; Fruehauf 36' hopper bottom grain trailer.

HORSE EQUIPMENT - 4 horse waler, 3 sp., hi-lo; Exercise saddle, bridles, saddle pads, leg wraps; 1 set stainless Alphabet branding irons; 1 set Number branding irons.

TILLAGE - Sunflower 35' chisel, walking tandems, Dbl. fold, excellent cond.; IHC 92 air, 8 row 40 lister, markers, seed drums, Dbl. gauge wheels; Bigham Bros. 8 row, 40 dbl. tool bar, knife sled; Bigham Bros. 8 row 40 single tool bar w/sweeps; Noble 52' springtooth harrow; Noble 7-6 sweep plow; Sunflower 5-5 sweep plow w/pickers; Wilbeck 35' chisel, dbl. fold; Crustbuster 54' deep hole drill; Crustbuster 40' deep hole drill; 2 - Caukins 40' rod weeders; 2 - JD DRA disc drills; 1 - JD DRB disc drills; 6-JD LZ 12 deep hole drills; 18' Krause offset disc; 22' Rhino 122 tandem disc, dbl. fold; 20' Rhino mower; 20' Land drag, heavy; 21' triple bar tool bar w/chisels; triple tool bar, 6-40 lister w/fert.; 22' 3 pt. blade; 2 Caldwell 10' Hyd., 3 pt. blades; 8', 3 pt. blade, V ditcher; Orthman 3 pt. back fill disc; 2 - 300 gal. trailer sprayers; 2-24' Hume reels; 6-JD lister planters; Nash bros. frail shredder; 15' dbl. tool bar 3 pt. chisel w/gauge wheels; 4 sec. rotary hoe.

NON-CLASSIFIED - 500 gal. tractor mount NH3 tank; 83 - joints 8", 20' alum pipe, flip gates; 16-plastic 8", 20' slide gates; 9-12X8 Hyd. 1 lot elbows, T's, irrig. tubes; 4-pipe trailers; 13-bullet drags; 2-grail fill augers; lister shanks, fert. knives; 1 lot irrig. tubes; wire roller on trailer w/gas eng.; 1-750 gal. fuel tank; 2-500 gal. fuel tanks; 1-100 gal. fuel tank; 8 point trailer caddy; 2-500 gal. overhead fuel tanks; Homelite Textron Model HSB 50-1 generator. 5,000 wat. 120/240 olt w/breaker box and 220 and 110 outlets; Hobart portable welder, MDL G250 250 amp.; 2 wheel round bale trailer w/elect. winch; Sturdy-Lite truck protector rack, aluminum; free standing fire place; 2" centrifugal pump w/gas eng.; 3 pt. Danhusser post hole digger; 2 wheel trailer w/dog box; Avery jacks; 1 lot tires; swamp coolers; 18' drill fill auger, 12 V.; J&I Flatbed for pickup; Boys 30" like new Monterey bicycle.

For More Information **NAYLOR AUCTION AND REALTY, INC.** NOT RESPONSIBLE FOR ACCIDENTS

Broker: Dale Naylor - CAI - OK 107486 - TX 7285
(405) 646-3548 - Balco, OK
Randy Schreiner - Associate - TX 9095
(405) 423-7110 - Texhoma, OK

Leading the Way, The Auction Way

NOTICE OF IMPOUNDMENT OF ESTRAY

Case No. 95-1
Date 10-25-95

On the 20 day of OCT., 19 95, I impounded the following estray:

Kind of Animal BOVINE
Breed HEREFORD
Color RED WITH WHITE FACE
Sex FEMALE
Age AGED
Size 1100 POUNDS
Brand, Marks, Identifying Characteristics RT. SIDE 3 RT. HIP

and, on the 25 day of OCT., 19 95, I filed a **Notice of Estray** in the Estray Book of HANSFORD County, Texas.

I have made a diligent search of the register of recorded brands in HANSFORD County, Texas, for the owner of said estray, but the search did not reveal the owner.

Notice is hereby given that, if the ownership of said estray is not determined by the 12 day of NOVEMBER, 19 95, said estray will be sold at public auction/sheriff's sale at GUYMON LIVESTOCK AUCTION INC.

WITNESS my hand this 25 day of OCT., 19 95.

R.L. MCFARLIN, JR.
Sheriff of HANSFORD County, Texas

(Designee of Sheriff of County, Texas)

Lynx 7th and 8th fall to West Texas

By Chad Davis and Kevin Bynum

Coach Gibson and the Spearman Lynx 7th and 8th grade teams were in heated grid-iron action this past Thursday night, as the two teams traveled to West Texas to take on the Comanches. Both games went down to the very last few ticks on the clock, but the Lynx were just edged out by the Comanches, 7th 24-20 and 8th 20-14.

In the 7th grade game, the first quarter belonged to the Comanches. They outscored the Lynx 16-6. Spearman held them in the second stanza of play to no points, and they

put 12 up of their own. The third quarter was a defensive standoff, as neither team scored. For the final quarter of play, the Lynx added another touchdown with a 2-point conversion. However, WT also added another score in the final seconds of the game.

Jimmy Gayton was the strong man for the Lynx. He brought in 305 yards on 17 carries, for an outstanding average of 18 yards per carry. Gayton also blasted in for 2 touchdowns. Dib Kirk was also a main force in this game. He managed 6 carries for 54 yards, for an average of 9 yards per carry. He also scored one touchdown and 12-

point conversion. Dusty Vinson also gave Spearman 34 yards on 2 carries. Steven Vasquez also brought in 1 carry for 26 yards. Kirk also had a fumble recovery.

Not very many stats for the 8th grade could be obtained at this time. However, the Comanches did slip by the Lynx 20-14.

Both of these teams will be in action this week, as they will be hosting the Roughriders of Boys Ranch. This will be the last game for both of these Lynx teams, and it should be a good forecast of how the junior varsity team will look next year.

Lynx JV beats West Texas, 24-22

By Chad Davis and Kevin Bynum

With the help of Aaron Witten, Kevin Baker, the offensive and defensive line, and Coach Neff, the Spearman Lynx junior varsity team was the only Lynx team to come away with a win from a West Texas High Comanches' football team. As every game that the Lynx have played with West Texas, this one too went down to the wire, as the Lynx brought in the winning score at last to give them the 2-point win, 24-22.

WT's #21 put the scare in the Lynx in the first quarter, as he was the lone scorer of the first stanza. He also brought in the 2-point conversion.

Then, in the second quarter, Spearman's Witten, evened up the odds, as he sprinted in for a huge 58 yard touchdown. He took the honors again and added the extra special touch, as he brought in the 2-point conversion afterwards.

After the half time break, WT's #21 again sprinted in for a touchdown, but this time he ran the ball back 82 yards on the opening kick-

off. The extra point failed, but the Comanches slowly pulled away. This 2 point miss would come back to haunt the Comanches.

The first three quarters of play was pretty much a dual between Witten and the Comanches' #21. In fact, shortly after WT's touchdown kickoff, Witten blasted in from 1 yard out to give Spearman their next score. He did it again, and put yet another 2-point conversion on the board, but the Lynx up 16-14.

The fourth quarter switched quickly from the running dual that was played in the first three stanzas to a passing match-up in the last quarter. To start off, West Texas' #22 caught an 11 yard touchdown pass, and #10 caught the 2-point conversion pass play.

With very little time left on the clock, Spearman was trailing, and they had to have a touchdown and the 2-point conversion to win this one. Like a lightning bolt from the sky, there was the great hands of Kevin Baker to answer the Lynx's prayers. He jumped up and caught a beautiful 20 yard pass in the end zone from Josh Bynum to tie the

game up. Then, it was time to go for the victory. Of course, Spearman did it, with the quick and powerful Witten, who pushed his way in for the 2-point conversion, and the go-ahead win, 24-22.

When all was said and done, Witten carried the ball 36 times for an incredible 257 yards and an average of 7.1 yards per carry. He also brought in 2 touchdowns. Bynum rushed 6 times for 14 yards an average of 2.3 yards per carry, pretty good for a quarterback. Chuck Grayson also was a great ball carrier for the Lynx, and he brought in 2 carries for yards.

All together, the Lynx carried the ball 44 times, in which Witten carried it 82% of the time, for 276 yards, for an average of 6.3 yards per carry. Spearman also had 1 completed pass out of 3 attempts for a 33.3% completion rate.

This same set of Lynx JV stars will be in action again this week, as they play host to the Boys Ranch Roughriders. The game is expected to start sometime shortly after the 8th grade game.

LYNX PLAYERS OF THE WEEK

FOR THE GRUVER GAME



OFFENSIVE BRENT COLLINS



DEFENSIVE MATT GAFFORD



DEFENSIVE TRAVIS LOOMIS

FOR THE WEST TEXAS HIGH GAME



OFFENSIVE MICHAEL WITTEN



OFFENSIVE ERIC VARNON



DEFENSIVE GREG ELLIOTT

Hansford County Hospital District
announces the opening of
the clinic at 702 S. Roland

Dr. Ahmed Iqbal

Internal Medicine
General Medicine

Office Hours: 8-12; 1-5
Call 659-2846 for appointment

Clinic Staff: Betty Pugh, Darlene Pierce, Helen Prachar, & Elizabeth Duncan, RN

Hansford County Hospital District
announces the opening of
the clinic at 710 S. Roland

Dr. Raul C. Tamayo

Pediatrics
General Medicine

Office Hours: 8-12; 1-5
Call 659-5234 for appointment

Clinic Staff: Brenda Busch and Tanja Whitefield, LVN

SPEARMAN AT BOYS RANCH

Curtis' Hot Oilers

806-659-3432

"Taking Service to Perfection"

GRUVER FORD, INC.

531 MAIN • GRUVER
"Well worth the drive"

OKLAHOMA STATE AT OKLAHOMA

NOTHING RUNS LIKE A DEERE!

HANSFORD IMPLEMENT

HWY 207 South (806)659-2568
1-800-753-1511 (806)733-2088

GAME OF THE WEEK
PAMPA AT BORGER

ABILENE CHRISTIAN AT WEST TEXAS A&M

The Bunkhouse

Cathy Gafford, Owner

Clothing & Accessories for Men, Women

Buyers:
Ladd Gafford
Jan Belzen
Betty Lookingbill

(806)659-2617
2125 Main
Spearman, TX

NEBRASKA AT KANSAS

AUTOMOTIVE • INDUSTRIAL • OILFIELD SUPPLIES
WHOLESALE AND RETAIL • IRRIGATION PARTS

Hi-Plains Auto Supply, Inc.

VANCE SNIDER - CLOIS (BILLY) BAKER
Owners

Box 116
Spearman, Texas 79081
806/659 2506
800 657 8142

Mobile Numbers
806/435 0289
806/435 0288

PERRYTON EQUITY

BUS. (806) 659-2420

Spearman
Pringle
Morse
Holt

TCU AT TEXAS TECH

For the Sport of it

by Bob Bort

Well, it's official. The Gruver Greyhounds will be playing only for pride against the West Texas Comanches at Stinnett this Friday, and their season will end with this game. West Texas will play Panhandle in bi-district, and Stratford will play Canadian in bi-district.

However, the Hounds will have something to shoot for - they will be shooting for the finest Hounds season record since the 1968 Hounds started the season 9-2. The Hounds will be 7-2 if they beat West Texas this week.

I would like this to end positively, so here goes. Even if the Hounds lose to WT this week, they will have compiled back to back 6-3 seasons, and only once since 1968 have the Hounds compiled back to back winning seasons. That was 1984-85, when they were 9-4, 5-4-1. And if they finish next season with a winning record - well, you have to go back to 1966-68 when they were 7-2-1, 8-3, 9-3. So, the Hounds should be proud of their accomplishments the past two seasons. Maybe next year they will break the jinx and make the playoffs.

Basketball season will get underway this week, with the Dumas teams in Greyhound Gym on Tuesday, November 14. The Hounds figure to open the season with 11 seniors, a junior and a sophomore. It should be an outstanding season for the Hounds and for the Lady Hounds.

Here is a list for the Hounds: Juan Arreola, Bailey Barkley, Daniel Bort, Phil De La Cruz, Travis Ferguson, Max Frick, Doug Gumfory, Scott Jarvis, Wylee Maupin, Sammy Renteria, Tye

Womble, Josh Mayhew, and Brant Armes.

And for the Lady Hounds, it figures to be five seniors, three juniors and a sophomore returning, with some additions, of course, possible: Kiki Carthel, Joni Hart, Robbi Mathews, Molly McLain, Tara Shapley, Kaysha Cluck, Cara Hathaway, Amber Murrell, and Weslyn Maupin.

That is 13 for the Hounds, maybe with a couple of additions; and 9 for the Lady Hounds, maybe with some additions. It should be a fine, fine season for both teams.

Lynx

CONTINUED FROM PAGE 9

age to get to the 42. Comanches' Todd Hopkins and Eric Burks did all of the 8 play 58 yard drive for WT in their next score of the night. With only 3:17 left in the next to last quarter, Hopkins took a 1 yard sweep for the score. The extra point flew in between the uprights, and WT increased their lead, 14-6.

Spearman was then really ready to score, and it showed. On the first play, the Lynx tried one of the trickiest and most hard to execute play they have ever done this season - the flea-flicker. This play saw a Lynx back getting the ball, while Tigrett acted like he was blocking, when all of sudden, the back threw the ball back to Tigrett, who then hit Martin Sanders on an awesome pass with a fantastic catch for 48 yards. After a few more great running plays by Phillip Sanders, Collins, and Witten, Spearman was sitting on about the 24 yard line. Martin Sanders got the call again with 31 ticks left, as leaped up and grabbed a Tigrett pass in the end zone. Unfortunately, the refs said that he dropped the ball when he hit the ground, and the great catch did not count. This put disappointment in the heads of the Lynx, as well as ended the third quarter of play. Spearman was not even close to being out of this one, 14-6.

Well, apparently good fortune did not smile on the Lynx. On the very first play of the fourth and final quarter, a fumbled occurred, and, of course, WT recovered.

The Comanches were real excited about this, and they then put on a 15 play drive that lasted most of the quarter. However, Elliott, who not just in this game but every game this season has been doing an excellent job, jumped and snagged a WT pass on a 4th and 11 play, with 4:13 left in the game.

Elliott's fumble, although it was beneficial to Spearman, put the Lynx back deep in their own territory on the 10. Now with that much time left, it should be easy to see how the Lynx could march down the field, get the touchdown, the 2-point conversion, and tie this game. Right? Unfortunately, wrong. On the very first play of Spearman's drive, Tigrett was deep in the pocket with more pressure than he should have had. He rared back to throw the ball, when a WT defender knocked it loose into the end zone and Comanche Josh Batenhorst pounced on it. The refs said Tigrett did not make a motion to throw, therefore it was a fumble and another WT touchdown. The extra point was good, and a very hurt and mad Lynx team was falling behind

late in the game, 21-6.

The Lynx then took over on the 33. Lusby had a short gain of 2 yards, which was really the only Spearman highlight of this drive. On a 2nd and 13 play, WT's Cooper Mitchell leaped up and stole a Spearman pass.

This is what really did it for Spearman, as soon after, Comanche Jerry Greene ran in for a 35 yard touchdown, with only 2:14 left in the quarter.

After that, the game was pretty well wrapped up. Blan did catch a pass from Tigrett for 14 yards, but a play after Mitchell again robbed another pass from Spearman.

After the interception, Greene ran for 17 yards and the last first down of the night, which ended this tearful and heartbreaking last home game for the Lynx.

On the offensive statistic side, Blan was the best of the best for the backs. He carried the ball only 2 times for an amazing 41 yards, for a 20.5 yards per carry average. He also caught the ball twice for 22 yards. Witten came in with 9 carries for 34 yards, for an average of 3.8 yards per carry. Collins, who had the most carries for the Lynx, ran 11 times for 32 yards, for an average of 2.9 yards per carry. Lusby came in with 10 carries for



The abacus was used by the ancient Greeks and Romans as well as the Chinese.

Royal Neighbors
OF AMERICA

100 Years
Fraternal Life Insurance

Complete
FRATERNAL LIFE INSURANCE
for the entire family including
Omni-Plus II Universal Life
Annuities and IRAS --
Highly Competitive Interest Rates
Term-Plus

MARILYNN HART
P.O. BOX 426
GRUVER, TX
(806)733-2066



Early Order Discount

POINSETTIAS

\$12⁹⁹ wrapped

NOW THRU NOV. 22, 1995

Order NOW and SAVE

Florist Quality Locally Grown

D&C GREENHOUSE • 2 miles west on Hwy 15 • Spearman
Call 806/659-5171 We Appreciate Your Business!

Holiday Extravaganza

Tuesday, November 14th

10 a.m. to 9 p.m. • The O'Loughlin Center, 502 Brandt

Anita's - formerly of Boots & Jeans
Sterling Silver at **LOW LOW** Prices
14 Karat Gold • Medals
Peyote Bird Jewelry
Clothing - velvet dresses, etc.

Aureli and Hawthorne
Jewelry • Gifts • Antiques
14 K, 18K, & Platimun Jewelry
Estate Jewelry
Indian sterling silver jewelry & Concho belts

Seasonal Creations
Dried Floral Arrangements
Wall Hangings
Wreaths
& Bird Houses

**Mountain Man
Nut & Fruit Co.**
Tasty treats by JoAnn
Gift Baskets • Chili Pots • Christmas Trays
(lots of samplings)

Allen
Julie
1103 S.
613 Ken
Good H

NEW LISTI
1113 Ba
2 LOTS
1010 Ha
16 Gold
160 Acr
FOR OU

1117 TO
\$50,000/
bedroom,
ment. Ca
4623.
S32, RTN

MAKE US
location.
with firep
Gibner. C
733-5555
S19, RTI

FORSALE
Addition
linked ou
electric w
or any ar
\$25, 3tp.

HOUSE
older vict
suntan ro
lot. 3 be
(806)659
in Spear
\$42, RTI
OFFICE
office an
acres. B
Please c
Spearman
\$42, RTI

FOR SA
N.E. sid
3762.
\$42, RTI

Re:
L
D
706 C
single
work
NEW L
908 I
Grea
730 I
11.1
1/2 b
1013
gara
711 I
gara
to S
NEW
320

For the Sport of it

by Bob Bort

Well, it's official. The Gruver Greyhounds will be playing only for pride against the West Texas Comanches at Stinnett this Friday, and their season will end with this game. West Texas will play Panhandle in bi-district, and Stratford will play Canadian in bi-district.

However, the Hounds will have something to shoot for - they will be shooting for the finest Hounds season record since the 1968 Hounds started the season 9-2. The Hounds will be 7-2 if they beat West Texas this week.

I would like this to end positively, so here goes. Even if the Hounds lose to WT this week, they will have compiled back to back 6-3 seasons, and only once since 1968 have the Hounds compiled back to back winning seasons. That was 1984-85, when they were 9-4, 5-4-1. And if they finish next season with a winning record - well, you have to go back to 1966-68 when they were 7-2-1, 8-3, 9-3. So, the Hounds should be proud of their accomplishments the past two seasons. Maybe next year they will break the jinx and make the playoffs.

Basketball season will get underway this week, with the Dumas teams in Greyhound Gym on Tuesday, November 14. The Hounds figure to open the season with 11 seniors, a junior and a sophomore. It should be an outstanding season for the Hounds and for the Lady Hounds.

Here is a list for the Hounds: Juan Arreola, Bailey Barkley, Daniel Bort, Phil De La Cruz, Travis Ferguson, Max Frick, Doug Gumfory, Scott Jarvis, Wylee Maupin, Sammy Renteria, Tye

Womble, Josh Mayhew, and Brant Armes.

And for the Lady Hounds, it figures to be five seniors, three juniors and a sophomore returning, with some additions, of course, possible: Kiki Carthel, Joni Hart, Robbi Mathews, Molly McLain, Tara Shapley, Kaysha Cluck, Cara Hathaway, Amber Murrell, and Weslyn Maupin.

That is 13 for the Hounds, maybe with a couple of additions; and 9 for the Lady Hounds, maybe with some additions. It should be a fine, fine season for both teams.

Lynx

CONTINUED FROM PAGE 9

age to get to the 42. Comanches' Todd Hopkins and Eric Burks did all of the 8 play 58 yard drive for WT in their next score of the night. With only 3:17 left in the next to last quarter, Hopkins took a 1 yard sweep for the score. The extra point flew in between the uprights, and WT increased their lead, 14-6.

Spearman was then really ready to score, and it showed. On the first play, the Lynx tried one of the trickiest and most hard to execute play they have ever done this season - the flea-flicker. This play saw a Lynx back getting the ball, while Tigrett acted like he was blocking, when all of sudden, the back threw the ball back to Tigrett, who then hit Martin Sanders on an awesome pass with a fantastic catch for 48 yards. After a few more great running plays by Phillip Sanders, Collins, and Witten, Spearman was sitting on about the 24 yard line. Martin Sanders got the call again with 31 ticks left, as leaped up and grabbed a Tigrett pass in the end zone. Unfortunately, the refs said that he dropped the ball when he hit the ground, and the great catch did not count. This put disappointment in the heads of the Lynx, as well as ended the third quarter of play. Spearman was not even close to being out of this one, 14-6.

Well, apparently good fortune did not smile on the Lynx. On the very first play of the fourth and final quarter, a fumbled occurred, and, of course, WT recovered.

The Comanches were real excited about this, and they then put on a 15 play drive that lasted most of the quarter. However, Elliott, who not just in this game but every game this season has been doing an excellent job, jumped and snagged a WT pass on a 4th and 11 play, with 4:13 left in the game.

Elliott's fumble, although it was beneficial to Spearman, put the Lynx back deep in their own territory on the 10. Now with that much time left, it should be easy to see how the Lynx could march down the field, get the touchdown, the 2-point conversion, and tie this game. Right? Unfortunately, wrong. On the very first play of Spearman's drive, Tigrett was deep in the pocket with more pressure than he should have had. He rared back to throw the ball, when a WT defender knocked it loose into the end zone and Comanche Josh Batenhorst pounced on it. The refs said Tigrett did not make a motion to throw, therefore it was a fumble and another WT touchdown. The extra point was good, and a very hurt and mad Lynx team was falling behind

late in the game, 21-6.

The Lynx then took over on the 33. Lusby had a short gain of 2 yards, which was really the only Spearman highlight of this drive. On a 2nd and 13 play, WT's Cooper Mitchell leaped up and stole a Spearman pass.

This is what really did for it Spearman, as soon after, Comanche Jerry Greene ran in for a 35 yard touchdown, with only 2:14 left in the quarter.

After that, the game was pretty well wrapped up. Blan did catch a pass from Tigrett for 14 yards, but a play after Mitchell again robbed another pass from Spearman.

After the interception, Greene ran for 17 yards and the last first down of the night, which ended this tearful and heartbreaking last home game for the Lynx.

On the offensive statistic side, Blan was the best of the best for the backs. He carried the ball only 2 times for an amazing 41 yards, for a 20.5 yards per carry average. He also caught the ball twice for 22 yards. Witten came in with 9 carries for 34 yards, for an average of 3.8 yards per carry. Collins, who had the most carries for the Lynx, ran 11 times for 32 yards, for an average of 2.9 yards per carry. Lusby came in with 10 carries for



The abacus was used by the ancient Greeks and Romans as well as the Chinese.

Royal Neighbors
OF AMERICA

100 Years
Fraternal Life Insurance

Complete
FRATERNAL LIFE INSURANCE
for the entire family including
Omni-Plus II Universal Life
Annuities and IRAs -
Highly Competitive Interest Rates
Term-Plus

MARILYNN HART
P.O. BOX 426
GRUVER, TX
(806)733-2066



Early Order Discount

POINSETTIAS

\$12⁹⁹ wrapped

NOW THRU NOV. 22, 1995

Order NOW and SAVE

Florist Quality Locally Grown

D&C GREENHOUSE • 2 miles west on Hwy 15 • Spearman

Call 806/659-5171 We Appreciate Your Business!

Holiday Extravaganza

Tuesday, November 14th

10 a.m. to 9 p.m. • The O'Loughlin Center, 502 Brandt

Anita's - formerly of Boots & Jeans
Sterling Silver at **LOW LOW** Prices
14 Karat Gold • Medalais
Peyote Bird Jewelry
Clothing - velvet dresses, etc.

Aureli and Hawthorne
Jewelry • Gifts • Antiques
14 K, 18K, & Platimun Jewelry
Estate Jewelry
Indian sterling silver jewelry & Concho belts

Seasonal Creations
Dried Floral Arrangements
Wall Hangings
Wreaths
& Bird Houses

**Mountain Man
Nut & Fruit Co.**
Tasty treats by JoAnn
Gift Baskets • Chili Pots • Christmas Trays
(lots of samplings)

Alle
Julie
1103 S.
613 Ker
Good H

NEW LIST
1113 Ba
2 LOTS
1010 Ha
16 Gol
160 Ac
FOR QU

1117 T
\$50,000
bedroom
ment. C
4623.
S32, RT

MAKE U
location.
with firep
Cibnar.
733-555
S19, RT

FOR SA
Addition
linked o
electric v
or any a
\$25, 3tp

HOUSE
older vic
suntan r
lot. 3 be
(806)655
in Spear
S42, RT
OFFICE
office ar
acres. B
Please
Spearman
S42, RT

FOR SA
N.E. sid
3762.
S42, R

Re
L
706
singl
work
NEW
908
Grea
730
11.1
1/2
1011
gara
711
gara
to S
NEW
320

