

INSIDE

Spiritually Speaking 3
PTA News 8
Track Results 9 & 11
Tennis and FFA 10
Want Ads 13

The Hansford County Reporter-Statesman

Serving All Of
Hansford County

14 pages

Vol. 83, No. 25

213 Main

Spearman, Hansford County, Texas

25¢

Thursday, April 18, 1991

Resignations accepted by Gruver board

by JoAnn Morton
Editor

The Gruver Independent School District Board of Trustees, at its April 10 meeting, accepted the resignations of Mike and Doty Banks from Gruver schools.

Mike Banks is girls' basketball and track coach, and girls' athletic coordinator. Doty Banks is a third grade teacher at Gruver Elementary School.

"They'll be going to Idalou, Texas, to accept similar positions there," said Tommy Cathey, superintendent. "We sure hate to lose them."

Meredith Runyan, Gruver High School senior, was recognized as the Student of the Month by the school board after she was introduced by

D.D. (Bradshaw) Tipps.

"She is one of our most outstanding senior students," said Cathey. "We will really miss her next year after she graduates."

According to Cathey, the board also adopted the 1991-92 School Calendar. "But it is subject to change, depending on what legislation is passed," he commented.

Other school board business included discussion of the monitoring visit from the Texas Education Agency, which took place at the beginning of this school year. Gruver ISD received a letter from the TEA, said Cathey, which acknowledged corrections and changes made following the compliance visit.

Board members also discussed a

Texas Association of School Boards local policy concerning campus improvement committees, but took no action.

The purchase of a new school bus was postponed because the bus ordered is only available with a diesel engine, and a gasoline engine is preferred, said Cathey.

The board discussed personnel matters in executive session and afterward, rehired auxiliary personnel including cafeteria workers, custodians and maintenance personnel. The board also accepted the Banks' resignations at that time.

In his superintendent's report, Cathey gave the board information on converting one of the district's smaller school buses for use by

physically disabled persons. Consideration is also being given, he said, to hiring a Special Education/handicap teacher's aide for the 1991-92 school year.

Cathey discussed with board members some problems occurring with the Gruver County Barn, and correction of those problems.

He gave the board a list of students who will participate at the U.I.L. Regional Literary Meet in Levelland, and gave a reminder of the May 4 School Board election.

He noted the Gruver PTA had suggested purchasing ceiling fans for the high school building, and had indicated willingness to donate funds for the purchase. The board will make a decision on the purchase in the future, he said.

SISD budget requests up for 1991-92 year

Spearman Independent School District budget requests for the 1991-92 school year are up over \$198,000, according to Superintendent Larry Butler.

At the Spearman ISD Board of Trustees meeting April 8, Butler told school board members about the increased budget requests and informed board members of legislative action which would probably reduce state funding for Spearman schools.

In a related matter, the board voted to encumber the reserve funds held by the Spearman ISD. Butler explained later that encumbrance of the money does not mean the funds have been spent. He said there is a move underway in the legislature to capture reserve funds held by school

districts. The board encumbered the money in the hope of preventing this type of action.

The school board adopted a school calendar for the 1991-92 school year, with a minor change at the end of the year. Memorial Day will be a holiday and the final day of classes will be May 27. Teachers will have an inservice-work day on May 28.

A bid for cafeteria tables was accepted from Hoover Brothers Inc. Nine mobile folding tables with attached stools were purchased for a total price of \$6,482.79.

Susan Kidder, math teacher at Spearman High School, reported to the board on possible changes in Texas math programs for the 1990s. She said a statewide committee is

making an effort to change mathematics programs to keep up with technological changes.

Mac Sproul from the TI-IN Network previewed the capabilities of the satellite system offering courses, teacher inservice and board training, along with opportunities available through the cable network. Butler commented that a number of possibilities exist for the Spearman ISD.

The board discussed whether to repair the district's 1983 Eagle travel bus or to sell the bus, then voted to have it repaired. In addition, board members discussed a previously-ordered school bus. It was noted that the state will not send a bus with a gasoline engine. The bus will be a

diesel, which will be more expensive, according to Butler.

A resolution supporting expansion of the Pantex nuclear plant near Amarillo was not accepted by the board. Two lots that had been turned over to the district for back taxes were awarded through bidding, and will now go back onto the tax rolls.

A statement was made concerning board members' training, which is required by the state. It was noted that all Spearman school board members have received numerous hours of training. Also, a letter of congratulations was presented from First State Bank of Spearman. It was noted the bank has been an outstanding supporter of Spearman school activities.

Turner, Trosper receive Eagle

Two Spearman Boy Scouts, Christopher Turner and Dallas Trosper, will receive Scouting's coveted Eagle award Sunday, April 21.

The two will receive their Eagle Awards in a special ceremony at 3 p.m. in the Sacred Heart Catholic Church parish hall. A reception will follow the ceremony.

Turner is the son of Loyall and

Ginger Turner. Trosper is the son of Larry and Janet Trosper. Both young men joined Scout Troop 561 in June, 1985 and have been actively involved in the troop since that time.

Chris has earned the following Merit Badges on his Trail to Eagle: First Aid, Swimming, Indian Lore, Pioneering, Rowing, Wilderness Survival, Citizenship in the Community, Atomic Energy, Emergency

Preparedness, Canoeing, Woodcarving, Camping, Citizenship in the Nation, Communications, Environmental Science, Lifesaving, Orienteering, Safety, Nature, Personal Management and Citizenship in the World.

Chris has completed a NAGATAMEN Leadership Course and has served on staff. He is a member of the Order of the Arrow and currently serves as a Junior Assistant Scout Master in Troop 551.

His Eagle Project involved the repainting of the Stationmaster's House Museum. His dedication, many hours of work and leadership abilities resulted in the fulfillment of a project that is enjoyed by all the residents of and visitors to Hansford County.

Dallas has earned the following Merit Badges on his Trail to Eagle: Citizenship in the Nation, Swimming, Archery, Indian Lore, Pioneering, First Aid, Environmental Science, Fishing, Horsemanship, Rifle & Shotgun, Rowing, Wilderness Survival, Citizenship in the Community, Atomic Energy, Music, Lifesaving, Camping, Citizenship in the World, Personal Management, Public

See Eagle page 10

The City of Gruver's early warning system will be tested Friday, April 19 at approximately 10:05 a.m. Police Chief Steve Gaines said the test will be conducted if the weather is clear, and Gruver residents should be aware it is only a test.

Council has special session

Spearman's city council met in a special session Tuesday, April 9.

The special meeting included an executive session for discussion of litigation and personnel matters.

After the meeting was opened to the public, Mayor Burl Buchanan said no action was taken during the executive session, only discussion.

The council then voted to advertise for a customer accounts clerk and to table advertisement for an administrative assistant.



Workmen are replanting a tree in the park area behind the Palo Duro Dam. The tree was taken from a stand of trees in front of the dam.

Palo Duro Dam done

by JoAnn Morton
Editor

The Palo Duro Dam is completed, according to Johnnie Lee, general manager for the Palo Duro River Authority.

Saturday, July 6 is the tentative date set for dedication of the dam, Lee said after the PDRA board met April 9. He explained the date is tentative because the board is trying to make sure dedication on that date will not conflict with other activities.

Other PDRA discussion centered on plans such as "finishing and fixing up the park area," said Lee. He said trees are currently being

transplanted from the lower portion of the area to the upper portion. About 100 trees are being moved to the south side of the lake area and to the park area north of the dam, he added.

As a taxing entity, the PDRA has authority to set property tax exemptions. At the April 9 meeting, board members set exemptions for disabled property owners and for those who are recipients of Social Security benefits.

Regular business for the PDRA board included approval of minutes of the last meeting, approval of the treasurer's report, and payment of claims.

Well permits decrease

AUSTIN - A total of 1,166 drilling permits were issued by the Railroad Commission in March, according to RRC Chairman Robert Krueger. In February, the total was 1,230. March 1990's total was 1,344.

The March total included 656 permits to drill new oil and gas tests, 43 to re-enter existing well bores, 28 to deepen existing holes, 141 to plugback existing holes, and 92 for

other wells. Operators were also issued 206 amended drilling permits.

Krueger said permits issued for new oil and gas holes in March included 27 in the San Antonio area (District 1), 41 in the Refugio area (District 2), 40 in Southeast Texas (District 3), 69 in deep South Texas (District 4), 15 in East Central Texas (District 5), 43 in East Texas (District 6), 93 in West Central Texas (District 7B), 67 in the San Angelo area (District 7C), 90 in the Midland area (District 8), 58 in the Lubbock area (District 8A), 91 in North Texas (District 9), and 22 in the Panhandle (District 10).

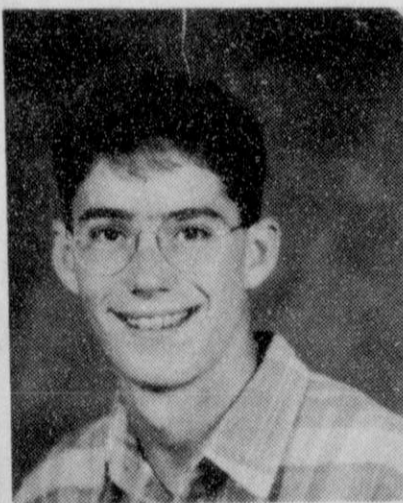
In the first three months of 1991, the Commission has issued 3,813 drilling permits, a 0.03 percent increase from the 3,812 issued during the same period of 1990.

The 1,166 permits issued in March included 546 oil permits, 169 gas permits, 387 oil and gas permits, 29 injection permits, 14 disposal permits, and 21 other permits.

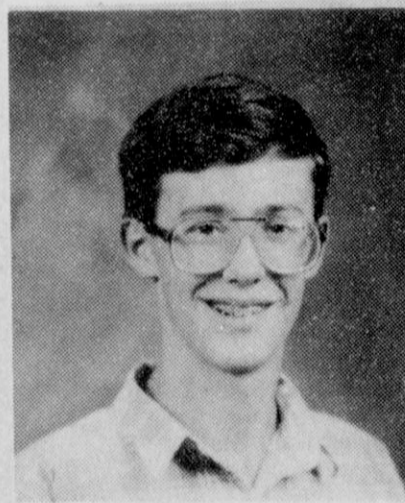
Texas oil and gas operators reported 247 gas and 615 oil completions in March, according to Krueger. In February the total was 205 gas and 604 oil completions. March 1990's total was 284 gas and 517 oil completions.

Gas completions in March included seven in the San Antonio area (District 1), 29 in the Refugio area (District 2), 29 in Southeast Texas (District 3), 85 in deep South Texas (District 4), six in East Central Texas (District 5), 22 in East Texas (District 6), 14 in West Central Texas (District

See permits page 10



Dallas Trosper



Chris Turner

St. Jude Bike-A-Thon Friday in Gruver

Gruver's "Wheels for Life" Bike-A-Thon to benefit St. Jude Children's Hospital is set for Friday, April 19 at 4 p.m. according to Dave Karlin, coordinator for the event.

Last year, 131 Gruver bike riders raised \$3,443.50 for St. Jude Children's Research Hospital. The goal for this year's ride is to have 131 riders and raise \$5,000, said Karlin.

As an added incentive for riders in the 1991 Bike-A-Thon, prizes are being offered for those turning in the most money.

A new bicycle will be presented to the top boy rider and the top girl rider, said Karlin. The top riders are the ones turning in the most money of all riders in the Bike-A-Thon. The bicycles are donated by Caprock Feed Lot No. 1 and by Gruver State Bank.

Every rider returning \$75 or more from their efforts will receive a barrel tote bag. Riders turning in \$30 or

more will receive a t-shirt, and everyone turning in money will receive a certificate.

Anyone interested in riding in the "Wheels for Life" Bike-A-Thon, or donating to St. Jude Children's Research Hospital should call Karlin at 733-2169.

St. Jude Children's Research Hospital provides treatment and research for children suffering from the most devastating kinds of childhood diseases: acute lymphocytic leukemia, Hodgkin's disease and other forms of cancer, sickle cell anemia, and other maladies of childhood. Children who come to the hospital receive the best, most up-to-date medical care available, regardless of their economic status, race, or religion.

St. Jude Children's Hospital is the largest childhood cancer research center in America. It is the first and only institution established for the

sole purpose of conducting basic and clinical research into catastrophic childhood diseases.

St. Jude Children's Hospital is primarily supported by funds from volunteer contributions. The hospital also receives assistance from federal grants, mainly through the National Institutes of Health and the National Cancer Institute. Part of the multi-million dollar operating budget also comes from insurance and investments.

Costs continue to rise, and the following 1990 figures show a small sample of typical expenses incurred in a child's treatment.

- *First year treatment of a child with leukemia - \$38,000.
- *One day's hospitalization, intensive care unit - \$615.
- *Spinal tap - \$65.
- *One hour physical therapy - \$50.
- *Wig for patients who lose their hair after chemotherapy - \$25.

- *Complete blood count - \$51.
- *Bone marrow test - \$280.
- *Chest x-ray, one view - \$65.
- *Blood transfusion, minimum - \$62.
- *One day of chemotherapy administered intravenously to leukemia or solid tumor patients - \$524.

- *Surgical suite, including anesthesia for major operation - \$3,177.
- *Computerized axial tomography (cat scan), a special test looking for tumors in the body, minimum - \$700.
- *Ultrasound study, also another special test looking for tumors in the body - abdomen and pelvis - \$183.
- *Radiotherapy treatment with the linear accelerator - \$98.
- *Artificial leg (above knee), quadrilateral, total contact with pneumatic knee - \$5,700.

Brooke Simon, a solid tumor patient at St. Jude Children's Research Hospital, represents all the patients at St. Jude by serving as the Bike-A-

Thon poster child.

Brooke, at age 3, developed a malignant tumor in her abdomen and after surgery was treated with radiation and chemotherapy. She has now been taken off all therapy and returns to St. Jude only for check-ups. At age 5, she is well on her

See bike page 10

WEATHER			
Day	Hi	Lo	Precip
Thu	87	56	0.00
Fri	84	46	0.00
Sat	66	38	0.00
Sun	62	40	0.00
Mon	83	37	0.00
Tue	82	50	0.00

Pringle-Morse school menu

APRIL 29-MAY 3 LUNCH
Monday - Tacos/soft burritos, beans, salad, tater tots, cookie, milk
Tuesday - Chicken strips, potatoes/gravy, corn, salad, dessert, milk
Wednesday - Meat loaf/ravioli, baked potato, salad, dessert, milk

BREAKFAST
Monday - Cereal, toast, juice, milk
Tuesday - Donuts, cheese toast, juice, milk
Wednesday - Pancakes, sausage, juice, milk
Thursday - Muffins, toast, juice, milk
Friday - Biscuits, sausage, juice, milk

At the movies . . .

Scheduled for Friday, April 19 through Tuesday, April 23 at Spearman's Lyric Theatre are "Shipwrecked" and "Awakenings." "Shipwrecked" will show on the Lyric's Screen 1 at 8 p.m., and "Awakenings" will show on Screen 2 at 7:45 p.m.

A young boy is stranded on a desert island and has all sorts of adventures in "Shipwrecked," a Norwegian pick-up from The Disney Studios. Stian Smestad and Gabriel Byrne star. Nils Gaup, who made the acclaimed "Pathfinder," directs.

"Shipwrecked," billed as "a quest for survival that became the adventure of a lifetime," is rated PG.

"Awakenings" is an absorbing drama about one doctor's attempt to transform the lives of several neurologically afflicted patients in a Bronx chronic-care hospital. The men and women who inhabit the ward are locked into a silent world that begs release. Some neurological disease has crept into their bodies and made them sleeping souls, or so it would appear. Yet behind the appearance of catatonia lies a wealth of thought and dream that longs to be explored.

As an odd yet heroic (and painfully repressed) doctor, Robin Williams is a mesmerizing bundle of nuances, never once betraying the film with a sudden departure for outrageousness. He creates a compelling character.

Robert De Niro stars as the patient who is briefly transformed and comes to life with the aid of a drug administered by Williams. De Niro's character is saturated with texture and deeply-embedded psychological substance.

"Awakenings" is rated PG-13 for hospital ward scenes.

Letter to the editor

Editor:
 Spearman, Gruver and Hansford County are blessed with several good churches, and school systems.

Our hospital and manor are way above average. At the present time we are fortunate to have two doctors. We have always had good nurses and staff, but we still go out of town for this service.

We have financial institutions with the capital to meet the needs of our community. Several contractors live in our county, but we call in outside contractors to do our work. We have three lumber yards, and a carpet and paint store that can compete with anyone in the country if given the opportunity.

What about the auto dealers? One has already moved to Perryton and one has completely closed its doors. Have we tried to buy or trade with those that are left?

The farm equipment dealers are owned and managed by good people in our community. Do we try to deal with them?

We have grocery stores that are more than adequate to serve the needs of our area. The prices have been tested by shoppers that know. Their prices compare with the stores in other towns. And that goes double for our good drug store that we are very fortunate to have.

We have two jewelry stores that people drive from some distance to trade with. That is also true with our furniture and clothing stores. People from other towns order by phone or come to buy from these stores.

This tells me that we should do our best to keep what we have by trying to trade with our own business people.

Just recently a long time oil company closed down and others are talking about doing the same.

I see people from all over the area coming to our eating establishments for lunch or dinner. This we are proud of.

There are other good honest businesses such as parts houses, service centers and stations that are left. Add to the list B & B Farms, Clark's Flying Service and other businesses that meet the needs of the farmer, such as spraying, cleaning seed, fertilizer, and seed for planting.

Wake up Spearman, we may have to pay much higher taxes if we don't start checking at home before we buy from out of town, so called, discount houses. If we don't, we may see half of the people move out after several stores close. Then how will those of us left pay for our city and county law enforcement, road maintenance, hospital and schools?

All of us are guilty of going to those "out of town" businesses to buy everything you can think of. We are just a free hauler for all the big discount stores. But I am real confident that when tax time comes, all of these "out of town" businesses will come to Spearman and help pay our taxes.

One last thing. The mayor of Amarillo has stated on TV that we pay a large percentage of their taxes. Let us change the old slogan "The last one out, turn out the lights" to "The first one in turn on the lights and all others leave them on," so we won't have to drive for miles just to buy a loaf of bread.

R.L. Nelson

Hansford Happenings

The Spearman Classroom Teachers Association will sponsor a forum featuring candidates for election to the Spearman School Board. The forum is scheduled for Thursday, May 2 at 7:30 p.m. at the Spearman High School auditorium. Dwayne Mitchell will serve as moderator for the event, during which candidates will respond to prepared questions. The public is invited and encouraged to submit questions for the candidates. Questions for school board candidates can be submitted to either Dwayne Mitchell or Wesley Jarvis at Spearman High School.

The annual Texas Aggie Muster will be held in Spearman Sunday, April 21 at 1:30 p.m. at Ivey's Hungry Cowboy Restaurant. A barbecue dinner will be served, with the Muster program to follow. All former students, students and friends of Texas A&M University are invited to attend. For more information or reservations, contact Jodi Irwin at 659-3965. The Muster in Spearman is sponsored by the High Plains A&M Club which includes Aggies from Hansford, Hutchinson and Carson counties.

The Spearman High School freshman class will have a car wash Saturday, April 20 from 1 to 6 p.m. at the Crazy Corner Shop, 501 W. Kenneth in Spearman. Proceeds will be used to purchase a memorial display for Paul Trooper and the freshman class. Donations will be accepted.

The annual Golden Spread Senior Citizen's Center Radiothon will be Thursday, May 2 from 10 a.m. to 4 p.m. on the local radio station, KRDF.

The Spearman High School Senior Class will have a garage sale Saturday, April 20 from 8 a.m. to 4 p.m. in the high school cafeteria. Proceeds will go toward the senior trip. The class is accepting donations of items for sale. Donations can be made by contacting Mary Baker at 659-5557, Cindy Blackman at 659-2476, or Jan Williamson at 659-3743.

The Evergreen Gospel Trio will minister Sunday, April 21 at 7 p.m. at Community Bible Church, Highway 15 in Gruver. The public is welcome to attend.

First Baptist Church of Gruver will have a Spring Revival Wednesday, April 17 through Sunday, April 21 at 7:30 p.m. nightly. Special speakers will be Warren and Brian McClenagan.

Panhandle Transit returns to Spearman on Wednesdays, from 8 a.m. to 5 p.m., with driver Linda Butt of Spearman. Transportation will be provided at a cost of 50 cents per trip in town. Coupon booklets are available. Out-of-town transportation for medical purposes only will be provided Tuesdays and Thursdays. For more information or to schedule a ride, call 659-3866.

Now Playing At The Lyric Theatre

Friday, April 19 - Tuesday, April 23

Bargain Nights Mon. & Tue. All Seats \$3
 Screen 1 - 8:00 Screen 2 - 7:45



113 Main, Spearman

Police report

Spearman Police Department
 Spearman Police Chief Joe Raper reports his department responded on an ambulance run to the 100 block of South Hazelwood on Tuesday, April 9. The afternoon call was for care for a female patient.

HENSON CHIROPRACTIC
 410 S. Davis Spearman, TX
 Call For Appointment 659-5603
 Office Hours: Mon., Wed., Fri. 8:30-5:00
 Tue., Thu. 8:30-11:30

Spearman police also received a call reporting a fire near the intersection of the Gruver Highway and Airport Road. The call came in shortly after midnight on Thursday, April 11.

Another call for the ambulance was received by Spearman police, this time on the evening of Sunday, April 14. The response was for care of a man in the 400 block of North Bernice.

Also on April 14, Spearman police made an arrest on outstanding traffic warrants issued by the Texas Department of Public Safety.

Gruver Police Department
 Gruver Police Chief Steve Gaines reports two citations were issued by his department over the weekend of April 12-13. One citation was for exhibition of acceleration in the 600 block of Cator Street.

On Friday, April 12, Gruver police were called to unlock a vehicle at the high school parking lot.

A message was delivered to the track meet in Gruver on Saturday, April 13.

Also on April 13, the Police Department responded to a residential alarm in the 100 block of Cooper Street. Upon investigation, it was discovered to be a false alarm.

The Gruver ambulance answered two calls last week, reports Gaines.

On Friday, April 12, the ambulance was summoned to Gruver Junior High School, where a student was having a seizure. The patient was transferred to Hansford Hospital in Spearman.

On Saturday, April 13, the Gruver ambulance responded to a call nine miles southwest of Gruver for a woman in cardiac arrest. The EMS crew resuscitated the patient and transferred her to Hansford Hospital, where she was pronounced dead shortly after arrival.

Gruver Fire Department
 Gruver Fire Chief Sam Gruver reports his department responded to two calls on Monday, April 8.

The first fire was in the northeast part of Gruver, where high wind downed power lines. No property loss resulted from the fire.

That same night, the Gruver Fire Department answered a call reporting a fire, but upon investigation, no fire was found.

Attend the Church of YOUR Choice!

<p>Primera Mission Bautista 502 E. 7th 659-3991 Sunday School 9:45 a.m. Worship 11:00 a.m. Pastor Jose Rauda Perez</p> <p>First Assembly of God 401 N. Bernice 659-2295 Sunday School 9:45 a.m. Worship 10:45 a.m. Evening Worship 7 p.m. Wednesday Worship 7 p.m. Pastor Ray Cook</p> <p>Church of Christ 1101 S. Bernice 659-2252 (Faith Lutheran Church) Sunday Bible Class 9:45 a.m. Worship 10:30 a.m. Evening Worship 6:00 p.m. Bible Study Wed. 7:30 p.m. KRDF Radio Program Living With Christ 7:50 a.m. M-F Minister John Scott</p> <p>First Baptist Church 123 N. Bernice 659-5557 Sunday School 9:45 a.m. Worship 11:00 a.m. Evening Worship 7:00 p.m. 24 Hr. Prayer 659-2911 Pastor Russ Gibbs</p> <p>Faith Lutheran Church 1021 Cotter 659-2033 Sunday School 9:45 a.m. Worship 11:00 a.m. KRDF Program Sun. 9 a.m.</p> <p>First Presbyterian Church 1021 Cotter 659-2033 Sunday School 9:45 a.m. Worship 11:00 a.m. KRDF Program Sun. 9 a.m.</p> <p>Word of Life Community Church (Interdenominational) 1105 S. Roland Sunday School 9:45 a.m. Sun. Morning Service 10:45 a.m. Sun. Eve. Service 6:30 p.m. Wed. Eve. Service 7 p.m. Interim Pastor Merle Davis</p> <p>Union Church 31 S. Endicott 659-2644 Sunday School 9:45 a.m. Worship 10:45 a.m. Sun. Evening 6:30 p.m. Wed. Bible Study 7 p.m. Pastor Jeff L. Burruss</p>	<p>In Spearman</p> <p>Fellowship Baptist 1102 S. Archer 659-2783 Sunday School 9:45 a.m. Worship 11:00 a.m. Evening Worship 7:30 p.m. Wed. Evening 7:30 Pastor Ron Fox</p> <p>First United Methodist Church 407 S. Haney 695-5503 Sunday School 9:45 a.m. Worship 11:00 a.m. Worship/Study 7:00 p.m. Youth Wed. 7 p.m. & Sun. 6 p.m. Pastor Todd Dyess</p> <p>Apostolic Faith Church 822 S. Dressen 659-2870 Sunday School 10:00 a.m. Worship 11:00 a.m. Sunday Evening 6:30 p.m. Wed. Prayer Meeting 7 p.m. Pastor Lealand Grimmer</p>	<p>First Christian Church Disciples of Christ 29 S. Bernice 659-2036 Sunday School 9:45 a.m. Worship 10:50 a.m. Women's Bible Study Wed. 2 p.m. Youth Wed. 6 p.m. & Sun 5 p.m. Pastor LaVern Draper</p> <p>Sacred Heart Catholic Church 901 Roland 659-2166 Sat. Night Mass 7:00 p.m. Sunday Mass 9:30 a.m. C.C.D. Sunday 10:30 a.m. Spanish Bible Study Fri. 8 p.m. Father Norbert Kieferle</p>	<p>Devotional</p> <p>WORD of GOD</p> <p>Prophecy Fulfilled</p> <p>And beginning at Moses and all the prophets, he expounded unto them in all the Scriptures the things concerning himself.</p> <p>And he said unto them, These are the words which I spake unto you, while I was yet with you, that all things must be fulfilled, which were written in the law of Moses, and in the prophets, and in the psalms, concerning me.</p> <p>Luke 24:27,44</p>	<p>In Gruver</p> <p>Church of Christ 209 King 733-2760 Sunday School 9:45 a.m. Worship 10:20 a.m. Sunday Evening 6:00 p.m. Wed. Eve. 7:30 p.m. Minister Harold Sneed</p> <p>Community Bible Church (Interdenominational) Hwy. 15 733-2838 Sunday School 10 a.m. Worship 11 a.m. Sunday Evening 6:30 Wednesday 7 p.m. Pastor Zane Gray</p> <p>First Christian Church 510 King 733-2960 Sunday School 10 a.m. Worship 11 a.m. Wed. Bible Study 7:30 p.m. Youth Wed. 6:30 p.m. Pastor Gary Gumfory</p> <p>First Baptist Church 402 E. Broadway 733-2411 Sunday School 9:45 a.m. Worship 10:50 a.m. Disciple Training Sunday 6 p.m. unday Eve. 7 p.m. Youth Happening Wed. 6:30 p.m. Prayer Meeting Wed. 7 p.m. Pastor Larry Miller</p> <p>Oslo Lutheran Church (ELCA) West of Gruver On Hwy 15 & N. FM 1162 339-7709 Sunday School 9:45 a.m. Worship 11 a.m. Pastor Nate Hanson</p> <p>First United Methodist Church Broadway & Garrett 733-2651 Sunday School 9:45 a.m. Worship 8:30 & 10:55 a.m. Sun. Evening 6 p.m. UMY 6 p.m. Pastor Lewis Holland</p>
--	---	---	--	--

Brought to you by these Fine Hansford Businesses

<p>Boxwell Brothers Funeral Directors 519 Evans Spearman</p>	<p><i>Berry Cleaners</i> DAN DESIMONE - OWNER P.O. Box 1017 • 207 Main St. Phone 659-3122 SPEARMAN, TEXAS 79081</p>	<p>Dr. Laurence Behney 702 S. Roland 659-2846</p> <p>Dr. Charles Ridge 721 S. Evans 659-3395</p> <p>After Hours 659-2535</p>
<p>Hagerman's Service 1213 Hwy. 15 659-5131</p>	<p>Kerry L. Henton</p>	<p>Stand Firm Christian Book Store 322 Main Gruver 733-5124</p>
<p>GSA GRUVER STATE BANK GRUVER, TEXAS 79041 PHONE (817) 733-5041 HOA 928</p>	<p><i>The Gift Registry</i> 103 E. Broadway Gruver</p>	<p>Hansford County Reporter-Statesman</p>

The Hansford County Reporter-Statesman

"Serving All Of Hansford County"

USPS 509660
 213 Main, Box 458, 659-3434
 Spearman, TX 79081

Published Weekly at
 213 Main, Spearman, Texas

Owned and Operated by:
Texas Independent Newspapers, Inc.
 15915 Alsace
 San Antonio, TX 78232
 (512) 545-1739

Second Class postage paid at Spearman, Texas 79081.

Any erroneous reflection upon the character of any person or firm appearing in these pages will be gladly and promptly corrected upon being brought to the attention of the management.

Publisher - Robert M. Hulett
Copy Editor - JoAnn Morton
Bookkeeper - Colleen Burkhammer

Subscription Rate: Hansford County, \$19.95; out of county, \$24.95 annually.

Postmaster: Send address changes to **Hansford County Reporter-Statesman**, Box 458, Spearman, TX 79081.

The publisher reserves the right to revise or reject at its option any advertisement which it deems objectionable, either in subject or phraseology, or which it may deem detrimental to its business.

Advertising and Story Deadlines: Tuesday, 12:00 p.m.

TA MEMBER TEXAS PRESS ASSOCIATION

Biggers receives medal

Lieutenant Colonel Cecil R. Biggers of Spearman, who serves with the 13th Judge Advocate General Detachment in Lubbock, was presented with the United States Army Meritorious Service Medal on April 6.

LTC Biggers was presented the medal for exceptionally meritorious service during the period Jan. 31, 1987 through April 1, 1990 while serving as Team Director and Chief Contract Law Officer, 13th Judge Advocate General Detachment.

LTC Biggers provided premobilization support to all units of the 90th U.S. Army Reserve Command, the 420th Engineer Brigade, and the 877th Medical Brigade units within an expansive geographical area. His participation contributed to the 13th Judge Advocate General Detachment receiving the Superior Unit Award.



LTC Cecil Biggers



Little Dribblers Team 1, third graders, include (front row, l-r) Reagan Renner, Sean Baker, Jeremy Mackie, Clayton Wilkerson (back row, l-r) Dusty Barber, Evan Cudd, Jordan Brock and Josh Schumann. They are coached by Craig Schumann.



Members of Spearman Cub Scouts Den 1 were busy Sunday afternoon, sanding and painting the concrete culverts in the Spearman parks. This was their service project to earn a World Conservation award. Inside the culvert are Jordan Brockman and Andrew Cummings. Working on the outside are (l-r) Joe Bob Wrinkle, Timmy Bynum, Dib Kirk, John Gage, Wayne McCubbin, David Sharp, Cary Cates and Daniel Ellis.

Spiritually Speaking

by Larry Miller
First Baptist Church, Gruver

"Therefore, to him that knoweth to do good, and doeth it not, to him it is sin." - James 4:17.

Many years ago when I was attending Wayland, this particular verse stared at me from a poster in a Sunday School room for several weeks. It became a permanent part of my mind. It often speaks to me today about the failures of the Christian community. For example, it tells me when we know:

-That our place in God's order of things is to be a faithful Light of truth to a darkened world, and we don't, it is our SIN!

-That we are to love one another and we don't, it is our SIN!

-That we are to obey all our Lord's commands, and we don't, it is our SIN!

-That we are to make disciples of all nations, starting at home, and we don't, it is our SIN!

-That we are to be cheerful givers of our resources to the Lord's work,

and we don't, it is our SIN!

-That we are to PRAY without ceasing, and we don't, it is our SIN!

If we Christians did what we KNOW we should do, we would be faithful to worship on Sunday; we would fill the house for the mid-week prayer service; we would be engaged in sharing the good news of salvation to our neighbors and friends; and we would be ministering to the needy.

Vance Havner once said, "America has had more Light than any nation on earth. We have had the greatest gospel privilege of any people in history. If judgment is in proportion to the Light we have had, God have mercy on America!"

Jesus said, "If the miracles that were performed in you had been performed in Sodom, it would have remained until this day. But I tell you that it will be more bearable for Sodom on the day of judgment than for you." - Matt. 11:23-24.

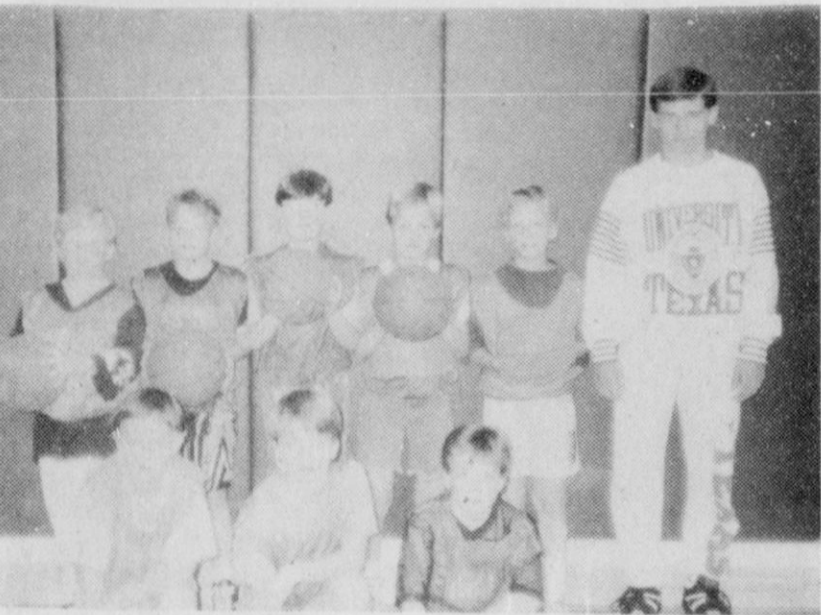
God help us!!

Bro. Larry Miller

Hospital notes

ADMISSIONS
Thursday, April 11 - Rita Palmer, Maudine Patterson
Friday, April 12 - Will Etheredge, Bruce Sheets
Saturday, April 13 - Cam Butts
Sunday, April 14 - Dorothy Bryan
Monday, April 15 - Maria Robeldo
Tuesday, April 16 - Albert Mackie
DISMISSALS
Thursday, April 11 - Janice Riley,

Esta Dixon, Doris Cluck
Friday, April 12 - Lester Slaten, Mary Cornelius
Saturday, April 13 - Rita Palmer
Monday, April 15 - Will Etheredge
Tuesday, April 16 - Cam Butts
Patients in the hospital are Albert Mackie, Maudine Patterson, Bruce Sheets, Maria Robeldo and Dorothy Bryan



Little Dribblers Team 2, third graders, include (front row, l-r) Jeremy Ledgewood, Aaron Winegarner, Landon Delozier, (back row, l-r) David Parker, Kelsey Henton, Brandon Hataway, Ricky Goodson and Ryan Gibbs. They are coached by Brian Beck.

Chamber Chatter

by Brett Whitford

Things are very busy at the Spearman Chamber of Commerce. Round-Up plans are underway. Loretto Cook is the 1991 Round-Up Chairperson. If you would like to help with Round-up, give us a call.

We would like to say Thank You to everyone that signed the survey on the Bar-B-Que. The Round-Up Committee has decided on food booths once again this year, so now is the time to call and get your booth reserved. As last year, they will be on a first come, first serve basis. Calls are already coming in.

We are also having a beard growing contest! To enter, come by the Chamber office and sign up! The entry fee is \$1.00 and the winner gets the pot! The entry deadline is April 22, 1991 at 5:00 p.m.

This Friday the Rotary Club and the Chamber of Commerce will host a Career Day Clinic. We are especially excited about this. We would like to thank the consultants taking time out of their very busy schedules to be here to speak to the high school students.

Our consultants are Dr. Stan Cobb, Dr. Charles Ridge, Dr. Lonnie Adkins, Art Schneider, Dawn Hooks, Shelly Tracy, Randy Kirk, Judy Nelson, Holly Simpson, David Bowles, Joe Raper, Sheri Benton, Lyn Woolley, Wanda Reed, Tom Latta, John Hutchison, Tidle Ramon, Karen Babitzke, William Seagley, Tracy Webber, Shawn Tevis, James C. Wilson, Bernice Lawson, and Carol Hergert.

We are really looking forward to

Career Day 1991. Our thanks to the Spearman Rotary Club for being a co-sponsor and to the staff at Spearman High School for being so helpful in putting it together.

Back to our Hansford Round-Up. It will be held on June 1 and 2 this year. Miss Hansford County will be crowned on Friday night, May 31, 1991. Entry forms are still available at the Chamber office. Deadline for those is Monday, May 22, 1991 at 5:00 p.m.

Stop by and visit with us soon! Until next time,
Brett

results you want? you want classifieds!

Adult \$1 Hearing Test
Thursday & Friday, April 25 & 26
Testing - 9:00 a.m. to 4:00 p.m.

If you have trouble hearing or understanding, this Test (which uses the latest electronic equipment) will determine your particular loss. Test is performed by State Licensed Hearing Aid personnel. You will see a hearing Aid so tiny it fits totally within the ear canal.

West Texas Miracle-Ear Center
Corner Drug
122 South Main Perryton
435-3637 Walk-ins Welcome

ALLSUP'S
"BEEF, BEAN & GREEN CHILI"
BURRITOS
2/99¢

ALLSUP'S
HOMO MILK
1 GALLON
\$1.99

ALLSUP'S
SAUSAGE - ON-A-STICK
99¢

ALLSUP'S
LSS
"BUY ONE GET ONE FREE"
REG. 75¢

ALLSUP'S
PRIMMOST HAM & SWISS
\$1.99

THE BEST PRODUCT WITH THE BEST PRICES SHOP & SAVE

ALLSUP'S
Breakfast Burritos
79¢

305 W. KENNETH, SPEARMAN
101 MAIN, GRUVER

6 PACK/ 12 OZ. CANS \$2.29

APRIL 14 - APRIL 20
WHILE QUANTITIES LAST

Shur Saving Bathroom Tissue 4 roll pkg.	2/\$1.00
Mardi Gras Paper Towels	69¢
Shur Fine Dog Food 35 lb. bag (Gravy or Chunk)	\$4.99
Crisco Shortening 3 lb. can	\$2.59
Shur Fine Sugar 5 lb. bag	\$1.69
Shur Fine Saltine Crackers 1 lb. box	59¢

HOT FOODS MENU

BARBECUE BEEF SANDWICH	99¢	8 PIECE BOX CHICKEN	\$4.99
BARBECUE PORK RIBS (L.B.)	\$3.99	BEEF & CHEESE CHURCHANGA	\$1.19
BARBECUE WHOLE CHICKEN	\$3.99	BREAD	69¢
ALLSUP'S BURRITO	79¢	CORN DOG	59¢
BREAKFAST BURRITO	99¢	DELICIOUS HAMBURGER	59¢
BURRITO	99¢	WILSON HOT LINKS	99¢
BEF & SALSA	\$1.19	SAUSAGE ON A STICK	\$1.59
DELICIOUS CHEESEBURGER	79¢	SAUSAGE & BISCUIT	79¢
CHICKEN FRIED STEAK	\$1.59	SAUSAGE, EGG & BISCUIT	\$1.09
3 COUNT CHICKEN STRIPS	\$1.49	SAUTEEDA SAUSAGE	\$1.09
WIPOTATO WEDGES	\$1.99	4 COUNT STEAK FINGERS	\$1.00

CALL-IN ORDERS WELCOME CHECK OUR WEEKLY SPECIALS

\$2.99 CHICKEN COUNTRY BASKET
FOUR CHICKEN FILLET STRIPS, GRAVY, FRIES, TEXAS TOAST

\$2.49 GRILLED CHICKEN SANDWICH
FEWER THAN 300 CALORIES!

DQ VALUE
ON SALE AT DAIRY QUEEN APRIL 15-28, 1991

Among the Neighbors

by Helen Fisher

Rita Underwood will be facing a definite adjustment in her new environment in Woodward where she and Pat are moving.

Rita has lived in Spearman all her life; was born here - the daughter of Georgia and the late Rock McLeod. Pat came here in 1961 with Baker-Taylor. He will now be employed by JCR Inc. and will be working with compressors.

All the neighbors hope the Underwoods will enjoy living in Woodward and the adjustments will be easy. Rita promises to return often.

Ray and Helen Gibson were in Vernon last Monday and Tuesday. They attended the funeral of his 80 year old sister on Monday.

Carlee Dixon flew into Amarillo on Monday having finished a most interesting year as the Traveling Leadership Consultant for her sorority Zeta Tau Alpha.

She has been based in Tucson, though the sorority is headquartered in Indianapolis. She traveled to 10 different states during her tenure. Though she enjoyed her work, she is ready for a career change.

Bright-eyed Ethel Ellsworth - always seeing the world through rose colored glasses, is finding that a bit more difficult the last few days. She underwent cataract surgery at Pampa last week and is facing the second operation in the very near future.

Mary and Perry Dixon, Barbara and Lewis Schnell are still relishing their pleasant five day vacation in San Jose Los Cabos, Mexico, recently. This was their first trip to this location which is on the tip of Baja peninsula where the Atlantic and Gulf meet. They were very impressed with the beauty of the scenery, the beach, entertainment facilities and their accommodations in the El Presidente Hotel. Their time passed quickly with driving through the

countryside, the men fishing and golfing and the ladies snorkeling. Though they brought back no trophies for the golf, no prizes for the fish, not even a snorkel for the fishing, they did bring back a load of fun memories.

Cleo and Lowell Denman and Nell Henderson of Morse attended the meeting of the Stroke Survivors Support Group in Amarillo on April 11th. This is the Hi-Plains Chapter and meets monthly.

Cleo was pleased to have a recent letter from her grandson, Kent Lee, who is a student at the University in Hamburg, Germany. Recently between semesters he toured the countries of Eastern Germany, Czechoslovakia, Austria, Hungary, Yugoslavia, Bulgaria and Greece. He returned to Hamburg through Italy and Switzerland.

Kent has enrolled for the next semester and will be studying English and German Literature, Linguistic Korean and Augustinian Theology.

A highlight for him was being present at the opening of the infamous Berlin Wall.

Guests of Ernestine Gray for the weekend were her son, Gary and Marci and their three children from Dumas.

Joining them on Sunday was another son, Ron of Hooker, and a friend, Diane Beal of Amarillo.

They all enjoyed thoroughly the outstanding musicale at the First Baptist Church on Sunday morning.

Freda and Bruce Sheets returned Friday from Amarillo where Bruce had been hospitalized in St. Anthony's hospital for several days. Bruce suffered an elbow injury in a fall at Hansford Manor, from which he appears to be recovering.

Nina and Del Taylor of Lakin, Kan. accompanied Freda to Amarillo.

Andy and Ann Etter of Olathe, Kan. have been visiting Helen Etter for a few days. She has joined them for a tour of the Big Bend Country.

After a long Easter visit of 11 days, Joe and Enzie Copeland are again at home. They were guests of their daughter Joe Lynn and Bob Leland of Broomfield, Colo.

Wanda Burke is back at home

after two long, painful weeks in St. Anthony's hospital in Amarillo. She had a complete knee replacement and says she is told that it was successful and she is recovering, but hasn't sensed any first hand evidence as yet.

She will be confined to their home for quite some time yet. She and Bob are most grateful for the kindness of their neighbors, friends and their church for all errands ran, duties performed, food brought, and other considerations.

Sympathy is expressed to the Reimer family on the death of Karen's mother, Mrs. Kathleen Lewis, 67. Her services were held at 10 a.m. Thursday in Perryton.

Also to the Pete Walls family on the passing of his father, Pete Walls, 69, of Stratford. His funeral was in Stratford on Thursday.

Many, many Hansford County folk and many from adjoining counties took time out from their activities last Saturday to pay last respects to Hootie Cline, 60, of Gruver. This huge crowd attested to regard and esteem accorded him and should be a consolation to his family.

Hootie was born in Hansford County and lived here all his life. His parents and grandparents were early day settlers here. After a long and valiant struggle, he passed away in Oklahoma City in the home of a daughter last Thursday.

During her last year at Texas A&M, Ann Marie Jarvis Pearson worked long and diligently on a set of research dealings with Agricultural Economics. Many undergraduates worked on similar projects with a certain professor as advisor.

Anne Marie's paper was presented to an undergraduate research contest held in Vancouver, Canada last spring. Out of the many submitted, her paper was selected as the best.

Included among the many whose respect and admiration was won by this prestigious award was that of the professor advisor at A & M. As a consequence, he has joined her in a second research project. On completion this work will be submitted to an Agricultural Economics Journal.

Anne Marie spent last week at College Station working on this research.

Well, that ugly and dreaded April 15th has come and gone--and all the

Sheets family holds reunion

The children of the pioneer family, Claud and Nannie Archer Sheets, met in Spearman, April 6-9 at the home of Mr. and Mrs. Claude Sheets Jr., at 610 E. Kenneth.

Nannie Archer Sheets came to the Texas Panhandle in 1900, in a covered wagon with her family, Mr. and Mrs. John M. Archer.

In 1906 Claud Sheets came to Hutchinson County where he settled land in what is now known as "the Holt Community." They farmed and ranched in Hutchinson and Hansford Counties and raised 12 children, two of whom are deceased. Leroy died in World War II. Floyd passed away Jan. 5, 1991.

Those attending were Art and Alice Johnson of Stinnett, J.D. and Zola Mitchell of Waco, Branch and Mallie Sheets of Happy, Laverne (Mrs. Floyd) Sheets of Gould, Okla., Martin and Inez Sheets of Bracketville, Rodney and Grace Harmond of Wharton, Willis and Nelda Sheets of Amarillo, and Daniel and Jean Sheets, S.B. Sheets, Gene and Frances Cudd, and Claude and Jo Nell Sheets, all of Spearman.

The family members attended Sunday services at the Spearman Church of Christ as a group.

The reunion was four full days of eating, bridge, forty-two, croquet, and reminiscing.



(photo courtesy Frances Cudd)

Family members attending the recent Sheets family reunion included (front row, l-r) Zola Mitchell, Frances Cudd, Grace Harmond, Alice Johnson, (back row, l-r) Claude Sheets Jr., S.B. Sheets, Willis Sheets, Branch Sheets, Martin Sheets and Daniel Sheets.



Krystal Stokes, daughter of Larry and Yvonda Stokes of Amarillo and granddaughter of John and Edith Pipkin of Spearman, is among the students from Friends University in Wichita, Kan. to be included in the 1991 edition of Who's Who Among Students in American Universities and Colleges. The book lists students who have been selected as national outstanding leaders. Stokes is a senior elementary education student at Friends University.

Parade entries sought

Amarillo - Servicemen and women, who will be home on leave from Persian Gulf duty, are encouraged to be in Amarillo's "Welcome Home Parade" on Saturday, May 18.

According to Mac Douglas, parade co-chair, all veterans and active duty personnel are welcome to participate. But because many returning troops aren't aware of the parade, the parade committee is relying on troops' friends and family to inform them. Many veterans organizations from all over the tri-state area have already made plans to be in the parade.

"We want to recognize all the men and women from this area who have fought for freedom, not just the troops in the Gulf. We're indebted to generations of heroes," said Douglas.

In addition to military units, the parade will feature many high school bands and non-profit, youth organizations such as the Boy Scouts and the Girl Scouts.

"We've had a lot of businesses and political parties express interest in being a part of the parade, but felt it would be better to have them on the sidelines cheering on the honorees."

Hometown News

WEATHERFORD, Okla.
Gregory Howard Reimer of Spearman is among approximately 424 students at Southwestern Oklahoma State University who will complete requirements for either a bachelor's or master's degree this spring.

Reimer will receive a B.S. degree in management.

Club News

DAHLIA FLOWER CLUB

The Dahlia Flower Club met at Ivey's Cowboy, with Hollie Riley as hostess, April 15.

President Marjorie Curtis opened the meeting with the Pledge to the Flag and Club Collect. Minutes of the last meeting were read and corrected. Roll call was answered by "How well I communicate with my Doctor."

Marjorie Curtis gave a few excerpts from "Then and Now," a book written by Ruth Mary Whitson and her sister Charlotte Ballinger.

Flower arrangements were judged and Louise Archer won first place with her Iris. Cleo Denman won first place with her Spring arrangement.

Next meeting will be with Jewel Turner as hostess, on May 6.

Refreshments were served to Marjorie Curtis, Louise Archer, Sada Hoskins, Jewel Turner, Cleo Denman, Sara Dossett and the hostess, Hollie Riley.

Aggie Muster slated

Former students and friends of Texas A&M University will assemble in Spearman on Sunday, April 21 for the annual Texas Aggie Muster.

Muster activities will begin at 1:30 p.m. at Ivey's Hungry Cowboy Restaurant. A barbecue dinner will be served, with the Muster program to follow.

All former students, students, and friends of Texas A&M University are invited to attend. For more information or reservations, contact Jodi Irwin at 659-3965.

The Aggie Muster dates back to the mid-1880s and has been held annually since that time. More than 600 Musters will be held around the world this April 21, including Saudi Arabia, Kuwait and Iraq.

Every Muster ceremony throughout the world is the same. The Aggies pay their respect to their university, the nation and the state, and honor those who are absent, because of death, since the last Muster was held.

The Muster in Spearman is sponsored by the High Plains A&M Club which includes Aggies from Hansford, Hutchinson and Carson counties.

New Tuxedo Styles!

Michael Jordan Jam Coats!



Our new 1991 Catalog is here, with Rentals starting at \$54⁰⁰

ORDER NOW!

Gruver Prom May 4 Spearman Prom May 18

The Bunkhouse
212 Main Spearman 659-2476

THANK YOU

I would like to express my deepest appreciation for all the flowers and food sent to me. Also, all the kind deeds were appreciated.

Maudine Patterson
Pat & Cathy Patterson
John & June Patterson

Announcing New Ways To Hear Better

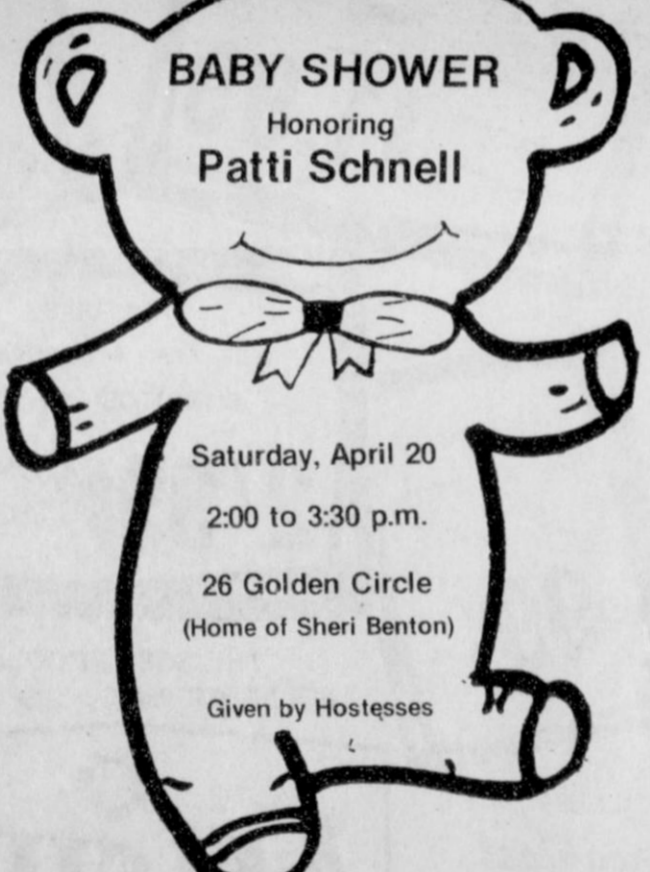


Finally, hearing technology that's affordable and effective. It's the Manhattan Circuit, a microscopic automatic signal processor, and it fits into your hearing aid to filter out background noise. This circuit filters out street noise, crowd noise - any annoying noises - to enhance rich, quality hearing. Call us or visit our office for information about the affordable Manhattan Circuit.

Manhattan Circuit
Automatic Signal Processor

High Plains Hearing Aid Center

Every 2nd & 4th Tuesday
2 p.m. to 4 p.m.
Golden Spread Senior Citizens Center
14 S. Haney
659-3521
1-800-333-4504



BABY SHOWER

Honoring
Patti Schnell

Saturday, April 20
2:00 to 3:30 p.m.
26 Golden Circle
(Home of Sheri Benton)

Given by Hostesses

THANK YOU

Thank You, First State Bank, for underwriting the Amarillo Little Theatre production "Pump Boys & Dinettes," also for cooking the hamburgers & fries for us. And thanks to your wonderful girls for helping with all preparations & the serving.

We also want to Thank Thriftway Grocery & Jack & Jill for all their help with food supplies.

Golden Spread Center, Inc.
Members, Board Members & Directors



Selected as "Citizen of the Month" at Gruver Junior High School were Brandea Hicks, 5th grade; Keith Miller, 6th grade; Travis Ferguson, 7th grade; and Kimberly Wagner, 8th grade. This new program for the junior high is being done monthly. Students were nominated by their teachers as the students who best exemplified those qualities necessary to be a good citizen. These students daily exhibited qualities of proper attitude, self-motivation, friendliness, and the drive to succeed in whatever was presented to them.

Crisis Center reports

by Mary Frances Ellzey

You readers familiar with us may skip this paragraph, and start with the next one. The PCC offers services to men or women who are victims of domestic violence, whether verbal or physical. We give counseling, support, and information to these victims, plus a shelter to those who feel themselves to be in danger at home. These services are free of charge. If you want information only, call us at the office from 9 a.m. to 5 p.m. We are available for help at any time, 24 hours a day. Our number is 435-5008. For those of you who must call us long distance, we have a toll-free number: 1-800-753-5308.

You'll never ever guess what our next fund raiser will be. It's Pass the Goat Along! Have you heard of it? No? Well, we, the fund raisers, will bring a goat to your place of work or your dwelling, and tell you that you have the choice of passing that goat along to a friend or enemy, or of buying the beast. To pass it along will cost you \$20. To buy it will cost you \$200. Now how's that for a wild-eyed idea, not to say hare-brained? We'll soon discover just how funny your funny bone is!

Things are going along apace at the Crisis Center. That whistle of wind that just rushed past is the sigh of relief heaved by the Grant Proposal Committee as it finished gathering the material, writing it up, and mailing the VOCA grant proposal. Until you've participated in grant proposal writing to the Government, you have no idea of the work involved; nor, if it is granted, of the work to be involved in making the monthly reports of exactly how we spent it. Believe me, the Government does its best to see that you get your tax money's worth - if it is given to a non-profit organization.

We are required to have our accounts audited and to send a copy of the audit to the Powers That Be in order to prove that we are doing what we say we are doing. If something looks a trifle off color, here comes a government agent to check things out. (We've had only excellent reports on our performance. Remember I told you that we are such a good model in our record keeping, etc., that neophyte organizations are sent to us to see how we do it!)

By the way, you may not know that city, county, state, and federal funds pay only half our expenses. The rest we must raise ourselves, either through donations (for which we thank God) or through fund raisers. Which is why the Mexican Pile-on, the Amarillo Little Theatre productions, the Mystery Plays, the

THANK YOU

We would like to take this opportunity to say Thank You to everyone who donated food to our food drive and also everyone who purchased items at our Bake Sale. Without your help we wouldn't have had the success we had. Thanks again for your support. We appreciate it very much. Also thanks to the mothers who baked items for us.

Gruver Boy Scouts
David Rosser-Scout master
Peggy Dillow-Unit commissioner
and The Committee members

On The Go With Joy

by Joy Henderson

Another recipe that we have been granted permission to publish during Cancer Crusade month is "Beef and Vegetable Stew." This recipe courtesy of Anne Lindsay from the American Cancer Society cookbook published by William Morrow & Co.

- 1 1/4 lbs. boneless stewing beef
- 2 tbs. all purpose flour
- 1 tbs. vegetable oil
- 2 cups water
- 3 onions-1 bay leaf-1 tsp. thyme
- 1/2 tsp. marjoram or oregano
- 1 tsp. salt
- 1/4 tsp. freshly ground pepper
- 1 tsp. grated orange rind
- 1 small turnip (about 1 pound)
- 5 carrots - 1 cup frozen peas
- 1/4 cup chopped fresh parsley
- Salt and freshly ground pepper

Cut all visible fat from beef and discard. Cut beef into about 1 inch cubes. Coat beef with flour, using it all.

Into heavy pan, heat oil over medium high heat. Add beef and cook, stirring, until brown on all sides.

Pour in water and bring to a boil, scraping up any brown bits on bottom of pan. Add onions, bay leaf, thyme, marjoram, salt, pepper and orange rind. Cover and let simmer for 1 1/2 hours.

Peel turnip and cut into 3/4 inch pieces (you should have about 3 cups). Peel carrots and cut into 1 inch pieces. Add carrots and turnips to pan; simmer covered for 40 minutes or until vegetables are tender. Add peas, parsley, salt and pepper to taste. Simmer until peas are hot. Makes 6 servings.

200 calories per serving - 9 grams fat per serving. Excellent fiber and niacin, vitamins A and C, iron - good.

A good tip to remember is to cook meats a day in advance and refrigerate overnight. The fat will solidify on surface and can be easily removed.

I saw a program on TV Sunday that portrayed the battles of five leukemia victims and how they were treated at St. Jude hospital in Ten-

nessee. The founder of St. Jude, Danny Thomas, and his daughter were the narrators. Danny Thomas died on Feb. 6, but his work will be carried on. One way that we can help is with helping these kids out with their Bike-A-Thon April 19 and encouraging them as they ride.

Gruver's own Clint Williams rides every year and he has been the recipient of treatment at St. Jude. Ask him how important your donations are.

Another way Hansford County is helping fight the battles of cancer is by organizing the hospice care program. There is at least one way that we can help; so all of you be prepared to contribute time, money or energy in any way you can.

A wedding show honoring Katrina Bratton will be held Saturday, April 20 from 2:30 to 4 p.m. in the First Christian Church fellowship hall.

This county lost another citizen to cancer last week and seems like new patients are added to the list monthly.

Spending several days in the Perryton hospital was Oscar Lee with a viral infection. He is home now and his condition has improved. Meanwhile, Violet Lee showed some signs of contacting that same kind of "bug" and even the Hendersons are having some of the same kind of symptoms.

Debbie Chisum is maybe in the process of a new type of treatment being done in Lubbock. We hope to hear some good news about this.

Charlie Casdorph is going to be taking radiation treatments for a spot that has shown up on a brain scan. Details are not known at this time.

A local student, Will Etheredge, is due to be taken for some tests after suffering a seizure at school last week.

Some of those who have had surgery recently are Boots Williams, Marie Bostick and Elmer Adcock. Elmer has recently had a pacemaker installed to help his 80-years-plus heart do its job better. Dorris Cluck was a patient in Hansford Hospital recently. We hope all of these are recuperating at home now and able to enjoy this warm weather.

Some visitors in our community recently were Julie (Barkley) Sledge and little son. Diane Brown had her parents as guests and Louis Robinson of Lawton, Okla. was guest of Donald Robinson.

M.H. and I paid a visit to a doctor in Amarillo recently and while there we were able to make contact with Paula and Dustin Henderson and Shari Whitefield. Found out Wayne Thomas did not have to have an appendectomy but that Dustin is having tooth problems and has already been to the dentist at the age of 10 months. Poor kid, he's been in the hospital at age of one month. Guess he has the Henderson curse.

Gruver school menu

April 22-26
LUNCH

Monday: Fish nuggets, cole slaw, tater tots, oatmeal chocolate chip cookies, corn bread, milk

Tuesday: Tacos with lettuce and cheese, fruit, sopapillas, milk

Wednesday: Chicken patties, mashed potatoes with gravy, corn, cake, hot rolls, milk

Thursday: Frito pie with cheese, fruit, tossed salad, milk

Friday: Hamburgers, french fries, lettuce, pickles, cheese, cookies, milk

Salad bar on Monday and Wednes-

day. Nacho bar on Monday and Wednesday. Potato bar on request only.

BREAKFAST

Monday: Cereal, fruit or juice, muffins, milk

Tuesday: Biscuits and sausage, fruit, milk

Wednesday: Cowboy bread, fruit, peanuts, milk

Thursday: Toast, peanut butter and jelly, fruit, milk

Friday: Cinnamon rolls, fruit, peanuts, milk

Potential retirees should call soon

by Virginia DeWitt
SSA branch manager

PAMPA - People who plan to retire this year may want to call about their plans soon. A 1991 change in the Social Security law that may limit the start of benefits to the month the person actually retires, makes it more important than it used to be to notify Social Security of plans to retire.

Depending on their earnings, some people may still be able to get additional benefits by applying for Social Security early in the year, even though they won't be retiring until later in the year.

If Social Security is contacted early in the year, we can look at current earnings and benefit information

that can help you choose the most advantageous time to start your benefits.

In choosing the best retirement date, some things you should consider are your age (the earliest you can start collecting Social Security retirement benefits is the month you turn age 62), expected earnings for the year, estimated benefits, and whether family members will also receive benefits. These factors can be discussed with Social Security as to how they will affect your benefits.

The Social Security office is located at 125 South Gillespie. Office hours are 9 a.m. until 4:30 p.m., Monday through Friday, except on national holidays. The toll-free telephone for your convenience is 1-800-234-5772.

Hometown News

Gruver resident Jesus Renteria Jr. has been accepted into the Automotive/Diesel Technology program at Universal Technical Institute (UTI) in Houston. Renteria attended Gruver High School and is scheduled to begin classes at UTI on Aug. 26.

Nationally accredited, UTI trains students for careers in the automotive, diesel, marine, and air

conditioning, refrigeration and heating repair industries. Students graduate with the skills necessary for entry into their chosen field of training.

The Institute has campuses in Phoenix, Ariz.; Houston; and Glendale Heights, Ill. (near Chicago). It has graduated nearly 20,000 technicians into those industries since opening in 1965.

Et Cetera

GALVESTON - A five-day summer adventure for youngsters with a yen for the sea is being offered beginning in June by Texas A&M University at Galveston. The TAMUG Sea Camp explores the wonders of the marine environment of the Galveston Bay area, and includes field trips on university research vessels and the use of oceanographic equipment and laboratory facilities.

Camps are planned for students 10-12, and 13-16, with an advanced camp planned for students 14-16 who have previous experience in the marine environment. Teenage camps will be June 2-8, July 14-20, and July 28-Aug. 3. Camps for younger students will be June 9-15, July 7-13, and July 21-27. Advanced camp is June 30-July 6.

Cost of the camps is \$500. More information is available from Sea Camps at (409) 740-4525, or write SEA CAMP-TAMUG, P.O. Box 1675, Galveston, TX 77553-1675.

AMARILLO - The 10th annual Texas Joint Conference on Aging will be held Sunday, April 28 through Wednesday, May 1.

The Amarillo Civic Center complex, 401 S. Buchanan, will house four days of workshops, training, networking and special events such as the seniors state spelling bee.

For registration information, contact the AARP office at (214) 361-3060, or JCOA, P.O. Box 9257, Amarillo, TX 79206-9257, (1-800-642-6006).

Spring Revival

Warren & Brian

McClenagan

FIRST BAPTIST CHURCH
GRUVER, TEXAS

April 17-21, 1991



7:30 p.m.

PUBLICATION COPY - COMMERCIAL AND SAVINGS BANKS
CONSOLIDATED REPORT OF CONDITION (Including Domestic and Foreign Subsidiaries)

STATE BANK NO. 1763-34
FEDERAL RESERVE DISTRICT NO. 11 13 22318
CLOSE OF BUSINESS DATE March 31, 1991

LEGAL TITLE OF BANK: Gruver State Bank
PO Box 978
Gruver, Texas
CITY: Gruver COUNTY: HANSFORD STATE: Texas ZIP CODE: 79040-0978

ASSETS	Dollar Amounts in Thousands		
	Bill	Mill	Thou
1. Cash and balances due from depository institutions:			
a. Noninterest-bearing balances and currency and coin	1,521		1.4
b. Interest-bearing balances	0		1.5
2. Securities:			
a. Federal funds sold & securities purchased under agreements to resell in domestic offices of the bank & of its Edge & Agreement subsidiaries, & in IFBs:			
a. Federal funds sold	3,400		3.4
b. Securities purchased under agreements to resell	0		3.5
4. Loans and lease financing receivables:			
a. Loans and leases, net of unearned income	13,812		4.4
b. LESS: Allowance for loan and lease losses	486		4.5
c. LESS: Allocated transfer risk reserve	0		4.6
d. Loans and leases, net of unearned income, allowance, and reserve (Item 4.a minus 4.b and 4.c)	13,326		4.6
5. Assets held in trading accounts	0		5.0
6. Premises and fixed assets (including capitalized leases)	179		6.0
7. Other real estate owned	97		7.0
8. Investments in unconsolidated subsidiaries and associated companies	0		8.0
9. Customers' liability to this bank on acceptances outstanding	0		9.0
10. Intangible assets	702		10.0
11. Other assets	13		11.0
12. a. Total assets (sum of items 1 through 11)	30,539		12.0
b. Loans deferred pursuant to 12 U.S.C. 1823 (j)	0		12.1
c. Total assets and losses deferred pursuant to 12 U.S.C. 1823 (j) (sum of items 12.a and 12.b)	30,539		12.2
LIABILITIES			
13. Deposits:			
a. In domestic offices:			
(1) Noninterest-bearing	2,807		13.1(1)
(2) Interest-bearing	24,838		13.1(2)
b. In foreign offices, Edge and Agreement subsidiaries, and IFBs:			
(1) Noninterest-bearing	0		13.2(1)
(2) Interest-bearing	0		13.2(2)
14. Federal funds purchased and securities sold under agreements to repurchase in domestic offices of the bank & of its Edge & Agreement subsidiaries, & in IFBs:			
a. Federal funds purchased	0		14.0
b. Securities sold under agreements to repurchase	0		14.1
15. Demand notes issued to the U.S. Treasury	0		15.0
16. Other borrowed money	0		16.0
17. Mortgage indebtedness and obligations under capitalized leases	0		17.0
18. Bank's liability on acceptances executed and outstanding	0		18.0
19. Subordinated notes and debentures	0		19.0
20. Other liabilities	27		20.0
21. Total liabilities (sum of items 13 through 20)	27,692		21.0
22. Limited - life preferred stock and related surplus	0		22.0
23. Perpetual preferred stock and related surplus (No. of shares outstanding)	0		23.0
24. Common stock (No. of shares: a. Authorized 6,000; b. Outstanding 6,000)	600		24.0
25. Surplus (exclude all surplus related to preferred stock)	800		25.0
26. a. Undivided profits and capital reserves	1,440		26.0
b. LESS: Net unrealized loss on marketable equity securities	0		26.1
27. Cumulative foreign currency translation adjustments	0		27.0
28. a. Total equity capital (sum of items 22 through 27)	2,840		28.0
b. Loans deferred pursuant to 12 U.S.C. 1823 (j)	0		28.1
c. Total equity capital and losses deferred pursuant to 12 U.S.C. 1823 (j) (sum of items 28.a & 28.b)	2,840		28.2
29. Total liabilities, limited - life preferred stock, equity capital, and losses deferred pursuant to 12 U.S.C. 1823 (j) (sum of items 21, 22, and 28.c)	30,539		29.0
MEMORANDA: Amounts outstanding as of Report Date			
1. a. Standby letters of credit: Total	0		MEMO
b. Amount of Standby letters of credit in memo 1.a. conveyed to others through participations	0		11.0
NOTE: This report must be signed by an authorized officer(s) and attested by not less than three directors other than the officer(s) signing the report. The undersigned officer(s), do hereby declare that this Report of Condition has been prepared in conformance with official instructions and is true and correct to the best of my own knowledge and belief.			
SIGNATURE OF OFFICER(S) AUTHORIZED TO SIGN REPORT	DATE SIGNED		
NAME AND TITLE OF OFFICER(S) AUTHORIZED TO SIGN REPORT	AREA CODE-PHONE NO.		
Signature: League Wagner, Cashier	(805) 133-5061		
We, the undersigned directors, attest the correctness of this Report of Condition and declare that it has been examined by us and to the best of our knowledge and belief has been prepared in conformance with official instructions and is true and correct.			
SIGNATURE OF DIRECTOR	SIGNATURE OF DIRECTOR	SIGNATURE OF DIRECTOR	
Signature: [Blank]	Signature: [Blank]	Signature: [Blank]	
MAKE MARK FOR NOTARY'S SEAL	State of Texas	12th County of Hansford	
	Sworn to and subscribed before me this	91	
	and I hereby certify that I am not an officer or director of the		
	My commission expires	2/29	
		921	

Texas Wheat Producers Board holds 10th biennial election

The Texas Wheat Producers Board engaged in wheat research, market development and services designed to add to the value of the crop, will hold its 10th biennial mail election between June 3 and June 18, according to Jack Norman, farmer-elected chairman of the organization.

The board was formed in 1971 in the Panhandle-North Texas area and expanded statewide by a producer referendum in 1985.

The terms of five of the current 15 board members expiring at this time include: District I, Scott McGarrugh, Perryton; District II, Leo Witkowski, Hereford; District III, Wiley Tabor, Quanah; District IV, Bob Beakley, Ennis and Ben Scholz, Wylie.

In 1971 when the board was formed by producers as a self-help program to enhance the value of wheat in Texas, the 1.5 million acre crop produced 31.4 million bushels, market priced at \$1.25 per bu., for a value of about \$37 million. Texas' peak harvested acres of 5.8 million in 1985 produced a 187 million bu. crop valued in excess of \$600 million. Changes in government programs, particularly the Conservation

Reserve Program (CRP), Agricultural Conservation Reserve (ACR), 0/92 and Conservation Use (CU) has combined with changing cropping practices to drop Texas' harvested acres to 4.2 million this year. This reduced acreage produced a 130 million bu. crop for a value in excess of \$430 million.

Any farmer producing wheat in Texas is eligible to vote for a board member for that district in which he farms.

Hansford County is included in District I.

Norman points out that any person qualifying to vote in the election may place his name in nomination for a six-year membership in the Texas Wheat Producers Board by application to the organization, signed by himself and at least 10 other persons eligible to vote in his district in the election, at least 30 days (May 20) prior to the election final (June 18) date, in order to have his name placed on the ballot.

The election will be held by mail ballot, which will be provided to all eligible voters 15 days prior to the election, Norman said. He also indicates that any person qualified to

vote who does not receive a ballot 15 days before the election date, may obtain one at Agricultural Extension Service offices as provided by the Texas Commodity Refund Law.

Wheat producers fund TWPB with a one-cent assessment on their deliveries of wheat at commercial handlers, principally at country elevators and feed yards. Proceeds from such participation supports programs of foreign and domestic market expansion, food and wheat technical service, insect control, research and demonstrations, and other activities designed to strengthen wheat producers' income.

In addition to the five members with expiring terms, other TWPB members are Jack Norman, Howe; Keith Spears, Vernon; Otis Harman, Tulia; Kenneth Keisling, Dumas; Cagle Kendrick, Stratford; Foy Gibson, Lometa; C.L. Edwards, Panhandle; W.R. Moore, Munday; Dennis Rabbe, Crawford and Billy Vinson, Abilene.

Applications for names to be placed on the ballot should be sent to the organization headquarters office, 803 Texas Commerce Bank Bldg., 2201 Civic Circle, Amarillo, Texas 79109.



(photo by JoAnn Morton)

Students in Cindy Clyburn's and Brenda Pier-son's first grade classes at Spearman Elementary School gave a special program for their parents and friends on April 10. Following studies of the United States and Texas, each student was given a "part" to memorize for the

program, and patriotic songs were sung. Students with parts for the U.S. portion of the program were decked out in "Uncle Sam" hats, while students with parts for the Texas portion wore "sunglasses" with lenses in the shape of the state of Texas.

TG&Y STORE CLOSING

50% Off

EVERYTHING IN THE STORE!

- Family Apparel
- Health and Beauty Aids
- Domestic
- Family Hosiery
- Housewares
- Candy and Snacks

ALL SALES FINAL! VISA, MASTERCARD, DISCOVER OR CASH. SORRY NO PERSONAL CHECKS.

Plains Shopping Center

521 Hwy. 207S
Spearman, Texas

Allergy season here

HOUSTON - People who suffer from seasonal allergies already know that the season started early this year.

Their sneezing, itching and congestion told them so.

"The pollen that brings misery to sufferers appeared early due to a mild winter," said Dr. David P. Huston, associate professor of medicine at Baylor College of Medicine in Houston.

"Of course, some people suffer almost year round from such allergies because they live in temperate climates where the pollen count remains high most of the time," Huston said.

In temperate climates, tree pollens usually are heavy in March, succeeded in the coming months by other pollens. January and February are relatively irritant-free for many areas.

"Air pollution compounds the problem," Huston said. "Chemicals and smoke can definitely aggravate allergy symptoms."

Some people are afflicted with perennial allergies in addition to seasonal allergies.

"These are the people allergic to things which, unlike a specific pollen, are present in their environments year-round," Huston said.

Many people are allergic to the dander of animals they keep in their homes.

Others have what is commonly called a dust allergy but is in fact a reaction to contaminants found in dust. Roaches and mites contribute

heavily to this.

Molds are also common causes of allergic reactions. Air conditioning systems and air ducts frequently harbor these allergy villains.

"Avoidance is clearly the best of all alternatives," Huston said, "but we have to be realistic. Avoidance is not always possible."

Over-the-counter relief is available for allergies that cause runny noses, itchy eyes and congestion. Those most commonly used are antihistamines, but they can cause drowsiness.

Prescription drugs, including antihistamines that do not cause drowsiness, are available through physicians.

"Allergy shots are not necessarily the first line of therapy," Huston said. "The shots do help some people but they should be reserved for patients whose allergy symptoms can not be adequately controlled in other ways."

Allergies and allergy-like reaction can result from conditions other than pollens and perennial irritants. Foods, for example, can be a source of allergies, and some dyes and other substances can cause allergic-like reactions.

Careful screening by allergists can help people pinpoint the causes of their suffering, Huston said.

A free brochure entitled "Living with Allergies" is available by writing to "Living with Allergies," Baylor College of Medicine, P.O. Box 130567, Houston, Texas 77219.

EXPERTS AGREE!

When your old air conditioner wears out, switch to the

Dual Fuel Heat Pump



Benny Wilson
Wilson Electric
Gruber, TX

Heating and cooling specialists recommend replacing your old air conditioner with a Dual Fuel Heat Pump. It not only cools but works with your present gas furnace to more efficiently heat your home, too. A Dual Fuel Heat Pump is economical to operate, dependable and clean. When your old air conditioner has gasped its last, do what the experts recommend: Switch to the Dual Fuel Heat Pump!

Contact your nearest Dual Fuel Heat Pump dealer.



Mable Wisian and Aimee Rook

Youngsters winners at pageant

Three Spearman youngsters took first place honors at the April 7 Amarillo All Star Children's Pageant. They are Amber and Nicholas Moore and Aimee LeAnn Rook.

Amber was awarded a first place in Easter wear and second alternate in beauty in the age 6-9 division. Her brother, Nicholas, won first in sportswear, and was ranked first as an All Star Beau in the 12-23 months age division. Amber and Nicholas are the children of Paul and Julie Moore.

Aimee received three first place awards on her way to being named overall point winner in the 0-36 months division. She was awarded a first in the all star beautiful baby, age 24-36 months, division. Aimee's other two firsts came in the sportswear and special event divisions. She is the daughter of Kevin and Ann Rook. Aimee was sponsored by Mable Wisian of the Elroy Wisian Insurance Agency.



Amber and Nicholas Moore

Perryton shows set for April 24... Shriners to present 45th circus

FREE PASS ADMIT ONE CHILD

ONE CHILD UNDER 12 FREE WITH EACH PAYING ADULT. VALID ONLY WHEN SEATING IS AVAILABLE. MAY NOT BE BOUGHT OR SOLD OR GIVEN AWAY AT CIRCUS LOCATION. EXCHANGE AT CIRCUS BOX OFFICE ON DAY OF SHOW.

\$ 5.00 VALUE

Good for the 1991 shows in:
 Dumas 4/23
 Perryton 4/24
 Borger 4/25
 Pampa 4/26
 Amarillo 4/27 - 4/28

LIMIT 2 FREE CHILDREN PER EACH PAYING ADULT

The Khiva Shrine Temple of Amarillo is presenting its annual circus at several cities in the Texas Panhandle area.

The circus tour will start in Dumas at the Moore County Rodeo Grounds on Tuesday, April 23 with two performances at 4 and 7:30 p.m. On April 24 the circus sets up in the Perryton Rodeo Arena for two shows. They start at 4 and 7:30 p.m.

After the last Perryton show the circus moves south to Borger and Pampa. On April 25 the circus has a 4 p.m. and a 7:30 p.m. show at Huber Park in Borger. Top of Texas Rodeo Grounds in Pampa is the location for the circus' 4 and 7:30 p.m. shows.

On April 27 and 28 the circus moves to the Amarillo Civic Center Coliseum for four performances, on Saturday at 2 and 7:30 p.m., and Sunday at 1 and 5 p.m.

This year's circus is the biggest yet with the new Jordan International Three Ring Circus. Lions, tigers, elephants, thrilling high wire, crazy clowns and everything that makes up a first class circus. The show features the exciting "Globe of Death" motorcycle act.

The Shriners and the Reporter-Statesman are offering a chance for kids under 12 to get into the circus free. Just cut out the coupon next to this article. Take it to the ticket window, and a kid under 12 gets in free when accompanied by a paying adult.

The Shriners, of course, are known for their work with children. Handicapped and retarded children from local organizations will be sponsored to attend for free. Discount advance sale tickets or information may be obtained by calling (806)359-0436.



Little Dribblers Team 4, fourth graders, include (front row, l-r) Aaron Witten, Dwayne Creel, Chuck Grayson, T.J. Evans, (back row, l-r) Michael Carey, Chester Hutchison, Michael Lusby, Quentin Shieldknight and Nathan Pipkin. They are coached by Joel Shields.



Little Dribblers Team 3, fourth graders, include (front row, l-r) Phillip Creel, Matt Scott, Cody Brooks, Brian Black, (back row, l-r) Derek George, Landon Miller, Dallas Burgess, Clancy Vanderburg, Albert LaRochelle and David Pacheco. They are coached by Tim Kizziar and Chris Strawn.

Infant mortality rate declines in 1990

Protection of pregnant women and their children from illness and poor nutrition is a fundamental aim of modern public health care. And preventive health care for Texas' women and children showed dramatic results last year.

By at least one important statistical measure, the state's infant mortality rate, officials at the Texas Department of Health (TDH) have said that 1990 may have been a landmark year for the state's new babies and their mothers.

TDH's Bureau of Vital Statistics compared "provisional" data (estimated to be almost 90 percent complete at the close of the calendar year) from 1990 and 1989. The bureau found that there were more births and fewer infant deaths in 1990 than in 1989.

Dr. Robert Bernstein, Texas Commissioner of Health, said, "If the final 1990 count of births and infant deaths reflects the trend we have seen so far, Texas will have reached a milestone. For the first time, the state may have achieved an infant mortality rate of about 8 deaths per 1,000 live births."

At the end of December, there were 294,875 live births registered in Texas for 1990, compared to 280,528 counted at the end of 1989.

The 2,360 infant deaths recorded at the end of December were 10.4 percent fewer than the 2,633 infant deaths counted at the end of 1989.

Dr. Bernstein explained that the provisional 1990 infant mortality rate of 8 deaths per 1,000 live births, down from 9.1 during 1989, "is mostly a credit to remarkable success in

preventive health care and nutrition programs for Texas' women and children."

At TDH, two bureaus are charged with safeguarding the health of low-income and high-risk mothers and babies.

The Bureau of Maternal and Child Health offers such basic health care services as pregnancy testing, counseling, immunizations, and prenatal, maternity and post-natal care for both mothers and babies.

The Bureau of WIC (Women, Infants and Children) Nutrition ensures that pregnant or breastfeeding women, their babies and children younger than 5 receive health

counseling, vouchers for healthful foods and referrals to other needed services.

Dr. Bernstein added that not only do the combined programs save lives of newborns and infants, they also save tax dollars by preventing tragic and costly medical problems for mothers and babies alike.

"For example," he said, "mothers who participate in WIC during their pregnancies are more likely to have bigger, healthier babies. They also are more likely to carry their babies to full term than they would be without WIC's help. These improvements are major factors in the declining infant mortality rate."

If you like C.D.s, you'll love **TAX DEFERRED ASSET ACCUMULATION**



A Single Premium Deferred Annuity

Features of This Plan

No Sales Charges or Fees

Interest
 Interest is earned daily and compounded annually to the Annuity Fund. The interest rate on the Premium is guaranteed for one contract year.

Bonus Interest Rate
 The first year's interest rate is a "bonus" rate. Interest rates in subsequent years will be lower.

Penalty-Free Withdrawal Options
 1. Penalty-free partial withdrawal up to 10% of the beginning of the year Annuity Fund for any year is available. This amount does not accumulate from year to year.

Withdrawal Charges
 For any withdrawal in excess of the amount available under the Penalty-Free Withdrawal Option, the following withdrawal charges will be deducted (see contract for full details):

Contract Yr.	1	2	3	4	5	6	7	8	after 8
Withdrawal	9%	8%	7%	6%	5%	4%	3%	2%	0

Charge

Return of Premium
 Central Life guarantees return of the premium at surrender or at the death of the owner.

Call today. And discover why thousands of families are handling risks and accumulating wealth with Central Life. You may never be satisfied with a C.D. again.

8.25%
 Current Rate*



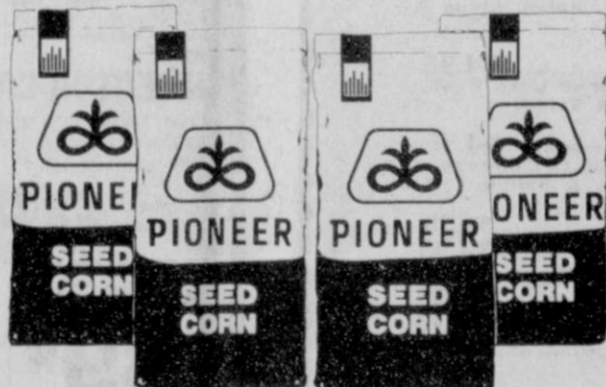
DONALD M. ROGERS, CLU, ChFC
 P.O. Box 1005, 7 S.W. 3rd Ave.
 PERRYTON, TX 79070
 (806) 435-3931 (515) 243-6057



Backed by Central Life Assurance Co., Home Office, Des Moines, Iowa; one of America's oldest and highest rated insurance companies. Assets are over two billion dollars.***

*Your actual rate will be the one in effect on the date of investment. The minimum guaranteed rate is 4 1/2%.
 **Withdrawals subject to contract terms. See policy for complete details. For more information ask for a copy of the SPA Family brochure.
 ***A.M. Best Company, an independent insurance analyst, rates Central Life A+ Superior.

Plant The Leader Package For Total Performance



3189 3168 3162

North Plains Chemical

304 N. First Gruver, TX

Keith Gibson

733-2376

1-800-749-6127



PIONEER HI-BRED INTERNATIONAL, INC.
 All sales are subject to the terms of labeling and rate documents.
 © Registered trademark of Pioneer Hi-Bred International, Inc.

NOTICE OF GENERAL ELECTION
 (AVISO DE ELECCION GENERAL)

To the Registered Voters of the City of SPEARMAN, Texas.
 (A los votantes registrados del Ciudad de Spearman, Texas)

Notice is hereby given that the polling places listed below will be open from 7:00 a.m. to 7:00 p.m. on MAY 4, 19 91, for voting in a general election to elect THREE (3) ALDERMEN FOR TWO YEAR TERMS.

(Notifique por las presente, que las casillas electorales indicadas abajo se abren desde las 7:00 a.m. hasta las 7:00 p.m. el 5 de MAYO de 91 para votar en la Eleccion General para elegir TRES CONCEJALEROS POR UN PERIODO DE DOS ANOS.)

LOCATIONS OF POLLING PLACES
 (DIRECCIONES DE LAS CASILLAS ELECTORALES)

PREDICTS 1, 5 & 6
 SPEARMAN HIGH SCHOOL
 403 W. 11TH

Absentee voting by personal appearance will be conducted each weekday at CITY HALL, 30 S.W. COURT, SPEARMAN, TX.
 (La votacion en ausencia en persona se llevará a cabo de lunes a viernes en LAS OFICINAS DE LA CIUDAD LOCALIZADAS EN 30, S.W. COURT, SPEARMAN, TEXAS)

(Locations listed Recommended but not required)

between the hours of 8:00 a.m. and 5:00 p.m. beginning on APRIL 15, 1991 (date)
 entre las 8:00 de la mañana y las 5:00 de la tarde empezando el 15 DE ABRIL DE 1991 (fecha)

and ending on APRIL 30, 1991 (date) (terminando el 30 DE ABRIL DE 1991) (fecha)

Applications for ballots by mail shall be mailed to:
 (Las solicitudes para boletines que se solicitan en ausencia por correo deberan enviarse a)

KEITH GIBSON
 (Name of Absentee Voting Clerk) (Nombre del Secretario de la Votacion En Ausencia)

P. O. BOX 37
 (Address) (Direccion)
 SPEARMAN, TEXAS 79081-0037
 (City) (Ciudad) (Zip Code) (Código Postal)

Applications for ballots by mail must be received no later than the close of business on APRIL 26, 1991 (date) (fecha)
26 DE ABRIL DE 1991

Issued this the 15TH day of JANUARY, 19 91.
 (Emisado por día 15th de JANUARY, 19 91)

Keith Gibson
 Signature of Mayor (Firma del Alcalde)

PTA nominates Mitchell for outstanding educator award

by Teresa Kirk
Dwayne Mitchell, language arts teacher at Spearman High School, has been nominated for the 1991



Dwayne Mitchell

Phoebe Apperson Hearst Outstanding Educator Award. He will be honored at the Spearman PTA meeting scheduled for Monday, April 22.

Mitchell received a B.A. in English from Panhandle State University and a Master's of Education from Emporia State University at Emporia, Kan. He has done additional college work at Colorado State University, the University of Arkansas and West Texas State University.

He has spent 21 of his 31 teaching years in the Spearman school system. He presently teaches English in grades 9 and 12, and Honors English courses for grades 9-12.

It has been said that Mitchell's students dread his class and love it at the same time. He is a teacher who is remembered long after Spearman High School, and one student came

to say "thank you" to after graduation. He is probably best known for his senior English requirements: major papers on poetry and mythology, essays, blitz writing and that famous term paper called a "critical analysis."

Always, behind all this is reading, reading, reading. Mitchell uses vast amounts of classic literature to broaden the horizons of West Texas young people. His lectures on symbolism and his writing topics encourage the students to expand their vision of their own relationship to the world around them.

He was encouraging higher level thinking skills before the rest of us even heard the term. Mitchell can accurately be described as a "Master Teacher" of language arts.

Mitchell is currently a member of the National Council of Teachers of English, the Association of Texas Professional Educators, the Spearman Classroom Teachers Association and the Spearman PTA. He is a highly respected educator in his field, throughout our region and state. He was nominated by Region XVI Education Service Center to serve on the Texas Education Agency Advisory Committee to write the High School Senior Exit Exam.

Mitchell is respected by the students, teachers, parents and administration. Whenever there is a new or difficult job to do, the school seems to know that they can depend on his ability to design, organize and implement a plan. He has recently developed the Gifted and Talented Program for Spearman High School and serves as a teacher for it. He was honored in 1990 by the Spearman ISD as the high school "Teacher of the Year."

During his 31 years as an educator, Mitchell has sponsored literally hundreds of student activities, clubs and school events. He is unquestionably an excellent teacher, one of the "unsung heroes" in education who is really making a difference in the world, by making a difference in the lives of students.

Spearman PTA is proud to have a part in nominating Mitchell for this prestigious award.

PTA, GTE launch Common Sense

WASHINGTON, D.C. - After two years of intensive research and planning, The National PTA and GTE are launching a unique, comprehensive program to help parents prevent the use of alcohol and other drugs by their children. Funded by a \$1.4 million grant from the GTE Foundation, the program - "Common Sense: Strategies For Raising Alcohol and Drug-Free Children" - is being offered free to PTA units nationwide.

The program spotlights specific ways parents can minimize the risk that their children will become involved with alcohol or other drugs. Designed for use by PTA's and other groups to educate parents of children in grades 3-6, the program is contained in a kit which offers research-based information and easy-to-follow instructions, providing the resources to organize and conduct four interactive meetings.

The kit also includes parent brochures with tips on raising alcohol and drug-free children, and a 15-minute video that helps evaluate parent-child communications and aids in the program discussion. A national advisory committee of educators, physicians and experts in alcohol and drug-abuse prevention helped develop the program.

"The time to deal with the problem of drug and alcohol use by children is before they first try them," said Ann Lynch, president of The National PTA. "It is our hope that with this program we can give every parent the tools needed to prevent their children from ever using drugs," she added.

"GTE is proud that, as partners with the National PTA, we're launching this excellent program," said James L. "Rocky" Johnson, GTE chairman and chief executive officer. "Our actions spotlight the need for corporate America to step up its involvement in the national issue of alcohol and other drug abuse."

Program Features
Common Sense combines several unique features according to Lynch. It encourages coalition building in the community, seeks to educate parents early in their children's lives and provides them with positive parenting skills. "We've based this program on current prevention research, which indicated actions taken by parents are the most influential factors in keeping children drug free," Lynch said.

The Common Sense program focuses on three areas: building bonds to families and schools; setting rights, rules and limits; and parents as role models. The program is designed to be used at any time during the year and as often as needed.

The kit, developed by Lifetime Learning Systems, Fairfield, Conn., provides strategies for leaders of PTA meetings to use in getting parents and others involved in drug prevention. It includes guidance for promoting the program; arranging for speakers, panelists and videos; creating follow-up activities; and establishing community outreach.

PTA & GTE to Evaluate Six Model Sites

GTE and PTA volunteers and staff are working with six model sites: Brainard School, Lakeview Terrace, Calif. (near Los Angeles); Lochart Elementary, Tampa, Fla.; Rosemeade Elementary, Carrollton, Texas; Leo Elementary, Leo, Ind.; Lilja School, Natick, Mass.; and Field-Allen School, Windham, Maine.

The model sites were selected to help evaluate the Common Sense program and provide new ideas and guidance to others as the program spreads nationwide, Lynch said.

GTE and the National PTA chose these sites because they are in areas where GTE has operations, making it possible for GTE employee volunteers to support the program.

PTA's may receive one free kit by calling 1-800-225-5483. This number may be used only to order kits. The program is also available to civic, community or other parent-teacher organizations for \$40 (plus shipping

and handling) by calling the same "800" number. To reach out to America's large Hispanic population, GTE translated selected Common Sense materials into Spanish. The National PTA will use proceeds from the kit to continue to support Common Sense.

The National PTA, headquartered in Chicago, is the nation's oldest and largest child advocacy and parent-education volunteer association. It has 6.8 million members in every state, the District of Columbia and Department of Defense schools in Europe.

GTE is a leader in its three core businesses - telecommunications, lighting and precision materials - providing products and services worldwide. The GTE Foundation provides financial assistance to scientific, educational and charitable institutions within the United States and its possessions on behalf of GTE and its many subsidiaries.

HOME IMPROVEMENT SHOW

Borger Aluminum Dome

April 20 & 21

Pest Control • Weed Control • Siding • Hot Tubs • Windows • Lumber & Hardware • Patio Covers • Storage Buildings • Patio Rooms • Lawn & Garden Equipment • Heating & Air-Conditioning • Plumbing Supplies • Vacuum Cleaners • Security Systems • Water Conditioning • Cellular Phones • Food • Computers • Medical & Health Supplies • Bank Financing • Carpet & Floor Covering

Hot Air Balloon Rides
Saturday Only (Weather Permitting)
Free Blood Pressure Check
Free Children's Fingerprinting
By Borger Police Department

Welcome to Kay's Cafe

Starting Friday, April 19th -

We will be open until 9:00 p.m. and have a Brand New Menu for Evening Dining!

<h4 style="text-align: center;">Appetizers</h4> <p style="text-align: center;">(served after 5:00pm)</p> <p>Cheese Sticks.....\$3.00 Zucchini Sticks.....\$2.50 Cheese Nachos.....\$2.25</p> <h4 style="text-align: center;">Entrees</h4> <p>Liver & Onions.....\$4.95 Ham Steak.....\$5.25 Chicken Livers.....\$4.95 Chicken Gizzards.....\$4.95 Fried Chicken (3 Pieces).....\$5.50 Chicken Strips.....\$4.95 Breaded Pork Chops.....\$5.25</p> <h4 style="text-align: center;">Steaks</h4> <p>Large T-Bone.....\$10.75 Large Rib-Eye.....\$9.75 Small Rib-Eye.....\$8.25 K.C. Strip.....\$9.25 Bacon Wrapped Filet.....\$8.50 Chicken Fry w/Gravy.....\$5.25 Hamburger Steak.....\$4.95 Cheeseburger Steak.....\$5.35 Dutch Steak.....\$5.25 Salisbury Steak.....\$4.75</p> <h4 style="text-align: center;">Seafood</h4> <p>Catfish Fillets (3).....\$6.25 Jumbo Fried Shrimp (6).....\$8.75 Popcorn Shrimp.....\$8.25 Seafood Platter.....\$12.95 Fish Sticks.....\$4.50 Fried Oysters.....\$7.25 Clam Strips.....\$6.95</p> <p>All above are served with your choice of Baked Potatoes or French Fries, one trip to the Salad Bar & Texas Toast.</p> <h4 style="text-align: center;">Sandwiches</h4> <p>Bar-B-Q Sandwich Reuben Sandwich</p>	<h4 style="text-align: center;">Mexican</h4> <p style="text-align: center;">(Served after 5:00pm)</p> <p>Fajitas (Beef or Chicken).....\$6.95 Served with Chips, Salsa, Beans, Rice, Cheese & Guacamole.</p> <p>Enchiladas.....\$5.95 Beef, Cheese or Combination) Served with Beans, Rice, Salad, Chips & Sauce.</p> <p>Chili Rellenos.....\$5.95 Served with Beans, rice, Salad, Chips & Sauce.</p> <p>Combination Plate.....\$5.95 (1 Chili Relleno, 1 Enchilada, 1 Taco) Served with Beans, Rice, Salad, Chips & Sauce.</p> <p>Tostada Plate.....\$4.95 Crisp Corn Tortilla covered with Beef, Refried Beans, Cheese & Salad.</p> <p>Open Burritos (Homemade).....\$4.95 Beef & Beans, Onions, Grated Cheese, Lettuce & Tomato, Chips & Sauce.</p> <p>Tacos (Each).....\$1.35 Taco Salad.....\$3.95 Beef & Cheese Nachos.....\$3.75 Guacamole Salad.....\$3.25 Guacamole Salad (small).....\$2.75 Chips & Hot Sauce.....\$2.25</p> <h4 style="text-align: center;">Italian</h4> <p style="text-align: center;">(served after 5:00pm)</p> <p>Lasagna.....\$4.95 Spaghetti & Meat Sauce.....\$4.95 Above Served with Salad & Garlic Bread</p> <h4 style="text-align: center;">Chinese</h4> <p style="text-align: center;">(Served after 5:00pm)</p> <p>Pepper Steak.....\$4.95 Almond Chicken.....\$4.95 Above Served on Rice</p> <h4 style="text-align: center;">Salads</h4> <p>Taco Salad Guacamole Salad Wilted Lettuce Salad</p>
---	---

210 Main Spearman

Schools celebrate week for libraries

by JoAnn Morton
Editor

"Kids Who Read Succeed" is the theme for National Library Week, April 14-20.

National Library Week is being celebrated in special ways at Spearman Elementary School and Spearman Junior High School, according to Librarian Paula Butler.

"Each day this week, we have been having a time for silent reading. Every morning from 8:15 to 8:30 a.m., everybody at Spearman Elementary spends 15 minutes reading silently. That includes the students, the teachers, and even Mr. Gage, our principal!" she explained.

"We're also having a daily drawing, where one student's name is drawn to win a free paperback book," Butler added.

The teachers also had a drawing, she said. The winning teacher's classroom received an extra library period this week.

Each student at the elementary school received a book mark commemorating National Library Week.

At Spearman Junior High School, there is also a daily drawing for a free paperback book for one lucky student, and the students there received commemorative book marks as well.

Spearman school menu

Spearman High School
April 22-April 26

Monday - Beef fritter, mashed potatoes/gravy, opt., salad bar, hot rolls/butter, fruit, milk

Tuesday - Tacos, pinto beans, salad bar, sopaipilla-honey, fruit, milk

Wednesday - Bar B Q on a bun, fried okra, salad bar, cake, milk

Thursday - Fish sticks, whole potatoes w cheese sauce, salad bar, cornbread-butter, pudding, milk

Friday - Hamburger, french fries, salad bar, cookie, milk

Jr. High/Elementary

Monday - Beef fritter, mashed potatoes/gravy, opt., mixed vegetables, hot rolls/butter, fruit, milk

Tuesday - Tacos, pinto beans, lettuce-tomato salad, sopaipilla-honey, fruit, milk

Wednesday - Bar B Q on a bun,

fried okra, celery & carrot sticks, dill spears-onion, cake, milk

Thursday - Fish sticks, whole potatoes w cheese sauce, sweet peas, cornbread/butter, pudding, milk

Friday - Hamburger, french fries, lettuce-tomato, pickle-onion, cookie, milk

Advertising Pays \$\$\$\$

Call 659-3434
or
1-800-395-9482

NAPA AUTO PARTS

The Professional Mechanics' Source ... and Yours Too!

AUTOLITE SPARK PLUGS
Non-Resistor*
Resistor
99¢
89¢
*AFTER 25¢ MAIL-IN REBATE

CHAMPION
Non-Resistor
Resistor
99¢
\$1.09
*After 25¢ Mail-In Rebate

NAPA H.D. GAS DELUXE SHOCKS
Fits most cars and light trucks.
All 94000 Series
12.99 EACH

99¢ **SALE** **99¢**

NAPA INJECTOR CARE
Cleans fuel injectors, fuel lines and carburetors while you drive. (12 oz.) #6600 with coupon
Expires 5-31-91
99¢

NAPA OIL
* 89¢ per quart
Limit one case per address.
*after rebate
10W-30, 10W-40, HD JAE 30

NAPA Air Filters
\$1.99 After \$2.00 mail-in rebate
\$2.00 mail-in rebate
Fits Most Cars & Light Trucks

GRANDE SHOCKS
FOR LIGHT TRUCKS
\$25.99 EACH

50-FT. REINFORCED VINYL GARDEN HOSE
Economical hose with brass couplings.
#827-8075
With Coupon
Expires 5-31-91
\$9.99

NAPA LAWN & GARDEN TRACTOR BATTERY
Fits most garden tractors.
Plenty of cold cranking amps.
(GROUP U1-L) #8221
\$21.95 W/EXCH

available at these and other participating NAPA stores

DALHART	Lucas Auto Parts, 211 Oak	249-4563
SPEARMAN	Hi Plains Auto, 118 Main St.	659-2506

For the finest automotive repair visit NAPA AUTOCARE CENTERS or GARAGES where quality NAPA parts are installed.

MOST MAJOR CREDIT CARDS ACCEPTED

Because there are no unimportant parts.



Chris Strawn gives a second effort to get across the finish line ahead of the competition at the Spearman Relays.



Holly Jarvis is on her way to the regional track meet. She finished first in the long jump event.



Tim Kizziar flies through the air and clears the bar during the high jump competition at the Spearman Relays. He won the high jump event at the district meet Saturday.

Spearman sends 14 thinclads to regional

Spearman track teams traveled to Stinnett to compete in the District 1-AA track meet last Friday and Saturday. At the end of the meet the varsity track teams had 14 competitors headed for the regional track meet next week.

The Lynxette track team will have 14 girls at the regional meet. Joy Gafford earned her way to the regional meet by finishing second in both the 100m and 300m hurdles and by being a part of the first place finishing 1600m relay team.

Other members of that team were Shannon Holton, Sonya Nitschke and Jill Lusby. The other two relay teams will also be going to regionals by virtue of their second place finishes. Members of the 800m relay team are Holton, Nitschke, Suzanne Sanders and Michelle Garnett. Members of the 400m relay team are Mendy Lasater, Garnett, Sanders and Bonnie Thompson.

Girls going in individual events include Nitschke (200m dash), Lusby (first in high jump and 800m run), Sanders (second in high jump) and Mary Cook (1600m and 800m runs). Joining them will be Holly Jarvis (first in long jump).

The varsity Lynx were led into regionals by Lyn Garrard and Chris Williamson. They both posted two first place finishes at the district meet.

Garrard finished first in the 3200m and 1600m runs. Williamson got his two first place finishes in the triple jump and the 100m dash.

They will be joined at the regionals by Brian Beck (second in pole vault and first in 300m hurdles), Tim Kizziar (first in high jump), Tim Dooley (first in 800m run).

Spearman district track results are as follows.

Varsity Girls

100 M. Hurdles - Joy Gafford - 2nd, 16.11; Suzanne Sanders - 5th, 17.41

400 M. Dash - Shannon Holton - 3rd, 63.5; Carla Greene - 4th, 65.5; Christie Taylor, 68.58

200 M. Dash - Sonya Nitschke - 2nd, 28.01; Holly Jarvis - 4th, 28.92; Carla Greene - 6th, 28.79

High Jump - Jill Lusby - 1st, 5'2"; Suzanne Sanders - 2nd, 5'; Mary Cook - 3rd, 5'

Triple Jump - Michelle Garnett - 3rd, 31'10 1/2"; Carla Greene - 7th, 30'4"; Tracy Tigrett, 28'4"

4 x 200 Relay - Shannon Holton, Sonya Nitschke, Suzanne Sanders, Michelle Garnett - 2nd, 1:50.26

4 x 400 Relay - Shannon Holton, Sonya Nitschke, Jill Lusby, Joy Gafford - 1st, 4:12.02

3200 M. Run - Amanda Nobles - 6th, 15:23; Elizabeth Pipkin - 7th, 16:56

1600 M. Run - Mary Cook - 2nd, 6:08; Amanda Nobles - 6th, 6:35; Elizabeth Pipkin, 7:13

100 M. Dash - Michelle Garnett - 3rd, 13.45; Bonnie Thompson - 4th, 13.62; Carla Greene - 5th, 13.52

300 M. Hurdles - Joy Gafford - 2nd, 47.7; Mendy Lasater - 4th, 49.3

800 M. Run - Jill Lusby - 1st, 2:31; Mary Cook - 2nd, 2:35; Christie Taylor - 4th, 2:42

Long Jump - Holly Jarvis - 1st, 16'2 1/2"; Bonnie Thompson - 4th, 15'2 1/2"; Carla Greene, 14'

Shot Put - Lindee Bradley - 4th, 29'4"; Laura Pearson, 28'; Tracy Tigrett, 21'10"

Discus - Lindee Bradley - 6th; Tommie Latta and Amber Cates also competed

4 x 100 Relay - Mendy Lasater, Michelle Garnett, Suzanne Sanders, Bonnie Thompson - 2nd, 52.72

8th Grade Girls

Discus - Ashly Shieldknight - 1st, 91'; Lyndee Cook - 6th, 63'3"

High Jump - Molly Blackman - 2nd, 4'8"; Ashly Shieldknight - 3rd, 4'4"

Triple Jump - Lyndee Cook - 3rd, 28'9"; Molly Blackman - 4th, 27'9 1/4"; Mika Pipkin - 5th, 26'2"

400 M. Relay - Kiki Kelp, Nora Nava, Traci Martin, Mandi Lair - 3rd, 61.51

800 M. Run - Molly Blackman - 5th, 2:46

100 M. Hurdles - Lyndee Cook - 3rd

800 M. Relay - Molly Blackman, Ashly Shieldknight, Rashele Reed, Mandi Lair - 2nd, 2:03.94

400 M. Dash - Ashly Shieldknight - 2nd, 67.48; Heather Reimer - 6th, 77.07

200 Hurdles - Lyndee Cook - 1st

200 M. Dash - Rashele Reed - 3rd, 30:85; Amanda Burress - 6th, 32:90

1200 M. Run - Molly Blackman - 4th, 5:10.76; Mika Pipkin - 5th, 5:16.58

1600 M. Relay - Mandi Lair, Rashele Reed, Ashly Shieldknight, Lyndee Cook - 2nd, 4:43

7th Grade Girls

Long Jump - Kelly Shieldknight - 1st, 13'5"; Virginia Barrera - 2nd, 13'3"

Triple Jump - Kara Townsen - 1st, 29'6"; Virginia Barrera - 3rd, 25'2"; Laci Baker - 4th, 24'6"

Shot Put - Tiffani Rex - 1st, 26'7"; Discus - Kara Townsen - 2nd, 78'5"

High Jump - Tiffany Bruning - 2nd, 4'4"

800 M. Run - Virginia Barrera - 1st; Lacie Baker - 5th

1200 M. Run - Lacie Baker - 5th

400 M. Run - Nicole Burgess - 5th, 86.82

100 M. Hurdles - Kelly Shieldknight - 3rd

100 M. Dash - Tiffani Rex - 4th

100 M. Hurdles - Crystal Boyd - 5th

200 M. Hurdles - Tiffany Bruning - 2nd; Toni Davis - 3rd; Crystal Boyd - 4th

200 M. Dash - Kara Townsen - 1st

400 M. Relay - Spearman - 4th

800 M. Relay - Spearman - 1st

1600 M. Relay - Spearman - 1st

Varsity Boys

Pole Vault - Brian Beck - 2nd, 11'

High Jump - Tim Kizziar - 1st, 6'; Cody Pipkin - 4th, 5'10"; Chris Strawn - 5th, 5'8"

Triple Jump - Chris Williamson - 1st, 40'9"

Discus - Brian Kidder - 5th, 125'8"

Shot Put - Chad Davis - 4th, 42'3/4"

400 Meter Relay - Brian Beck, Mark Brown, Tim Dooley, Chris Williamson - 3rd, 44.69

3200 M. Run - Lyn Garrard - 1st, 10:55.49

800 M. Run - Tim Dooley - 1st, 2:06.17; Chad Riggins - 4th, 2:10.88; Cody Pipkin - 5th, 2:11.14

100 M. Dash - Chris Williamson - 1st, 11.08; Mark Brown - 5th, 11.76

300 M. Hurdles - Brian Beck - 1st, 40.71; Jason Varmon - 5th, 42.97

1600 M. Run - Lyn Garrard - 1st, 4:49.60; Chad Riggins - 6th, 5:09.85

110 M. Hurdles - Brian Beck - 4th, 15.65; Jason Varmon - 5th, 15.85

1600 M. Relay - Chris Strawn, Chris Williamson, Ron Whittington, Tim Dooley - 4th, 3:37.48

Long Jump - Chris Strawn - 6th, 18'1/2"

Junior Varsity Boys

Triple Jump - Clay Scribner - 1st, 37'8 1/2"

Shot Put - Kory Brown - 1st, 36'2"; Chad Gardiner - 3rd, 35'8 1/2"

Pole Vault - Clay Scribner - 5th, 9'; Dee Mayfield - 6th, 8'6"

400 M. Relay - Brett Coates, Dee Mayfield, Kory Brown, Chad Gardiner - 4th, 49.84

800 M. Run - Ernesto Puentes - 2nd, 2:17.84; Toby Thompson - 6th, 3:07.15

100 M. Dash - Clay Scribner - 3rd, 12.2

110 M. Hurdles - Dee Mayfield - 5th, 19.36

300 M. Hurdles - Dee Mayfield - 6th, 50.0

200 M. Dash - Clay Scribner - 3rd, 25.0

1600 M. Relay - Clay Scribner, Toby Thompson, James Macias, Ernesto

 You are invited to attend the
Eagle Scout Ceremony
 Honoring
Christopher Turner
 and
Dallas Trosper
Sunday, April 21, 1991
3 p.m.
Parish Hall
901 S. Roland
Spearman, Texas
 Reception Following

REVIVAL April 21 - 25



Dr. Bruce Chesser
 (Former Pastor)
Gerry Lewis
 - Musician -

Sunday - Morning Worship - 11:00 a.m.
Monday - Thursday - Noon Luncheon
- Evening Service - 7:30 p.m.
 (Nursery provided every service)

FIRST BAPTIST CHURCH
 123 Bernice Spearman
- Everyone Welcome! -

NOTICE OF TRUSTEE ELECTION
 (AVISO DE ELECCION TRUSTEES)

To the Registered Voters of FRINGLE-MORSE, Texas
 (A los votantes registrados del Texas)

Notice is hereby given that the polling places listed below will be open from 7:00 a.m. to 7:00 p.m. on MAY 4
 19 91, for voting in a SCHOOL TRUSTEE election, to ELECT 2 SCHOOL BOARD TRUSTEES
 (Notificación por las papeles que las cédulas electorales están abiertas de las 7:00 a.m. hasta las 7:00 p.m. el 4 de MAYO
 de 19 91 para votar en la Elección para ELECTA dos TRUSTEES para la escuela la

LOCATIONS OF POLLING PLACES
 (DIRECCIONES DE LAS CASI LAS ELECTORALES)

Absentee voting by personal appearance will be conducted each weekday at
 (La votación en ausencia en persona se llevará a cabo de lunes a viernes en)

SUPERINTENDENT'S OFFICE, 100 EIGHTH STREET, MORSE, TX
 (Location) (sitio)

between the hours of 8 a.m. and 4 p.m. beginning on APRIL 15, 1991 (date)
 (entre las 8 de la mañana y las 4 de la tarde empezando el APRIL 15, 1991) (fecha)

and ending on APRIL 30, 1991 (date)
 (y terminando el APRIL 30, 1991) (fecha)

Additional absentee voting will be held at the same location as follows:
 (La votación en ausencia adicional se llevará a cabo en el mismo sitio de tal manera)

Date (Fecha) Hour (Hora)

NONE

Applications for ballot by mail shall be mailed in
 (Las solicitudes para boletas que se envíen en ausencia por correo deberán enviarse a)

BOY HARRIS
 (Name of Absentee Voting Clerk)
 (Nombre del Secretario de la Comisión de Ausencia)

BOX 109
 (Address) (Dirección)

MORSE, TX 79062
 (City) (Ciudad) (Zip Code) (Código Postal)

Recommended but not required

Applications for ballots by mail must be received no later than the close of business on
 (Las solicitudes para boletas que se envíen en ausencia por correo deberán recibirse para el fin de las horas de negocio en el)

APRIL 26, 1991
 (date) (fecha)

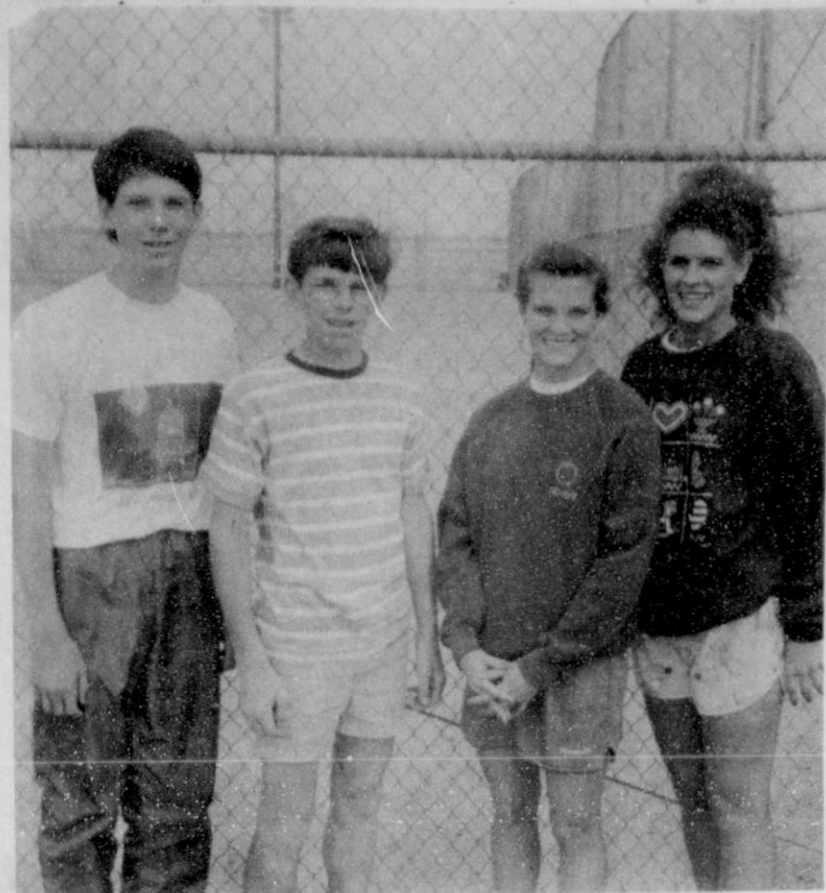
Issued this the 12 day of APRIL, 19 91
 (Emandado por día 12 de APRIL, 19 91)

[Signature]
 Secretary of Voting (Secretario de la Comisión de Votación)

*If absentee voting is not given to be conducted on other Saturdays or the last Sunday during the period absentee voting begins the year

TO ALL INTERESTED PERSONS AND PARTIES:

The Gruver Redi-Mix Cement has made application with the Texas Air Control Board for Permit No. C-20616 to construct a Redi-Mix Cement Plant in Gruver, Hansford County, Texas. The proposed location is 700 S. McCree, Gruver, TX. Additional information concerning the application is contained in the Public Notice Section of this Newspaper.



The Spearman doubles teams are number one in district. They are (l-r) Mike Hagar and Clint Townsen, boys doubles; and Cam Butts and Tamri Townsen, girls doubles.

Spearman netters win at district tourney

The Spearman tennis team dominated the District 1-AA tournament at Stratford last week, taking the first place spot in all four divisions.

In the girls part of the tournament, the Spearman number one team of Tamri Townsen and Cam Butts defeated teammates Shay Crawford and Carrie Pearson in the finals to win that event. Crawford and Pearson were second. The girls singles event was won by Kimbre Townsen. Brandi Schneider came in third.

On the boys side of the tournament Wess Dyess took first in the singles event. In doubles it was the number one team of Clint Townsen and Mike Hagar who placed first for the Spearman team. The newly organized team of Khris Kelp and Daryl Hawkins finished fourth.

These strong finishes by the Spearman players means that Spearman will have three doubles teams and two singles players entered in the

regional tournament in Abilene next week. Who will be playing where, was in doubt as of press time this week.

Butts was in the hospital with a throat infection on Tuesday. According to tennis coach Kurt Ashmore, she was expected to have a tonsillectomy. "This makes her a no-go at regionals and an unknown for state," said Ashmore.

The other member of that girls doubles team, Townsen, missed school Monday and Tuesday with a stomach disorder, reported Ashmore. He was not sure of her status at press time.

Ashmore stated that he is not sure what kind of player substitution he will make at regionals to replace Butts. He indicated he has several options available and will keep them all open for as long as he can. "I only hope none of the other regional players get sick," he concluded.



Members of the Gruver High School FFA Land Judging team proudly display the third place flag they won at the 63rd annual Regional FFA Judging Contest at Texas Tech University.

GHS Land Judging team places third

The Gruver High School National FFA Organization judging team placed third in the Land Judging at the 63rd annual regional FFA Judging Contest April 13 at Texas Tech University.

Members of the team include Junior Rivera, son of Mr. and Mrs. Santos Rivera; Justin Carthel, son of Mr. and Mrs. Dan Carthel; Sharlet Slough, daughter of Mr. and Mrs. Kenneth Slough; and Ashley Wagner, daughter of Mr. and Mrs. Richard Wagner.

The regional contests included agricultural mechanics, cotton classing, crops, dairy cattle judging, dairy foods, horse judging, livestock judging, land judging, meats judging, poultry judging, range and pasture plant identification, range and pasture plant judging and wool judging.

The contest was supervised by Texas Tech College of Agricultural Sciences faculty. Individual placings were Justin Carthel, fifth, and Junior

Rivera, 10th. There were approximately 120 students on 32 teams that competed in the Land Judging Contest.

The top 10 percent of the teams from each area advance to the State FFA Judging Contests. The next competition for the Gruver Land team will be the State Land and Range and Pasture Contest on April 18, 1991 at Tarleton State University.

Other team placings include Livestock, sixth, Area I and second, District. Members include Kenny Slough, Jason Bass, Rex Ralston and Chad Stork.

Individual honors went to Kenny Slough who placed seventh overall out of approximately 400 students competing in the contest made up of about 100 teams.

In Dairy Products the team placings were seventh, Area I and first, District. The team members include Hart Derington, Clint Bell, Jered Bass and Tek Ferguson. There were 28 teams in this category.



Marvin Nash brought his "Don't Clown Around With Drugs" show to Gruver Elementary School, where he spoke with students including these 4th and 5th grade classes.

Tax rebates down

In the April disbursement of city sales tax rebates, Spearman received a check for \$10,876.87 and Gruver's share was \$2,929.25.

As compared with the April 1990 rebate checks, Spearman's receipts were down 9.79 percent and Gruver's

were down .57 percent, according to the state comptroller's office. Last year in April, Spearman received \$12,057.16 and Gruver received 2,946.02.

1991 payments to date for Spearman total \$53,361.80, down 10.84 percent from the 1990 payments of \$59,850.92 received through April. Payments to date for Gruver total \$14,371.94 this year, which is 6.42 percent less than the \$15,358.60 received through April last year.

Statewide rebates show a 24 percent increase from last April, according to State Comptroller John Sharp. Monthly checks to city and county governments, hospital districts and the El Paso City Transit Department totaled \$82.9 million, 24 percent more than last April's checks for \$74.8 million.

April's rebate reflect taxable sales made in February.

The comptroller's office said that in addition to steady economic growth throughout the state over the past year, some cities raised their sales tax rate since last February, and more counties now collect sales tax.

Bike from page 1

Brooke came to St. Jude from Louisiana and will be entering kindergarten this fall. She enjoys dolls, reading and drawing and has two brothers, Jonathan and Dobie. Her parents are Tammy and Dobie Simon.

Eagle from page 1

Speaking, Communications, and Safety.

Dallas has completed a NAGATAMEN Leadership Course and has served on staff. He is a member of the Order of the Arrow and currently serves as a Junior Scout Master in Troop 551.

His Eagle Project involved the establishment of a permanent fund for children in need in Hansford County. In recognition of this accomplishment, Dallas received an award from the Governor of Texas.

Golf tourney May 17

AMARILLO - A new car and a trip to Las Vegas are up for grabs at the seventh annual Amarillo Area Association of Life Underwriters golf tournament May 17 at Ross Rogers Golf Course.

Proceeds from the event are used to send an area child to the Moncrief Mountain Ranch in Colorado. The facility allows chronically ill children to hike, fish, ride horses, rappel down cliffs, and participate in other camp activities in a medically supervised mountain environment.

The Amarillo Area Association of Life Underwriters has sent at least one local child to the camp for each of the past five years. The field for the 8 a.m. shotgun start is limited to the first 100 paid golfers. The \$40 en-

try fee covers greens fees, cart, drinks, and buffet lunch following the tournament. A drawing for numerous door prizes will be held during the lunch.

The annual event utilizes a four-player scramble format with each team requiring a minimum total handicap of 40. Only one team member may have a handicap of 9 or less.

A new car, courtesy of Buddy Covin Farmers Insurance Group, will be won by the first golfer making a hole-in-one on the 10th hole during the tournament played on the Ross Rogers east course.

A round trip ticket for two to Las Vegas, with transportation provided by American Airlines, goes to the winner of a putting tournament following completion of the golf scramble.

To enter, write to tournament chairman Bill Rawlings, 1100 S. Washington, Amarillo, TX 79102. More information can be obtained by calling Rawlings at 406-371-8711.

BEHNE ELECTRIC & CONSTRUCTION

Electrical Repairs & Handy Man Service Reasonable Rates

CALL 659-3404

Volunteer.

American Heart Association

APRIL SPECIAL

Feedlot Manure Prices

20¢ Per Ton Off On All Orders In April. Even More From Some Feedlots.

Call For More Information.

REAGAN 659-3402

DENNIS 659-2634

CLOIS (BILLY) 659-3642

BAKER'S DOUBLE "C" FEED PEN SERVICE INC.

AUCTION

Real Estate — Minerals
May 2, 1991 — 10 a.m.
Perryton, Texas

Owner: Bob Williams

Location: From Perryton, Texas, 15 mi. south on Hwy. 70, then 2 mi. West on FM 759.

REAL ESTATE

Legal: The North 1/2 of Sec. 84, blk. 13, T&NO Survey, Ochiltree County, Texas.

This Ochiltree Co., Texas farm consists of 253 acres of irrigatable land with one irrigation well. Irrigation pump and gearhead intact. Fuel is at well head price. Tail water pit in north east corner tied into underground water line. Also lake water available in southeast corner when lake is full. 2.5 miles of underground line. ASCS allotments consist of 121 ac. wheat with a 40 bu. irrigated yield. Milo 127 allotted acres with a 104 bu. irrigated average. New 1991 weighted yields for dryland are wheat - 32 bu. and milo - 77 bu. CRP 39.5 acres - 7 years remaining on contract.

MINERALS

Owner will offer 80 acres of producing minerals. This farm has two producing oil wells at the present time. Five year average gross production income is \$9,877. Zones below the Cleveland are now producing in this section. Potential for more production in the lower zones is possible.

Terms: 10% of the purchase price will be deposited in escrow the day of sale. Abstracts to date, warranty deed and merchantable title will be furnished. Purchaser to have 15 days to examine title. Closing will be held within 30 days of signing of contract. This property will be offered to the highest bidder subject to seller's confirmation of the contract. Property will be offered separately, then as one unit. 1990 and prior taxes to be paid by seller. 1991 taxes prorated to date of closing. Possession of wheat ground after harvest. Possession of milo ground at closing.

Closing Agent: Bruce Julian, Texas Attorney

REAL ESTATE BROKER
DALE NAYLOR
Balko, Oklahoma
(405) 646-3548

NAYLOR
AUCTION and REALTY, INC.
RT. 1 BOX 65 • BALKO, OK 73931 • (405) 646-3548

REPRESENTATIVE
RANDY SCHREINER
Tehoma, Oklahoma
(405) 423-7110



If you are considering an auction, or if you have any equipment that you would like to sell, contact Reagan & Brown Auctioneers and give us a chance to work for you.

REAGAN & BROWN AUCTIONEERS, INC.
806-249-6776

Farm Equipment, Real Estate, Business Liquidations & Estates

BOB BROWI
(806) 249-4033
TXS-058-007442

Reagan & Brown
AUCTIONEERS, INC.

DALE REAGAN
(806) 384-2066
TXS-058-007443



IF YOUR BUDGET PLANNING IS ONLY THIS ACCURATE

The Budget Billing Plan Can Help

The Budget Billing Plan from Texas-New Mexico Power Company makes your electric bill predictable, regardless of the season. The plan averages the highs and lows of your bill so that you pay the same amount each month. To see if you qualify for the plan, call or visit your nearest TNP office.

Texas-New Mexico Power Company.



(photo courtesy Mindy Davis)

Max Davis finished first in both the 3200 and 1600 meter runs at the district track meet at Gruver. He is shown here in a race at the Spearman Relays.



(photo courtesy Mindy Davis)

Amanda Hiller will be headed for regionals next week as part of the 1600m relay team. Here, she is running in the 800m run at the Spearman Relays.



(photo courtesy Mindy Davis)

Julie Meyer broke her own school record Saturday in the finals of the 800m run at the district track meet. She is shown here as she set that record at the Spearman Relays.

Gruver varsity tracksters send 11 to regional meet

The Gruver varsity track teams will have 11 competitors in the regional meet after hosting the District 1-A track meet on Friday and Saturday.

The varsity boys qualified seven competitors for regional in 10 events on their way to a second place finish in the district meet. Brice Goldsmith and Max Davis both qualified in two events. Davis finished first in both the 3200 and 1600 meter runs. Goldsmith finished one and two in the shot and disc events, respectively.

Also qualifying were Shannon Poole in pole vault, Kyle Haenish in the 800m run and Trent Seagler in the 400m run. Joining them at regionals will be Felipe Dominguez in the 300m high hurdles, Dan McCloy in the 200m dash and the 1600m relay team.

The varsity girls track team placed six girls in four events of the regional track meet. Cora Meyer leads these girls with three first place finishes. She finished first in the 800m run, the 400m dash and as a member of the 1600m relay team. Her 800m and the 1600m relay team times were the best so far reported in the region, according to girls track coach Mike Banks. Other members of the relay team are Amanda Hiller, Gina Hoel and Holly Venneman.

Hiller also qualified for regional in the 800m run. But, according to Banks, she will not compete in the event. "We want her at her best for the relay," Banks said.

Janelle Haefner will be joining these other girls at regionals. She finished second in the 100m low hurdles at the district meet. Wynn Maupin made it to regionals with a third place finish in the triple jump. This made her the alternate and when the Vega competitor dropped, Maupin was in.

In the JV part of the meet the Gruver boys were listed as finishing first. Further details as to their performances were not made available before press time.

The junior high girls teams both finished first in the district meet. The eighth grade team was led by Julie Meyer and Tisha Ralston. These girls both had three first place finishes.

Meyer broke her own school record in the 800m run for a first place finish. She was a member of the first place finishing 400m relay and the 1600m relay teams. The latter also posted a new school record.

Ralston was a member of those two relay teams as well. A first place finish in the 400m dash was her third win. Joining Ralston and Meyer on those relay teams were Wendy Rodriguez and Kimberly Wagner, on the 400m, and Rodriguez and Kim Venneman on the 1600m.

On the seventh grade team, Tara Shapley had four first place finishes. They included the 200m dash and hurdles, the triple jump and the long jump. Also posting victories were

Joni Hart (800m run and 1200m run), 1600m relay team of Myriam Alvarez, Molly McLain, Kiki Carthel and Shapley and McLain (high jump).

The seventh grade boys team set a new school record and tied another at the district meet. Bailey Barkley set a new school record for the 1600m run. The school record for the 300m intermediate hurdles was tied by Daniel Bort.

Results of the district track meet that were made available at press time are as follows.

Gruver High School Girls

3200 Meter Run - Brendy Brown - 3rd, 13.20.95; Monica Ward - 5th, 15.30.15
 400 M. Relay - Janelle Haefner, Holly Venneman, Gina Hoel, Wynn Maupin - 3rd, 53.42
 Hurdles - Janelle Haefner - 2nd, 17.02; Mika McLain - 6th, 18.78
 800 M. Run - Cora Meyer - 1st, 2:27.17; Amanda Hiller - 2nd, 2:32.84
 400 M. Dash - Cora Meyer - 1st, 62.77; Kasey Davis - 6th, 66.32
 300 M. Int. Hurdles - Mika McLain - 4th, 53.41
 1600 M. Run - Brendy Brown - 3rd, 5:56.59
 1600 M. Relay - Cora Meyer, Amanda Hiller, Gina Hoel, Holly Venneman - 1st, 4:14.57
 800 M. Relay - Janelle Haefner, Gina Hoel, Amanda Hiller, Holly Venneman - 2nd, 1:53.56
 Discus Throw - Anissa Ryan - 5th, 78'4"; Sara Jones - 6th, 75'7"
 Triple Jump - Wynn Maupin - 3rd, 33'1"
 Long Jump - Wynn Maupin - 4th, 15'5"
 Running High Jump - Holly Venneman - 1st, 5'0"; Mika McLain - 2nd, 5'0"; Wynn Maupin - 5th, 4'6"

8th Grade Girls
 400 M. Relay - Wendy Rodriguez, Tisha Ralston, Kimberley Wagner, Julie Meyer - 1st, 55.3
 100 M. Hurdles - Angela Overbey - 3rd, 19.04; Monica Garcia - 6th, 19.9
 800 M. Run - Julie Meyer - 1st, 2:40.8 (new school record); Janyth Hart - 7th, 2:58; Dorothy Wells - 8th, 2:58.6
 100 M. Dash - Tracy Robinson - 15.01
 400 M. Dash - Tisha Ralston - 1st, 66.7; Wendy Rodriguez - 2nd, 68; Lacy Barkley - 6th, 69.9
 200 M. Hurdles - Angela Overbey - 2nd, 36.7
 200 M. Dash - Kim Venneman - 3rd, 29.6; Kayce Haenisch - 6th, 30.5
 1200 M. Run - Melissa Thompson - 2nd; Dorothy Wells - 4th; Janyth Hart - 6th
 800 M. Relay - Kimberley Wagner, Kayce Haenisch, Lacy Barkley, Kim Venneman - 5th, 2:03
 1600 M. Relay - Kim Venneman, Wendy Rodriguez, Tisha Ralston, Julie Meyer - 1st, 4:28.4 (new school record)
 High Jump - Cristy Pitman - 2nd, 4'6"; Kim Venneman - 3rd, 4'6"; Angela Overbey - 5th, 4'4"
 Long Jump - Wendy Rodriguez - 2nd,

15'1"; Julie Meyer - 3rd, 14'4"
 Triple Jump - Wendy Rodriguez - 2nd, 30'8 3/4"; Julie Meyer - 3rd, 29' 10 1/2"
 Discus - Tisha Ralston - 3rd, 74'8"
 Shot Put - Lacy Barkley - 6th, 24'10"

7th Grade Girls

400 M. Relay - Corie Lowe, Shannon Acker, Roxane Holt, Robbi Mathews - 4th, 63.01
 100 M. Hurdles - Molly McLain - 2nd, 19.5; Kiki Carthel - 3rd, 19.6
 800 M. Run - Joni Hart - 1st, 2:52; Josie Pool - 2nd, 2:57
 400 M. Dash - Cristy Marquez - 2nd, 73.1; Myriam Alvarez - 3rd, 73.2; Hailey Lamb - 6th, 80.01
 200 M. Hurdles - Tara Shapley - 1st, 34.1; Molly McLain - 2nd, 35.7; Kiki Carthel - 4th, 36.0
 200 M. Dash - Tara Shapley - 1st, 29.3; Cori Lowe - 4th, 31.6; Shannon Acker - 5th, 32.9
 1200 M. Run - Joni Hart - 1st, 4:43 (new school record); Josie Pool - 3rd, 5:05
 800 M. Relay - Cristy Marquez, Josie Pool, Cori Lowe, Joni Hart - 3rd, 2:08
 1600 M. Relay - Myriam Alvarez, Molly McLain, Kiki Carthel, Tara Shapley - 1st, 4:51
 Shot Put - Kiki Carthel - 2nd, 21'9"; Roxane Holt - 5th, 18'7 1/2"
 Discus Throw - Cristy Marquez - 2nd, 63'9" (new school record); Kiki Carthel - 4th, 57'6"
 Triple Jump - Tara Shapley - 1st, 29'10 3/4"; Joni Hart - 3rd, 28'6 1/4"; Shannon Acker - 5th, 26' 1 1/4"
 Long Jump - Tara Shapley - 1st, 14'7 3/4"
 High Jump - Molly McLain - 1st, 4'6";

Josie Pool - 2nd, 4'4".

7th Grade Boys

400 M. Relay - Daniel Bort, Max Frick, Travis Ferguson, Wylee Maupin - 2nd, 54.59
 Hurdles - Sammy Renteria - 2nd, 20.57; Travis Ferguson - 3rd, 21.04; Jason Ward, 23
 800 M. Run - Bailey Barkley - 1st, 2:25.13; Chris Musick, 3:00
 100 Meter Dash - Sammy Renteria - 4th, 14.2; Jason Ward, 15.2; Doug Gurfory, 18.3
 400 M. Dash - Wylee Maupin - 1st, 61.6; Andy Morris, 86; Doug Gurfory, 78.3
 300 M. Int. Hurdles - Daniel Bort - 1st, 31.2 (tied school record); Sammy Renteria - 4th, 34.35; Travis Ferguson - 6th, 34.4
 200 M. Dash - Juan Arreola - 3rd, 29.4; Max Frick, 31; Doug Gurfory, 32
 1600 M. Run - Bailey Barkley - 1st, 3:52.5 (new school record); Jason Ward - 5th, 4:29.57
 1600 M. Relay - Juan Arreola, Bailey Barkley, Daniel Bort, Wylee Maupin - 1st, 4:18.94
 Shot Put - Chris Musick - 4th, 27'11 1/2"; Andy Morris, 22'9"; Sammy Renteria, 24'7"
 Discus Throw - Juan Arreola - 2nd, 91'9"; Chris Musick - 5th, 81'11"; Andy Morris
 Pole Vault - Jason Ward competed
 Triple Jump - Wylee Maupin - 1st, 32'2 1/2"; Juan Arreola - 5th, 28'4"; Bailey Barkley - 6th, 29'2"
 Long Jump - Daniel Bort - 3rd, 15'2 3/4"; Max Frick - 5th, 15'2 1/2"; Travis Ferguson - 6th, 14'6 1/2"
 Running High Jump - Wylee Maupin

- 6th, 4'8"; Bailey Barkley, 4'6"; Max Frick, 4'2"

8th Grade Boys

400 M. Relay - Jace Dawson - 2nd, 50.41. Also competing were Ricky Oliva, Fabian Salazar and Rosalio Arreola
 Hurdles - Fabian Salazar - 2nd, 19.07; Kevin McNett - 6th, 19.92; Joe Bravo, 22.11
 800 M. Run - Rosalio Arreola, 2:33; Isias Arzate, 2:37
 100 M. Dash - John Holland, 13:07; J.D. Christian, 13.82; Clint Williams, 17.07
 400 M. Dash - Ricky Oliva - 2nd, 58.06; Aaron Frick, 64.0; J.D. Christian, 70.0
 300 M. Int. Hurdles - Jace Dawson - 2nd, 30.2; Roma Tomlinson, 34.98; Kevin McNett also competed
 200 M. Dash - Aaron Frick, 28.2; Wes Babbs, 31.5
 1600 M. Run - Jose Bravo, 4:21; Galen Slough, 4:17; Grant Odom
 1600 M. Relay - Jace Dawson - 1st, 3:57.68; Rosalio Arreola, Fabian Salazar and Ricky Oliva also competed
 Shot Put - Ricky Oliva - 1st, 43' 2 1/2"; Aaron Frick - 2nd, 41'6"; Ricardo

Soto also competed
 Discus Throw - Aaron Frick - 3rd, 119'11"; Ricky Oliva, 98"; Brady Tidwell, 59"
 Pole Vault - Aaron Frick - 4th, 8'0"; Jose Bravo - 5th, 7'6"; Grant Odom also competed
 Triple Jump - Rosalio Arreola - 2nd, 34'8"; Jace Dawson - 6th, 32'6 1/2"; Fabian Salazar, 29'7"
 Long Jump - Rosalio Arreola - 2nd, 17'7 3/4"; Jace Dawson and Isias Arzate also competed
 Running High Jump - John Holland, 4'8"; Isias Arzate, 4'4"; Fabian Salazar, 4'4"



American Heart Association
 This space provided as a public service.

GOOD LUCK AT REGIONALS!

Gruver Equity Elevators
 101 S. McCree
 733-2280

Go Hounds and Lady Hounds

Gruver Farm Supply
 515 Main
 733-2427

GOOD LUCK!

Swing Hard

Regional Competitors!

Run Fast

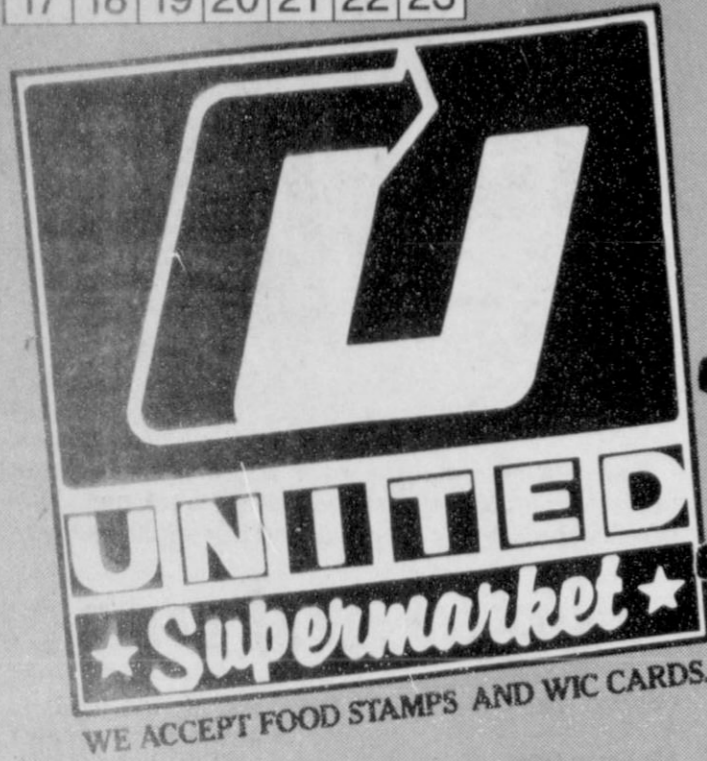
The Gift Registry
 103 E. Broadway
 733-2914

All The Way Gruver Put Your Heart In It At Regionals!

<p>G & G Food Liner 516 Main 733-2471</p>	<p>Hansford Supply 210 Main 733-2469</p>	<p>Gruver Lumber Co. 105 W. Broadway 733-2404</p>	<p>Caprock Feed Lot No. 2 733-5025</p>
--	---	--	---

PRICES GOOD THRU TUES. APRIL 23RD

WED	THUR	FRI	SAT	SUN	MON	TUES
17	18	19	20	21	22	23



GOOD THRU
APRIL 23RD
IN PERRYTON ONLY.



**Wilson
Meat Franks**

Buy One
Get One
Free

Priced
at \$1.39

12 oz. pkg.



**Wilson
Meat
Bologna**

Regular or Thick Sliced

Buy One
Get One
Free

Priced
at \$2.19

1 lb. pkg.



**Potter's
Sausage 'N
Biscuits**

All Varieties

Priced
at \$2.69

Buy One
Get One
Free

12 oz.
pkg.

**DOUBLE
COUPONS
7 DAYS A WEEK!**

**EASY
AS 1.2.
FREE**



**Mrs Bairds
Apple Cinnamon
or Cherry Rolls**

Buy One
Get One
Free

Priced
at \$1.49

8 ct.



**Keebler
Crackers**

Regular, Low Salt, Unsalted

Buy One
Get One
Free

Priced
at \$1.49

16 oz.

Limit 2 Please



Sunchips

Assorted

**BUY ONE
GET ONE
FREE!**

Priced
at \$1.52

7 oz.



**Fine Fare
American
Singles**

Priced
at \$2.19

Buy One
Get One
Free

12 oz.
pkg.

the personal touch

Southwest Outdoors

with Mel Phillip

The West Texas Sportsman Show is coming to Lubbock on May 10-12, and promises to be great entertainment for the entire family. Former Dallas Cowboy All-Pro Randy White will be just one of the major attractions at the Lubbock Fairgrounds.

Fishing pros at the sportsman show include B.A.S.S. national champion and 1990 Sun Country Champion Ted Miller, who will share his winning strategies on Ute and P.K. Ted is one of only 40 anglers who qualified for the \$100,000 Redman All-American.

Trout enthusiasts will enjoy noted author and expert angler Ti Piper, as he reveals where to go and what to use for successful fishing trips to New Mexico and Colorado.

This sportsman show will include boats, RV's, lake information, hunting/fishing seminars (at three casting tanks!) and even a gun and a craft show.

Mother's Day is just around the corner on May 12th and a neat gift idea is a new sewing kit/tackle box. The Plano #1232, commonly called the TackleRacker, is just what that special mom might need. This new item contains five utility boxes and is adjustable up to 88 compartments. Check out her old sewing kit. If it has had it, surprise her with one of the great ideas in storing valuable items. By the way, better pickup an extra

TackleRacker for her fishing gear and maybe she will let you borrow it. A nice card and candy might work for the more traditional moms.

Good news for local walleye fishermen. Joe Kraai, the biologist for the West Texas region of Texas Parks and Wildlife, reports that walleye in Lake Meredith are in great shape. The declining lake level is cause for some concern, and an old fashioned rain dance soon may be required, but "the number of keeper walleye (over 16 inches) has never been better," according to Kraai. He is the area's leading proponent of those toothy monsters that seem to disappear during prime summertime fishing. Perhaps this is the year to start catching the tasty walleye and give the bass a rest.

If and when Joe shares his how-to-catch-em walleye secrets, you will read them first in this column. Catching walleye remains a mystery to all but a handful of anglers, and these experts keep their lips sealed and sneak around the lake on those moonless nights.

As a Navy Pilot raised on the high plains of Texas, I had two goals. One was to be an astronaut and the other was to catch a limit of Walleye. A call from NASA seems more likely than a livewell full of those yankee transplants, but this year just might be one for the record books.

**TNMP demonstration
part of safety fair**

An electric arcing demonstration that has received favorable comments throughout Texas-New Mexico Power Company's service area will come to Perryton April 25 during the company's safety fair.

The safety fair is free and open to the public. It will be held from 9 a.m. until 4 p.m. at the Expo Center at Fairgrounds in Perryton.

The electric arcing demonstration will be presented at 10 a.m., noon and 2 p.m. The demonstration uses live electricity to dramatically demonstrate the dangers of electricity.

TNP has presented the demonstration in various towns it serves and has received favorable comments from those attending. "Excellent" and "educational" are two words that have been used in many of the thank you letters TNP has received concerning the program.

Although the electric arcing demonstrations will be one of the most vivid reminders of the need for safety during the fair, it certainly won't be the only one. Exhibits at the fair will also provide information about highway safety, hunting and fishing safety, fire protection and other ways to prevent accidents and injuries.

In addition to TNP, exhibitors include County Extension Service-Hansford, Lipscomb and Ochiltree Counties, City of Perryton Municipal Gas, Ochiltree General Hospital, Perryton Police Department, Texas Department of Public Safety, Perryton Fire Department, Texas-New Mexico Power Company, American Red Cross and Beehive Daycare Center.

The fair will also feature an exhibit of the winners of a safety poster contest sponsored for students in first through fifth grades at five area elementary schools. The school winners will be on display at the fair, and a grand champion will be selected from the five school winners. The grand champion will receive a bicycle.



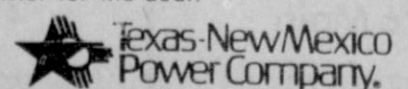
The deepest known depression in the surface of the earth—Marianas Trench—is nearly a mile deeper than the world's highest mountain, Everest, is high.

**Statement of Intent
to Change Rates**

In accordance with the regulations of the Public Utility Commission of Texas, Texas-New Mexico Power Company announces the Company's intent to change rates for its entire Texas operations. The effective date of such change is May 17, 1991. All classes of customers will be affected by said proposed changes. The proposed rates will produce an increase in gross revenues to the Company over test year revenues adjusted for test year customer growth and weather and annualization of test year rate increases of \$35,836,827, or 9.63%. TNP is proposing an alternative rate base treatment for Unit 2 of TNP One, the second unit of the Company's generating facility located in Robertson County, Texas. Under this alternative, sale-leaseback treatment will be given to Unit 2, thereby including a lease payment in the cost of service, as opposed to traditional rate base treatment. If adopted, the sale-leaseback plan results in an increase in gross revenues of \$31,210,197, or an 8.38% increase over adjusted test year revenues during the first year of the plan. Texas-New Mexico Power Company provides electrical service to more than 165,011 customers located within the state of Texas.

A complete copy of the requested rate filing package is on file with the Public Utility Commission of Texas in Austin, Texas, and with all cities served by Texas-New Mexico Power Company which have retained original jurisdiction. You may inspect a copy of the filing during normal business hours at each business office of Texas-New Mexico Power Company in your area.

Persons who wish to intervene or otherwise participate in these proceedings should notify the Commission as soon as possible. A request to intervene, participate, or for further information should be mailed to the Public Utility Commission of Texas, 7800 Shoal Creek Boulevard, Suite 400N, Austin, Texas 78757. Further information may also be obtained by calling the Public Utility Commission Consumer Affairs Division at (512) 458-0223 or (512) 458-0227, or (512) 458-0221 teletypewriter for the deaf.





Sheep shearers from New Zealand and Australia had a busy weekend here in Spearman. They sheared just under 1,800 sheep between Friday afternoon and Monday afternoon.

Oil from page 13

(2219 ac) 175' from North & 2260' from West line, Sec. 47, T.4N, R.10E, 3 mi SE from Waka, PD 7835' (406 NW Expressway, Okla. City, OK 73116) Rule 37

SHERMAN (CRAIG RANCH Morrow) Phillips Petroleum Co., #1 Corene 'A' (653.3 ac) 467' from South & West line, Sec. 78, T.1C, R.10E, 4 mi south from Texhoma, PD 7000'

Applications to Plug-Back HUTCHINSON (NORTH HUTCHINSON Cherokee) Strat Land Exploration Co., #1-4 Buchner (80 ac) 467' from South & West line, Sec. 4, A.D.L. & C, 12 mi NE from Pringle, PD 6500'

LIPSCOMB (LIPSCOMB Atoka) Exxon Corp., #1 Harry Parker (1949 ac) 2880' from North & 1980' from West line, Sec. 697, 43, H&TC, 7.6 mi NE from Lipscomb, PD 9682' (Box 4358, Houston, TX 77210)

Application to Re-Enter ROBERTS (WILDCAT) Alpar Resources, Inc., #2A Barbara Lips 158' (8540 ac) 467' from North & 1960' from East line, Sec. 158, 13, T&NO, 26 mi N-NW from Miami, PD 5855' (Box 1046, Perryton, TX 79070) Salt Water Disposal

Oil Well Completion HUTCHINSON (PANHANDLE) J.M. Huber Corp., #28 Otis Phillips 'A', Sec. 2, M-16, AB&M, elev. 3348 kb, spud 1-14-91, drlg. compl 1-21-91, tested 3-22-91, pumped 3 bbl. of 40 grav. oil + 33 bbls. water, GOR 41000, perforated 3148-3246, TD 3350', PBTD 3325'

Gas Well Completions HANSFORD (HANSFORD Lower Morrow) BHP Petroleum Co., Inc., #3 Converse, Sec. 26, R, B&B, elev. 3109 gr, spud 8-26-90, drlg. compl 9-13-90, tested 4-1-91, potential 1700 MCF, rock pressure 1531, pay 8373-8400, TD 8600', PBTD 8566'

HARTLEY (HARTLEY HUGOTON Krider Dolomite) Cambridge Production, Inc., #1 Christine, Sec. 3, J, J, Poitevent, elev. 3827 kb, spud 1-15-91, drlg. compl 1-20-91, tested 3-12-91, potential 265 MCF, rock pressure 319, pay 3525-3550, TD 3620', PBTD 3591'

HARTLEY (HARTLEY HUGOTON Krider Dolomite) Cambridge Production, Inc., #1 Lasley, Sec. 4, J, J, Poitevent, elev. 3826 kb, spud 1-5-91, drlg. compl 1-11-91, tested 3-12-91, potential 150 MCF, rock pressure 410, pay 3516-3548, TD 3618', PBTD 3603' - Form 1 filed as #1 Claughton HEMPHILL (TWISTER Douglas)

Maxus Exploration Co., #2-58 Urschel '58', Sec. 58, T, G&M, elev. 2518 kb, spud 1-16-91, drlg. compl 2-5-91, tested 3-18-91, potential 6500 MCF, rock pressure 1547, pay 6974-7068, TD 7300'

MOORE (WEST PANHANDLE) APX Corp., #1-34A Brown, Sec. 34, T, T&NO, elev. 3408 kb, spud 11-14-90, drlg. compl 11-24-90, tested 2-13-91, potential 1690 MCF, rock pressure 32.5, pay 2298-3326, TD 3326' - This well replaces the #1-34 Brown SHERMAN (TEXAS HUGOTON) Mobil Producing TX & N.M., Inc., #1-A Baskin-Jahns Unit, Sec. 414, T, T&NO, elev. 3591 kb, spud 12-19-90, drlg. compl 2-3-91, tested 3-21-91, potential 668 MCF, rock pressure 53.65, pay 2856-3212, TD 3309', PBTD 3229' -

Plugged Wells CARSON (PANHANDLE) Jay-Dee Producing Co., #6 Sarah, Sec. 1, 2, T, T, R, R, spud 5-6-63, plugged 3-20-91, TD 3172' (oil) - Form 1 filed in Shamrock Oil & Gas Corp.

CARSON (WEST PANHANDLE) Damson Oil Corp., #B-1 Eller, Sec. 200, 3, T, G&N, spud unknown, plugged 2-21-91, TD 2581' (gas) - Form 1 filed in Skelly Oil Co.

GRAY (WEST PANHANDLE) Conoco, Inc., #4 J.H. Palmer, Sec. 31, B, 2, T, G&N, spud unknown, plugged 1-22-91, TD 3055' (gas) -

HANSFORD (CLEMENTINE Upper Morrow) Permian West Pipe, Inc., #1 Glasgow, Sec. 31, C, I, F., spud unknown, plugged 3-8-91, TD 7300' (gas) - Form 1 filed in Essex Explor.

HEMPHILL (S.E. CANADIAN Douglas) Permian West Pipe, Inc., #2 J.C. Studer, Sec. 168, 41, H&TC, spud unknown, plugged 3-10-91, TD 7300' (gas) - Form 1 filed in Forest Oil Co.

HEMPHILL (HEMPHILL Granite Wash) Anadarko Petroleum Corp., #1-27 Gill 'A', Sec. 27, A, 2, H&G&N, spud 3-13-90, plugged 3-18-91, TD 10550' (gas) -

HUTCHINSON (PANHANDLE) G.C.&W., Inc., Sanford Estate, Sec. 81, 46, H&TC, spud unknown (oil) - Form 1 filed in Direction Energy Corp., for the following wells:

#7, plugged 3-25-91, TD 3250' - #16, plugged 3-26-91, TD 3200' - LIPSCOMB (DARROUZETT Tonkawa) Medallion Petroleum, Inc., #1 Hazel Watson Unit, Sec. 158, 10, SPRR, spud 9-18-86, plugged 11-17-90, TD 6441' (oil) - Form 1 filed in Amoco

LIPSCOMB (DUKE-MAY Tonkawa) Permian West Pipe, Inc., Sec. 154, 10, SPRR, spud unknown (oil) - Form 1 filed in Santa Fe

Energy, for the following wells: #1-154 C.T. Phillips, plugged 3-6-91, TD 6508' - #3 C.T. Phillips 'A', plugged 2-27-91, TD 6500' - #4 C.T. Phillips 'A', plugged 2-25-91, TD 6486' - MOORE (PANHANDLE) Kerr-McGee Corp., #2 Emma McDowell, Sec. 16, M-16, AB&M, spud 10-18-58, plugged 3-20-91, TD 3303' (oil) - MOORE (PANHANDLE) Kerr-McGee Corp., Wells Oil, Sec. 153, 3, T, T&NO (oil) - for the following wells:

#1, spud 4-14-81, plugged 3-14-91, TD 3500' - #4, spud 1-8-84, plugged 3-18-91, TD 3510' -

MOORE (PANHANDLE) Mustang Enterprises, Peter, Sec. 4, 1, PD, R.A. Grant (oil) - Form 1 filed in W.L. Bruce, for the following wells:

#3, spud 5-31-83, plugged 3-19-91, TD 3360' - #4, spud 5-26-83, plugged 3-14-91, TD 3352' -

OCHILTREE (HORIZON Cleveland) Horizon Oil & Gas Co., #3 J.A. King, Sec. 27, J, T, B&B, spud 1-27-60, plugged 3-26-91, TD 6792' (oil) - Form 1 filed in Texaco, Inc.

WHEELER (ZYBACH 15000') Marsh Operating Co., #1 C. Zybach #1-14, Sec. 14, -Camp County School Land, spud 1-15-80, plugged 2-14-91, TD 15750' (gas) - Form 1 filed in Tom F. Marsh, Inc.

Obituary

O.H. Cline O.H. "Hootie" Cline, 60, of Gruver died Wednesday, April 10.

Mr. Cline was born in Hansford County and had been a lifelong resident. He married Maxine Cooper in 1948 at Gruver. He was a farmer and rancher. He was a member of the First Baptist Church.

Survivors include his wife; two daughters, Dana Blankenship of Mustang, Okla., and Denise Hledik of Oklahoma City; a brother, Morris Cline of Richardson; two sisters, Cease Riley and Olene Cluck, both of Gruver; and four grandchildren.

Funeral services were conducted Saturday, April 13 in First Baptist Church with the Rev. Larry Miller, pastor, officiating. Burial was in Gruver Cemetery.

CLASSIFIED ADS PAY OFF!

MAY 4, 1991
 DON R. HAWKINS
 FOR
 SPEARMAN SCHOOL BOARD
 20 YEARS
 BUSINESS EXPERIENCE,
 BUDGETING,
 PROBLEM SOLVING AND
 WORKING WITH PEOPLE
 HE IS CONCERNED ABOUT
 ALL CHILDREN AND THEIR
 EDUCATION

Lookin' Back

5 YEARS AGO...
 Thursday, Feb. 27, 1986
 The Spearman Lynxettes played Abernathy in Area play-off Tuesday in Canyon. Abernathy won the game with a final score of Spearman 46 - Abernathy 81. Lynxettes scoring were Shannon Jenkins 10, Heather Murrell 9, Mary Lou Baker 8, Jill McLain 5, Donda Pool 4, Jennifer Yarbrough 2, Cayla Eaton 2, Carrie Guthrie 2, Amy Runyan 2 and Julie Jones 2.

10 YEARS AGO...
 Thursday, Feb. 26, 1981
 The Lynxettes traveled to Amarillo to play against the Dimmitt Bobbies. The Lady Lynx were District 1-3A Champions and the Dimmitt Bobbies were the District 2-3A Champions. The game was at the Civic Center for the Bi-District title. The see-saw game ended with the Bobbies 39 - Lynxettes 37.

Jay Pack performed as a member of the 1981 Texas All-State Choir in San Antonio. He is a sophomore at Spearman High School and the son of Mr. and Mrs. E.N. Pack.

STARS & STRIPES
Mobil Oil Sale
 APRIL 1st - APRIL 30th
 Farmers...
 Truckers...
 Construction Companies...
30¢ per gallon discount on Delvac engine oils and Mobilfluid 423
NUSSER OIL COMPANY, INC.
 570 BORDER AVE.
 ELKHART, KS. 67950
 1-800-232-2294 • (316) 697-4624

IT'S THE NATIONAL DODGE SELL-A-THON!
 Rediscover American value at the National Dodge Sell-a-Thon. Your Dodge dealer has some of the best Dodge deals ever assembled under one roof with total savings up to \$4370! But hurry! These deals can't last forever!

DODGE DYNASTY UP TO \$1600 TOTAL SAVINGS*
 DODGE DAKOTA UP TO \$3700 TOTAL SAVINGS*
 DODGE D-150 PICKUP UP TO \$4200 TOTAL SAVINGS*
 DODGE CUMMINS TURBO DIESEL UP TO \$2700 PACKAGE SAVINGS**

*On select vehicles in stock. \$300-\$1500 cash back plus \$50-\$3370 package savings based on list prices of items if sold separately. †On select models in st.-ck. No charge air conditioning offer based on list prices of AFW package items if sold separately. **Base list prices exclude tax and destination charges (Dakota S-\$7483 after \$1000 cash back; Shadow America 2 Dr. -\$7699). ††Pkg. savings based on list prices of 28E pkg. items if sold separately.

Rediscover American Value at GILLASPIE
 AUTO & TRUCK CENTER, INC.
 CHRYSLER, PLYMOUTH, DODGE
 Highway 207 South, P.O. Box 427, (804) 856-2541
 SPEARMAN, TEXAS 79081
 Advantage: Dodge
 770 Dodge
 BUCKLE UP... AND PLEASE DRIVE SAFELY

	Regular Price	Discount	SALE PRICE
Mobil Delvac 1300 Super 15W40 W/B	4.55	Less 30¢	= 4.25/Gal.
Mobil Delvac 1200 Super 15W40 W/B	4.15	Less 30¢	= 3.85/Gal.
Mobil Delvac 1330 W/B	4.13	Less 30¢	= 3.83/Gal.
Mobil Delvac 1230 W/B	4.02	Less 30¢	= 3.72/Gal.
Mobil Delvac 1140 W/B	3.69	Less 30¢	= 3.39/Gal.
Mobil Delvac 1130 W/B	3.69	Less 30¢	= 3.39/Gal.
MobilFluid 423 W/B	3.98	Less 30¢	= 3.68/Gal.