



★ HANSFORD COUNTY ★  
**THE REPORTER-STATESMAN**

THURSDAY,  
FEBRUARY 16, 2012

CELEBRATING 104 YEARS OF SERVICE TO HANSFORD COUNTY  
HANSFORD COUNTY'S ONLY NEWSPAPER

75¢

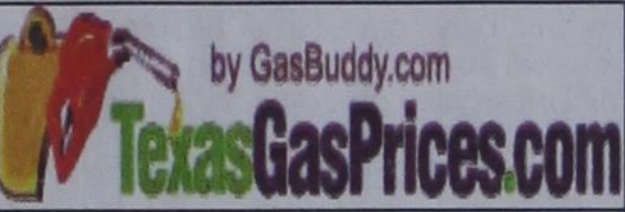
WWW.SPEARMANREPORTER.COM

VOLUME 105 • ISSUE 7

REPORTER@SPEARMANREPORTER.COM



**Gruver Greyhounds/Lady Hounds**  
Lady Hounds vs. Lockney. Thursday, February 16th, 7 p.m., FUBC at WTAMU in Canyon.



**Weekly Update**

Texas, February 13- Average retail gasoline prices in Texas have risen 5.3 cents per gallon in the past week, averaging \$3.43/g yesterday. This compares with the national average that has increased 3.3 cents per gallon in the last week to \$3.47/g, according to gasoline price website TexasGasPrices.com.

Including the change in gas prices in Texas during the past week, prices yesterday were 46.7 cents per gallon higher than the same day one year ago and are 21.9 cents per gallon higher than a month ago. The national average has increased 12.3 cents per gallon during the last month and stands 34.8 cents per gallon higher than this day one year ago.

"Retail gasoline prices have continued to slowly rise across a majority of the United States," said GasBuddy.com Senior Petroleum Analyst Patrick DeHaan. "With the exception of one state-Wyoming- all states are seeing their gasoline prices averaging over \$3/gallon again, with some of the largest cities-New York City and Los Angeles closing in on \$4/gallon," DeHaan said.

GasBuddy operates, TexasGasPrices.com, and over 225 other local gasoline pricetracking websites that follow prices at over 125,000 gasoline stations in the United States and Canada. GasBuddy also uses Facebook (facebook.com/gasbuddy) Twitter (twitter.com/gasbuddy), and phone apps to keep motorists ahead of changing gasoline prices.

**Texas Crop & Weather**

The following specific livestock, crop and weather conditions were reported by Panhandle Extension directors for February 6-14, 2012. Temperatures were near to slightly above normal for most of the week, then dropped to below normal by week's end. A few areas reported receiving some moisture late in the week. Soil-moisture levels varied from adequate to very short, with most reporting short to very short. Winter wheat was in good to very poor condition, with most reporting poor condition. Rangeland and pastures were in mostly poor to very poor condition. Livestock producers were still providing supplemental feed to cattle.

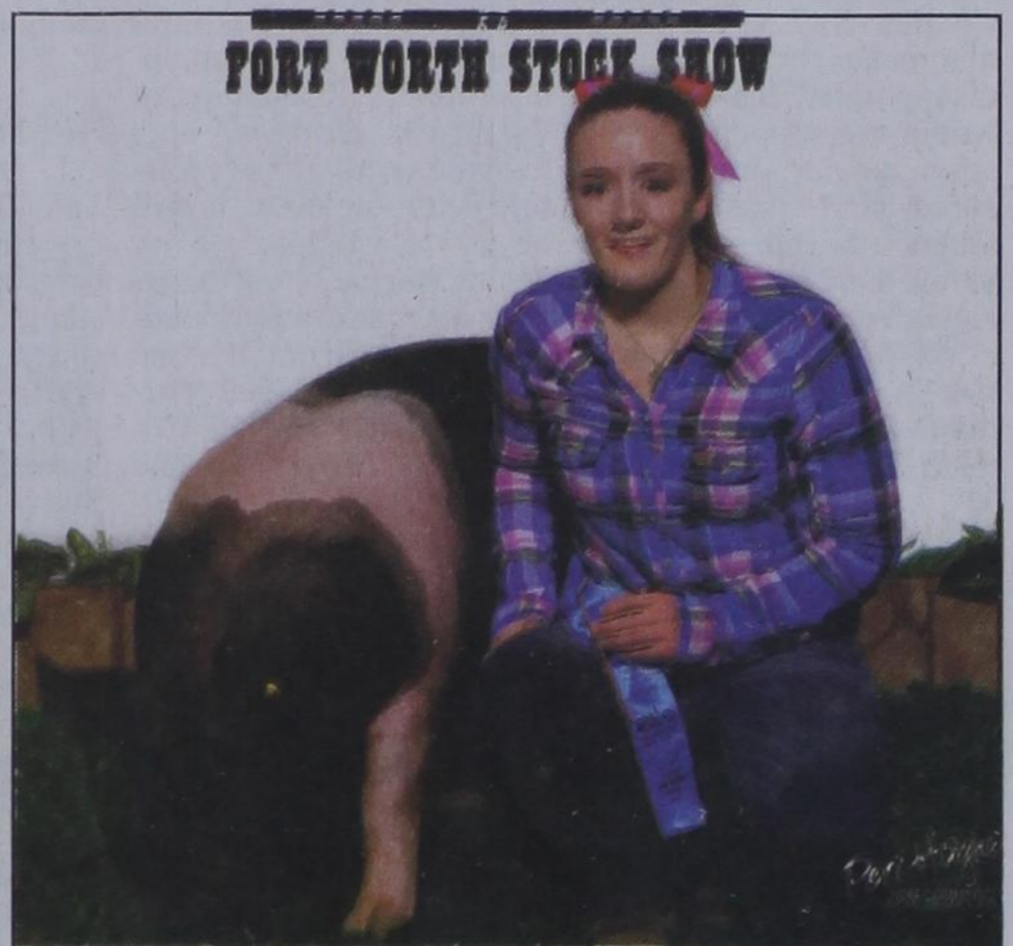
**Weather Forecast**

**THURSDAY** - Partly cloudy. Highs in the lower 50s. Southwest winds around 5 mph shifting to the southeast in the afternoon.  
**THURSDAY NIGHT** - Partly cloudy. Lows in the mid 20s. South winds around 10 mph.  
**FRIDAY** - Partly cloudy. Highs in the mid 50s.  
**FRIDAY NIGHT** - Partly cloudy in the evening then becoming mostly cloudy. Lows in the upper 20s.  
**SATURDAY** - Mostly cloudy. Highs in the mid 40s.  
**SATURDAY NIGHT** - Partly cloudy. Lows in the mid 20s.  
**SUNDAY** - Partly cloudy. Breezy. Highs in the upper 50s.  
**SUNDAY NIGHT** - Partly cloudy. Lows in the upper 20s.  
**WASHINGTON'S BIRTHDAY** - Partly cloudy. Highs in the lower 50s.  
**MONDAY NIGHT** - Partly cloudy. Lows in the mid 20s.  
**TUESDAY** - Mostly cloudy. Highs in the lower 50s.  
Read more: <http://www.city-data.com/forecast/w-Spearman-Texas.html#ixzz1mQ9XRdE1>

**Local Students Win at Fort Worth Stock Show**



Thaxton Boyd exhibited the Reserve Champion Barrow in the Junior White/Other Purebred Barrows Show at the 2012 Fort Worth Stock Show & Rodeo on February 2, 2012.



Mabry Sutterfield exhibited the 1st Place Medium Weight 252-257 lbs. in the Junior White/Other Purebred Barrows Show at the 2012 Fort Worth Stock Show & Rodeo on February 3, 2012.

Thaxton Boyd a FFA member from Spearman, exhibited the Reserve Champion Barrow in the Junior White/Other Purebred Barrows Show at the 2012 Fort Worth Stock Show & Rodeo on February 2, 2012.

Mabry Sutterfield a FFA member from SPEARMAN, exhibited the 1st Place Medium Weight 252-257 LBS in the Junior Crossbreds Jr. Barrows Show at the 2012 Fort Worth Stock Show & Rodeo on February 3, 2012.

The 2012 Show is proud to be hosting nearly 10,000 junior exhibitors from across Texas, competing for prizes and

\$94,065.00 in premiums.

Since 1896, the Fort Worth Stock Show & Rodeo has remained a prominent figure in the livestock industry. The nation's oldest livestock show will see nearly 22,000 head of world-class livestock roll through "cowtown" between January 13 - February 4. While the show is continually looking ahead, the focus on the livestock industry and our youth is unwavering.

"One of the Show's main priorities is our commitment to the livestock industry and the agriculture leaders of tomorrow," said Bradford S. Barnes, President and General Manager of the Fort Worth Stock

Show. "Junior exhibitors learn many valuable life lessons during their years of showing livestock, which will serve them well throughout their lives. Our Show ensures a progressive future for agriculture by assisting in the development and education of 4-H and FFA students."

The 116th edition of the legendary Fort Worth Stock Show & Rodeo offers visitors a chance to experience the unique western lifestyle along with a one-of-a-kind combination of history, tradition and Western heritage. For more information and a detailed daily schedule, visit [www.fwssr.com](http://www.fwssr.com). This thing is legendary.

**2012 Hansford County Stock Show**



Grand Champion Swine - Mabry Sutterfield; Reserve Grand Champion Swine - Brantly Shields (not pictured)



Grand Champion Lamb - Jace Lane; Reserve Grand Champion Lamb - Jennifer Crowl (not pictured)



Grand Champion Steer - Lauren Patterson; Reserve Grand Champion Steer - Zane Patterson (not pictured)

**May 12th General Election**

The filing date for the May 12th General Election began on February 6, 2012. The Deadline to file for election is Monday, March 5, 2012 at 5 p.m. Monday, March 5, 2012 is also the last day for write-in candidates to file declarations of write-in candidacy for regular officers.

The City of Spearman has two Alderman positions up for reelection - Jon Garnett and, as well as the Mayor. As of Tuesday, February 14, 2012, the following have filed: Mayor Brian Gillispie has filed for re-election. Alderman Jon Garnett has filed for re-election. Also filing for Alderman are Armando Martinez and Bryce Williams. Anyone interested in filing to be on the ballot for Mayor or Alderman for the City of Spearman should contact Cheryl Gibson-Salgado, Assistant City Manager for the City of Spearman, at 806-659-2524.

Spearman ISD has two terms up this year for School Board. At this time no one has filed. The two terms expiring are Maria Sibley and Glen Ray Mackie. Anyone interested in filing to be on the ballot for the Spearman ISD School Board should contact Nora Saenz at 806-659-3233.

Gruver ISD has two positions on the ballot this year for School Board, but no one has filed. The two candidates up for reelection are Dwayne Thompson and Brent Stedje. Anyone interested in filing for Gruver ISD School Board should contact Matt Messer at 806-733-2821.

Early voting for these elections will be held from April 30th to May 8th. Election day will be Saturday, May 12th.

**HUD Awards \$650K for Public Housing**

by Aziza Musa, Amarillo Globe-News  
The U.S. Department of Housing and Urban Development awarded nearly \$650,000 Friday to Texas Panhandle cities for public housing developments.

HUD doled out \$1.8 billion nationally to construct or repair public housing. Nearly a dozen Texas Panhandle cities' housing authorities - including Borger, Memphis, Spearman and McLean - received about \$648,500 for the projects, according to department statistics.

Borger's Housing Authority received the most funding of the Texas Panhandle at nearly \$230,000, records show. The grants from the department's Capital Fund program will help housing authorities make large-scale repairs to public housing units, according to the news release.

The department released a study last year that found public housing units needed an estimated \$25.6 billion for large-scale capital improvements, such as repairing roofs and electrical systems, according to a news release.

**WHEN DOES YOUR SUBSCRIPTION EXPIRE?**

SCR1  
2/12 EXPIRES

JOHN Q. PUBLIC  
PO BOX 123  
SPEARMAN TX 79081

Expiration dates are printed on the top of all mailing labels. Our readers can help keep the cost of subscriptions down by mailing in renewals in the appropriate month.

Thank you, Catherine Smith

THE HANSFORD COUNTY REPORTER-STATESMAN  
213 Main Street • Spearman, TX 79081

**Annual Subscription Rates**

In Hansford County - \$30

Out of County - \$40

E-Subscription - \$35 (sent through e-mail)

# Wolf Creek Heritage Museum Notes

by Virginia Scott

## MUSEUM HAPPENINGS

Let it be known that our museum and county have always been unique in our approach to projects. Friday was no different. We were scheduled to erect our Quannah Parker arrows in Higgins and Lipscomb. Everything went just fine until we tried to erect the arrows.

Our recent blessing of rain held our soil too soft to hold the weight of the arrow in the ground. Charles Smith, the artist that makes the arrows, was disappointed that our soil would not support his creation, but our local men assured him that a little addition of pipe welded on to the base would give it enough depth to stay erect.

We want to thank everyone in Higgins that came out to help and volunteered to do the welding. I will ob-

tain their names and give them credit in future articles. In Lipscomb, Terry, Lance, and Bernie were joined by my husband, Ed; Hugh Barton; Tai Kreidler; and Charles Smith in situating the arrow until modifications can be made. Thanks, everyone.

We had a great gathering at both sites to observe the delivering of the arrows and we all enjoyed visiting with each other at the museum. Visitors from Borger, Canadian, Mobetie, Tulia, and Lubbock enjoyed our crisp weather and our beautiful country. I will keep you updated on the installation of the arrows. However, with the wonderful gift of moisture with the snow, it will be a while before we try again. You can view the arrows at their location. Vertically or horizontally, the arrows achieve their purpose. Quannah and the Comanche, Cheyenne, and

Apache were here and left us with a great legacy that we are still celebrating.

## Reminders:

1. **The Lipscomb County Student Art Show is fully installed** and is very colorful. It seems the major theme is snow with snowmen and snowflakes. Maybe this will bring us moisture! Plan to visit and see your children's art.

2. **We need Sports Memorabilia** for an exhibit we are creating on sports in Lipscomb County (especially town teams).

## HISTORICAL MUSINGS

I hope you enjoyed Valentine's Day this week. Lovella has our women's bathroom decorated with some of the great love songs that we have celebrated Valentine's Day with: "Let me call you Sweetheart," "Ain't she Sweet," "Love Walked In," are just some of the greats. She also hung Norman Rockwell's print entitled "Cupid's Visit." Sharing cards and candy or just expressing your friendship or love for someone makes Valentine's Day a fun day.

It is thought that Valentine's day started with an ancient Roman festival called Lupercalia, which celebrated on the 15th day of February. The Roman calendar had February in the Spring, so Lupercalia was a spring festival. The festival was a festival to celebrate love and fertility for the women and animals of the village. A ritual of dancing through the village touching the foreheads of the women and sacrificing an animal was believed to ensure prosperity to the Village.

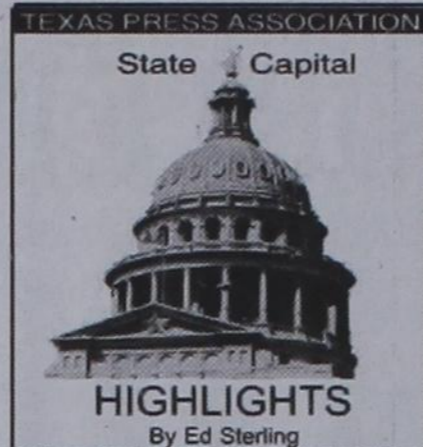
Others contribute it to St. Valentine and his execution in 270 A.D. Through the ages, it has become a day to celebrate Love.

Here are some quotes of famous people on their thoughts of Valentine Day and Love. Enjoy!

"Never sign a Valentine with your own name." Pickwick Papers. Charles Dickens

"Then, must you speak of one that loved not wisely but too well; of one not easily jealous, but being wrong perplex'd in the extreme" William Shakespeare

"Tis better to have loved and lost than to have never loved at all" Tennyson



## Redistricting talks move toward compromise

AUSTIN - Indications that compromise might not be so far away arose last week in the redrawing of the House, Senate and U.S. congressional districts of Texas.

Texas Attorney General Greg Abbott, acting on behalf of the state, and the League of United Latin American Citizens (LULAC) and MALDEF (Mexican American Legal Defense and Educational Fund) released statements of commitment to the negotiation process.

The statements were made following orders by Judge Orlando Garcia, U.S. District Court, Western District of Texas, in San Antonio, for plaintiffs and defendants in work to resolve matters and to appear at a Feb. 14 court hearing.

LULAC and MALDEF have petitioned for the maps to be drawn to include more minority opportunity districts allowing citizens more power in choosing who they want to represent them. The state's position has been that redistricting maps drawn by the Texas Legislature are legal and enforceable in accordance with the U.S. Voting Rights Act of 1965.

But Section 5 of the Act requires that in redrawing district boundaries, maps must be submitted to the federal government for pre-clearance in order to prevent discrimination against minorities. The maps enacted by the Texas Legislature last spring were not granted pre-clearance.

Revised sets of maps have been submitted, talks continue, and although pressure is on to resolve any outstanding matters this week, a complete resolution still could take weeks.

Abbott said he thinks compromise may be achieved in time for the Texas primaries to be conducted in April.

The original date for the Texas primaries was Super Tuesday, March 6, when 10 other states will conduct their primaries.

## Legislators make pipeline plea

Last fall, the Obama administration postponed until 2013 possible approval of pipeline's permit application over unresolved environmental concerns.

On Feb. 6, five state senators and Lt. Gov. David Dewhurst sent a letter to



## STATE CAPITAL HIGHLIGHTS

U.S. Senate Majority Leader Harry Reid and House Speaker John Boehner in hopes of urging Congress immediately to approve construction of the Keystone XL Pipeline part of which runs from Canada through the Great Plains and East Texas to the Gulf of Mexico.

In their letter, Dewhurst and Republican Sens. Bob Deuell of Greenville, Troy Fraser of Horseshoe Bay, Joan Huffman of Houston, Mike Jackson of La Porte and Tommy Williams of The Woodlands, wrote that construction of the pipeline would "create 20,000 jobs, support 118,000 spinoff jobs for local businesses and generate more than \$20 billion in economic output."

## Sales tax revenue climbs

Texas Comptroller Susan Combs announced last week that state sales tax revenue in January was \$2 billion, up 9.5 percent compared to January 2011.

Combs, who said collections have increased for 22 consecutive months, pointed out that the recent monthly increase was led by the oil and natural gas-related sectors, and restaurants and services sectors also showed significant gains.

## Combs warns of cost of drought

Texas Comptroller Susan Combs on Feb. 8 released a 16-page document describing the effects of the 2011 drought, current and future

water resources in the state and solutions to help solve the water crisis.

According to the document titled "The Impact of the 2011 Drought and Beyond" the state's current water plan predicts demand will increase by 22 percent by 2060 and should Texas experience another "megadrought" as severe as the 1950s drought, "it could cost Texas businesses and workers nearly \$116 billion in income by 2060."

## Higher speeds for some stretches

Speed limit increases for nearly 1,500 miles of interstate highways in the Lone Star State have either been posted or soon will be by TxDOT, as announced at the Texas Transportation Commission meeting on Jan. 26.

House Bill 1353 authorized the commission to increase the legal speed limit on certain portions of highway in some 60 counties to 75 miles per hour and eliminate the 65 mile per hour nighttime speed limit as appropriate.

Prior to the enactment of HB 1353 last May, Texas had 1,445 miles of 75 mph speed limits and 521 miles of 80 mph speed limits designated on certain state highways, the Texas Department of Transportation said.

The bill actually took effect on Sept. 1, 2011, but signs are being changed "as soon as practicable." The Highway Patrol enforces posted speed limits.

## Words from Faith & Grace

by Cecil R. Biggers, Lutheran Lay Minister



During the last Sunday in the Season of Epiphany we discover who Jesus really is as we read of the Transfiguration. We study 2 Kings 2: 1-12, Psalm 30: 1-6, 2 Corinthians 4: 3-6, and Mark 9: 2-9.

Elijah the prophet knows that he is going to be with the Lord; his assistant, Elisha, who is dedicated to Elijah is somber. Elijah and Elisha leave Gilgal, journey to Bethel then Jericho and then cross the Jordan river. (Elijah's route is the reverse of that of Joshua when the Children of Israel entered the promised land.) The interplay between the older prophet and the younger prophet is amusing as Elijah tries to dissuade Elisha from coming with him; yet the younger man continues to accompany him. Elisha pleads to 'inherit' a double portion of Elijah's spirit; Elijah tells Elisha that if he sees Elijah as God takes him away, Elisha will succeed him as prophet in Israel. A fiery chariot with fiery horses descends from heaven and carries Elijah away; Elijah's mantle falls to earth and is picked up by Elisha. Thus, Elisha is called by God to minister to Israel. Please note that the call to ministry is not a solo task for Elisha now leads the "company of prophets". Remember too that the ancient prophets took the word of God to the people; whereas, the priests led the people in the temple worship.

The Psalmist sings of the Mighty God who shines forth. The Mighty God calls for the earth below and the heavens above to act as witnesses as He comes to judge His people. The verses that follow tell us that God wants each believer to offer the sacrifice of 'thanksgiving' and that God shows them his salvation. Discover from this that will desire our sincere thanks for his many blessings to us; God does not care for empty promises or meaningless ritual!

Paul proclaims the Gospel to be the gift of God. And Paul, as a servant of the Gospel, proclaims Jesus Christ as Lord! Those who hear the Gospel and believe are also called by God. Yet, the "god of this world" blinds many to the truth of the Gospel. Give thanks to God that you have been called from darkness.

Jesus takes Peter, James and John with him as he ascends a high mountain. As they near the summit Jesus is transfigured before them. His clothes become dazzlingly white, unearthly bright. Jesus is joined by Elijah and Moses who converse with Jesus. Peter, in awe, offers to build three dwellings (booths) one for Jesus, Elijah and Moses. (Peter is not nuts, the 'Feast of Booths' is near in time). Suddenly a cloud surrounds the terrified disciples. (The cloud, as in Exodus, is a symbol of the presence of God). From the cloud a voice speaks saying, "This is my Son, the Beloved; listen to him!" The cloud clears and only Jesus is left with his wondering disciples. We discover that Jesus is The Christ! The greatest of the prophets, Elijah, and the greatest giver of the law, Moses, have endorsed Him! And we, like the disciples, marvel at this discovery.

May the Holy Spirit unveil your eyes that you may see clearly that Jesus The Christ is Lord!

**The Hansford County Reporter-Statesman**  
Mailing Address - 213 Main Street • Spearman TX 79081  
Physical Address - 310 Barkley Street • Spearman TX 79081  
Phone - (806) 659-3434 • Fax - (806) 398-9080  
www.spearmanreporter.com • reporter@spearmanreporter.com  
Mon.-Thurs. 9 a.m.-12 p.m., Mon.-Wed. & 1-5 p.m.  
Closed Thurs. afternoon and all day Fri., Sat. & Sun.

**Gary Smith - Publisher** Catherine Smith - Editor  
Contributing Writers: Dorothy Hudson, Jim Detriton, Merry Sparks, Cecil Biggers, Virginia Scott, Ed Sterling, Rod Sumner  
Contributing Photographers: Lisa Johnson, Tami Hargrove, Tammy Batten, Bonnie Bergan, Rod Sumner

**Subscription Rates**  
In Hansford County - \$30.00 • Out of County - \$40.00  
E-Mail Subscription - \$35.00

The Hansford County Reporter-Statesman (USPS 529660) is published weekly in Spearman, TX. Periodical postage paid in Spearman, TX. **POSTMASTER:** Send address changes to: The Hansford County Reporter-Statesman, 213 Main Street, Spearman, TX 79081.

**Publication Policy**  
The deadline to submit news and advertising to The Hansford County Reporter-Statesman is Monday at 5 p.m. Items submitted after the deadline will be published at a later date, as time and space permit. Publication of all items is at the discretion of the editor.

**Advertising**  
Open Display rates are \$4.00 per column inch. Classified Ads are \$7 for the first 20 words and 15¢ per word for each additional word. (Additional charge for boxed classifieds.) There is a \$1 charge per week if billed.

Member of  
Gruver Chamber of Commerce  
Spearman Chamber of Commerce  
Texas Press Association and Panhandle Press Association



## THE GRAMMYS

- ACROSS**
- Desert survivors
  - Orlando Bloom in "Lord of the Rings"
  - Type of ski lift
  - German destroyer
  - "To Kill a Mockingbird" recluse
  - Bob and \_\_\_\_\_
  - Civil rights marches started here
  - Clingy plant
  - Galactic path
  - \*Grammy Awards venue sponsor
  - "Bruno Mars' hit
  - Between "ready" and "fire"?
  - Marie Antoinette's hairstyle
  - "Time," e.g.
  - Surrender
  - Total bore, Yiddish
  - One on a list
  - Less than average tide
  - "Queen of Mean"
  - Head of hair
  - Old European coin
  - Panache
  - Homer's classic
  - Causes a pucker
  - Pluribus
  - Homer's classic
  46. Causes a pucker
  47. Pluribus
  48. Treating place
  50. Fan reaction
  52. Indicates maiden name
  53. Don't do it when someone's down
- DOWN**
- Spew profanities
  - Aid and \_\_\_\_\_
  - Jolt, e.g.
  - Home to Buccaners
  - Right-leaning characters
  - Goes with flows
  - \* \_\_\_\_\_ Rawls, Grammy-winning soul singer
  - Forfeit
  - Type of seabird
  - Bottle to a baby?
  - Like a devoted fan
  - Network of nerves
  - Full of grief
  - Make corrections
  - \_\_\_\_\_D.M.C.
  - NBC's logo
  - Will Ferrell as G. W.
- 55. \*AC/DC won their first Grammy for "Machine"**
- 57. \*Nominated comedian**
- 61. \*2012 Grammy Awards host**
- 65. Binary digits code**
- 66. Ryder Cup team**
- 68. Icy hut**
- 69. Heard by Horton**
- 70. Cow chew**
- 71. Dissociative state**
- 72. Evil side of Dr. Jekyll**
- 73. Author of "The Star-Spangled Banner"**
- 74. "The Second Coming" poet**

## These games are brought to you by the Hansford County Reporter-Statesman

- VolunteerMatch.org**  
Where volunteering begins.
- |    |    |    |    |    |    |    |    |    |    |    |    |    |
|----|----|----|----|----|----|----|----|----|----|----|----|----|
| 1  | 2  | 3  | 4  | 5  | 6  | 7  | 8  | 9  | 10 | 11 | 12 |    |
| 13 |    |    |    |    | 14 |    |    | 15 |    |    |    |    |
| 16 |    |    |    |    | 17 |    |    | 18 |    |    |    |    |
| 19 |    |    |    | 20 |    |    | 21 | 22 |    |    |    |    |
|    |    | 23 |    |    |    | 24 |    |    |    |    |    |    |
| 25 | 26 | 27 | 28 | 29 |    | 30 |    | 31 | 32 | 33 | 34 |    |
| 35 |    | 36 |    | 37 |    | 38 |    | 39 |    |    |    |    |
| 40 |    |    |    | 41 |    |    |    | 42 |    | 43 |    |    |
| 44 |    |    | 45 | 46 |    |    |    |    |    | 47 |    |    |
| 48 |    |    |    | 49 |    | 50 |    |    |    | 51 | 52 |    |
|    |    |    |    | 53 |    | 54 |    | 55 |    | 56 |    |    |
| 57 | 58 | 59 | 60 |    |    | 61 |    |    |    | 62 | 63 | 64 |
| 65 |    |    |    |    | 66 | 67 |    | 68 |    |    |    |    |
| 69 |    |    |    |    |    |    |    |    |    |    |    |    |
| 72 |    |    |    |    | 73 |    |    | 74 |    |    |    |    |

**CROSSWORD**

Fill in the blank squares in the grid, making sure that every row, column and 3-by-3 box includes all digits 1 through 9.

**VolunteerMatch.org**  
Where volunteering begins.

© StatePoint Media answer on classified page

Happy Birthday!

February 16 Birthday - Johnny Pat O'Connell, David Parker, Mike Larson, Lynda Owens, Ismael Vela, Timothy Peck, Maylynn Ayers, Cliff Lang, Brittany Claxton, Diana Pepper, Rex Reid, J.D. Wilbanks
Anniversary - M/M Jesus Espinosa, M/M Charles Chritton, M/M Augustine Mejia, M/M Bob Hohertz, M/M Gene Fletcher, Eschol & Eulalia Blankenship
February 17 Birthday - Katie Jones, Manuel Ruiz Jr., Mark Guthrie, Lee Ann Schrader, T.H. Rodriguez, Ernest Wayne Jr., Ric Smith, Isela Huerta
Anniversary - M/M Ed Castillo
February 18 Birthday - Vickie Bullard, Carla Jo Riggins, Luke Stroud, Beau Roberts, Buck Sell, Edith Breland, Blan Rutherford, J.D. Poer
Anniversary - M/M Richie Fletcher
February 19 Birthday - Melissa Quillin, Delphine Etling, Bob Womble, Stephanie Hays, Bennie Brogdon, David Kellum, Sylvia Rosales, Niki Taylor, Robert Dean Meire, Chuck Ball, Sylvia Taranto
Anniversary - M/M Dorsey Perez, M/M Lupe Moreno, M/M Larry Trosper
February 20 Birthday - Brant Armes, Ed Mayfield, Greg Stork, Tessa Yanke, Kathy Brown, John Antalek, Terry Morris, Melissa Holt, Brenda Moyer, Steve Shields, Clayton Hergert, Bill Volden, Cody Brandvick, Rosemary McKee, Jeannie Folwen, Pauline McGee, Richey Thompson
Anniversary - M/M Wilson Bruning, M/M Charles Evans, M/M Jon Hart
February 21 Birthday - Sandra Proffitt, Walter McDade, Lisa Meisner, Raul Ortega, Ann Thomas, Chandler Adkins, Tom Speck, C.J. Renteria
Anniversary - Ken & JoAnn Schneider
February 22 Birthday - Russell Dahl, Rhonda Hicks, Betty Mathews, Ryan Mathews, Sherri Hall, Tim Cook, Bobby Jo Grayson, Paul Reimer, Sonny Kell, DeAnn Sparkman, Derryla Stedje, Connie Davis, Linda Coombs, Jack Sparks, Brenda Winegarner, Kreisun Dominguez
Anniversary - M/M Jason Bass, M/M Freddy Walton
February 23 Birthday - Hailey Lamb, Randy Reid, Dave Clement, Janyth Smith, Cynthia Miller, Phil Larson, Aaron Hager, Kacey Smith, Elizabeth Pipkin, Jim McMahan, Maxine Cline, Jason Bartimos, Edolinda Garcia, Tommy Reger, Daryl Noble, Mollie Burnam, Alan Jones,

Our Sympathy

DONALD E. COTTER
SPEARMAN - Donald E. Cotter, 71, of Spearman died Wednesday, Feb. 8, 2012.
Services were at 10 a.m. Monday, February 13, 2012 in Gruver Church of Christ with Mitchell O'Dell officiating. Burial was in Gruver Cemetery. Arrangements were by Boxwell Brothers Funeral Home of Spearman.
Mr. Cotter was born July 31, 1940, in Hansford County. He married Doris Cotter on Dec. 3, 1965, at Spearman Church of Christ.
He was a truck driver for Sluder-Evans Oil in Gruver. He was an elder in the Church of Christ and liked to hunt, fish and ride 4-wheelers.
Survivors include his wife; a daughter, Dusty Cotter of Phoenix; a brother, Pete Cotter of Dimmitt; and a sister, Mary Olson of Cimarron, N.M.
The family requests memorials be to the Pulmonary Fibrosis Foundation, 811 W. Evergreen Ave, Suite 204, Chicago IL 60642.

LOU CHAPMAN
AMARILLO - Lou Chapman, 81, of Amarillo died Monday, Feb. 13, 2012.
Services will be at 10 a.m. Wednesday in Gruver United Methodist Church. A memorial service will be at 10 a.m. Thursday in Park Place Towers. Arrangements are by Boxwell Brothers of Spearman.
Lou was born July 2, 1930, in Olney. At age 12, she moved to Gruver. She graduated from Gruver High School and attended West Texas State University, where she met the love of her life, Corky Chapman. They were married in 1950.
In 1968, they moved to Houston, where she had a successful career in real estate. In 1984, Lou and Corky moved back to Gruver, a place near and dear to their hearts. Their home was always filled with family and friends and fun and laughter. Lou will be remembered for her love for Corky and her family, and her great affection for people.
Lou was preceded in death by her husband, Corky; her parents, Jewell and R.D. McClellan; a brother, Billy McClellan; and two sisters, Betty Burris and Judy McClellan.
Survivors include her children, Cindy Sahli and husband Don of Evergreen, Colo., Nancy Chapman of Amarillo, Mindy Hayden and husband Bill of Milton, Fla., and David Chapman and wife Katy of Prosper; her grandchildren, Michael Chapman and wife Jennifer of Celina, Diane Noles and husband Kevin of Dallas, Josh and Cody Hayden of Milton, Fla., and Jeff and Sam Sahli of Evergreen, Colo.; her great-grandchildren, Courtney, Victoria and Madison Hayden of Milton, Fla. and Grant, Sean and Kate Chapman of Celina.
The family will receive guests after 1 p.m. today at the home of Louetta McClellan, 203 Richardson Ave. in Gruver.
The family suggests memorials to the United Methodist Church of Gruver, P.O. Box 977, Gruver, TX 79040 or BSA Hospice, P.O. Box 950, Amarillo, TX 79105.

OLIVIA CAZARES
GRUVER - Olivia Cazares, 79, died on Feb. 13, 2012.
Services were at 1 p.m. Wednesday, February 15, 2012 in the Sacred Heart Catholic Church in Spearman with Father Mike Caldwell officiating. Interment will be in Hillcrest Cemetery under the direction of Hillcrest Cemetery.
Olivia was born in Edinburg, TX on May 5, 1932. She married Arnulfo Cazares March 9, 1952 in Littlefield, TX.
She was an active member of the Sacred Heart Catholic Church for many years, and she was a member of the Women's Guild. She was a loving mother, a wonderful wife and a great friend. She will be greatly missed by her family and friends.
She is survived by three sons, Carlos Cazares of Gruver, Amadeo Cazares of Murphy, TX and Rick Cazares of Spearman; and two daughters, Mary Young and Lisa Link, both of Canyon.

MONUMENTS
Boxwell Brothers Funeral Home
519 Evans • Spearman 659-3802
Dear friends,
When you buy a monument from us we make sure it is exactly what you want at a price you can afford. If it is not right, we will make it right. And you will not have to search the countryside to find us. We are here when you have a need.
Sincerely, Bob Boxwell

CAROLE J. DICKENS RUSHING
SPEARMAN - Carole J. Dickens Rushing, 65, of Spearman died Wednesday, Feb. 8, 2012.
Services were at 2 p.m. Monday, Feb. 13, 2012 in First Christian Church in Spearman with Jim Reeves officiating. Burial was in Hansford Cemetery. Arrangements were by Boxwell Brothers Funeral Home of Spearman.
Mrs. Rushing was born July 29, 1946, in Watonga, Okla. She lived in the area since 1967 and had worked at Interstate Bank and as a secretary for many years. She was a member of First Christian Church.
She was preceded in death by her parents, Norman and Iona Dickens; and a cousin, Rebecca Yost.
Survivors include her husband, Danny; two uncles, the Rev. Grant Newton and wife June of Fredrick, Okla., and Lawrence Dickens and wife Daisy of Moore, Okla.; three aunts, Etta Busler of McLeod, Okla., Marieta Dickens of Oklahoma City and Bee Dickens of Melbourne, Fla.; and 12 cousins, Louis, John, Kim, Becca, Kale and Les Yost, all of Omega, Okla., Dennis, Lora, Kelsi and Kori Baker, all of Kingfisher, Okla., Eddie Weideman and wife Phyllis and family of Wichita, Kan., and Larry Pruett and wife Donna and family of Tulsa, Okla.

MARY SUE BOYD WESTER
AMARILLO - Mary Sue Boyd Wester, 57, of Amarillo died Friday, Feb. 10, 2012.
Services will be at 2 p.m. today in First Christian Church in Gruver with the Rev. Chris Robeson officiating. Burial will be in Gruver Cemetery. Arrangements are by Boxwell Brothers Funeral Home of Spearman.
Ms. Wester was born Dec. 20, 1954, in Perryton. She was a homemaker, devoted mother, grandmother and friend. Mary always had a smile and a warm hug for anyone and everyone. Providing strength and a strong foundation for her daughter and grandchildren, she found good in every situation and never let the bad deter her. She faced her battles head on and never wavered in fear.
Survivors include a daughter, Alisa Hollenback and husband Heath of Amarillo; her parents, Helen and Irvin Boyd of Gruver; two brothers, Willis Boyd and wife Sherry of Spearman and Daniel Boyd of Gruver; and two grandchildren, Alana and Sean Hollenback, both of Amarillo.
The family suggests memorials be to Stationmasters Museum, 30 S Townsend ST, Spearman, TX 79081.

RUTH BALZER
PERRYTON - Ruth Balzer, 92, of Perryton died Sunday, Feb. 12, 2012.
Services will be at 2 p.m. Wednesday in Church of the Nazarene with Dennis Knight officiating. Burial will be in Ochiltree Cemetery. Arrangements are by Boxwell Brothers Funeral Home of Perryton.
Mrs. Balzer was born May 2, 1919, in Ochiltree County. She married Lyndon Balzer on Feb. 18, 1951, in Perryton.
Survivors include two daughters, Avis Brannon of Lubbock and Lynda Sheeis of Canyon; three sons, Delbert Balzer of Spearman, Dennis Balzer of Flag Staff, Ariz., and Danny Balzer of Edmond, Okla.; a sister, Mabel Brody of Denton; a brother, Sid Carpenter of Denton; 12 grandchildren; 22 great-grandchildren; and two great-great-grandchildren.

dish AUTHORIZED RETAILER
FREE HBO CINEMAX SHOWTIME STARS
30 premium movie channels for 1mo.
FREE BLOCKBUSTER @HOME
FREE 2 Year HD DVR Upgrade
1-800-392-8211 WWW.INFINITYDISH.COM

Visit FAMILYPOOLFUN.COM
Our pools create Generations of Memories everyday, vacations never end!
Aboveground & Inground pools at WHOLESALE PRICING
SIMPLE DIY Pool Kit Assembly
SAVE MONEY on All Pool Supplies & Accessories. Ships Fast
Call Today! 800-950-2210

Go Painlessly with THERA-GESIC.
Maximum strength analgesic creme for temporary relief from:
• Back pain
• Muscle pain
• Arthritis pain
• Joint pain

Actos® BLADDER CANCER?
FDA Reports Increased Risk of Bladder Cancer with Extended Usage
The Type 2 diabetes drug, Actos®, has been reported to increase the risk of bladder cancer to patients with extended usage and increased cumulative dosages. Bladder cancer symptoms may include painful urination, blood in urine, frequent urination and other side effects.
If you or a loved one have taken ACTOS®, ActosPlus MET®, or Actosplus MET XRC® and have been diagnosed with bladder cancer, then call us about your legal rights. No Legal Fees or Expenses charged unless we make a recovery.
WILLIS LAW FIRM HOUSTON, TEXAS
BOARD CERTIFIED PERSONAL INJURY TRIAL LAWYER
1-800-883-9858

Replenish the seed of faith through... DAILY BIBLE READING, PRAYER & REGULAR CHURCH ATTENDANCE

Spearman
Sacred Heart Catholic Church
First United Methodist
First Assembly of God
First Christian Church
First Baptist Church
Church of Christ
Union Church
Fellowship Baptist
Church of Christ
Grace Presbyterian Church
Faith Lutheran Church (ELCA)
First Baptist Church
Church of Christ
First Christian Church

He has showed you, O man, what is good. And what does the LORD require of you? To act justly and to love mercy and to walk humbly with your God. Micah 6:8

This feature is made possible through the sponsorship of these civic minded businesses:

Deakin ELECTRIC
Bartlett's Lumber & Hardware
BERRY CLEANERS
Morse Implement & Auto Supply
PRAIRIE MOTORS INC.
MurMur's Cafe
Hansford County Reporter-Statesman
INTERSTATE BANK, sbb

# HYI

FOR YOUR INFORMATION

### Spearman Food Bank 1st Thursday

If you would like to help the Spearman Food Bank, they need help unloading the truck at 11:30 each 1st Thursday of each month. Contact Cecil Biggers for more information.

**Hansford Co. Library Thrift Shop Accepting Donations**  
Alley Katz (Library Thrift Shop) is accepting donations of quality items. You may ask for the key to the Thrift Shop at the library desk during regular hours (9:30 a.m.-5 p.m., Monday-Friday). Alley Katz is open from 10 a.m.-4 p.m. each Wednesday.

### Medical Fund for Francis Scroggs Pond

A Medical Fund that has been set up at FNB for Francis (Scroggs) Pond, she has been Diagnosed with cancer and will begin chemotherapy in Amarillo (and possibly surgery in Dallas in the near future).

### Gruver Band Concert Postponed

Due to the uncertainty of the basketball playoffs the band concert has been postponed to a later date. We are very sorry for the inconvenience and hope that you can make plans to attend for the rescheduled time! As soon as a date has been determined we will have it advertised! Thank you very much for your support and understanding!

### Gruver BB Playoff Games

Thursday evening the Lady Hounds will take on Lockney in the Area Round of the Playoffs. The game is set to tip off at 7:00, Thursday evening, at the First United Bank Center in Canyon. Friday evening the Hounds will take on Meadow in a warm up game at the Randall Playoff Preview. Game time is 8:00 at Randall High School.

### Ready, Set, Sew!

4-H Fashion & Fun begins in March with creative make and take projects. Participants must be 3rd grade and older. Please call County Extension Agent Peggy Winegarner at 659-4131 for more information, your support and understanding!

### Winter Landfill Hours

Due to a shortage of employees, the City of Spearman has decided to implement the winter hours at the landfill 2 weeks early. Normally it would not change until daylight savings time changes, but they implemented the winter hours beginning Tuesday, October 25, 2011. Winter hours are: Tues-Sat, 8 a.m. - 5 p.m. Closed on Monday and Sun day. They will also begin the one garbage pickup. If you have any questions, please contact Spearman City Hall at 806-659-2524.

### Gruver Elementary Register Tapes for Education

Gruver Elementary is participating in the Lowe's Supermarket Register for Tapes for Education. Please help us earn free education material and equipment by collecting register tapes from Lowe's. You can deposit your register tapes in the boxes at the Elementary School Lobby, or the south entrance, Gruver City Library, City Hall, Gruver Library, Night & Day Beauty Salon and Shear Style Salon. Call Jo at 733-2247 for pickup of tapes or for more information.

### OPSU Senior Day

Aggie Senior Day at Oklahoma Panhandle State University is scheduled for Saturday, February 18 beginning at 9:30 a.m. Each senior who registers to attend will receive a \$450 tuition scholarship. Free admission to the Aggie Basketball game @ noon and lunch is also provided. Please register with Danae Moore @ danae@opsu.edu <mailto:danae@opsu.edu> by February 17, 2012. OPSU Academic Scholarship Applications are due by March 1. A complete list of scholarships and an application can be found at www.opsu.edu

### Hansford Hospice

Volunteering for Hospice is very flexible and easy to work into your schedule. Our volunteers provide important services to the people we serve, whether it is: providing companionship to patients and their families; helping with clerical duties in the office; helping with special projects such as cooking food, baking, running or helping with community outreach. If you are interested in being a Hansford Hospice Volunteer, please contact us at 806-659-5811. We are having a Volunteer Training Program in February 2012.

### Ground Hog Dinner

The United Methodist Women will host their annual Ground Hog Dinner on Thursday, February 2, 2012 from 11:30 a.m.-1 p.m. Sausage, pork chops, cole slaw, sweet potatoes, biscuits and gravy, applesauce and homemade pies will be served. Tickets are \$7 for adults. The meal will be held in the Fellowship Hall of the First United Methodist Church of Spearman, 407 S. Haney.

### Timeless Treasures Quilt Group

The Timeless Treasures Quilt Group will meet on Jan. 28 at the First Christian Church Disciple Center on Quinn Street in Guymon starting at 9:30 for coffee and the meeting at 10:00. Please everyone bring your crazy quilts to this meeting. New or old, finished or unfinished, fancy or plain and anything in between is acceptable. Please do your part to make this a very interesting morning meeting. The more we have the more we can show the diversity of crazy quilts. And the more fun it will be. New members are welcome. Bring a guest. The afternoon program will include four demonstrations about: Curved Pieces, Embellishments, Brazilian Embroidery, and joining stitches. Please plan to participate in this program--it should be fun. Bring a salad for the noon luncheon.

### Cross Country Rings

It is 2012 and time for me to begin asking for donations to the Lynxettes Cross Country ring fund. Already, many of you have given. We would appreciate any donations from members and businesses in our community. The Lynxettes are 4 time state champs and deserve recognition for this. All donations can be made to Stephanie Brock, Special at First National Bank.

### Texas SNAP Benefits Assistance

Need help applying for SNAP benefits? We can help! High Plains Food Bank is providing application assistance for Texas SNAP benefits (Food Stamps) in your area. Telephone application assistance is available. If you need to apply for benefits, please call us today at 806374-8562 or 1-800-774-8564.

### Don't Text and Drive Decals

If you would like to purchase a lime green 'AMT 1994-2009 Don't Text and Drive' window decal in memory of Ali Tyler, please contact Stephanie Tyler at 806-736-0019. All proceeds go to the Ali Tyler Memorial Scholarship Fund. Decals are also available at Hansford County Floral Company on Main Street in Spearman.

### Help Available for Breast Cancer Survivors

Any woman who has had breast cancer surgery and cannot afford undergarments and prosthetics can get help from the American Cancer Society through a grant from Susan G. Komen for the Cure®. The Amarillo Area Breast Prosthesis and Lymphedema Accessory Program will provide financial help to women in need of breast forms or prostheses, mastectomy bras and accessories to help with lymphedema, which is swelling of the arm caused by a build-up of lymph fluid. For more information, call the American Cancer Society office in Amarillo at (806) 353-4307 or 1-877-227-2345.

### Friendship Quilter Quilt Guild

The Friendship Quilter Quilt Guild of Perryton, Texas would like to invite you to their meetings. The Day Guild meets the 2nd Wednesdays of each month at 9 a.m. in the Community Worship Center, 2210 SW 15th, Perryton. The Night Guild meets the 2nd Tuesday of each month at 6 p.m. in the Community Worship Center, 2210 SW 15th, Perryton. Annual dues are \$15. (To receive only the newsletter \$7.50/yr.) Visitors are welcome. For more information, contact Cynthia Shattles at 806-435-2765 or Marilyn Robins at 806-624-2691.

### Fire Department Donations

Persons wishing to make donations to the Fire Departments in Hansford County may do so at the following addresses: Spearman Fire Dept., Box 37, Spearman TX 79081; Gruver Fire Dept., Box 947, Gruver TX 79040 or Morse Fire Dept., Box 28, Morse TX 79062.



## Golden Anniversary

### Mr. and Mrs. Woolley

Paul and Joyce Woolley of Amarillo celebrated their 50th wedding anniversary at First Christian Church in Spearman.

Mr. Woolley married the former Joyce Butz on Feb. 11, 1962, in Anthony, Kan. They have lived in Amarillo for three years. They previously resided in Wichita, Kan.; Liberty, Mo.; Buckeye, Ariz.; Spearman and Dumas.

Mr. Woolley is a retired master electrician from the City of Dumas.

Mrs. Woolley is a homemaker. Mr. and Mrs. Woolley are members of Hillside Christian Church and Amarillo Inventors' Association.

Children of the couple are Tonya Rice and husband Loy, Tina Rex and husband George, and Tim Woolley and wife Heather. They have nine grandchildren, Kyra Skipworth, Torey Mahanay, Kaleb Rice, Austin Rice, Garrett Rex, Kelcee Rex, Brandon Rex, Tiffani Rex and Jaedyn Woolley. Their two great-grandchildren are Brailyn and Callaway Skipworth.



## Engagement Announcement

Eugene and Judy Yarbrough of Spearman TX wish to announce the engagement of their daughter Haley Leigh Lombard to Justin Aaron Amaro of Borger TX. Justin is the son of Jimmy and Elaine Amaro of Borger TX.

Haley is the granddaughter of Qzella Bradley Hendricks and the late Lee Hendricks and Lilly Love of Spearman TX.

Justin is the grandson of Robert and Frances Bunting of Henrietta TX and the late Gonzalo and Ophelia Amaro of O'Donnell TX.

Haley is a 2001 graduate of Spearman High School and went to graduate from Texas Tech University in 2005 receiving her Bachelors Degree in Business Administration. Haley has been employed with Oxford & Associates for the past four years and now holds a branch management position in Cleveland, Ohio.

Justin graduated in 2000 from West Texas High School in Stinnett TX and went on to graduate from Texas A&M University in 2004 with a Bachelors Degree in Chemistry. In 2010 he received his Doctorate from Lake Erie College of Osteopathic Medicine. He is now in the process of completing his residency with an affiliate of The Cleveland Clinic Hospital with a focus in Family Medicine.

A July 20, 2012 wedding is planned in Riviera Maya, Mexico.

We will be closed on Monday, February 20th, in observance of

**INTERSTATE BANK, ssb**  
www.interstatebankssb.com

322 Main Street \* Spearman, TX  
(806) 659-2559

You are invited to a  
**Wedding Shower**  
honoring  
**Kylie Knight**  
(bride-elect of Tatum Rice)  
Sunday, February 26, 2012  
from 2:00-3:30 p.m. at the  
205 Etling Ave Gruver TX  
Selections: Gordons Drug,  
William Sonoma, and Bed, Bath & Beyond

**Hansford County**  
JUNIOR LIVESTOCK SHOW  
AND  
PREMIUM SALE

**CONGRATULATIONS!**  
to all the boys and girls in  
FFA and 4-H on a great  
job in the 2012 Hansford  
County Livestock Show.

-----  
**Britt & Linda Jarvis**

**Gordon's**

**Bridal Registry**

**Couples Currently Registered**

- Kylie Knight & Tatum Rice - 2/26
- Lindsey Mireles & Daniel Gale - 3/31
- Jena (Cherry) & Charles Davis - TBA
- Shelby Begnaud & Chase Farrar - TBA
- Mandie Hunter & Josh Duggan - TBA
- Amy Brown & Jon D'Zamko - TBA
- Heather Ford & Garrett Martin
- Dana McLaughlin & Justin Hendrick
- Brittney (Bradley) & Rhett Renner

**Baby Registry**

Baby Boy of Brooke (Bevil) & Andrew McMurry - 2/11  
Baby Girl of Kendra & Jim Potts - 2/25  
Baby Boy of Adrienne & Kevin Baker

We're proud to support

**Hansford County**  
youth involved in the  
**Livestock Show and Sale**

-----  
**MurMur's Cafe**  
100 Roland St. Spearman (806) 659-3580

**Gordon's** 659-2141  
314 Main Spearman

# Open Letter

Dear Editor,

A bunch of us sailors are trying to locate a Navy buddy we were stationed with at NAS Chase Field in Beeville, TX in the late '60's. His name is Kenneth Wesley Taylor, or as he most often went by, KW, and he was and hopefully still is, from Spearman, TX.

We're writing to you today in hopes someone at the paper may know of Ken or KW and/or someone in his immediate family that we might contact. As I understand it, his father's name was Orville. Ken also had and/or has a brother and sister, with his sister living just across the border in Oklahoma. Unfortunately, I don't have either of their names.

Thanks from a grateful group of Navy guys.  
Mark (Norm) Webb  
626 355 1951

## Alert

by Chief Robert Baker

Reports have been made to the Spearman Police Dept. regarding the thefts of trailers. Trailers are extremely easy to steal and can be disposed of by thieves very quickly for cash money. Even if the license plate is attached to the trailer it can be removed and tossed in a ditch or trash can and no one will ever notice. Stolen trailers are extremely difficult to trace as typically the only means of identification is the license plate. Most trailers we see around town do not even have a license plate attached, and are left sitting in the street or a parking lot unsecured. Trailer thieves will have your trailer hooked up and gone in less than two minutes.

Your trailer is an expen-

sive investment, protect that investment and secure it in some way by making it difficult to steal.

Please keep vigilant and be aware of your surroundings. Complacency of the law abiding public is what criminals rely upon to be profitable.

## Alert

by Chief Robert Baker

The Spearman Police Dept. and Gruver Police Dept. are investigating the thefts of drive shafts from Ford pick-ups.

The drive shafts are apparently very easy to remove, and the tools needed to remove the 4 bolts are easily obtained. Two Ford Expeditions were also hit but only the bolts were taken.

Any information on these thefts or any crime will be greatly appreciated.

Please keep vigilant and be aware of your surroundings. Complacency of the law abiding public is what criminals rely upon to be profitable.

## Spearman Allsup's Robbed at Gunpoint

by Chief Robert Baker

We have been hearing many rumors regarding the robbery at the Spearman Allsup's. One rumor asserts that the suspect was a blond haired female. Please put all the rumors aside.

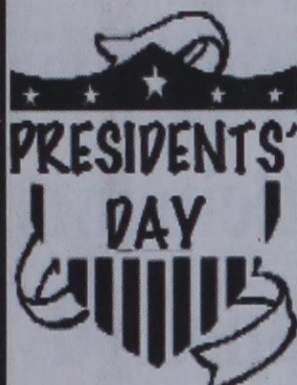
The following is what actually occurred: On January 31, 2012 at approximately 11:59 PM, the Spearman Allsup's was robbed by an unknown male. The suspect is white or Hispanic, early twenties, slender build, approximately 5'2" to 5'5" (but believed to be taller).

The suspect wore a black hoodie, jeans, and a pink bandana concealing his face except for the eyes. The suspect did have a handgun, but was not threatening with it. Total time the event occurred was approximately 28 seconds after the suspect entered the store.

Spearman officers, HCSO deputies, as well as deputies from Ochiltree County searched the area immediately on being dispatched. Tracking dogs were brought in from the prison unit at Dalhart, which searched the city for almost 2 hours with negative results. Video footage of the robbery was obtained from Allsup's, and it will be sent off for evidentiary examination.

If you have any further concerns or questions, please feel free to contact us.

**First State Bank**  
will be closed  
on Monday,  
February 20th, in  
observance of



**FSB**

The Bank that has the  
Tradition of Strength  
and Service

One NE Court  
Spearman, Texas  
(806) 659-5565  
member FDIC

**FIREWOOD FOR SALE**  
Cedar firewood for sale.  
Delivered & stacked, or self  
pickup. Call (806) 658-2573.  
15(8/12/10)P

# SMART THING...

## I think I LOVE you!

Let PTCI connect your SMART THINGS

Get **FREE myWiFi**

Get any speed Internet for only

**\$29.99**  
mo.  
up to 3  
months



721 W 7th in Spearman  
800-562-2556  
ptci.net

\*Free myWiFi offer available to new & existing PTCI Internet customers, and includes free installation of up to 4 devices, plus up to 3 months free myWiFi service. Internet restrictions apply. See store for details. Limited time offer.



# Thank You, Spearman & Hansford County, for 54 years of support of Hi-Plains Auto Supply!

## 2012 ANNUAL CUSTOMER APPRECIATION SALE

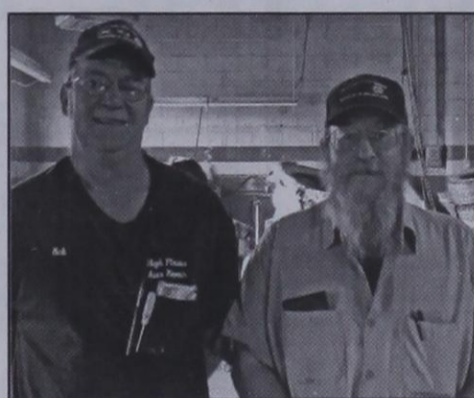
Tuesday, February 21st • 7 a.m. - 6 p.m.

# Everything is on Sale!



Irene, Jean, and Jimmy Snider

For every \$300 spent on Feb. 21st, receive a ticket for a 46" Color TV, a heated jacket, or roll around tool box. Drawings will be held on Feb. 21st at 5:30 p.m.



Rob Shields - Shop Forman, and Sam Gruver; Not Pictured: Toby Thomas, Glen Bixby

Custom Exhaust Systems,  
Front End Alignment,  
Transmission, Brakes,  
Engines, General Tune-Up,  
Tires & More!



Up To 65% Off  
List Price  
on Filters  
plus  
NAPA Hand  
Tools At Cost  
and other in-store sales



Brad Hardesty, Tim Taylor, Jake Leicht



Join us for  
**FREE**

Donuts & Coffee  
Popcorn & Cokes  
Hamburgers, 11-2  
• DOOR PRIZES •

Irene, Jimmy, Bobby, Billy & Marie Snider and the employees of Hi-Plains Auto Supply, Inc. would like to thank you for your business

Entire inventory marked down, including - NAPA Tools and Equipment,  
NAPA Gold & Silver Filters, NAPA Batteries, NAPA Truck Parts & Much, Much More!

For special pricing, call



# HI-PLAINS AUTO SUPPLY

118 Main • (806) 659-2506 • Spearman  
Se Habla Español

Complete engine machine shop available.  
Come to NAPA for ALL your Farm Needs!

Factory reps will be in-store on Feb. 21st!

The annual Hansford County Junior Livestock Show and Premium Sale was held on Friday and Saturday, January 27th and 28th at the Hansford County Barn in Gruver, Texas.

A total of 189 entries competed, representing Gruver 4-H, Gruver FFA, Gruver Jr. FFA, Morse 4-H, Spearman 4-H and Spearman FFA.

Friday's show began at 7 a.m. with the weighing in of all steers and lambs. The grand opening of the show was held at 9 a.m. The lamb show began at 9 a.m., followed by the heifer show at 12:30 and the steer show at 1 p.m. The weighing of pigs was held after the steer show.

Saturday's schedule was as follows: 9 a.m. - Swine show; 6:30 p.m. - Door prizes will be auctioned, with the presentation of Showmanship Awards. Immediately following the presentation of awards, the auction began. The sell order was - lamb, swine and steer.

The Showmanship Awards are as follows: **Market Lamb Senior Showmanship** - Jace Lane; **Market Lamb Junior Showmanship** - Jonathan Crowl; **Market Steer Senior Showmanship** - Jace Lane; **Market Steer Junior Showmanship** - Zane Patterson; **Market Swine Senior Showmanship** - Malory Martin; **Market Swine Junior Showmanship** - Jaci Burgan.

The Livestock Show Results are as follows: **Grand Champion Lamb** - Jace Lane; **Reserve Grand Champion Lamb** - Jennifer Crowl; **Grand Champion Steer** - Lauren Patterson;

**Reserve Grand Champion Steer** - Zane Patterson; **Grand Champion Heifer** - Taos Anderson; **Reserve Grand Champion Heifer** - Audy Reed; **Grand Champion Swine** - Mabry Sutterfield; **Reserve Grand Champion Swine** - Brantly Shields; **Dark Cross Breed Champion** - Mabry Sutterfield; **Reserve Dark Cross Breed Champion** - Jace Lang-Swan; **Duroc Breed Champion** - Reece Shields; **Duroc Reserve Breed Champion** - Rhett Sparks; **Hampshire Breed Champion** - Brantly Shields; **Reserve Hampshire Breed Champion** - Halli Mans; **Light Cross Breed Champion** - Greyson Karlin; **Light Cross Breed Reserve Champion** - Trace Patterson; **Other Purebred Barrows Breed Champion** - Thaxton Boyd; **OPB Reserve Breed Champion** - Jennifer Crowl; **Yorkshire Breed Champion** - Creed Spivey; **Yorkshire Reserve Breed Champion** - Lauren Patterson

**MARKET LAMB  
01 Fine Wool**

1. Ry Clark, Morse 4-H; 2. Mia Pipkin, Spearman 4-H; 3. Grace Adams, Gruver 4-H; 4. Kailley Whitehead, Gruver 4-H; 5. Dakota Butman, Gruver 4-H; 6. Joshua Martinez, Spearman FFA; 7. Kari Whitehead, Gruver 4-H

**02 Medium Wool**

1. Tylo Farrar, Spearman FFA; 2. Brittney Grimes, Gruver 4-H; 3. Taos Anderson, Gruver 4-H; 4. Karissa Martinez, Spearman FFA; 5. Daniel Jacquez, Spearman 4-H; 6. Kaycee Anderson, Gruver 4-H

**03 Medium Wool**

1. Lane Farrar, Spearman 4-H; 2. Mattie McCloy, Spearman 4-H; 3. Makayla Wheelock, Gruver 4-H; 4. Jonathan Crowl, Morse 4-H; 5. Sierra Butman, Gruver 4-H; 6. Cooper Lieb, Morse 4-H

*Continued on Page 7*

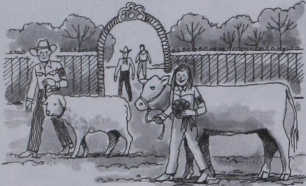
**The Bunkhouse Restaurant  
Salutes**

the 4-H and FFA youth for demonstrating personal responsibility, exhibiting high standards in animal care and promoting production agriculture.

**The Bunkhouse Restaurant**

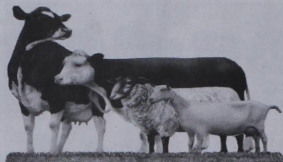
212 Main Street • Spearman  
(806) 659-2089

Congratulations to all of the stock show winners, and a special thank you to all of the individuals and businesses that are committed to supporting the youth of Hansford County.



**First National Bank**

FDIC



**CONGRATULATIONS**

to all the boys and girls in FFA and 4-H on a great job in the 2012 Hansford County Jr. Livestock Show!

**Gruver Ford**

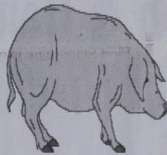
531 Main Ave. • 733-2431 • Gruver TX

Supporting all the participants in the Hansford County Livestock Show



**Lowe's Marketplace**

Plains Shopping Center • Spearman  
(806) 659-2522



Proud to support events like the Hansford County Livestock Show that promote strong family ties.

**Hansford County Vet Clinic**

Spearman, TX • 659-2100

We salute our ag teacher, Jackie Burkhalter, and the good things our kids do!



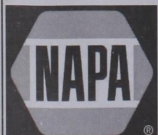
Spearman Independent School District and Board of Trustees

We salute the 4-H and FFA youth for demonstrating personal responsibility, exhibiting high standards in animal care and promoting production agriculture.



**Hi-Plains Auto Supply**

118 Main • Spearman  
(806) 659-2506  
Se Habla Español



**CONGRATULATIONS  
FFA & 4-H Members!**

We salute you on all your hard work!



**North Plains Electric Co-op**

14585 N. Hwy. 83 • Perryton, Texas  
(806) 435-5482 • 1-800-272-5482

# Congratulations



**4-H & FFA  
on a job  
well  
done!**

**H&H Water Well Service Inc.**

Gruver Highway • Spearman TX  
659-5577

*Continued from Page 6*

**04 Medium Wool**

1. Jace Lane, Morse 4-H; 2. Tyann Hight, Spearman 4-H; 3. Haylee Miesner, Morse 4-H; 4. Lauren Ferguson, Spearman 4-H; 5. Braxton Crane, Gruver 4-H; 6. Joe Martinez, Spearman FFA

**05 Medium Wool**

1. Jennifer Crowl, Morse 4-H; 2. KD McCloy, Spearman 4-H; 3. Reese Clark, Morse 4-H; 4. Gena Gillispie, Morse 4-H; 5. Daniel Jarvis, Spearman 4-H; 6. Beau Brown, Spearman 4-H

**06 Medium Wool**

1. Katie Miesner, Morse 4-H; 2. Carson Pearson, Spearman FFA; 3. Averie Greene, Spearman 4-H; 4. TeAnna Lively, Spearman 4-H; 5. Macy McLennan, Gruver 4-H; 6. Cooper DeArmond, Spearman FFA

**07 Medium Wool**

1. Richard Jarvis, Spearman 4-H; 2. Justin Roberts, Spearman 4-H; 3. Halston Kenney, Spearman 4-H; 4. Sabrina Butman, Gruver 4-H; 5. Katy McLennan, Gruver 4-H; 6. Alison Brown, Spearman 4-H

**MARKET STEER**

**01 Lightweight**

1. Jace Lane, Morse 4-H; 2. Bailey Stedje, Gruver FFA; 3. Taos Anderson, Gruver 4-H

**02 Medium weight**

1. Zane Patterson, Spearman FFA; 2. Kaycee Anderson, Gruver 4-H; 3. Travis Stedje, Gruver 4-H; 4. Audrey Lieb, Morse 4-H

**03 Heavy weight**

1. Lauren Patterson, Spearman FFA; 2. Trace Patterson, Spearman FFA; 3. Jonathan Crowl, Morse 4-H; 4. Rayel Anderson, Gruver 4-H; 5. Callie Stedje, Gruver FFA

**04 Heavy weight**

1. Trayse Heater, Spearman FFA; 2. Tyler Stedje, Gruver Jr. FFA; 3. Kaitlyn Stedje, Gruver 4-H; 4. Reed Anderson, Gruver 4-H

**MARKET HEIFER**

**Heifer**

1. Taos Anderson, Gruver 4-H; 2. Audy Reed, Spearman FFA; 3. Saxie Ralston, Gruver 4-H

**MARKET SWINE**

**Dark Cross**

**01 Dark Cross**

1. Cassidy Seaney, Gruver Jr. FFA; 2. Stefan Cook, Spearman FFA; 3. Kaleb Chockley, Spearman FFA; 4. LC Perez, Gruver FFA

**02 Dark Cross**

1. Lilly Patterson, Spearman FFA; 2. Brinkley Williams, Gruver 4-H; 3. Molly Lieb, Morse 4-H; 4. Molly Harbour, Spearman FFA

**03 Dark Cross**

1. Richard Jarvis, Spearman FFA; 2. Michaela Davis, Gruver 4-H; 3. Maggie Davis, Spearman 4-H; 4. Jonathan

Crowl, Spearman FFA

**04 Dark Cross**

1. Sarah M. Jackson, Spearman FFA; 2. Jace Lane, Morse 4-H; 3. Rayel Anderson, Gruver 4-H; 4. Sabrina Butman, Gruver 4-H

**05 Dark Cross**

1. Jace Lang-Swan, Spearman FFA; 2. William Jackson, Spearman FFA; 3. Dustyn Kelley, Spearman 4-H; 4. Wyatt Womble, Spearman FFA; 5. Justin Roberts, Spearman 4-H

**06 Dark Cross**

1. Mabry Sutterfield, Spearman FFA; 2. Audrey Lieb, Morse 4-H; 3. Kaysha Bass, Gruver 4-H; 4. Drew Herrington, Spearman 4-H

*Continued on Page 8*

Thank you to the following for their continued support of the Hansford County Stock Show!

**All Buyers**

All People Donating to Stock Show and Sale

Hansford Co Extension Service (Burt, Peggy, & Tammy)

Hansford Co Stock Show Board

All Help During the Stock Show and Sale

Richard & Wanda Wagner

Clay Myers, Sale Auctioneer

Stock Show Judges

**You are appreciated!!!**

**Morse 4-H Club**

CONGRATULATIONS TO ALL HANSFORD COUNTY STOCK SHOW EXHIBITORS

*Neelley Armes*  
**PHOTOGRAPHY**  
www.arnesranch.com  
PO Box 307 Gruver, TX 79040  
(940) 391-8224 arnesranch@yahoo.com

**We're Proud Of You!**

We are proud of the young people -- FFA and 4-H youth -- adults and sponsors who participated in and helped with the 2012 Hansford County Livestock Show.

**Five Star Equipment, Inc.**  
Spearman, Texas ★★★★★ (806) 659-3743

**CONGRATULATIONS!**  
4-H & FFA Members!

First State Bank is proud to be involved in various community activities, such as the Hansford County 4-H & FFA Livestock Show. We would like to congratulate all of the participants.

**FSB**  
**FIRST STATE BANK**  
"The Good Ag Bank"

1 NE Court • 806-659-5565 • Spearman TX 79081  
member FDIC

**Working For The FUTURE**  
Supporting the Youth of Hansford County

We want to take this opportunity to recognize the farming and ranching youths of our area.

Your hard work was very evident when you displayed your animal projects at the Hansford County Livestock Show.

**INTERSTATE BANK, ssb**  
www.interstatebankssb.com

322 Main Street \* Spearman, TX  
(806) 659-2559

We're proud to support Hansford County youth involved in the Livestock Show and Sale

**hchd**  
Hansford County Hospital District

Dr. Mark Garnett, D.O.  
Dr. Heath Cotter, M.D.

Dr. Hasham, M.D.  
Michelle Davis, PA-C

707 S. Roland • Spearman, TX  
(806) 659-2535

Continued from Page 7  
**Duroc**

**01 Duroc**  
1. Carter Burgin, Spearman 4-H; 2. Zane Patterson, Spearman FFA; 3. Kaitlyn Stedje, Gruver 4-H; 4. TeAnna Lively, Spearman 4-H; 5. Scarlett Shields, Morse 4-H; 6. Britney Grimes, Gruver 4-H; 7. Damian Pierce, Gruver FFA; 8. Colton Cator, Spearman 4-H

**02 Duroc**  
1. Reece Shields, Spearman FFA; 2. Tyler Stedje, Gruver Jr. FFA; 3. Avonlea Shields, Morse 4-H; 4. Jade Red, Gru-

ver 4-H; 5. Quentin Goodson, Gruver 4-H; 6. Hunter Kenney, Spearman FFA

**03 Duroc**  
1. Rhett Sparks, Gruver Jr. FFA; 2. Connor Haynes, Gruver Jr. FFA; 3. Gus Gifford, Gruver 4-H; 4. Dakota Butman, Gruver 4-H; 5. Tate Tyler, Gruver Jr. FFA

**Hampshire**  
**01 Hampshire**  
1. Payton Harrell, Spearman FFA; 2. Trayse Heater, Spearman FFA; 3. Carson Williams, Gruver 4-H; 4. Kyler Cator, Spearman FFA; 5. Maggie Pipkin, Spearman

4-H; 6. Taos Anderson, Gruver 4-H; 7. Miguel Perez, Gruver Jr. FFA

**02 Hampshire**  
1. Ryan Schnell, Spearman FFA; 2. Colton Close, Spearman FFA; 3. Laurren Williams, Gruver 4-H; 4. Jesus Lucero, Spearman FFA; 5. Braxton Crane, Gruver 4-H; 6. JD Reed, Spearman FFA; 7. Cooper Lieb, Morse 4-H

**03 Hampshire**  
1. Reid Harrell, Spearman FFA; 2. Kelsea Porter, Spearman FFA; 3. Daniel Jarvis, Spearman FFA; 4. Isaiah Navarette, Spearman FFA; 5. Bailey Glass, Gruver Jr. FFA;

6. Brock Schroeder, Spearman FFA; 7. Daniel Jacquez, Spearman 4-H

**04 Hampshire**  
1. Brantly Shields, Spearman FFA; 2. Joshua Martinez, Spearman FFA; 3. Ry Clark, Morse 4-H; 4. Colton Seaney, Gruver Jr. FFA

**05 Hampshire**  
1. Halli Mans, Gruver FFA; 2. Caylin Brown, Spearman 4-H; 3. Joel Ray Pecha, Spearman 4-H

**Light Cross**  
**01 Light Cross**  
1. Carson, Pearson, Spearman FFA; 2. Tanner Baird, Spearman FFA; 3. Allison

Brown, Spearman FFA; 4. Shakota Field, Spearman FFA; 5. Dax Haight, Gruver FFA; 6. Addie Williams, Gruver 4-H; 7. Serena Harbour, Spearman FFA

**02 Light Cross**  
1. Trenton Baird, Spearman FFA; 2. Braedon Ralston, Gruver 4-H; 3. Bailey Stedje, Gruver FFA; 4. Halston Kenney, Spearman 4-H

**03 Light Cross**  
1. Judd Sutterfield, Spearman FFA; 2. Alec Cenicerros, Spearman FFA; 3. Creed Callaway, Gruver Jr. FFA; 4. Blaise Davis, Gruver Jr. FFA; 5. Keegan Kelp, Spearman


FFA; 6. Katy McLennan, Gruver 4-H; 7. Ethan Bixby, Gruver 4-H

**04 Light Cross**  
1. Trace Patterson, Spearman FFA; 2. Malory Martin, Spearman FFA; 3. Marlie Kelp, Spearman FFA; 4. Charles Patterson, Spearman FFA

**05 Light Cross**  
1. Alyssa King, Gruver 4-H; 2. Reese Clark, Morse 4-H; 3. Steffan Werner, Spearman FFA; 4. Tyann Hight, Spearman 4-H; 5. Ansley Red, Gruver 4-H


Continued on Page 10

We are proud to support Hansford County youth in the Livestock Show & Sale.




**Willis Boyd Dirt Service**  
Fully Insured  
24-Hour Service

904 Wilmeth Dr. Office: 806-659-9848  
Spearman TX (806) 662-3662  
(806) 898-2813



We are proud to support Hansford County youth involved in the Livestock Show and Sale.


**Golden Spread Sales Co.**  
414 S. Hwy. 207 • Spearman TX  
(806) 659-3776



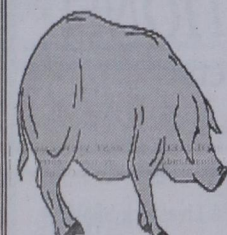
**Gigot Agra Products, Inc.**  
"Committed to making things better in and out of the field."

Congratulations to all the exhibitors in the Hansford County Livestock Show & Sale.

Gigot Agra Products, Inc.  
506 Hwy. 207 South  
Spearman, Texas  
(806) 659-3121



Precision Irrigation Made Easy™



Proud to support events like the Hansford County Livestock Show that promote strong family ties.

**GORDON'S DRUG & PHOTO**

314 Main Spearman, TX 79081  
Tel: 806-659-2141 Fax: 806-659-5135  
www.gordonsdrug.com

Pharmacy Compounding, Photo Lab, Gifts & Bridal Registry

**MITCHELL THEATRES.COM**  
GUYMON, OK • LIBERAL, KS • NEWTON, KS

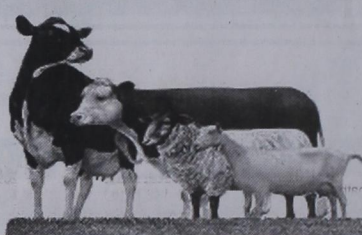
**NORTHRIDGE 8**  
Guymon, Oklahoma  
www.northridge8.com  
580-338-3281

**SOUTHGATE 6**  
Liberal, Kansas  
www.southgate6.com  
620-624-5573

**SEQUOYAH 8**  
Garden City, Kansas  
www.sequoyah8.com  
620-275-2760

**CHISHOLM TRAIL 8**  
Newton, Kansas  
www.chisholmtrail8.com  
316-283-0555

FRESH POPCORN EVERYDAY!  
-PARTY ROOM & ARCADE-



**CONGRATULATIONS!**

WE ARE PROUD TO SUPPORT OUR AREA YOUNGSTERS!

**AD@BE WALLS GIN**

**JERRELL KEY**  
MANAGER  
1017 S. SH 51  
SPEARMAN, TX 79081  
(806) 659-2574  
(806) 659-1032 FAX  
(806) 683-9671 MOBILE  
adobe.walls@gin.com

A • W • G

We salute all the participants of the 2012 Hansford County Livestock Show


**B&B Sales Co.**  
205 Dillon • 659-2662 • Spearman

**Congratulations!**

to all the youth who participated in the Hansford County Junior Livestock Show & Sale.

We believe in the future of farming and ranching!

from the employees, officers and directors of



**GSB**  
**Gruver State Bank**  
3 Main Plaza • (806) 733-5061 • Gruver, TX  
member FDIC



**REAL ESTATE**

**FOR RENT:** 1 & 2 BR furnished apartments. All bills paid. Call 659-2247. TFN(11/03/11)B

**HELP WANTED**

**HELP WANTED:** Oilfield work, must have drivers license. Good pay and benefits. Call 806-659-3911 or come by at 1103 West 7th, Spearman. Trencor Enterprises, Inc. TFN(11/10/11)B

**HELP WANTED:** \$5,000 Sign-On Bonus! Tons of runs! Frac Sand Hauling. Owner Operators need tractor, pneumatic trailer, blower. 800-397-2338 1(2/16/12)P

**HELP WANTED:** Natural Gas Compressor Mechanic needed. Experience preferred but not necessary. Good driving record and drug test required. Competitive pay and benefits. Fax resume to 806-669-7399 Attn: Whitney Davis, email: wdavis@flogistix.com or mail to P.O. Box 501 Pampa, TX 79066. Call 806-669-7499 for application. 4(1/26/12)B

**SERVICES**

**HOOCHY POOCHY PARLOR** Call us for all your pet's grooming and boarding needs. Call now for reservations! 806-273-2724. TFN(11/2/07)B

**TIRED OF GARAGE SALE PRICES?** Let me buy your good used furniture! 2nd Chance Antiques & Furniture, Don 806-648-1480; 806-202-1391 cell. TFN(1/20/11)B

**WANTED**

**WANTED:** Horses to ride, train, exercise. 20+ years experience. Reasonable Rates. New to area. Call Russ at 254-716-1656. 2(2/16/12)B

**MARTIN & ASSOCIATES REALTY**

Serving Hansford County Since 1990

209 N. Bernice: 2 houses, garage and storage bldg. Call for details.

711 S. Townsend: darling 3 bed, 1 3/4 bath, place, cent. air/heat, dining and detached garage w/shop

301 Hazelwood: 3 bed, 1 bath, fireplace, large yard

Julie Martin: Broker - 659-2425

**We'd Like Your Listing!**

**FOR QUALITY & SERVICE CALL US TODAY!**

Equal Housing Opportunity

**Check our websites for other properties.**

**DUMAS FARMS II** - 1280 acres deeded, 320 ac. for lease with purchase of property, nice 2 bdrm. mobile home w/concrete foundation, mud room and patio, 2 all-steel barns w/concrete floors, 7 irrigation wells, UG pipe, on pvm. and all weather road.

**VALLEY VIEW RANCH** - Lipscomb Co., TX - 177 ac. w/extraordinary 5404 sq. ft. +/- home overlooking the property w/ beautiful views of live creek, trees, wildlife (deer, quail, & turkey), covered horse training facilities, stables, excellent cattle working facilities & pens, commercial dog kennels, employee housing. We can divide (10 ac. w/main residence or 167 ac. +/- w/other improvements)!

**SHERMAN CO., TX** - 627 acres, choice land, four 1/4 mile sprinklers, fully developed, one 1/4 mile off Hwy 287 on paved CR - CC, 3 phase electricity, new irrigation well drilled in 2010.

**WEST OF DUMAS** on pvm. 606 ac. +/-, 17 tower sprinkler, four irr. wells, excellent location for residential or commercial development.

**BUDDY CLINE ROAD** - Moore Co., TX - 1/2 section choice land, two wells (one new) and sprinklers.

**1200 SOW FARROW TO FINNISH OPERATION** - Moore Co., TX - New 5 yr. lease with major hog company. Two separate units, can be divided - Please contact broker for info package and price.

www.scottlandcompany.com  
www.texascrp.com  
Shawn Gillispie 806/922-5532  
Ben G. Scott, Broker  
1-800-933-9698 day/eve  
TFN(2-2-12)

**ALL STATE REALTY**

806 435-SOLD (7653)

All State Realty  
Sherrie E. Rima  
806-435-SOLD (7653)

322 S. DRESSEN  
Corner Lot, 3 or 4 bedrooms, 2 Living spaces, 3 baths. Newly Remodeled & Priced To SELL!!

We have Buyers but We Need Listings! Call Us Today & Let us put the Two of you together!

**PUBLIC NOTICE**

**NOTICE TO CREDITORS**  
Notice is hereby given that original Letters Testamentary for the Estate of Billie Joyce Walker Johnson, Deceased, were issued on November 15, 2011, in Cause No. P02651, pending in the County Court of Hansford County, Texas, to: Estate of Billie Joyce Johnson. All persons having claims against this Estate which is currently being administered are required to present them to the undersigned within the time and in the manner prescribed by law.

c/o Billy Britt Jarvis  
Attorney at Law  
The Jarvis Law Office, P.C.  
PO Box 515  
Spearman TX 79081  
DATED the 9th day of February 2012.

Billy Britt Jarvis  
Attorney for Estate of Billie Joyce Johnson  
State Bar No.: 10585000  
The Jarvis Law Office, P.C.  
PO Box 515  
Spearman TX 79081  
Telephone: (806) 659-2554  
Facsimile: (806) 659-3517  
1(2/9/12)B



**Palace Theatre**

MOVIE SHOW TIMES  
Friday-Thursday - 7 p.m.  
Sunday - 2 p.m.  
Closed Sunday Night

FRESH POPCORN & DRINKS!  
PARTY ROOM & ARCADE  
MOVIE RENTALS

**Palace Theatre**  
210 Main Street  
Canadian TX 79014  
806-323-5133  
www.palacetheatre.com

The Palace Theatre meets Lucasfilm THX specifications for site and sound quality.

CACTI ELF TBAR  
UBOAT BOO WEAVE  
SELMA BUR ORBIT  
STAPLES GREENADE  
AIM POUF  
MAG CEDE NUDNIK  
ITEM NEAP LEONA  
MANE DUCAT ELAN  
ILJAD SOUR MANY  
CLINIC CLAP NEE  
KICK WAR  
WEIRDAL LLLCOOLJ  
ASCIIT USA IGL00  
SPECK CUD FUGUE  
HYDE KEY YEATS

8	7	4	9	3	2	1	5	6
2	6	9	7	1	5	3	8	4
1	3	5	8	4	6	9	2	7
6	2	8	1	9	4	5	7	3
4	1	3	5	6	7	2	9	8
9	5	7	2	8	3	6	4	1
5	4	2	6	7	1	8	3	9
7	9	6	3	2	8	4	1	5
3	8	1	4	5	9	7	6	2

**hchd**  
Hansford County Hospital District

**Maintenance:** Perform duties as directed by the maintenance supervisor. Responsible for maintenance of buildings, grounds, and equipment to include carpentry, painting, plumbing, electrical work, air conditioning, gardening, furniture repair welding, etc.

**Pharmacy Assistant/Book-keeper:** Day to day operations including, but not limited to, stockings, reconciling insurance reports, check in order daily, answer phone, run cash register, reconcile payments & invoices. Any and all instructions from the Pharmacist. Great customer service is a must.

Great working environment and staff, quality facility providing opportunities for professional growth. Great Benefit package. Apply at 707 S Roland, Spearman, Tx or contact Jackie Nelson, HR 806-659-5841. Download application at hchd.net EEOE (2/2/12)

**Blankenship Real Estate**  
659-3052 - 670-3774

LET US HELP YOU  
SELL YOUR HOME.

NEW LISTINGS WANTED!

Eulalia Blankenship - Sales  
Eschol Blankenship - Broker

**Shirley Howard**  
Properties

**We NEED listings!**  
Call us now to help YOU sell your home for top dollar!

1026 Townsend - Spearman: 2,883 sq ft, 4 bed, 1 1/2 bath, LARGE Family Room!

1016 S Barkley - Spearman: 4,081 sq ft, 4 bed, 4 bath 3 lvg areas, 2 Att gar, Fireplace, Corner Lot! REDUCED AGAIN!

1007 Haney - Spearman: 860,000 sq ft, 3 bed, 1 bath, CACH, Fireplace, Storm Shelter, NEW Fence, Great Deck!

710 Front - Gruver: \$145,000 - @ 2,177 sqft, 3 bed, 2 3/4 bath, NEW Metal roof, NEW CACH, NEW Outside Stucco, and NEW Kitchen!

Shirley Howard, Broker/Owner  
806-886-6536, Cell  
806-648-4444, Work

Melinda McCullough, Realtor  
(806) 733-5678

We would LOVE to sell your HOUSE!  
CALL US!

**Junior LIVESTOCK SHOW**

2012

**CONGRATULATIONS!** to all the boys and girls in FFA and 4-H on a great job in the 2012 Hansford County Livestock Show.

**Kirk Insurance Agency**  
29 S Highway 207, Spearman • (806) 659-2794

**Cupid Cash**

Guymon shoppers have a chance to win \$500! It is Cupid Cash time again from Main Street Guymon.

Each time you make a purchase at one of the participating merchants, you'll get more tickets and increase your chance to win the \$500. You can also get one ticket a day, with no purchase, at the Main Street Guymon office, 116 NE Fifth Street.

At straight up noon on Sat., Feb. 18, is the Epic Drawing for the Cupid Cash. This year the \$500 is given in Main Bucks, which can be redeemed at any of the following places: 3 Wild Hairs Salon, 31 Consultant Sara Hitch, Acapulco Restaurant, Chamber of Commerce, Chris Urias Photography, Christine's Home Furnishings, Dizzy B's, Epic Touch, G & G Electronics, Garrison Insurance Agency, Gebara Networking, Gibson Chiropractic, Guymon Furniture, Jafra Consultant Shelley Wirtz, Merle Norman, Mitre Box Frame Shop, SPC, Sound Service / Radio Shack, Southern Office Supply, The Studio in Guymon, Tech Savvy Computer Service, Urban Bru, Wirtz Lumber, and Wolf Creek Mini-Mall. The Main Bucks are given in \$20 bills, so they can be spent at several places, if the winner so wishes.

For more information about Cupid Cash, a retail promotion by the Main Street Guymon Promotion Committee, contact Director@MainStreetGuymon.com or call 338-6246.

Go into the following stores and when you make a purchase you will receive a ticket:

- Chris Urias Photography
- Christine's Home Furnishings
- Dizzy B's Convenience Store
- Epic Touch
- G & G Electronics
- Garrison Insurance Agency
- Gibson Chiropractic
- Merle Norman
- Radio Shack / Sound Service
- SPC
- Urban Bru
- Wolf Creek Mini Mall

TEXAS STATEWIDE CLASSIFIED ADVERTISING NETWORK

**TexSCAN**

**TexSCAN Week of February 12, 2012**

**AUTOS WANTED**  
CASH FOR CARS We buy any car or truck running or not. Damaged, wrecked, salvaged OK. Get top dollar instant offer today! 1-800-273-9194

**CABLE/SATELLITE**  
AT&T U-VERSE for just \$29.99/month! Save when you bundle Internet+Phone+TV and get up to \$300 back! (Select plans). Limited time call now! 1-877-577-4394

**DRIVERS**  
DRIVER - FULL-TIME/PART-TIME OTR drivers. Up to 42¢/mile plus 2¢/mile safety bonus. Daily pay, weekly home time, CDL-A, 3 months recent experience required. 1-800-414-9569, www.driveknights.com

DRIVER \$0 TUITION CDL-A training & a job! Top Industry Pay, Quality Training, Stability & Miles! Short employment commitment required. 1-800-326-2778; www.JoinCRST.com

DRIVER-GET MILES, home most weekends, SW regional. Top pay benefits. Paid orientation and training. 6 months OTR & CDL required. 1-800-545-1351, www.cypresstruck.com

**EXPERIENCED FLATBED DRIVERS**  
Regional opportunities now open with plenty of freight and great pay. 1-800-277-0212 or primeinc.com

**OWNER OPERATORS \$5000 Sign-on bonus.** Tons of warm, prosperous South TX runs. Frac Sand Hauling. Must have tractor, pneumatic trailers and blower. 1-800-397-2639.

**PAID CDL TRAINING!** No experience needed. Stevens Transport will sponsor the cost of your CDL training. Earn up to \$40K first year and \$70K third year. Excellent benefits! EOE. 1-800-333-8595, www.becomeadrivers.com

**REGIONAL CDL-A drivers, ramp up your career!** at 37¢ cpm with 1 year experience. 4-12 months experience? Then we have a financing. No credit checks. Near El Paso, Texas paid refresher course. 1-888-362-8608 or visit www.westernexasland.com

**20 ACRES, Live on land now!** \$0 down, owner paid daily, liberal underwriting, leads, leads, leads. Life insurance, license required. Call 1-888-713-6020.

**REAL ESTATE**  
3 TRACKS TOTALING 693 acres in Reeves county, 15 miles North Pecos river frontage. Call Jack 1-214-755-6224

10.1 ACRES, Duval County Heavy mesquite, brush cover. Deer, hogs, quail. Good roads, locked gate. \$1475/5% down. \$290/month, (\$29,500, 11%, 20 years). 1-866-286-0199, www.westernexasland.com

**WANTED: LIFE AGENTS** earn up to \$500 a day, great agent benefits. Commissions paid daily, liberal underwriting, leads, leads, leads. Life insurance, license required. Call 1-888-713-6020.

**TRAVEL NATIONWIDE** with cool sales group. Resort cities, high commission, great work, great group. Rock & Roll atmosphere. Call for your ticket today! 1-888-802-8747.

**WANTED: LIFE AGENTS** earn up to \$500 a day, great agent benefits. Commissions paid daily, liberal underwriting, leads, leads, leads. Life insurance, license required. Call 1-888-713-6020.

**SEMI DRIVERS** wanted to deliver bobtails from either Garland or Laredo. Class B CDL required. Get pre-qualified by calling 1-866-764-1601 or www.qualitydriveaway.com

**TANGO TRANSPORT** now hiring regional, OTR, team. Top pay, plenty of miles, great home time. Family medical/dental. 401K. Paid vacations. Call 1-877-826-4605 or www.drivefortango.com

**25 ACRE RANCH BARGAIN!** This one has it all! 100 yr old live oaks, pond with great water well. Historic rock walls, pasture areas for horses/livestock. Asphalt road, concrete ribbon curb, electricity, more. Age exempt - incredibly low taxes! Just \$7,830/acre! The Best Priced Ranch in the Hill Country. Call now 1-866-999-6697, ext 22

**\$106 MONTH BUYS** land for RV, MH or cabin. Gated entry, \$690 down. (\$6900/10.91%/7yr) 90 days same as cash. Guaranteed financing. 1-936-377-3235

**ABSOLUTELY THE BEST VIEW** Lake Medina/Bandera, 1/4 acre tract, central W/S/E. RV/motor home/house, OK only \$830 down \$235 month (12.91%/10yr). Guaranteed financing. more information call 1-830-460-8354

**AFFORDABLE RESORT LIVING** on Lake Fork. RV and manufactured housing OK! Guaranteed financing with 10% down. Lots starting as low as \$6900. Call Josh, 1-903-878-7265

**FORECLOSED HILL COUNTRY HOME** on 13.93 acres. 3BR/2BA furnished home with incredible hill top views. Canopied amid 100 year old live oaks! Includes 1800's settlers home, 2 water wells, shed, storage barn, fenced animal stalls & pond. Originally \$499,900, liquidation price: \$349,900. Call now 1-866-999-6697, ext 24

**VACATION PROPERTY**  
WEEKEND GETAWAY available on Lake Fork, Lake Livingston or Lake Medina. Rooms fully furnished! Gated community with clubhouse, swimming pool and boat ramps. Call for more information: 1-903-878-7265, 1-936-377-3235 or 1-830-460-8354

**Run Your Ad In TexSCAN!**

Statewide Ad.....	\$500
301 Newspapers, 942,418 Circulation	
North Region Only.....	\$230
98 Newspapers, 283,811 Circulation	
South Region Only.....	\$230
101 Newspapers, 366,726 Circulation	
West Region Only.....	\$230
102 Newspapers, 311,881 Circulation	

To Order: Call this Newspaper direct, or call Texas Press Service at 1-800-743-4793 Today!

NOTICE: While most advertisers are reputable, we cannot guarantee products or services advertised. We urge readers to use caution and when in doubt, contact the Texas Attorney General at 1-800-621-0508 or the Federal Trade Commission at 1-877-FTC-HELP. The FTC web site is www.ftc.gov/bizop

**Extend your advertising reach with TexSCAN, your Statewide Classified Ad Network.**

**Hansford County**

**20** **12**

**Junior Livestock Show**

The Spearman Chamber of Commerce and the Spearman Economic Development Corporation Salute the 4-H and FFA youth for demonstrating personal responsibility, exhibiting high standards in animal care and promoting the production of agriculture.



Continued from Page 8

**06 Light Cross**

1. Macy Haight, Gruver Jr. FFA; 2. Keegan Callaway, Gruver Jr. FFA; 3. Callie Stedje, Gruver FFA; 4. Baylee Baker, Spearman FFA

**07 Light Cross**

1. Jaci Burgin, Spearman 4-H; 2. Carter Armes, Gruver Jr. FFA; 3. Macy McLennan, Gruver 4-H; 4. Cooper DeArmond, Spearman FFA

**08 Light Cross**

1. Greyson Karlin, Gruver FFA; 2. Hunter Haynes, Gruver Jr. FFA; 3. Sierria Butman, Gruver 4-H

**09 Light Cross**

1. Kennedy Venneman, Gruver Jr. FFA; 2. Saxie Ralston, Gruver 4-H; 3. Klaire Irwin, Gruver Jr. FFA; 4. Hadlee Spivey, Gruver Jr. FFA

**Other Purebred Barrows**

**01 OPB**

1. Jennifer Cowl, Spearman FFA; 2. Joe Martinez, Spearman FFA; 3. Karissa

Martinez, Spearman FFA

**02 OPB**

1. Lexie Jackson, Spearman FFA; 2. Reed Anderson, Gruver 4-H; 3. Madison Nicholson, Gruver 4-H

**03 OPB**

1. Thaxton Boyd, Spearman FFA; 2. Jorge Caro, Spearman FFA

**Yorkshire**

**01 Yorkshire**

1. Lauren Patterson, Spearman FFA; 2. Travis Stedje, Gruver FFA; 3. Beau Brown, Spearman FFA

**02 Yorkshire**

1. Creed Spivey, Gruver Jr. FFA; 2. Madison Williams, Gruver FFA

**Thank You!**

The 4-H and FFA exhibitors express their sincere thanks for your encouragement and support. Your actions have helped each to be successful with their projects.

The Hansford County Jr. Livestock Board of Directors

would also like to thank the parents, family members, and buyers for their support and encouragement of these exhibitors.

Sincerely,  
Malory Martin, President Spearman FFA; Audrey Lieb, President Gruver FFA; Audrey Lieb, President, Morse 4-H; Travis Stedje, President Gruver 4-H; Bryce Jarvis, President Spearman 4-H; Scot Martin, Board President, Hansford County Stock Show

**Thank You!**  
Hansford County Jr. Livestock Show photos courtesy of Neelley Armes Photography, Gruver, TX, 806-733-2478 home, 940-391-8224 cell, <http://armesranch.zenfolio.com> (Pictures from the Livestock Show will be uploaded to the gallery and are available for purchase.)

by Dorothy Hudson  
**Out at the Lake**

February 13, 2012 - Lake Palo Duro level - 30.39 feet  
Geese, ducks, and bald eagles are still the most visible visitors at the lake. Our two legged friends, the fishermen, are beginning to appear, however. There was even a boat out on the lake one cold, windy day last week. I have not received any big fish reports yet. In the past, some of the biggest blue cats have been caught in February and March. If you can brave the elements this time of year, it might be worth it.

The picture for this week is a small porcupine, feeding in a tree. You can probably see the damage they can do. Apparently, when other vegetation is available, they don't feed on the trees. We ordinarily only see them do this in the winter.

I will attempt to get pictures of the various duck species that are here. They are camera shy, and it is a little difficult to get close enough for a good picture. Last week's pintail picture



A porcupine feeding on an elm tree, near Lake Palo Duro.

was only possible by sneaking and crawling behind trees, to get in range for a decent picture.

Connor Willimon, Eagle Scout candidate, is nearly finished with his flagpole project, located near the group shelter, behind the dam. It will make a nice addition to the park, and will be officially dedicated, upon completion.

Sightings this week at

Lake Palo Duro include: bald eagles, Canada geese, snow geese, blue phase snow geese, ring-billed gulls, mallards, pintails, wood ducks, northern shovellers, coots, robins, cardinals, red shafted flickers, mountain bluebirds, cedar waxwings, porcupines, & beaver. A bird book is helpful to identify the various species. I refer to it often.

**Spearman Lynx & Lynxettes**

<http://spearmansports.smugmug.com/>

Photos available of Spearman Lynx and Lynxette athletic events.



**ALL-TEX COTTON SEED**  
Proven Performance



2011 picture in Moore County Texas - 4.1 bales acre - 37% turnout - average loan 57.3

Rapid, Edge, Epic, Patriot, & Dinero, early to medium season, we have a variety that fits your farm.

We service what we sell.

**Harbert & Calvert Partnership**

Butch Harbert - 806-930-8905      Justin Calvert - 806-341-8666