

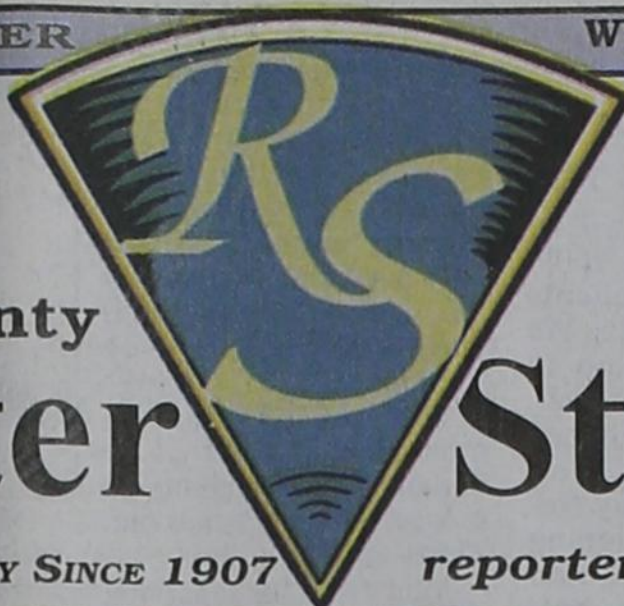


100 YEARS

The Hansford County

# Reporter

PROUDLY SERVING HANSFORD COUNTY SINCE 1907



# Statesman

reporter@spearmanreporter.com

SCR2  
COMP  
HANSFORD COUNTY LIBRARY  
0122 MAIN ST  
SPEARMAN TX 79081-2064

VOLUME 102 • ISSUE 37

THURSDAY, SEPTEMBER 10, 2009

## COME TO THE GAME

**SPEARMAN LYNX** VS **Stratford**  
9/11  
7:30 p.m.  
at Spearman

**Gruver Greyhounds** 9/11 VS **Panhandle**  
7:30 p.m. at Panhandle



Holly McLain welcomes everyone to the 2009 Hansford County Circle of Friends Annual Membership Party.

### Hansford Co. Circle of Friends Annual Membership Party

The Hansford County Circle of Friends recently held their annual membership party on Saturday, August 29, 2009 at the O'Loughlin Center in Spearman. We had a great crowd and everyone enjoyed the wonderful meal cooked by Richard & Wanda Wagner. The silent and live auctions were a huge success! Overall through memberships, auctions, and raffle we have so far raised over \$22,000 for the Circle of Friends. We are so grateful for the generosity of our Hansford County friends and thank everyone for their continued support! There is still the

### Weather Forecast

**FRIDAY** - Mostly cloudy with a 20 percent chance of showers and thunderstorms. Highs in the lower 80s. Light and variable winds becoming southeast around 10 mph in the afternoon.

**FRIDAY NIGHT** - Mostly cloudy with a 40 percent chance of showers and thunderstorms. Lows in the upper 50s. East winds around 10 mph.

**SATURDAY** - Mostly cloudy with a 40 percent chance of showers and thunderstorms. Highs in the lower 70s.

**SATURDAY NIGHT** - Mostly cloudy with a 40 percent chance of showers and thunderstorms. Lows in the mid 50s.

**SUNDAY** - Partly cloudy with a 20 percent chance of showers and thunderstorms. Highs in the upper 70s.

**SUNDAY NIGHT** - Partly cloudy with a 20 percent chance of showers and thunderstorms. Lows in the mid 50s.

**MONDAY** - Partly cloudy. Highs in the lower 80s.

**MONDAY NIGHT** - Partly cloudy. Lows in the upper 50s.

**TUESDAY** - Partly cloudy. Highs in the mid 80s.

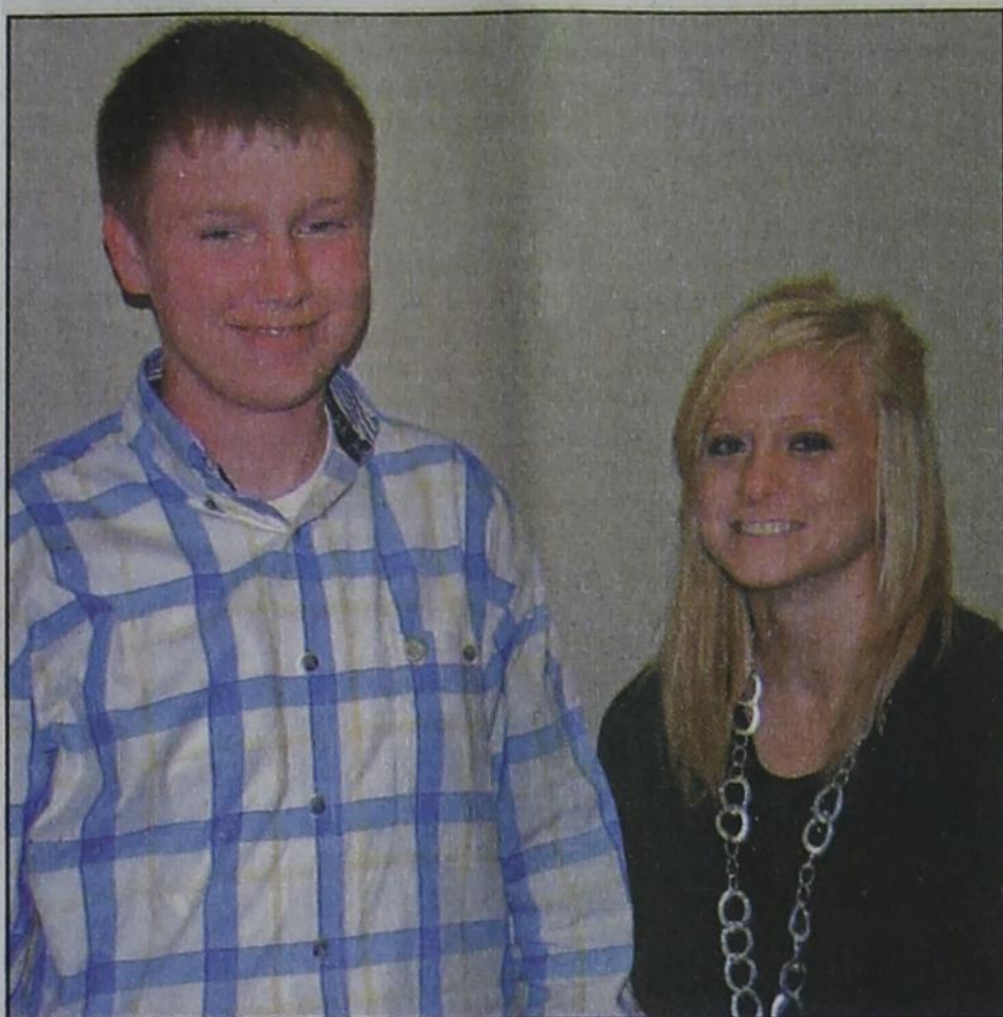
**TUESDAY NIGHT** - Partly cloudy. Lows in the upper 50s.

**WEDNESDAY** - Partly cloudy. Highs in the mid 80s.

### Texas Crop & Weather

The following specific livestock, crop and weather conditions were reported by Panhandle Extension directors: Soil moisture was adequate, but some areas could use another rain. Harvesting of silage began. Corn harvest in most areas was a week or two away. Growers were preparing for the harvest of other crops. Sorghum's yield potential looked good, better than it has for years. Dryland cotton showed a heavy boll load while irrigated cotton was a little behind. Producers began planting winter wheat with some areas as much as 30 percent already planted for early grazing. Fewer corn acres were going to silage due to depressed cattle prices and low feedlot placement numbers. Cattle remained in good condition.

## Youth Receive Top Awards at 4-H Banquet



The annual Hansford County 4-H Awards Banquet was held Sunday in Gruver. Gold Star Award was presented to Makenzie Crane and Jacob Lieb. The Gold Star is the highest award presented in 4-H and may be awarded only one time in a member's 4-H career.

Makenzie is the 16 year old daughter of Will and Tifanee Crane of Gruver, and Jacob is the 16 year old son of James and Sharon Lieb of Morse.

These winners will receive special recognition at a district banquet at WTAMU to be held in their honor on November 7th in Canyon.

opportunity to become a member of the Circle of Friends. If you are interested please send your dues (\$20 single or \$35 couple) to the Hansford County Circle of Friends, c/o Holly McLain, P.O. Box 1135, Gruver, TX 79040.

Mark your calendars! We will be having our annual 5K Fun Run & 1 Mile Family Walk on Saturday, October 17, 2009 at the Palo Duro Lake. The 5K Run will begin at 8:00 a.m. and the Family Walk will follow soon after. GHS will also be hosting a Cross Country Meet which will begin at 9:00 a.m. Please come and support your local youth and enjoy a fun morning benefiting the Circle of Friends. If you are interested in running or walking, the entry fee will be \$25 and include an event t-shirt. Please call Holly McLain (806-733-2268) or Tonni Yanke (806-733-2008) if you would like more information.



## Hansford County 4-H Awards Banquet Held

The Hansford County 4-H Awards Banquet was held Sunday, August 30th at the Fellowship Hall of Gruver Methodist Church with 4-H youth, their parents, volunteer leaders and supporters of the 4-H program in attendance. Dakota Cator and Brenna Reid presided over the event which carried out the theme "Showcase of Excellence." Cody Benton led the Pledge of Allegiance and Kyler Cator led the 4-H Motto and Pledge. Audrey Lieb gave the Welcome and Matthew Jarvis introduced the guests. Shelby Wagner gave the 4-H Creed.

This year's Gold Star recipients were Makenzie Crane and Jacob Lieb. Makenzie is the daughter of Will and Tifanee Crane of Gruver. Jacob is the son of James and Sharon Lieb of Morse. Makenzie and Jacob will be honored at the District 4-H Gold Star Banquet November 7th in Canyon.

Maren Garnett was recognized for winning first place in the District Share-

the-Fun Musical competition. Cody Benton and Megan Stedje competed in the State Photography contest. Maren Garnett, Lilly Patterson, Brantley Shields and Finley Garnett were recognized for placing 2nd in the District Nutrition Quiz Bowl contest. Rayel Anderson, Kaycee Anderson and Bailey Stedje competed in the District Fashion Show.

State Livestock Judging participants recognized were Dakota Cator, Jacob Lieb, and Brenna Reid. District Livestock judging participants present were Kaycee Anderson, Rayel Anderson, Jaci Burgin Colton Cator, Audrey Lieb, Bailey Stedje, Callie Stedje, and Tyler Stedje.

Year awards were presented by teen leaders Cody Benton, Jacob Lieb, Macy McLennon, Callie Stedje, Taos Anderson, Megan Stedje, Bryce Jarvis and Makenzie Crane to 4-H youth completing a project during the 2008-2009 year. 4-H gate signs were presented to all first year members.

BELOW: Dakota Cator, Brenna Reid and Audrey Lieb

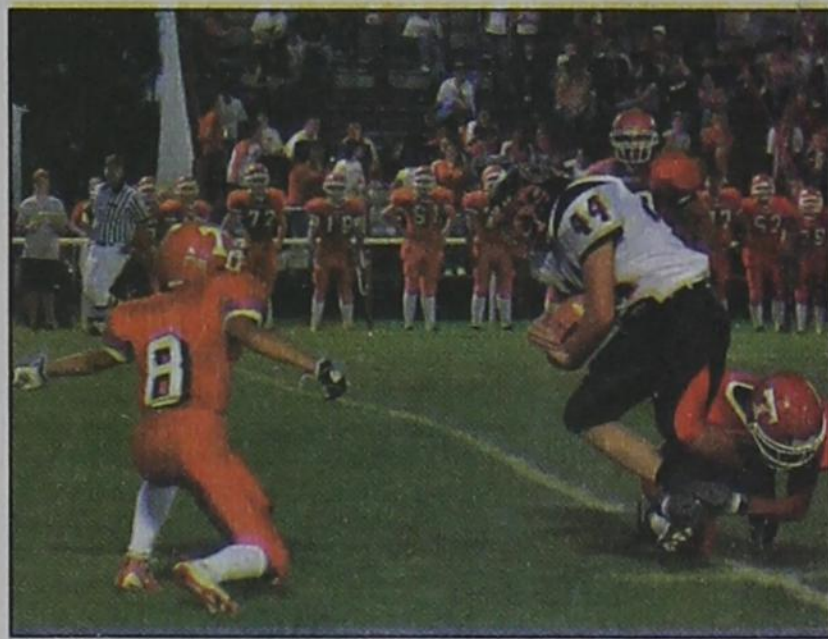


## Hansford County Football

The Spearman Lynx played the Wheeler Mustangs in Wheeler on Friday, September 4th for their opening game of the season.

The Texhoma, OK Red Devils outscored the Gruver Greyhounds 35-14 on Friday, September 4, 2009 in Texhoma.

For complete stories, see page 6.



LEFT: Blayne Schroeder rolls out for a pass.

BELOW: The Lynx take the field to start the second half of their game against Wheeler.

(Photos by Tami Hargrove. Pictures available at <http://spearmansports.smugmug.com>)

Tyler Wills breaks away to gain yardage for the Gruver Greyhounds against the Texhoma Red Devils.



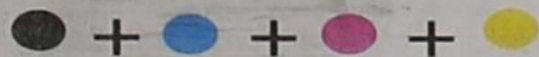
### FINAL MEETING Spearman ISD Mandatory Drug Testing Parent/Student Meeting

Spearman ISD has a Random Student Drug Testing Policy for all students in grades 7-12 who are involved in extra-curricular activities. Consent to drug-use testing is mandatory for all students to participate in any extra-curricular activity.

Also, participating students and at least one parent/guardian must attend a required annual meeting. The FINAL meeting for this school year will be held in the High School Auditorium on September 15 at 6:00 p.m. Failure of the student and/or parent/guardian to attend this meeting will prevent the student from extra-curricular activity participation.

If you attended the meeting on August 11, 2009 you do not have to attend this meeting.

If you have any questions please contact Bill Belger, Principal, at 806-659-2584.





**Wolf Creek Heritage Museum Notes**

**MUSEUM HAPPENINGS**

Labor Day weekend was beautiful with lots of activity throughout the county. *Happy Birthday to Booker* was the biggest item on everyone's schedule and I hope everyone joined the citizens of Booker in celebrating their 90th birthday. We look forward to all the photos of the various celebrations.

Wednesday was busy for the group as we reviewed our book collection and removed some from the stacks. Ann Wright is cataloging the collection and documenting the condition of each book and inspecting them for mold, etc. Thanks, Ann for performing this not too clean job. When Ann is finished, we will be able to establish a criteria for our collection.

Lovella received another collection of newspapers and Dorothy and Fern assisted her in preparing them for the Binder. Two more volumes were shipped by Dorothy. We are getting a lot of papers from needed years to increase our chronicle of the county newspapers. We thank all of you who have brought papers to us.

The following are our reminders for the month:

**1. We need members for our Book Committee from Darrouzett, Booker and Higgins!** If you live around these towns and want to help us document the county history and families from 1976 to

2010, please contact us. Our training school will be Wednesday, Sept 23, 2009.

**2. Names of Students of Artist Dord Fitz.** We would like to develop an exhibit as a tribute to Mr. Fitz and his contribution to our regional art.

**3. Third Saturday Reception and Booksigning for Sandra Elliott and Rene Heil, 4-7 p.m., Saturday, September 16, 2009.**

**HISTORICAL MUSINGS**

Since it is Booker's birthday, I have been searching our files, newspapers, and two volumes of Booker histories for an appropriate story about Booker and its citizens. What I discovered was an article written by Amarillo Globe News reporter Fritz Thompson about a WWII memorial erected by John Teare. The article was written in June of 1965. Entitled "Salute in Memory of War Dead: Concrete Pillar Near Booker One Man's Patriotic Gesture."

The article states that the monument is located beside Texas Hwy. 15, 3 1/2 miles east of Booker in a weed covered pasture. The monument is described as 18-foot tall, a tapered pillar that looks like a miniature Washington Monument without the pointed pinnacle. There is no sign, no inscription, or date.

The monument was built and erected by John Teare, a longtime resident and

hardworking farmer. He tried to join the army when the war started, but he was too old. Harry Teare, the younger brother (and the only surviving member of the Teare family in 1965) was interviewed by Thompson.

When asked "What's the monument for?" He replied "John wanted to go to war, but he was too old. That's why he built it."

John's idea for satisfying his conscience came one day during the war while pouring concrete for a new house. If he could not help the United States fight the war, he would build a monument to those who could.

Harry remembered that the monument was poured in one day, and that John obtained a flag which had flown over Washington, D.C. Each morning he would raise it on a pole near the monument, and each afternoon he would lower it down. John fenced in a small plot around the monument and planted \$40 worth of tulips.

Harry recalled that a lot of cars would stop when passing to view the flowering tulips, the flag, and the monument. John would also pick the tulips and take them to Booker to show his friends. He watered the flowers by hauling barrels of water from his house.

The article stated that the tulips were gone in 1965, but the monument and flagpole were still intact.

**QUESTION:** Is the Teare monument still there? If so, it would probably qualify for the Texas Historical Commission WWII program and we could get a Historical Marker for it. I will be looking along Hwy 15 for signs. If you know its location, please call. This is a piece of our history well worth preserving.



HIGHLIGHTS By Ed Sterling

**GOVERNOR NAMES NEW LEADERSHIP TEAM FOR TEXAS YOUTH COMMISSION**



by Ed Sterling

Officially, the Texas Youth Commission provides services to delinquent youths, ages 10 to 19, through programs and facilities that administer constructive training for rehabilitation.

The troubled agency has been through a series of leadership changes following allegations of sexual abuse by overseers and mismanagement.

Now, there will be a new leadership team. Gov. Rick Perry on Sept. 2 announced the naming of Scott Fisher of Bedford chair of the Texas Youth Commission.

Fisher is senior pastor of Metroplex Chapel of Eulless. He is a member of Texas Hospital Trustees and Tarrant County Hospital District Board of Managers. He is a past member of the Texas Ethics Commission and Texas Youth Commission Advisory Board.

Perry also appointed five members to the commission for terms to expire Sept. 1, 2011:

- Joseph Brown of Sherman, criminal district attorney of Grayson County
- Larry Carroll of Midland, a past member of the TYC Advisory Board, who is executive director of the Permian Basin Community Centers for Mental Health and Mental Retardation
- Manson B. Johnson of Houston, pastor of Holman Street Baptist Church
- Rolando Olvera of Brownsville, Cameron County district judge; and
- David Teuscher of Beaumont, a licensed physician and orthopedic surgeon at the Beaumont Bone and Joint Institute.

permit was to purchase one from an existing holder. This has raised the value of the permits, which are valued today between \$8,000 and \$10,000 according to NOAA authorities.

**RRC gets funding for propane vehicles**

Railroad Commissioner Michael Williams on Aug. 26 hailed news that grant money is coming to pay for 882 clean-burning propane fueled vehicles to be added to fleets operating at schools, state agencies and local government entities.

In May, the Railroad Commission - the state's energy agency - applied for American Recovery and Reinvestment Act funding through the U.S. Department of Energy's Clean Cities grant program.

The Commission was awarded \$12.6 million, with a match of \$37.7 million from the grant participants, for the purchase of 245 propane school buses and 637 light- and medium-duty propane trucks, vans and cars. The total project is \$50.4 million.

"Schools and local governments have shown tremendous interest in alternative fuels, Williams said. "This grant helps support their efforts and manage the initial cost of switching to a cleaner, domestically produced fuel. Clearly, these entities want to reduce tailpipe emissions from diesel exhausts and be responsible with taxpayers' dollars. As an added benefit, propane is domestically produced, so the schools and local governments are helping im-

prove our energy security, too."

**Texas to recover money in Medicaid fraud**

Texas Attorney General Greg Abbott, a coalition of state attorneys general and the U.S. Department of Justice announced the resolving of a Medicaid fraud investigation into pharmaceutical giant Pfizer Inc.

Texas' share will be \$55 million of more than \$1 billion recovered for state Medicaid programs and several federal programs.

According to investigators, Pfizer deceptively marketed its antipsychotic drug Geodon, its arthritis pain medication Bextra, which is no longer on the market, and 11 other pharmaceutical products.

The investigation revealed that Pfizer unlawfully promoted atypical antipsychotic Geodon for use by Medicaid-eligible children to treat numerous conditions, including attention deficit disorder and anxiety.

**MITCHELL THEATRES NORTHBRIDGE CINEMA 3**  
Guymon, Oklahoma  
**FRESH POPCORN EVERYDAY!**  
-PARTY ROOM & ARCADE-  
Call for Showtimes  
580-338-3281  
www.northridge8.com

**Words from Faith & Grace**



by Cecil R. Biggers, Lutheran Lay Minister

In the fifteenth week of Pentecost, we learn to be servants, curb our tongues and take up our crosses, as we study Isaiah 50: 4-9, Psalm 116: 4-9, James 3: 1-12, and Mark 8: 27-38. Isaiah sings the third "Servant Song". The Teacher sustains the weary with a word. The Teacher listens and hears the word of God. He suffers insult and injury from those who reject the word. Yet, the Teacher continues for he is vindicated by God. From the Teacher we may learn that we who persevere in our faith despite all evil, shall receive God's vindication.

The Psalmist sings of why he loves the Lord. The Lord has heard the Psalmist's prayers; the Lord has inclined his ear to the Psalmist. The Lord has saved the life of the Psalmist; therefore, the Psalmist will walk before the Lord in the land of the living. We who have been saved by the Lord should praise the Lord. Remember "praise" is gratitude in action.

James warns us that teachers are judged with greater strictness. Those who teach the gospel must not teach their own views, prejudices or opinions. We must teach the gospel of Jesus Christ; moreover, we must live the gospel of Jesus Christ. We teach more by doing. Yet all the good that can be done by a teacher can be destroyed if we fail to curb our tongues. James warns us all that what we say has an impact on our lives and others lives. If we truly love our neighbor as ourselves, then our speech will reflect that love.

Jesus is near Caesarea Philippi. This is an area known for the worship of Baal, centuries earlier; it is an area which was held by the Greeks to be the birthplace of the god, Pan. Nearby is the magnificent Temple of Caesar the Emperor as god. In this place, Jesus asks his disciples, "Who do people say that I am?" They answer him, "John the Baptist; and others, Elijah; and still others, one of the prophets." He asked them, "But who do you say that I am?" Peter answered him, "You are the Messiah." The Messiah, the most destructive conqueror ever. The one who will make Palestine the center of the world; the one who will destroy the gentiles! Jesus dashes these "Messianic" expectations by explaining the true nature of "Messiah", the Way of the Cross.

May the Holy Spirit enable you to live your life boldly, to spend your life for Christ.

**Wolf Creek Heritage Museum**

**Museum Hours:** Monday thru Friday 10 a.m. to 4 p.m., Sunday 2 to 4 p.m. Special hours upon request.  
**Museum Information:** 13310 Hwy 305, PO Box 5, Lipscomb TX 79056; telephone: 806-852-2123; e m a i l : wolferk@amaonline.com; website: www.wolfcreekheritagemuseum.org

**Red snapper fishing results in fines**

Red snapper reportedly is a main target of charter boats, and it is one of the most over-fished resources in the Gulf of Mexico. In 2003, a federal moratorium was placed on permits to limit access to the fishery in an effort to maintain sustainability of red snapper.

The National Oceanographic and Atmospheric Administration's law enforcement arm and Texas Parks & Wildlife Department agents conducted a yearlong undercover operation that resulted in more than \$100,000 in charges against Texas-based owners and operators of seven charter boats. Undercover agents and investigators documented violations on each vessel for operating without federal charter boat moratorium permits.

Since this moratorium, the only way to obtain a

**SUDOKU PRESENTED BY VolunteerMatch.org**  
Where volunteering begins.

7								1	9
9			1			4			
	6				4	8	3		
		6	7	5					
	3	7				5	9		
					8	1	6		
	7	4	2					5	
		9		3					4
5	2								3

© 2009, StatePoint Media, Inc. Fill in the blank squares in the grid, making sure that every row, column and 3-by-3 box includes all digits 1 through 9.

**PHOBIAS**

- ACROSS**
- Caterpillar in relation to butterfly
  - Semicircular basin in a mountain
  - Goes well with crafts
  - Operatic solos
  - Christian Chi- symbol
  - Island resort in Lesser Antilles
  - Filled with fog
  - Old-fashioned "far"
  - Twofold
  - Phobia, fear of microbes
  - Farm cultivator
  - Theatrical trigger for action
  - Cabbage
  - You're usually warned when it's low
  - A friend down under
  - Adjective often used with "respect"
  - Phobia, fear of heights
  - Pinta or Santa Maria, e.g.
  - Oil tanker
  - The other white meat?
  - One owned by a feudal lord
  - Tear violently
  - Alternate spelling
- DOWN**
- It's often sacrificed
  - "Summertime" of Porgy and Bess, e.g.
  - Reduced Instruction Set Computer
  - Resembling a prophet
  - Shelter from danger, often in relation to politics
  - Phobia, fear of extreme cold
  - British sci-fi doctor
  - About four weeks
  - Seed cover
  - Character from ancient Germanic alphabet
  - Type of ski lift
  - Short version of popular Italian name
  - Phobia, fear of bathing
  - Dog restraint
  - You owe who?
  - Glass career stopper
  - One who stares at traffic accident, e.g.
  - \*Autophobia is the fear of being this
  - Guitar sound
  - \*Paranoids fear this group
  - Spanish surrealist painter (1893-1983)
  - Popeye's sweetie
  - All the deadly sins?
  - Shoulder pads in the 1980s, e.g.
  - Southern stew staple
  - Prince Charles en-

**These games are brought to you by the Hansford County Reporter-Statesman**

**CROSSWORD**

1	2	3	4	5	6	7	8	9	10	11	12
13											
16											
19											
25	26	27	28	29	30	31	32	33	34		
35											
40											
44											
48											
57	58	59	60	61	62	63					
68											
71											

**VolunteerMatch.org**  
Where volunteering begins.  
© 2009, StatePoint Media, Inc. answer on classified page

**The Hansford County Reporter-Statesman**  
213 Main Street • Spearman, TX 79081  
Phone - (806) 659-3434 • Fax - (806) 398-9080  
www.spearmanreporter.com  
reporter@spearmanreporter.com  
cathysmith@valornet.com  
Mon.-Thurs. 9 a.m.-12 p.m., Mon.-Wed. & 1-5 p.m.  
Closed Thurs. afternoon and all day Fri., Sat. & Sun.

**Gary Smith - Publisher** Catherine Smith - Editor  
Contributing Writers: Dorothy Hudson, Jim Derington, Merry Sparks, Cecil Biggers  
Contributing Photographer: Charlie Johnson

**Subscription Rates**  
In Hansford County - \$30.00 • Out of County - \$40.00

The Hansford County Reporter-Statesman (USPS 529660) is published weekly in Spearman, TX. Periodical postage paid in Spearman, TX. **POSTMASTER:** Send address changes to: The Hansford County Reporter-Statesman, 213 Main Street, Spearman, TX 79081.

**Publication Policy**  
The deadline to submit news and advertising to The Hansford County Reporter-Statesman is Monday at 5 p.m. Items submitted after the deadline will be published at a later date, as time and space permit. Publication of all items is at the discretion of the editor.

**Advertising**  
Open Display rates are \$4.00 per column inch. Classified Ads are \$6 for the first 25 words and 10¢ per word for each additional word. (Additional charge for boxed classifieds.) There is a \$1 charge per week if billed.

Member of  
Gruver Chamber of Commerce  
Spearman Chamber of Commerce  
Texas Press Association and Panhandle Press Association

**TEXAS PRESS ASSOCIATION AWARD WINNER**



# Happy Birthday!

**September 10**  
**Birthday** - Donnie Osborne, Michael Minter, Derek Kuehl, Lil Turner, Rosa Alexander, Don Moore, Jeff Hand, Makala Weakly, Scott Wilkerson, Rosa Rodriguez, Susan Harnish, Chris Lopez, Janet Trosper, Quentin Shieldknight, Jarick Howard, Brent Collins, Kami Hammonds  
**Anniversary** - M/M Pedro Garza

**September 11**  
**Birthday** - Erika Stedje, Gary Lynn Evans, Ginger Pittman, DaVonna Dharsh, Jimmy Jackson, Jim Davis, Teresa Pipkin, Clarence Mitchell, Tony Pacheco Jr., Julia Wofford, Everette Layton, Angela Lomeli, Janice Watley, Jean Laughlin, Trey Duke  
**Anniversary** - Rusty & Judy Tindell, Buck & Beatrice Self

**September 12**  
**Birthday** - Linda Haight, Evi Meyer, Carrie Ann Guthrie, Deanne Gilley, Connie Shields, Issabella Hermosellio, Peggy Varnon, Ty Martin, Quincy Graber, Roland Graber, Chasidy Thomas, Charles Elliott  
**Anniversary** - M/M Wayne Kruse

**September 13**  
**Birthday** - Alice Alvarez, Mindy Davis, Aaron Frick, Pam Harris, Kevin Holt, B.J. Renner, Jimmy Beeson, Carol Hergert, Hadley Reed, Terry Cook, Jim Baker, Burt Williams, Charolette Jackson, Keri Holt, Kalib Nash, Zeke Meddock  
**September 14**  
**Birthday** - Max Clawson, Justin Duncan, William O'Connell, Johnny Dunning, Allen Hart, Robin Snider, Ken Schneider, Gregg VanBuskirk, Clayton Williams, Velma Sanders, Doug Holmes, Steven Salazar, Joel Stark, Debbie Canto

**September 15**  
**Birthday** - Les Barkley, Dan Ralston, Karen Durham, Becky Byers, Misty Dawn Villarreal, Matt Jones, Audrey Winegarner, Debbie Dingman, Amanda Bowman, Matthew Jones, Arturo Huerta, Gary Vasek  
**Anniversary** - M/M Bob Meek, Karen & Buford Babitzke  
**September 16**  
**Birthday** - Marcia Kuehl, Terrell Evans, Jarret Warren, Oscar Rojas Jr., Jason Evans, Leticia Salazar, Frank Galvin, Pauline Winger, Silvia Lopez, Margy Schoenhals  
**Anniversary** - M/M Charles Greenwood  
**September 17**  
**Birthday** - Hugh Bell, Krystle Deeds, Pablo Perez, Glenda Renner, Johnny White, Jan Allen, Helen Melton, Joe Wattier, Teresa Ford, Myrtle Eller, Janna Brock, Robbie Cochran, R.D. McLain, Judy Fredrick, Mario Molina, Dale Wofford, Andrew Cummings, Kayla Swink  
**Anniversary** - M/M Larry Kennedy, M/M Ray Gressett  
**September 18**  
**Birthday** - Betty Davis, Alton Ellsworth, Pat Jackson, Scarlett Jackson, Cary Cates, Mrs. Don Ladd, Donna Phillips, Van Hamilton, David Baca, Jamie Townsen  
**Anniversary** - M/M Scott Swan  
**September 19**  
**Birthday** - Sally Holt Meek, Carol Hester, Sue Jackson, Tildon Sparks, Jim Jones, Amadita Vargas, Alberto Vargas, Randy Kirk, Tammy Woodward, Julie Pittman, Cassidy Taylor  
**Anniversary** - M/M Dennis Nelson, M/M Tindle Ramon  
**September 20**  
**Birthday** - Tiffanee Crane, Jerry Overbey, Karen Archer, Charles Shieldknight, Mrs. Jimmy Watson, Dee Mayfield, Edrie Jones, Lance McMahan, Dora Salgado, Chris Womble, Beverly Vinson, Pedro Garza  
**September 21**  
**Birthday** - Amber Murrell, Teresa Sue Dodson, Mrs. Ola Davis, Lisa Pipkin, Sharon Craig, Millie Craig, Gary Thomas, Karen Goodman, Arthur Cantu, Cathy Brown, Paul Mahafey, Ashlee Flowers, Allene Bayless, Callie Cazares, Francis Murrell, Jacie Baker, Mike Ladd

## Our Sympathy

**GROVER TAYLOR**  
 GRUVER - Grover Taylor, 88, died Saturday, Sept. 5, 2009.

Services were at 10 a.m. Tuesday, September 8, 2009 in First Baptist Church in Gruver with the Rev. Scott Curry officiating. Burial was in Gruver Cemetery by Boxwell Brothers of Spearman.

Grover was born Feb. 19, 1921, in Elkhart to W.F. and Ida Taylor. He was the sixth of 11 children.

He spent his early childhood in the Brownfield area, southwest of Lubbock, where the family was involved in farming. His teenage years were spent in Vinson, Okla., where he met and married Velma Nippert.

After serving in the U.S. Navy, the young couple settled in the Gruver area, where they raised two sons, Jay and Jim. After leaving the farm, Grover worked for Tillie Poston at Universal Oil Co., in Gruver, and eventually bought the business and ran it until his retirement.

Grover had many loyal customers and he was always proud of his business and loved serving his customers.

Grover was a deacon at First Baptist Church of Gruver and loved serving and witnessing for the Lord he loved.

Grover passed from this life on Saturday, Sept. 5, 2009, to be reunited with the love of his life, Velma, who preceded him in death in July 1975.

The family wishes to thank all the wonderful people from Gruver who have been so good about keeping watch over our loved one these past few years: Ted Harris and Glen Ward, who each stopped by almost daily to make sure he was OK; the Meals on Wheels people who provided him meals; and the nurses who provided needed care at his home. We love you all from the bottom of our hearts. Thanks also to the staff at Hansford Manor and Hansford hospital for your merciful loving care. May God bless you all.

He was preceded in death by five brothers and three sisters.

Survivors include two sons, Jay of San Antonio and Jim and wife Lanae of Dallas; a granddaughter, Allison of Los Angeles; two grandsons, Travis of West Orange, N.J., and Chris of San Antonio; and two sisters, Sue Brownworth of Enid, Okla., and Jewel Hays of Dayton.

**JACK WILS WEBSTER**  
 DARROUZETT - Jack Wils Webster, 78, died Friday, Sept. 4, 2009.

Services were at 2 p.m. Tuesday, September 8, 2009 in Darrouzett High School Auditorium with the Rev. Gary McDonald, pastor, officiating. Burial was in Darrouzett Cemetery by Good Samaritan Funeral Service of Booker.

Jack was born Nov. 12, 1930, in Boulevard, Calif., to Newton and Elsie Webster. He went to school in California and Arizona before graduating from Mountain Park High School in Oklahoma.

Jack served his country in the U.S. Navy from 1952 through 1955 as a member of the Early Warning Group stationed in Hawaii and the Philippines. This was the first group of its kind in the Navy.

Mr. Webster then went on to receive a Bachelor of Science in social studies from Panhandle A&M College in May 1956 in Goodwell, Okla. Also, in the same year, Jack married Fern Hale in Amarillo.

Mr. Webster began his career in education in 1959 at Briscoe as a teacher, coach and bus driver. Jack and his family moved in 1963 to Hedley, where he added the responsibilities of being a principal to his list of duties.

Mr. Webster earned his master's degree in education in 1968 from West Texas State University and became the superintendent of Darrouzett ISD.

Jack took the job of coordinating special education programs in 1975 for Spearman, Perryton, Booker, Darrouzett, Follett and Waka school districts, a position he held until his retirement in 1990.

Jack was a longtime member of the First Baptist Church of Darrouzett. Over the years he was active in the community as a youth sports coach, a volunteer firefighter, Lions Club member, American Legion member and he was a member of the Senior Citizens Club.

Jack served several terms as mayor of Darrouzett and also as a member of the Darrouzett ISD school board.

Mr. Webster was preceded in death by his parents, Newton Webster and Elsie Barnhart; a sister, Mozelle Johnson; and two half brothers, Robert and George Mattox.

Survivors include his wife of 53 years, Fern; three daughters, Carol Barrett and husband Rusty of Hobbs, N.M., Linda Logan and husband Randy of Mesquite and Darlene Hardy and husband Hugh of Weatherford; a son, Mark Webster and wife Laurie of Amarillo; 16 grandchildren; and two great-grandchildren.

The family suggests memorials be to Gideons International, in care of the funeral home, P.O. Box 341, Booker, TX 79005.

Hotline for Priority Seating - 435-3945

## MONUMENTS

### BBQ & STEAK HOUSE

We Are THPLC-2-B



14 SE 3rd Ave Perryton, TX

Stan and Donna Zepp

Under New Ownership  
Same Great Service & Menu!

Alva Monument Co.  
Formerly Liberal Monument & Memorial Company

New Location:  
111 Tucker Road  
Liberal, Kansas

North of the New Wal-mart

Serving Kansas, Oklahoma & Texas for 93 years  
(316) 624-4211 toll free # 888-654-9318

## MONUMENTS

### Boxwell Brothers Funeral Home

519 Evans • Spearman  
659-3802


Dear friends,  
When you buy a monument from us we make sure it is exactly what you want at a price you can afford. If it is not right, we will make it right. And you will not have to search the countryside to find us. We are here when you have a need.

Sincerely,  
Bob Boxwell

## STOP LEG CRAMPS BEFORE THEY STOP YOU.

Petite Tablet with More Calcium & Vitamin D3

Calcet® is designed to help stop low calcium leg cramps. Just ask your pharmacist.



Helps fight leg cramps, Fat those with milk allergies, Fights osteoporosis

## VISIT COLORADO, GET A FREE HAT!

Order yours at COLORADO.COM and pick it up when you visit any Official Colorado Welcome Center.



LET'S TALK COLORADO

SEE DO EAT STAY GO @ COLORADO.COM/hatgiveaway

Offer good while supplies last. One hat per customer. Must be 18 years of age or older. Some restrictions apply.

## FREE DIRECTV 5 MONTHS!

ALL 265+ DIGITAL CHANNELS!  
130 HD CHANNELS!  
Plus HBO, Cinemax, Showtime & Starz!

ALL FREE FOR 5 MONTHS!  
Ask How  
FREE DVR/HD  
We're Local Installers!

Toll Free 800-214-7110

## Tired Of Slow Dial-Up?

Get High-Speed by Satellite with HughesNet

Up to 50x Faster Than Dial-Up

FREE Standard Installation\*\*  
FREE First Month of Service\*

CALL NOW! 1-888-876-3377 Promo TX100

Nationwide Satellite • www.highspeedbysat.com  
Call for complete terms. \*After mail-in-rebate \*\*Lease Option

## HOME PHONE SERVICE

1st Month FREE with Lifeline

Starting at \$13.49/mo • \$0 Deposit

NO Credit Check • NO Contracts

Everyone Approved!

Restrictions May Apply.

NEWTALK 866.934.3448

## Replenish the seed of faith through . . .

### DAILY BIBLE READING, PRAYER & REGULAR CHURCH ATTENDANCE

<p><b>Spearman</b></p> <p><b>Apostolic Faith Church</b> 822 S. Drexler • 659-2870 Sunday School: 10 a.m. Worship Service: 11 a.m. Sun. Eve.: 6 p.m. Wed. Prayer Mtg: 7 p.m. Pastor - Roland Haney</p> <p><b>First Assembly of God</b> 401 N. Bernice • 659-2295 Sunday School: 9:30 a.m. Worship: 10:40 a.m. Evening Worship: 6 p.m. Wed. Worship: 7 p.m. Wed. Youth: 7 Pastor - Jerry Pollard</p> <p><b>First Christian Church</b> (Disciples of Christ) 29 S. Bernice • 659-2036 Sunday School: 9:45 a.m. Worship: 10:50 a.m. Minister -</p> <p><b>First Baptist Church</b> 123 N. Bernice • 659-5557 Sunday School: 9:45 a.m. Worship: 11 a.m. Evening Worship: 7 p.m. Men's Bible Study - Wed., 7 a.m. Children's Choir - Wed, 6 p.m. Adult Choir - Wed, 7 p.m. Wed. Bible Study: 7 p.m. Pastor - Jim Medley</p> <p><b>Church of Christ</b> 121 S. Haney • 659-3244 Sunday Bible Class: 9:45 a.m. Worship: 10:30 a.m. Evening Worship: 6 p.m. Bible Study Wed.: 7:30 p.m.</p>	<p><b>Sacred Heart Catholic Church</b> 901 Roland • 659-2792 Sat. Night Mass: 5:30 p.m. Sun. Mass: 9 a.m. - English Sun. Mass: 11:30 - Spanish 1:30 p.m. - Gruver - Christo Renditor Mass - Spanish Rev. Guillermo Morales</p> <p><b>First United Methodist</b> 407 S. Haney • 659-5503 Sunday School: 9:45 a.m. Worship: 8:30 &amp; 11 a.m. Jr. High Youth: 5 p.m. Sunday High School: 6 p.m. Sunday Kids Club: 3 p.m. Wed. Pastor - Neely Landrum</p> <p><b>Grace Presbyterian Church</b> (Worships with Faith Lutheran Church) 1101 Bernice • 659-2033</p> <p><b>Faith Lutheran Church (ELCA)</b> 1101 Bernice • 659-2252 Sunday School: 9:45 a.m. Worship: 11 a.m. (Worships with Grace Presbyterian Church) Pastor - Cecil Biggers, PLM</p> <p><b>Union Church</b> 31 S. Endicott • 659-2644 Sunday School: 10:00 a.m. Worship: 11:00 a.m. Bible Study: 7 p.m. Wed. Youth Service: 6 p.m. Wed. Pastor - Don Baltazor</p> <p><b>Fellowship Baptist</b> 1102 S. Archer • 659-2783 Sunday School: 10 a.m. Worship: 11 a.m. Sun. Evening Worship: 6 p.m. Sun. Evening Spanish Worship: 7 p.m. Youth/Adult Service: 7:30 Wed. Pastor - Philip Hudson</p>	<p><b>Primera Mision Bautista</b> 502 E. 7th • 659-3991 Sunday School: 9:45 a.m. Worship: 11 a.m.; Evening: 6 p.m. Wed. Prayer Meeting: 7 p.m. Thurs. Visitation: 7 p.m. Pastor Joe Garcia Jr.</p> <p><b>El Aposento Alto U.P.C.I.</b> 1105 S. Roland Domingos: Escuela-Domical - 10 a.m. Culto Evangelistico - 7 p.m. Jueves: Oracion - 8 p.m. Mier: Estudio Biblico - 7 p.m. Pastor - A.G. Martell (806) 659-2153</p> <p><b>Gruver</b></p> <p><b>First Baptist Church</b> 402 E. Broadway • 733-2411 Sunday School: 9:45 a.m. Worship: 10:50 a.m. Disciple Training: 6 p.m. Sunday Prayer Meeting: 7:30 p.m. Wednesday Pastor - Scott Curry</p> <p><b>Church of Christ</b> 209 King • 733-2760 Sunday School: 9:30 a.m. Worship: 10:20 a.m. Evening Worship: 6 p.m. Wed. Worship: 7:00 p.m. Minister - Gaylord Cook</p> <p><b>First Christian Church</b> 510 King • 733-2690 Sunday School: 10:00 a.m. Sunday Worship: 11 a.m. Youth: 7:30, Sunday Adult Bible Study: 7:30, Sun. Wed. Bible Study: 8:00 p.m. Pastor - Gary Gumfory</p>	<p><b>Gruver United Methodist</b> Broadway &amp; Garrett 733-2651 Sunday School: 9:45 a.m. Worship: 8:30 &amp; 10:50 a.m. Eve. Worship &amp; UMY: 6 p.m. Pastor - George Price</p> <p><b>Spanish Cristo Redentor Church</b> Sunday Mass: 1:30 p.m. Friday Evening Mass Summer - 8:00 p.m. Fall/Winter - 7:30 p.m.</p> <p><b>Oslo</b></p> <p><b>Oslo Lutheran Church (ELCA)</b> 6 Miles West &amp; 12 Miles North of Gruver 339-7648 Sunday School: 9:45 a.m. Worship: 11 a.m. Pastor - Arlen Lloyd</p> <p><b>Morse</b></p> <p><b>Morse Baptist Church</b> 733-2757 Pastor - Mike Martin</p> <p><b>Waka</b></p> <p><b>Church of Christ</b> 300 Rogers Ave. 202-7126 Sunday Worship: 6 p.m. Wednesday Bible Study: 6 p.m. Preacher - James Gordon</p>
---	--	--	---

He has showed you, O man, what is good. And what does the LORD require of you? To act justly and to love mercy and to walk humbly with your God.

Micah 6:8

This feature is made possible through the sponsorship of these civic minded businesses:

<p><b>Deakin ELECTRIC</b></p> <p>OILFIELD • RESIDENTIAL • COMMERCIAL 321 S. MAIN • SPEARMAN 1-800-999-1506 Chris Deakin 8061 659-5016 President</p>	<p><b>Bartlett's Lumber &amp; Hardware</b></p> <p>105 W. Broadway • Gruver, TX (806) 733-2404</p>	<p><b>BERRY CLEANERS</b></p> <p>Ann &amp; Vernon Pipkin - Owners Phone 659-3122 • P.O. Box 1017 207 Main St. • Spearman, TX</p>	<p><b>Morse Implement &amp; Auto Supply</b></p> <p>"Join us in church" Tom Dorch 733-2668 Box 89 • Spearman, TX 79062</p>
<p><b>PRAIRIE MOTORS INC.</b></p> <p>Hwy. 207 South • P.O. Box 430 Spearman, TX 79081 • (806) 659-2541 www.prairiemotors.com</p>	<p><b>MurMur's Cafe</b></p> <p>100 Roland St. Spearman, TX. 659-3580</p>	<p><b>Hansford County Reporter-Statesman</b> "Proudly Serving Hansford County Since 1907" (806) 659-3434 310 Barkley • Spearman, TX</p>	<p><b>INTERSTATE BANK, sbb</b></p> <p>www.interstatebank.net 322 Main • P.O. Box 146 Spearman, TX • 659-2559</p>



# WYI

FOR YOUR INFORMATION

**Medical Fund for Krystal Puentes**  
A medical fund has been established for Krystal (Burkhammer) Puentes at First National Bank, Spearman. If you would like to make a contribution you may make a deposit with any teller or mail a donation to First National Bank, Krystal Puentes Medical Fund, PO Box 337, Spearman TX 79081.

**Medical Fund for Rene Griffin**  
A medical fund has been established for Rene Griffin at First State Bank, Spearman. If you would like to make a contribution you may make a deposit with any teller or mail a donation to First State Bank, Rene Griffin Medical Fund, PO Box 247, Spearman TX 79081.

**Medical Fund for Bruce Duncan**  
A medical fund has been established for Bruce Duncan at First National Bank, Spearman. If you would like to make a donation you may make a deposit with any teller or mail a donation to First National Bank, Bruce Duncan Medical Fund, PO Box 337, Spearman TX 79081.

**Medical Fund for Nancy DeLuna Jernberg**  
A medical fund has been established for Nancy DeLuna Jernberg of Stinnett. Nancy was diagnosed with a rare malignant brain tumor and will be undergoing treatment. If you would like to make a contribution you may make a deposit with any teller or mail a donation to H&H Federal Credit Union, 104 Main Street, Stinnett TX 79083.

**PTCI Hosts SHS Tailgate Party**  
PTCI is hosting a tailgate party before the Spearman High School football game against Stratford on Friday, September 11th. The tailgate party will be held in the H.S. parking lot by the stadium between 5:00-7:30 p.m.

**Rushing Wind Emmaus Community Meeting**  
The Rushing Wind Emmaus Community will meet at 6 p.m., Saturday, September 12, in Spearman at the First United Methodist Church, 407 S. Haney. A potluck meal will be served followed by a training for sponsors and a praise and worship service. A nursery will be provided for the children, and families and friends are welcome. A women's Walk to Emmaus is planned for September 24-27 at the Waka Christian Center.

**Spearman 4-H Selling Football Roster Cards**  
Spearman 4-H is selling roster cards to raise money for their scholarship fund. If you would like a roster for 7th, 8th (next week), JV or Varsity Spearman Football teams please contact the Extension Office at 659-4130. The cards are \$2.00 each. Kellye Buchanan will have the JV cards at the Thursday game in Fritch. Thanks for your support!!

**Lunch and Learn - September 10**  
Texas AgriLife Extension Service in Hansford County is hosting "Bra Talk" for the Lunch and Learn Program on Thursday, September 10th. The event will take place during the noon hour at the Spearman Church of Christ in the fellowship hall. The church is located at 121 Haney. A meal is provided and donations are accepted. The Amarillo Area Breast Health Coalition will present the program. The program will share three steps for early detection of breast cancer. Presenters will use bra art to share facts about breast health. The bra art is part of an exhibit that was recently held at Westgate Mall in Amarillo. It is a way for survivors, their family members and friends to express their personal experiences with breast cancer. For more information about the program, contact the Hansford County Extension Service at 806-659-4130.

**DATE Grant**  
The latest version of the 2009-2011 DATE Grant is available to be viewed in the Gruver Middle School Library.

**Forage quality field day set for Sept. 15 in Miami**  
Monitoring forage quantity and quality is a critical element of both rangeland health and profitability, according to Brandon Dukes, Texas AgriLife Extension Service agent for Roberts County. The Roberts County Range Field Day will be held from 10 a.m. to 4 p.m. Sept. 15 in the Miami Community Center. It will provide producers with tools that will aid them in visually monitoring forage quantity. A field tour following the presentations will take participants out to forage demonstrations at Locke Cattle Company. Three continuing education units -- two general and one laws and regulations -- will be offered. Registration for the event is free, but producers are asked to RSVP on or before Sept. 9 so lunch preparations can be made. To register or for more information, contact Dukes at 806-868-3191 or bkdukes@ag.tamu.edu.

**Gruver Elementary Open House**  
Parent meetings are being scheduled in students' homerooms Monday, September 14, 2009, are scheduled at the following times: 4th Grade 5:15-6 p.m., 2nd Grade 6-7 p.m., 3rd Grade 7-7:45 p.m.

**High Plains Storm 14th Annual Fall Basketball Clinic**  
The Fundamental Skills Basketball Clinic and League, for girls 1st grade through 6th grade and Junior High through High School boys and girls will begin on Sunday, September 13th in the Beaver Grade School Gymnasium. Sessions will be held each Sunday until December 20th at the following times: 1st-6th grade girls, 1:30-3:30 p.m.; junior high and high school boys and girls, 3:30-5:30 p.m. There is no charge for the sessions, and participants are asked to bring water. For more information, contact Lonnie Bailey at telephone 580 934-3452 or email cbailey@ptsi.net

**September 4-H Meetings**  
Spearman 4-H Club will meet on Monday, September 14, 2009 at 7:00 p.m. at the Spearman County Barn. Gruver 4-H club will meet on Tuesday, September 15 at 7:00 p.m. at the Gruver County Barn. This meeting is for 4-H Enrollment. Parents are welcome and encouraged to attend. Sign up now for Fun with Foods and Livestock projects. Call the County Extension office at 659-4130 for more information.

**Area Parkinson's Disease Support Group**  
The Area Parkinson's Disease Support Group will be meeting Friday, Sept. 11 for a noon lunch at the Perryton Mennonite Church, 2821 S. Ash. (Lunch will be provided.) Anyone who has Parkinson's Disease or has a family member with it, is welcome to attend. Contact Bev Burger for more information at 435-3437.

**Elks Plan Poker Run**  
The Perryton Elks Lodge will hold its "Elks Angels" Poker Run on Saturday, October 3rd, beginning at 1 p.m. Proceeds will benefit children with special needs. Everyone who pre-registers by September 18th will receive a pocket T-shirt. Pre-registration is \$25 for bikers and \$15 for passengers. Registration on the day of the run, which does not include a T-shirt, is \$30 and \$15 respectively. Prizes will be given for first and second place and worst hands. After the run, a hamburger feed will be held at 5 p.m. at the Elks Lodge. To enter, call Marc Padgett at 435-1295, Rocky Frantz at 435-8552 or Brenda Frantz at 435-0021.

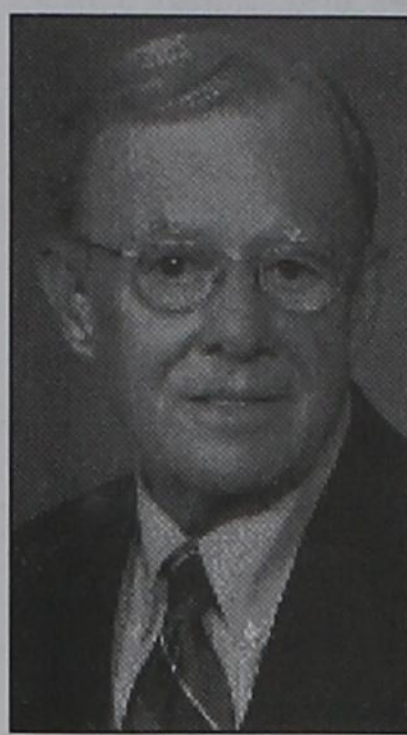
**Gruver Elementary Register Tapes for Education**  
Gruver Elementary is participating in the Lowe's Supermarket Register for Tapes for Education. Gruver Elementary is also collecting the Pink Box Tops for Education and the UPC bar code (yellow) labels for Education from Campbell and Swanson products. You can deposit your register tapes, pink Box Tops, and Yellow UPC Bar Codes in the Elementary School Lobby, Gruver City Library, City Hall, Night & Day Beauty Salon, or Hitchin' Nails. Jo Clawson will also collect them at 711 Womble. Please help us earn free education equipment by collecting these items.

**Fire Department Donations**  
Persons wishing to make donations to the Fire Departments in Hansford County may do so at the following addresses: Spearman Fire Dept., Box 37, Spearman TX 79081; Gruver Fire Dept., Box 947, Gruver TX 79040 or Morse Fire Dept., Box 28, Morse TX 79062

**Take Off Pounds Sensibly Meets**  
Take Off Pounds Sensibly (TOPS) meets on Tuesday morning at 8:30 a.m. at the First Christian Church in Gruver. Anyone interested is invited. Contact Marilyn Been at 806-733-2087.

## Our Sympathy

### KENNETH EUGENE IRWIN



Kenneth Eugene Irwin, 82, of Gruver, died on Tuesday, September 8, 2009.

Services will be at 11:00 a.m. Friday in the Gruver United Methodist Church with Dr. Brad Reeves officiating. Private family burial will precede the service at the Gruver Cemetery by Boxwell Brothers Funeral Home in Spearman.

Kenneth was born in St. Louis, Missouri, on January 24, 1927, to Sedden Fleet Irwin and Clara Bort Irwin. He was raised in Iberia, Missouri on a small family farm and graduated from Iberia Academy in 1945. He served in the U. S. Navy in the Pacific Theater during WW II. After the war, he entered the University of Missouri and graduated in 1950 with a Finance degree. He married Janet Sutherland in Windsor, Missouri, on June 10, 1950.

Kenneth began a 60 year banking career in 1949 at the Lindell Trust Company in St. Louis, Missouri. In 1950, at the invitation of his uncle, Ralph Bort, Kenneth and Janet moved from Missouri to Gruver, Texas, where he went to work at the newly formed Gruver State Bank as an assistant cashier. In his younger days, Kenneth worked at the bank during the day and farmed for Uncle Ralph many evenings, while Janet taught music in the Gruver public schools. Kenneth graduated from the Institute for Financial Management at the Harvard Graduate School of Business in 1968. Kenneth and Janet bought controlling interest in the bank in 1982. Kenneth served as Chairman, President and CEO of the bank and GSB Bancshares, Inc. for many years. He continued to work at the bank and served as Chairman until his death.

Kenneth was active in many banking organizations and served on countless committees. He was an officer and director of the Texas Bankers Association, the Independent Bankers Association of Texas, and the North Panhandle Bankers Association. During his banking career, he was an advisor, mentor and friend to many bankers across the country who sought his advice and counsel. He also received many awards for his dedicated service to the banking profession, including the Distinguished Service Award at the Texas Tech Bankers Agricultural Credit Conference in 1987. In 2004, his friend Pat Hickman presented him with the Independent Bankers Association of Texas Chairman's Award. One of his proudest moments came in 1995, when he made a hole-in-one while playing in the IBAT convention golf tournament at the Hill Country Golf Club in San Antonio.

Kenneth was Mayor of Gruver, Texas, from 1965 to 1979. He and Janet were active members of the Gruver United Methodist Church for 59 years where he served on numerous committees. He chaired the church building committee charged with rebuilding the church after it burned in 1978.

In addition to banking, Kenneth was a farmer, rancher and cattleman. Kenneth and Janet owned a farm southwest of Gruver. In 1976, he was awarded Outstanding Conservation Farmer of the Year by the Hansford County Soil and Water Conservation District. He was a co-founder of Caprock Industries, Inc., which built two feed yards near Gruver, Texas, in 1969 and 1970. He loved his family, banking, agriculture, the Texas panhandle and its people. He was respected by his peers and was loved and admired by his family. He was one of those great men of that greatest generation.

Survivors include his wife of 59 years, Janet Sutherland Irwin; four children: a daughter, Debby Irwin Odom of Gruver and her children: Kenton Odom and wife, Jodi; Grant Odom; Jill Weller and husband, Ryan; and Dan Odom; a son, John S. Irwin and wife, Janie, of Amarillo and their children: Jase Irwin and wife, Lind-

sey; Jeff Irwin and wife, Carrie; and Mary Jane Neilson and husband, Chris; a son, Mark K. Irwin and wife, Pat of Gruver and their son Kyle Irwin and wife, Kimberly; a son, Clint J. Irwin and wife, Jody and their children: Brock Irwin and Tanner Irwin; and 10 great-grandchildren.

The family wish to express their gratitude to the staff at BSA Hospice for the loving care Kenneth received from them in his last days.

In lieu of flowers, the family suggests memorials to the Gruver EMS at P.O. Box 947, Gruver, Texas 79040, BSA Hospice at P.O. Box 950, Amarillo, Texas 79105, or a favorite charity.

### Thank You!

Thank you for all your prayers during the past five years of our Mother, sister, Aunt, Grandmother and Great-grandmother, Rosie Gulley.

As you all know she has gone to be with our Heavenly Father. When you know that there is a better place, where there is no sickness and no tears, you can't help but to feel peace. We know that our Mom is in a beautiful place now. Planting flowers and dancing and anything else that her illness kept her from doing. She has reunited with our Dad and other family members. How cool is that to know that when God makes promises he keeps them.

Thank you all for being such faithful friends. Without you guys and God, I don't know how anyone can make it through such hard times. Thank you for the beautiful flowers and cards, the prayers, the words, and anything else that was done for our family during this time. We are sure we have left something or someone out, but you know who you are and what you did. Everything was appreciated so much.

May God pour down his blessings on each and every one of you for your true faithfulness.

Love You All,  
Robin & James Stroud, Debbie Hukill, and all Family members of Rosie Gulley

### Sumner Opens Home Daycare Facility

Katisha Sumner has opened a home daycare facility in Spearman. She has worked in childcare for two years and has extensive childcare training as well as infant/child first aid and CPR.

We will follow a weekly curriculum during the school year and each parent will receive a child activity sheet daily. Breakfast, lunch and an afternoon snack will be provided.

The hours of business will be from 7:30 a.m.-6 p.m., Monday-Friday. References are available upon request. For more information, please call 659-9943 after 7 p.m. or on weekends. or leave a brief message and I will return your call as soon as possible.

### Trees 4 Troops

A tree planting will be held on Friday, September 11, 2009 at 4 p.m. at the Hansford County Courthouse in honor of the troops.

Donations are currently being accepted at Hansford Implement, Prairie Motors, the Barber Shop and the Hansford County Library for Care Packages for troops.

Anyone interested in helping is asked to contact Les Sullivan at 336-0456, or pennies4peace@rocket-mail.com



Kirk Weatherford (806) 336-2820  
8125 FM 3305 Toll Free: 1-800-535-6047  
Sanford, TX 79078 Email: kirk@weatherford-construction.com

### WHEN DOES YOUR SUBSCRIPTION EXPIRE?

SCR1  
08/09 EXPIRES  
JOHN Q. PUBLIC  
PO BOX 123  
SPEARMAN TX 79081

Expiration dates are printed on the top of all mailing labels. Our readers can help keep the cost of subscriptions down by mailing in renewals in the appropriate month.

Thank you, Catherine Smith

THE HANSFORD COUNTY REPORTER-STATESMAN  
213 Main Street • Spearman, TX 79081  
**Annual Subscription Rates**  
In Hansford County - \$30  
Out of County - \$40  
E-Subscription - \$35 (sent through e-mail)

## Celebrate

Gifts for all your celebrations!

### Bridal Registry

Kristina Ortiz & Andy Jones - 9/12  
Blythe Finley & Aaron Boyd - 9/19  
Donia Henderson & Jason Varnon - 9/27  
Tessa Thoreson & Hunter Martin - TBA  
Amber Ramon & Dustin King

### Baby Registry

Krystle (Deeds) & Brian Haggard - TBA  
Mika (McLain) & Matthew Devaney  
Haley Tindell & Felix Lopez  
Dusty Desmond  
Amy & Markus Schick

## Celebrate

203 Main St. Spearman, TX  
(806) 659-3350 1-800-663-8026

**Hoochy Poochy Parlor**

For Boarding reservations and grooming appointments, call now!

Where Spearman Customers Get Priority!

Please visit us for a free estimate on your pet care needs.

421 E. 10th St.  
Borger, TX 79007  
806-273-2724  
hoochypoochy@att.net  
www.hoochypoochy.net  
Hours:  
Mon.-Fri., 8 a.m.-5 p.m.  
Saturday by appointment only

We put the Hoochy in your Poochy



*Uniquely Yours...*





**Hours: M-S 9-8 • Sun 1-6**  
118 NW 4th St • 338.3332  
Guymon, OK

# Brighton® Your Day

Men's, Women's, and Kid's Clothing

*a*  
**CHARMED**  
*life...*





## Hutchison's Celebrate 40th Anniversary

John L. and Jo Linda Hutchison of Spearman recently celebrated their 40th wedding anniversary with family and friends at a reception at First Baptist Church of Ralls.

The Hutchisons were married Aug. 22, 1969, in Ralls. The reception was kept a surprise by promoting it as an 85th birthday reception for Jo Linda's father - he was equally surprised by what he thought was an anniversary reception.

Joining in the celebration were their two children and spouses, Jeff & Trilby Hutchison of Borger and Alan & Melisa Hutchison of Dripping Spring; three grandchildren Danner, Audrey and Logan Hutchison; Jo Linda's father Robber Danner; Jo Linda's two sisters and spouses, James & Tretha Caddell and Carl and Karla Coffee; and Bro. Floyd Haddock who married them.

## Association Announces 2009-2010 West Texas A&M Univ. Scholarships

Working in coordination with the West Texas A&M University Department of Agricultural Sciences and the West Texas A&M University Foundation, Panhandle-Plains Land Bank is pleased to announce this year's scholarship winners. Each scholarship is for \$1,000 awarded to upper class students for the coming school year.

Rachel Adkins, will be a Senior Agriculture Media and Communications major from Canadian, Texas. Graduating in 2007, Ms. Adkins grew up helping her father and grandfather on the family owned commercial Hereford ranch. She will be her family's 5th generation cattle rancher in the Texas panhandle. She is active in various service and honor societies, most notably, West Texas' Mortar Board.

Clete Vanderburg is also a Senior. He is an Agriculture Education major from Spearman. With a small town and family farming background, his appreciation of agriculture runs deep. With a passion for teaching, his goal is to instill this same appreciation in young minds.

Two Sophomores were among this years winners; Kalan Steinle, an AgBusiness major from Dimmitt, and Hadley Perkins, an Animal Science major from Wildorado. All four students attest that their agriculture roots serve them well in college.

Each summer, four students are chosen from the association's lending territory by an Agriculture Scholarship Committee from within the university. Additional criterion for selection includes enrollment in the College of Agriculture Sciences, and preference given to Seniors, then Juniors and Sophomores.

The association is pleased to continue this scholarship program. WT has served our area well graduating agriculture, business, and community leaders. Several of the association's officers are graduates of the school who give back a significant amount of time and energy.

Panhandle-Plains Land Bank provides long-term mortgage financing to farmers, ranchers, and agribusiness in the Panhandle and South Plains. Offices are located in Amarillo, Pampa, Perryton, and Plainview.



Clete Vanderburg

## Congressman Thornberry to Hold Town Hall Meeting

Congressman Mac Thornberry today announced that he will hold town hall meetings in Amarillo and Wichita Falls on Saturday, September 19, 2009.

These meetings will continue the practice that Thornberry has followed of holding town hall meetings, as well as telephone town hall meetings and other events across the 13th District.

"I have heard from a lot of people in the past few weeks in letters, emails, phone calls, and in person. These town hall meetings are another way for me to listen to the people I work for and for me to share some of my thoughts with them," Congressman Thornberry concluded.

All citizens of the 13th Congressional District are invited to attend.

The Amarillo Town Hall Meeting will be held on Saturday, September 19, 2009 from 8:30-10:00 a.m. in the Amarillo Civic Center Heritage Room, located at 401 S. Buchanan in Amarillo, Texas.

## Panhandle Exposition Fair Results

Hansford County 4-H members participated in a two day steer show at the Panhandle Exposition Fair at Guymon, Oklahoma on August 15, 2009. Junior exhibitors from Texas, Oklahoma and Kansas attended the event. Results are as follows:

### Saturday show

**Prospect under 900 numbers** - Callie Stedje Champion Simmental & Reserve Grand Champion Overall; Jacob Lieb - 2nd shorthorn; Brenna Reid - 3rd shorthorn; Bailey Stedje - 2nd Chianina; Tyler Stedje - 2nd AOB

**Progress Steers 900 and over** - Audrey Lieb - 2nd Chianina; Brenna Reid - Champion Angus & Reserve Champion Maine Anjou; Sabrina Butman - 3rd Shorthorn; Sierra Butman - 3rd Angus

### Sunday Show

**Prospect:** Callie Stedje - Champion Simmental & Grand Champion Overall; Brenna Reid - Champion Shorthorn; Jacob Lieb - Reserve Grand Champion Shorthorn; Bailey Stedje - 2nd Chianina; Tyler Stedje - 2nd Chianina

Following the steer show several members of Hansford 4-H participate in the Panhandle Exposition Livestock Judging Contest

Results are as follows

### Senior Team

**Morse 4-H High Team** - Jacob Lieb - High Individual Overall, Audrey Lieb - 2nd High Individual Overall, Brenna Reid

### Junior Teams

**Gruver 4-H - First Overall:** Callie Stedje - High Individual Overall, Travis Stedje - 3rd High Individual, Tyler Stedje - 6th High Individual, and Bailey Stedje

**Gruver 4-H Junior Team II** - 3rd High Team: Rayel Anderson - 2nd High Individual, Kaylee Anderson, Reed Anderson


## Quote of the Month

*The skill of writing is to create a context in which other people can think.*

Edwin Schlossberg

### It's A Girl!

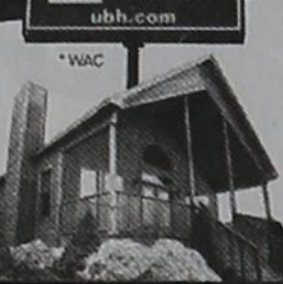
Bailey Marie Walton was born August 27, 2009 to Meg and Ben Walton. She weighed 7 pounds, 8 ounces and was 20 1/2 inches long. They live in Mays Landing, NJ.



Proud grandparents are Joey and Lyn Woolley of Spearman. Great-grandparents are Beth and Wes Daniel of Spearman.

## Zero down!

plus 100% financing and no payments for 6 months!  
Quality, custom-built homes on your land... you're practically home free!  
Now with 14 Sales Offices in Texas.



United-Bilt Homes  
ubh.com  
800.756.2506  
Homemade just for you.

## Family Pool Fun.com

Wholesale prices on Quality Winter Pool Supplies, Pool Kits & Accessories  
Deep Discounts on Inground Safety Covers  
Save Money on all Aboveground & Inground Mesh and Winter Covers



Call Today! 800-250-5502

## PAID CDL TRAINING!

NO EXPERIENCE NEEDED!  
Stevens Transport, the premier refrigerated carrier in the US, sponsors the total cost of your CDL training! In 17 short days you will earn your CDL and begin your paid on-the-job training! Potential to earn up to \$40K first year! Excellent benefits and 401K!



For more information, call 800-333-8595  
www.becomeadrivers.com

## REGLAN

Parkinson's Like Symptoms  
Tongue Protrusions  
Frowning, Facial Twitching

Reglan® (metoclopramide) has been linked to a serious condition called Tardive Dyskinesia (TD), which causes involuntary movements of the tongue, face or mouth, lip smacking, shakes, NMS, Dystonia, Akathisia and other Parkinson's-like symptoms.

In Feb. 2009, the FDA required the manufacturers of Reglan® to include Black Box Warnings regarding the drug's usage for more than 12 weeks.

If you or a loved one has suffered severe side effects after taking Reglan® you may be entitled to compensation. Cases taken on a Contingency Fee Basis. Call for a Free Case Consultation

WILLIS LAW FIRM  
HOUSTON, TEXAS  
BOARD CERTIFIED  
PERSONAL INJURY TRIAL LAWYER  
Texas Board of Legal Specialization  
DAVID P. WILLIS - ATTORNEY AT LAW  
1-800-883-9858

## PUBLIC NOTICE

Brief Explanatory Statements of Proposed Constitutional Amendments  
Special Election November 3, 2009

### PROPOSITION 1

HJR 132 would amend the constitution to authorize the legislature to allow a municipality or a county to issue bonds and notes to finance the purchase of buffer areas or open spaces adjacent to military installations. The buffer areas would be used to prevent encroachment or to construct roadways utilities, or other infrastructure to protect or promote the mission of the military installation. The municipality or county may pledge increases in ad valorem tax revenues for repayment of the bonds or notes.

The proposed amendment would appear on the ballot as follows: "The constitutional amendment authorizing the financing, including through tax increment financing, of the acquisition by municipalities and counties of buffer areas or open spaces adjacent to a military installation for the prevention of encroachment or for the construction of roadways, utilities, or other infrastructure to protect or promote the mission of the military installation."

### PROPOSITION 2

HJR 36 would amend the constitution to authorize the legislature to provide for the taxation of a residence homestead solely on the basis of the property's value as a residence homestead, regardless of whether the property may have a higher value if it were used for other purposes.

The proposed amendment would appear on the ballot as follows: "The constitutional amendment authorizing the legislature to provide for the ad valorem taxation of a residence homestead solely on the basis of the property's value as a residence homestead."

### PROPOSITION 3

HJR 36 would amend the constitution to require the legislature to provide for the administration and enforcement of uniform standards and procedures for appraisal of property for ad valorem tax purposes.

The proposed amendment would appear on the ballot as follows: "The constitutional amendment providing for uniform standards and procedures for the appraisal of property for ad valorem tax purposes."

### PROPOSITION 4

HJR 14 would amend the constitution to establish the national research university fund to provide a source of funding that will enable emerging research universities in this state to develop into major research universities. The amendment would require the legislature to dedicate state revenue to the fund and to transfer the balance of the existing higher education fund to the national research university fund. This amendment would further require the legislature to establish the criteria by which a state university may become eligible to receive and use distributions from the fund.

The proposed amendment would appear on the ballot as follows: "The constitutional amendment establishing the national research university fund to enable emerging research universities in this state to achieve national prominence as major research universities and transferring the balance of the higher education fund to the national research university fund."

### PROPOSITION 5

HJR 36 would amend the constitution to authorize the legislature to allow for a single appraisal review board for two or more adjoining appraisal entities that elect to provide for consolidated reviews of tax appraisals.

The proposed amendment would appear on the ballot as follows: "The constitutional amendment authorizing the legislature to authorize a single board of equalization for two or more adjoining appraisal entities that elect to provide for consolidated equalizations."

### PROPOSITION 6

HJR 116 would amend the constitution

to authorize the Veterans' Land Board to issue general obligation bonds, subject to certain constitutional limits, for the purpose of selling land and providing home or land mortgage loans to veterans of the state.

The proposed amendment would appear on the ballot as follows: "The constitutional amendment authorizing the Veterans' Land Board to issue general obligation bonds in amounts equal to or less than amounts previously authorized."

### PROPOSITION 7

HJR 127 would amend the constitution to allow an officer or enlisted member of the Texas State Guard or other state militia or military force to hold other civil offices.

The proposed amendment would appear on the ballot as follows: "The constitutional amendment to allow an officer or enlisted member of the Texas State Guard or other state militia or military force to hold other civil offices."

### PROPOSITION 8

HJR 7 would amend the constitution to authorize the state to contribute money, property, and other resources for the establishment, maintenance, and operation of veterans' hospitals in this state.

The proposed amendment would appear on the ballot as follows: "The constitutional amendment authorizing the state to contribute money, property, and other resources for the establishment, maintenance, and operation of veterans hospitals in this state."

### PROPOSITION 9

HJR 102 would define what is a state-owned public beach. The public, individually and collectively, would have an unrestricted right to use and a right of ingress to and egress from a public beach. The amendment would authorize the legislature to enact laws to protect these rights.

The proposed amendment would appear on the ballot as follows: "The constitutional amendment to protect the right of the public, individually and collectively, to access and use

the public beaches bordering the seaward shore of the Gulf of Mexico."

### PROPOSITION 10

HJR 85 would amend the constitution to authorize the legislature to provide that members of the governing board of an emergency services district may serve terms not to exceed four years.

The proposed amendment would appear on the ballot as follows: "The constitutional amendment to provide that elected members of the governing boards of emergency services districts may serve terms not to exceed four years."

### PROPOSITION 11

HJR 14 would amend the constitution to provide that the taking of private property for public use ("eminent domain") is authorized only if it is for the ownership, use, and enjoyment of the property by the State, its political subdivisions, the public at large, or by entities granted the power of eminent domain, or for the removal of urban blight. The amendment would prohibit the taking of private property for transfer to a private entity for the purpose of economic development or to increase tax revenues. The amendment would also limit the legislature's authority to grant the power of eminent domain in the future unless it is approved by a two-thirds vote of all the members elected to each house.

The proposed amendment would appear on the ballot as follows: "The constitutional amendment to prohibit the taking, damaging, or destroying of private property for public use unless the action is for the ownership, use, and enjoyment of the property by the State, a political subdivision of the State, the public at large, or entities granted the power of eminent domain under law or for the elimination of urban blight on a particular parcel of property, but not for certain economic development or enhancement of tax revenue purposes, and to limit the legislature's authority to grant the power of eminent domain to an entity."

Published by Secretary of State Hope Andrade, www.sos.state.tx.us, 1-800-252-VOTE (8683).



# School News

## Lynx Outrun by Mustangs

The Spearman Lynx played the Wheeler Mustangs in Wheeler on Friday, September 4th for their opening game of the season.

Wheeler rolled to its second straight win, defeating Spearman in a 27-7 victory.

The Mustang offense managed to get into Lynx territory several times during the first quarter, but the Lynx defense held them to only one touchdown - a one-yard run by Terry Menefield. (PAT good) The Lynx held the Mustang offense scoreless in the second quarter, but Michael Gaines managed a 45-yard touchdown in the third quarter. (PAT good) The fourth quarter started with a 14-0 score in favor of the Mustangs.

Jose Mendoza made a 30-yard run in the fourth quarter to get the Lynx within one yard of the goal line. Quarterback Blayne Schroeder was able to run the ball in for the score. After the PAT by Francisco Camacho, the score was 14-7.

With just five minutes left in the game, tallback Cameron Meddock made a 70-yard touchdown run to tie the game. Unfortunately, the Lynx were penalized for holding. The touchdown was called back and the Lynx were moved back 10 yards, deep into Lynx territory. On the next play the Lynx fumbled the ball and the Mustangs recovered it. Terry Menefield was able to score on a 14-yard run, and the PAT was good.

Mustang Terry Menefield completed a 27-yard touchdown pass to Johnny Venzor, leaving the final score 27-7.

Michael Gaines led the Mustangs on the ground, carrying the ball 16 times for 125 yards and one touchdown. Quarterback Terry Menefield ran for 55 yards and two scores and connected with Johnny Venzor for a 27-yard touchdown pass.

Spearman's Jose Mendoza was a bright spot for the Lynx, running 12 times for 91 yards. Blayne Schroeder had the lone Spearman touchdown, scoring from one yard out in the fourth quarter.

### Statistics

WM	SL
First Downs	9
14	
Rushing Yards	151

233	
Passing Yards	63
38	
Total Yards	214
271	
Comp-Att-INT	9-20-2
2-7-0	
Punts-Avg.	5-38
5-33	
Fumbles-Lost	1-1
0-0	
Penalties-Yards	10-90
8-85	

### Spearman JV

Spearman JV lost to Fritch 26-36. They played well for their first game of the season.

### Greyhounds fall to Texhoma Red Devils

The Texhoma, OK Red Devils outscored the Gruver Greyhounds 35-14 on Friday, September 4, 2009 in Texhoma.

Payton Thoreson made the only Greyhound score.

Tyler Wills was named the Greyhound Player of the Week for his 21 tackles from his linebacker position, which gives him 37 in just 2 games. He also had one sack against Texhoma.

### Gruver Cross Country News by Coach Rod Been

The High School and Junior High Cross Country teams kicked off the '09 season at Wolf Creek State Park this past Saturday. The weather was perfect for an early season race, and the Gruver athletes did an outstanding job of representing our schools!

The varsity boys and girls teams will be competing in the Amarillo Invitational this coming weekend.

The Jr. High Cross Country Teams were scheduled to travel to Follett this Saturday, September 12th, but the schedule has changed. The junior high boys and girls will now be competing in the Guymon Meet.

We appreciate the support, and please continue to be watchful for these kids as they train on and around the streets of Gruver!

### SPEARMAN ISD SEPTEMBER CALENDAR

- 11 - Elementary Picture Day; PTCI Tailgate Party, Lynx Stadium, 5:30 p.m.; Varsity Football Game vs. Stratford, Home, 7:30 p.m.
- 12 - Amarillo Invitational Cross Country Meet (HS only); Guymon Cross Country Meet (JH only),

### Follett

14 - Regular Spearman ISD Board of Trustees Meeting, HS Library, 7 p.m.

17 - U.S. Constitution Day

18 - Varsity Football Game vs. West Texas, Stinnett, 7:30 p.m.

19 - Sunray Cross Country Meet

22 - Powder Puff Football Game, Lynx Stadium, 7-8 p.m.

23 - District Education Improvement Committee Meeting, HS Library, 4-6 p.m.

24 - Snake Dance, SHS, 7 p.m.

25 - District-wide Pep Rally, Varsity Gym, 2:30 p.m.; Lynx vs. Boys Ranch (Homecoming Game), Lynx Stadium, 7:30 p.m.; Homecoming Dance (HS only), SHS, 10 p.m.-1 a.m.; Fifth Quarter (JH only), First Baptist Church, 10-11 p.m.

26 - Lubbock Invitational Cross Country Meet (Varsity only); Beaver, OK Cross Country Meet (JV/JH only)

### FINAL MEETING Spearman ISD Mandatory Drug Testing Parent/Student Meeting Notice

Spearman ISD has a Random Student Drug Testing Policy for all students in grades 7-12 who are involved in extra-curricular activities. Consent to drug-use testing is mandatory for all students to participate in any extra-curricular activity.

Also, participating students and at least one parent/guardian must attend a required annual meeting. The FINAL meeting for this school year will be held in the High School Auditorium on September 15 at 6:00 p.m. Failure of the student and/or parent/guardian to attend this meeting will prevent the student from extra-curricular activity participation.

If you attended the meeting on August 11, 2009 you do not have to attend this meeting.

If you have any questions please contact Bill Belger, Principal, at 806-659-2584.

### GRUVER ISD NEWS Mini-Cheer Camp

The Gruver Cheerleaders will hold their Mini-Cheer Camp on Tuesday, September 15th from 4:5:30 p.m. in the elementary gym. All girls Pre-K through 6th grade are invited to attend. Girls who attend camp will get the opportunity to cheer with the Varsity cheerleaders during the 3rd quarter of the Gruver vs. Clarendon game Friday, September 18th. The cost for camp will be \$10.

The GHS Cheerleaders will be selling their old uniforms at Mini-Cheer camp this year. If you are interested, please contact Issa Bazaldua, GHS cheerleader sponsor. They will be sold as a set (a top and bottom) for \$35.

### GHS Sr. Parent Seminar

A Senior Parent Seminar will be held on Tuesday, Sept. 15 at 6:30 p.m. in the Gruver High School FCS room. Parents are encouraged to attend to receive helpful information regarding college testing, college applications, scholarships, and vocational schools/training.

### GHS Jr. Parent Seminar

A Junior Parent Seminar will be held on Tuesday, Sept. 22 at 6:30 p.m. in the Gruver High School FCS room. Parents are encouraged to attend to receive information about how to best prepare for their child's senior year, which includes searching for a college or vocational school.

### PRINGLE-MORSE CISD 7th Grade Fundraiser

The Pringle-Morse 7th Grade class is holding a fundraiser. They are sell-

ing Cougar T-Shirts, Sweatshirts, & Hoodies. Order forms were sent home this week with students and must be returned by September 10th. If you would like to purchase a shirt, but don't have an order form, please call 806-733-2507.

### Gruver 4th Grade Celebrates Being Green

This was the phrase floating around the halls in 4th Grade this last week. To start the week we ventured down to the recycling center where Mark Washburn gave us a tour of the facilities and informed us on how to recycle in our community. We also talked and experimented with how much water we waste. In order to better understand and value our fresh water we made our own Ogallala Aquifer. In conclusion to our week we had a "Trash Monster" show and tell. They created "Green" monsters out of our garbage. The kids loved it! They are all about recycling and making our earth GREEN, so join us!

### Gruver Elementary September Calendar

- 10 HS Students work w/ Elementary
- 11 Kinder Gingerbread Man Hunt
- 14 Elementary Open House: 4th Grade - 5:15 p.m.; 2nd Grade - 6 p.m.; 3rd Grade 7 p.m.; Pre K-Humpty Dumpty Hunt; Kinder: Community Helpers Week
- 15 HS Students work w/ Elementary
- 17 HS Students work w/ Elementary; Constitution Day observed in Elementary
- 22 HS Students work w/ Elementary
- 24 HS Students work w/ Elementary

Elementary  
25 Kinder Career Day  
28 Kinder TPRI Testing Begins; Migrant Parent Meeting at 6 p.m.; Parenting Seminar w/Mrs. Curry 6:30-HS FCS Room (If materials come in)  
29 HS Students work w/ Elementary

### WTAMU to Host Buff-A-Rama for Area Youth

All kids, especially little kids, are invited to Buff-A-Rama 2009, a free block party and safety fair at West Texas A&M University.

Buff-A-Rama 2009 is from 10 a.m.-1 p.m. Saturday, Sept. 26 at the Pedestrian Mall on the WTAMU campus. Activities are primarily directed at kids 12 and under, but everyone is welcome regardless of age, and everything is free.

Kids and their parents are invited to stop by for a few hours of fun and games with lots to see and do. There will be interactive exhibits to learn about bicycle and water safety, martial arts, the military and police and fire safety. Free hot dogs, drinks and ice cream will be available, along with car seat safety checks, giveaways and door prizes. Plus, every kid will receive a free backpack.

"This is an event designed to inform kids about safety issues in a fun environment," Chance Haugen, assistant director of the Jack B. Kelley Student Center and event organizer, said. "We'll have live entertainment, free food and all sorts of fun activities for children. It will be a great time for everyone, and it's all free."

For more information about Buff-A-Rama, call Haugen at 806-651-2394.

## Spearman Lynx & Lynxettes

<http://spearmansports.smugmug.com/>

Photos available of Spearman Lynx and Lynxette athletic events.

Everyone is invited to a **FREE** **Lynx Tailgate Party!**

**Fri. September 11**  
5:30 pm - 7:00 pm or till food is gone!

Lynx Stadium (entrance)

Enjoy **FREE** Hot Dogs + Soft Drinks

Sponsored by: **PTCI** Prizes!

**The Lynx Cheerleaders will be there to perform...** so YOU should be there, too!

Don't miss the fun!

Hurting from low CD rates? Call First Fidelity for the cure!

**5.01%\*** APY

1 Year CD • FDIC Insured

Hurry - rate won't last!

**FIRST FIDELITY** Financial Group, LLC  
Your Safe Money Solution®  
1800 Washington, Suite 110 - Amarillo, TX

**806-373-9480** 1-800-371-9201  
By appointment only

First Fidelity is a financial services firm that locates FDIC insured banks offering the highest CD yields nationwide. Minimum deposits may apply; rate and deposit subject to availability; subject to change without notice; penalty for early withdrawal; FDIC insured to \$250,000 per institution; promotional incentive may be included to obtain yield. First Fidelity Financial Group is not a state or federally insured financial institution, and is not affiliated with First Fidelity Bank, First Fidelity Trust, or First Fidelity Savings & Loan. Insurance products, including fixed annuities, are not guaranteed by any bank, federal agency, or the FDIC. © 2009 First Fidelity Financial Group, LLC Rev. 3-09

**DITCH YOUR DIAL-UP GET HI-SPEED WITH**

**SATELLITE INTERNET.com**

Available Everywhere • Always Connected  
**CALL NOW 1-866-408-8927**

- No \$\$\$ Down!
- One Month FREE!

HughesNet  
Broadband Unbound!

**Palace Theatre**

MOVIE SHOW TIMES  
Friday-Thursday - 7 p.m.  
Sunday - 2 p.m.  
Closed Sunday Night

FRESH POPCORN & DRINKS!  
PARTY ROOM & ARCADE  
MOVIE RENTALS

Palace Theatre  
210 Main Street  
Canadian TX 79014  
806-323-5133  
[www.palacetheatre.com](http://www.palacetheatre.com)

The Palace Theatre meets Lucasfilm THX specifications for site and sound quality.

**LYNX**

**2009 Homecoming**

Spearman High School

Sept. 25th

**HANSFORD COUNTY FLORAL COMPANY**

300 MAIN • SPEARMAN  
806-644-4000

WHERE EXPERIENCE COUNTS

Oct. 9th

**COME TO THE GAME**



**REAL ESTATE**

**FOR SALE:** 1108 Dressen, Spearman. 1400 sq. ft. 3BR, 1B, bonus room for office or 4th bedroom! Two outdoor storage buildings, underground tornado shelter and carport. Nice brick home. Must see!! \$69,000. 806 330-1179 or 806-330-1180 after 4 p.m. 3(9/10/09)

**FOR RENT:** 1BR apartment, furnished, bills paid, laundry available. 659-2247. TFN(8/20/09)B

**FOR LEASE:** Available Soon - 2 Bedroom Apartment, \$400.00 month, water paid, NO PETS! Call Larry O'Neal at 405-285-8782 or 580-819-0007. TFN(6/25/09)B

**FOR RENT:** Large 1BR apt. with washer/dryer hook-up, central AC/heat. \$375/month plus \$375 deposit. Call 940-631-0894. TFN(7/2/09)B

**WINDMILL COURTYARD APARTMENTS:** Available August!! 4 - 2 bedroom / 1 bath unfurnished apartments. Central heat and Air. All units include new appliances. Pets are allowed with additional deposit. Utilities are not included. \$500/month rent with a \$500 deposit. Inquire about applications at Deakin Electric 321 Main St. Spearman. TFN(7/16/09)B

**HELP WANTED**

**HELP WANTED: PART-TIME CUSTODIAN NEEDED** to work 12 hours a week at the Hansford County Courthouse. Apply at Hansford County Judge's Office. TFN(8/13/09)B

**HELP WANTED: Experienced Automotive Technician.** Must have own tools. Good working environment. Paid Holidays. Call Prairie Motors at 659-2541, ask for Mike. 4(9/10/09)B

**HELP WANTED:** First State Bank, Spearman, has full time positions open for a Teller. Applicant must have a high school diploma or equivalent, typing and some ten-key skills required, customer relation and telephone skills are very important. Computer skills in word-processing and spreadsheets is helpful but not required. Benefit program includes group hospitalization insurance, retirement, vacation pay, sick leave pay and holiday pay. Apply with Ginger Turner at First State Bank, PO Box 247, Spearman, Tx. 79081, telephone #(806) 659-5565. An Equal Opportunity Employer. TFN(9/3/09)B

**SERVICES**

**HOOCHY POOCHY PARLOR** Call us for all your pet's grooming and boarding needs. Call now for reservations! 806-273-2724. TFN(11/2/07)

**FOR SALE**

**PIANO FOR SALE:** Rudolph Wurlitzer piano in good condition interested call 659-5918. TFN(9/3/09)B

**PUBLIC NOTICE**

**NOTICE OF PUBLIC HEARING FOR THE CITY OF GRUVER**  
A public hearing will be held on September 16, 2009 at 6 p.m. at the Gruver City Hall, 201 East Broadway, to consider the 2009-2010 Annual Budget. 1(9/10/09)B

**LEGAL NOTICE**

Hansford County Commissioner's Court will receive sealed bids until 4:00 p.m. on Friday, September 25, 2009 on the sell of a 4240 Tractor. The tractor has a PTO problem (works, but won't shut off). Tractor belongs to Precinct 3. Bids will be opened on Monday, September 28, 2009 at the regular Commissioners' Court meeting beginning at 10:00 a.m.

Tractor may be seen at Hansford County Maintenance Barn in Gruver on Front Street. For questions concerning tractor, contact Rex Casdorff, Precinct Foreman at 806-736-5009.

The Court reserves the right to accept or reject any or all bids.

Benny Wilson  
Hansford County Judge  
3(8/27/09)B

**PUBLIC NOTICE**

Dallas MTA, LP doing business as Verizon Wireless is proposing to construct a new telecommunications tower at 121 Cooper Avenue, near Gruver, Hansford County, Texas. The proposed tower will be a 310 foot total height guyed lattice tower. In accordance with 36 CFR Part 800 of the National Historic Preservation Act of 1966, any interested party wishing to comment regarding any effects the proposed facility may have on any historic property may do so by sending such comments to E. Heinemann at Aarcher, Inc. 200 Rufe Snow N., Suite 103, Keller, TX 76248 or calling (817) 946-7156. Refer to number 555-2760. 1(9/10/09)B

L	A	R	V	A	C	W	M	A	R	T	S	7	4	8	5	6	3	2	1	9
A	R	I	A	S	R	H	O	A	R	U	B	9	5	3	8	1	2	4	6	7
M	I	S	T	I	Y	O	N	B	I	N	A	1	6	2	9	7	4	8	3	5
B	A	C	I	L	L	O	T	I	L	L	E	2	1	6	7	5	9	3	4	8
												8	3	7	4	2	6	5	9	1
G	A	S	M	A	T	E	U	T	M	O	S	4	9	5	3	8	1	6	7	2
A	L	T	O	S	H	I	P	O	I	L	L	3	7	4	2	9	8	1	5	6
P	O	R	K	H	E	L	O	T	R	I	V	6	8	9	1	3	5	7	2	4
E	N	U	R	E	M	I	L	E	O	V	E	5	2	1	6	4	7	9	8	3
R	E	M	A	N	D	N	O	N	E	E	N									
P	A	Y	O	L	A	T	A	R	A	C	H	N								
G	O	L	E	M	T	A	M	C	L	E	A	R								
A	N	G	L	O	T	H	O	T	A	M	P	A								
P	E	A	L	L	Y	A	K	S	T	E	E	L								

7	4	8	5	6	3	2	1	9
9	5	3	8	1	2	4	6	7
1	6	2	9	7	4	8	3	5
2	1	6	7	5	9	3	4	8
8	3	7	4	2	6	5	9	1
4	9	5	3	8	1	6	7	2
3	7	4	2	9	8	1	5	6
6	8	9	1	3	5	7	2	4
5	2	1	6	4	7	9	8	3

Quality Seed Wheat  
available at  
**Stratford Grain Co.**  
806-396-5541

# HUNNY'S

## Saturday September 19th

### RBC Band

From Liberal, KS  
Returns to Hunny's

Playing songs from the 60's-70's-80's  
Band Starts 7:30

Hunny's  
103 N. Main  
Guymon, OK  
580-338-7383

**MARTIN & ASSOCIATES REALTY**  
Serving Hansford County for 15 years  
Julie Martin: Broker - 659-2425  
**PRICE REDUCED ON BOTH 804 & 806 Wilbanks**  
New Construction. Call for your private showing!  
**We'd Like Your Listing!**  
**FOR QUALITY & SERVICE CALL US TODAY!**  
Equal Housing Opportunity

**Blankenship Real Estate**  
659-3052 - 670-3774

**4BR/3B Home (Spearman)** - 3 living areas, new paint & flooring, storm shelter.

**3BR/2B Home (Spearman)** - 1500 sq. ft, brick, 2CG, patio, walk-in closets

**3BR/2B Home (Spearman)** - 1460 sq. ft, brick, 2CG, patio, walk-in closets.  
**PRICE REDUCED!**

**NEW LISTINGS WANTED!**  
Eulalia Blankenship - Sales  
Eschol Blankenship - Broker

**hchd**  
Hansford County Hospital District

**Openings at Hansford Pharmacy**

**PART-TIME PHARMACY ASSISTANT** needed. Great working environment and staff. Job duties include helping the Pharmacist to coordinate activities and functions of the District's Hospital, Manor and Retail Pharmacies

**Openings at Hansford Manor**

**LVN:** Graduate of an approved LPN/LVN program. Must be able to make independent decisions when circumstances warrant. Must possess the ability to deal tactfully with residents, family and public.

**Medication Aide:** MA certification required. Must be able to provide assigned residents with routine daily nursing and services in accordance with the resident's assessment and care plan, and as may be directed by your supervisor.

**CNA:** CNA certification required. Must be able to provide assigned residents with routine daily nursing and services in accordance with the resident's assessment and care plan, and as may be directed by your supervisor.

Great working environment and staff, quality facility providing opportunities for professional growth. Great benefit package. Apply at 707 S. Roland, Spearman, TX or contact Jackie Nelson at 806-659-5841. Download application at www.hchd.net  
EEOE 2(8-20-09)B

**Shirley Howard Properties**  
Shirley Howard

**We NEED listings!**  
Call us now to help YOU sell your home for top dollar!

**902 9th - Gruver:** Horse Stables FOR SALE! 18 pens, circular training pen, arena, & 4500 sf barn on 10.42 acres!

**712 Womble - Gruver:** 1070sf, 3 Bed, 1 Bath, Central Heat, Lrg Corner Lot!

**Shirley Howard, Broker / Owner**  
806-886-6536, Cell

**Melinda McCullough, Realtor**  
(806) 733-5678

We would LOVE to sell your HOUSE!  
**CALL US!**

**HARTLEY CO., TX** - 640 ac., 10 miles to Hilmar Cheese plant, on pvmt, dairy permit, 3 pivots, home, barn, grain storage.

**HANSFORD CO** - 640 acres, approx. 1/2 dryland 1/2 breaks of Coldwater Creek, pavement

**HANSFORD CO** - 2 1/2 miles from town, on pvmt., 640 acres, choice land, 1/2 mile sprinkler, excellent location for dairy.

**READY TO RANCH & DEVELOP (wind energy, comm., res.) Potter Co., TX** - 4872.8 acres of beautiful ranch country four miles north of loop 335, Amarillo, TX, pvmt. on four sides (3 mi. - hwy 287, 1 mi. - Western St., 1 mi. - Givens Rd., 1 mi. - Rivera Park Rd.) Well watered by pumps powered by solar energy (state of the art) and windmills. Deer, quail & dove. Talk to us about dividing (640 ac. min.).

**OCHILTREE CO** - Choice dairy location, strong water area, three phase electricity, 776.5 acres more or less of choice land (Pullman Clay Loam - almost all "A" slope) with two pivot points for sprinklers, two irrigation wells, preconditioning pens with indoor working area, grain, hay and fuel storage.

**OCEANS OF WATER II** - Hansford Co., Texas - 4 sections, strong water, dev. with sprinklers, wells, feedyard, home, barns, pvmt., 2 mi. hwy. frontage.  
**SEE OUR WEBSITE OR CALL US!**  
www.scottlandcompany.com  
Shawn Gillispie 806/922-5532  
Ben G. Scott, Broker  
1-800-933-9698 day/eve  
TFN(7-30-09)

TEXAS STATEWIDE CLASSIFIED ADVERTISING NETWORK

# TexSCAN

**TexSCAN Week of August 30, 2009**

**AUTOS**  
\$500! POLICE IMPOUNDS & Reposs! 2002 Chevy Malibu \$500, 1997 Acura Integra \$500! 2000 Toyota Camry \$550! Fee. For BNI listings 1-800-544-1092 x1750

**BUSINESS OPPORTUNITIES**  
ALL CASH VENDING! Do you earn \$800 in a day? Your own local candy route. 25 machines and candy. All for \$9.95. 1-888-625-5481. Multi Vend, LLC.

**EQUIPMENT FOR SALE**  
SAWMILLS FROM ONLY \$2,990.00. Convert your logs to valuable lumber with your own Norwood portable band sawmill. Log skidders also available. norwoodawmills.com/300n. Free information: 1-800-378-1363, Ext.300-N.

**HELP WANTED**  
RN's, LVN's, CNA's & Med Aides 20 year company has immediate openings for medical staff in the local area and nationwide. 1-866-914-2199 xpm@rapidtemp.com

**HOMES FOR SALE**  
A 5 BEDROOM 2 BATH only \$229/month! or \$16,700! Must sell this home! 4% down, 30 years at 8% apr! Call 1-800-544-6258 Ext. 5850

**AFFORDABLE FORECLOSURE!** \$288/month! 7 Bed 2 Bath \$386/month! 4 Bed, 4 Bath! \$299/month! 5 Bed, 4 Bath 5% down, 20yrs @ 8% Fee. BNI listings call 1-800-544-6258 ext. 7664

**7 BEDROOM 4 BATH** HUD \$23,812! 3 bedroom 2 bath only \$10,500! 4 bedroom 3 bath only \$14,669! Foreclosures & Bank Reposs. These homes will sell! Fee for local BNI listings call 1-800-544-6258 ext. 5851.

**MISCELLANEOUS**  
AIRLINES ARE HIRING, Train for high paying aviation maintenance career. FAA approved program. Financial aid if qualified. Housing available. Call Aviation Institute of Maintenance, 1-888-349-5387.

**ATTEND COLLEGE ONLINE** from home. Medical, Business, Paralegal, Accounting, Criminal Justice. Job placement assistance. Computer available. Financial aid if qualified. Call 1-866-858-2121. www.CenturaOnline.com

**REAL ESTATE**  
\$106 MONTH BUYS land for RV, MH or cabin. Gated entry, \$690 down, (\$6900/10.91%/7yr) 90 days same as cash, Guaranteed financing, 1-936-377-3235

\$106 MONTH BUYS land for RV/motor home/ house, pier, boat ramp, pool, clubhouse, gated entry, on Lake Fork, \$690 down (\$6900/10.91%/7yr) Guaranteed financing, 1-214-696-2315

**ABSOLUTELY THE BEST VIEW** Lake Medina/ Bandera 1/4 acre tract, central W/S/E, RV/motor home/home, OK only \$830 down \$235 month (12.91%/10yr), Guaranteed financing. More information call 1-830-460-8354

**ACREAGE FOR SALE** 660+ acres in Reeves County 10000 per acre, OBO, Call Jack, 1-214-755-6224

**LAKE LOT BARGAIN!** \$19,900 includes free deeded boat slip on 45,000 acre recreational lake in Oklahoma. Excellent financing. Call now 1-877-909-5253 ext. 5362 or www.oklakeland.com

**10-20 ACRES, SOUTH TX** brush, Duval County. Electricity, paved road. Deer, hogs, quail, turkey. \$2450-2950/acre, owner or TX Vet financing. Toll-free 1-866-286-0199. www.western-texasland.com

**2536 ACRES, NORTH of Bracketville.** Electricity. Rugged, oak, cedar, brush cover. White-tail and exotics. Beautiful views, \$1375/acre, long term fixed rate financing. 1-800-876-9720. www.hillcountryranches.com

**Run Your Ad In TexSCAN!**

Statewide Ad	\$500
307 Newspapers, 1,018,298 Circulation	
North Region Only	\$230
99 Newspapers, 270,016 Circulation	
South Region Only	\$230
107 Newspapers, 601,889 Circulation	
West Region Only	\$230
101 Newspapers, 246,651 Circulation	

To Order: Call This Newspaper direct, or call Texas Press Service at 1-800-749-4793 Today!

**Start Thinking Now About This Winter!**

**New Fur and Mink Makeover TRANS-FUR-MATION!**

**ONE DAY ONLY!**

Do you have an old sentimental fur stole, coat or jacket hanging in the closet not being worn?  
Let us restyle it into a fabulous

**Mink & Knit Sweater, Ultra Suede Jacket, Vest or a cuddly Teddy Bear!**

See the most beautiful collection of new furs, cashmeres, feathers and shearlings at some of the best values in America!

Tues. Sept 15th • 10am-6pm

**MERLE NORMAN.**  
COSMETIC STUDIOS

419 N. Main Street in Guymon, OK  
**(580) 338-3020**

Brought to you by LaBelle Furs • Since 1919  
A 4th Generation Family Furrier • www.labellefurs.com

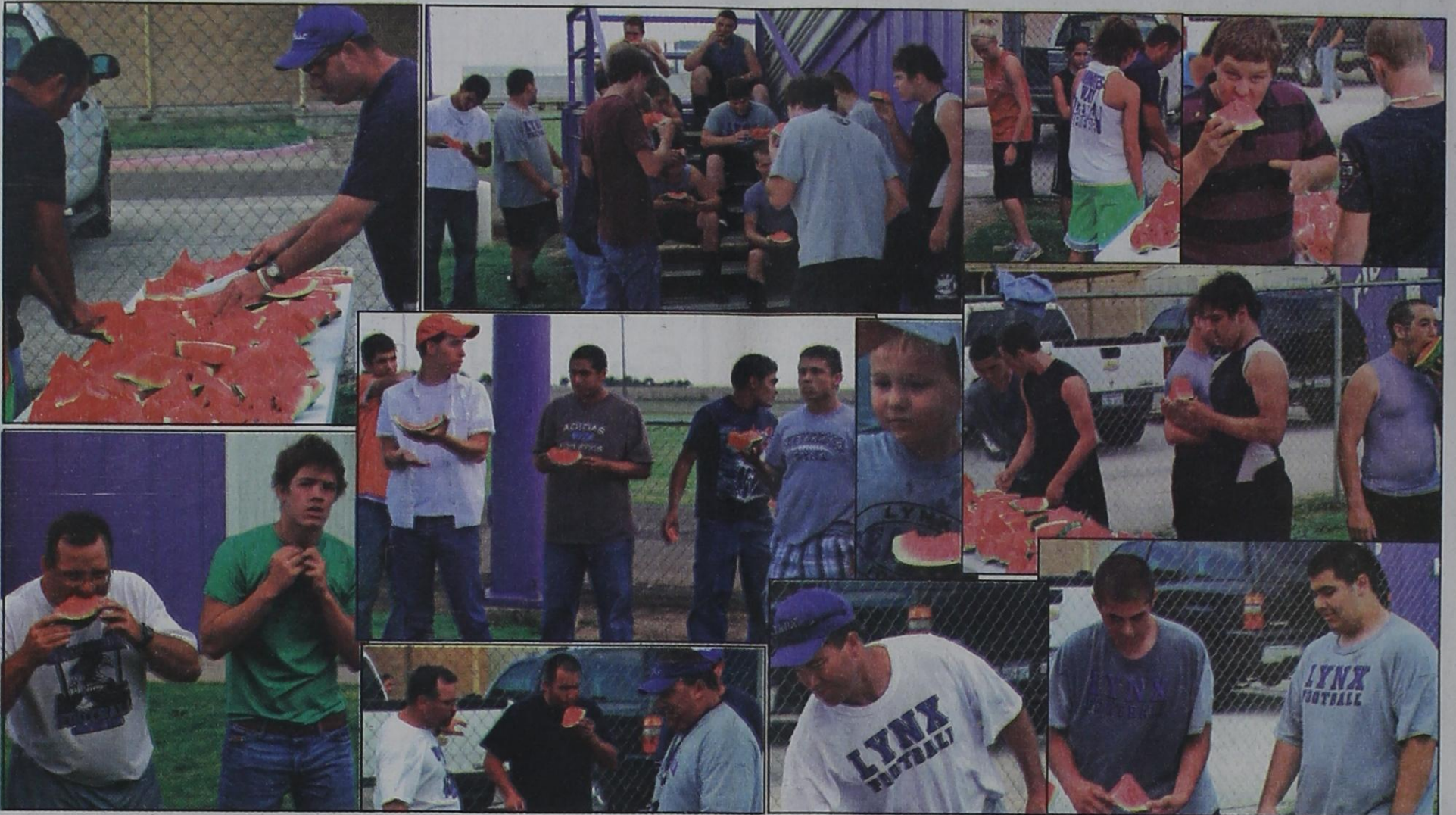
NOTICE: While most advertisers are reputable, we cannot guarantee products or services advertised. We urge readers to use caution and when in doubt, contact the Texas Attorney General at 1-800-621-0508 or the Federal Trade Commission at 1-877-FTC-HELP. The FTC web site is www.ftc.gov/bizop

Extend your advertising reach with TexSCAN, your Statewide Classified Ad Network.



# Watermelon Feed

The Spearman Cross Country runners and Football players enjoyed watermelon after workout on Thursday, September 3rd. The watermelon was provided by the Spearman Lynx & Lynettes Booster Club.



**HIGH SCHOOL TRACK**

SHS **LYNX** SHS

is **CLOSED**

for 2 months for repair  
(NO WALKERS ALLOWED)

Specializing in one-of-a-kind mums.

Matching mums and armbands, custom-made for you and your date.

**HOME COMING '09**

Gruver Homecoming October 9

Spearman Homecoming September 25

All Occasion Flowers

202 N. Bernice (across from the Post Office) 659-5180 • Spearman

Faithfully serving Hansford County since 1992.

## Notice of Tax Revenue Increase

The City of Spearman conducted public hearings on August 18, 2009 and September 8, 2009 on a proposal to increase the total tax revenues of the City of Spearman from properties on the tax roll in the preceding year by 3.07 percent.

The total tax revenue raised last year at last year's tax rate of \$0.531000 for each \$100 of taxable value was \$362,086.

The total tax revenue proposed to be raised this year at the proposed tax rate of \$0.531000 for each \$100 of taxable value, excluding tax revenue to be raised from new property added to the tax roll this year, is \$371,083.

The total tax revenue proposed to be raised this year at the proposed tax rate of \$0.531000 for each \$100 of taxable value, including tax revenue to be raised from new property added to the tax roll this year, is \$374,757.

The City of Spearman of City of Spearman is scheduled to vote on the tax rate that will result in that tax increase at a public meeting to be held on September 22, 2009 at Spearman City Hall at 7:00 am.

## KUBOTA SUMMER VALUE DAYS

**L3400 w/ Loader**

- 357 HP, 3-Cylinder Diesel Engine
- Category I, 3-Point Hitch

**L-SERIES TRACTOR LOADER PACKAGE!**

**\$500 OFF SALE PRICE\*\* PLUS \$0 DOWN, 0% APR FINANCING FOR 60 MONTHS\***

WITH THE PURCHASE OF AN L3400 OR L2800 WITH A KUBOTA LOADER!

**B3200**

- 32 HP 4-Cylinder Diesel Engine
- Power Steering • HST Transmission

**M125X**

- 125 HP, 4-Cylinder Diesel Engine
- Comfortable, Air Conditioned Cab

**RTV1140**

- 24.8 HP, 3-Cylinder Diesel Engine
- Two and Four-Seat Configurations

**RTV500**

- 15.8 HP, 2-Cylinder Gasoline Engine
- Fits In The Back Of A Full-Size, Long-Bed Pickup Truck

**\$0 DOWN, 0% A.P.R. FINANCING FOR UP TO 60 MONTHS\* ON SELECT NEW KUBOTAS!**

**PANHANDLE IMPLEMENT CO., INC.**  
710 NORTH MAIN STREET • PERRYTON, TX  
806-435-6508

\*\$0 down, 0% A.P.R. financing for terms up to 60 months on purchases of new Kubota L-Series, M-Series, RTV, and RTV models. Financing is available to customers with a credit score of 600 or higher. Example: A 60-month monthly installment agreement term at 0% A.P.R. requires 60 payments of \$1,147 per \$1,000 financed. 0% A.P.R. financing is available to customers if no dealer documentation preparation fee is charged. Dealer charges for document preparation fee shall be in accordance with state law. Only Kubota and select Kubota performance model (and Pro) equipment are eligible. Inclusion of an in-cab entertainment system is an optional extra charge. Dealer charges for dealer's administrative and governmental expenses. 0% A.P.R. and low rate financing may not be available with customer credit scores below 600. Financing is available through Kubota Credit Corporation, U.S.A., subject to credit approval. Some exceptions apply. Offer expires 9/30/2009. See us for details on this and other low rate options or go to www.kubota.com for more information.

\*\*\$500 off customer select models. 0% A.P.R. financing is available on select models with 0% down payment (including 0% A.P.R. and low rate program) of new Kubota tractor & loader packages for L2800, L3400, L3600, L4800, L5000, L5400, L5600, L5800, L6000, L6400, L6600, L6800, L7000, L7200, L7400, L7600, L7800, L8000, L8200, L8400, L8600, L8800, L9000, L9200, L9400, L9600, L9800, L10000, L10200, L10400, L10600, L10800, L11000, L11200, L11400, L11600, L11800, L12000, L12200, L12400, L12600, L12800, L13000, L13200, L13400, L13600, L13800, L14000, L14200, L14400, L14600, L14800, L15000, L15200, L15400, L15600, L15800, L16000, L16200, L16400, L16600, L16800, L17000, L17200, L17400, L17600, L17800, L18000, L18200, L18400, L18600, L18800, L19000, L19200, L19400, L19600, L19800, L20000, L20200, L20400, L20600, L20800, L21000, L21200, L21400, L21600, L21800, L22000, L22200, L22400, L22600, L22800, L23000, L23200, L23400, L23600, L23800, L24000, L24200, L24400, L24600, L24800, L25000, L25200, L25400, L25600, L25800, L26000, L26200, L26400, L26600, L26800, L27000, L27200, L27400, L27600, L27800, L28000, L28200, L28400, L28600, L28800, L29000, L29200, L29400, L29600, L29800, L30000, L30200, L30400, L30600, L30800, L31000, L31200, L31400, L31600, L31800, L32000, L32200, L32400, L32600, L32800, L33000, L33200, L33400, L33600, L33800, L34000, L34200, L34400, L34600, L34800, L35000, L35200, L35400, L35600, L35800, L36000, L36200, L36400, L36600, L36800, L37000, L37200, L37400, L37600, L37800, L38000, L38200, L38400, L38600, L38800, L39000, L39200, L39400, L39600, L39800, L40000, L40200, L40400, L40600, L40800, L41000, L41200, L41400, L41600, L41800, L42000, L42200, L42400, L42600, L42800, L43000, L43200, L43400, L43600, L43800, L44000, L44200, L44400, L44600, L44800, L45000, L45200, L45400, L45600, L45800, L46000, L46200, L46400, L46600, L46800, L47000, L47200, L47400, L47600, L47800, L48000, L48200, L48400, L48600, L48800, L49000, L49200, L49400, L49600, L49800, L50000, L50200, L50400, L50600, L50800, L51000, L51200, L51400, L51600, L51800, L52000, L52200, L52400, L52600, L52800, L53000, L53200, L53400, L53600, L53800, L54000, L54200, L54400, L54600, L54800, L55000, L55200, L55400, L55600, L55800, L56000, L56200, L56400, L56600, L56800, L57000, L57200, L57400, L57600, L57800, L58000, L58200, L58400, L58600, L58800, L59000, L59200, L59400, L59600, L59800, L60000, L60200, L60400, L60600, L60800, L61000, L61200, L61400, L61600, L61800, L62000, L62200, L62400, L62600, L62800, L63000, L63200, L63400, L63600, L63800, L64000, L64200, L64400, L64600, L64800, L65000, L65200, L65400, L65600, L65800, L66000, L66200, L66400, L66600, L66800, L67000, L67200, L67400, L67600, L67800, L68000, L68200, L68400, L68600, L68800, L69000, L69200, L69400, L69600, L69800, L70000, L70200, L70400, L70600, L70800, L71000, L71200, L71400, L71600, L71800, L72000, L72200, L72400, L72600, L72800, L73000, L73200, L73400, L73600, L73800, L74000, L74200, L74400, L74600, L74800, L75000, L75200, L75400, L75600, L75800, L76000, L76200, L76400, L76600, L76800, L77000, L77200, L77400, L77600, L77800, L78000, L78200, L78400, L78600, L78800, L79000, L79200, L79400, L79600, L79800, L80000, L80200, L80400, L80600, L80800, L81000, L81200, L81400, L81600, L81800, L82000, L82200, L82400, L82600, L82800, L83000, L83200, L83400, L83600, L83800, L84000, L84200, L84400, L84600, L84800, L85000, L85200, L85400, L85600, L85800, L86000, L86200, L86400, L86600, L86800, L87000, L87200, L87400, L87600, L87800, L88000, L88200, L88400, L88600, L88800, L89000, L89200, L89400, L89600, L89800, L90000, L90200, L90400, L90600, L90800, L91000, L91200, L91400, L91600, L91800, L92000, L92200, L92400, L92600, L92800, L93000, L93200, L93400, L93600, L93800, L94000, L94200, L94400, L94600, L94800, L95000, L95200, L95400, L95600, L95800, L96000, L96200, L96400, L96600, L96800, L97000, L97200, L97400, L97600, L97800, L98000, L98200, L98400, L98600, L98800, L99000, L99200, L99400, L99600, L99800, L100000, L100200, L100400, L100600, L100800, L101000, L101200, L101400, L101600, L101800, L102000, L102200, L102400, L102600, L102800, L103000, L103200, L103400, L103600, L103800, L104000, L104200, L104400, L104600, L104800, L105000, L105200, L105400, L105600, L105800, L106000, L106200, L106400, L106600, L106800, L107000, L107200, L107400, L107600, L107800, L108000, L108200, L108400, L108600, L108800, L109000, L109200, L109400, L109600, L109800, L110000, L110200, L110400, L110600, L110800, L111000, L111200, L111400, L111600, L111800, L112000, L112200, L112400, L112600, L112800, L113000, L113200, L113400, L113600, L113800, L114000, L114200, L114400, L114600, L114800, L115000, L115200, L115400, L115600, L115800, L116000, L116200, L116400, L116600, L116800, L117000, L117200, L117400, L117600, L117800, L118000, L118200, L118400, L118600, L118800, L119000, L119200, L119400, L119600, L119800, L120000, L120200, L120400, L120600, L120800, L121000, L121200, L121400, L121600, L121800, L122000, L122200, L122400, L122600, L122800, L123000, L123200, L123400, L123600, L123800, L124000, L124200, L124400, L124600, L124800, L125000, L125200, L125400, L125600, L125800, L126000, L126200, L126400, L126600, L126800, L127000, L127200, L127400, L127600, L127800, L128000, L128200, L128400, L128600, L128800, L129000, L129200, L129400, L129600, L129800, L130000, L130200, L130400, L130600, L130800, L131000, L131200, L131400, L131600, L131800, L132000, L132200, L132400, L132600, L132800, L133000, L133200, L133400, L133600, L133800, L134000, L134200, L134400, L134600, L134800, L135000, L135200, L135400, L135600, L135800, L136000, L136200, L136400, L136600, L136800, L137000, L137200, L137400, L137600, L137800, L138000, L138200, L138400, L138600, L138800, L139000, L139200, L139400, L139600, L139800, L140000, L140200, L140400, L140600, L140800, L141000, L141200, L141400, L141600, L141800, L142000, L142200, L142400, L142600, L142800, L143000, L143200, L143400, L143600, L143800, L144000, L144200, L144400, L144600, L144800, L145000, L145200, L145400, L145600, L145800, L146000, L146200, L146400, L146600, L146800, L147000, L147200, L147400, L147600, L147800, L148000, L148200, L148400, L148600, L148800, L149000, L149200, L149400, L149600, L149800, L150000, L150200, L150400, L150600, L150800, L151000, L151200, L151400, L151600, L151800, L152000, L152200, L152400, L152600, L152800, L153000, L153200, L153400, L153600, L153800, L154000, L154200, L154400, L154600, L154800, L155000, L155200, L155400, L155600, L155800, L156000, L156200, L156400, L156600, L156800, L157000, L157200, L157400, L157600, L157800, L158000, L158200, L158400, L158600, L158800, L159000, L159200, L159400, L159600, L159800, L160000, L160200, L160400, L160600, L160800, L161000, L161200, L161400, L161600, L161800, L162000, L162200, L162400, L162600, L162800, L163000, L163200, L163400, L163600, L163800, L164000, L164200, L164400, L164600, L164800, L165000, L165200, L165400, L165600, L165800, L166000, L166200, L166400, L166600, L166800, L167000, L167200, L167400, L167600, L167800, L168000, L168200, L168400, L168600, L168800, L169000, L169200, L169400, L169600, L169800, L170000, L170200, L170400, L170600, L170800, L171000, L171200, L171400, L171600, L171800, L172000, L172200, L172400, L172600, L172800, L173000, L173200, L173400, L173600, L173800, L174000, L174200, L174400, L174600, L174800, L175000, L175200, L175400, L175600, L175800, L176000, L176200, L176400, L176600, L176800, L177000, L177200, L177400, L177600, L177800, L178000, L178200, L178400, L178600, L178800, L179000, L179200, L179400, L179600, L179800, L180000, L180200, L180400, L180600, L180800, L181000, L181200, L181400, L181600, L181800, L182000, L182200, L182400, L182600, L182800, L183000, L183200, L183400, L183600, L183800, L184000, L184200, L184400, L184600, L184800, L185000, L185200, L185400, L185600, L185800, L186000, L186200, L186400, L186600, L186800, L187000, L187200, L187400, L187600, L187800, L188000, L188200, L188400, L188600, L188800, L189000, L189200, L189400, L189600, L189800, L190000, L190200, L190400, L190600, L190800, L191000, L191200, L191400, L191600, L191800, L192000, L192200, L192400, L192600, L192800, L193000, L193200, L193400, L193600, L193800, L194000, L194200, L194400, L194600, L194800, L195000, L195200, L195400, L195600, L195800, L196000, L196200, L196400, L196600, L196800, L197000, L197200, L197400, L197600, L197800, L198000, L198200, L198400, L198600, L198800, L199000, L199200, L199400, L199600, L199800, L200000, L200200, L200400, L200600, L200800, L201000, L201200, L201400, L201600, L201800, L202000, L202200, L202400, L202600, L202800, L203000, L203200, L203400, L203600, L203800, L204000, L204200, L204400, L204600, L204800, L205000, L205200, L205400, L205600, L205800, L206000, L206200, L206400, L206600, L206800, L207000, L207200, L207400, L207600, L207800, L208000, L208200, L208400, L208600, L208800, L209000, L209200, L209400, L209600, L209800, L210000, L210200, L210400, L210600, L210800, L211000, L211200, L211400, L211600, L211800, L212000, L212200, L212400, L212600, L212800, L213000, L213200, L213400, L213600, L213800, L214000, L214200, L214400, L214600, L214800, L215000, L215200, L215400, L215600, L215800, L216000, L216200, L216400, L216600, L216800, L217000, L217200, L217400, L217600, L217800, L218000, L218200, L218400, L218600, L218800, L219000, L219200, L219400, L219600, L219800, L220000, L220200, L220400, L220600, L220800, L221000, L221200, L221400, L221600, L221800, L222000, L222200, L222400, L222600, L222800, L223000, L223200, L223400, L223600, L223800, L224000, L224200, L224400, L224600, L224800, L225000, L225200, L225400, L225600, L225800, L226000, L226200, L226400, L226600, L226800, L227000, L227200, L227400, L227600, L227800, L228000, L228200, L228400, L228600, L228800, L229000, L229200, L229400, L229600, L229800, L230000, L230200, L230400, L230600, L230800, L231000, L231200, L231400, L231600, L231800, L232000, L232200, L232400, L232600, L232800, L233000, L233200, L233400, L233600, L233800, L234000, L234200, L234400, L234600, L234800, L235000, L235200, L235400, L235600, L235800, L236000, L236200, L236400, L236600, L236800, L237000, L237200, L237400, L237600, L237800, L238000, L238200, L238400, L238600, L238800, L239000, L239200, L239400, L239600, L239800, L240000, L240200, L240400, L240600, L240800, L241000, L241200, L241400, L241600, L241800, L242000, L242200, L242400, L242600, L242800, L243000, L243200, L243400, L243600, L243800, L244000, L244200, L244400, L244600, L244800, L245000, L245200, L245400, L245600, L245800, L246000, L246200, L246400, L246600, L246800, L247000, L247200, L247400, L247600, L247800, L248000, L248200, L248400, L248600, L248800, L249000, L249200, L249400, L249600, L249800, L250000, L250200, L250400, L250600, L250800, L251000, L251200, L251400, L251600, L251800, L252000, L252200, L252400, L252600, L252800, L253000, L253200, L253400, L253600, L253800, L254000, L254200, L254400, L254600, L254800, L255000, L255200, L255400, L255600, L255800, L256000, L256200, L256400, L256600, L256800, L257000, L257200, L257400, L257600, L257800, L258000, L258200, L258400, L258600, L258800, L259000, L259200, L259400, L259600, L259800, L260000, L260200, L260400, L260600, L260800, L261000, L261200, L261400, L261600, L261800, L262000, L262200, L262400, L262600, L262800, L263000, L263200, L263400, L263600, L263800, L264000, L264200, L264400, L264600, L264800, L265000, L265200, L265400, L265600, L265800, L266000, L266200, L266400, L266600, L266800, L267000, L267200, L267400, L267600, L267800, L268000, L268200, L268400, L268600, L268800, L269000, L269200, L269400, L269600, L269800, L270000, L270200, L270400, L270600, L270800, L271000, L271200, L271400, L271600, L271800, L272000, L272200, L272400, L272600, L272800, L273000, L273200, L273400, L273600, L273800, L274000, L274200, L274400, L274600, L274800, L275000, L275200, L275400, L275600, L275800, L276000,