

## Inside

Lunch Menus	2	Sports	7&8
Among the Neighbors	4	Out at the Lake	6
Chamber Chatter	5	Classifieds	9
City Lites	5	Obituaries	10

## Mr. & Miss Hansford Manor

Page 3

## WEATHER FOR WEEK OF 2-16 THRU 2-22

Day	Hi	Lo	Precip	Day	Hi	Lo	Precip
Thu	50	18	.00	Mon	71	38	.00
Fri	63	21	.00	Tue	76	38	.00
Sat	68	28	.00	Wed	--	46	.00
Sun	64	28	.00	Total Precipitation 2.00			

HANSFORD COUNTY LIBRARY  
0120 MAIN ST.  
SPEARMAN, TX 79081-2064  
EXPIRES 04/15/1995 THANK YOU

## The Hansford County

# Reporter-Statesman

Serving Hansford County Since 1907

Volume 87 • Issue 8

213 Main • Spearman, Texas 79081

Thursday • February 23, 1995

## Nominees for COC 'Citizen of the Year' needed

It is that time of the year again when Spearman residents are being asked to consider a "Citizen of the Year" candidate.

The Spearman Chamber of Commerce is currently receiving nominations for the 1994 Citizen of the Year.

A nominee application is available in today's issue or at the Chamber Office.

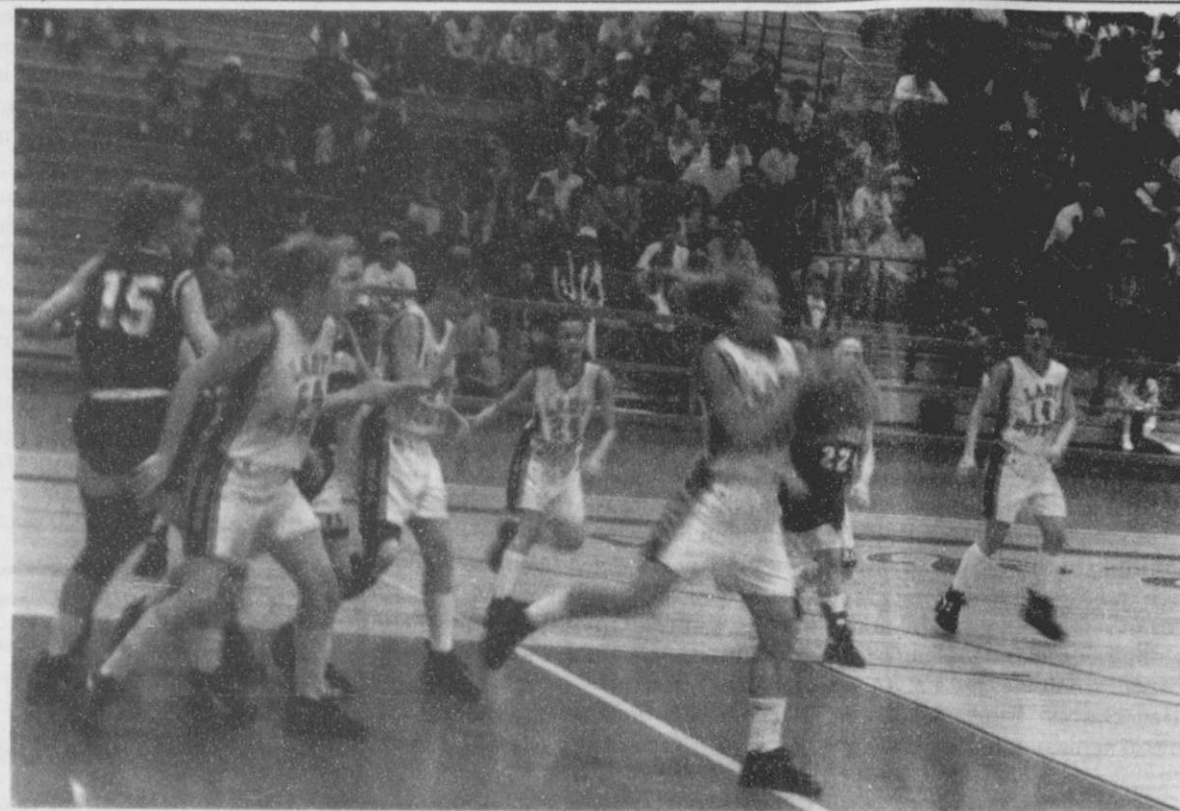
The naming of Spearman's top resident will be made at the annual Chamber of Commerce Banquet on April 1. The banquet will be held at the O'Loughlin Center at 7 p.m.

Deadline for submitting names for the award is set for Wednesday, March 8.

Some of the qualifications to which to base your nomination on are as follows: nominee should be someone who has made outstanding voluntary contributions toward the benefit of others over the past year not directly related to his/her employment. Someone who lives within the Spearman Independent School District. May be of any race, age, or sex and from any or no religious or political affiliation. And keep in mind the contributions to community welfare, leadership ability, and participation in community affairs.

For more information call the Chamber of Commerce, or see the nomination application inside today's issue.

Some of the past winners include:  
See CHAMBER, page 8



**DRIVING HARD** - The Gruver Lady Hounds ended their fantastic season last Tuesday night, February 21 at Amarillo's Tascosa's Activity Center against the Lady Horns of Hart. This Area game went down to the wire, - a close controversial overtime loss, 50-49. Seen here are Julie Meyer, the ball carrier, Amber Murrell, Wendy Rodriguez, Molly McLain, and Cara Hathaway. For details of last Tuesday night's game, see page 7. (Photo by Chad Davis)

## SISD board members hold meeting

The Board of Trustees of the Spearman Independent School District held their regular monthly meeting last Monday, February 13 at 7:00 p.m.

Several topics, including special reports, action items, and discussion items, were discussed at the meeting.

In the meeting, three special reports were given by faculty and other members of the community. The first report, given by Junior High Principal Larry Morris and

Mrs. Pierson, dealt with the agenda and information on the scheduled Junior High Trip to Washington D.C. the week of March 27. Mr. Wayne Devers, representative for Blue Bird Bus, then explained lease-purchase options for busses. Bids for this item will be secured for the Board at the March meeting. The last report, given by Alice Peedy, explained the Comptroller's Property Value.

After the special reports, the Board moved immediately into the

action items. In this topic, the Board approved three items, accepted one, ordered one, appointed one, and rescheduled one for later. The Board approved a request to use school facilities for the youth basketball tournaments. Next the Board approved the destruction of unscheduled records as authorized by the Texas State Library. Then, they ordered the School Trustee Election to be held on May 6, and they also appointed J.L. Brock as School Trustee Election judge and Harry Stumpf as Alternate judge. Also, a point of interest to those who plan on attending next month's meeting, the Board rescheduled the March Board meeting from March 13th to the 9th. After they accepted the gas/diesel bid from Golden Spread, the Board approved the paying the bills in the amount of \$74,018.30.

On the discussion items list, the Board discussed the Panhandle Day that will be coming up in Austin the 28th of March. Government officials and Chamber of Commerce personnel from the Panhandle will go to Austin and visit with Governor...

See SISD, page 8

## Spearman hires new police chief

Kelvin Knauf, Spearman City Manager, is pleased to announce that the City of Spearman has hired Mr. Larry Kenealy as the new Police Chief.

Mr. Kenealy is currently the Police Chief of Mabank, Texas, a small town with a population of 1,750 people, but it does have a 4A high school.

He is married and has two daughters, aged 15 and 5. Mr. Kenealy's wife used to teach in Borger as well.

He will start work around March 1, and it is believed by Knauf that Kenealy will provide strong leadership to the Police Department and will relate well to the community.

## Behney planning to leave Spearman

Efforts to bring another doctor to Hansford County by hospital officials will be stepped up after officials were notified that Spearman's lone doctor will be leaving.

In a recent letter to the Hansford County Hospital District Board of Directors, Dr. Laurence W. Behney announced his intention to discontinue his practice of medicine here on August 15, 1995.

Dr. Behney said that he is leaving to pursue an opportunity with a medical corporation in Bloomington, Indiana, near his alma mater, Indiana University, where he will have the opportunity to teach medical students.

"I have deeply appreciated the last six and one half years in Spearman and the tremendous contribution it has made to me personally and professionally. The community has been warm and welcoming to myself and my family and I am grateful for its support," said Dr. Behney. He added, "the hospital administration and board have always supported me one hundred percent. We will really miss Hansford County and all the wonderful people here."

Hospital District Administrator, Anne Snow, announced Dr. Behney's departure at a recent staff

meeting, "I am sad that Dr. Behney and his family are going to be leaving us. We have come to depend on Dr. Behney for so much, and he has been so dedicated."

The hospital district has already started recruiting for a doctor to replace Dr. Behney, according to Snow. "We are also recruiting for two physician's assistants so that people will have a number of options available to them for basic medical care," she said.

"Recruiting physicians to rural areas has always been difficult," said Snow, "but our recent designation as a health professional shortage area allows us to offer recruitment incentives not available to us in the past. Our designation, which was received last week, could not have come at a better time."

Dr. Behney opened his practice in Spearman in September of 1989, having relocated from Missouri. His wife, Jean Ann, has been a reporter for the Hansford County Reporter-Statesman, and taught sixth, seventh and eighth grade English at Pringle-Morse for one year. They have three children: Monica, age 11, Allison, age 10, and Nick, age 8. Since July, 1994 Dr. Behney has been the only doctor in Hansford County.

## Hospital district gets approval from USDH

Hansford County Hospital District received a long awaited notice from the U.S. Department of Health and Human Services that its request for special designation as a primary medical care Health Professional Shortage Area (HPSA) has been approved.

The HPSA designation was instituted by Congress to enable rural communities who suffer a shortage of physicians to receive special benefits to help recruit and retain primary care doctors.

The designation will allow the hospital district to establish rural health clinics. These rural health clinics receive much higher pay-

ment from Medicare and Medicaid and also provide for doctors to work with physician assistants. "What this means for us is that we can afford to offer highly competitive salaries while giving everyone more options in their choice of caregiver," said Anne Snow, District Administrator.

Another of the benefits to Hansford County is the ability to recruit well-qualified foreign doctors who have completed advanced training in the United States. These doctors must serve in a HPSA in order to remain in the U.S. According to

See HOSPITAL, page 4

## The Debbie Sears story...

# "We have a heart!"

By JEAN ANN BEHNEY

Editor's Note: This is the third and final part of a three part series.

### "We have a heart!"

Beryl was taking his leave of Debbie on April 26 to return to the airport for his flight back to Morse for the week. He had brought a board game for them to play that weekend, but Debbie was too weak to lift her arm and move her playing piece. Just as he was departing, at about 7:40 p.m., he said, "Here they came, carrying these blue papers. We had been told that the blue papers were heart transplant permission forms."

He said the nurse said, "We have a heart. It's yours if you want it." Debbie added, "We said 'Yes! Of course!'" Then the nurse explained the risks of the surgery, death being one of them, but Beryl and Debbie said they did not need to discuss the pros and cons of the transplant.

Beryl recalled, "The staff was so excited. It was almost like a birth!"

At 11 p.m., Debbie was taken to surgery for a preliminary operation on the blood clots in her legs. Beryl sat in a chair in the waiting area, "numbed to everything," as he described it later. "I trusted the doctors one hundred per cent, and was never in any doubt about their abilities," he said. "It was simply out of my hands."

Another patient received a heart transplant that same night, he said, but then some medical personnel came in and took that patient's family to another room. "At first I wondered why they had left me behind, why I wasn't being moved, too," Beryl said. Soon afterwards, he learned that the other patient had died during the surgery. "I hurt for that family," he said, "but it didn't affect the way I felt about our transplant."

A transplant coordinator, who moved back and forth from the surgery to the waiting area, kept Beryl updated during the operation until, at the end of the fourth hour, the news came that her new heart was in place and Debbie was being moved to transplant recovery.

At that point, the new widow of the other transplant patient came over to him. He said, "She said, 'Our news is not as good as yours, but I'm very happy for you.'"

Beryl hardly knew how to respond to such a gracious person. For the transplant coordinator, however, he had an instant question: "When can I see Debbie?"

**Transplant Recovery**  
"When I did see her," he said, "She looked so much better than after the bypass that it was a relief. I was able to relax almost immediately after seeing her in recovery."

And it went on to be a story-book recovery," Beryl said. "It still is!" his wife chimed in as we sat talking in the living room of their home. Brent bopped in and out, taking in some of the conversation but more excited about his upcoming fifth birthday party than the story of his mother's new heart.

The Sears explained that Debbie remained at St. Luke's until May 12, when she was released to a nearby Houston apartment pro-

See SEARS, page 6



## School Lunch Menus

### SPEARMAN SCHOOL LUNCH MENU

Monday, February 27

No School

Tuesday, February 28

No School

Wednesday, March 1

Beef enchiladas with cheese, refried pinto beans, Spanish rice, lettuce-tomato salad, pineapple tidbits, and milk.

Thursday, March 2

Spaghetti and meatballs, whole kernel corn, bread sticks, dill pickle spears, peaches, and milk.

Friday, March 3

Chili dog with cheese, tator tots, pickle relish, diced onions, pork 'n beans, apple cobbler, and milk.

### SISD BREAKFAST

Wednesday - Breakfast pizza, fruit and milk.

Thursday - Cereal, toast, fruit juice and milk.

Friday - Toast, scrambled egg, fruit and milk.

### GRUVER SCHOOL LUNCH and BREAKFAST MENU

No school during the week of February 27 through March 3. All

GISD students will be on Spring Break.

### PRINGLE-MORSE LUNCH MENU

Monday, February 27

Frito pie, cornbread, salad/fruit, and milk.

Tuesday, February 28

Steak fingers, potatoes, green beans, gravy, rolls, and milk.

Wednesday, March 1

Hamburgers, lettuce-etc., french fries, brownie, and milk.

Thursday, March 2

Lasagna, salad, rolls, jello, and milk.

Friday, March 3

Pizza, salad, fruit, ice cream, and milk.

### PMISD BREAKFAST

Monday - Cheese toast, toast, juice and milk.

Tuesday - Cereal, toast, juice and milk.

Wednesday - Sausage, pancakes, juice and milk.

Thursday - Muffins, toast, juice and milk.

Friday - Eggs, toast, juice and milk.

## SISD band students place at contest

Seventeen Spearman band students earned high marks recently after they competed at the Solo and Ensemble Contest at West Texas A&M in Canyon.

The bulk of the outstanding ratings recorded in the competition came from the Spearman Junior High band members. The SJHS Band had 14 students who earned one or two ratings.

Receiving a I-Rating (Superior) were sixth graders - Dustin Beck (trombone), Sara Goodson (flute), Haley Lombard (flute), Junior Moreno (trombone), Kara Pipkin (clarinet), Sally Pittman (cornet), Jenn Schnell (clarinet), Adrienne Simpson (flute), Richard Varmon

(trombone), and Chelsea Villines (trumpet). Representing the seventh grade was Audra Sanders (flute). Brandi Willis (flute) and Krista Boyd (clarinet) received a one in the eighth grade competition.

Krist Wall (typami) received a II-Rating (Excellent) in the seventh grade division.

In the high school category, the Spearman Lynx Band was represented by Amber Morgan, Michael Covington and Brandi Burch.

Morgan received a I-Rating playing the clarinet; while Covington (alto sax) and Burch (clarinet) were awarded a II-Rating.

The contest was conducted Saturday, February 4.

## Gruver band students place at competition

At the UIL Region 1 Solo and ensemble instrumental competition eight Gruver students gained recognition as outstanding player. The competition, held at West Texas A&M University, was Saturday, February 4.

Results of the competition are as follows: Saxophone Quartet, Division 2 - John Duncan, Braquel Ferguson, Jared Johnson, and Kelley Ogilvie; Trumpet Solo Division 2, Rosalio Arreola; Trumpet

Solo Division 1, Kaydee Jordan and Wesley Miser; Baritone Solo Division 1, Hailey Lamb.

By virtue of playing a Grade 1 (most difficult) piece of music and earning a first division at the district level, Hailey Lamb will represent Gruver at the Texas State Solo and Ensemble competition at Austin May 27-29. Congratulations to all participants!

thanks to Hailey Garland for providing outstanding accompaniments for the soloists!

## Spearman schools set for public school week

Texas Public Week, February 27 through March 3, is more than an opportunity for local resident to visit their schools. It is their duty.

Education is the key to the future; it is the link to a successful and productive life. And education is everyone's business. That's why it is important for the parents, families and citizens of Spearman to take time out this week to visit the local schools and to ensure that the community's children are receiving a high quality education.

No other country in the world has emphasized and lifelong learning with greater results than the United States. Education is big business across our nation, through-

out Texas and certainly in Spearman, where the public school system is the number one employer.

In Texas, funding for public schools takes the lion's share of every tax dollar, and, on the local level, school taxes are the biggest chunk taxpayers must pay. Yet many taxpayers in many communities never take the time to make sure their dollars are being spent wisely in educating local kids.

Any time is a good time to visit your local schools, but you've been issued a special invitation over the next five days during Texas Public Schools Week.

Take time this week to check up on your investment.

## Pringle-Morse to take part in TPS week

Students and staff in the Pringle-Morse Consolidated Independent School District will join more than three million children throughout the state in celebrating Texas Public Schools Week, February 27 through March 3, 1995. This year's theme, "Texas Public Schools: A Landscape for Learning, celebrates the array of academic and extracurricular opportunities available to students attending the state's public schools.

Texas Public Schools Week was established more than 40 years ago by the Masonic Lodges of Texas to recognize the state's outstanding public education system. Schools across Texas celebrates Texas Public Schools Week by hosting a full slate of special activities and events designed to attract parents, families, and the community onto school campuses for the week-long festivities.

"The community is encouraged to visit the Pringle-Morse School throughout the school year," Superintendent Beryl Sears said. "Of course, the community is always welcome in our school, but this week

is especially exciting because our students have planned special activities emphasizing Texas Public Schools Week.

The highlight of the week's activities is the Pringle-Morse Band and Choir Concert and Open House Thursday, March 2 at 7:00 p.m.

"Each year, we plan Texas Public Schools Week as a celebration in which everyone in the community may take part," Sears added. "Texas Public Schools Week provides our district an opportunity to showcase the high quality education our students are receiving each day in our local schools. We invite the community to witness the Landscape for Learning available to all students in Pringle-Morse School."

"Texas Public Schools Weeks is a celebration in which everyone - parents, grandparents, families, and the community-at-large can participate," said Sears. "It is the responsibility of the community to ensure that a high quality education is being provided to its students, and Texas Public Schools Week is an optimal time for local residents to check in on their schools."

## Spearman Elementary planning to begin new Head Start and Pre-K

Spearman Elementary School is considering beginning a Head Start/Pre-Kindergarten program for the 1995-96 school year. This is a program for four year old students having an educational need and that meet certain economic and social criteria. The program is designed to allow students get an early start on the educational process.

If you would like for your child to have an opportunity to be part of the program, please complete the survey form and return to the office at Spearman Elementary School before Friday, March 10. If you have any questions, please call Mr. Hargis or Mrs. Bravo at the school any time between 8 a.m. and 3 p.m. Monday through Friday.

La escuela elementaria de Spear-

man esta considerando empezar un programa de ventaja para los niños/ninas, por el año escolar 1995-96. Este es un programa para niños/ninas cuatro años de edad, tambien si tienen una necesidad educativa y tambien ciertos criterios economicos y sociales. Este programa es designado para permitir que los estudiantes tengan una oportunidad del proceso educativo mas temprano en sus vidas. Si gustaria que su niño/nina tenga una oportunidad de ser parte del programa, por favor de venir ala escuela elementaria de Spearman y llene una forma, si necesita ayuda la Senora Bravo estara para asistirle de lunes a viernes de las 8:00 de la mañana alas 3:00 de la tarde.

## Letter to Editor

Letter to the Editor,  
Over the last couple of months I have received several inquiries from Gruver residents concerning telephone solicitations from state agencies asking for donations. These agencies are directly benefit our local fire, EMS, and law enforcement organizations.

Gruver Volunteer Emergency Medical Services and the Gruver Volunteer Fire Department both accept donations and those funds directly benefit our department by providing training and equipment for our volunteer EMS and fire personnel.

Gruver EMS recently used donation funds to replace two worn out pagers that after several repairs still continued to function inadequately, and is in the process of trying to outfit our volunteer personnel with jumpsuit type uniforms. These uniforms will add a professional look to the service and cut down on the cost to personnel incurred due to the loss of personnel clothing that has been torn or stained with blood, grease, etc.

Gruver Fire Department is currently in the process of restoring and outfitting a donated bus. The bus will serve as a rescue vehicle used to carry extrication equipment for vehicle accidents, breathing apparatus, generators, lighting equipment, and smoke exhaust fans. The fire department is also attempting to purchase a new set of air/hydraulic extrication tools to cut down the time it takes to extricate

a patient from a vehicle after a collision.

Our volunteers are caring, dedicated people who take a time out from their work and families to provide medical and fire services to the people of our community with the only compensation being the thought of knowing that they were able to help someone. In the nine months that I have been in Gruver I have been able to observe and be a part of both of these volunteer organizations and feel that the Gruver has one of the best volunteer EMS and fire departments in the area. The ambulance service currently has 11 volunteers and the fire department currently has 22 volunteers.

Nick Jordan  
Gruver Chief of Police  
and EMS Director

## Berry Cleaners

has been operating as a sole proprietorship, but has recently incorporated. The ownership and management, however, have not changed. We look forward to serving you in the future!

## HENSON CHIROPRACTIC

300 S. Ash • Perryton, TX

Call for Appointment • 435-7525

OFFICE HOURS:

Monday, Wednesday & Friday 9:00 to 5:00  
Tuesday & Thursday 9:00 to 11:30

## At The Lyric Theatre...

We will be closed for an indefinite time, but watch for us soon!

Stay tuned for coming attractions!

113 Main • Spearman

## KINDERGARTEN ROUND-UP

Children attending Spearman Kindergarten next school year will be invited to visit school in April. To know who these students are, Spearman Elementary School is starting the 1995-96 Kindergarten list. It is important that next year's students be known now in order that they may be given information on the immunizations and other items necessary for enrollment.

If you have a child, or know of any child, whose birth date was prior to September 1, 1990, and who will be 5 years old on or before September 1, 1995, please complete the form and return it to the school office at the Elementary School, 511 South Townsend. THIS SHOULD BE DONE PRIOR TO FRIDAY, MARCH 10, 1995.

Registration Form for 1995-1996 Kindergarten, Spearman Elementary

(Please Print)

Child's Name (First) (Middle) (Last)

Parents' Name

Phone Number Child's Social Security #

Birthdate Sex Age as of Sept. 1, 1995

THESE DOCUMENTS WILL BE NECESSARY TO ENROLL YOUR CHILD IN SCHOOL!!!

Do you have a birth certificate for your child? If the answer is NO, please apply for one NOW.

Do you have immunizations up to date for your child? If you do not have a social security card and number for your child, please apply for it NOW.

## The Hansford County Reporter-Statesman

Serving all of Hansford County  
Spearman • Gruver • Morse

USPS 509660 • 213 Main, Box 458 • Spearman, Tx. 79081  
(806) 659-3434 • 1-800-395-9482 • FAX (806) 659-3368

Published weekly at 213 Main, Spearman, Texas

Owned & Operated by

Texas Independent Newspapers, Inc.

16607 Blanco Road #100 • San Antonio, Tx. 78232

(210) 492-8907

Second class postage paid at Spearman, Texas 79081

Any erroneous reflection upon the character of any person or firm will be gladly and promptly corrected upon being brought to the attention of the management.

Publisher - Daniel Ramos

Office Manager - Deziree Torres

Staff Writer - Chad Davis

The publisher reserves the right to revise or reject at its option any advertisement which it deems objectionable, either in subject or phraseology, or which it may deem detrimental to its business.

Subscription Rate: Hansford County, \$19.95; out of county, \$24.95 annually.  
Postmaster: Send address changes to Hansford County Reporter-Statesman, Box 458, Spearman, Tx. 79081.

Advertising & Story Deadlines  
Monday, 5:00 p.m.

Spearman ISD is considering a Pre-Kindergarten/Head Start program for the 1995-96 school year. It is important that qualified students be known now in order for Spearman ISD to make a decision on this program.

If you have a child, or know of any child, whose birth date was prior to September 1, 1991, and who will be 4 years old on or before September 1, 1995, please complete the form and return it to the school office at the Elementary School, 511 South Townsend. THIS SHOULD BE DONE PRIOR TO FRIDAY, MARCH 3, 1995.

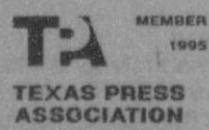
Registration Form for 1995-96 Pre-Kindergarten/Head Start  
Spearman ISD  
Hansford County, Texas

Last Name	First	Middle
Mailing Address Home Address (if different)		
City	State	Zip
# of people in family	Parents Working	Mother Yes No
Annual Household Income	Public Assistance Information	Father Yes No
0-6000	Welfare	HUD
6000-10000	Medicaid	SSI
10000-14000	Medicare	WIC
14000-16000	Food Stamps	Other
Over 16000		

Please fill in the following chart. USE THE FOLLOWING CODES AND INCLUDE EVERYONE IN THE HOUSEHOLD.

A - Anglo	BL - Blind
B - Black	VI - Visually Impaired
IC - Indo Chinese	D - Deaf
AL - American Indian	H - Hearing Impaired
H - Hispanic	ED - Emotionally Disturbed
	MR - Mentally Retarded
	SP - Speech Impaired
	PHY - Physical Handicap
	O - Other

Sex	Birthdate	Race	Home Language	Handicap	Health Needs
1.					
2.					
3.					
4.					
5.					
6.					
7.					
8.					
9.					





# Lifestyles



**CONTEST WINNER** - Josh Stephenson, son of Robert and Kathy Stephenson of Amarillo, was the winner of the Muscular Dystrophy Association 'Kids Are Cute' Contest. The contest was held Saturday, Jan. 28 at the Westgate Mall in Amarillo. Josh was entered in the Boys 14-18 Month Age Division. This event is an annual fund raising event for MDA. There to cheer Josh on were mom and dad, along with grandparents, Ron and Jean Stephenson of Amarillo; and Jimmy and Gail Vanlandingham of Spearman.

## Jesse Davis/Sada Hoskins named Mr. and Miss Hansford Manor

The Hansford Manor in Spearman recently had a little fun as they celebrated Valentine's Day. Residents at the manor, along with staff members voted on this year's Mr. and Miss Hansford Manor.

Taking the top honors were Jessie Davis and Sada Hoskins.

Davis was named Mr. Hansford Manor. He was born on June 22, 1904 in Lipscomb, Texas to Jessie James and Virginia Davis. He grew up in Higgins with his two young brothers.

Jessie married Dorothy White in 1930, in Shattuck, Oklahoma. He has two daughters, Mary Lou Wysong and Delia Kaye Sampson. He also has six grandchildren, and four great grandchildren. He moved to Spearman in 1941 and worked as a pharmacist for over 50 years.

In 1969 Jessie Davis was named Man of the Year by the Spearman Chamber of Commerce.

Hoskins was named Miss Hansford Manor. She was born in May 17, 1898 in Vadaia, Missouri to Mr. and Mrs. C.E. Campbell. She grew up in Seattle, Washington and Texhoma, Oklahoma with her three brothers and one sister.

Sada moved to this part of Texas in 1991, and married Fred Hoskins in 1920. She has four daughters, Frances Kilgore, Joann Lee, Freida Ruth Long, Winifred Hester, and one son, Fred Hoskins, Jr. She has 17 grandchildren, 25 great grandchildren, and two great-great grandchildren.

Hoskins was a schoolteacher in Texhoma and in Spearman.

Receiving first runner-up honors were Ralph Bort (Mr. Hansford Manor) and Fern Pope (Miss Hansford Manor).

Bort was born December 15, 1897 in Bunker Hill, Illinois to Christian

and Emma Bort. He grew up near the small town of Iberia, Missouri.

He attended school at the Iberia Academy, and the College of Business at Springfield, Missouri.

Ralph was married to Beulah Ownbey on June 1, 1930. They have two daughters, Barbara Cluck and Peggy Jones. He has six grandchildren and two great grandchildren.

He came to Spearman in 1926 to work in the bank. He moved to Gruver in 1929 when the First State Bank of Gruver opened. That bank later merged with the bank in Spearman and Ralph was able to get a charter for the Gruver State Bank. He served there first as the executive vice president, then as president, and now is still recognized as the chairman of the board.

Pope was born August 30, 1909 in Haileyville, Oklahoma to Joe and Gaybelle Muir. She grew up and went to school in Haileyville with

her three brothers and sisters.

She married Cleburn Utah Pope and they moved to the Black Community in Ochiltree County, Texas. Later they moved to a home south of Waka, where they farmed.

Fern has one son, Kenneth, and four grandchildren. She was active in the Black Community Home Demonstration Club, The Twentieth Century Club, The Order of the Eastern Star, and The Church of Christ.

Other contestants who finished as runners-up were - Mr. Hansford Manor: Richard Shedeck, Orville Nash, Woodville Jarvis, Roy Blackman, Dutch Jesch, E.W. Dickson, John Bishop, Ernie Newcomb, R.P. Stout, and Lawrence. Miss Hansford Manor: Edith Hoff, Jane Meek, Daisy Rhea, Bertha Brown, Lois Beeson, Sarah Hamilton, Minnie Chesser, Myrle Holt, Jewell Renner, and Catherine Balentine.

## Jarvis honored by the College of the State Bar

The College of the State Bar of Texas recognized 3,517 attorneys as certified members of the College in ceremonies held in Austin during their Annual Awards Luncheon on Saturday, January 28. This distinguished group of attorneys accounts for less than 8 percent of the total number of attorneys in Texas.

The College was created by the Supreme Court of Texas as a means of recognizing members of the State Bar who voluntarily attain an extraordinary number of continuing legal education credits each year. To qualify for membership, attorneys must complete 80 hours of

continuing legal education (CLE) within a consecutive three-year period or 45 hours during the current year. In succeeding years, an attorney must then complete 30 hours of CLE each year to maintain membership in the Bar College.

Guest speaker for the Awards Luncheon was J. Harris Morgan of Greenville. Robert L. Meyers III, of Dallas, Chair of the Board of the College of the State Bar of Texas, presided over the ceremony.

Billy Britt Jarvis, of Spearman, was the only attorney in the Hansford County area to receive recognition at the awards.



**KING AND QUEEN FOR A DAY** - Last Valentine's Day, the Hansford Manor celebrated in a very special way. The personnel and members of the Manor chose Jessie Davis and Sada Hoskins for King and Queen of the festive banquet.

### Birth Announcement

#### JOSEPH COLLIN VANLANDINGHAM

Jeff and Suzy Vanlandingham and big sister, Chelsea, are proud to announce the arrival of Joseph Collin Vanlandingham.

Collin was born February 14 at Nacogdoches, Texas.

His grandparents are Jimmy and Gail Vanlandingham of Spearman and Mr. and Mrs. Fred Ragsdale of Jacksonville, Texas.

**GET THE ALCO Advantage**

**FREE**  
SECOND SET OF PRINTS EVERY TUESDAY!

Receive a second set of 3" prints FREE with any exposure roll of 35mm. disc, 110 or 126 color print film left for developing and printing at our everyday prices! C-41 process only. Excludes larger 4" size prints, photo galaxy or kodalux finishes.

**DAILY:** 9 a.m. to 8 p.m.  
**SUNDAY:** 12 p.m. to 5 p.m.

521 Hwy 207 S. • Spearman, TX

# HANSFORD COUNTY HOSPITAL DISTRICT

**Welcome New Residents!**  
Lucille Cook • Morse  
Virginia Franz, Guymon  
Olive Pendergraft • Spearman  
Pauline Pshigoda • Perryton  
T.D. Sansing • Spearman

## Daisy Rhea named Solid Gold Selection

Our featured resident for the month of February is Daisy Rhea. Daisy was born May 25, 1920, in Westville, Oklahoma, and grew up there with her four brothers and five sisters. Her parents were farmers and ran an Opera House.



DAISY RHEA

Daisy was married for 25 years; her husband is deceased. She has three children, eight grandchildren, and six great grandchildren. Daisy was employed as a bookkeeper for Equity Elevators in Morse, Texas, before she retired.

When we asked Daisy about her fondest memory as a child, she told us about living with her sisters. The happiest time of her life was being married. The thing she misses most is cooking; in fact, she is known by family and friends for her baking talents. Daisy's favorite hobbies were playing basketball and sewing for her children. Daisy tells us that the greatest changes in her life time have been the invention of television and hair cuts for women.

## Hospital changes office hours

To improve customer service, the Business Office at the Hospital is setting up a new schedule on a trial basis. Monday through Friday, the office will be open from 8:00 a.m. to 7:00 p.m. The office is closed Saturday. Please call or come by if you have any questions about your account or an insurance claim. Any of the staff will be happy to help you.



PATSY BARRERA, RHONDA CHRISTIAN, and ELENA VARGAS

## Hospital employees contribute at offices

Patsy Barrera, Business Office Manager, has been employed by the District for thirteen years. She began her career with H.C.H.D. as Ward clerk and was promoted to Insurance Clerk before she started her current position. Patsy is involved in data processing, filing insurance claims, and following up on Medicare and Medicaid. Patsy is married to Xavier and has two daughters, Andrea, a junior at SHS and Tobi, a seventh grader at S.J.H.

Elena Vargas has worked for the District for three and one-half years. Elena handles Medicare billing, electronic claims filing to medicare and Blue Cross. She also does billing for Hansford Manor, Hansford Home Care, a and Hansford Hospice. Elena can help if you have any questions about

insurance claims. Elena has lived in Spearman all her life.

Rhonda Christian, who is head of the Collection Department, has worked for H.C.H.D. for two years. She takes care of all admissions and discharges from the Hospital and Manor and can answer insurance claim questions. Rhonda and her husband Jack live in Gruver and have four children: JD, a senior at GHS, Crystal, a sophomore, Jared in the 7th grade at GJH, and Zackery, a 5th grader at GJH.

Brenda Busch has been employed by H.C.H.D. since June 1994. She works in the office part-time for insurance follow-up and other office procedures. Brenda also works in Dr. Behney's office. Brenda is married to Lonnie Busch and has two children, Steffan who is in the 3rd grade and two-year-old Rachel.

## Sanford recognized as "Employee of Month"

Debra Sanford, the Activity Director at Hansford Manor since June 1993, was voted Employee of the Month for February. Debby is married to Dale Sanford, and they live in Perryton with their son William, a seventh grader at Perryton Jr. High. She enjoys camping, fishing, sewing, crafts and volleyball.

Debra's sense of humor and her close relationship with "her residents" is her best contribution to Hansford County Hospital District. According to Debra, "Activities is the spice of life!" She really enjoys her co-workers and the residents at Hansford Manor.



DEBRA SANFORD

## Notes from Activity Director

In the midst of our daily celebration of life, we look up and realize that February is not only upon us but more than half gone! This is the time for love, hearts, and Valentines. Give yourself a special treat this year by coming to visit at the Manor. Here we have lots of hearts and plenty of love. I am convinced that our residents are the best people in town to visit with. Here you will find a wealth of wonderful and diverse life experiences, and hearts open and ready to share them with you.

This time of year finds our residents looking forward to our Valentine pageant. This is an

annual celebration in which residents and staff vote for their choice for Mister and Miss Hansford Manor. Laquita Evans is our emcee at this event, and does a wonderful job announcing the winners and providing great musical entertainment. This year's pageant was held on Valentine's Day at 2:00. Mr. Hansford Manor is Jesse Davis, and Miss Hansford Manor is Sada Hoskins.

February's Christian Buffet was held February 8 and was sponsored by the United Methodist Church of Gruver.

Our monthly resident birthday party will be February 24

with entertainments by Charles Brillhart and Steve Mathews. Our birthday parties are sponsored each month by the Hansford Hospital Auxiliary. These ladies do a wonderful job and spend many hours contributing to the quality of life here at the Manor. Besides the monthly birthday party, they also sponsor bingo each Thursday afternoon, pass juice, and are always the first in line when the Activity Director hollers for help! We appreciate our Auxiliary very much.

We hope everyone is having a great month and will feel free to stop by and celebrate life with us!

Debra Sanford, Activities Director

**Resident Birthdays!**

Ina Martin • 5th  
Nina Evans • 10th  
Myrle Holt • 11th  
Luda Duncan • 12th  
Mary Virden • 12th  
Viola Whitson • 12th  
Kim Cluck • 15th  
Louise Beebe • 21st  
Roy Blackman • 21st



# Among The Neighbors

by Helen Fisher

A number of relatives and friends gathered at Hansford Cemetery on Friday afternoon when Walter Wallin was laid to rest, beside his parents, Arthur and Minnie Wallin.

He grew up north of Gruver and attended school in Gruver, but has lived in Oklahoma many years. He was brother of the late Oliver Wallin, and has several cousins in Gruver and this area.

Kay Hamilton returned home Friday after three long weeks in Ochiltee General Hospital at Peryton. She was being treated for pneumonia and arthritis. On Tuesday she was recovered enough to meet her husband, Jimmie, at the airport in Amarillo. He returned from Bogato, Columbia and will be here a month.

He is employed by Parker Drilling Company and works in Columbia for one month, then returns home for a month. His present location is at the foot of the spectacular Andes mountains. The strange and fascinating animals that he sees are a stark contrast to those on the Panhandle prairies.

Jimmie's work has taken him to various countries, including Russia and Indonesia.

The Hamilton's have five children, four live in Oklahoma and one daughter, Kim Lozano is a teacher in Spearman school.

A correction in last week's column regarding the death of Earl Kenney, former Spearman resident. He married Joy Blandford in Spearman in 1951 - not Joy Bradford as was stated. The Blandford's were Spearman residents for a number of years.

By the time this issue is being read, the results of the Gruver-Hart girls basket ball for area championship will be history. The game was Tuesday and our best wishes were for Gruver to win.

However, one Spearman couple, being loyal Hansford County citizens, found their loyalties divided. Don and Gloria Knox watched their

granddaughter, Traci Knox of Hart, play on Friday night in Plainview for the bi-district. She scored 12 points, and they expect to watch her again on Tuesday.

Traci is the daughter of David Knox, Spearman Alumni.

Darlene Archer received the "Teacher of the Year" award last week at the Memphis Chamber of Commerce banquet. Darlene, who teaches the advanced students at Memphis, is the wife of Earl Archer. They are in Spearman frequently visiting his parents, Louise and Ernest Archer.

Jean Ann Behney returned Thursday from several days in Indianapolis, Indiana where she had gone to be with her sister and husband who had just lost a baby son. Jean Ann's parents also live in Indianapolis.

Brooks Beck and Brandon Baker spent the week-end in Paris, Texas visiting Barry Beck, a student at Paris Junior College. Monte Beck from Dallas joined them. Barry is studying gemology and related subjects.

Donnie Smith brought joy to Wanda and Don Smith when he visited them Sunday. Donnie, who uses a wheelchair, was driven by his nurse from his home in Two Buttes, Colorado. The weather was pleasant and he enjoyed the drive and being with his parents.

Due to his undergoing extensive and major surgery more than a month ago, following equally serious surgery just the previous month, Donnie and his parents had not shared Christmas. He brought his gifts and they had a belated gift exchange.

The Smiths had had a short visit with Donnie two weeks ago when he was being flown to Dallas for corrective surgery. During his stop-over change in Amarillo, they visited him at the airport.

Dale and Margie Hendricks were

expected home Monday after a two weeks visit with their daughter, Cindy Caldwell, and her family in Ft. Worth. Shawn, their grandson who makes his home with them, welcomes their return as he has been "baching" and is ready for some grandmother cooking.

James Riley returned home Sunday from an Amarillo hospital where he was taken by ambulance after a fall in his home. He was taken as precaution for a broken hip. It was determined that there was no break but painful bruises and muscles. Mrs. Ruby Riley, their daughter Betty and Tommy Davis of Beaver, and daughter Pauline Heinz of Laverne were all in attendance.

Customs, vocabulary, and inventions are changing the mores of American society so fast-your neighbor meanders in a daze. Will some mod reader translate an item from the newspaper-what kind of a vehicle is a "sunk low car" and how does one enjoy a "low rider"?

A most interesting article was in the Friday Amarillo paper, Generation Y section, reporting on the week spent in Washington, D.C. by Joni Hart of Gruver and two other high school girls, one from Pampa and one from White Deer. The account included a picture of the pretty Gruver junior and a detailed interview with her. It is too lengthy to report it all here, but details her meeting with Congressman Mac Thornberry and another congressman from Massachusetts. There were 350 other high school students attending the conference.

In addition to the meetings with the congressman, the students participated in several political simulations, and took several tours around the city.

Jody Robertson underwent major surgery on February 13 at High Plains Baptist hospital in Amarillo. She recovered so quickly that she was able to return home on Thurs-

day. She is pleased with her progress but it is not definite when she can resume her duties at Lowe's Market.

Phyllis Owens spent the last two weeks in Canadian at the bedside of her brother, Ralph Longhofer. He is seriously ill in the hospital there and had surgery in Dallas two months ago. Phyllis expects to return to Canadian shortly.

Donetta and Jimmie Greene had a busy but delightful week-end. Their son, Dean, was here as well as his bride-to-be Brooke Helmy and her mother, Jan Helmsley from Paris, Tennessee. The occasion was the bridal shower given for Brooke as the wedding date is March 18.

Other week-end guests were the Green's daughter Sherry and Kirk Thompson with daughters Emily, Kady, Courtney and Jessica came from Meade, Kansas.

Dean has been living in Paris, Tennessee since last spring as he is employed by a building contractor there.

An item in the Amarillo News this past week reported that a Tulsa Appeals Court has granted a number of new trials in criminal cases for the reason that a Tulsa judge used the phrase that a defendant is "presumed not guilty" rather than the phrase "presumed innocent" in his charge to the jury. Several of the convictions were three years ago and it may be difficult to find witnesses as well as expensive. Three of the convictions involve murder-including a Tulsa man sentenced for shooting a 12 year old girl and then setting her on fire in the street.

Defense lawyers argue that the defendants were "deprived constitutional and statutory rights because jurors were not told they should consider the defendants' presumed innocent instead of presumed not guilty."

One wonders if these defense lawyers and the appeals judge have 12 year old daughters.....

## Spearman Ministerial Alliance financial report

The Spearman Ministerial alliance would like to thank everyone on our community who has supported and participated in the various activities we have sponsored in 1994. To inform you of the way the offerings received by the Alliance were distributed, our Treasurer Arnis Pape has compiled the following financial summary for 1994.

Strike Force Campaign: We began 1994 with a balance of \$608.18.

Our Strike Force Campaign of last Spring was our first activity of the year. The contributions collected each evening during this campaign totaled \$3251.70, all of which was paid directly to Strike Force.

Our expenses for the campaign totaled \$1223.37. These included payment of \$555.47 in building use fees to the S.I.S.D., and \$498.01 to house, feed, and transport the Strike Force members. Our expenses for advertising, postage and

materials came to \$169.89. Additional services and materials were provided free of charge by participating churches and individuals.

Our expenses were covered by business and individual contributions received prior to the campaign (\$850), a fee paid by S.I.S.D. for a Strike Force anti-drug program for the students (\$150), a contribution by the Perryton Ministerial Alliance (\$200), and the sale of unused program materials (\$40). These collections totaled \$1240. This left us with a positive balance on the campaign of \$16.63 and a checkbook balance of \$624.81.

Summer Community Series: After two small miscellaneous expenses (totaling \$49.58) we began the summer with a balance of \$575.23. We sponsored three activities at the O'Loughlin Community Center during the summer. Contributions collected at these services totaled \$707.64. Expenses

included \$87 to World Wide Pictures for a movie rental, and \$650 in rental fees to the O'Loughlin Community Center. This left us with a difference of \$57.64 and a checkbook balance of \$632.87.

Community Thanksgiving Service: A contribution of \$597.68 was collected at the Thanksgiving service. We gave \$600 to the Spearman Welfare Association--a special benevolence fund administered by the County Judge. This left us with a final balance of \$630.55.

Again, thank you for all your support and participation in 1994. We hope that some of these events have touched your life in a special way.

And let us not be weary in well doing: for in due season we shall reap, if we faint not. As we have therefore opportunity. Let us do good unto all men, especially unto them who are of the household of faith. Gal. 6:9-10.

## Sutton enrolled in spring semester at OSU-Okmulgee

Brandon Sutton from Spearman is among 1,824 students enrolled for the spring semester at Oklahoma State University, Okmulgee.

OSU-Okmulgee is the only college in Oklahoma established specifically for technical education. It offers college-level technical/occupational programs of study in 11 major disciplines.

Students graduating from OSU-

Okmulgee can earn the Associate of Applied Science degree and be certified by the college's unique Graduate Performance Guarantee.

Students enrolled for the spring semester represent 73 of Oklahoma's 77 counties, 24 other states and one foreign country.

Sutton is enrolled in diesel and heavy equipment technology.

## Hospital

CONTINUED FROM PAGE 1


Snow, "This provision means that rural areas like ours have access to some of the best doctors in the country, with up-to-date training at the finest medical centers in the world."

A third benefit is the recruiting tool of medical school loan forgiveness for doctors that have national health service corps loans. Doctors may receive loan forgiveness of up to \$120,000 in exchange for making a four year commitment to serve in a rural area. Said Snow, "We are currently working with a young medical resident who is interested in coming to Hansford County, if we can offer this kind of benefit. Most doctors starting out are really weighed down with tremendous debts. This will be a big plug for us."

According to Ms. Snow, "The Hospital districts's goal is to have at least four practitioners in Hansford County within the next six months - two doctors and two physician assistants."

### NEW TRAMPOLINES

Mats & springs  
Resew trampoline mats.  
Make new boat covers.  
Call (806)659-2109  
Harry Stumpf  
301 W. 12th  
Spearman, Texas



### DUKE'S CHIROPRACTIC CENTER


**EVENING HOURS AVAILABLE**

<input type="checkbox"/> Headaches / TMJ	<input type="checkbox"/> Family Health Care
<input type="checkbox"/> Neck Pain / Stiffness	<input type="checkbox"/> Pediatrics
<input type="checkbox"/> Low Back Pain	<input type="checkbox"/> Athletic Injuries
<input type="checkbox"/> Shoulder / Arm Pain	<input type="checkbox"/> Numbness
<input type="checkbox"/> Hip / Leg Pain	<input type="checkbox"/> Gentle Treatment

AUTO ACCIDENTS • WORK INJURIES  
(Most Insurance Accepted)

**New Hours:  
2-6 p.m. Mon. thru Fri.**

**659-5505**



11 W. Kenneth • Spearman, Tx.

C.J.'s Xtra Dimensions  
518 N. Main, Borger, Texas

### CLEARANCE SALE

**Up to 60% off Fall & Winter Merchandise**  
**Sweaters all 1/2 price**  
**New Springwear arriving daily**



### We don't clown around!

We take drycleaning seriously! Caring for your clothes is serious business. That's why quality is in everything we do from thorough drycleaning to flawless finishing. We return your clothes spot free, fresh, and ready to wear. Good drycleaning is no laughing matter.

**PERRYTON CLEANERS & LAUNDRY**  
**1-800-232-5370**

A member of the International Fabricare Institute, the association of professional drycleaners and laundries.

Elwanda Presents...  
*The Boutique*  
310 S. Bliss  
935-4219  
(Across from Post Office)

### Whopping Big Chance Of A Lifetime!

## Draw For EXTRA % Off

### During Our Annual Fall and Winter Clearance Sale

**40% - 50% off**

Whopping Big Savings On Selected Group Merchandise

**60% off**

*Gordon's*  
DRUG

### Bridal Gift Registry

COME BY & LET US HELP YOU SET UP YOUR SPECIAL GIFT TABLE

### Couples Currently Registered

Brad & Tiffany Brown \*Feb. 26  
George & Olivia (Salgado) DeSantiago  
Dean Greene & Brooke Homesly  
David & Traci Tucker  
Robert & Cyndi (Jenkins) Post

\* Date of the Bridal Shower

314 MAIN  
PHONE  
659-2141



SPEARMAN  
TEXAS



# City Lites

by Kelvin Knauf,  
Spearman City Manager

The Texas Municipal League has been busy setting its goals for the Texas Legislature. The three major goals of the TML are:

The League will vigorously oppose any legislation that would erode the Authority of Texas cities to govern their own local affairs; cities must be assured of a predictable and sufficient level of revenue and must resist efforts to reduce municipal revenue; the League will oppose any state mandates that do not give cities the money to implement the mandates.

Also, the Texas Municipal League has taken on several legislative proposals that the City of Spearman created. First, the TML will seek introduction and passage of a law that would let cities add a flat fee of up to \$2.00 on utility bills of city-owned utilities for public improvements and to make payment mandatory. The city council would be allowed to determine how often the fee would be placed on utility bills.

Second, the League will support a law that: (1) requires investor-owned electric and telephone utilities and cooperatives to have a Certificate of Necessity and Necessity from the Public Utility Commissions and a valid local franchise, (2)

lets cities change electric and telephone utility providers when the franchise expires; and (3) requires that the purchase of a telephone or electric franchise be at a fair and reasonable price. This law, if passed, would restore the cities right to change electric or telephone companies when the franchise expires or, let the cities buy the telephone and/or electric franchises. Cities had the right to change electric and telephone companies before the Public Utility Commission was created. We are simply asking that this right be restored.

Finally, the Texas Municipal League will endorse legislation that rebates one percent of the sales of lottery tickets sold in each city to the city government. The Texas Lottery has far exceeded the original projections for generating revenues for the State of Texas. The City of Spearman, and the Texas Municipal League, believe that cities are entitled to part of the proceeds from the state lottery.

The City of Spearman will be actively watching these and other proposed laws in the Texas Legislature. Spearman citizens can help by writing the elected representatives in Austin and encourage them to support these proposals.

## National Law Enforcement Memorial fund honors Martin

The late Robert Martin, who served as sheriff for Hansford County is being honored.

The National Law Enforcement Officers Memorial Fund has recently recognized Sheriff Martin, who died on January 26, 1911 in the line of duty during the month of

January.

The association pays tribute to all lawmen who have died in the line of duty. "We would like to remind everyone of the special man who made the ultimate sacrifice for the safety and well being of others," reported Craig Floyd, chairman of the association.

## Fritch Chamber of Commerce to hold annual banquet

The Fritch Chamber of Commerce will be having their annual Chamber Banquet on Monday, March 6th at 7:00 p.m. at the Champs academy. The guest speaker for the evening will be Bob Izzard, and Lyndy Phillips will provide the entertainment.

Mr. Izzard is a well-known television and radio personality. He has also the author of such books as *Texas Trails of the Red River War*, *McClellan: Baldwin's Battle*, and *Adobe Walls Wars*. There will be a reception at 6:00 p.m. for Mr. Izzard, and he will have his books there for anyone wanting to purchase one or just to visit with him.

Lyndy Phillips is the Associate Pastor and the Music Minister at the First Southern Baptist Church in Fritch. Lyndy did a marvelous job last year at the Banquet with his magician talents and he will again entertain them this year.

The theme of the Banquet will be for St. Patrick's Day, and the Chamber is asking those attending to wear green. The dress for the evening will be casual.

The tickets for the Banquet will be \$10 per person. The tickets can be purchased at the Lake Meredith Museum. Cattle Call from Amarillo will be catering the meal.

The Citizen of the Year and the Museum Supporter of the Year awards will be presenting the evening of the Banquet. The Cham-

ber is still asking for nominations for Citizen of the Year. Please bring your nomination to the Lake Meredith Museum by February 20th. If you should need any further information, please contact Janet Ferguson at the Chamber Office at 857-2458.

## Hunter's keepsake antler basket displayed at meal

By Peggy Winegarner

"Basket weaving is a dying art," according to Peggiann Combs, accomplished basket weaver from Pampa. It is an art she is trying to keep alive as she travels across the U.S. showing and selling baskets of her own design.

A popular design shown locally at the Golden Spread Senior Citizen Center's luncheon program, February 16, was the Hunter's Keepsake Antler Basket. This basket offers a unique way to display those trophies brought home by the hunter in the family. Many Southwest designs were shown along with some made from cross stitch patterns.

## Chamber Chatter

by Cindy Blackman  
Chamber Manager

Once again it is time for our annual Chamber of Commerce Banquet and Meeting. Plans are almost complete and we are now taking nominations for the 1994 Citizen of the Year. Forms can be picked up at the Chamber Office and deadline for entries is Wednesday, March 8, 5:00 p.m. at the Chamber Office, 211 Main St. The Banquet and Meeting is scheduled for April 1, 7:00 p.m. at the O'Loughlin Community Center.

March calendar:  
Wed. March 1 - deadline for Panhandle Day in Austin; Wed. March 8 - Women's Division Executive Board meeting; Thurs. March 9 - Board of Directors meeting, 12:00 noon, Palo Duro Cafe; Fri. March 10 - Panhandle Area Chamber meeting in Amarillo; Tues. March 14 - Tourism Workshop in Plainview; Wed. March 15 - Women's Division; Tues. March 28 - Panhandle Day in Austin; Thurs. March 30 - Meeting for celebration, 5:00 p.m., Chamber Office.

Mrs. Combs displayed many of her baskets and demonstrated the art of baskets weaving by making a heart-shaped wall hanging. This was given away in a drawing won by Janie Kunsleman.

As for care of the baskets you have in your home, Mrs. Combs said to mist them with water once month and use a brush to coat them with mineral oil once every six months. Take care of the surface where the basket will sit until all the oil is absorbed. Paper towels can be laid inside to absorb the oil and protect the contents of the basket.

The ladies at the Golden Spread Senior Citizen Center prepared a delicious lunch for program participants. Chicken Crescents, tossed salad, baby carrots and a variety of desserts completed the meal.

Mrs. Combs will teach basket weaving classes if there is enough interest locally. If you would like to take a class, please call the Extension office for more information (659-4130 or 733-2901).



A DYING ART - Peggiann Combs from Pampa displays some of her many baskets that she weaved herself.

*This day I will marry my friend  
the one I laugh with,  
live for, dream with, Love*

Mr. and Mrs. James Deakin  
request the honour of your presence  
at the marriage of their daughter  
**Julie LeAnne**

to  
**Mr. Steven Otto Babe**  
on Saturday, the fourth of March  
Nineteen hundred and ninety-five  
at two-thirty in the afternoon  
First Baptist Church  
Gruver, Texas

Reception to follow  
Nursery provided

You are invited  
to a Wedding Shower  
honoring  
**Brad & Tiffany  
Brown**  
Sun. Feb. 26, 1995  
2 to 4 p.m.  
First National Bank  
Selections at  
Gordon's & Celebrate

MARY KAY  
FACE-TO-FACE BEAUTY ADVICE™

Leann Gillaspie

Beauty Consultant

659-3889

Thank You  
to the nurses, Dr.  
Behney, and  
ambulance  
personnel for quick  
response when  
James fell. And  
everyone for their  
prayers and  
concerns. May God  
bless everyone.  
With love,  
James and Ruby Riley

Thank you to all  
those attending  
the Gruver  
Community Fish  
Fry for their  
special donations  
given for  
Hansford  
Hospice.

Thank You  
The family of Jerry Mills  
wishes to extend their deep  
heartfelt Thanks for the  
prayers, visits, food, flowers,  
memorials, and support given  
during the illness and passing  
of our Beloved Jerry.  
Thanks to all,  
Sandra, Tomi Day and Kelly Mills

THANKS  
to all who  
contributed to  
the Hansford  
Hospice  
Chili-Stew  
Luncheon.  
Your  
attendance  
and donations  
are greatly  
appreciated.

**Now at**  
It's Our  
**KitchenAid CLOSE-OUT  
EXTRAVAGANZA**

**No-Frost, 25.1 Cu. Ft. SUPERBA™ Refrigerator with Through-the-Door Ice & Water Dispenser Model KRSR25QA**

- Flexible Storage in Refrigerator and Freezer Compartments
- Humidity-Controlled Crispers Keep Fruits and Vegetables Fresh
- WinterChill™ Meat Locker Prolongs Meat Flavor and Quality

**\$1599<sup>95</sup>**

**No-Frost, 19.8 Cu. Ft. SUPERBA™ Refrigerator Model KTRS20KA**

- Crystal-Frost Tempered-Glass Shelves Adjust to Fit Your Needs
- RollerTrac™ Plus System Provides Easy Access to Drawers and Shelves
- ClearVue™ Drawer and Compartment Fronts Make it Easy to Find Foods

**\$869<sup>95</sup>**

**Extra-Large Capacity Automatic Washer with 5 Automatic Cycles Model KAW570B**

- Two-Speed Motor with SURE-SCRUB™ Clothes Mover Agitator
- SURE-CLEAN™ Lint Filter is Completely Self-Cleaning
- TriDura™ Wash Basket Finish Resists Rust, Stains and Scratches
- Available in White or Almond

**\$479<sup>95</sup>**

**Extra-Large Capacity Electric Dryer with 4 Automatic Cycles Model KEYE670B**

- Electronic Custom Dry Control/4 Temp. Selections
- Wide-Opening Hamper Door for Easy Loading/Unloading
- Top-Mounted Lint Screen is Easy to Access
- Also Available in Gas (KGYE670B) at \$50 Premium

**\$429<sup>95</sup>**

**4-Cycle Dishwasher Model KUDI230B**

- Seamless, Built-in Look Matches Cabinet Drawer Height
- QUIET SCRUB™ Insulates Entire Dishwasher from Operating Noises
- SURE-CLEAN™ Water Heating System Assures Proper Water Temperature for Cleaning Dishes

**\$519<sup>95</sup>**

Hurry before we close the books on these special deals!







# Sports

## Lady Hounds end season to Hart, 50-49



**KEEPING YOUR GROUND** - With the score 33-30, in favor of Hart, the Lady Horns' 6'3" post, Traci Knox, towers over Gruver's Molly McLain (34) and Cara Hathaway (54), looking for the rebound. Gruver was about to score 9 straight points for a 39-33 lead. (Photo by Chad Davis)

Walt Whitman wrote in *Leaves of Grass*:

"When I peruse the conquer'd fame of heroes and the victories of mighty generals, I do not envy the generals,

Nor the President in his Presidency, nor the rich in his great house,

But when I hear of the brotherhood of lovers, how it was with them,

How together through life, through dangers, odium, unchanging, long and long,

Through youth and through middle and old age, how unfaltering, how affectionate and faithful they were,

Then I am pensive - I hastily walk away filled with the bitterest envy."

For the Lady Hounds of 1994-95, the season has come to a climactic close. It is the second year in a row that the Gruver ladies have suffered a disappointing and controversial one-point loss in the state playoffs. The Lady Hounds were defeated by the Hart Lady Horns in overtime 50-49 this past Tuesday night February 21 at the Tascosa High School Activity Center in Amarillo. Gruver had the last shot, then the rebound, then another attempted shot, and an apparent foul at the very end that was not called. The buzzer went off, and the game was over.

The Lady Hounds can remember the words of Whitman, though. Their lives have just begun - they are only in their teenage years, and fame and fortune and power are lost for the moment, and it seems to be a great loss. But the friendships and the love that exist among the team members are to be cherished for their lifetimes, and are to be envied. That is where the true value is to be placed. And the Gruver Lady Hounds are still number one in the hearts and minds of all of Gruver.

Gruver fell behind at the start of this game 4-0, and both teams were jittery. The Lady Hounds finally scored after 3:06 had elapsed in the game, on a pair of Julie Meyer free throws. Then Amber Murrell hit from under the basket, and it was tied 4-4.

Meyer had an outstanding game, with 20 points. For her it was the last time she will have worn the red and black and white of the Lady Hounds. Along with Julie, playmakers Wendy Rodriguez and Tisha Ralston made their farewells in this game. All three seniors will graduate this year.

Hart led through much of the

## Hounds to play Panthers in bi-district match-up

The Gruver Greyhounds will face the Panhandle Panthers in a bi-district match-up tonight, Thursday, February 23, at Borger's Tex Hanna Fieldhouse, at 7:30 p.m. Gruver is the number two seed from District 1-AA with a final regular season record of 16-16; and Panhandle (23-8) is the District 2-AA champion. Gruver will be the underdog in their bi-district game. However, one of the Panthers' 8 losses this season was a big upset - the Hounds beat them in the Lake Meredith Classic at Fritch this past December 3, 45-38.

If Gruver should be the upset winner of their bi-district game, then the Hounds would face the

winner in the game between Sundown (20-10) and Abernathy (18-14) in their area playoff contest on February 27 or 28, in Amarillo or Canyon.

This is the first appearance by the Gruver Greyhounds in the state playoffs since 1992. The Hounds made three straight regional tournament appearances from 1989-1991 at Levelland, and were beaten in their area playoff game in 1992. This year, the Hounds match up well with their potential playoff opponents, and they have a legitimate shot at winning some playoff games, and making it to the Region I Class AA Tournament at Abilene. Springlake-Earth (24-4) is the heavy regional favorites.

## Lady Hounds take bi-district easily, 54-28

The Gruver Lady Hounds coasted in the second half of their bi-district ball game with the Wellington Lady Rockets this past Thursday evening at the Tex Hanna Fieldhouse in Borger, crushing the opponents by a 54-28 margin. It was their awesome defense that really stifled the Wellington team.

The Lady Hounds, though, did not play well in the first half, and led only 18-10 at the intermission. Many of the Lady Hounds shots were put up and came out, as though the basket had a lid on it. In the second quarter, the Gruver ladies were only 3-14 shooting, while Wellington was an awful 1-8. Gruver's defense held Wellington to only 2 points in the second quarter.

Kaysha Cluck had put the Lady Hounds up for good in this game early on, with a jumper to give them a 4-2 lead. Prior to that, the first 3:09 of the game had passed with no scoring, before Cluck nailed two free throws to put Gruver up 2-0. Wellington tied it 2-2, before Cluck's jumper put Gruver up to stay. They led 10-2, and threatened to blow away Wellington, but the Lady Rockets came back to trail only 10-8 at the first quarter break.

In the second quarter, Gruver quickly jumped up 16-8, before the Lady Rockets hit with 6:03 left in the half to make it 16-10. Then another long dry spell. An unbelievable 5:48 passed with no scoring before Cluck hit at the end of the half, with 15 seconds left, to put

Gruver up 18-10.

This was a game of turnovers (Gruver forced Wellington into 32 turnovers, and had only 16 themselves. Gruver had 21 steals for the game, an awesome number.) and not good shooting in the first half. But the defense was there, and it was outstanding for the Gruver ladies. They held Wellington to only 10 points in the first half. In addition, the Gruver ladies hit their free throws, with 21-30 (70%).

"Molly set the tone for the second half with that three pointer," said Coach Steve Myatt after the game. "Defense was the headline of the game. Our full court pressure hurt them. I guess we just had playoff jitters at the start, but we really played well in the second half."

With the score 18-10, Molly McLain hit a clutch trey to open the second half, and all of a sudden the Lady Hounds shots were falling in. They had an awesome 18-1 run to lead 34-11 late in the third quarter. Cluck started it with her jumper to end the first half, then McLain's trey, then in succession a Weslyn Maupin free throw, Cluck, Julie Meyer free throws, McLain, Cluck, McLain free throws, and Maupin for the 34-11 lead. It was fantastic!

Maupin was devastating on defense. She blocked five shots while she was in the game, including one that she slammed and pinned against the backboard. Psychologi-

See GRUVER, page 8

### Basketball . . .

**Lady Hounds JV (13-11, 1-4) vs. West Texas Lady Coman. JV**  
Tuesday 2-7-95 at VG  
W-T 6 15 31 43  
Gru 5 16 21 31  
Gru - Amy Gillispie - 9, Autumn Bateman - 7, Mary Dawn Henson - 6, Jill Odom - 3, Joni Hart - 2, Kathy Slough - 2, Crystal Christian - 1, Robbi Mathews - 1.

**Lady Hounds (22-6, 4-1) vs. West Lady Comanches**  
Tuesday 2-7-95 at VG  
W-T 9 15 23 39  
Gru 17 36 53 64  
3-Pointer - Julie Meyer.  
Gru - Julie Meyer - 19, Kaysha Cluck - 15, Tisha Ralston - 9, Molly McLain - 8, Weslyn Maupin - 4, Tara Shapley - 4, Amber Murrell - 2, Wendy Rodriguez - 2, Kiki Carthel - 1.

**Hounds JV (16-11, 5-2) vs. West Texas Comanches JV**  
Tuesday 2-7-95 at AC  
W-T 7 17 27 34  
Gru 15 33 49 64  
3-Pointers - Daniel Bort, Blake Ferguson, Tucker Henson, Tye Womble.

Gru - Bailey Barkley - 22, Daniel Bort - 9, Tye Womble - 8, Tucker Henson - 7, Juan Arreola - 6, Scott Jarvis - 4, Blake Ferguson - 3, Buster McLain - 3, Heath Tolleson - 2.

first half. The game was tied at 6-6, 12-12, and at 16-16, but the Lady Hounds trailed 23-20 at halftime.

The third quarter was the Lady Hounds big quarter. They outscored the Lady Horns 19-10. With two minutes left, Gruver trailed 33-30, but Cara Hathaway hit, and then with 1:07 left in the quarter, Meyer hit from under the basket to give Gruver a 34-33 lead, their first lead since 6-4. She followed that with a driving layup, and Tara Shapley canned a long trey at the buzzer, and Gruver had opened up a big 39-33 lead at the end of the third quarter, the largest lead of the night for either team. The Lady Hounds had scored 9 straight points.

Wendy Rodriguez had canned two clutch treys in the third quarter to keep the Lady Hounds within striking distance.

The Lady Hounds lost this game at the start of the fourth quarter. Two clutch, successive treys, built around a jumper by Hathaway, brought the Lady Horns back. Kim Grossman and Sandra Lopez had hit the three pointers, and they were part of a 10-2 run that gave Hart the lead back, 43-41.

The lead jockeyed back and forth, but Gruver had the last shot at the very end of regulation, a shot by Meyer that was blocked. It was 47-

47.

In overtime, Lopez, who scored 17 points, connected to give Hart the 49-47 lead, but Molly McLain answered with 1:57 left on a nice jumper, and we were tied again 49-49. With only 14 seconds left, Hart's star player, number 00, Shea Bennett, who scored 18 points, hit the first of two free throws, but missed the second. The ball was rebounded by the Lady Hounds and calmly brought down court, and McLain dribbled in for what would have been the game winning shot. It was banked off glass with a couple of seconds left, but just a little too hard, and it came off the front of the rim. It was rebounded by freshman Weslyn Maupin, who attempted to shoot, and Meyer picked up the ball and attempted to put up the shot,

but she appeared to have been slapped on the arm. The foul was not called. Time expired. What would have been, what could have been...


"I am very proud of the girls," said Lady Hounds coach Steve Myatt after the game. "It was a great effort against a senior-led team and you can't ask for a better effort. It was a great ball game. We worked really hard this year, under a lot of adversity, and I'm sorry it had to end this way. I told the girls they had nothing to be ashamed of."

The Gruver Lady Hounds struggled this year to get to the state tournament in Austin, and to take home the state championship trophy. That was their goal, their destination of the moment. It was

See LADY HOUNDS, page 8

**ELLISON BROTHERS INSULATION**

P.O. Box 212  
Canadian, TX 79014



Rockwool & Fiberglass Blow-In  
**FREE ESTIMATES**

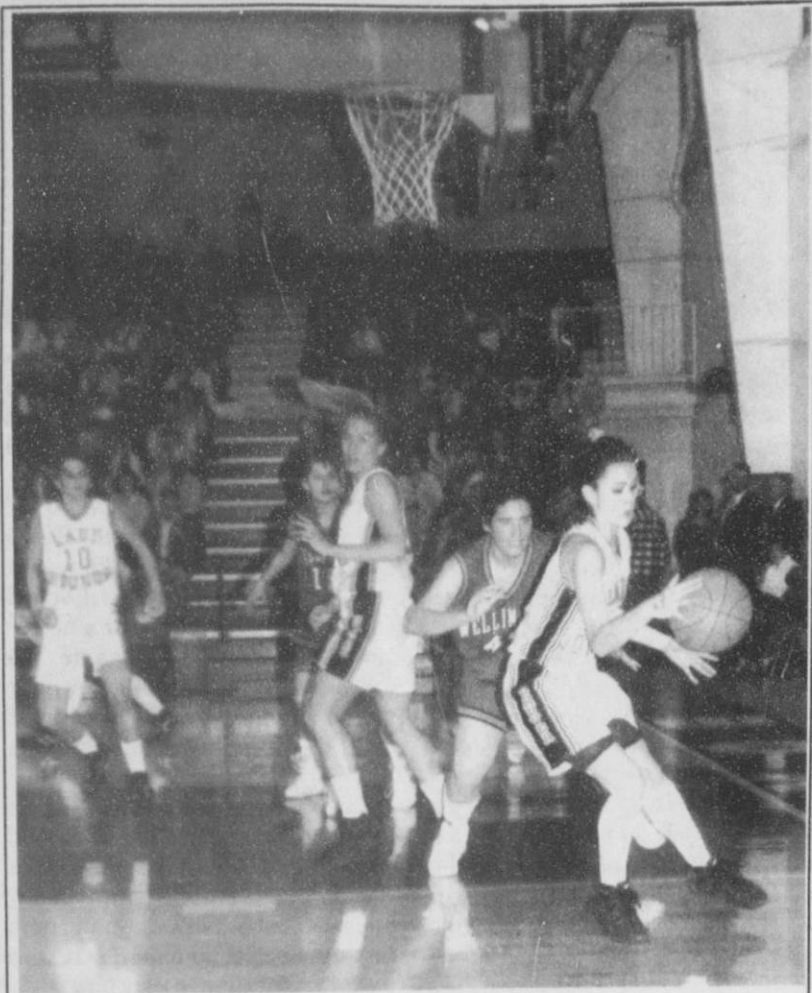
Keith Ellison 323-5629      Allen Ellison 323-5737



**EFFECTIVE FEBRUARY 19-25, 1995**  
Gruver, Spearman, Perryton, & Booker Only

<p><b>SAVE ON COCA-COLA</b> 6 pk. - 12 oz. cans <b>\$2<sup>39</sup></b></p> <p style="text-align: center;">OUR POP SPECIAL!</p>	<p><b>ALLSUP'S BREAKFAST BURRITOS</b> FOR ONLY <b>99¢</b></p> <p>HAM, EGG &amp; CHEESE OR SAUSAGE, EGG &amp; CHEESE</p>
<p><b>NICE 'N SOFT BATH TISSUE</b> 4 ROLL PKG. <b>99¢</b></p> 	<p><b>SAVE ON ALLSUP'S CHIMICHANGA</b> FOR ONLY <b>99¢</b></p> <p>Beef, Cheese &amp; Green Chili</p>
<p><b>SAVE ON SHURFINE FLOUR</b> 5 LB. BAG <b>89¢</b></p> 	<p><b>SHURFINE SALTINE CRACKERS</b> 1 LB. BOX <b>79¢</b></p> 
<p><b>SAVE ON SHURFINE FANCY SWEET PEAS</b> 17 OZ. CAN <b>39¢</b></p> 	<p><b>SAVE ON GRANDMA'S COOKIES</b> REGULAR 49¢ <b>2 FOR 89¢</b></p> <p>ALLSUP'S SAVINGS!</p>
<p><b>ALLSUP'S 1.5 LB. LOAF SANDWICH BREAD</b> 69¢ EACH OR <b>2 \$1 FOR 1</b></p> 	<p><b>ALLSUP'S MONEY ORDERS</b> UP TO \$299.00. FOR ONLY 29¢</p>
<p><b>Shurfine Sugar</b> 5 lb. bag <b>\$1<sup>59</sup></b></p>	<p><b>Fitti Diapers</b> 20M &amp; 30 L <b>\$4<sup>99</sup></b></p>
<p><b>Shurfine Bleach</b> 1 gal. <b>99¢</b></p>	<p><b>Shurfine Dog Food</b> 20 lb. bag <b>\$4<sup>99</sup></b></p>





**HOLDING ON** - In the first playoff game for the Lady Hounds, bi-district, Wendy Rodriguez handled the ball well in the 54-28 victory over the Wellington Lady Rockets. This game was a push-over for the Lady Hounds, and it launched them to the Area playoff game against Hart. (Photo by Chad Davis)

## Basketball...

**Hounds (12-16, 4-3) vs. West Texas Comanches**  
 Tuesday 2-7-95 at VG  
 W-T 6 24 40 59  
 Gru 13 19 26 43  
 3-Pointers - Josh Mayhew - 2, Brant Armes, Jace Dawson.  
 Gru - Jace Dawson - 11, Josh Mayhew - 10, Brant Armes - 6, Sammy Renteria - 6, Eric Wright - 4, Travis Ferguson - 2, Aaron Frick - 2, Wylee Maupin - 2.  
**Lady Hounds 7th Black (14-2) vs. Spearman Lynxettes 7th A**  
 Monday 2-6-95 at Gruver VG

Spm 0 8 10 15  
 Gru 12 18 23 30  
 Gru - Chelsie Hicks - 8, Annie Mayhew - 8, Janae Watley - 6, Becky Cassady - 4, Lindy Tolleson - 3, Amanda Schneider - 1.  
 Spm - Brooke Lesly - 6, Connie Smith - 4, Halee Beasley - 3, Kristi Wall - 2.

**Lady Hounds 7th White (5-3) vs. Spearman Lynxettes 7th B**  
 Monday 2-6-95 at Gruver AC  
 Spm 2 6 9 13  
 Gru 4 14 18 28  
 Spm - Marcy Vilaboes - 4, Nacy Flores - 3, Cindy Goodman - 2, Brandie Conley - 2, Marcella Macias - 2.  
 Gru - Cayla Simon - 12, Essie Bravo - 10, Amanda Griffin - 2, Lacie Osbourne - 2, Brenda Soto - 2.

**Lady Hounds 8th Black (7-9) vs. Spearman Lynxettes A**  
 Monday 2-6-95 at Gruver VG  
 Gru 7 16 26 32  
 Spm 9 17 32 47  
 3-Pointers - Erika Salmans.  
 Gru - Erika Salmans - 15, Kelley Ogilvie - 7, Missy Johnson - 4, Sabrina Cookenour - 2, Kadie Grotegut - 2, Holly McCloy - 2.  
 Spm - Kristin Beedy - 18, Grace Davis - 16, Gale Mayfield - 4, Kristi Carbajal - 3, Betsy Holt - 2, Leslie Holton - 2, Lisa Swink - 2.

**Lady Hounds 8th White (4-6) vs. Spearman Lynxettes 8th B**  
 Monday 2-6-95 at Gruver AC  
 Spm 6 14 20 29  
 Gru 4 6 16 20

Spm - Krista Boyd - 8, Randi Burch - 6, Dyneli Vera - 6, Rachel Burch - 5, Mandy Vernon - 2.  
 Gru - Jennifer Lopez - 10, Bobbi Christian - 8, Audrey Beasley - 2.

**Lady Hounds 9th (7-11) vs. Spearman Lynx 9th**  
 Monday 2-6-95 at Gruver VG  
 Gru 5 15 16 21 27  
 Spm 3 10 14 21 23  
 3-Pointers - Virginia Barrera, Brandy Morris.  
 Gru - Amber Roberts - 9, Virginia Barrera - 7, Laura Garcia - 5, Brandy Morris - 4, Steffany Simon - 2.

Spm - Kasey Dunning - 10, Jocelyn Edwards - 6, Ashly Brown - 2, Leah Harbour - 1, Andee McGaha - 1.

## Gruver

CONTINUED FROM PAGE 7

cally, this was not good for the Lady Rockets...

Wellington's vaunted post, Marnie Spillman, scored six points early, then was held to two free throws over the final three quarters. Again, it was defense that won this game.

Give the Lady Hounds credit! They won their bi-district game by 26 points, and some Gruver fans were almost ho-hum about it. This was an outstanding victory, and the fans should be very proud of the Gruver Lady Hounds.

**Lady Hounds (24-6) vs. Wellington Lady Rockets**  
 Bi-District Thursday 2-16-95 at Borger Tex Hanna Fieldhouse  
 Wel 8 10 15 28  
 Gru 10 18 38 54  
 3-Pointer - Molly McLain.

Gru - Molly McLain - 15, Kaysha Cluck - 14, Weslyn Maupin - 7, Julie Meyer - 6, Amber Murrell - 6, Tisha Ralston - 2, Wendy Rodriguez - 2, Kiki Carthel - 1, Cara Hathaway - 1.

## Lady Hounds

CONTINUED FROM PAGE 7

the voyage they were on. It was not to be. But remember again the words of Whitman.

"One thought ever at the fore - That in the Divine Ship, the World, breasting Time and Space, All peoples of the globe together sail, sail the same voyage, and are bound to the same destination."

Hart will now play the Ozona Lady Lions this Friday at 7:30 p.m. at the regional tournament in Abilene. In the first game at 6 p.m., Abernathy will play Albany.

The Lady Hounds ended the sea-

son with a sparkling record of 24-7. They are to be commended for a fantastic season!

**Lady Hounds (24-7) vs. Hart Area Playoff Game** Tuesday 2-21-95 at Tascosa High School  
 Har 10 23 33 47 50  
 Gru 8 20 39 47 49  
 3-Pointers - Wendy Rodriguez - 2, Tara Shapley.

Gru - Julie Meyer - 20, Wendy Rodriguez - 8, Cara Hathaway - 6, Molly McLain - 6, Tara Shapley - 3, Kaysha Cluck - 2, Weslyn Maupin - 2, Amber Murrell - 2.

## Chamber

CONTINUED FROM PAGE 1

Verna Lee Shirley (1993), Helen Melton (1992), Charles Brillhart (1991), John Scott (1990), Pat Dear (1989), Nina Hendricks (1988), Mike Cudd (1987), Jane Kunselman (1986), Judy Nelson (1985), Marsha Murphy (1984), Jackie Pearson (1983), Gene Cudd (1982), Junior Lusby (1981), Orvil Brummett (1980), Jim McLain (1979), C. Ralph Brodgett (1978), Francis Loftin (1977), Dee Jackson (1976), J.L.

Brock (1975), L.L. Anthony (1974), Charlene Bulls (1973), Dean Weese (1972), Harry Stumpf (1971), Mrs. Frank Davis and Bruce Sheets (1970), Mrs. E.A. Greever and Jesse Davis (1969), J.B. Cooke (1967), Sam Watson (1965), John R. Colard, Jr. (1963), Frank Massad (1961), Oscar Donnell (1958), B.J. Copeland (1957), and Mrs. R.B. Archer, Sr. (1956).

## SISD

CONTINUED FROM PAGE 1

nor Bush, Lieutenant Governor Bullock and legislators from the Panhandle concerning issues and their effects on this region of the state. The next item was a report given by Willard Murrey, Superintendent of Spearman Schools, on the research was continuing on automation of the High School Library. The High School Library Committee is evaluating the Harrington Union Library System and a stand alone system by Follett. The Board is still expecting a recommendation on that issue. Also, the Board discussed the technology hardware that has been ordered. Threshold is preparing to begin the network at the High School. The system should be in operation within the month. Murrey went on to report later on the activities to address facility updates. Bids for the track and auditorium work should be ready for

presentation at the March meeting. Bids for painting projects and the chair lift at the Junior High School are also being secured.

After closing the meeting with the consideration of personnel matters, the Board soon reconvened into open session for three more items of business. On this, the Board first of all approved extended sick leave for Marsha Pipkin. They then employed Jackie Graham for the remainder of the 1994-95 school year. Finally, the Board approved a one year contract extension for Principals Atwood, Morris, and Hargis. After that item, the meeting came to an end.

The Spearman Independent School District Board of Trustees meet the third Monday of each month, unless otherwise noted. As with all meetings, they are open to the public.

## NOTICE

The Spearman Housing Authority is now taking applications for residents. Eligible applicants will be placed on a community-wide waiting list. Families with the following incomes are especially needed for occupancy of the Housing Authority:

FAMILY SIZE	FAMILY INCOME	
	From	To
1 Person	\$11,800	\$18,850
2 Person	\$13,500	\$21,500
3 Person	\$15,150	\$24,250
4 Person	\$16,850	\$26,950
5 Person	\$18,200	\$29,100
6 Person	\$19,500	\$31,250
7 Person	\$20,900	\$33,450
8 Person	\$22,250	\$35,600

Rent is based on family income minus allowances for children and elderly occupants. For more information, contact Gary Ellsworth at Spearman City Hall or call 659-2524 from 8:00 a.m. until 5:00 p.m. Mondays through Fridays. The Spearman Housing Authority does not discriminate based on race, religion, sex, age, disability, national origin or other classification protected by federal and state laws.

## Keep Energy Savings From Going Out The Window.



Texas-New Mexico Power Company furnishes clean, reliable power, plus tips to help you save energy. ★ For instance, make sure any cracks around windows are caulked. Drapes, curtains and shutters also can help. ★ For more information about keeping energy savings from going out the window, call or visit your local TNP office for our free fact sheet, Straight Talk About Window Treatments.



# "Truck Of Texas" Twice!



## Dodge Ram Voted Best "Truck Of Texas" Two Years In A Row.

Last year, the Texas Auto Writers Association named the Dodge Ram pickup best "Truck of Texas." But last year is history. Meet the 1995 best "Truck of Texas." The new Dodge Ram Club Cab.

Like the standard cab model that won last year, this Ram serves up the considerable power of a Magnum engine. Plus the safety of a standard driver's airbag and available 4-wheel anti-lock brakes.\* And like all Rams, its big-rig looks are

found on no other pickup in Texas.

But the new Ram Club Cab offers even more. Like more room for those things you'd rather haul in the cab than in the bed. Like people. Or your four-legged friends.

So for the best "Truck of Texas" two years running, you don't even have to think twice. Because the Texas Auto Writers Association already has. Dodge Ram. And the new Dodge Ram Club Cab.

## Texas Truck Stop. The New Dodge.



See The Friendly Dodge Dealer Near You.

\*Always wear your seat belt for a fully effective airbag.

## GILLASPIE AUTO & TRUCK CENTER

CHEVROLET, OLDS, BUICK, PONTIAC, CHRYSLER, PLYMOUTH, DODGE

Highway 207 South • P.O. Box 430 • Spearman, Texas

(806)659-2541



**"IT'S FOR YOU"...**  
The Classifieds Have Something For Everyone!

The Home Sealer...  
The Car Buyer...  
The Do-it-Yourselfer...  
The Mother's Helper...  
The Job Seeker...  
The Bargain Reaper...

When you want results, turn to The Classifieds.

# The Hansford County Reporter-Statesman

Serving Hansford County Since 1907

Telephone: 1-800-395-9482 or (806)659-3434

**REAL ESTATE**

**AA Realty**

Allen Alford - Broker - 659-3034  
Julie Martin - Sales - 659-2425  
Larry Trospen - Sales - 659-3491

1017 Townsend - 3/2/1 - New lower price!  
1103 S. Townsend - 3/1 3/4, 1, good loc.  
510 S. Endicott - 3-2, 2 story  
417 S. Dressen - 3, 1 1/4, 1, garden, pati.

NEW LISTING  
613 Kenneth - 5 BR, 2 story, rock house  
1107 S. Barkley - 3, 1 1/2, 2, BELOW APPRAISAL!  
Good Hanger & Storage - Old Airport  
1017 Wilmetth Dr. - 5/2/2, two story w/bsmt  
412 Roland - 3/1/1, make offer

FOR QUALITY & SERVICE CALL US TODAY  
We Need Your Listing.

**REAL ESTATE**

**FOR SALE:** Affordable priced 3-bedroom, 1 3/4 bath. Secluded master bedroom, oak hardwood floor, fireplace, beautiful landscaping and much more. Can all be yours at 417 Dressen. Call today for appointment. Real Estate & Retail 435-4623. S8, RTN

**FOR SALE OR RENT:** 2-story brick house, 3 bedroom, 2 baths, double garage. Located a short distance from town. Call James Martin at 501-589-3135. S8, 2tc

**FOR RENT:** Trailer park spaces for rent. Located on S.E. 7th and Loop road, Spearman. \$30 per month. Call 435-5080. S23, 1tc/RTN.

**FOR RENT:** 2 bedroom house. 659-3260. S60, RTN

**FOR RENT:** One bedroom newly decorated, furnished apartments, utilities paid. Call 659-3260. S47, RTN

**GREAT HOUSE IN GREAT LOCATION FOR SALE**

2100 sq. ft., basement, double car garage, 4 bedrooms, 3 baths, big den, fireplace, living room, ceiling fans, central heat and air. 702 Gibner. Call 659-3838, 659-3970, or 733-5555. S42, RTN

**FARM PRODUCTS**

**FOR SALE:** 1 Kraus one-way 781; one 510 International Wheat Drill. Call 659-491. S8, 2tp

**FOR SALE:** 1 IH500 Air Planter, 6 row 40", 1 corn drum, 2 milo drums, monitor. 733-2164 after 6 p.m. S8, 2tc

**200 ACRES FARMLAND:** 6 miles southwest of Spearman, irrigation well, no mineral rights. Seller reserves right to approve buyer. Bob Hardy Realty, 659-3440, Robert Hardy, Broker. S59, RTN

**HOUSE FOR SALE: REDUCED!!!!** 5 lots fenced, 2 car carport, shed, hot tub, fish pond, 3 bedroom, 3 bath, handicap accessible, large LR, bar. \$29,000. 605 S. Archer, 659-2235. S55, RTN

**Three Bedroom Brick,** two baths, double garage, lots of trees, 1.8 acres, horse barn, 26 by 36 shop. 205 E. 10th, Gruver, Texas. Call J.W. Whitaker at 733-2433. Also 1983 Coachman Motor-home. S30, 1tp/RTN.

**AUTOMOBILES**

**FOR SALE:** 1990 Ford Tempo GL, 4 door, AC, cruise, power locks, rear defrost, cassette, tilt wheel, nearly new tires on front, local one-owner car. Very good condition. \$3,300.00 659-2870. S8, 2p

**FOR SALE:** 1984 Ford Truck with 20' van and lift. V-8 diesel engine. Excellent condition. For more information call 659-3432 or 659-2912. S52, RTN

**FOR SALE:** 1994 Ford Mustang Convertible. 3,600 miles, forest green with white top. 913-852-4742. S7, 2tc

**FOR SALE:** 90 model Cougar LS. Excellent condition. Call 435-2092 after 5 p.m. S5, 4tc

**FOR SALE BY OWNER - 3 bedroom, 1 1/2 bath,** storm door and windows, fireplace, ceiling fans, 14 closets, 1 car garage, 1728 sq. ft. \$35,000 - 605 Cluck, Gruver. Call 733-2015. S28, 3tp RTN

**FOR SALE:** 1984 Ford Truck with 20' van and lift. V-8 diesel engine. Excellent condition. For more information call 659-3432 or 659-2912. S52, RTN

**FOR SALE OR RENT:** Old City Hall building. 221 Sanders. Call 659-2518. S3, RTN

**FOR SALE:** Attractive 3 bedroom, 1 3/4 bath, brick home, single garage, storage building, RV port, C.H. & C.A., ceiling fans, storm windows, fenced yard and extra lot 64 by 100 ft. Call (806)659-3353. S2, 3tp

**FOR SALE:** 1117 Townsend, great location for your family. Affordably priced. 3 bed, 1 3/4 bath, with game room & basement. Call Real Estate & Rental TODAY for appointment at 435-4623. S5, RTN

**FOR SALE:** 1984 Ford Truck with 20' van and lift. V-8 diesel engine. Excellent condition. For more information call 659-3432 or 659-2912. S52, RTN

**FOR SALE:** 1994 Ford Mustang Convertible. 3,600 miles, forest green with white top. 913-852-4742. S7, 2tc

**FOR SALE:** 90 model Cougar LS. Excellent condition. Call 435-2092 after 5 p.m. S5, 4tc

**JOB OPPORTUNITIES**

**OWN YOUR OWN APPAREL OR SHOE STORE; CHOOSE:** Jean/sportswear, bridal, lingerie, westernwear, ladies, men's, large sizes, infant/preteen, petite, dancewear/aerobic, maternity, or accessories store. Over 2000 name brands. \$25,900 to \$37,900: inventory, training, fixtures, grand opening, etc. Can open 15 days. Mr. Loughlin (612) 888-6555. S1, 3tp

**SERVICES**

**PITS CLEANED:** Dragline or Loader. Call LeeRoy Mitchell, 733-2384 or 733-2175. S47, 1tc/RTN.

**NEED TEMPORARY SECRETARIAL HELP?** Call Mrs. Donnie Arnold at 659-3354. Also will do typing, light bookkeeping, and statements in my home. S2, 5tc

**Free Bible Correspondence Course.** Write P.O. Box 604, Perryton, TX 79070. S46, RTN

**CALL YOUR LOCAL Used Cow Dealer** for days a week stock removal. 659-3544 or 1-800-692-4043. Serving Cattlemen for the past 20 years. G51/RTN.

**WEIGHT WATCHERS** is now meeting every Thursday in Gruver. For more information, please call 1-800-359-3131.

**PUBLIC NOTICE**

**LEGAL NOTICE**

Hansford County Commissioners' Court will receive sealed bids until 4:00 p.m., Friday, February 24, 1995 on the sale of a 1982 GMC 1/2 ton pickup and a 1983 Ford Heavy 1/2 ton super cab. Bids will be opened on Monday, February 27, 1995 at the regular Commissioner's Court meeting, beginning at 10:00 a.m. Pickups may be seen at Hansford County Court-house. The Court reserves the right to accept or reject any or all bids.

Jim D. Brown  
Hansford County Judge  
S6, 3tc

**PUBLIC NOTICE**

**NOTICE TO BIDDERS**

The Spearman Independent School District will receive bids until 1:00 p.m. on March 31, 1995, in the Business Office located at 403 East 11th Avenue to refurbish Auditorium seats and the painting of the Auditorium. The Spearman Independent School District reserves the right to accept or reject any or all bids or parts of bids; and to waive any formalities and technicalities. Detailed instructions and specifications on the above may be secured by writing Spearman I.S.D., 403 East 11th Avenue, Spearman, Texas 79081 or calling (806)659-2116. The envelope must be marked "AUDITORIUM SEATS BID". S7, 2tc

**HELP WANTED**

**ADJUNCT FACULTY POSITIONS** available. Morning, afternoon, evening instruction schedules open, on or off-campus. All fields of study available. Requires M.A./M.S. with 18 graduate hours in teaching field. Send transcripts, three letters of recommendation and letter of application to Continuing Education, Oklahoma Panhandle State University, P.O. Box 430, Goodwell, Oklahoma 73939. EO/AA Employer. S6, 3tc

**HELP WANTED:** Experienced auto mechanic with our tools. Contact Greg at Irwin Auto in Perryton, TX., (806)435-3663. S6, 3tc

**HELP WANTED:** Full-time experienced clerk to train as assistant manager. Must have some knowledge in bookkeeping. Apply in person only at Taylor Food Mart, 17 Collard, Spearman, TX. S5, 4tp

**PETS**

**FREE PUPPIES:** Adorable puppies to give away. Mom is medium size. These puppies have been played with and will be great with children. Call 659-3348. S8, 1tp

**PUBLIC NOTICE**

**LEGAL NOTICE**

In accordance with Section 116, Local Government Code of Texas Revised Civil Statutes, the Commissioner's Court of Hansford County will select an official depository for both County funds and certain School funds handled by the County for the biennium 1995-1997 at their regular meeting on February 27, 1995 at 10:00 a.m. in the Deliberation Room in the Hansford County Court-house, Spearman, Texas.

Jim D. Brown  
Hansford County Judge  
S6, 3tc

**PUBLIC NOTICE**

**REQUEST FOR BIDS ON TEXAS HIGHWAY CONSTRUCTION**

Sealed proposals for 35.834 miles of slurry seal on at various locations on US 287, IH 40, FM 277, FM 2124, FM 2654 and FM 3214, covered by CPM 42-1-25, CPM 275-1-124, CPM 798-4-15, CPM 1999-1-8, CPM 2612-1-8 and CPM 2900-1-9 in Potter, Hemphill and Hansford County, will be received at the Texas Department of Transportation, Austin, until 1:00 p.m., March 14, 1995, and then publicly opened and read. Plans and specifications, including minimum wage rates as provided by Law, are available for inspection at the office of Kenneth Petr, Area Engineer, Borger, Texas, and at the Texas Department of Transportation, Austin, Texas. Bidding proposals are to be requested from the Construction and Maintenance Division 125 E. 11th St. Austin, Texas 78701. Plans are available through commercial printers in Austin, Texas, at the expense of the bidder. The Texas Department of Transportation hereby notifies all bidders that it will insure that bidders will not be discriminated against on the ground of race, color, sex or national origin, in having full opportunity to submit bids in response to this invitation, and in consideration for an award. Usual rights reserved. S8, 2tc

**FOR RENT**

**FOR RENT:** Trailer park spaces for rent. Located on S.E. 7th and Loop road, Spearman. \$30 per month. Call 435-5080. S23, 1tc/RTN.

**FOR RENT:** 2 bedroom house. 659-3260. S60, RTN

**FOR RENT:** One bedroom newly decorated, furnished apartments, utilities paid. Call 659-3260. S47, RTN

**PUBLIC NOTICE**

The Spearman Independent School District will accept sealed bids to purchase four (4) 1995 model, diesel powered, type "C" school buses. The bids shall be in the Spearman School District Business Office at 403 East 11th Avenue, Spearman, Texas 79081, no later than February 28, 1995 at 1:00 p.m. CDST. Bid envelopes must be marked in lower left hand corner (School Bus Bid). Specifications may be obtained from Mr. Allen Alford, Business Manager at the School Administration Office. The bids will be presented to the school board at their regular meeting on March 9, 1995, at 7:00 p.m. CDST. Spearman Independent School District reserves the right to accept or reject any or all bids in the best interest of the Spearman Independent School District. S8, 1tc

**PUBLIC NOTICE**

**NOTICE TO BIDDERS**

Spearman Independent School District is accepting bids for a Plate Lift for the Middle School, and installation. Spearman I.S.D. will receive bids until 1:00 p.m. on March 1, 1995. The Spearman Independent School District reserves the right to accept or reject any or all bids or parts of bids; and to waive any formalities and technicalities. Detailed instructions and specifications on the above may be secured by writing Spearman I.S.D., 403 East 11th Avenue, Spearman, Texas 79081 or calling (806)659-2116. The envelope must be marked "PLATE LIFT BID". S7, 2tc

**PUBLIC NOTICE**

**LEGAL NOTICE**

First State Bank, Spearman, Texas, is accepting sealed bids for a 1988 Ford F-150 pickup, as is. All bids must be received on or before Friday, February 24, 1995. Bids will be accepted at 1 N.E. Court, or mailed to P.O. Box 247, Spearman, Texas 79081. First State Bank reserves the right to accept or reject any or all bids. The property hereinabove described may be inspected during normal business hours at the address mentioned above. For any further information, please contact Worth Whitworth at (806)659-5565. S7, 2tc

**FOR SALE**

**FOR SALE:** Completely rebuilt 605 International and HD 800 Moline Irrigation engines. Call 733-5263 or 659-5036 7:30 a.m. to 5:30 p.m., Monday thru Friday, 7:30 a.m. to 12 p.m. Saturdays. S4, RTN

**FOR SALE:** Radio Shack in Borger has the RCA 18" Digital Satellite System installation available in the Hansford County area. Call 274-7077, 425 W 10th.

**FOR SALE:** Pianos - Preowned Baldwin, Wurlitzer, Kimball, Samick & Others - from \$28 a month - see locally - Call 1-800-658-1724 (Piano Department) - Brier & Hale Music - Liberal, KS. S7, 3tc

**FOR SALE:** Oak reproduction desk, Grandfather Clock (Walnut) (Buluva), round coffee table with smoke glass, 2 end stands, 2 brass table lamps, 1 like new Harvest Gold electric range. Also looking for housework and ironing, \$5/hr. References. Call 659-3657. S8, 2tp

**FOR SALE:** Good used bunk beds - \$50. Like new bedding - includes sheets, blankets & bedspreads - \$30. Call 659-2404. S8, 1tp

**FOR SALE:** Quilting machine for sale. 216 Main, Spearman, TX 79081. Ph. 806-659-3999. S7, 3tc

**PUBLIC NOTICE**

**LEGAL NOTICE**

Information is being sought relating to a potential class action lawsuit which may be filed on behalf of persons who received pacemaker leads manufactured by Intermedics, Electronics, and Medtronic because of problems with the leads. If you have received one of these pacemaker leads and are interested in consulting and/or participating in this class action, contact: Whittington, Phiffer & Vacek\*\*, 2600 S. Gessner, Suite 600, Houston, TX 77063, 713-789-8850, call collect. No fee for preliminary consultations. \*Not Certified by the Texas Board of Legal Specialization, \*\*Board Certified Personal Injury Trial Law-Texas Board of Legal Specialization.

**GM TRUCK FIRES,** Bronco II, Jeep, ATV, Minivan & pickup rollovers. Serious injuries & death. Free consultation 1-800-883-9858 David P. Willis, Houston, Texas \*\*\*\* Board Certified Personal Injury Trial Lawyer.

**BREAST IMPLANTS,** FREE registration forms and free consultation. Call 1-800-833-9121, women and post-implant children. Carl Waldman, Board Certified Personal Injury Trial Lawyer, Texas since 1978.

**NORPLANT BIRTH CONTROL implants.** Complications from those silicone implants? Call for free legal consultation, 1-800-833-9121. Carl Waldman, Board Certified Personal Injury Trial Lawyer 1957.

**FOR INFORMATION ON** natural pure antibiotic send \$3.00 SASE to Cabanis 0077, P.O. Box 1241, Greenville, TX 75403-1241.

**20/20 WITHOUT GLASSES!** Safe, rapid, non-surgical, permanent restoration in 6-8 weeks. Airline pilot developed, doctor approved. Free information by mail: 1-800-422-7320, 406-961-5570, FAX 406-961-5577. Satisfaction guaranteed.

**RAPID WEIGHT LOSS,** "only \$17.95". Burns fat + calories + stops hunger. Lose 3-5 pounds/week. Money back guarantee. Call for information: United Pharmaceutical 1-800-733-3288, (C.O.D.'s accepted).

**BUCHANAN'S ANTIQUE FLEA Market -** Feb. 28-29, Dallas Fair Park Tower Building, Sat & Sun, 9AM-5PM. \*Buy \*Sell \*Show \*Trade. Antiques, collectables, jewelry, furniture, glassware, toys, advertising, 405-330-1330.

**SUNQUEST WOLFFTANNING beds.** New commercial-home tanning units from \$199.00. Lampe-Lotions-Accesories. Payments low as \$20.00. Call today. Free new color catalog, 1-800-462-9197.

**HUNTER'S PARADISE,** 47.44 acres near Rocksprings, thick oak and cedar cover, dry creek bed. Deer, turkey, hogs, \$1,500 d.p., \$250/month (11% - 15yr.). 1-800-876-9720.

**CLEANING FRANCHISE, BUILD A family business.** Let the ServiceMaster family help your family start your own residential or commercial cleaning franchise for as little as \$5,955 down. Fortune service 500 company offering unique training and marketing support. Financing available. Call for free brochure: 1-800-230-2360.

**PUBLIC NOTICE**

**LEGAL NOTICE**

Attention Driver Teams, \$15,000 in bonus, paid monthly, quarterly & yearly, plus top mileage pay, 401(K) plan, \$500 sign-on bonus. Other paid benefits: "vacation" health & life "dead head" motel/layover "loading & unloading. Covenant Transport, solos and teams call 1-800-441-4594/915-852-3357, students and driving school grads, call 1-800-338-6428.

**TRUCK DRIVERS DRIVE to own!** \$50 down or company drivers. Here's our new program. 78¢ per mile. Tractor ownership 30-42 months! Average 10,000+ miles/month! New Apple Lines. 1-800-843-8308/1-800-843-3384 Madison, SD. Mon-Fri, 8-5PM Central.

**DRIVERS & MOVER HELPERS!** \$555,555,555 Make the money you deserve! Call 1-800-456-8406 and find out why Bekins Van Lines is your "better partner".

**DRIVERS 3TOP opportunities!** North American Van Lines has owner operator openings in relocation services, high value products and blanketwrap divisions. Tuition-free training for inexperienced drivers, outstanding tractor purchase plan available. Ask about our RSD performance compensation - Earn up to 6% over already top compensation! 1-800-348-2147, Dept. A-36.

**DRIVER - FIND THE respect** on the road with Burlington! Get home often. Starting pay up to 30¢/mile plus bonuses, assigned trucks & great benefits. Call anytime - Burlington Motor Carriers: 1-800-JOIN-BMC. EOE.

**BECOME A PARALEGAL.** Join one of America's fastest growing professions. Lawyer instructed home study. Specialty programs offered. P.C.D.L., Atlanta, Georgia. Free catalogue. 1-800-362-7070, Dept. LLB722.

**CASH NOW!** 1 billion available. We buy mortgages, trust deeds, annuities, loans, sold property? Receiving payments? Why wait. We have cash. Any size. Nationwide. Free evaluation. Call 1-800-504-CASH (2274).

**CASH NOW!** WE buy mortgages, trust deeds, land contracts. Sold property? Receiving payments? Get cash you need now! Best Prices! National Mortgage Buyers, Inc. 1-800-222-5199.

**FREE DEBT CONSOLIDATION.** Immediate relief! Too many debts? Overdue bills? Reduce monthly payments 30%-50%. Eliminate interest. Stop collection callers. Restore credit. NCCS, nonprofit. 1-800-955-0412.

**FREE ENTRY \$1,000 learning contest,** all grades, subjects. All entrants receive cash prize. Rules: send stamped, self-addressed envelope to: Learning, P.O. Box 962, Bemidji, MN 56601.

**ADOPTION - SPECIAL LIFE** awaits newborn - endless love, financial security, education, waterfront home, garden, music, art, sports, pets, close family. Laura - Alan 1-800-407-2560. Allowed expenses paid. It's illegal to be paid for anything beyond legal/medical expenses.

**ADOPTION: YOU HAVE choices!** I'm an adoption consultant who offers you open/closed adoptions. Choose/meet family, ongoing contact optional. We want to help you now! Tammy 1-800-675-3407. It's illegal to be paid for anything beyond legal/medical expenses.

**TexSCAN**  
Statewide Classified Advertising Network  
More than 300 Texas newspapers for \$250. Call this newspaper for details.

*In Real Estate, We Know Which Way The Wind Is Blowing.*

Listings. Interest rates. Taxes.  
Don't get blown away by the real estate market. Let us give you some direction.

Discover The Power Of Number 1!

**Century 21**

Golden Spread Realty  
200 S. Main - Perryton, TX  
806-435-5444

Equal Housing Opportunity. All real estate advertised here is owned and operated by a minority-owned and operated business.

**WANT TO BUY**

**WANT TO BUY:** Ranch oak furniture and a pneumatic tire changer. 1-800-658-6683. S7, 3tc

**WANT TO PURCHASE:** Mineral rights and other oil/gas interests. Send details to: P.O. Box 13557, Denver, CO 80201. S60, 20tc

**PUBLIC NOTICE**

**NOTICE OF PUBLIC HEARING**

The Texas Department of Transportation (TxDOT) is initiating planning studies to identify possible freeway routes between Lubbock, beginning at the terminus point of Interstate Highway 27, and terminating at points along Interstate Highway 10 between Fort Stockton and Junction. The study will also identify possible freeway routes located north of Interstate Highway 40 to the Texas state line commencing at Interstate Highway 27 in Amarillo. TxDOT will conduct a public meeting on March 27, 1995 starting at 7:00 p.m. with public input beginning at 7:30 p.m., Amarillo City Commission Chambers, 3rd floor of City Hall at 509 E. 7th, Amarillo, for the purpose of discussing the route study and soliciting input from citizens and other concerned groups. TxDOT will conduct an open house at the same location from 4:00 p.m. to 7:00 p.m.

All interested citizens are invited to attend the open house to provide input. TxDOT will have personnel available to answer questions and provide assistance. Persons interested in attending the hearing who have special communication or accommodation needs are encouraged to contact the District Public Information Office at (806)356-3256. Requests should be made no later than two days prior to the public hearing. TxDOT will make every reasonable effort to accommodate these needs. S8 & S11

**MISCELLANEOUS**

Discouraged with diet aids of the past? Look forward to a more satisfying future with FORMULA THREE...all-natural and amazing. See Jim Evans - 659-2141 or 659-3379. S60, RTN?

**SERVICES**

**J & M Service Center 24-Hour Service** 415 Collard, Spearman 79081. 659-5519 or 659-3352. Tires, flats, oil & lube, wash, brakes, batteries and minor repairs. Now selling gas. S27, 1tc/RTN.

**CLIFCO WINDSHIELD REPAIR SERVICE:** Don't replace your damaged windshields. Mobile service: 435-0126. Home phone: 435-9149. Ask for Clifford Cox. S43, RTN



# Obituaries



## MARY BELLE MORRIS WISINGER

DUMAS - Mary Belle Morris Wisinger, 85, died February 20, 1995.

Services will be at 2:00 p.m., Thursday, February 23 in The First Street Church of Christ in Dumas, with the Mr. Ben Mereness, pastor of First Street Church of Christ. Burial will be in Dumas Cemetery.

Mary Belle, daughter of John L. and Nettie Belle Vance Mercer was born August 3, 1909, in Washington Township, Republic County, Kansas. The family moved to Aline, Oklahoma when she was six. She was baptized in the Eagle Chief Creek near Aline in 1920. Mary Belle attended college at Northwestern State Teachers College in Alva, Oklahoma and taught school at Blue Mound Country school for two years.

She married Joseph R. Morris in Perryton, Texas, December 25, 1928. They farmed and ranched southwest of Gruver for 38 years.

Mary Belle taught school in Sunray a few years. She worked as an Abstractor for Abstract and Title in Dumas for 10 years. She was Rose Lady in the Dumas Memorial Hospital and a charter member of Malin de Viento - Daughter of the Revolution. Mary Belle was a faithful member of The First Street Church of Christ in Dumas.

She later married James S. Wisinger, in Dumas, November 27, 1970.

Survivors include: her husband James, a son, Vance B. Morris, Southwest of Gruver and a daughter, Francis M. Morris Duncan of Gruver, seven grandchildren: V.B. Morris, Len Morris and Joe Morris, Southwest of Gruver; Sherry Morris Crowley of Sunray; Renee Morris Boyd of Amarillo; Scott E. Duncan and Steve E. Duncan both of Houston; ten great-grandchildren and three great-grandchildren; Two faster daughters, Hazel Stumpf of Spearman and Hellen Boyd of Gruver; also, step daughters, Peggy Wisinger Carter from San Angelo and Betty Wisinger Ramsey from Belton; three stepsons, Jewell V. Wisinger, Amarillo, Gary Wisinger of Trinidad, Colorado and James D. Wisinger of Mexia, Texas; fourteen step grandchildren and six step great grandchildren.

She is also survived by two brothers, Laurence Mercer of Logan, Oklahoma and Homer Mercer, Denver, Colorado and a sister, Ruth Mercer Manser, Tulsa, Oklahoma. She was preceded in death by her sister Lois Mercer Morris of Sunray, and a brother Chester Mercer from Glendale, AZ.

The family suggest memorials be made to The First Street Church of Christ Memorial Fund, Dumas, Texas or to the Heart Fund.

## BARBARA F. WEBB

PANHANDLE - Barbra F. Webb, 47, died Monday, February 13, 1995.

Services will be at 3 p.m. Thursday in The First Baptist Church with the Reverend and Jim Perkins, pastor, officiating. Burial will be in Panhandle Cemetery by Minton/Chatwell Funeral Directors.

Mrs. Webb was born in Odessa and had been a Panhandle resident since 1982. She graduated from high school in Bloomfield, N.M., and received a degree from Eastern New Mexico University at Portales, N.M. She retired from the Texas Department of Human Services, for which she had worked in Amarillo, Borger and Pampa. She was member of First Baptist Church.

Survivors include her husband, O'Dell Webb; a son, Jason Lee O'Dell Webb of the home; three daughters, Sherri Lynn Oceletto of Panhandle and Stacy Renee Webb and

Shayla Elizabeth Webb, both of the home; her farther and stepmother, W.D. and Rosalia Tharp of Farmington, N.M.; her mother, Lorena M. Tharp of Panhandle; and two brothers, Don Tharp and Elbert Tharp, both of Farmington.

## E. EARL KENNEY

AMARILLO - E. Earl Kenney, 65, of Amarillo, died Saturday, February 11, 1995.

Services will be at 4 p.m. Tuesday in Memorial Park Funeral Home Chapel of Memories, 6969 E. Interstate 40, with Rev. Jay Graham, assistant pastor at Paramount Terrace Christian Church, officiating. Entombment will be in Memorial Park East Mausoleum.

Mr. Kenney was born in Spearman. He moved to Amarillo in 1985 from Aurora, Ill. He married E. Joy Blandford in 1951 at Spearman. He was a trainmaster for Burlington Northern Railroad, retiring in 1984.

Mr. Kenney was a member of Hurst Masonic Lodge No. 1387, Veterans of Foreign Wars No. 475, Elks Lodge No. 923, Scottish Rite of Dallas and Moslah Shrine Temple of Fort Worth. He was Baptist and an Army veteran.

Survivors include his wife; a son, Tim Kenney of Amarillo; two brothers, Lonnie Kenney of Ada, Okla., and Bryon Kenney of Texline; two sisters, Helen Kenney of Albuquerque, N.M., and Maxine Johnston of San Diego, Calif.; and a granddaughter.

The family requests memorials be sent to Cal Farley's Boys Ranch.

## WALTER OLEN WALLIN

GRUVER - Walter Olen Wallin, 73, a former Gruver resident, died Wednesday, Feb. 15, in Chickasha, Okla.

Graveside services will be at 2 p.m. Friday in Hansford Cemetery. Arrangements are by Boxwell Brothers Funeral Home of Spearman.

Mr. Wallin was born in Gruver. He was a veteran, serving in the Navy during World War II. A daughter, Pamela Wallin, preceded him in death.

Survivors include three daughters, Glenna Walder of Lindsay, Okla., Terri Wallin of Guymon, Okla., and Michelle Wallin of Dallas; a brother, Meri Wallin of Grapevine; three sisters, Ollie Buchanan of Pampa, Harley Jean Stanfield of Guymon and Bett Shurm-Anderson of Calgary, Alberta, Canada; three grandchildren; and a great-grandchildren.

## ROBIN GIBLIN

MORSE - Robin Giblin, 78, died Monday, Feb. 20.

Services will be at 2 p.m. Thursday in First Baptist Church with the Rev. Mike Martin, pastor, officiating. Burial will be in Lieb Cemetery at Morse by Minton/Chatwell Funeral Directors of Borger.

Mr. Giblin was born in Hansford County and had been a Morse resident for 65 years. He married Leota Harbour in 1938 at Amarillo. He was a retired farmer. He was a member and deacon of First Baptist Church, a past member of the Morse Lions Club, a past member of the Morse school board, a member of the Eagle Scouts and a 50-year Masonic Lodge member.

A son, Jack Giblin, died in 1986. Survivors include his wife; two daughters, Peggy Dodds of Irving and Robbie Reid of Morse; a sister, Ruby Womble of Dalhart; eight grandchildren; and eight great-grandchildren.

## OSGOOD MONUMENT CO.

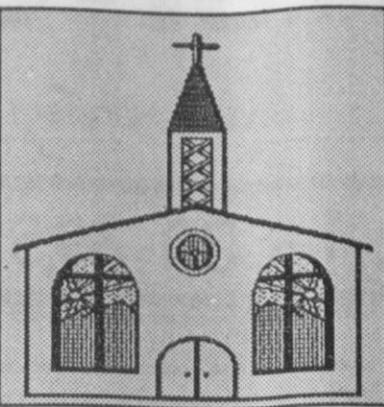
Amarillo, Texas  
Dealers of Rock of Ages Granite, as well as all colored granites, marble and bronze memorials.

Represented by  
**Boxwell Bros.**  
Funeral Home

519 S. Evans  
659-3802

Let us replenish the seed of faith through...

# REGULAR CHURCH ATTENDANCE, DAILY BIBLE READING & PRAYER



**Curtis' Hot Oilers**  
806-659-3432  
"Taking Service to Perfection"  
806-659-2912 P.O. Box 714  
800-821-6714 Spearman, TX 79081

**Palo Duro Supper Club**  
22 S. Archer  
659-2232

**C.O.'S SUPPLY CO.**  
Plumbing & Tire Sales & Service  
421 W. Kenneth • Spearman  
659-3781 or 659-3555

**Bartlett's Ace Hardware**  
105 W. Broadway  
733-2404

**GILLASPIE**  
AUTO & TRUCK CENTER, INC.  
519 Plains Shopping Center  
Spearman, TX 79081  
1-800-999-1506 (806)659-5016

**REINNE IRRIGATION SYSTEMS**  
Paschel Irrigation  
(806)659-5228 • 1-800-659-6580  
Corner Airport Rd. & Hwy 15 West  
Spearman, Tx.

**Gruver Cablevision**  
Quality Family Entertainment  
with "the Disney Channel"  
308 Main • 733-5295

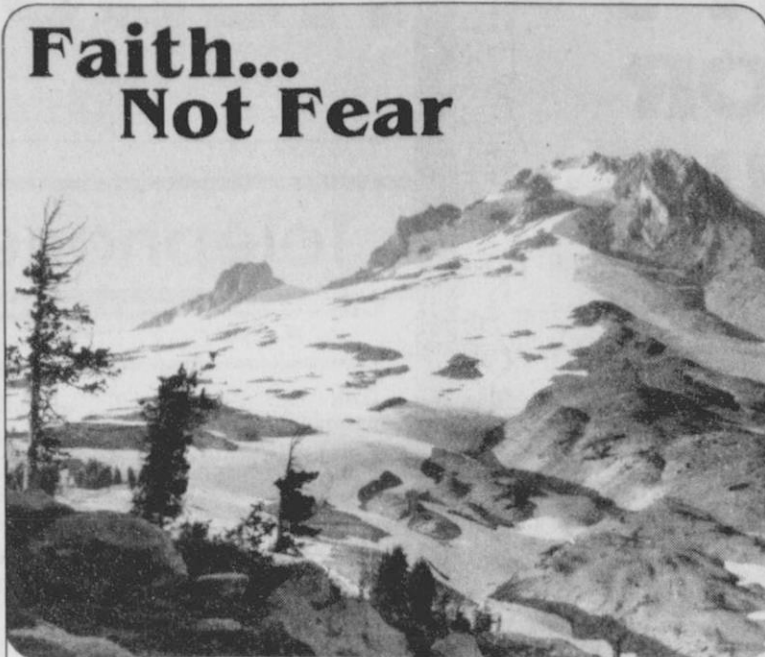
**Morse Implement Company**  
"Join us in church this week"

**Boxwell Bros. Funeral Home**

**THE HANSFORD COUNTY REPORTER-STATESMAN**  
Serving The Communities Of Spearman, Gruver & Morse  
213 Main • 659-3434  
1-800-395-9482

**CORONADO HOSPITAL**  
Pampa, Texas  
(806)665-3721

Compliments of  
**G&G FOODLINER**  
516 Main • Gruver  
733-2471



**Faith... Not Fear**  
It has been observed that "those who are afraid of the deep will not catch many fishes." Grammar notwithstanding, this axiom holds a solemn truth.  
We must deny impossibility. Faith, like love, is to some degree blind if it is true. It need not qualify. Faith, like God, simply is. Faith laughs at fear and forges ahead, encouraged by the certainty that the will of God prevails. We read in Luke 1:37, "With God, nothing shall be impossible." No mountain was ever conquered with fear as the guide.  
This Sabbath, visit God's house. If this is a new experience, you can be confident that God is waiting to welcome you. With God as your friend and faith as your guide, fear fades into oblivion forever... and no mountain is ever too high.

Sunday	Monday	Tuesday	Wednesday	Thursday	Friday	Saturday
2 Peter	2 Peter	2 Peter	John	John	John	Deuteronomy
1:1-15	1:16-21	3:1-18	14:1-14	14:15-31	15:1-17	7:1-11

Copyright 1995, Keister-Williams Newspaper Services, P. O. Box 8005, Charlottesville, VA 22906

**In Spearman...**  
**Apostolic Faith Church**  
822 S. Dressen • 659-2870  
Sunday School: 10 a.m.  
Worship: 11 a.m.  
Evening Worship: 6 p.m. Sun.  
Wed. Prayer Meeting: 7:30 p.m.  
Pastor James Brown

**First Assembly of God**  
401 N. Bernice • 659-2295  
Sunday School: 9:45 a.m.  
Worship: 10:50 a.m.  
Evening Worship: 7 p.m.  
Wednesday Worship: 7:30 p.m.  
Youth: 7:30 Wednesday  
Pastor Todd Lillard

**First Christian Church (Disciples of Christ)**  
29 S. Bernice • 659-2036  
Sunday School: 9:45 a.m.  
Worship: 10:50 a.m.  
Women's Bible Study: 2 p.m. Wed.  
Youth: Wed. 6 p.m. & Sun. 5 p.m.  
Pastor LaVern Draper

**First Baptist Church**  
123 N. Bernice • 659-5557  
Sunday School: 9:45 a.m.  
Worship: 11 a.m.  
Evening Worship: 7 p.m.  
Jr. High Youth: 6 p.m. Wed.  
High School Youth: 7 p.m. Wed.  
Youth Choir: 6 p.m. Sun.  
Pastor Kyle Henderson

**Church of Christ**  
121 S. Haney • 659-3244  
Sunday Bible Class: 9:45 a.m.  
Worship: 10:30 a.m.  
Evening Worship: 6 p.m.  
Bible Study Wed. 7:30 p.m.  
KRDF Radio Program  
Living With Christ 7:50 a.m. M-F  
Minister Arnis Pape

**Fellowship Baptist**  
1102 S. Archer • 659-2783  
Sunday School: 10 a.m.  
Worship: 11 a.m.  
Evening Worship: 6 p.m. Sunday  
Youth & Adult Serv.: 7:30 Wed.  
Pastor Rick Fincher

**Primera Mission Bautista**  
502 E. 7th • 659-3991  
Sunday School: 9:45 a.m.  
Worship: 11 a.m.  
Pastor Guadalupe Carranza, Jr.

**Trinity Community Church**  
717 W. 7th Ave. • 659-2671  
Celebration of Praise 10:15  
Worship Service and Children's Church 10:30  
Sunday Evening 6:30 p.m.  
Wednesday evening: 7 p.m.  
Pastor Dan Carter

**Faith Lutheran Church (ELCA)**  
1101 Bernice • 659-2252  
(Worships with First Presbyterian Church)

**First Presbyterian Church (Worships with Faith Lutheran Church)**  
1021 Cotter • 659-2033  
Sunday School: 9:45 a.m. at Lutheran Church  
Worship: 11 a.m. (alternates monthly between addresses above)  
Pastor Beverly Cook

**First United Methodist**  
407 S. Haney • 659-5503  
Sunday School: 9:45 a.m.  
Worship: 11 a.m.  
Jr. High Youth: 5 p.m. Sun.  
High School: 6 p.m. Sun.  
Pastor Jeff Lust

**Union Church**  
31 S. Endicott • 659-2644  
Sunday School: 9:45 a.m.  
Worship: 10:45 a.m.  
Evening Worship: 6:00 p.m.  
Bible Study & Prayer Meeting: 7:00 p.m. Wed.  
Pastor Billy Stanford

**Sacred Heart Catholic Church**  
901 Roland • 659-2792  
Sat. Night Mass: 7 p.m.  
Sunday Mass: 8:45 a.m. - English (8:45a.m. Service on KRDF 98.3 FM)  
11:15 a.m. - Spanish  
1:30 p.m. - Gruver - Christo Renditor Mass - Spanish  
Rev. Fernand Couture

**This feature is made possible through the Sponsorship of these Civic Minded Businesses**

**"WE SUPPORT OUR LOCAL CHURCHES"**  
**CAPROCK#1 & #2**  
Mike Heard, Gen. Mgr.  
(806)733-5043 or 733-5025  
"Custom Cattle Feeding"

**AGCO of Spearman, Inc.**  
"See you in Church"  
659-3751

**In Gruver...**  
**First Baptist Church**  
402 E. Broadway • 733-2411  
Sunday School: 9:45 a.m.  
Worship: 10:50 a.m.  
Disciple Training: 6 p.m. Sunday  
Prayer Meeting: 7:30 p.m. Wednesday  
Pastor Larry Miller

**Church of Christ**  
209 King • 733-2760  
Sunday School: 9:30 a.m.  
Worship: 10:20 a.m.  
Evening Worship: 6 p.m.  
Wed. Evening Worship: 7:30 p.m.  
Minister Bob Setliff

**First Christian Church**  
510 King • 733-2960  
Sunday School: 9:45 a.m.  
Worship: 11 a.m.  
Wed. Bible Study: 7:30 p.m.  
Youth: 6:30 Wednesday  
Pastor Gary Gumfory

**Oslo Lutheran Church (ECLA)**  
West of Gruver on Hwy 15 & N. FM 1162  
339-7646  
Sunday School: 9:45 a.m.  
Worship: 11 a.m.  
Morning Prayer: 9 a.m. Wed.  
Pioneer Clubs (Grades 1-6): 4-5:30 p.m. Wednesday  
Pastor John R. Chandler

**Community Bible Church (Interdenominational)**  
Hwy. 15 • 733-2443  
Sunday School: 10 a.m.  
Worship: 11 a.m.  
Wed. Prayer Meeting: 7 p.m.

**First United Methodist**  
Broadway & Garret • 733-2651  
Sunday School: 9:45 a.m.  
Worship: 8:30 a.m. & 10:50 a.m.  
Evening Worship: 6 p.m.  
Pastor Lewis Holland

**In Morse...**  
**Morse Baptist Church**  
Pastor Mike Martin  
733-2757

**"Your Home Away From Home"**  
**Nursanickel Motel**  
815 Hwy. 207 S.  
Phone: (806)659-3737 P.O. Box 115 Spearman, Texas 79081

**BERRY CLEANERS**  
DAN DESIMONE - OWNER  
Phone 659-3122 • P.O. Box 1017  
207 Main St. • Spearman, Tx. 79081

**GRUVER FORD**  
531 Main • Gruver • 733-2431

**Interstate Savings & Loan**  
322 Main • Spearman • 659-2559

**Hagerman Services**  
Backhoe • Dozer • Welding  
North Hwy. 15 • Spearman  
659-5131

**Gordon Drugs**  
Dependable Prescription Service  
314 Main • Spearman  
659-2141  
Jim Evans