



The Hansford County

Reporter



Statesman

PROUDLY SERVING HANSFORD COUNTY SINCE 1907

reporter@spearmanreporter.com

VOLUME 100 • ISSUE 32

WWW.SPEARMANREPORTER.COM

THURSDAY, AUGUST 16, 2007

Senator Seliger to Kick Off His Tour of Senate District 31

AMARILLO, Texas -- State Senator Kel Seliger has embarked on his annual town hall meetings across Senate District 31 to discuss and receive feedback from constituents on the recently completed regular session of the 80th Legislature.

"Town hall meetings have proven to be a great opportunity to report to my constituents about the activities of the Texas Legislature," said Seliger.

Starting in his hometown of Borger on August 7th, Seliger will continue making stops in each of the 26 counties over the next several weeks to visit with constituents throughout the Panhandle, South Plains and the Permian Basin.

"These visits help me to develop new ideas about how best to represent the citizens of the 31st District in the Texas Senate."

Upcoming stops on Senator Seliger's town hall meeting schedule include:

Tuesday, August 21

11:30 - 1:00 p.m. - Martin County Town Hall Meeting; Location: Martin County Community Center, 301 North Saint Theresa, Stanton

Tuesday, September 18

9:30 - 10:30 a.m. - Hansford County Town Hall Meeting; Location: Gruver High School, 405 Garrett Avenue

11:15 - 12:15 p.m. - Ochiltree County Town Hall Meeting; Location: Frank Phillips College, 2314 South Jefferson, Perryton

1:30 - 2:30 p.m. - Lipscomb County Town Hall Meeting; Location: Booker Library, 600 South Main, Booker

Wednesday, September 19

11:30 - 12:30 p.m. - Roberts County Town Hall Meeting; Location: Miami High School Auditorium, 321 Wichita, Miami

Spearman ISD

Mandatory Drug Testing Parent/Student Meeting

Spearman ISD has a Random Student Drug Testing Policy for all students in grades 7-12 who are involved in extra-curricular activities. Consent to drug-use testing is mandatory for all students to participate in any extra-curricular activity.

Also, participating students and at least one parent/guardian must attend a required annual meeting. The last meeting for this school year will be held in the High School Auditorium on August 21 at 6 p.m. Failure of the student and/or parent/guardian to attend at least one meeting will prevent the student from extra-curricular activity participation.

If you have any questions, please contact Bill Belger, Principal, at 659-2584.

Weather Forecast

THURSDAY NIGHT - Mostly cloudy with a 20 percent chance of showers and thunderstorms. Lows around 70. East winds 10 to 15 mph.

FRIDAY - Mostly cloudy. A 20 percent chance of showers and thunderstorms in the afternoon. Highs in the mid 90s. East winds 10 to 20 mph.

FRIDAY NIGHT - Mostly cloudy. Lows around 70.

SATURDAY - Partly cloudy. Highs in the mid 90s.

SATURDAY NIGHT - Partly cloudy. Lows around 70.

SUNDAY - Partly cloudy. Highs in the upper 90s.

SUNDAY NIGHT - Partly cloudy. Lows in the lower 70s.

MONDAY - Partly cloudy. Highs in the upper 90s.

MONDAY NIGHT - Partly cloudy. Lows in the upper 60s.

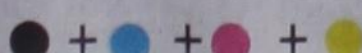
TUESDAY - Partly cloudy. Highs in the upper 90s.

New Surprises at
www.spearmanreporter.com

Spearman Chamber of Commerce's
Yard of the Week

Robert Howell - 620 Endicott
Louis Schnell - 1015 Barkley
Bill Pittman - 508 Roland

If you have a yard you would like to nominate, please contact the Spearman Chamber of Commerce at 659-5555.



Jarvis Receives Texas A&M Inspiration Award

Wesley Jarvis, a retired chemistry and computer science teacher at Borger High School, received the Texas A&M University Inspiration Award for Exceptional Education during summer commencement ceremonies Friday, Aug. 10, in Reed Arena.

Teachers selected to receive this unusual award - believed to be the first of its type by any university in Texas - are nominated by one of their former students who are about to graduate from Texas A&M.

Recipients of the award are recognized during commencement ceremonies at the university where they are presented a check for \$2,000. Their high school receives \$1,000.

As a university known for valuing excellence, leadership and service, the Office of the President sponsors the award as a way of recognizing those values in the teachers who have inspired and challenged their students to excel.

"I have never met another teacher who cared more about students than Mr. Jarvis," said Laura Cummings, who nominated Jarvis for the award. Cummings, who graduated with both a bachelor of arts in accounting and a master's degree in finance, said she will be the first in her family to graduate from college. Jarvis, an Aggie from the Class of 1967, encouraged her to go to Texas A&M.

"He is the one who talked me into coming down here for Aggieland Saturday (a program that offers prospective students a chance to learn more about life at Texas A&M) and in a large part is responsible for me attending Texas A&M. He even kept in touch with me my freshman year to ensure everything was going well," she added.

"It is a very humbling and rewarding thing for a teacher to be honored in this way," Jarvis said when asked how he felt about the award.

"It doesn't surprise me at all but it does please me that this student has done so well. Laura has excelled in all her academic pursuits," he added.

Cummings said she wants Jarvis to know that he was an inspiration to all of his students. "I would love for him to know that all of his hard work and dedication to us as high school students did not go unnoticed, unappreciated or unrewarded," she said.

Jarvis certainly knows that now and, because award recipients are given the opportunity to present Texas A&M diplomas to the former student who nominated them - an honor normally retained by the universi-

ty president -Cummings' wish will come true.

Jarvis taught for 14 years at Spearman High School and also taught for two years at

Frank Phillips College before moving to Borger High School, where he taught for six years before retiring in 2002.



Wesley Jarvis poses with Laura Cummings after the graduation ceremony on Friday, August 10, 2007 at Texas A&M University. Jarvis received the Texas A&M University Inspiration Award for Exceptional Education Award. Cummings, a former student of Jarvis', nominated him for the award.

Comptroller Susan Combs Announces Changes in August Sales Tax Holiday

Second Opportunity for Tax-Free Shopping Coming Next Year

Comptroller Susan Combs announced that the date for the annual sales tax holiday has changed from the first weekend of August to the third weekend of August. Combs also said backpacks, a standard item on many kids' school supply lists, can now be purchased tax free during the sales tax holiday.

"From now on, the sales tax holiday will occur on the third Friday, Saturday and Sunday of August," Combs said. "This year, the date is Aug. 17-19."

Since many school districts are now starting their school year later, the 80th Legislature changed the date of the sales tax holiday to move it closer to the first day of school.

During the sales tax holiday, children's and adults' clothing and shoes priced less than \$100 - and now backpacks that cost less than \$100 - are exempt from state and local sales taxes.

"The Legislature responded to parents' requests to add backpacks to the list of tax-exempt items," Combs said. "Backpacks can be expensive, especially for parents who have to buy them for several children. A tax break helps."

Combs also announced that, starting in May 2008, energy-efficient appliances will be exempt from sales tax during the three-day Memorial Day weekend. Certain appliances with a federal Energy Star rating will be tax-free, including washing machines, dishwashers, ceiling fans, dehumidifiers, programmable thermostats and incandescent

fluorescent light bulbs. Air conditioners priced at \$2,000 or less can also be purchased tax free.

"Texas consumers will save about \$8 for every \$100 they spend on qualifying appliances," Combs said. "Even more importantly, they will reap savings on their utility bills by purchasing energy-efficient appliances,

and the demand for electricity will be reduced."

The Comptroller predicts families will save about \$52.1 million in sales taxes during the August sales tax holiday.

More information about the August sales tax holiday for clothing and shoes can be found on the Comptroller's Web site at www.window.state.tx.us.

Below is a selected list of items and their exemption status during the sales tax holiday

TAX-Free	TAXED
Baby clothes	Accessories (generally) - barrettes, elastic ponytail holders, wallets, watches
Backpacks for use by elementary and secondary students	Backpacks - unless for use by elementary and secondary students
Belts with attached buckles	Baseball cleats and pants
Boots - cowboy, hiking	Belt buckles (without belt)
Caps/hats - baseball, fishing, golf, knitted	Boots - climbing, fishing, rubber work boots, ski, waders
Coats and wraps	Buttons and zippers
Diapers - adult and baby	Cloth and lace, knitting yarns, and other fabrics
Dresses	Dry cleaning services
Gloves (generally)	Football pants
Gym suits and uniforms	Golf gloves
Hooded shirts and hooded sweatshirts	Handbags and purses
Hosiery	Handkerchiefs
Jackets	Hard hats
Jeans	Helmets - bike, baseball, football, hockey, motorcycle, sports
Jerseys - baseball and football	Ice skates
Jogging apparel	Jewelry
Neckwear and ties	Laundry services
Pajamas	Leather goods - except belts with buckles and wearing apparel
Pants and trousers	Pads - football, hockey, soccer, elbow, knee, shoulder
Raincoats and ponchos	Personal flotation devices
Robes	Rented clothing (including uniforms, formal wear, and costumes)
Shirts	Roller blades and skates
Shoes - sandals, slippers, sneakers, tennis, walking	Safety clothing, glasses
Socks (including athletic)	Shoes - bicycle (cleated), bowling, golf
Shorts	
Suits, slacks, and jackets	
Sweatshirts	
Sweat suits	
Sweaters	
Swimsuits	
Underclothes	
Work clothes and uniforms	

Spearman Lynx
vs.
Gruver Greyhounds
Saturday, August 18th
Gruver Varsity Field
Scrimmage at 6 p.m.

Lullabies, Legends & Lies

by Parson Smith, the Prime Minister of Laughter

My daughter, Jennifer, sent me the following. I have known for a while that I had problems. But, it was only after reading the following that I knew what it was. Thank goodness there's a name for this disorder. Somehow I feel better, even though I have it!!

AAADD

KNOW THE SYMPTOMS

Recently, I was diagnosed with A.A.A.D.D. - Age Activated Attention Deficit Disorder. This is how it manifests:

I decide to water my garden.

As I turn on the hose in the driveway, I look over at my car and decide it needs washing.

As I start toward the garage, I notice mail on the porch table that I brought up from the mail box earlier.

I decide to go through the mail before I wash the car.

I lay my car keys on the table, put the junk mail in the garbage can under the table, and notice that the can is full.

So, I decide to put the bills back on the table and take out the garbage first.

But then I think, since I'm going to be near the mailbox when I take out the garbage anyway, I may as well pay the bills first.

I take my check book off the table, and see that there is only one check left.

My extra checks are in my desk in the study, so I go inside the house to my desk where I find the can of Coke I'd been drinking.

I'm going to look for my checks, but first I need to push the Coke aside so that I don't accidentally knock it over.

The Coke is getting warm, and I decide to put it in the refrigerator to keep it cold.

As I head toward the kitchen with the Coke, a vase of flowers on the counter catches my eye--they need water.

I put the Coke on the counter and discover my reading glasses that I've been searching for all morning.

I decide I better put them back on my desk, but first I'm going to water the flowers.

I set the glasses back down on the counter, fill a container with water and suddenly spot the TV remote. Someone left it on the

kitchen table.

I realize that tonight when we go to watch TV, I'll be looking for the remote, but I won't remember that it's on the kitchen table, so I decide to put it back in the den where it belongs, but first I'll water the flowers.

I pour some water in the flowers, but quite a bit of it spills on the floor.

So, I set the remote back on the table, get some towels and wipe up the spill.

Then, I head down the hall trying to remember what I was planning to do.

At the end of the day: the car isn't washed, the bills aren't paid, there is a warm can of Coke sitting on the counter, the flowers don't have enough water, there is still only one check in my check book, I can't find the remote, I can't find my glasses, and I don't remember what I did with the car keys.

Then, when I try to figure out why nothing got done today, I'm really baffled because I know I was busy all day long, and I'm really tired.

Until the next time,
God bless.

State Capital



HIGHLIGHTS

by Ed Sterling



ANNUAL SALES TAX HOLIDAY SET AUG. 17-19

AUSTIN — The annual state sales tax holiday is Aug. 17-19 and Texas shoppers will get a break from state and local sales taxes for most clothing and footwear priced under \$100.

Lay-away plans can be used again this year to take advantage of the sales tax holiday.

For the first time backpacks under \$100 specifically used by elementary and secondary students also are exempt. The new exemption includes backpacks with wheels, provided they can also be worn on the back like a traditional backpack.

Comptroller Susan Combs estimates that shoppers can save about \$8 on every \$100 they spend during the state sales tax holiday.

Examples of items that qualify for the sales tax exemption include baby clothes, boots, diapers, neckwear and ties, pajamas and swimsuits.

Items not covered in the holiday include belt buckles, most sport specific shoes such as baseball cleats, purses and jewelry.

This year the annual sales tax holiday was moved to the third weekend in August to better coincide with the first day of school.

"The Legislature voted to change the date of the sales tax holiday because schools are opening later in many districts," Combs said. "Most families take advantage of the sales tax holiday to buy back-to-school clothes for the kids."

TPWD to hire 200 new workers

The Texas Parks and Wildlife Department is adding 200 new employees to state parks after receiving increased funding from the Texas Legislature during this year's session.

The staffing increase is the first for the state park system in many years and follows several lean years where the department was forced to make major cuts to park services, staffing and hours of operation.

The available positions will be advertised through the TPWD Web site www.tpwd.state.tx.us and will be filled in September and October.

"We're looking for people who are really excited about helping take care of some of the most special places in our state, folks who are interested in a long-term career with Texas State Parks," said Walt Dabney, TPWD state parks director.

Gov's speechwriter resigns

Gov. Rick Perry's director of communications, Eric Bearse, resigned Aug. 6 to form his own consulting business, specializing in

speechwriting, public affairs and political consulting.

For the last nine years, Bearse has been Perry's principle speechwriter, authoring two inaugural addresses, the governor's initial oath of office speech, four State-of-the-State speeches, and three Republican state convention speeches among nearly 2,000 speeches given by Gov. Perry since 1999.

Carrollton rep gets pace-maker

State Rep. Jim Jackson, R-Carrollton, was admitted to Massachusetts General Hospital Aug. 6 with a low heart rate. On Aug. 8 he received a permanent pacemaker and flew home a day later.

Jackson was in Boston attending the National Conference of State Legislatures' annual meeting.

AG alerts parents to toy recall

The Office of the Attorney General is urging Texas consumers to stop using certain toys after Fisher-Price and the U.S. Consumer Product Safety Commission issued a recall due to potential lead poisoning hazards.

According to the safety commission, toys and figures bearing the likeness of characters from Sesame Street, Dora the Explorer and other popular children's programs contain surface paints with excessive levels of lead, which could be toxic if ingested.

More than 950,000 of the recalled toys were sold nationwide from May 2007 to August 2007. The products were sold both alone and as parts of sets. The toys are all marked with "Fisher-Price" and may have a date code between 109-7LF and 187-7LF marked on the product or packaging.

A detailed list of the recalled toys can be found on the Attorney General's Web site at www.oag.state.tx.us.

EARN \$40,000+
SAGE CDL TRAINING
PROFESSIONAL TRUCK DRIVER TRAINING SCHOOLS NATIONWIDE
TRAINEES NEEDED!
Get your CDL A&B in 5 short weeks with SAGE at St. Phillips College.
ONE-ON-ONE TRAINING AT #1 RATED SCHOOL
FINANCIAL AID & EMPLOYMENT ASSISTANCE
CALL TODAY! 866-787-4454
START A HIGH PAYING CAREER IN TRUCKING NOW!
WWW.SAGESCHOOLS.COM

AUCTION
CORPUS CHRISTI FLEET AUCTION
SATURDAY, AUGUST 25, 2007-10AM
5352 AYERS, CORPUS CHRISTI, TX
VIEWING: FRIDAY 24TH, 10AM TILL 5PM; SALE DAY 8-10AM
HEAVY EQUIPMENT, POLICE CARS, FIRE ENGINES, AMBULANCES, GENERATORS, VAC-CON TRUCK, TRACTORS, (2) BATWING SHREDDERS, NAVSTAR SWEEPER TRUCK, DUMPS, & MUCH MORE BID LIVE OR ONLINE SEE OUR WEBSITE. 8% BUYERS PREMIUM
NAA Live **JOHN SISK AUCTIONEERS, INC #7425**
P O BOX 759, GEORGE WEST, TX 78022
PHONE: 361-456-7771 WEB: WWW.SISKAUCTION.COM

PAID CDL TRAINING! YOUR FUTURE BEGINS HERE
NO EXPERIENCE NEEDED!
Stevens Transport, the premier refrigerated carrier in the US, sponsors the total cost of your CDL training! In 17 short days you will earn your CDL and begin your paid on-the-job training! Earn \$40K first year and up to \$150K fifth year! Excellent benefits and 401K!
For more information, call **800-333-8595**
www.becomeadrivers.com

These games are brought to you by the
Hansford County Reporter-Statesman

WORLD RECORDS

- ACROSS**
- Lowest for female and highest for male
 - Not her
 - Golly!
 - "Best ___ plans"
 - "Well" in Italy
 - Unusual object of art
 - Irish name of Ireland
 - Twelfth month of civil year
 - City in Belgium
 - World Record: the largest has 82,951 squares
 - In a little while, old-fashioned
 - Wipe it clean to start fresh
 - Women's Taylor
 - Sailor's breath
 - Catholic bell
 - Jump forward on a keyboard
 - Contemptibly small
 - Fill to satisfaction
 - Talk pompously
 - Fix, as in a game or ship
 - Meat or seafood coating
 - ___ A Sketch
 - Sloppy handwrit-ing
 - Part of a play
 - King Tut, e.g.
 - Hurrahs
 - Playfully mischievous
 - Semitic for "night"
 - Tangerine, grape-fruit hybrid
- DOWN**
- Smart ___
 - Batman's cave, e.g.
 - Novice
 - Black Sea port
 - One owned by the feudal lord
 - Habituate, harden
 - Mix together
 - Official arbiter of world records
 - The one with the white filling
 - Leo or Libra
 - Done before you seed
 - ___ of dog!
 - Loud noise
 - Snail trail
 - One or some or all
 - Porch
 - Third planet from sun
 - Manilla hemp
 - Water organism with no stems, roots

Fantastic Franchise Opportunities

- ✓ Liberty Tax Service is seeking franchisees in Texas!
- ✓ Entrepreneur magazine ranked Liberty Tax #17 on it's Franchise 500.
- ✓ National Brand, local opportunities.
- ✓ Locations available in national retail outlets.

Call 1-888-557-4333
www.libertytaxfranchise.com

SUDOKU
PRESENTED BY
VolunteerMatch.org
Where volunteering begins.

2	1				6	5		
4	3	6				1		
	7	5	1		4			
		2	7	6		4	3	
			3		1			
7	6			9	4	2		
		7			3	5	9	
	5					8	3	2
3	9				1			4

© 2007, StatePoint Media, Inc. answer on classified page
Fill in the blank squares in the grid, making sure that every row, column and 3-by-3 box includes all digits 1 through 9.

- World Record: best-selling music album ever
- Bastard or spurious wing
- Conciliatory gift
- Sound of something moving rapidly
- Awry
- Capital of Croatia
- World record holder for most Olympic gold medals
- Dropsy
- 2nd word in fairytale?
- Delinquent group
- Boyfriend
- Hindu or Buddhist leader
- Period following Ash Wednesday
- At one time
- The top seed

STATEPOINT CROSSWORD

1	2	3	4		5	6	7		8	9	10	11		
12					13					14				
15					16					17				
18					19					20				
					21					22				
23	24	25				26				27	28	29		
30					31	32	33			34				
35					36					38				
39						40				41		42		
43					44					45		46		
					47					48	49			
					50	51				52		53	54	55
56										57			58	
59										60			61	
62										63			64	

PRESENTED BY
Guinness World Records
2008 edition
In Stores Now
www.guinnessworldrecords.com

SIGN UP FOR A FREE SCOOTER
One Scooter Given Away Each Month
Toll Free **800-606-9860**
Med Care MEDICAL SUPPLY
www.medcaremedicalsupply.com

The Hansford County Reporter-Statesman
213 Main Street • Spearman, TX 79081
Phone - (806) 659-3434 • Fax - (806) 398-9080
www.spearmanreporter.com
reporter@spearmanreporter.com
cathysmith@valomet.com
Mon.-Thurs. 9 a.m.-12 p.m., Mon.-Wed. & 1-5 p.m.
Closed Thurs. afternoon and all day Fri., Sat. & Sun.

Gary Smith - Publisher Catherine Smith - Editor
Contributing Writers: Dorothy Hudson, Jim Derington, Merry Sparks, Cecil Biggers
Contributing Photographer: Charlie Johnson

Subscription Rates
In Hansford County - \$30.00 • Out of County - \$40.00

The Hansford County Reporter-Statesman (USPS 529660) is published weekly in Spearman, TX. Periodical postage paid in Spearman, TX. **POSTMASTER:** Send address changes to: The Hansford County Reporter-Statesman, 213 Main Street, Spearman, TX 79081.

Publication Policy
The deadline to submit news and advertising to The Hansford County Reporter-Statesman is Monday at 5 p.m. Items submitted after the deadline will be published at a later date, as time and space permit. Publication of all items is at the discretion of the editor.

Advertising
Open Display rates are \$4.00 per column inch. Classified Ads are \$6 for the first 25 words and 10¢ per word for each additional word. (Additional charge for boxed classifieds.) There is a \$1 charge per week if billed.

Member of
Gruber Chamber of Commerce
Spearman Chamber of Commerce
Texas Press Association and Panhandle Press Association

TPA **TEXAS PRESS ASSOCIATION** **AWARD WINNER**

Happy Birthday!

Editor's Note: This Happy Birthday list is run as a public service by the Hansford County Reporter-Statesman. We apologize if any names are misspelled. If you know of a name that needs to be changed, added or deleted, please call 659-3434.

Thank you, Catherine

August 16

Birthday - Corky Chapman, Ed Fry, Ronny Womble, Wayne Burchard, Ben Dunaway, Sondra Younger, Felix Sandaval, Tyce Hergert, Teresa Cook, Sharon Ross, Jason Villines, Lillie Love, Kathy Love, Nicholas Vinson, Ruben Gomez, Donetta Greene, Carlos Hernandez, Alexander Davis

August 17

Birthday - Christy Brown, Guy Paul Hindergart, Allison Reid, Dean Sparks, Dodie Beedy, Delinda McLaughlin, Halee Rice, Bo Bensinger, Kimberly Boyd

Anniversary - Betty & Dub Womble, M/M Danny Jackson, M/M Don Allen, M/M Wayne Ware, Kitty & Frank Edwards, David & Kim Swink

August 18

Birthday - Brenda Dahl, Carla Johnson, Heather Murrell, Jack Weldon, Tina Wilmeth, Jerry Beth Prachar, Tammy Welch, Kenneth Burke, Bob Cook, Robbin Keetch, Pat Miller, Jeanie Bennett, Glen Ward, Andrew Correll, Janet Mayo

Anniversary - M/M David Link, M/M Dennis Baker, M/M Charles Deakin

August 19

Birthday - Diana Bradshaw, Buddy Murrell, Kenton Odom, Linda Tidwell, Carey Bridges, Perry Dixon, Mary Lou Mathews, Chris Trout, Lisa Collins, Teddy Lynn Whitefield, Melissa Harvey, Joshua Miller, Jordan Fisher, Lenny Pecha

Anniversary - M/M Kelly Smith, M/M Larry Hicks, M/M Jim Bartimus

August 20

Birthday - David Bergin, Joyce Messer, Joyce Lackey, Irene Snider, Tony Hart, Shelley Edenborough, Joe Olivarez, Derek Irlbeck, Kathy Lewis, Jodi Hight

Anniversary - M/M Mike Grolegut, M/M Les Barkley, M/M Tommy Russell, M/M Larry Babbs

August 21

Birthday - Lou Garrett, Lauren Hoel, Reg Robertson, Michael Lane Whitefield, Linda Lawson, Carolyn Mauldin, Brandon

Babitzke, Joshua Bynum, Rick Harvey, Coy H. Kelly Jr, Shane Hill

Anniversary - M/M Dwayne Marrs

August 22

Birthday - Amber Roberts, Autumn Roberts, Tony Hester, Michelle Davis, Tuesday Reed, Jonell Sheets, Roger Brown, Marge Papay, John Michael Sterling, Phil Garza, Kathrine Tope, Janie Perez, Garrett Griffin, Brian Robinson, Brett Winegarner, Janie Reza, Kay Snider

Anniversary - M/M Silva, Kenneth & Lisa Brown, M/M Pat Jackson

August 23

Birthday - Ann Dorman, Reagan Baker, Eddie Reed, Donnie Mitchell, Sara Blackburn, Ralph Blodgett, Bill Jack Pittman, Kathy Lewis, Miriam Mendoza

Anniversary - M/M Billy DeArmond, M/M Chris Johnson, M/M Jimmie Vernon

August 24

Birthday - Frances Atwood, Laci Fitzgerald, Sarah Van Buskirk, Rosio Rosales, Charlie West, Claudine Clark, Melissa Kay McLain, Lila West, Marilyn Hughes, Scott Houghton, Willie Lee Wilkerson, LeRoy Farris, Clayton Wilkerson, Charlie West, Travis Boyd

Anniversary - M/M Terry Austin, M/M Dwayne Mitchell, M/M Randy Brown

August 25

Birthday - Carol Ross, Kathleen Sutton, Connie Sue Wooley, Kathy Yancey, Linda Young, Courtney Roach, Kathrine Pipkin, Gay Bowen, Michael Janzen, Katie Miesner

Anniversary - M/M Butch Lasater, M/M Roy Don Gammon

August 26

Birthday - Wayne Kruse, Debbie Davis, Chayci Dominguez, Mike Cudd, David Archer, Juanita Tucker, Mary Thompson, Kimberly Slater, Ashley Patterson

Anniversary - M/M Eddie Clemmons, M/M Vernon Morris

August 27

Birthday - Amy Grubbs, Brian Hoel, Pat Ochoa, June Jackson, Donald Rhea, Gregg Weaver, Chad Davis, Patricia Bevera, Virginio Ortega Jr., J. T. Sanders, Bertha Waits, Gabriel Moreno, Krystal Vela, Christopher Abernathy, Cassidy Odegaard, Dara Faries

Anniversary - M/M Bill Swan, Jim & Pamela Morrison, M/M Jerry Bowling

Words from Faith & Grace

by Cecil R. Biggers, Lutheran Lay Minister

In the twelfth week of Pentecost, we study Jeremiah 23:23-29, Psalm 82:8, Hebrews 11:29-12:2, and Luke 12:49-56. Jeremiah faced opposition from false prophets, but how to reveal them? The test of a "false prophet" is if the "prophecy" does not come true; however, in Jeremiah's prophecy there was not time to wait. Jeremiah reminds the people that God is here! God is not far away, we cannot hide our actions from Him. God knows our deeds; God knows our nature; therefore, we must speak God's word faithfully. We have already studied Psalm 82, but the Psalmist in verse 8 sings, "Rise up, O God, judge the earth; for all the nations belong to you!" God judged the false prophets of Jeremiah's day and He shall judge us all.

The writer of Hebrews continues his lecture on "Faith". He names the "heroes of the faith" who have preceded us. He points out that these "heroes" believed the promises of God, suffered many terrible experiences; yet, they never saw the completion of God's promises. He says, "Therefore since we are surrounded by so great a cloud of witnesses...let us run with perseverance the race that is set before us". This can be read two ways and may be meant two ways. The "heroes" of the faith who preceded us, surround us in our remembrance and inspire us to greater deeds and if we believe in the "communion of saints" as in the Apostles' Creed, we may well picture these "heroes" in heaven cheering us on to the finish line of our lives. We attain Faith through God's Grace and sustain that Faith through prayer. There is a sign at the entrance to Winchester Cathedral that reads, "You are entering a conversation that began long before you were born, and will continue long after you are dead". Consider that prayer is a conversation with God.

Jesus has turned from teaching the crowds and has started preparing his disciples for their trials and glory. He tells them, "I have a baptism with which to be baptized, and what stress I am under until it is completed." The word "baptism" as used here means "submerged" as in a sunken vessel. Jesus is saying that he has a grim and terrible experience to get through before he emerges victorious. If this is true of the Master can it be less true for the disciple? Jesus then takes the crowd to task for being able to predict the weather, but not being able to interpret the present time. What did the crowd miss seeing in Jesus' parables? Behold, the Kingdom of God is here!

May the Holy Spirit enable you through faith to run the race of your life to victory!

Our Sympathy

CECIL RAY CHISUM

BORGER - Cecil Ray Chisum, 63, died Sunday, Aug. 12, 2007.

Services were at 11 a.m. Wednesday, August 15, 2007 in Wesley United Methodist Church with the Rev. Dr. Jerry Lane, pastor, and chaplain John Watson officiating. Burial was in Highland Park Cemetery by Minton/Chatwell Funeral Directors of Borger.

Mr. Chisum served in the U.S. Air Force during the Vietnam War. He worked as a computer operator for Sid Richardson Carbon Black for 29 years, retiring in 2006.

Survivors include his wife, Dee; two sons, Chris Chisum and Tim Chisum, both of Borger; a daughter, Tammy Pfeiffer of Loveland, Colo.; and eight grandchildren.

MARGARET ETHEL SMITH

SPOKANE, WA - Margaret Ethel Smith, 75 passed away August 8, 2007 in Spokane, WA.

A Graveside Service will be held Saturday, August 18, 2007 at 11 AM at the Gruver Cemetery in Gruver, TX. Boxwell Brothers, Inc., Spearman, TX.

She was born April 3, 1932 in Skarda, NM to John Edgar and Lizzie Morris Cotter. Margaret grew up in Gruver, TX, where she graduated high school in 1950. She married Dwight Smith and they lived in several different areas because he was in the Air Force. Eventually, they settled in Cheney, WA and later divorced. They had 5 children. Margaret moved to Medical Lake, WA. When she was 35, she earned her LPN degree and worked at the Lakeland Village in Medical Lake.

Margaret became disabled when she was 58 and moved to Thornton, WA, where her son, Maurice took care of her for the last 15 years. She was a member of the Church of Christ and enjoyed spending time with her children and her job as a LPN.

Margaret is survived by her children, Vera Williams of Thornton, WA, Joanna Bray of Pauls Valley, OK, Maurice Smith of Thornton, WA, Michael Smith of Henderson, NV and Steve Smith of Spokane, WA; her siblings, Mary Gruver of Cimarron, NM, Charles Cotter of Dimmitt, TX, Donald Cotter of Gruver, TX and Peggy Dillow of Gruver, TX; 5 grandchildren and several great-grandchildren. She was preceded in death by a sister, 2 brothers and her parents.

New Surprises at
www.spearmanreporter.com

Ralph Depee, D.D.S.
 Member American Association of Orthodontists
Orthodontics For Children and Adults

- Free exam and estimate of cost
- Free second opinion
- Insurance filed

821 S. Amherst Perryton, Texas
 1-800-521-0831
 (806) 435-2320

Share Your Home, Change the World
Host Families Needed

Youth For Understanding is seeking families to host exchange students for the 2007 school year.

For more information call Shirley Adams (800) 872-0200 ext 271 www.yfu-usa.org

MONUMENTS
Boxwell Brothers
Funeral Home
 519 Evans • Spearman
 659-3802

Dear friends, When you buy a monument from us we make sure it is exactly what you want at a price you can afford. If it is not right, we will make it right. And you will not have to search the countryside to find us. We are here when you have a need.

Sincerely,
 Bob Boxwell

"Stick With The Best Food In Town"

Flying X Steakhouse
 By Reservation Only

From Stinnett: Go West on Hwy. 152
 17 miles - Turn Left at Big Red Cactus (About 2 miles on Gravel Road)

From Dumas: Go East on Hwy. 152
 16 miles - Turn Right at Big Red Cactus (About 2 miles on Gravel Road)

(806) 935-9427
 Sheree & Eddie Burgess

STOP LEG CRAMPS BEFORE THEY STOP YOU.

Calcet's triple calcium formula is designed to help stop low calcium leg cramps. Just ask your pharmacist.

Mission
 CAL-00901 Rev. 05/06/05 © 2005 Mission Pharmaceuticals Company. All rights reserved.

PERSONAL CHECKS ACCEPTED!

FREE DIRECTV 4 Room System!
 FREE 4 MONTHS!
 ALL 250 Channels + HBO, Cinemax & Showtime
 HURRY, ASK HOW!!
 PKGS. STARTS \$29.99
 FREE DVR / HD!
 1-800-214-7110

Mesothelioma EXPERIENCE COUNTS
 Lawyers with over 85 years combined expertise.

Ryan A. Krebs, M.D., J.D. *Diagnose-Lawyer to Full-time Law Practice*
 Richard A. Duxid, L.C.
 Timothy R. Cappolino, P.C. *Based Certified Personal Injury Trial Law and Civil Trial Law by the Texas Board of Legal Specializations*
 NO FEE FOR FIRST VISIT
 CAMERON, TEXAS

1-800-460-0606
www.AsbestosLaw.com

Replenish the seed of faith through . . . DAILY BIBLE READING, PRAYER & REGULAR CHURCH ATTENDANCE

Spearman

Apostolic Faith Church
 822 S. Dressen • 659-2870
 Sunday School: 10 a.m.
 Worship Service: 11 a.m.
 Sun. Eve: 6 p.m.
 Wed. Prayer Mtg: 7 p.m.
 Pastor - Roland Haney

First Assembly of God
 401 N. Bernice • 659-2295
 Sunday School: 9:30 a.m.
 Worship: 10:35 a.m.
 Kid's Church: 10:35 a.m.
 Evening Worship: 6 p.m.
 Wed. Worship: 7 p.m.
 Wed. Youth: 7 p.m.
 Pastor - Bob Elder

First Christian Church (Disciples of Christ)
 29 S. Bernice • 659-2036
 Sunday School: 9:45 a.m.
 Worship: 10:50 a.m.
 Minister -

First Baptist Church
 123 N. Bernice • 659-5577
 Sunday School: 9:45 a.m.
 Worship: 11 a.m.
 Evening Worship: 7 p.m.
 Men's Bible Study - Wed., 7 a.m.
 Children's Choir - Wed., 6 p.m.
 Adult Choir - Wed., 7 p.m.
 Wed. Bible Study: 7 p.m.
 Pastor - Jim Medley

Church of Christ
 121 S. Haney • 659-3244
 Sunday Bible Class: 9:45 a.m.
 Worship: 10:30 a.m.
 Evening Worship: 6 p.m.
 Bible Study Wed.: 7:30 p.m.

Sacred Heart Catholic Church
 901 Roland • 659-2792
 Sat. Night Mass: 5:30 p.m.
 Sun. Mass: 9 a.m. - English
 Sun. Mass: 11:30 - Spanish
 1:30 p.m. - Gruver - Christo
 Rendonator Mass - Spanish
 Rev. Guillermo Morales

First United Methodist
 407 S. Haney • 659-5503
 Sunday School: 9:45 a.m.
 Worship: 8:30 & 11 a.m.
 Jr. High Youth: 5 p.m. Sunday
 High School: 6 p.m. Sunday
 Kids Club: 3 p.m. Wed.
 Pastor - Neely Landrum

Grace Presbyterian Church (Worships with Faith Lutheran Church)
 1101 Bernice • 659-2033
 Pastor - Beverly Cook
Faith Lutheran Church (ELCA)
 1101 Bernice • 659-2252
 Sunday School: 9:45 a.m.
 Worship: 11 a.m.
 (Worships with Grace Presbyterian Church)
 Pastor - Beverly Cook

Union Church
 31 S. Endicott • 659-2644
 Sunday School: 9:45 a.m.
 Worship: 10:45 a.m.
 Evening Worship: 6 p.m.
 Bible Study: 7 p.m. Wed.
 Pastor - Dr. Timothy Minor

Fellowship Baptist
 1102 S. Archer • 659-2783
 Sunday School: 10 a.m.
 Worship: 11 a.m.
 Sun. Evening Worship: 6 p.m.
 Youth/Adult Service: 7:30 Wed.
 Pastor - James Washburn

Primera Mision Bautista
 502 E. 7th • 659-3991
 Sunday School: 9:45 a.m.
 Worship: 11 a.m.
 Evening: 6 p.m.
 Wed. Prayer Meeting: 7 p.m.
 Thurs. Visitation: 7 p.m.
 Pastor Joe Garcia Jr.

El Aposento Alto U.P.C.I.
 1105 S. Roland
 Domingos: Escuela-Domical - 10 a.m.
 Culto Evangelistico - 7 p.m.
 Jueves: Oracion - 8 p.m.
 Mier: Estudio Biblico - 7 p.m.
 Pastor - A.G. Martell
 (806) 659-2153

Gruver United Methodist
 Broadway & Garrett
 733-2651
 Sunday School: 9:45 a.m.
 Worship: 8:30 & 10:50 a.m.
 Eve. Worship & UMY: 6 p.m.
 Pastor - George Price

Spanish Cristo Redentor Church
 Sunday Mass: 1:30 p.m.
 Friday Evening Mass
 Summer - 8:00 p.m.
 Fall/Winter - 7:30 p.m.

Oslo
Oslo Lutheran Church (ELCA)
 6 Miles West & 12 Miles North of Gruver
 339-7646
 Sunday School: 9:45 a.m.
 Worship: 11 a.m.
 Pastor - Arlen Lloyd

Morse
Morse Baptist Church
 733-2757
 Pastor - Mike Martin

Church of Christ
 209 King • 733-2760
 Sunday School: 9:30 a.m.
 Worship: 10:20 a.m.
 Evening Worship: 6 p.m.
 Wed. Worship: 7:00 p.m.
 Minister - Gaylord Cook

First Christian Church
 510 King • 733-2960
 Sunday School: 10:00 a.m.
 Sunday Worship: 11 a.m.
 Youth: 7:30, Sunday
 Adult Bible Study: 7:30, Sun.
 Wed. Bible Study: 8:00 p.m.
 Pastor - Gary Gumfory

This feature is made possible through the sponsorship of these civic minded businesses.

Deakin ELECTRIC
 OILFIELD • RESIDENTIAL • COMMERCIAL
 321 S. MAIN • SPEARMAN
 1-800-999-1506 Chris Deakin
 (806) 659-5016 President

Bartlett's Lumber & Hardware
 105 W. Broadway • Gruver, Texas
 (806) 733-2404

BERRY CLEANERS
 Ann & Vernon Pipkin - Owners
 Phone 659-3122 • P.O. Box 1017
 207 Main St. • Spearman, TX

Morse Implement & Auto Supply
 "Join us in church"
 Tom Dortch 733-2668
 Box 89 • Morse, TX 79062

PRAIRIE MOTORS INC.
 Hwy. 207 South • P.O. Box 430
 Spearman, TX 79081 • (806) 659-2541
www.prairiemotors.com

Gruver Cablevision
 308 Main
 Gruver, TX 79040
 733-5295

Hansford County Reporter-Statesman
 "Proudly Serving Hansford County Since 1907"
 (806) 659-3434
 310 Barkley • Spearman, TX

INTERSTATE BANK, ssb
www.interstatebank.net
 322 Main • P.O. Box 146
 Spearman, TX • 659-2559

TYI

FOR YOUR INFORMATION

NITRO

The NITRO high school youth group will not be meeting the rest of the summer. We will resume Monday, September 17th for the Back to School Hog Roast.

Spearman Soccer Association

The Spearman Soccer Association will hold sign-ups for kids ages 4-10 (by September 1st) on Thursday, August 16th and Monday, August 20th from 4-6 p.m. at the Spearman Dairy Queen. Entry fees are \$35, and are due at the time of registration. For more information, call Abby Pipkin at 733-9439.

Gruver Blood Drive

Coffee Memorial Blood Center is hosting a blood drive in the Gruver area on Tuesday, August 28th, from 2-7 p.m. at Gruver State Bank, 3 Main Plaza in Gruver. Every eligible donor who presents to donate will receive a T-Shirt and be entered into a drawing to win 6 months of free milk from Gandy's! To schedule an appointment, please call 1-877-574-8800. ALL BLOOD TYPES ARE CURRENTLY NEEDED!

Women's Conference

Victory Center Church, Guymon, Ok., will be holding their annual Women's Conference at 5th and Quinn, August 23-25th. The theme of this year's conference is "Treasured and Unique". Early Bird registration fee before August 15th is \$30 and \$35 after August 15th. This fee includes lunch, all sessions and fingerfoods after the evening session. To register, call Victory Center Church, 580-338-5616 or e-mail victory@ptsi.net.

Yello Dyno to be in Perryton Parade

HEY KIDS! YELLO DYNO will be in the Perryton Parade on Saturday, August 25th. Would you like to be in the parade with YelloDyno? If so, have your parents call Janice at the Panhandle Crisis Center, (806) 435-5008.

SHS Class of 1987 Holds 20-Year Reunion

The Spearman High School Class of 1987 will celebrate their 20-year High School Reunion on Saturday, August 18th. Please contact Shari (Vernon) Skaggs at 940-455-2308 or skaggsfam@verizon.net for more information, or if you can help us to locate any of the following members of the Class of 87: Diana Arjona, Kim Branstetter, Margaret Espinosa, Lynette Gomez, Diane Sorgi, Scott Taylor.

Perryton Activity Center - Volleyball Registration

Youth Volleyball games will begin in early September for girls in grades 3rd-6th. Fees are \$20 for PAC Members and \$50 for all non PAC members. Deadline to sign-up is August 17th. For more information please call Barry at 806-435-3661.

Perryton Activity Center - Soccer Registration

Youth Soccer Fall League will begin in September. Games will be played on Saturdays and Mondays. Ages Pre K - 6th, boys and girls are encouraged to play. Fees are \$20 for PAC members and \$50 for non PAC members. The deadline to sign up is August 24th. For more information please call Barry at 806-435-3661.

Area Agency on Aging

There is a series of Lunch and Learns coming up beginning August 14 at the Women's Building at 1400 Wallace from 11-1. The Senior Fall Festival (Health Fair) will be held on October 11 at the Amarillo Civic Center. For more information, contact Laura Hershey at the Area Agency on Aging in Amarillo, at (806) 331-2227 or hershey@theprpc.org. the Website is www.theprpc.org/programs/aaa/aaa.htm.

Tuesday Night Golf Scrambles

The Spearman Golf Course holds Tuesday Night Scrambles, with a tee-time of 6 p.m. sharp. For more information, call 270-0157 or 659-2233.

You're Never Alone - Narcotics Anonymous Group

Each year individuals struggling with drug and alcohol addiction make the resolution to quit using drugs. For many of them it is a resolution that they cannot keep. Narcotics Anonymous can help. Open meetings are held on Monday and Thursday nights from 8-9 p.m. at the First Christian Church (29 S. Bernice in Spearman) for the "You're Never Alone" group of Narcotics Anonymous. Anyone interested is invited to attend. Drug addiction can leave you feeling helpless and out of control - we can help.

Spearhead AA Group

The Spearhead AA Group meets every Tuesday at 8 p.m. in the Pittman-Shieldknight building. Alcoholics Anonymous is a fellowship of men and women who share their experience, strength and hope with each other to help solve their common problem and help others to recover from alcoholism. The only requirement for membership is a desire to stop drinking. There are no dues or fees for AA membership; we are self-supporting through our own contributions. Our primary purpose is to stay sober and help other alcoholics achieve sobriety. For information, call 662-1111.

Al-Anon

If you are concerned with someone else's drinking or addiction, the Al-Anon program can help you. Each Al-Anon Family Group has but one purpose - to help families and friends of alcoholics and addicts. The Spearhead Al-Anon Group meets every Tuesday night at 8 p.m. in the Pittman-Shieldknight Building, 511 SW 11th Avenue, Spearman. For more information, call 806-330-0349.



Lusby-McCloy wedding

After 32 years, divergent paths and a blessed reconnection, high school sweethearts Katina Frances McCloy and Lonnie Edward Lusby were married April 28 at 11 a.m. at the First Baptist Church in Spearman.

Officiating was the Rt. Rev. Leo Michael of St. Gabriel's Episcopal Church (UECNA), Springdale, Ark.

The bride is the daughter of Mr. and Mrs. Willard (Si) McCloy of Morse. The groom is the son of Mrs. Dorothy Lusby and the late A.E. Lusby, Jr., of Spearman.

The bride wore an off-white embroidered voile dress that her grandmother, Leslie Braly, wore while courting Hutchinson County pioneer McLeod McCloy, whom she married in 1916. The bride accessorized it with a waistpiece of powder blue embroidered linen, made from a suit of her mother's, and a diamond forget-me-not necklace, a gift from the groom in 1973. She carried a hand-tied bouquet of pink roses, white lisianthus, baby's breath and green ivy.

Deborah Liefer of Colorado Springs attended the bride. Ronnie Stockton of Moore, Okla., attended the groom. Haley Byers, the groom's niece from Spearman, was flower girl.

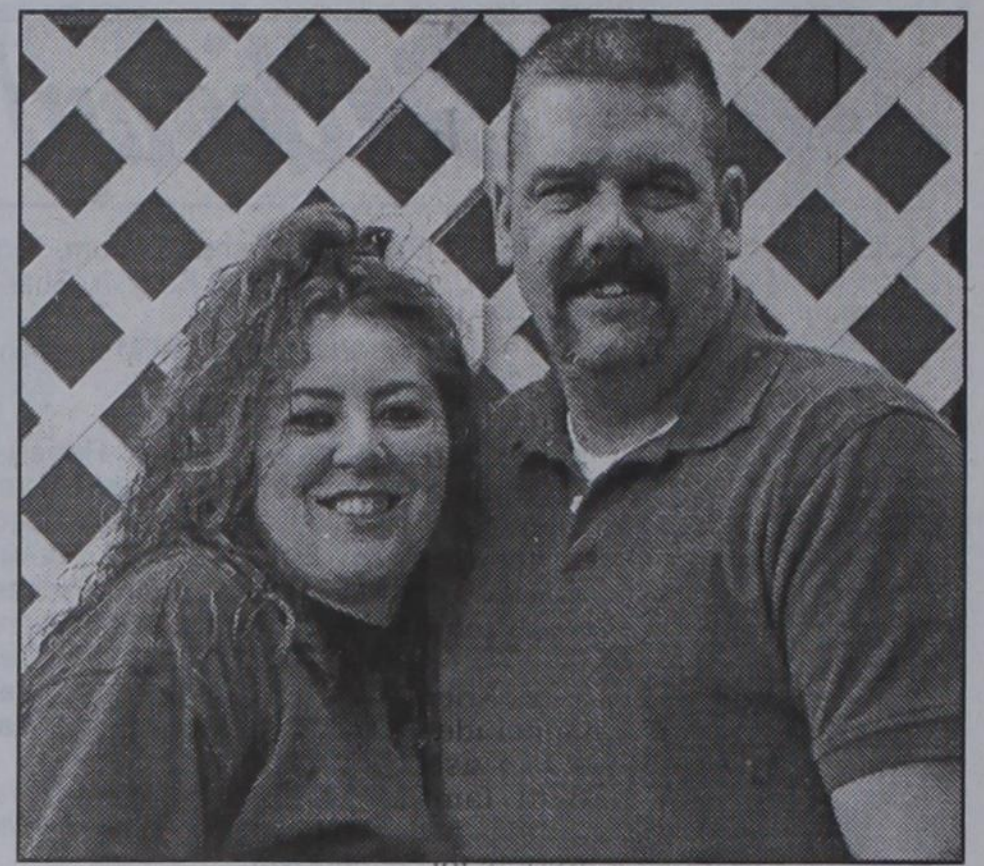
Becky Byers, the groom's sister, and Kathye Archer, both of Spearman, sang "The Prayer," "Panis Angelicus" and "Great Is Thy Faithfulness." Carol Pack of Spearman was the pianist.

The groom's nieces, Allison Vyoral of Perryton and Mandi Lusby of Spearman, registered guests. Ushers were the groom's nephews, James Lusby and Albert Lusby of Amarillo and Michael Lusby of Spearman, and the bride's nephew, Clint McCloy of Clayton, New Mex.

A reception featuring Colorado bison followed at The Bunkhouse restaurant in Spearman.

Both the bride and groom are 1974 graduates of Spearman High School and both earned degrees from Texas Tech. She is a writer, editor and landscape consultant from Black Forest, Colo. The groom is retired from the heavy construction industry.

After a wedding trip to New Mexico and receptions in Black Forest and Arkansas, the couple is at home in Fayetteville, Ark.



Engagement Announcement

Johnny and Brenda Vera of Spearman announce the engagement and upcoming marriage of their daughter, Misty Dawn Rodgers, to Gary L. Garrett, son of Roy Garrett and the late Joe Garrett of Fritch.

The couple will exchange vows on September 15, 2007, at 1:00 P.M., at First Baptist Church, 123 S Bernice in Spearman.

The bride elect is a graduate of Spearman High School and is employed by Hansford County Sheriff's Office.

The prospective groom is a graduate of Sanford - Fritch High School and is employed by Hansford County Sheriff's Office.

Thank You!

Coffee Memorial Blood Center hosted a Spearman Community Blood Drive on August 13th at The O'Louhlin Center. A total of 44 people supported the event, resulting in 35 units of blood!

Thank you for supporting Coffee Memorial Blood Center and the patients of the High Plains Region...Give the Gift of Life!

Please join us for a 50th Wedding Anniversary in honor of our parents, Jim and Kay Vernon,

on August 18, 2007 from 3:00 to 5:00 p.m. at the First Christian Church of Spearman Texas

Jim, Lynn and Shari



MONEY'S
BBQ & STEAK HOUSE

14 SE 3rd Ave
Perryton
(806) 435-3945

Stan and Donna Zepp

Under New Ownership
Same Great Service & Menu!

Gordon's

Your place for
Bridal Registry

Couples Currently Registered

- Misha Davis & Duane Dorsey - 8/11
- Camille Smith & Scott Prewett - 9/8
- Laura Gomez & Richardo Plascencia
- Daniele Catron & Randy Duffy
- Amy Boorigie & Doran Schoenhals
- Charlotte Procter & Tim Bynum
- Bethany Harris & Nick Peterson
- Syd Woodington & Don Coddling
- Nikki Stewart & Brady Hart

Baby Registry

- Ross & Kristi (Pearson) Renner - 8/11
- Heath & Miranda (The Reason) Hill - 8/18
- Lucas & Jessica Biggs - 8/19
- Clint & Brandy Sasser - 8/25
- Justin & Grace (Davis) Calvert - 9/8
- Kentan & Jodi Odom - 10/20
- Crystal Boyd & Jason Gonzales - TBA
- Ashley Rivas & Nic Cenicerros

Gordon's 659-2141
314 Main Spearman

Celebrate
Gifts for all your celebrations!
Bridal Registry

Shower Dates

- Courtney & Travis Ferguson - 8/26
- Camille Smith & Scott Prewett - 9/8
- Bethany Harris & Nicholas Peterson
- Nikki Stewart & Brady Hart
- Misha Davis & Duane Dorsey

Baby Registry

- Jodi & Kenton Odom - 10/20
- Crystal Boyd & Jason Gonzales - TBA
- Misti (Hland) & Jimmy Gayton - TBA
- Macy & Taos Weldon
- Courtney & Tye Womble
- Brandea & Mark Allen
- Kristi & Ross Renner

Celebrate

203 Main St. Spearman, TX
(806) 659-3350 1-800-663-8026

2007 SUMMER CLEARANCE SALE
SALE PRICES GOOD FROM AUGUST 17-25

NO SALES TAX ON PURCHASES MADE FRIDAY AND SATURDAY, AUGUST 17-18 (EXCEPT JEWELRY, BUCKLES, WALLET, ANY ITEMS SELLING FOR \$100 OR MORE)

221 MAIN ST. SPEARMAN, TX

MEN AND BOYS SUMMER CLOTHING 30% OFF

MEN SUMMER PULLOVER AND SPORT SHIRTS COMPANY 81-CHAPS TOMMY-IZOD-FALCON BAY **30% OFF**

MEN SHORTS & SWIM SUITS **30% OFF**

MEN SUMMER TALLMAN PULLOVER & SPORT SHIRTS **30% OFF**

MEN LEVI JEANS **550-560-501 STF \$29.95**

MEN & BOYS WESTERN & FASHION STRAW HATS **30% OFF**

BOY SUMMER CLOTHING, SHIRTS AND SHORTS COMPANY 81-TOMMY-LEVI UNIONBAY **30% OFF**

MEN AND BOY ADIDAS SHOES **20% OFF**

BOY CINCH SHIRTS **20%**

BOY JEANS LEVI-WRANGLER-CINCH 20X **20% OFF**

BOY FASHION JEANS **\$29.95**

MEN FASHION JEANS **\$39.95**

Circle of Friends Membership Party

The Hansford County Circle of Friends will host a membership party in support of The Don & Sybil Harrington Cancer Center on August 30, 2007 at 7:30 p.m. The party will be held at The O'Loughlin Center, 502 S. Brandt, in Spearman. The cost is \$20 per person, or \$35 per couple.

The Circle of Friends is a non-profit organization dedicated to helping cancer patients and their families in times of need. Through its affiliation with Harrington Cancer Center, the Circle of Friends develops and implements fund raising activities to provide financial assistance and patient care and support programs for those affected by cancer. The Circle of Friends also works with Harrington Cancer Center to provide cancer educational opportunities for people throughout the region.

Examples of Circle of Friends support of Harrington Cancer Center patients includes: Two furnished apartments for out-of-town patients to use when going through treatment; Pediatric patient/family gatherings (a day at Wonderland Park, Christmas party, etc.); Supplies for weekly support groups; Materials for chemotherapy classes, new patient books; Refreshments for patients during treatment; and Assistance with patients' travel, insurance premiums, rent or mortgage payments, medication, nutritional supplements, utilities and breast prosthesis.

For more information on the Hansford County Circle of Friends, or if you are interested in attending and/or volunteering to help with the event, please contact Holly McLain at (806) 733-2268 or Erika Stedje at (806) 733-2509.

Treasured & Unique Overcoming in Life Women's Conference Set for August 23-25

Women of Victory proudly presents their 2007 Overcoming In Life Conference highlighting "Treasured and Unique" as this year's theme. The conference will convene on August 23rd-25th at Victory Center Church, 5th and Quinn, in Guymon, Ok.

The conference will commence on Thursday afternoon, August 23rd, with registration starting at 5:00 p.m. and the Evening Session beginning at 6:30 p.m. The First Morning Session on Friday, August 24th, will start at 9:00 a.m. with the Second Morning Session starting at 10:30 a.m. Events for the day will include a delicious luncheon at noon with the Afternoon Session starting at 1:00 p.m. The Second Afternoon Session will be at 2:30 p.m. There will be an afternoon break starting at 3:30 p.m. with the Evening Session starting at 6:30 p.m. Saturday's meetings will resume with the First Morning Session at 9:00 a.m., the Second Morning Session will begin at 10:30 a.m. with the conclusion of the conference ending at noon. Finger-foods will be served following Evening Sessions and no nursery will be provided.

Again, we will be giving away a makeover on Friday morning, August 24th, which includes a visit to the beauty salon for a new hairstyle and makeup and an opportunity to pick out a new outfit. You must be present to win. Special guest speaker for this year's conference is Nancy James, a Preacher and Evangelist who ministers in the miraculous. God has established a very clear prophetic ear within her, and her mix of humor, street smarts and everyday life experiences help to create an atmosphere in which everyone can receive from God. She preaches the uncompromised Word of God with signs and wonders following.

The other featured speaker and conference hostess is Margaret Mendenhall, whose anointed ministry will share powerful, practical insights into the word of God. Other speakers will include Tamy Mendenhall, co-pastor of World Harvest Church in Enid, Oklahoma, who will share a timely word. Also, Kim Like, from Folsom, New Mexico, mother of five boys and popular conference speaker, will teach a workshop on "Cultivating the Treasure in Your Children." Beth Elliott will lead in anointed praise and worship.

Women of Victory Center Church want to invite every lady to come and experience anointed music, food, fun, fellowship and most of all the transforming presence of God. For more information, or to register, call 580-338-5616 or e-mail victory @ptsi.net.

Spearman Police Department Launches 'Drunk Driving. Over the Limit. Under Arrest' Crackdown on August 17

Major Enforcement Effort Seeks to Save Lives

Drunk driving is one of America's deadliest crimes. In 2005, nearly 13,000 people died in highway crashes involving a driver or motorcycle operator with a blood alcohol concentration (BAC) of .08 or higher. The picture for motorcycle operators is particularly bleak. Forty-one percent of the 1,878 motorcycle operators who died in single-vehicle crashes in 2005 had BAC levels of .08 or higher.

That is why the Spearman Police Department announced today they will be joining with thousands of other law enforcement and highway safety agencies across the nation from August 17 throughout the Labor Day holiday to take part in the Drunk Driving, Over the Limit, Under Arrest, crackdown on impaired driving.

"Make no mistake. Our message is simple. No matter what you drive—a passenger car, pickup, sport utility vehicle or motorcycle—if we catch you driving impaired, we will arrest you. No exceptions. No excuses," said Senior Patrolman Brian Massey. "We will be out in full force to get more drunk

drivers off the road—and save lives that might otherwise be lost.

"Driving with a BAC of .08 or higher is illegal in every state. Yet we continue to see far too many people suffer debilitating injuries and loss of their loved ones as a result of impaired driving. This careless disregard for human life must stop. To help ensure that happens, The Spearman PD is dedicated to arresting impaired drivers wherever and whenever we find them," said Corporal Jessica Kay.

"Drunk driving is simply not worth the risk. Not only do you risk killing yourself or someone else, but the trauma and financial costs of a crash or an arrest for impaired driving can be significant," said Officer Massey. "Violators often face jail time, the loss of their driver's license, higher insurance rates, attorney fees,

time away from work, and dozens of other expenses.

"So don't take the chance. Remember, if you are over the limit, you are under arrest."

The national Drunk Driving, Over the Limit, Under Arrest, impaired driving crackdown is a prevention program organized by the U.S. Department of Transportation's National Highway Traffic Safety Administration (NHTSA) that

focuses on combining high-visibility enforcement with heightened public awareness through advertising and publicity.

This year's effort is supported by \$11 million in paid-national advertising to help put everyone on notice that if they are caught driving impaired, they will be arrested.

For more information, visit www.StopImpairedDriving.org.

Gruver Community Blood Drive

Coffee Memorial Blood Center is hosting a blood drive in the Gruver area on Tuesday, August 28th, from 2-7 p.m. at Gruver State Bank, 3 Main Plaza in Gruver.

Every eligible donor who presents to donate will receive a T-Shirt and be entered into a drawing to win 6 months of free milk from Gandy's!

To schedule an appointment, please call 1-877-574-8800.

ALL BLOOD TYPES ARE CURRENTLY NEEDED!

The need is real. There is no substitute for blood. It can only come from volunteer blood donors. Please support the patients of the High Plains Region... Give the Gift of Life!

Auction Calendar

**** Log On To Our Website For Complete Listings ****
www.5starauctioneers.com

Tuesday Thru Saturday, August 21 Thru 25, 2007—Sale Time: 10:00 a.m. except Saturday
36th Annual Harvest Equipment Auction
Located: Plainview, Texas—Selling: Farm, Ranch Construction Livestock Equipment

Thursday, August 30, 2007—Sale Time: 9:00 a.m.
McLain Farm Equipment—Owners

Located: Crowell, Texas—Selling: Farm Equipment, Parts, Real Estate, Tractors

Saturday September 1, 2007—Sale Time: 10:00 a.m.
Herman Ledbetter—Owner

Located: Tahoka, Texas—Selling: Farm Equipment

Saturday September 8, 2007—Sale Time: 10:00 a.m.
McClain Brothers—Owners

★ Jimmy Reeves.....(806) 864-3362 (Clerk)
★ Jim Summers.....(806) 864-3611 (10006)
★ Donna Noel.....(806) 293-1124 (Secretary)

Five Star Auctioneers
Office: (806) 296-0379—PO Box 1030—Plainview, TX
Website: www.5starauctioneers.com
Terms of Sale: Cash, Personal or Business Check
All Accounts Settled Day of Sale—We Are Agents Only
Winch Truck Available on Sale Day

www.spearmanreporter.com
www.spearmantexas.biz

See us for:
AUTO • HOME • CROP HAIL • FARM & RANCH • MULTIPERIL • LIVESTOCK

INSURANCE



BORT AGENCY, INC.
510 Main St. • Gruver, TX
(806) 733-2456

Thank You!

Spearman Booster Club would like to say a Big Thank You to the following folks for all the support in purchasing the new football scoreboard. This could not have taken place without your help.

Panhandle Anchors, Willis Boyd Dirt Service, Trencor, Booster Club 2007, Crop Chasers Inc. Custom Application, Junior Lusby "Cats" Dirt Contractor, 4-S Farms, Class of '86, James Nicholson, Viola George, Don and Mary Allen, Mr. and Mrs. Jimmy Vernon in memory of Kurk Adams

Last year Booster Club gave 19 scholarships, purchased a Shoot-A-Way for the basketball programs and helped with the scoreboard. Again - THANKS A BUNCH to all the Spearman businesses and families for all that you do for Booster Club.



Immediate Full-Time Openings at Hansford Hospital

Pharmacy Assistant: Assist Pharmacist with daily operations of pharmacy. Hours 7 a.m.-4:30 p.m.

Maintenance Personnel: experience a plus, but not required. Salary compensation with experience. Starting salary - \$10/hour for full-time employment.

Openings at Hansford Manor

CNA Class to begin on or around September 3, 2007.

Housekeeping - full-time and part-time

CNA's - full-time and part-time.

LVN - full-time and part-time. Must be licensed by the State of Texas.

Great working environment and staff, quality facility providing opportunities for professional growth. Great benefit package. Apply at 707 S. Roland, Spearman, TX or contact Jackie Nelson at 806-659-5841. Download application at www.hchd.net
EEOE
2(8-16-07)B



MAKE THE SMART CHOICE.

HIGH-SPEED INTERNET

\$14.99 PER MONTH
FOR 12 MONTHS WITH QUALIFYING SERVICES

- NO CONTRACT REQUIRED
- 30-DAY SATISFACTION GUARANTEE
- LIMITED-TIME OFFER

PHONE
BROADBAND
DIGITAL TV

THE FASTEST, MOST RELIABLE SPEED FOR THE MONEY

1.877.312.WIND | WINDSTREAM.COM

windstream
grow places

VISIT US IN TEXAS:

ANDREWS 112 S.W. 1st Street 432-523-3323	DALHART 310 Rock Island Avenue 806-249-1100	PERRYTON 301 S. Amherst Street 806-435-2050	SEYMOUR 400 N. Main Street 940-888-1220	SUGAR LAND 403 Highway 6 S., Suite H 281-490-9412	TEXARKANA 2315 Richmond Road, Suite 101 903-223-4688
---	--	--	--	--	--

Limited-time offer for new Windstream Broadband customers. Subject to availability. Offer Details: Price for Broadband Lite when bundled with Connect Package and Digital TV. Includes Broadband transport and internet access. \$25 activation fee applies. Speeds are distance-sensitive and availability varies by address. Windstream cannot guarantee speeds or uninterrupted, error-free service. Satisfaction Guarantee: If customer cancels within the first 30 days, first month fee will be refunded. Modem equipment purchased through Windstream must be returned upon termination. Taxes and fees are non-refundable. Additional information: Credit approval required. Taxes, fees and other charges, including Universal Service Fund, apply. Services convert to the regular qualified monthly rate. Long distance converts to windstream 30. If any bundled service is disconnected, Windstream reserves the right to alter or discontinue this plan at any time. Other conditions may apply. Subject to Windstream Terms and Conditions available at Windstream.com or Windstream.com. Windstream is a registered service mark of Windstream Corporation. ©2007 Windstream Corporation



RELIABLE
SAFE • SECURE
mostreliablephone.com



Tell your friends!

Colorado Peaches from Palisade!

Straight from the grower to you! Tree ripe, juicy and bursting with flavor. From the tree to the box, to bring you the best quality shippable. Refrigerated. Semi-load. Worth the drive - also Bartlett Pears.

Cunningham Peaches - 970-314-1469

Irwin Chevrolet in Perryton

Thursday, Aug. 23rd - 8 a.m.-5 p.m.

www.CunninghamPeaches.com

Spearman Booster Club

Booster Club will have a called meeting August 17th at 6 p.m. at the High School parking lot, just before we paint paws on road ways. This meeting is to vote on purchasing the inflatable helmet and tunnel. All members are encouraged to attend this meeting to vote.

We will repaint the paws that are around the High School, Elementary and Junior High, following this meeting, starting around 7

p.m. We are requesting the public would not drive in those areas - so the paint can dry. We ask that no one park between the school and field house street. We do not want to paint anyone's vehicle.

Meet the Lynx and Lynettes will be held August 23rd at the High School Football Field at 7 p.m. Everyone is invited to meet the football players, cross country runners, cheerleaders and coaches. The cheerleaders from cheer camp will also be participating.

Afterward a Community wide tailgate party will take place on the east side of the football stands. Hotdogs, chip and drinks will be provided for anyone and Booster Club will have a membership and merchandise booth set up with shirts, blankets, jackets, pullovers, stadium seats, etc. for sell.

We are also in the process of their annual membership drive. Membership dues are \$25 for businesses and \$10 for individuals and families.

If you would like to join the Spearman Booster Club, please contact Rhonda Baker at 659-5056.

The Spearman Booster Club is also selling Sports Sponsorship Packages. Quentin Shieldknight is going to broadcast the football and basketball games this year. He does a great job of making sure that all sponsors are put on every game.

The deadline to purchase a package is August 20th. Descriptions of the packages are as follows: **Sports Sponsorship Packages:** 1) **Sponsors** - \$2000/year - includes 60-second taped commercials aired during live broadcast, individual page listed on Cable TV, live broadcast promotion; 2) **Super Booster** - \$1000/year - Individual page listed on Cable TV, 30-second advertisement read from index card during live broadcast; 3) **Booster** - \$500/year - Name listed on Cable TV (running across bottom of screen), 15-second on-line ad aired during live broadcast; 4) **Signature Ads** - \$50-\$200/year - Name listed on Cable TV

More information is also available online at spearmanlynx.com.



MITCHELL THEATRES
NORTHDRIDGE CINEMA 8

Guymon, Oklahoma

Movies beginning 8/17

SUPERBAD

R - Seth Rogan

THE INVASION

PG-13 - Nicole Kidman

RUSH HOUR 3

PG-13 - Jackie Chan, Chris Tucker

STARDUST

PG-13 - Michelle Pfeiffer, Robert DeNiro

THE BOURNE ULTIMATUM

PG-13 - Matt Damon

UNDERDOG

PG - Jim Belushi

BRATZ

PG - Nathalia Ramos

PRONOUNCE YOU CHUCK & LARRY

PG-13 - Shia LaBeouf

FRESH POPCORN EVERYDAY!
-PARTY ROOM & ARCADE-
Call for Showtimes
580-338-3281

www.northridge8.com
Office -- 580-338-8969

CASH & CREDIT CARDS ONLY
THANK YOU!

School News

ADULT ESL CLASSES
Spearman ISD Community Resource Program and Region 16 ESC are sponsoring Adult English Second Language classes. They began Tuesday, August 14 and will continue through May, each Tuesday and Thursday nights from 7-9pm. Dana Saylor, elementary ESL teacher, will teach the class in room 112 at Spearman High School. For more information contact Cindy Blackman, Community Resource Coordinator, at 659-3233.

GRUVER HIGH SCHOOL
Gruver High School registration and schedule confirmation will be August 16 from 9 a.m.-4 p.m. for Juniors and Seniors and August 17th from 9 a.m.-4 p.m. for Freshmen and Sophomores.

All students must confirm their schedule with Mrs. Curry on these dates.

GRUVER JR. HIGH AND ELEMENTARY
Elementary and Junior High registration will be held August 17 from 9 a.m.-12 noon and 1-4 p.m.

SPEARMAN JR. HIGH
Spearman Jr. High students may register on Wednesday, August 22nd. Returning students register from 9 a.m. to 12 noon and new students may register from 1-4 p.m.

SPEARMAN ELEMENTARY
Spearman Elementary registration will be held through August 17 from 8:30 a.m.-12 noon and 1-3:30 p.m. Elementary homeroom assignments were mailed this week.

HEAD OF THE CLASS

Be part of the solution!
Shopping at home benefits everyone.
Local merchants can provide things you can't get in the "BIG CITIES."

- 1 Have any "Big City" businesses ever bought tickets for local fundraisers or contributed to worthwhile community projects?
- 2 Have they ever bought ads in the school yearbooks or tickets to school activities?
- 3 Have they ever put your posters in their windows?
- 4 Do they attend local school activities and cheer from the sidelines?
- 5 Have they always been handy and willing to service their merchandise when you need it?
- 6 Have they always cheerfully and quickly exchanged merchandise or let you return merchandise for a cash refund without a receipt?
- 7 Have they ever special-ordered something for you and then given you a discount?
- 8 How many of their employees volunteer to help with local community service projects?
- 9 Have they ever bought popcorn, cookies or magazines from local children?
- 10 Have they ever bought a show animal from local children or supported them in a bike-a-thon?

Your local small merchants provide these extras because they are your friends and neighbors and you see them everyday in your community. All they ask in return is a chance for your business!

SHOP SPEARMAN!

brought to you by
Spearman Chamber of Commerce
Spearman Economic Development Corporation
Hansford County Reporter-Statesman

Notice of Public Hearing on Tax Increase

The Hansford County will hold a public hearing on a proposal to increase total tax revenues from properties on the tax roll in the preceding tax year by 4.00 percent (percentage by which proposed tax rate exceeds lower of rollback tax rate or effective tax calculated under Chapter 26, Tax Code). Your individual taxes may increase at a greater or lesser rate, or even decrease, depending on the change in the taxable value of your property in relation to the change in taxable value of all other property and the tax rate that is adopted.

The public hearing will be held on August 27, 2007 at 10:00 AM and September 4, 2007 at 10:00 AM at Hansford County Law Library.

The members of the governing body voted on the proposal to consider the tax increase as follows:

FOR:	Joe T Venneman	Ira G "Butch" Reed
	Tim Stodje	Danny Henson
	Benny Wilson	

AGAINST:
PRESENT and not voting:
ABSENT:

Comparison of Proposed Budget with Last Year's Budget

The applicable percentage increase or decrease (or difference) in the amount budgeted in the preceding fiscal year and the amount budgeted for the fiscal year that begins during the current tax year is indicated for each of the following expenditure categories:

Maintenance and operations	10.38% increase
Debt service	0.00% increase
Total expenditures	10.38% increase

Total Appraised Value and Total Taxable Value as calculated under section 26.04, Tax Code

	Preceding Tax Year	Current Tax Year
Total appraised value* of all property	\$761,722,667	\$642,040,775
Total appraised value* of new property**	\$799,344	\$1,255,374
Total taxable value*** of all property	\$638,452,681	\$621,414,394
Total taxable value*** of new property**	\$583,521	\$849,101

Bonded Indebtedness

Total amount of outstanding and unpaid bonded indebtedness \$0

Tax Rates

Adopted tax rate for the preceding tax year	\$0.371918	per \$100 in value
Proposed tax rate for the current tax year	\$0.397800	per \$100 in value
Difference in the proposed tax rate and the adopted tax rate for the preceding tax year	\$0.025882	per \$100 in value
Percentage increase or decrease in the proposed tax rate and the adopted tax rate for the preceding tax year	6.96%	Increase

These tax rate figures are not adjusted for changes in the taxable value of property.

Comparison of Residence Homestead Values

Average appraised and taxable values on residence homesteads are compared from the preceding tax year and the current tax year.

	Preceding Tax Year	Current Tax Year
Average residence homestead appraised value	\$43,971	\$42,064
Homestead exemption amount for the taxing unit	\$11,794	\$11,412
(excluding special exemptions for persons 65 years of age or older or disabled)		
Average taxable value of a residence homestead	\$32,177	\$30,652
(excluding special exemptions for persons 65 years of age or older or disabled)		

Comparison of Residence Homestead Taxes

The taxes that would have been imposed in the preceding tax year on a residence homestead at the average appraised value (excluding special exemptions for persons 65 years of age or older or disabled) are estimated to be \$119.67. The taxes that would be imposed in the current tax year on a residence homestead appraised at the average appraised value in the current tax year (excluding special exemptions for persons 65 years of age or older or disabled), if the proposed tax rate is adopted, are estimated to be \$121.93. The difference between the amount of taxes on the average residence homestead in the current tax year, if the proposed tax rate is adopted, and the preceding tax year would be an increase of \$2.26 in taxes.

Criminal Justice Mandate

The Hansford County Auditor certifies that Hansford County has spent \$7,700 in the previous 12 months beginning July 31, 2006, for the maintenance and operations cost of keeping inmates sentenced to the Texas Department of Criminal Justice. Hansford County Sheriff has provided information on these costs, minus the state revenues received for reimbursement of such costs.

* "Appraised value" is the amount shown on the appraisal roll and defined by Section 1.04(8), Tax Code.

** "New property" is defined by Section 26.012(17), Tax Code.

*** "Taxable value" is defined by Section 1.04(10), Tax Code.

2007 Property Tax Rates in City of Spearman

This notice concerns 2007 property tax rates for City of Spearman. It presents information about three tax rates. Last year's tax rate is the actual rate the taxing unit used to determine property taxes last year. This year's effective tax rate would impose the same total taxes as last year if you compare properties taxed in both years. This year's rollback tax rate is the highest tax rate the taxing unit can set before taxpayers can start tax rollback procedures. In each case these rates are found by dividing the total amount of taxes by the tax base (the total value of taxable property) with adjustments as required by state law. The rates are given per \$100 of property value.

Last year's tax rate:

Last year's operating taxes	\$ 310,246
Last year's debt taxes	\$ 0
Last year's total taxes	\$ 310,246
Last year's tax base	\$ 62,061,612
Last year's total tax rate	0.499900 /\$100

This year's effective tax rate:

Last year's adjusted taxes (after subtracting taxes on lost property)	\$ 309,282
+ This year's adjusted tax base (after subtracting value of new property)	\$ 61,391,092
= This year's effective tax rate	0.503789 /\$100

(Maximum rate unless unit publishes notices and holds hearings.)

This year's rollback tax rate:

Last year's adjusted operating taxes (after subtracting taxes on lost property and adjusting for any transferred function, tax increment financing, and/or enhanced indigent health care expenditures)	\$ 410,245
+ This year's adjusted tax base	\$ 61,391,092
= This year's effective operating rate	0.668248 /\$100
x 1.08 = this year's maximum operating rate	0.721707 /\$100
+ This year's debt rate	0.000000 /\$100
= This year's total rollback rate	0.721707 /\$100
- Sales tax adjustment rate	0.163350 /\$100
= Rollback tax rate	0.558357 /\$100

Statement of Increase/Decrease

If City of Spearman adopts a 2007 tax rate equal to the effective tax rate of \$0.503789 per \$100 of value, taxes would increase compared to 2006 taxes by \$1,136.

Schedule A - Unencumbered Fund Balances

The following estimated balances will be left in the unit's property tax accounts at the end of the fiscal year. These balances are not encumbered by a corresponding debt obligation.

Type of Property Tax Fund	Balance
Maintenance & Operations	\$673,700

Schedule C - Expected Revenue from Additional Sales Tax

In calculating its effective and rollback tax rates, the unit estimated that it will receive \$100,963 in additional sales and use tax revenues.

This notice contains a summary of actual effective and rollback tax rates' calculations. You can inspect a copy of the full calculations at 709 W 7th Ave, Spearman Tx 79081.

Name of person preparing this notice: Sonya Shieldknight

Title: Chief Appraiser

Date Prepared: August 9, 2007

REAL ESTATE FOR SALE

FOR SALE Cottonwood Springs Ranch, Roberts County: 100 +/- acres with 3100 sq. ft. 2-story log home, oversized 2-car garage, 2 guest houses, ponds in front and back lawn, large multi-purpose barn w/steel cattle pens. Currently operated as Bed & Breakfast and party facility, or would be nice residence. Call Cliff Scott & Company at 663-3575, ask for Cal Ferguson. 4(8-2-07)B

FOR SALE - 904 Wilmeth, Spearman: 5,162 sq ft home with FIVE Bed, 3.5 Baths, Office, Exercise Rm, Bsmnt, CACH, & 3 Car Gar on 2 lots! It also has a lrg Utility Rm, Lrg Pantry, Granite Countertops, New Appliances, FP, and Tons of Storage. Call E-Properties, Shirley Howard-Broker/Owner, 806-886-6536. 4(8-16-07)B

FOR RENT/LEASE

OFFICE SPACE FOR RENT, SPEARMAN: Pittman-Shieldknight building - all sizes available. Call 659-5588 or 659-3399 for more information. TFN(01-27-05)B

FOR RENT: 2BR apartment, \$375.00 per month, water paid. Call Larry O'Neal at 580-772-5617. TFN(7-06-06)B

FOR RENT: 1BR efficiency apartment. Utilities paid. Call 659-2247.

TFN(5-24-06)B
FOR RENT: 2BR, 1 B, large fenced yard, garage. \$425 deposit, \$425/month. Call 940-631-0894. TFN(7-5-06)B

EMPLOYMENT

HELP WANTED: Experienced automotive technician wanted. Good working environment, paid holidays, paid vacation and health insurance. Chrysler experience helpful. GM & Chrysler Dealership. Call 1-800-692-4657, ask for Mike. TFN(7-26-07)B

HELP WANTED: Hansford County Feedyard is looking to hire mature, dependable people for pen rider/cowboy and doctor positions. We would like to hire experienced people and we will consider experience towards compensation. We are also willing to train people with the right attitude and work ethic. We also offer excellent benefits and a performance bonus opportunity. Contact Matt at 806-733-5025 or 806-736-0064. 3(8-09-07)B

HELP WANTED: Now Hiring Multiple Positions at the Gruver Branch of Sunray Coop. Some will be temporary through fall harvest and some could lead to full time positions. Must be able to speak English and pass a drug test. Apply in person at 221 W. Hwy 15- Gruver. 2(8-16-07)B

HELP WANTED: Manager needed for apartment complex in Perryton. Must be honest and dependable. Fax resume to 817-732-7716 or call 817-732-1055. 4(8-16-07)B

HELP WANTED: Now accepting applications for an office manager. Apply in person. Prairie Motors.

Hwy 207 South, Spearman. TFN(7-26-07)B

VEHICLES

FOR SALE: 97 Ford Explorer XLT White/Tan, Loaded, Leather. Good Condition. \$4200 obo. 806-228-6885 TFN(7-26-07)B

FOR SALE: 1998 Grand Marquis LS Loaded, leather, auto, cruise, tilt, PW/PL, power seats, coach roof, 65K - \$5995. Call 806-330-1220 or 659-3194. TFN(5-17-07)B

FOR SALE: 2002 Chevy Pickup - 4WD, 4-door, Crew Cab, electric windows/seats, shortbed, 135K miles. \$12,000 OBO. Call 659-3105, leave message. TFN(8-2-07)B

MISC.

FOR SALE: Green sofa, over-sized chair w/Ottoman, Tables, Lamps, 3 Oak Bar Stools w/Backs. Call 659-3105, leave message. 2(8-16-07)B

LOST & FOUND

LOST: Red Terrier/Miniature Collie mix female dog. Black with tan

spots - one in shape of a heart, short tail, answers to Cheeky. If found, please call 806-659-2661. 2(8-16-07)NC

GARAGE SALE

MOVING SALE: 1020 Evans, Spearman: Thurs., Aug. 16, 12 noon-6 p.m.; Fri., Aug. 17, 9 a.m.-6 p.m.; Sat., Aug. 18, 9 a.m.-12 noon. Furniture, tools, household items, clothes, scrubs, lots of misc. 1(8-16-07)B

PUBLIC NOTICE

NOTICE TO CREDITORS
 Notice is hereby given that original Letters Testamentary for the Estate of Reginald Robertson, Deceased, were issued on July 3, 2007, in Cause No. P02510, pending in the County Court of Hansford County, Texas, to: JoAnn Robertson. All persons having claims against this Estate which is currently being administered are required to present them to the undersigned within the time and in the manner prescribed by law. c/o: JoAnn Robertson 609 S Bernice Spearman TX 79081 DATED the 3rd day of July, 2007. Cecil R. Biggers

Attorney for JoAnn Robertson State Bar No.: 02308500 PO Box 342 13 W Kenneth Spearman TX 79081 Telephone: (806) 659-5531 Facsimile: (806) 659-5531 1(8-16-07)B

No. P02508
IN THE ESTATE OF CLETA C. CASDORPH, DECEASED
IN THE COUNTY COURT OF HANSFORD COUNTY, TEXAS NOTICE TO CREDITORS

Notice is hereby given that original Letters Testamentary for the Estate of Cleta C. Casdorff, Deceased, were issued on July 13, 2007, in Cause No. P02508, pending in the

County Court of Hansford County, Texas, to: Rex Casdorff. All persons having claims against this Estate which is currently being administered are required to present them to the undersigned within the time and in the manner prescribed by law. c/o: Rex Casdorff PO Box 772 Gruver TX 79040 DATED the 13th day of July, 2007. David T. Scott Attorney for Rex Casdorff State Bar No.: 17894525 PO Box 88 315 S Main Perryton TX 79070 Telephone: (806) 435-6121 Facsimile: (806) 435-9731 1(8-16-07)B

2	8	1	4	7	9	3	6	5
4	3	6	2	8	5	7	1	9
9	7	5	1	3	6	4	2	8
5	1	2	7	6	8	9	4	3
8	4	9	3	2	1	6	5	7
7	6	3	5	9	4	2	8	1
1	2	7	8	4	3	5	9	6
6	5	4	9	1	7	8	3	2
3	9	8	6	5	2	1	7	4

ALTO	HIM	GOSH
LAI	BENE	CURIO
EIRE	ELUL	LIEGE
CROSS	WORD	ANON
SLATE	ANN	
SEAA	AIR	ANGELUS
TAB	MEASLY	SATE
ORATE	RIG	ASPIC
ETCH	SCRAWL	ACT
PHARAOH	HUZZAS	
IMP	LEILA	
UGLI	BEDRAGGLE	
OPALS	EWER	RUER
NONES	AIMS	ERNS
ENGR	USA	BUTT

Real Estate & Rental

PROPERTY OF THE WEEK Spearman Property
 306 Davis - Great store-front in desirable location. EX- 504 Roland - 3BR, 2B, storm shelter, stg bldg. 222 S. Haney - 2BR, 1B, newly remodeled

Gruver Property
 813 Richardson - 2BR, 1B - BIG REDUCTION!
 802 Womble - 2-3BR, carport, corner lot

Rental Property
 Spearman - 1BR apartment
 Gruver - 1BR, 1B home

Real Estate & Rental for all your real estate needs!
 Melinda McCullough, Realtor (806) 733-5678

Century 21 Golden Spread Realty

1104 Dressen, SPEARMAN - 3BR, 1B, 1 attached garage.
 Janice Flathers, Realtor (806) 435-5444, office (806) 202-0745, cell

1110 Dressen, SPEARMAN - 3BR, 1 1/2B, 1 attached garage.
 Deana Foster, Realtor (806) 435-5444, office (806) 202-1061, cell

221 S Bernice, SPEARMAN - 3BR, 1 1/2B, 2 detached garage.
 Cindy Anderson, Realtor (806) 435-5444, office (806) 435-0011, cell

INDEPENDENTLY OWNED & OPERATED. ©1992® and Century 21 Real Estate Corporation. Equal Housing Opportunity. EOW(11-11-06)B

MARTIN & ASSOCIATES REALTY

Serving Hansford County for 14 years
 Julie Martin: Broker - 659-2425

IN SPEARMAN
 422 S Barkley - 3 1/2 - newly remodeled, extra lg. corner lot, new furnace, fixtures & more
 721 Cotter Dr. - **SOLED** facade, central air/heat
 703 Collier - 3/1 1/2 investment property, subject to lease
 11 Glover - 2722 preferred location on circle drive, 3 bedrooms, 2 full bathrooms & more

UNDER CONTRACT
 We'd Like Your Listing FOR QUALITY & SERVICE CALL US TODAY! Equal Housing Opportunity

Blankenship Real Estate
 659-3052 - 670-3774

NEW LISTING - 3/2 1/2 brick home - central h/a, hardwood floors, back yard with storage building. Low maintenance. Great location!
SOLED

Crawford Addition - oversized detached 2-car garage, storm shelter
SOLED

BRICK 3/1 1/2 - good carpet, new paint. Ready to move in! **PRICE REDUCED!**

BRICK 3 UNDER CONTRACT
 Eulalia Blankenship - Sales
 Eschol Blankenship - Broker
NEW LISTINGS WANTED!

FSB First State Bank
 P.O. Box 247 Spearman, TX 79081 Telephone 806-659-5565 Member FDIC

Planning to buy a home, but not sure if you can get an affordable mortgage?
 Interest too high on your present mortgage?
 Want to do business with a local bank?

We can help!

Come by First State Bank, Spearman.
 Check out our competitive fixed and adjustable rate mortgages for terms up to 30 years.
 We can work with you to find a mortgage that fits your needs and help you buy or refinance your home.
 Contact Ginger Turner and find out more.

HARD WORK HAS NEVER BEEN SO EASY!



NO MONEY DOWN, 0% A.P.R. FINANCING FOR UP TO 36* MONTHS

PANHANDLE IMPLEMENT CO
 710 NORTH MAIN STREET • PERRYTON, TX • 806-435-6508



Neoma and Willie Wilkerson Celebrate 60th Wedding Anniversary

The children of Willie and Neoma Wilkerson honored their parents with a 60th Anniversary party and an 80th birthday party for their mom on July 14, 2007. The couple was married on Neoma's birthday on July 17, 1947, in Henryetta, Oklahoma. They lived in Dewar, Oklahoma before moving to Spearman, Texas in 1957. They have called Spearman their home for the past 50 years. Willie worked and retired from Daco Lease and Well Service, and Neoma was a homemaker.

The children and spouses of the couple are sons: Roddy and Stephanie Woodson of Sachse, Texas; Roy and Melinda Woodson of Lewisville, Texas; William and Boots Wilkerson of Flint, Texas; Ronald and Doreen Wilkerson of Allegan, Michigan; W.L. and Diane Dowdy of Grants Pass, Oregon; Anthony and Linda Wilkerson and Marvin and Anne Wilkerson of Spearman, Texas; and daughter Darlene and John Taft of Raton, New Mexico. The couple has 17 grandchildren and 18 great-grandchildren.

The backyard party was hosted by their children at the home of Anthony and Linda Wilkerson. A Friday night get together was also held at the home of Marvin and Anne Wilkerson. Several relatives traveled to join in this celebration. A very special picture of the old home place was painted by a family friend and presented to the couple by their son Roddy. Their daughter Darlene also wrote, read, and gave to them a very meaningful poem about their life as they grew up all those years ago in Oklahoma and later in Texas. A scrapbook of memories and cards from family and friends was also presented to the couple as a reminder of how special they are to so many people.

Everyone enjoyed visiting and sharing old memories of days gone by. Willie and Neoma, along with their children, would like to extend a special thank you to all of the family and friends who sent cards, memories and made the trip to Spearman to help celebrate these two great milestones. Your efforts helped to make this a very special celebration for everyone.



Lake Level--August 13, 2007--24.22 feet (-0.18)

Happenings at the Lake included a youth group from the Gruver Methodist Church camping Friday night, a nice crowd out to Pokey the Clown's Jr. Ranch Rodeo on Saturday night, and plans for the Spearman elementary teachers to have a get-acquainted party this Monday evening.

There were 5 RV campers behind the dam.

Some of the readers will remember Mackie and Joe Woods who lived in Gruver some years ago when Joe ran the lumber yard. Now they live in Panhandle. Mackie is a grandmother who brings her grandchildren to spend time at the Lake. On her third trip this summer, she brought 4 grandchildren. In the heat of the day they play games in the air-conditioned pop-up camper. When it cools, they fish and play outside.

Jim said that he and Mandy had a hummingbird visit the flowers in their front yard last week. Also, Mandy witnessed an unusual event while watching her Mama Cat introduce her five little kittens to the outside world: A buzzard swooped down to snatch one, but the heroic cat jumped in the air at the bird and scared it away.

TEXAS HORNED LIZARD

This rare picture of a Texas horned lizard was taken by Frank Edwards. I owe Frank an apology as his excellent picture of the raccoon that we used 2 weeks ago was attributed to Frank Miller. I made the mistake and I regret the error.



I have never gotten to see a "horny toad" in this posture of being up on its four legs. Usually they stay very flat on the ground. The experts say that by staying flat they will not cast a shadow to attract a hawk. Notice the white stripe down the lizard's back. That, too, is part of its camouflage. When all of their defensive tricks fail, horned lizards get up high on their legs to look bigger. Then they lower their heads in the manner of a little fighting bull and hop at their predator. They have been known to bite the boots of human tormentors.

If one of these little creatures is picked up and stroked between the eyes or turned over and given a belly rub, it will go immobile. I'm not sure how this helps in their survival, but most youngsters really enjoy putting a horny toad to sleep.

Tong's Chinese Restaurant

511 S. Hwy. 207 • 659-2838 • Spearman

All-You-Can-Eat Buffet Specials

Tuesday - Steak	\$7.99
Thursday - BBQ Ribs	\$6.50
Friday - Shrimp	\$6.50
Saturday - Catfish	\$6.50
Mon., Wed. & Sat.	\$5.50

Buffet Hours: 11 a.m.-2:30 p.m. & 5:30-Close

www.spearmanreporter.com
www.spearmantexas.biz

Miss Vicky's Soul Food

817 SW 5th Street (Corner of 6th & Adams)
Amarillo TX • (806) 372-2247

Down Home Cooking at it's Best!

All-You-Can-Eat

Chicken, Pork Chops, Ribs,
Cheese Meat Loaf Fish, Smothered
Chicken, Chicken 'n Dumplings,
and Much More!
Vegetables, Home-Made Desserts
Kook-Aid

Hours: Monday-Tuesday, 11 a.m.-3 p.m.
Wednesday-Sunday, 11 a.m.-5 p.m.

STATE OF TEXAS COUNTY OF HANSFORD

BUDGET HEARING

WHEREAS, the Board of Directors of Hansford County Hospital District have caused to be prepared an annual budget for the fiscal year beginning October 1, 2007, and ending September 30, 2008, Notice is hereby given that a public hearing on said proposed budget will be held on Thursday, August 30, 2007, at 6:00 p.m. in the Business Office Conference Room of Hansford Hospital, 707 Roland, Spearman, Hansford County, Texas.

Ginger Pittman
President / Board of Directors

Local Offices
Local People
Local Causes

\$13.5 Million invested in the
Texas Panhandle since 2000

Over 100 miles of fiber buried

DEEP
ROOTS



www.ptci.net

1-800-562-2556