

SCR2
COMP
HANSFORD COUNTY LIBRARY
0122 MAIN ST
SPEARMAN TX 79081-2064



★ HANSFORD COUNTY ★
THE REPORTER-STATESMAN

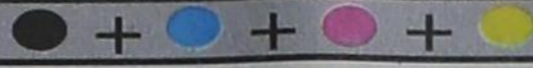
THURSDAY,
MARCH 11, 2010

CELEBRATING 103 YEARS OF SERVICE TO HANSFORD COUNTY
HANSFORD COUNTY'S ONLY NEWSPAPER

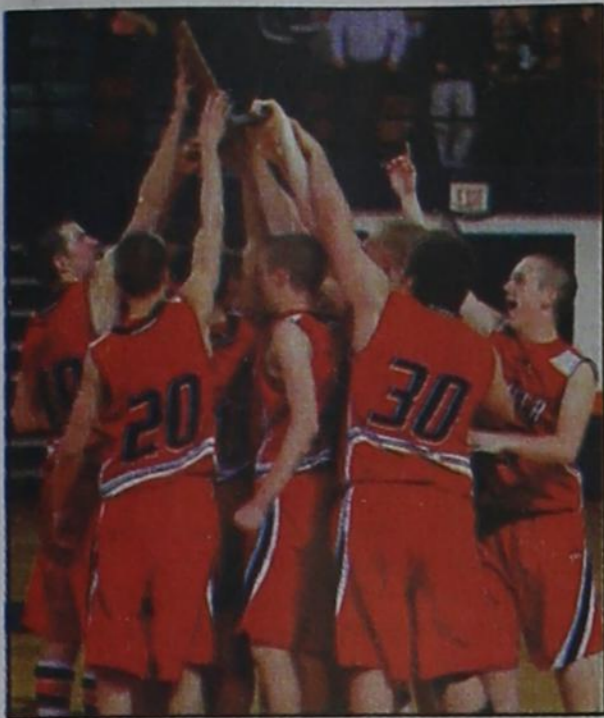
75¢

WWW.SPEARMANREPORTER.COM

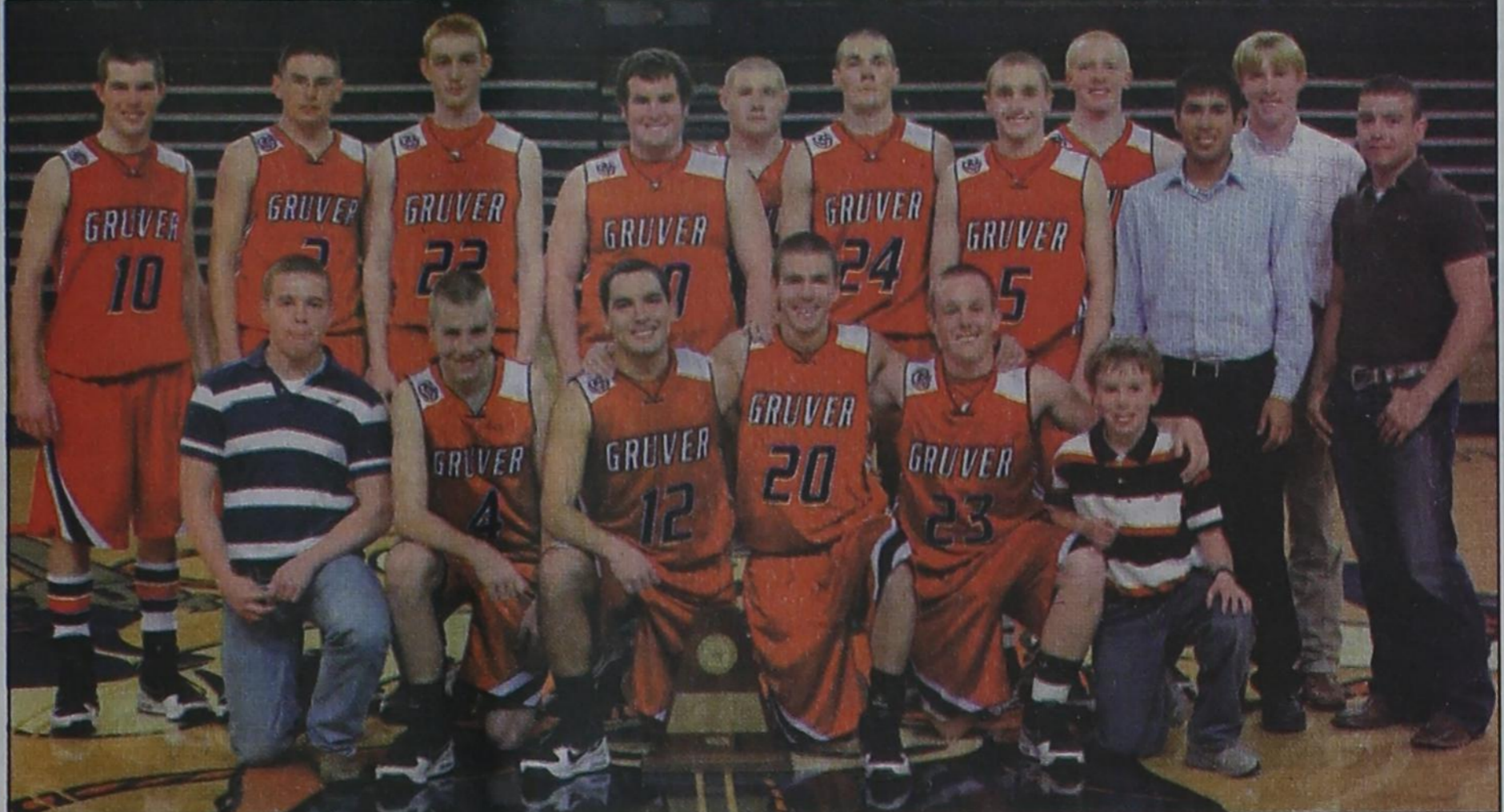
VOLUME 103 • ISSUE 10



reporter@spearmanreporter.com



The Gruver Greyhounds and fans celebrate following their victory at the Region 1-1A Division 1 Tournament.



The Gruver Greyhounds defeated Olton 53-19 on Friday, March 5, 2010 in the Region 1-1A Division 1 Tournament. The Greyhounds defeated Clarendon 43-36 on Saturday, March 6, 2010. The Hounds will compete in the State Tournament beginning on Thursday, March 11th. They will begin tournament play against Bronte at 8:30 a.m. on Thursday. (Photos by Lisa Johnson) See stories on page 6. Visit www.spearmanreporter.com for updates throughout the tournament.



Weather Forecast

THURSDAY NIGHT - Decreasing clouds. Lows around 30. Northwest winds 10 to 15 mph.

FRIDAY - Partly cloudy. Windy. Highs in the upper 50s. Northwest winds 20 to 30 mph.

FRIDAY NIGHT - Mostly clear. Lows in the lower 30s. Northwest winds 10 to 15 mph.

SATURDAY - Sunny. Highs in the lower 60s.

SATURDAY NIGHT - Partly cloudy. Lows in the lower 30s.

SUNDAY - Mostly cloudy with a 20 percent chance of rain showers. Highs in the upper 50s.

SUNDAY NIGHT - Mostly cloudy with a 20 percent chance of rain showers. Lows in the lower 30s.

MONDAY - Mostly cloudy with a 20 percent chance of rain showers. Highs around 50.

MONDAY NIGHT - Mostly cloudy. Lows in the lower 30s.

TUESDAY - Partly cloudy. Highs in the upper 50s.

TUESDAY NIGHT - Mostly clear. Lows around 30.

WEDNESDAY - Mostly sunny. Highs in the lower 60s.

Read more: <http://www.city-data.com/forecast/w-Spearman-Texas.html#ixzz0hpsn7jIU>

Texas Crop & Weather

The following specific livestock, crop and weather conditions were reported by Panhandle Extension directors: Except the far northeast corner of the region, soil-moisture levels were good. A slow snow melt during the past month resulted in deep penetration of moisture, which will be a good for spring crops. Warmer days helped wheat start to grow again. Producers were still trying to get into fields to prepare for upcoming planting of spring crops, but because of wet conditions, most were only able to speculate on what crops to plant. Cattle were in fair condition with some improvement as feedlots started to dry out and wheat fields became grazable again. Producers continued to provide supplemental feed to cattle on rangeland.

Hansford Manor Earns Designation As One Of "America's Best Nursing Homes"

Hansford Manor has earned designation as one of "America's Best Nursing Homes" by U.S. News and World Report, in its February 2010 Special Issue on "Aging Well." The magazine is famous for its annual rating of "Best U.S. Colleges" and "Top 100 American Hospitals."

The Best Nursing Home selection is based on a ranking published on line by the Centers for Medicare and Medicaid Services (CMS), the federal agency which oversees these programs.

The CMS "Five-Star" rating system is based on facilities' staffing levels, inspection results, and performance on 24 "Quality Indicators," which compare data on all nursing home residents to state and national averages.

Quality Indicators include criteria such as pain management, occurrence of bedsores, prevalence of infections and medication management, among others.

US News and World Report also ranked the "Ten Best" states, and the "Ten Worst" states, based on the percentage of nursing homes designated "Five Star" within each state. Among the lowest ranking states is Texas, with only 9.7 percent of its 1126 homes earning a five-star rating.

According to Hansford Manor Administrator Anne Snow, many in the eldercare industry have linked the quality of care in nursing homes to the amount each state pays for Medicaid-covered nursing home care, which varies widely from state to state. Texas has frequently been cited as one of the poorest-paying states, which may help explain its low ranking by US News and World Report.

Hansford Manor Director of Nursing Services, Jancee Russell, RN, commented, "Studies have shown that the most influential factor in quality of care is low turnover among direct care staff. Many of our staff have been here for many years, growing up in Hansford County, and have long-standing, close relationships with residents, families, and



Hansford Manor

coworkers."

"We strive to show our staff the respect and appreciation they deserve," Russell continued, "and encourage their professional and personal growth in any way we can. Some have progressed from Nurse Aide to RN and others have transferred to

other departments to grow their skills and then have returned to the Manor. Our outstanding staff and amazing community support are what makes Hansford Manor one of America's best nursing homes."

Hansford County Historical Commission Seeks Input

submitted by Gina Gillispie

"The duties of men are summarily comprised in the Ten Commandments, consisting of two tables; one comprehending the duties which we owe immediately to God-the other, the duties we owe to our fellow men." Noah Webster [Source: 1828, in the preface to his American Dictionary of the English Language]

This will be one of the quotes etched into the monument that will soon be placed at the Hansford County Courthouse.

The Hansford County Celebration will take place May 22, 2010 and this monument that will include the 10 Commandments, will be unveiled at that time.

To make this monument specific to Hansford County and its history, the Hansford County Historical Commission is seeking your help.

For consideration for the monument or immediate surrounding base, please submit a poem or your own words that reflect and express your love of God, country, and community. These words can be from 10-20 lines and must be submitted by Tuesday, April 6, 2010.

To submit your words, you may email them to bgillispie@ptsi.net, or mail them to 315 Endicott, Spearman, Texas 79081

The committee is also taking donations at this time, which may also be mailed to 315 Endicott.

Wolf Creek Heritage Museum Notes

MUSEUM HAPPENINGS

Last week was a busy one with Georgia and I in Borger on Tuesday. The Workshop was very informative with a review of the process for recording our collection. We now will start taking photos of each of our items to place in the file. This should be fun, and we can also post some of our more interesting items on our Web site for those who like to take virtual tours.

The March exhibit was installed on Tuesday and it is a beautiful exhibit of bejeweled bras designed by breast cancer survivors, or someone close to a woman who died of breast cancer. Each bra tells its own story. The exhibit is beautiful and very educational.

We will have an open house for the exhibit on Sunday, March 21st from 2-4 p.m. Come and bring

someone with you to enjoy this great exhibit. It will only be until April 1st.

This is the last month for submitting your stories for the history book, so get them in as soon as possible. We will ship our first 50 to the publisher this week and it is looking good. Call us with any questions.

HISTORICAL MUSINGS

This month (March) and next (April) are the months that our wildflowers will start blooming down south, with ours coming into bloom April and May (depending on when winter decides to leave).

The Texas legislature proclaimed the bluebonnet the state flower on March 7, 1901. The bluebonnet was considered a gift from the Great Spirit to some Indian tribes.

In the 1930's the state began a highway-beautifi-

cation program that included scattering bluebonnet seed beside roadways. Lady Bird Johnson was able to get the Texas legislature to create a highway beautification program when her husband was a congressman. This program expanded the wildflower program and added the fencing of junkyards and other sites that were considered unsightly.

In 1982, the Lady Bird Johnson Wildflower Center for Research and Education of Texas Wildflowers and Native Plants was opened in Austin. This center develops seeds that can be grown all over the state. Wildflowers now grow all over our state, including our area. Our Indian blankets and yucca provide beautiful landscapes. The bluebonnet is slowly moving our way.

The snow and the rain we are receiving should provide us a great gift of color soon.

Bra Talk Exhibit Open at Wolf Creek Heritage Museum

The public is invited to visit the Wolf Creek Heritage Museum in Lipscomb at 13310 Hwy 305 (corner of Main and Hwy 305) during the month of March to enjoy the exhibit entitled "BRA TALK" presented by the Amarillo Area Breast Health Coalition.

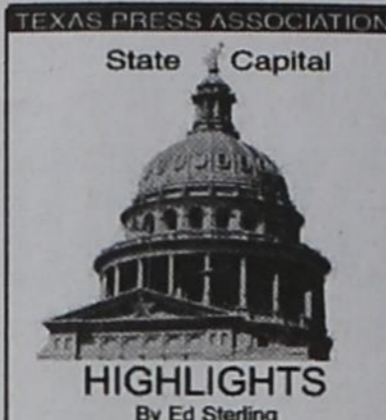
The exhibit is a creative and unique exhibit of bra art designed by breast cancer survivors, their family members, or friends. The Bras become the canvas for expressing personal experiences with breast cancer. The message of BRA TALK is to heighten awareness about breast cancer and stress the importance of breast health and early detection.

BRA TALK began in 2008 with over 115,000 people having viewed the exhibit thus far. Over 50 survivors have designed bras.

The Amarillo Area Breast Health Coalition is an organization that collaborating with other organization and individuals to provide education, support and greater access to breast health services and promoting awareness, early detection of breast cancer and healthy lifestyles of people in the Texas Panhandle. Their special goal is to support and help the uninsured/underserved obtain medical assistance and treatment.

BRA TALK is one of four programs offered by the coalition.

The museum will have an open house on Sunday, March 21st from 2-4 p.m. Call 806-852-2123 for directions or further information.



STATE CAPITAL HIGHLIGHTS



by Ed Sterling

Perry to face White in November general election

AUSTIN — Gov. Rick Perry fought off two strong challengers in the March 2 Republican Party primary, positioning himself for an unprecedented third term as governor of Texas.

By drawing more than 50 percent of the vote, Perry avoided an April runoff with his closest challenger, U.S. Sen. Kay Bailey Hutchison, who received 30.3 percent. Newcomer Debra Medina of Wharton followed with 18.6 percent.

Combined voter turnout for the primaries was the highest since 1992, according to the Secretary of State's office, with an estimated 2.1 million ballots cast.

In the Democratic primary, Houston Mayor Bill White took 76 percent of the vote to Houston businessman Farouk Shami's nearly 13 percent, so it will be Perry versus White in the November general election.

Perry, already the longest-serving governor in Texas history, advanced from lieutenant governor to governor when George W. Bush left for the White House in January 2001. He was reelected in 2002 and 2006 and now looks forward to a record third full term, but White stands in his way.

Incumbent Lt. Gov. David Dewhurst, running unopposed in the GOP primary, will face Democrat Linda Chavez-Thompson in November.

Chavez-Thompson, a long-time labor activist, got 53 percent of the vote to former Travis County District Attorney Ronnie Earle's 34 percent. Coming in third was Austin delicatessen owner Marc Katz with 12 percent.

Other key matchups in statewide races will include:

Incumbent Republican Attorney General Greg Abbott versus Dallas Democrat Barbara Ann Radnofsky, a Houston attorney who challenged Hutchison for her U.S. Senate seat in 2006.

Incumbent State Comptroller Susan Combs ran unopposed in the GOP primary and no one ran for the office of comptroller in the Democratic primary.

Incumbent Land Commissioner Jerry Patterson, a Republican, will face Democrat Hector Uribe, a former state representative and senator from Zapata

County.

Incumbent Agriculture Commissioner Todd Staples, a Republican, will face Democrat Hank Gilbert. Gilbert shifted from his gubernatorial campaign to run as agriculture commissioner last fall when Bill White announced for governor. In the Democratic primary, Gilbert, an East Texas rancher, outdrew Hill Country humorist Richard S. "Kinky" Friedman, founder of Utopia Animal Rescue Ranch near Kerrville.

Incumbent Texas Railroad Commissioner Victor G. Carrillo lost to Midland accountant David Porter in the Republican primary. Porter will face Democrat Jeff Weems in November.

Six incumbent state representatives lost to challengers. For a complete listing of primary results, go to www.sos.state.tx.us.

Perry issues posthumous pardon

Gov. Perry on March 1 granted a posthumous pardon to Timothy Brian Cole, a Texan who died in state prison in 1999 while serving a 25-year sentence for a 1985 aggravated sexual assault he did not commit.

Perry said he pardoned Cole after receiving a unanimous recommendation to do so from the Texas Board of Pardons and Paroles. More than a year earlier, a court ruled Cole was innocent after proof was confirmed through DNA testing.

Cole, who turned down an offer of parole in exchange for admitting guilt, maintained his innocence

throughout his time in prison. In 1995, five years before Cole's death, another suspect confessed to the crime. Cole died in prison of an asthma attack on Dec. 2, 1999, having served nearly 15 years of the wrongful sentence.

Independence Day site debuts

A Web site created by the Texas Parks and Wildlife Department and Brenham-based Blinn College, www.txindependence.org, debuted on March 2, Texas Independence Day.

The site spotlights the convention held at Washington-on-the-Brazos in 1836 when 59 elected delegates met, signed the Texas Declaration of Independence from Mexico and created a new nation, The Republic of Texas.

DPS says stay away from border

The Texas Department of Public Safety on March 4 urged spring break travelers to avoid border cities in Mexico. DPS Director Steve McCraw said there is an increase in drug cartel-related violence in those cities, adding that parents should not allow their children to visit there because their safety cannot be guaranteed.

Unemployment figure repeats

On March 3, the Texas Workforce Commission reported the state's seasonally adjusted unemployment rate was 8.2 percent in January, the same as in December 2009.

Words from Faith & Grace



by Cecil R. Biggers, Lutheran Lay Minister

In the Season of Lent we are asked, "Who am I becoming?" as we study forgiveness in Joshua 5: 9-12, Psalm 32, 2 Corinthians 5: 16-21, and Luke 15: 1-3a, 11-32.

The people of Israel are camped at Gilgal after having entered the Promised Land. Two things occur here, the rite of circumcision is re-introduced as a sign of the people recognizing that the land is the gift of God. (The older generation who first performed circumcision passed away in the desert) and the people celebrate the Passover, in remembrance of God who led them to the Promised Land. We are told that the "disgrace of Egypt" was rolled back at Gilgal. This "disgrace" was the disobedience of those who came out of Egypt, grumbled at God in the desert and longed for the pleasures of Egypt. The occurrences at Gilgal are a sign of God's forgiveness. In fact the name given the site, Gilgal, is similar to galloiti which means 'rolled away' in Hebrew. The people's sin was 'rolled away' by God.

The Psalmist sings a song of thanksgiving, "Happy are those whose transgression is forgiven, whose sin is covered". Can we say anymore than, Amen!

Paul is seeking reconciliation. The Corinthians are frustrated with Paul because he does not have the powerful presence and demeanor that they expected from an apostle; they are frustrated with Paul because he keeps writing that he is coming, but he doesn't show up. Paul responds by reminding the Corinthians that we no longer see Christ in a human way; we now see the Christ of the resurrection who has reconciled us with God! Those who live 'in Christ' are part of a new creation, a creation that is on-going. If Christ has forgiven us for our mistakes, then we must forgive others their missteps. Paul in seeking reconciliation, teaches us much about 'forgiveness' in this passage.

Jesus is teaching the Pharisees about forgiveness in three parables--the lost sheep, the lost coin, and this parable, the prodigal son. The Pharisees attitude was, "There is rejoicing when one sinner is obliterated before God." Jesus was teaching, that angels in heaven and God, himself, rejoice when one sinner returns. When we read this parable, the youngest son seems to affront the father. "Give me my inheritance now!" Which is close to, "I wish you were dead". (In the system of the day, the eldest son got 2/3 of the father's estate, the youngest 1/3). The father appears to us as indulgent; he divides his estate between his sons; the father can even appear to us as foolish for allowing the request. The older son, who has received the greatest part of the estate, appears unforgiving and resentful. The father appears highly credulous when he runs to meet his wayward son, and when he forgives him even before the son begs to be a servant. Consider that both of these sons are "lost", both misunderstand the working of grace. The story is unresolved but we see the Father's love for his sons. God is like that.

May the Holy Spirit allow you to see "Who you are becoming" so that you may be forgiven and you may, in turn, forgive.

SUDOKU PRESENTED BY VolunteerMatch.org Where volunteering begins.

| | | | | | | | | | |
|---|---|---|---|---|---|---|---|---|---|
| | | | | 6 | 5 | 1 | 9 | | |
| | | | | | 8 | | | | |
| 5 | 4 | | | 8 | | | | 3 | |
| 8 | 3 | 1 | | | | | | | |
| 4 | | | | | | | | | 7 |
| | | | | | 7 | 6 | | | 8 |
| 3 | | | 6 | | | 4 | 9 | | |
| | | 5 | | | | | | | |
| 6 | 4 | 8 | 9 | | | | | | |

© 2010, StatePoint Media, Inc. answer on classified page
Fill in the blank squares in the grid, making sure that every row, column and 3-by-3 box includes all digits 1 through 9.

The Hansford County Reporter-Statesman

Mailing Address - 213 Main Street • Spearman TX 79081
Physical Address - 310 Barkley Street • Spearman TX 79081
Phone - (806) 659-3434 • Fax - (806) 398-9080
www.spearmanreporter.com • reporter@spearmanreporter.com
Mon.-Thurs. 9 a.m.-12 p.m., Mon.-Wed. & 1-5 p.m.
Closed Thurs. afternoon and all day Fri., Sat. & Sun.

Gary Smith - Publisher Catherine Smith - Editor
Contributing Writers: Dorothy Hudson, Jim Derrington, Merry Sparks, Cecil Biggers
Contributing Photographers: Charlie Johnson, Lisa Johnson Tammy Batton, Bonnie Bergan

Subscription Rates
In Hansford County - \$30.00 • Out of County - \$40.00
E-Mail Subscription - \$35.00

The Hansford County Reporter-Statesman (USPS 529660) is published weekly in Spearman, TX. Periodical postage paid in Spearman, TX. POSTMASTER: Send address changes to: The Hansford County Reporter-Statesman, 213 Main Street, Spearman, TX 79081.

Publication Policy

The deadline to submit news and advertising to The Hansford County Reporter-Statesman is Monday at 5 p.m. Items submitted after the deadline will be published at a later date, as time and space permit. Publication of all items is at the discretion of the editor.

Advertising

Open Display rates are \$4.00 per column inch. Classified Ads are \$6 for the first 25 words and 10¢ per word for each additional word. (Additional charge for boxed classifieds.) There is a \$1 charge per week if billed.

Member of
Gruver Chamber of Commerce
Spearman Chamber of Commerce
Texas Press Association and Panhandle Press Association



MARCH MADNESS

ACROSS

- NE's largest city
- *You need it on a free throw
- Ambush
- *Found on the scoreboard and shot clock
- One from Laos
- Dashboard instrument
- Vitruvian Man, e.g.
- Cash giver
- Stomach sore
- *A sweet number
- *Game tracker
- He had
- It's taken with interest
- Consumed
- Pocket bread
- *Winner of 10 championships in 12-year period
- Cough syrup balsam
- It introduces a logical conclusion
- One of Ben Franklin's inventions
- Dollar bills
- More sane
- French "idea"
- Capital of Belarus
- Some are worth a million dollars?
- Newborn connection
- Sacred Egyptian beetle
- Invitation request
- Pig's home

DOWN

- Elevator manufacturing giant
- Longer than mini
- American stock exchange in NYC
- Late actor Ledger
- Not awake
- Indiana's Henderson, member of '92 Final Four Team
- Mob snitch
- Fast food meal
- Baby powder ingredient
- A crowd of ordinary people or things
- *A Death in the Family" Pulitzer-winning author
- Saucy
- Sea bird-produced fertilizer, pl.
- What editor does
- Like one who needs improvement
- Home chore
- Smallest components of elements
- Second T in T&T drink
- Helen in Russian
- Cuisine known for being spicy
- Ear-related
- Famous extinct bird, pl.
- American tennis great
- Always demanding attention
- CCCP
- Perceives by sight
- Poe's poem "The _____"
- *Where basketball's inventor coached
- Feathery neckwear
- Preacher's platform
- More sly
- Nincompoop
- She is
- Beaver's coat, e.g.
- "For Your Eyes _____"
- Computer operating system

These games are brought to you by the Hansford County Reporter-Statesman

- *Short for Hoosier
- State's capital city
- Heart feeling
- Hair removal product
- Pharaohs' cobras
- Lennon's wife

CROSSWORD

| | | | | | | | | | | | | |
|----|----|----|----|----|----|---|----|----|----|----|----|----|
| 1 | 2 | 3 | 4 | 5 | 6 | 7 | 8 | 9 | 10 | 11 | 12 | |
| 13 | | | | | 14 | | | 15 | | | | |
| 16 | | | | | 17 | | | 18 | | | | |
| 19 | | | | | 20 | | | 21 | 22 | | | |
| 23 | | | | | 24 | | | | | | | |
| 25 | 26 | 27 | | 28 | 29 | | | 30 | 31 | 32 | 33 | 34 |
| 35 | | 36 | | 37 | | | 38 | | 39 | | | |
| 40 | | | | 41 | | | 42 | | 43 | | | |
| 44 | | | | 45 | | | 46 | | | 47 | | |
| 48 | | | | 49 | | | 50 | | 51 | | 52 | |
| | | | | 53 | | | 54 | | 55 | | 56 | |
| 57 | 58 | 59 | 60 | | | | 61 | | | 62 | 63 | 64 |
| 65 | | | | | | | 66 | 67 | | 68 | | |
| 69 | | | | | | | 70 | | | 71 | | |
| 72 | | | | | | | 73 | | | 74 | | |

PRESENTED BY VolunteerMatch.org Where volunteering begins.

© 2010, StatePoint Media, Inc. answer on classified page

Happy Birthday!

March 11
Birthday - Daniel Rojas, Nina Hendricks, Dorothy Buzzard, Monty Dixon, Bob Breedson, Sandi Holt, David Ortega, Willie Jones, Felipe Dominguez
Anniversary - Buddy & Amber Newman, M/M Orville Brummett

March 12
Birthday - Loree Hart, Jason TeBeest, Lindy Tolleson, Judy Martin, Lorraine Davidson, Sherry Bullard, J.L. Griffin, Sammi Johnson, Makenzie Crane, Katie Hintergardt
Anniversary - M/M Andy Hoel, M/M Tommy Henson, Kristal & Ernesto Puentes

March 13
Birthday - Fran Duncan, Bonnie Frick, Gene Leatherman, Brady Tidwell, Vernon Pipkin, Gary Pracher, Roy Flowers, Shannon (Holton) Steinger, Chuck Fletcher, Lynell Williams, Kevin Bynum, Gretchen Collinsworth, Jerry Garcia, Dolores Moreno, Larry Butts, Hadley Fletcher, LeAnn Sheets, Thomas Cain, Pam Mayfield
Anniversary - M/M Forrest Acker, M/M Jim Dick Goodall

March 14
Birthday - Sue Gerardy, Chris Johnson, Brandy Shelton, Buck Tidwell, Steve Cook, Barbara Brown, Reagan Renner, James Ray Barimus, David Terry, Kelly Mills, Curtis Dudley, Mike Wilhelm, Madison Williams, Caylin Brown, Mason Turner
Anniversary - M/M Bill Robertson, Charles & Betty West, M/M Jimmy Bishard

March 15
Birthday - Trina Horton, Jerry Bowling, Randy Stafford, Darlene Schick, Parrish Larson, Gary Osborne, Mona Rivera, Richard Varmon, Trent Seagler, Ora Fay Watkins, Krista Dement, Araceli Briones, Trenton Finley
Anniversary - M/M Bill Robertson, M/M Joe Bynum, M/M Joe T. Veneman

March 16
Birthday - Ted Harbour, Tonya Woodington, Janice Mayfield, Gary Davis, Missie Bates, Dan McCloy, Michael Gruver, Payton Thoreson, Suzanne Schad, Hadley Spivey, Jessica Brown, Christina Bently
Anniversary - Carey & Denise Bridges, M/M Robert Womble

March 17
Birthday - Dala Cathey, J.P. TeBeest, Elvana Davis, Kathy Slater, Carrol

VanBuskirk, Tony Barrera Jr., Tony Miller III, Jamie Thomas, Terry Latham, Jason Genn, Anna Soto, Kathy Brown, Makayla Wheelock, Rachel Cook, Curtney Chambers
Anniversary - M/M Richard Ooley, M/M Chris Christy

March 18
Birthday - Danny Henson, Tony Harper, Charles Friday, Cody McLeod, Kenny Virden, Laura Garcia, Tobe Shields, Connie Hobbs, Kelsey Henton, Matthew Bain
Anniversary - M/M Edwin Pearcy, M/M Ken Bullard

March 19
Birthday - Barry Haensch, Melinda McCullough, Kerri Minter, Ron Gibson, Altha Groves, Pete Garcia Jr., Jesse Ruth Gerrard, Rose Marie Bruning, Cathy Davis, April Knight
Anniversary - M/M Michael Wilson

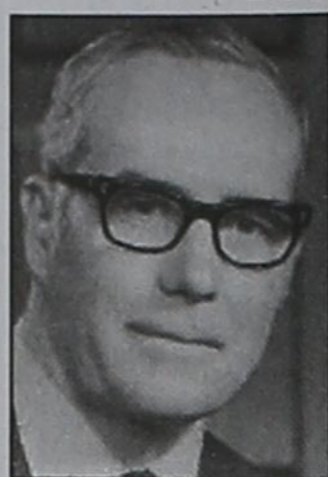
March 20
Birthday - Mack Bevell, Travis Ferguson, Chad TeBeest, Martha Stinson, Florencio Martinez, Angela Sinta, Jane Henton, Kim King, Marion Upchurch, Kay Christian, Garry Hathaway, Lisa Tice, Rocio Garcia
Anniversary - M/M R. M. Crawford, M/M Benny McCullough, M/M Rod Barkley

March 21
Birthday - Kathy Duncan, Kelly Hart, Nancy Alvarez, Rhonda Riley, Judy Hergert, Chelsey Clark, Pepe Tarrango, Jose Tarango
Anniversary - Bill and Jo Ann Weaver

March 22
Birthday - Veta Alloway, Charmaine Gross, Maggie Key, Bob Miller, Payton Mitchell, Marty McCloy, Kelly Rauscher, Randie (Renner) Baumann, Roy Garrard, Rosalinda Vela, Tim Kizzar, Michael Burke, Doug Gumfory, Tavo Borunda, Jorge Soto, Carla Jones, Debbie Clement, Andy Lindsey, Reid Wilson, J.J. Gallegos
Anniversary - Mr. and Mrs. Benny Wilson

March 23
Birthday - Tanner Irwin, Mercedes Perez, Dwayne TeBeest, Annie Houghton, Jamie Sterling, Beth Ann Flowers, Angela Craig, Teresa Russell, Marvin G. Wilson, Christopher Turner, Ramon Garcia Jr., Bernice Flores, Jason Evans, Carter Strawn, Wilbur Hull, Krystal DeLa Garza, Braylen Lusby
Anniversary - Mr. and Mrs. Tony Cazares

Our Sympathy



BUSTER W. KIRK

SPEARMAN - Buster W. Kirk, 95, passed away peacefully in his sleep, March 2, 2010.

Memorial service will be March 13, 2010 at the First United Methodist Church, 200 North McGee, Borger, TX at 2 p.m.

Buster was born April 25, 1914, in Northern Hutchinson County to Dib and Minnie Kirk. He was the 8th of 9 children, and as he liked to put it;

"I had 5 brothers, and we each had 3 sisters."

Buster was a son, a brother, a husband, a father, a grandfather, and a great grandfather. He cherished his family's roots as pioneers in Hutchinson County; his service in World War II; becoming a farmer/rancher after the war; serving as a director in Panhandle Bank and Trust; serving as president of Kirk Properties Incorporated; his 39 years service to North Plains Ground Water District; and serving on many other county and State agriculture committees. He was a past Master Mason with over 50 years service.

Buster was educated in Lackey, Spearman High School, and Texas Tech receiving an education in Mechanical Engineering, which proved to be very valuable during nearly four years in the Army Air Force in the South West Pacific Theatre of World War II.

Buster met Dorene Davis before the war and they were married 7 years later on Feb 21, 1948. Pamela Kirk was born Feb 19, 1949, and Randy Kirk on Sept 19, 1950.

Buster and Dorene lived in Borger, TX and became members of Angel Fire Resort in 1974. He was a member of First United Methodist Church in Borger, a past member of First United Methodist Church of Spearman, and a charter member of the United Church of Angel Fire.

He is survived by: Dorene of Amarillo; Pamela and Richard Moore of Angel Fire; Randy and Teresa of Spearman; Tom Kirk, his wife Anna Leigh and their son Marshall of Dallas; Dib Kirk of Amarillo; and sister Dorris Faver of Lubbock.

In lieu of flowers, the family suggests memorials be made to: Child Evangelism Fellowship of West Texas, 818 W. 9th Ave., Amarillo, TX 79101; Holt Cemetery, 10239 FM 281, Spearman, TX 79081.

There will be a time of fellowship after the Memorial Service in the Garden Room of the FUMC, Borger.

JACKIE THORESON BELL

LUBBOCK - Jackie Thoreson Bell, 74, of Lubbock died Thursday, March 4, 2010.

Graveside services were at 1:00 p.m. Saturday, March 6, 2010 at Resthaven Memorial Park of Lubbock. Arrangements were by Agape Funeral Chapel.

Mrs. Thoreson was born May 10, 1935, in Hansford County near Gruver. She was the daughter of Arnold and Grace Thoreson. She graduated from Gruver High School in 1953 and attended Stephens College in Columbia, Missouri and then transferred to Texas Tech University in Lubbock.

She married Wynn Hamilton, and they resided in Pecos, Texas. Jackie relocated to California where she pursued a modeling career before settling back in Lubbock. While in Lubbock she owned the Polk-A-Dot boutique and was married to her loving husband, Jim Bell.

Jackie had a great love for animals, especially her baby Gucci, who preceded her in death. She also had a passion for fast cars and world travel. She assisted those in need by donating time at the local Salvation Army and Meals on Wheels charities.

She was preceded in death by her husband, Jim Bell, in June of 1999, her father and mother Arnold and Grace, brothers Arthur, RB and Billy, sister Frances Glasgow, and sister-in-law Nell.

She is survived by her sister, Jeanette Niles of Amarillo; brother, Donnie Thoreson of Gruver; and many nieces and nephews.

In lieu of flowers, the family suggests memorials to be to the Salvation Army or Meals on Wheels of Lubbock.

FLOYDEAN SHOOK



GRUVER - Floydean Shook, 77, formerly of Gruver, died Wednesday, March 3, 2010, in Amarillo.

Services were at 10 a.m. Friday, March 5, 2010 in First Baptist Church of Gruver with the Rev. Scott Curry officiating. Burial was in Gruver Cemetery by Boxwell Brothers Funeral Home of Spearman.

Floydean was born May 1, 1932, in Gruver to Ed and Winnie Vernon. She married Wayne Shook on Dec. 25, 1949. After 54 years of marriage, he preceded her in death in 2004.

Floydean was an artist and a teacher of art. Her students were 5 years of age to 99 in a retirement home. Art was her passion.

Her purpose in life was to be a caregiver to everyone. No one was sick or hungry around her who did not get doctored or fed.

Her 10 grandchildren and 15 great-grandchildren were all the light of her life.

She also was preceded in death by her parents, Ed and Winnie Vernon.

Survivors include a daughter, Rhonda Stafford and husband Vernon of Dumas; two sons, Eddy Shook and wife Mary of Sunray and Rex Shook and wife Nena of Dumas; two sisters, Winnell Shaw and Doug Shaw and Judy Fletcher and husband Bob, all of Amarillo; three brothers, Billy Ed Vernon and Pete Vernon, both of Brownwood, and Roger Vernon and wife Nancy of Tomball; 10 grandchildren; 15 great-grandchildren; and numerous nieces, nephews and friends.

The family suggests memorials be to Memorial Hospice, 224 E. Second St., Dumas, TX 79029.

JESSE LONG

BALKO, OK - Jesse Long, 95, died Friday, March 5, 2010, in Perryton, Texas.

Memorial services were at 1 p.m. Monday, March 8, 2010 in Good Samaritan Funeral Service in Booker, Texas, with the Rev. Mark A. Farr of Balko Baptist Church officiating.

Mr. Long was born Feb. 23, 1915, in Cadet, Mo., to Walter and Fannie Joplin Long. He owned and operated numerous area skating rinks, including Guymon, Perryton and Spearman and also held a real estate license.

Survivors include a son, Jerry Long; three grandchildren; and two great grandchildren.

The family suggests memorials be to Balko Education Foundation in care of Good Samaritan Funeral Service, P.O. Box 341, Booker, TX 79005.

Leave online condolences at www.goodsamaritanfuneral.com.

VI HORNSBY

SPEARMAN - Vi Hornsby, age 81, died Tuesday March 9, 2010.

No services are planned at this time. Cremation will be by Boxwell Brothers Funeral Home of Spearman.

Vi was born on March 30, 1928 in Young County to Carl and Pearl Tucker. She married L.J. Hornsby on February 15, 1947 in Spearman. He preceded her in death in 1985.

Vi was a member of the Spearman Church of Christ and was a nurses aide.

She is survived by two sons, Cliff Hornsby of Pampa and Larry Hornsby of Spearman; one brother, Bob Tucker of Spearman; one sister, Sue Sloan of Amarillo; eight grandchildren; and eight great-grandchildren.

She was preceded in death by her parents, and a daughter, Mary.

The family request memorials be to Hansford Hospice, 707 Roland, Spearman TX 79081.

Toyota Recall EXPERIENCE COUNTS
 Lawyers with over 95 years combined expertise.
 Toyota has recalled millions of cars because of unintended acceleration. The company has also recalled its popular hybrid because of brake issues. If you or someone you love has been injured in a wreck involving one of these cars, please call us for professional insight.
 Ryan A. Krebs, M.D., J.D. Doctor-Lawyer in Full-time Law Practice
 Richard A. Dodd, L.C.
 Timothy R. Cappolino, P.C. Board Certified Personal Injury Trial Law and Civil Trial Law by the Texas Board of Legal Specialization
NO FEE FOR FIRST VISIT
 CAMERON, TEXAS
1-800-460-0606
www.YourCarWreck.com

DIRECTV SAVE \$29/MO FOR A YEAR!
 PLUS: FREE 1-4 Room System
FREE Standard Installation
FREE HD DVR Receiver Upgrade
FREE 3 MONTHS SHOWTIME & Starz
 No start costs! Local installs!
 ASK HOW! CALL DIRECTSTARTV
Toll Free 800-214-7110

ARE YOUR ENERGY COSTS OUT OF CONTROL?
 Join over 1 million people who have made the switch to **Just Energy!**
 Get a Fixed Rate Plan from **just energy**
 Plus! Green Energy Solutions
CALL NOW to Lock in your Rate
877-540-3806
 PUCT Cert. No. 10052

HOME PHONE SERVICE
1st Month FREE
Starting at \$3.99/mo
 \$14/mo including appropriate taxes and fees
\$0 Deposit • NO Credit Check
NO Contracts • Everyone Approved!
 Restrictions May Apply.
NEWTALK 866.934.3448

Replenish the seed of faith through . . . DAILY BIBLE READING, PRAYER & REGULAR CHURCH ATTENDANCE

| | | | |
|--|---|---|---|
| <p>Spearman</p> <p>Apostolic Faith Church 622 S. Drexler • 659-2870 Sunday School: 10 a.m. Worship Service: 11 a.m. Sun. Eve.: 6 p.m. Wed. Prayer Mtg: 7 p.m. Pastor - Roland Haney</p> <p>First Assembly of God 401 N. Bernice • 659-2295 Sunday School: 9:30 a.m. Worship: 10:40 a.m. Evening Worship: 6 p.m. Wed. Worship: 7 p.m. Wed. Youth: 7 Pastor - Jerry Pollard</p> <p>First Christian Church (Disciples of Christ) 29 S. Bernice • 659-2036 Sunday School: 9:45 a.m. Worship: 10:50 a.m. Minister -</p> <p>First Baptist Church 123 N. Bernice • 659-5557 Sunday School: 9:45 a.m. Worship: 11 a.m. Evening Worship: 7 p.m. Men's Bible Study - Wed, 7 a.m. Children's Choir - Wed, 6 p.m. Adult Choir - Wed, 7 p.m. Wed. Bible Study: 7 p.m. Pastor - Jim Medley</p> <p>Church of Christ 121 S. Haney • 659-3244 Sunday Bible Class: 9:45 a.m. Worship: 10:30 a.m. Evening Worship: 6 p.m. Bible Study Wed.: 7:30 p.m.</p> | <p>Sacred Heart Catholic Church 901 Roland • 659-2792 Sat. Night Mass: 5:30 p.m. Sun. Mass: 9 a.m. - English Sun. Mass: 11:30 - Spanish 1:30 p.m. - Gruver - Cristo Redentor Mass - Spanish Rev. Guillermo Morales</p> <p>First United Methodist 407 S. Haney • 659-5503 Sunday School: 9:45 a.m. Worship: 8:30 & 11 a.m. Jr. High Youth: 5 p.m. Sunday High School: 6 p.m. Sunday Kids Club: 3 p.m. Wed. Pastor - Neely Landrum</p> <p>Grace Presbyterian Church (Worships with Faith Lutheran Church) 1101 Bernice • 659-2033</p> <p>Faith Lutheran Church (ELCA) 1101 Bernice • 659-2252 Sunday School: 9:45 a.m. Worship: 11 a.m. (Worships with Grace Presbyterian Church) Pastor - Cecil Biggers, PLM</p> <p>Union Church 31 S. Endicot • 659-2644 Sunday School: 10:00 a.m. Worship: 11:00 a.m. Bible Study: 7 p.m. Wed. Youth Service: 6 p.m. Wed. Pastor - Don Baltazor</p> <p>Fellowship Baptist 1102 S. Archer • 659-2783 Sunday School: 10 a.m. Worship: 11 a.m. Sun. Evening Worship: 6 p.m. Sun. Evening Spanish Worship: 7 p.m. Youth/Adult Service: 7:30 Wed. Pastor - Philip Hudson</p> | <p>Primera Mision Bautista 502 E. 7th • 659-3991 Sunday School: 9:45 a.m. Worship: 11 a.m.; Evening: 6 p.m. Wed. Prayer Meeting: 7 p.m. Thurs. Visitation: 7 p.m. Pastor Joe Garcia Jr.</p> <p>El Aposento Alto U.P.C.I. 1105 S. Roland Domingos: Escuela-Dominical - 10 a.m. Culto Evangelistico - 7 p.m. Jueves: Oracion - 8 p.m. Mier: Estudio Biblico - 7 p.m. Pastor - A.G. Martell (806) 659-2153</p> | <p>Gruver United Methodist Broadway & Garrett 733-2651 Sunday School: 9:45 a.m. Worship: 8:30 & 10:50 a.m. Eve. Worship & UMY: 6 p.m. Pastor - George Price</p> <p>Spanish Cristo Redentor Church Sunday Mass: 1:30 p.m. Friday Evening Mass Summer - 8:00 p.m. Fall/Winter - 7:30 p.m.</p> |
| <p>Oslo</p> <p>Oslo Lutheran Church (ELCA) 6 Miles West & 12 Miles North of Gruver 339-7646 Sunday School: 9:45 a.m. Worship: 11 a.m. Pastor - Arlen Lloyd</p> | <p>Morse</p> <p>Morse Baptist Church 733-2757 Pastor - Mike Martin</p> | <p>Waka</p> <p>Church of Christ 300 Rogers Ave. 202-7126 Sunday Worship: 6 p.m. Wednesday Bible Study: 6 p.m. Preacher - James Gordon</p> | |

He has showed you, O man, what is good. And what does the LORD require of you? To act justly and to love mercy and to walk humbly with your God.

Micah 6:8

This feature is made possible through the sponsorship of these civic minded businesses:

| | | | |
|---|--|--|---|
| <p>Deakin ELECTRIC OILFIELD • RESIDENTIAL • COMMERCIAL 321 S. MAIN • SPEARMAN 1-800-999-1506 Chris Deakin 8061 659-5016 President</p> | <p>Bartlett's Lumber & Hardware 105 W. Broadway • Gruver, TX (806) 733-2404</p> | <p>BERRY CLEANERS Ann & Vernon Pipkin - Owners Phone 659-3122 • P.O. Box 1017 207 Main St. • Spearman, TX</p> | <p>Morse Implement & Auto Supply "Join us in church" Tom Dortch 733-2668 Box 89 • Morse, TX 79062</p> |
| <p>PRAIRIE MOTORS INC. Hwy. 207 South • P.O. Box 430 Spearman, TX 79081 • (806) 659-2541 www.prairiemotors.com</p> | <p>MurMur's Cafe 100 Roland St Spearman, TX. 659-3580</p> | <p>Hansford County Reporter-Statesman "Proudly Serving Hansford County Since 1907" (806) 659-3434 310 Barkley • Spearman, TX</p> | <p>INTERSTATE BANK, sssb www.interstatebank.net 322 Main • P.O. Box 146 Spearman, TX • 659-2559</p> |

by Dorothy Hudson

Out at the Lake

Jim Derington
Palo Duro River Authority
P.O. Box 99
Spearman, TX 79081
806-882-4401
pdra@dishmail.net

Lake Level--March 8, 2010--15.70 feet (-0.09)

With the old record low at 15.67, we are less than a half inch off of a new one. Jim's gauge showed .41 inch rain yesterday, and there are prospects for more on Wednesday and Thursday.

Activity at the lake picked up last week with the nice weather. Campers came from Pampa, Stinnett, and Perryton. The group from Perryton were mountain bikers.

Jim spent the week at water meetings, but Ramon Cantu reported several fishermen out. No one seemed to be catching, and they didn't stay long.

Ramon did see a golden eagle at the Lake. As the big bird flew over him, he was able to identify it from the white patches under the wings and on the tail. It is difficult for many of us to tell the difference between an immature bald eagle and a juvenile golden eagle, as both have white patches under the wings and on the tails. The trick seems to be to learn how the patches go, how to look for the golden or tawny shine on the golden eagles, and the difference in the tails of the two species.

Gruver Hotel and Coffee Shop

Two weeks ago the column ended with the Hotel at Lucern losing its identity, as it was torn down and rebuilt as the second and third stories of a new hotel by the Ayres family. It became the Gruver Hotel and Coffee Shop, opened in 1945.

As one entered the hotel lobby from Main Street, a door on the right led into a barber shop run by a Mr. Whitehorn. He is remembered as the barber who nicknamed many of the town's people. Stairs to the second floor were opposite the entrance, and to the left was a spacious lobby.

Off of it, to the east was the coffee shop. There were two apartments where the banquet room is now. Pauline Winger and her four children lived in one, and the Carl Lyle family in the other. Val Winger remembers that their apartment didn't have a kitchen. They ate in the coffee shop at first.

The rooms on the second floor all had bathrooms except for two. On the third floor the only windows to the outside were at the street and alley sides. The 8 little rooms were dark with one window each to the hall. There was one bathroom for the floor. One larger room was fitted with bunk beds. A room could be rented for \$8 a week.

At this time men addicted to alcohol were called winos. Many of

them worked for local farmers as tractor drivers. The third floor became known as the wino floor. Val remembers many of them as good people who had an addiction.

One of the distinctive features of the Hotel lobby was the light-colored terrazzo floor. The builders asked the local ranchers to pay \$25 a brand to have their brands set in the terrazzo tiles that would be

used. Val's grandfather, I. W. Ayres, Sr. chose to have the center block made with a star and an embedded horseshoe furnished by Autra Ward. A framed poster was made showing the location of the brand on a cow and the name of the owner. After 65 years the floor is still beautiful, and the poster of the 84 tiles is still informative.

(To be continued)

2010 National Honor Society Induction

On Tuesday, February 23, 2010, the Spearman High School National Honor Society inducted 22 new members.

President of the SHS National Honor Society Chance Pack called the program to order.

Dr. Mark Garnett, former Spearman High School National Honor Society member and 1987 graduate of SHS, gave the address.

Following the ceremony, a reception was held in the library for parents, teachers, and members.

2010 inductees were: **Senior** - LeAnna Espinosa; **Juniors** - Uriel Aguilera, Jesus Carrasco, Edgar Castillo, Yesenia Romero, Joselyn Terrazas, Nidia Terrazas; **Sophomores** - Morgan Ashmore, Lexi Batton, Cassie Bowers, Stefan Cook, Tylo Farrar, Gately Garnett, Shelby Hanna, Brody Hargrove, Malory Martin, Justin Rindlisbacher, Kevin Ruiz, Sarah Snider, Janneth Terrazas, Cristina Vargas, Iris Villa

Current NHS members are: **Seniors** - Isvy Acosta, Preslee Baker, Tate Batton (Historian), Ashton Comp, Abbey Eudy (Treasurer), Suten Garnett (Vice President), Zack Hughes, Whitney Maestas, Rosa Ortiz, Chance Pack (President), Andi Linn Scarborough (Vice President); **Juniors** - Jessica Bueno, Cody Benton, Nikki Boyd, Allysa Comp, Laura Hernandez, Joel Kern, Jessica Pinon, Kaitlyn Poole, Natalie Saldivar, Seth Salgado, Blayne Schroeder, Tori Sheets, Dedee Vaquera
NHS sponsors are Treva Braun and Sandra Blankenship.

Spearman High School Students Win Top Awards at Regional Art Competition



ABOVE: Jose Ibarra and Blanca Valtierra with their prize winning artwork. They will compete at the State Art Competition on April 9th and 10th in Houston, Texas.

RIGHT: Brody Hargrove's illustration of the book Hondo. He will compete at the State Art Competition on April 9th and 10th in Houston, Texas.

Spearman High School students are to be congratulated for their outstanding achievement in the Regional Visual Arts and Scholastic Event. Twenty-two students won gold medals for their outstanding artwork. Three students, Jose Ibarra, Blanca Valtierra and Brody Hargrove will advance to the State Visual Arts and Scholastic Event in Houston, Texas April 9-10. At this event, they will have the opportunity to take two days of art classes with college professors, visit art museums, and meet the most talented high school art students in the state of Texas.

Blanca and Jose, both seniors, entered a self portrait. This was a semester long project that involved photography, drawing, color theory, and painting. This is Blanca's first year taking art and Jose's third. Brody, a sophomore, illustrated a scene from the book Hondo. He carved his drawing into linoleum

and then made a print. This is Brody's first year in art.

History of VASE

(<http://www.taee.org/vase/>)

The Visual Arts Scholastic Event is the culminating event of a year of hard work and creative genius on behalf of the art students, teachers, and administrators in Texas. This event begins with each of the Regional Events scheduled during the months of January and February. Roughly 14,000 students in the 20 various regions of Texas are invited to participate in their Regional Event. The students are interviewed and their artworks are juried by certified, professional TAEA jurors. The top entries advance to the State Event.

The State Event is held annually in April and sponsored by the University of Houston-Clear Lake. While the artworks are being juried, the students are participating in professional workshops, lectures,



slide presentations, demonstrations, and outdoor sketching opportunities. The event is intended to provide a forum for art students to meet and to grow artistically and personally.

All of the entries are exhibited and open for viewing after the jury process has been completed. This provides opportunities for students to view the works of other student artists and to see the vast talents and fresh ideas of other students their age. At the awards ceremony on April 10th, students await to see who wins medals for the state event. Top pieces will receive a gold medal, and the top 1% of those pieces receive the coveted Golden Seal Award.

Tong's Chinese Restaurant
(806) 644-2838
22 Archer Street • Spearman

Closed for Spring Break
March 13-24

Will open for regular business on March 25th

SPEARMAN INDEPENDENT SCHOOL DISTRICT STATEMENT OF REVENUES, EXPENDITURES, AND CHANGES IN FUND BALANCE GOVERNMENTAL FUNDS FOR THE YEAR ENDED AUGUST 31, 2009

| Data Control Codes | 10 General Fund | Permanent Trust Fund | 60 Capital Projects | Other Funds | Total Governmental Funds |
|--|--------------------|----------------------|------------------------|--------------|--------------------------|
| REVENUES: | | | | | |
| 5700 Total Local and Intermediate Sources | \$ 4,699,396 | \$ 5,824 | \$ 4,095 | \$ 1,017,889 | \$ 5,727,204 |
| 5800 State Program Revenues | 3,615,354 | - | - | 110,601 | 3,725,955 |
| 5900 Federal Program Revenues | - | - | - | 542,540 | 542,540 |
| 5020 Total Revenues | 8,314,750 | 5,824 | 4,095 | 1,671,030 | 9,995,699 |
| EXPENDITURES: | | | | | |
| Current: | | | | | |
| 0011 Instruction | 4,711,026 | - | - | 542,186 | 5,253,212 |
| 0012 Instructional Resources and Media Services | 135,319 | - | - | - | 135,319 |
| 0013 Curriculum and Instructional Staff Development | 55,425 | - | - | 918 | 56,343 |
| 0021 Instructional Leadership | 2,500 | - | - | - | 2,500 |
| 0023 School Leadership | 396,426 | - | - | 400 | 396,826 |
| 0031 Guidance, Counseling and Evaluation Services | 205,151 | - | - | 268 | 205,419 |
| 0033 Health Services | 76,239 | - | - | - | 76,239 |
| 0034 Student (Pupil) Transportation | 328,572 | - | - | - | 328,572 |
| 0035 Food Services | 10,970 | - | - | 412,546 | 423,516 |
| 0036 Extracurricular Activities | 331,302 | - | - | - | 331,302 |
| 0041 General Administration | 542,464 | - | - | - | 542,464 |
| 0051 Facilities Maintenance and Operations | 829,392 | - | - | - | 829,392 |
| 0053 Data Processing Services | 63,689 | - | - | - | 63,689 |
| 0061 Community Services | 40,038 | - | - | - | 40,038 |
| Debt Service: | | | | | |
| 0071 Debt Service - Principal on Long Term Debt | - | - | - | 320,000 | 320,000 |
| 0072 Debt Service - Interest on Long Term Debt | - | - | - | 482,825 | 482,825 |
| 0073 Debt Service - Bond Issuance Cost and Fees | - | - | - | 431 | 431 |
| Capital Outlay: | | | | | |
| 0081 Facilities Acquisition and Construction | - | - | 1,059,362 | - | 1,059,362 |
| Intergovernmental: | | | | | |
| 0093 Payments to Fiscal Agent/Member Districts of SSA | 64,304 | - | - | - | 64,304 |
| 6030 Total Expenditures | 7,792,817 | - | 1,059,362 | 1,759,574 | 10,611,753 |
| 1100 Excess (Deficiency) of Revenues Over (Under) Expenditures | 521,933 | 5,824 | (1,055,267) | (88,544) | (616,054) |
| OTHER FINANCING SOURCES (USES): | | | | | |
| 7915 Transfers In | 90,927 | - | 130,008 | 29,083 | 250,018 |
| 8911 Transfers Out (Use) | (97,393) | (61,698) | (90,927) | - | (250,018) |
| 7080 Total Other Financing Sources (Uses) | (6,466) | (61,698) | 39,081 | 29,083 | - |
| 1200 Net Change in Fund Balances | 515,467 | (55,874) | (1,016,186) | (59,461) | (616,054) |
| 0100 Fund Balance - September 1 (Beginning) | 3,229,757 | 1,164,121 | 1,057,535 | 129,573 | 5,580,986 |
| 3000 Fund Balance - August 31 (Ending) | \$ 3,745,224 | \$ 1,108,247 | \$ 41,349 | \$ 70,112 | \$ 4,964,932 |

Palace Theatre

MOVIE SHOW TIMES
Friday-Thursday - 7 p.m.
Sunday - 2 p.m.
Closed Sunday Night

FRESH POPCORN & DRINKS!
PARTY ROOM & ARCADE
MOVIE RENTALS

Palace Theatre
210 Main Street
Canadian TX 79014
806-323-5133
www.palacetheatre.com

The Palace Theatre meets Lucasfilm THX specifications for site and sound quality.

Clarendon, Gruver Advance Handily

By Lee Passmore, Amarillo Globe-News

LEVELLAND - Clarendon and Gruver have something to prove for different reasons with shadows of the recent and distant past hanging over them.

What those boys basketball teams have in common is they took care of business rather efficiently Friday in the semifinals of the Region I-1A Division I tournament at South Plains College's Texan Dome.

And that's why they'll meet at 3:30 p.m. today with a trip to the state tournament in Austin on the line.

Clarendon beat Seagraves, 72-56, in the first semifinal, followed by Gruver's 53-19 dismantling of Olton.

The way those area teams played leaves little doubt as to them being the best left in the region, at least the way Gruver coach Troy Seagler sees it.

"They were very impressive against Seagraves," Seagler said of Clarendon. "They're very good, so we're going to have to be ready."

There's already some familiarity between the teams, as Clarendon (25-6) beat Gruver (27-5) in December at Lubbock's Caprock Tournament. A lot more is on the line today.

The Clarendon-Seagraves game might have been the most entertaining of the day's four games at the Texan Dome, at least in terms of offensive output. Both teams pushed the ball, but the Broncos did it more successfully. Clarendon took the lead for good late in the first quarter, but the Eagles never made the Broncos feel comfortable.

"We knew (the Eagles) had some really good athletes who can get up and down the floor, but we like to play that way as well," Clarendon coach Clint Coley said.

What the Broncos had which Seagraves didn't, though, was point guard Johnny Gaines, who fueled Clarendon's fast break with 22 points and seven assists. Gaines had 14 points in the first half as the Broncos took a 40-28 halftime lead.

"Any team at this stage has a good point guard, and Johnny has this gift of getting people the ball in the right space," Coley said. "He's a junior, and he looks like a veteran running things."

The inside presence was provided by Tre Brown, who had 19 points for the Broncos, including 10 in the third quarter when Seagraves (18-9) looked primed to get back into the game. Stephino McCamp-

bell had 15 points for Clarendon, which is aiming for its first trip to the state tournament in 40 years.

Jirus Davis led Seagraves with 25 points, while Damien Vidales had 21, but they didn't get much help from the rest of their teammates.

Still, the Eagles put up more of a fight than Olton (17-14) did against Gruver. The game was tied 2-2 in the opening minutes, but after the Greyhounds scored the next 10 points, it seemed the Mustangs couldn't do much right.

"We came out ready and focused once again and got (the Mustangs) frustrated early," Seagler said. "I think we made them take some shots they didn't want to take."

"We were able to defend their fast break."

Gruver led 30-8 at halftime, and Olton never generated a credible threat in the second half. Rily Urban had 14 points, while Tyler Wills scored 12, all in the first half.

The Greyhounds have a chance to wash away the memories of last year's regional final loss to Plains.

"Our obvious goal is to get to Austin and not be satisfied until the last game is played," Seagler said. "We're going to face some very, very tough obstacles from here on out."

Clarendon 72, Seagraves 56

SEAGRAVES (18-9): Hector Perez 2 1-2 5, Ricky Simental 1 0-0 3, Jirus Davis 10 5-7 25, Damien Vidales 6 9-14 21, Travis Thompson 0 0-1 0, Jachee Harrell 0 2-6 2, Samej Cole 0 0-0 0, Miguel Nino 0 0 0-0 0, Nick Bueno 0 0-0 0. Totals: 19 17-30 56.

CLARENDON (25-6): Johnny Gaines 7 8-9 22, Stephino McCampbell 7 1-2 15, Mike Crump 1 1-2 3, Jadon Thornton 1 2-4 4, Tre Brown 8 3-5 19, Brayden Phillips 1 1-2 3, Chris Crump 0 0-1 0, Justin Shillings 1 1-2 4, Forrest Yelverton 1 0-2 2, Glen Weatheron 0 0-0 0, Dylan Wright 0 0-0 0, Matt Henderson 0 0-0 0. Totals: 27

17-29 72.

Score by Quarters: Seagraves 21 28 45 56 Clarendon 25 40 56 72

3-point goals: Seagraves 1 (Simental), Clarendon 1 (Shillings). **Total fouls:** Seagraves 23, Clarendon 22. **Fouled out:** M. Crump. **Technical:** none.

Gruver 53, Olton 19

OLTON (17-14): Torey Jimenez 2 1-2 6, Bobby Wayne Workman 0 2-4 2, Eli Perez 0 0-0 0, Ryan Nieto 1 2-2 4, Tanner Neinaast 0 0-0 0, Nate Martinez 0 0-0 0, Pecos Martin 1 0-0 2, Adrian Sandoval 0 0-0 0, Tommy Guerrero 1 3-4 5, Jamie Reyna 0 0-0 0, Billy Ross 0 0-0 0, Aiden McGill 0 0-0 0. Totals: 5 8-12 19.

GRUVER (27-5): Danny Bonilla 2 0-0 4, Blake Fitzgerald 1 0-0 3, Drew Mireles 3 0-0 7, Tyler Wills 6 2-4 12, Rily Urban 6 2-4 14, Haden Hart 1 3-3 5, Parker Grotegut 1 0-1 2, Cory Graves 1 0-0 2, Caleb Miller 1 0-0 2, Zach Logsdon 0 0-1 0, Payton Thoreson 0 0-0 0, Justin Bass 1 0-0 2. Totals: 23 5-9 53.

Score by Quarters: Olton 5 8 12 19, Gruver 19 30 47 53

3-point goals: Olton 1 (Jimenez), Gruver 2 (Fitzgerald, Mireles). **Total fouls:** Olton 17, Gruver 16. **Fouled out:** Jimenez, Workman. **Technical:** none.

Gruver Drops Clarendon

Greyhounds' defense sparks 43-36 victory

By Lee Passmore, Amarillo Globe-News

LEVELLAND - This year, the Gruver Greyhounds made sure they finished the job.

One year after losing in the Region I-1A Division I finals, the Greyhounds returned to South Plains College's Texan Dome on Saturday with another chance to earn a trip to the state tournament in Austin.

The Clarendon Broncos promised to be a major obstacle, but a year of experience seemed to pay off for Gruver, which dominated the fourth quarter to win the region championship, 43-36.

The scene on the court after the game was far different from last year, when the Greyhounds lost the region title game to Plains.

"That added to our determination and desire," Gruver coach Troy Seagler said. "We weren't just happy with being here."

Gruver (28-5) appeared to be on a mission against a Clarendon team which Seagler admitted concerned him after Friday's semifinals. Clarendon's up-tempo style prevailed in a 72-56 win over Seagraves, which was sparked by point guard Johnny Gaines.

While Gaines was a factor in helping Clarendon (25-7) take a lead in the third quarter after a halftime deficit, the Grey-

hounds kept him in check in the third quarter, holding the Broncos to three points in the fourth quarter.

"We were going to try to use a team approach because one guy can't stop (Gaines) for the whole game," Seagler said. "Defensively, I'm extremely proud of the guys."

Gruver led by as many as 12 points in the first half and went into the locker room with a 25-20 halftime lead. But Clarendon came back and led 33-30 late in the third quarter before Gruver's Blake Fitzgerald hit a 3-pointer in the final seconds of the quarter to tie it 33-33 headed to the final period.

Those were the only points for Fitzgerald, but it seemed to be a turning point, as it sparked a 9-0 run by Gruver from which the Broncos were unable to recover. They weren't able to score again until the final minute.

"I think the biggest thing is that we didn't make shots we made in this play-off streak," Clarendon coach Clint Coley said. "We got a lot of good looks but we didn't take advantage."

Clarendon got within 39-36 on a layup by Tre Brown, but the Broncos couldn't score again. Gruver senior Drew Mireles was fouled twice in the final minutes and he put it away by making all four of his free throw attempts.

Mireles led the Greyhounds with 13 points, including eight in the fourth quarter after sitting out the entire second quarter after drawing two fouls.

"I thrive on being in control of a situation," Mireles said. "I've always been the leader on the team as far as taking care of the ball. I came back out in the second half and for me it was like the first quarter because I had all my energy back."

Tyler Wills had 12 points for Gruver, while Rily Urban had 11. Gaines was Clarendon's only scorer in double figures with 13.

GRUVER (28-5): Danny Bonilla 0 0-2 0, Blake Fitzgerald 1 0-0 3,

Drew Mireles 3 7-9 13, Tyler Wills 2 8-10 12, Rily Urban 5 1-1 11, Haden Hart 1 0-0 2, Caleb Miller 1 0-0 2, Cory Graves 0 0-0 0, Parker Grotegut 0 0-0 0. Totals: 13 16-22 43.

CLARENDON (25-7): Johnny Gaines 3 6-10 13, Stephino McCampbell 3 1-2 7, Mike Crump 0 0-0 0, Jadon Thornton 0 1-2 1, Tre Brown 3 0-0 6, Brayden Phillips 1 0-0 3, Justin Shillings 2 0-0 6, Forrest Yelverton 0 0-0 0, Chris Crump 0 0-0 0. Totals: 12 8-14 36.

Score by Quarters: Gruver 13 25 33 43, Clarendon 10 20 33 36

3-point goals: Gruver 1 (Fitzgerald), Clarendon 4 (Gaines, Phillips, Shillings 2). **Total fouls:** Gruver 13, Clarendon 16. **Fouled out:** none. **Technical:** none.

Records: Gruver is 28-5. Clarendon finishes 25-7.

Noteworthy: Gruver holds Clarendon to three points in the fourth quarter to earn a trip to Austin.

Amarillo Globe-News Athlete of the Week Honorable Mention: Rily Urban was named to the Amarillo Globe-News Athlete of the Week Honorable Mention. Urban totaled 42 points in Gruver's Region I-1A Division I quarterfinal, semifinal and championship wins, leading the Greyhounds to a state tournament berth.

1A State Basketball Tourney

The Gruver Greyhounds (28-5) will compete in the 1A State Basketball Tournament beginning on Thursday, March 11th.

They will begin tournament play against Bronte (26-5) at 8:30 a.m. on Thursday. Cayuga (20-2) will play Spurger (27-5) at 10 a.m. The winners of these two games will play on Saturday, March 13, 2010 at 8:30 a.m. for the State Championship.

The Gruver games will be aired on KXDJ-FM.

Garrett Rex Memorial Basketball Tournament

The Garrett Rex Memorial Basketball Tournament will be held March 11, 12, and 13, 2010. There are four divisions competing: 3rd/4th Girls, 3rd/4th Boys, 5th/6th Girls, and 5th/6th Boys. This is the 18th year for the Spearman Tournament to be held - the 10th year as the Garrett Rex Memorial. (go to www.spearmanreporter.com for division brackets)

All members of the community are encouraged to come out this week to the Spearman Varsity and Activity gyms to support our future Lynx and Lynxettes. Proceeds from the tournament support the youth basketball program, as well as the Garrett Rex Memorial scholarships.

The Jr. Lynx and Lynxettes would like to thank the following for helping to sponsor the tournament: The SportZone, Gordon's Drug, First National Bank, Agco, North Plains Insurance, The Hansford Agency, and Edward and Beth McIntyre.

GRUVER INDEPENDENT SCHOOL DISTRICT STATEMENT OF REVENUES, EXPENDITURES, AND CHANGES IN FUND BALANCE GOVERNMENTAL FUNDS FOR THE YEAR ENDED AUGUST 31, 2009

| Data Control Codes | | 10 | | Total Governmental Funds |
|--|---|--------------|--------------|--------------------------|
| | | General Fund | Other Funds | |
| REVENUES: | | | | |
| 5700 | Total Local and Intermediate Sources | \$ 5,456,328 | \$ 33,658 | \$ 5,489,986 |
| 5800 | State Program Revenues | 2,526,289 | 202,507 | 2,728,796 |
| 5900 | Federal Program Revenues | - | 311,504 | 311,504 |
| 5020 | Total Revenues | 7,982,617 | 547,669 | 8,530,286 |
| EXPENDITURES: | | | | |
| Current: | | | | |
| 0011 | Instruction | 2,801,756 | 393,477 | 3,195,233 |
| 0012 | Instructional Resources and Media Services | 35,351 | - | 35,351 |
| 0013 | Curriculum and Instructional Staff Development | 19,823 | - | 19,823 |
| 0023 | School Leadership | 236,459 | 7,817 | 244,276 |
| 0031 | Guidance, Counseling and Evaluation Services | 65,933 | - | 65,933 |
| 0033 | Health Services | 67,035 | - | 67,035 |
| 0034 | Student (Pupil) Transportation | 282,003 | 2,159 | 284,162 |
| 0035 | Food Services | - | 180,651 | 180,651 |
| 0036 | Extracurricular Activities | 227,002 | - | 227,002 |
| 0041 | General Administration | 398,478 | - | 398,478 |
| 0051 | Facilities Maintenance and Operations | 564,562 | - | 564,562 |
| 0053 | Data Processing Services | 25,072 | - | 25,072 |
| Debt Service: | | | | |
| 0071 | Debt Service - Principal on Long Term Debt | 44,450 | - | 44,450 |
| 0072 | Debt Service - Interest on Long Term Debt | 20,918 | - | 20,918 |
| Capital Outlay: | | | | |
| 0081 | Facilities Acquisition and Construction | 380,469 | 68,300 | 448,769 |
| Intergovernmental: | | | | |
| 0091 | Contracted Instructional Services Between Schools | 1,814,202 | - | 1,814,202 |
| 0093 | Payments to Fiscal Agent/Member Districts of SSA | 30,410 | - | 30,410 |
| 6030 | Total Expenditures | 7,013,923 | 652,404 | 7,666,327 |
| 1100 | Excess (Deficiency) of Revenues Over (Under) Expenditures | 968,694 | (104,735) | 863,959 |
| OTHER FINANCING SOURCES (USES): | | | | |
| 7911 | Capital Related Debt Issued (Regular Bonds) | - | 5,000,000 | 5,000,000 |
| 7915 | Transfers In | - | 38,256 | 38,256 |
| 8911 | Transfers Out (Use) | (38,256) | - | (38,256) |
| 7080 | Total Other Financing Sources (Uses) | (38,256) | 5,038,256 | 5,000,000 |
| 1200 | Net Change in Fund Balances | 930,438 | 4,933,521 | 5,863,959 |
| 0100 | Fund Balance - September 1 (Beginning) | 3,832,835 | - | 3,832,835 |
| 3000 | Fund Balance - August 31 (Ending) | \$ 4,763,273 | \$ 4,933,521 | \$ 9,696,794 |

MITCHELL THEATRES.COM
GUYMON, OK • LIBERAL, KS • NEWTON, KS

NORTHRIDGE 8
Guymon, Oklahoma
www.northridge8.com
580-338-3281

SOUTHGATE 6
Liberal, Kansas
www.southgate6.com
620-624-5573

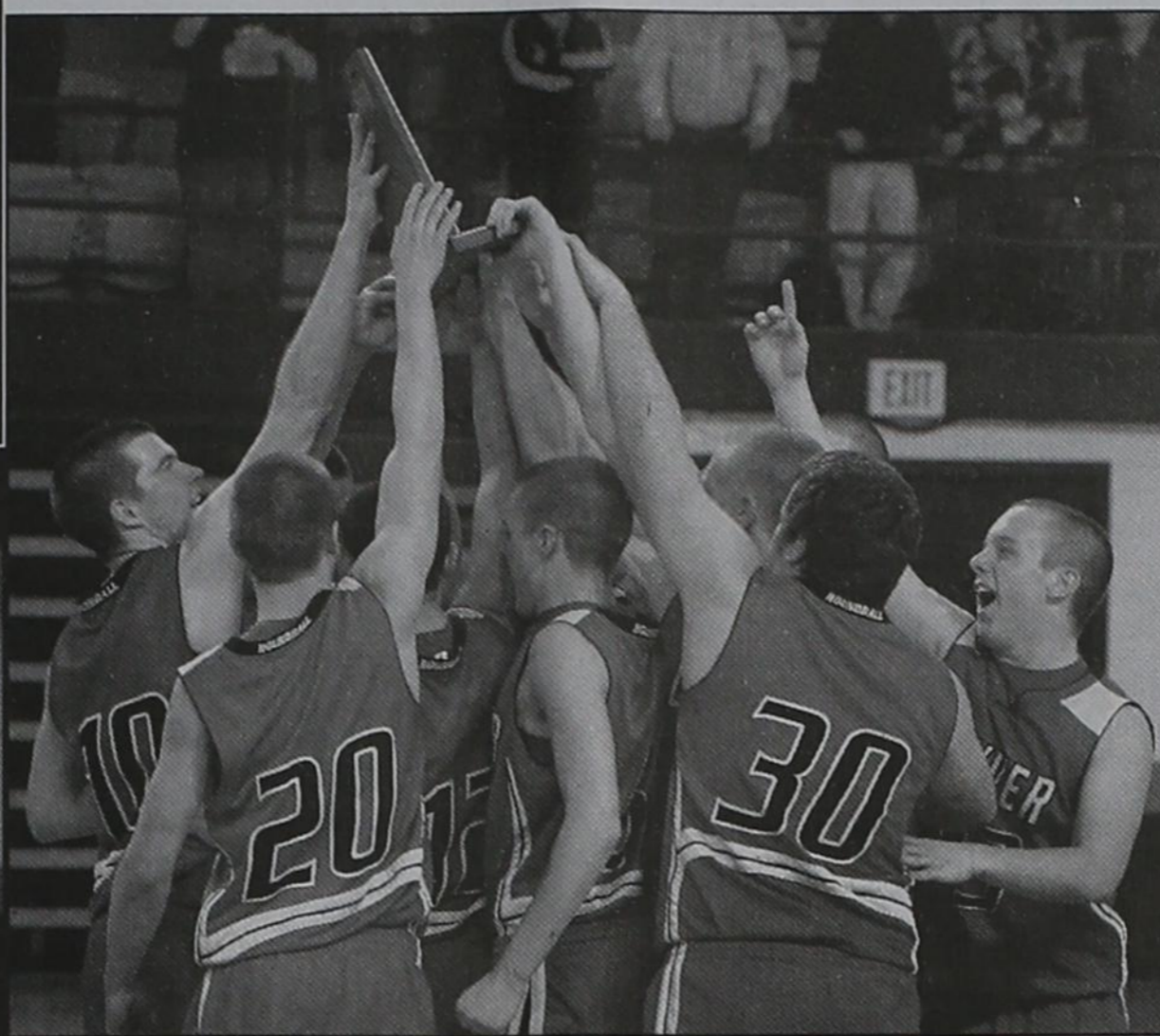
CHISHOLM TRAIL 8
Newton, Kansas
www.chisholmtrail8.com
316-283-0555

SEQUOYAH 8
Garden City, Kansas
www.sequoyah8.com
620-275-7707

FRESH POPCORN EVERYDAY!
-PARTY ROOM & ARCADE-

GRUVER GREYHOUNDS

STATE BOUND!



WE'RE PROUD OF YOU!

Adobe Walls Gin, LP
Spearman • 659-2574

Aeroflight Publications
Gruver • 733-2483

AeroTan
Gruver • 733-2483

All Occasion Flowers
Spearman • 659-5180

AMA TechTel
Gruver • (806) 322-2429

Bartlett's Lumber & Hardware
Gruver • 733-2404

Bort Agency
Gruver • 733-2456

Boxwell Brothers Funeral Home
Spearman • 659-3802

Brown, Graham & Co.
Spearman • 659-2538

The Bunkhouse Restaurant
Spearman • 659-2089

Cargill Ag Horizons
Spearman • 659-3554

Cates Men & Boys Wear
Spearman • 659-3426

City Cafe & Donuts
Spearman • 330-0676

Dairy Queen
Spearman • 659-3324

Bob & Cathy Davis
Gruver • Spearman

Dreamer's Salon
Spearman • 659-9907

eProperties
(806) 886-6536 • (806) 733-5678

El Vaquero Restaurant
Gruver • 733-2407

Equity Elevators
Spearman • 659-2420

Farm Bureau of Hansford County
Spearman • 659-3133

Farmers Ag Supply, LLC
Spearman • 659-5000

Farm Supply & Service
Spearman • 659-5519

First National Bank
Member FDIC
Spearman • 659-5544

First State Bank
Member FDIC
Spearman • 659-5565

Five Star Equipment Co.
Spearman • 659-3743

Frank Phillips College
Allen Campus
Perryton • 648-1450

Gigot Agri Products
Spearman • 659-3121

Golden Spread Sales Co.
Spearman • 659-3776

Gordon's Drug & Photo
Spearman • 659-2141

Gruver Agri Industries, Inc.
Gruver • 733-5005

Gruver Cablevision
Gruver • 733-5295

Gruver Ford, Inc.
Gruver • 733-2431

Gruver Fuel
Gruver • 733-2282

Gruver State Bank
Member FDIC
Gruver • 733-5061

H&H Credit Union
Stinnett • 878-2452

Hansford County Feeders, LP
Gruver • 733-5025

Hansford County Floral Co.
Spearman • 644-4000

Hansford County Hospital District
Spearman • 659-2535

Hansford County Reporter-Statesman
Spearman • 659-3434

Hansford County Vet Clinic
Spearman • 659-2100

Hansford Pharmacy
Spearman • 659-2226

Hargrove Photography
<http://spearmansports.smugmug.com>

The Headquarters Restaurant
Spearman • 664-4646

Hi-Plains Auto Supply, Inc.
Spearman • 659-2506

Hoochy Poochy Parlor
Borger • 273-2724

Hungry Cowboy
Spearman • 659-5151

Hunny's
Guyton • 580-338-7383

Interstate Bank, ssb
Spearman • 659-2559

John L. Hutchison, Attorney
Spearman • 659-3703

Money's
Perryton • 435-3945

Morse Implement
Morse • 733-2668

MurMurs
Spearman • 659-3580

North Plains Electric Coop
(806) 435-5482 • 800-272-5482

Panhandle Anchors
Spearman • 659-2558

Dr. James Pinkerton, DDS
Spearman • 659-3315

Pizza Hut
Spearman • 659-2547

Prairie Garden Flowers
Spearman • 659-3329

Prairie Motors
Spearman • 659-2541

PTCI
Spearman • 800-562-2556

Rockin' F Boot & Saddle Shop
Spearman • 659-3342

Rodney Sumner
Spearman ISD Superintendent

Simple Simon's Pizza
Spearman • 659-9991

Sparrow Photography
Spearman • 330-0302

Spearman Farm & Auto Supply
Spearman • 659-2588

Storage Depot • Doodlebug RV
Spearman • 330-1997

Tong's Chinese Food
Spearman • 644-2838

Video Madness
Spearman • 659-5046

Hansford County School News

Track Meet Changes

Gruver has canceled their track meet this week so that they can watch their boys in the state basketball tournament. The Lynx were scheduled to attend the Gruver track meet and are now attending the Panhandle Relays.

The Jr. High Meet is on Thursday, March 11 with a 3:30 start. The High School meet is a two-day meet on Friday and Saturday, March 12 & 13.

High School running prelims will be on Friday starting at 4 p.m., and Saturday will include field events at 9 a.m. and running finals at 2 p.m. or one hour after the last field event.

SHS Cheerleaders

Spearman High School held Cheerleader Tryouts on Thursday, March 4, 2010. Cheerleaders for 2010-2011 are Morgan Ashmore, Cassie Bowers, Malory Martin, Joselyn Terrazas, Kyla Walker, Erin Saenz, Gina Hargrove, Cynthia Mendoza, and Mascot Paige Pierson.

Lynx Compete in Wellington Golf Tourney

The Lynx Golf Team competed in their first golf tournament of 2010 at Wellington. The Lynx team placed with a team total of 350.

The Lynx were lead by Blayne Schroeder, third place medalist with an individual score of 83, followed by Trent Goodheart 87, Sawyer Sutterfield 90, Blaine Pack 90 and Jake Willimon 94.

Lynxettes Compete in Dumas Golf Tourney

The Spearman Lynxettes competed in the Dumas Golf Tournament on Mon-

day, March 8, 2010.

The Lynxettes had a team total of 444 points. Malory Martin led the Lynxettes with an individual score of 99, followed by Morgan Ashmore with 103, LeAnna Espinosa 119, Amber Martinez 123 and Mabry Sutterfield 140.

Lynx Compete in Dumas Golf Tournament

The Spearman Lynx competed in the Dumas Golf Tournament on Tuesday, March 9, 2010.

The Lynx shot a team total of 348. Sawyer Sutterfield led the Lynx with an individual score of 84, followed by Blayne Schroeder with 86, Trent Goodheart 89, Blaine Pack 89, and Jake Willimon 91.

Sunray Relays

The Spearman Jr. High, Gruver Jr. High and Pringle-Morse Jr. High track teams competed at the Sunray Relays on March 5th and 6th. Following are the team results.

8th Grade Boys: 1. Panhandle 118, 2. Boys Ranch 111, 3. Canadian 93, 4. Stratford 70, 5. Spearman 59, 6. San Jacinto 46, 7. Sunray 31, 8. Gruver 24, 9. Arbor Christian 21, 10. Pringle Morse 10
7th Grade Boys: 1. Spearman 121, 2. Stratford 106, 3. Panhandle 69, 4. Canadian 58, 5. Gruver 58, 6. Sunray 51, 7. San Jacinto 51, 8. Pringle Morse 21, 9. Boys Ranch 17, 10. Arbor Christian 16, 11. Hartley 14

Lynxette Junior High Track Results

The Spearman Jr. High Lynxettes competed in the Sunray Relays.

The 7th Grade Girls took first place with 178

points, and the 8th Grade Girls took 5th place with 58 points.

Panhandle Tennis Tournament

The Spearman Lynx and Lynxettes competed in the Panhandle Tennis Tournament at the Borger Tennis Courts on Tuesday, March 9th. The results are as follows. (The Girls Singles and Girls Doubles events were cancelled due to rain.)

Boys Singles

Jesus Anaya (Sp) def. Treijo (Sunray) 8-5; Roy Moreno (Sp) def. Smith (Panh) 9-7; Jesus Anaya (Sp) def. Virden (Well) 8-0; Jimenez (Boo) def. Roy Moreno (Sp) 8-4; **Quarterfinals** - Clark (Mem) def. Jesus Anaya (Sp) 8-3

Boys Doubles

Odegaard\Sumner (Sp) BYE; Molina\Vela (Sp) def. Polikva\Bell (Clau) 8-2; Wise\Murdock (Panh) def. Pack\Camacho (Sp) 8-6; Odegaard\Sumner (Sp) def. Schniederjan\Dailing (Dal) 8-0; Anderson\Anderson (Bor) def. Molina\Vela (Sp) 8-1; **Consolation Draw** - Barkley\Painter (Groo) def. Pack\Camacho (Sp) 8-2; **Quarterfinals** - Johnson\Reyes (Well) def. Odegaard\Sumner (Sp) 8-2

Mixed Doubles

Sewell\Martin (WD) def. Batton\Ortiz (Sp) 8-3; Urbanczyk\Friemel (Panh) def. Flores\Terrazas (Sp) 8-2; Perez\Galvan (Mem) def. Castillo\Pinon (Sp) 8-4; **Consolation Draw** - Batton\Ortiz (Sp) def. Clay\May (Panh) 8-0; Wieberg\Torres (Groo) def. Flores\Terrazas (Sp) 8-5; Wilson\Vasquez (Sun) def. Castillo\Pinon (Sp) 8-3; Batton\Ortiz (Sp) def. Clendennan\Ramos (Bor) 8-2

SHS Students of the Month



The December Students of the Month at Spearman High School are seniors, Andi Linn Scarborough and Gus Lopez.

Andi Linn is the daughter of Andy and Janet Scarborough. She has one older brother and sister-in-law Chad and Shannon Scarborough. She also has one niece Jadis, and one brand new nephew, Corin. Andi Linn has been active in Spearman Lynxette Basketball, Cross Country, Track, and Tennis. She is a member of National Honor Society, Student Council, Fellowship of Christian Athletes, and has participated in 4-H, dance, and piano. Andi Linn is a mentor in the Big Brother/Big Sister Program and volunteers for Kid Zone and Awana's. She is also a member of the First Baptist Church and FBC youth group. While in high school, Andi Linn as been named Academic All-District for Cross-Country and Track, received the Daughters of the American Revolution History Award, named to the National Society of High School Scholars, was voted Most Likely to Succeed in the senior class, and has received the Perfect Attendance Award. She has also been named to the All A Honor Roll all through her school years, was a District UIL winner in spelling, Regional UIL qualifier in spelling, and a member of People-to-

People. Andi Linn is currently serving as the Student Council secretary, and served as the Junior Class Secretary. In her spare time, Andi Linn loves reading, piano, dance, traveling, spending time with her family and friends, snow skiing, white water rafting, swimming, and shopping. Her future plans include graduating from high school and attending Dallas Baptist University and majoring in International Business, while also receiving her teaching degree. Andi Linn states, "I want to travel to places I have only read about and experience new things, eventually settle down, start a family, and lead a successful life." Andi Linn states the best thing about Spearman is, "The saying 'It takes a village to raise a child' describes Spearman perfectly. There is not one person who has not touched my life in some way. I have never gone without because someone is always there when it's needed." The best thing about Spearman High School is, "Everyone is friends with everyone. We all get along great. No matter the classification we have shared so many memories and laughs. It's a great school to grow up in." Andi Linn's most influential teacher during her school years Mr. Verlan Winegarner, but Andi feels that all of her teachers have been influential in her life.

Gus is the son of Gustavo and Magda Lopez. He has one younger brother, Erik Lopez, and one younger sister, Daisy Lopez. Gus is active in Spearman Lynx Varsity Football and Track, Family Career and Community Leaders of America (FCLLA), Future Farmers of America (FFA) Spearman Varsity Band, and Sacred Heart Catholic Youth Group. He was named Academic All-District in football in 2008, 2009, made 5 States Honor Band in 2007, 2009, and made All Region Band in 2009. In his spare time, Gus enjoys riding four wheelers, listening to music, playing video games, playing instruments, watching movies, working out, and competing. Gus plans on attending Amarillo College to receive his basic requirements before transferring to Texas Tech University. He plans on pursuing a career as a dentist. Gus states the best thing about Spearman is, "it is a small town where almost everyone knows each other and all of my good friends live here." Gus says the best thing about Spearman High School is, "I like that Spearman High School keeps our students disciplined and the small classes are better for learning." Gus's most influential teacher during his school years is Mrs. Amber TeBeest.

Congratulations to Andi Linn and Gus on being named the Spearman High School December Students of the Month.

See us for:
 AUTO • HOME • CROP HAIL •
 FARM & RANCH • MULTIPERIL •
 LIVESTOCK
INSURANCE

BORT AGENCY, INC.
 510 Main St. • Gruver, TX
 (806) 733-2456

ALLSUP'S

Prices Good Thru 3/20/10

12 PACK DIET COKE, SPRITE OR COKE
2 \$7.99 FOR

DIET COKE, SPRITE OR 2 LITER BOTTLE COKE
3 \$5.00 FOR

DIET COKE, SPRITE OR 6 PACKS COKE
2 \$5 FOR

BUY 12 GALLONS OF FRESH ALLSUP'S MILK... GET ONE FREE!

305 W. Kenneth Spearman • 659-3135

101 Main Ave. Gruver • 733-2953

ASSORTED **TOM'S CHIPS**
REGULARLY \$2.49
2 \$4.00 FOR

MUFFINS, BROWNIES OR DANISH
BROWNIE BAKER
\$1.49

ORG., TERIYAKI OR PEPPERED
JACK LINKS JERKY
3.25 OZ.
\$4.99

KELLOGG'S ASST. CEREAL-IN-A-CUP
99¢

PURCHASE A 20 OZ. **PEPSI MAX**
RECEIVE A COUPON FOR A FREE BAG OF **DORITOS**
UPTO \$1.29 VALUE

ASSORTED **ALLSUP'S ICE CREAM**
1/2 GALLON
2 \$6 FOR

BLUE BUNNY ASST. CHAMP CONE
EACH
99¢

MORE SPECIALS

| | |
|--|----------------------|
| ALLSUP'S SANDWICH BREAD 24 OZ / 794 OR | 2 FOR \$1.29 |
| ALLSUP'S WHEAT BREAD 24 OZ / 994 OR | 2 FOR \$1.49 |
| BREAKFAST WRAPS BACON, SAUSAGE OR STEAK | \$2.49 |
| LANCE SOFT COOKIES CHOCOLATE CHIP OR PEANUT BUTTER | 79¢ |
| NUTRIGRAIN BARS ASSORTED | BUY ONE GET ONE FREE |
| COLORTEX BATHROOM TISSUE 4 ROLL PKG. | 99¢ |
| COLORTEX MOPPER TOWELS SINGLE ROLL PKG. | 99¢ |

REAL ESTATE

FOR RENT: 1BR furnished apartment and 2BR furnished apartment. Bills paid, free laundry services. Call 659-2247.

WINDMILL COURTYARD APARTMENTS: 2BR, 1B unfurnished apartments. Central heat and air, new appliances. Pets allowed with additional deposit. Utilities not included. \$500/month rent with \$500 deposit. Inquire about applications at Deakin Electric, 321 Main St., Spearman. TFN(7/16/09)B

READY FOR MOVE-IN! 3 BR home, central H/A, hardwood floors, new paint & lighting, large bath w/2 sinks + tub/shower, lots of built-in storage, laundry rm, attached garage, huge fenced yard. 1017 Townsend St. **REDUCED TO \$59,500!** Call 659-5293 or 330-0384. 4(3/4/10)B

HELP WANTED

HELP WANTED: First United Methodist Church, Spearman is currently taking applications for a nursery worker. Need to be available for Sunday church services and various times throughout the week and for funerals. If interested, please come by the church to pick up an application. (407 S. Haney, Spearman, 806-659-5504) 4(2/4/10)B

SERVICES

CLICK PAINTING & HOME REPAIR Painting, Texturing, Drywall Repair, Fencing & General Carpentry. Serving Peryton, Spearman & Gruver. Don Click, 648-1480, or 202-1391 (cell). TFN(10/15/09)

Blankenship Real Estate
659-3052 - 670-3774

4BR/2B/2CG Home - Basement, pool, central H/A, fireplace

3BR/2B Home - 1500 sq. ft, brick, 2CG, patio, walk-in closets

3BR/2B Home - 1460 sq. ft, brick, 2CG, patio, walk-in closets.

NEW LISTINGS WANTED!

Eulalia Blankenship - Sales
Eschol Blankenship - Broker



We NEED listings!
Call us now to help YOU sell your home for top dollar!

501 Barkley - Spearman: 2,490sf, 3-4BR, 1 1/2 B, 2 car garage, 2nd floor, 2nd basement, plus wood shop! VERY modern and updated!

113 N. Brandt - Spearman: Spacious 3BR, 2B. An 1,848 sq. ft home in need of a FAMILY!

902 9th - Gruver: Horse Stables FOR SALE! 18 pens, circular training pen, arena, & 4500 sf barn on 10.42 acres! **PRICE REDUCED!!**

712 Womble - Gruver: 1070sf, 3 BR, 1 B, Central Heat, Lrg Corner Lot! **REDUCED!**

Shirley Howard, Broker/Owner
806-886-6536, Cell

Melinda McCullough, Realtor
(806) 733-5678

We would LOVE to sell your HOUSE!
CALL US!

HOOCHY POOCHY PARLOR
Call us for all your pet's grooming and boarding needs. Call now for reservations! 806-273-2724. TFN(11/2/07)

PUBLIC NOTICE

JOB OPENINGS
The City of Spearman is accepting applications through March 30, 2010 for:
Swimming Pool Manager
Assistant Pool Manager
Lifeguards
Park Maintenance
Assistant Manager and lifeguard positions must be able to obtain certified lifeguard training.
Applications may be obtained at City Hall, 30 SW Court. E.O.E.
2(3/11/10)B

| | | | | | | | | |
|---|---|---|---|---|---|---|---|---|
| 7 | 8 | 2 | 4 | 3 | 6 | 5 | 1 | 9 |
| 1 | 3 | 6 | 5 | 7 | 9 | 8 | 2 | 4 |
| 9 | 5 | 4 | 2 | 1 | 8 | 7 | 6 | 3 |
| 8 | 7 | 3 | 1 | 6 | 4 | 9 | 5 | 2 |
| 4 | 6 | 9 | 8 | 2 | 5 | 1 | 3 | 7 |
| 5 | 2 | 1 | 3 | 9 | 7 | 6 | 4 | 8 |
| 3 | 1 | 7 | 6 | 8 | 2 | 4 | 9 | 5 |
| 2 | 9 | 5 | 7 | 4 | 1 | 3 | 8 | 6 |
| 6 | 4 | 8 | 9 | 5 | 3 | 2 | 7 | 1 |

OMAHA ARG TRAP
TIMES LAO GAUGE
IDEAL ATM ULCER
SIXTEEN BRACKET
HED LOAN
ATE PITA WOODEN
TOLU THUS STOVE
ONES SANER IDEE
MINSK IDEA CORD
SCARAB RSYV STY
NOSY EON
SPOUSAL INDIANA
HENNA YON INCAS
ELLIS END UNHIP
STYX ROY MYERS

Are You A Victim of Domestic Violence, Sexual Abuse or Physical, Emotional or Sexual Assault?
Call Toll Free Hotline
1-800-753-5308
We can see individuals from Hansford County anytime upon request. Call 435-5008 or 1-800-753-5308 to set up an appointment in Hansford County. We operate a safe place for victims and their children to stay in times of crisis.
Battering Intervention & Anger Management Available
Panhandle Crisis Center
Serving Hansford, Lipscomb & Ochiltree Counties
301 S. Ash - Peryton, TX
Memorials Accepted

MARTIN & ASSOCIATES REALTY
Serving Hansford County for 15 years
Julie Martin - Broker - 659-2425
PRICE REDUCED ON BOTH 804 & 806 Wilbanks
New Construction. Call for your private showing!
We'd Like Your Listing!
FOR QUALITY & SERVICE CALL US TODAY!
Equal Housing Opportunity

This ad is just a small sample of the properties that we currently have for sale.
Please check our Web site and give us a call! We need your listings both large and small, all types of ag properties (ESPECIALLY CRP).
DALLAM CO. - Three adj. sections of dryland, some native grass, irrigation in area (two new wells across the road).
SWINE PRODUCTION FACILITY - Moore Co., TX. - 1200 sow capacity, capable of running 28,000 pigs annually, computerized feed mill, flex-flo feeding system, management in place. **PRICED TO SELL!**
RITA BLANCA RANCH - Dallam Co. TX. - 4,055 acres, 4 circles, 375 acres CPR, good fencing, pens and water. Priced to sell.
DALLAM CO. - 2 1/2 sections CRP.
HARTLEY CO., TX - 640 ac. 10 miles to Hilmar Cheese plant, on pvtmt., dairy permit, 3 pivots, home, barn, grain storage.
OCEANS OF WATER II - Hansford Co., Texas - 4 sections, strong water, dev. with sprinklers, wells, feedyard, home, barns, pvtmt., 2 mi. hwy. frontage.
SEE OUR WEBSITE OR CALL US!
www.scottlandcompany.com
Shawn Gillispie 806/922-5532
Ben G. Scott, Broker
1-800-933-9698 day/eve
TFN(2-04-10)

hchd
Hansford County Hospital District
Openings at Hansford Hospital
RN: 7pm-7am. Graduate of an accredited School of Professional Nursing. Currently licensed in the State of Texas. BCLS, ACLS and TNCC preferred. CPR required.
LVN: Graduate of an approved LVN program. Must be able to make independent decisions when circumstances warrant.
Openings at Hansford Manor
LVN: Graduate of an approved LPN/LVN program. Must be able to make independent decisions when circumstances warrant. Must possess the ability to deal tactfully with residents, family and public.
CNA: CNA certification required. Must be able to provide assigned residents with routine daily nursing and services in accordance with the resident's assessment and care plan, and as may be directed by your supervisor.
Great working environment and staff, quality facility providing opportunities for professional growth. Great benefit package. Apply at 707 S. Roland, Spearman, TX or contact Jackie Nelson at 806-659-5841. Download application at www.hchd.net
EEOE
(3-11-10)

RAYSCO FARMS RETIREMENT AG EQUIPMENT NO RESERVE INTERNET AUCTION
Bidding starts to close Wed., Mar. 17 | 10 A.M. CST

'05 JD 7460 cotton stripper, '06 Crustbuster Speed King boll buggy, '06 Crustbuster Speed King module builder, Case 2388 axial-flow combine, '00 JD 8410T tractor, NH TV140 Bidirectional tractor, '01 JD 1293 corn header, '98 Mac Don 962 draper platform, JD 1710 Max-EmergePlus vacuumer planter and more
Photos, descriptions, seller contact info & bidder registration online
CONSIGN, LEARN MORE & BID NOW!
866.608.9283
purplewave.com
Aarvin McKee TX Lic #16401 | 10% buyer's premium applies

CONCEALED HANDGUN CLASS
Saturday, March 6th - 9 a.m.-5 p.m.
Sunday, March 7th - 2-6 p.m.
MurMur's Cafe
100 Roland St. - Spearman TX
Instructional Fee - \$125*
For more information, or to register for the class, call Dee Mayfield at 806-330-0269.
Concealed Handgun Licensing
* Does not include Texas Department of Public Safety Concealed Handgun Licensing Fee.

Look'n for the Green
Celebrating 25 years of service
Daily cash giveaway at the teller line
March 15th-19th
You may be a Lucky winner!
FNBANK
First National Bank
Member FDIC
Spearman 806-659-5544
Dumas 806-934-8455

TEXAS STATEWIDE CLASSIFIED ADVERTISING NETWORK
TexSCAN

TexSCAN Week of March 7, 2010
BUSINESS OPPORTUNITIES
ALL CASH VENDING! Do you earn \$800 in a day? Your own local candy route. 25 machines and candy. All for \$9,995. 1-888-625-5481. Multi Vend, LLC.
DRIVERS
CDL-A DRIVERS: Owner Operators needed. Houston-based LTI is seeking qualified flatbed O/Os for immediate lease. Great freight, great rates, home often. Call Ray today! 1-800-462-4828
CDL-A TEAMS WANTED Celadon company drivers and owners operators! Paid vacation. Great pay, benefit and home time. 1 year verifiable T/T experience. 1-800-729-9770. www.DriveCeladon.com
DRIVERS-HIRING DEDICATED drivers. Average \$850-\$1250 per week. Great benefits. Home every 1-2 weeks. 1 year tractor-trailer experience and HS diploma or GED required. Call 1-888-605-5238 or apply online at www.averittcareers.com. Equal opportunity employer.
NO MONEY DOWN! No credit checks, top lease purchase plan, low monthly payments, high % pay package. Owner Operators welcome! 1-800-767-6918. www.JoinCRST.com
OTR DRIVERS New trucks! Average 2,500-3,000 miles! Up to 41¢ cpm. 12 months experience required. No felony or DUI past 5 years. 1-877-740-6262. www.pil-inc.com
PICKUP TRUCKS needed in Hope, AR. Make money now! Seeking qualified pickup truck owners to deliver 11,000 RV trailers from Hope, AR. www.horizontransport.com/hope
EQUIPMENT FOR SALE
NEW NORWOOD SAWMILLS - Lumber Mate-Pro handles logs 34" diameter, mills boards 28" wide. Automated quick-cycle sawing increases efficiency up to 40%! Clear title, survey. Priced way below market value! 1-877-462-9139.

HEALTH
IF YOU USED TYPE 2 Diabetes drug Avandia and suffered a stroke or heart attack, you may be entitled to compensation. Call Attorney Charles Johnson 1-800-535-5727

HELP WANTED
ABLE TO TRAVEL Hiring 8 people. No experience necessary. Transportation & Lodging furnished. Paid training. Work and travel entire USA. Start Today! www.protekchemical.com. 1-410-800-3614

REAL ESTATE
ABSOLUTELY THE BEST VIEW Lake Medina/Bandera 1/4 acre tract, central W/S/E, RV/motor home/house, OK only \$830 down \$235 month (12.91%/10yr). Guaranteed financing. More information call 1-830-460-8354
BOAT HOUSE READY! Must sell my wooded lakefront with retaining wall, approximately 100ft of shoreline. Build when ready, on 3rd largest lake in Texas. Gentle slope. Worth twice this \$70,000. Must see 1-214-390-5532.
\$106 MONTH BUYS land for RV/motor home/ house, pier, boat ramp, pool, clubhouse, gated entry, on Lake Fork, \$690 down (\$6900/10.91%/7yr) Guaranteed financing. 1-214-696-2315
676 ACRES-REEVES County, 15 Miles North Pecos. River frontage. Call Jack 1-214-755-6224.
\$106 MONTH BUYS land for RV, MH or cabin. Gated entry, \$690 down, (\$6900/10.91%/7yr) 90 days same as cash. Guaranteed financing. 1-936-377-3235

OWNER SACRIFICE must sell quickly. 3 acres of beautiful land with access to third largest lake in Texas only \$29,900. Horse privileges and financing. Won't last. Call now, 1-866-856-4194.
PAINT MARE RANCH #4, 131.34 acres, Terrell County in West Texas. Deer, dove, and quail. \$38,745. Owner financed or TX Vet. 1-866-286-0199. www.westernexasland.com
WATERFRONT REDUCED \$67,000 prime dockable waterfront on 44,742 acre full recreational and excellent fishing lake. Access to pool, clubhouse and private boat launch. No time limit to build. I am a motivated seller and will let this \$136,900 waterfront go for only \$69,900. Won't last long at this price! 1-866-799-5547.

SCHOOLS/TRAINING
AIRLINES ARE HIRING, Train for high paying aviation maintenance career. FAA approved program. Financial aid if qualified. Housing available. Call Aviation Institute of Maintenance, 1-888-349-5387
ATTEND COLLEGE ONLINE from home. Medical, Business, Paralegal, Accounting, Criminal Justice. Job placement assistance. Computer available. Financial aid if qualified. Call 1-888-205-8920, www.CenturaOnline.com
CAN YOU DIG IT? Heavy equipment 3 week training program. Backhoes, bulldozers, track hoes. Local job placement assistance. Start digging dirt now. 1-866-362-6497
HIGH SCHOOL DIPLOMA graduate in 4 weeks! Free brochure! Call now! 1-866-562-3650, ext. 55. www.southeasternHS.com

Run Your Ad in TexSCAN!
Statewide Ad.....\$500
307 Newspapers, 1,018,288 Circulation
North Region Only.....\$230
99 Newspapers, 270,045 Circulation
South Region Only.....\$230
107 Newspapers, 501,889 Circulation
West Region Only.....\$230
101 Newspapers, 248,581 Circulation
To Order: Call this Newspaper direct, or call Texas Press Service at 1-800-749-4793 Today!

NOTICE: While most advertisers are reputable, we cannot guarantee products or services advertised. We urge readers to use caution and when in doubt, contact the Texas Attorney General at 1-800-621-0508 or the Federal Trade Commission at 1-877-FTC-HELP. The FTC web site is www.ftc.gov/bizop

Extend your advertising reach with TexSCAN, your Statewide Classified Ad Network.

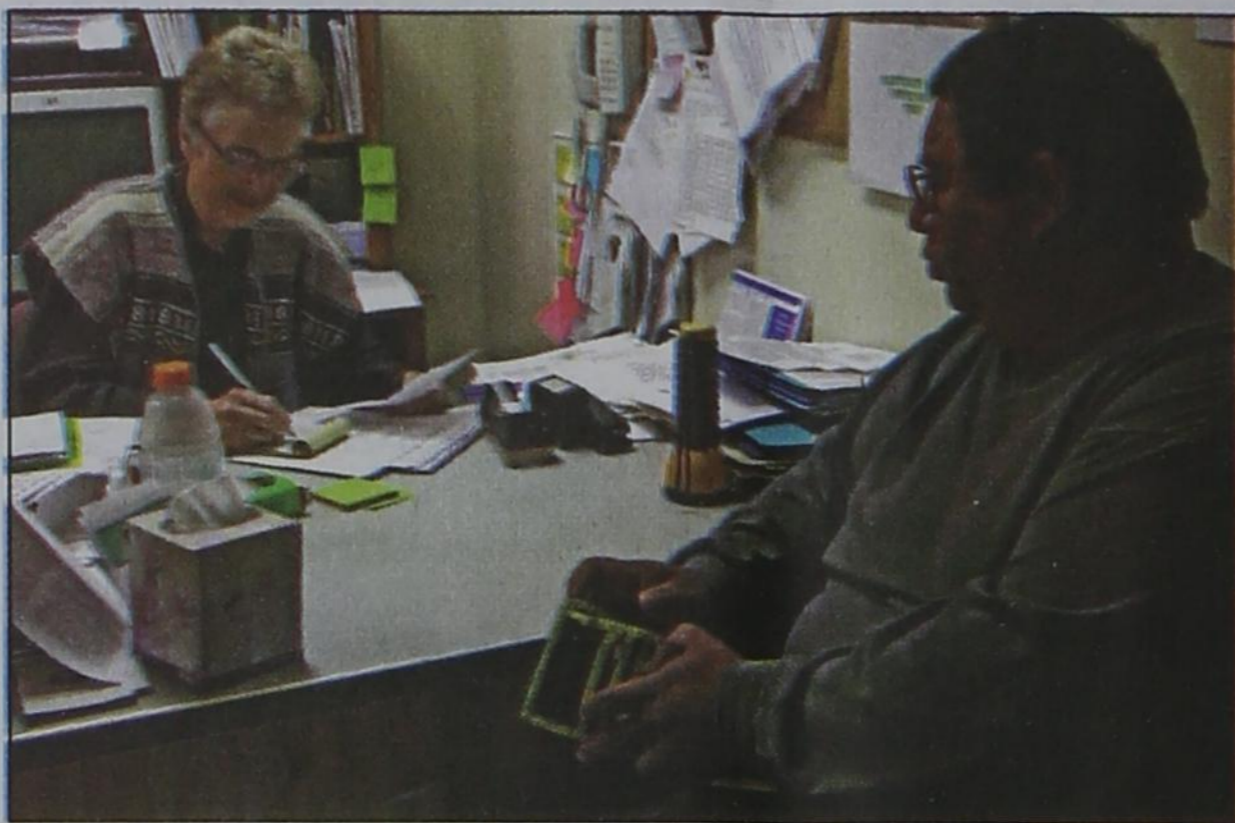
BUY HERE! PAY HERE!
We Finance!
CLASSIC CLOSED CARS, INC.
Devin Cook
Manager
(806) 878-3944
724 S. Main Street
Stinnett TX 79083

Spearman Housing Authority Provides Needed Services

The Spearman Housing Authority is in the process of spending over \$20,000 on improvements. The American Recovery and Reinvestment Act of February 2009 distributed the additional funds to the Spearman Housing Authority for use in capital improvements, and these were spent on new, energy-efficient windows, the continuation of the upgrade of the sewer system and on a new building which provides outside storage for two families.

The Spearman Housing Authority has provided housing for low-income families of Hansford County since the mid-sixties through the rental of six 3-bedroom and four 2-bedroom apartments. In addition to basic shelter and safety needs, families are assisted with other matters, including doctor visits and help with applications for other available forms of social service. Through its continuous operation over these 40+ years, the Housing Authority has served many local families through some of their most difficult times.

"Housing authorities, in general, are unique collaborations among federal,



Eugene Marquez (right) pays his rent at the Spearman Housing Authority office to Beverly Cook.

state and local governments which were initiated by the 1937 Housing Act, and amended several times, to provide decent, safe and sanitary housing to low-income families at affordable rents and in a fair manner," commented Beverly Cook, Executive Director for the Spearman Housing Authority.

Rent is based on the income information provided by tenants (that is then verified by a third

party). Tenants are given an electricity and gas allowance. If a tenant's income changes, the rent is adjusted.

"There are benefits to the community, however, which go beyond these direct services to families," continued Cook. "Among these are the investment of funds in the goods and services of local businesses - including banks, retail merchants, news media and other advertis-

ers, equipment servicing providers, professional electricians, carpenters, craftsmen and plumbers - plus the temporary employment of unskilled laborers who would otherwise be jobless."

The Spearman Housing Authority has a waiting list of about fifteen people, some of whom have been waiting for over two years. Residency averages over two years, with the longest resident having lived there for over eight years.

Funds for the Housing Authority are provided through the U.S. Department of Housing and Urban Development, through the regional office located in Fort Worth.

"Serving the Housing Authority, now for over 6 years, has been a blessing to me, especially from the viewpoint of a retired minister and pastor," said Cook. "The little commu-



Beverly Cook, executive director for the Spearman Housing Authority, stands in front of the office located at 201 S. Brandt.

nity we have going here has a 'family' feel to it which is not unlike that associated with the little congregations I have served.

"However, the aspect of sitting at the family table into the wee hours of the night, struggling with one or the other of 'the big three' (food/clothing/shelter), brings me full-circle with my early years at home, watching my mother redistribute all our meager income to precisely those 'three,'" continued Cook. "Having the opportunity to be instrumental in one of these areas on behalf of others has been and is a real joy, as is the great satisfaction of seeing public funds not only going precisely where they are most needed, but being multiplied many times over in their effects

on the lives of real people, real people who I know personally and consider my friends."

The Spearman Housing Authority is overseen by a board of four community representatives, one resident representative, and the executive director. Current board members are Anne Snow, chairman, Verna Strawn, R.L. McClellan, Carrie Ceniceros, and Tracy Gibson, resident.

All that goes on in the administration, management, maintenance and tenant services of Spearman Housing Authority, though complicated, is intended to be entirely transparent. Anyone wanting more information may call 659-9990 or go by the office, 201 S. Brandt.

Gigot Agra Products Honored as Performance Plus Dealer at Valley 2010 Global Meeting

Valmont Irrigation has announced Gigot Agra Products of Spearman, TX as a Valley Performance Plus Dealer at the company's 2010 Global Meeting. Gigot Agra Products has earned this designation for excelling in the areas of Sales, Service and Aftermarket Parts.

Each dealership is scored based on departmental evaluations and annual customer satisfaction surveys as well as the success of their own dealership growth plans. Focusing on best practices, Valley dealers strive to deliver the highest standards of service and product support to their mechanized irrigation customers.

The Dealer Performance Plus Program, now in its seventh year, focuses on the recognition of dealers as they continue to meet the ever increasing and changing needs of production agriculture.

"Being honored as a Performance Plus Dealer represents a significant dedication not only to Valley products and sales but also to Valley customers and the service they expect

from our company," stated Rich Panowicz, Director of North American Sales,

challenges before them and are successfully exceeding those goals,"



Gigot Agra Products was recently honored as a Performance Plus Dealer at the 2010 Global Meeting. They are being recognized for surpassing goals in the areas of Sales, Service and Aftermarket Parts and delivering the highest standards of service and product to their irrigation customers. Pictured are Doug Dale of Valmont Irrigation (left) and Lance Kemp of Gigot Agra Products (right).

Valmont Irrigation. "With this program, we honor those dealerships that set out to meet the

Panowicz stated. Gigot Agra Products is a 6 time Performance Plus Award Winner.



Jodie Hight displays the Lynx puzzle board that is at Gordon's Drug. Proceeds of the silent auction will go to the Lynxettes Cross Country Ring fund. This plaque was donated in memory of Waurayne Cope by Wayne Cope.

12th Annual

"Pot O' Gold"

Dinner, Dance & Calcutta

Saturday, March 27 • 7 p.m.

The O'Loughlin Center
502 S. Brandt • Spearman

Tickets - \$60 per person
Tenderloin Meal

Entertainment by "Insufficient Funds"
Grand Prize - \$2,500

Consolation Prizes & Calcutta
Call 659-3030 for more information.

FPC Allen Campus Parent Night

Helping you and your senior prepare for the future!

Tuesday, March 23rd, 6:30pm

FPC Allen Campus

Take advantage of this opportunity to:

- Hear about our academic/technical programs
- Ask questions regarding the admissions process
- Learn about free money (Financial Aid and Scholarship Opportunities)
- Find out about campus life and housing

Frank Phillips College is YOUR Community College.

For more information please call the Allen Campus at (806) 648-1450

Living Life to the Fullest

Spring 2010
Hospice Volunteer Training

Hospice Volunteer Classes will begin in April. These classes are for anyone interested in becoming a Hospice volunteer, learning more about hospice care, and/or desiring personal growth. Thirty class hours are required.

The class schedule will be decided by those who attend. Classes are free.

For more information, or to enroll, please call the Hospice Office at 659-5811.